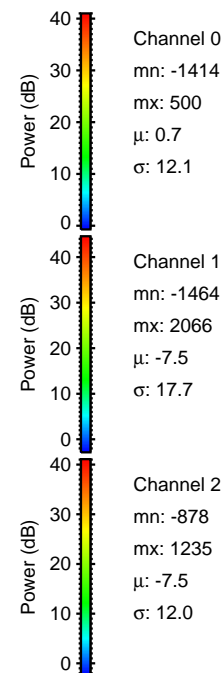
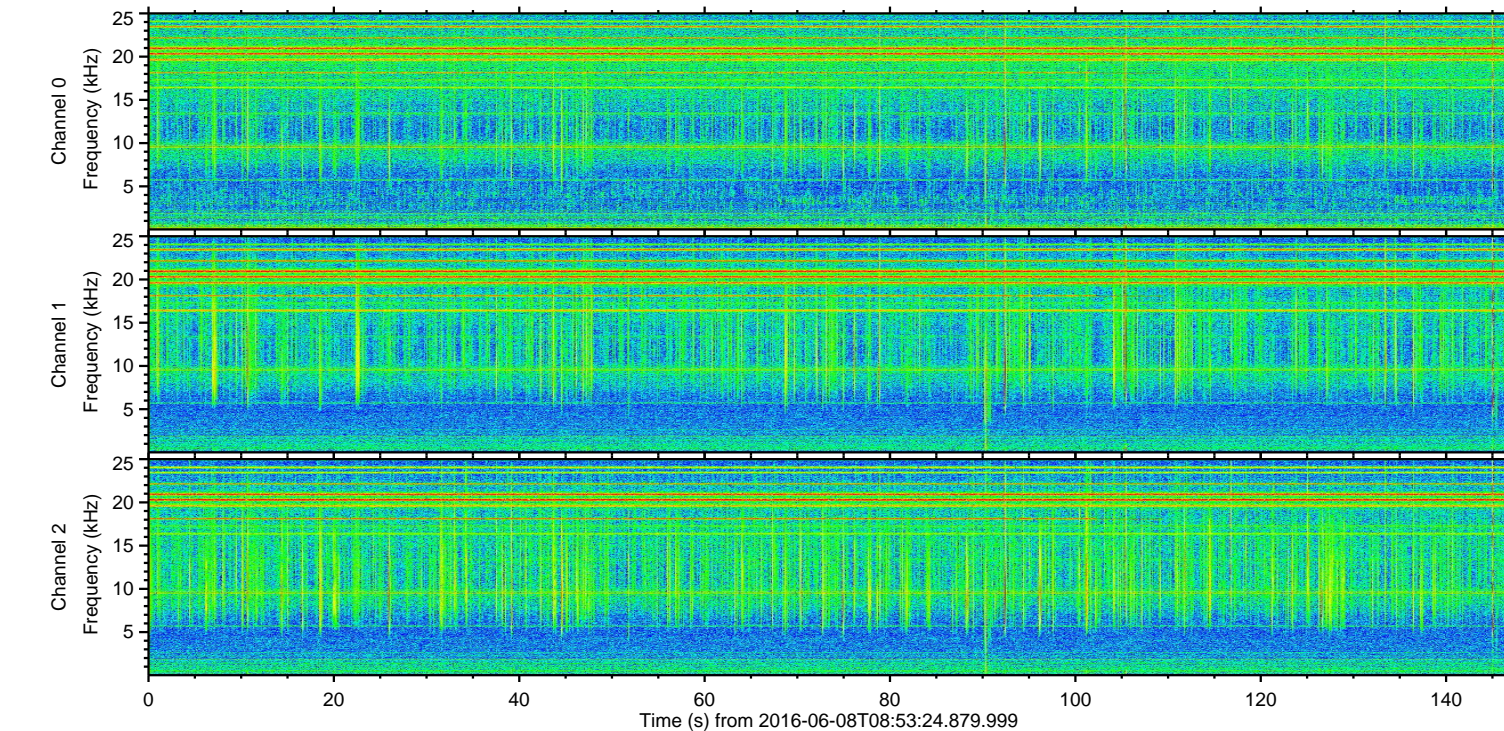
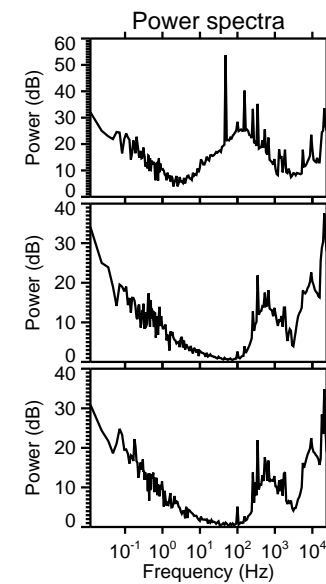
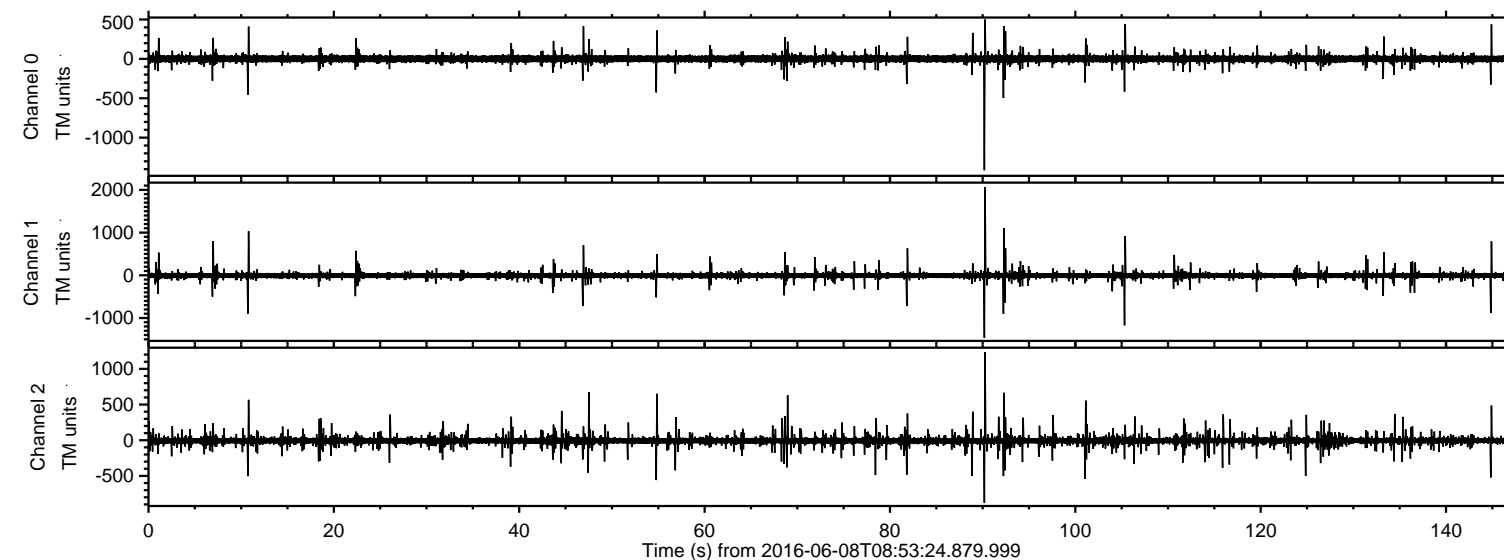
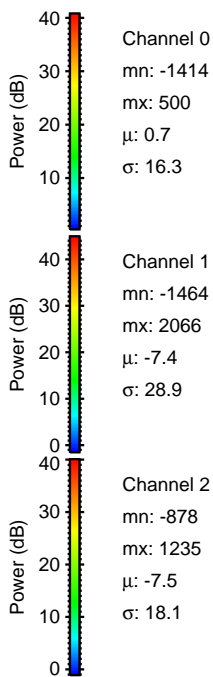
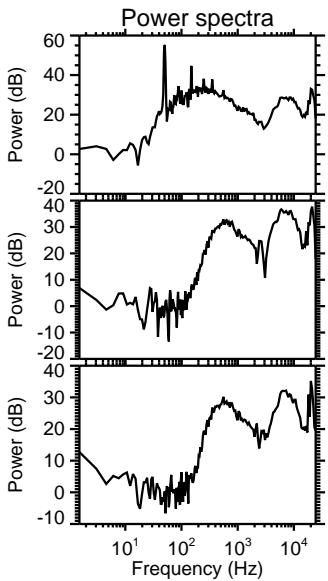
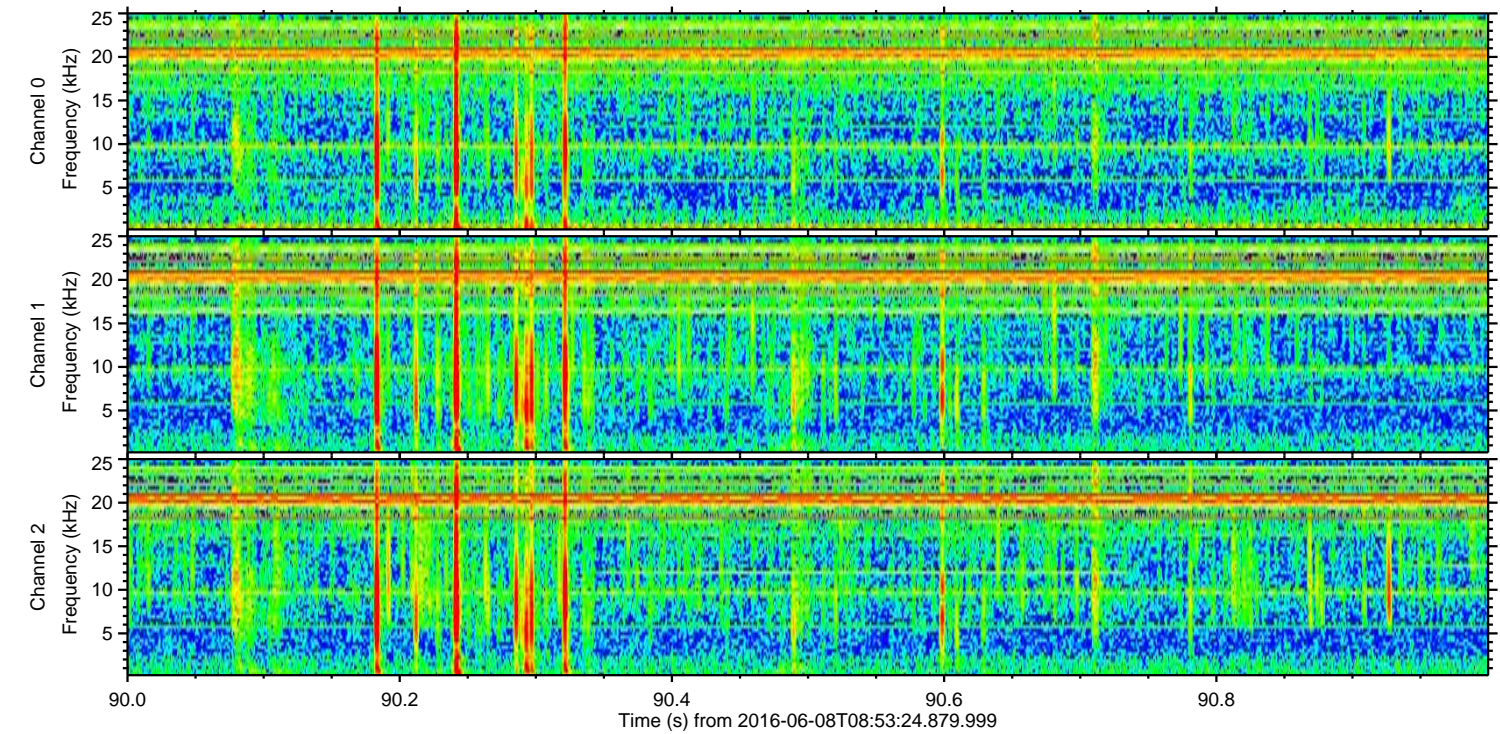
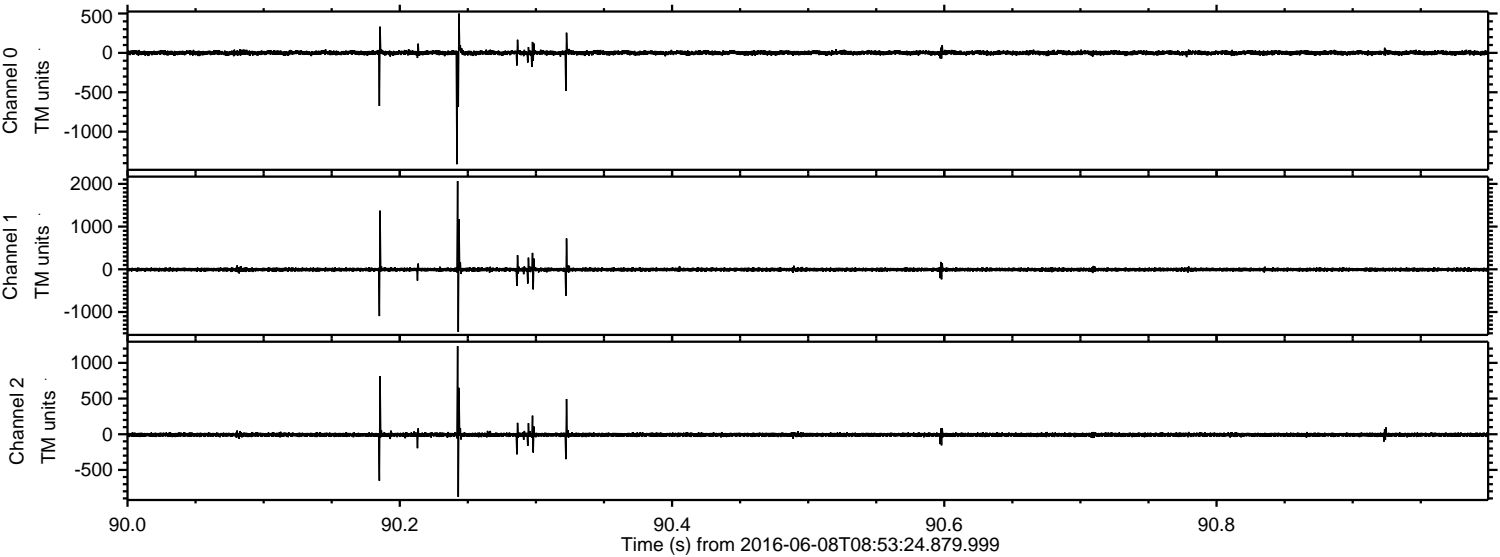


ELMAVAN 3D WAVEFORMS (Measured data sampled at 50 kHz) 51000 packets of 144 samples from 2016-06-08T08:53:24.879.999.

Processed Wed Jun 8 11:01:46 2016 by ELM ver.2012-10-06 from 001__elm20160608_085323__dat00.bin

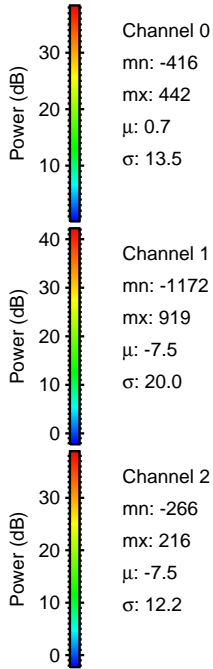
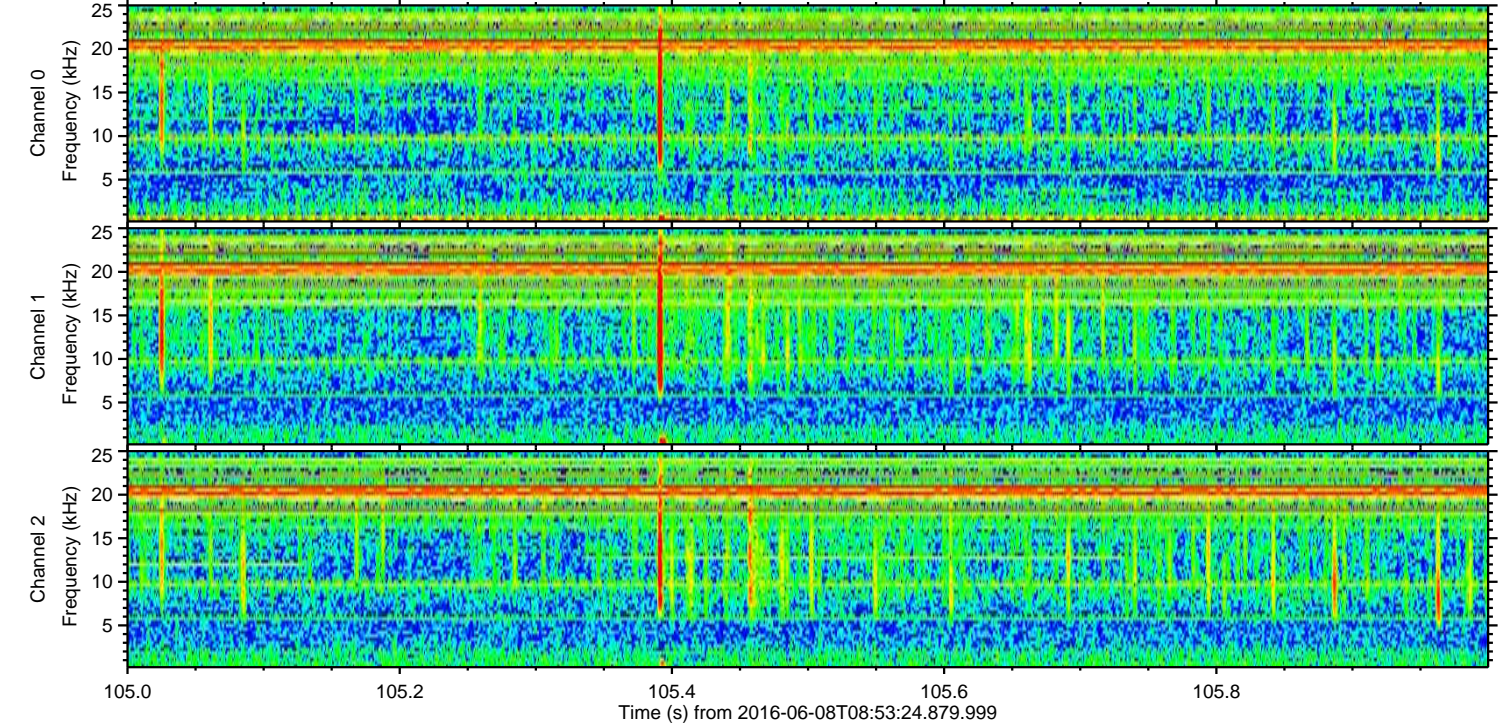
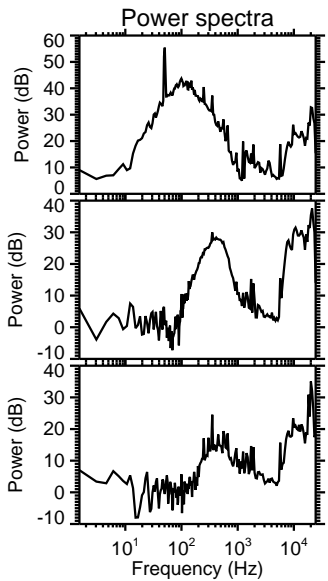
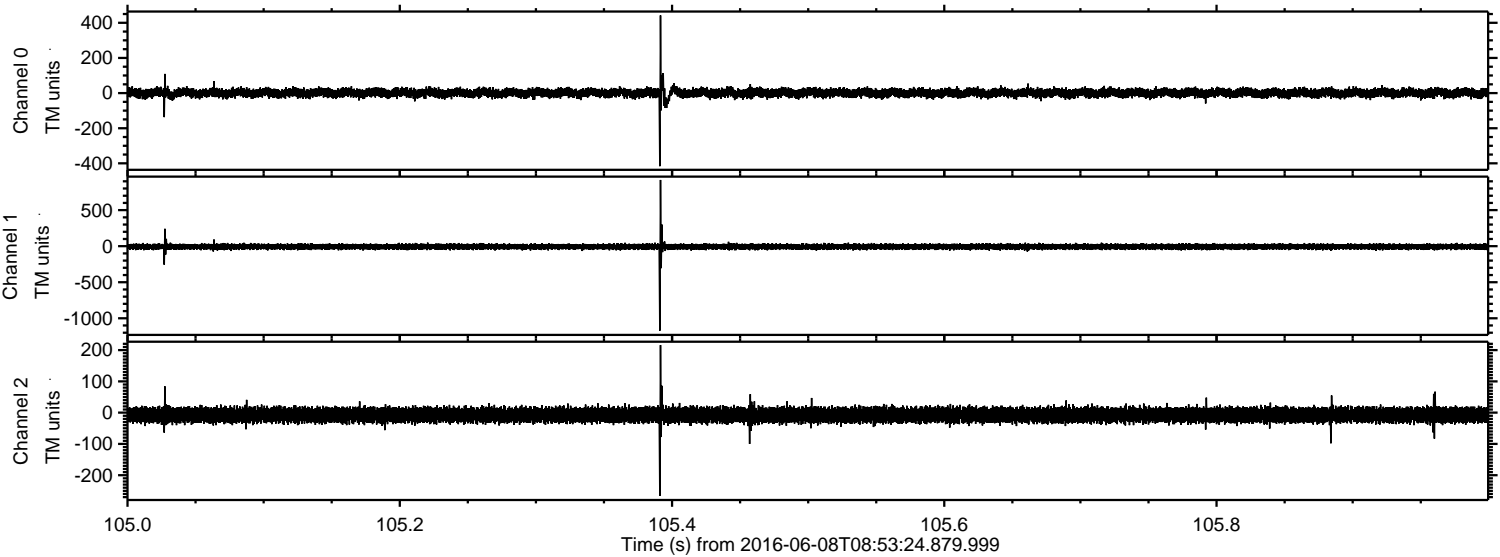


Processed Wed Jun 8 11:01:58 2016 by ELM ver.2012-10-06 from 001__elm20160608_085323__dat00.bin

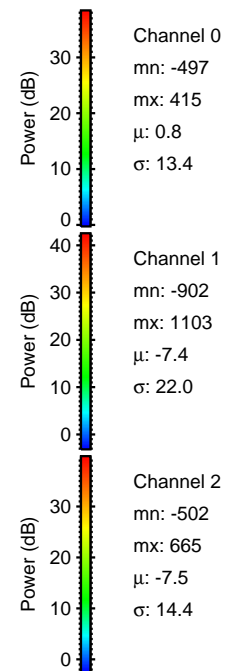
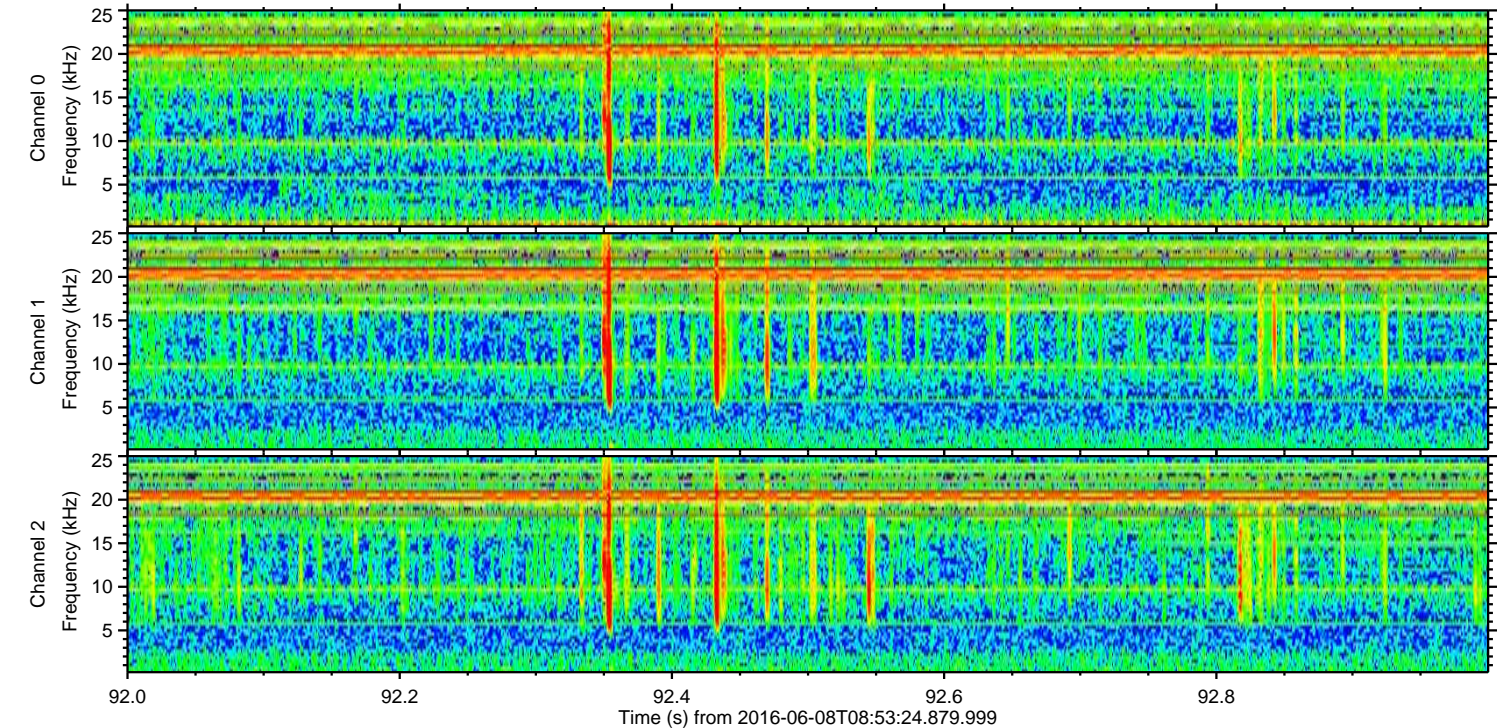
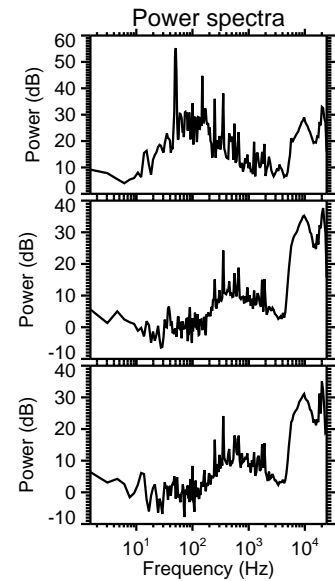
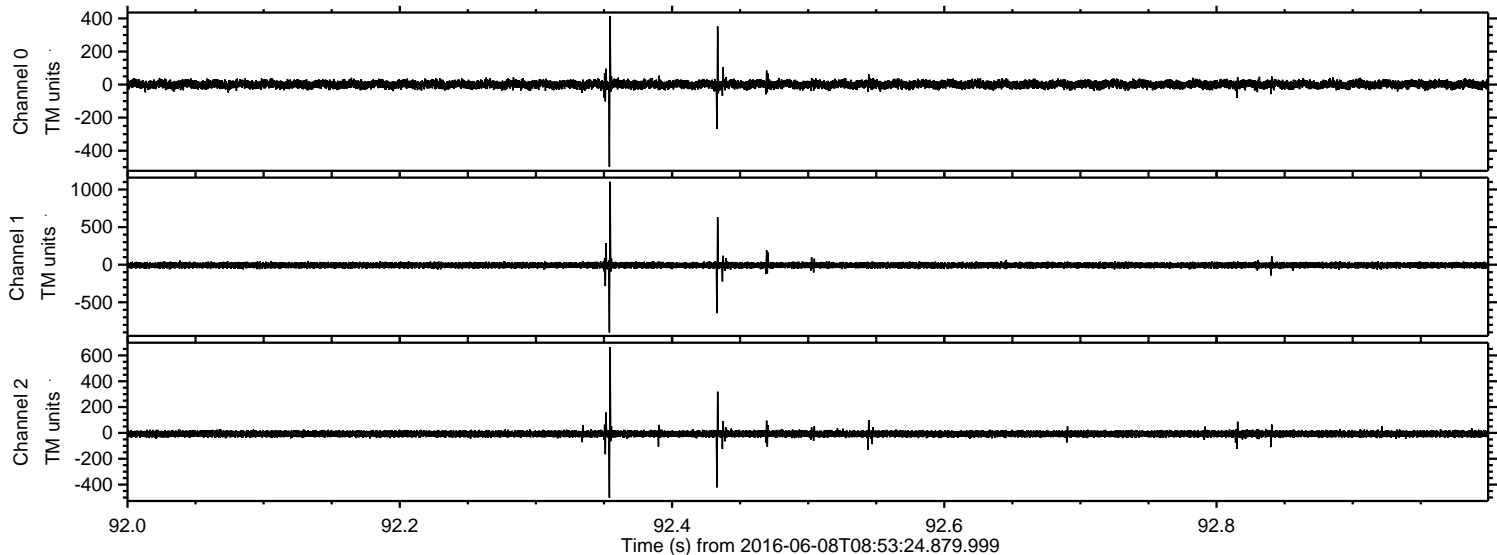


ELMAVAN 3D WAVEFORMS (Measured data sampled at 50 kHz) 51000 packets of 144 samples from 2016-06-08T08:53:24.879.999. Part 106/147

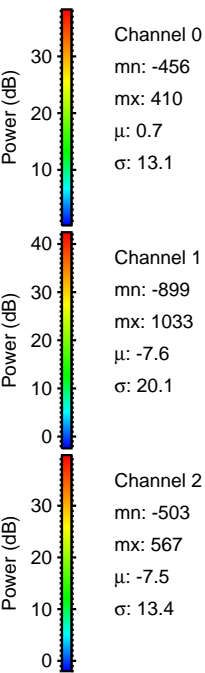
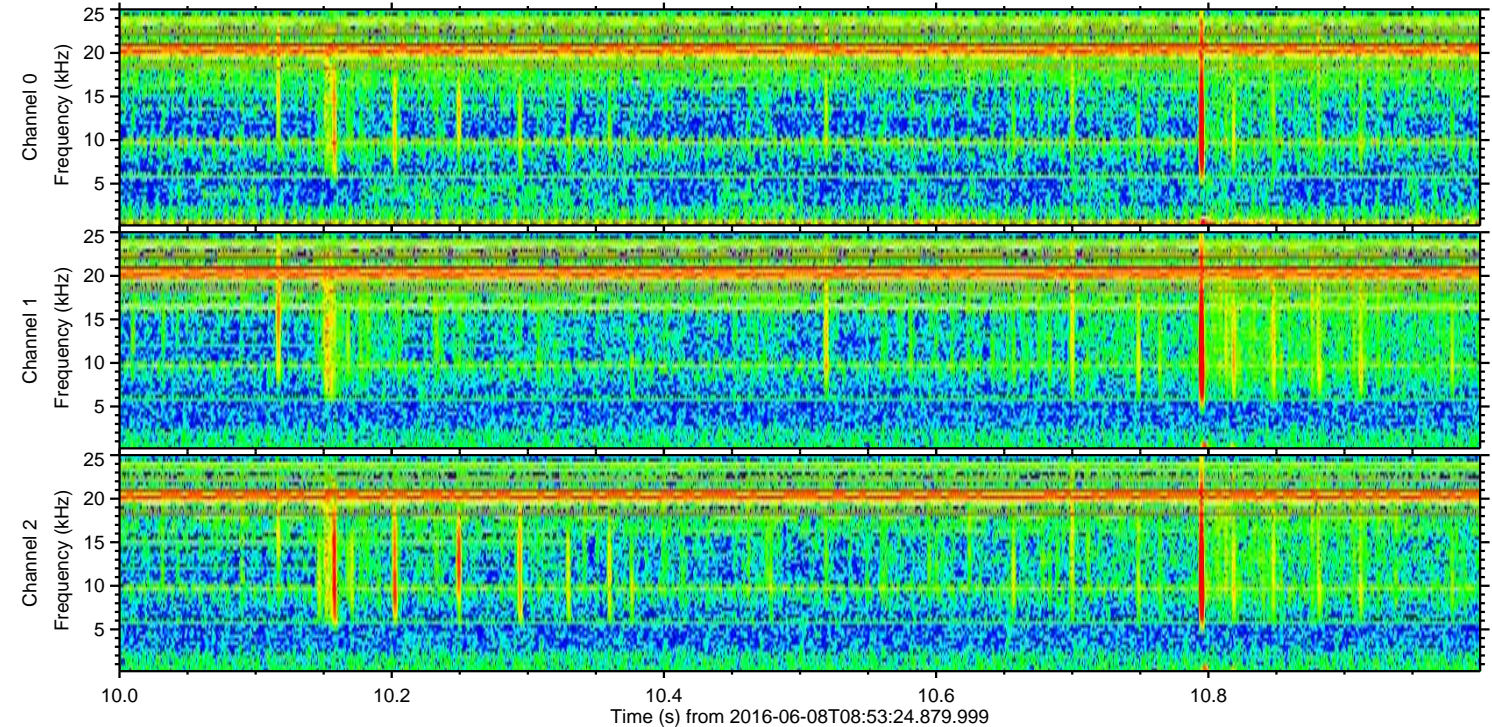
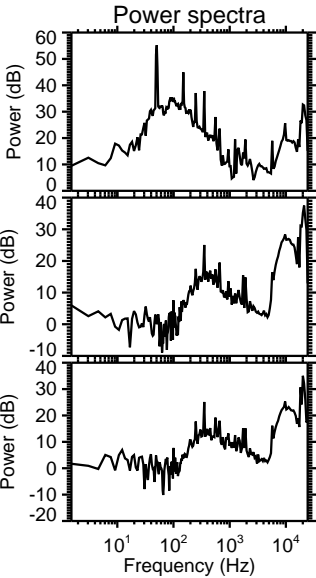
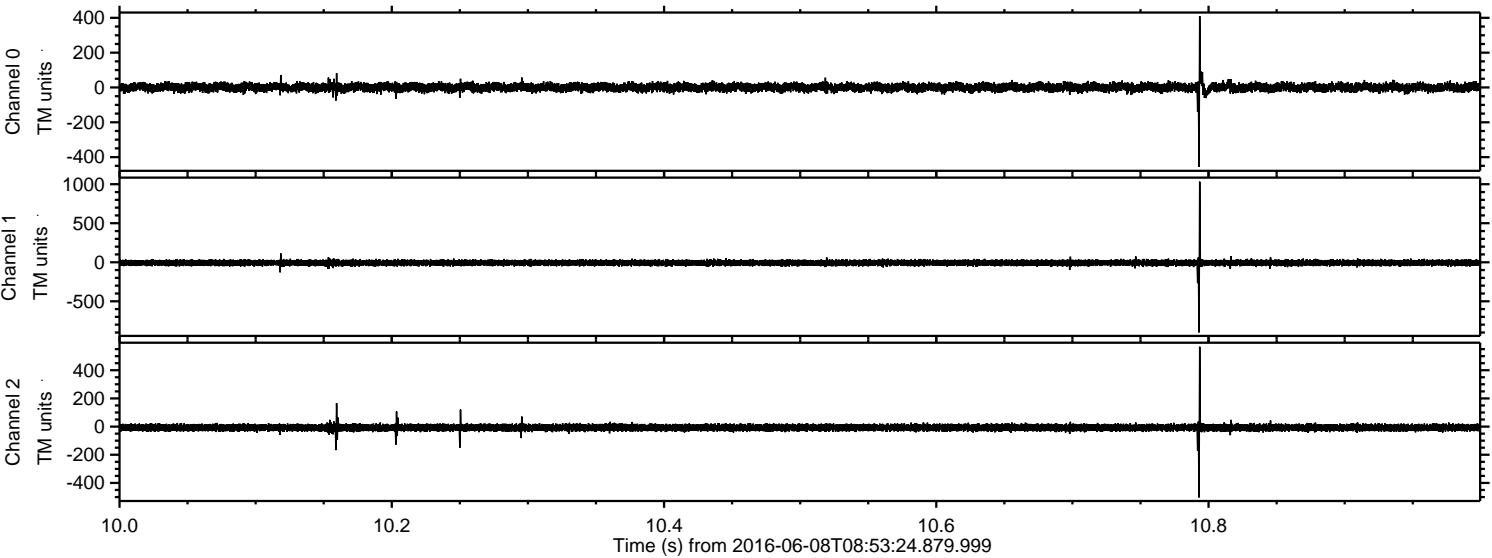
Processed Wed Jun 8 11:01:59 2016 by ELM ver.2012-10-06 from 001__elm20160608_085323__dat00.bin



Processed Wed Jun 8 11:02:00 2016 by ELM ver.2012-10-06 from 001__elm20160608_085323__dat00.bin

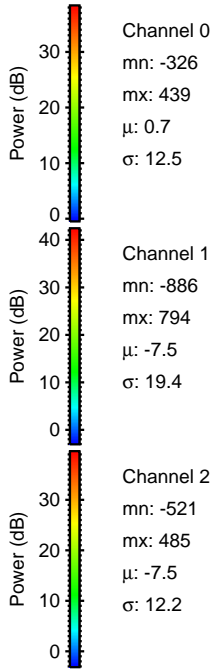
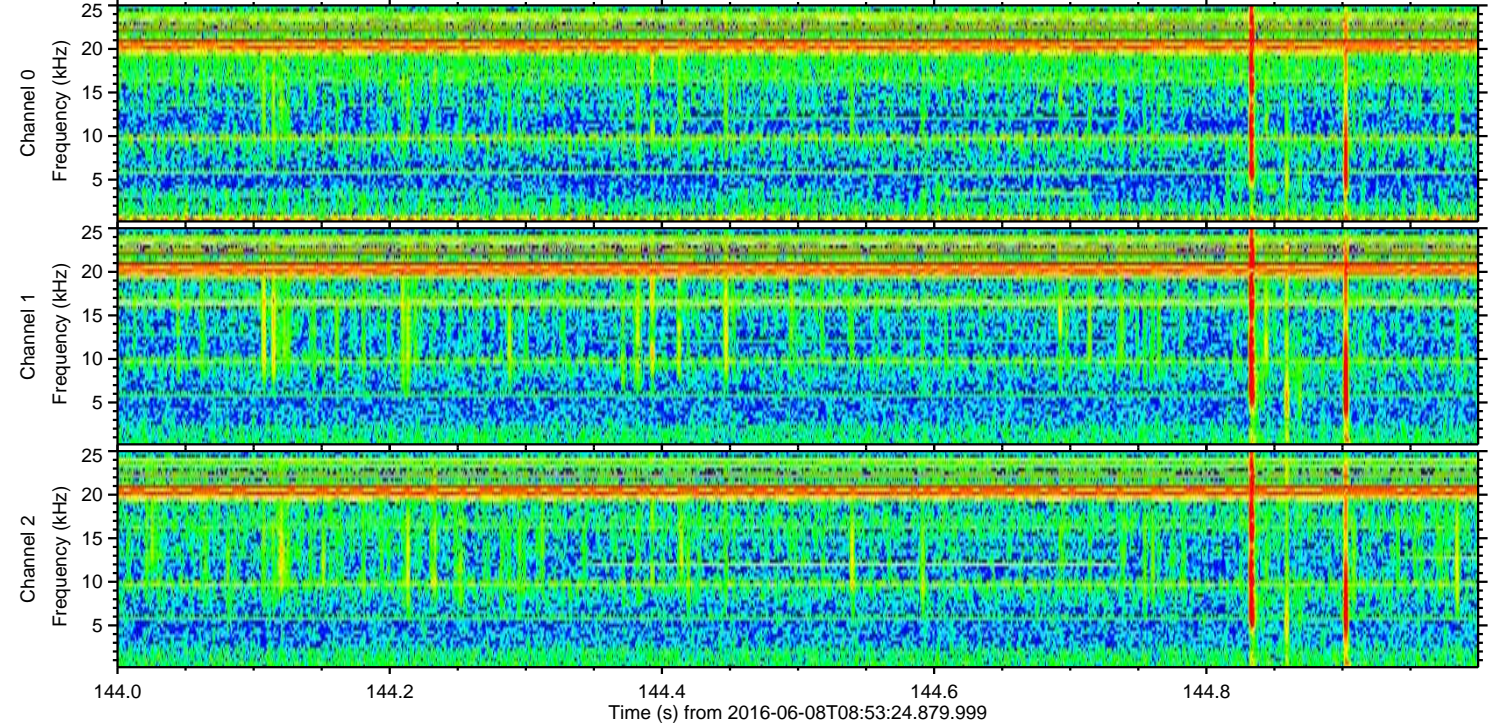
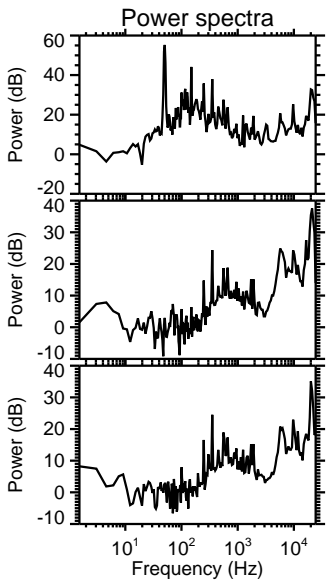
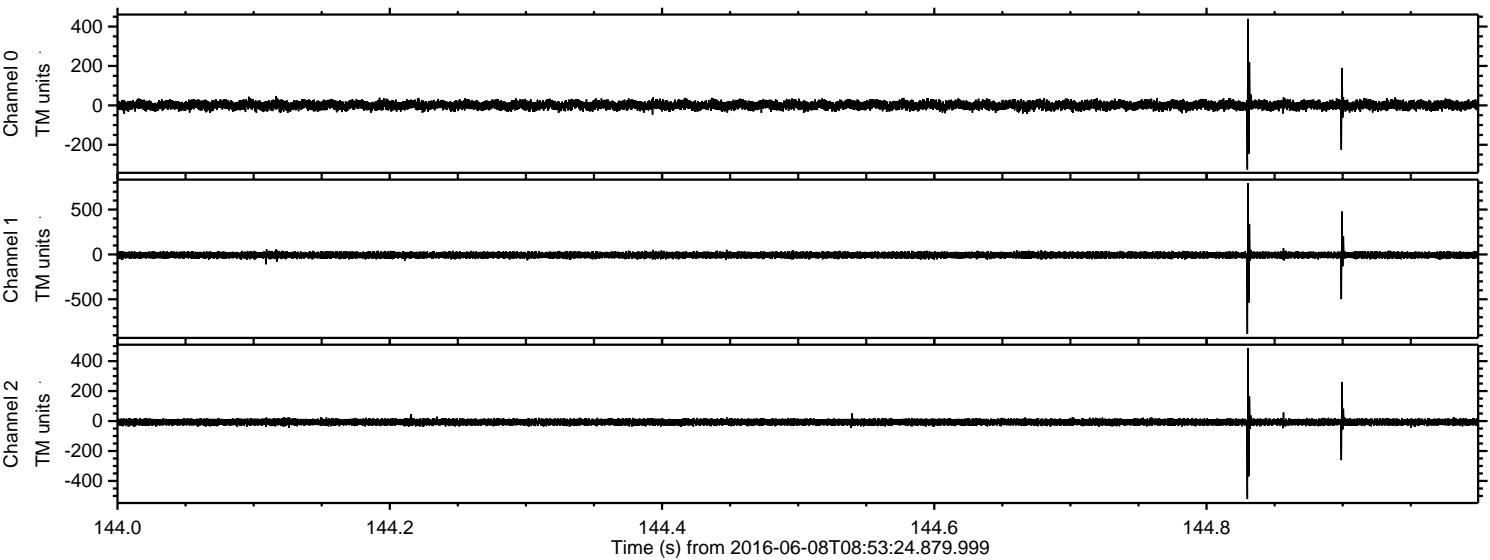


Processed Wed Jun 8 11:02:01 2016 by ELM ver.2012-10-06 from 001__elm20160608_085323__dat00.bin



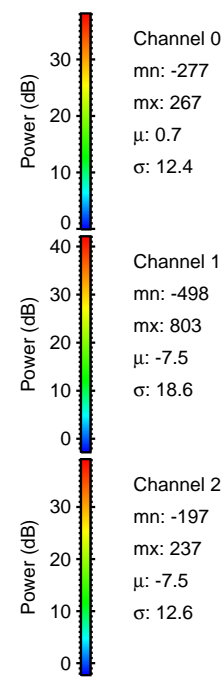
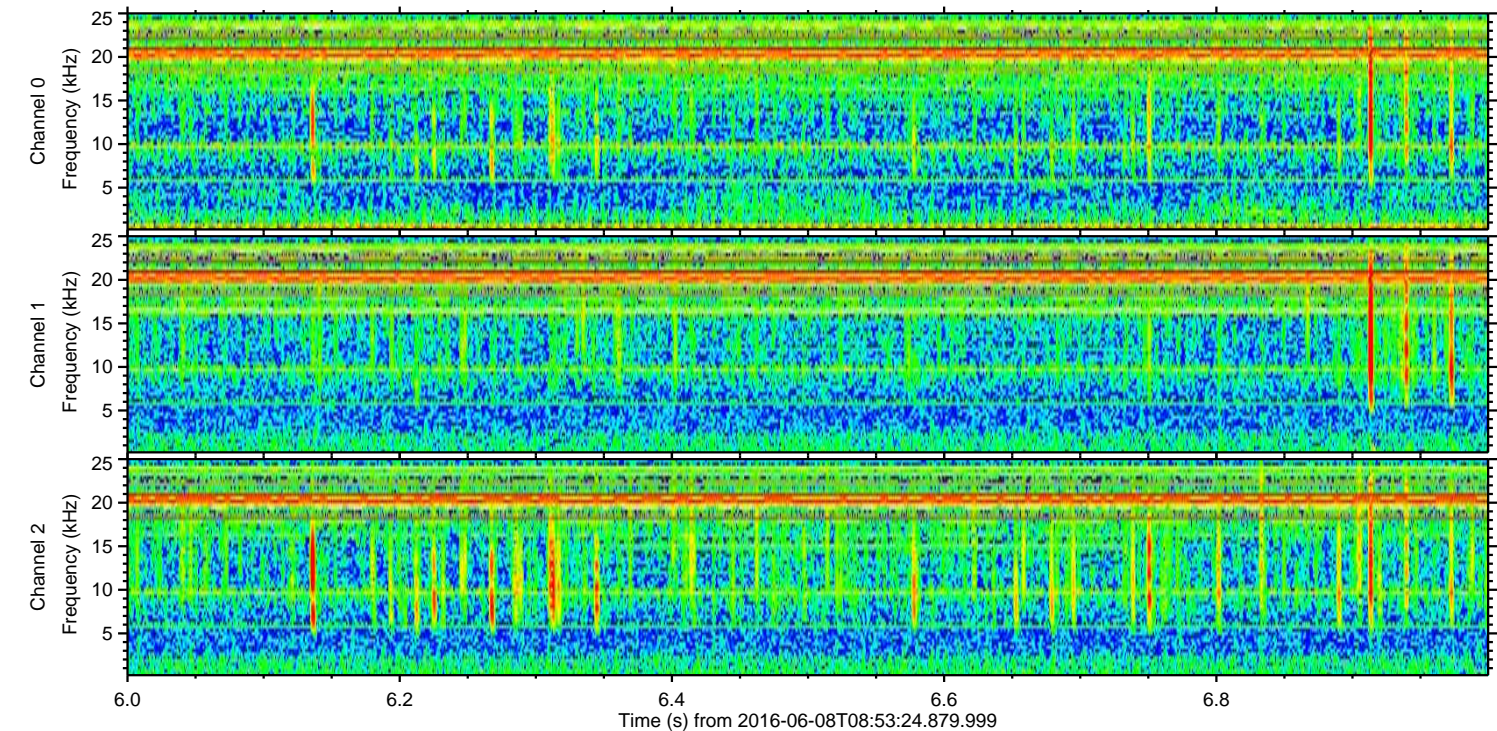
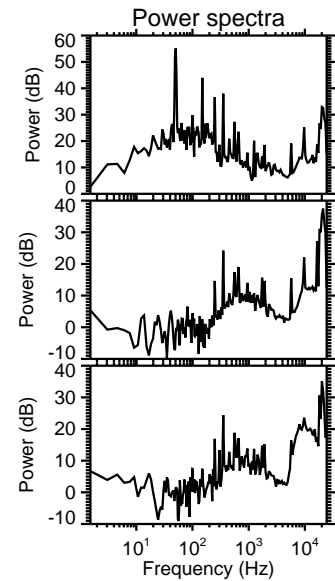
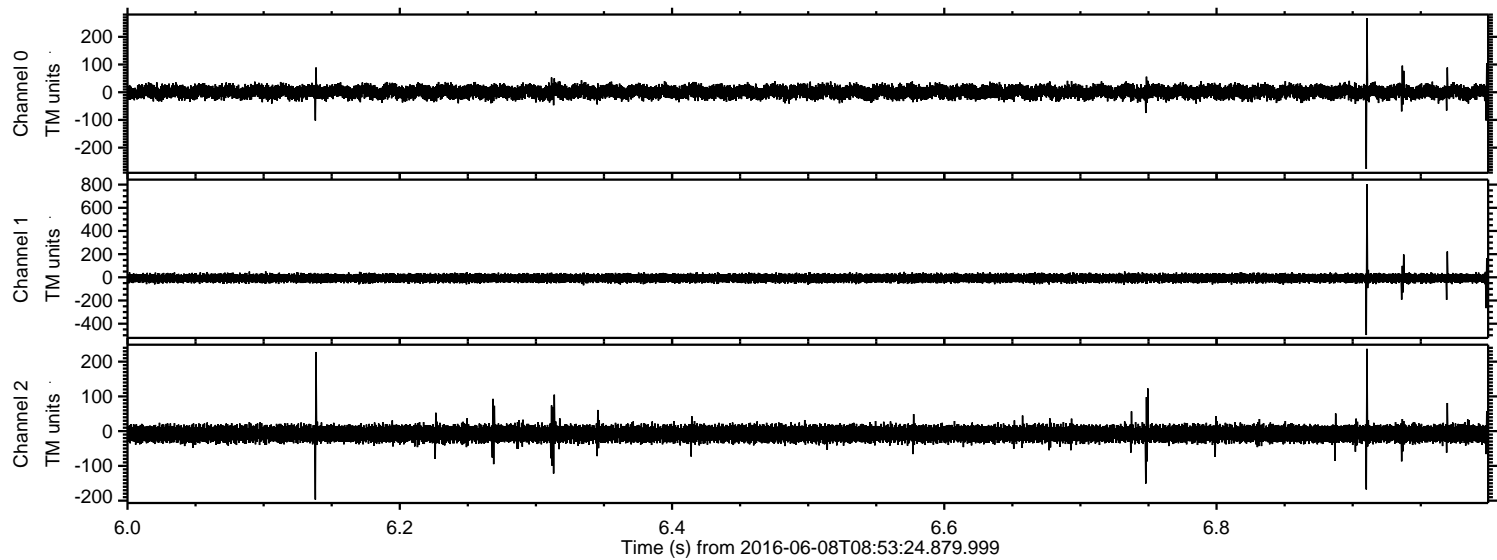
ELMAVAN 3D WAVEFORMS (Measured data sampled at 50 kHz) 51000 packets of 144 samples from 2016-06-08T08:53:24.879.999. Part 145/147

Processed Wed Jun 8 11:02:01 2016 by ELM ver.2012-10-06 from 001__elm20160608_085323__dat00.bin

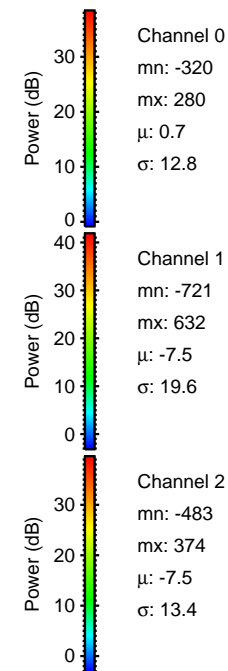
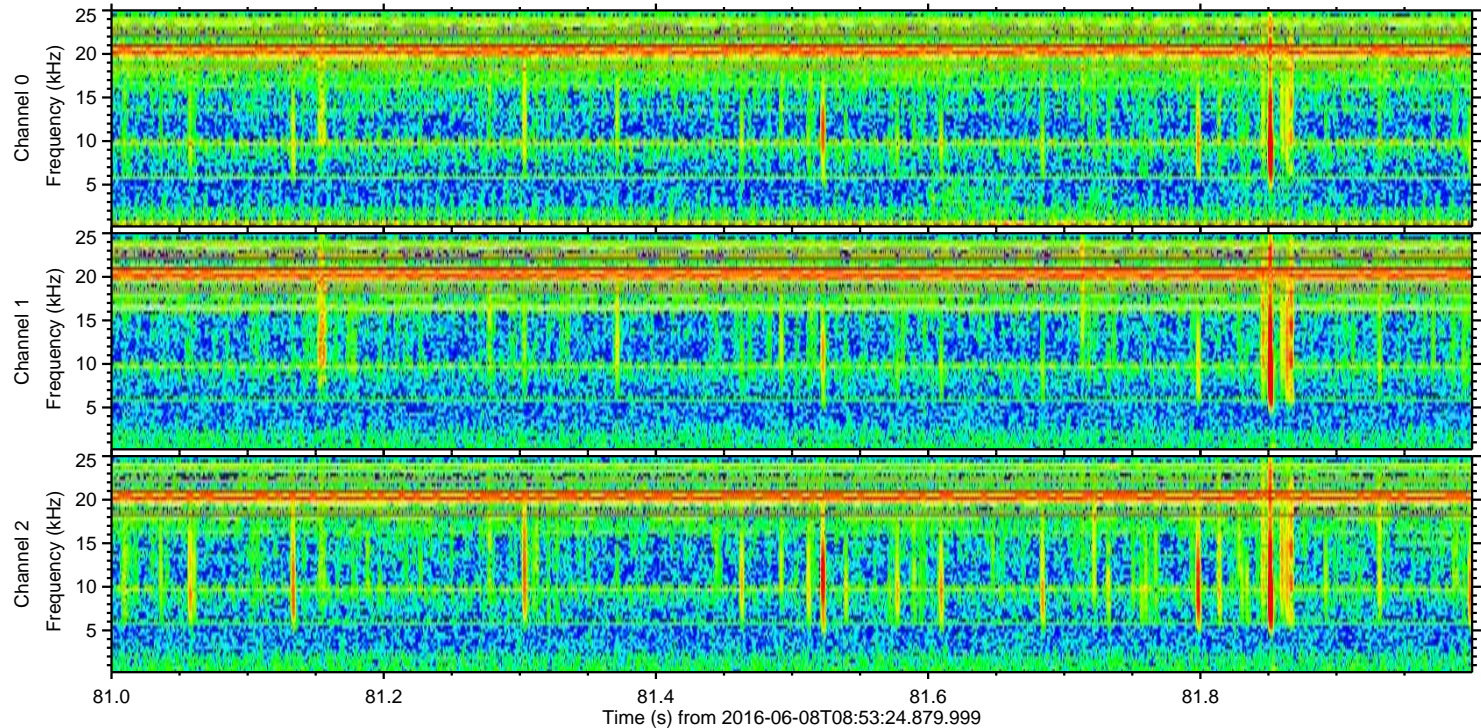
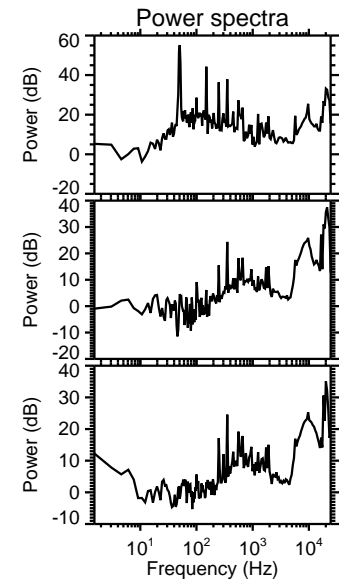
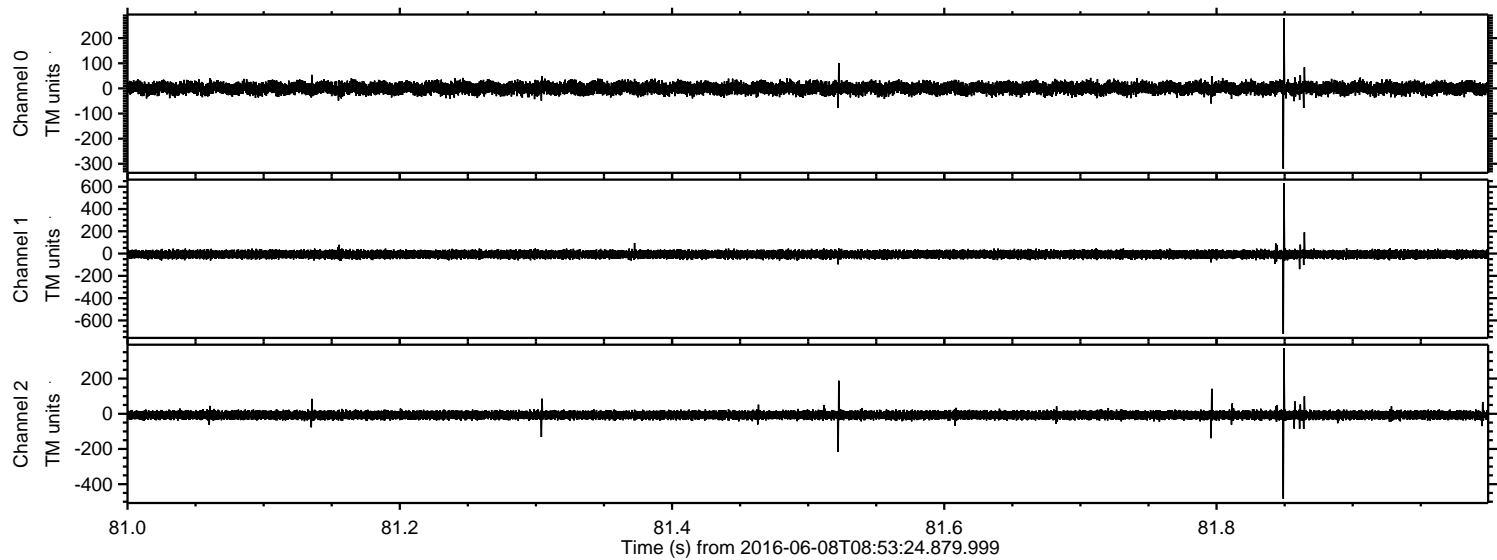


ELMAVAN 3D WAVEFORMS (Measured data sampled at 50 kHz) 51000 packets of 144 samples from 2016-06-08T08:53:24.879.999. Part 7/147

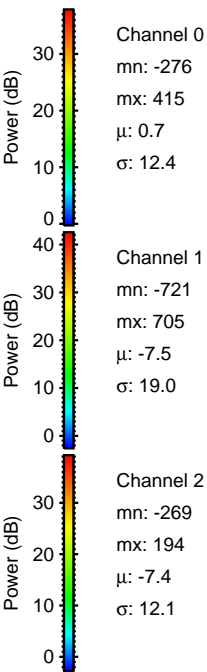
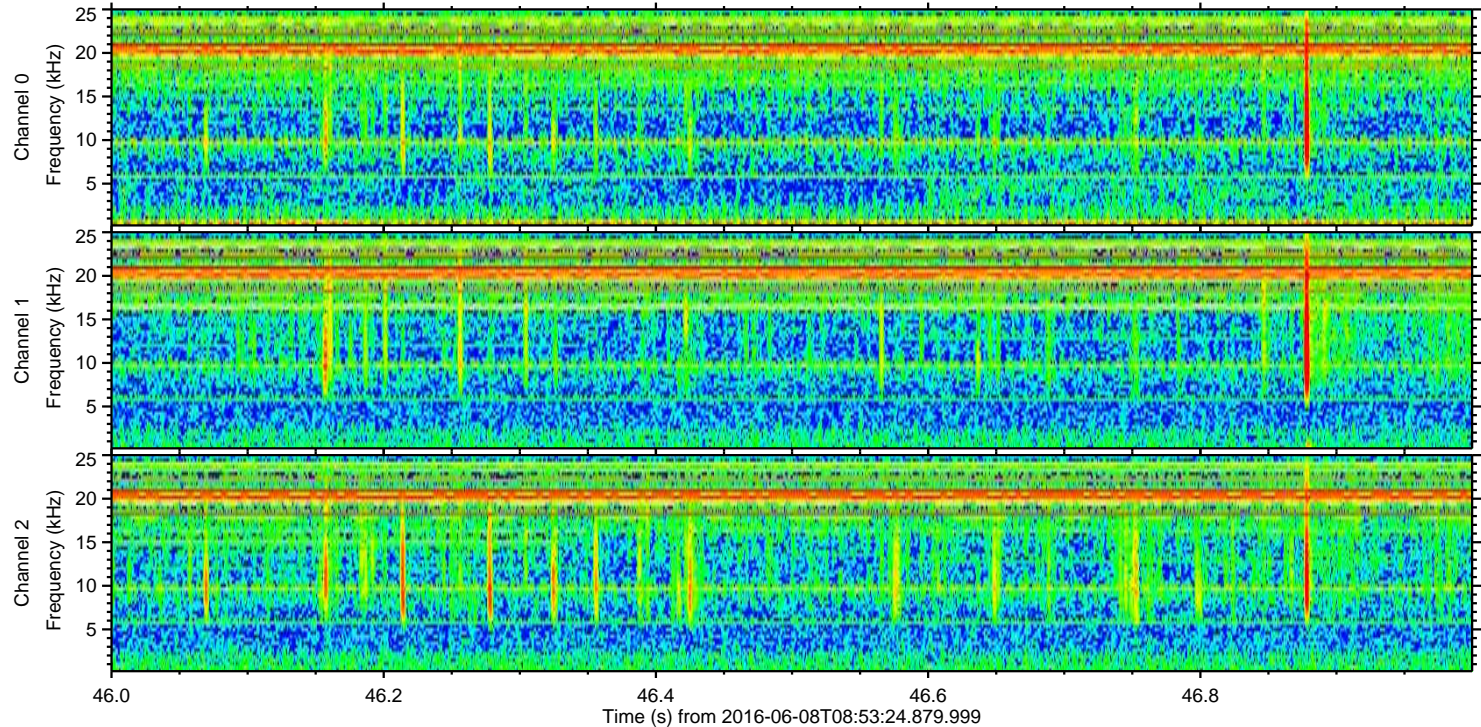
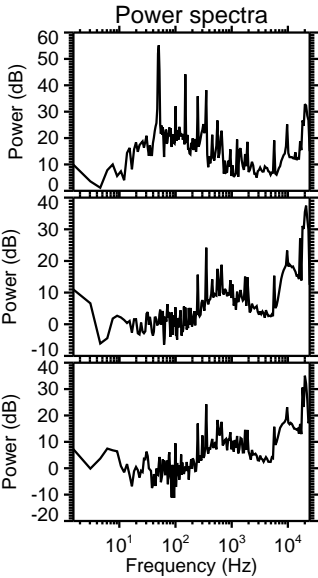
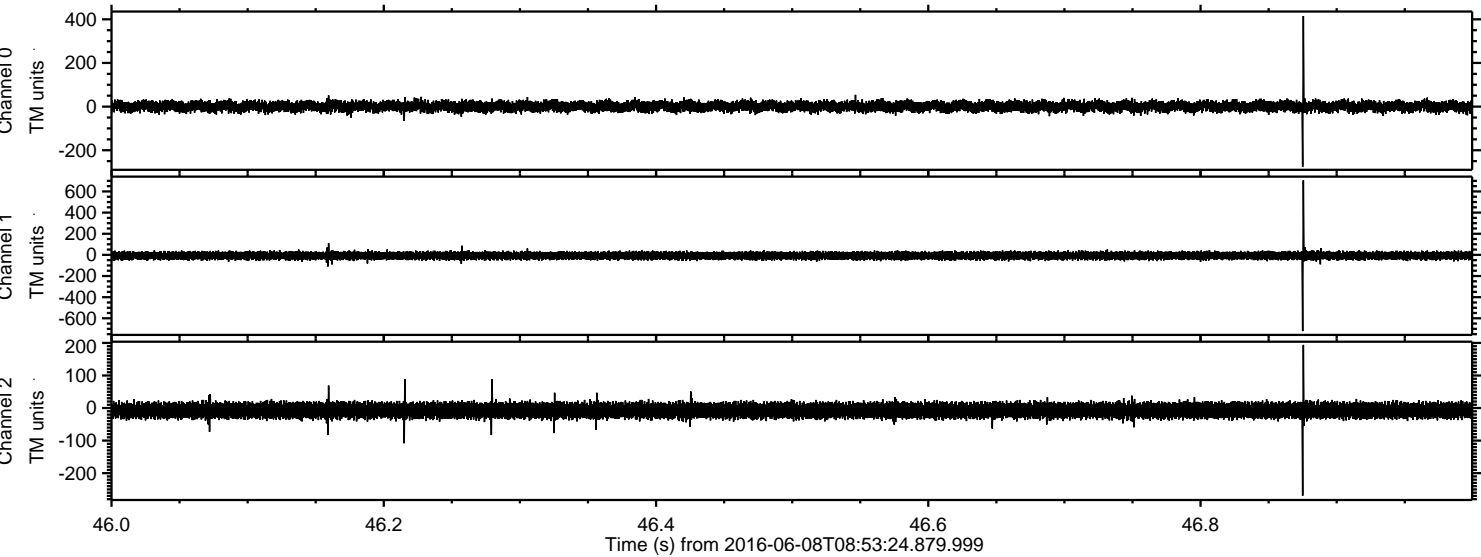
Processed Wed Jun 8 11:02:02 2016 by ELM ver.2012-10-06 from 001__elm20160608_085323__dat00.bin



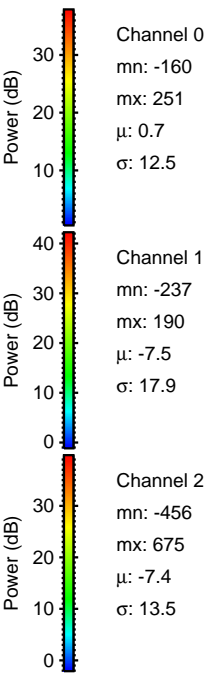
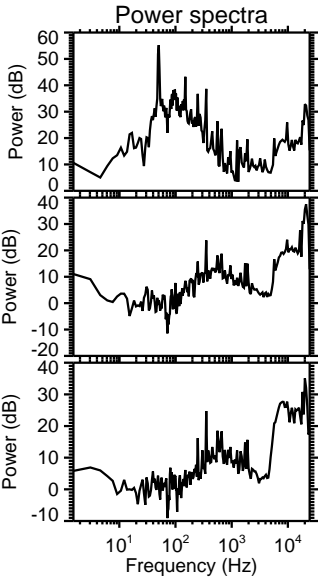
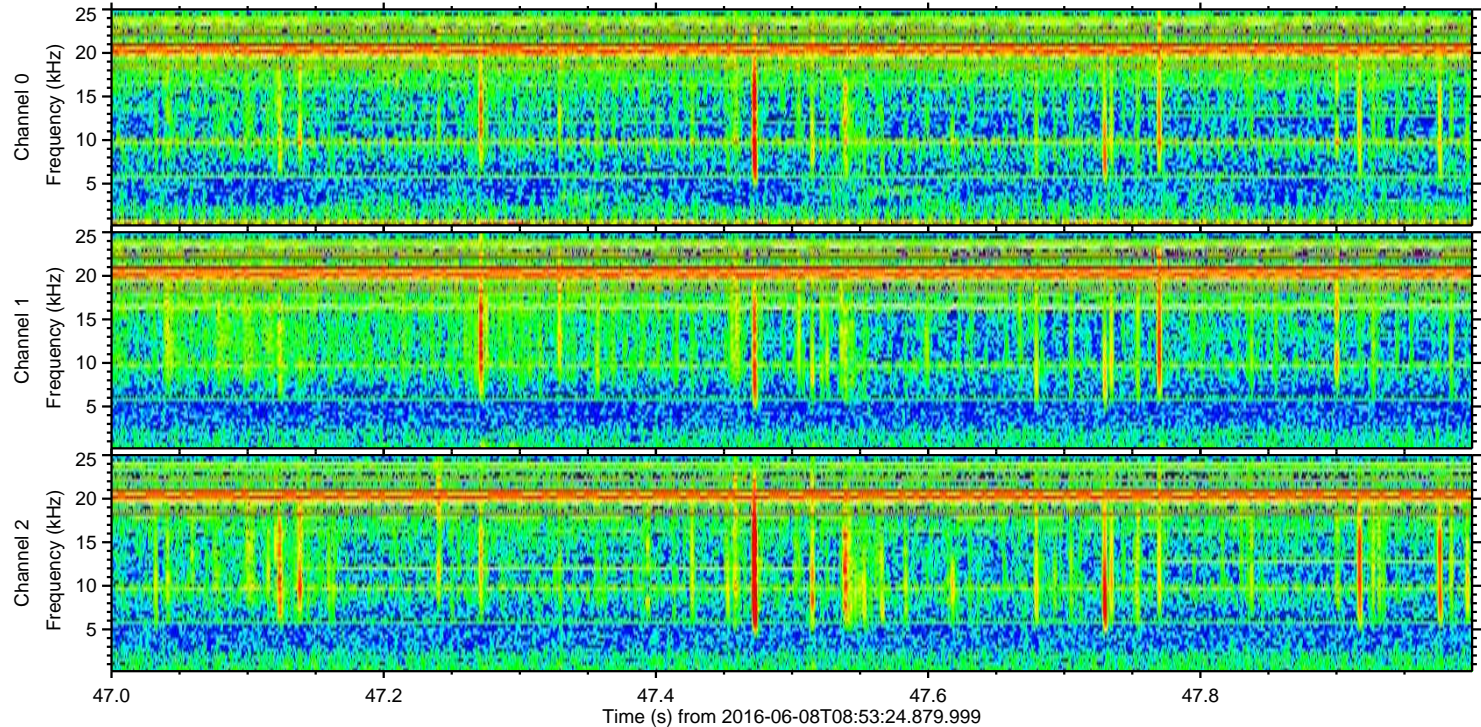
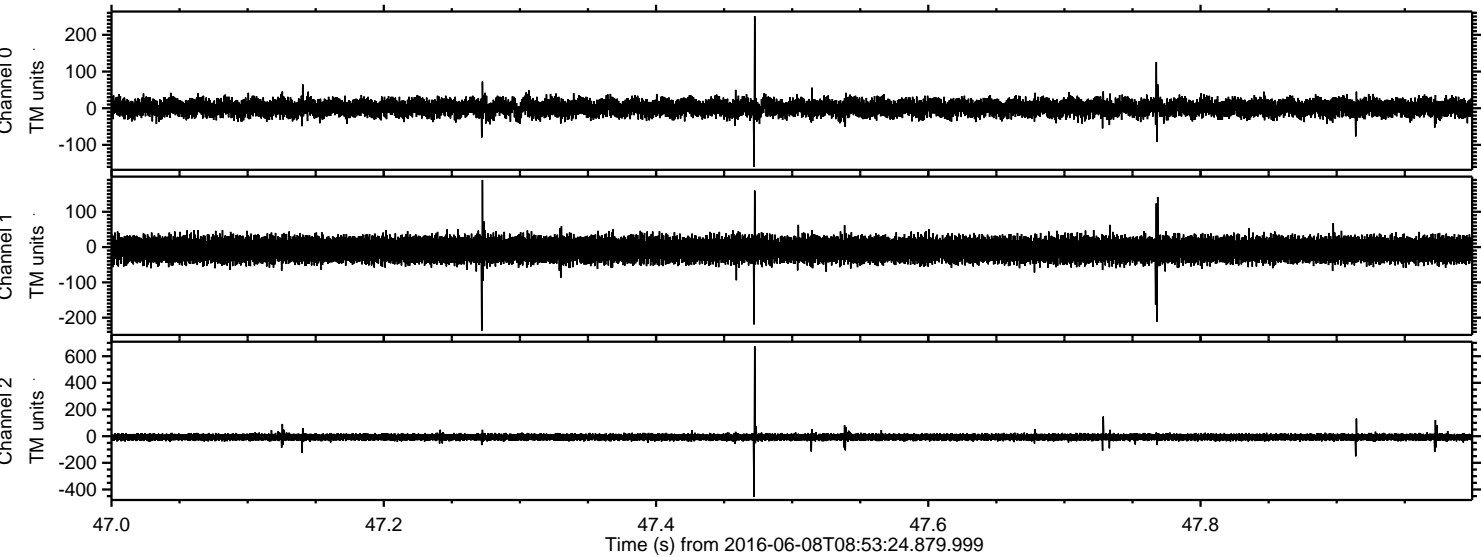
Processed Wed Jun 8 11:02:03 2016 by ELM ver.2012-10-06 from 001__elm20160608_085323__dat00.bin



Processed Wed Jun 8 11:02:04 2016 by ELM ver.2012-10-06 from 001__elm20160608_085323__dat00.bin



Processed Wed Jun 8 11:02:05 2016 by ELM ver.2012-10-06 from 001__elm20160608_085323__dat00.bin



Power spectra

Channel 0
mn: -160
mx: 251
 μ : 0.7
 σ : 12.5

Channel 1
mn: -237
mx: 190
 μ : -7.5
 σ : 17.9

Channel 2
mn: -456
mx: 675
 μ : -7.4
 σ : 13.5

Processed Wed Jun 8 11:02:06 2016 by ELM ver.2012-10-06 from 001__elm20160608_085323__dat00.bin

