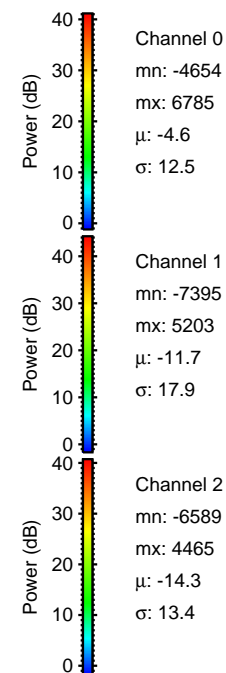
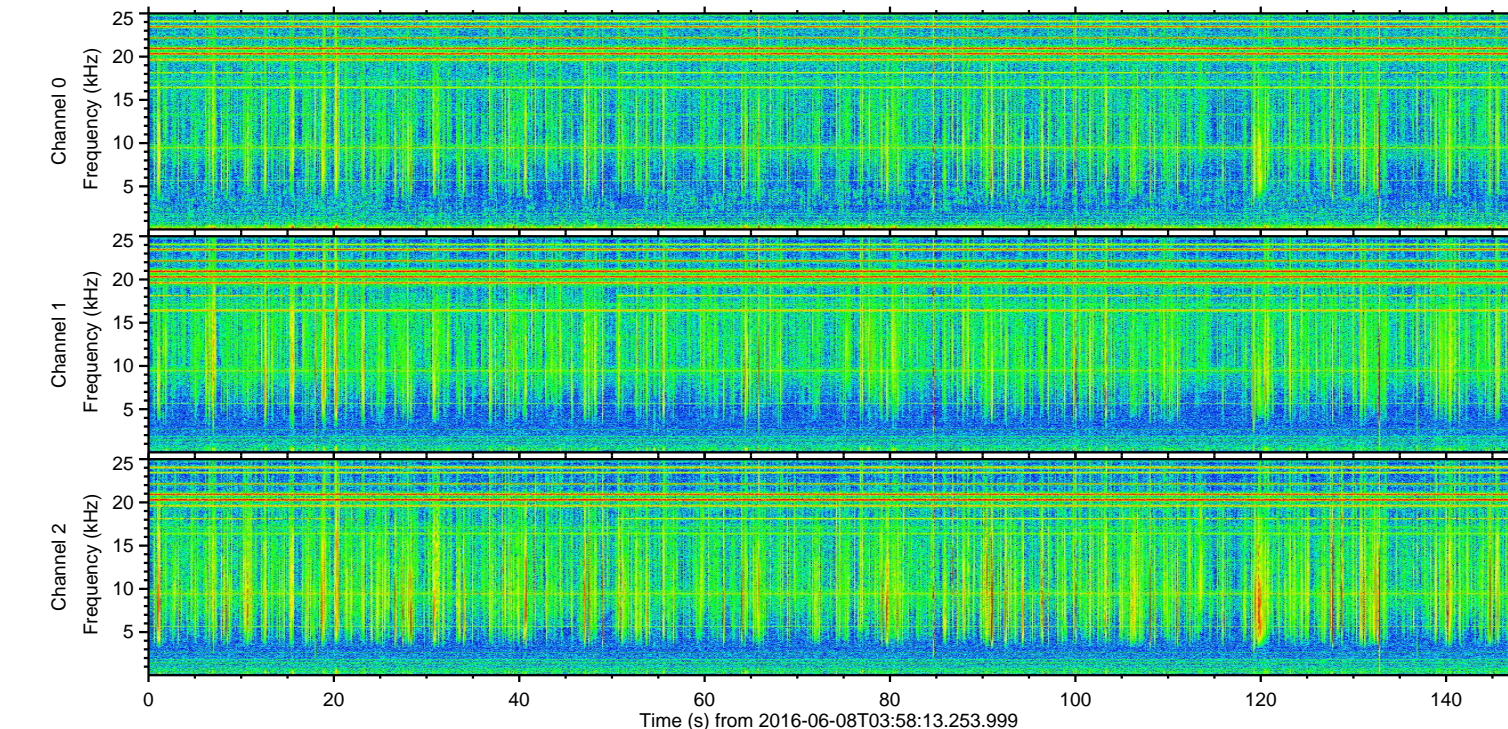
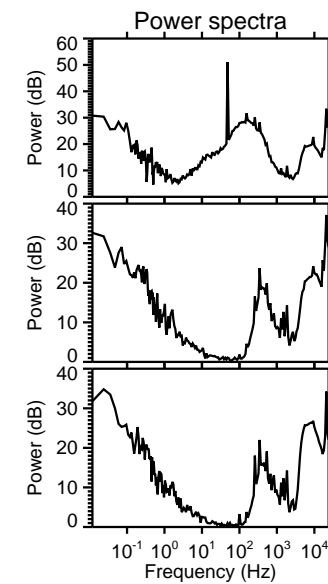
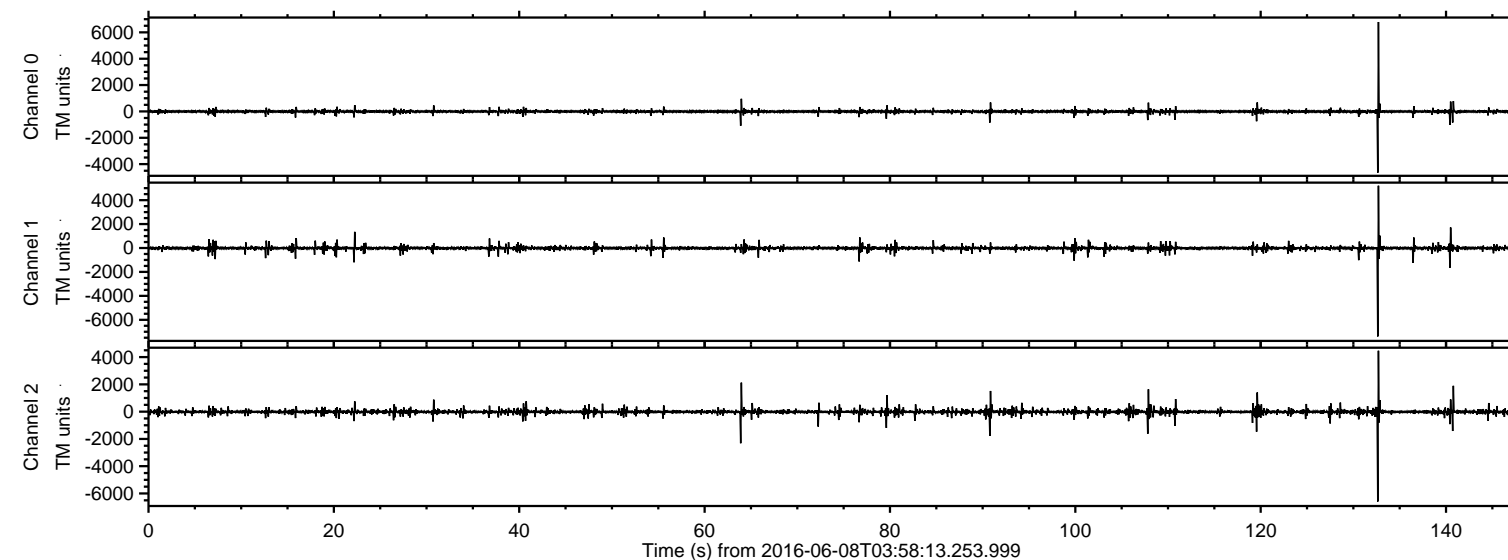


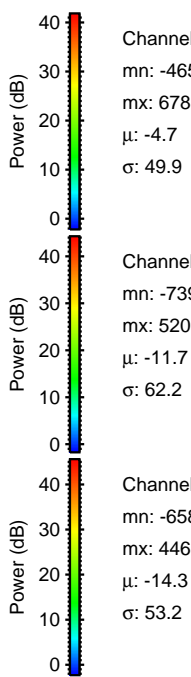
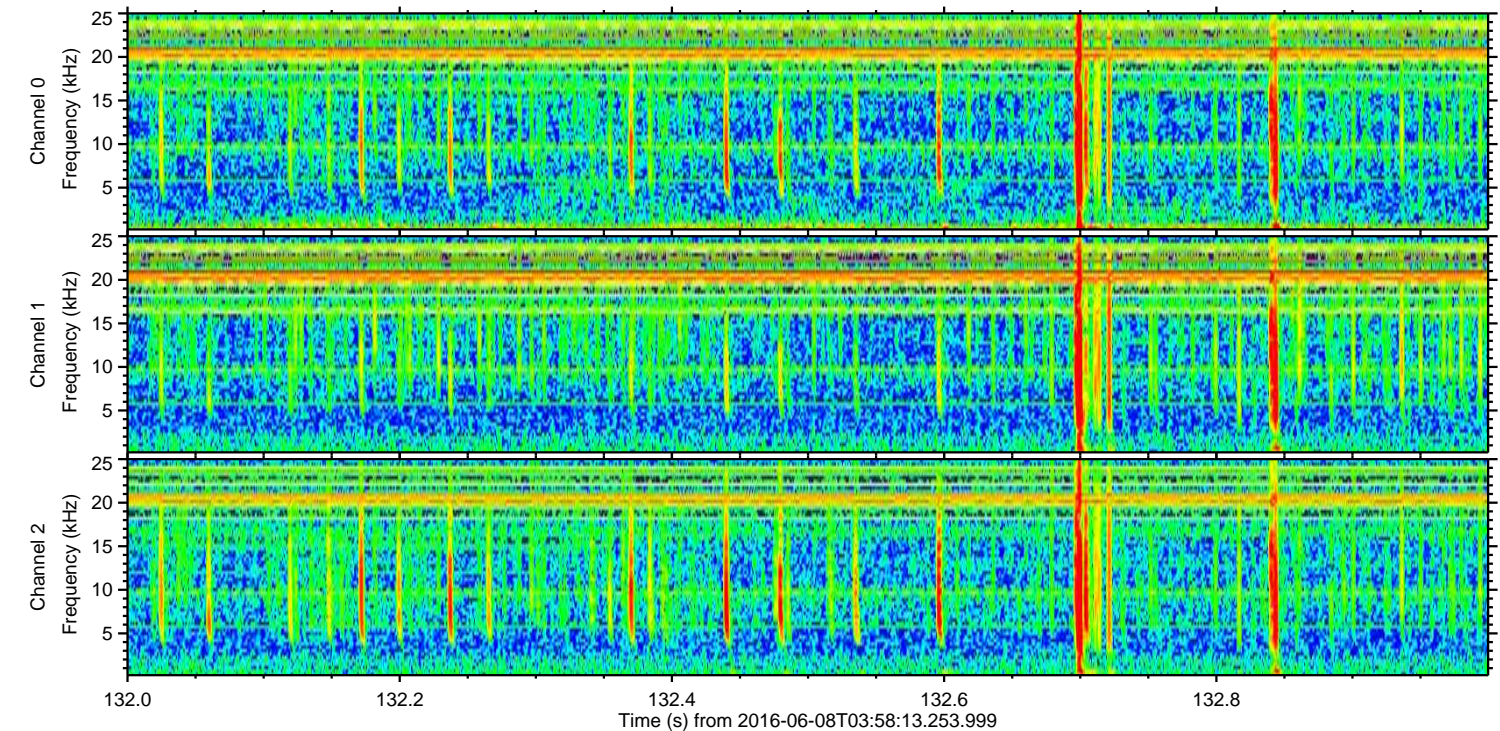
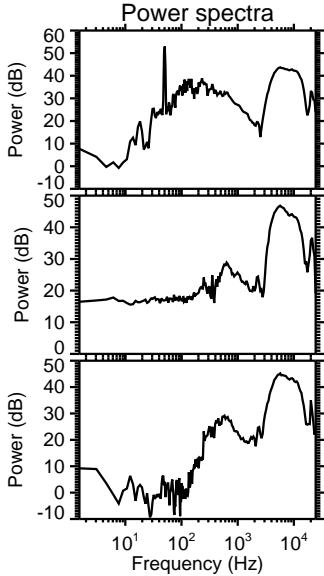
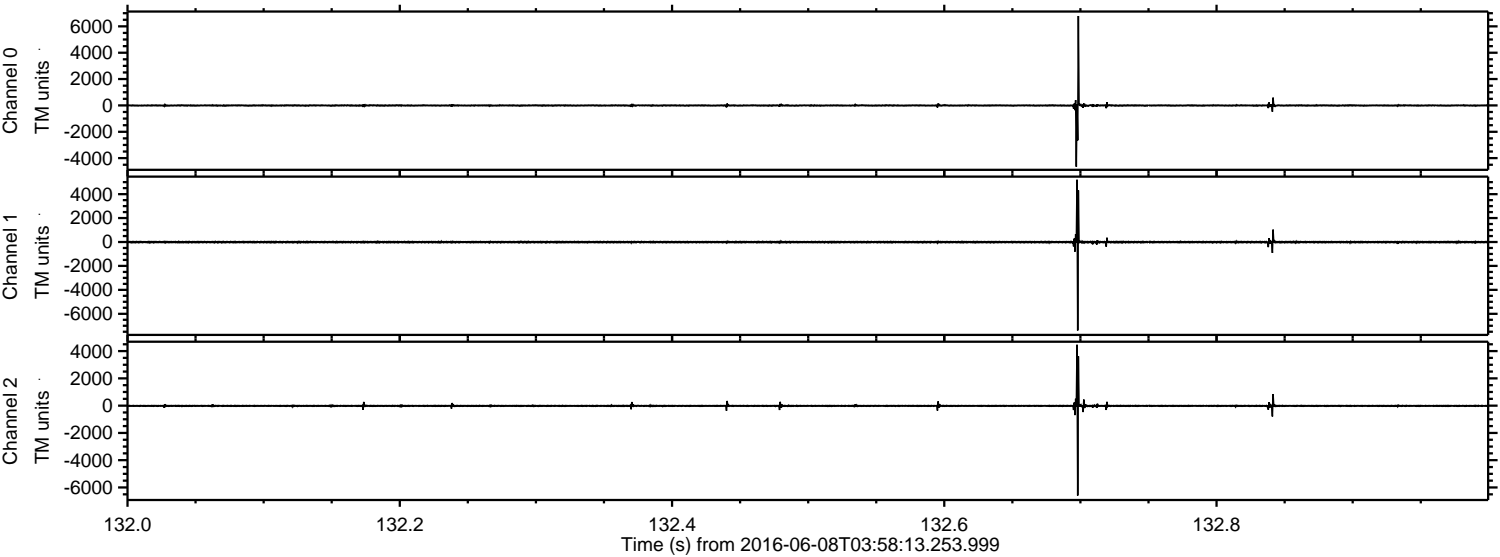
ELMAVAN 3D WAVEFORMS (Measured data sampled at 50 kHz) 51000 packets of 144 samples from 2016-06-08T03:58:13.253.999.

Processed Wed Jun 8 06:06:39 2016 by ELM ver.2012-10-06 from 001__elm20160608_035812__dat00.bin



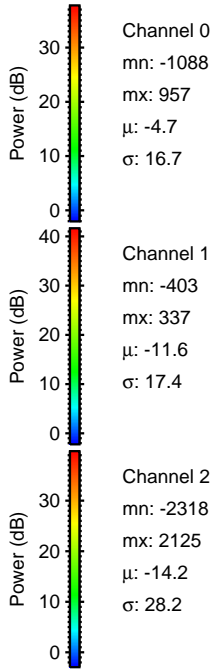
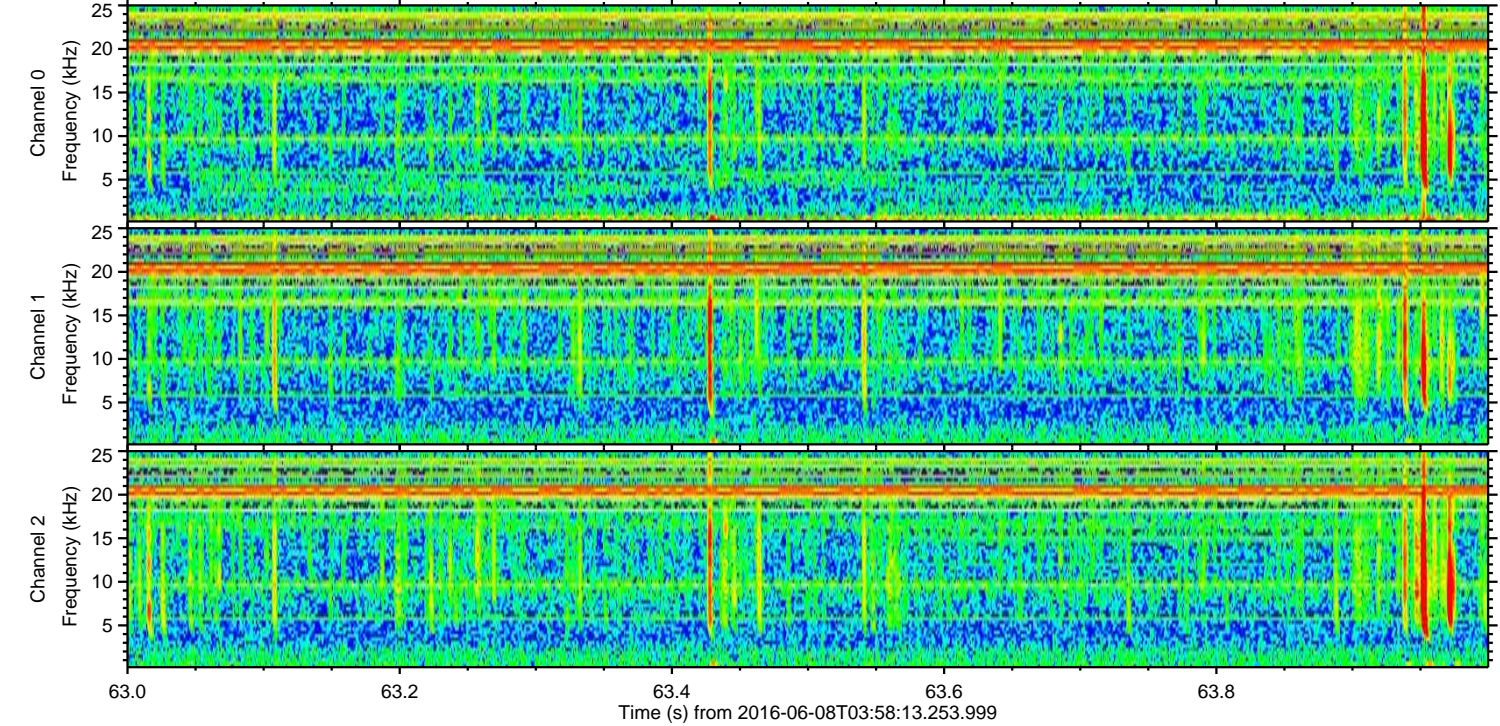
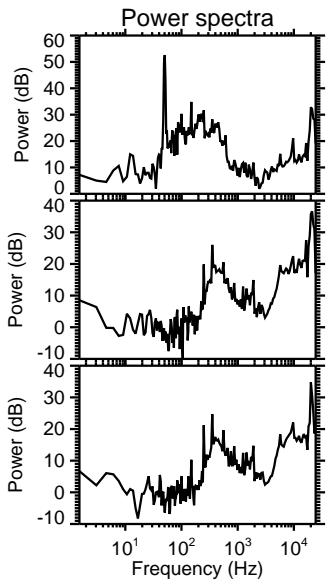
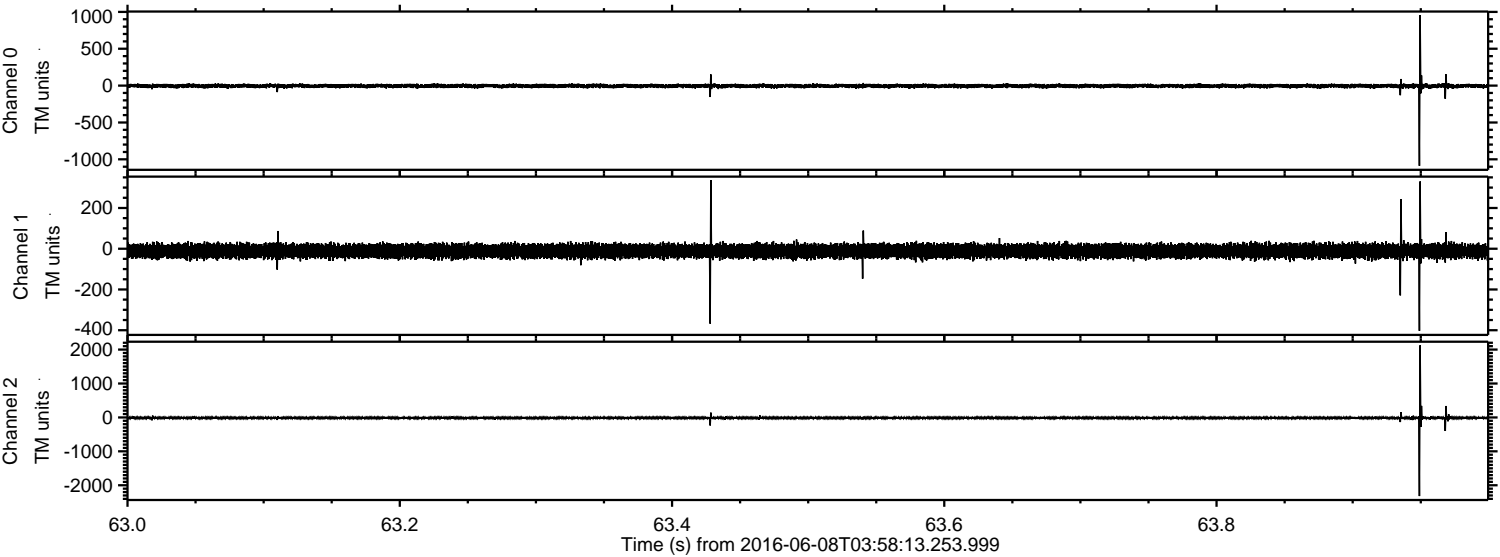
ELMAVAN 3D WAVEFORMS (Measured data sampled at 50 kHz) 51000 packets of 144 samples from 2016-06-08T03:58:13.253.999. Part 133/147

Processed Wed Jun 8 06:06:51 2016 by ELM ver.2012-10-06 from 001__elm20160608_035812__dat00.bin



ELMAVAN 3D WAVEFORMS (Measured data sampled at 50 kHz) 51000 packets of 144 samples from 2016-06-08T03:58:13.253.999. Part 64/147

Processed Wed Jun 8 06:06:52 2016 by ELM ver.2012-10-06 from 001__elm20160608_035812__dat00.bin



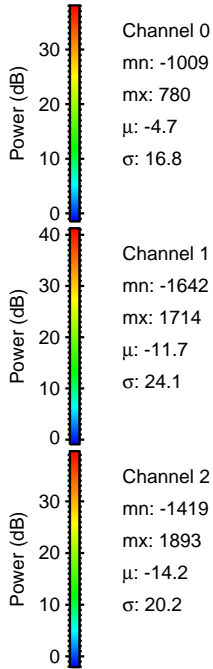
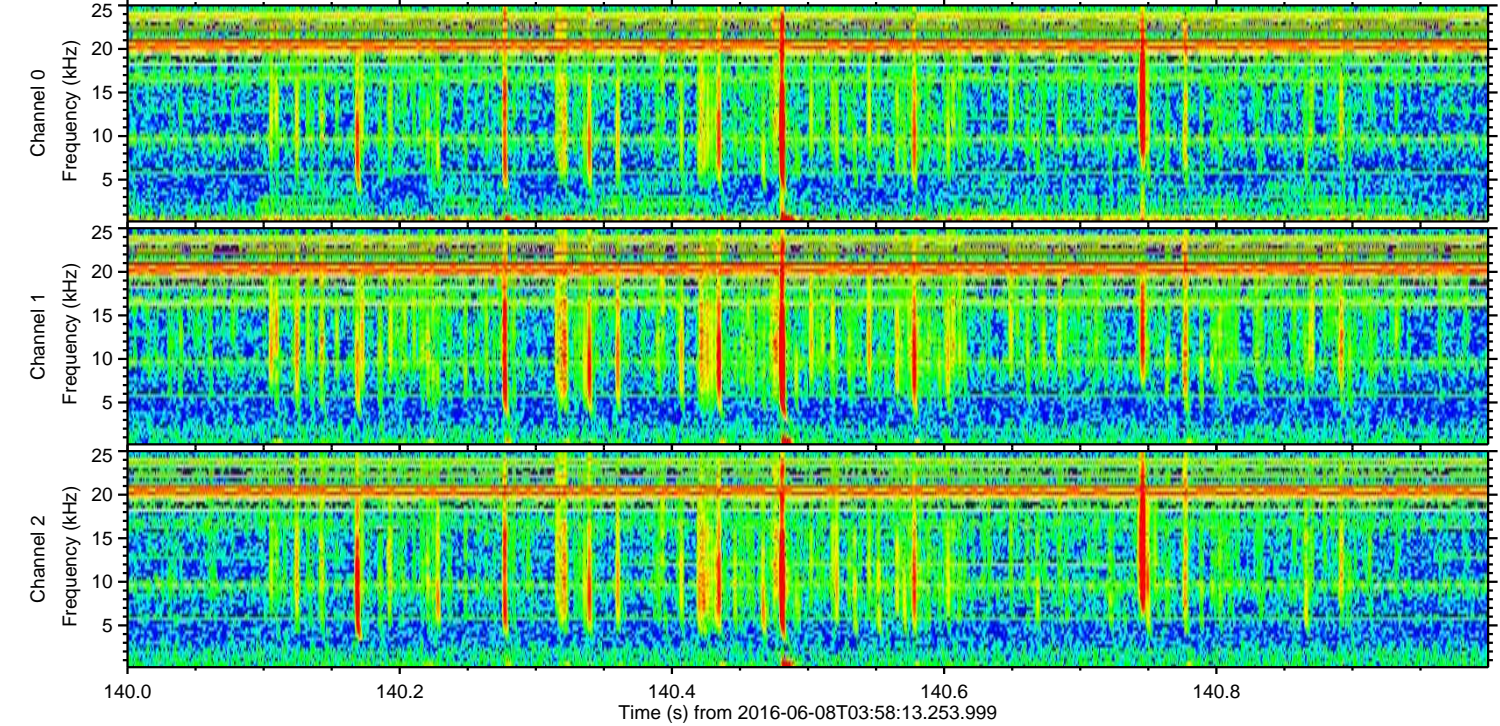
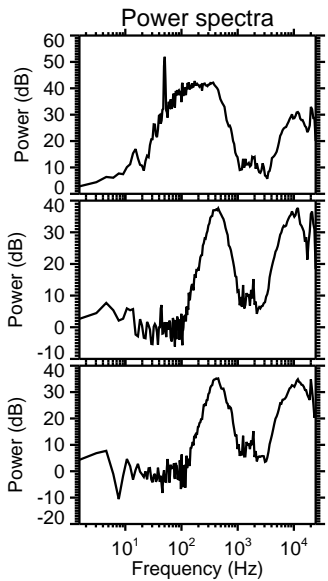
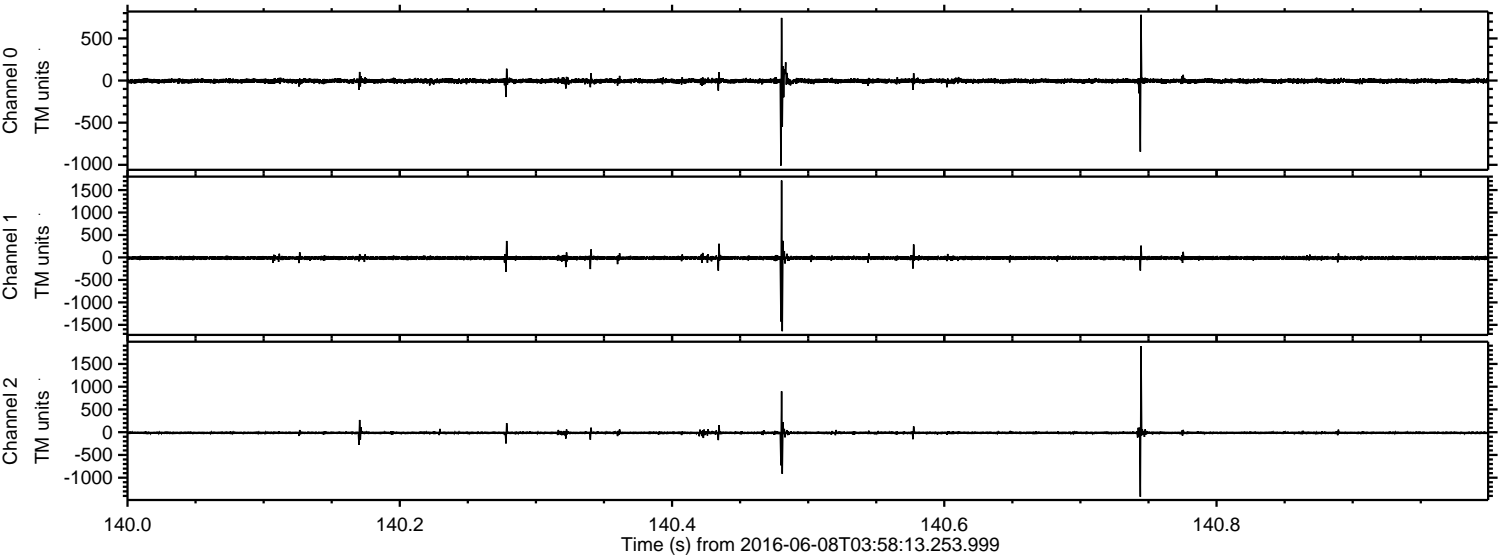
Channel 0
mn: -1088
mx: 957
 μ : -4.7
 σ : 16.7

Channel 1
mn: -403
mx: 337
 μ : -11.6
 σ : 17.4

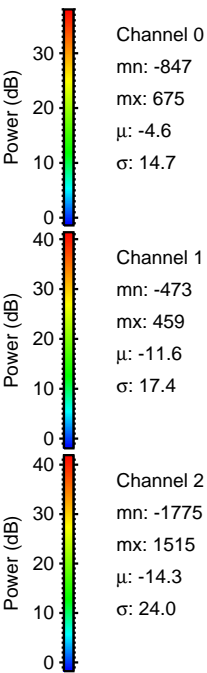
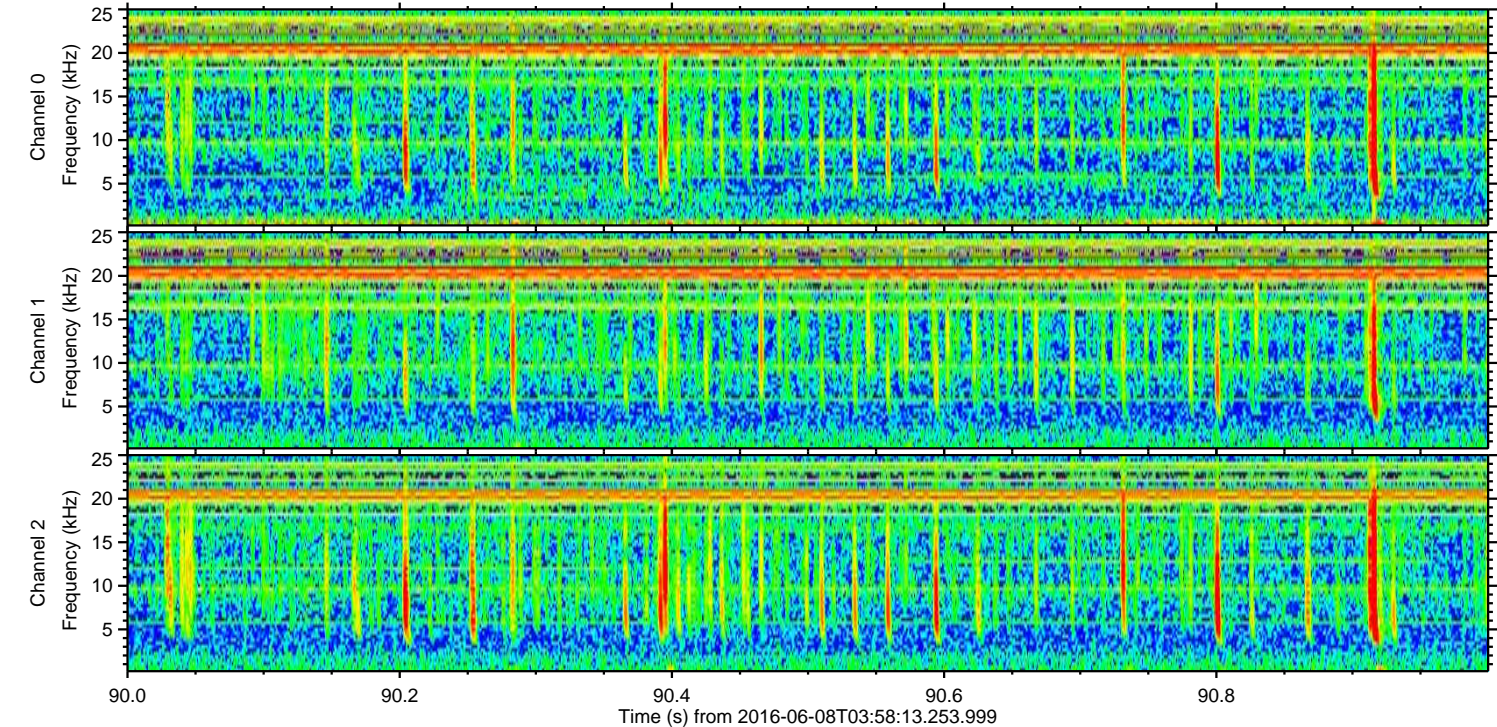
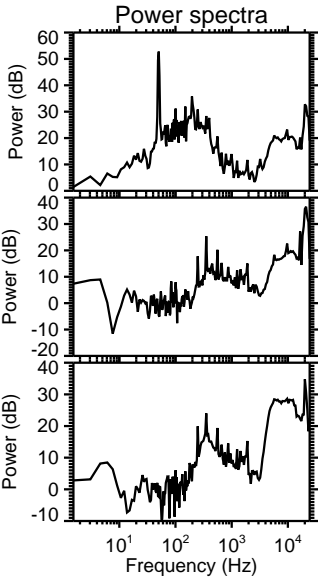
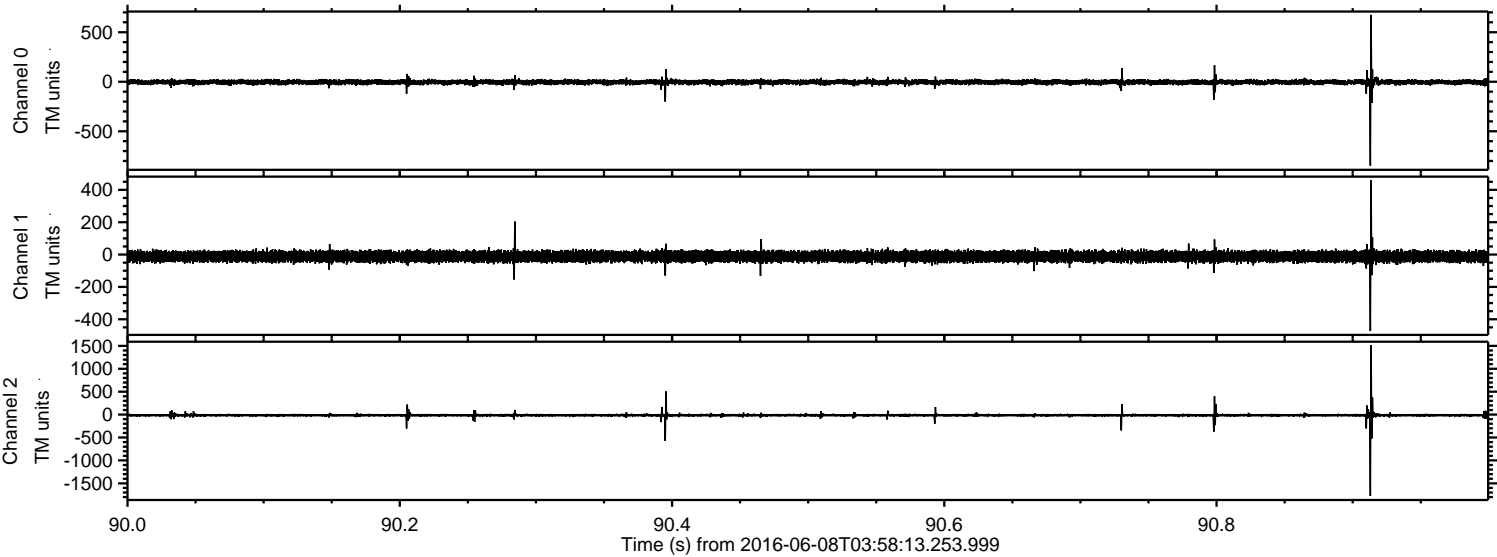
Channel 2
mn: -2318
mx: 2125
 μ : -14.2
 σ : 28.2

ELMAVAN 3D WAVEFORMS (Measured data sampled at 50 kHz) 51000 packets of 144 samples from 2016-06-08T03:58:13.253.999. Part 141/147

Processed Wed Jun 8 06:06:53 2016 by ELM ver.2012-10-06 from 001__elm20160608_035812__dat00.bin

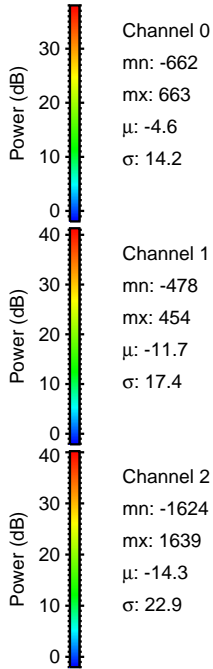
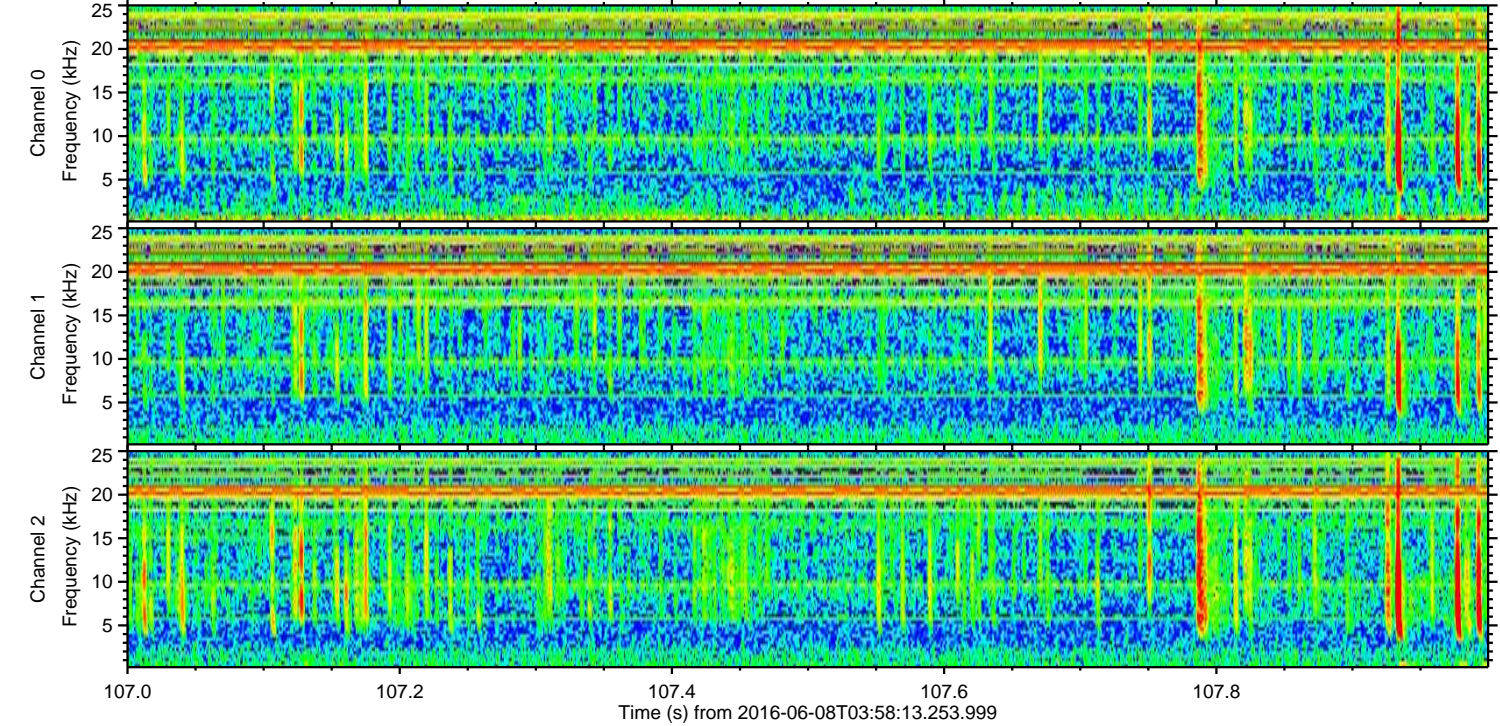
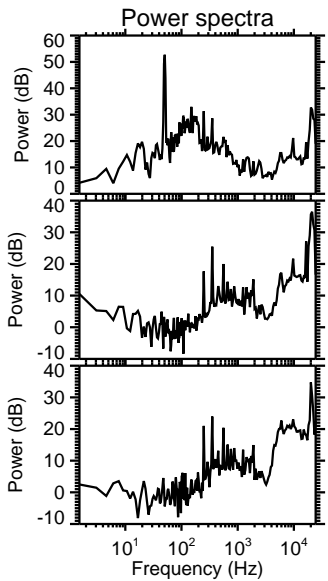
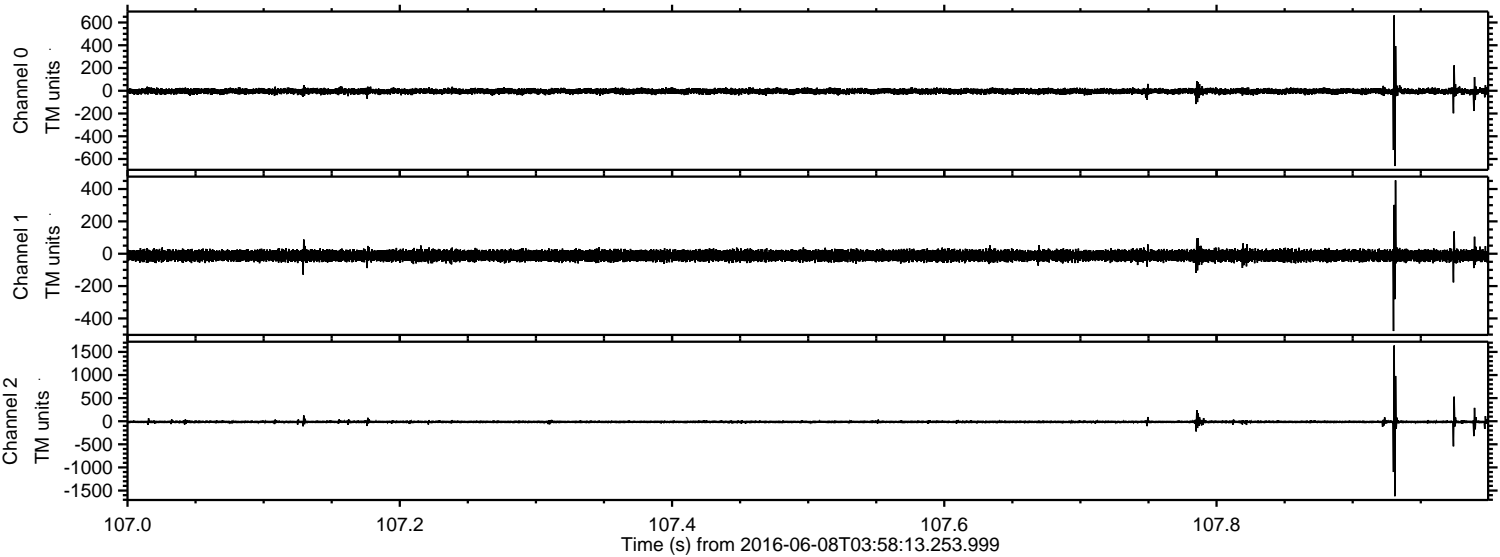


Processed Wed Jun 8 06:06:54 2016 by ELM ver.2012-10-06 from 001__elm20160608_035812__dat00.bin



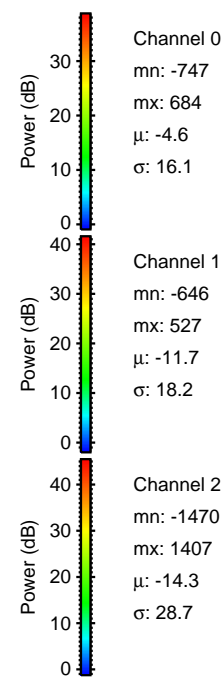
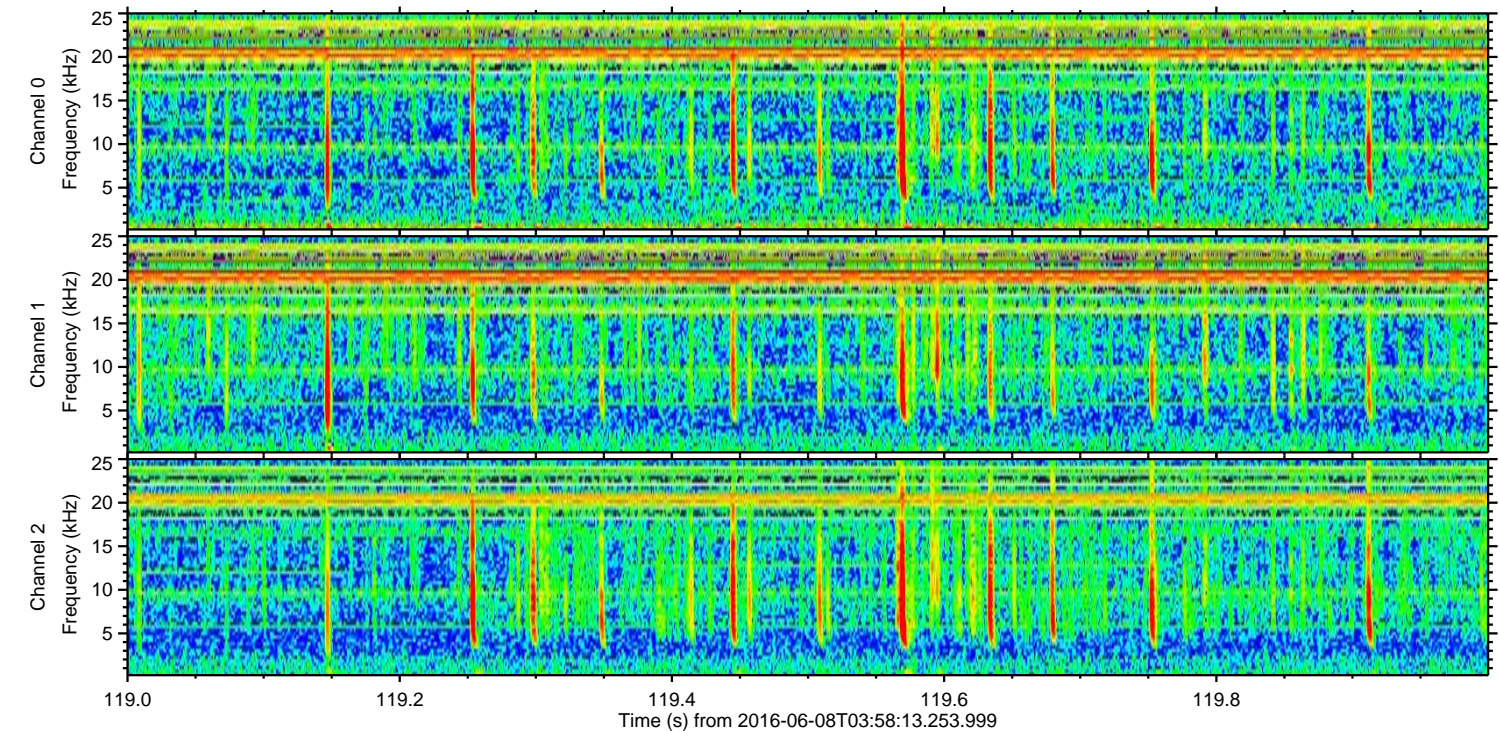
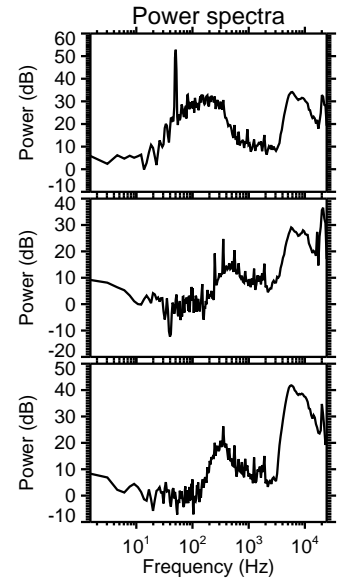
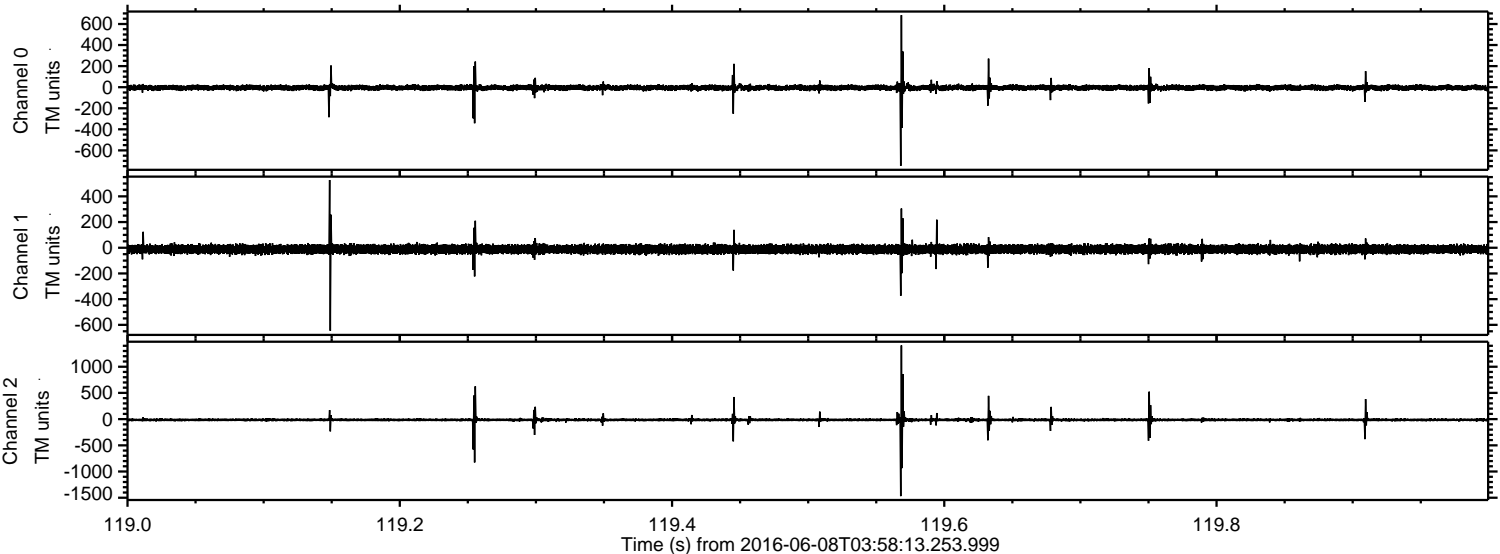
ELMAVAN 3D WAVEFORMS (Measured data sampled at 50 kHz) 51000 packets of 144 samples from 2016-06-08T03:58:13.253.999. Part 108/147

Processed Wed Jun 8 06:06:55 2016 by ELM ver.2012-10-06 from 001__elm20160608_035812__dat00.bin



ELMAVAN 3D WAVEFORMS (Measured data sampled at 50 kHz) 51000 packets of 144 samples from 2016-06-08T03:58:13.253.999. Part 120/147

Processed Wed Jun 8 06:06:56 2016 by ELM ver.2012-10-06 from 001__elm20160608_035812__dat00.bin



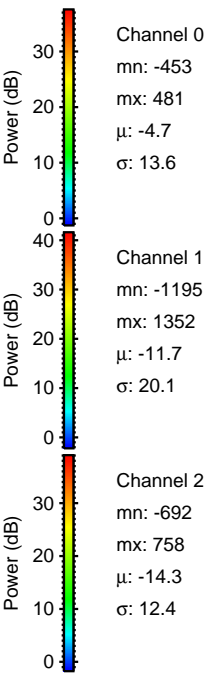
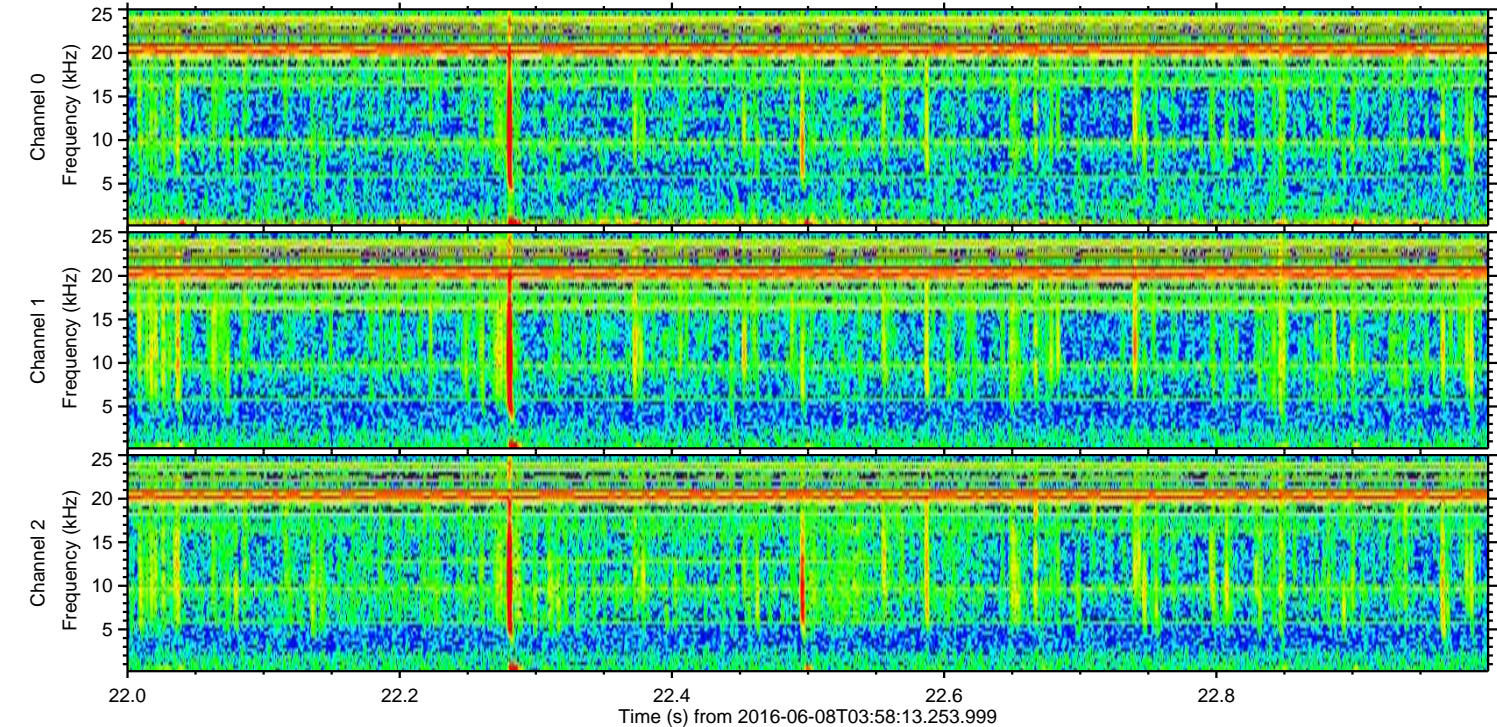
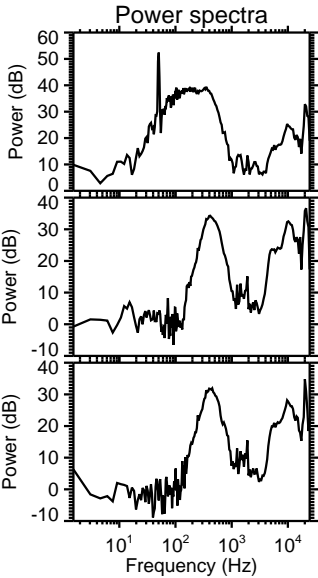
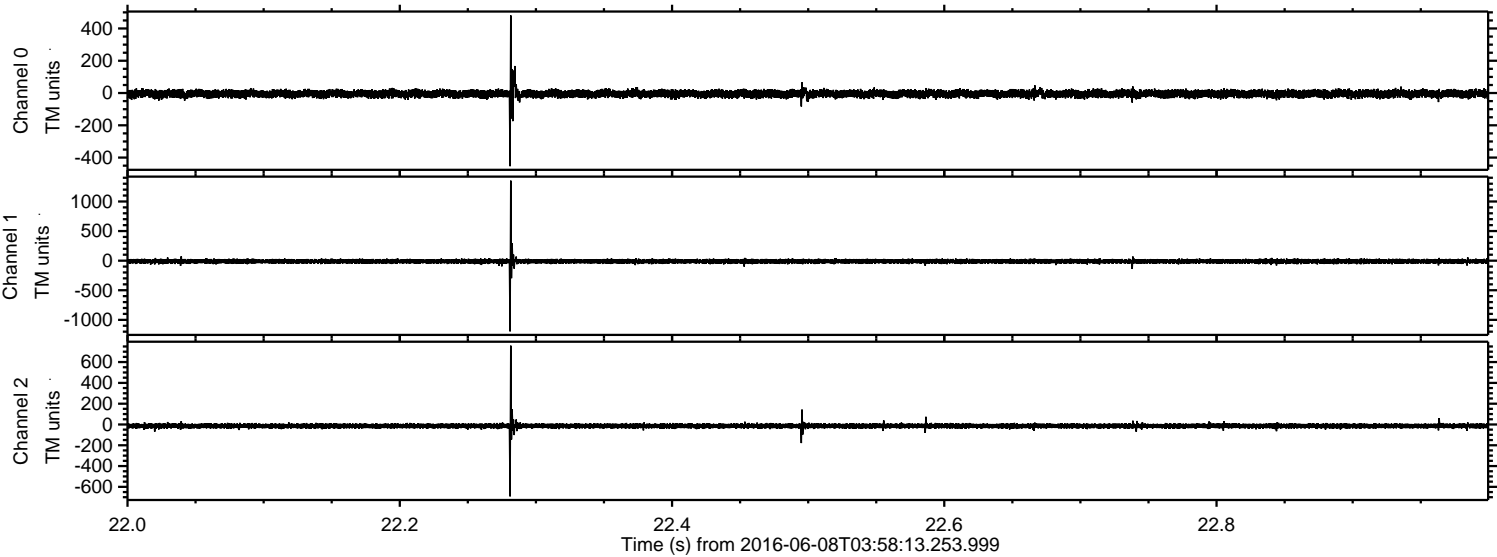
Channel 0
mn: -747
mx: 684
 μ : -4.6
 σ : 16.1

Channel 1
mn: -646
mx: 527
 μ : -11.7
 σ : 18.2

Channel 2
mn: -1470
mx: 1407
 μ : -14.3
 σ : 28.7

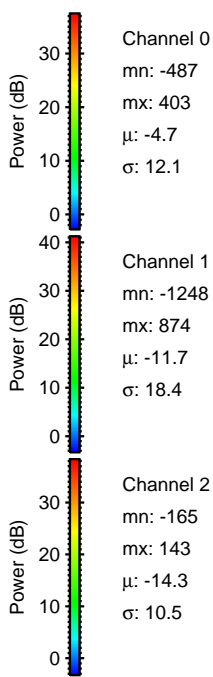
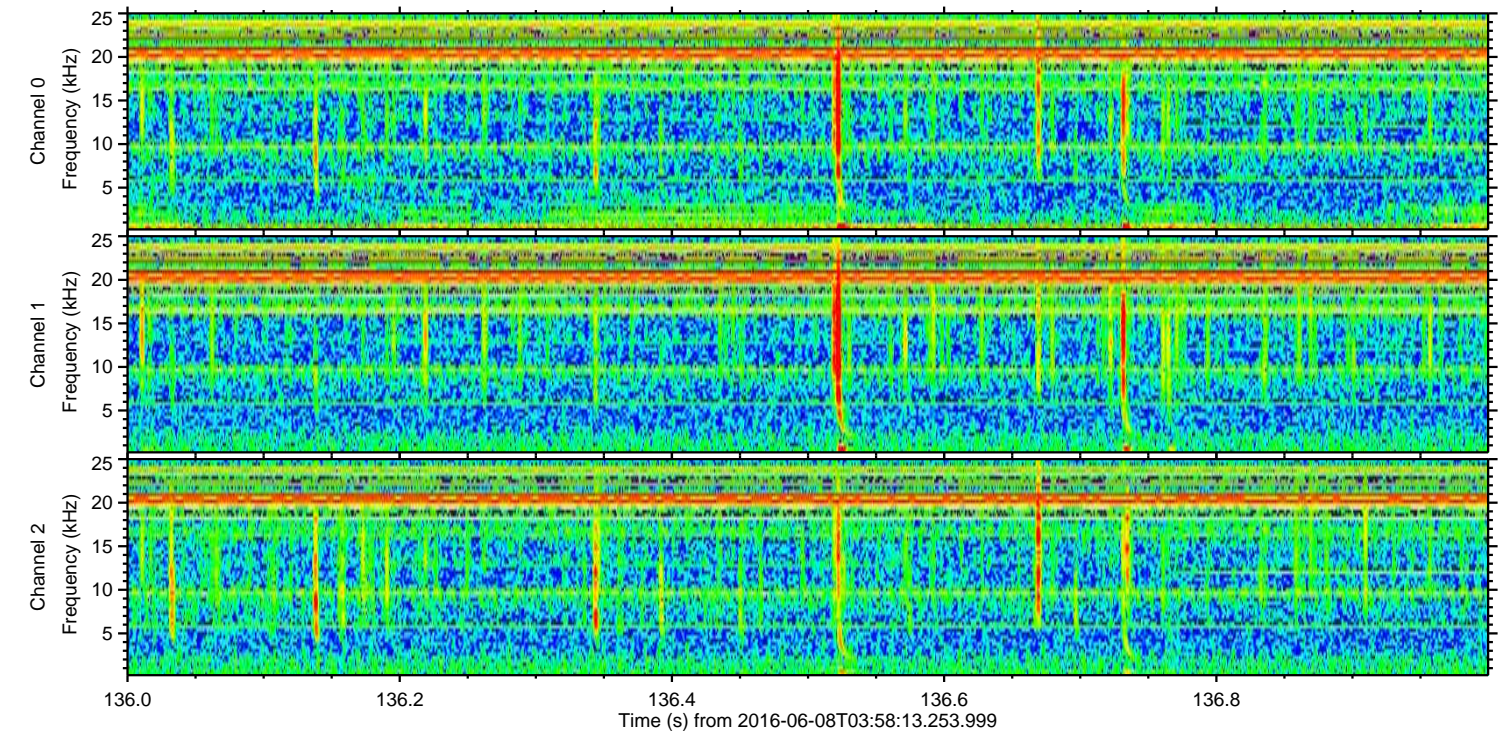
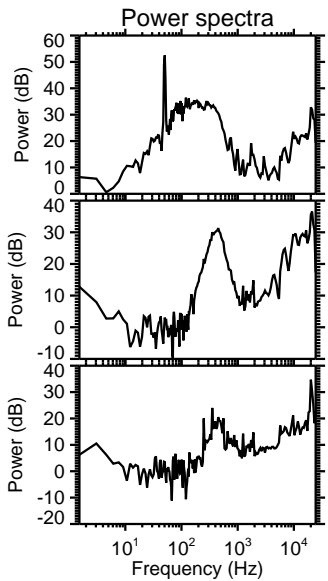
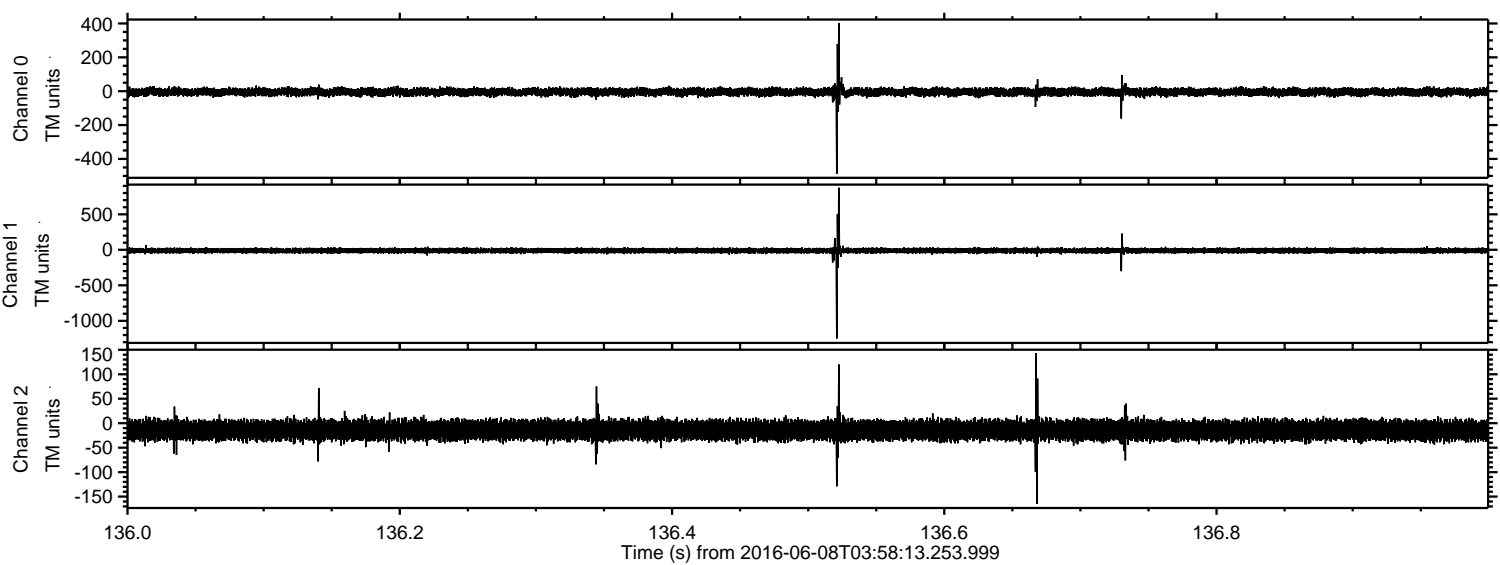
ELMAVAN 3D WAVEFORMS (Measured data sampled at 50 kHz) 51000 packets of 144 samples from 2016-06-08T03:58:13.253.999. Part 23/147

Processed Wed Jun 8 06:06:57 2016 by ELM ver.2012-10-06 from 001__elm20160608_035812__dat00.bin



ELMAVAN 3D WAVEFORMS (Measured data sampled at 50 kHz) 51000 packets of 144 samples from 2016-06-08T03:58:13.253.999. Part 137/147

Processed Wed Jun 8 06:06:58 2016 by ELM ver.2012-10-06 from 001__elm20160608_035812__dat00.bin



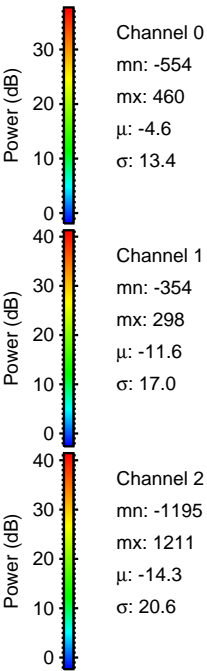
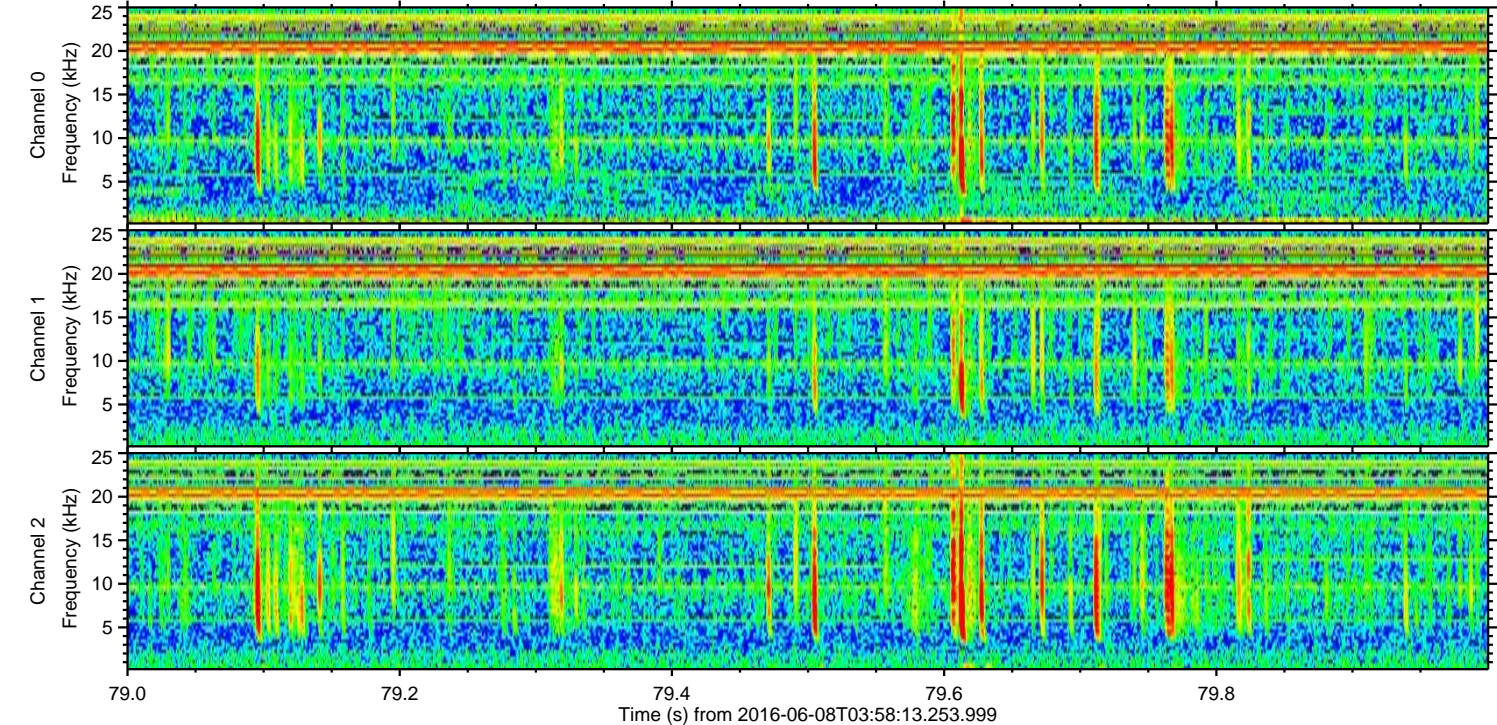
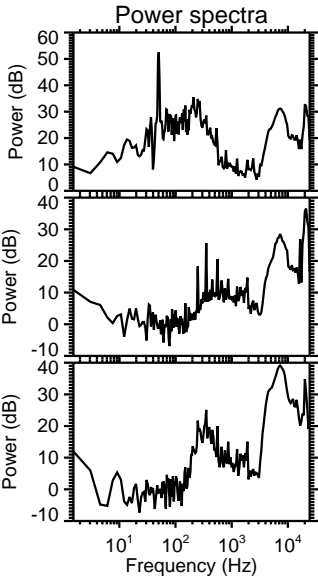
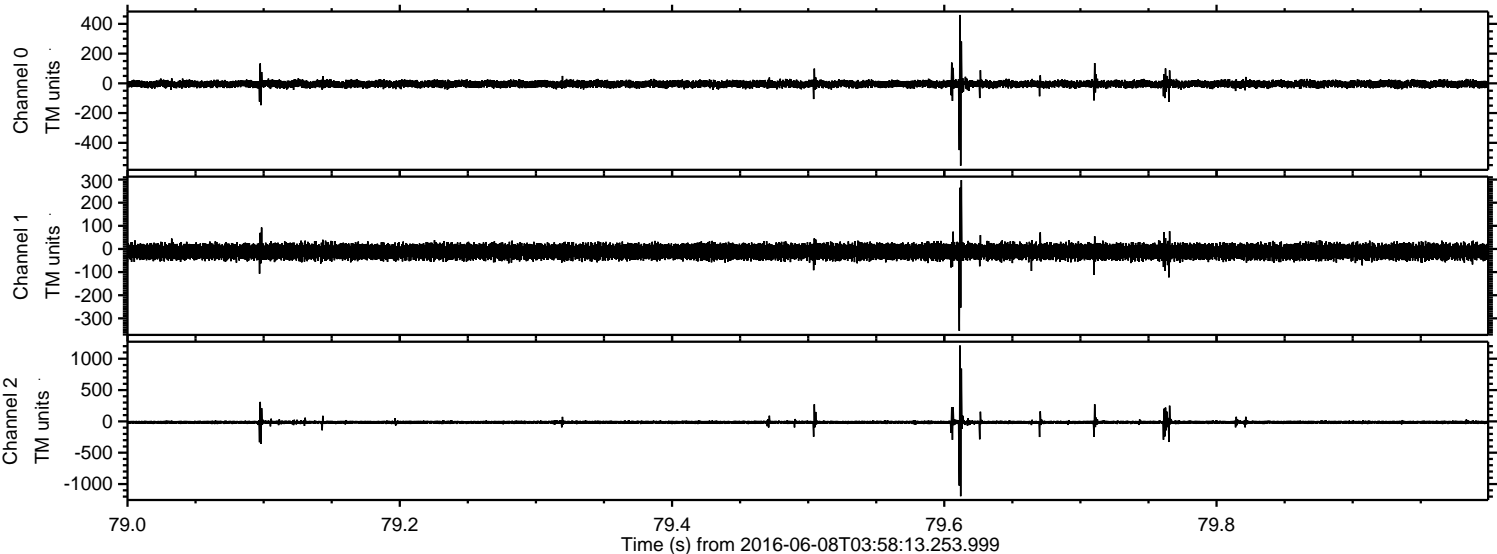
Channel 0
mn: -487
mx: 403
 μ : -4.7
 σ : 12.1

Channel 1
mn: -1248
mx: 874
 μ : -11.7
 σ : 18.4

Channel 2
mn: -165
mx: 143
 μ : -14.3
 σ : 10.5

ELMAVAN 3D WAVEFORMS (Measured data sampled at 50 kHz) 51000 packets of 144 samples from 2016-06-08T03:58:13.253.999. Part 80/147

Processed Wed Jun 8 06:06:59 2016 by ELM ver.2012-10-06 from 001__elm20160608_035812__dat00.bin



ELMAVAN 3D WAVEFORMS (Measured data sampled at 50 kHz) 51000 packets of 144 samples from 2016-06-08T03:58:13.253.999. Part 115/147

Processed Wed Jun 8 06:07:00 2016 by ELM ver.2012-10-06 from 001__elm20160608_035812__dat00.bin

