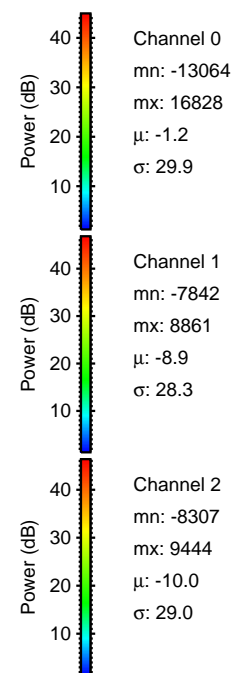
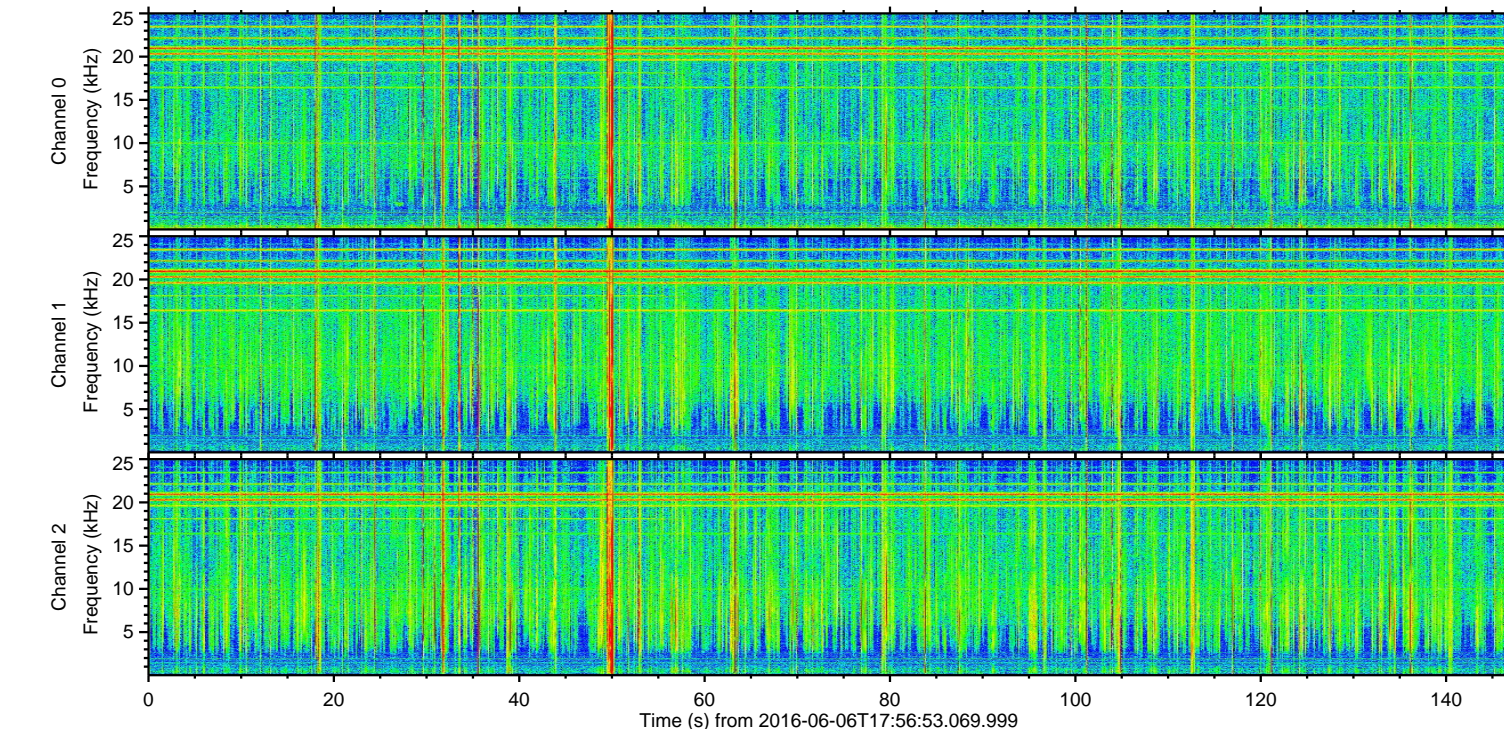
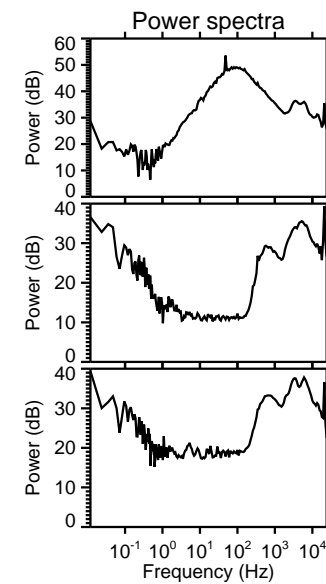
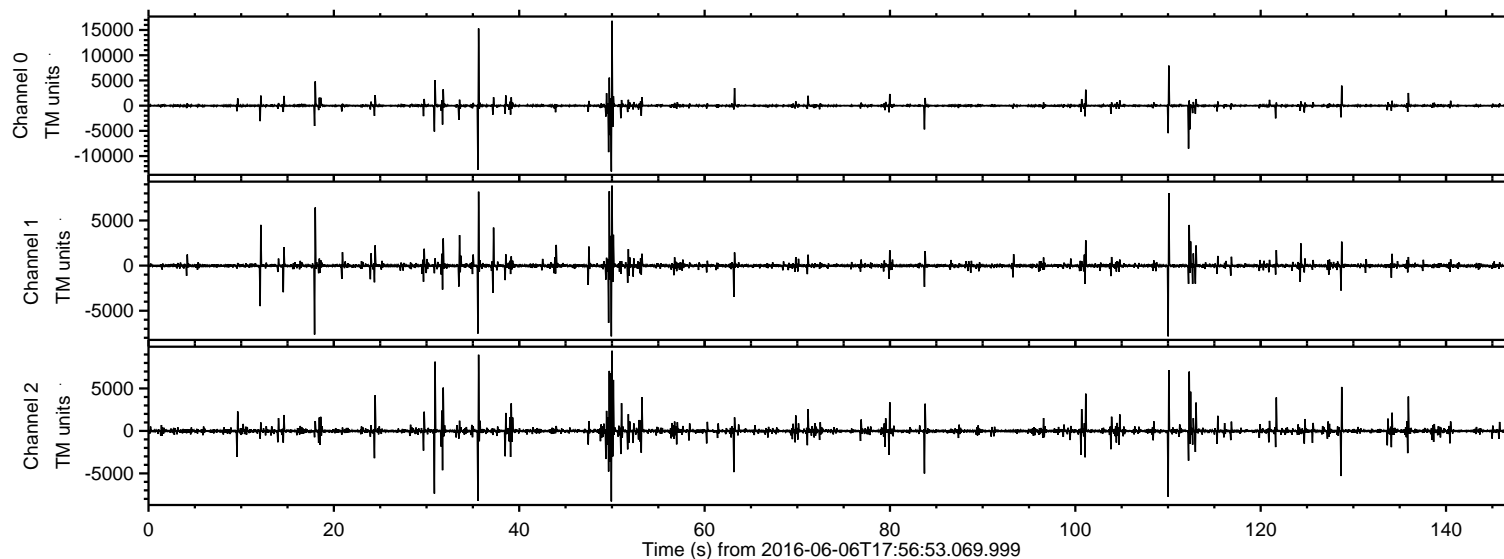


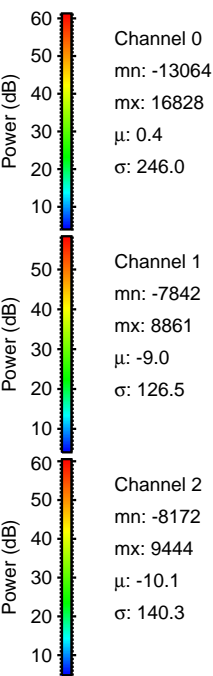
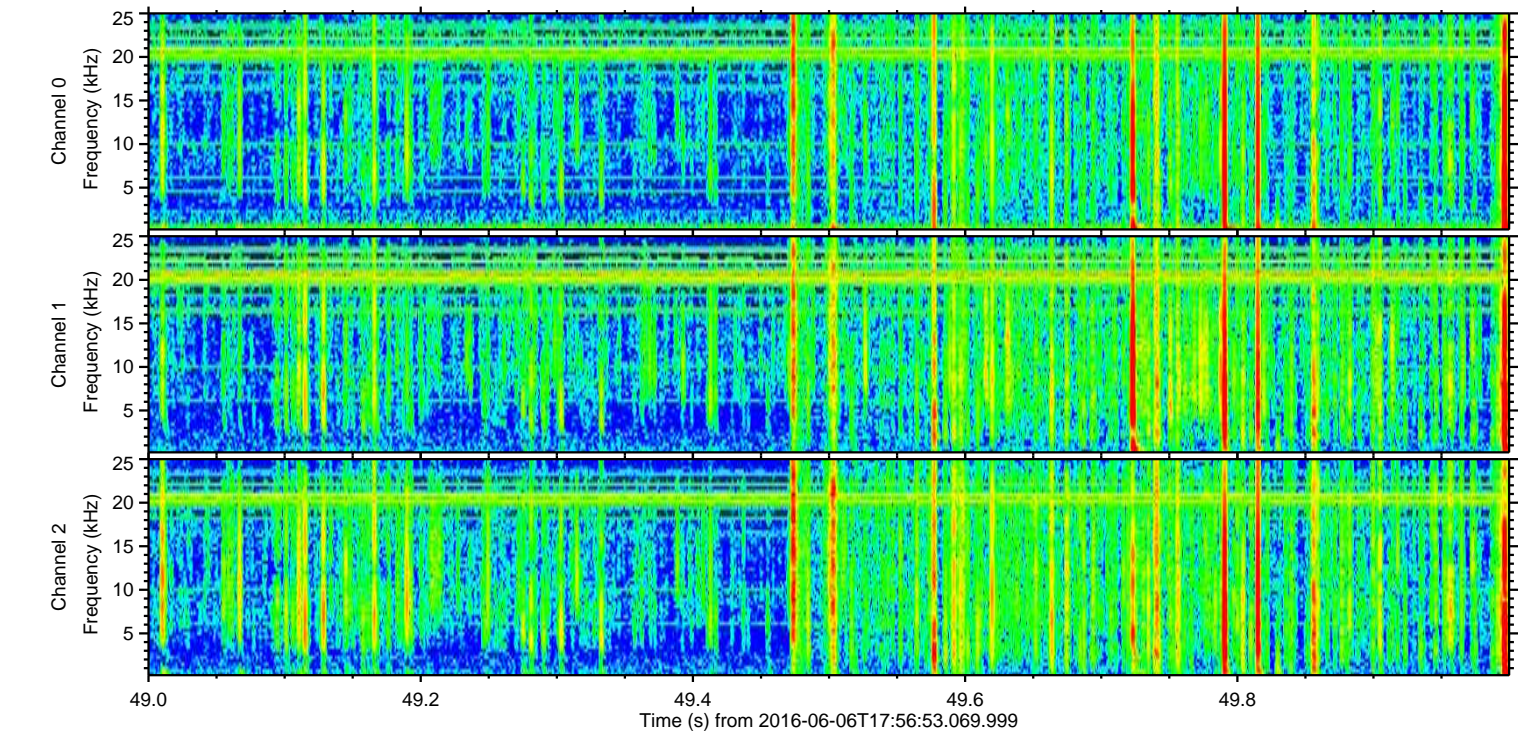
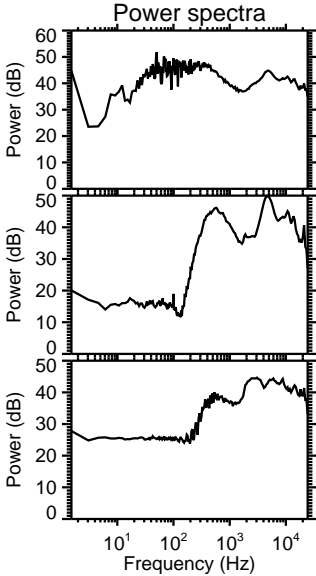
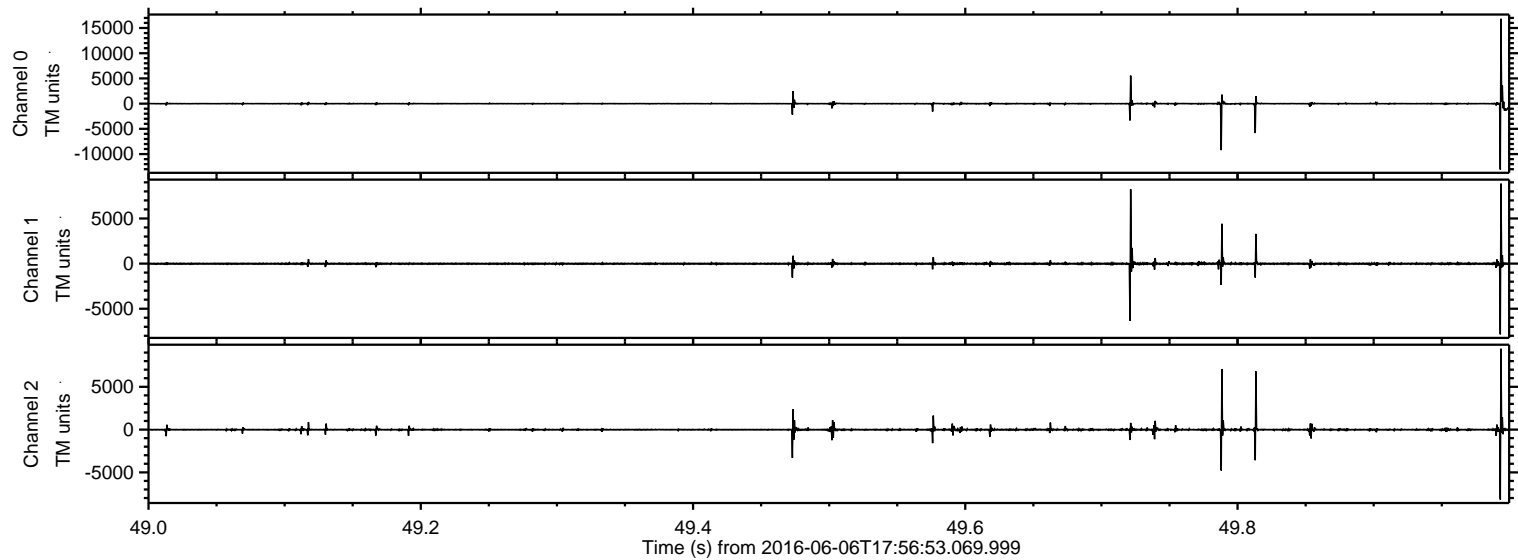
ELMAVAN 3D WAVEFORMS (Measured data sampled at 50 kHz) 51000 packets of 144 samples from 2016-06-06T17:56:53.069.999.

Processed Mon Jun 6 20:05:04 2016 by ELM ver.2012-10-06 from 001__elm20160606_175652__dat00.bin



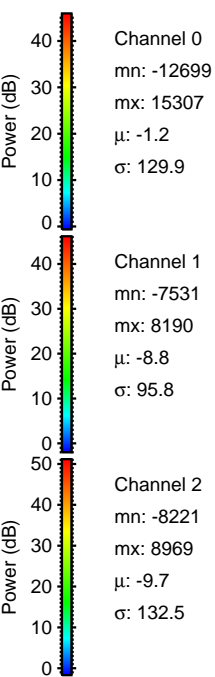
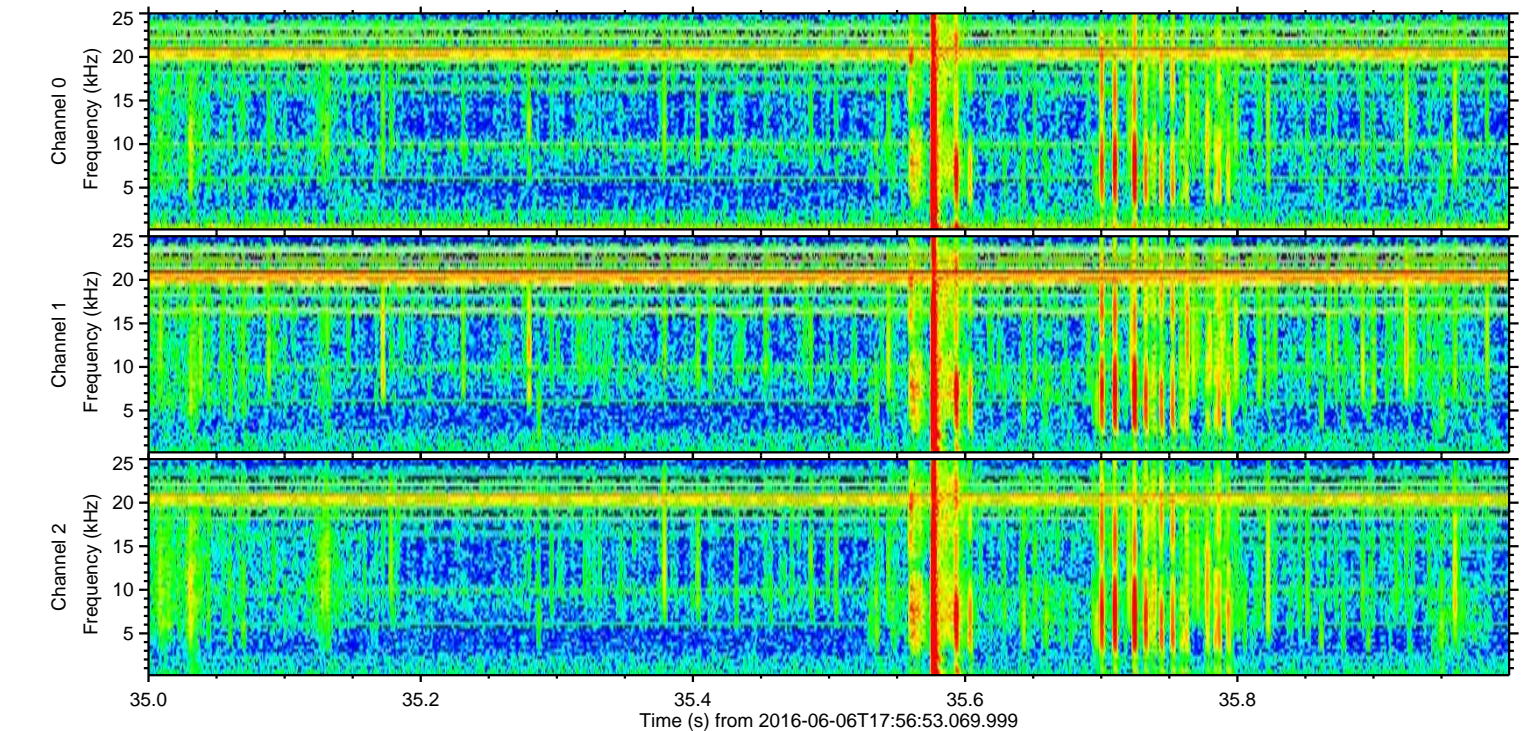
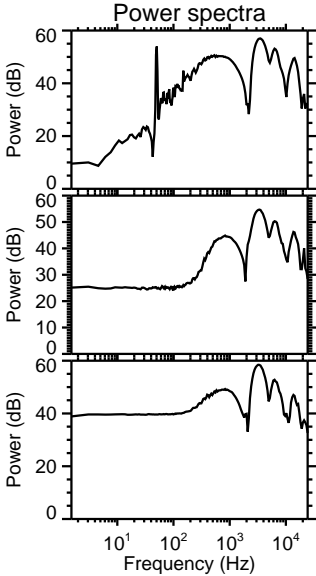
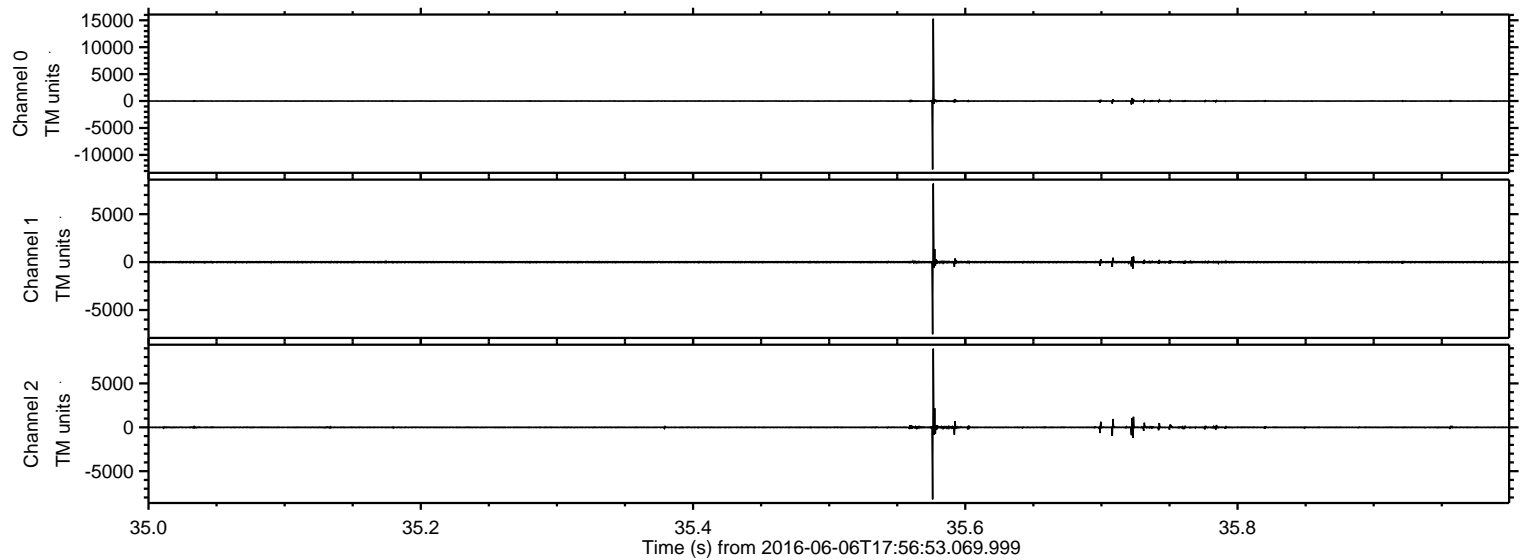
ELMAVAN 3D WAVEFORMS (Measured data sampled at 50 kHz) 51000 packets of 144 samples from 2016-06-06T17:56:53.069.999. Part 50/147

Processed Mon Jun 6 20:05:19 2016 by ELM ver.2012-10-06 from 001__elm20160606_175652__dat00.bin

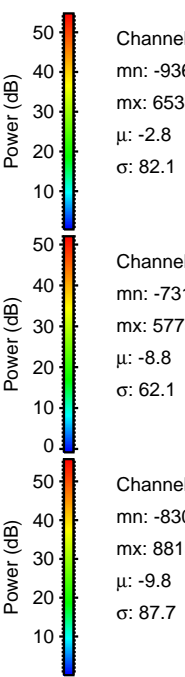
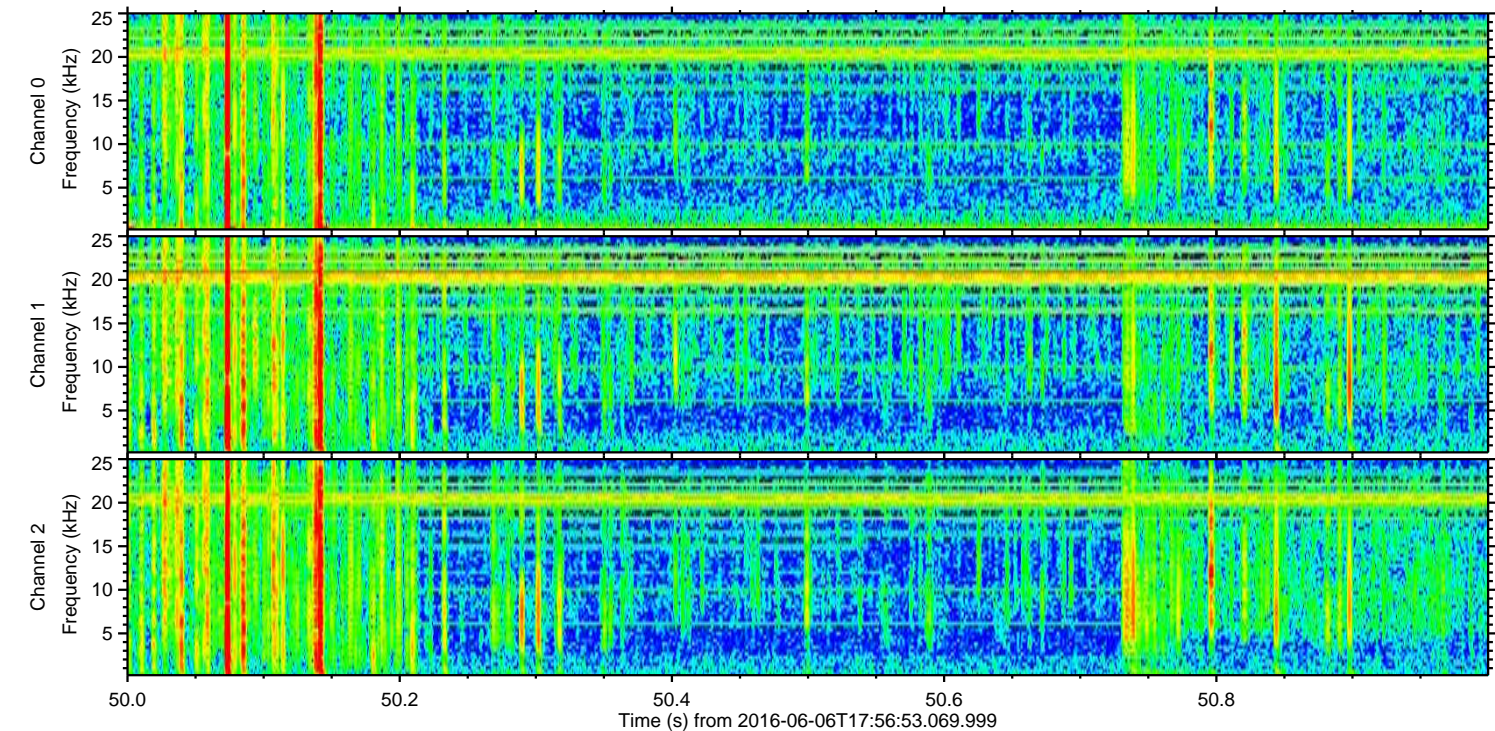
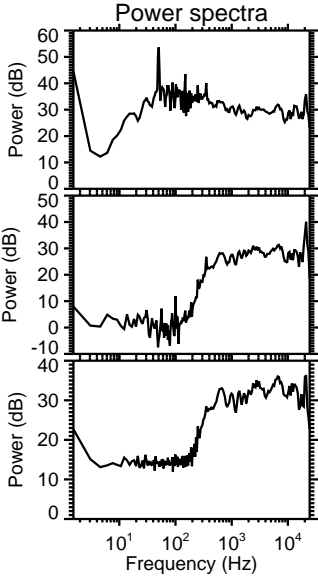
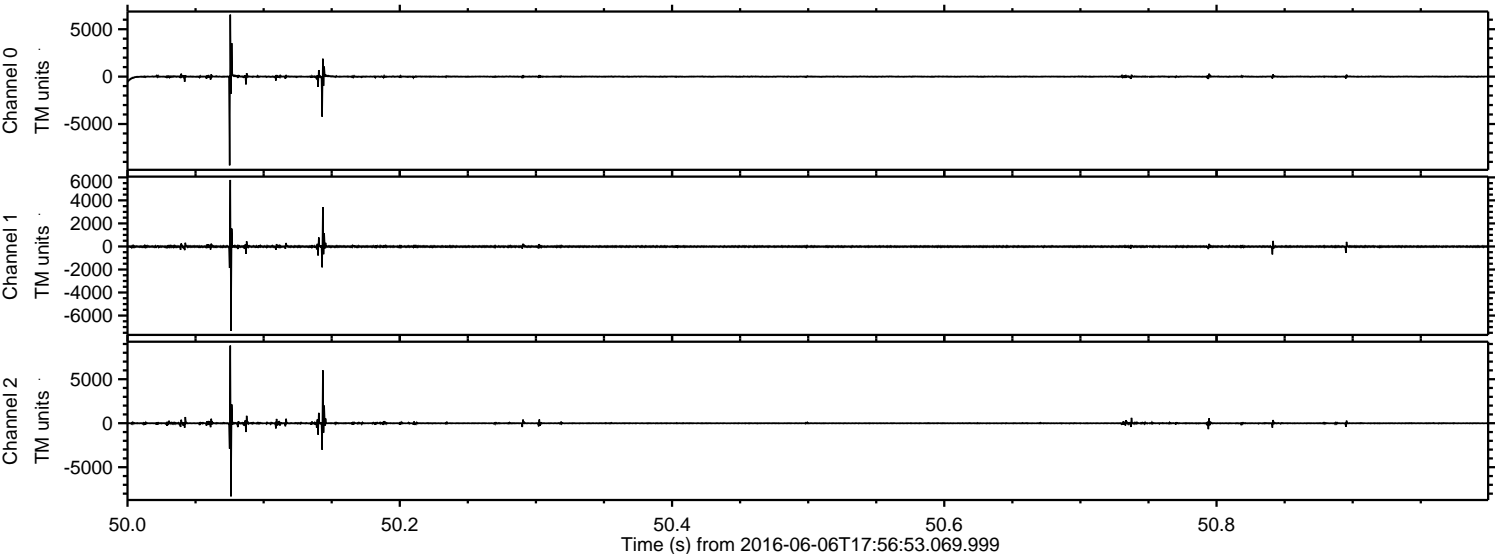


ELMAVAN 3D WAVEFORMS (Measured data sampled at 50 kHz) 51000 packets of 144 samples from 2016-06-06T17:56:53.069.999. Part 36/147

Processed Mon Jun 6 20:05:20 2016 by ELM ver.2012-10-06 from 001__elm20160606_175652__dat00.bin

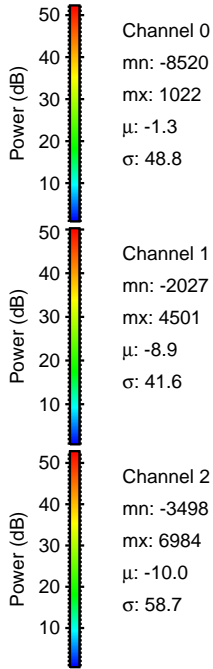
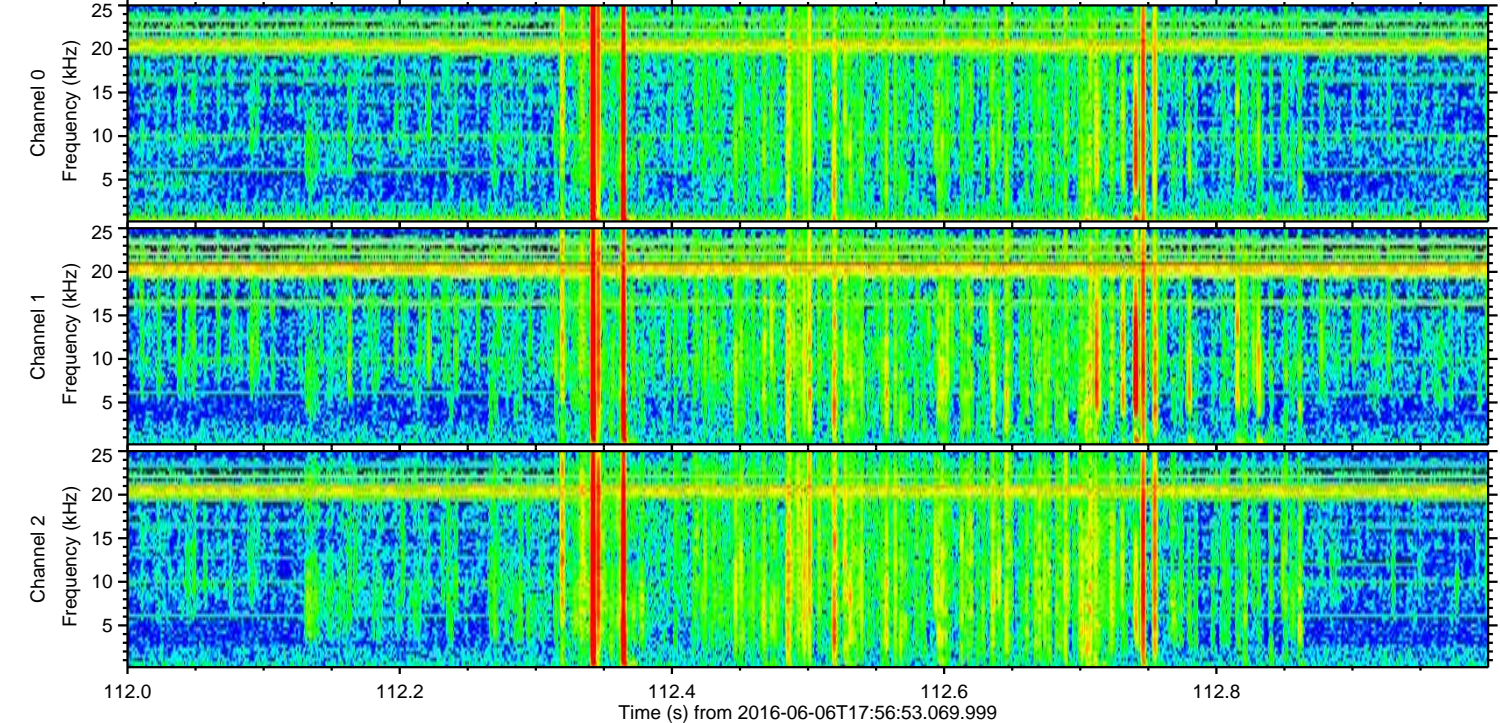
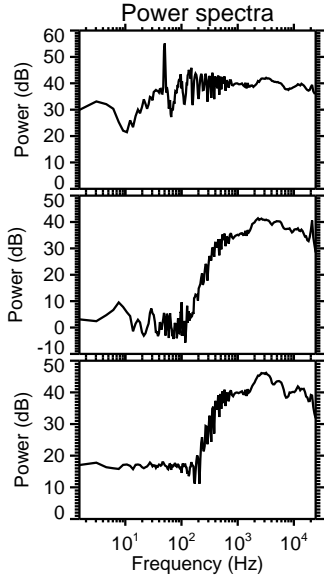
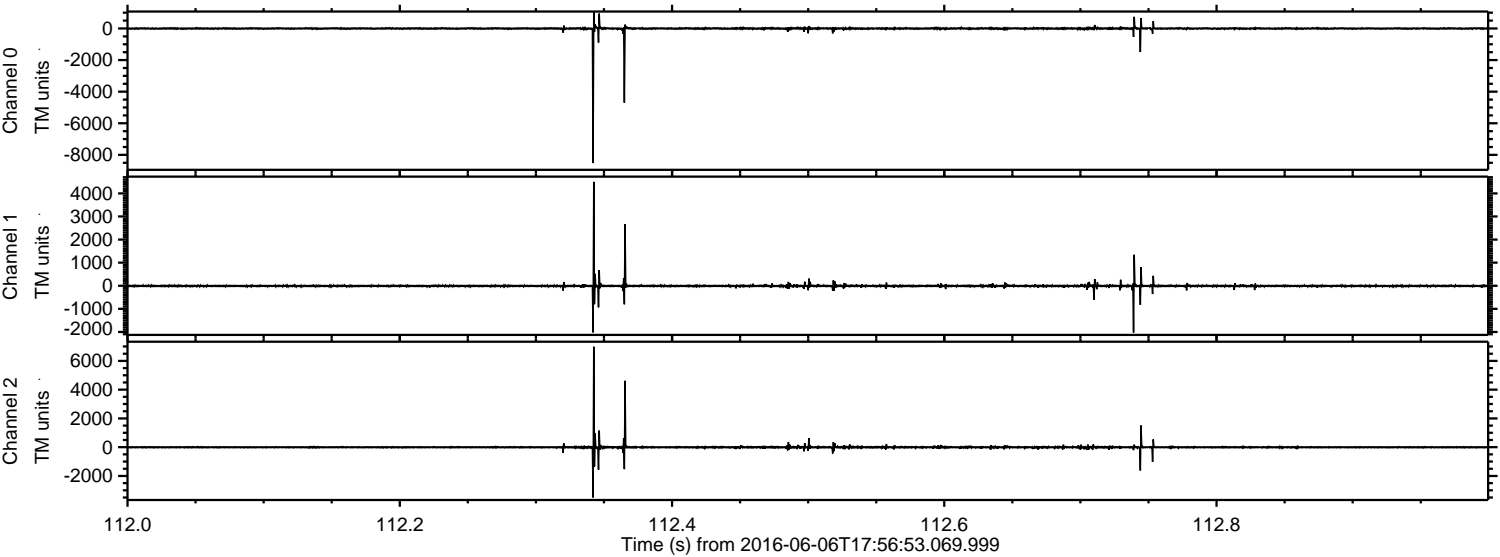


Processed Mon Jun 6 20:05:21 2016 by ELM ver.2012-10-06 from 001__elm20160606_175652__dat00.bin



ELMAVAN 3D WAVEFORMS (Measured data sampled at 50 kHz) 51000 packets of 144 samples from 2016-06-06T17:56:53.069.999. Part 113/147

Processed Mon Jun 6 20:05:22 2016 by ELM ver.2012-10-06 from 001__elm20160606_175652__dat00.bin

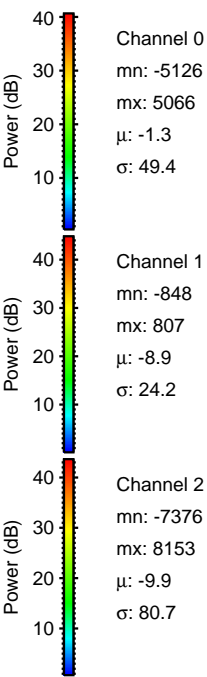
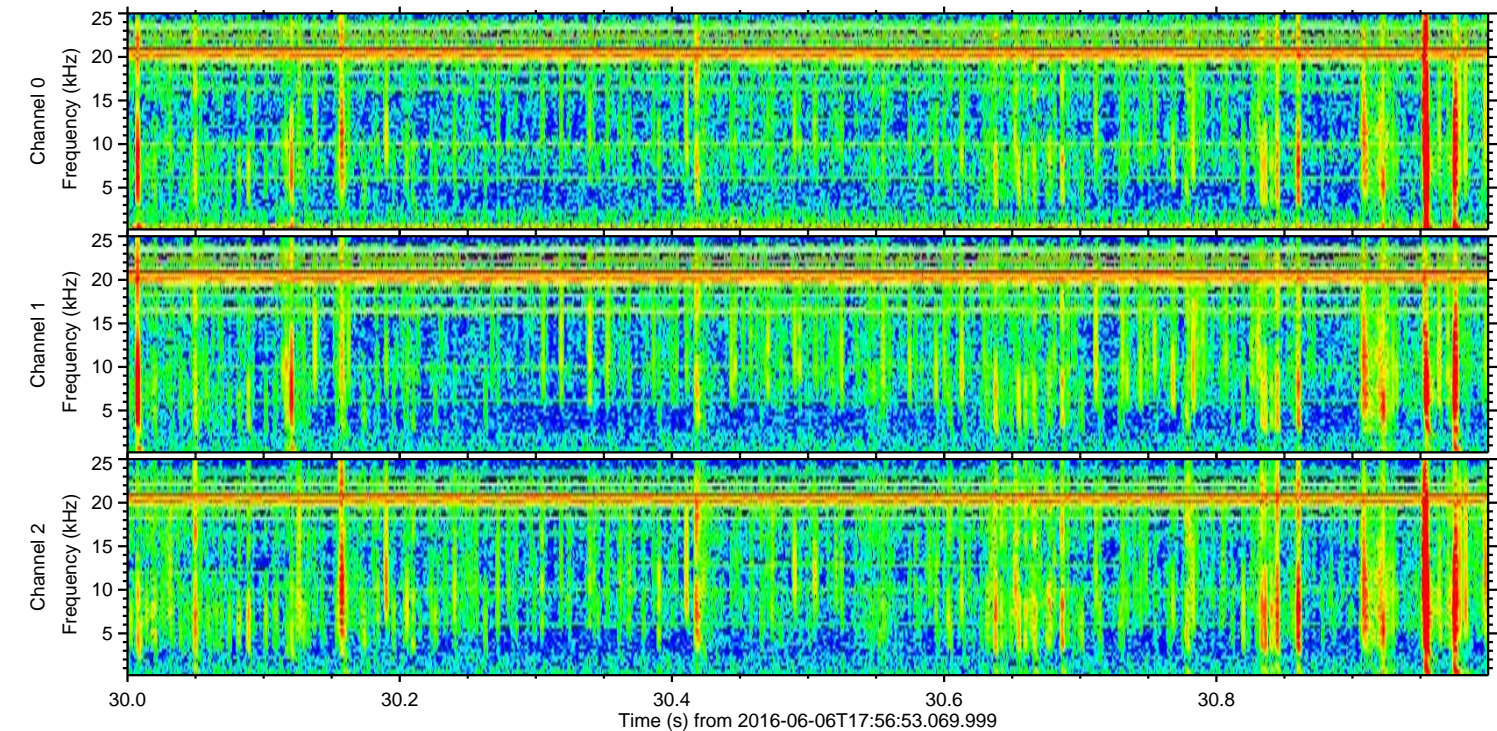
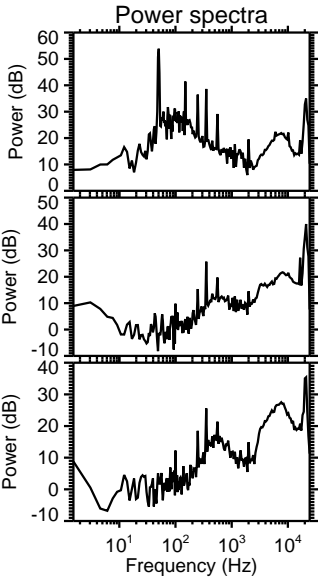
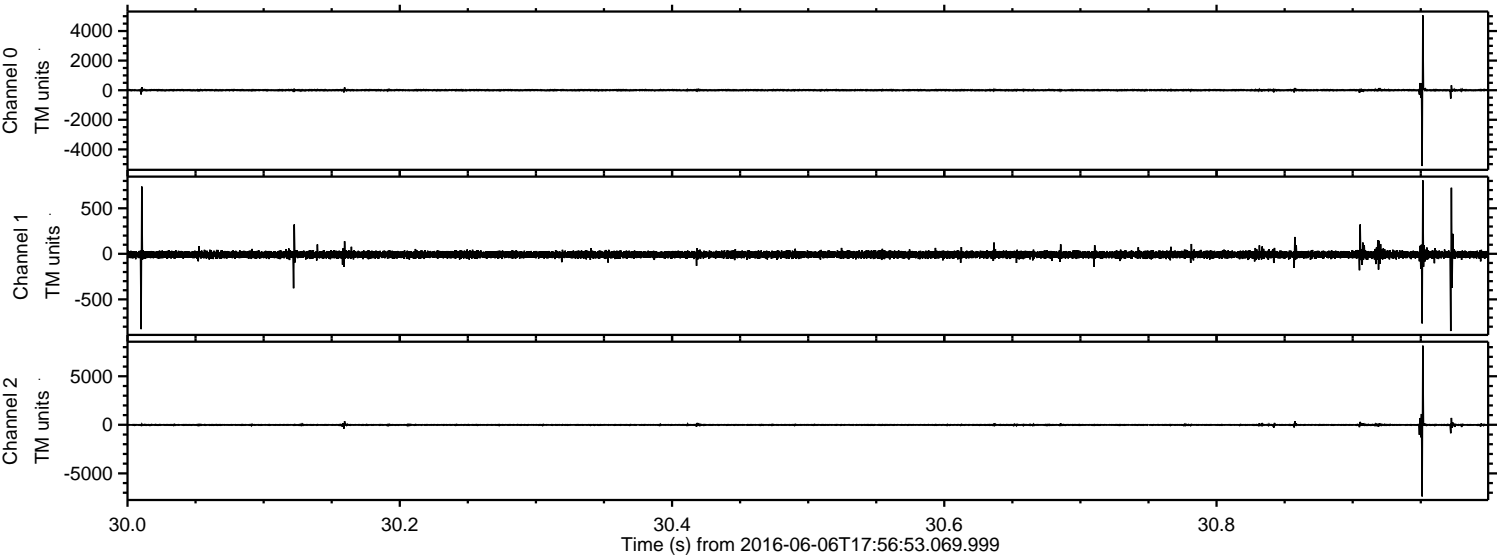


Channel 0
mn: -8520
mx: 1022
 μ : -1.3
 σ : 48.8

Channel 1
mn: -2027
mx: 4501
 μ : -8.9
 σ : 41.6

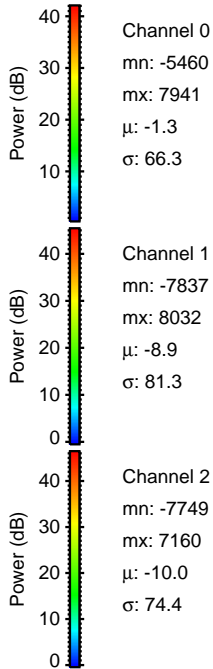
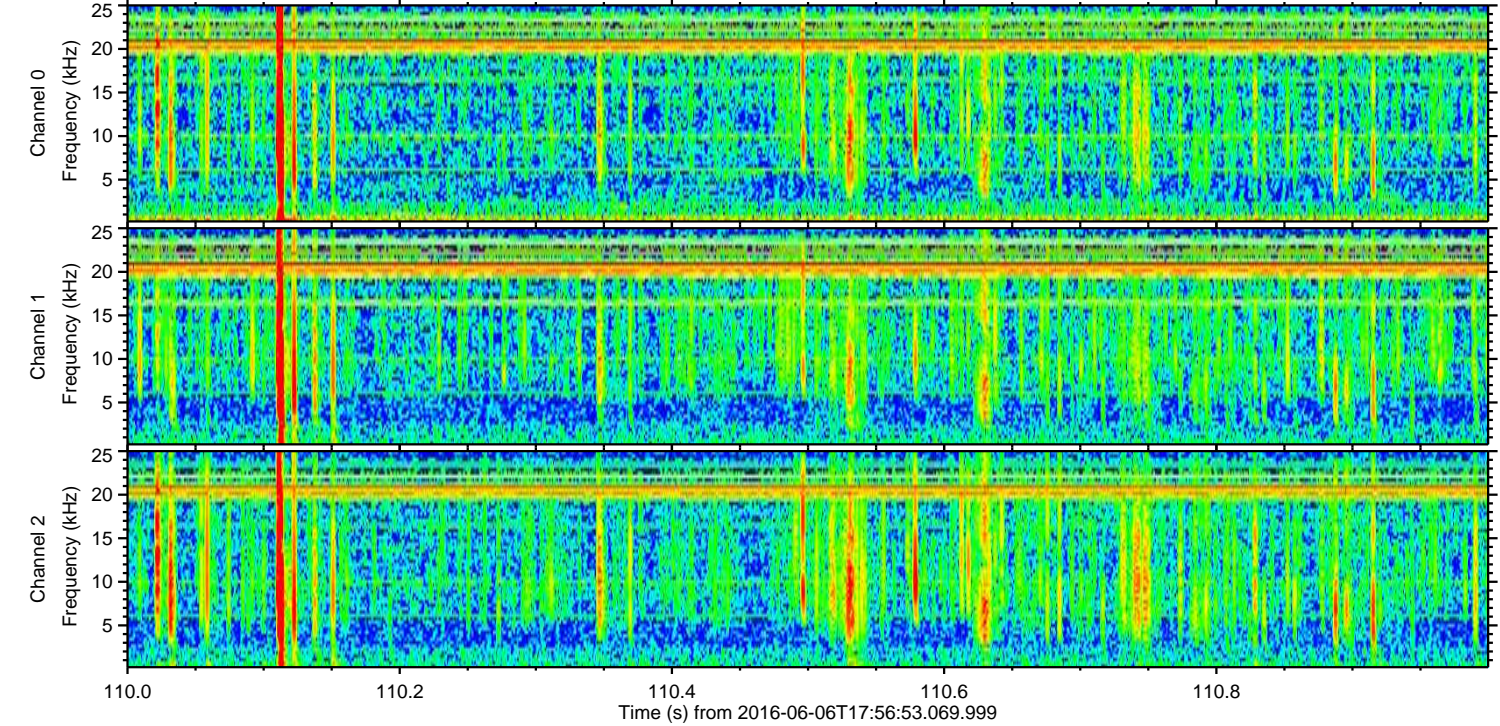
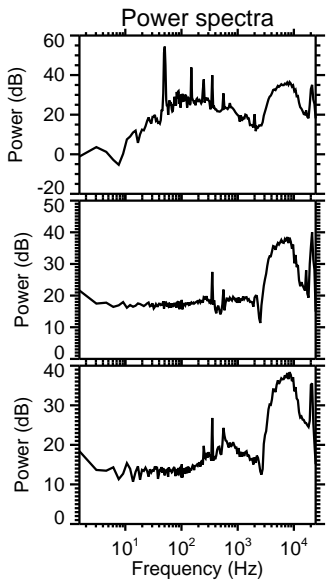
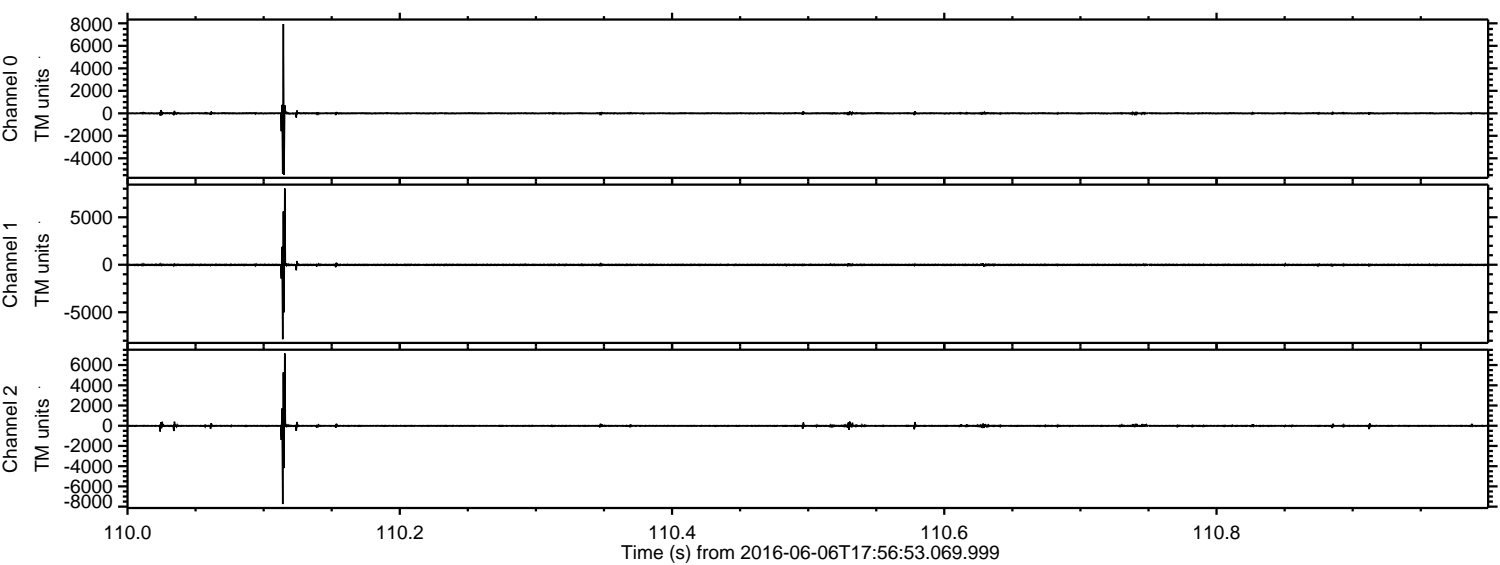
Channel 2
mn: -3498
mx: 6984
 μ : -10.0
 σ : 58.7

Processed Mon Jun 6 20:05:23 2016 by ELM ver.2012-10-06 from 001__elm20160606_175652__dat00.bin



ELMAVAN 3D WAVEFORMS (Measured data sampled at 50 kHz) 51000 packets of 144 samples from 2016-06-06T17:56:53.069.999. Part 111/147

Processed Mon Jun 6 20:05:24 2016 by ELM ver.2012-10-06 from 001__elm20160606_175652__dat00.bin

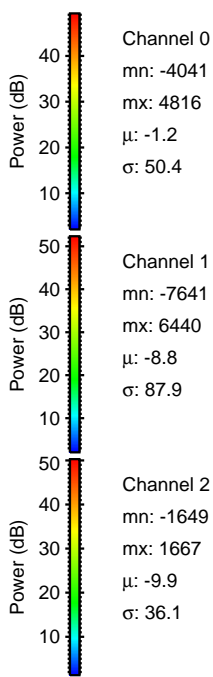
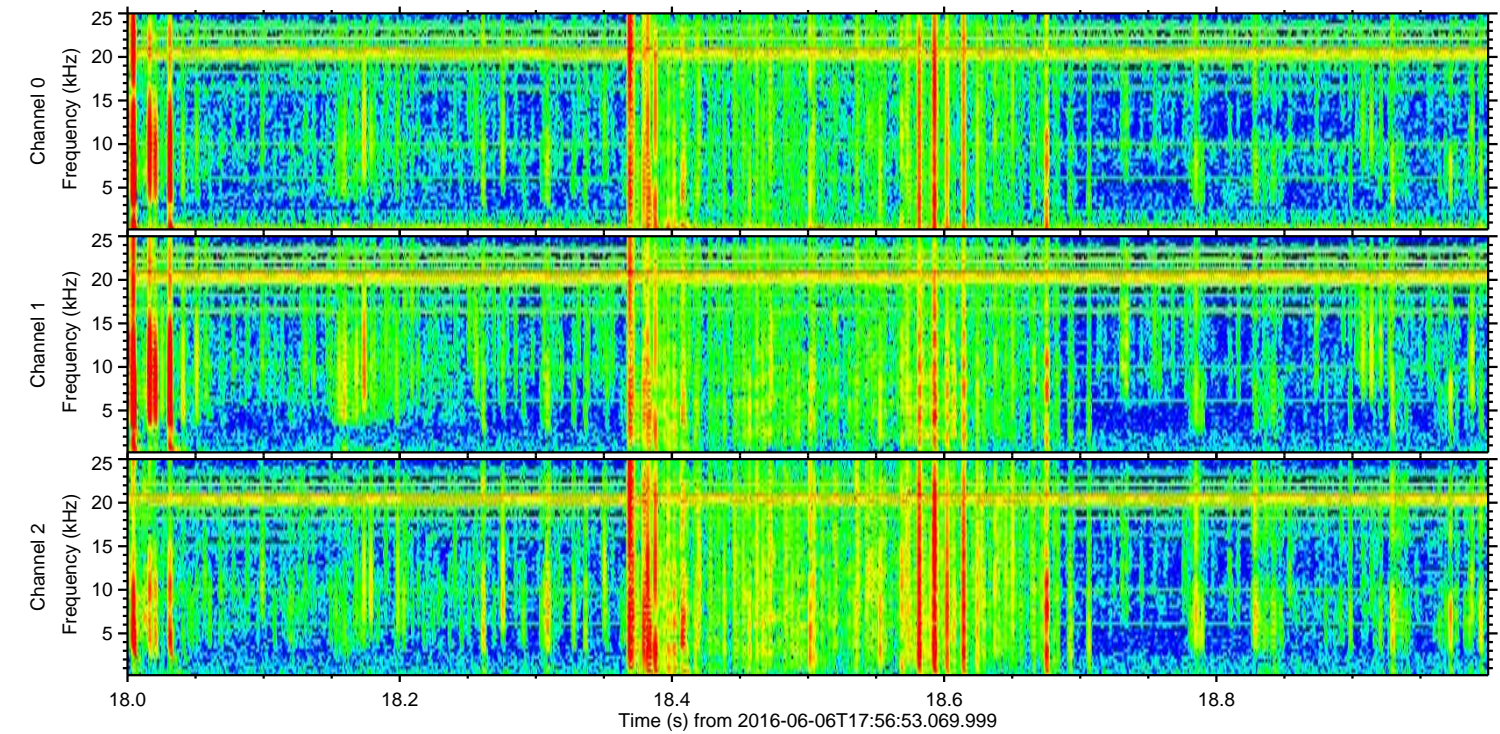
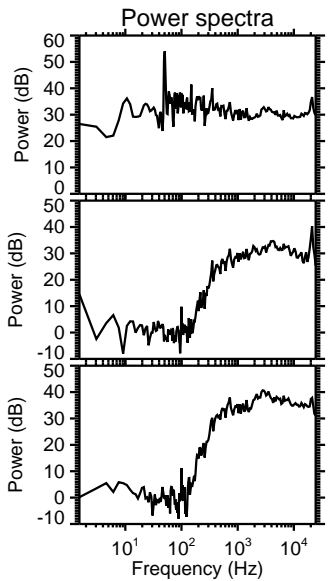
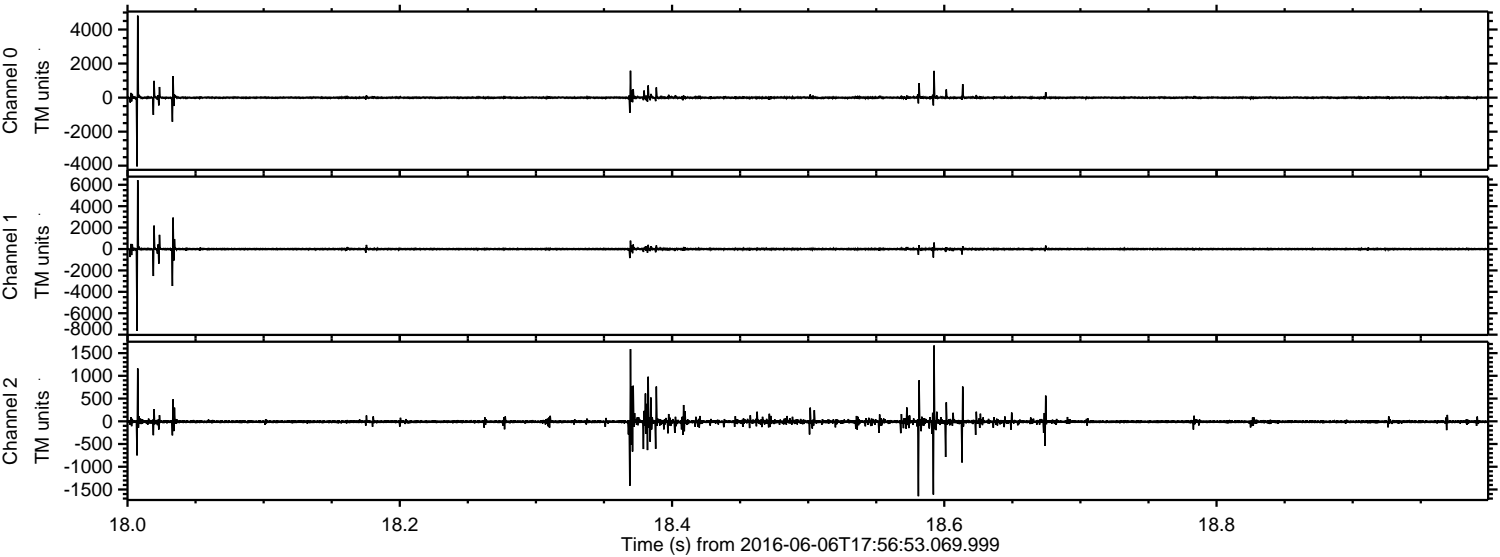


Channel 0
mn: -5460
mx: 7941
 μ : -1.3
 σ : 66.3

Channel 1
mn: -7837
mx: 8032
 μ : -8.9
 σ : 81.3

Channel 2
mn: -7749
mx: 7160
 μ : -10.0
 σ : 74.4

Processed Mon Jun 6 20:05:25 2016 by ELM ver.2012-10-06 from 001__elm20160606_175652__dat00.bin



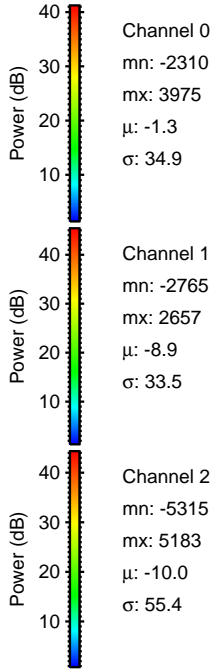
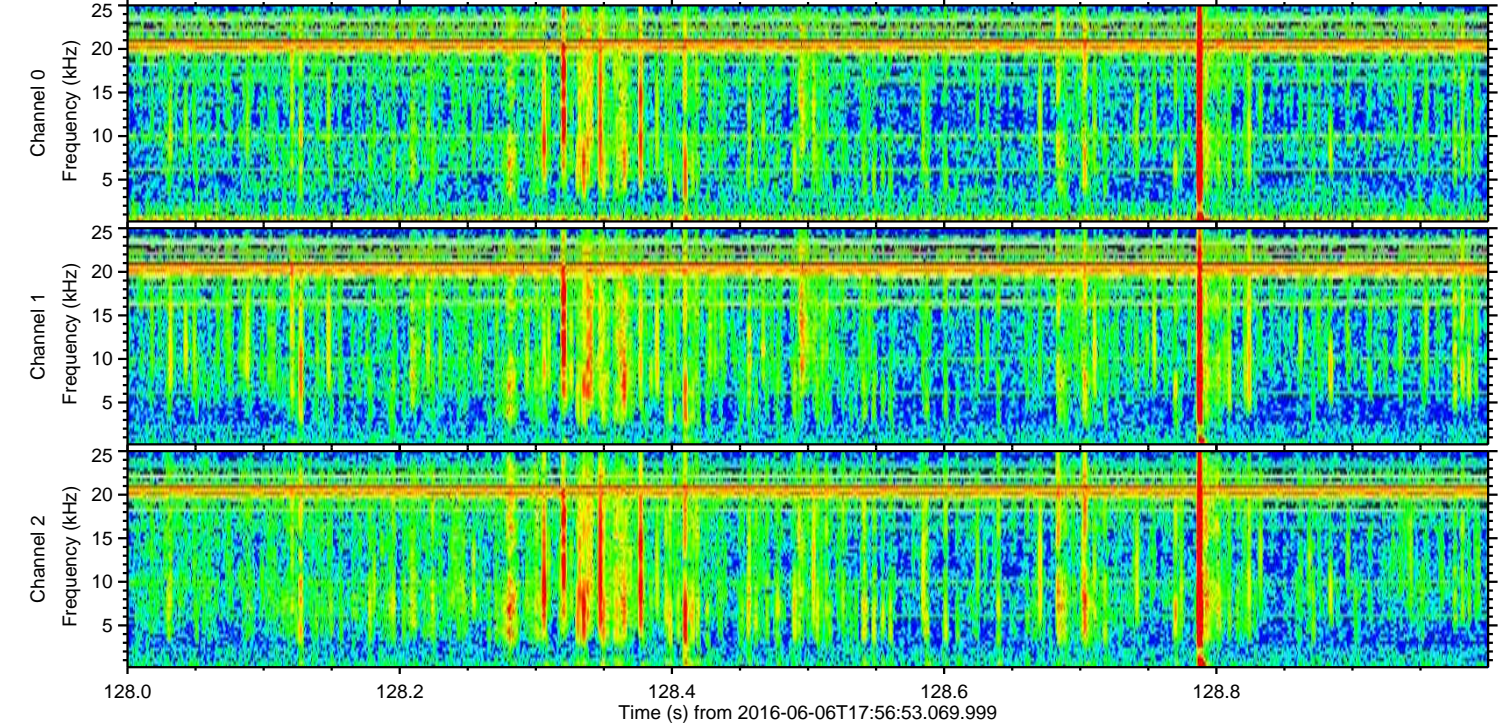
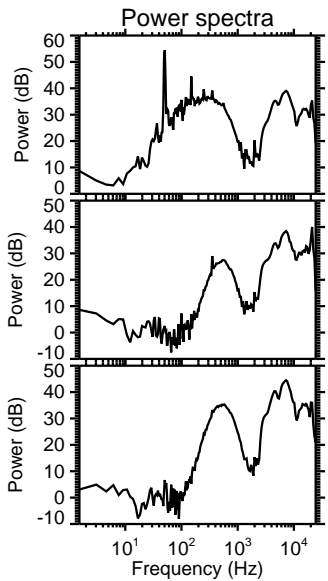
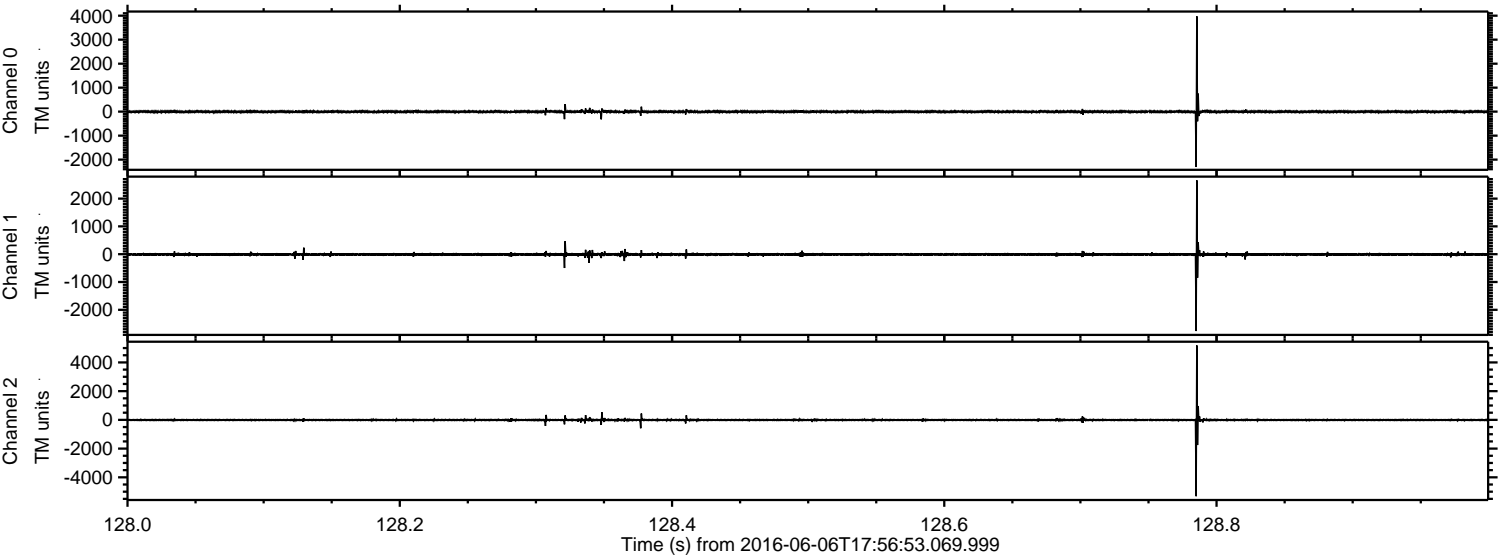
Channel 0
mn: -4041
mx: 4816
 μ : -1.2
 σ : 50.4

Channel 1
mn: -7641
mx: 6440
 μ : -8.8
 σ : 87.9

Channel 2
mn: -1649
mx: 1667
 μ : -9.9
 σ : 36.1

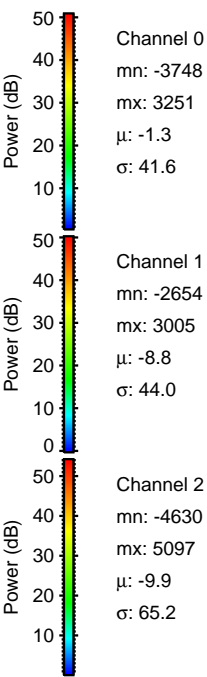
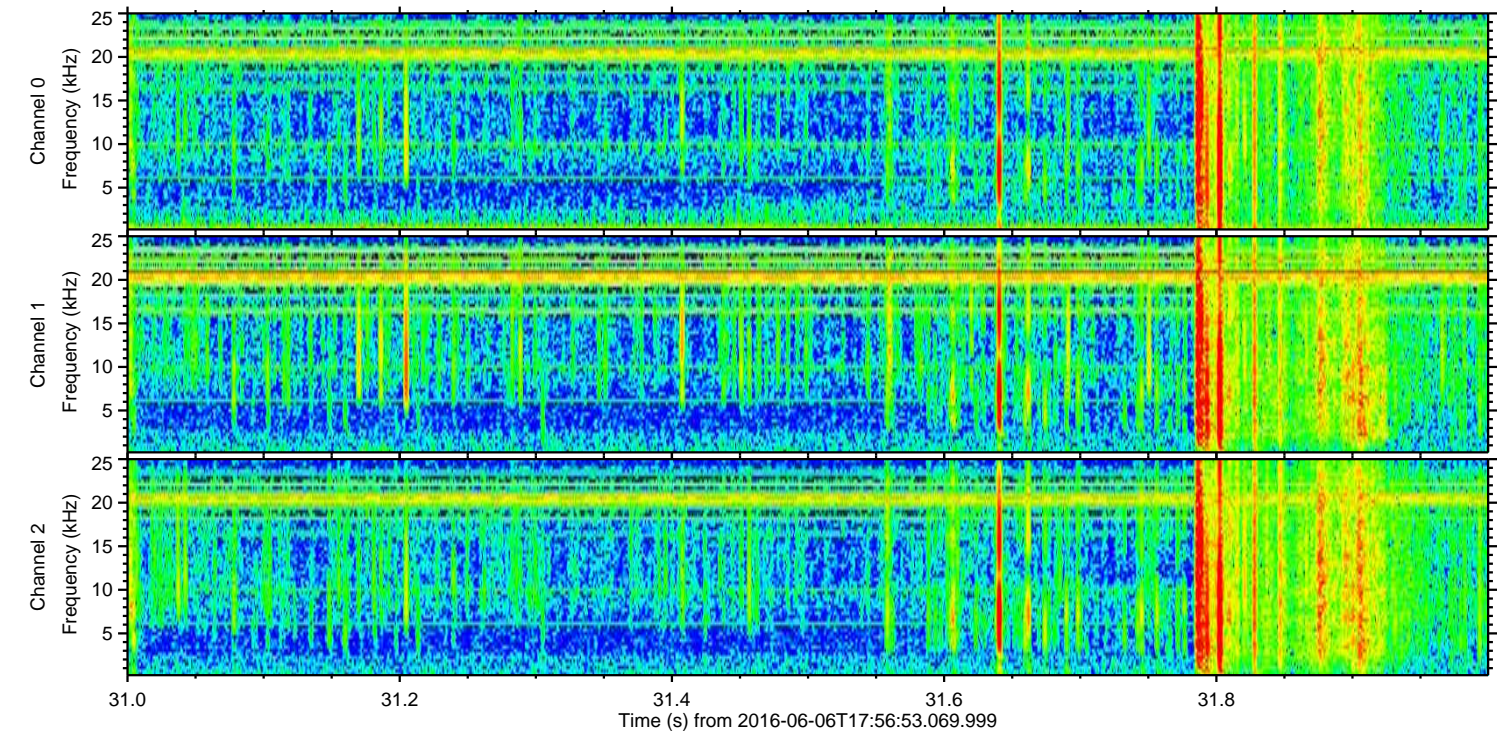
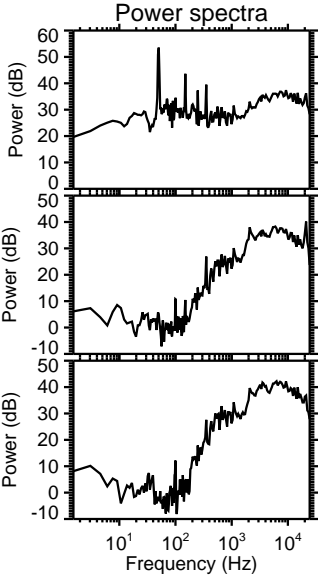
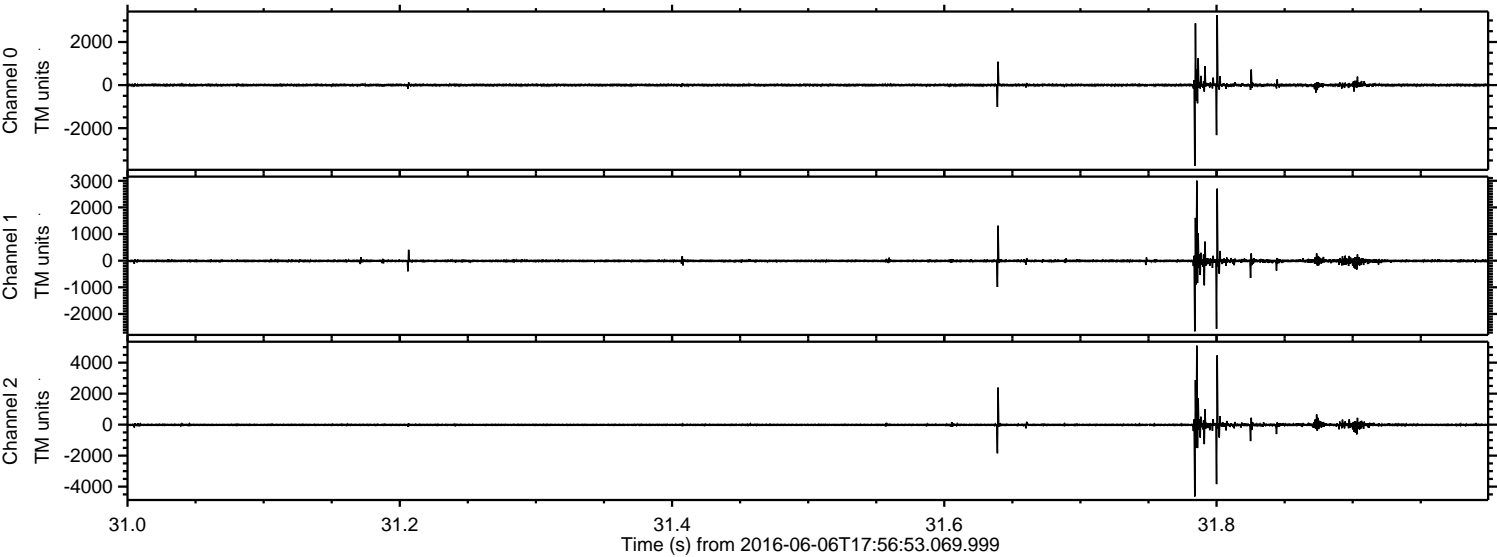
ELMAVAN 3D WAVEFORMS (Measured data sampled at 50 kHz) 51000 packets of 144 samples from 2016-06-06T17:56:53.069.999. Part 129/147

Processed Mon Jun 6 20:05:26 2016 by ELM ver.2012-10-06 from 001__elm20160606_175652__dat00.bin



ELMAVAN 3D WAVEFORMS (Measured data sampled at 50 kHz) 51000 packets of 144 samples from 2016-06-06T17:56:53.069.999. Part 32/147

Processed Mon Jun 6 20:05:27 2016 by ELM ver.2012-10-06 from 001__elm20160606_175652__dat00.bin



Processed Mon Jun 6 20:05:28 2016 by ELM ver.2012-10-06 from 001__elm20160606_175652__dat00.bin

