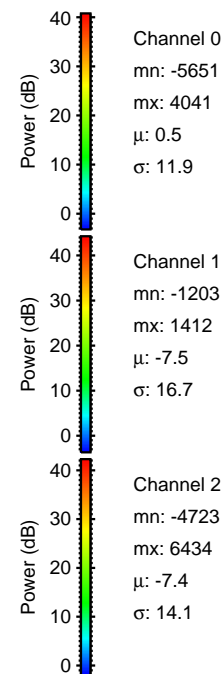
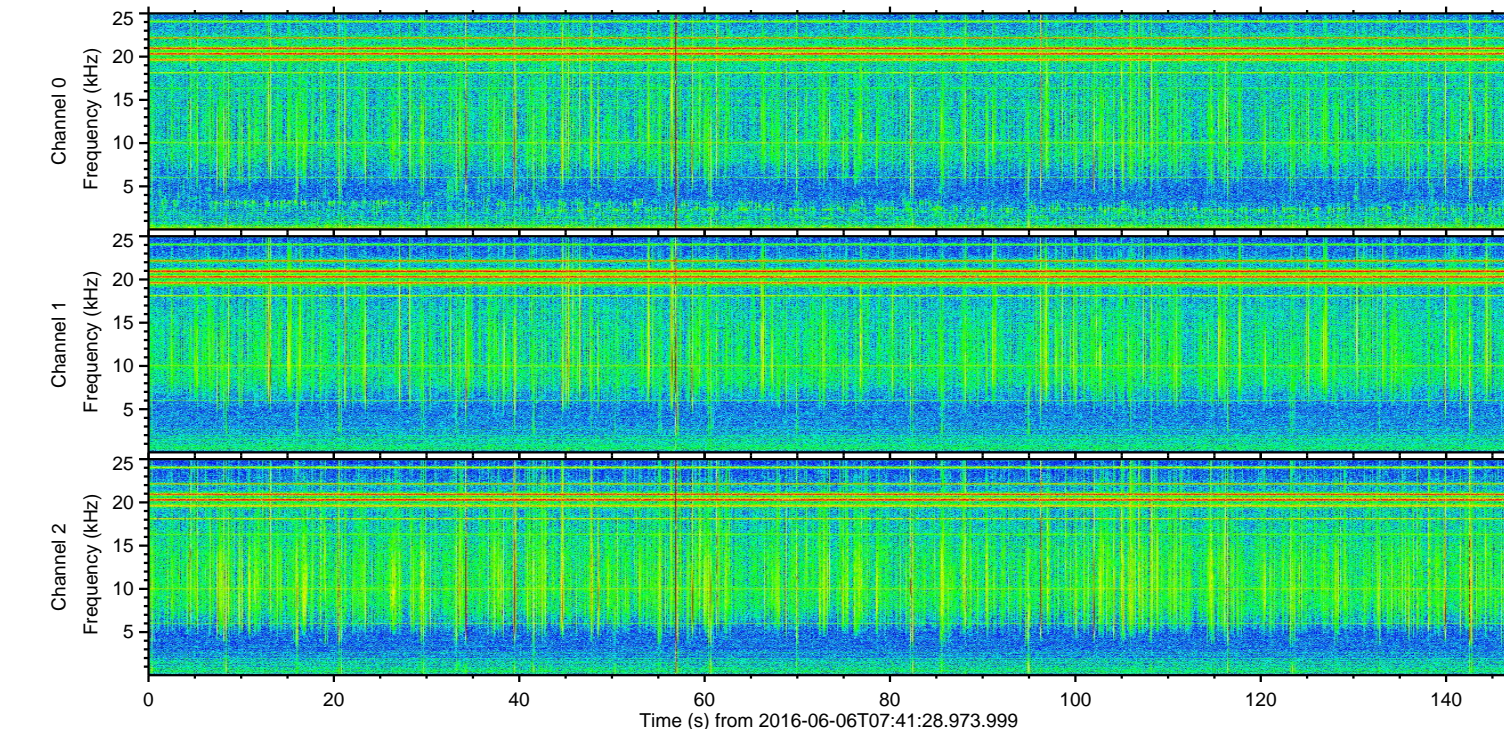
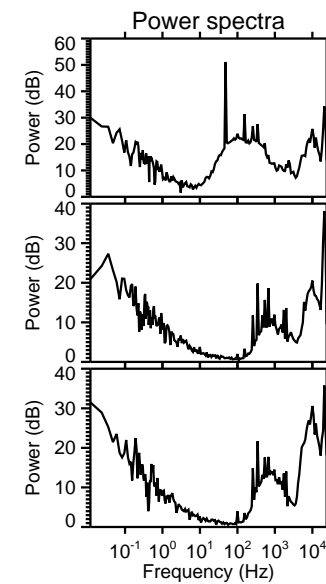
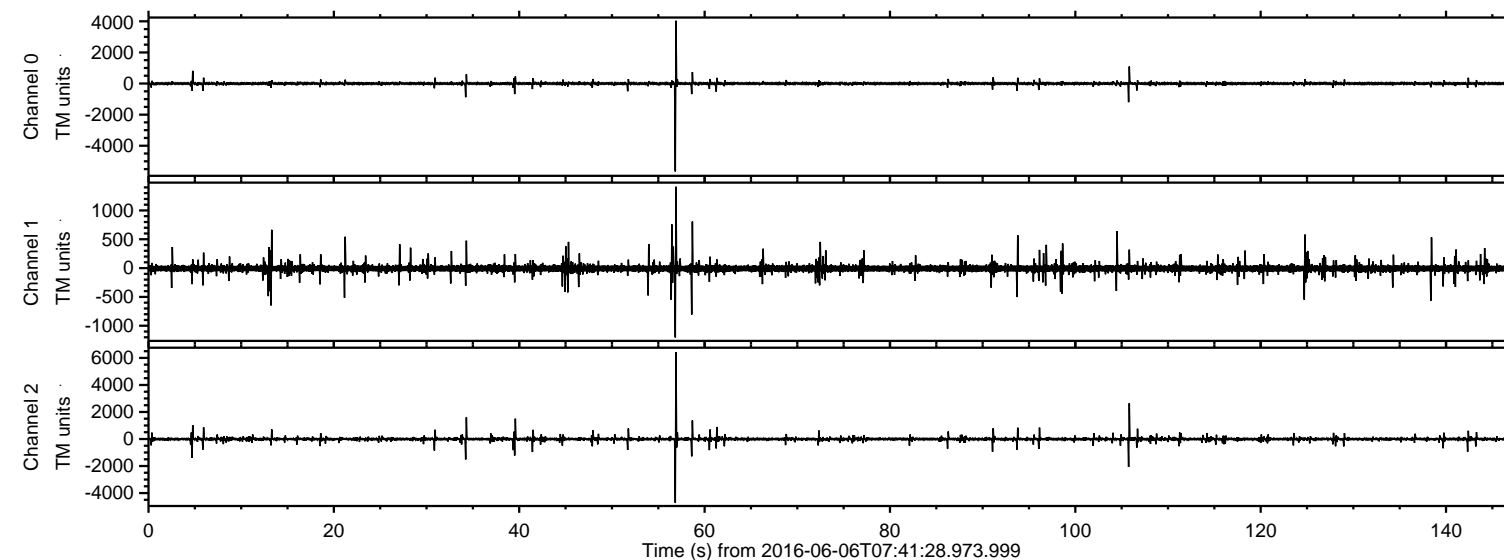


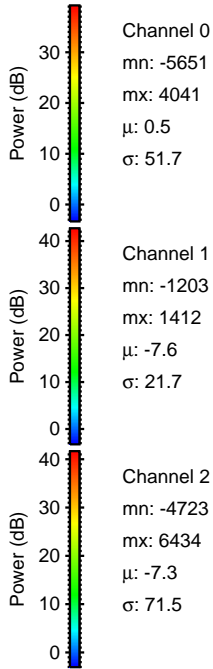
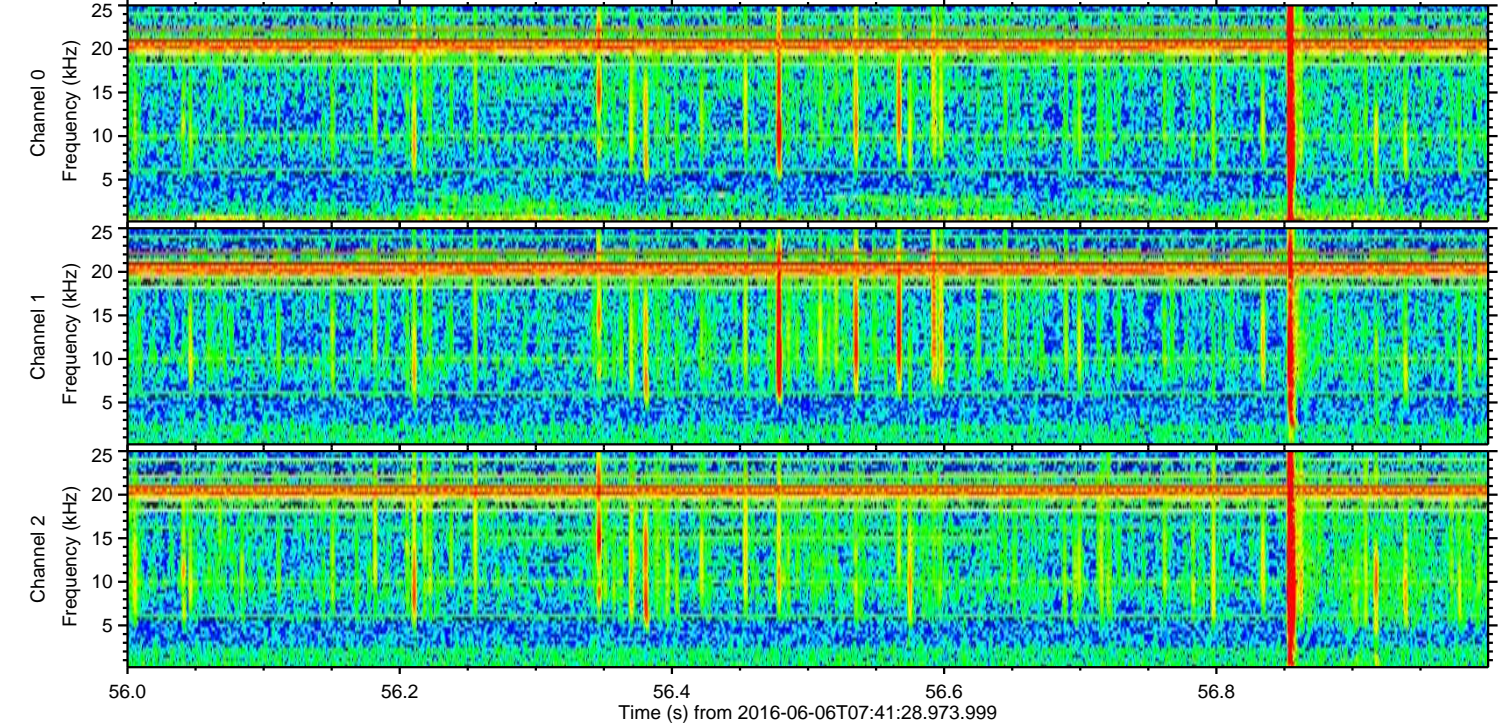
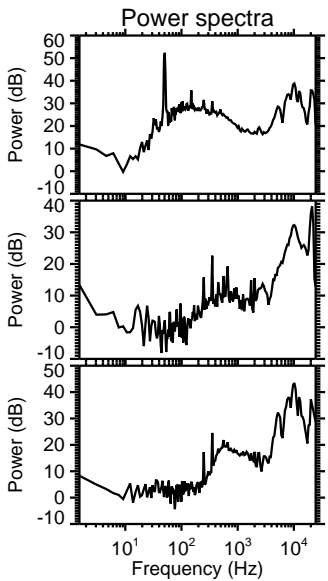
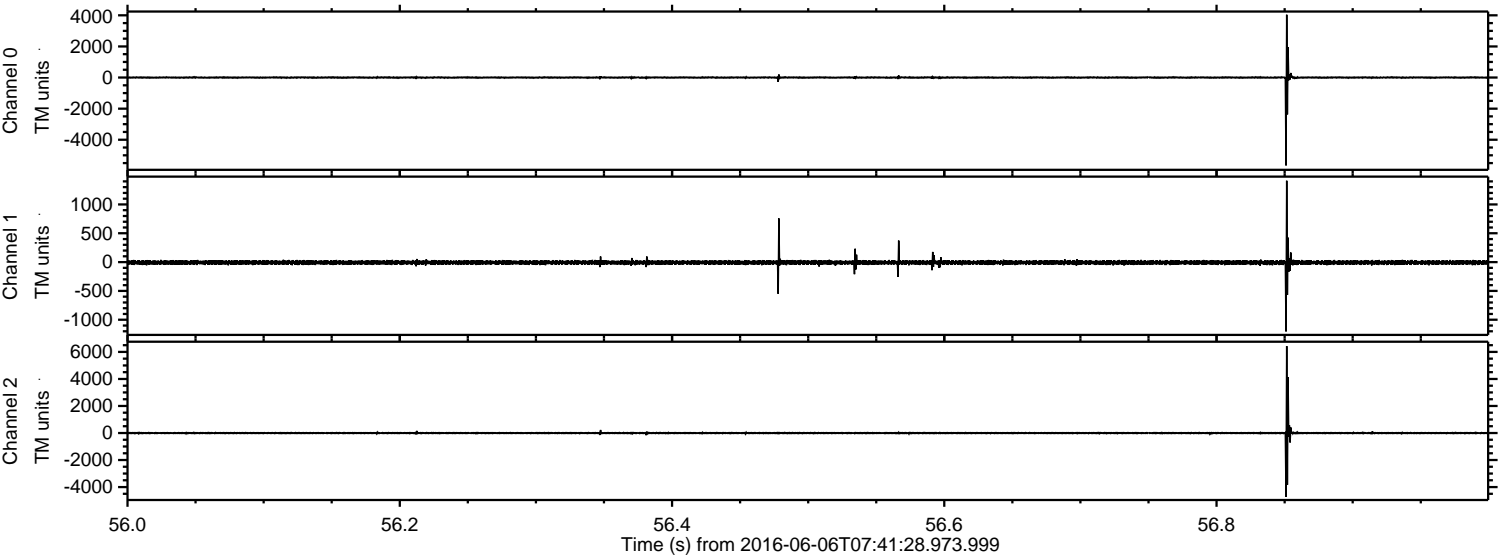
# ELMAVAN 3D WAVEFORMS (Measured data sampled at 50 kHz) 51000 packets of 144 samples from 2016-06-06T07:41:28.973.999.

Processed Mon Jun 6 09:49:08 2016 by ELM ver.2012-10-06 from 001\_\_elm20160606\_074127\_\_dat00.bin





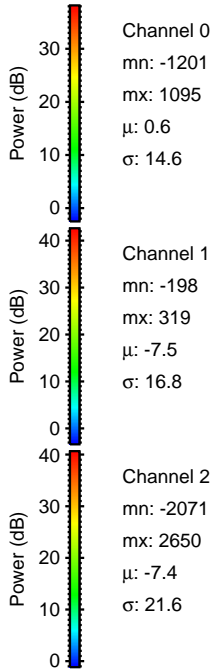
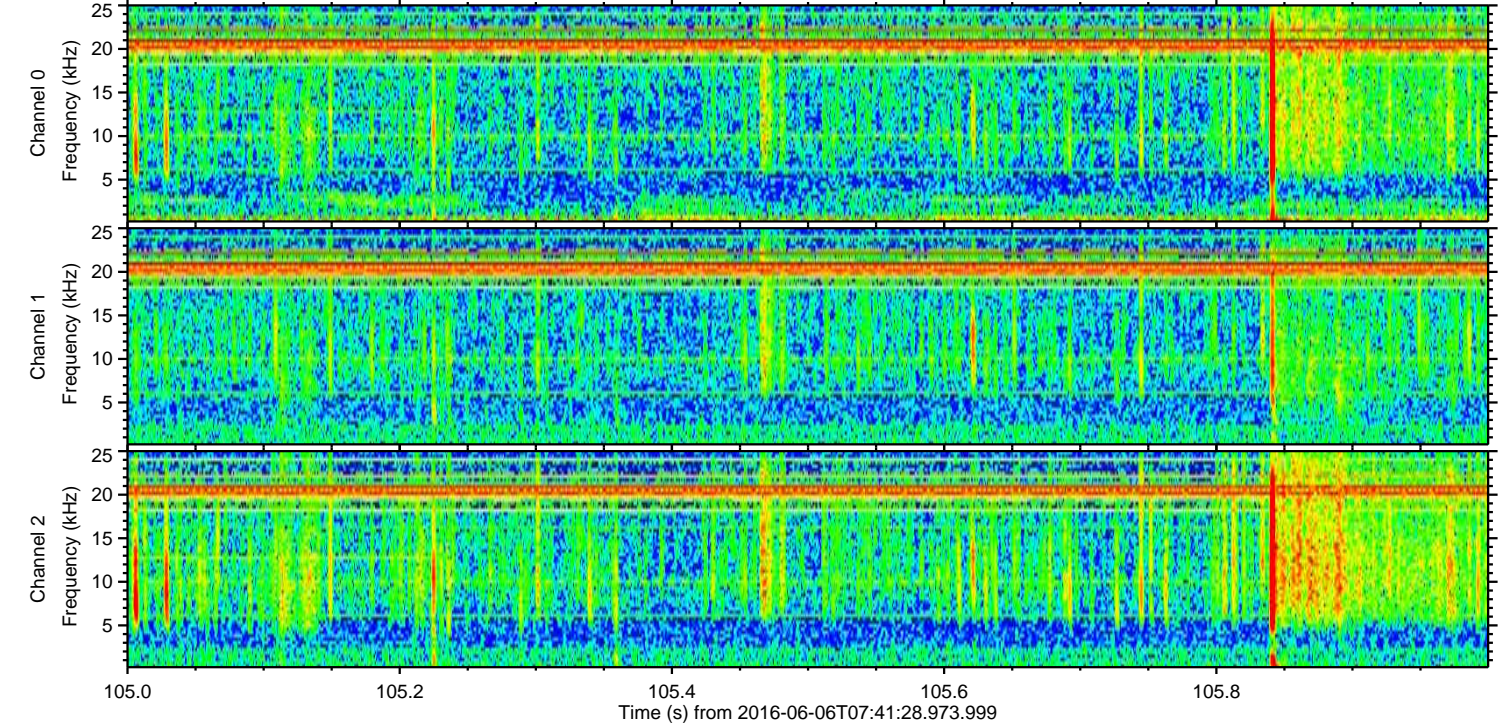
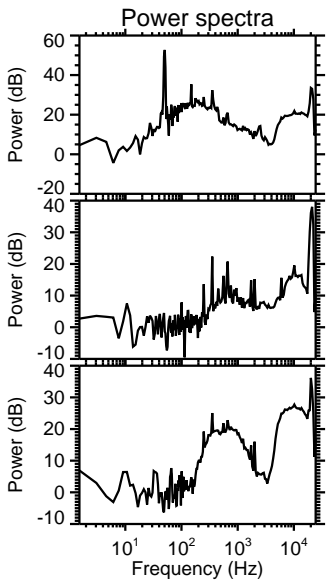
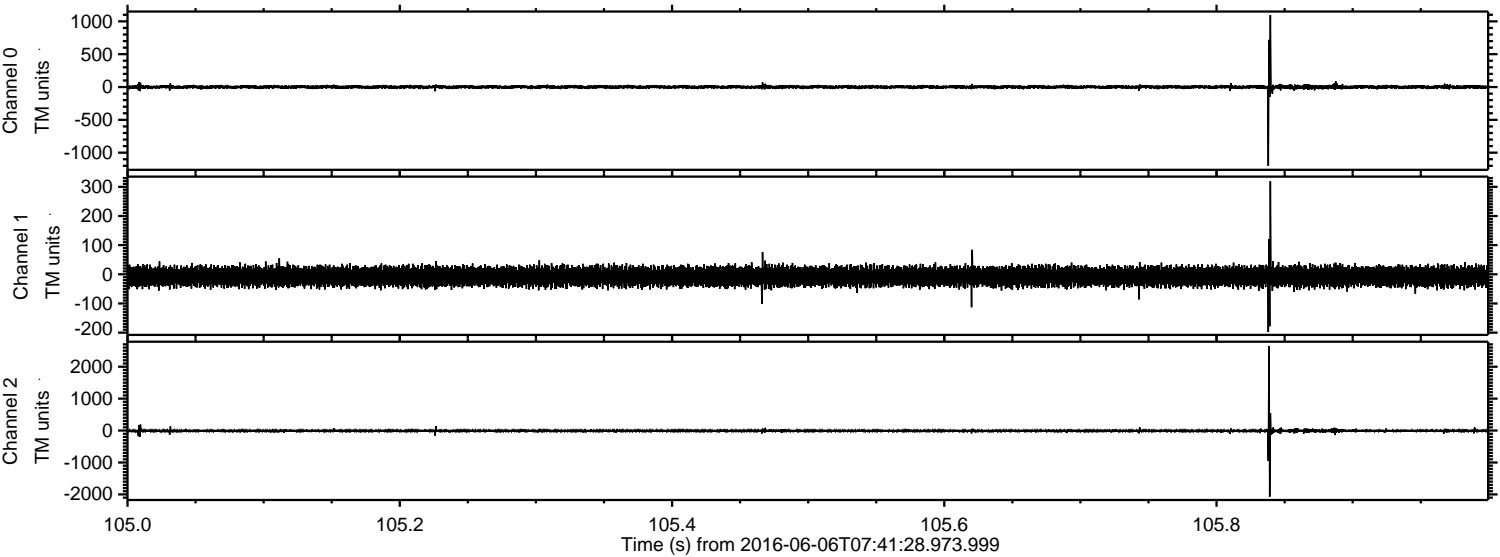
Processed Mon Jun 6 09:49:19 2016 by ELM ver.2012-10-06 from 001\_\_elm20160606\_074127\_\_dat00.bin





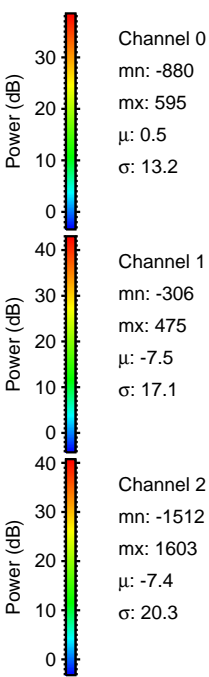
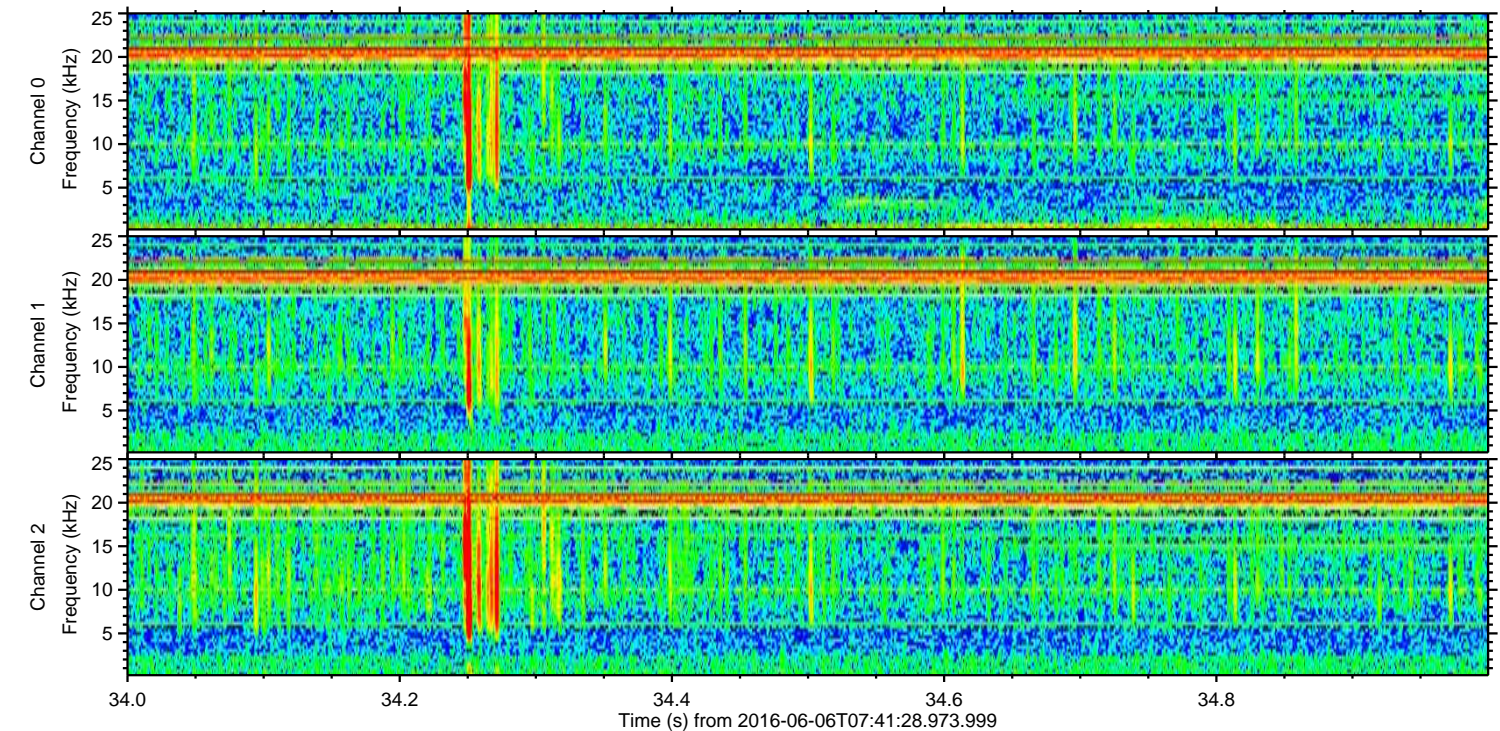
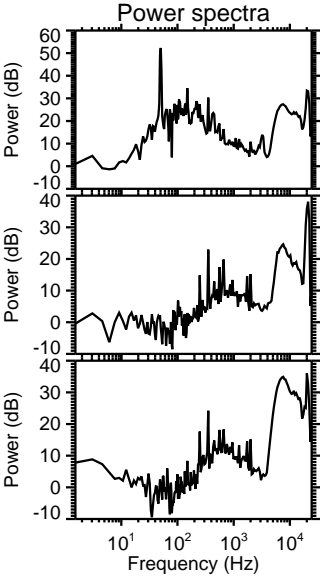
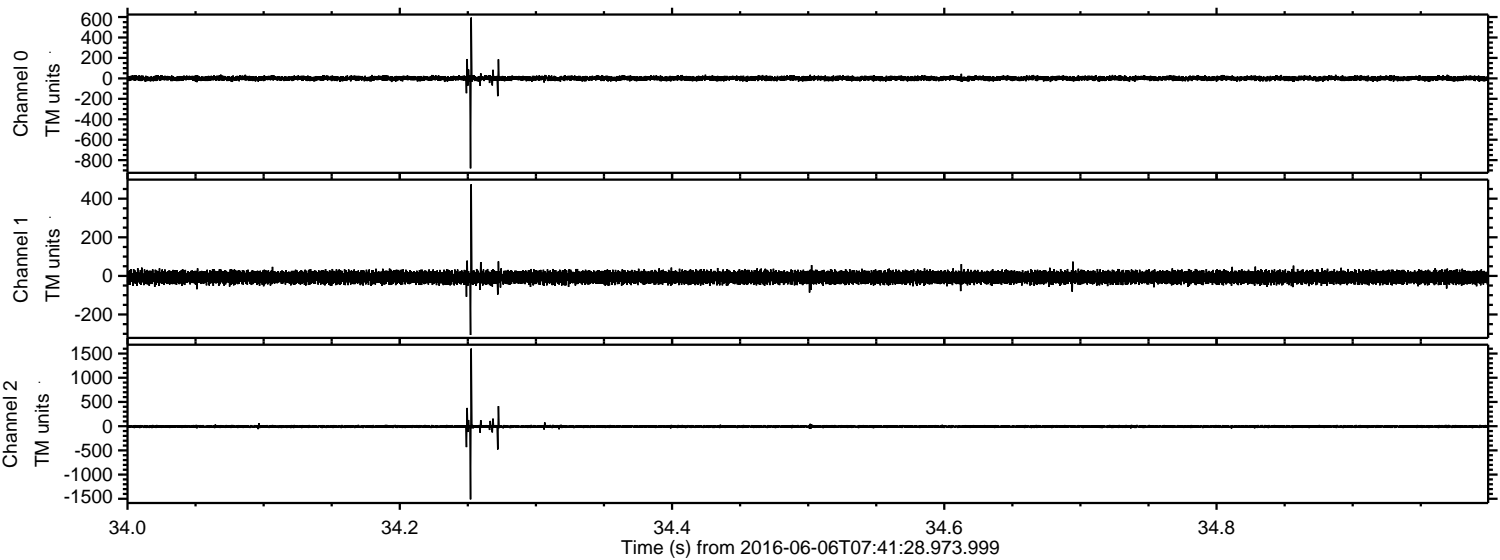
ELMAVAN 3D WAVEFORMS (Measured data sampled at 50 kHz) 51000 packets of 144 samples from 2016-06-06T07:41:28.973.999. Part 106/147

Processed Mon Jun 6 09:49:20 2016 by ELM ver.2012-10-06 from 001\_\_elm20160606\_074127\_\_dat00.bin





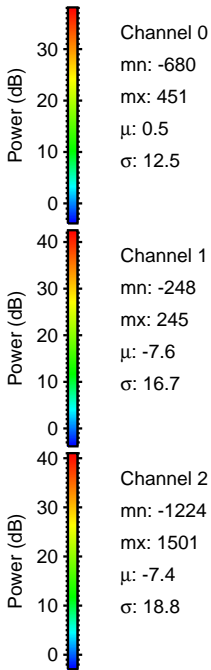
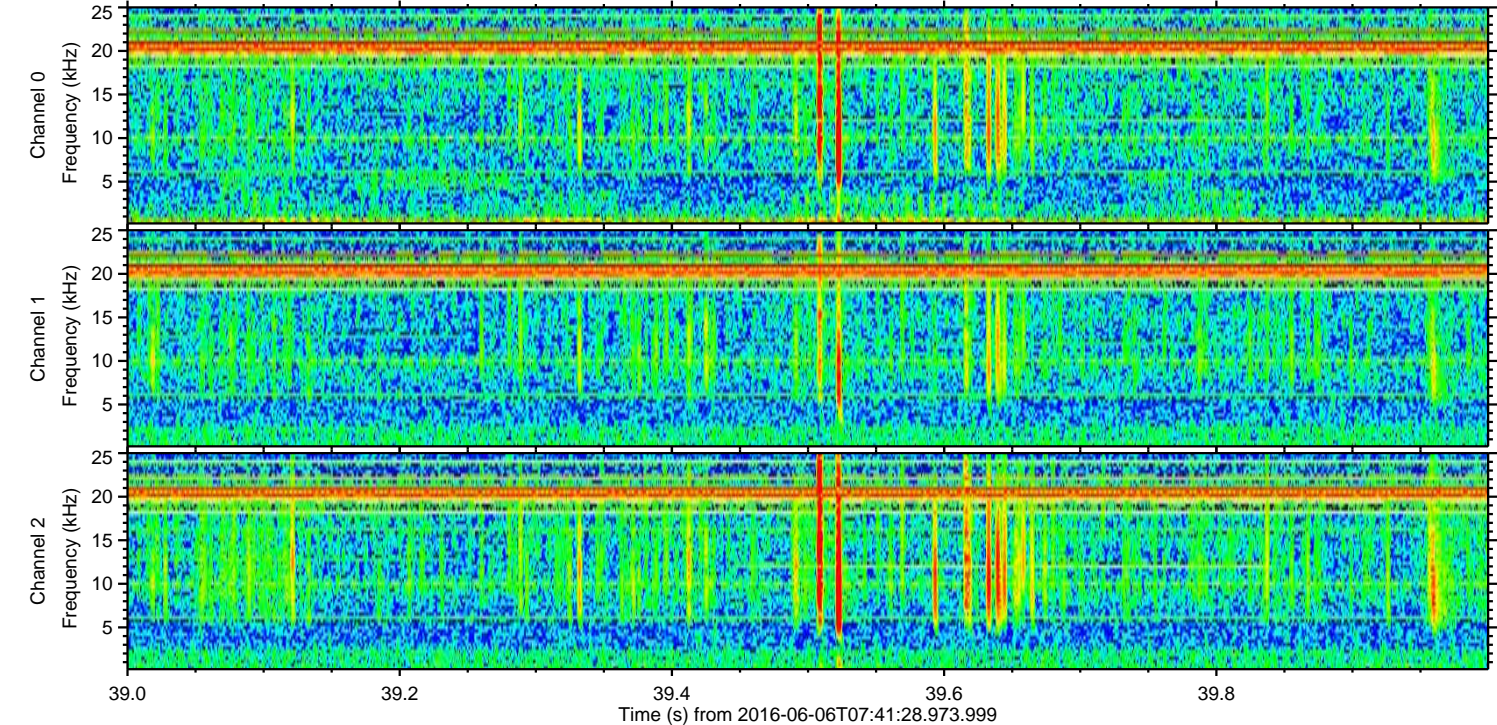
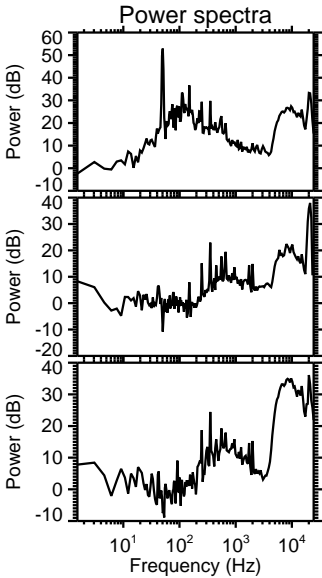
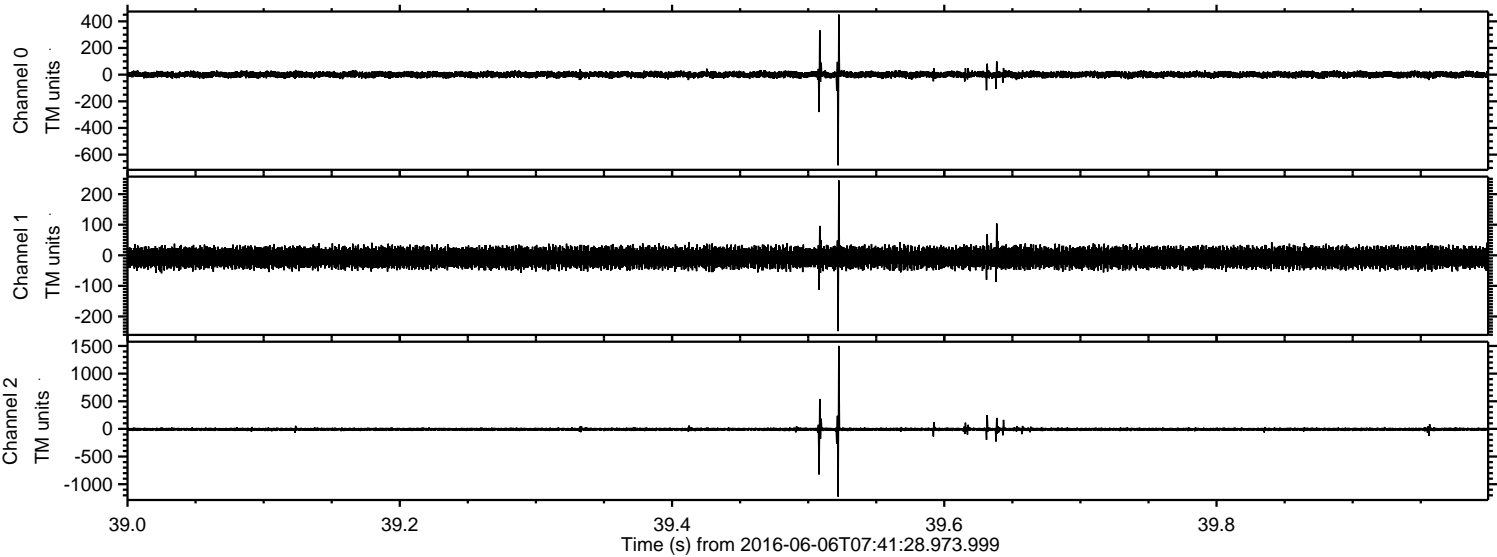
Processed Mon Jun 6 09:49:21 2016 by ELM ver.2012-10-06 from 001\_\_elm20160606\_074127\_\_dat00.bin





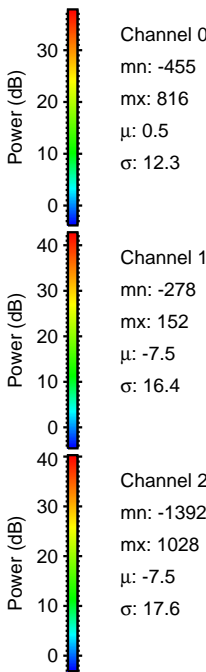
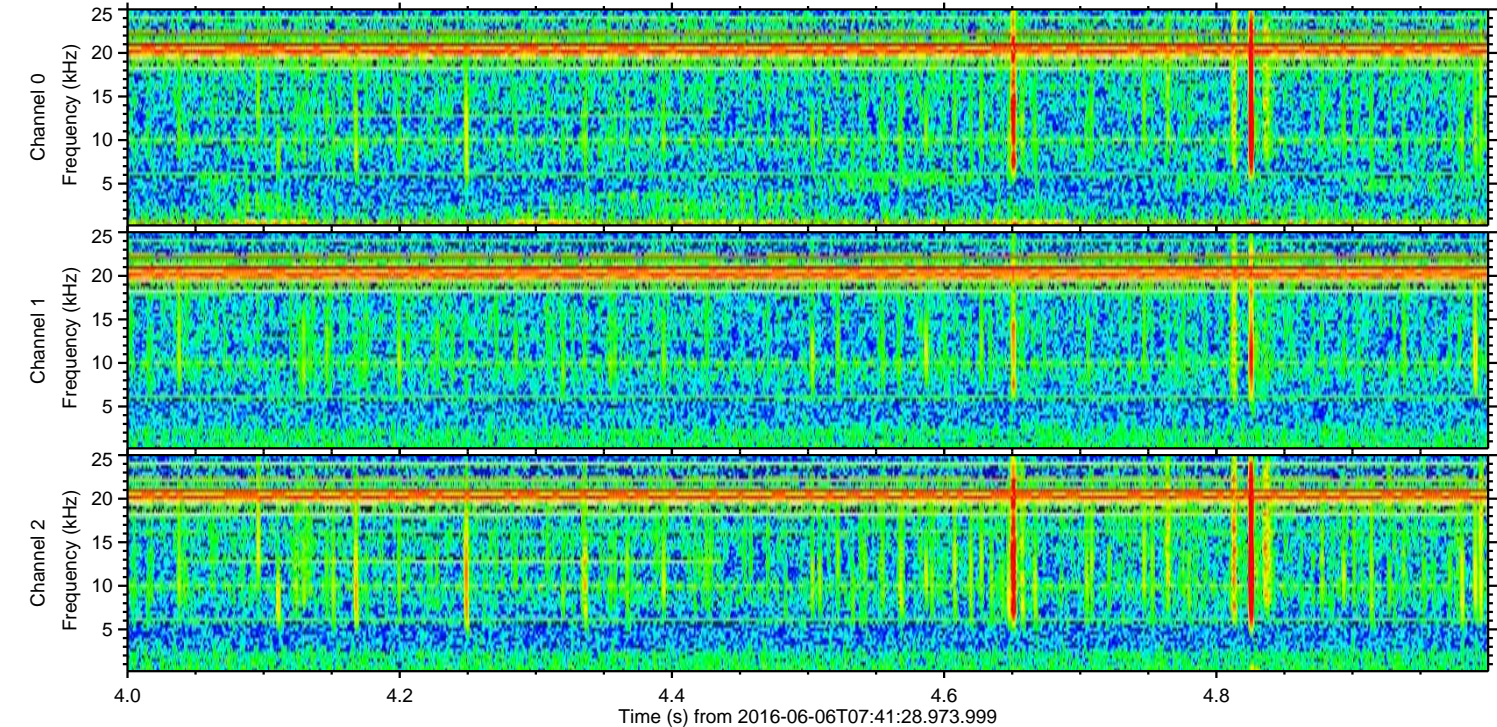
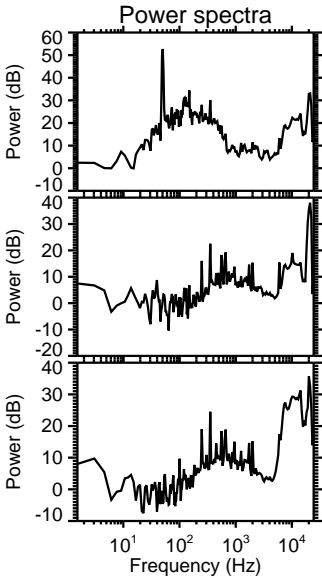
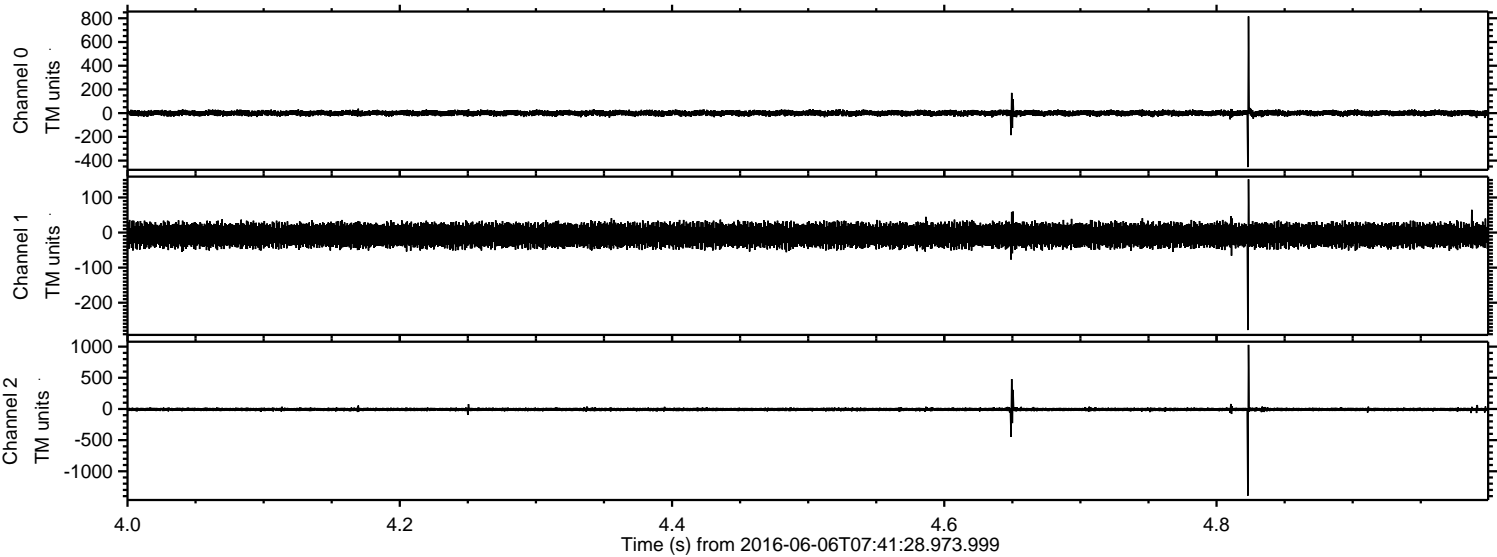
ELMAVAN 3D WAVEFORMS (Measured data sampled at 50 kHz) 51000 packets of 144 samples from 2016-06-06T07:41:28.973.999. Part 40/147

Processed Mon Jun 6 09:49:22 2016 by ELM ver.2012-10-06 from 001\_\_elm20160606\_074127\_\_dat00.bin



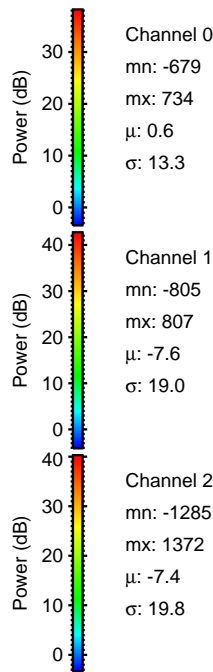
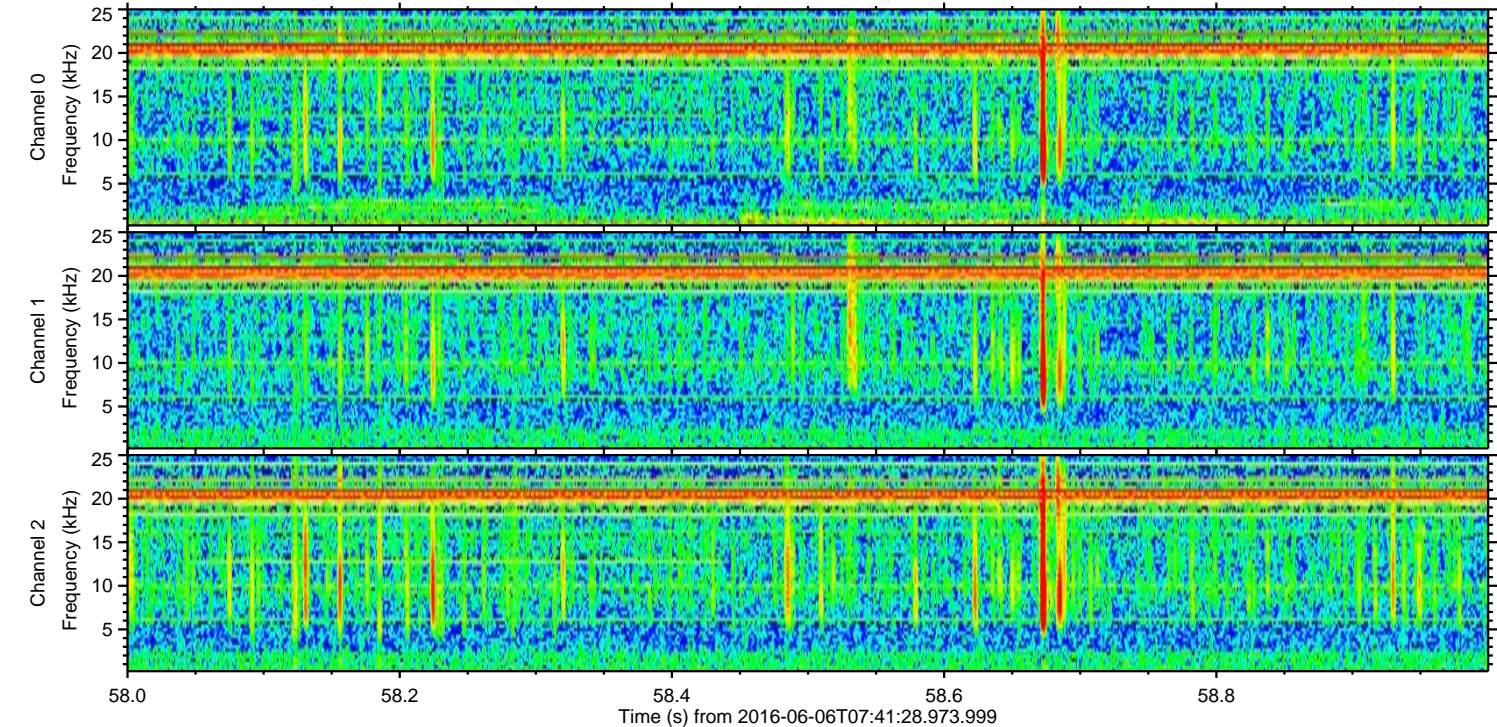
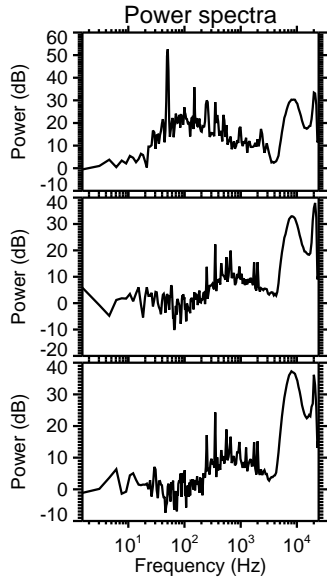
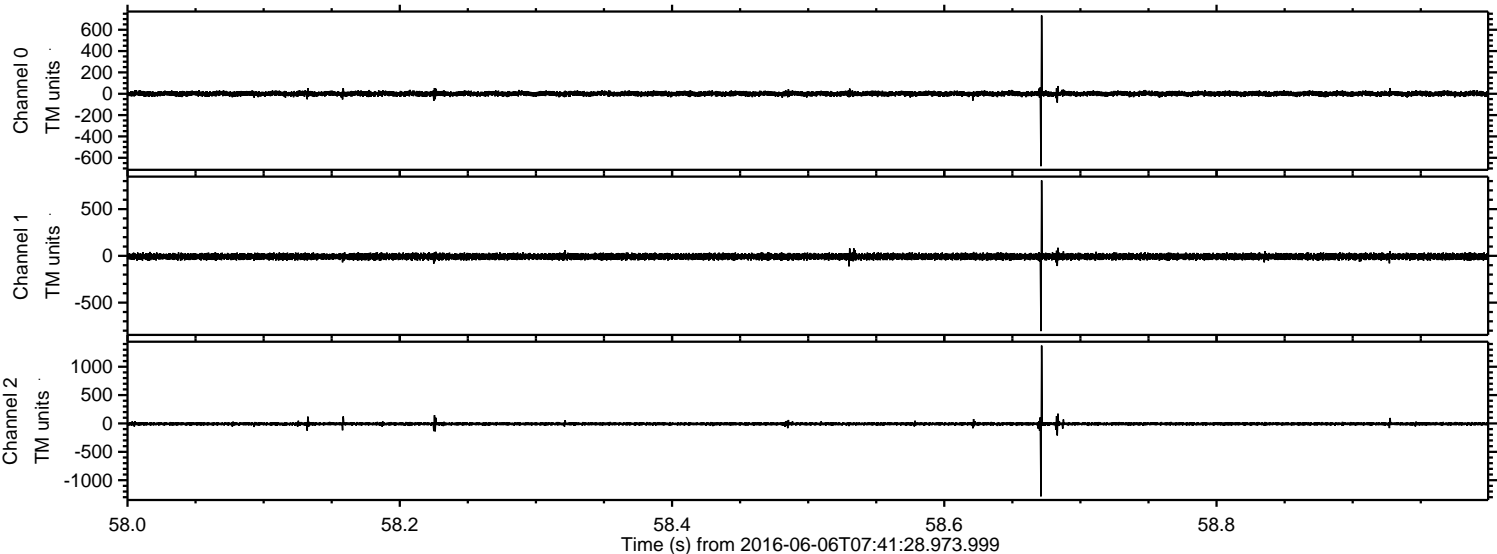


Processed Mon Jun 6 09:49:23 2016 by ELM ver.2012-10-06 from 001\_\_elm20160606\_074127\_\_dat00.bin



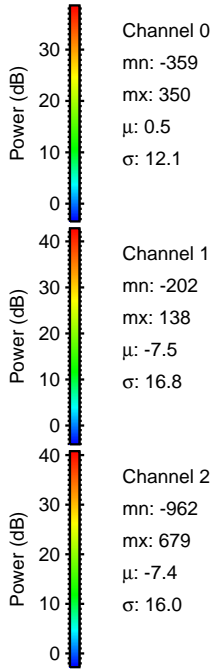
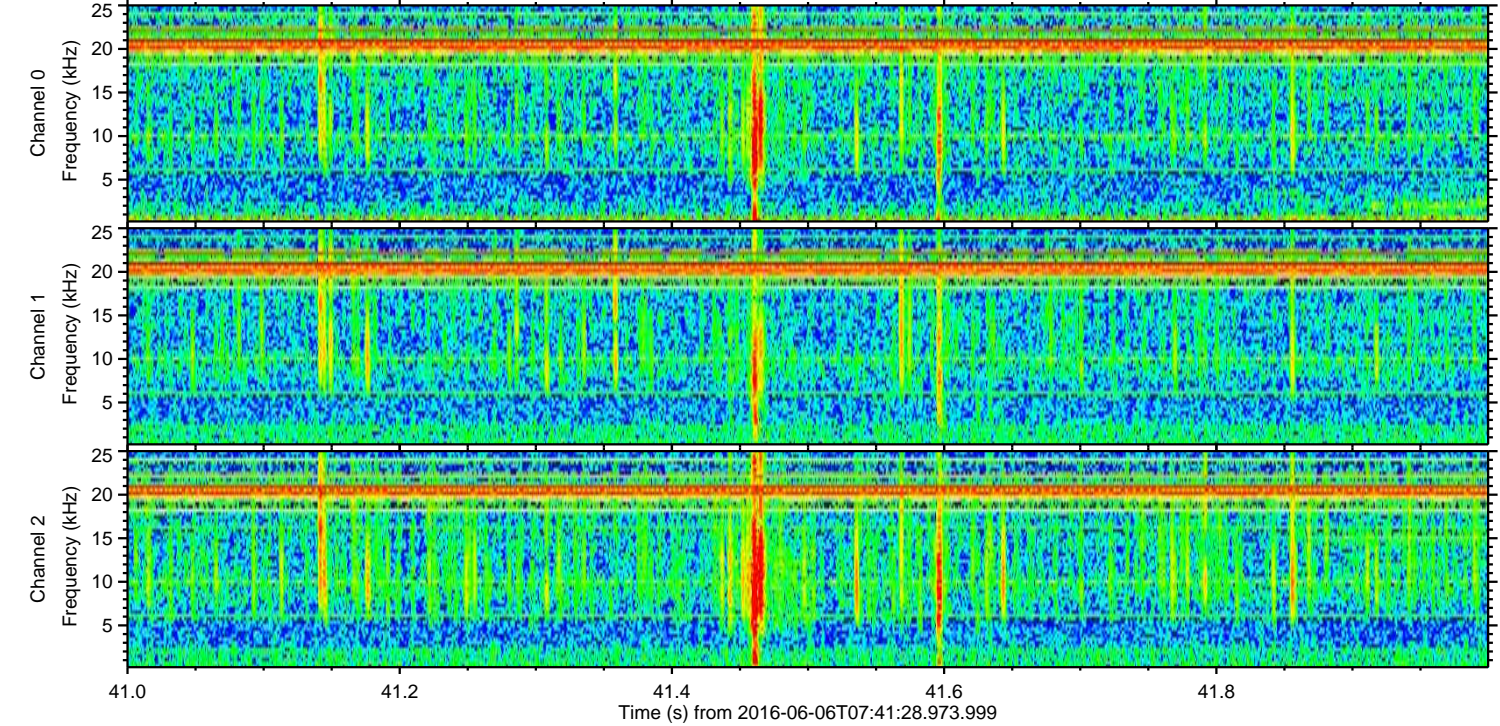
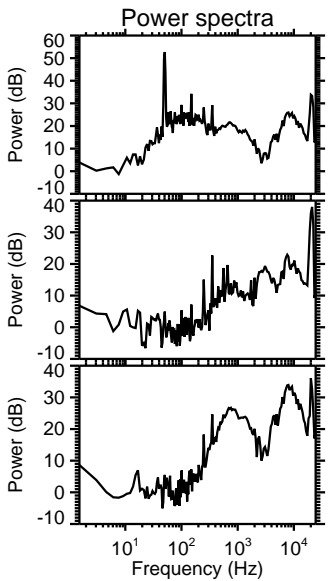
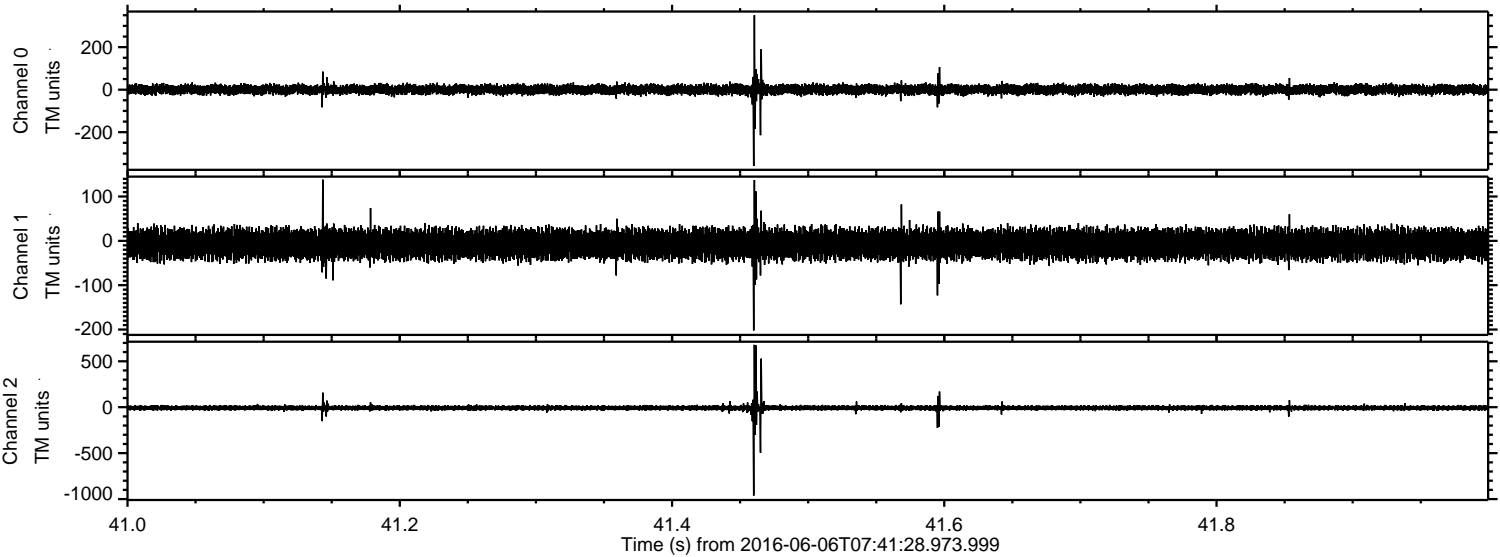


Processed Mon Jun 6 09:49:24 2016 by ELM ver.2012-10-06 from 001\_\_elm20160606\_074127\_\_dat00.bin



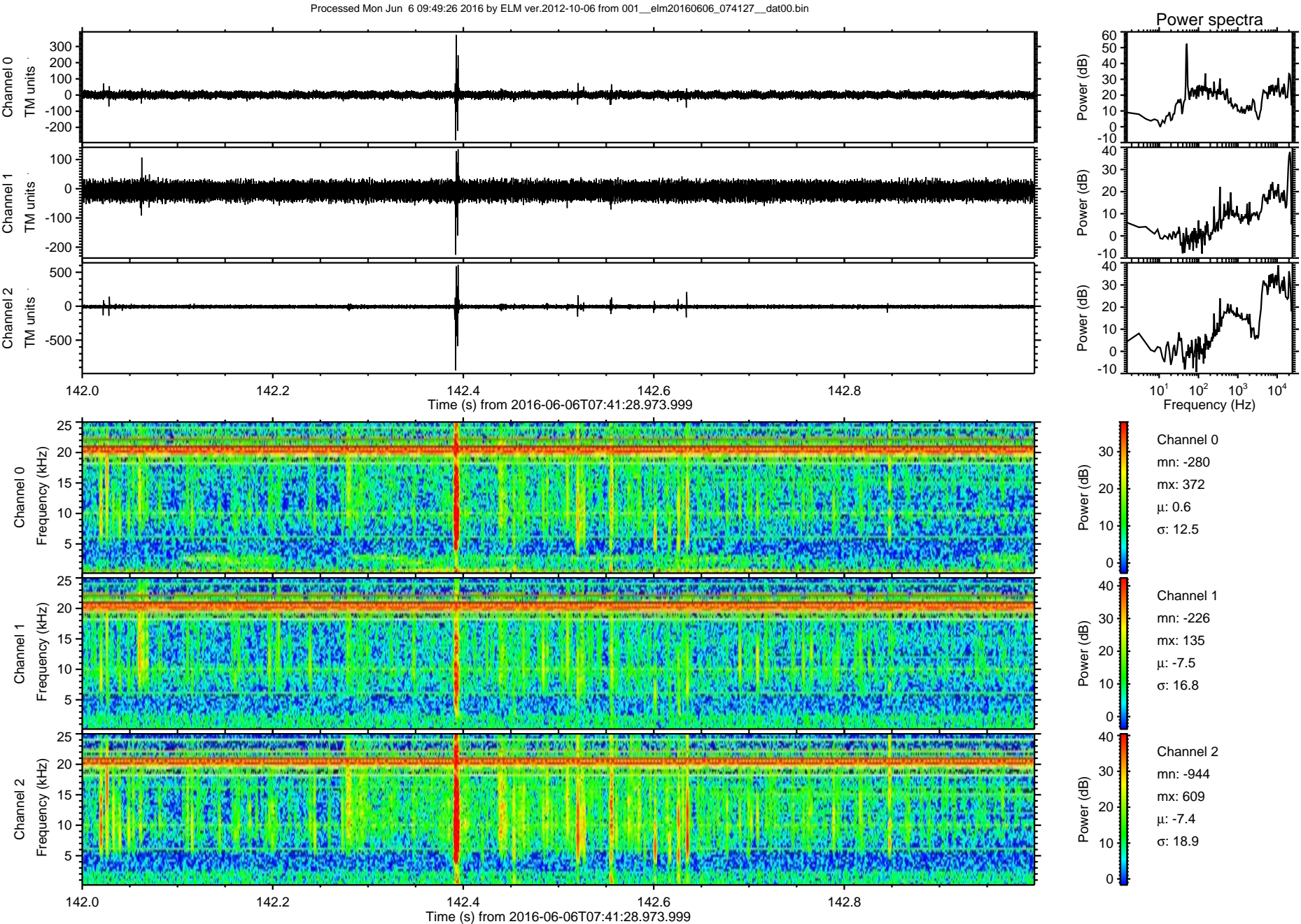


Processed Mon Jun 6 09:49:25 2016 by ELM ver.2012-10-06 from 001\_\_elm20160606\_074127\_\_dat00.bin





ELMAVAN 3D WAVEFORMS (Measured data sampled at 50 kHz) 51000 packets of 144 samples from 2016-06-06T07:41:28.973.999. Part 143/147





Processed Mon Jun 6 09:49:27 2016 by ELM ver.2012-10-06 from 001\_\_elm20160606\_074127\_\_dat00.bin

