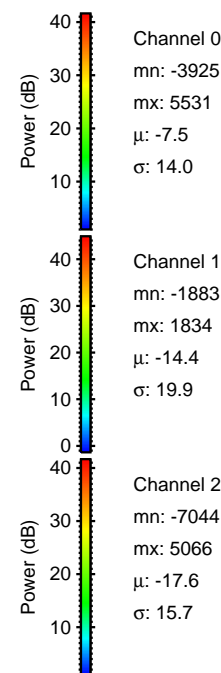
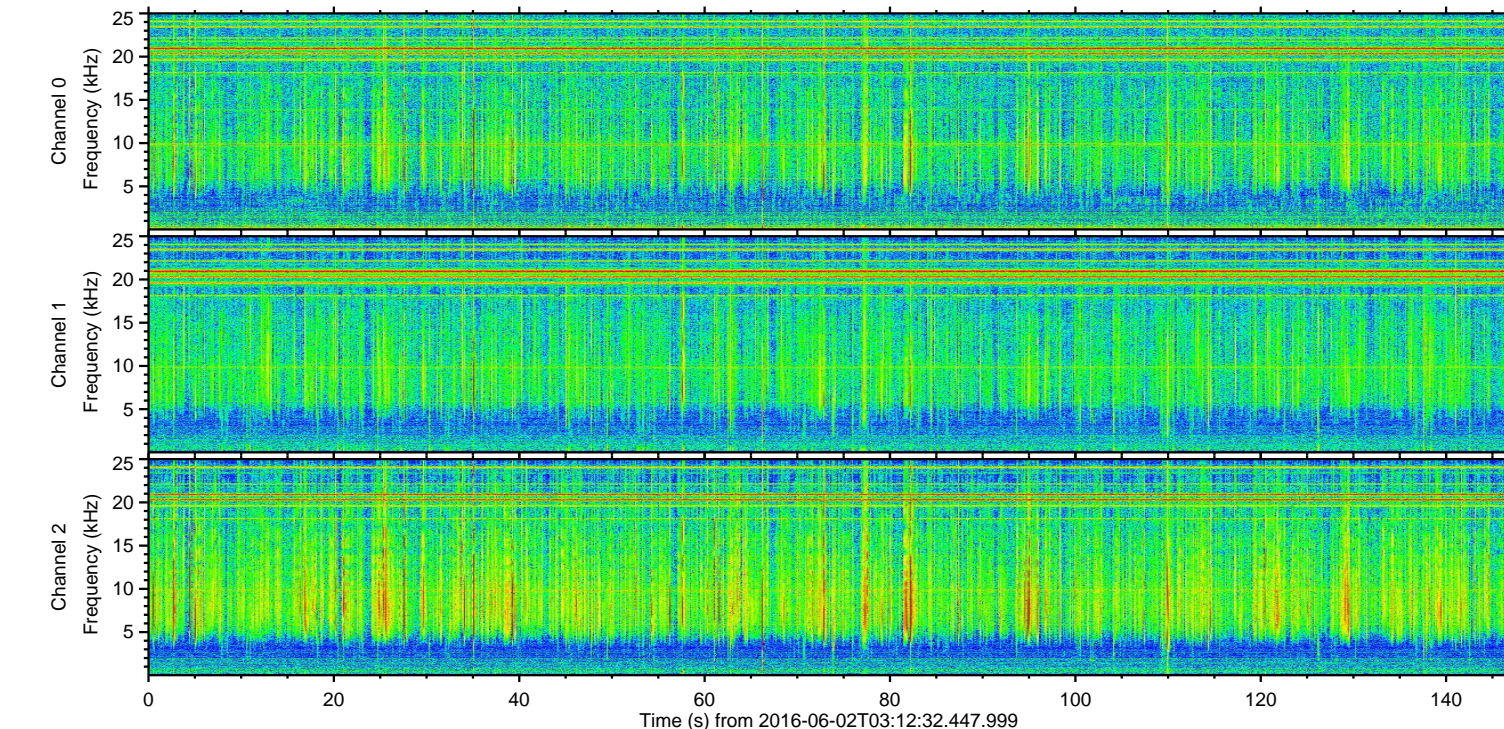
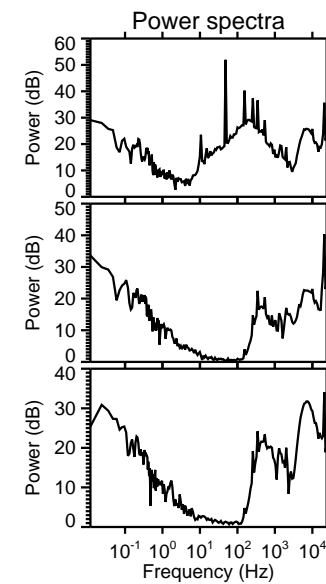
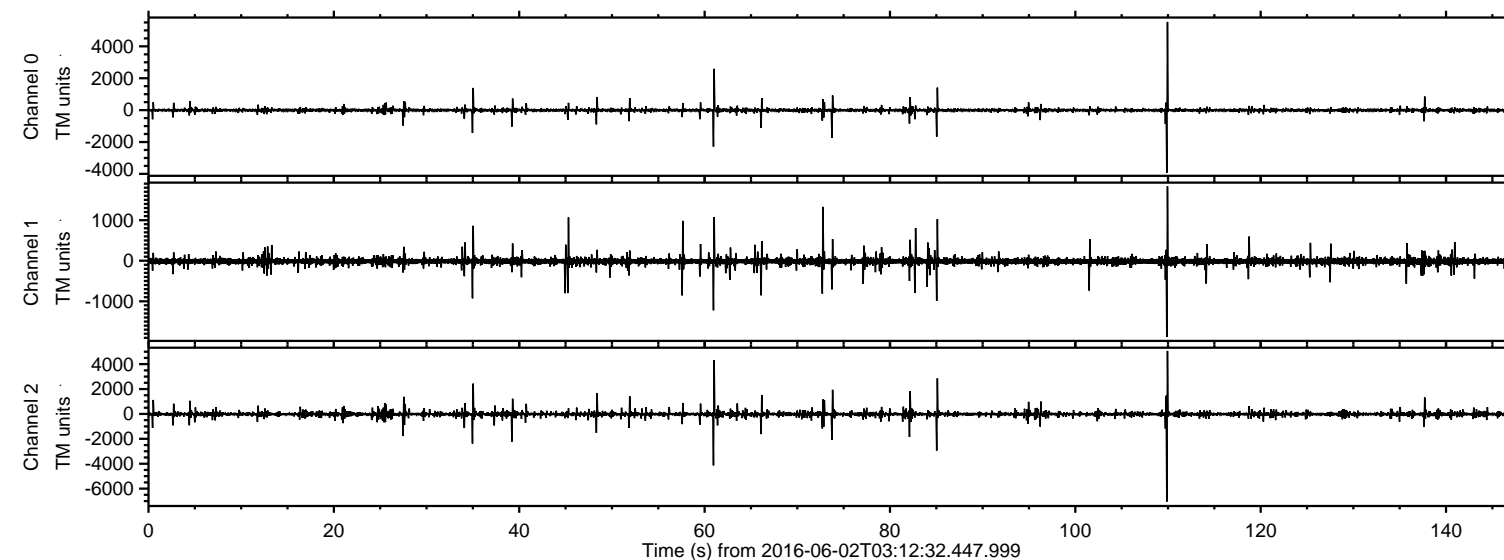


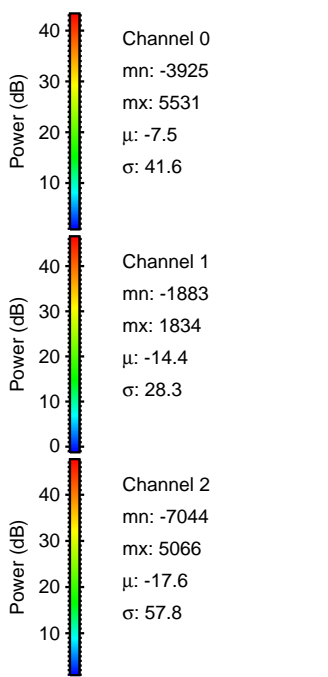
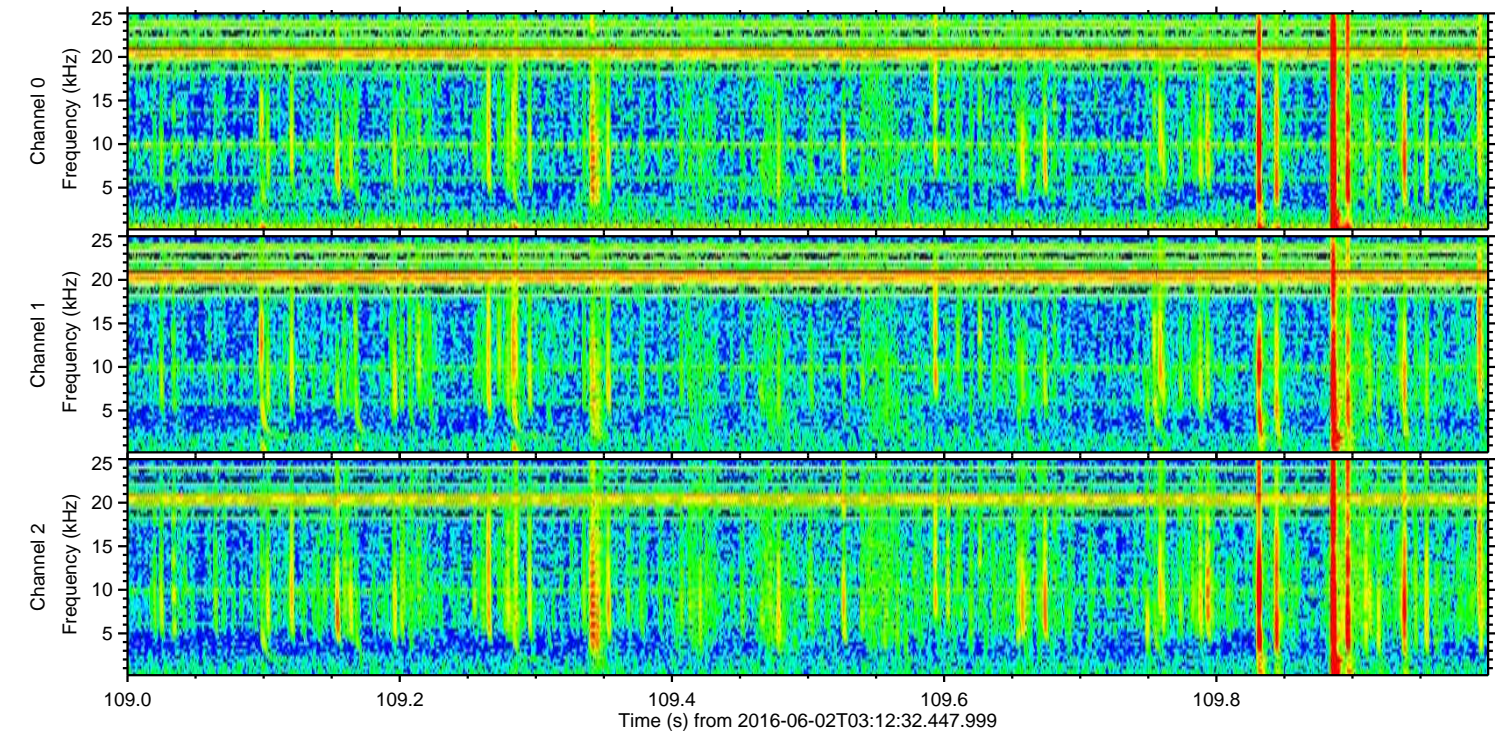
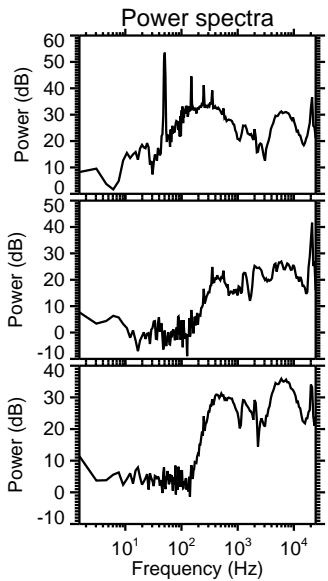
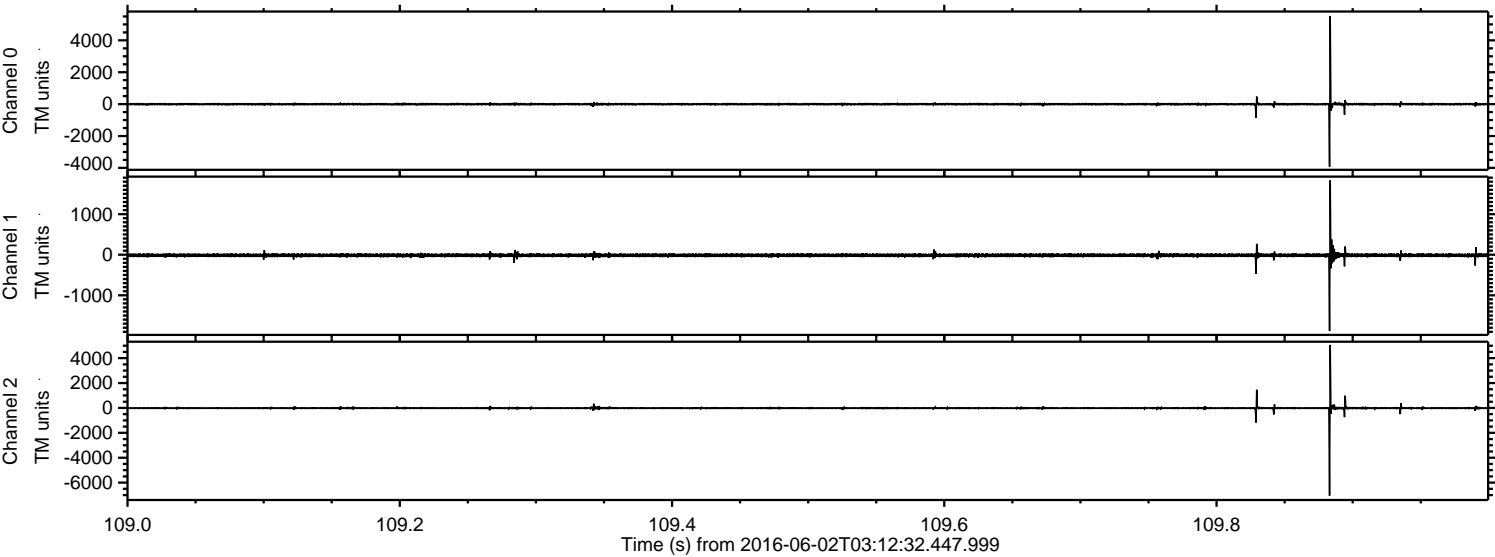
ELMAVAN 3D WAVEFORMS (Measured data sampled at 50 kHz) 51000 packets of 144 samples from 2016-06-02T03:12:32.447.999.

Processed Thu Jun 2 05:21:15 2016 by ELM ver.2012-10-06 from 001__elm20160602_031231__dat00.bin

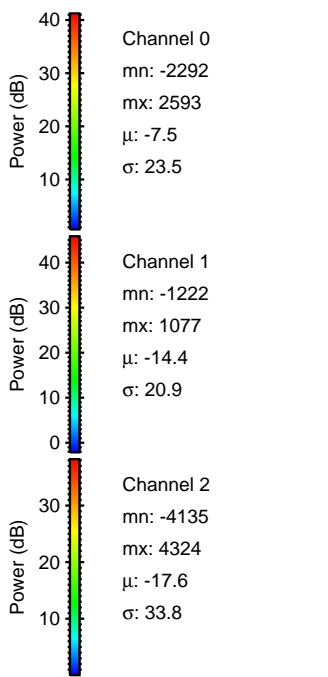
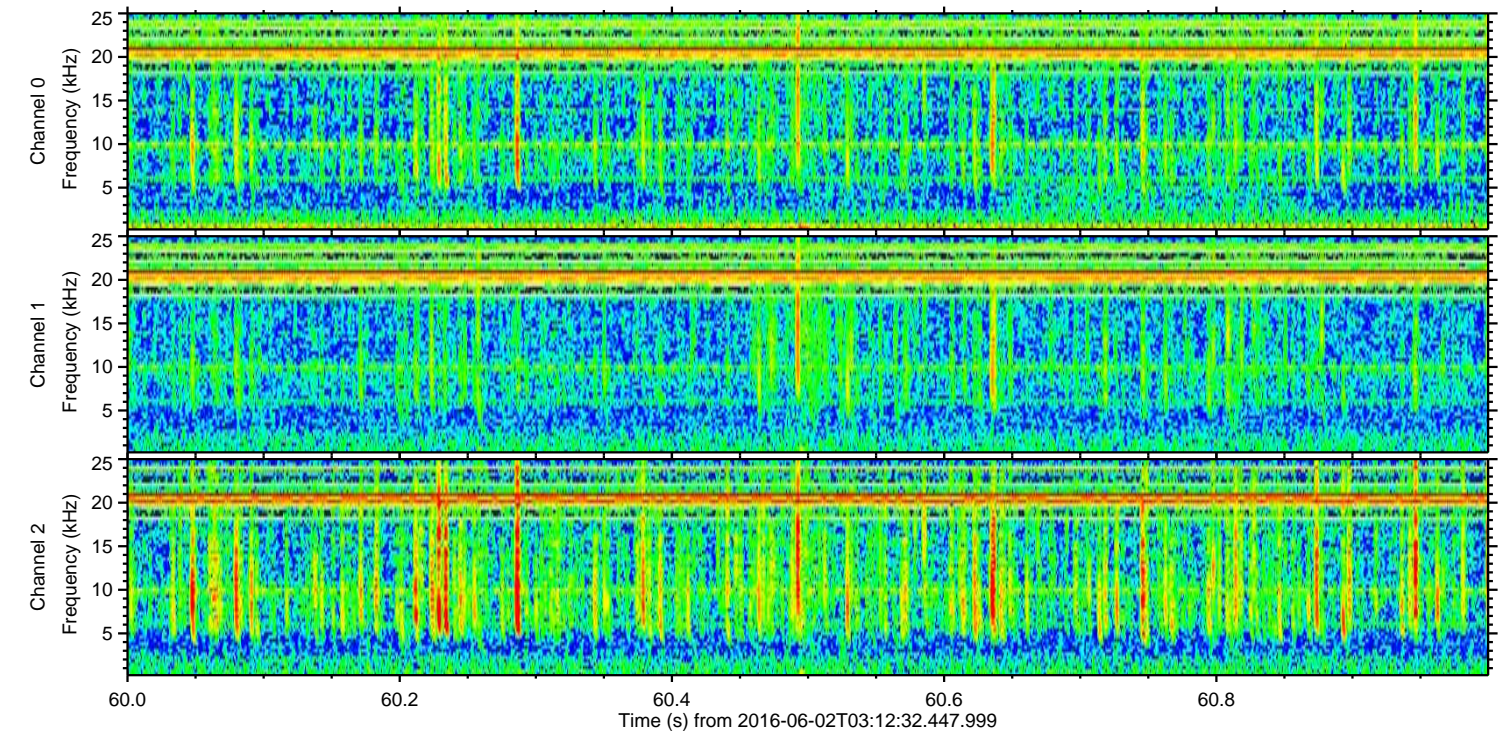
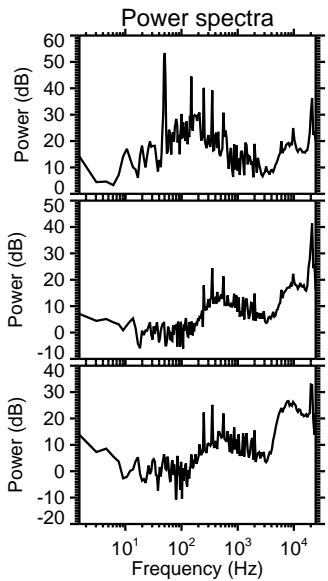
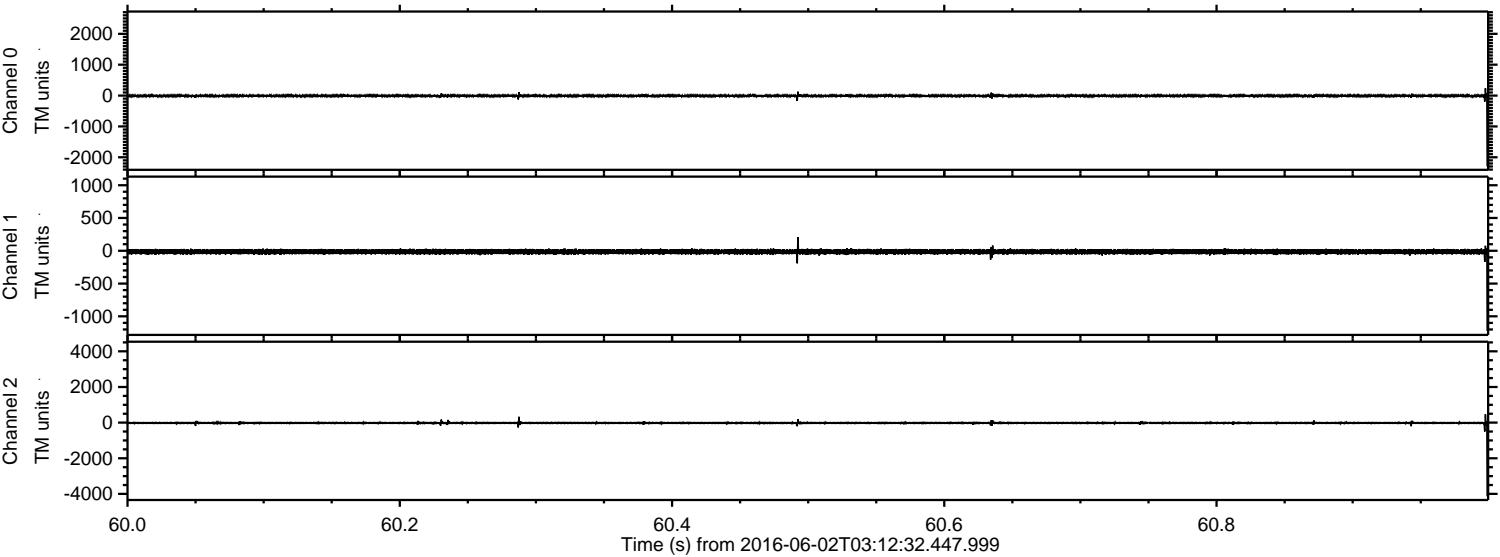


ELMAVAN 3D WAVEFORMS (Measured data sampled at 50 kHz) 51000 packets of 144 samples from 2016-06-02T03:12:32.447.999. Part 110/147

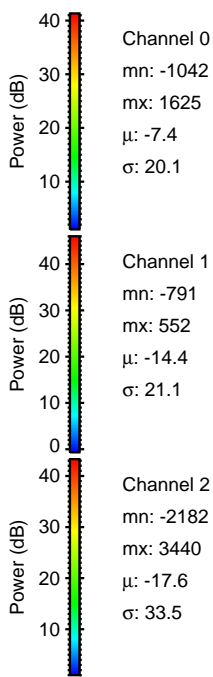
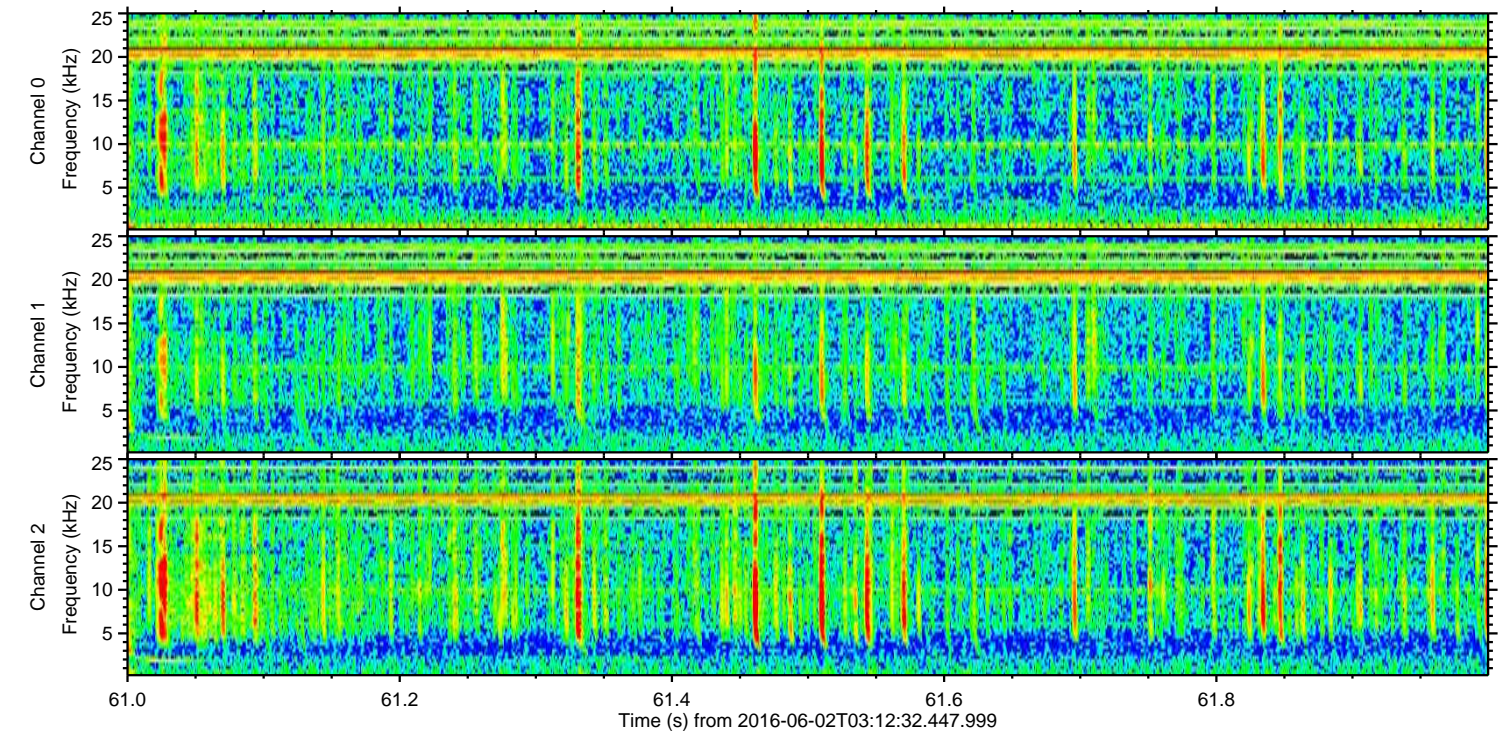
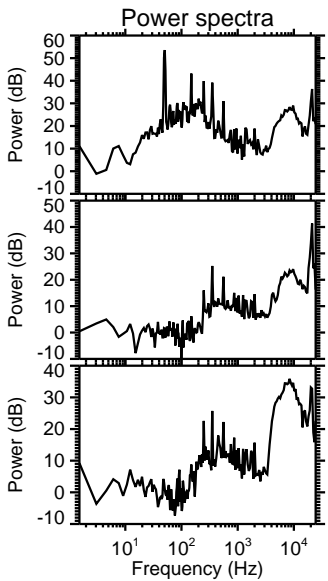
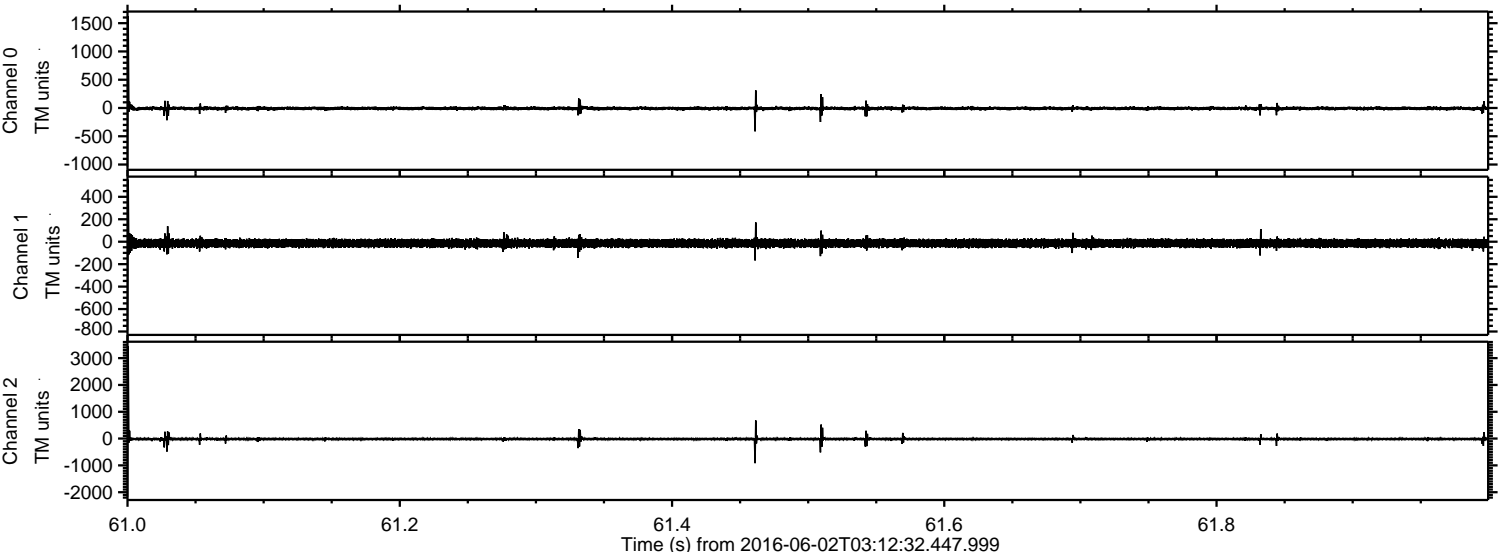
Processed Thu Jun 2 05:21:27 2016 by ELM ver.2012-10-06 from 001__elm20160602_031231__dat00.bin



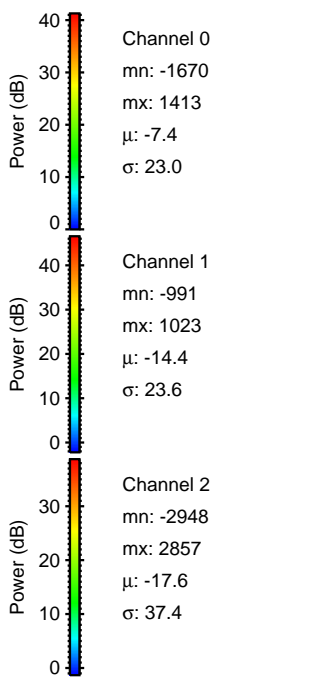
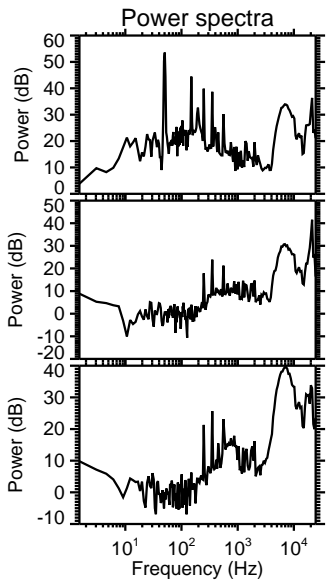
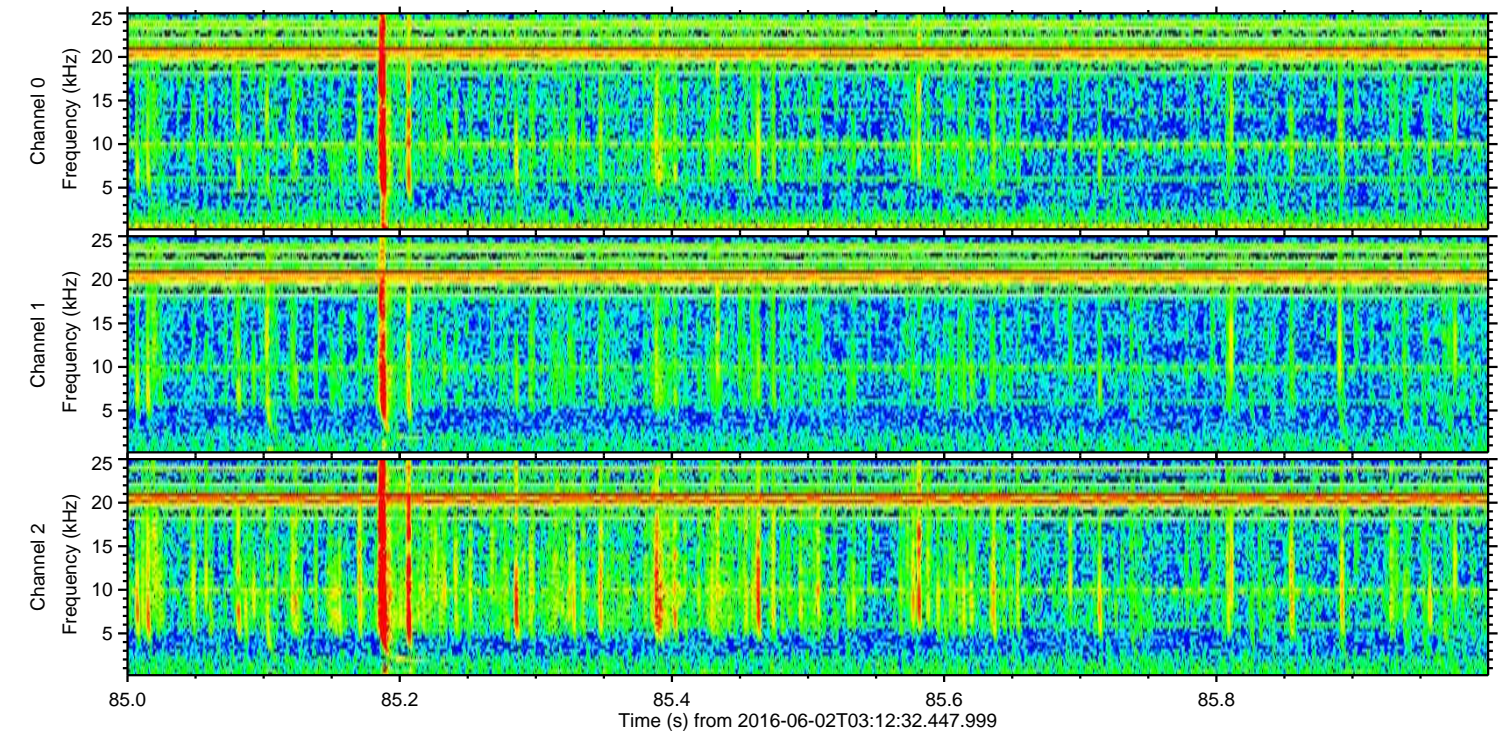
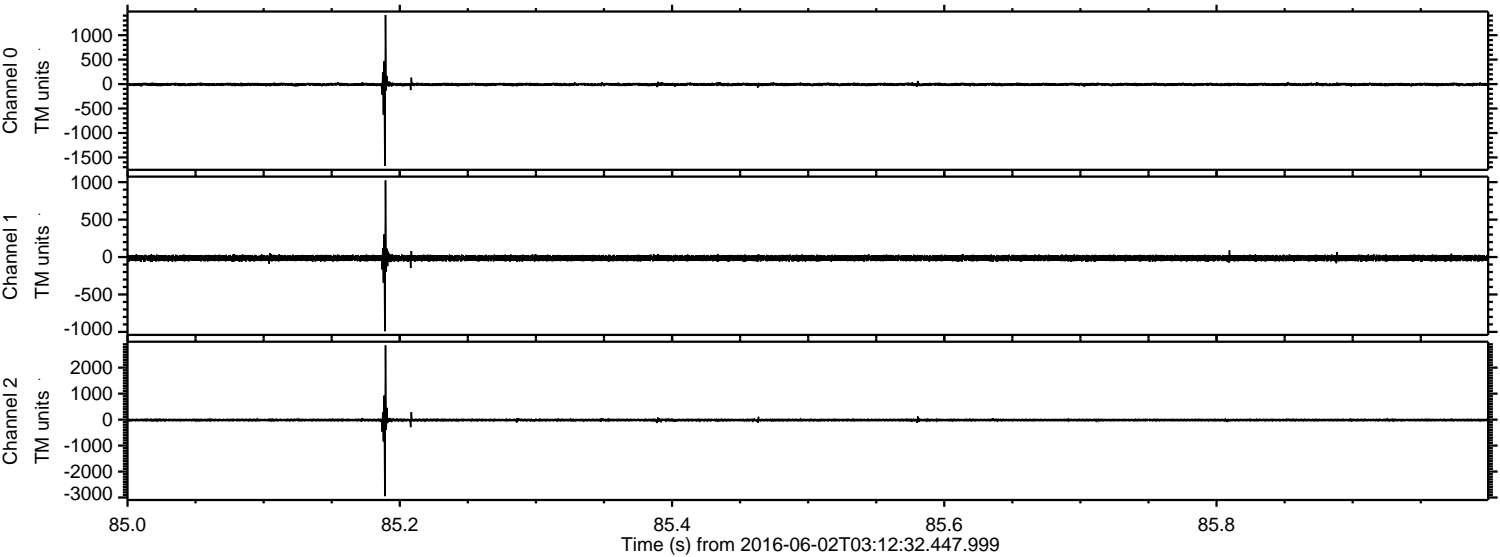
Processed Thu Jun 2 05:21:28 2016 by ELM ver.2012-10-06 from 001__elm20160602_031231__dat00.bin



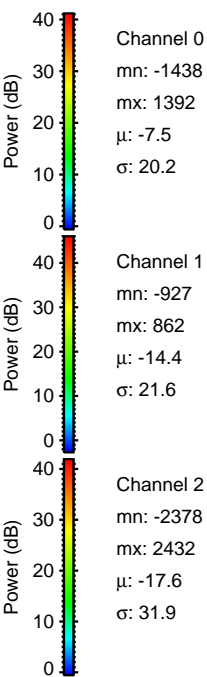
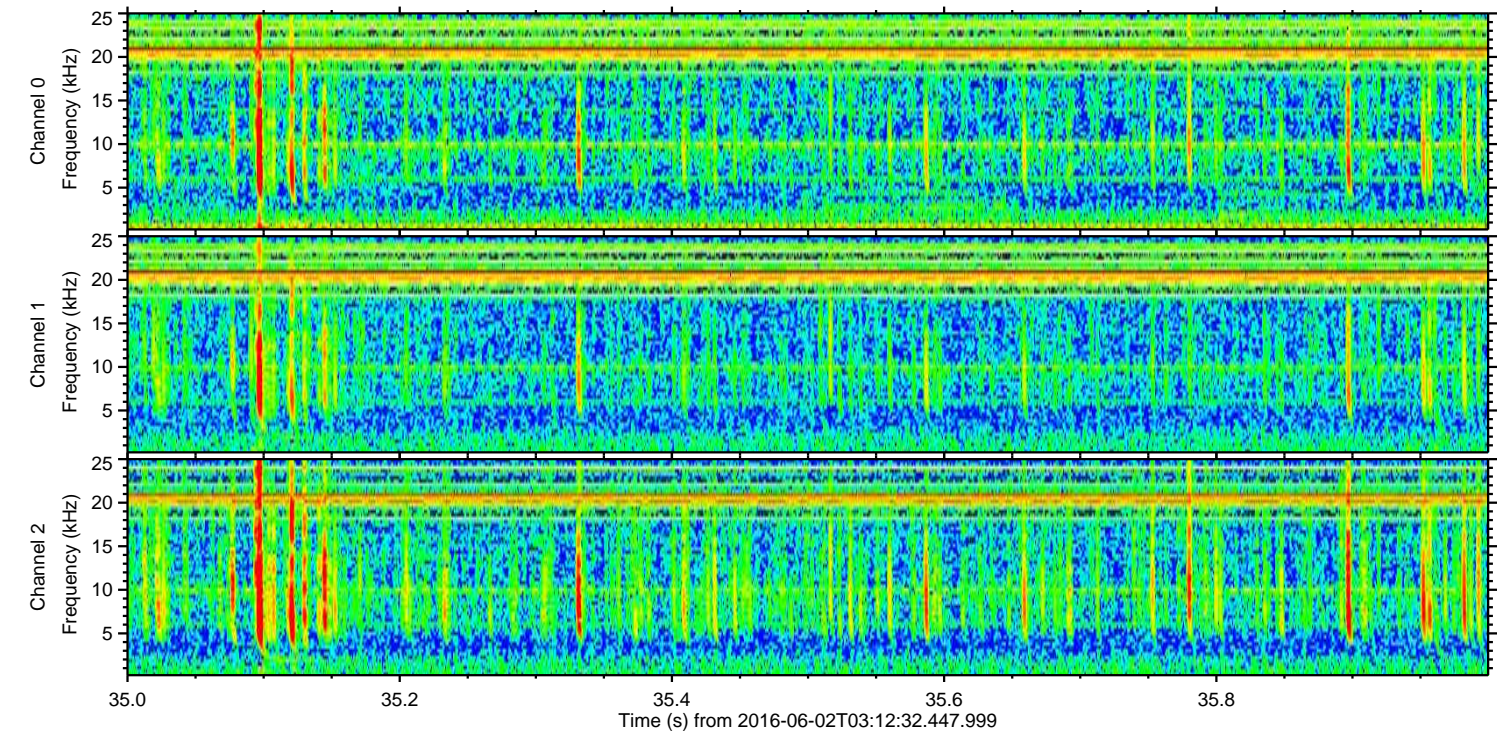
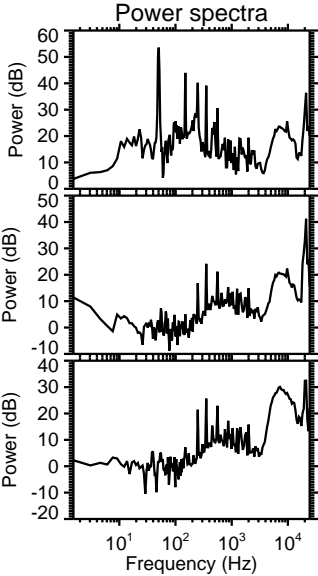
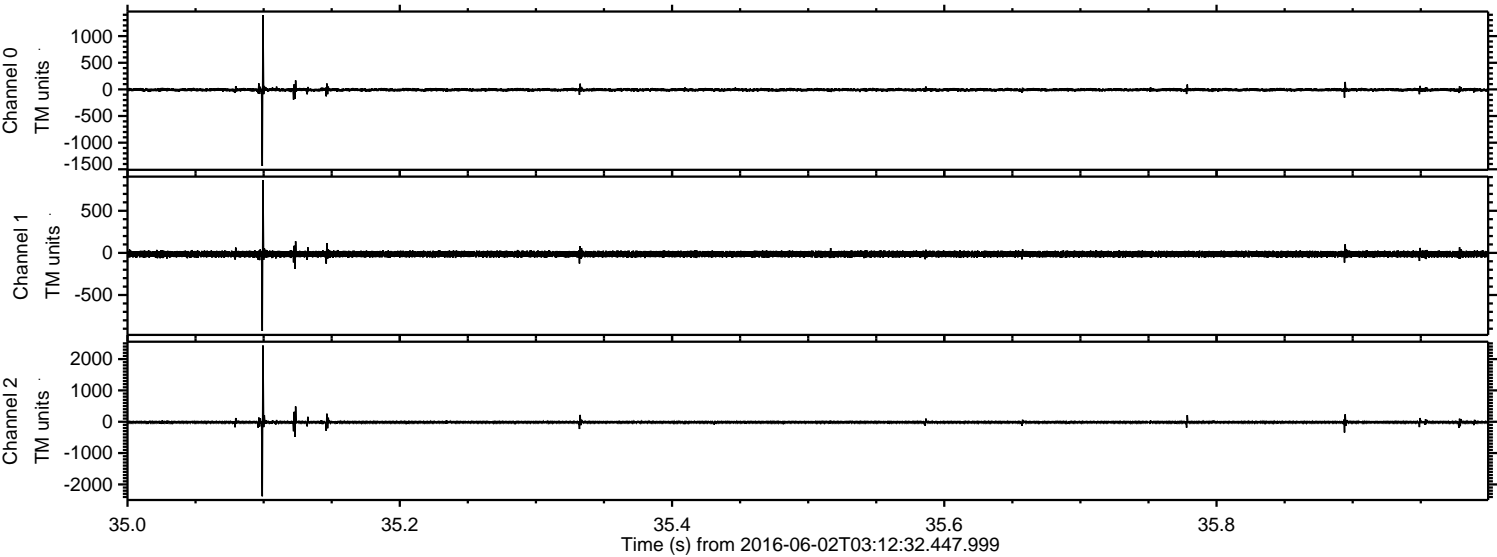
Processed Thu Jun 2 05:21:29 2016 by ELM ver.2012-10-06 from 001__elm20160602_031231__dat00.bin



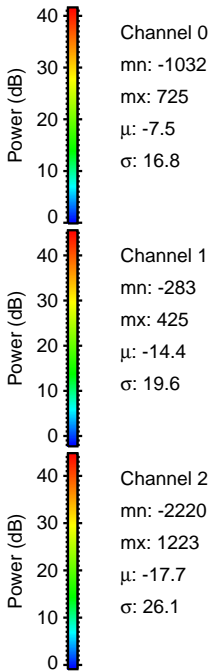
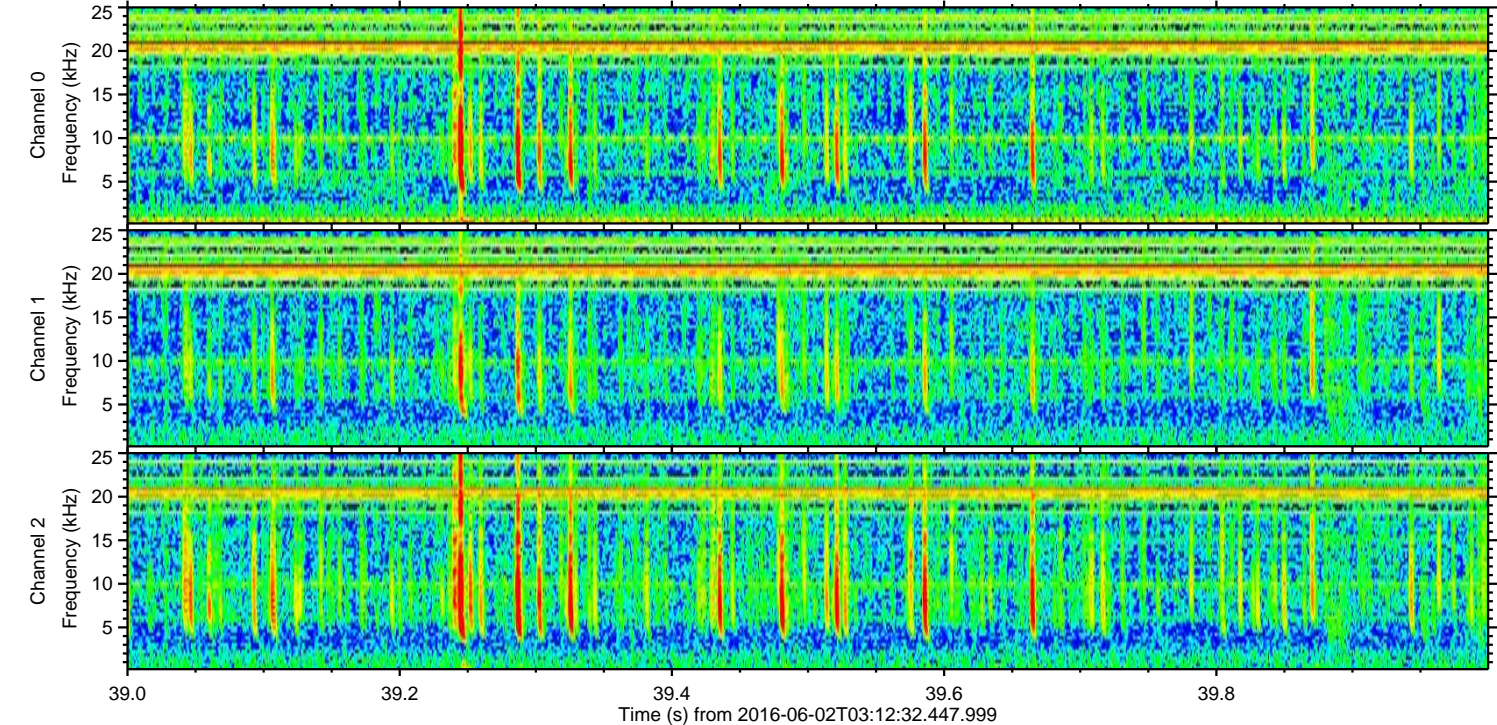
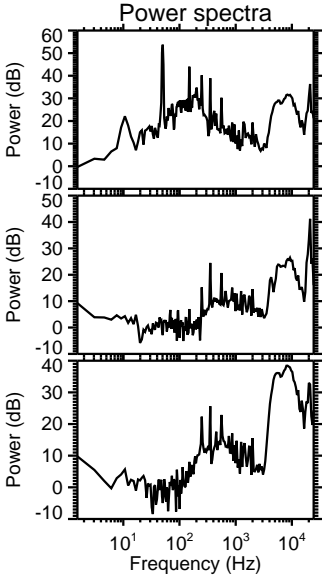
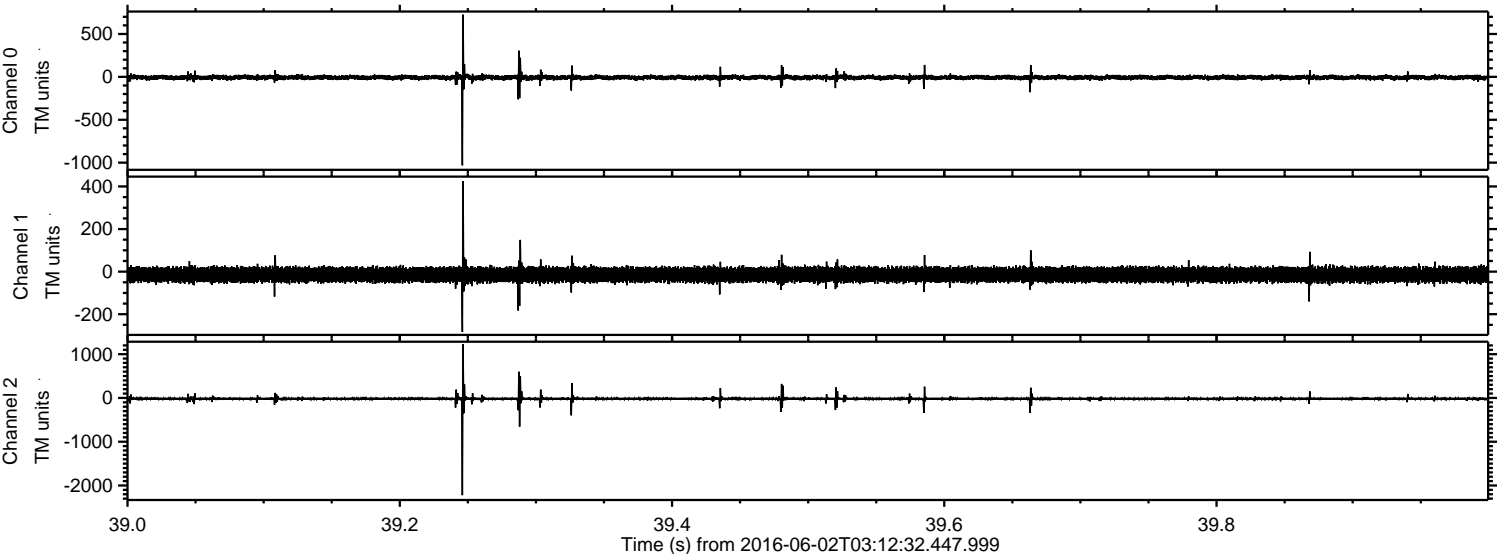
Processed Thu Jun 2 05:21:29 2016 by ELM ver.2012-10-06 from 001__elm20160602_031231__dat00.bin



Processed Thu Jun 2 05:21:30 2016 by ELM ver.2012-10-06 from 001__elm20160602_031231__dat00.bin

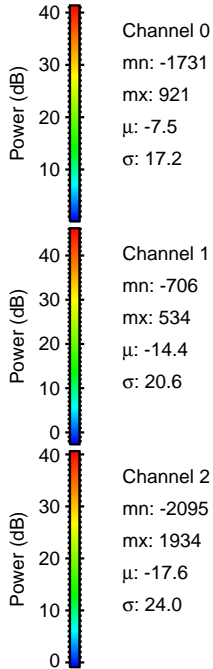
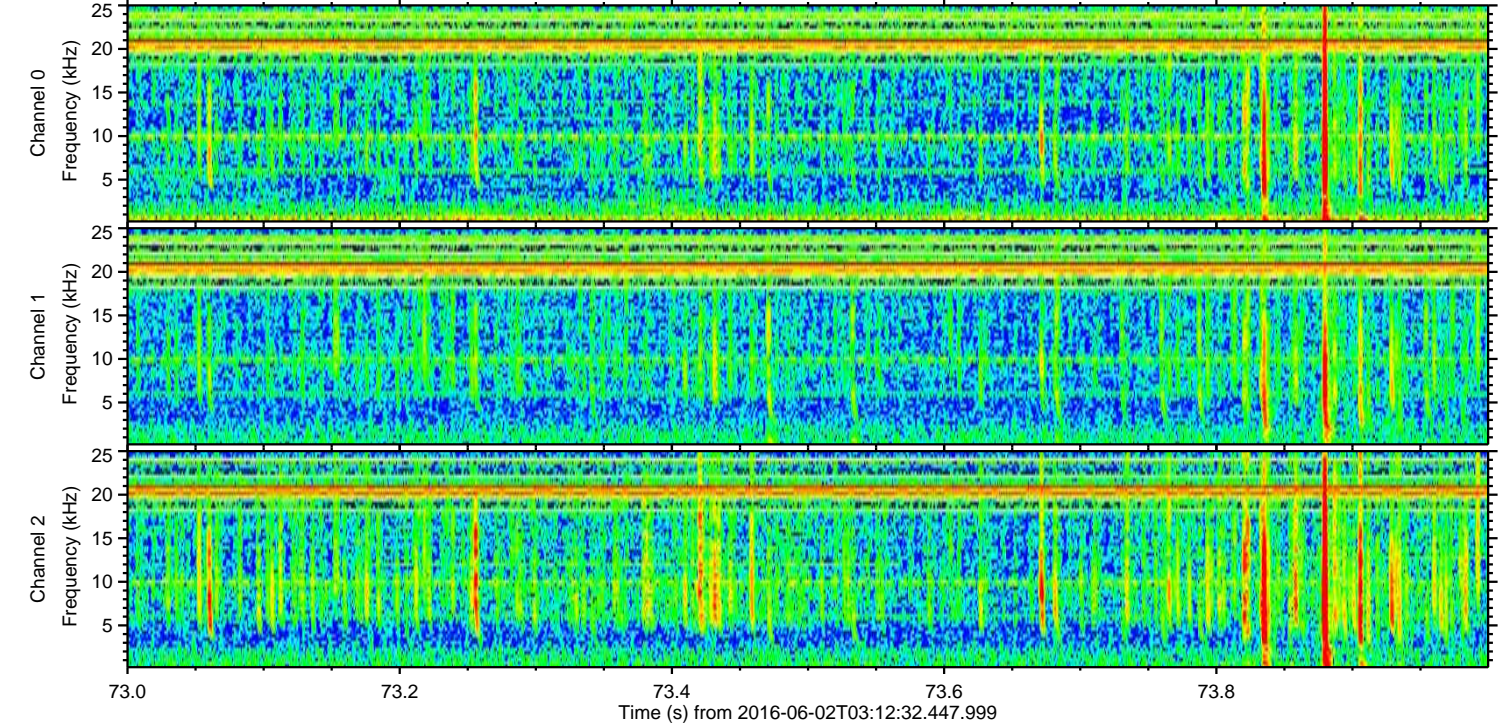
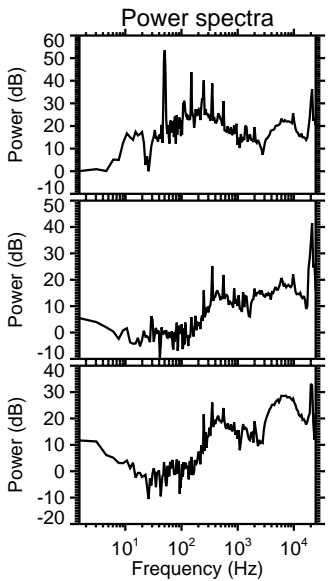
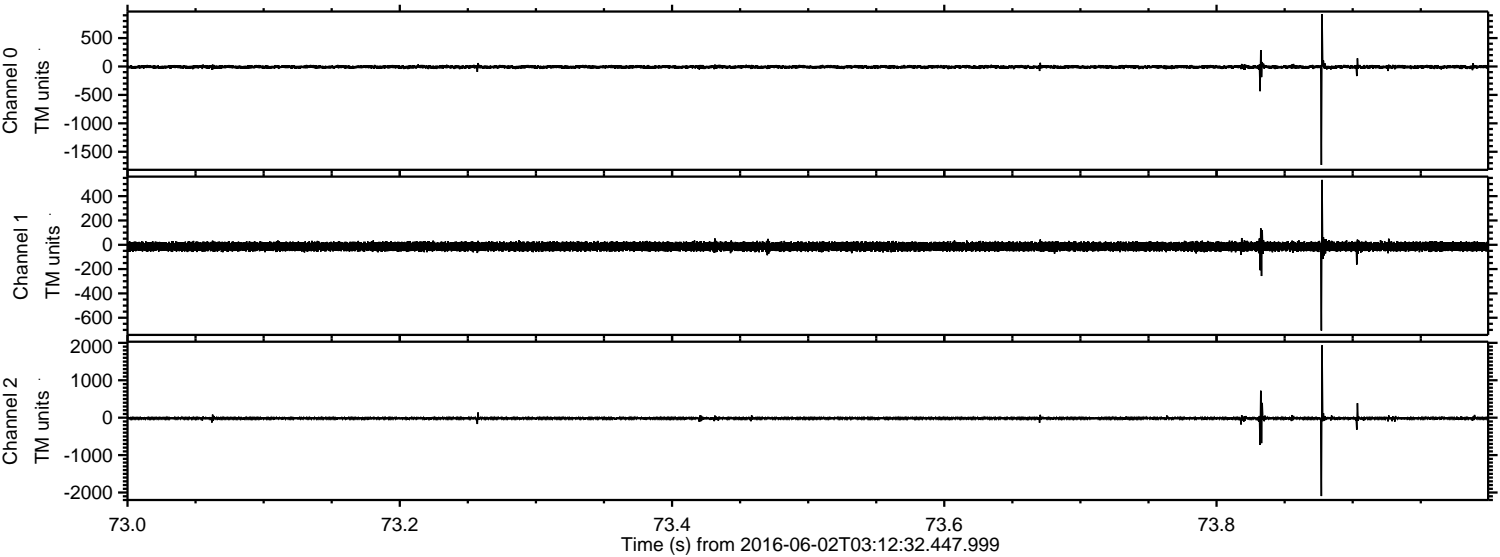


Processed Thu Jun 2 05:21:31 2016 by ELM ver.2012-10-06 from 001__elm20160602_031231__dat00.bin

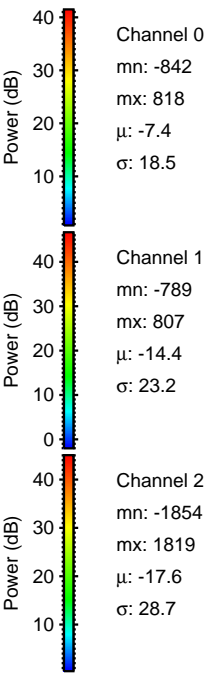
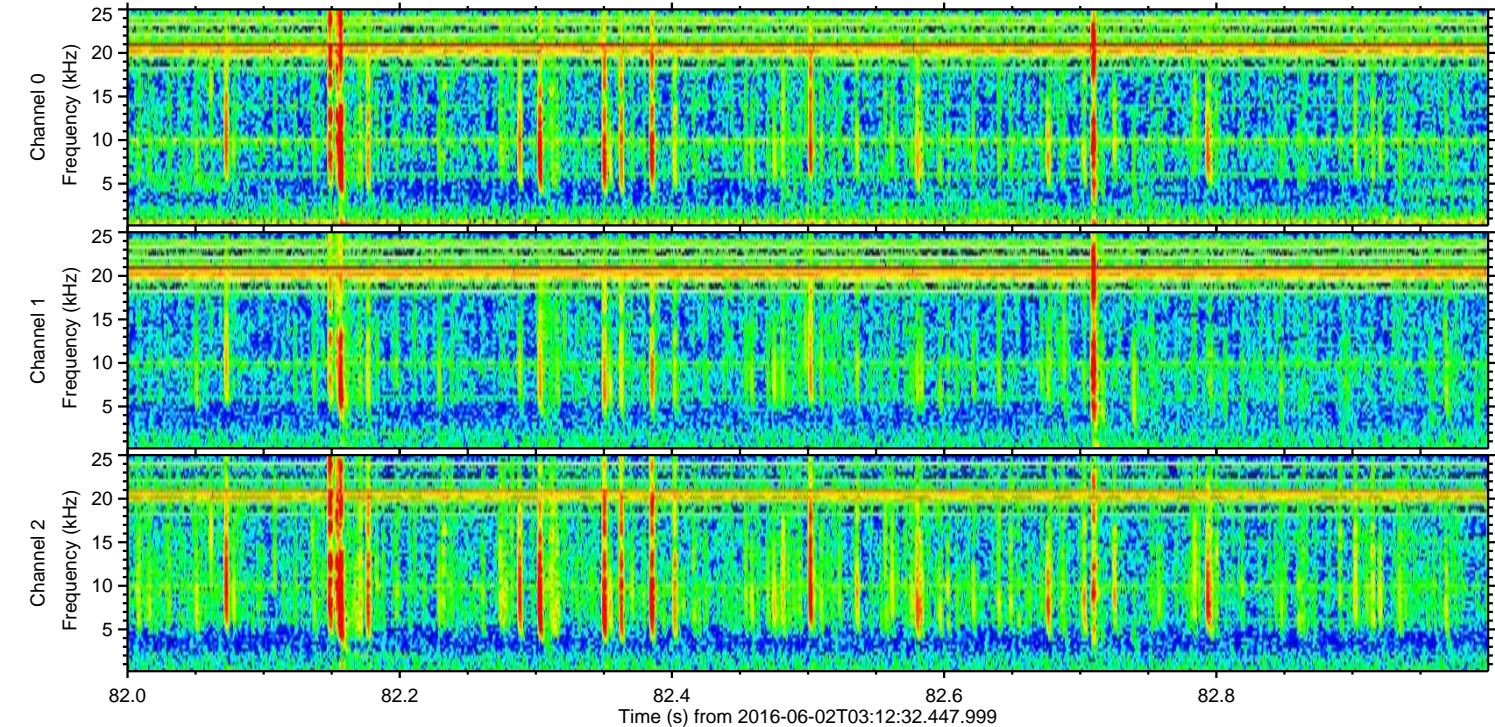
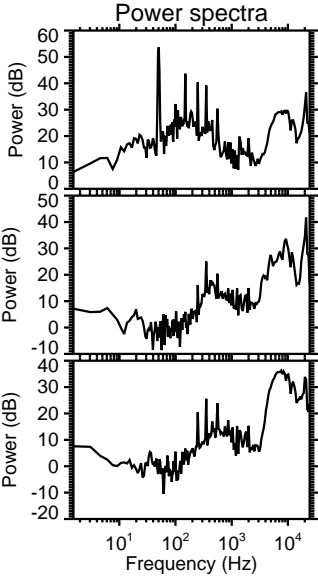
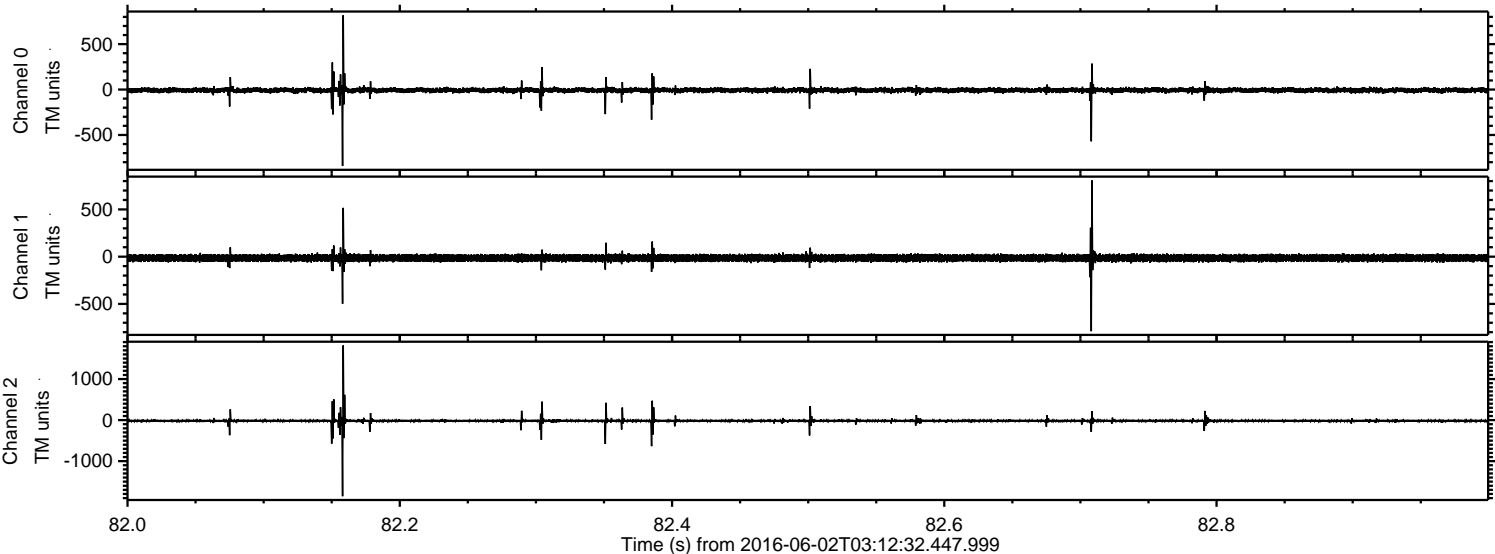


ELMAVAN 3D WAVEFORMS (Measured data sampled at 50 kHz) 51000 packets of 144 samples from 2016-06-02T03:12:32.447.999. Part 74/147

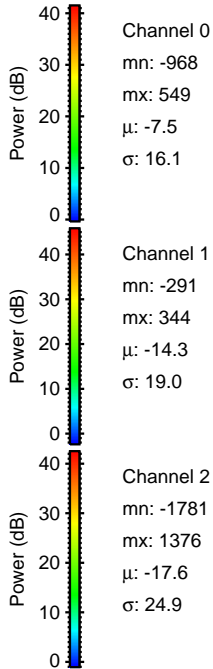
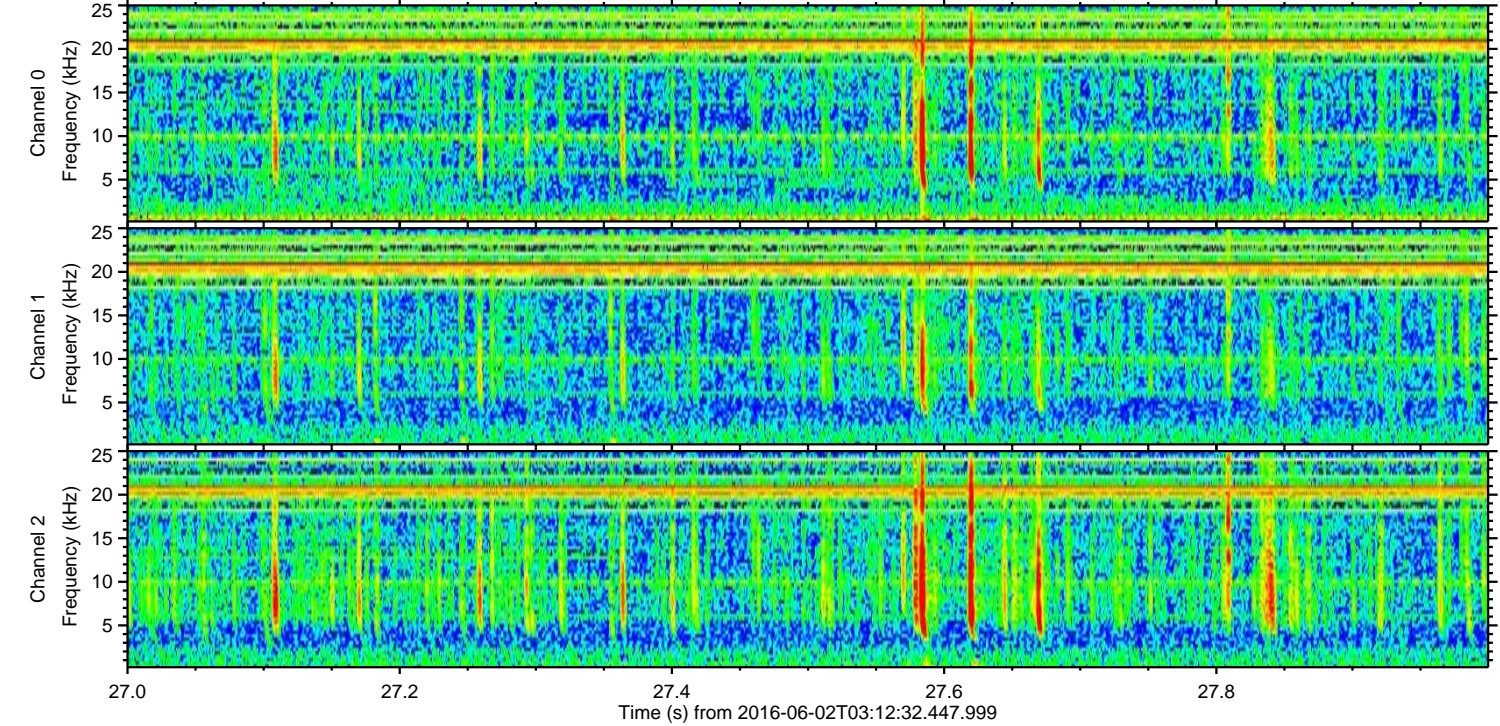
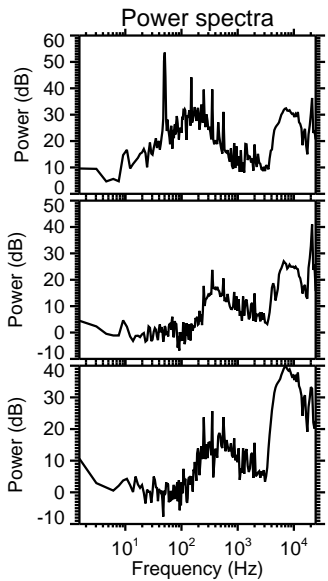
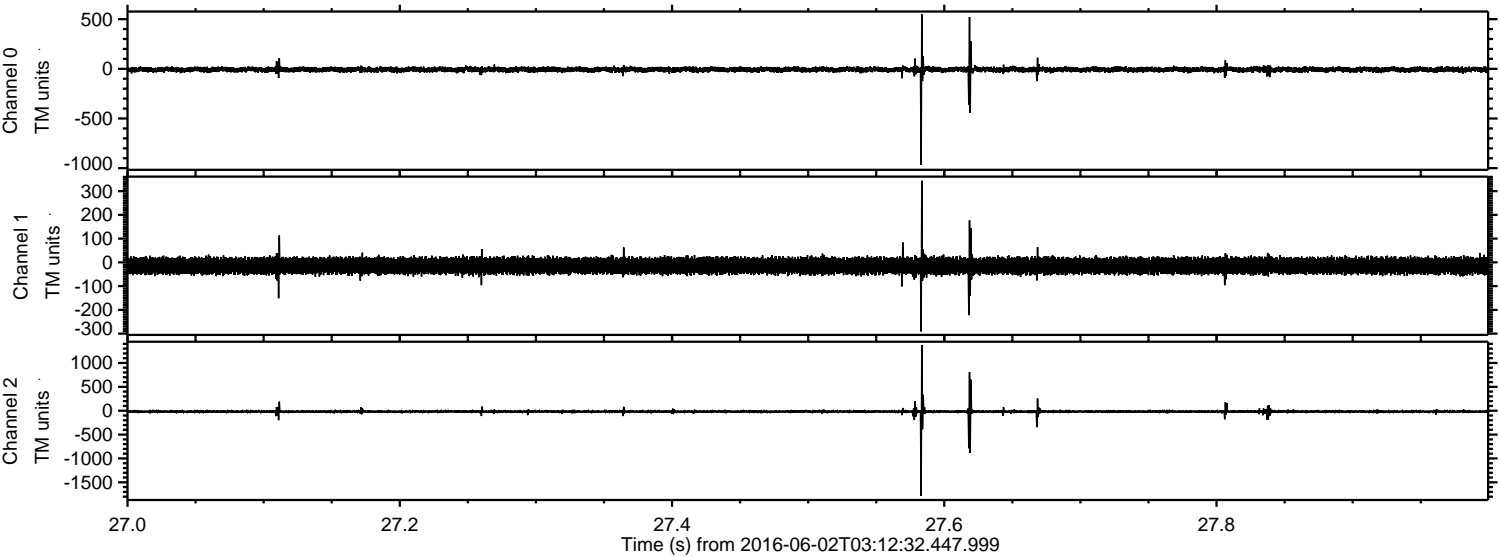
Processed Thu Jun 2 05:21:32 2016 by ELM ver.2012-10-06 from 001__elm20160602_031231__dat00.bin



Processed Thu Jun 2 05:21:33 2016 by ELM ver.2012-10-06 from 001__elm20160602_031231__dat00.bin



Processed Thu Jun 2 05:21:34 2016 by ELM ver.2012-10-06 from 001__elm20160602_031231__dat00.bin



Channel 0
mn: -968
mx: 549
 μ : -7.5
 σ : 16.1

Channel 1
mn: -291
mx: 344
 μ : -14.3
 σ : 19.0

Channel 2
mn: -1781
mx: 1376
 μ : -17.6
 σ : 24.9

Processed Thu Jun 2 05:21:35 2016 by ELM ver.2012-10-06 from 001__elm20160602_031231__dat00.bin

