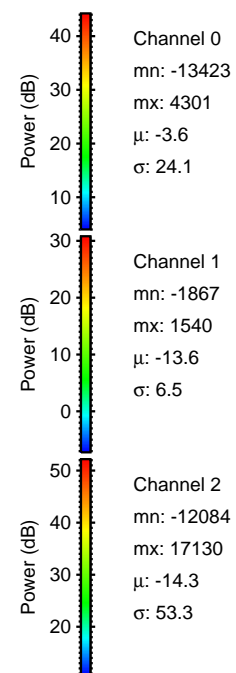
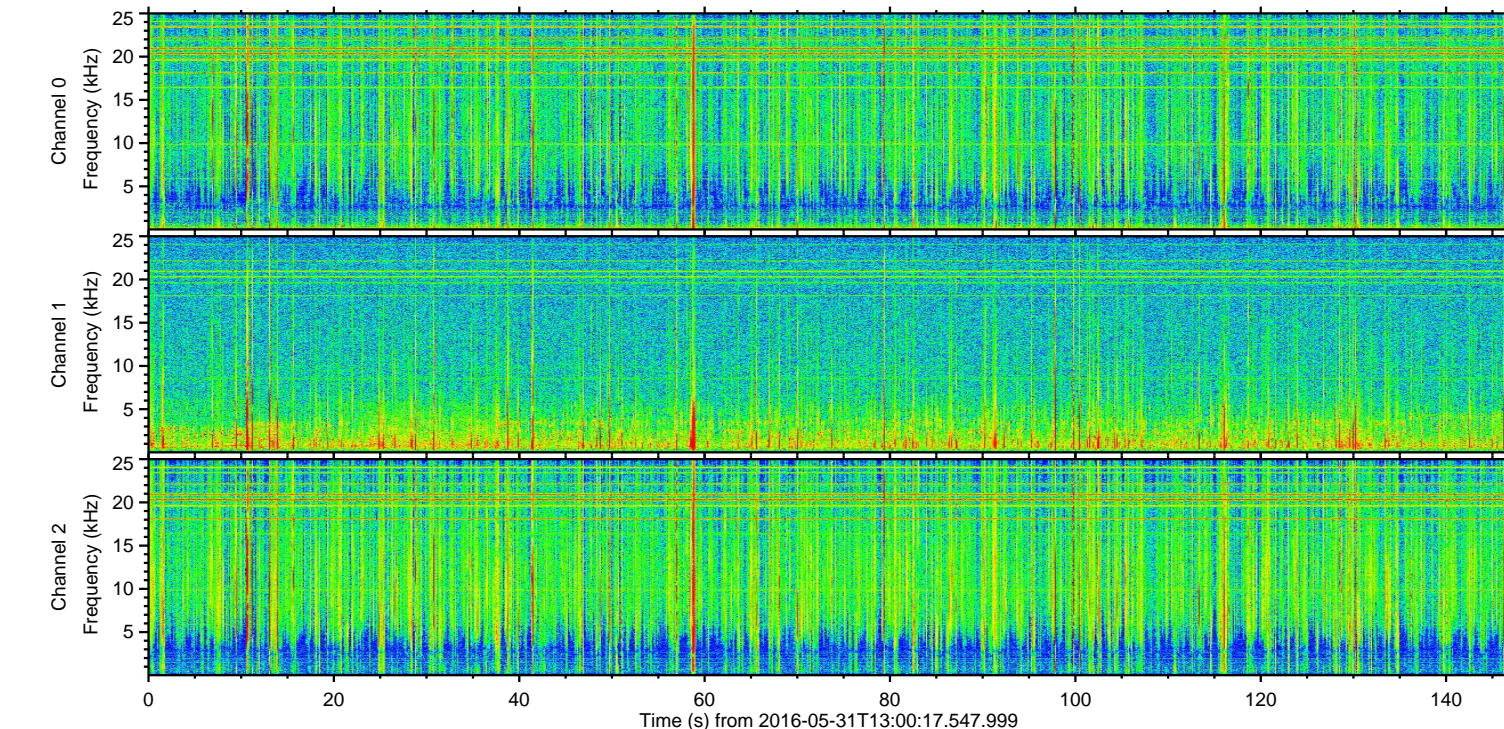
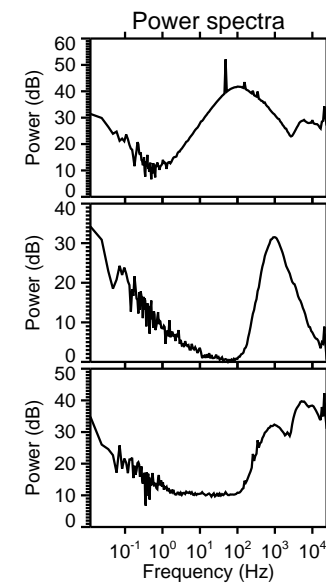
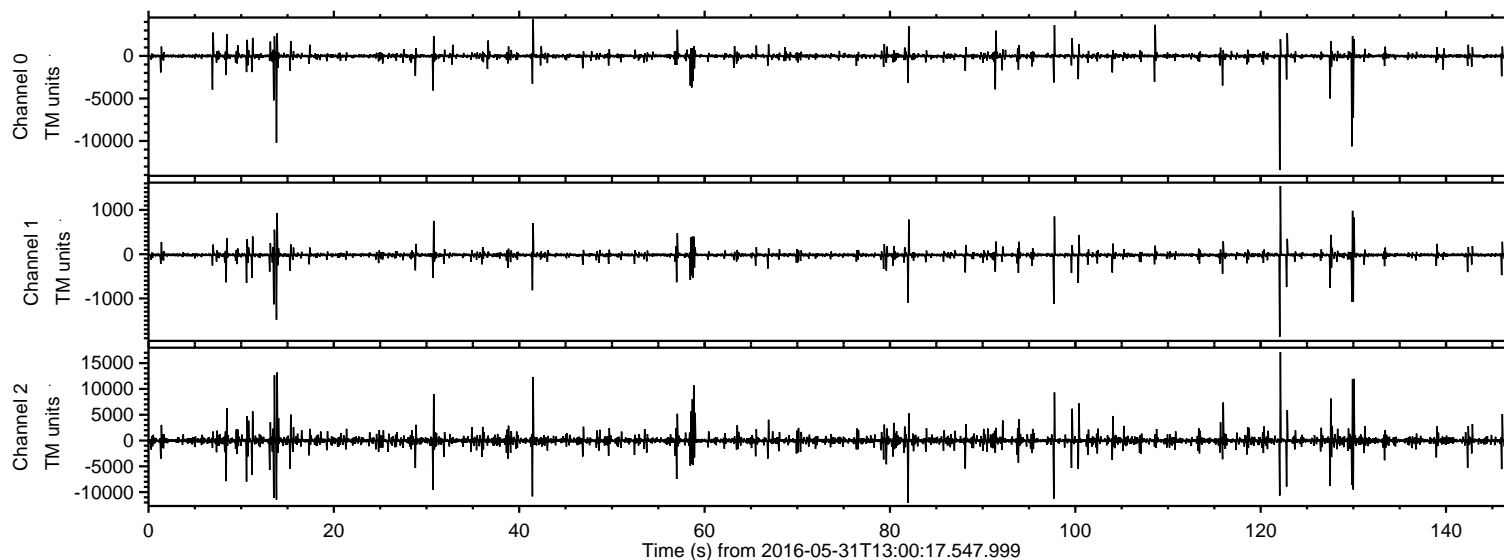


# ELMAVAN 3D WAVEFORMS (Measured data sampled at 50 kHz) 51000 packets of 144 samples from 2016-05-31T13:00:17.547.999.

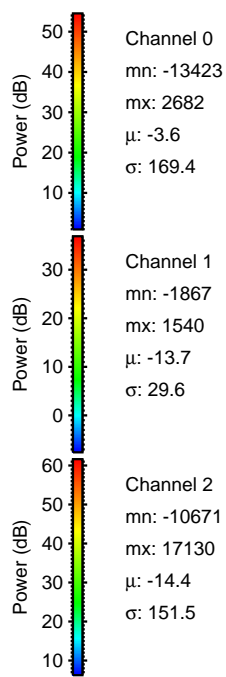
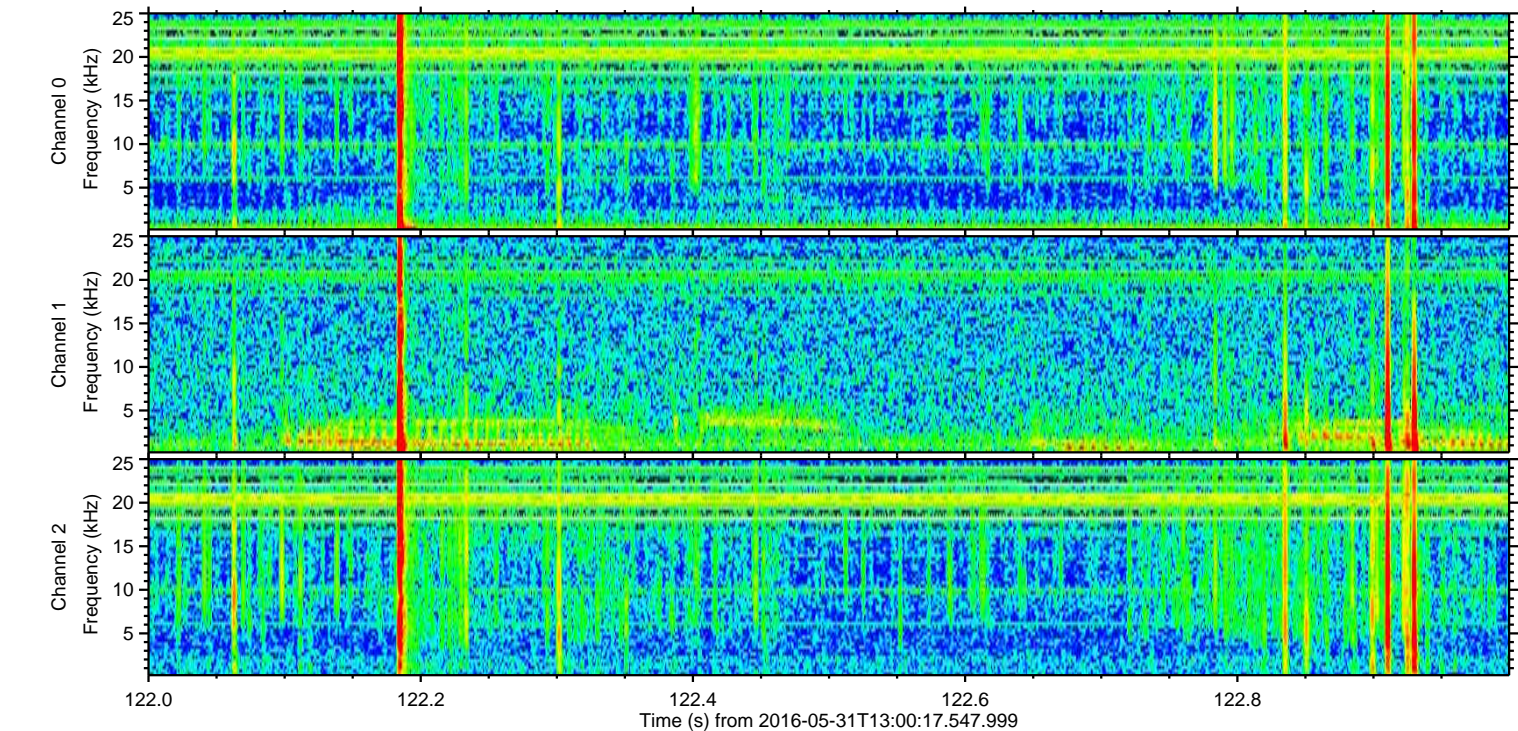
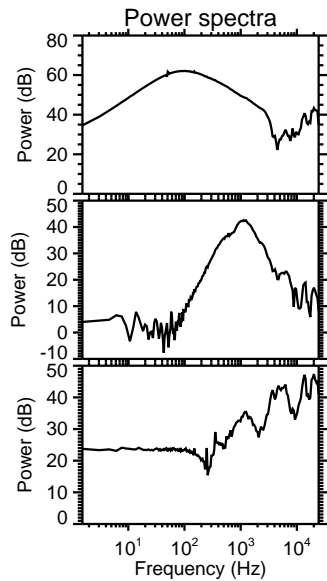
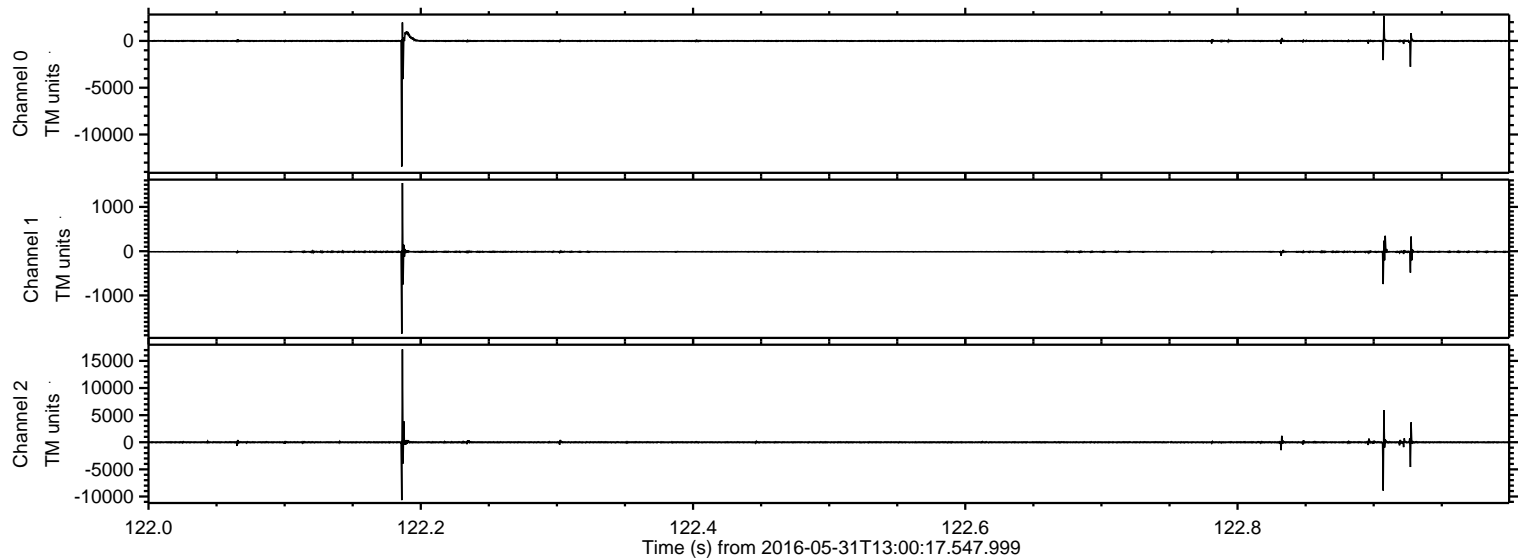
Processed Tue May 31 15:07:49 2016 by ELM ver.2012-10-06 from 001\_\_elm20160531\_130016\_\_dat00.bin





ELMAVAN 3D WAVEFORMS (Measured data sampled at 50 kHz) 51000 packets of 144 samples from 2016-05-31T13:00:17.547.999. Part 123/147

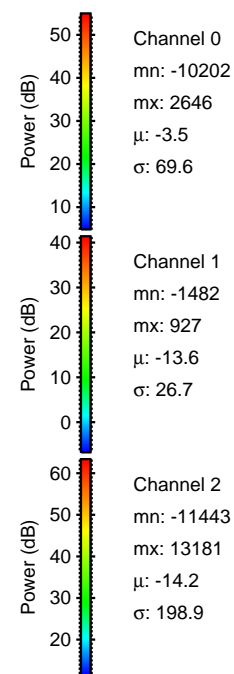
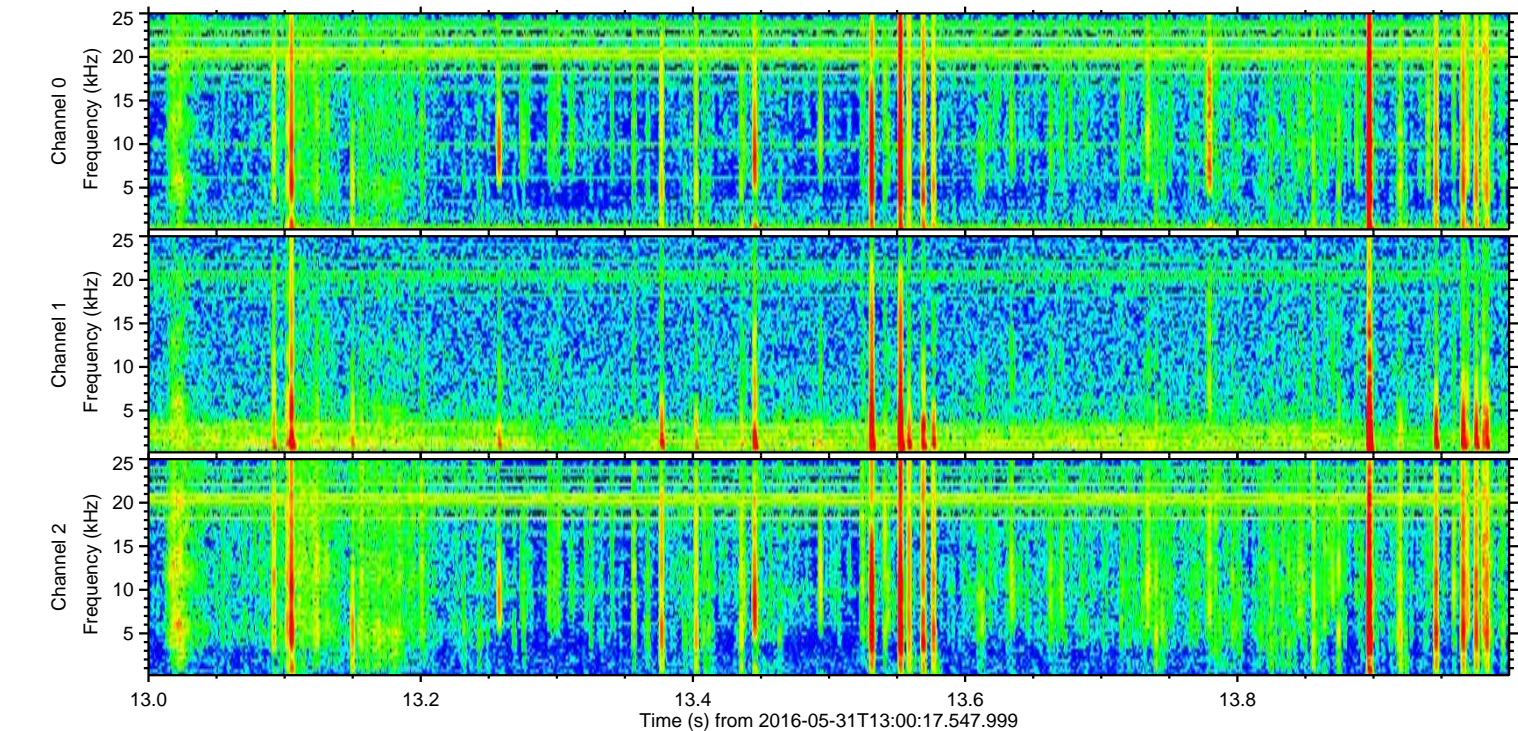
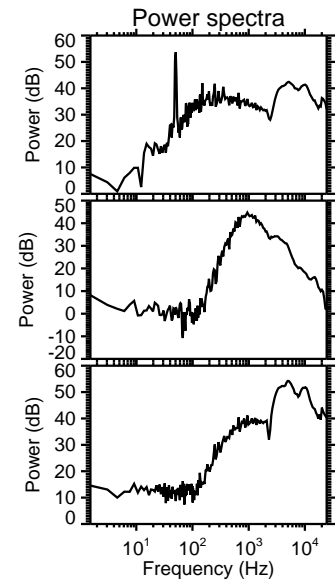
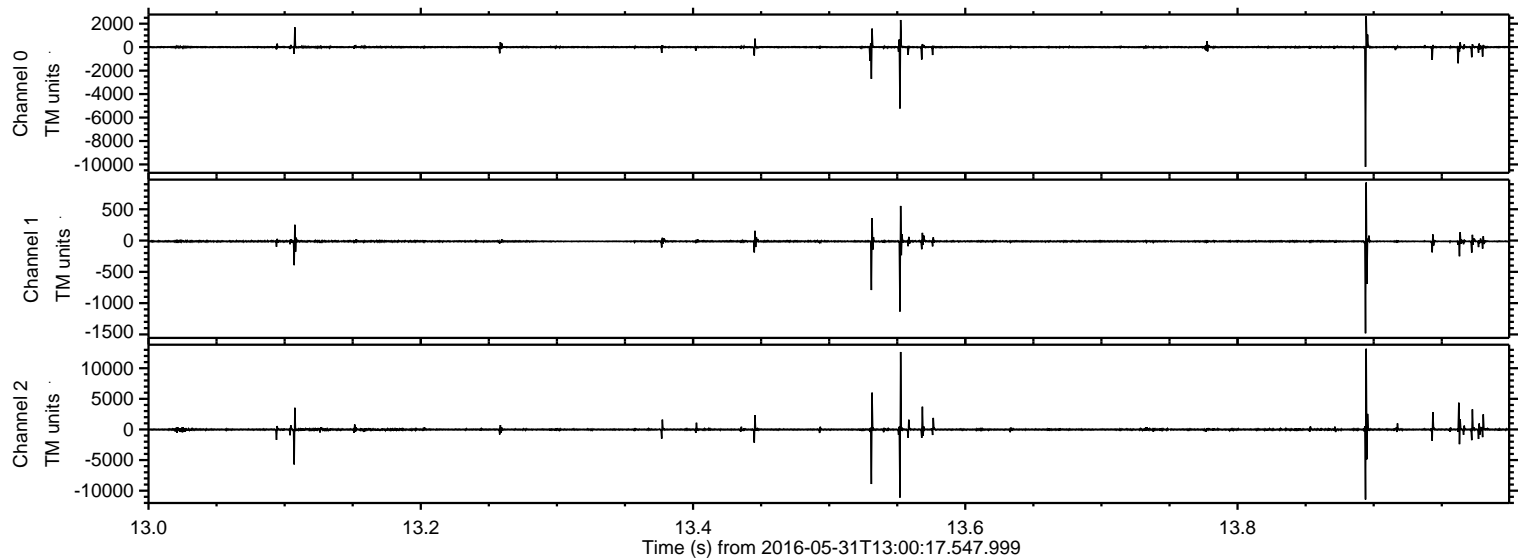
Processed Tue May 31 15:08:00 2016 by ELM ver.2012-10-06 from 001\_\_elm20160531\_130016\_\_dat00.bin





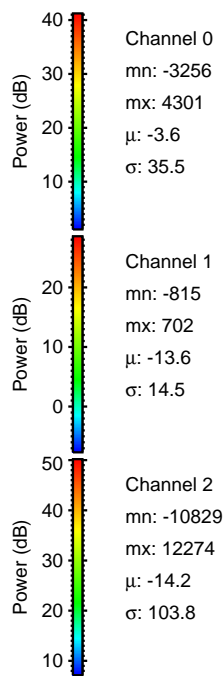
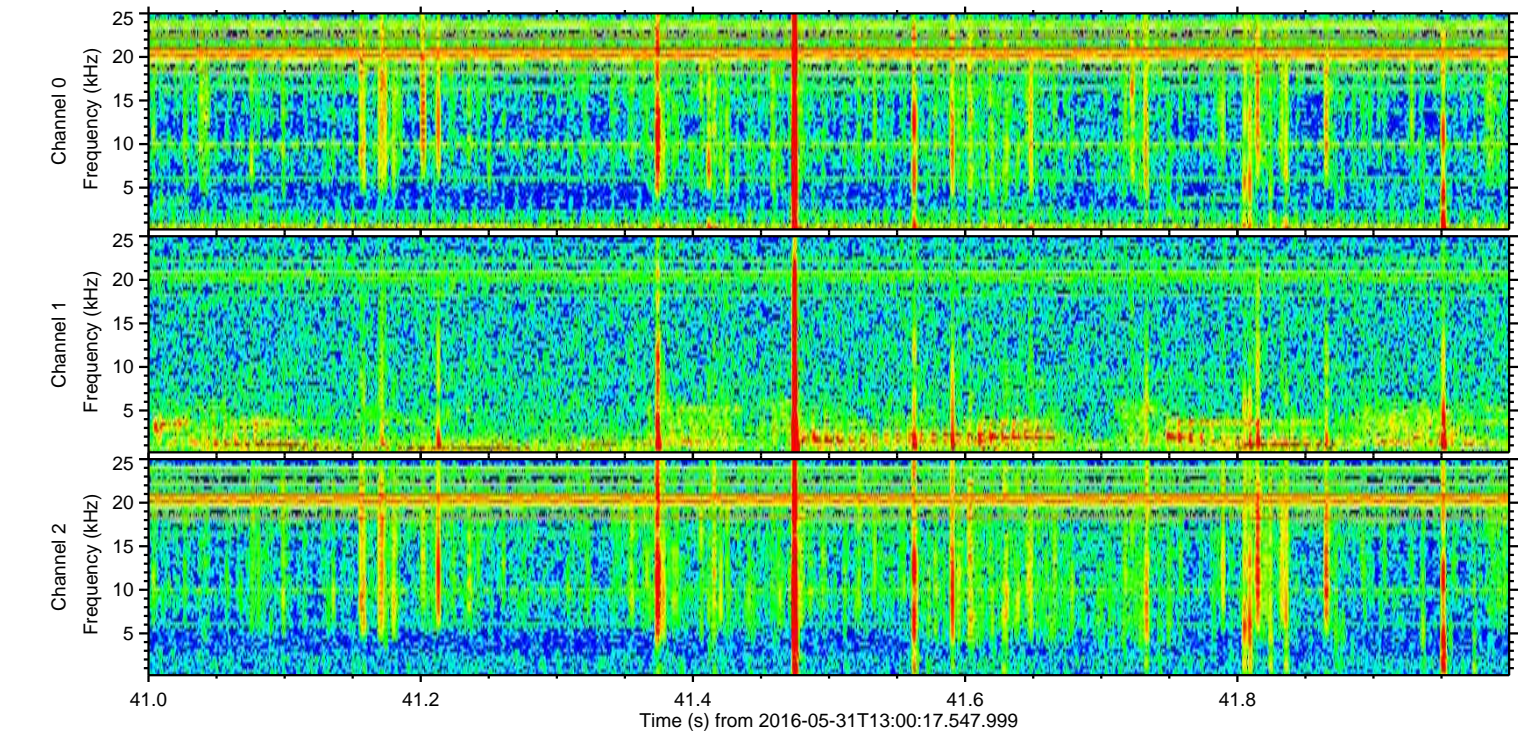
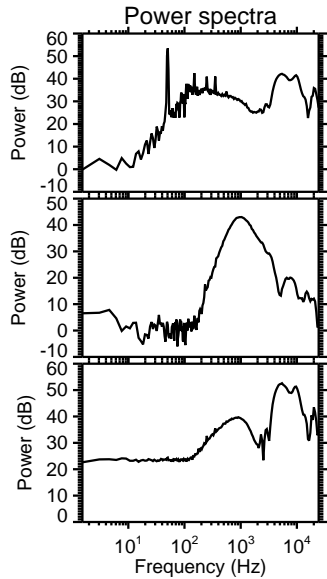
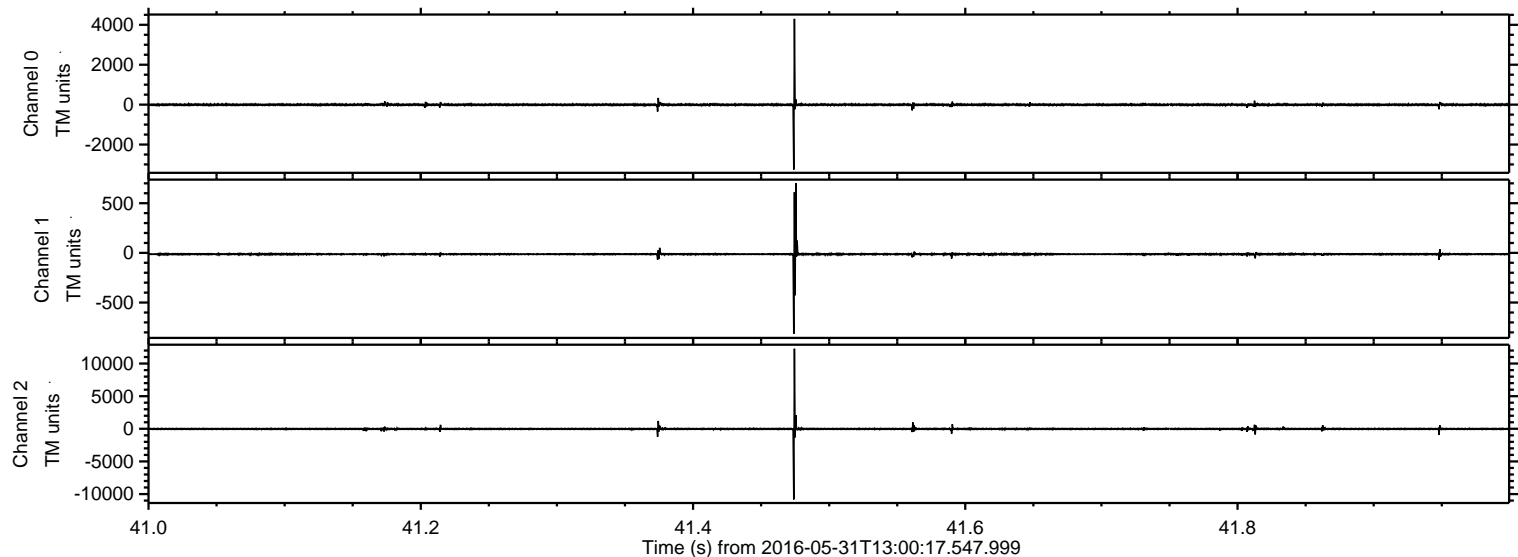
ELMAVAN 3D WAVEFORMS (Measured data sampled at 50 kHz) 51000 packets of 144 samples from 2016-05-31T13:00:17.547.999. Part 14/147

Processed Tue May 31 15:08:01 2016 by ELM ver.2012-10-06 from 001\_\_elm20160531\_130016\_\_dat00.bin



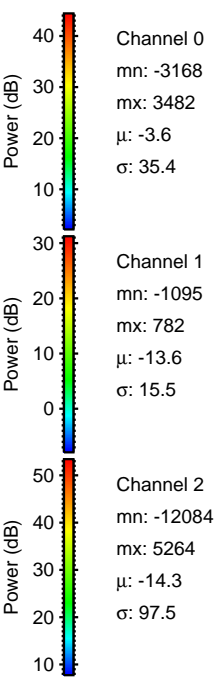
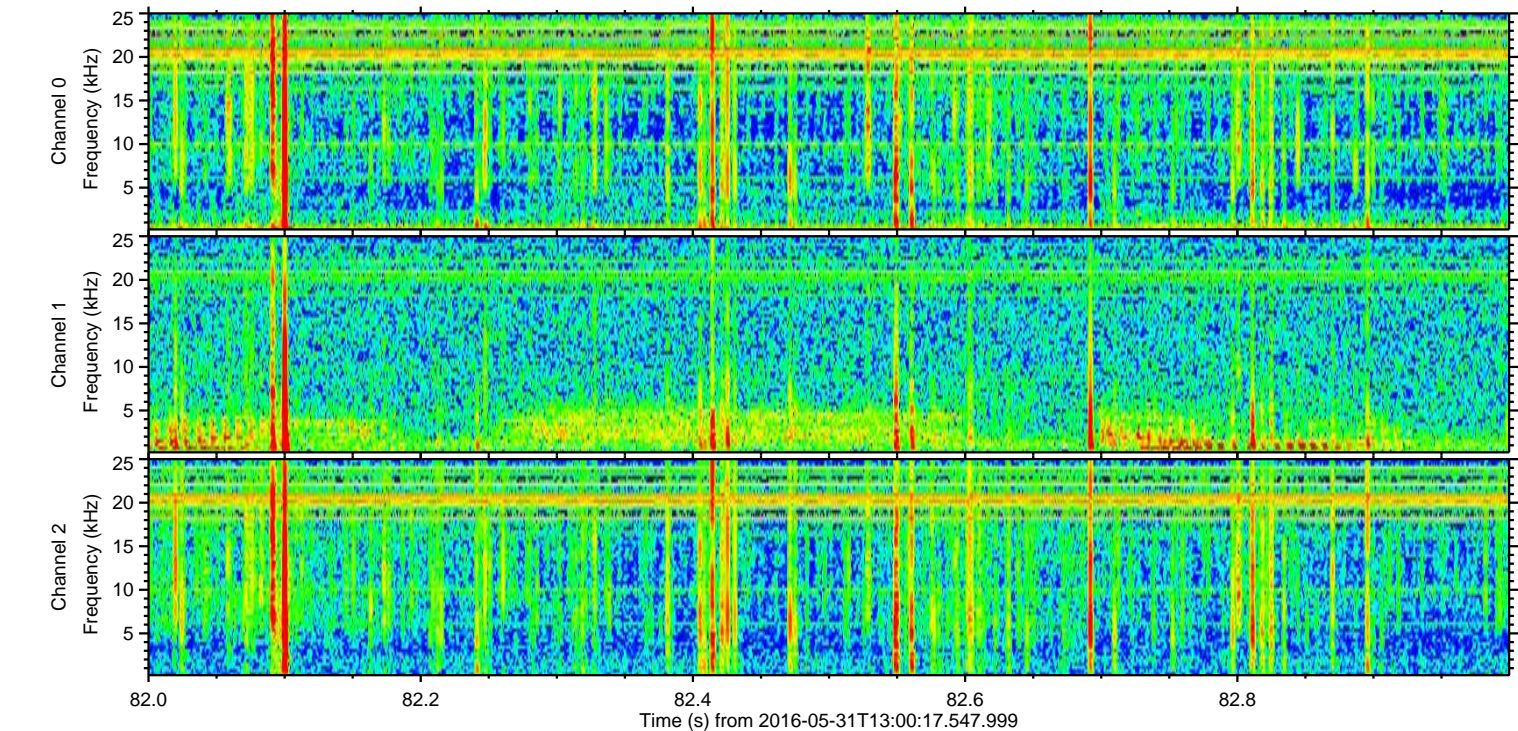
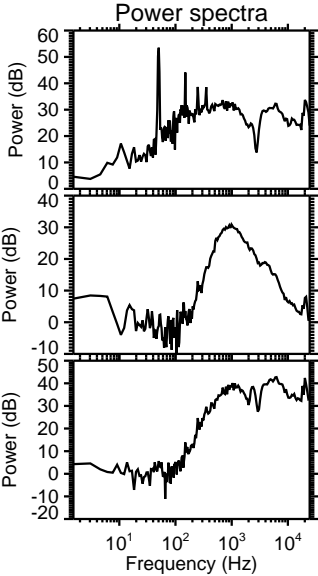
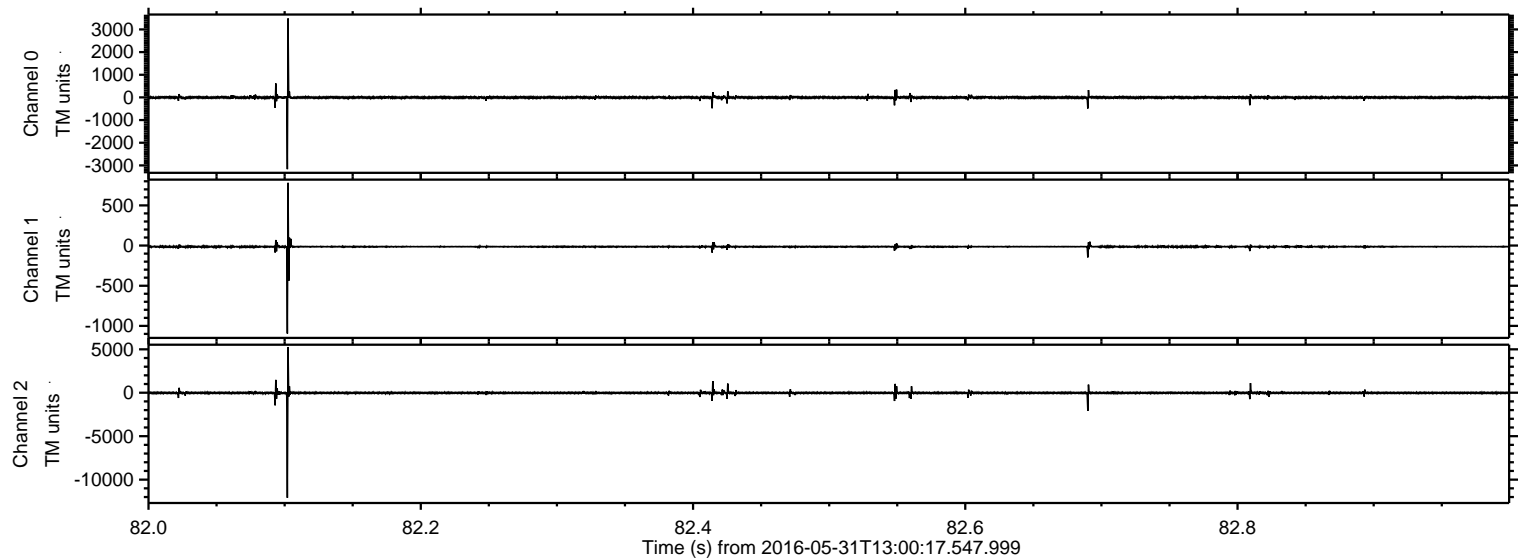


Processed Tue May 31 15:08:02 2016 by ELM ver.2012-10-06 from 001\_\_elm20160531\_130016\_\_dat00.bin





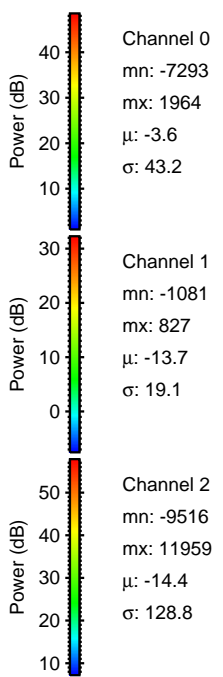
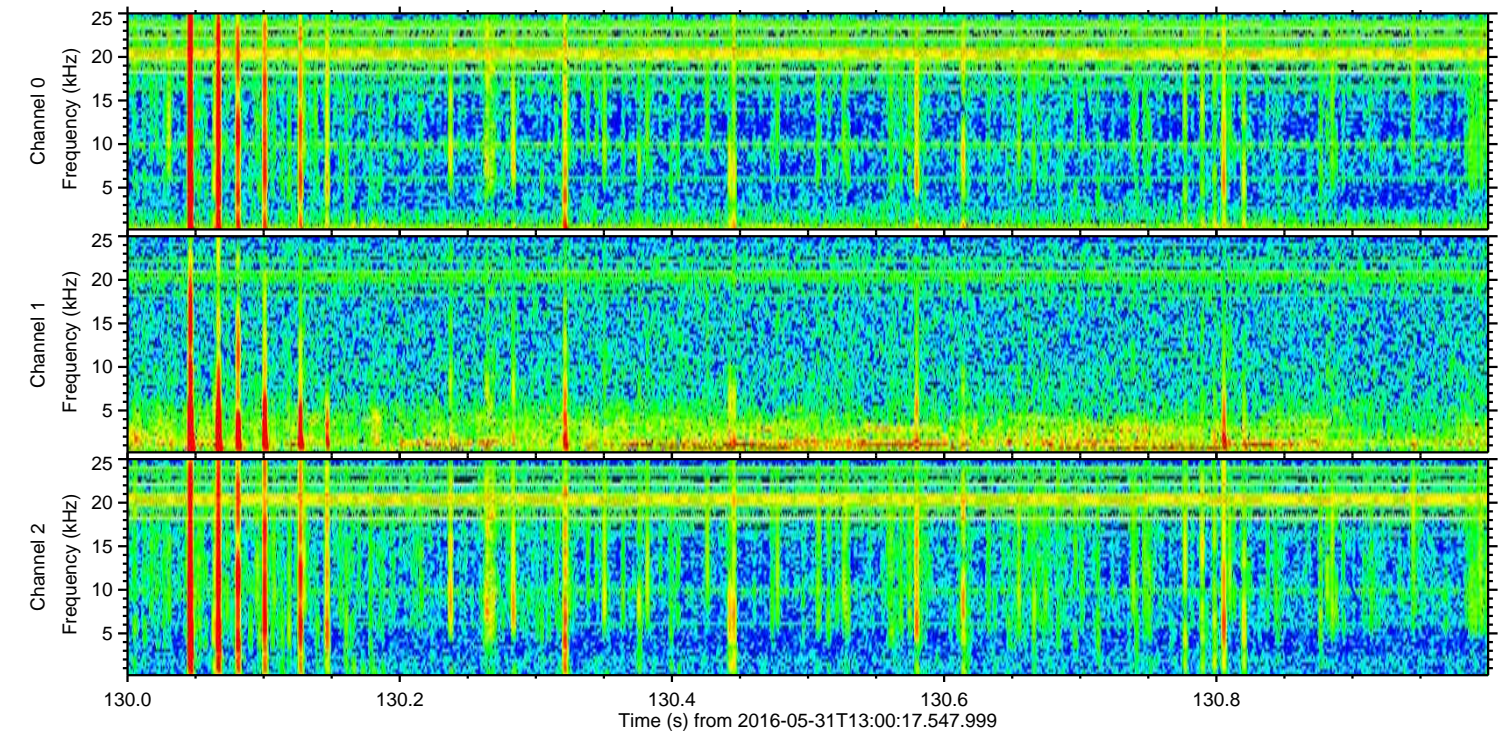
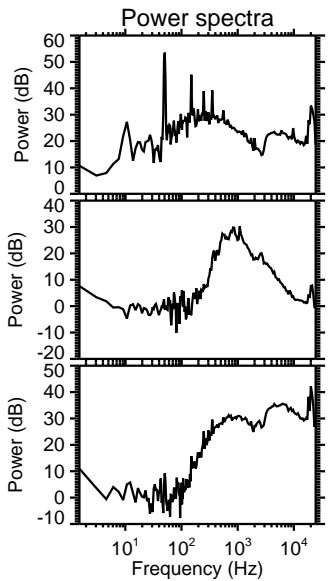
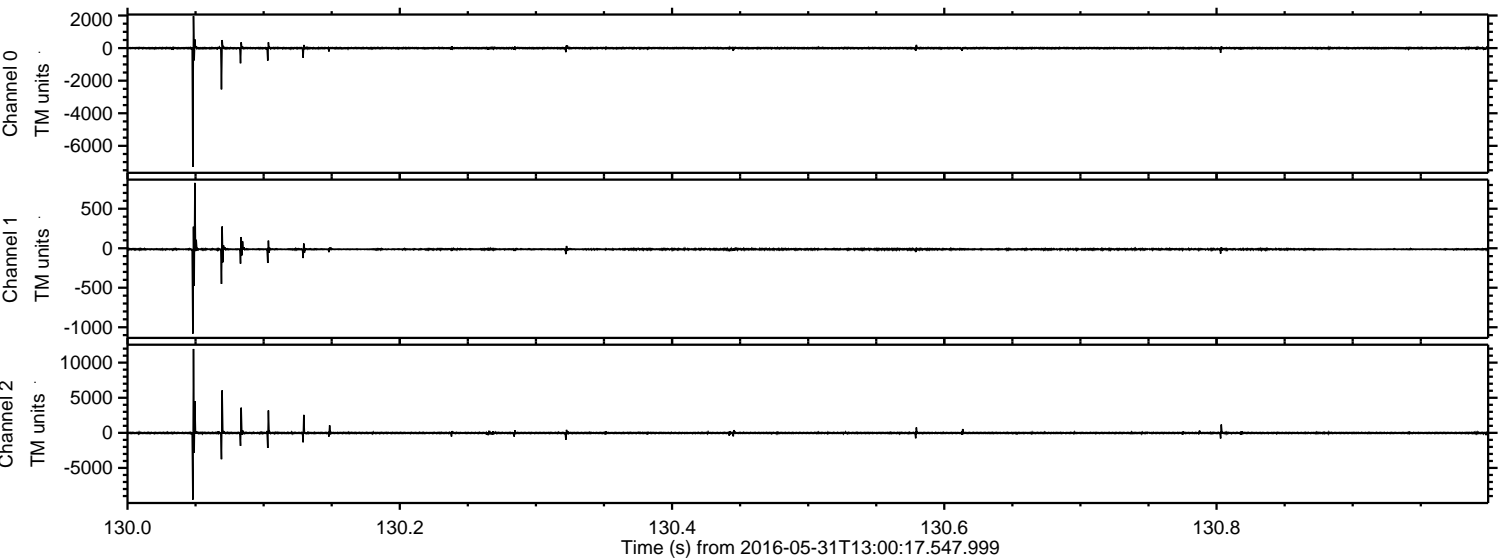
Processed Tue May 31 15:08:03 2016 by ELM ver.2012-10-06 from 001\_\_elm20160531\_130016\_\_dat00.bin





ELMAVAN 3D WAVEFORMS (Measured data sampled at 50 kHz) 51000 packets of 144 samples from 2016-05-31T13:00:17.547.999. Part 131/147

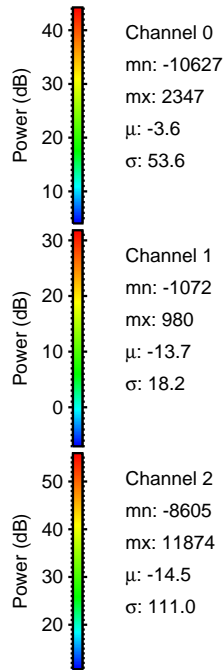
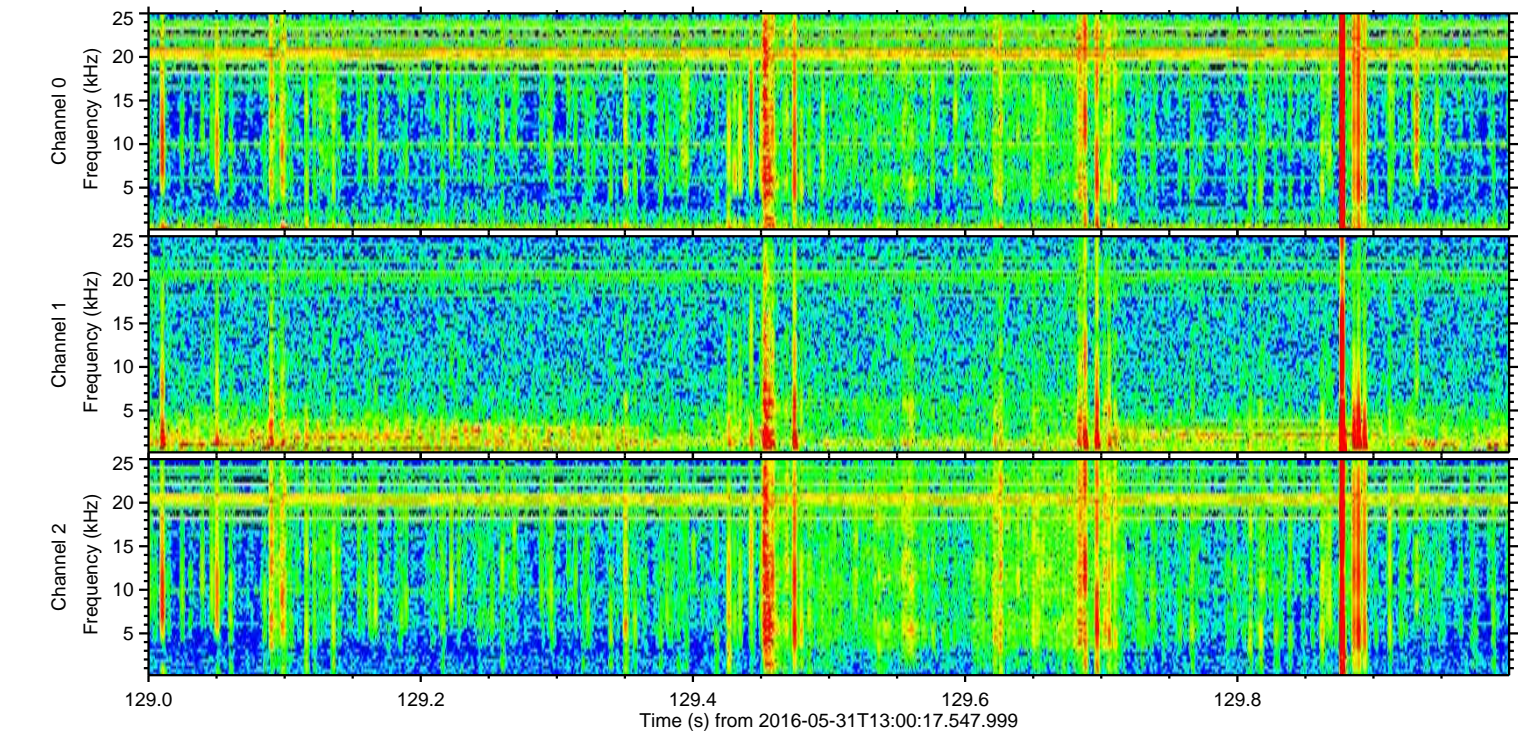
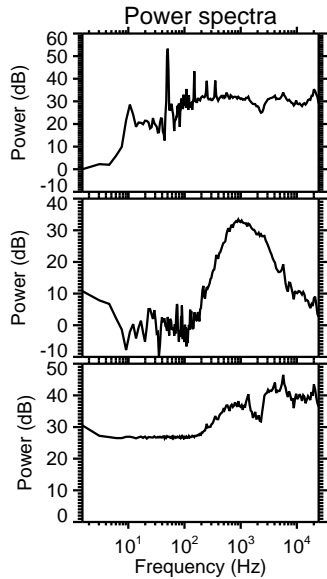
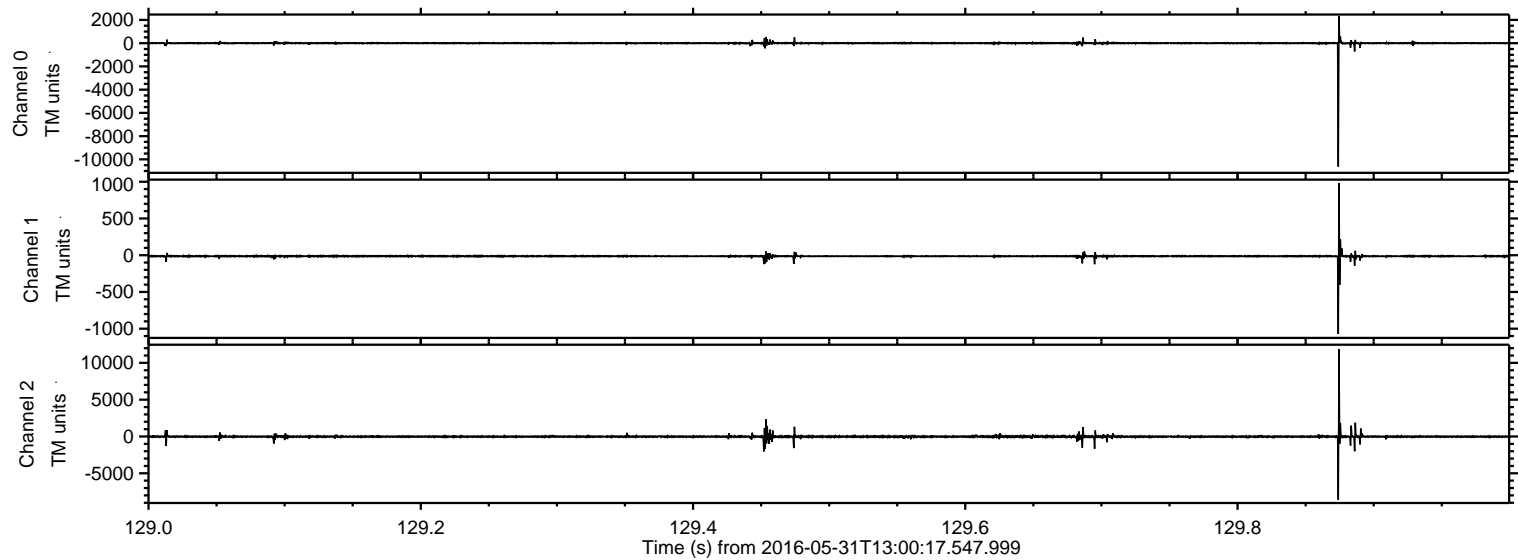
Processed Tue May 31 15:08:04 2016 by ELM ver.2012-10-06 from 001\_\_elm20160531\_130016\_\_dat00.bin





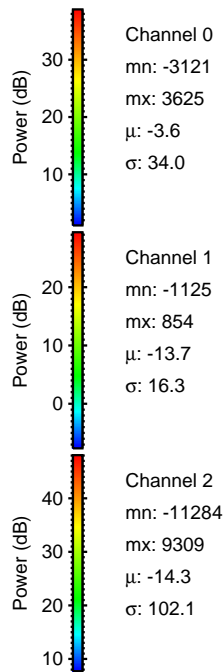
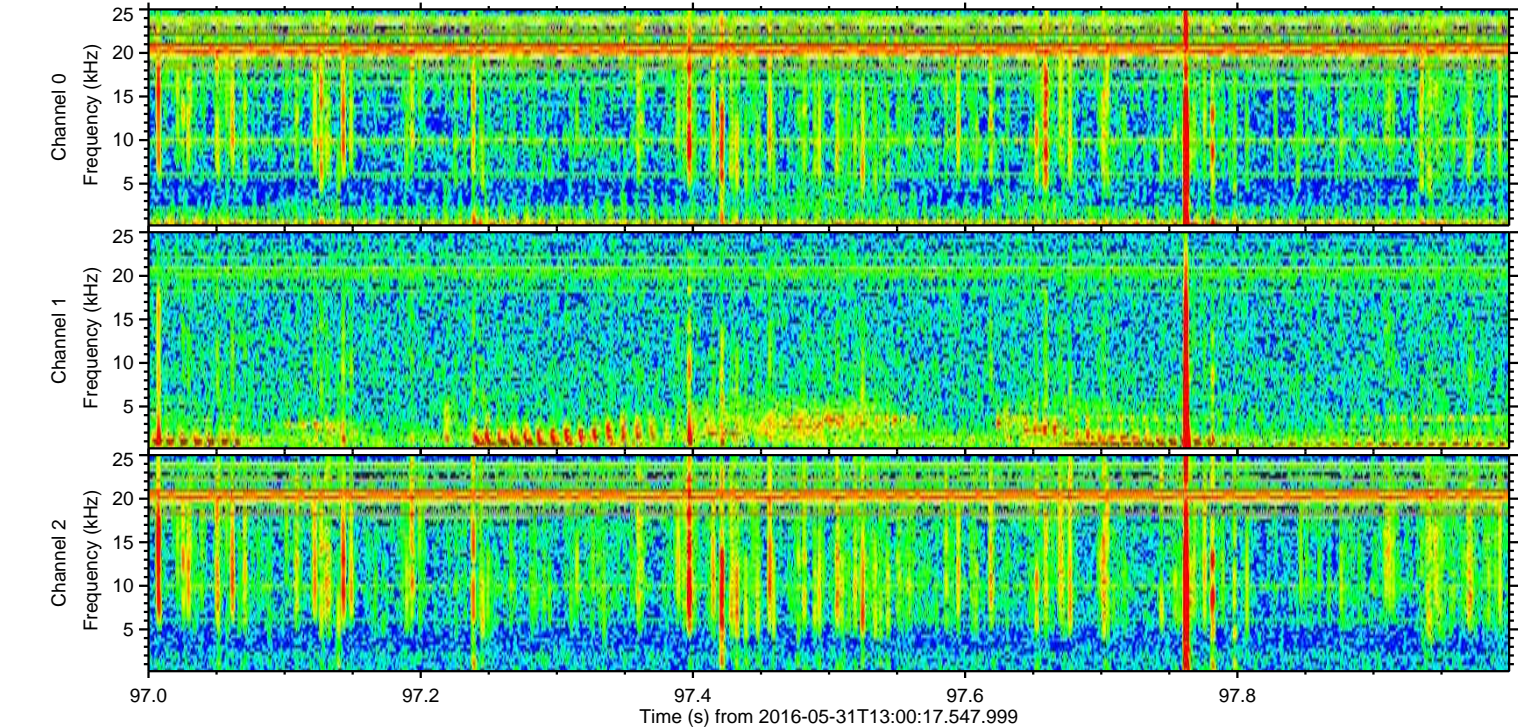
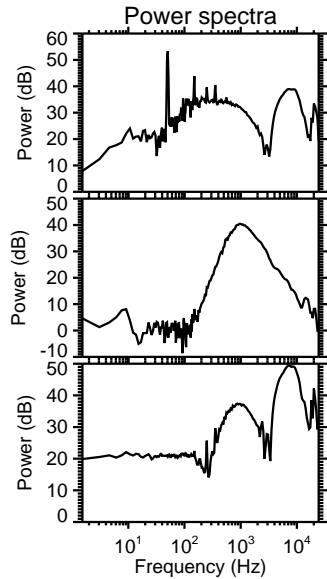
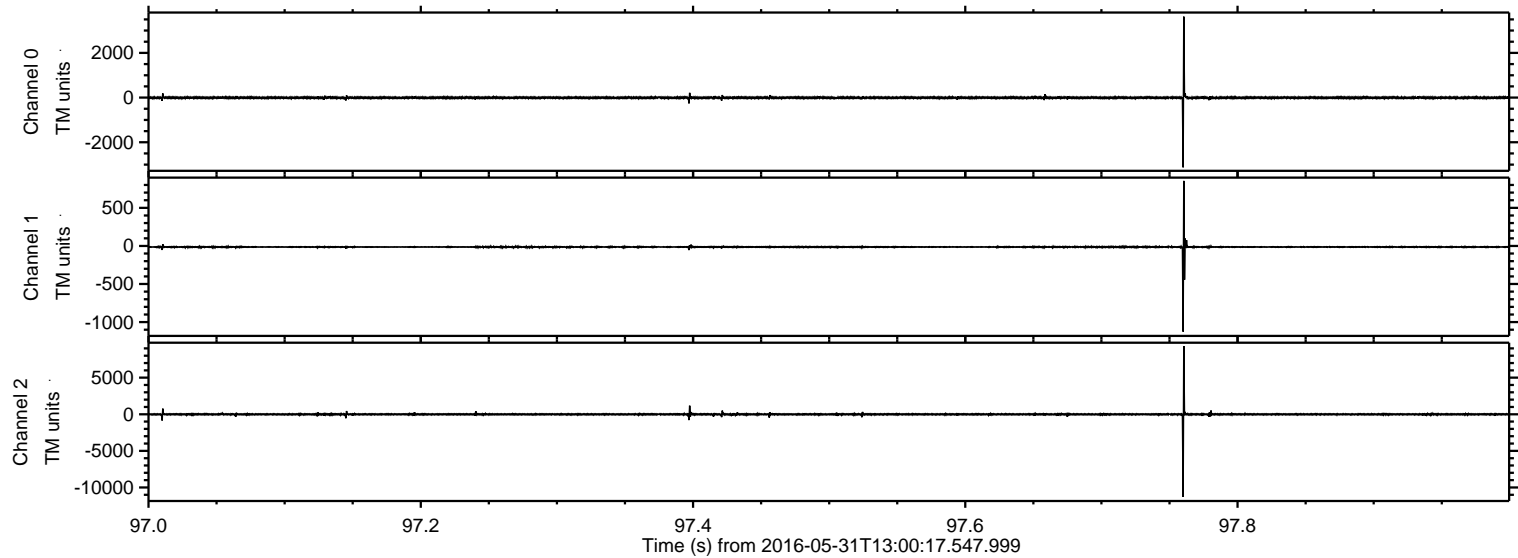
ELMAVAN 3D WAVEFORMS (Measured data sampled at 50 kHz) 51000 packets of 144 samples from 2016-05-31T13:00:17.547.999. Part 130/147

Processed Tue May 31 15:08:05 2016 by ELM ver.2012-10-06 from 001\_\_elm20160531\_130016\_\_dat00.bin



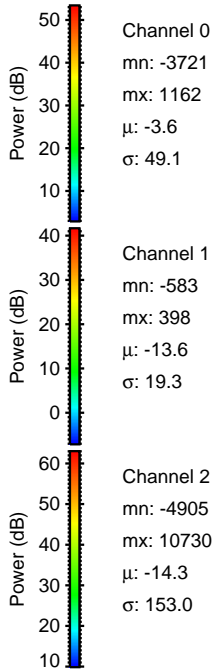
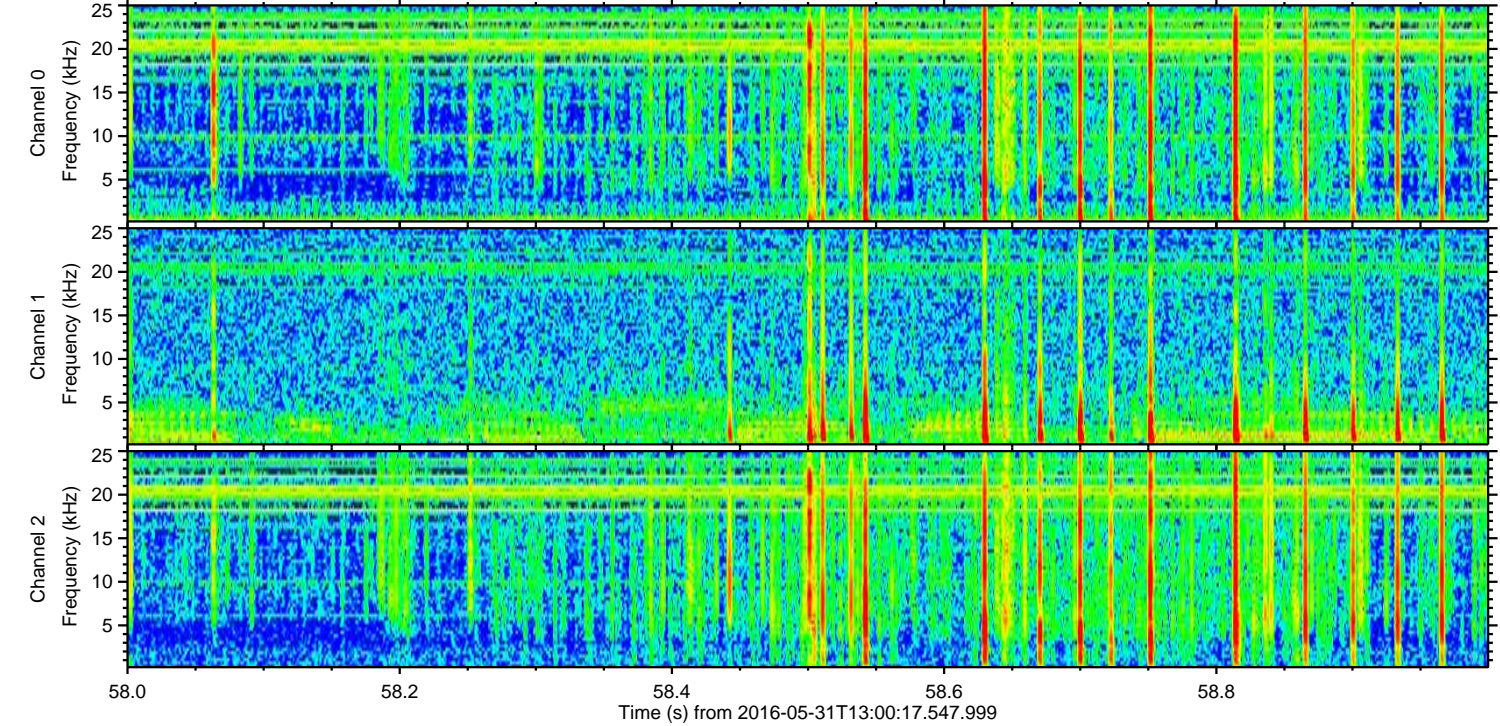
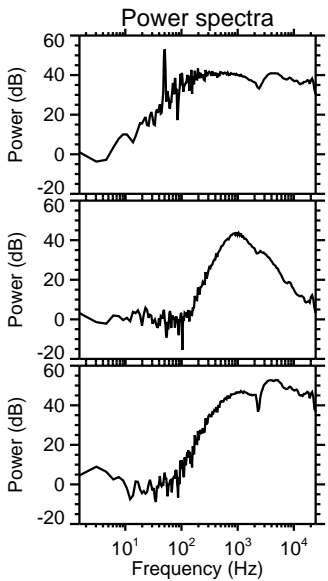
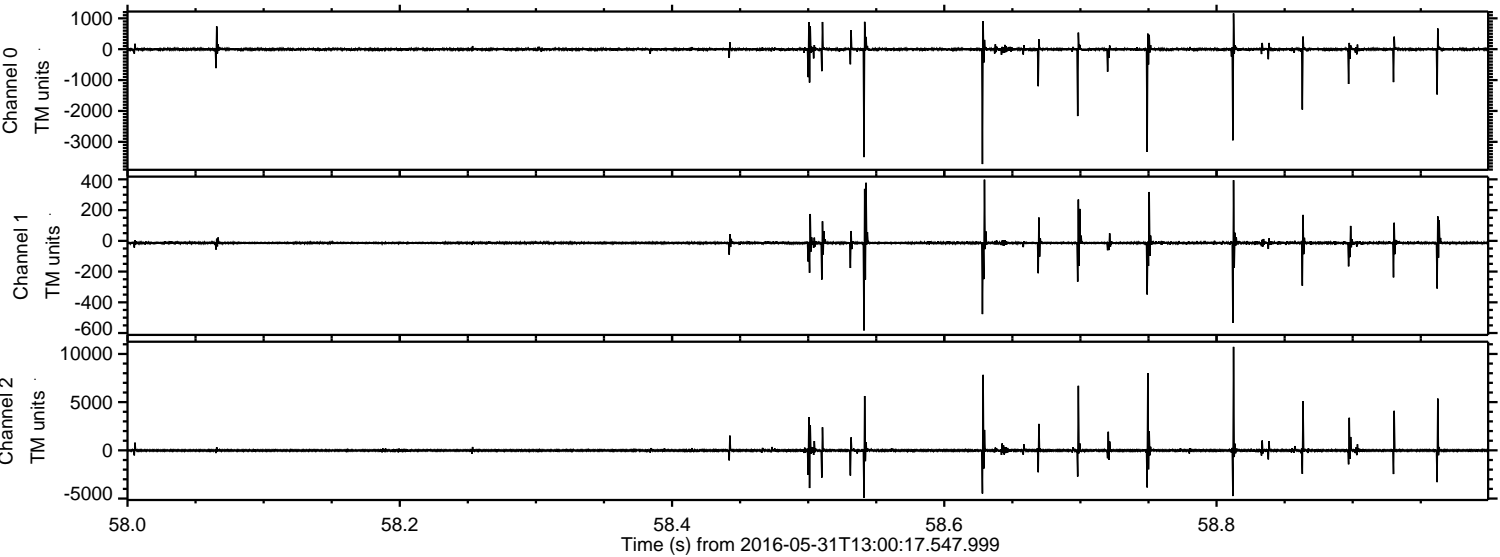


Processed Tue May 31 15:08:06 2016 by ELM ver.2012-10-06 from 001\_\_elm20160531\_130016\_\_dat00.bin





Processed Tue May 31 15:08:07 2016 by ELM ver.2012-10-06 from 001\_\_elm20160531\_130016\_\_dat00.bin



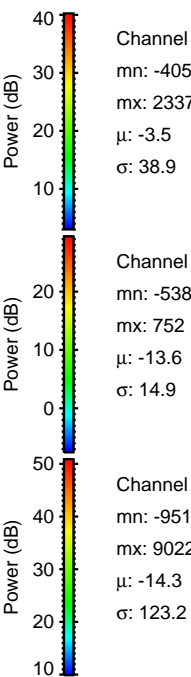
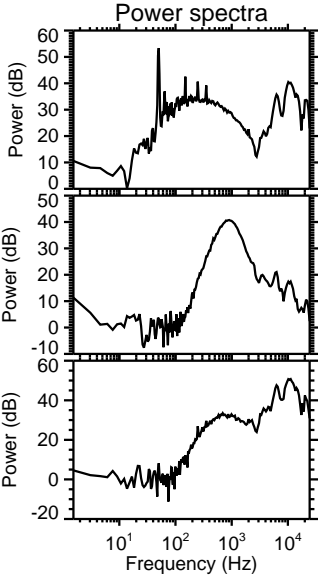
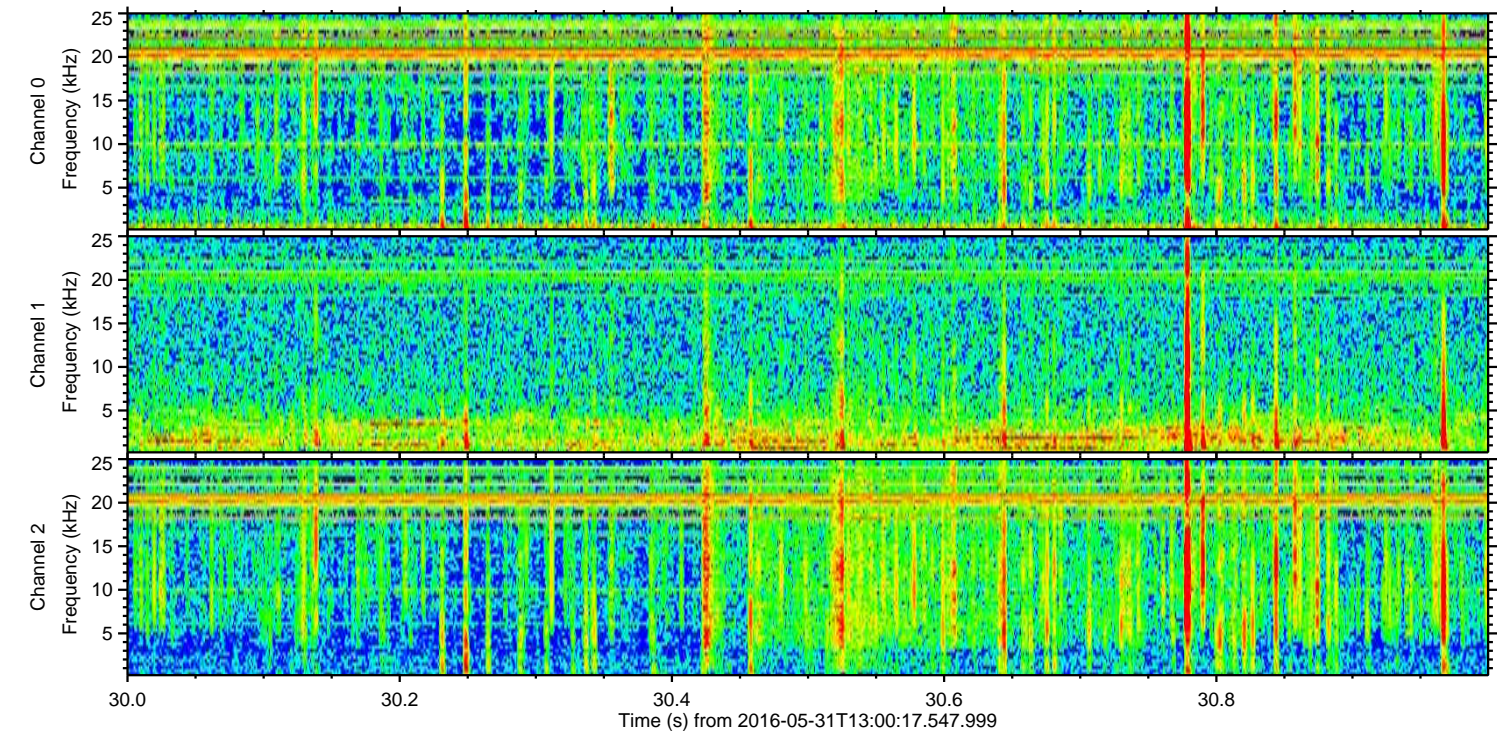
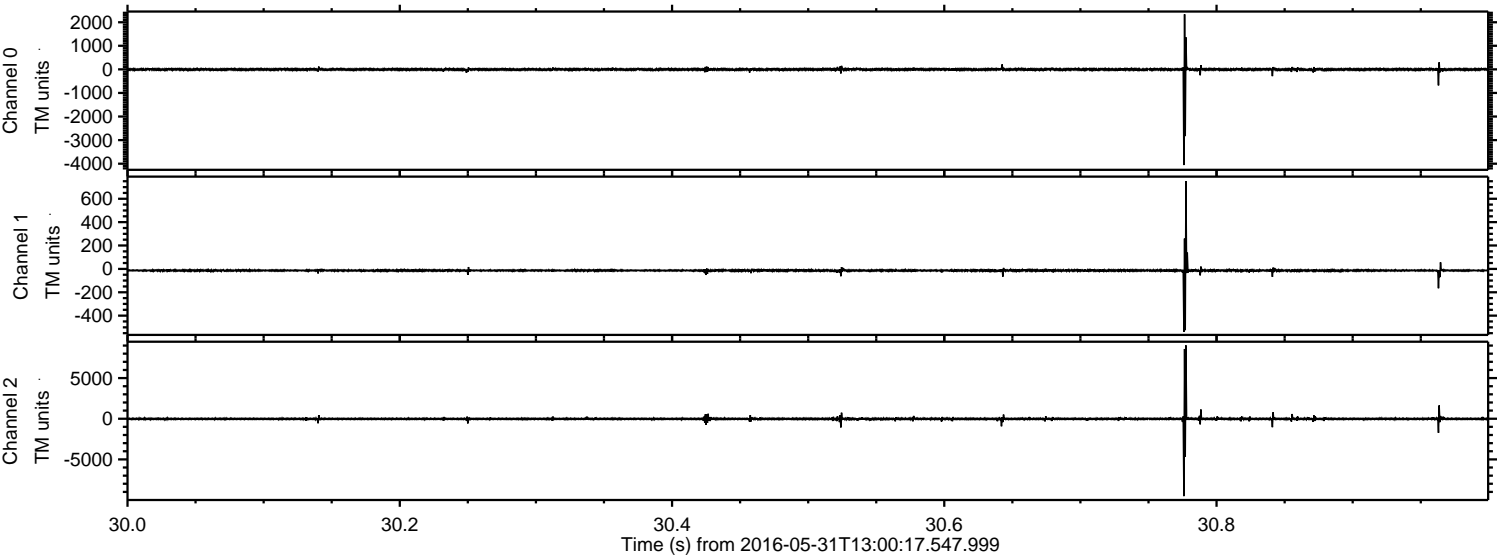
Channel 0  
mn: -3721  
mx: 1162  
 $\mu$ : -3.6  
 $\sigma$ : 49.1

Channel 1  
mn: -583  
mx: 398  
 $\mu$ : -13.6  
 $\sigma$ : 19.3

Channel 2  
mn: -4905  
mx: 10730  
 $\mu$ : -14.3  
 $\sigma$ : 153.0



Processed Tue May 31 15:08:08 2016 by ELM ver.2012-10-06 from 001\_\_elm20160531\_130016\_\_dat00.bin





Processed Tue May 31 15:08:09 2016 by ELM ver.2012-10-06 from 001\_\_elm20160531\_130016\_\_dat00.bin

