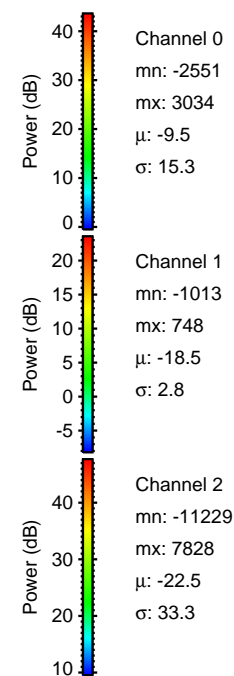
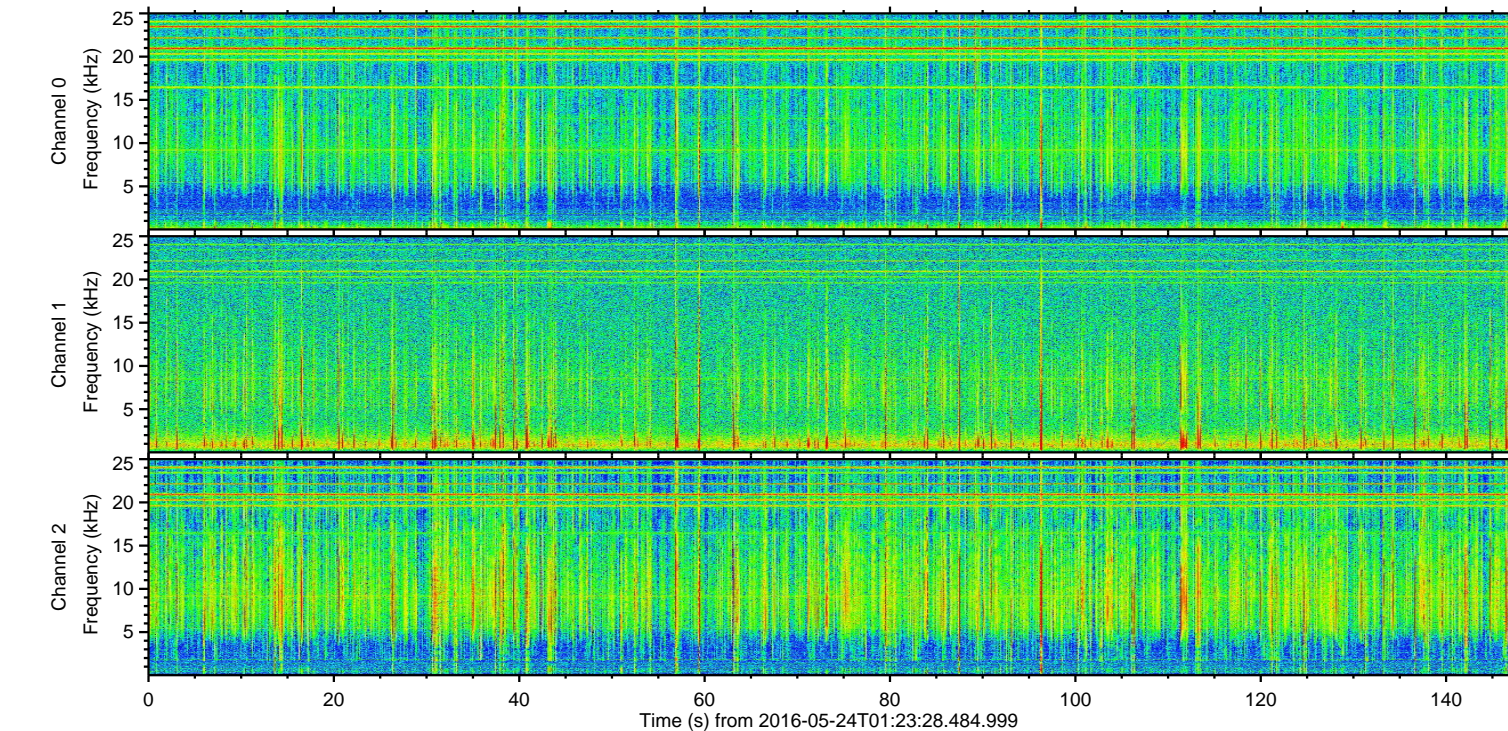
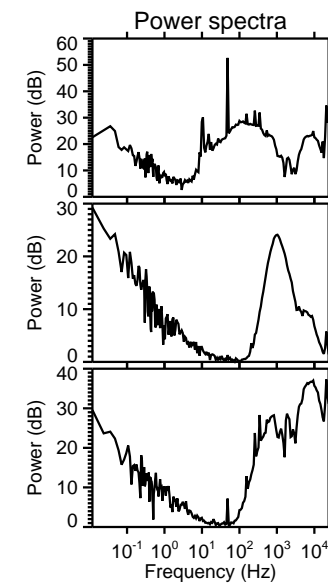
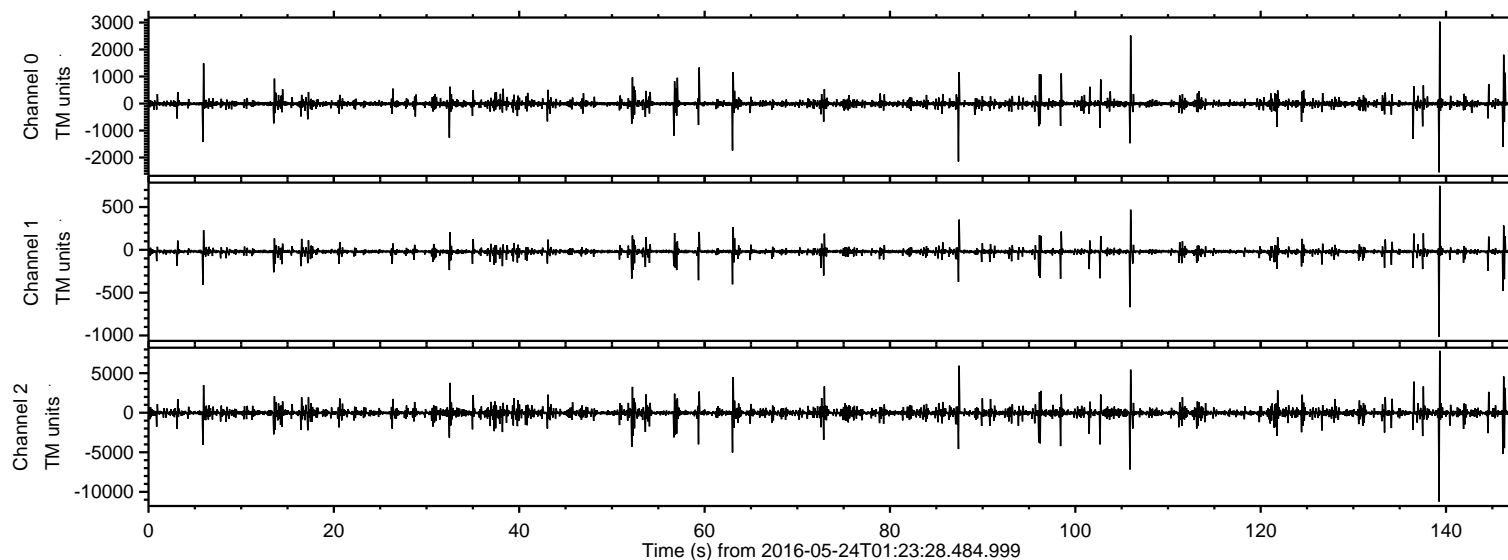


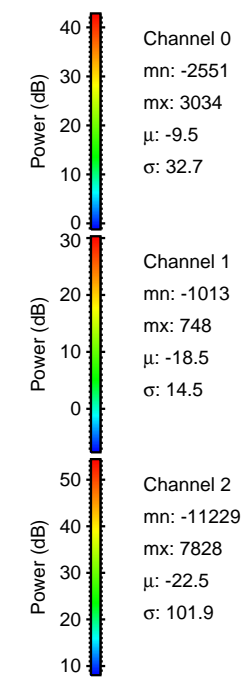
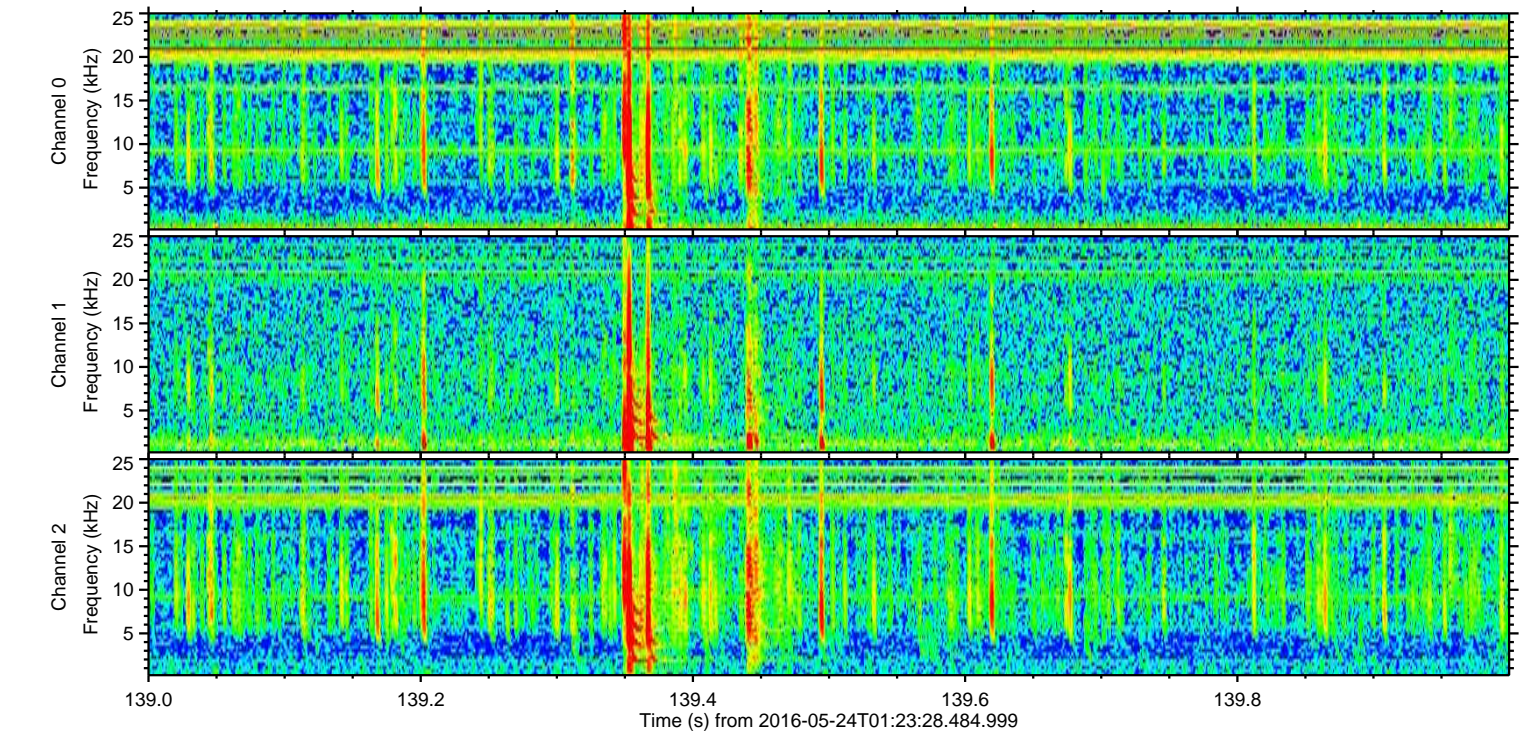
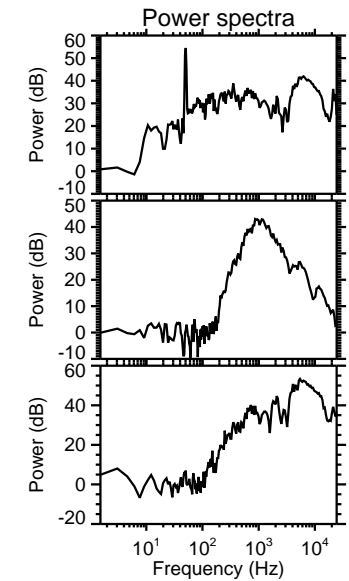
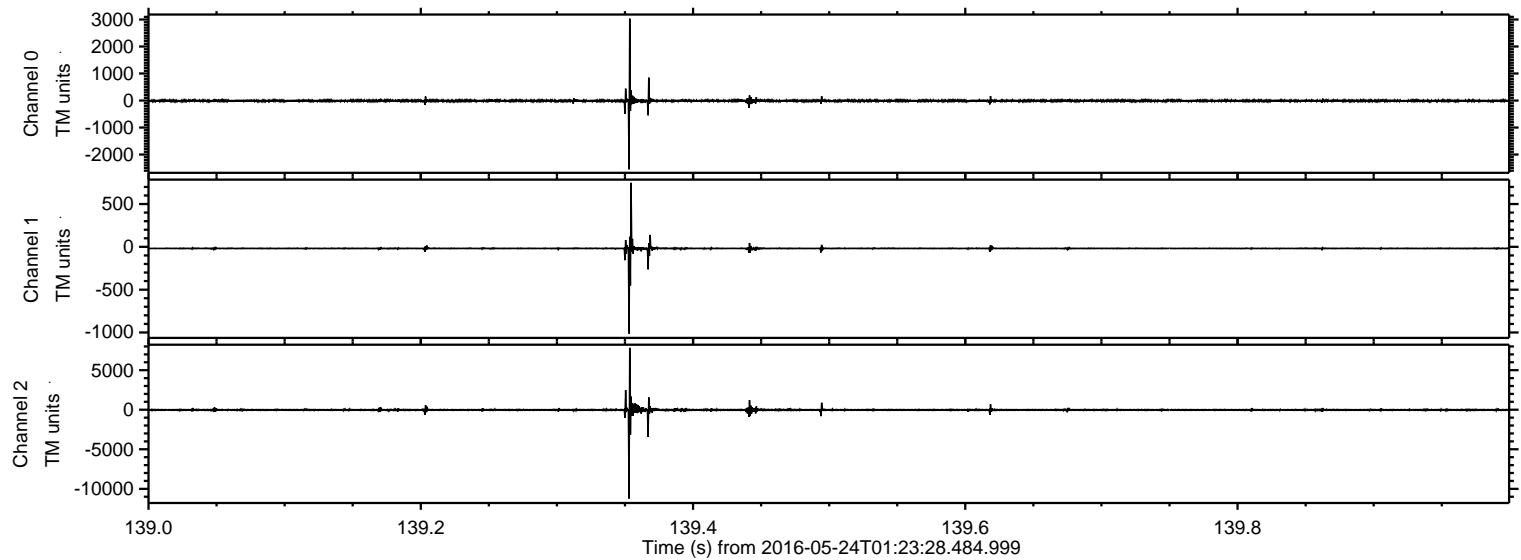
ELMAVAN 3D WAVEFORMS (Measured data sampled at 50 kHz) 51000 packets of 144 samples from 2016-05-24T01:23:28.484.999.

Processed Tue May 24 03:33:00 2016 by ELM ver.2012-10-06 from 001__elm20160524_012327__dat00.bin



ELMAVAN 3D WAVEFORMS (Measured data sampled at 50 kHz) 51000 packets of 144 samples from 2016-05-24T01:23:28.484.999. Part 140/147

Processed Tue May 24 03:33:11 2016 by ELM ver.2012-10-06 from 001__elm20160524_012327__dat00.bin



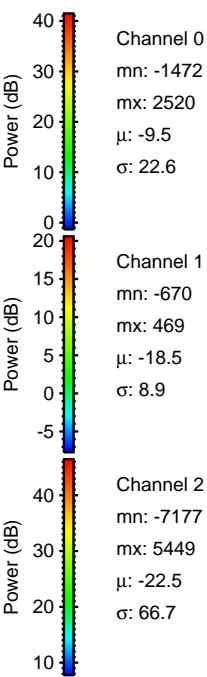
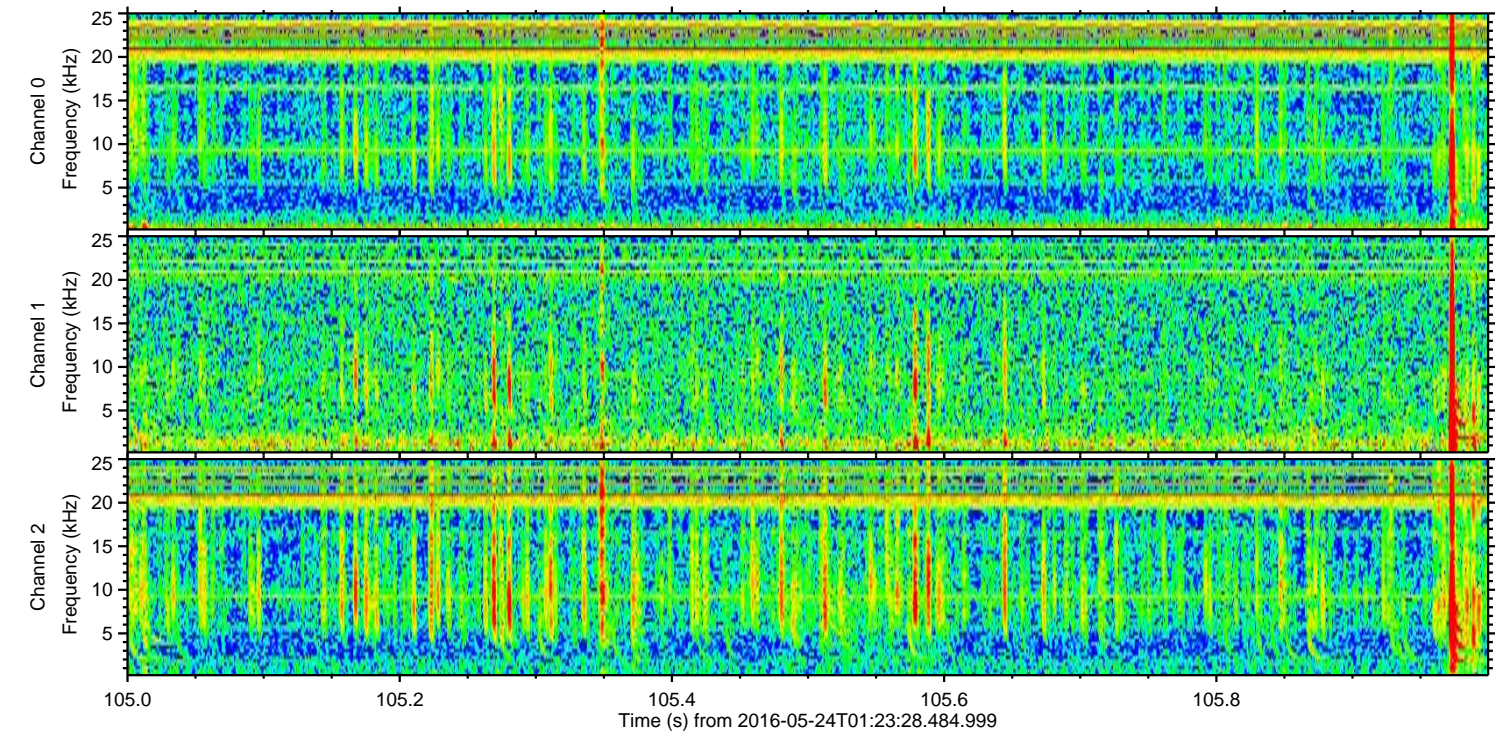
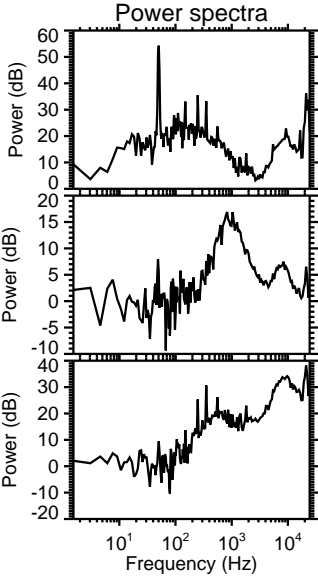
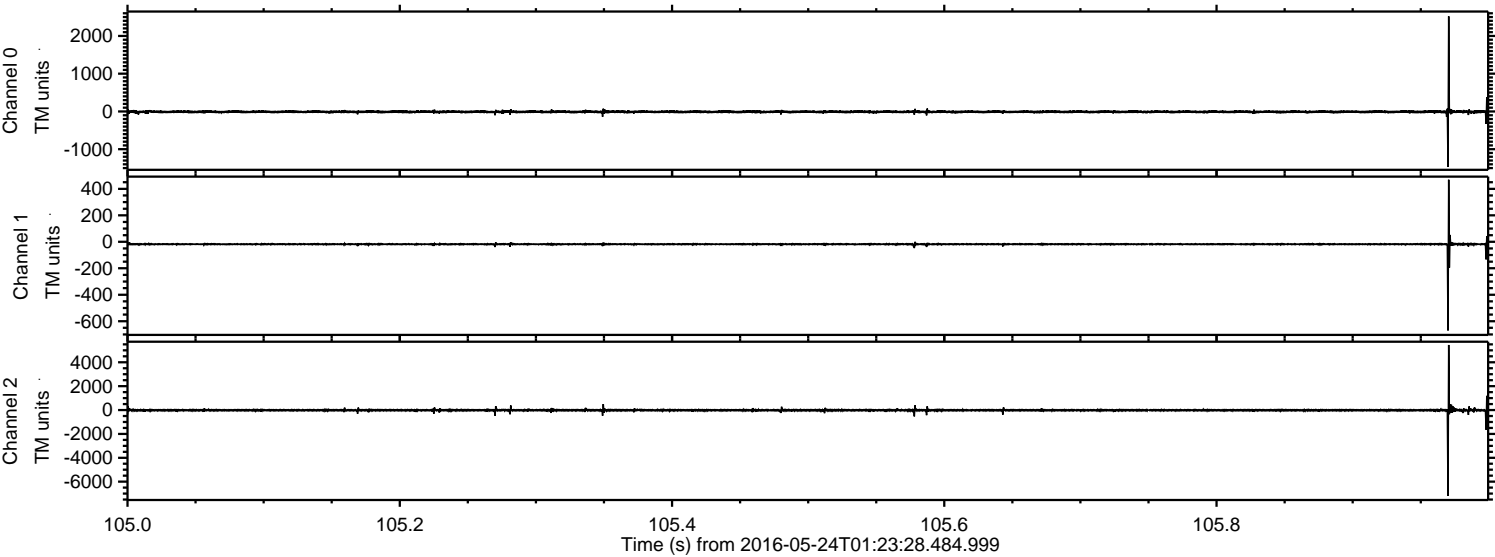
Channel 0
mn: -2551
mx: 3034
 μ : -9.5
 σ : 32.7

Channel 1
mn: -1013
mx: 748
 μ : -18.5
 σ : 14.5

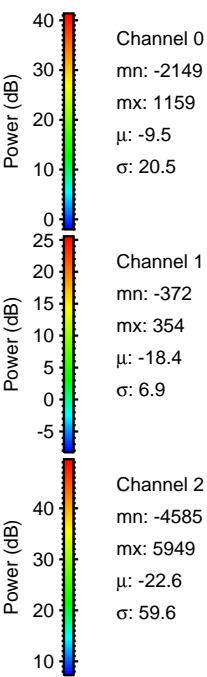
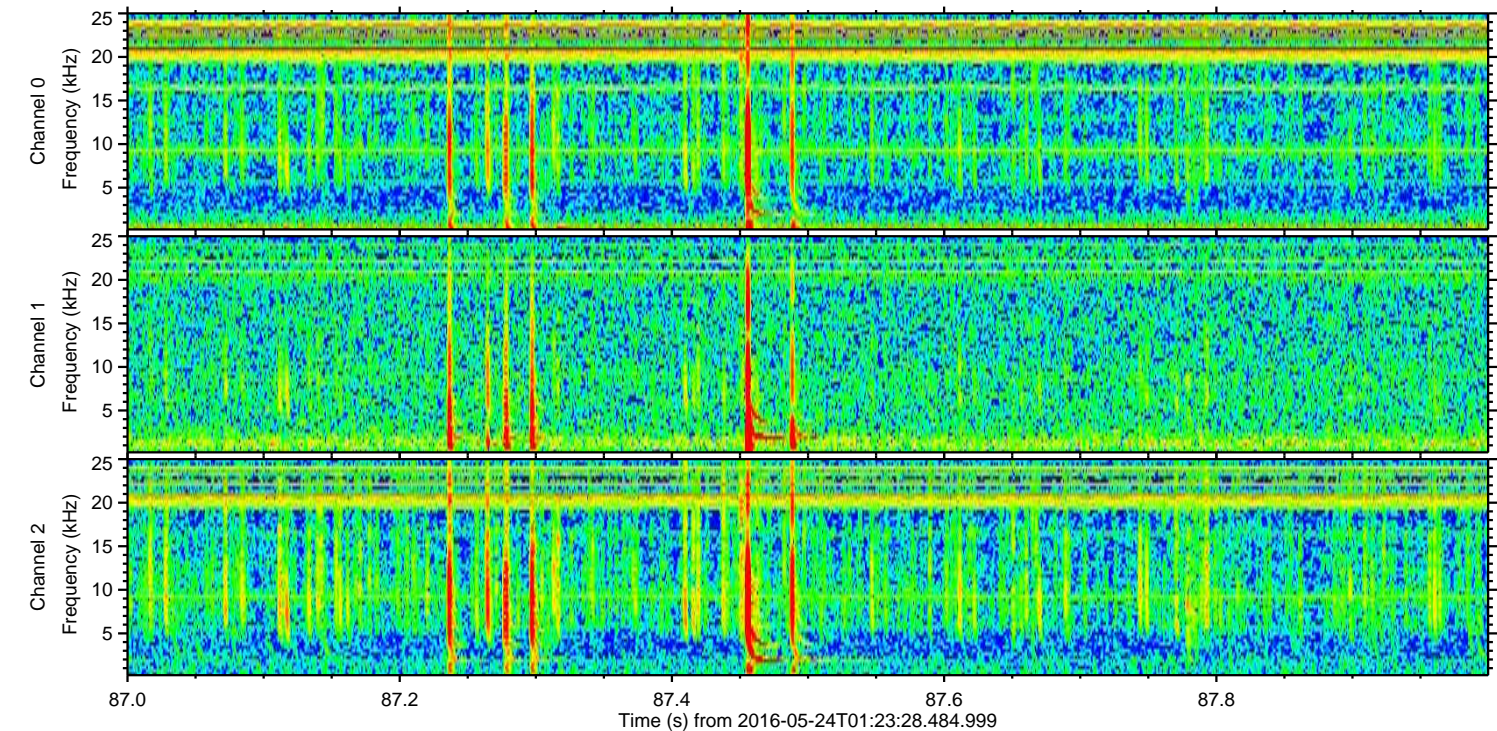
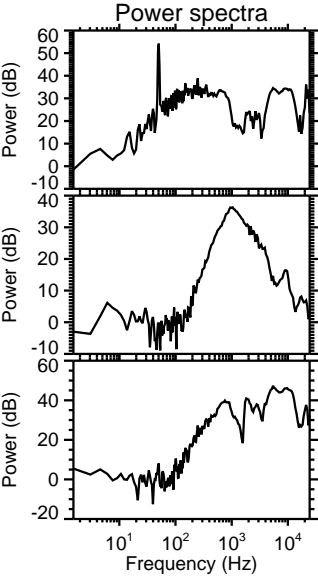
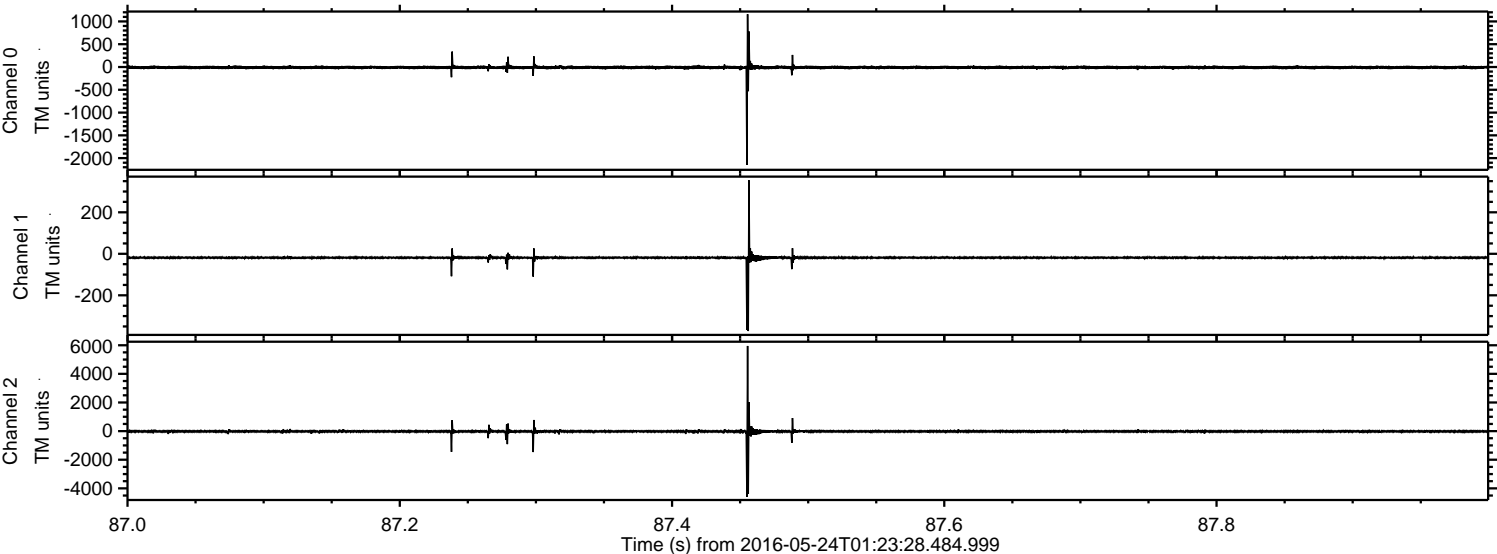
Channel 2
mn: -11229
mx: 7828
 μ : -22.5
 σ : 101.9

ELMAVAN 3D WAVEFORMS (Measured data sampled at 50 kHz) 51000 packets of 144 samples from 2016-05-24T01:23:28.484.999. Part 106/147

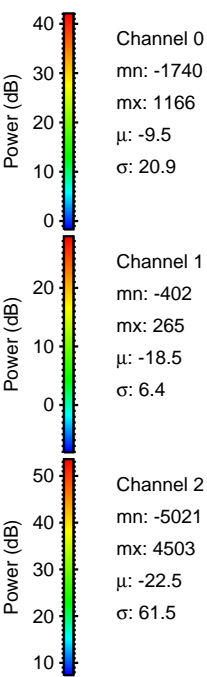
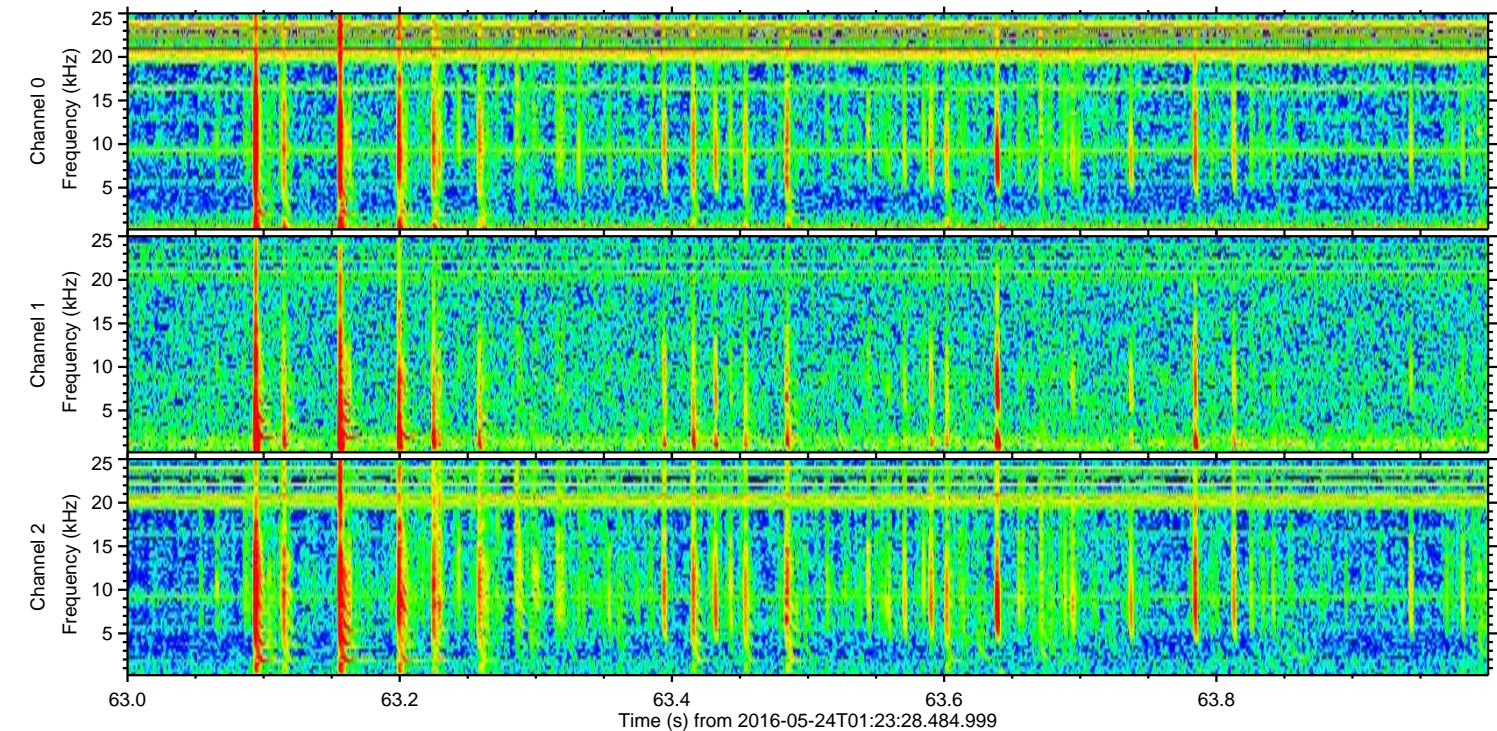
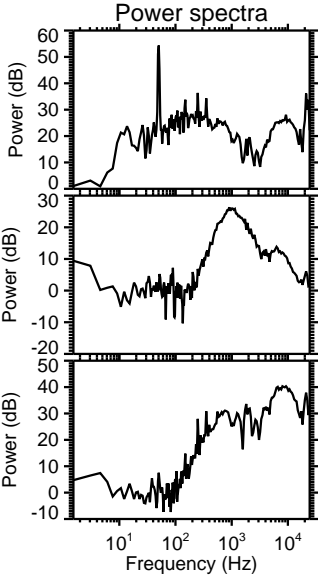
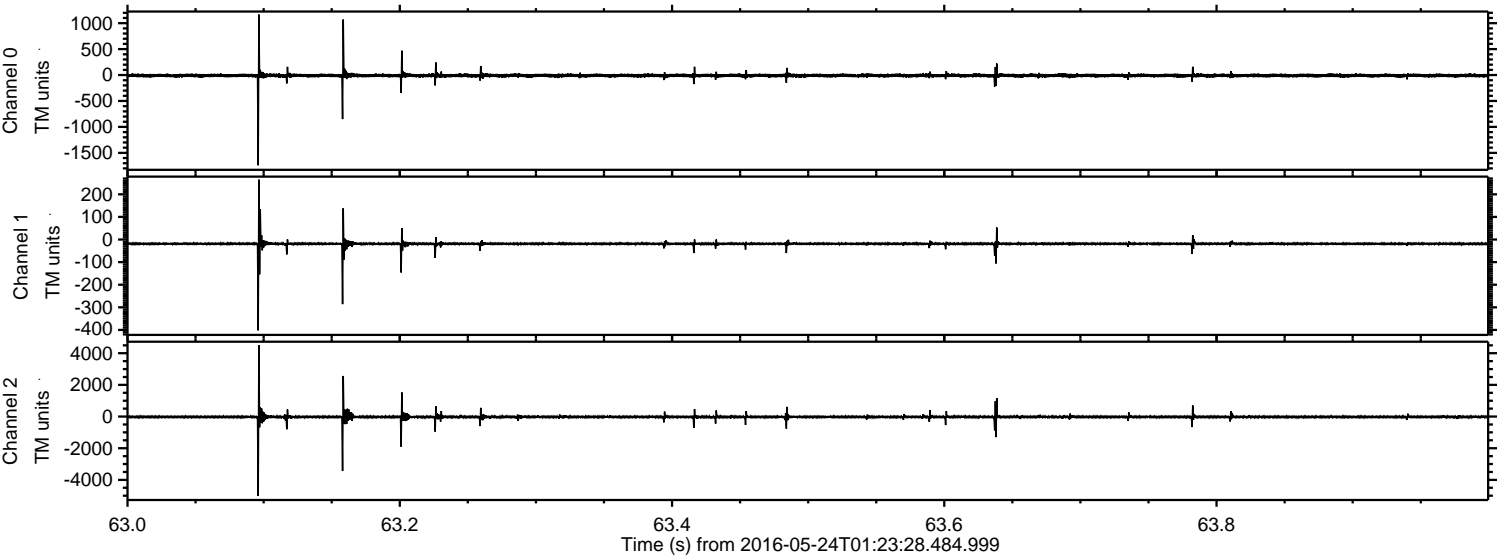
Processed Tue May 24 03:33:12 2016 by ELM ver.2012-10-06 from 001__elm20160524_012327__dat00.bin



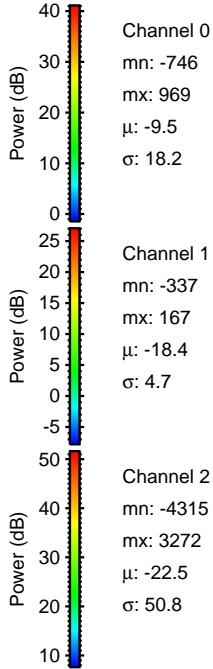
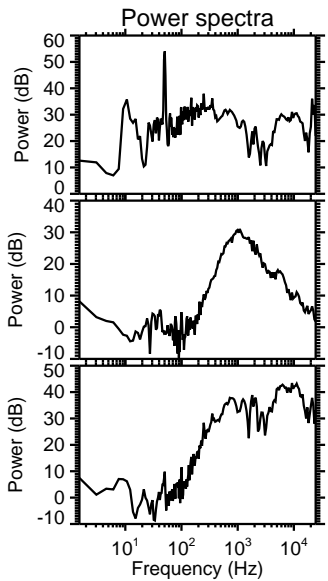
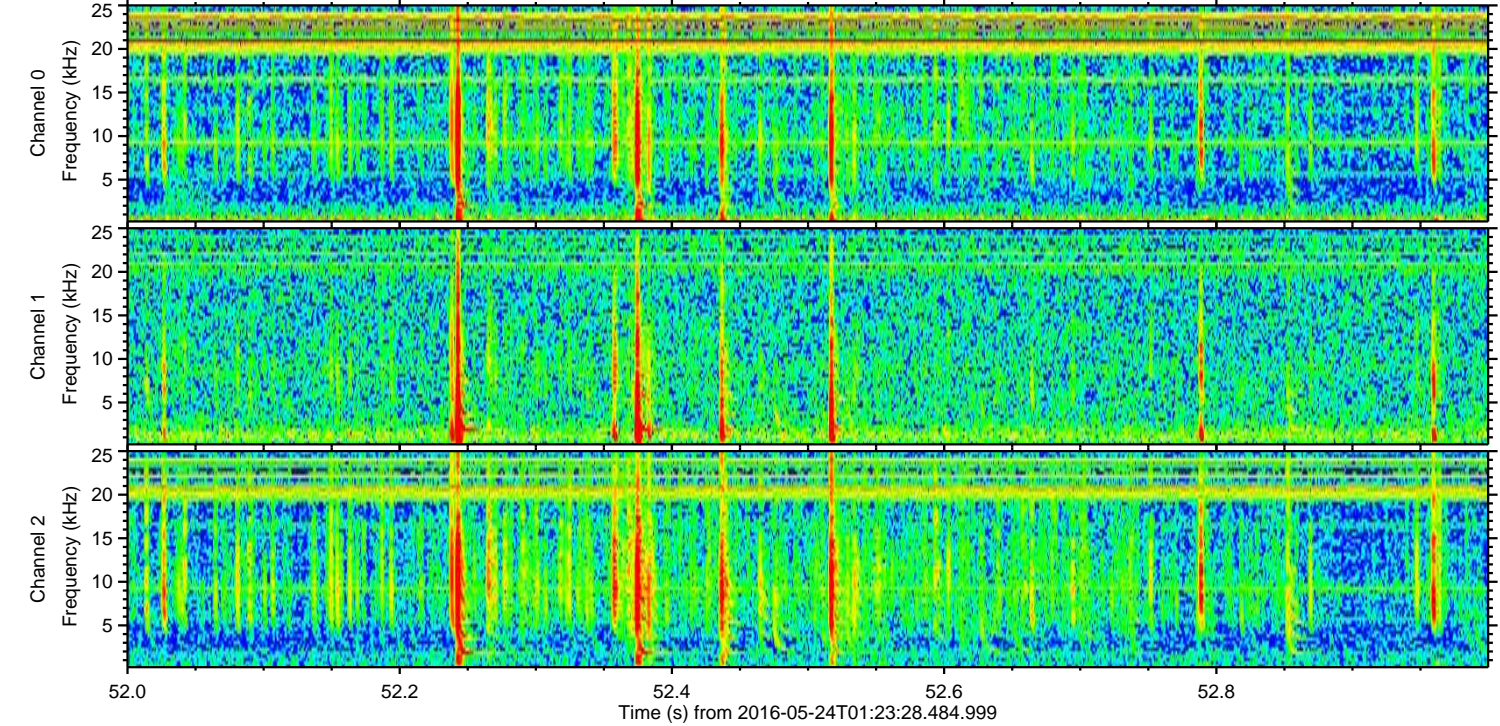
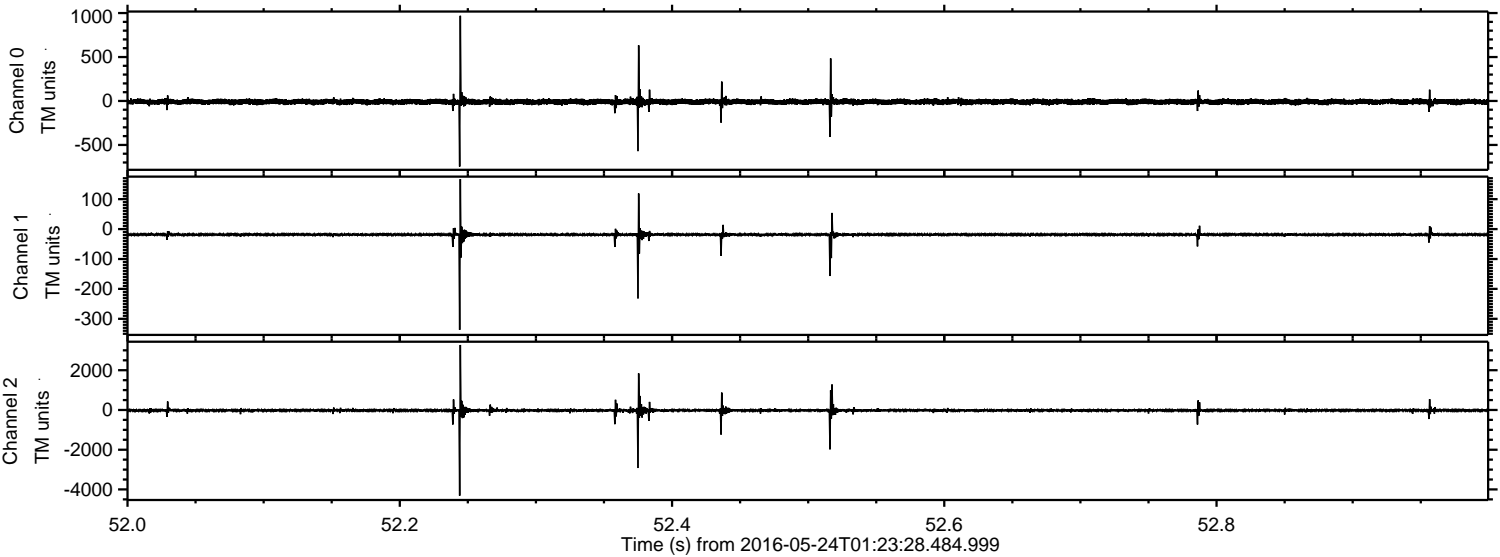
Processed Tue May 24 03:33:13 2016 by ELM ver.2012-10-06 from 001__elm20160524_012327__dat00.bin



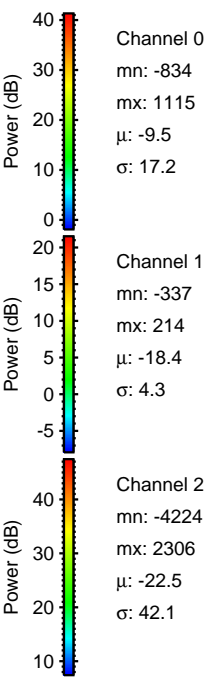
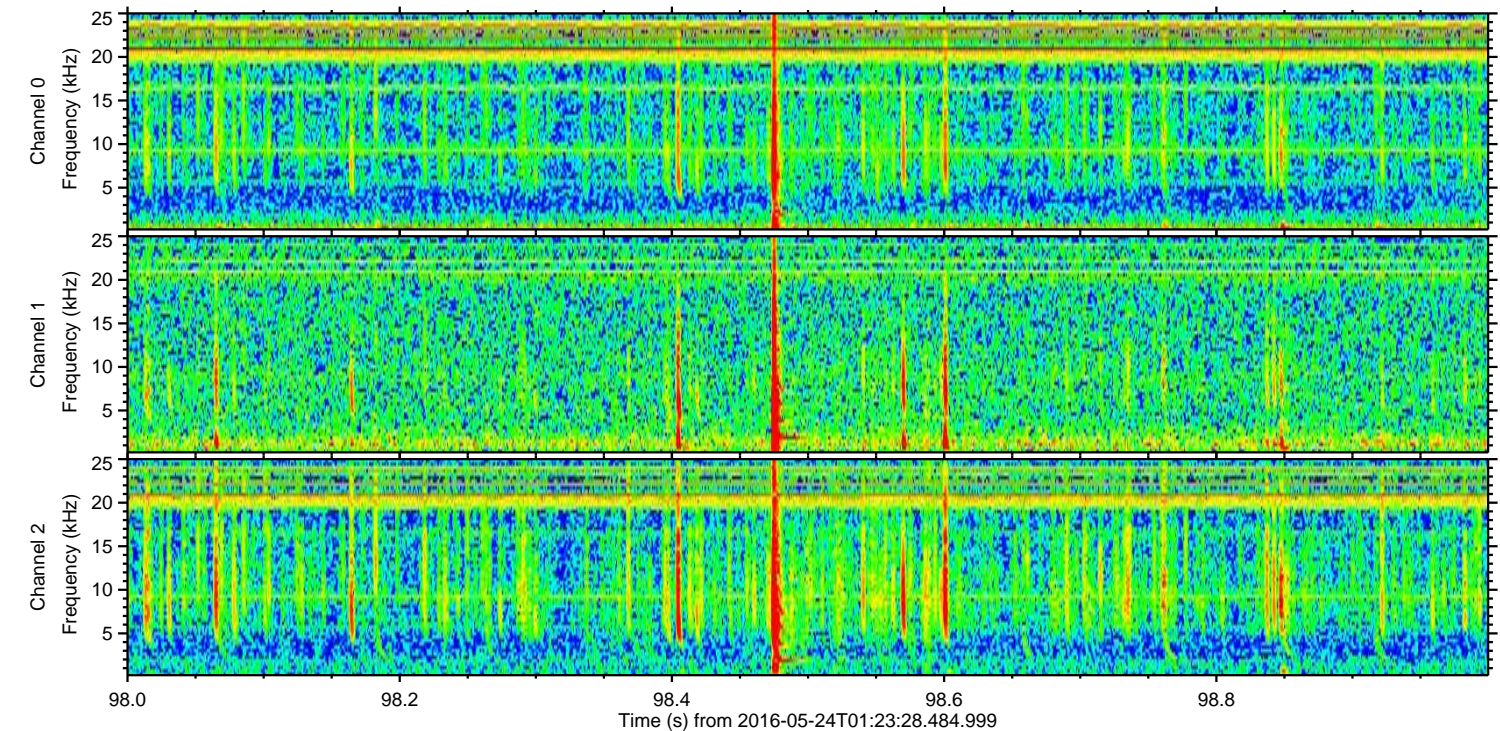
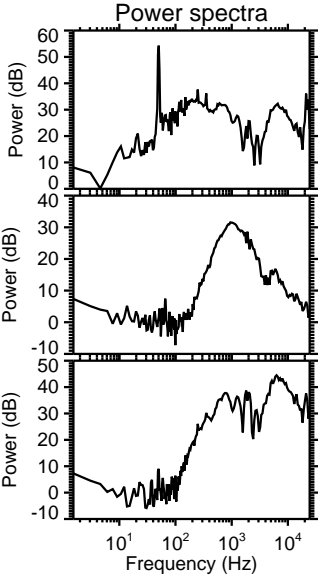
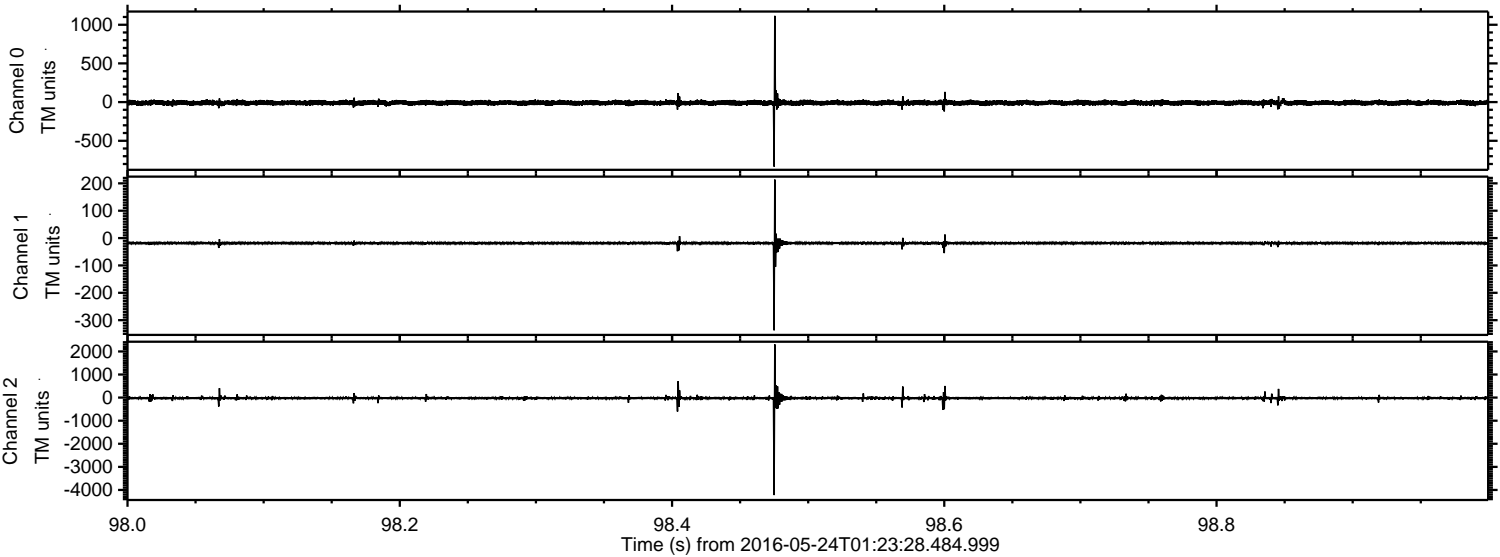
Processed Tue May 24 03:33:14 2016 by ELM ver.2012-10-06 from 001_elm20160524_012327__dat00.bin



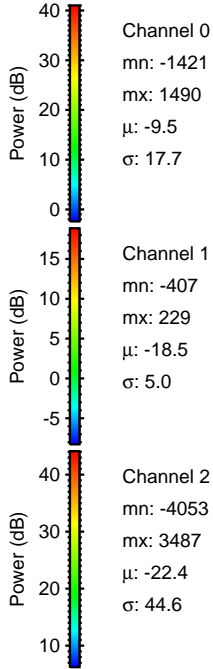
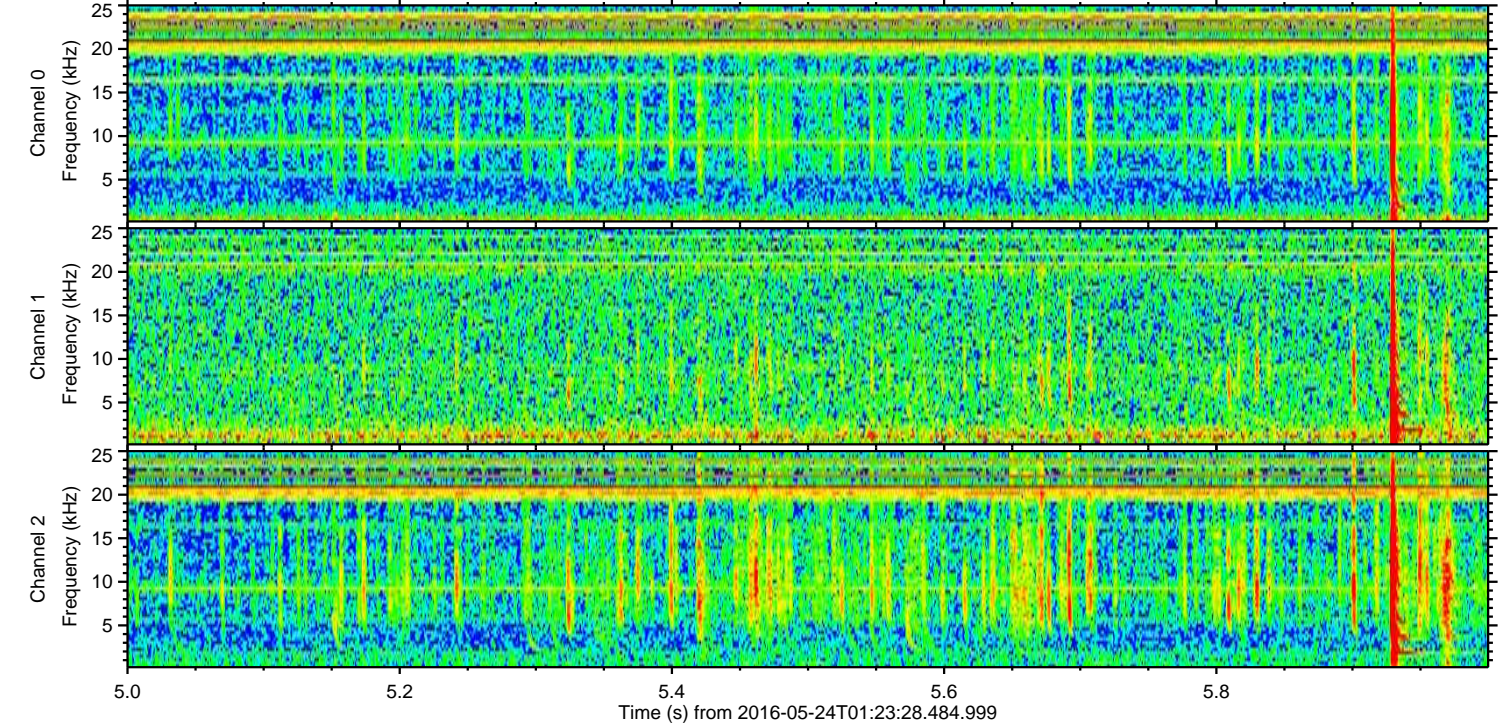
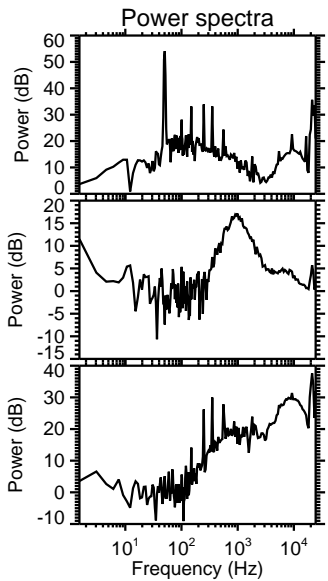
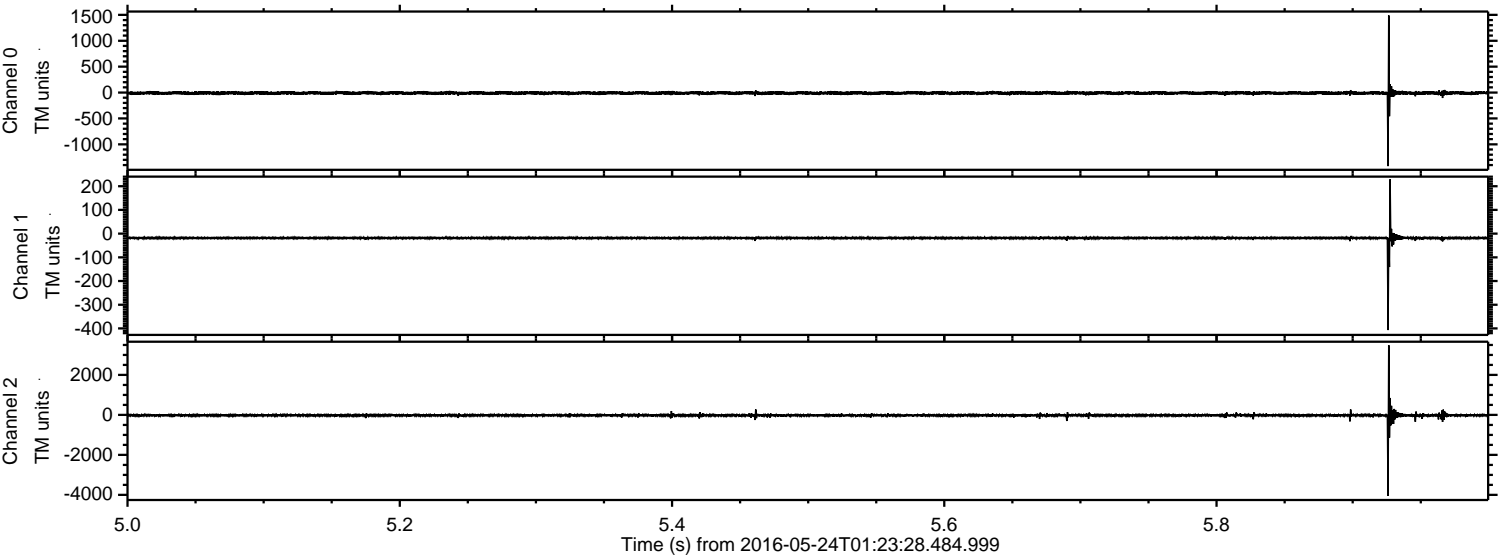
Processed Tue May 24 03:33:15 2016 by ELM ver.2012-10-06 from 001__elm20160524_012327__dat00.bin



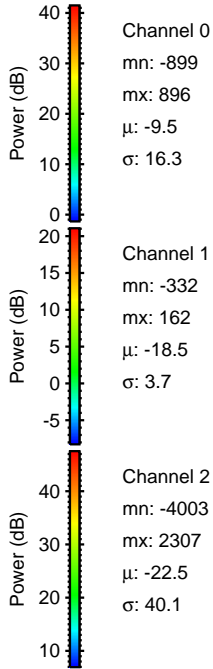
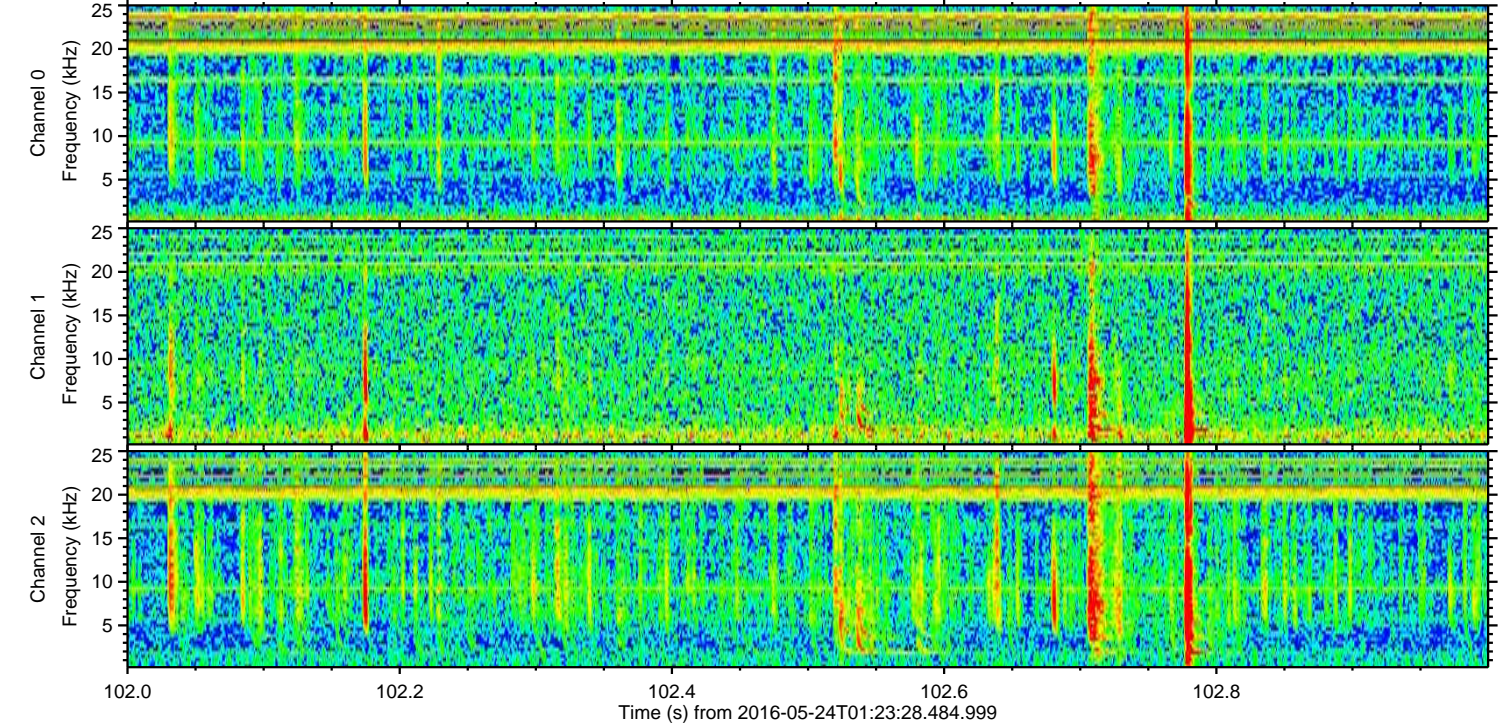
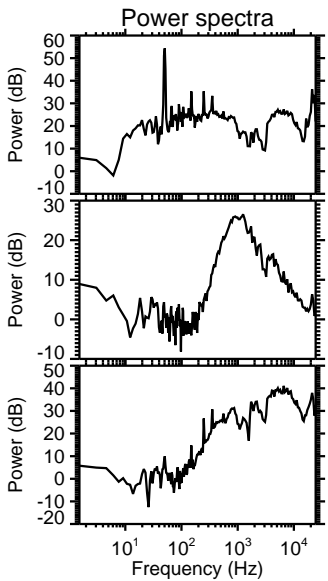
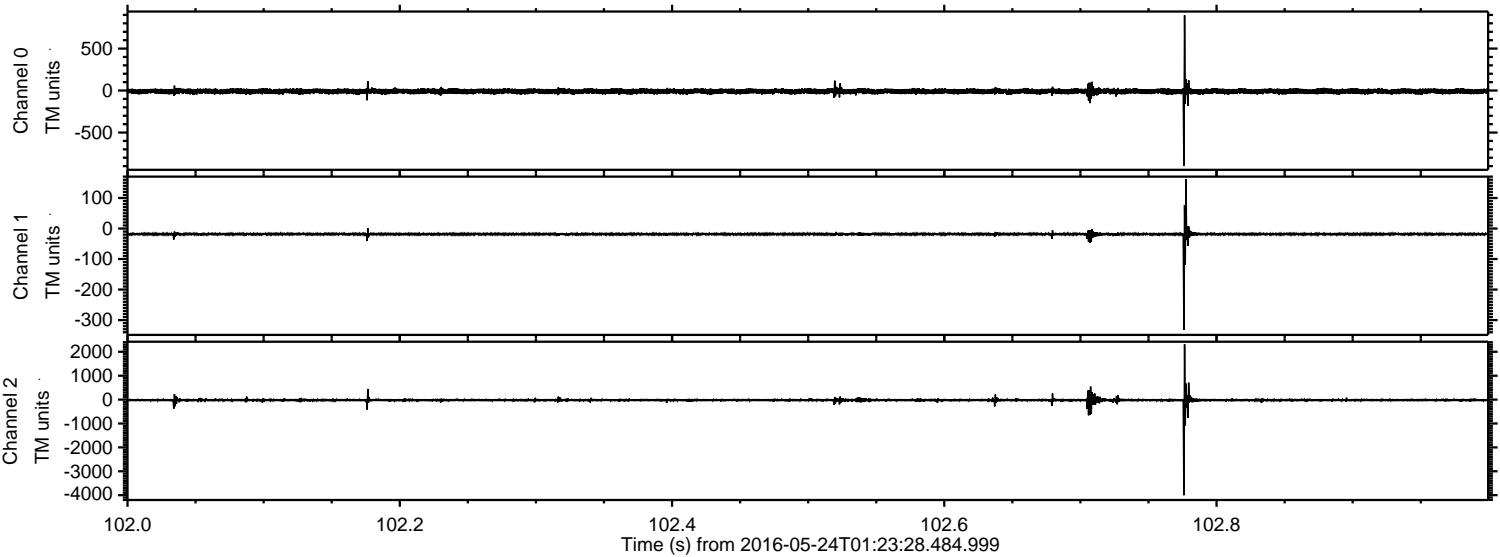
Processed Tue May 24 03:33:16 2016 by ELM ver.2012-10-06 from 001__elm20160524_012327__dat00.bin



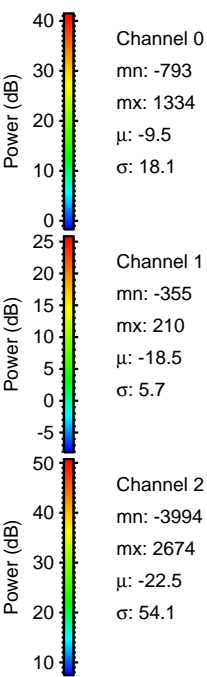
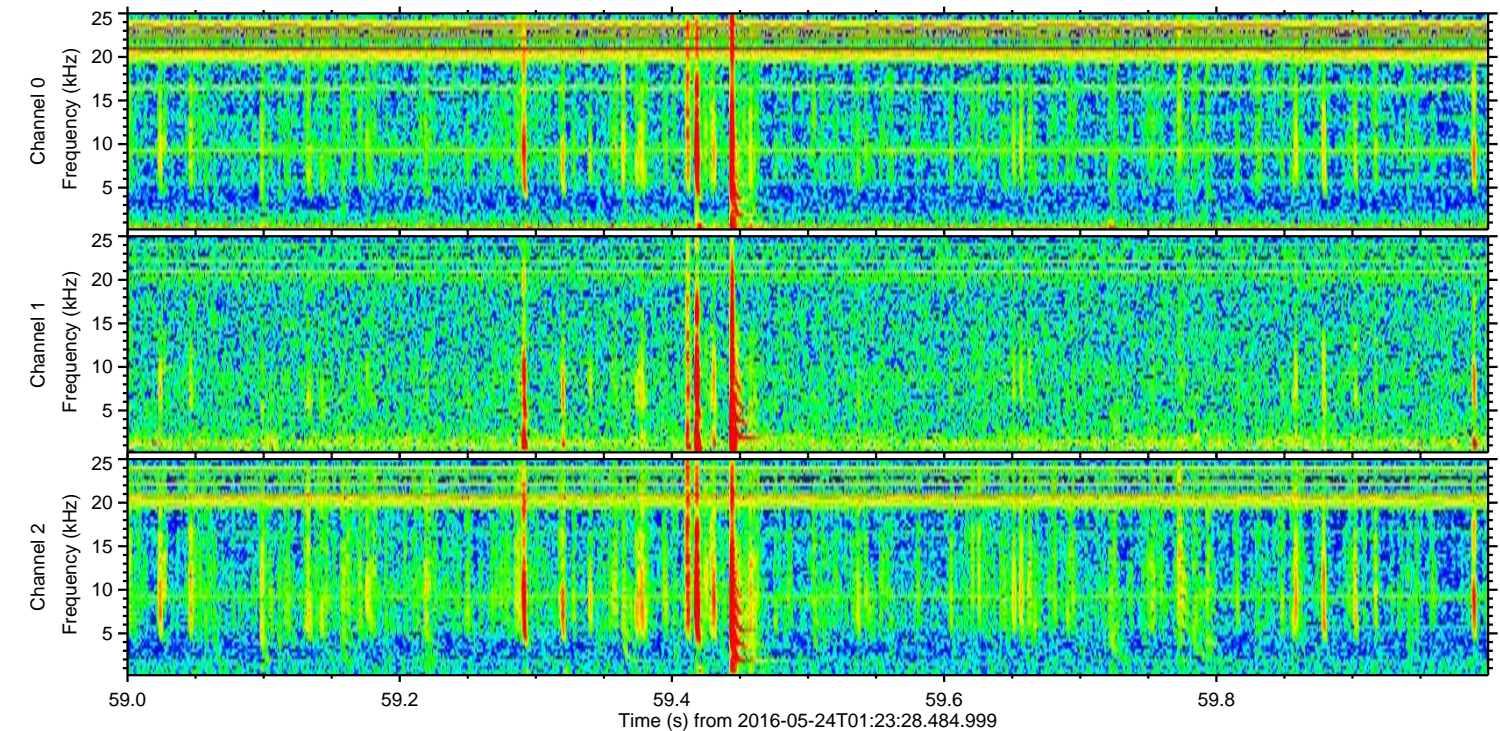
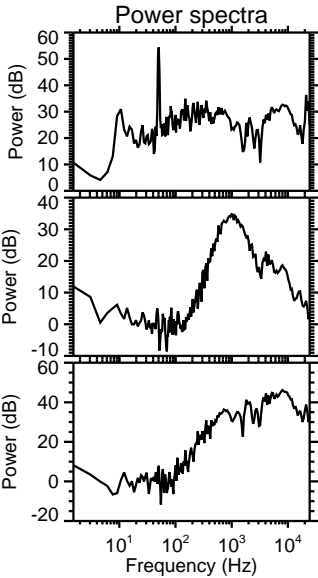
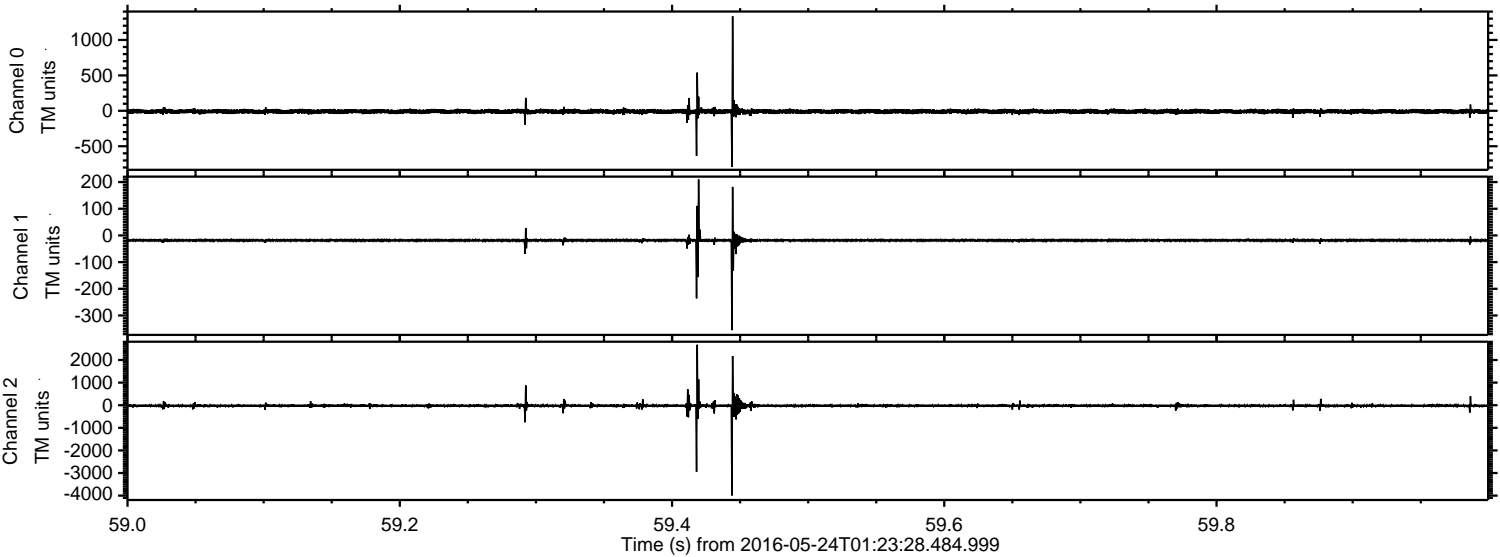
Processed Tue May 24 03:33:17 2016 by ELM ver.2012-10-06 from 001__elm20160524_012327__dat00.bin



Processed Tue May 24 03:33:18 2016 by ELM ver.2012-10-06 from 001__elm20160524_012327__dat00.bin



Processed Tue May 24 03:33:19 2016 by ELM ver.2012-10-06 from 001__elm20160524_012327__dat00.bin



Channel 0
mn: -793
mx: 1334
 μ : -9.5
 σ : 18.1

Channel 1
mn: -355
mx: 210
 μ : -18.5
 σ : 5.7

Channel 2
mn: -3994
mx: 2674
 μ : -22.5
 σ : 54.1

Processed Tue May 24 03:33:20 2016 by ELM ver.2012-10-06 from 001__elm20160524_012327__dat00.bin

