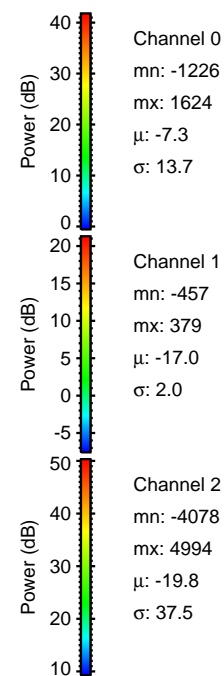
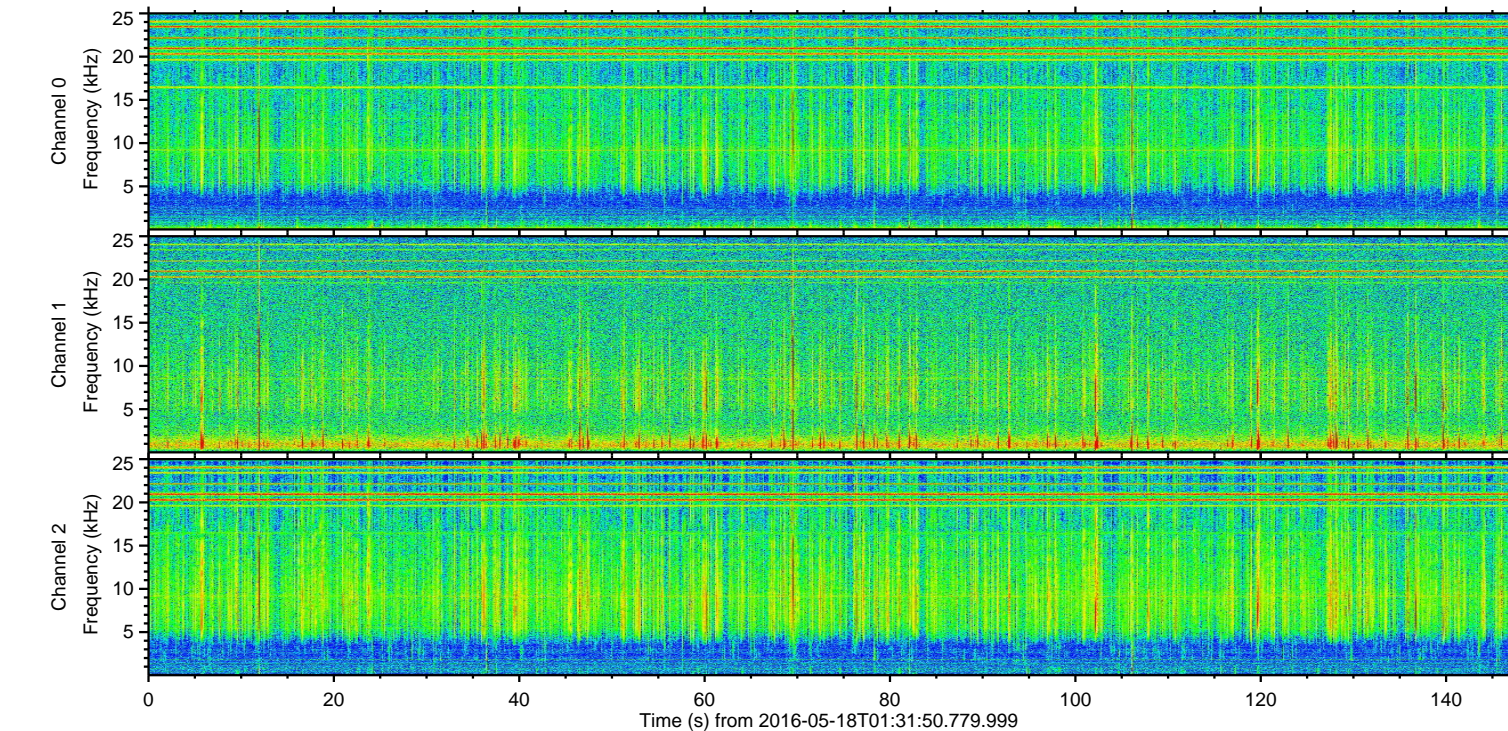
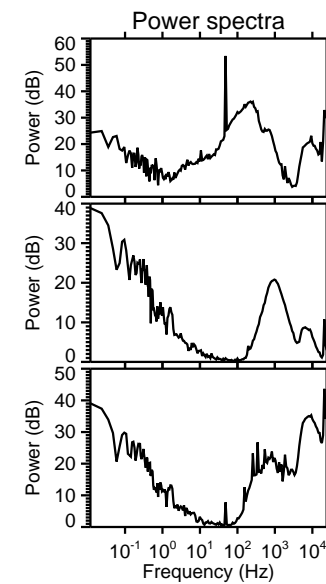
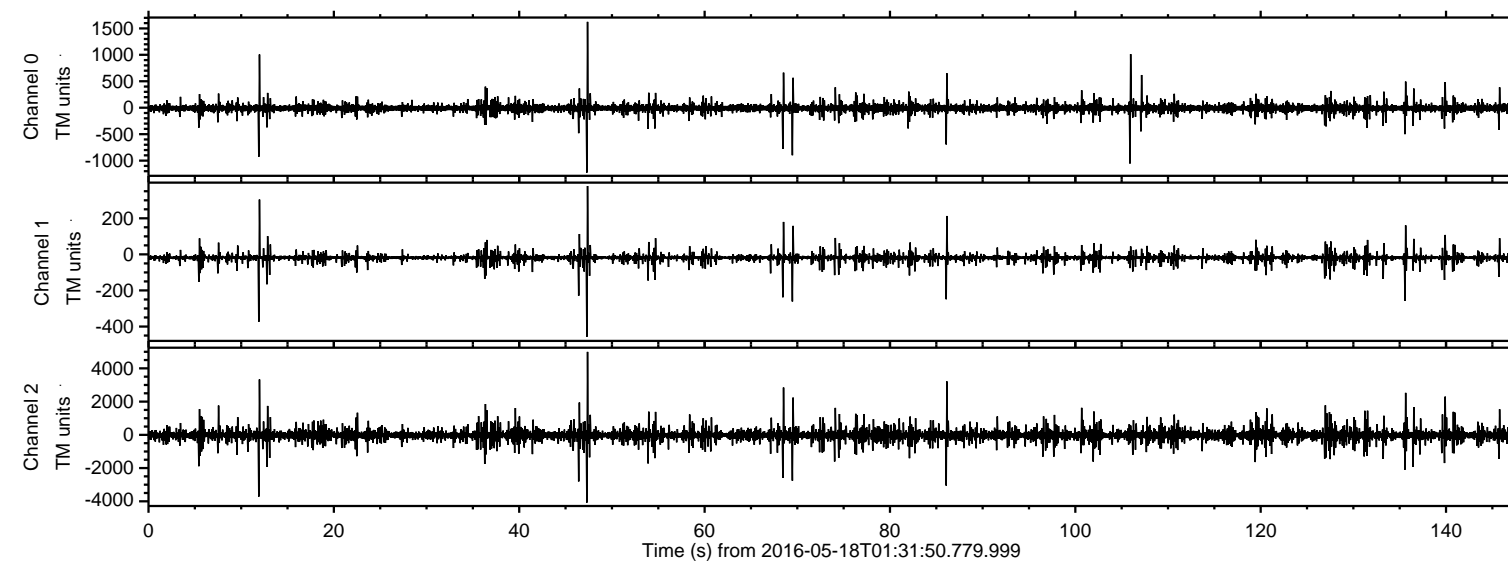
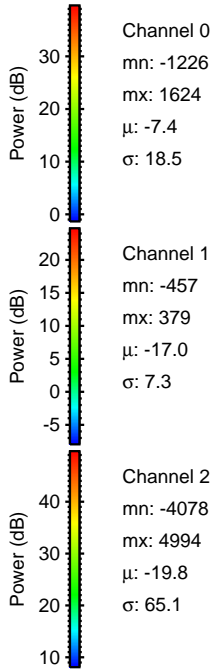
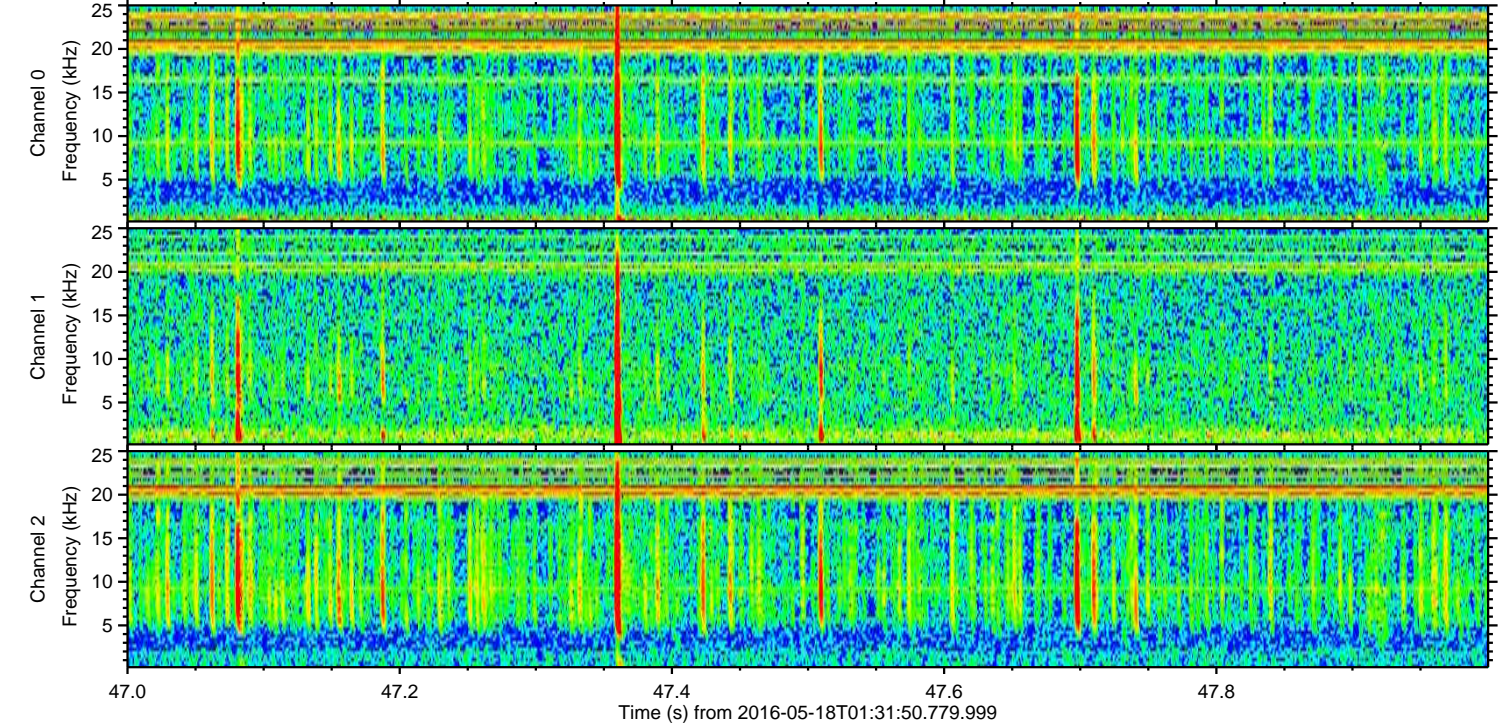
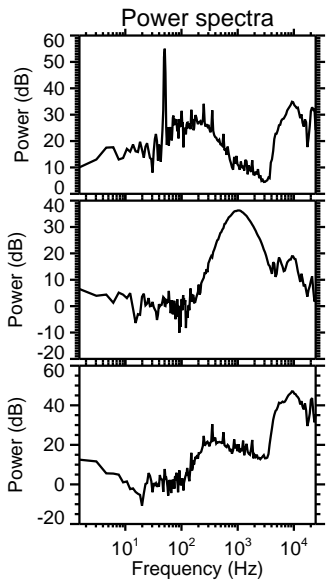
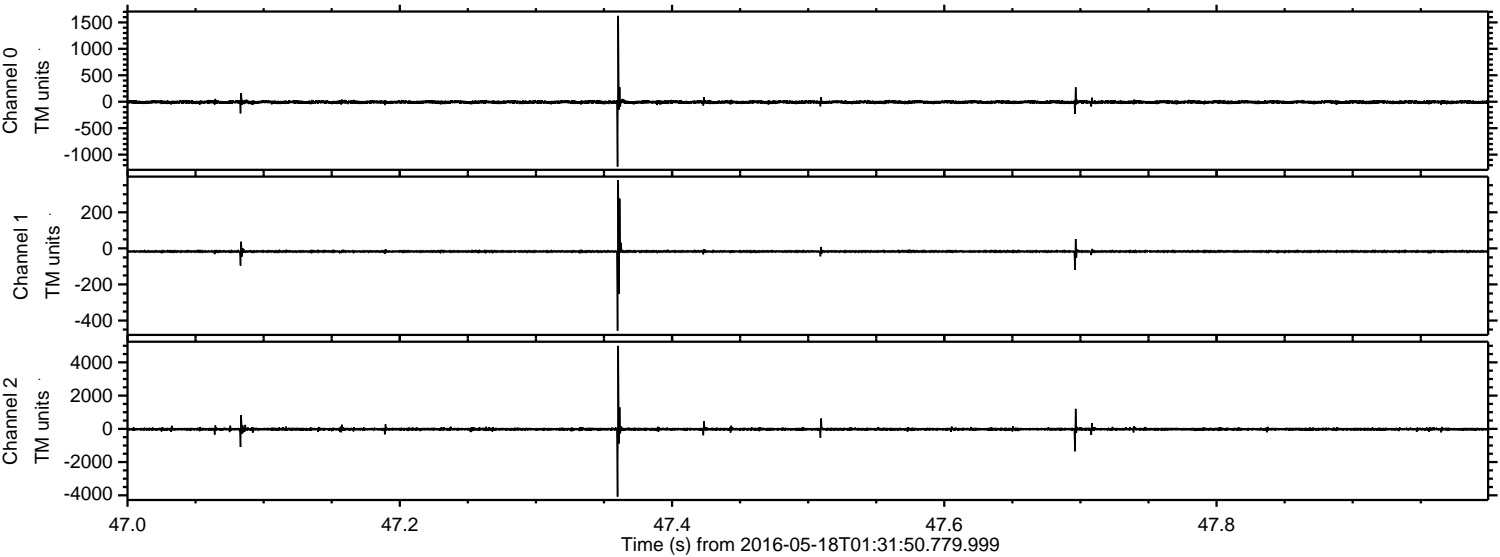


ELMAVAN 3D WAVEFORMS (Measured data sampled at 50 kHz) 51000 packets of 144 samples from 2016-05-18T01:31:50.779.999.

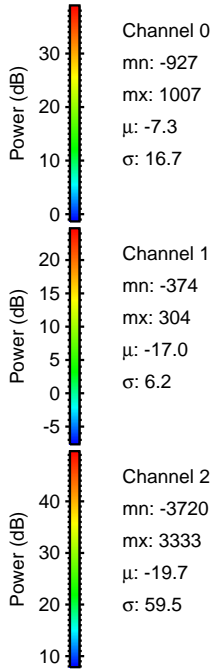
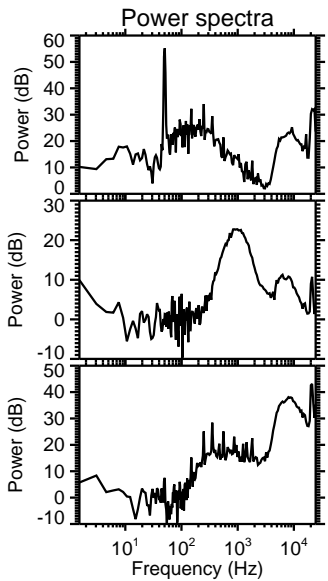
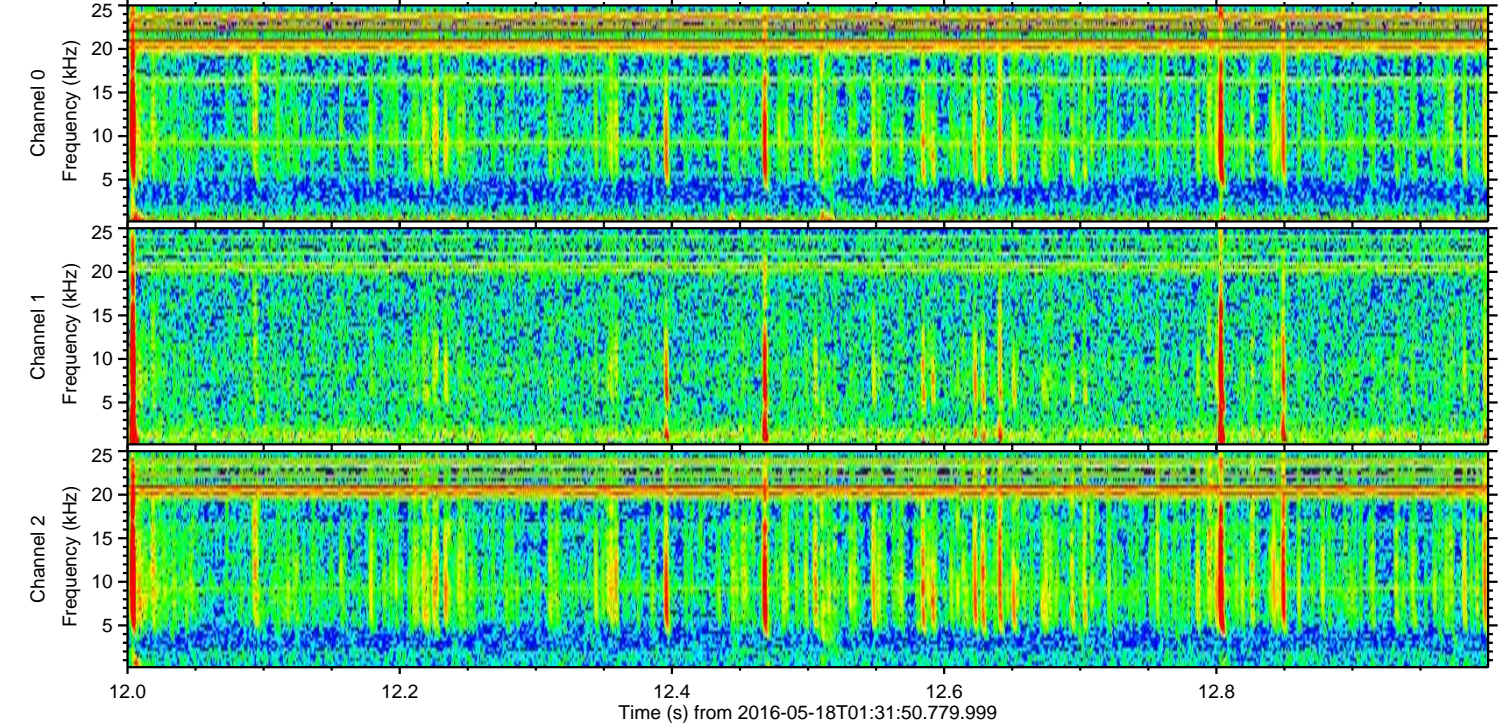
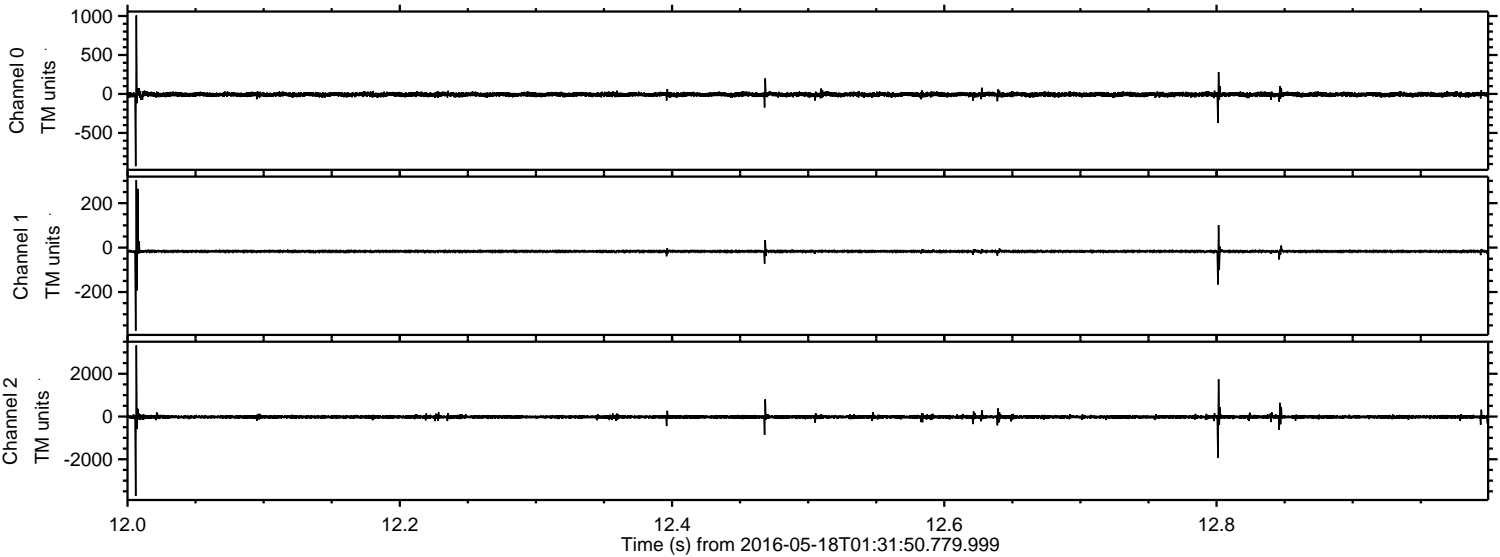
Processed Wed May 18 03:39:58 2016 by ELM ver.2012-10-06 from 001__elm20160518_013149__dat00.bin



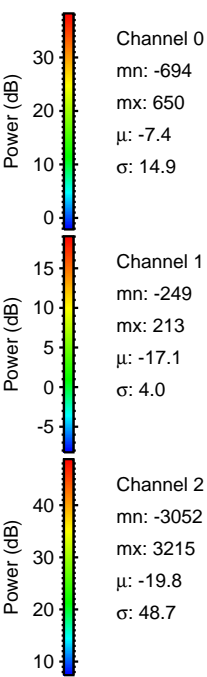
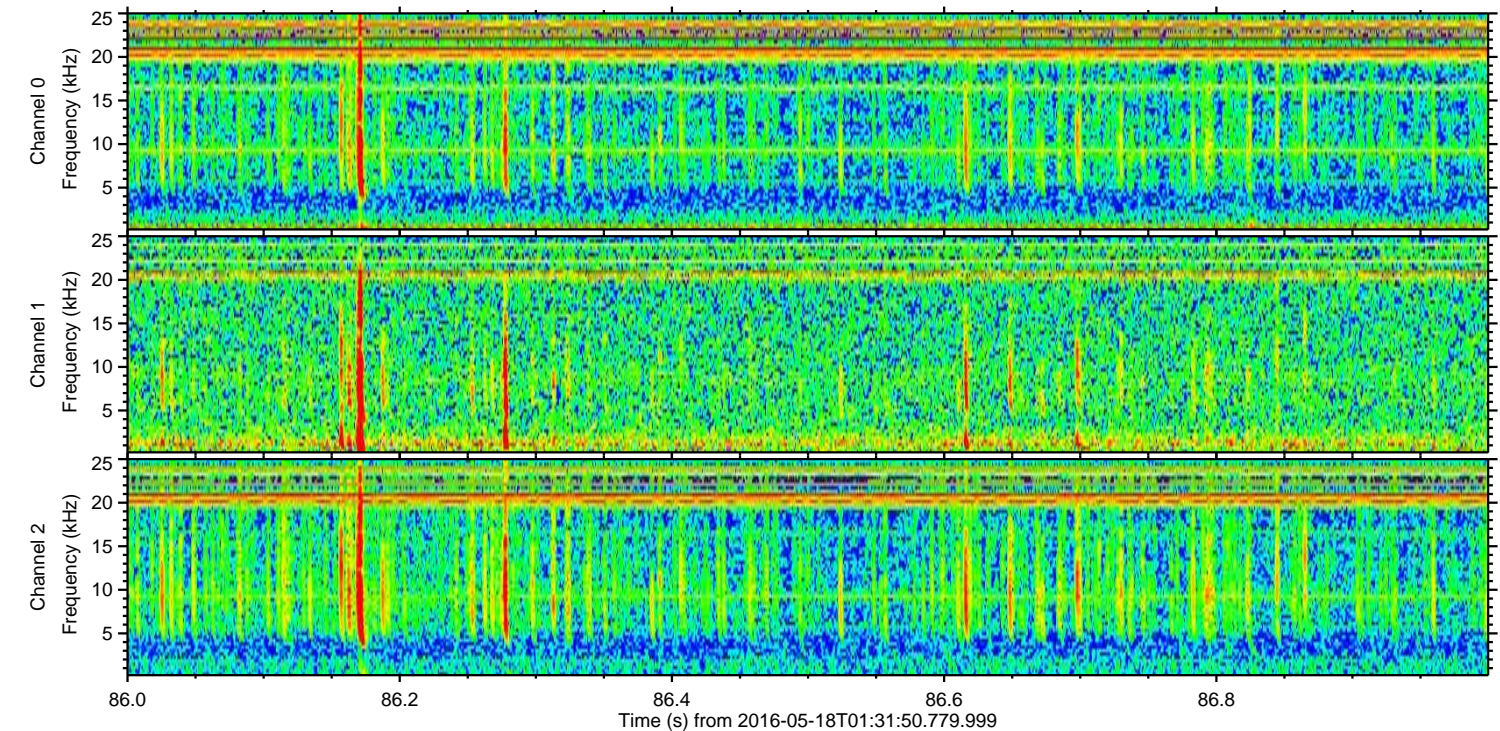
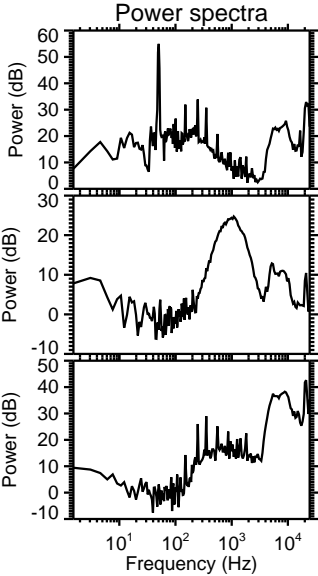
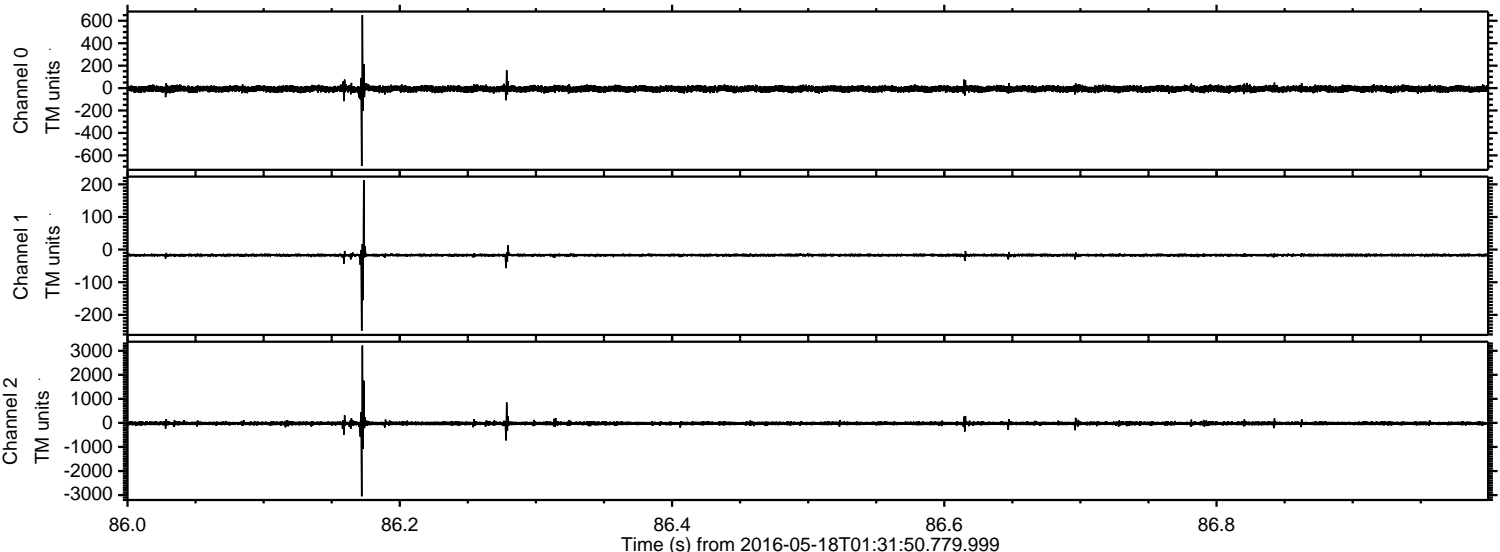
Processed Wed May 18 03:40:10 2016 by ELM ver.2012-10-06 from 001__elm20160518_013149__dat00.bin



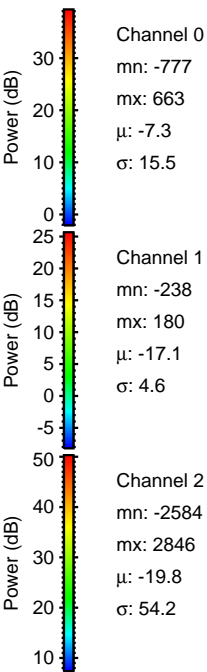
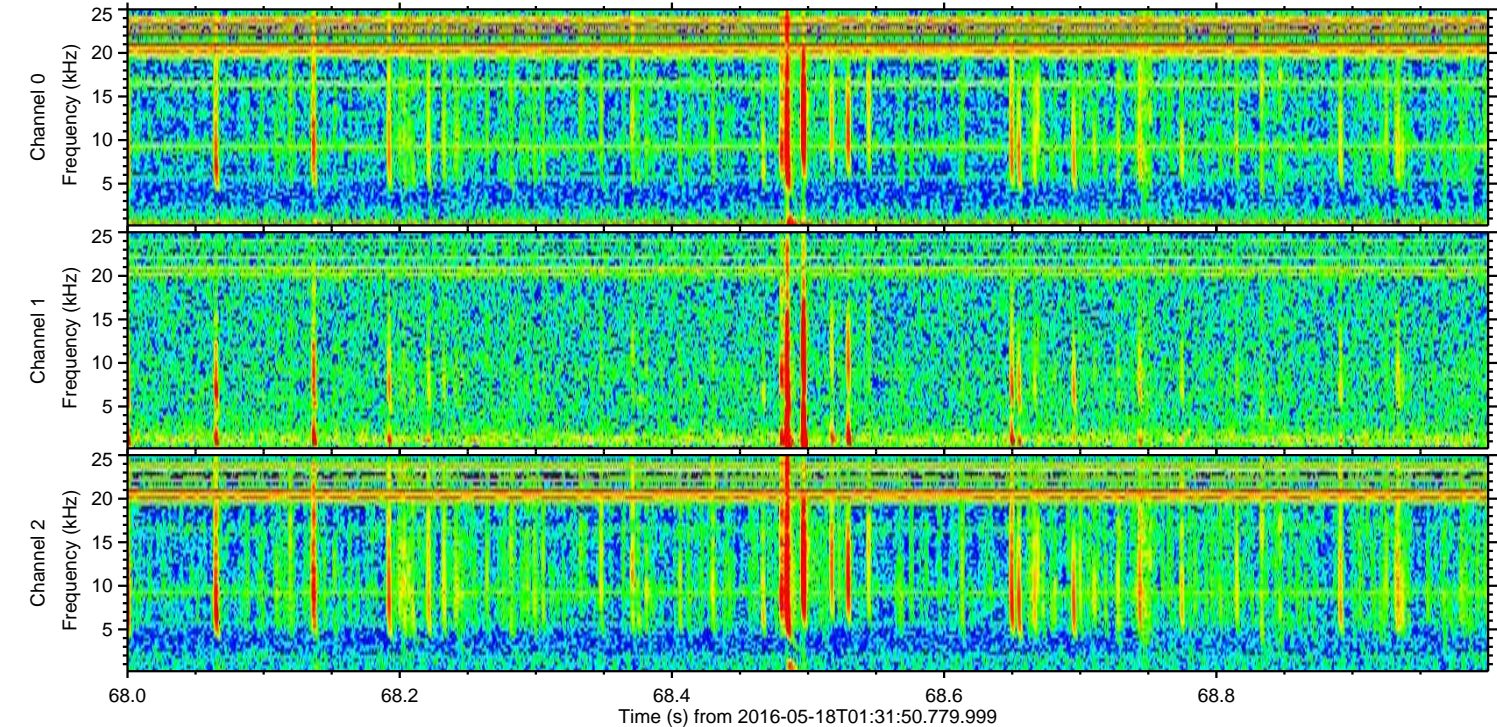
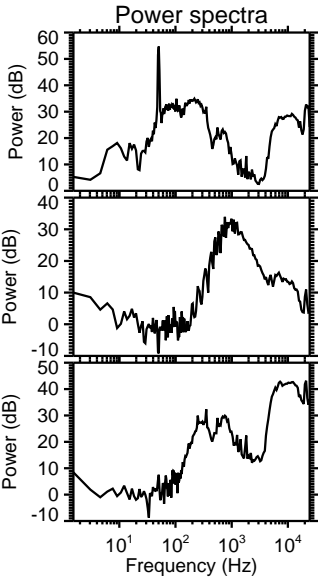
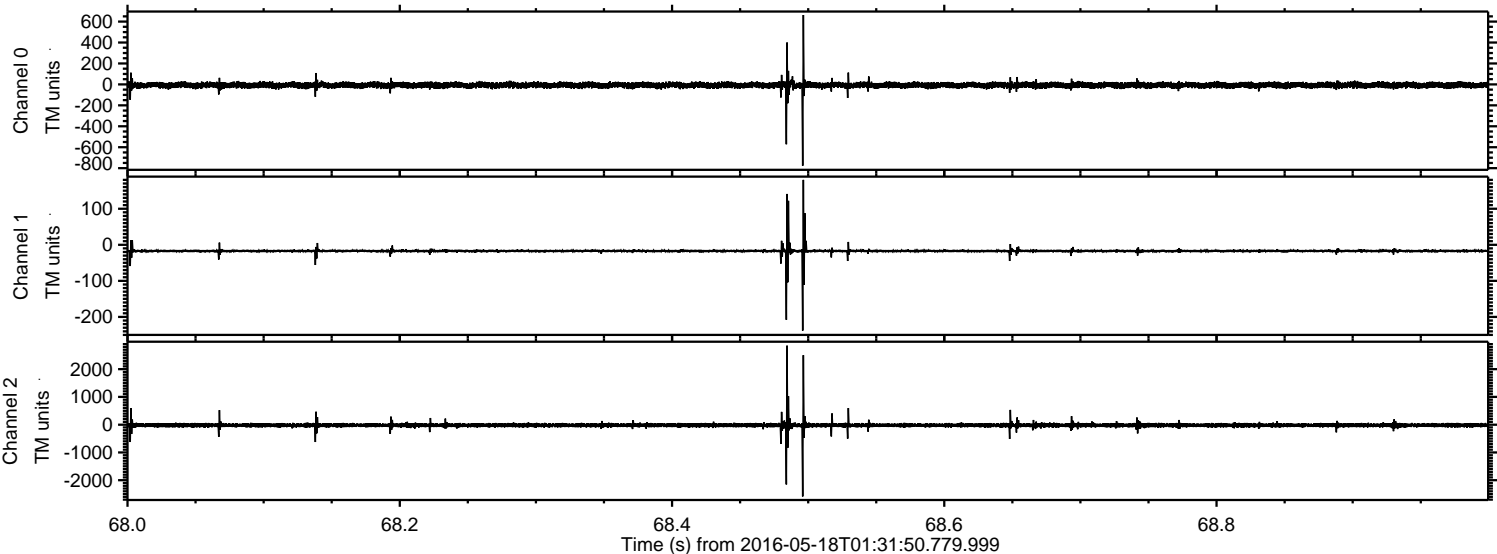
Processed Wed May 18 03:40:11 2016 by ELM ver.2012-10-06 from 001__elm20160518_013149__dat00.bin



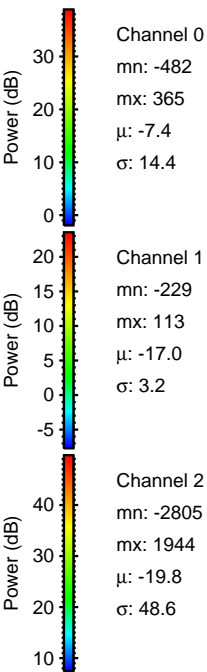
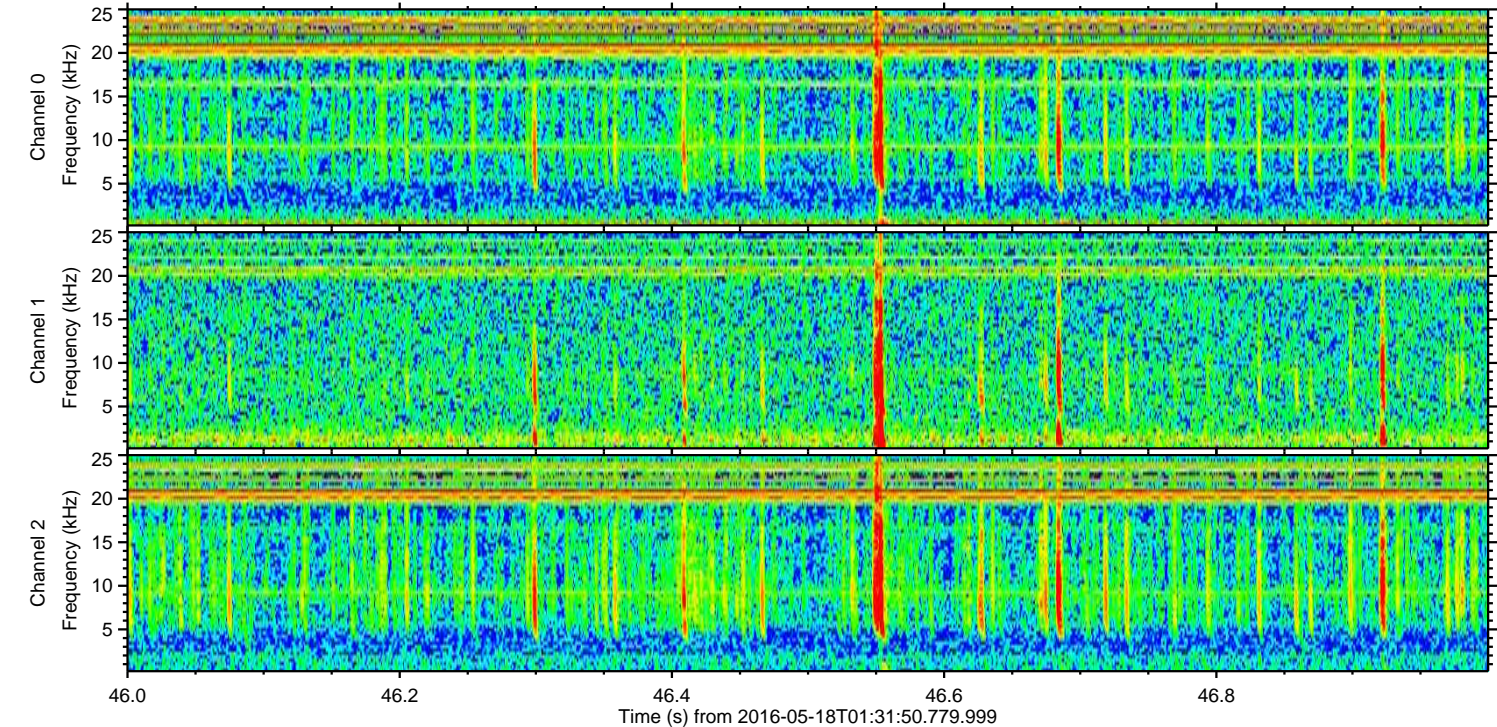
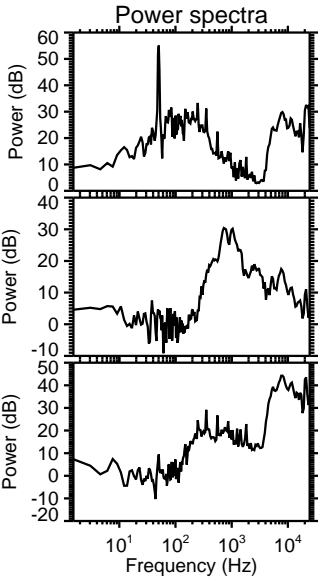
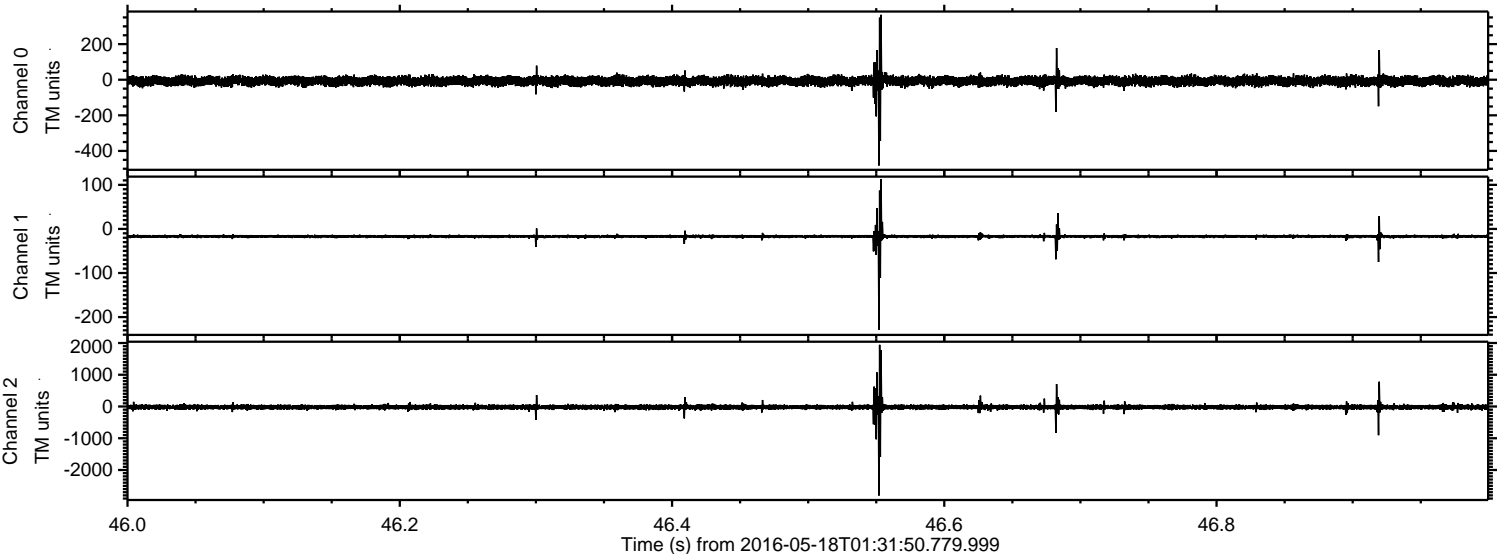
Processed Wed May 18 03:40:12 2016 by ELM ver.2012-10-06 from 001__elm20160518_013149__dat00.bin



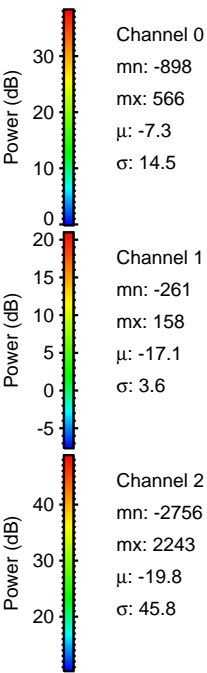
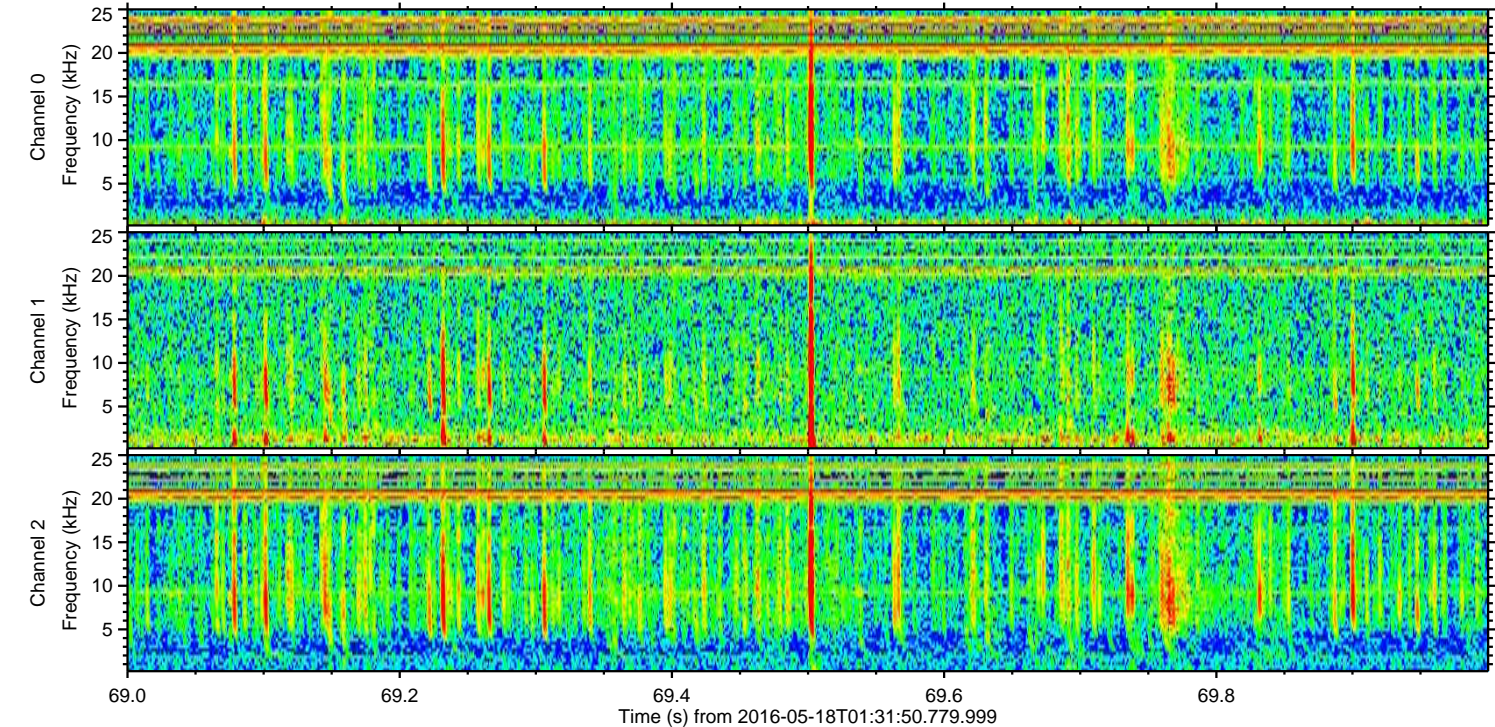
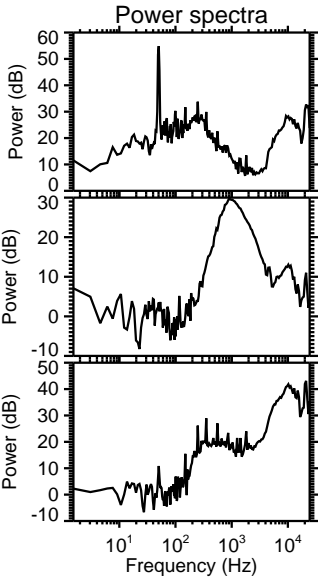
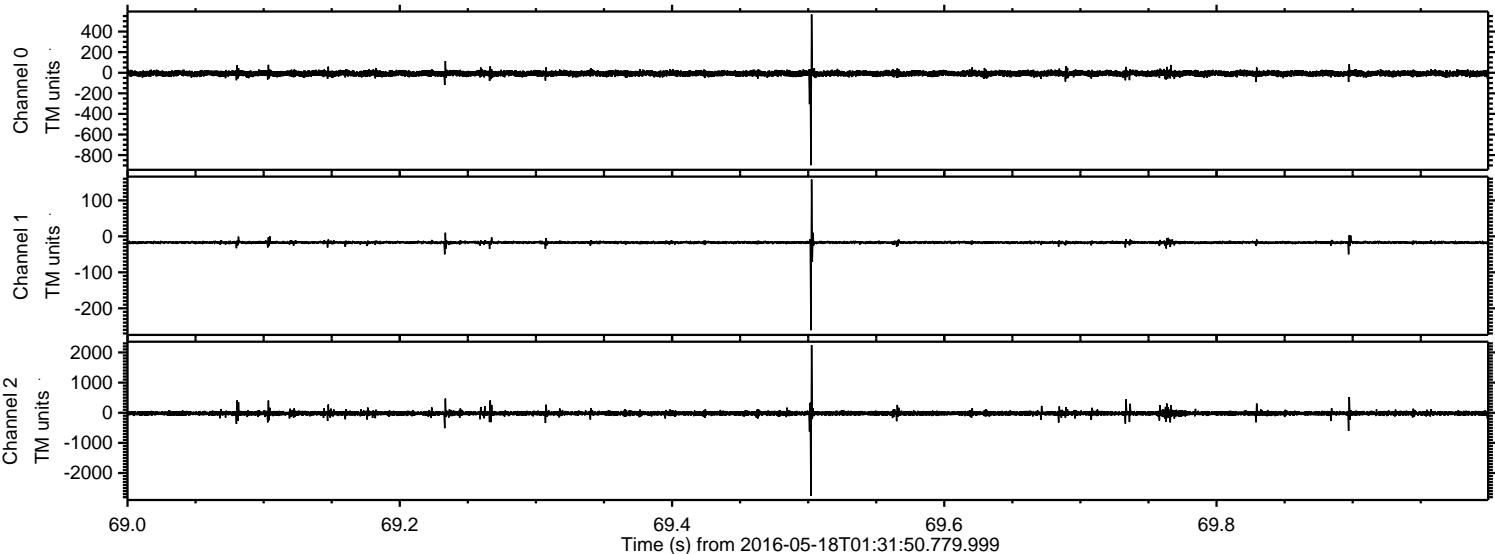
Processed Wed May 18 03:40:13 2016 by ELM ver.2012-10-06 from 001__elm20160518_013149__dat00.bin



Processed Wed May 18 03:40:14 2016 by ELM ver.2012-10-06 from 001__elm20160518_013149__dat00.bin

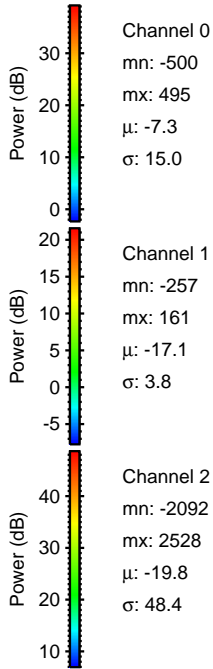
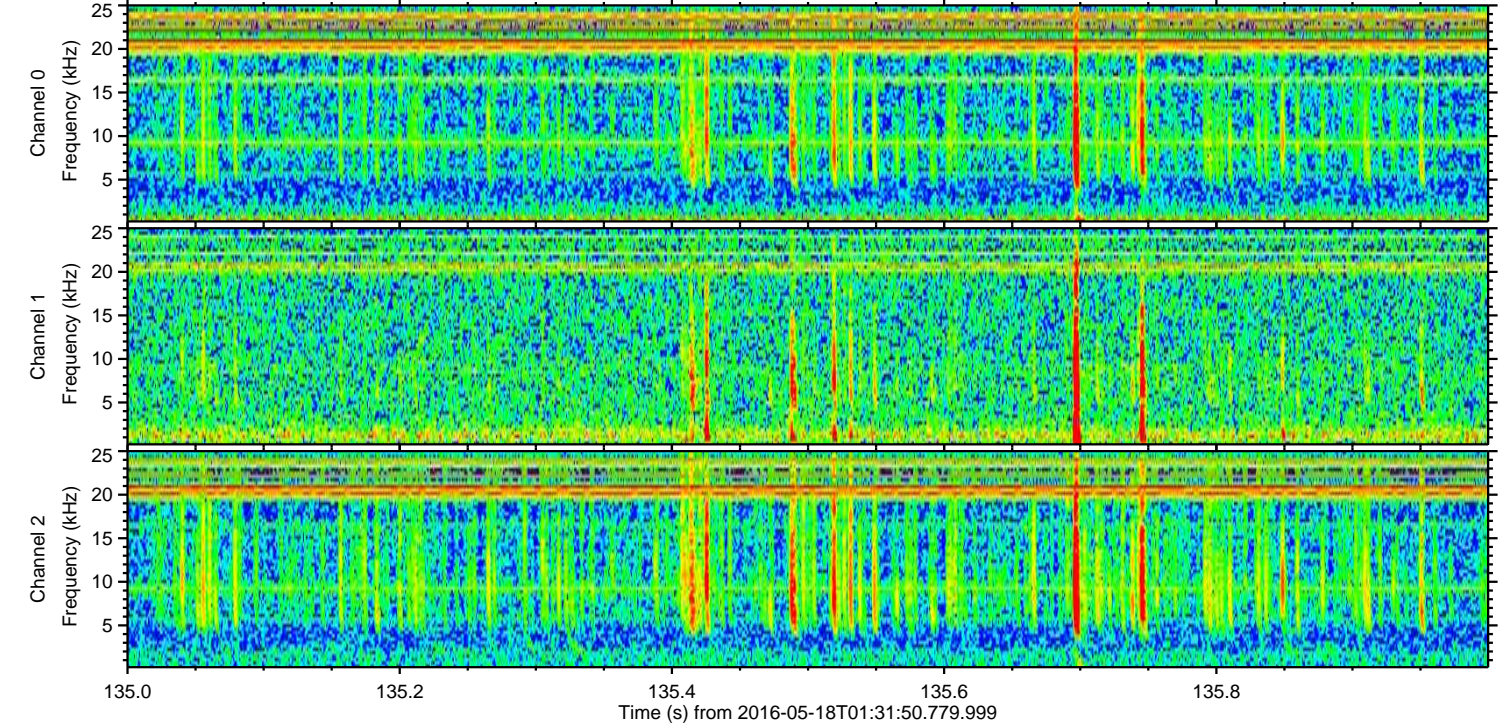
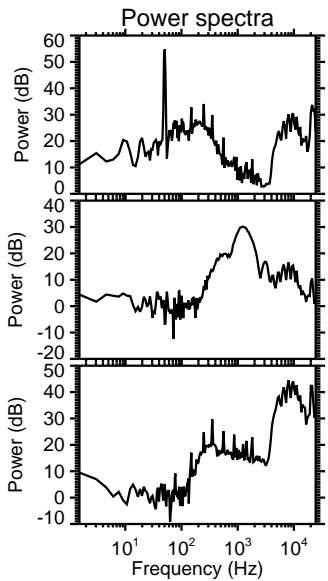
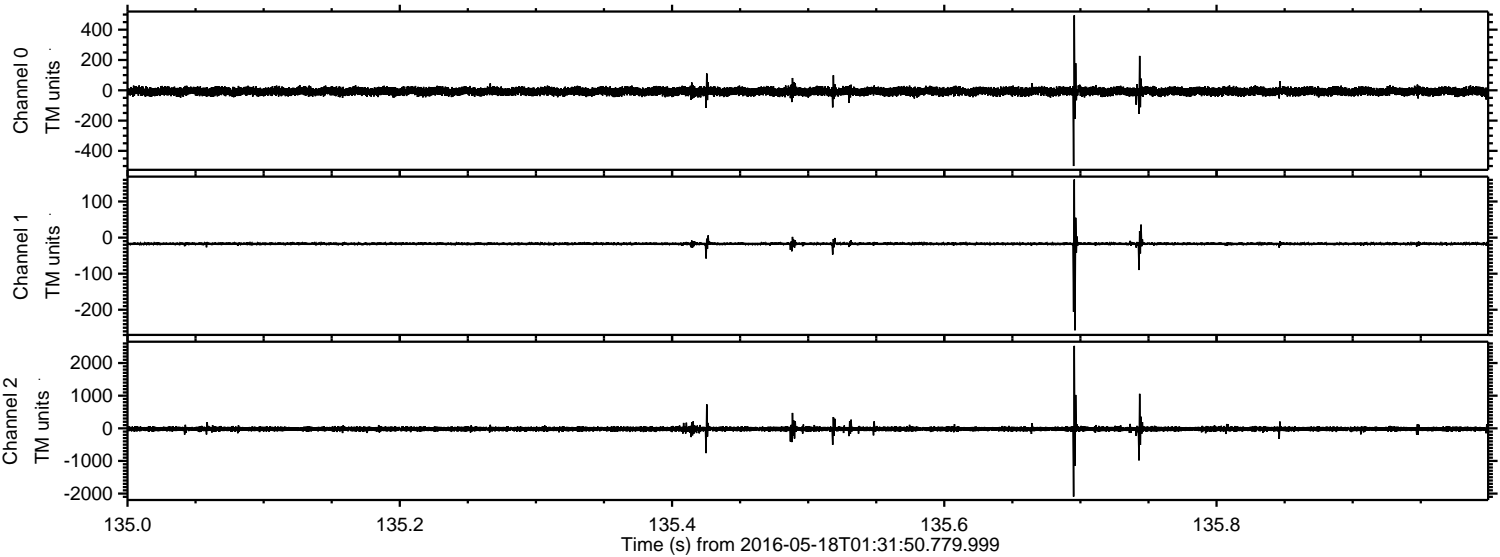


Processed Wed May 18 03:40:15 2016 by ELM ver.2012-10-06 from 001__elm20160518_013149__dat00.bin



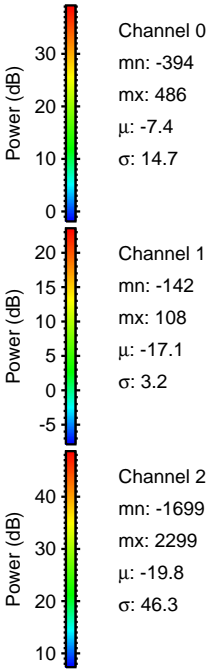
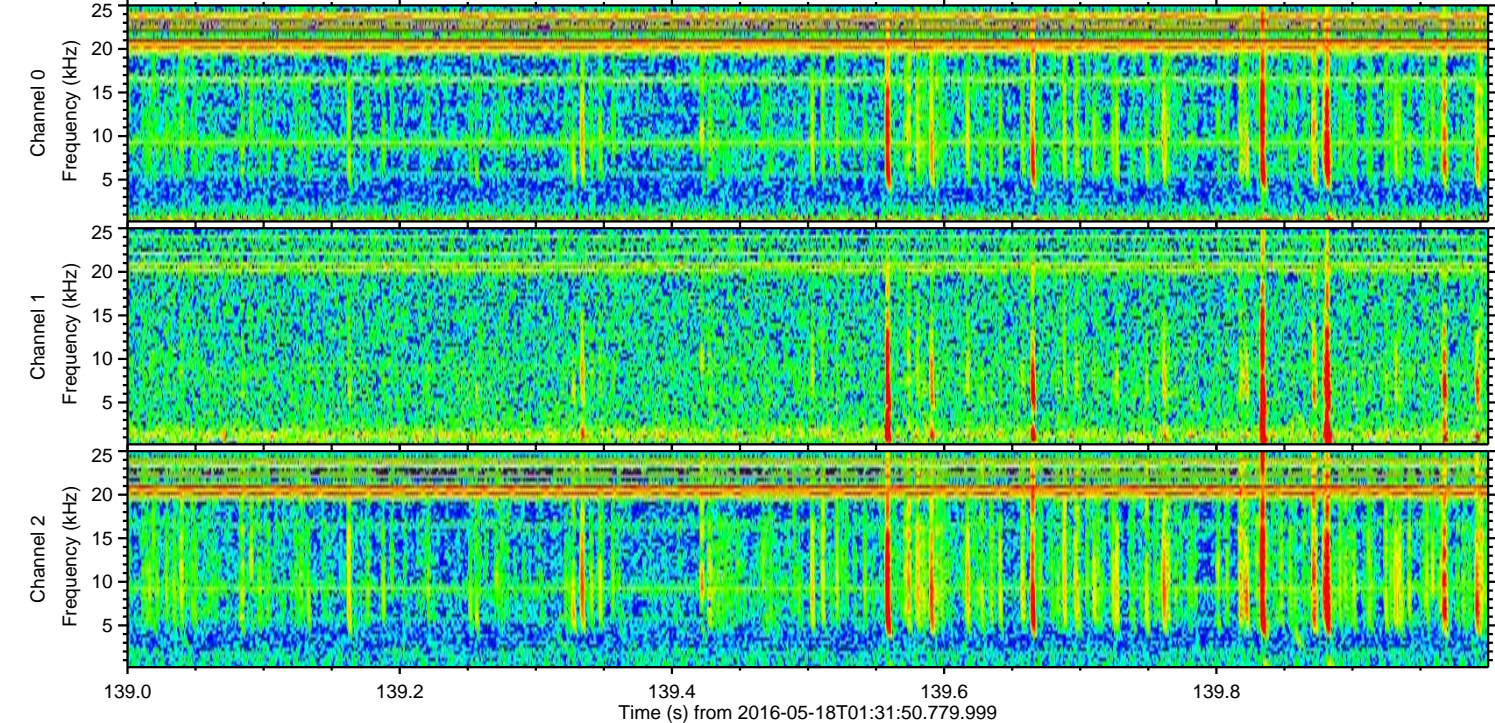
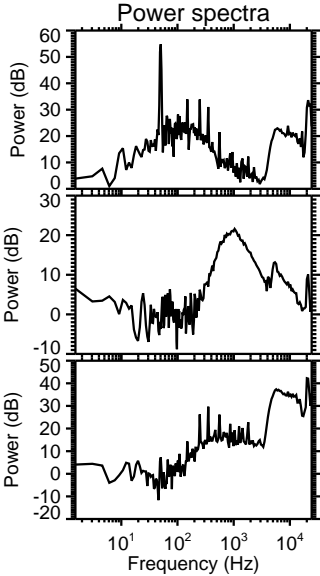
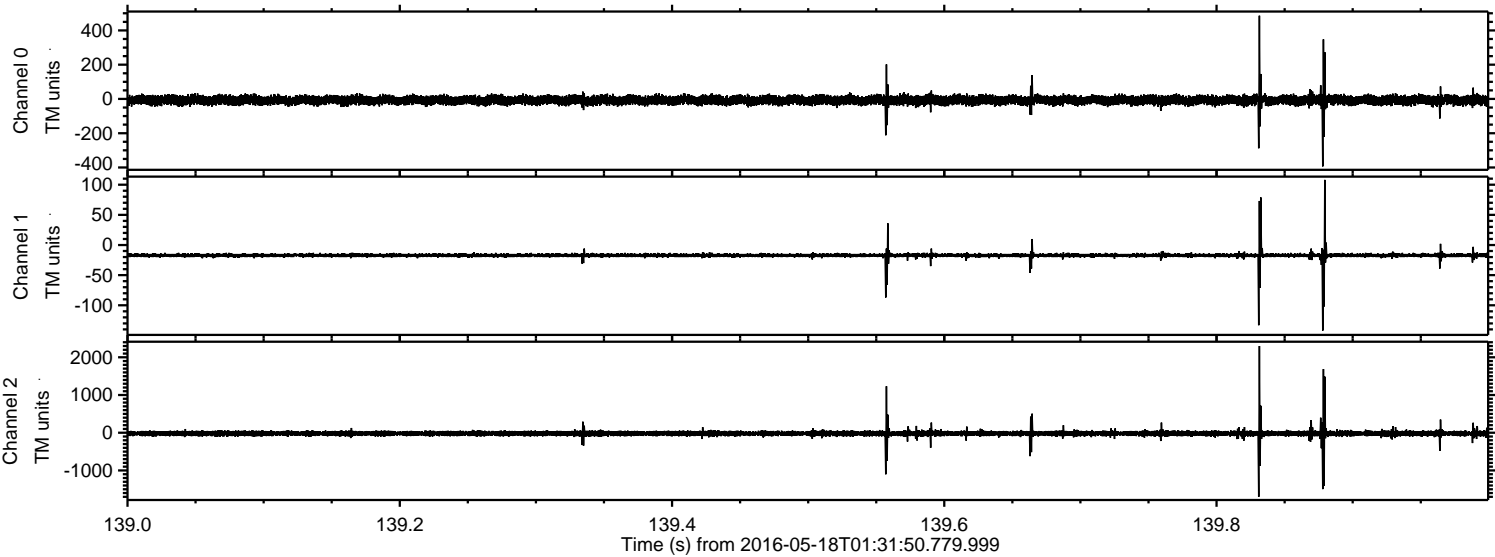
ELMAVAN 3D WAVEFORMS (Measured data sampled at 50 kHz) 51000 packets of 144 samples from 2016-05-18T01:31:50.779.999. Part 136/147

Processed Wed May 18 03:40:16 2016 by ELM ver.2012-10-06 from 001__elm20160518_013149__dat00.bin



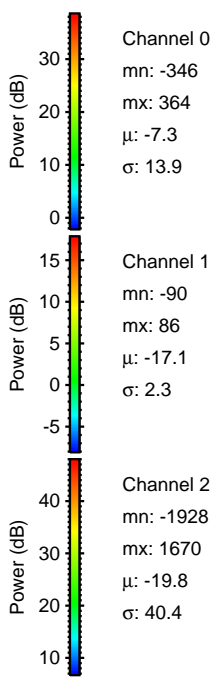
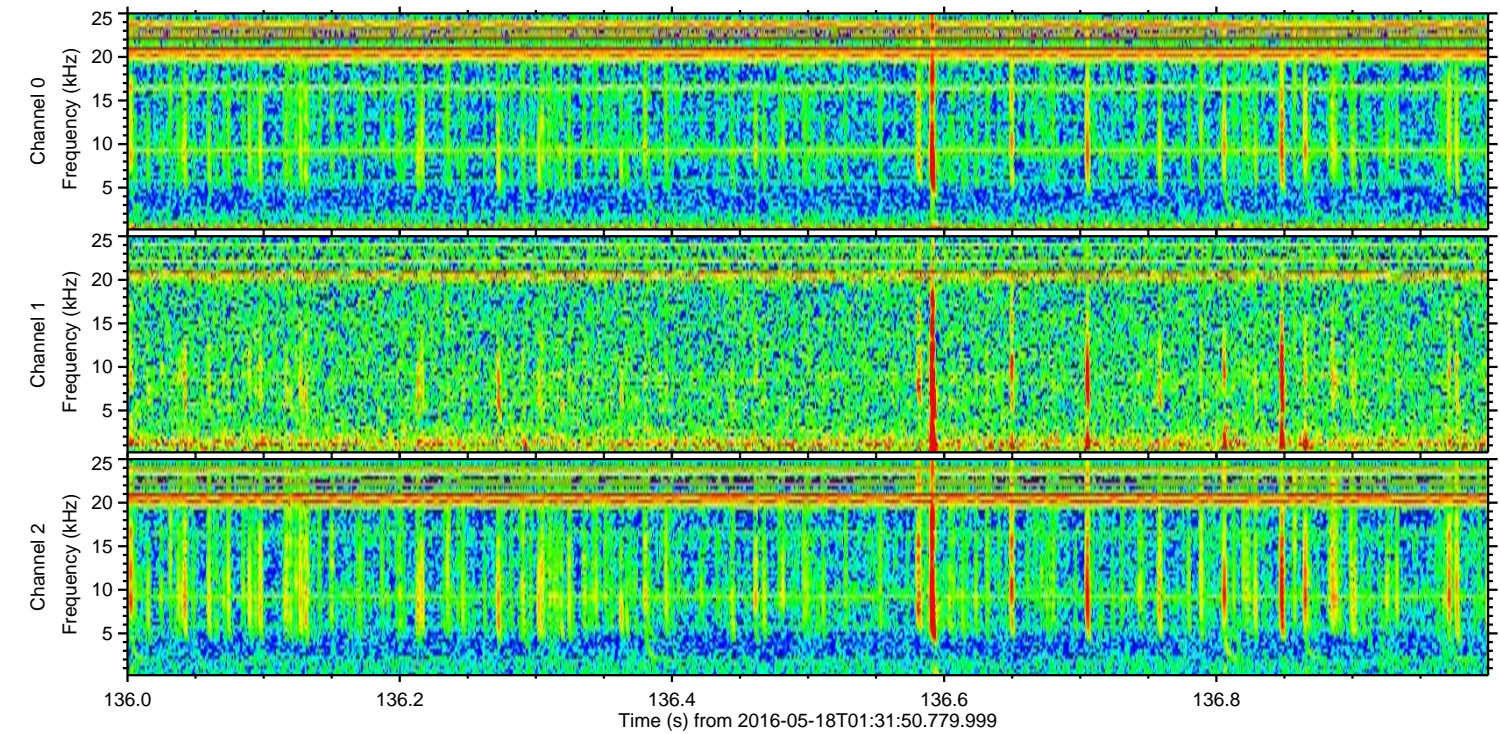
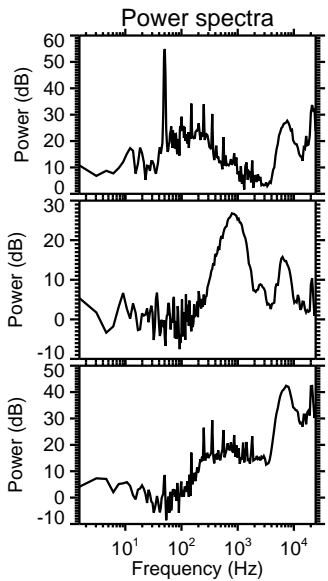
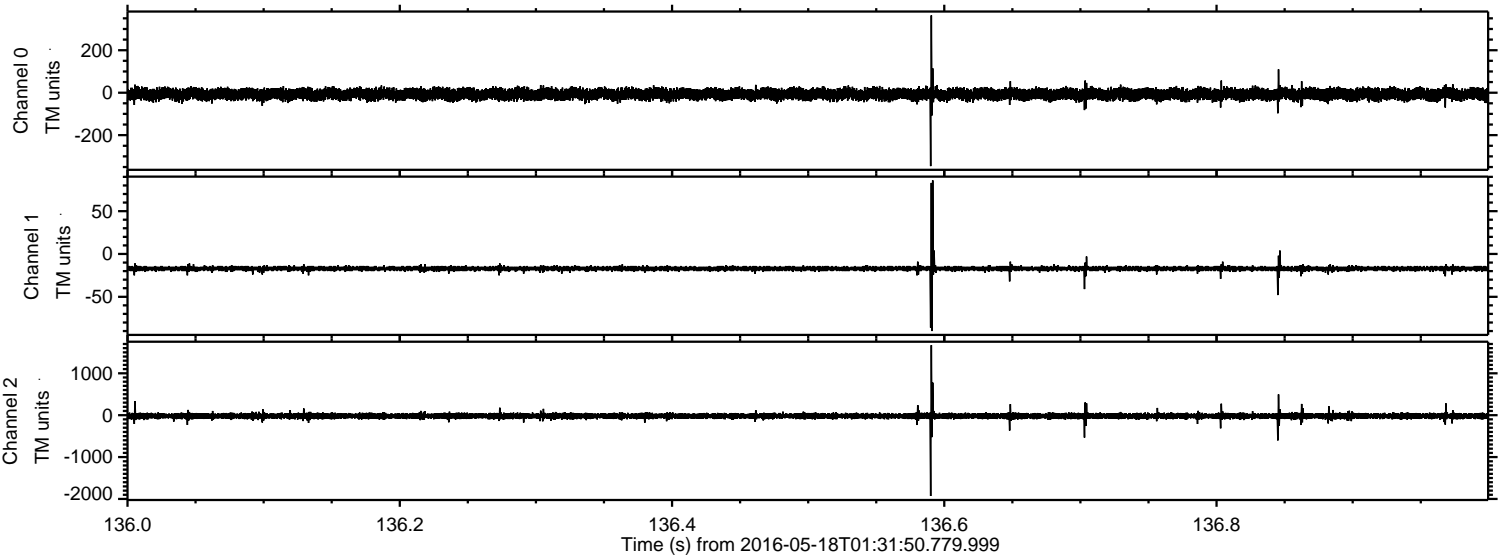
ELMAVAN 3D WAVEFORMS (Measured data sampled at 50 kHz) 51000 packets of 144 samples from 2016-05-18T01:31:50.779.999. Part 140/147

Processed Wed May 18 03:40:17 2016 by ELM ver.2012-10-06 from 001__elm20160518_013149__dat00.bin



ELMAVAN 3D WAVEFORMS (Measured data sampled at 50 kHz) 51000 packets of 144 samples from 2016-05-18T01:31:50.779.999. Part 137/147

Processed Wed May 18 03:40:18 2016 by ELM ver.2012-10-06 from 001__elm20160518_013149__dat00.bin



Channel 0
mn: -346
mx: 364
 μ : -7.3
 σ : 13.9

Channel 1
mn: -90
mx: 86
 μ : -17.1
 σ : 2.3

Channel 2
mn: -1928
mx: 1670
 μ : -19.8
 σ : 40.4

