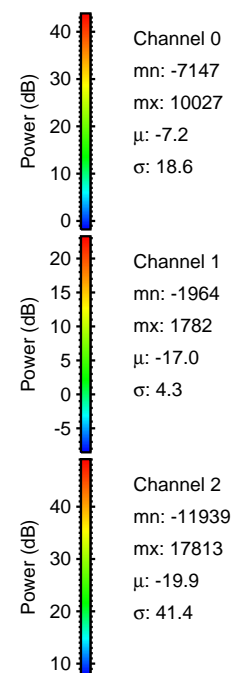
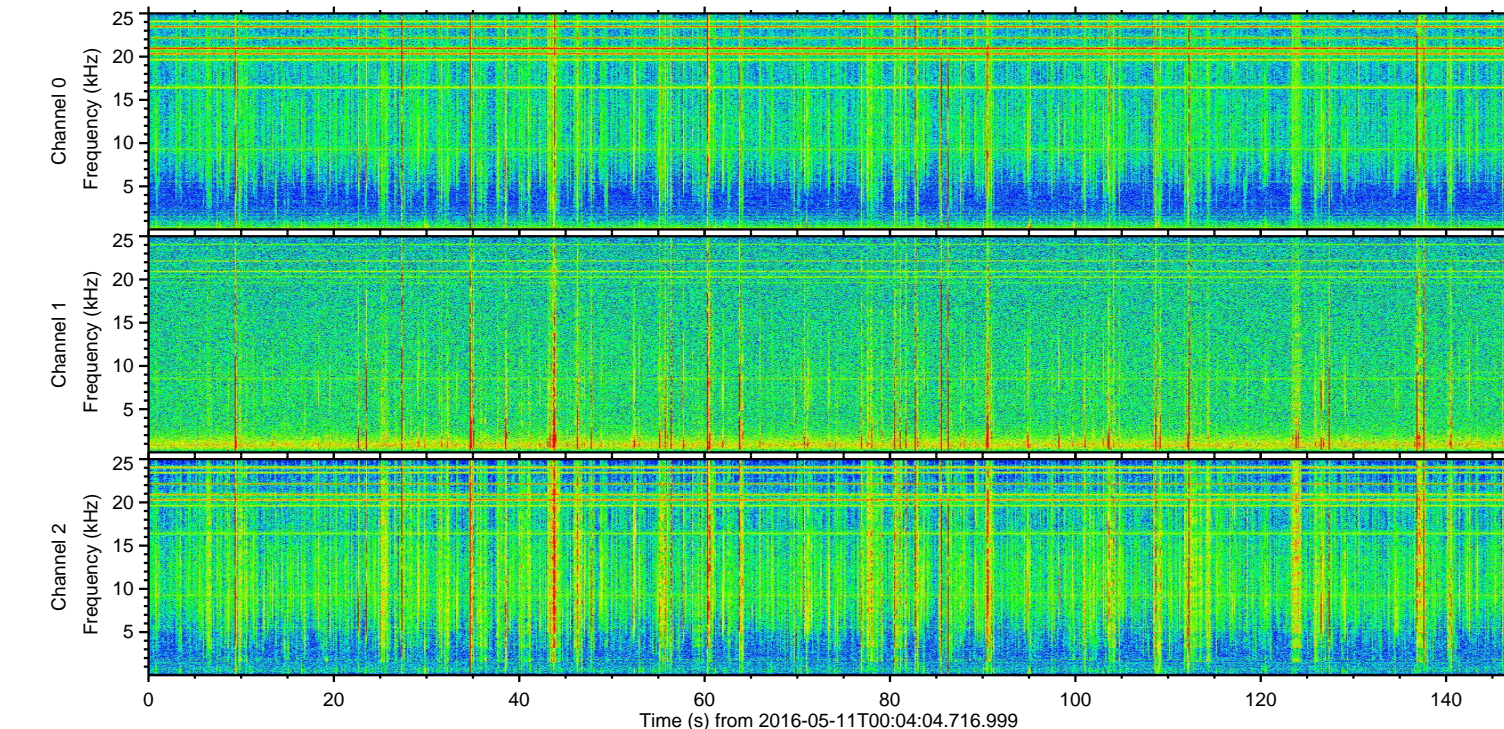
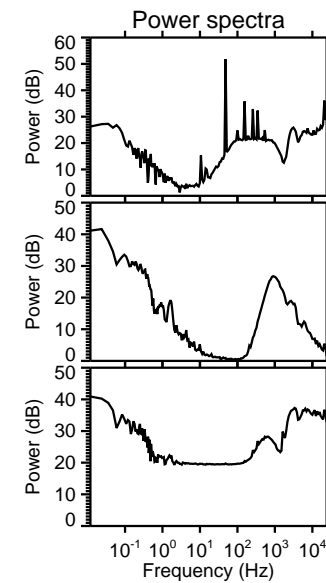
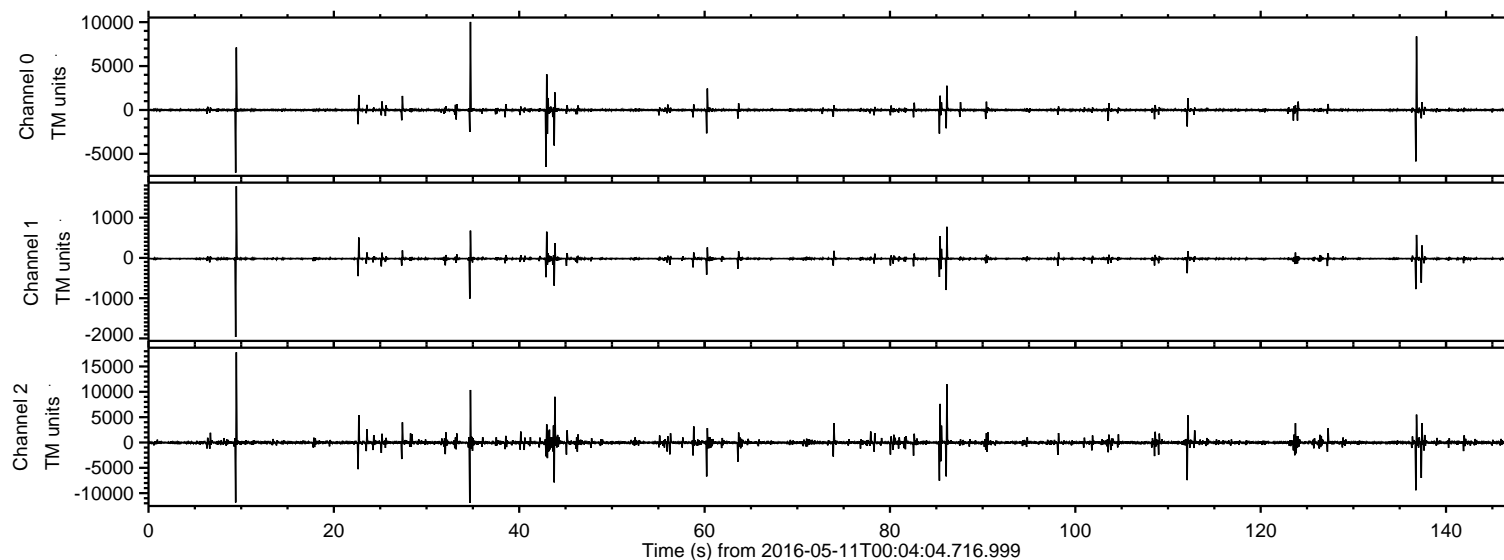
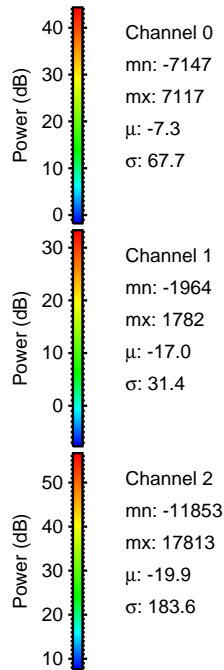
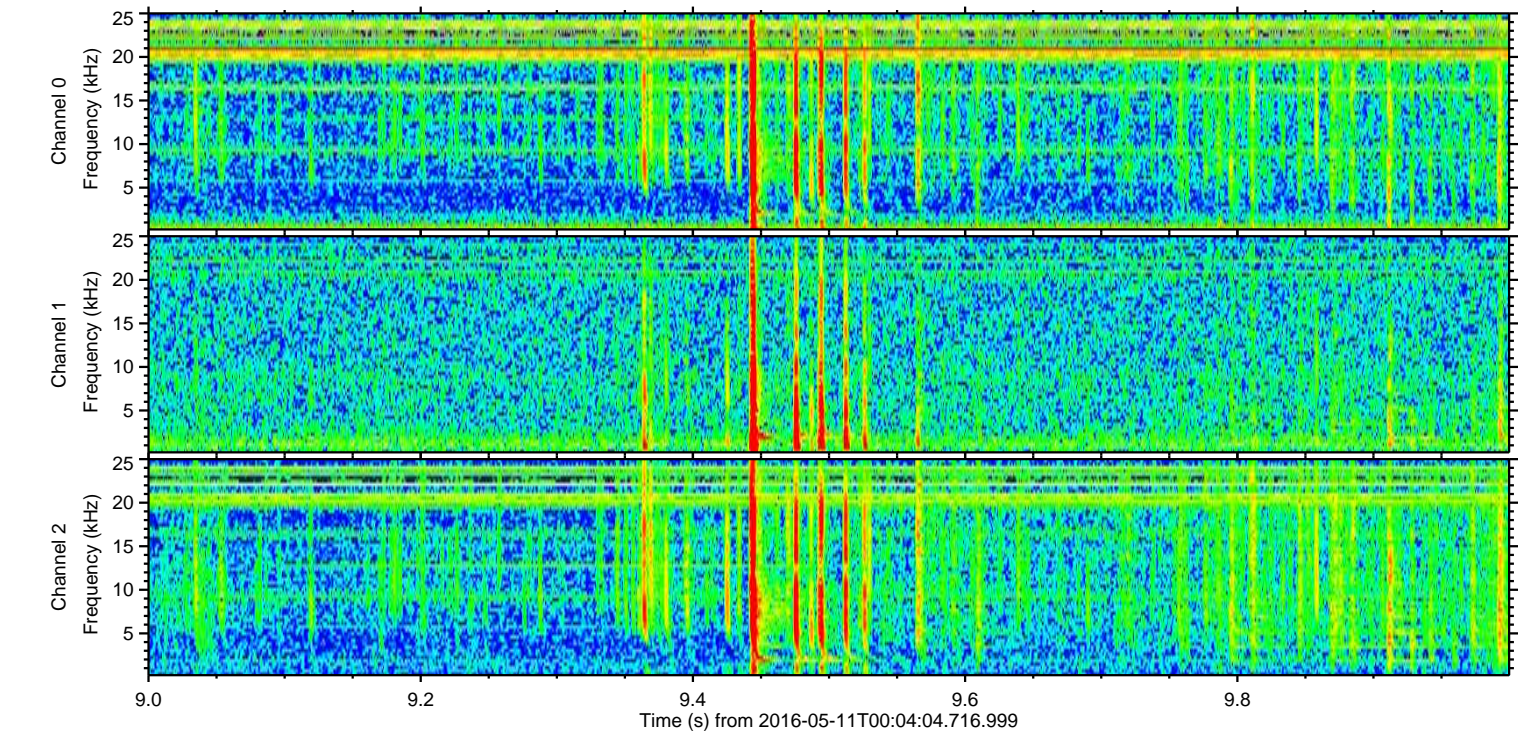
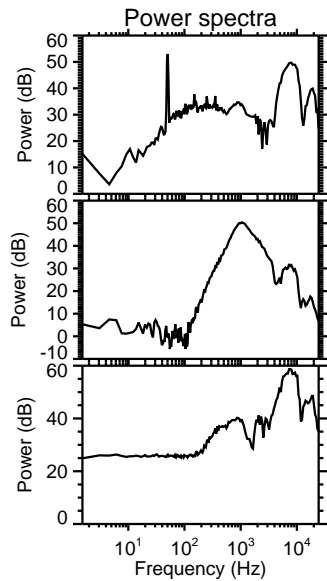
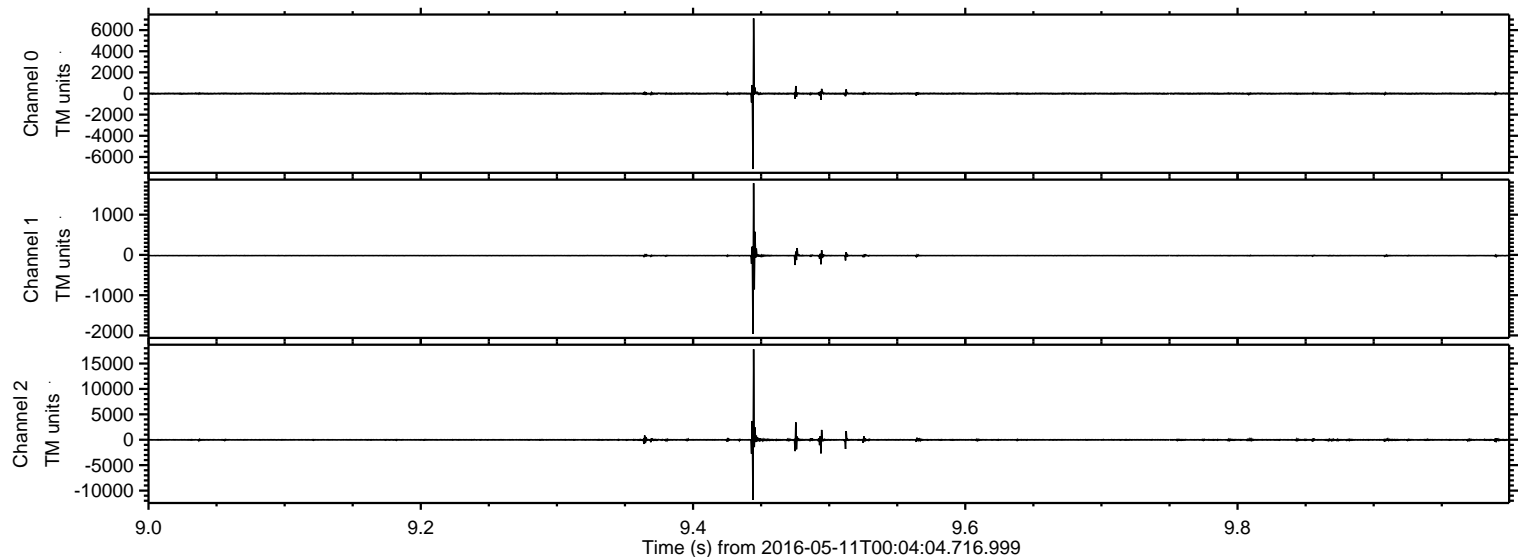


ELMAVAN 3D WAVEFORMS (Measured data sampled at 50 kHz) 51000 packets of 144 samples from 2016-05-11T00:04:04.716.999.

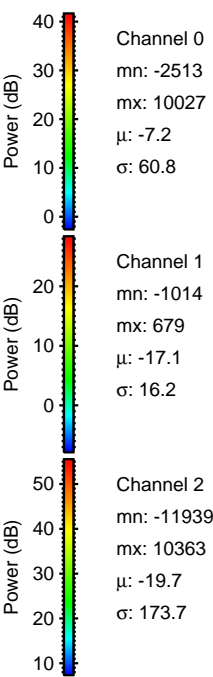
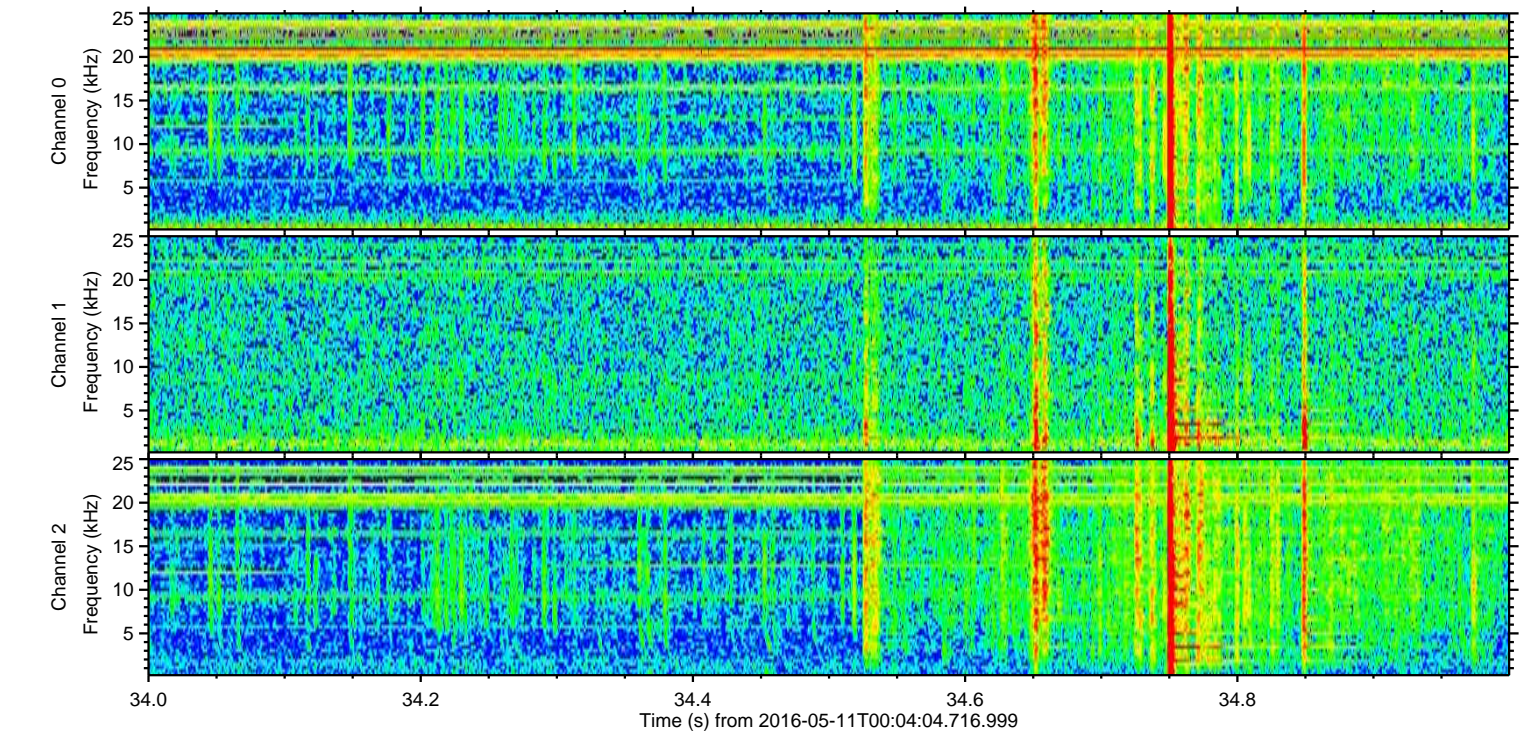
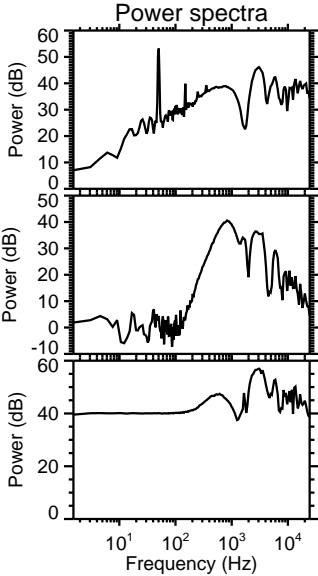
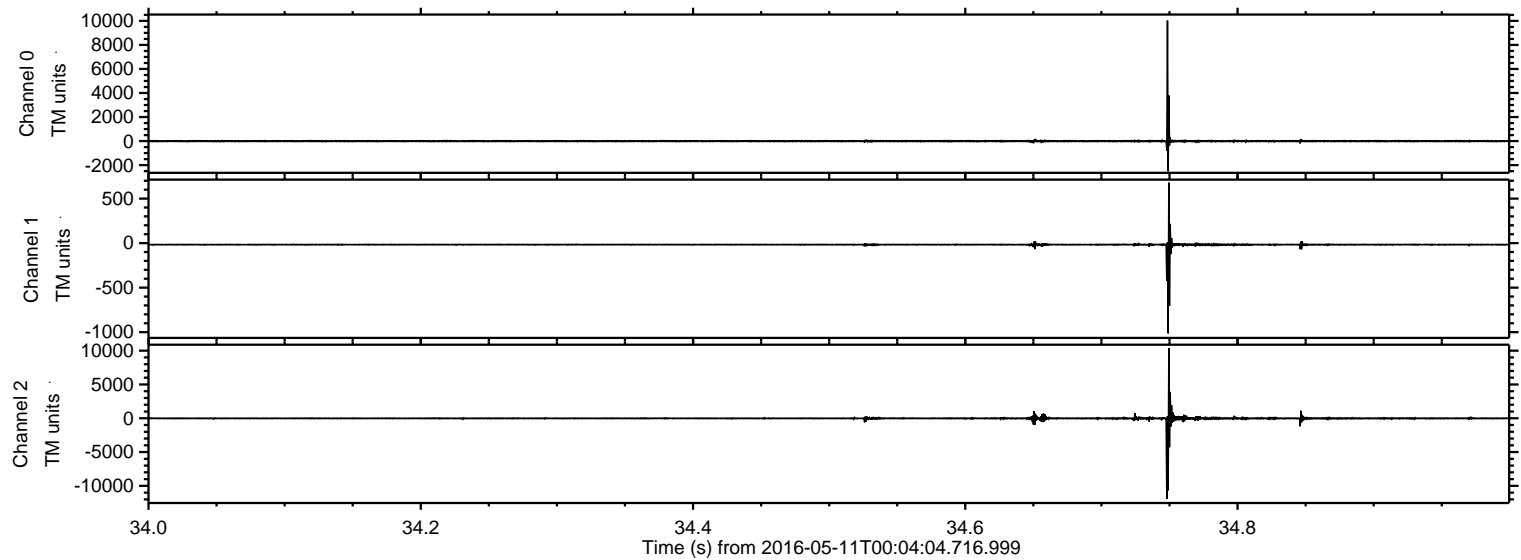
Processed Fri May 13 22:28:48 2016 by ELM ver.2012-10-06 from 001__elm20160511_000403__dat00.bin



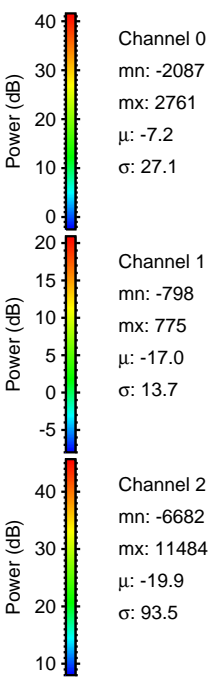
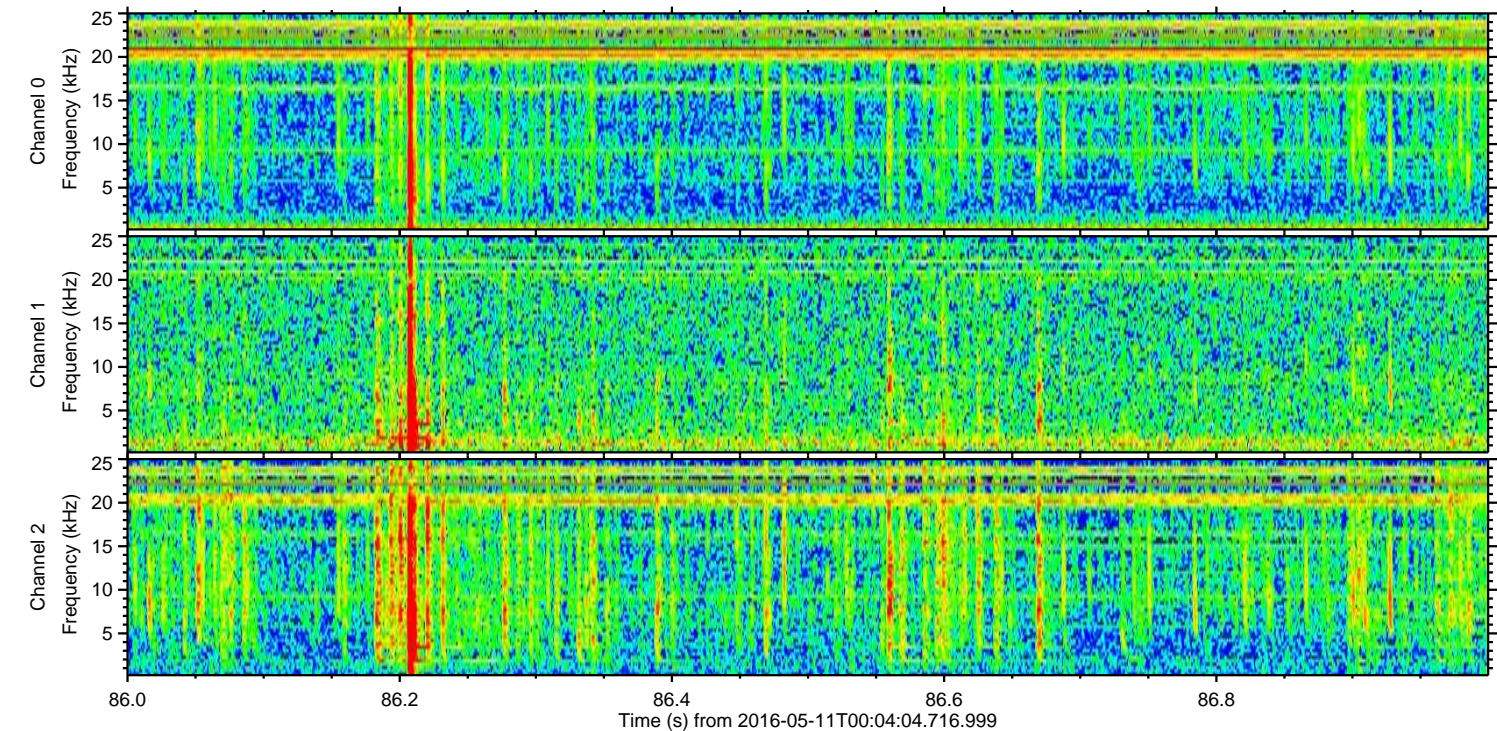
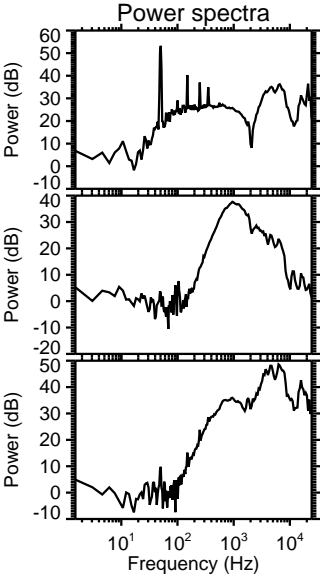
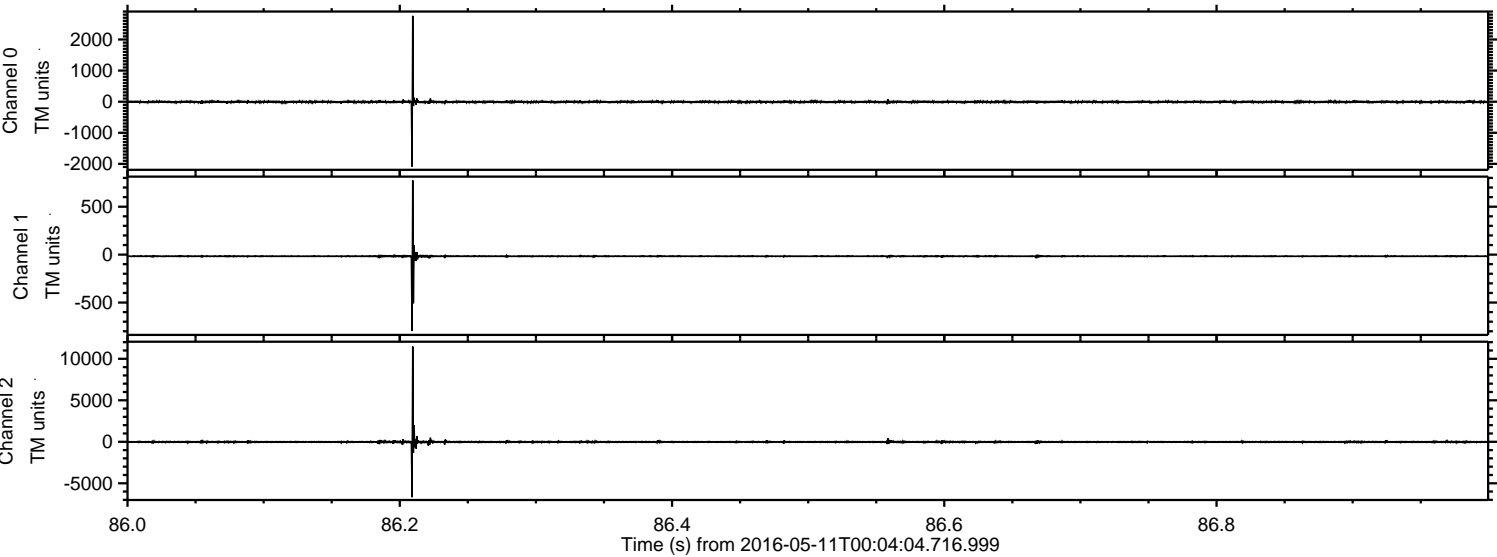
Processed Fri May 13 22:29:01 2016 by ELM ver.2012-10-06 from 001__elm20160511_000403__dat00.bin



Processed Fri May 13 22:29:02 2016 by ELM ver.2012-10-06 from 001__elm20160511_000403__dat00.bin

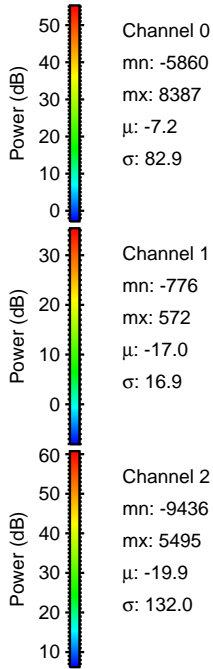
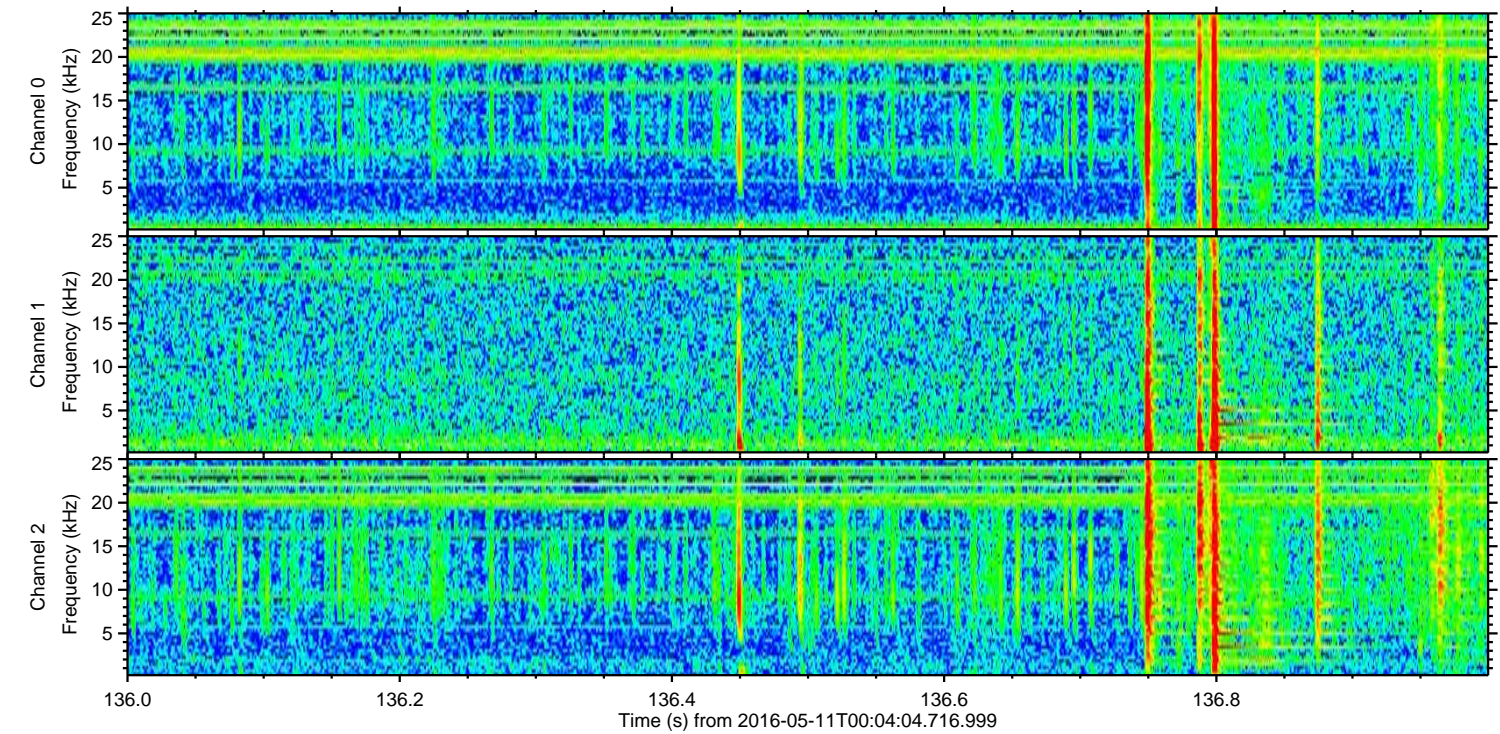
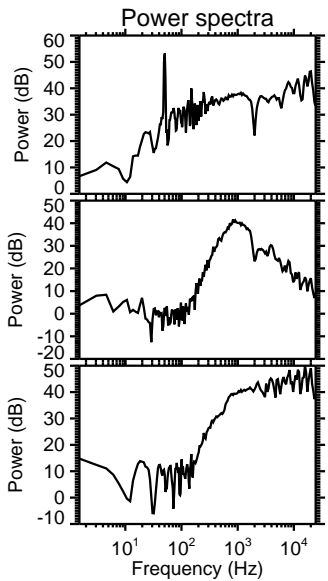
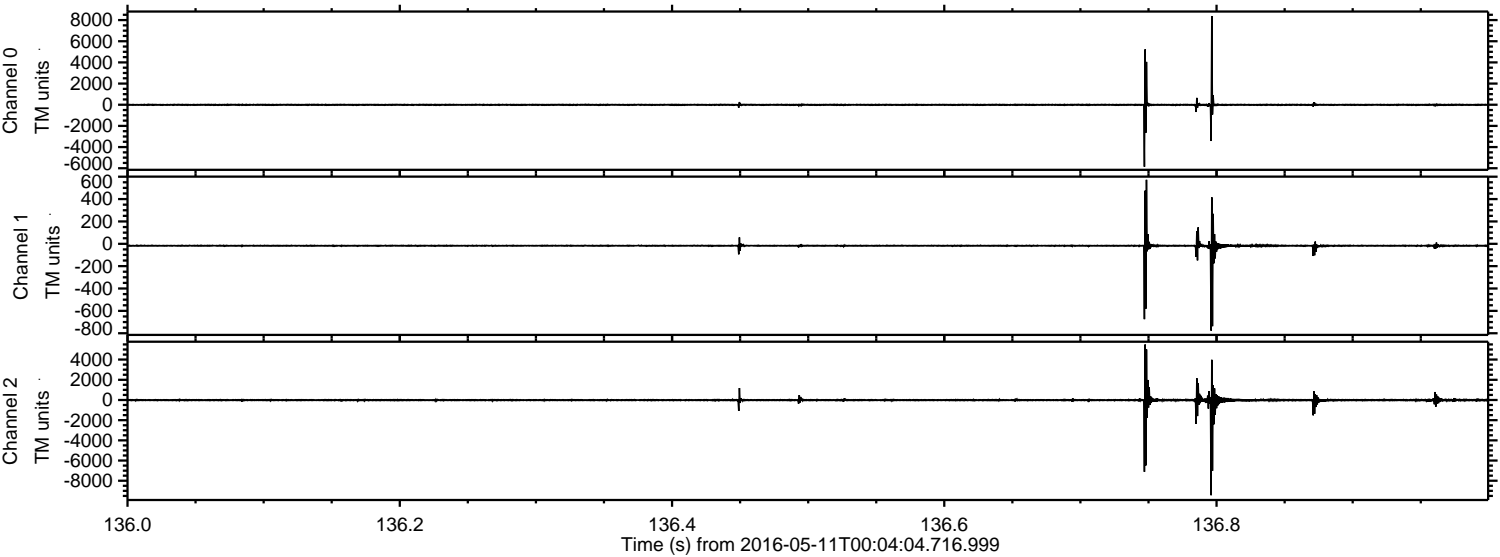


Processed Fri May 13 22:29:03 2016 by ELM ver.2012-10-06 from 001__elm20160511_000403__dat00.bin

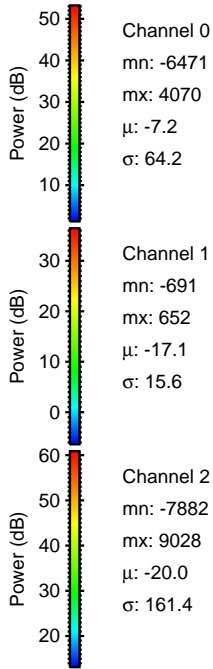
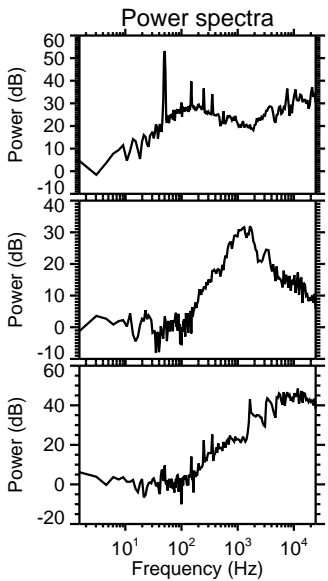
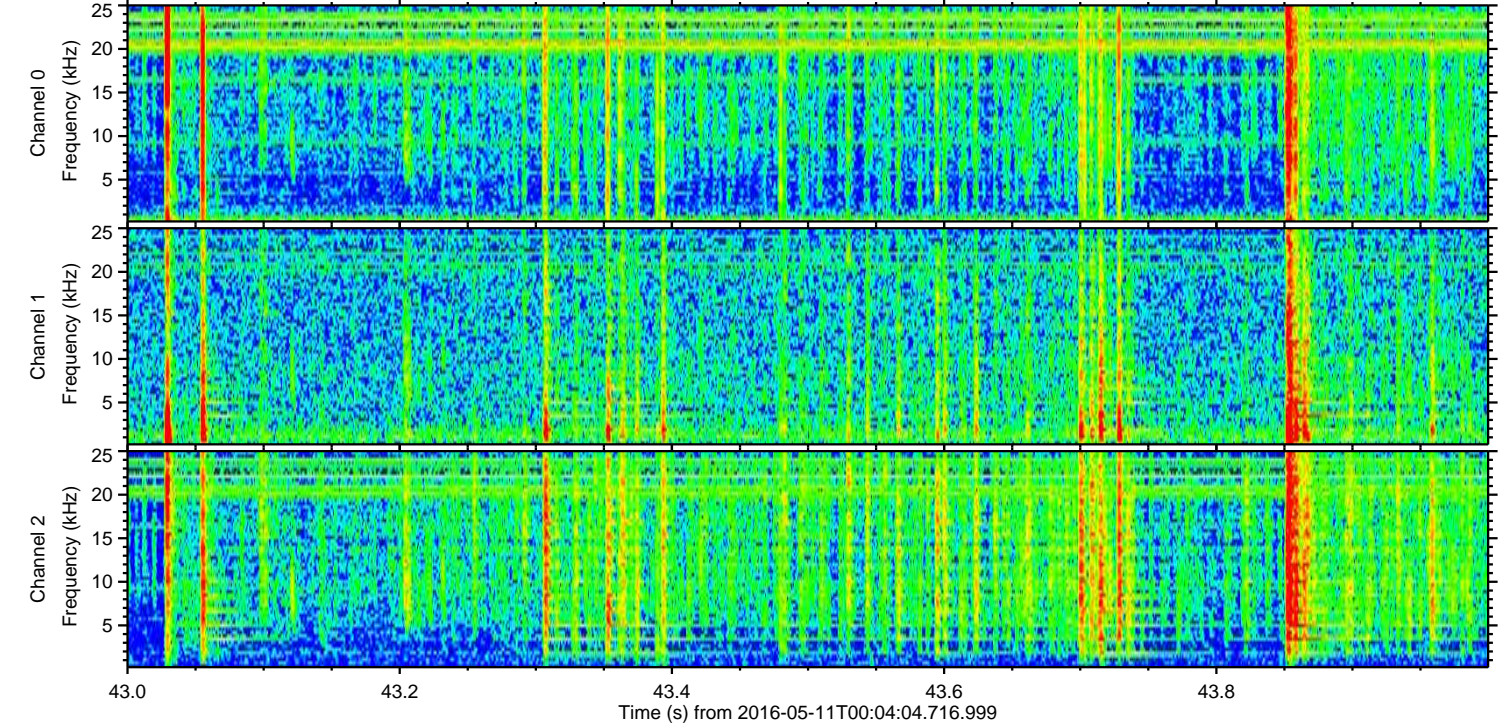
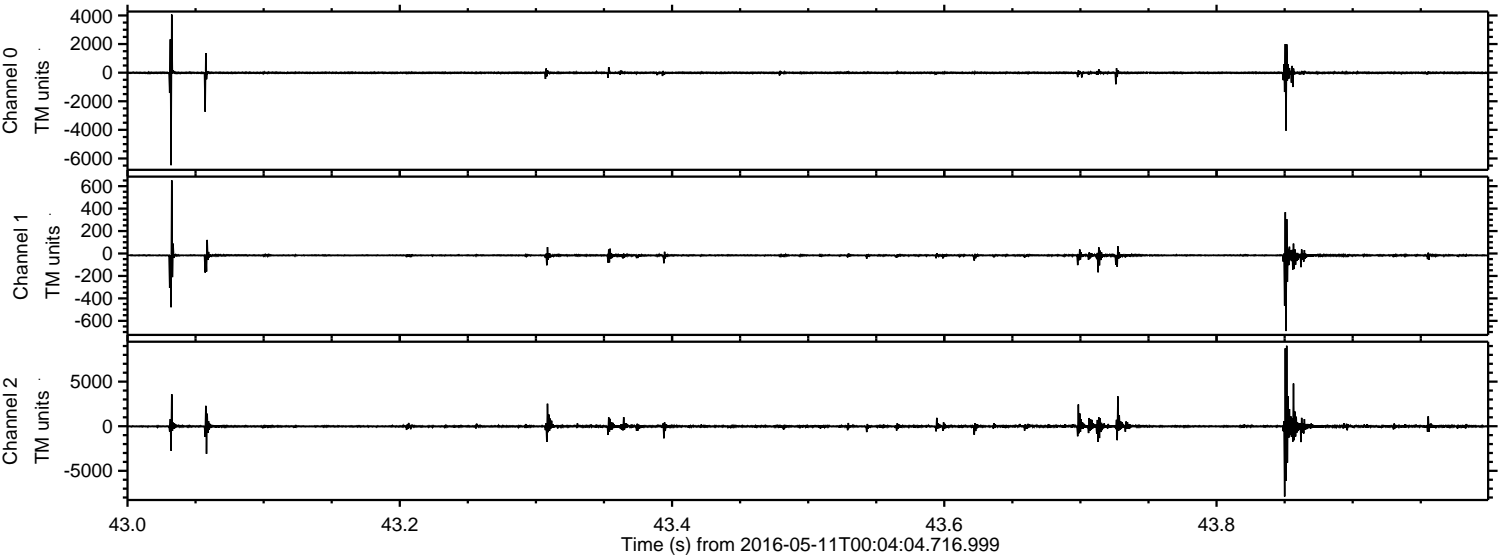


ELMAVAN 3D WAVEFORMS (Measured data sampled at 50 kHz) 51000 packets of 144 samples from 2016-05-11T00:04:04.716.999. Part 137/147

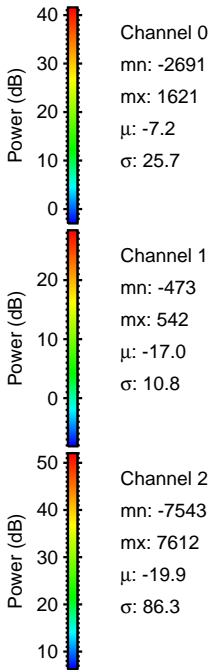
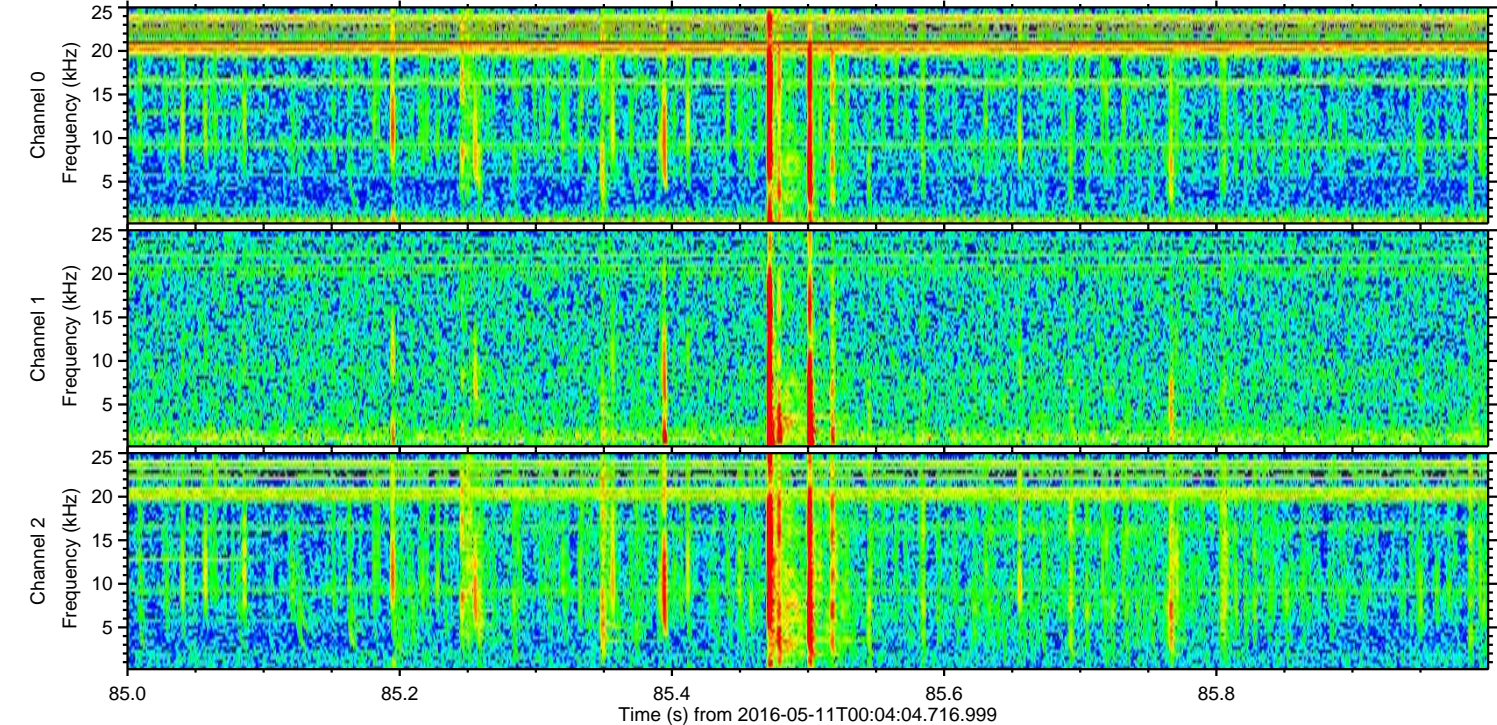
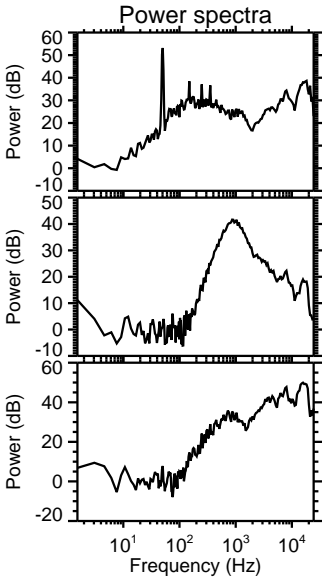
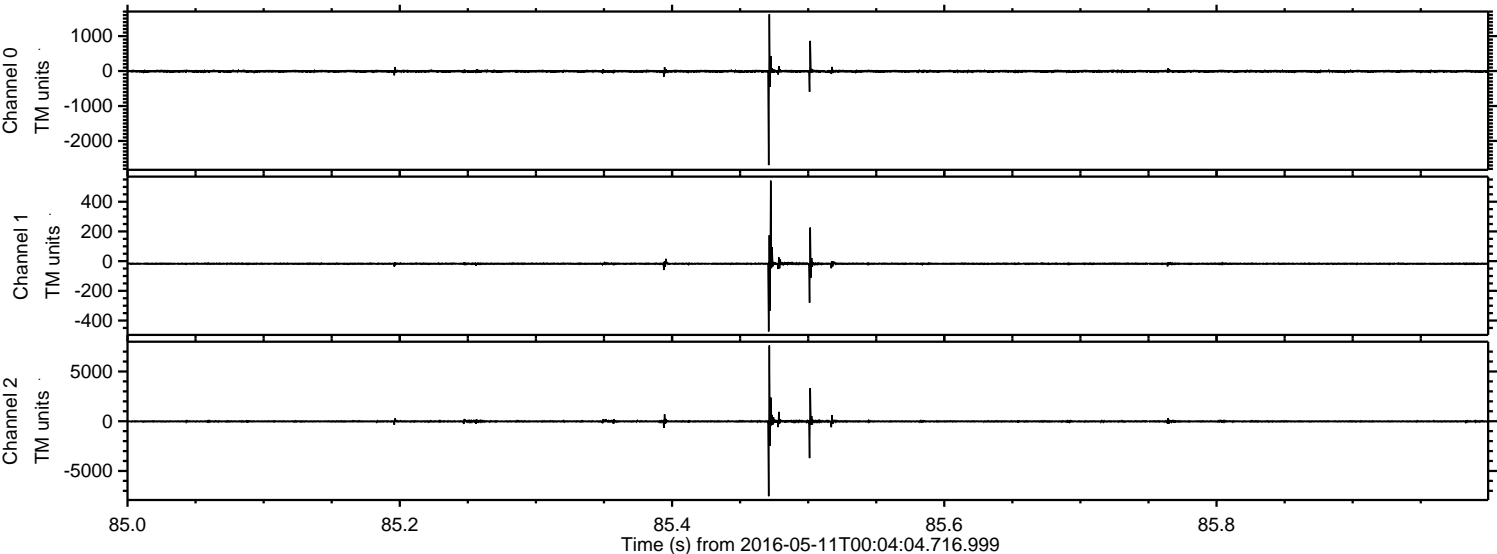
Processed Fri May 13 22:29:04 2016 by ELM ver.2012-10-06 from 001__elm20160511_000403__dat00.bin



Processed Fri May 13 22:29:05 2016 by ELM ver.2012-10-06 from 001__elm20160511_000403__dat00.bin

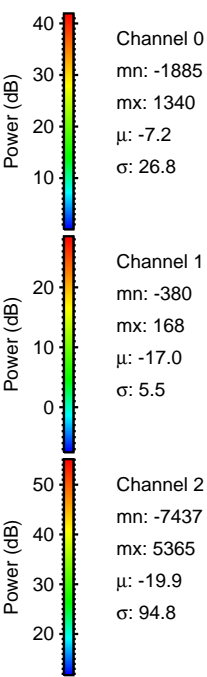
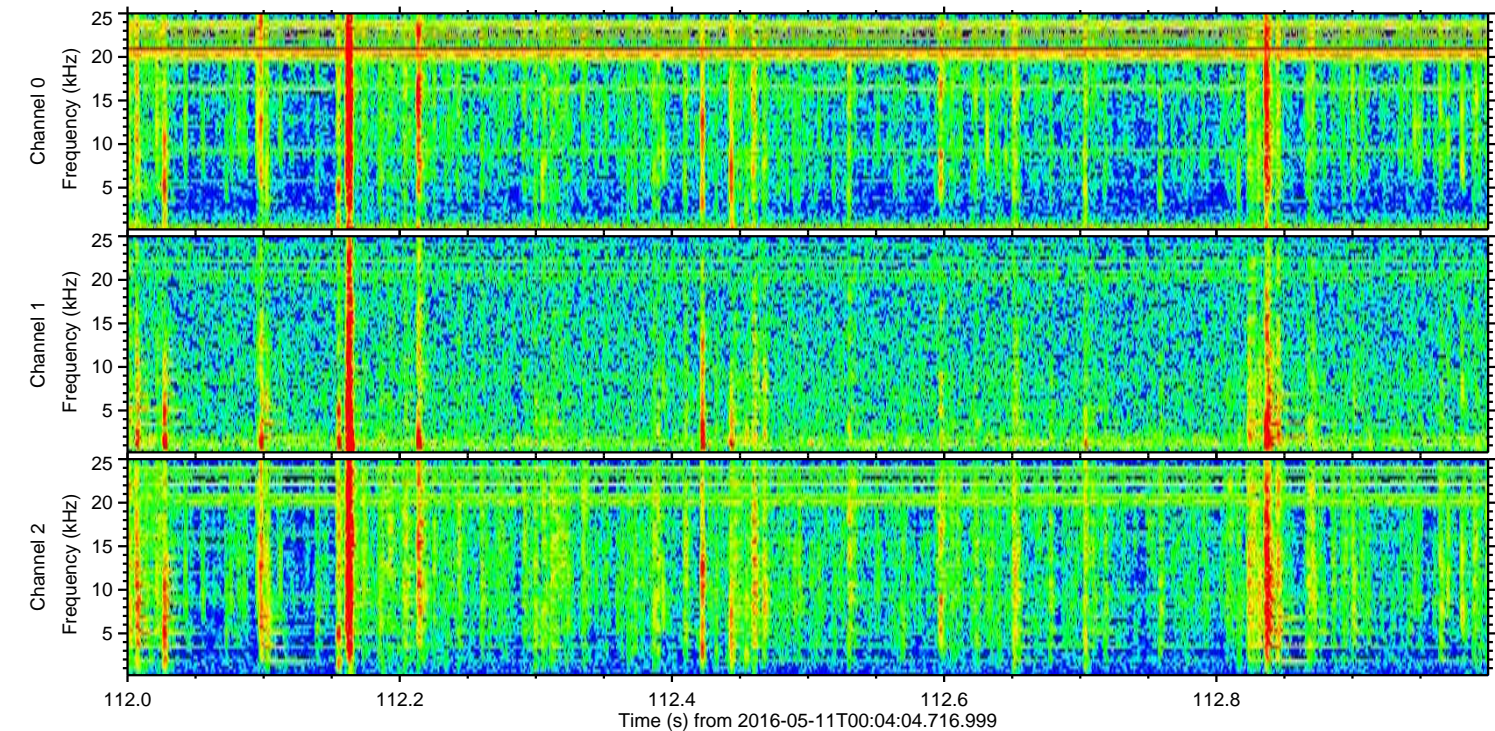
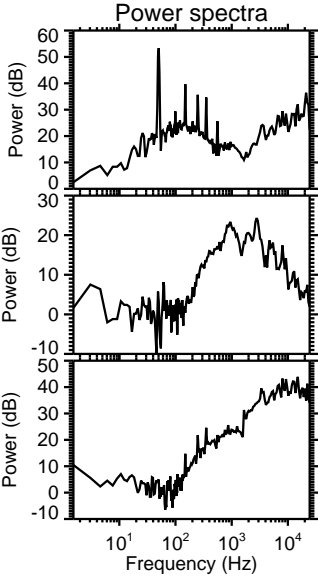
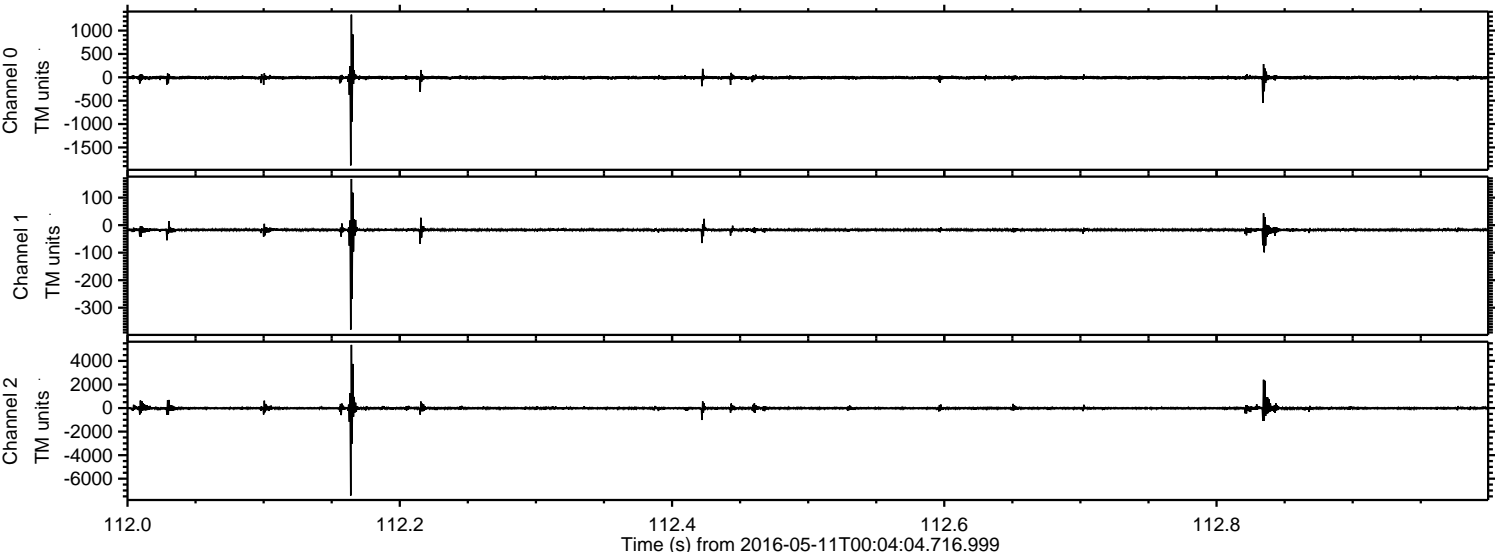


Processed Fri May 13 22:29:06 2016 by ELM ver.2012-10-06 from 001__elm20160511_000403__dat00.bin



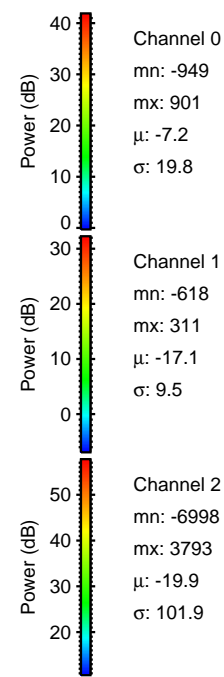
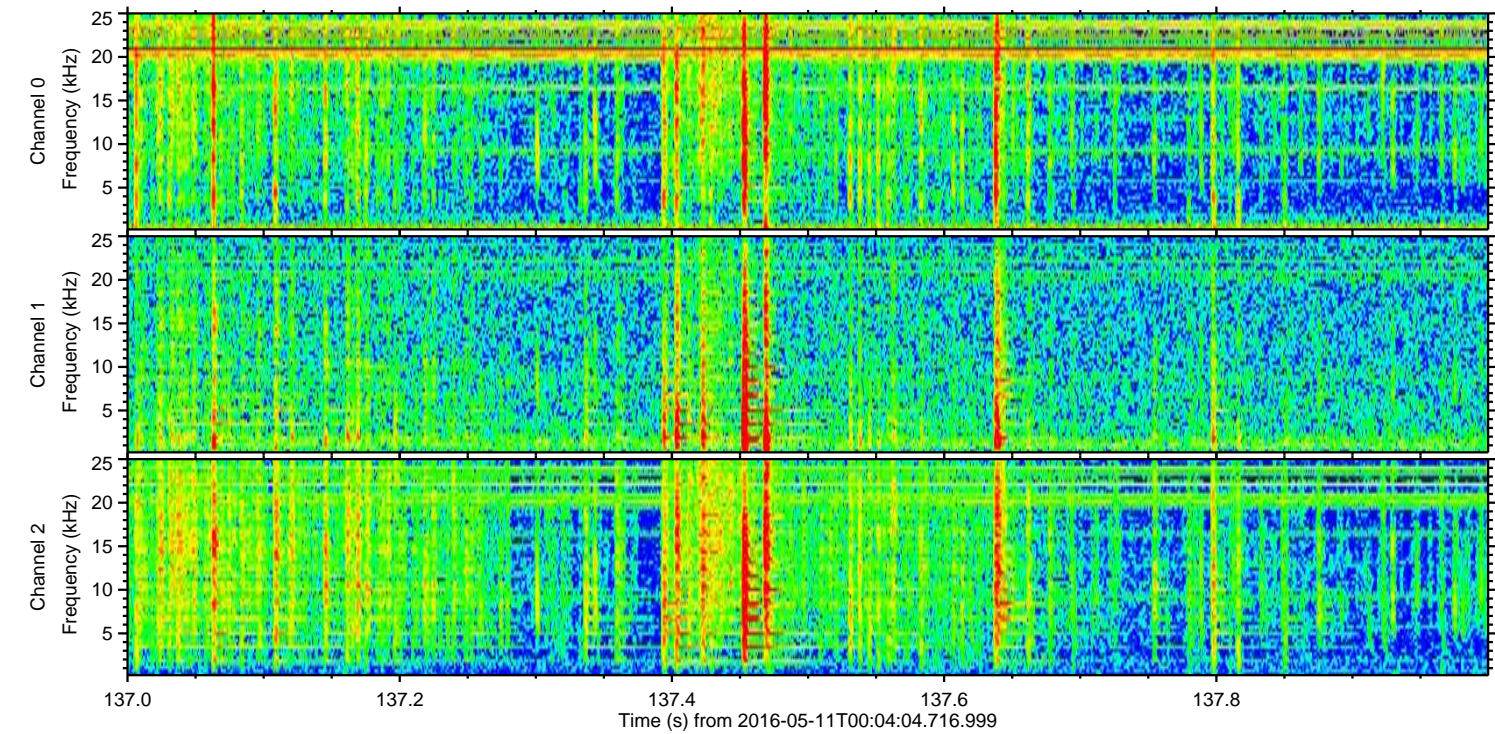
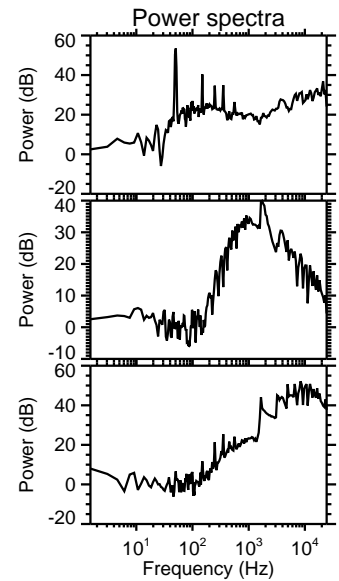
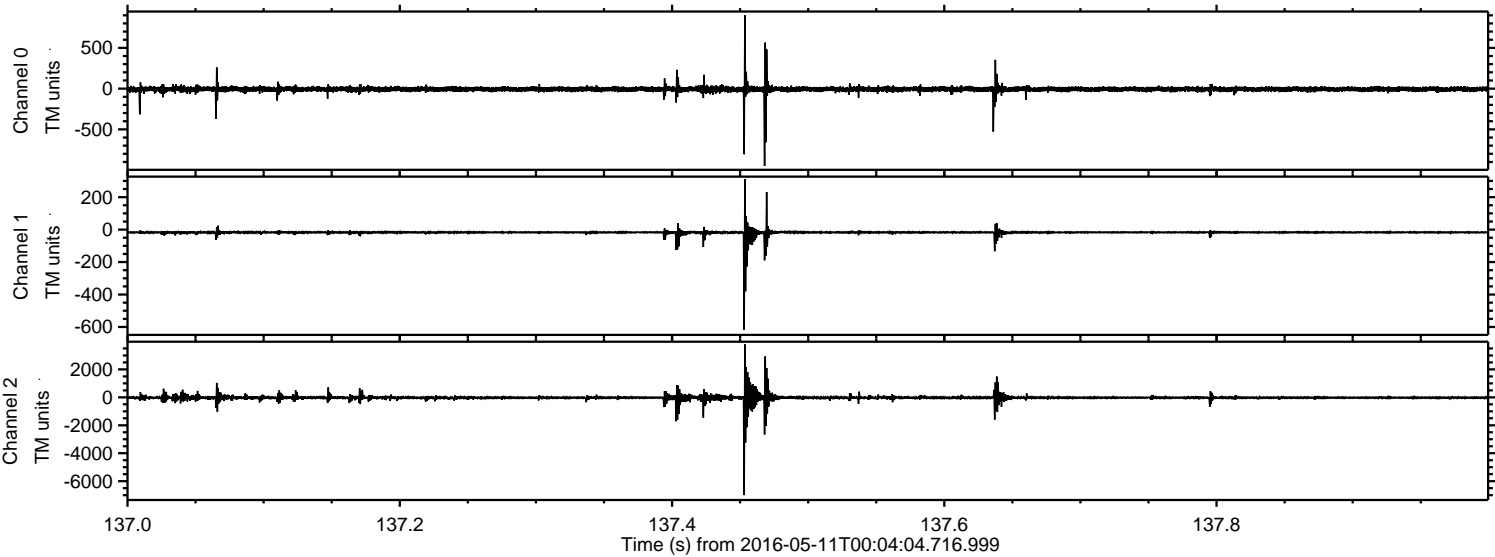
ELMAVAN 3D WAVEFORMS (Measured data sampled at 50 kHz) 51000 packets of 144 samples from 2016-05-11T00:04:04.716.999. Part 113/147

Processed Fri May 13 22:29:07 2016 by ELM ver.2012-10-06 from 001__elm20160511_000403__dat00.bin



ELMAVAN 3D WAVEFORMS (Measured data sampled at 50 kHz) 51000 packets of 144 samples from 2016-05-11T00:04:04.716.999. Part 138/147

Processed Fri May 13 22:29:08 2016 by ELM ver.2012-10-06 from 001__elm20160511_000403__dat00.bin

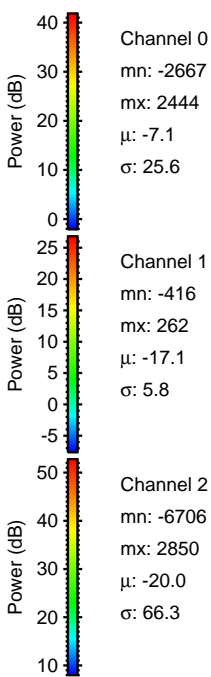
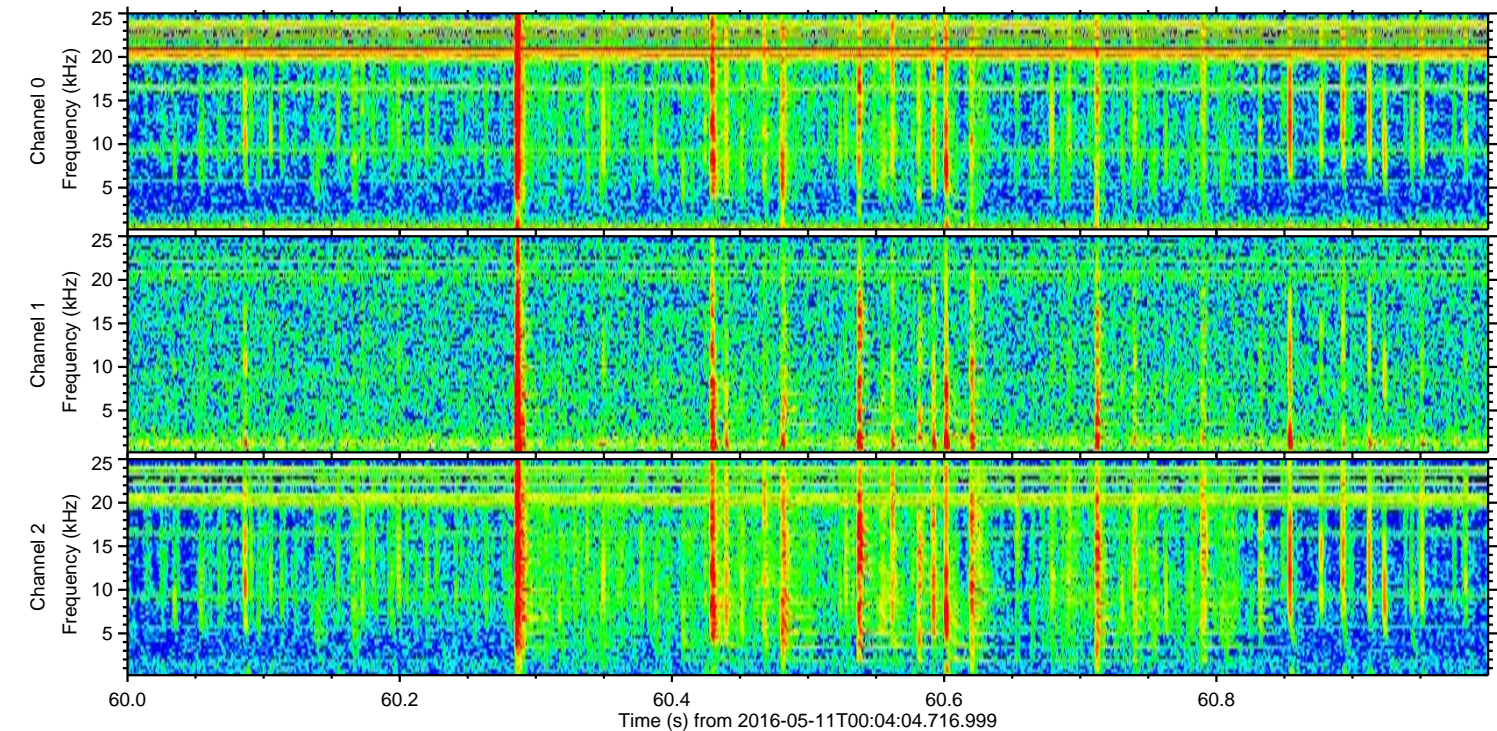
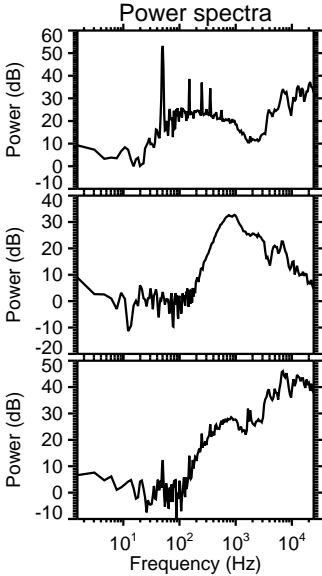
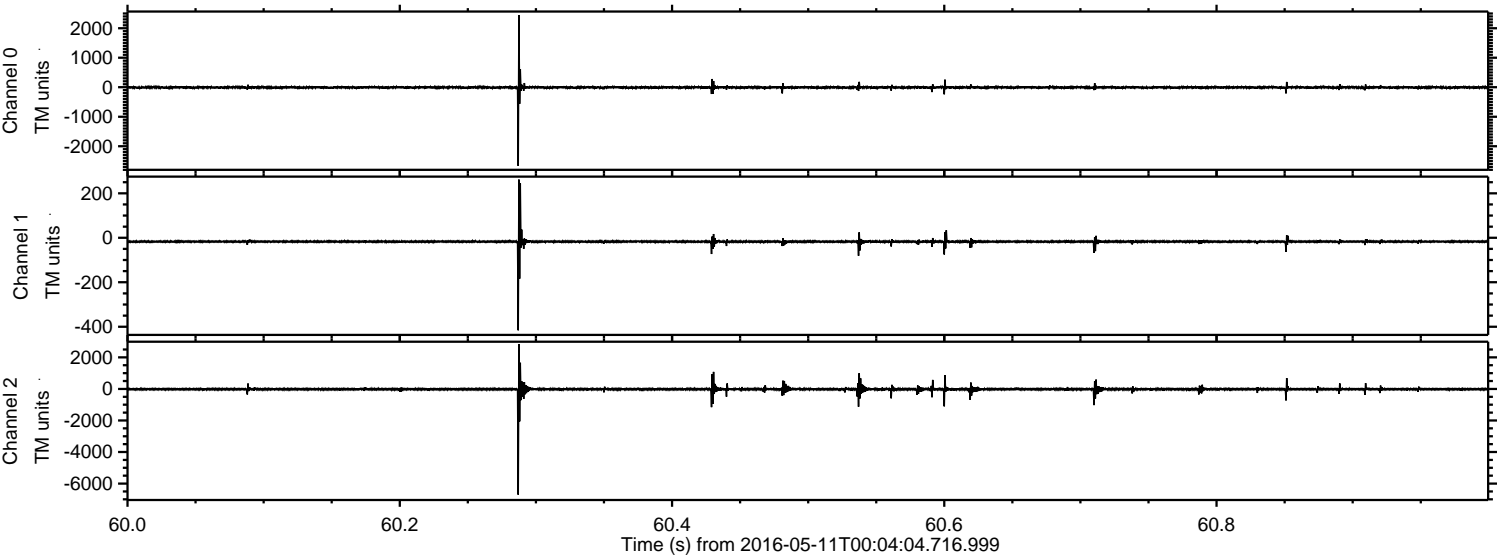


Channel 0
mn: -949
mx: 901
 μ : -7.2
 σ : 19.8

Channel 1
mn: -618
mx: 311
 μ : -17.1
 σ : 9.5

Channel 2
mn: -6998
mx: 3793
 μ : -19.9
 σ : 101.9

Processed Fri May 13 22:29:09 2016 by ELM ver.2012-10-06 from 001__elm20160511_000403__dat00.bin



Processed Fri May 13 22:29:10 2016 by ELM ver.2012-10-06 from 001__elm20160511_000403__dat00.bin

