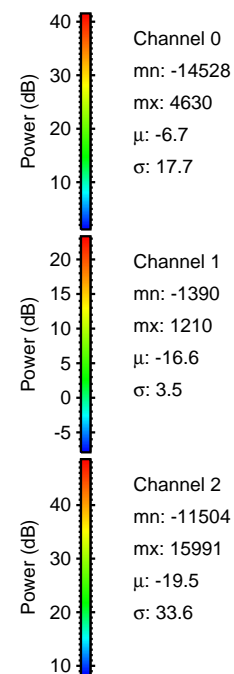
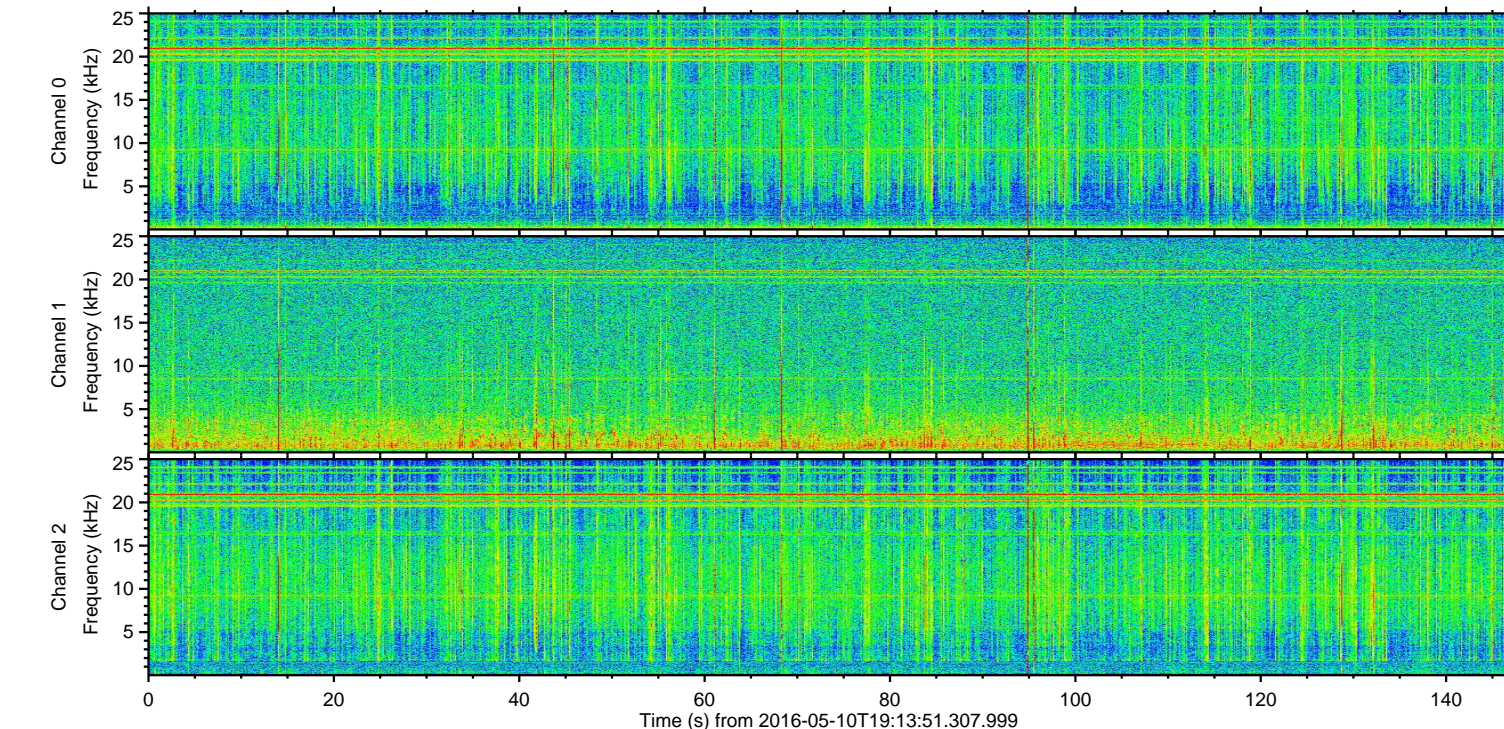
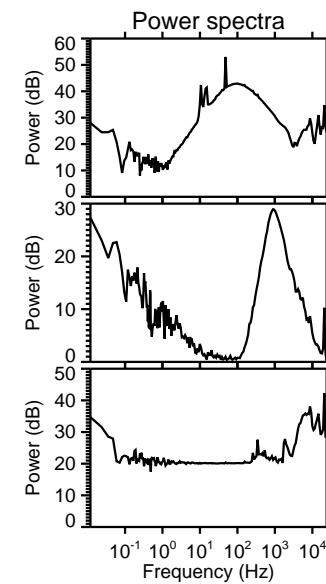
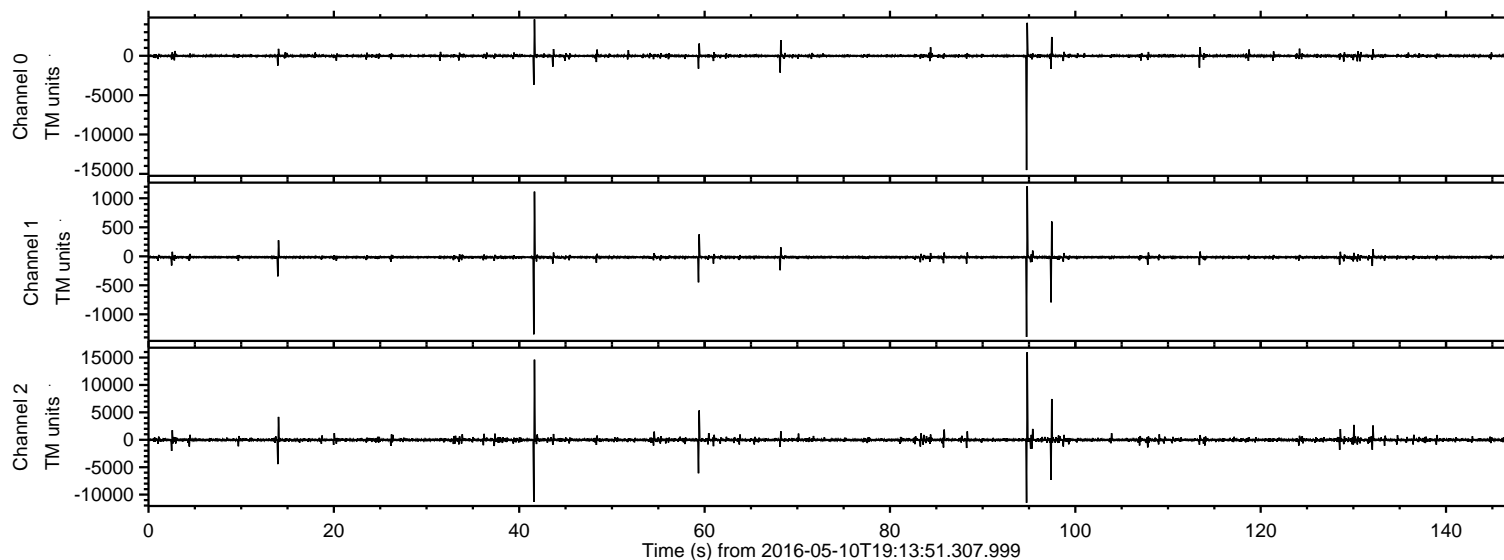
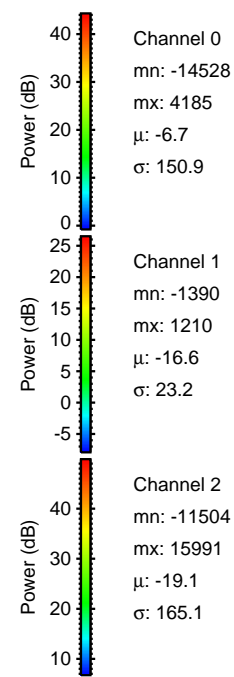
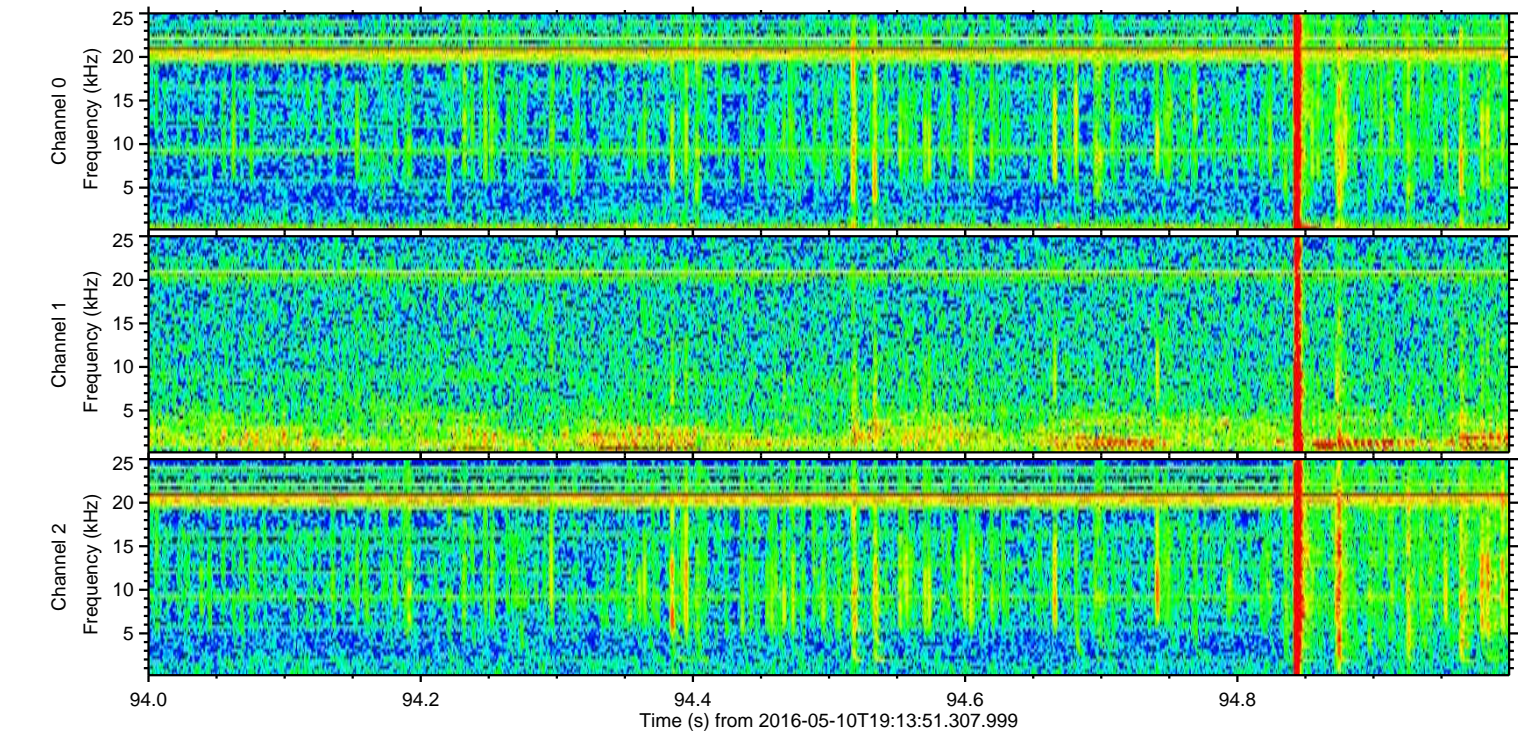
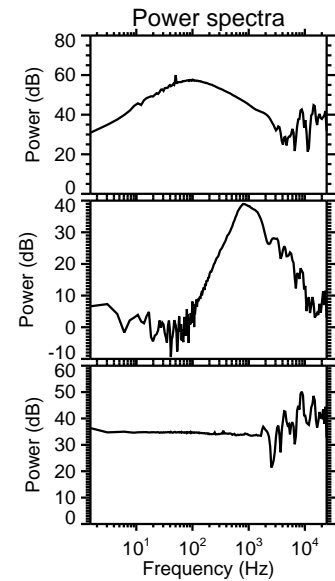
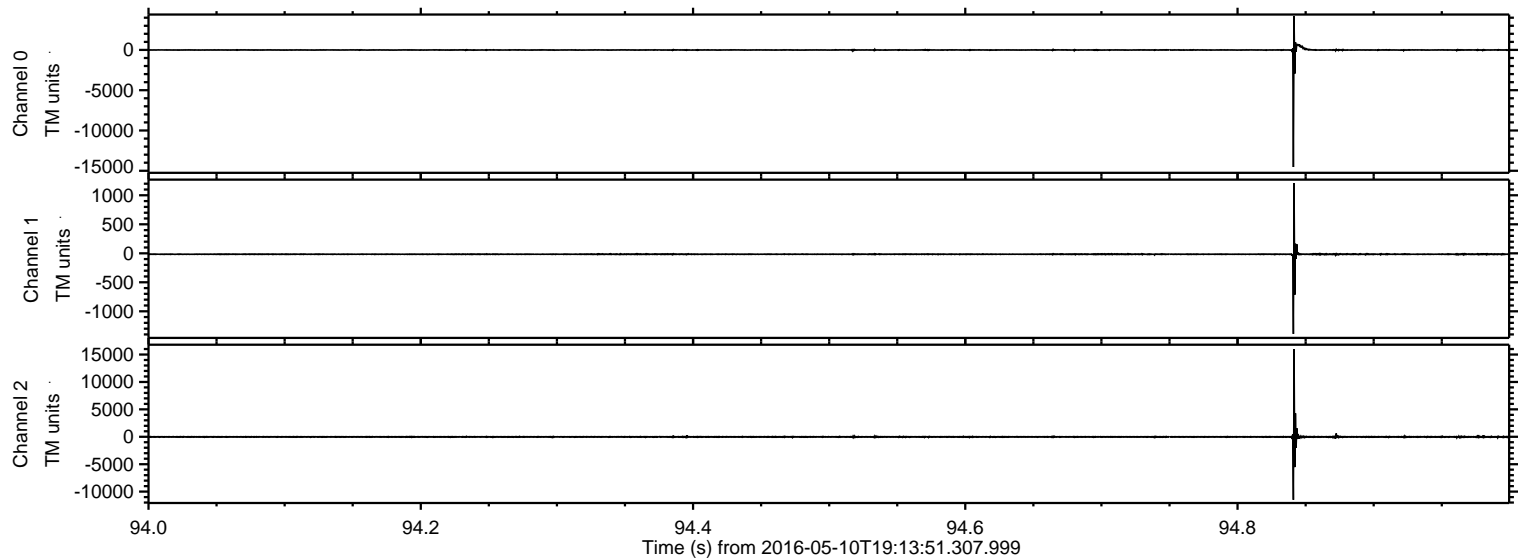


ELMAVAN 3D WAVEFORMS (Measured data sampled at 50 kHz) 51000 packets of 144 samples from 2016-05-10T19:13:51.307.999.

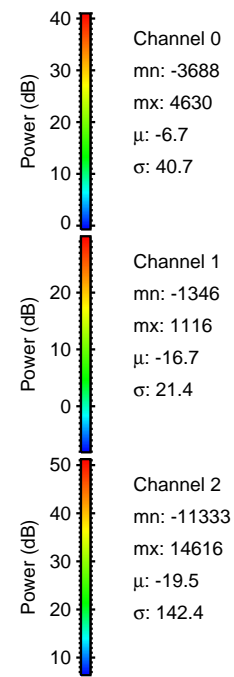
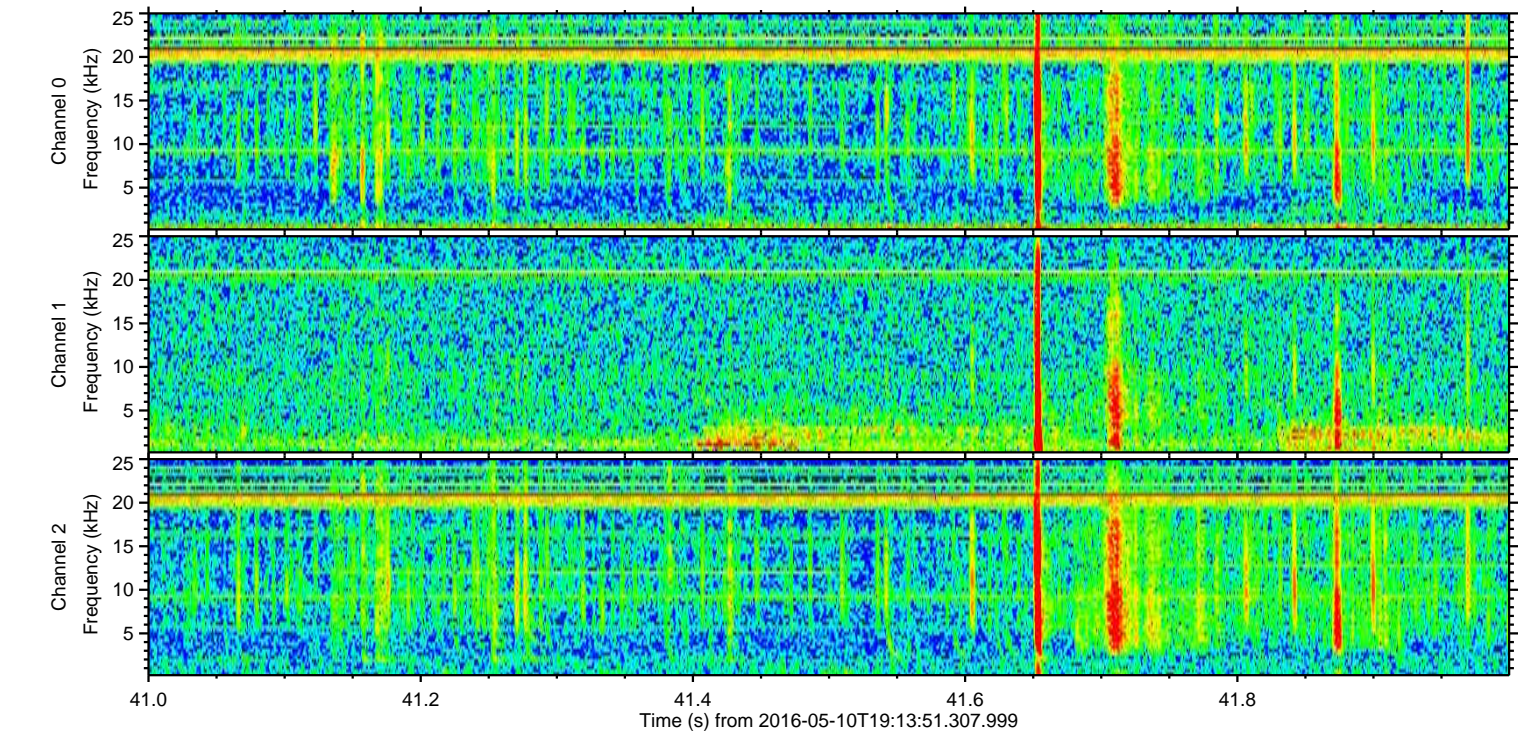
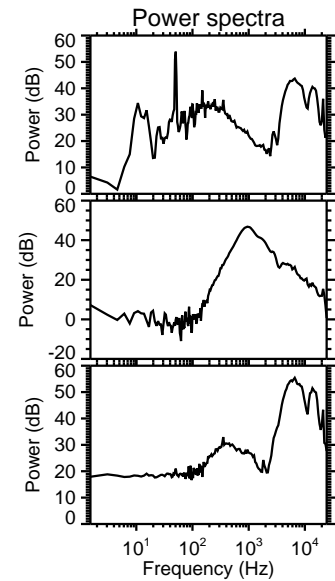
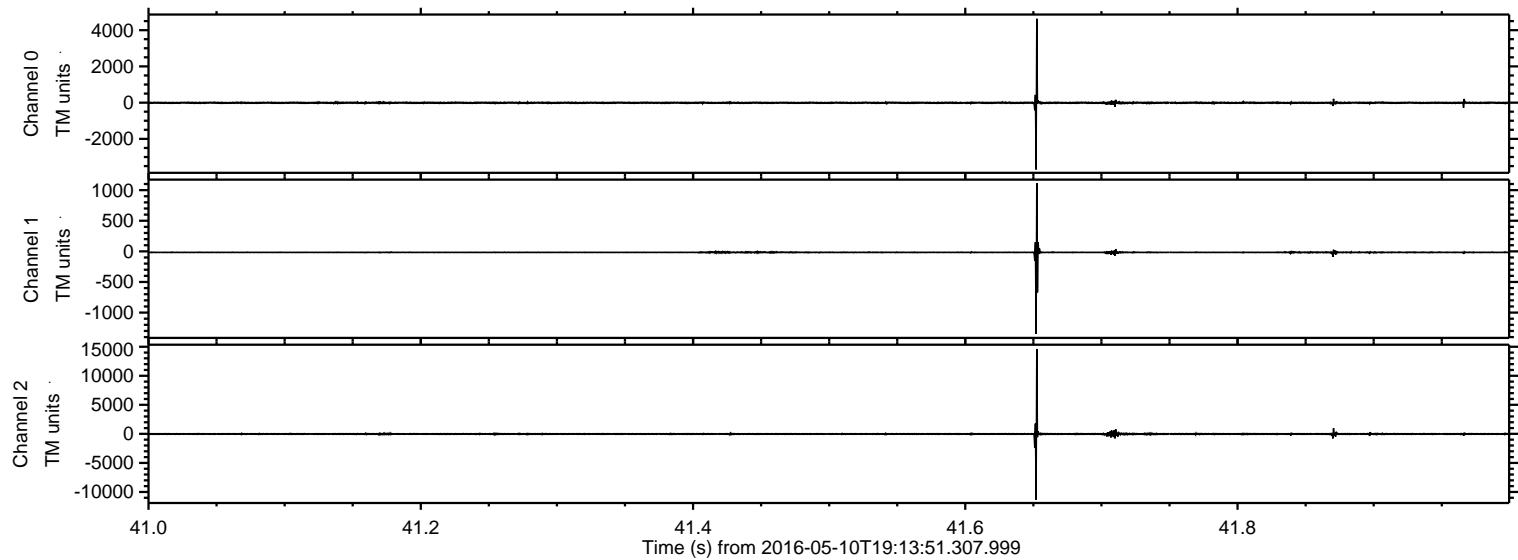
Processed Fri May 13 21:20:14 2016 by ELM ver.2012-10-06 from 001__elm20160510_191350__dat00.bin



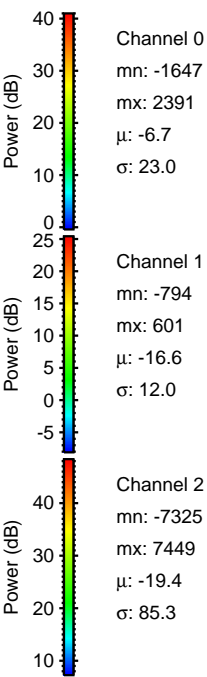
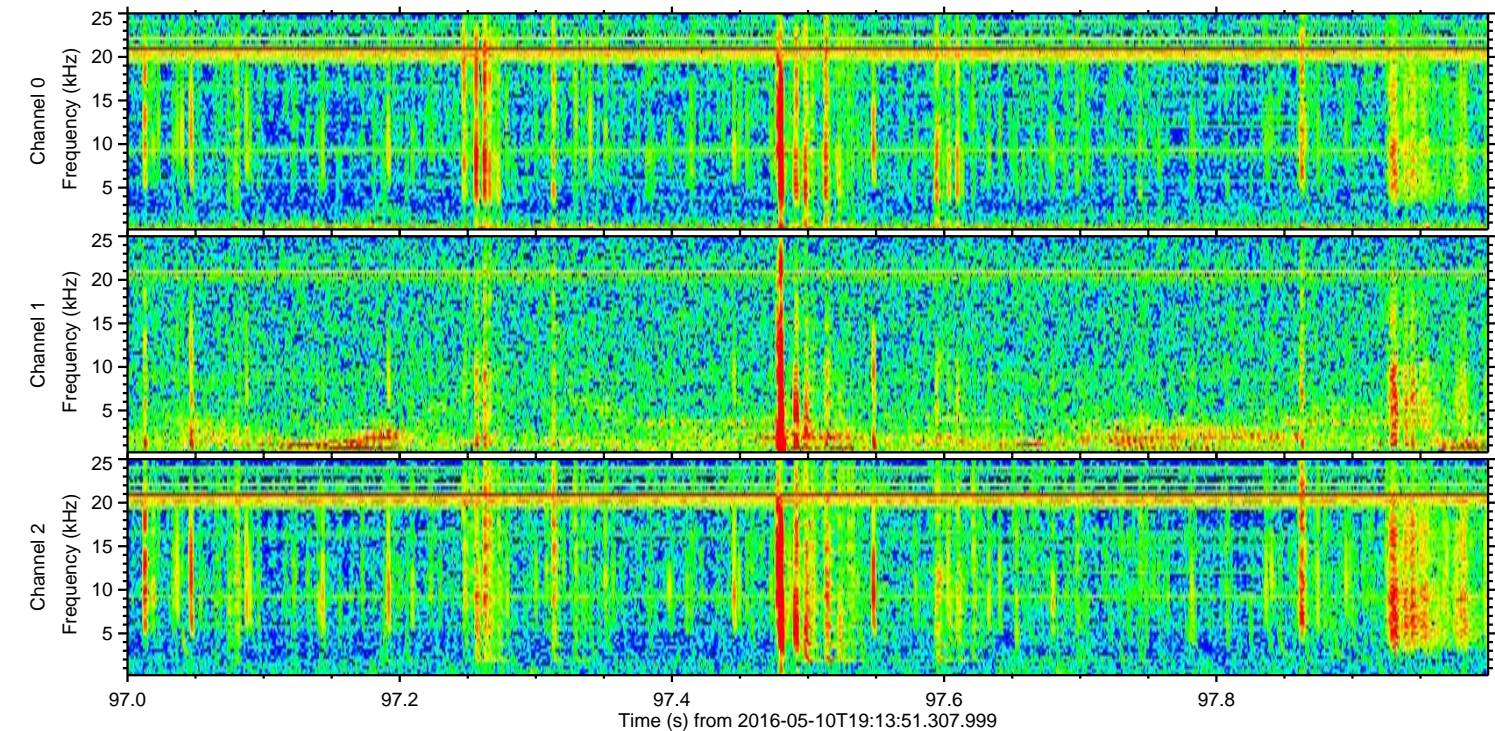
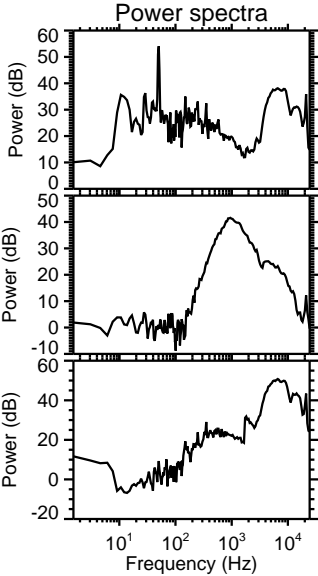
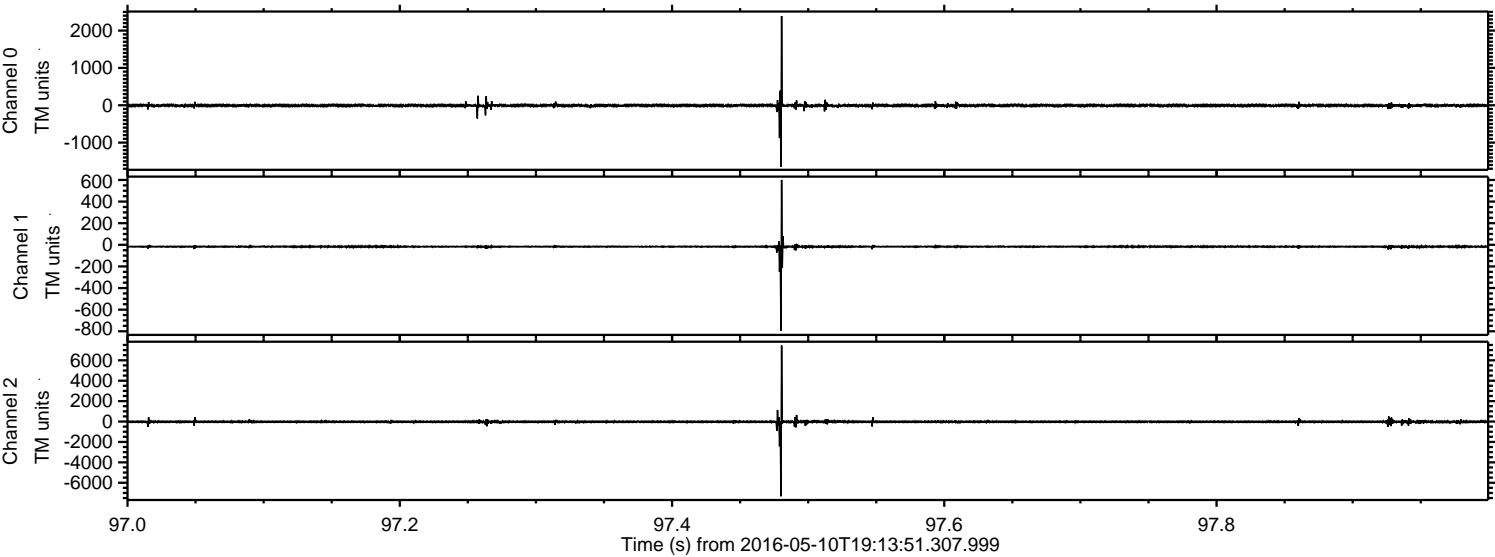
Processed Fri May 13 21:20:27 2016 by ELM ver.2012-10-06 from 001__elm20160510_191350__dat00.bin



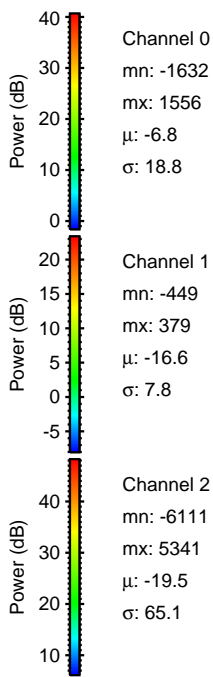
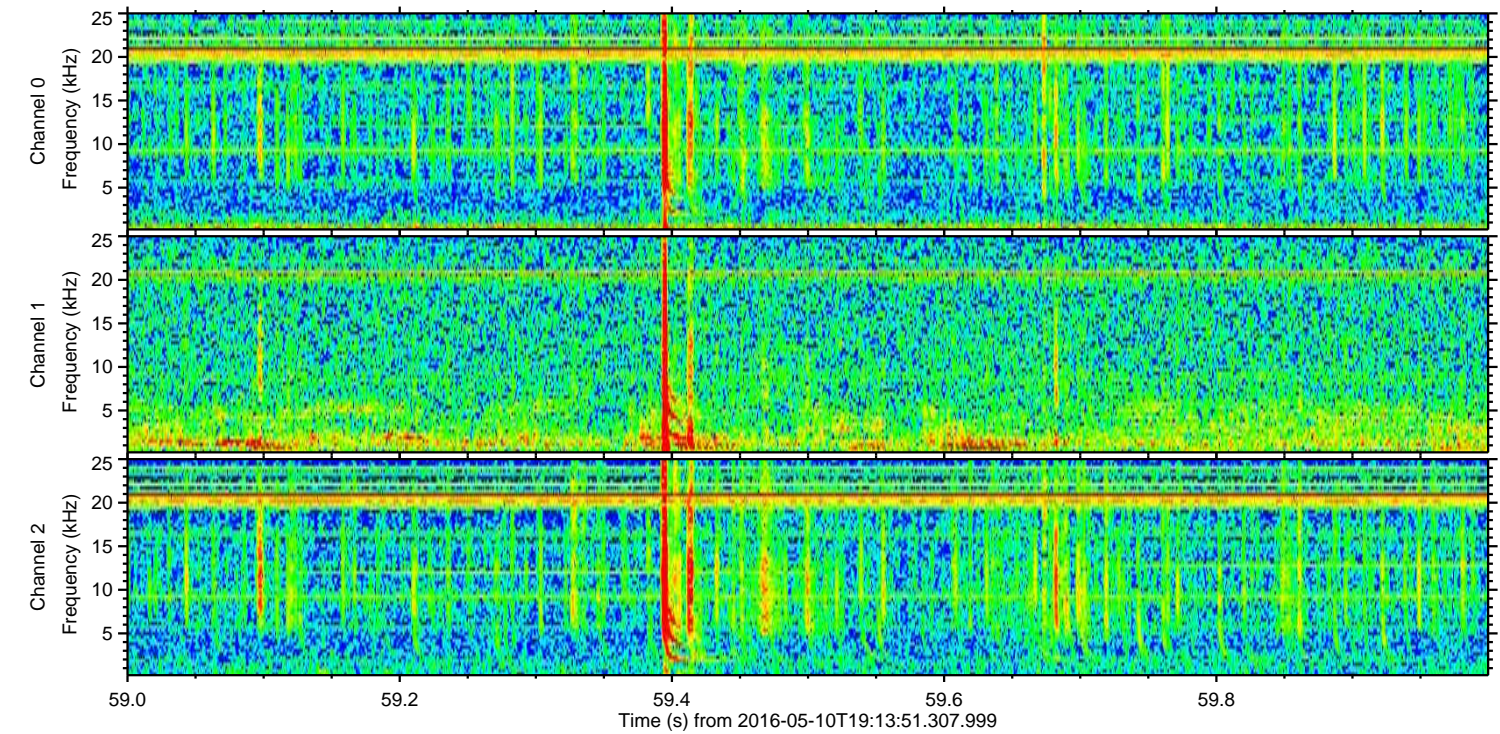
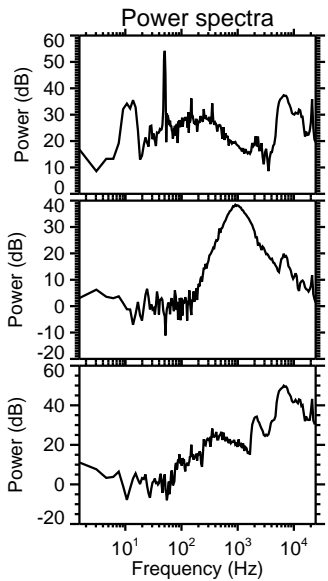
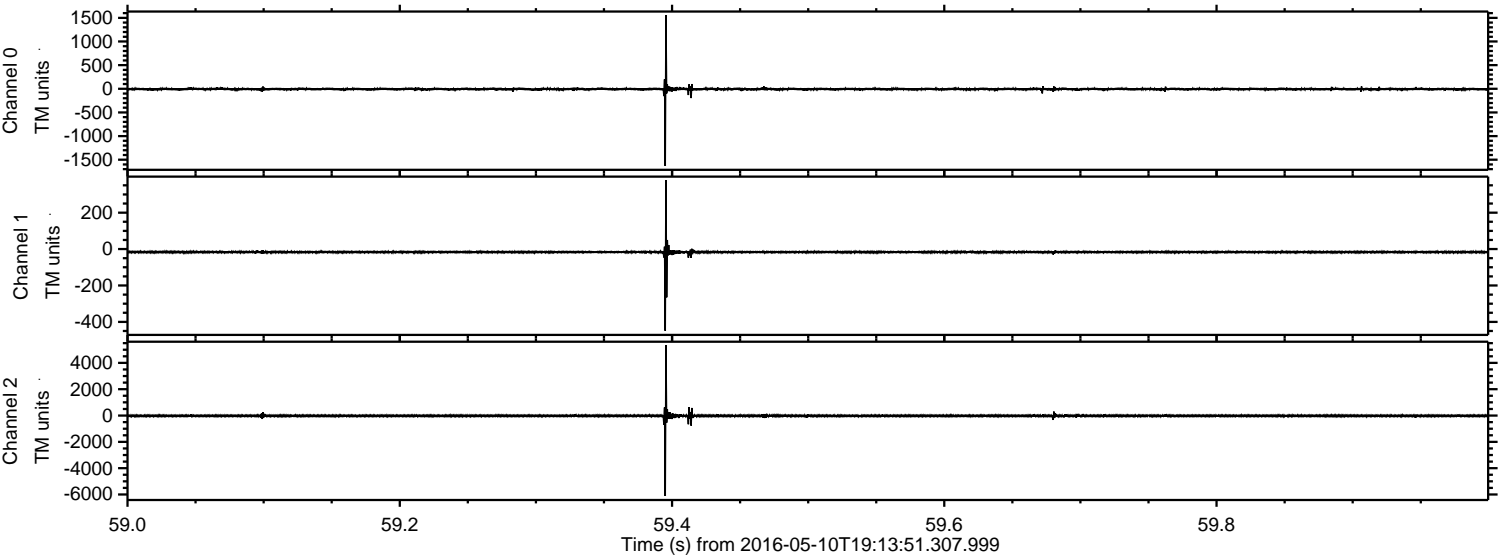
Processed Fri May 13 21:20:28 2016 by ELM ver.2012-10-06 from 001__elm20160510_191350__dat00.bin



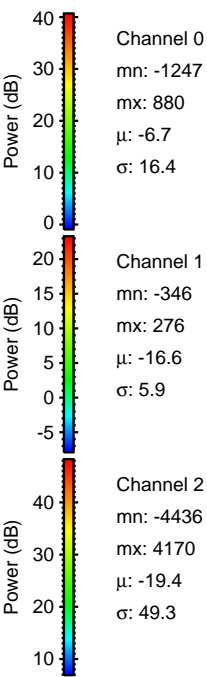
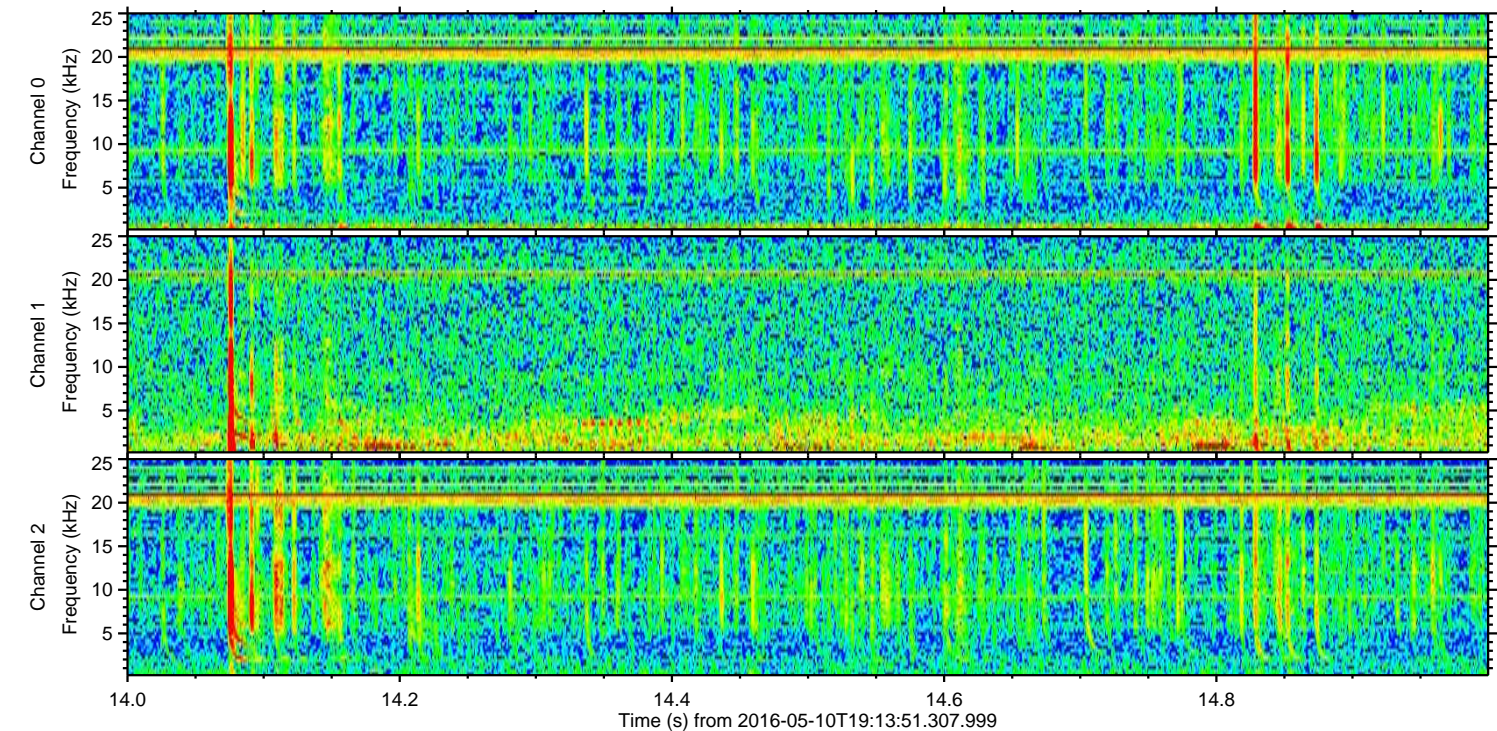
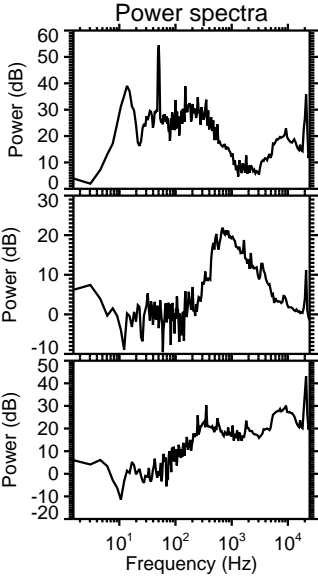
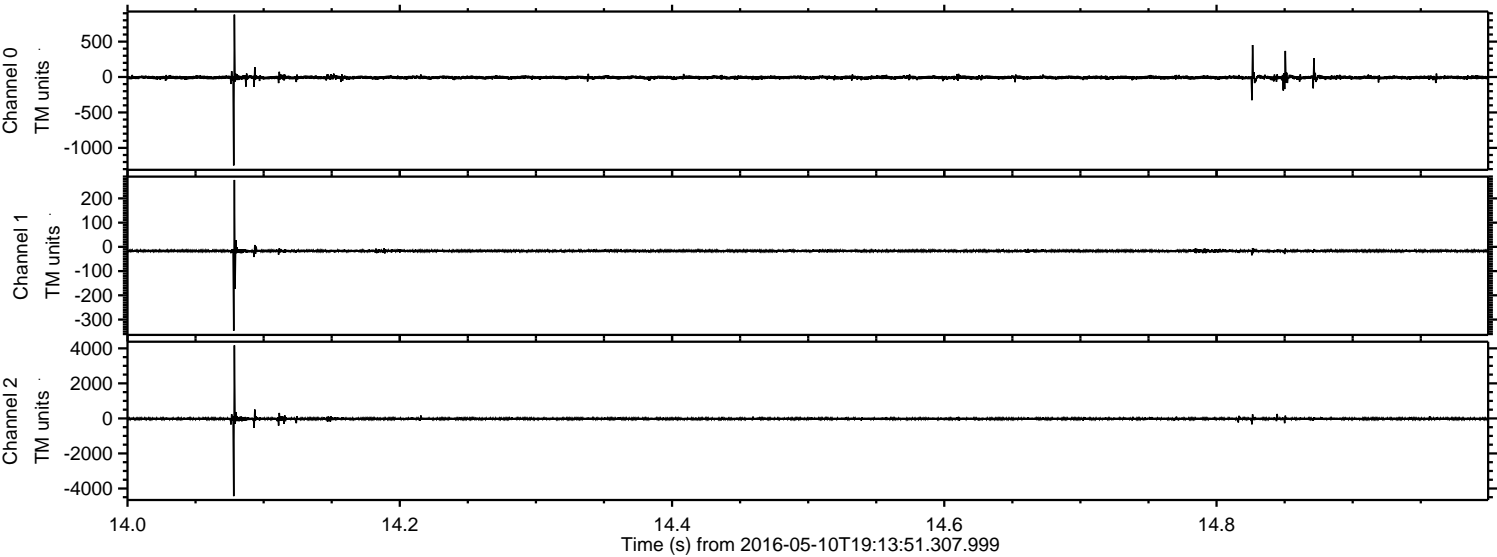
Processed Fri May 13 21:20:29 2016 by ELM ver.2012-10-06 from 001__elm20160510_191350__dat00.bin

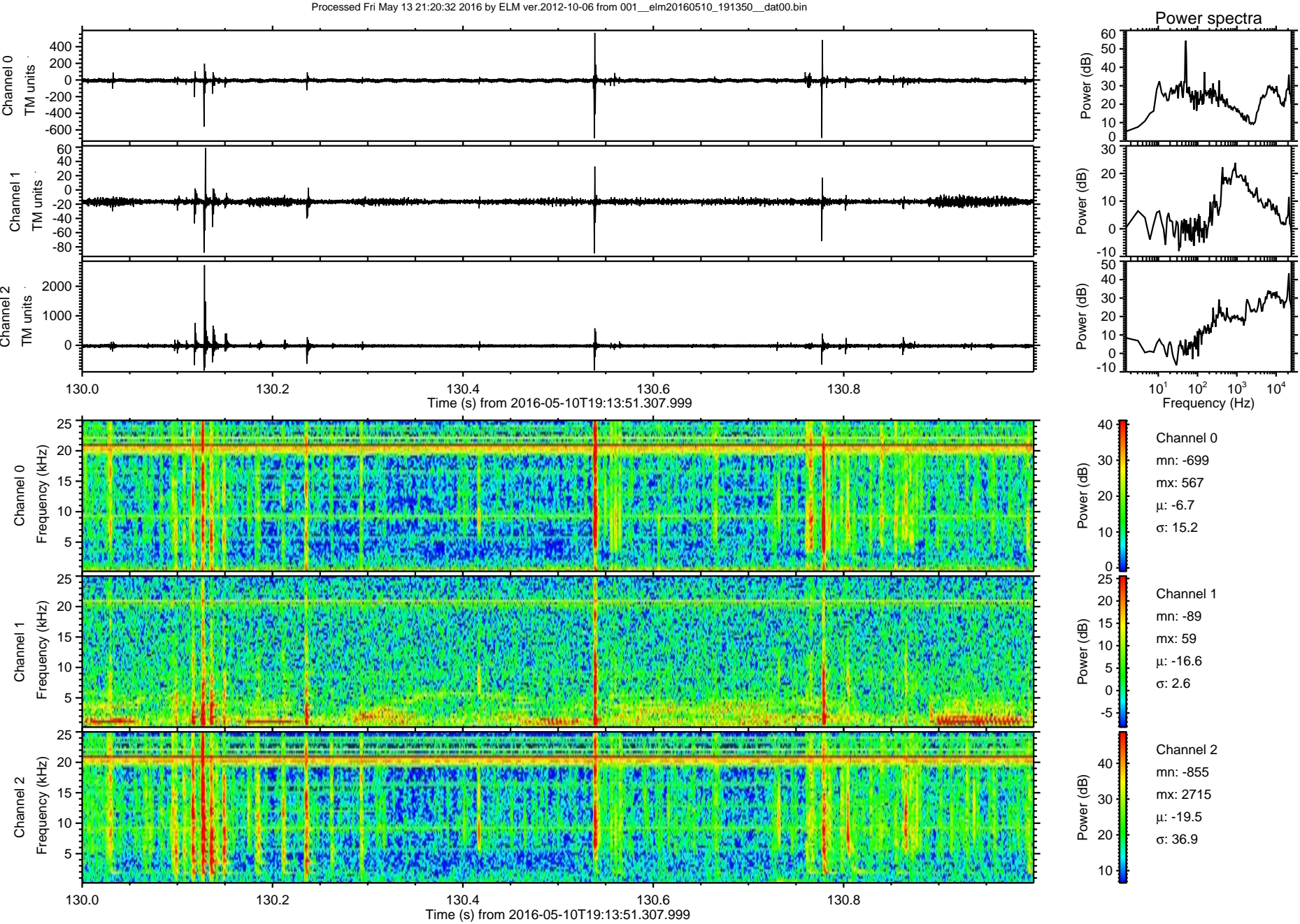


Processed Fri May 13 21:20:30 2016 by ELM ver.2012-10-06 from 001__elm20160510_191350__dat00.bin



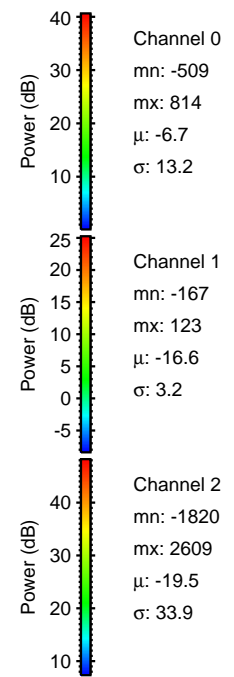
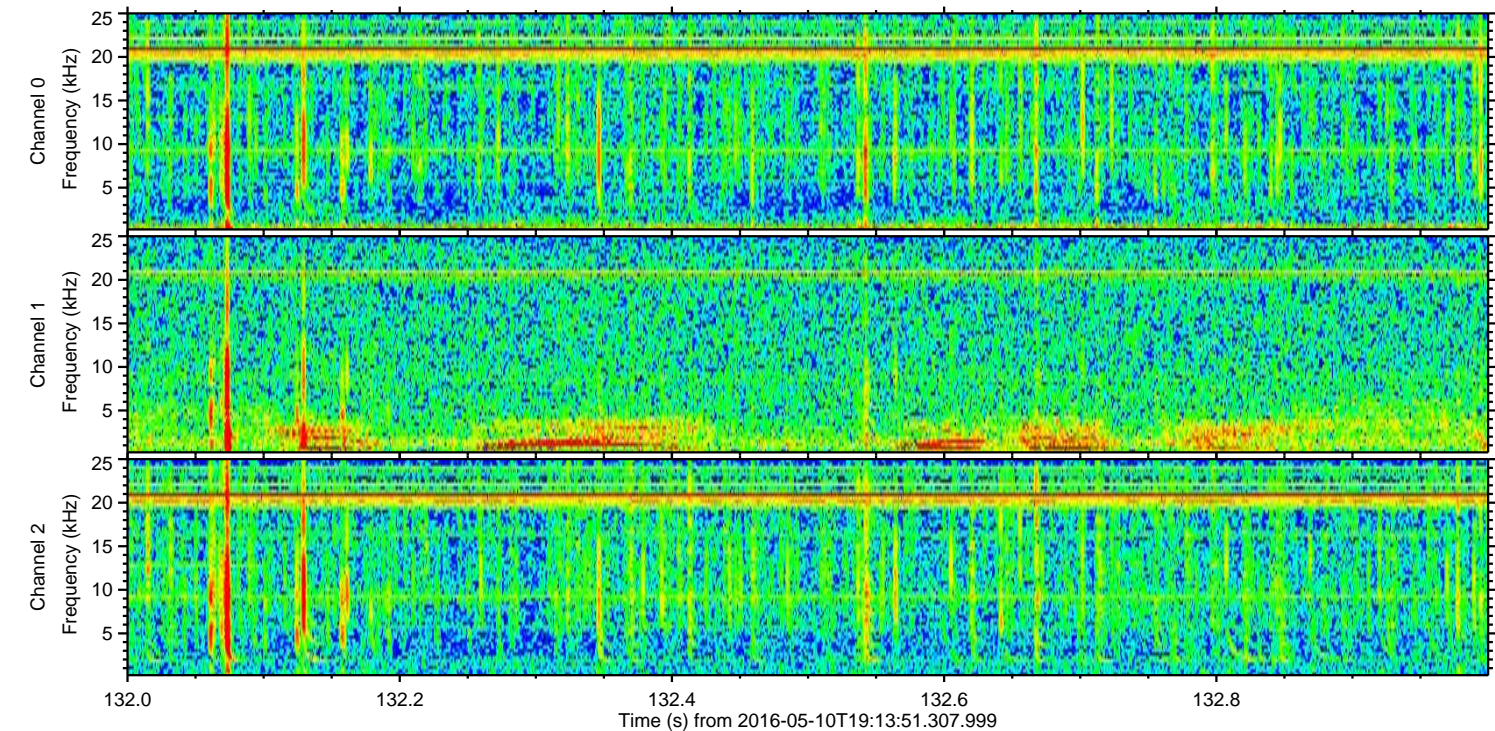
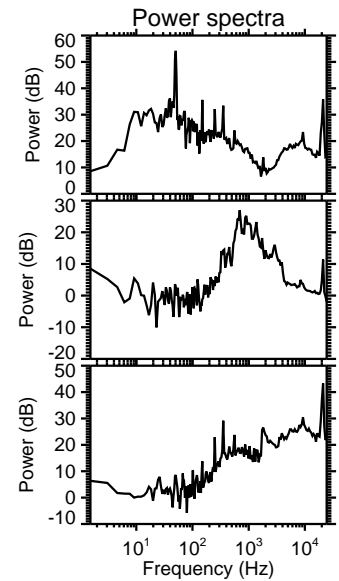
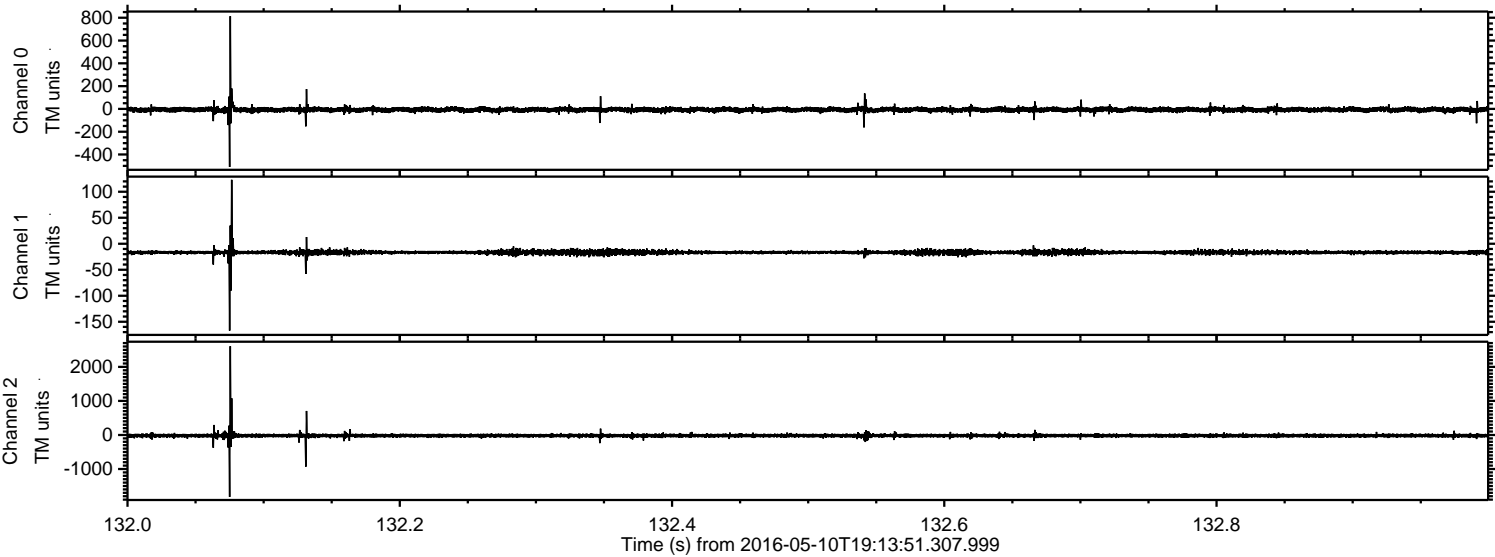
Processed Fri May 13 21:20:31 2016 by ELM ver.2012-10-06 from 001__elm20160510_191350__dat00.bin



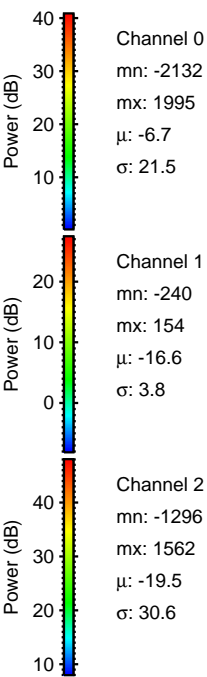
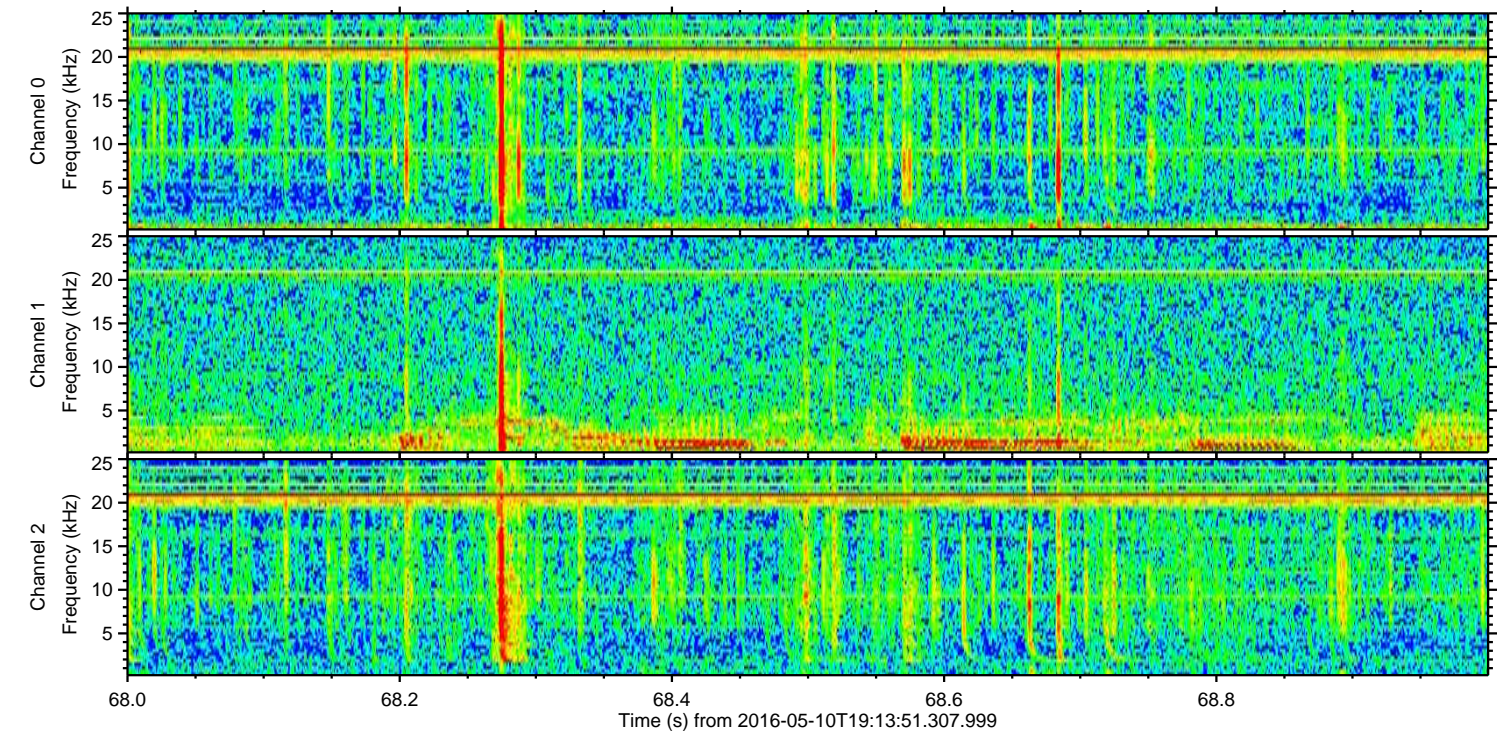
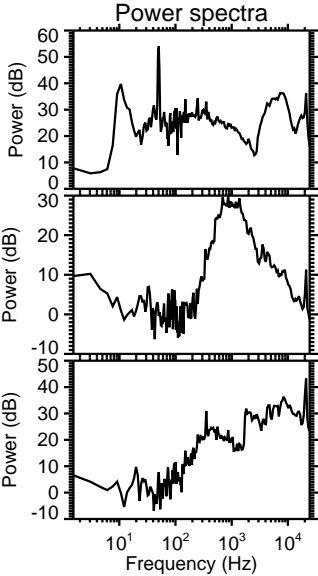
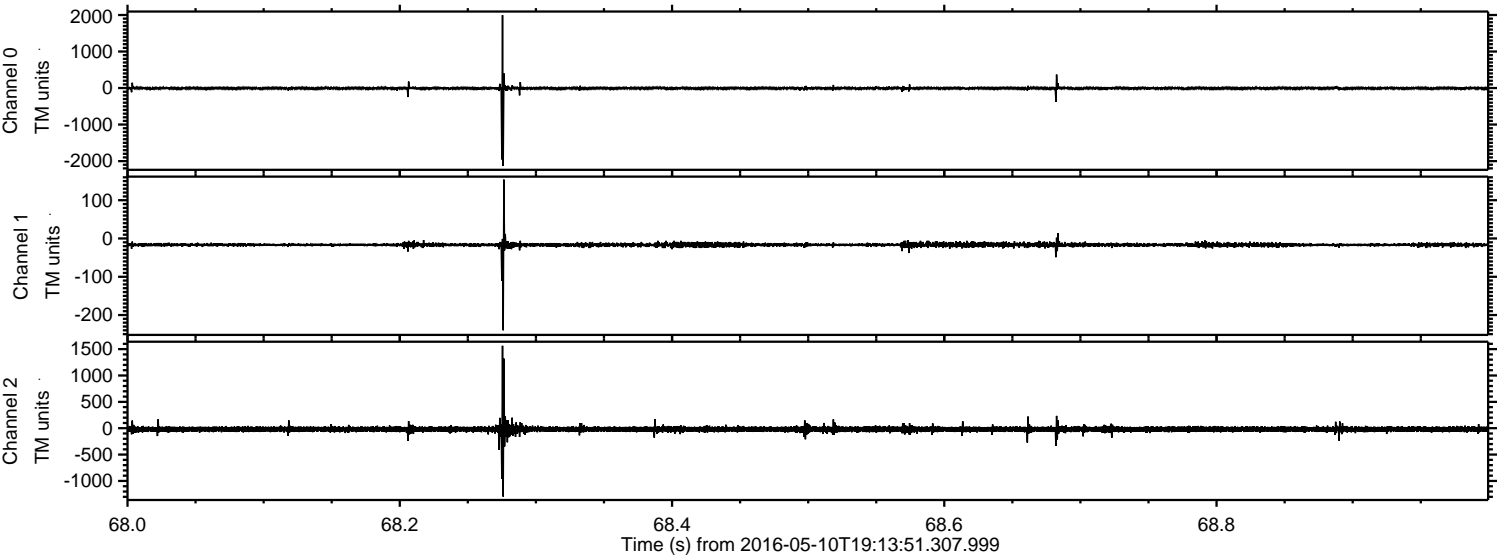


ELMAVAN 3D WAVEFORMS (Measured data sampled at 50 kHz) 51000 packets of 144 samples from 2016-05-10T19:13:51.307.999. Part 133/147

Processed Fri May 13 21:20:33 2016 by ELM ver.2012-10-06 from 001__elm20160510_191350__dat00.bin

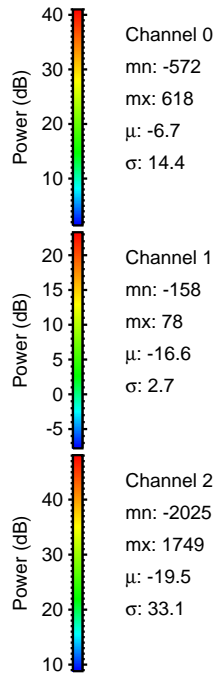
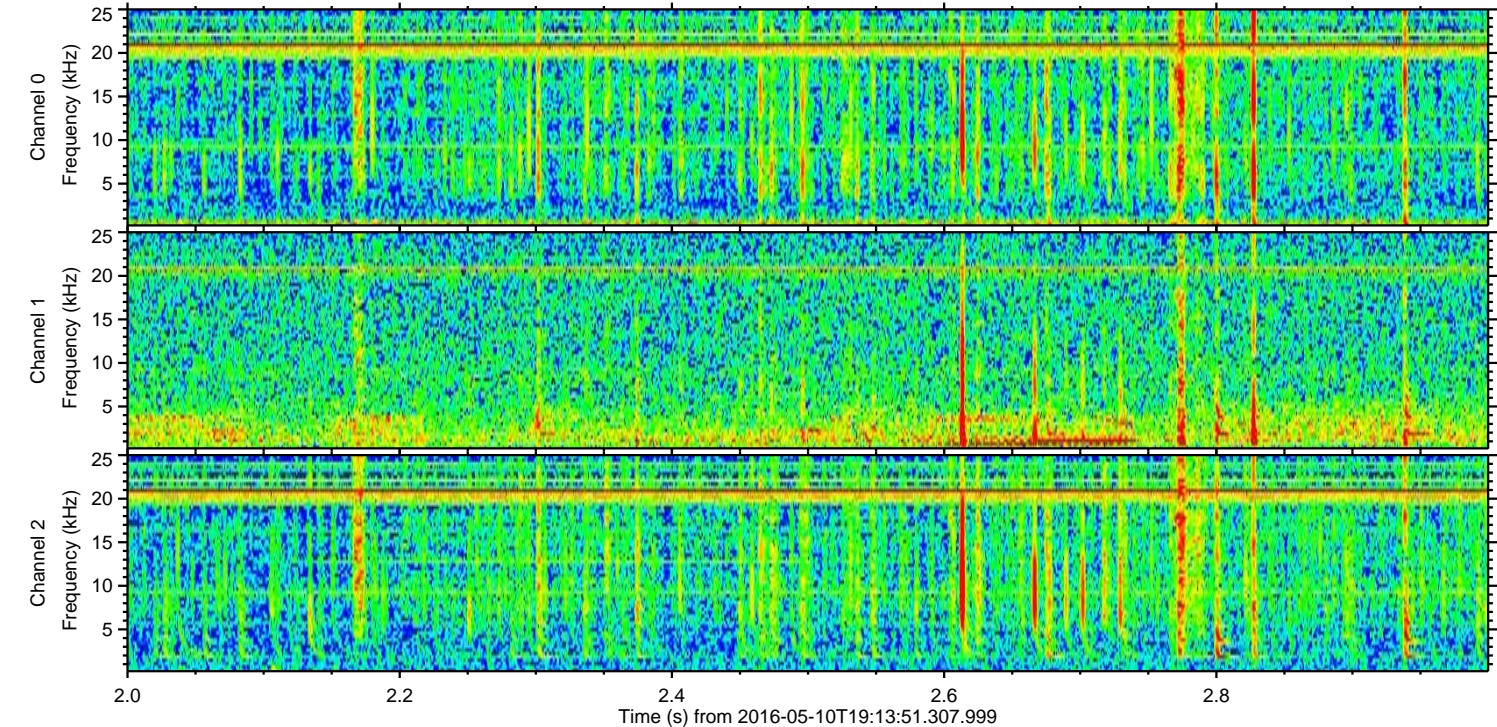
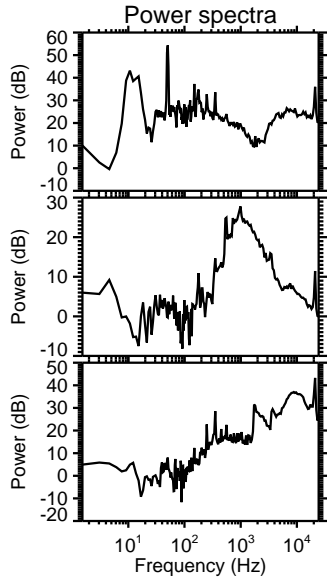
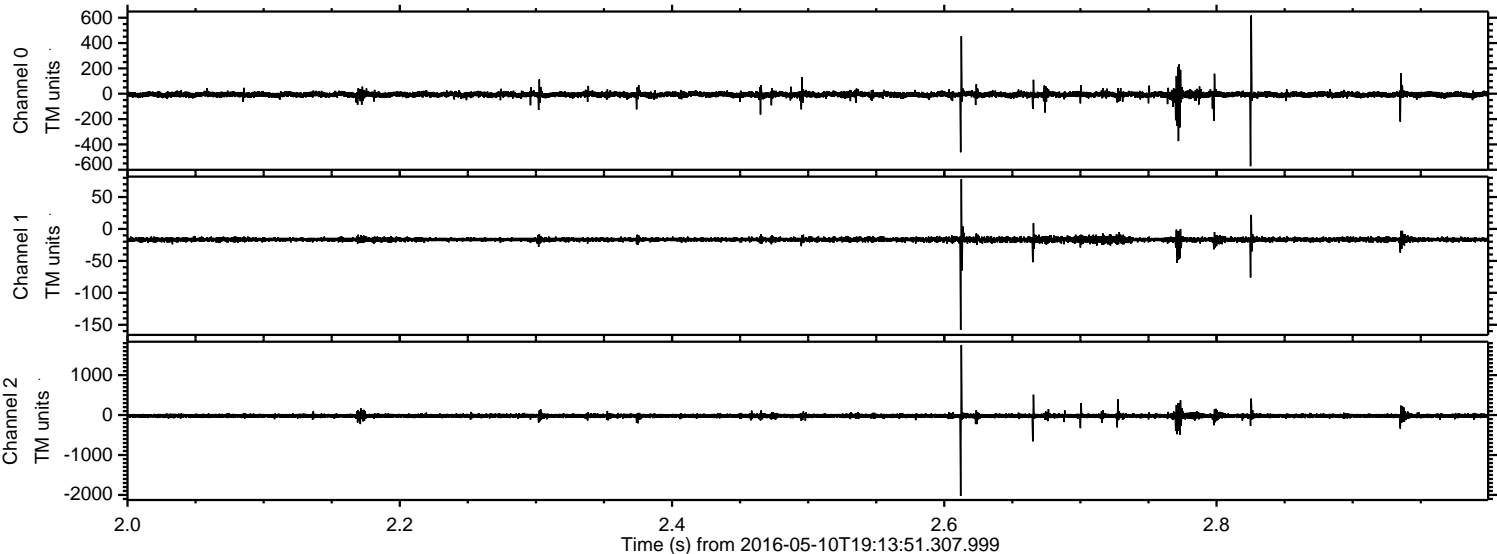


Processed Fri May 13 21:20:34 2016 by ELM ver.2012-10-06 from 001__elm20160510_191350__dat00.bin

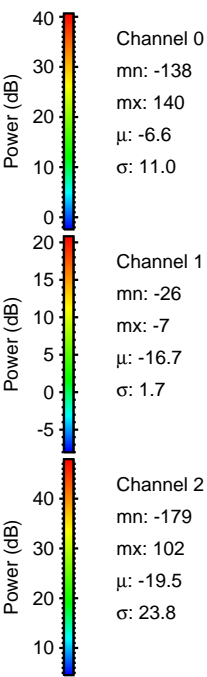
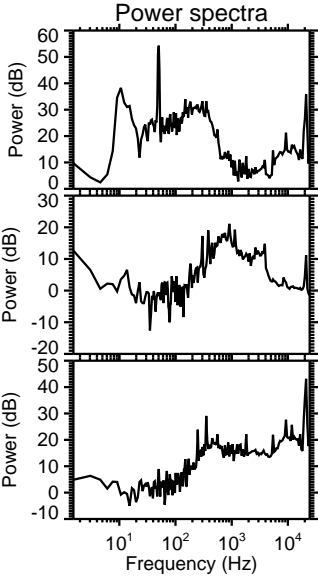
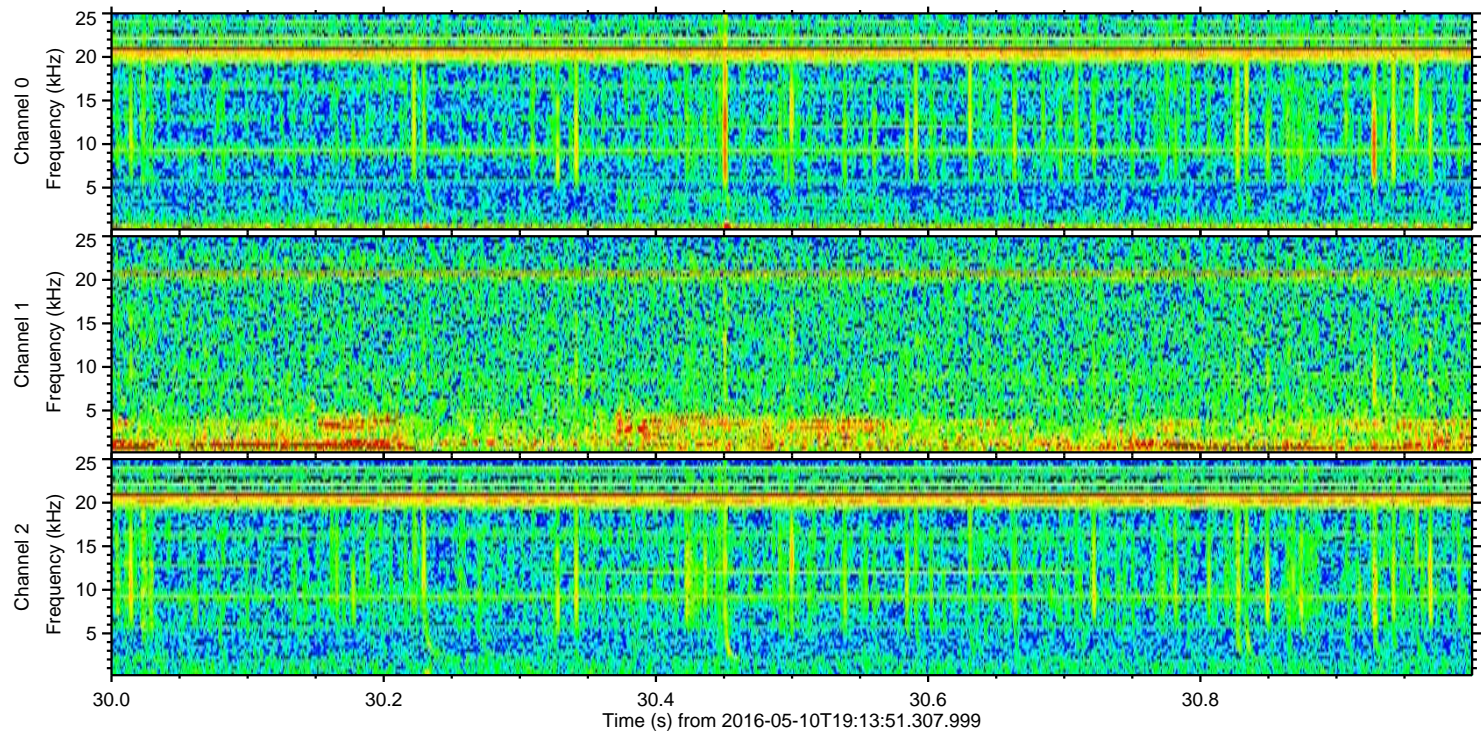
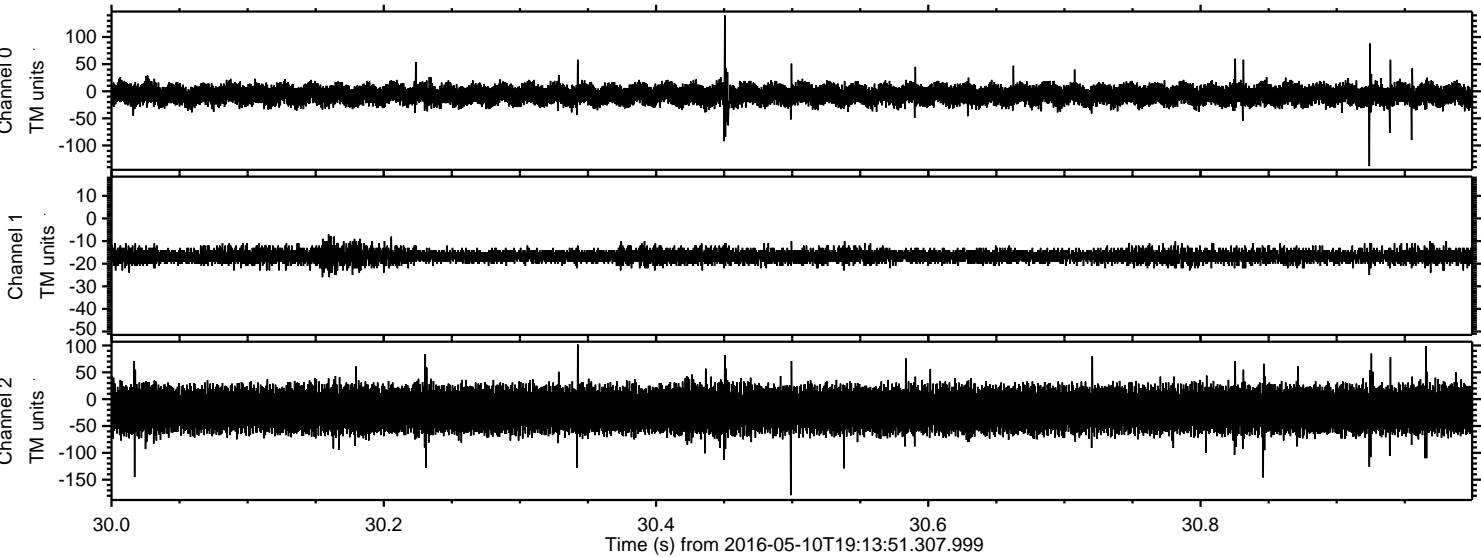


ELMAVAN 3D WAVEFORMS (Measured data sampled at 50 kHz) 51000 packets of 144 samples from 2016-05-10T19:13:51.307.999. Part 3/147

Processed Fri May 13 21:20:35 2016 by ELM ver.2012-10-06 from 001__elm20160510_191350__dat00.bin



Processed Fri May 13 21:20:36 2016 by ELM ver.2012-10-06 from 001__elm20160510_191350__dat00.bin



Channel 0
mn: -138
mx: 140
 μ : -6.6
 σ : 11.0

Channel 1
mn: -26
mx: -7
 μ : -16.7
 σ : 1.7

Channel 2
mn: -179
mx: 102
 μ : -19.5
 σ : 23.8