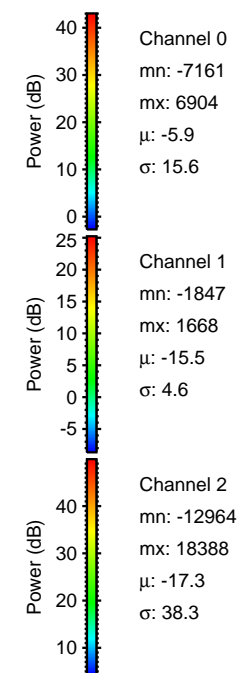
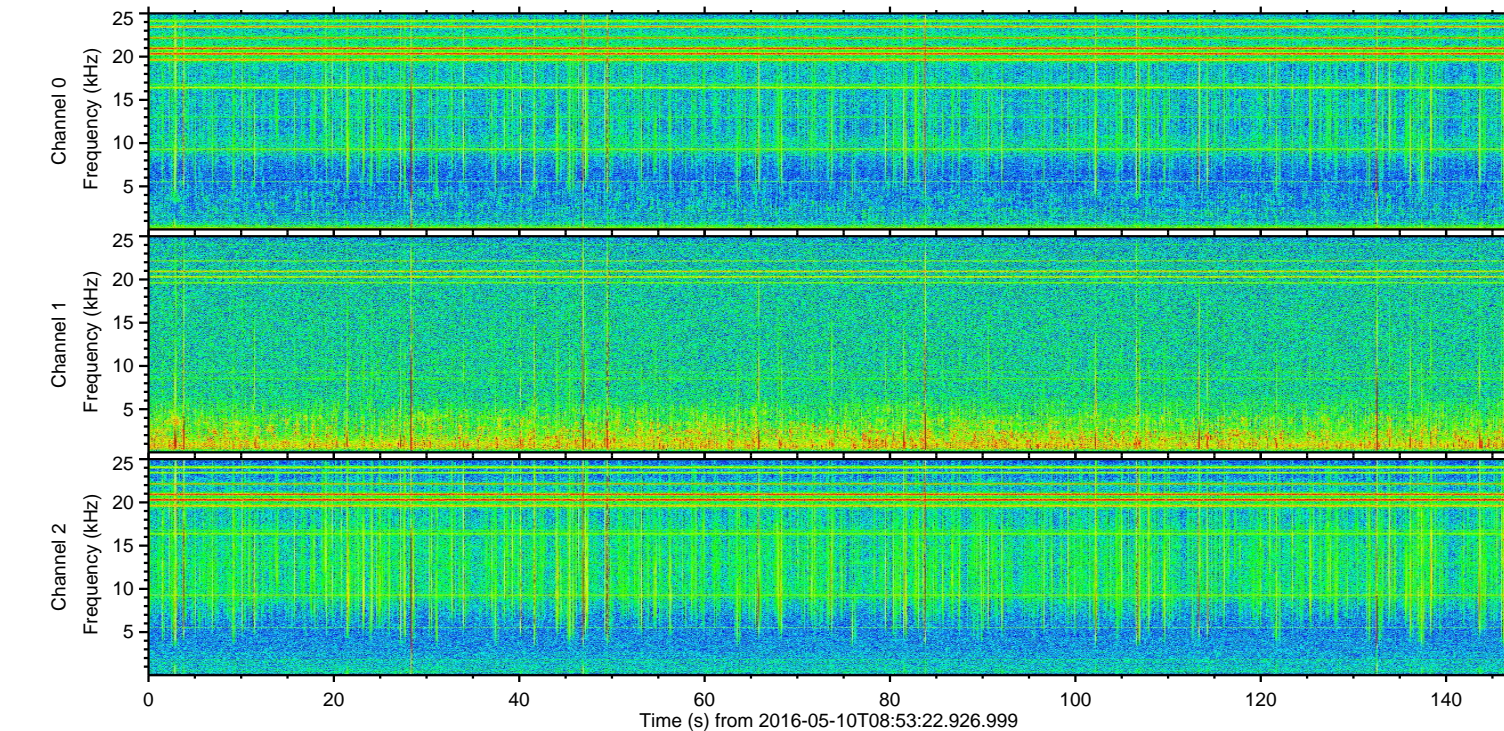
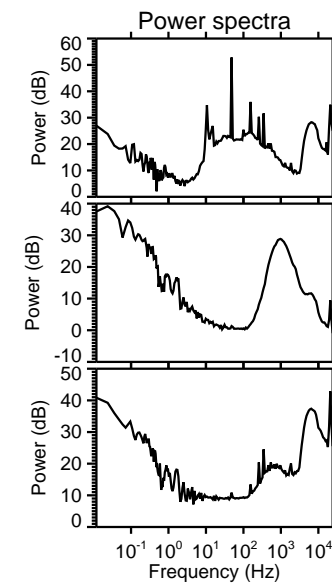
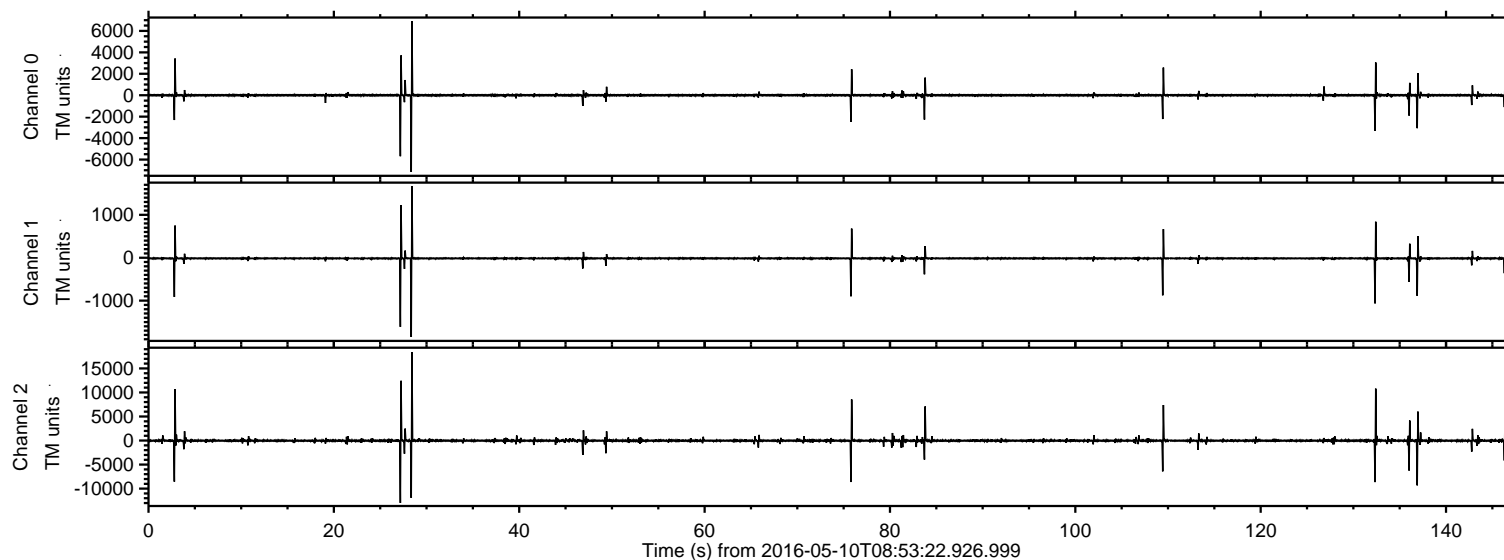


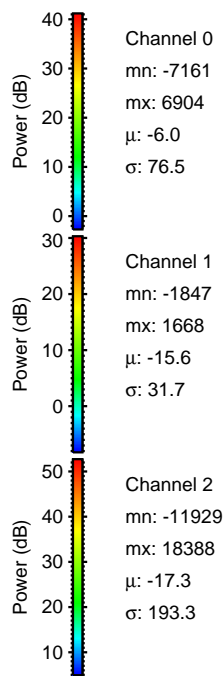
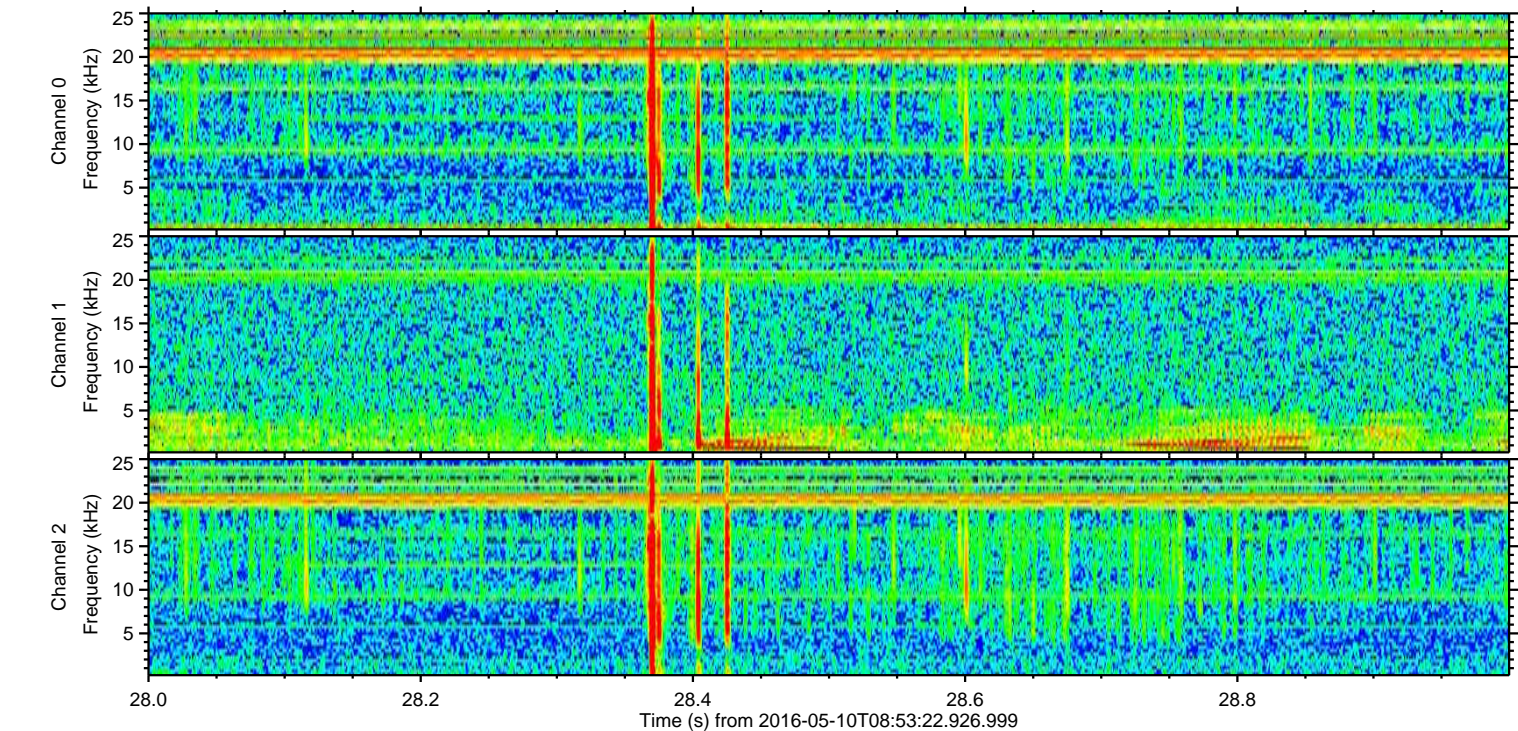
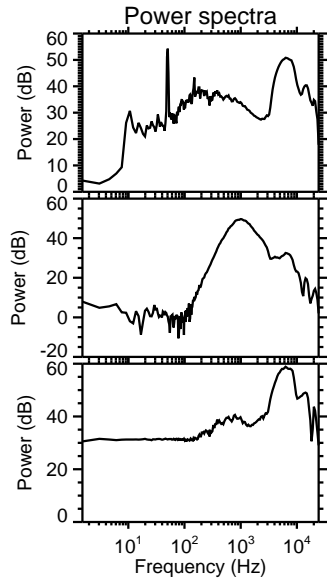
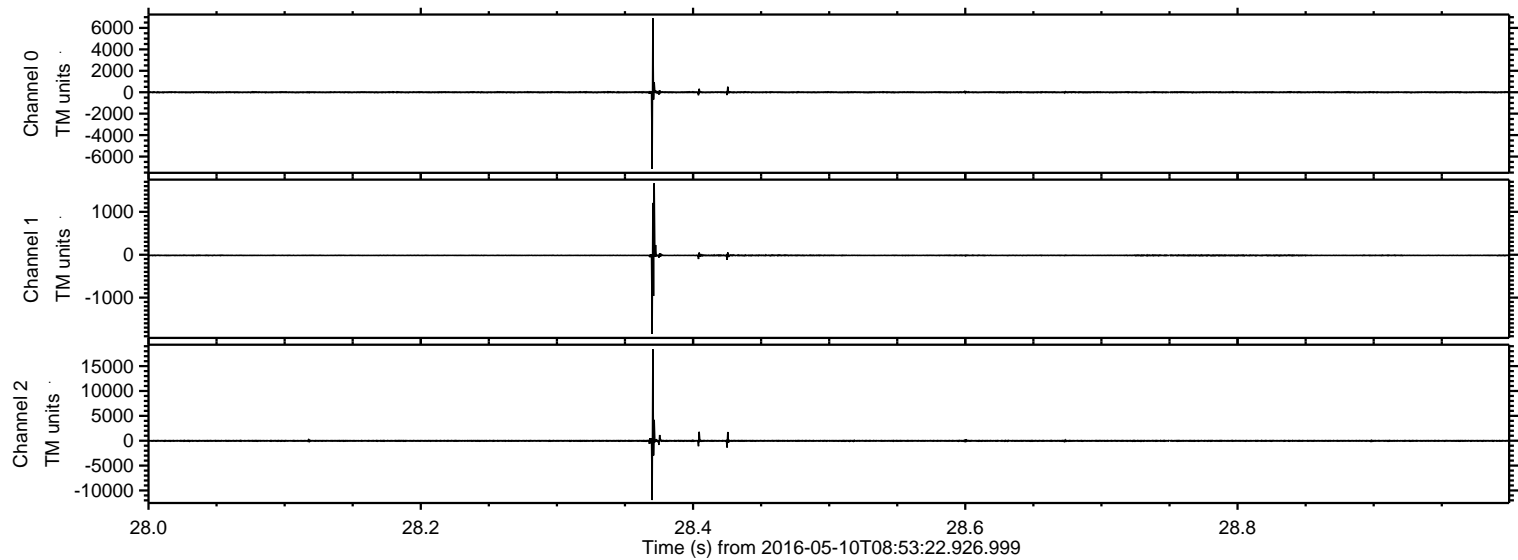
# ELMAVAN 3D WAVEFORMS (Measured data sampled at 50 kHz) 51000 packets of 144 samples from 2016-05-10T08:53:22.926.999.

Processed Fri May 13 18:54:29 2016 by ELM ver.2012-10-06 from 001\_\_elm20160510\_085321\_\_dat00.bin





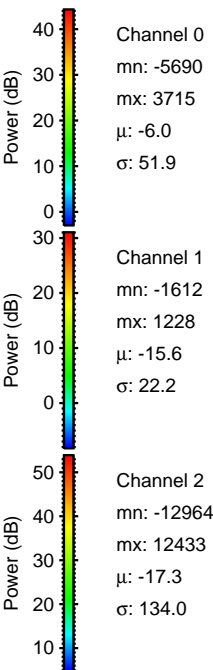
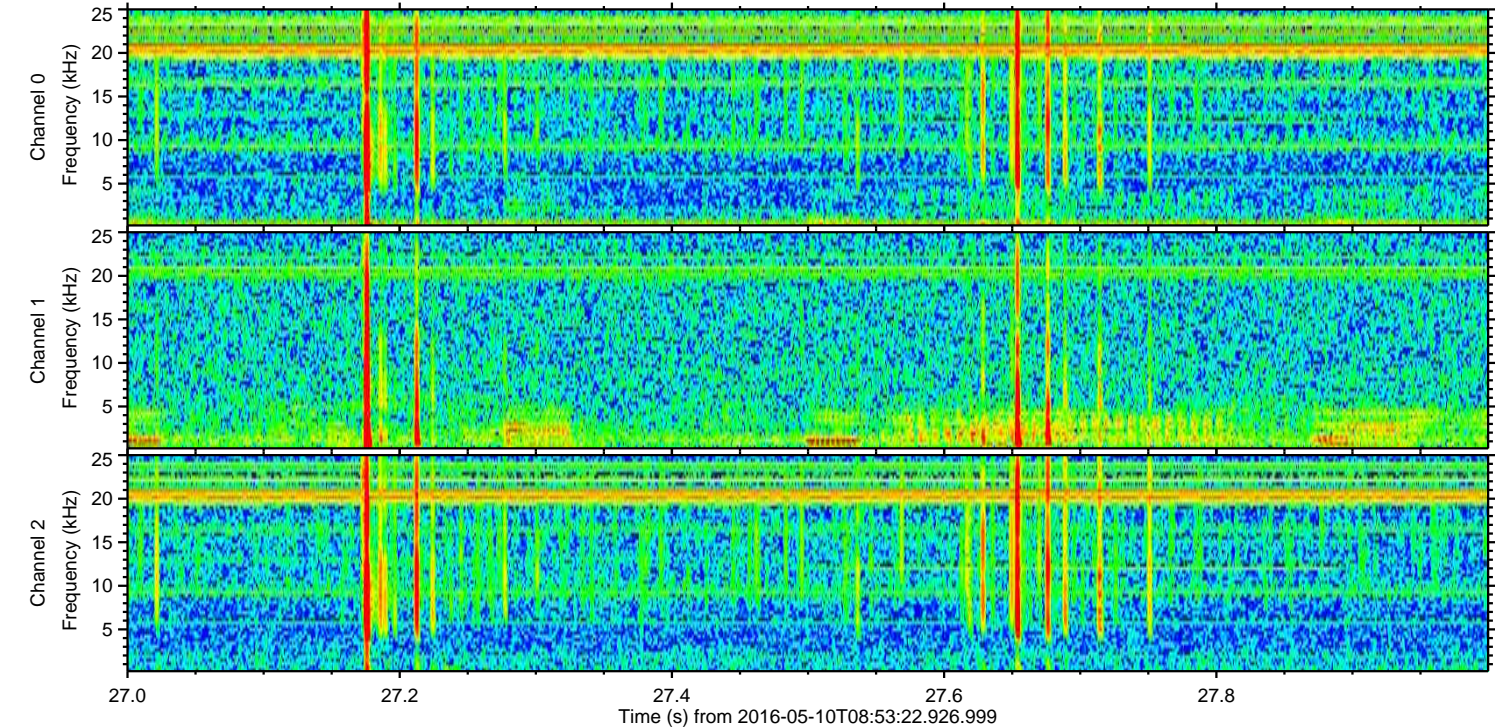
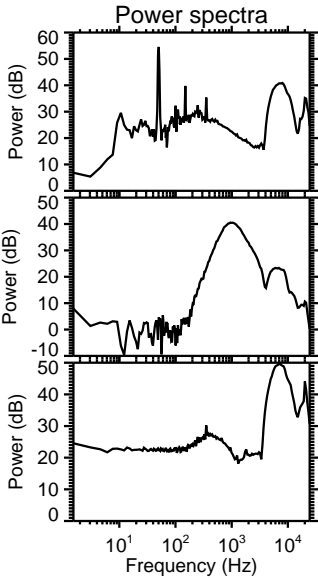
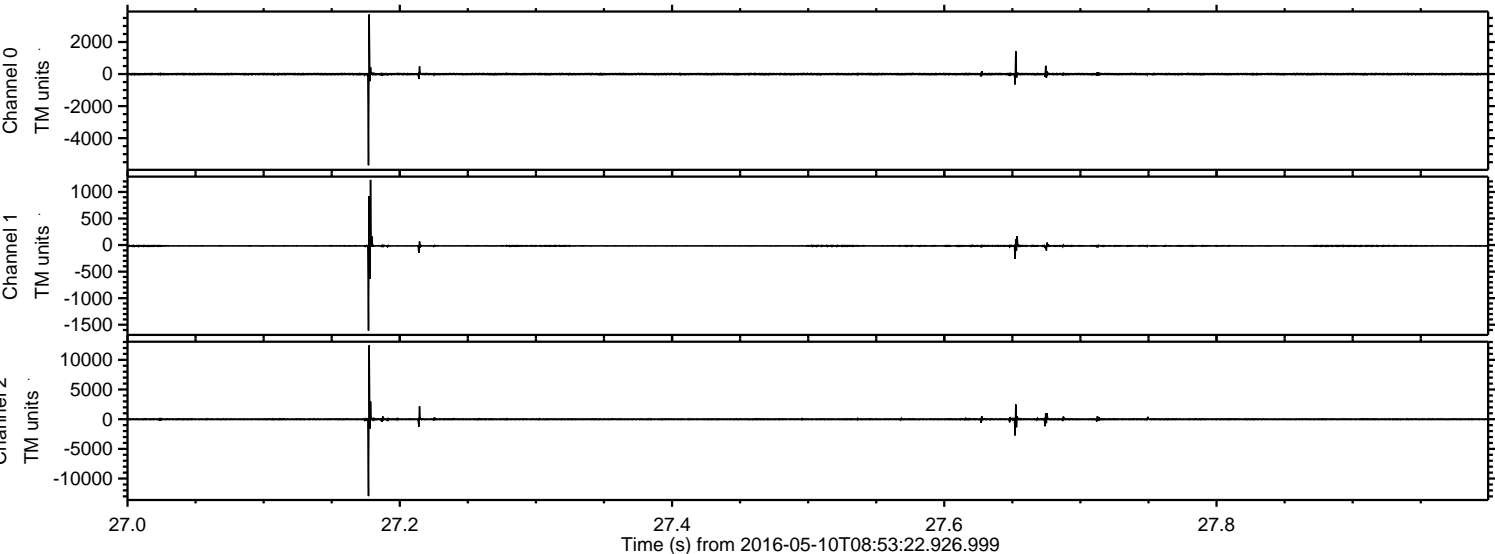
Processed Fri May 13 18:54:43 2016 by ELM ver.2012-10-06 from 001\_\_elm20160510\_085321\_\_dat00.bin





ELMAVAN 3D WAVEFORMS (Measured data sampled at 50 kHz) 51000 packets of 144 samples from 2016-05-10T08:53:22.926.999. Part 28/147

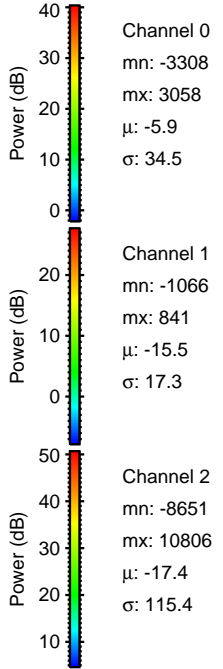
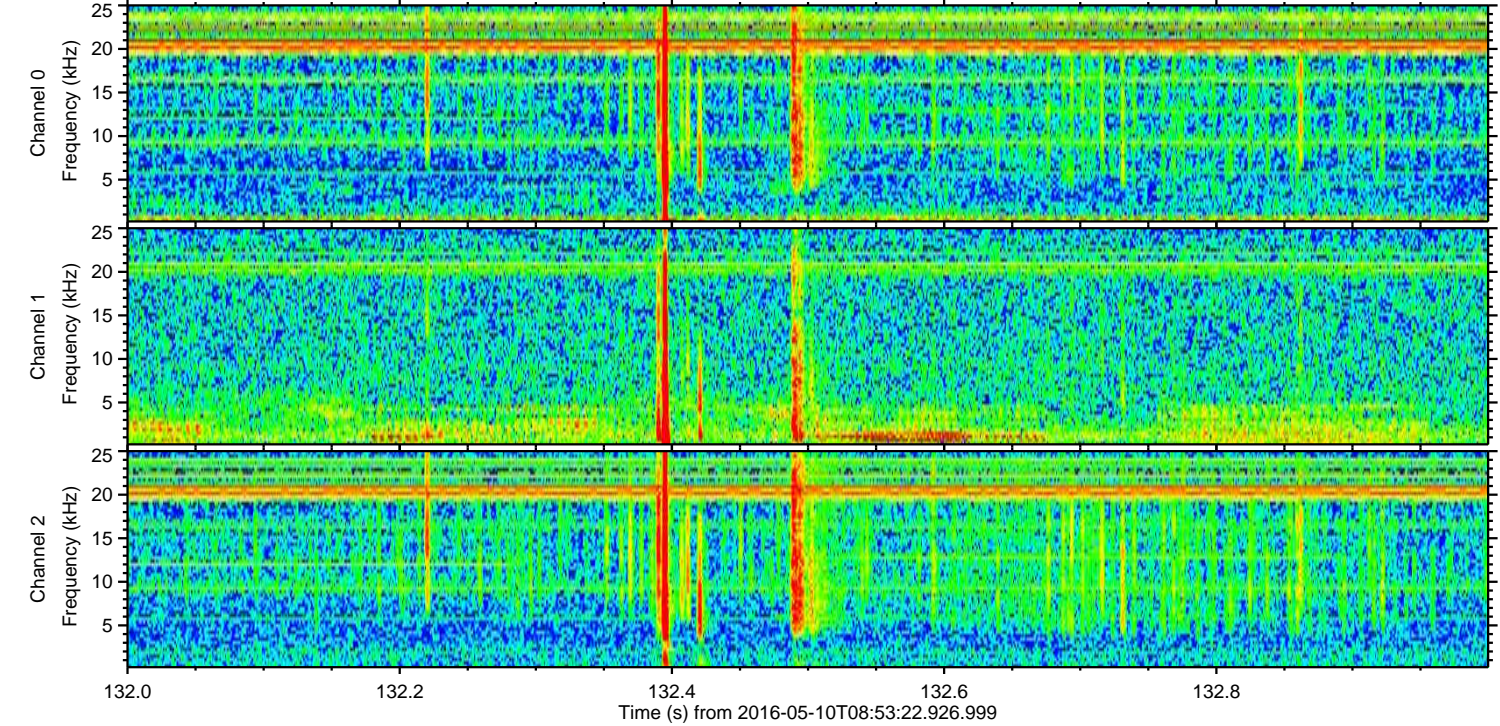
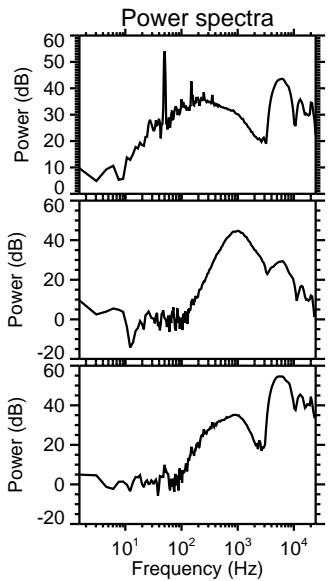
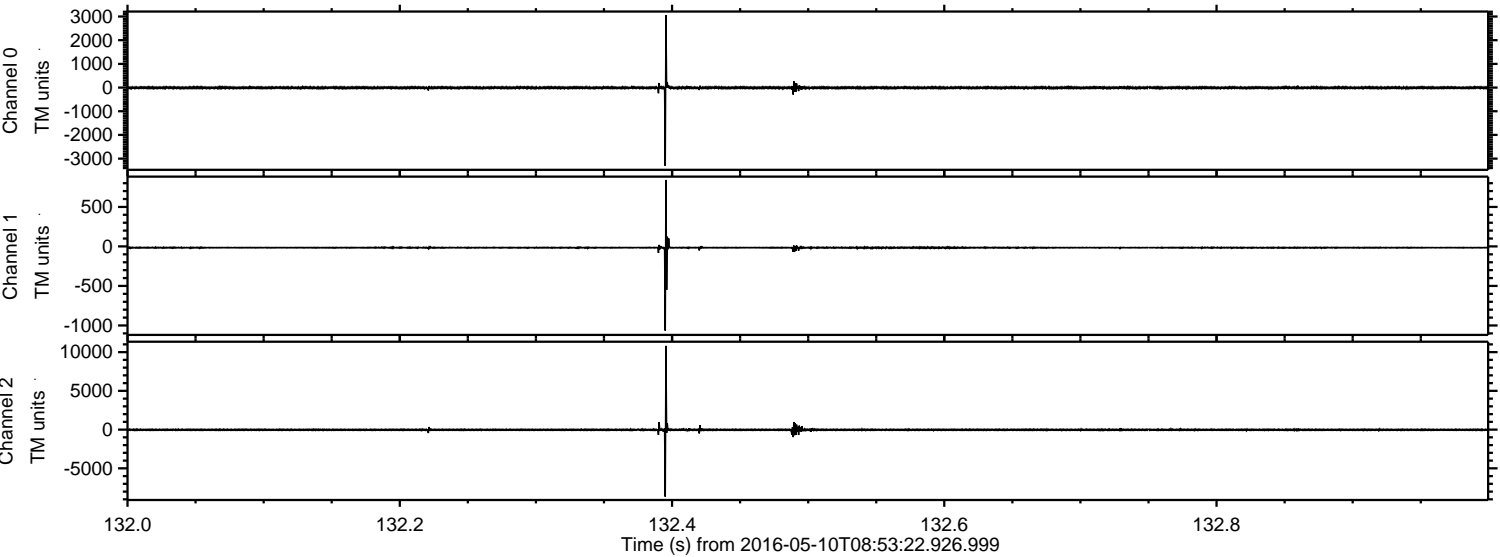
Processed Fri May 13 18:54:44 2016 by ELM ver.2012-10-06 from 001\_\_elm20160510\_085321\_\_dat00.bin





ELMAVAN 3D WAVEFORMS (Measured data sampled at 50 kHz) 51000 packets of 144 samples from 2016-05-10T08:53:22.926.999. Part 133/147

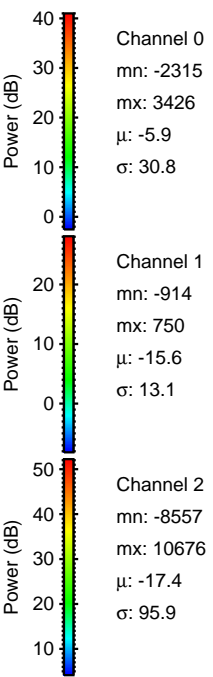
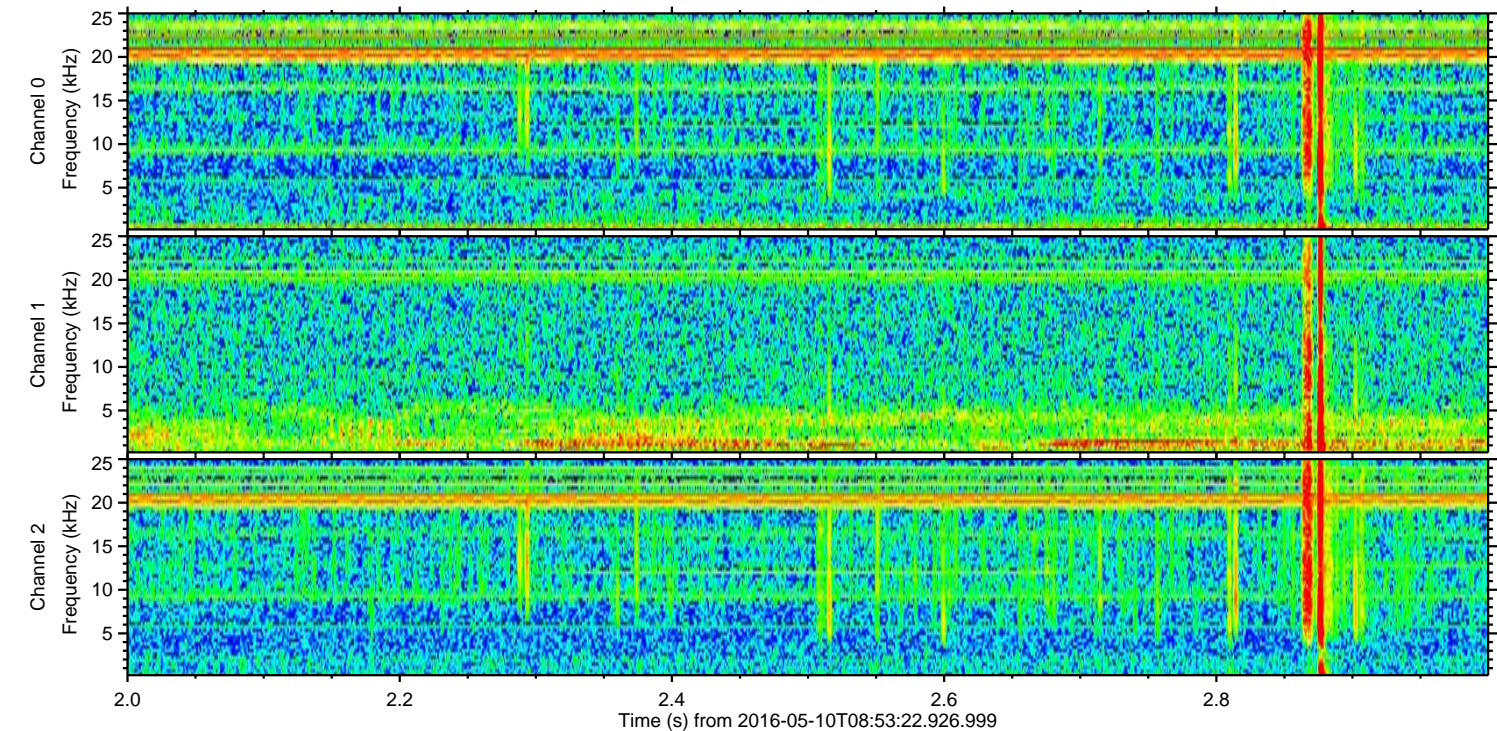
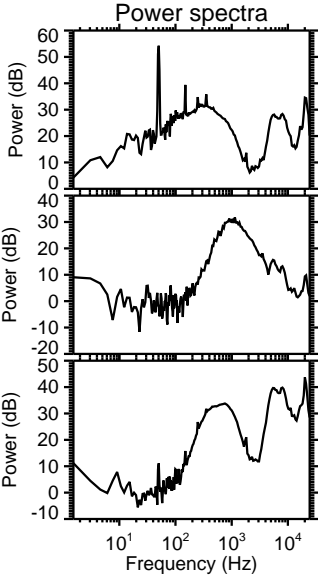
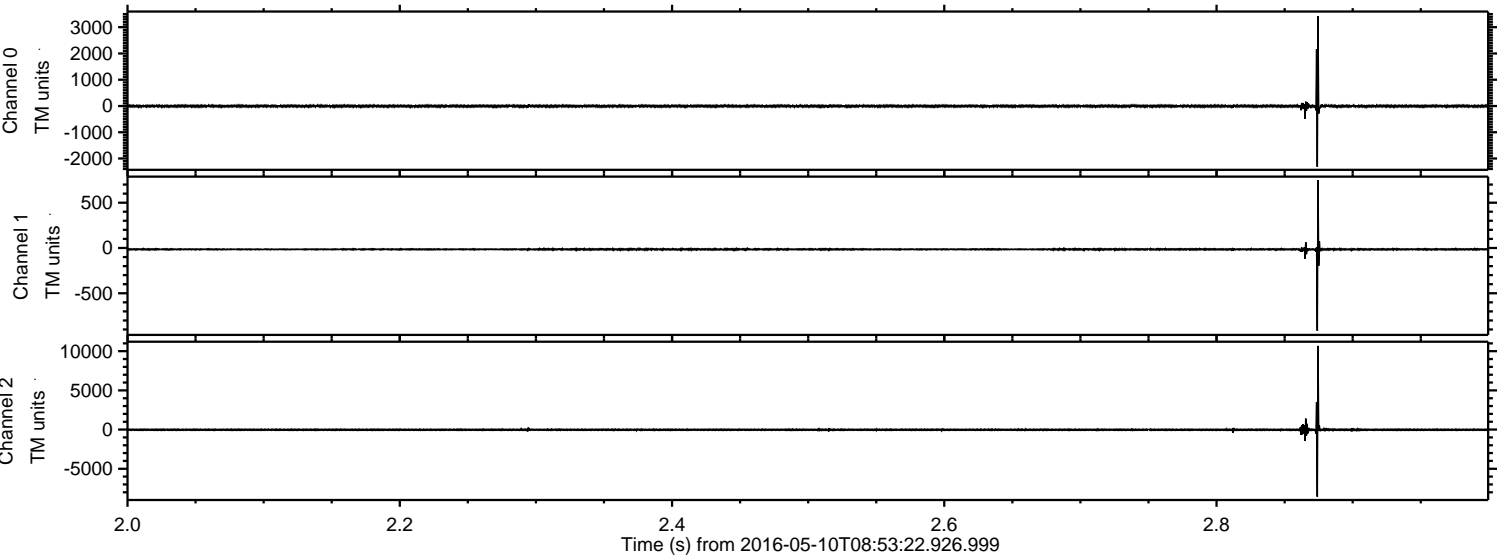
Processed Fri May 13 18:54:45 2016 by ELM ver.2012-10-06 from 001\_\_elm20160510\_085321\_\_dat00.bin





ELMAVAN 3D WAVEFORMS (Measured data sampled at 50 kHz) 51000 packets of 144 samples from 2016-05-10T08:53:22.926.999. Part 3/147

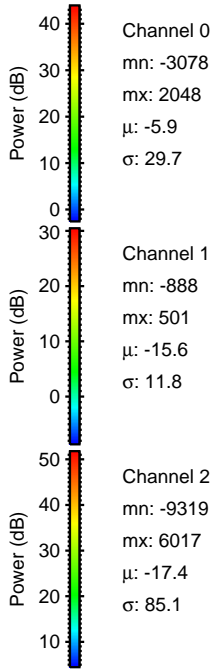
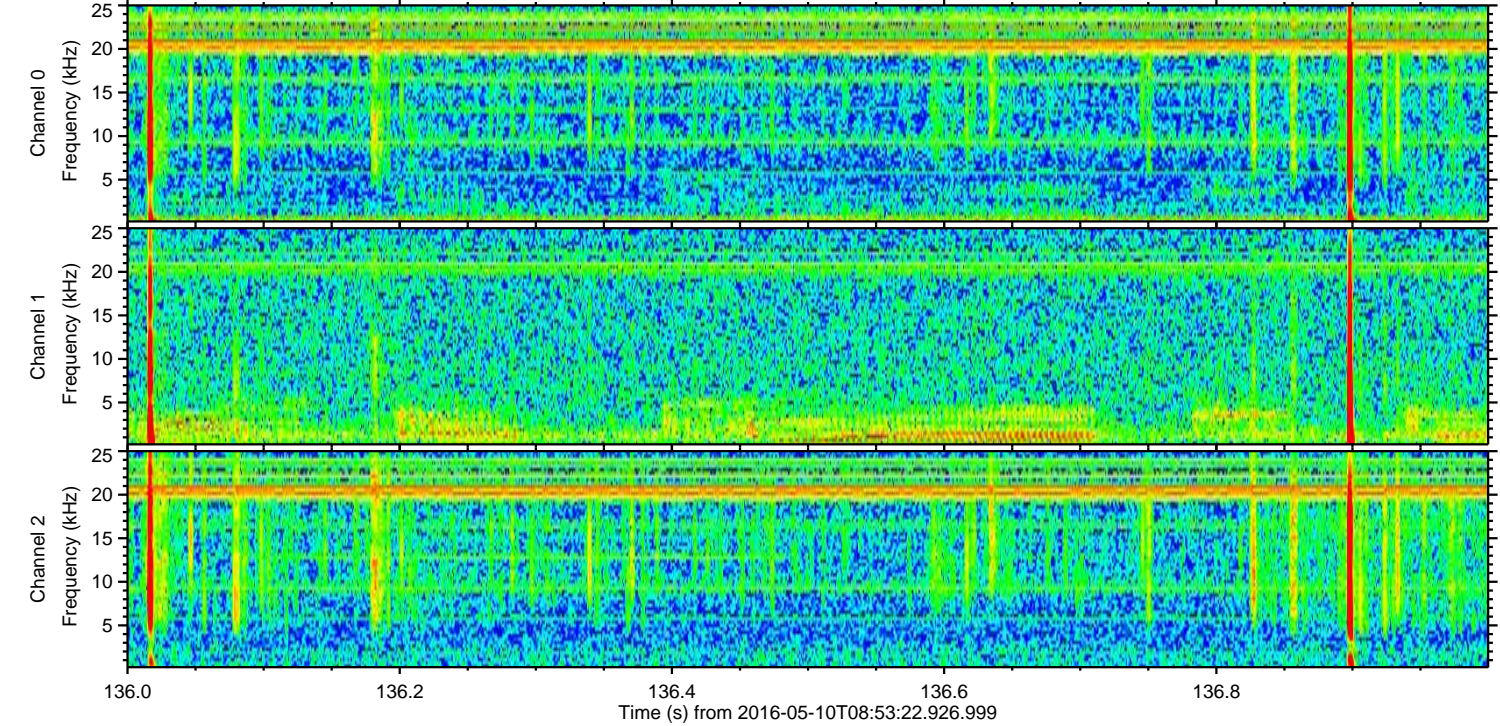
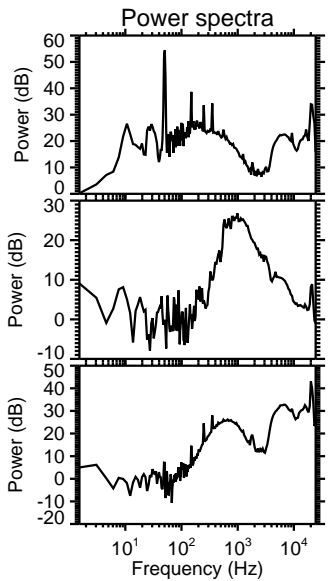
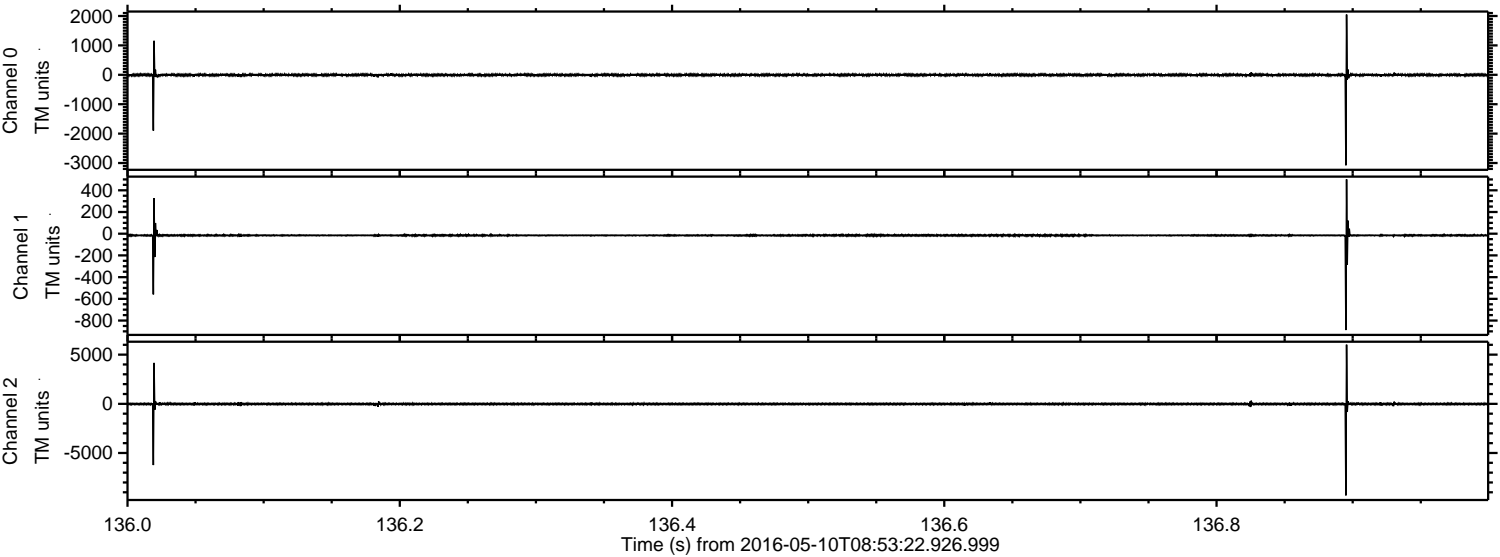
Processed Fri May 13 18:54:46 2016 by ELM ver.2012-10-06 from 001\_\_elm20160510\_085321\_\_dat00.bin





ELMAVAN 3D WAVEFORMS (Measured data sampled at 50 kHz) 51000 packets of 144 samples from 2016-05-10T08:53:22.926.999. Part 137/147

Processed Fri May 13 18:54:47 2016 by ELM ver.2012-10-06 from 001\_\_elm20160510\_085321\_\_dat00.bin



Channel 0  
mn: -3078  
mx: 2048  
 $\mu$ : -5.9  
 $\sigma$ : 29.7

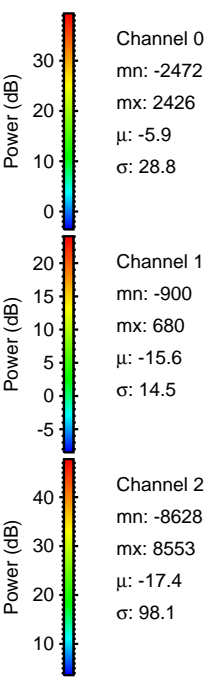
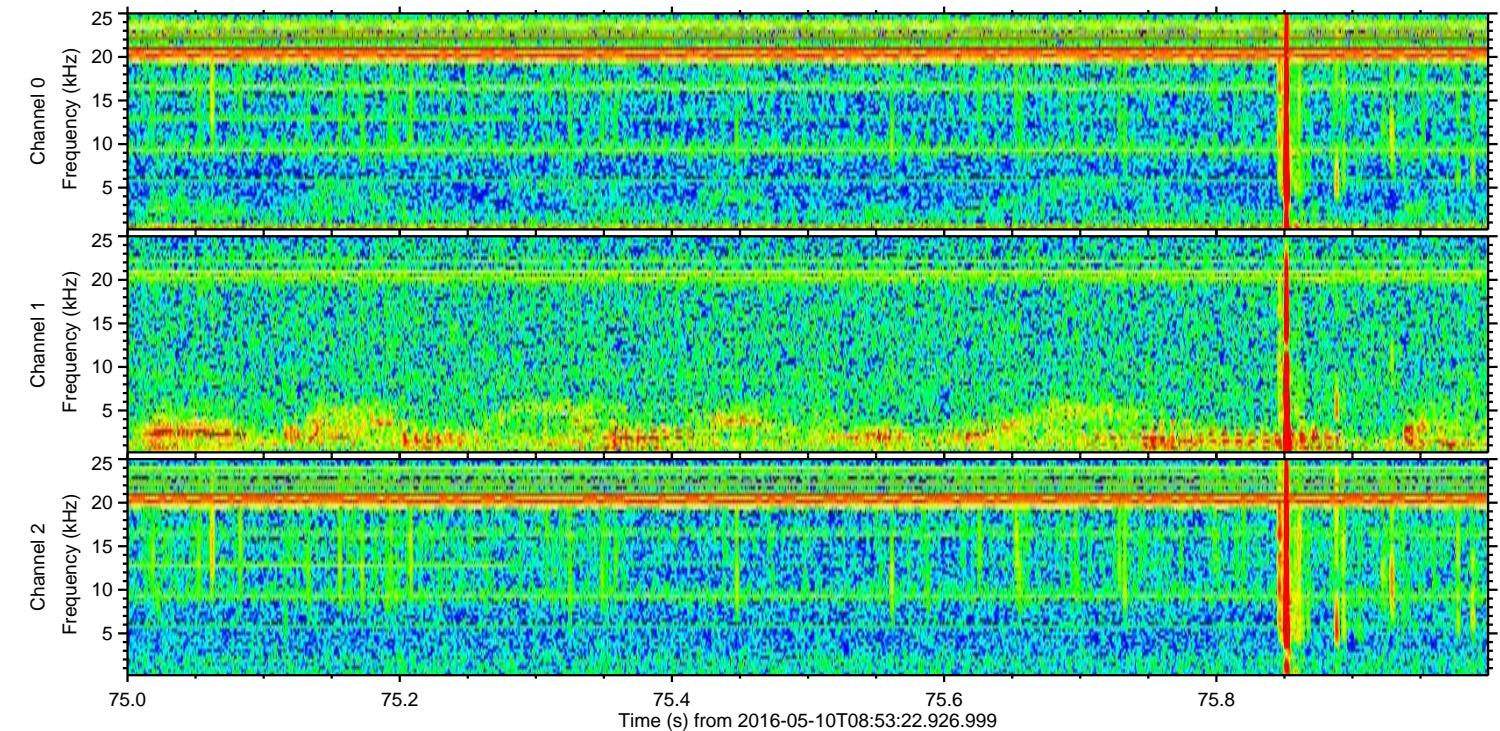
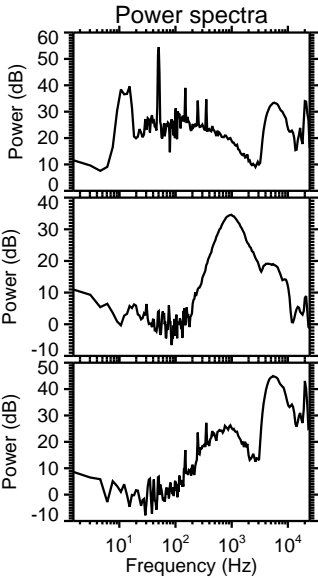
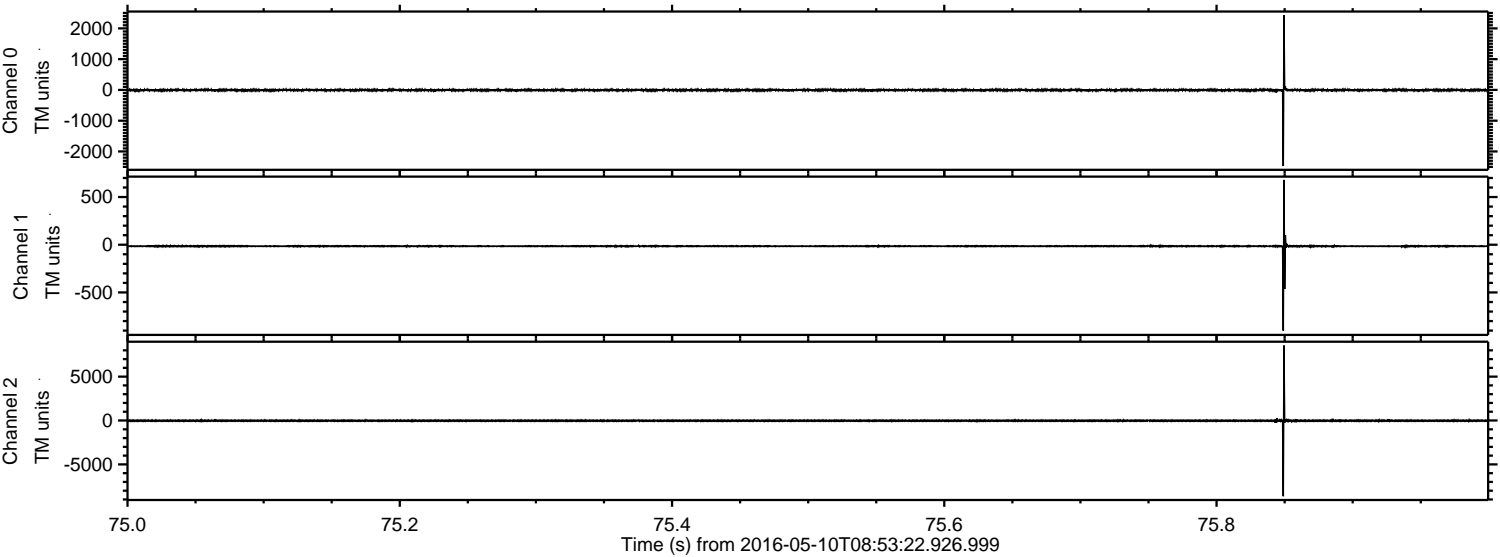
Channel 1  
mn: -888  
mx: 501  
 $\mu$ : -15.6  
 $\sigma$ : 11.8

Channel 2  
mn: -9319  
mx: 6017  
 $\mu$ : -17.4  
 $\sigma$ : 85.1



ELMAVAN 3D WAVEFORMS (Measured data sampled at 50 kHz) 51000 packets of 144 samples from 2016-05-10T08:53:22.926.999. Part 76/147

Processed Fri May 13 18:54:48 2016 by ELM ver.2012-10-06 from 001\_\_elm20160510\_085321\_\_dat00.bin



Channel 0  
mn: -2472  
mx: 2426  
 $\mu$ : -5.9  
 $\sigma$ : 28.8

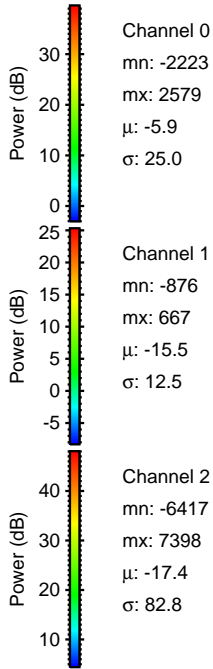
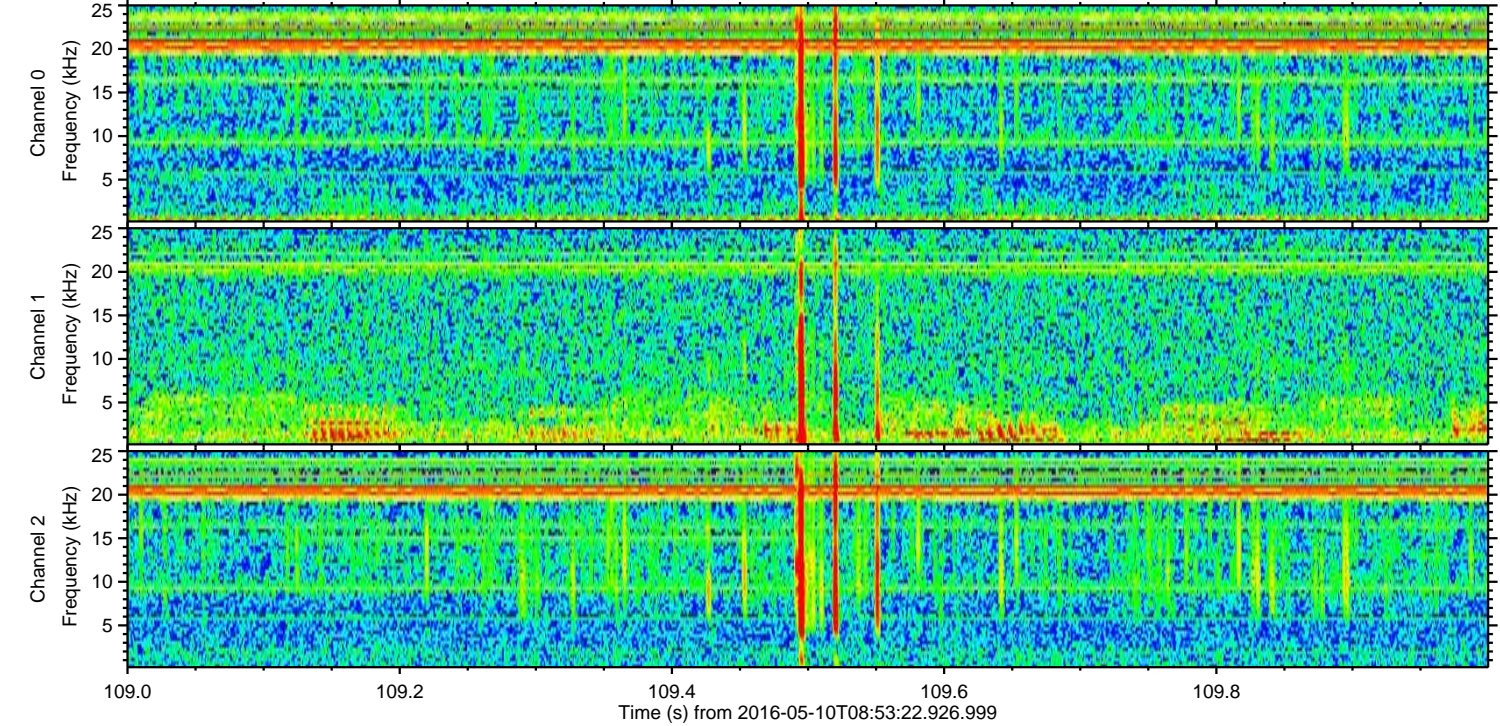
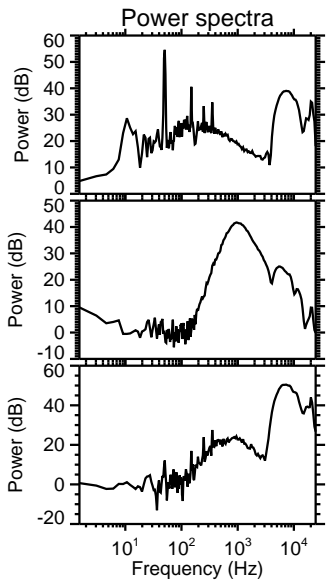
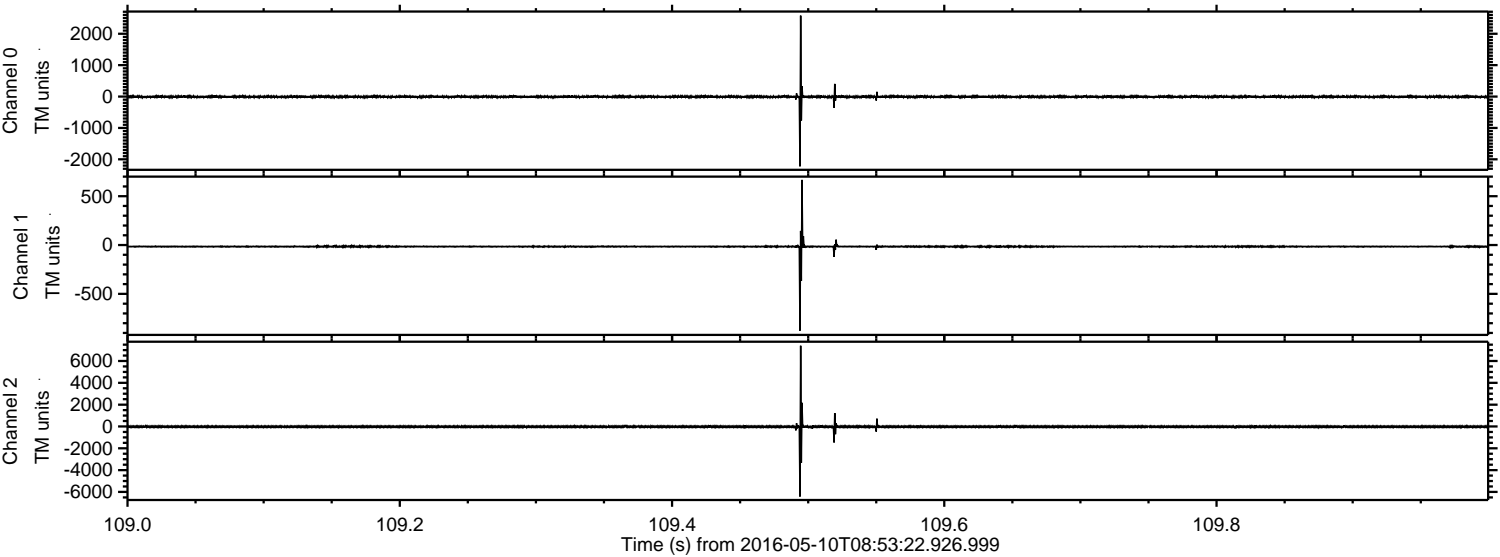
Channel 1  
mn: -900  
mx: 680  
 $\mu$ : -15.6  
 $\sigma$ : 14.5

Channel 2  
mn: -8628  
mx: 8553  
 $\mu$ : -17.4  
 $\sigma$ : 98.1



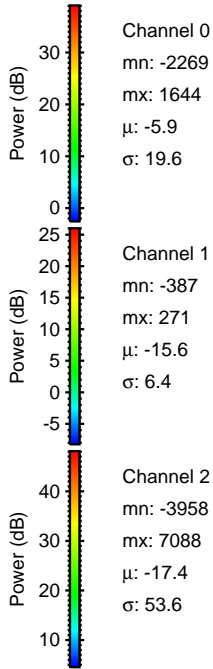
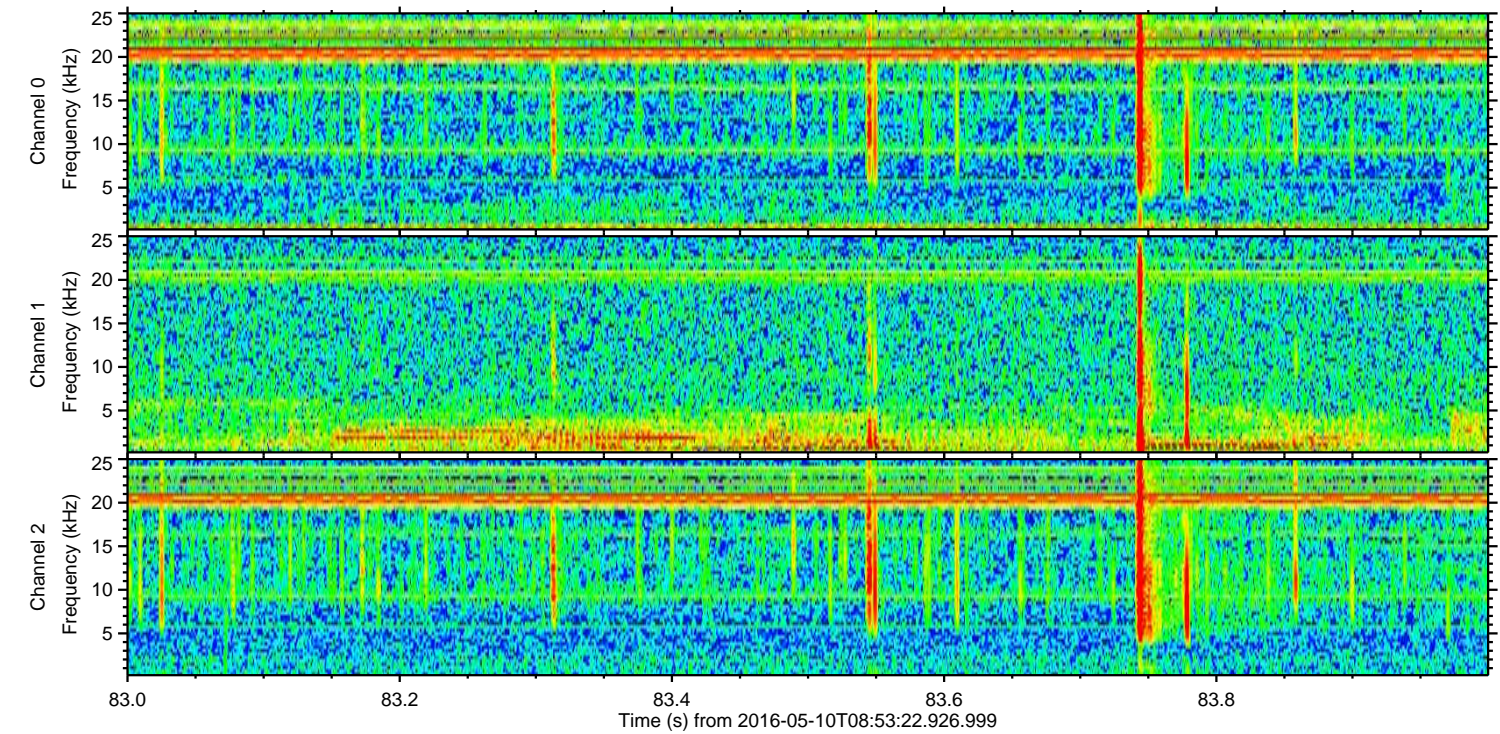
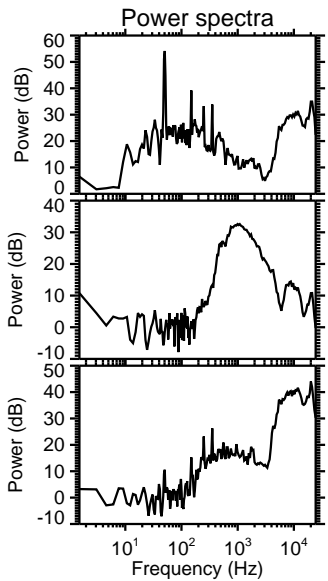
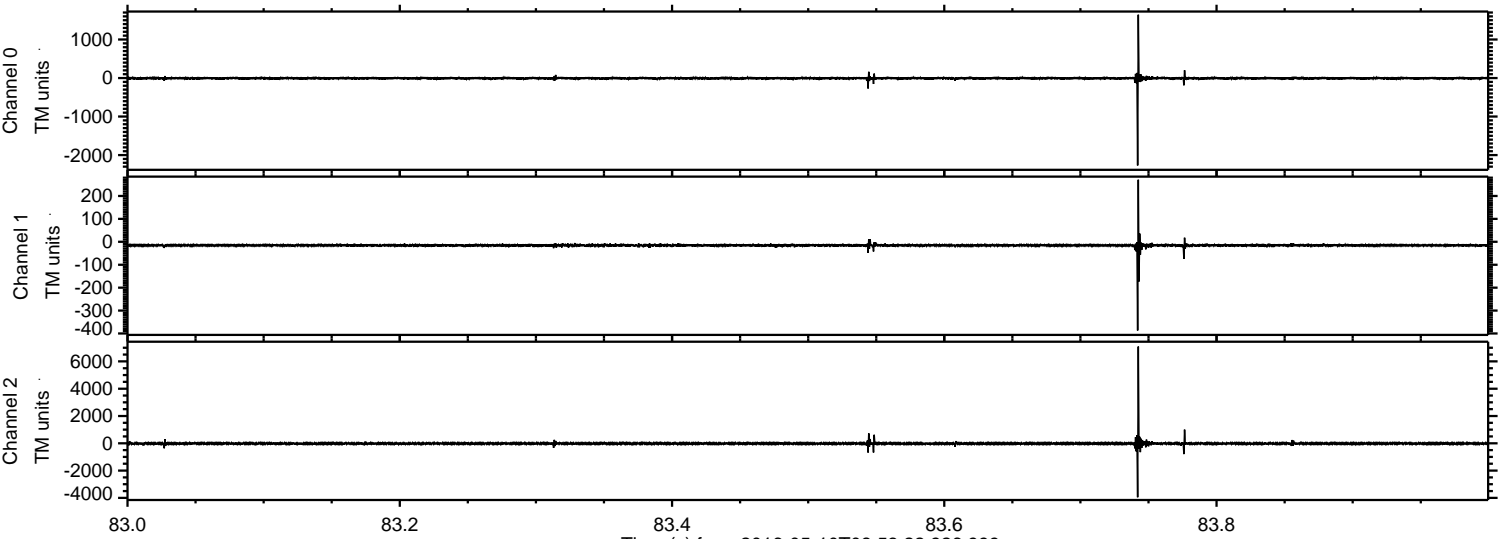
ELMAVAN 3D WAVEFORMS (Measured data sampled at 50 kHz) 51000 packets of 144 samples from 2016-05-10T08:53:22.926.999. Part 110/147

Processed Fri May 13 18:54:49 2016 by ELM ver.2012-10-06 from 001\_\_elm20160510\_085321\_\_dat00.bin





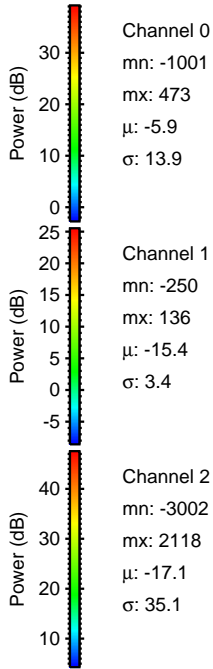
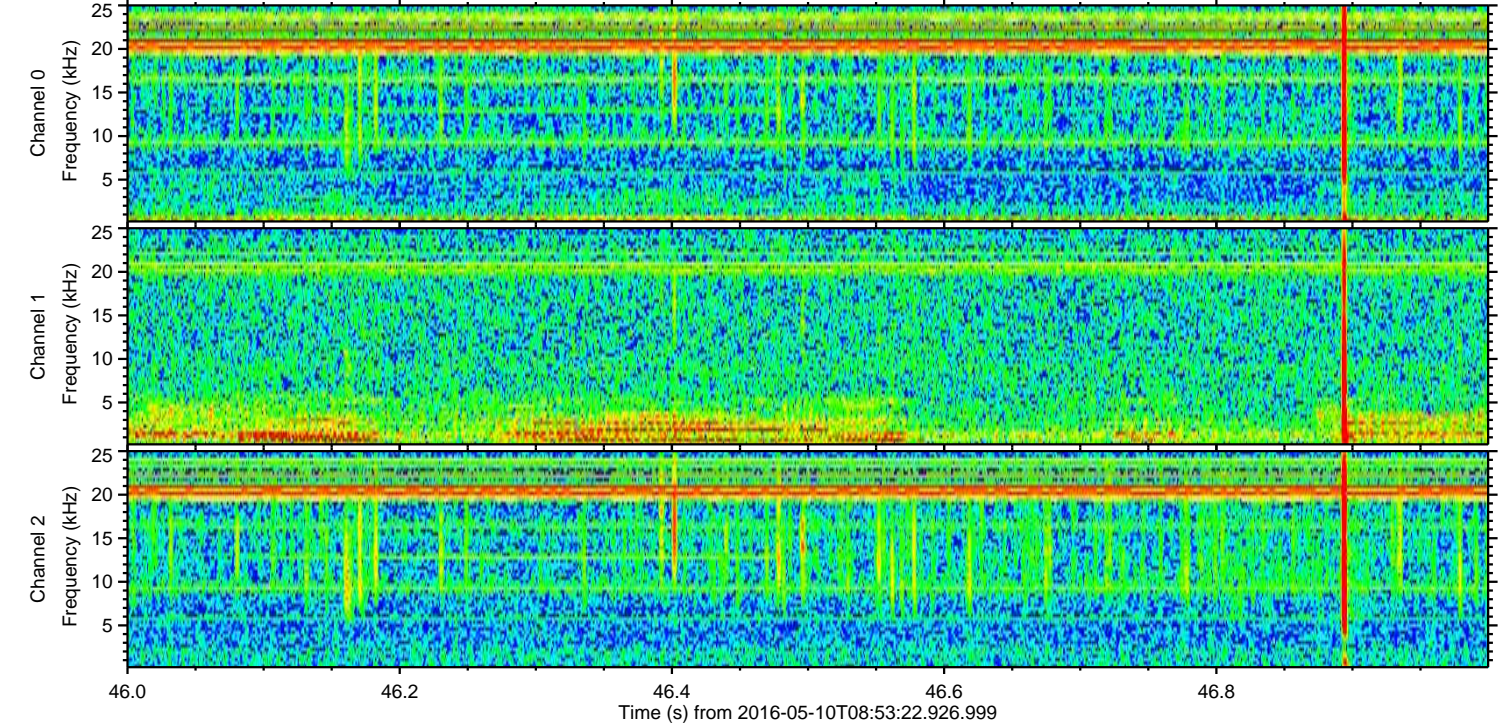
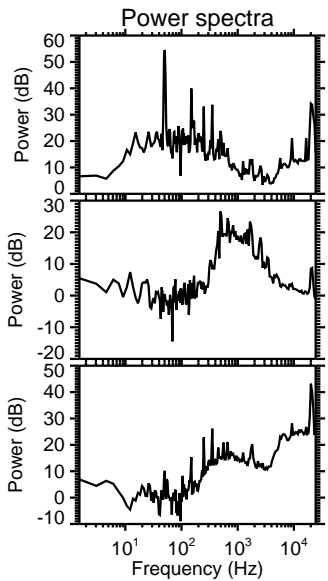
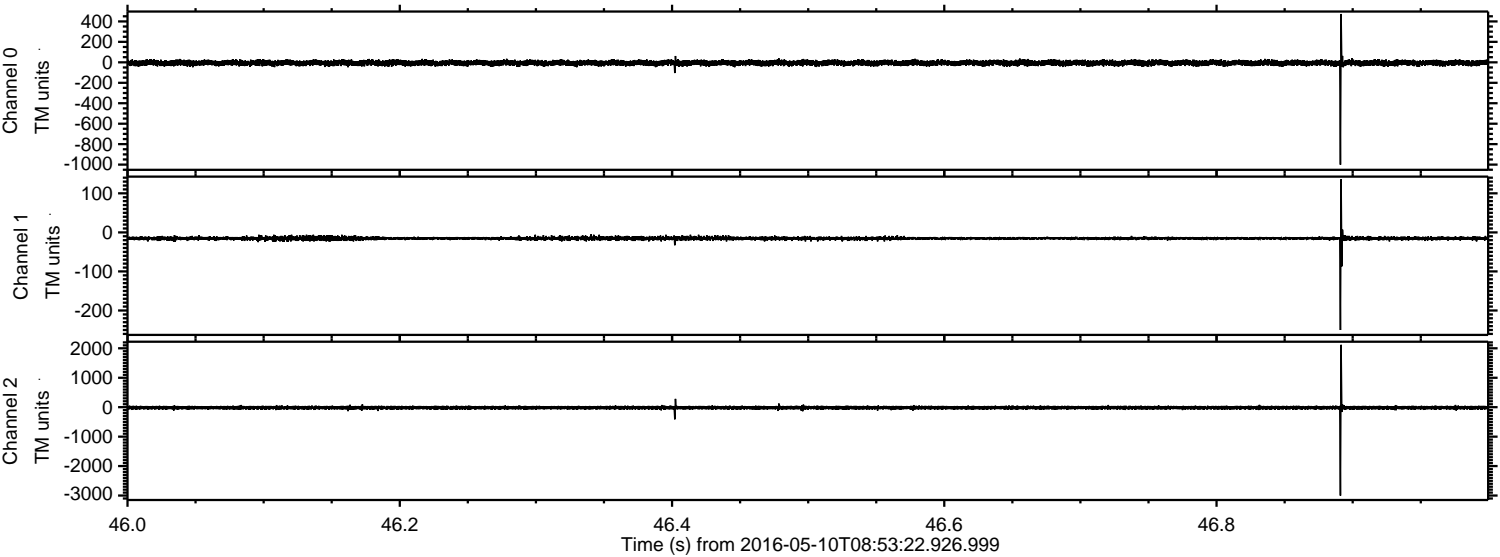
Processed Fri May 13 18:54:50 2016 by ELM ver.2012-10-06 from 001\_\_elm20160510\_085321\_\_dat00.bin





ELMAVAN 3D WAVEFORMS (Measured data sampled at 50 kHz) 51000 packets of 144 samples from 2016-05-10T08:53:22.926.999. Part 47/147

Processed Fri May 13 18:54:51 2016 by ELM ver.2012-10-06 from 001\_\_elm20160510\_085321\_\_dat00.bin





ELMAVAN 3D WAVEFORMS (Measured data sampled at 50 kHz) 51000 packets of 144 samples from 2016-05-10T08:53:22.926.999. Part 112/147

