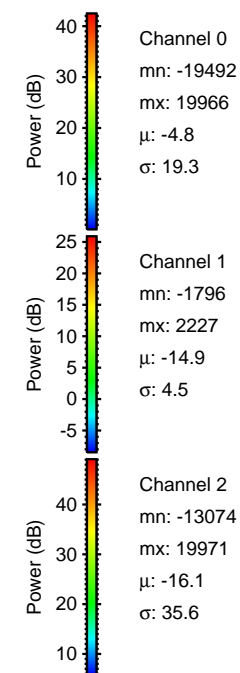
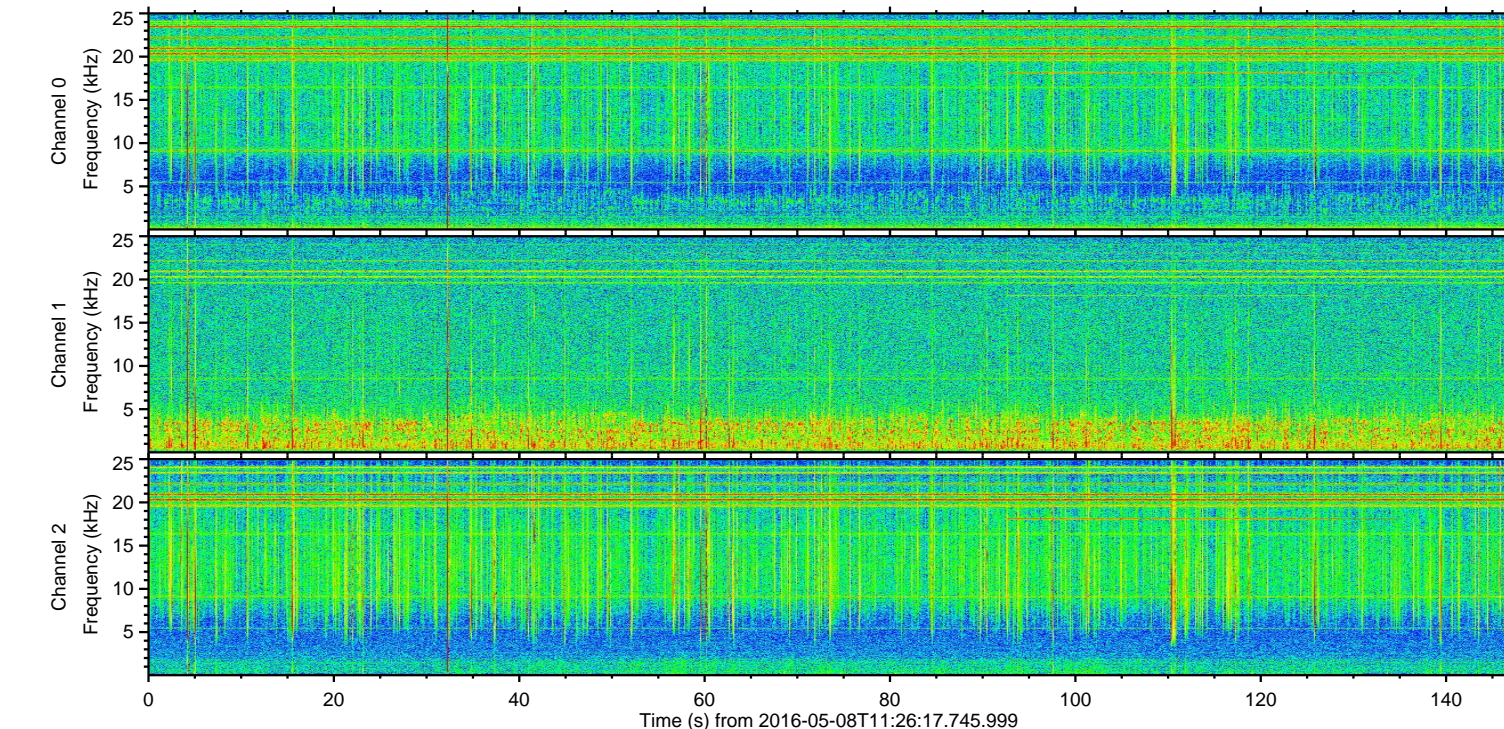
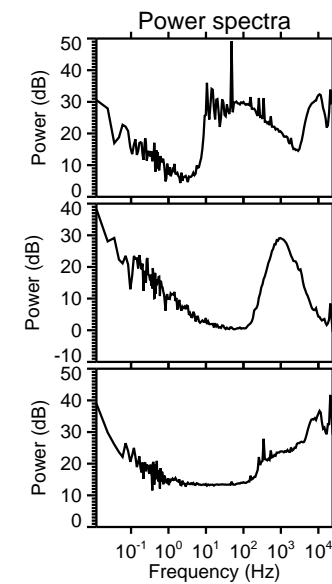
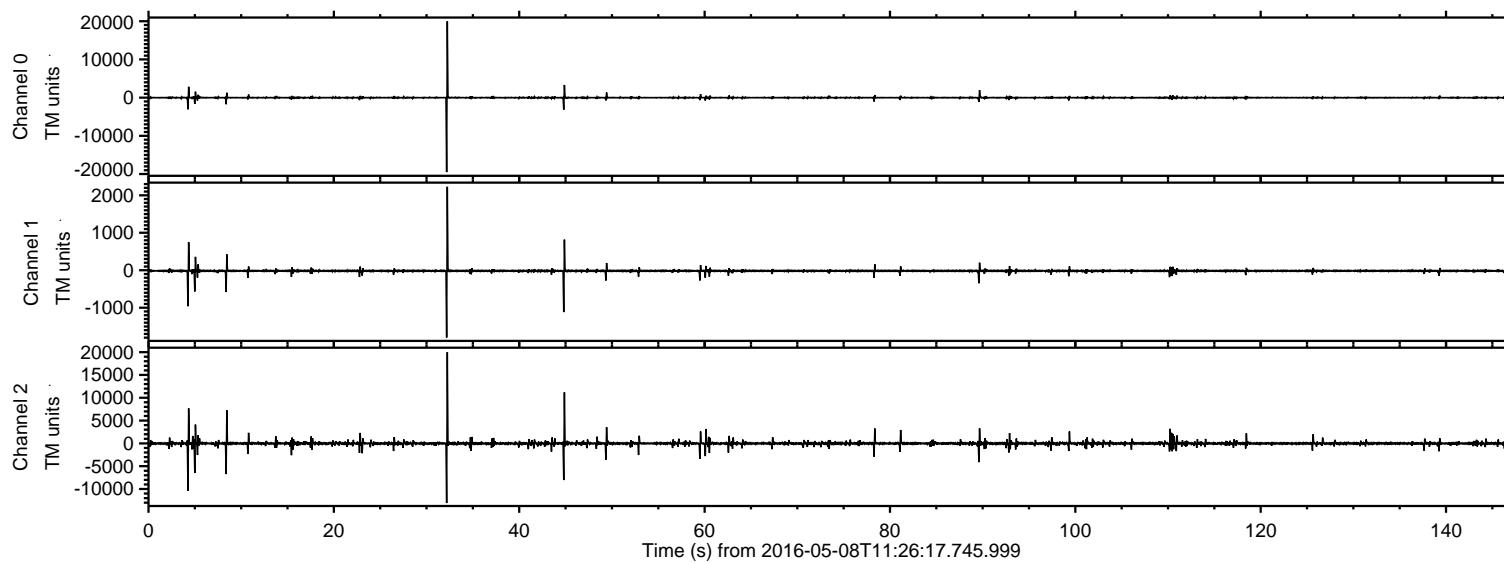
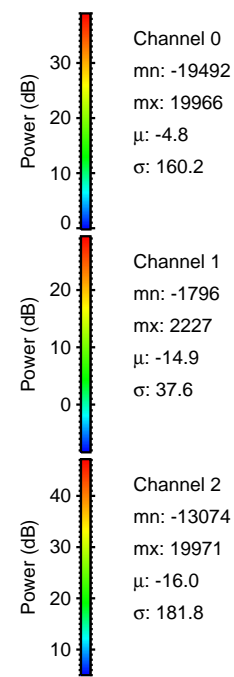
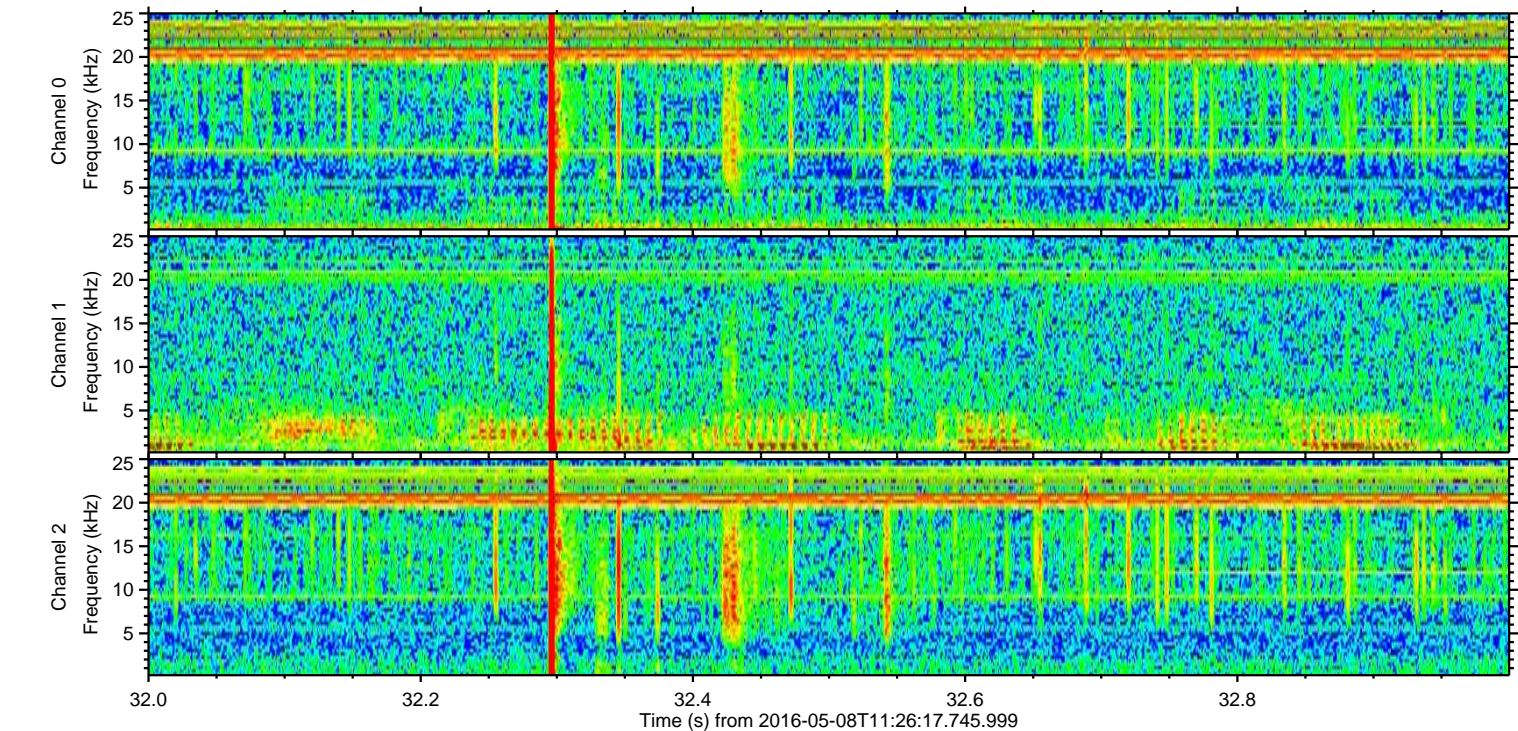
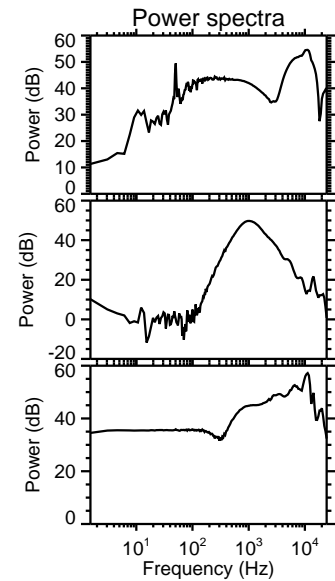
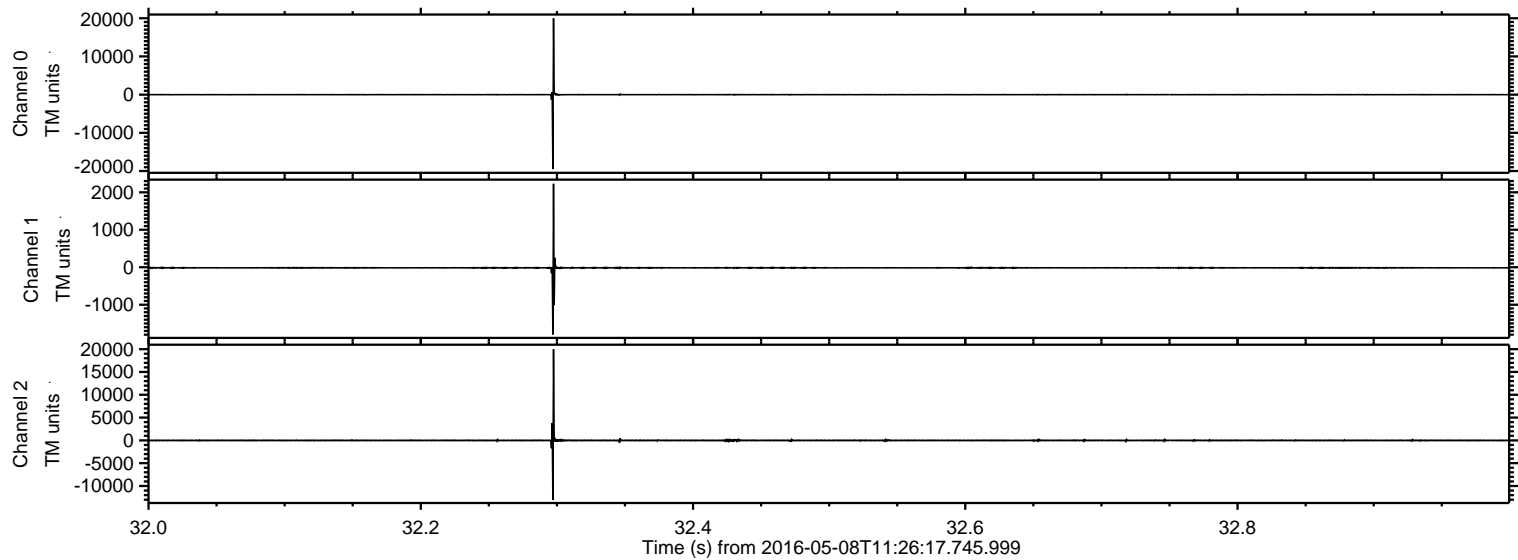


ELMAVAN 3D WAVEFORMS (Measured data sampled at 50 kHz) 51000 packets of 144 samples from 2016-05-08T11:26:17.745.999.

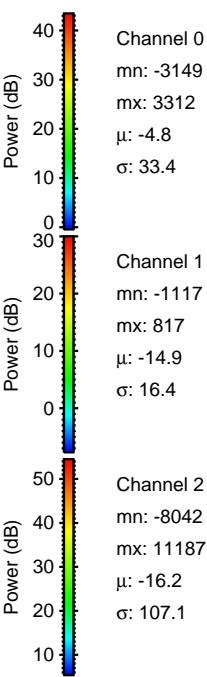
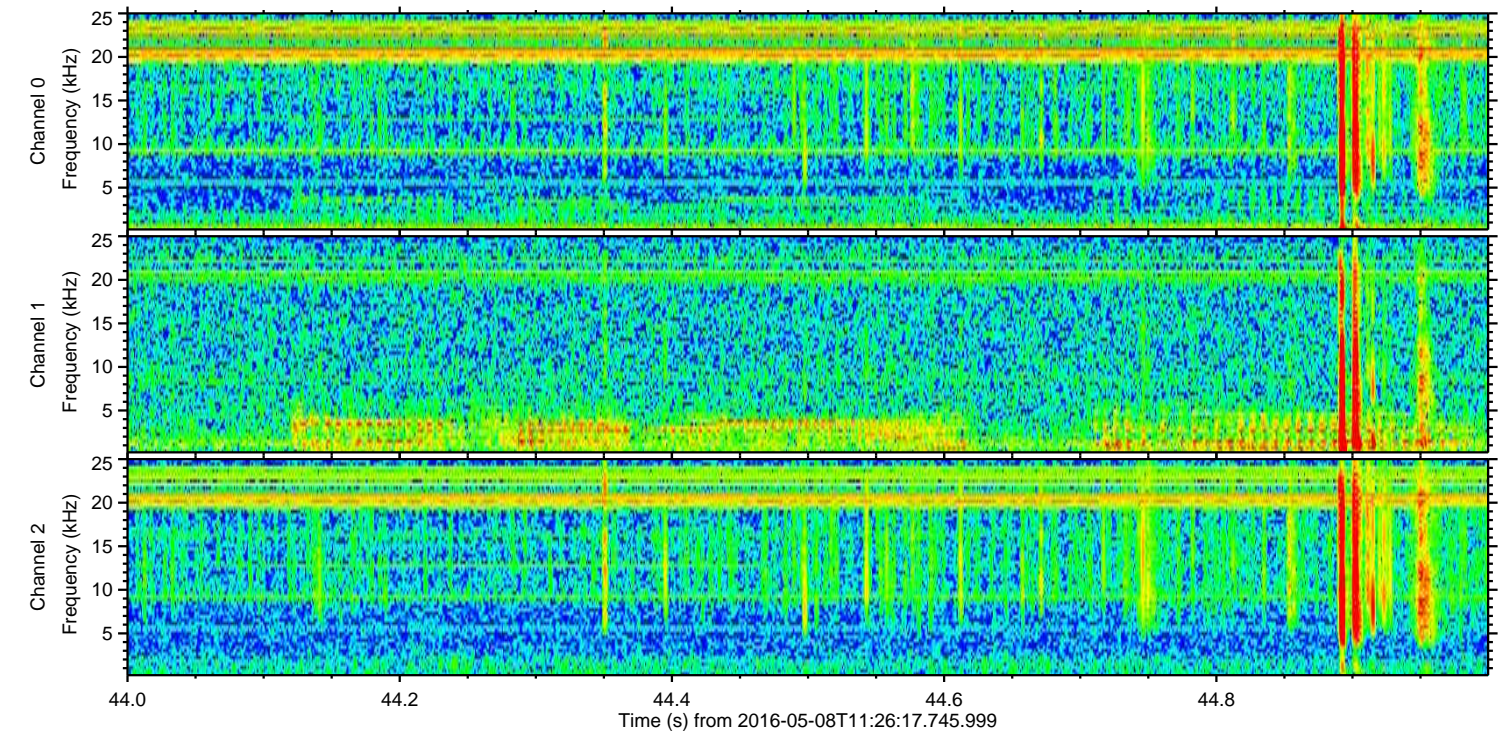
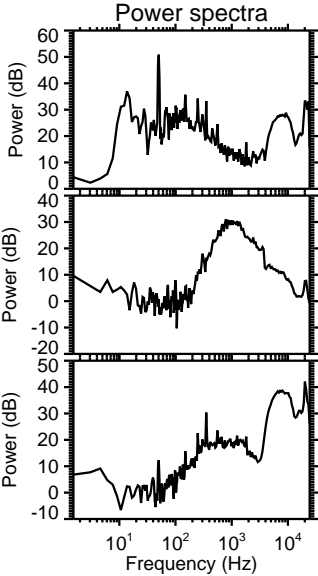
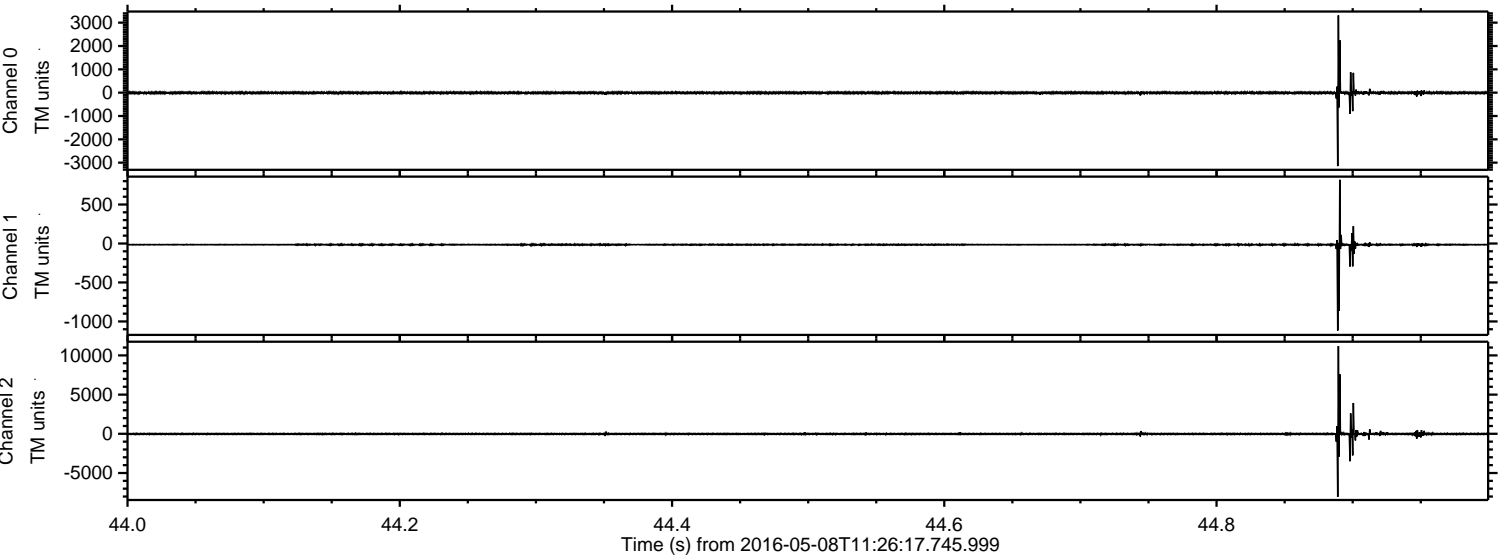
Processed Fri May 13 09:15:12 2016 by ELM ver.2012-10-06 from 001__elm20160508_112616__dat00.bin



Processed Fri May 13 09:15:24 2016 by ELM ver.2012-10-06 from 001__elm20160508_112616__dat00.bin



Processed Fri May 13 09:15:25 2016 by ELM ver.2012-10-06 from 001__elm20160508_112616__dat00.bin

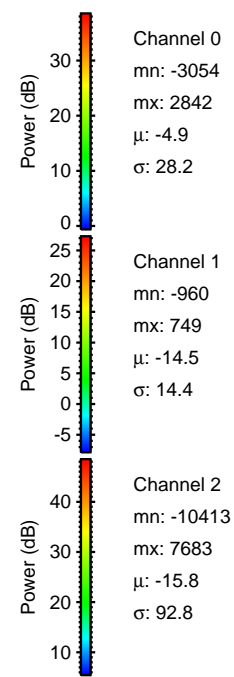
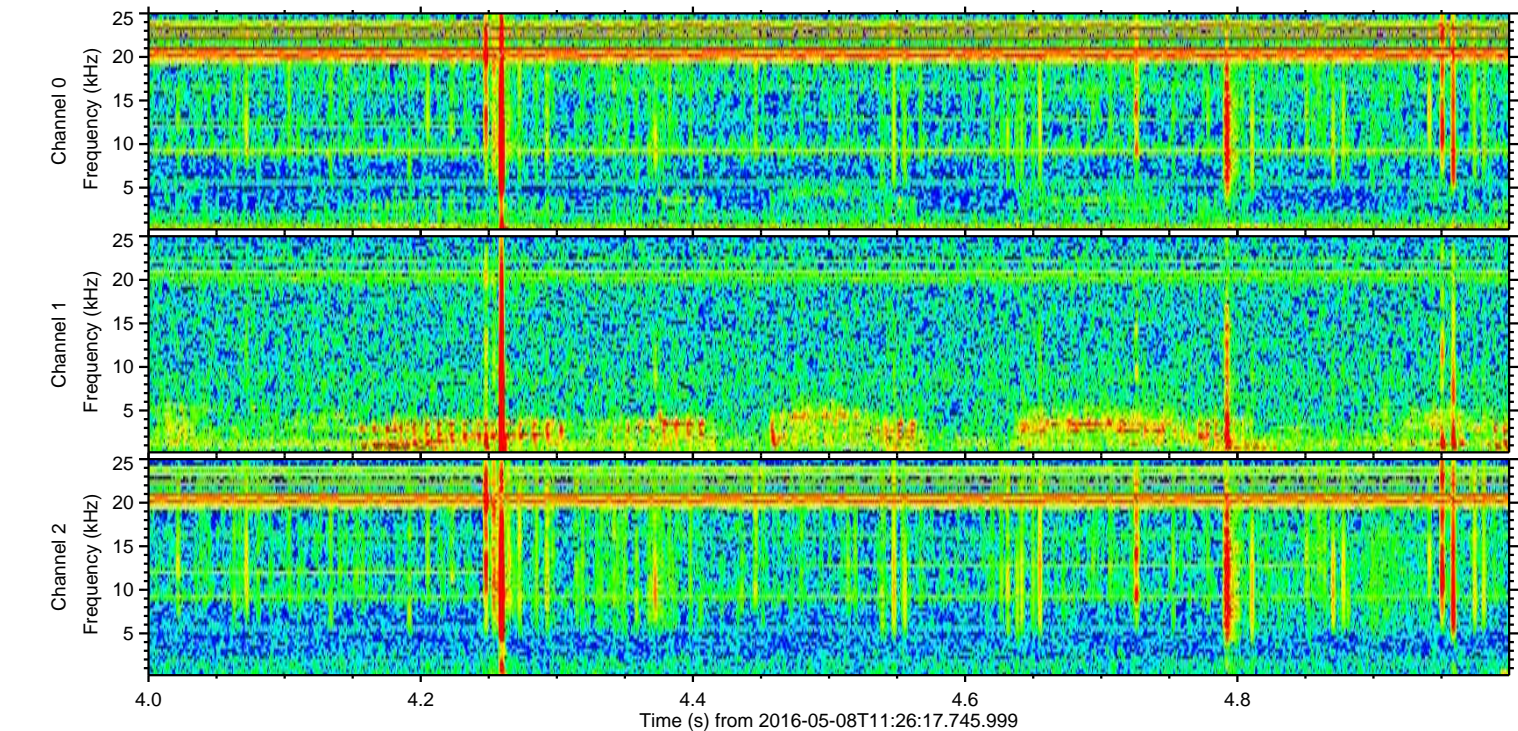
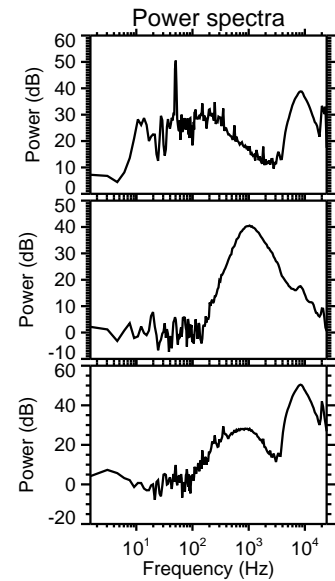
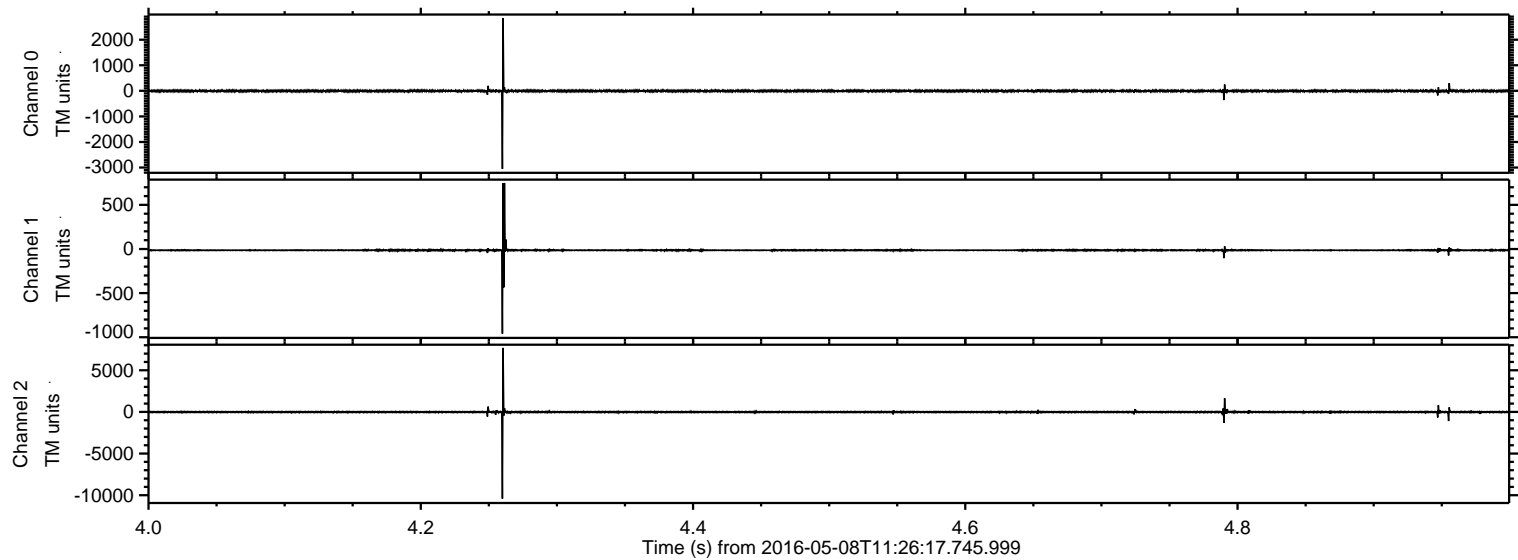


Channel 0
mn: -3149
mx: 3312
 μ : -4.8
 σ : 33.4

Channel 1
mn: -1117
mx: 817
 μ : -14.9
 σ : 16.4

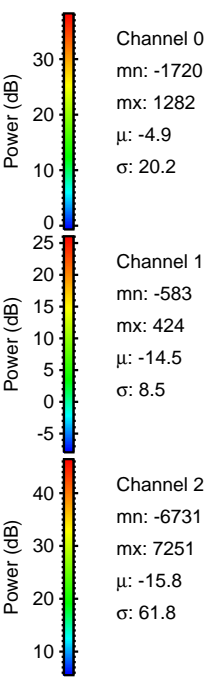
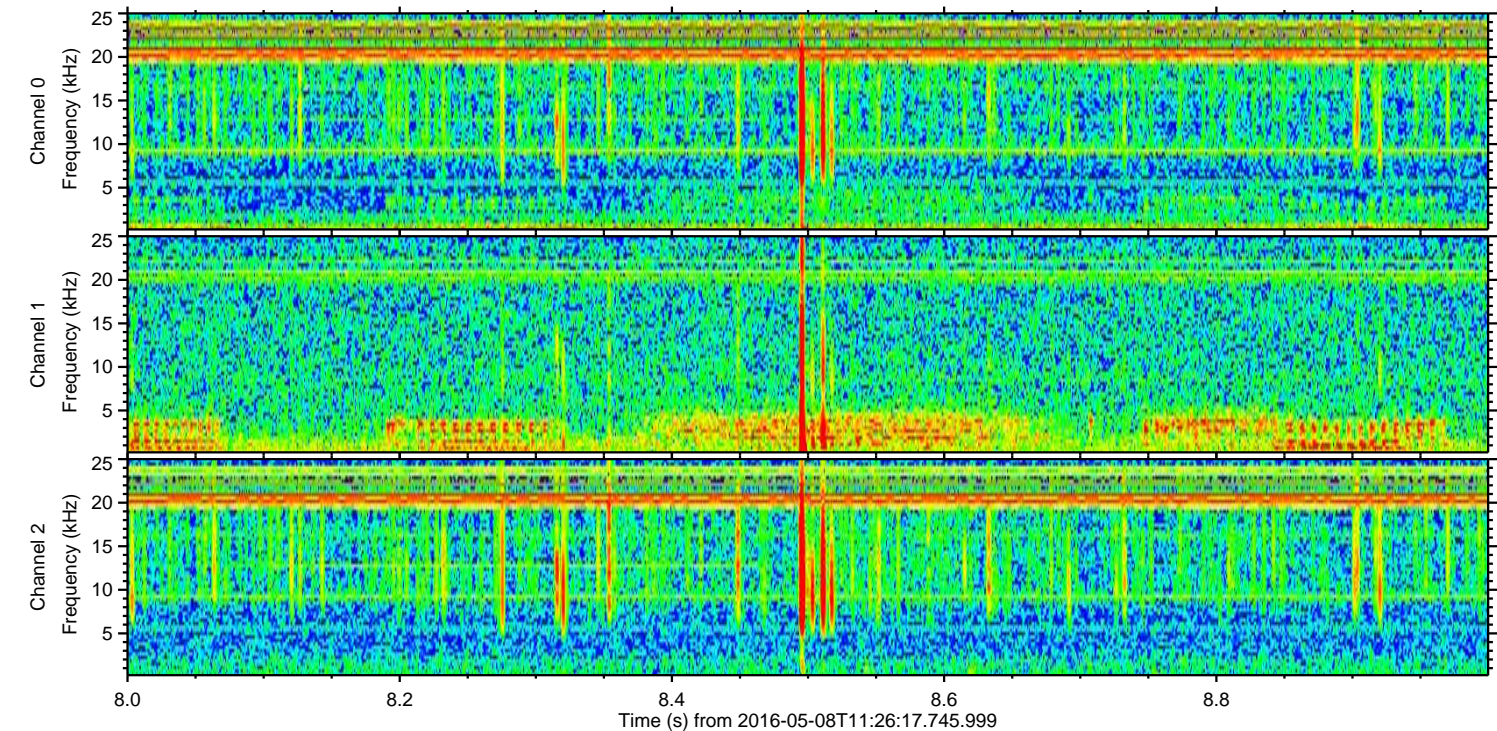
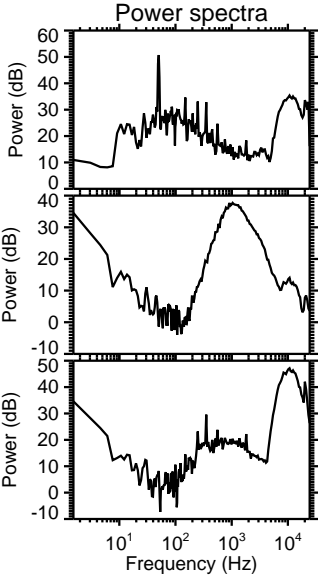
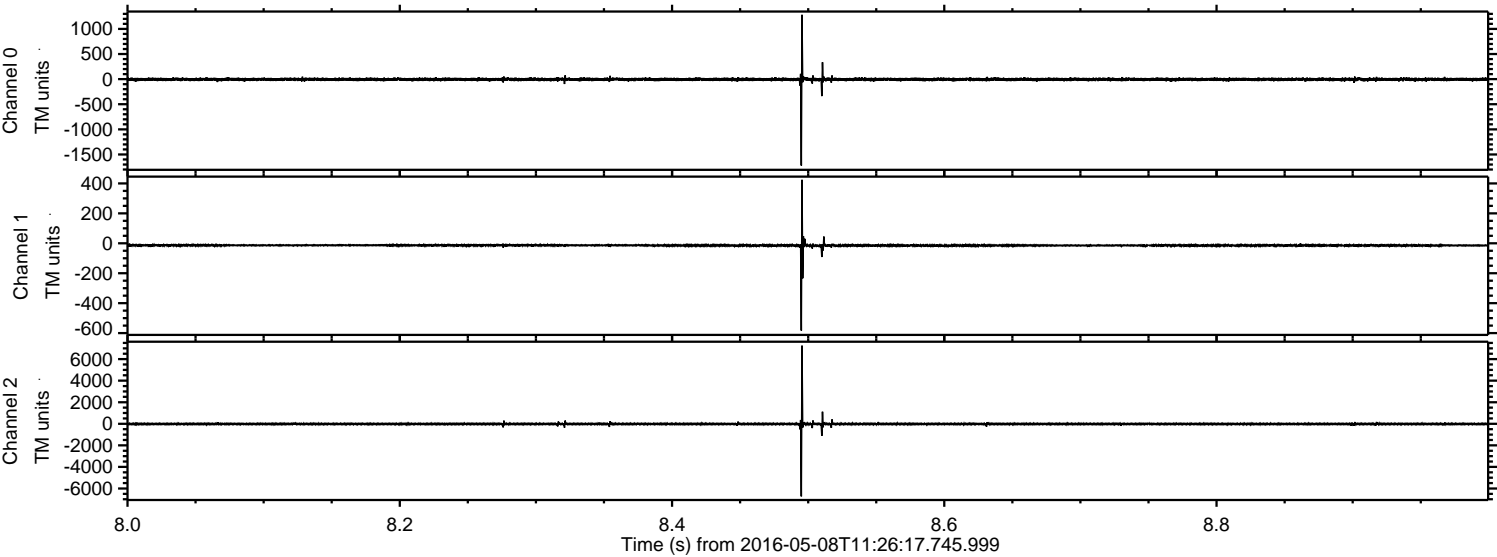
Channel 2
mn: -8042
mx: 11187
 μ : -16.2
 σ : 107.1

Processed Fri May 13 09:15:26 2016 by ELM ver.2012-10-06 from 001__elm20160508_112616__dat00.bin



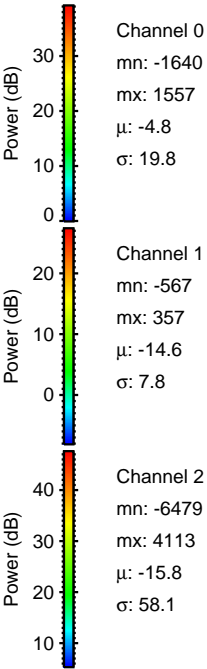
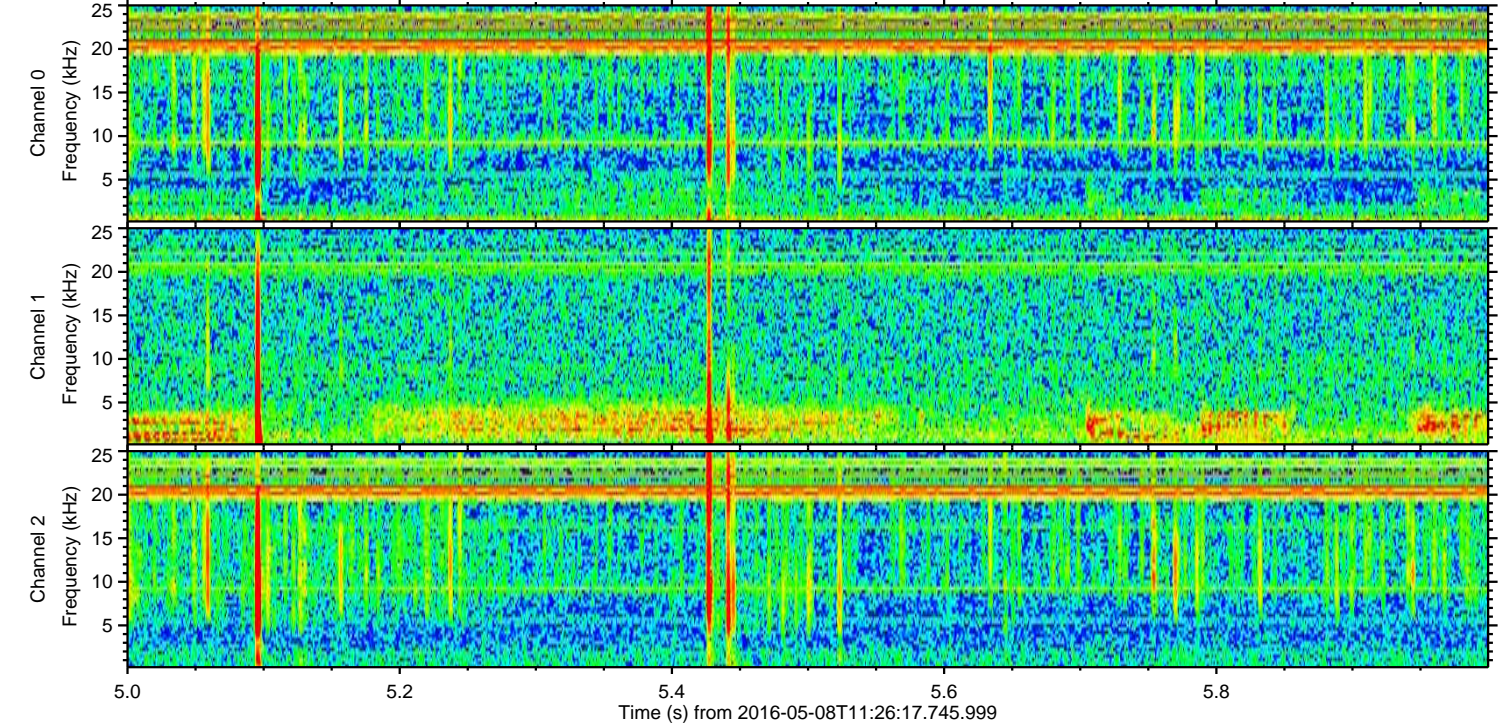
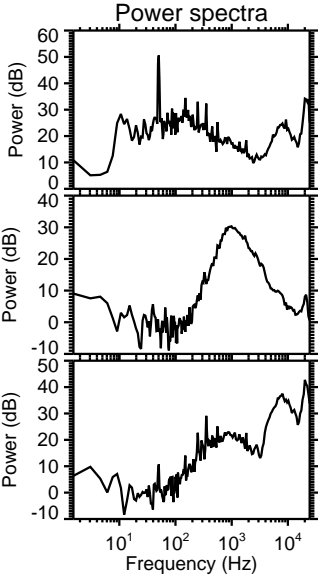
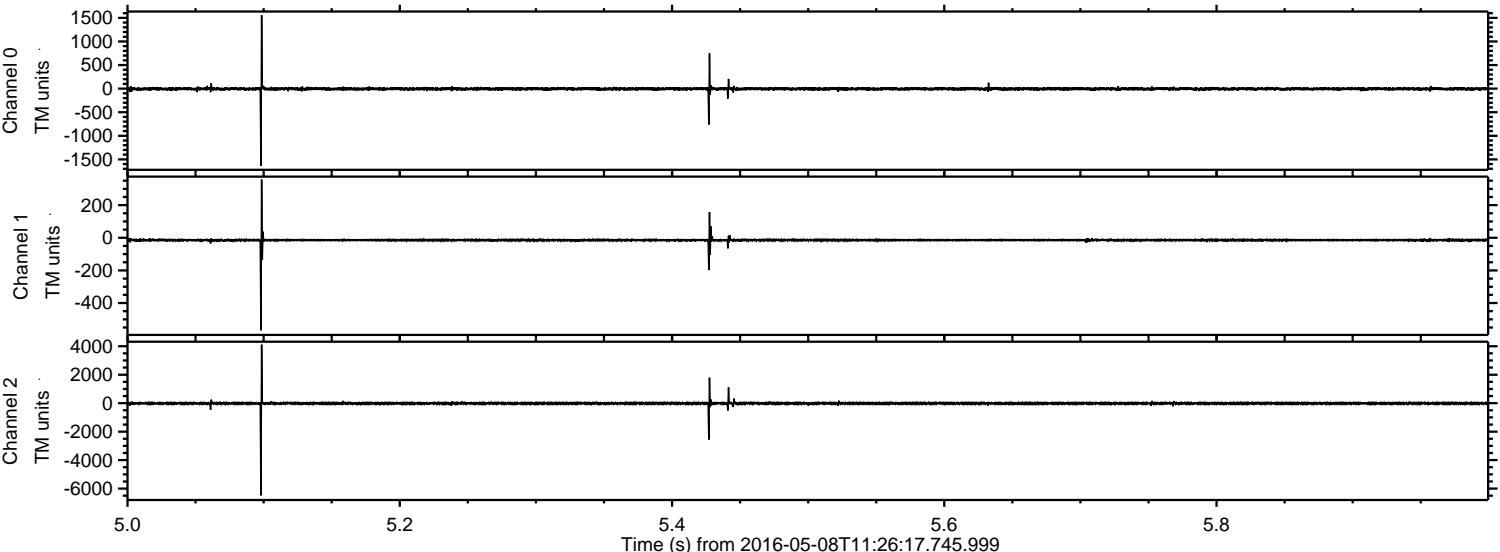
ELMAVAN 3D WAVEFORMS (Measured data sampled at 50 kHz) 51000 packets of 144 samples from 2016-05-08T11:26:17.745.999. Part 9/147

Processed Fri May 13 09:15:27 2016 by ELM ver.2012-10-06 from 001__elm20160508_112616__dat00.bin

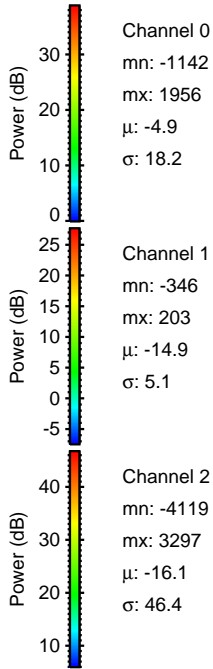
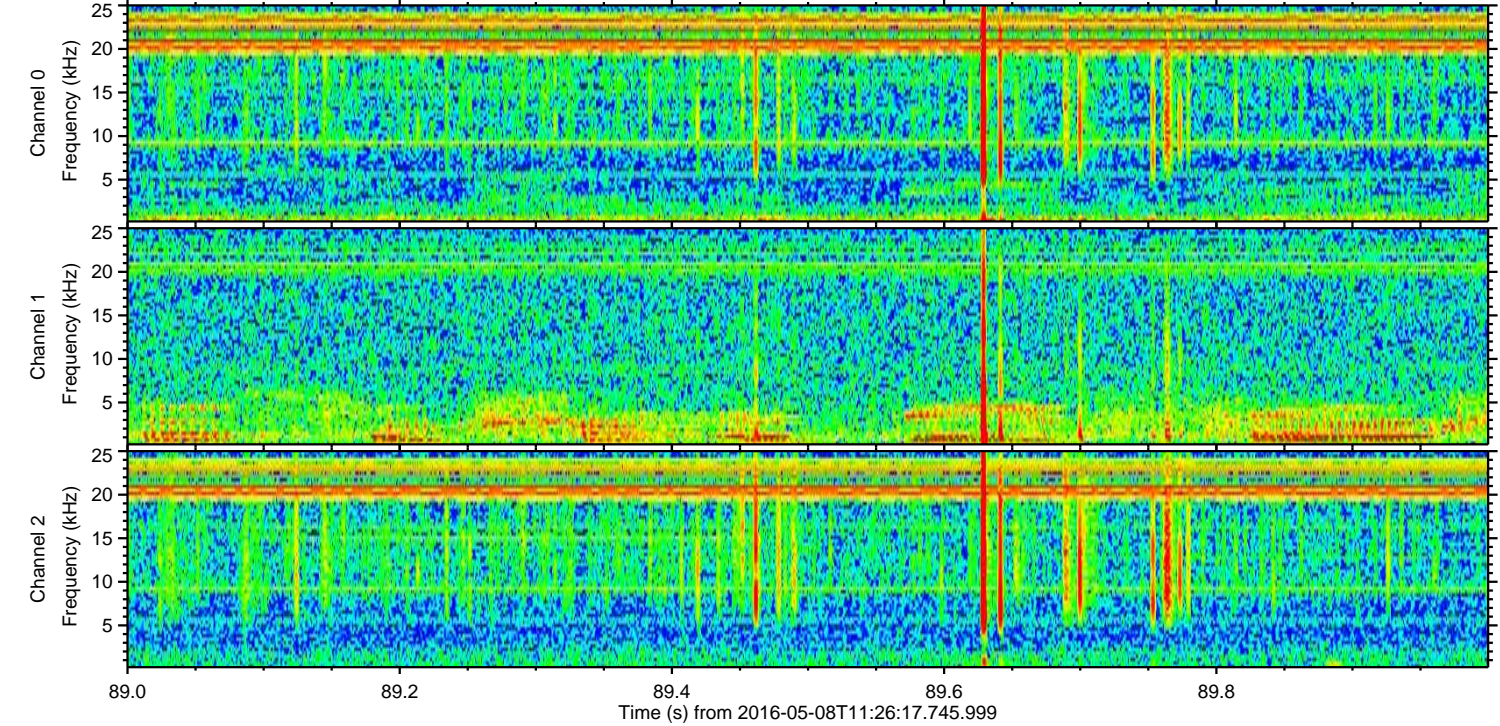
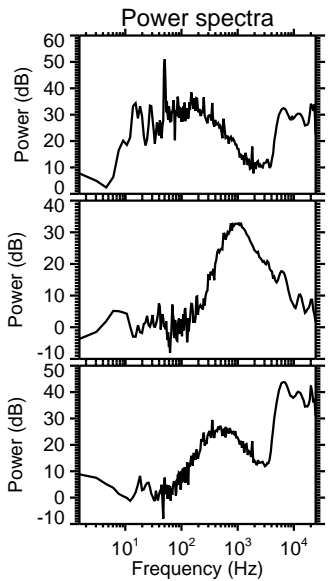
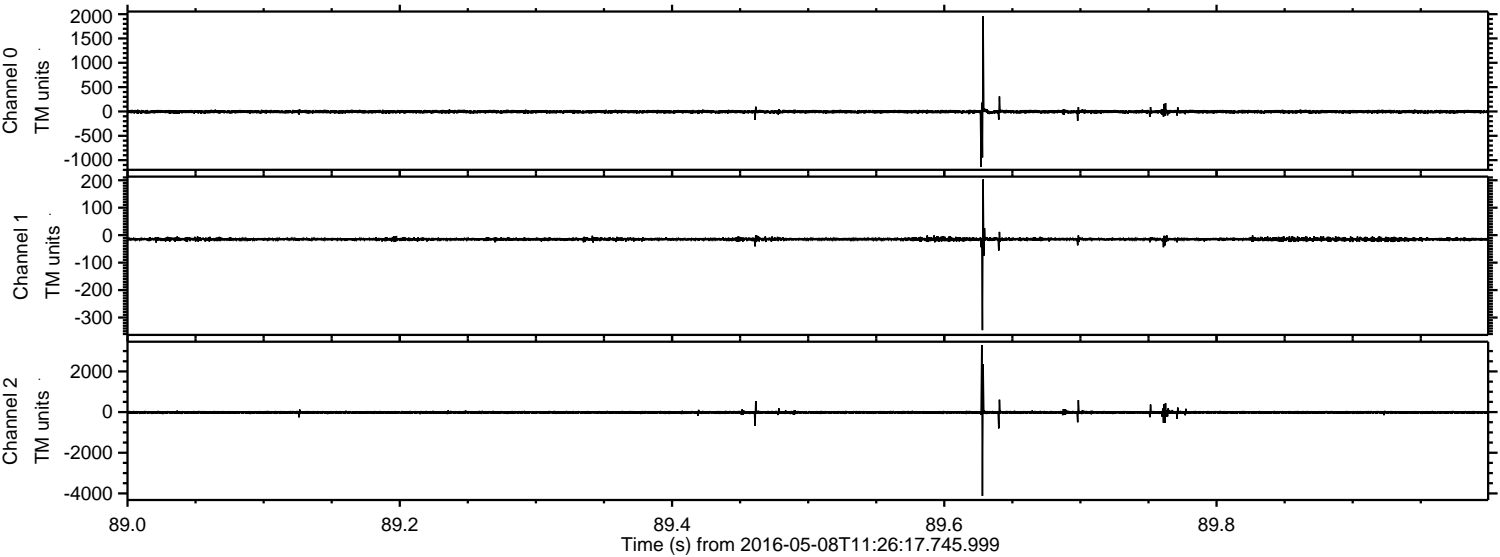


ELMAVAN 3D WAVEFORMS (Measured data sampled at 50 kHz) 51000 packets of 144 samples from 2016-05-08T11:26:17.745.999. Part 6/147

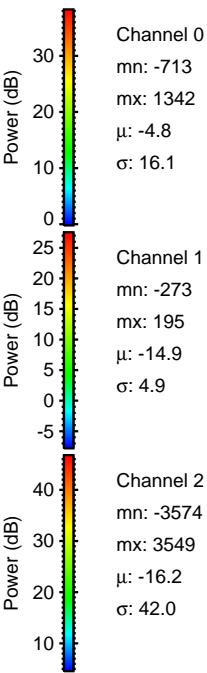
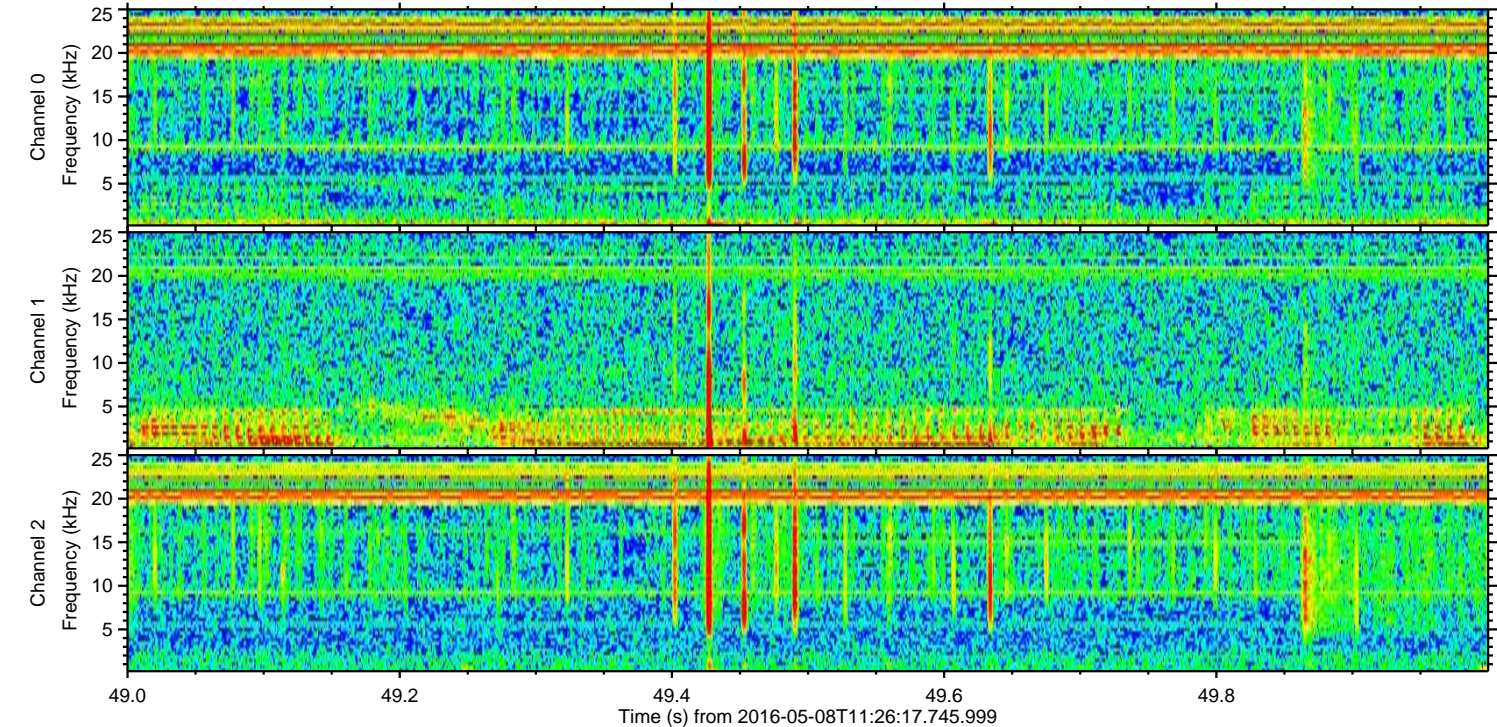
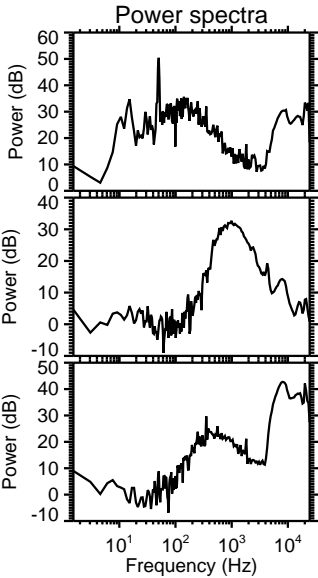
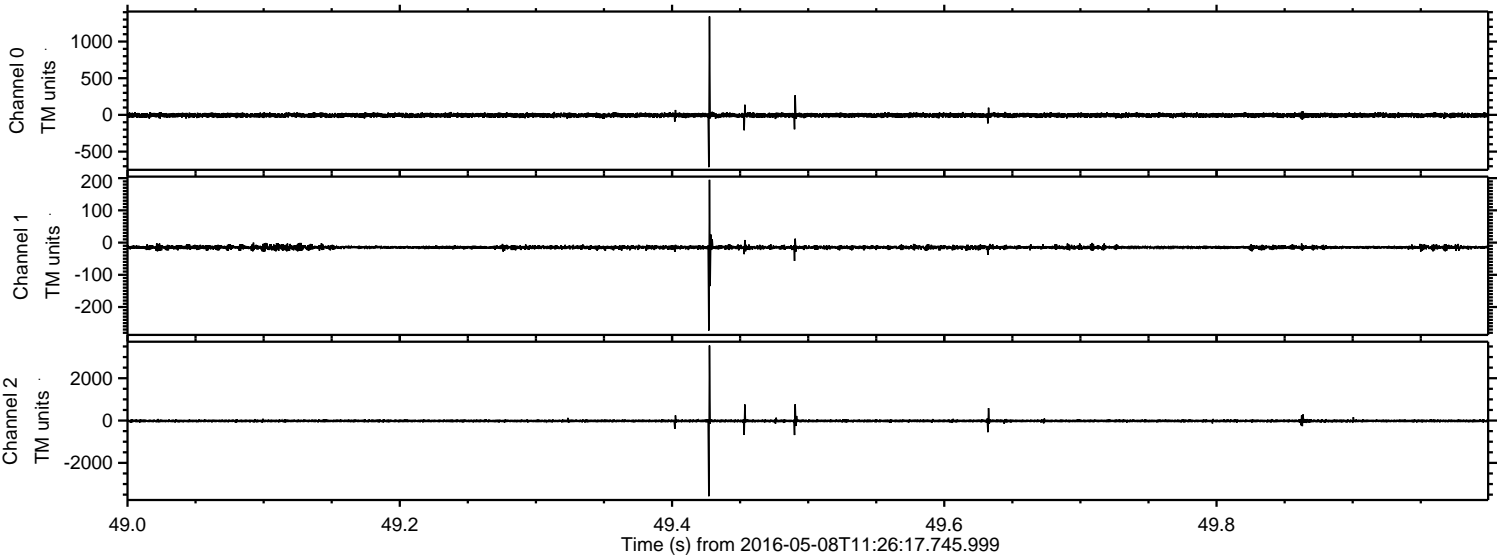
Processed Fri May 13 09:15:28 2016 by ELM ver.2012-10-06 from 001__elm20160508_112616__dat00.bin



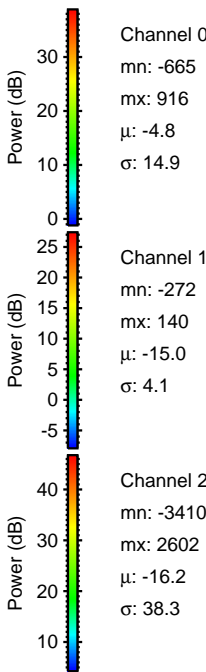
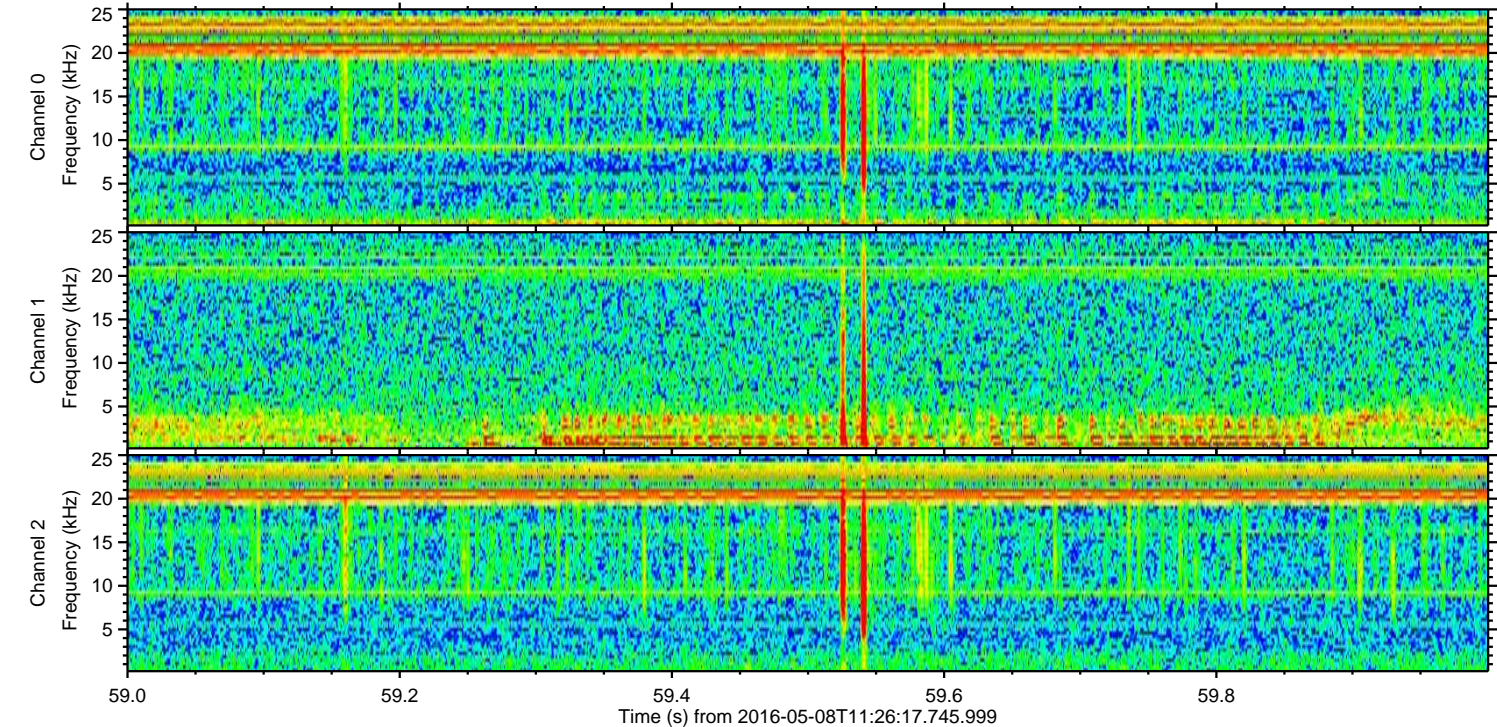
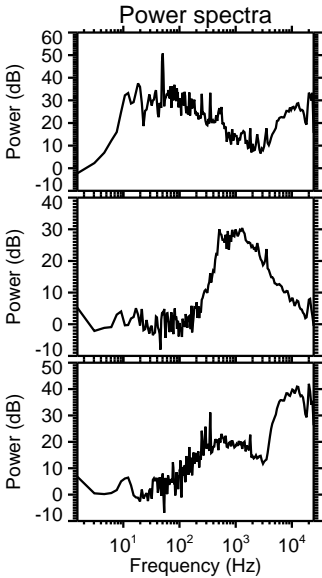
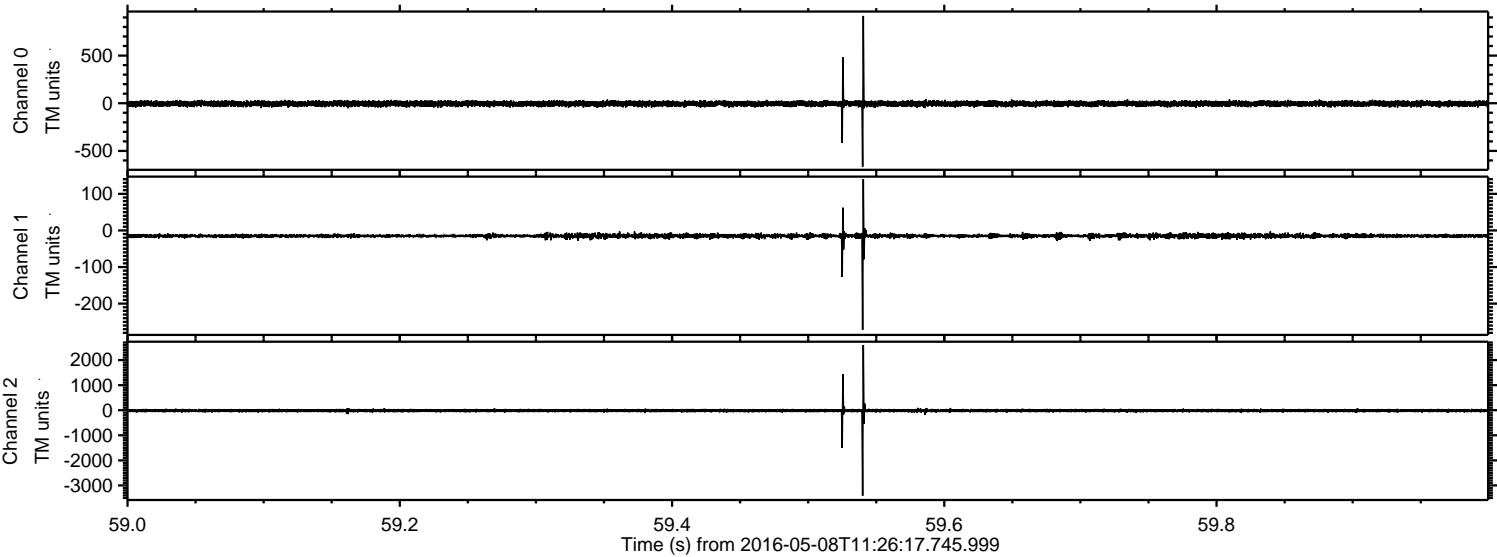
Processed Fri May 13 09:15:28 2016 by ELM ver.2012-10-06 from 001___elm20160508_112616__dat00.bin



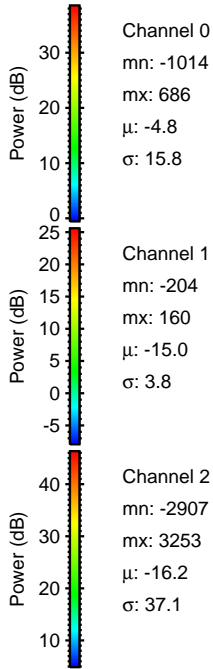
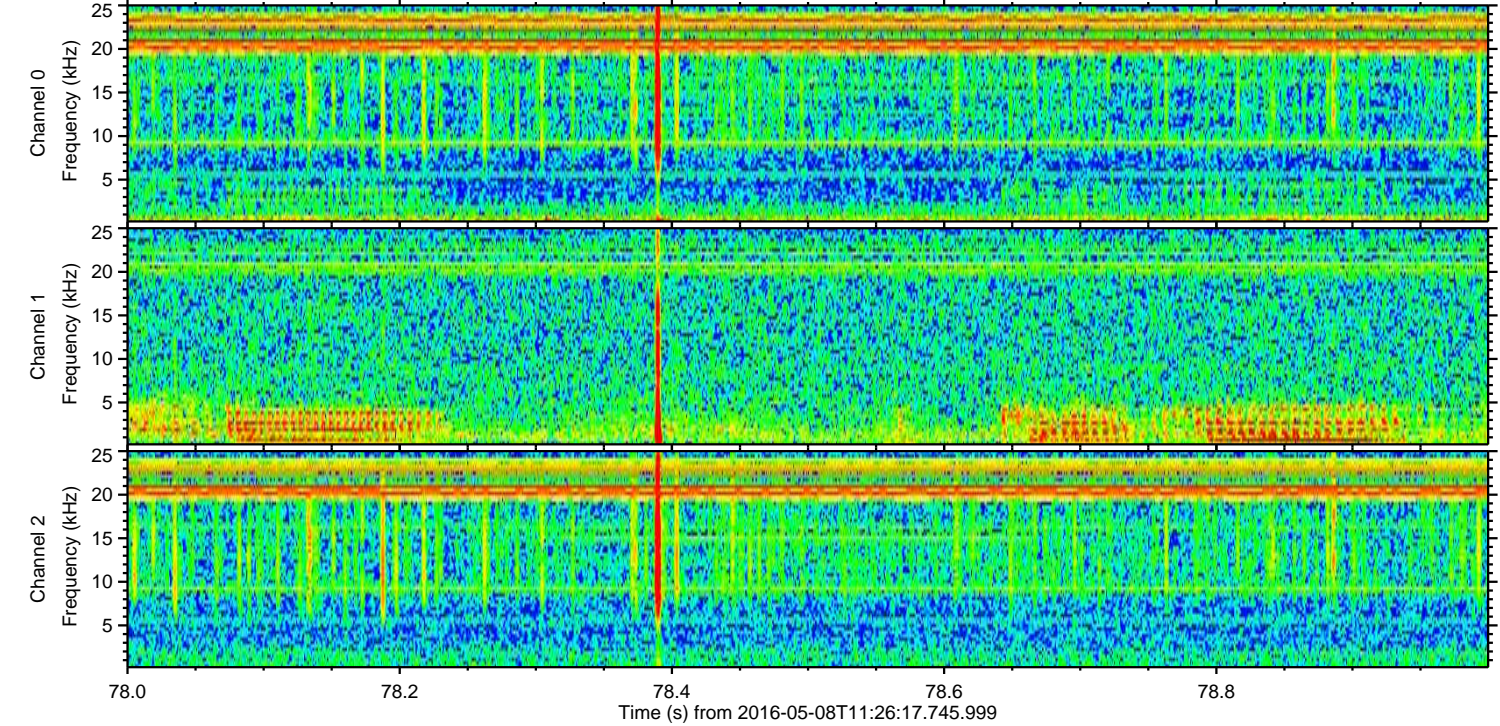
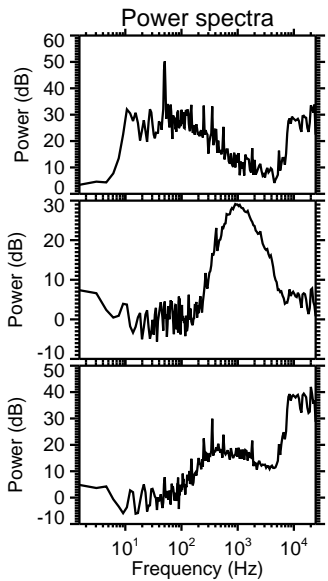
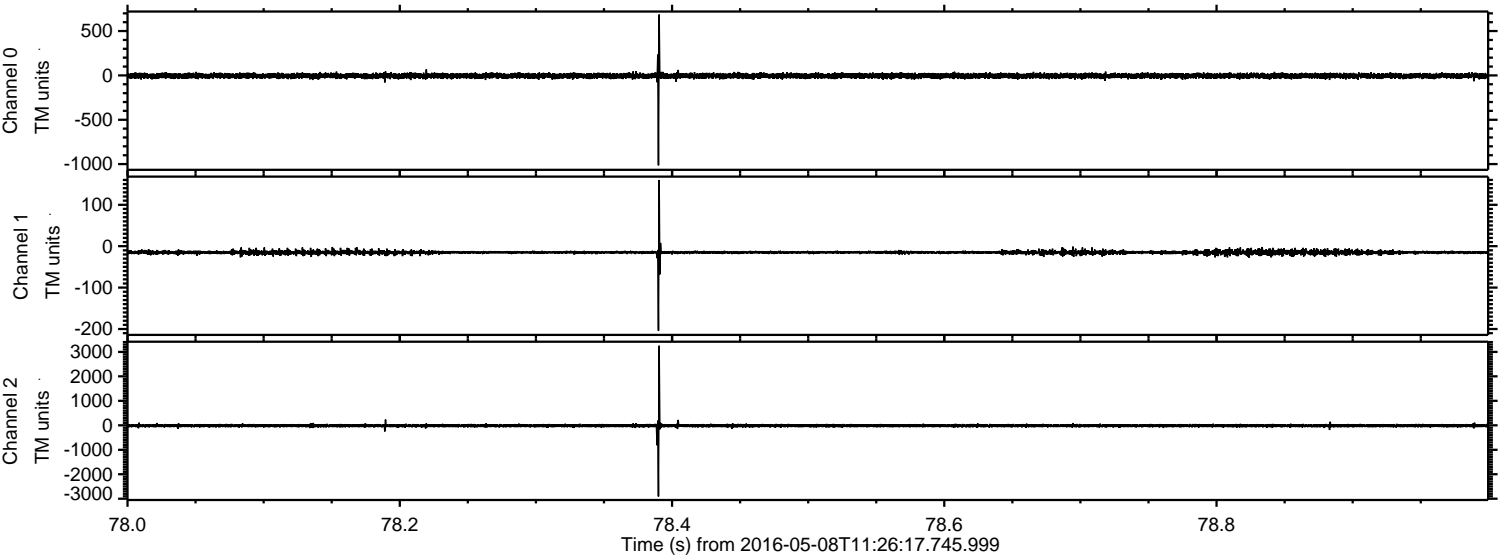
Processed Fri May 13 09:15:29 2016 by ELM ver.2012-10-06 from 001__elm20160508_112616__dat00.bin



Processed Fri May 13 09:15:30 2016 by ELM ver.2012-10-06 from 001__elm20160508_112616__dat00.bin



Processed Fri May 13 09:15:31 2016 by ELM ver.2012-10-06 from 001__elm20160508_112616__dat00.bin



Channel 0
mn: -1014
mx: 686
 μ : -4.8
 σ : 15.8

Channel 1
mn: -204
mx: 160
 μ : -15.0
 σ : 3.8

Channel 2
mn: -2907
mx: 3253
 μ : -16.2
 σ : 37.1

Processed Fri May 13 09:15:32 2016 by ELM ver.2012-10-06 from 001__elm20160508_112616__dat00.bin

