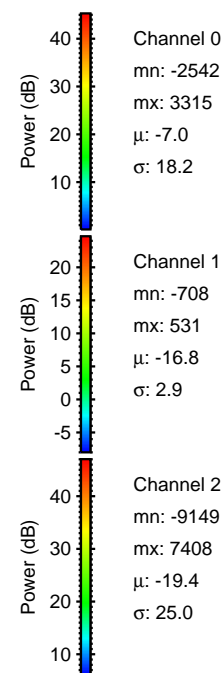
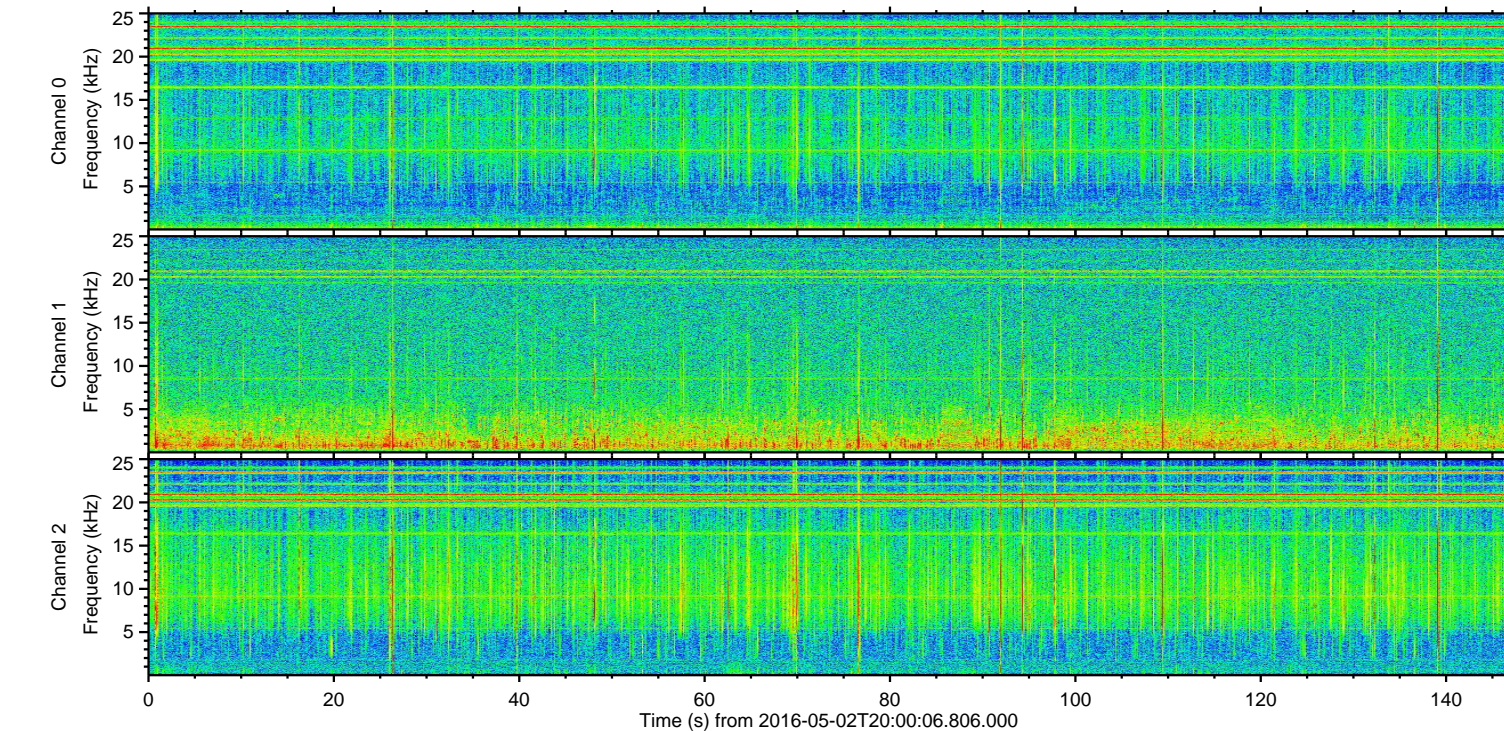
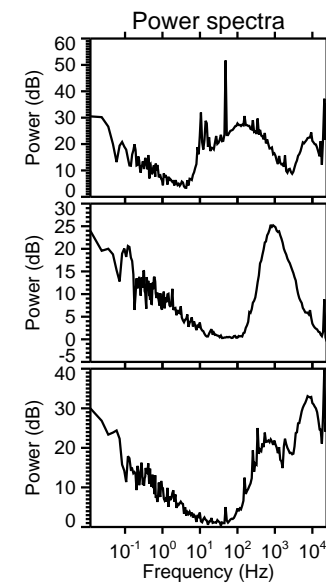
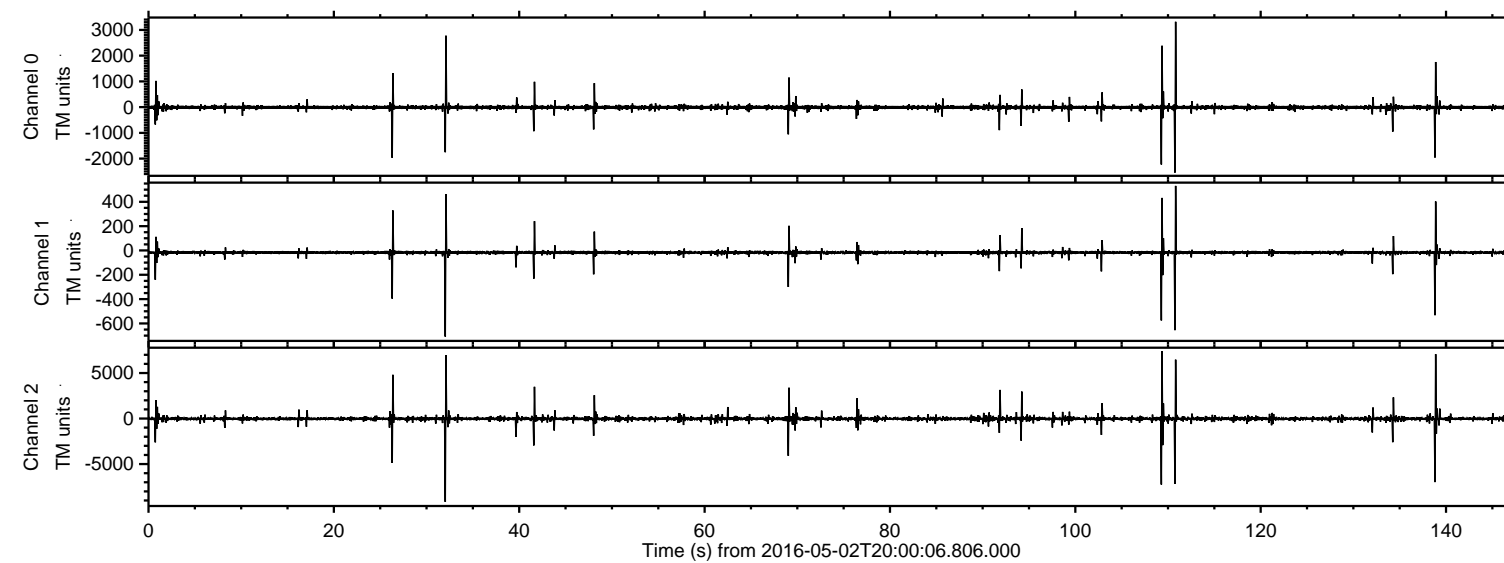


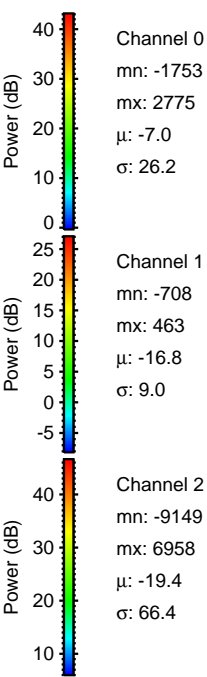
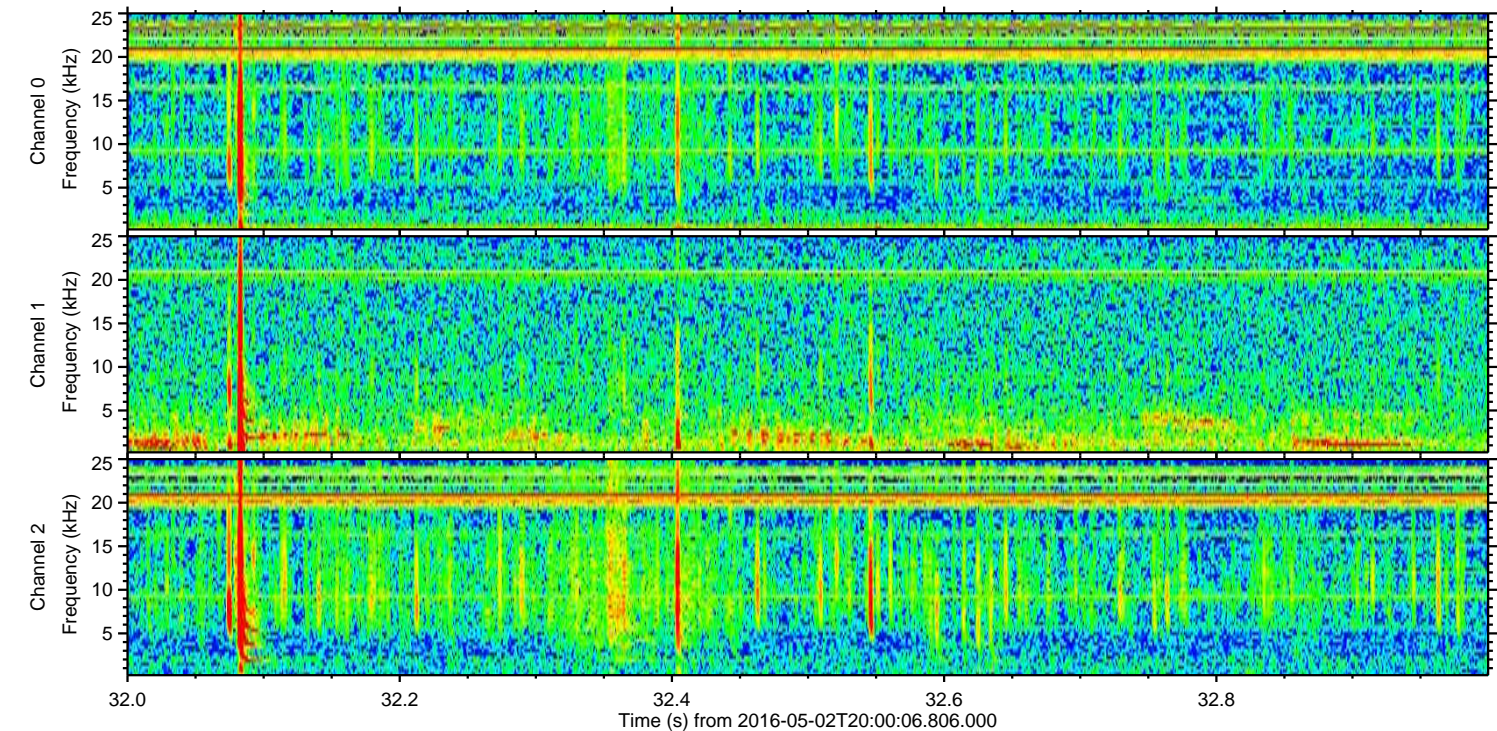
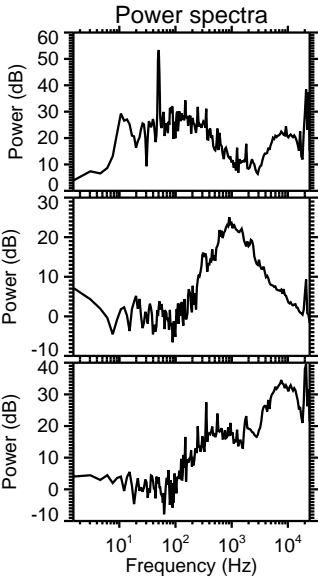
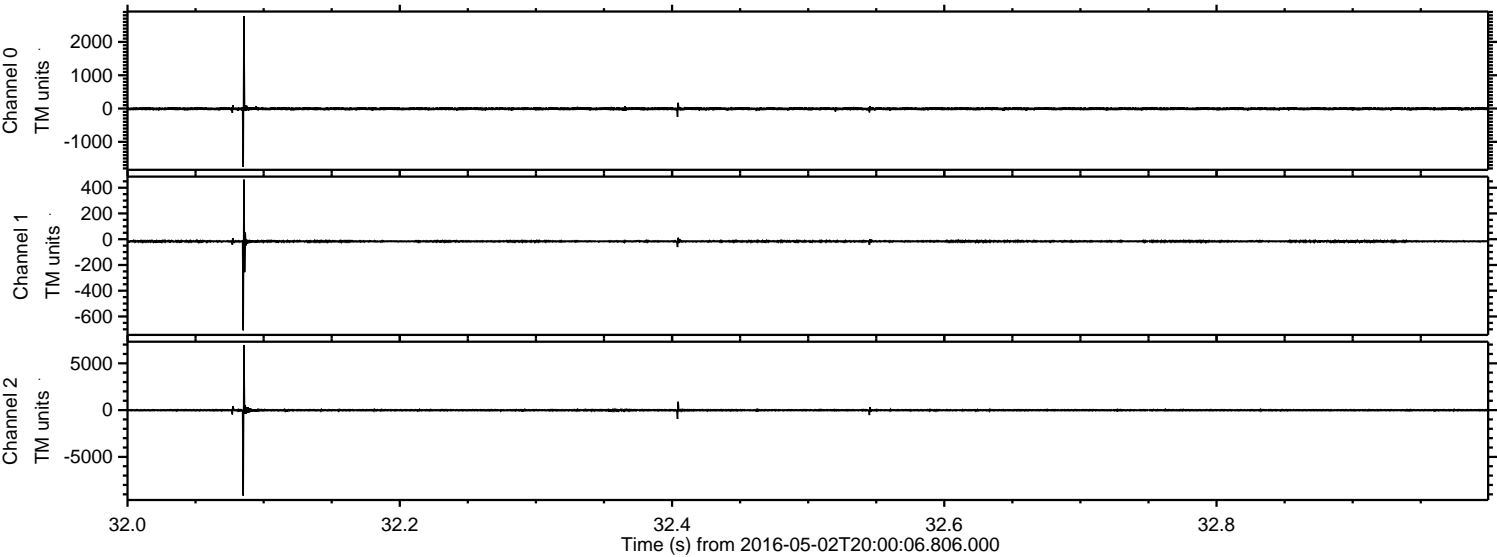
# ELMAVAN 3D WAVEFORMS (Measured data sampled at 50 kHz) 51000 packets of 144 samples from 2016-05-02T20:00:06.806.000.

Processed Thu May 12 05:19:08 2016 by ELM ver.2012-10-06 from 001\_\_elm20160502\_200005\_\_dat00.bin





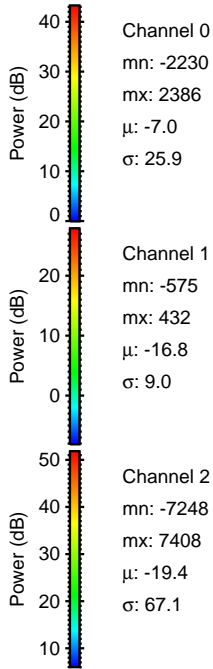
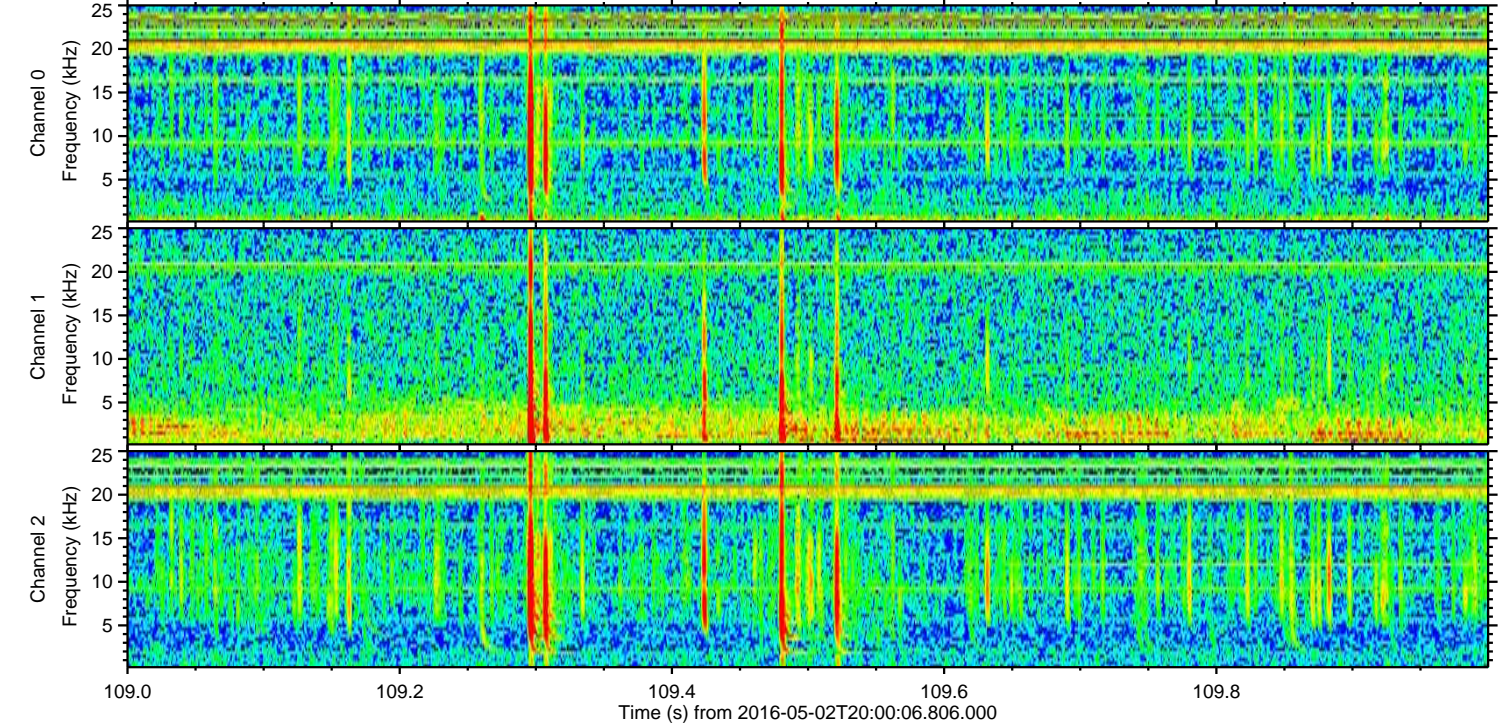
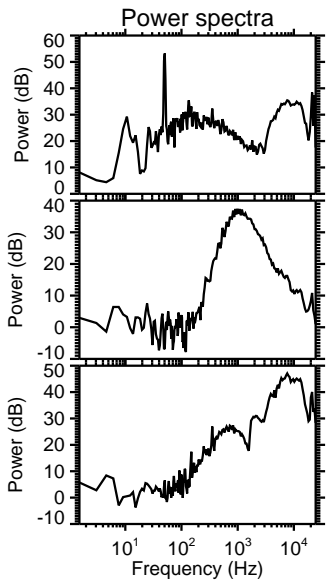
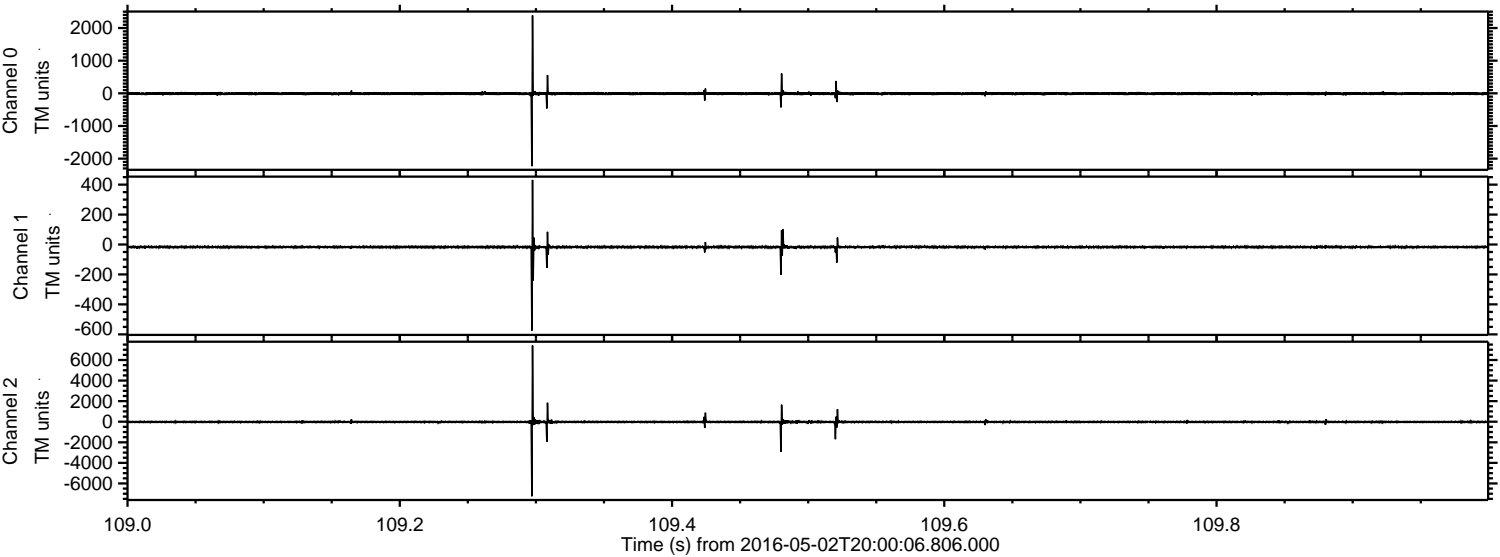
Processed Thu May 12 05:19:20 2016 by ELM ver.2012-10-06 from 001\_\_elm20160502\_200005\_\_dat00.bin





ELMAVAN 3D WAVEFORMS (Measured data sampled at 50 kHz) 51000 packets of 144 samples from 2016-05-02T20:00:06.806.000. Part 110/147

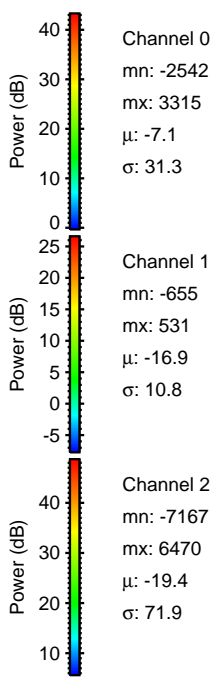
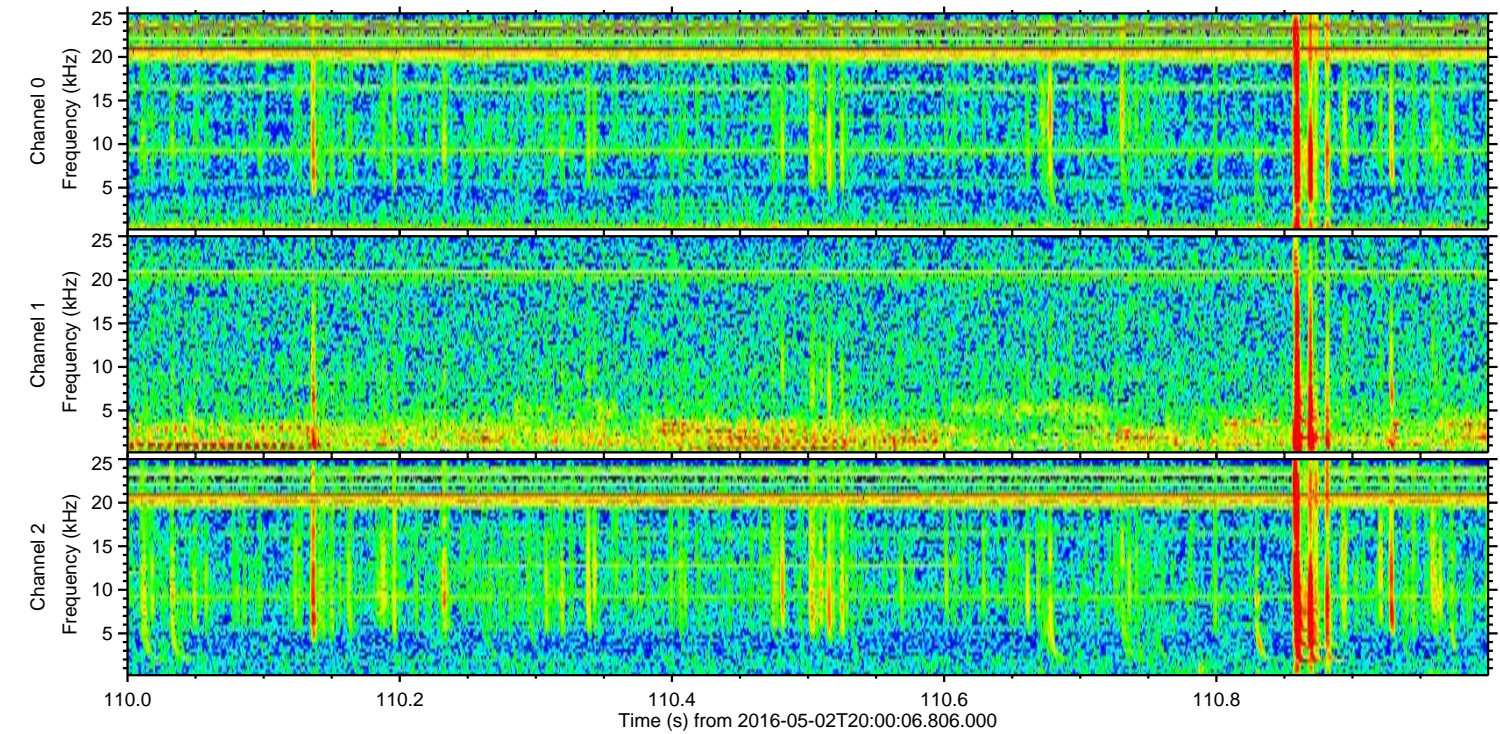
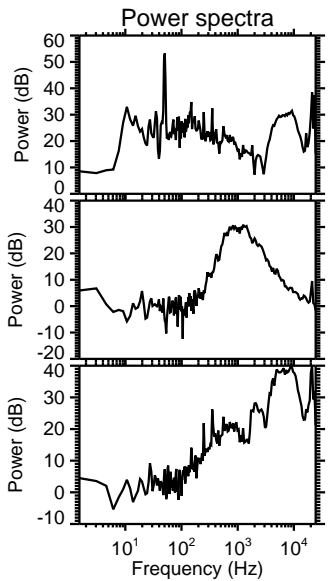
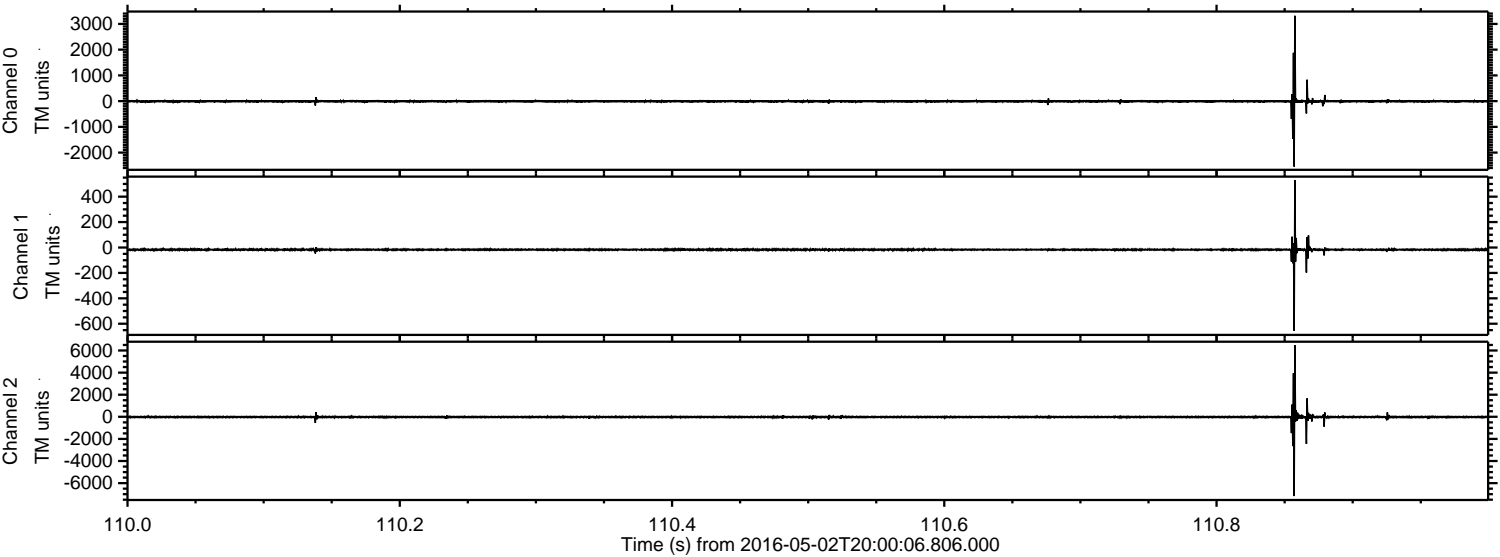
Processed Thu May 12 05:19:21 2016 by ELM ver.2012-10-06 from 001\_\_elm20160502\_200005\_\_dat00.bin





ELMAVAN 3D WAVEFORMS (Measured data sampled at 50 kHz) 51000 packets of 144 samples from 2016-05-02T20:00:06.806.000. Part 111/147

Processed Thu May 12 05:19:22 2016 by ELM ver.2012-10-06 from 001\_\_elm20160502\_200005\_\_dat00.bin



Channel 0  
mn: -25.42  
mx: 33.15  
 $\mu$ : -7.1  
 $\sigma$ : 31.3

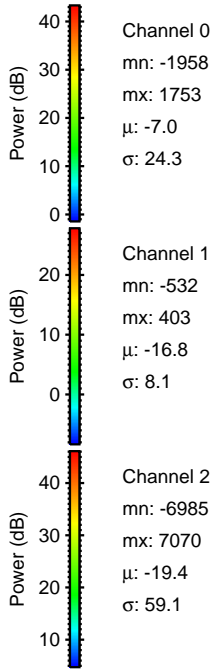
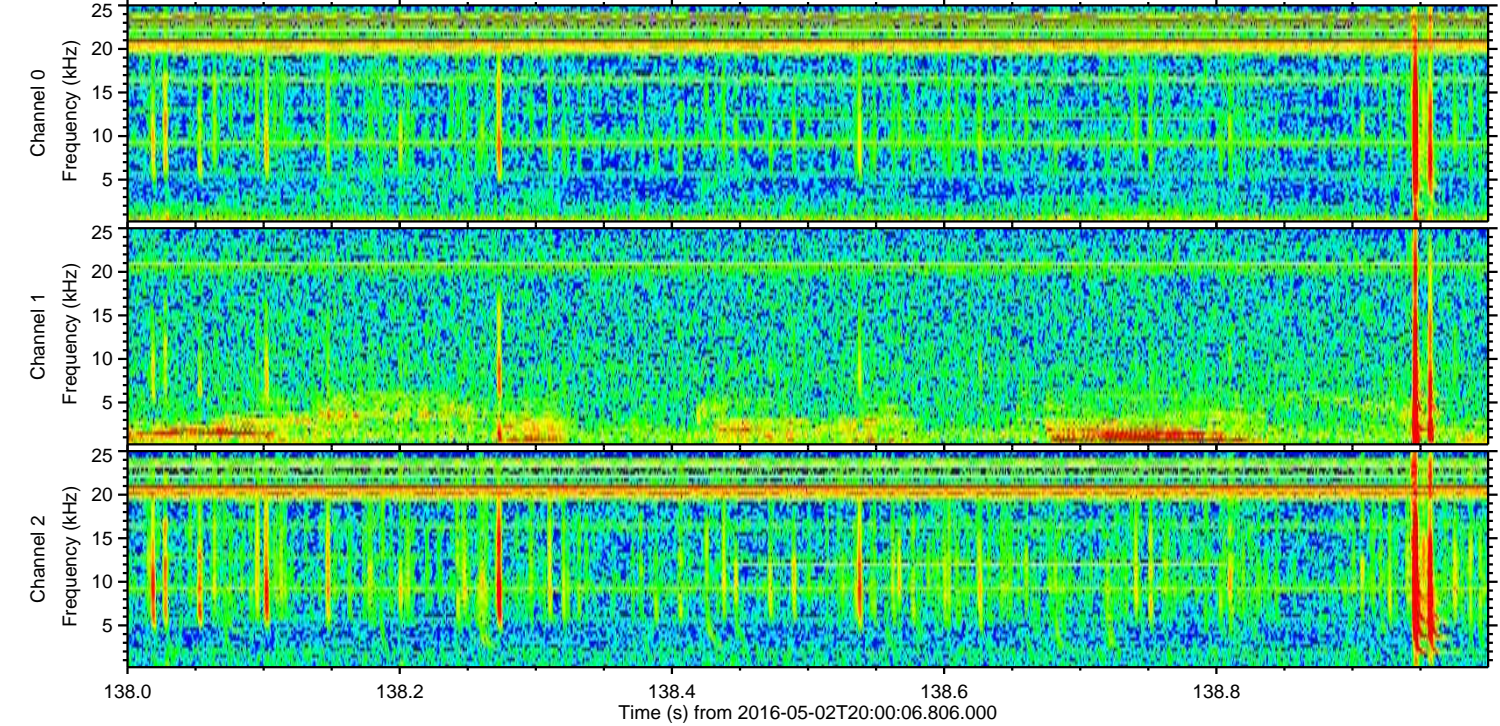
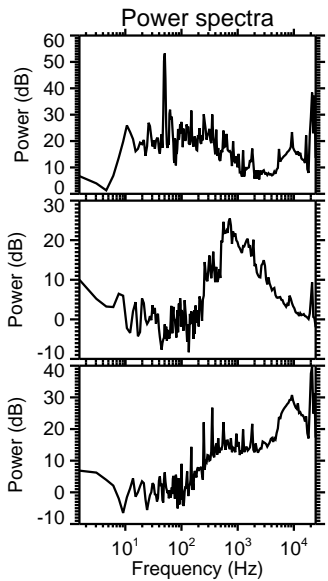
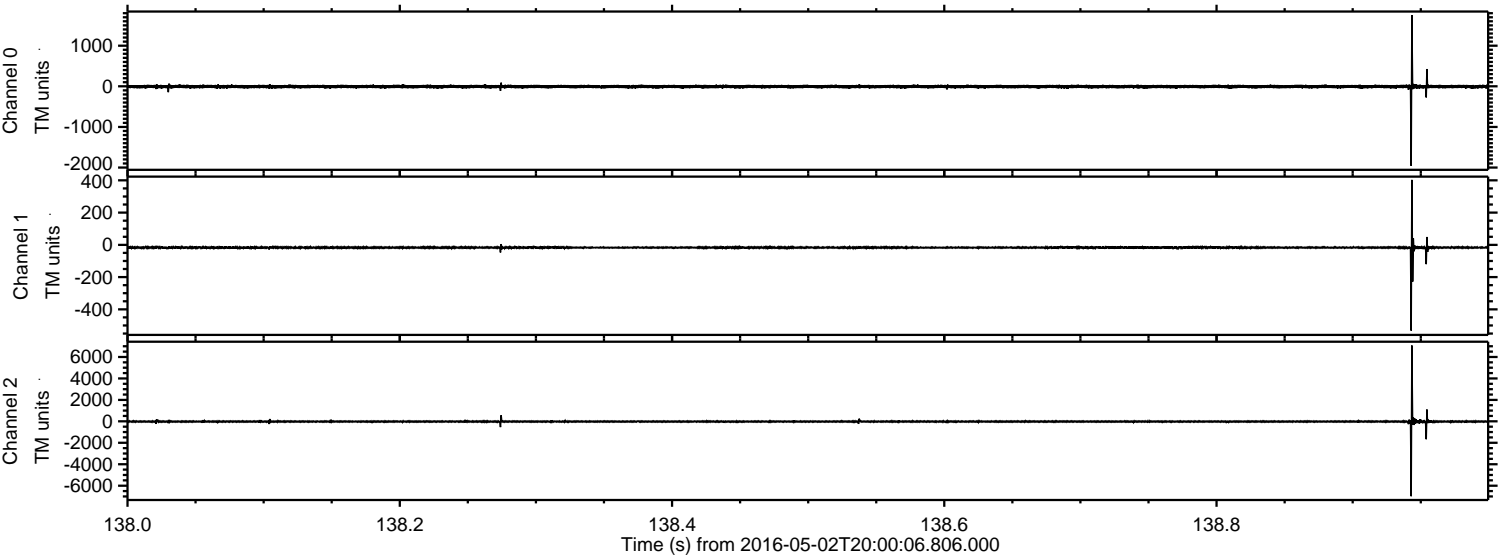
Channel 1  
mn: -6.55  
mx: 5.31  
 $\mu$ : -16.9  
 $\sigma$ : 10.8

Channel 2  
mn: -7.167  
mx: 6.470  
 $\mu$ : -19.4  
 $\sigma$ : 71.9



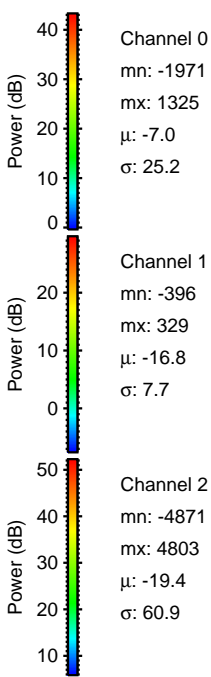
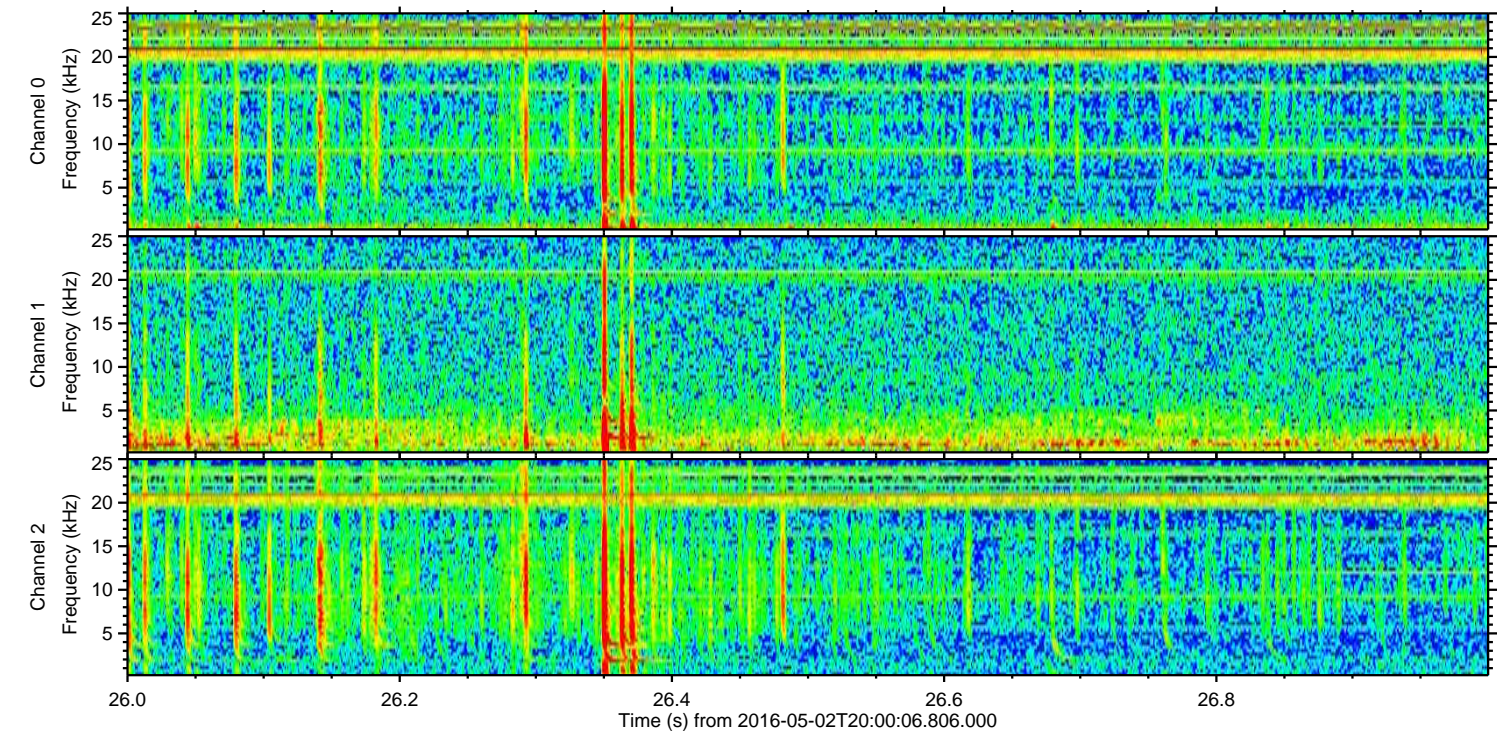
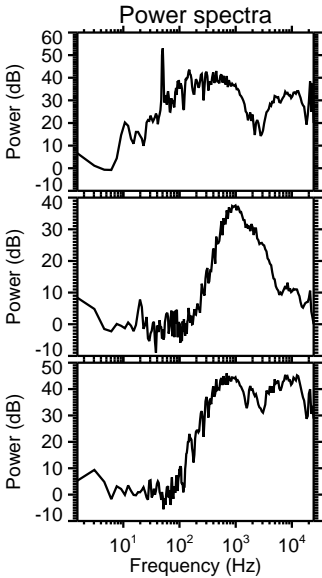
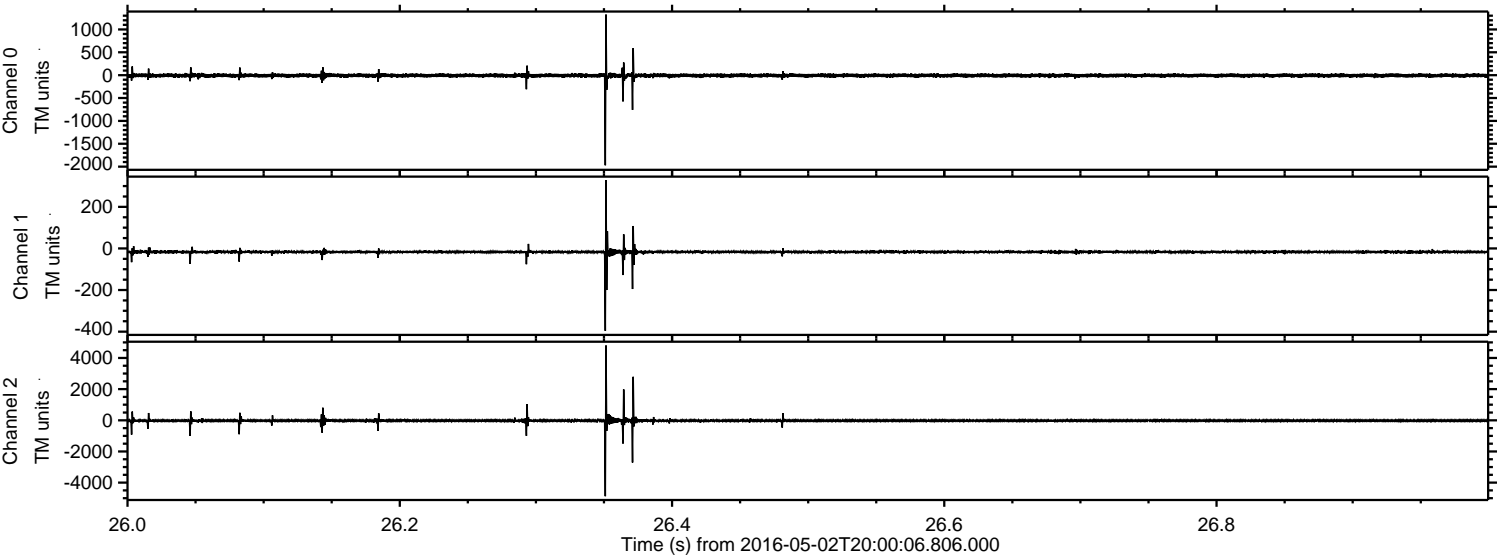
ELMAVAN 3D WAVEFORMS (Measured data sampled at 50 kHz) 51000 packets of 144 samples from 2016-05-02T20:00:06.806.000. Part 139/147

Processed Thu May 12 05:19:22 2016 by ELM ver.2012-10-06 from 001\_\_elm20160502\_200005\_\_dat00.bin



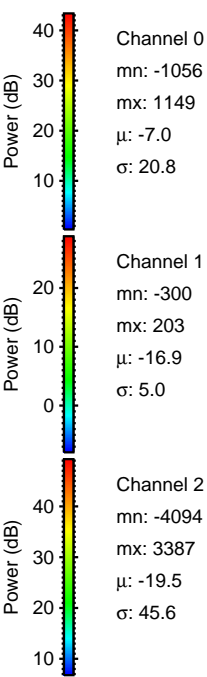
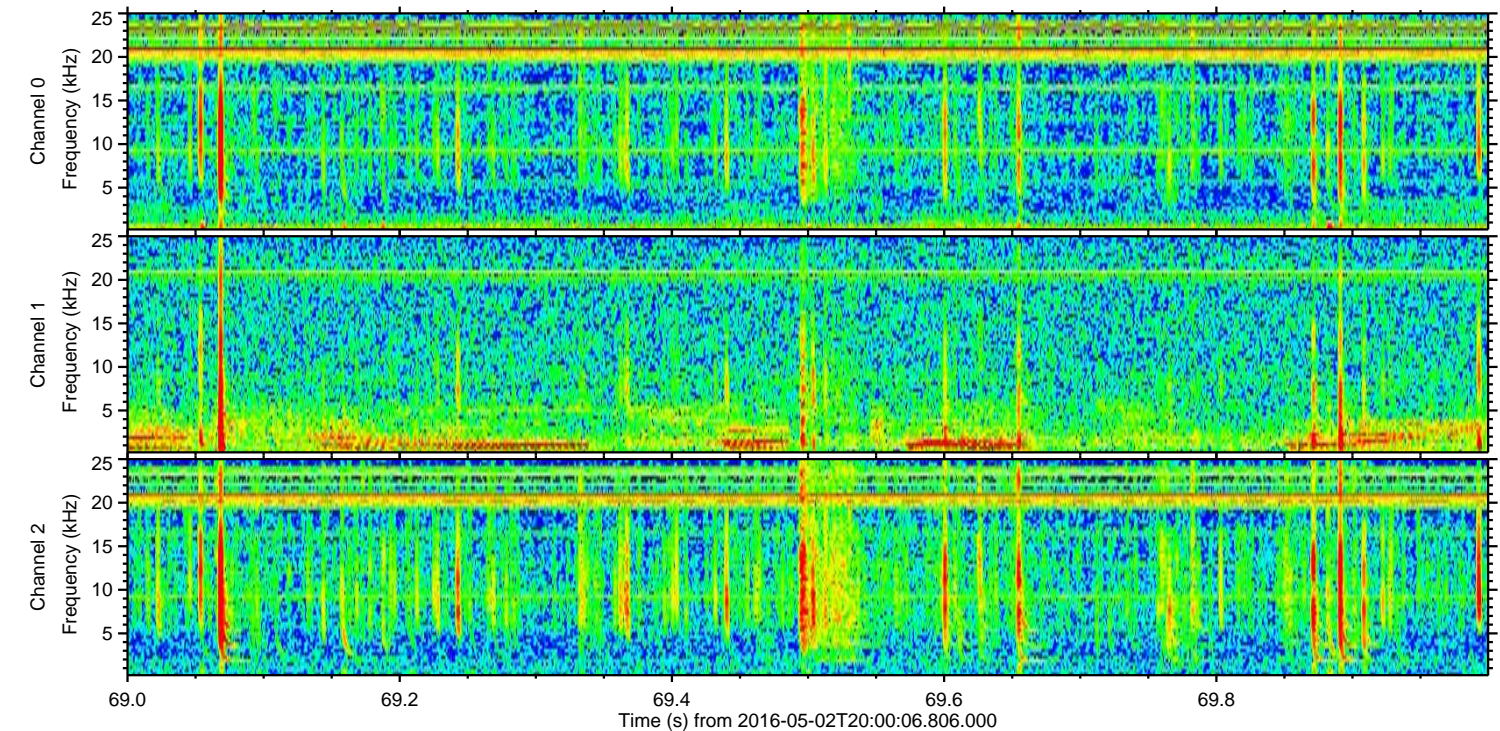
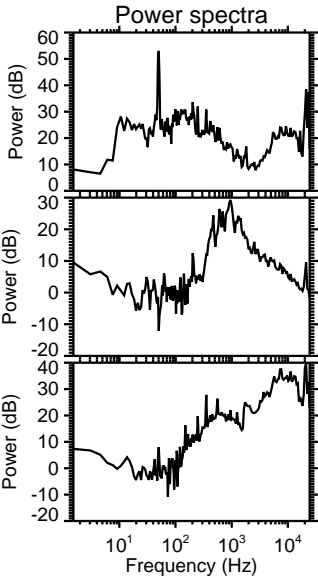
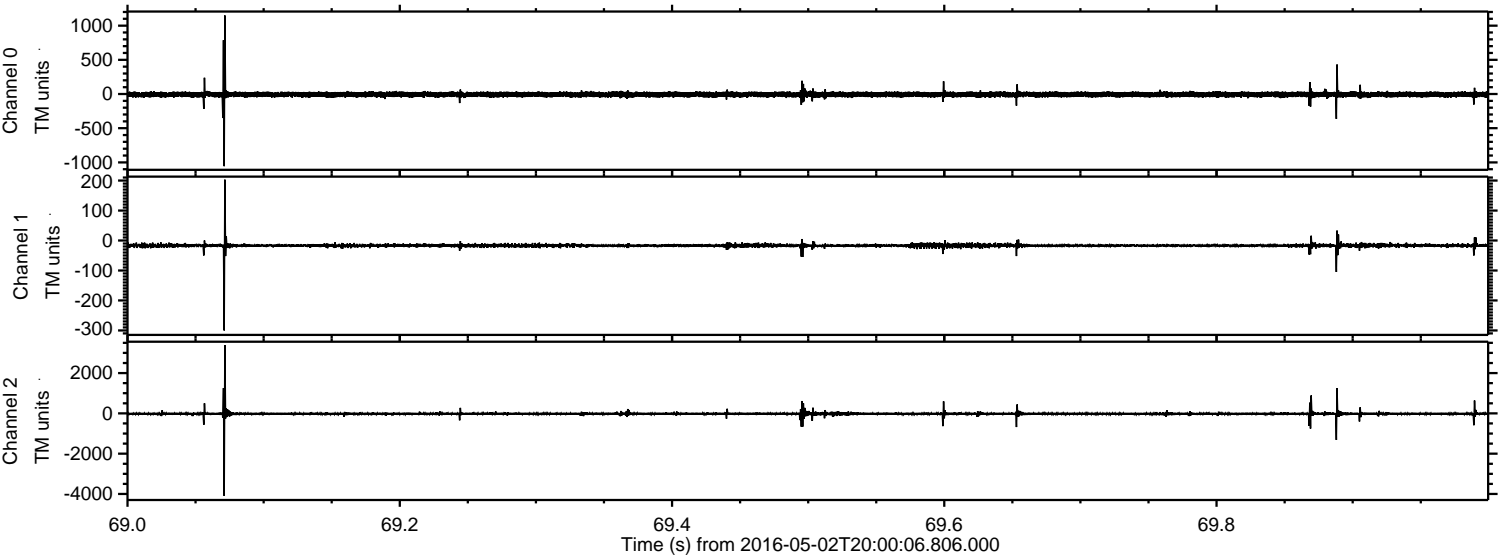


Processed Thu May 12 05:19:23 2016 by ELM ver.2012-10-06 from 001\_\_elm20160502\_200005\_\_dat00.bin



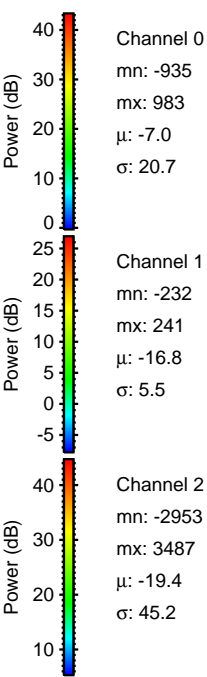
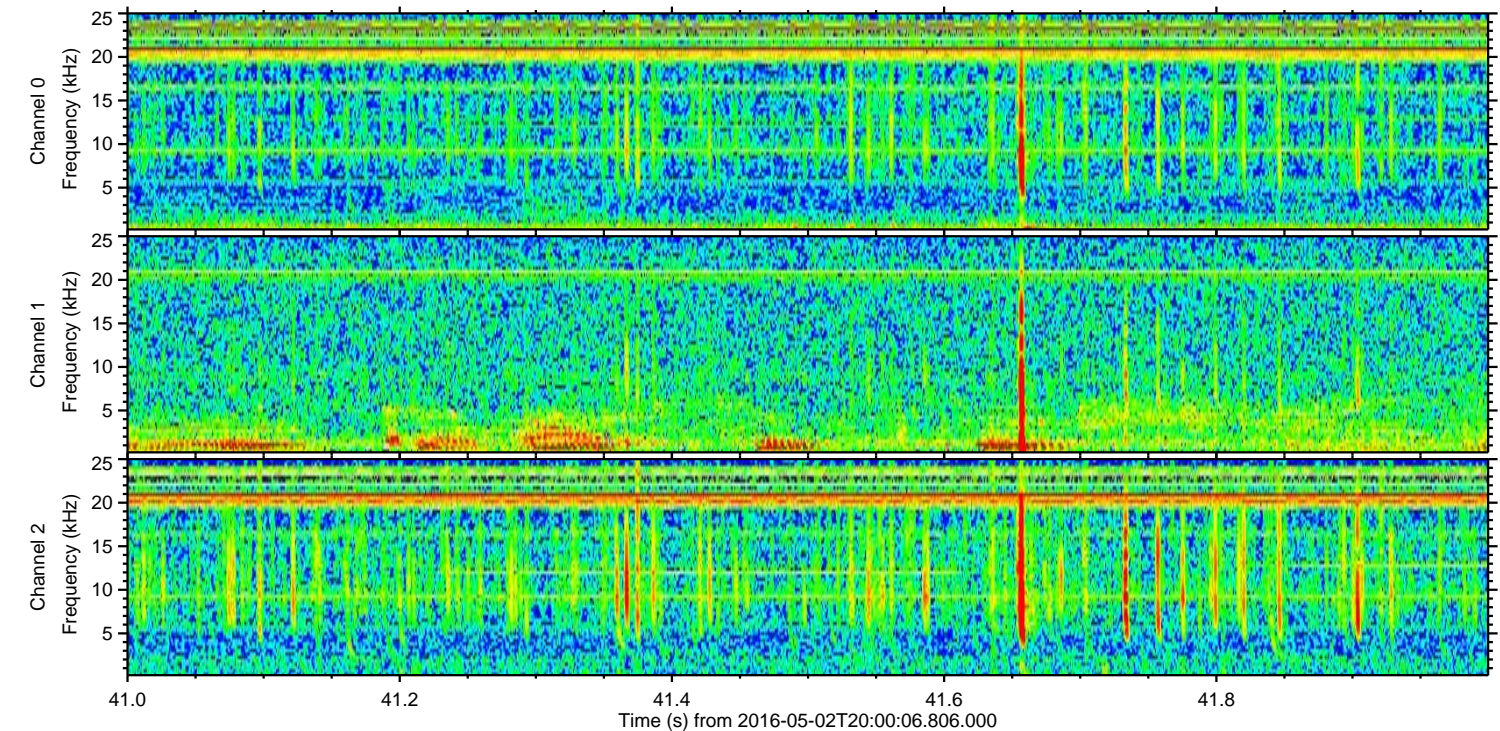
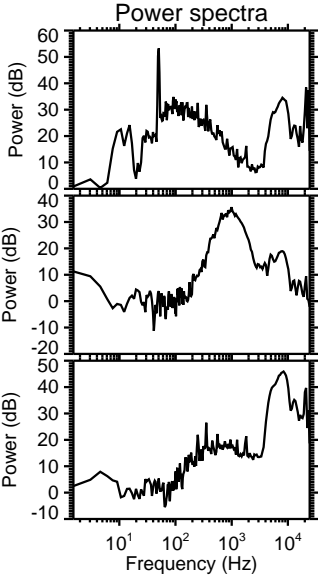
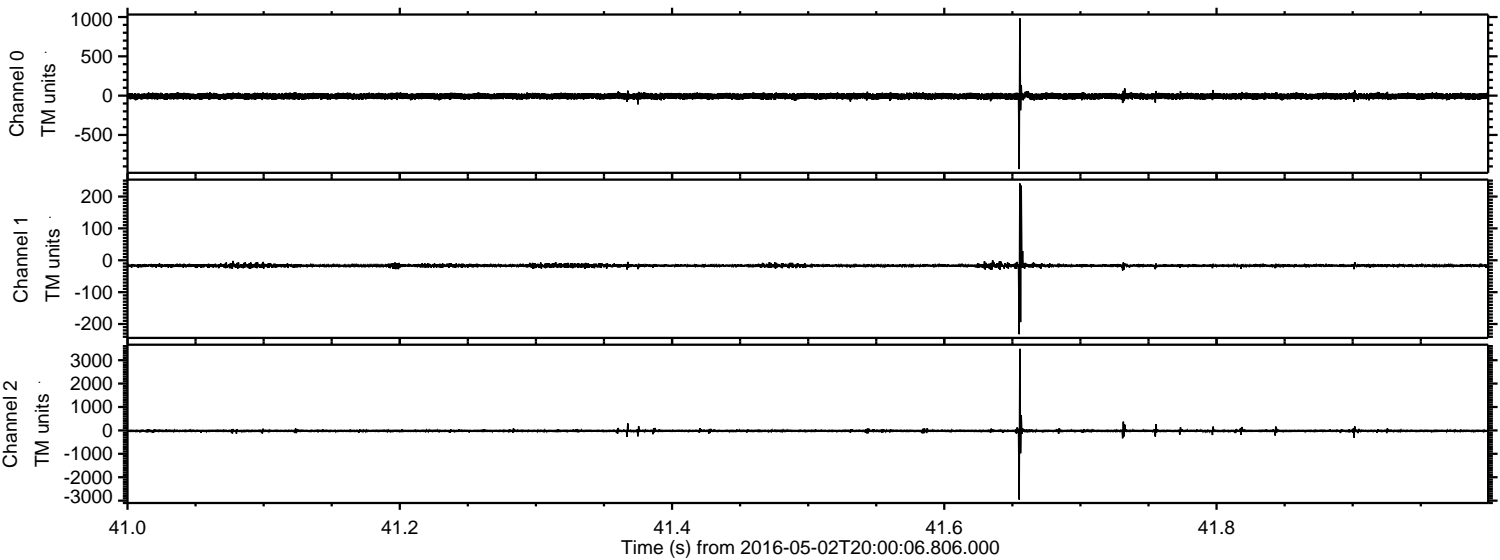


Processed Thu May 12 05:19:24 2016 by ELM ver.2012-10-06 from 001\_\_elm20160502\_200005\_\_dat00.bin



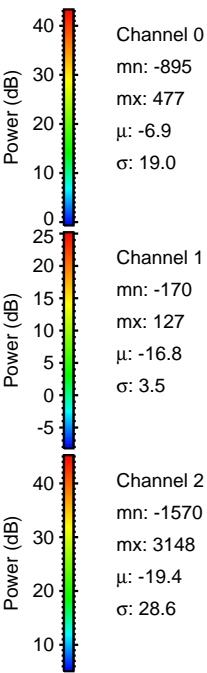
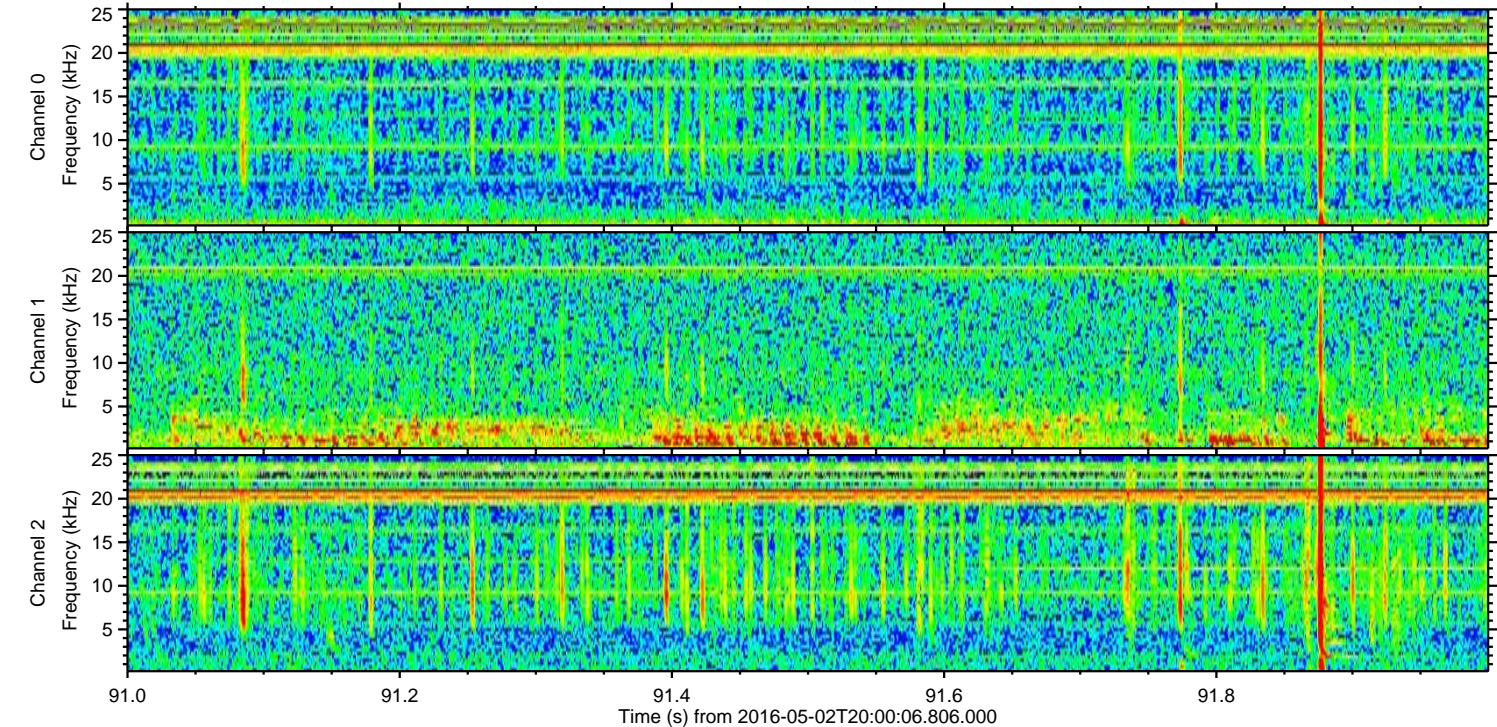
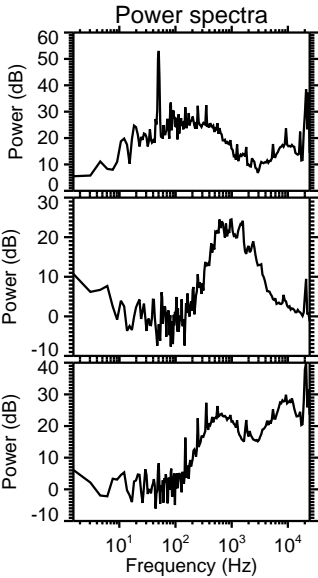
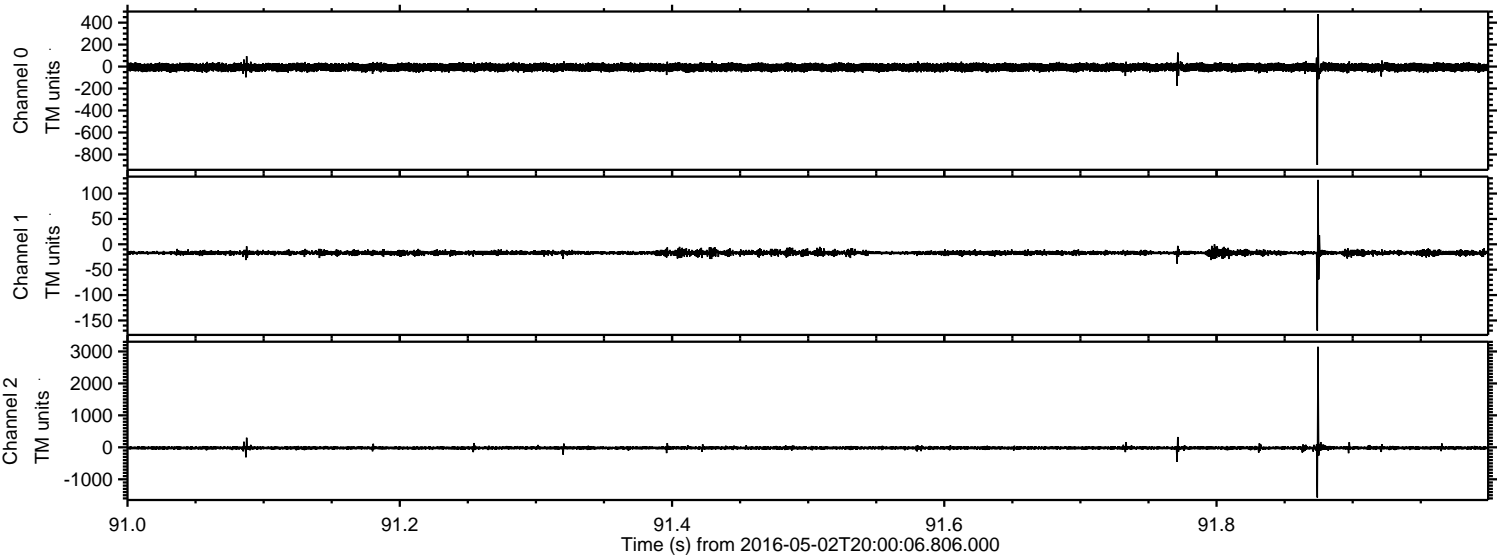


Processed Thu May 12 05:19:25 2016 by ELM ver.2012-10-06 from 001\_\_elm20160502\_200005\_\_dat00.bin





Processed Thu May 12 05:19:26 2016 by ELM ver.2012-10-06 from 001\_\_elm20160502\_200005\_\_dat00.bin





Processed Thu May 12 05:19:27 2016 by ELM ver.2012-10-06 from 001\_\_elm20160502\_200005\_\_dat00.bin

