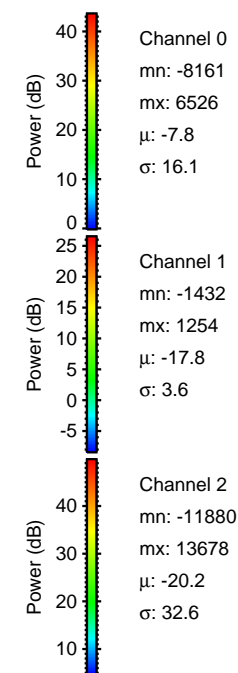
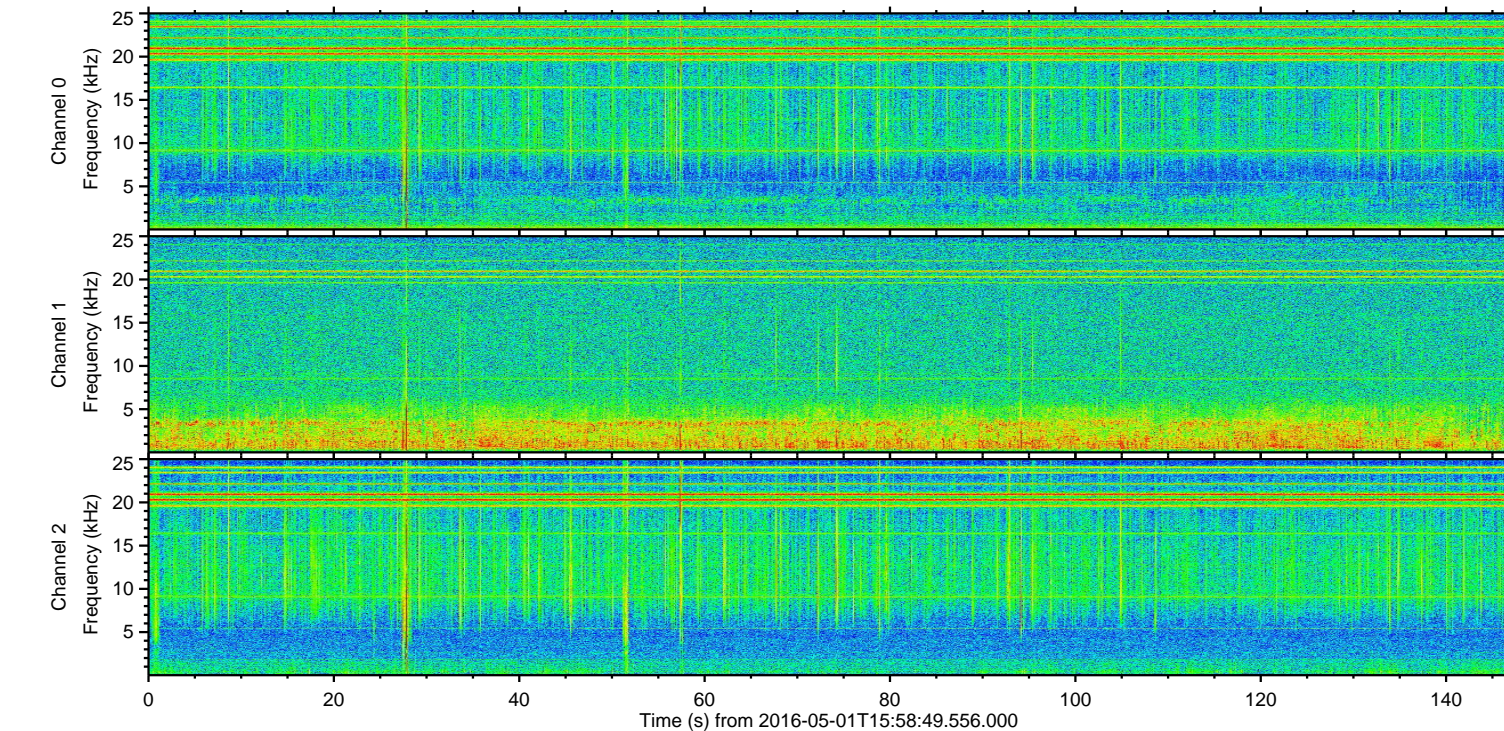
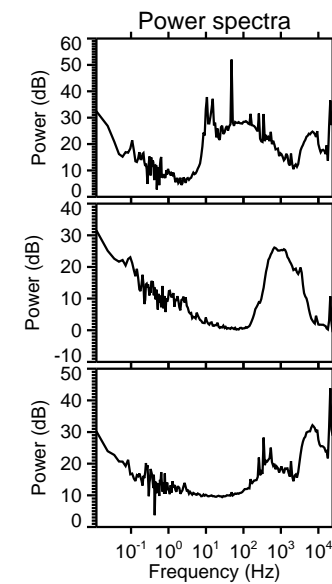
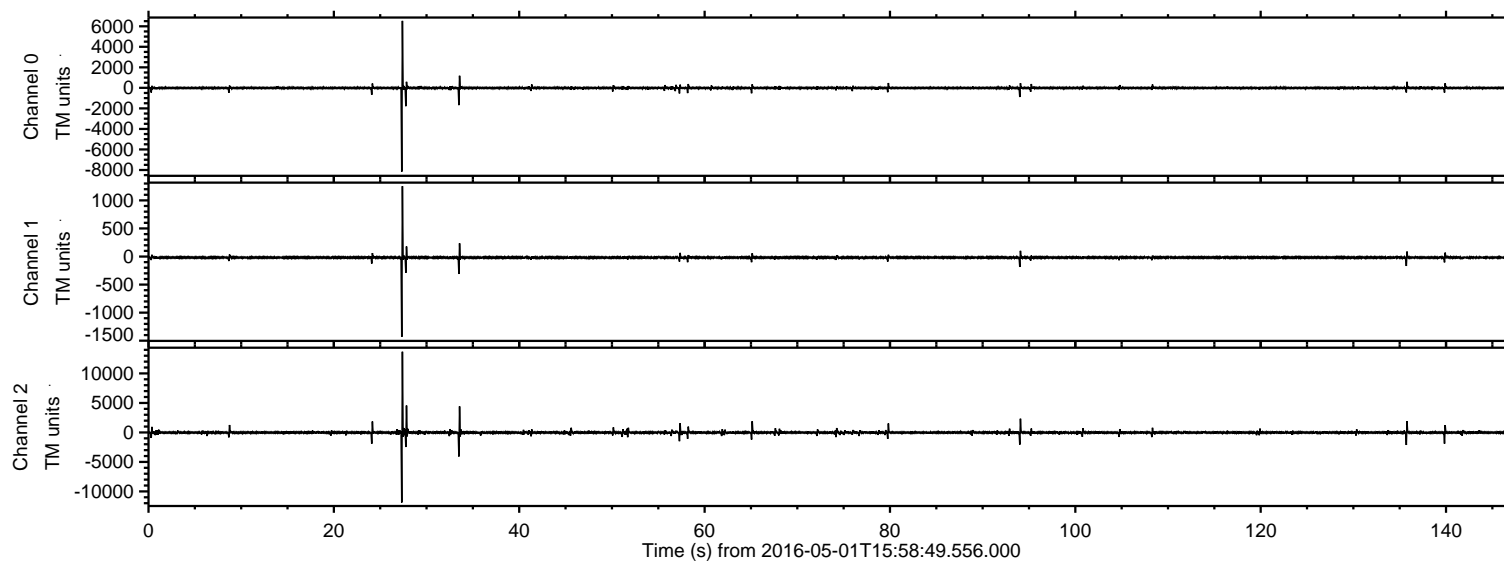


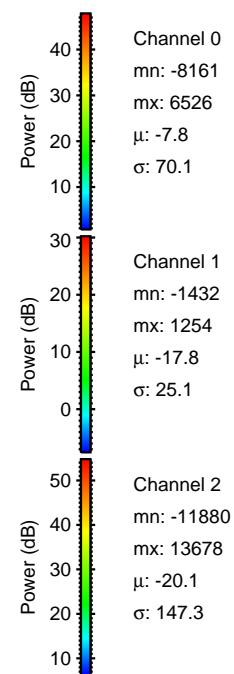
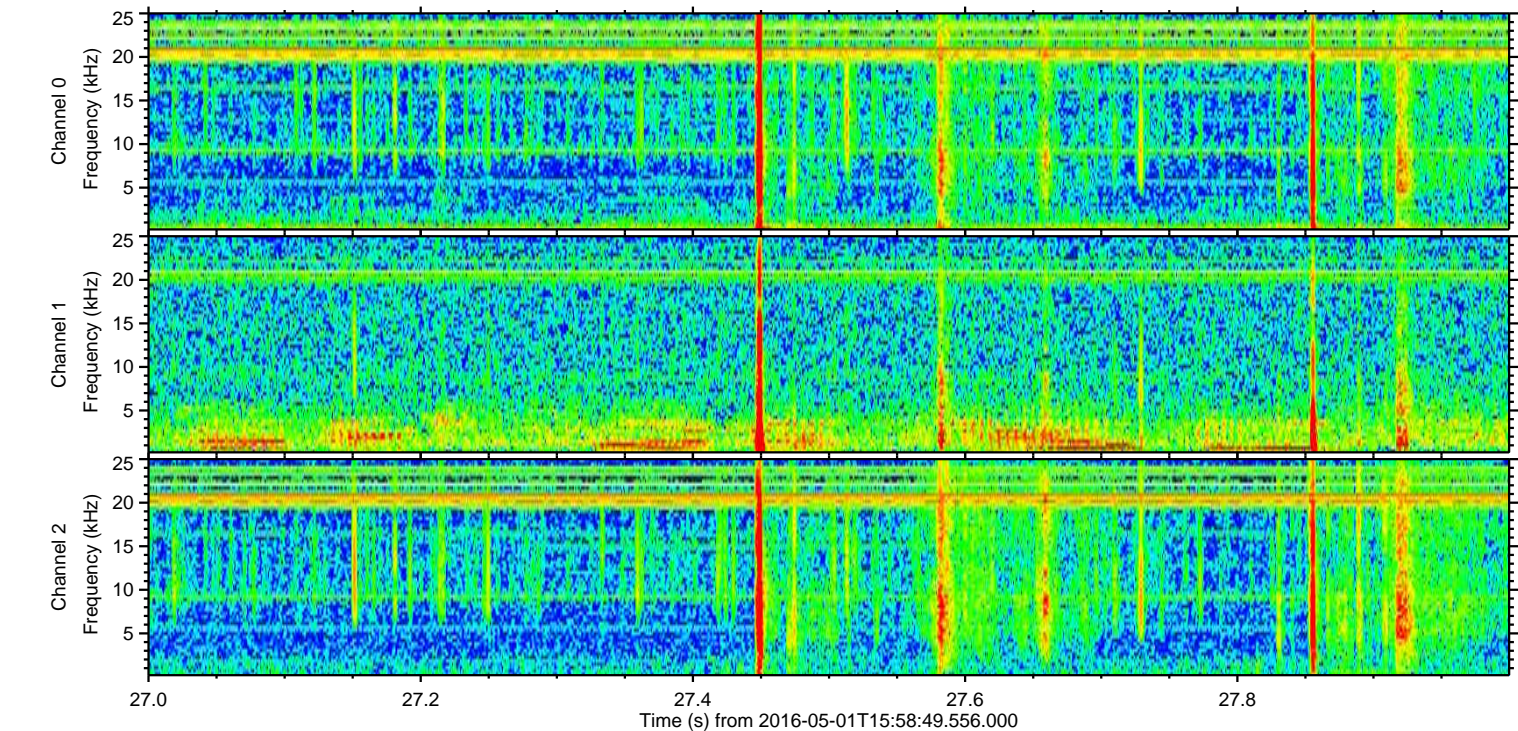
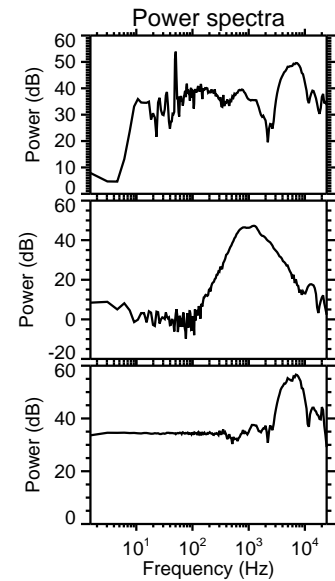
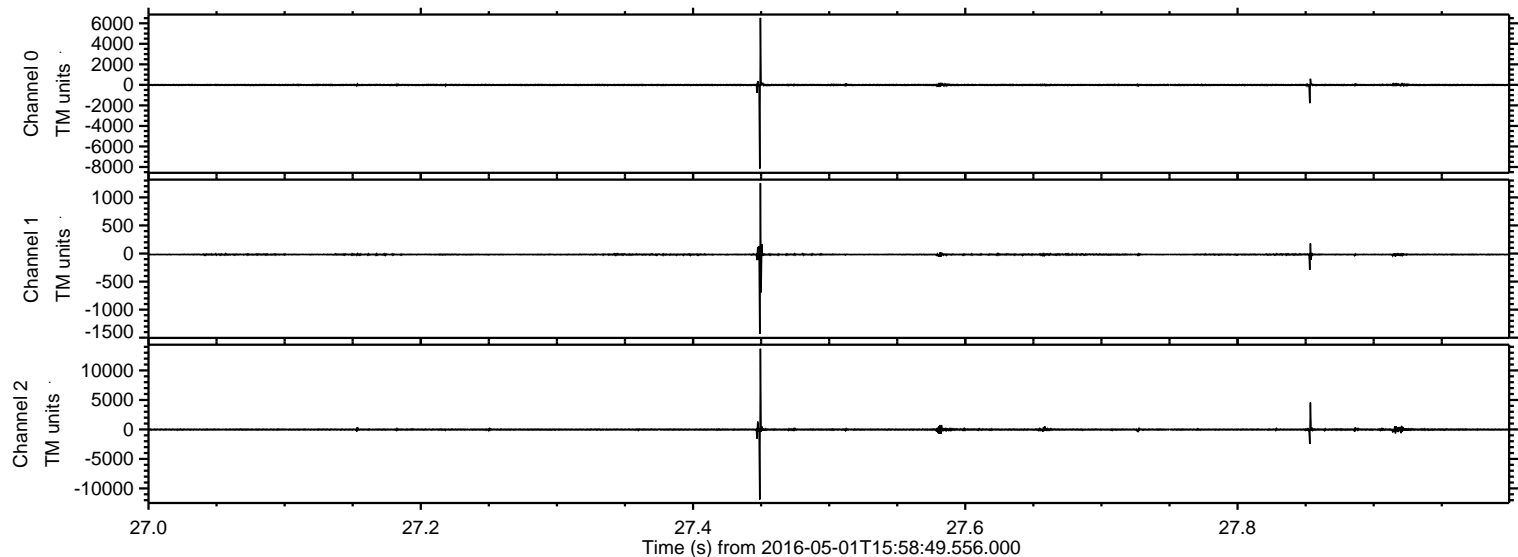
# ELMAVAN 3D WAVEFORMS (Measured data sampled at 50 kHz) 51000 packets of 144 samples from 2016-05-01T15:58:49.556.000.

Processed Wed May 11 23:34:28 2016 by ELM ver.2012-10-06 from 001\_\_elm20160501\_155848\_\_dat00.bin



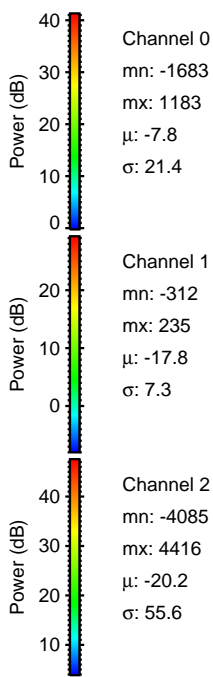
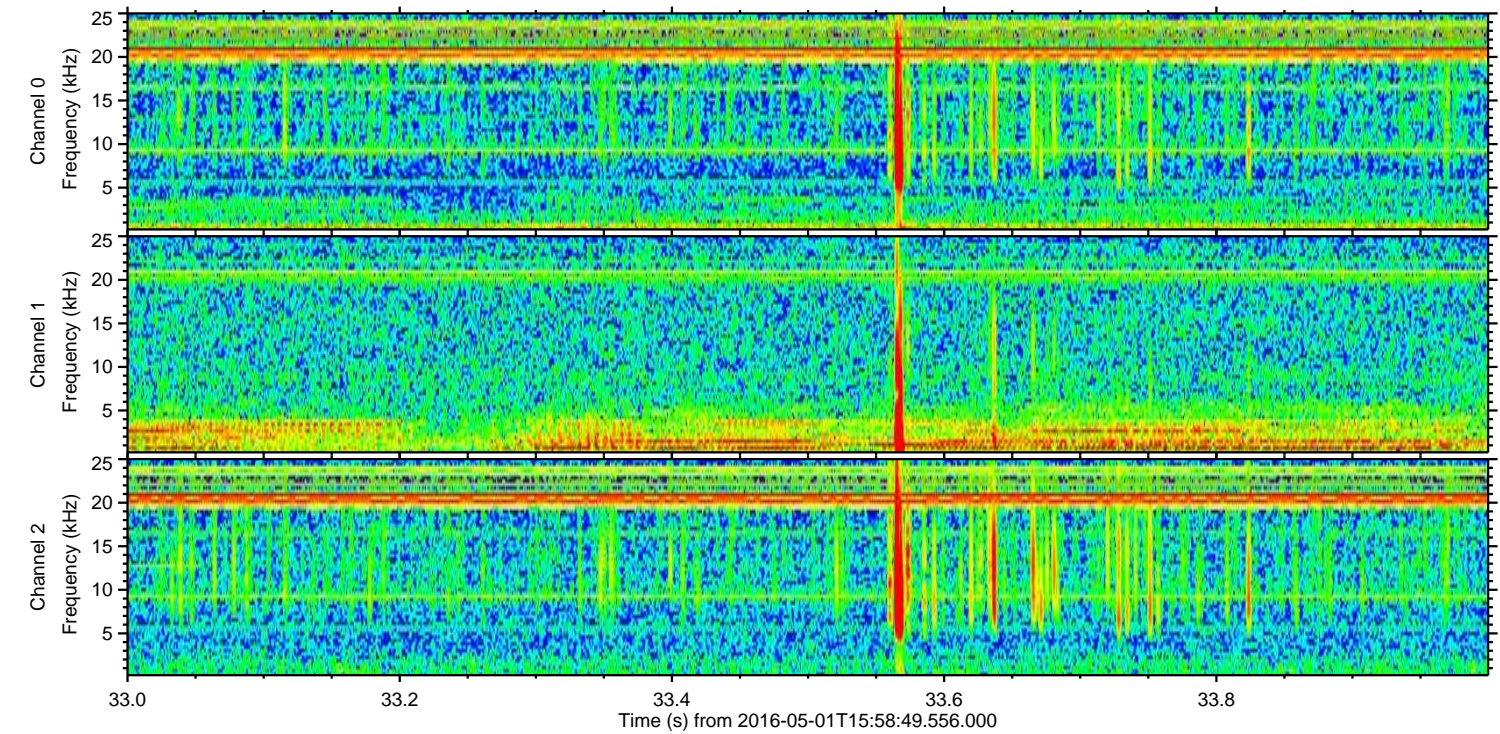
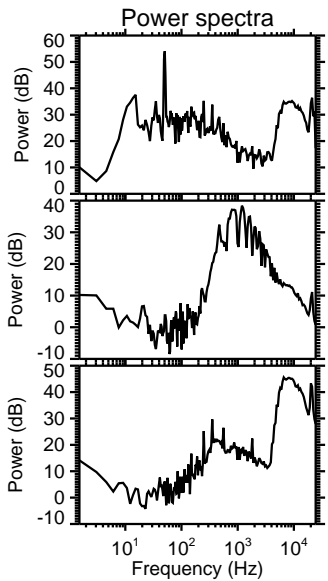
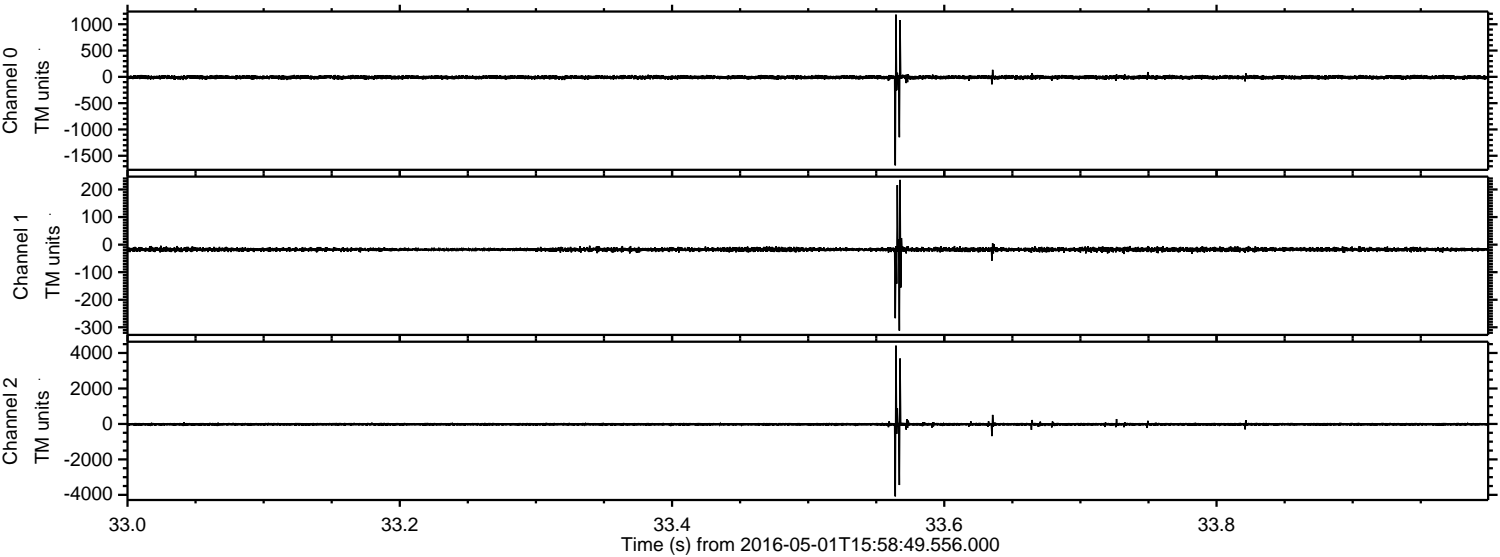


Processed Wed May 11 23:34:40 2016 by ELM ver.2012-10-06 from 001\_\_elm20160501\_155848\_\_dat00.bin



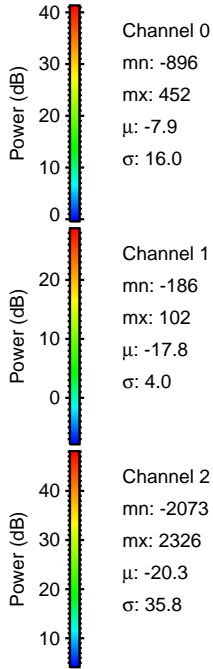
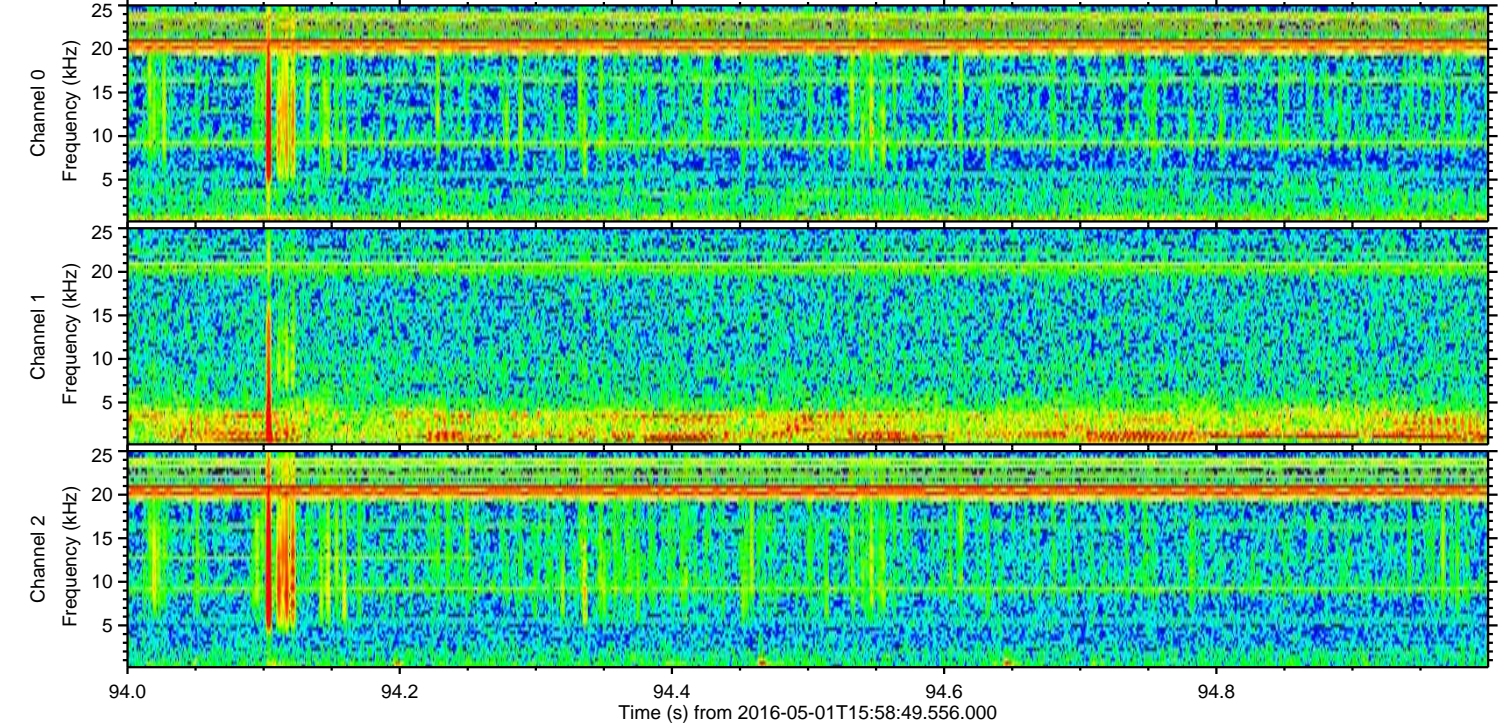
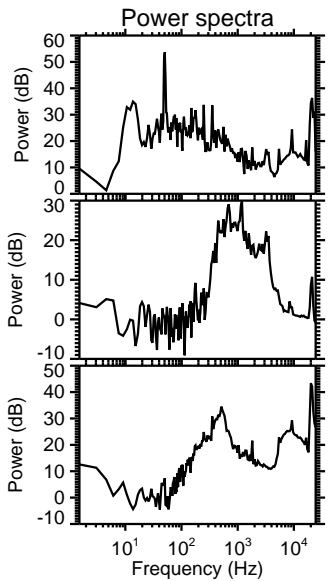
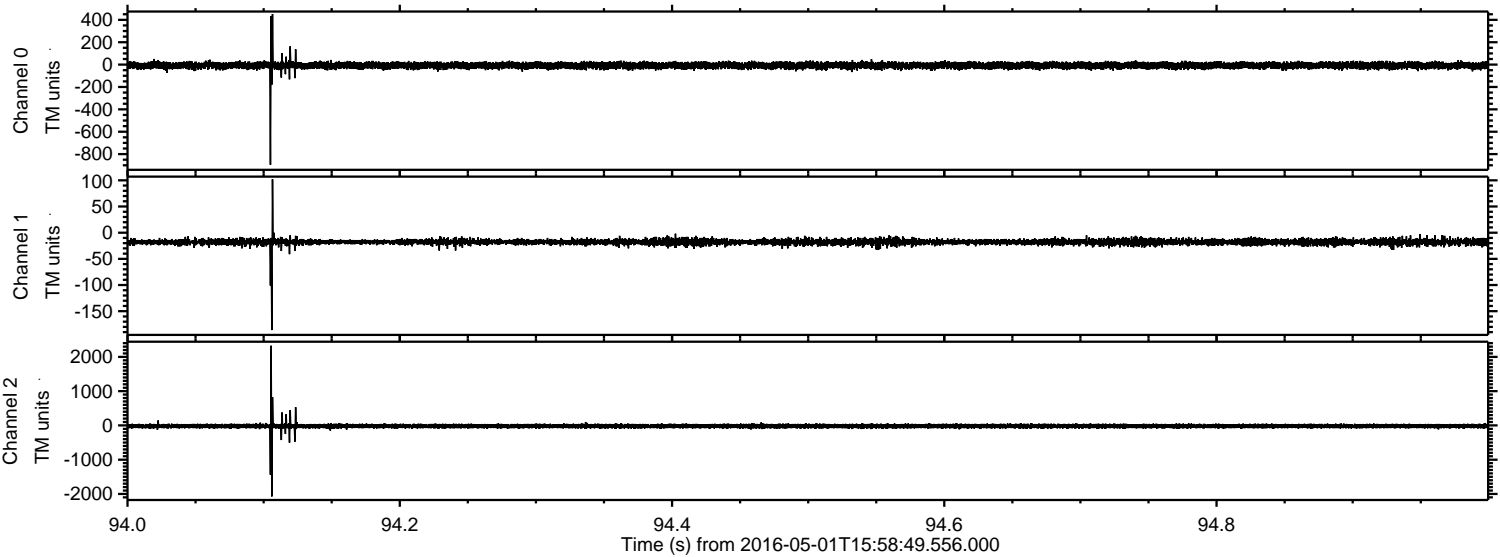


Processed Wed May 11 23:34:41 2016 by ELM ver.2012-10-06 from 001\_\_elm20160501\_155848\_\_dat00.bin





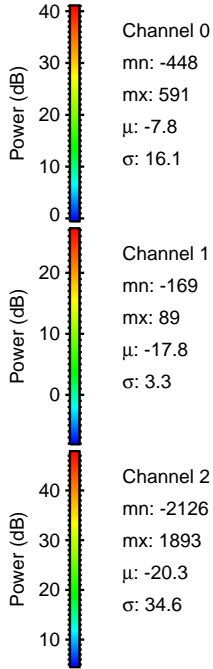
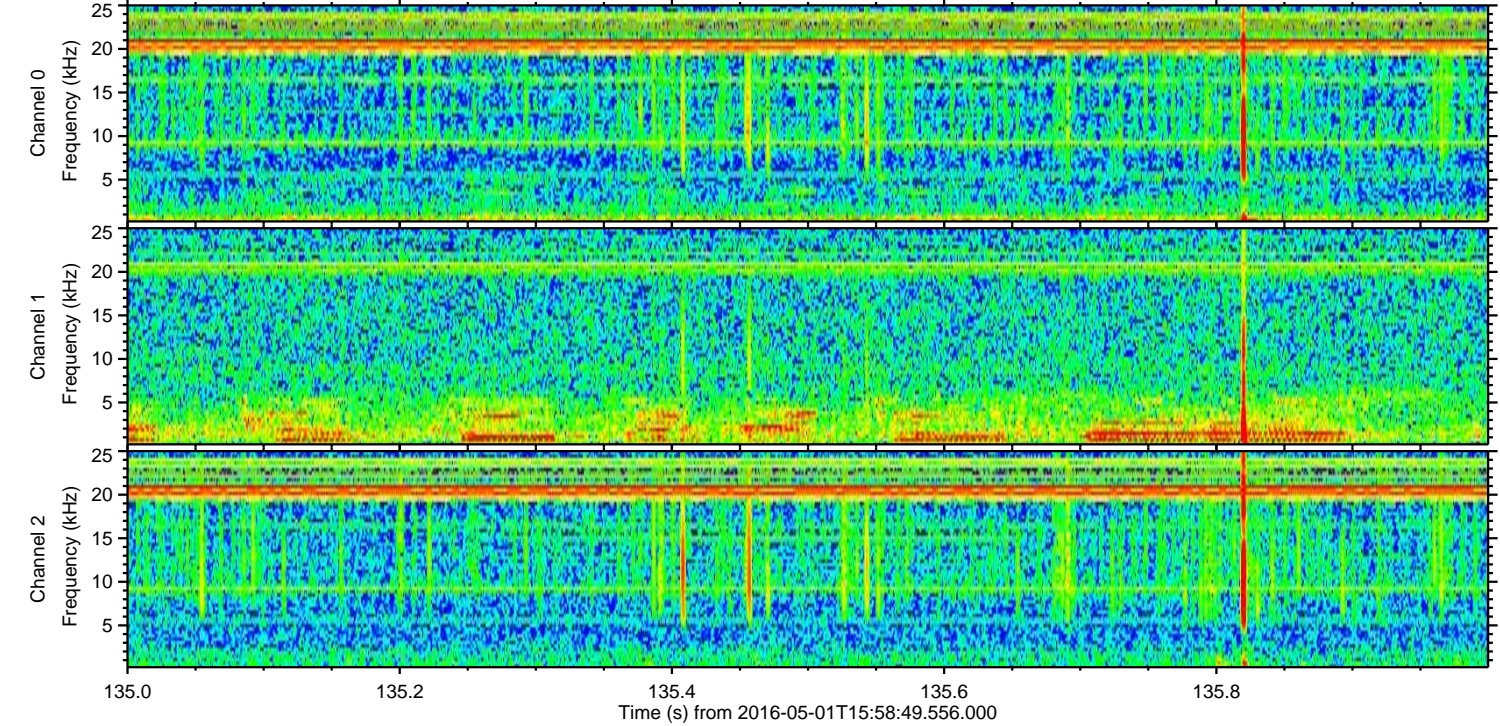
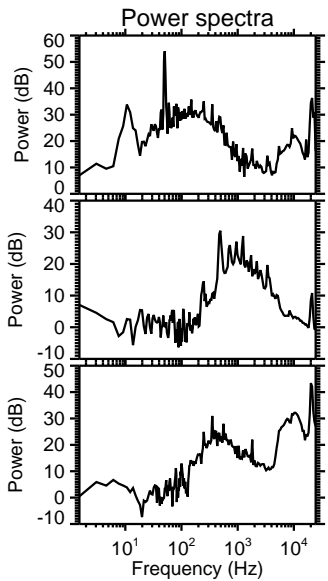
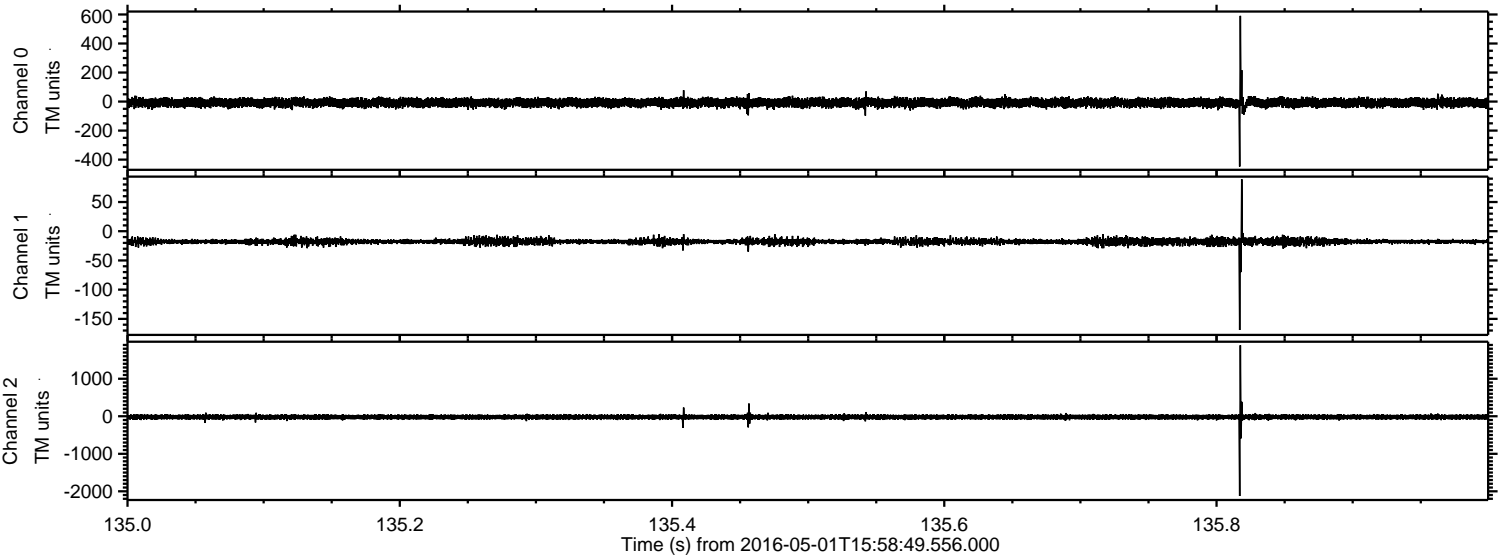
Processed Wed May 11 23:34:41 2016 by ELM ver.2012-10-06 from 001\_\_elm20160501\_155848\_\_dat00.bin





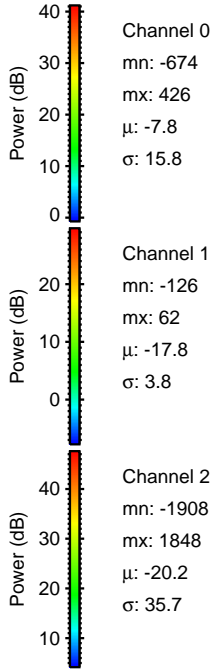
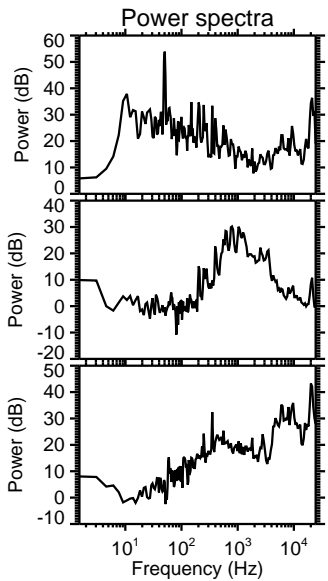
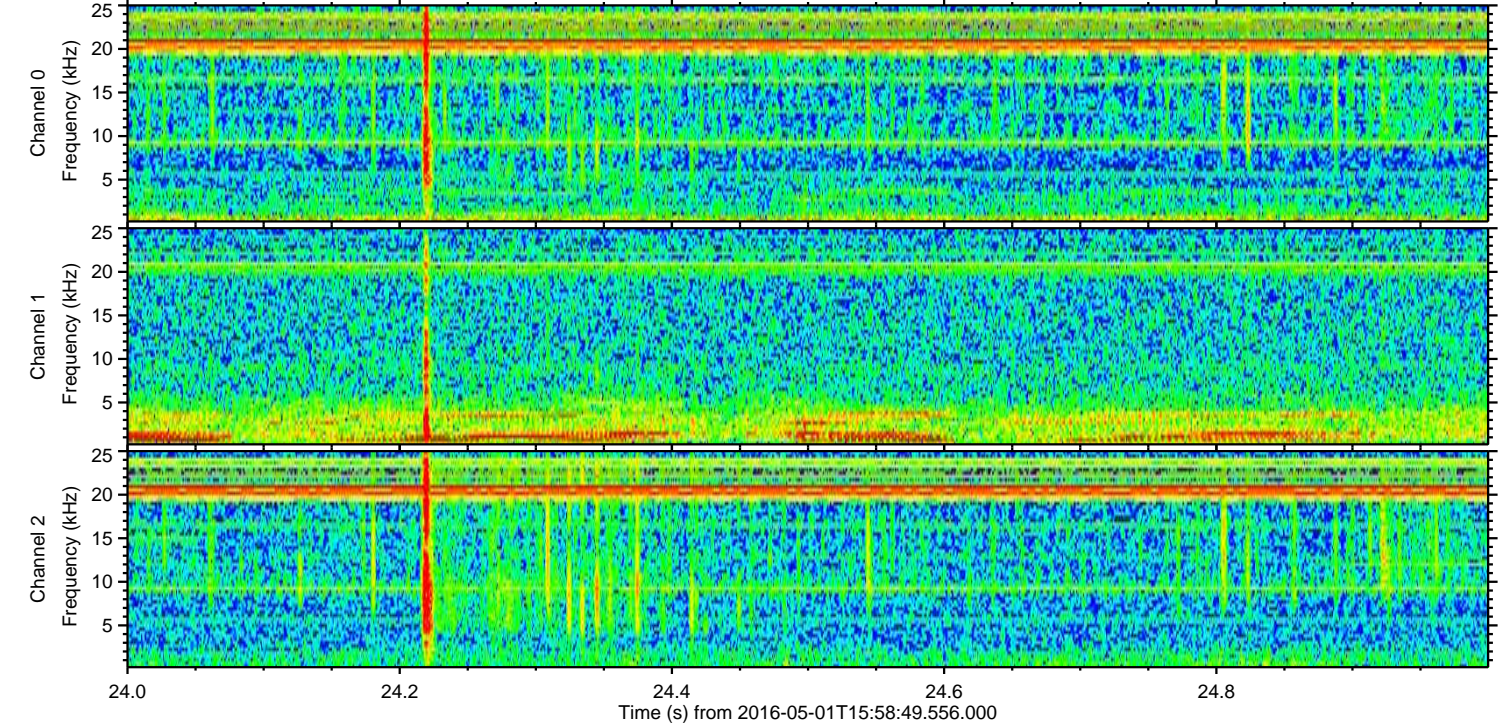
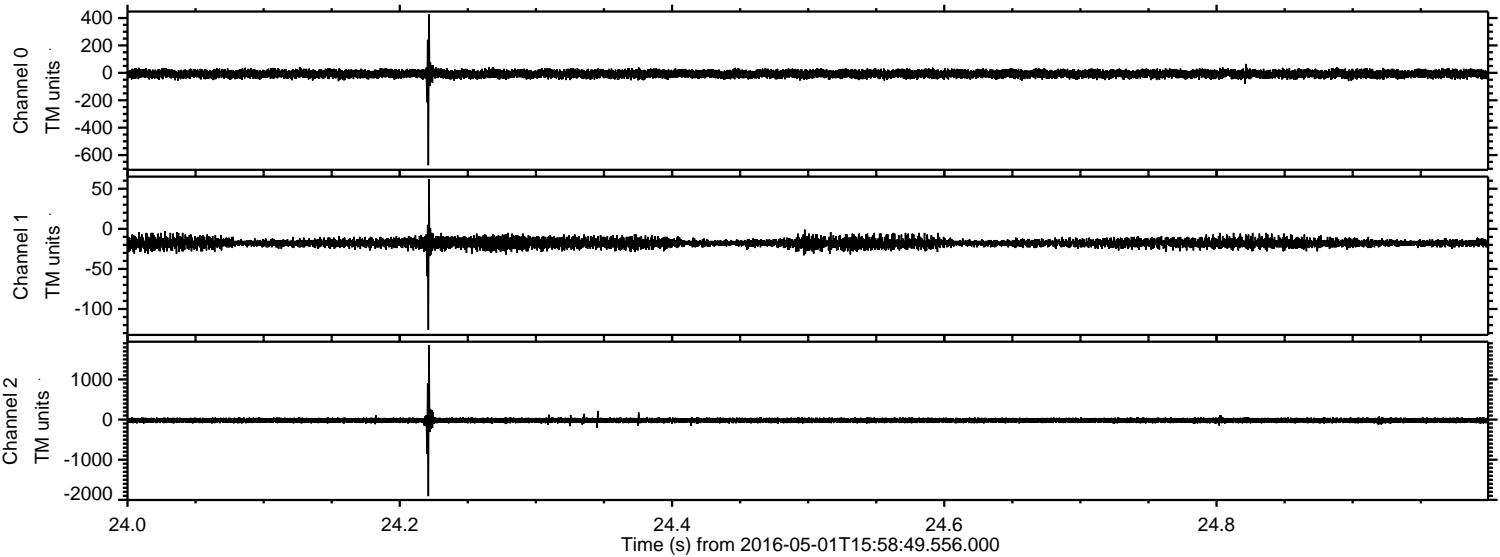
ELMAVAN 3D WAVEFORMS (Measured data sampled at 50 kHz) 51000 packets of 144 samples from 2016-05-01T15:58:49.556.000. Part 136/147

Processed Wed May 11 23:34:42 2016 by ELM ver.2012-10-06 from 001\_\_elm20160501\_155848\_\_dat00.bin





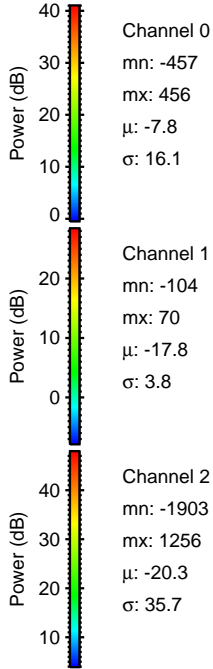
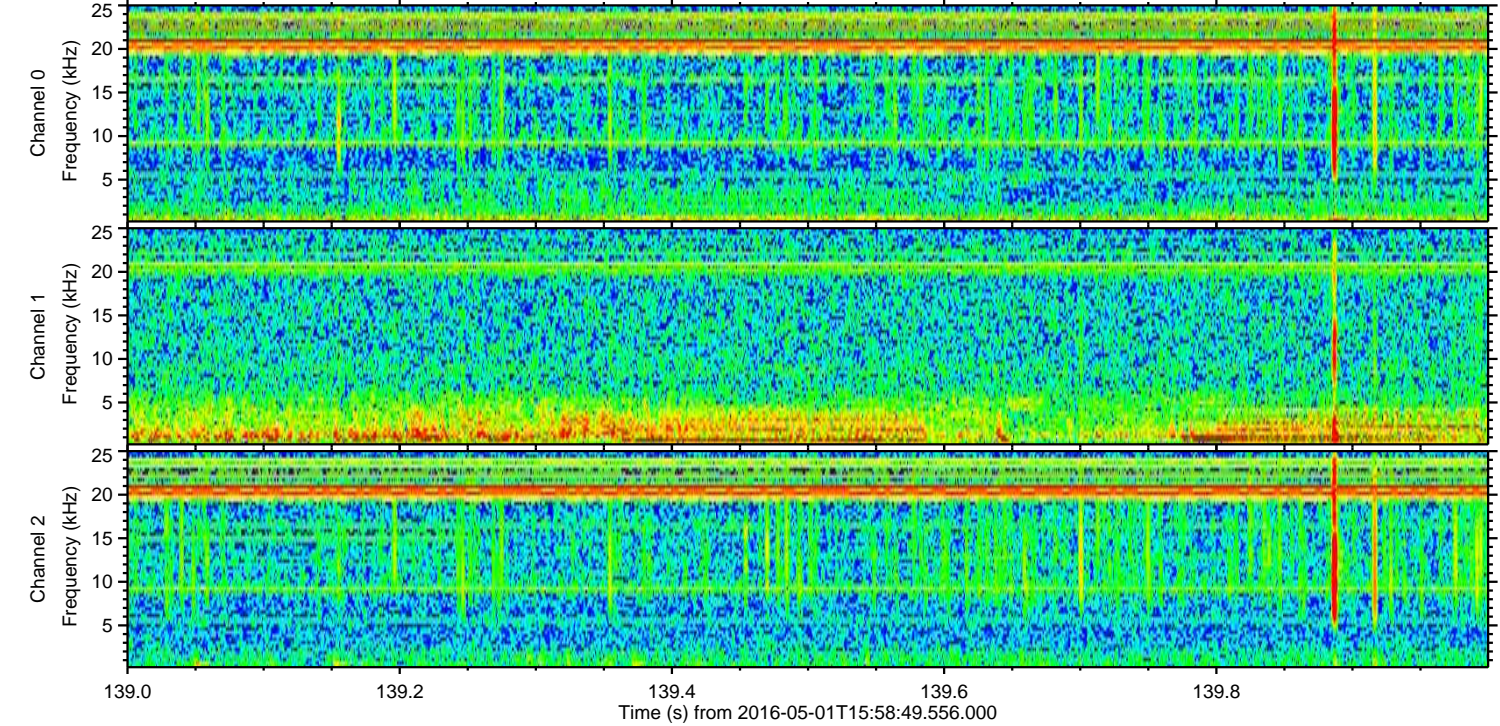
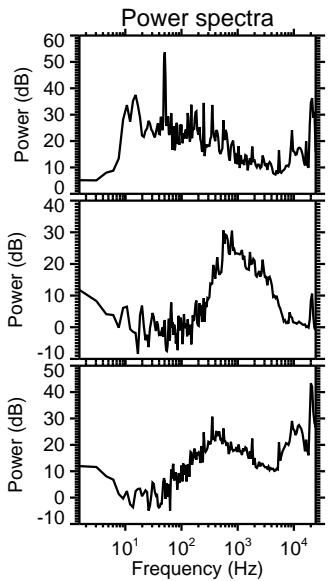
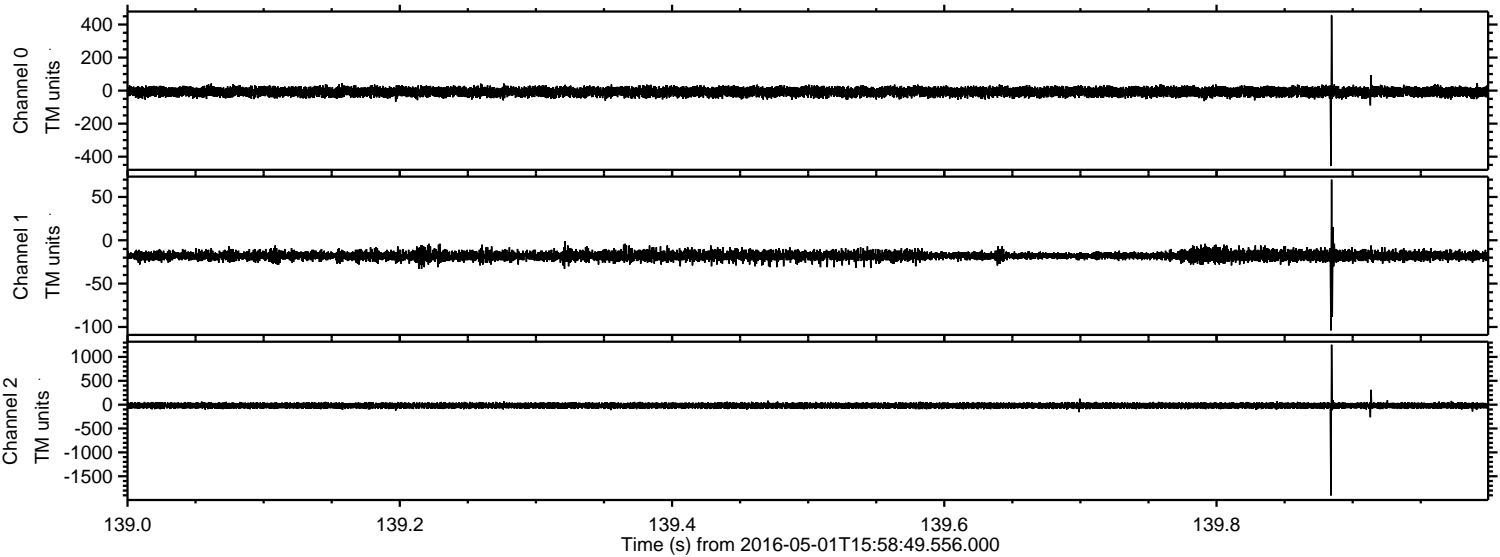
Processed Wed May 11 23:34:43 2016 by ELM ver.2012-10-06 from 001\_\_elm20160501\_155848\_\_dat00.bin





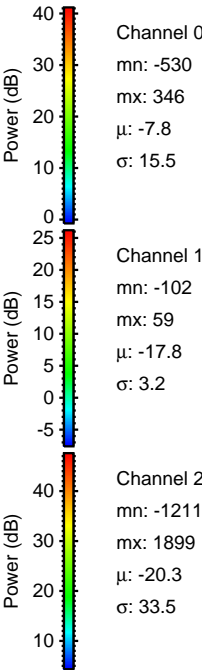
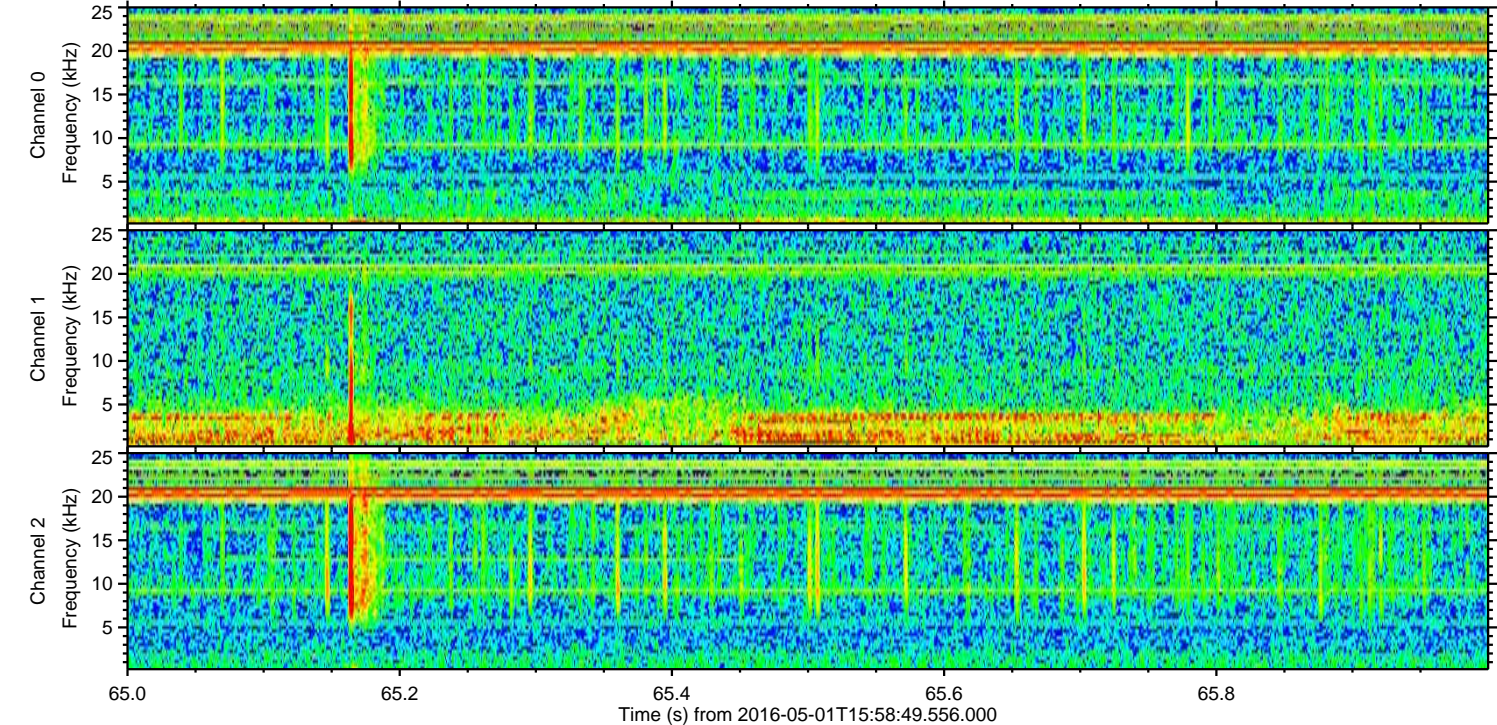
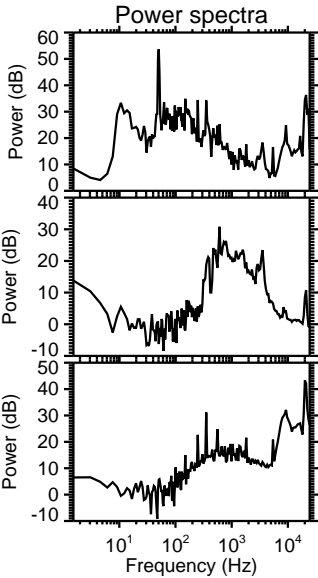
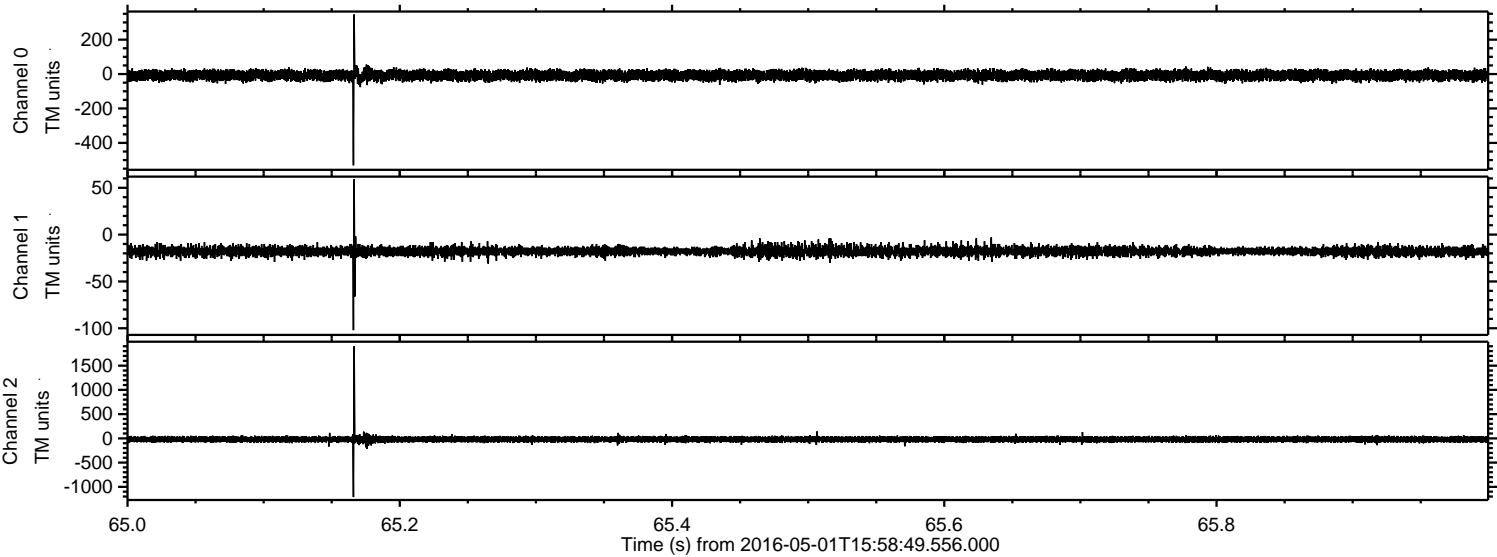
ELMAVAN 3D WAVEFORMS (Measured data sampled at 50 kHz) 51000 packets of 144 samples from 2016-05-01T15:58:49.556.000. Part 140/147

Processed Wed May 11 23:34:44 2016 by ELM ver.2012-10-06 from 001\_\_elm20160501\_155848\_\_dat00.bin



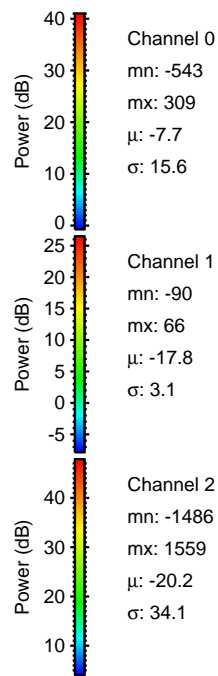
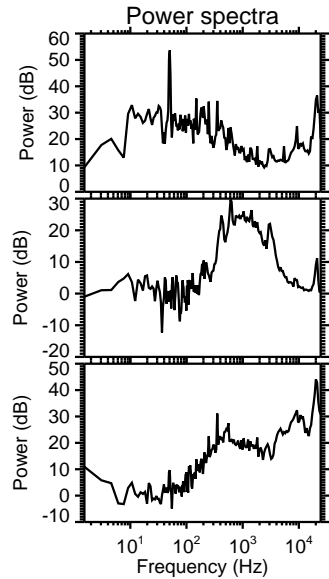
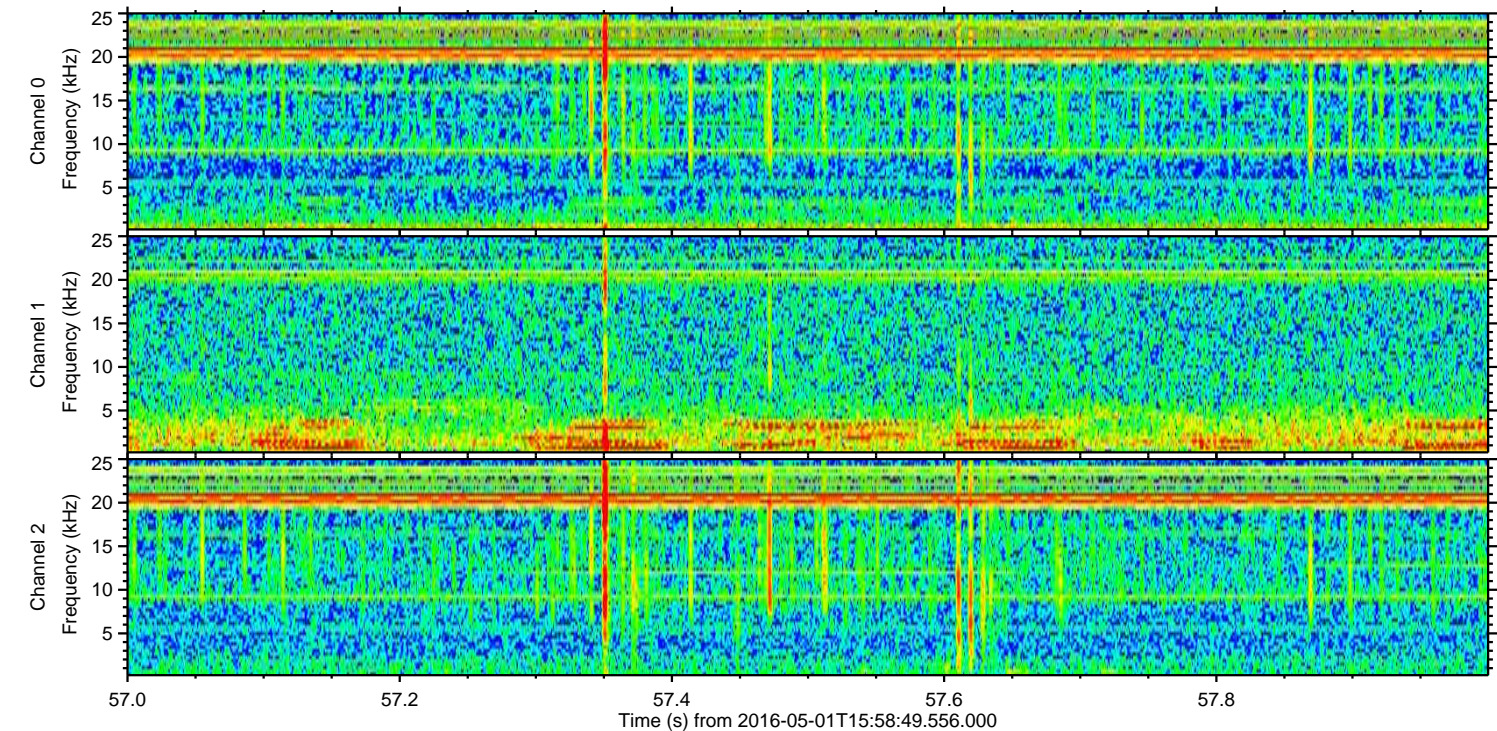
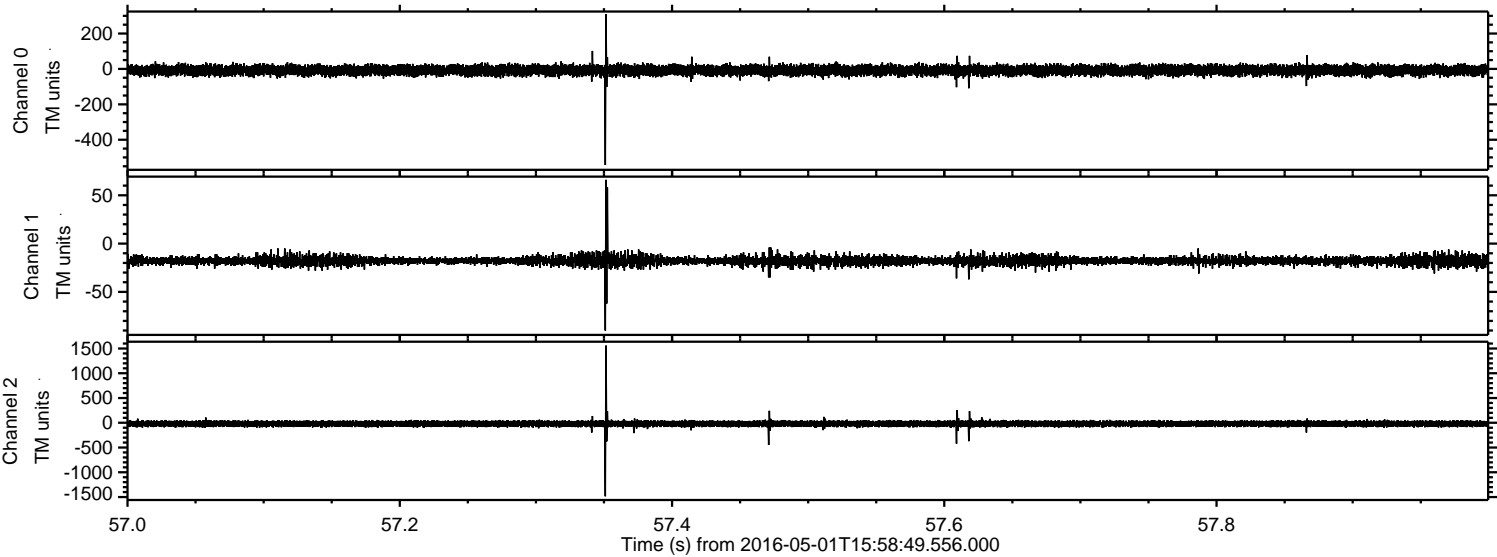


Processed Wed May 11 23:34:45 2016 by ELM ver.2012-10-06 from 001\_\_elm20160501\_155848\_\_dat00.bin





Processed Wed May 11 23:34:46 2016 by ELM ver.2012-10-06 from 001\_\_elm20160501\_155848\_\_dat00.bin



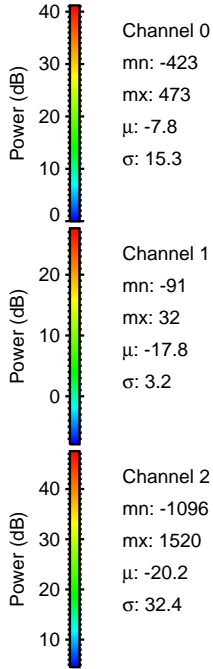
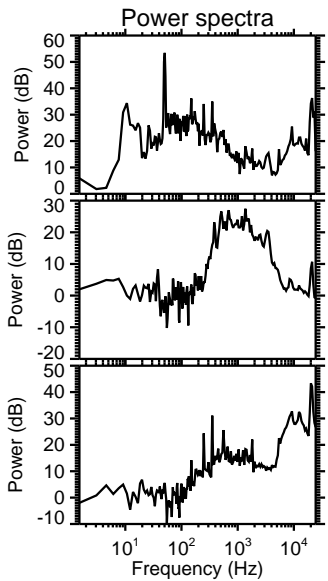
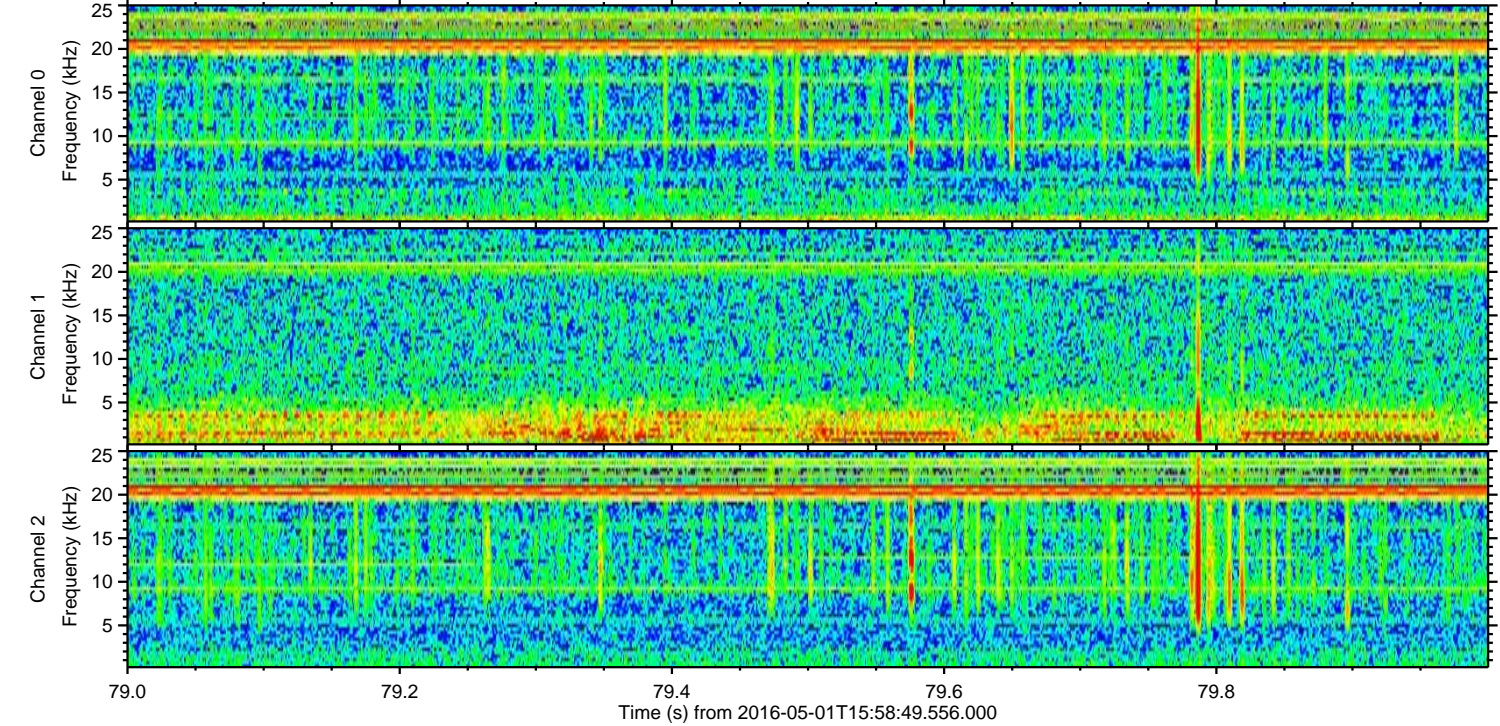
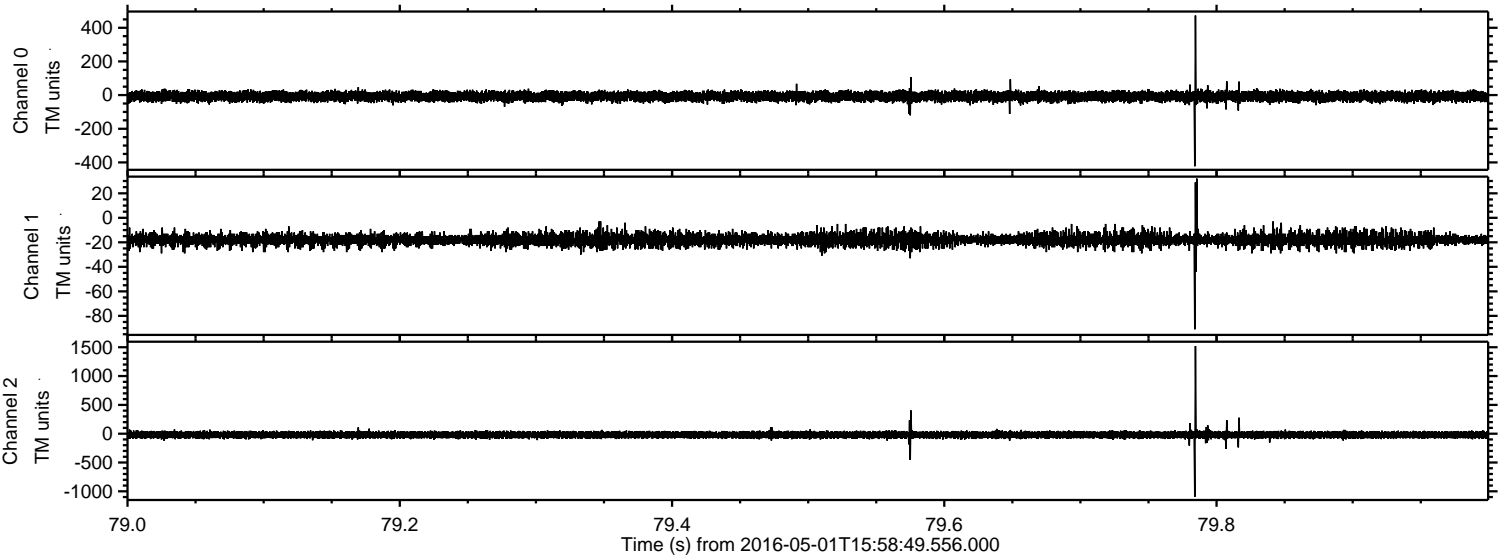
Channel 0  
mn: -543  
mx: 309  
 $\mu$ : -7.7  
 $\sigma$ : 15.6

Channel 1  
mn: -90  
mx: 66  
 $\mu$ : -17.8  
 $\sigma$ : 3.1

Channel 2  
mn: -1486  
mx: 1559  
 $\mu$ : -20.2  
 $\sigma$ : 34.1



Processed Wed May 11 23:34:47 2016 by ELM ver.2012-10-06 from 001\_\_elm20160501\_155848\_\_dat00.bin





Processed Wed May 11 23:34:48 2016 by ELM ver.2012-10-06 from 001\_\_elm20160501\_155848\_\_dat00.bin

