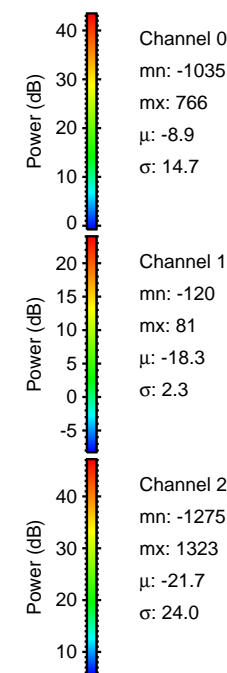
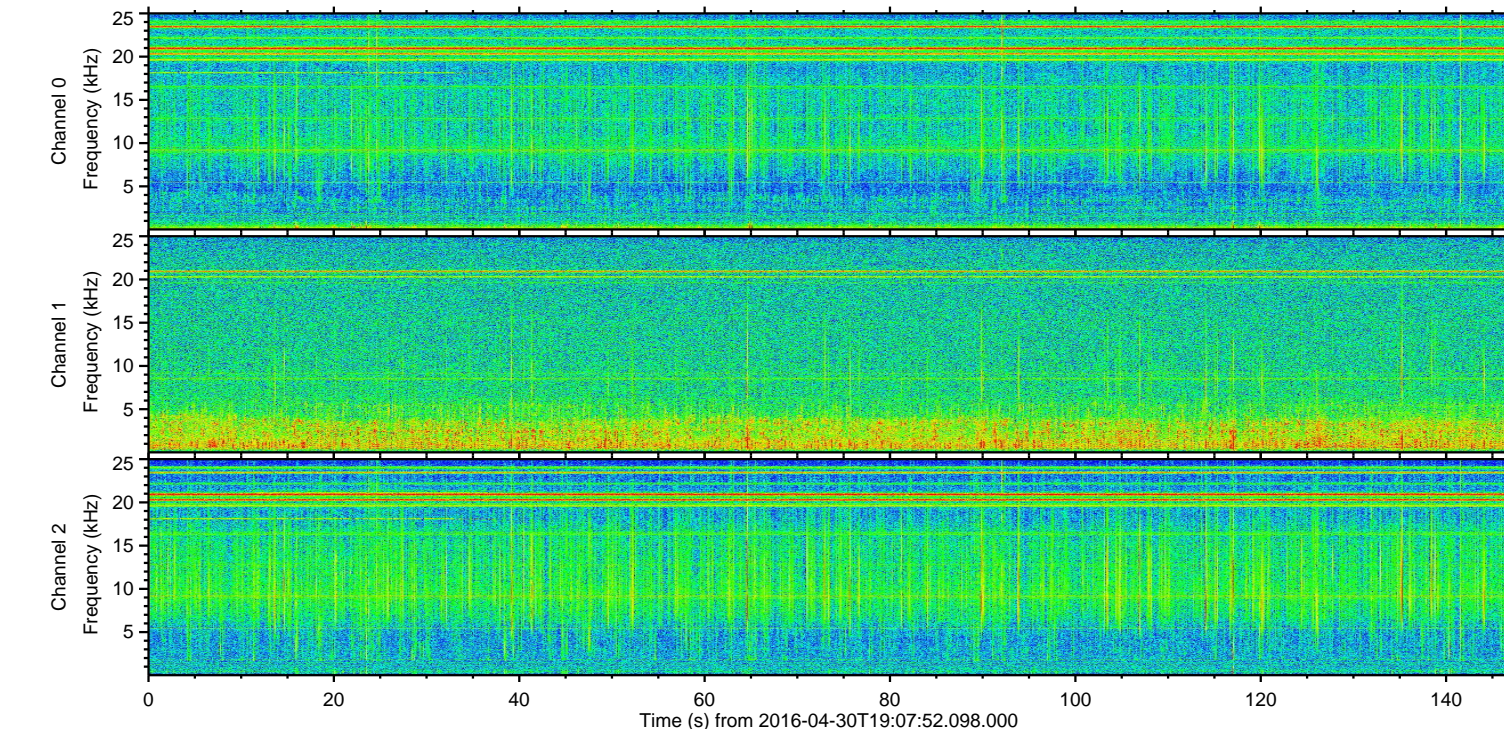
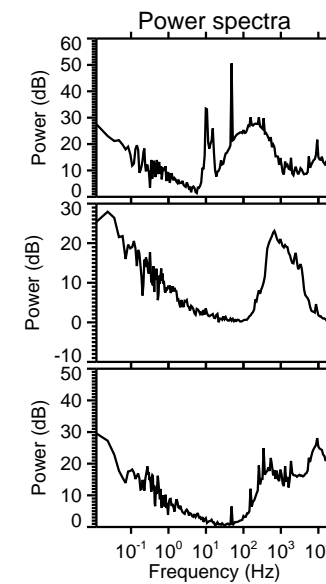
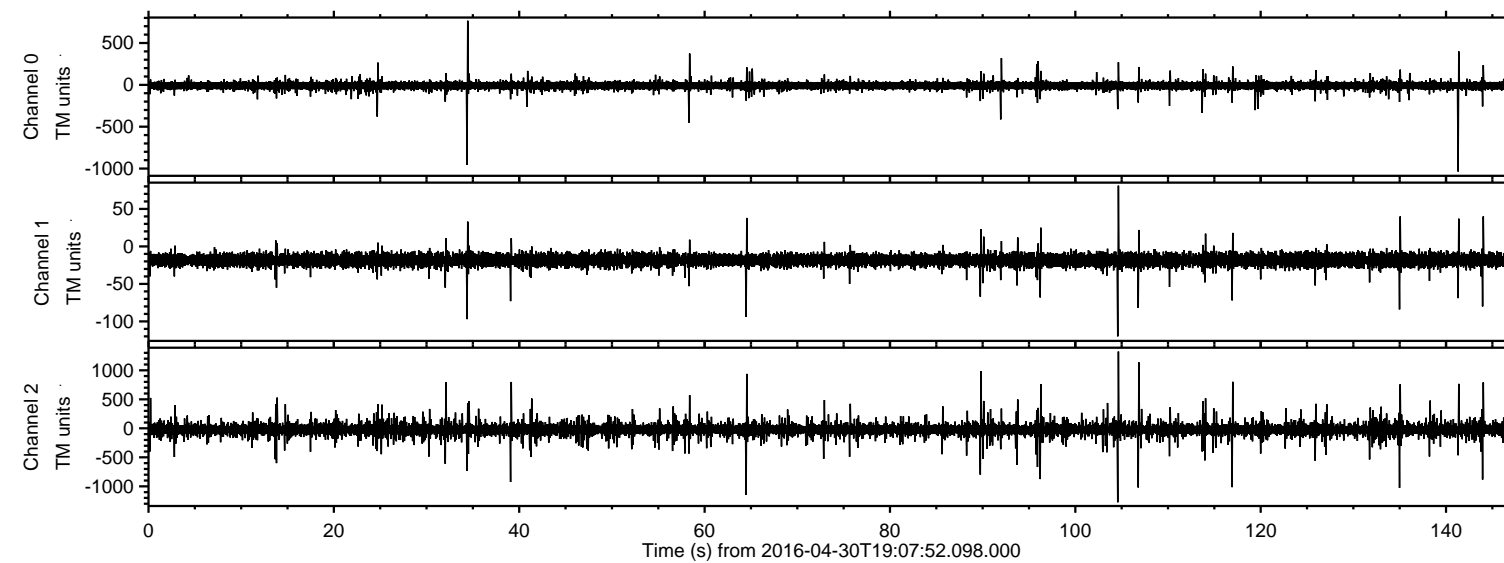


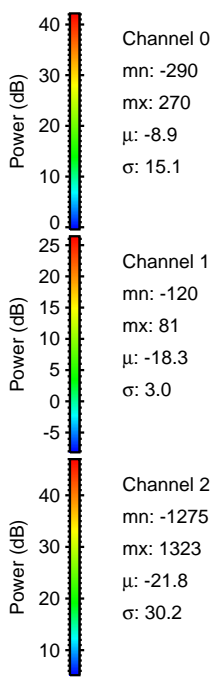
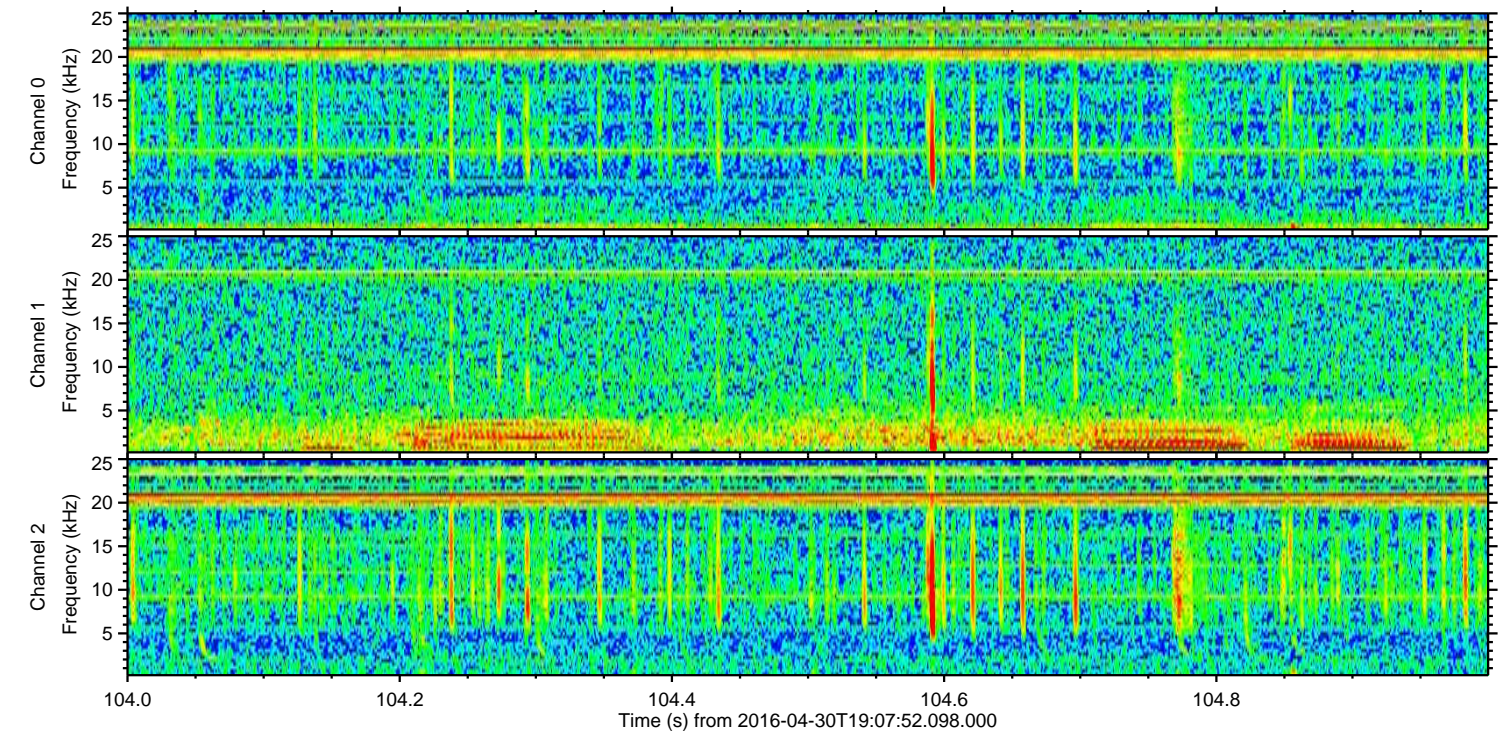
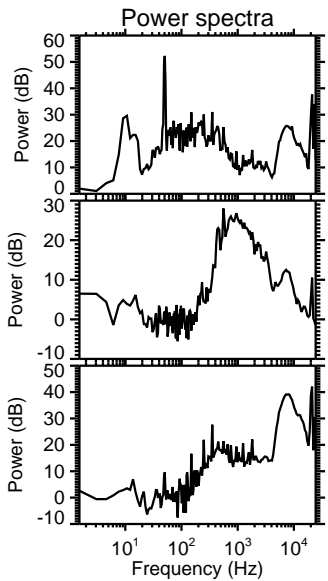
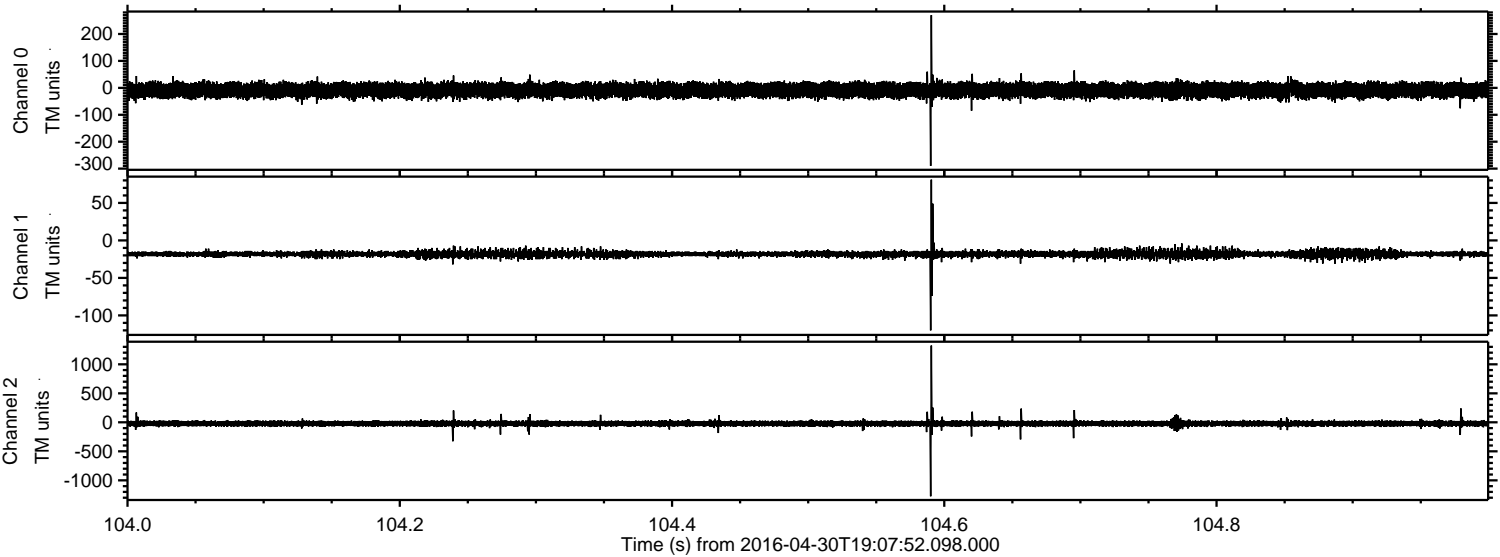
ELMAVAN 3D WAVEFORMS (Measured data sampled at 50 kHz) 51000 packets of 144 samples from 2016-04-30T19:07:52.098.000.

Processed Wed May 11 19:14:28 2016 by ELM ver.2012-10-06 from 001__elm20160430_190751__dat00.bin

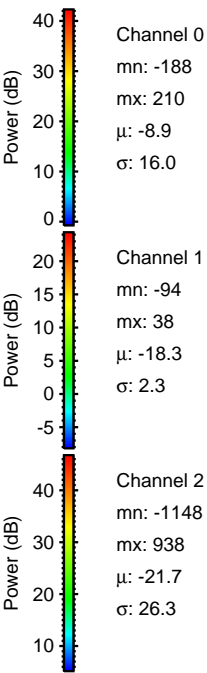
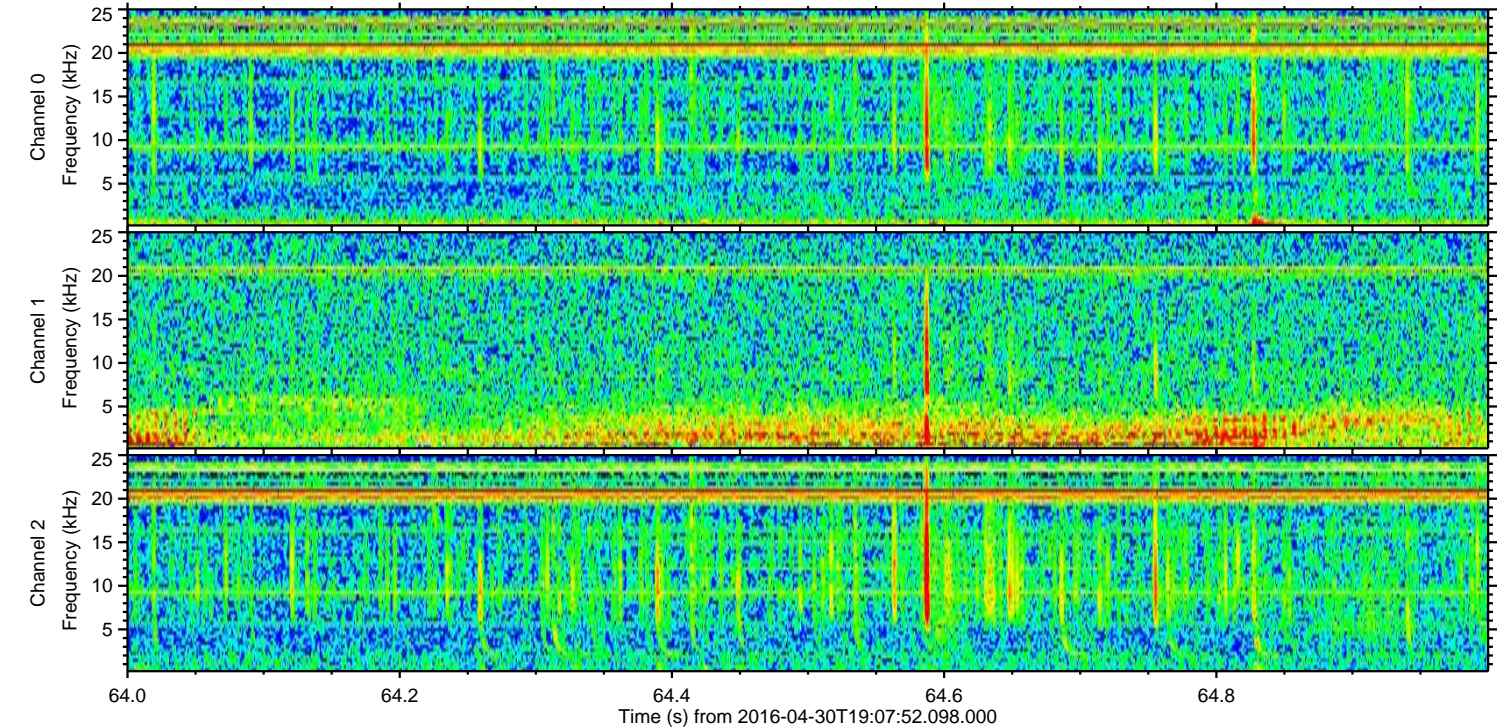
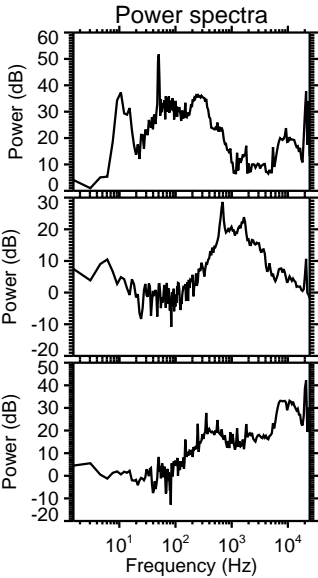
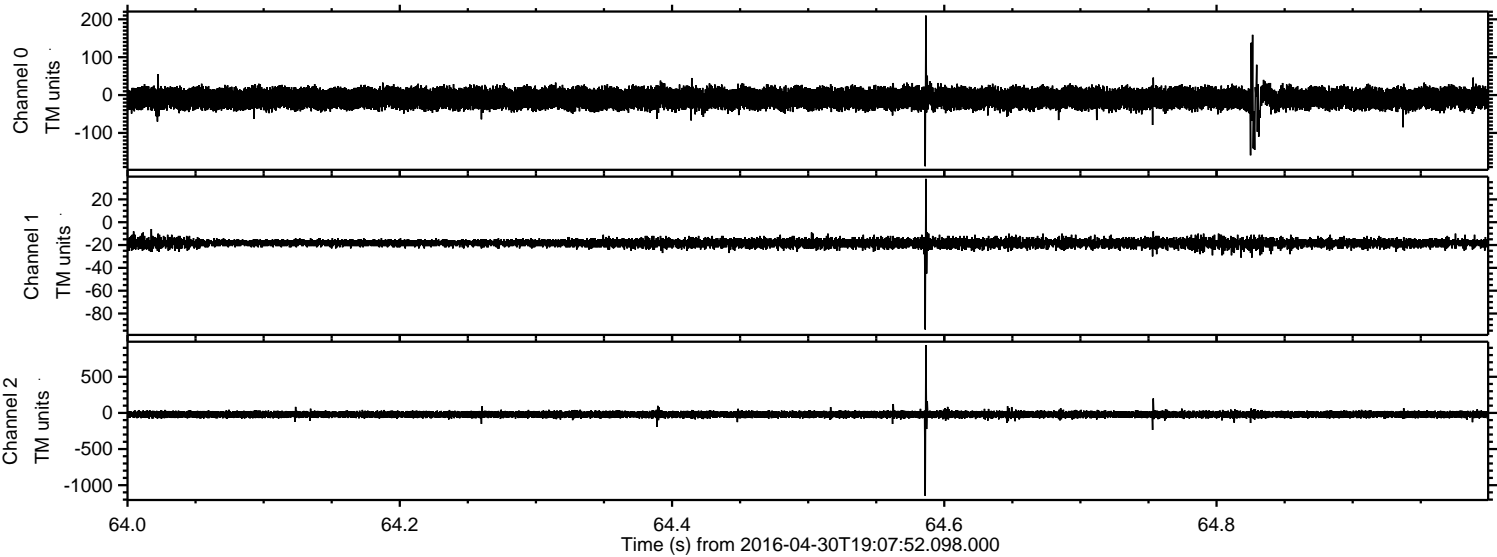


ELMAVAN 3D WAVEFORMS (Measured data sampled at 50 kHz) 51000 packets of 144 samples from 2016-04-30T19:07:52.098.000. Part 105/147

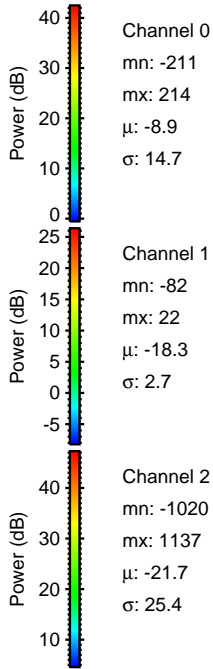
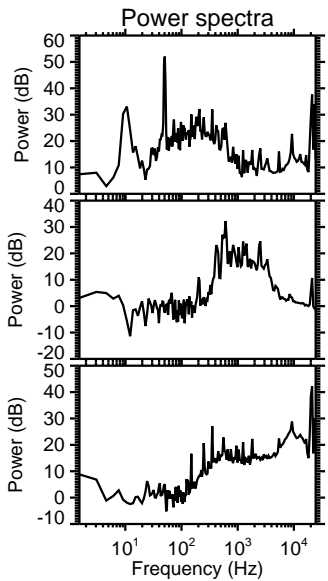
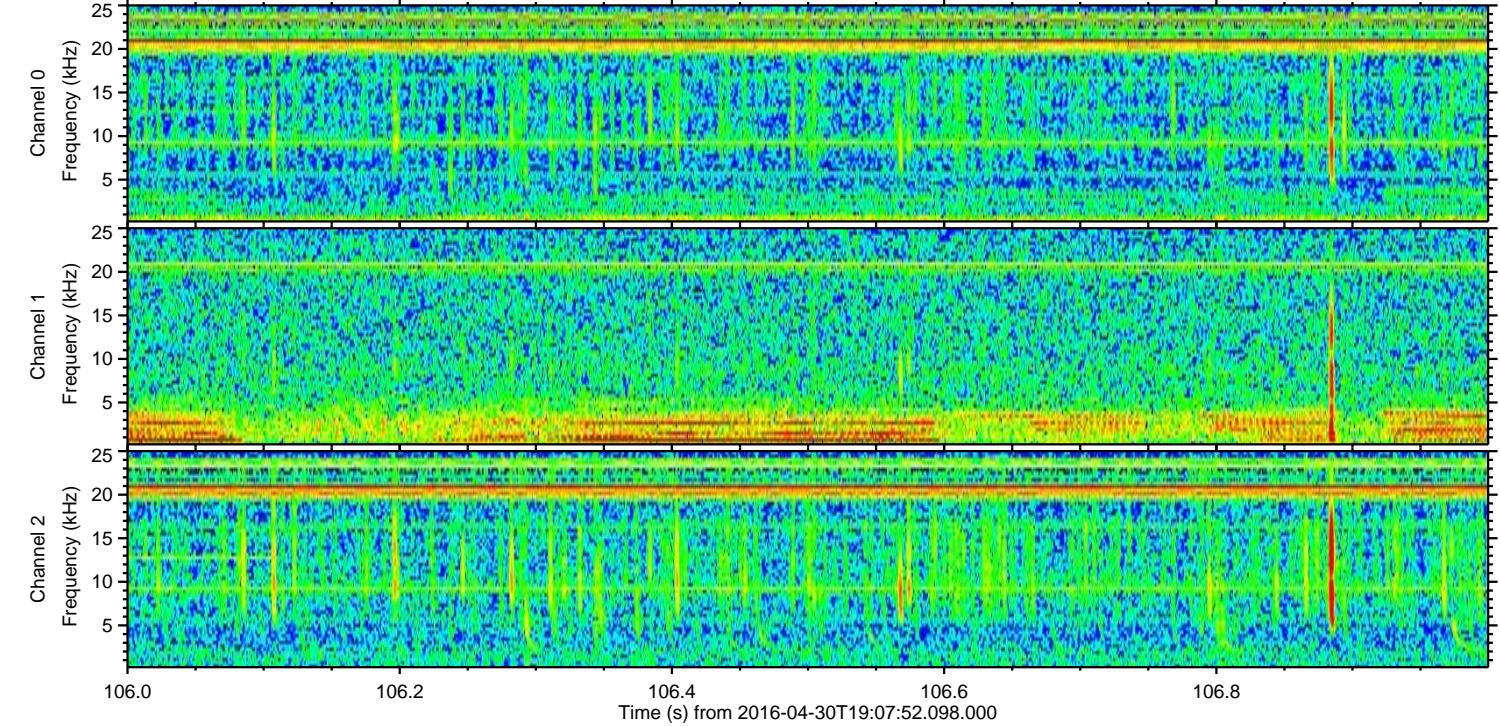
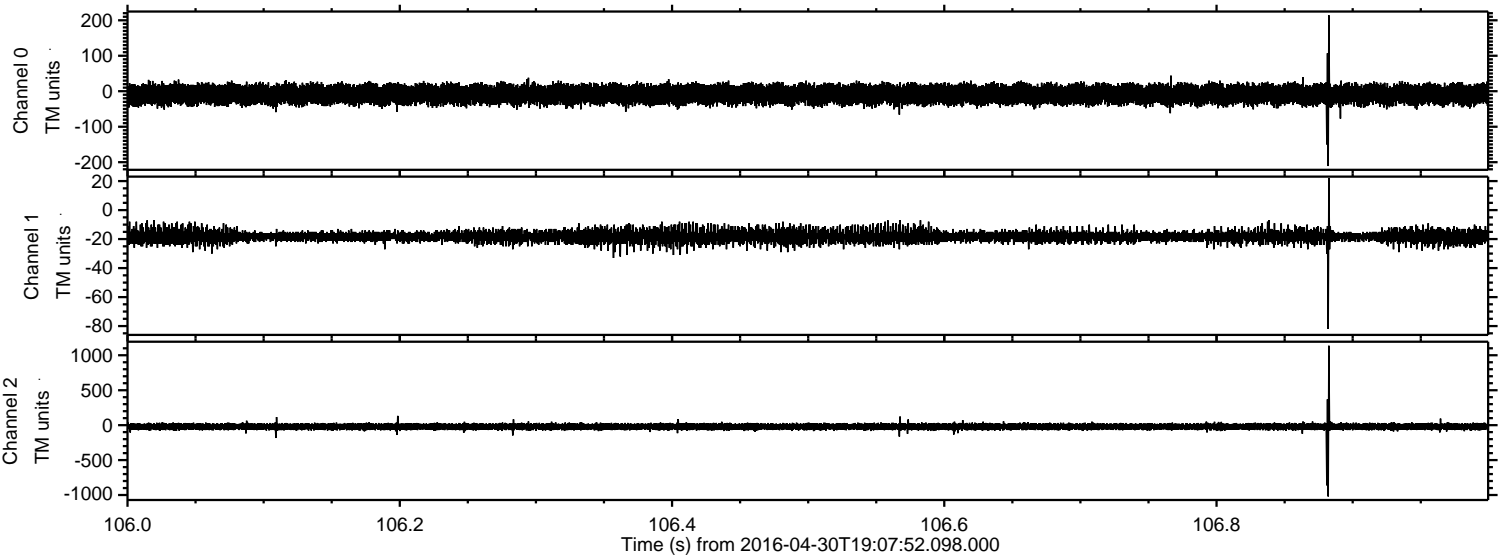
Processed Wed May 11 19:14:45 2016 by ELM ver.2012-10-06 from 001__elm20160430_190751__dat00.bin



Processed Wed May 11 19:14:46 2016 by ELM ver.2012-10-06 from 001__elm20160430_190751__dat00.bin



Processed Wed May 11 19:14:47 2016 by ELM ver.2012-10-06 from 001__elm20160430_190751__dat00.bin



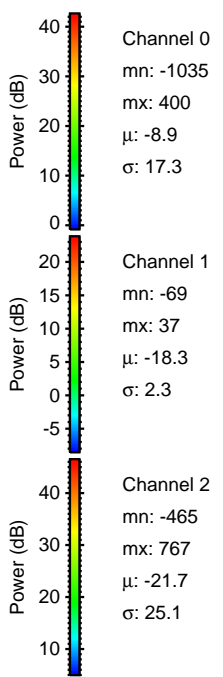
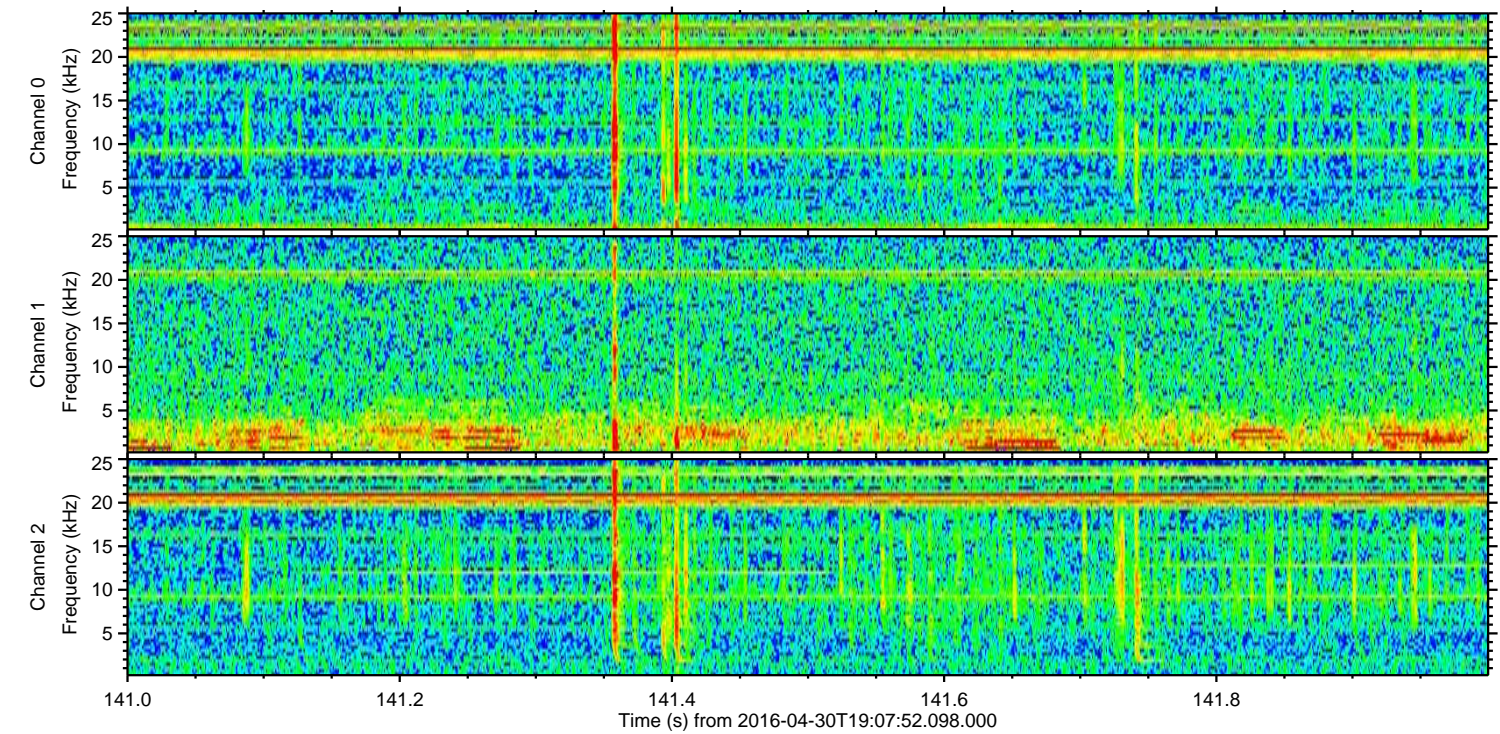
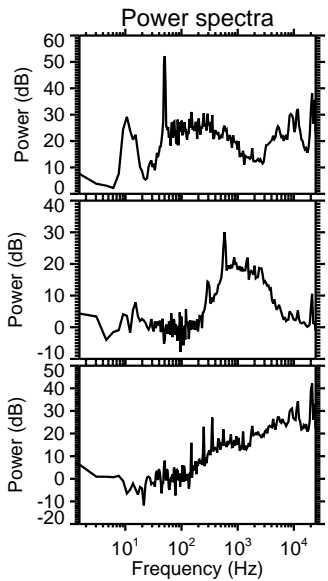
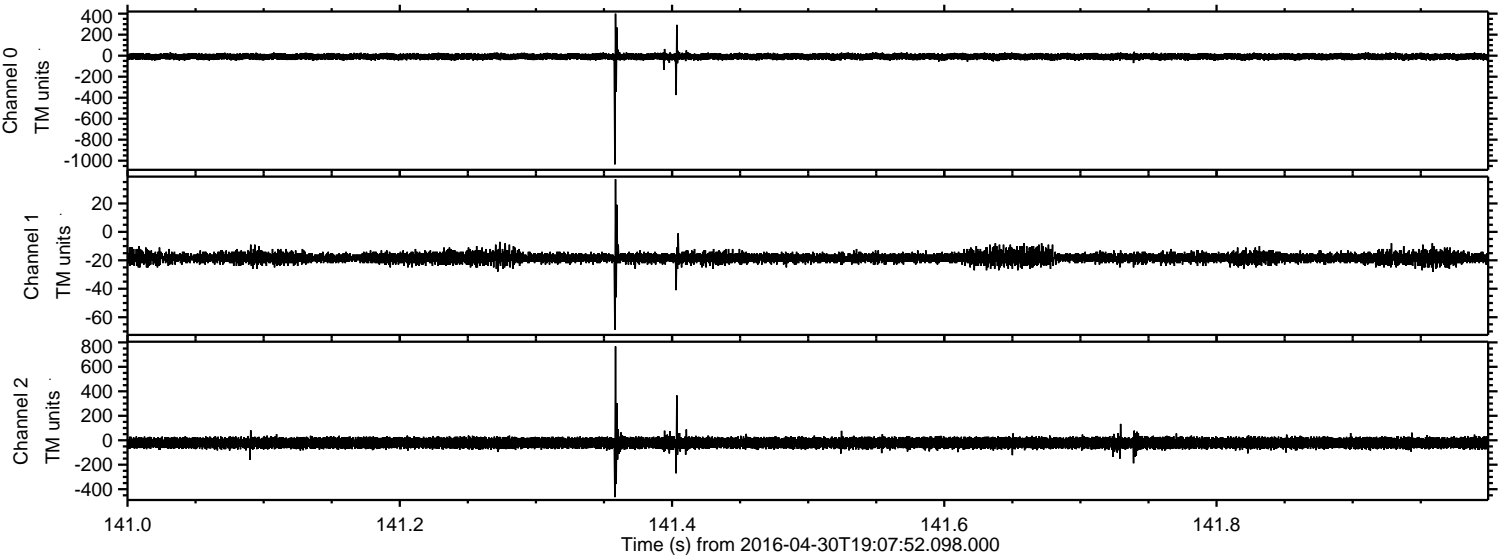
Channel 0
mn: -211
mx: 214
 μ : -8.9
 σ : 14.7

Channel 1
mn: -82
mx: 22
 μ : -18.3
 σ : 2.7

Channel 2
mn: -1020
mx: 1137
 μ : -21.7
 σ : 25.4

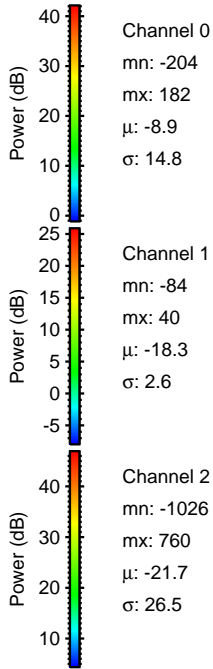
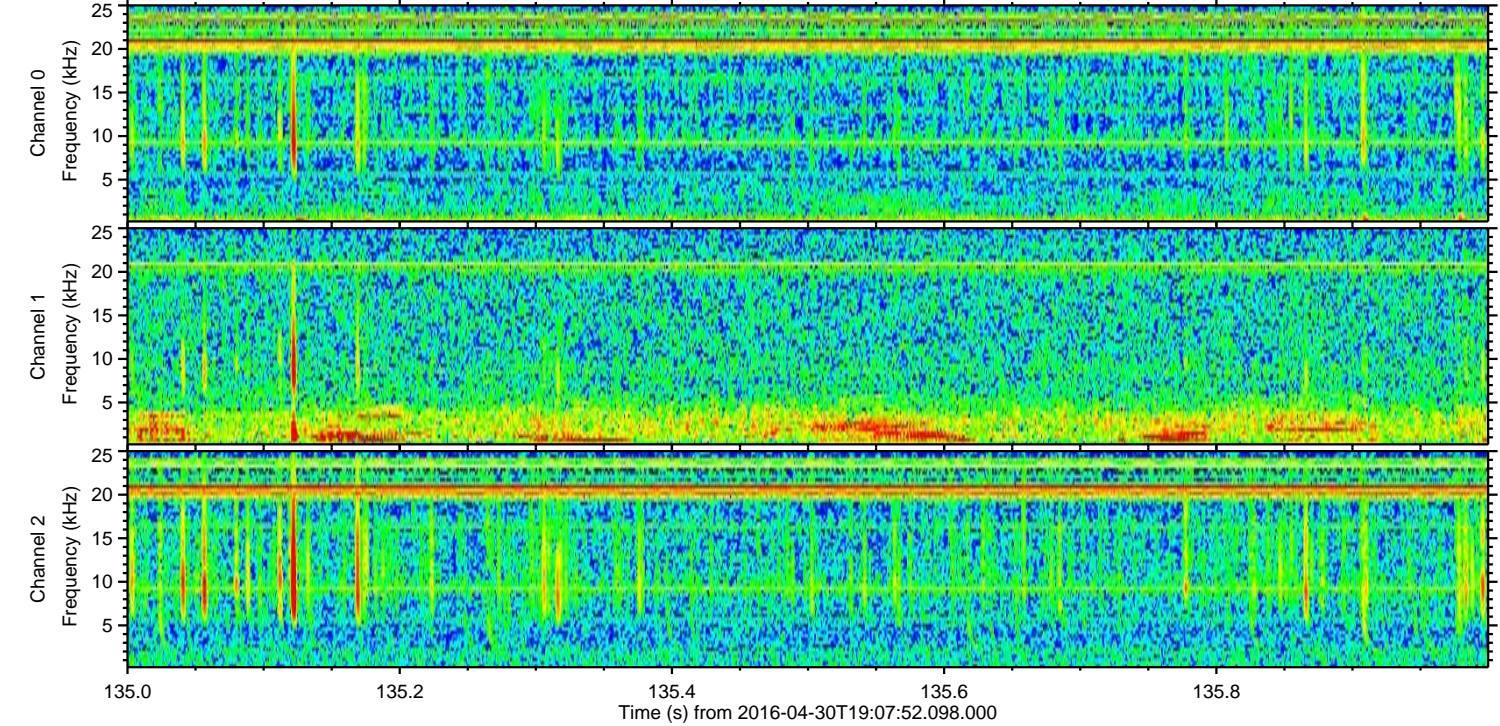
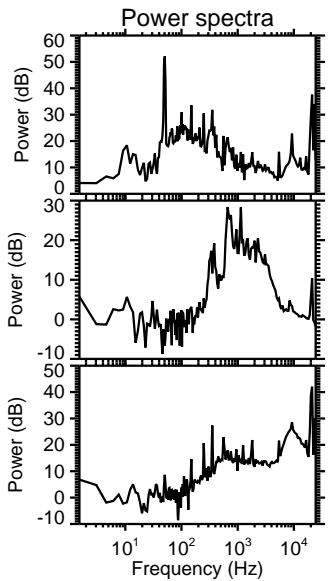
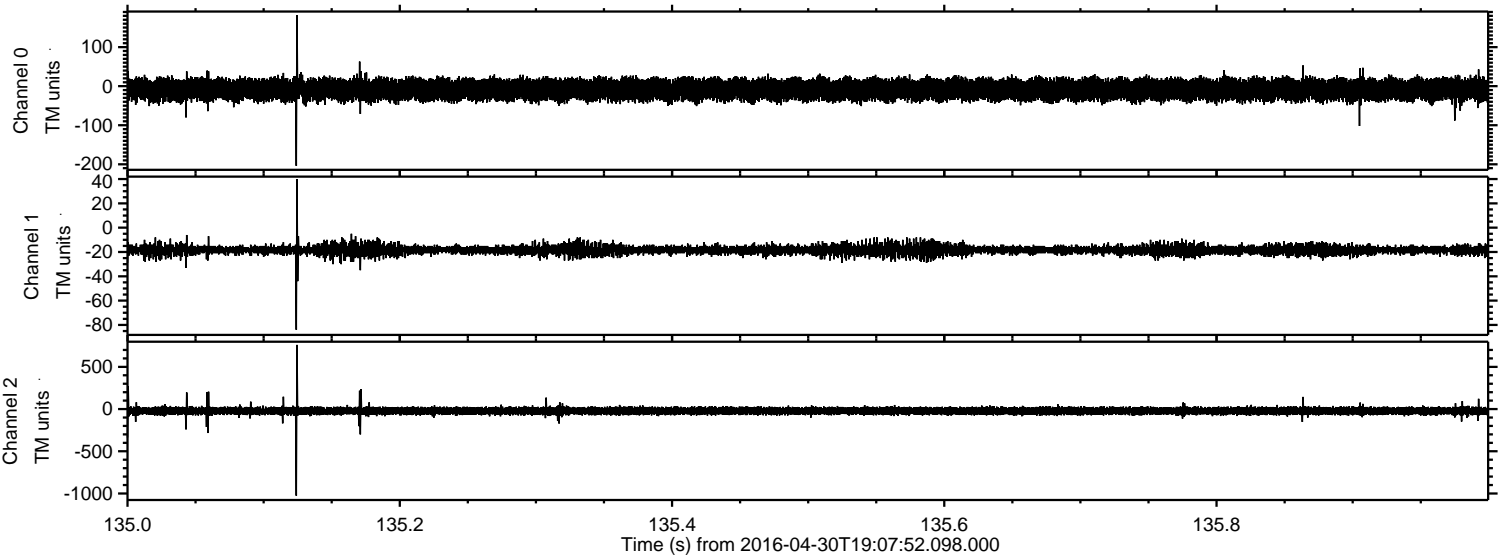
ELMAVAN 3D WAVEFORMS (Measured data sampled at 50 kHz) 51000 packets of 144 samples from 2016-04-30T19:07:52.098.000. Part 142/147

Processed Wed May 11 19:14:48 2016 by ELM ver.2012-10-06 from 001__elm20160430_190751__dat00.bin



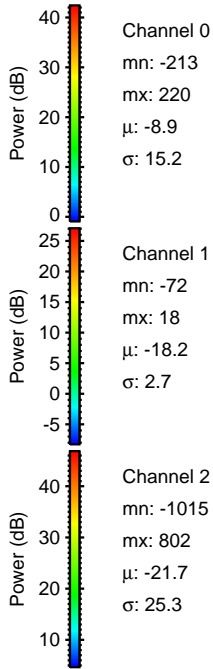
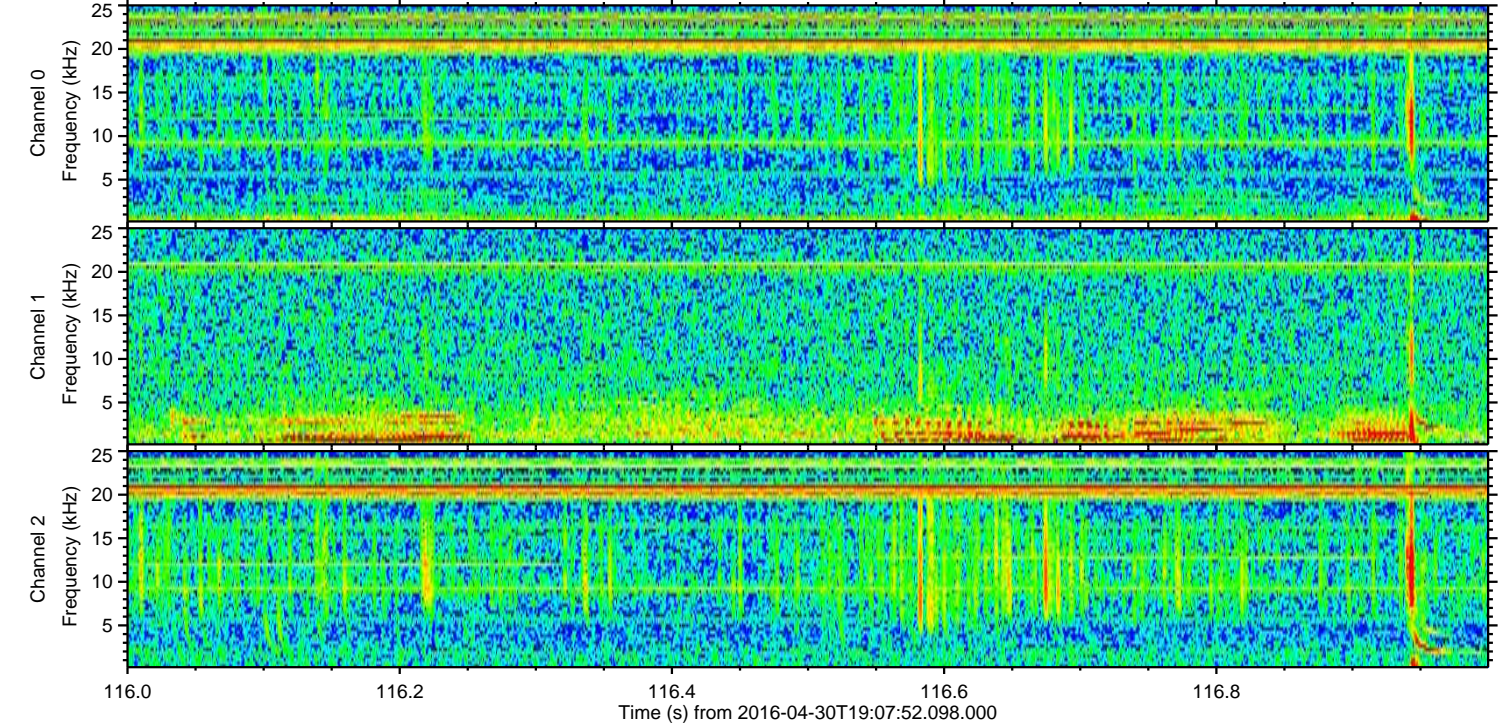
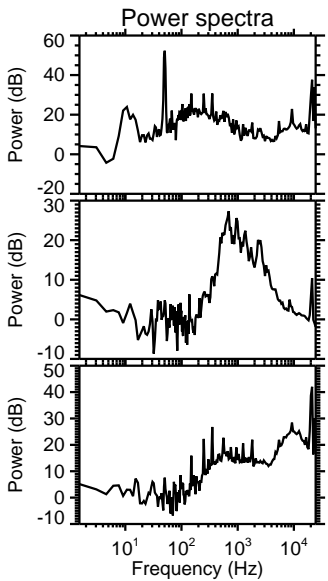
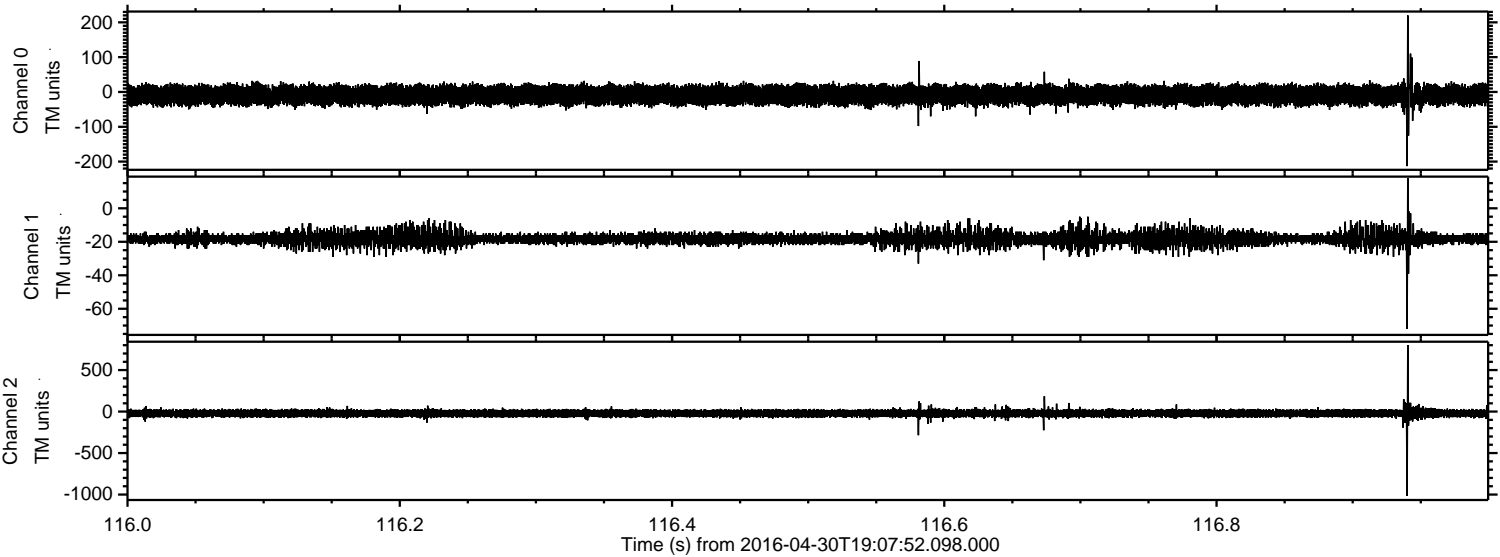
ELMAVAN 3D WAVEFORMS (Measured data sampled at 50 kHz) 51000 packets of 144 samples from 2016-04-30T19:07:52.098.000. Part 136/147

Processed Wed May 11 19:14:49 2016 by ELM ver.2012-10-06 from 001__elm20160430_190751__dat00.bin

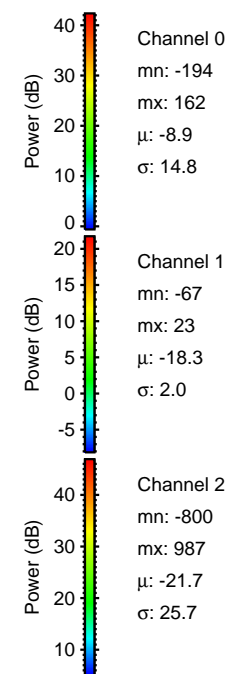
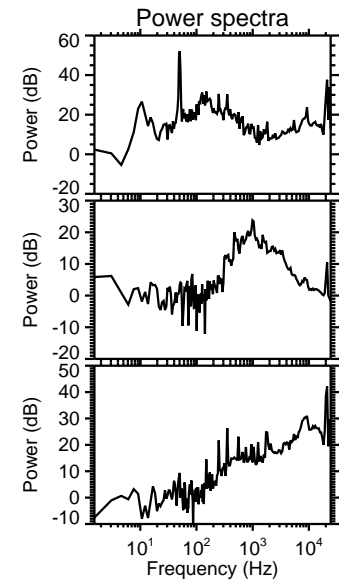
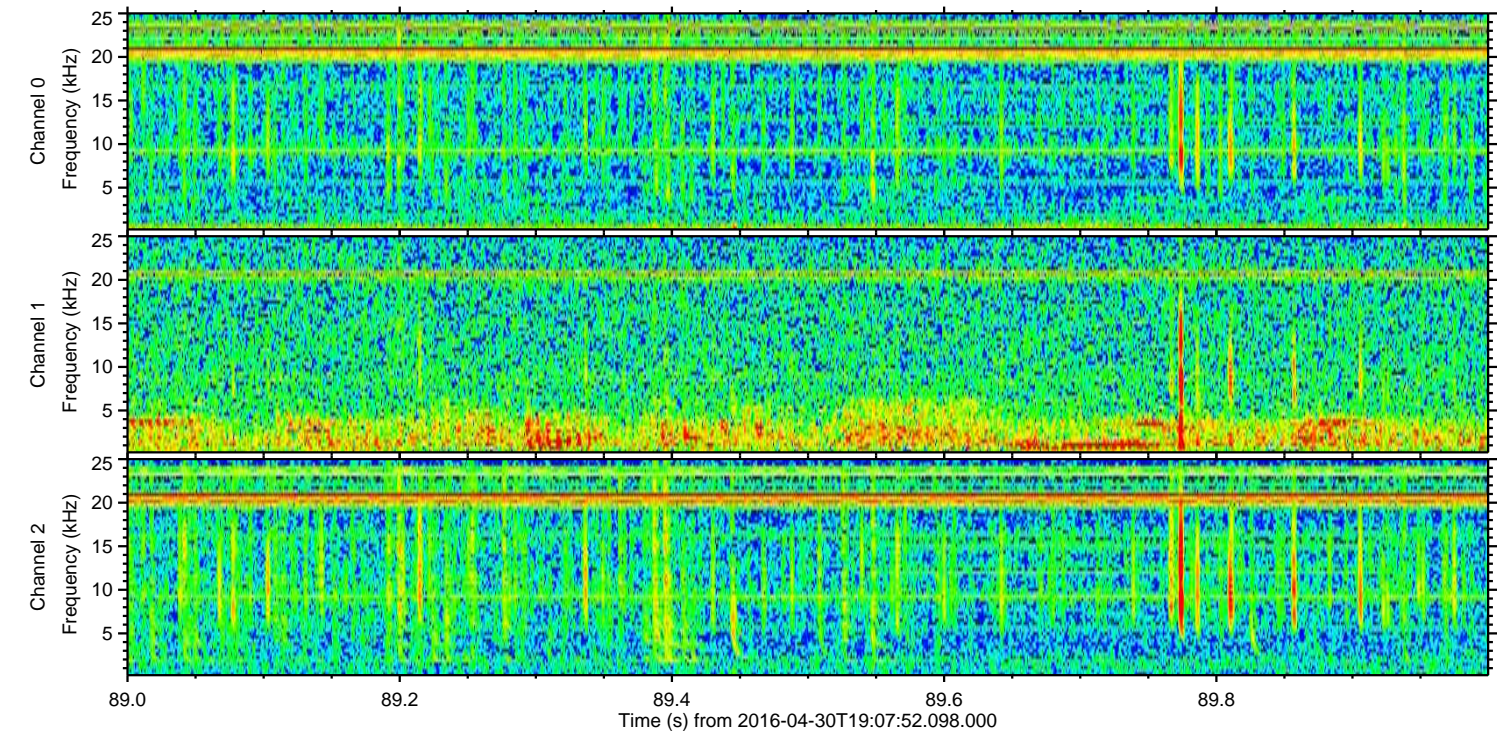
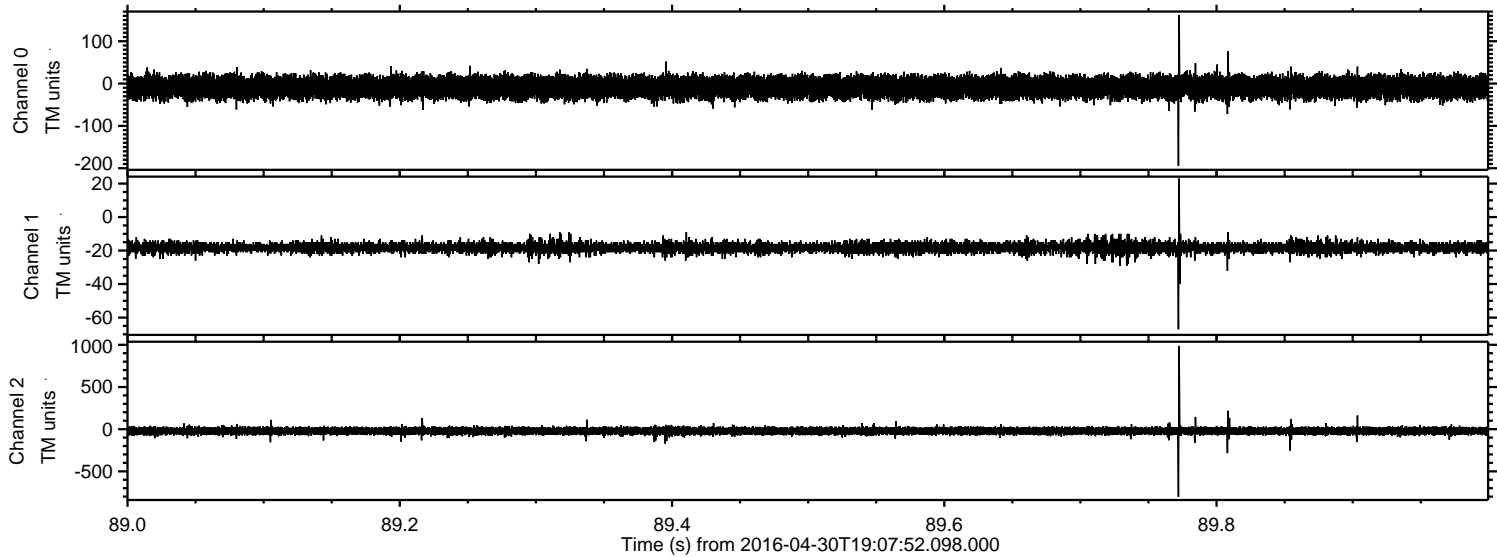


ELMAVAN 3D WAVEFORMS (Measured data sampled at 50 kHz) 51000 packets of 144 samples from 2016-04-30T19:07:52.098.000. Part 117/147

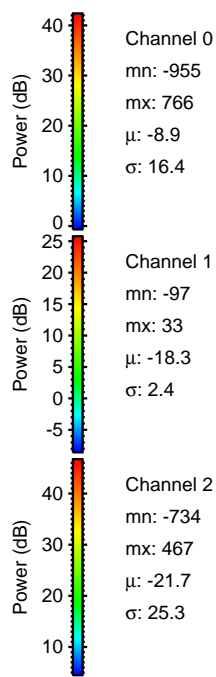
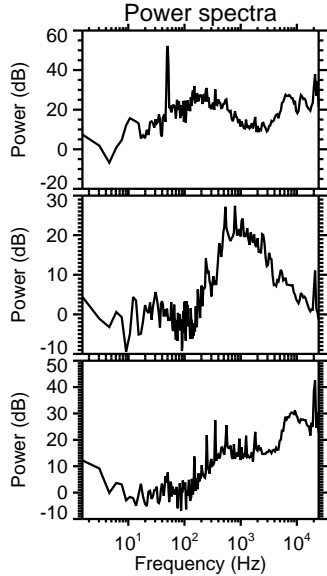
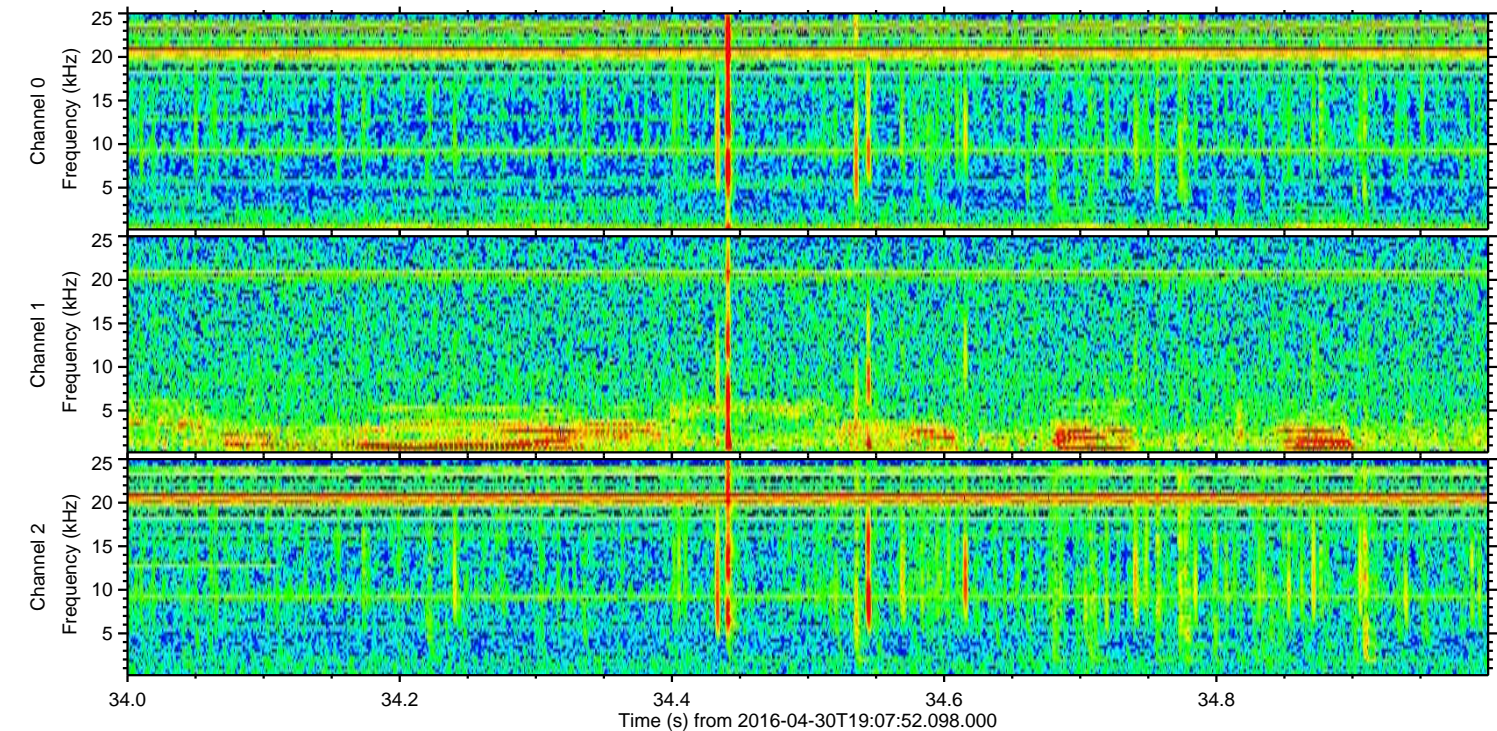
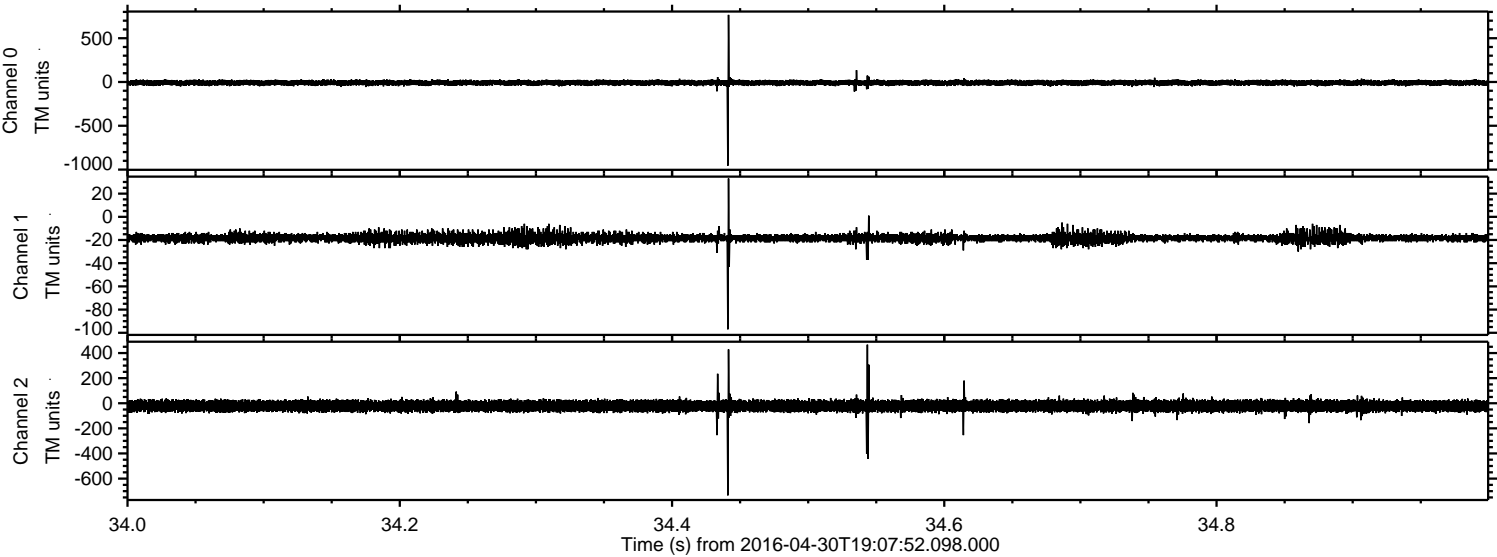
Processed Wed May 11 19:14:50 2016 by ELM ver.2012-10-06 from 001__elm20160430_190751__dat00.bin



Processed Wed May 11 19:14:51 2016 by ELM ver.2012-10-06 from 001__elm20160430_190751__dat00.bin



Processed Wed May 11 19:14:52 2016 by ELM ver.2012-10-06 from 001__elm20160430_190751__dat00.bin



Processed Wed May 11 19:14:53 2016 by ELM ver.2012-10-06 from 001__elm20160430_190751__dat00.bin

