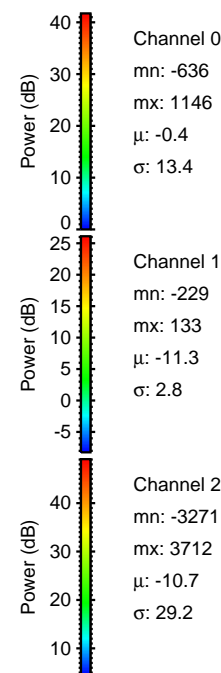
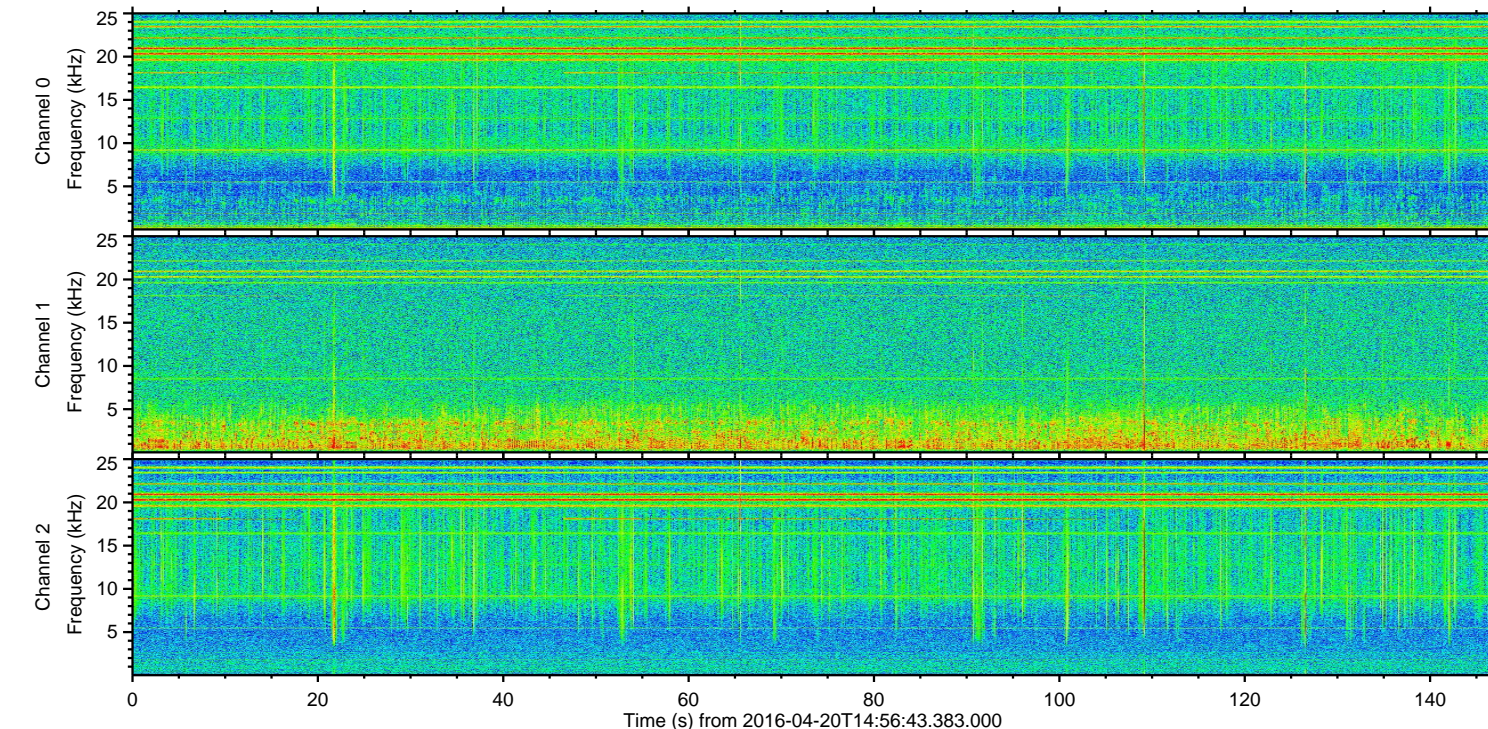
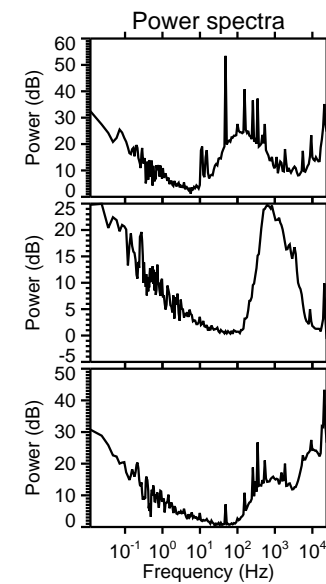
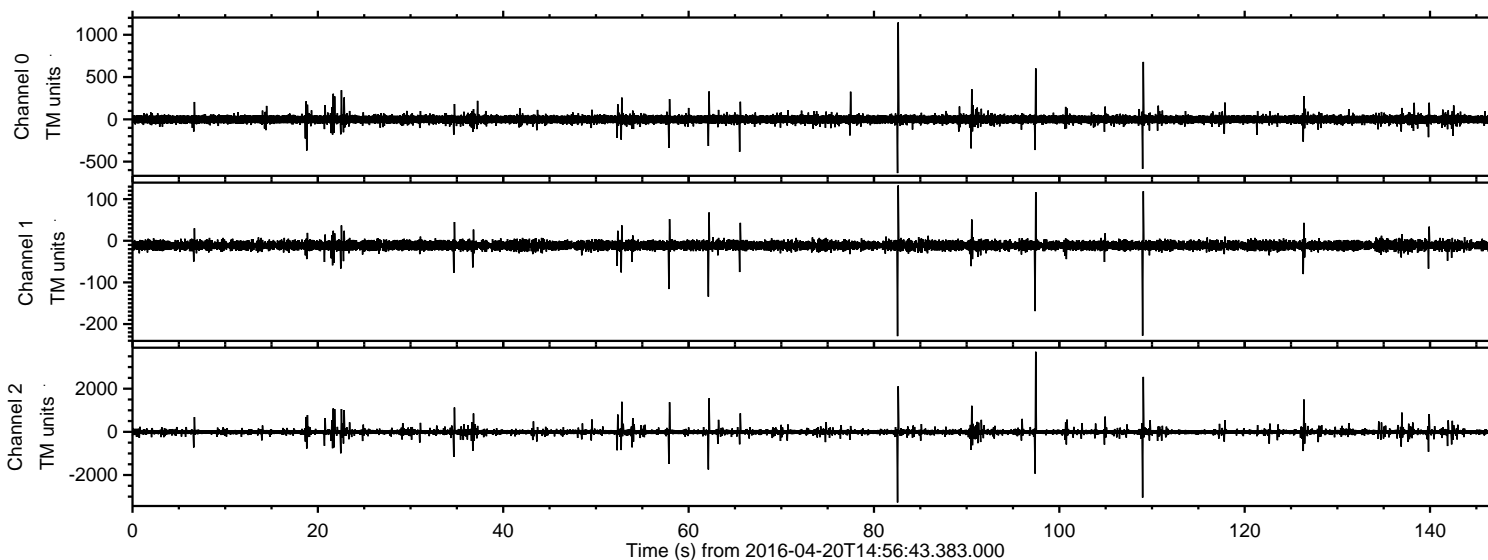
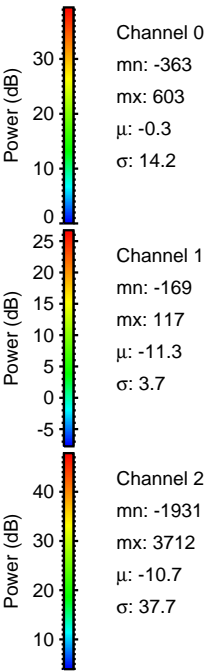
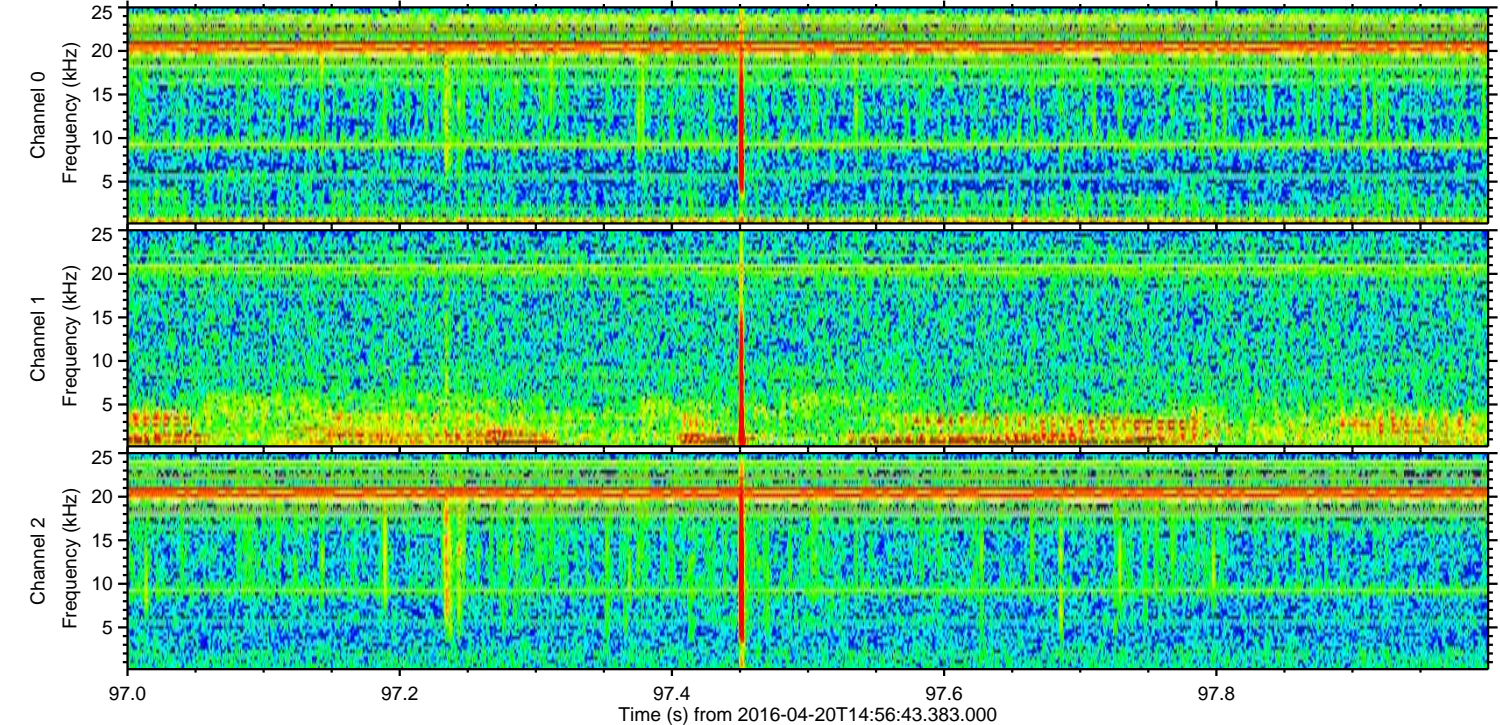
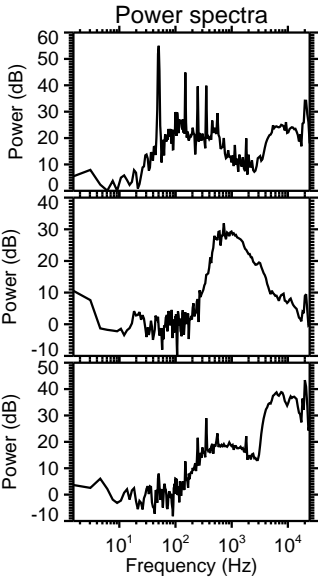
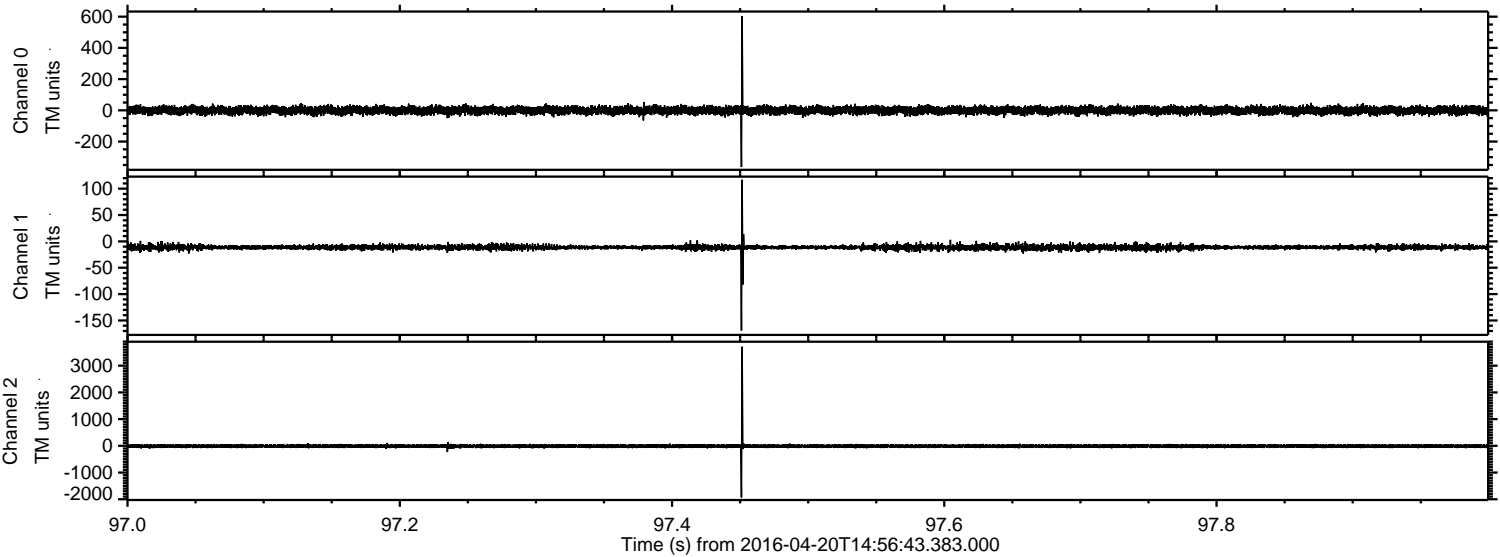


ELMAVAN 3D WAVEFORMS (Measured data sampled at 50 kHz) 51000 packets of 144 samples from 2016-04-20T14:56:43.383.000.

Processed Mon May 9 16:11:34 2016 by ELM ver.2012-10-06 from 001__elm20160420_145642__dat00.bin

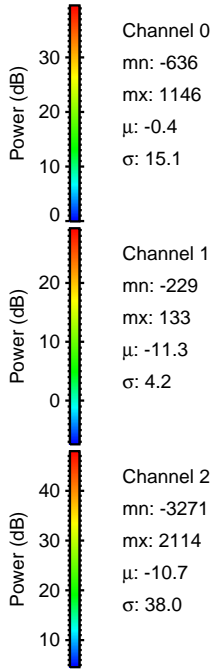
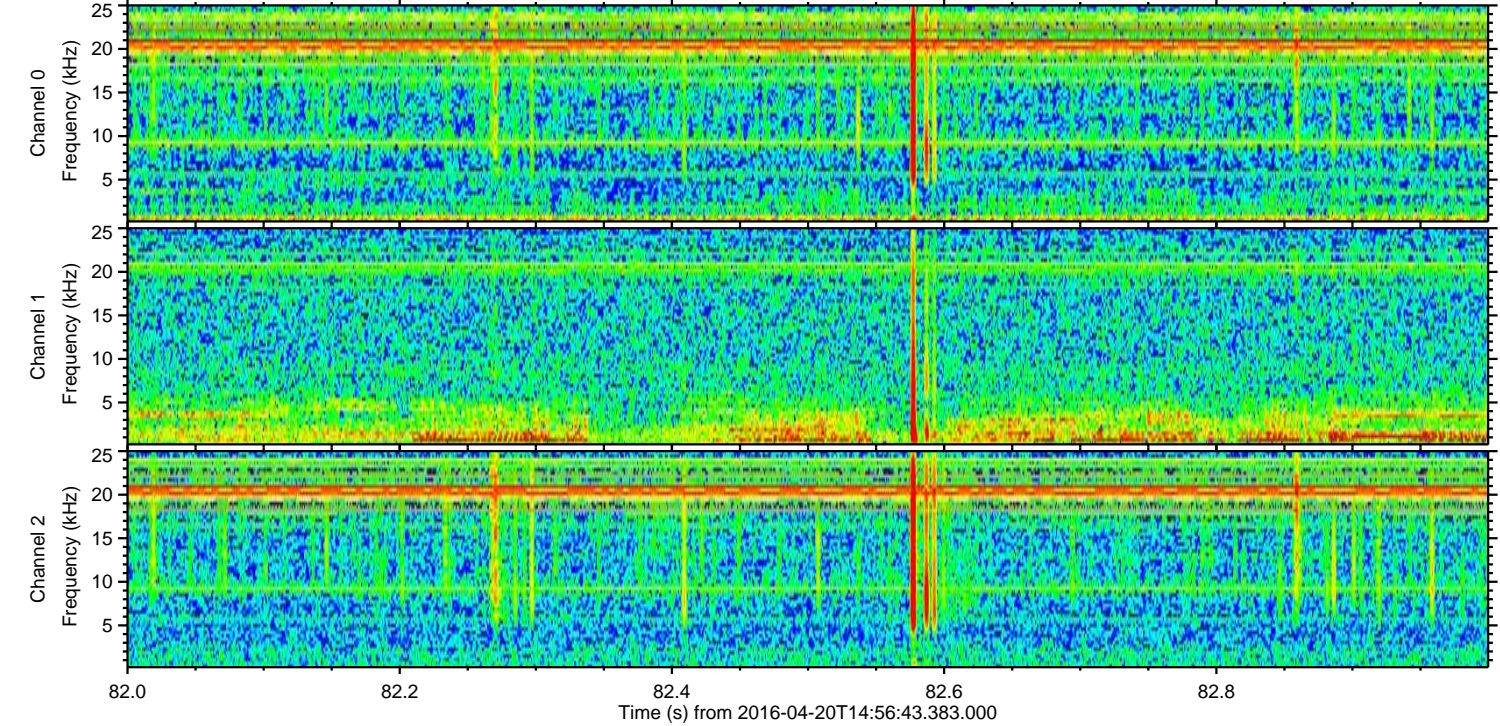
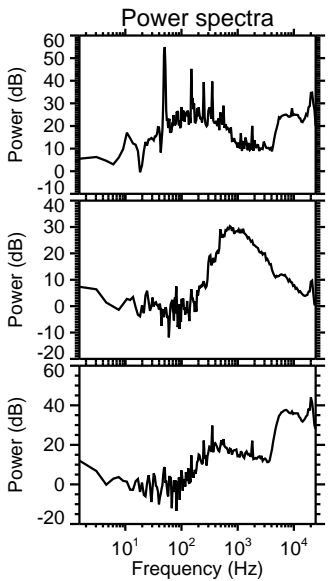
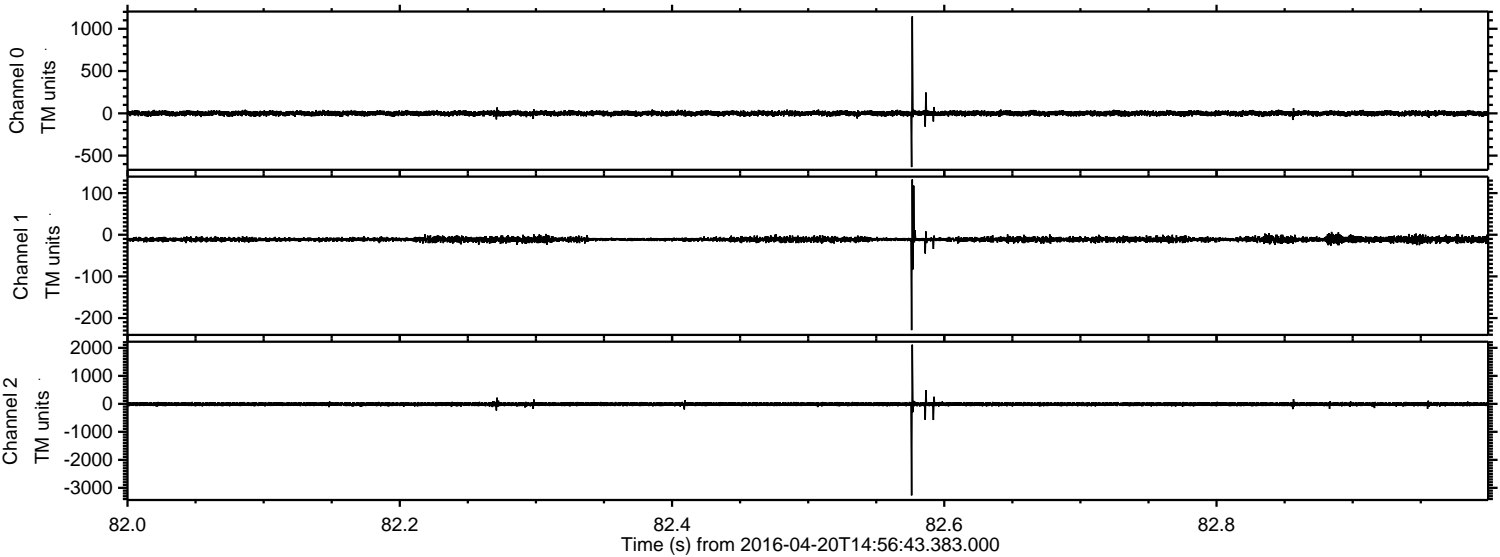


Processed Mon May 9 16:11:46 2016 by ELM ver.2012-10-06 from 001__elm20160420_145642__dat00.bin



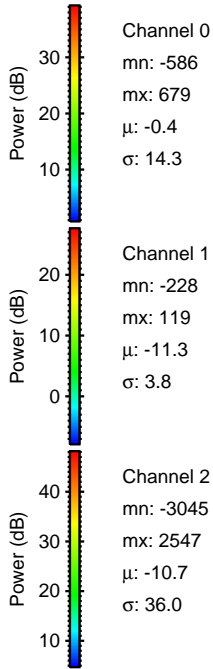
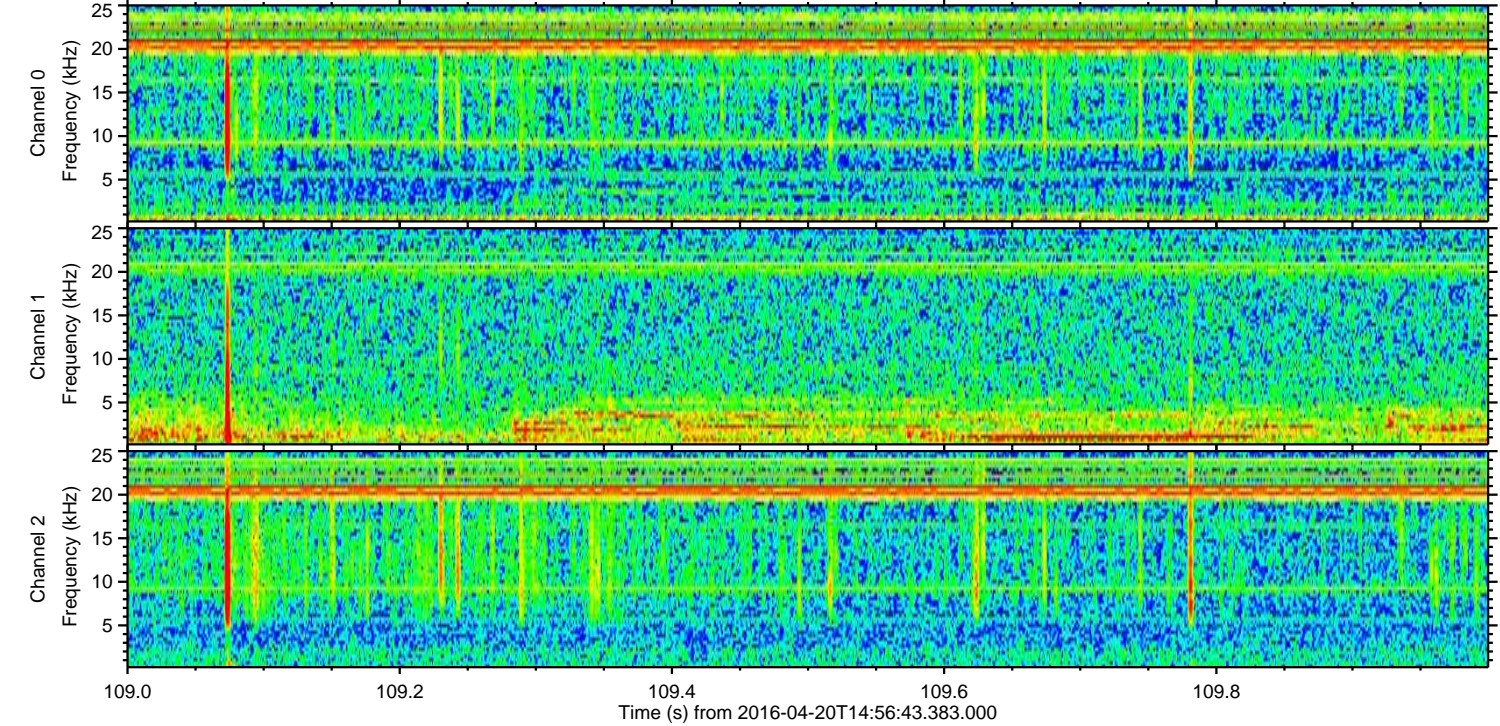
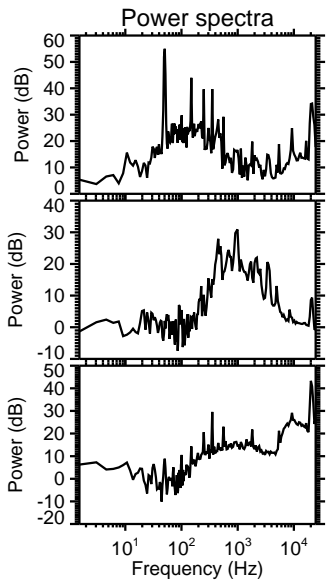
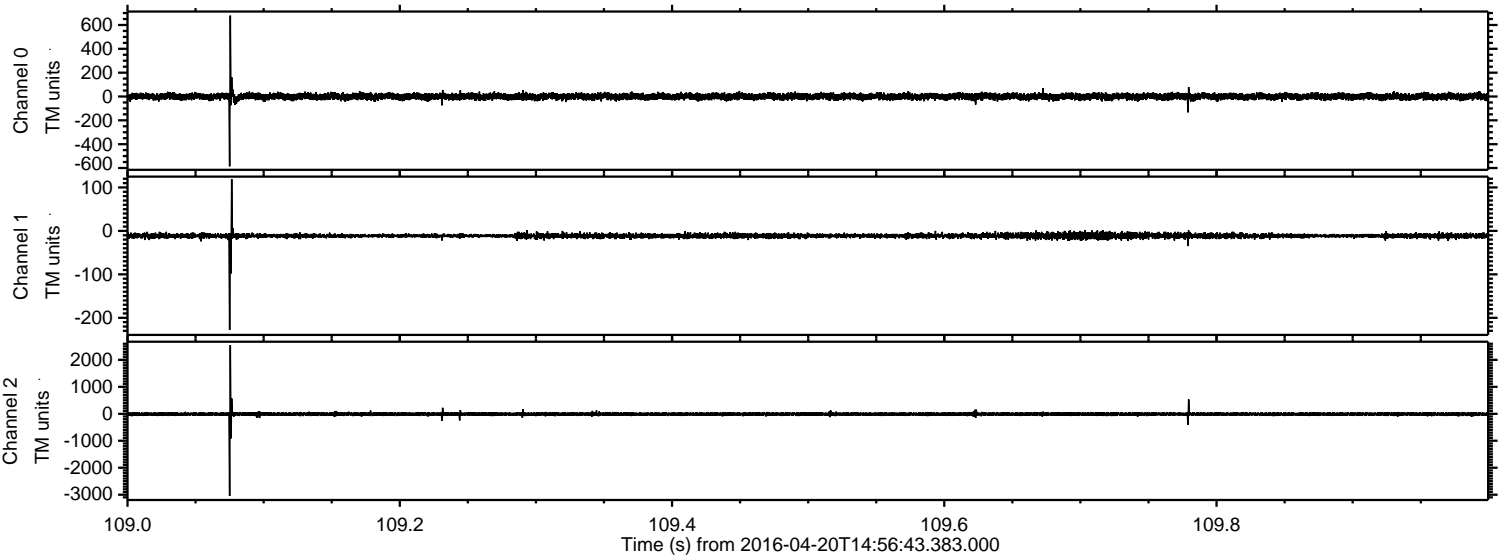
ELMAVAN 3D WAVEFORMS (Measured data sampled at 50 kHz) 51000 packets of 144 samples from 2016-04-20T14:56:43.383.000. Part 83/147

Processed Mon May 9 16:11:47 2016 by ELM ver.2012-10-06 from 001__elm20160420_145642__dat00.bin

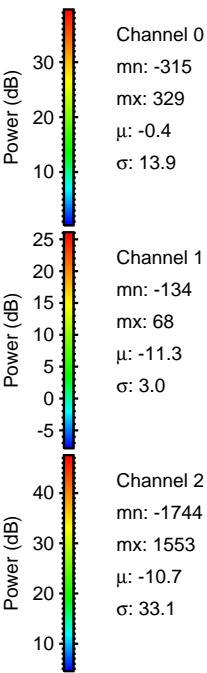
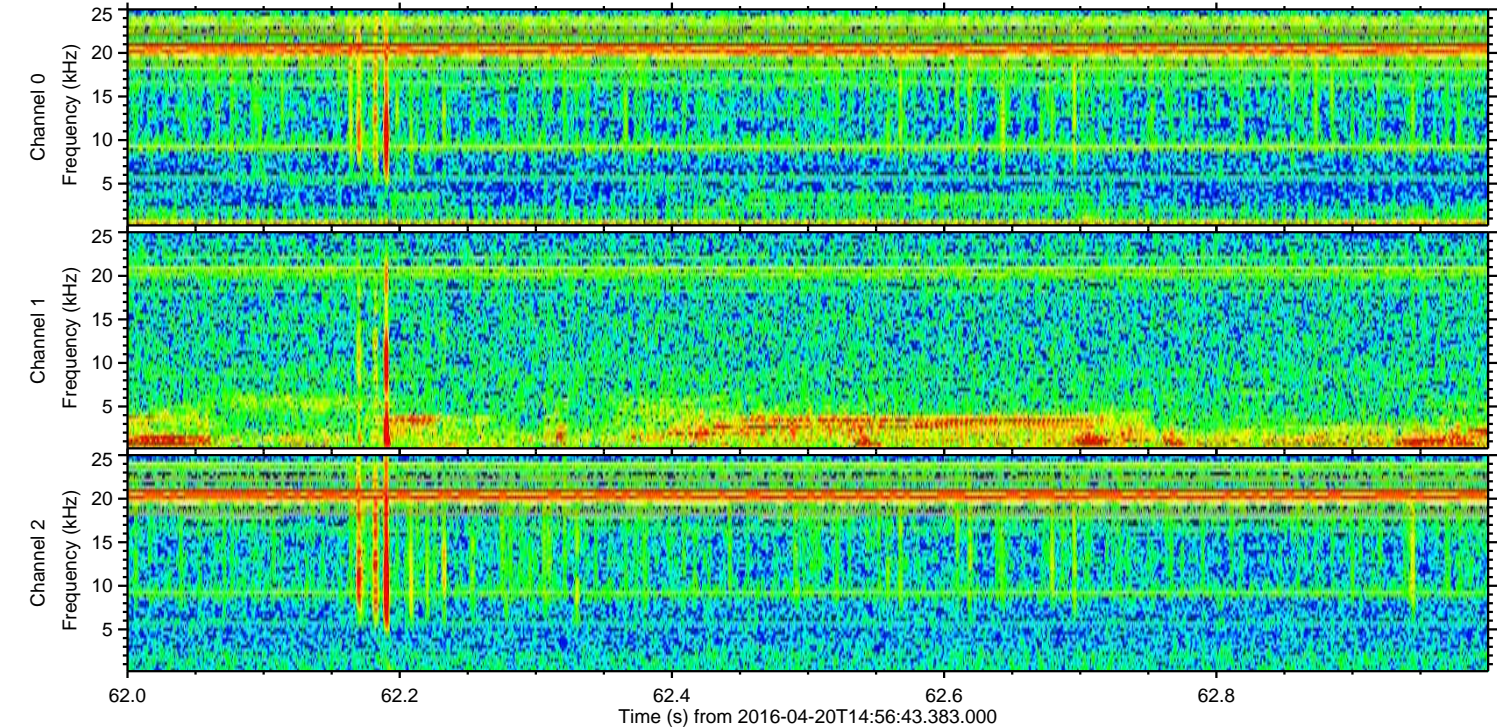
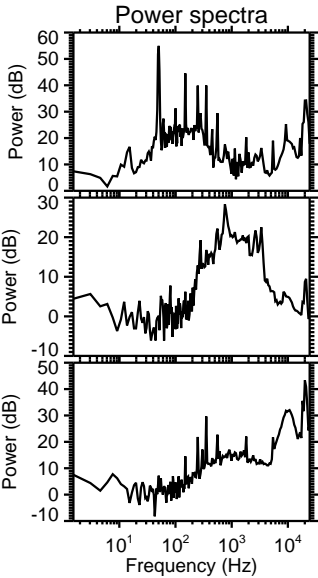
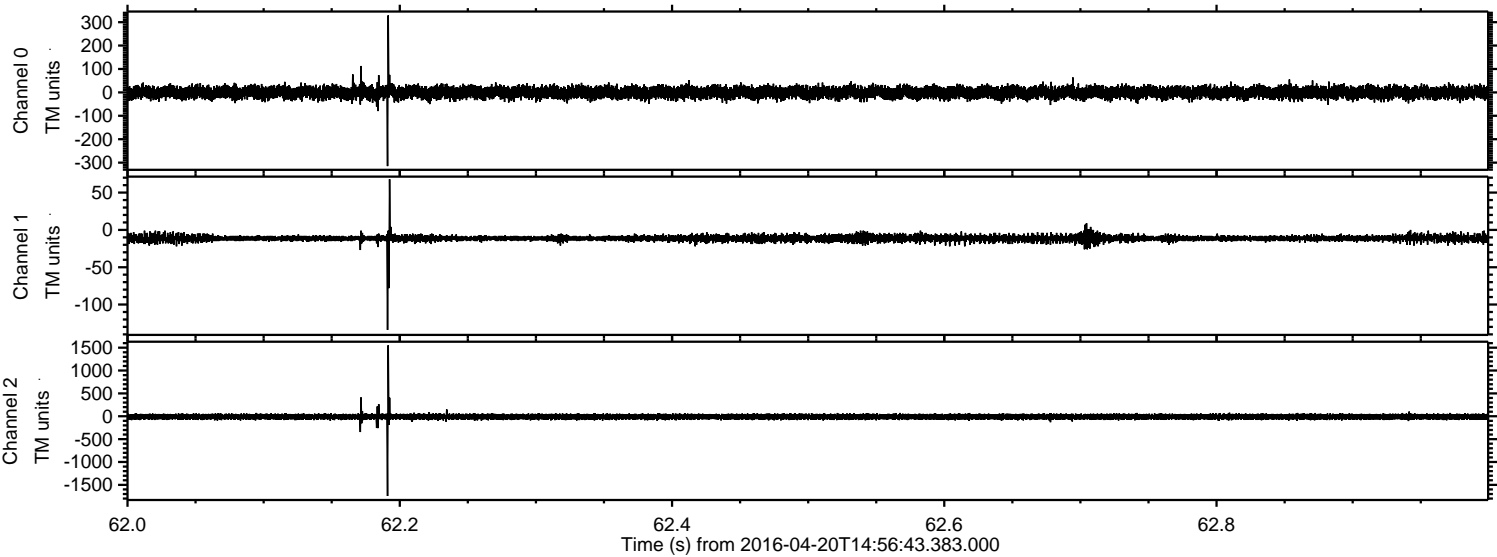


ELMAVAN 3D WAVEFORMS (Measured data sampled at 50 kHz) 51000 packets of 144 samples from 2016-04-20T14:56:43.383.000. Part 110/147

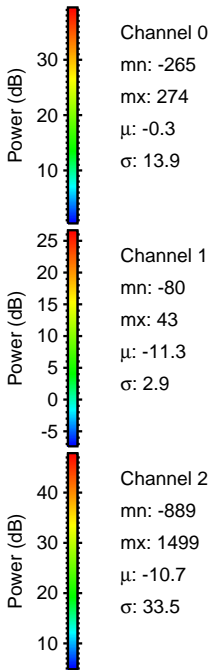
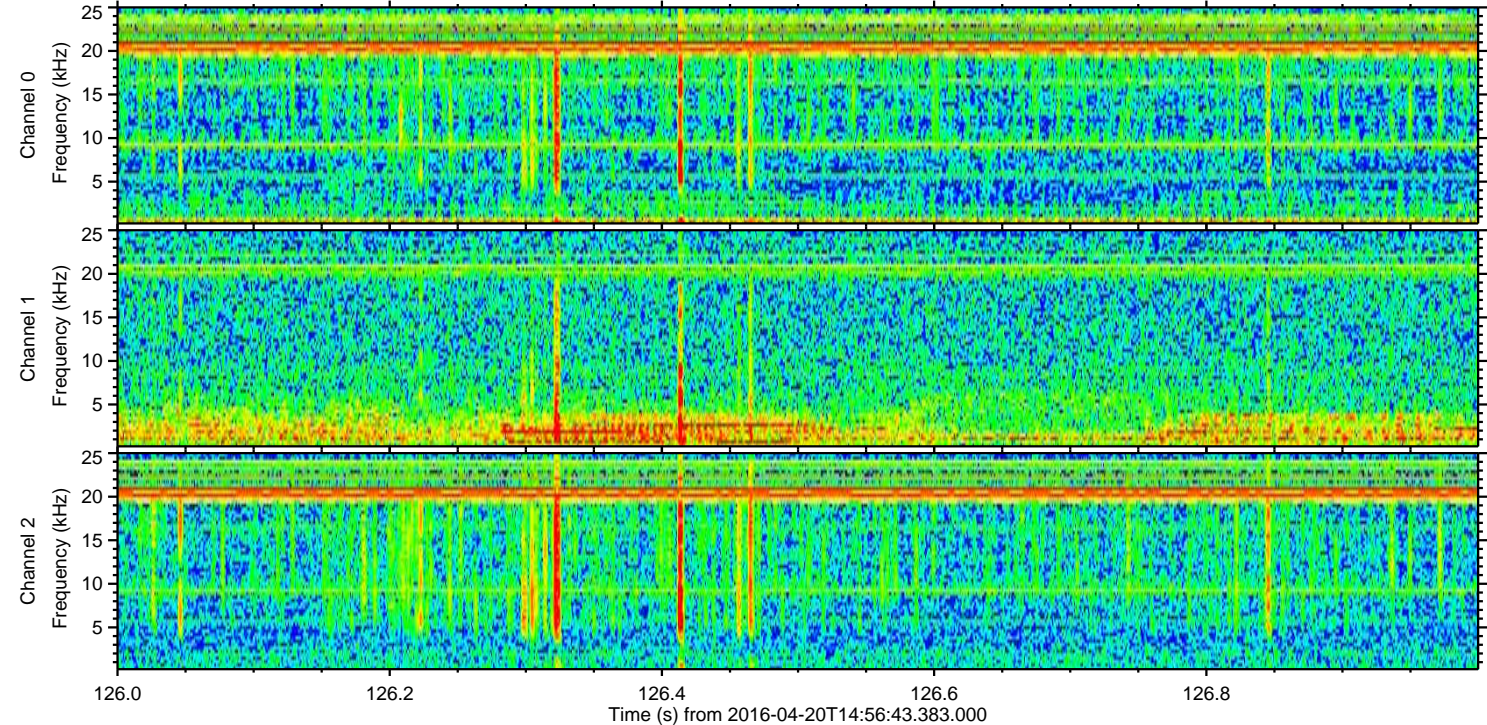
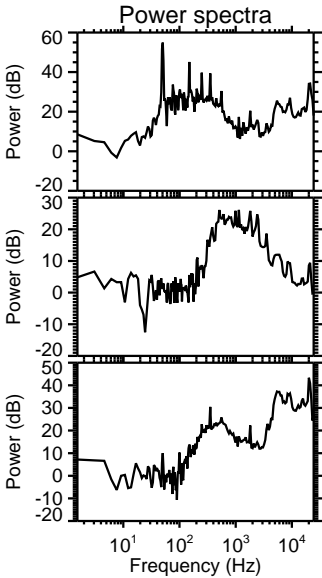
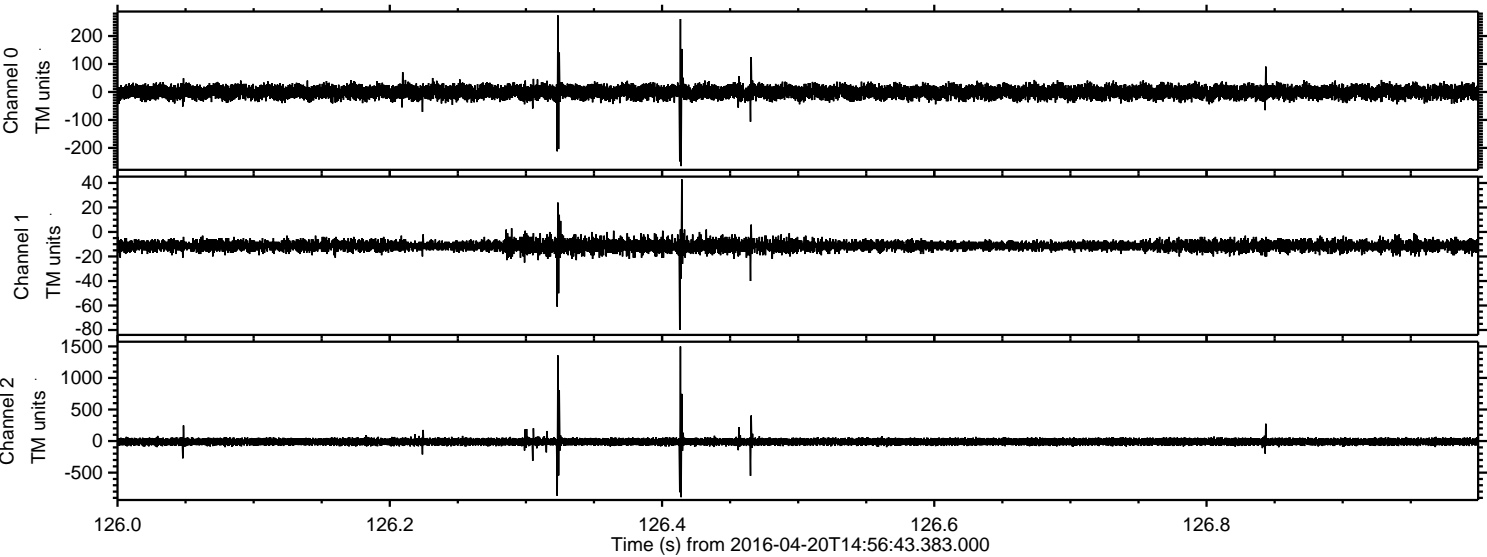
Processed Mon May 9 16:11:47 2016 by ELM ver.2012-10-06 from 001__elm20160420_145642__dat00.bin



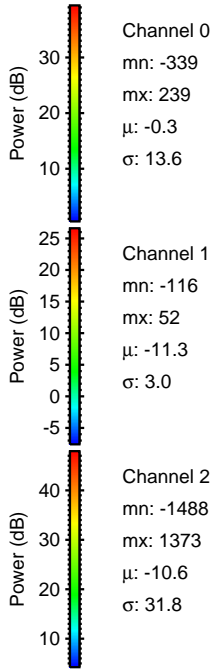
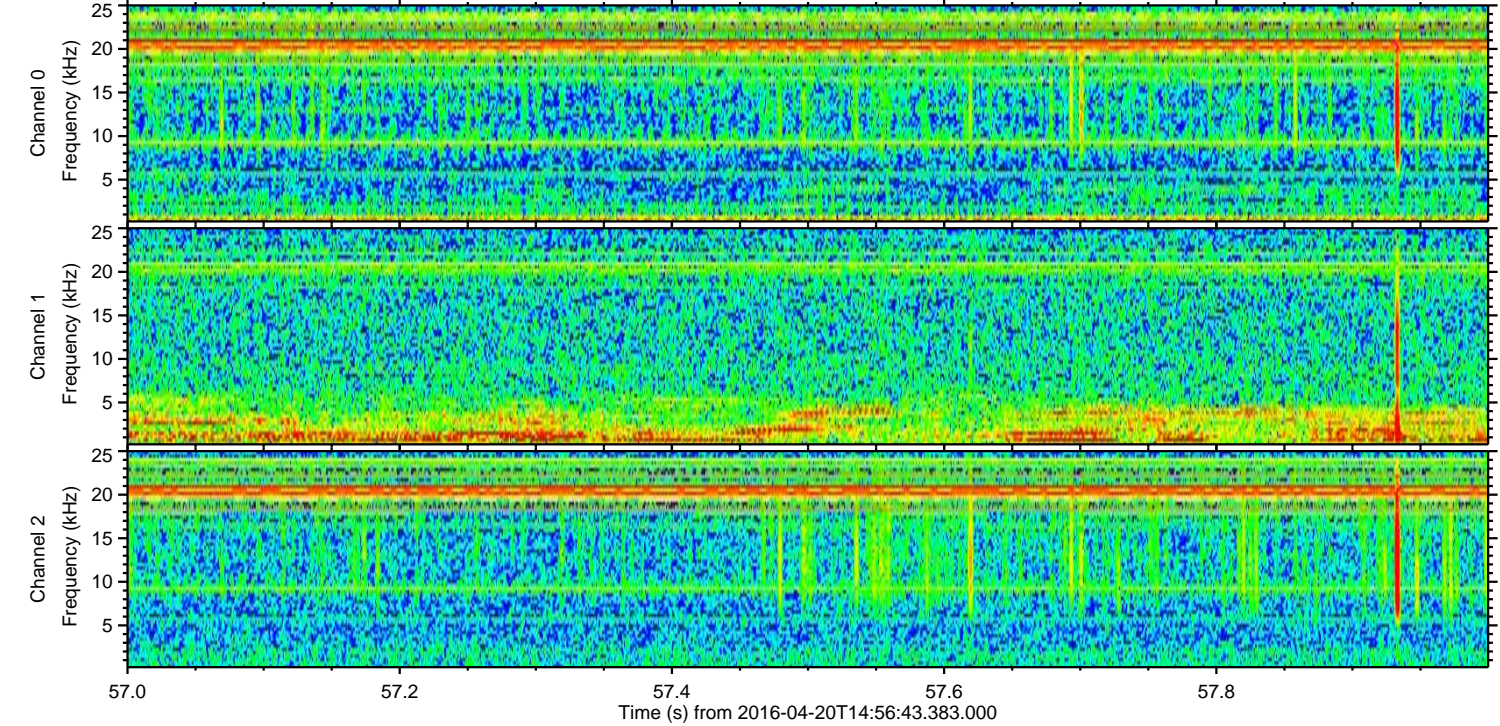
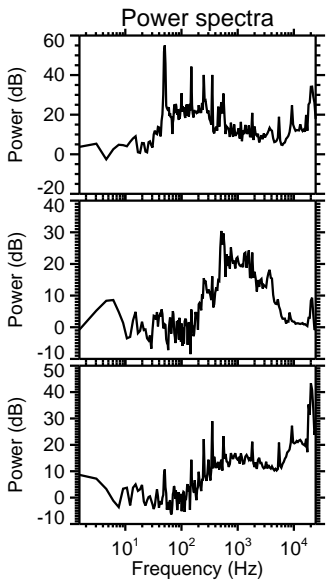
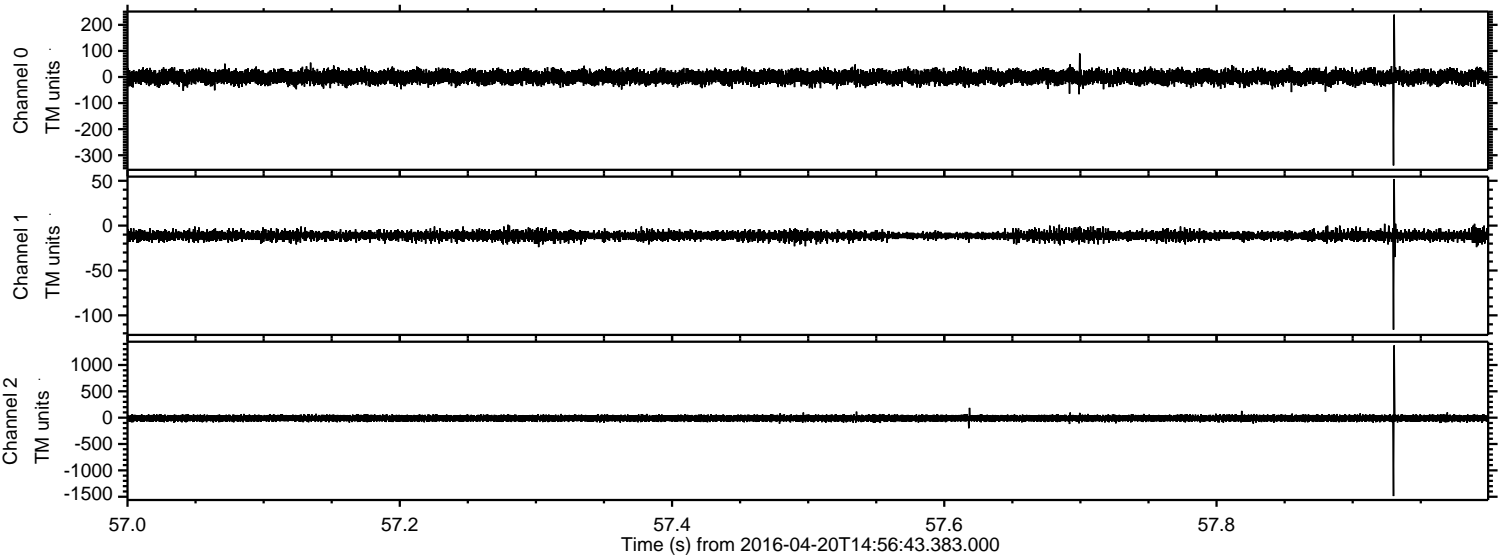
Processed Mon May 9 16:11:48 2016 by ELM ver.2012-10-06 from 001_elm20160420_145642__dat00.bin



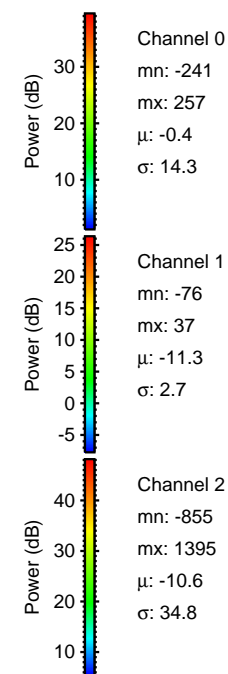
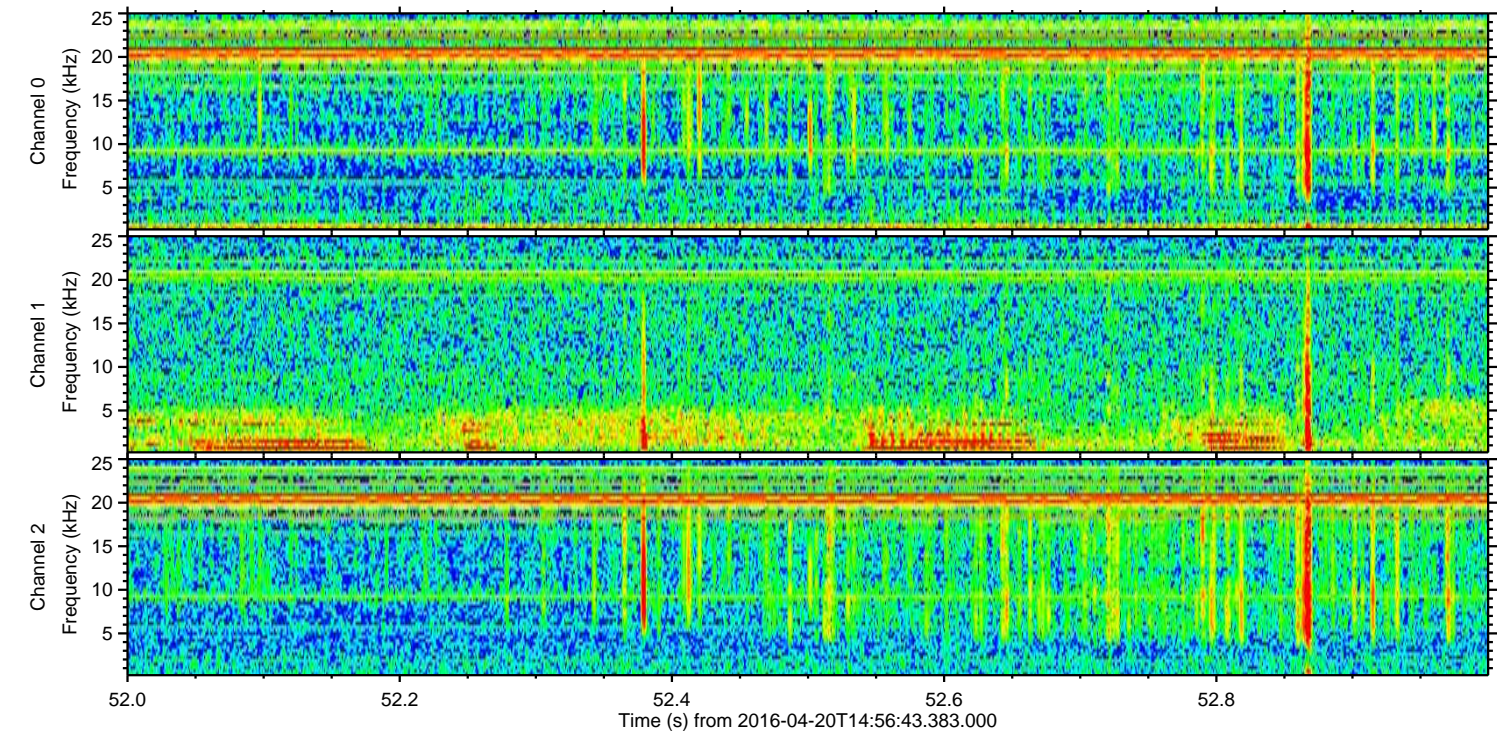
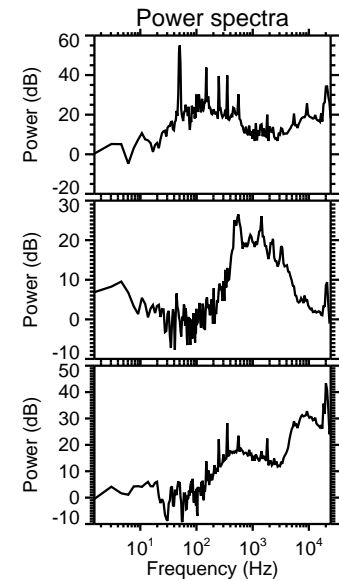
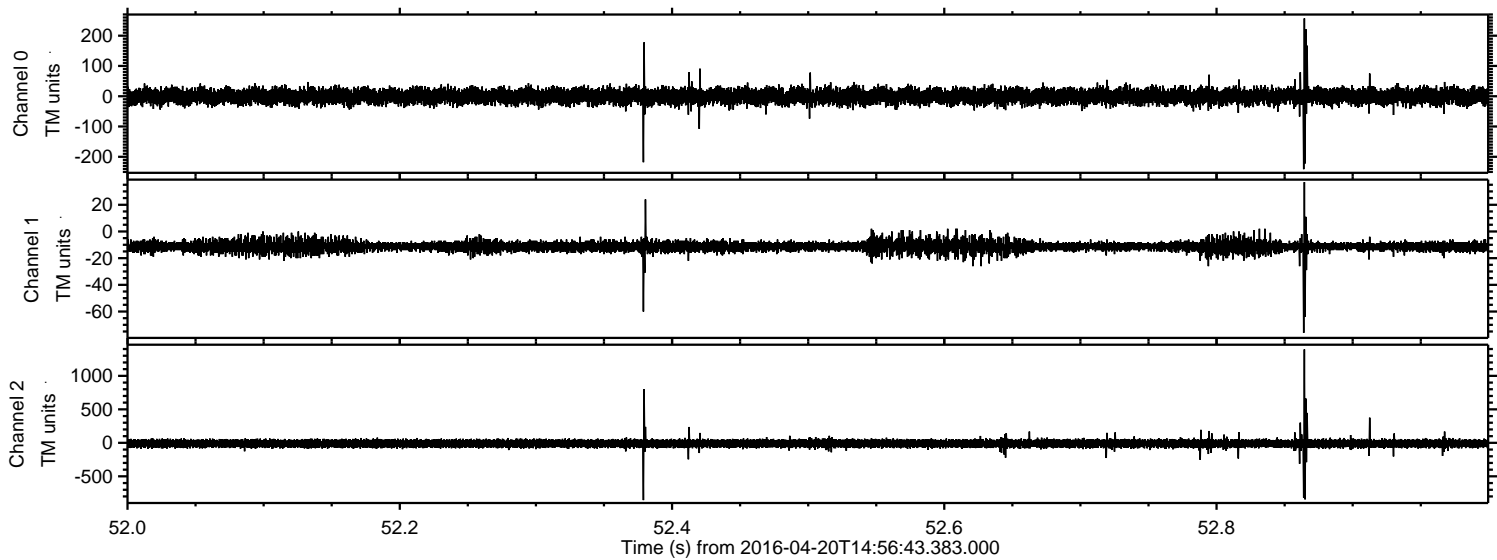
Processed Mon May 9 16:11:49 2016 by ELM ver.2012-10-06 from 001__elm20160420_145642__dat00.bin



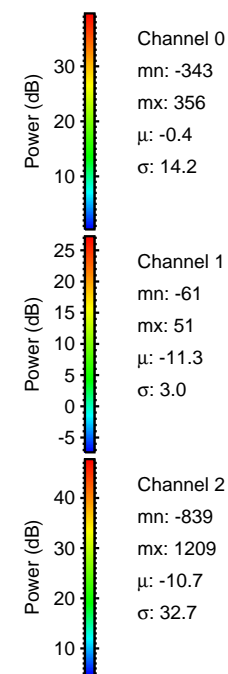
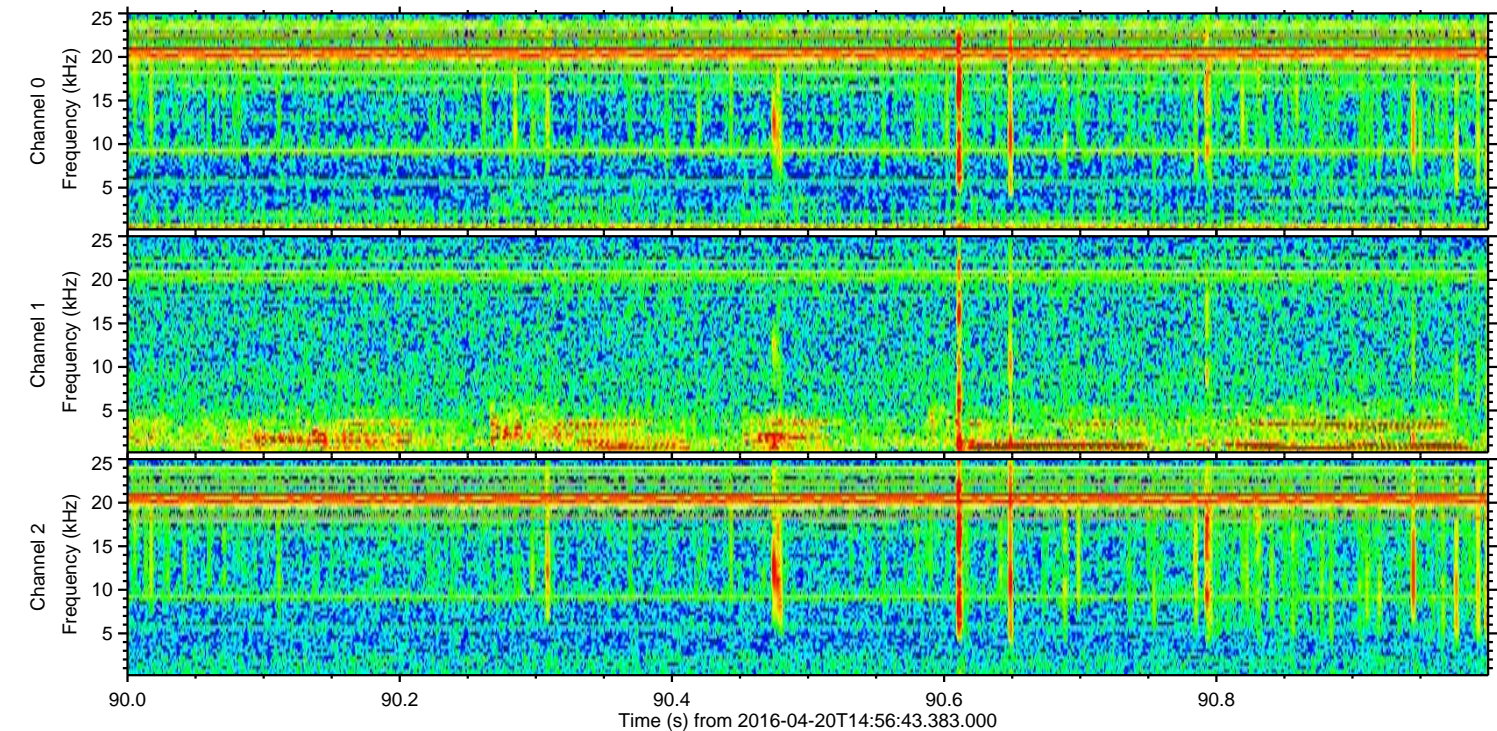
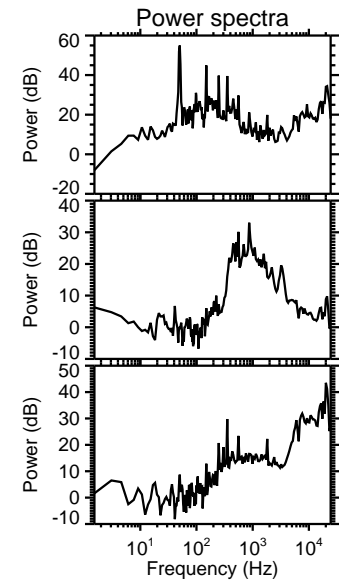
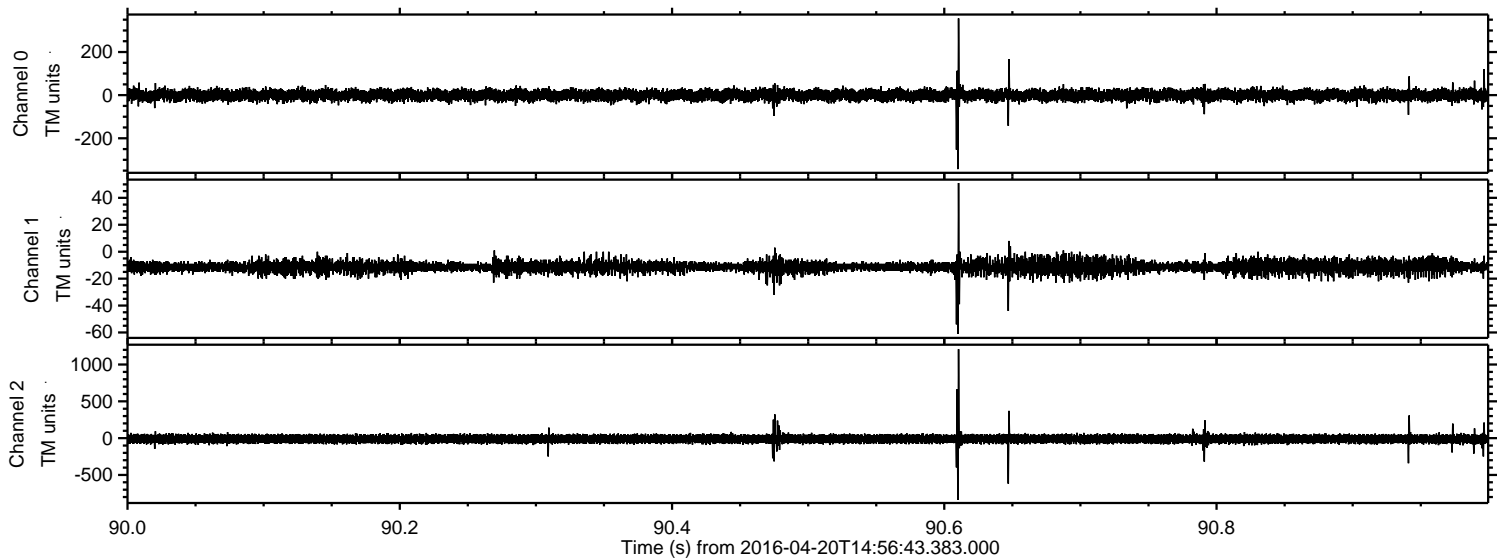
Processed Mon May 9 16:11:50 2016 by ELM ver.2012-10-06 from 001__elm20160420_145642__dat00.bin



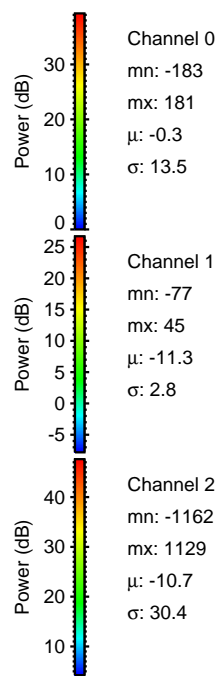
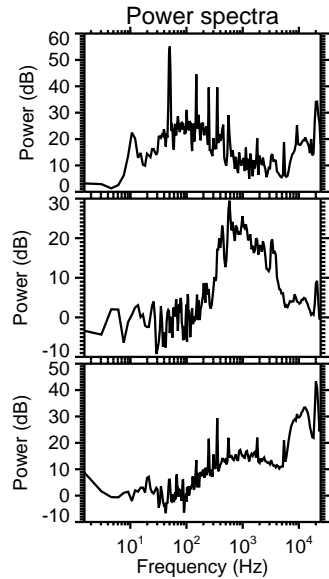
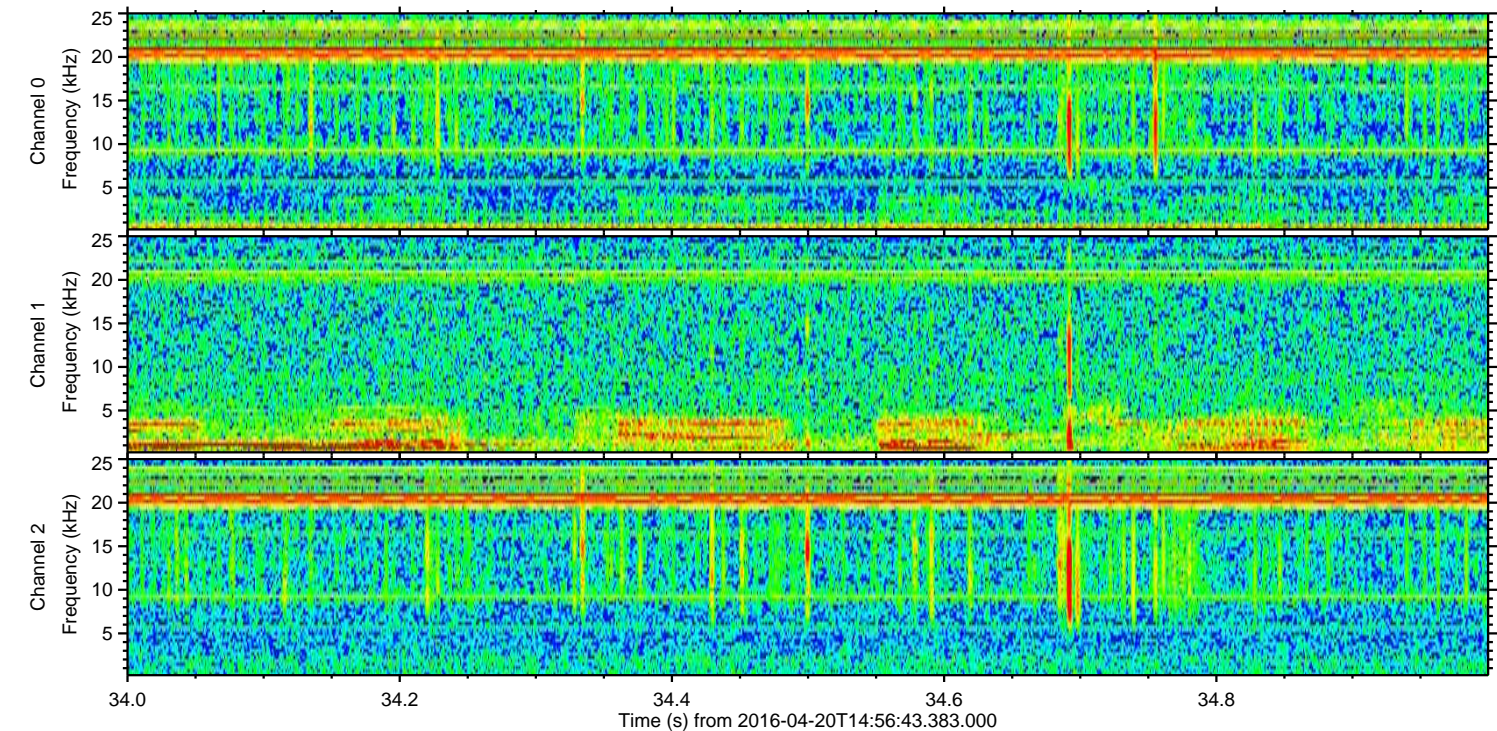
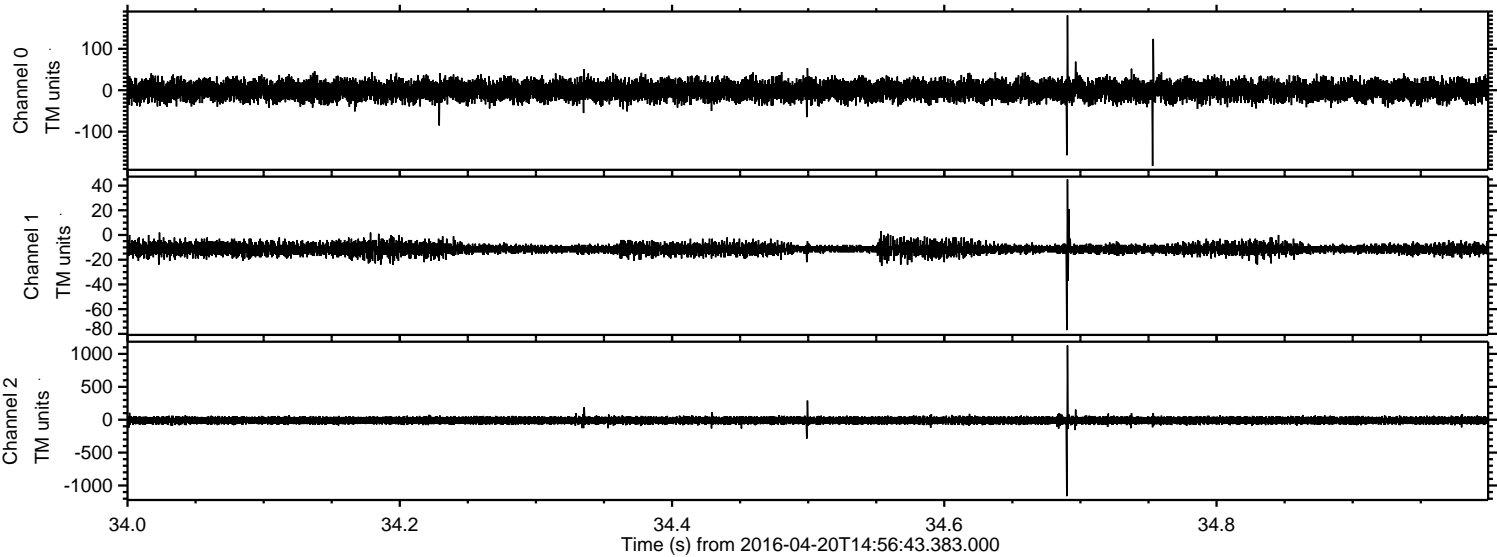
Processed Mon May 9 16:11:51 2016 by ELM ver.2012-10-06 from 001__elm20160420_145642__dat00.bin



Processed Mon May 9 16:11:52 2016 by ELM ver.2012-10-06 from 001__elm20160420_145642__dat00.bin



Processed Mon May 9 16:11:53 2016 by ELM ver.2012-10-06 from 001__elm20160420_145642__dat00.bin



Channel 0
mn: -183
mx: 181
 μ : -0.3
 σ : 13.5

Channel 1
mn: -77
mx: 45
 μ : -11.3
 σ : 2.8

Channel 2
mn: -1162
mx: 1129
 μ : -10.7
 σ : 30.4

