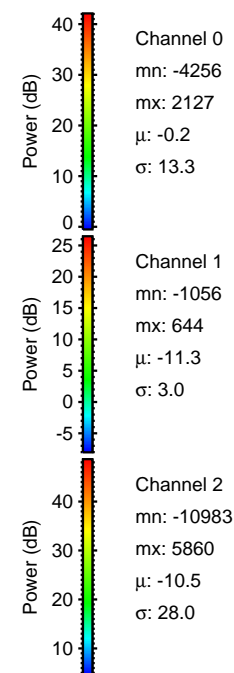
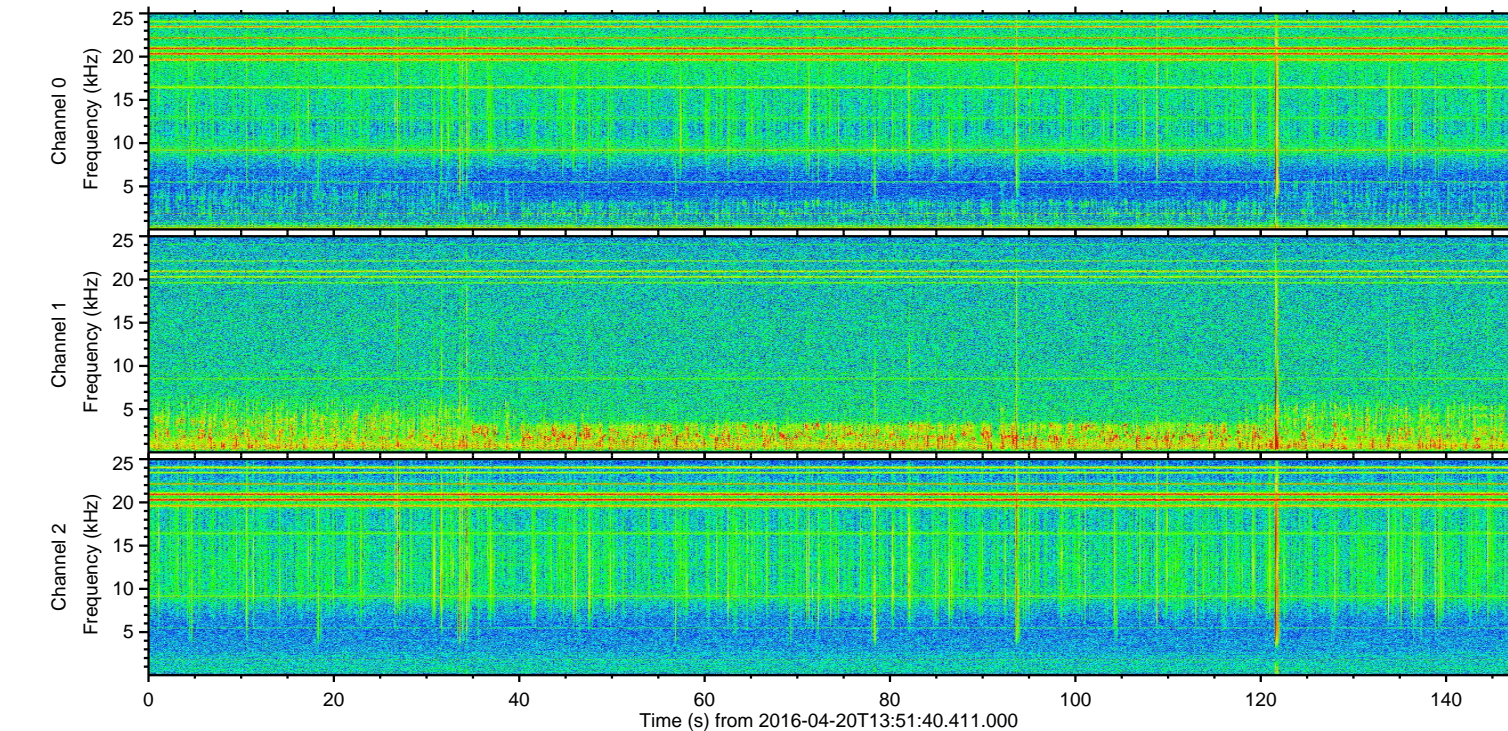
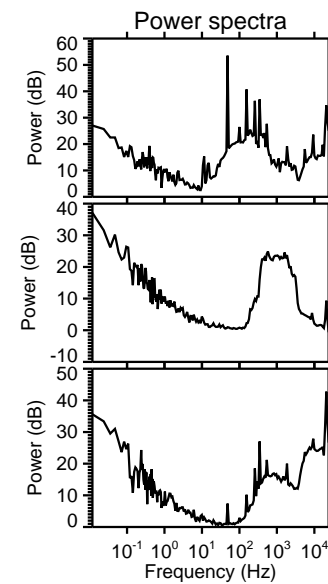
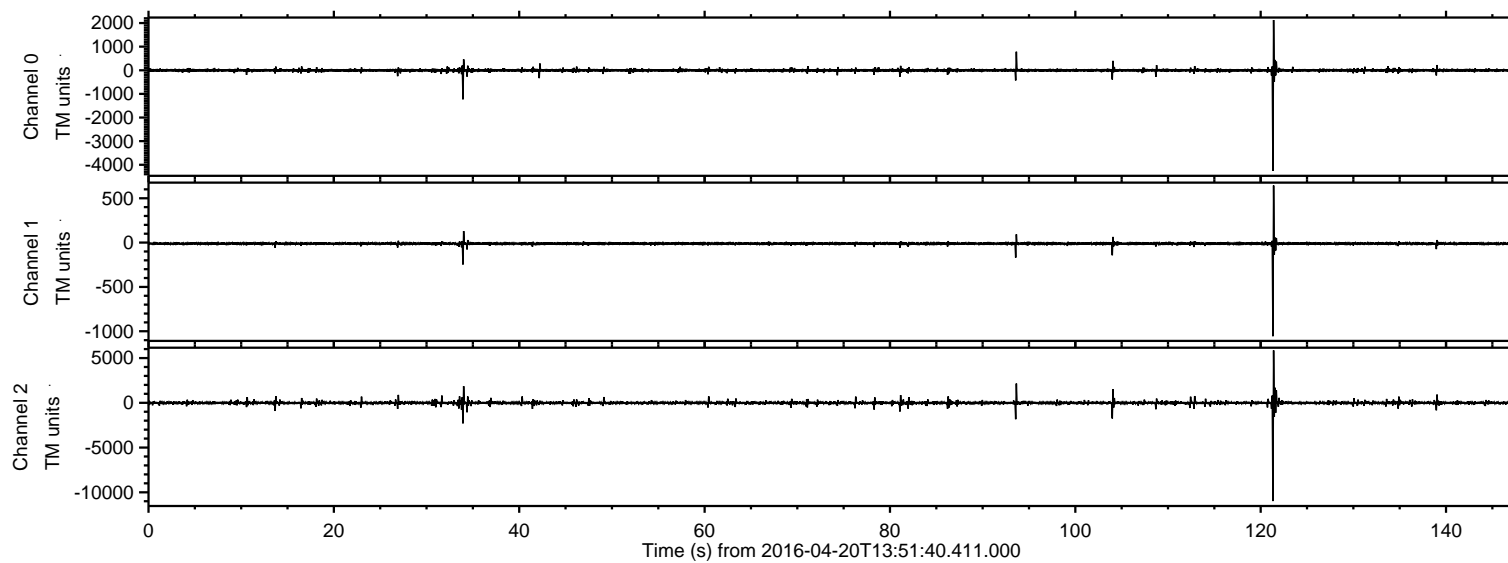


# ELMAVAN 3D WAVEFORMS (Measured data sampled at 50 kHz) 51000 packets of 144 samples from 2016-04-20T13:51:40.411.000.

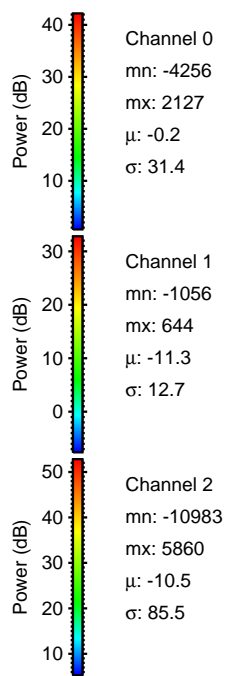
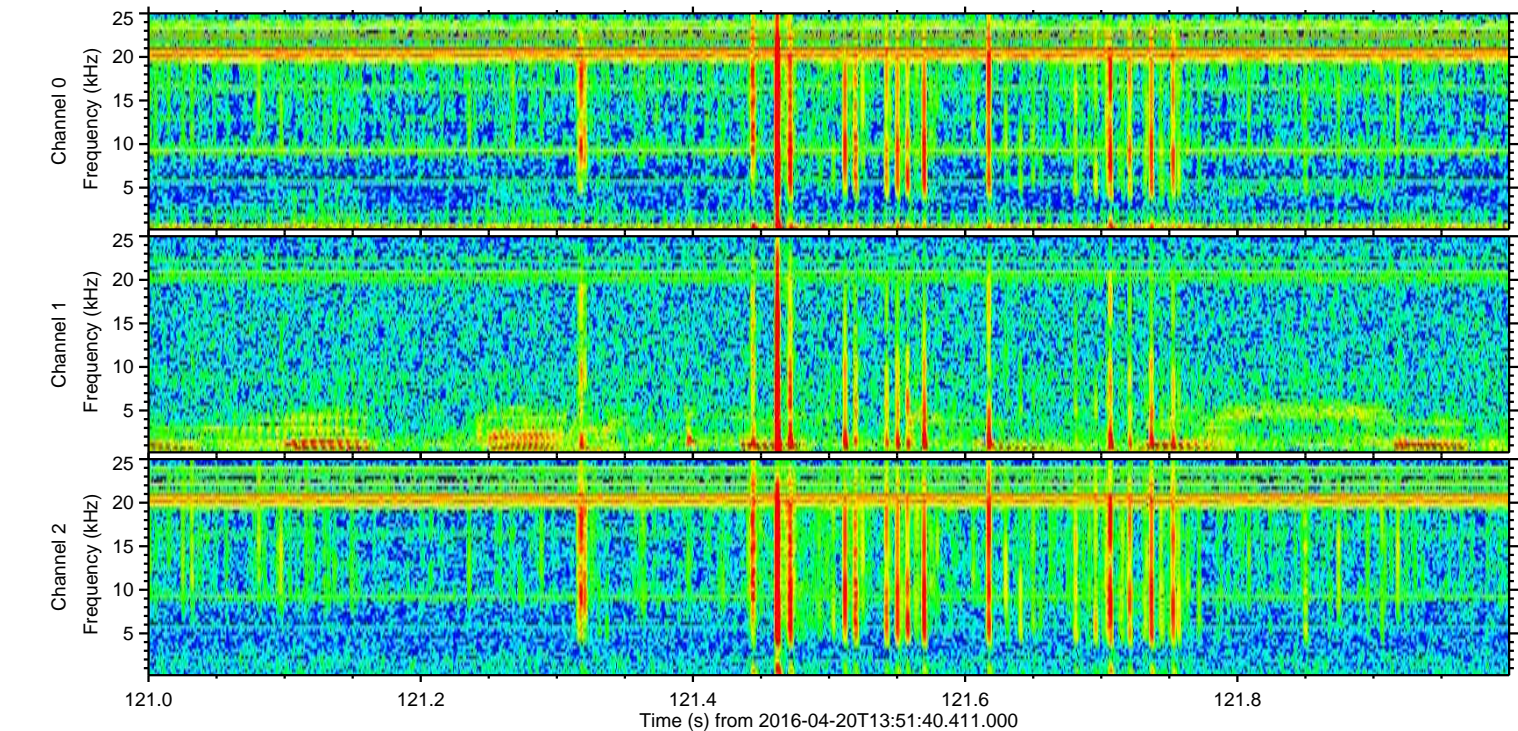
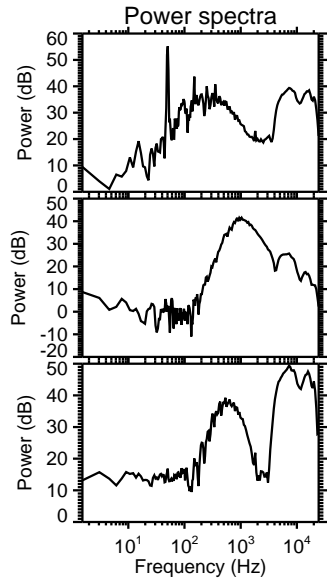
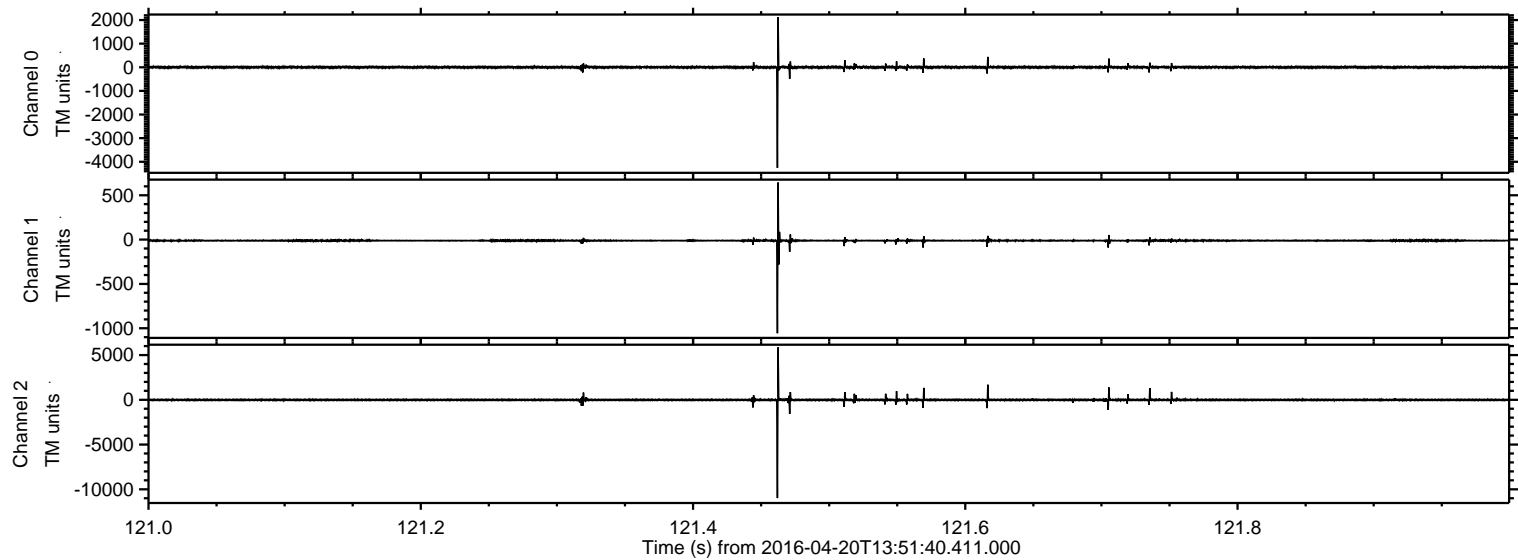
Processed Mon May 9 15:58:19 2016 by ELM ver.2012-10-06 from 001\_\_elm20160420\_135139\_\_dat00.bin





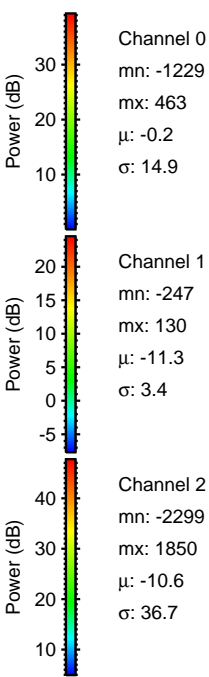
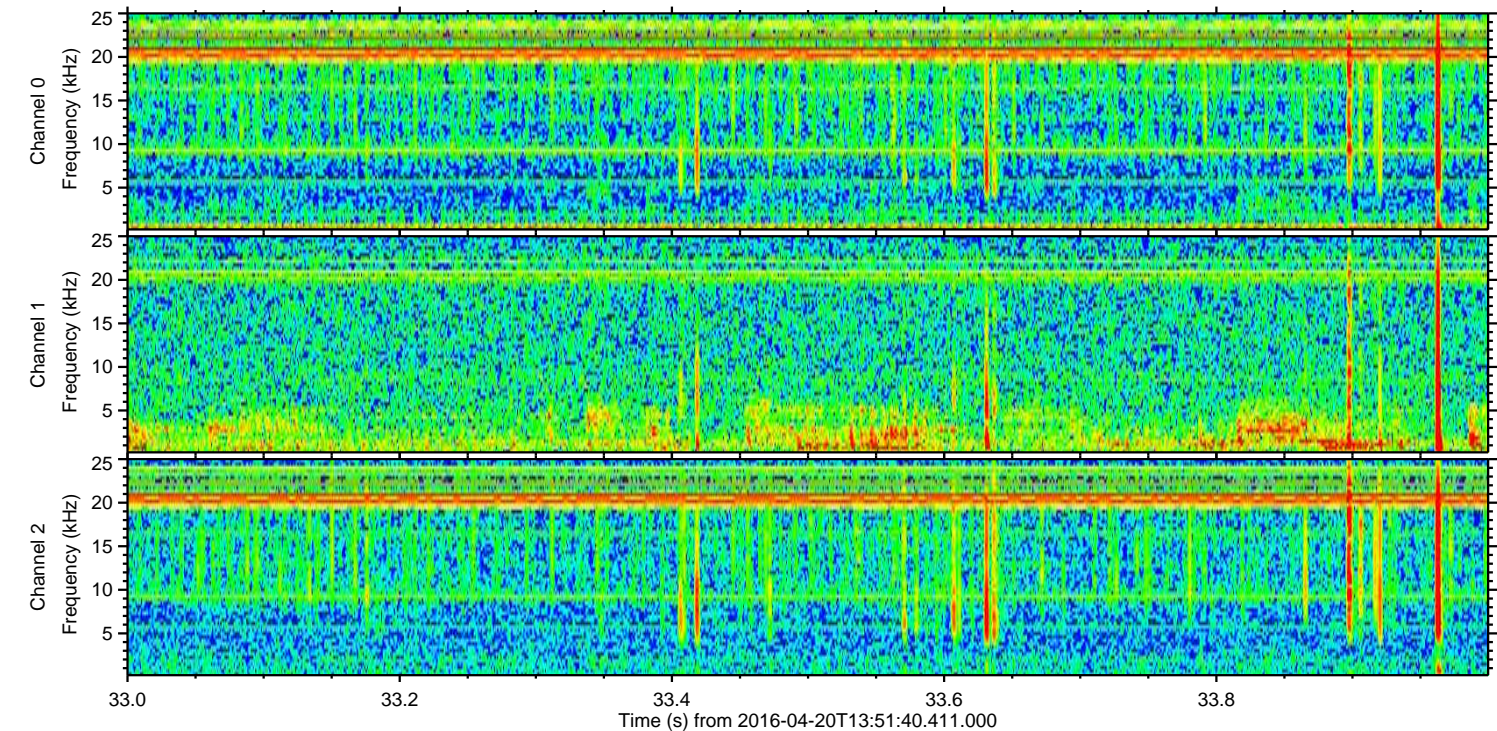
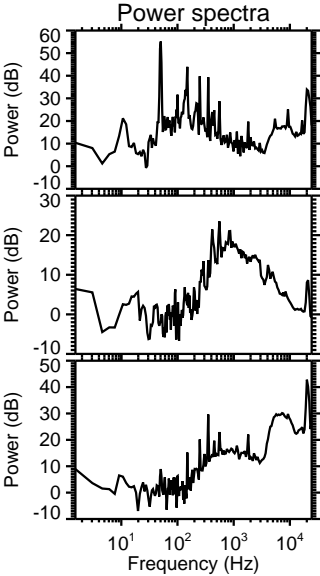
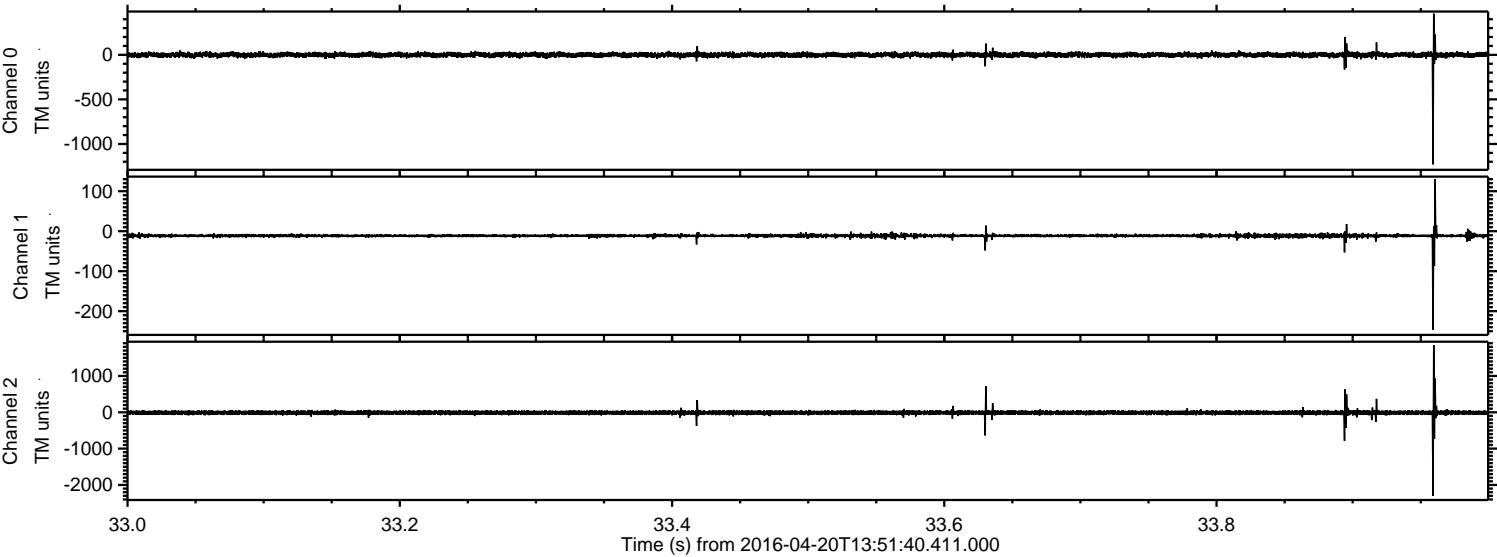
ELMAVAN 3D WAVEFORMS (Measured data sampled at 50 kHz) 51000 packets of 144 samples from 2016-04-20T13:51:40.411.000. Part 122/147

Processed Mon May 9 15:58:34 2016 by ELM ver.2012-10-06 from 001\_\_elm20160420\_135139\_\_dat00.bin



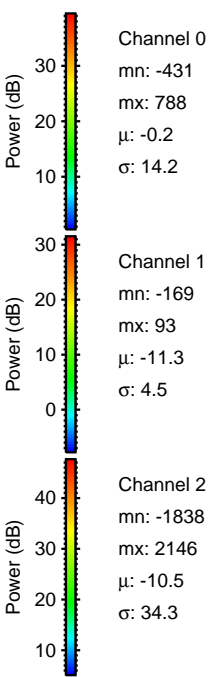
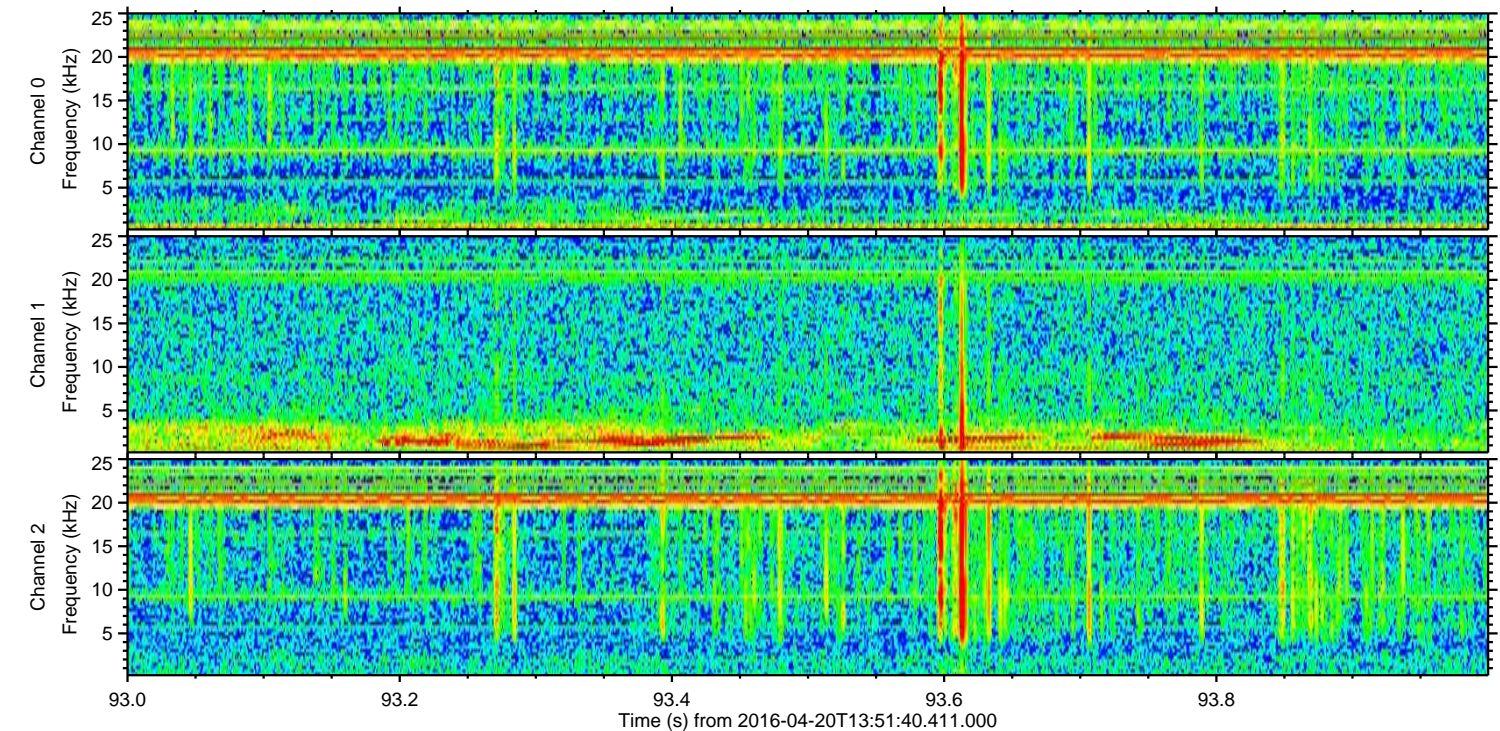
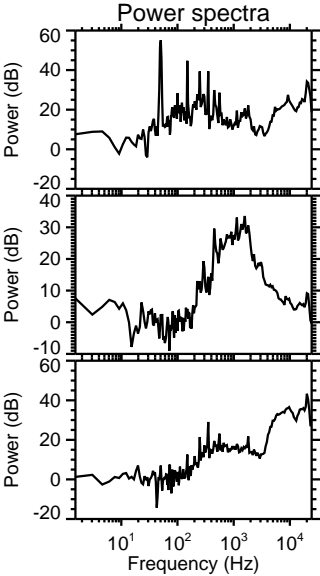
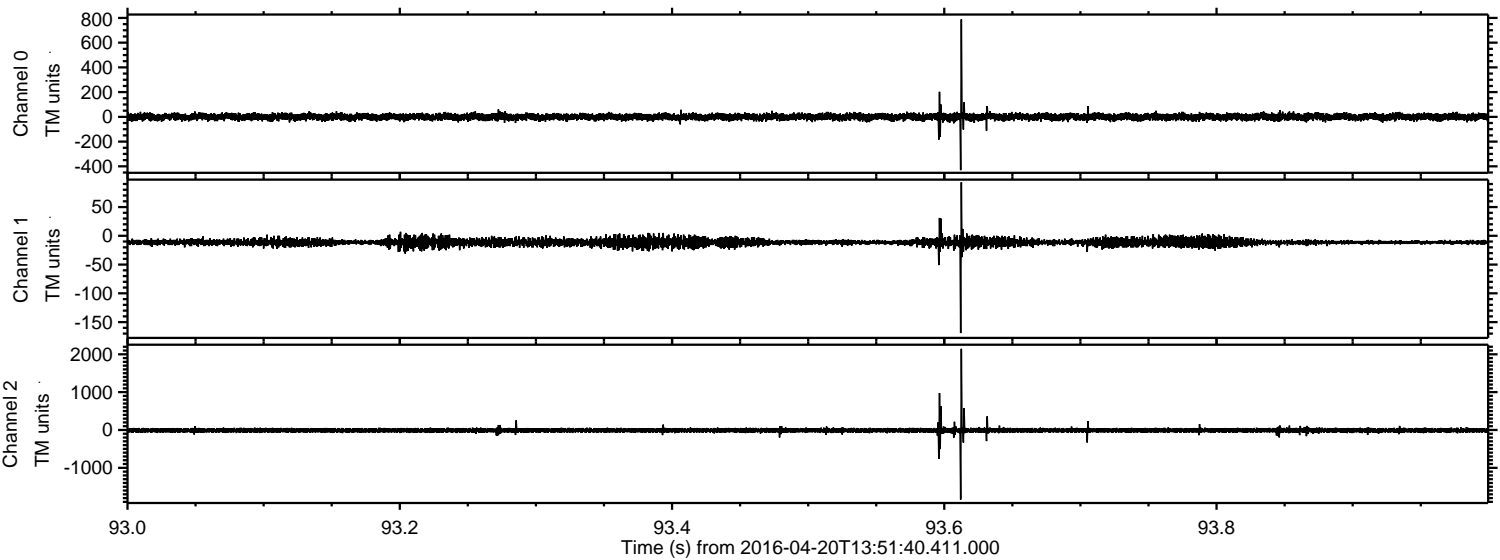


Processed Mon May 9 15:58:35 2016 by ELM ver.2012-10-06 from 001\_\_elm20160420\_135139\_\_dat00.bin





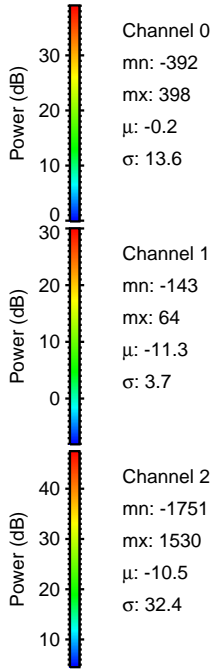
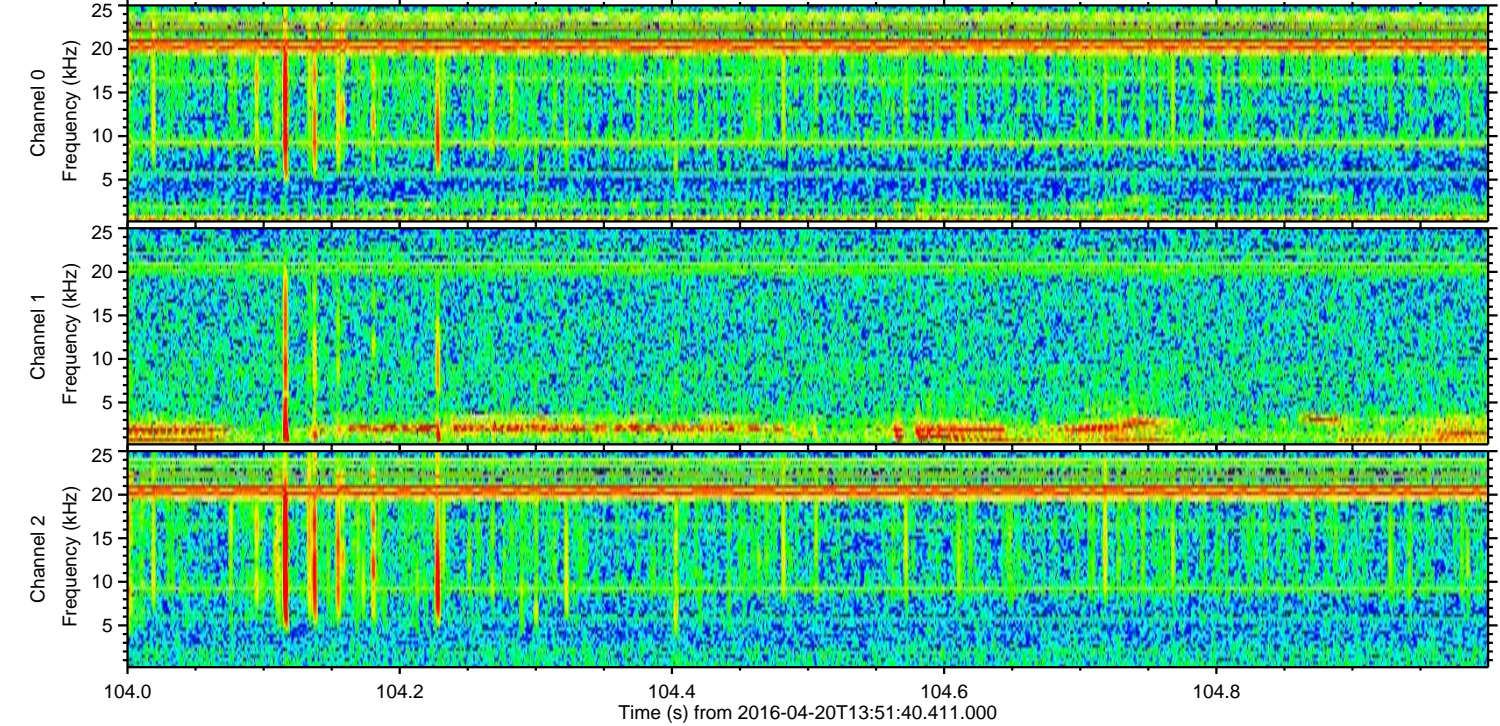
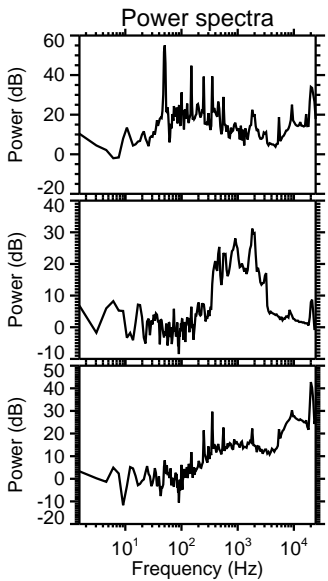
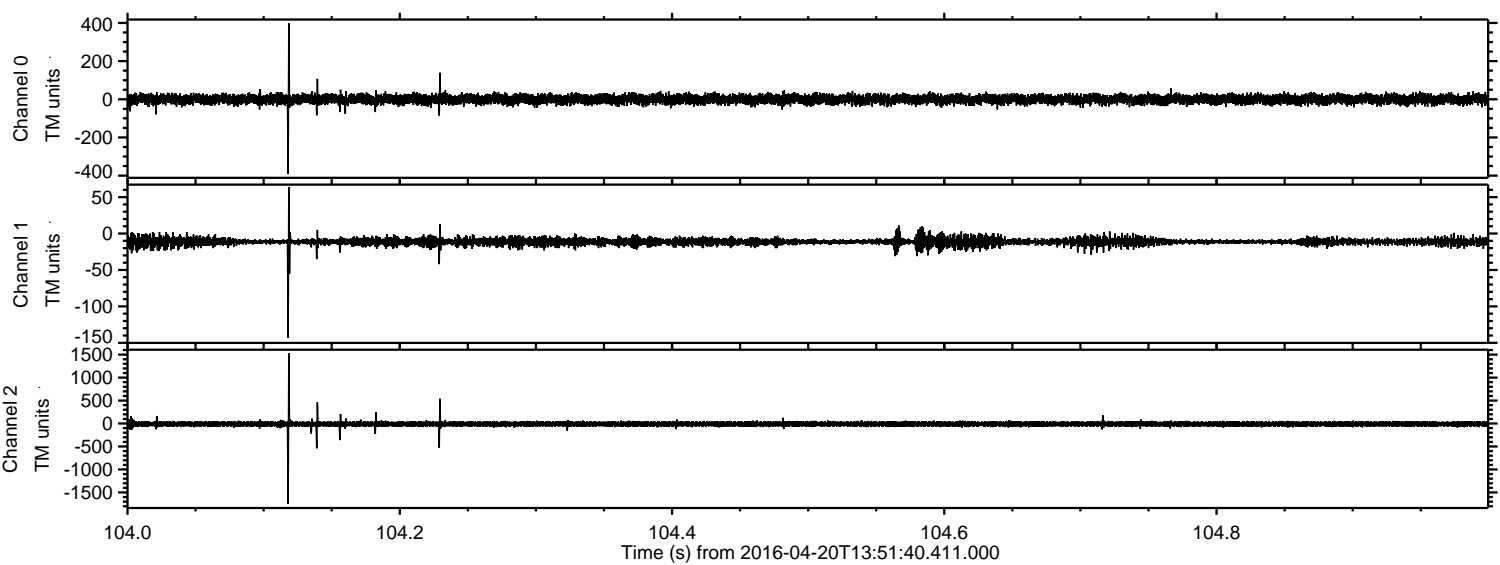
Processed Mon May 9 15:58:36 2016 by ELM ver.2012-10-06 from 001\_\_elm20160420\_135139\_\_dat00.bin





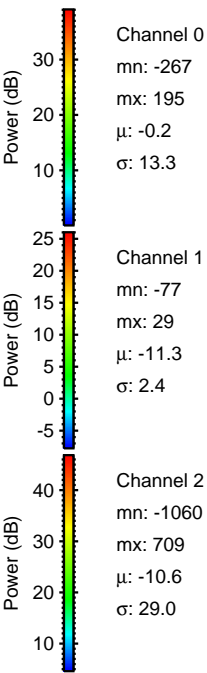
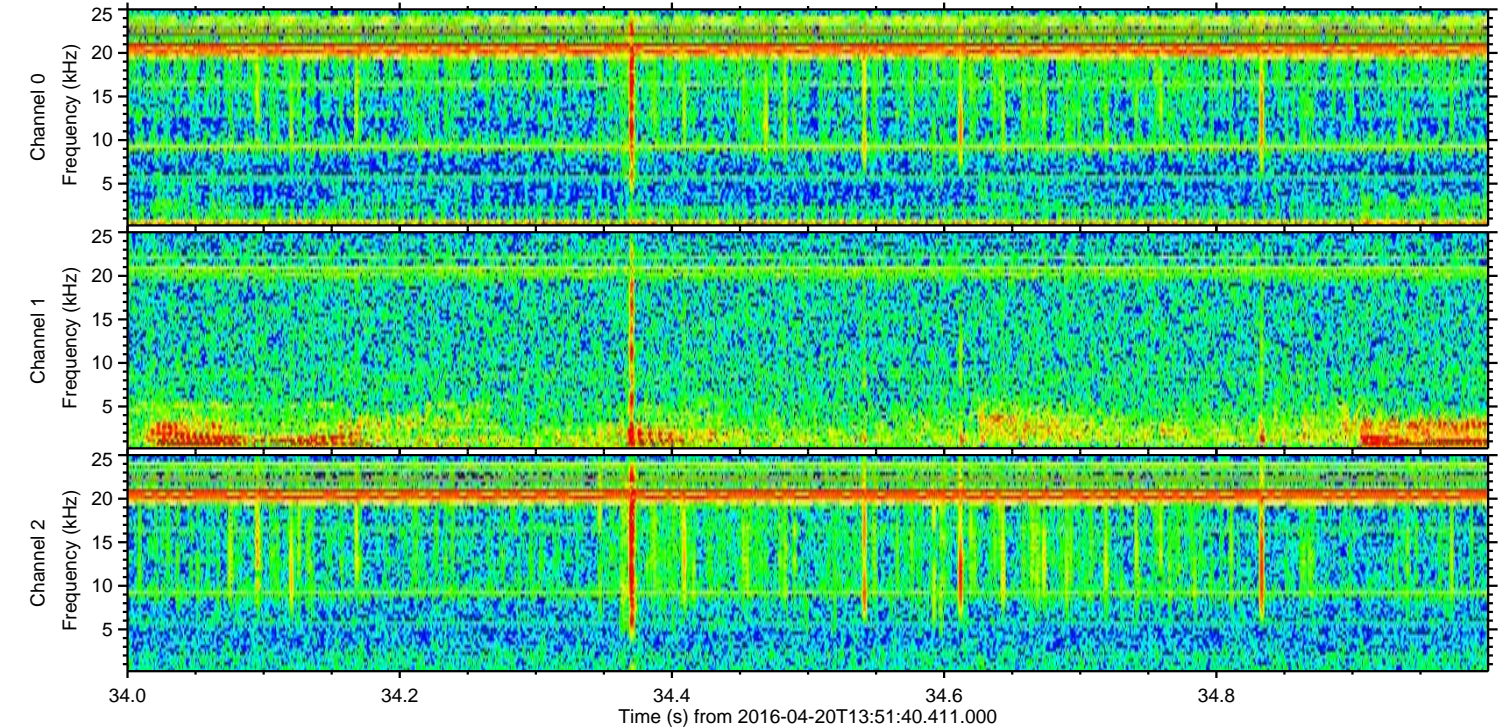
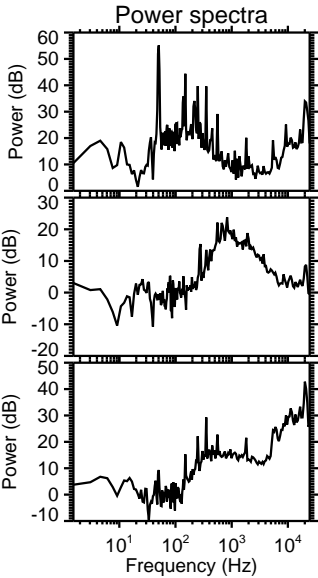
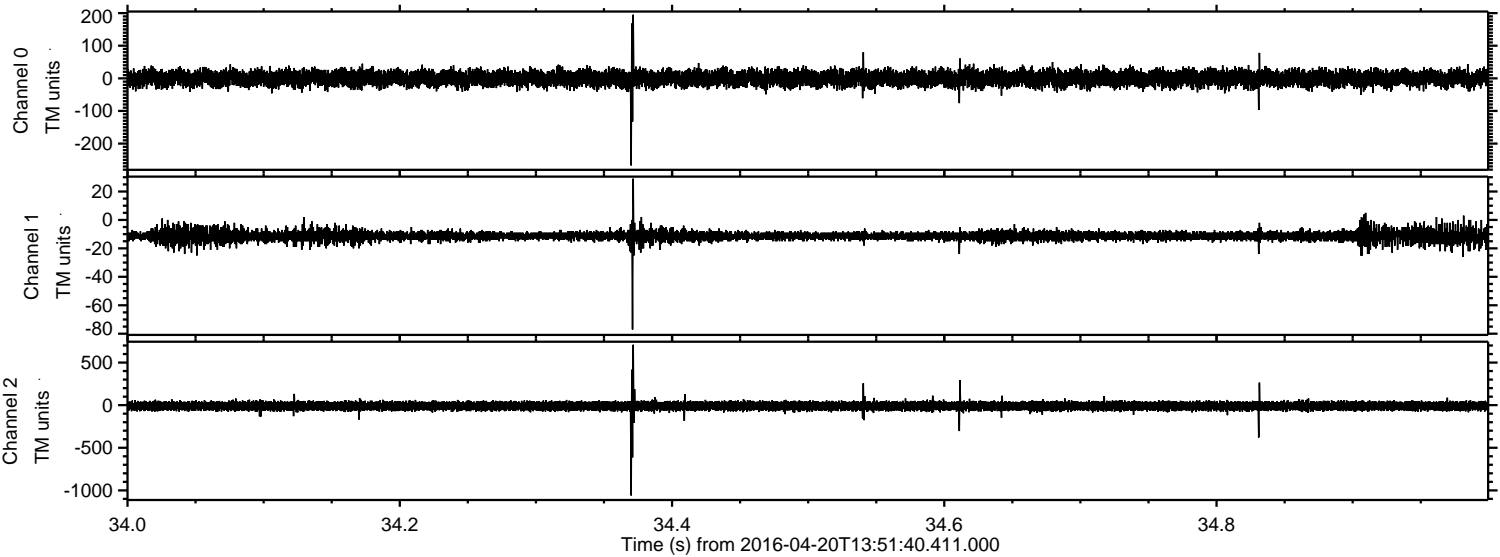
ELMAVAN 3D WAVEFORMS (Measured data sampled at 50 kHz) 51000 packets of 144 samples from 2016-04-20T13:51:40.411.000. Part 105/147

Processed Mon May 9 15:58:37 2016 by ELM ver.2012-10-06 from 001\_\_elm20160420\_135139\_\_dat00.bin



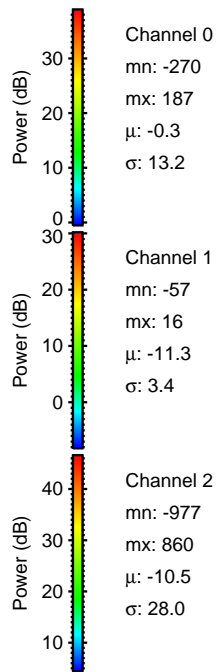
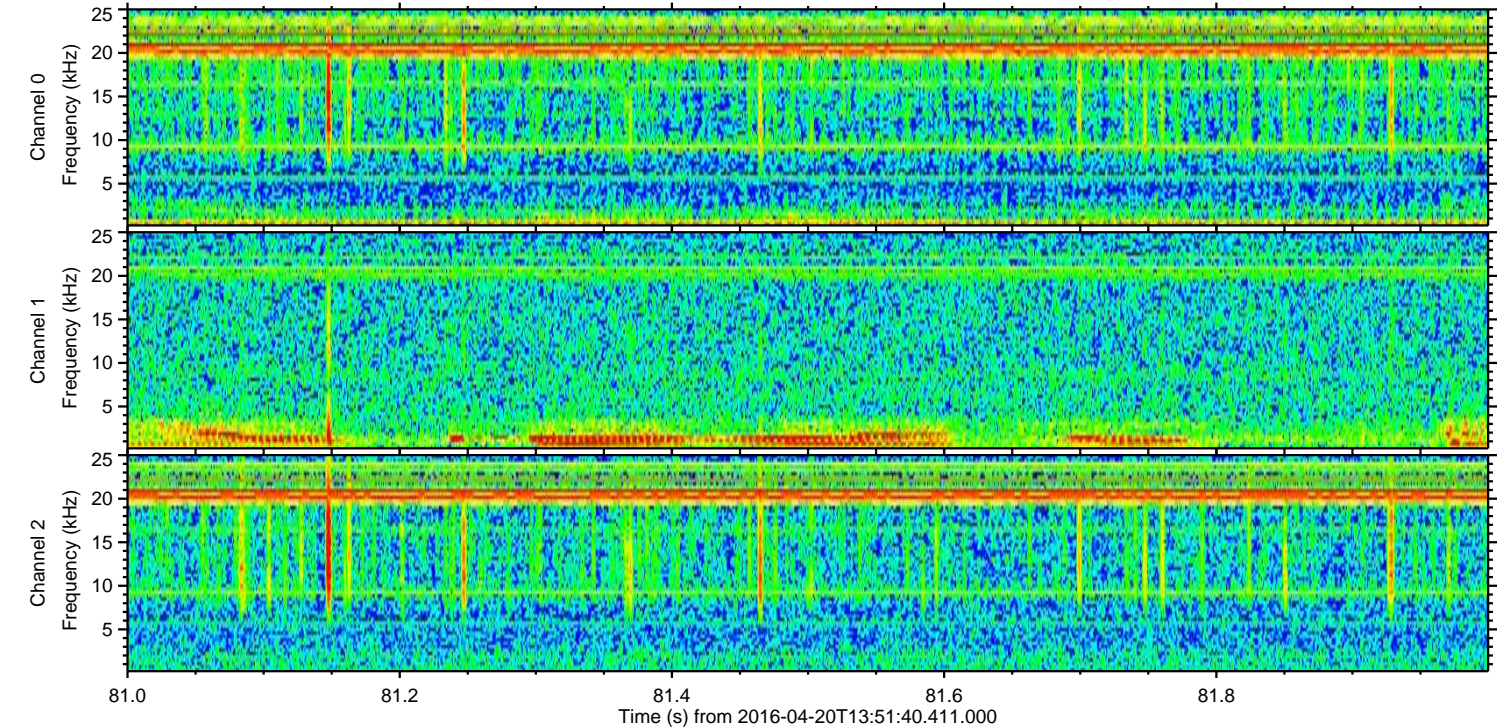
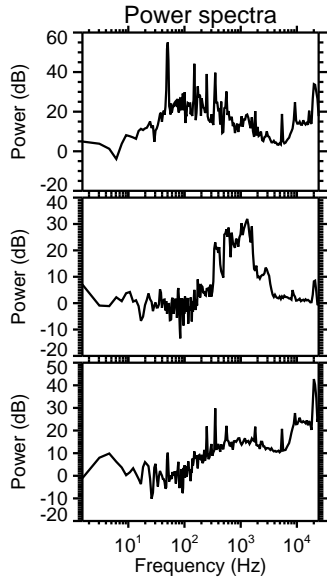
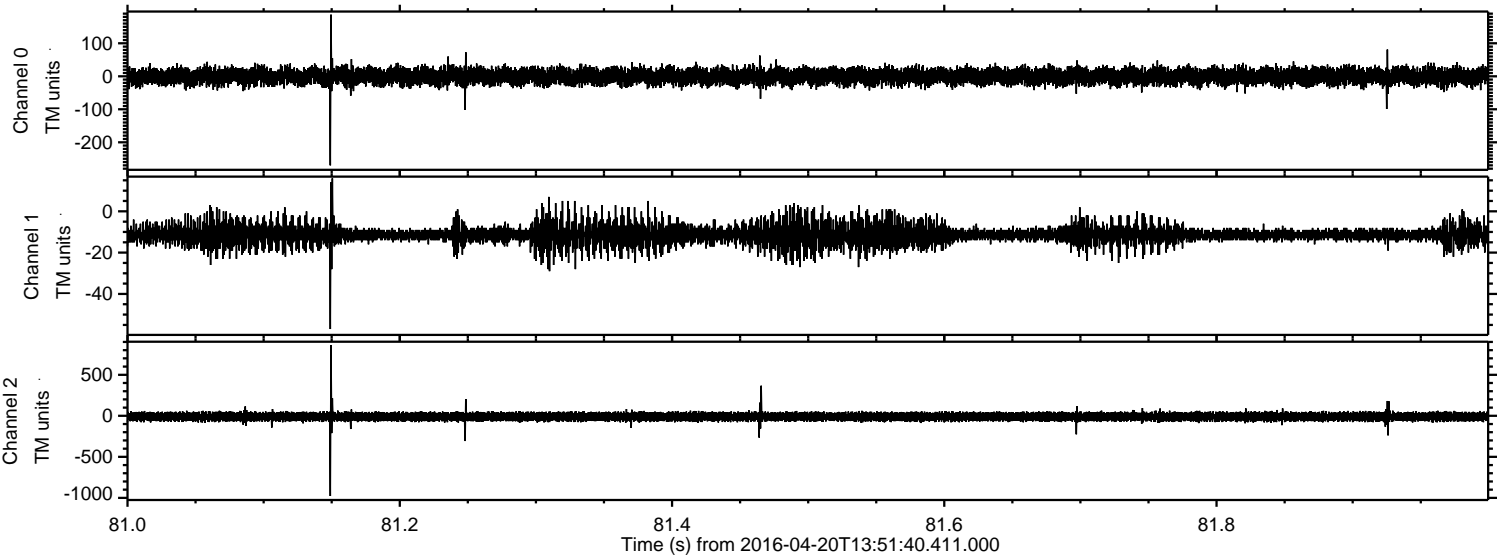


Processed Mon May 9 15:58:38 2016 by ELM ver.2012-10-06 from 001\_\_elm20160420\_135139\_\_dat00.bin



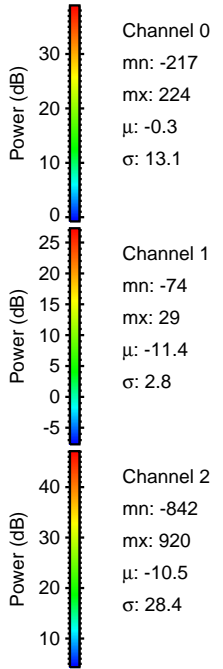
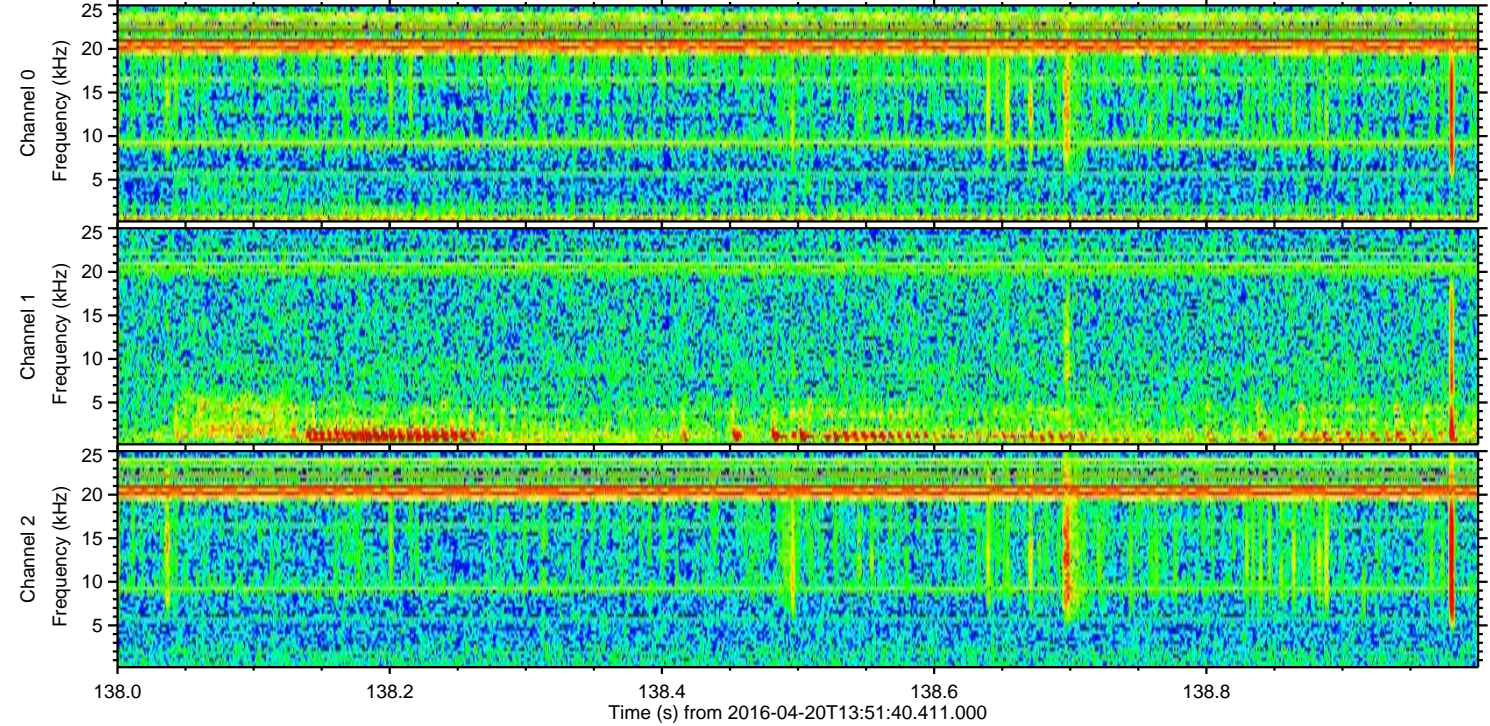
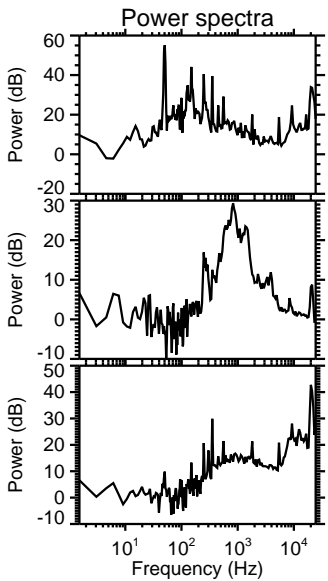
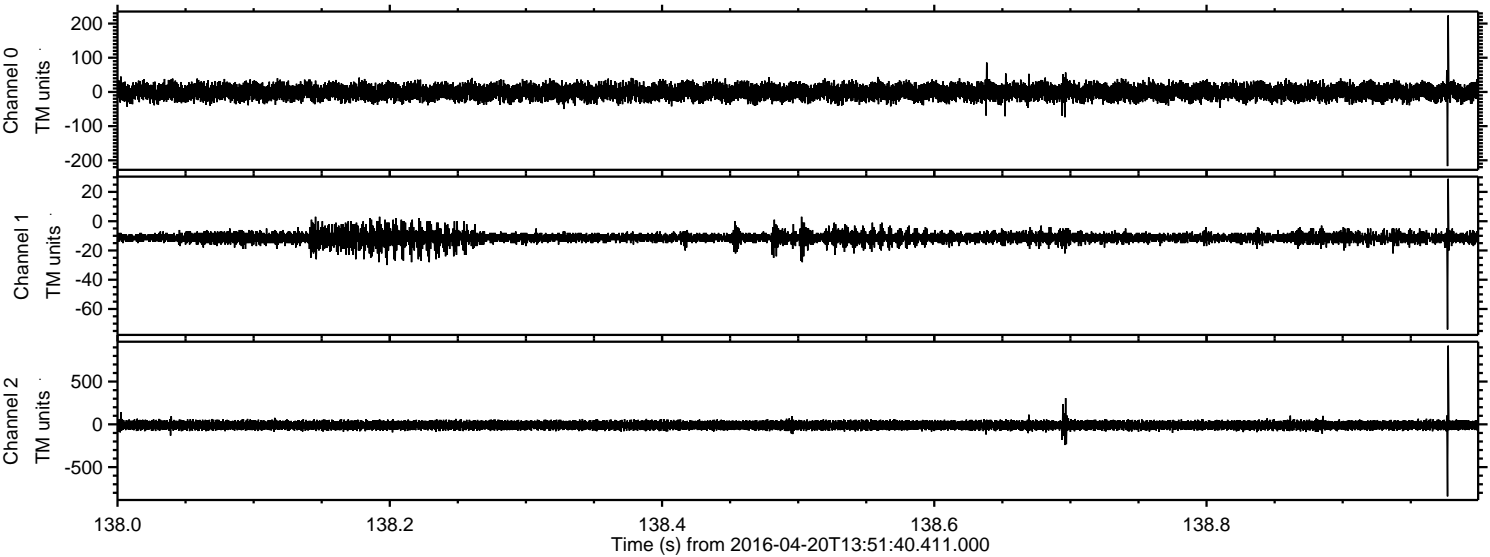


Processed Mon May 9 15:58:40 2016 by ELM ver.2012-10-06 from 001\_\_elm20160420\_135139\_\_dat00.bin



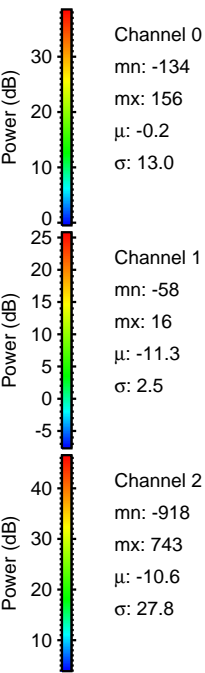
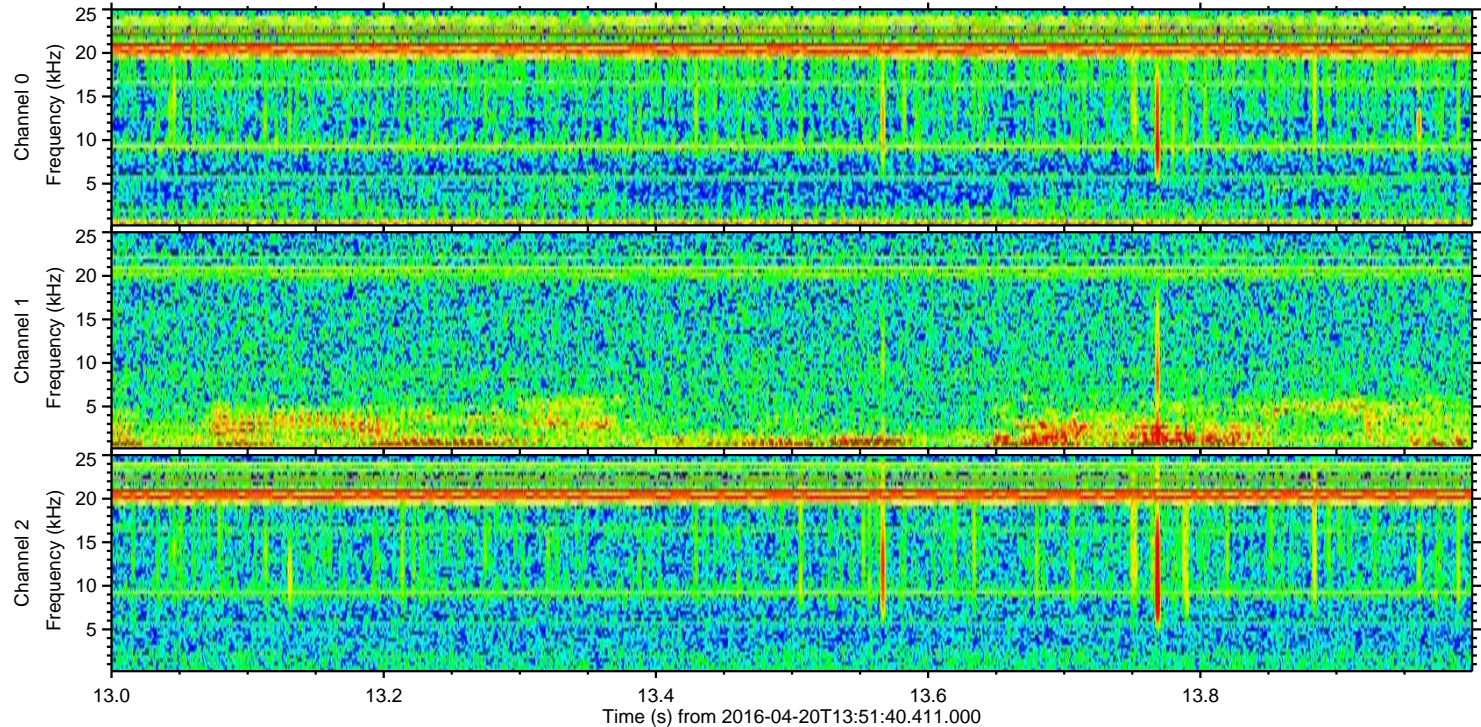
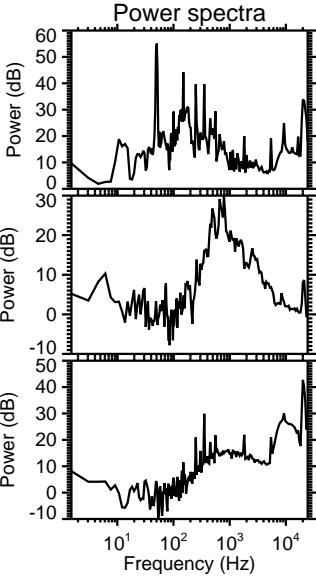
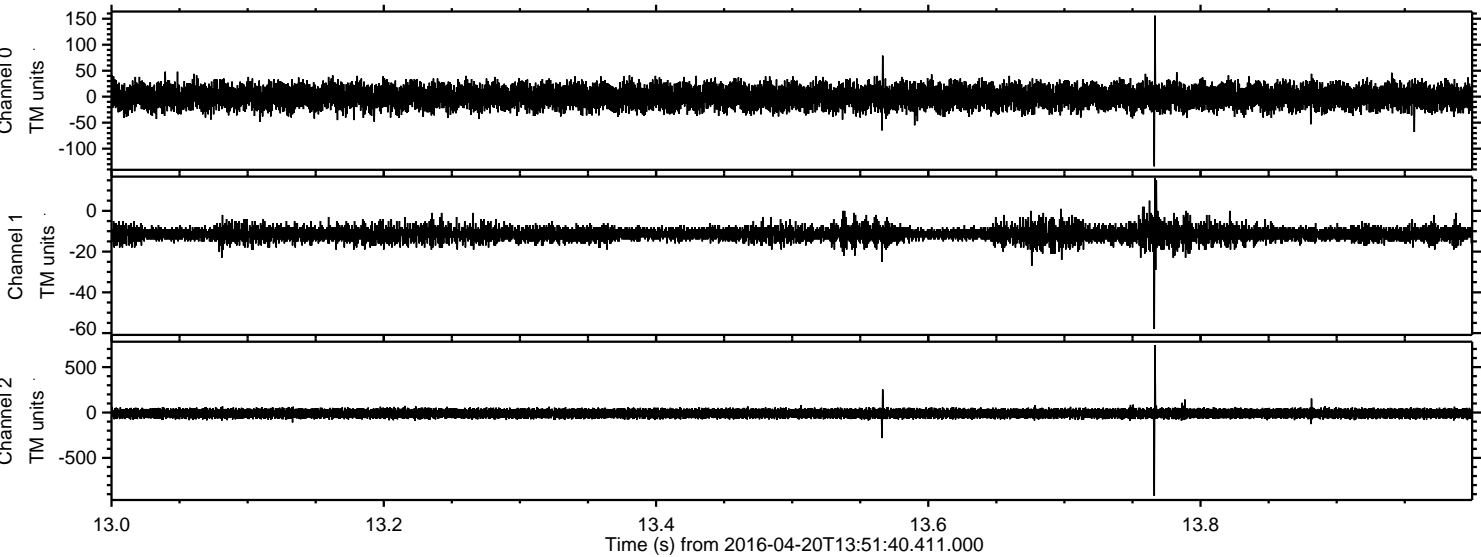


Processed Mon May 9 15:58:41 2016 by ELM ver.2012-10-06 from 001\_\_elm20160420\_135139\_\_dat00.bin





Processed Mon May 9 15:58:42 2016 by ELM ver.2012-10-06 from 001\_\_elm20160420\_135139\_\_dat00.bin





Processed Mon May 9 15:58:43 2016 by ELM ver.2012-10-06 from 001\_\_elm20160420\_135139\_\_dat00.bin

