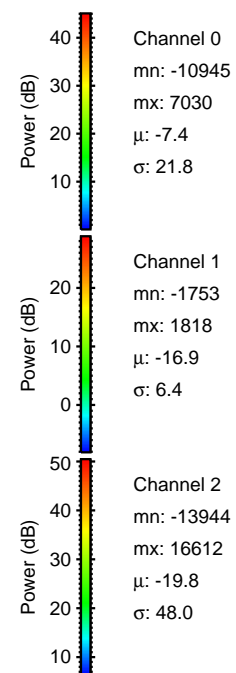
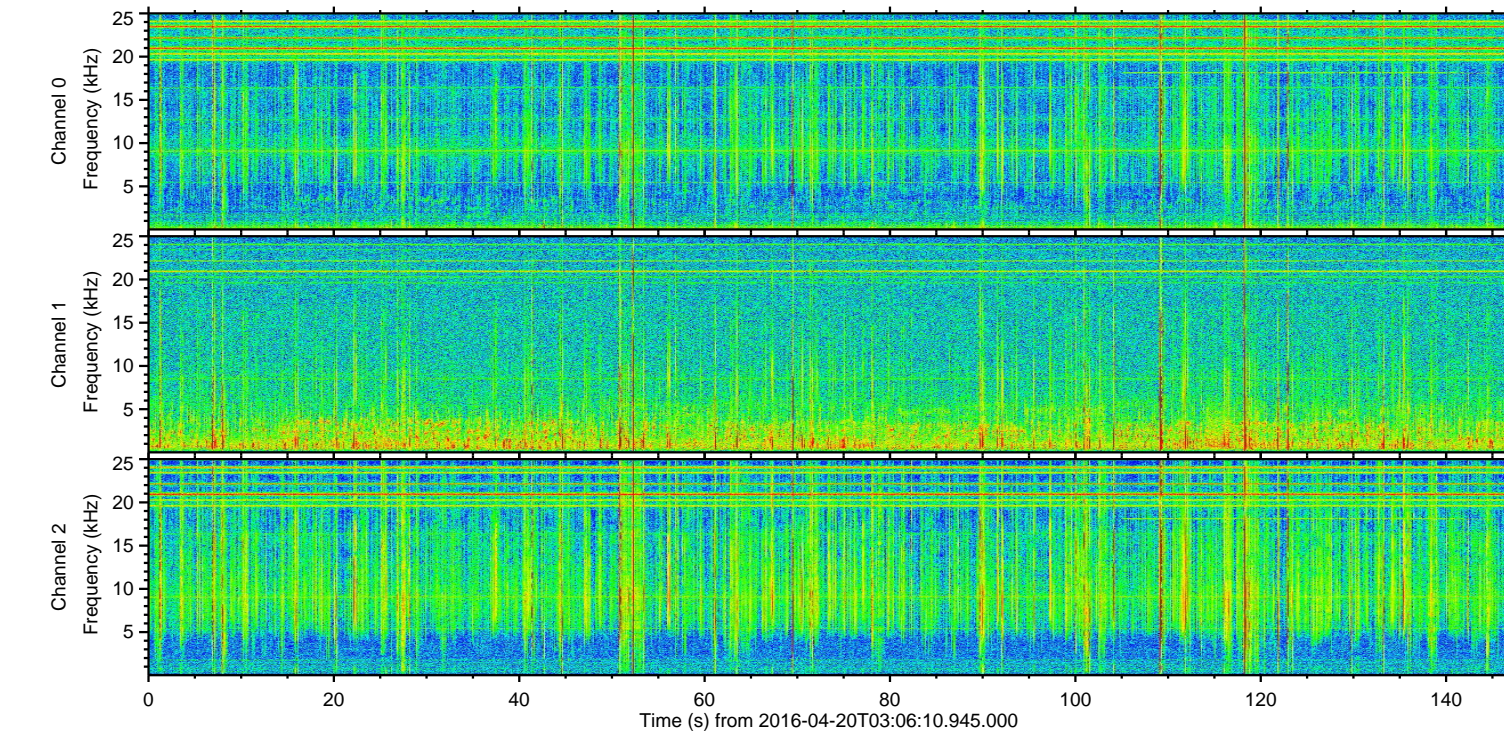
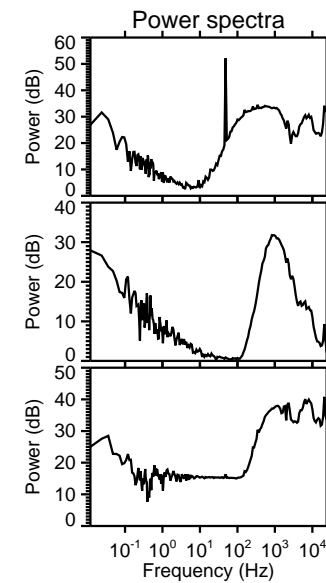
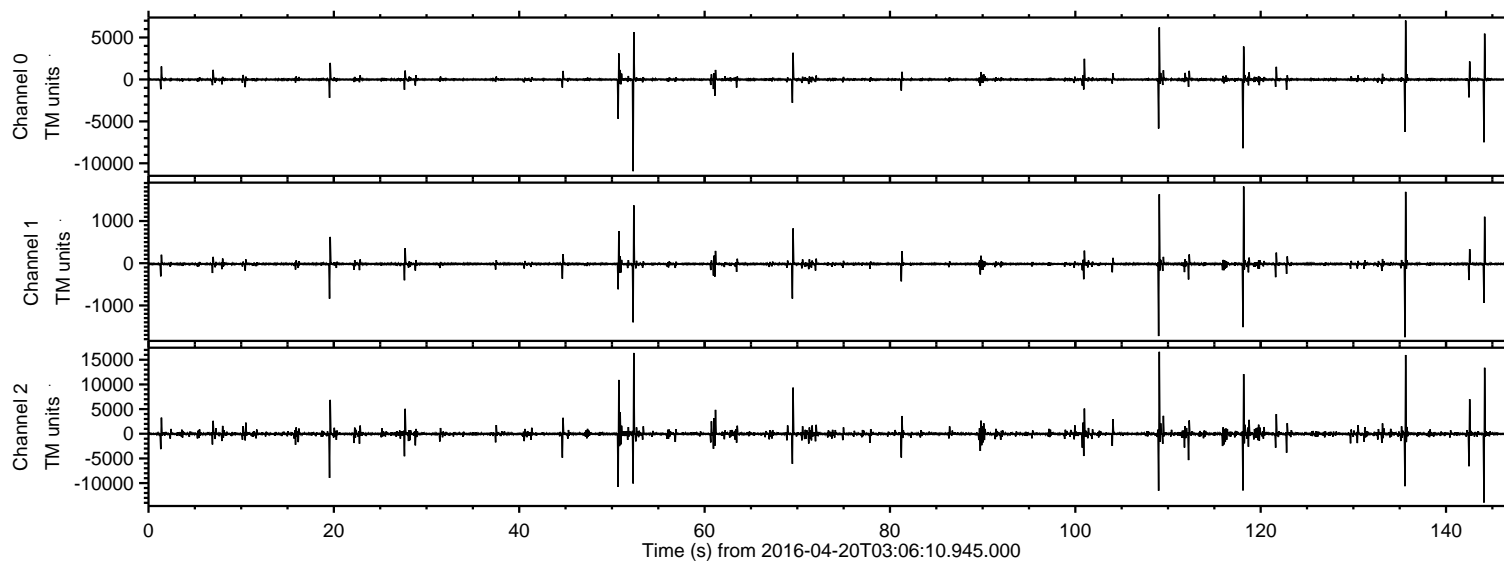


# ELMAVAN 3D WAVEFORMS (Measured data sampled at 50 kHz) 51000 packets of 144 samples from 2016-04-20T03:06:10.945.000.

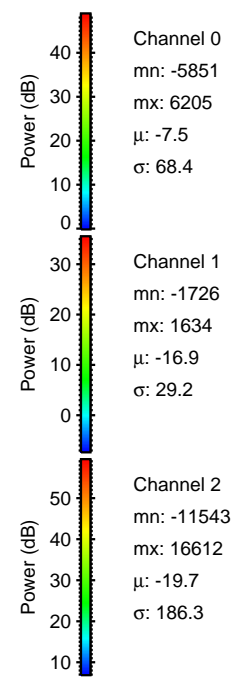
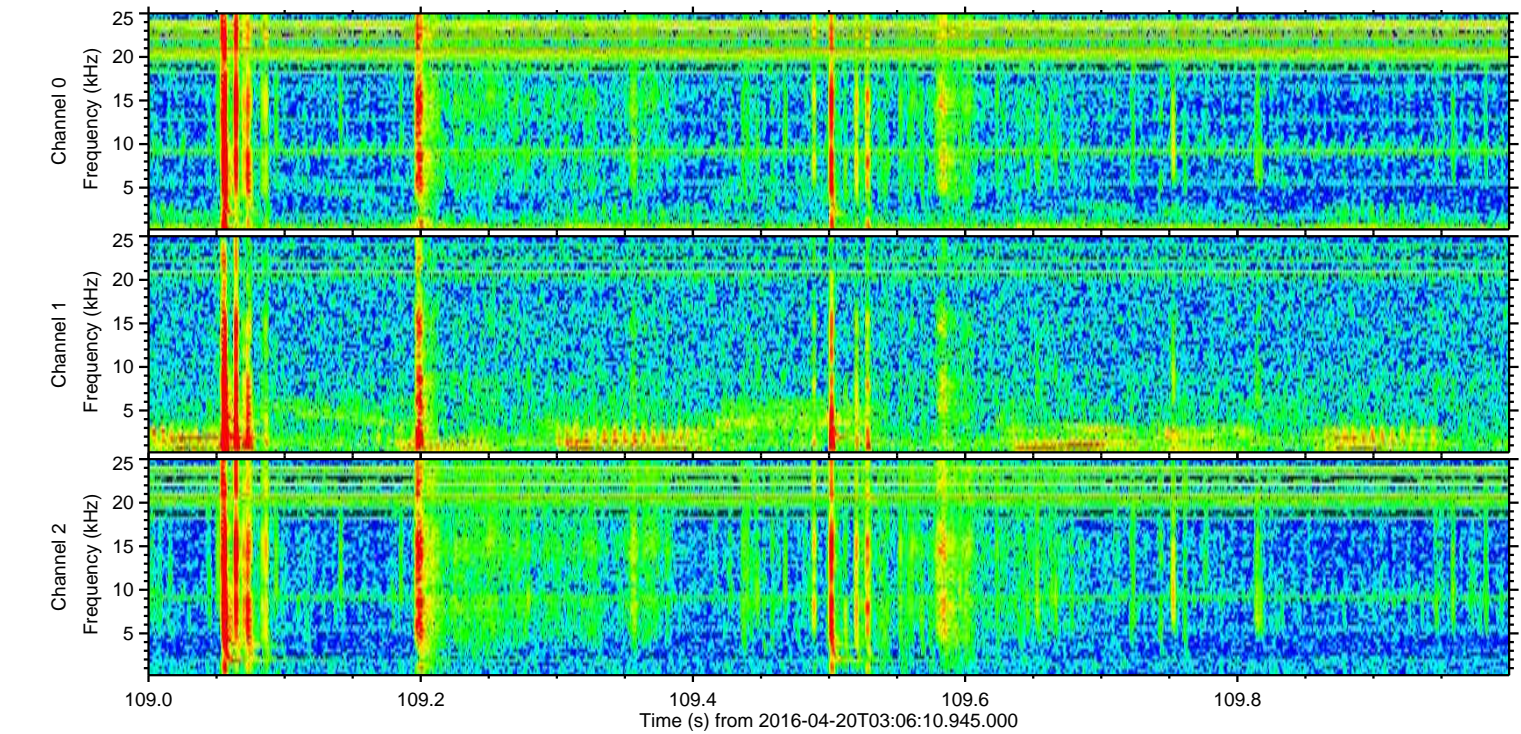
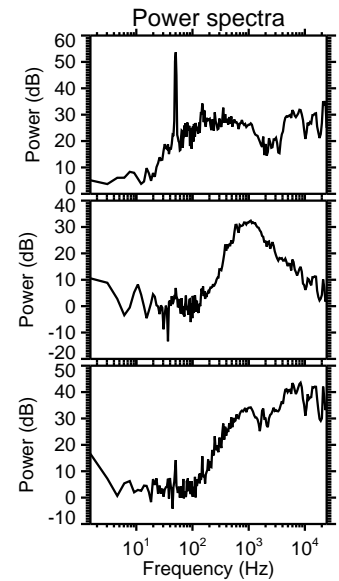
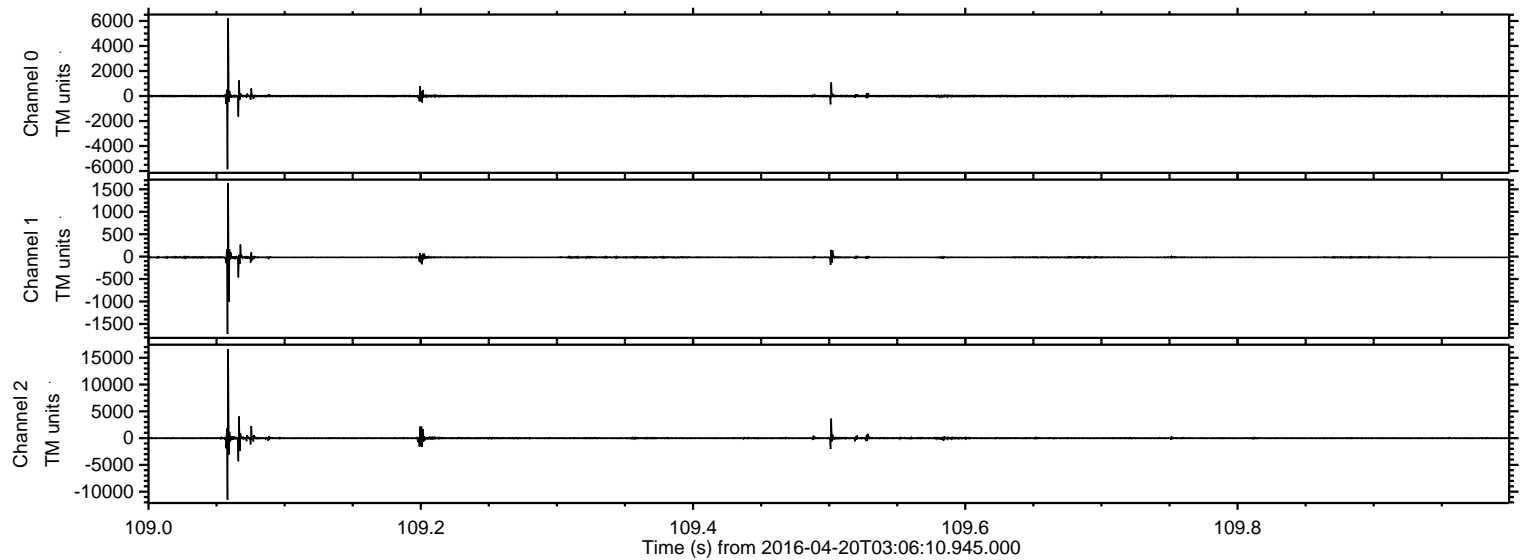
Processed Mon May 9 13:46:08 2016 by ELM ver.2012-10-06 from 001\_\_elm20160420\_030609\_\_dat00.bin





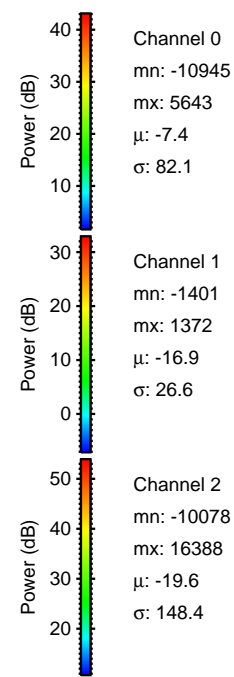
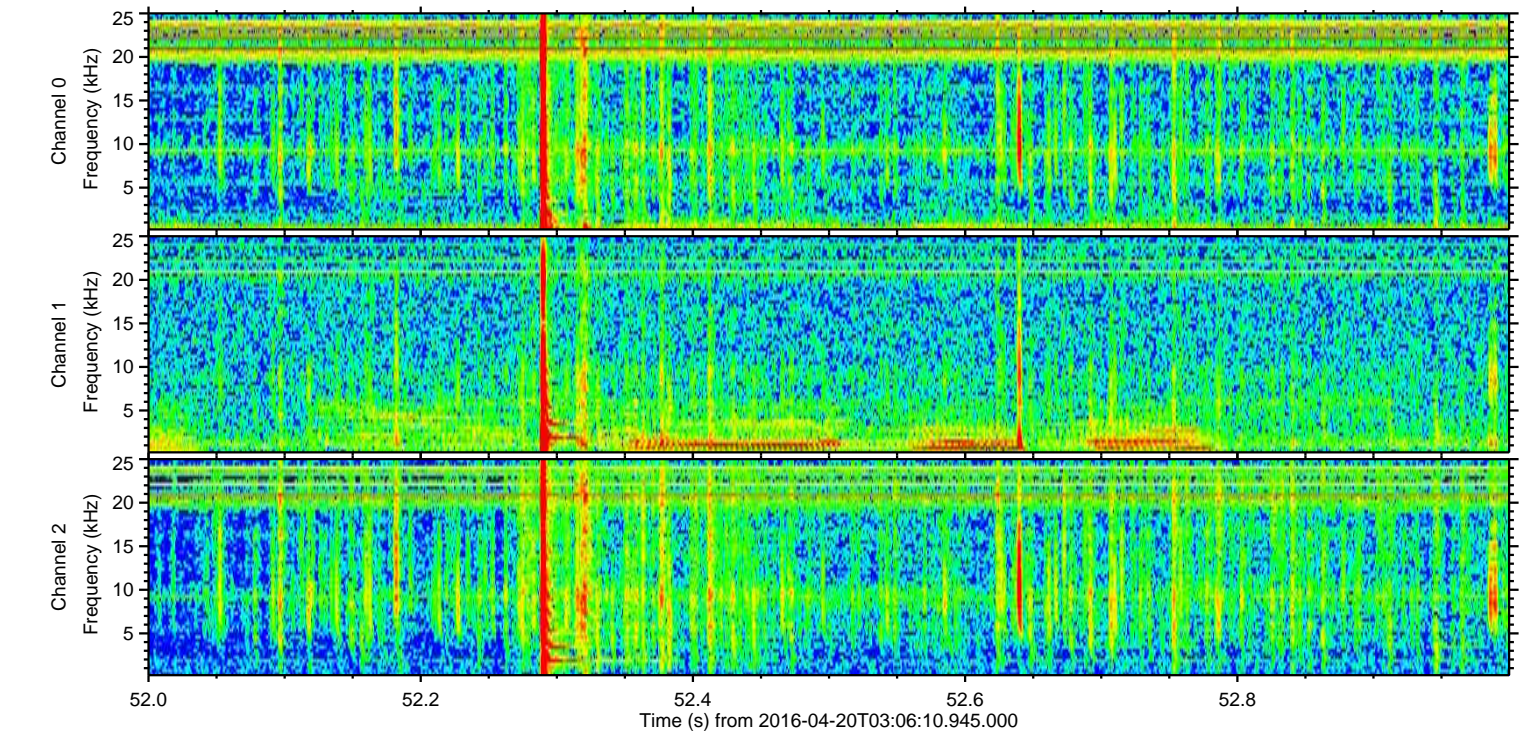
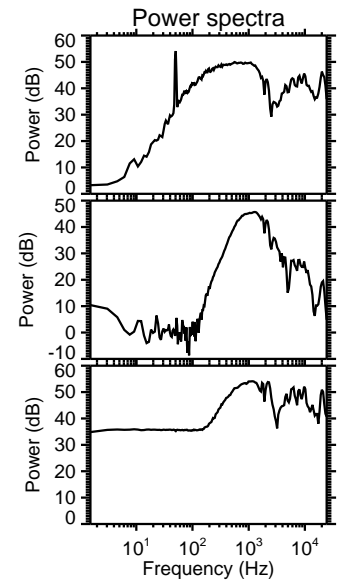
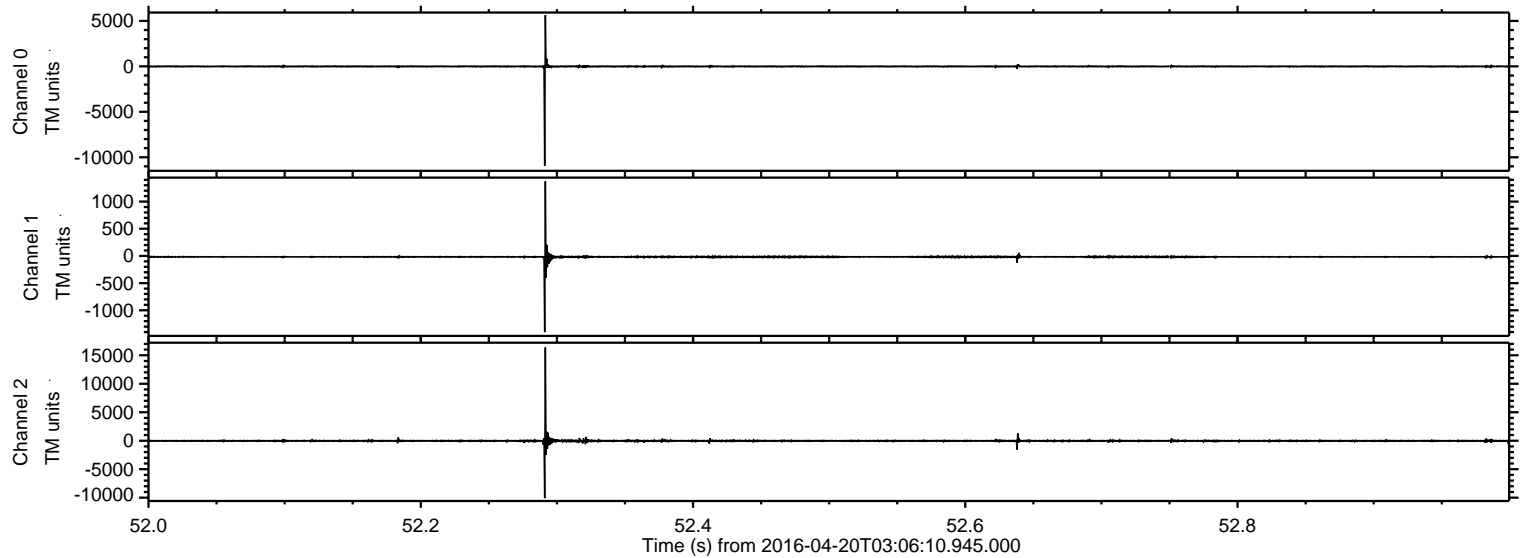
ELMAVAN 3D WAVEFORMS (Measured data sampled at 50 kHz) 51000 packets of 144 samples from 2016-04-20T03:06:10.945.000. Part 110/147

Processed Mon May 9 13:46:19 2016 by ELM ver.2012-10-06 from 001\_\_elm20160420\_030609\_\_dat00.bin





Processed Mon May 9 13:46:20 2016 by ELM ver.2012-10-06 from 001\_\_elm20160420\_030609\_\_dat00.bin



Channel 0  
mn: -10945  
mx: 5643  
 $\mu$ : -7.4  
 $\sigma$ : 82.1

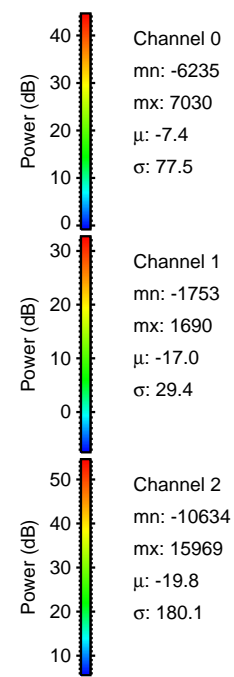
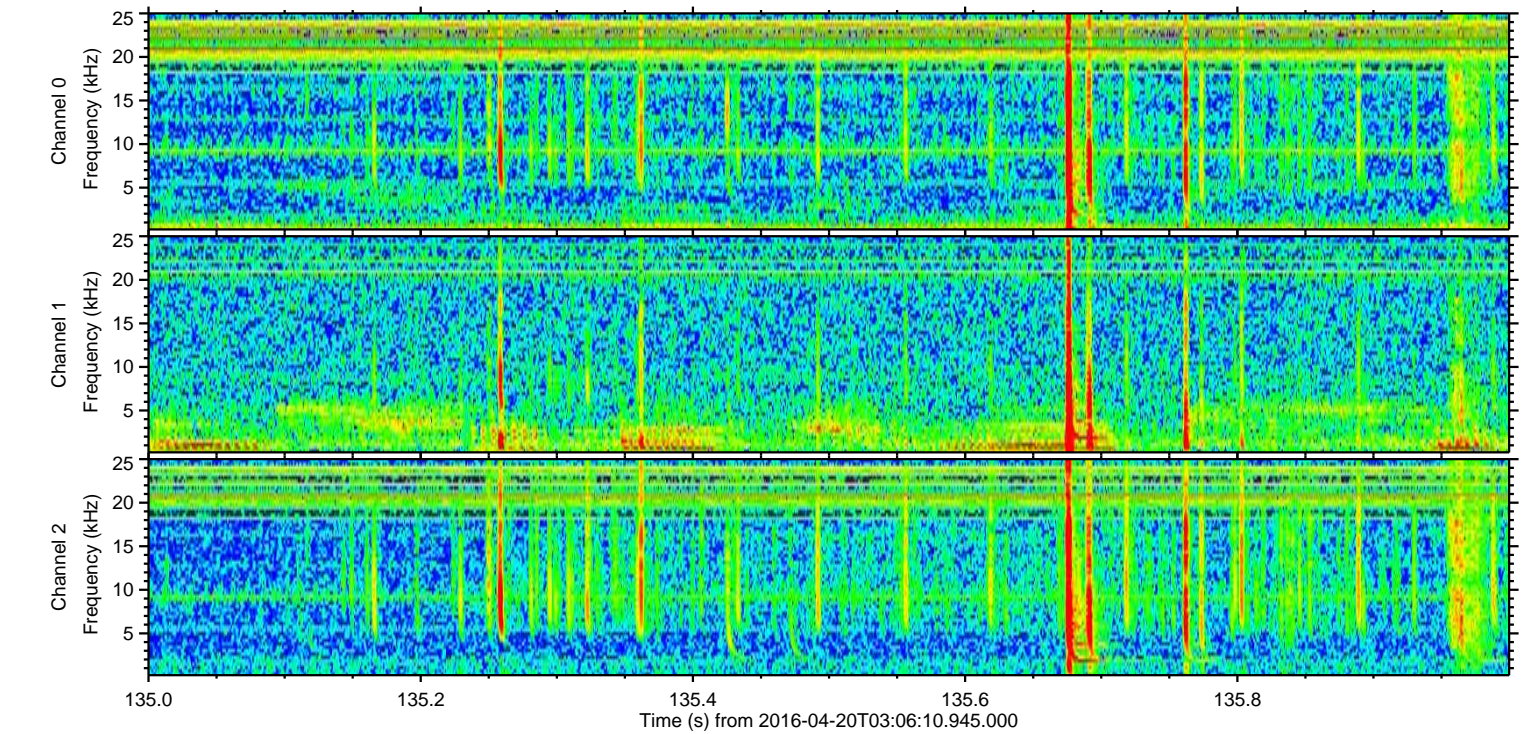
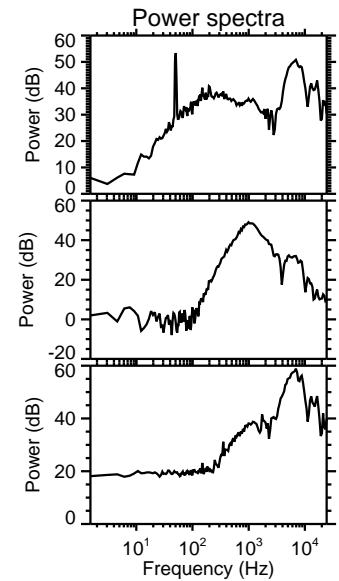
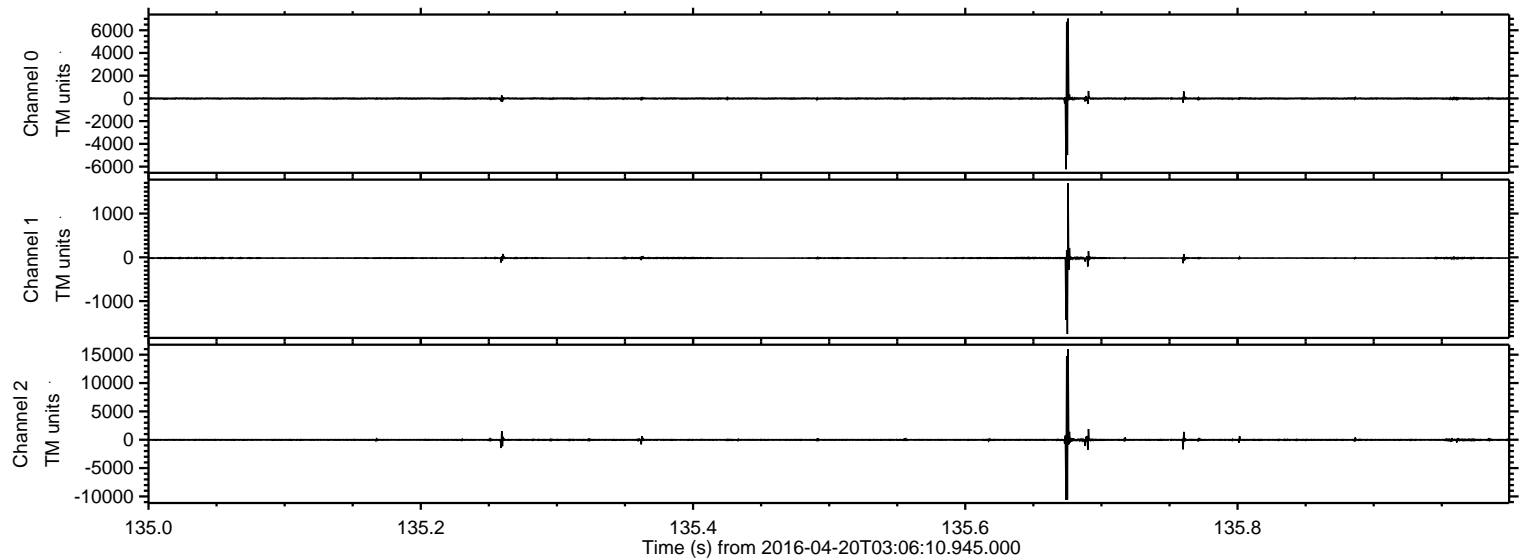
Channel 1  
mn: -1401  
mx: 1372  
 $\mu$ : -16.9  
 $\sigma$ : 26.6

Channel 2  
mn: -10078  
mx: 16388  
 $\mu$ : -19.6  
 $\sigma$ : 148.4



ELMAVAN 3D WAVEFORMS (Measured data sampled at 50 kHz) 51000 packets of 144 samples from 2016-04-20T03:06:10.945.000. Part 136/147

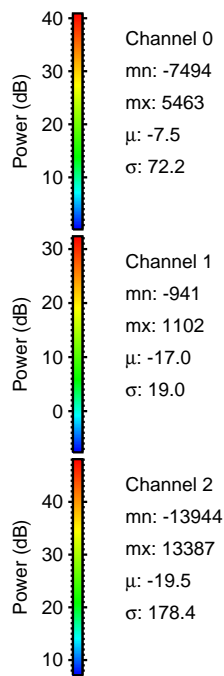
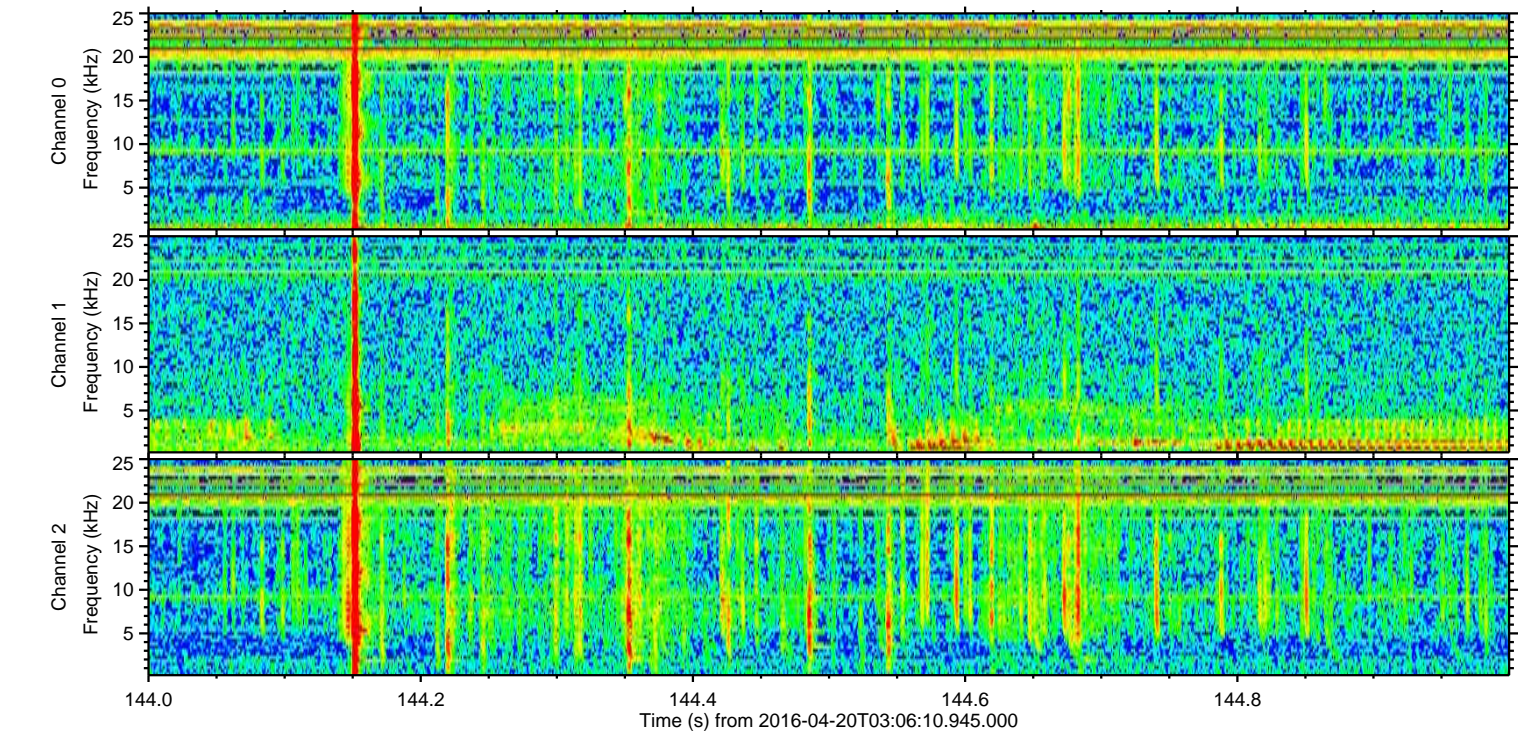
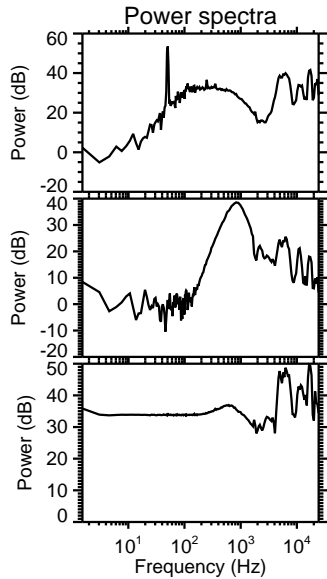
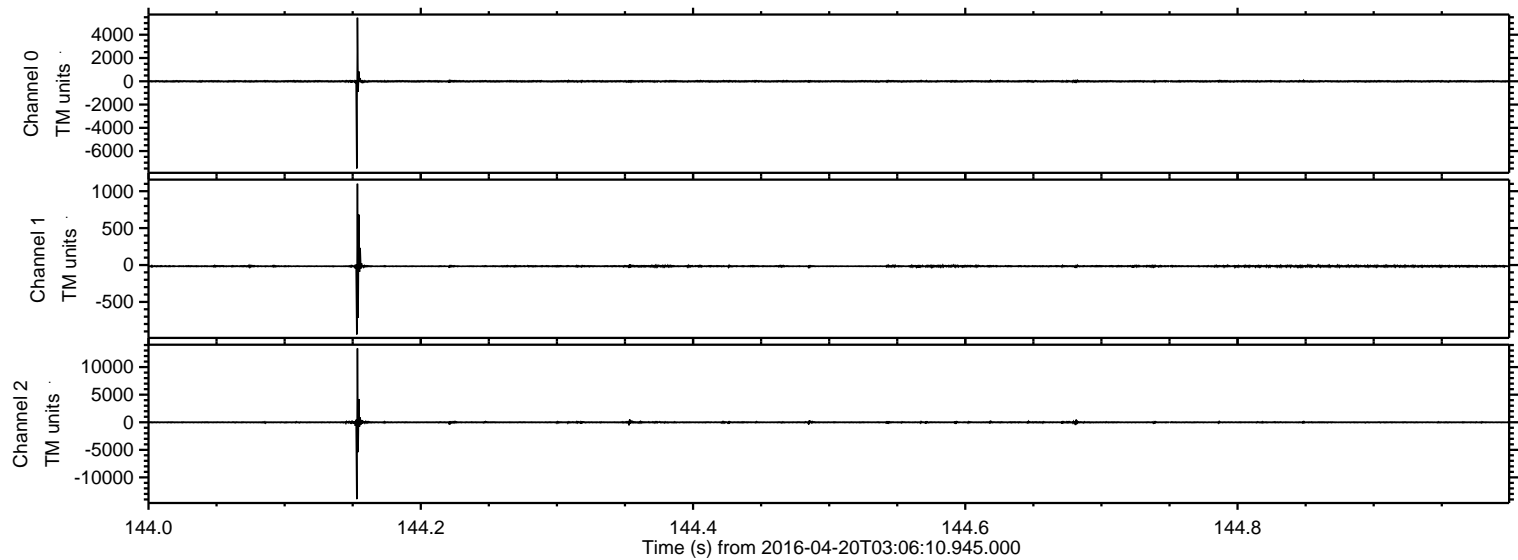
Processed Mon May 9 13:46:21 2016 by ELM ver.2012-10-06 from 001\_\_elm20160420\_030609\_\_dat00.bin





ELMAVAN 3D WAVEFORMS (Measured data sampled at 50 kHz) 51000 packets of 144 samples from 2016-04-20T03:06:10.945.000. Part 145/147

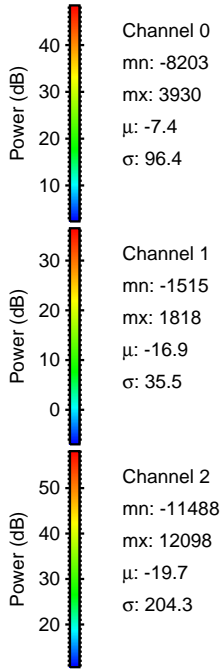
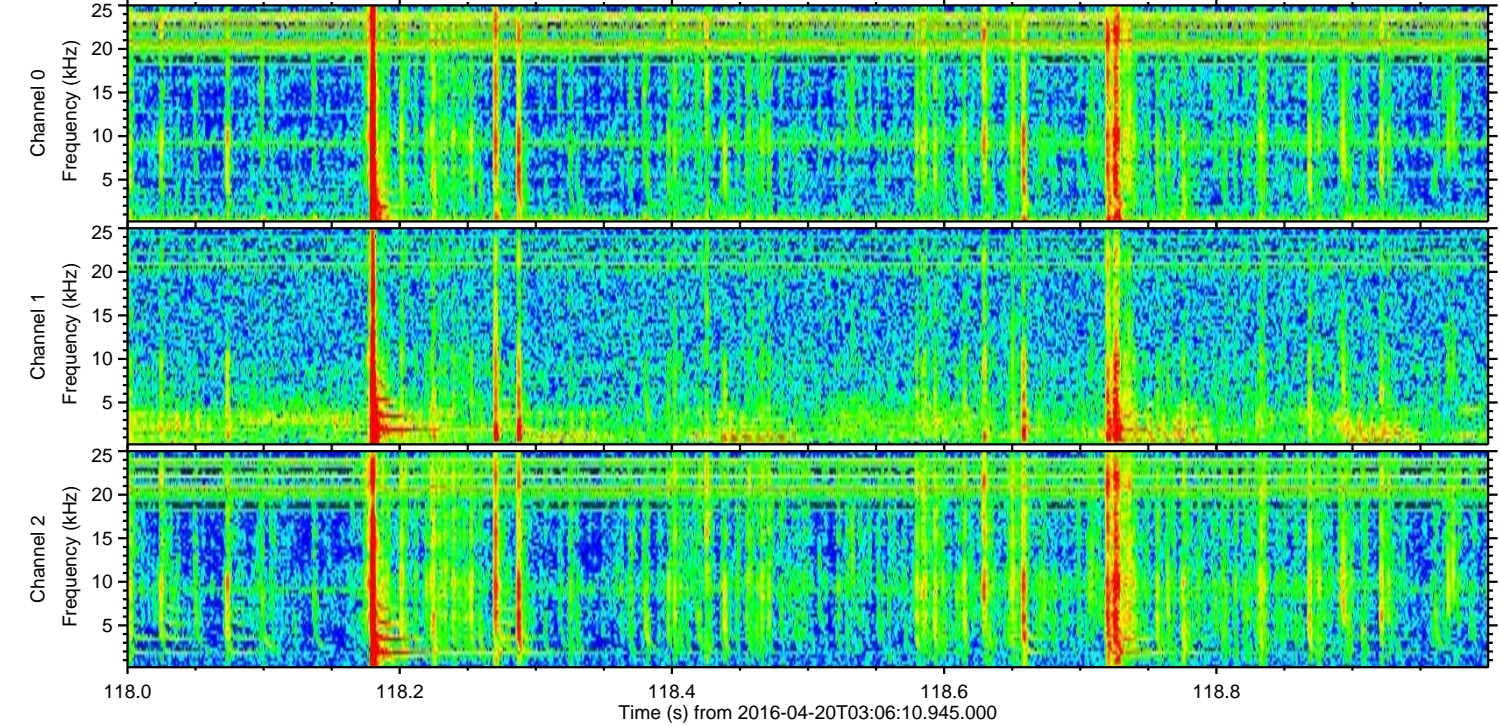
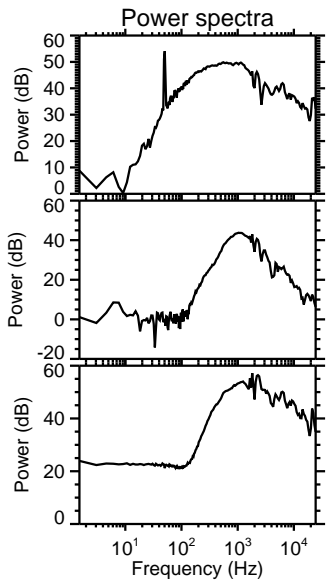
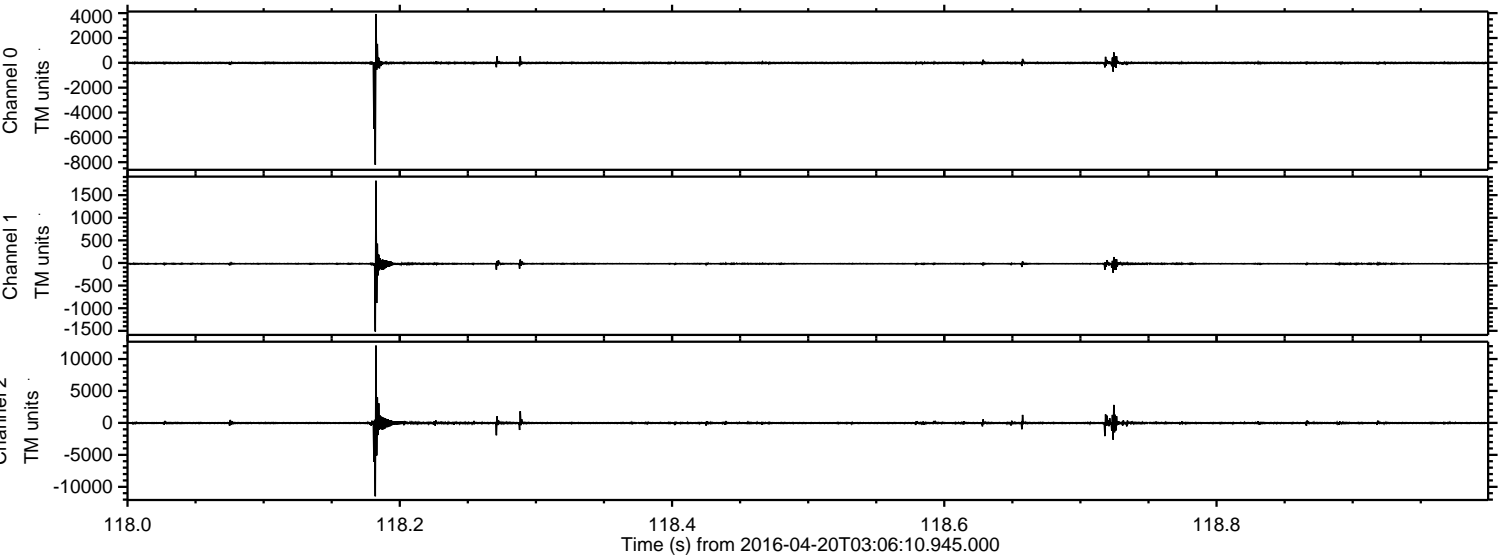
Processed Mon May 9 13:46:22 2016 by ELM ver.2012-10-06 from 001\_\_elm20160420\_030609\_\_dat00.bin





ELMAVAN 3D WAVEFORMS (Measured data sampled at 50 kHz) 51000 packets of 144 samples from 2016-04-20T03:06:10.945.000. Part 119/147

Processed Mon May 9 13:46:23 2016 by ELM ver.2012-10-06 from 001\_\_elm20160420\_030609\_\_dat00.bin



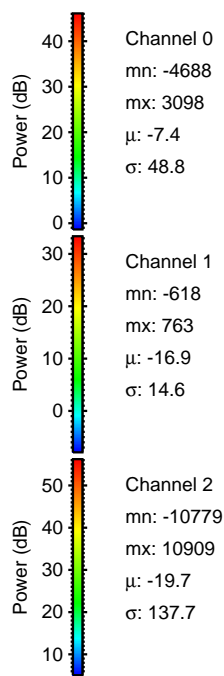
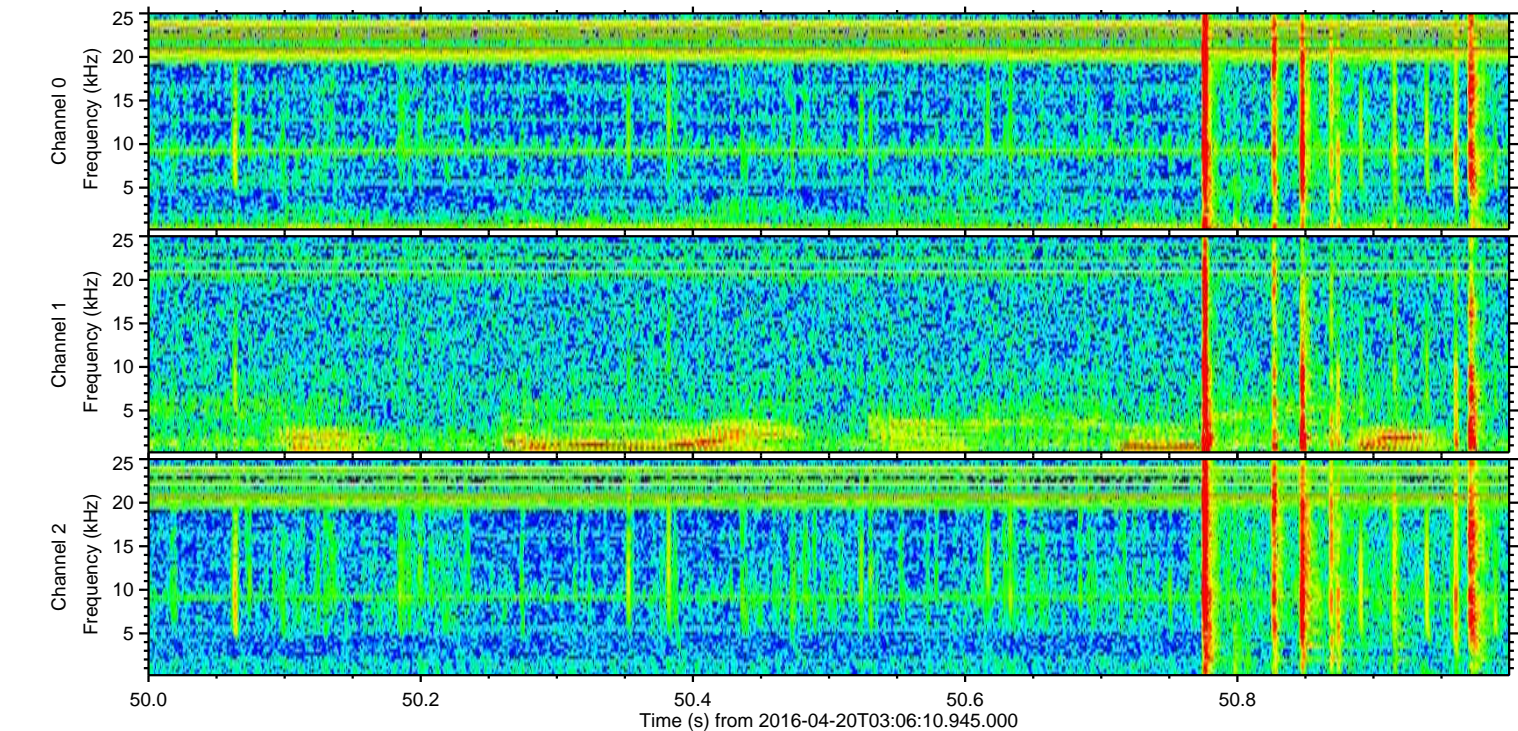
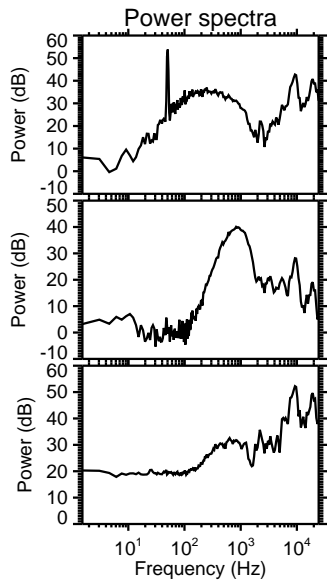
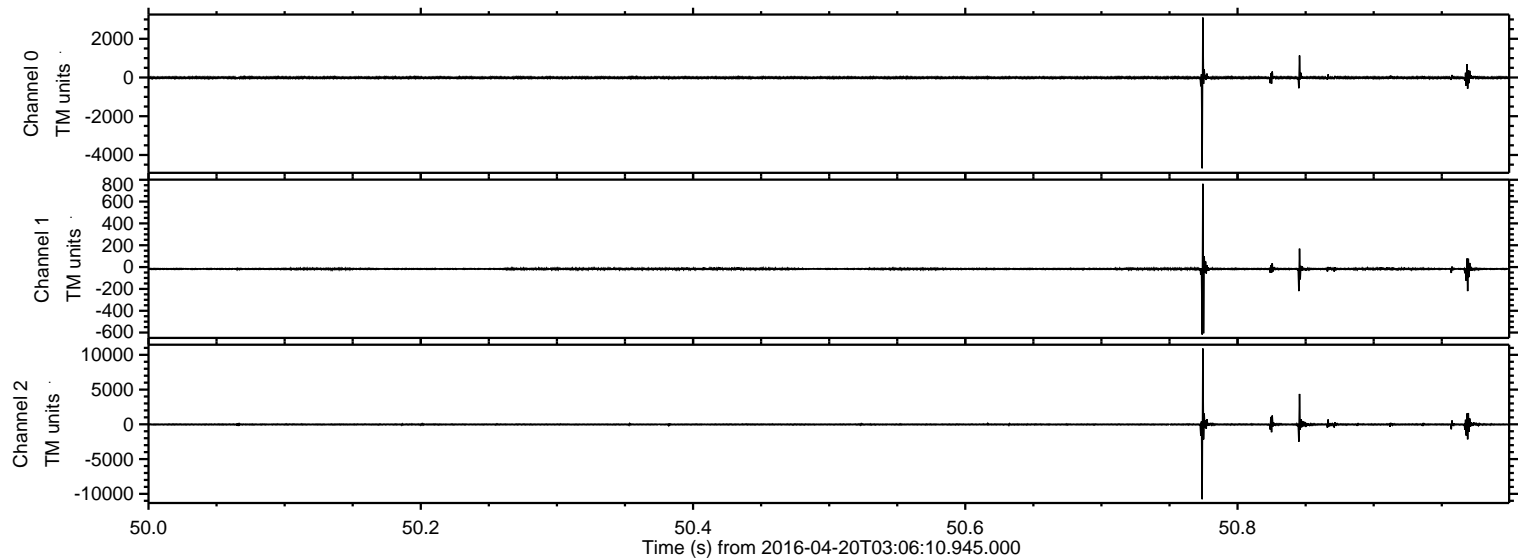
Channel 0  
mn: -8203  
mx: 3930  
 $\mu$ : -7.4  
 $\sigma$ : 96.4

Channel 1  
mn: -1515  
mx: 1818  
 $\mu$ : -16.9  
 $\sigma$ : 35.5

Channel 2  
mn: -11488  
mx: 12098  
 $\mu$ : -19.7  
 $\sigma$ : 204.3

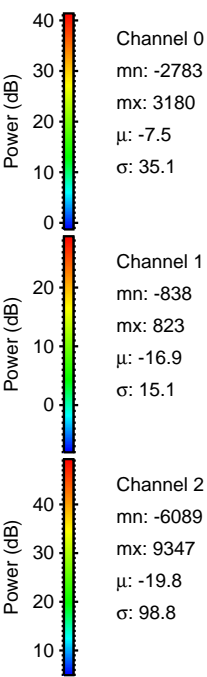
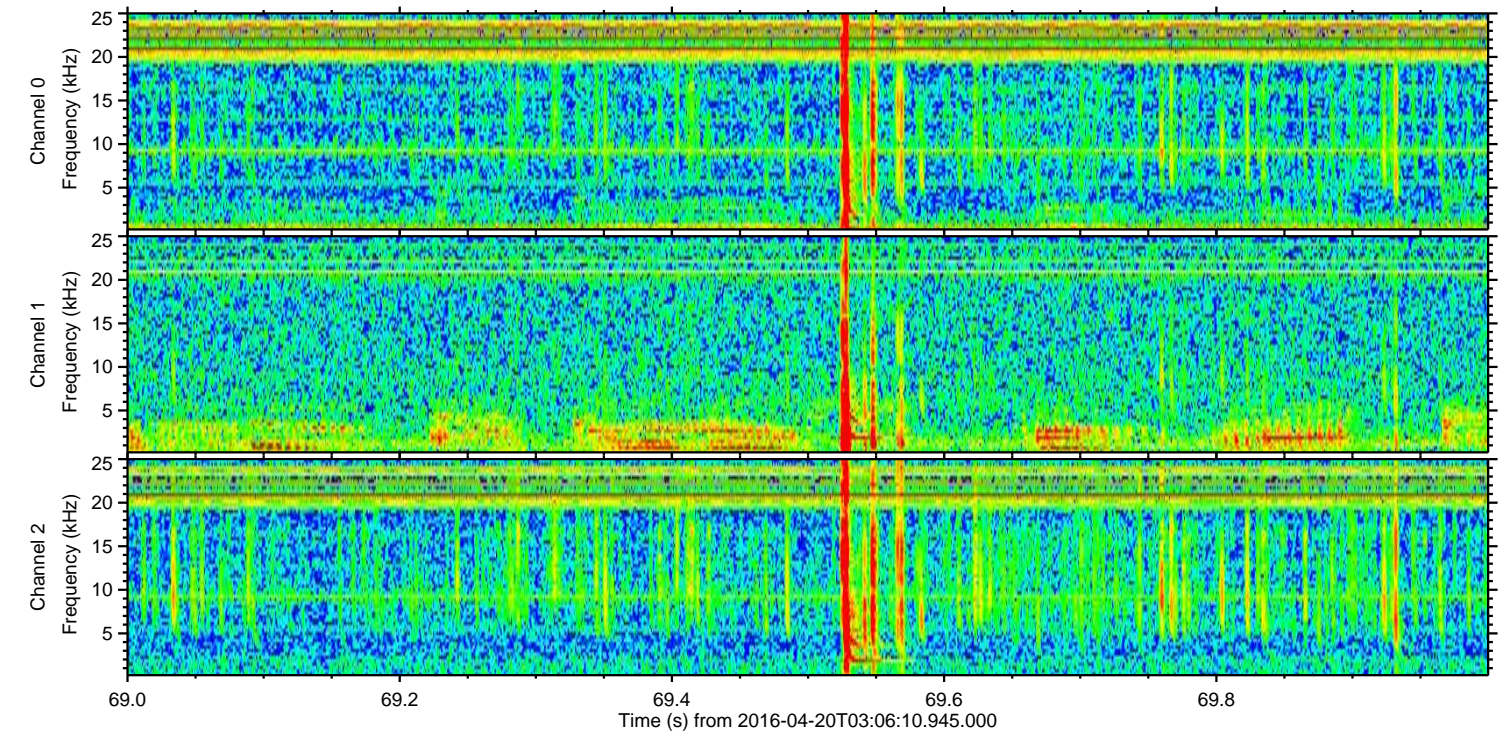
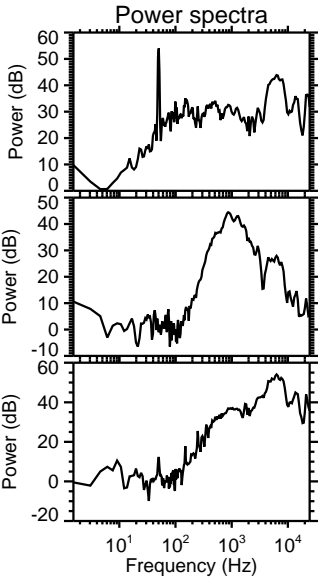
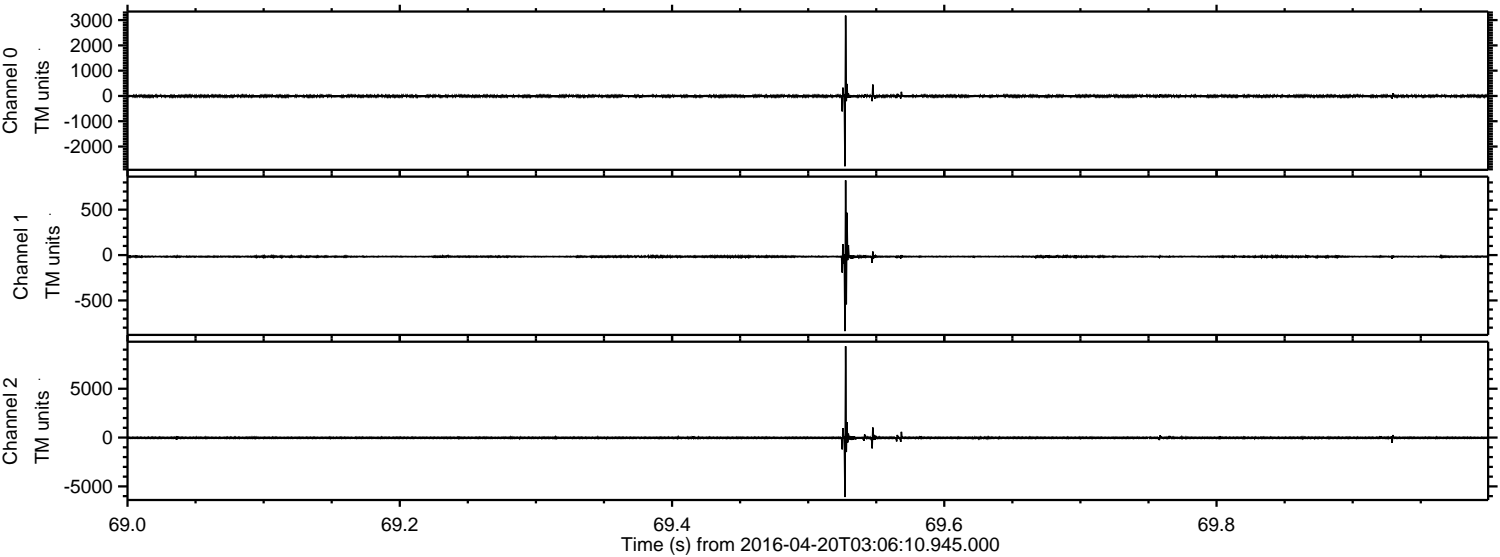


Processed Mon May 9 13:46:24 2016 by ELM ver.2012-10-06 from 001\_\_elm20160420\_030609\_\_dat00.bin



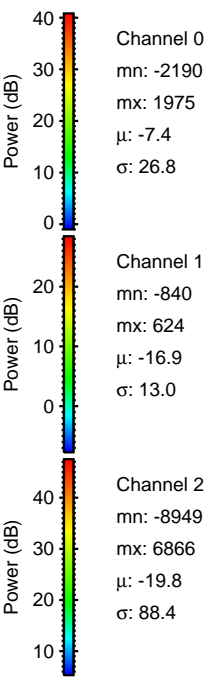
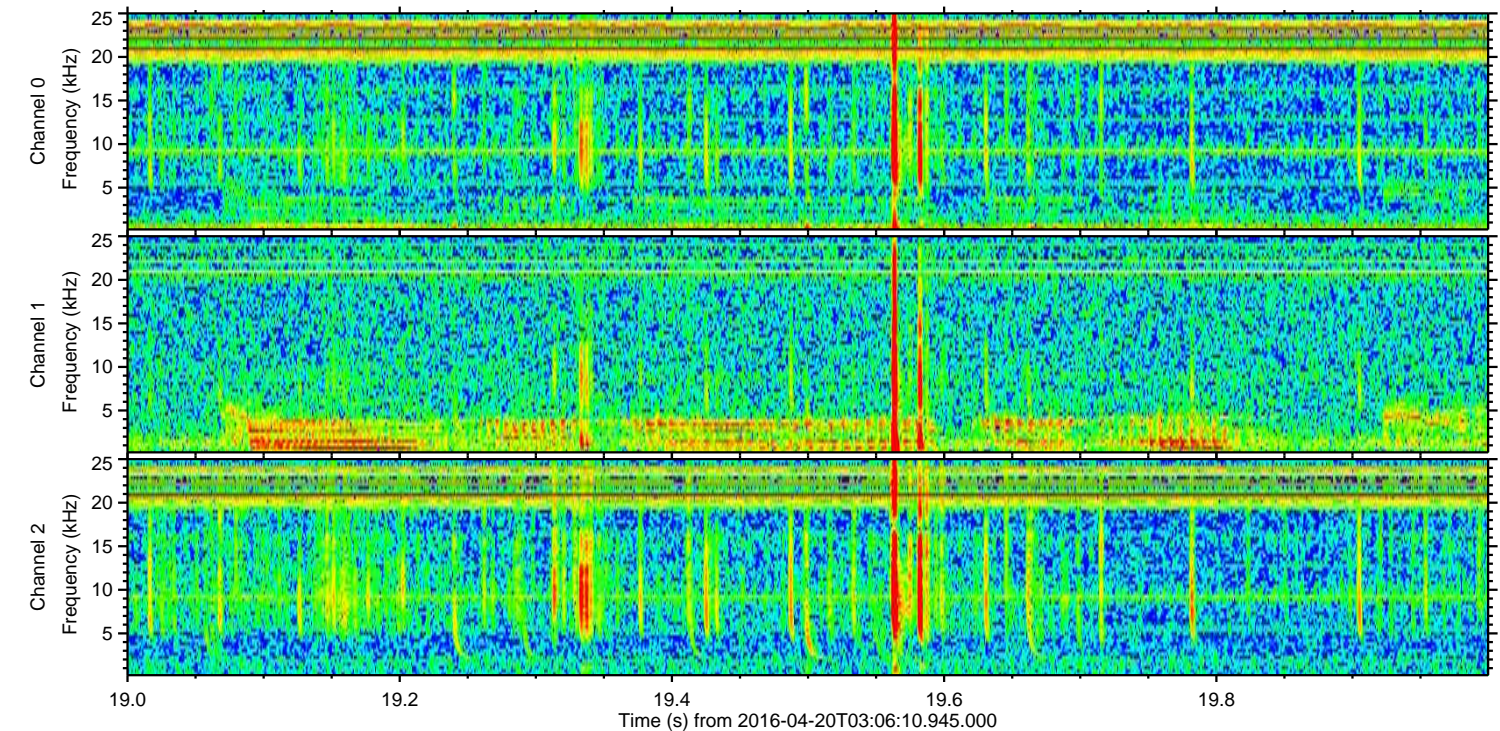
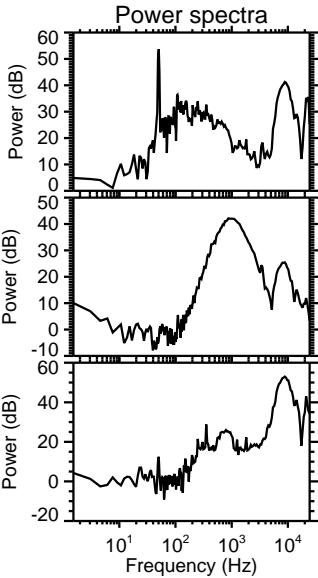
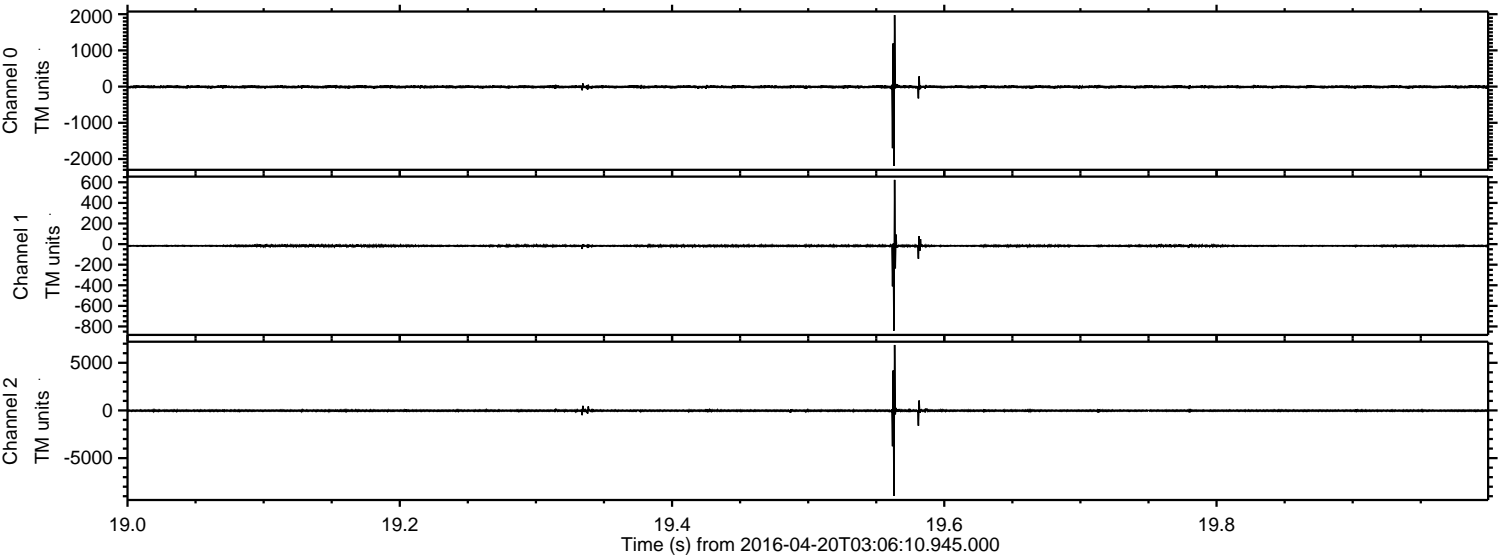


Processed Mon May 9 13:46:25 2016 by ELM ver.2012-10-06 from 001\_\_elm20160420\_030609\_\_dat00.bin





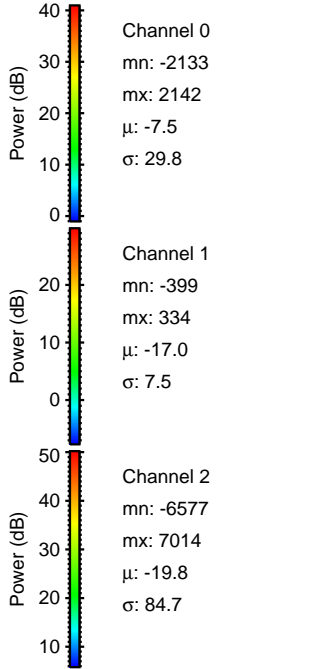
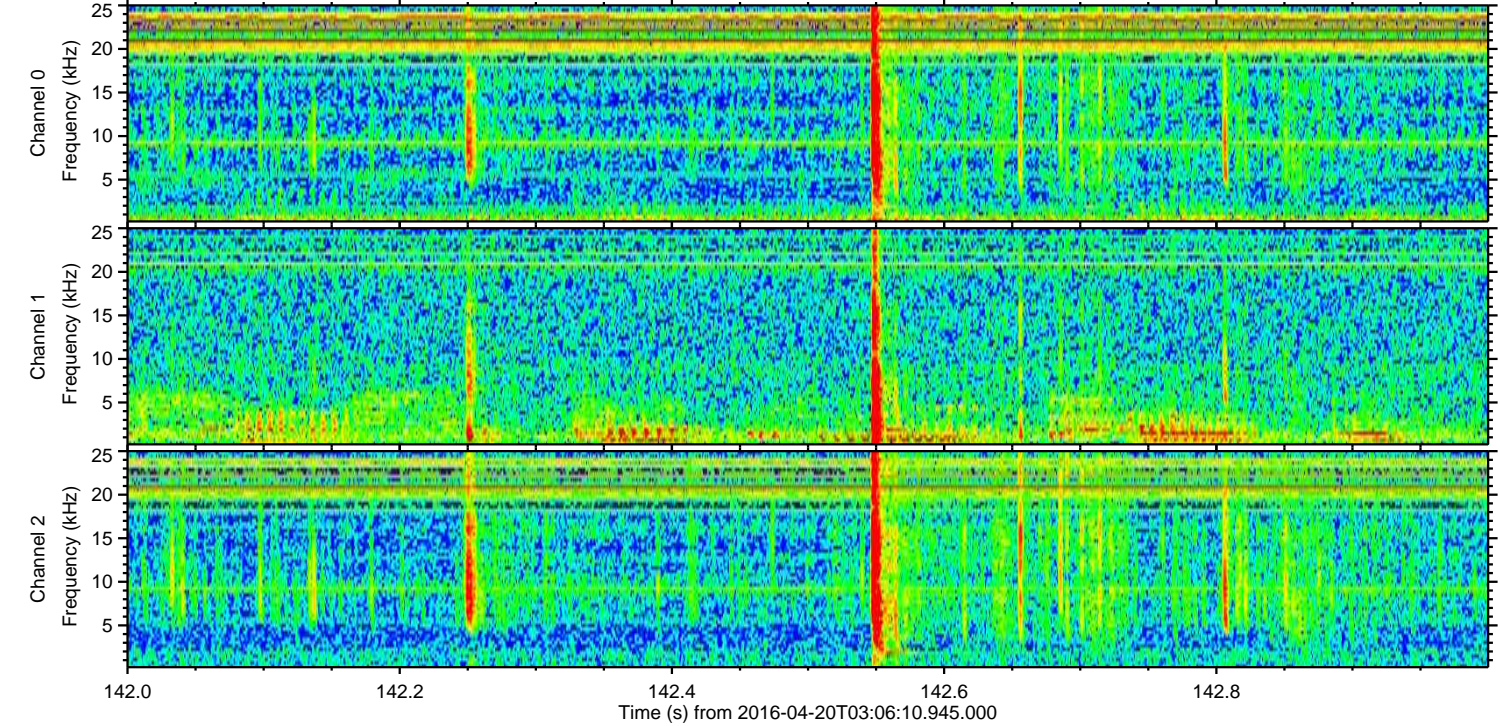
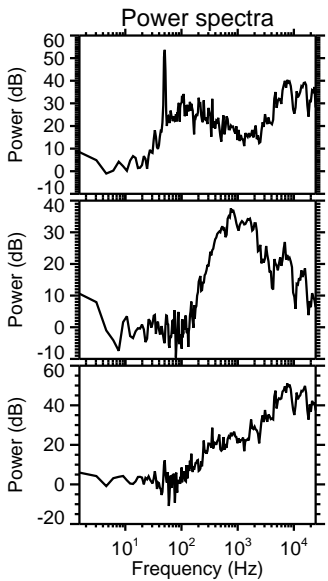
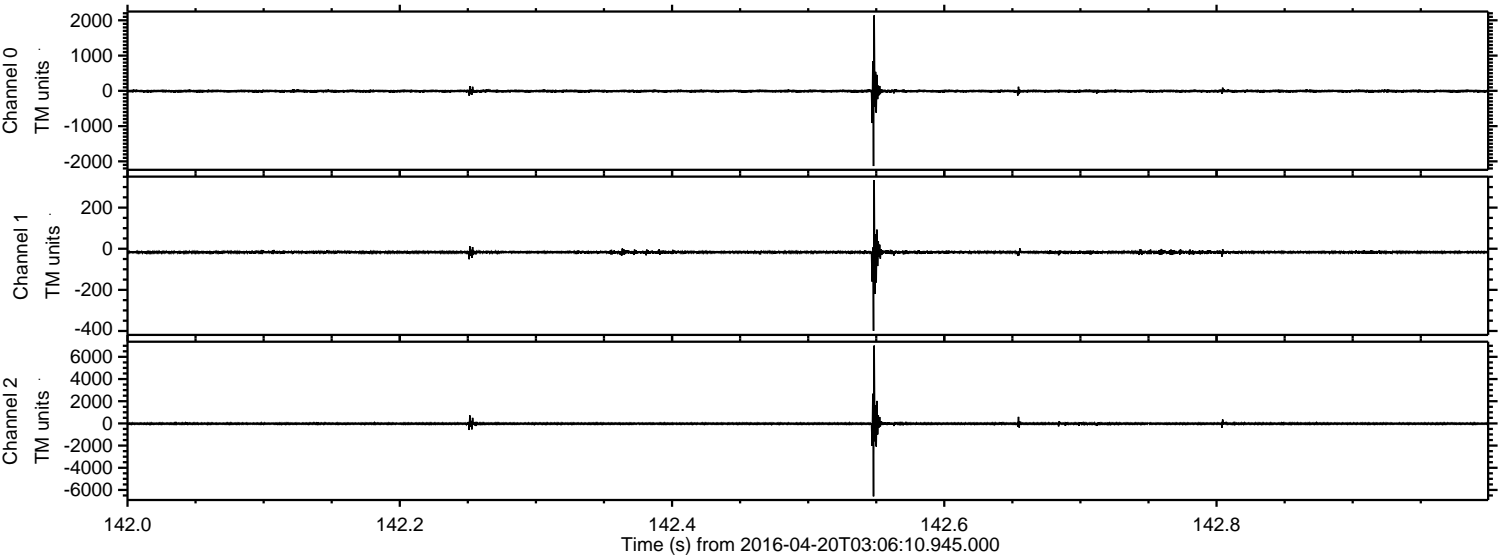
Processed Mon May 9 13:46:26 2016 by ELM ver.2012-10-06 from 001\_\_elm20160420\_030609\_\_dat00.bin





ELMAVAN 3D WAVEFORMS (Measured data sampled at 50 kHz) 51000 packets of 144 samples from 2016-04-20T03:06:10.945.000. Part 143/147

Processed Mon May 9 13:46:27 2016 by ELM ver.2012-10-06 from 001\_\_elm20160420\_030609\_\_dat00.bin





ELMAVAN 3D WAVEFORMS (Measured data sampled at 50 kHz) 51000 packets of 144 samples from 2016-04-20T03:06:10.945.000. Part 107/147

