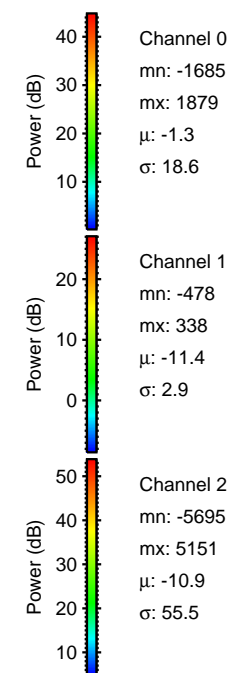
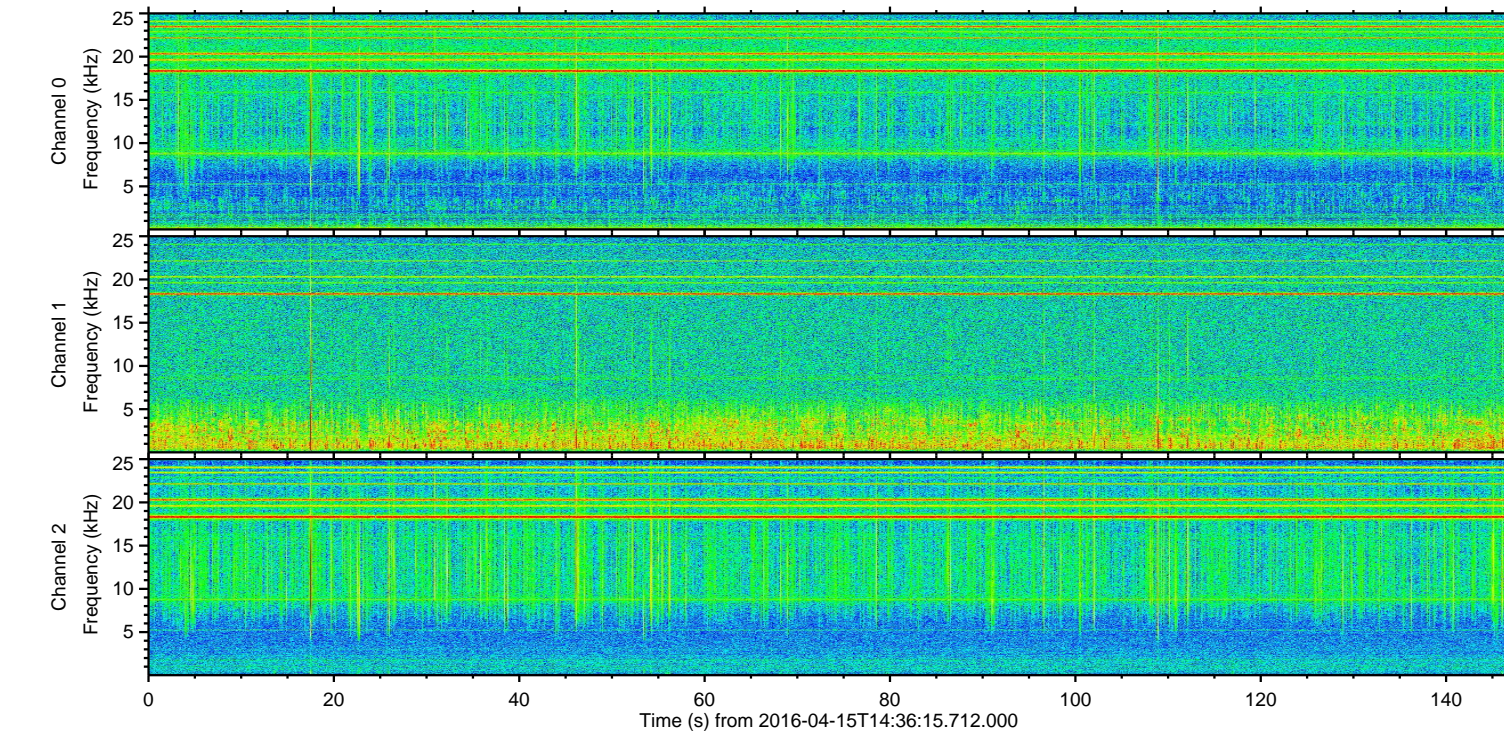
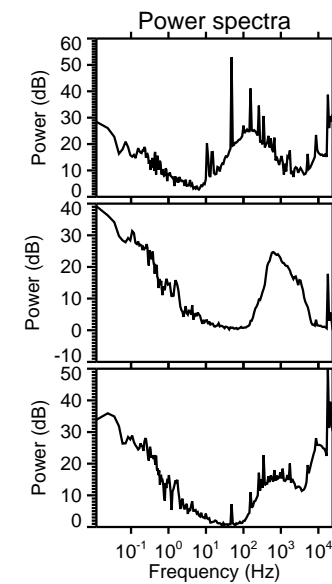
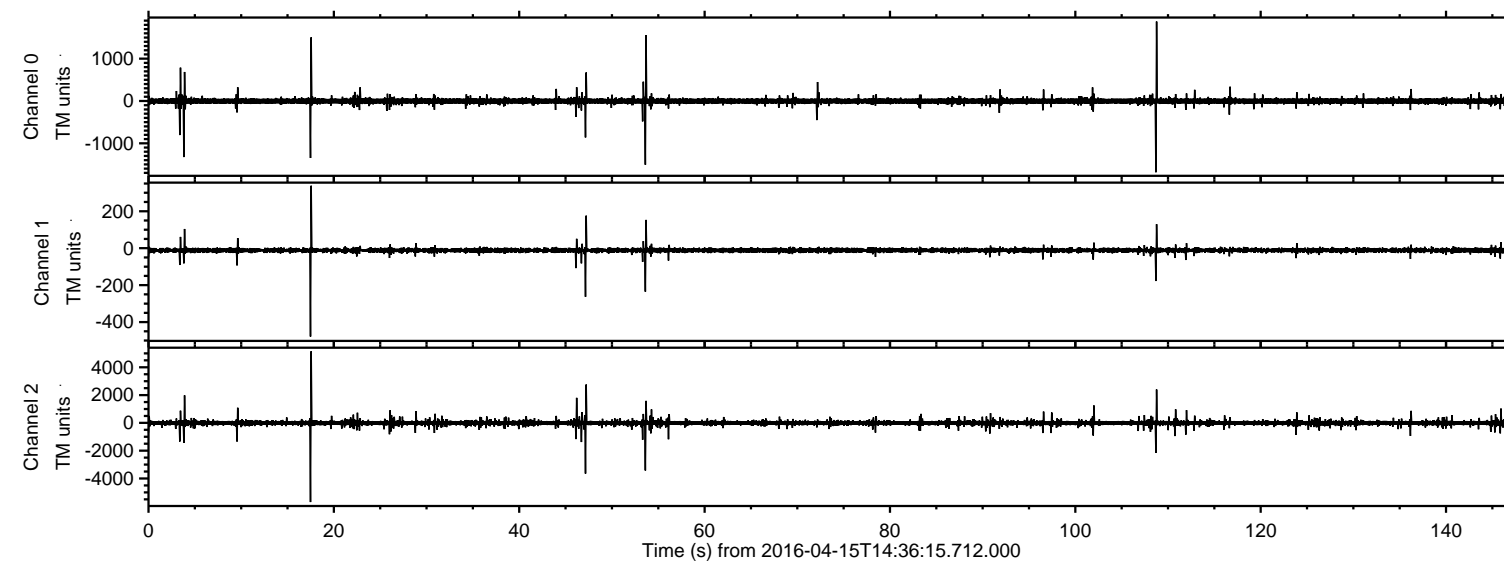
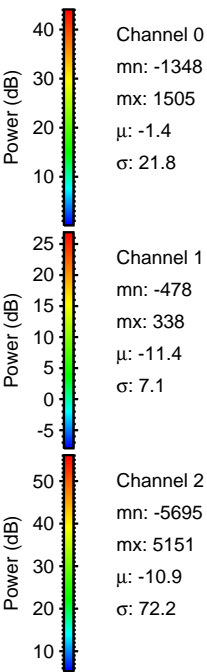
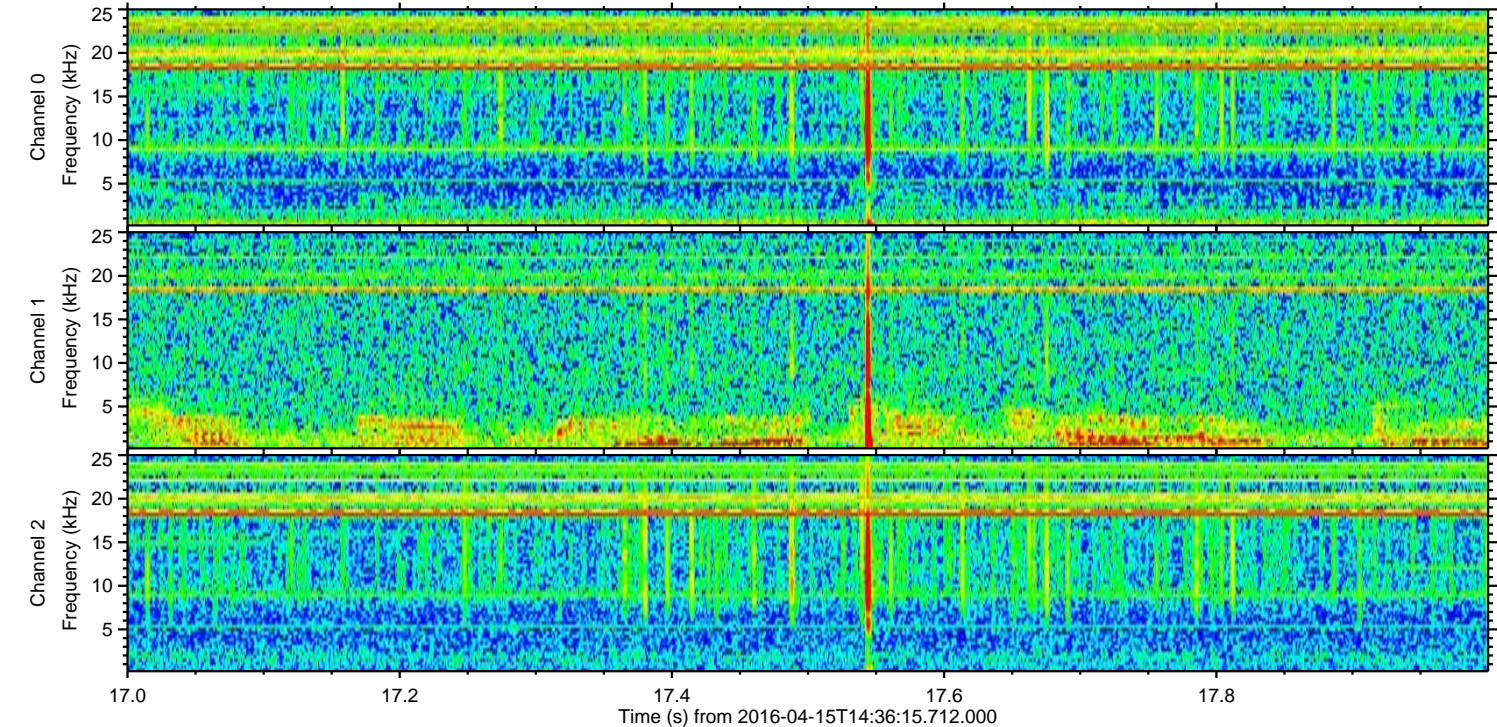
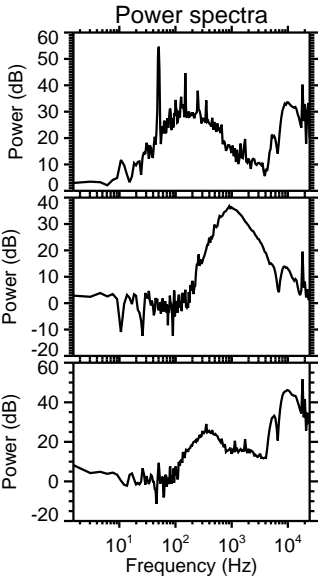
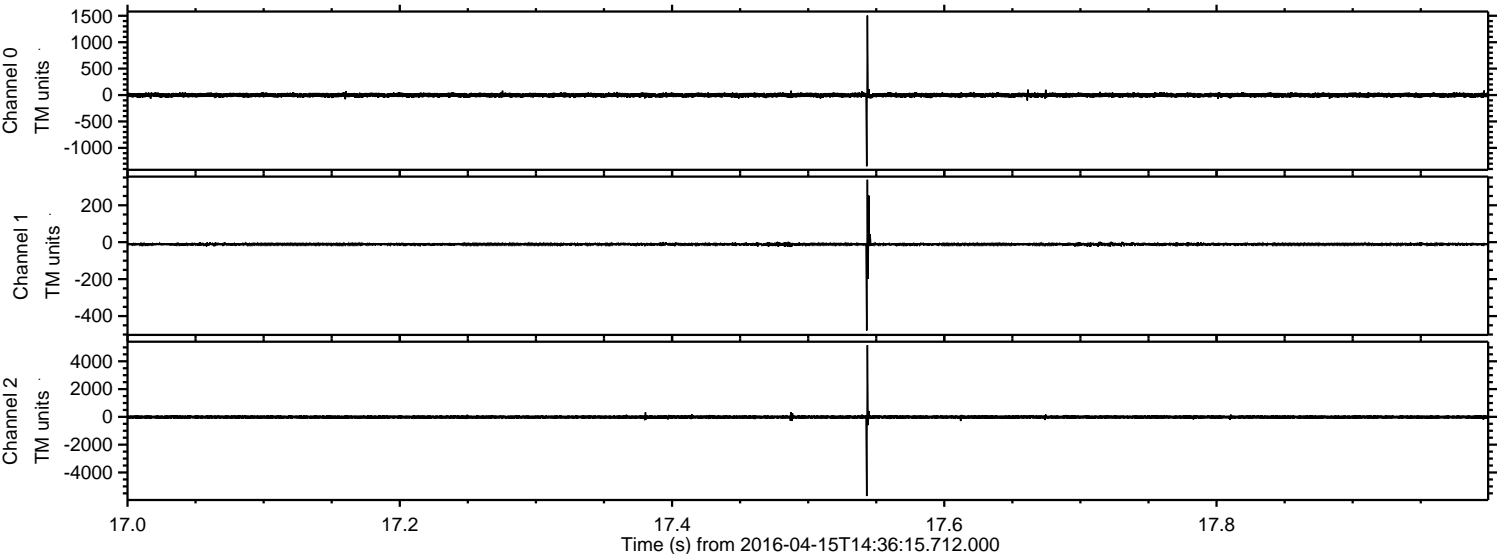


ELMAVAN 3D WAVEFORMS (Measured data sampled at 50 kHz) 51000 packets of 144 samples from 2016-04-15T14:36:15.712.000.

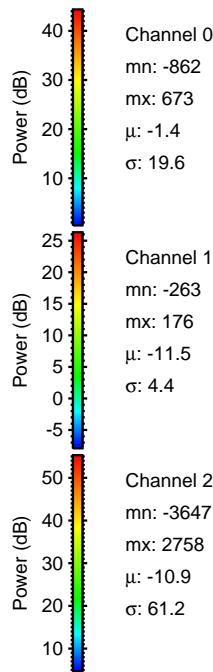
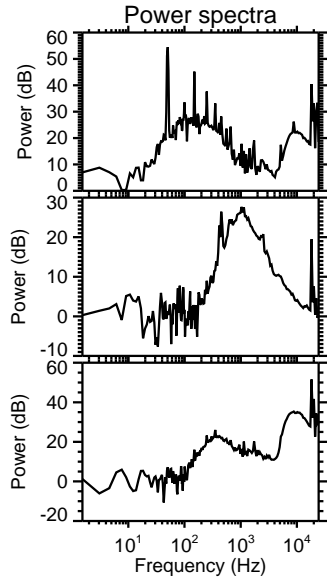
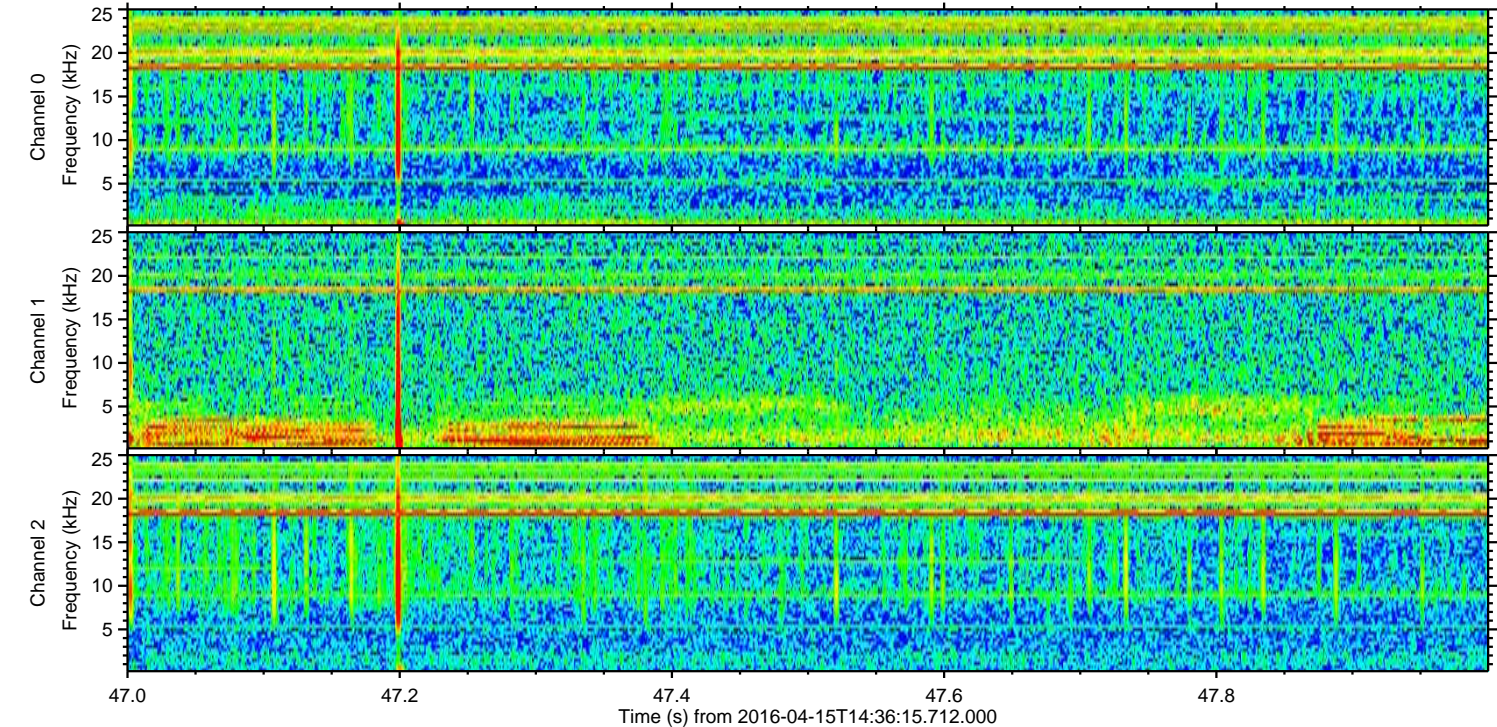
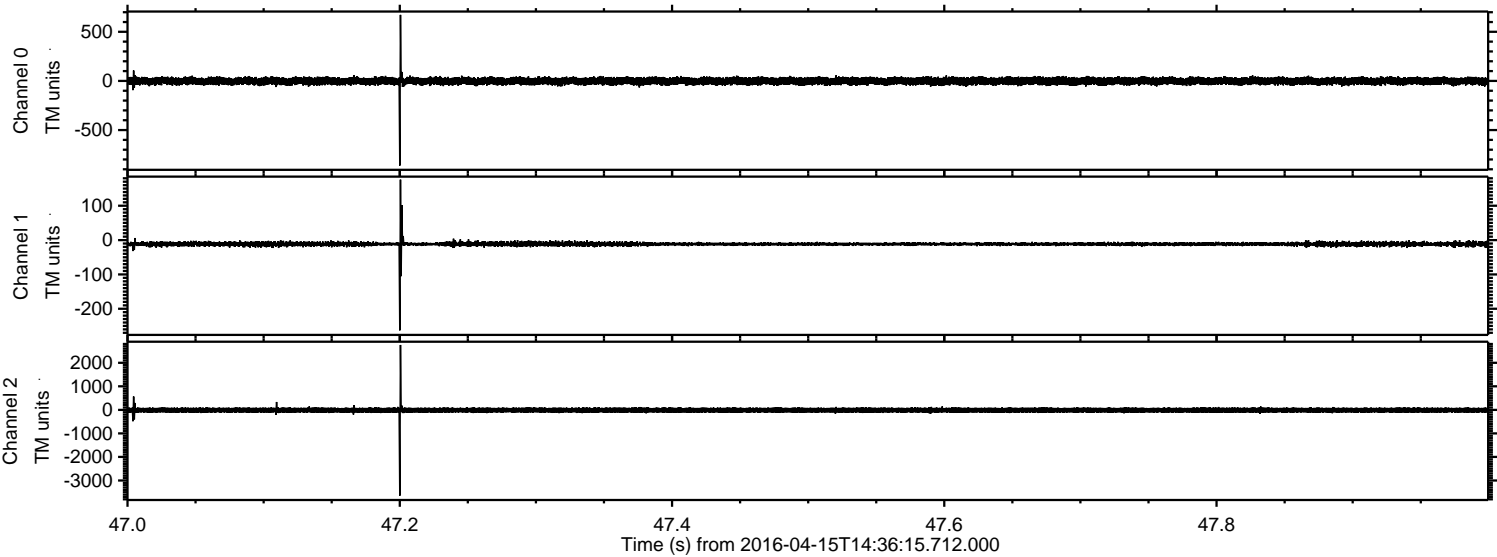
Processed Sun May 8 15:23:13 2016 by ELM ver.2012-10-06 from 001__elm20160415_143614__dat00.bin



Processed Sun May 8 15:23:24 2016 by ELM ver.2012-10-06 from 001__elm20160415_143614__dat00.bin

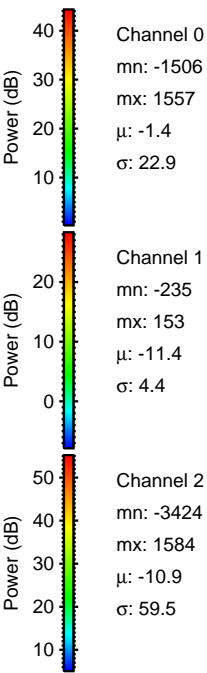
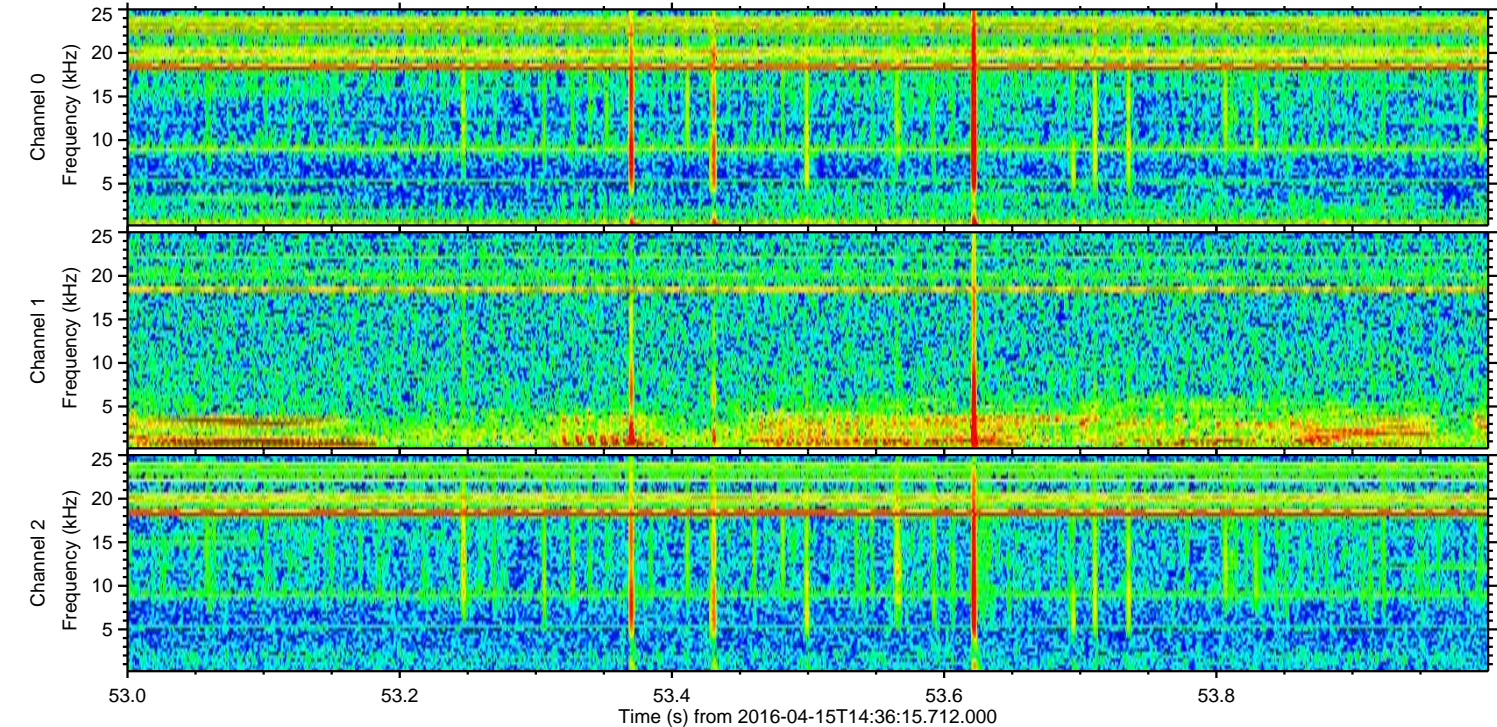
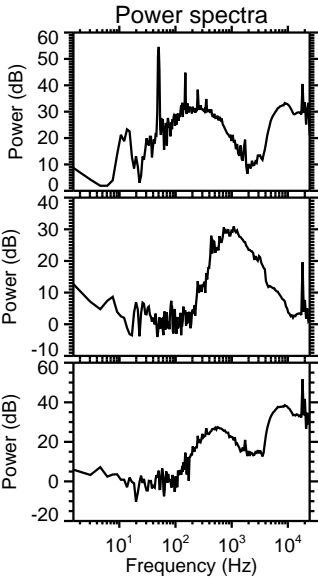
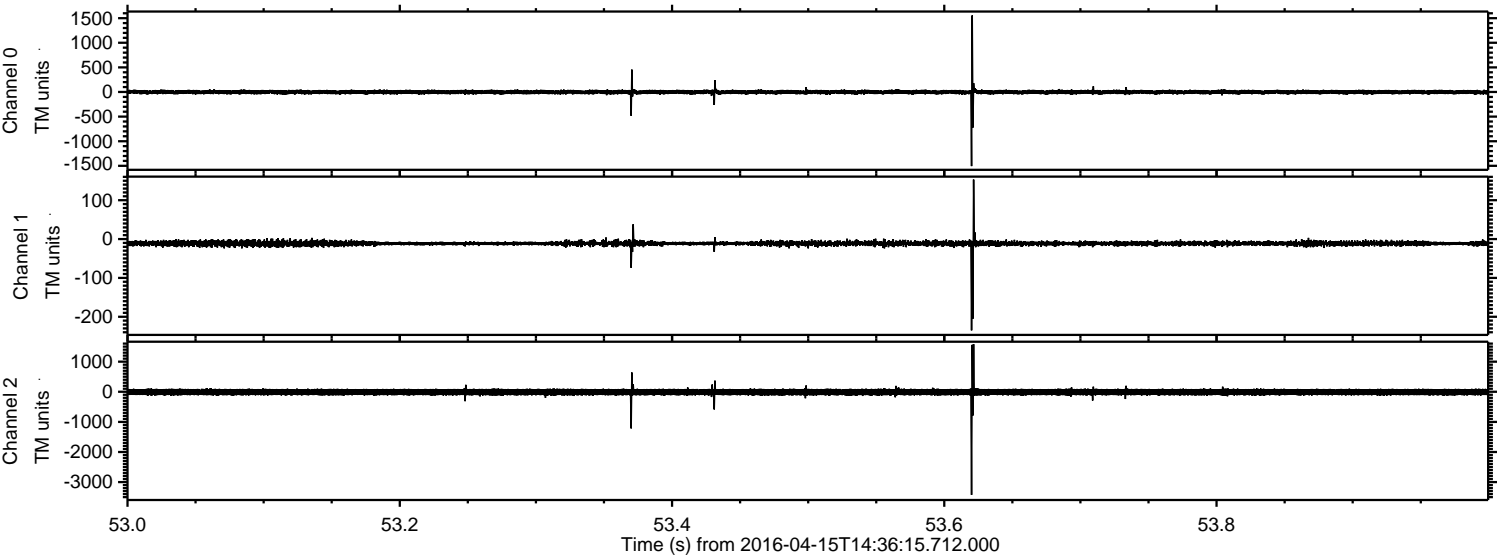


Processed Sun May 8 15:23:25 2016 by ELM ver.2012-10-06 from 001__elm20160415_143614__dat00.bin



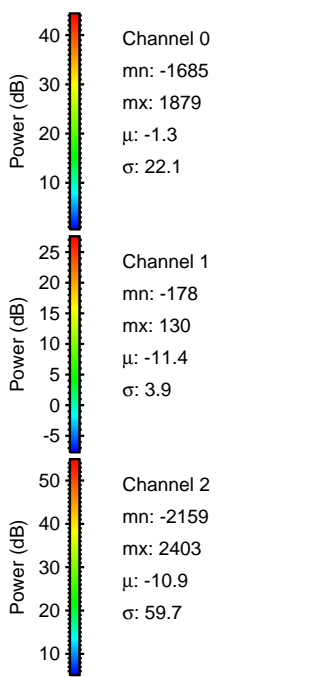
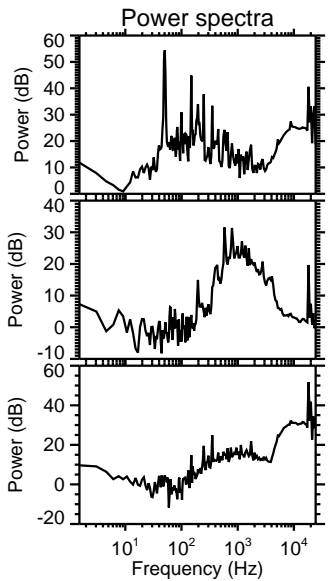
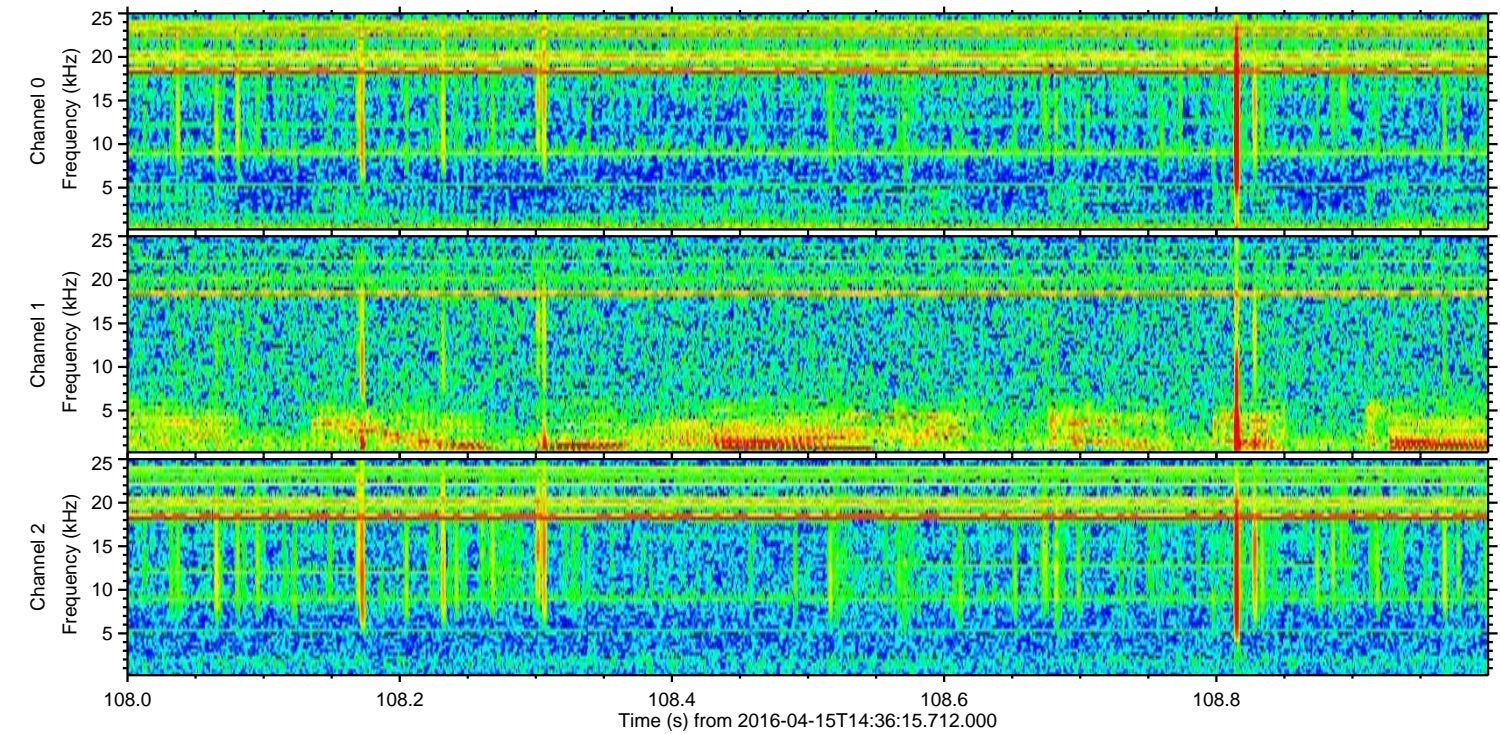
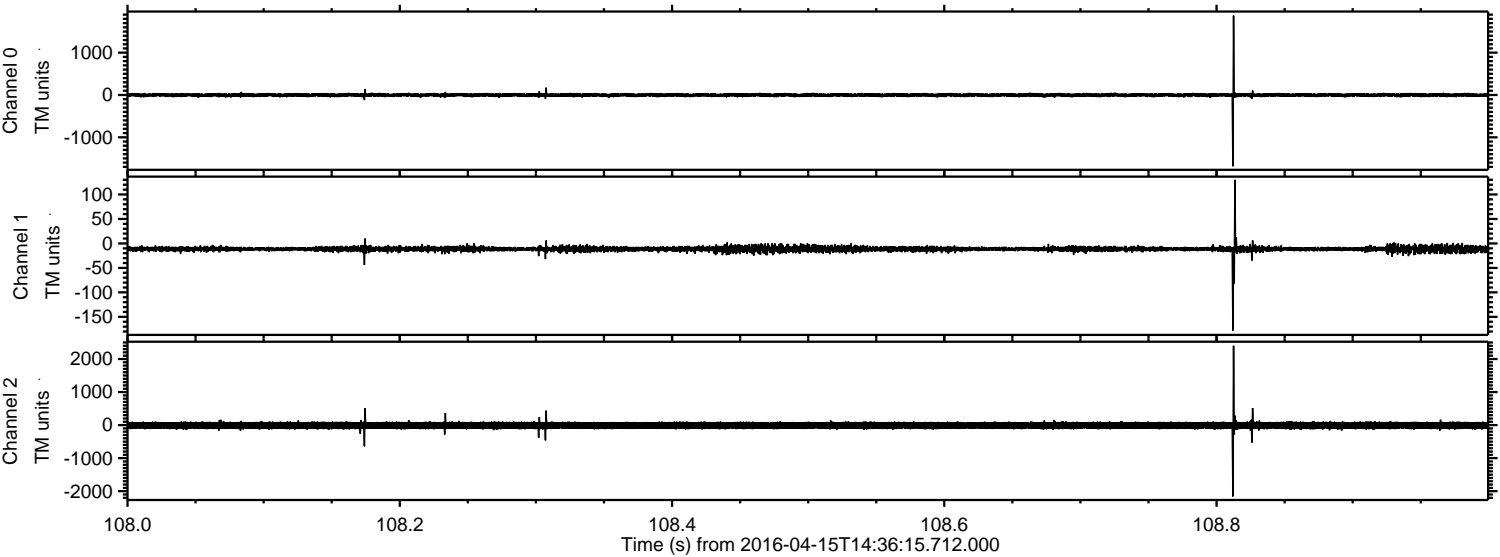
ELMAVAN 3D WAVEFORMS (Measured data sampled at 50 kHz) 51000 packets of 144 samples from 2016-04-15T14:36:15.712.000. Part 54/147

Processed Sun May 8 15:23:26 2016 by ELM ver.2012-10-06 from 001__elm20160415_143614__dat00.bin

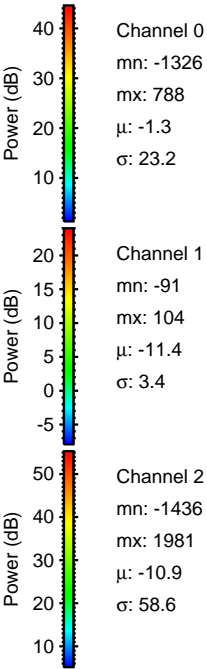
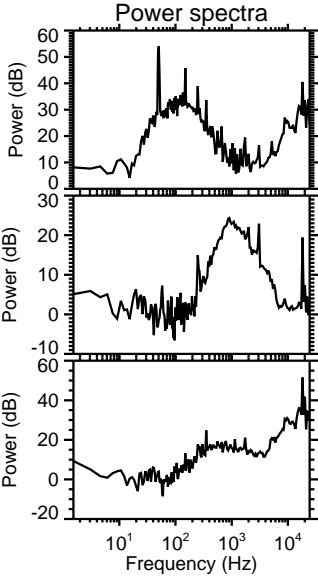
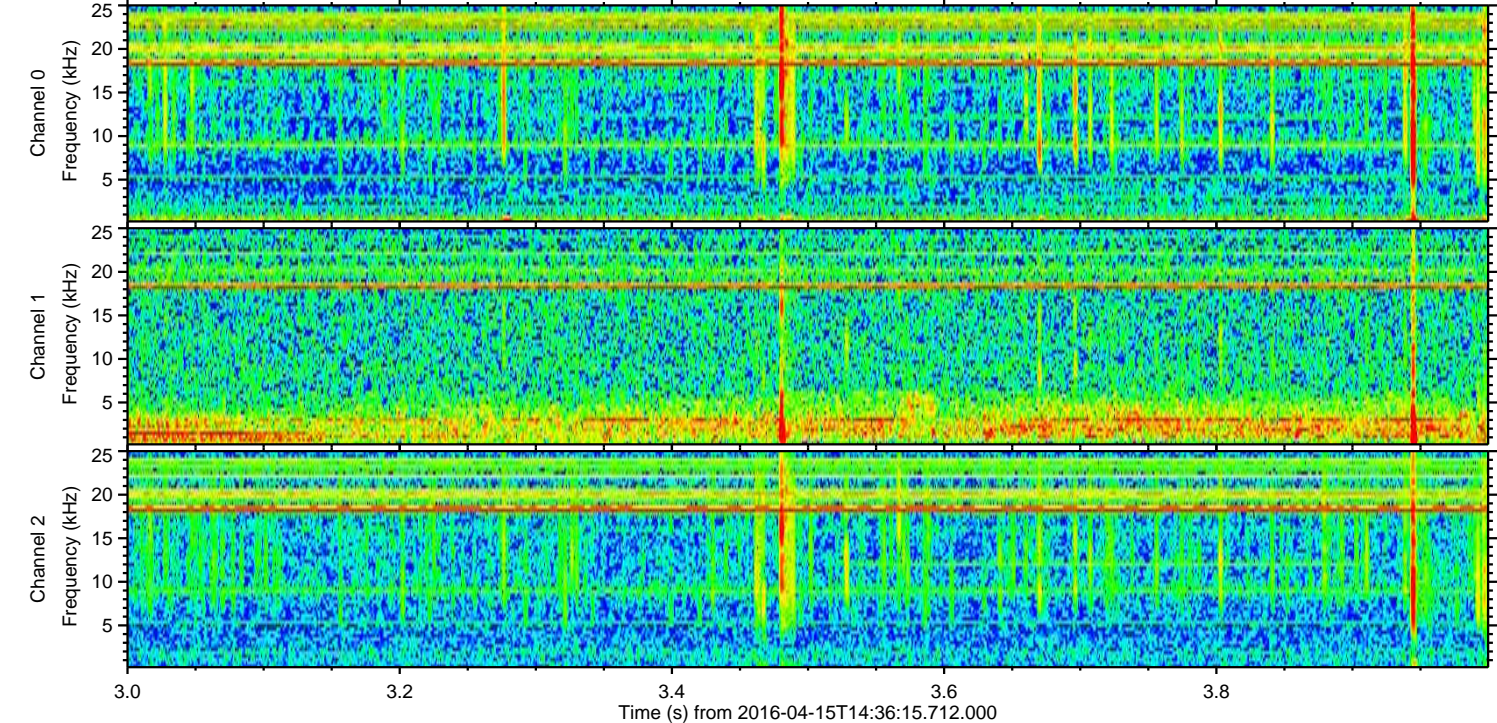
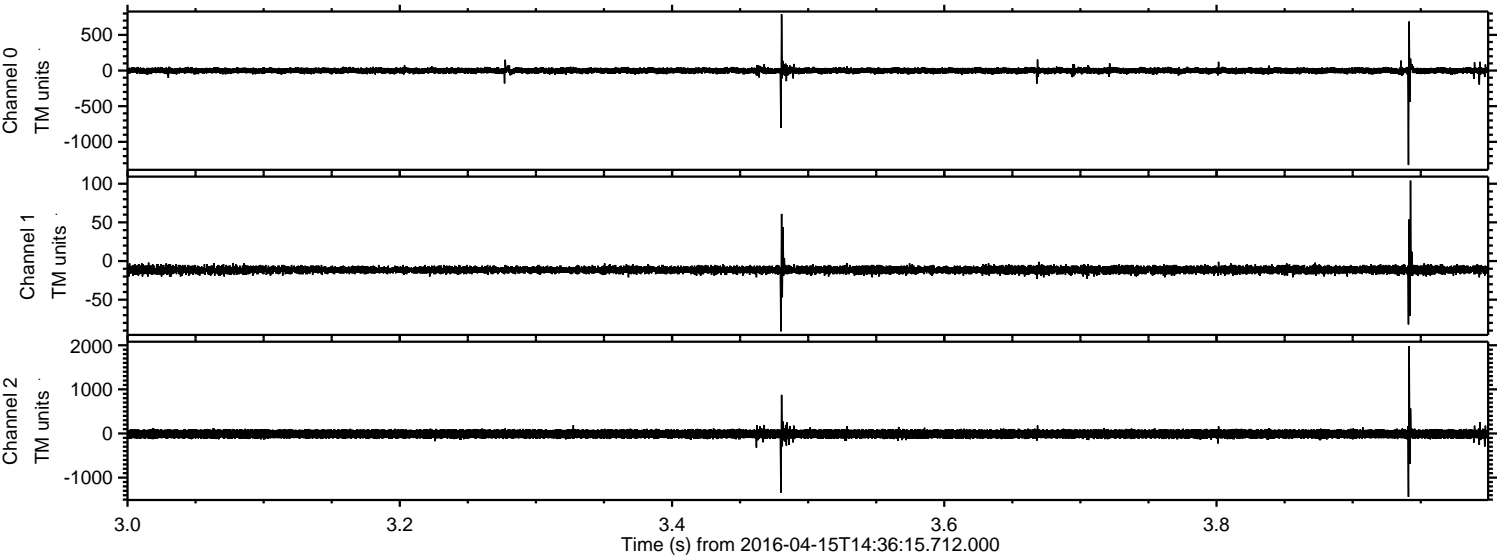


ELMAVAN 3D WAVEFORMS (Measured data sampled at 50 kHz) 51000 packets of 144 samples from 2016-04-15T14:36:15.712.000. Part 109/147

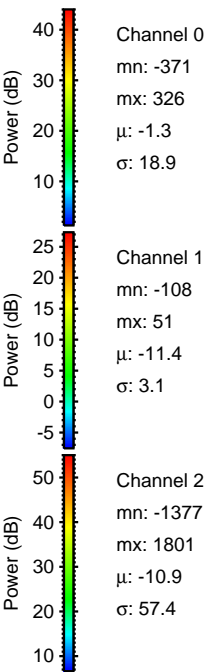
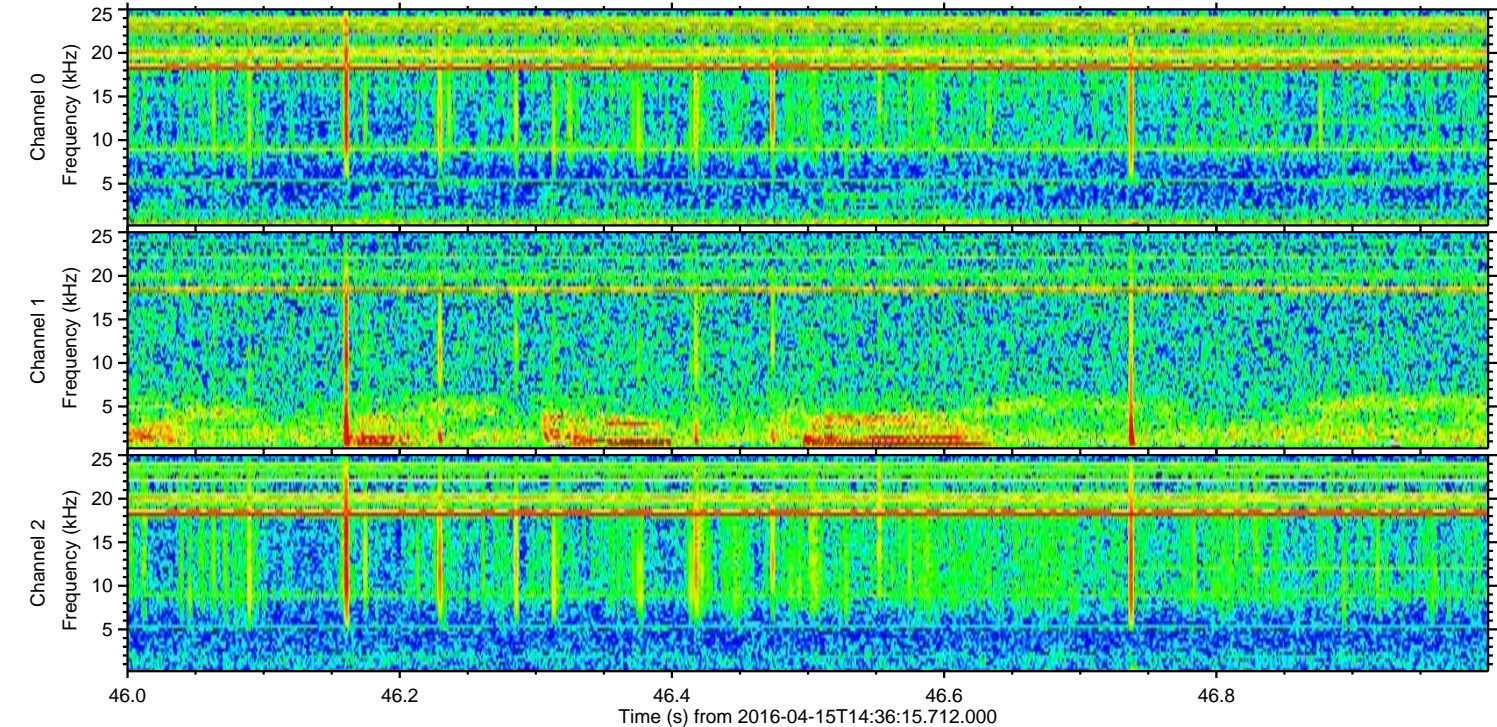
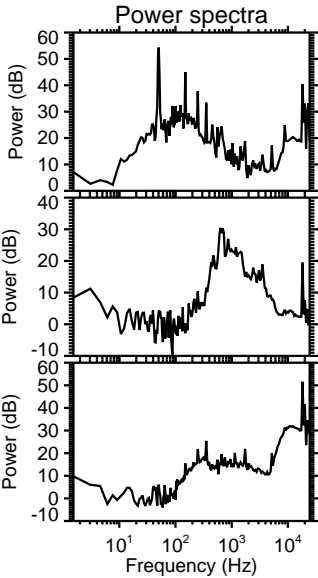
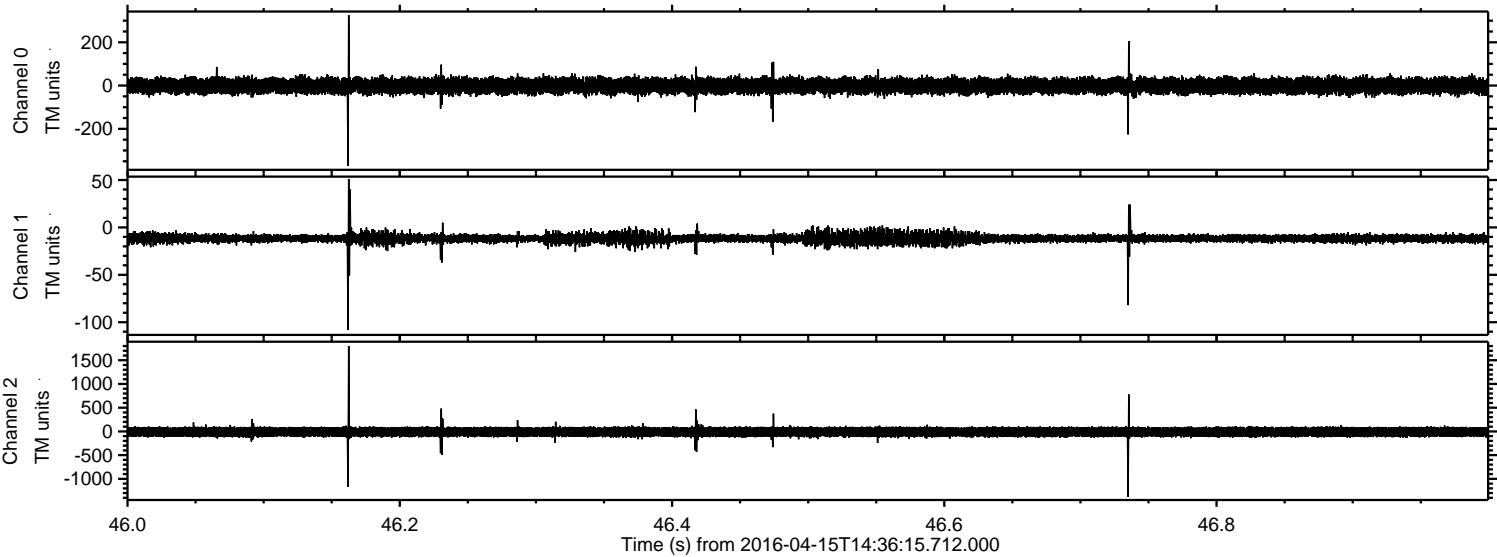
Processed Sun May 8 15:23:27 2016 by ELM ver.2012-10-06 from 001__elm20160415_143614__dat00.bin



Processed Sun May 8 15:23:28 2016 by ELM ver.2012-10-06 from 001__elm20160415_143614__dat00.bin

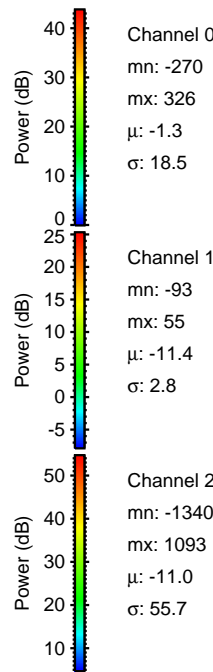
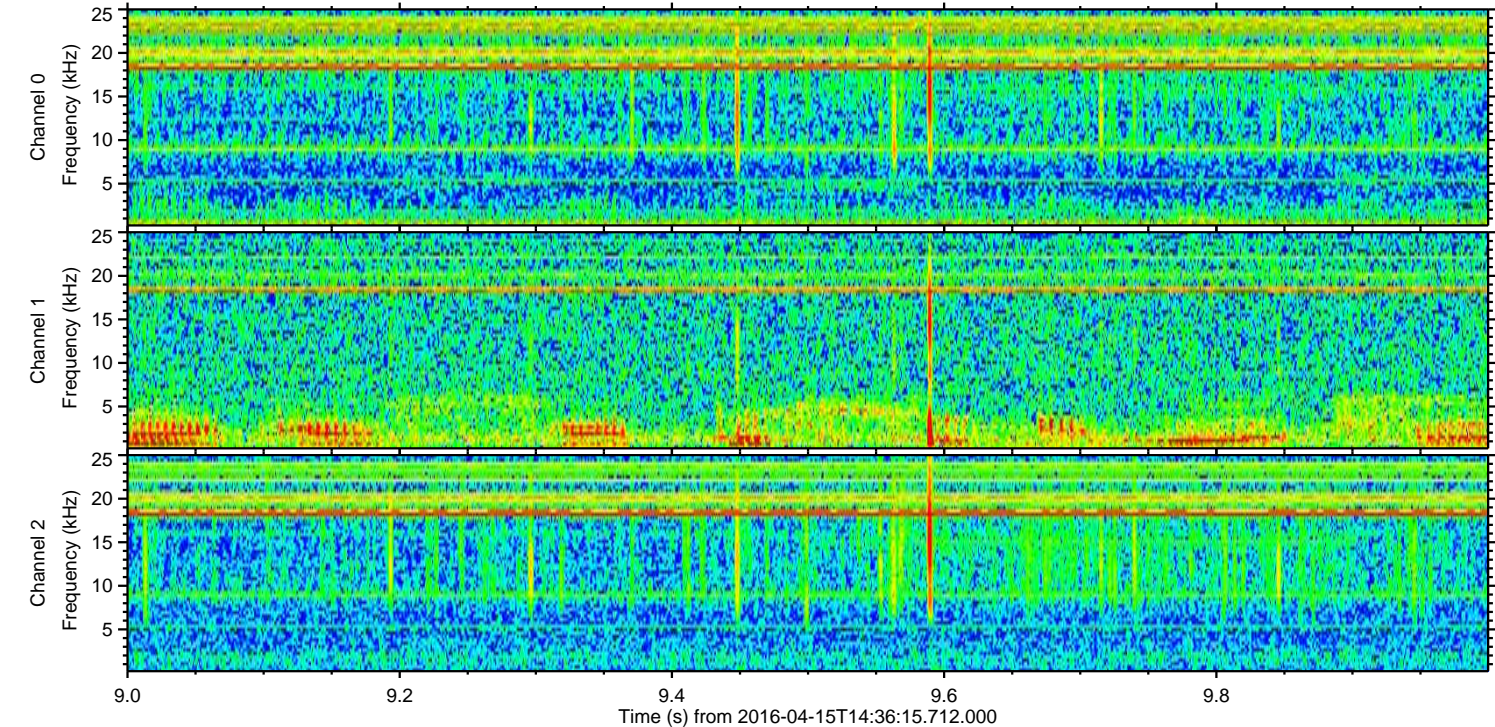
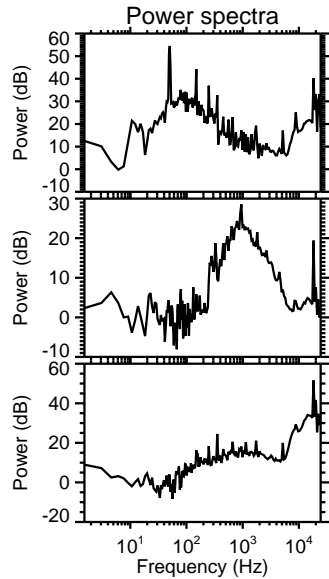
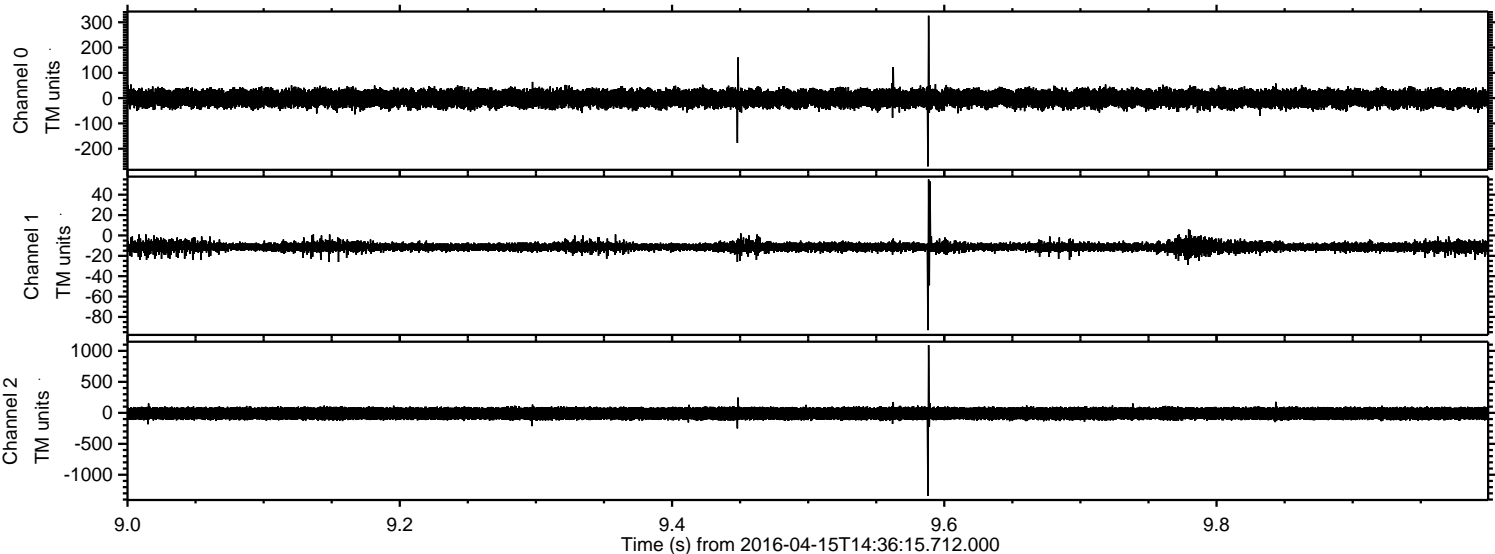


Processed Sun May 8 15:23:29 2016 by ELM ver.2012-10-06 from 001__elm20160415_143614__dat00.bin

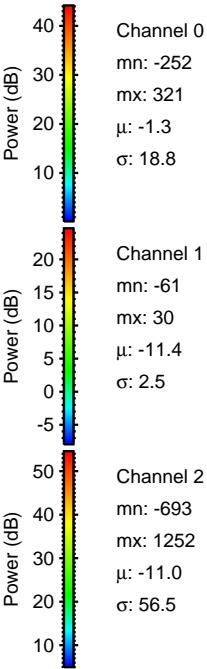
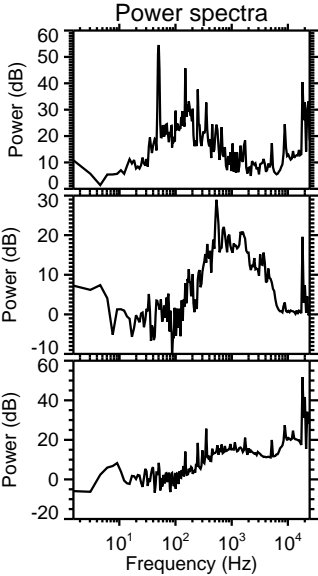
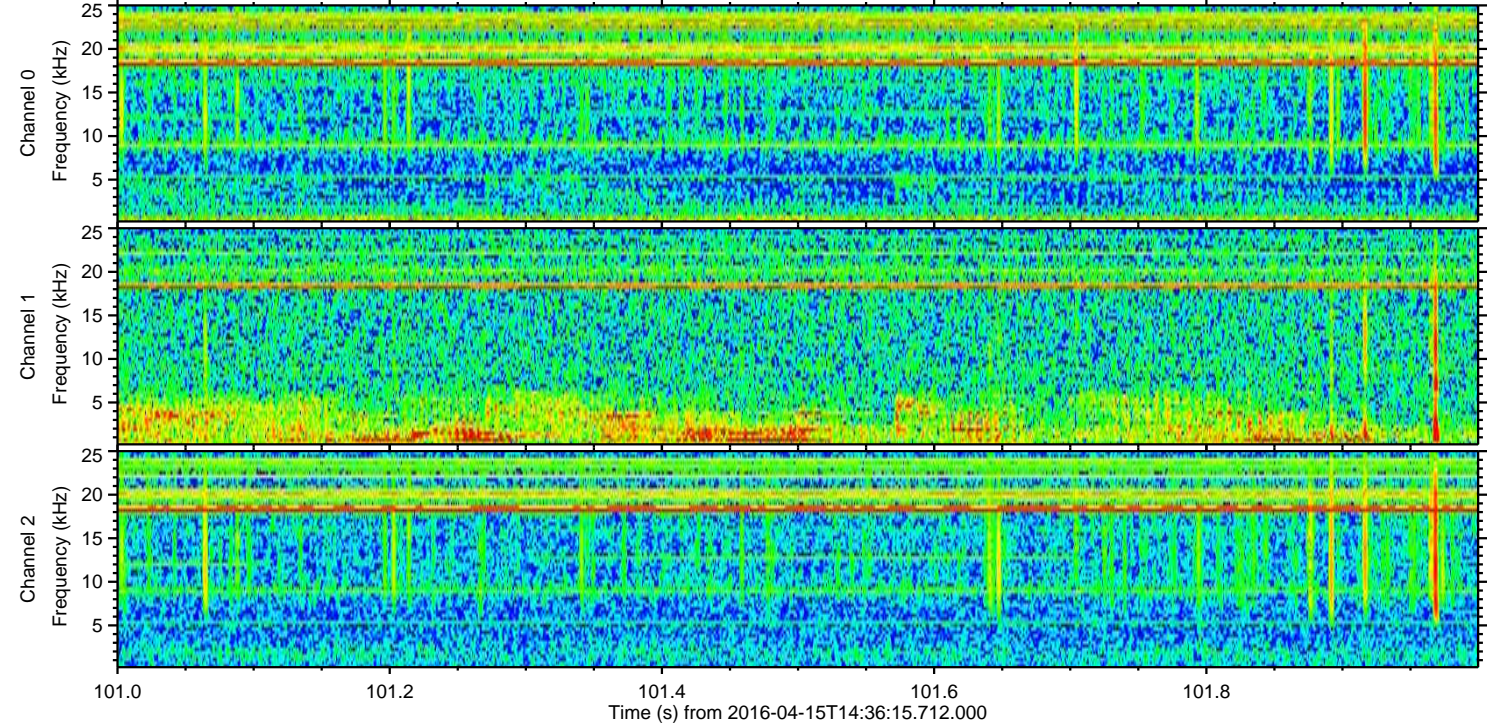
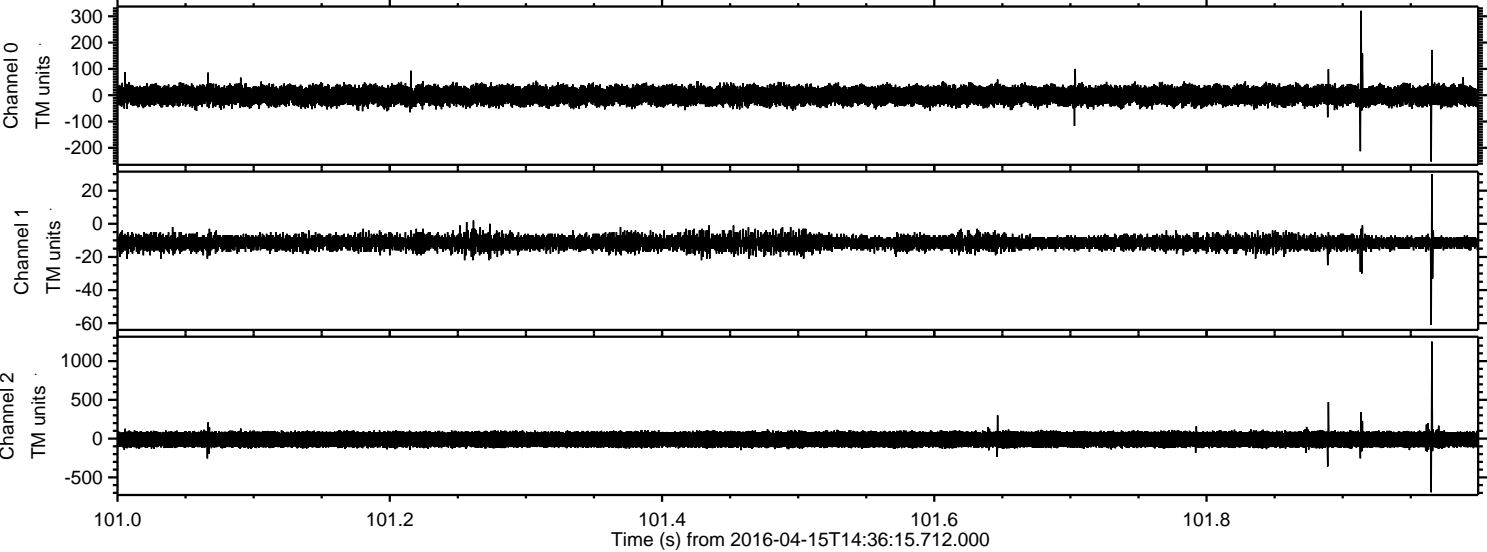


ELMAVAN 3D WAVEFORMS (Measured data sampled at 50 kHz) 51000 packets of 144 samples from 2016-04-15T14:36:15.712.000. Part 10/147

Processed Sun May 8 15:23:30 2016 by ELM ver.2012-10-06 from 001__elm20160415_143614__dat00.bin



Processed Sun May 8 15:23:31 2016 by ELM ver.2012-10-06 from 001__elm20160415_143614__dat00.bin



Channel 0
mn: -252
mx: 321
 μ : -1.3
 σ : 18.8

Channel 1
mn: -61
mx: 30
 μ : -11.4
 σ : 2.5

Channel 2
mn: -693
mx: 1252
 μ : -11.0
 σ : 56.5

Processed Sun May 8 15:23:32 2016 by ELM ver.2012-10-06 from 001__elm20160415_143614__dat00.bin

