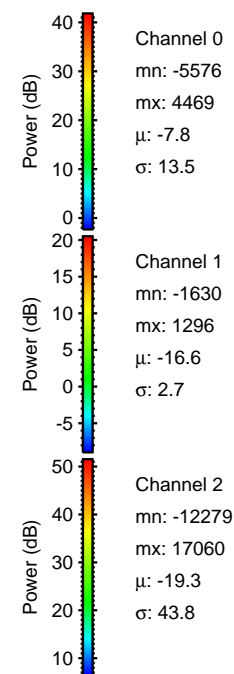
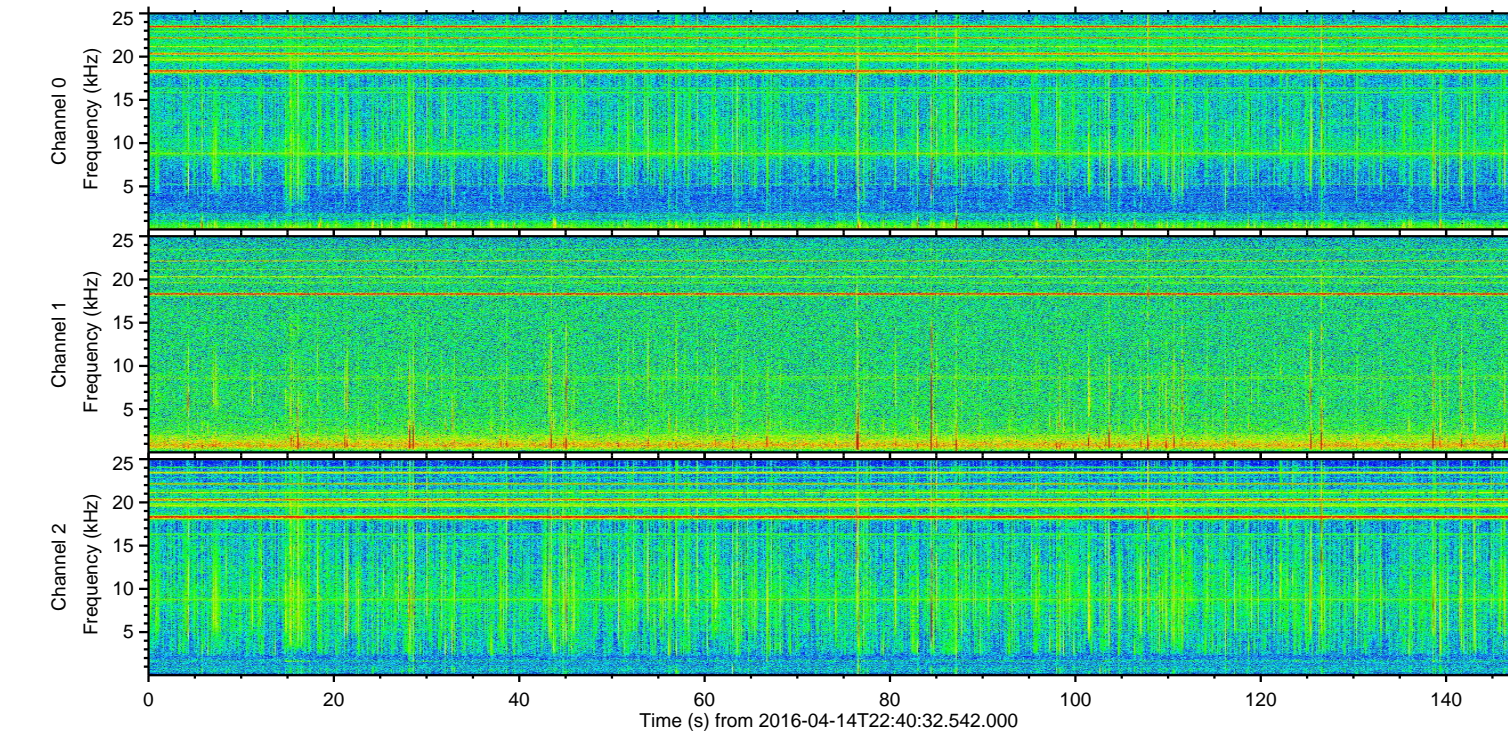
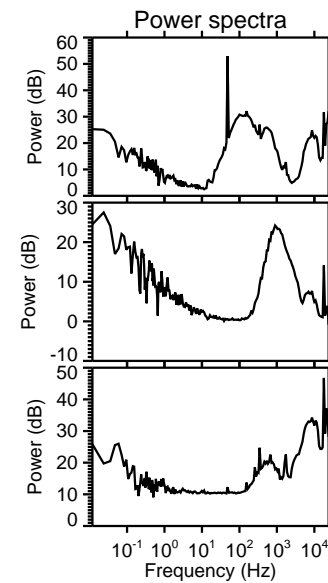
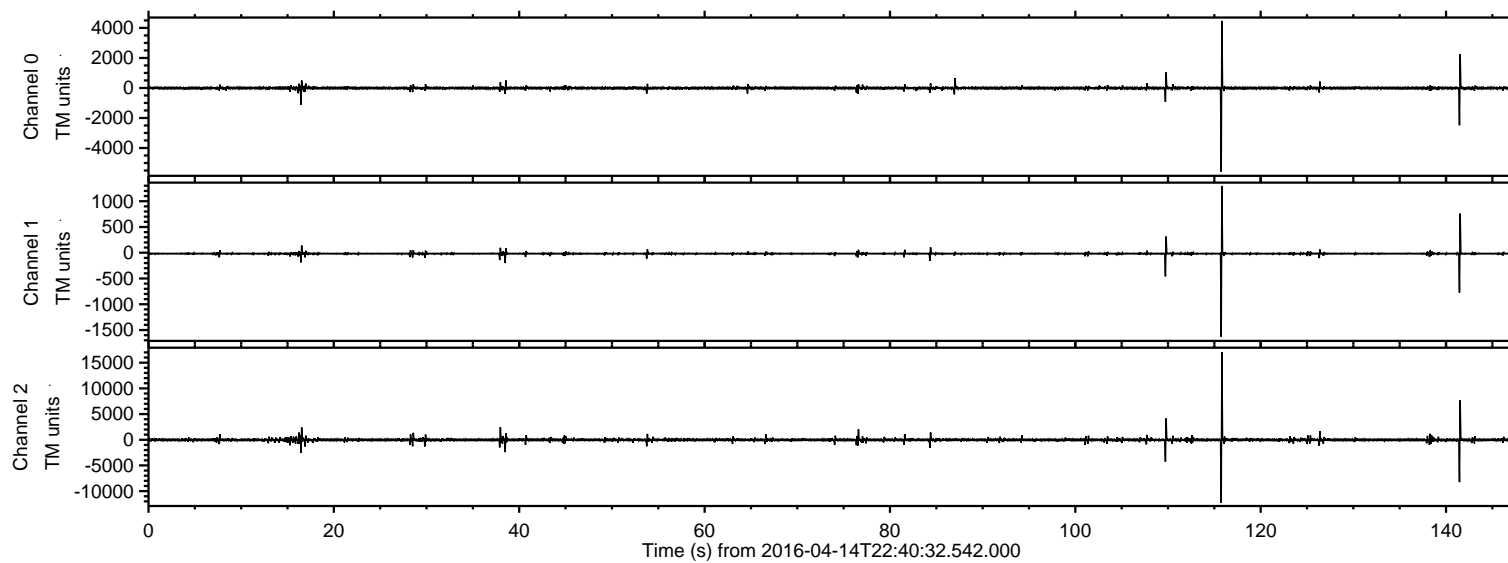


ELMAVAN 3D WAVEFORMS (Measured data sampled at 50 kHz) 51000 packets of 144 samples from 2016-04-14T22:40:32.542.000.

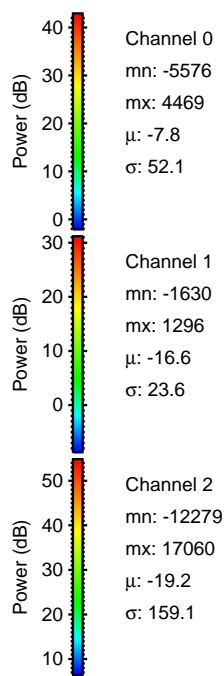
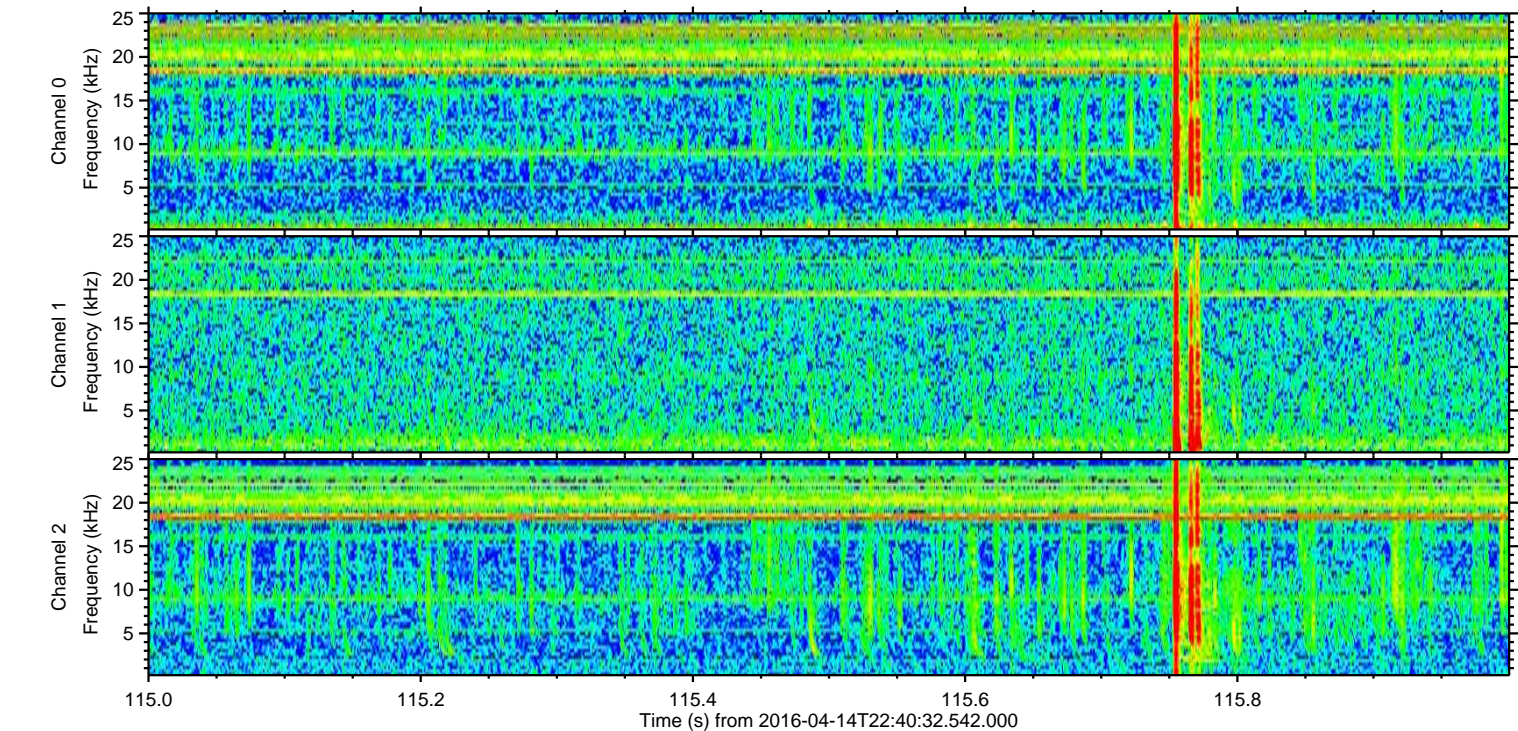
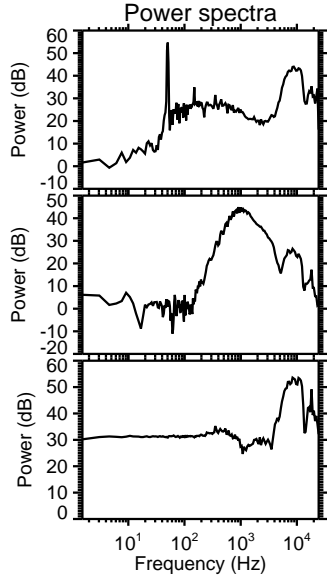
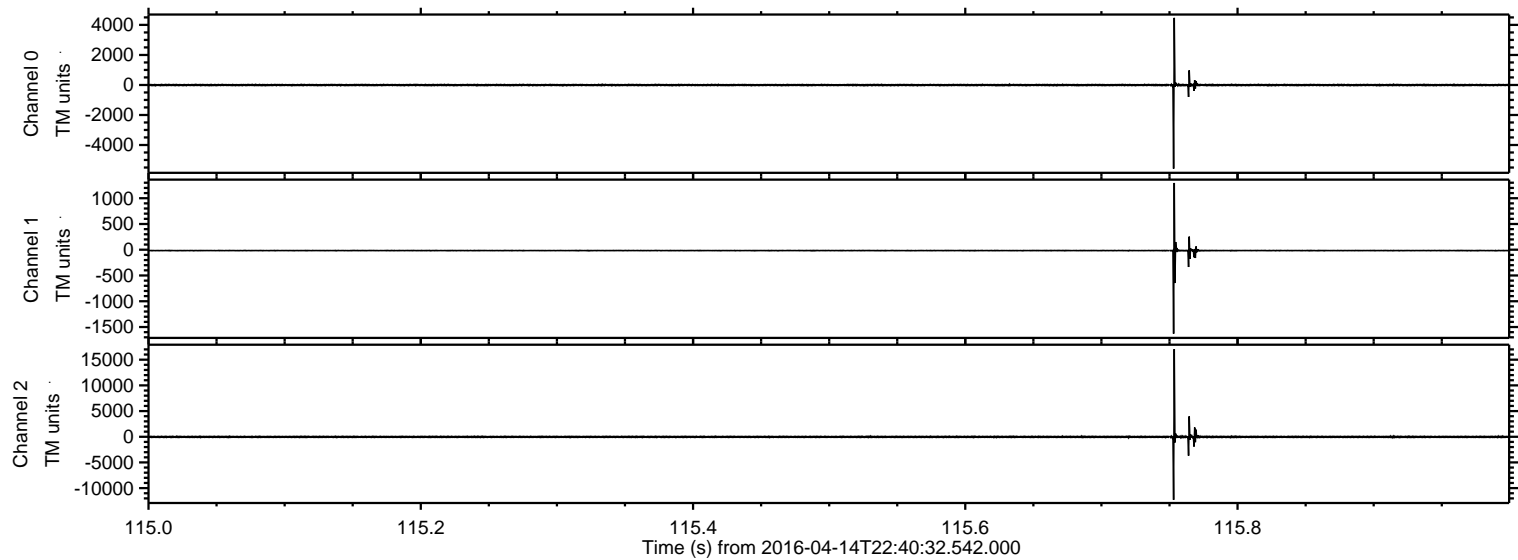
Processed Sun May 8 12:03:43 2016 by ELM ver.2012-10-06 from 001\_\_elm20160414\_224031\_\_dat00.bin





ELMAVAN 3D WAVEFORMS (Measured data sampled at 50 kHz) 51000 packets of 144 samples from 2016-04-14T22:40:32.542.000. Part 116/147

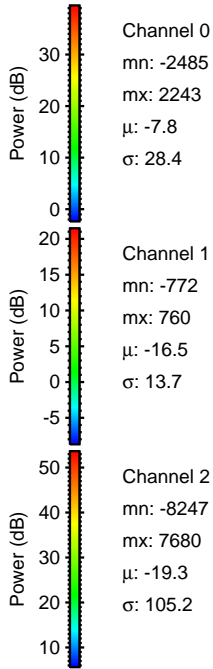
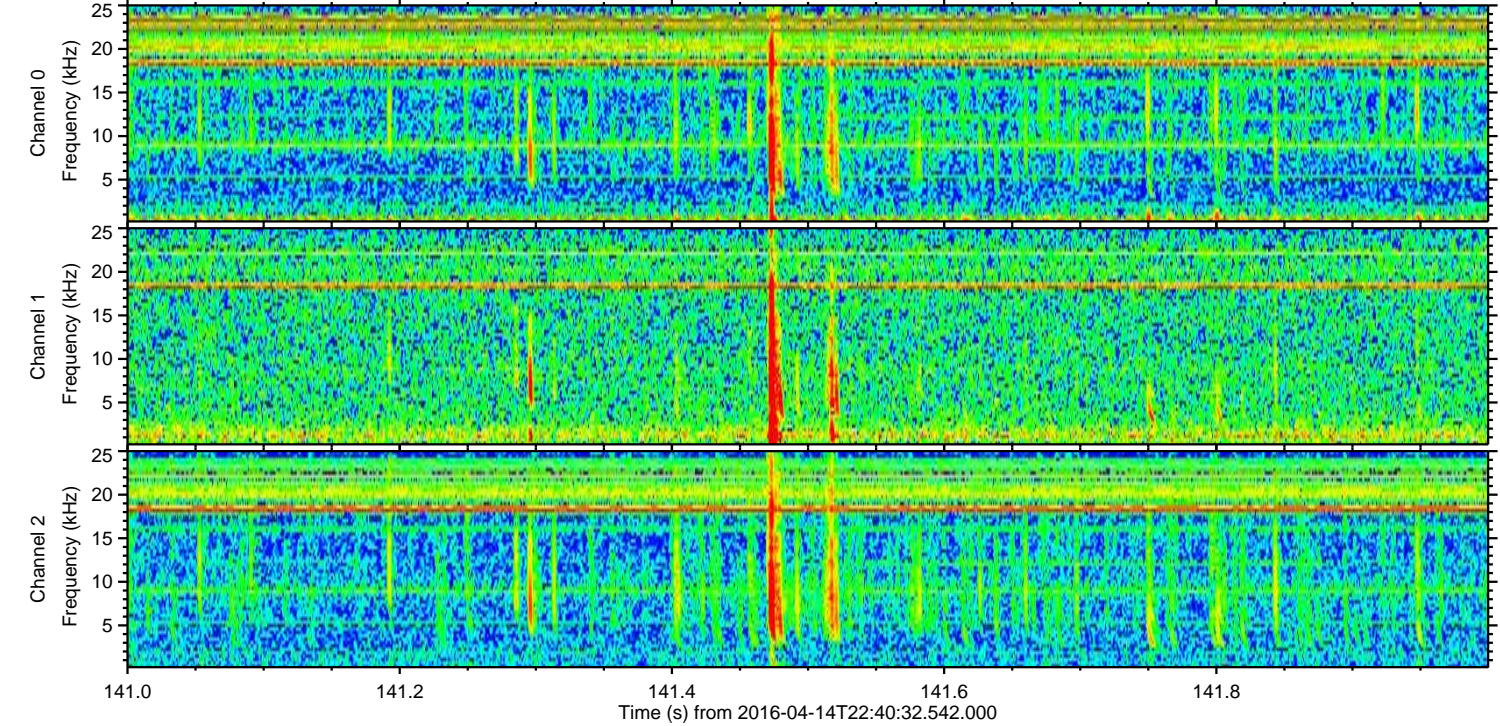
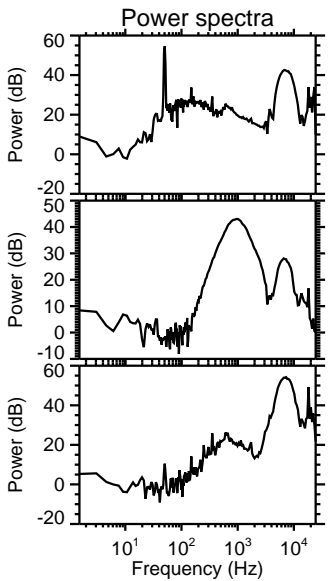
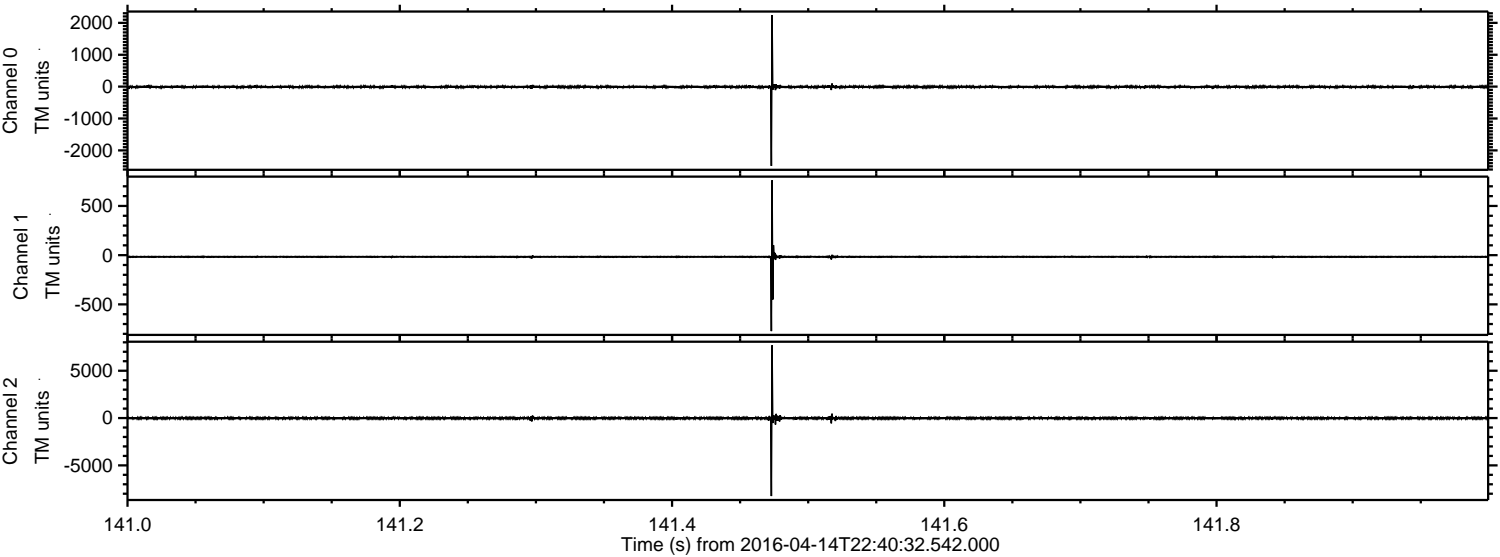
Processed Sun May 8 12:03:54 2016 by ELM ver.2012-10-06 from 001\_\_elm20160414\_224031\_\_dat00.bin





ELMAVAN 3D WAVEFORMS (Measured data sampled at 50 kHz) 51000 packets of 144 samples from 2016-04-14T22:40:32.542.000. Part 142/147

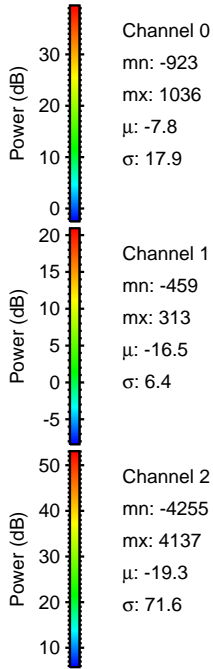
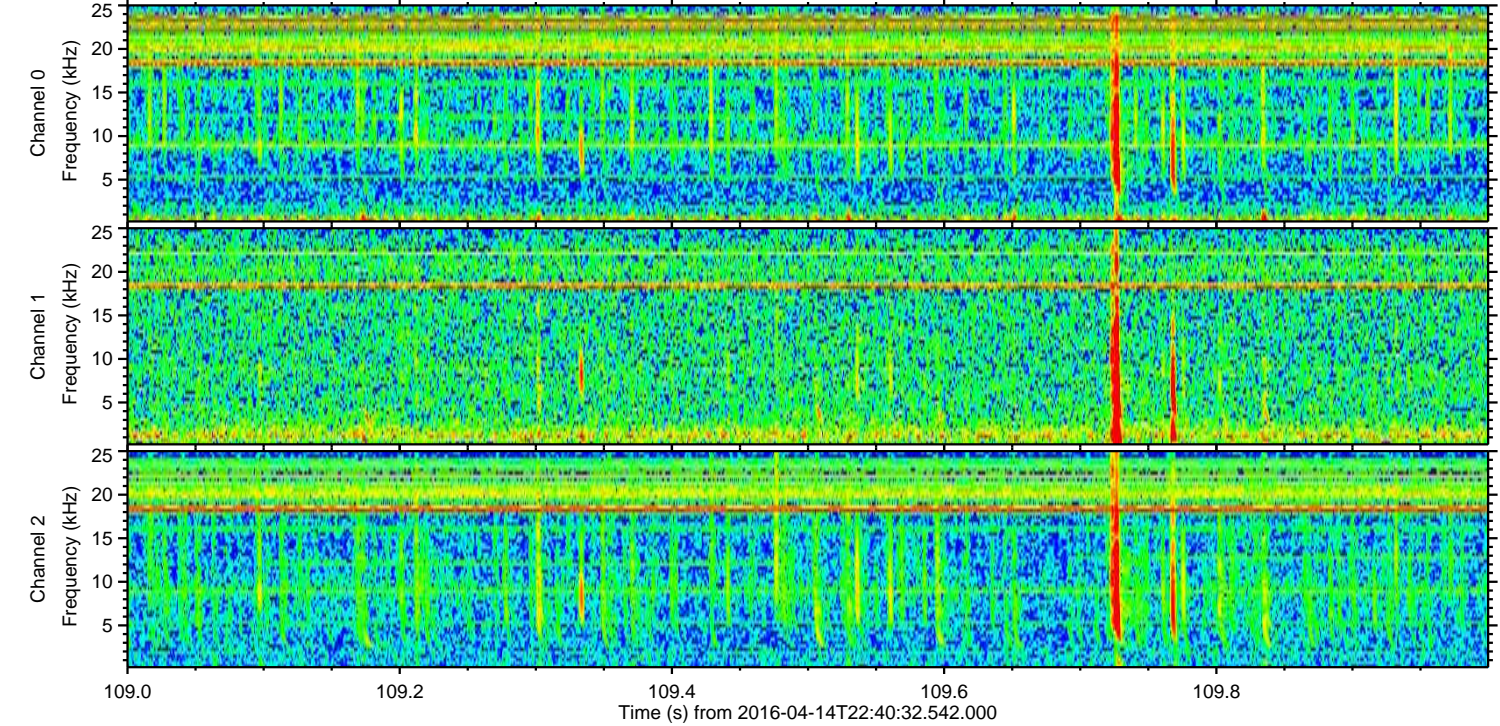
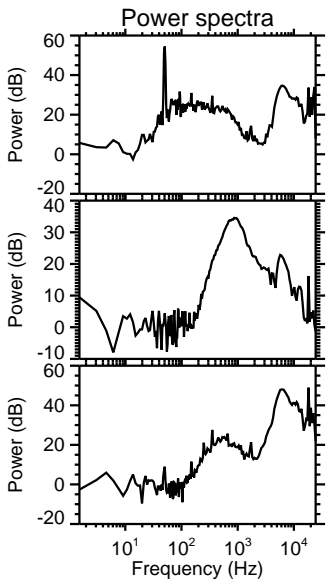
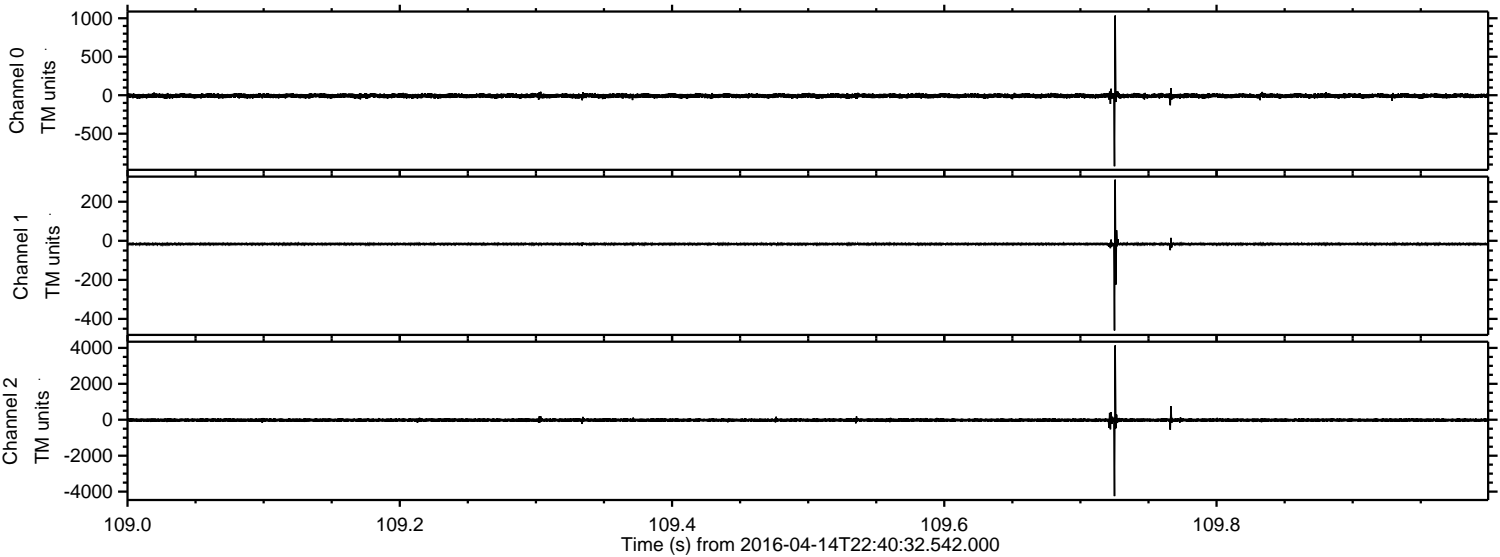
Processed Sun May 8 12:03:55 2016 by ELM ver.2012-10-06 from 001\_\_elm20160414\_224031\_\_dat00.bin





ELMAVAN 3D WAVEFORMS (Measured data sampled at 50 kHz) 51000 packets of 144 samples from 2016-04-14T22:40:32.542.000. Part 110/147

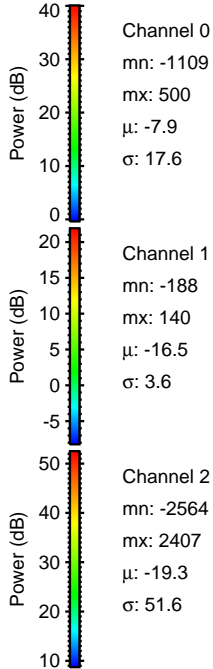
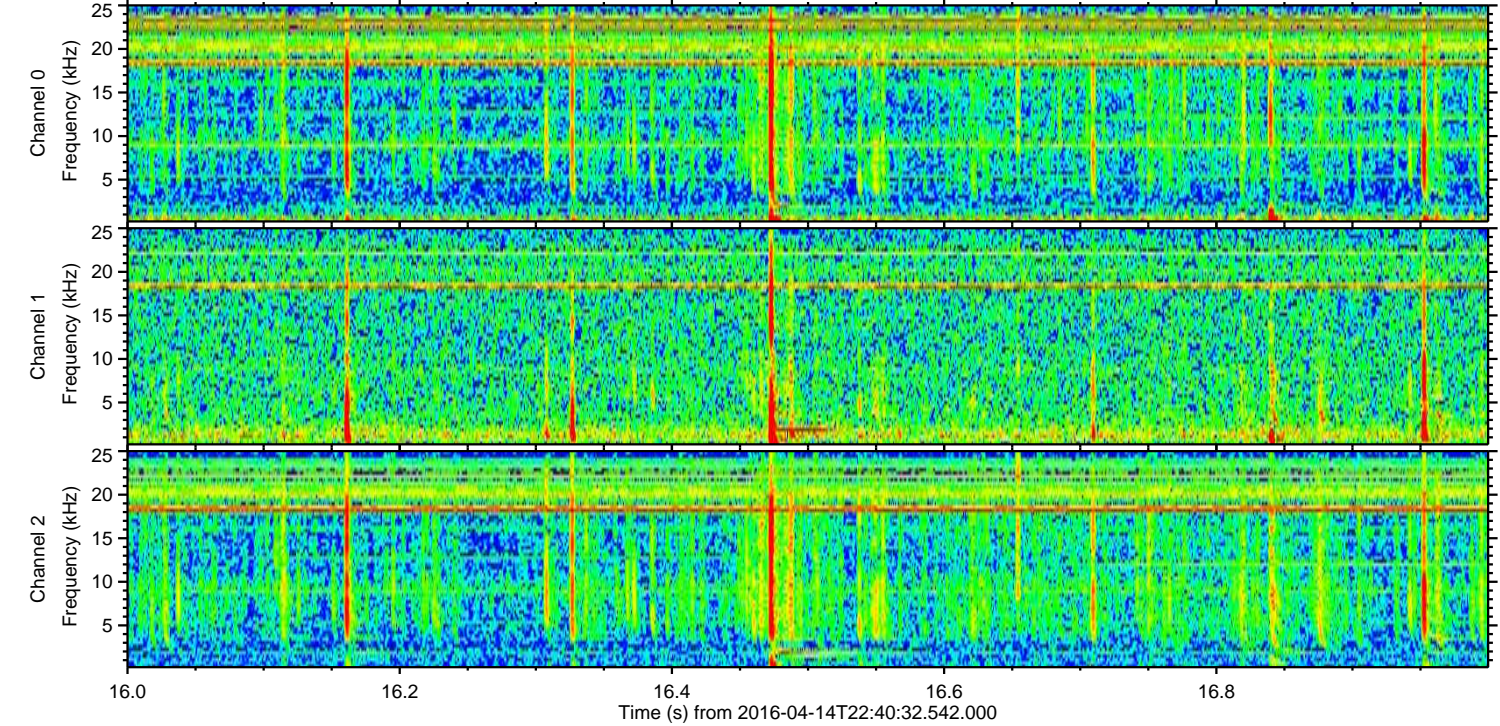
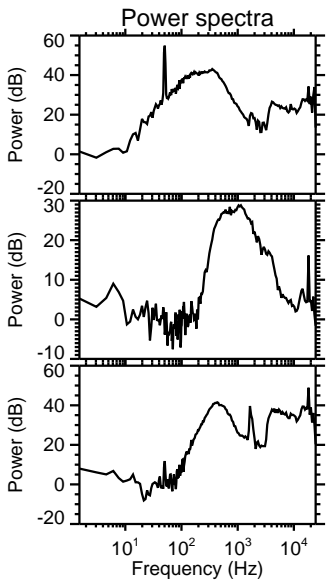
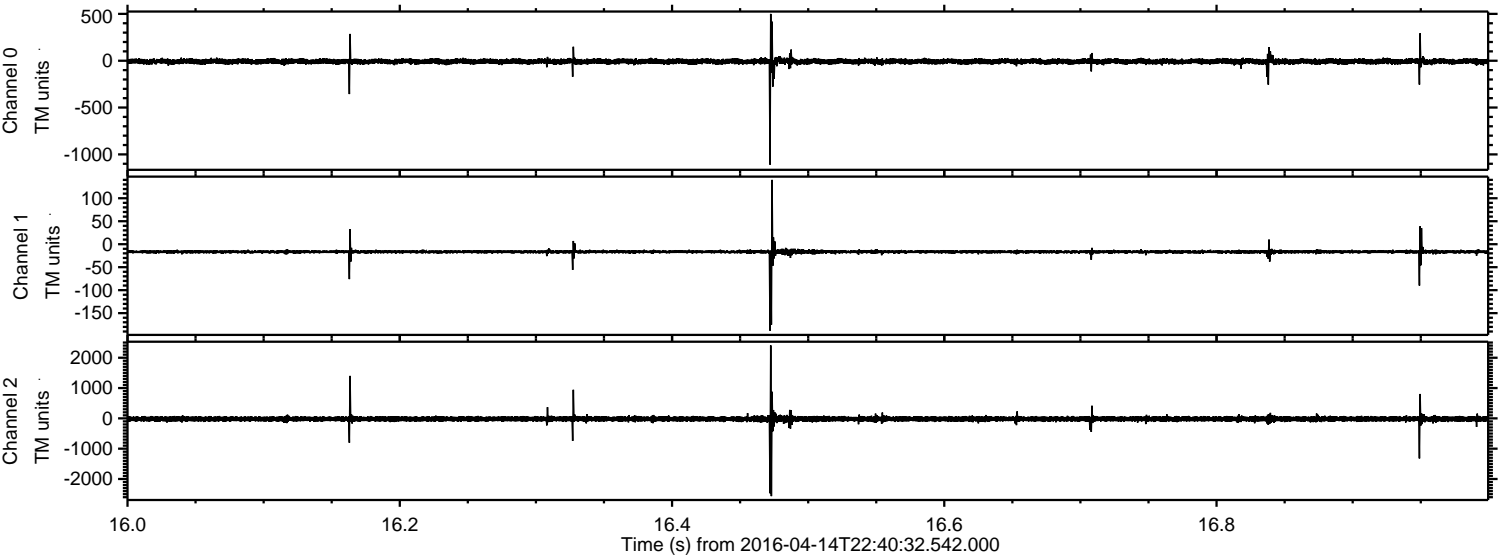
Processed Sun May 8 12:03:56 2016 by ELM ver.2012-10-06 from 001\_\_elm20160414\_224031\_\_dat00.bin





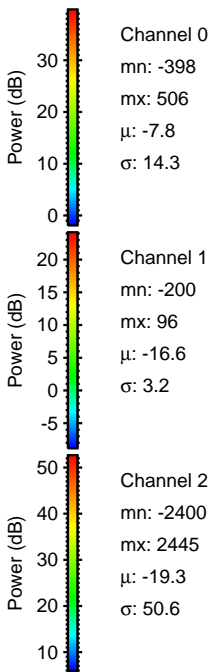
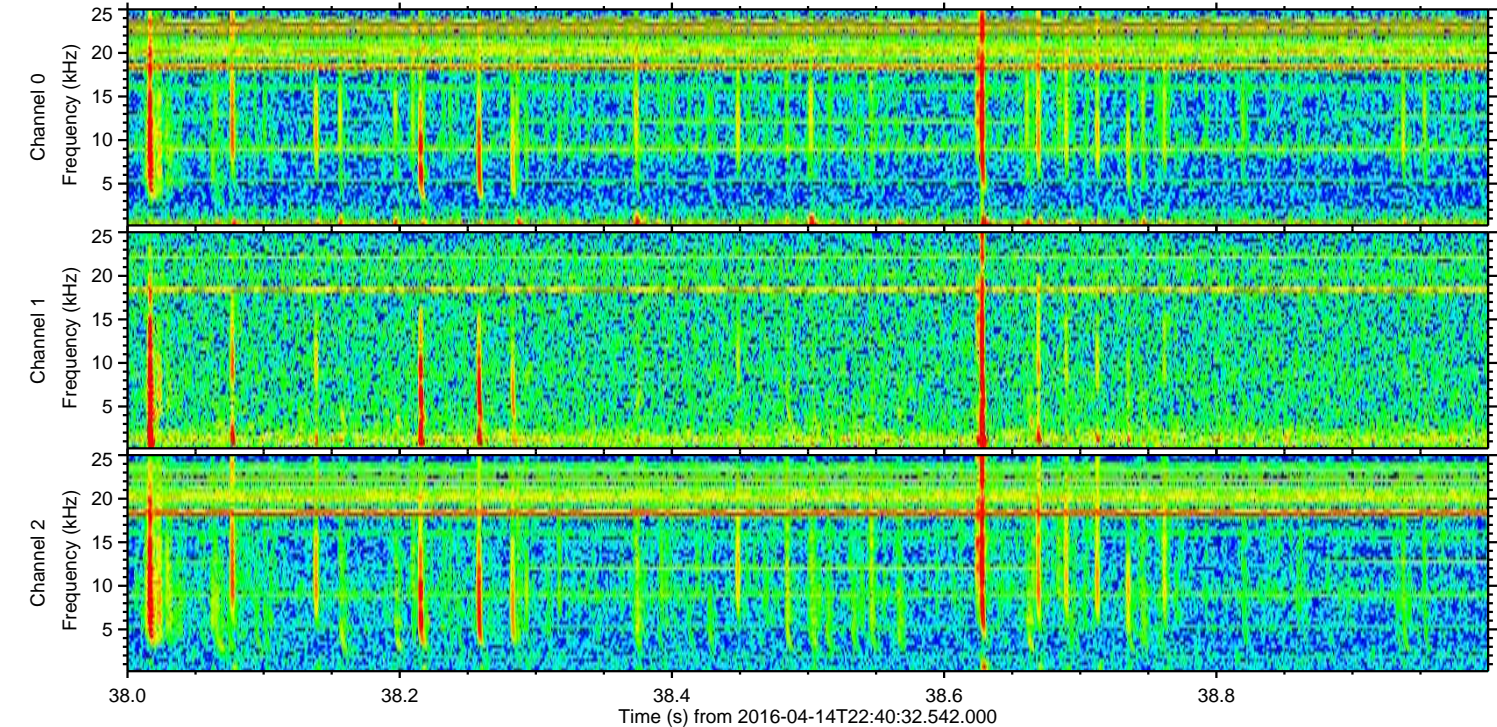
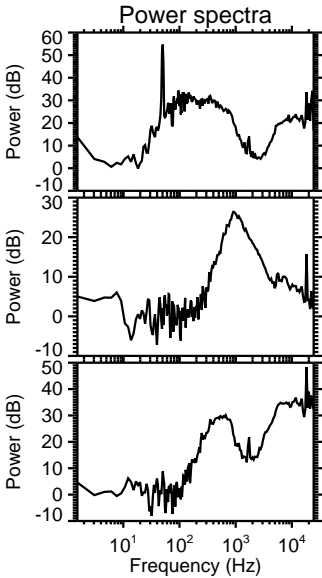
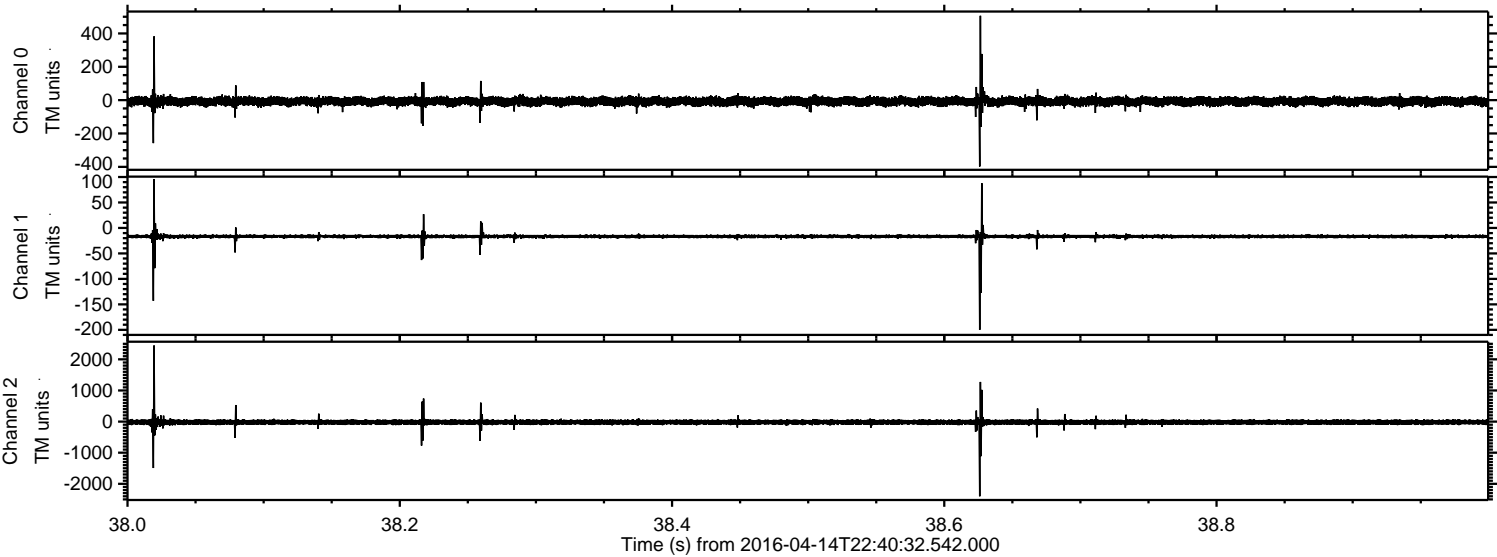
ELMAVAN 3D WAVEFORMS (Measured data sampled at 50 kHz) 51000 packets of 144 samples from 2016-04-14T22:40:32.542.000. Part 17/147

Processed Sun May 8 12:03:57 2016 by ELM ver.2012-10-06 from 001\_\_elm20160414\_224031\_\_dat00.bin



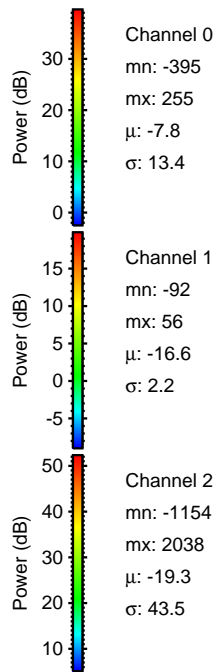
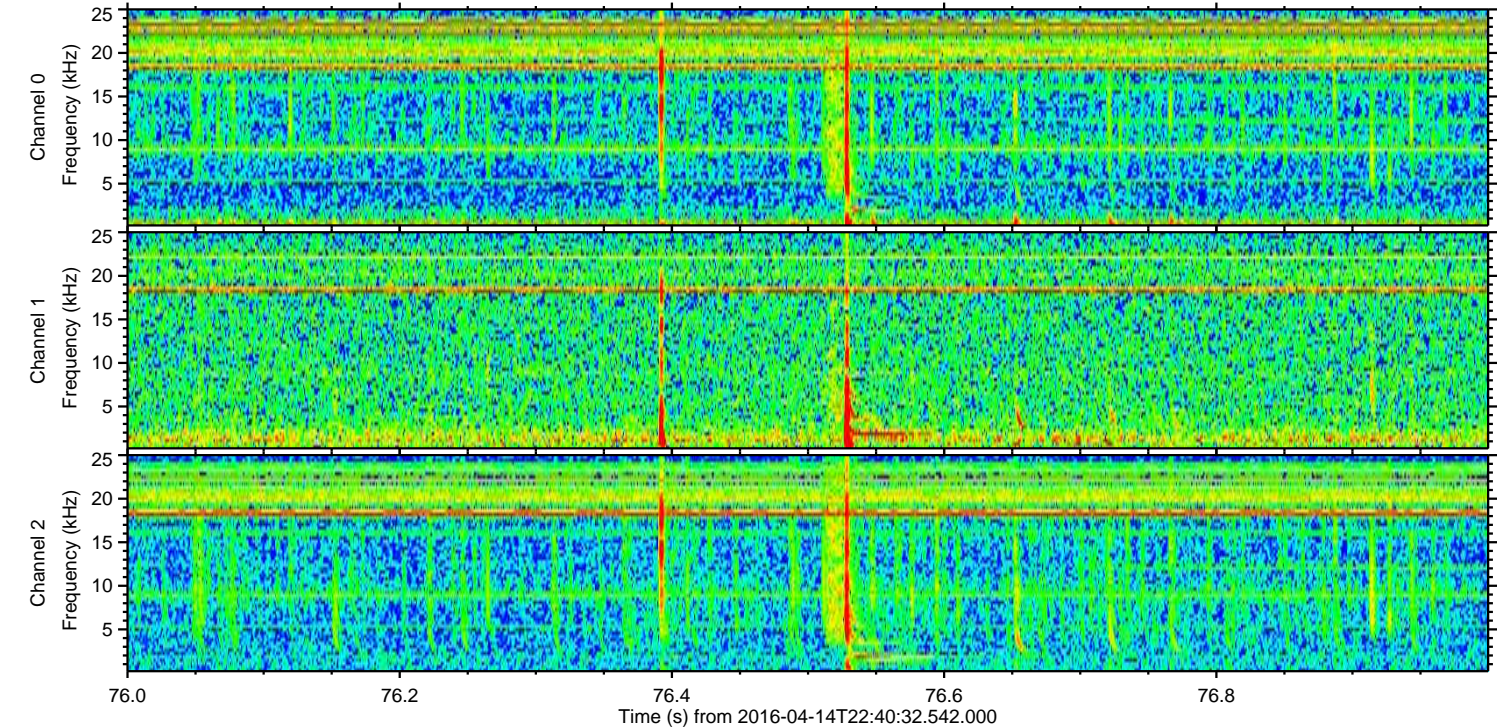
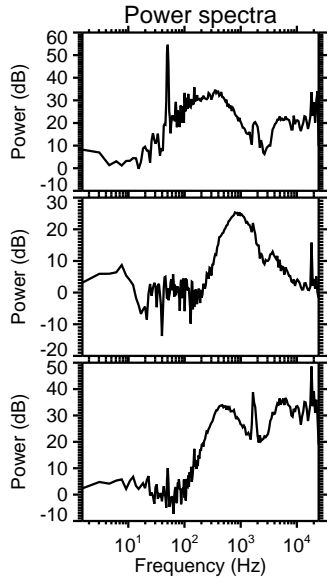
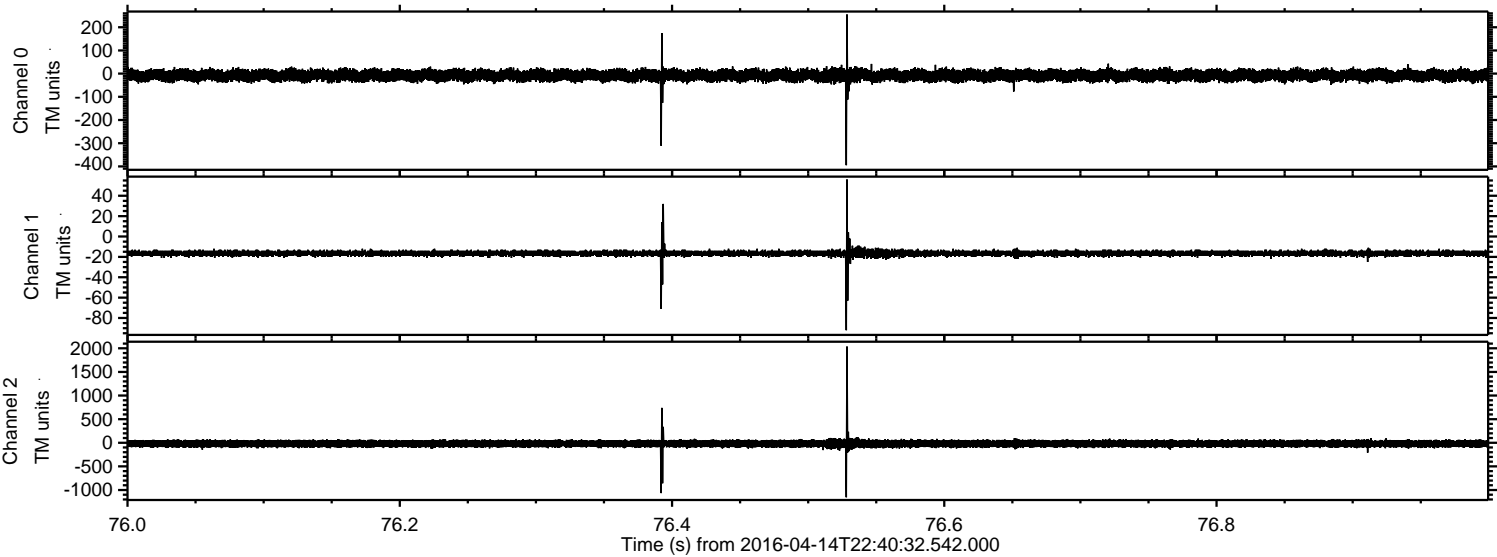


Processed Sun May 8 12:03:58 2016 by ELM ver.2012-10-06 from 001\_\_elm20160414\_224031\_\_dat00.bin





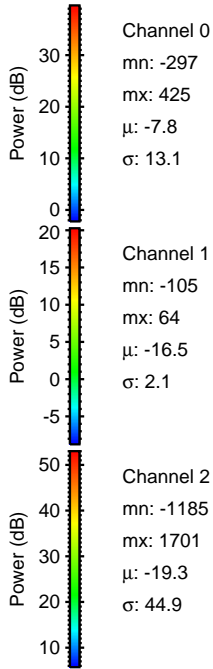
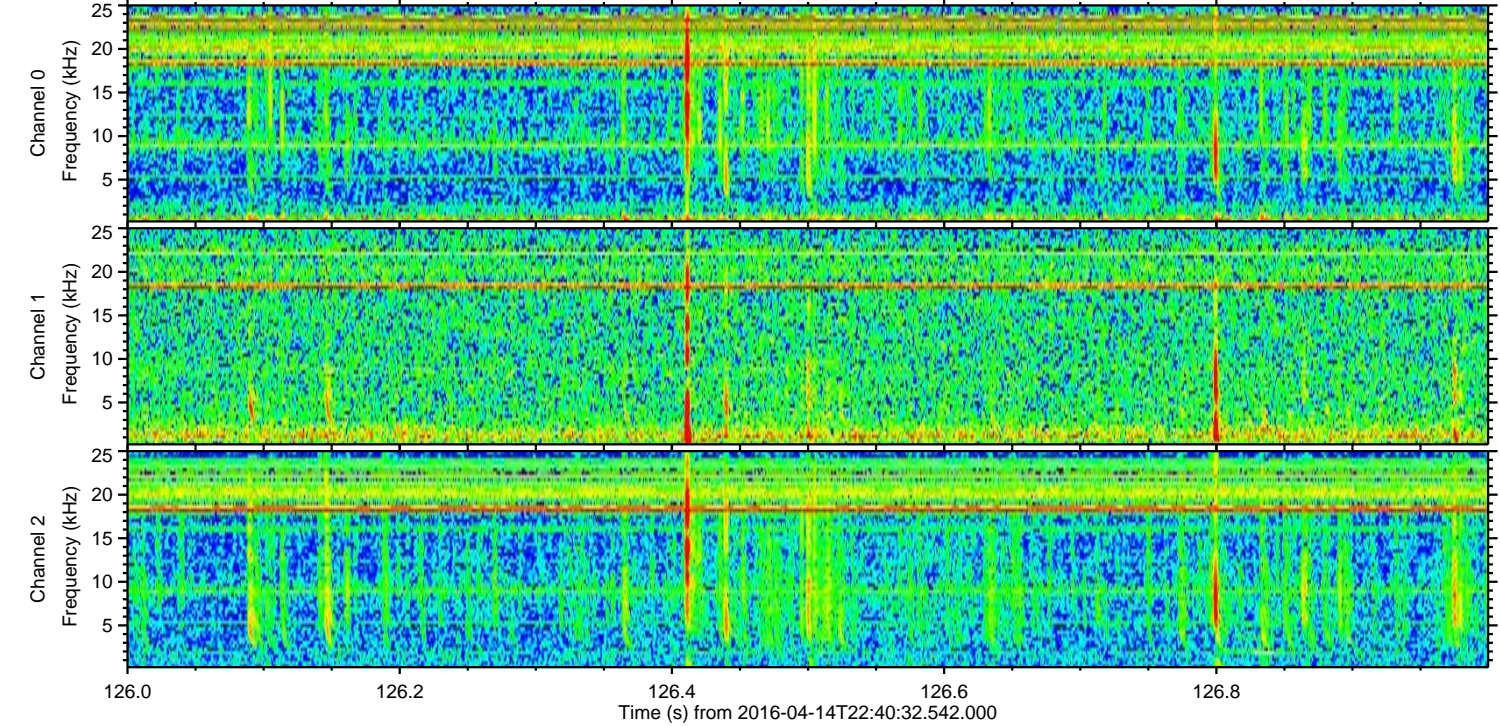
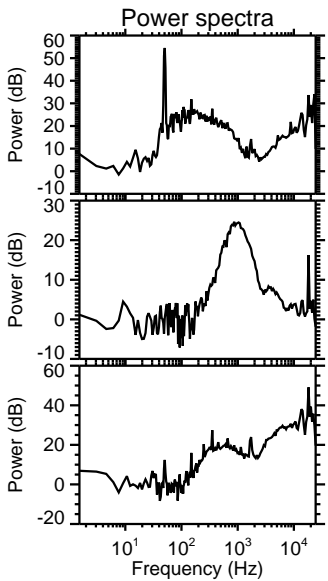
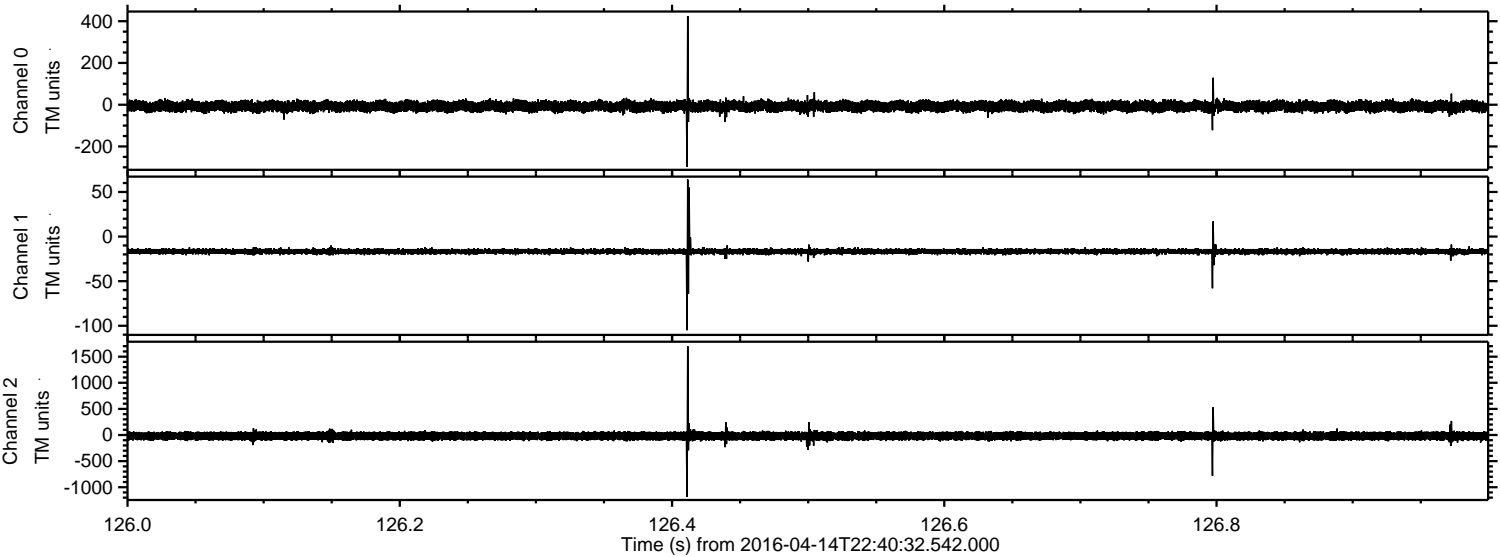
Processed Sun May 8 12:03:59 2016 by ELM ver.2012-10-06 from 001\_\_elm20160414\_224031\_\_dat00.bin





ELMAVAN 3D WAVEFORMS (Measured data sampled at 50 kHz) 51000 packets of 144 samples from 2016-04-14T22:40:32.542.000. Part 127/147

Processed Sun May 8 12:04:00 2016 by ELM ver.2012-10-06 from 001\_\_elm20160414\_224031\_\_dat00.bin



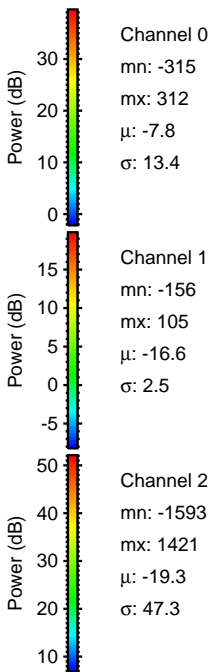
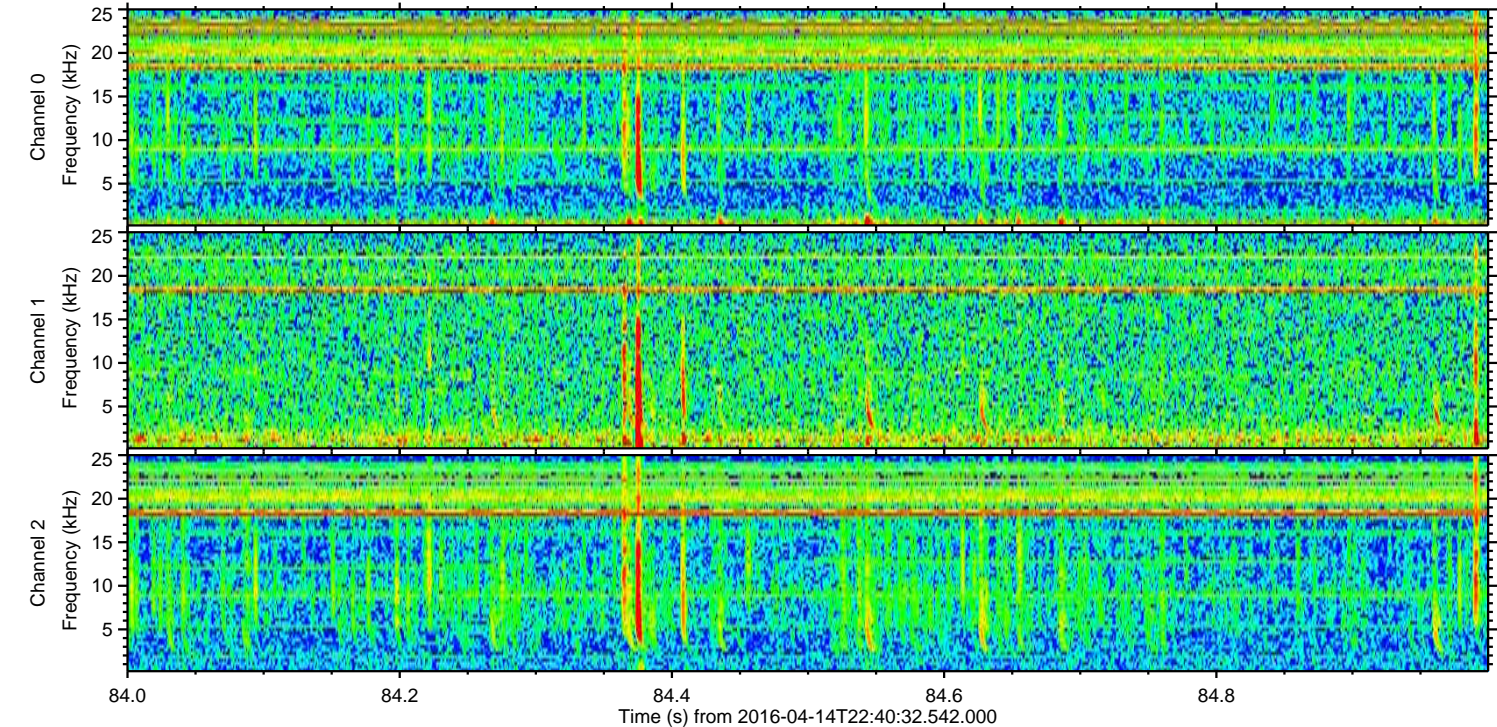
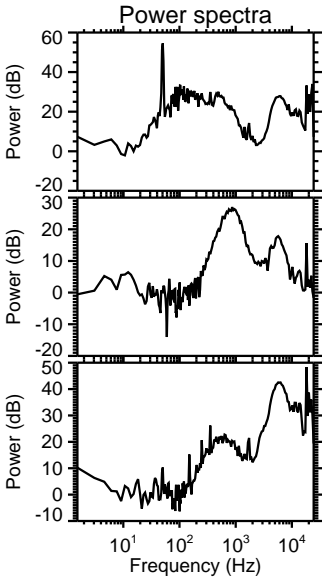
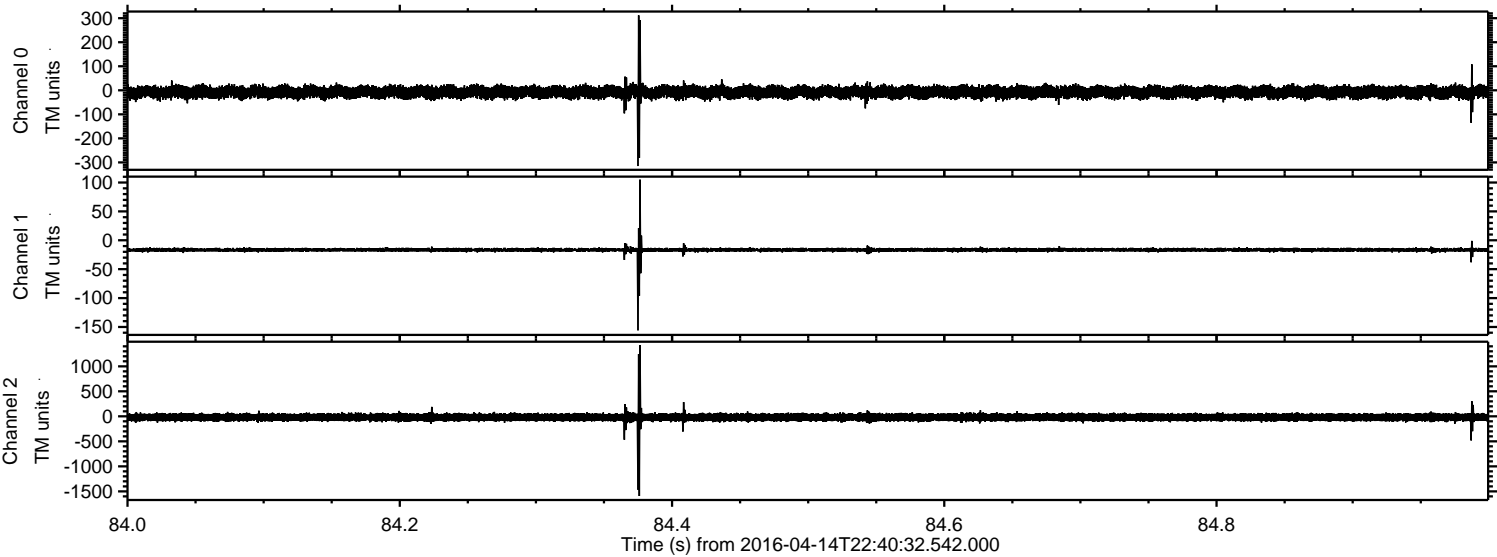
Channel 0  
mn: -297  
mx: 425  
 $\mu$ : -7.8  
 $\sigma$ : 13.1

Channel 1  
mn: -105  
mx: 64  
 $\mu$ : -16.5  
 $\sigma$ : 2.1

Channel 2  
mn: -1185  
mx: 1701  
 $\mu$ : -19.3  
 $\sigma$ : 44.9

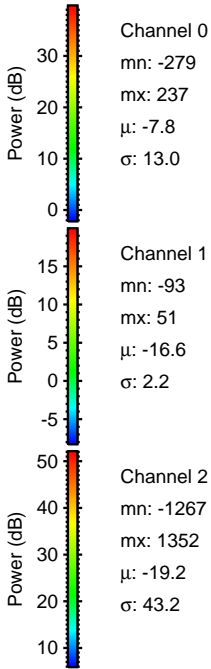
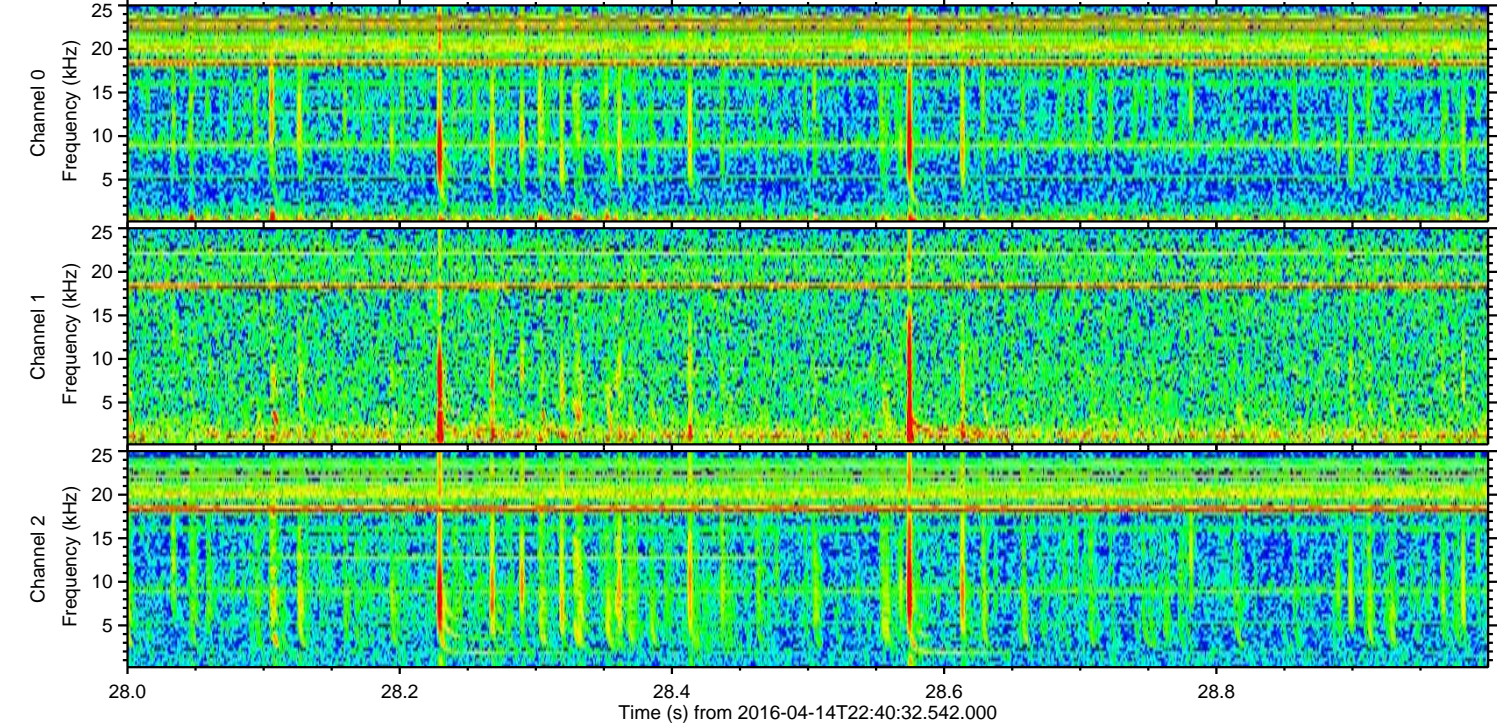
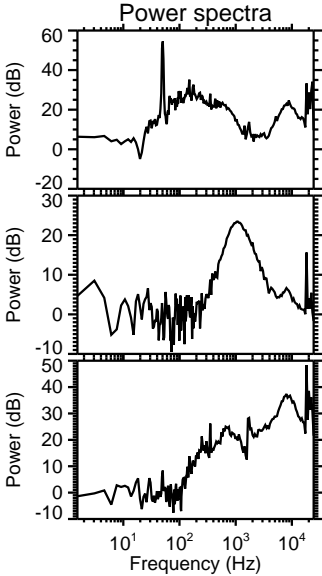
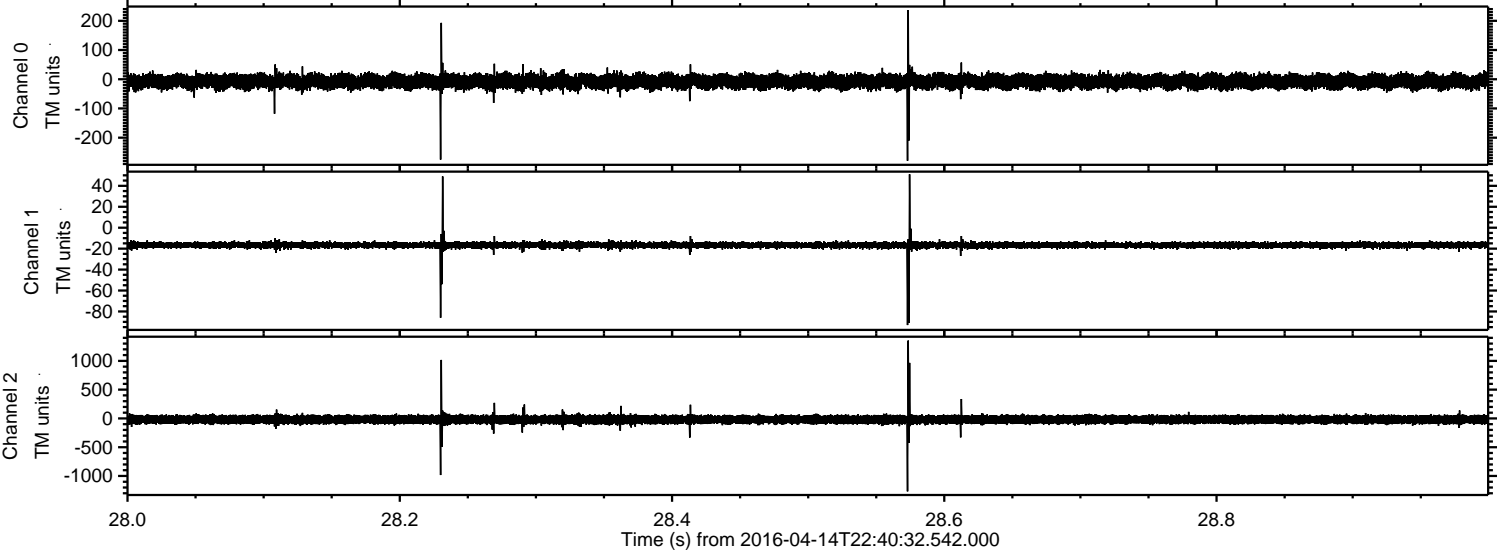


Processed Sun May 8 12:04:01 2016 by ELM ver.2012-10-06 from 001\_\_elm20160414\_224031\_\_dat00.bin





Processed Sun May 8 12:04:02 2016 by ELM ver.2012-10-06 from 001\_\_elm20160414\_224031\_\_dat00.bin





Processed Sun May 8 12:04:03 2016 by ELM ver.2012-10-06 from 001\_\_elm20160414\_224031\_\_dat00.bin

