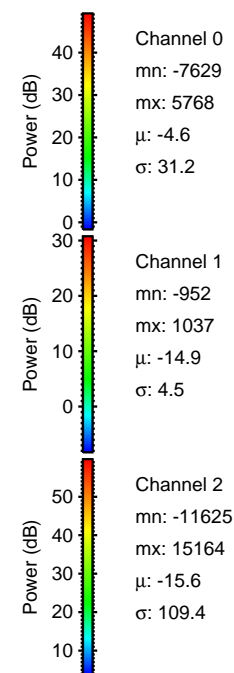
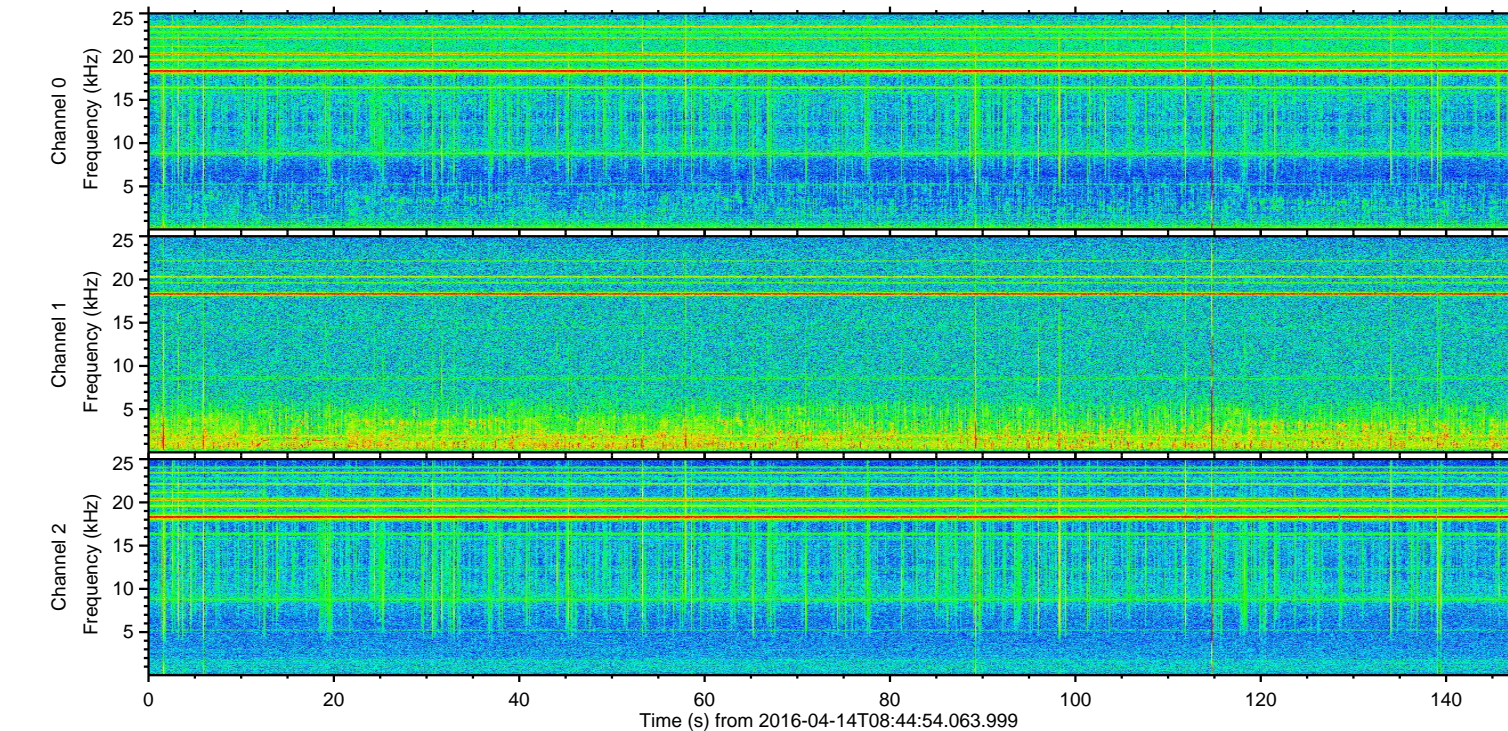
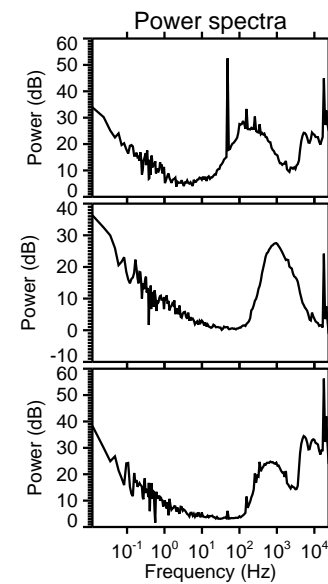
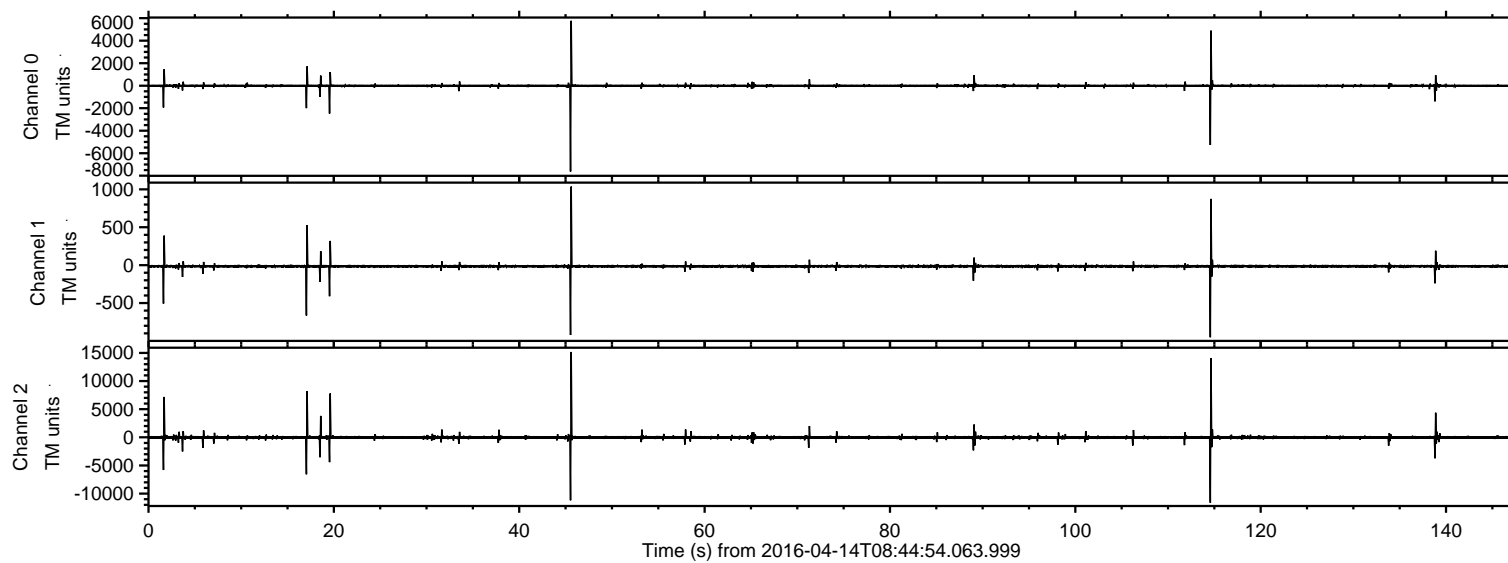


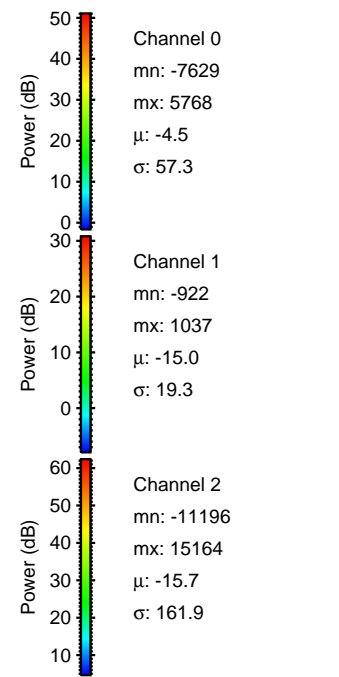
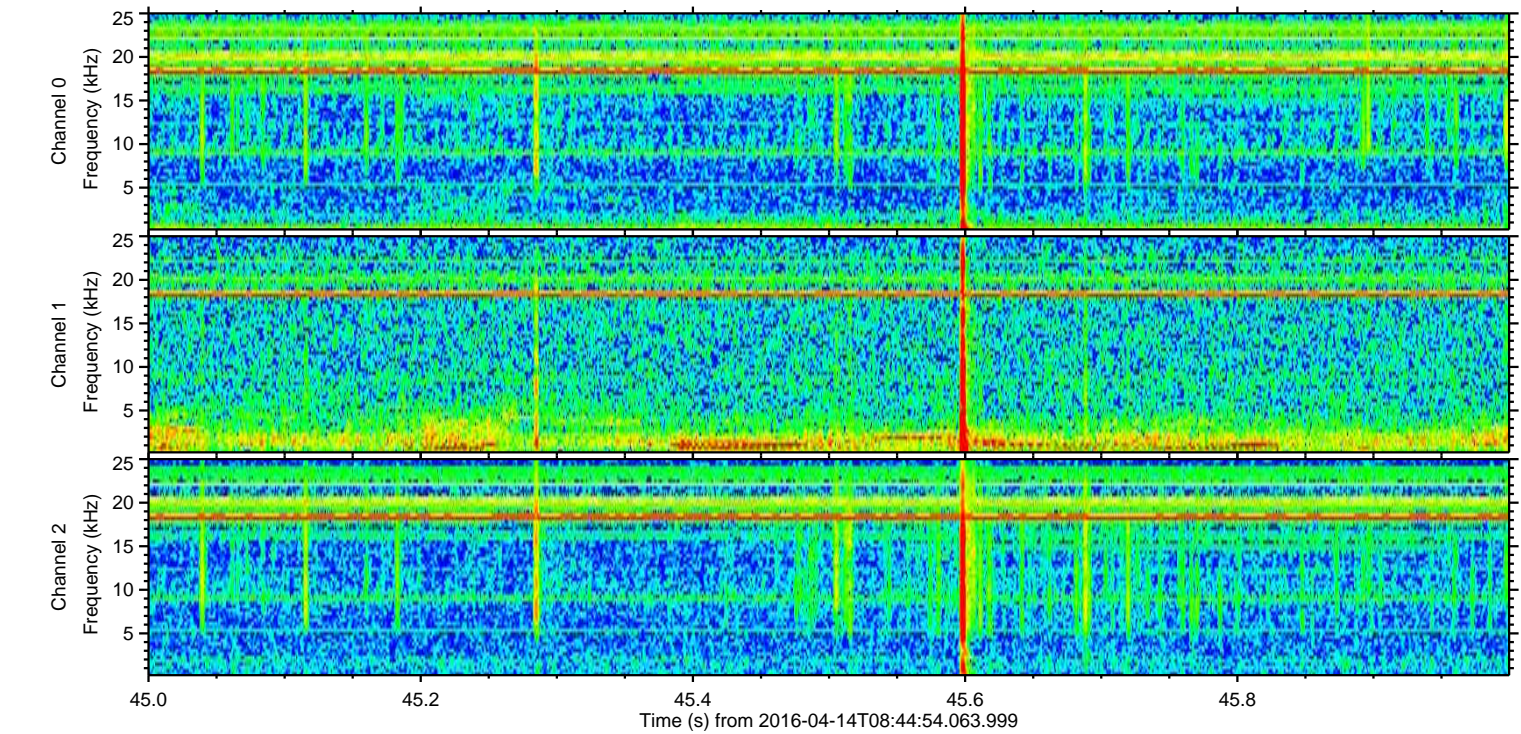
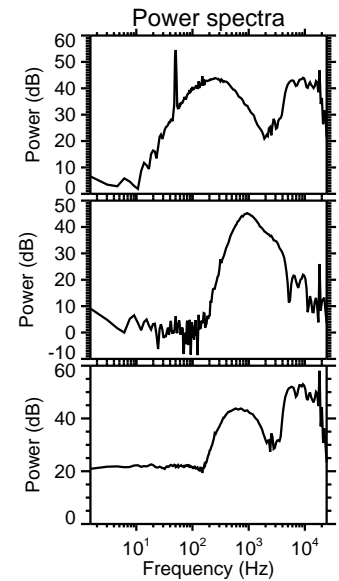
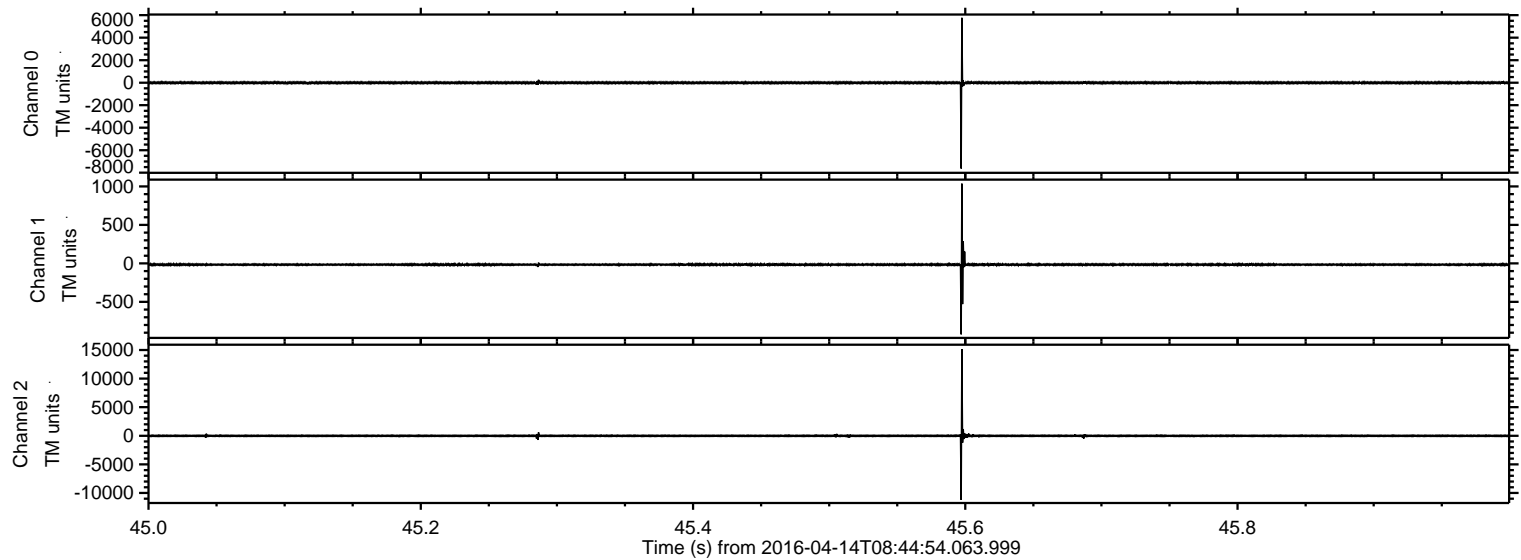
# ELMAVAN 3D WAVEFORMS (Measured data sampled at 50 kHz) 51000 packets of 144 samples from 2016-04-14T08:44:54.063.999.

Processed Sun May 8 09:06:05 2016 by ELM ver.2012-10-06 from 001\_\_elm20160414\_084453\_\_dat00.bin





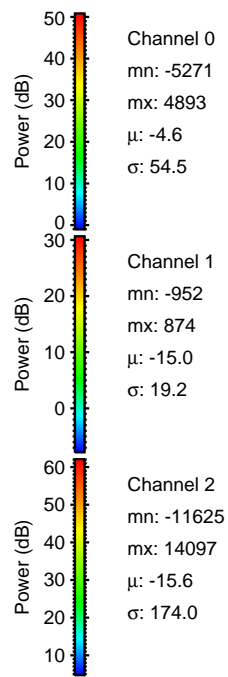
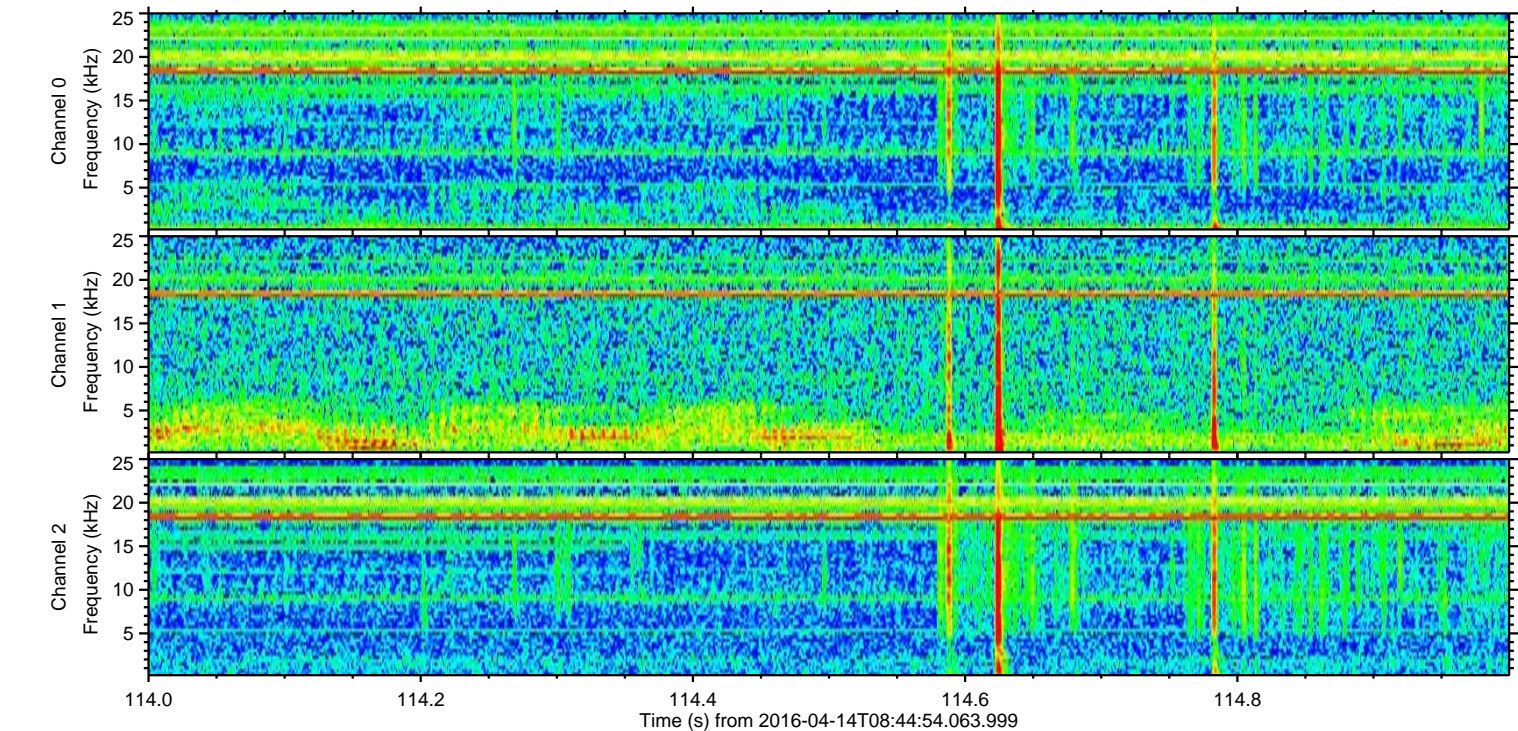
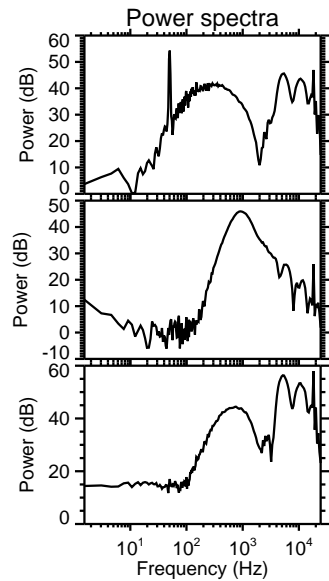
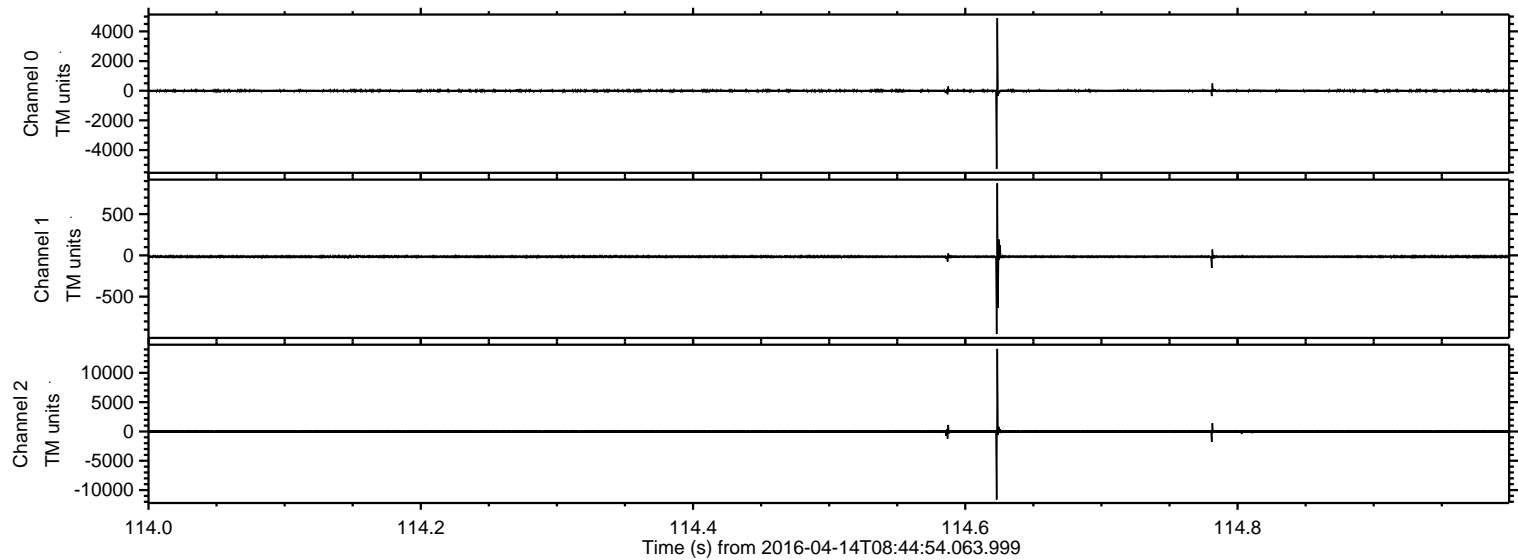
Processed Sun May 8 09:06:17 2016 by ELM ver.2012-10-06 from 001\_\_elm20160414\_084453\_\_dat00.bin





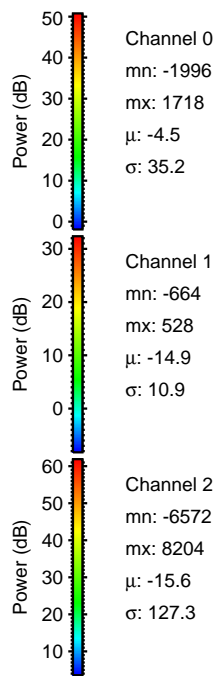
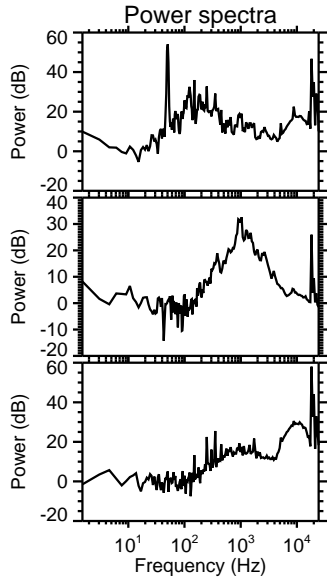
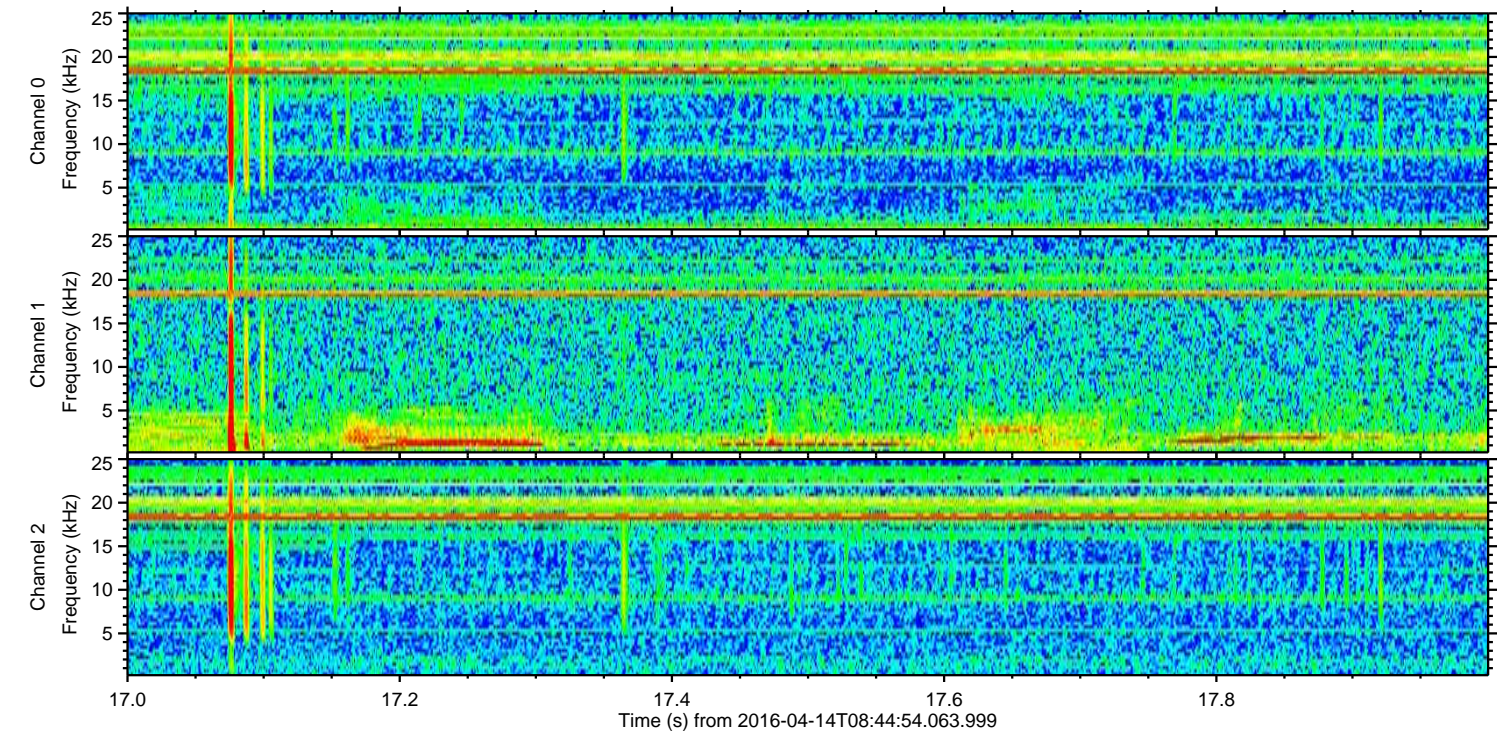
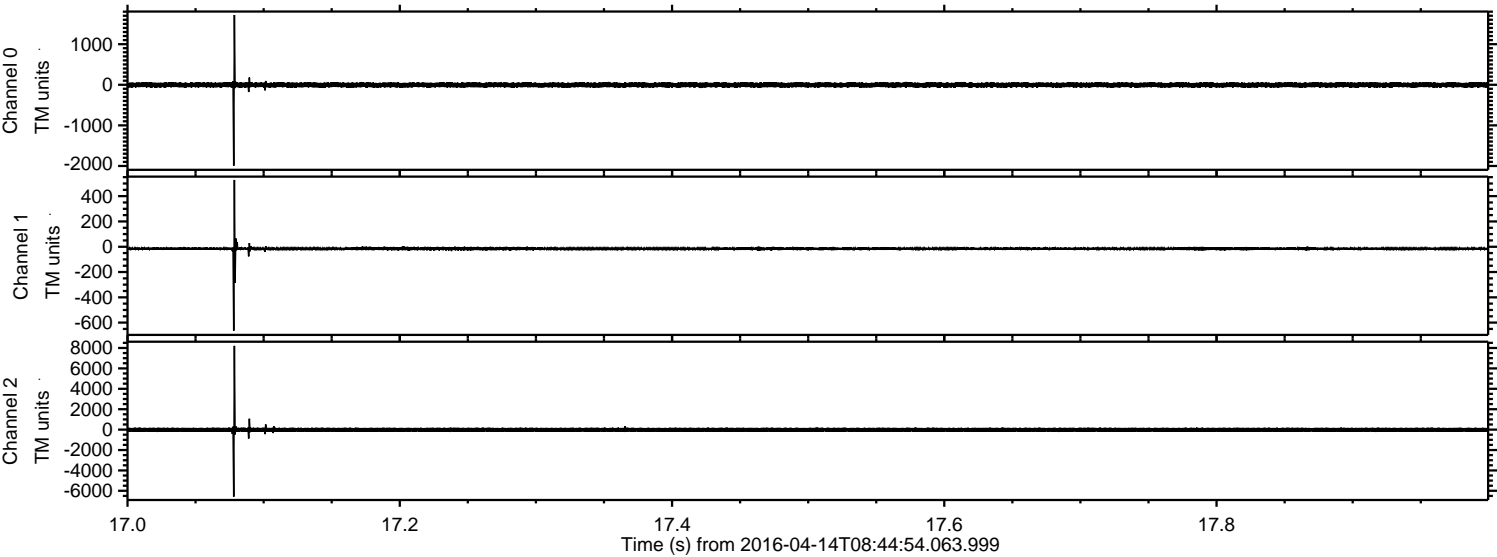
ELMAVAN 3D WAVEFORMS (Measured data sampled at 50 kHz) 51000 packets of 144 samples from 2016-04-14T08:44:54.063.999. Part 115/147

Processed Sun May 8 09:06:18 2016 by ELM ver.2012-10-06 from 001\_\_elm20160414\_084453\_\_dat00.bin



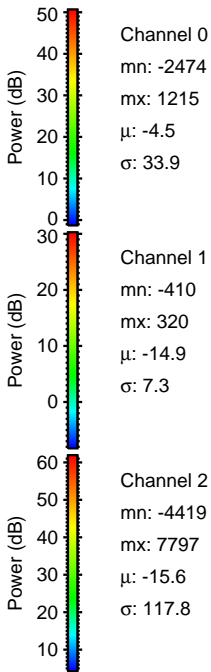
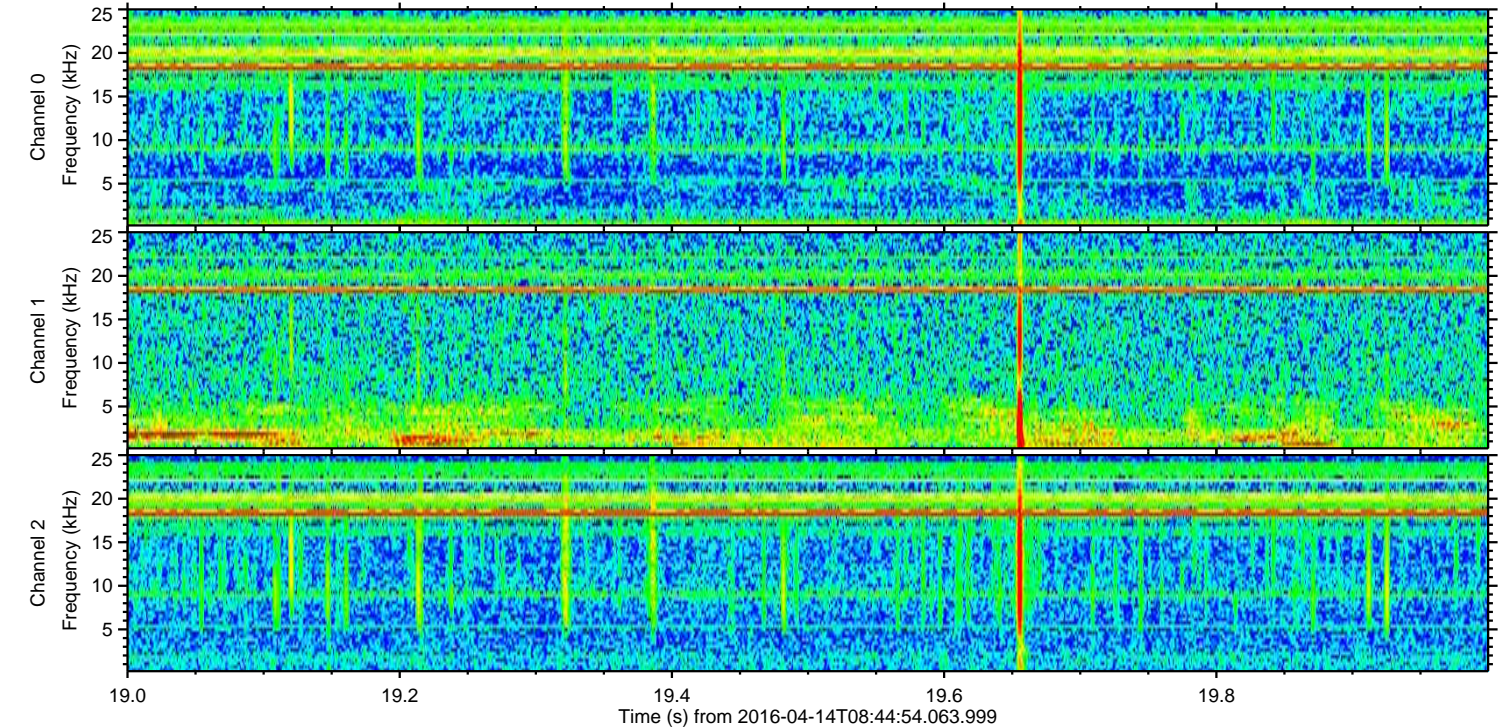
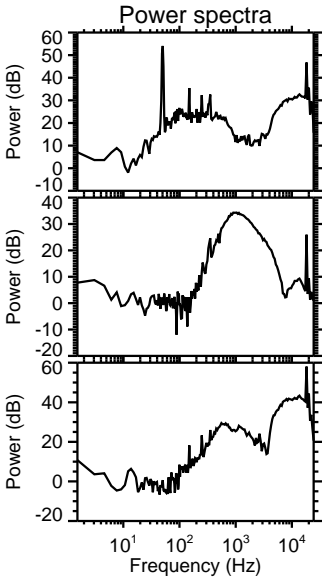
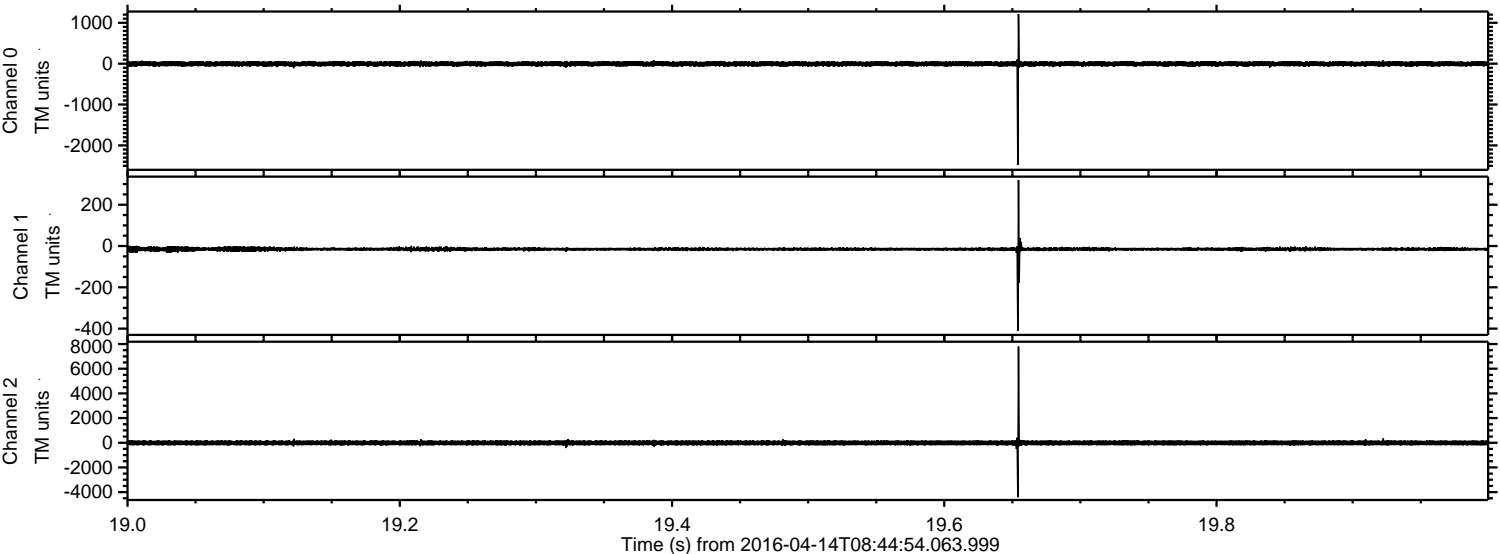


Processed Sun May 8 09:06:19 2016 by ELM ver.2012-10-06 from 001\_\_elm20160414\_084453\_\_dat00.bin



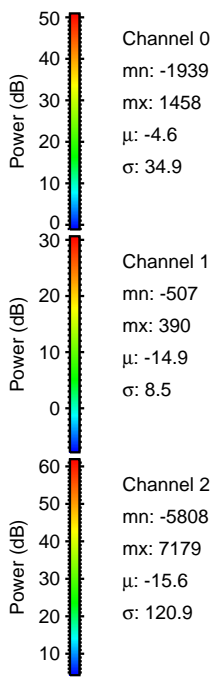
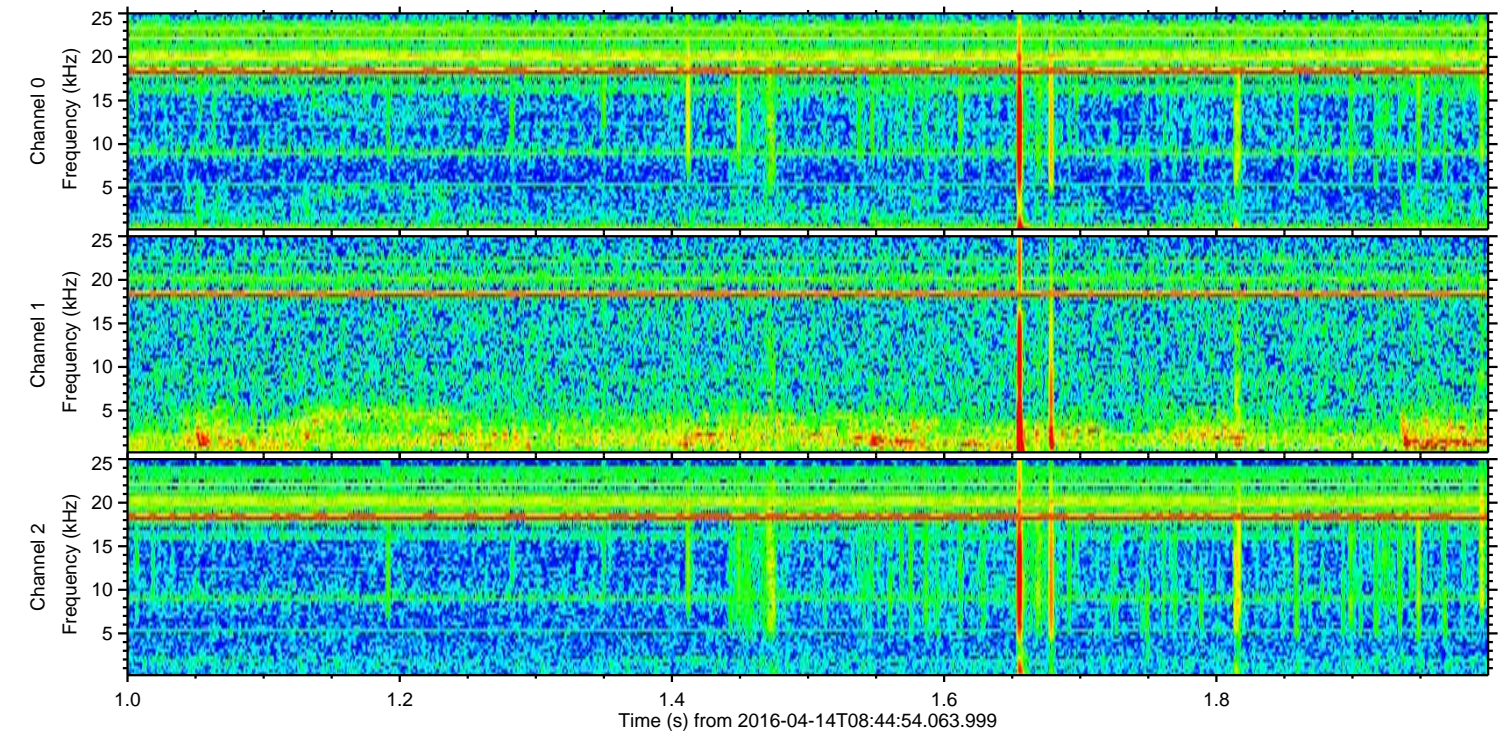
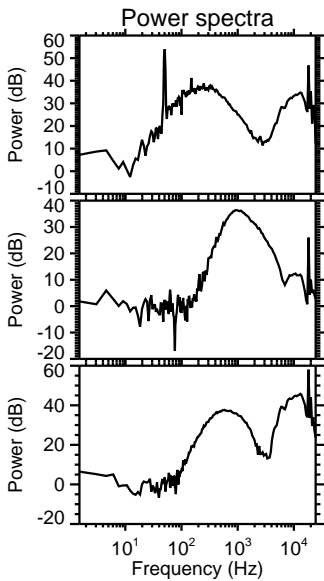
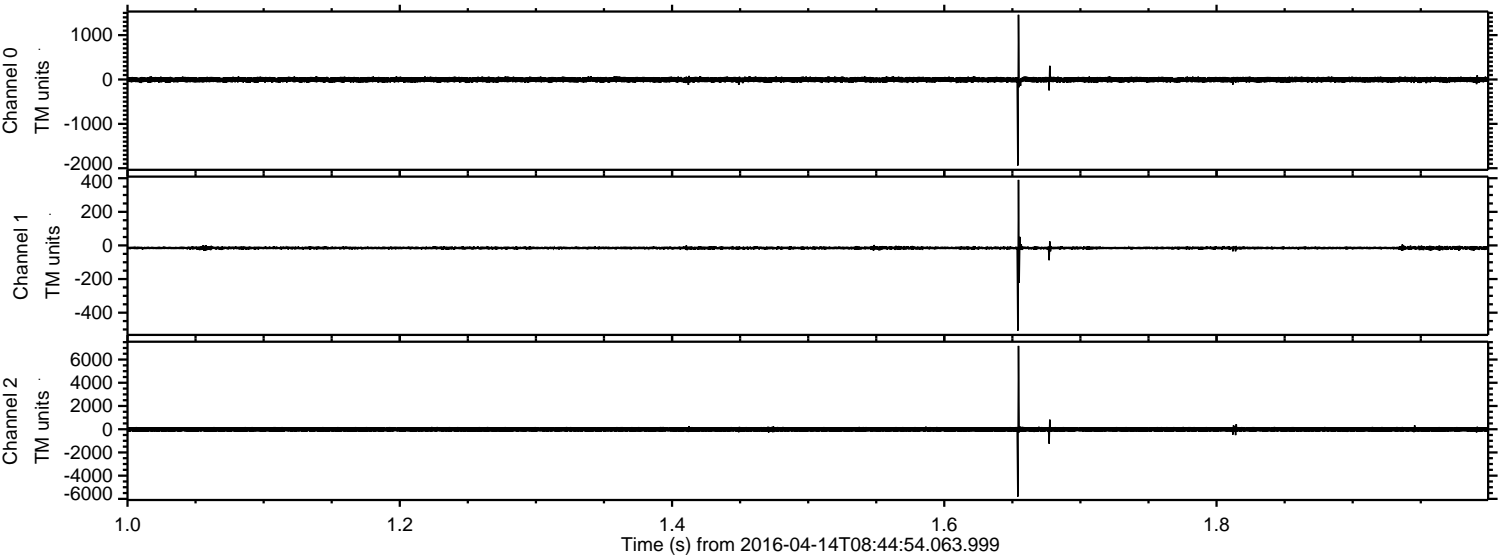


Processed Sun May 8 09:06:20 2016 by ELM ver.2012-10-06 from 001\_\_elm20160414\_084453\_\_dat00.bin





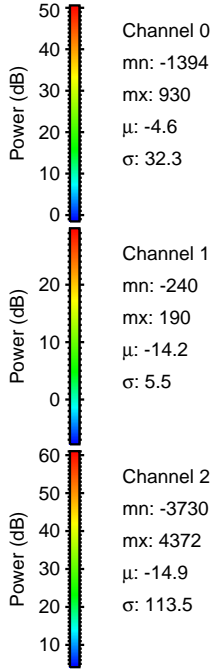
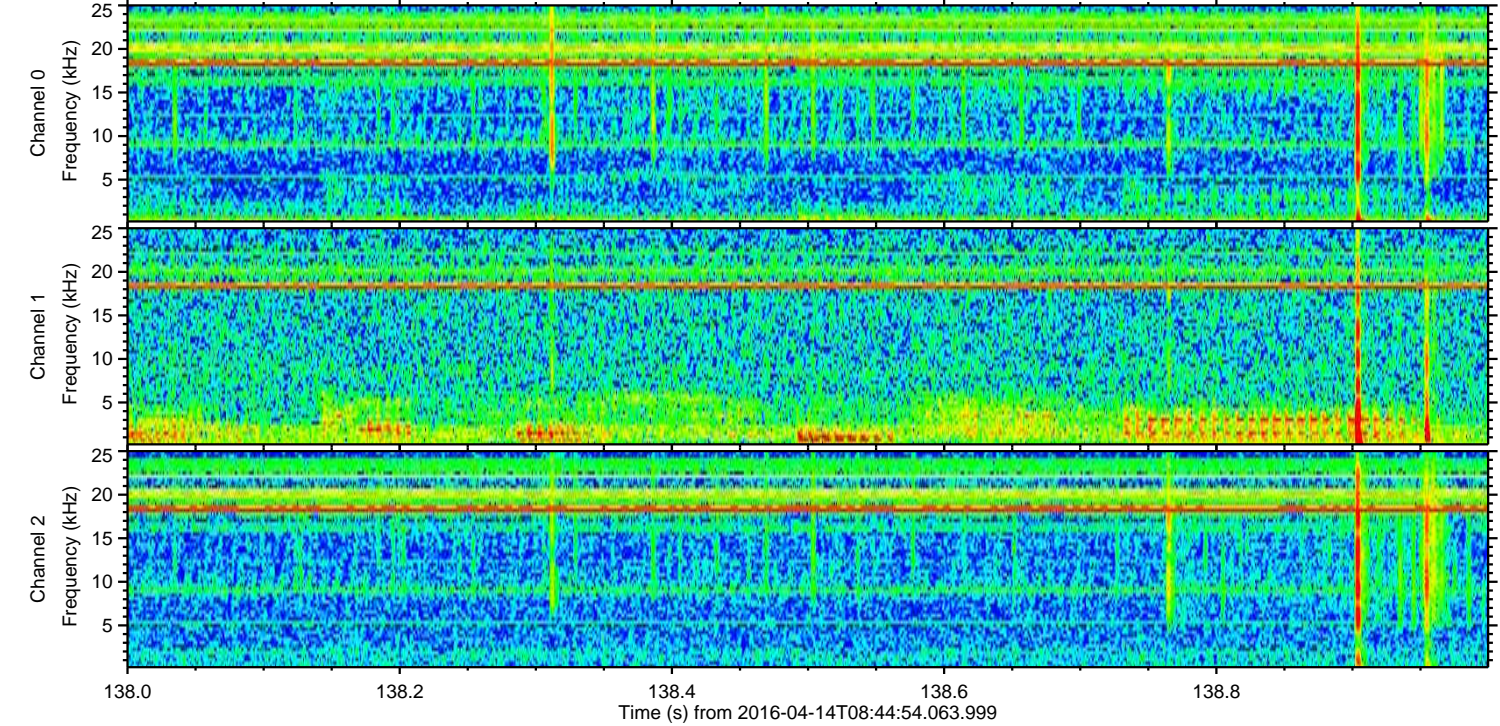
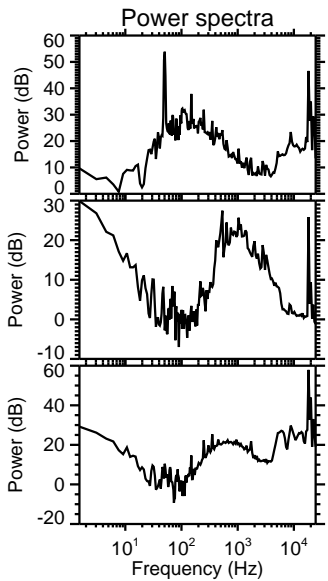
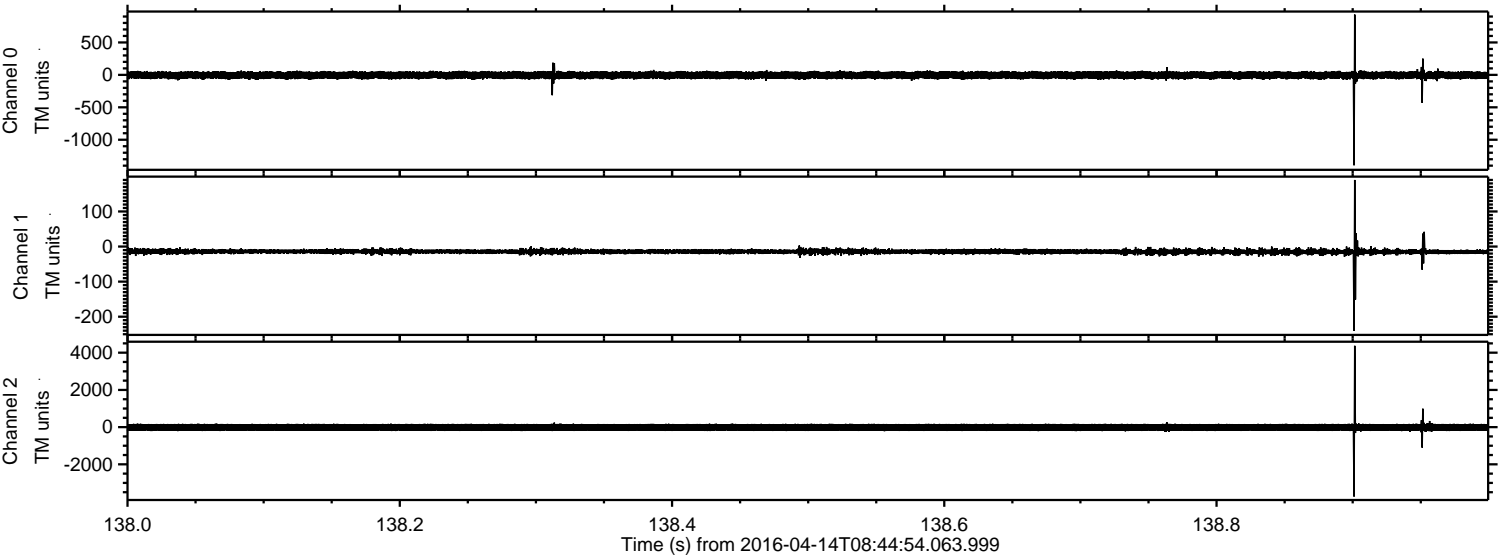
Processed Sun May 8 09:06:21 2016 by ELM ver.2012-10-06 from 001\_\_elm20160414\_084453\_\_dat00.bin





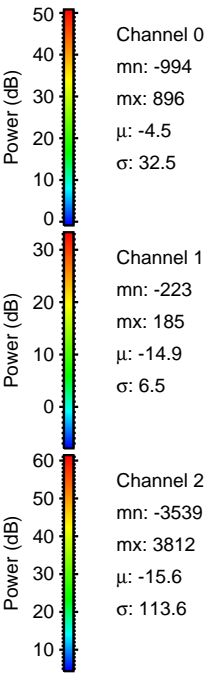
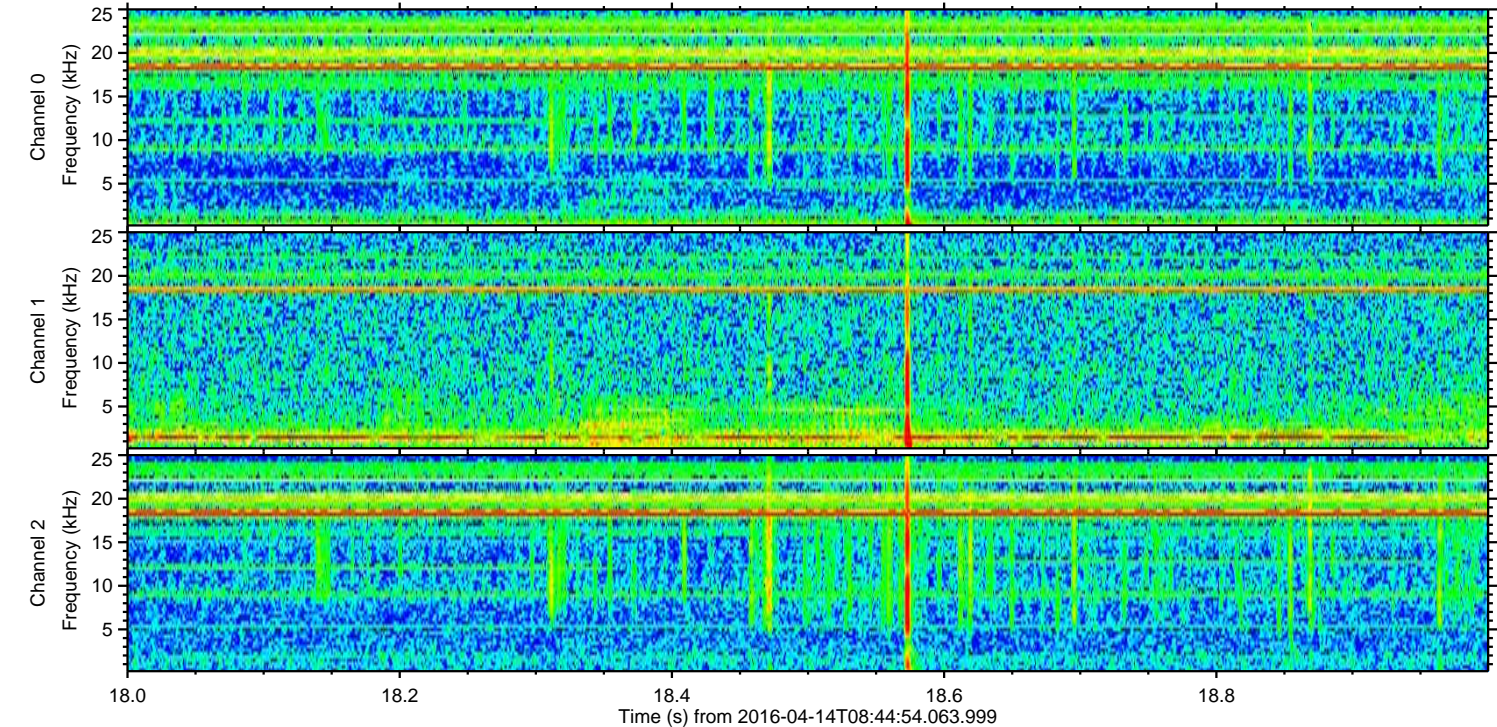
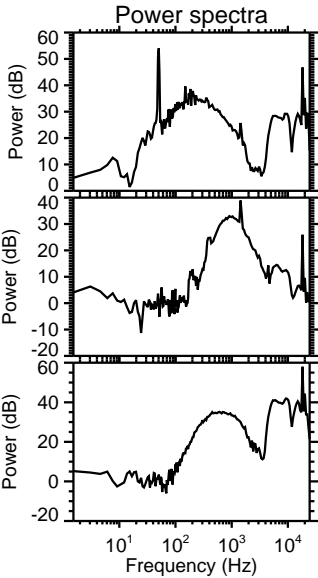
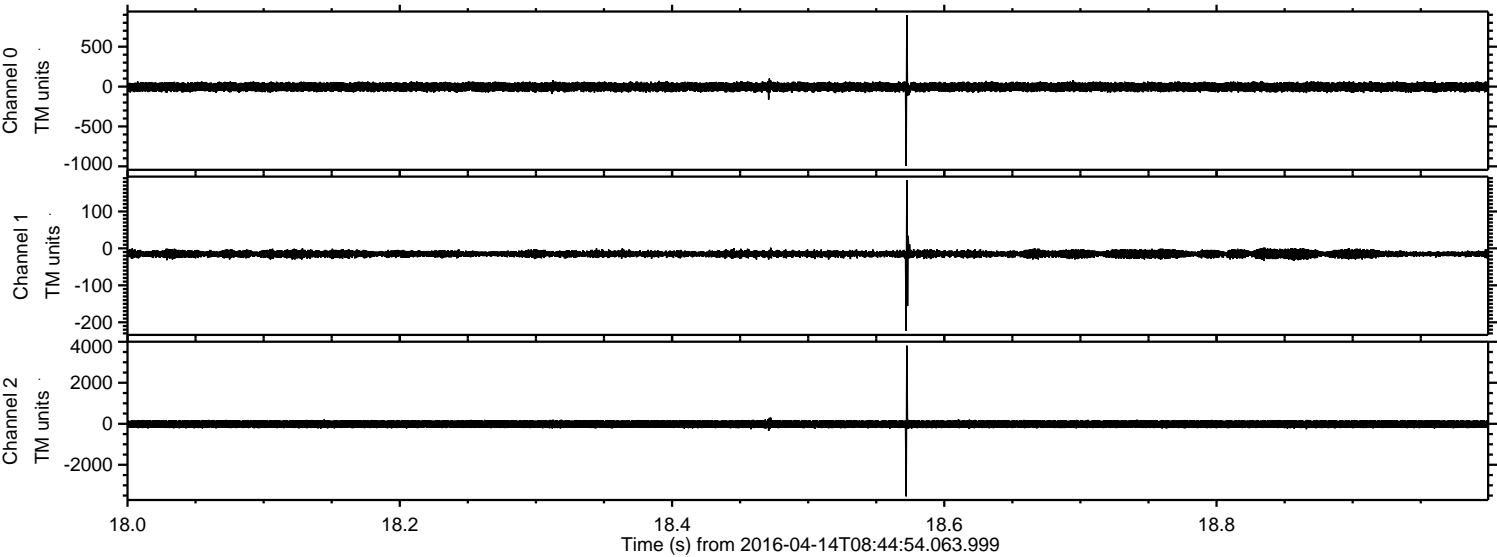
ELMAVAN 3D WAVEFORMS (Measured data sampled at 50 kHz) 51000 packets of 144 samples from 2016-04-14T08:44:54.063.999. Part 139/147

Processed Sun May 8 09:06:21 2016 by ELM ver.2012-10-06 from 001\_\_elm20160414\_084453\_\_dat00.bin



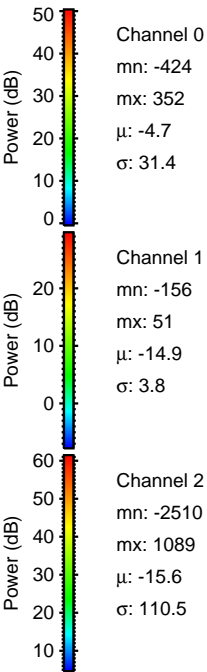
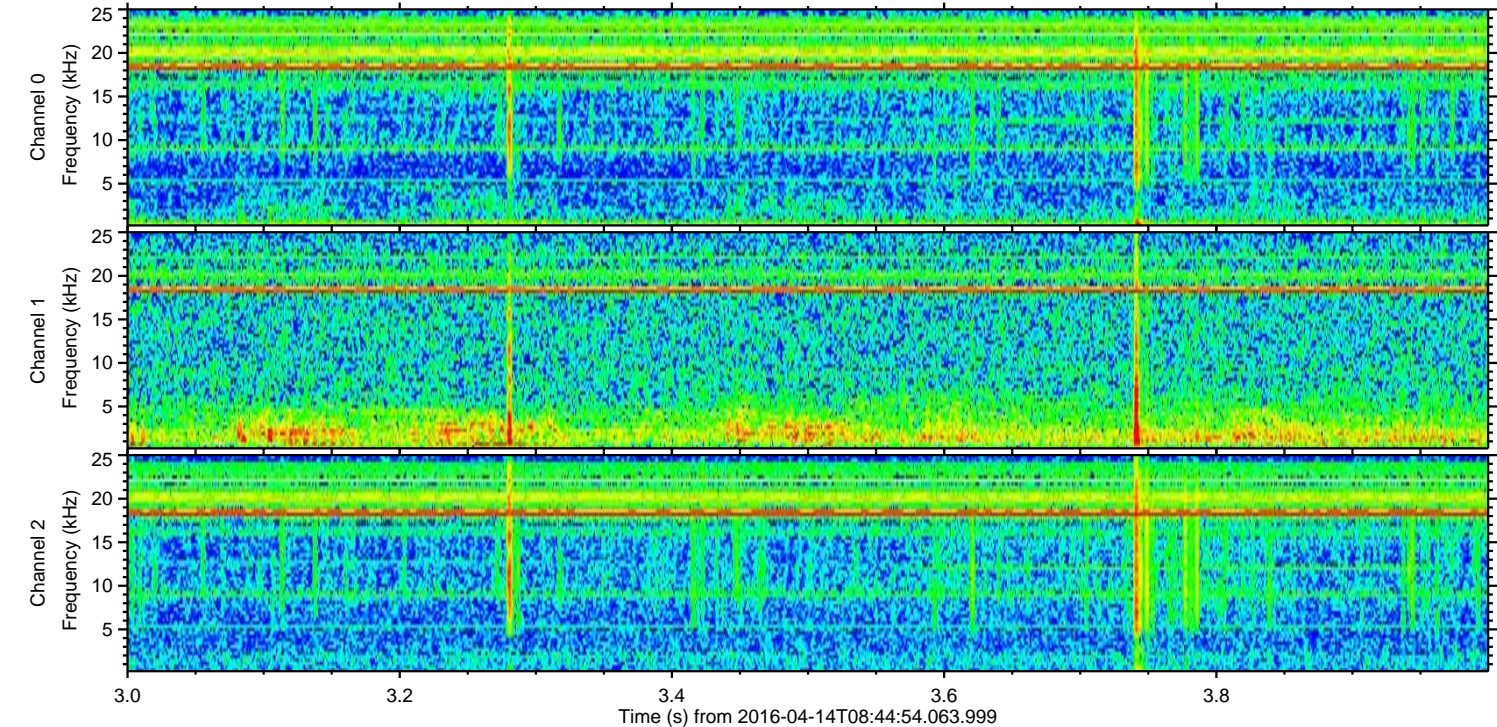
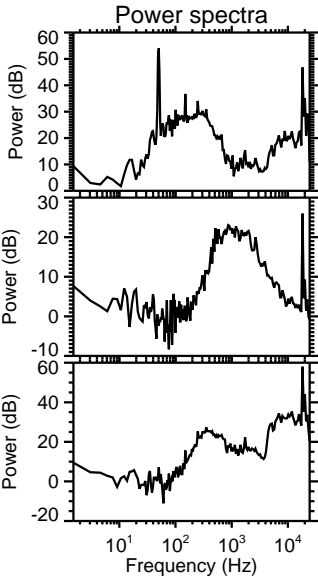
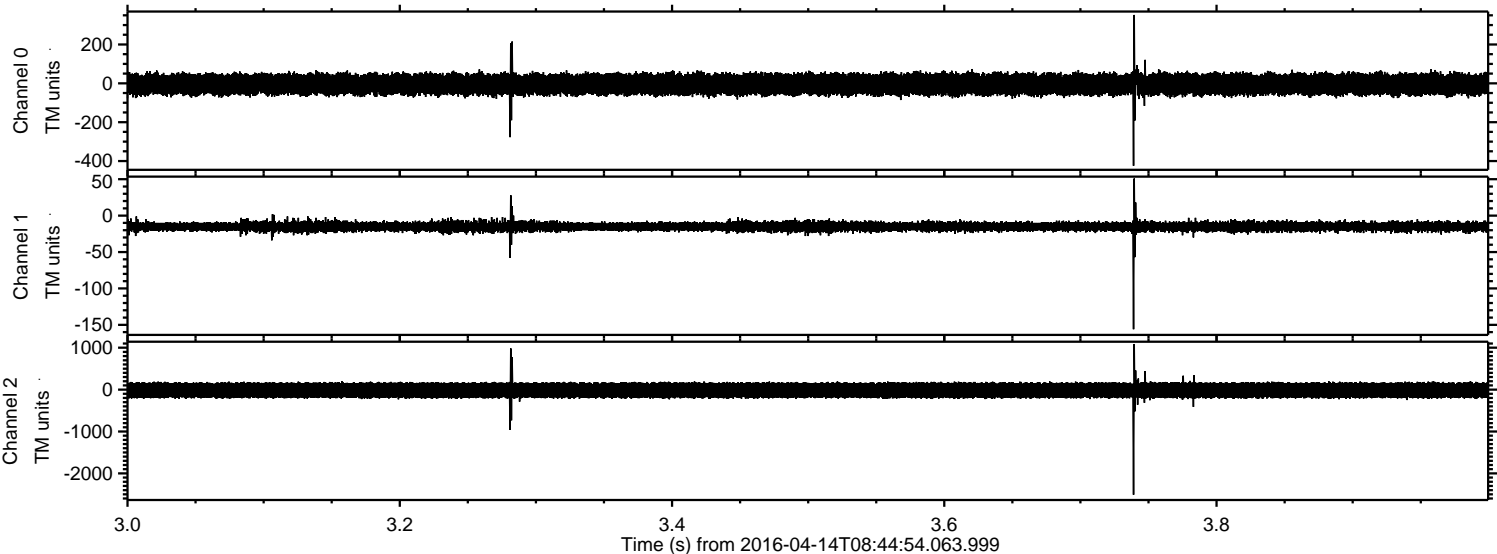


Processed Sun May 8 09:06:22 2016 by ELM ver.2012-10-06 from 001\_\_elm20160414\_084453\_\_dat00.bin





Processed Sun May 8 09:06:23 2016 by ELM ver.2012-10-06 from 001\_\_elm20160414\_084453\_\_dat00.bin





Processed Sun May 8 09:06:24 2016 by ELM ver.2012-10-06 from 001\_\_elm20160414\_084453\_\_dat00.bin

