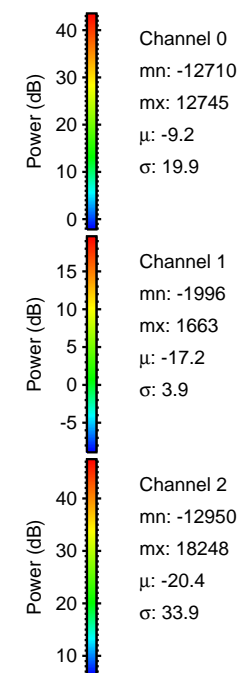
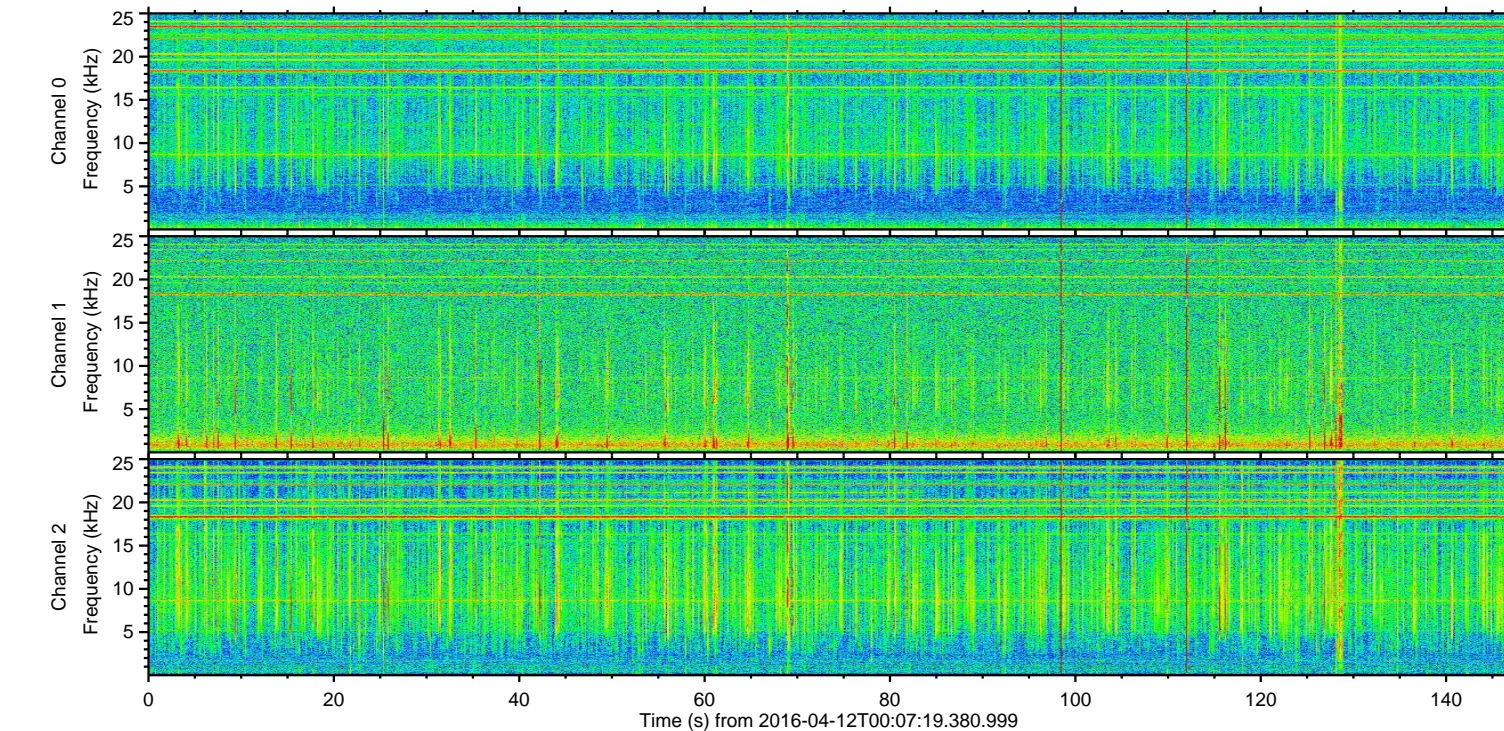
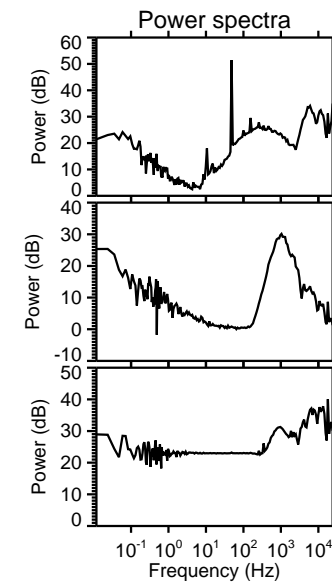
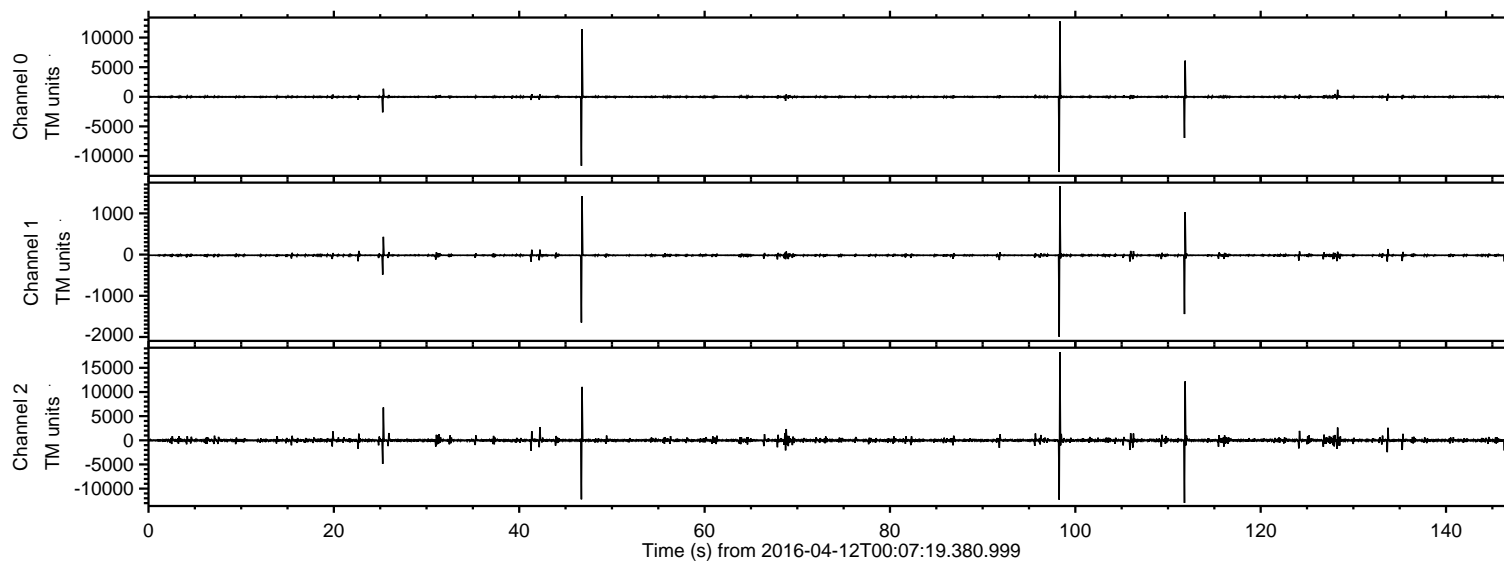
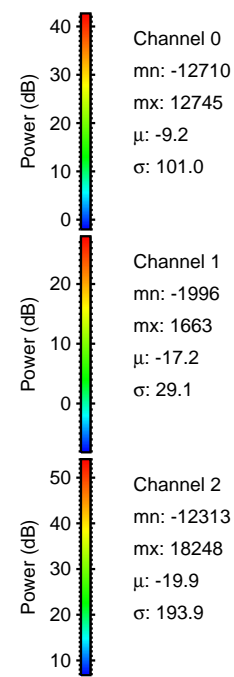
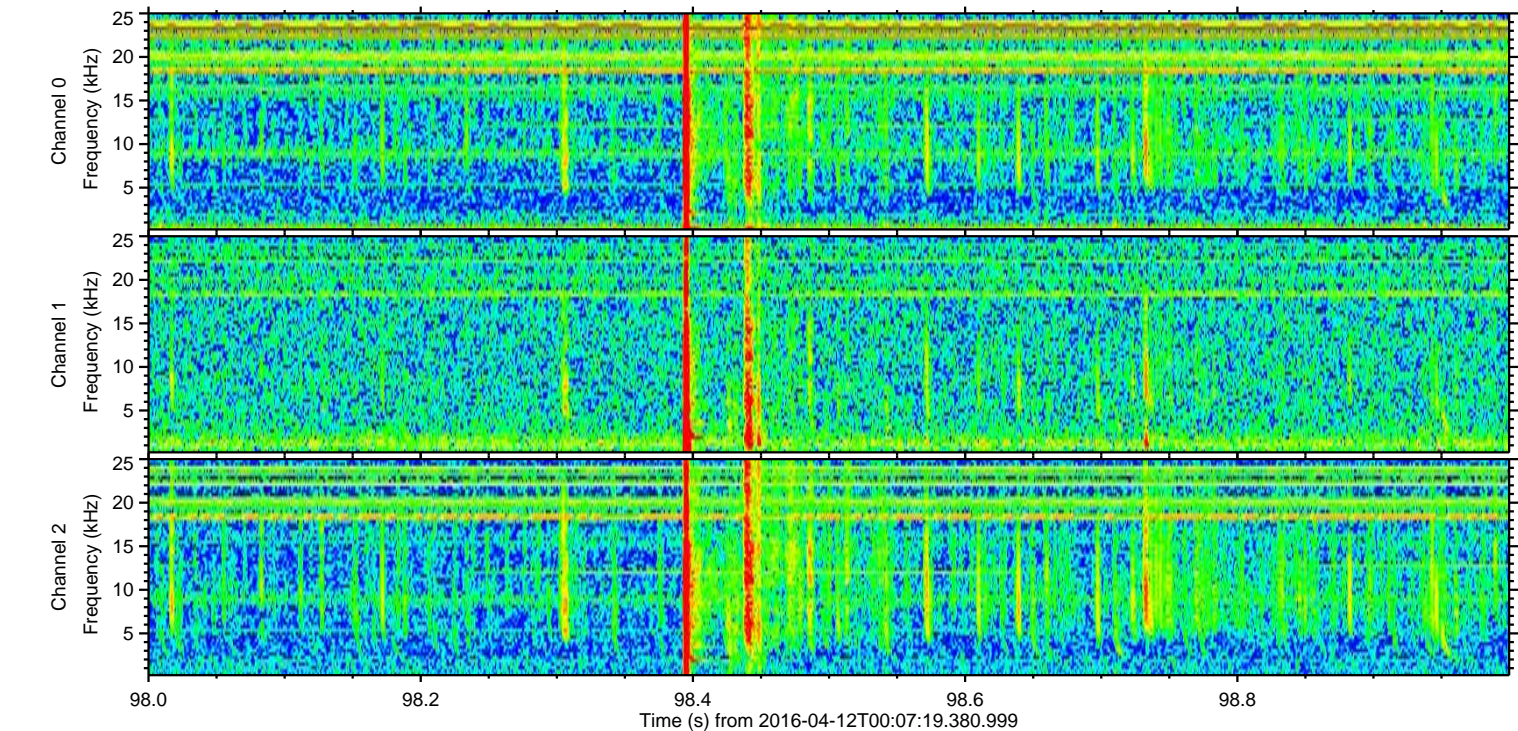
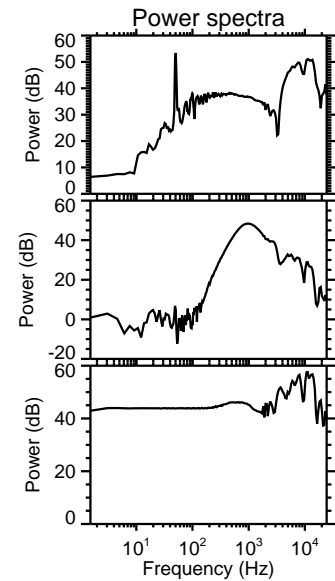
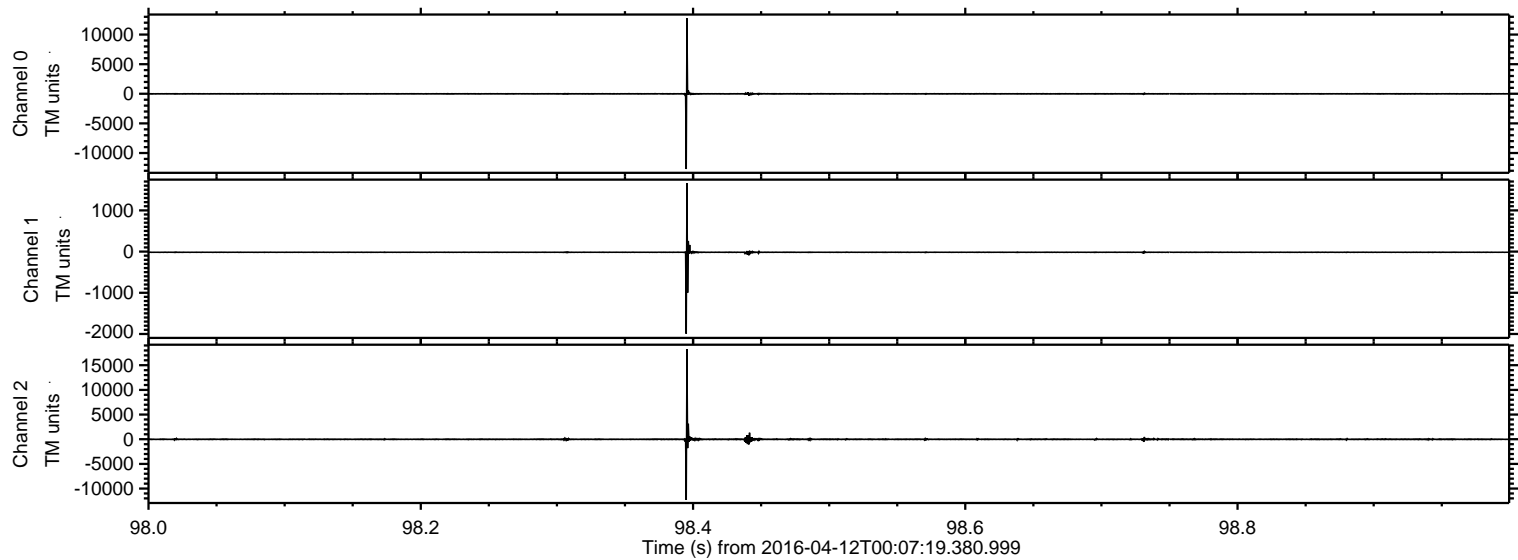


ELMAVAN 3D WAVEFORMS (Measured data sampled at 50 kHz) 51000 packets of 144 samples from 2016-04-12T00:07:19.380.999.

Processed Sat May 7 20:30:01 2016 by ELM ver.2012-10-06 from 001__elm20160412_000718__dat00.bin

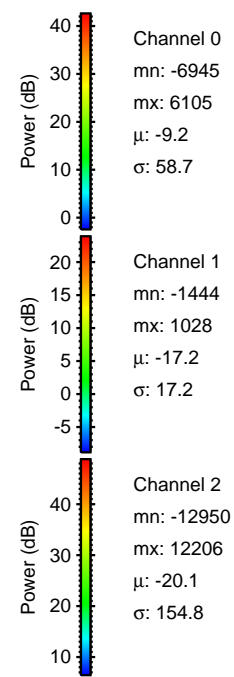
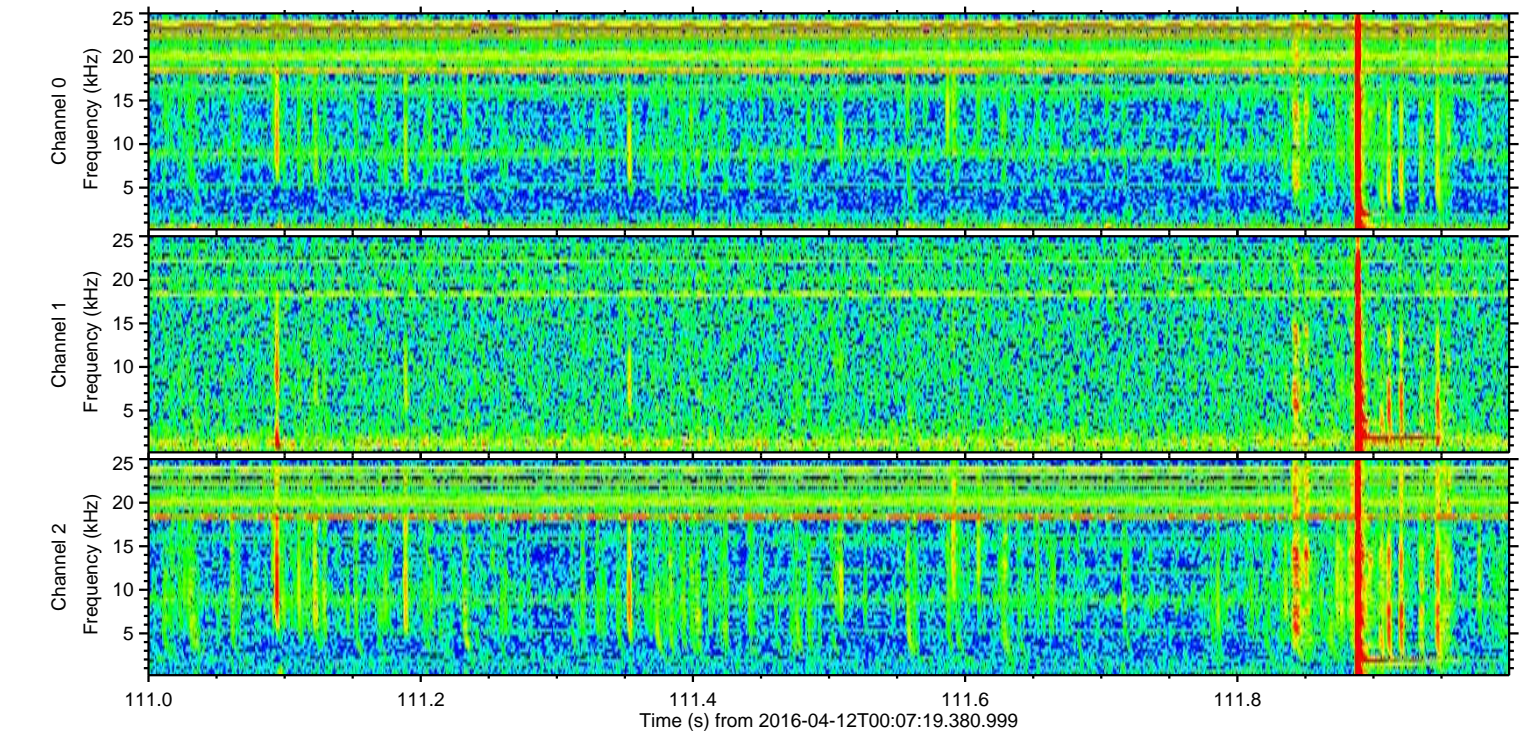
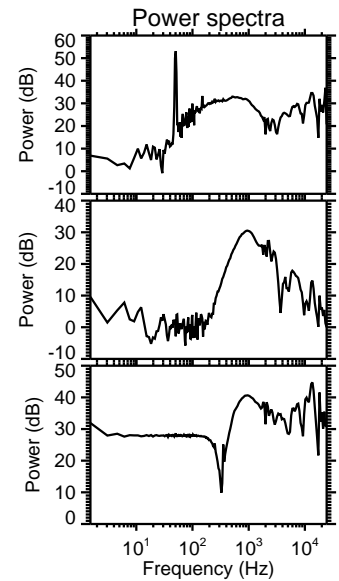
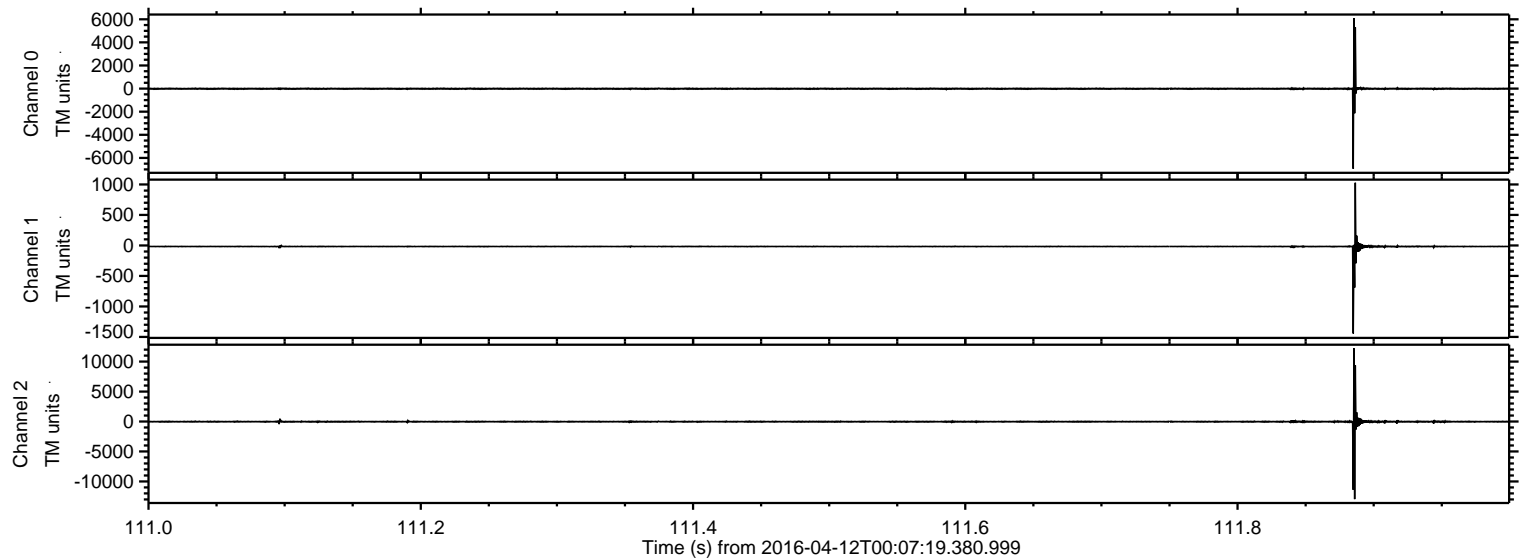


Processed Sat May 7 20:30:16 2016 by ELM ver.2012-10-06 from 001__elm20160412_000718__dat00.bin



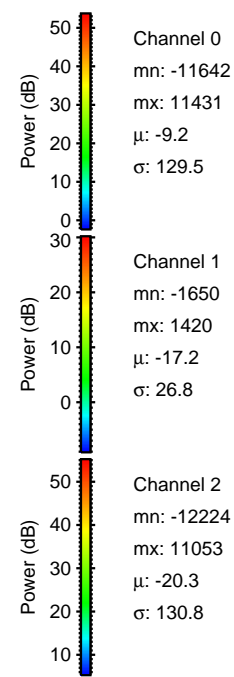
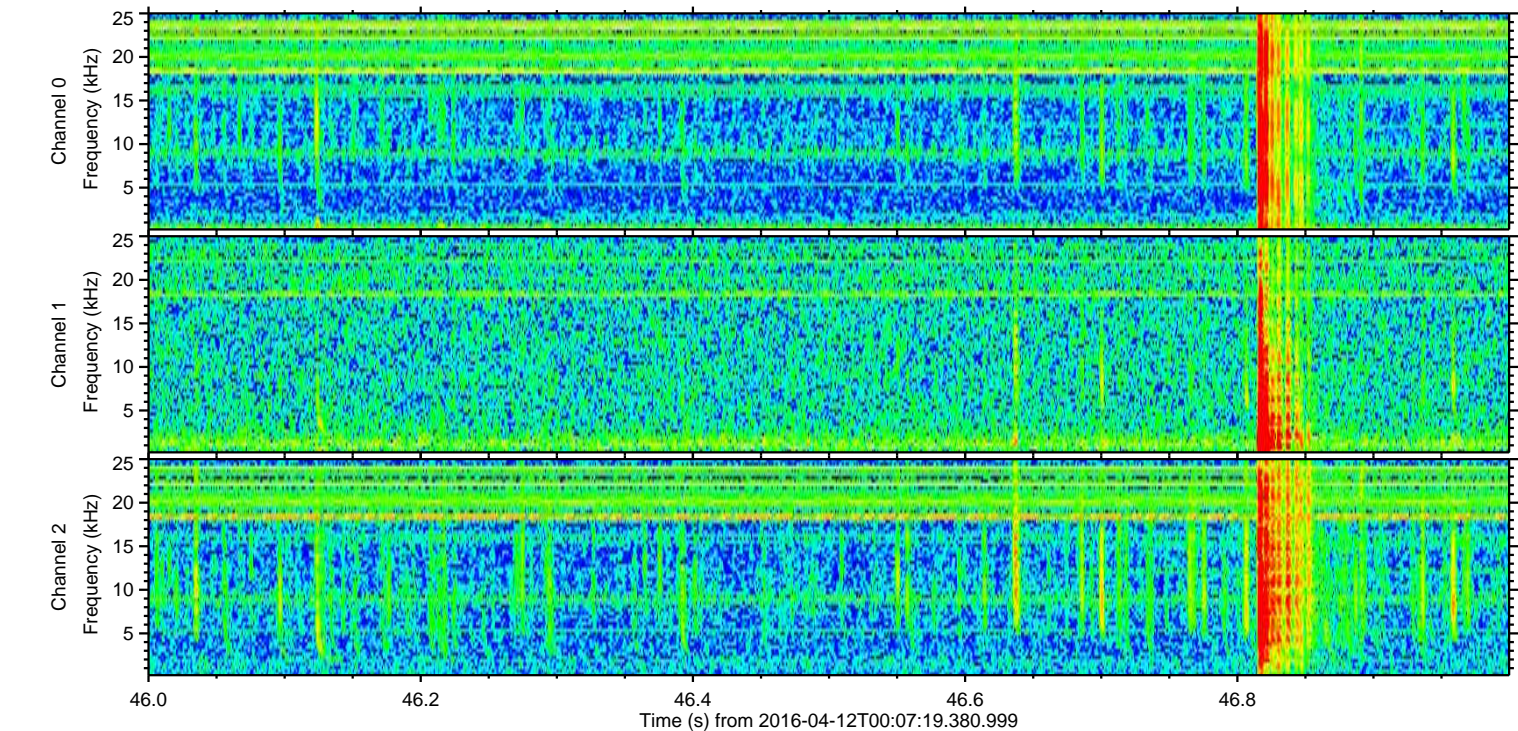
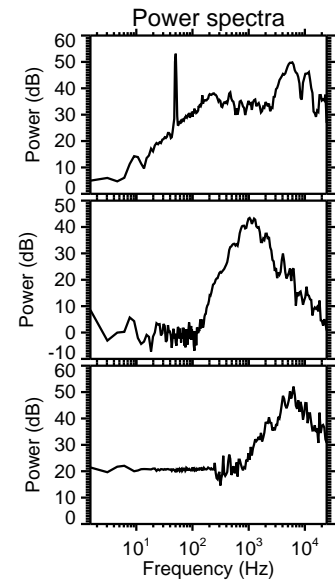
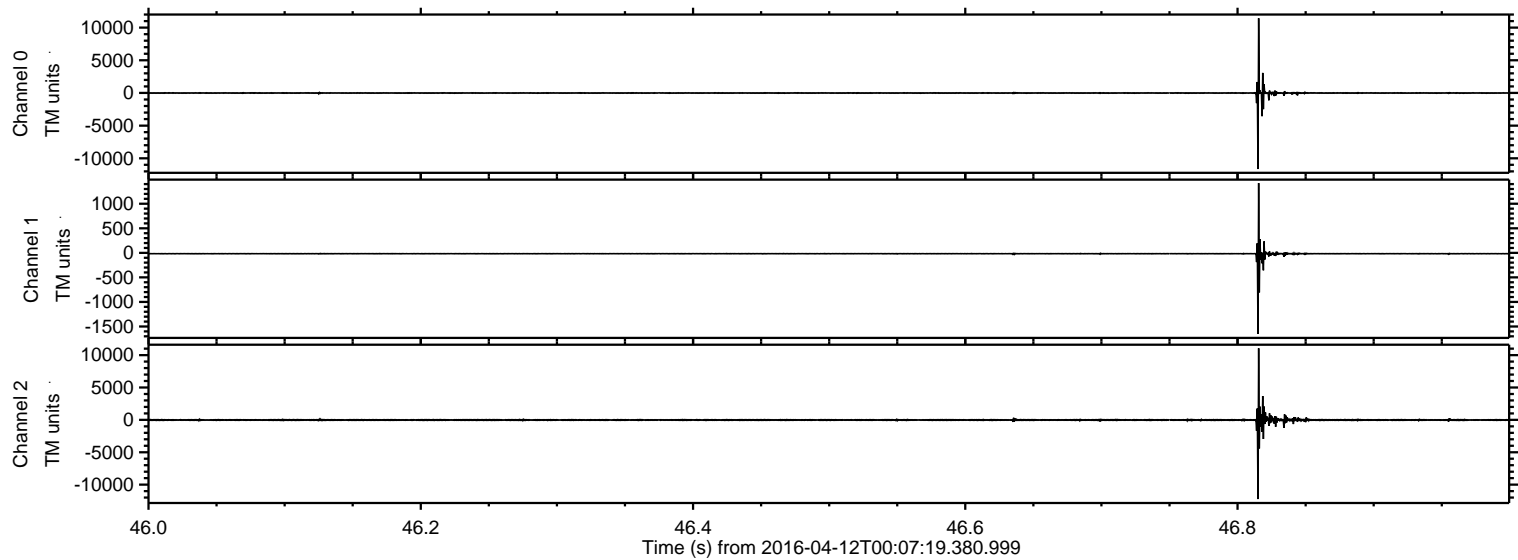
ELMAVAN 3D WAVEFORMS (Measured data sampled at 50 kHz) 51000 packets of 144 samples from 2016-04-12T00:07:19.380.999. Part 112/147

Processed Sat May 7 20:30:18 2016 by ELM ver.2012-10-06 from 001__elm20160412_000718__dat00.bin

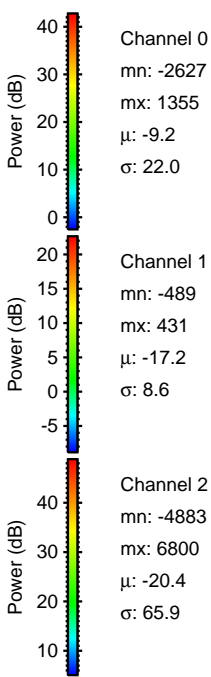
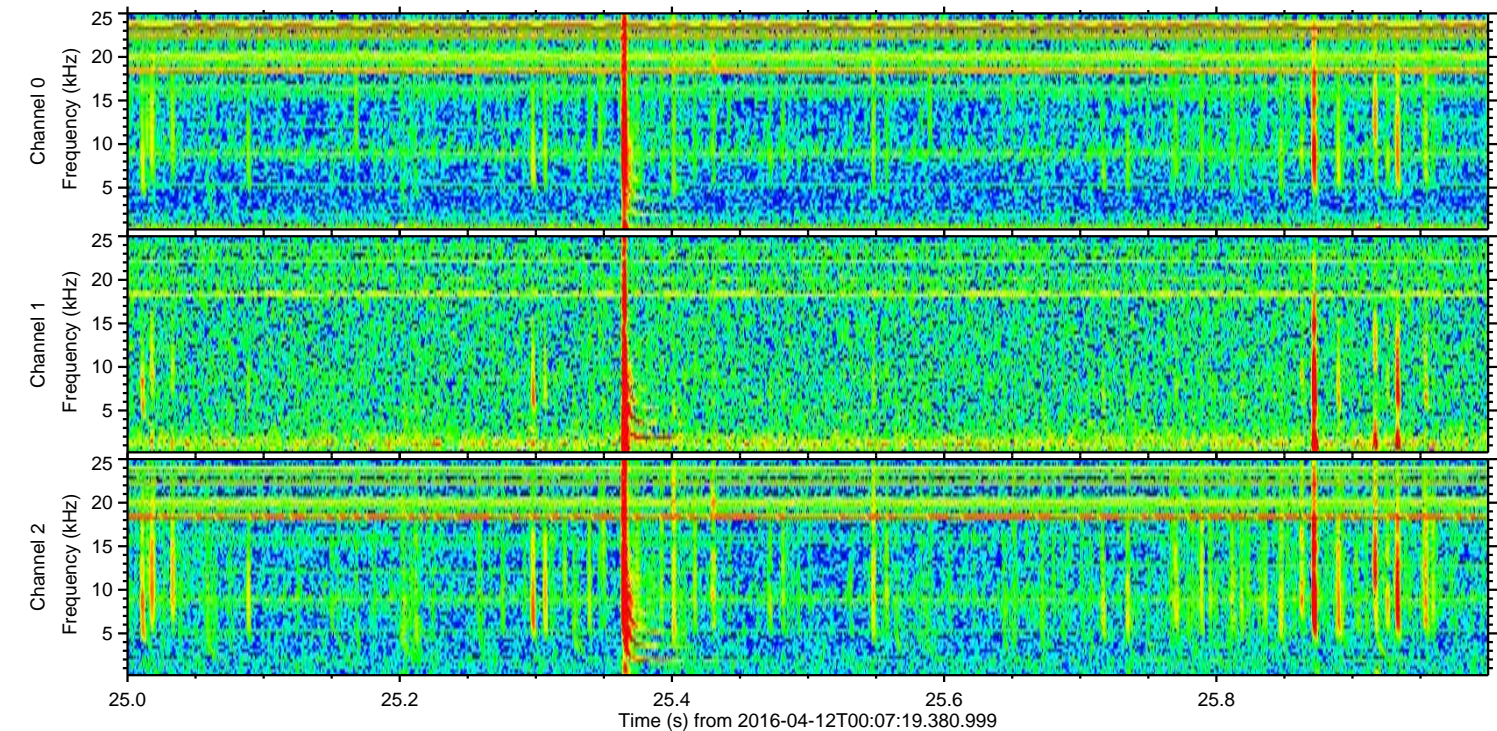
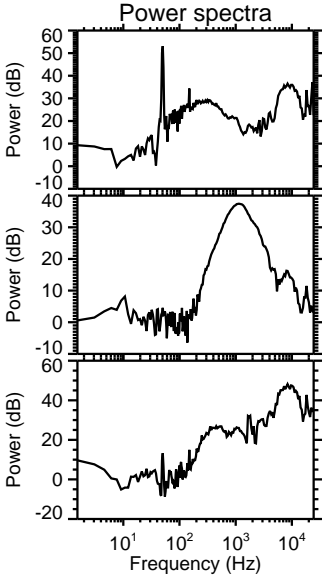
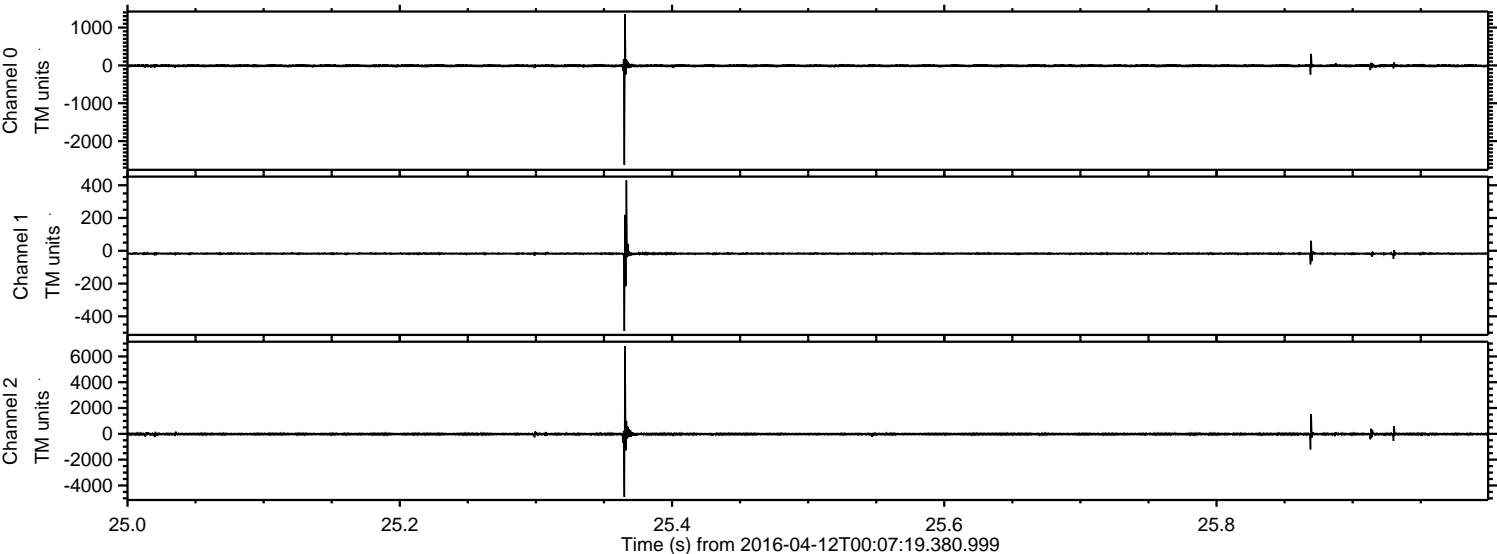


ELMAVAN 3D WAVEFORMS (Measured data sampled at 50 kHz) 51000 packets of 144 samples from 2016-04-12T00:07:19.380.999. Part 47/147

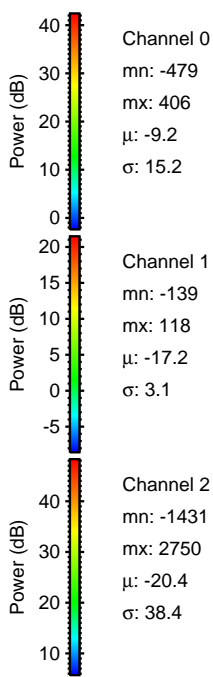
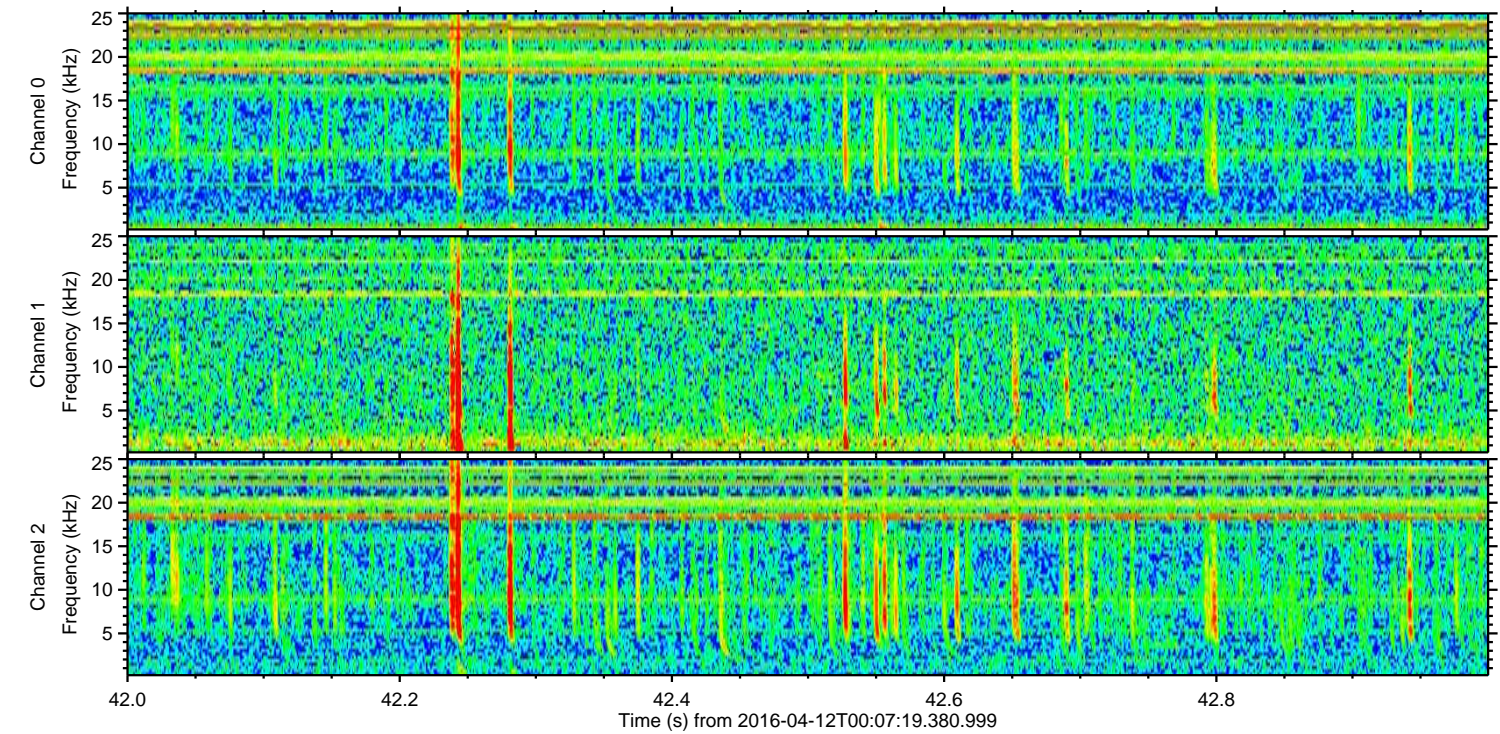
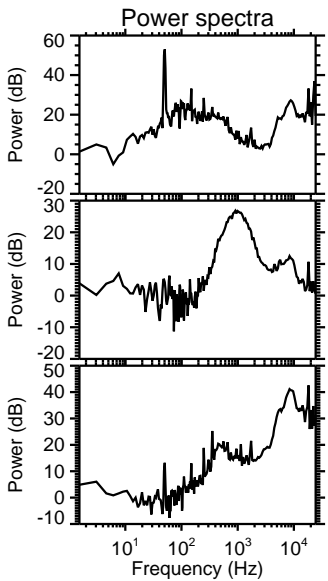
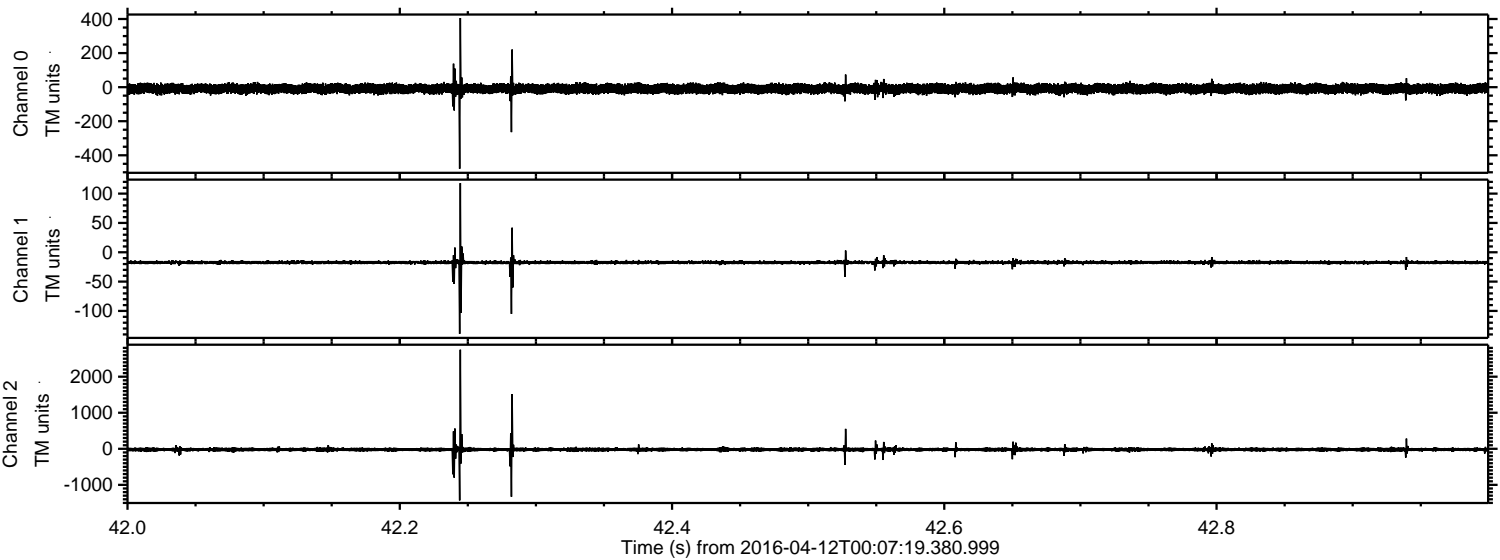
Processed Sat May 7 20:30:19 2016 by ELM ver.2012-10-06 from 001__elm20160412_000718__dat00.bin



Processed Sat May 7 20:30:20 2016 by ELM ver.2012-10-06 from 001__elm20160412_000718__dat00.bin

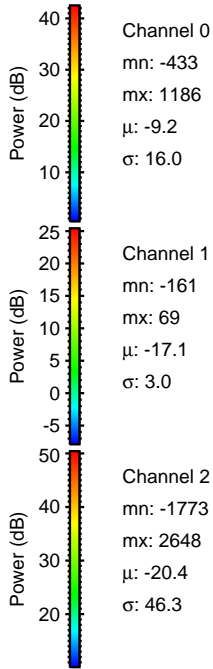
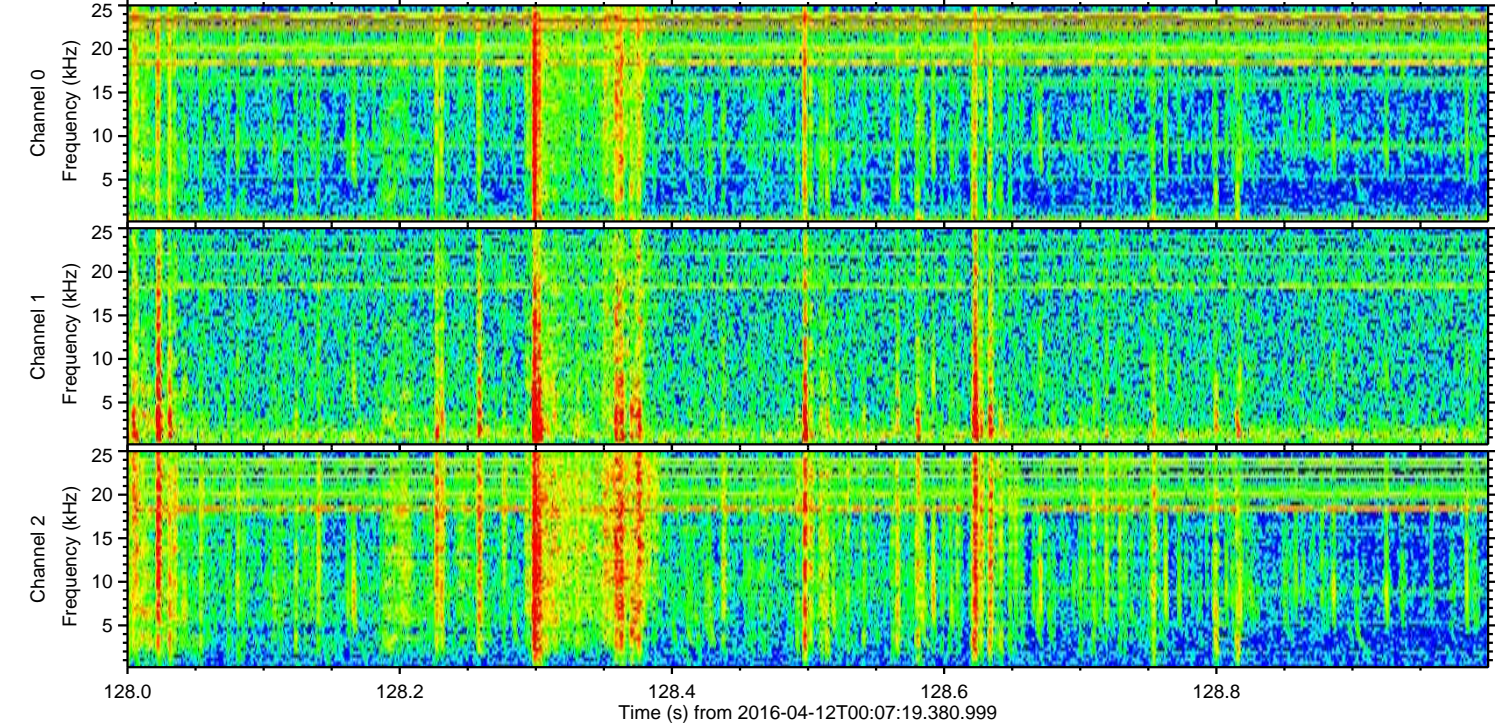
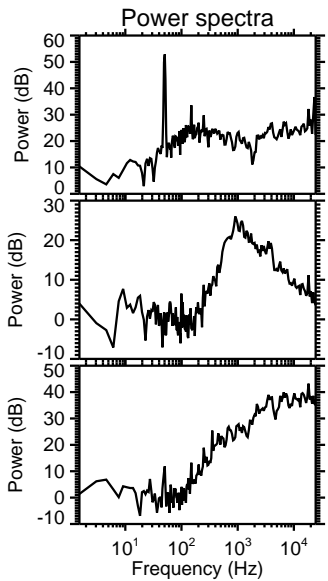
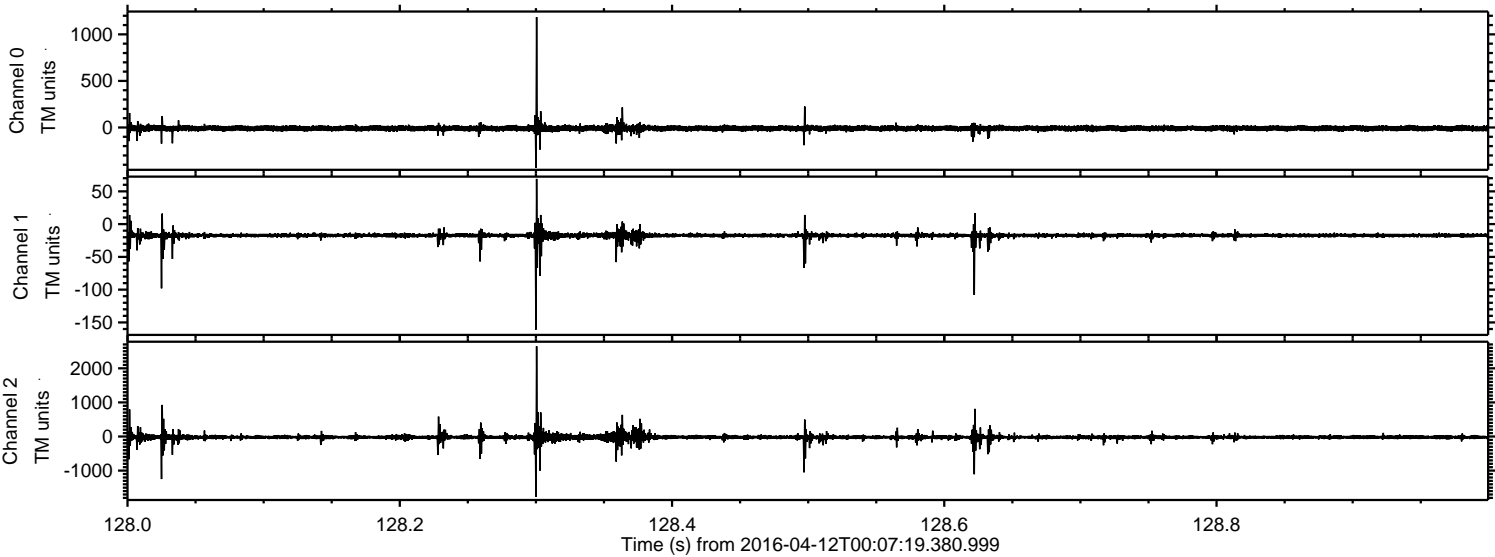


Processed Sat May 7 20:30:21 2016 by ELM ver.2012-10-06 from 001__elm20160412_000718__dat00.bin



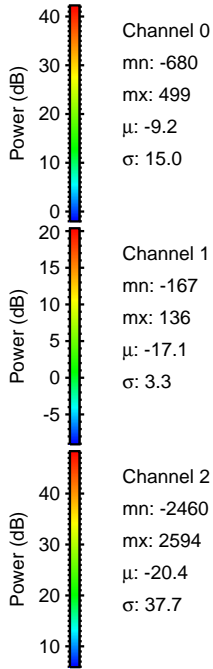
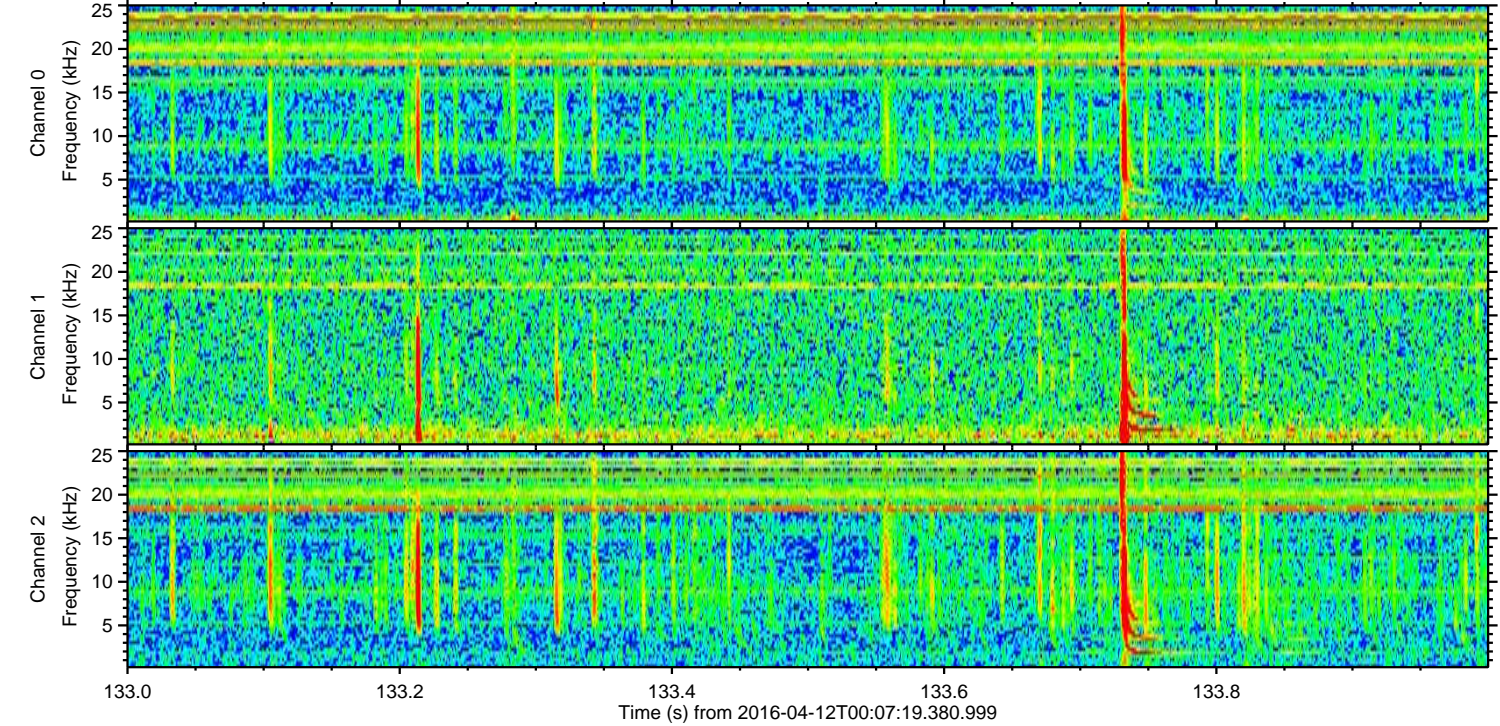
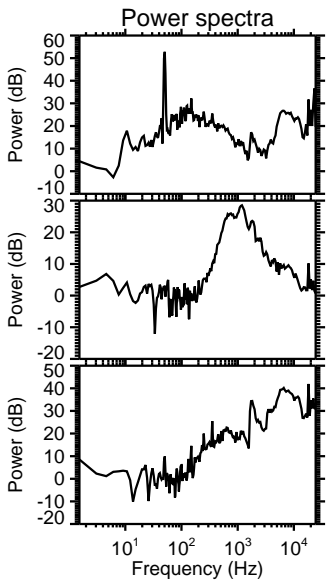
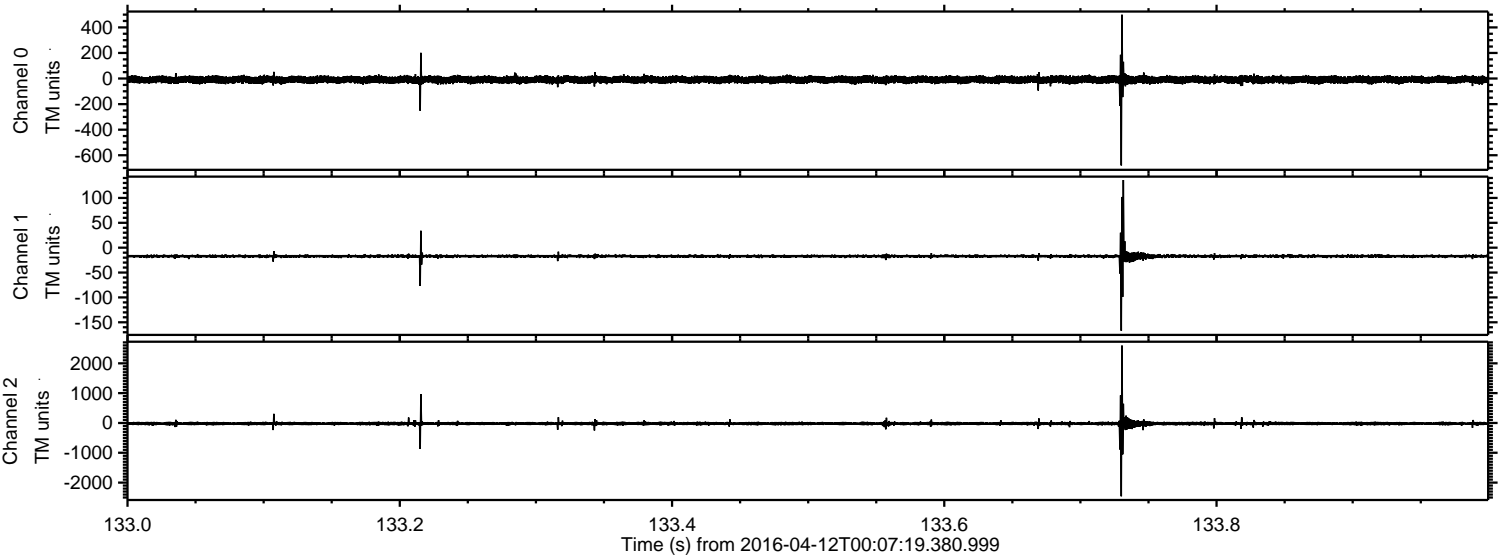
ELMAVAN 3D WAVEFORMS (Measured data sampled at 50 kHz) 51000 packets of 144 samples from 2016-04-12T00:07:19.380.999. Part 129/147

Processed Sat May 7 20:30:22 2016 by ELM ver.2012-10-06 from 001__elm20160412_000718__dat00.bin

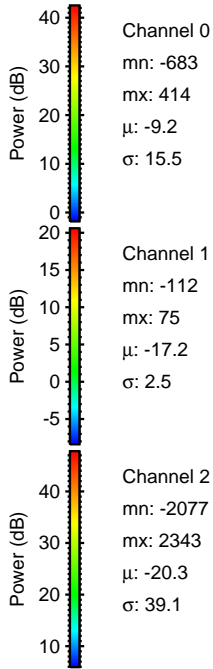
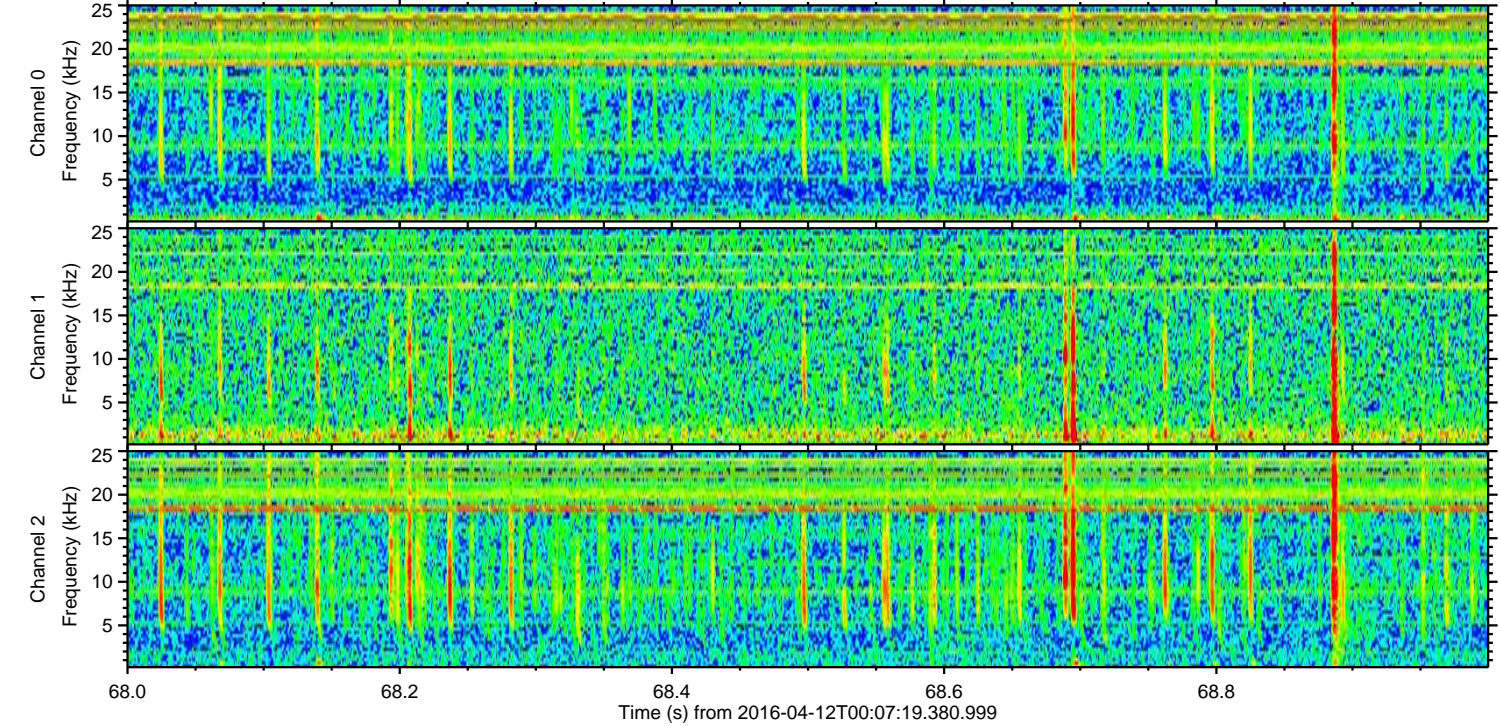
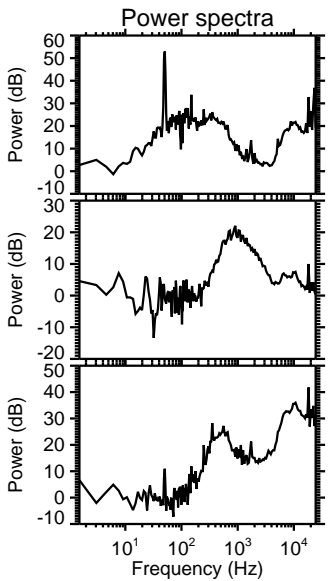
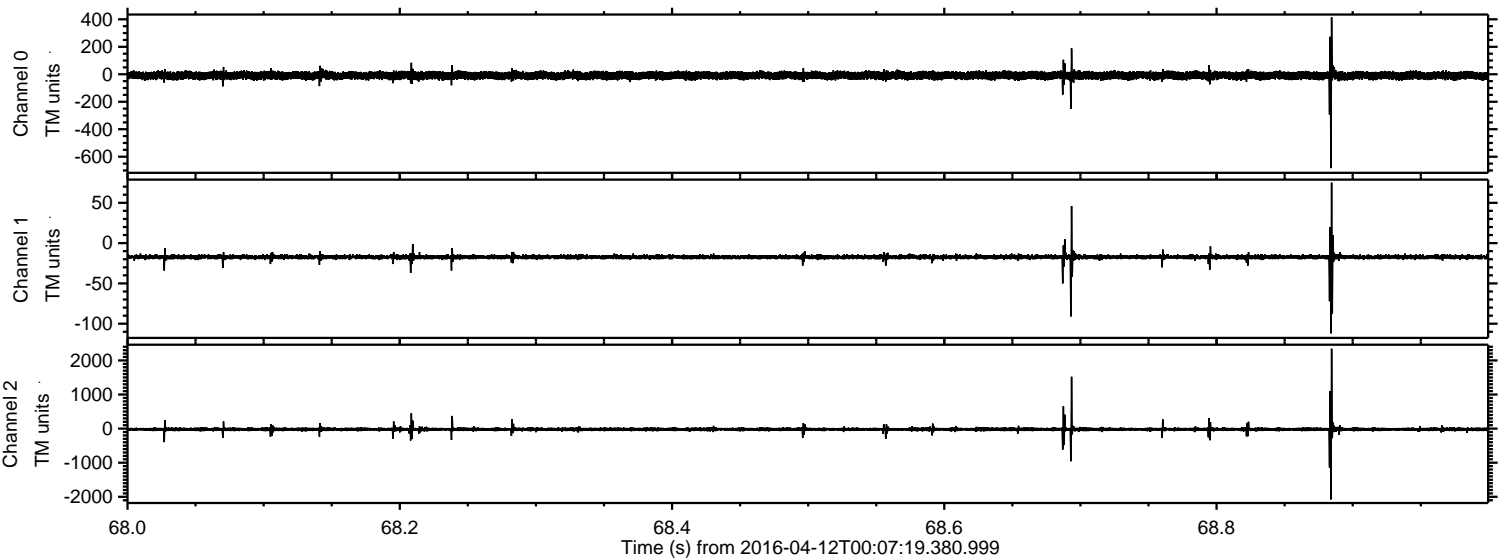


ELMAVAN 3D WAVEFORMS (Measured data sampled at 50 kHz) 51000 packets of 144 samples from 2016-04-12T00:07:19.380.999. Part 134/147

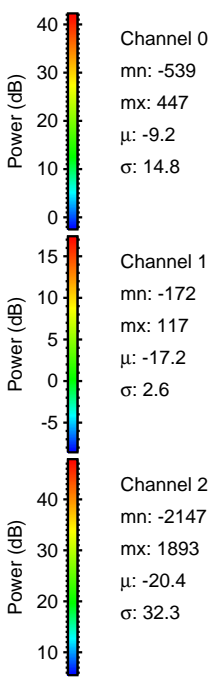
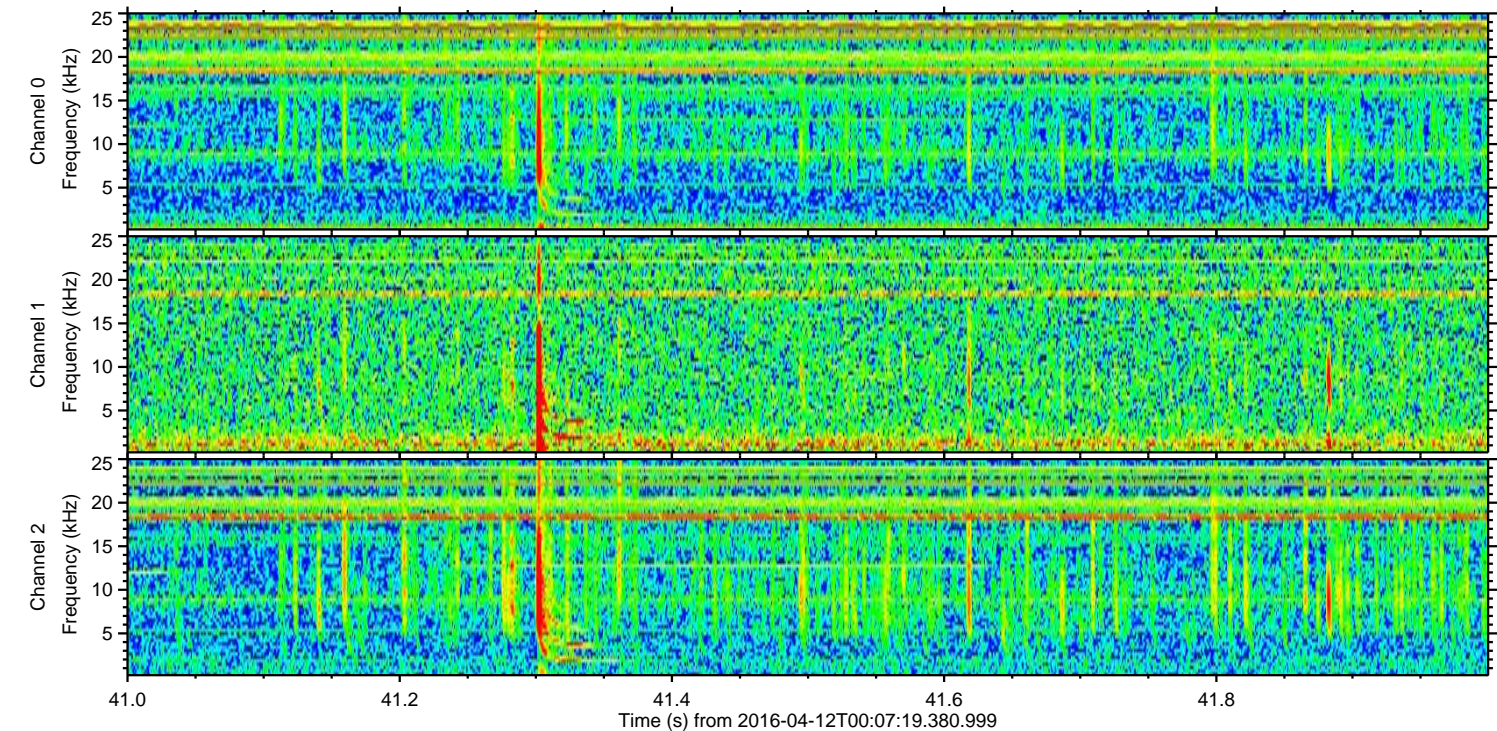
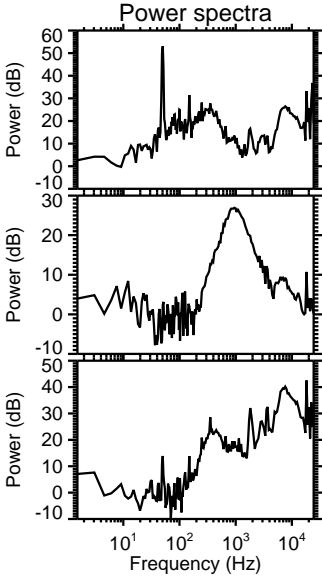
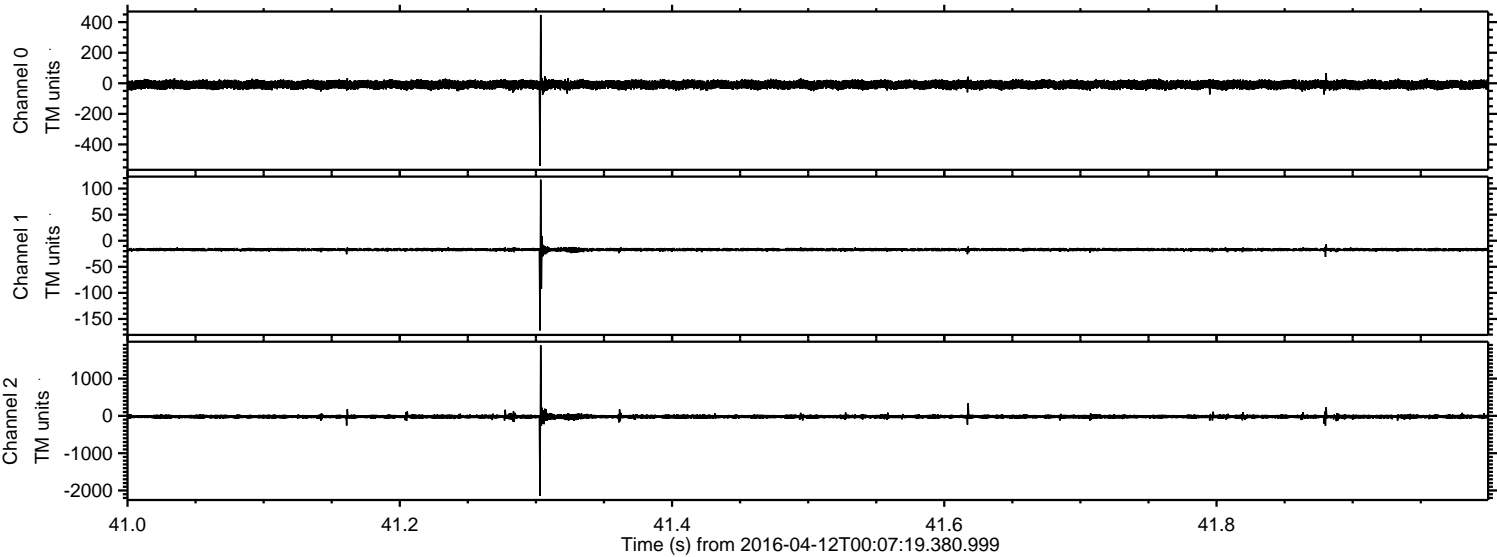
Processed Sat May 7 20:30:23 2016 by ELM ver.2012-10-06 from 001__elm20160412_000718__dat00.bin



Processed Sat May 7 20:30:24 2016 by ELM ver.2012-10-06 from 001__elm20160412_000718__dat00.bin



Processed Sat May 7 20:30:25 2016 by ELM ver.2012-10-06 from 001__elm20160412_000718__dat00.bin



Processed Sat May 7 20:30:26 2016 by ELM ver.2012-10-06 from 001__elm20160412_000718__dat00.bin

