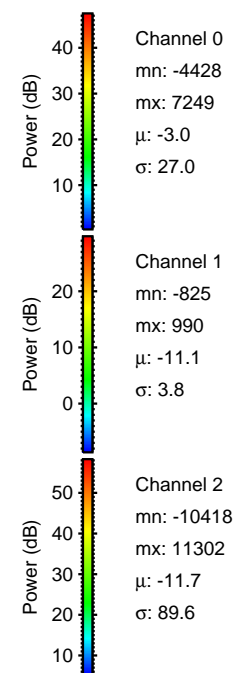
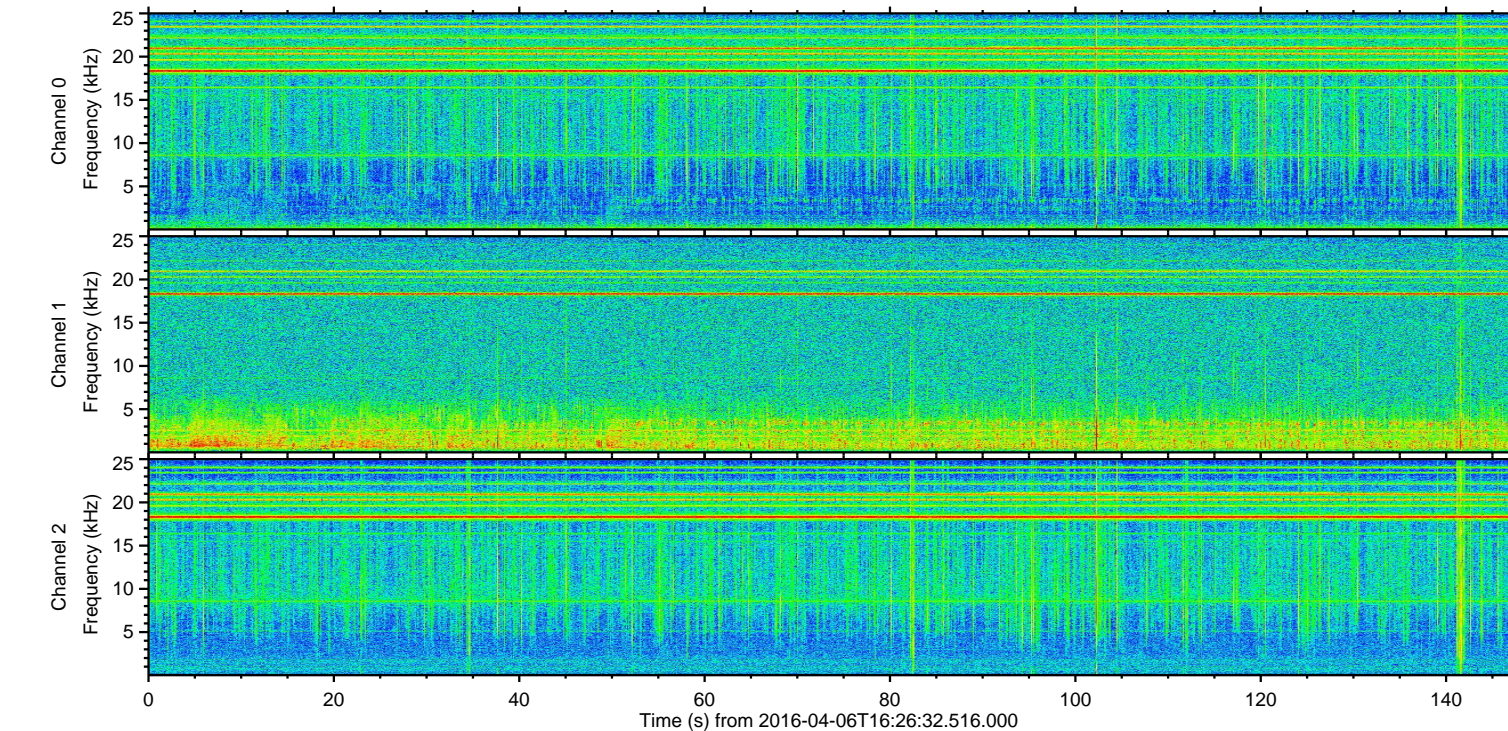
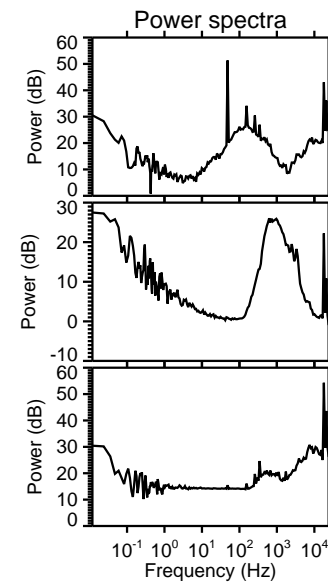
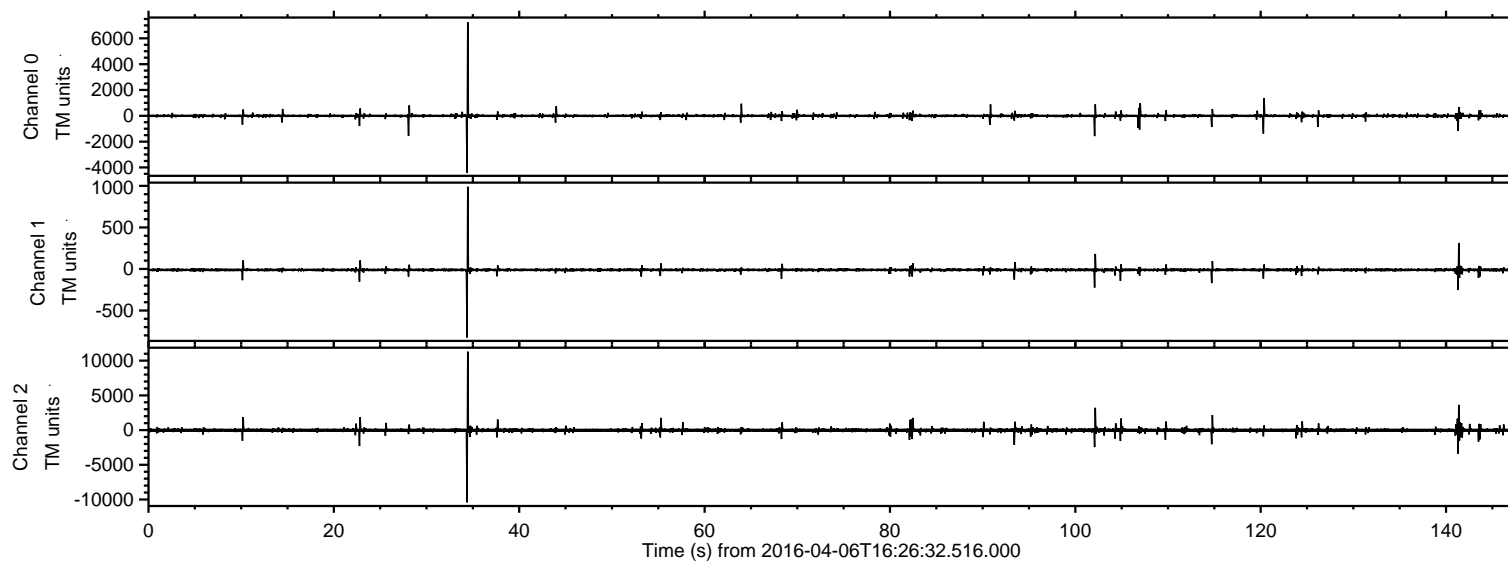
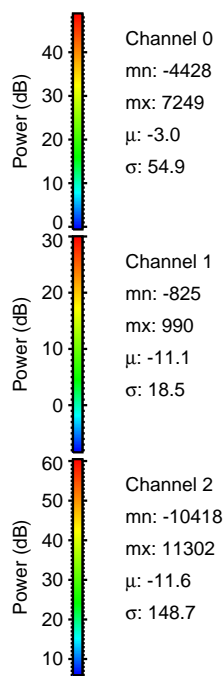
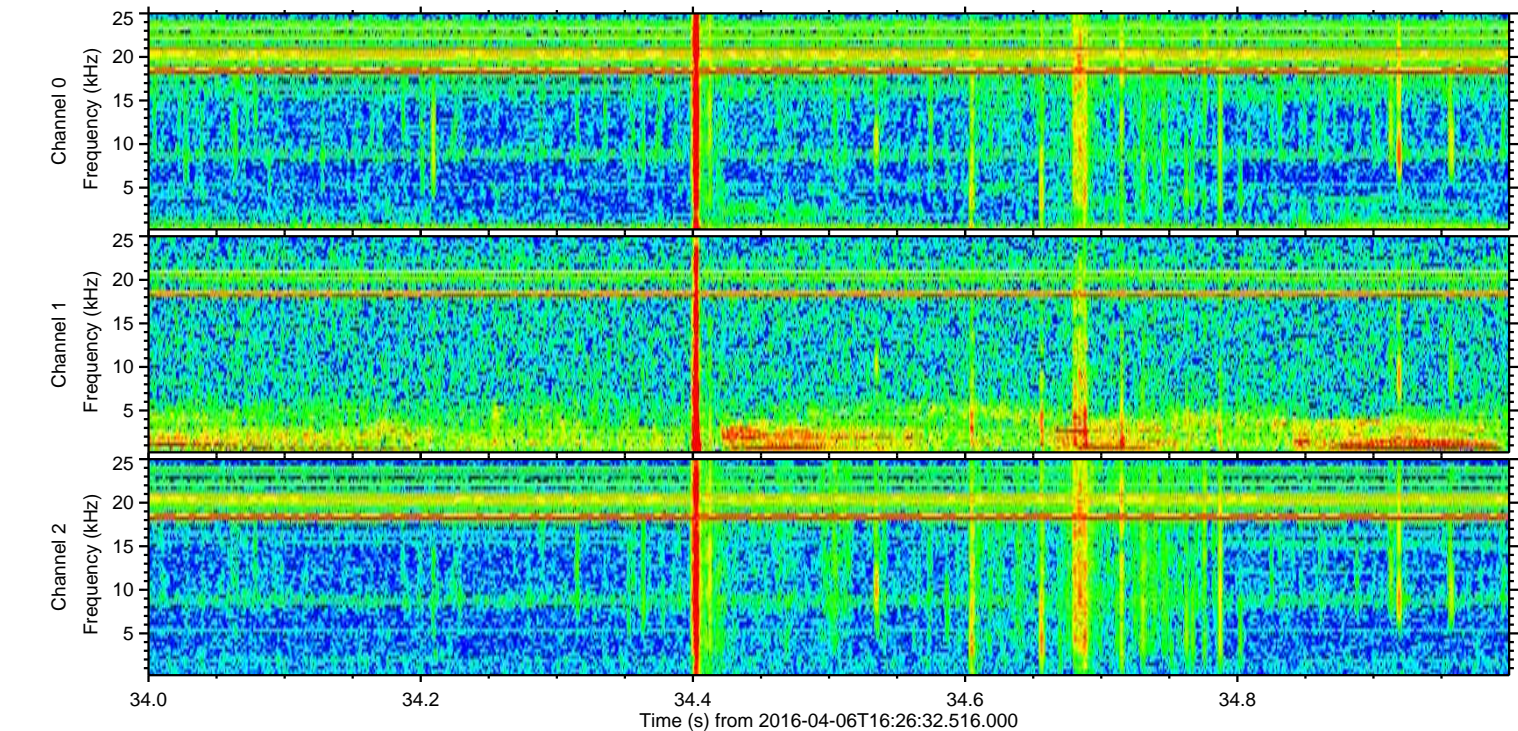
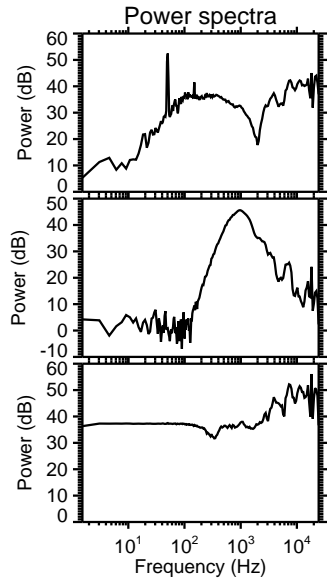
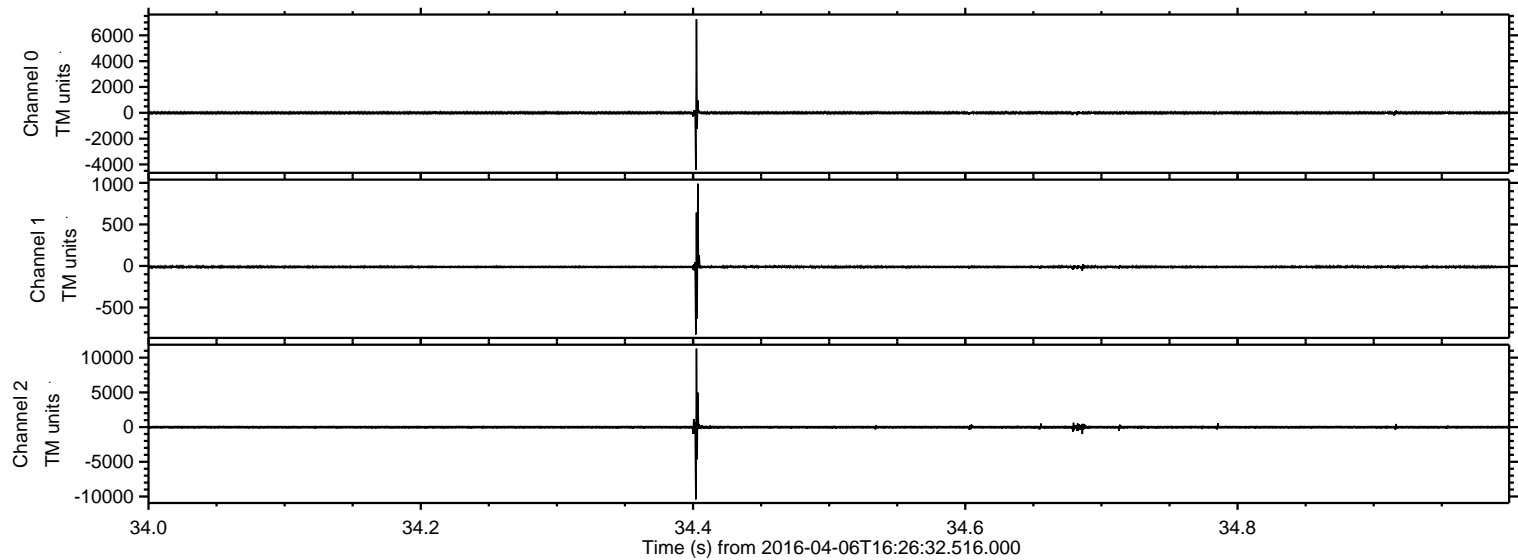


ELMAVAN 3D WAVEFORMS (Measured data sampled at 50 kHz) 51000 packets of 144 samples from 2016-04-06T16:26:32.516.000.

Processed Fri May 6 14:35:16 2016 by ELM ver.2012-10-06 from 001__elm20160406_162631__dat00.bin

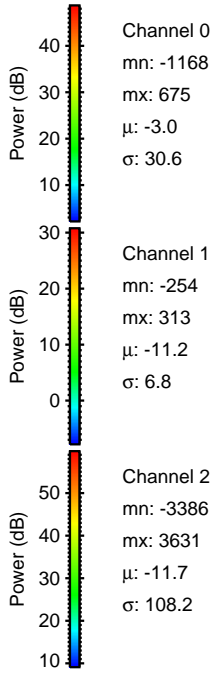
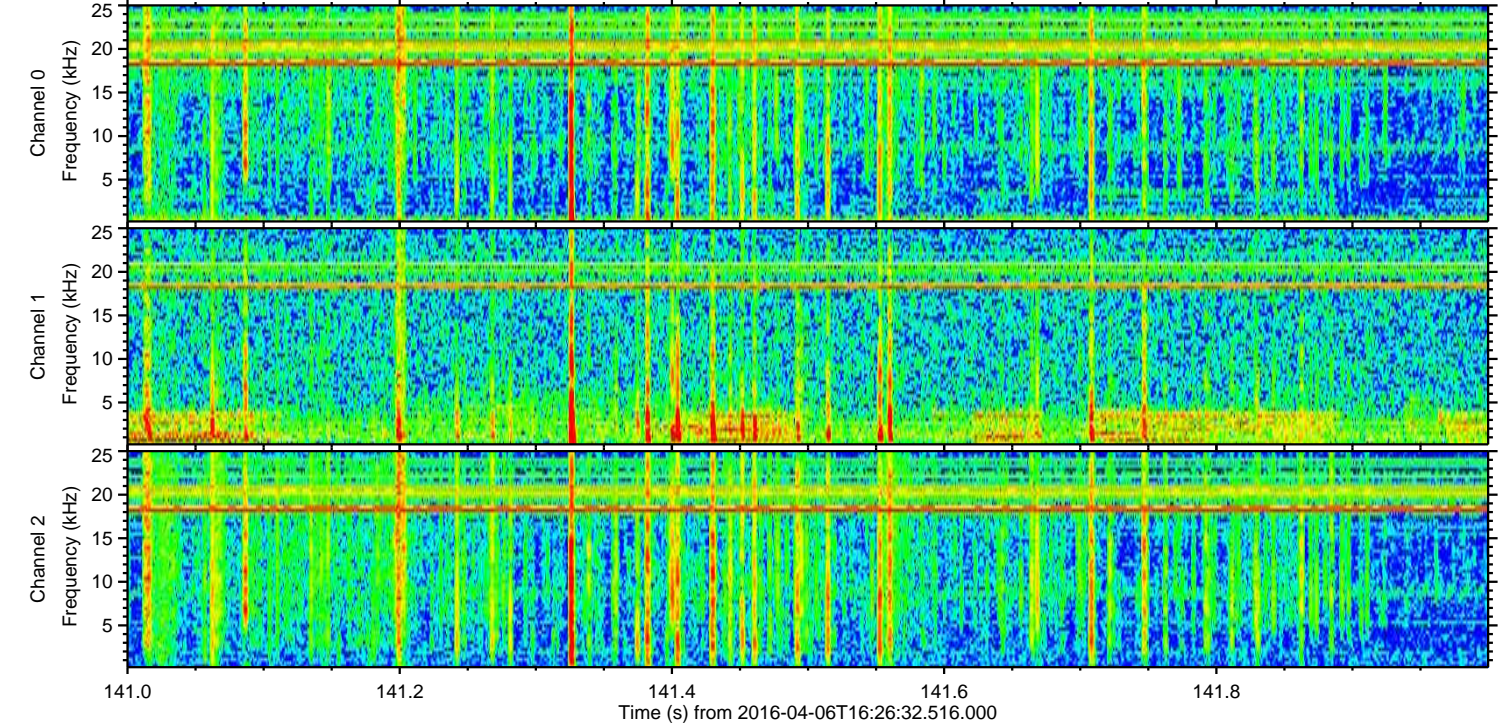
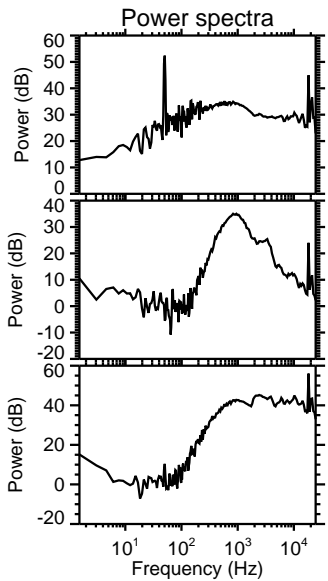
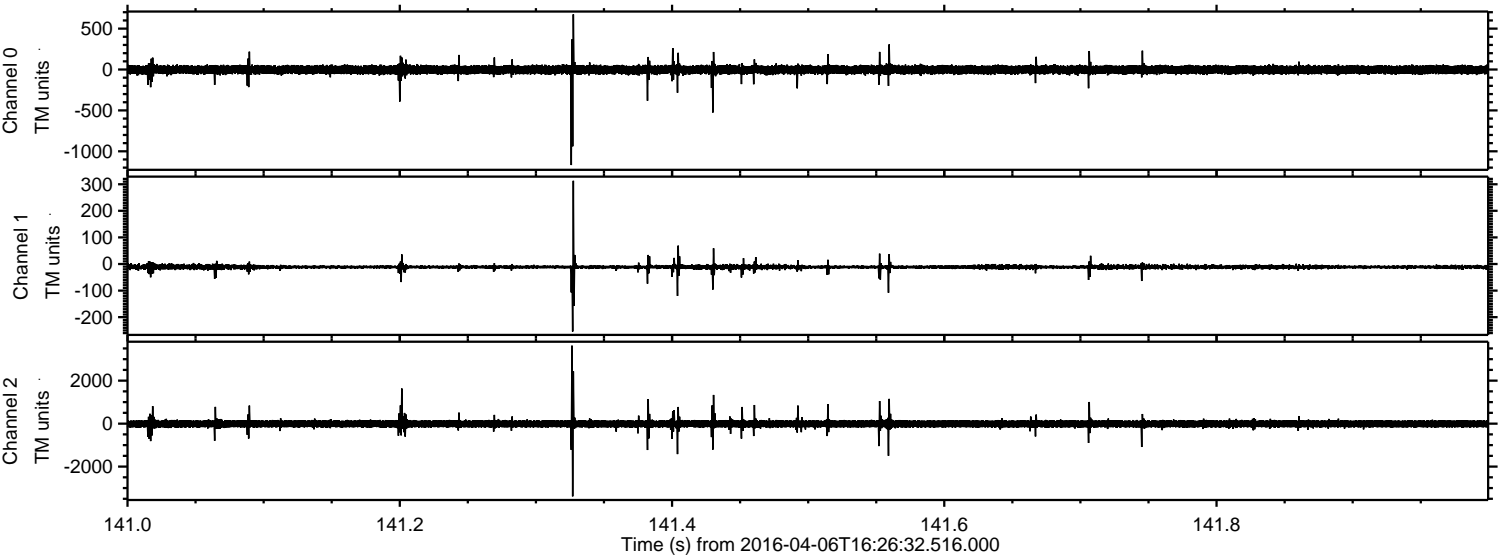


Processed Fri May 6 14:35:31 2016 by ELM ver.2012-10-06 from 001__elm20160406_162631__dat00.bin



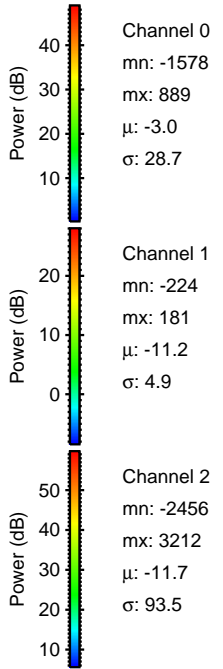
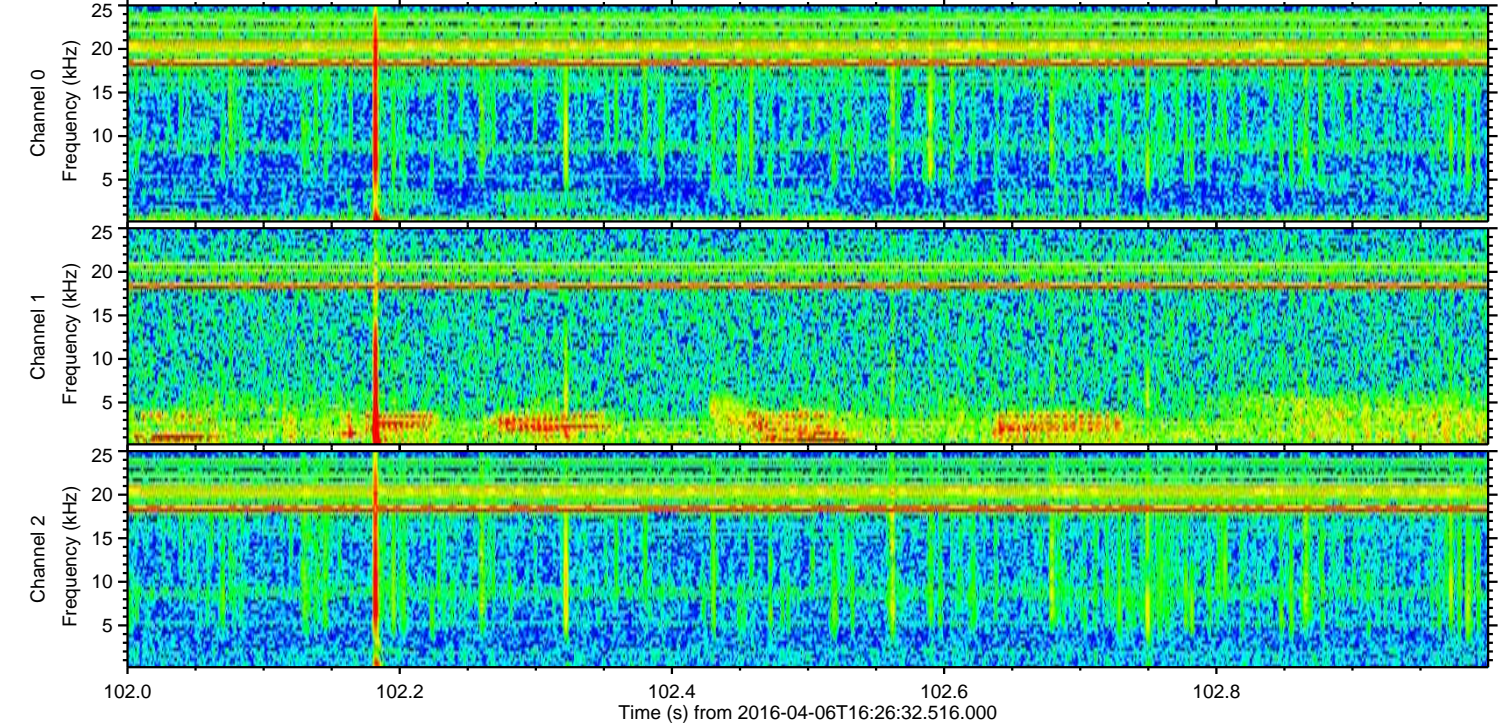
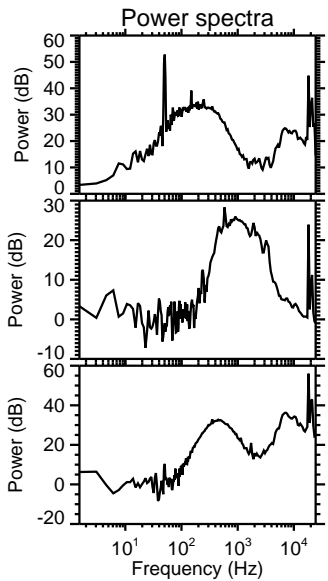
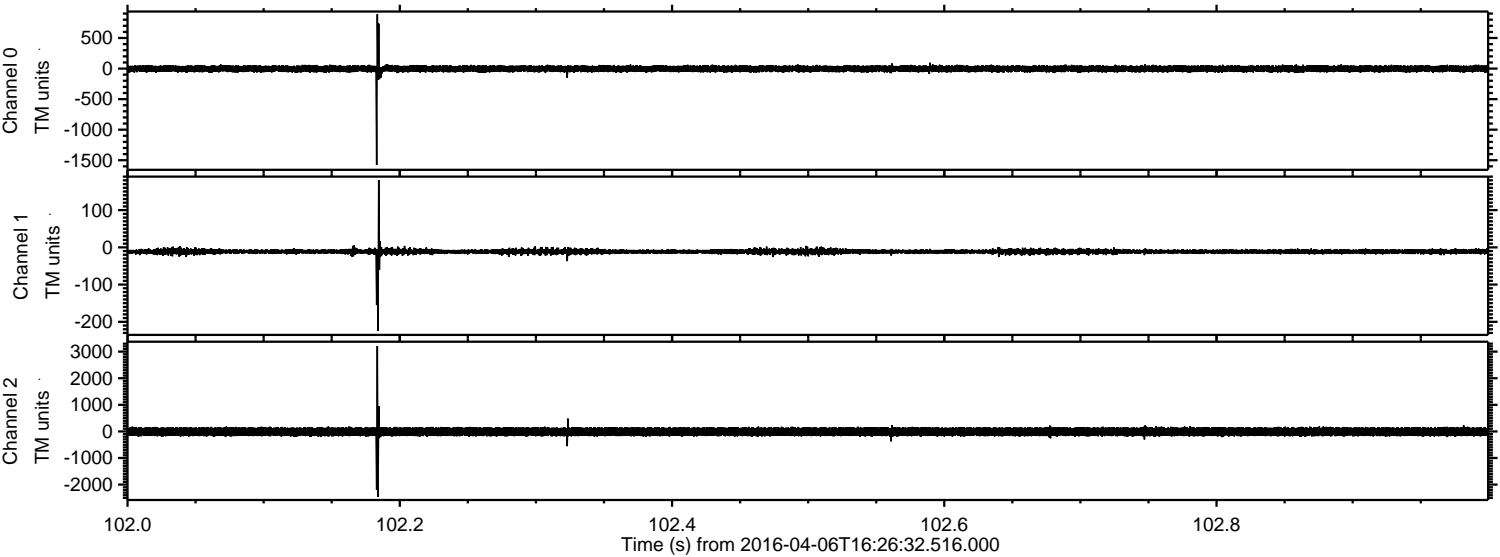
ELMAVAN 3D WAVEFORMS (Measured data sampled at 50 kHz) 51000 packets of 144 samples from 2016-04-06T16:26:32.516.000. Part 142/147

Processed Fri May 6 14:35:32 2016 by ELM ver.2012-10-06 from 001__elm20160406_162631__dat00.bin

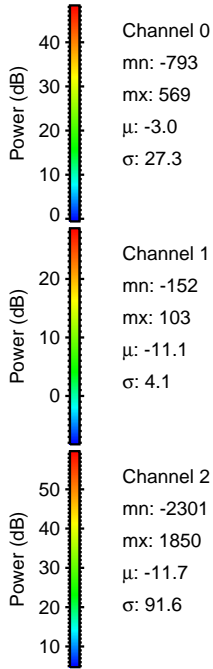
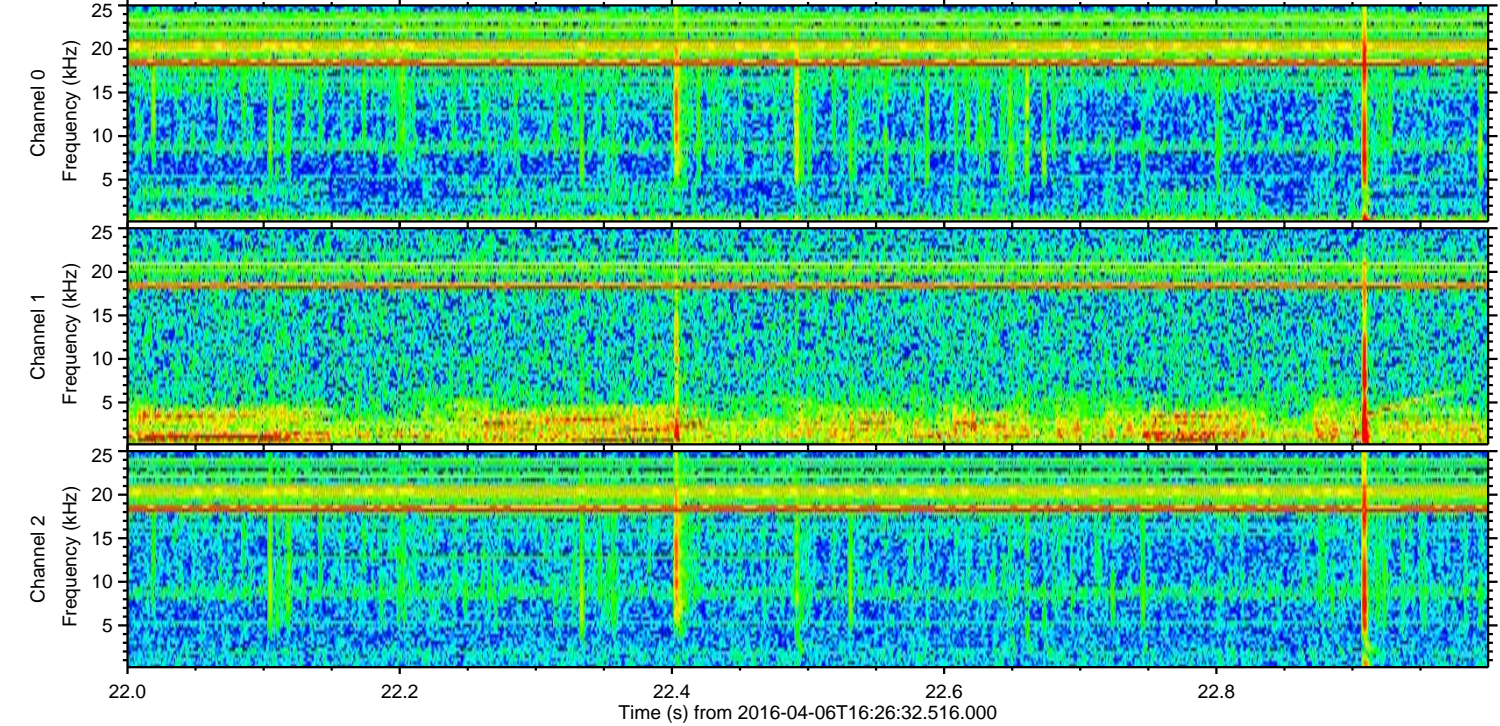
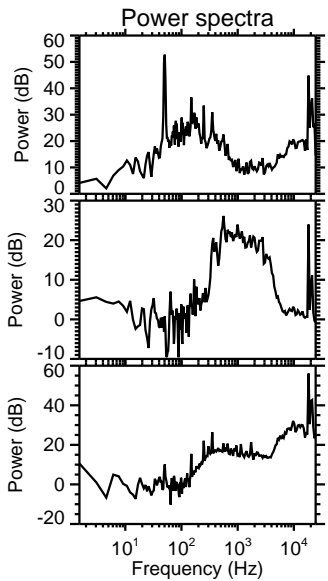
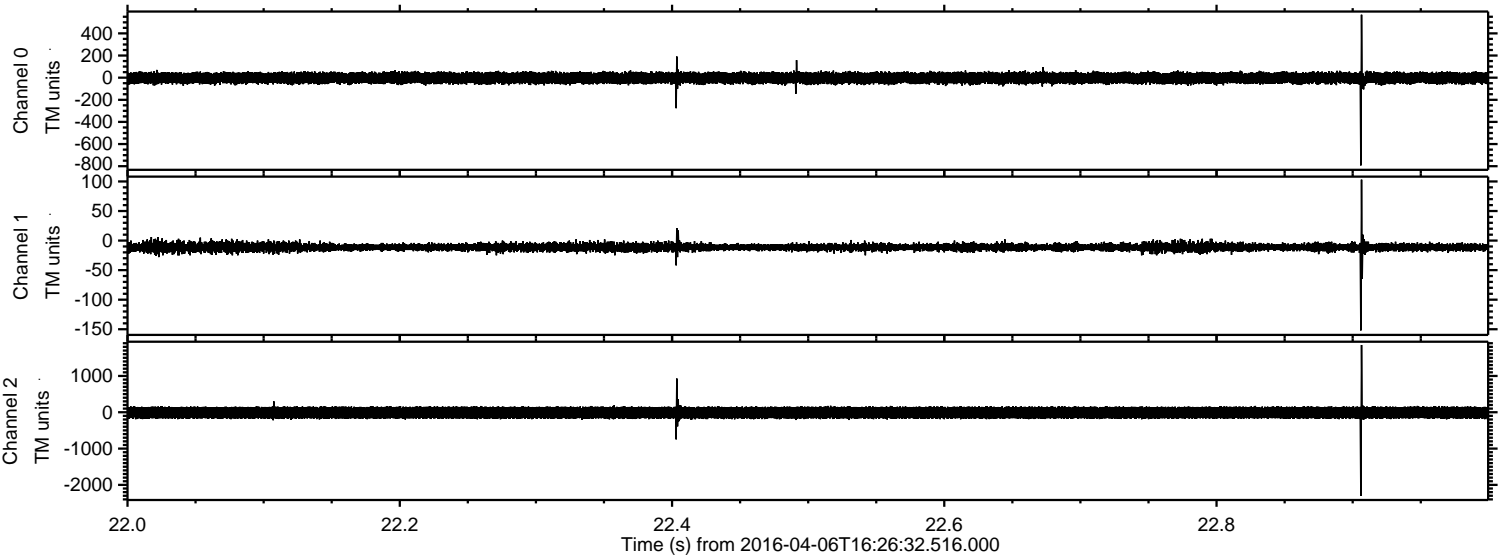


ELMAVAN 3D WAVEFORMS (Measured data sampled at 50 kHz) 51000 packets of 144 samples from 2016-04-06T16:26:32.516.000. Part 103/147

Processed Fri May 6 14:35:33 2016 by ELM ver.2012-10-06 from 001__elm20160406_162631__dat00.bin

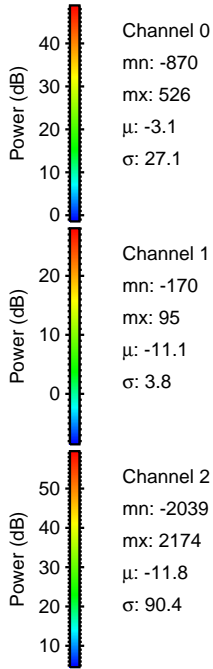
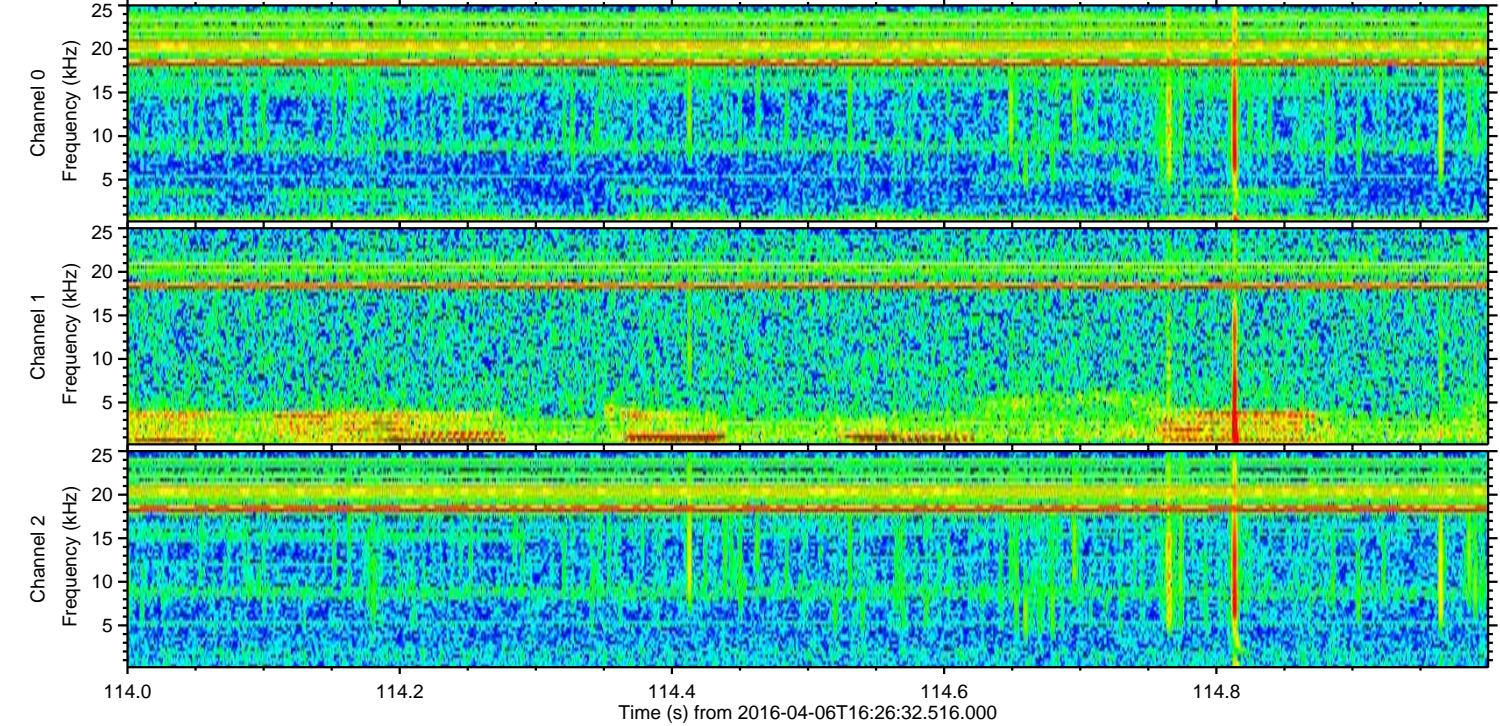
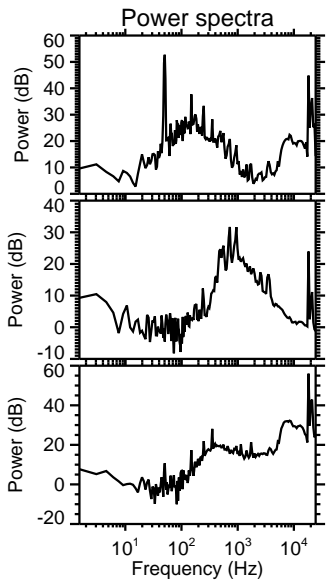
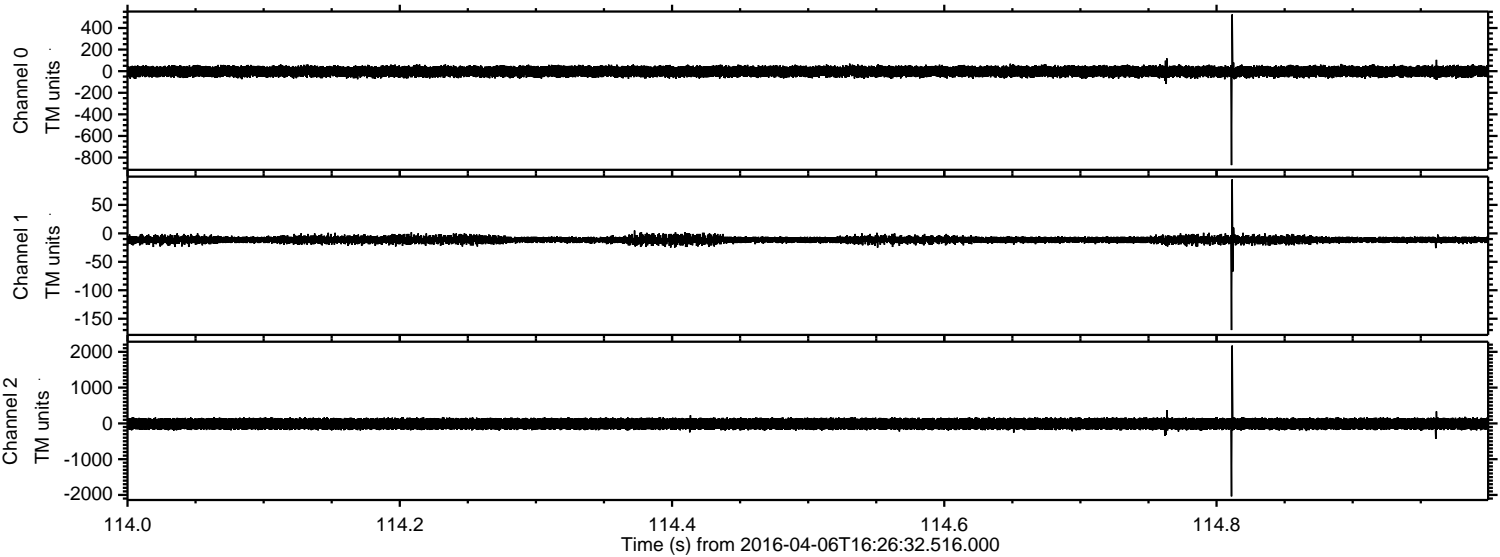


Processed Fri May 6 14:35:34 2016 by ELM ver.2012-10-06 from 001__elm20160406_162631__dat00.bin

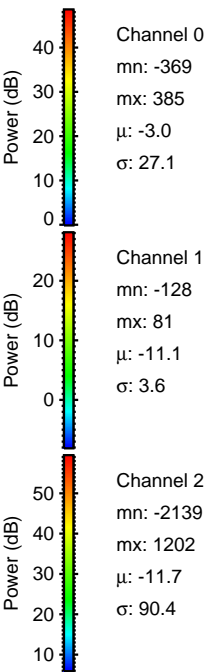
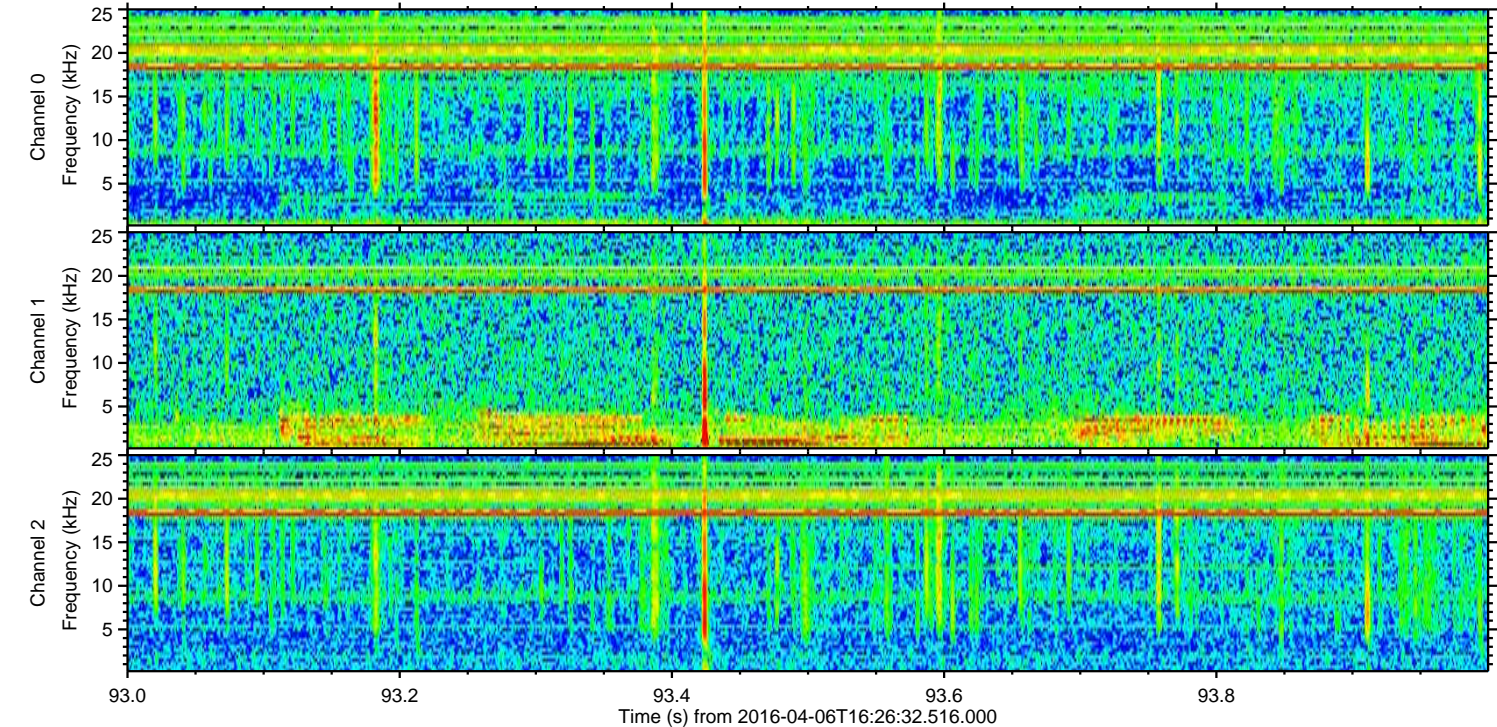
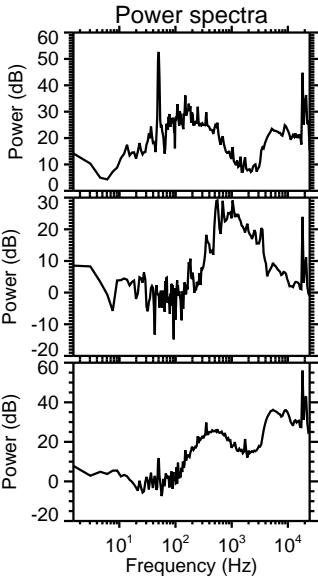
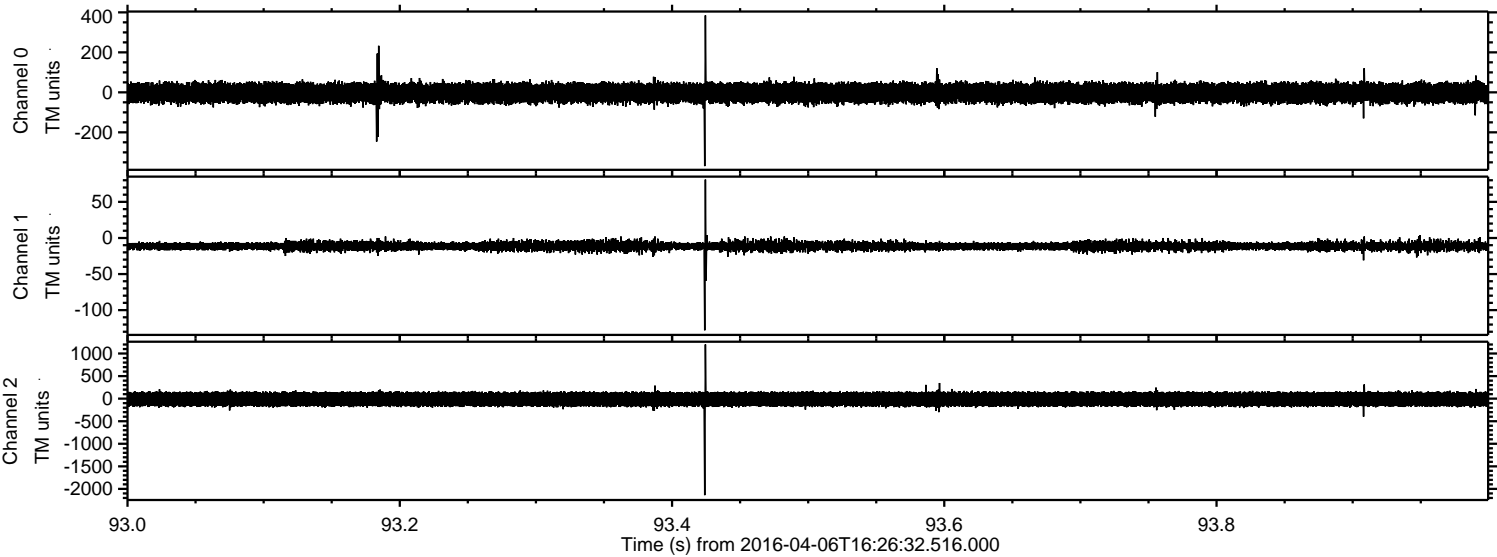


ELMAVAN 3D WAVEFORMS (Measured data sampled at 50 kHz) 51000 packets of 144 samples from 2016-04-06T16:26:32.516.000. Part 115/147

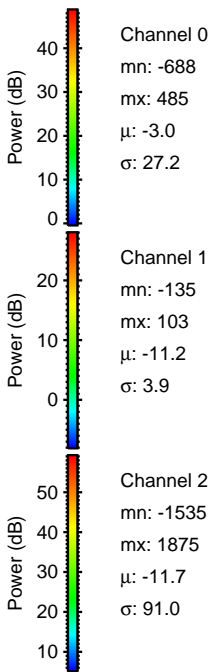
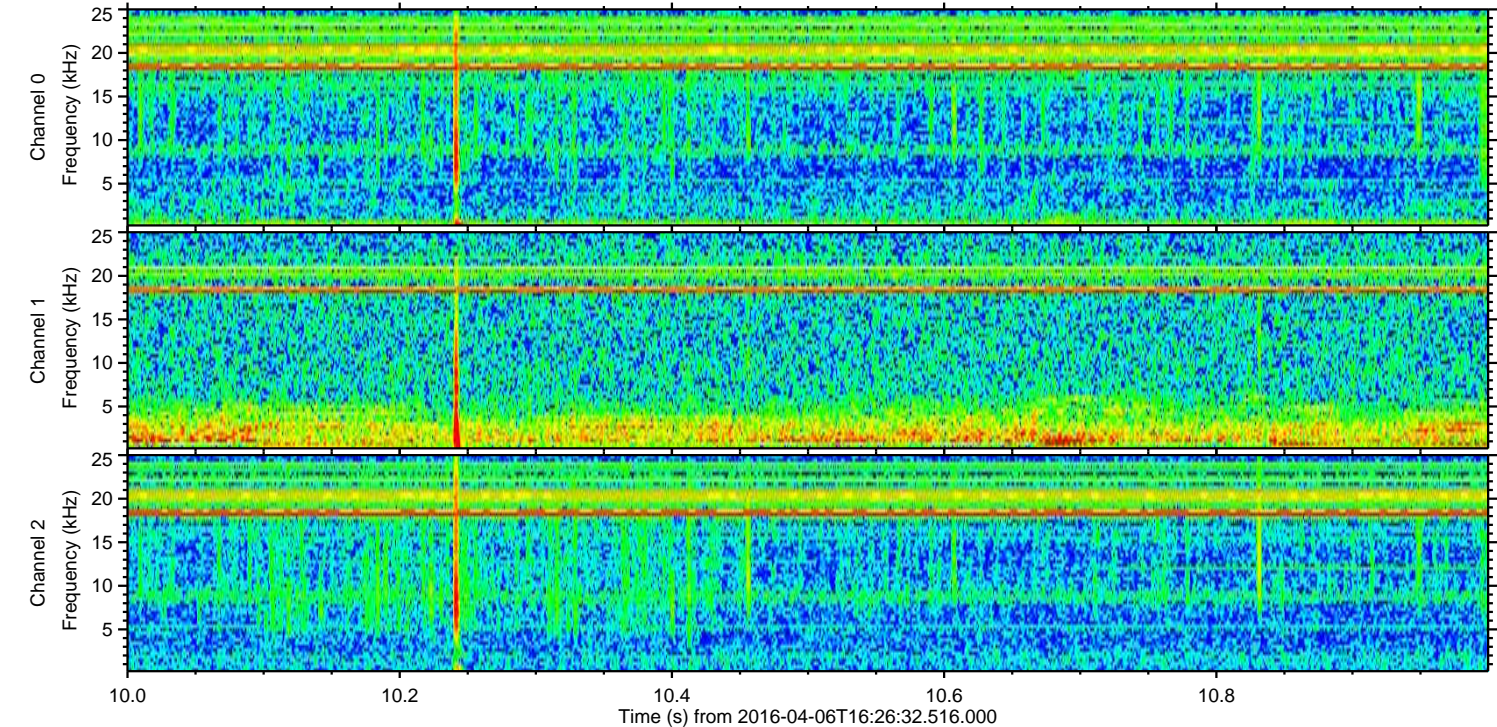
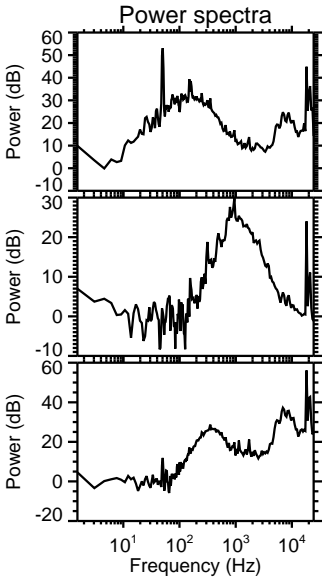
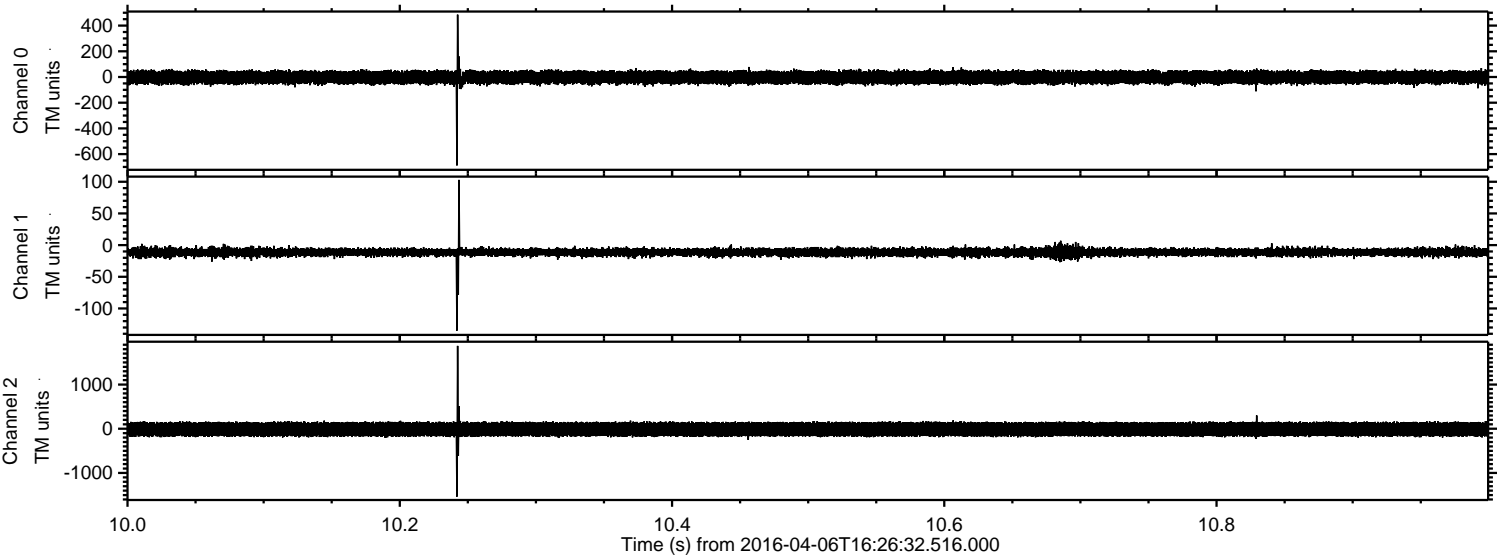
Processed Fri May 6 14:35:35 2016 by ELM ver.2012-10-06 from 001__elm20160406_162631__dat00.bin



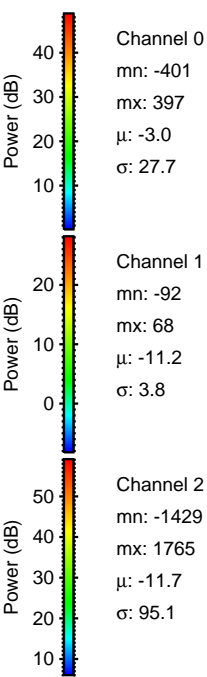
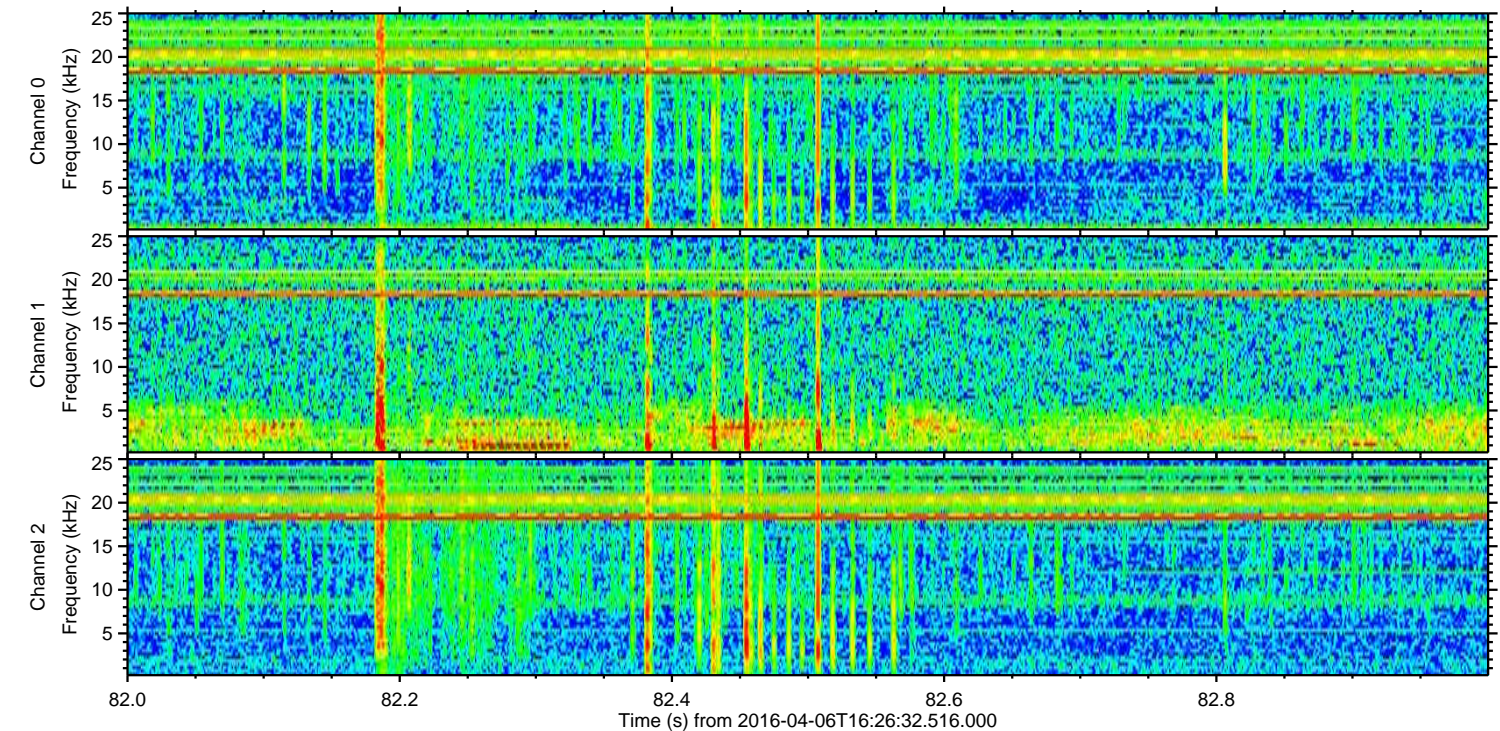
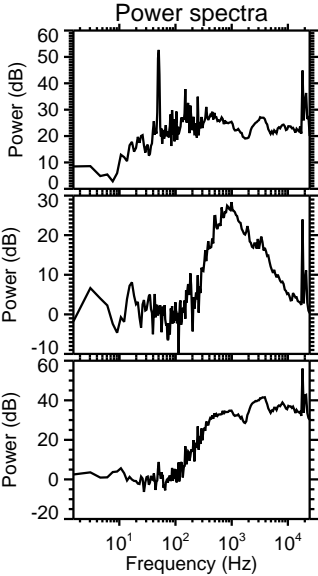
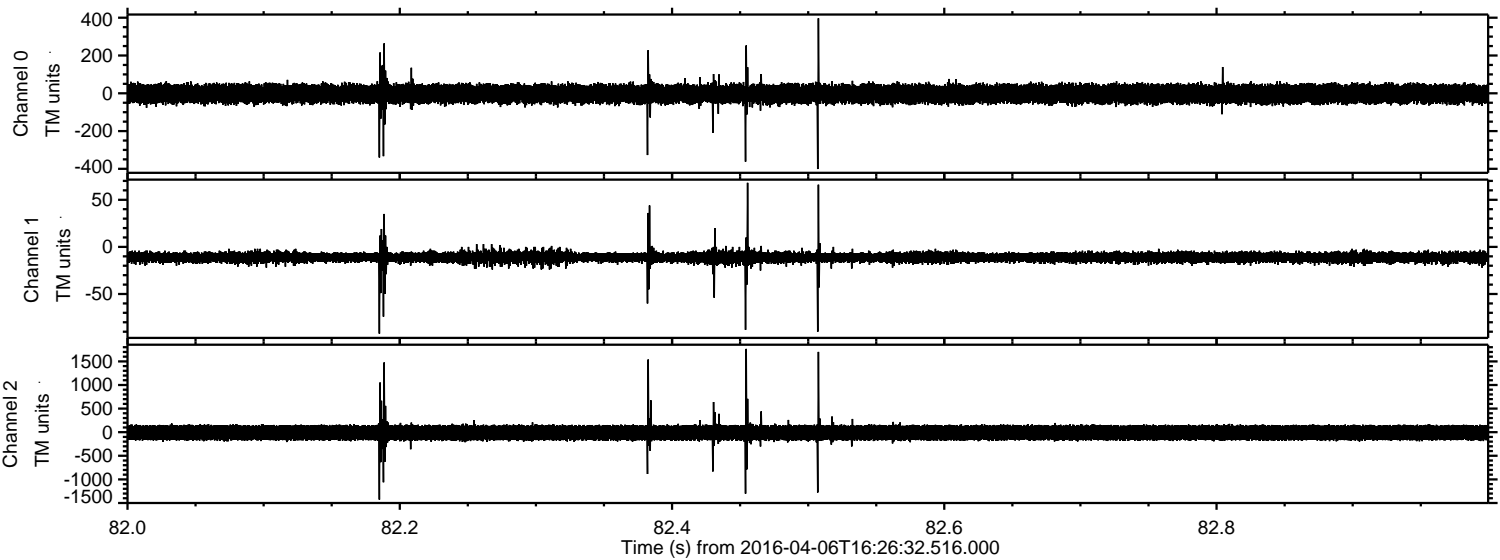
Processed Fri May 6 14:35:36 2016 by ELM ver.2012-10-06 from 001__elm20160406_162631__dat00.bin



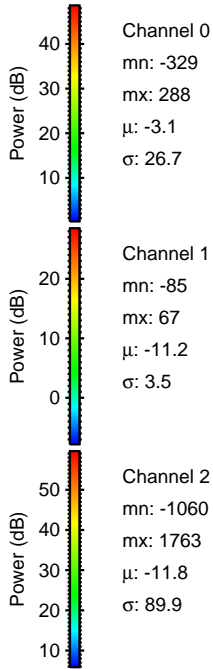
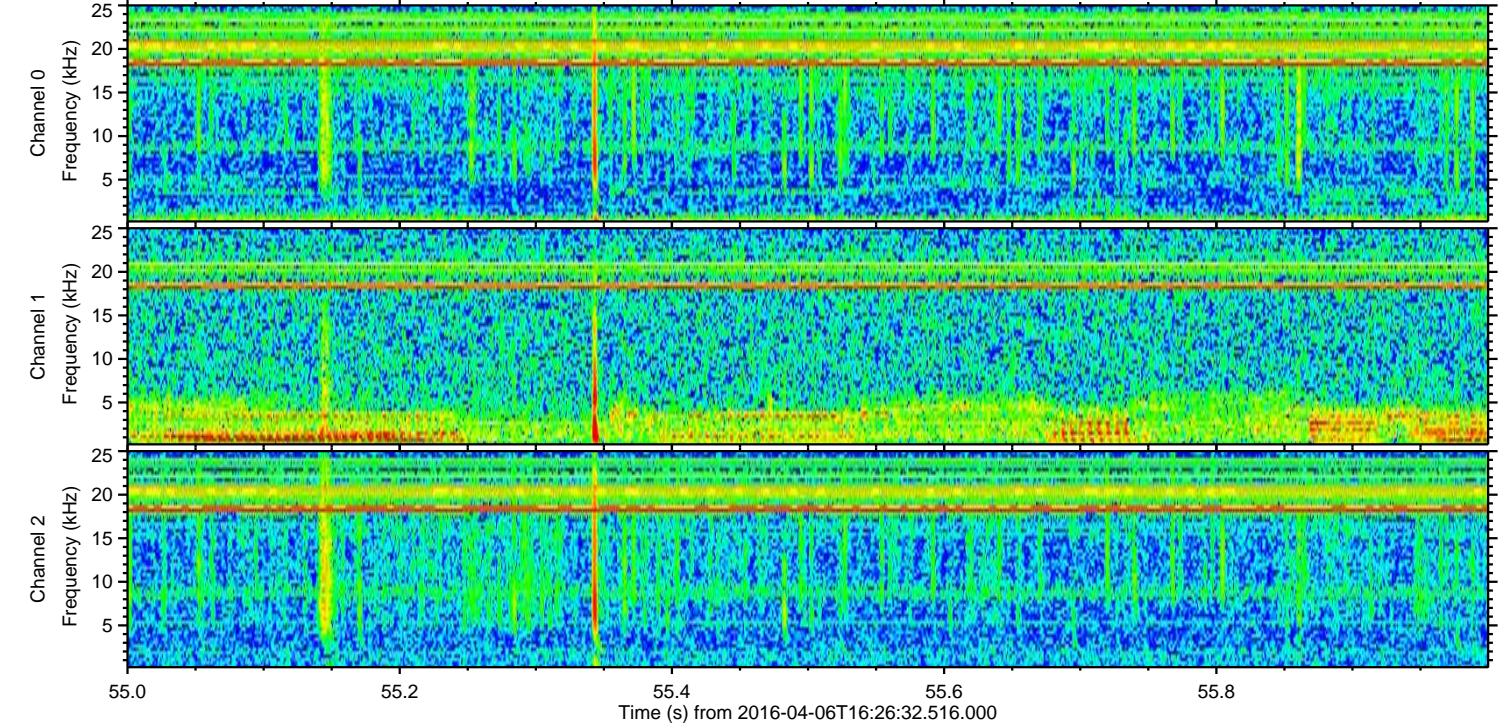
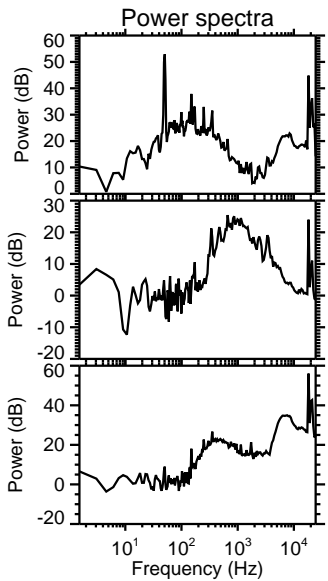
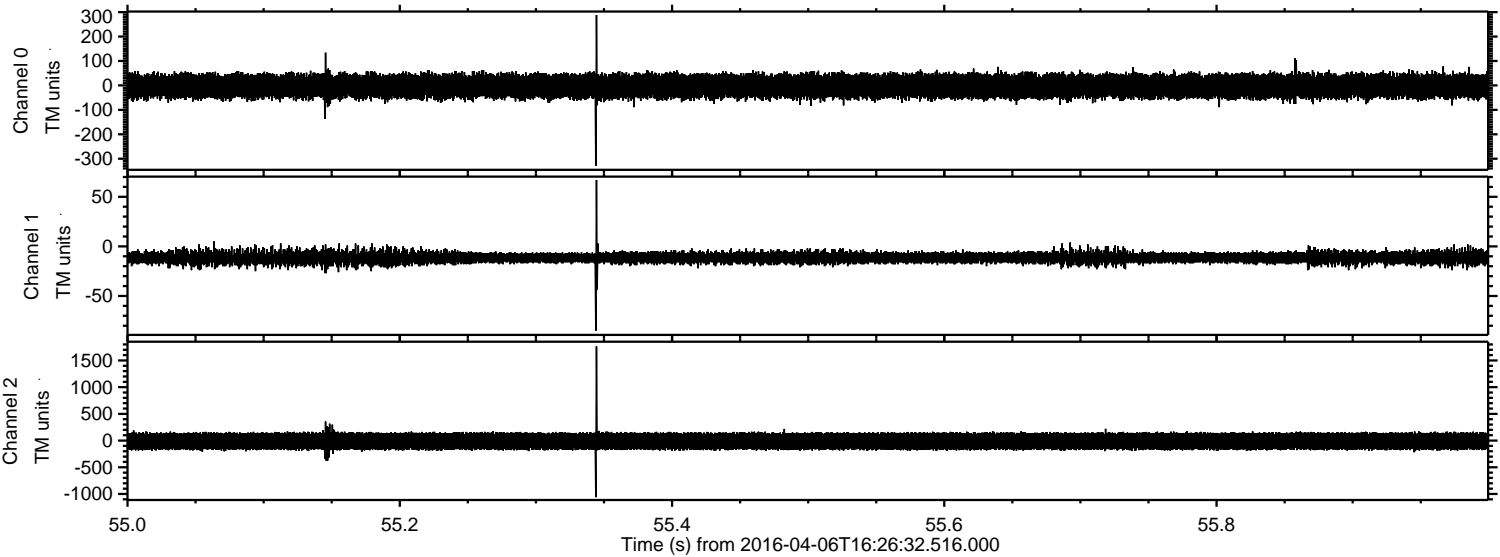
Processed Fri May 6 14:35:37 2016 by ELM ver.2012-10-06 from 001__elm20160406_162631__dat00.bin



Processed Fri May 6 14:35:38 2016 by ELM ver.2012-10-06 from 001__elm20160406_162631__dat00.bin



Processed Fri May 6 14:35:39 2016 by ELM ver.2012-10-06 from 001__elm20160406_162631__dat00.bin



Channel 0
mn: -329
mx: 288
 μ : -3.1
 σ : 26.7

Channel 1
mn: -85
mx: 67
 μ : -11.2
 σ : 3.5

Channel 2
mn: -1060
mx: 1763
 μ : -11.8
 σ : 89.9

