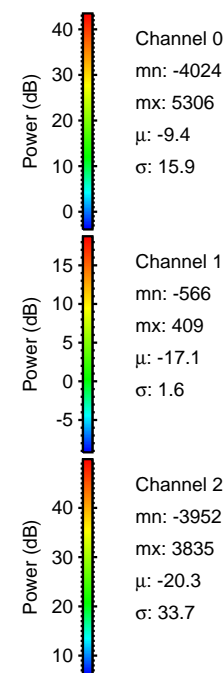
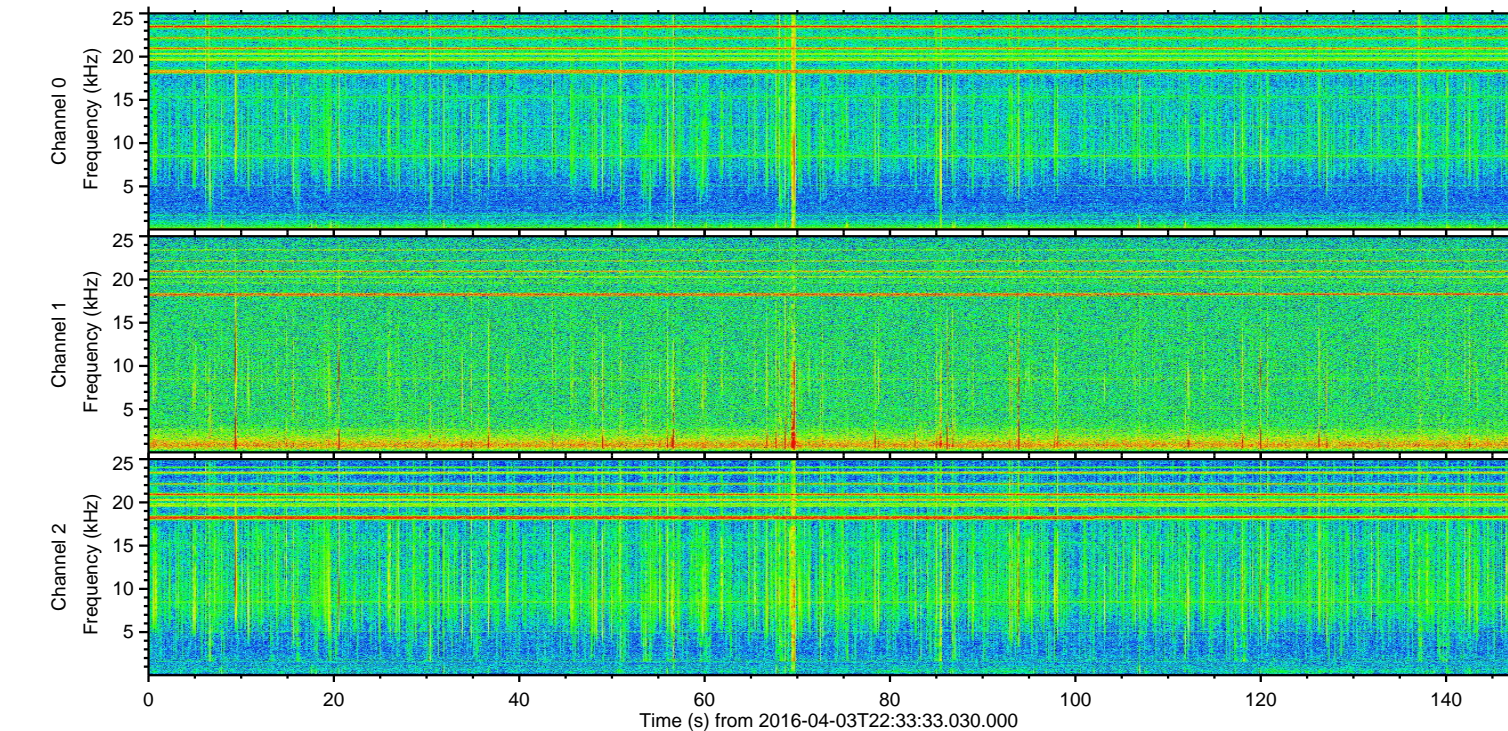
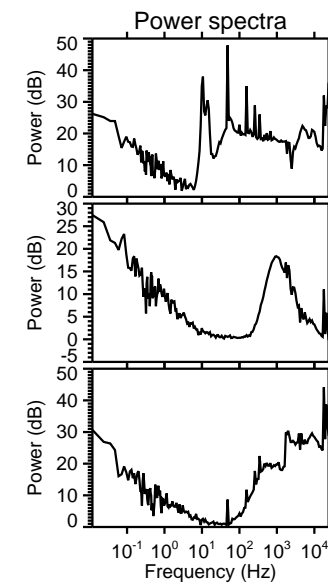
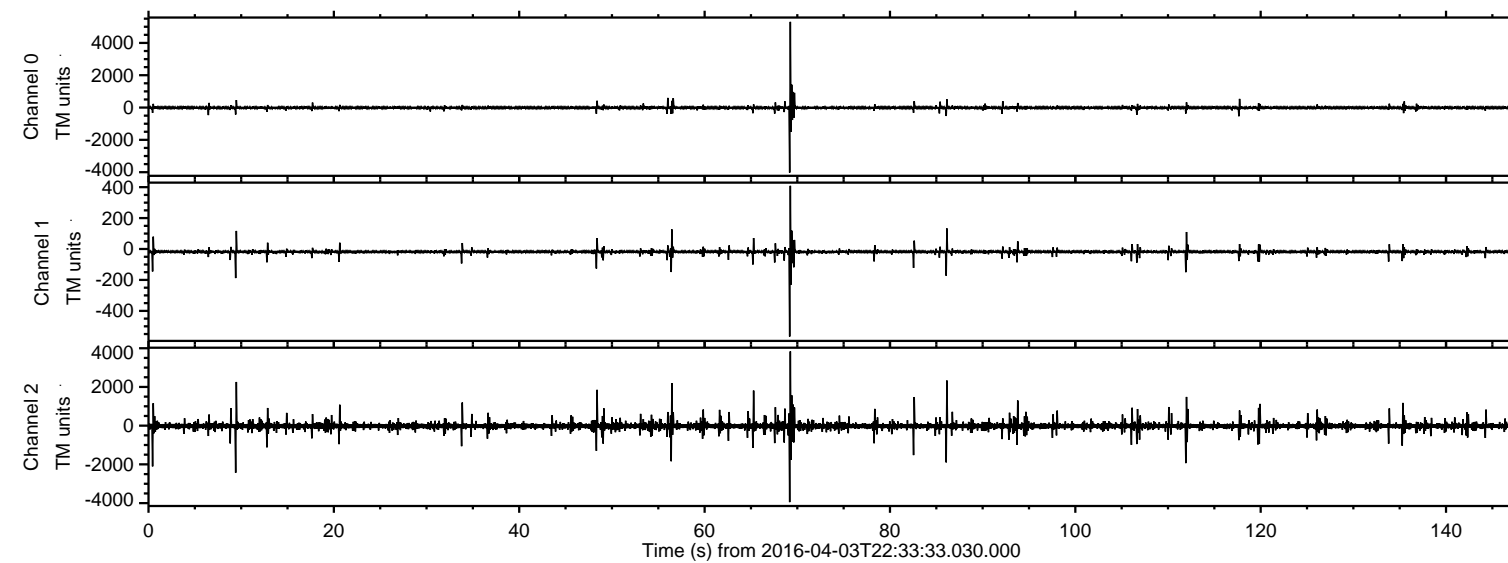


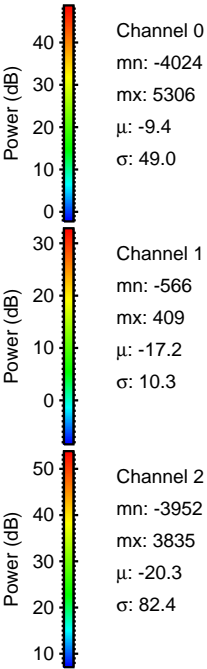
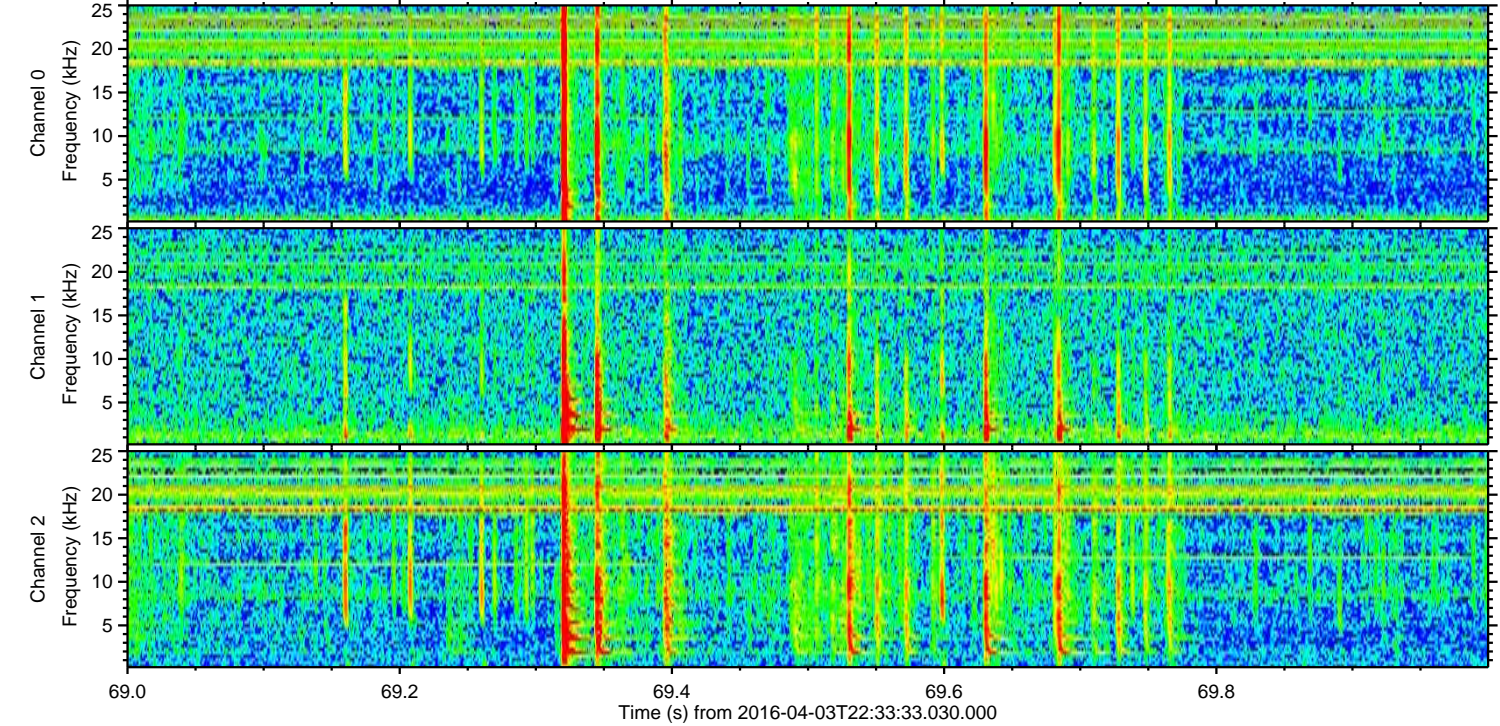
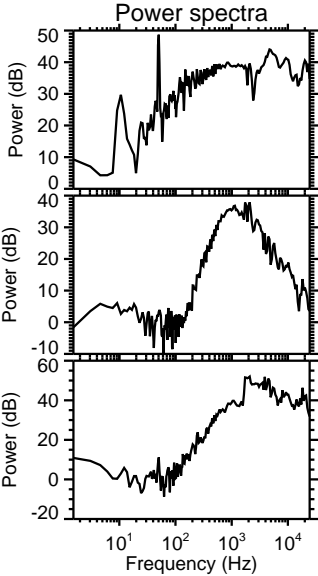
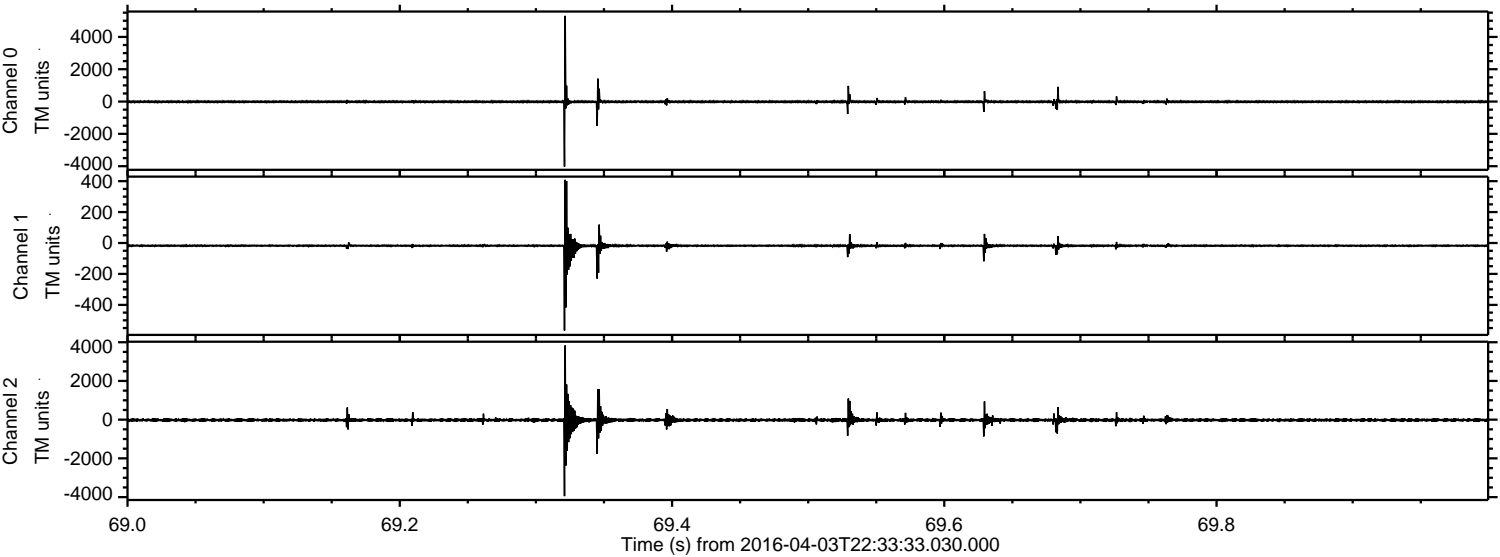
# ELMAVAN 3D WAVEFORMS (Measured data sampled at 50 kHz) 51000 packets of 144 samples from 2016-04-03T22:33:33.030.000.

Processed Thu May 5 22:28:04 2016 by ELM ver.2012-10-06 from 001\_\_elm20160403\_223332\_\_dat00.bin



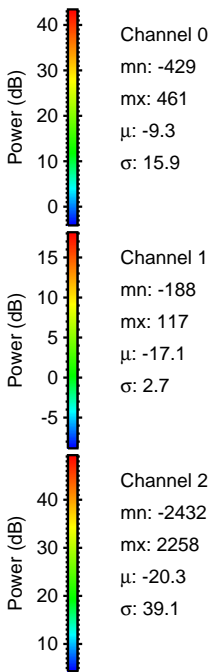
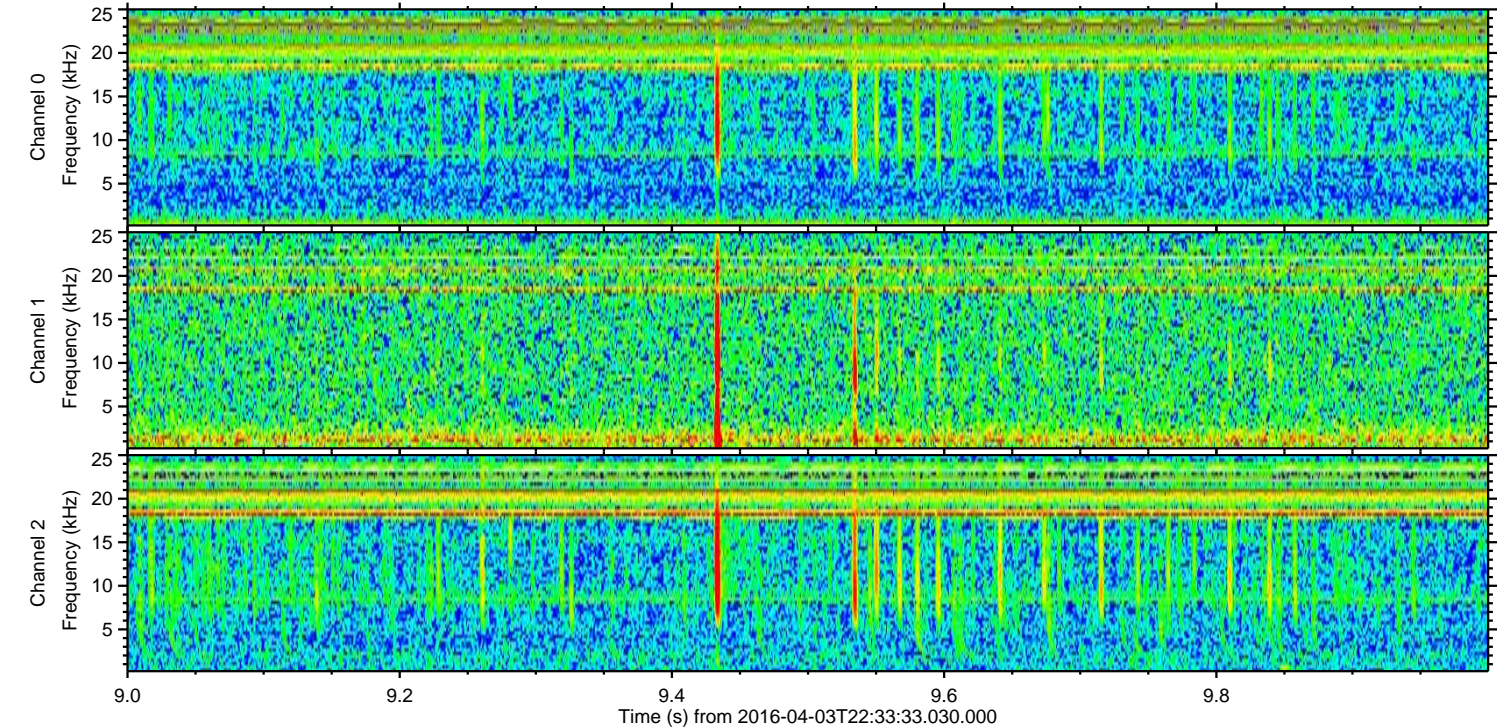
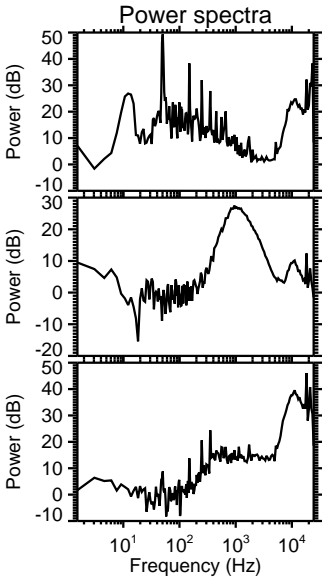
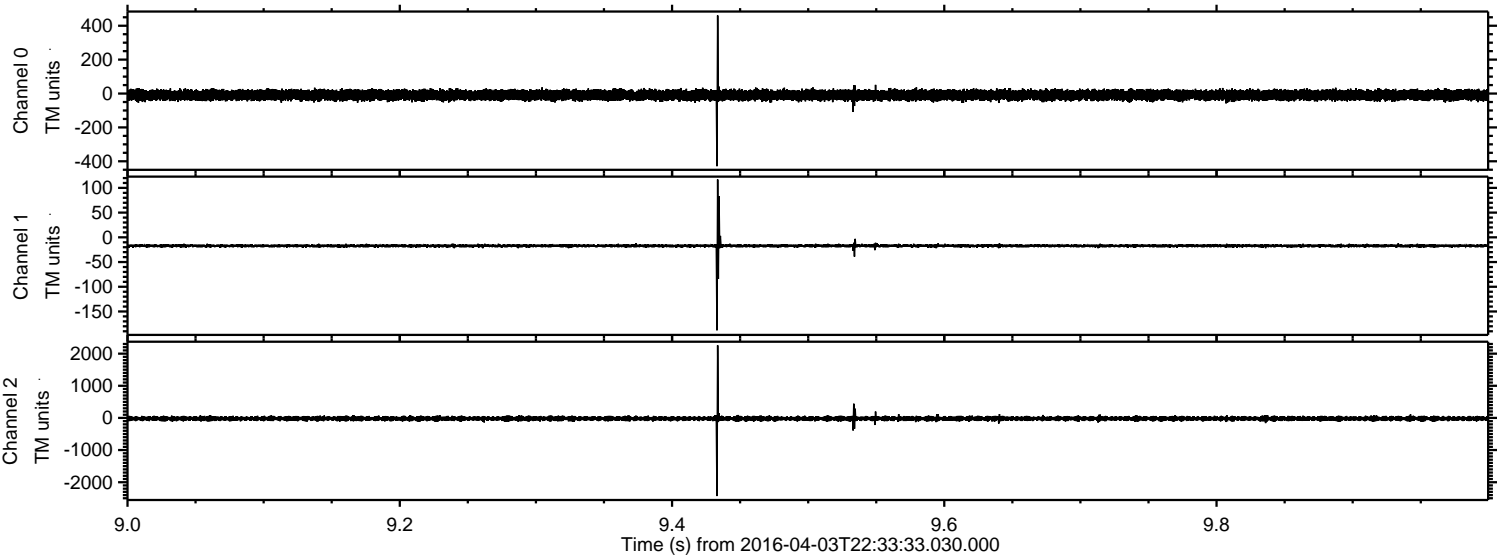


Processed Thu May 5 22:28:20 2016 by ELM ver.2012-10-06 from 001\_\_elm20160403\_223332\_\_dat00.bin



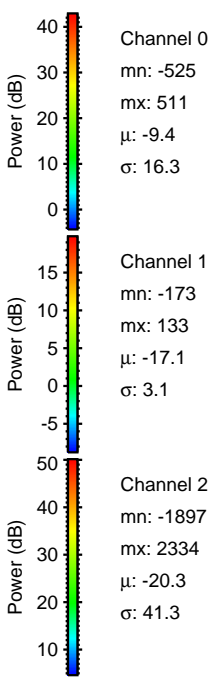
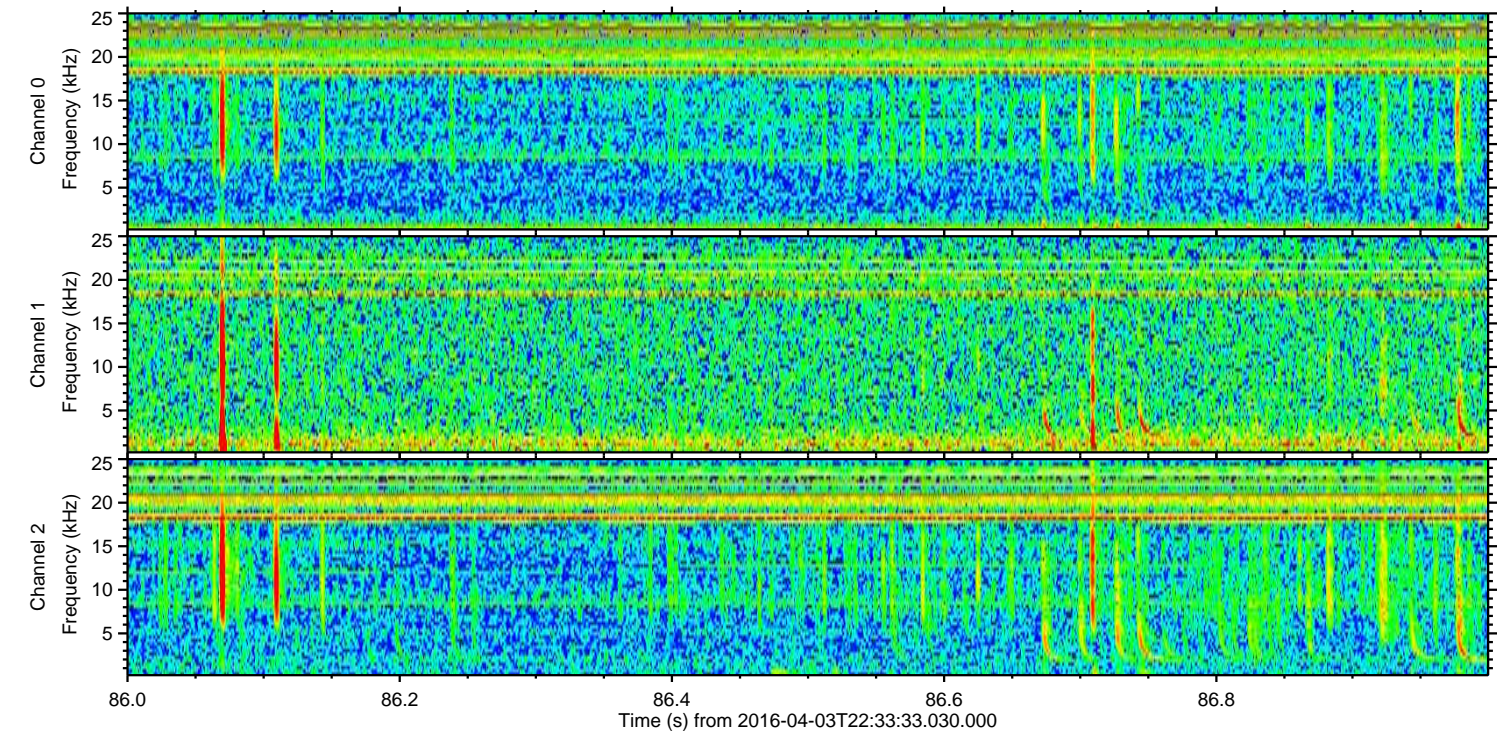
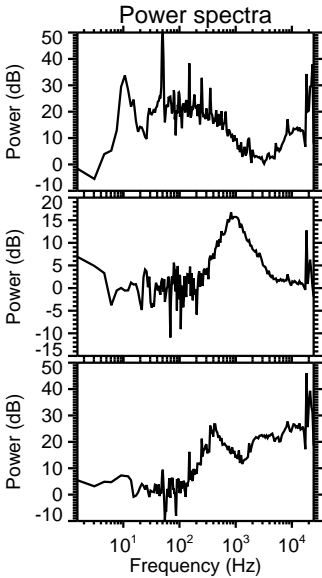
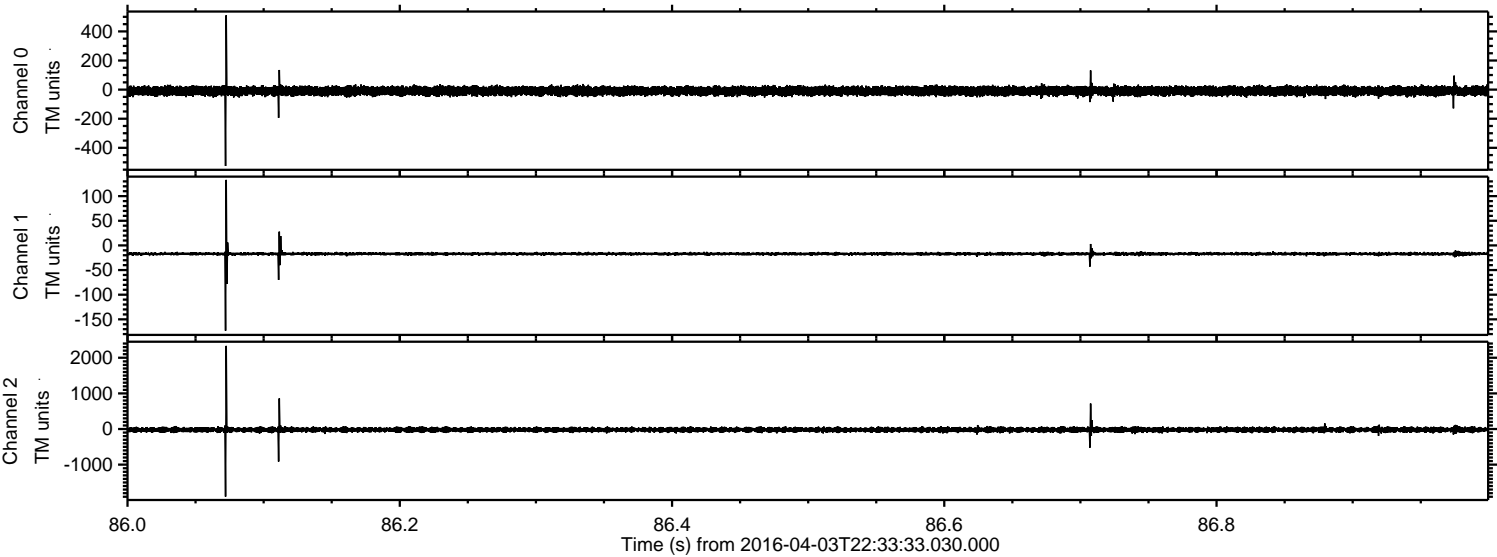


Processed Thu May 5 22:28:21 2016 by ELM ver.2012-10-06 from 001\_\_elm20160403\_223332\_\_dat00.bin



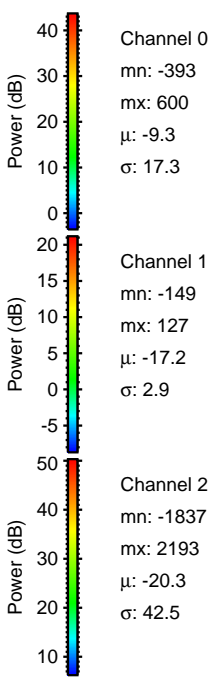
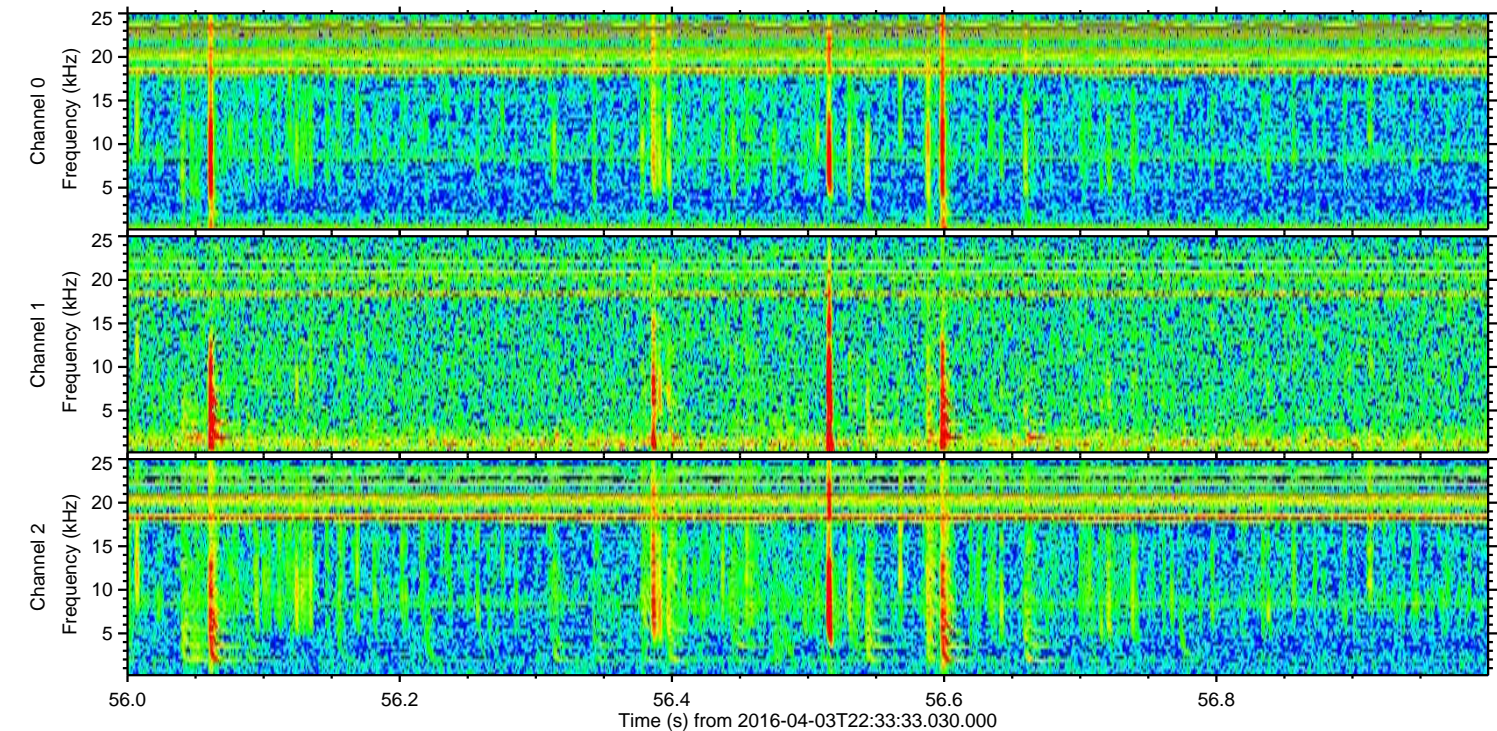
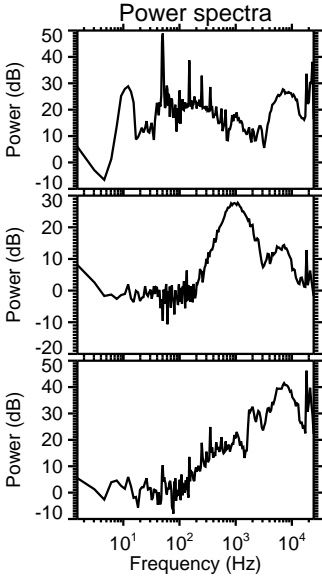
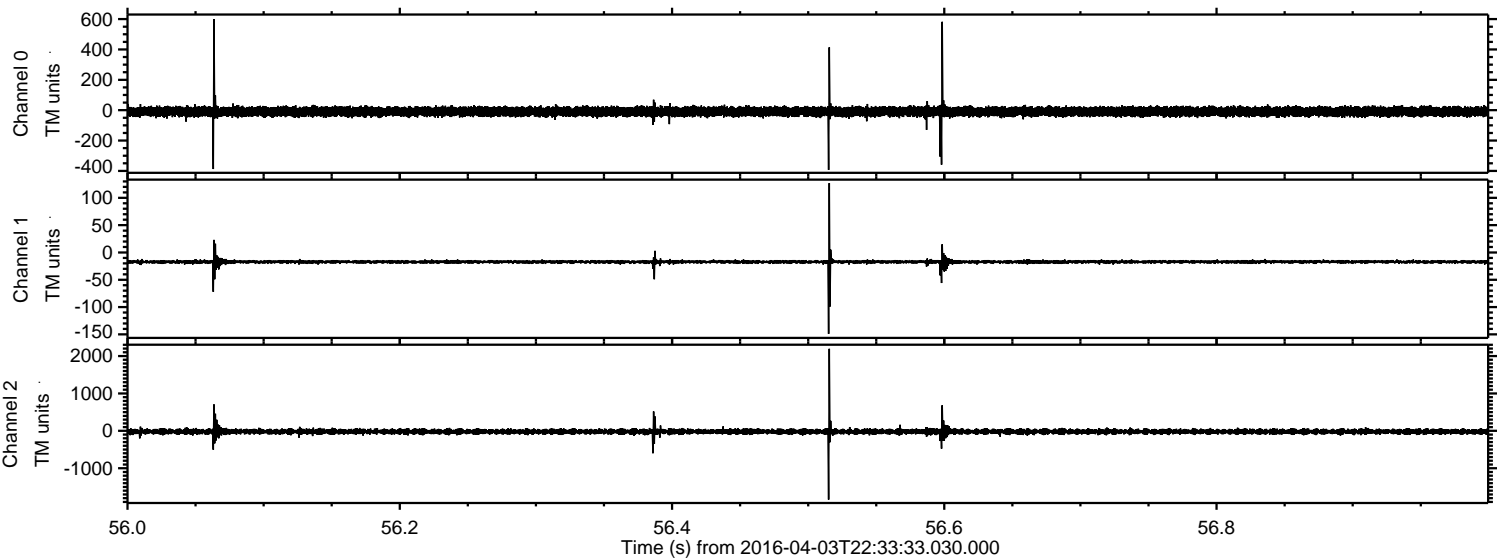


Processed Thu May 5 22:28:22 2016 by ELM ver.2012-10-06 from 001\_\_elm20160403\_223332\_\_dat00.bin





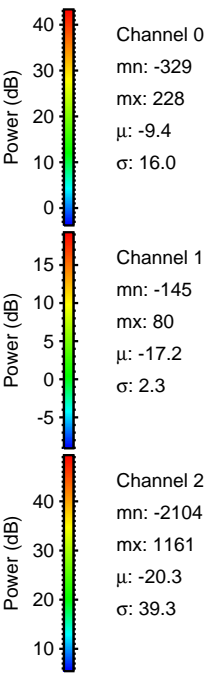
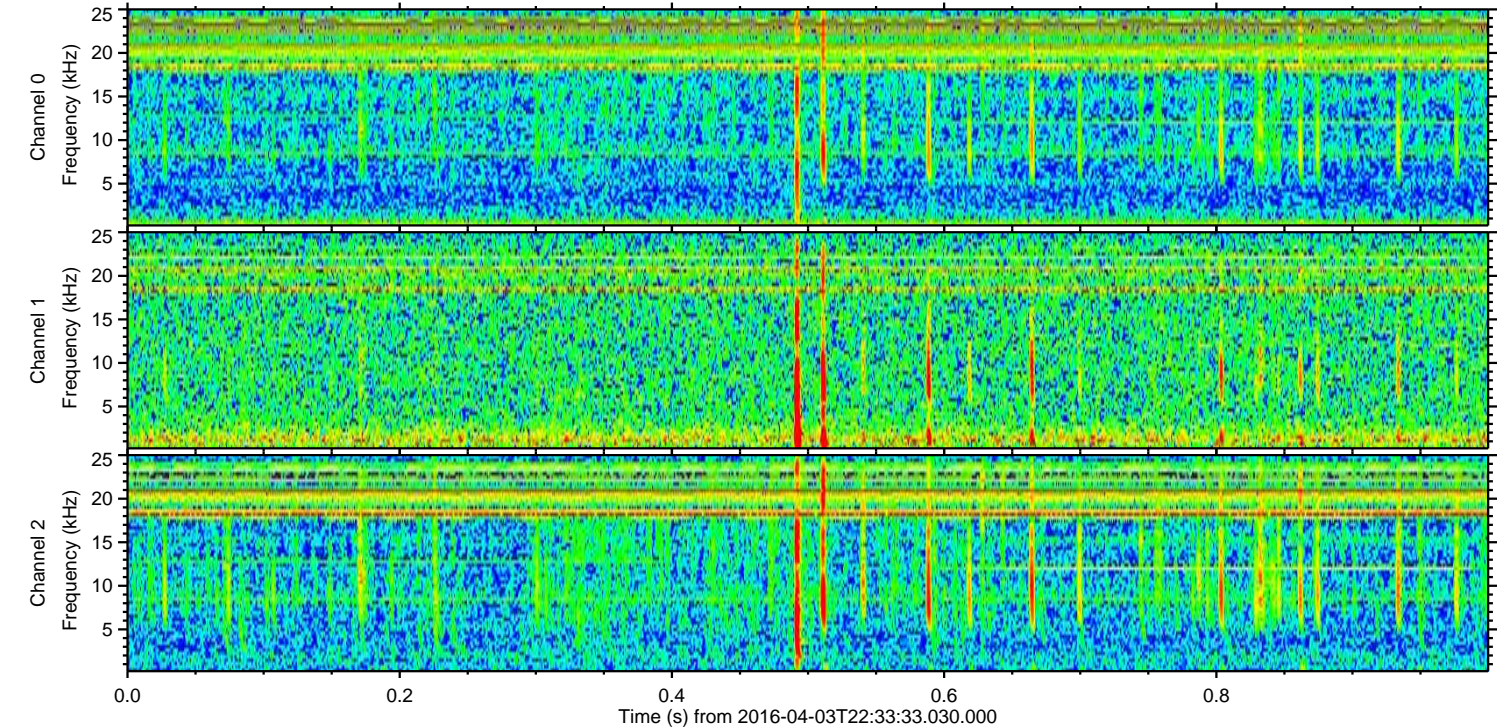
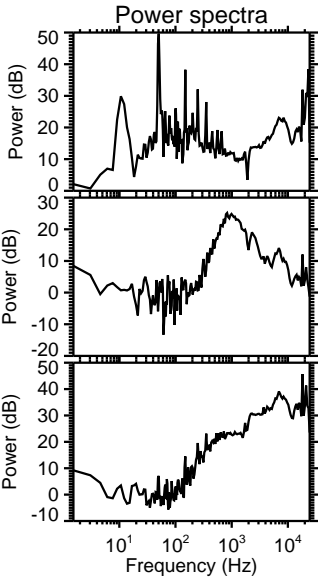
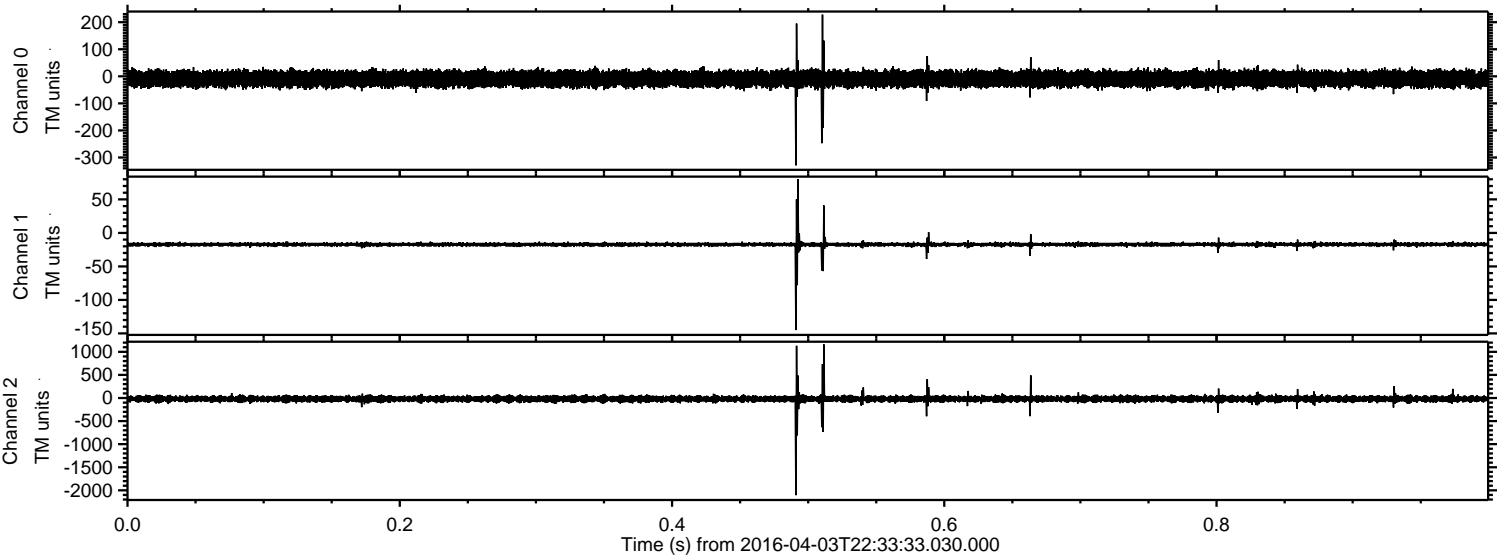
Processed Thu May 5 22:28:23 2016 by ELM ver.2012-10-06 from 001\_\_elm20160403\_223332\_\_dat00.bin





ELMAVAN 3D WAVEFORMS (Measured data sampled at 50 kHz) 51000 packets of 144 samples from 2016-04-03T22:33:33.030.000. Part 1/147

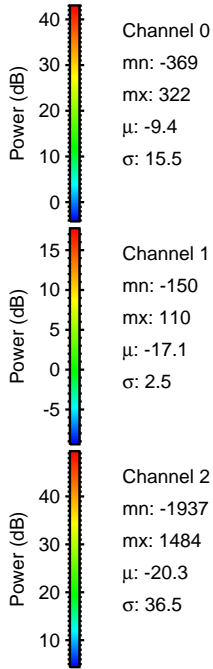
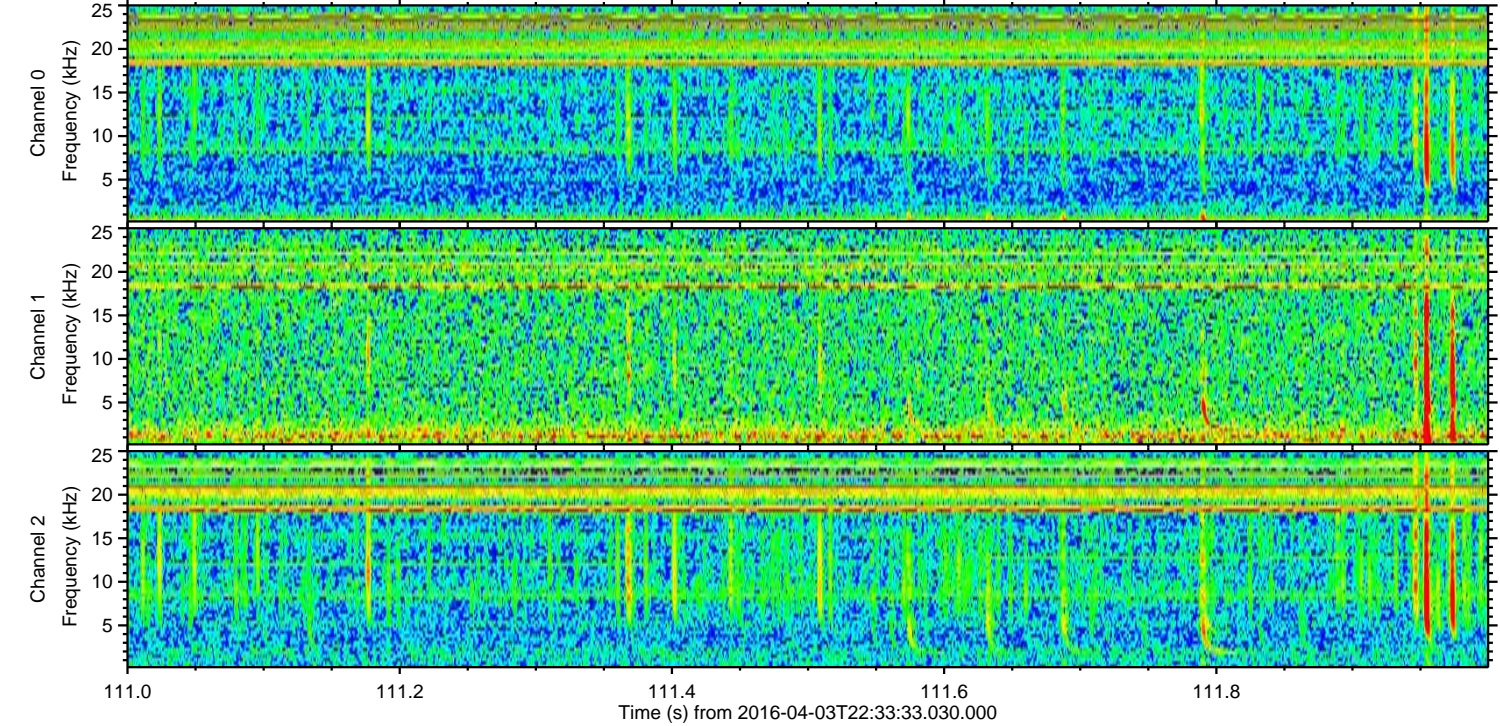
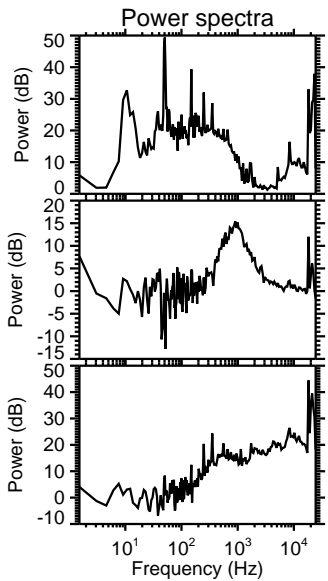
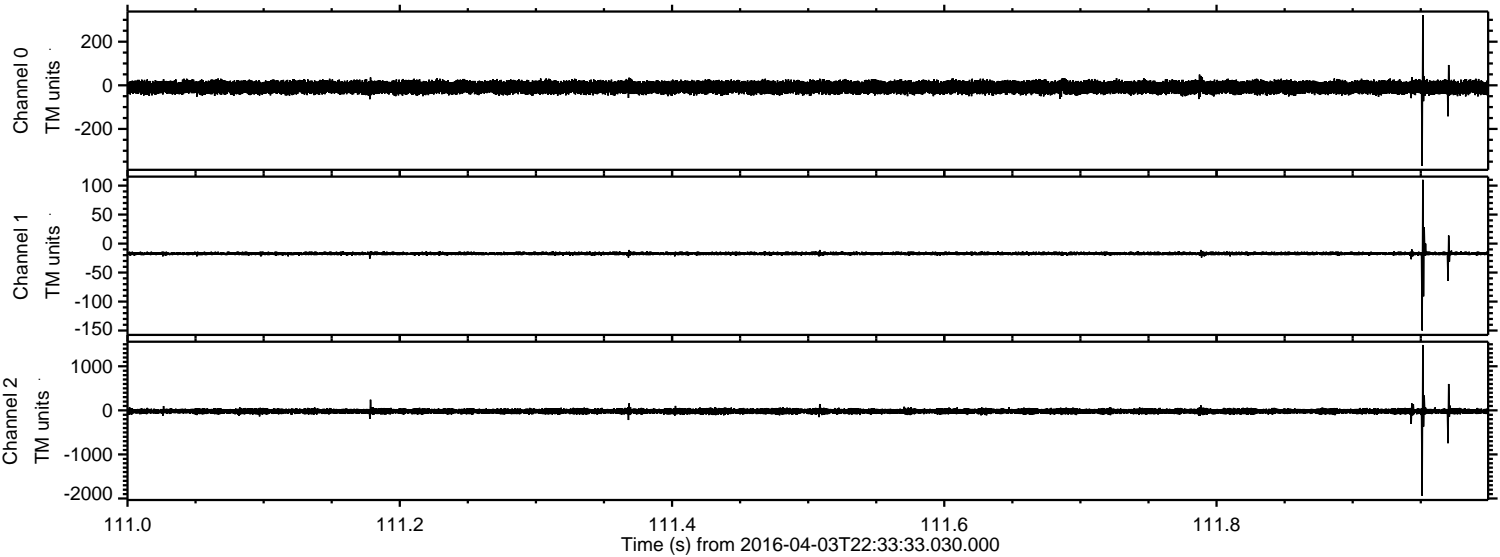
Processed Thu May 5 22:28:24 2016 by ELM ver.2012-10-06 from 001\_\_elm20160403\_223332\_\_dat00.bin





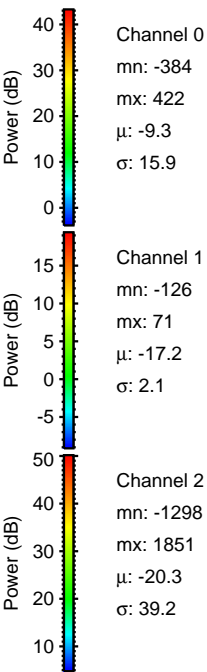
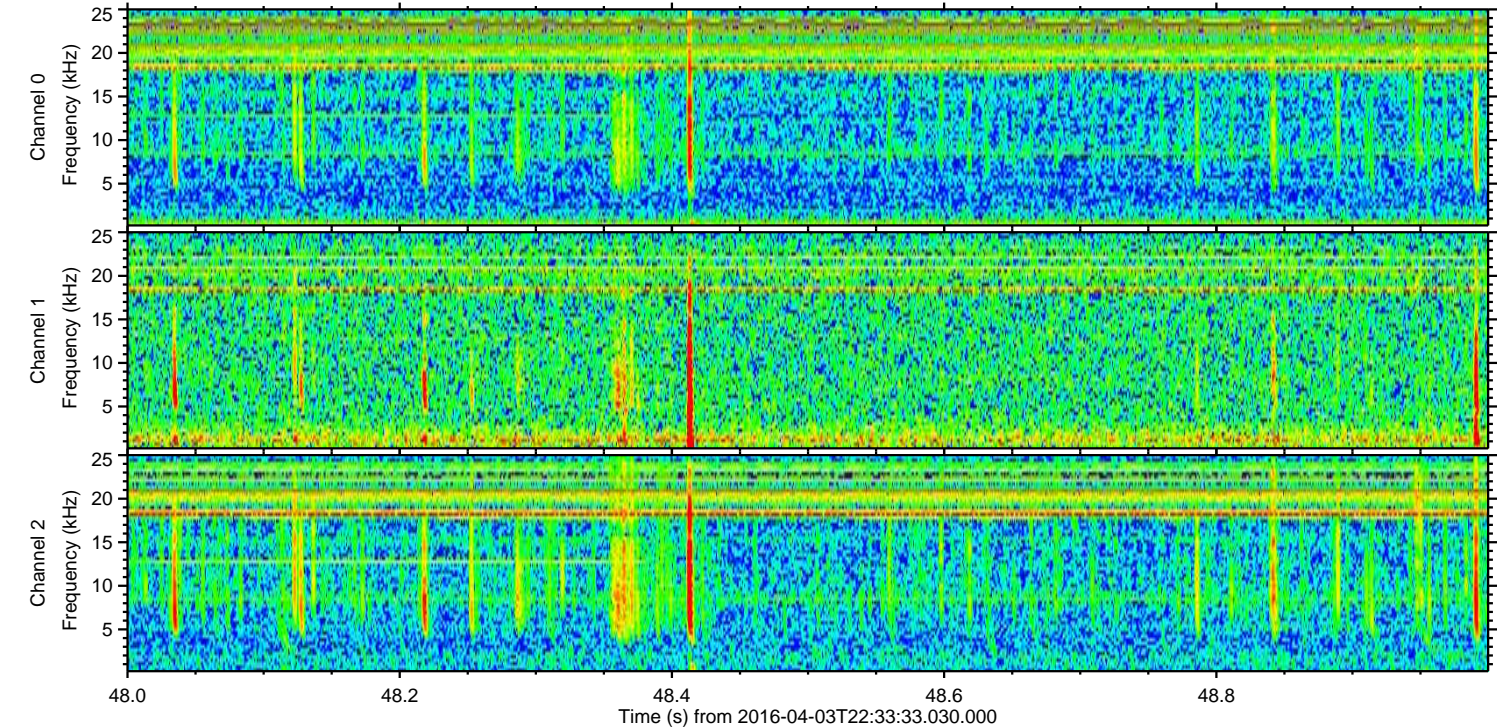
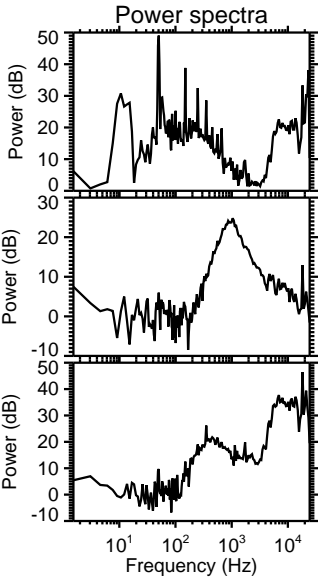
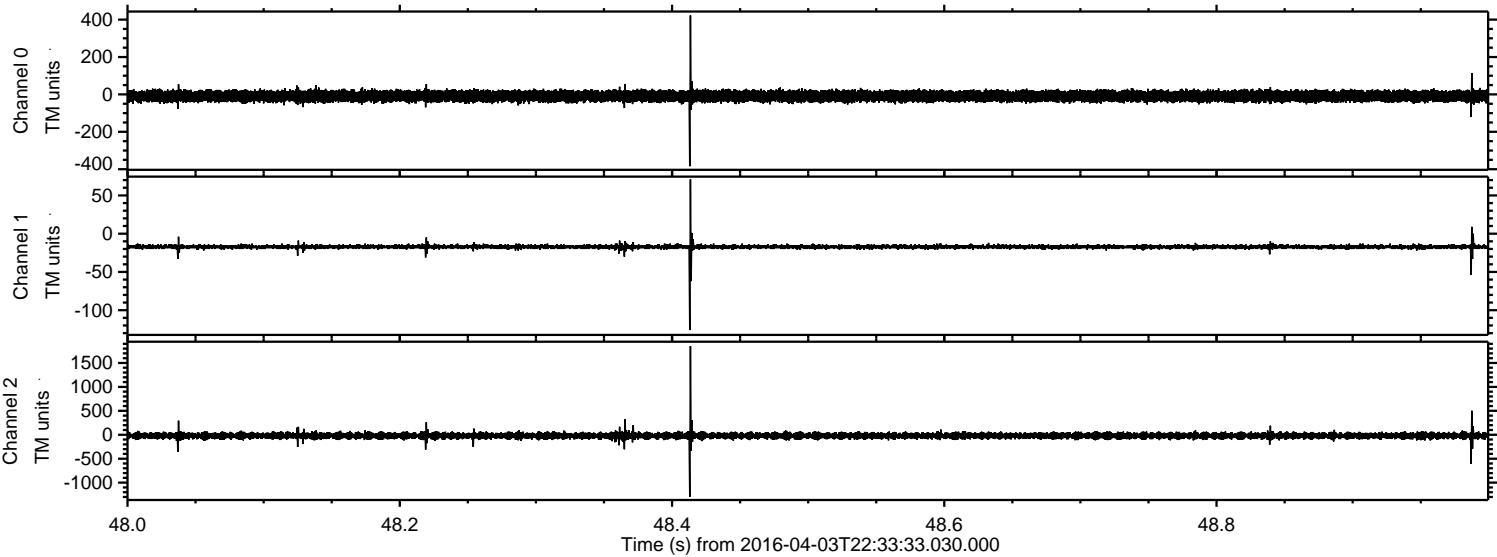
ELMAVAN 3D WAVEFORMS (Measured data sampled at 50 kHz) 51000 packets of 144 samples from 2016-04-03T22:33:33.030.000. Part 112/147

Processed Thu May 5 22:28:25 2016 by ELM ver.2012-10-06 from 001\_\_elm20160403\_223332\_\_dat00.bin



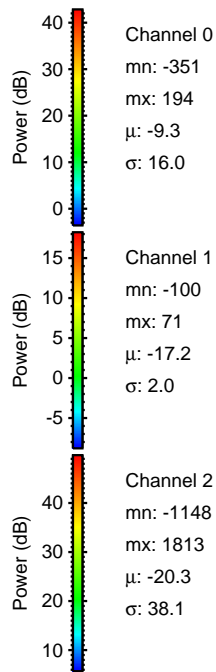
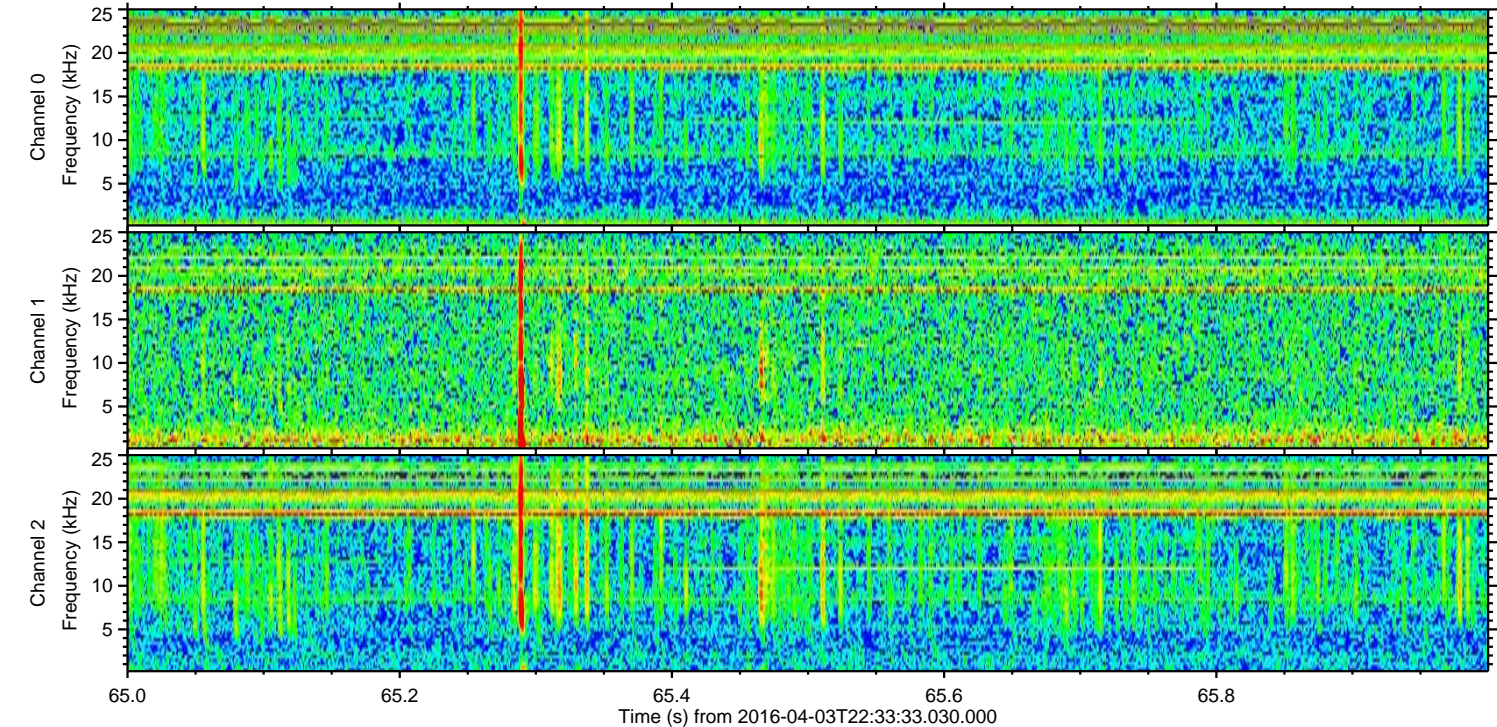
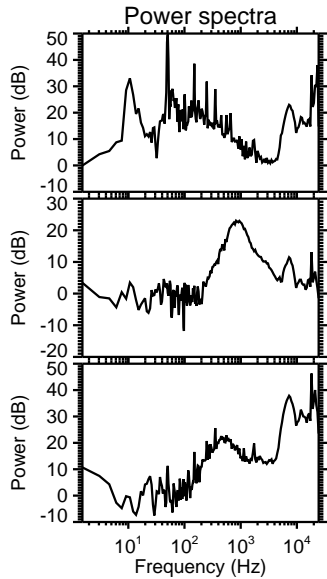
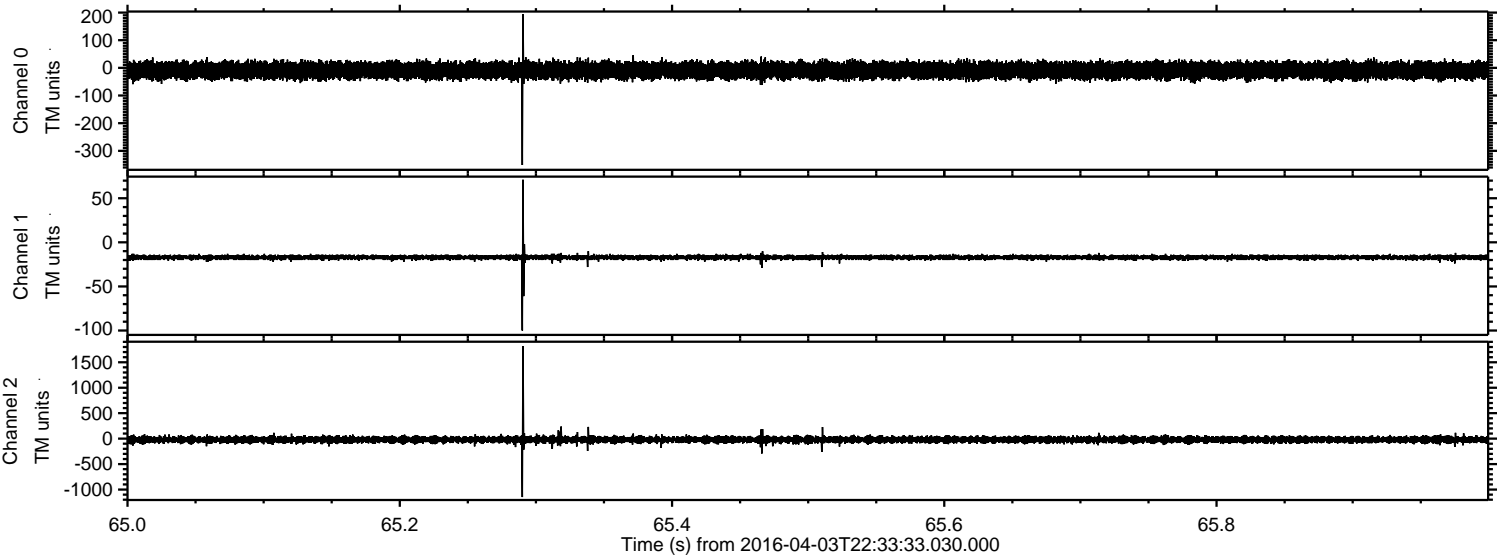


Processed Thu May 5 22:28:27 2016 by ELM ver.2012-10-06 from 001\_\_elm20160403\_223332\_\_dat00.bin



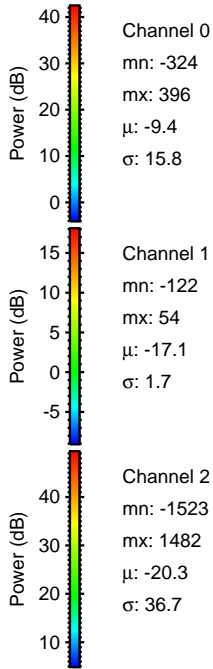
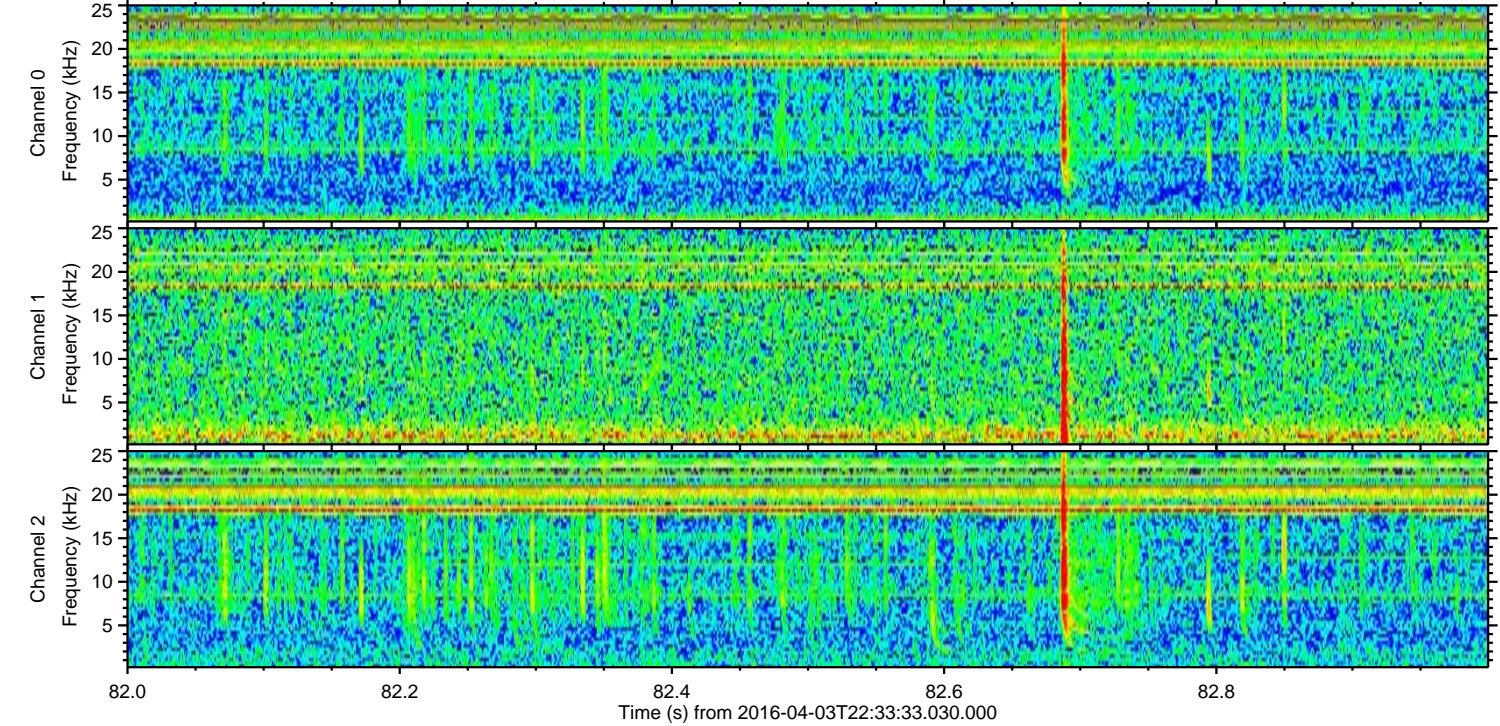
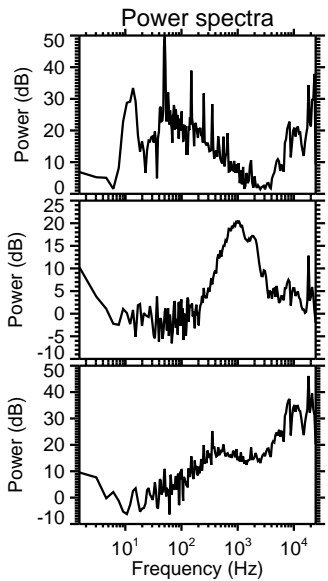
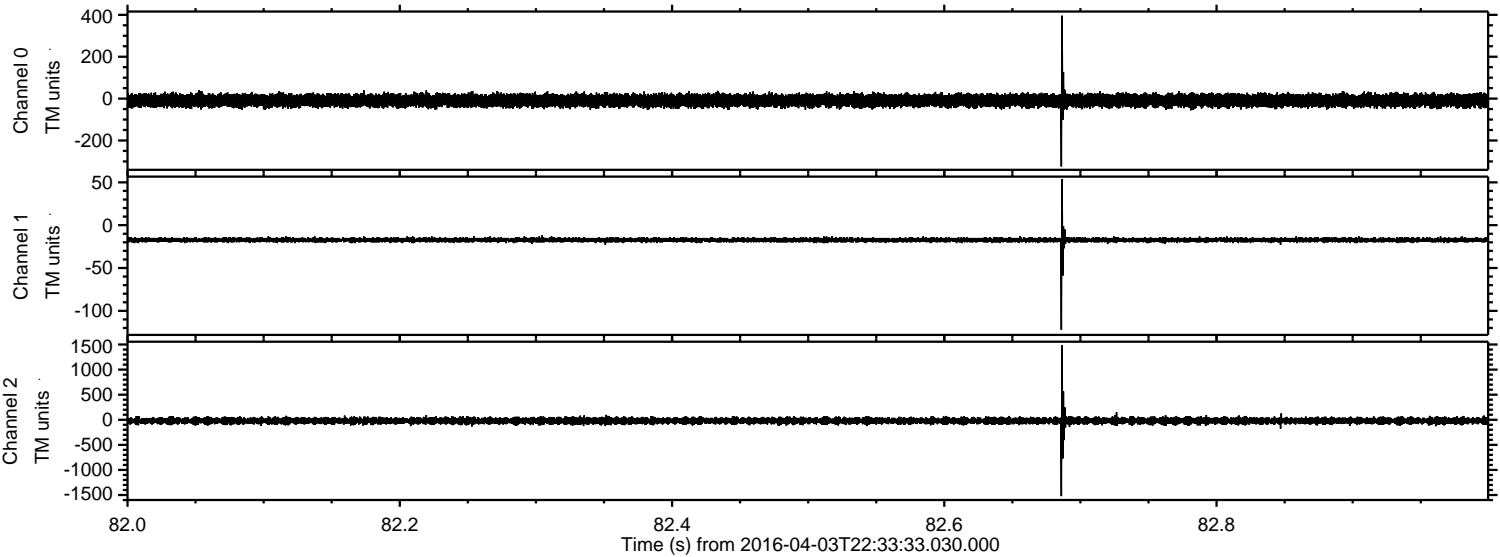


Processed Thu May 5 22:28:29 2016 by ELM ver.2012-10-06 from 001\_\_elm20160403\_223332\_\_dat00.bin





Processed Thu May 5 22:28:30 2016 by ELM ver.2012-10-06 from 001\_\_elm20160403\_223332\_\_dat00.bin



Channel 0  
mn: -324  
mx: 396  
 $\mu$ : -9.4  
 $\sigma$ : 15.8

Channel 1  
mn: -122  
mx: 54  
 $\mu$ : -17.1  
 $\sigma$ : 1.7

Channel 2  
mn: -1523  
mx: 1482  
 $\mu$ : -20.3  
 $\sigma$ : 36.7



