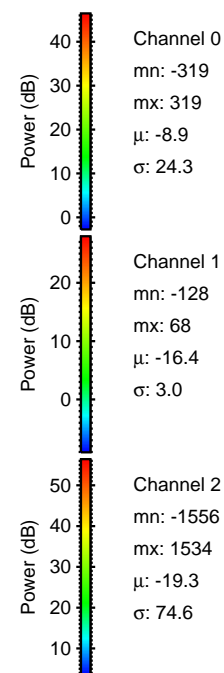
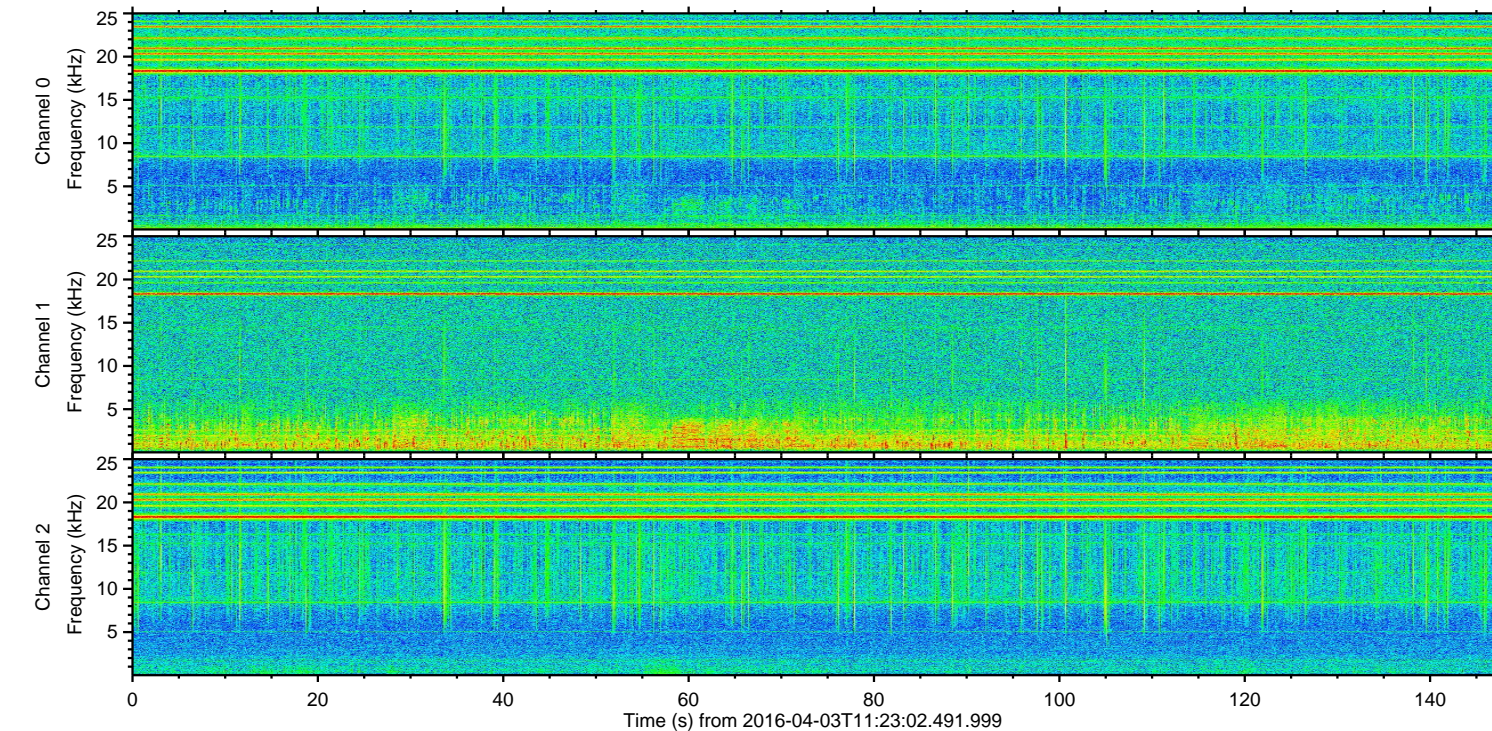
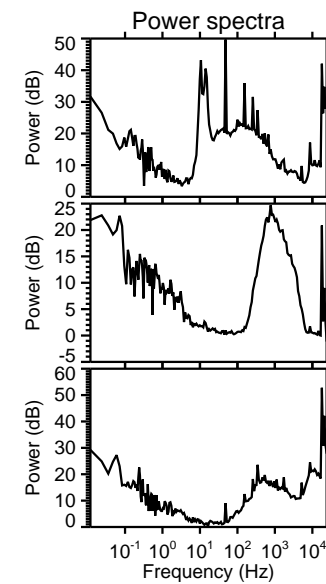
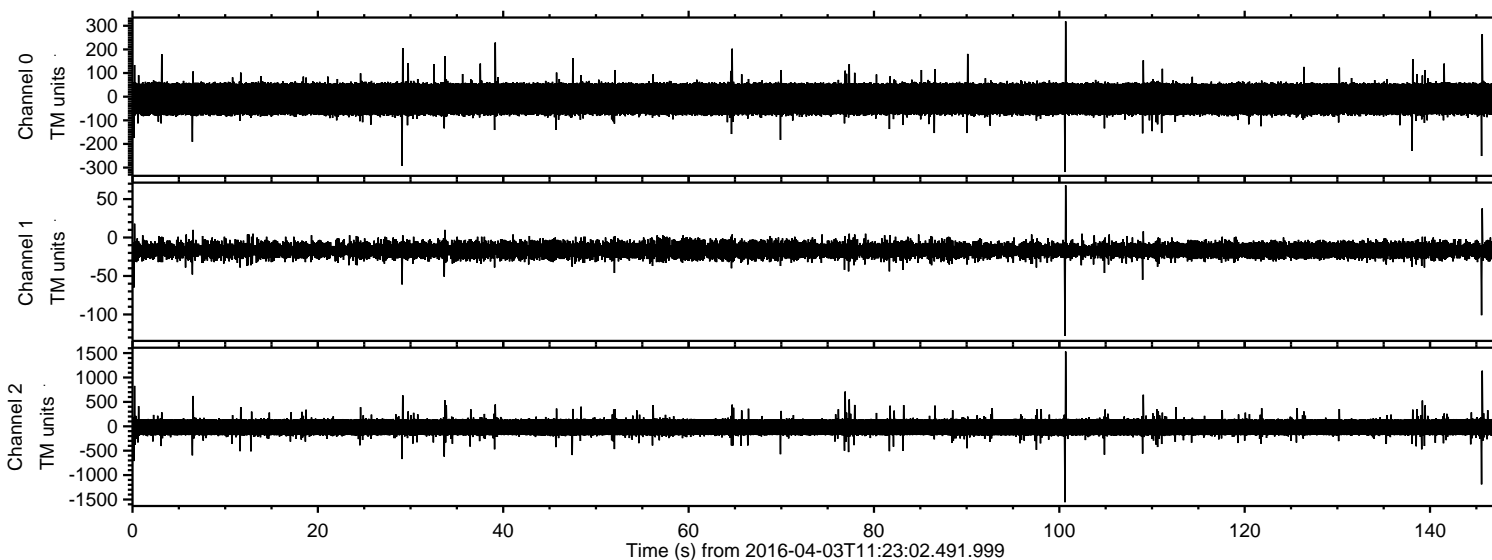


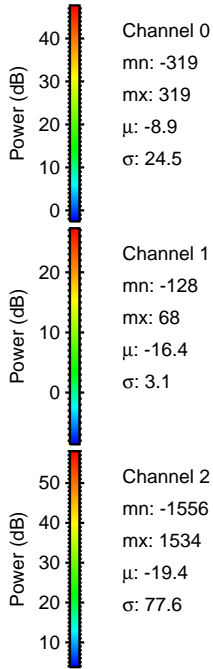
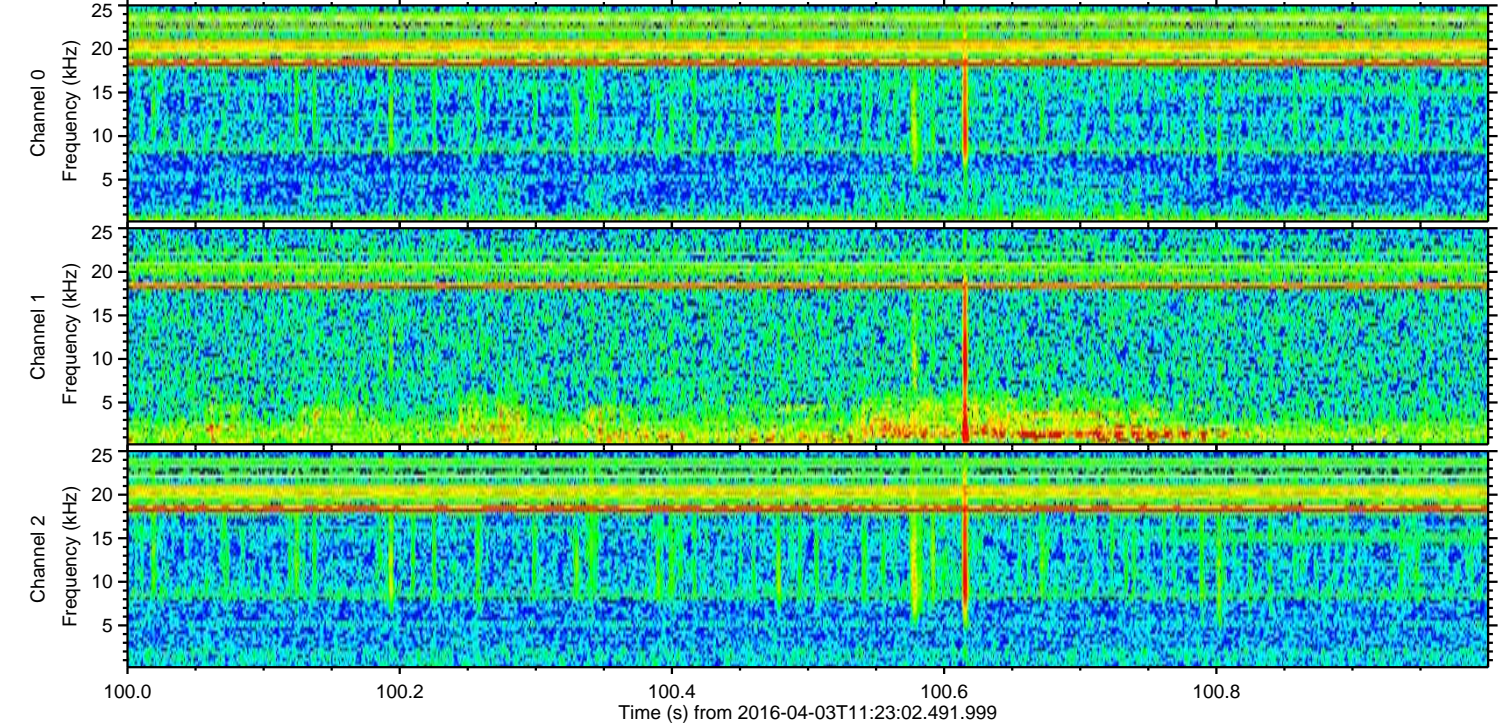
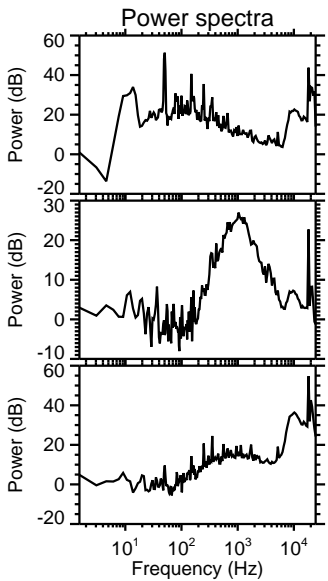
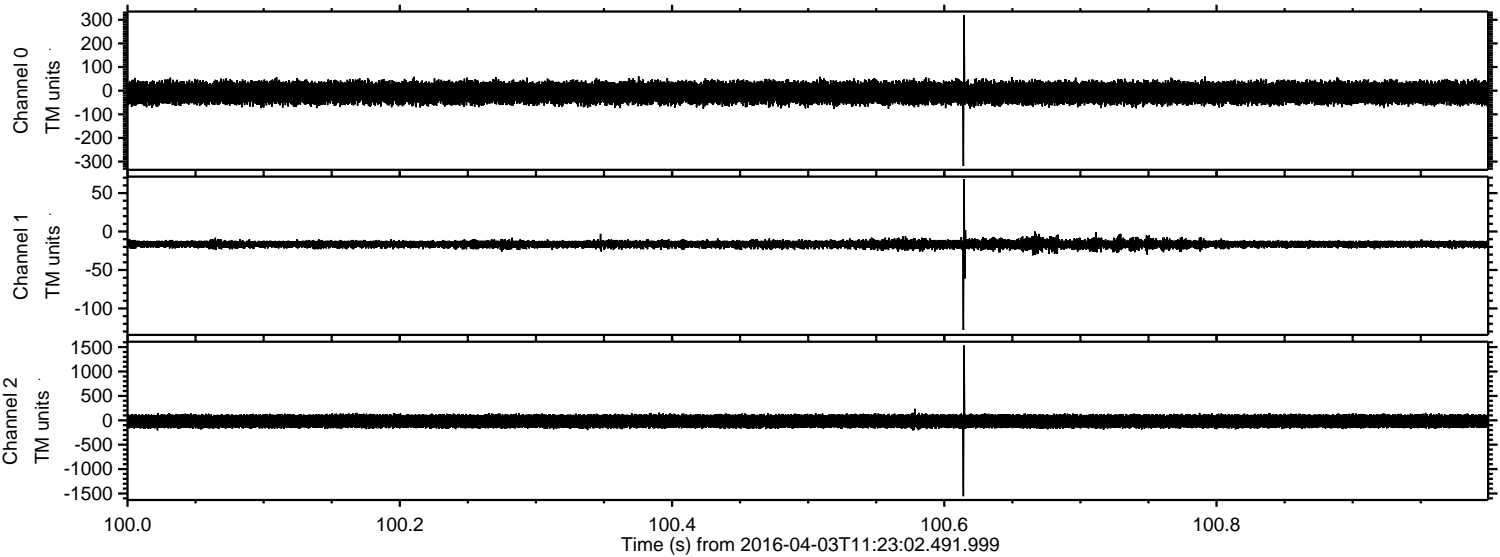
ELMAVAN 3D WAVEFORMS (Measured data sampled at 50 kHz) 51000 packets of 144 samples from 2016-04-03T11:23:02.491.999.

Processed Thu May 5 20:00:39 2016 by ELM ver.2012-10-06 from 001__elm20160403_112301__dat00.bin



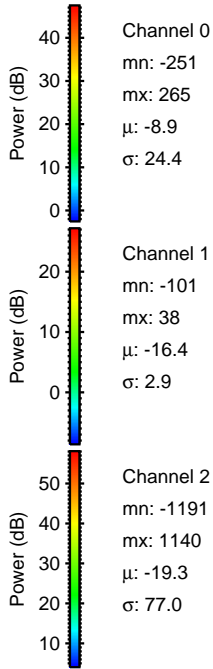
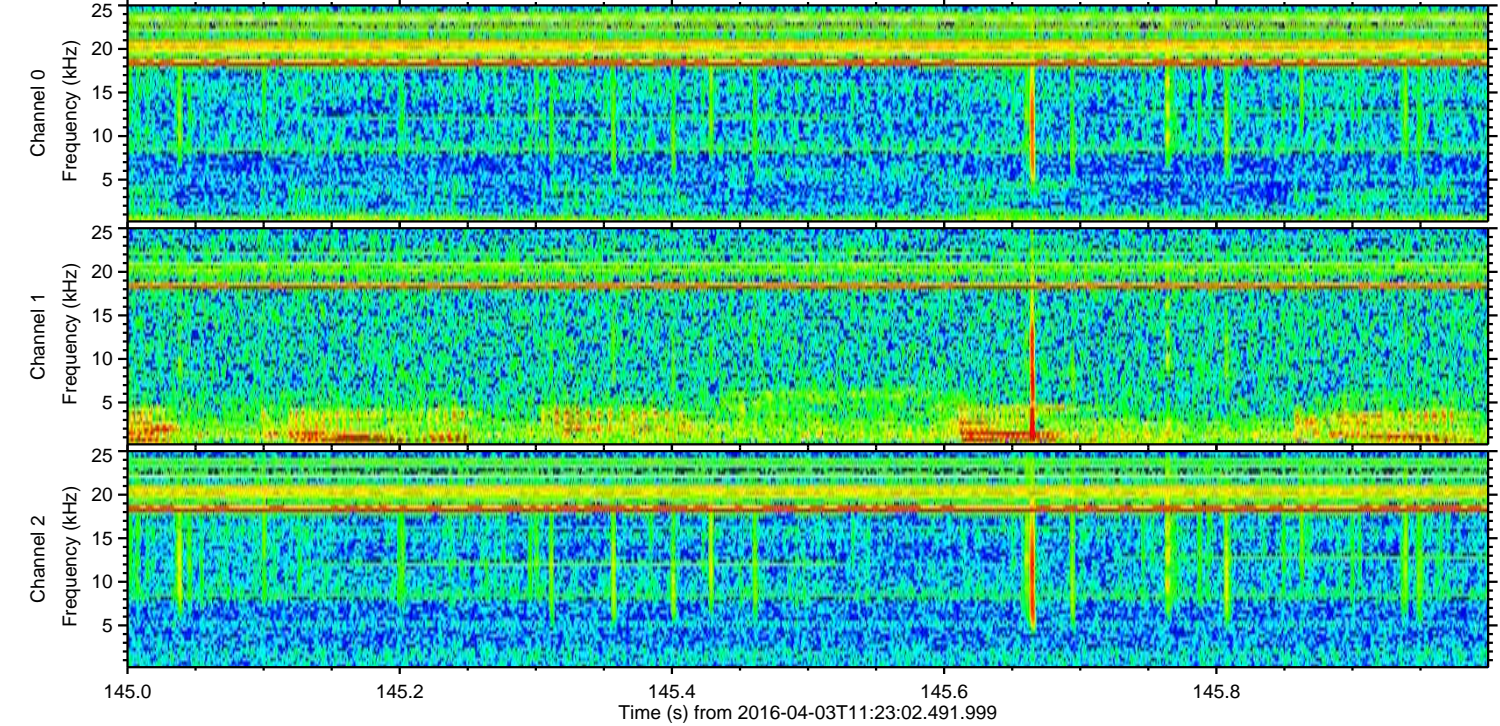
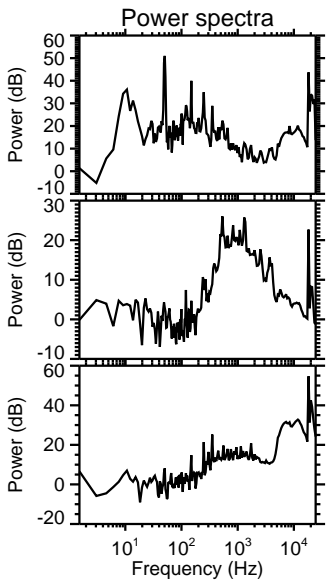
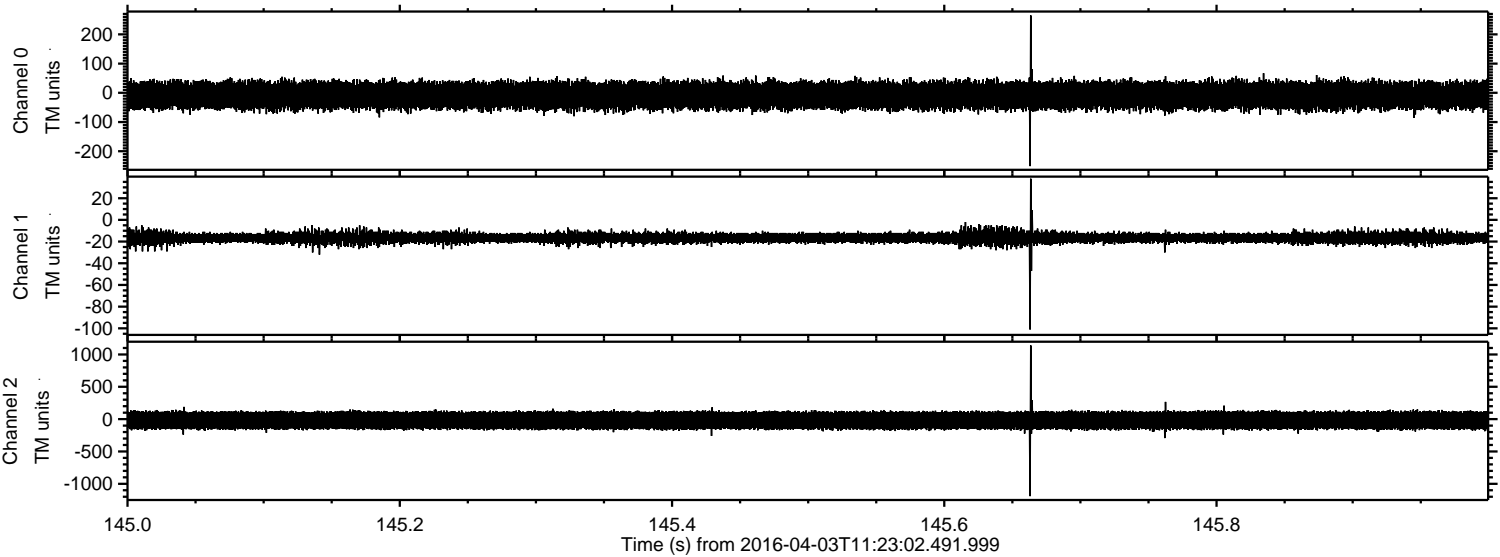
ELMAVAN 3D WAVEFORMS (Measured data sampled at 50 kHz) 51000 packets of 144 samples from 2016-04-03T11:23:02.491.999. Part 101/147

Processed Thu May 5 20:00:51 2016 by ELM ver.2012-10-06 from 001__elm20160403_112301__dat00.bin



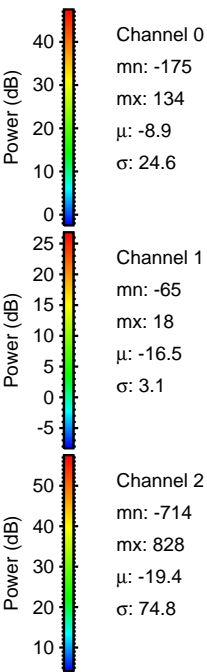
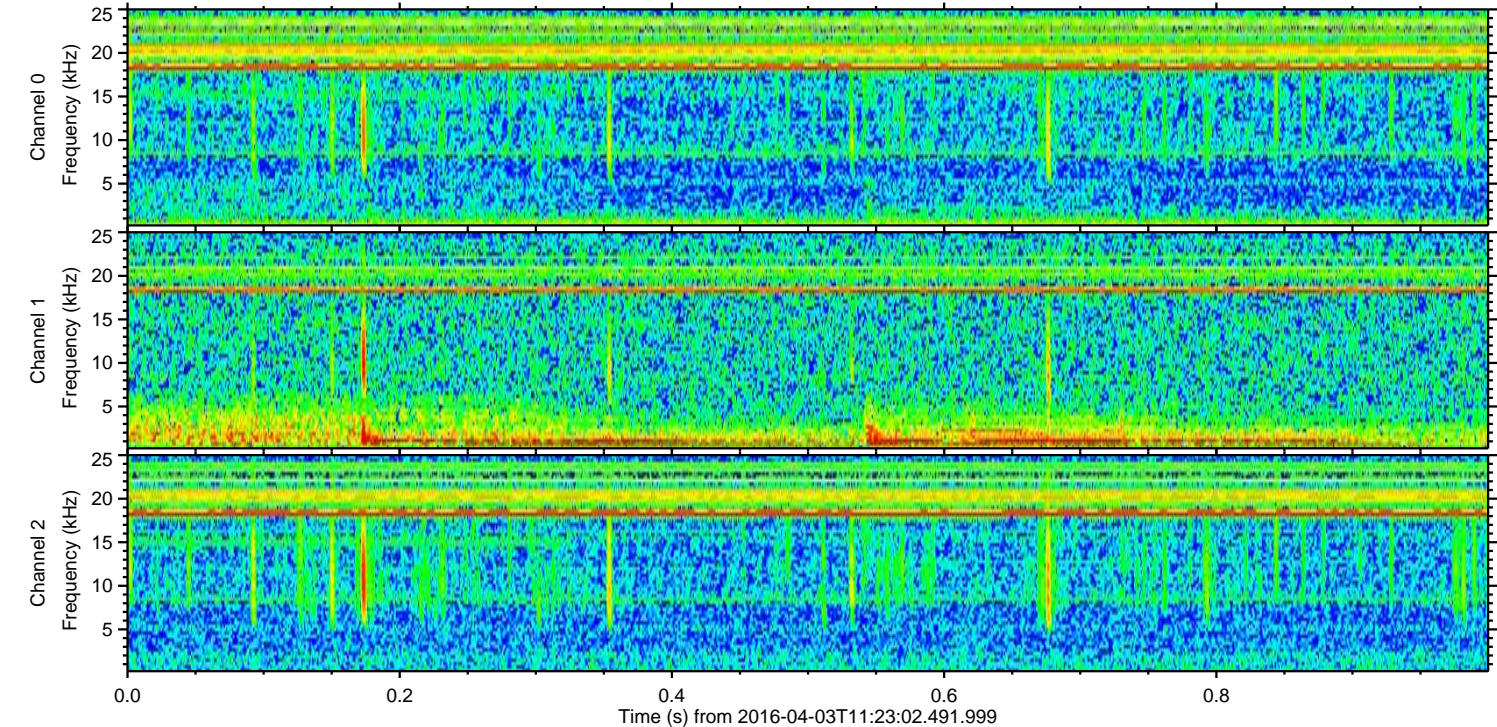
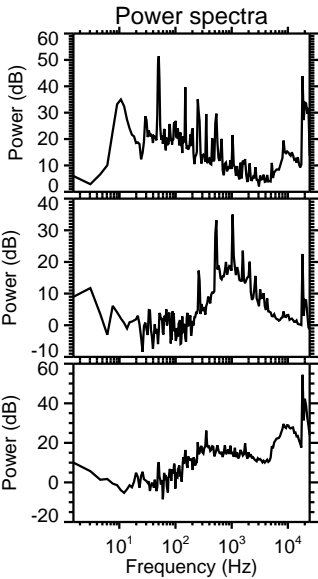
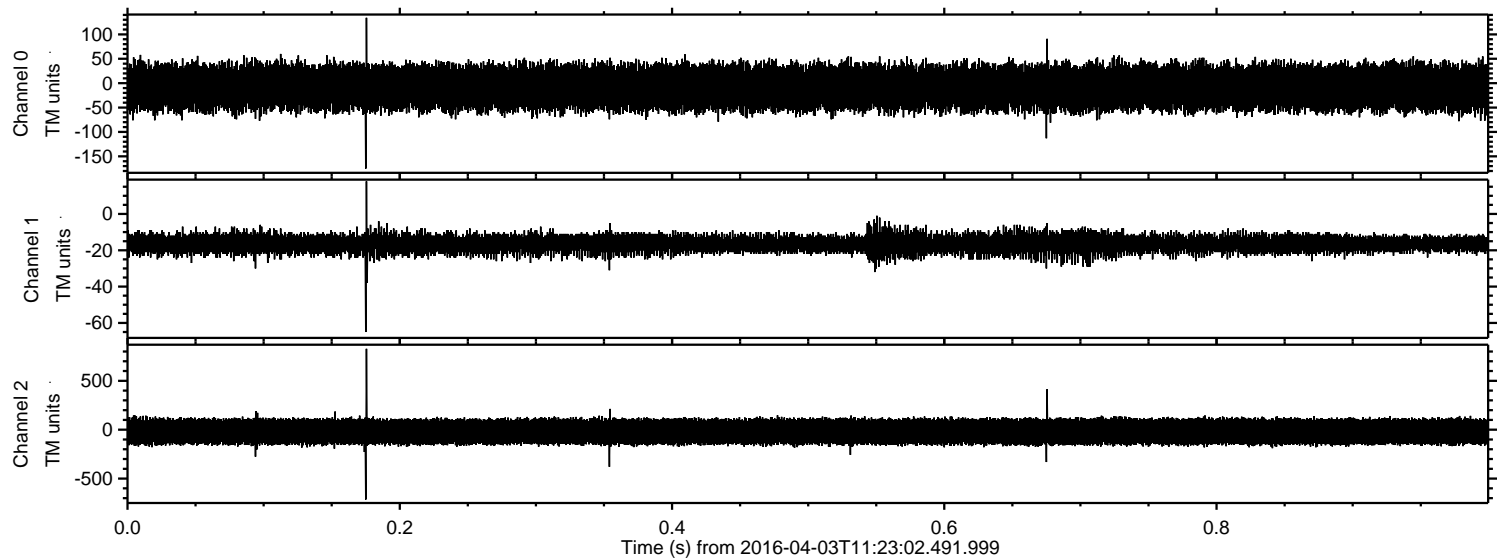
ELMAVAN 3D WAVEFORMS (Measured data sampled at 50 kHz) 51000 packets of 144 samples from 2016-04-03T11:23:02.491.999. Part 146/147

Processed Thu May 5 20:00:52 2016 by ELM ver.2012-10-06 from 001__elm20160403_112301__dat00.bin

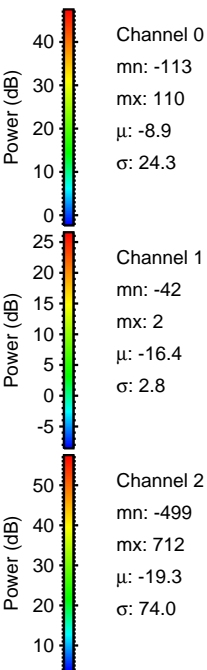
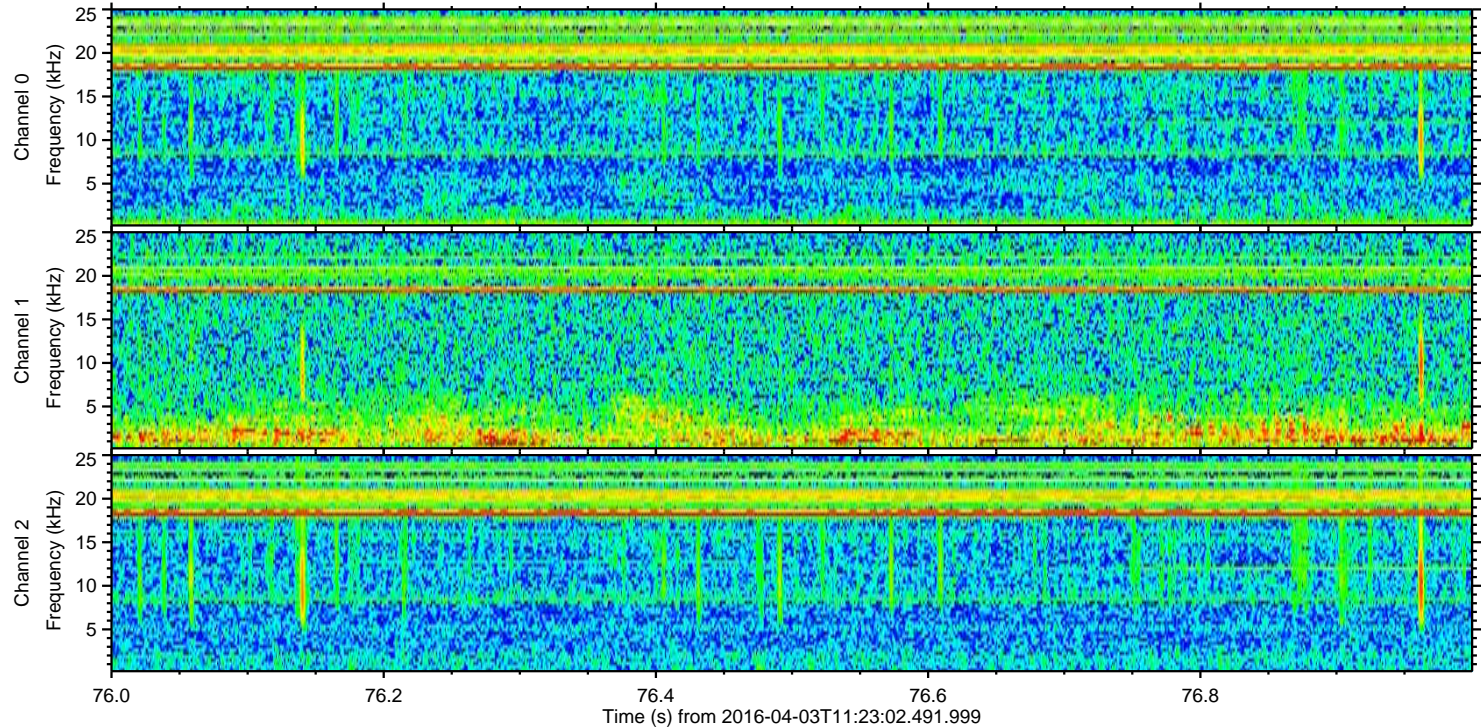
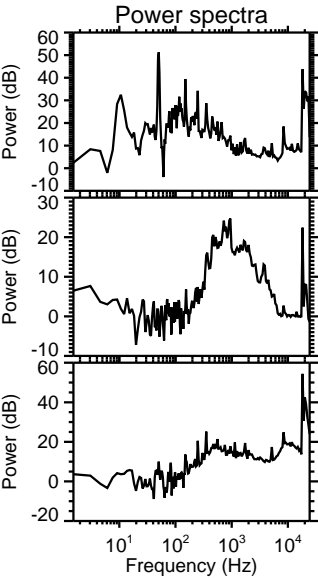
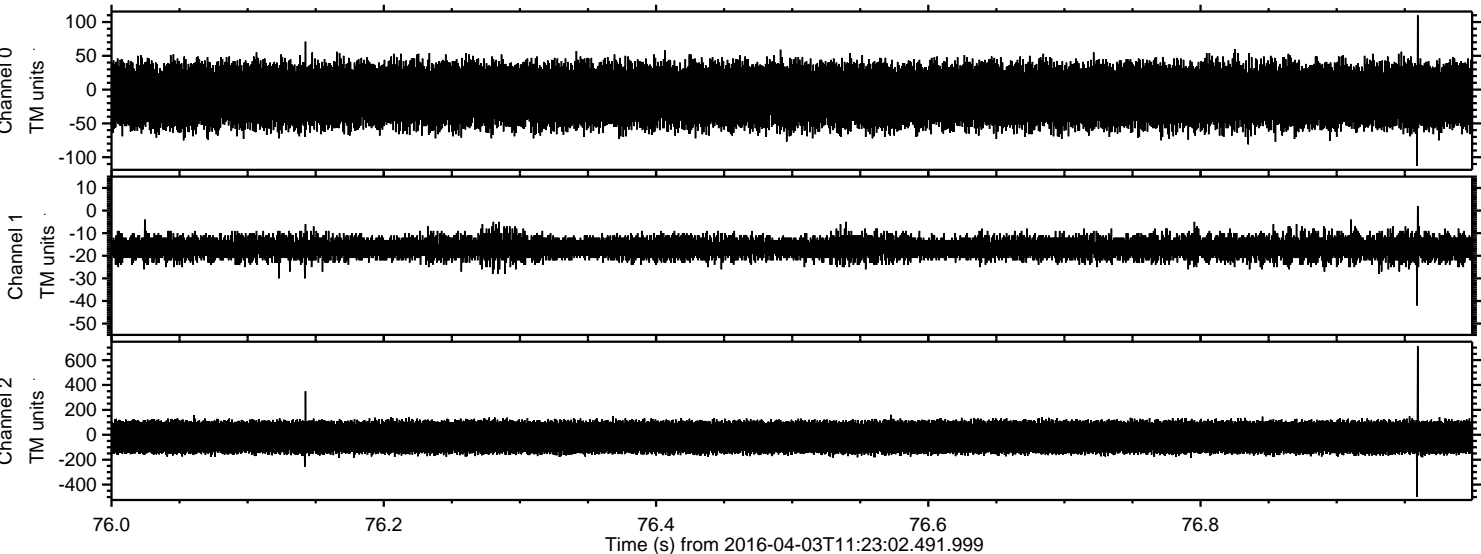


ELMAVAN 3D WAVEFORMS (Measured data sampled at 50 kHz) 51000 packets of 144 samples from 2016-04-03T11:23:02.491.999. Part 1/147

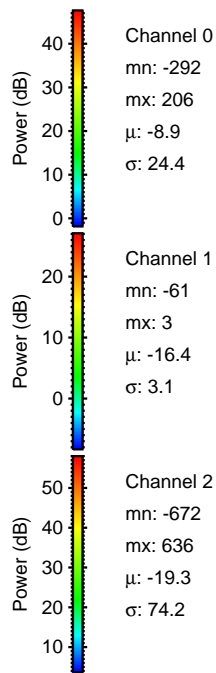
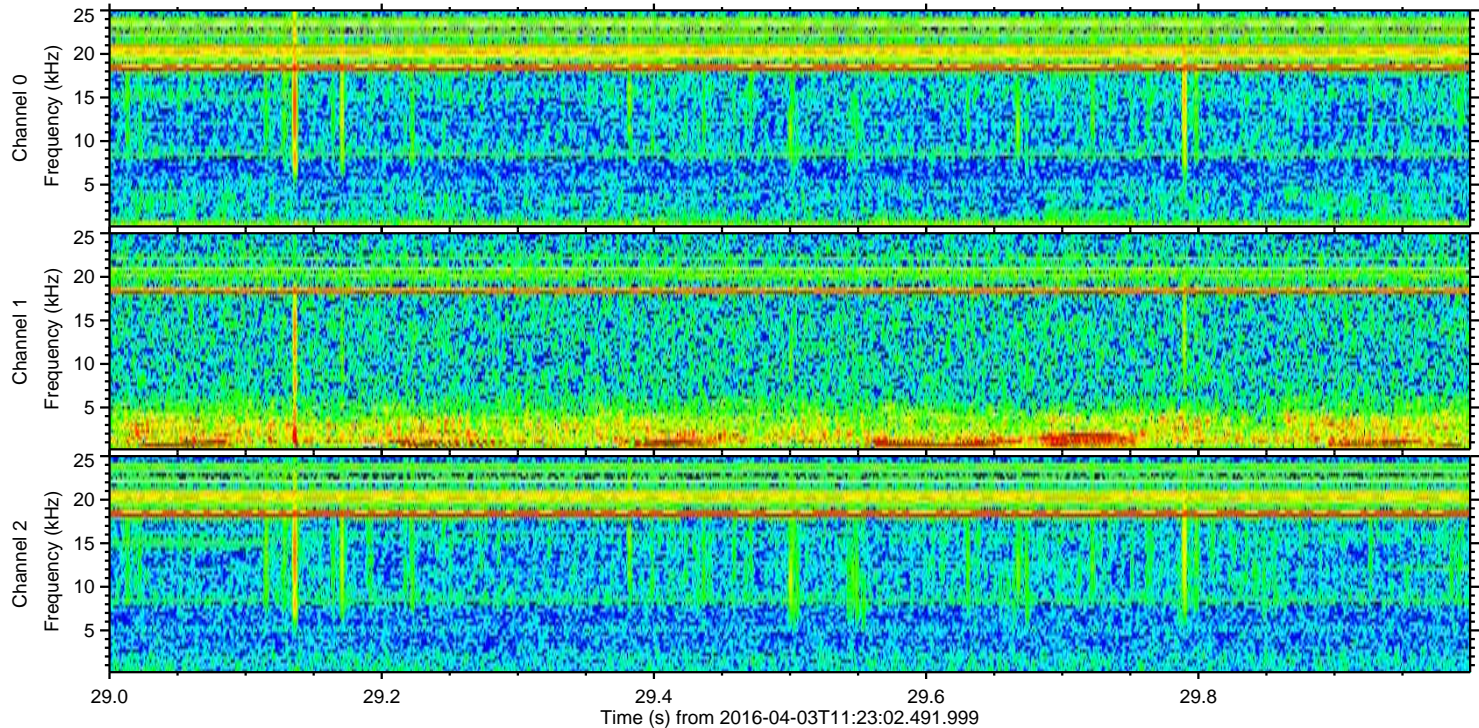
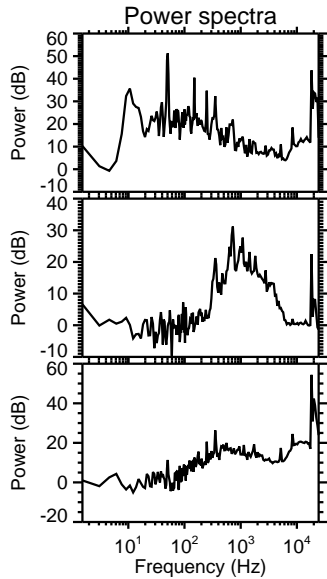
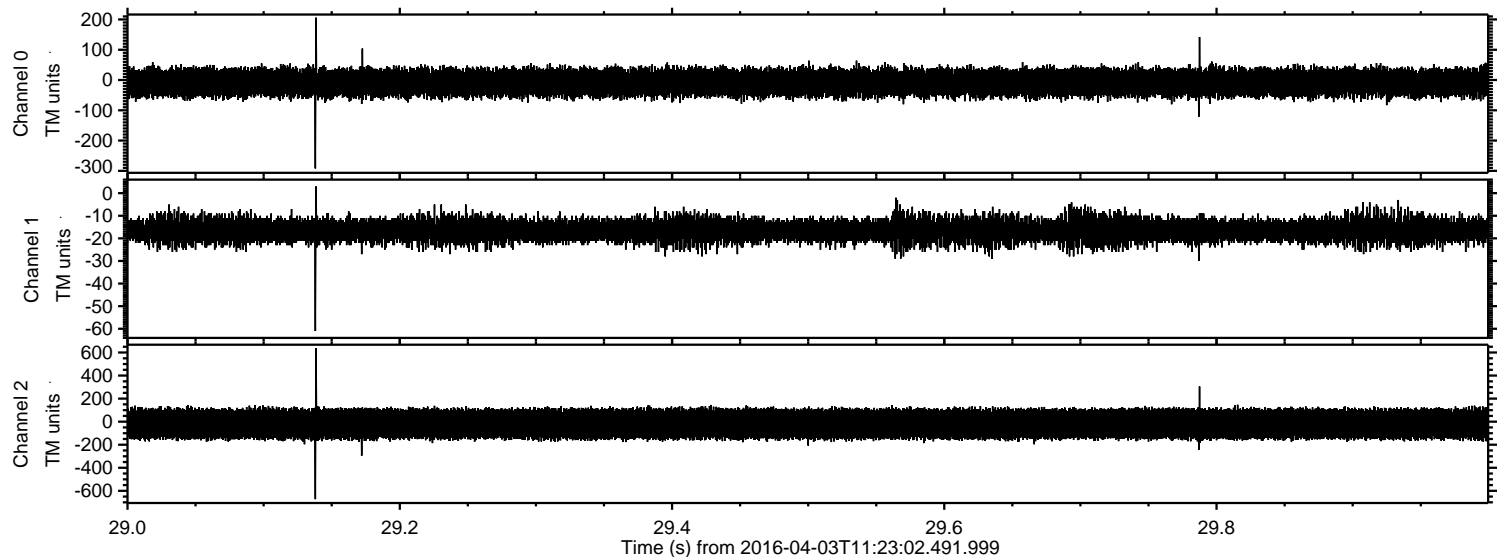
Processed Thu May 5 20:00:53 2016 by ELM ver.2012-10-06 from 001__elm20160403_112301__dat00.bin



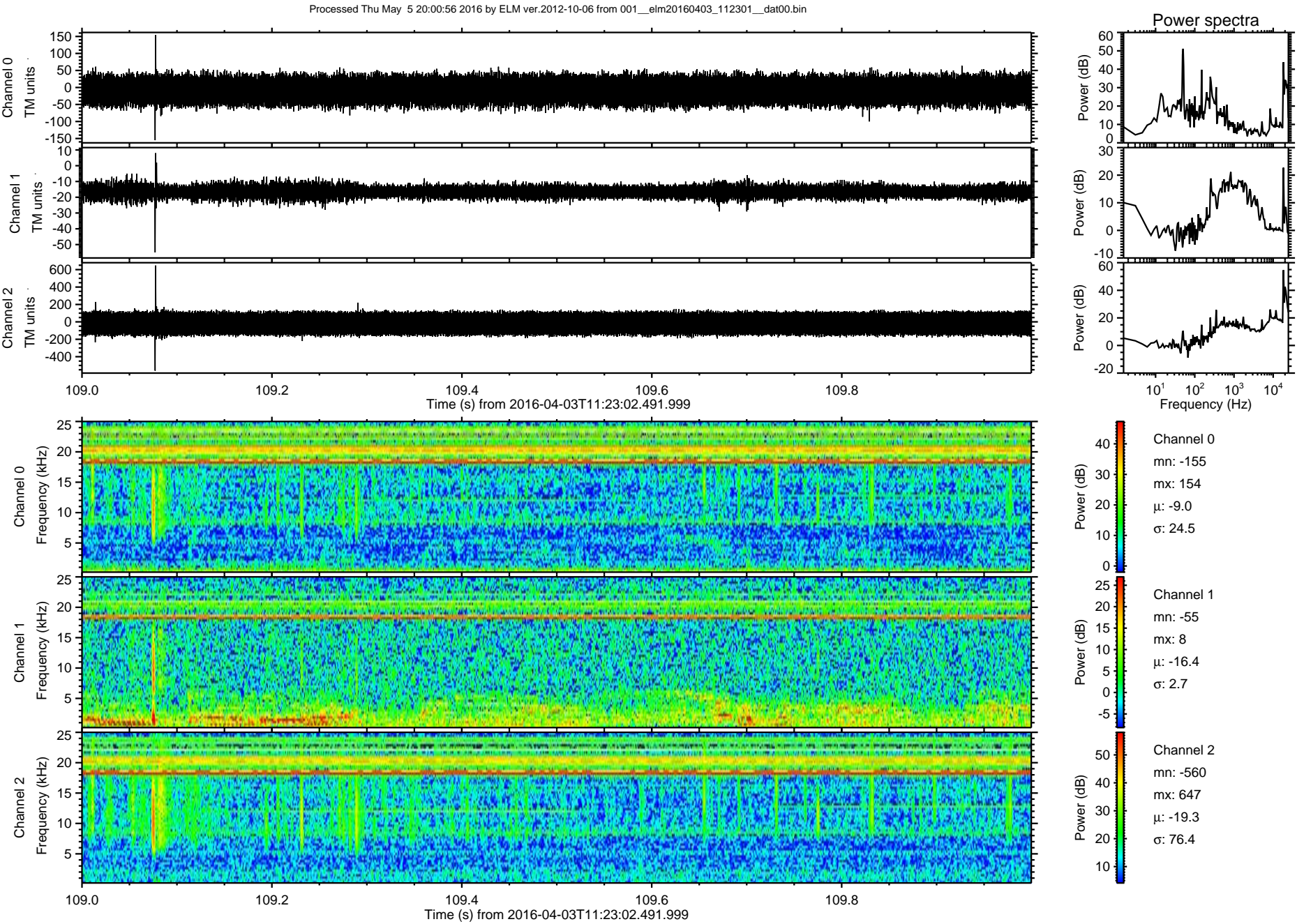
Processed Thu May 5 20:00:54 2016 by ELM ver.2012-10-06 from 001__elm20160403_112301__dat00.bin



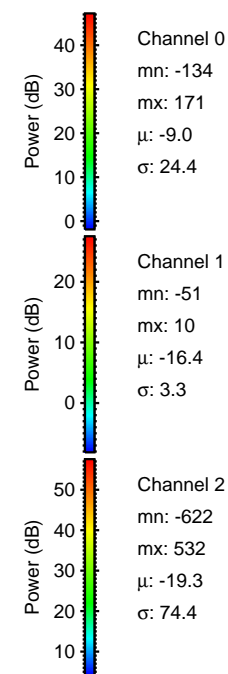
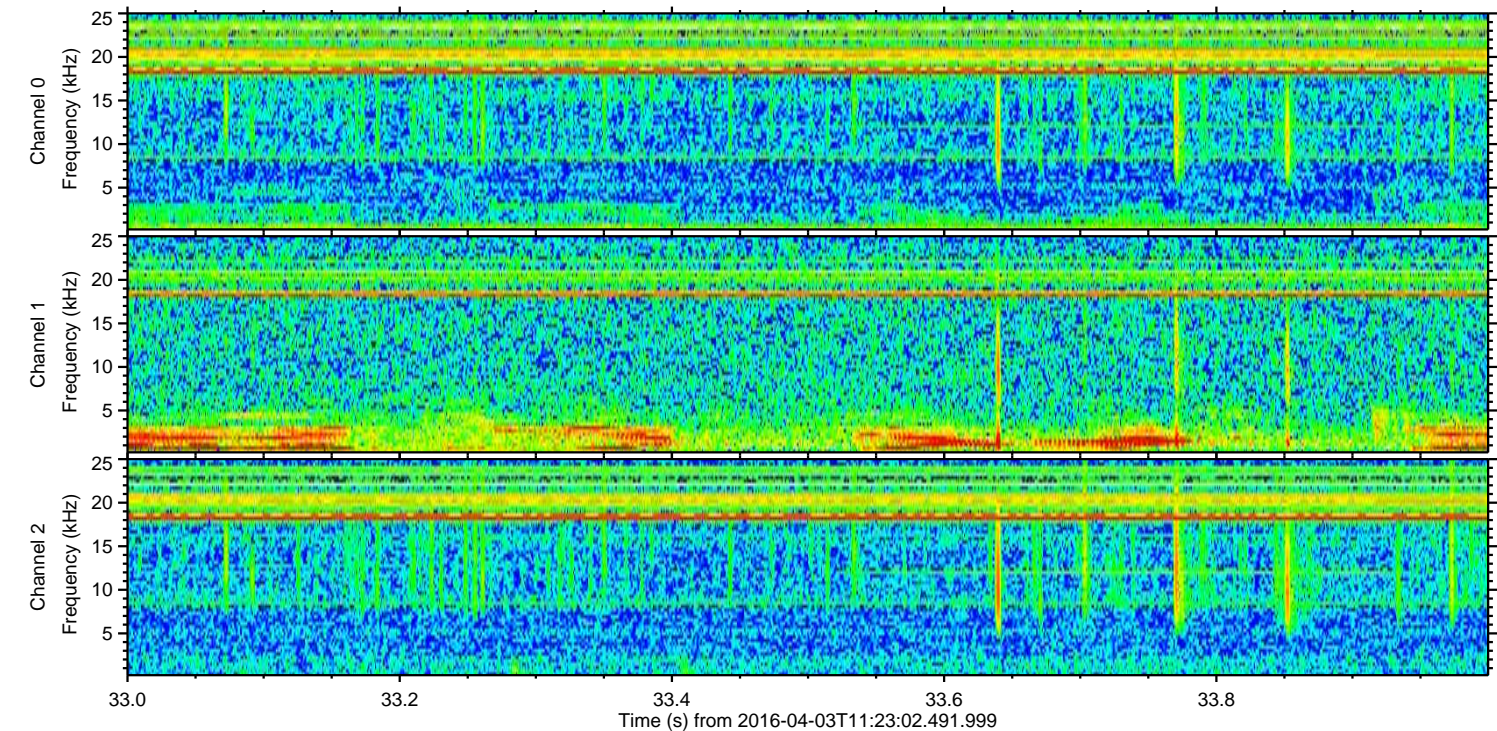
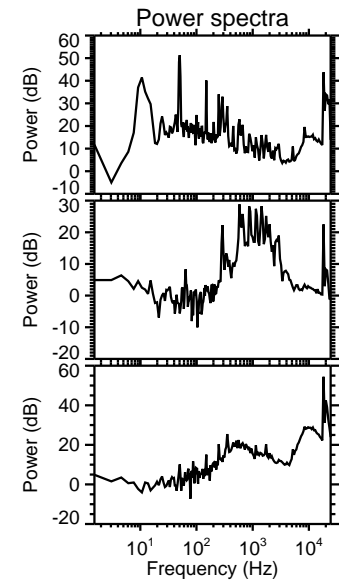
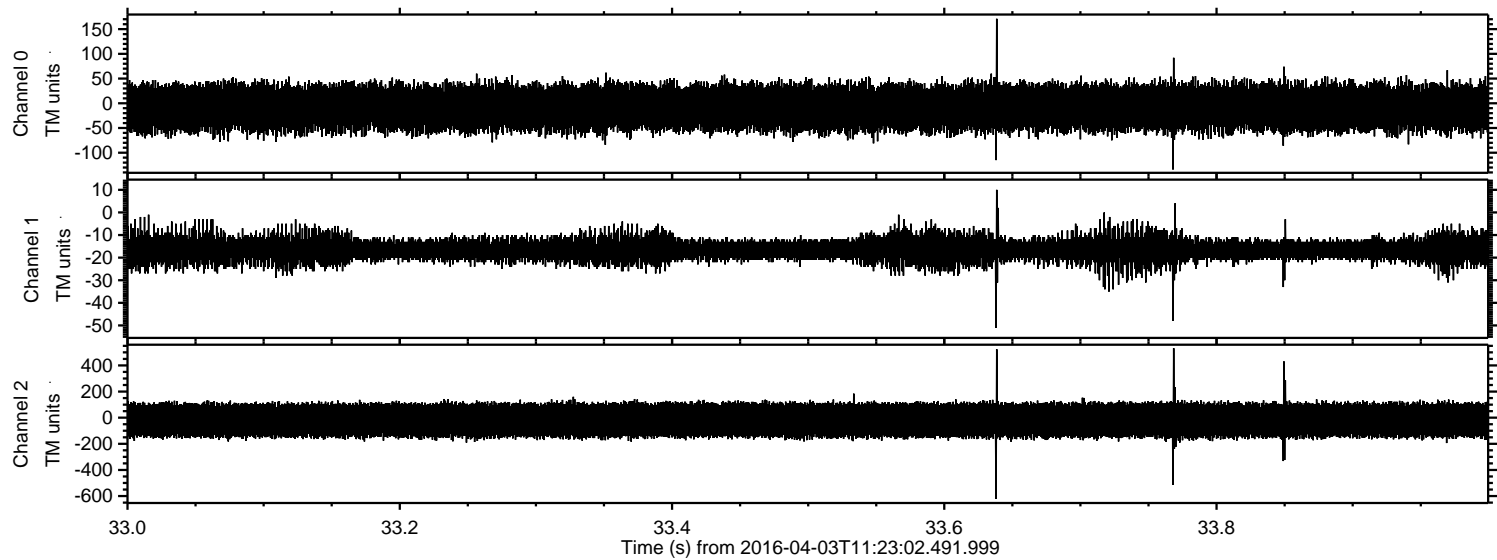
Processed Thu May 5 20:00:55 2016 by ELM ver.2012-10-06 from 001__elm20160403_112301__dat00.bin



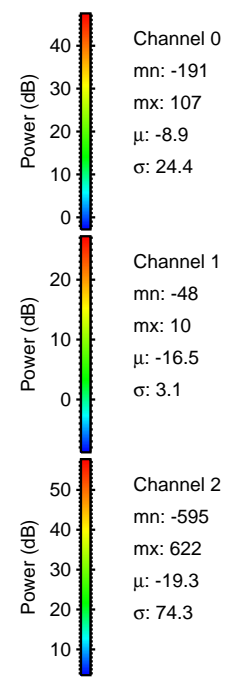
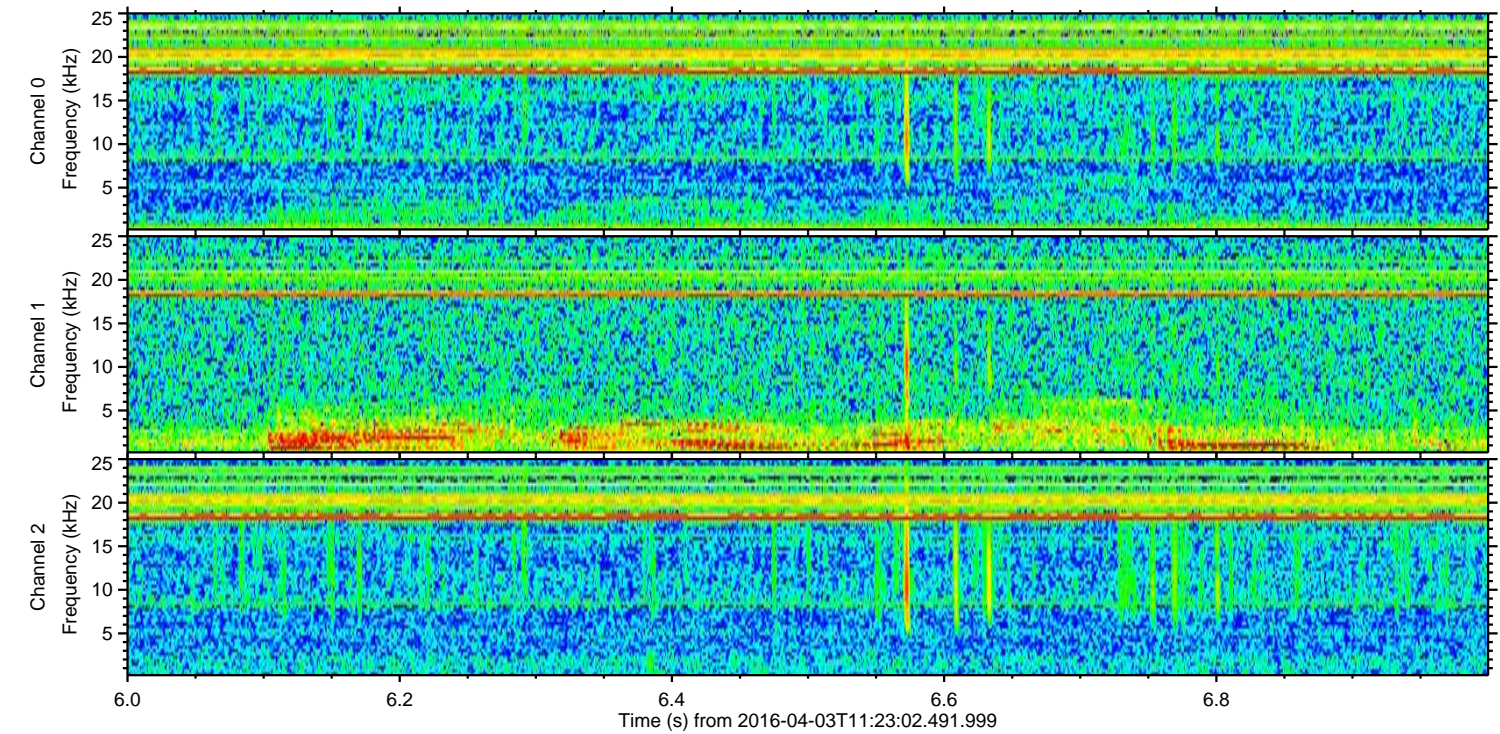
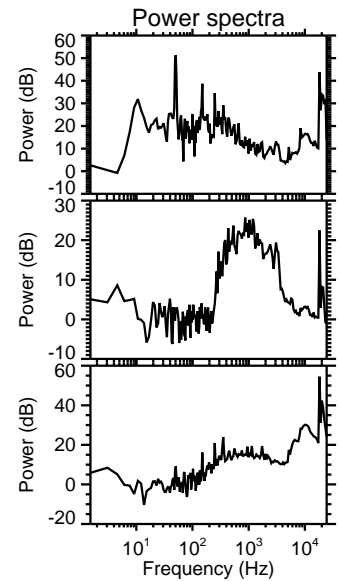
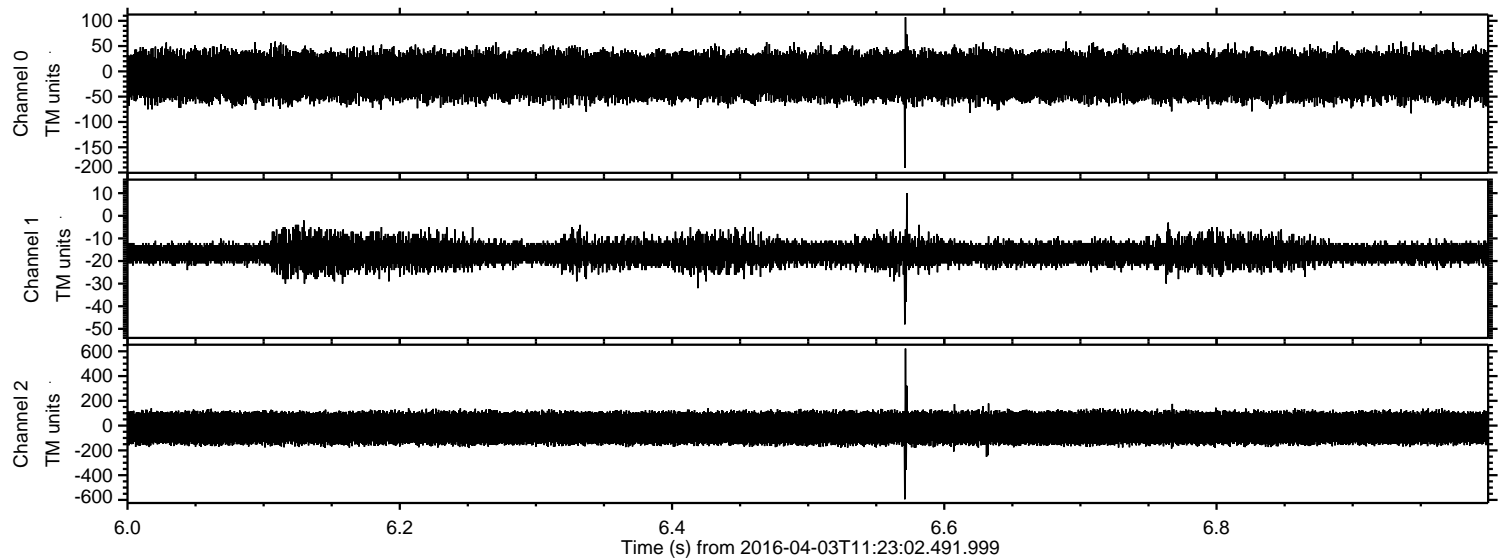
ELMAVAN 3D WAVEFORMS (Measured data sampled at 50 kHz) 51000 packets of 144 samples from 2016-04-03T11:23:02.491.999. Part 110/147



Processed Thu May 5 20:00:57 2016 by ELM ver.2012-10-06 from 001__elm20160403_112301__dat00.bin



Processed Thu May 5 20:00:58 2016 by ELM ver.2012-10-06 from 001__elm20160403_112301__dat00.bin



Channel 0
mn: -191
mx: 107
 μ : -8.9
 σ : 24.4

Channel 1
mn: -48
mx: 10
 μ : -16.5
 σ : 3.1

Channel 2
mn: -595
mx: 622
 μ : -19.3
 σ : 74.3

Processed Thu May 5 20:00:59 2016 by ELM ver.2012-10-06 from 001__elm20160403_112301__dat00.bin

