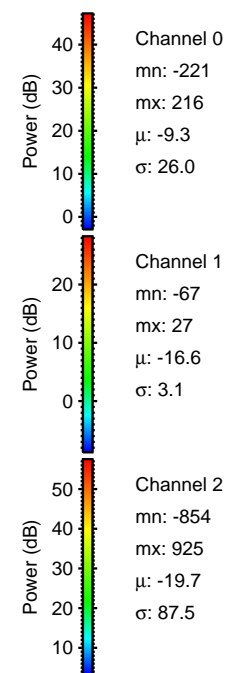
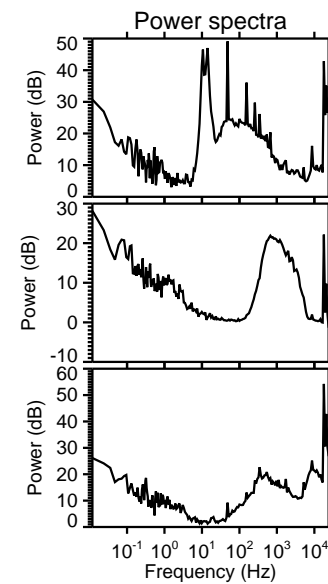
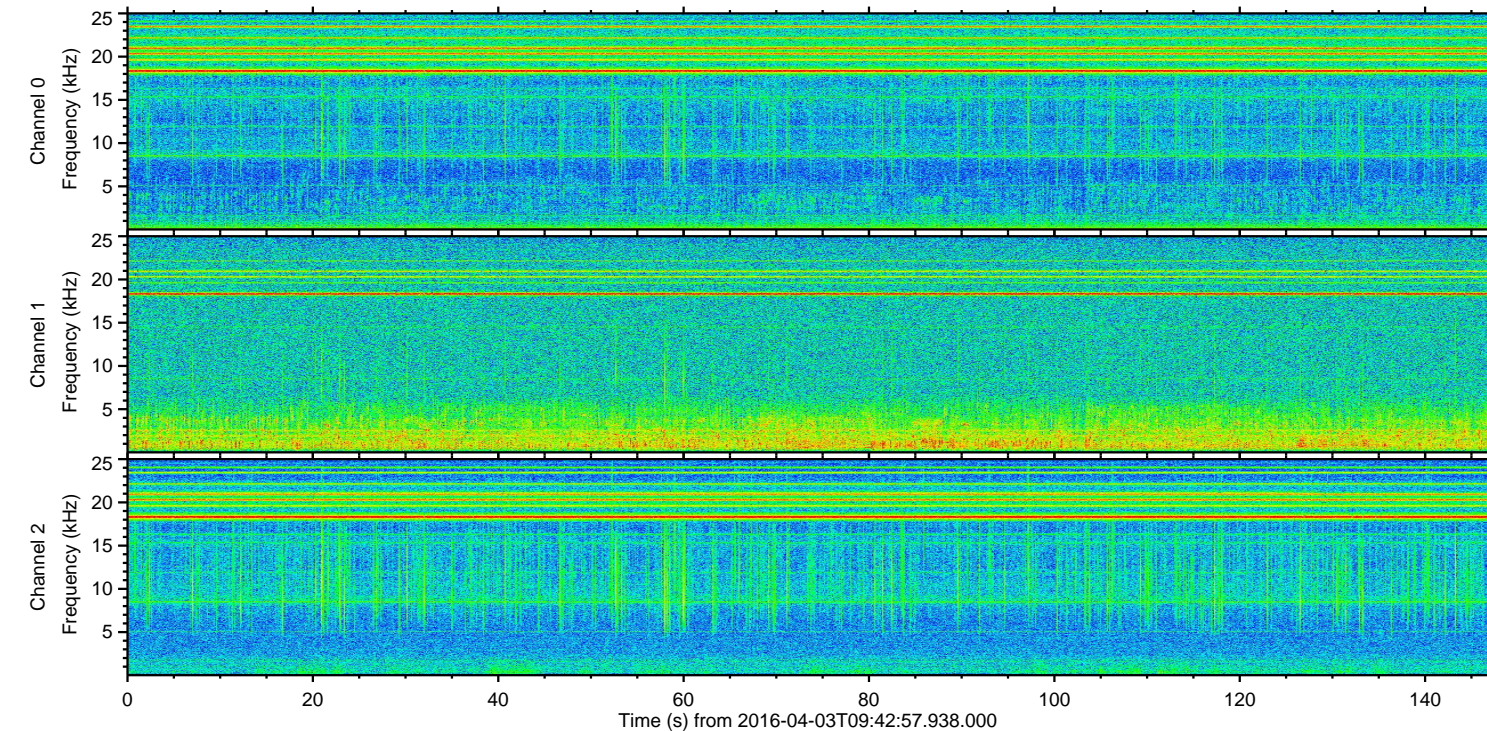
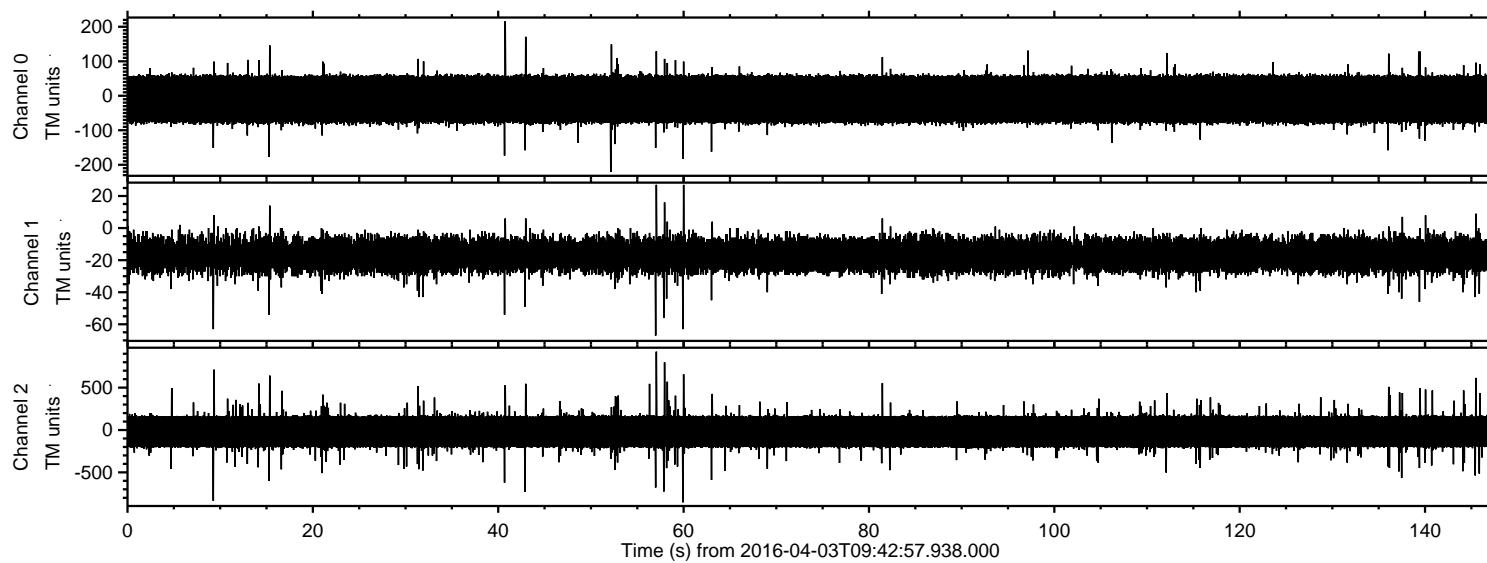
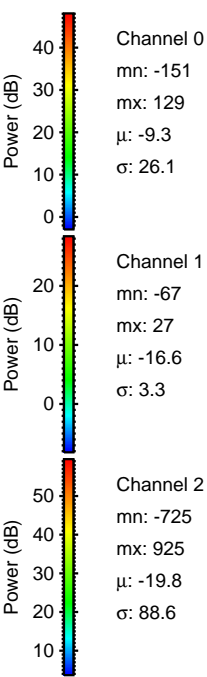
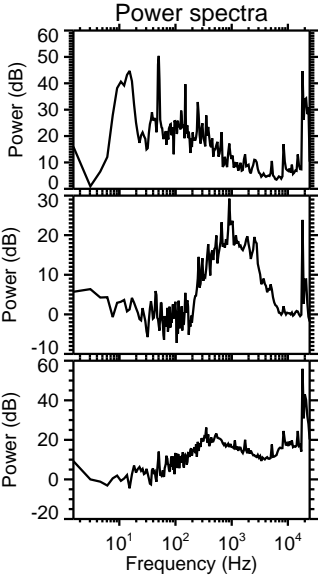
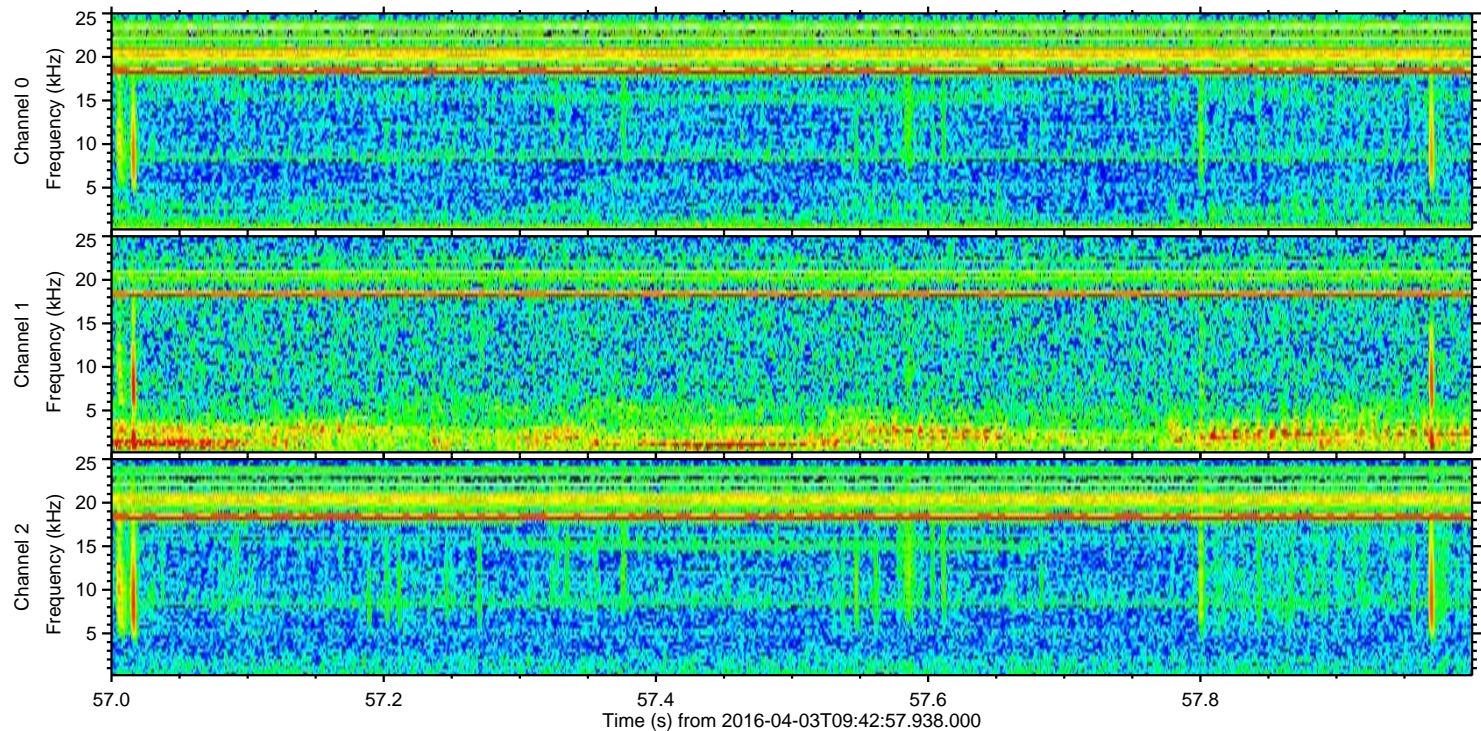
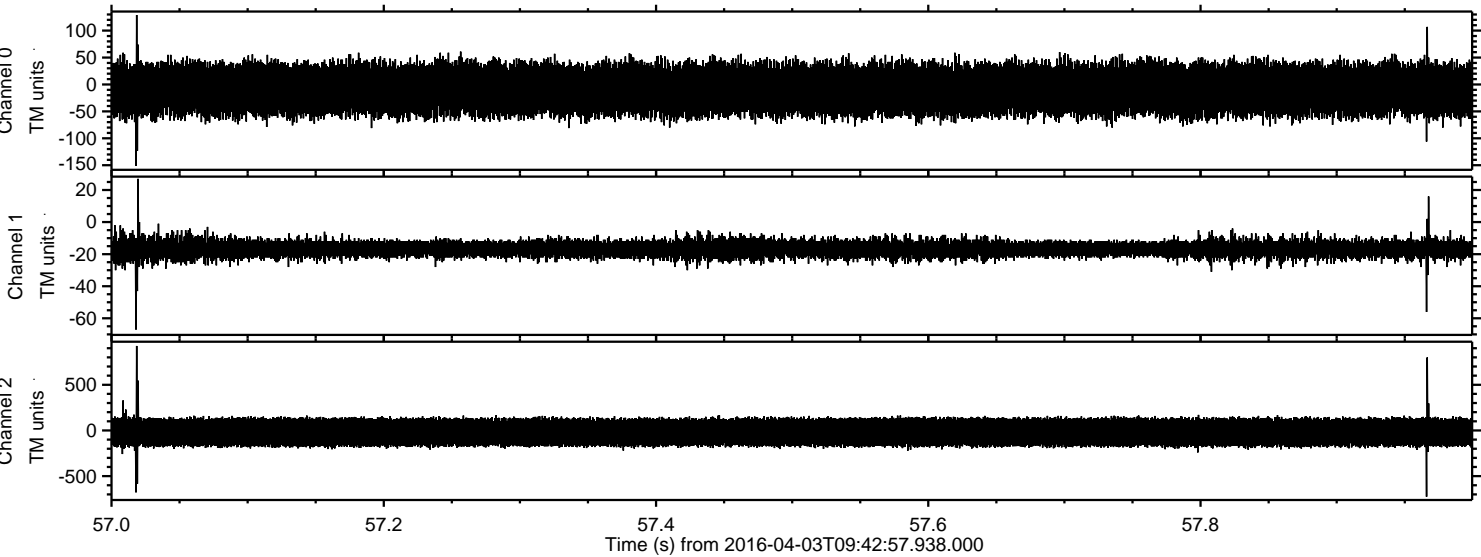


ELMAVAN 3D WAVEFORMS (Measured data sampled at 50 kHz) 51000 packets of 144 samples from 2016-04-03T09:42:57.938.000.

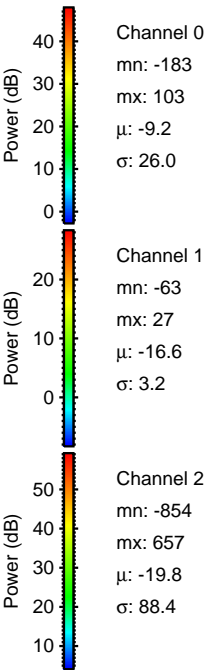
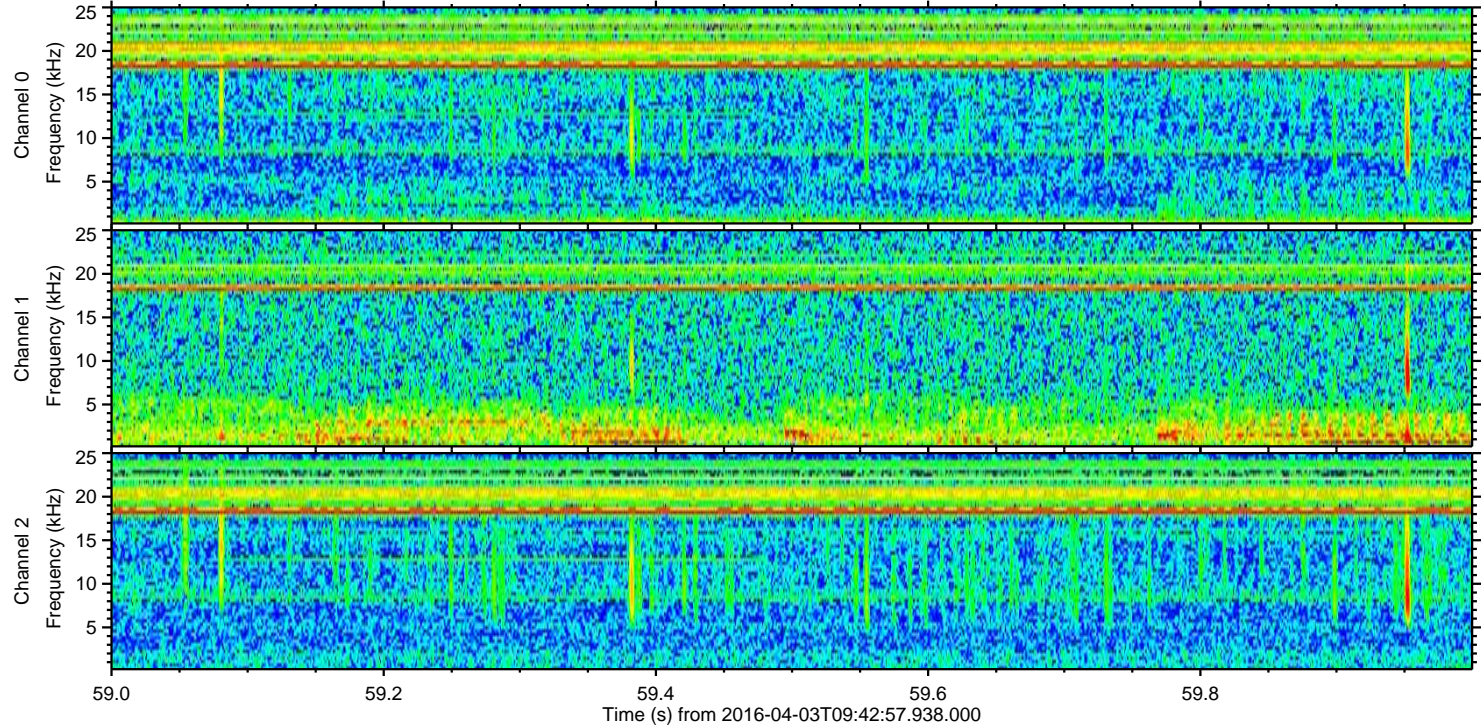
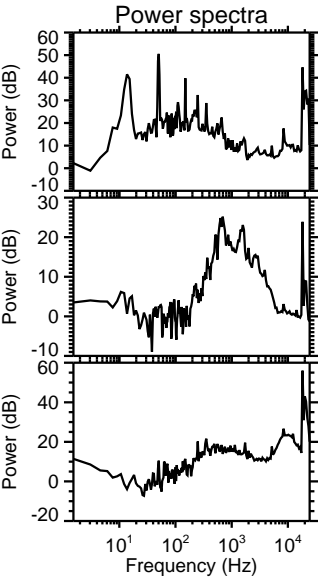
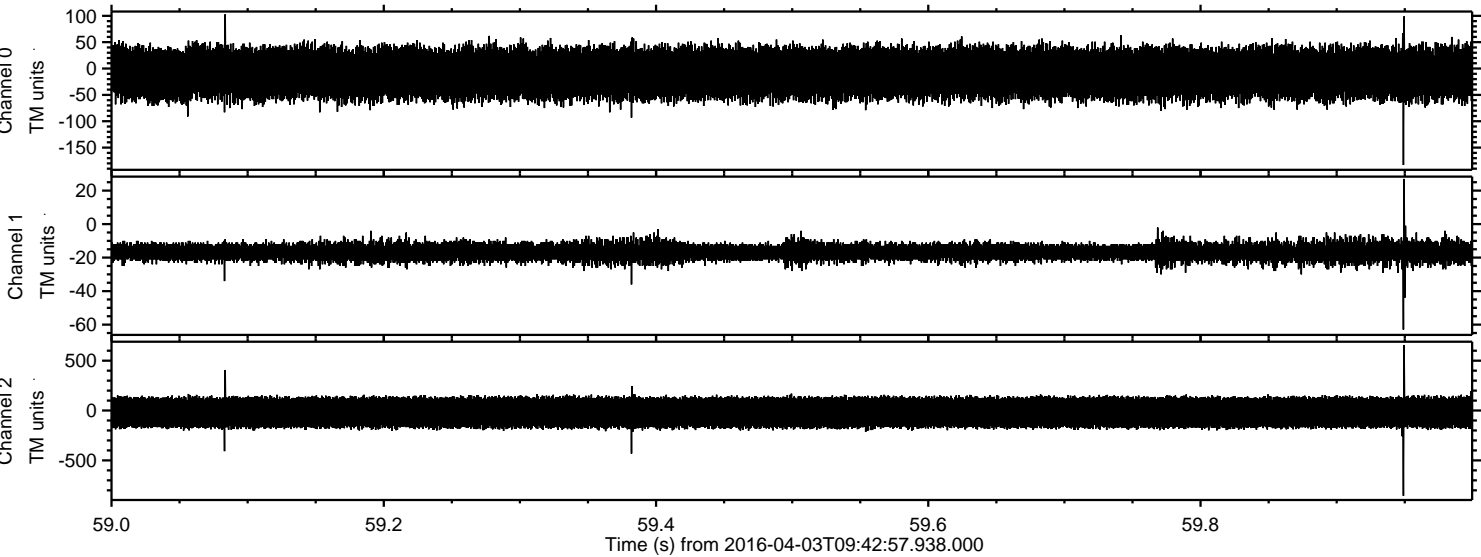
Processed Thu May 5 19:40:00 2016 by ELM ver.2012-10-06 from 001\_\_elm20160403\_094256\_\_dat00.bin



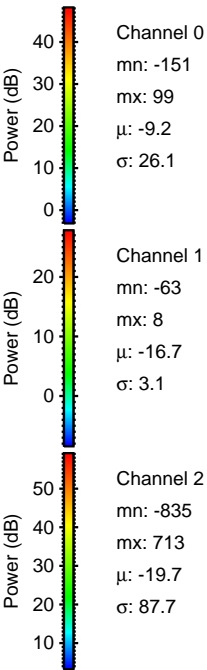
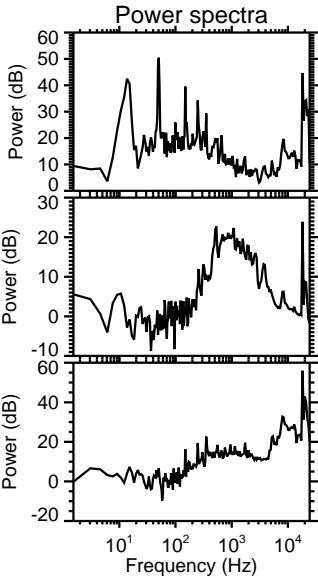
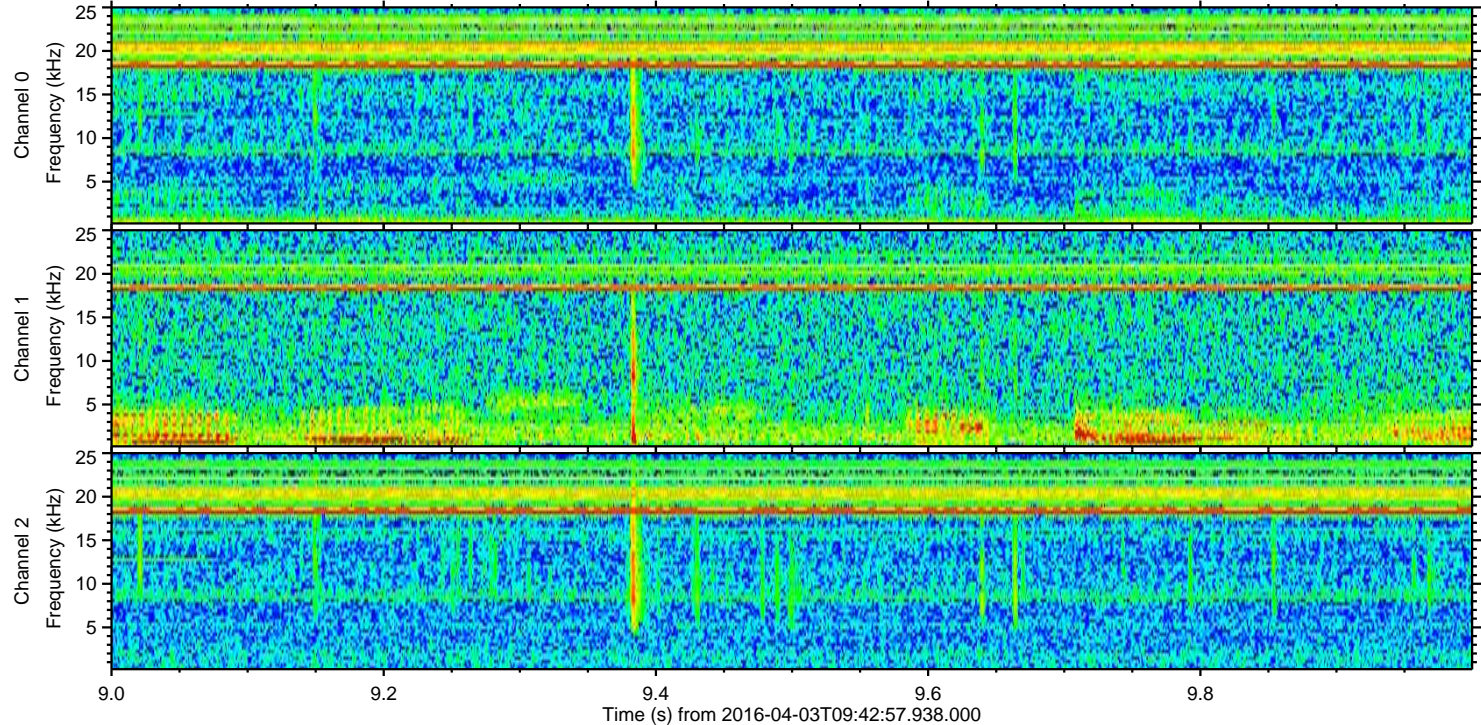
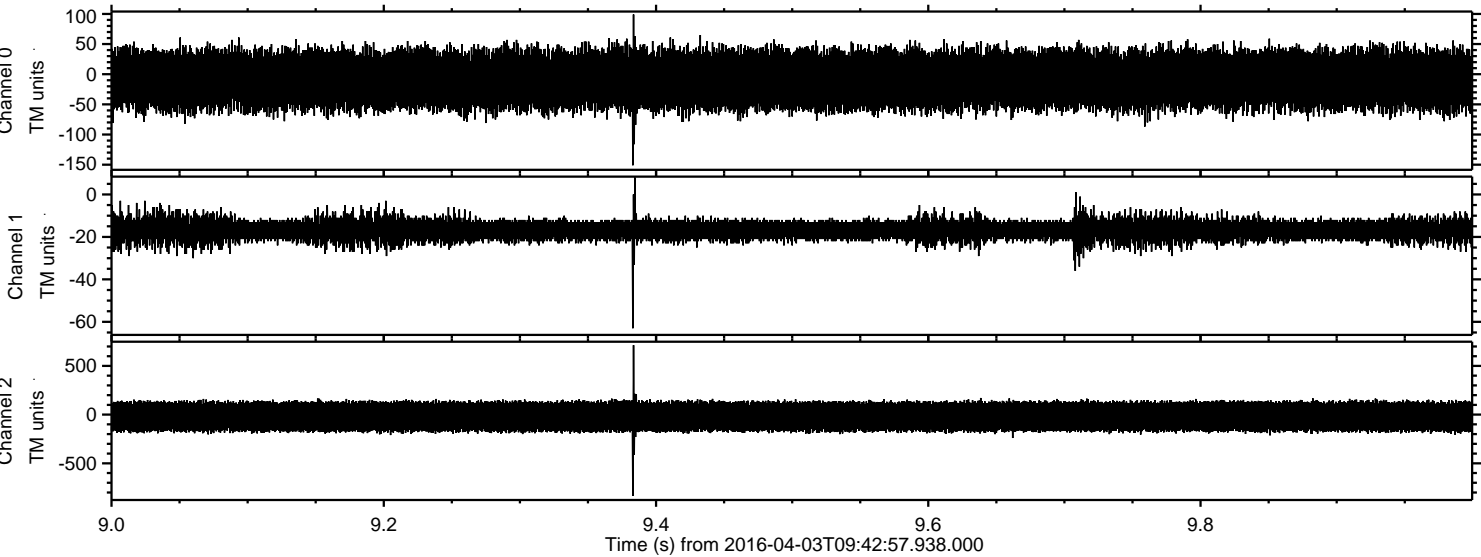
Processed Thu May 5 19:40:13 2016 by ELM ver.2012-10-06 from 001\_\_elm20160403\_094256\_\_dat00.bin



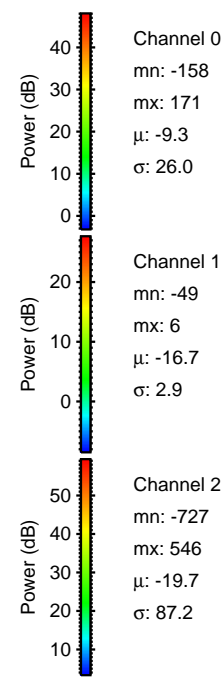
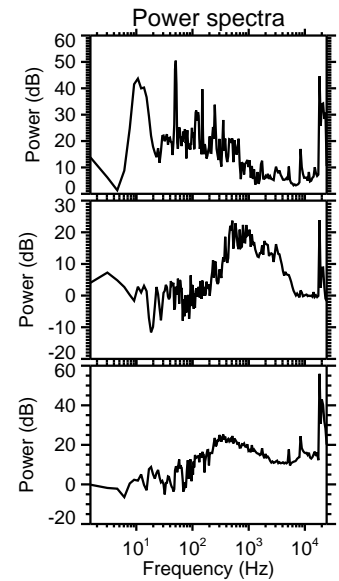
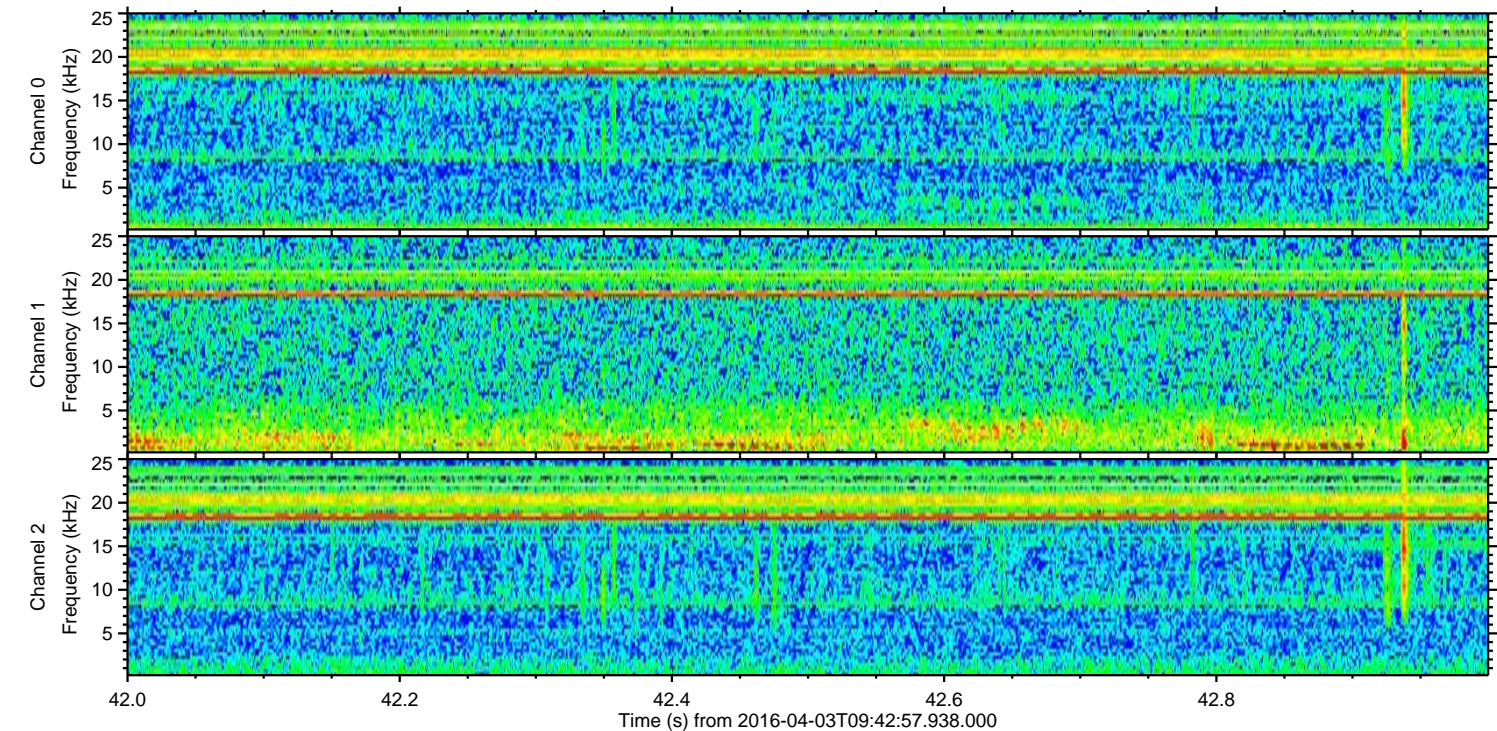
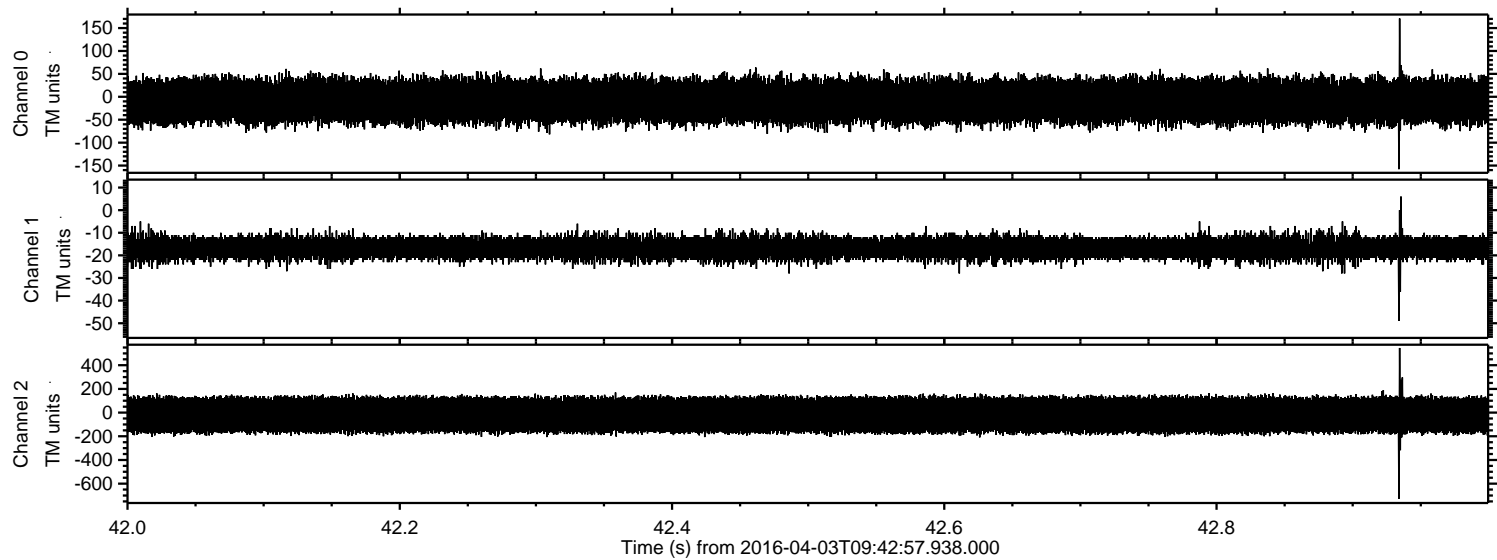
Processed Thu May 5 19:40:14 2016 by ELM ver.2012-10-06 from 001\_\_elm20160403\_094256\_\_dat00.bin



Processed Thu May 5 19:40:14 2016 by ELM ver.2012-10-06 from 001\_\_elm20160403\_094256\_\_dat00.bin

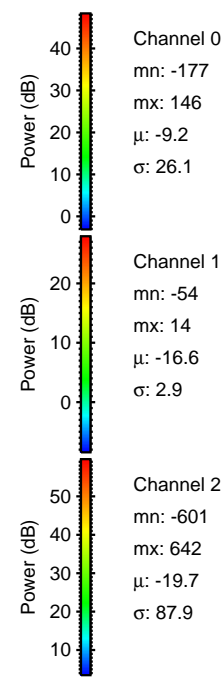
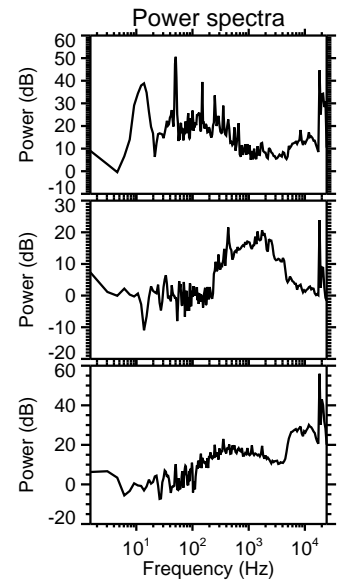
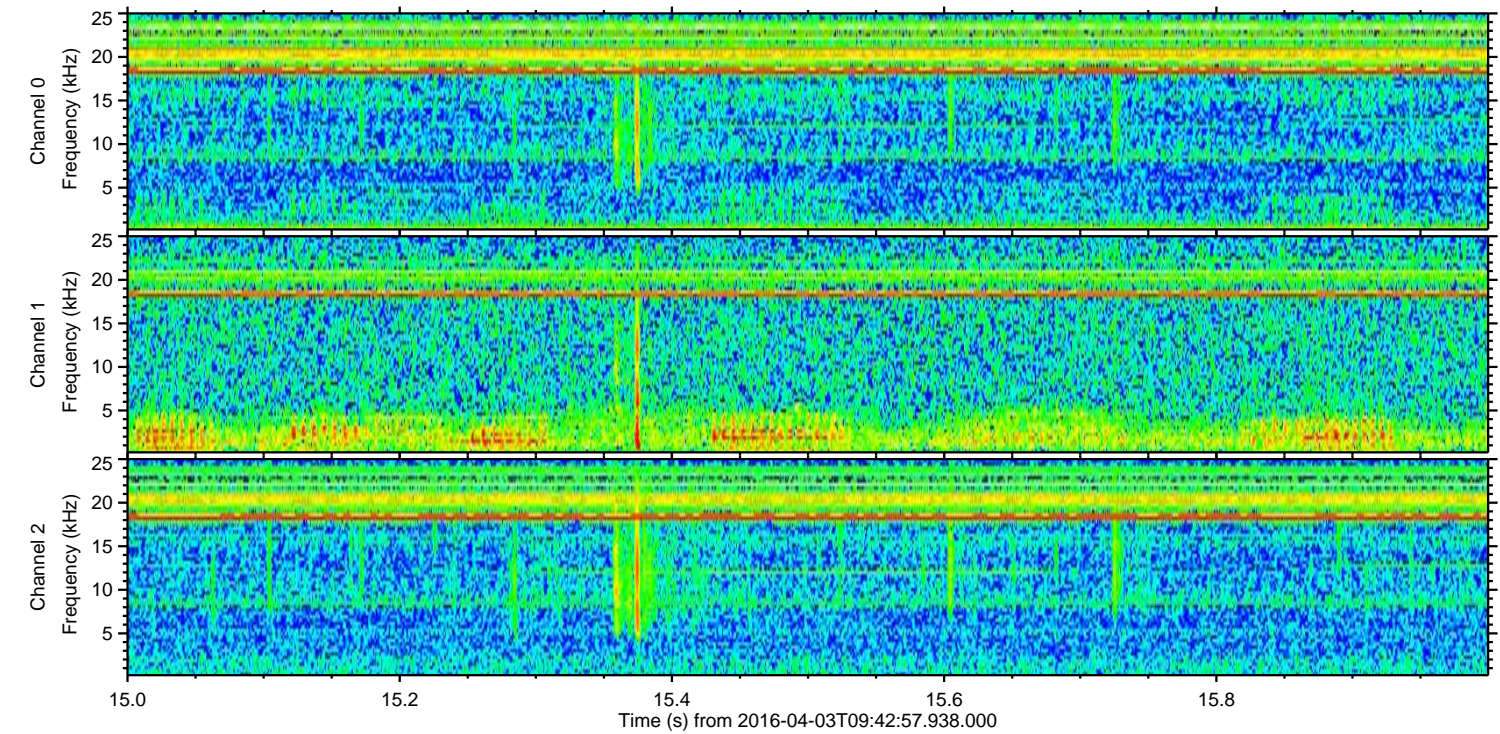
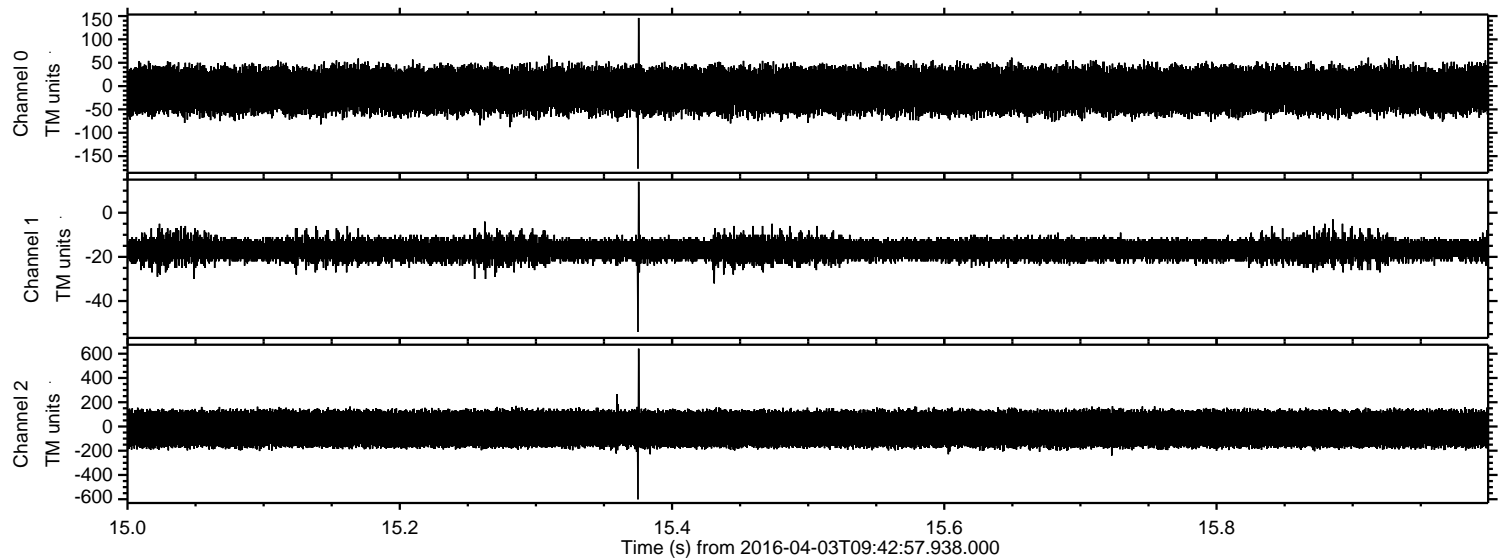


Processed Thu May 5 19:40:15 2016 by ELM ver.2012-10-06 from 001\_\_elm20160403\_094256\_\_dat00.bin

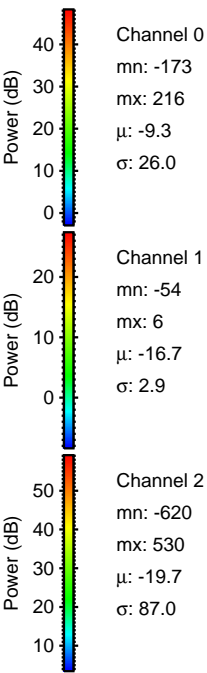
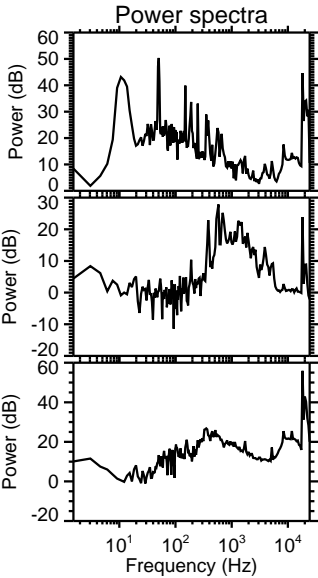
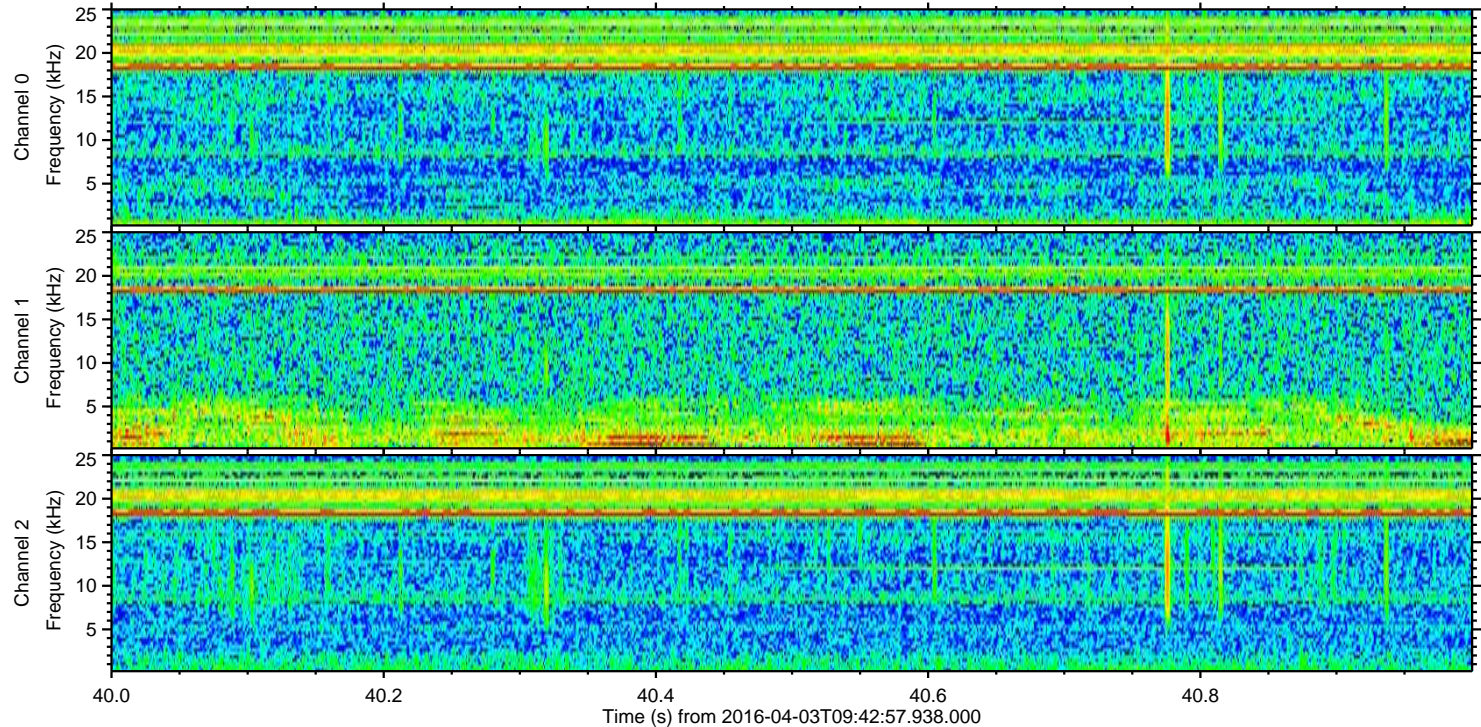
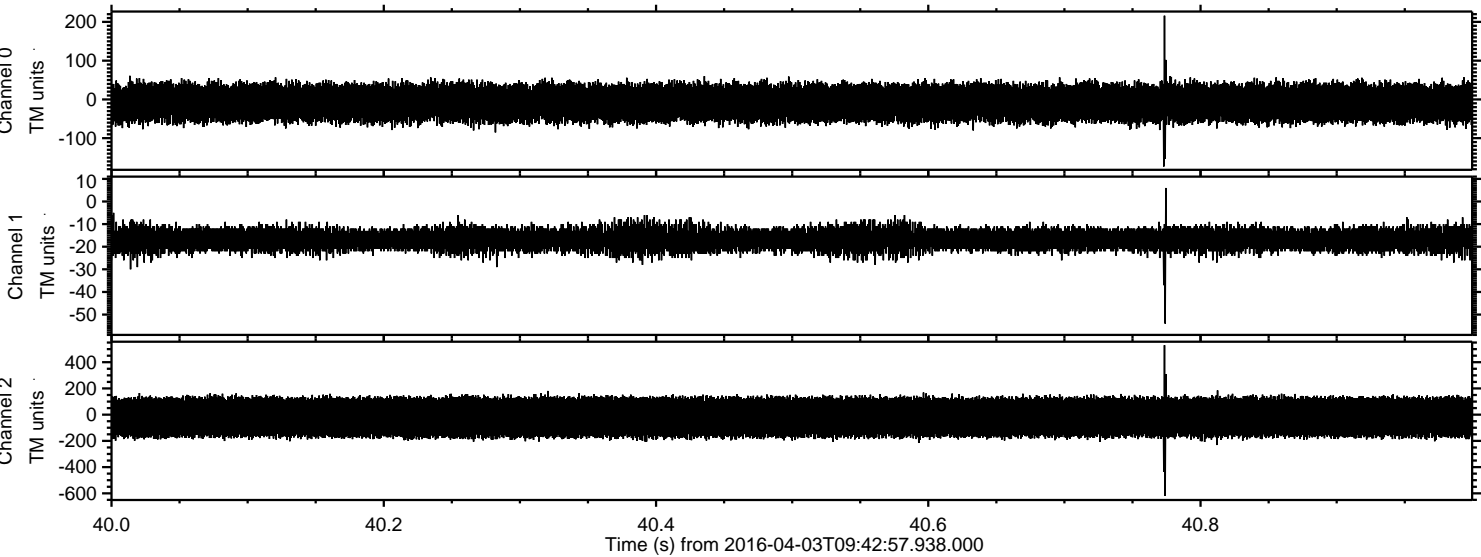


ELMAVAN 3D WAVEFORMS (Measured data sampled at 50 kHz) 51000 packets of 144 samples from 2016-04-03T09:42:57.938.000. Part 16/147

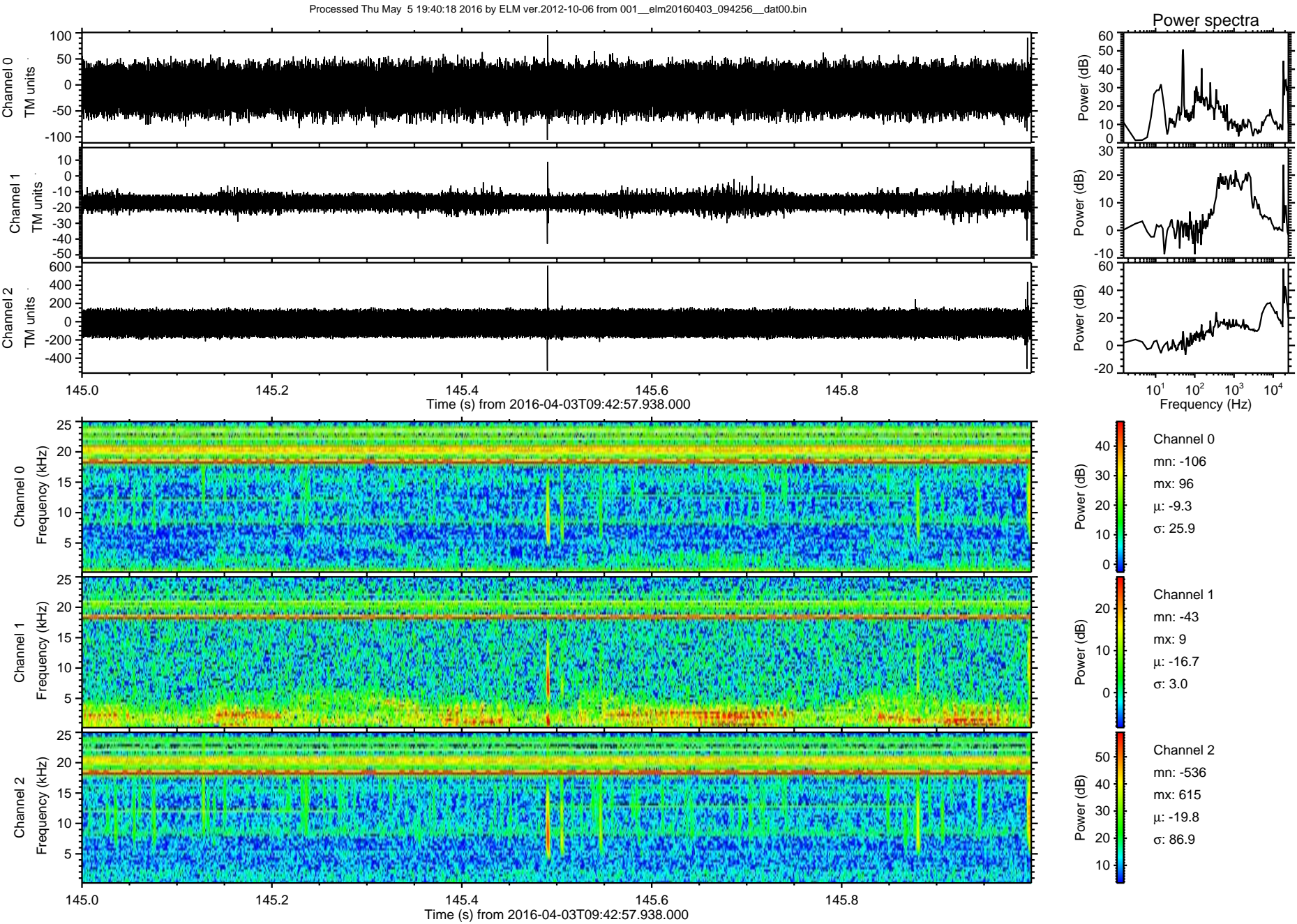
Processed Thu May 5 19:40:16 2016 by ELM ver.2012-10-06 from 001\_\_elm20160403\_094256\_\_dat00.bin



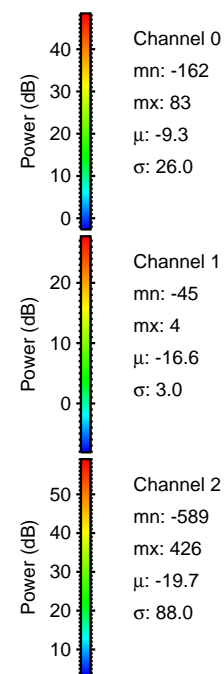
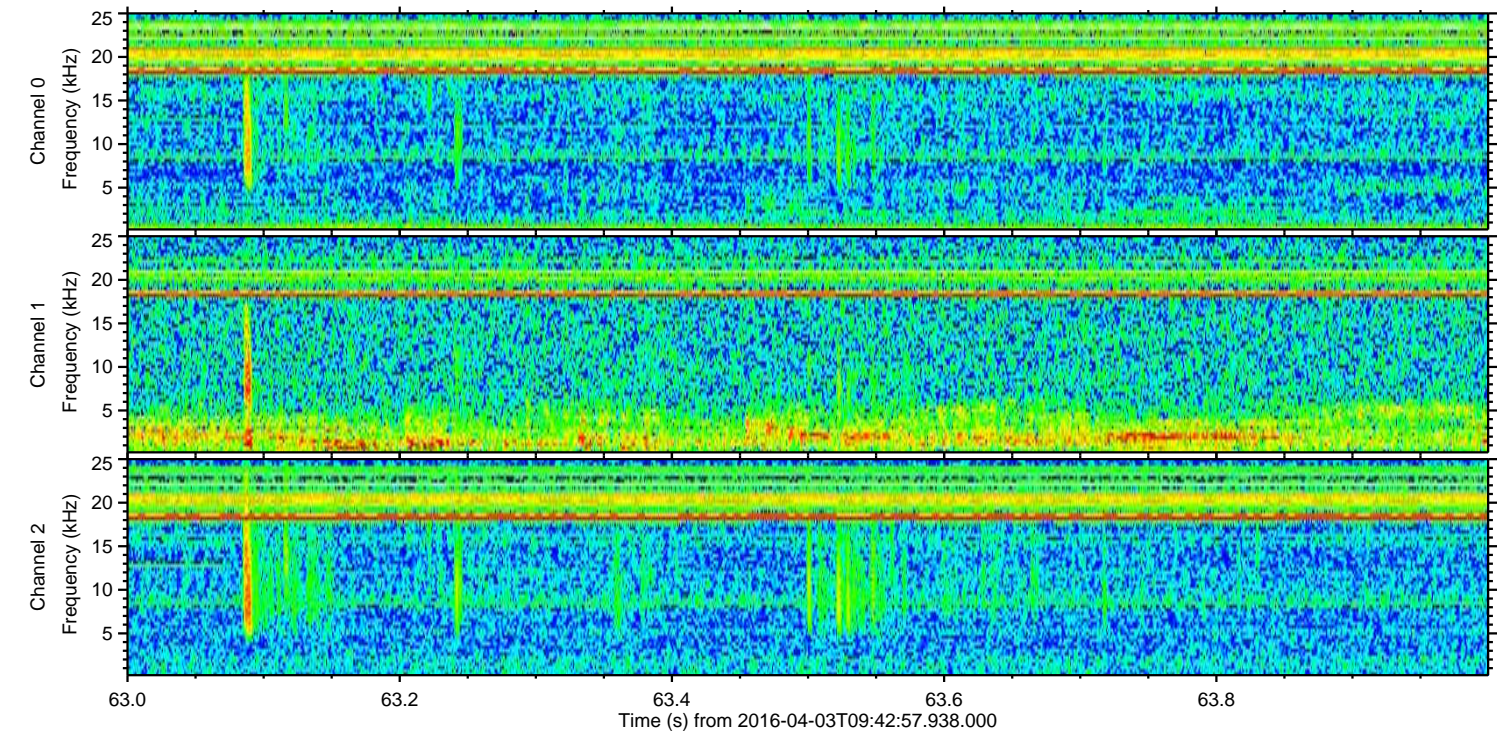
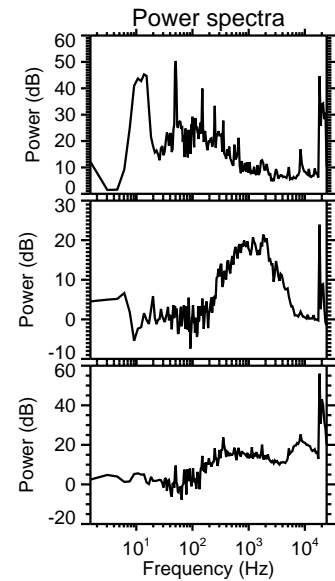
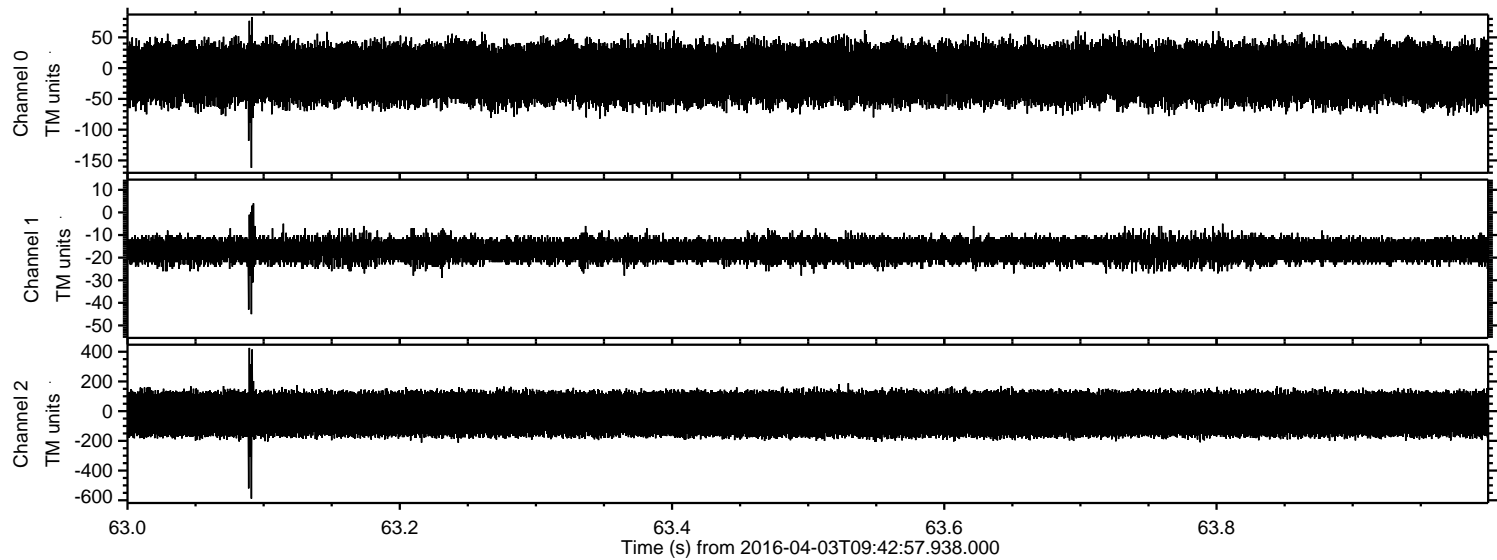
Processed Thu May 5 19:40:17 2016 by ELM ver.2012-10-06 from 001\_\_elm20160403\_094256\_\_dat00.bin



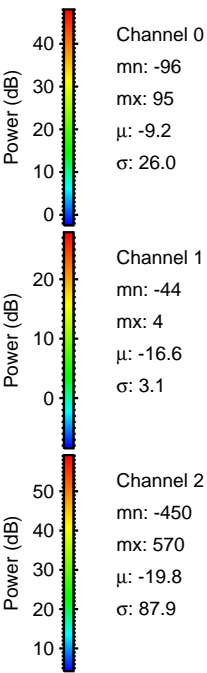
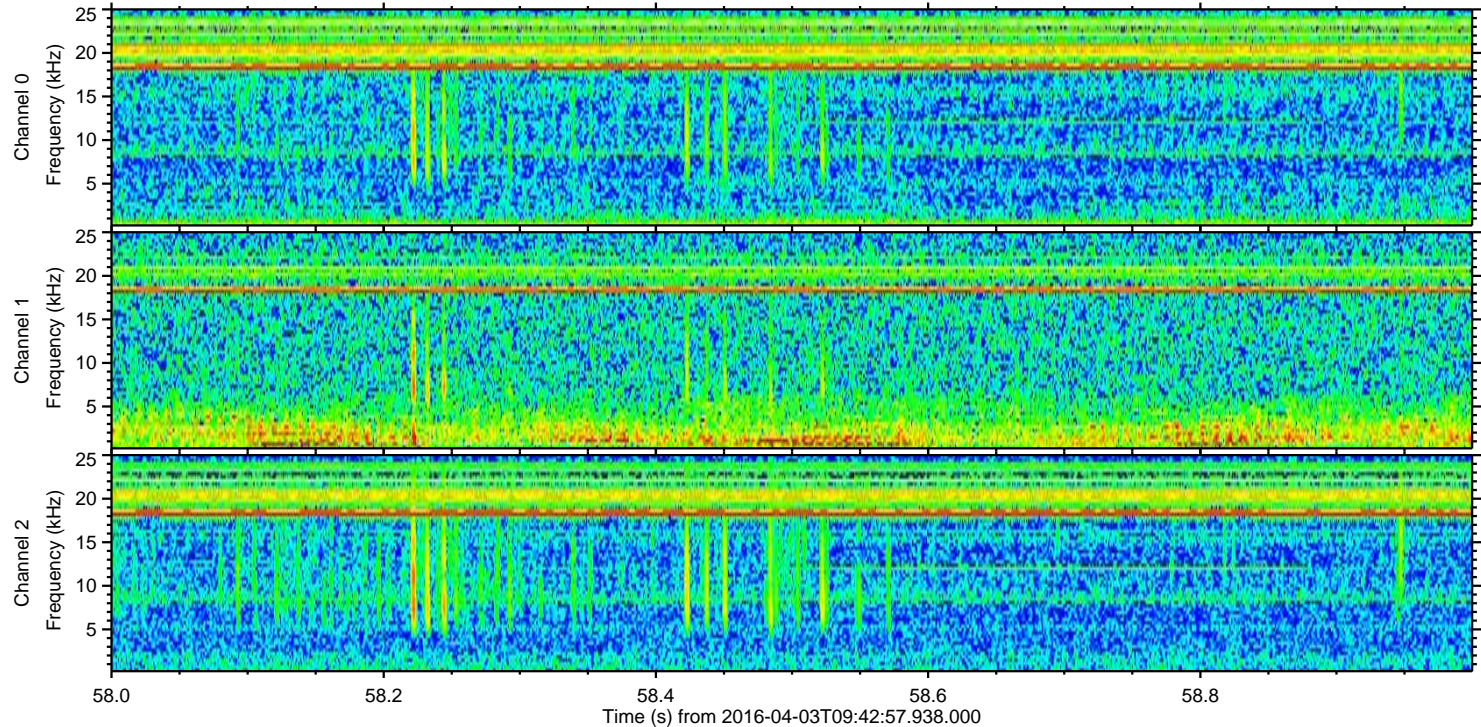
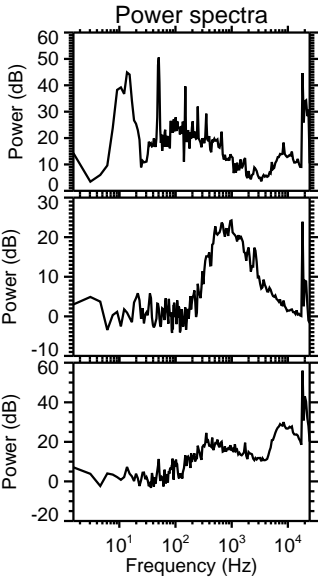
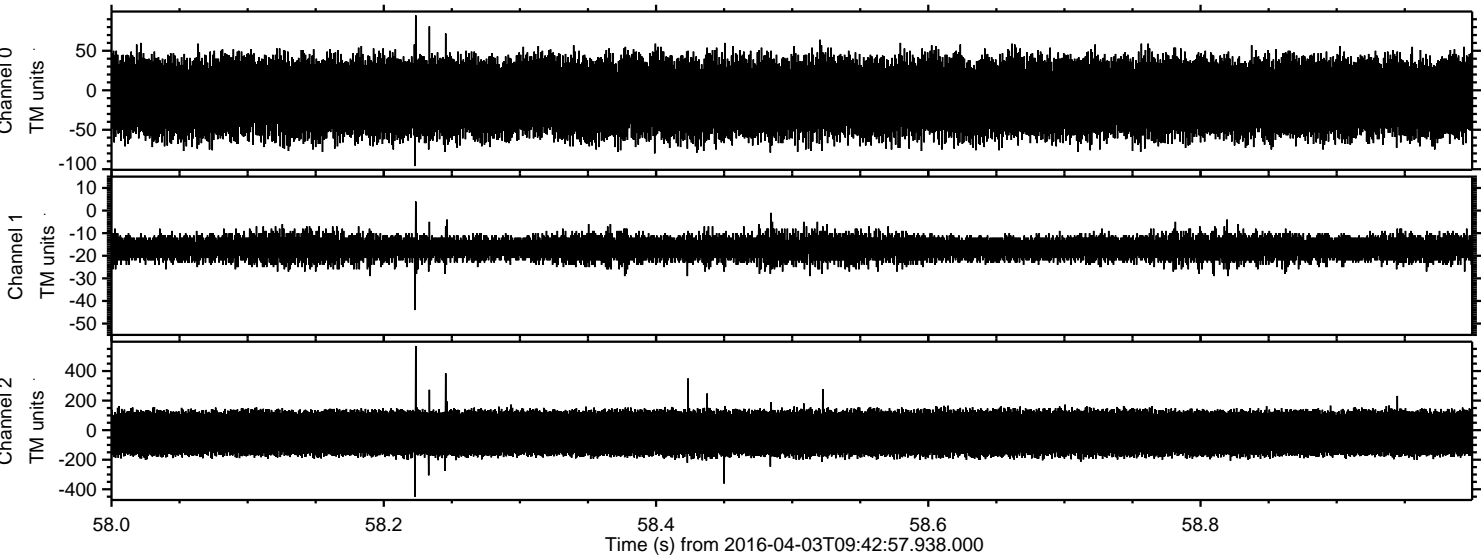
ELMAVAN 3D WAVEFORMS (Measured data sampled at 50 kHz) 51000 packets of 144 samples from 2016-04-03T09:42:57.938.000. Part 146/147



Processed Thu May 5 19:40:19 2016 by ELM ver.2012-10-06 from 001\_\_elm20160403\_094256\_\_dat00.bin



Processed Thu May 5 19:40:20 2016 by ELM ver.2012-10-06 from 001\_\_elm20160403\_094256\_\_dat00.bin



Processed Thu May 5 19:40:21 2016 by ELM ver.2012-10-06 from 001\_\_elm20160403\_094256\_\_dat00.bin

