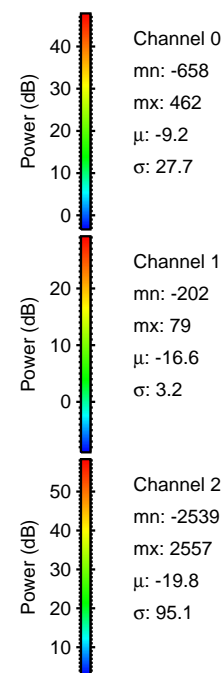
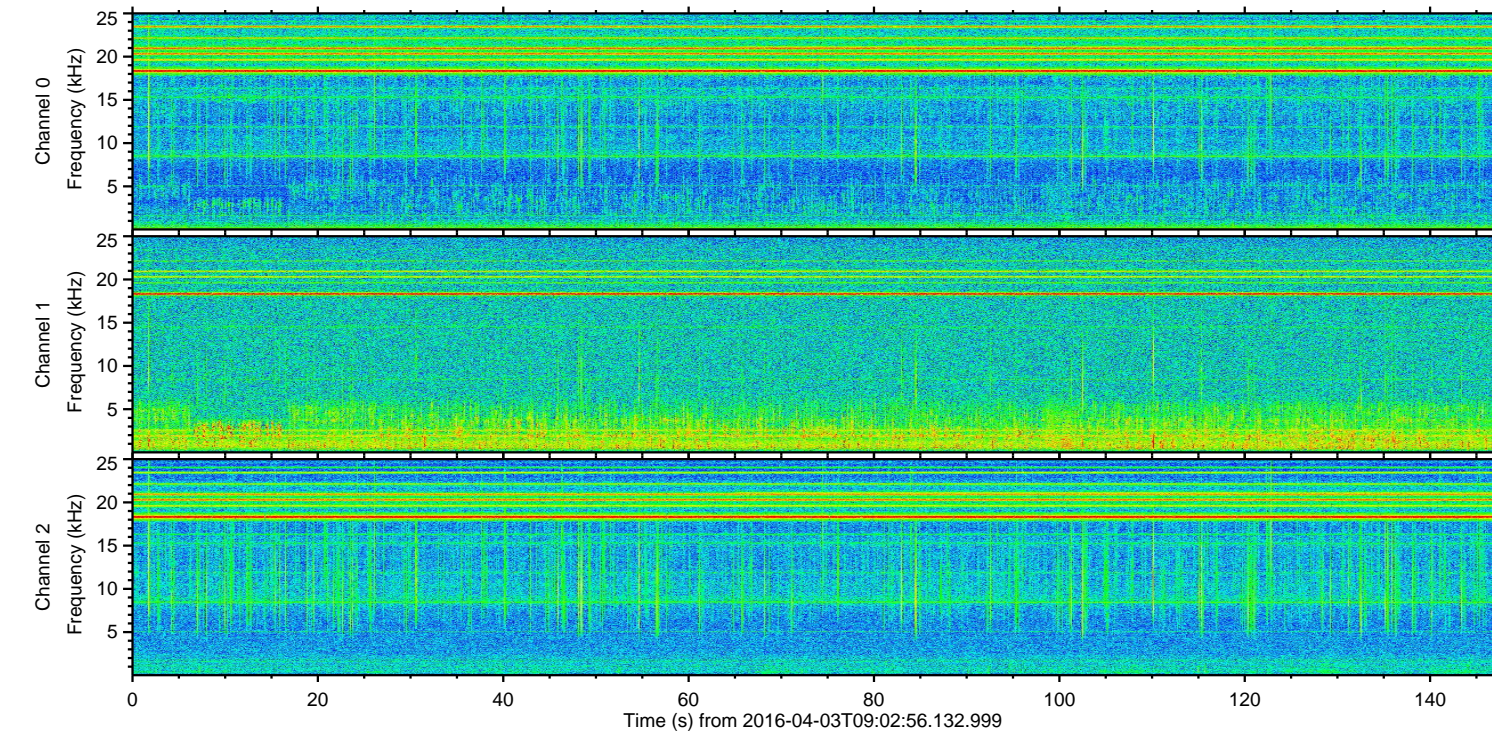
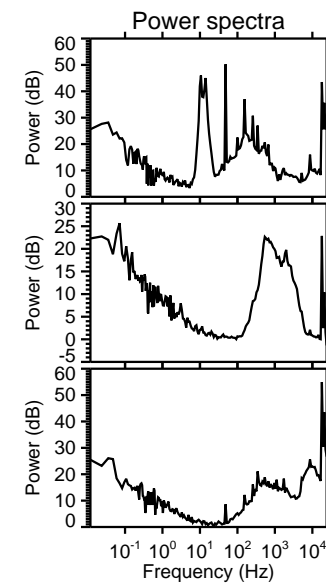
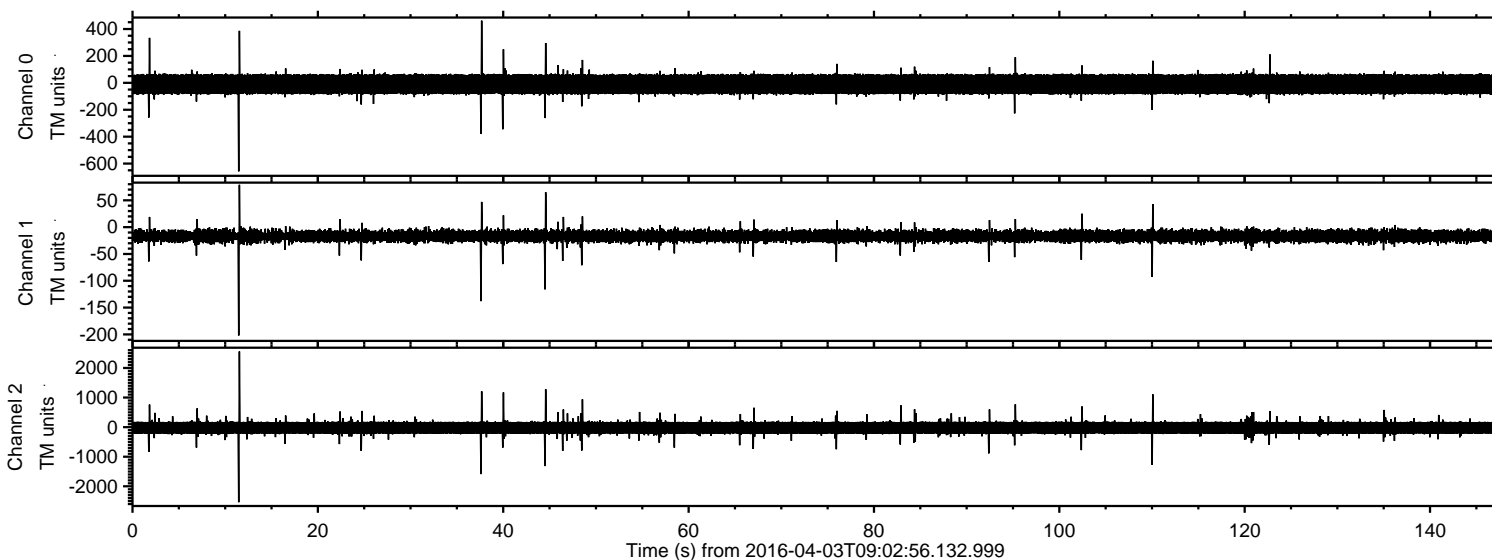
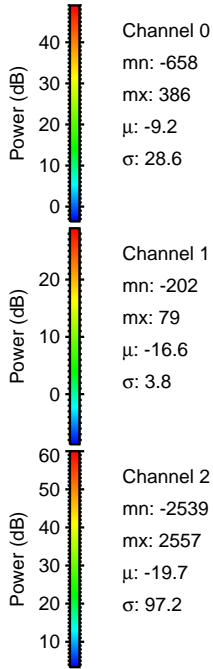
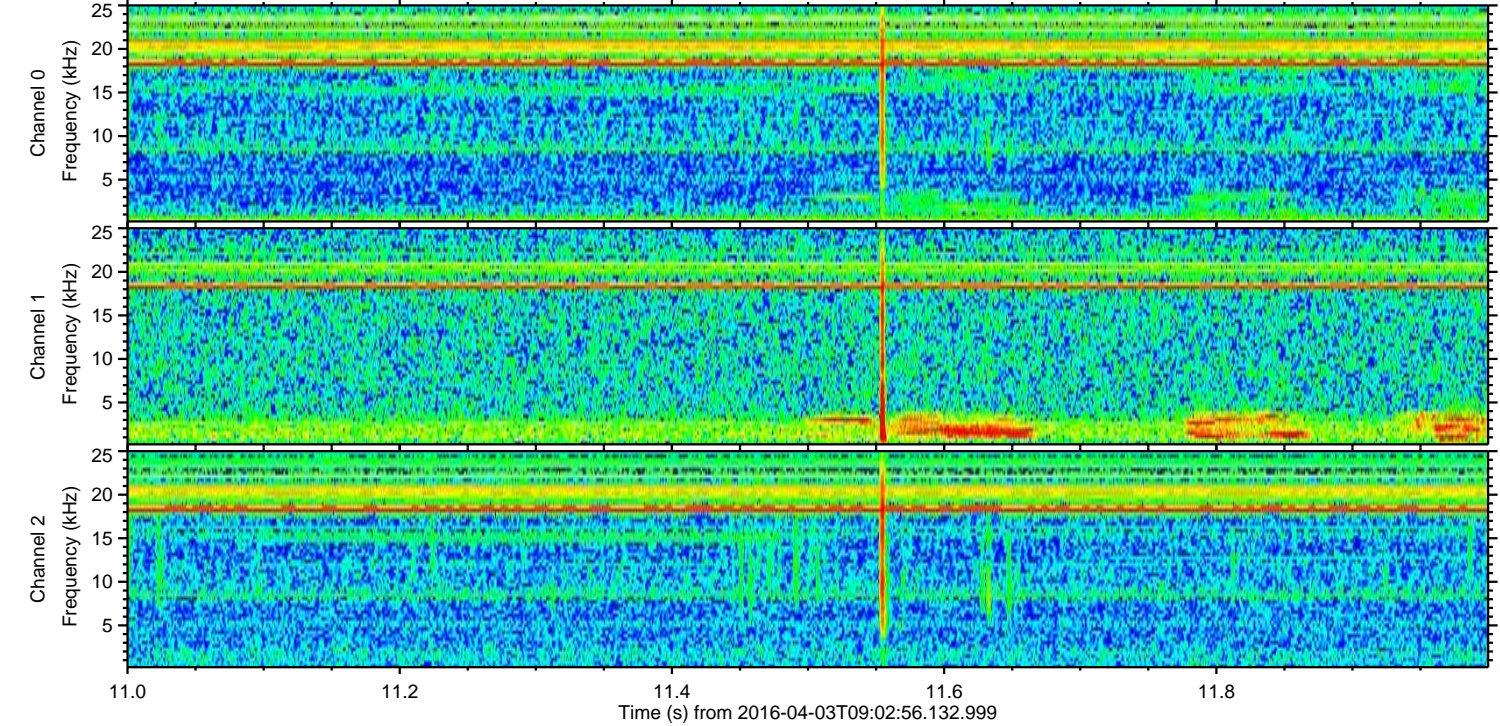
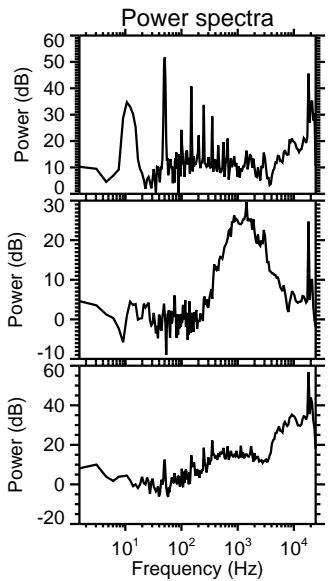
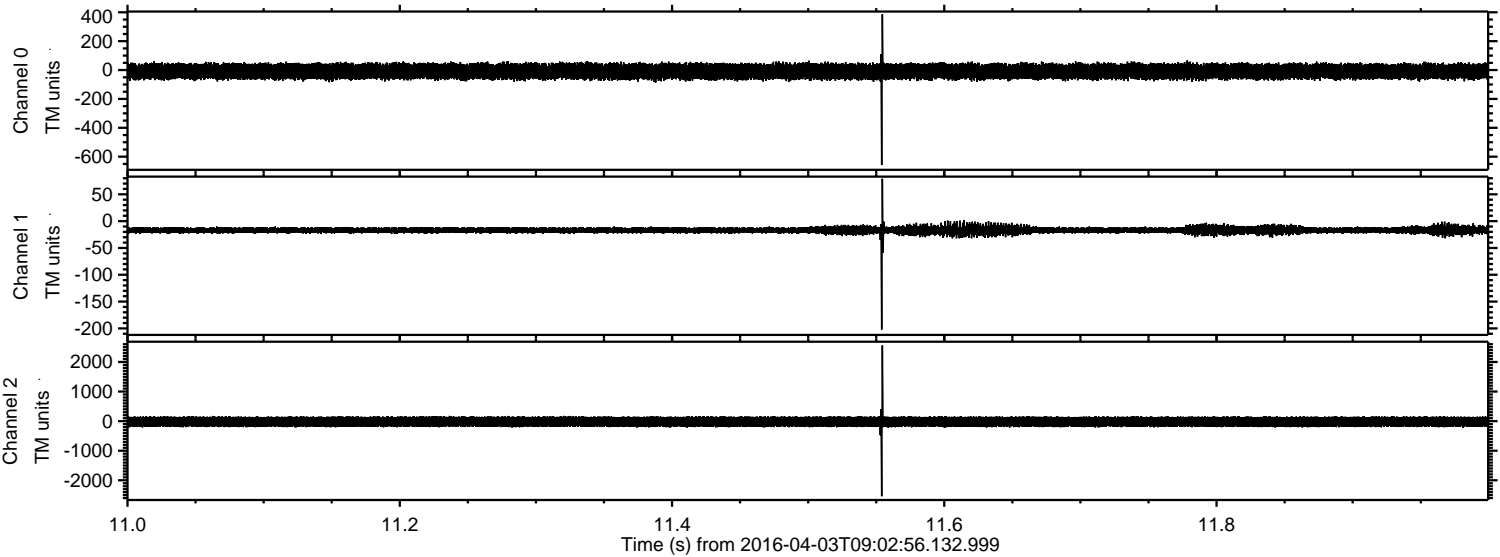


ELMAVAN 3D WAVEFORMS (Measured data sampled at 50 kHz) 51000 packets of 144 samples from 2016-04-03T09:02:56.132.999.

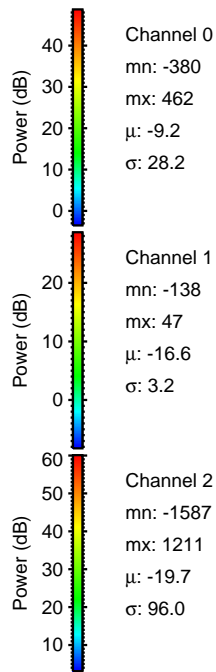
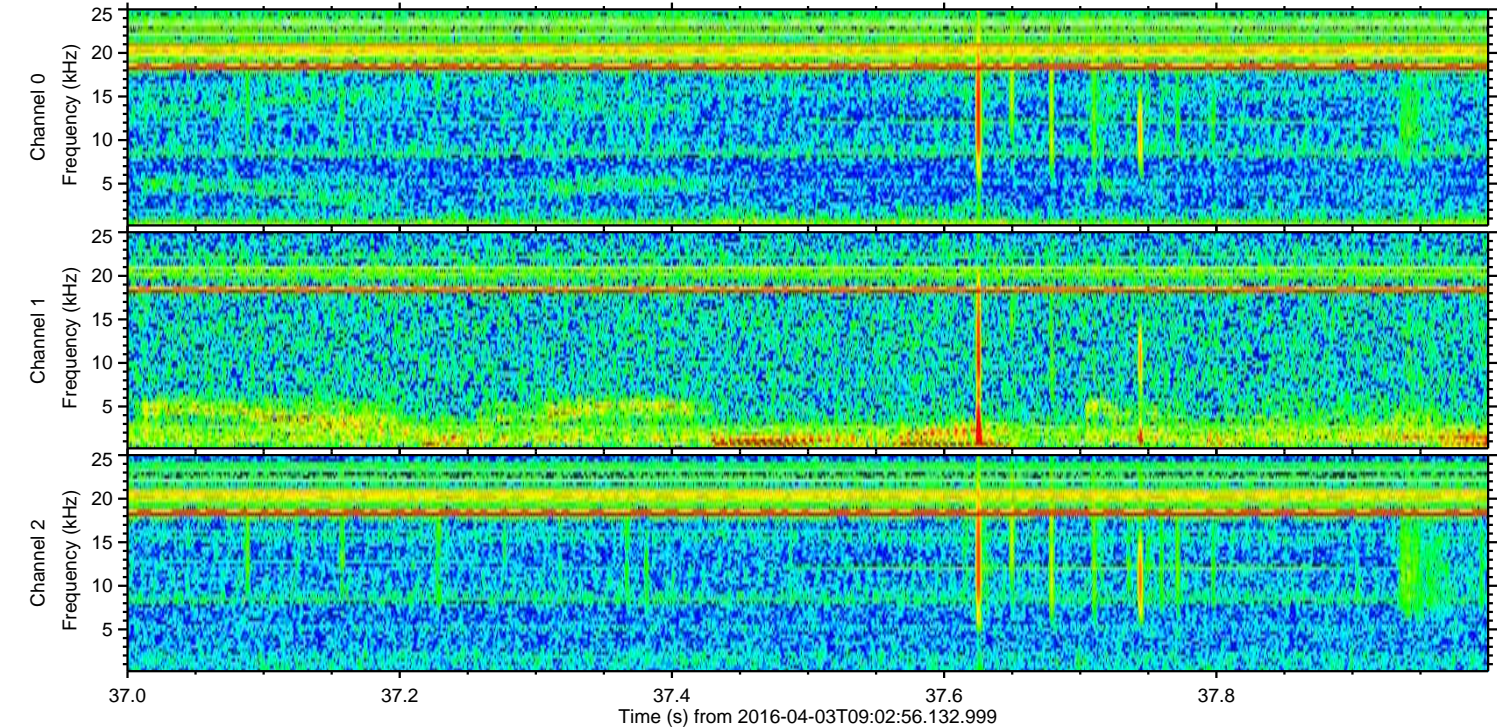
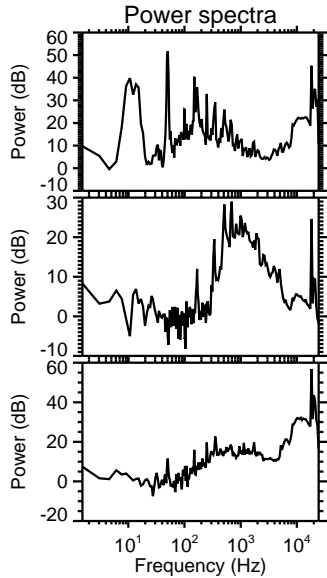
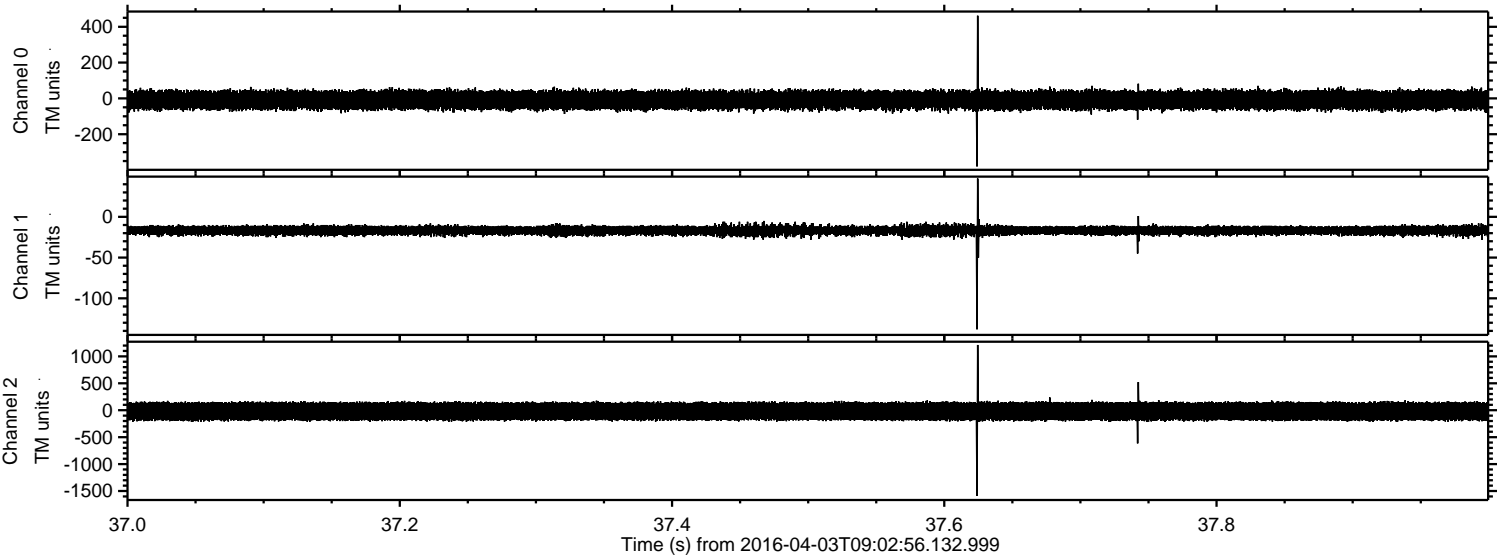
Processed Thu May 5 19:31:42 2016 by ELM ver.2012-10-06 from 001__elm20160403_090255__dat00.bin



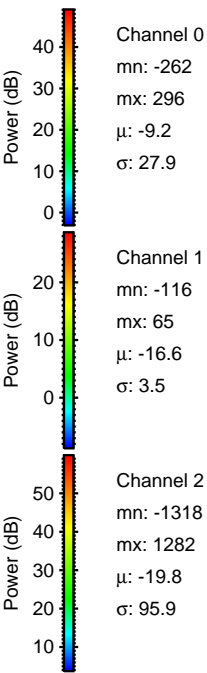
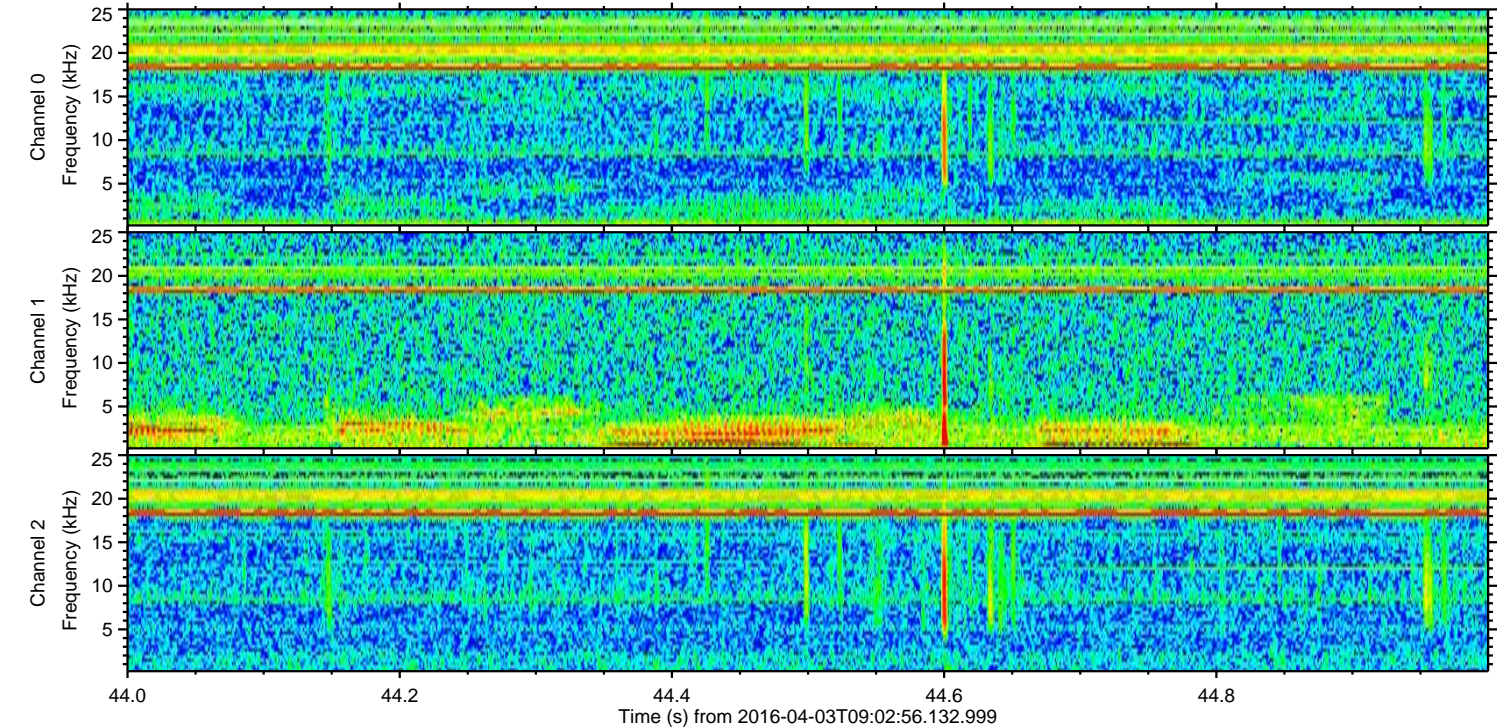
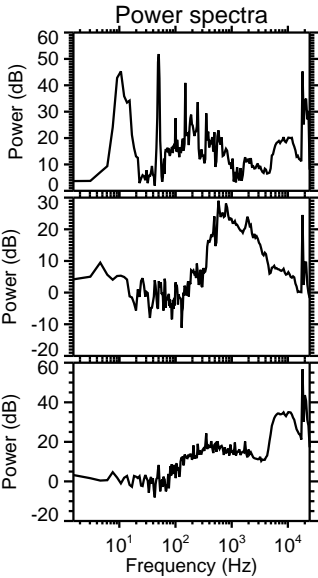
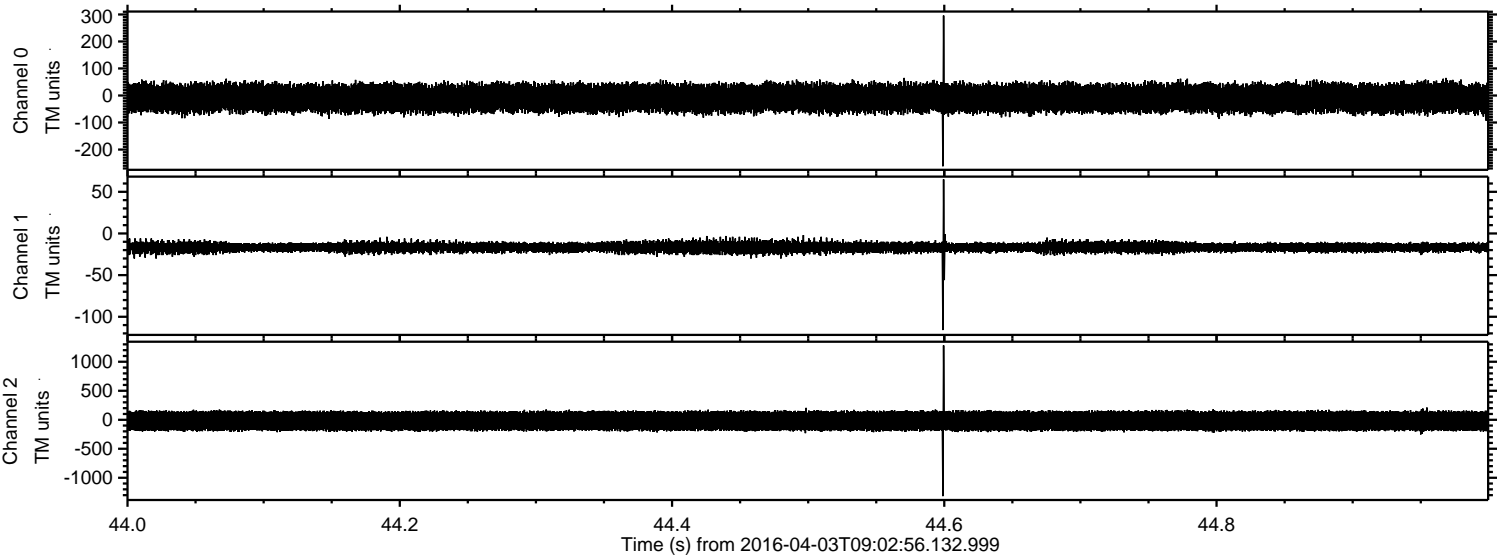
Processed Thu May 5 19:31:54 2016 by ELM ver.2012-10-06 from 001__elm20160403_090255__dat00.bin



Processed Thu May 5 19:31:55 2016 by ELM ver.2012-10-06 from 001__elm20160403_090255__dat00.bin

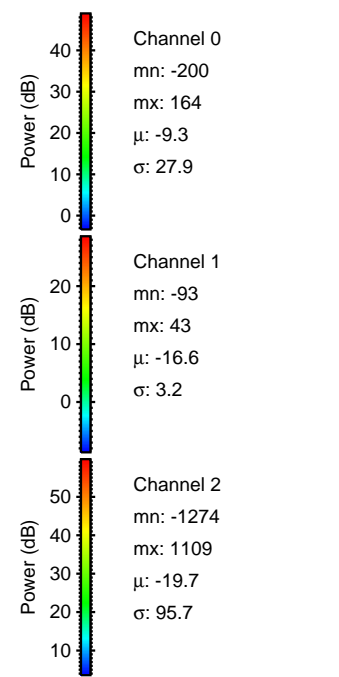
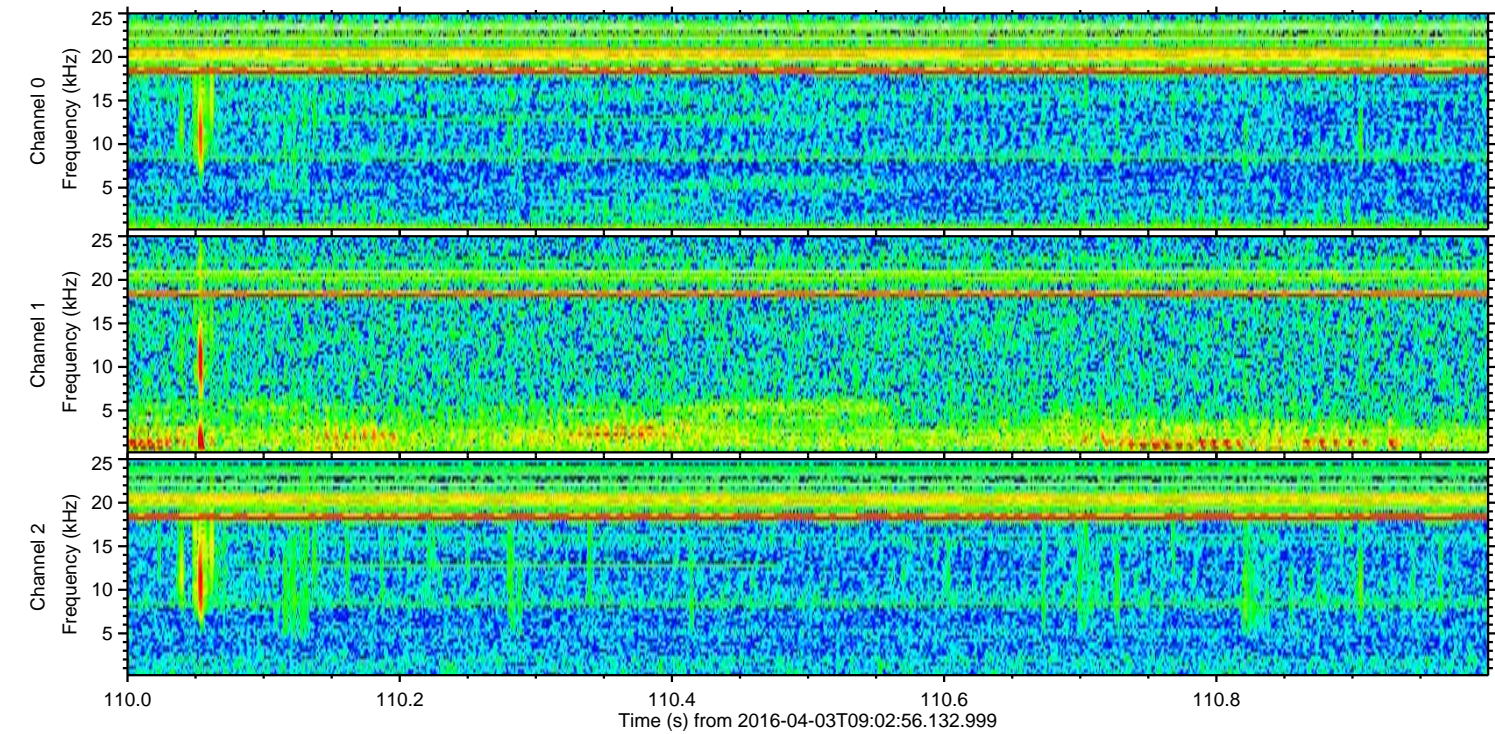
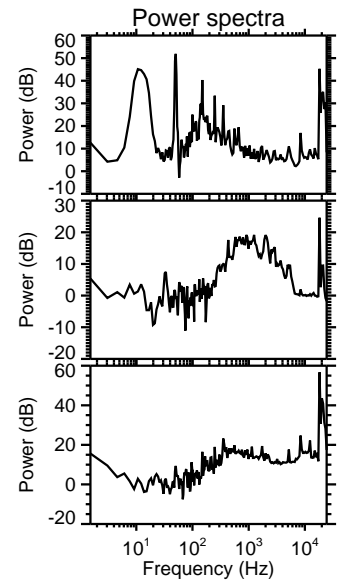
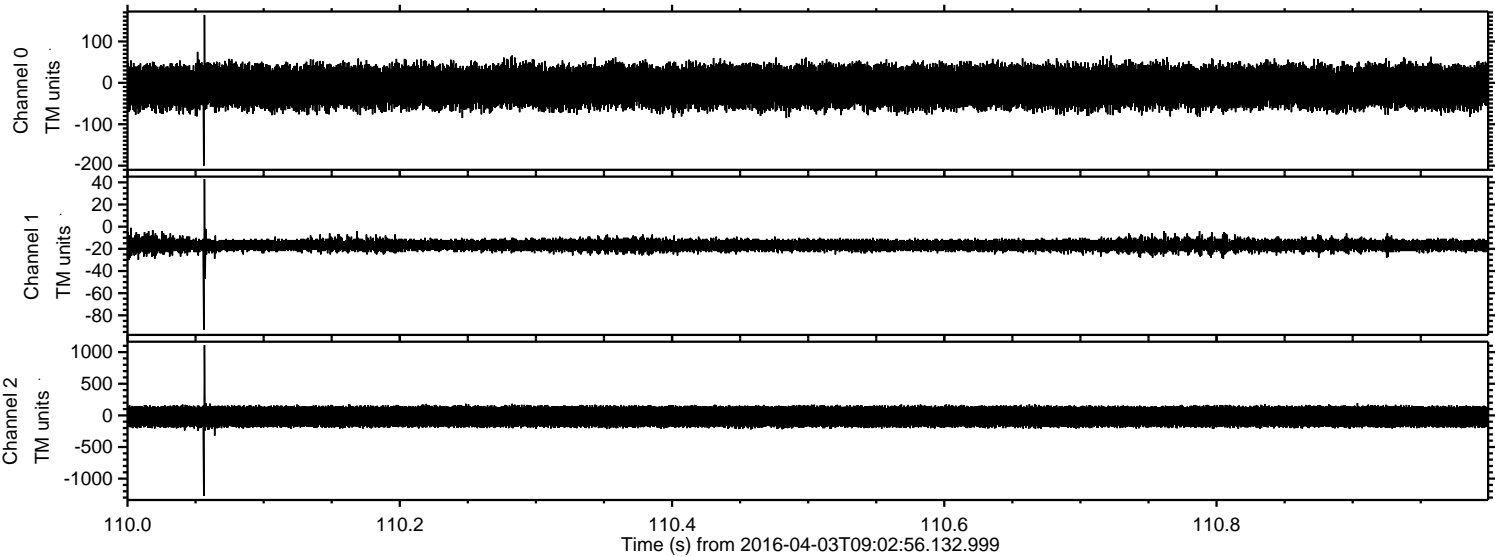


Processed Thu May 5 19:31:56 2016 by ELM ver.2012-10-06 from 001__elm20160403_090255__dat00.bin

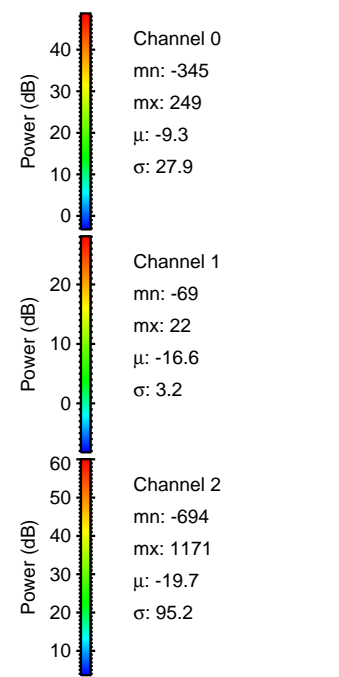
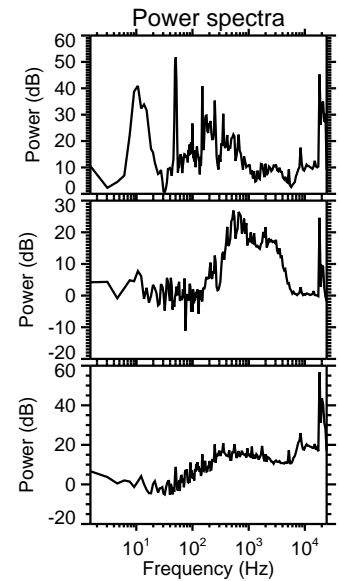
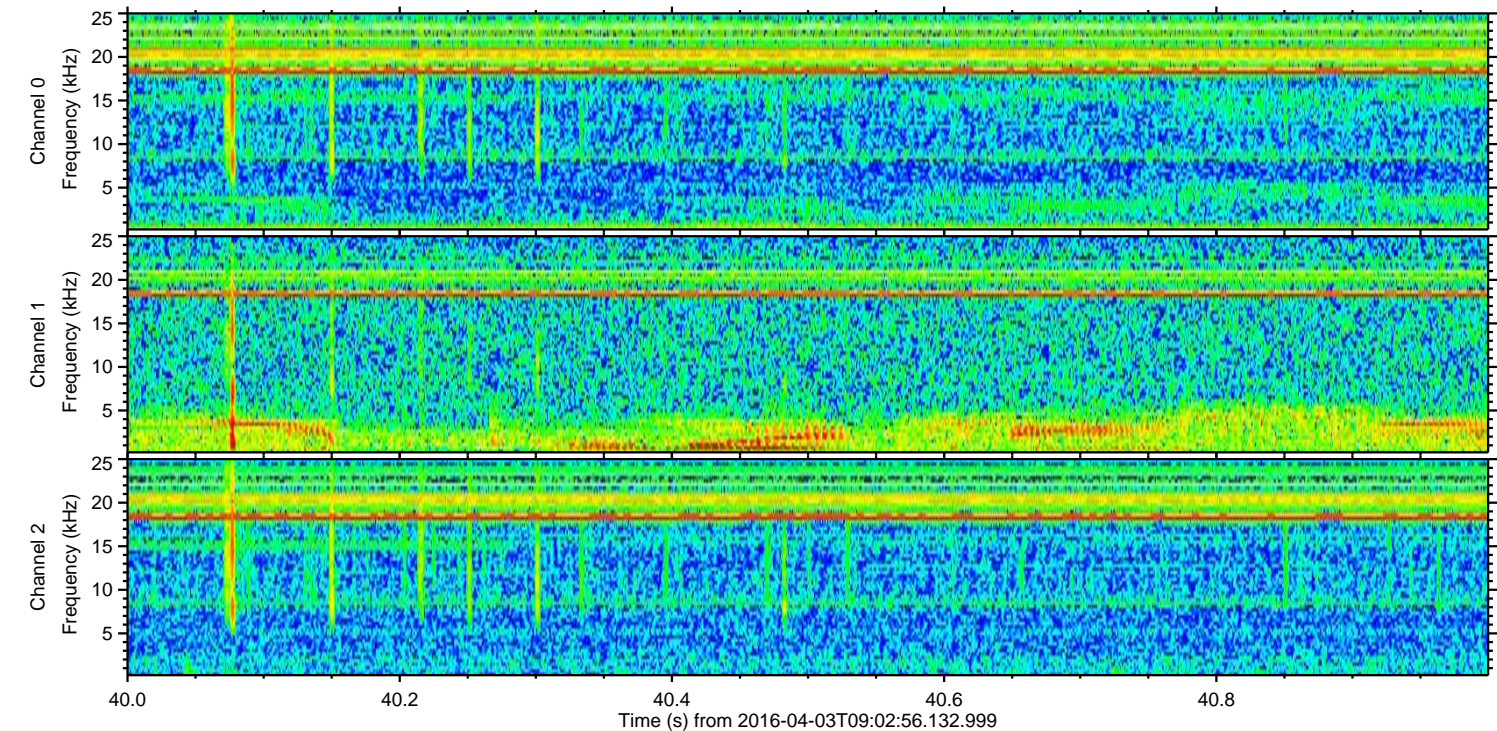
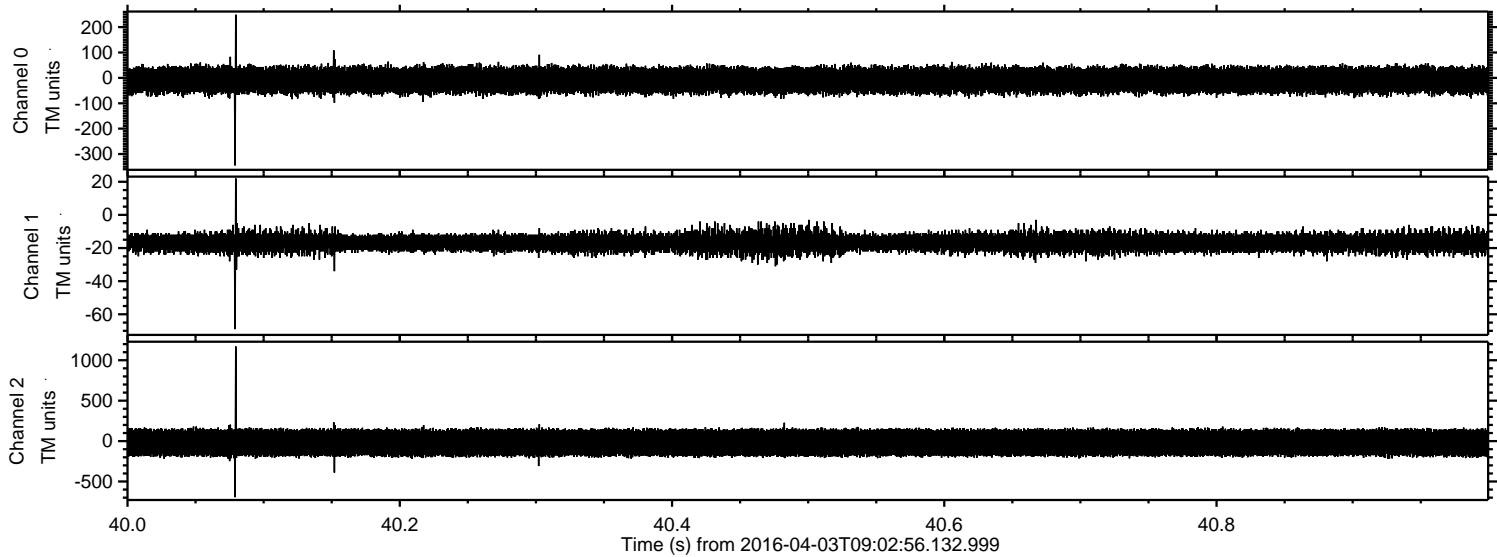


ELMAVAN 3D WAVEFORMS (Measured data sampled at 50 kHz) 51000 packets of 144 samples from 2016-04-03T09:02:56.132.999. Part 111/147

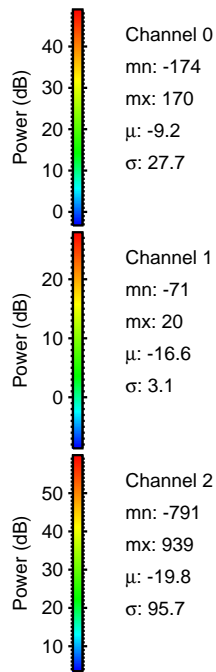
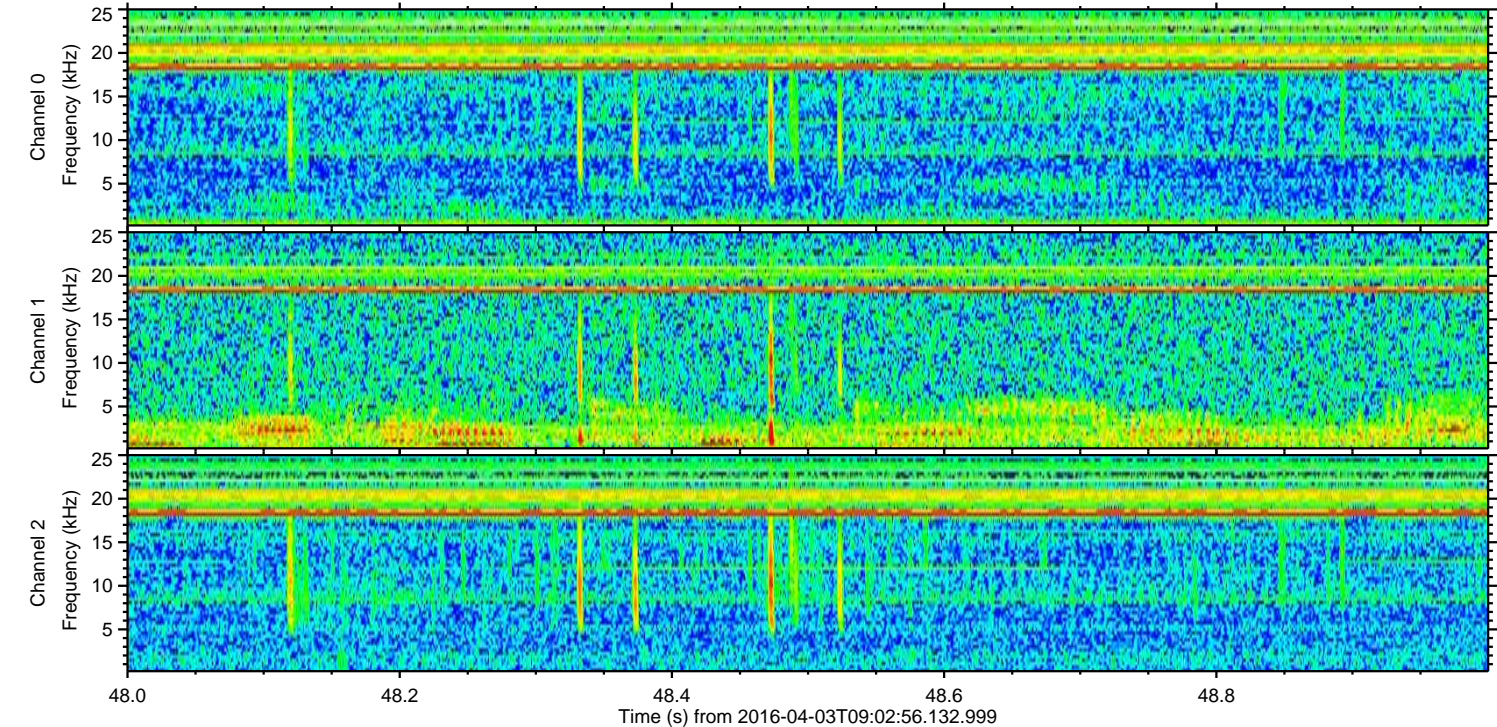
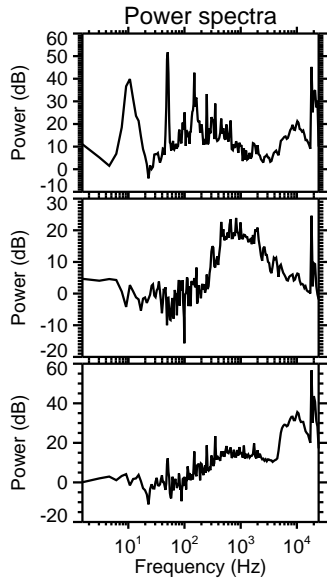
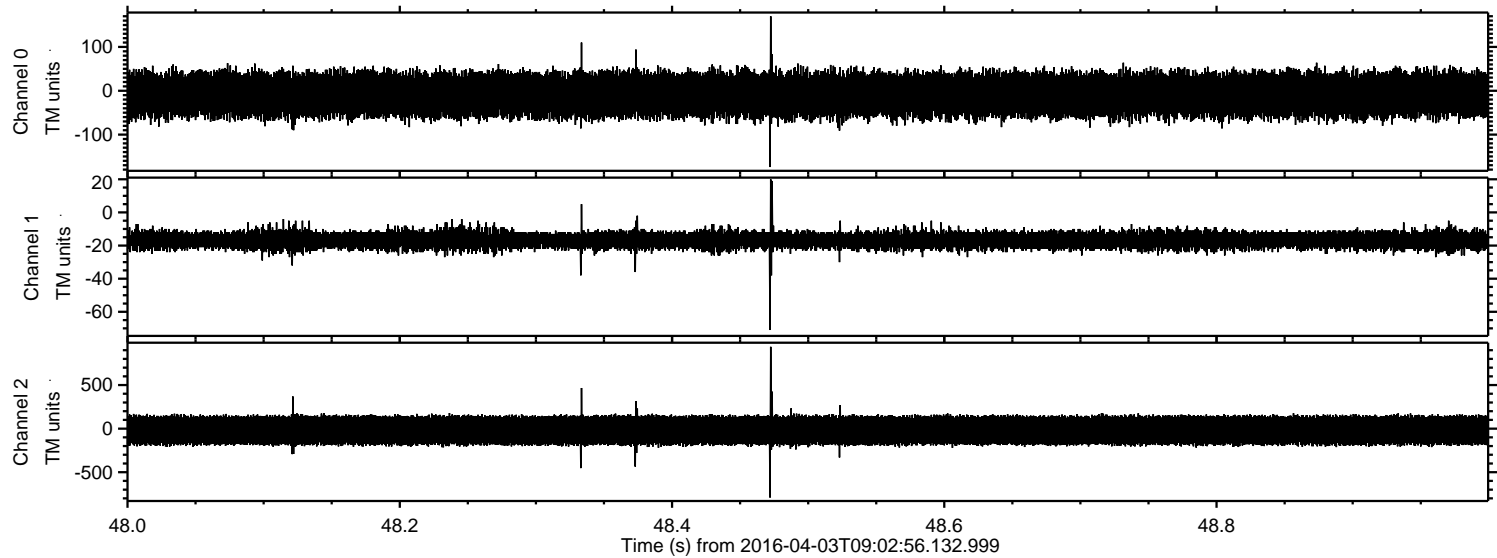
Processed Thu May 5 19:31:57 2016 by ELM ver.2012-10-06 from 001__elm20160403_090255__dat00.bin



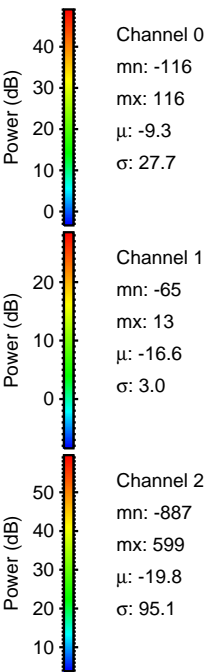
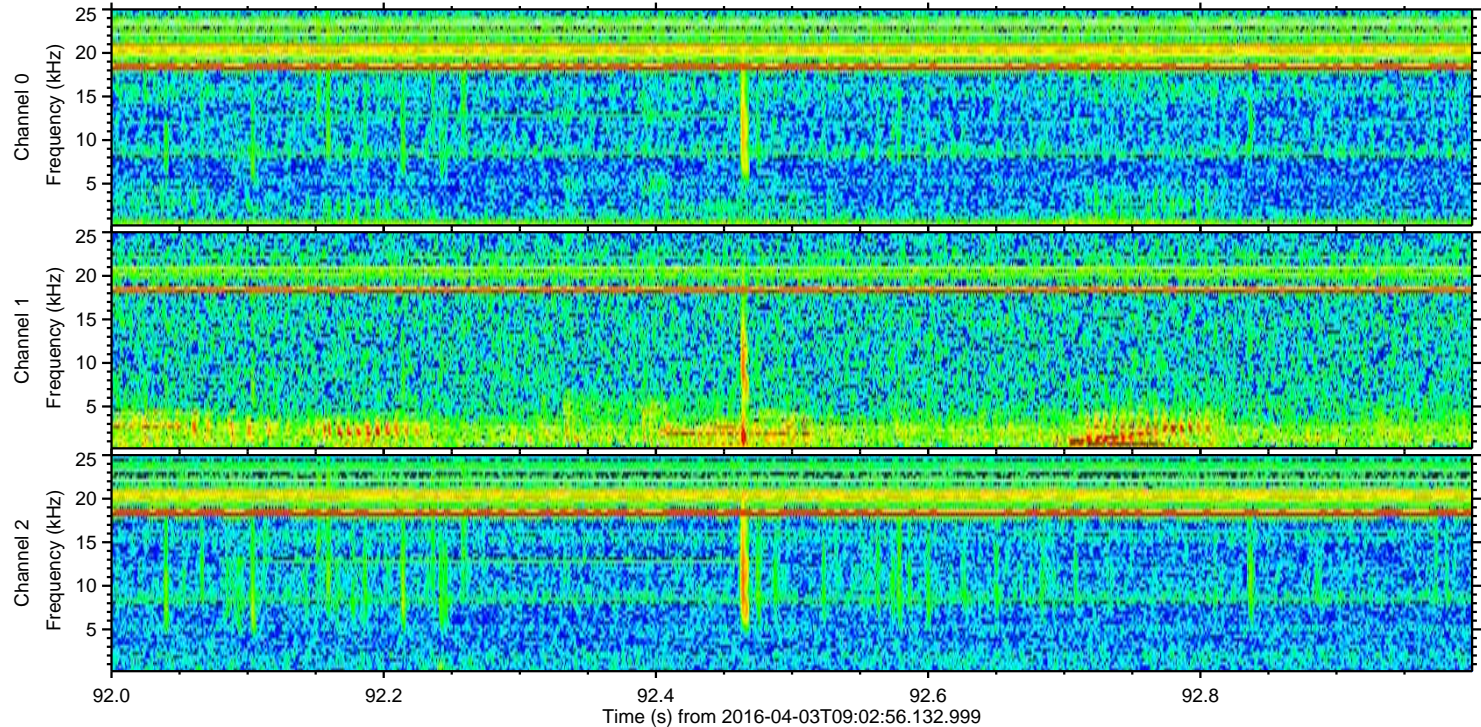
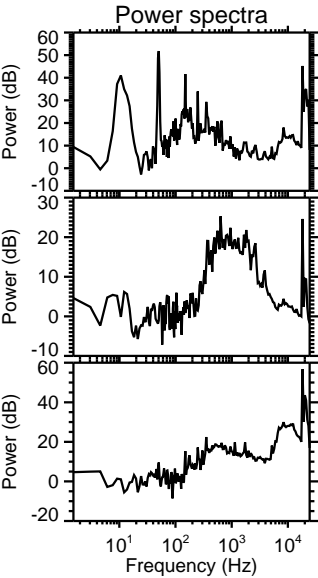
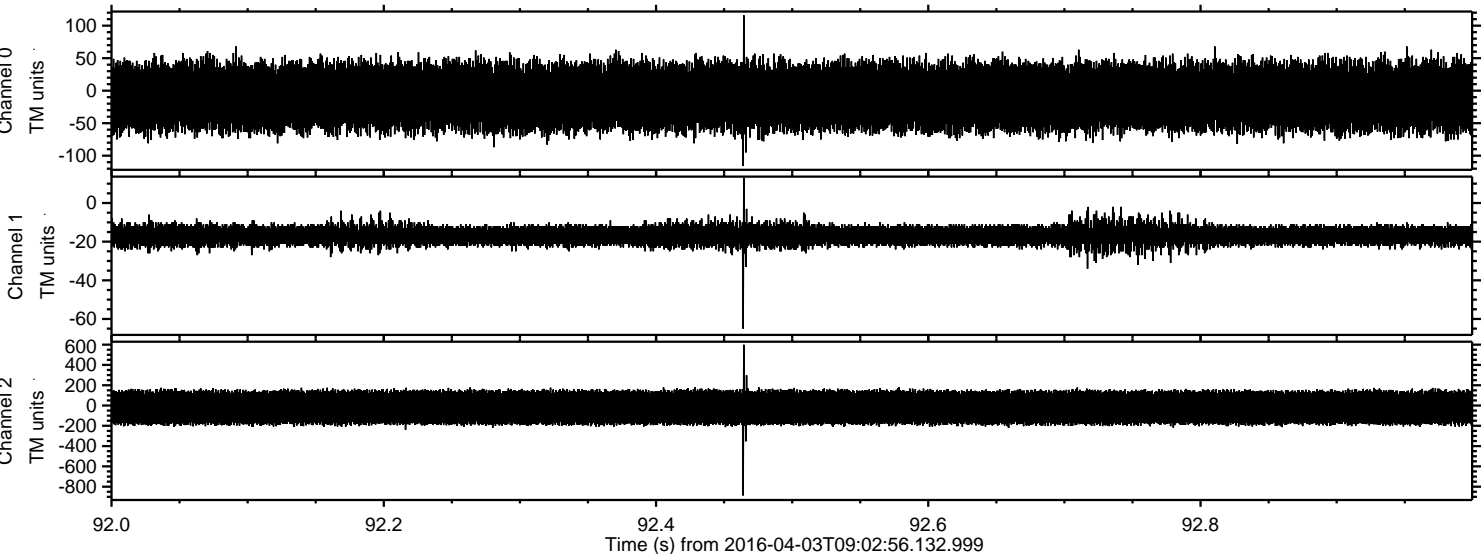
Processed Thu May 5 19:31:58 2016 by ELM ver.2012-10-06 from 001__elm20160403_090255__dat00.bin



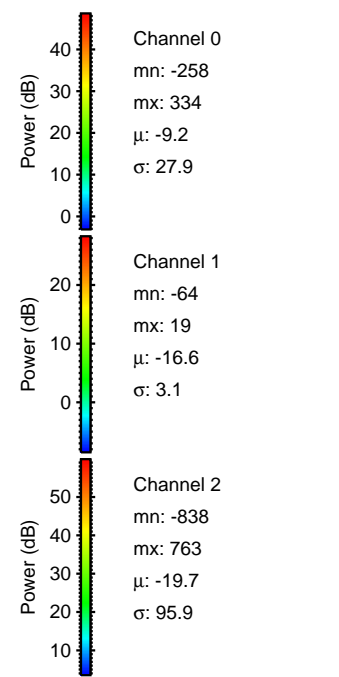
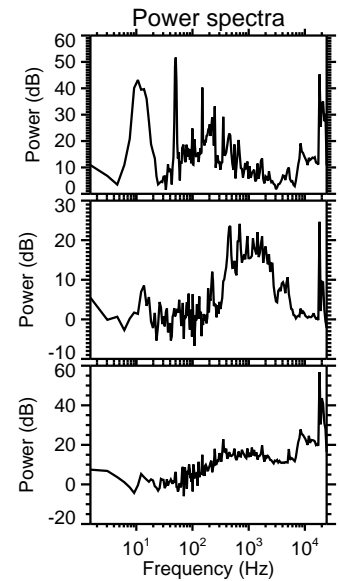
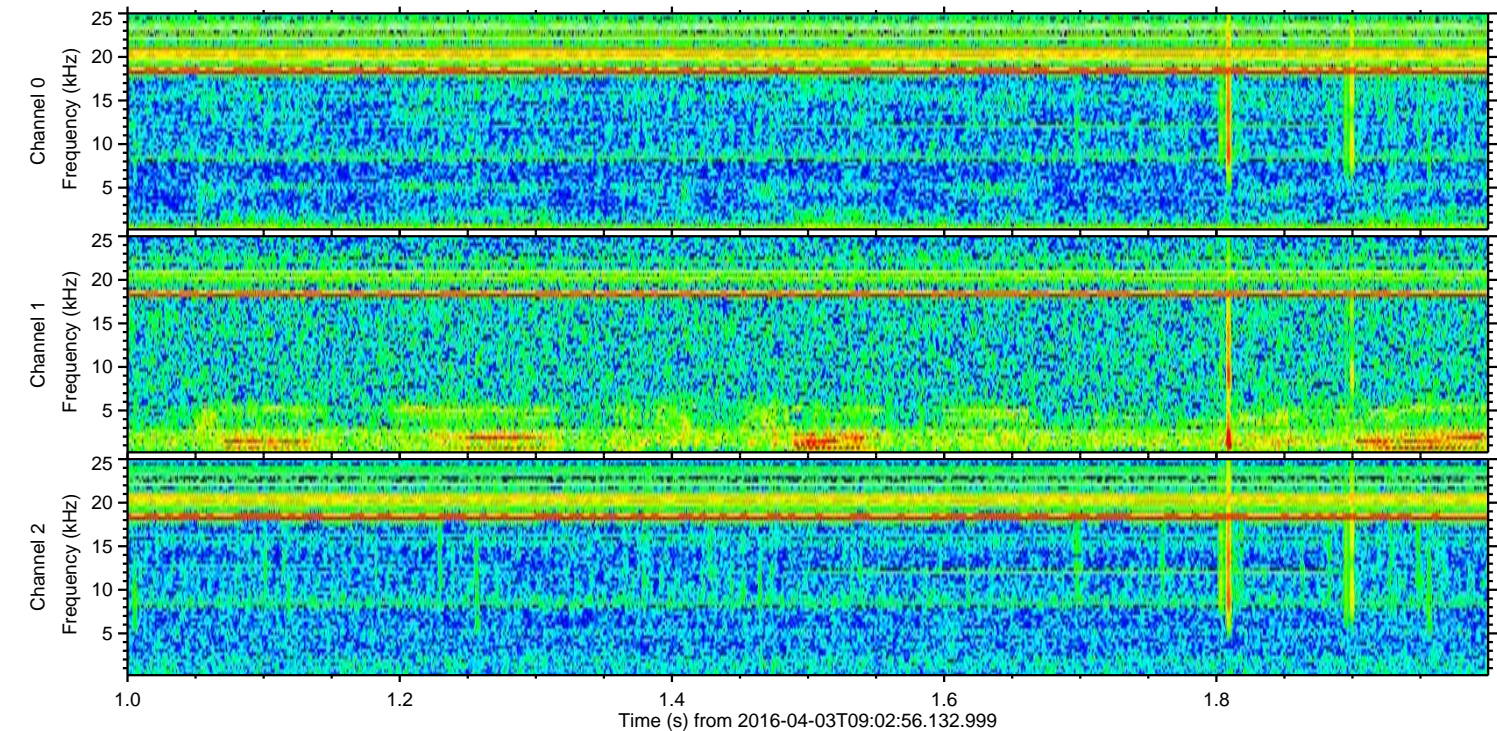
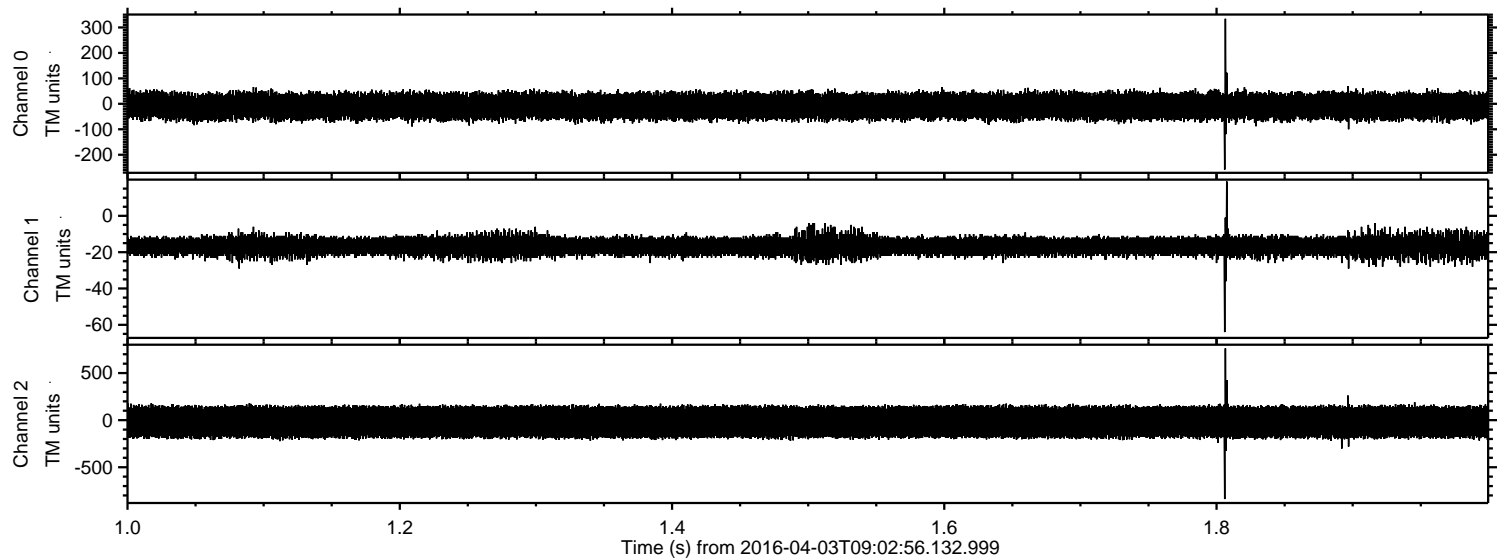
Processed Thu May 5 19:31:59 2016 by ELM ver.2012-10-06 from 001__elm20160403_090255__dat00.bin



Processed Thu May 5 19:32:00 2016 by ELM ver.2012-10-06 from 001__elm20160403_090255__dat00.bin

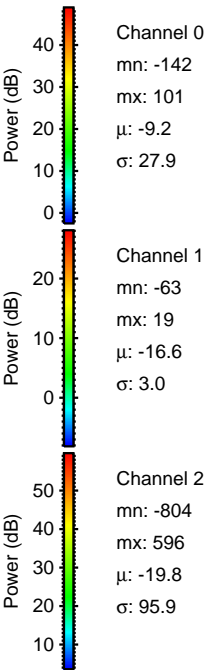
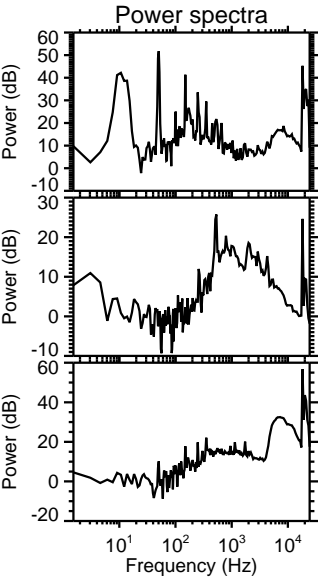
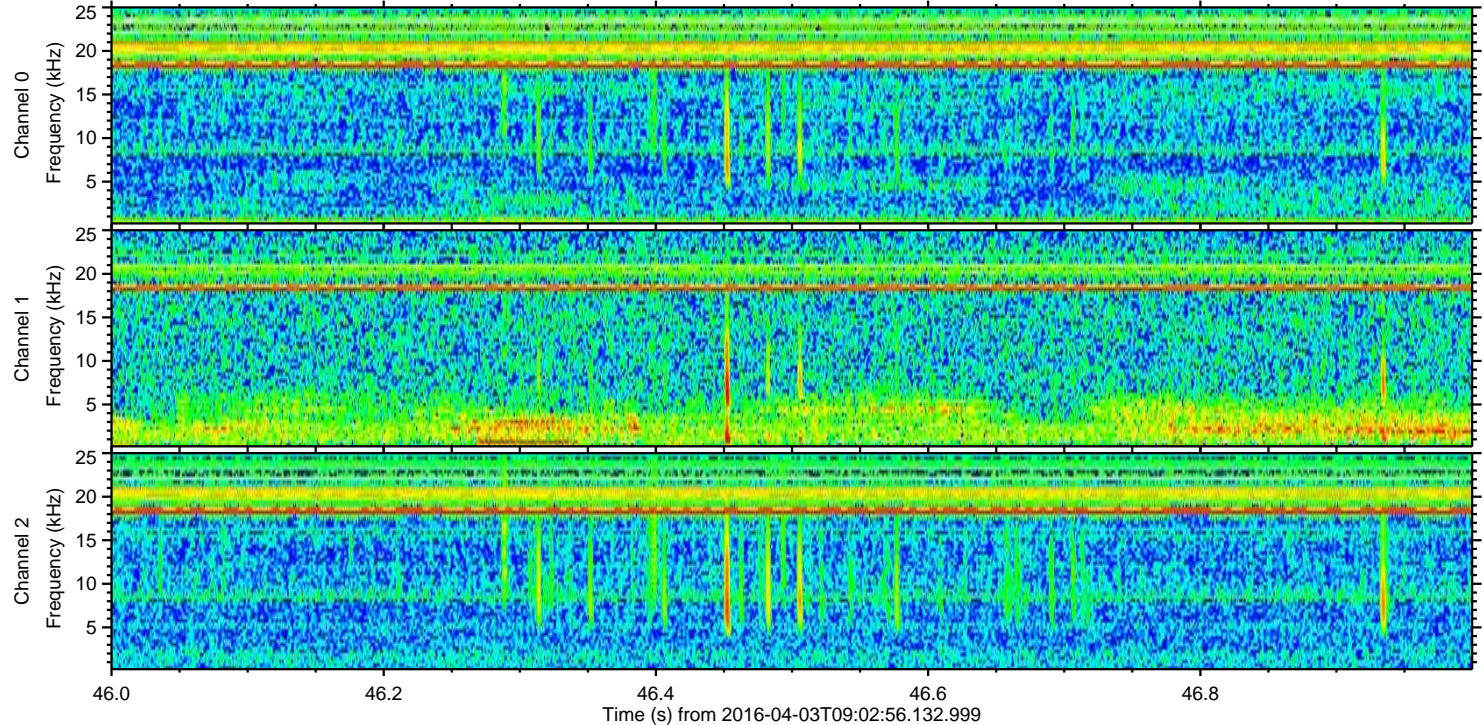
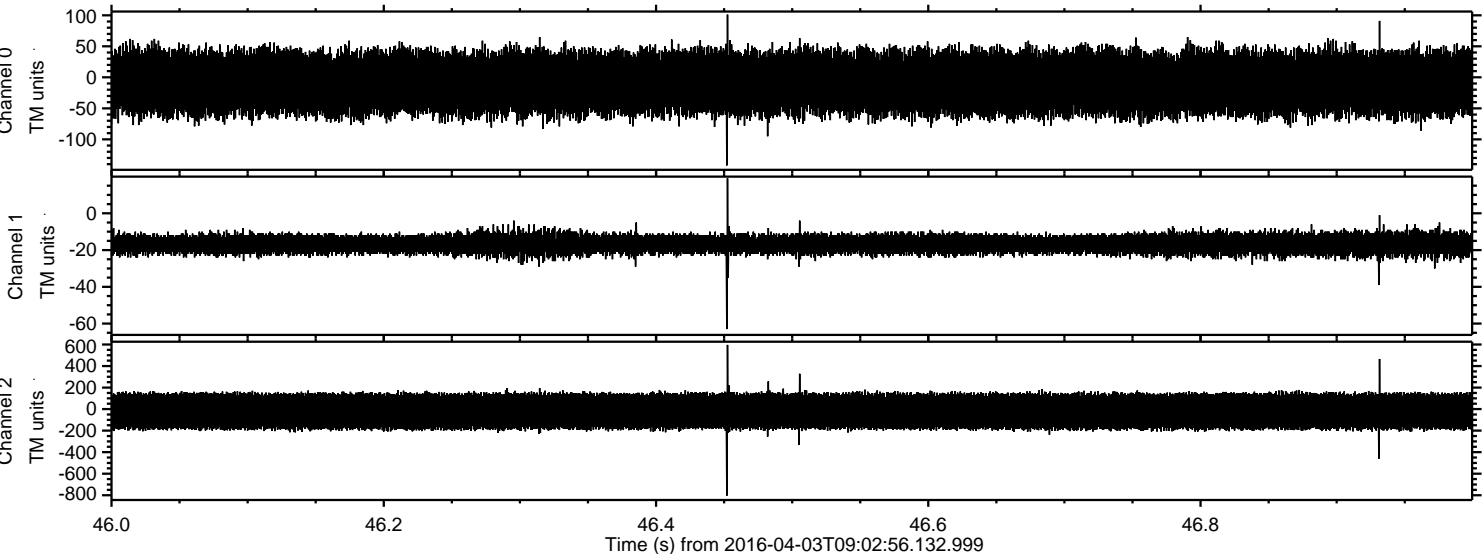


Processed Thu May 5 19:32:01 2016 by ELM ver.2012-10-06 from 001__elm20160403_090255__dat00.bin



ELMAVAN 3D WAVEFORMS (Measured data sampled at 50 kHz) 51000 packets of 144 samples from 2016-04-03T09:02:56.132.999. Part 47/147

Processed Thu May 5 19:32:02 2016 by ELM ver.2012-10-06 from 001__elm20160403_090255__dat00.bin



Channel 0
mn: -142
mx: 101
 μ : -9.2
 σ : 27.9

Channel 1
mn: -63
mx: 19
 μ : -16.6
 σ : 3.0

Channel 2
mn: -804
mx: 596
 μ : -19.8
 σ : 95.9

Processed Thu May 5 19:32:02 2016 by ELM ver.2012-10-06 from 001__elm20160403_090255__dat00.bin

