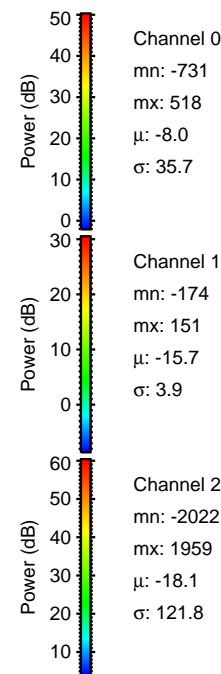
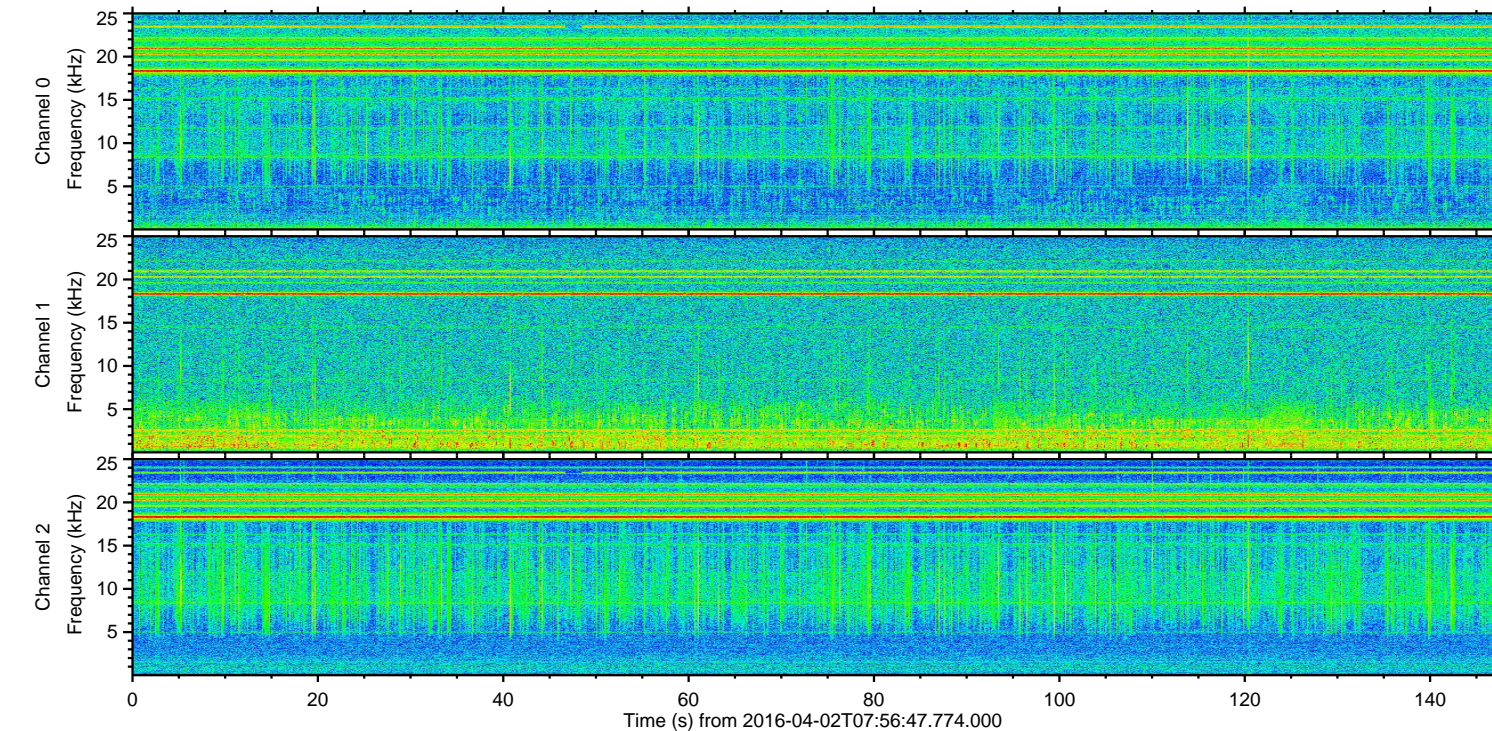
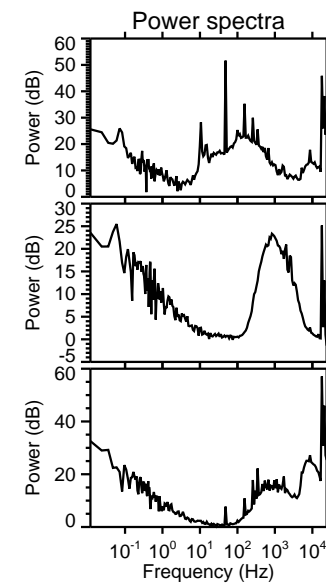
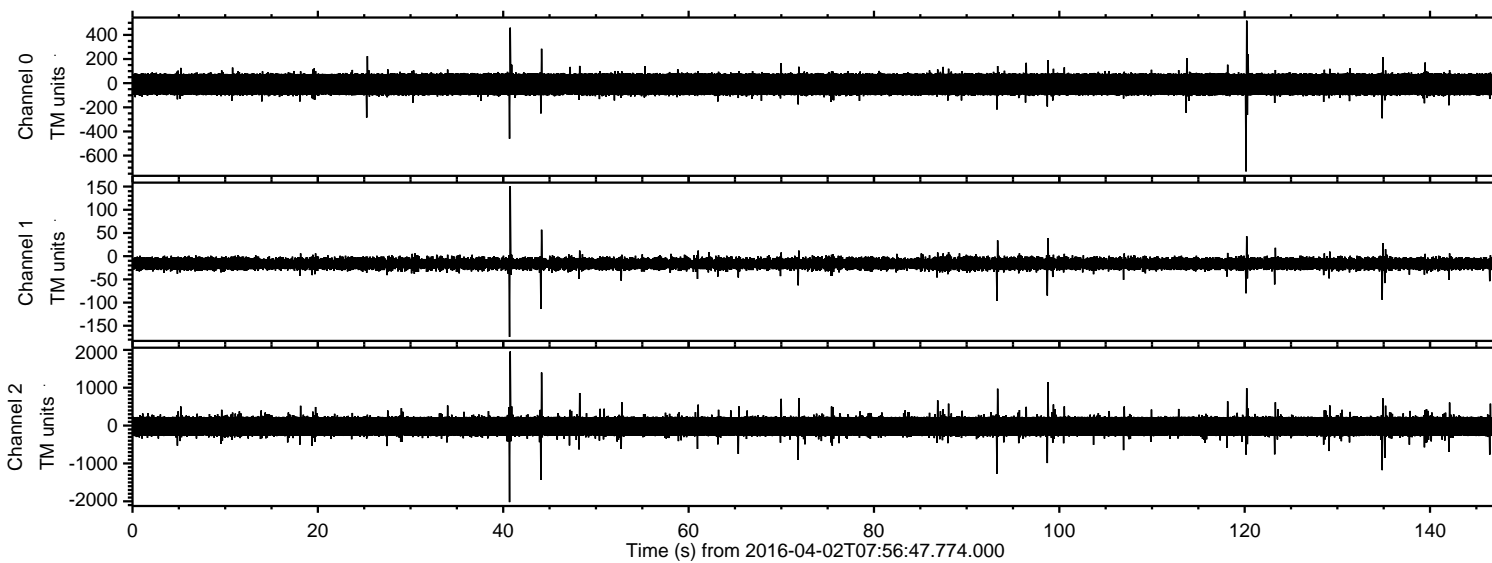


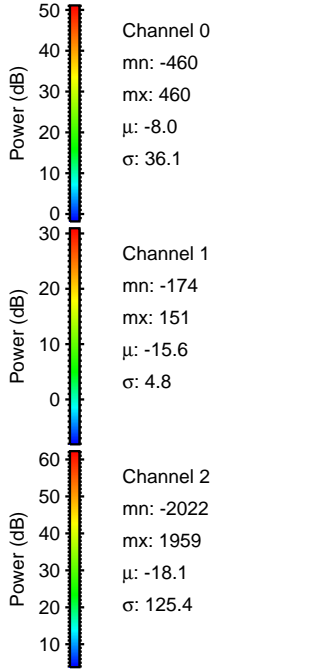
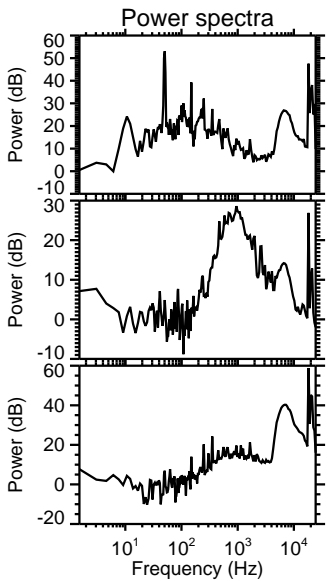
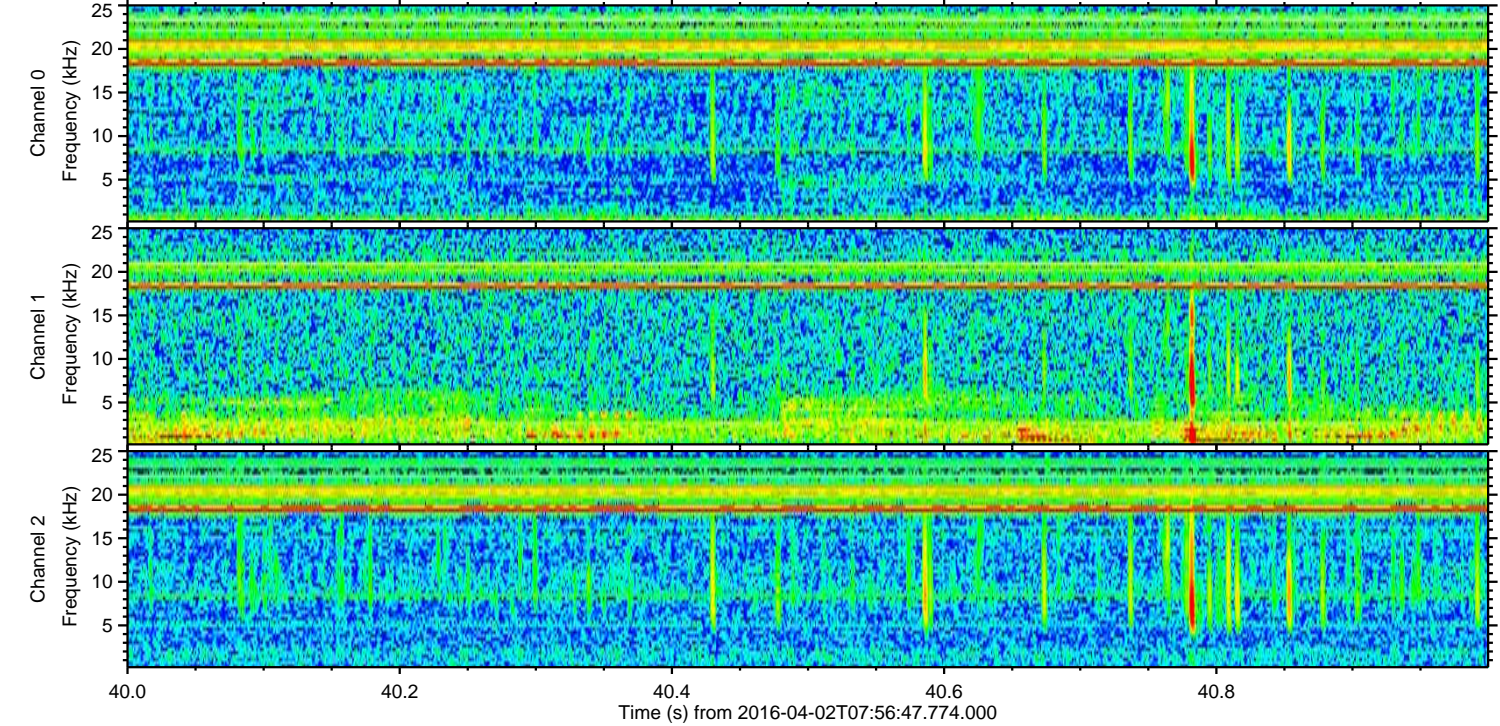
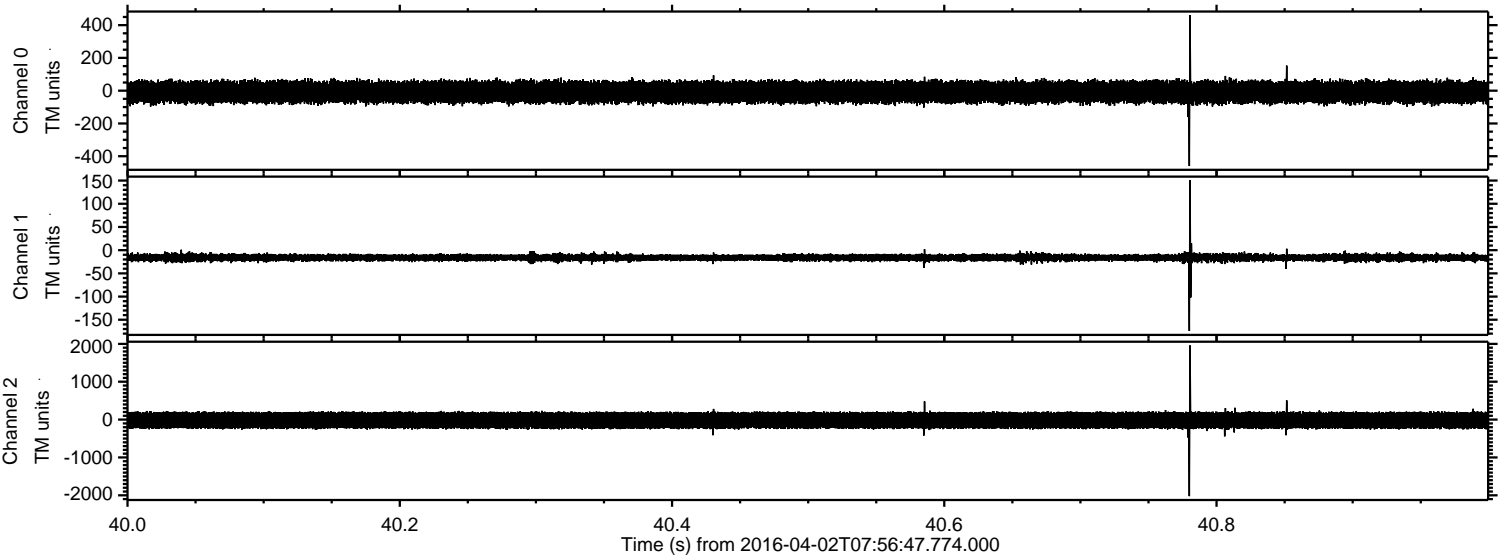
# ELMAVAN 3D WAVEFORMS (Measured data sampled at 50 kHz) 51000 packets of 144 samples from 2016-04-02T07:56:47.774.000.

Processed Thu May 5 16:00:39 2016 by ELM ver.2012-10-06 from 001\_\_elm20160402\_075646\_\_dat00.bin



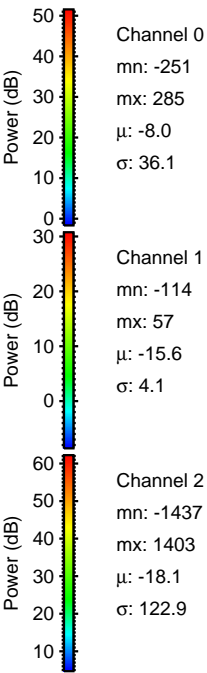
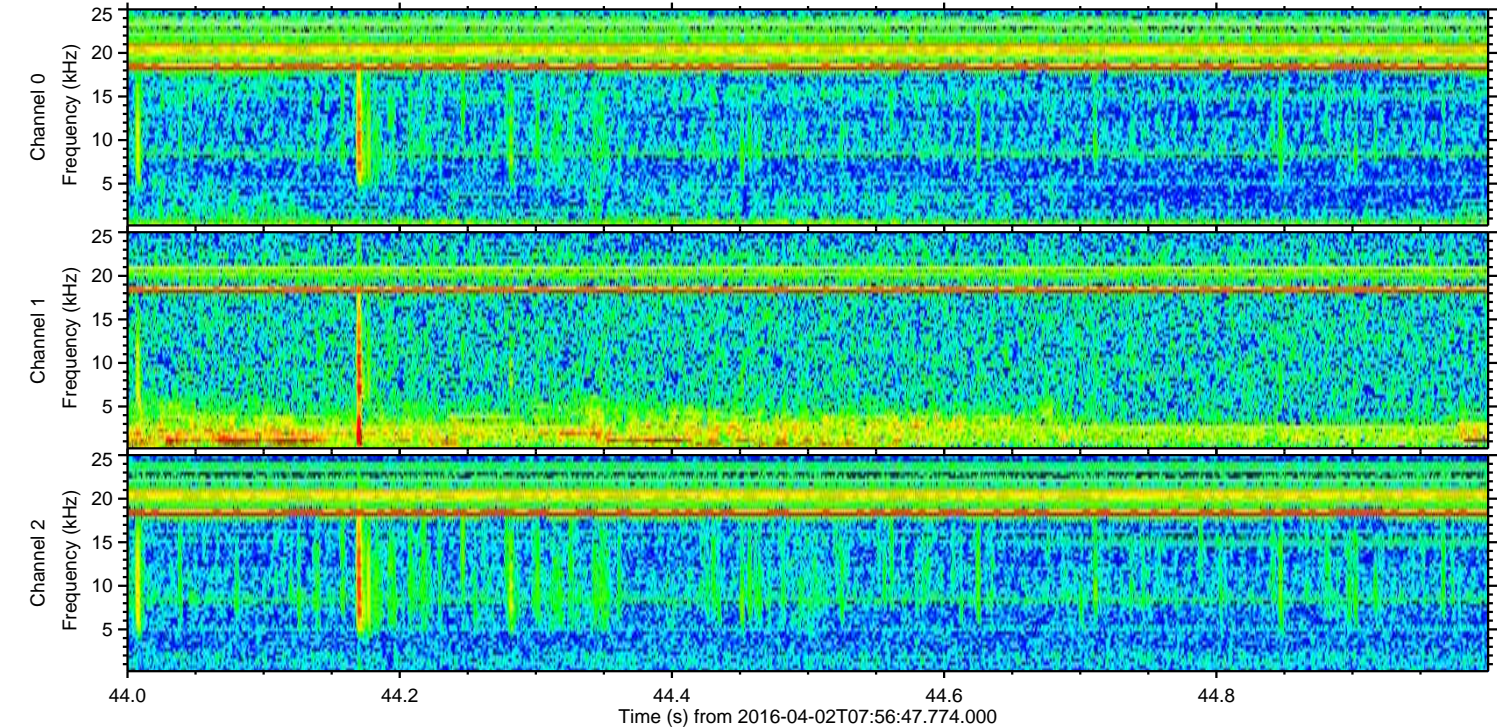
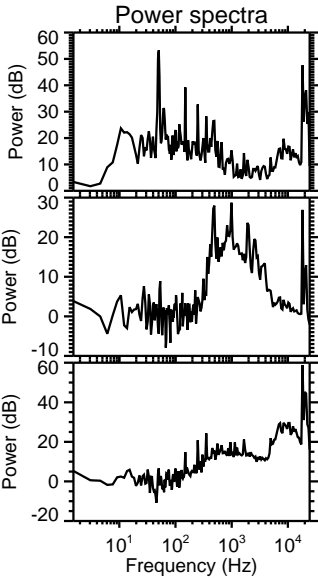
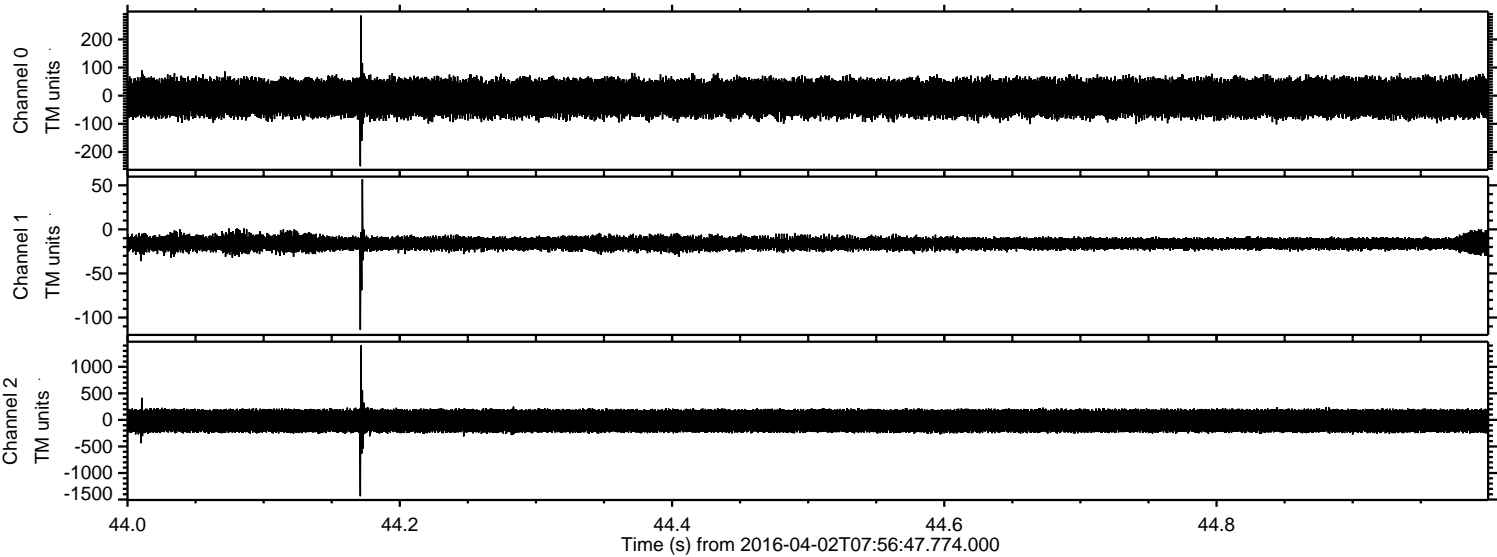


Processed Thu May 5 16:00:51 2016 by ELM ver.2012-10-06 from 001\_\_elm20160402\_075646\_\_dat00.bin



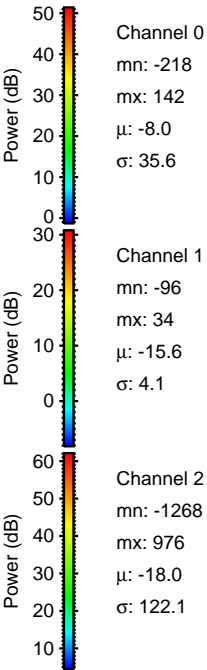
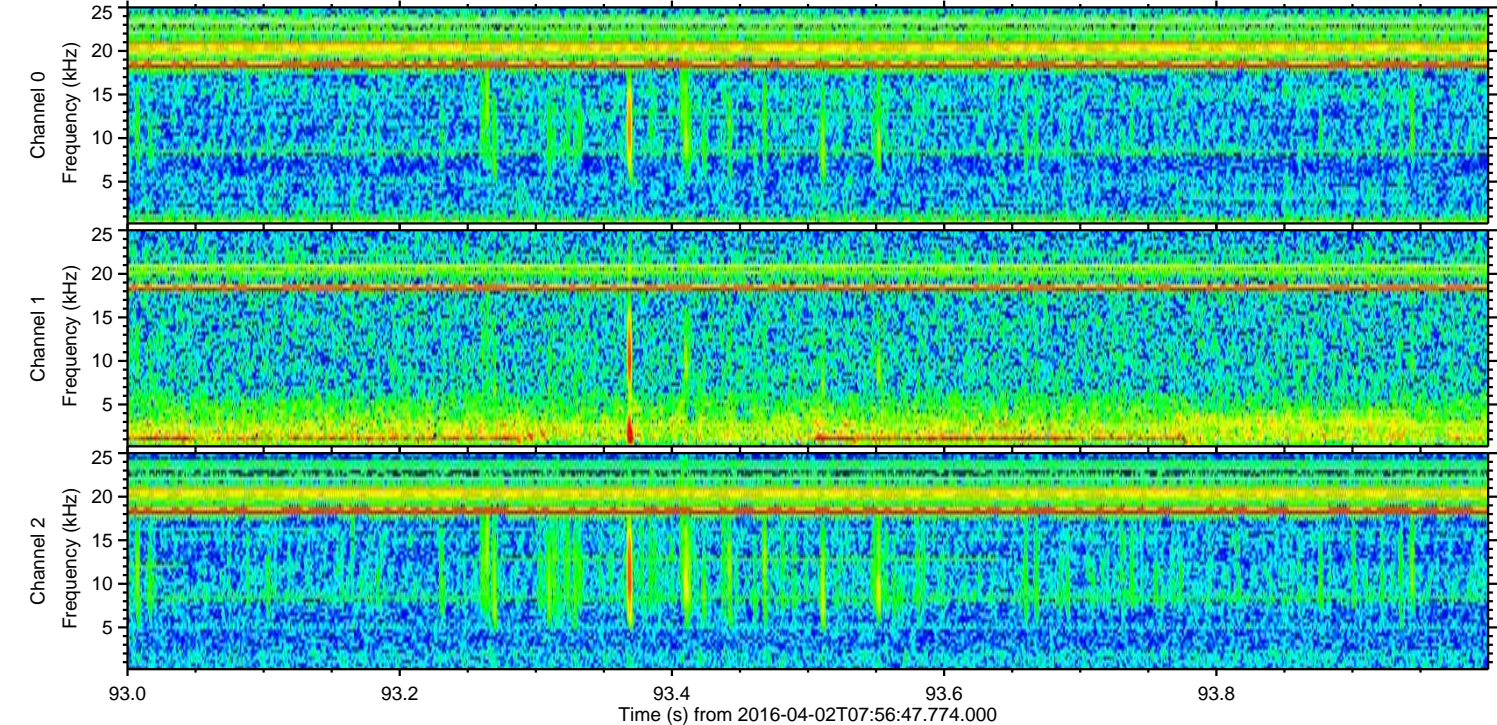
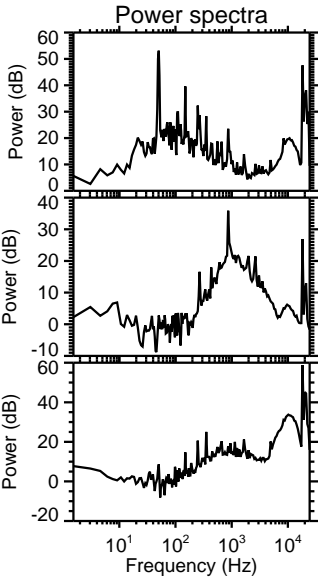
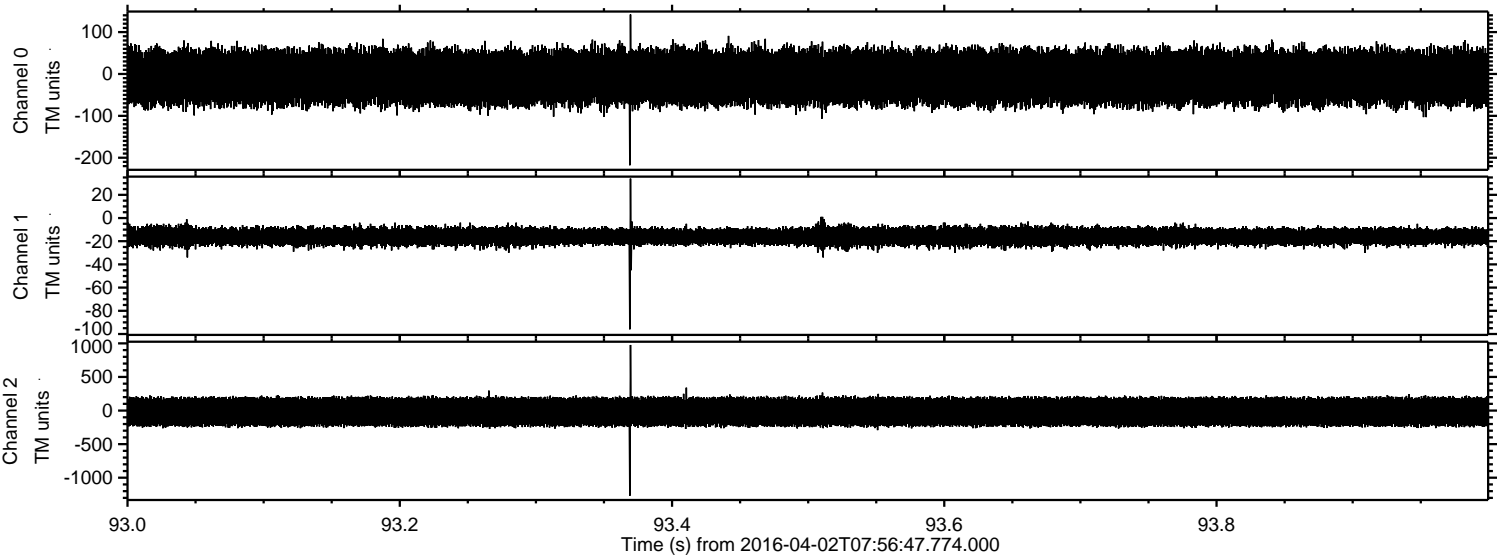


Processed Thu May 5 16:00:52 2016 by ELM ver.2012-10-06 from 001\_\_elm20160402\_075646\_\_dat00.bin





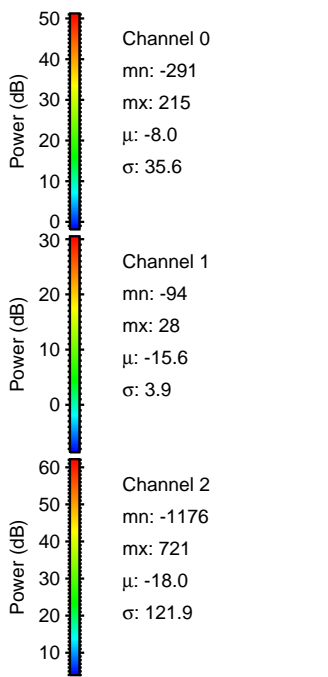
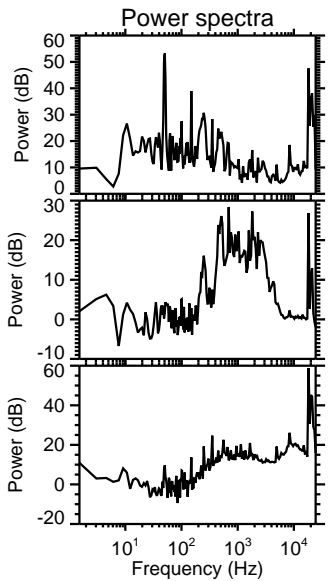
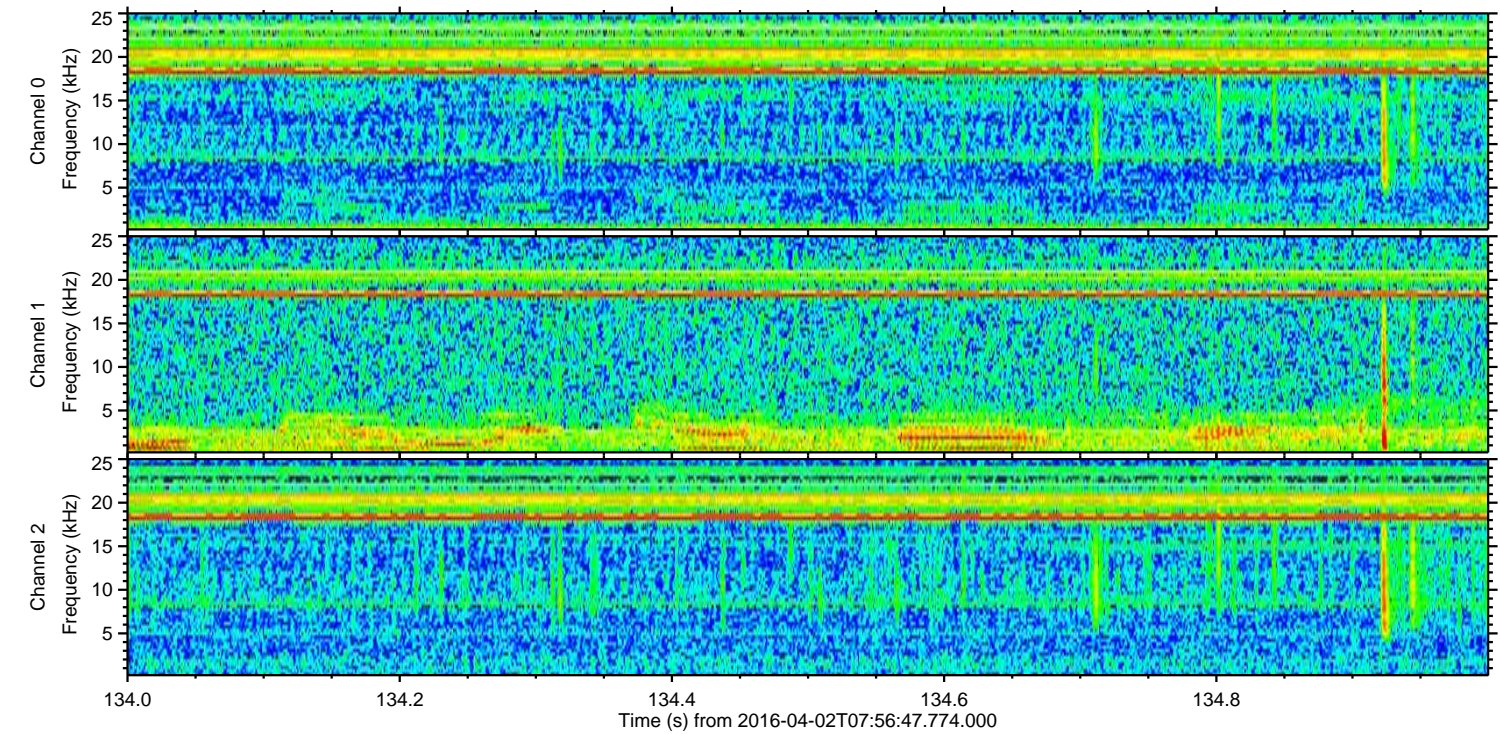
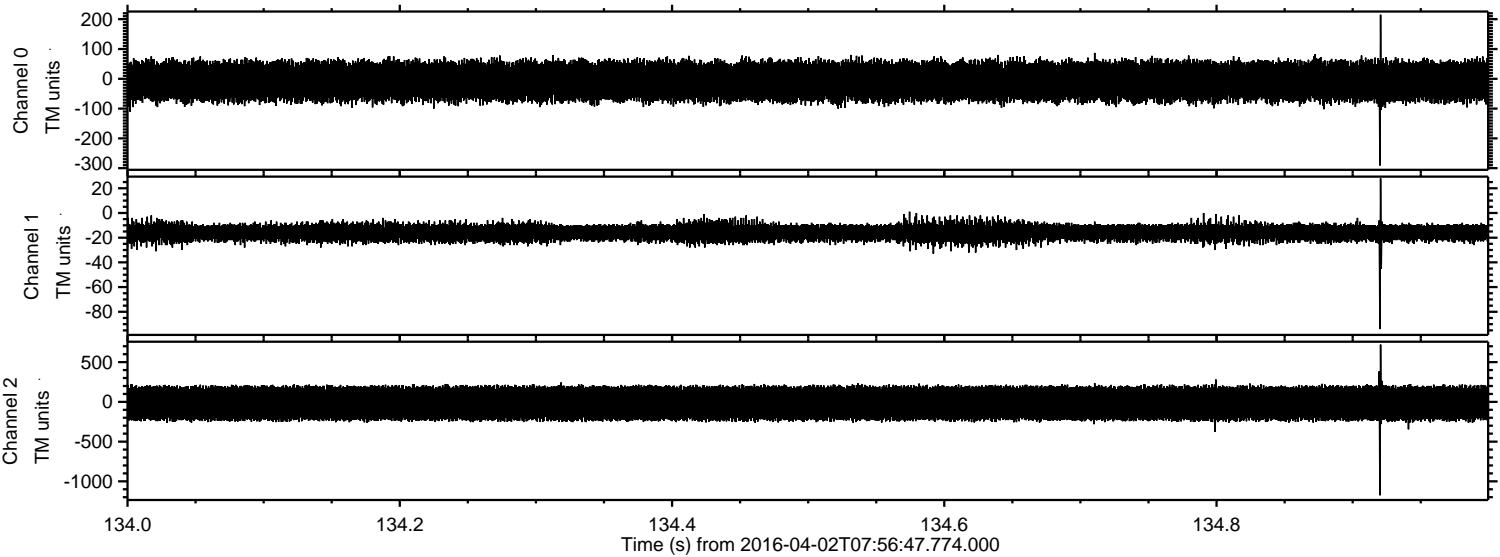
Processed Thu May 5 16:00:53 2016 by ELM ver.2012-10-06 from 001\_\_elm20160402\_075646\_\_dat00.bin





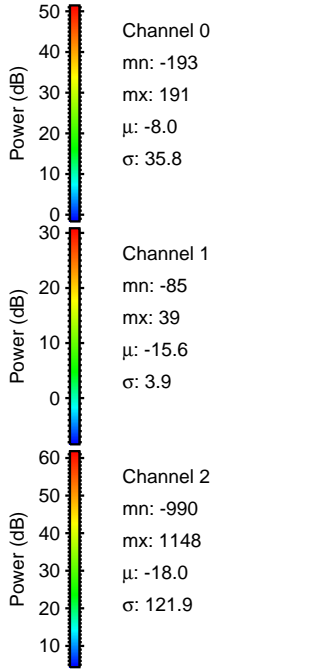
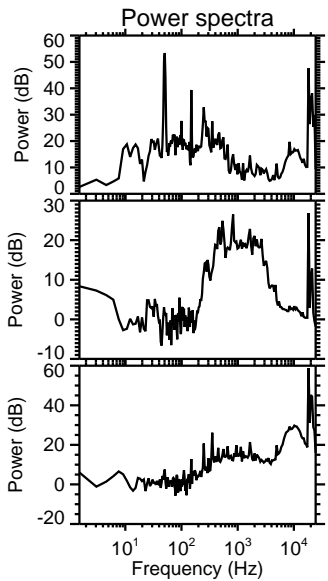
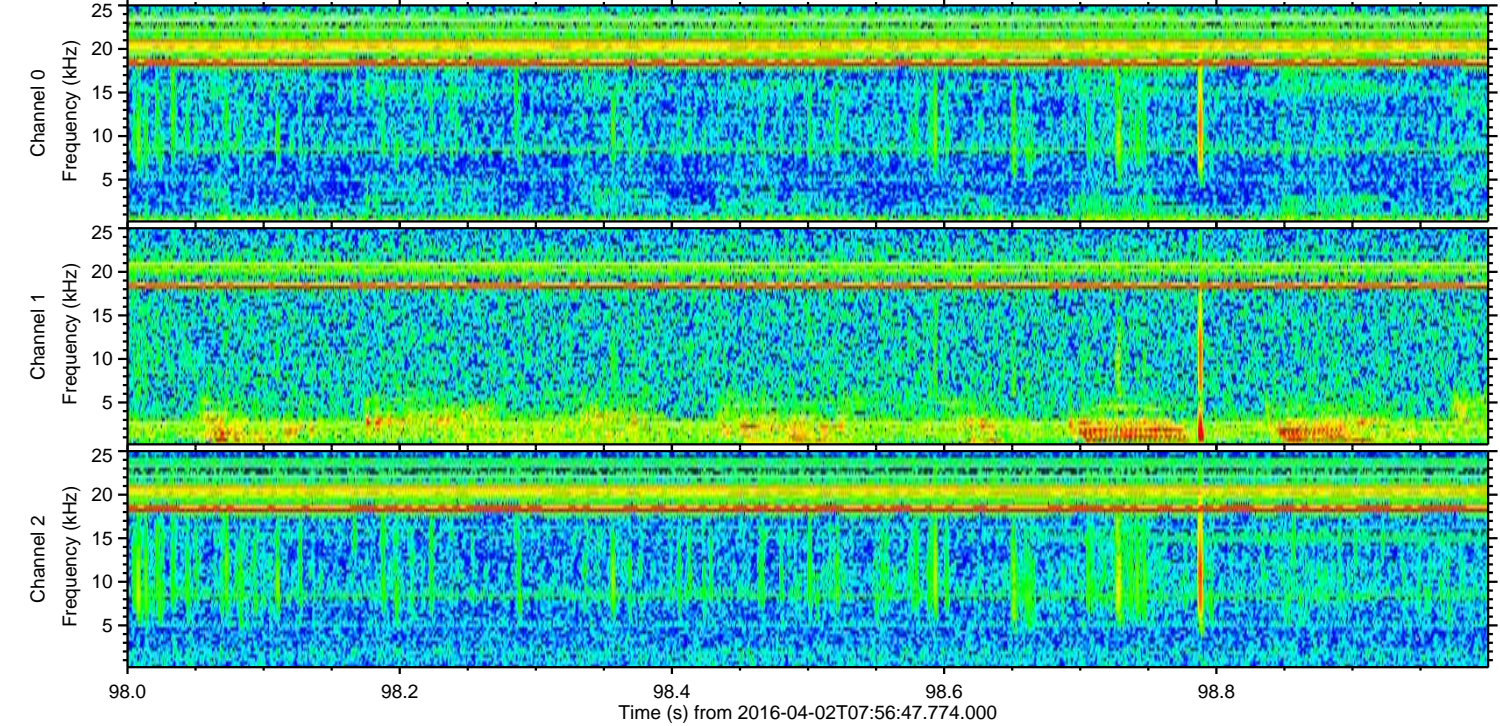
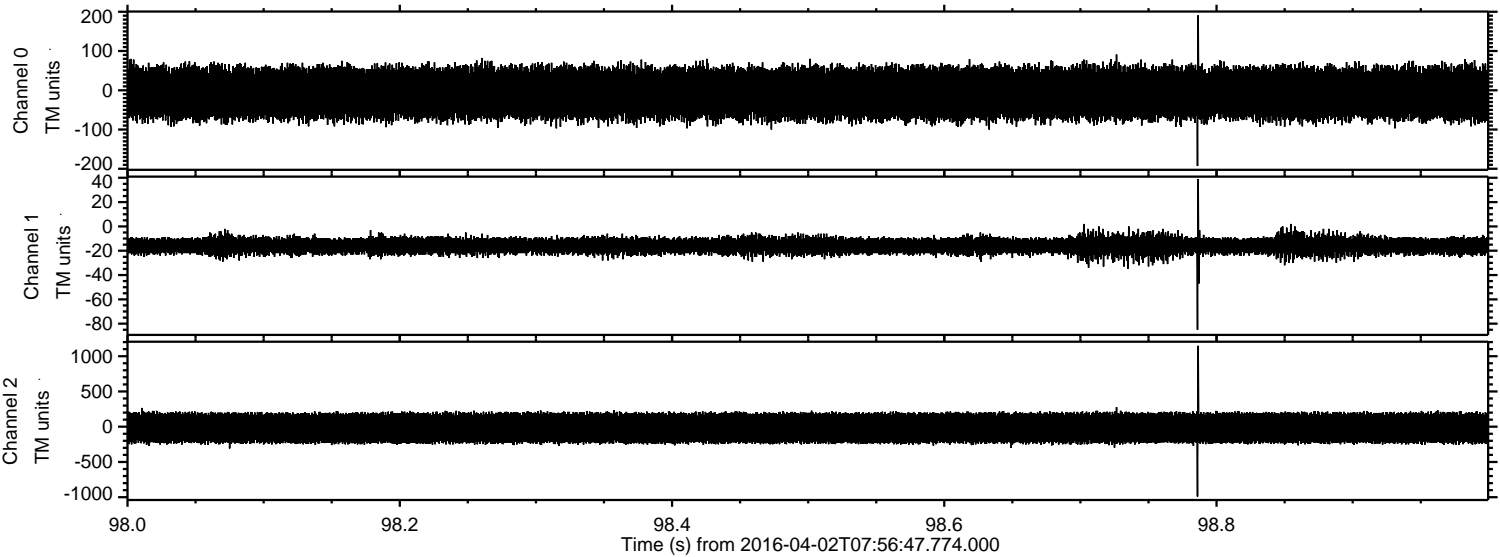
ELMAVAN 3D WAVEFORMS (Measured data sampled at 50 kHz) 51000 packets of 144 samples from 2016-04-02T07:56:47.774.000. Part 135/147

Processed Thu May 5 16:00:54 2016 by ELM ver.2012-10-06 from 001\_\_elm20160402\_075646\_\_dat00.bin



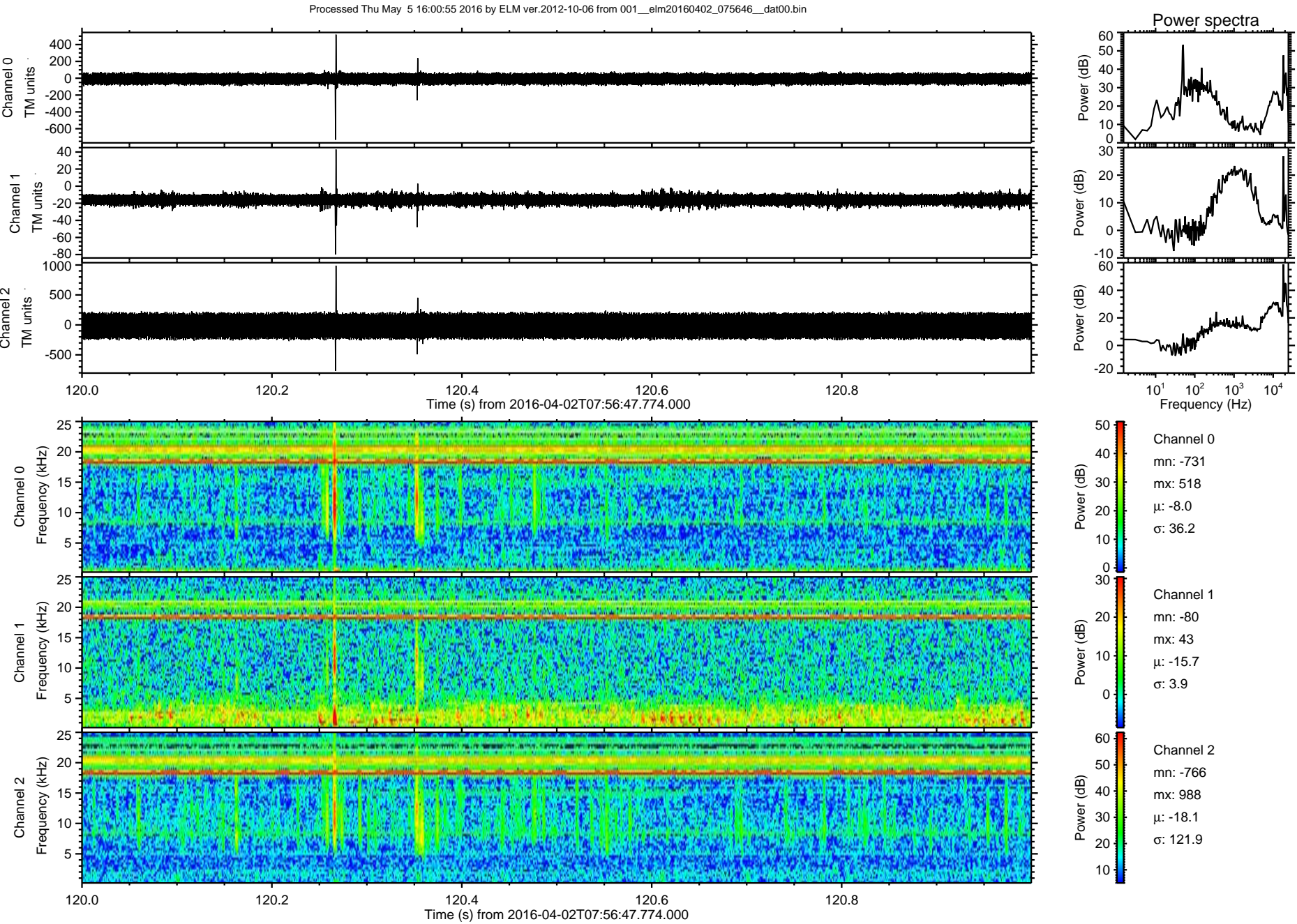


Processed Thu May 5 16:00:55 2016 by ELM ver.2012-10-06 from 001\_\_elm20160402\_075646\_\_dat00.bin



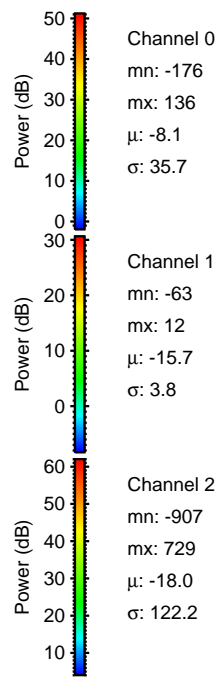
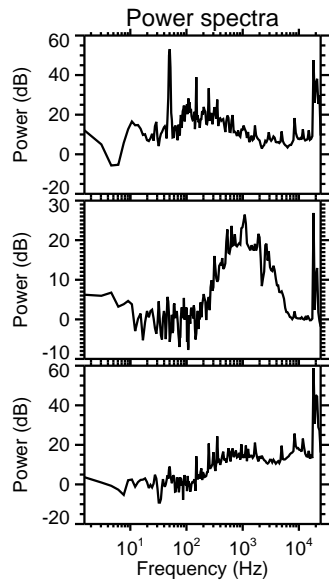
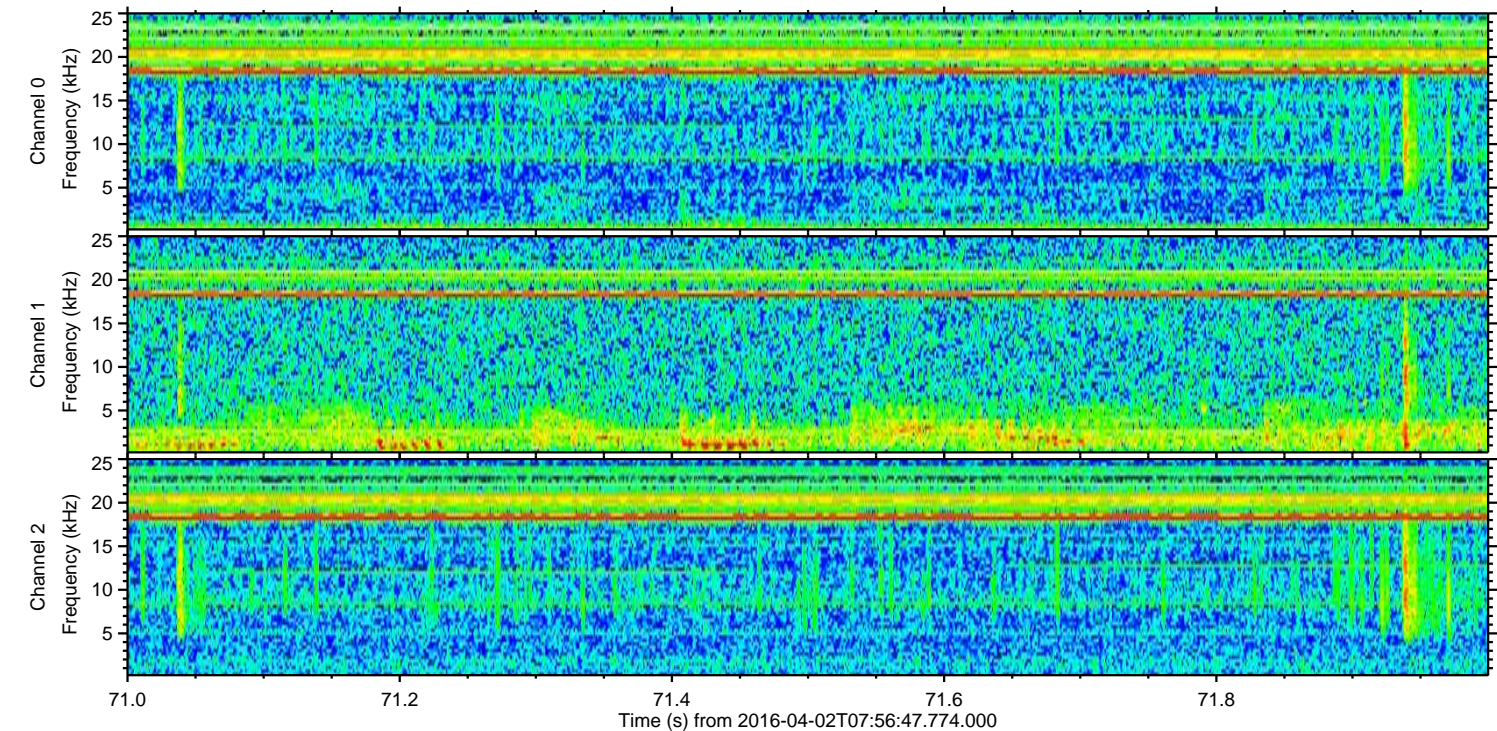
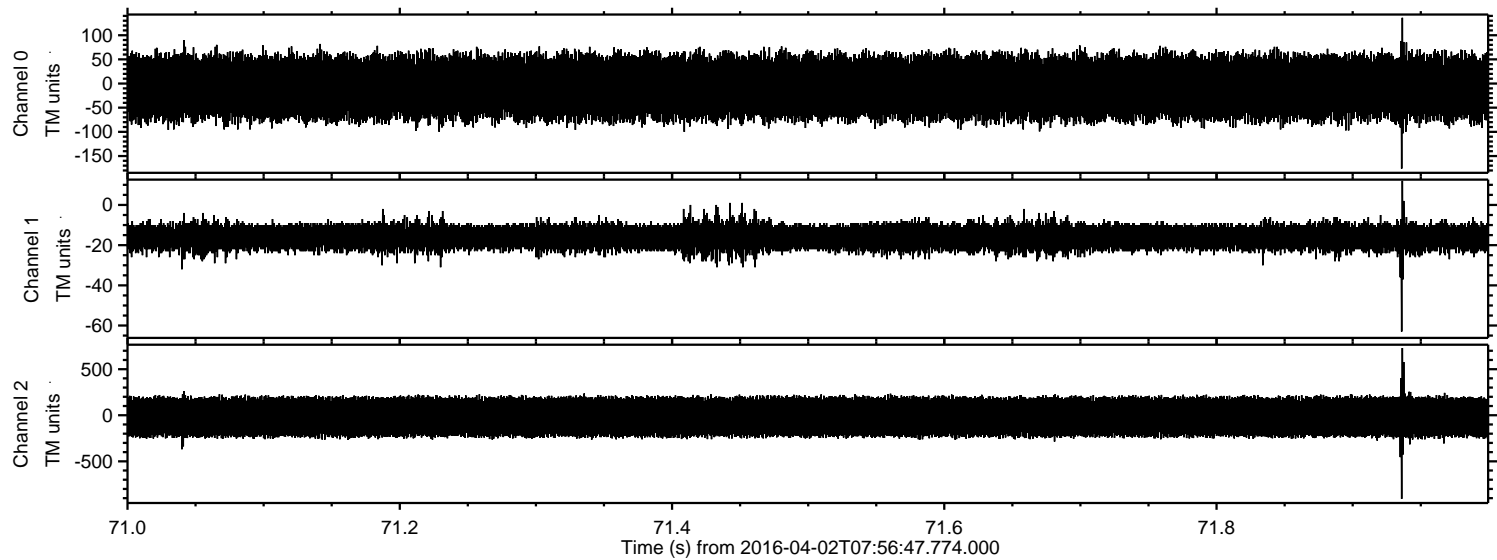


ELMAVAN 3D WAVEFORMS (Measured data sampled at 50 kHz) 51000 packets of 144 samples from 2016-04-02T07:56:47.774.000. Part 121/147





Processed Thu May 5 16:00:56 2016 by ELM ver.2012-10-06 from 001\_\_elm20160402\_075646\_\_dat00.bin



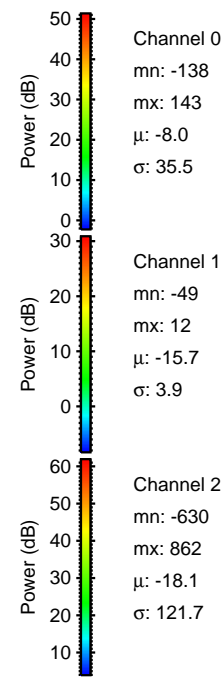
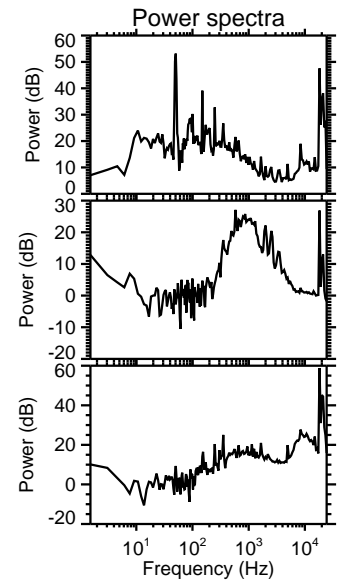
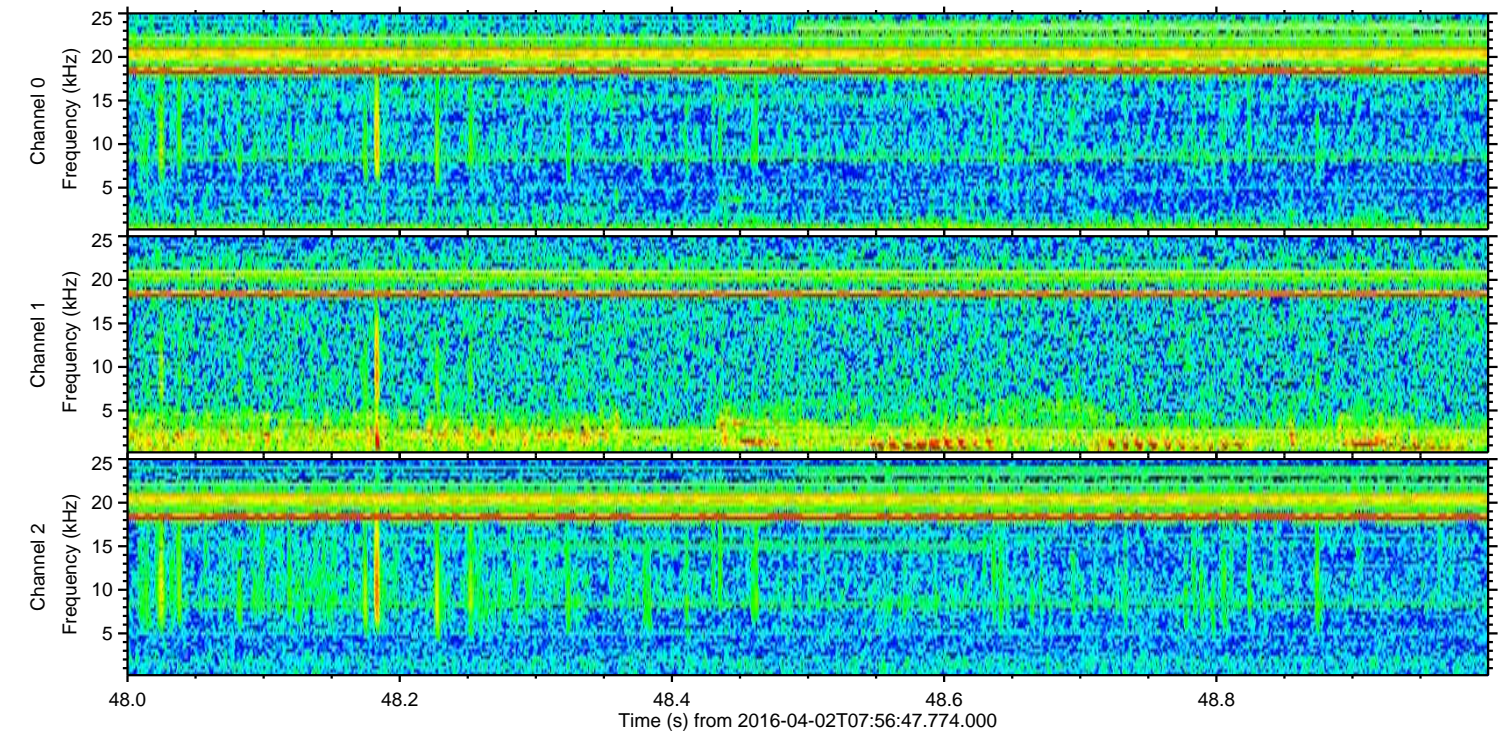
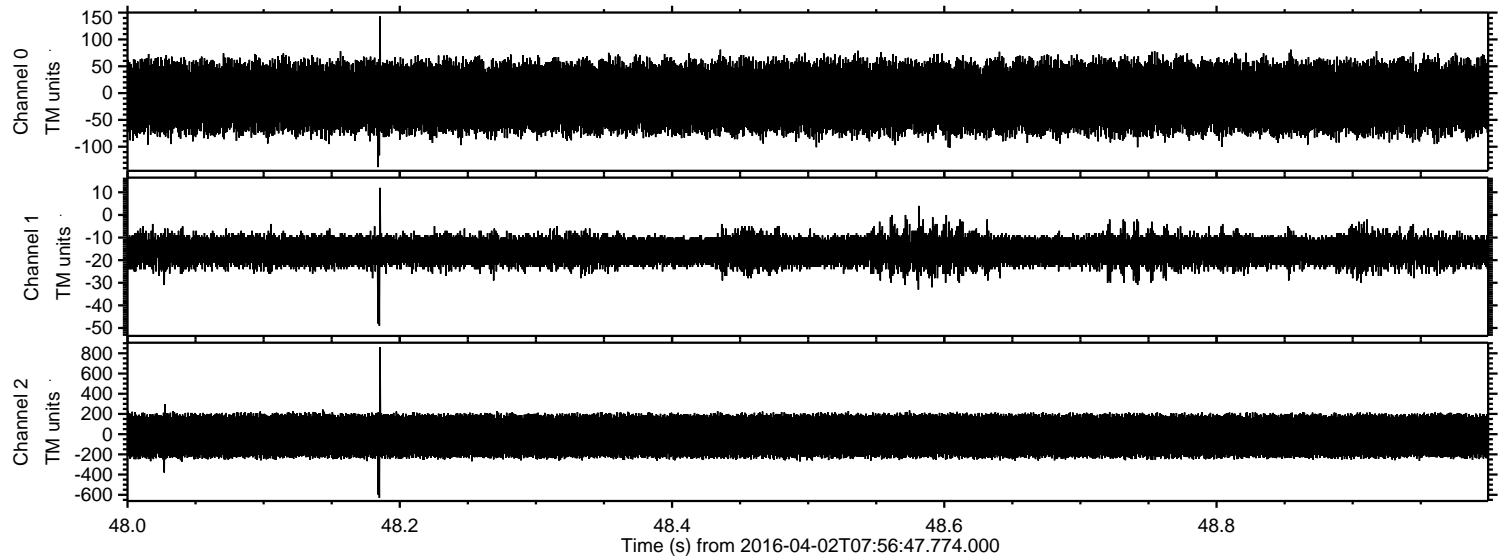
Channel 0  
mn: -176  
mx: 136  
 $\mu$ : -8.1  
 $\sigma$ : 35.7

Channel 1  
mn: -63  
mx: 12  
 $\mu$ : -15.7  
 $\sigma$ : 3.8

Channel 2  
mn: -907  
mx: 729  
 $\mu$ : -18.0  
 $\sigma$ : 122.2



Processed Thu May 5 16:00:57 2016 by ELM ver.2012-10-06 from 001\_\_elm20160402\_075646\_\_dat00.bin

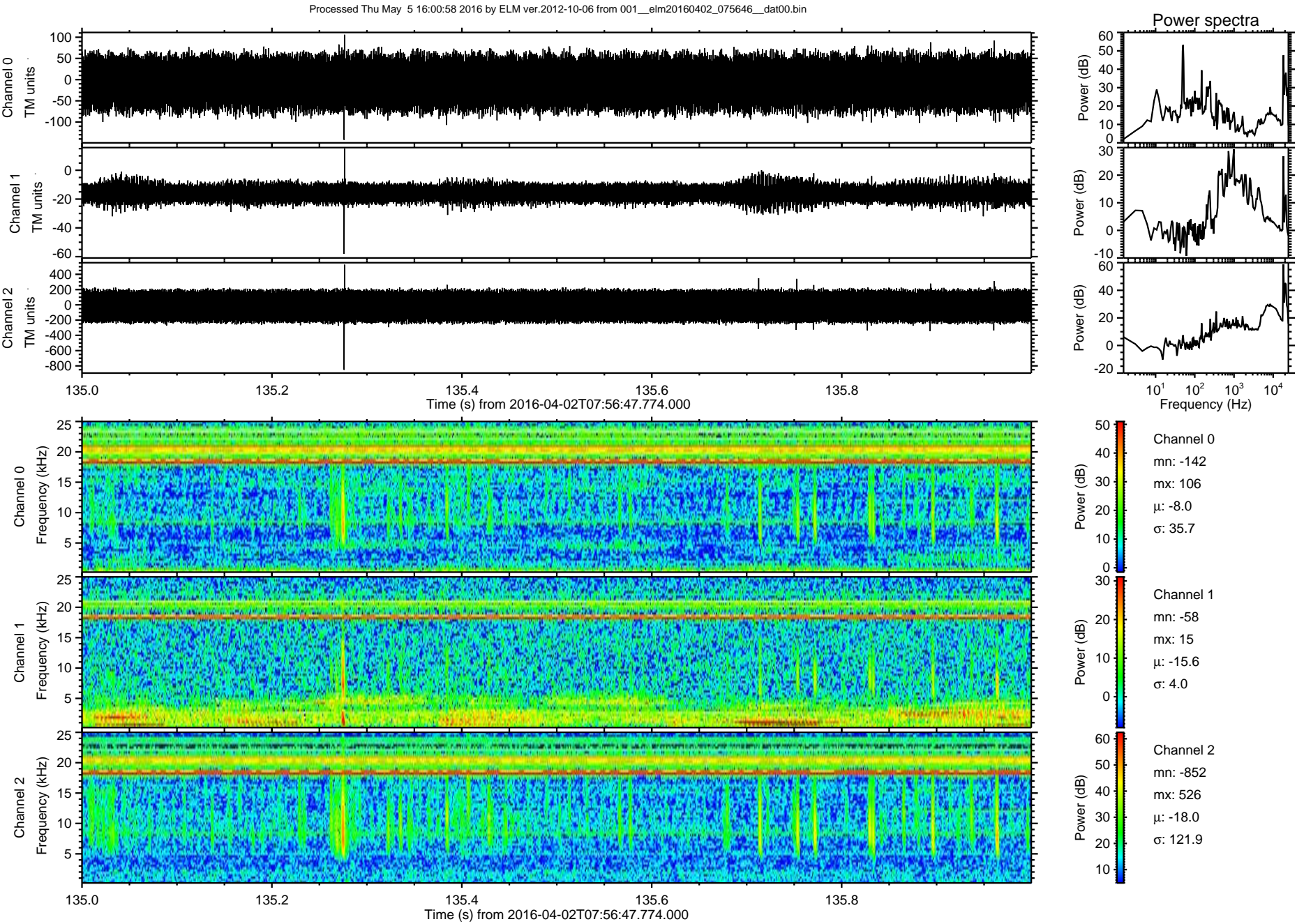


Channel 0  
mn: -138  
mx: 143  
 $\mu$ : -8.0  
 $\sigma$ : 35.5

Channel 1  
mn: -49  
mx: 12  
 $\mu$ : -15.7  
 $\sigma$ : 3.9

Channel 2  
mn: -630  
mx: 862  
 $\mu$ : -18.1  
 $\sigma$ : 121.7







Processed Thu May 5 16:00:59 2016 by ELM ver.2012-10-06 from 001\_\_elm20160402\_075646\_\_dat00.bin

