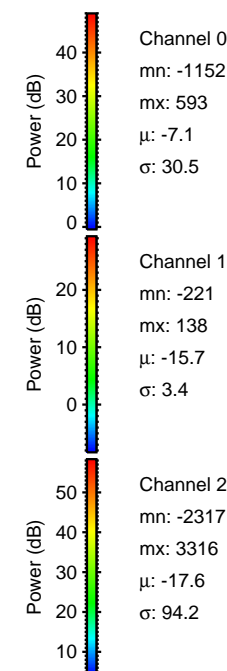
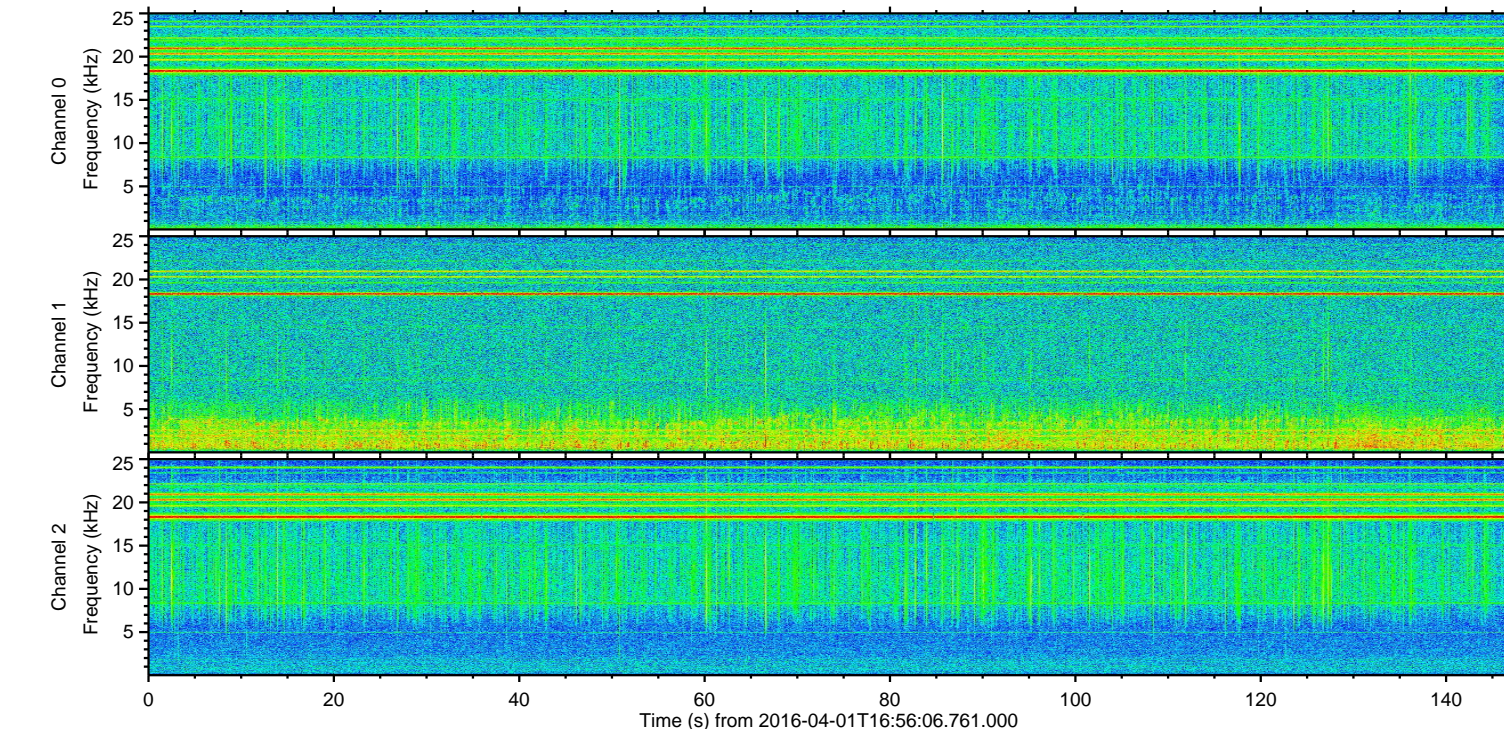
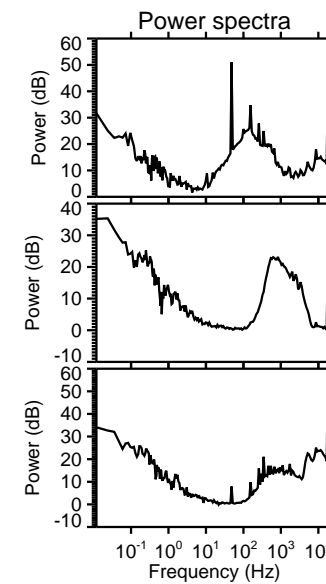
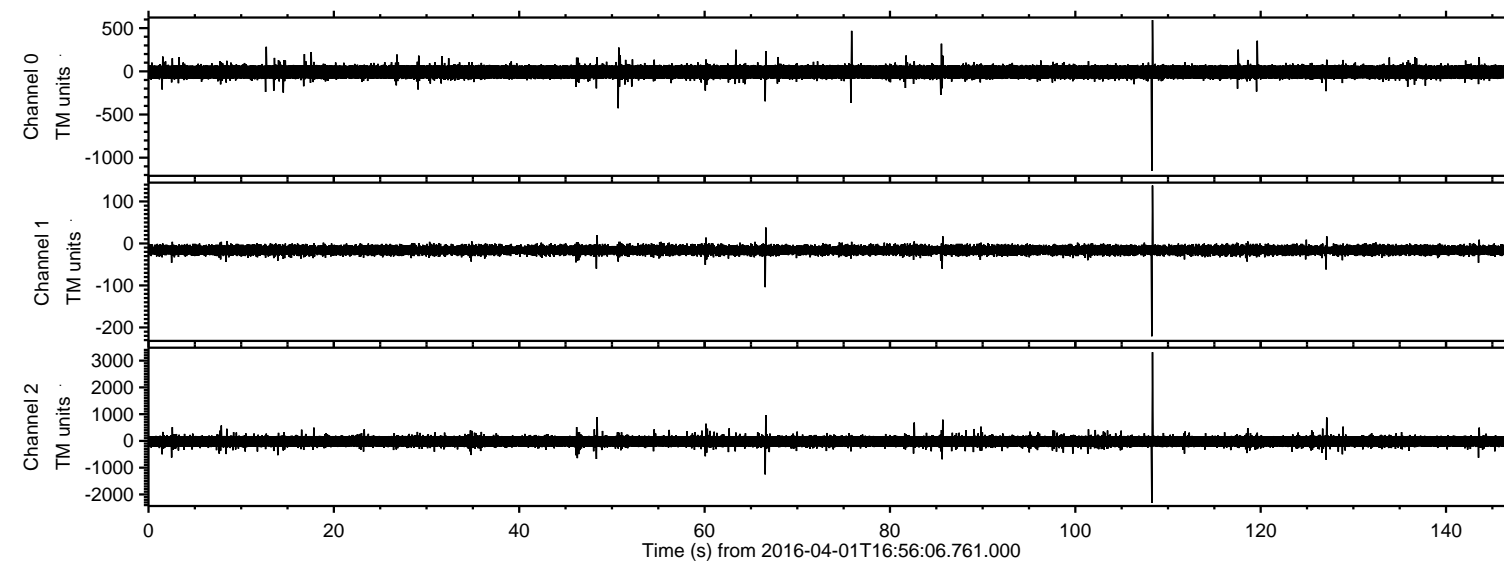


# ELMAVAN 3D WAVEFORMS (Measured data sampled at 50 kHz) 51000 packets of 144 samples from 2016-04-01T16:56:06.761.000.

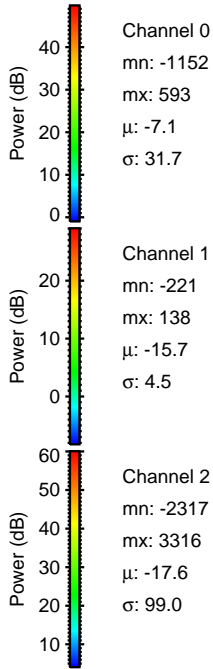
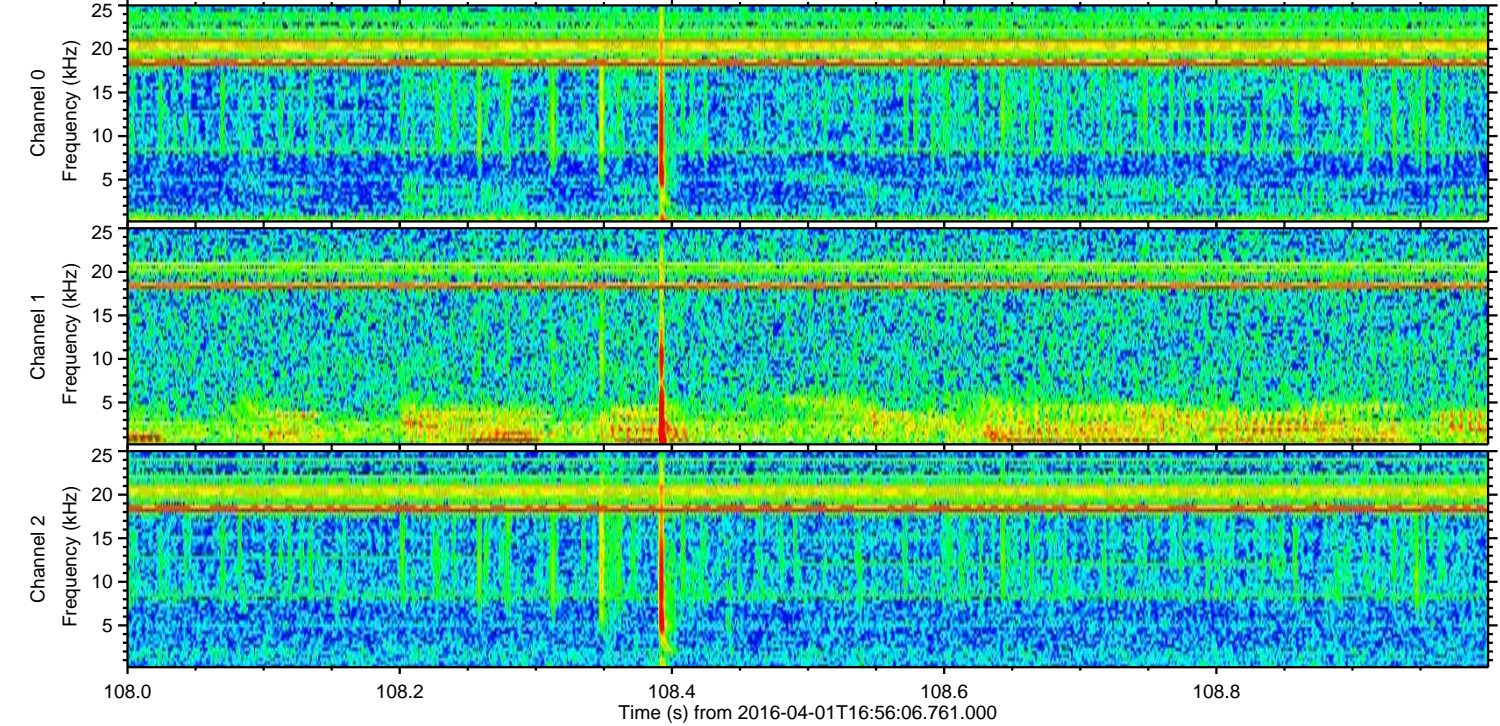
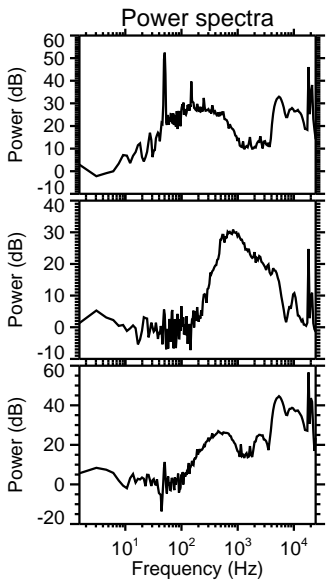
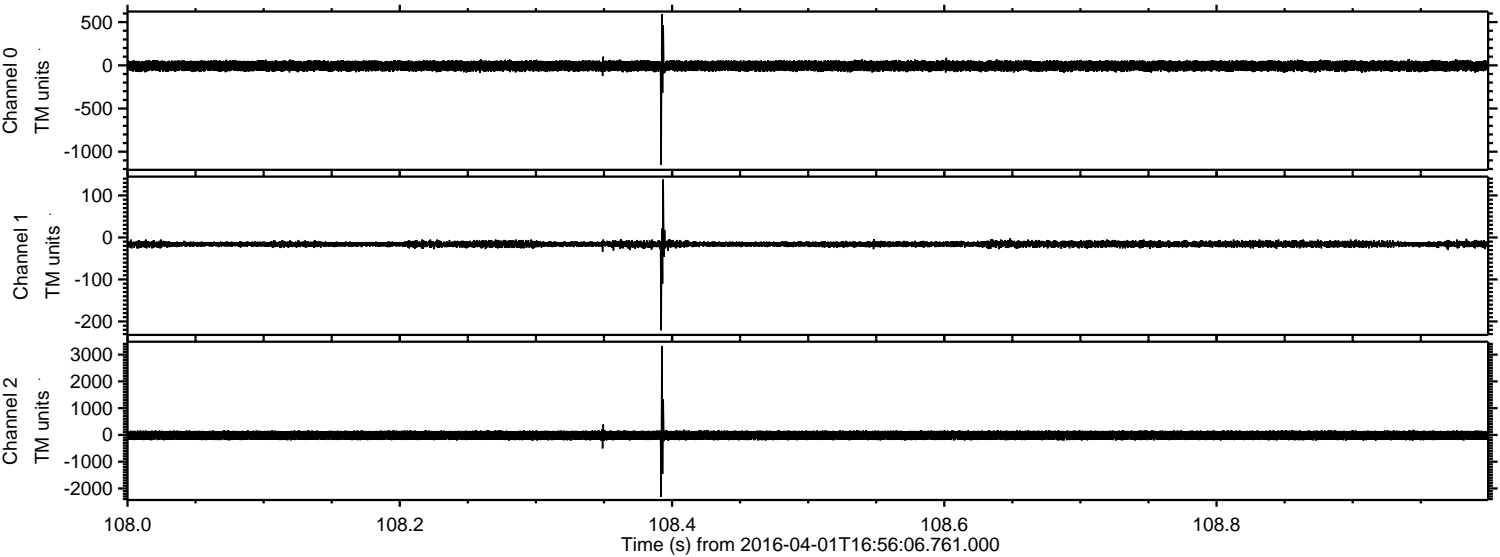
Processed Thu May 5 12:54:06 2016 by ELM ver.2012-10-06 from 001\_\_elm20160401\_165605\_\_dat00.bin





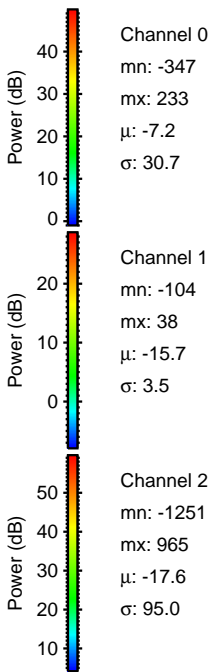
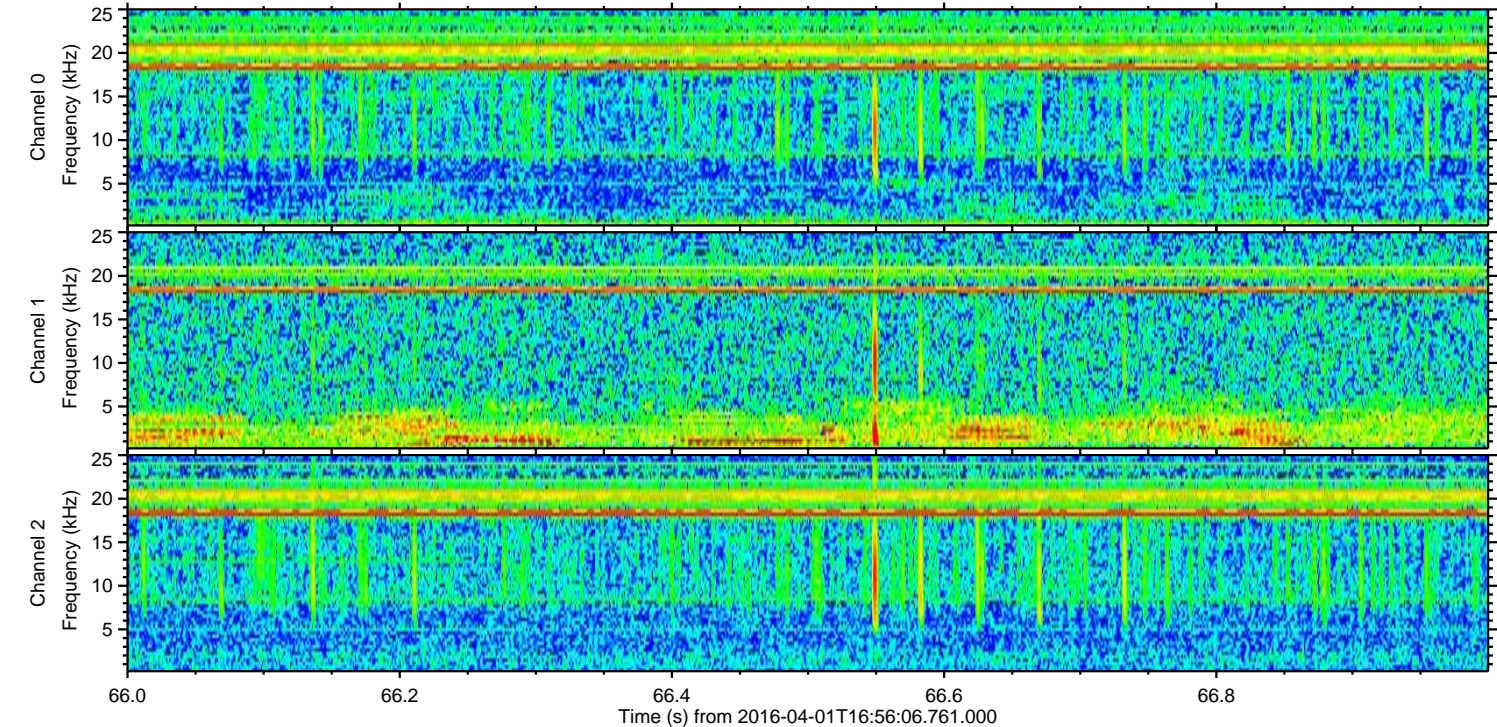
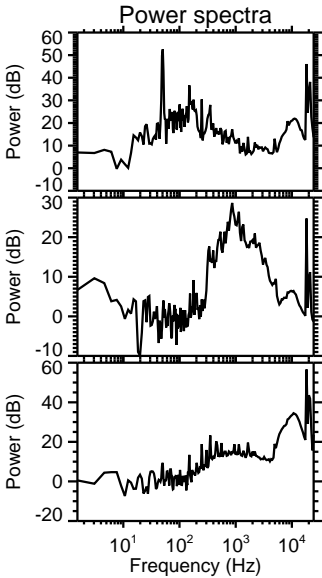
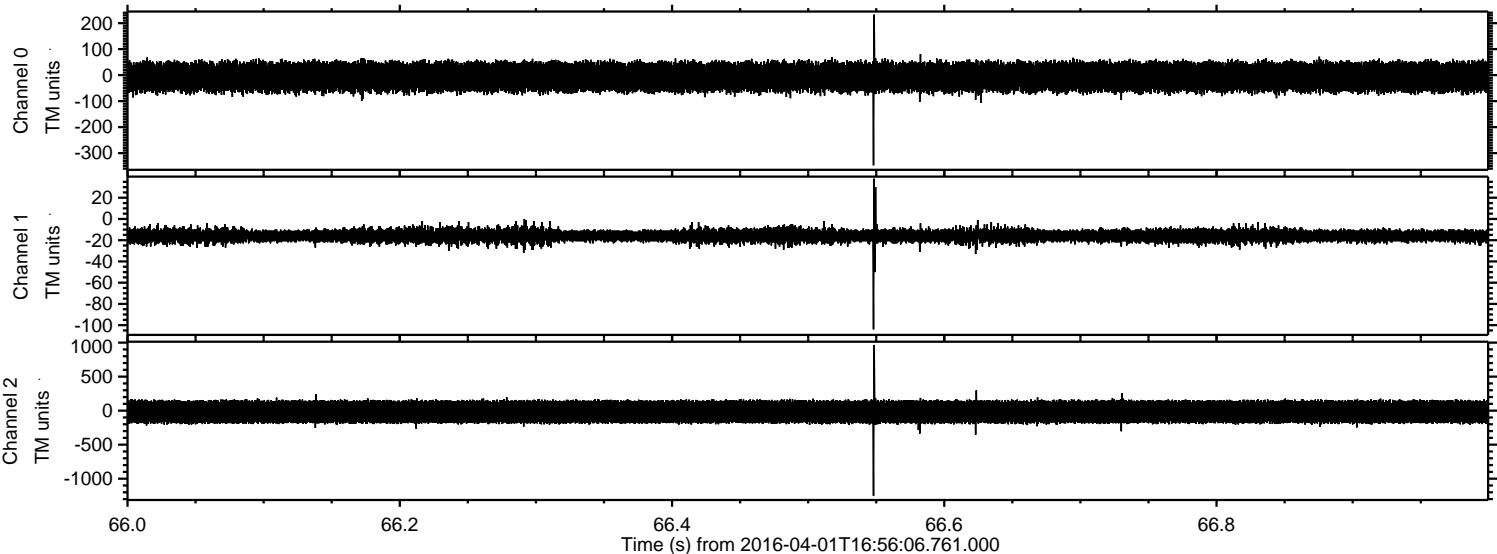
ELMAVAN 3D WAVEFORMS (Measured data sampled at 50 kHz) 51000 packets of 144 samples from 2016-04-01T16:56:06.761.000. Part 109/147

Processed Thu May 5 12:54:18 2016 by ELM ver.2012-10-06 from 001\_\_elm20160401\_165605\_\_dat00.bin



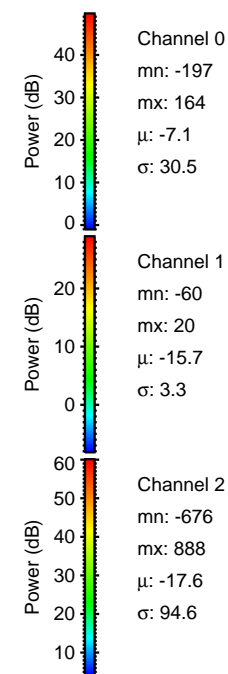
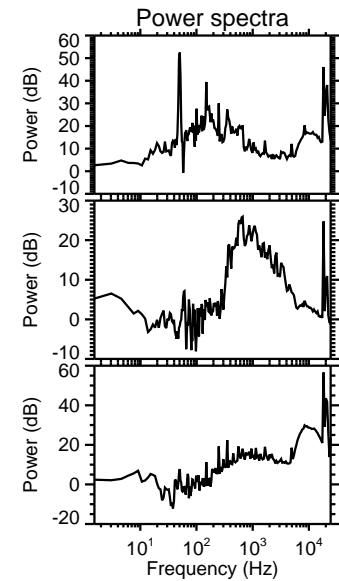
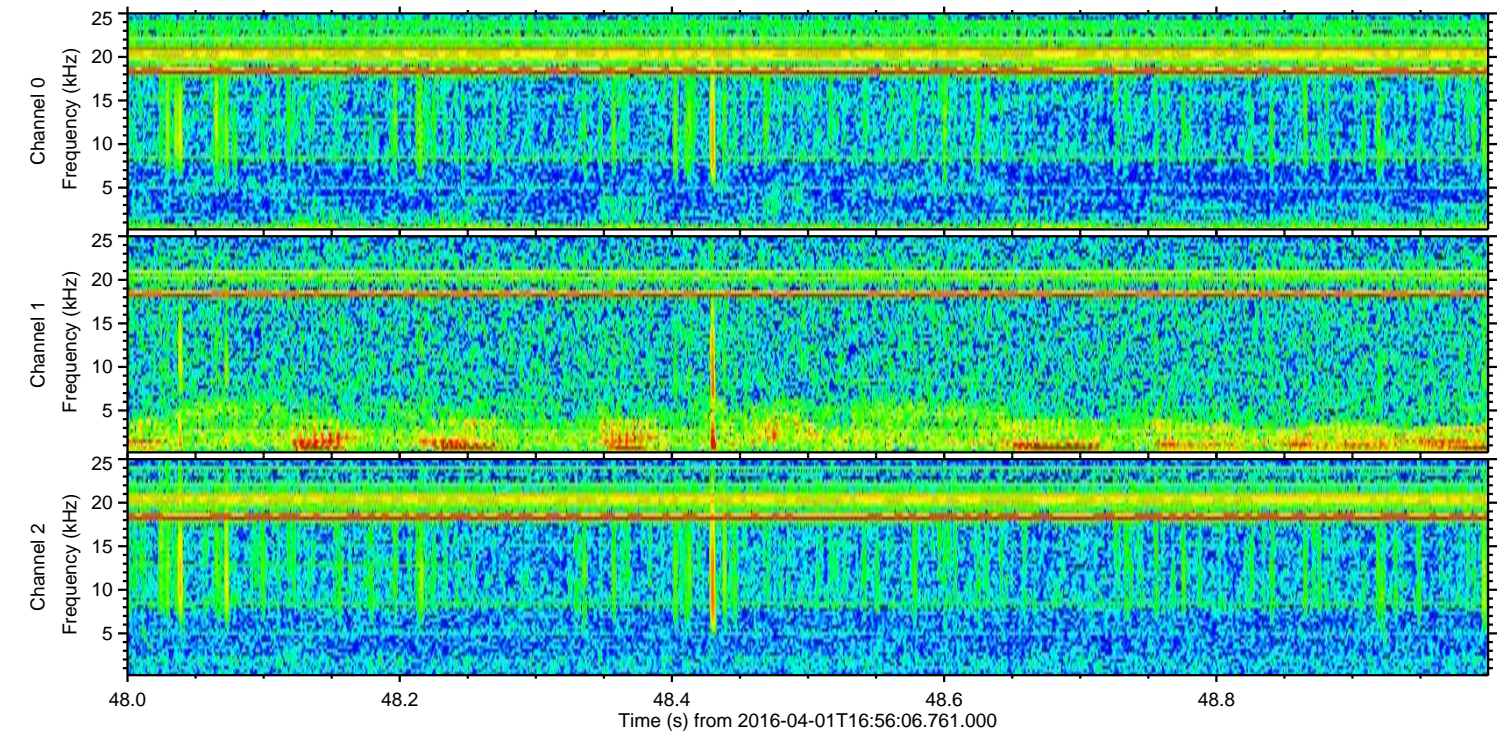
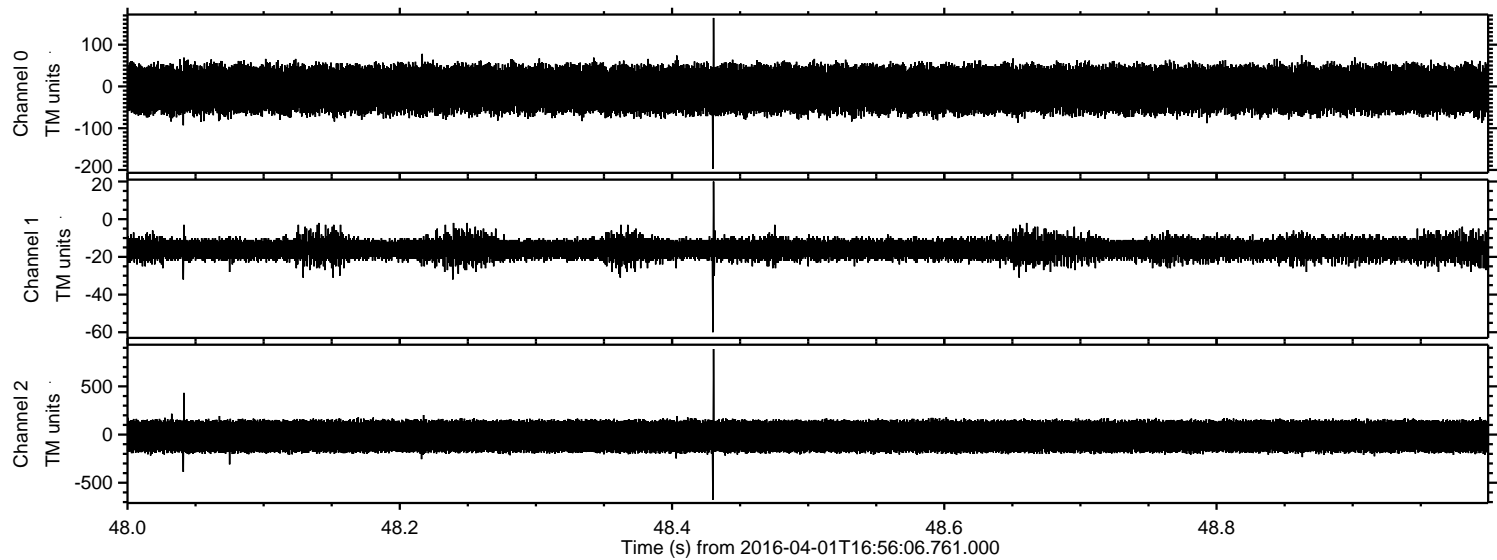


Processed Thu May 5 12:54:19 2016 by ELM ver.2012-10-06 from 001\_\_elm20160401\_165605\_\_dat00.bin



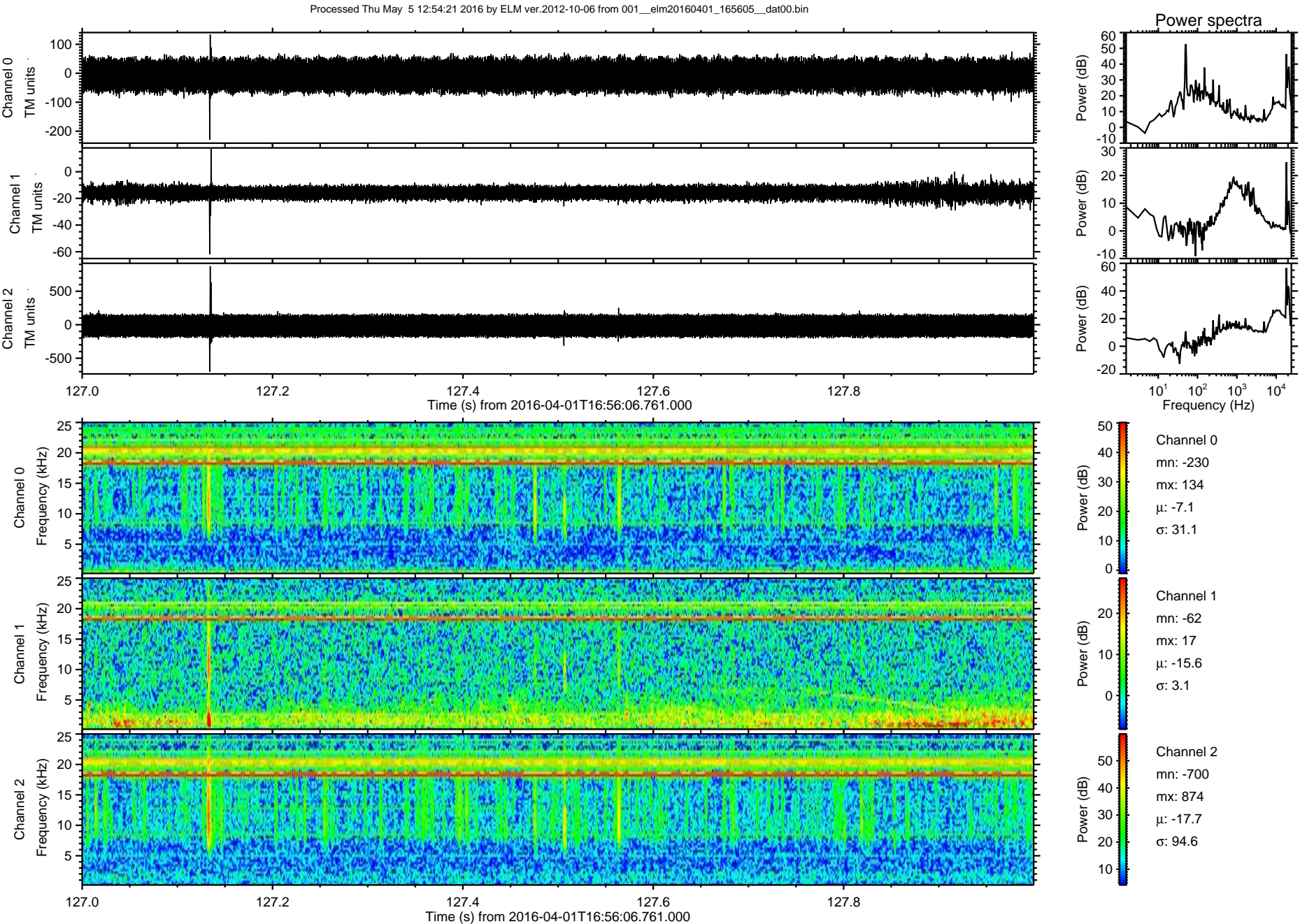


Processed Thu May 5 12:54:20 2016 by ELM ver.2012-10-06 from 001\_\_elm20160401\_165605\_\_dat00.bin



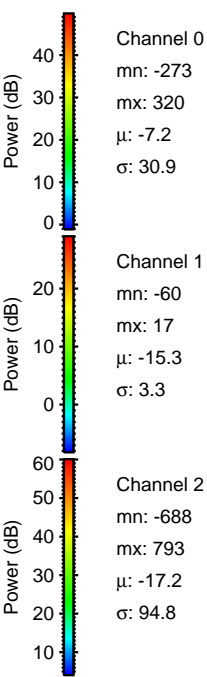
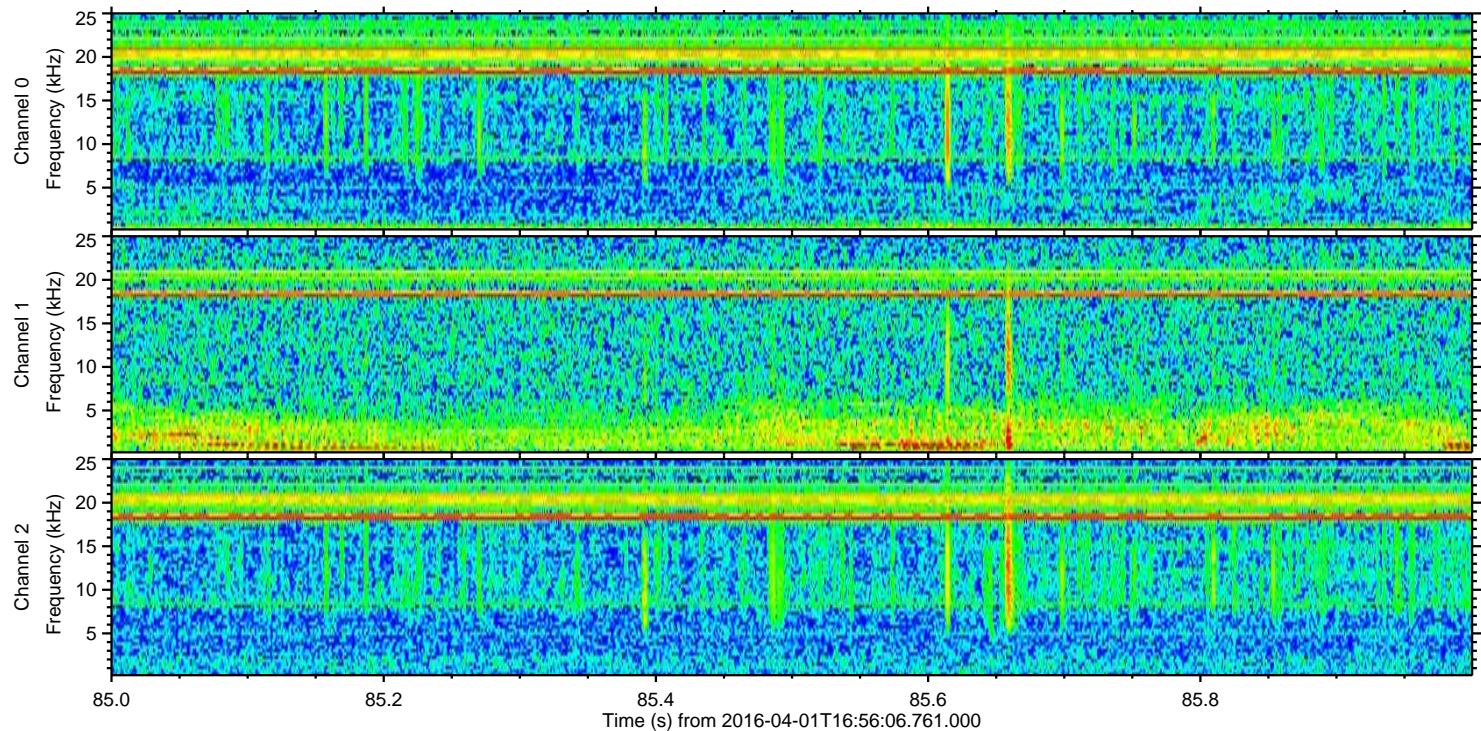
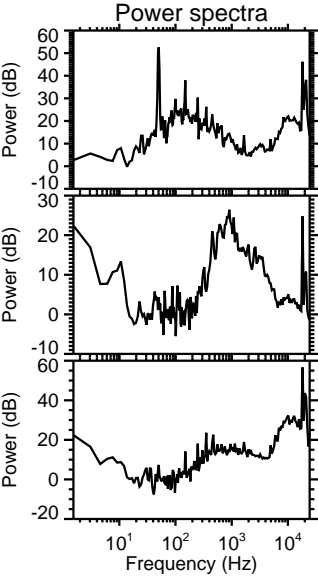
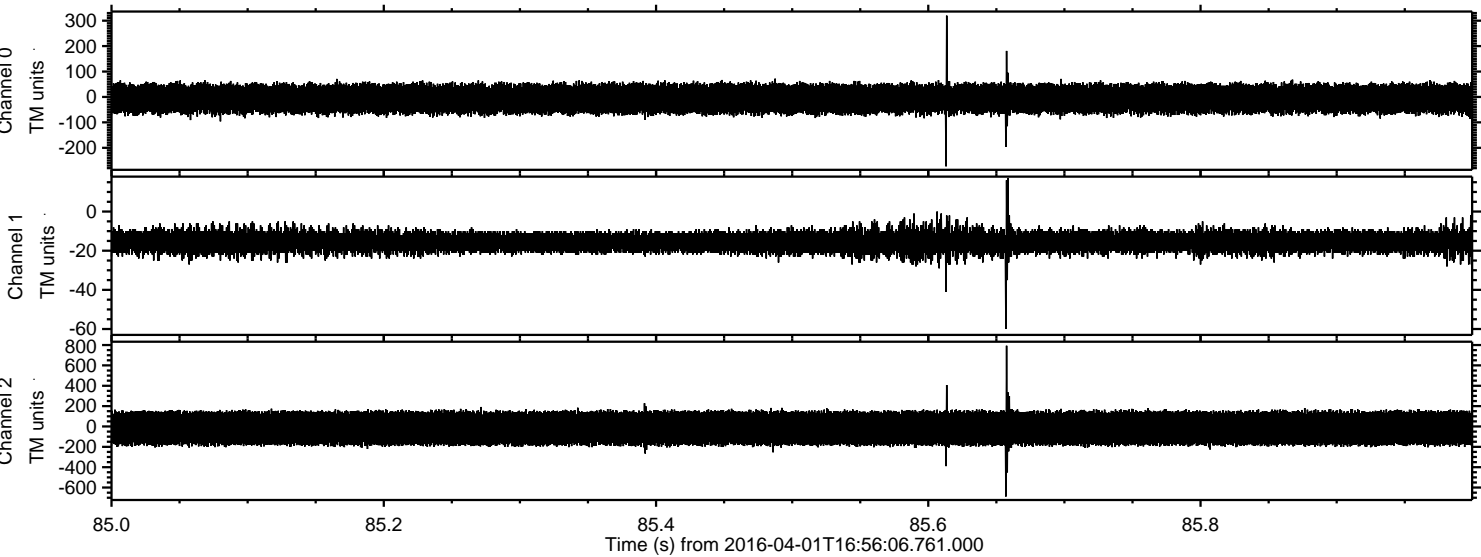


ELMAVAN 3D WAVEFORMS (Measured data sampled at 50 kHz) 51000 packets of 144 samples from 2016-04-01T16:56:06.761.000. Part 128/147



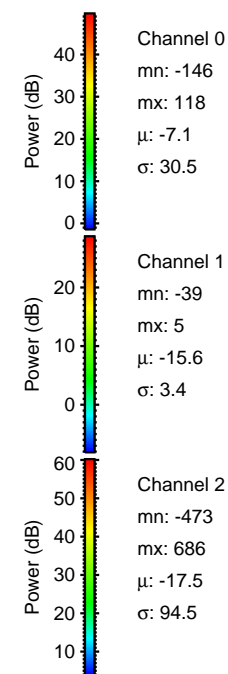
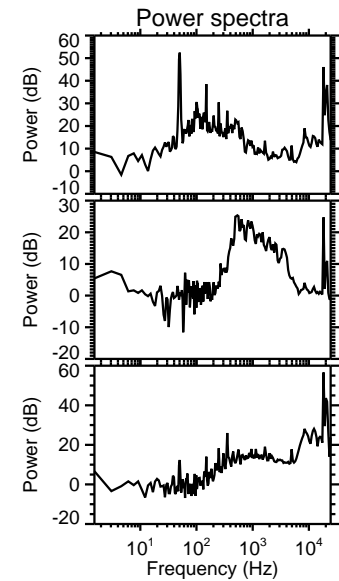
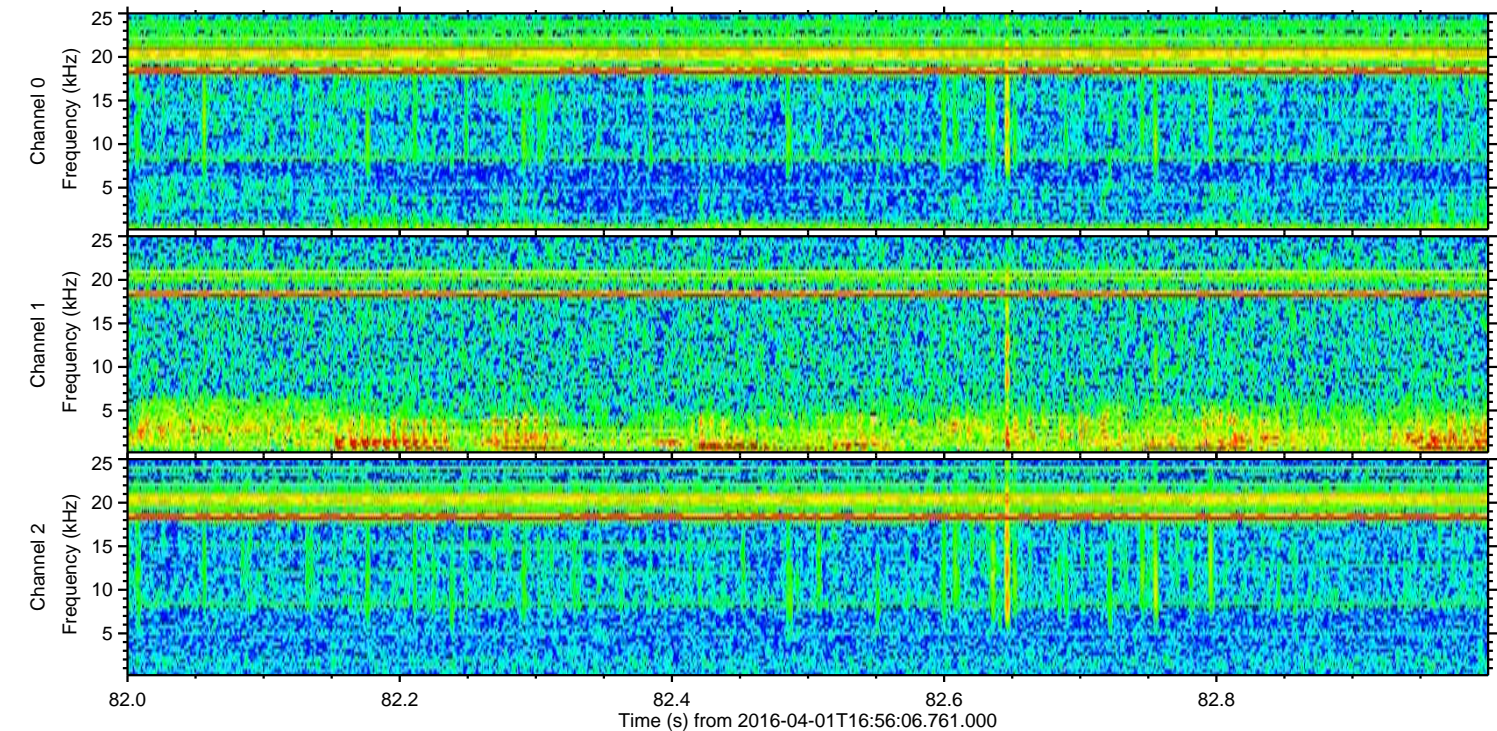
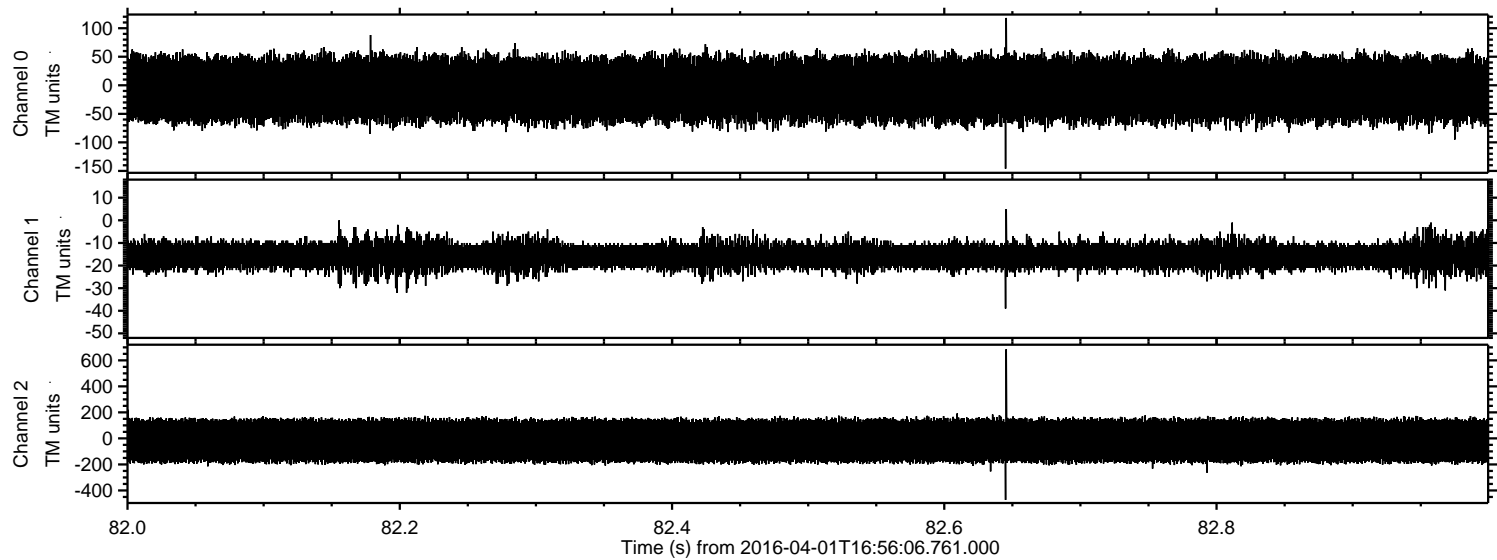


Processed Thu May 5 12:54:22 2016 by ELM ver.2012-10-06 from 001\_\_elm20160401\_165605\_\_dat00.bin



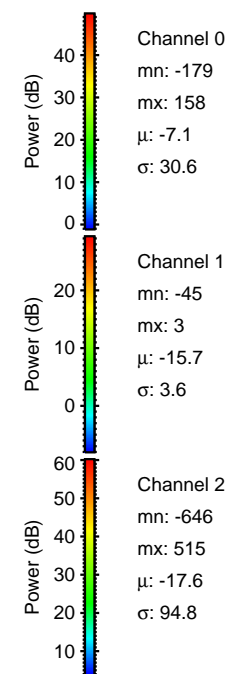
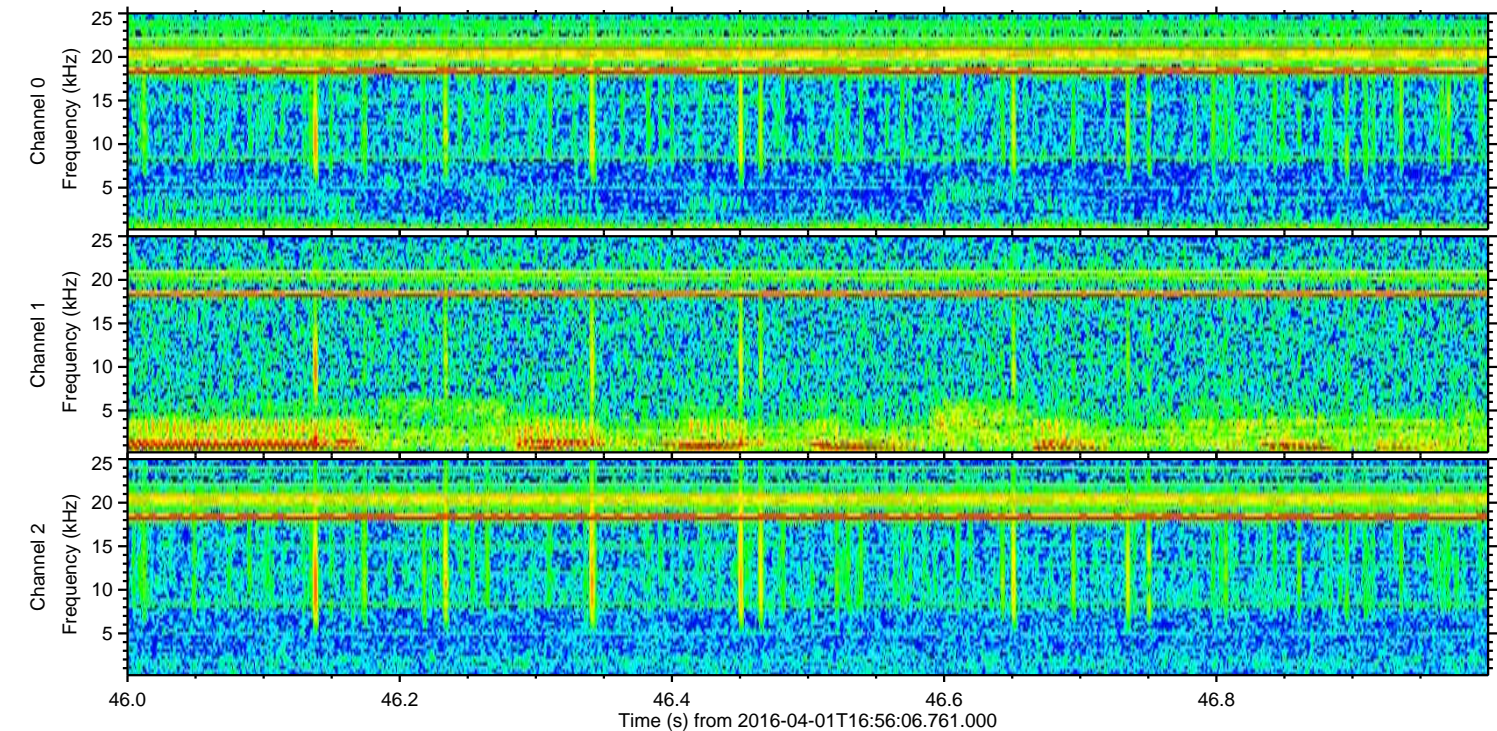
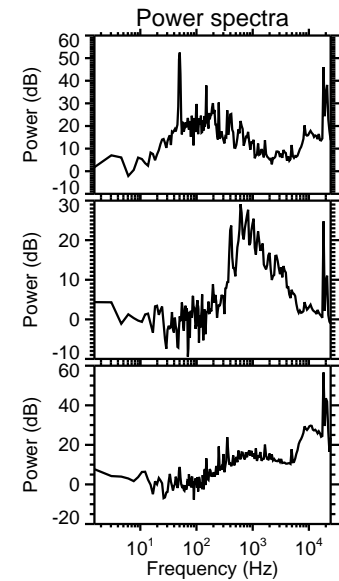
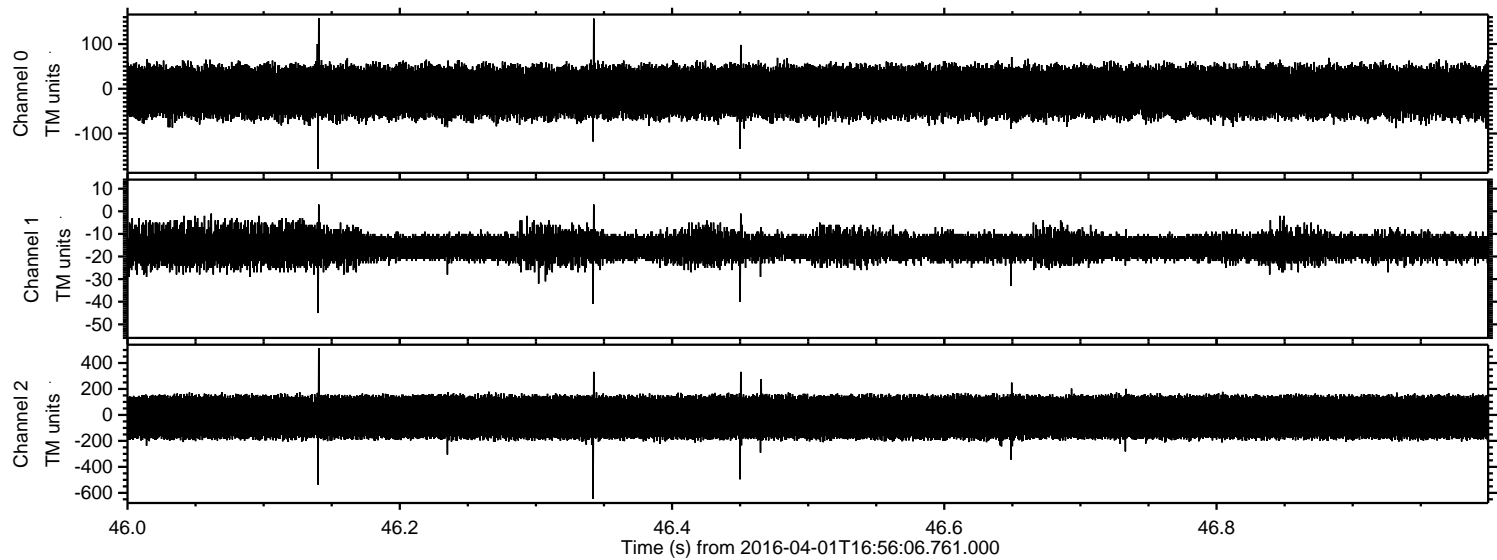


Processed Thu May 5 12:54:22 2016 by ELM ver.2012-10-06 from 001\_\_elm20160401\_165605\_\_dat00.bin



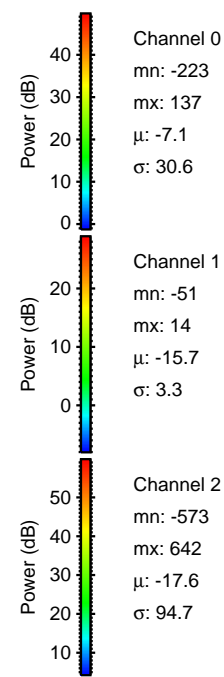
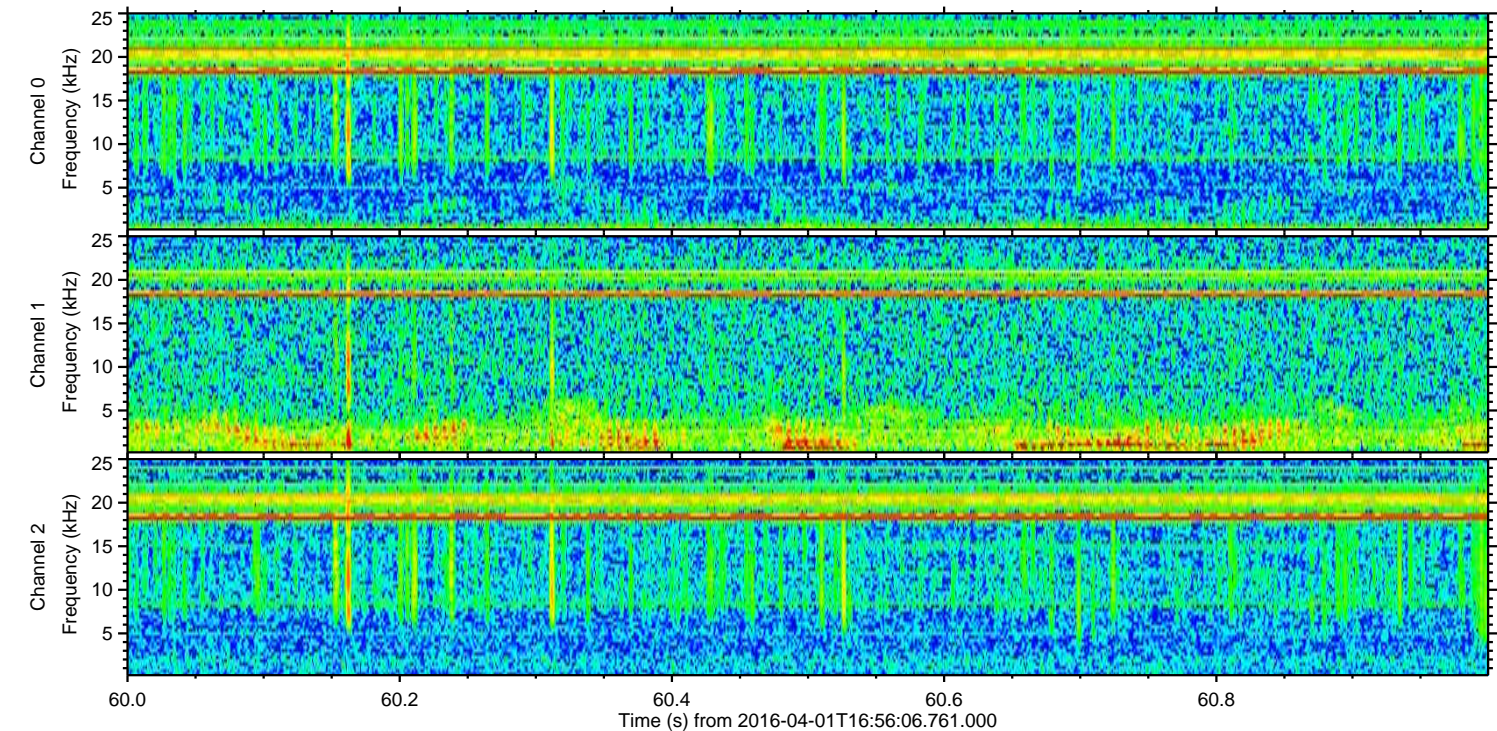
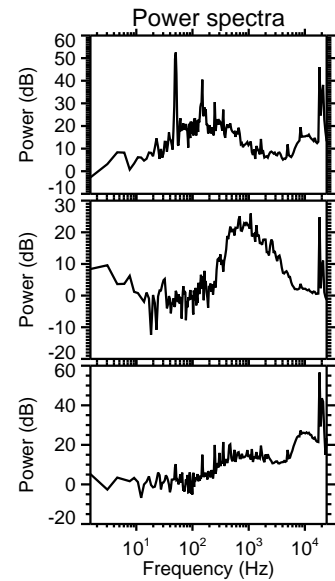
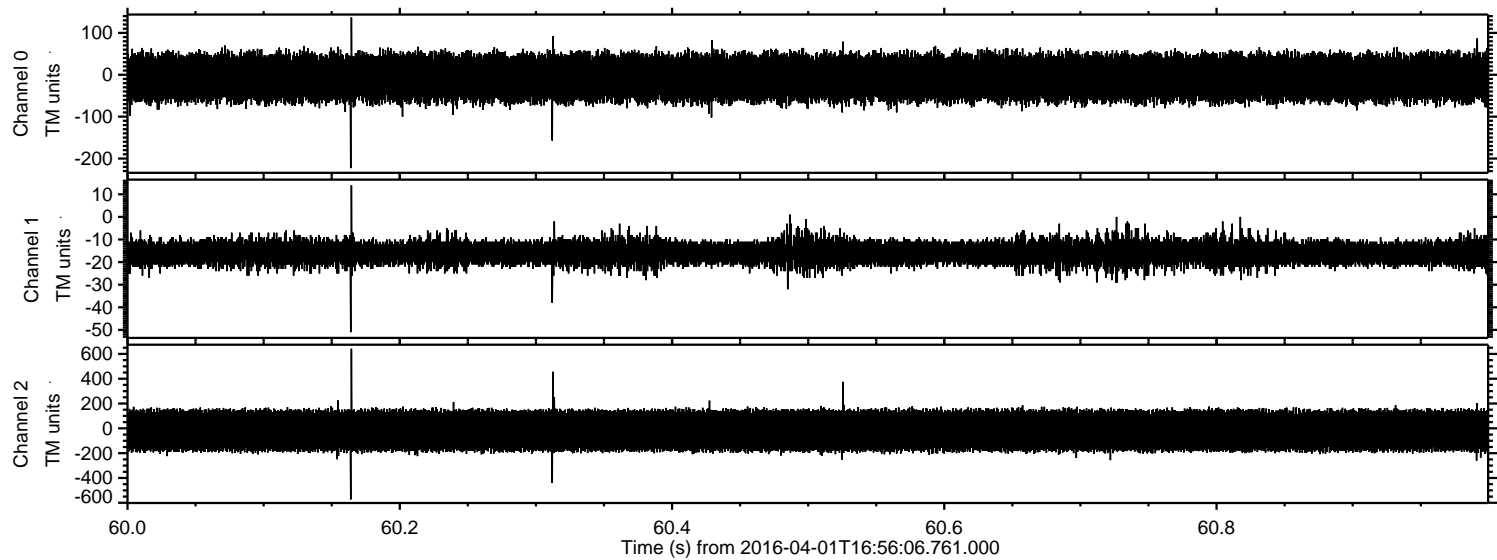


Processed Thu May 5 12:54:23 2016 by ELM ver.2012-10-06 from 001\_\_elm20160401\_165605\_\_dat00.bin



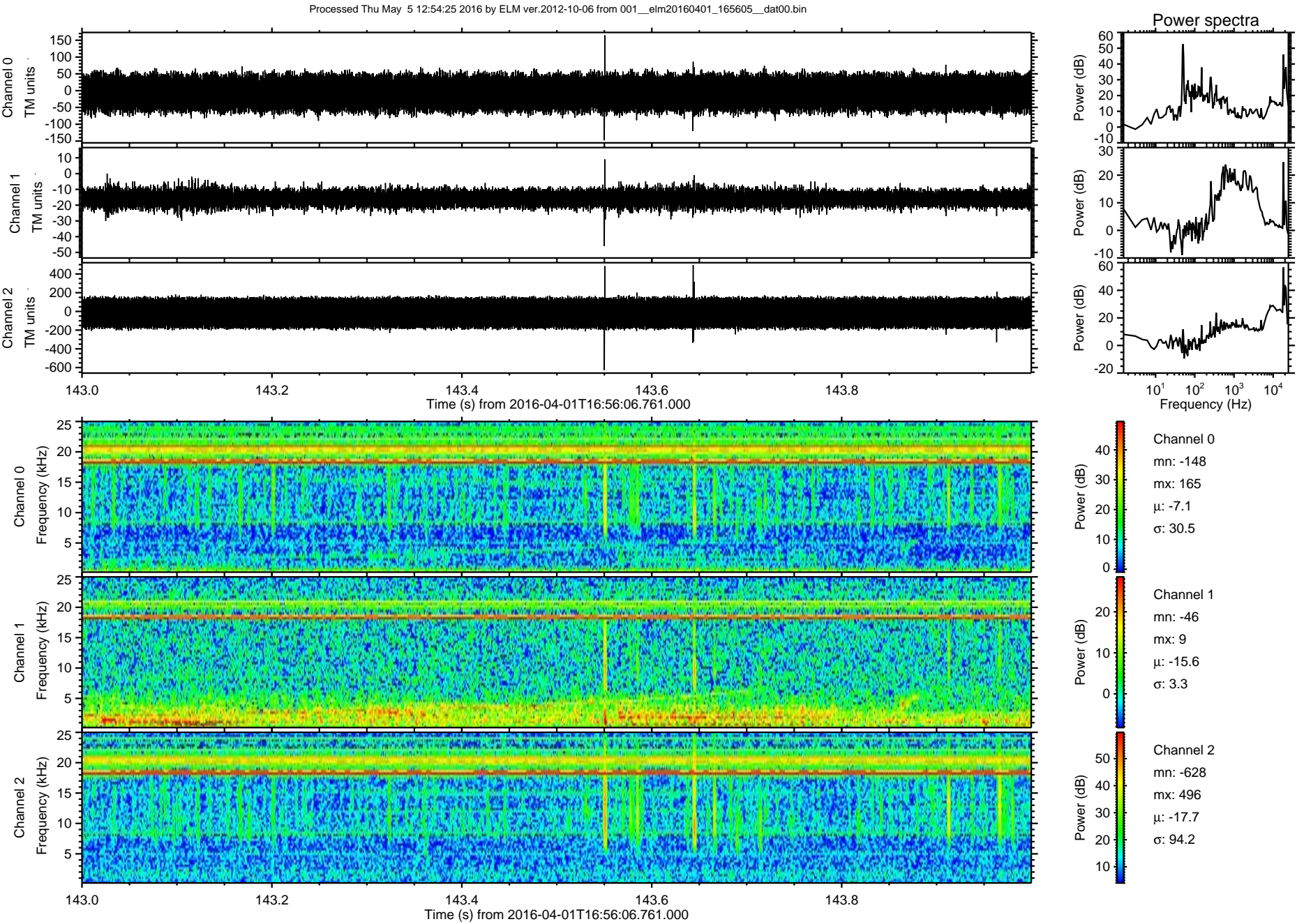


Processed Thu May 5 12:54:24 2016 by ELM ver.2012-10-06 from 001\_\_elm20160401\_165605\_\_dat00.bin





ELMAVAN 3D WAVEFORMS (Measured data sampled at 50 kHz) 51000 packets of 144 samples from 2016-04-01T16:56:06.761.000. Part 144/147





Processed Thu May 5 12:54:26 2016 by ELM ver.2012-10-06 from 001\_\_elm20160401\_165605\_\_dat00.bin

