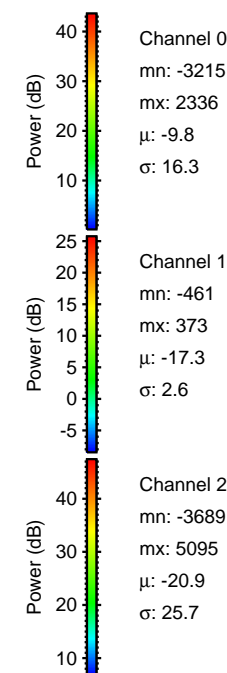
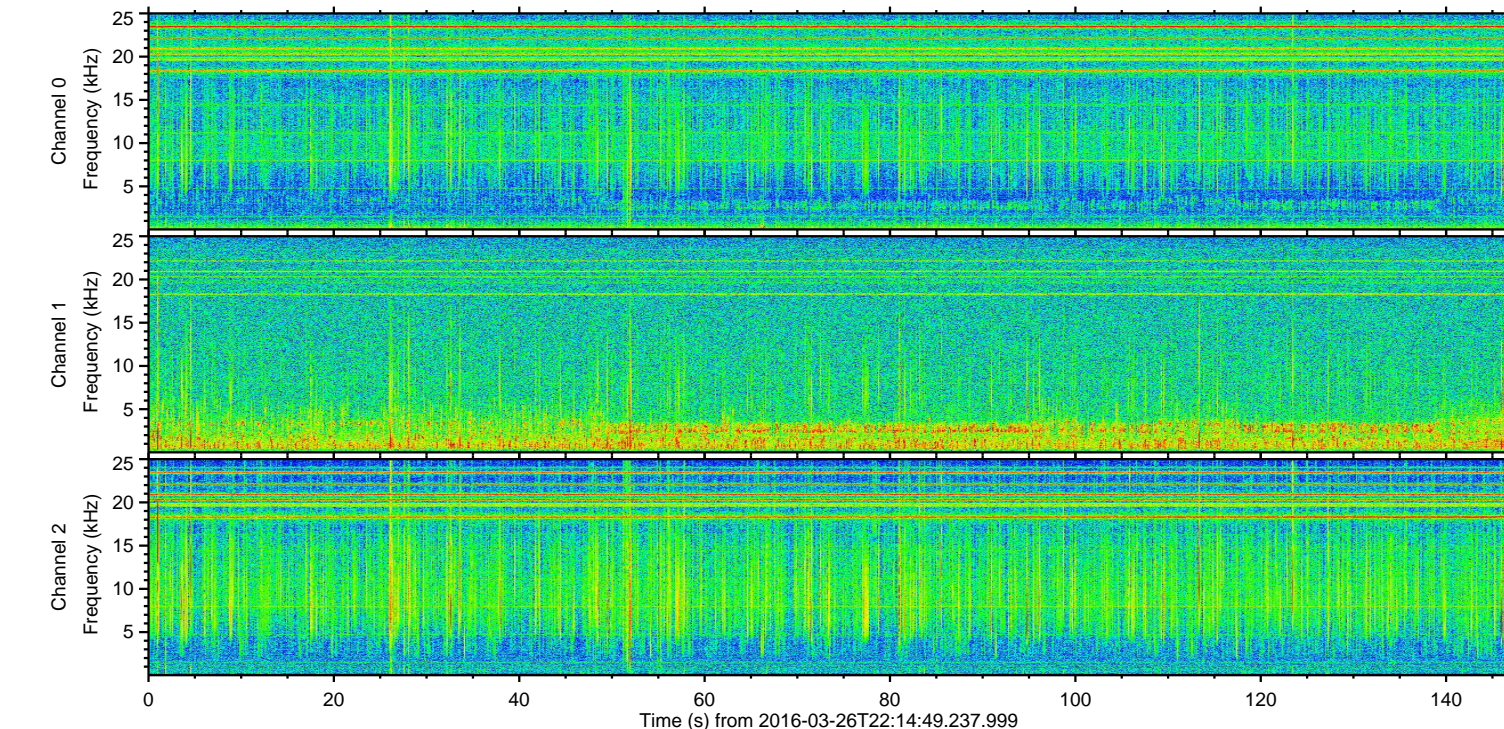
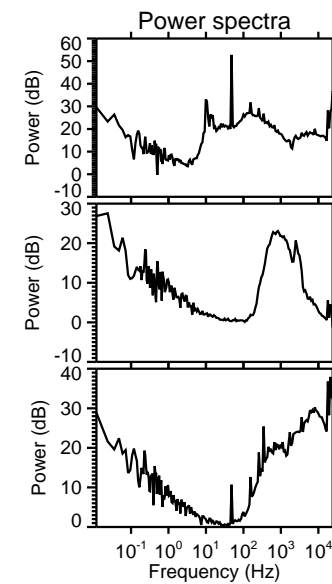
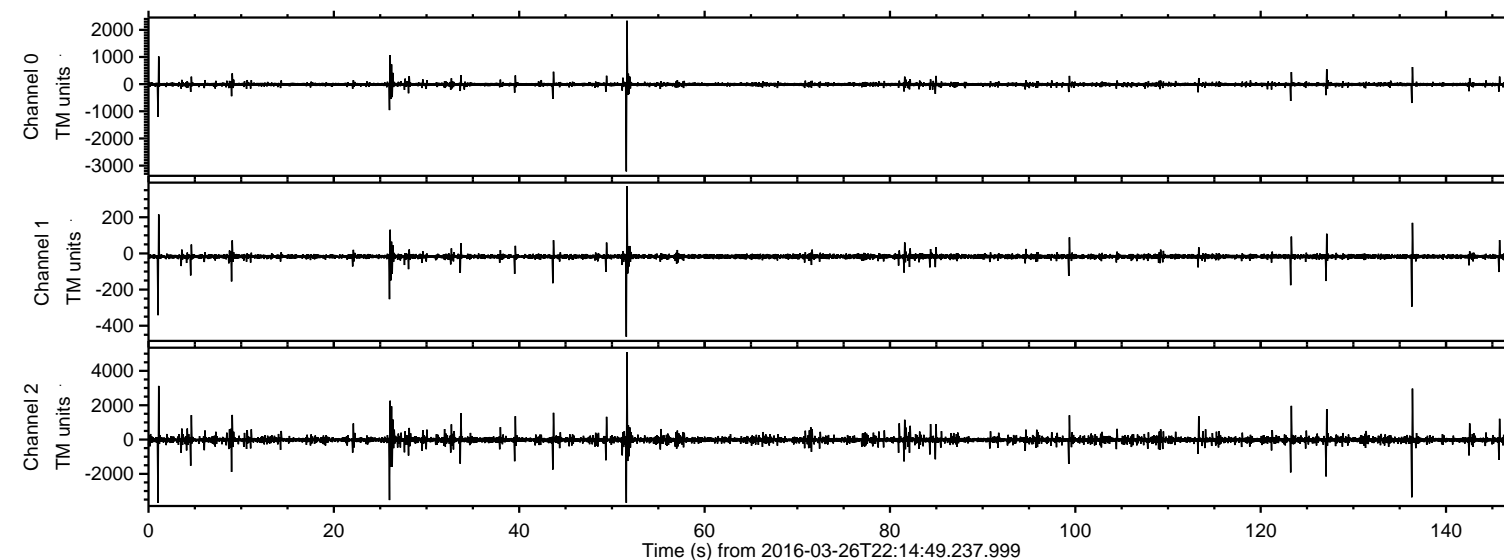


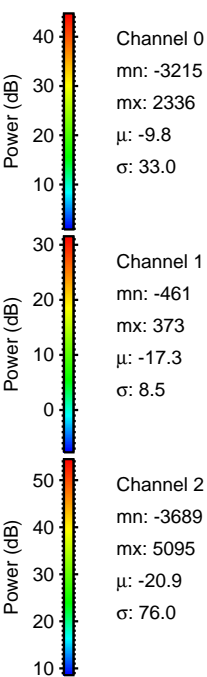
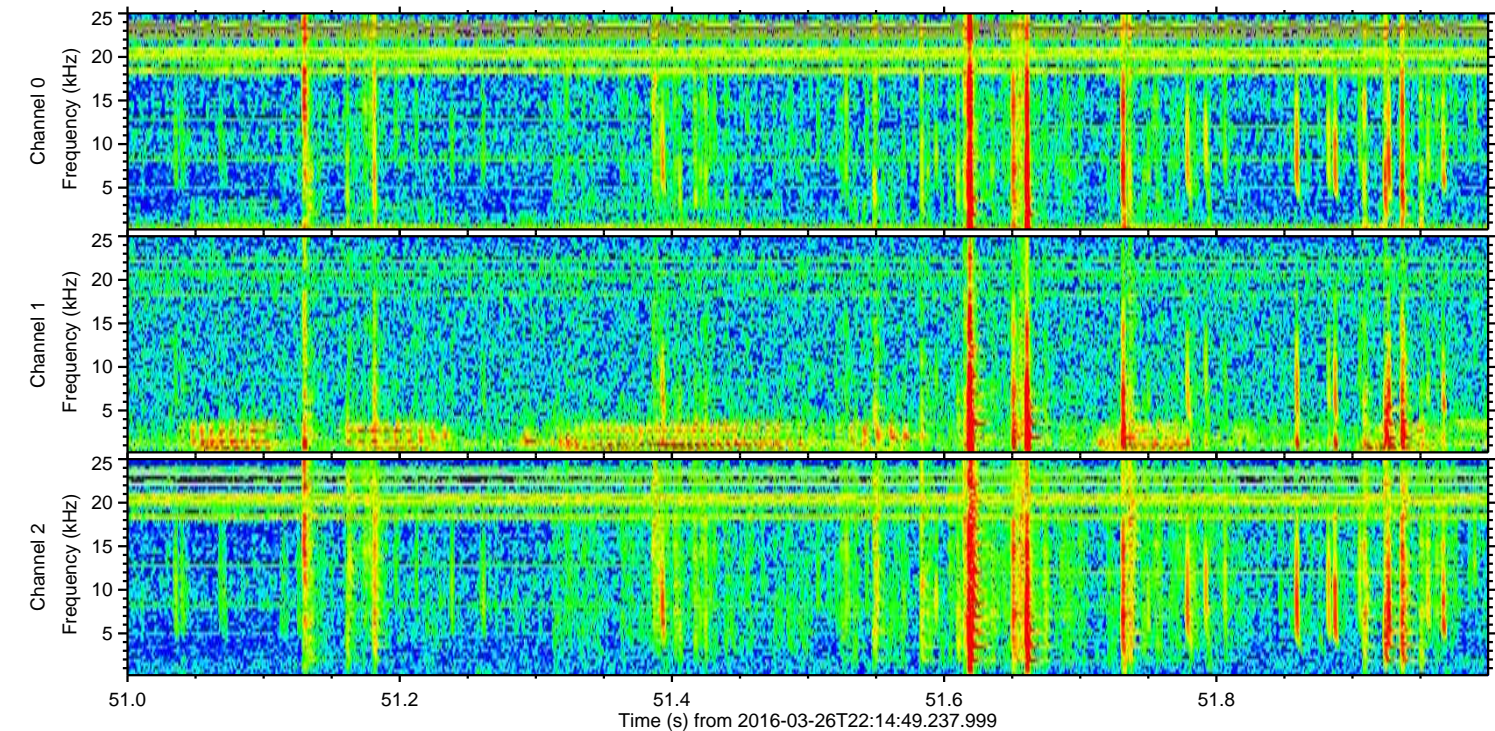
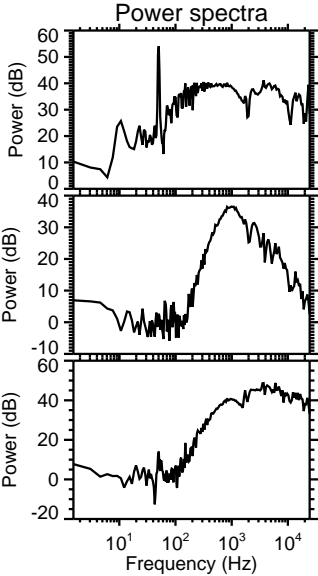
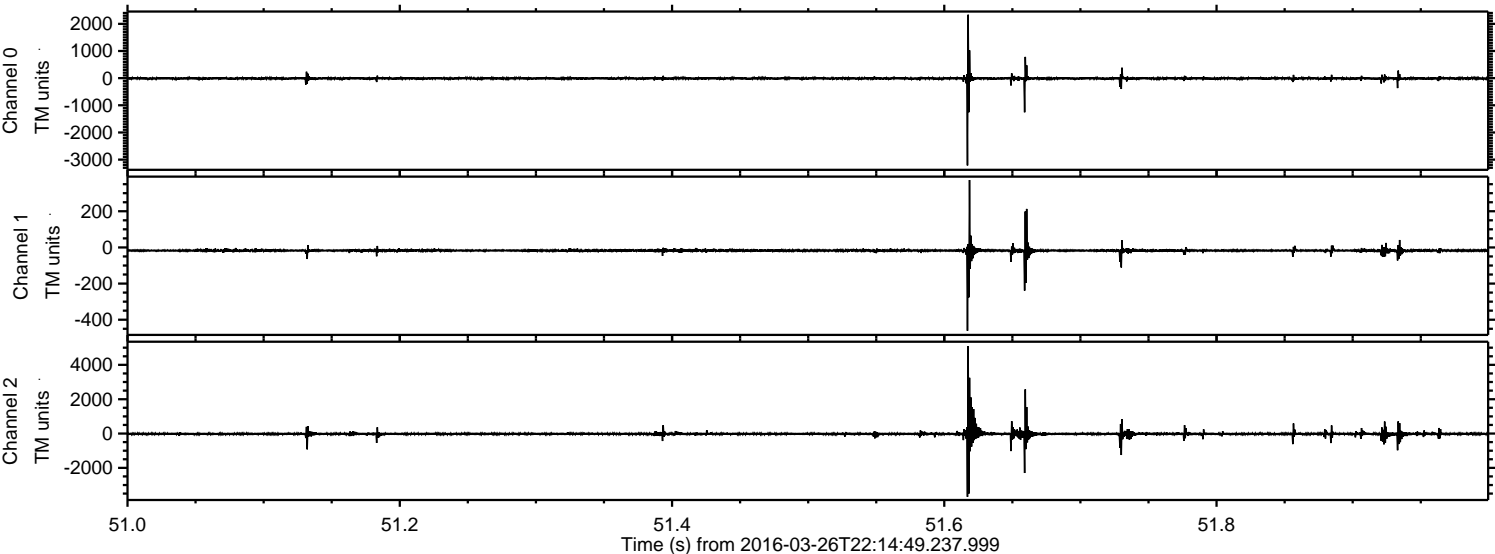
ELMAVAN 3D WAVEFORMS (Measured data sampled at 50 kHz) 51000 packets of 144 samples from 2016-03-26T22:14:49.237.999.

Processed Sat Apr 23 06:43:03 2016 by ELM ver.2012-10-06 from 001__elm20160326_221448__dat00.bin



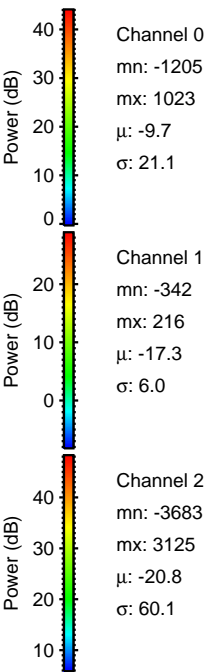
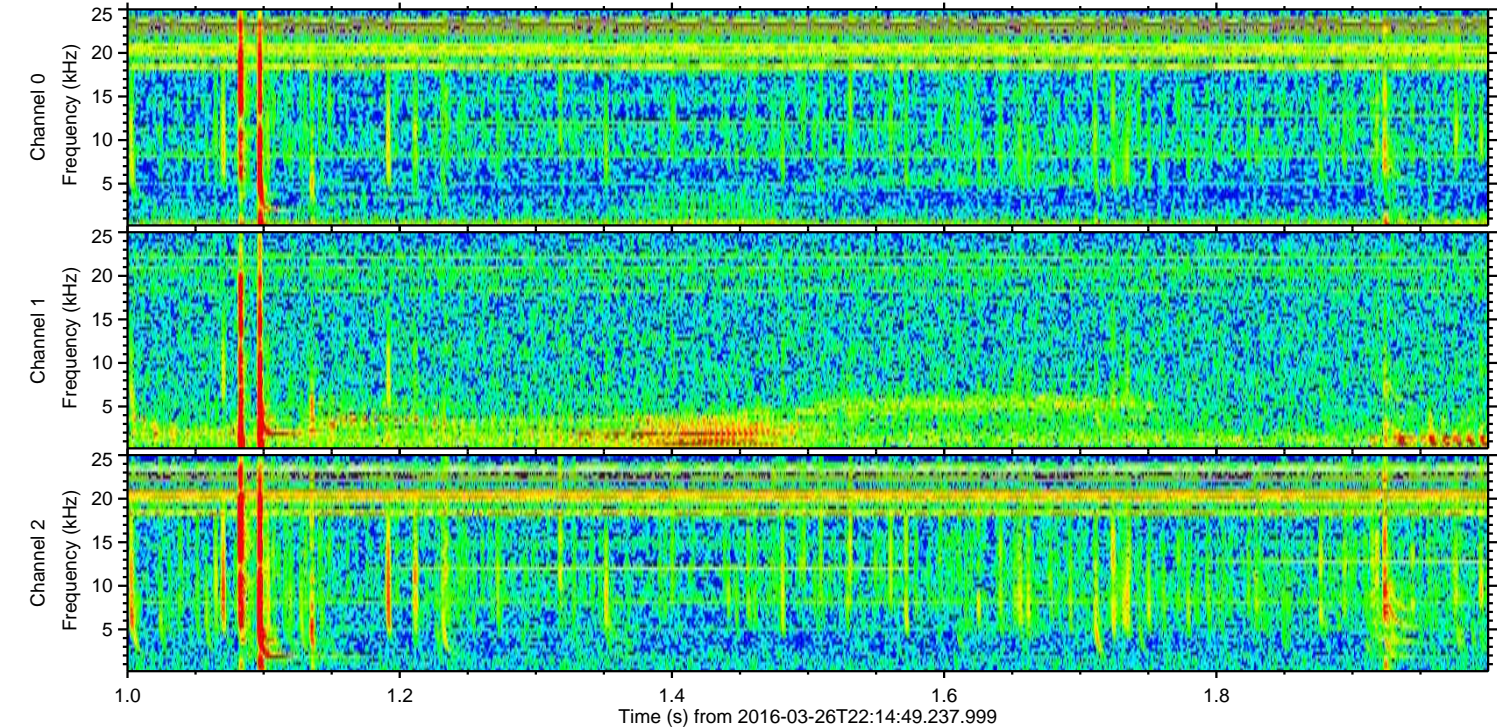
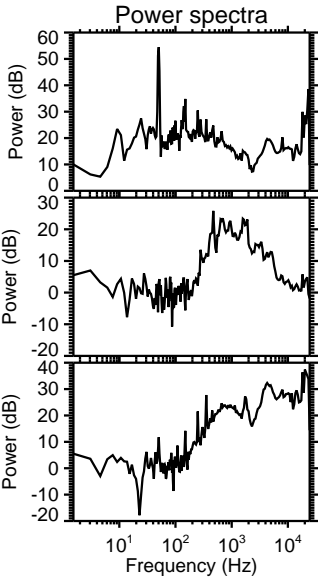
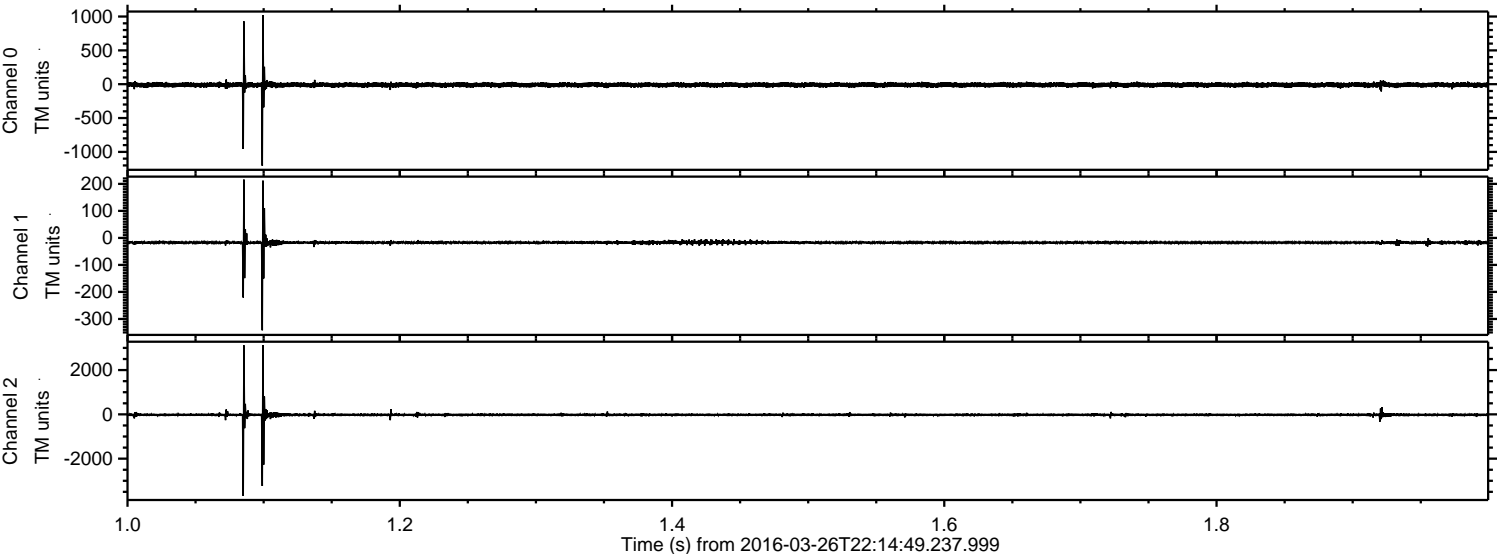
ELMAVAN 3D WAVEFORMS (Measured data sampled at 50 kHz) 51000 packets of 144 samples from 2016-03-26T22:14:49.237.999. Part 52/147

Processed Sat Apr 23 06:43:18 2016 by ELM ver.2012-10-06 from 001__elm20160326_221448__dat00.bin



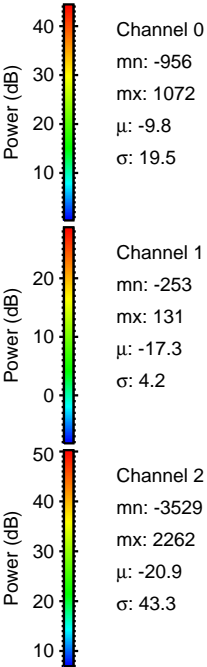
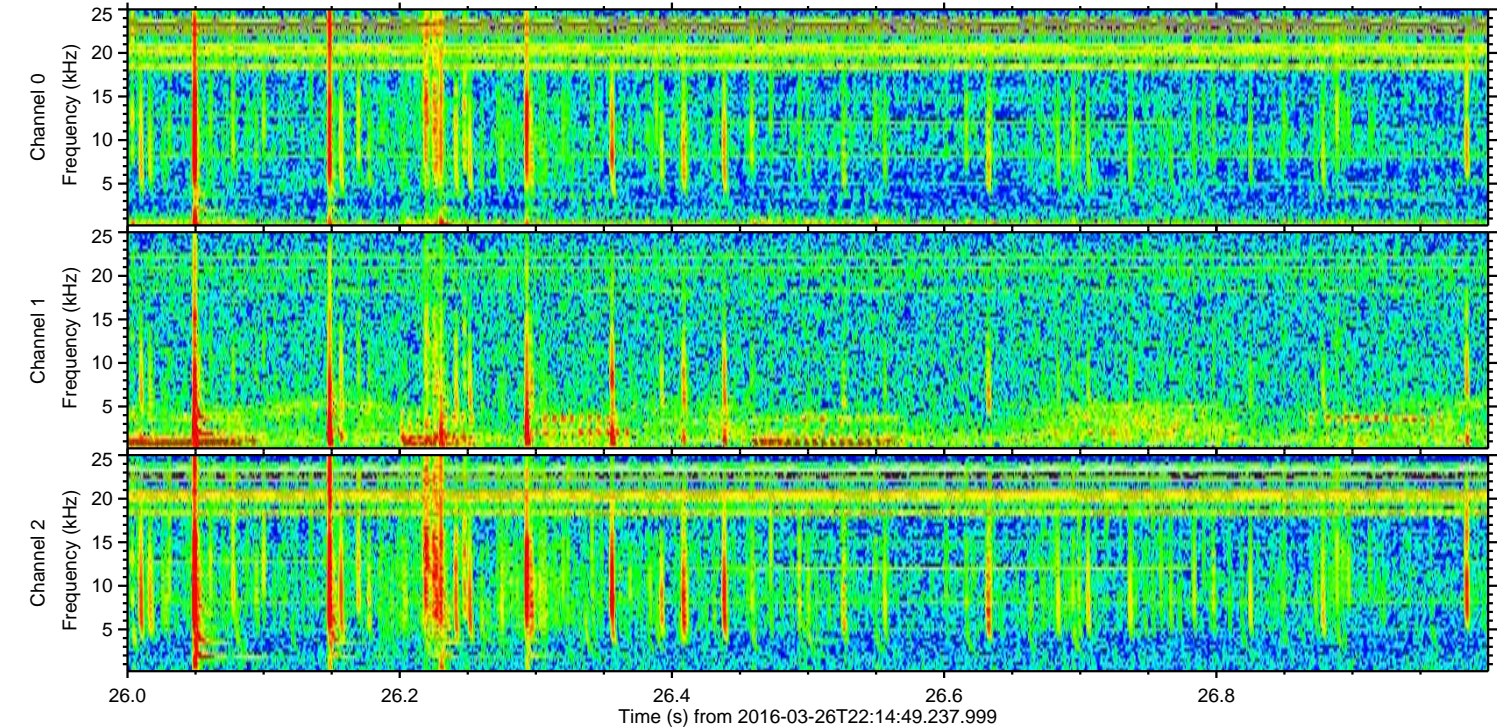
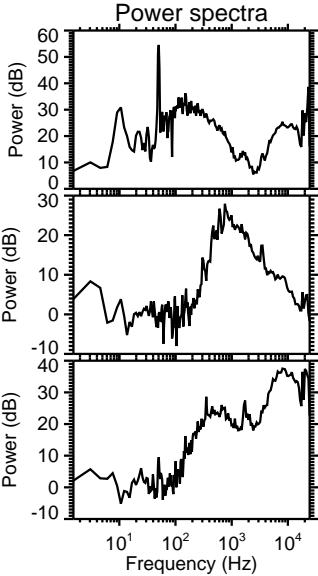
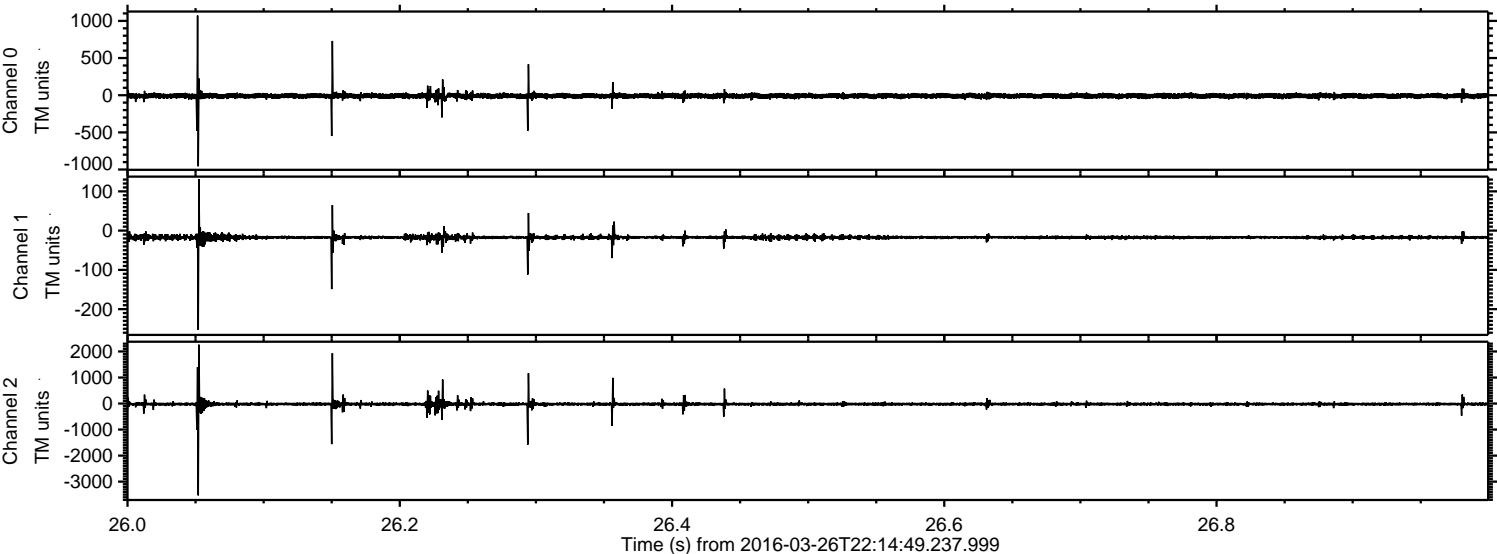
ELMAVAN 3D WAVEFORMS (Measured data sampled at 50 kHz) 51000 packets of 144 samples from 2016-03-26T22:14:49.237.999. Part 2/147

Processed Sat Apr 23 06:43:19 2016 by ELM ver.2012-10-06 from 001__elm20160326_221448__dat00.bin



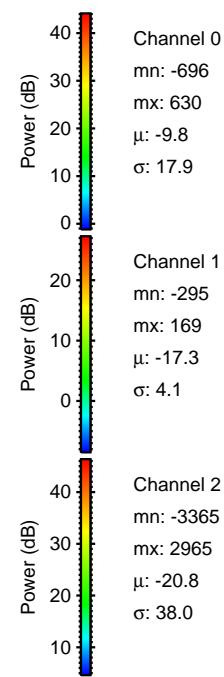
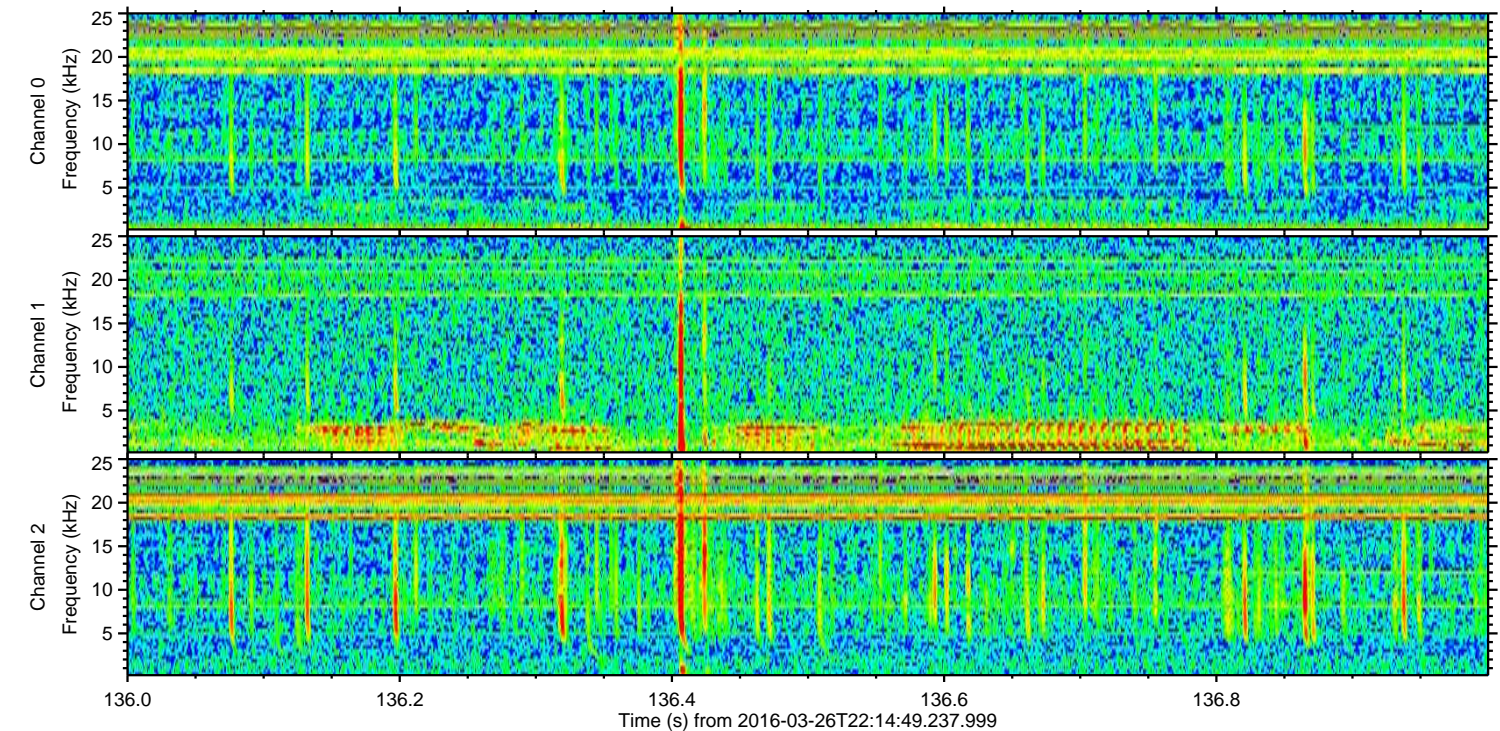
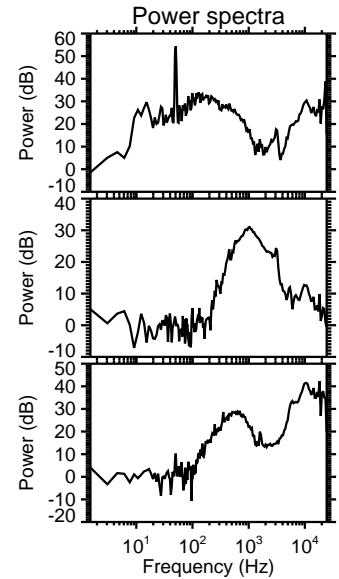
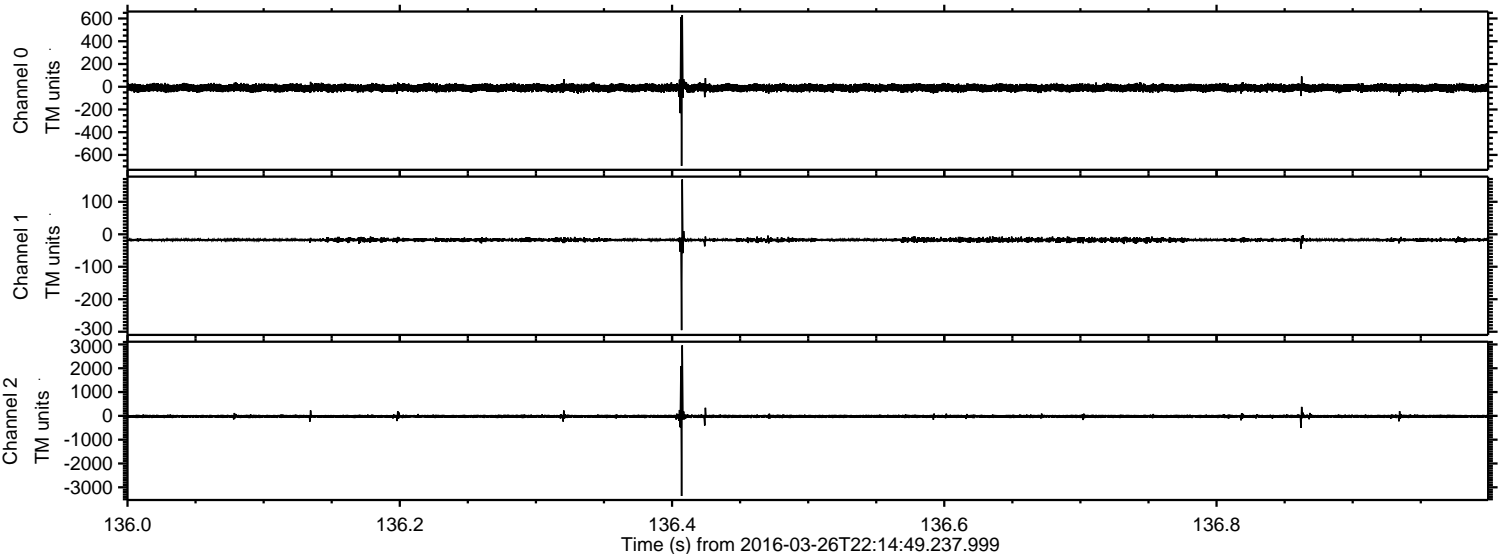
ELMAVAN 3D WAVEFORMS (Measured data sampled at 50 kHz) 51000 packets of 144 samples from 2016-03-26T22:14:49.237.999. Part 27/147

Processed Sat Apr 23 06:43:20 2016 by ELM ver.2012-10-06 from 001__elm20160326_221448__dat00.bin



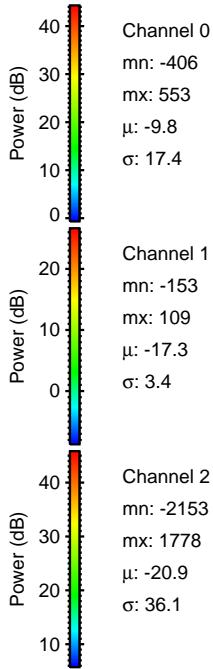
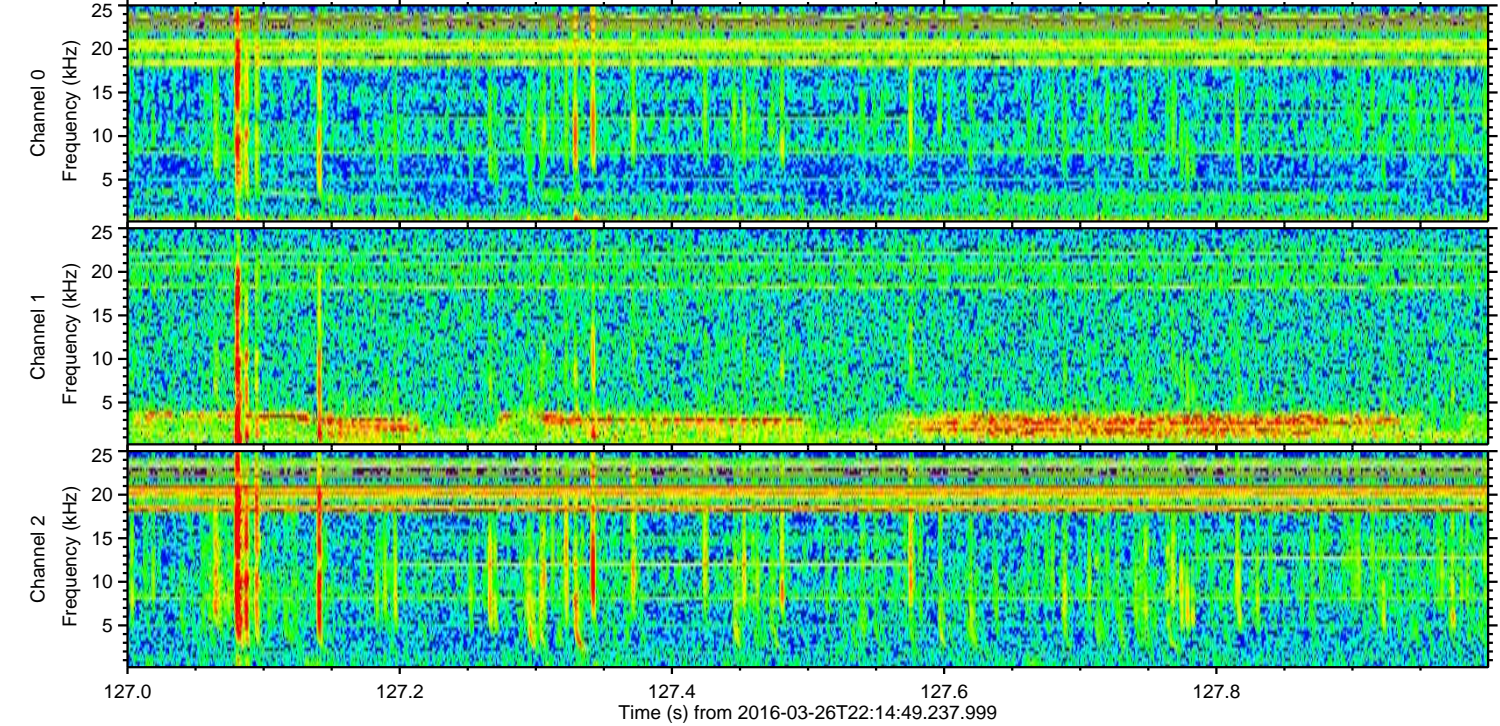
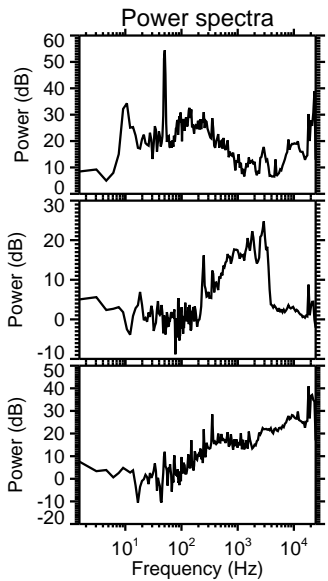
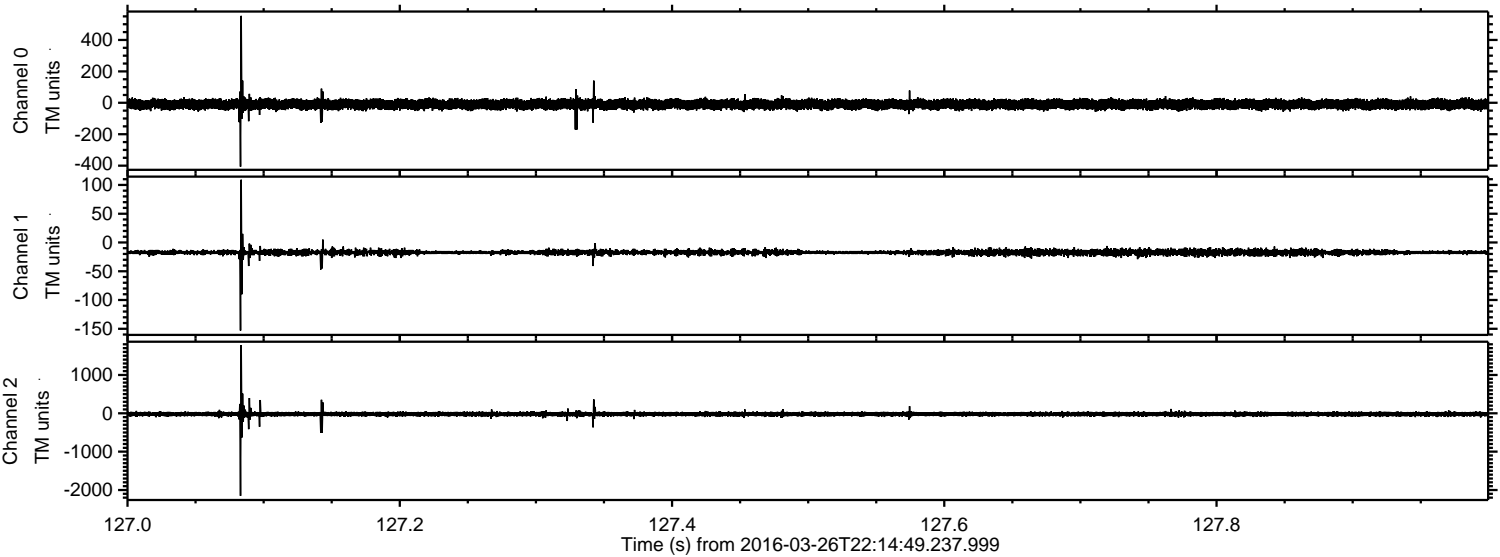
ELMAVAN 3D WAVEFORMS (Measured data sampled at 50 kHz) 51000 packets of 144 samples from 2016-03-26T22:14:49.237.999. Part 137/147

Processed Sat Apr 23 06:43:21 2016 by ELM ver.2012-10-06 from 001__elm20160326_221448__dat00.bin



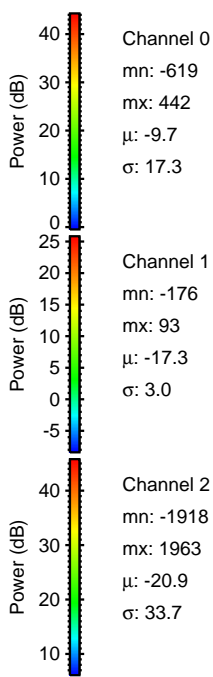
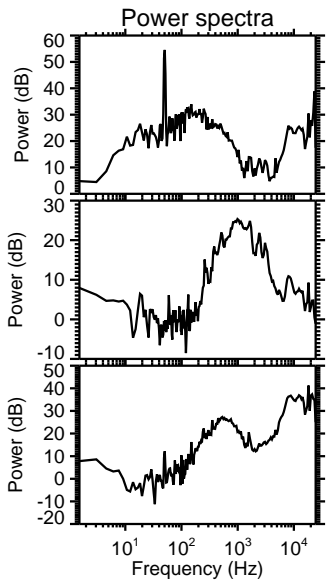
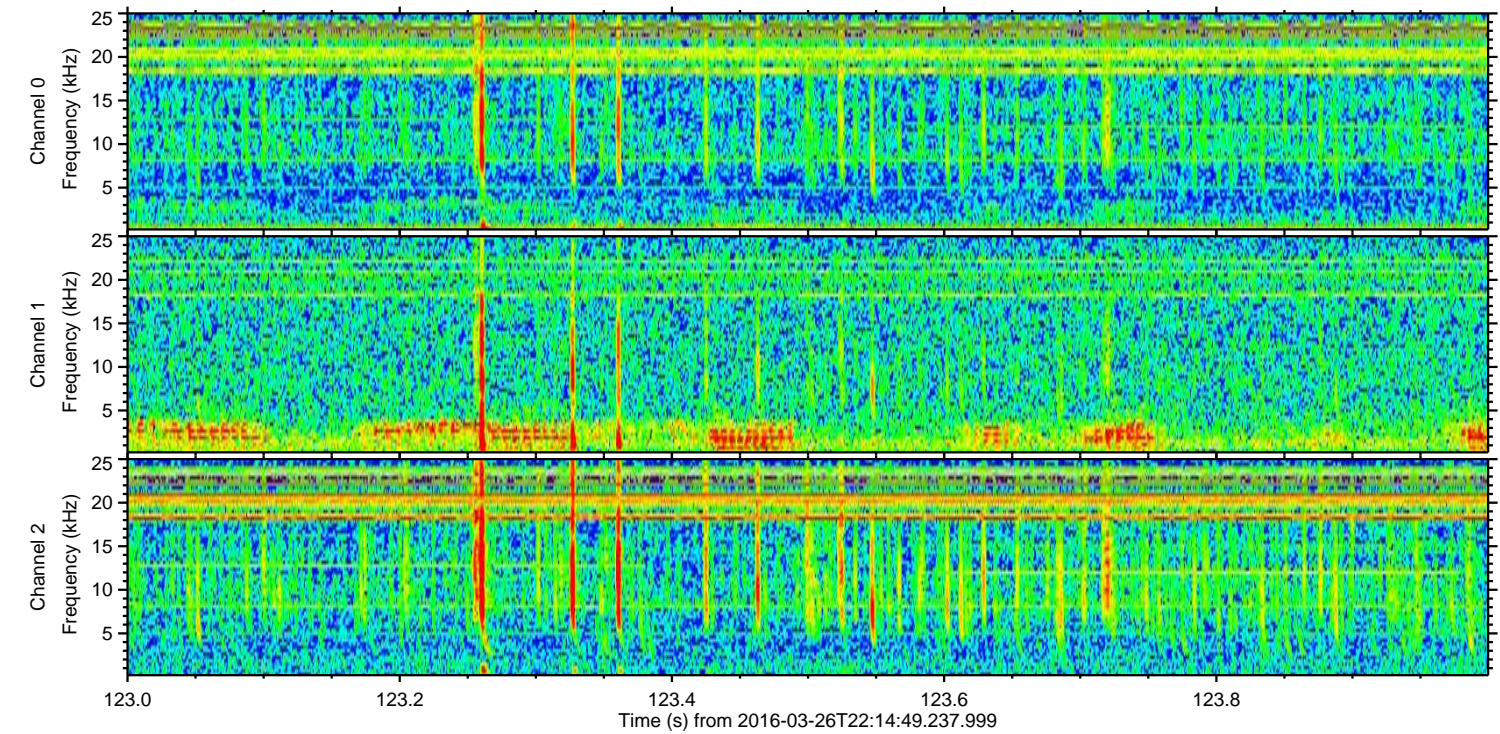
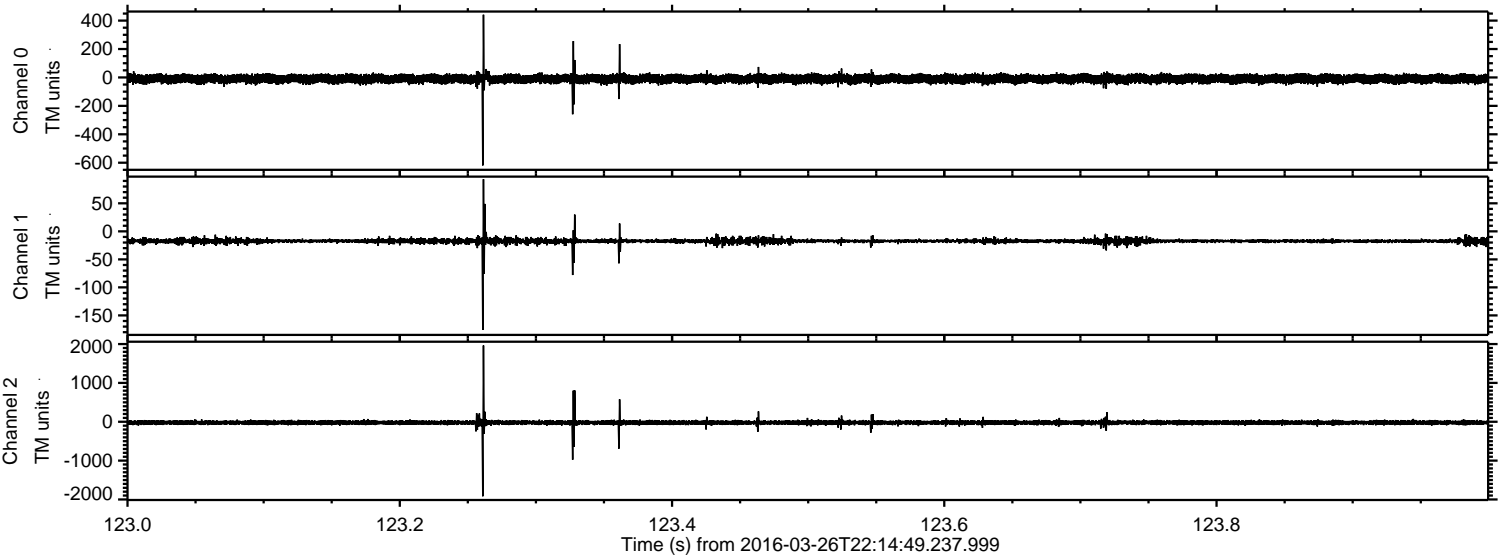
ELMAVAN 3D WAVEFORMS (Measured data sampled at 50 kHz) 51000 packets of 144 samples from 2016-03-26T22:14:49.237.999. Part 128/147

Processed Sat Apr 23 06:43:22 2016 by ELM ver.2012-10-06 from 001__elm20160326_221448__dat00.bin



ELMAVAN 3D WAVEFORMS (Measured data sampled at 50 kHz) 51000 packets of 144 samples from 2016-03-26T22:14:49.237.999. Part 124/147

Processed Sat Apr 23 06:43:23 2016 by ELM ver.2012-10-06 from 001__elm20160326_221448__dat00.bin

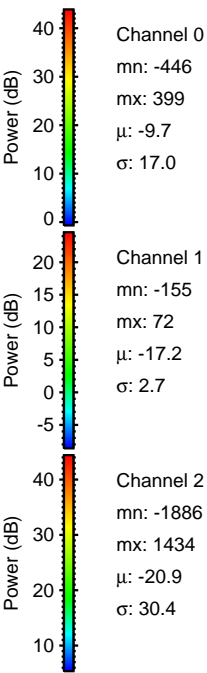
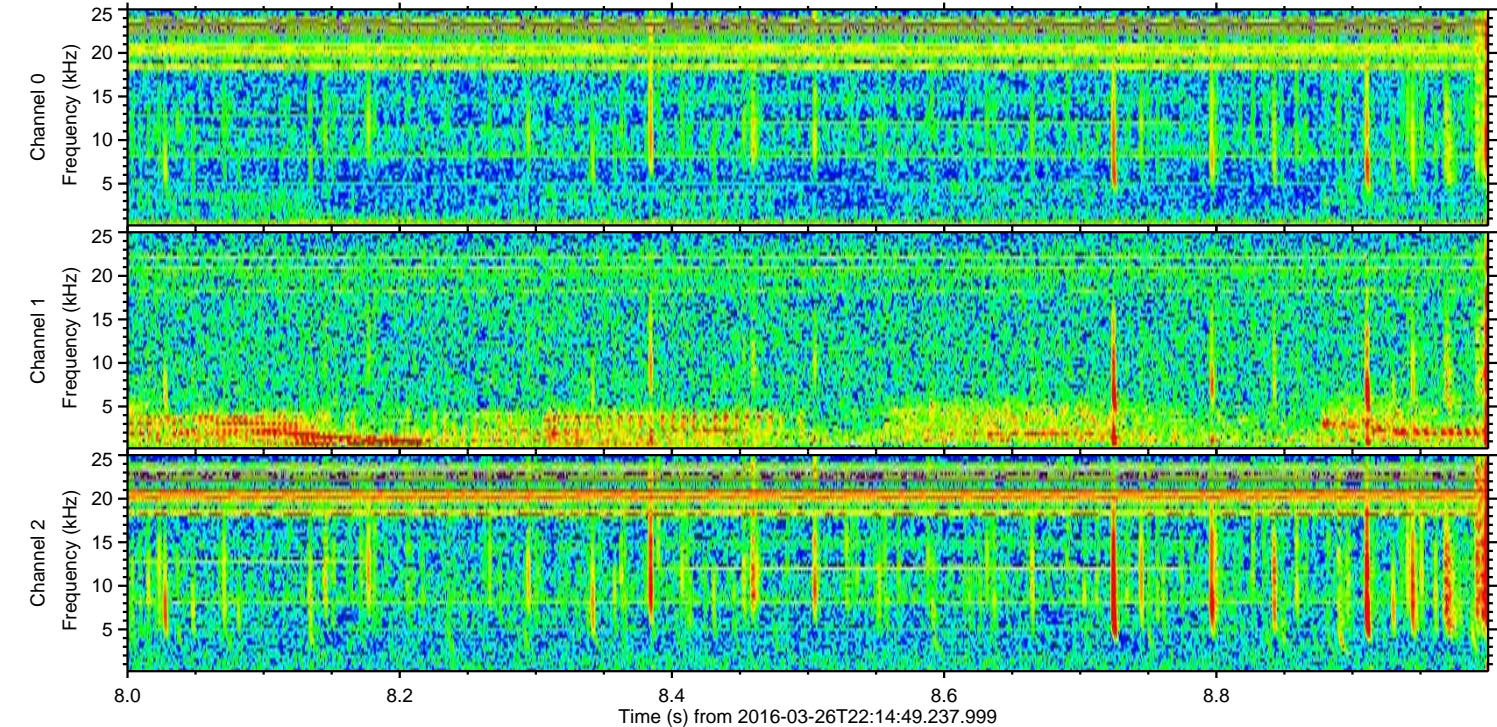
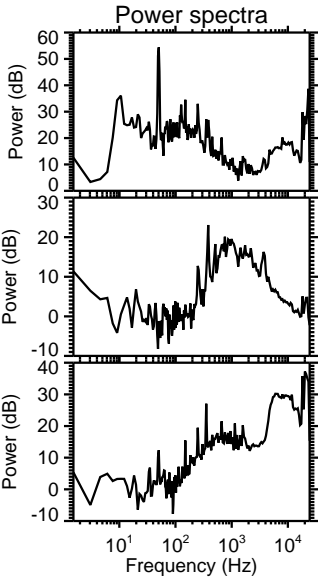
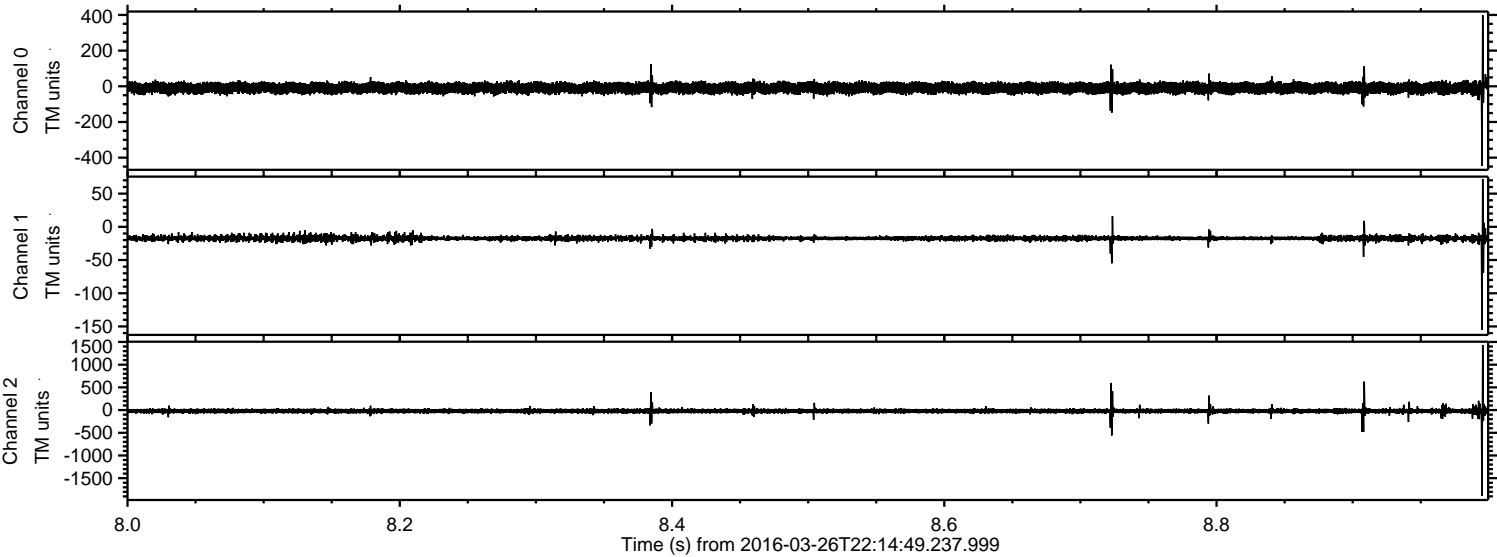


Channel 0
mn: -619
mx: 442
 μ : -9.7
 σ : 17.3

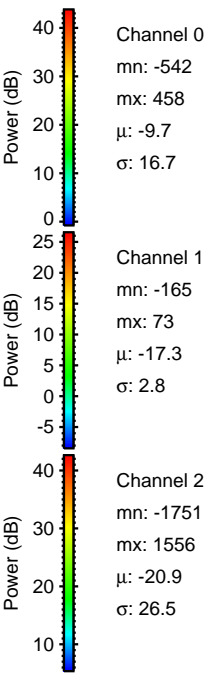
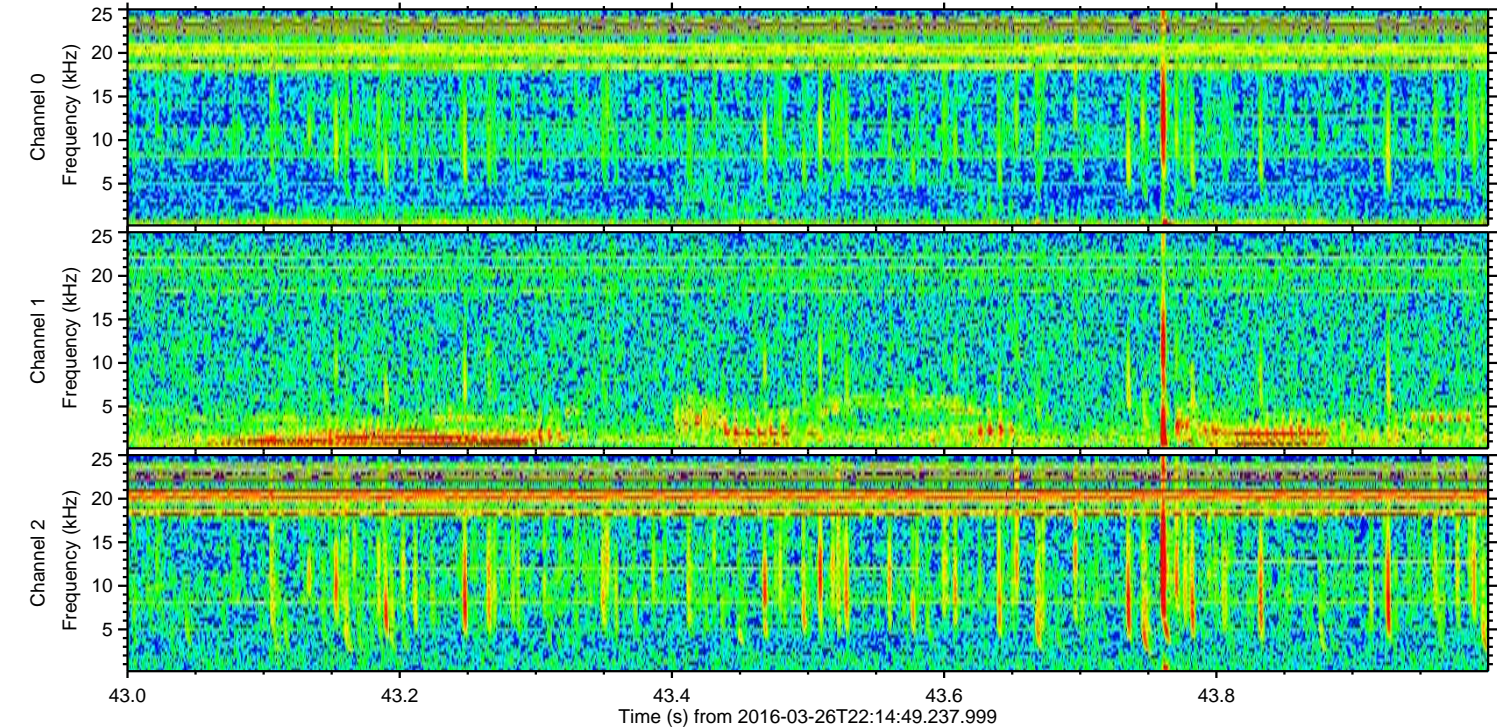
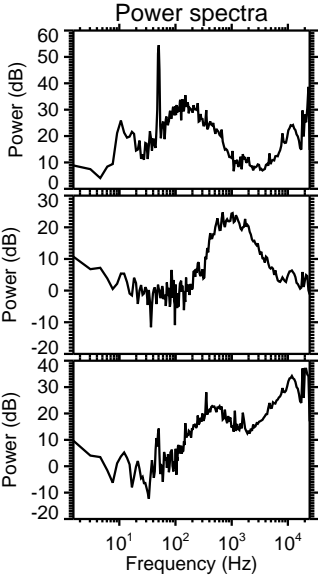
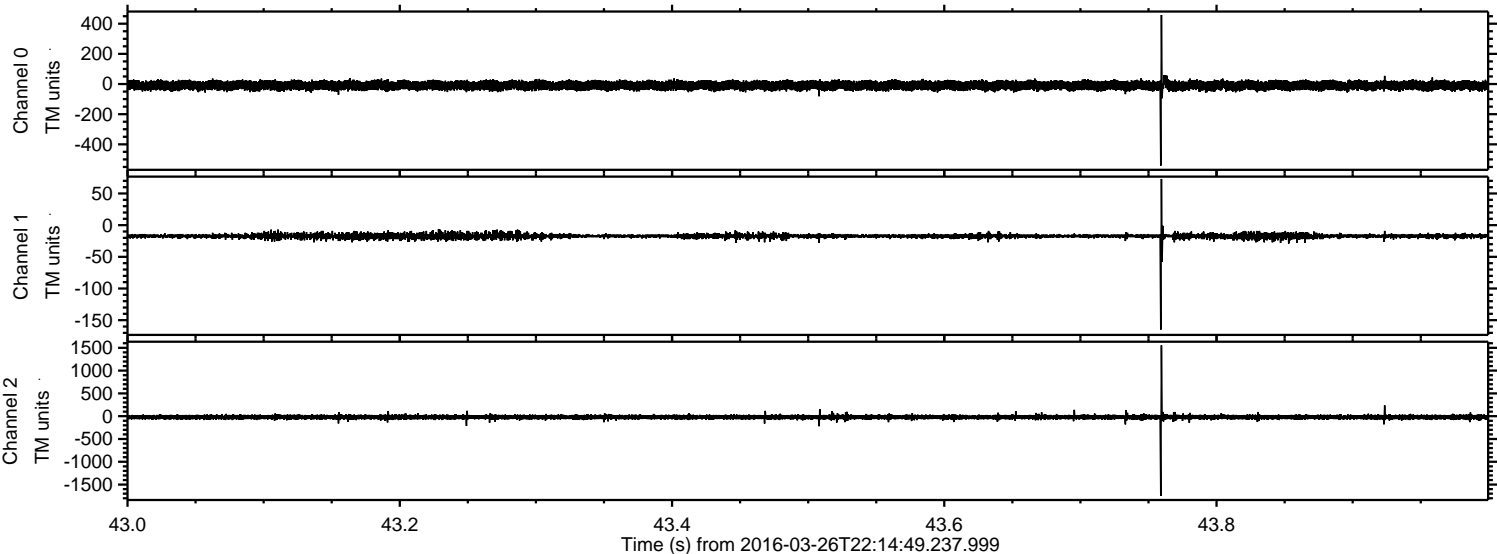
Channel 1
mn: -176
mx: 93
 μ : -17.3
 σ : 3.0

Channel 2
mn: -1918
mx: 1963
 μ : -20.9
 σ : 33.7

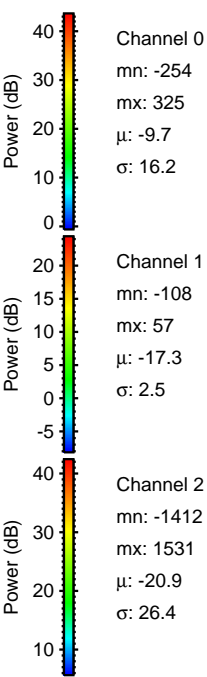
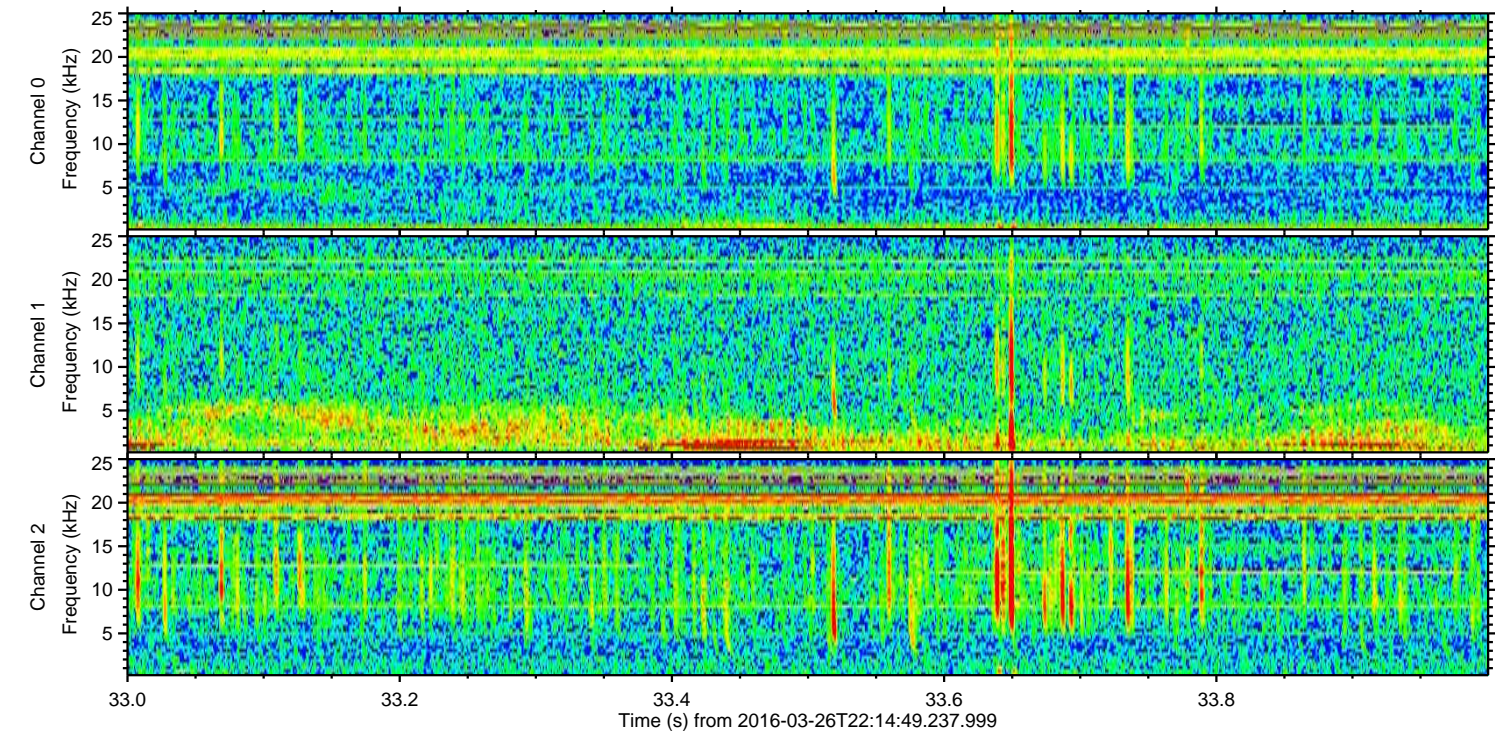
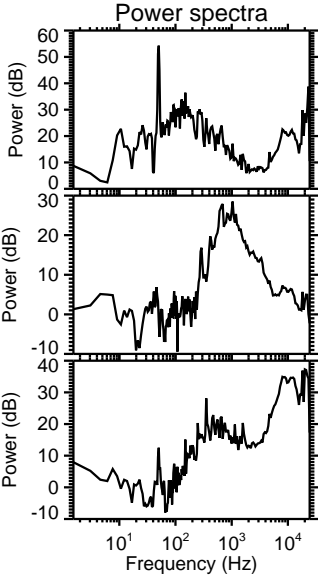
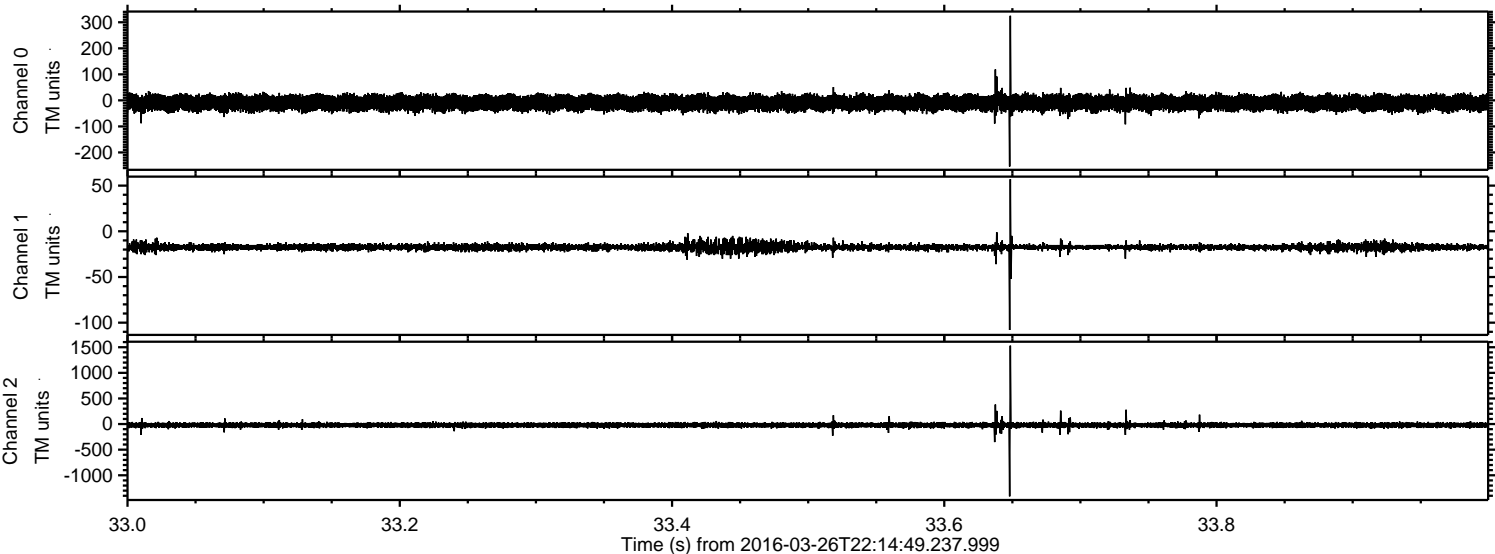
Processed Sat Apr 23 06:43:24 2016 by ELM ver.2012-10-06 from 001__elm20160326_221448__dat00.bin



Processed Sat Apr 23 06:43:25 2016 by ELM ver.2012-10-06 from 001__elm20160326_221448__dat00.bin



Processed Sat Apr 23 06:43:26 2016 by ELM ver.2012-10-06 from 001__elm20160326_221448__dat00.bin



Processed Sat Apr 23 06:43:27 2016 by ELM ver.2012-10-06 from 001__elm20160326_221448__dat00.bin

