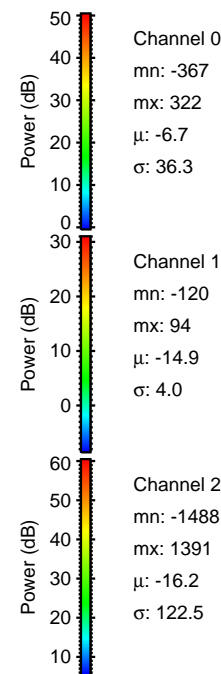
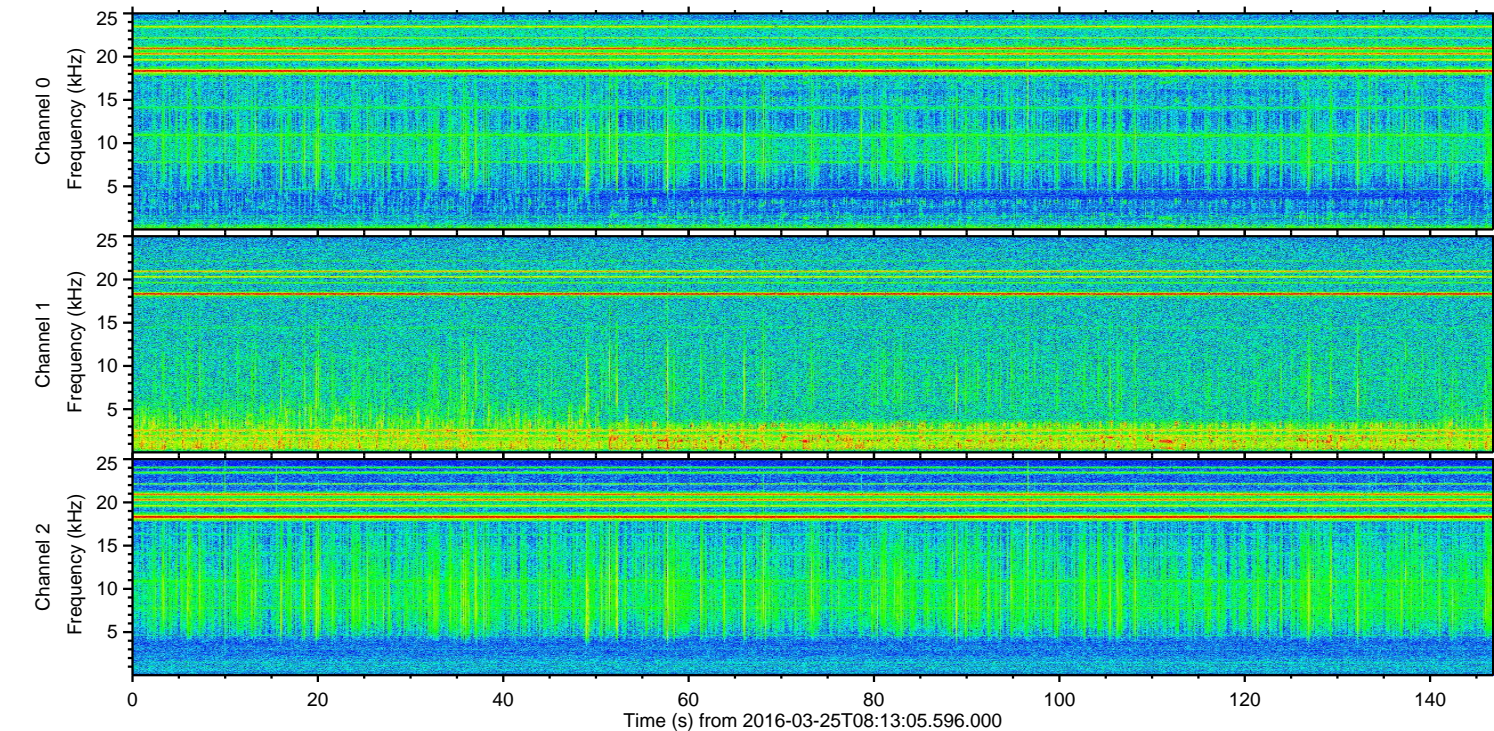
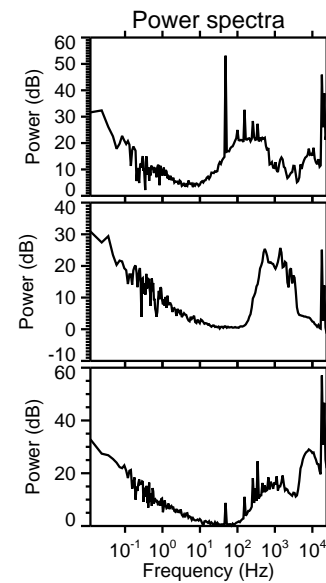
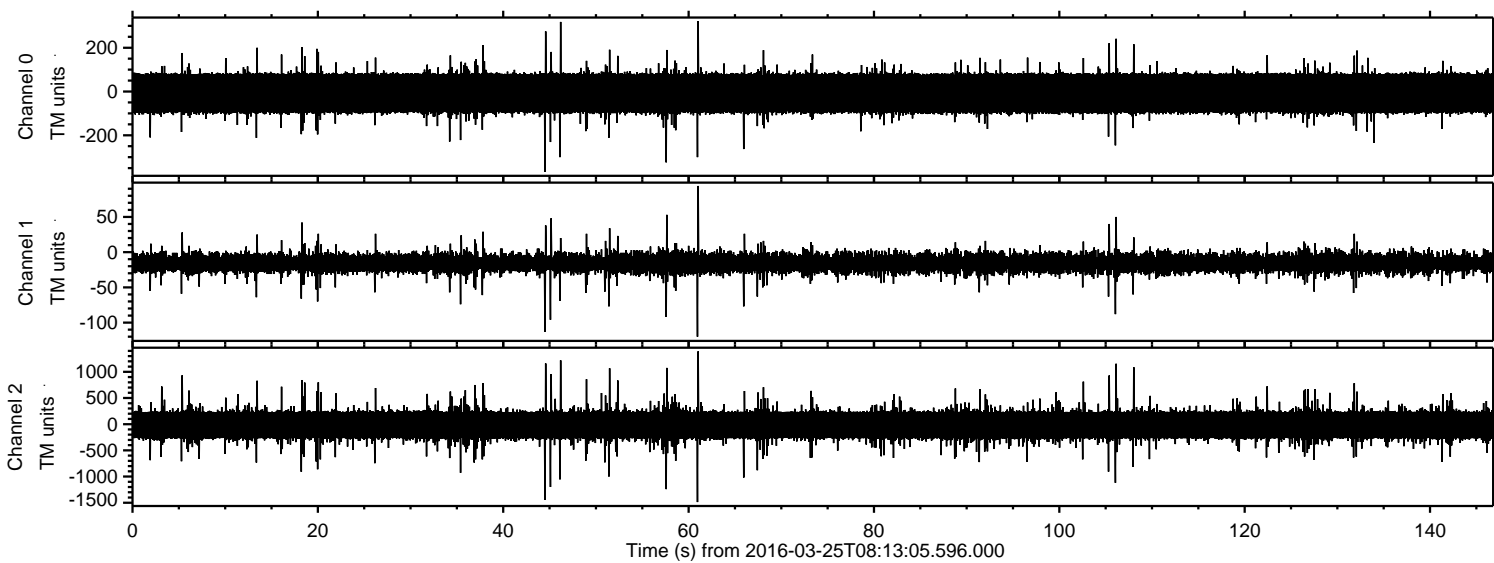
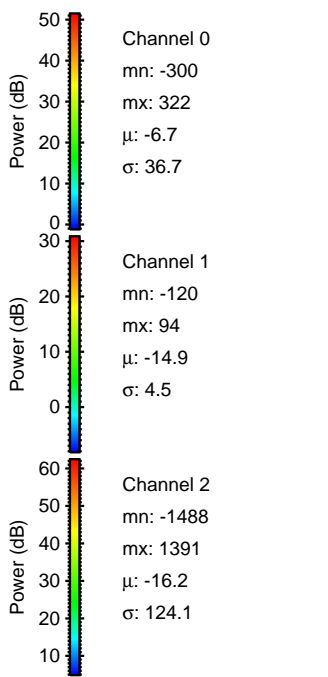
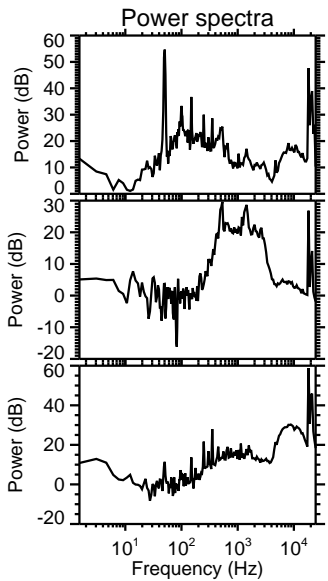
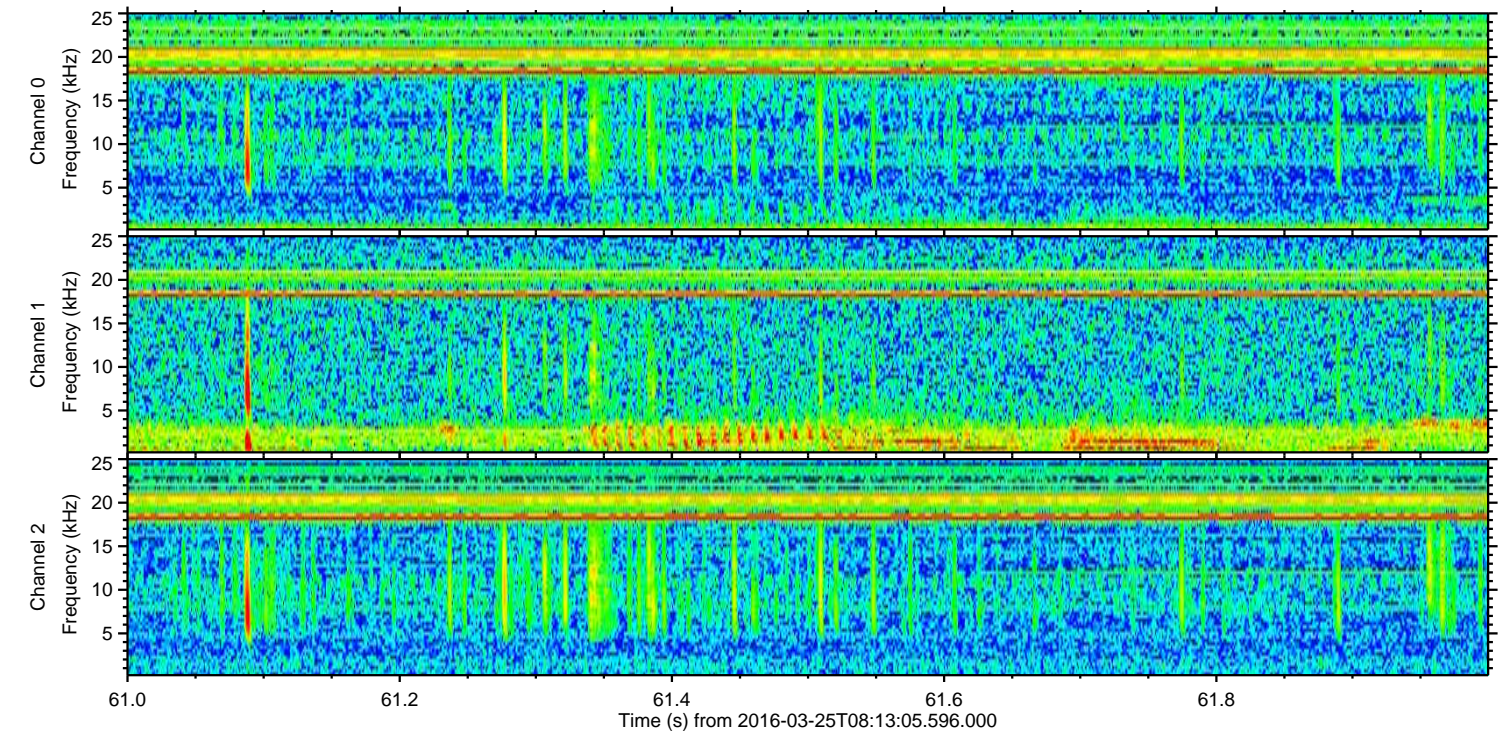
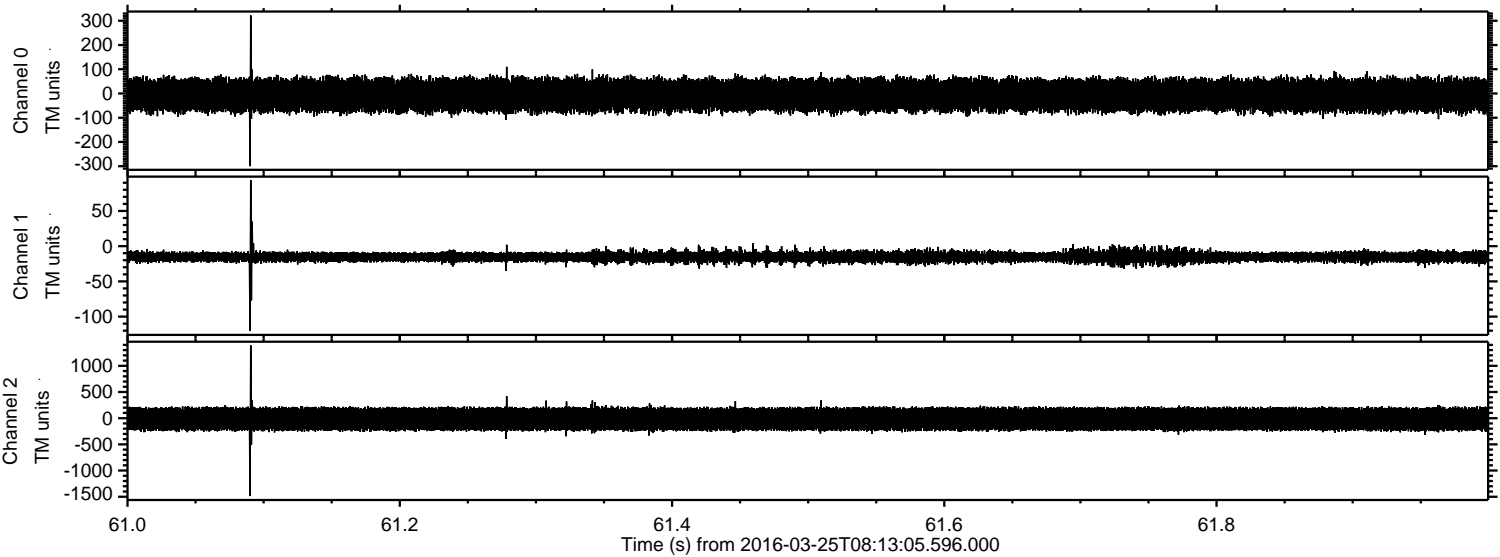


ELMAVAN 3D WAVEFORMS (Measured data sampled at 50 kHz) 51000 packets of 144 samples from 2016-03-25T08:13:05.596.000.

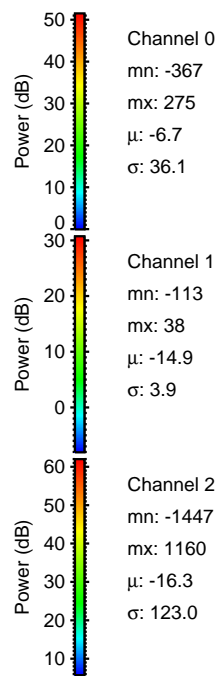
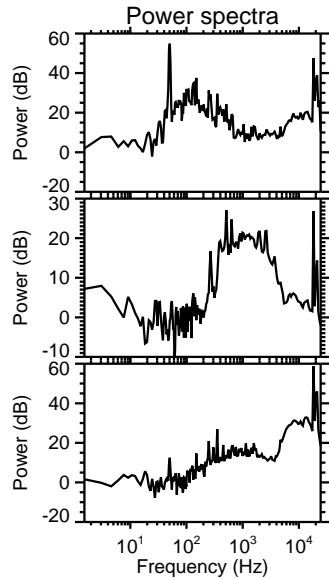
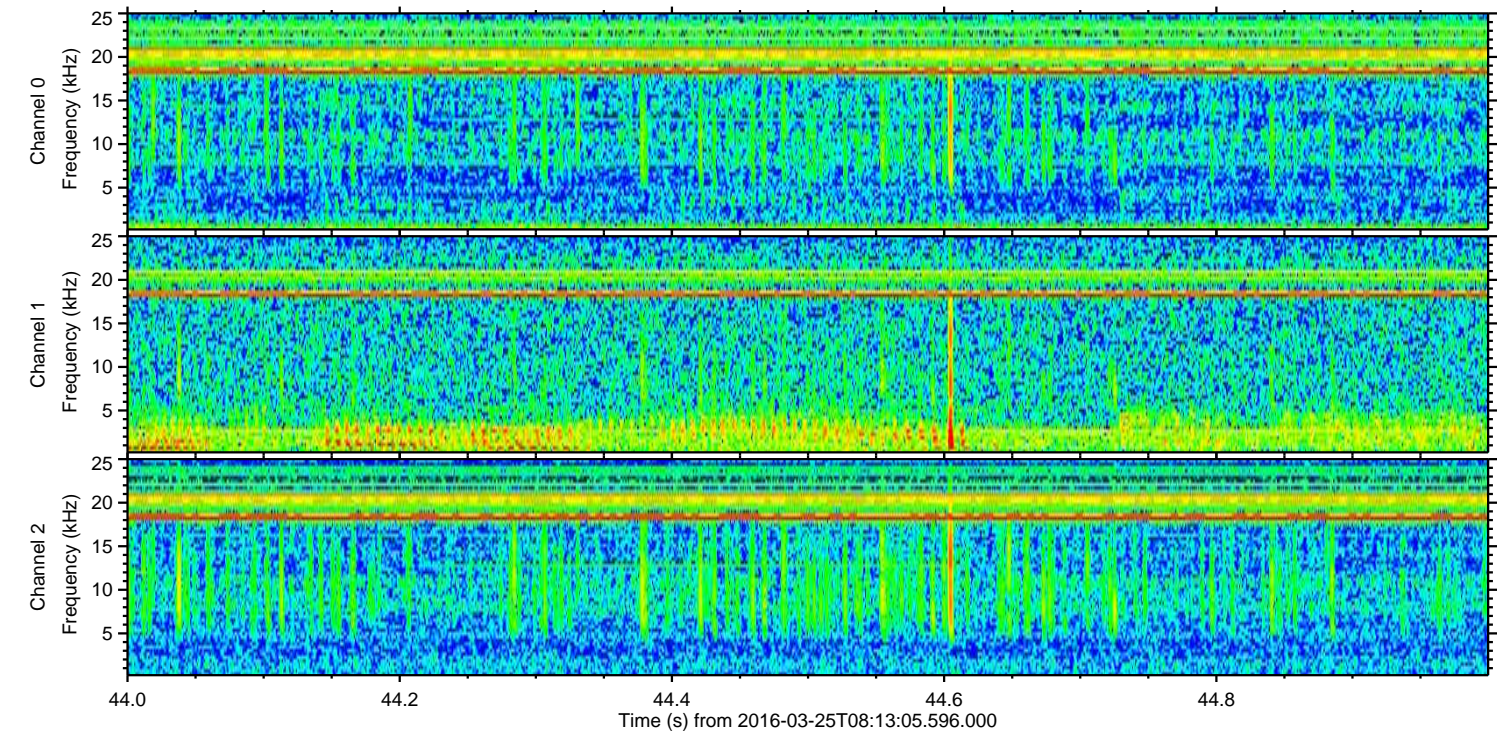
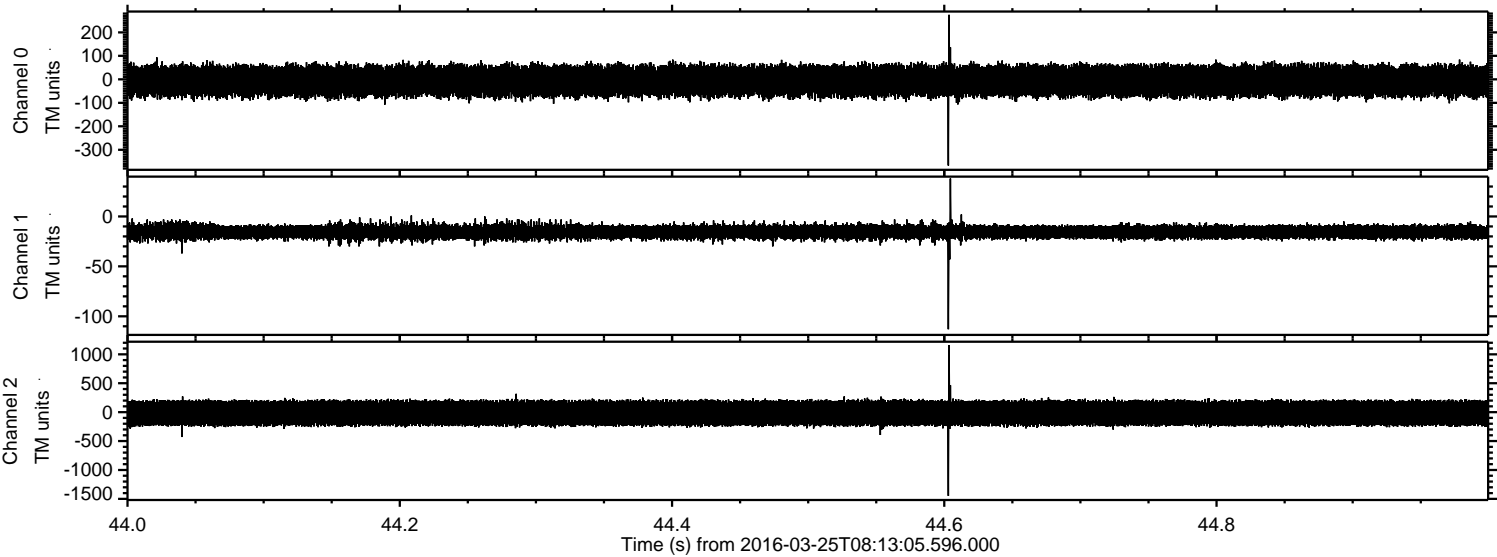
Processed Fri Apr 22 20:55:58 2016 by ELM ver.2012-10-06 from 001__elm20160325_081304__dat00.bin



Processed Fri Apr 22 20:56:13 2016 by ELM ver.2012-10-06 from 001__elm20160325_081304__dat00.bin



Processed Fri Apr 22 20:56:14 2016 by ELM ver.2012-10-06 from 001__elm20160325_081304__dat00.bin



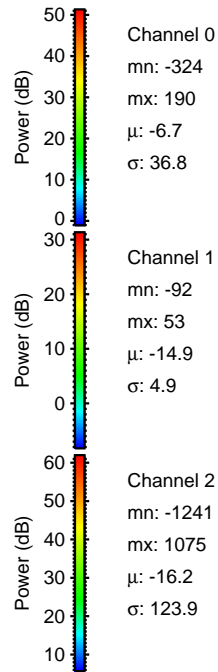
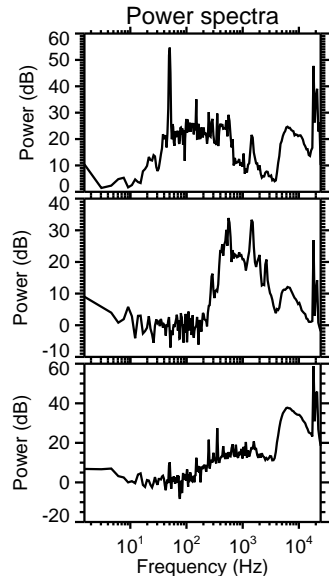
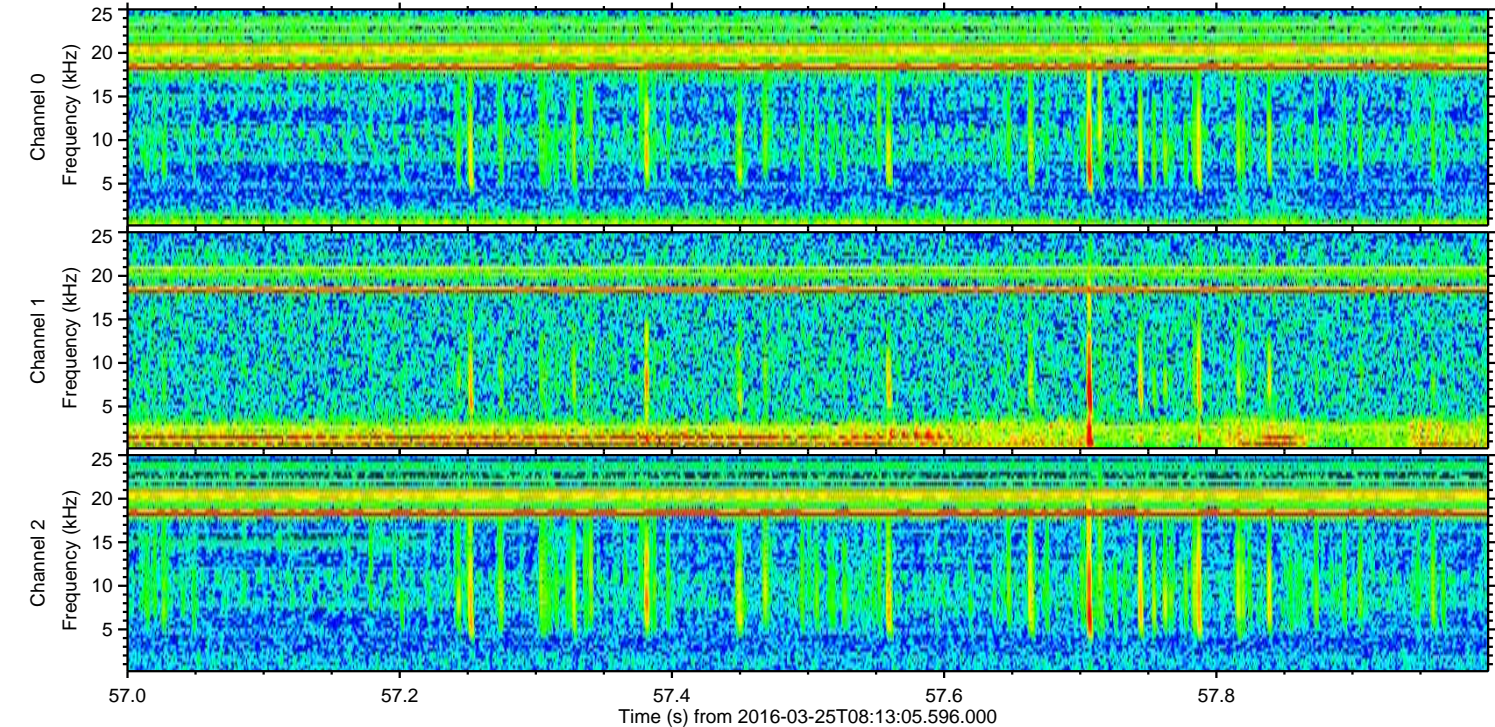
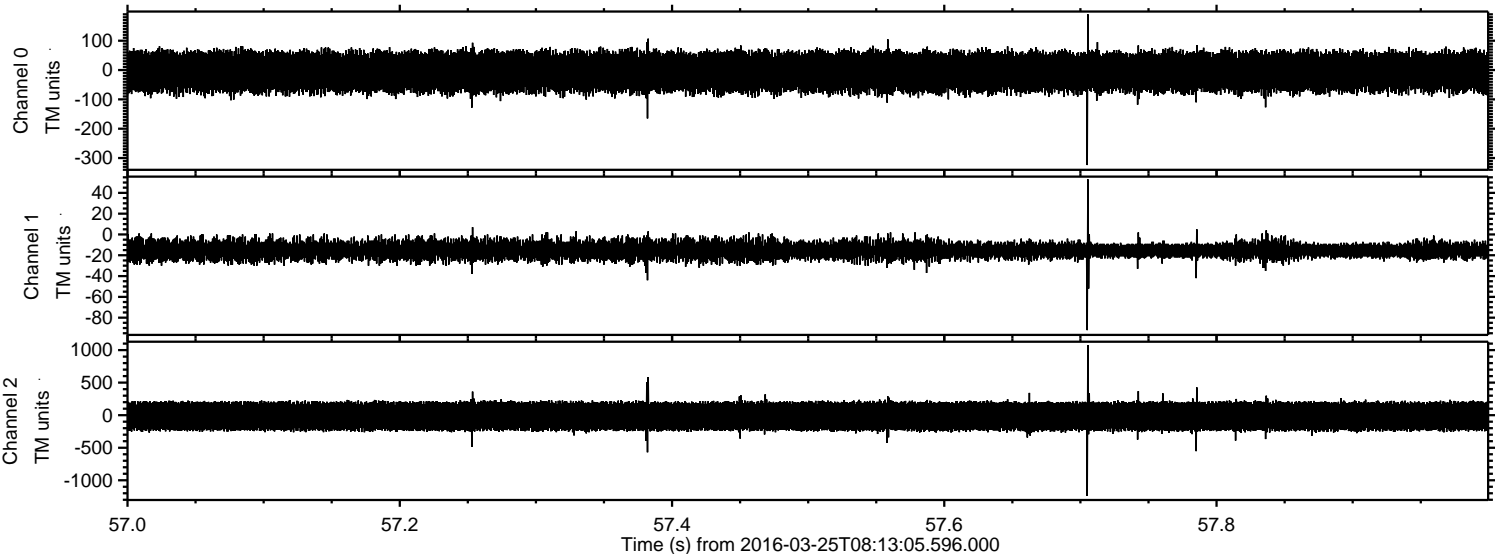
Power spectra

Channel 0
mn: -367
mx: 275
 μ : -6.7
 σ : 36.1

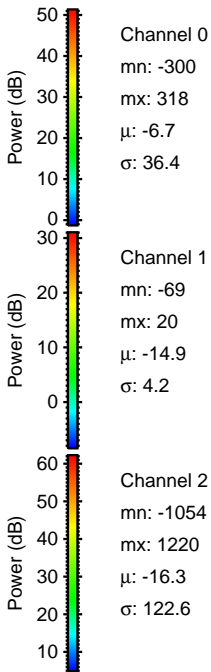
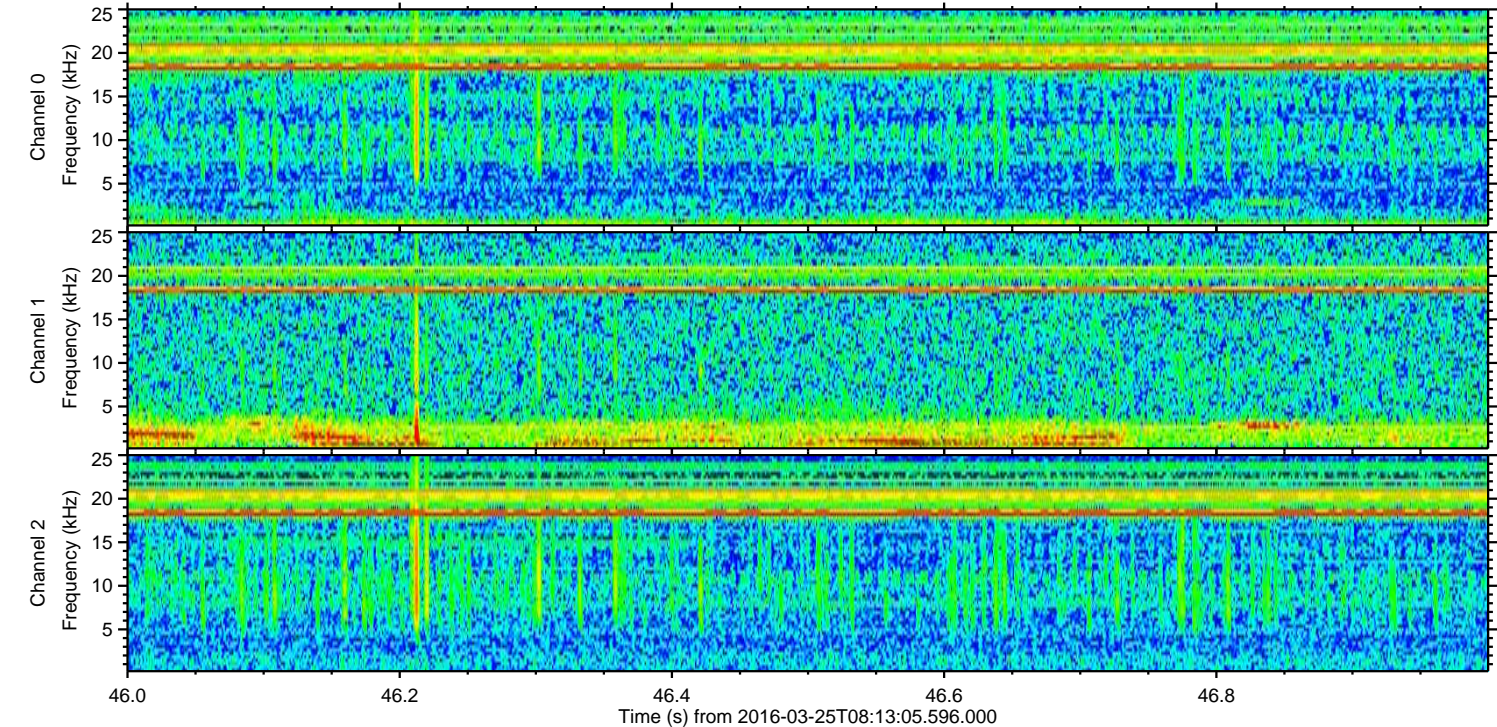
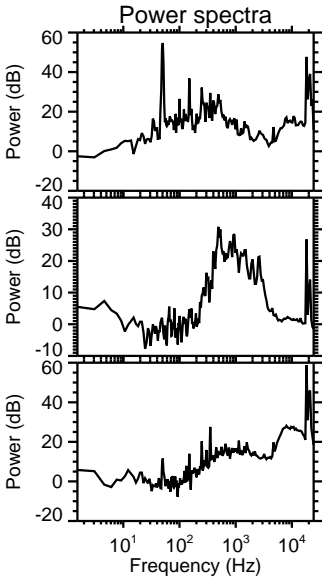
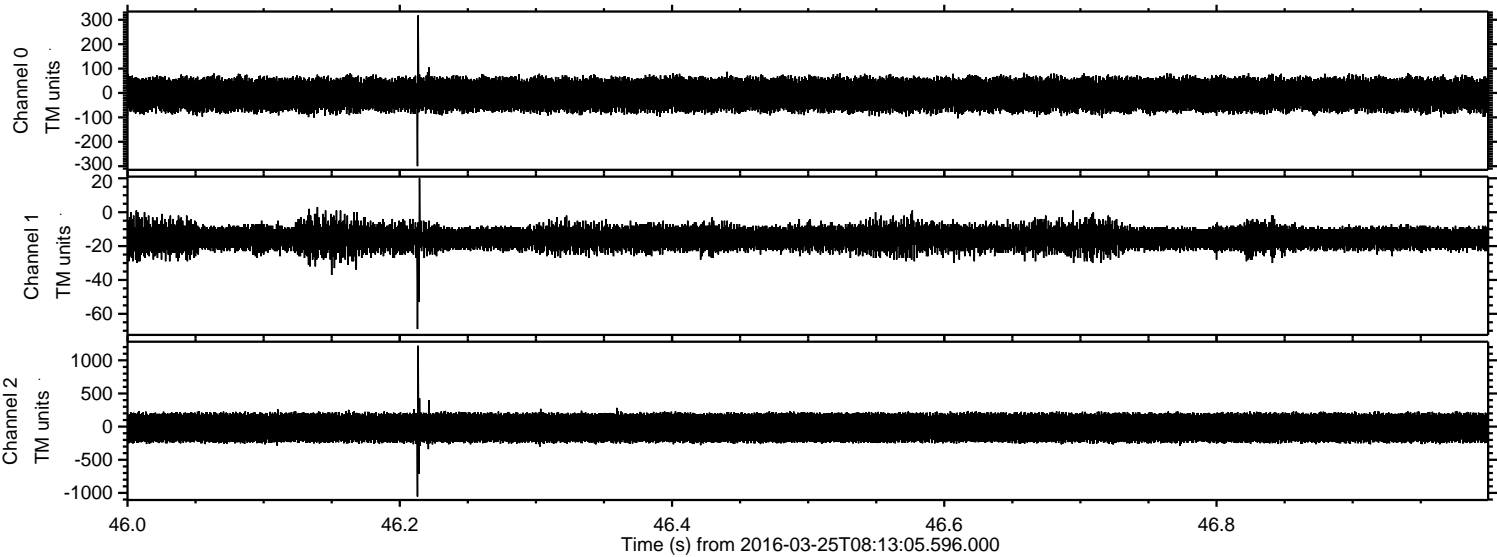
Channel 1
mn: -113
mx: 38
 μ : -14.9
 σ : 3.9

Channel 2
mn: -1447
mx: 1160
 μ : -16.3
 σ : 123.0

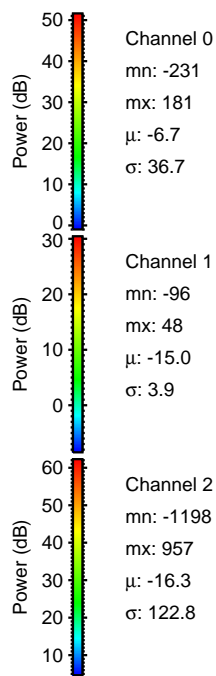
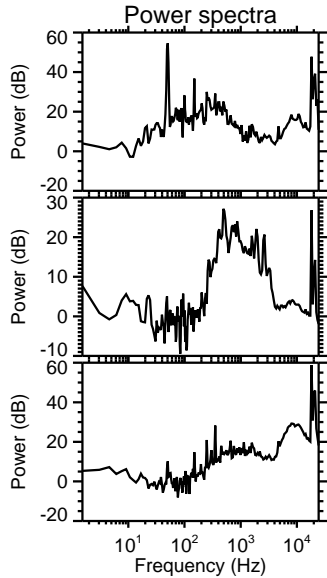
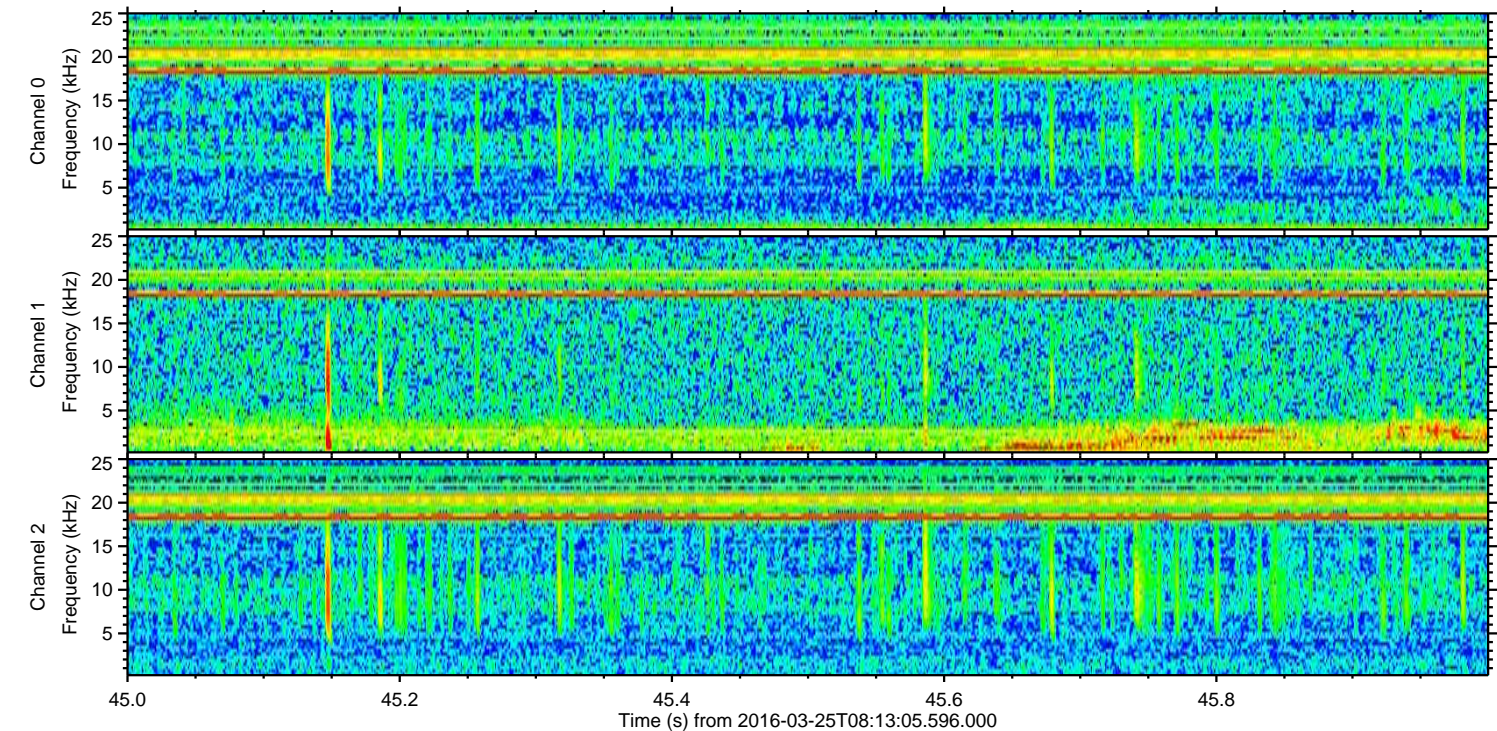
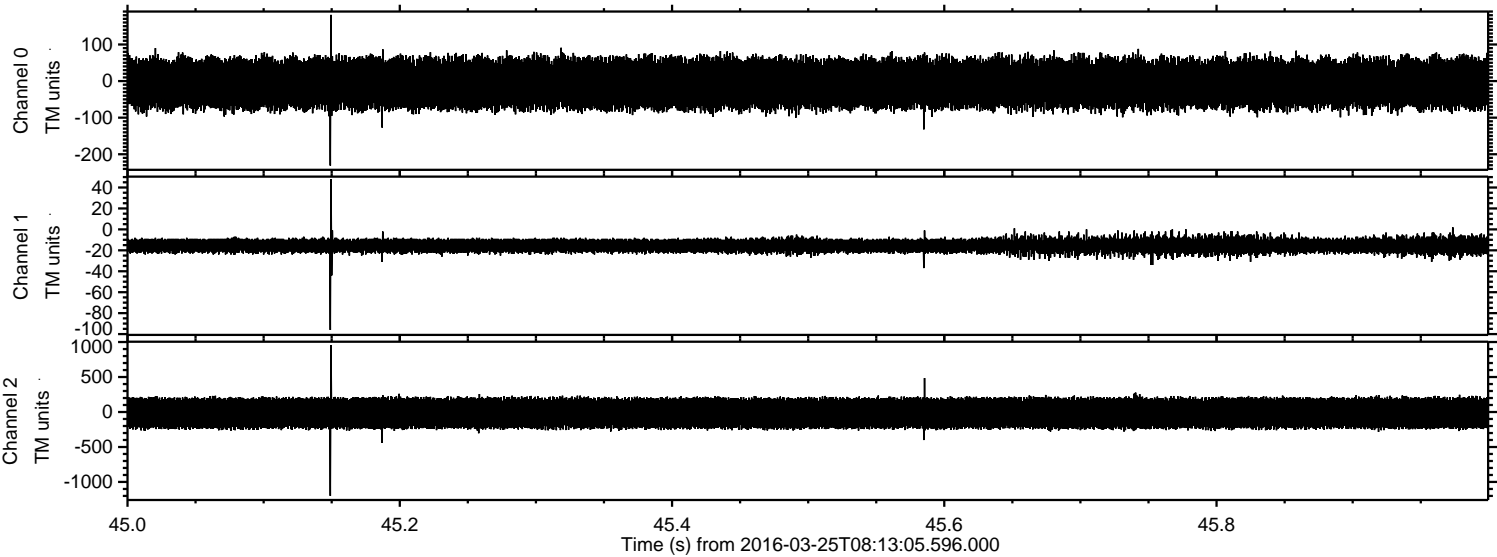
Processed Fri Apr 22 20:56:15 2016 by ELM ver.2012-10-06 from 001__elm20160325_081304__dat00.bin



Processed Fri Apr 22 20:56:17 2016 by ELM ver.2012-10-06 from 001__elm20160325_081304__dat00.bin

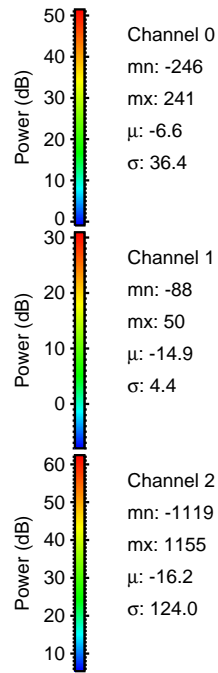
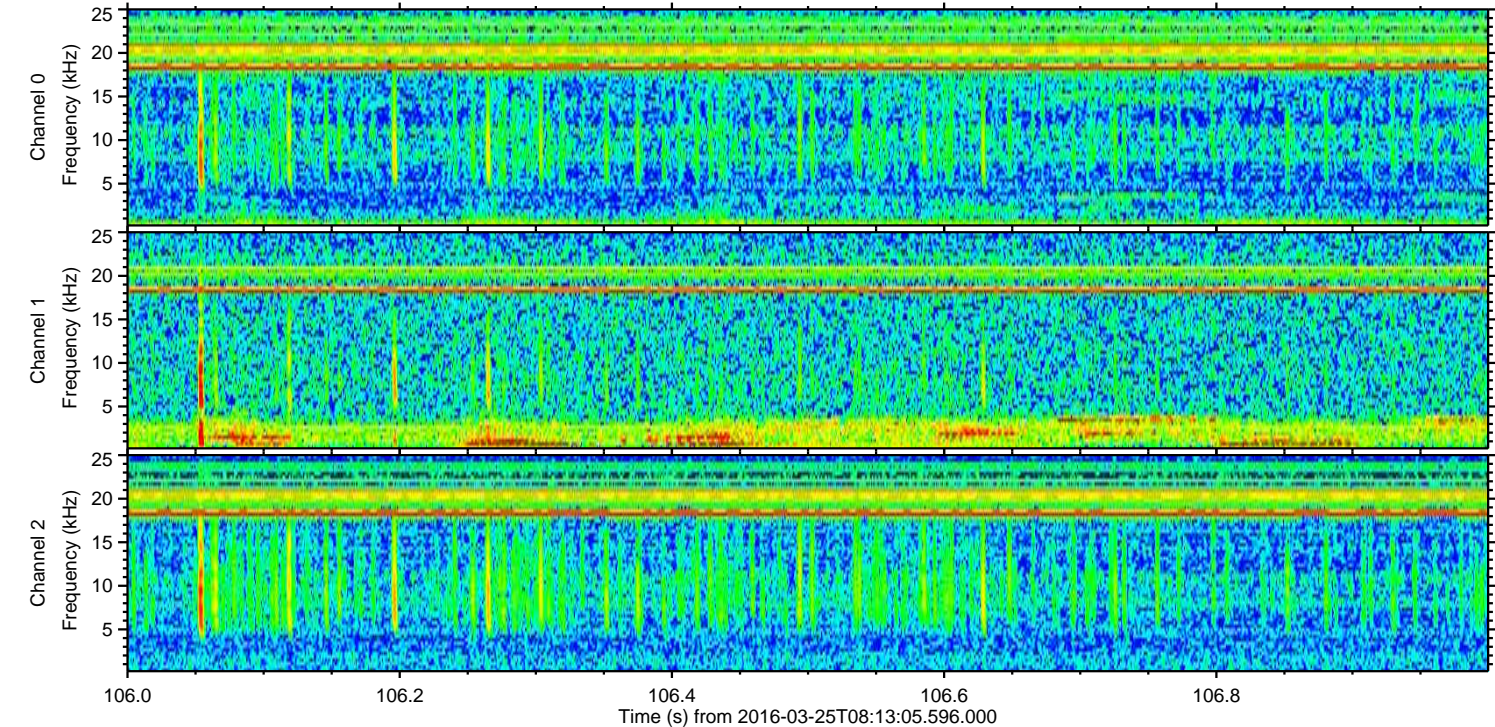
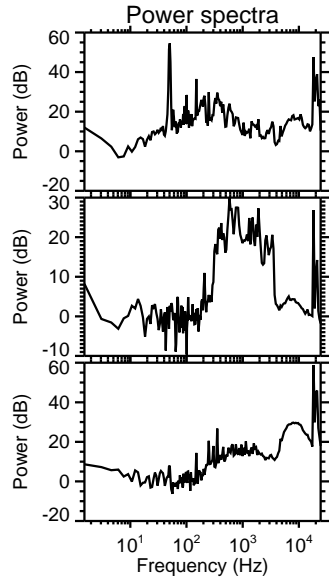
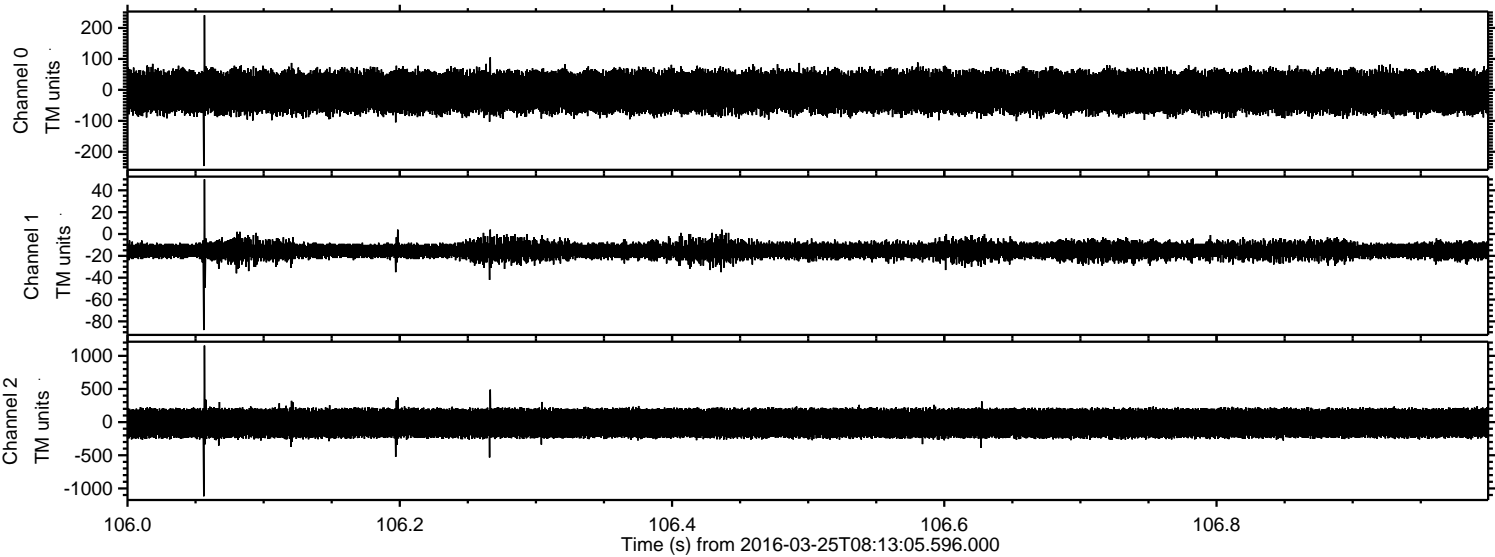


Processed Fri Apr 22 20:56:18 2016 by ELM ver.2012-10-06 from 001__elm20160325_081304__dat00.bin



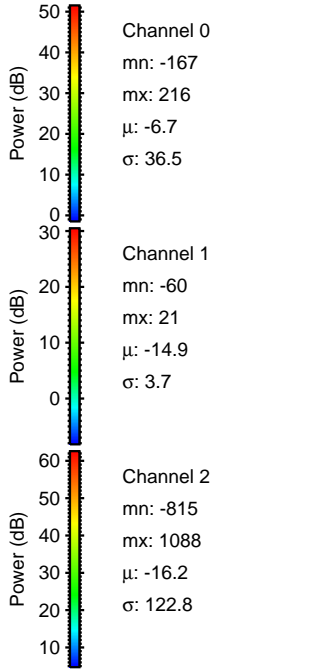
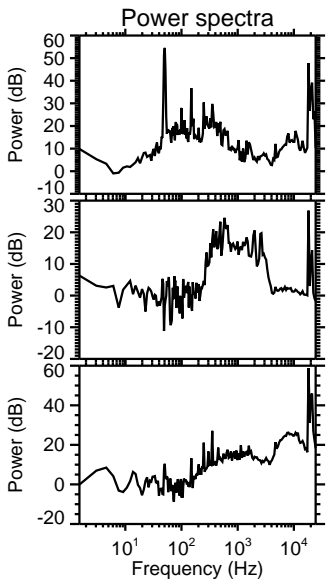
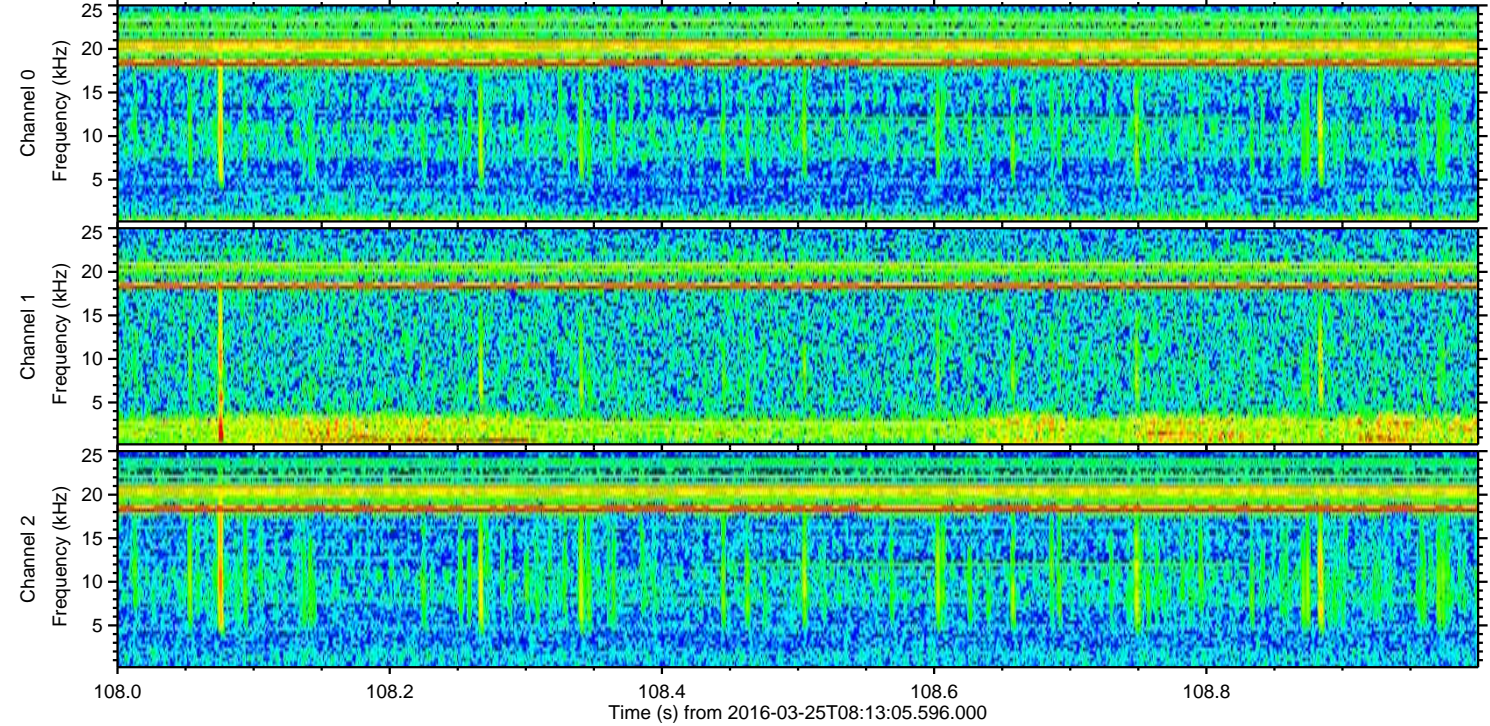
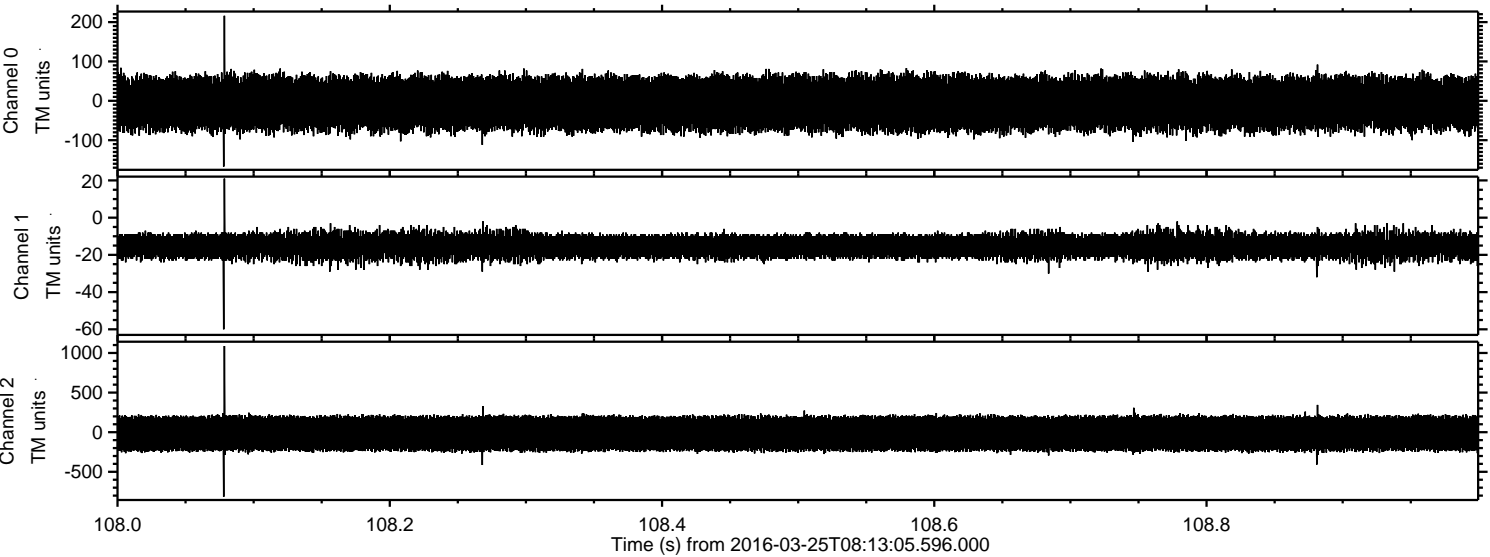
ELMAVAN 3D WAVEFORMS (Measured data sampled at 50 kHz) 51000 packets of 144 samples from 2016-03-25T08:13:05.596.000. Part 107/147

Processed Fri Apr 22 20:56:19 2016 by ELM ver.2012-10-06 from 001__elm20160325_081304__dat00.bin

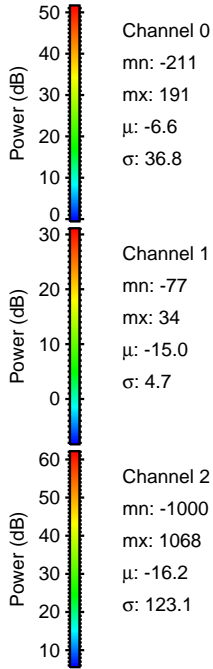
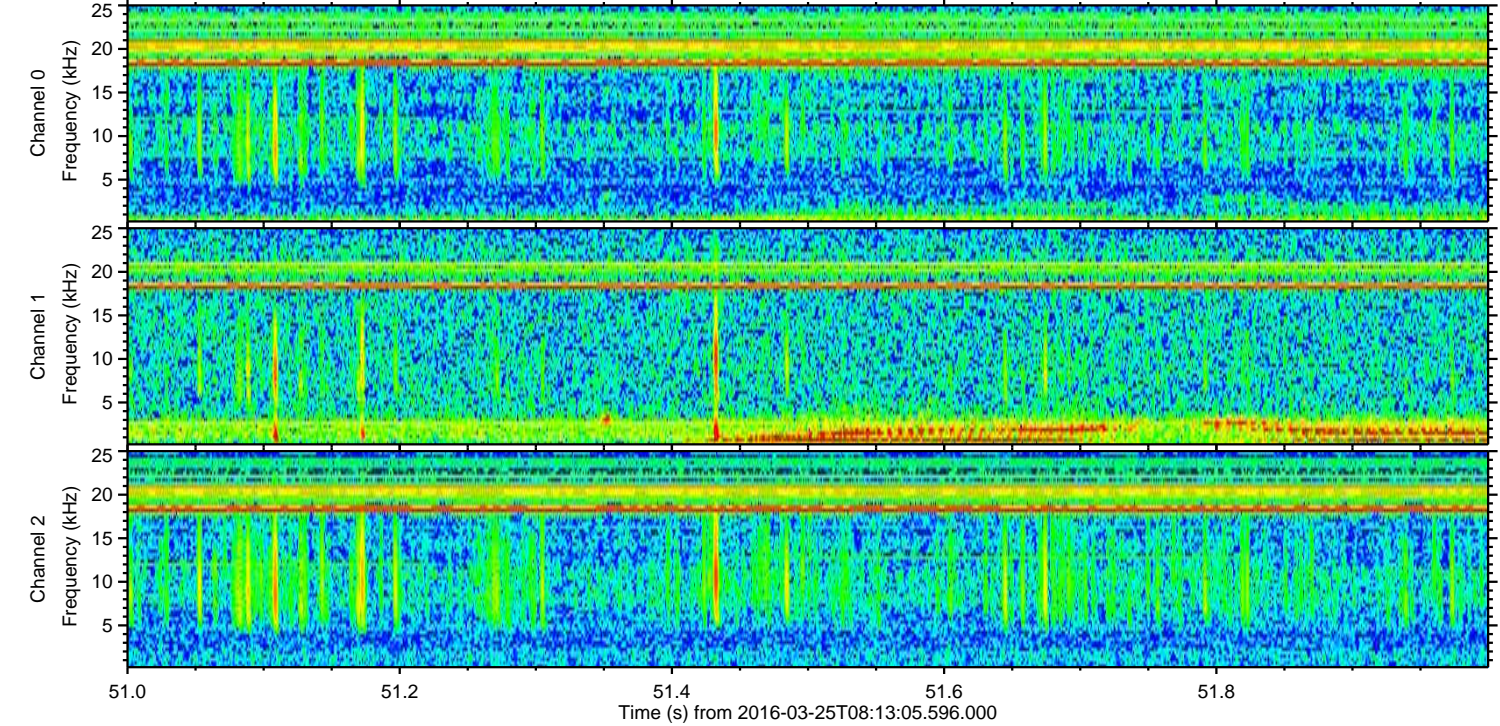
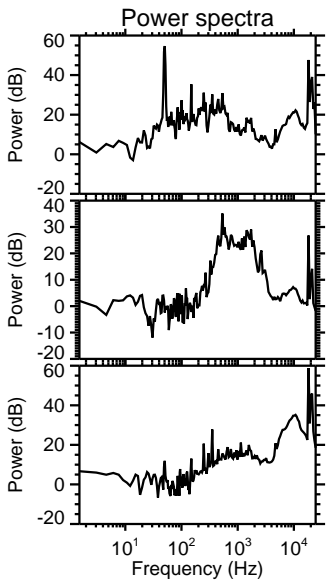
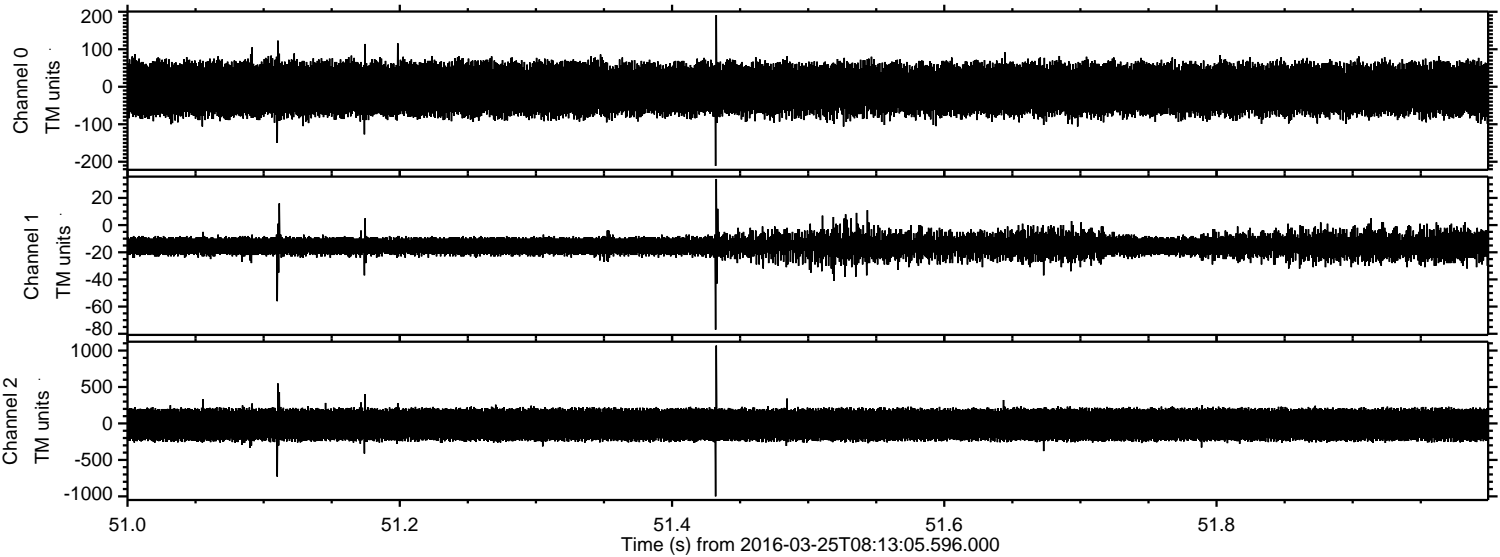


ELMAVAN 3D WAVEFORMS (Measured data sampled at 50 kHz) 51000 packets of 144 samples from 2016-03-25T08:13:05.596.000. Part 109/147

Processed Fri Apr 22 20:56:20 2016 by ELM ver.2012-10-06 from 001__elm20160325_081304__dat00.bin



Processed Fri Apr 22 20:56:21 2016 by ELM ver.2012-10-06 from 001__elm20160325_081304__dat00.bin



Channel 0
mn: -211
mx: 191
 μ : -6.6
 σ : 36.8

Channel 1
mn: -77
mx: 34
 μ : -15.0
 σ : 4.7

Channel 2
mn: -1000
mx: 1068
 μ : -16.2
 σ : 123.1

Processed Fri Apr 22 20:56:22 2016 by ELM ver.2012-10-06 from 001__elm20160325_081304__dat00.bin

