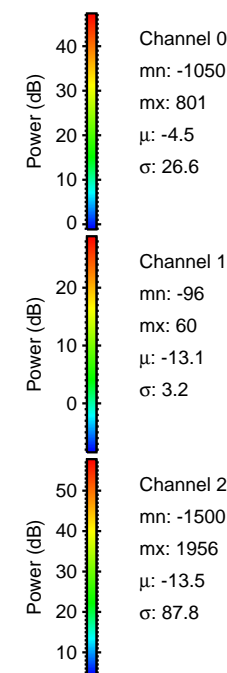
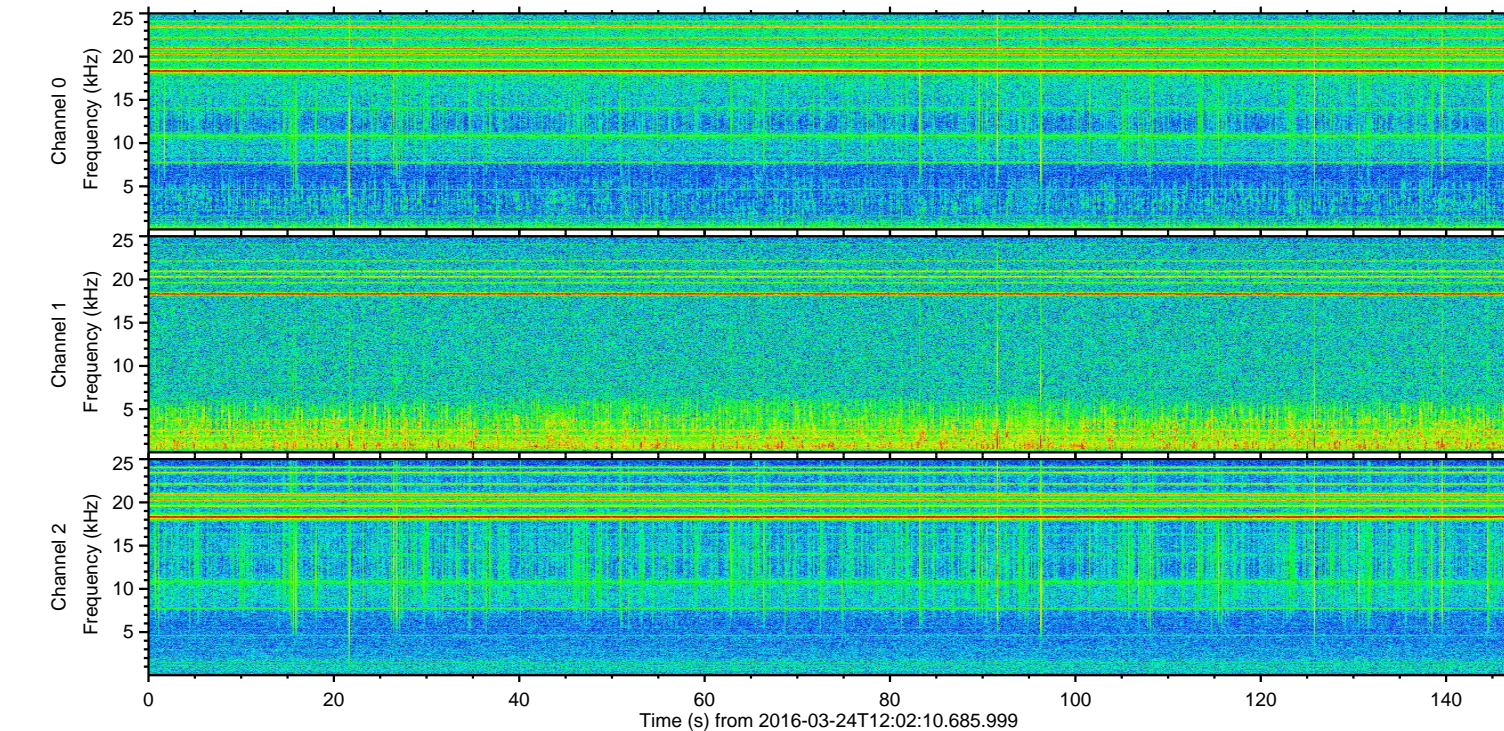
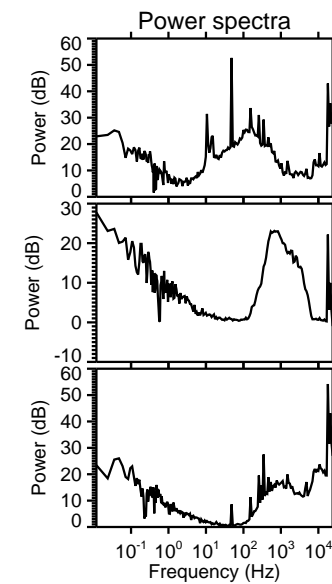
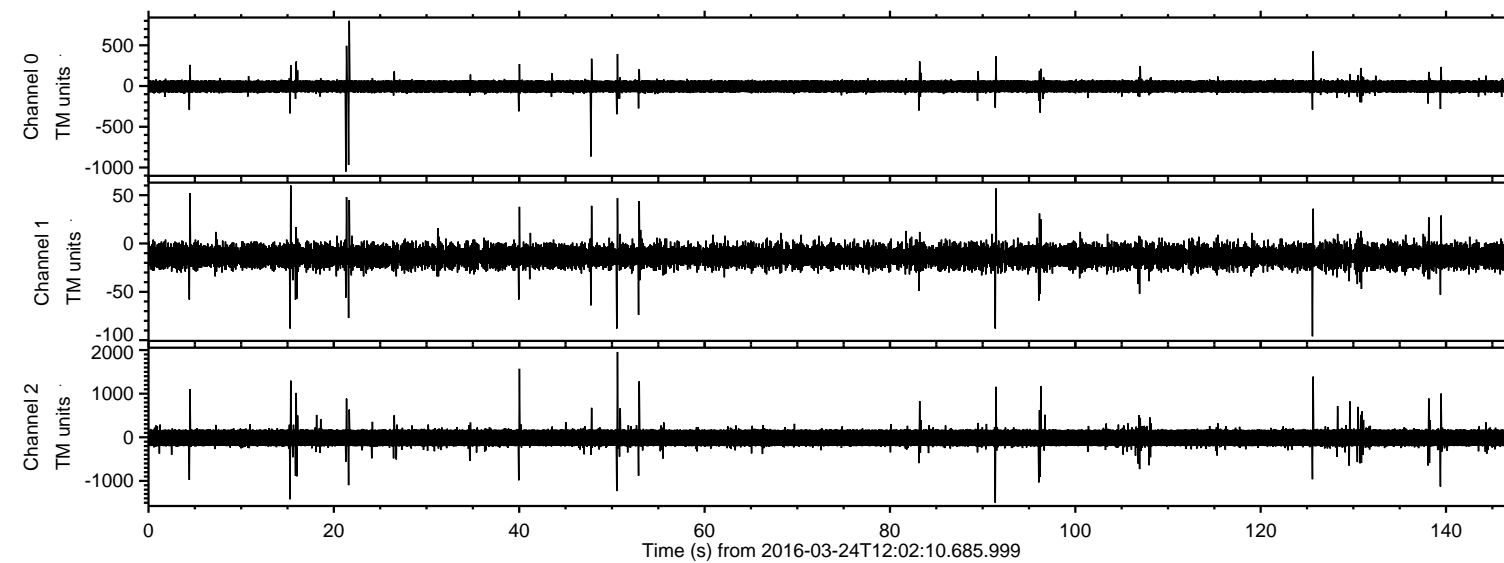
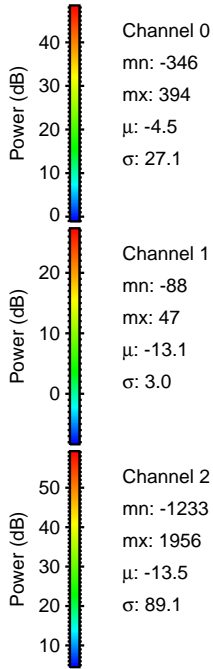
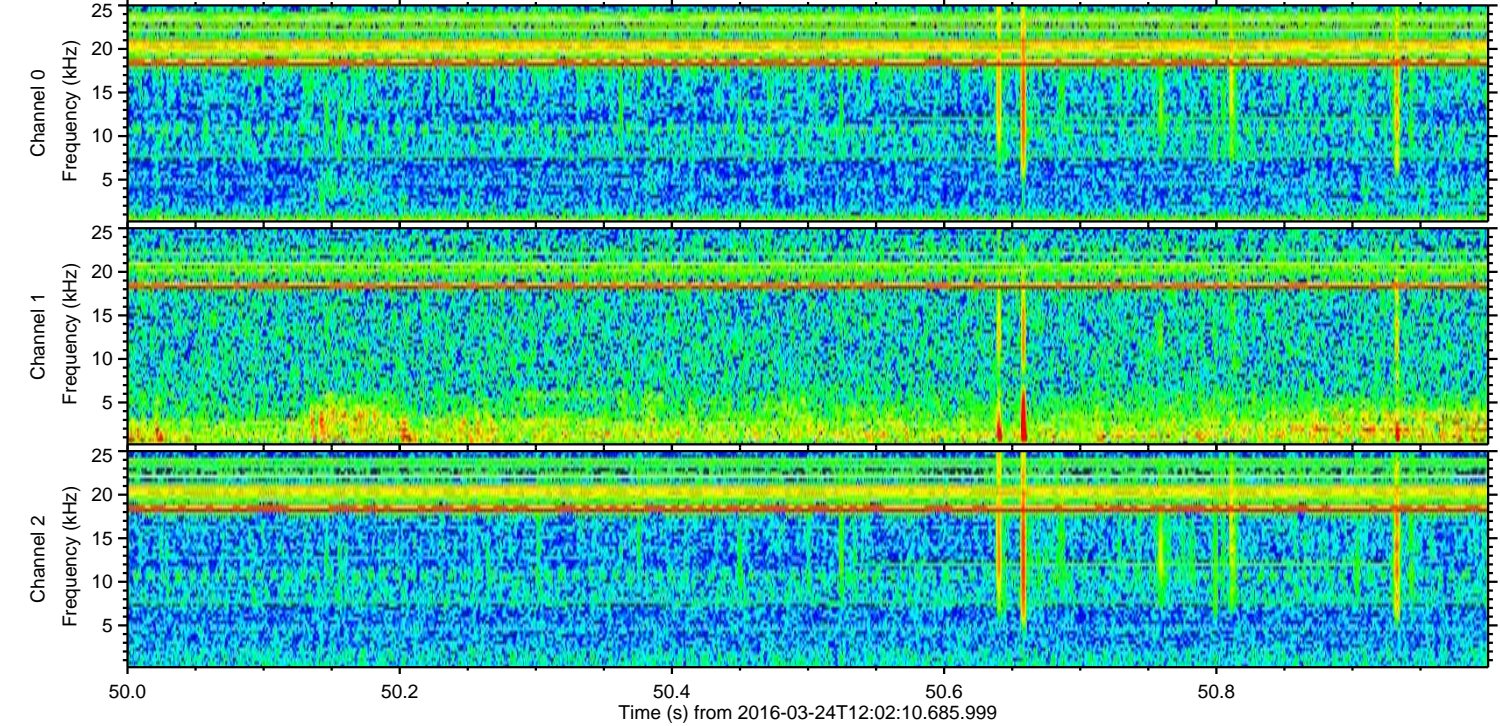
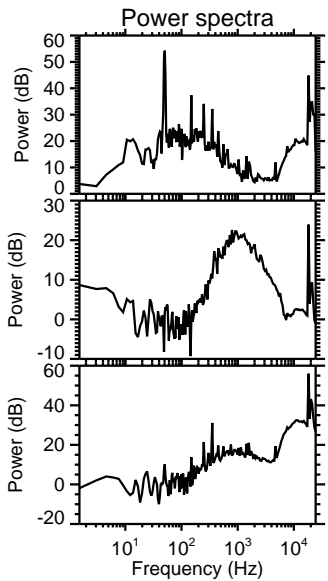
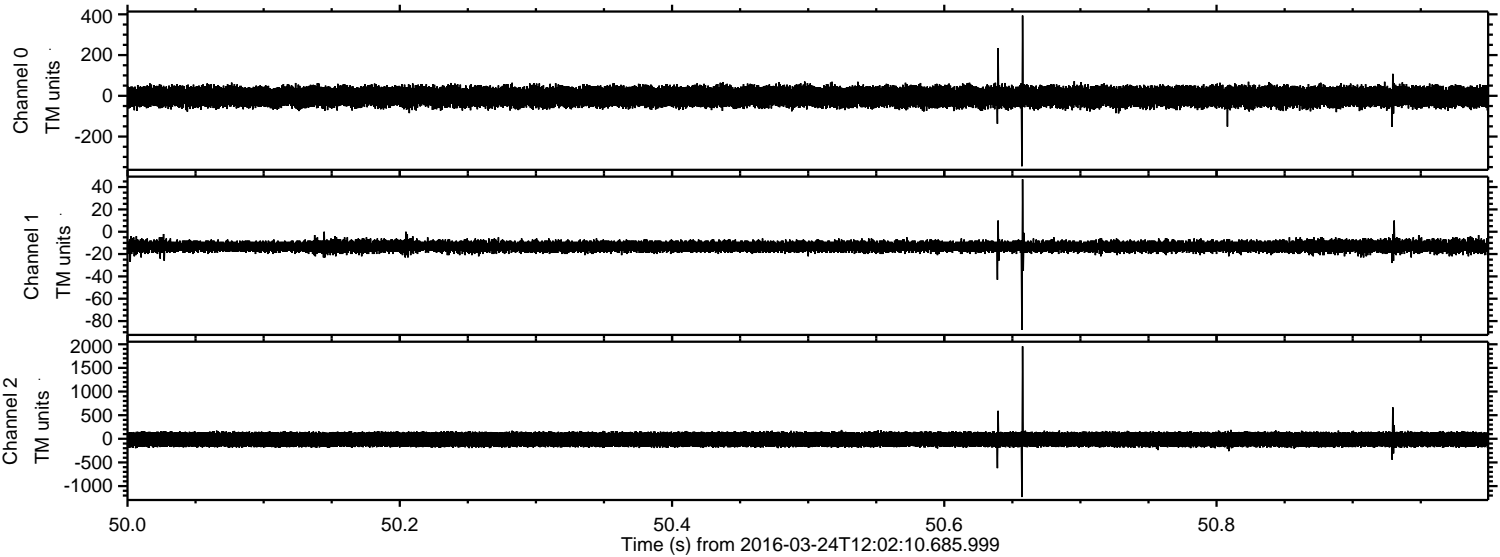


ELMAVAN 3D WAVEFORMS (Measured data sampled at 50 kHz) 51000 packets of 144 samples from 2016-03-24T12:02:10.685.999.

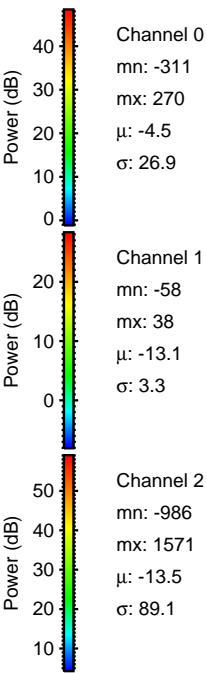
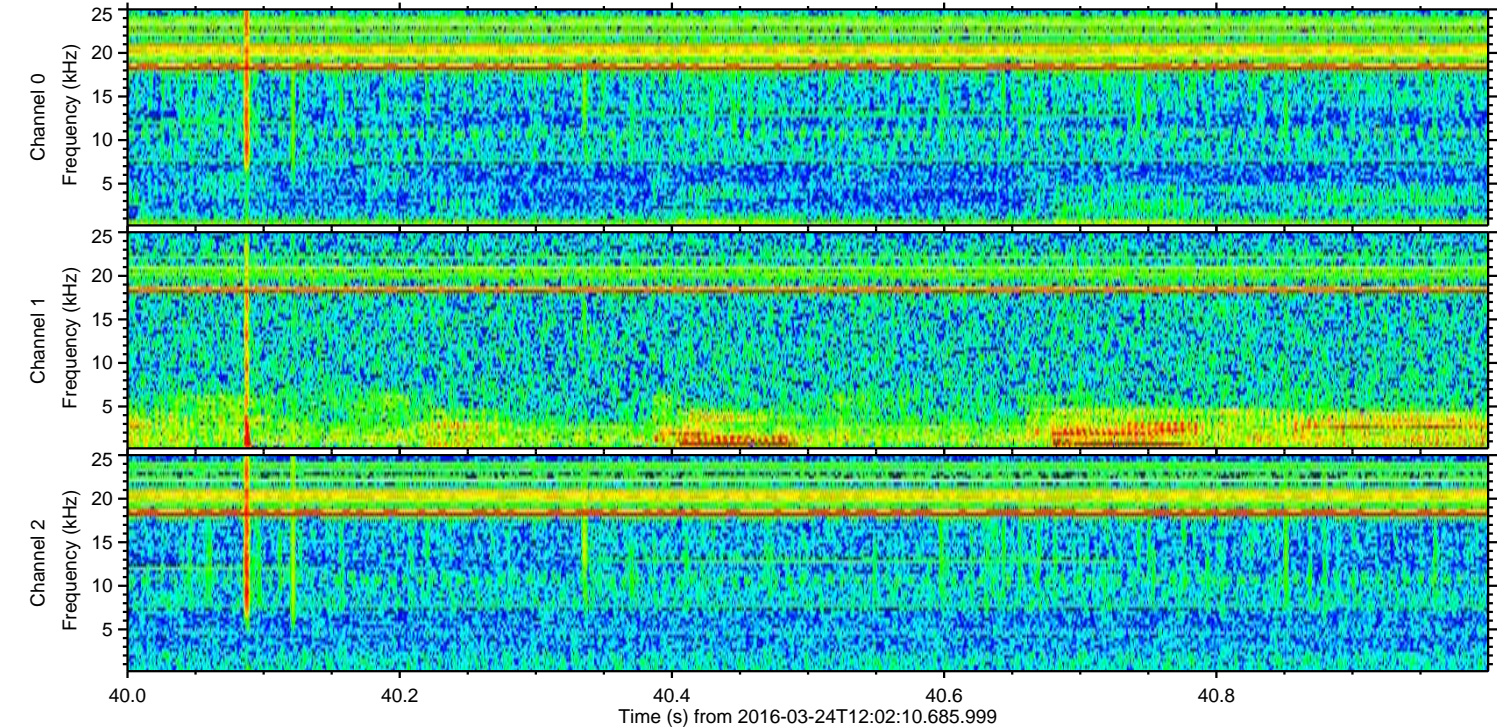
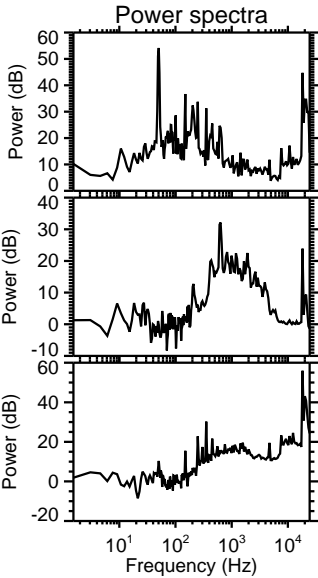
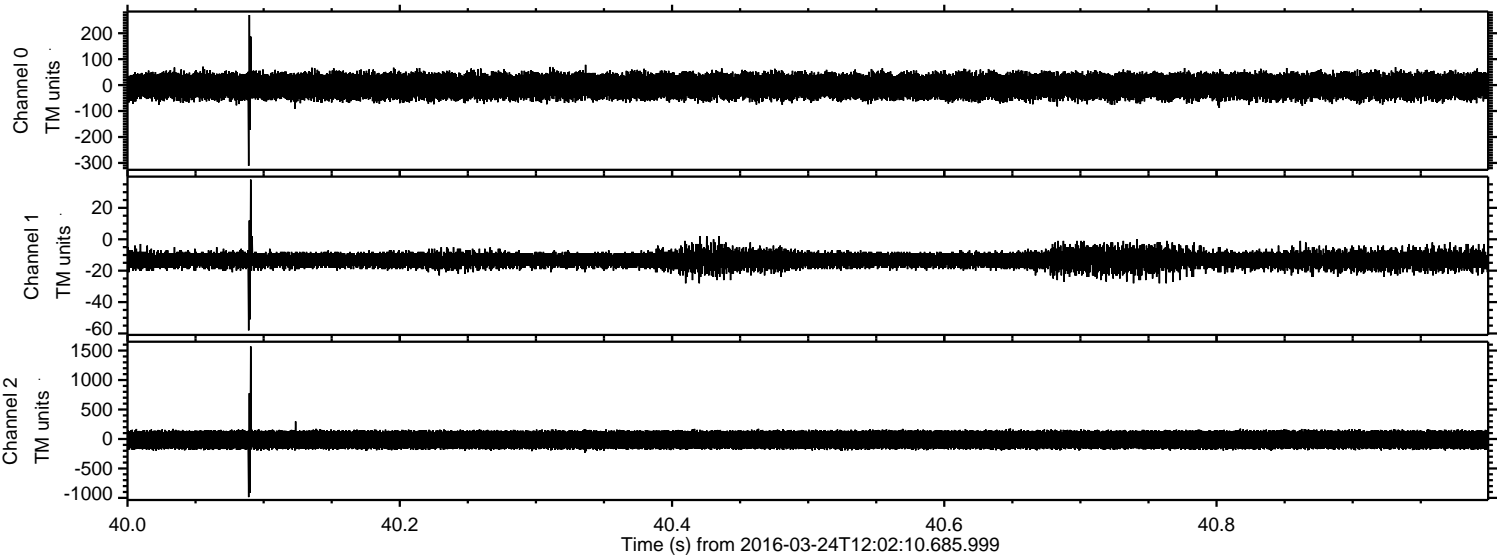
Processed Fri Apr 22 15:43:12 2016 by ELM ver.2012-10-06 from 001__elm20160324_120209__dat00.bin



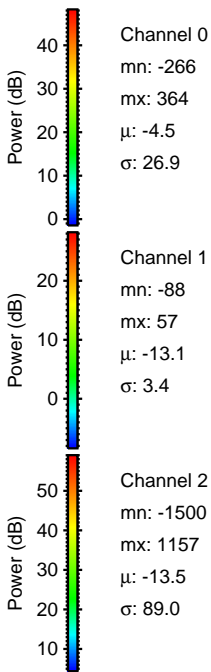
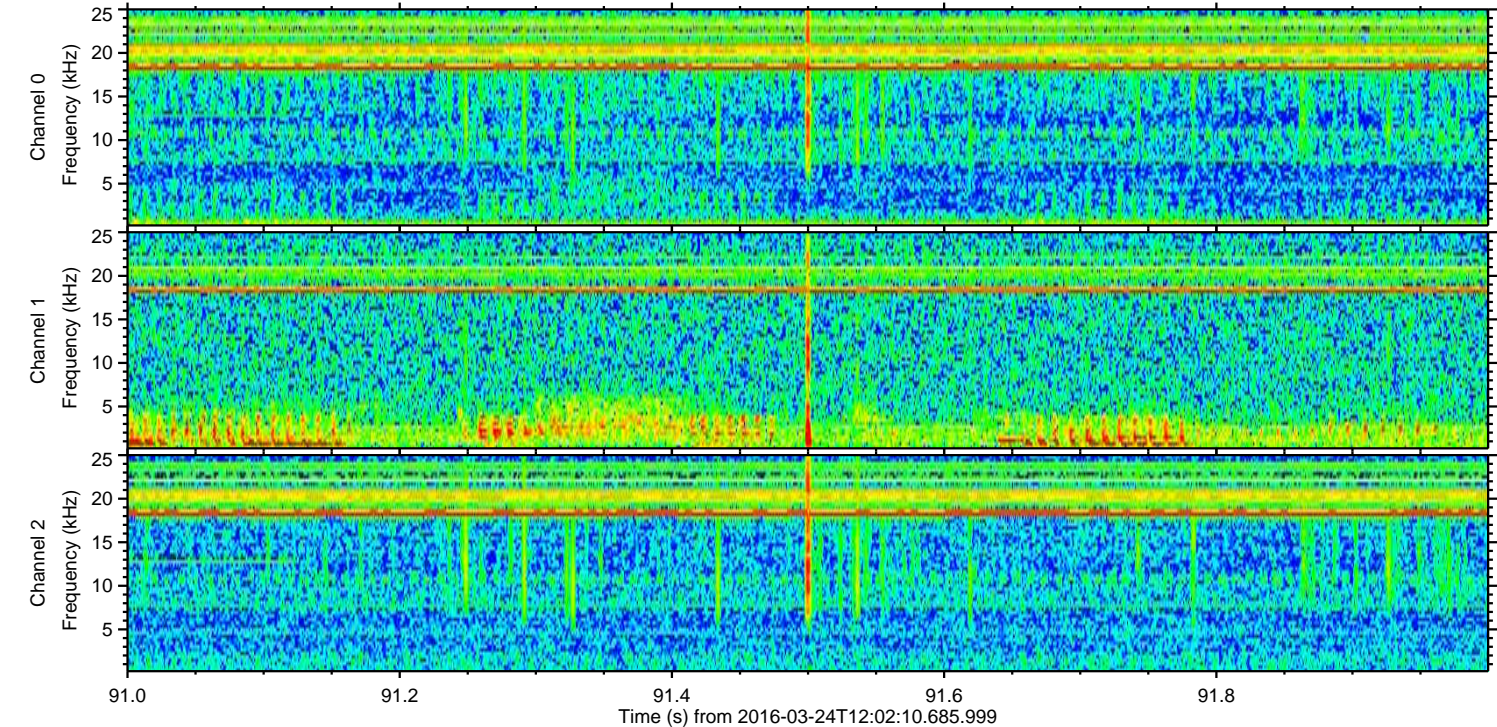
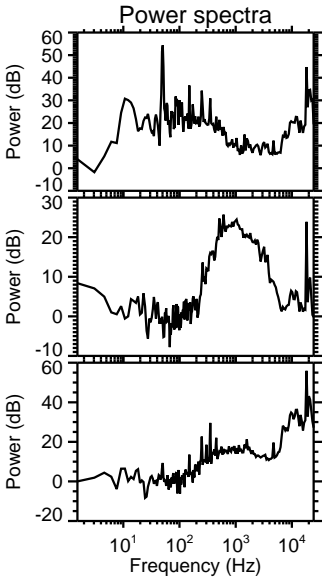
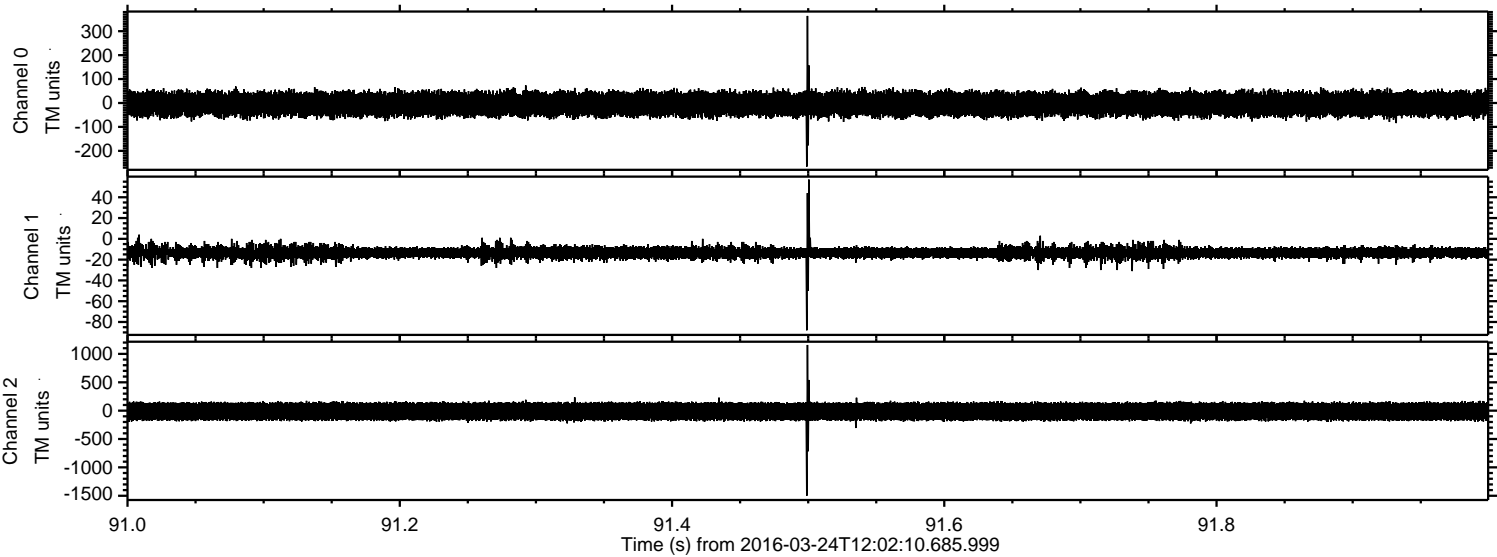
Processed Fri Apr 22 15:43:27 2016 by ELM ver.2012-10-06 from 001__elm20160324_120209__dat00.bin



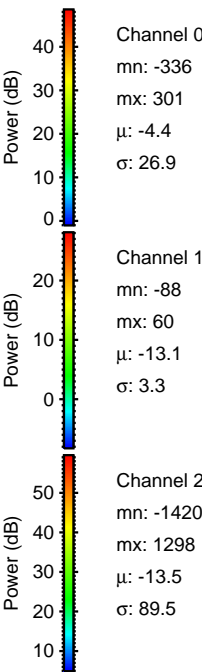
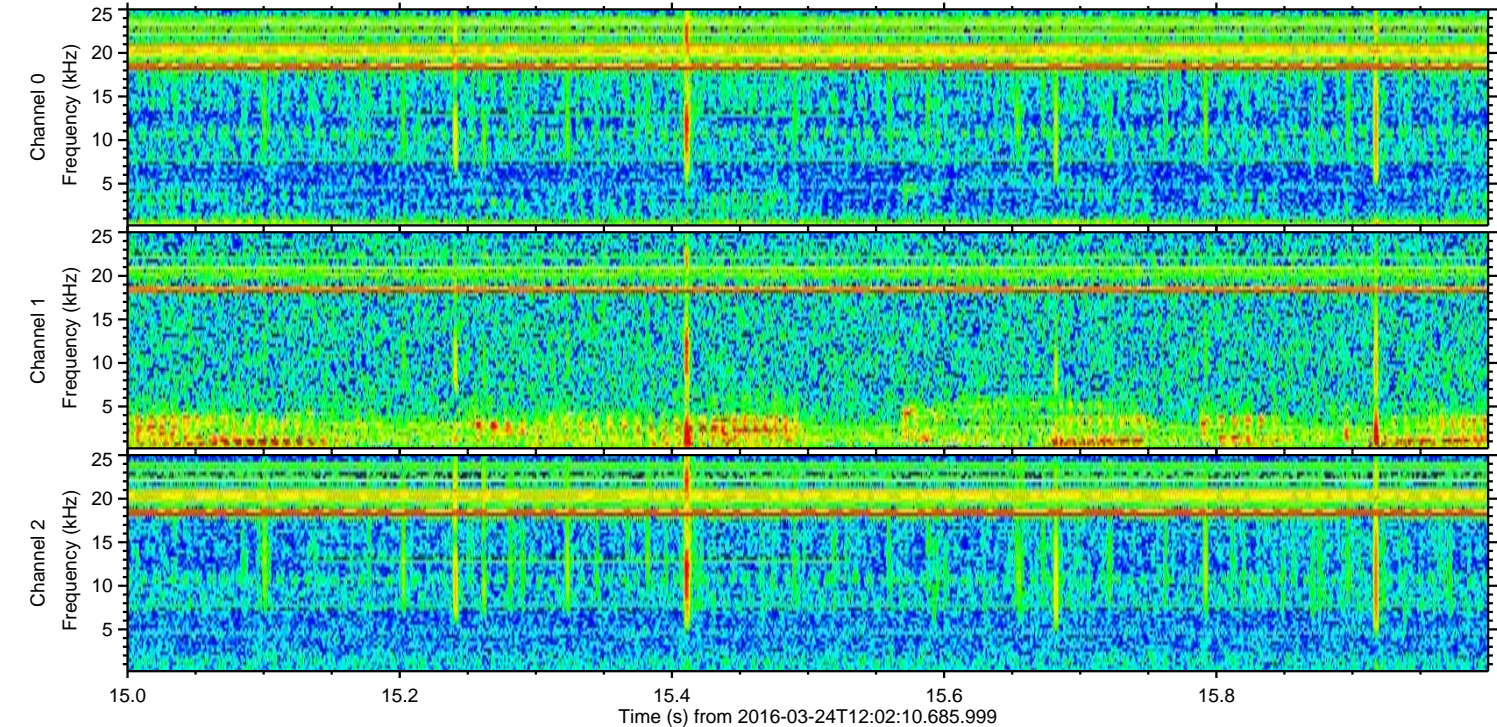
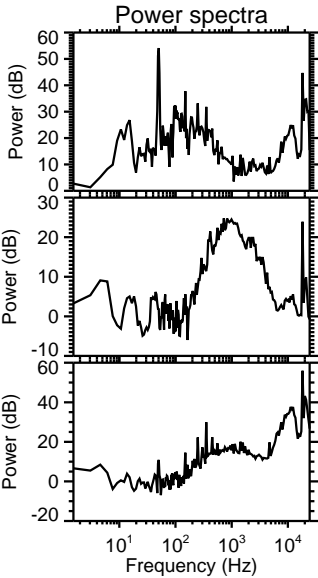
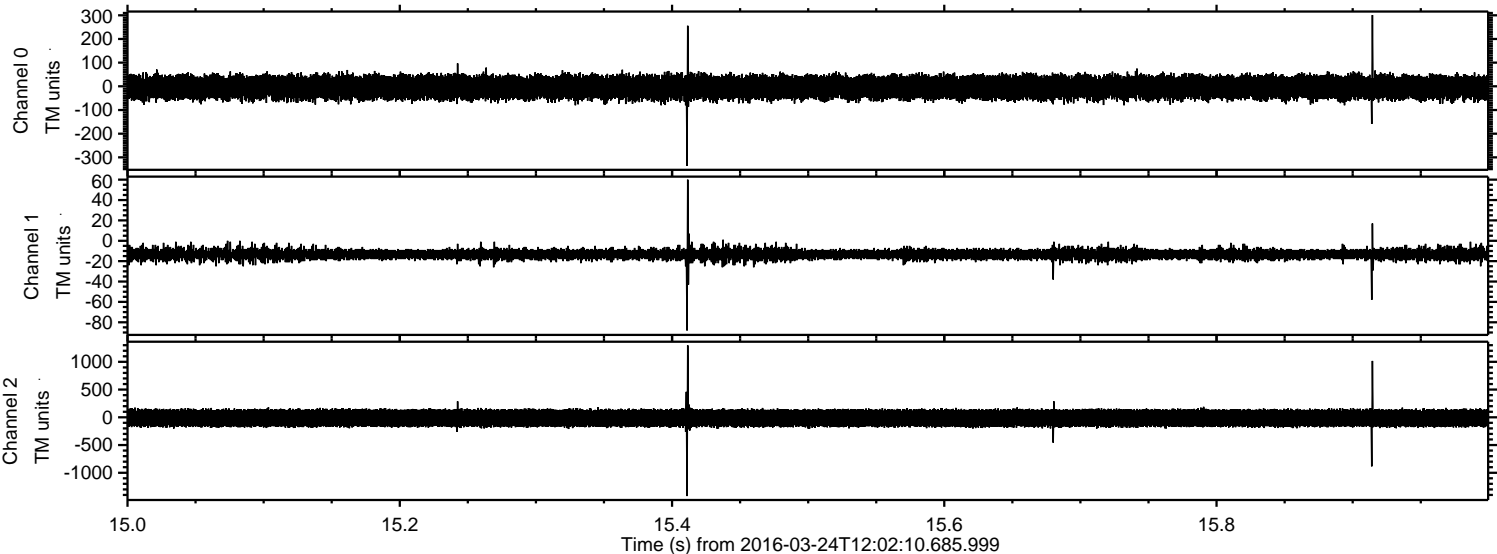
Processed Fri Apr 22 15:43:28 2016 by ELM ver.2012-10-06 from 001__elm20160324_120209__dat00.bin



Processed Fri Apr 22 15:43:29 2016 by ELM ver.2012-10-06 from 001__elm20160324_120209__dat00.bin



Processed Fri Apr 22 15:43:31 2016 by ELM ver.2012-10-06 from 001__elm20160324_120209__dat00.bin



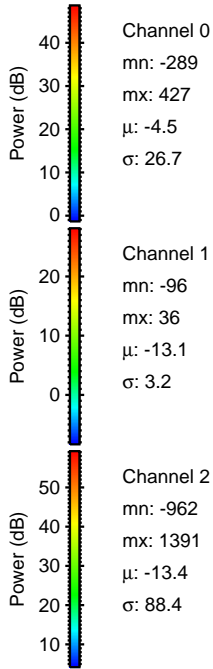
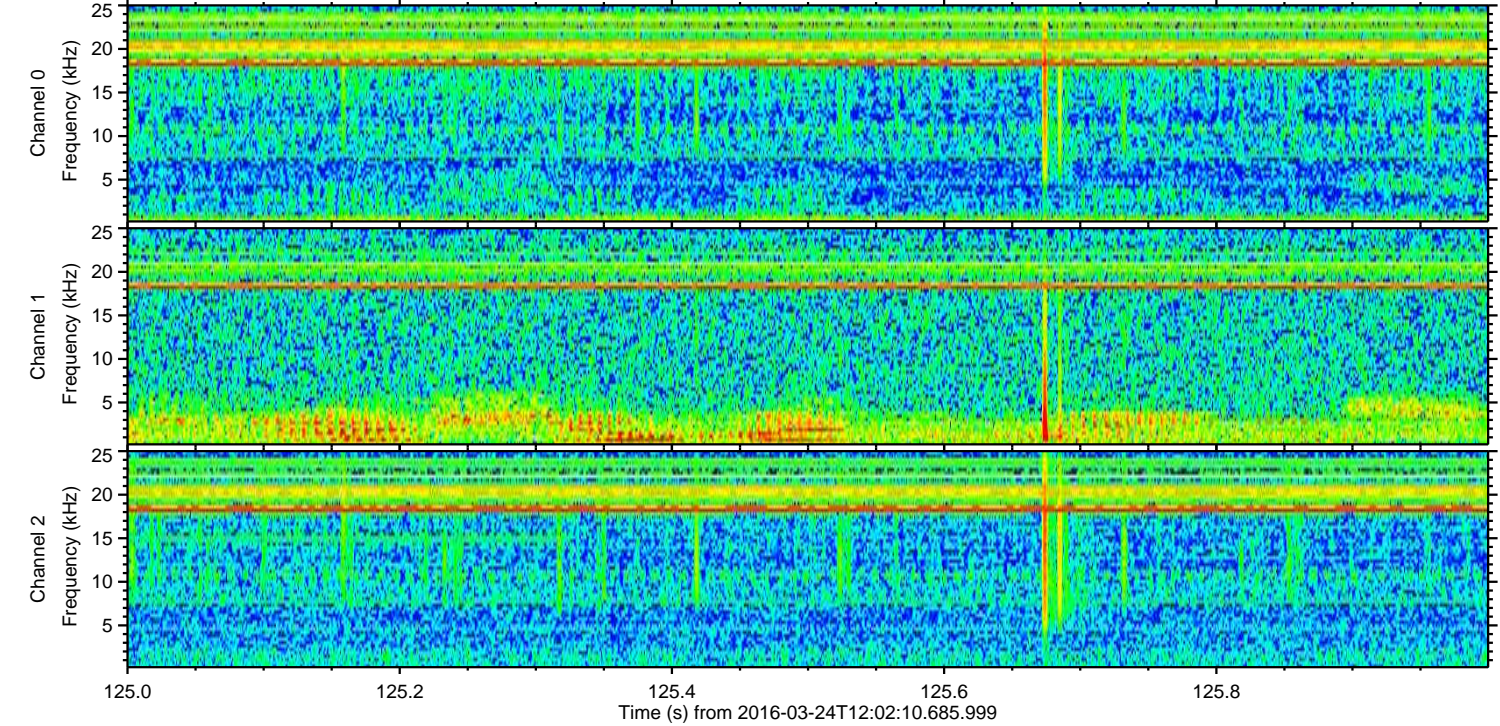
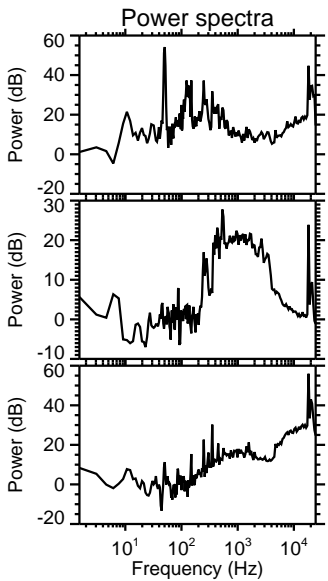
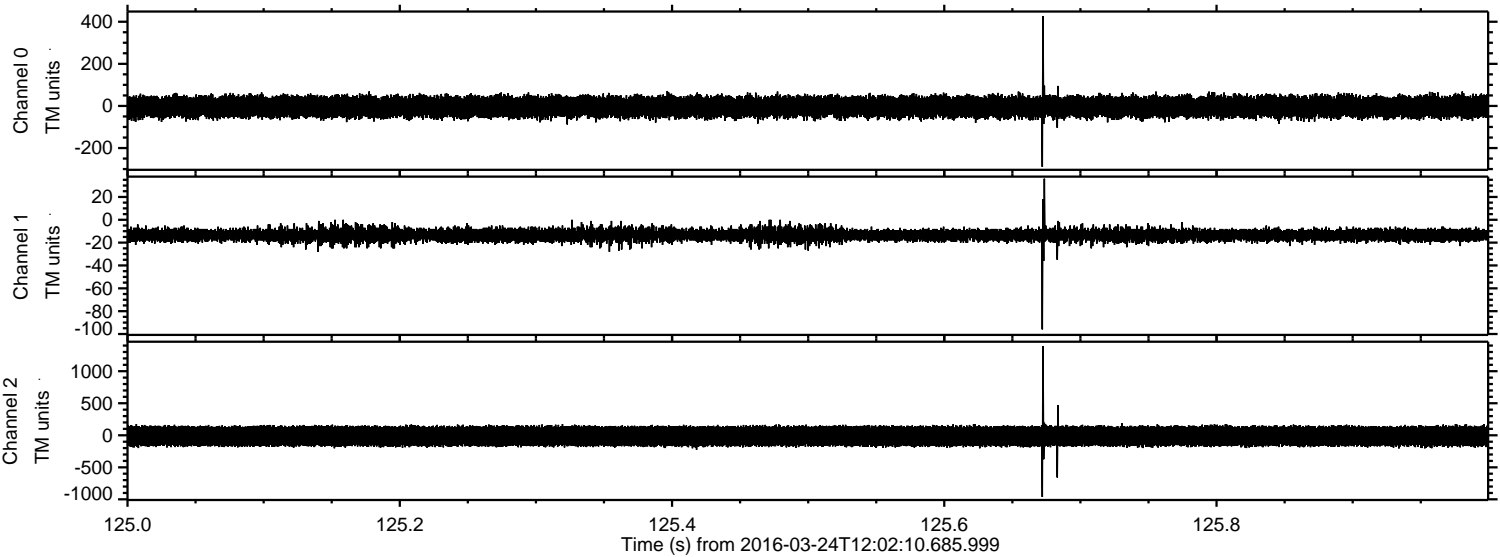
Channel 0
mn: -336
mx: 301
 μ : -4.4
 σ : 26.9

Channel 1
mn: -88
mx: 60
 μ : -13.1
 σ : 3.3

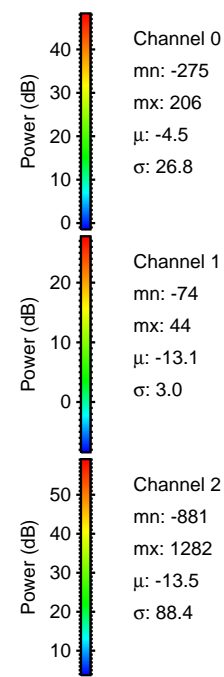
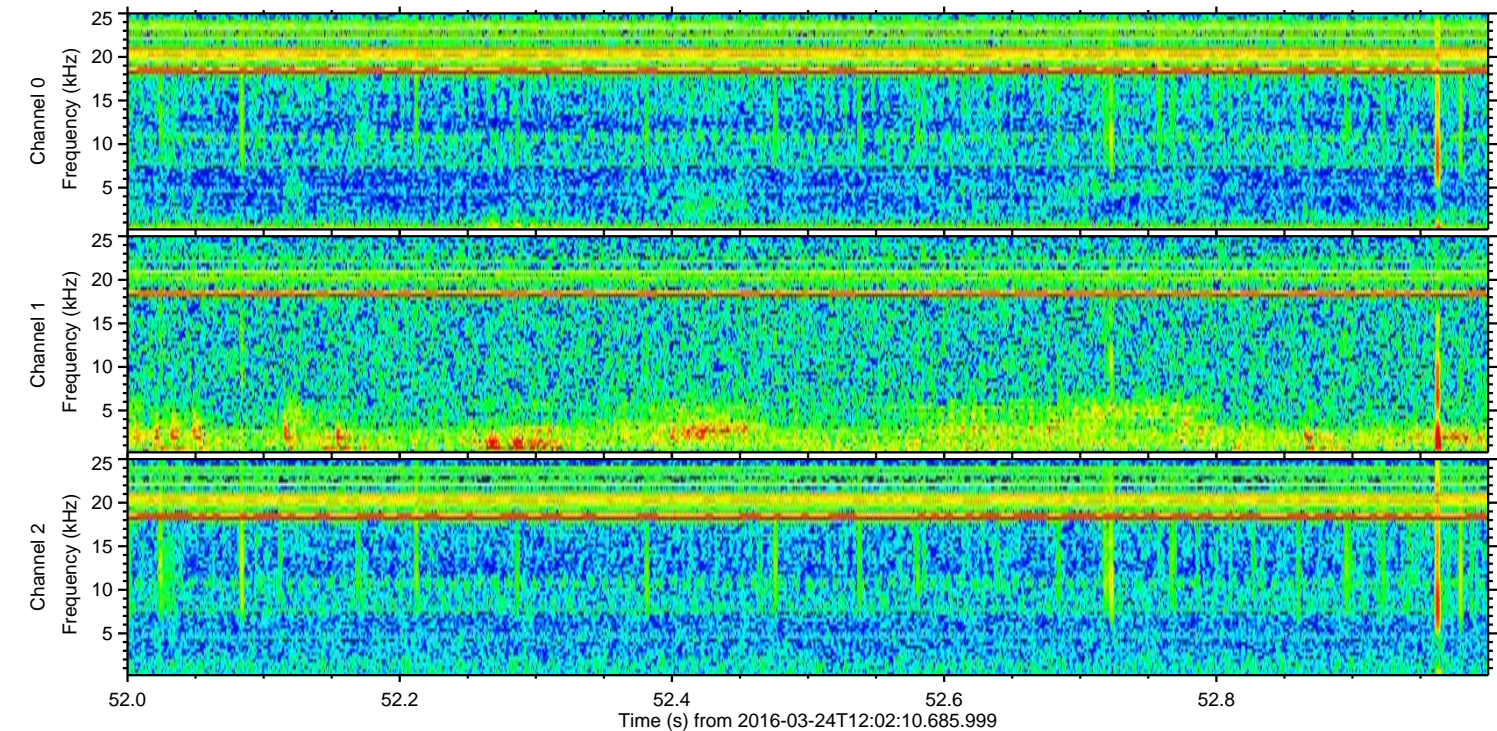
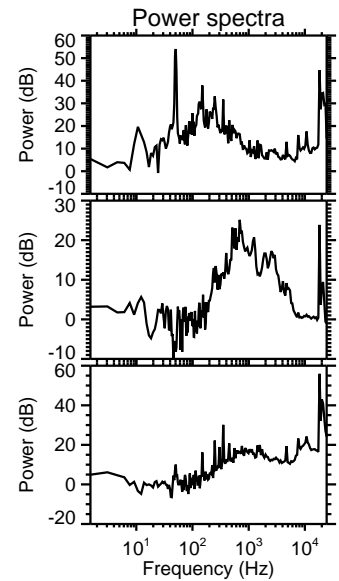
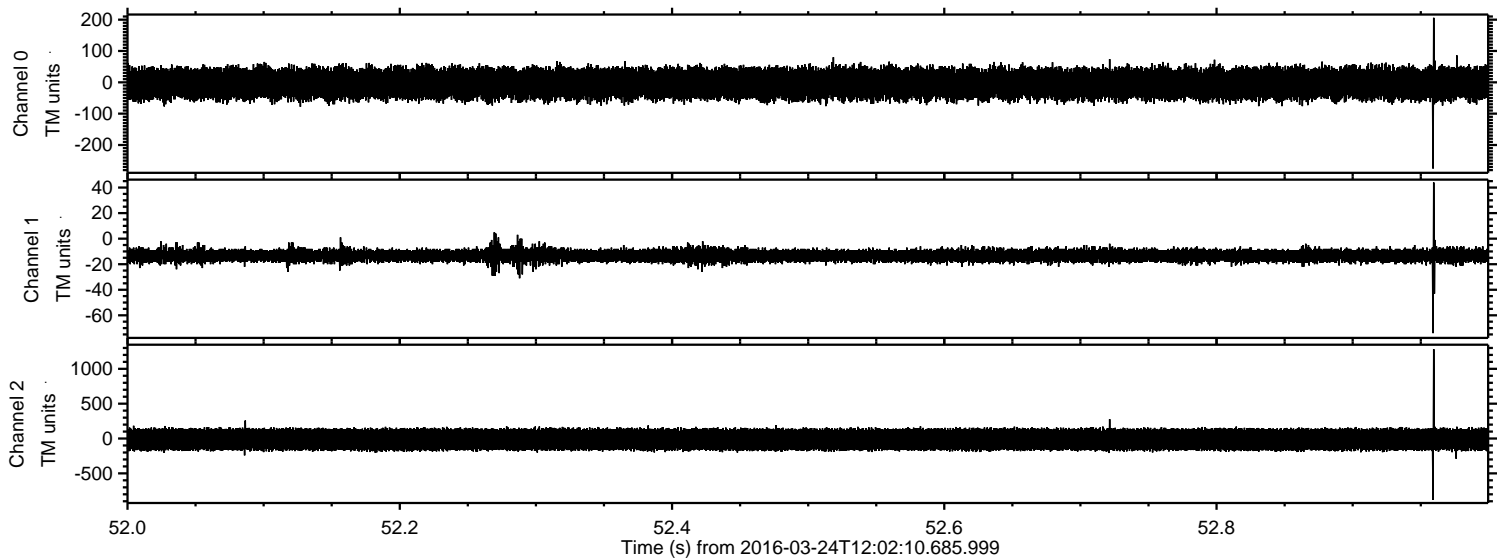
Channel 2
mn: -1420
mx: 1298
 μ : -13.5
 σ : 89.5

ELMAVAN 3D WAVEFORMS (Measured data sampled at 50 kHz) 51000 packets of 144 samples from 2016-03-24T12:02:10.685.999. Part 126/147

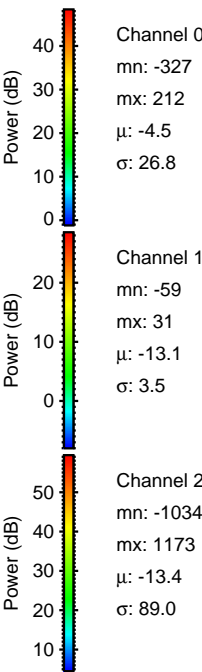
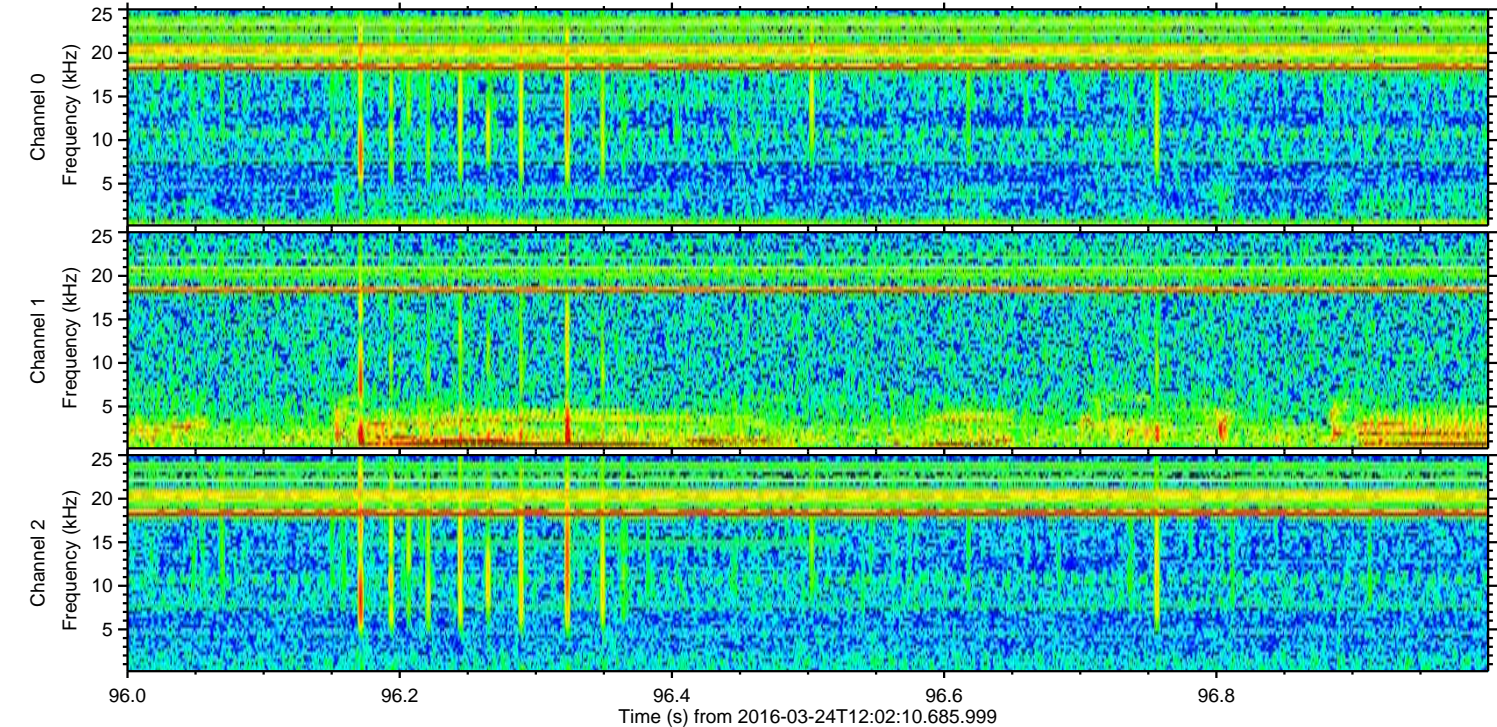
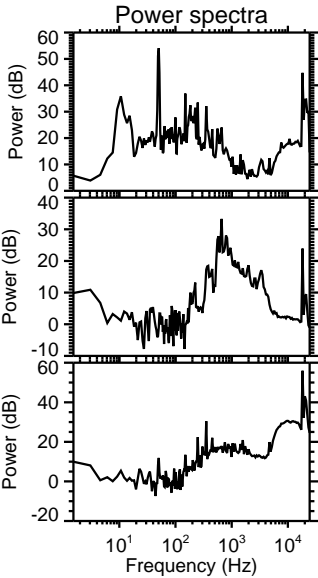
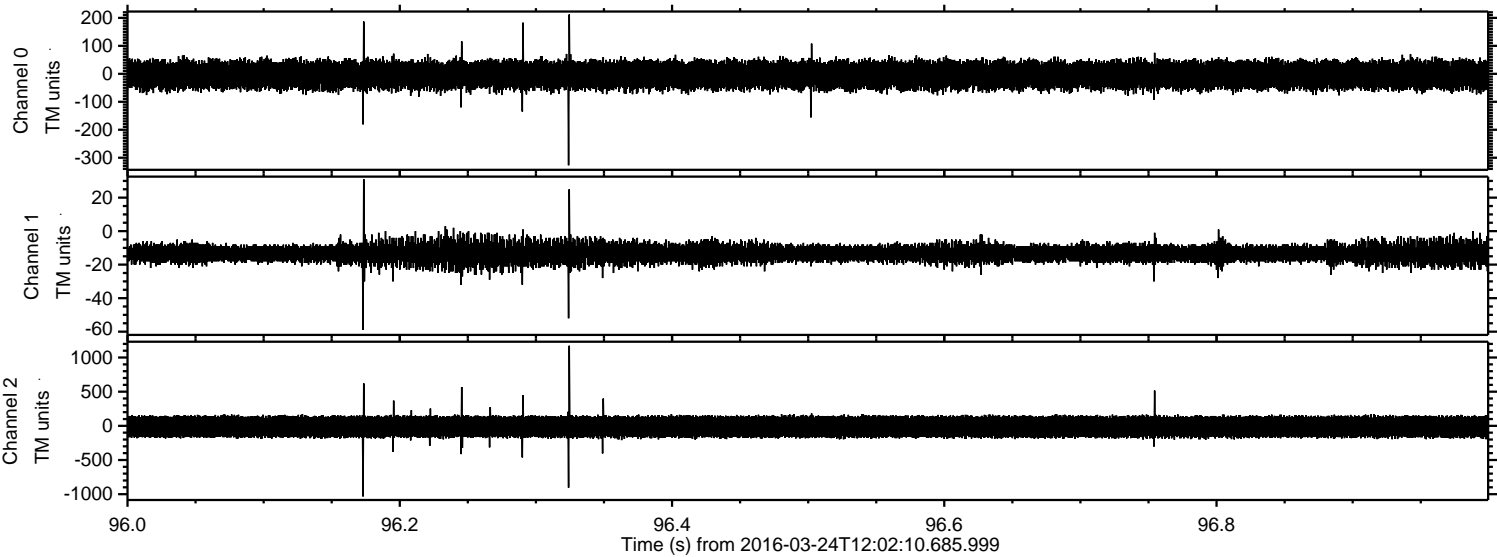
Processed Fri Apr 22 15:43:32 2016 by ELM ver.2012-10-06 from 001__elm20160324_120209__dat00.bin



Processed Fri Apr 22 15:43:33 2016 by ELM ver.2012-10-06 from 001__elm20160324_120209__dat00.bin

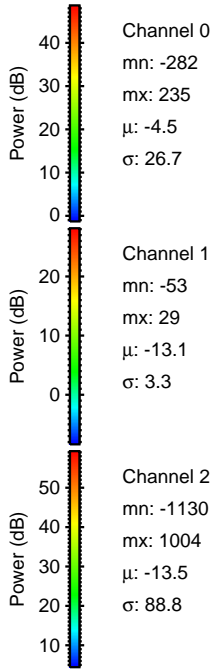
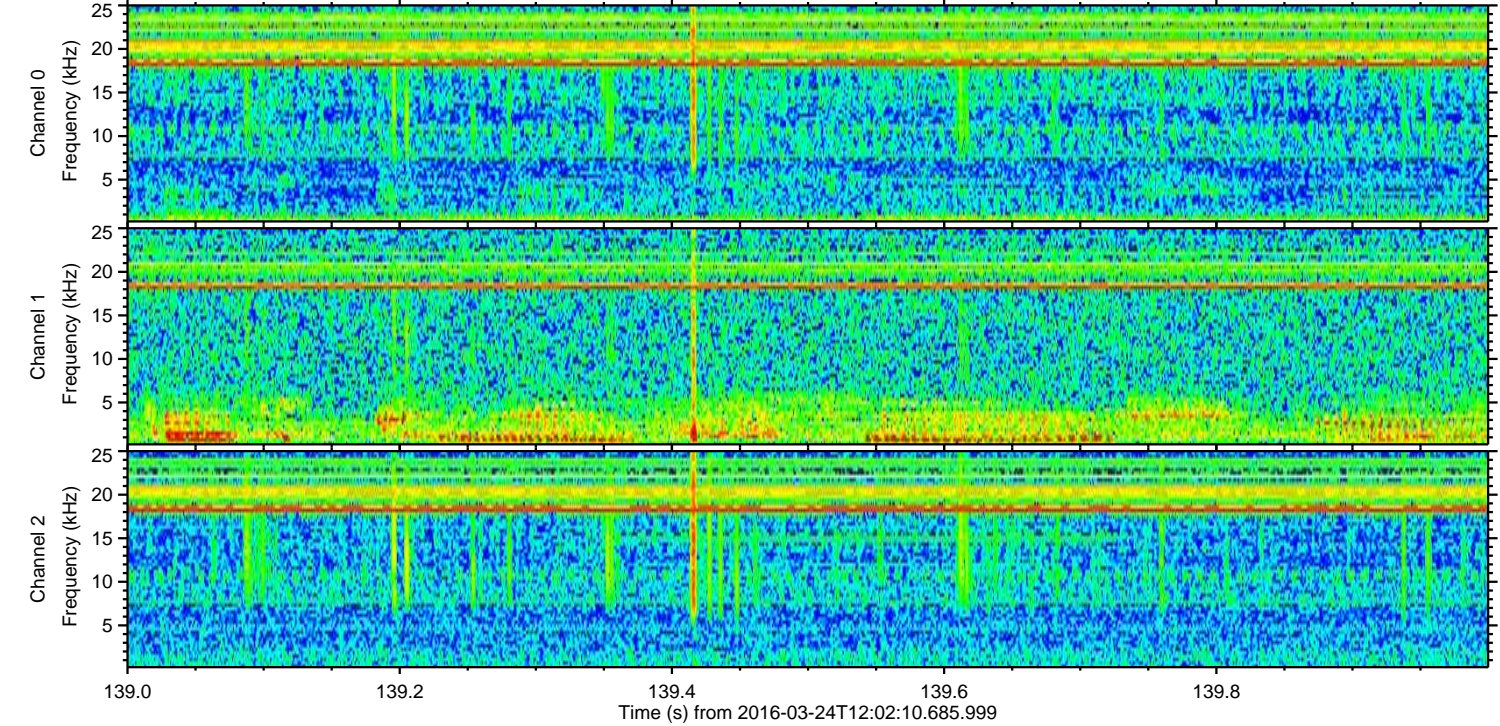
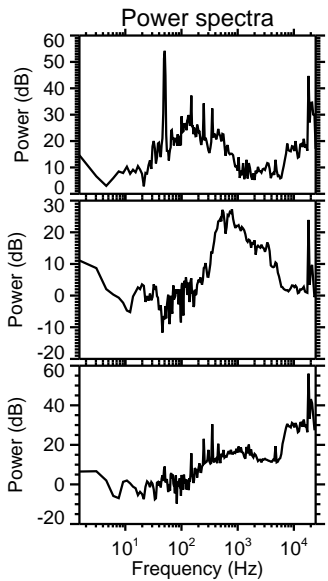
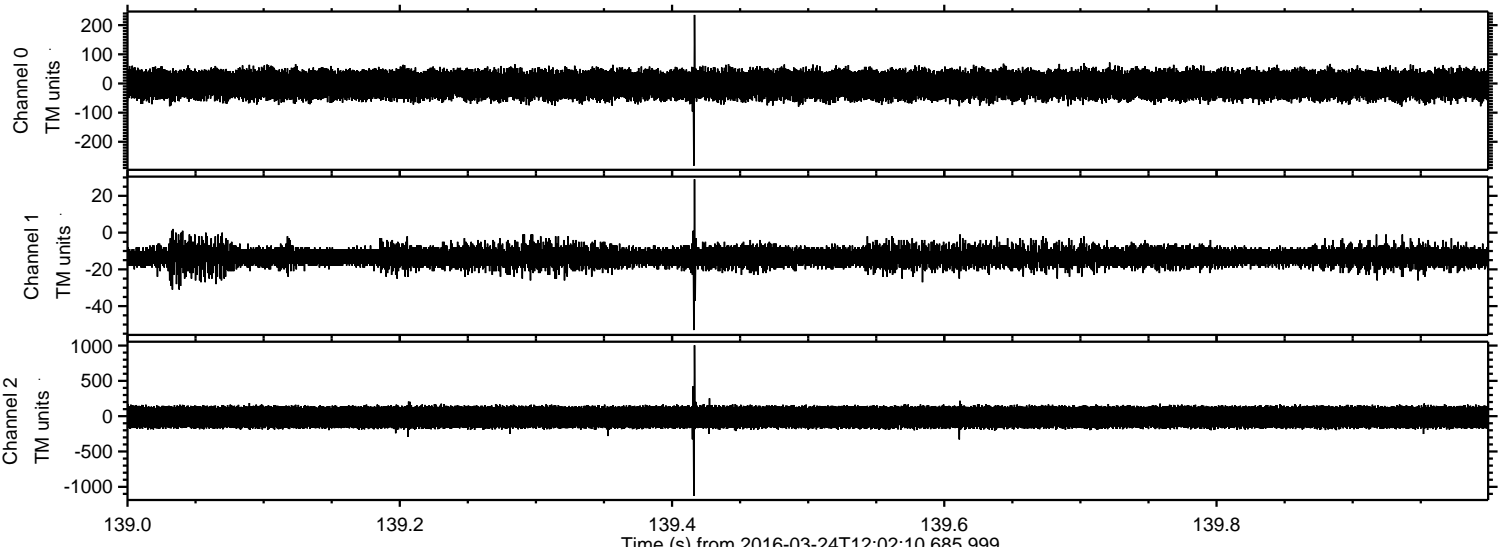


Processed Fri Apr 22 15:43:34 2016 by ELM ver.2012-10-06 from 001__elm20160324_120209__dat00.bin



ELMAVAN 3D WAVEFORMS (Measured data sampled at 50 kHz) 51000 packets of 144 samples from 2016-03-24T12:02:10.685.999. Part 140/147

Processed Fri Apr 22 15:43:35 2016 by ELM ver.2012-10-06 from 001__elm20160324_120209__dat00.bin

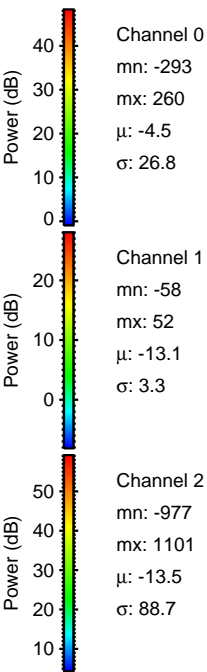
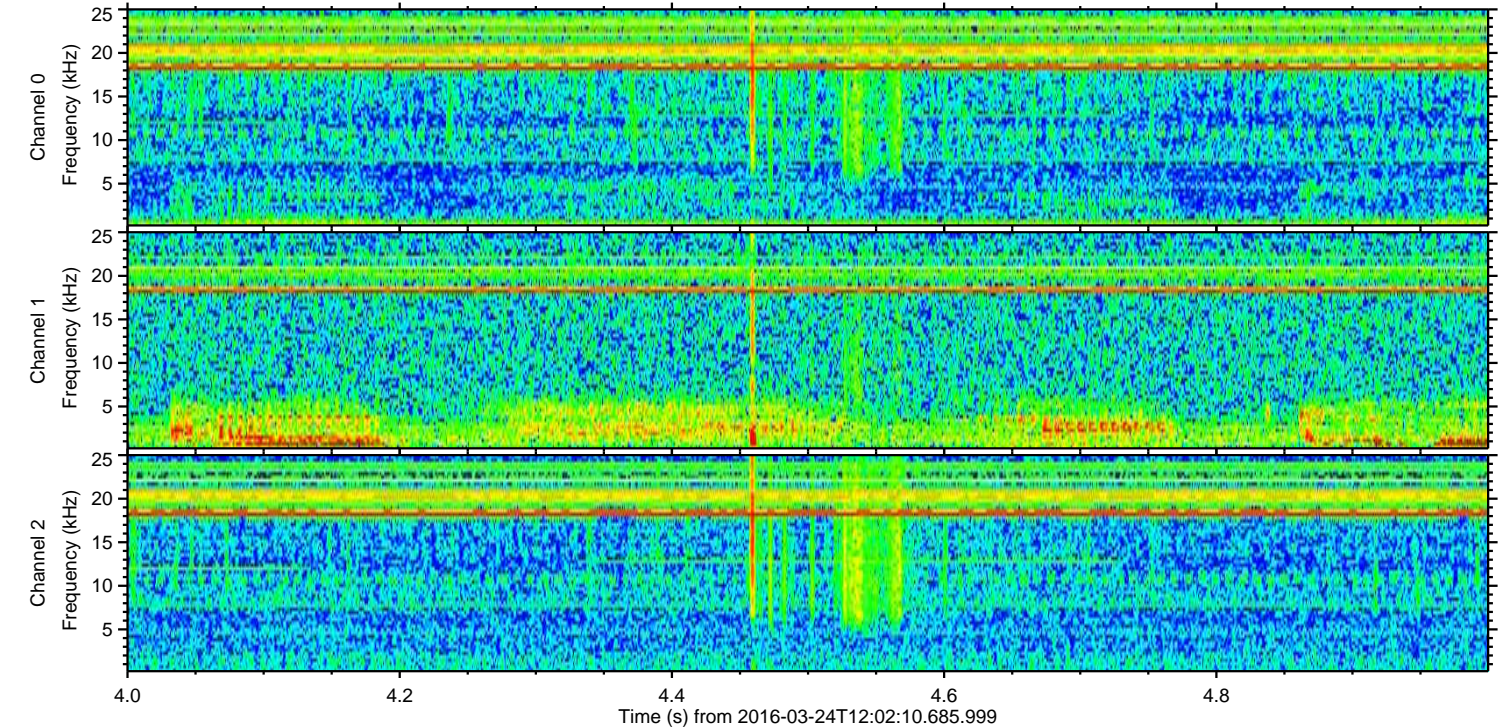
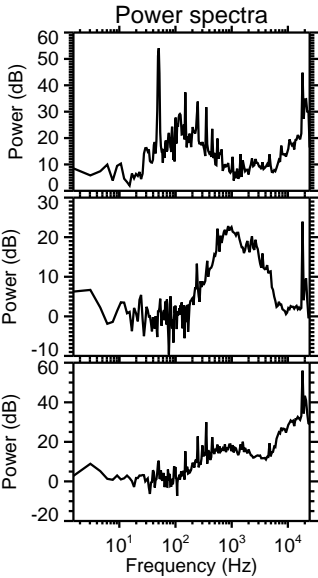
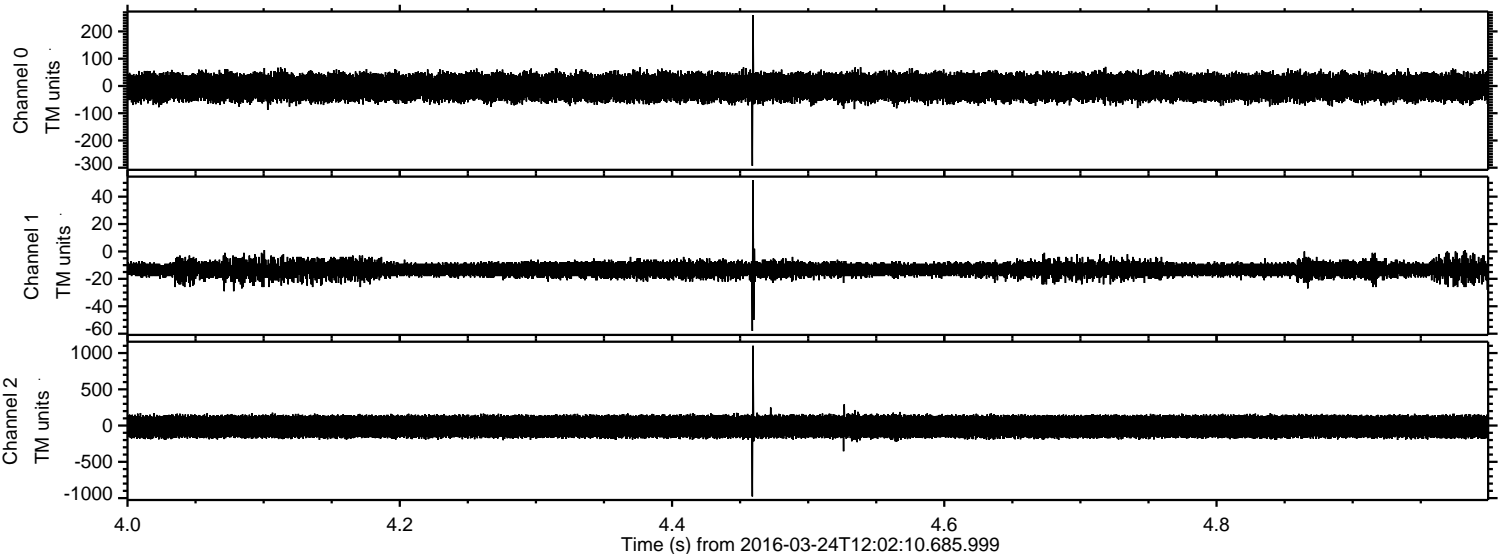


Channel 0
mn: -282
mx: 235
 μ : -4.5
 σ : 26.7

Channel 1
mn: -53
mx: 29
 μ : -13.1
 σ : 3.3

Channel 2
mn: -1130
mx: 1004
 μ : -13.5
 σ : 88.8

Processed Fri Apr 22 15:43:36 2016 by ELM ver.2012-10-06 from 001__elm20160324_120209__dat00.bin



Processed Fri Apr 22 15:43:37 2016 by ELM ver.2012-10-06 from 001__elm20160324_120209__dat00.bin

