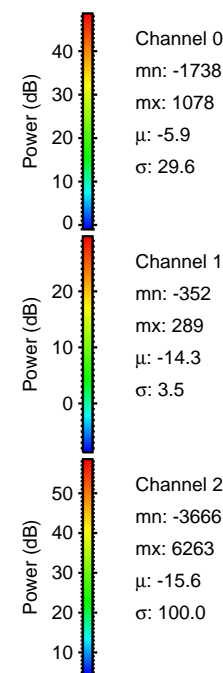
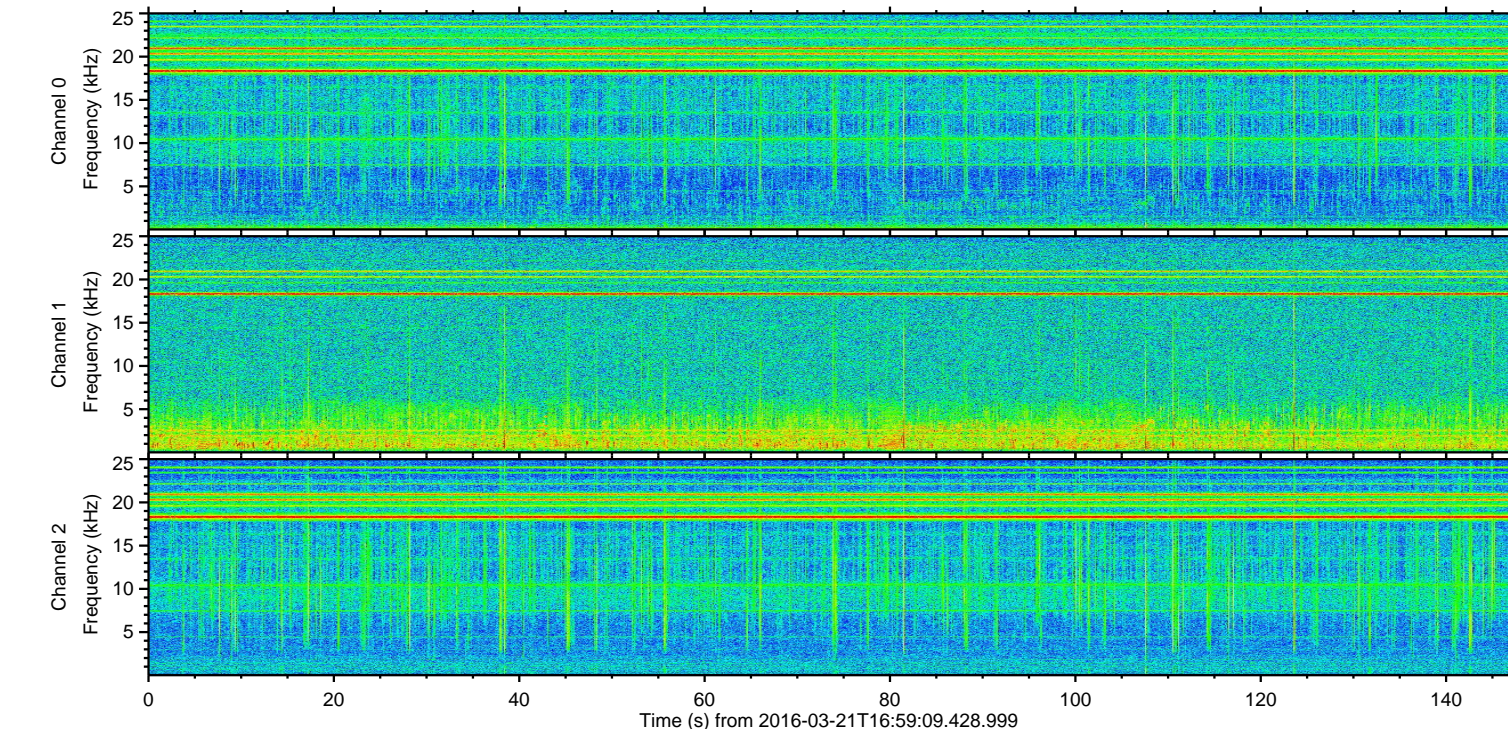
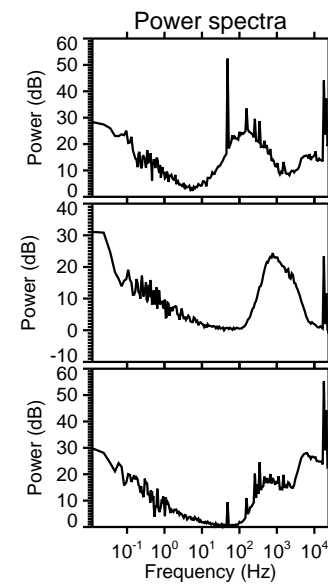
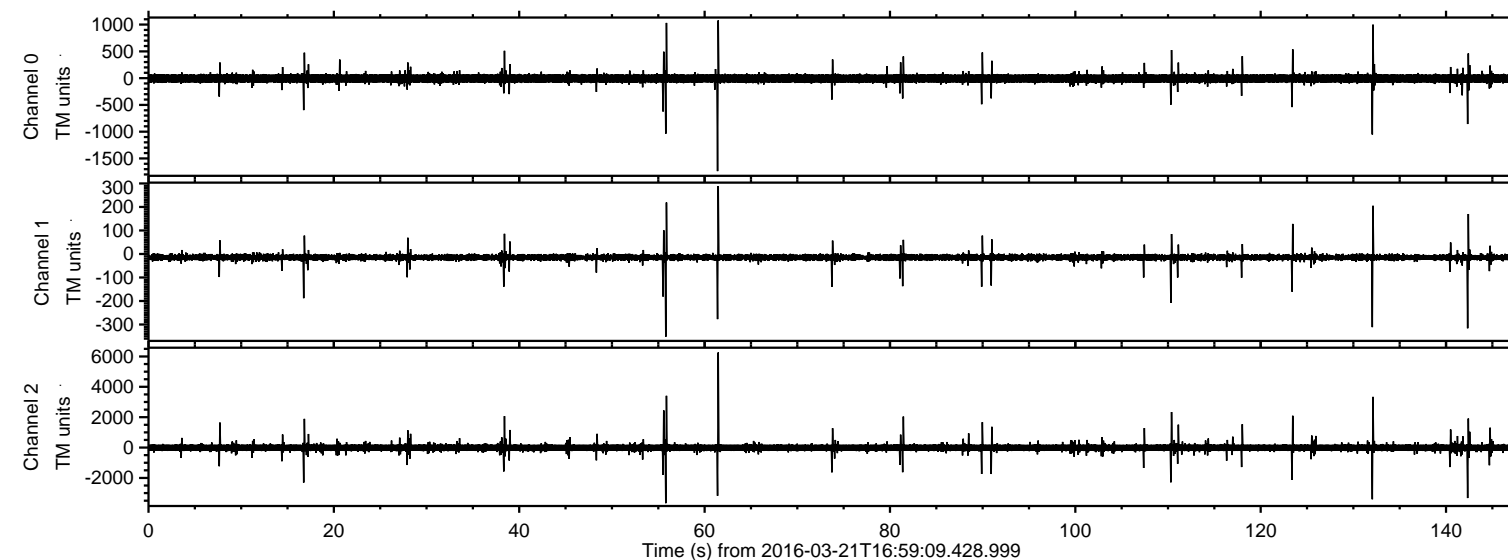
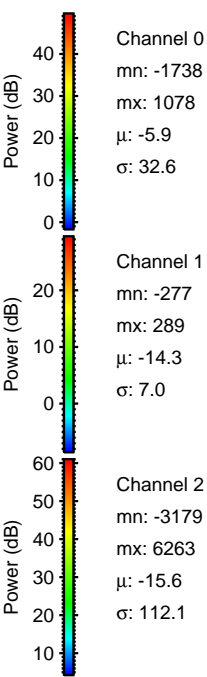
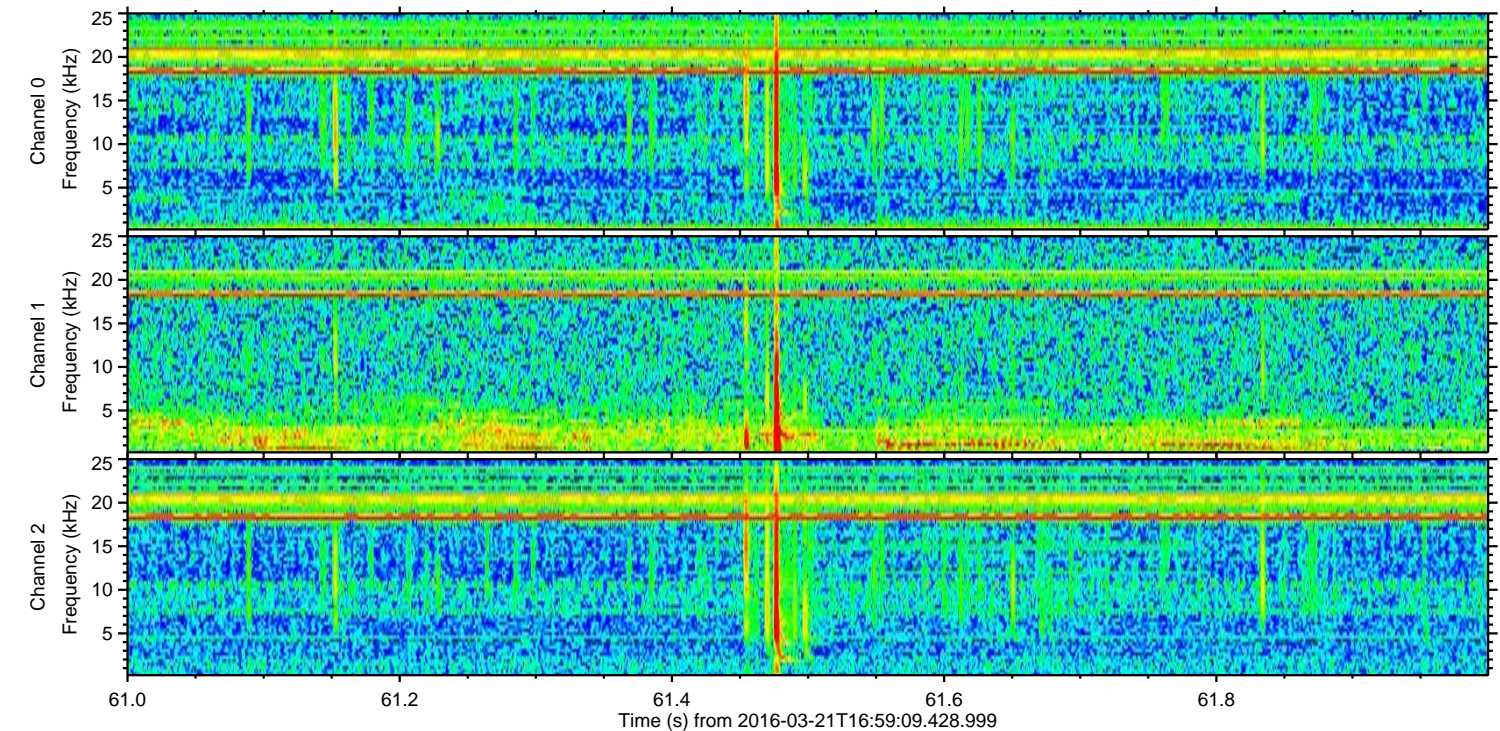
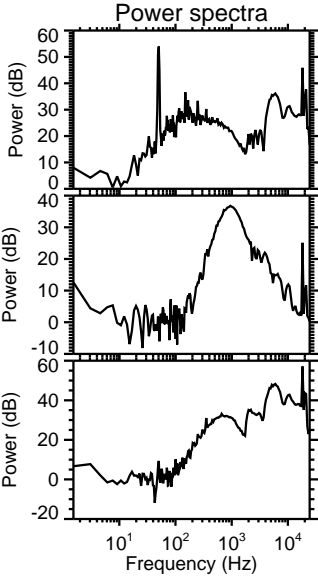
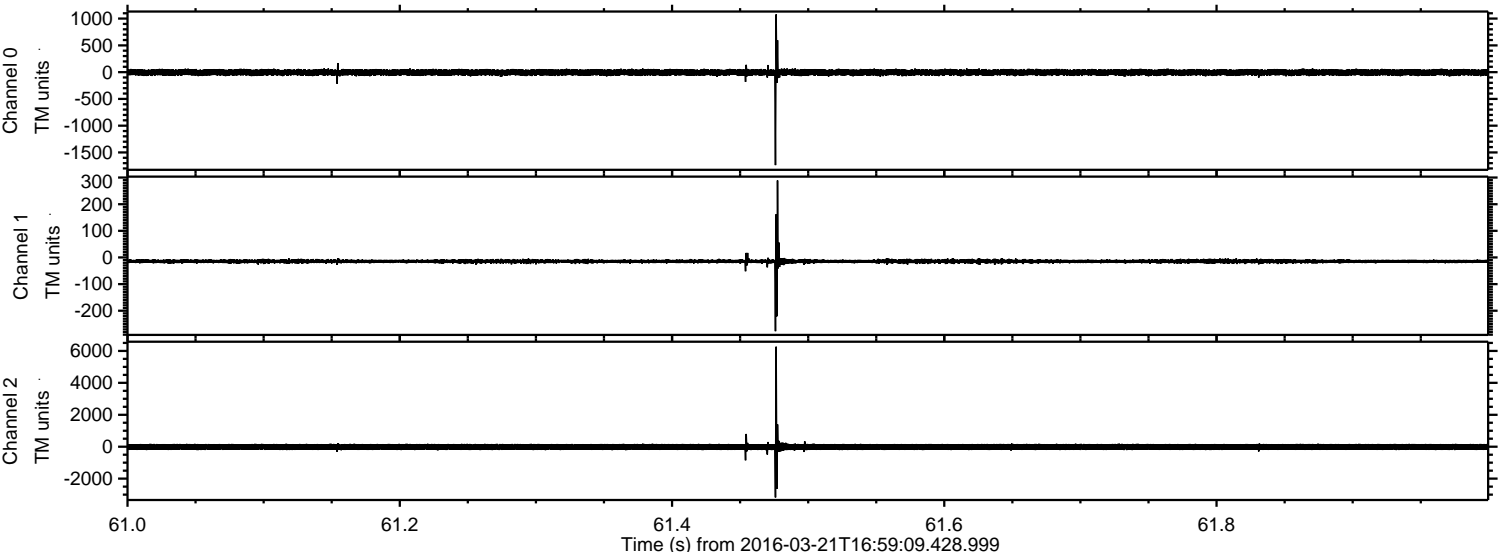


ELMAVAN 3D WAVEFORMS (Measured data sampled at 50 kHz) 51000 packets of 144 samples from 2016-03-21T16:59:09.428.999.

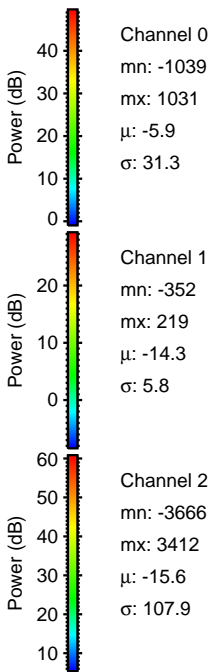
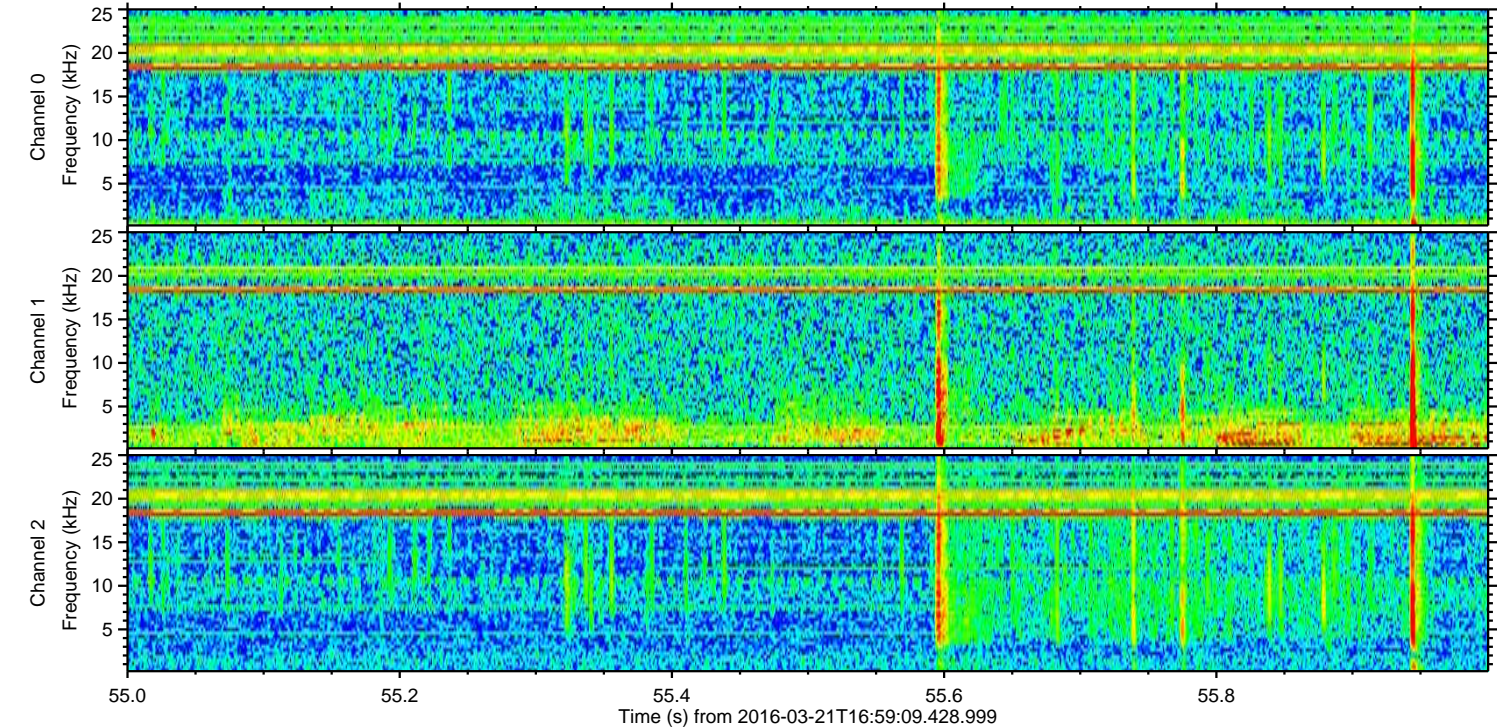
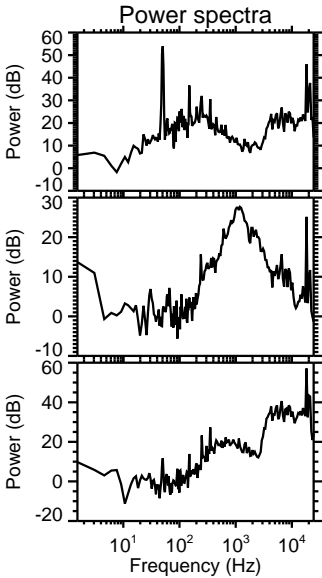
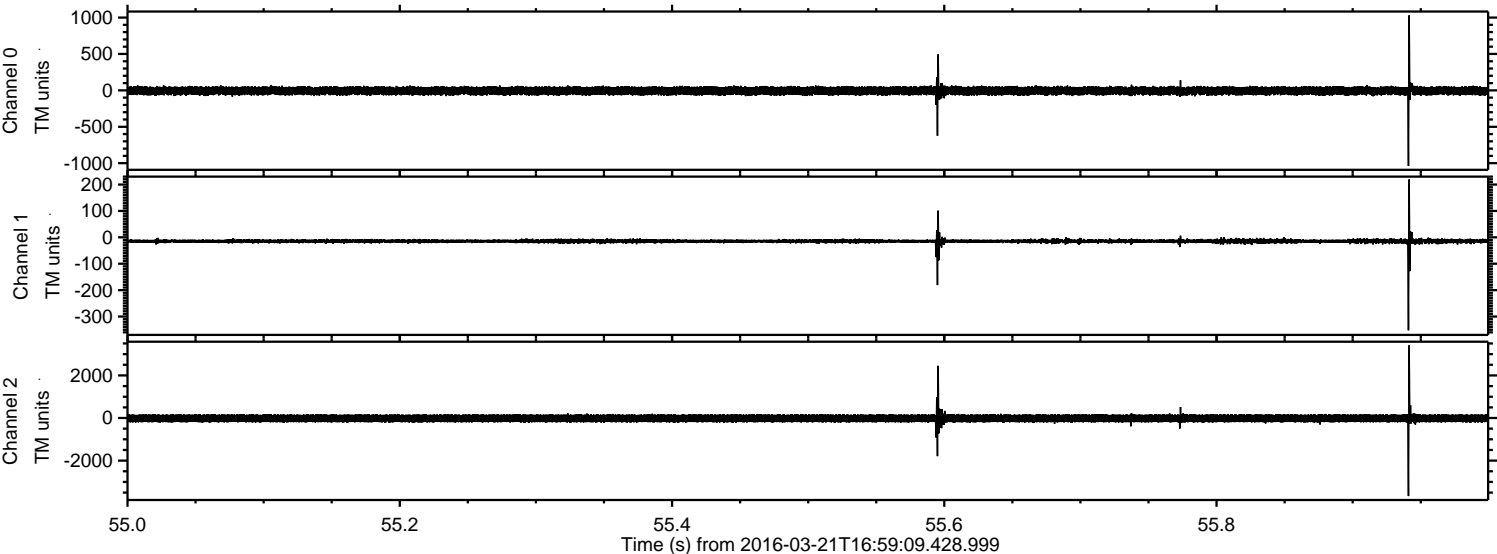
Processed Thu Apr 21 22:34:22 2016 by ELM ver.2012-10-06 from 001__elm20160321_165908__dat00.bin



Processed Thu Apr 21 22:34:37 2016 by ELM ver.2012-10-06 from 001__elm20160321_165908__dat00.bin

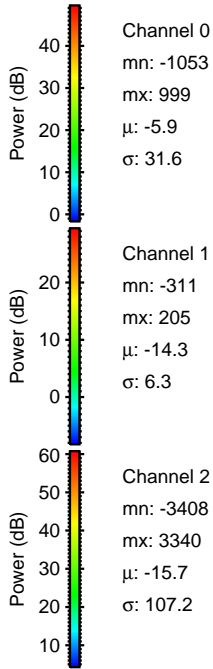
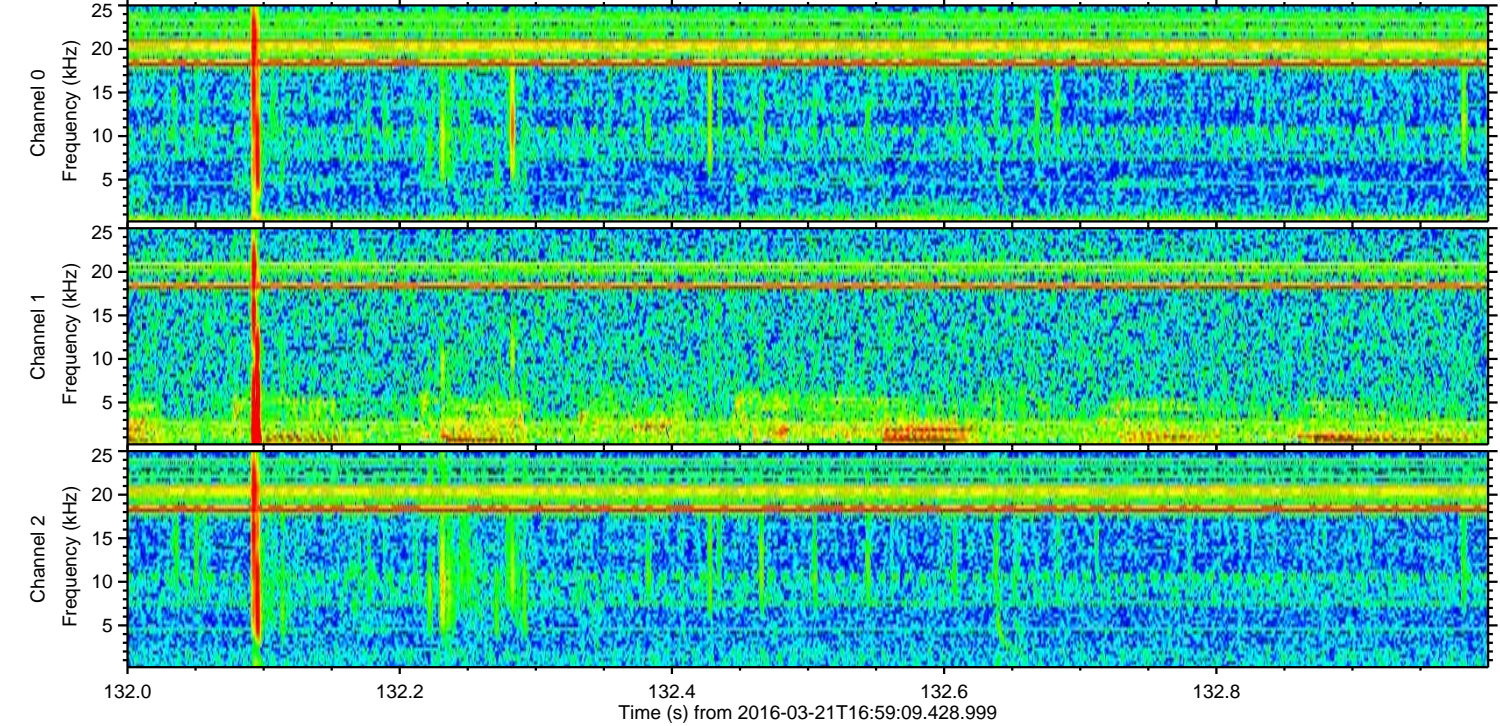
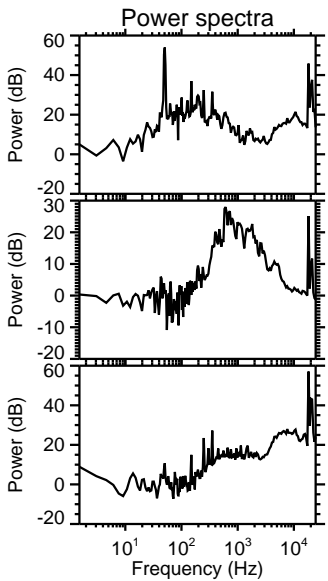
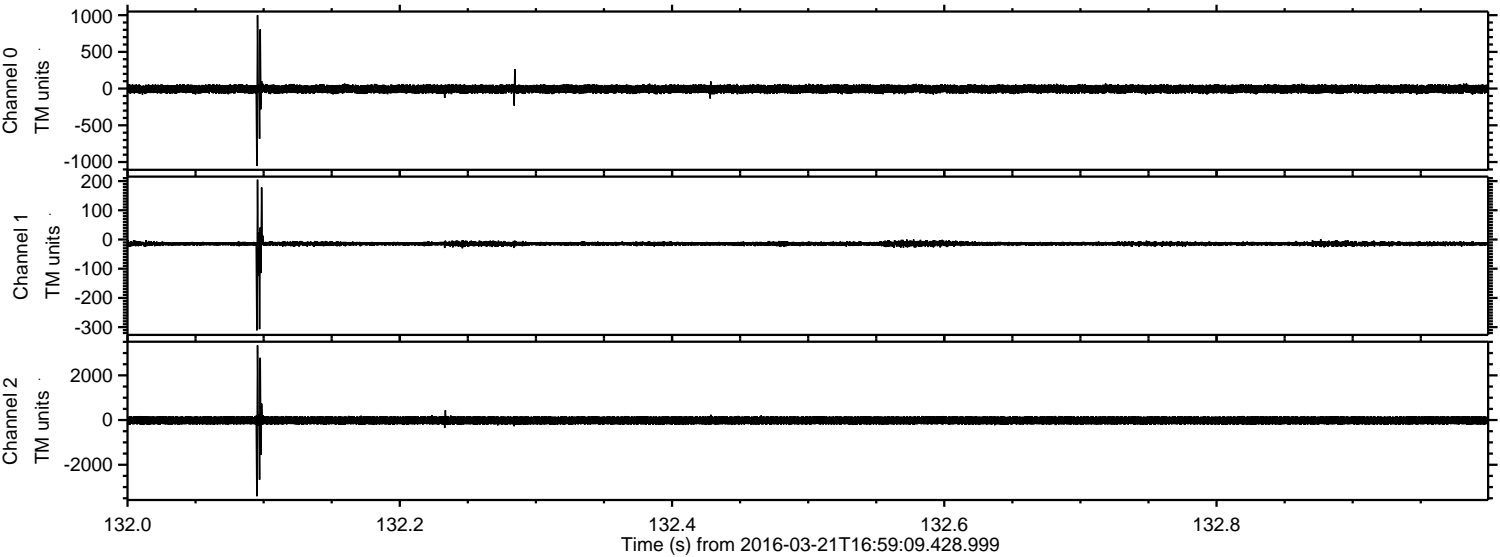


Processed Thu Apr 21 22:34:38 2016 by ELM ver.2012-10-06 from 001__elm20160321_165908__dat00.bin



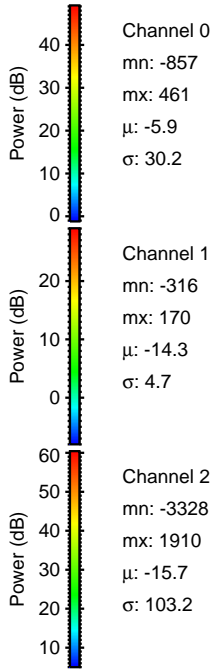
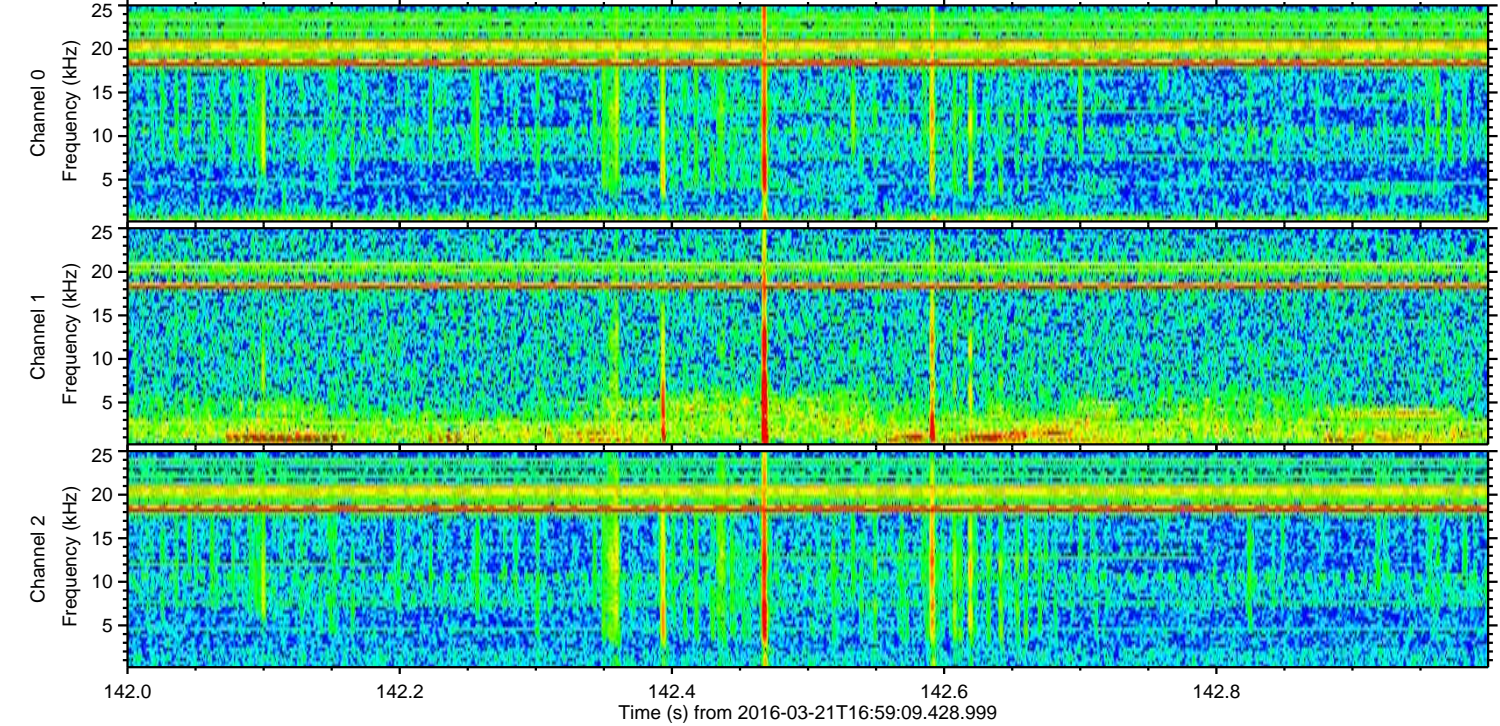
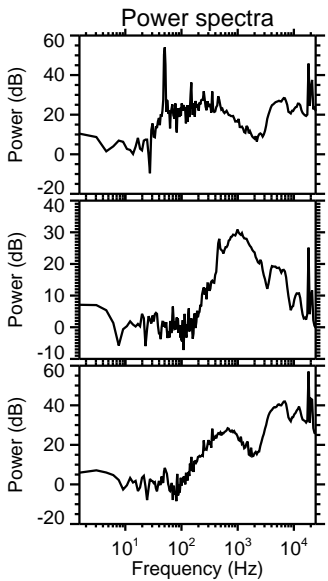
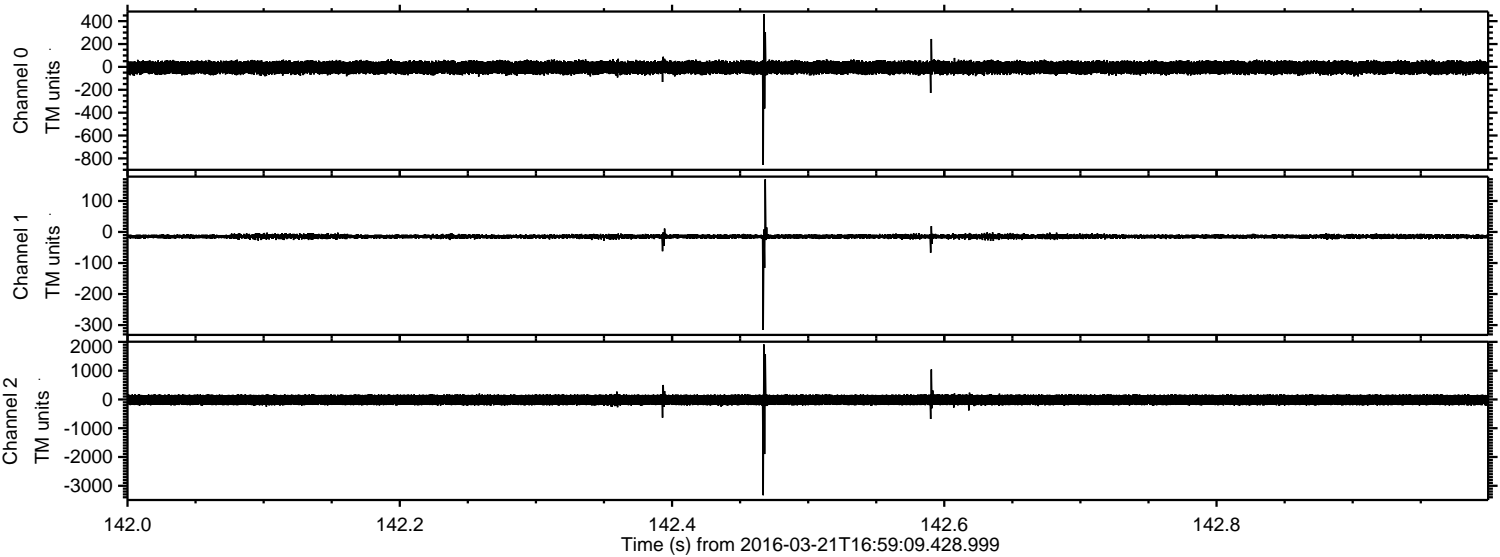
ELMAVAN 3D WAVEFORMS (Measured data sampled at 50 kHz) 51000 packets of 144 samples from 2016-03-21T16:59:09.428.999. Part 133/147

Processed Thu Apr 21 22:34:39 2016 by ELM ver.2012-10-06 from 001__elm20160321_165908__dat00.bin



ELMAVAN 3D WAVEFORMS (Measured data sampled at 50 kHz) 51000 packets of 144 samples from 2016-03-21T16:59:09.428.999. Part 143/147

Processed Thu Apr 21 22:34:40 2016 by ELM ver.2012-10-06 from 001__elm20160321_165908__dat00.bin



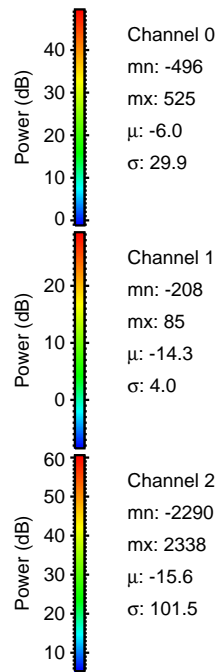
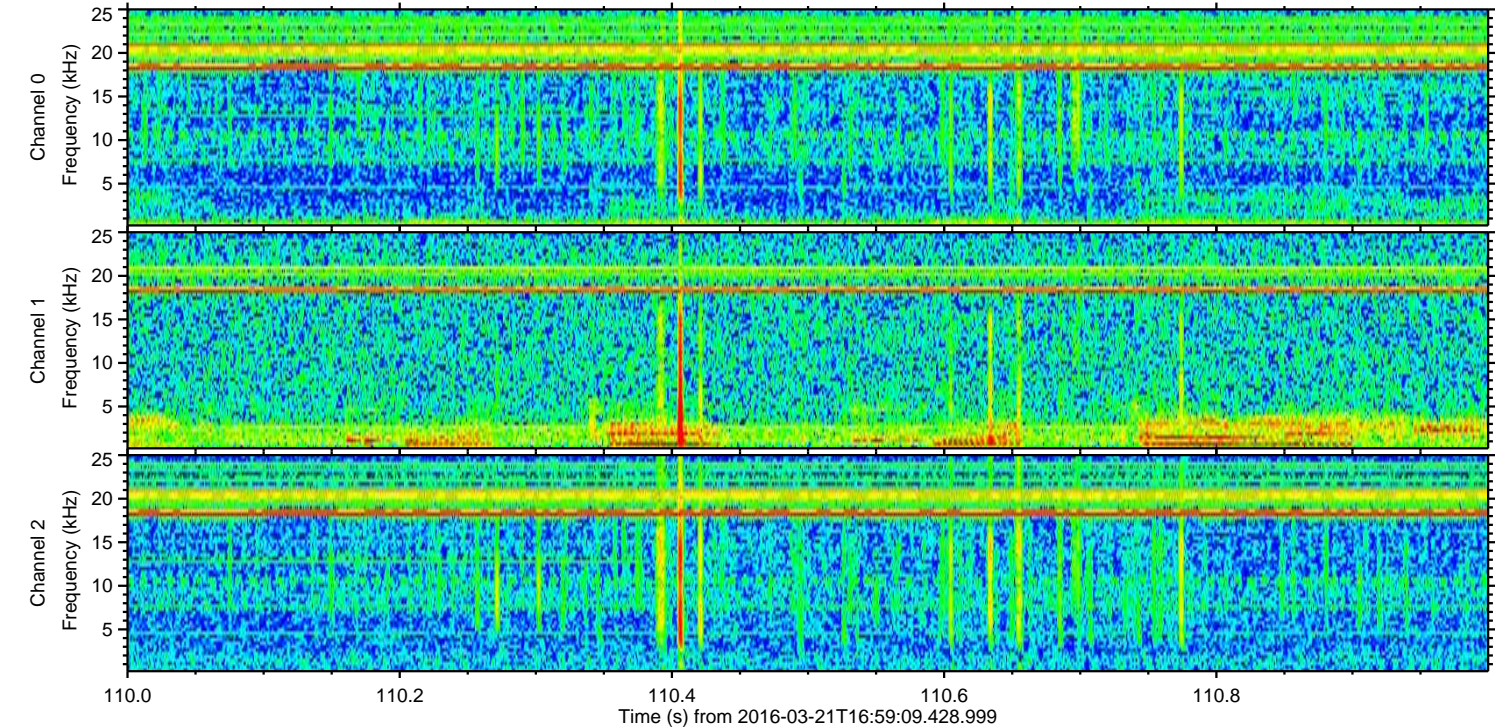
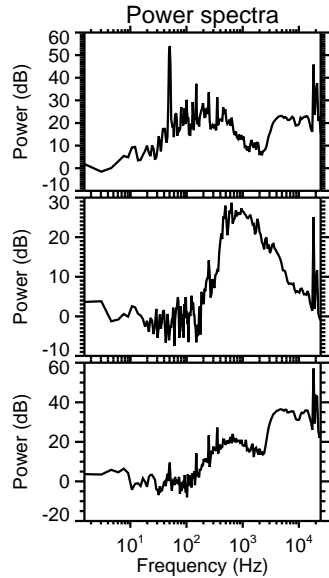
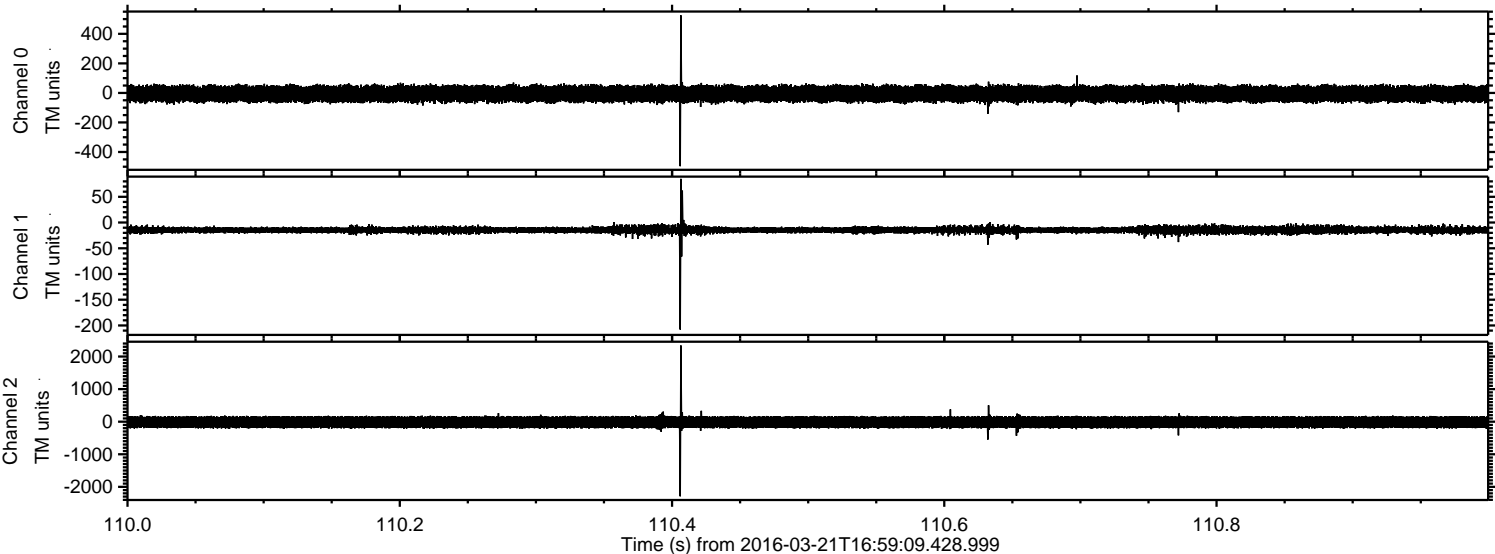
Channel 0
mn: -857
mx: 461
 μ : -5.9
 σ : 30.2

Channel 1
mn: -316
mx: 170
 μ : -14.3
 σ : 4.7

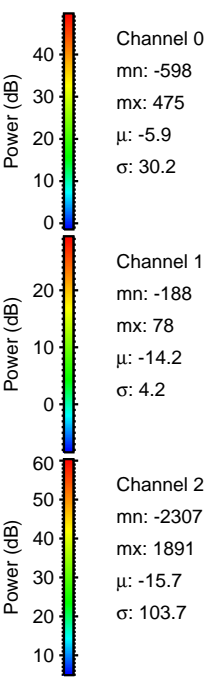
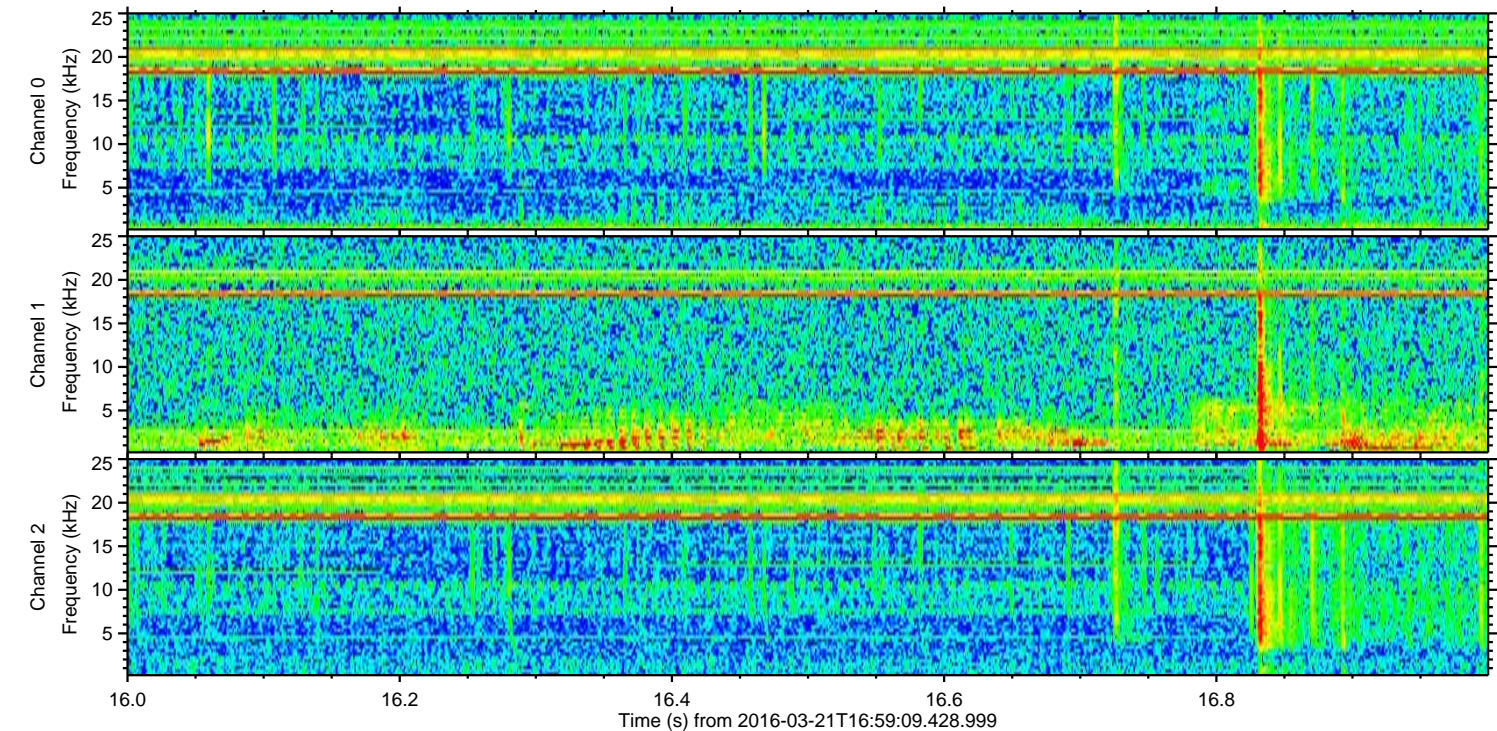
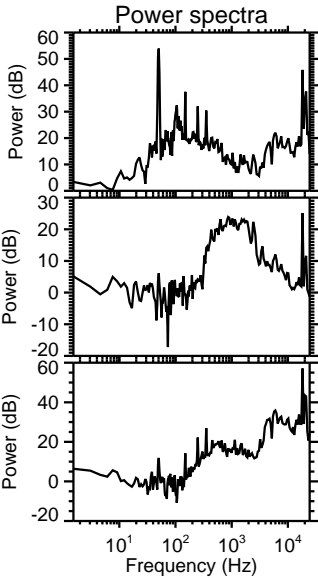
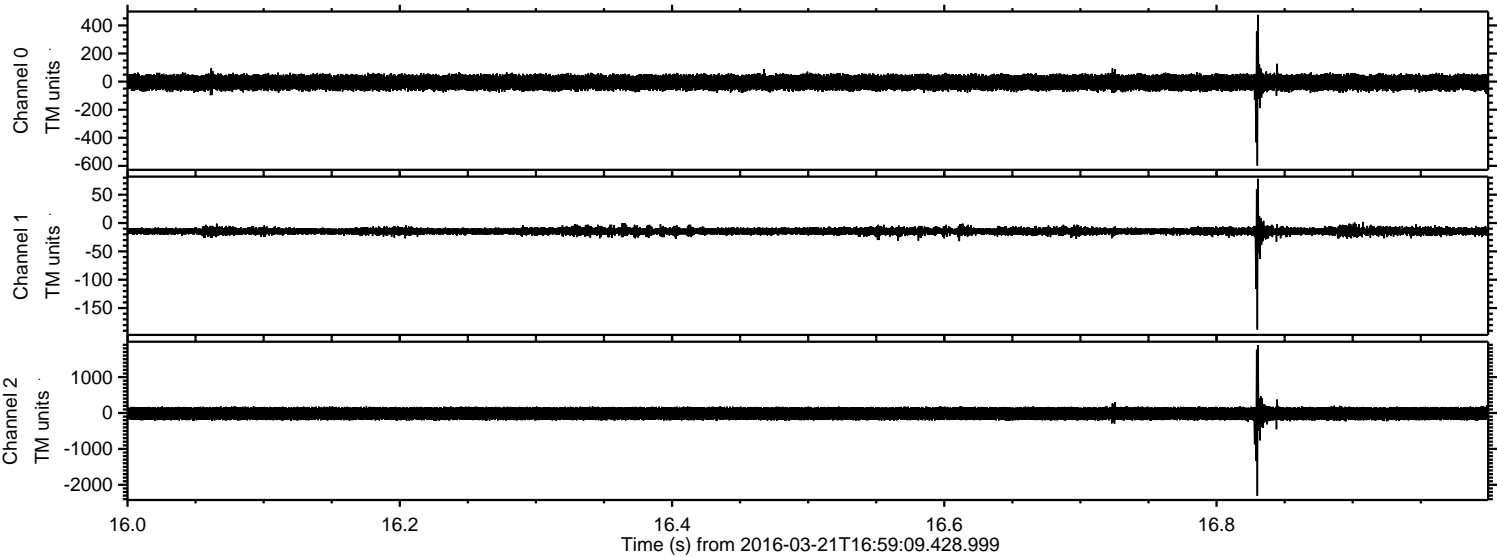
Channel 2
mn: -3328
mx: 1910
 μ : -15.7
 σ : 103.2

ELMAVAN 3D WAVEFORMS (Measured data sampled at 50 kHz) 51000 packets of 144 samples from 2016-03-21T16:59:09.428.999. Part 111/147

Processed Thu Apr 21 22:34:41 2016 by ELM ver.2012-10-06 from 001__elm20160321_165908__dat00.bin

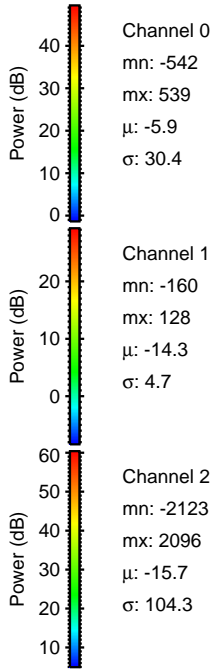
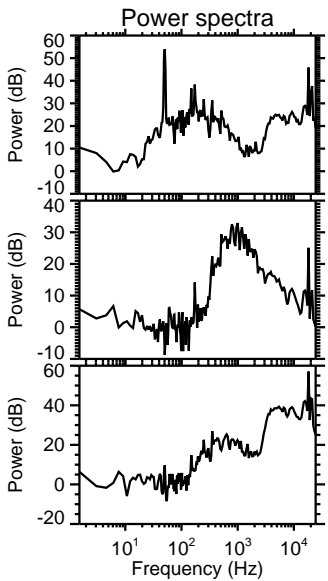
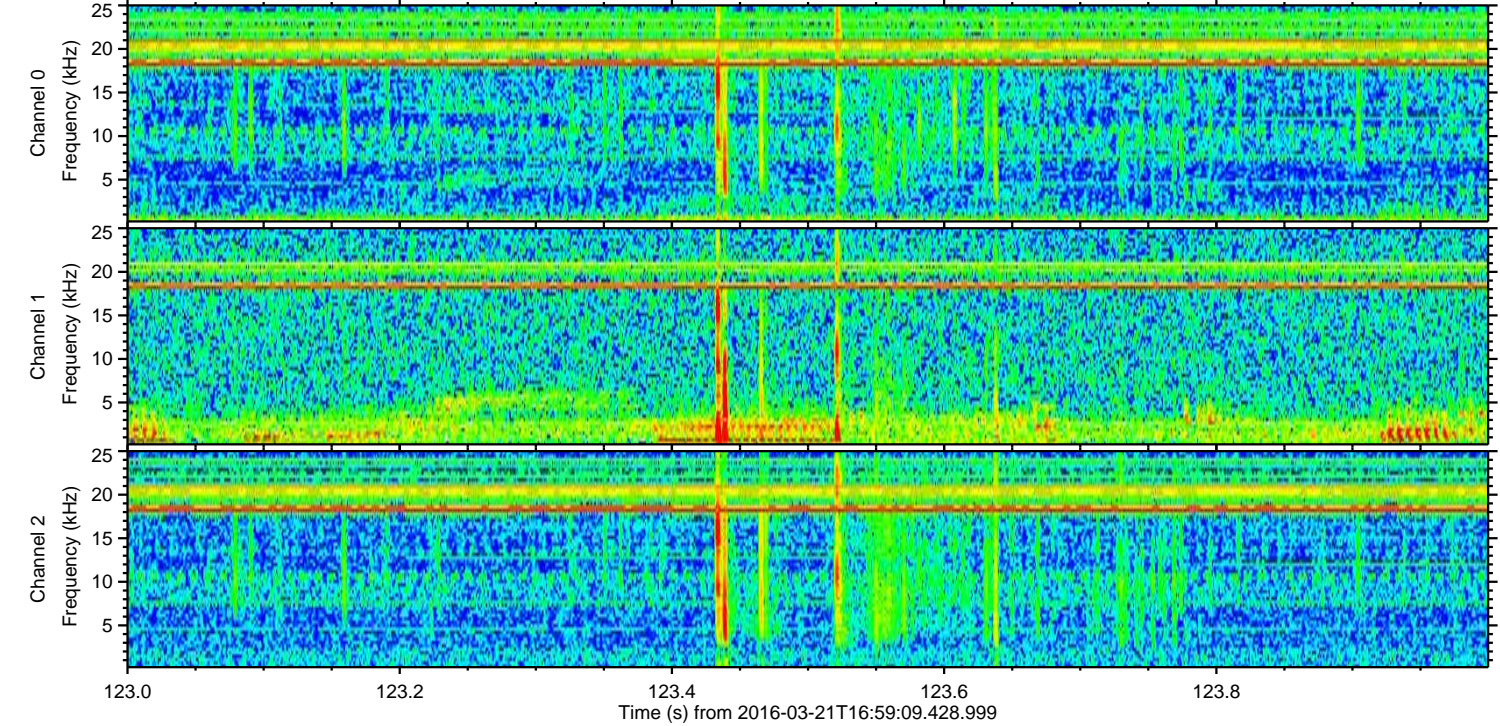
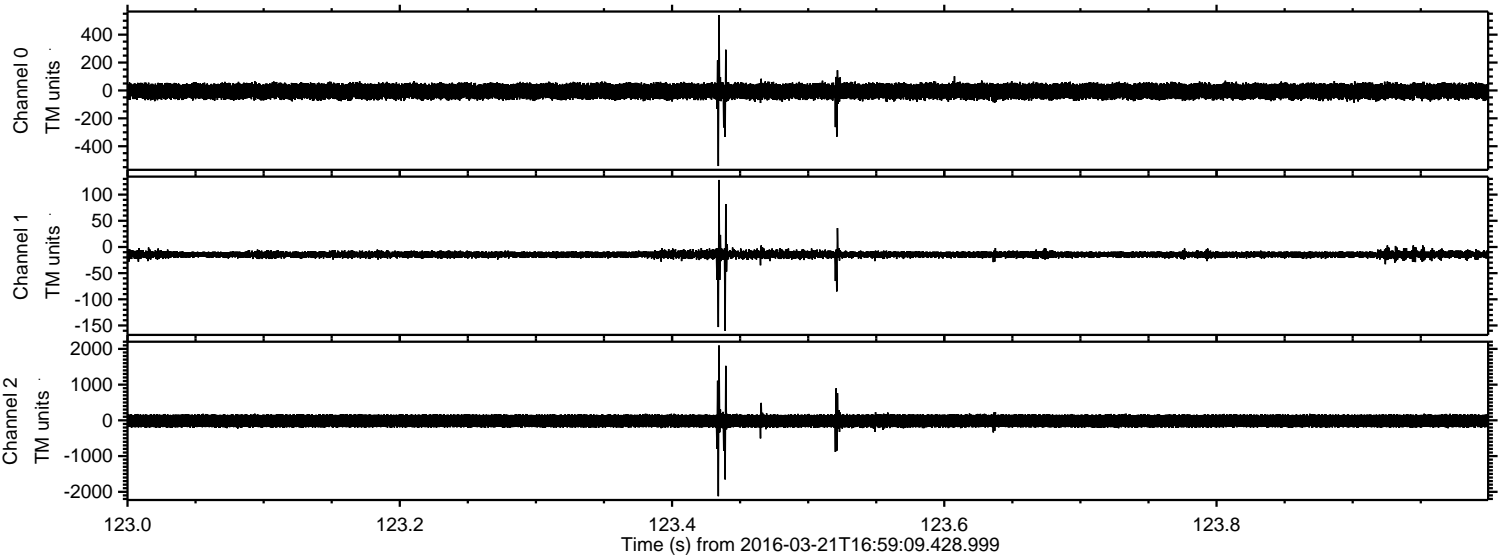


Processed Thu Apr 21 22:34:42 2016 by ELM ver.2012-10-06 from 001__elm20160321_165908__dat00.bin

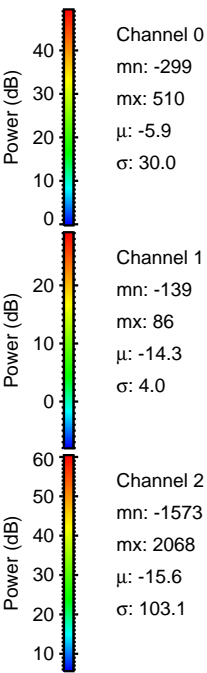
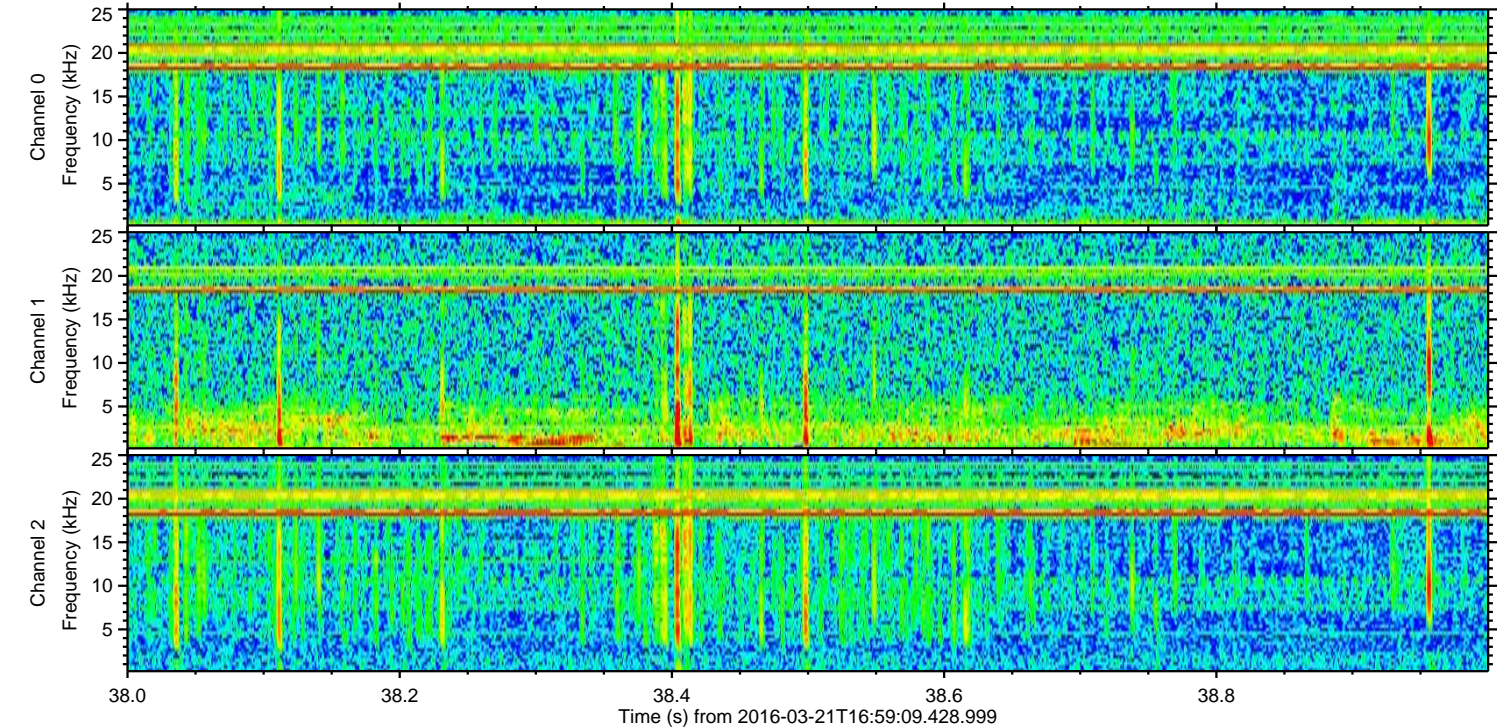
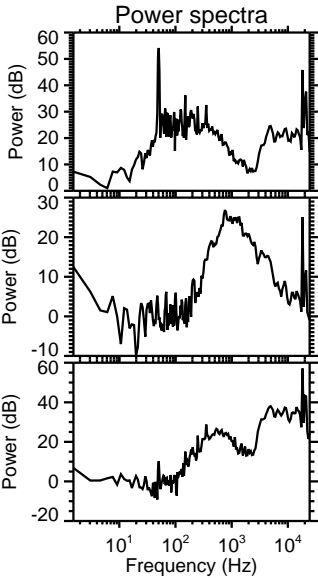
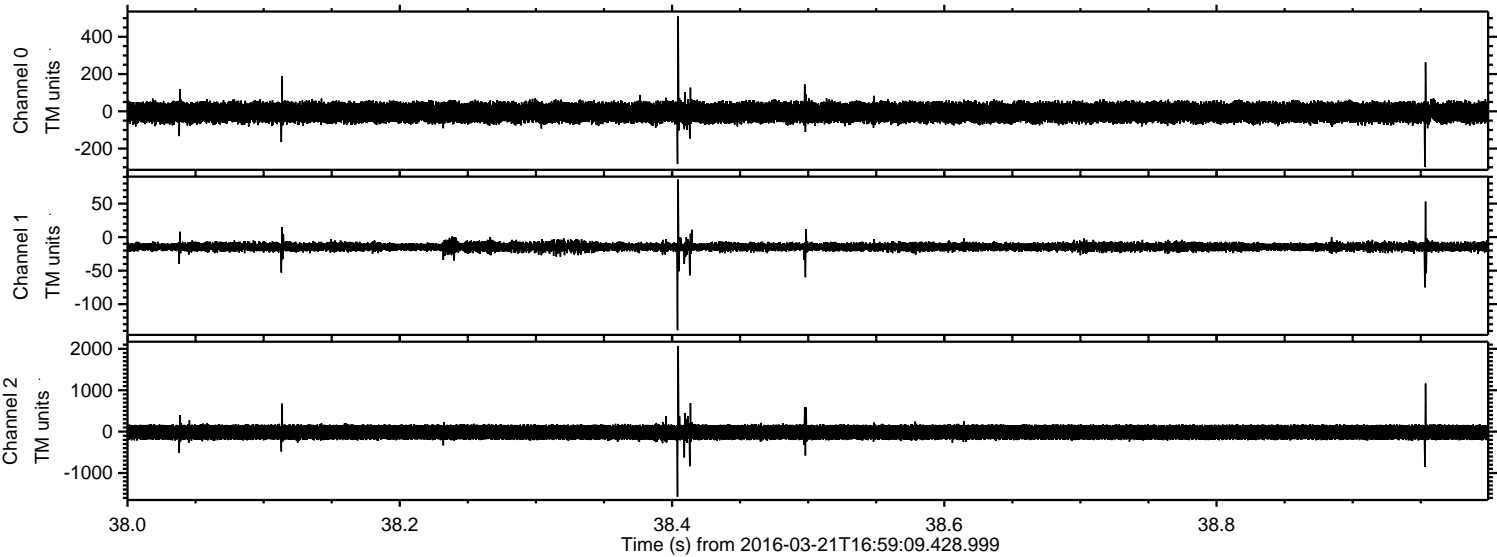


ELMAVAN 3D WAVEFORMS (Measured data sampled at 50 kHz) 51000 packets of 144 samples from 2016-03-21T16:59:09.428.999. Part 124/147

Processed Thu Apr 21 22:34:44 2016 by ELM ver.2012-10-06 from 001__elm20160321_165908__dat00.bin



Processed Thu Apr 21 22:34:46 2016 by ELM ver.2012-10-06 from 001__elm20160321_165908__dat00.bin

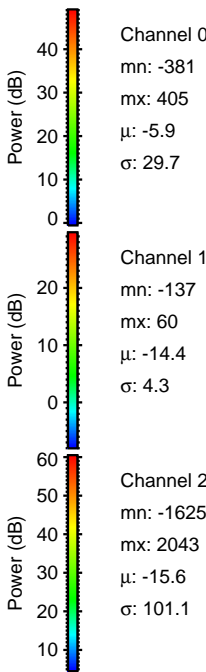
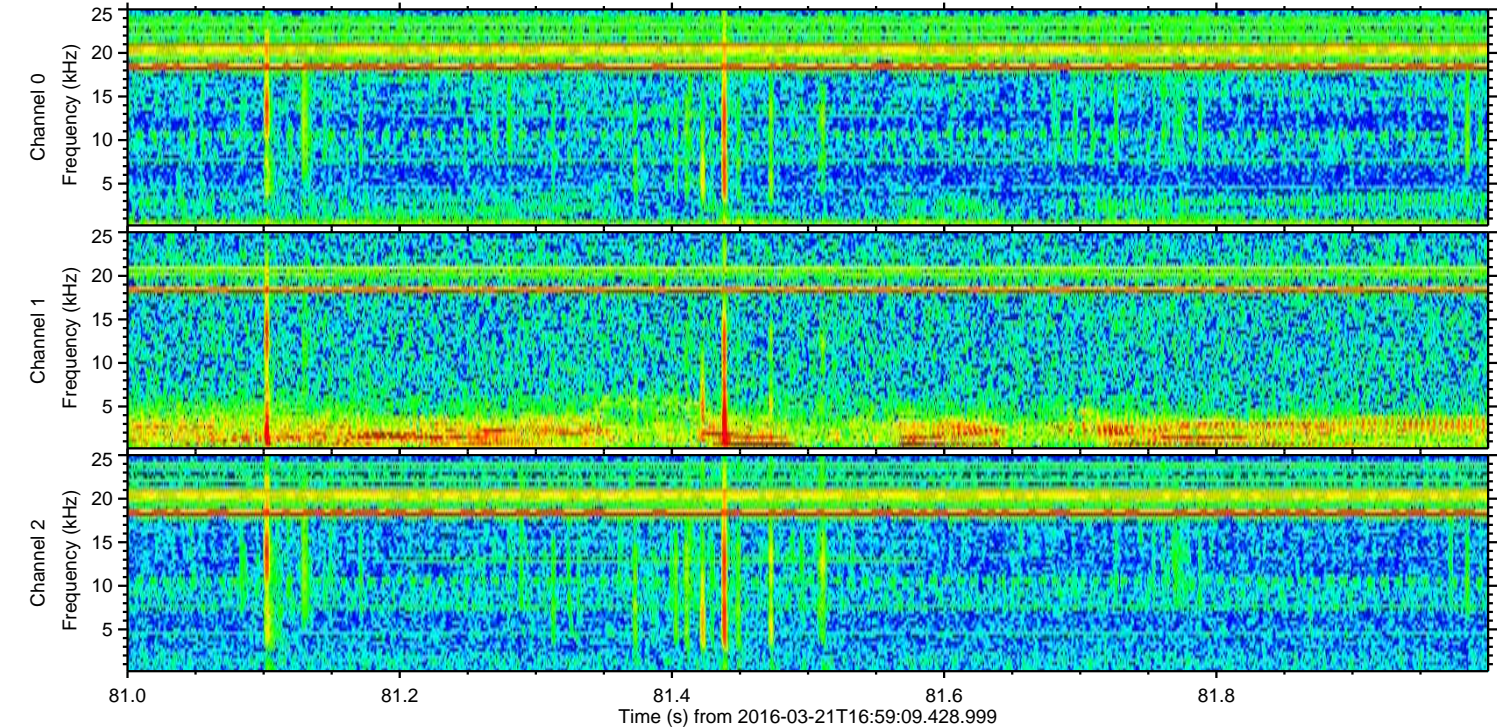
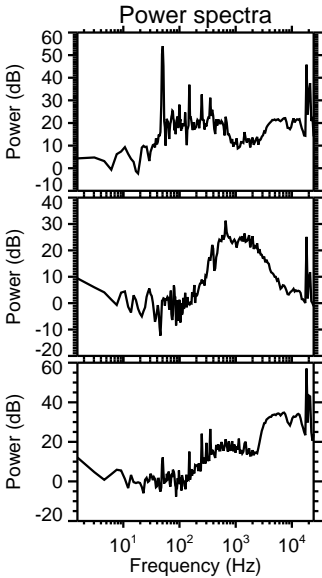
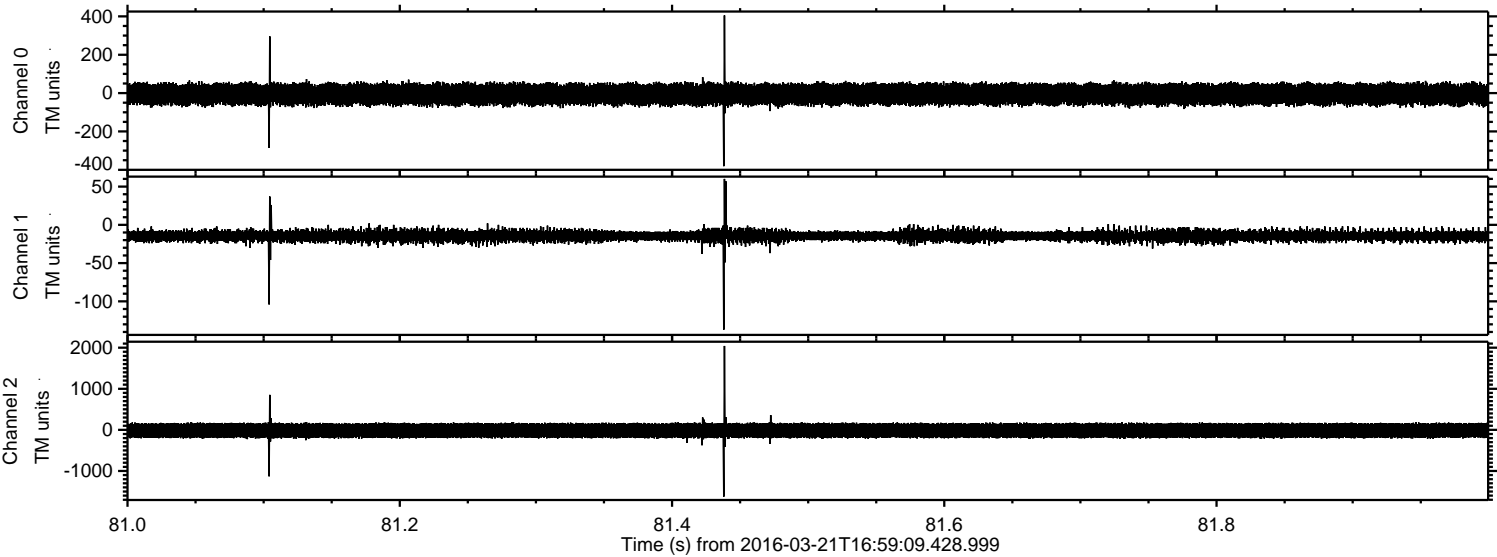


Channel 0
mn: -299
mx: 510
 μ : -5.9
 σ : 30.0

Channel 1
mn: -139
mx: 86
 μ : -14.3
 σ : 4.0

Channel 2
mn: -1573
mx: 2068
 μ : -15.6
 σ : 103.1

Processed Thu Apr 21 22:34:48 2016 by ELM ver.2012-10-06 from 001__elm20160321_165908__dat00.bin



Processed Thu Apr 21 22:34:51 2016 by ELM ver.2012-10-06 from 001__elm20160321_165908__dat00.bin

