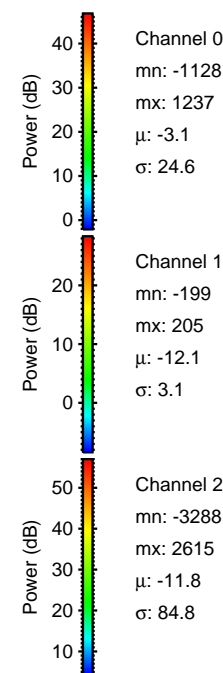
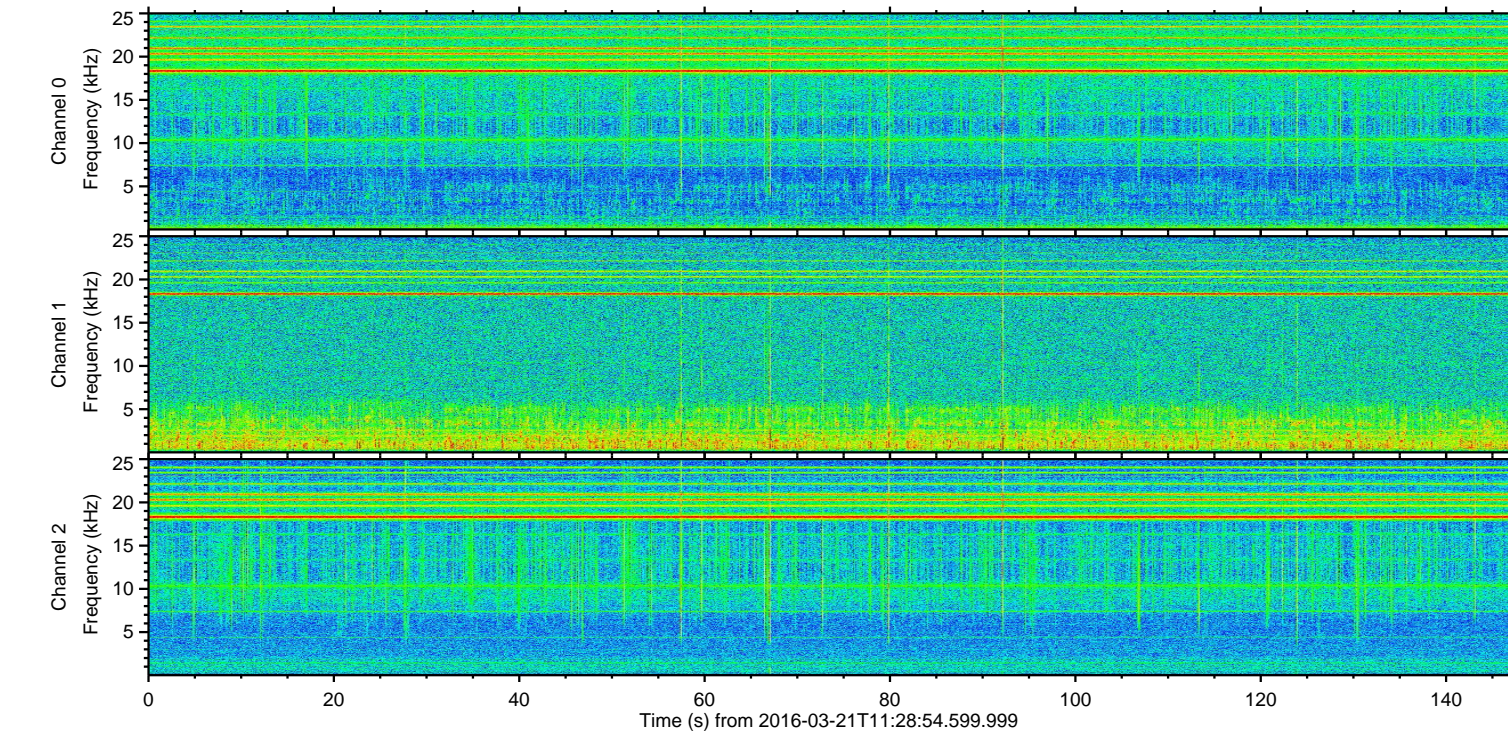
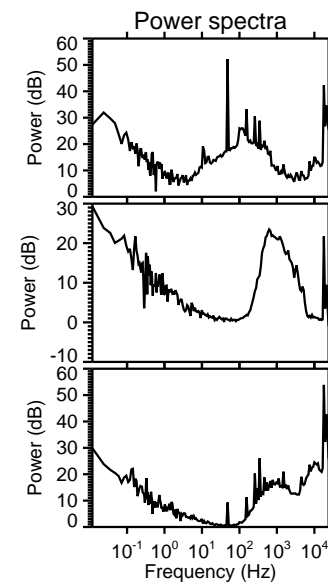
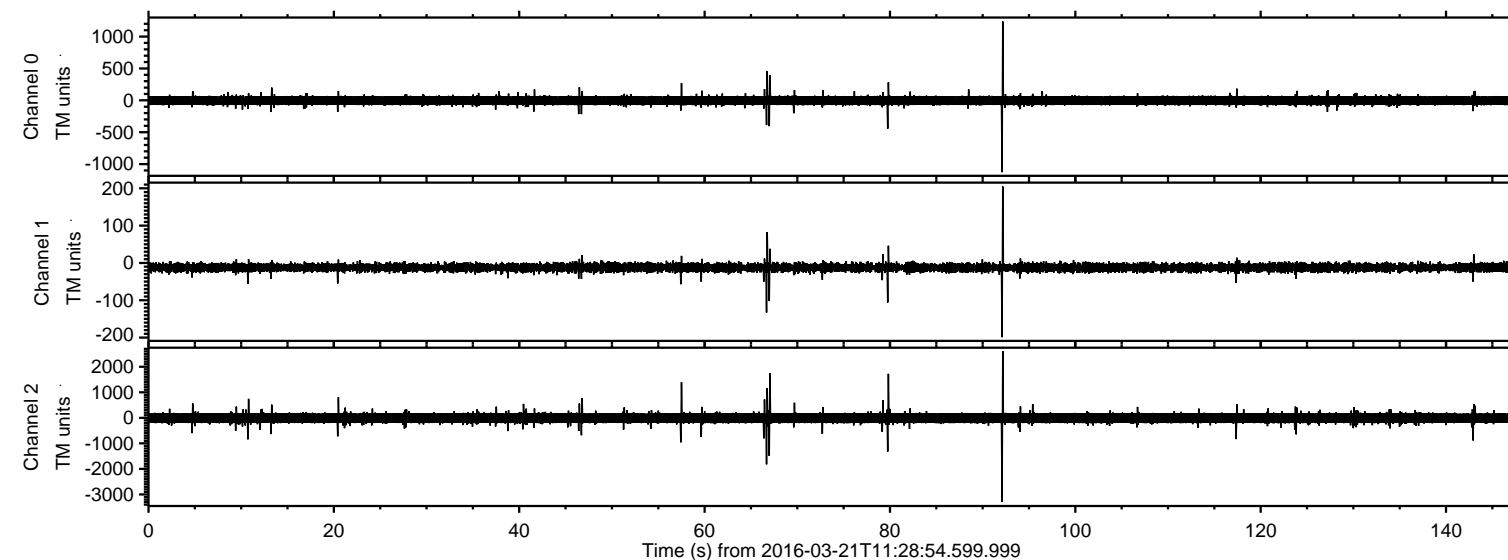


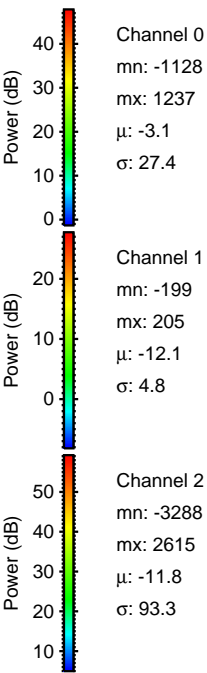
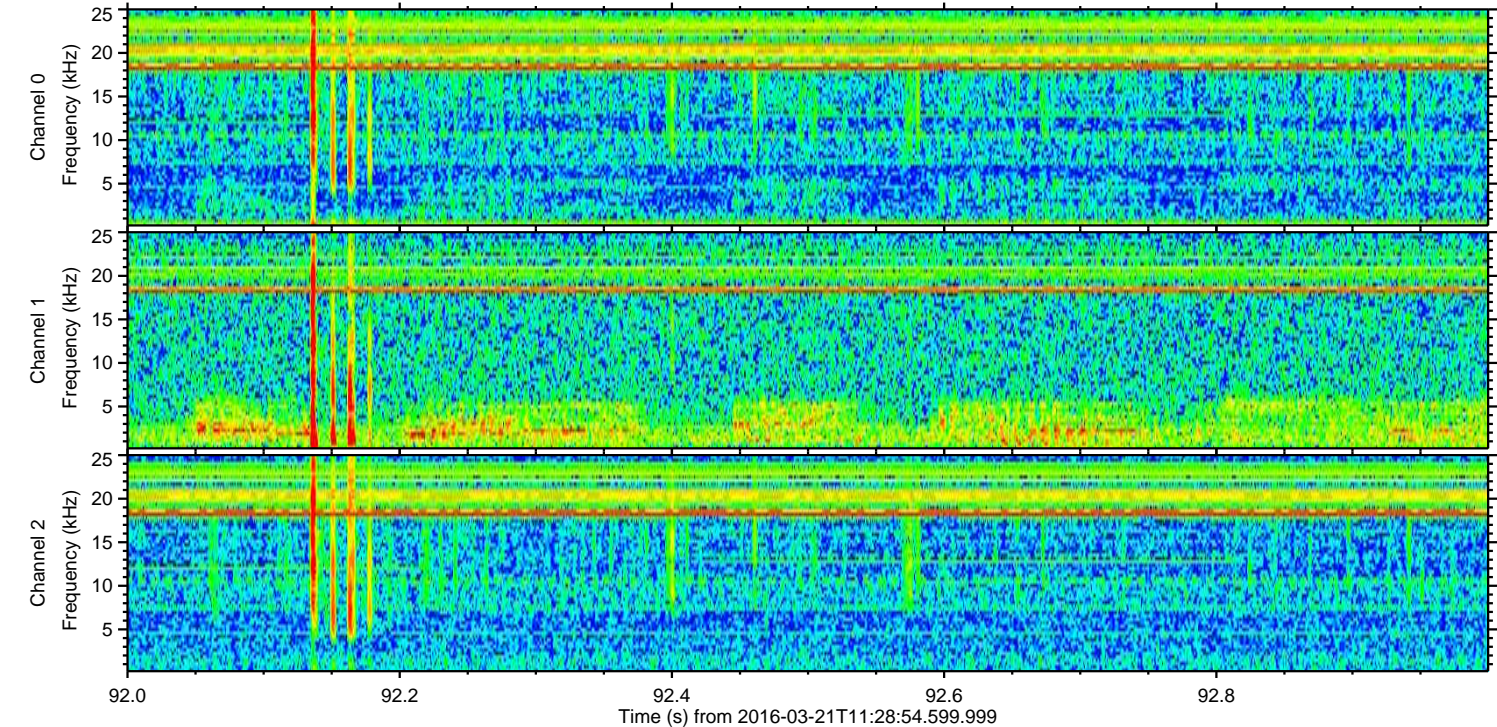
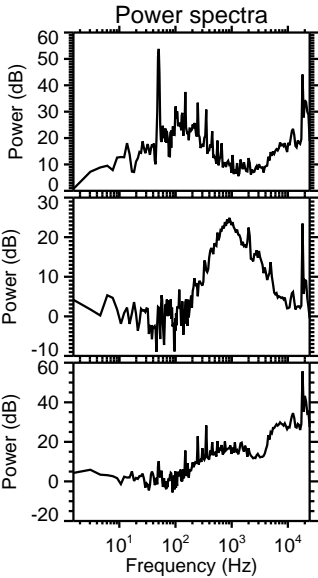
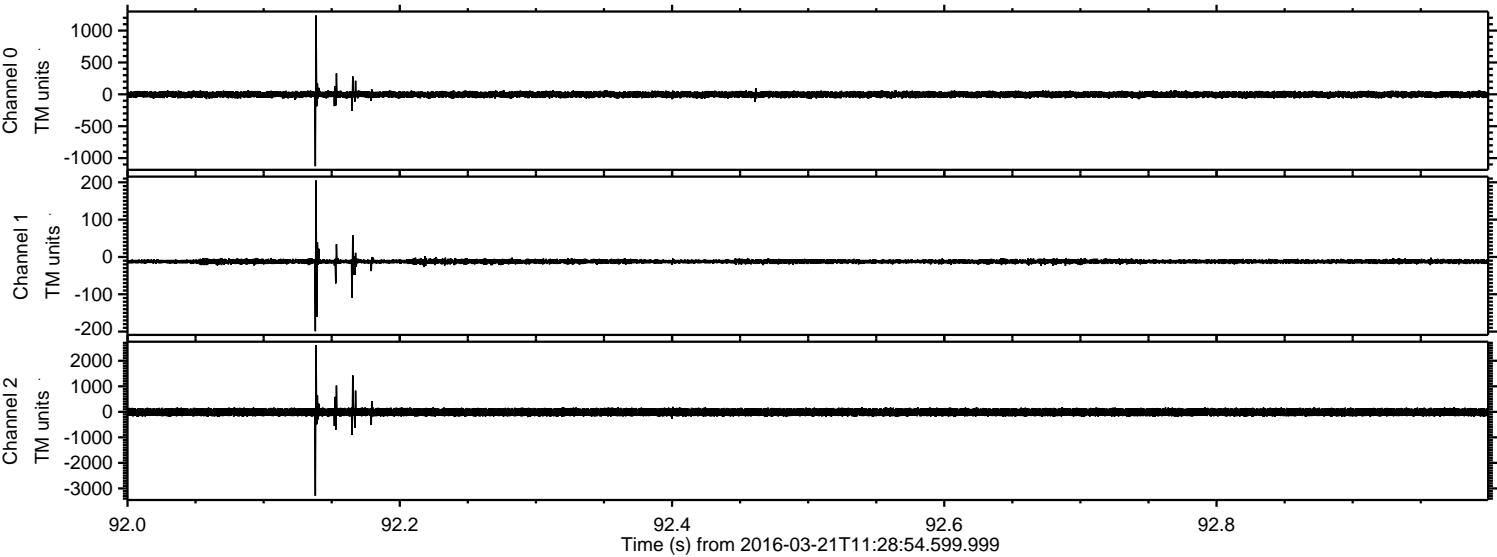
# ELMAVAN 3D WAVEFORMS (Measured data sampled at 50 kHz) 51000 packets of 144 samples from 2016-03-21T11:28:54.599.999.

Processed Thu Apr 21 21:09:38 2016 by ELM ver.2012-10-06 from 001\_\_elm20160321\_112853\_\_dat00.bin



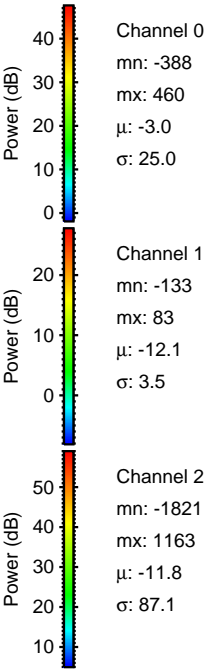
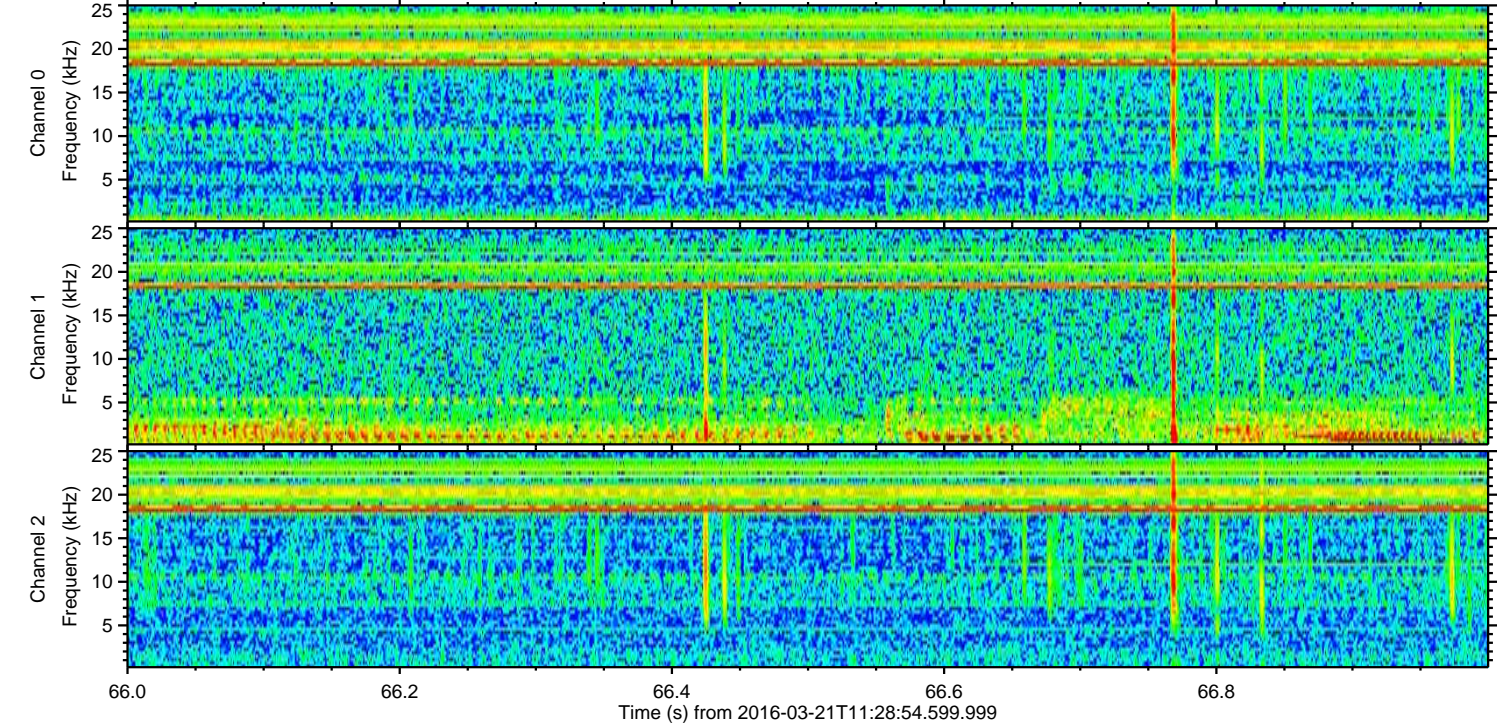
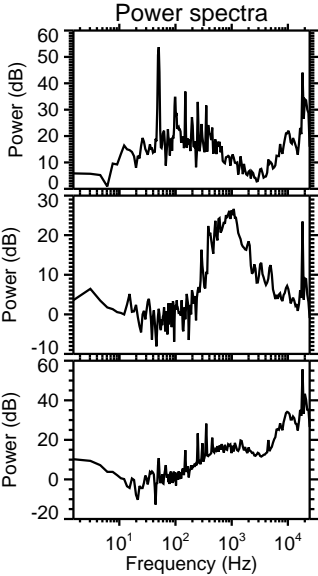
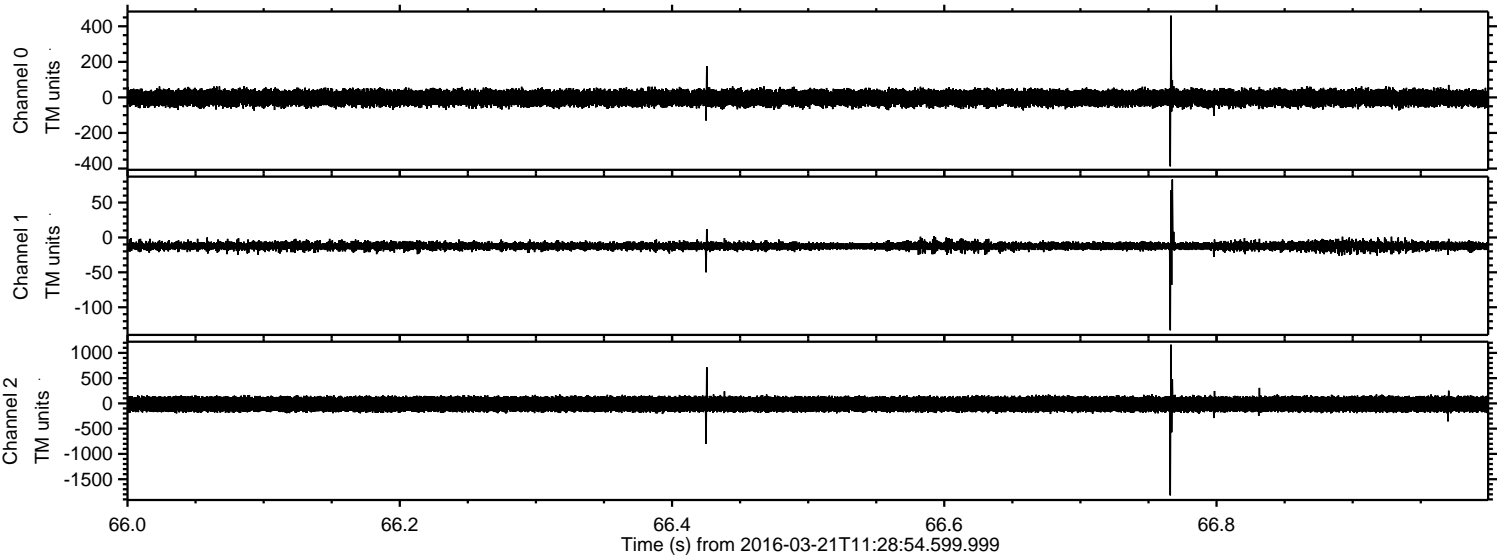


Processed Thu Apr 21 21:09:54 2016 by ELM ver.2012-10-06 from 001\_\_elm20160321\_112853\_\_dat00.bin



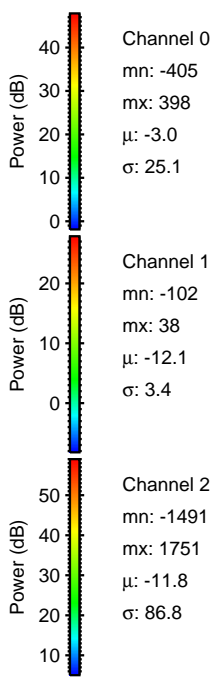
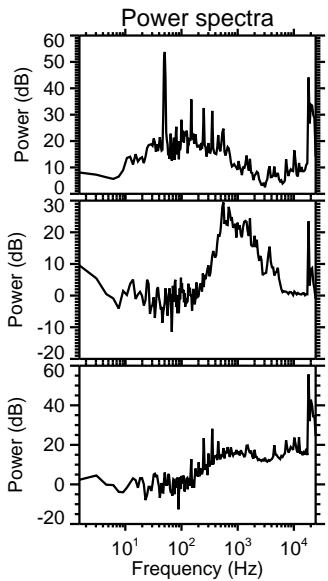
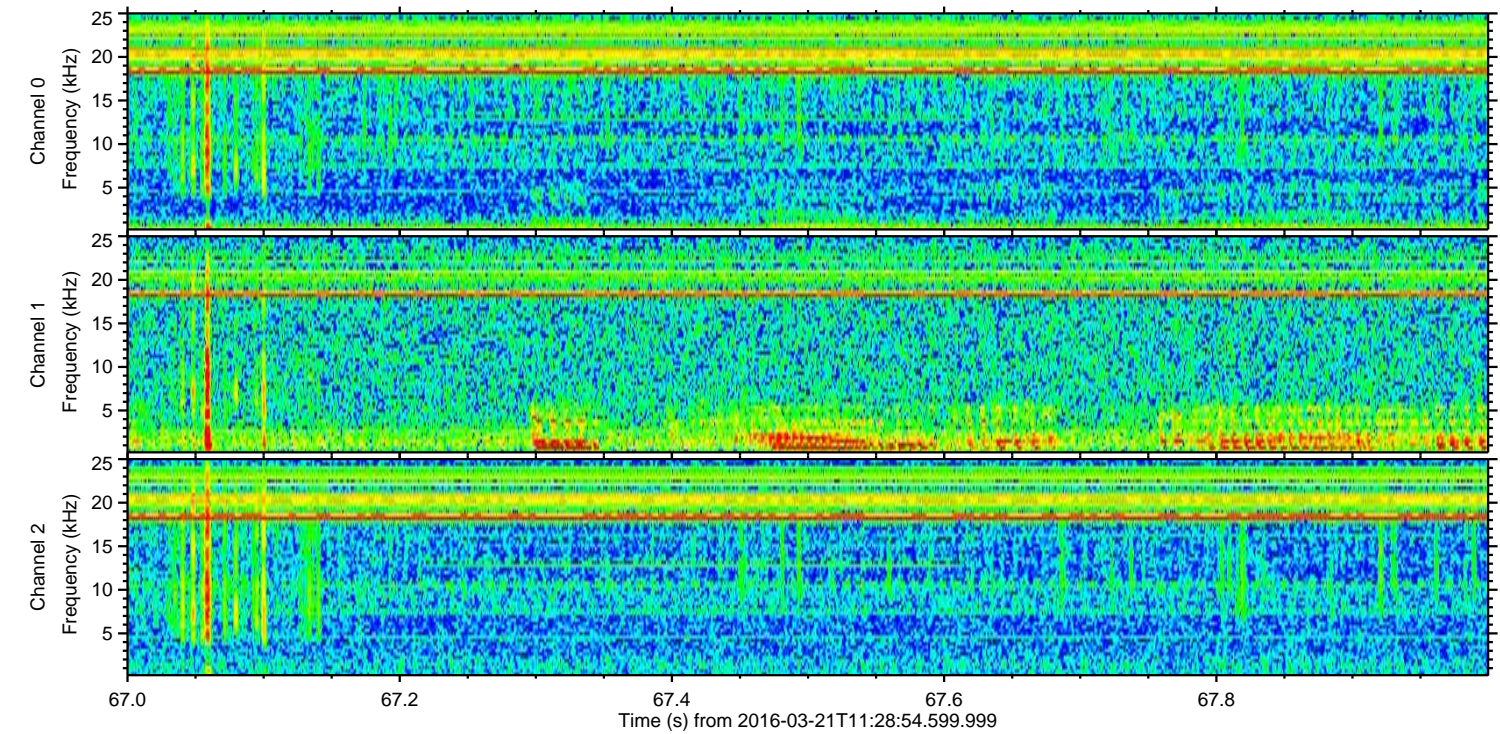
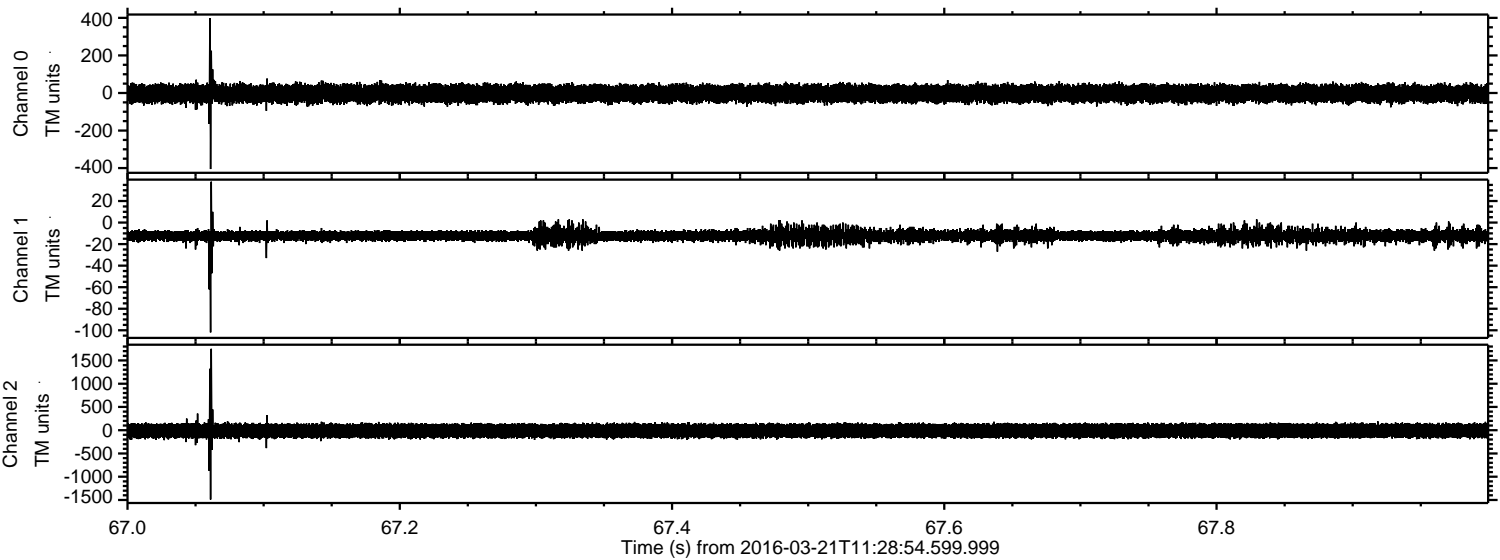


Processed Thu Apr 21 21:09:55 2016 by ELM ver.2012-10-06 from 001\_\_elm20160321\_112853\_\_dat00.bin





Processed Thu Apr 21 21:09:56 2016 by ELM ver.2012-10-06 from 001\_\_elm20160321\_112853\_\_dat00.bin



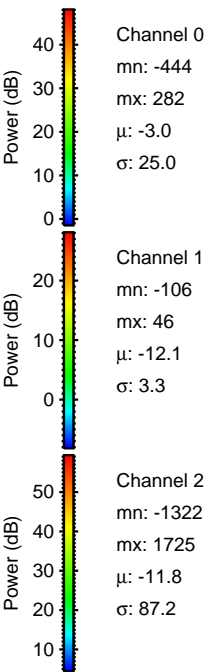
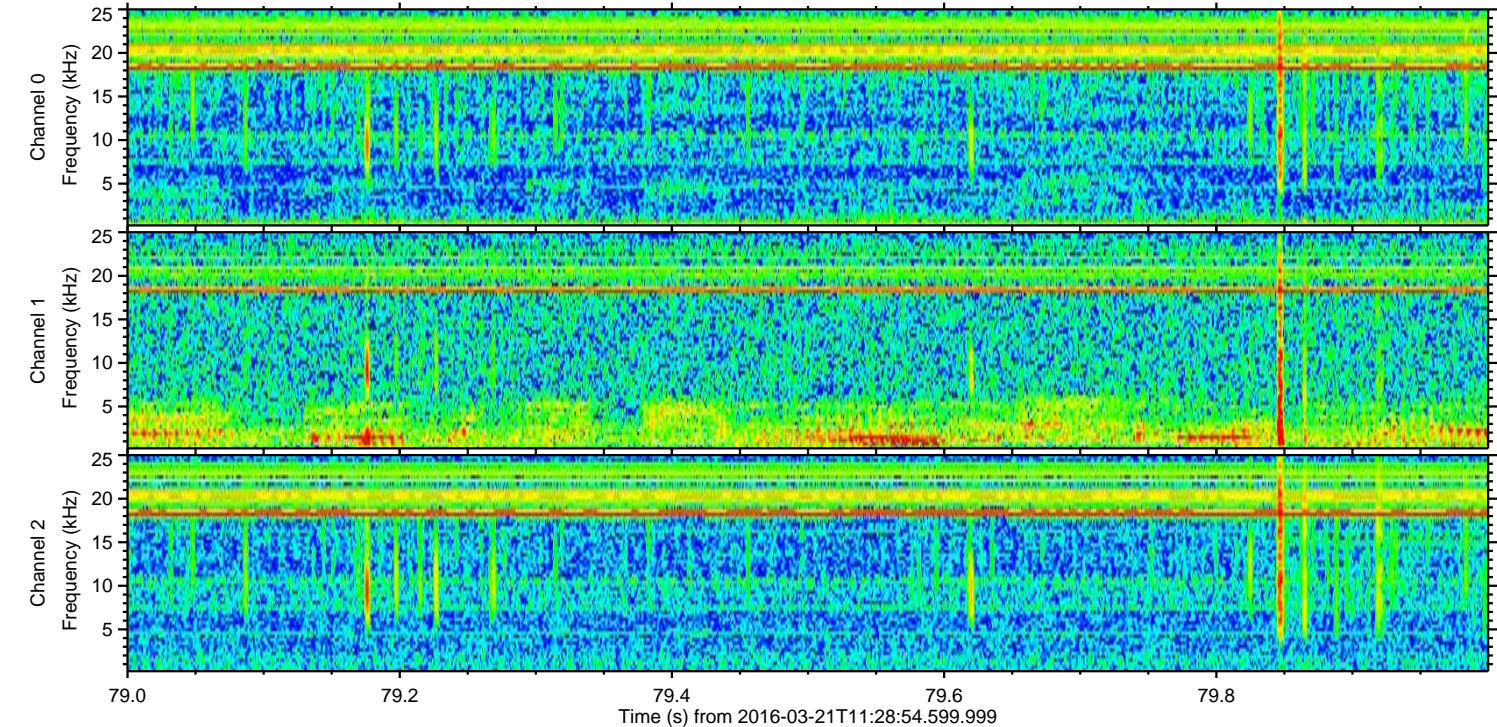
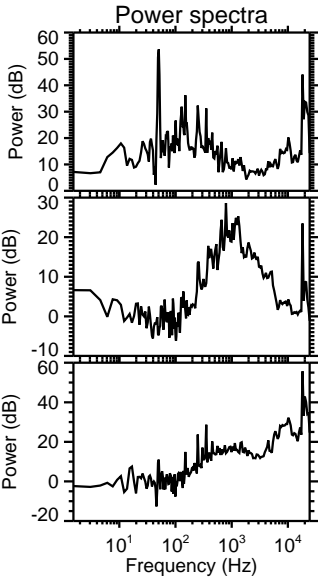
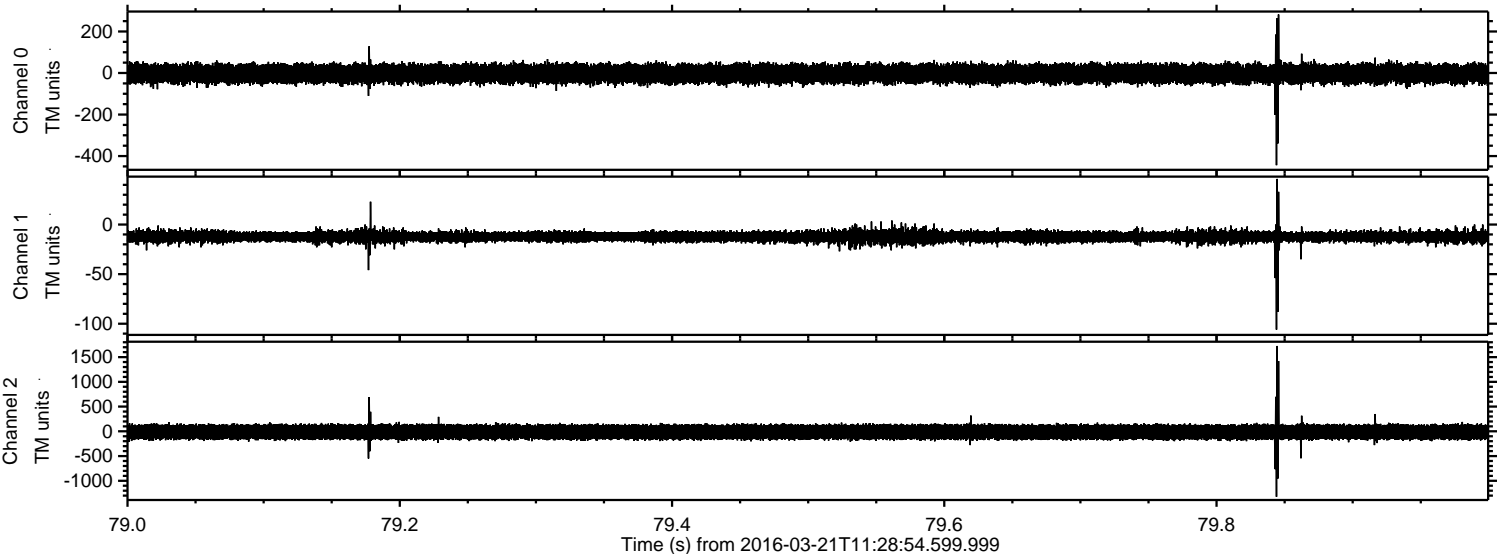
Channel 0  
mn: -405  
mx: 398  
 $\mu$ : -3.0  
 $\sigma$ : 25.1

Channel 1  
mn: -102  
mx: 38  
 $\mu$ : -12.1  
 $\sigma$ : 3.4

Channel 2  
mn: -1491  
mx: 1751  
 $\mu$ : -11.8  
 $\sigma$ : 86.8

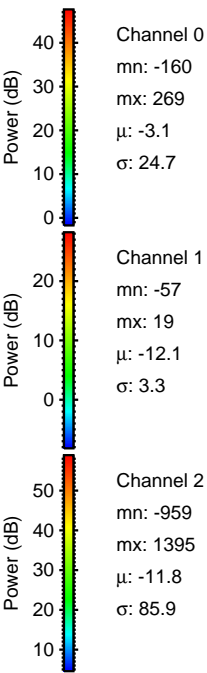
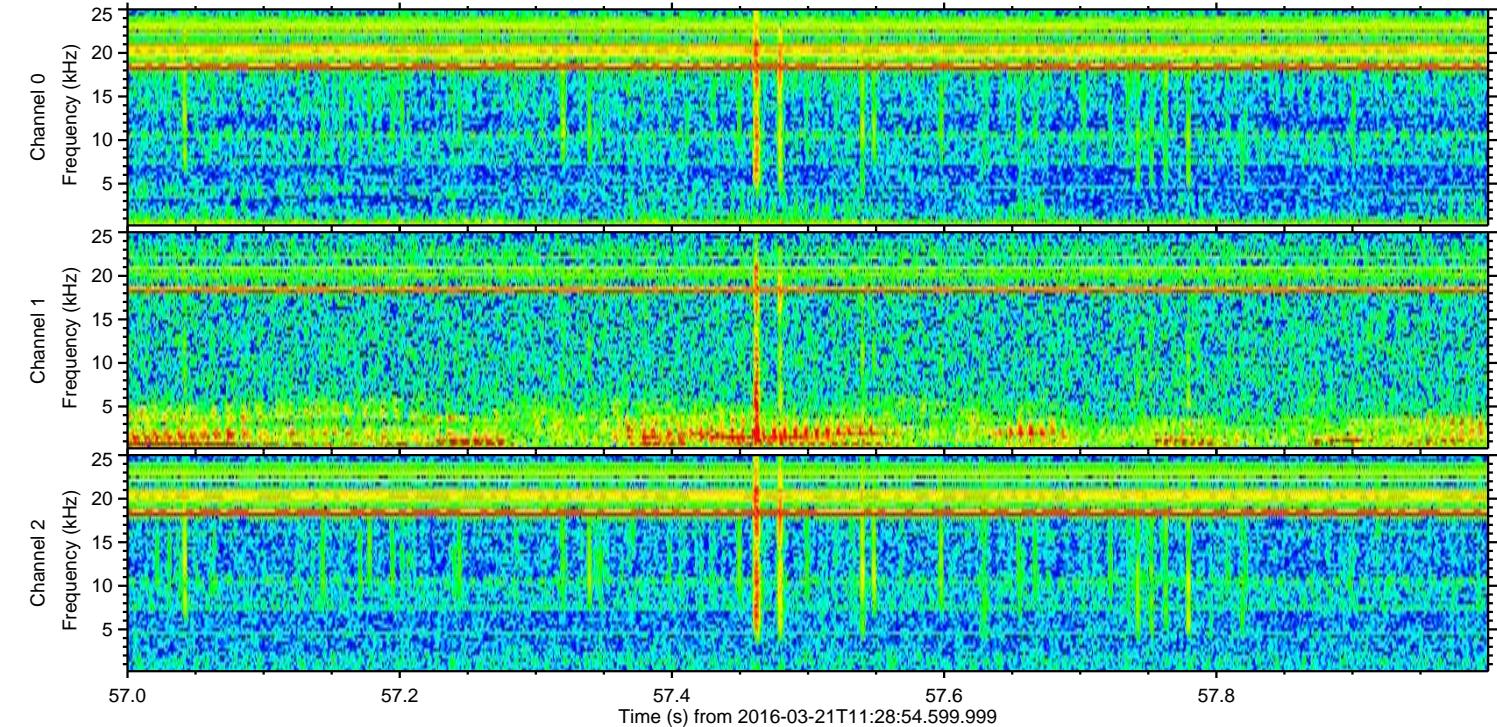
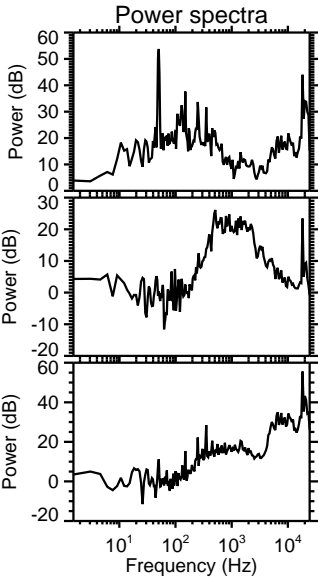
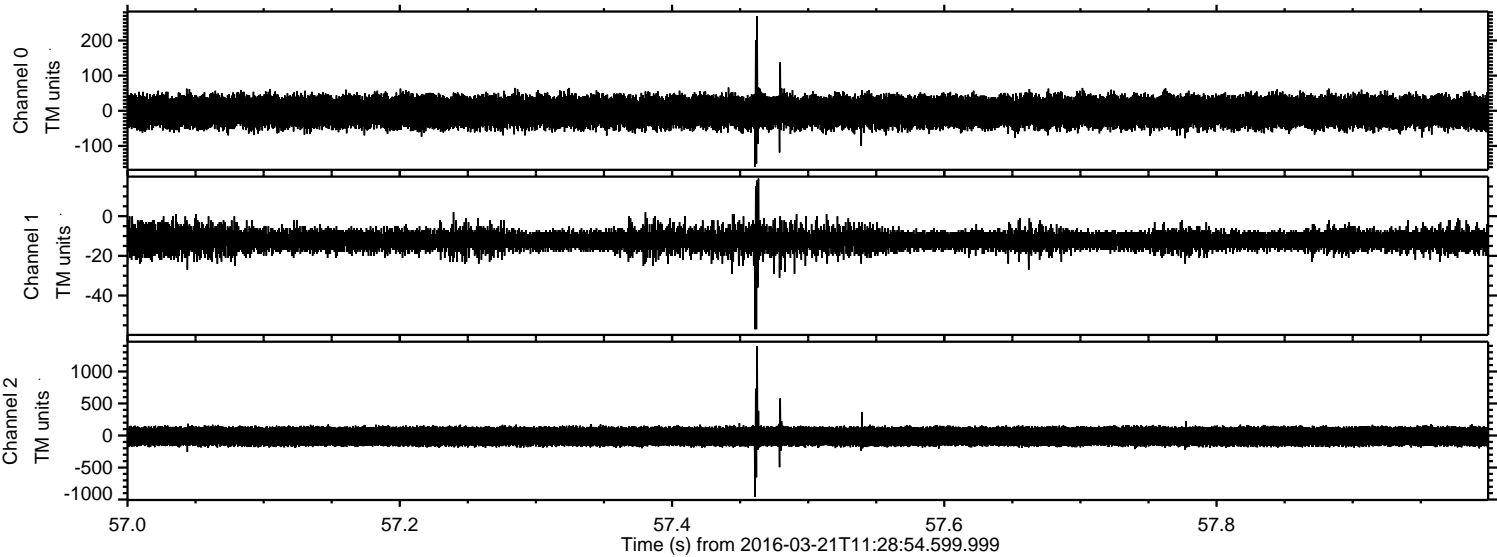


Processed Thu Apr 21 21:09:58 2016 by ELM ver.2012-10-06 from 001\_\_elm20160321\_112853\_\_dat00.bin



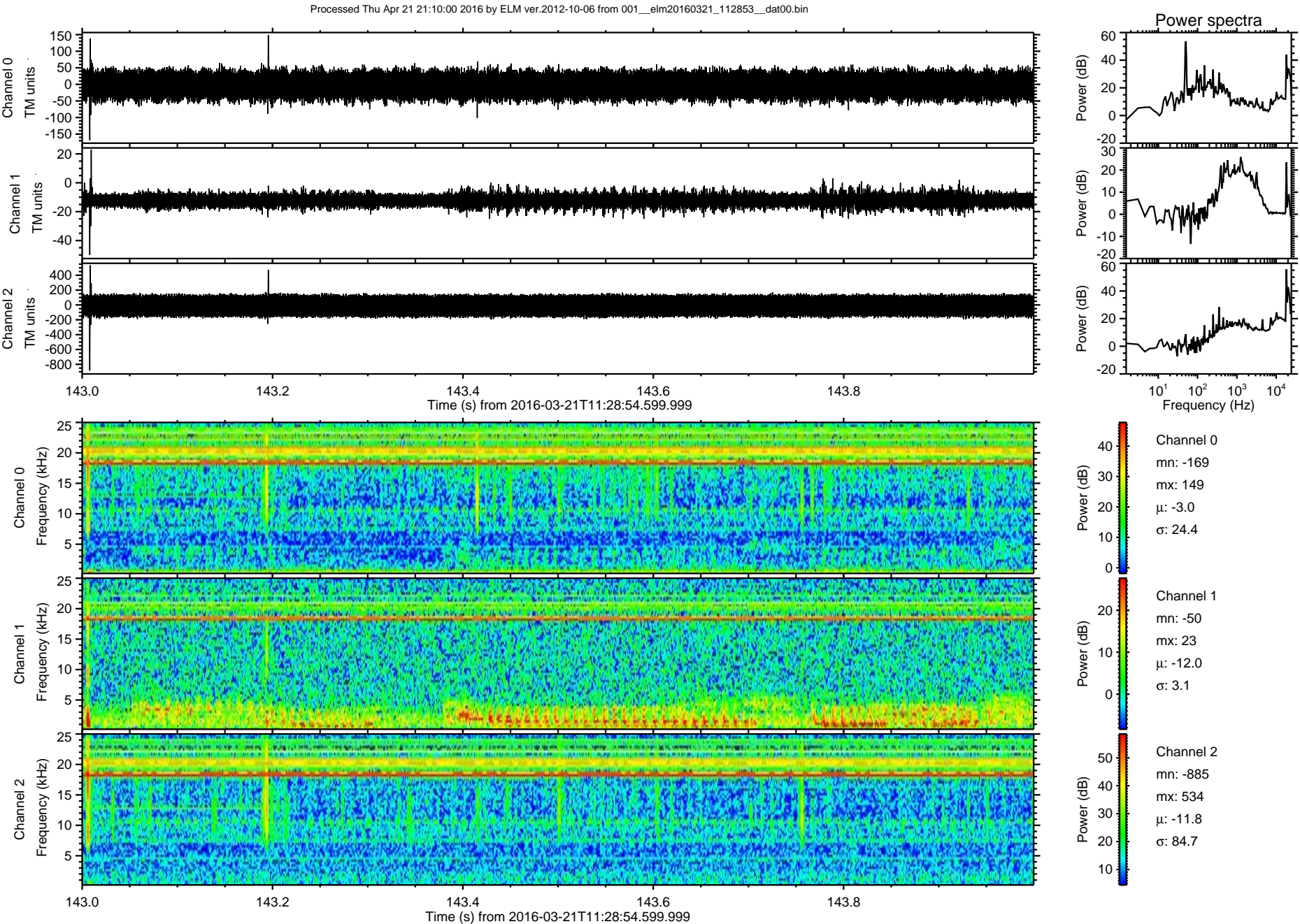


Processed Thu Apr 21 21:09:59 2016 by ELM ver.2012-10-06 from 001\_\_elm20160321\_112853\_\_dat00.bin

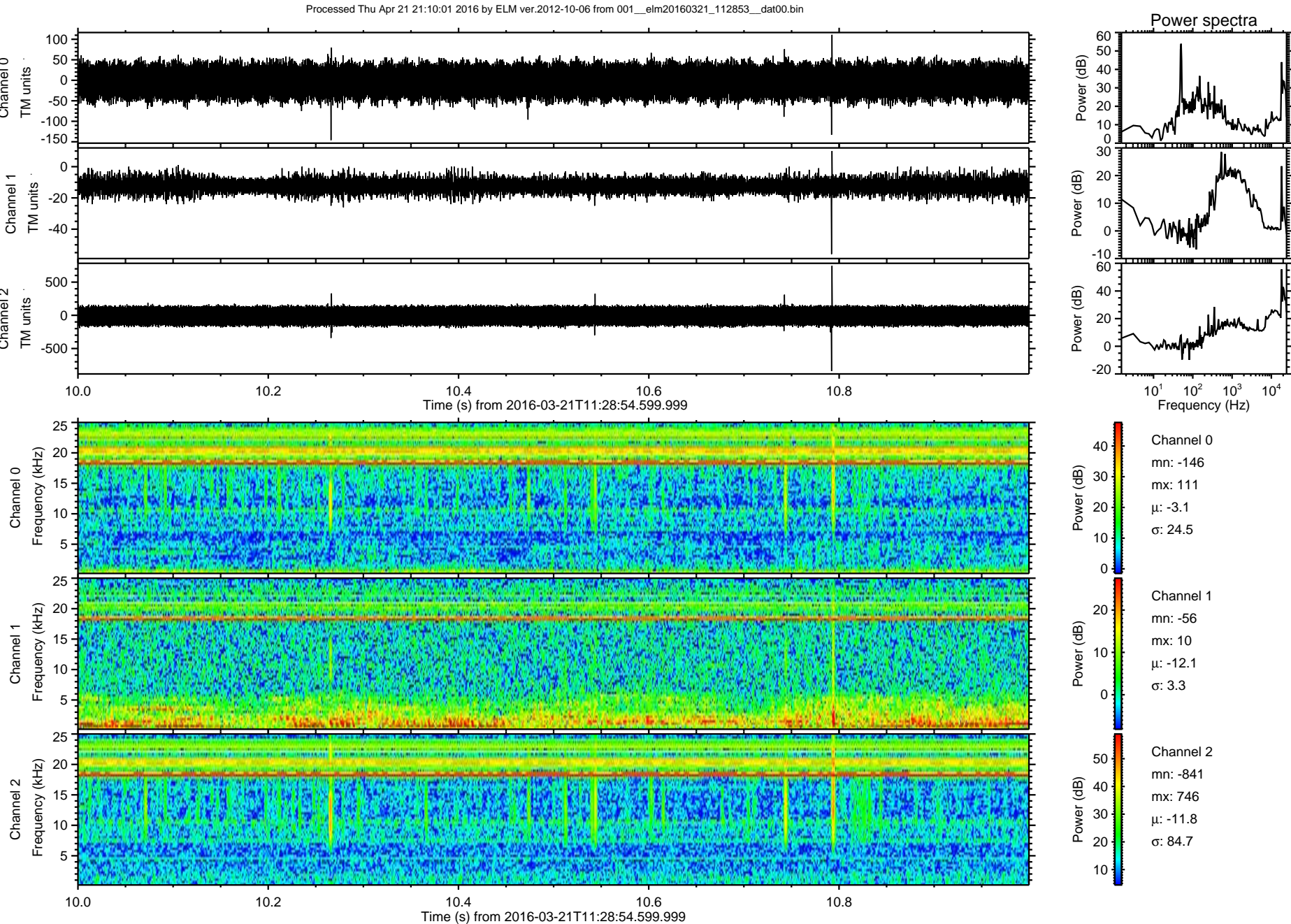




ELMAVAN 3D WAVEFORMS (Measured data sampled at 50 kHz) 51000 packets of 144 samples from 2016-03-21T11:28:54.599.999. Part 144/147

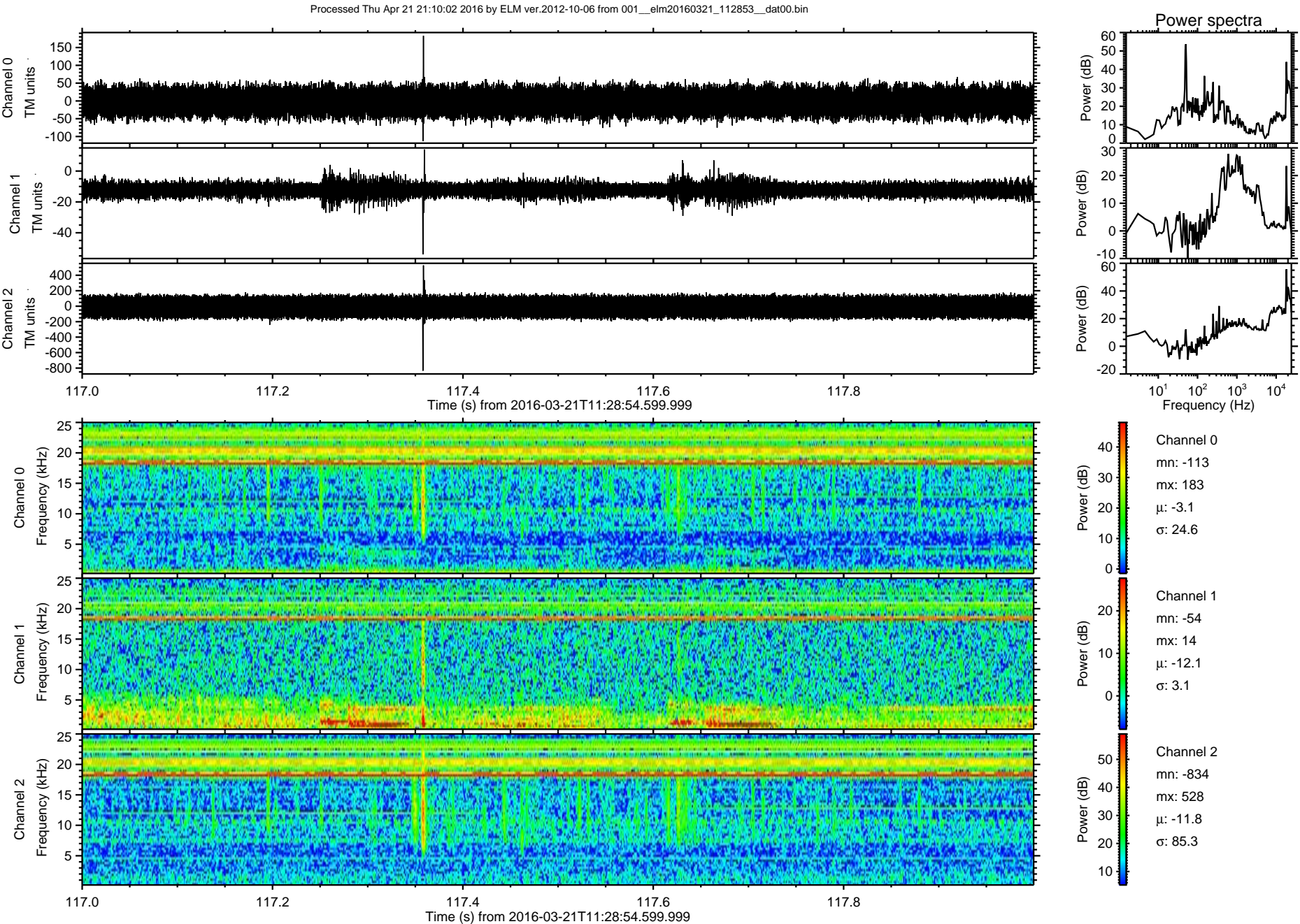






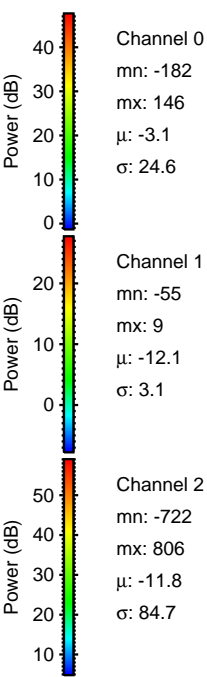
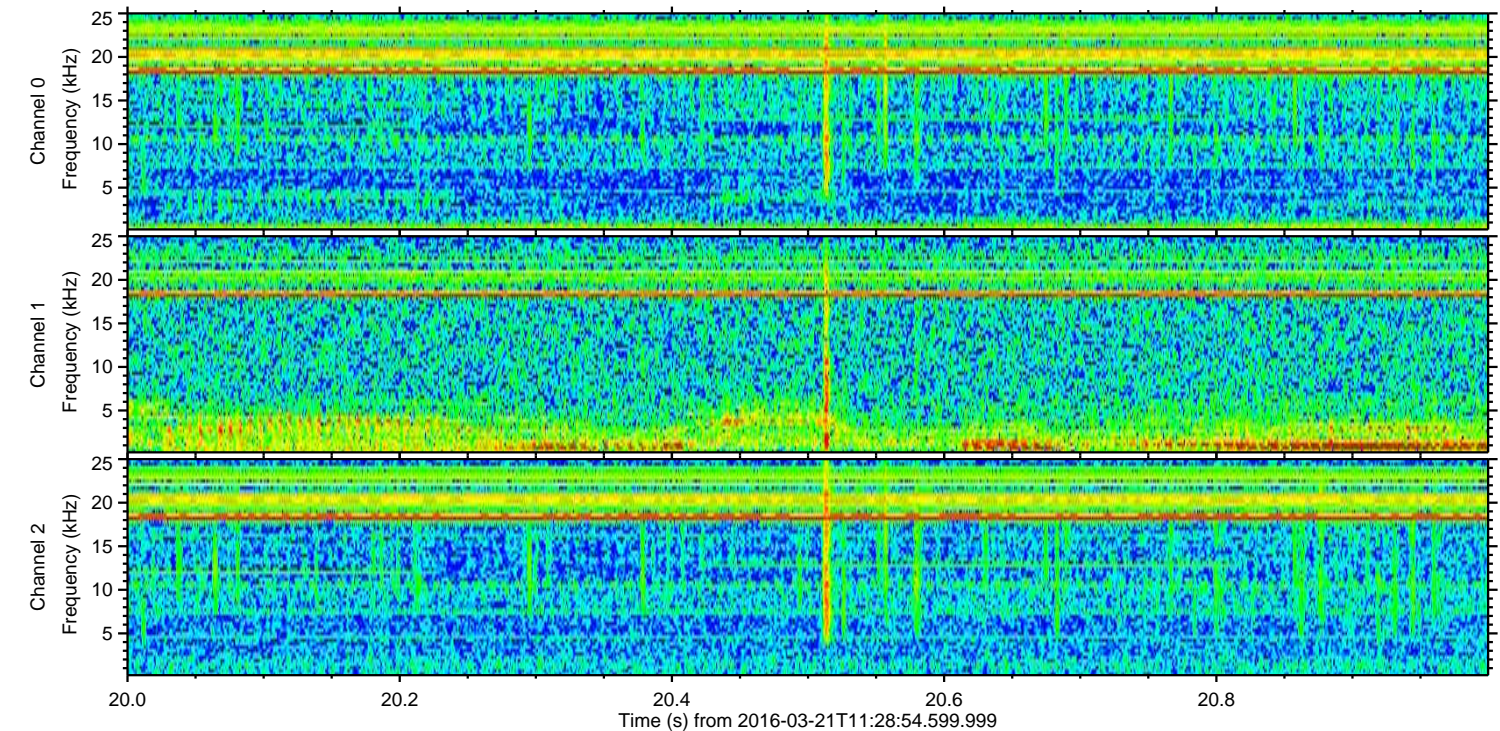
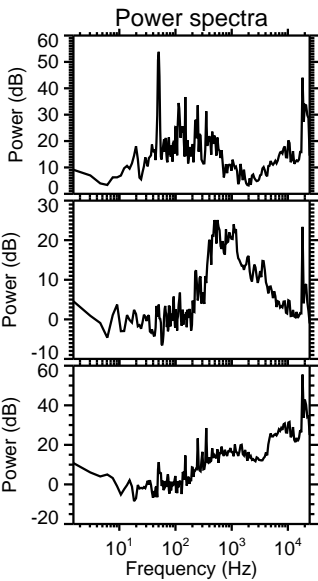
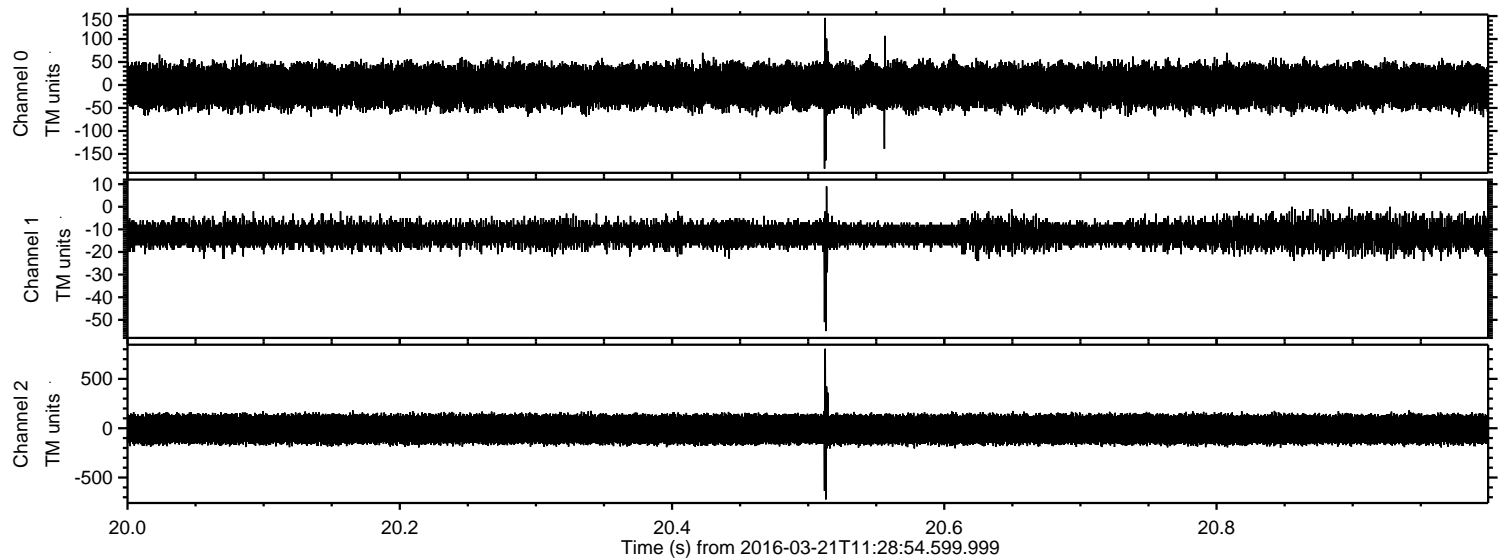


ELMAVAN 3D WAVEFORMS (Measured data sampled at 50 kHz) 51000 packets of 144 samples from 2016-03-21T11:28:54.599.999. Part 118/147





Processed Thu Apr 21 21:10:03 2016 by ELM ver.2012-10-06 from 001\_\_elm20160321\_112853\_\_dat00.bin





ELMAVAN 3D WAVEFORMS (Measured data sampled at 50 kHz) 51000 packets of 144 samples from 2016-03-21T11:28:54.599.999. Part 142/147

