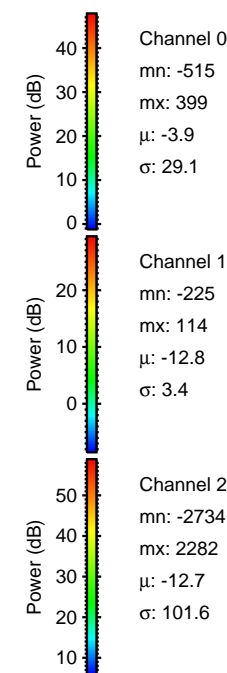
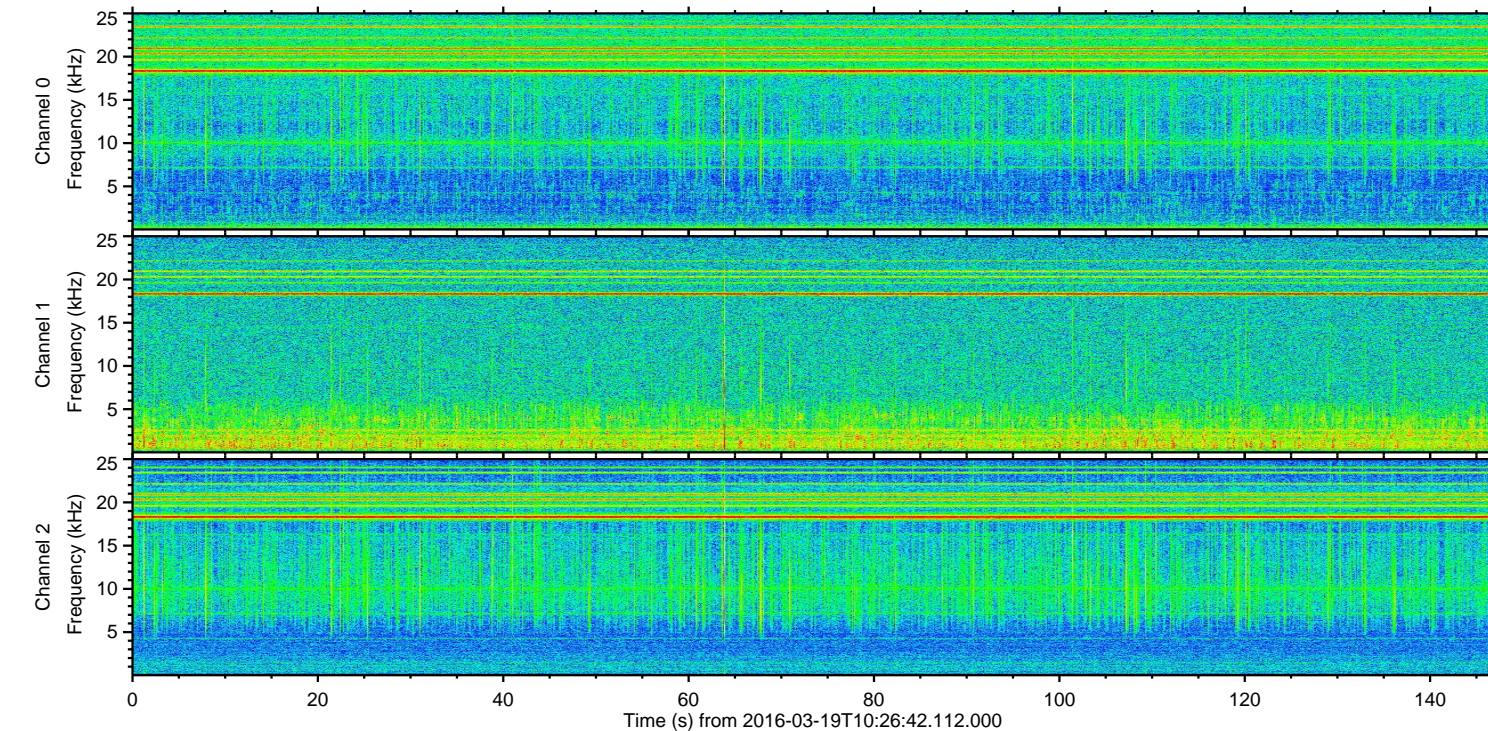
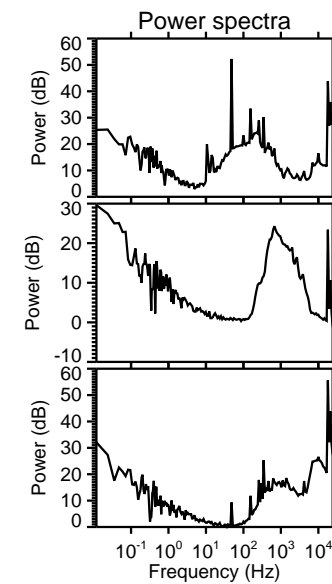
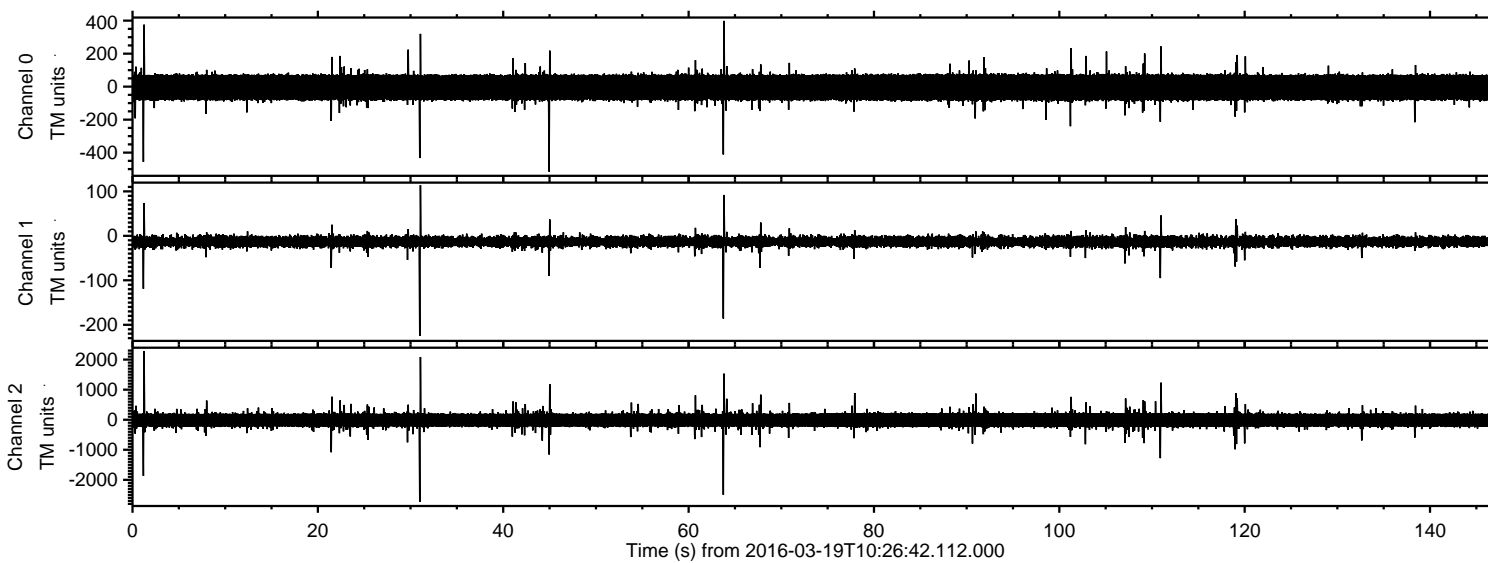
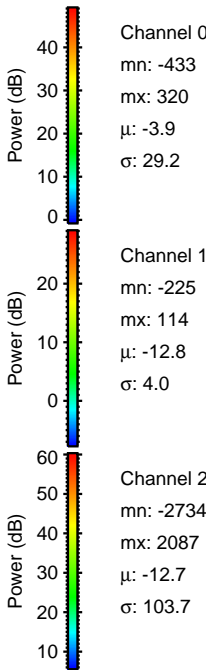
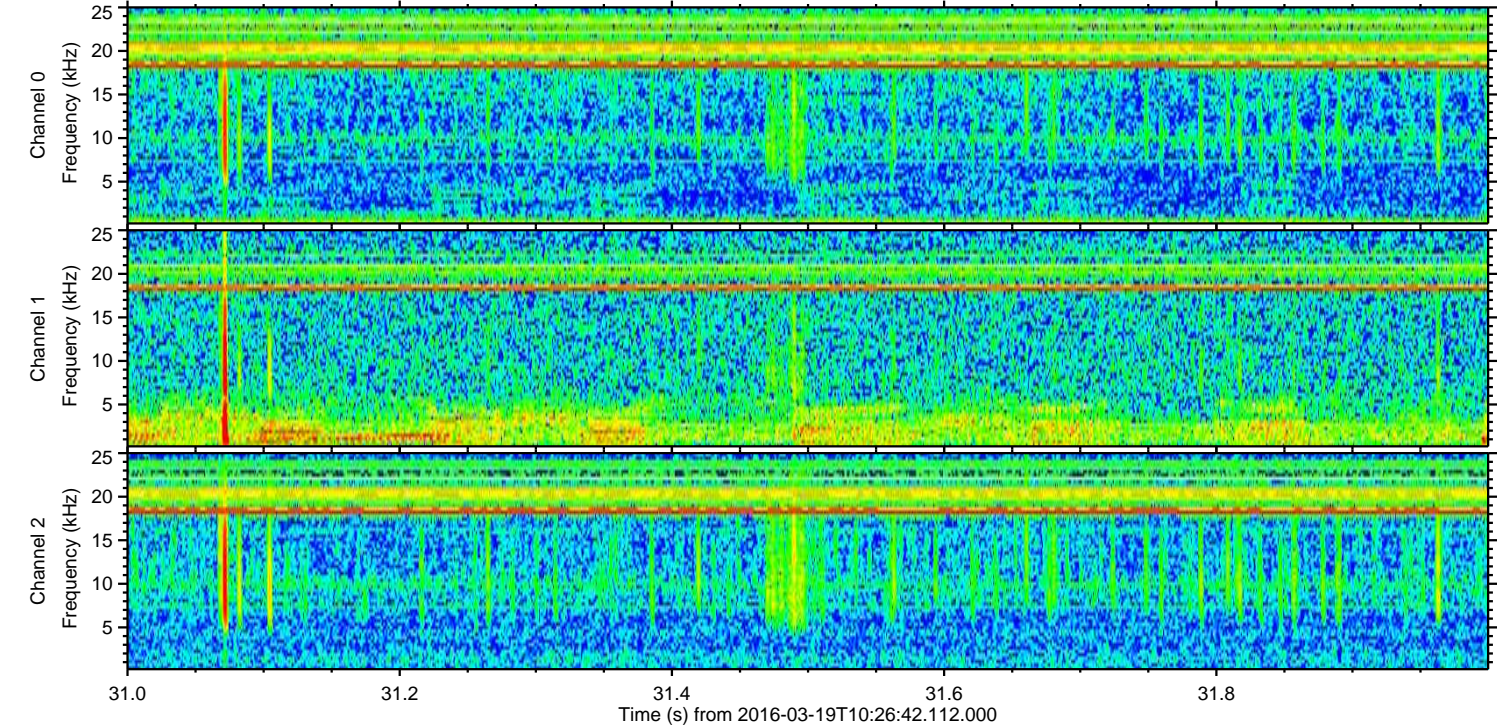
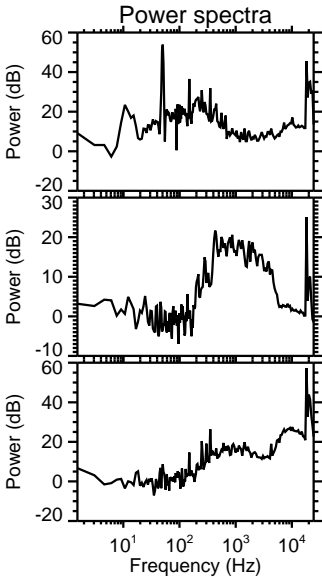
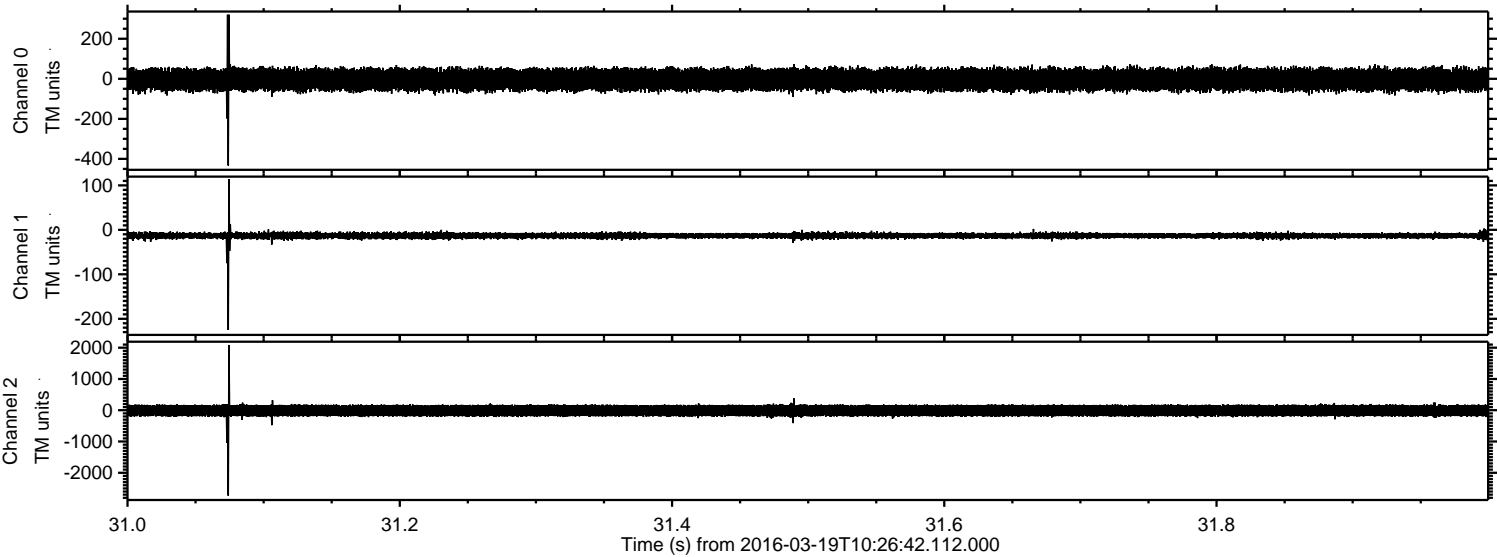


ELMAVAN 3D WAVEFORMS (Measured data sampled at 50 kHz) 51000 packets of 144 samples from 2016-03-19T10:26:42.112.000.

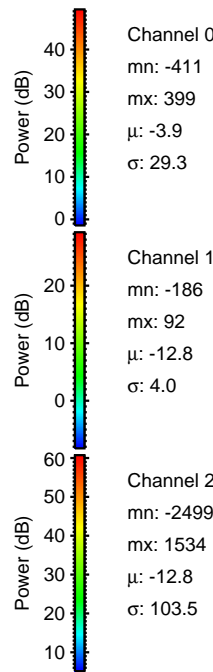
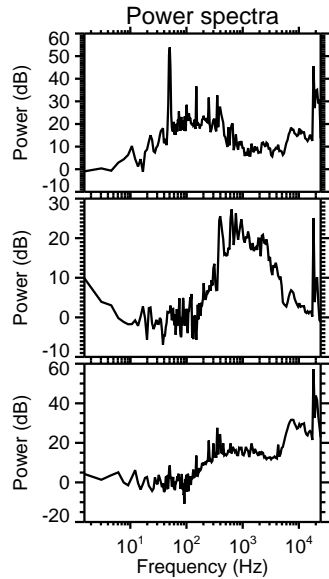
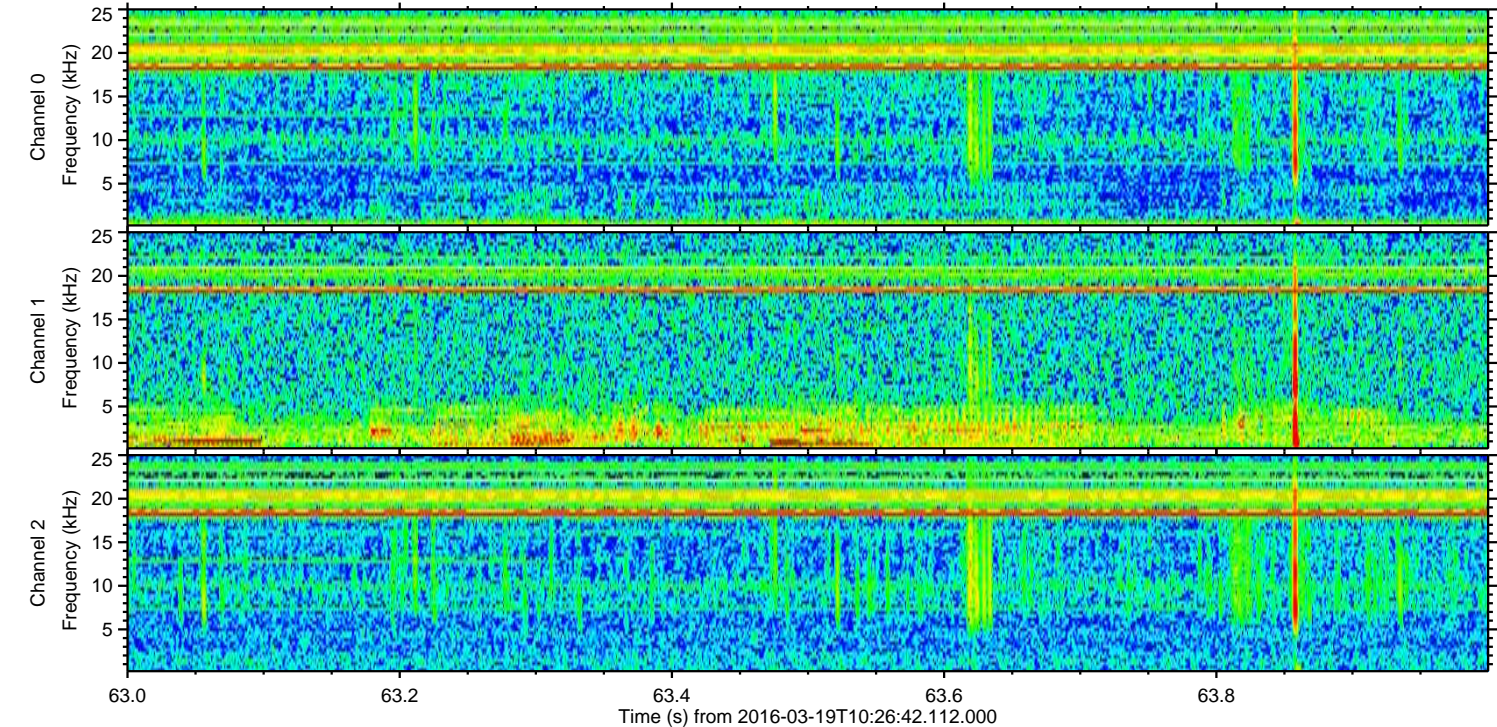
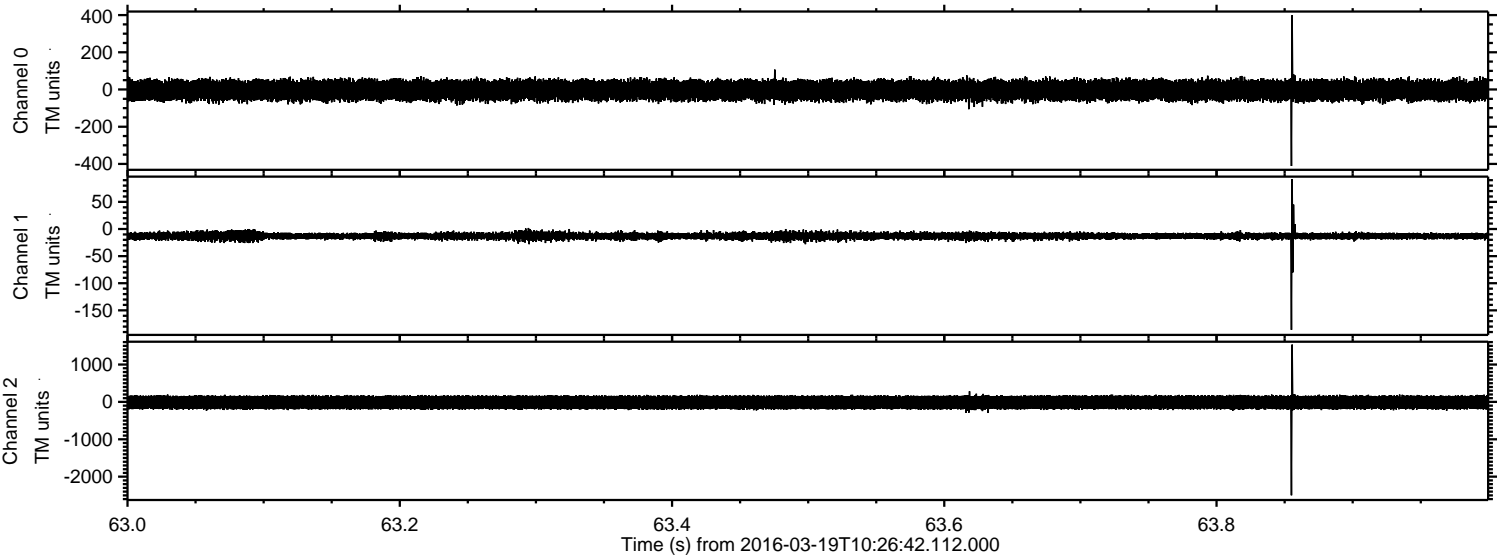
Processed Thu Apr 21 09:49:37 2016 by ELM ver.2012-10-06 from 001__elm20160319_102641__dat00.bin



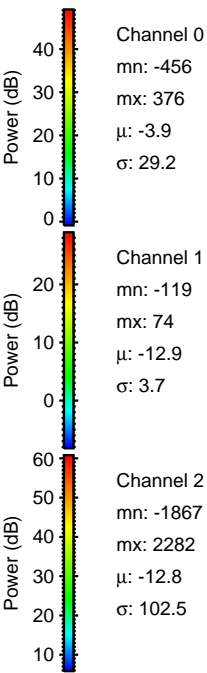
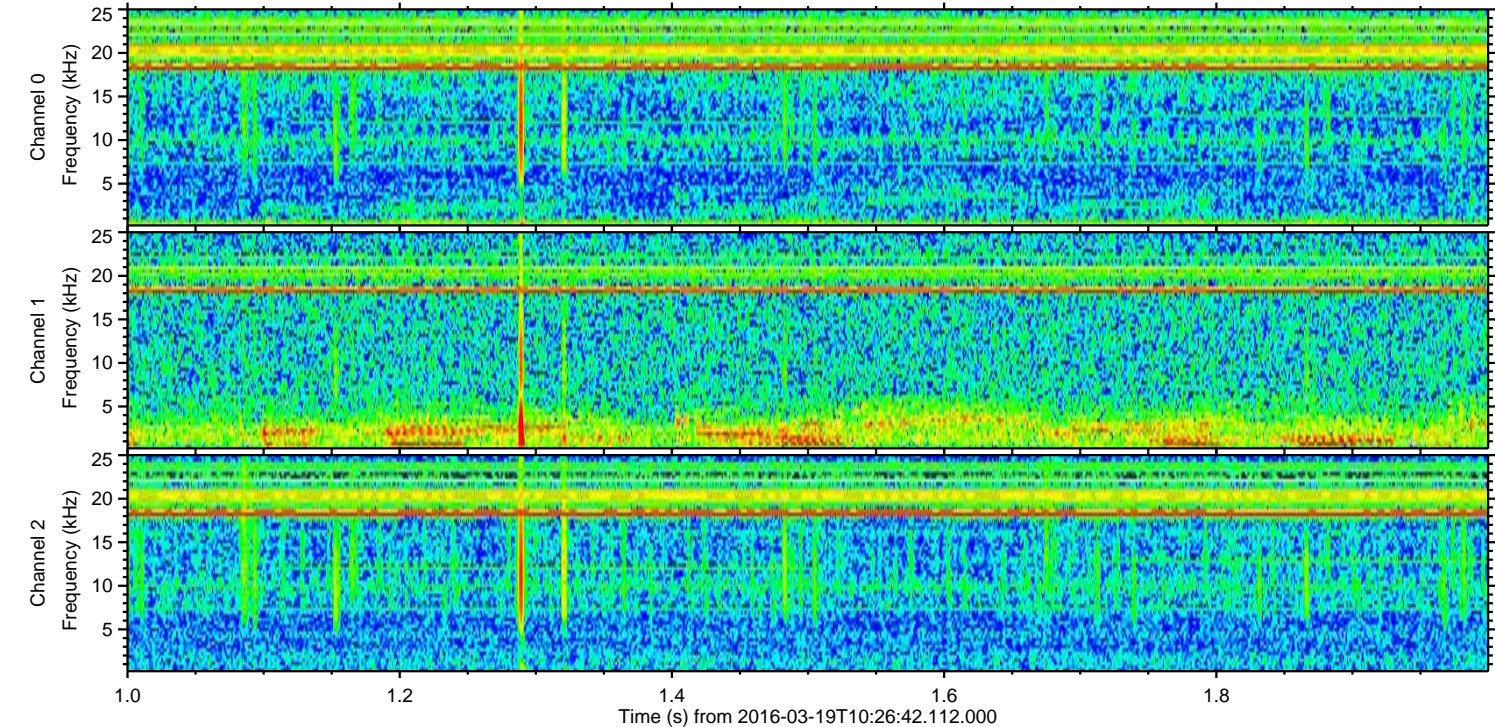
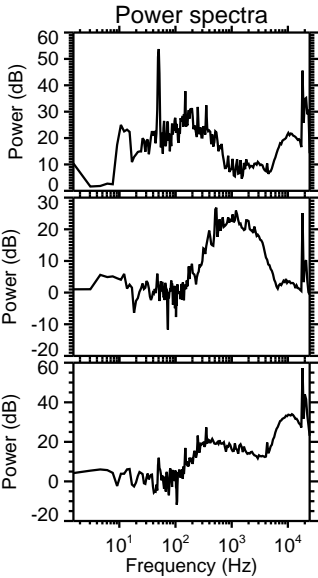
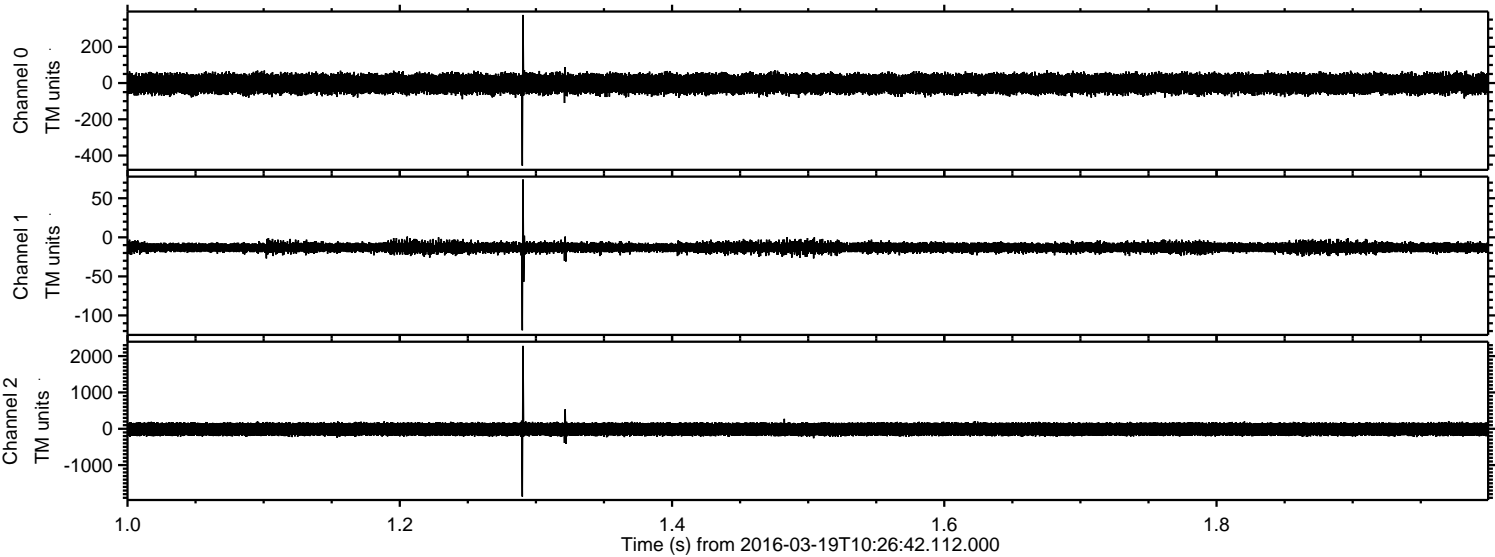
Processed Thu Apr 21 09:49:51 2016 by ELM ver.2012-10-06 from 001__elm20160319_102641__dat00.bin



Processed Thu Apr 21 09:49:52 2016 by ELM ver.2012-10-06 from 001__elm20160319_102641__dat00.bin

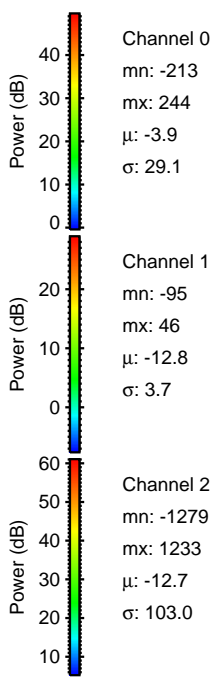
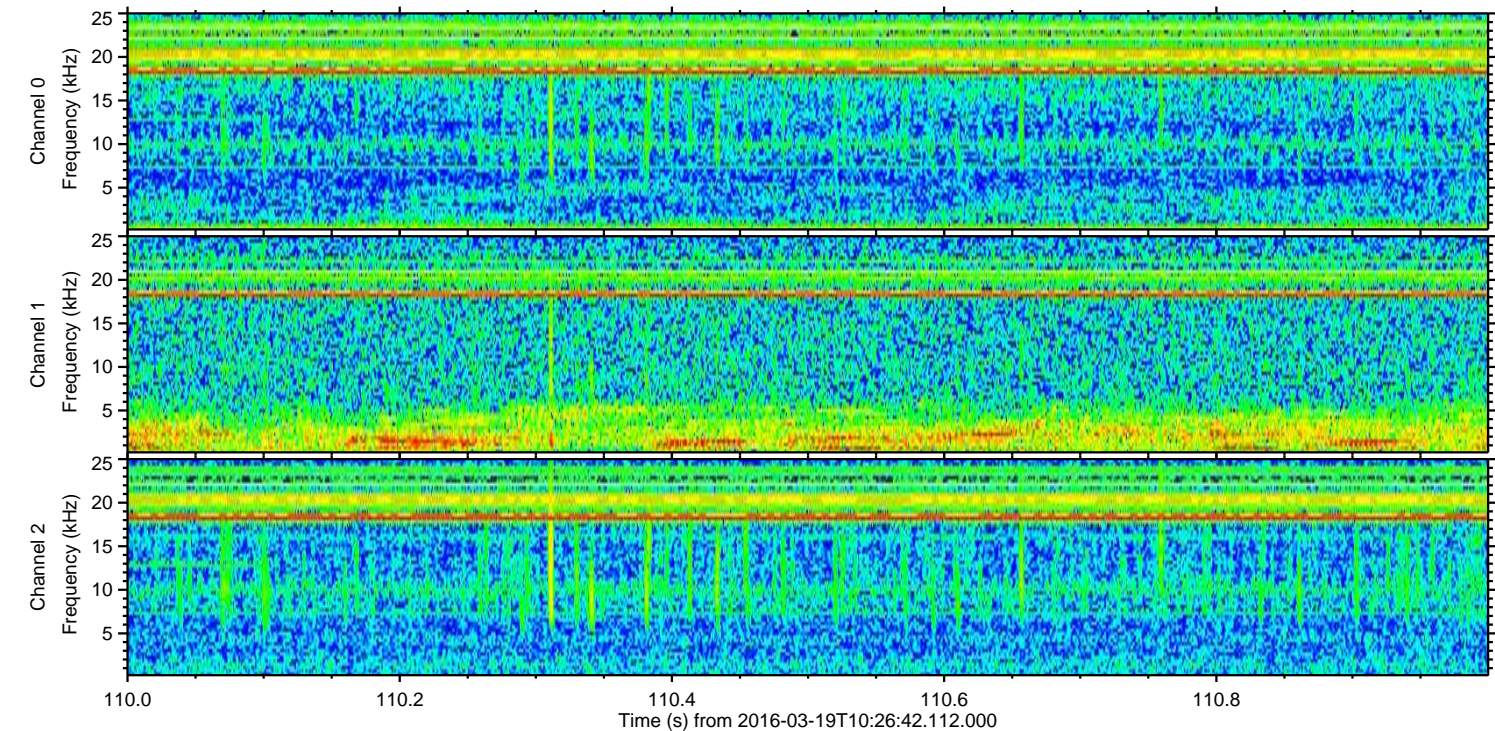
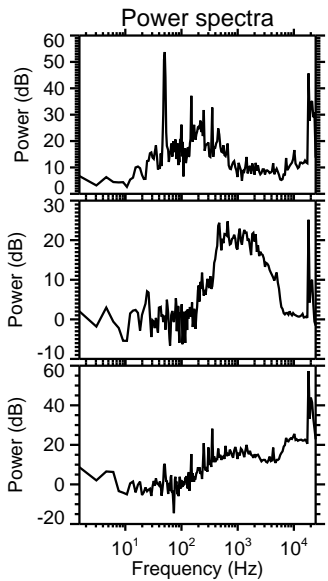
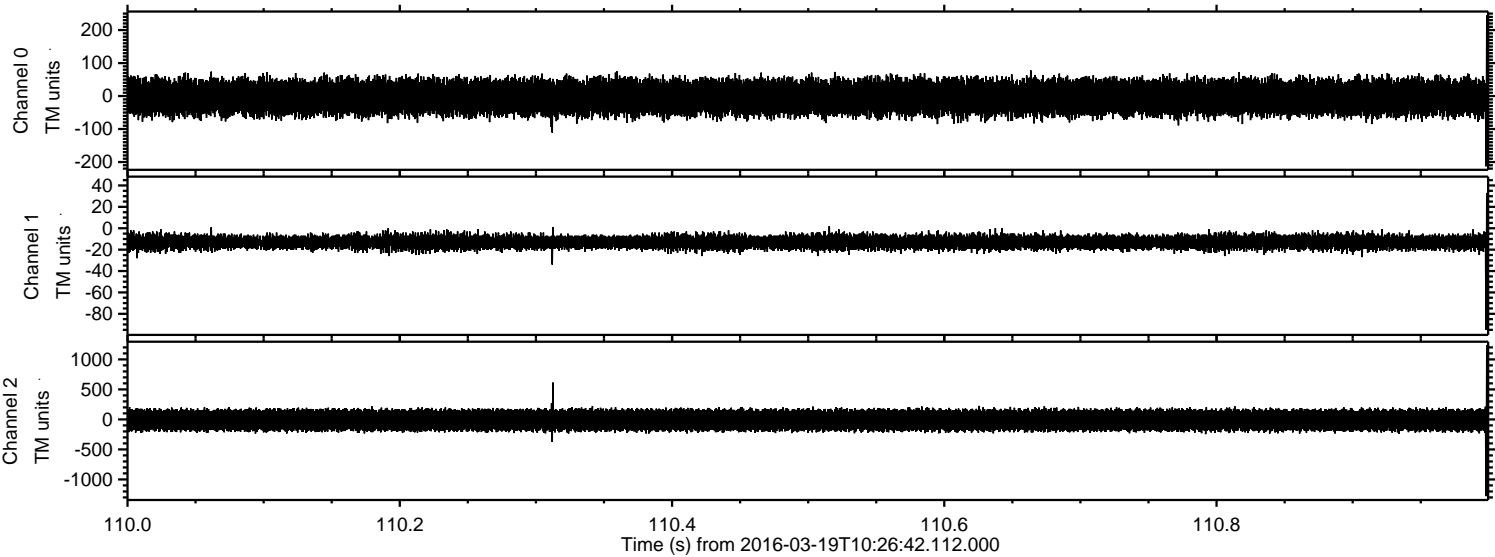


Processed Thu Apr 21 09:49:53 2016 by ELM ver.2012-10-06 from 001__elm20160319_102641__dat00.bin

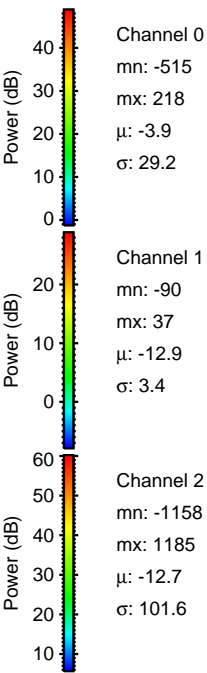
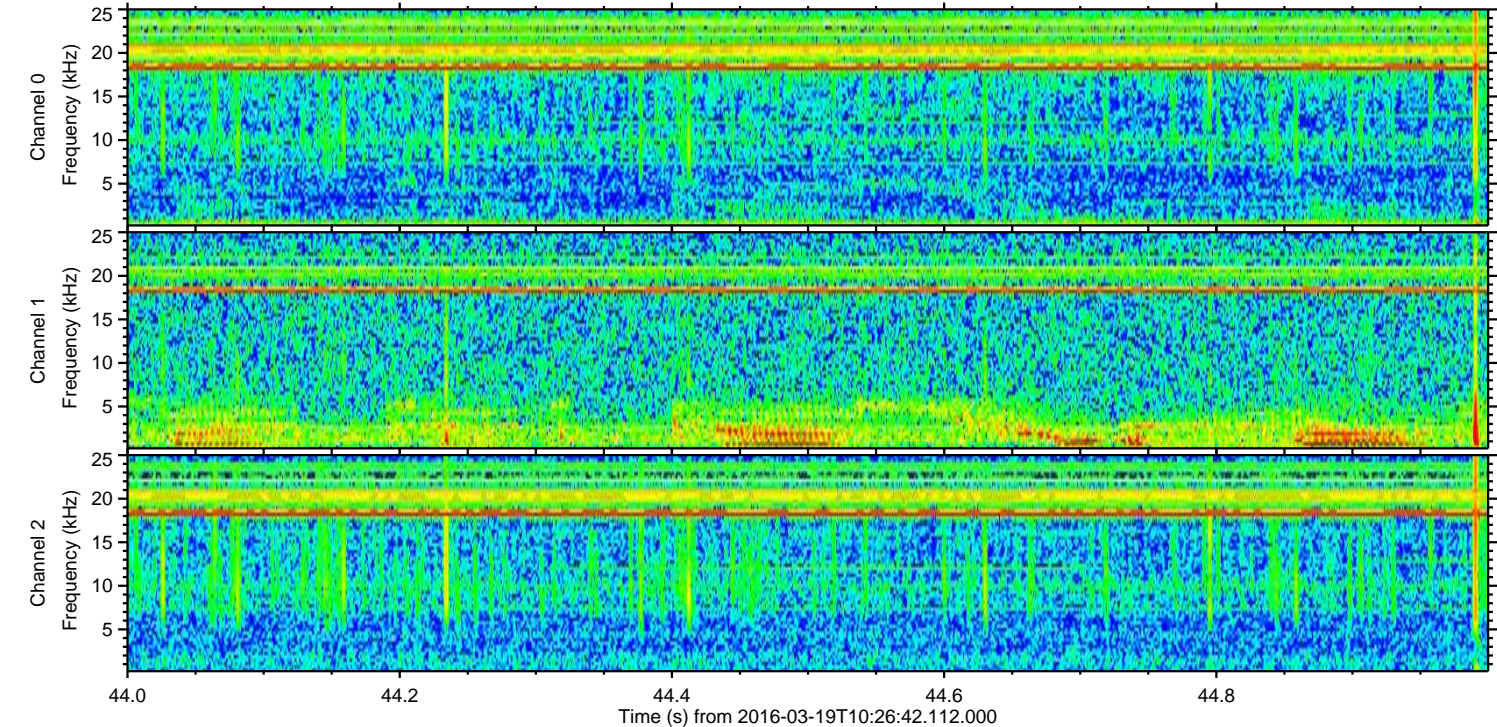
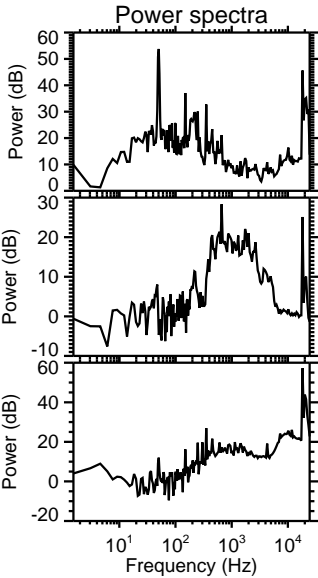
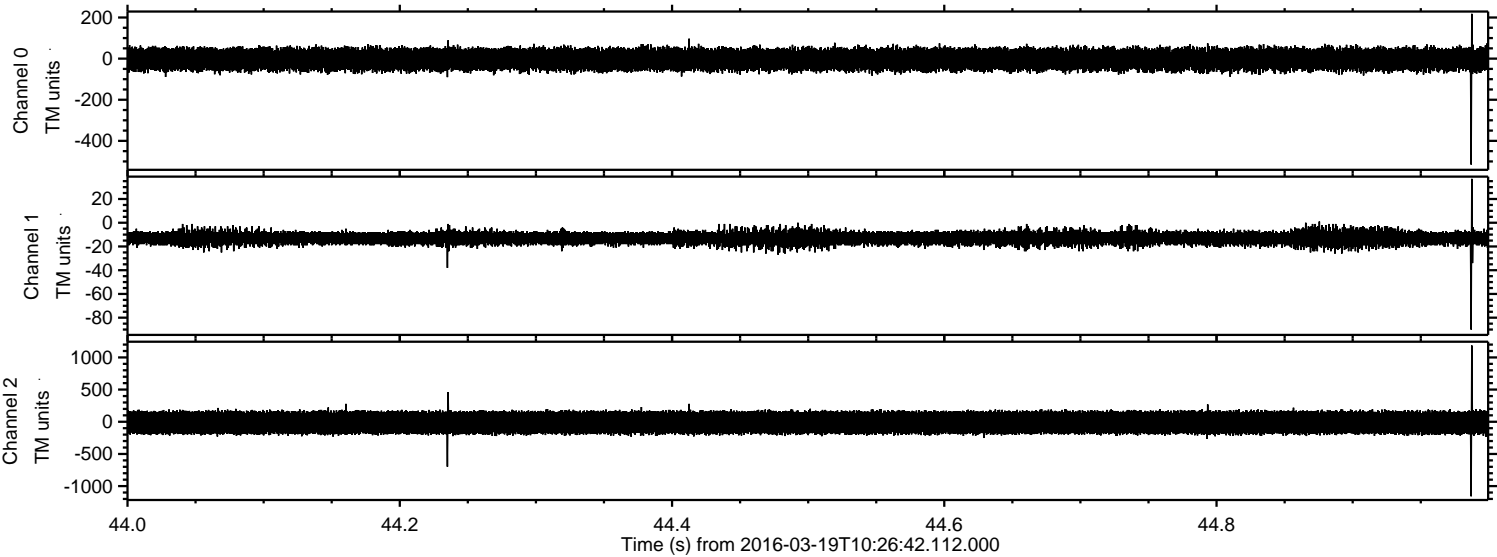


ELMAVAN 3D WAVEFORMS (Measured data sampled at 50 kHz) 51000 packets of 144 samples from 2016-03-19T10:26:42.112.000. Part 111/147

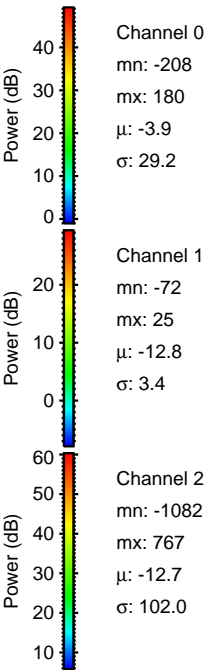
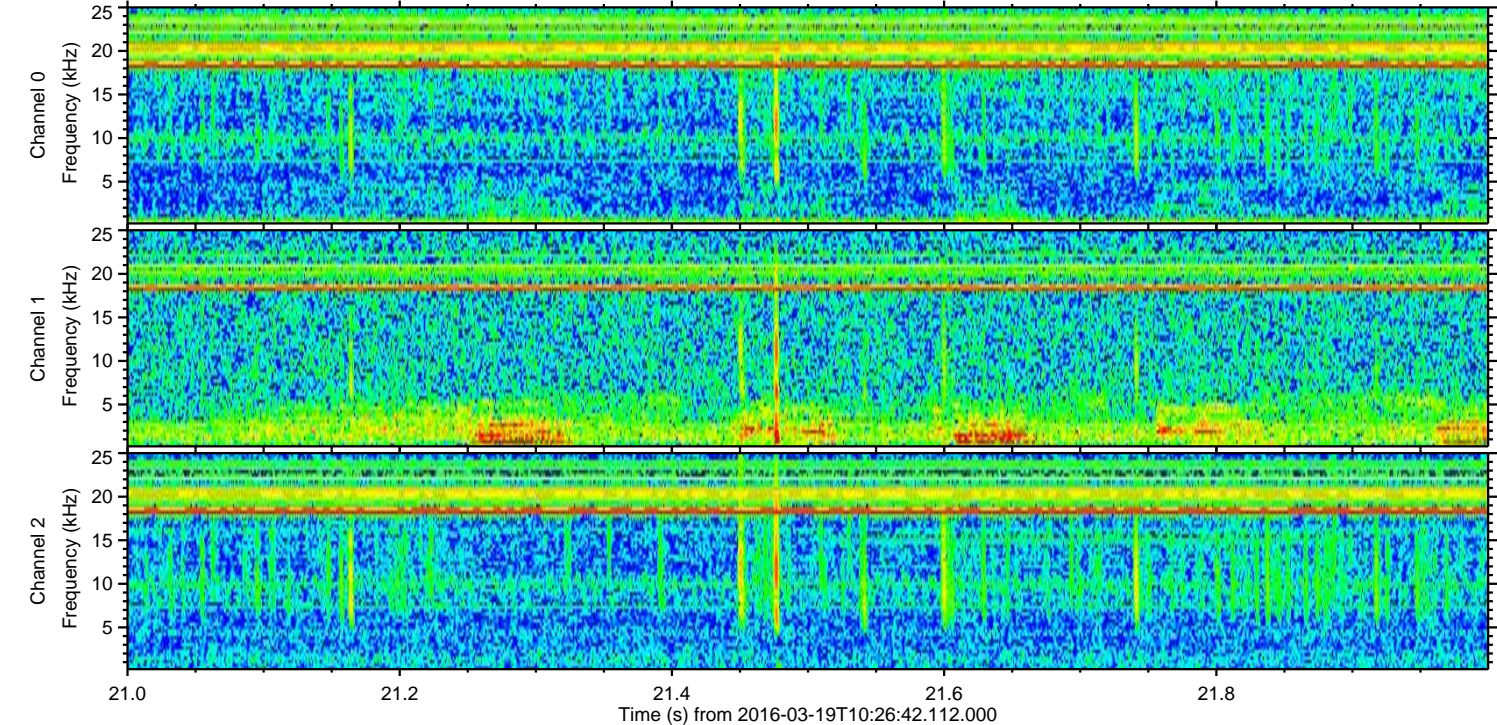
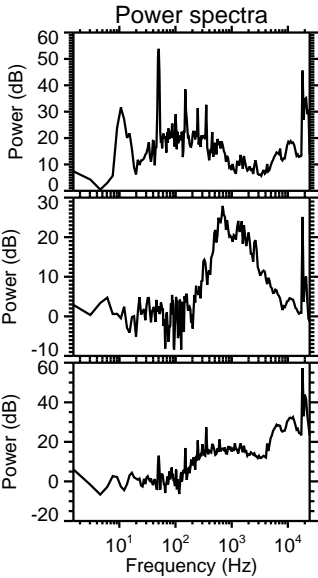
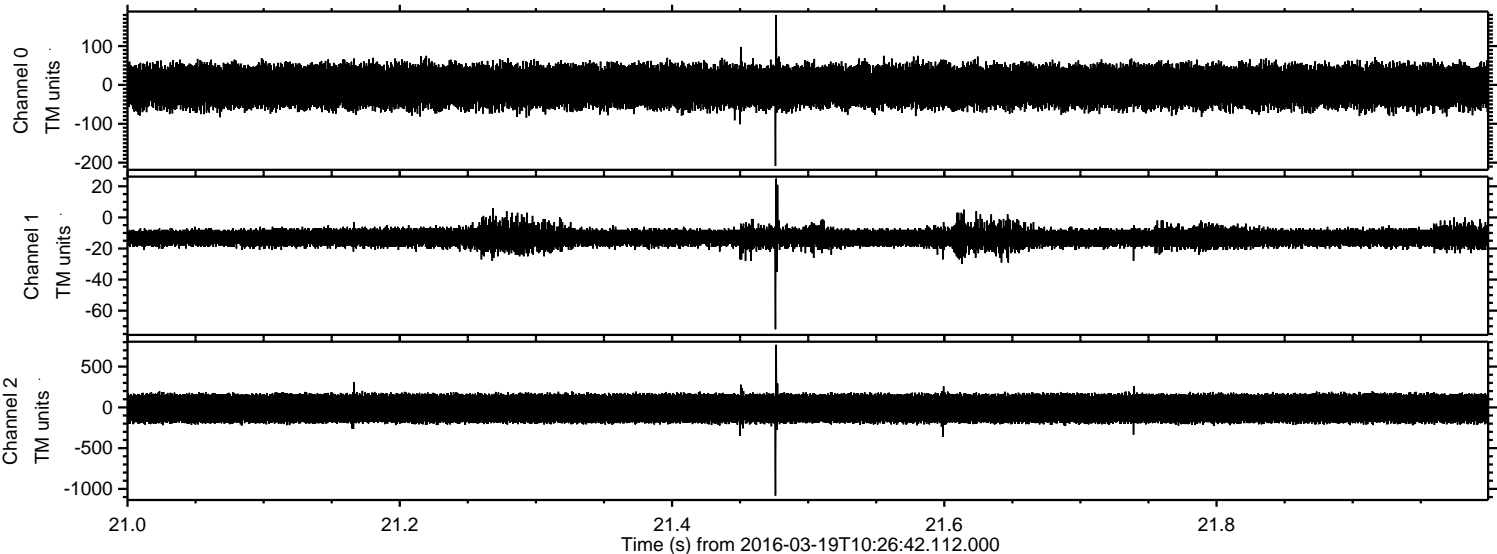
Processed Thu Apr 21 09:49:54 2016 by ELM ver.2012-10-06 from 001__elm20160319_102641__dat00.bin



Processed Thu Apr 21 09:49:55 2016 by ELM ver.2012-10-06 from 001__elm20160319_102641__dat00.bin

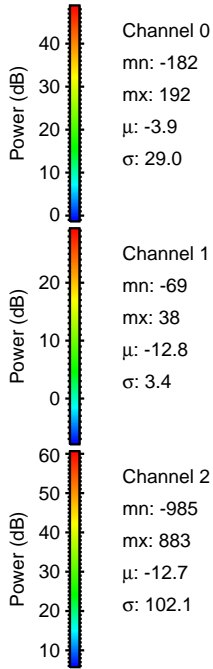
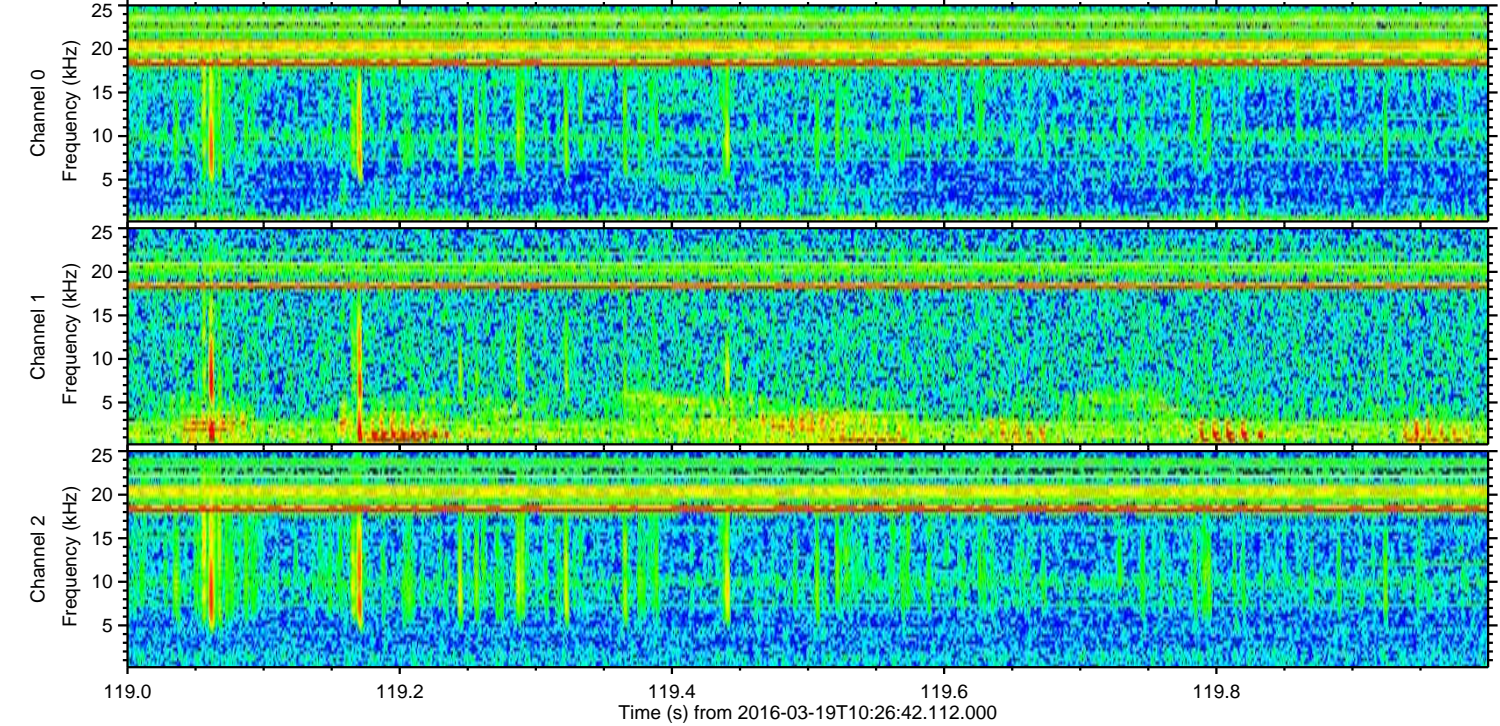
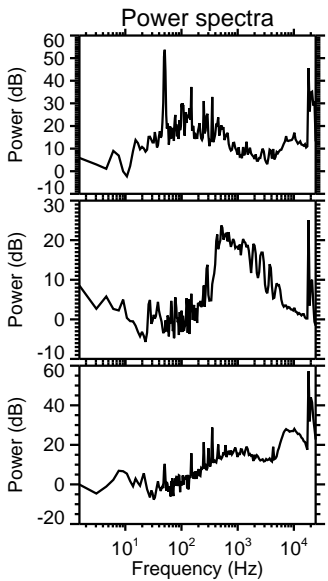
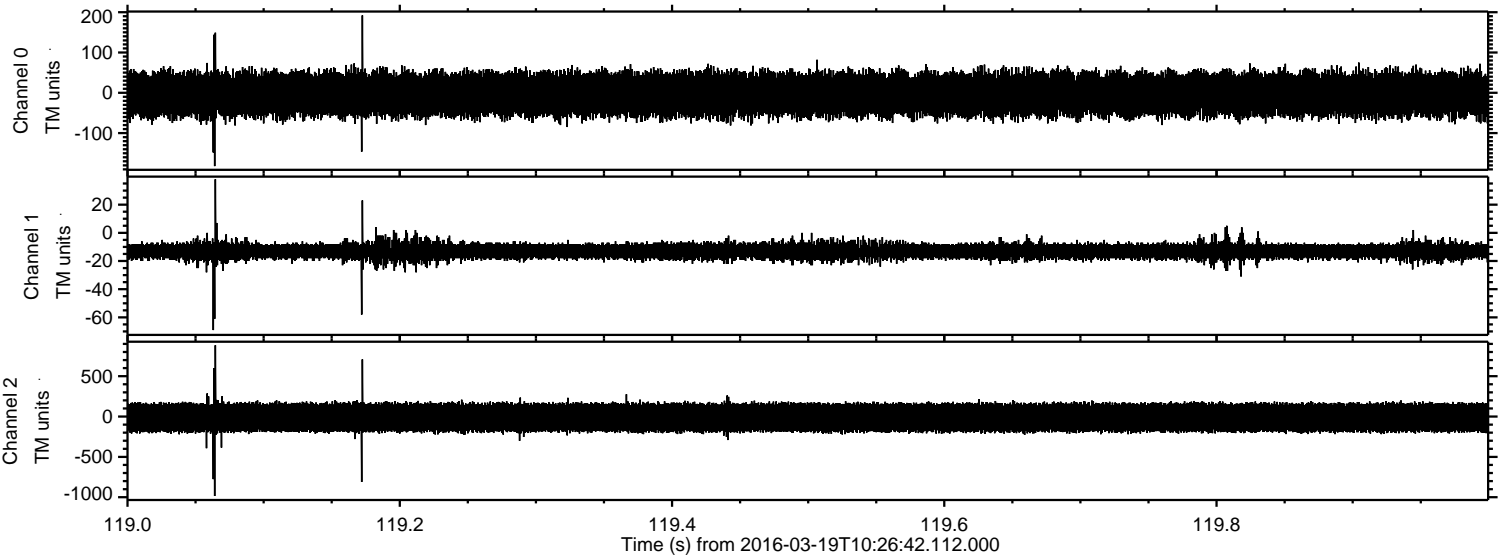


Processed Thu Apr 21 09:49:56 2016 by ELM ver.2012-10-06 from 001__elm20160319_102641__dat00.bin

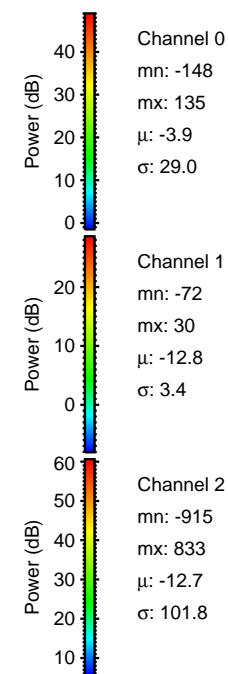
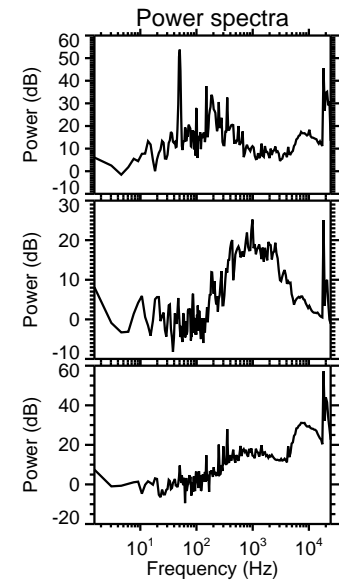
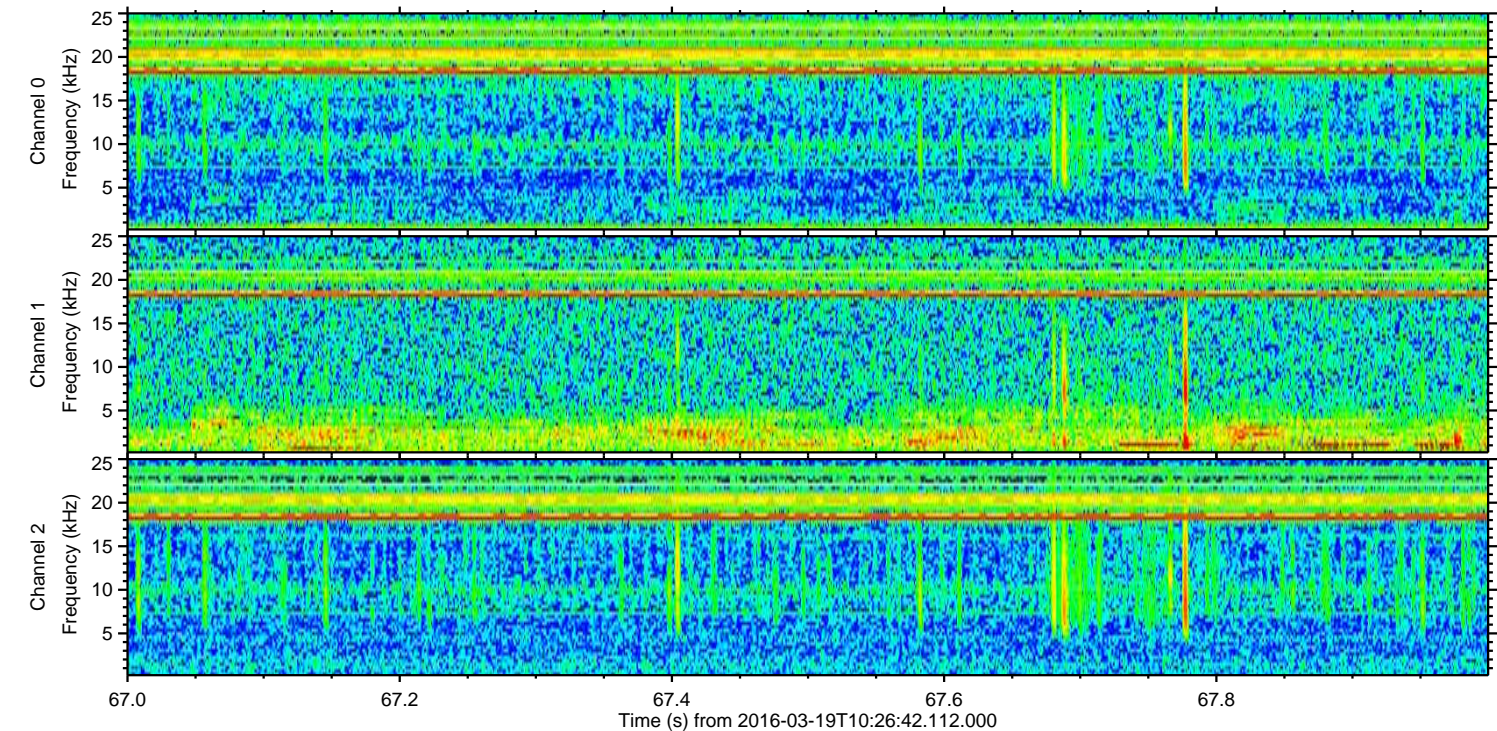
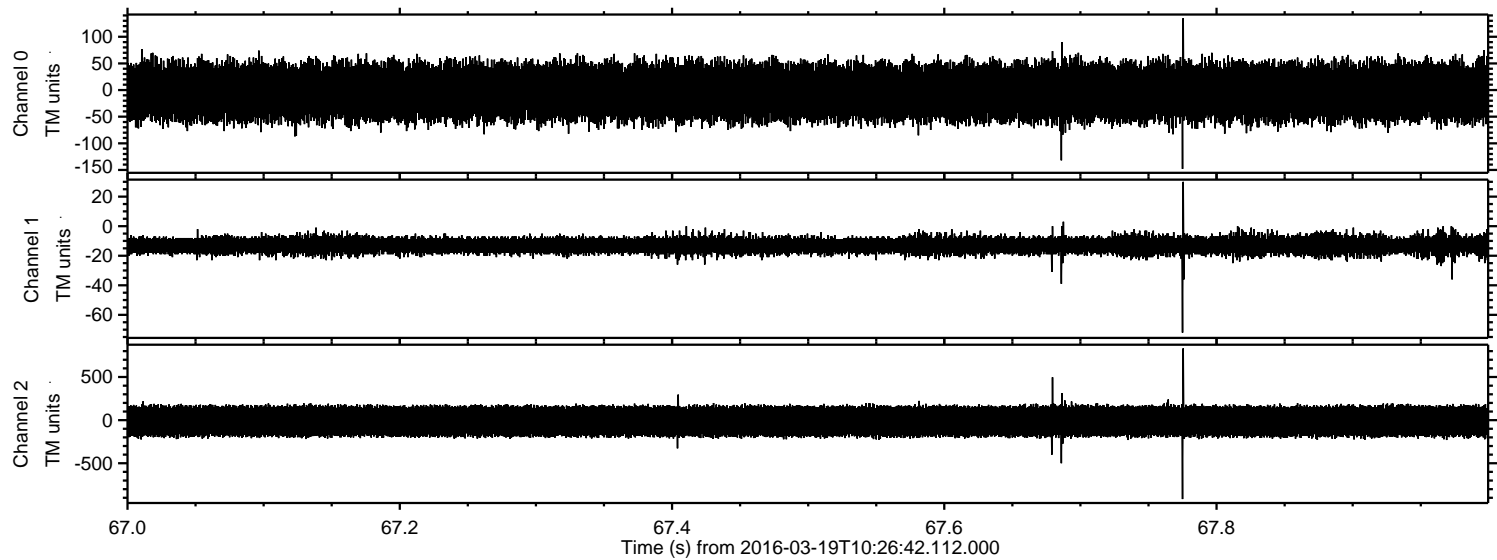


ELMAVAN 3D WAVEFORMS (Measured data sampled at 50 kHz) 51000 packets of 144 samples from 2016-03-19T10:26:42.112.000. Part 120/147

Processed Thu Apr 21 09:49:57 2016 by ELM ver.2012-10-06 from 001__elm20160319_102641__dat00.bin



Processed Thu Apr 21 09:49:58 2016 by ELM ver.2012-10-06 from 001__elm20160319_102641__dat00.bin



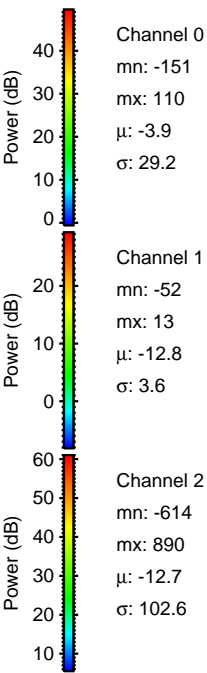
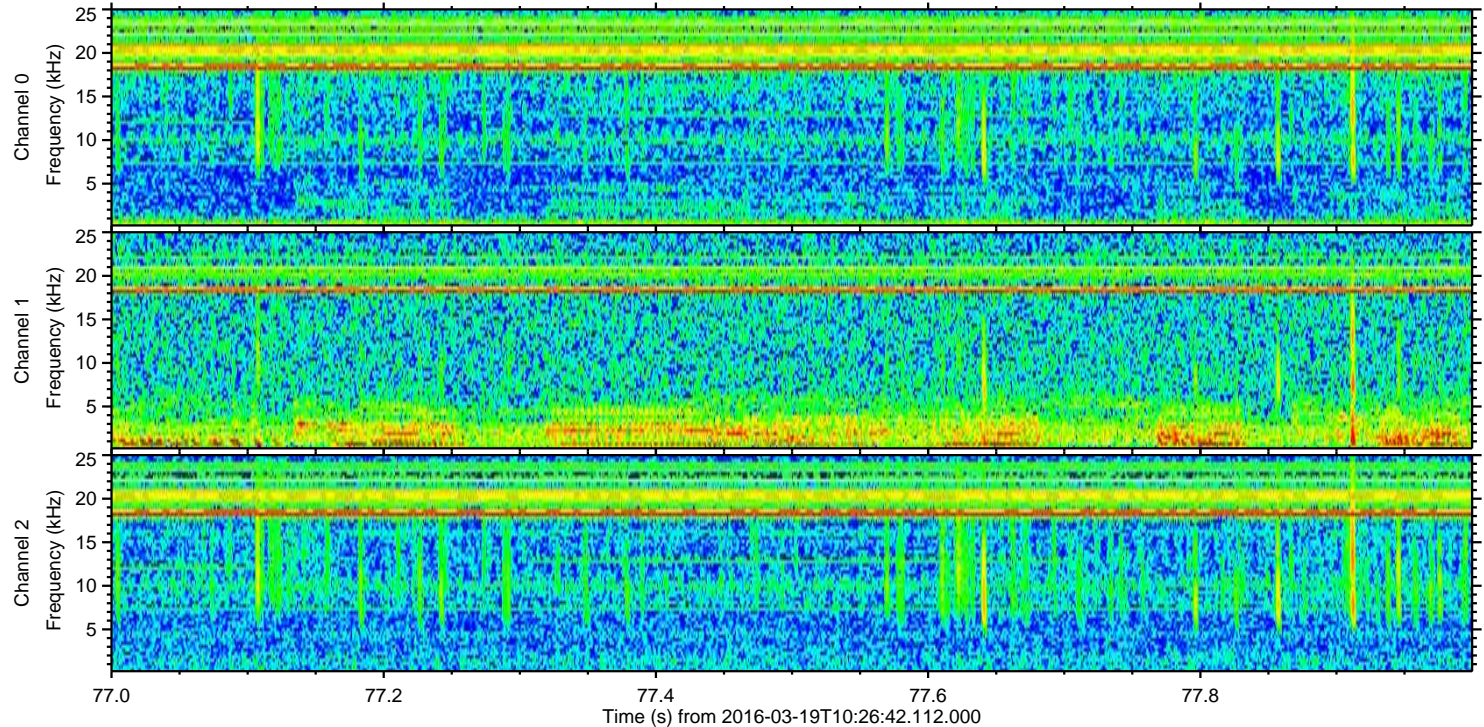
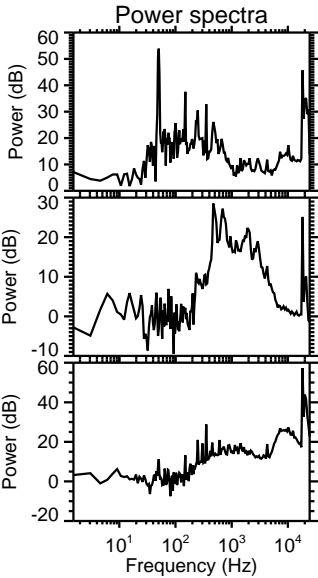
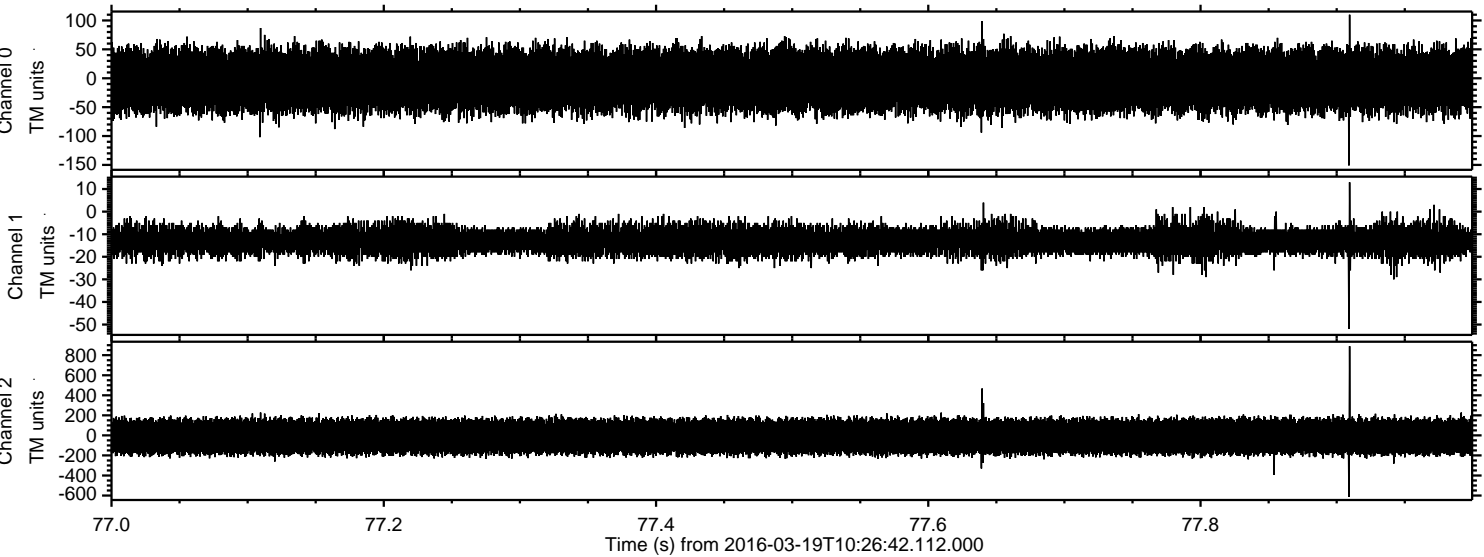
Power spectra

Channel 0
mn: -148
mx: 135
 μ : -3.9
 σ : 29.0

Channel 1
mn: -72
mx: 30
 μ : -12.8
 σ : 3.4

Channel 2
mn: -915
mx: 833
 μ : -12.7
 σ : 101.8

Processed Thu Apr 21 09:49:59 2016 by ELM ver.2012-10-06 from 001__elm20160319_102641__dat00.bin



Processed Thu Apr 21 09:50:00 2016 by ELM ver.2012-10-06 from 001__elm20160319_102641__dat00.bin

