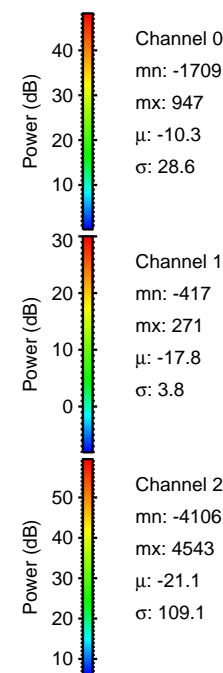
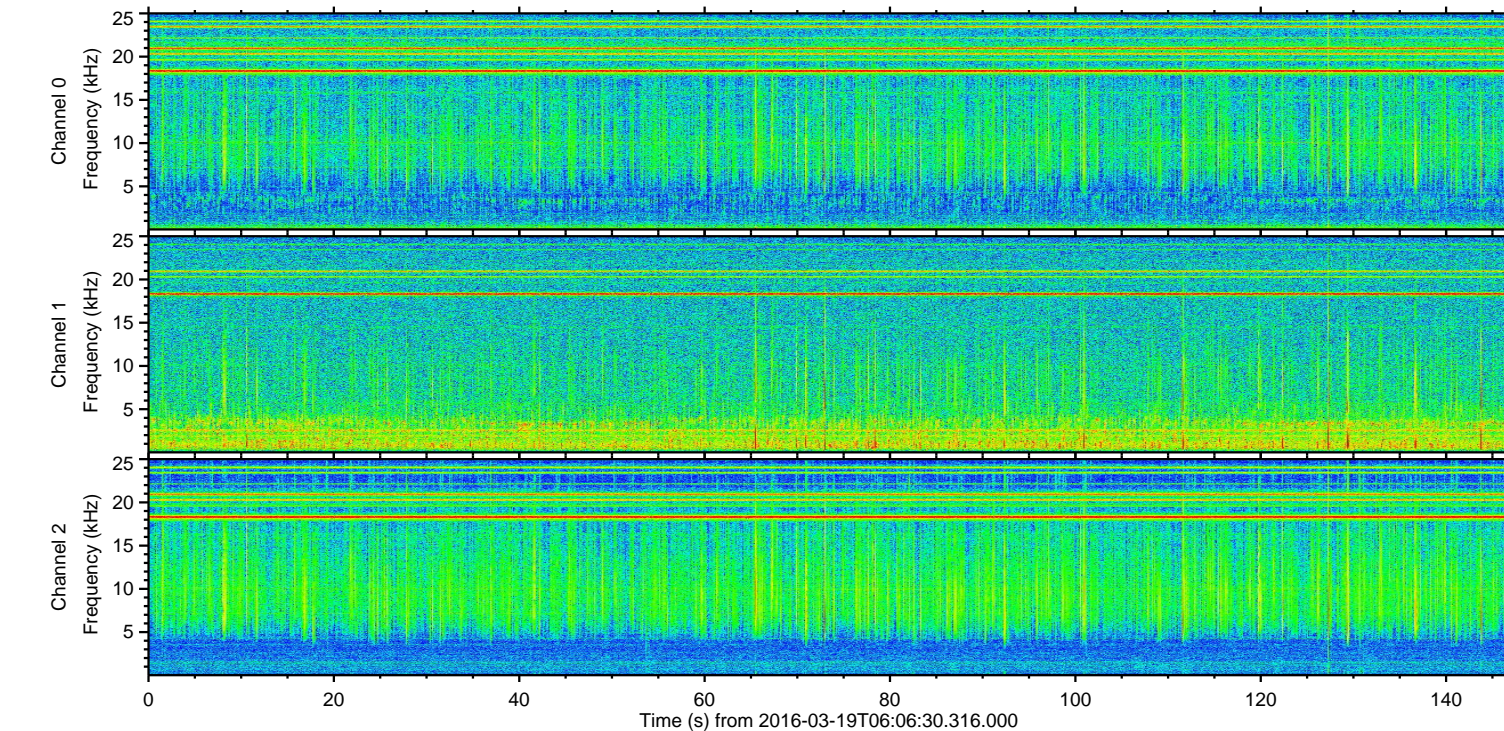
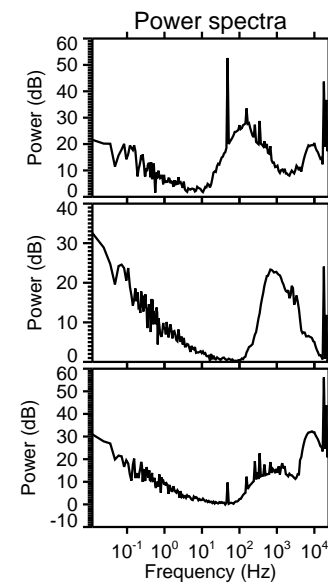
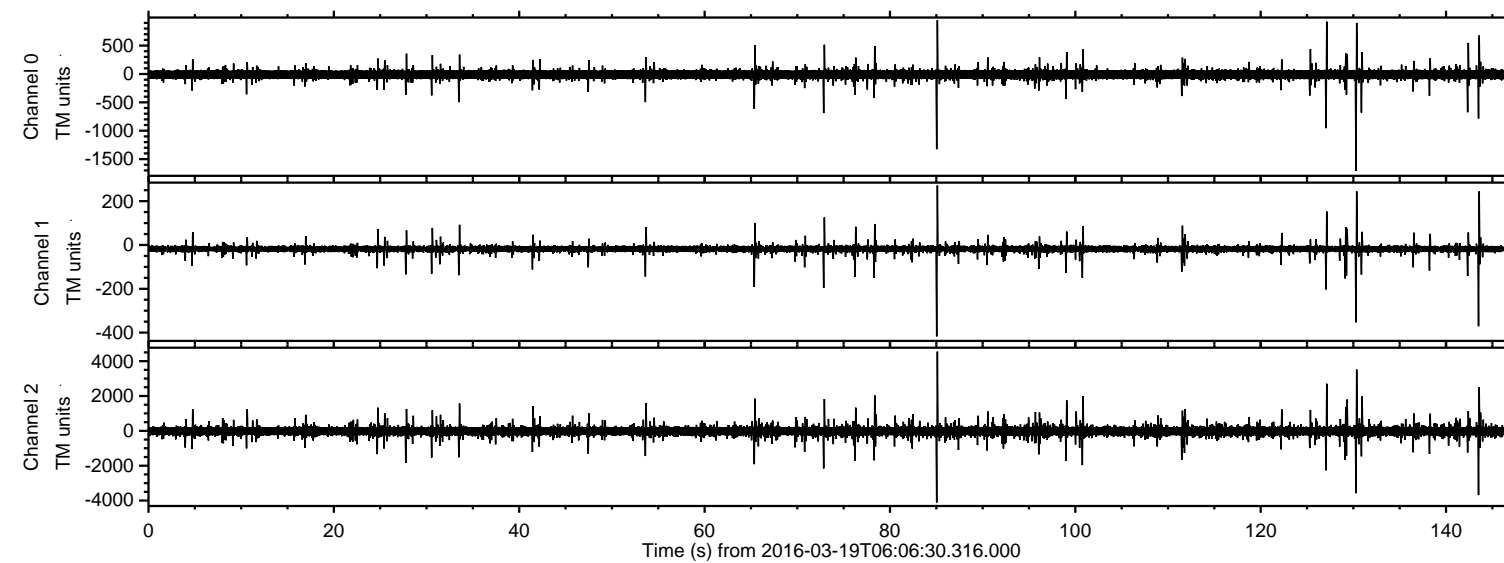
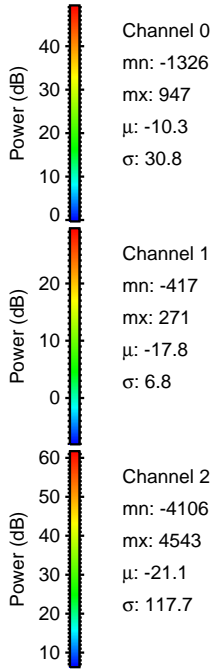
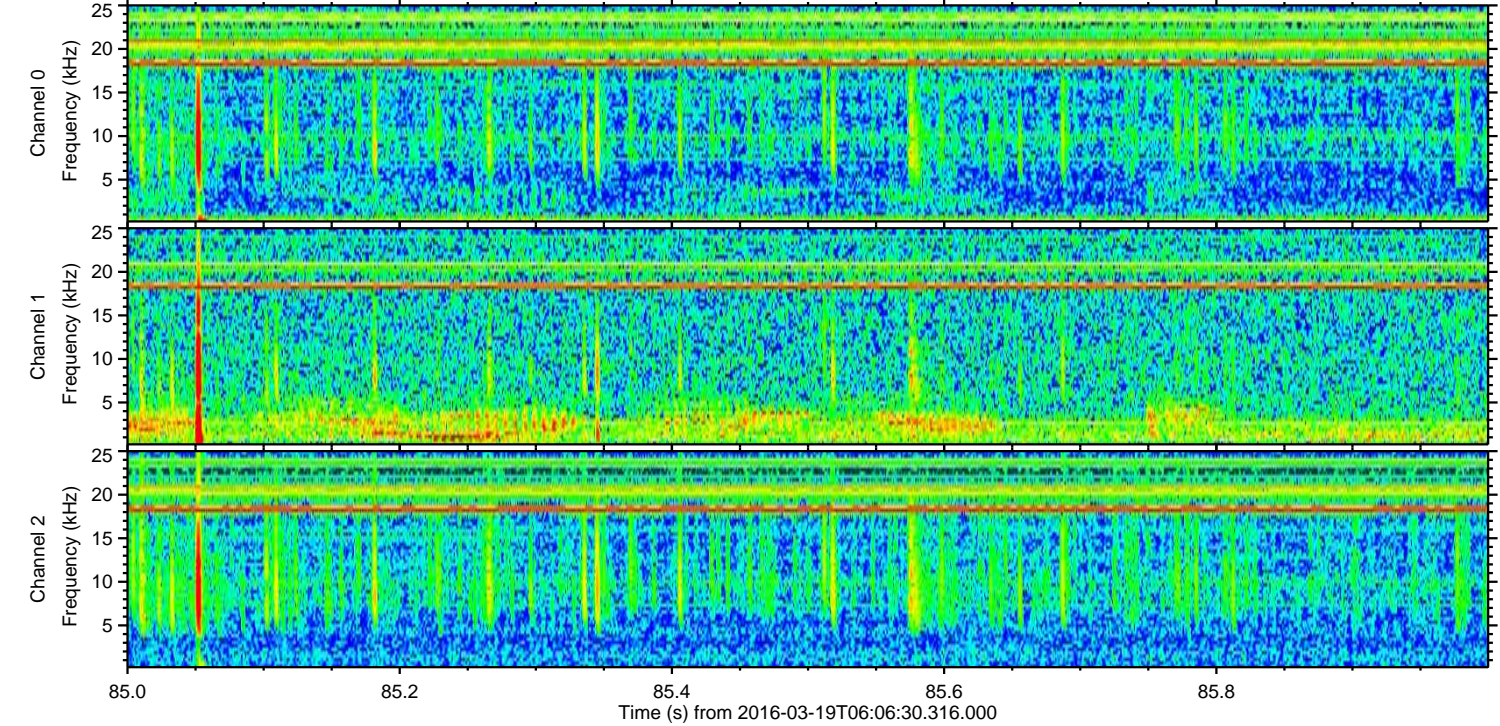
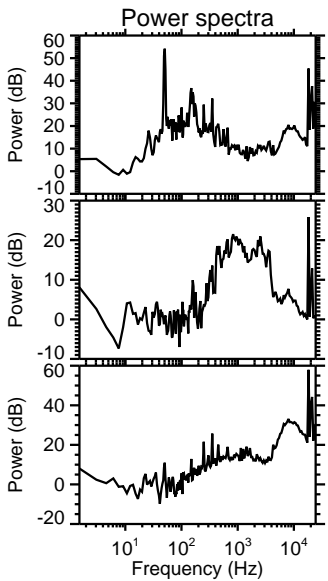
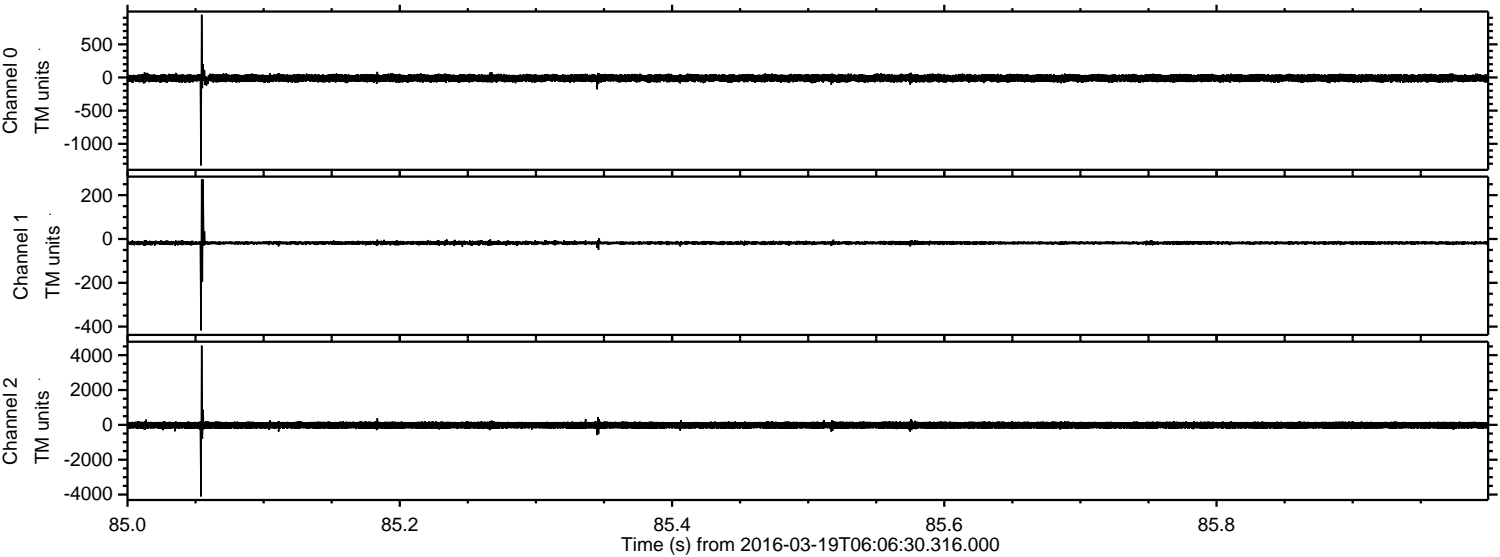


ELMAVAN 3D WAVEFORMS (Measured data sampled at 50 kHz) 51000 packets of 144 samples from 2016-03-19T06:06:30.316.000.

Processed Thu Apr 21 08:52:41 2016 by ELM ver.2012-10-06 from 001__elm20160319_060629__dat00.bin

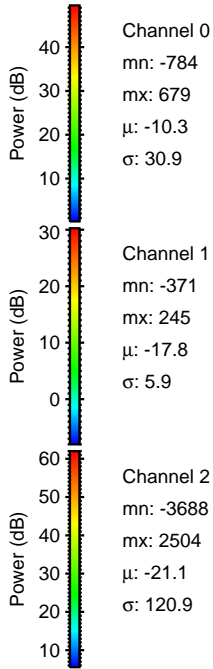
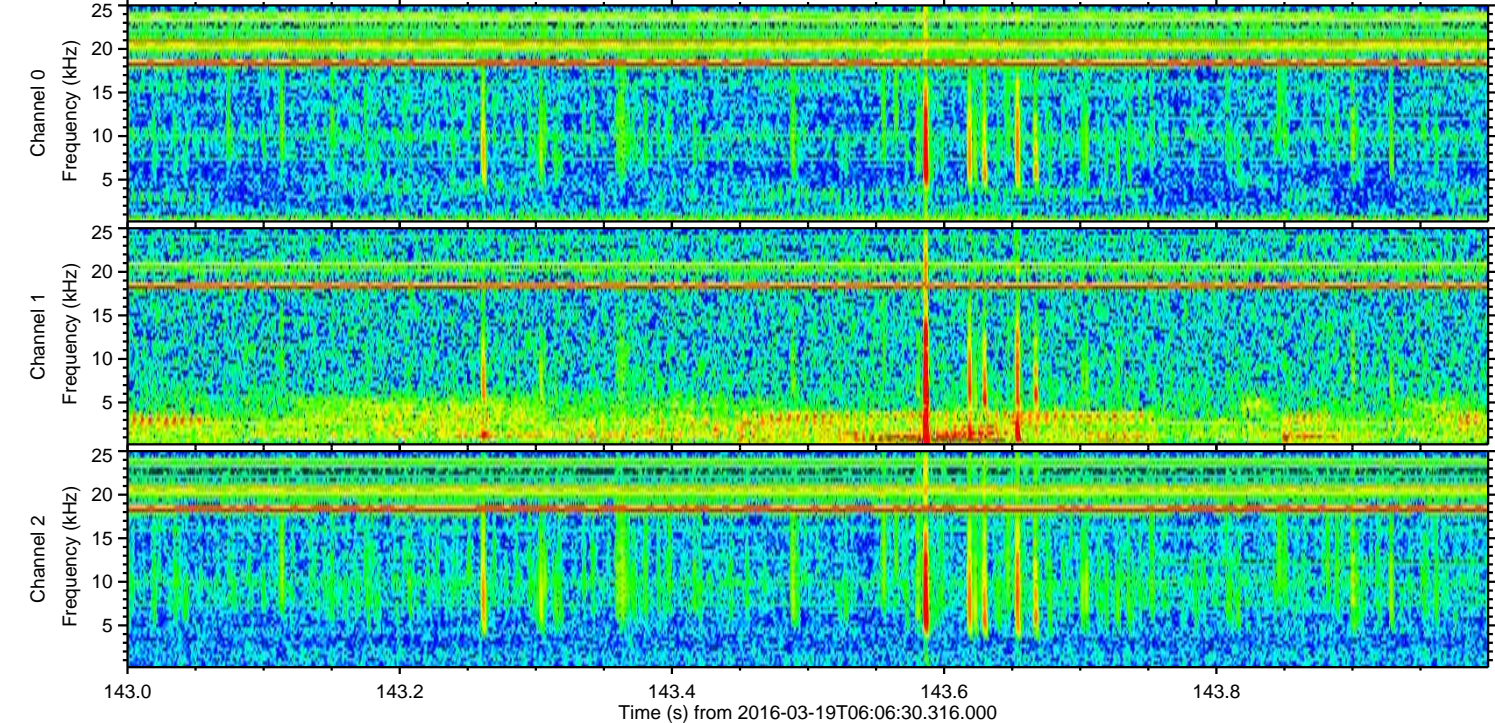
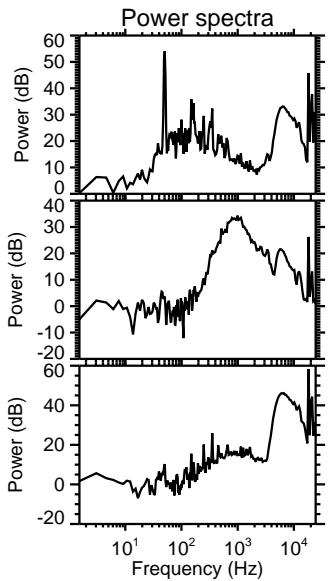
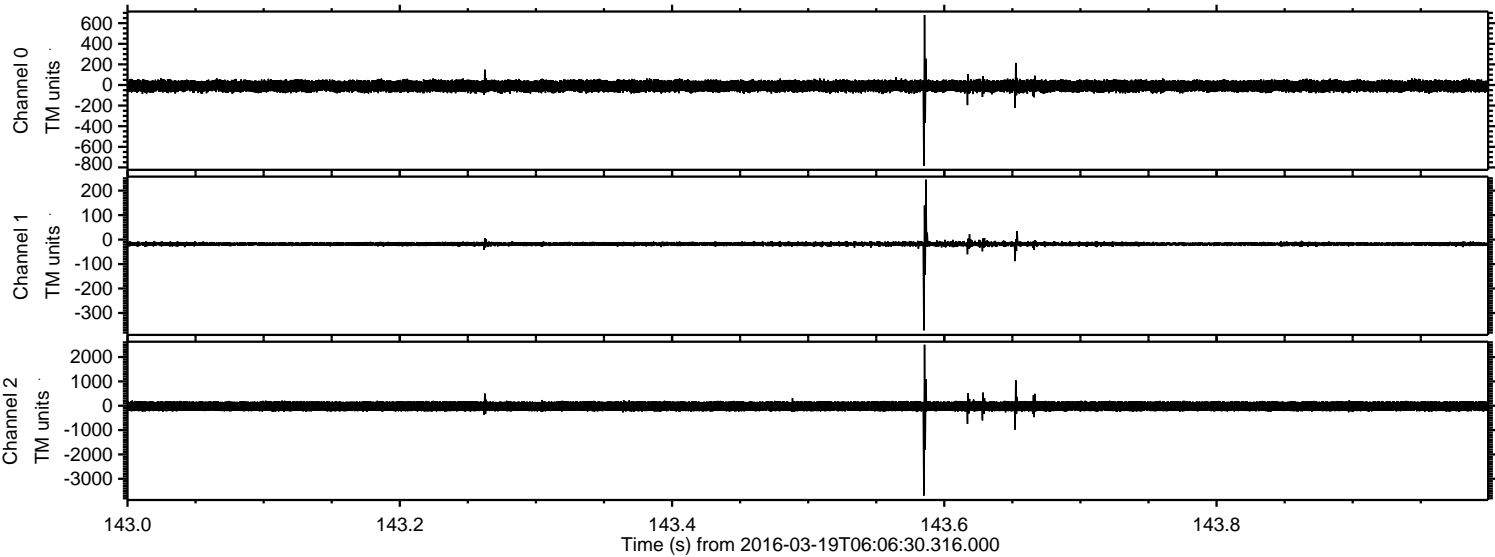


Processed Thu Apr 21 08:52:53 2016 by ELM ver.2012-10-06 from 001__elm20160319_060629__dat00.bin



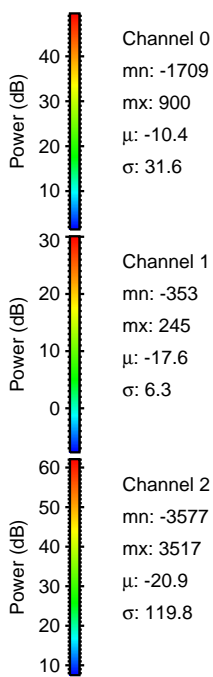
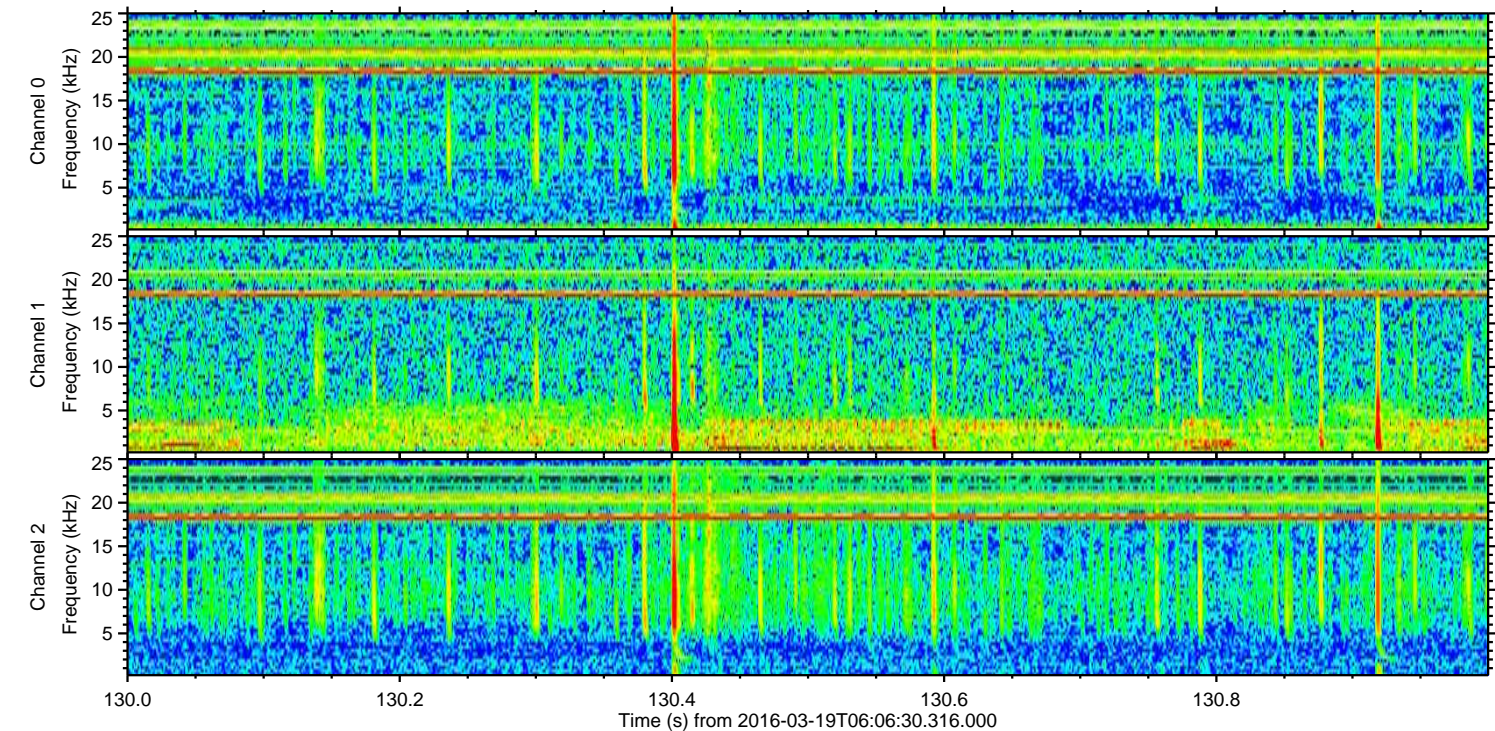
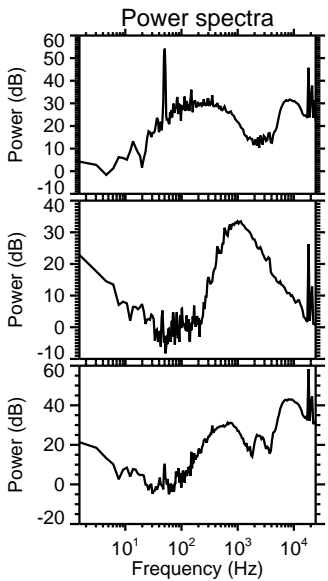
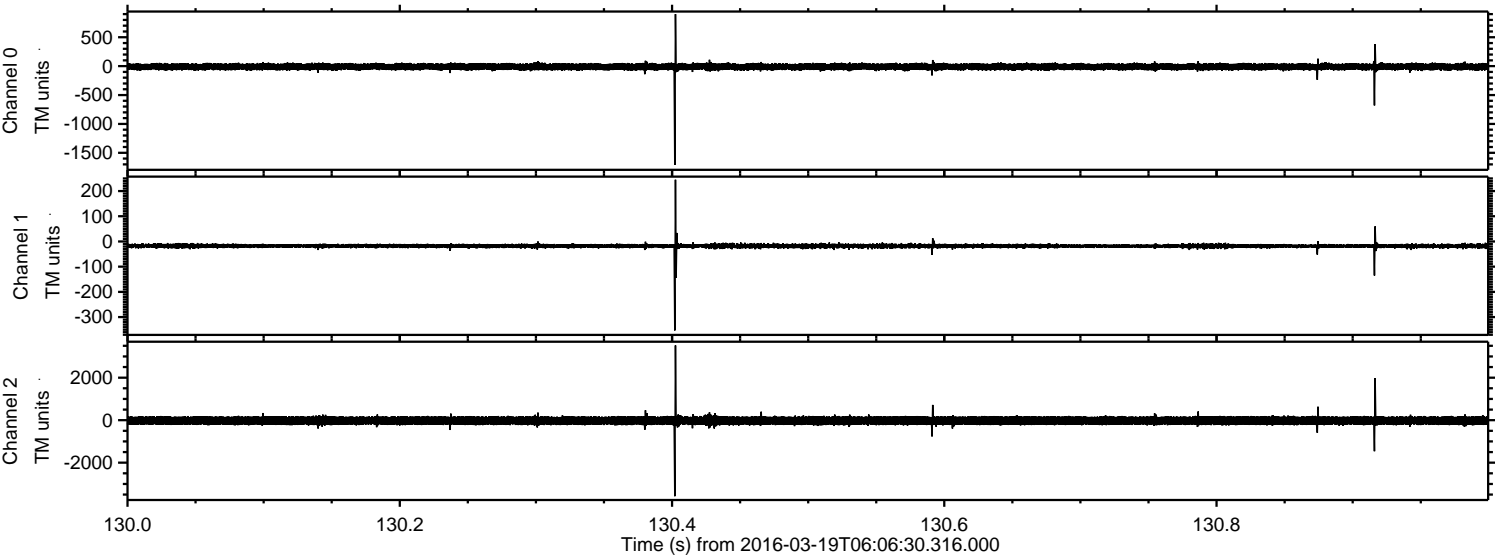
ELMAVAN 3D WAVEFORMS (Measured data sampled at 50 kHz) 51000 packets of 144 samples from 2016-03-19T06:06:30.316.000. Part 144/147

Processed Thu Apr 21 08:52:54 2016 by ELM ver.2012-10-06 from 001__elm20160319_060629__dat00.bin



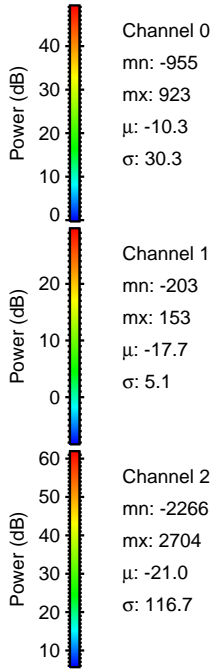
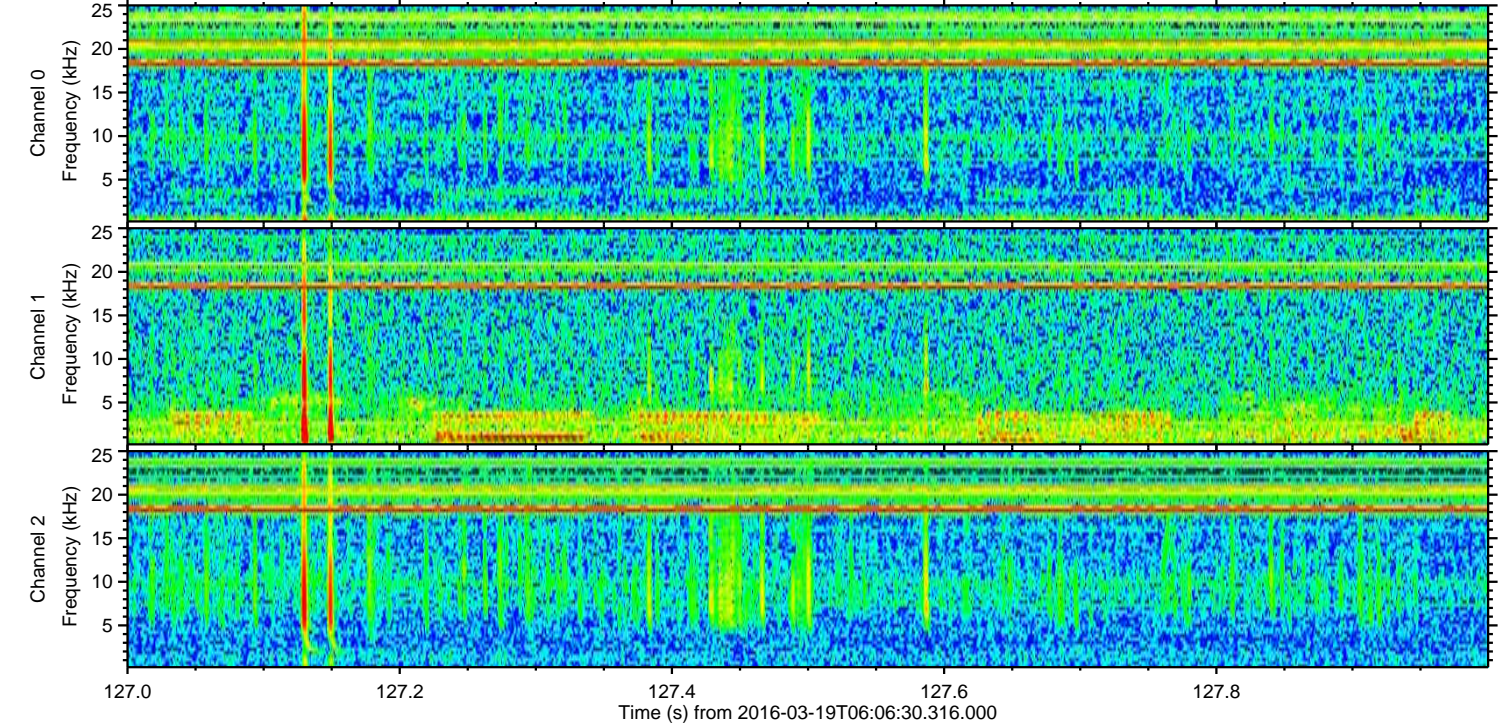
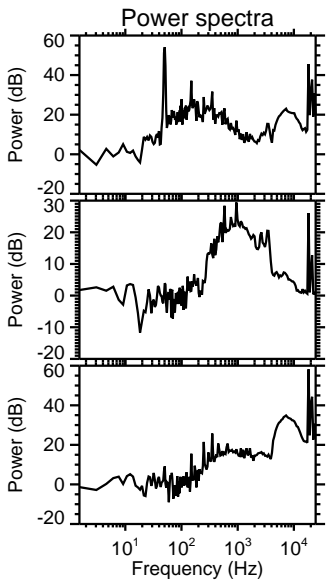
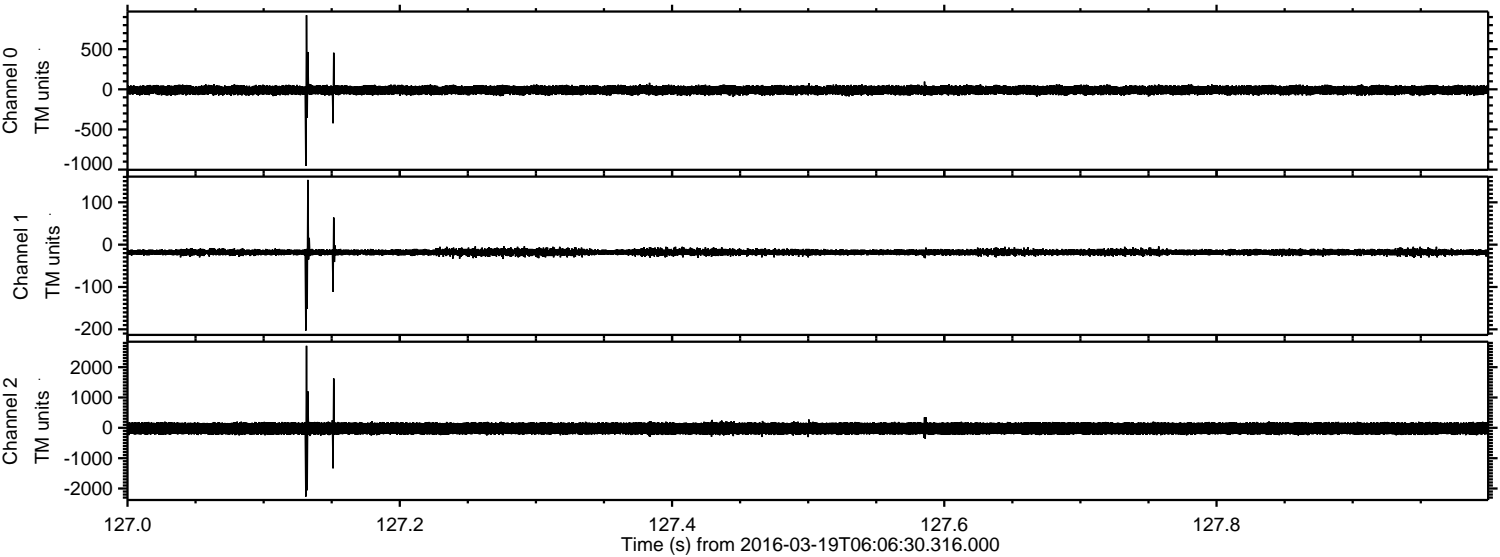
ELMAVAN 3D WAVEFORMS (Measured data sampled at 50 kHz) 51000 packets of 144 samples from 2016-03-19T06:06:30.316.000. Part 131/147

Processed Thu Apr 21 08:52:55 2016 by ELM ver.2012-10-06 from 001__elm20160319_060629__dat00.bin



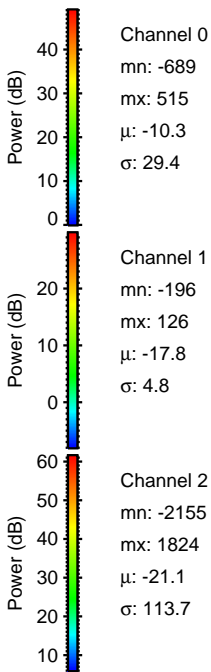
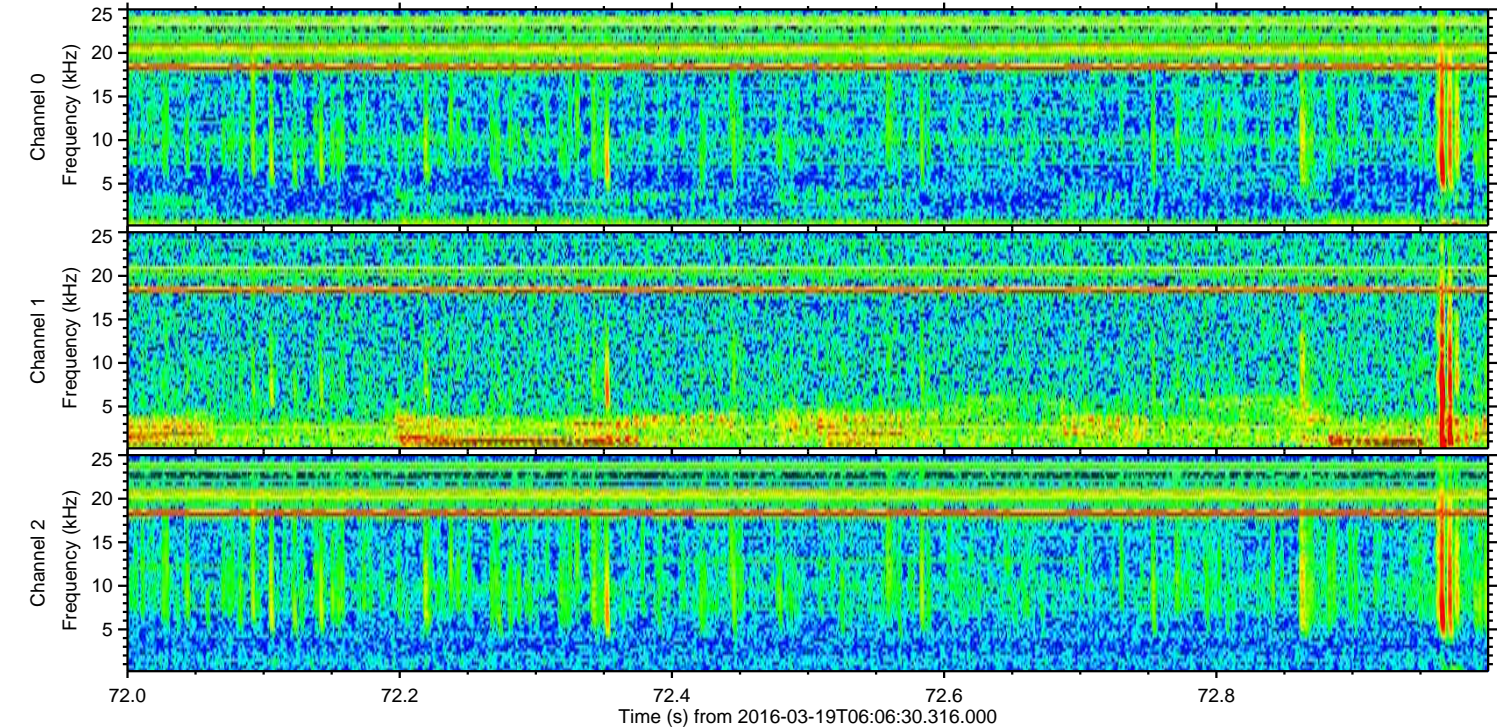
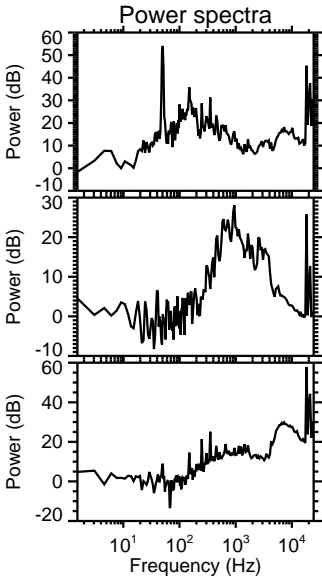
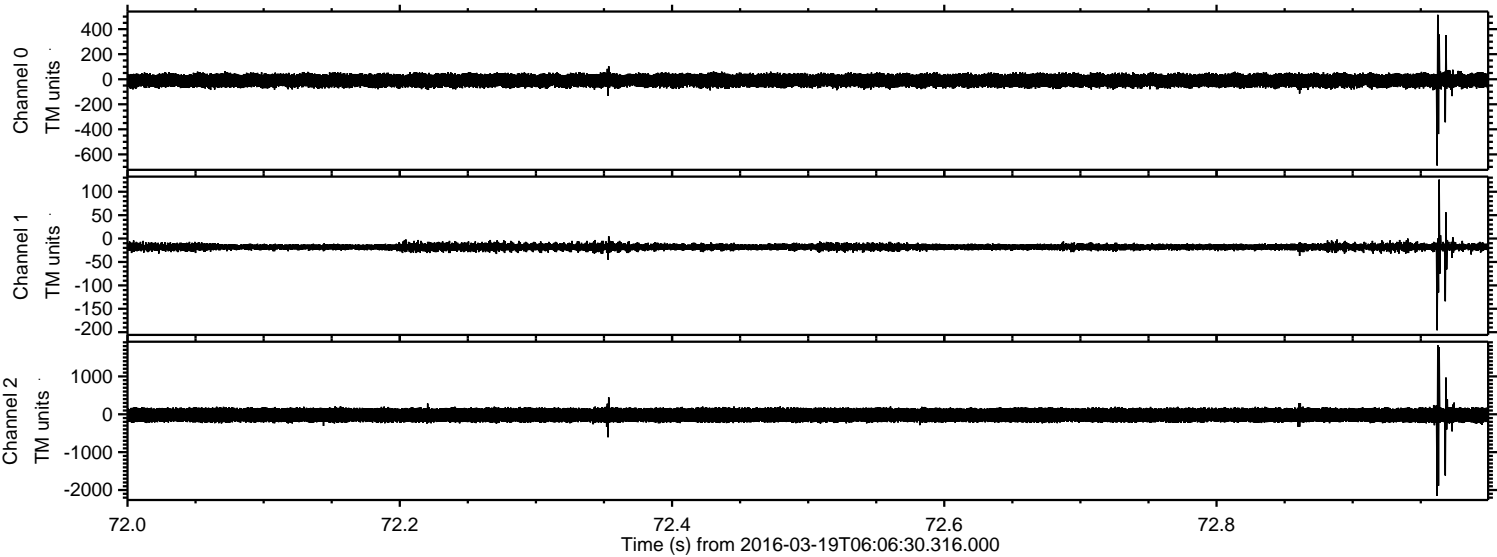
ELMAVAN 3D WAVEFORMS (Measured data sampled at 50 kHz) 51000 packets of 144 samples from 2016-03-19T06:06:30.316.000. Part 128/147

Processed Thu Apr 21 08:52:56 2016 by ELM ver.2012-10-06 from 001__elm20160319_060629__dat00.bin

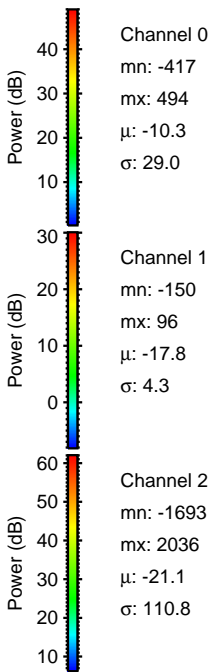
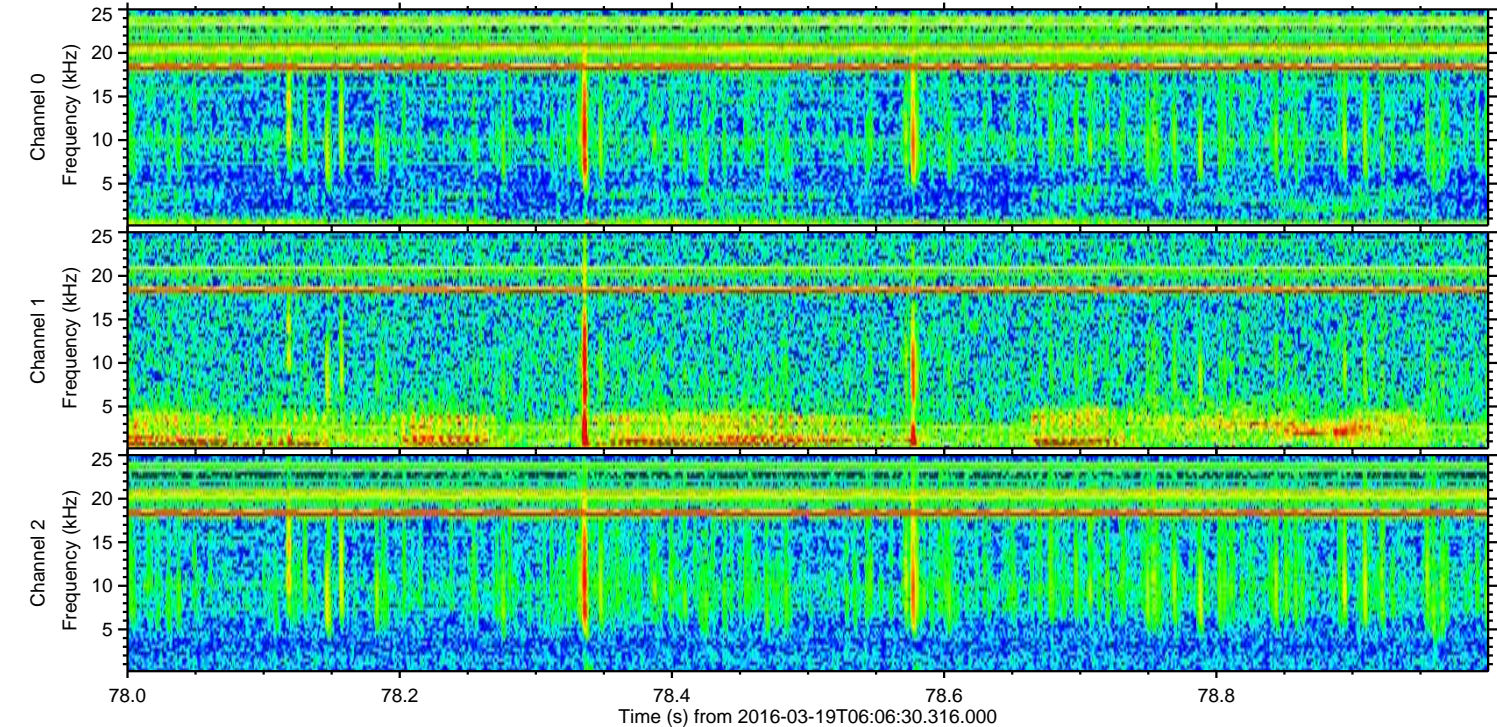
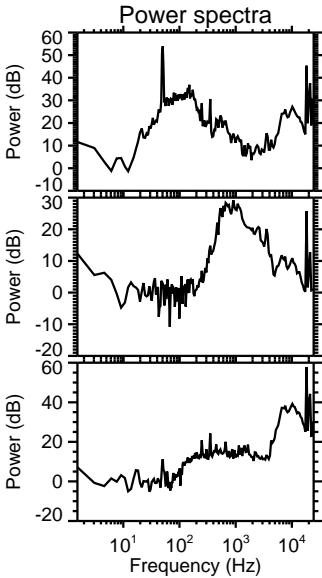
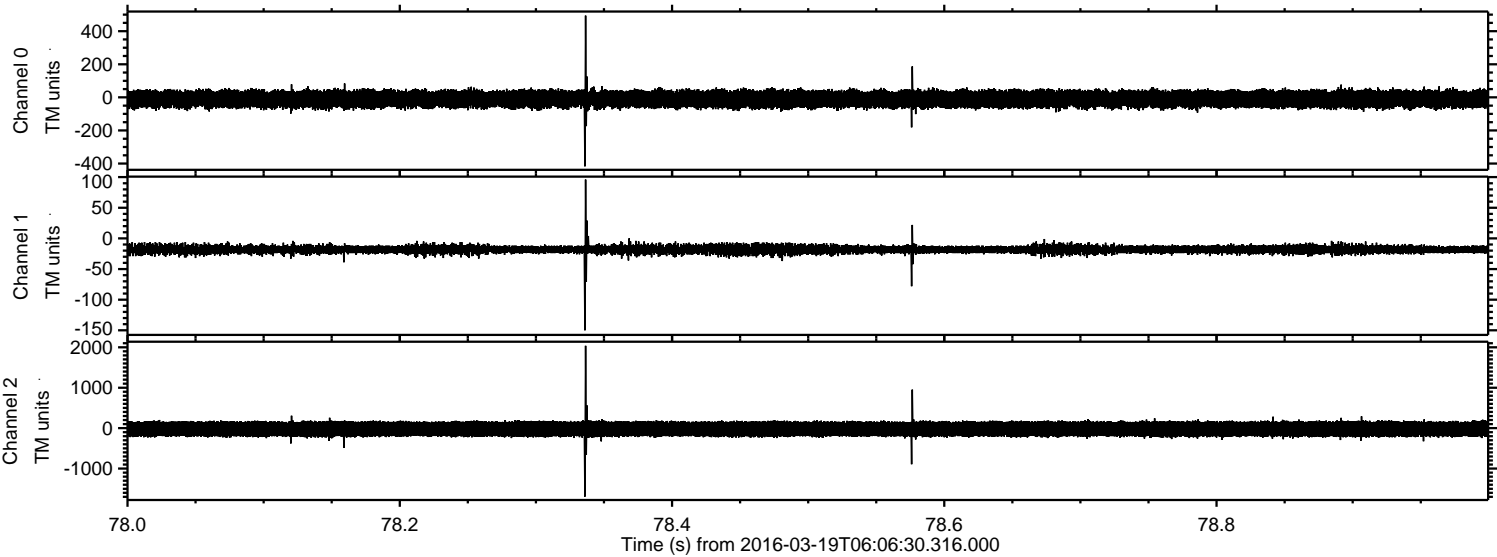


ELMAVAN 3D WAVEFORMS (Measured data sampled at 50 kHz) 51000 packets of 144 samples from 2016-03-19T06:06:30.316.000. Part 73/147

Processed Thu Apr 21 08:52:57 2016 by ELM ver.2012-10-06 from 001__elm20160319_060629__dat00.bin

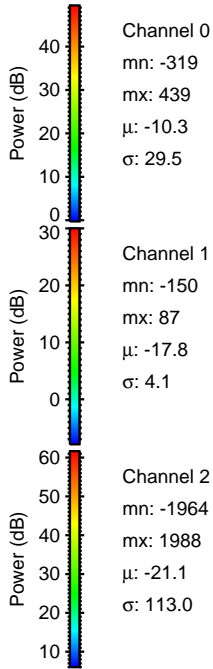
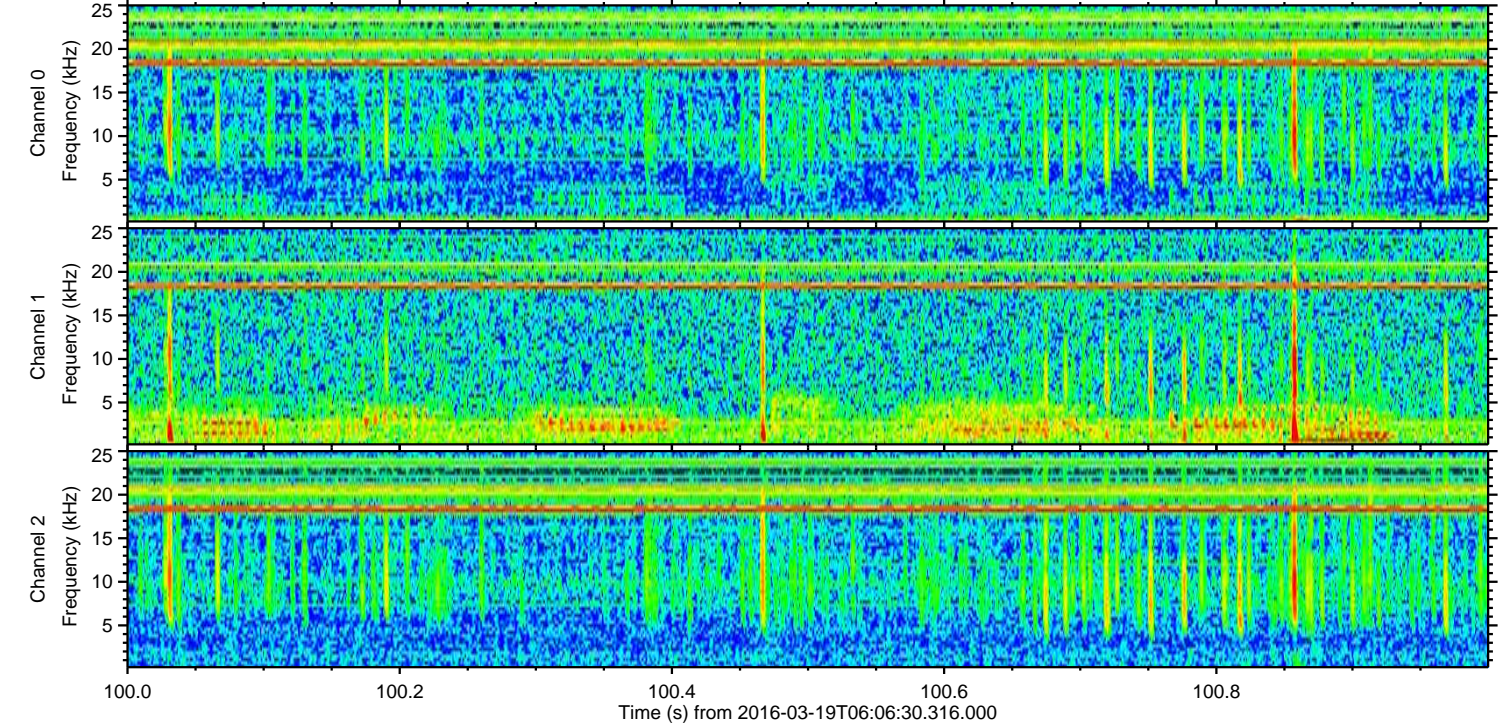
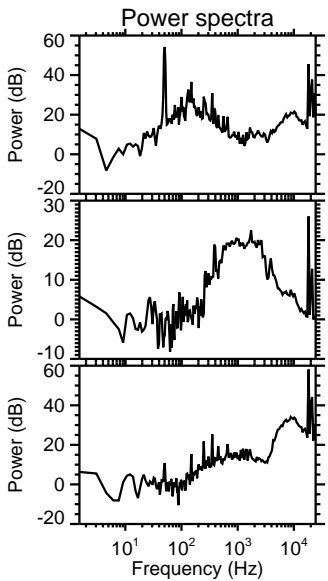
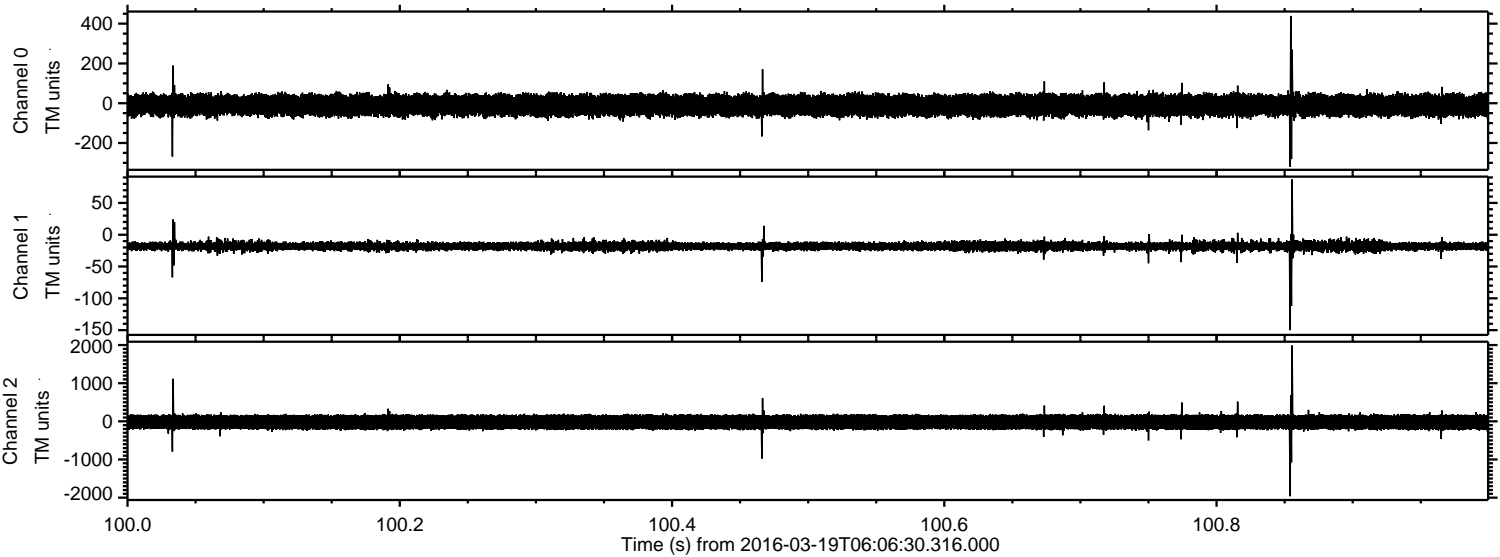


Processed Thu Apr 21 08:52:58 2016 by ELM ver.2012-10-06 from 001__elm20160319_060629__dat00.bin



ELMAVAN 3D WAVEFORMS (Measured data sampled at 50 kHz) 51000 packets of 144 samples from 2016-03-19T06:06:30.316.000. Part 101/147

Processed Thu Apr 21 08:52:59 2016 by ELM ver.2012-10-06 from 001__elm20160319_060629__dat00.bin

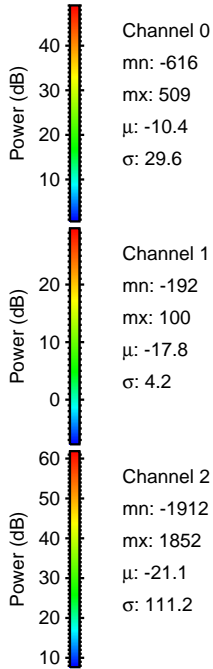
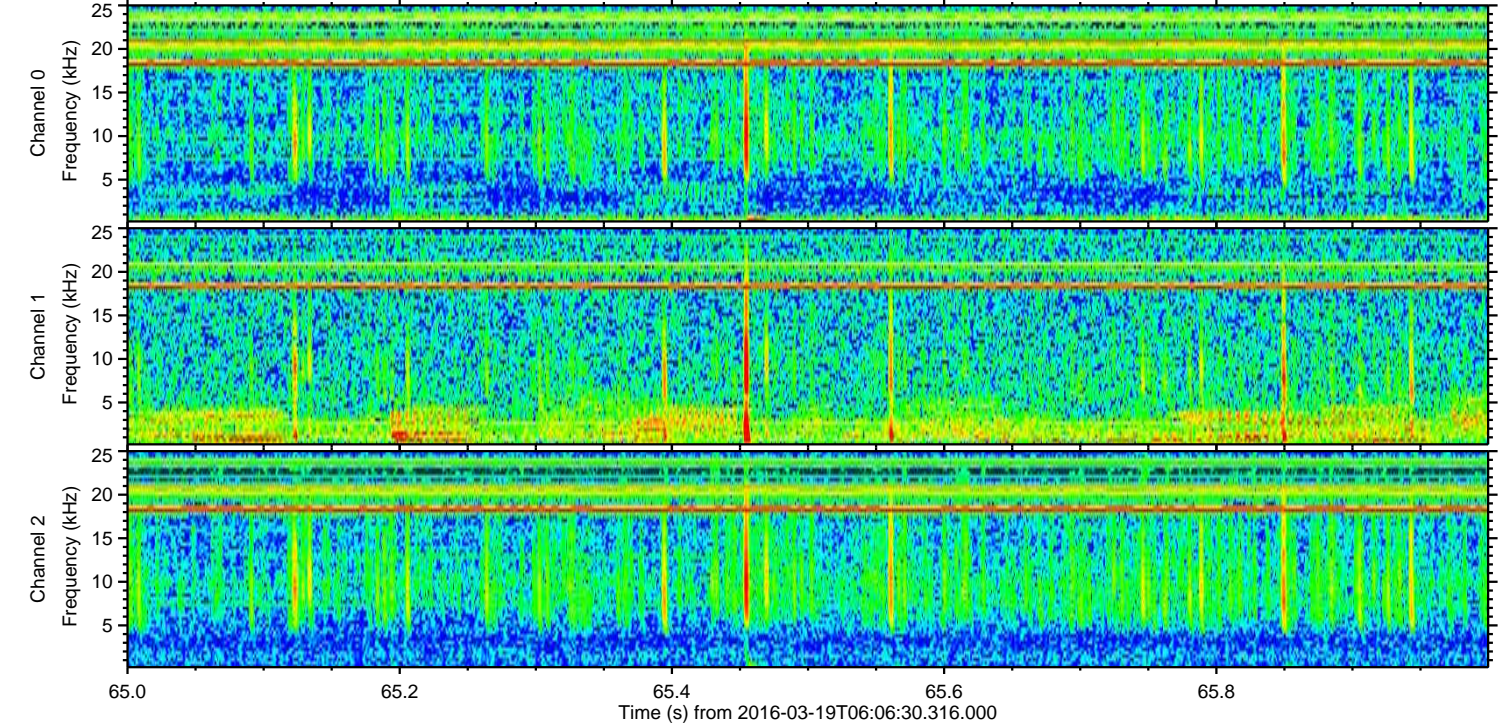
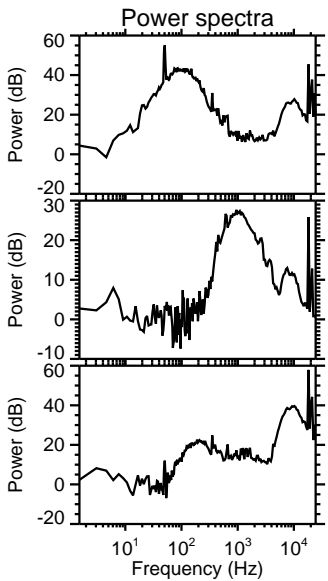
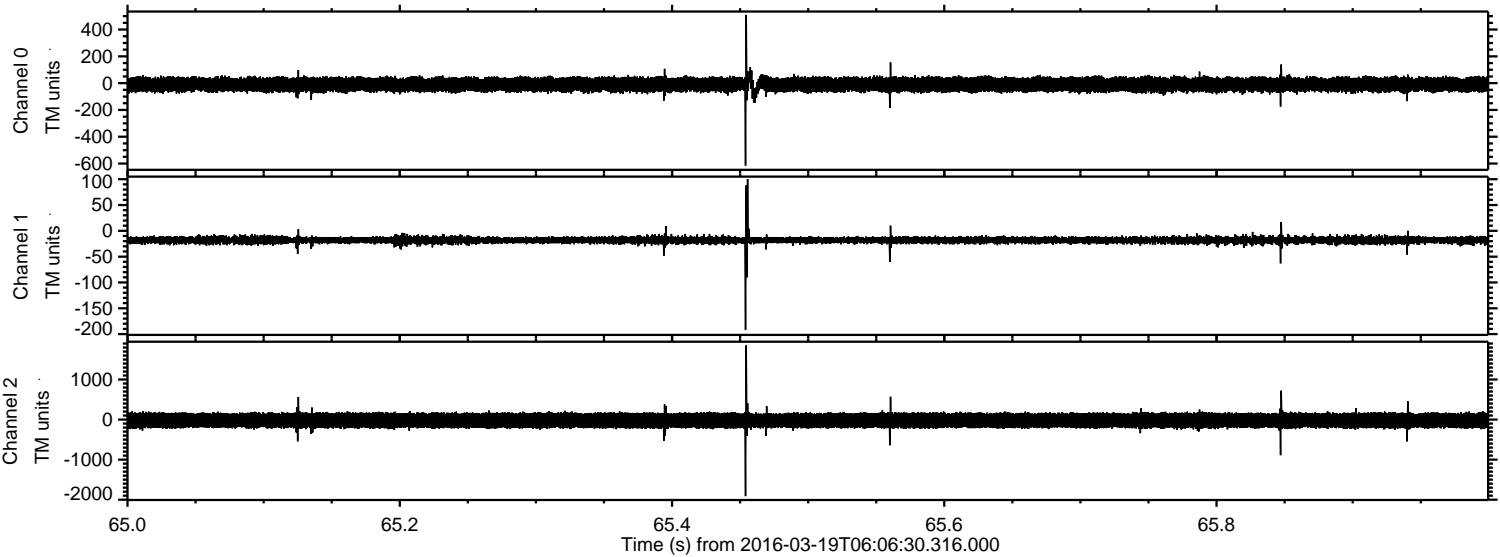


Channel 0
mn: -319
mx: 439
 μ : -10.3
 σ : 29.5

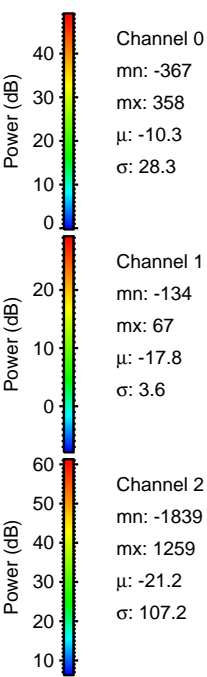
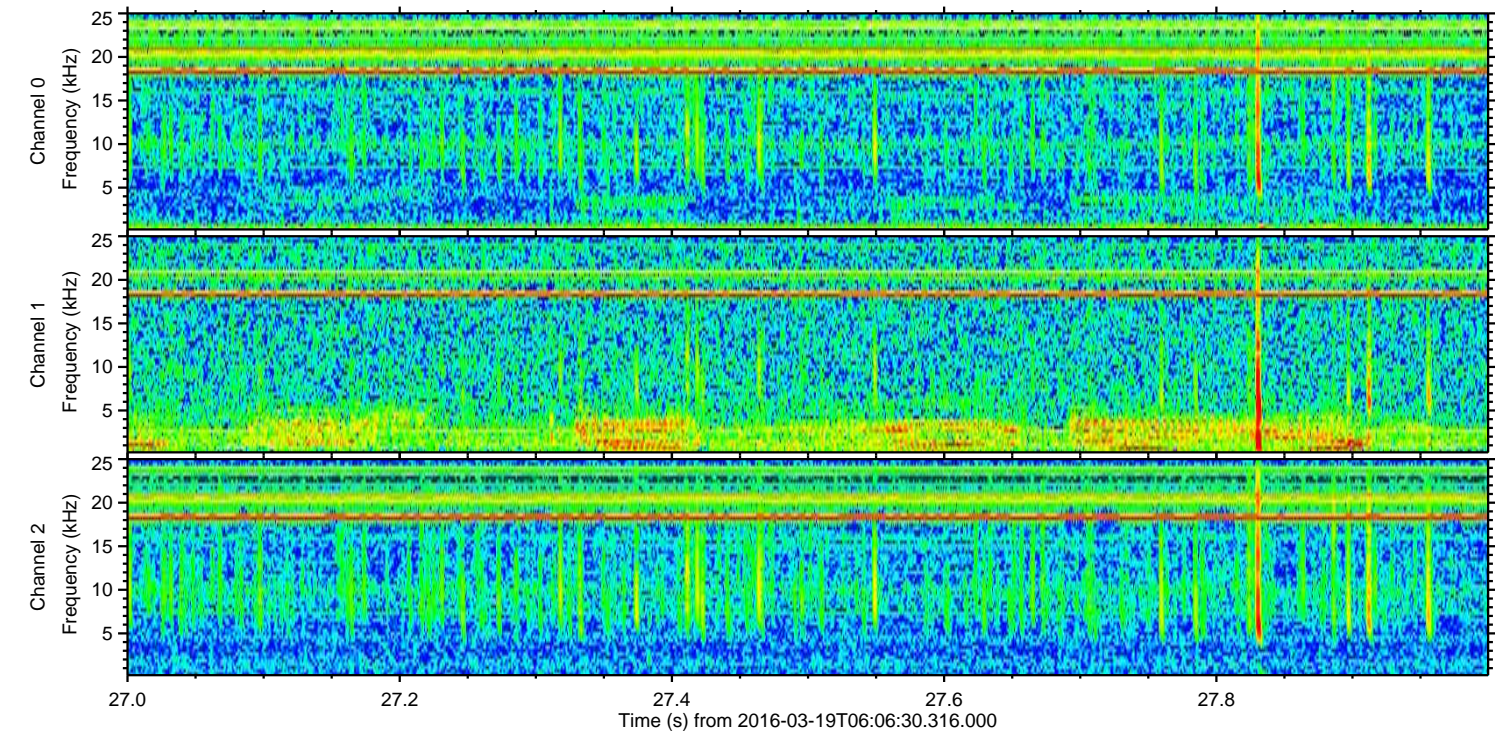
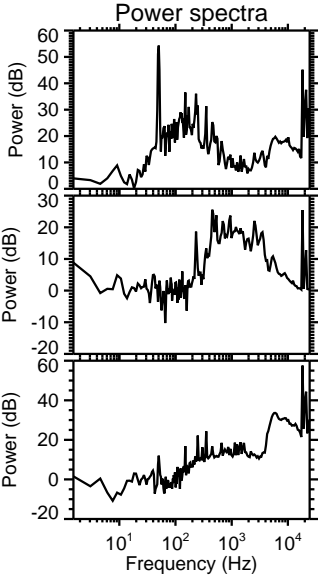
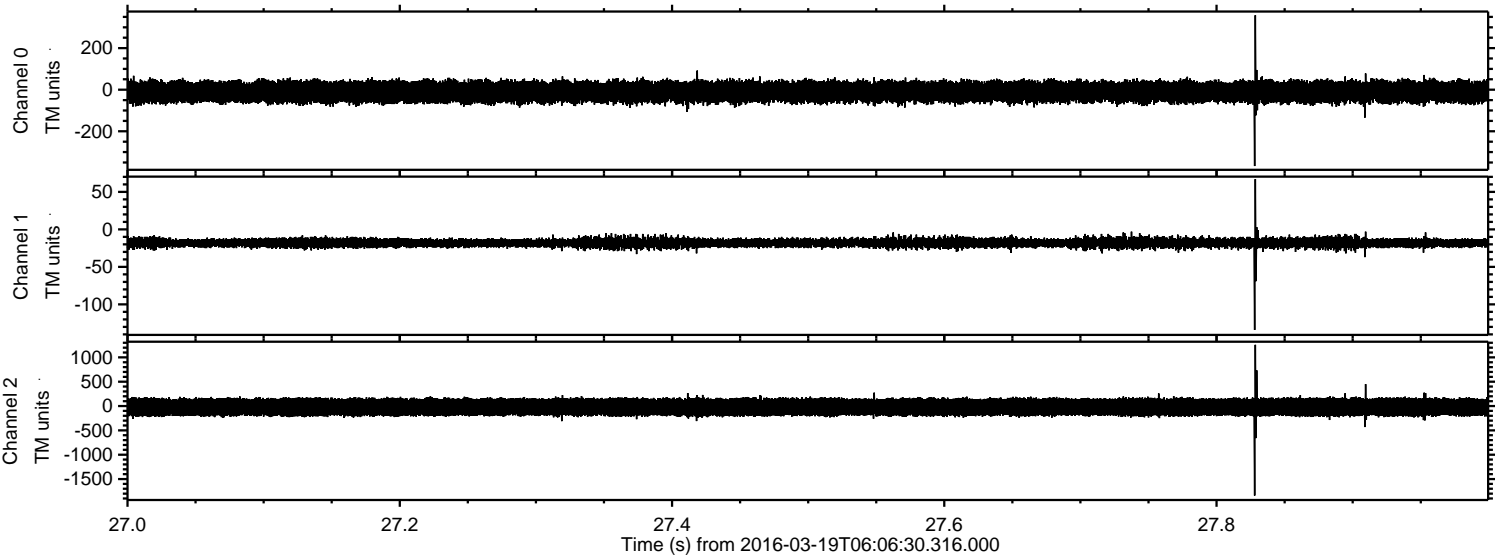
Channel 1
mn: -150
mx: 87
 μ : -17.8
 σ : 4.1

Channel 2
mn: -1964
mx: 1988
 μ : -21.1
 σ : 113.0

Processed Thu Apr 21 08:53:00 2016 by ELM ver.2012-10-06 from 001__elm20160319_060629__dat00.bin



Processed Thu Apr 21 08:53:01 2016 by ELM ver.2012-10-06 from 001__elm20160319_060629__dat00.bin



Processed Thu Apr 21 08:53:02 2016 by ELM ver.2012-10-06 from 001__elm20160319_060629__dat00.bin

