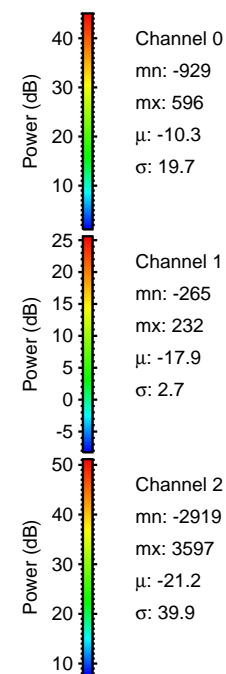
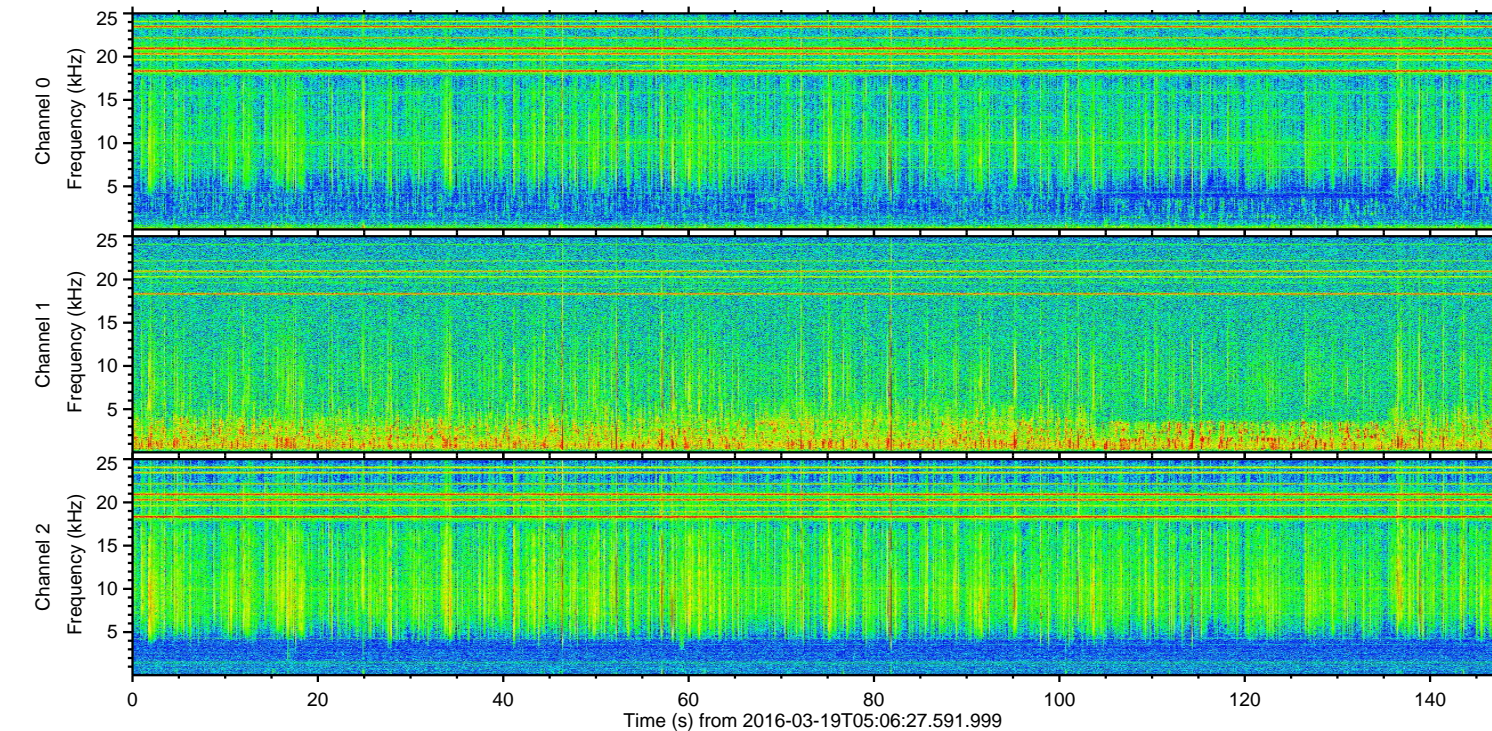
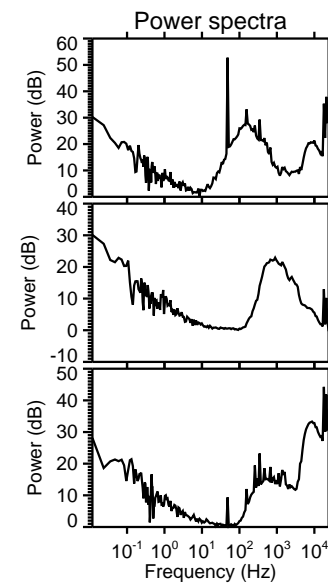
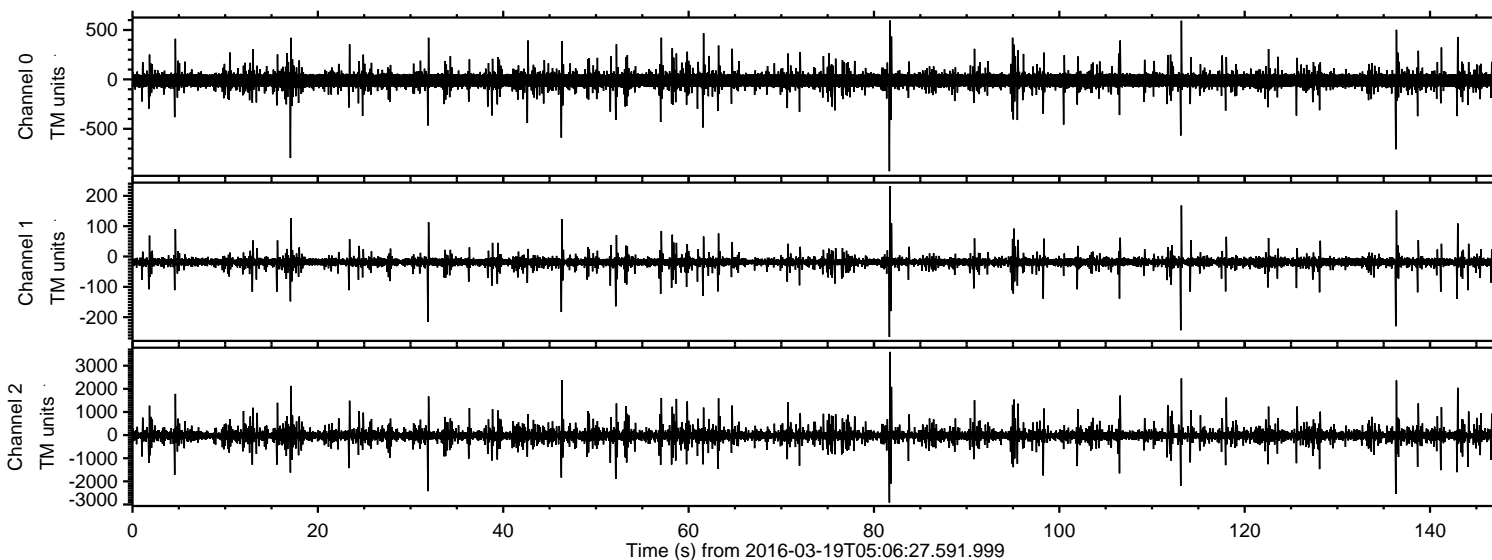
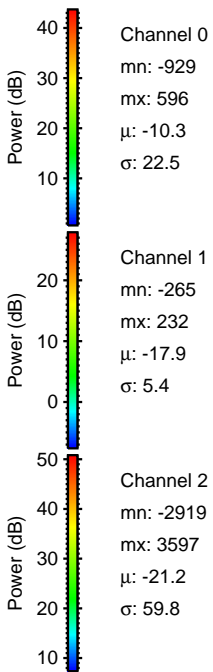
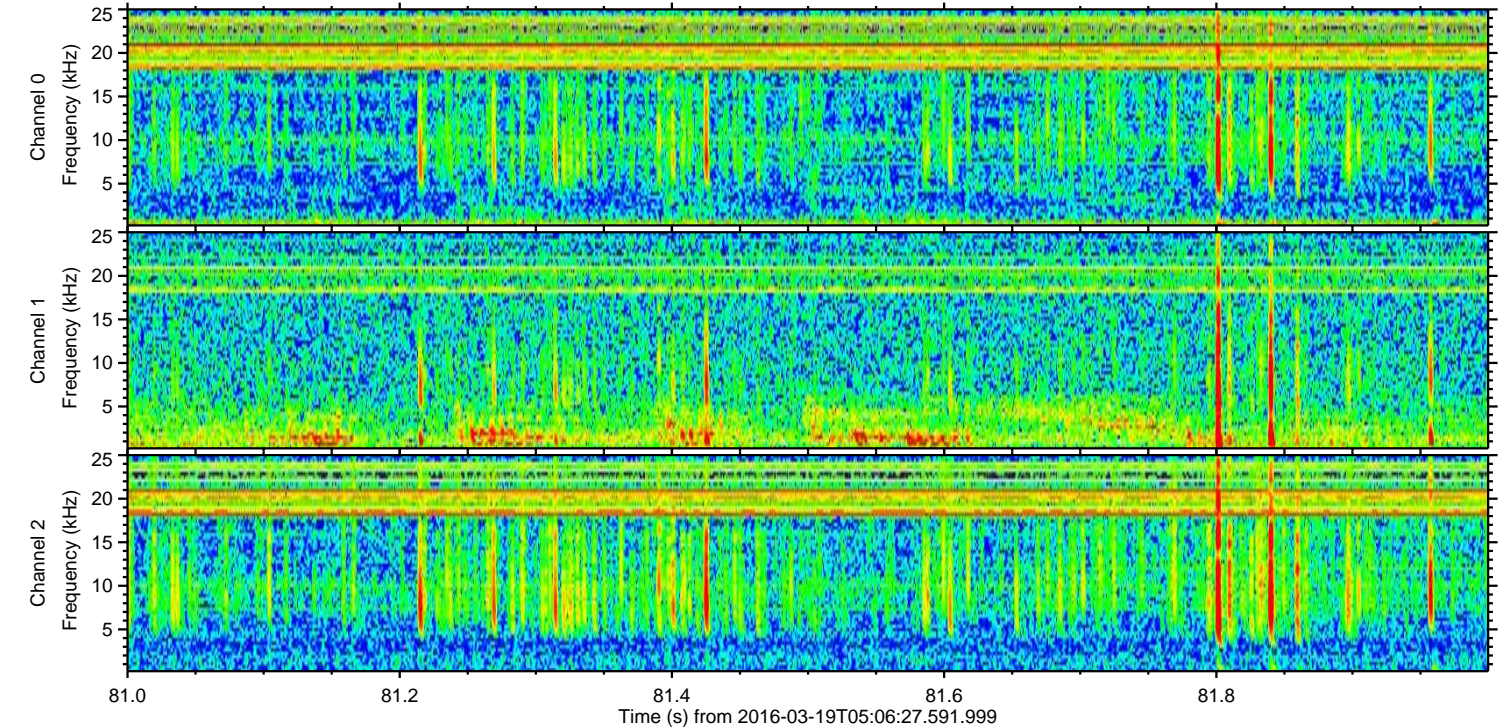
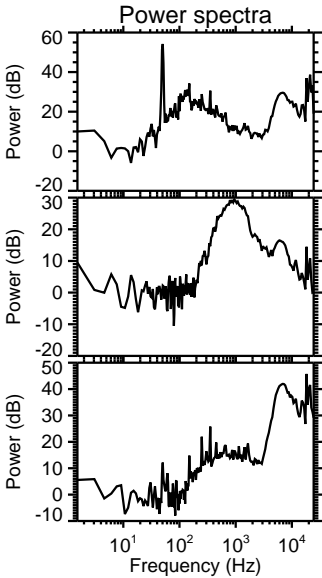
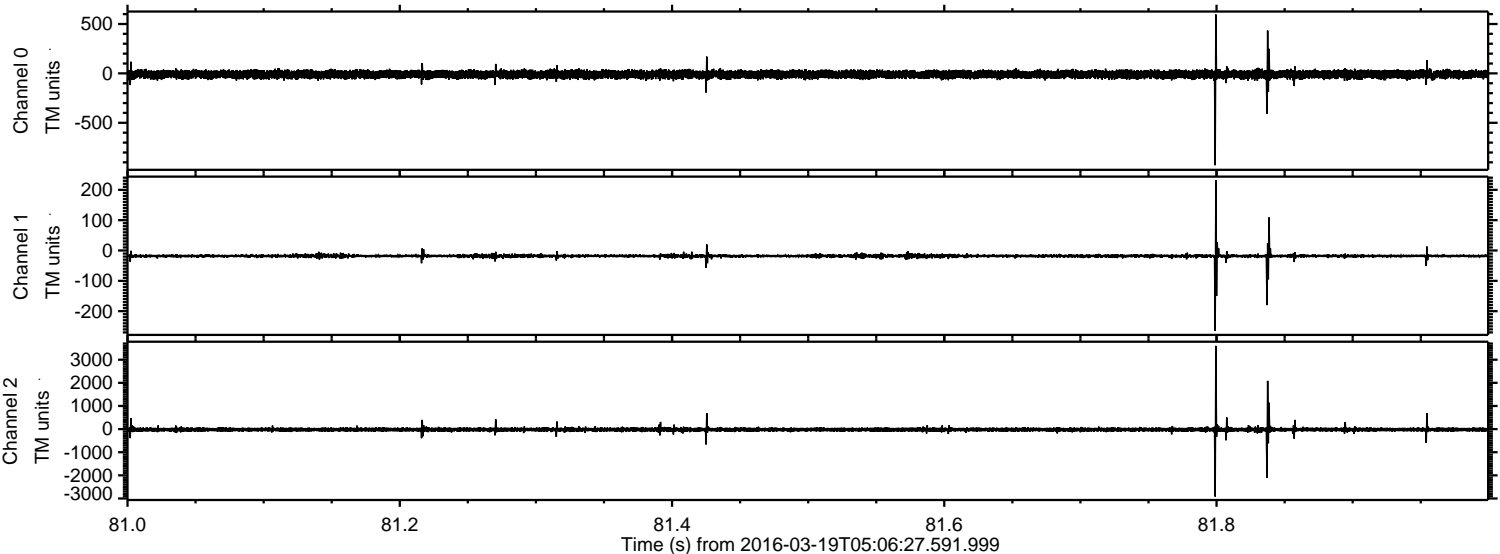


ELMAVAN 3D WAVEFORMS (Measured data sampled at 50 kHz) 51000 packets of 144 samples from 2016-03-19T05:06:27.591.999.

Processed Thu Apr 21 08:40:16 2016 by ELM ver.2012-10-06 from 001__elm20160319_050626__dat00.bin

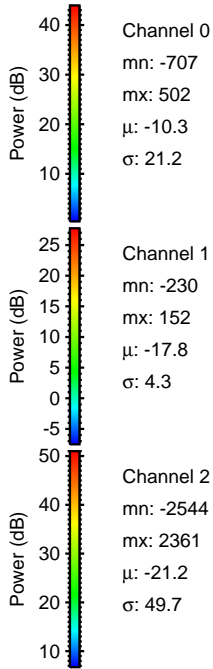
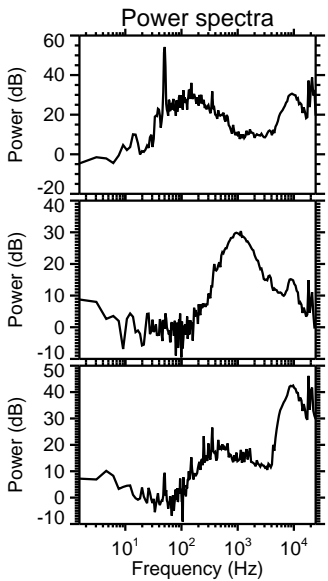
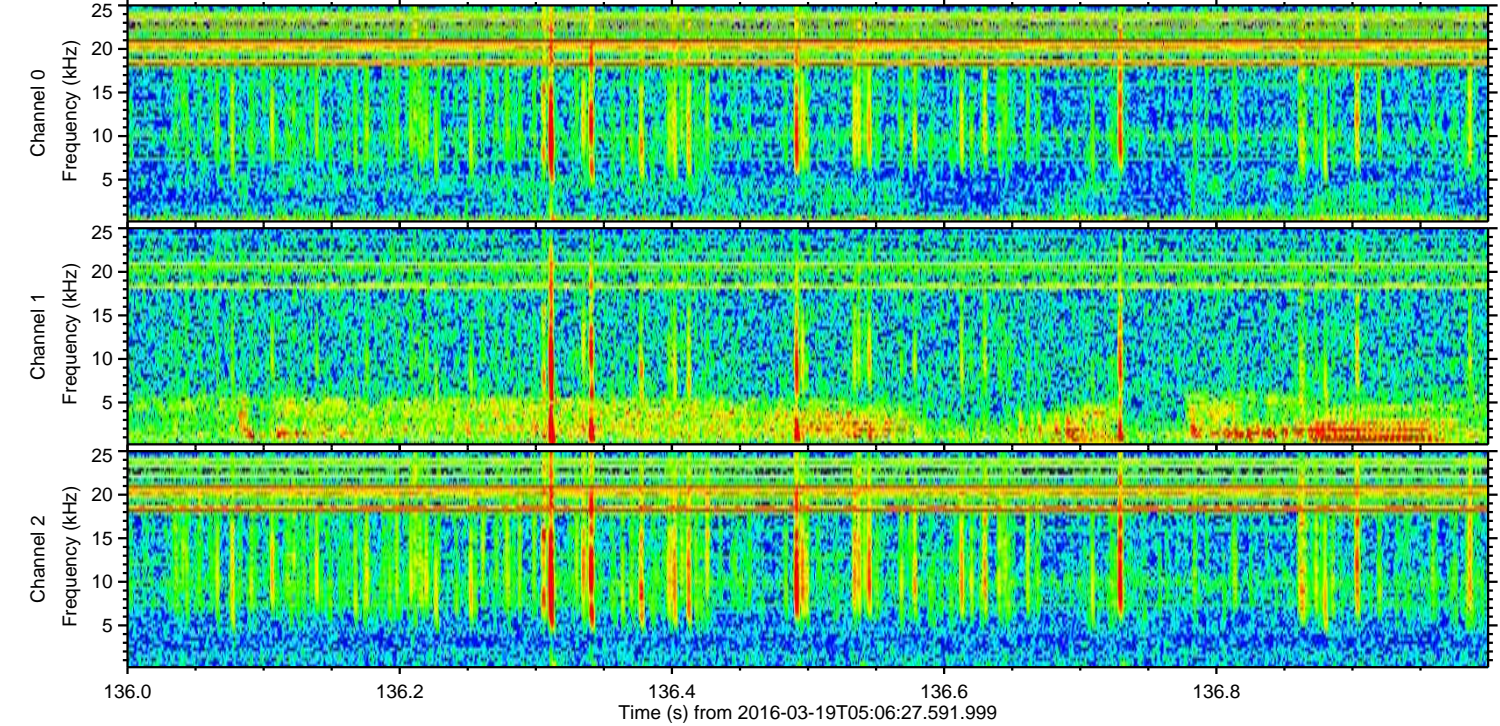
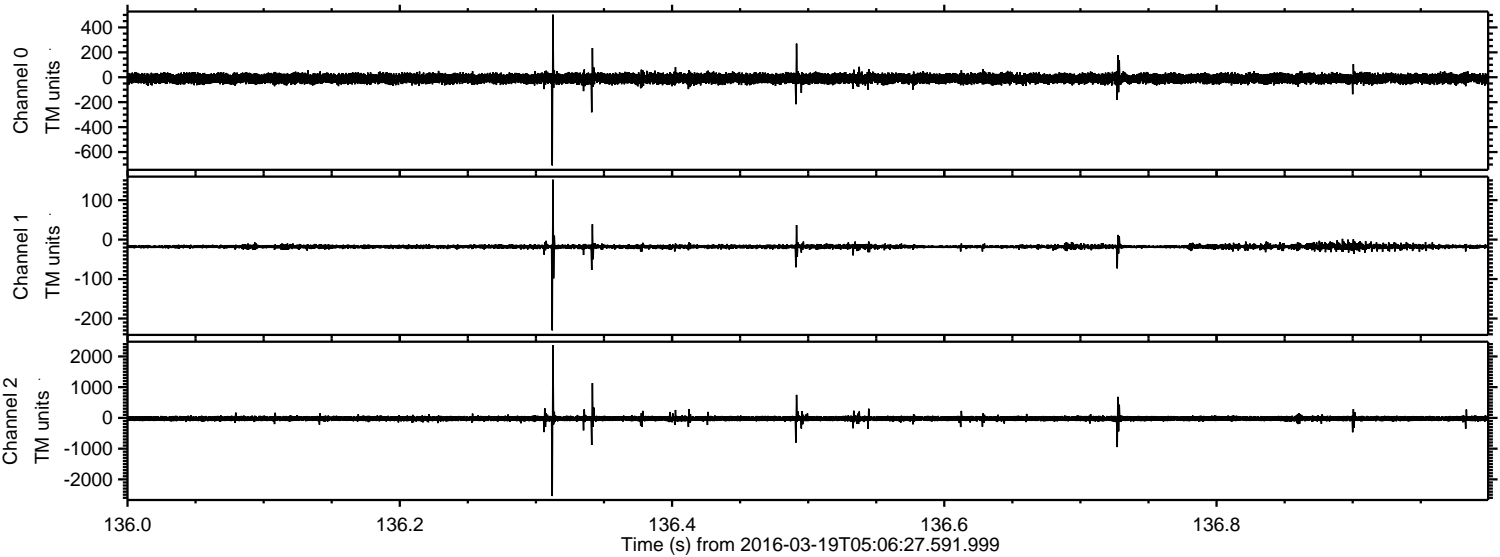


Processed Thu Apr 21 08:40:28 2016 by ELM ver.2012-10-06 from 001__elm20160319_050626__dat00.bin



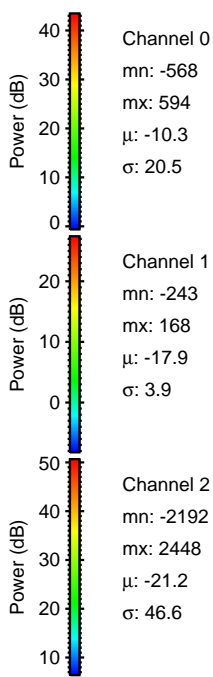
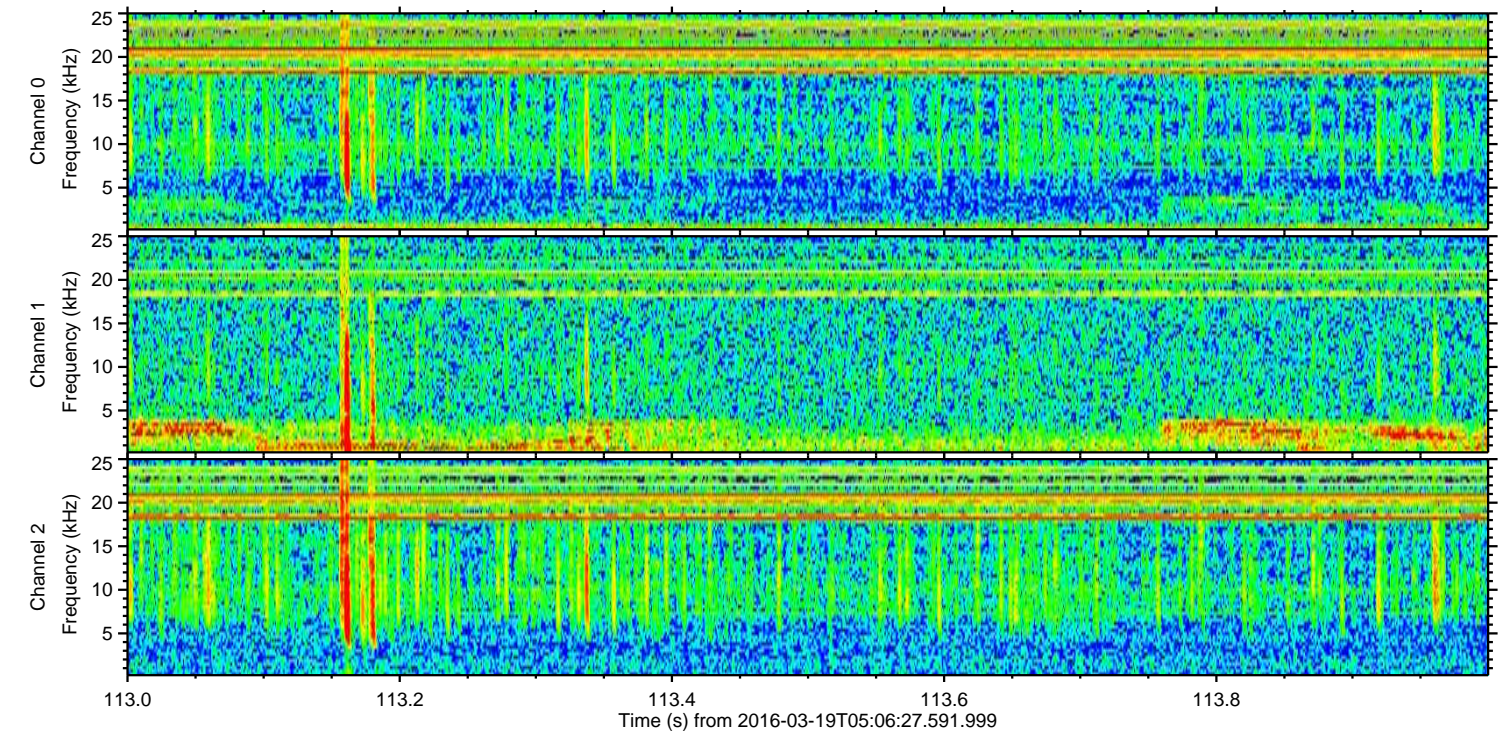
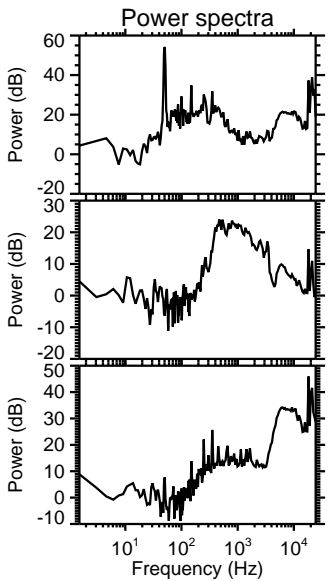
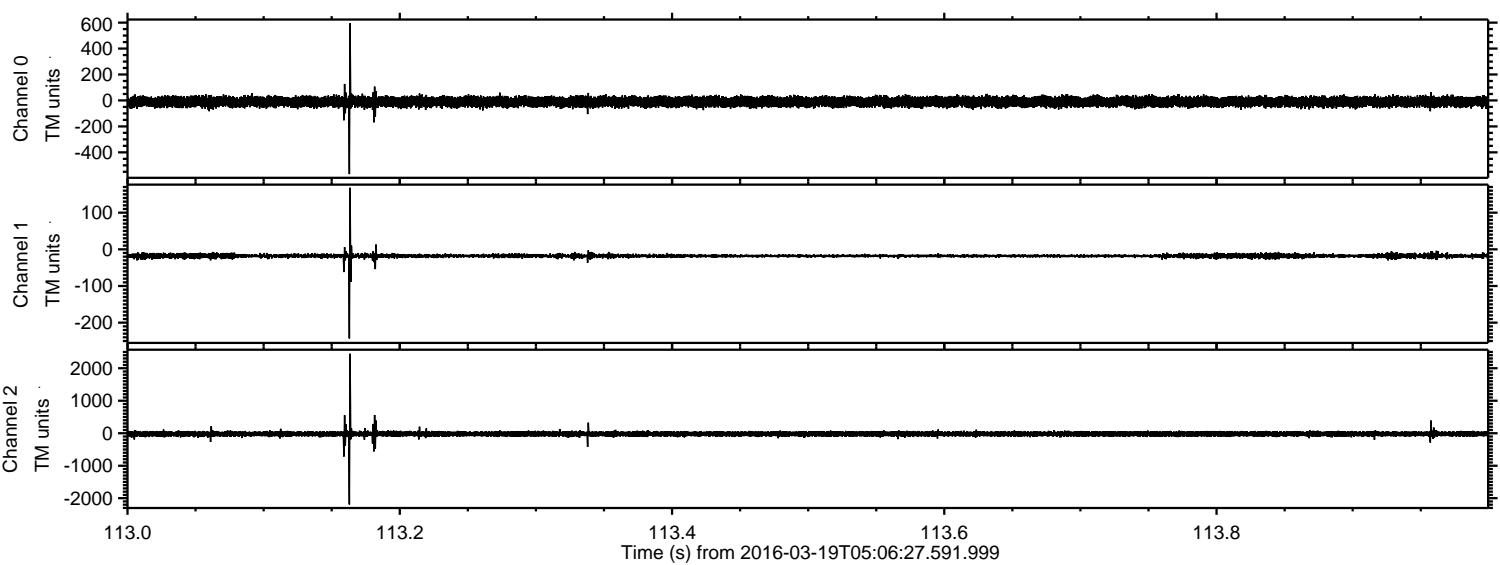
ELMAVAN 3D WAVEFORMS (Measured data sampled at 50 kHz) 51000 packets of 144 samples from 2016-03-19T05:06:27.591.999. Part 137/147

Processed Thu Apr 21 08:40:29 2016 by ELM ver.2012-10-06 from 001__elm20160319_050626__dat00.bin

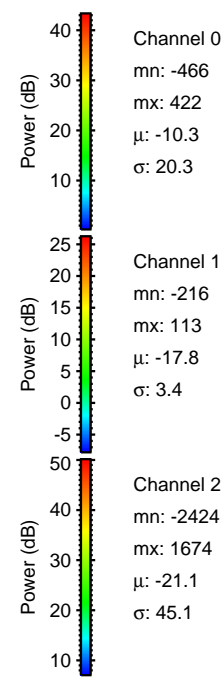
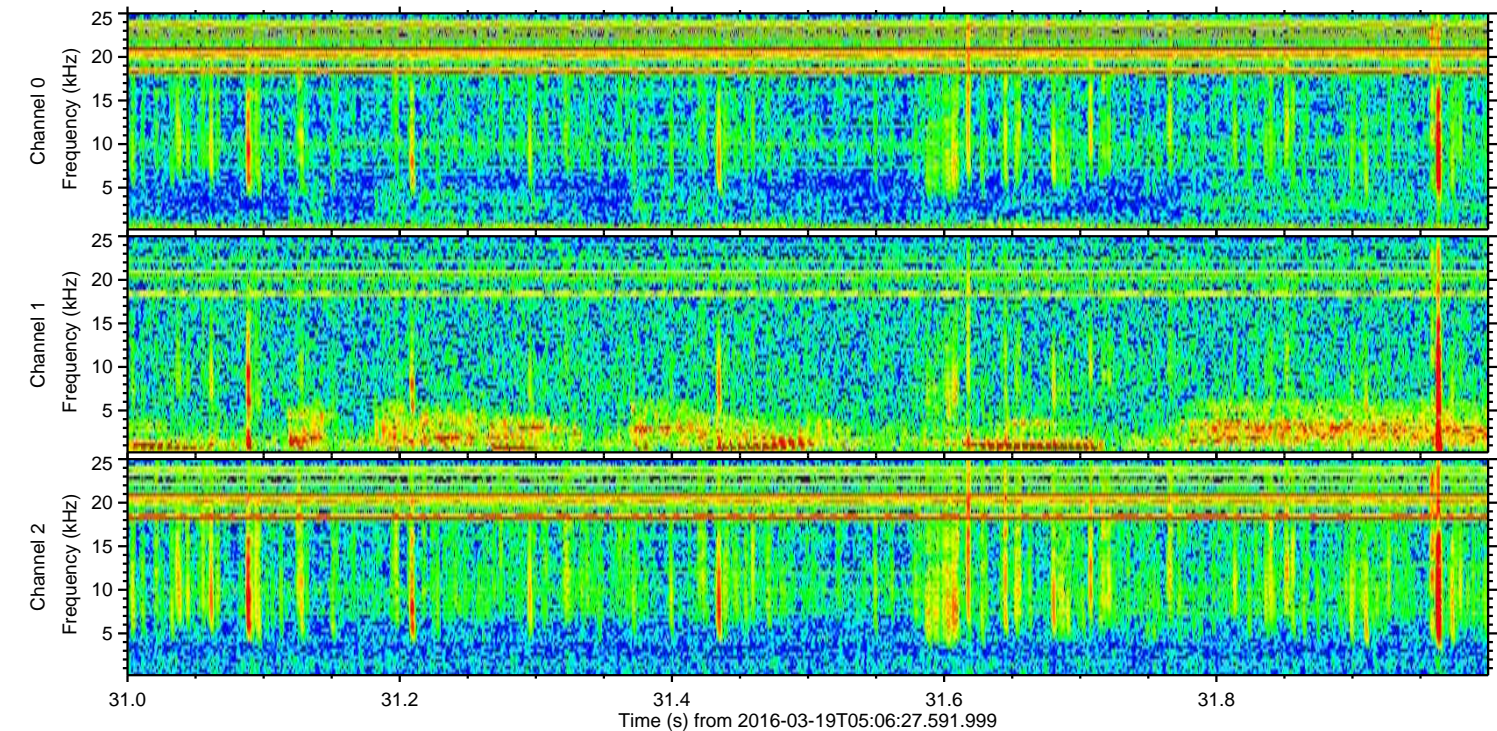
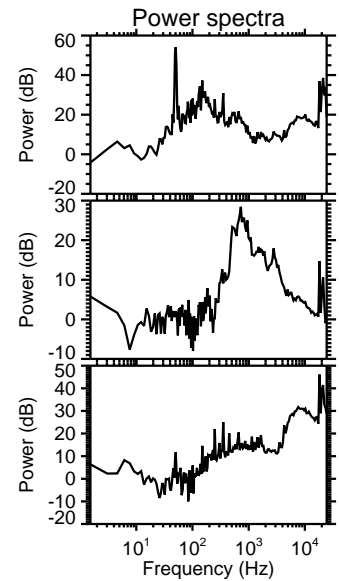
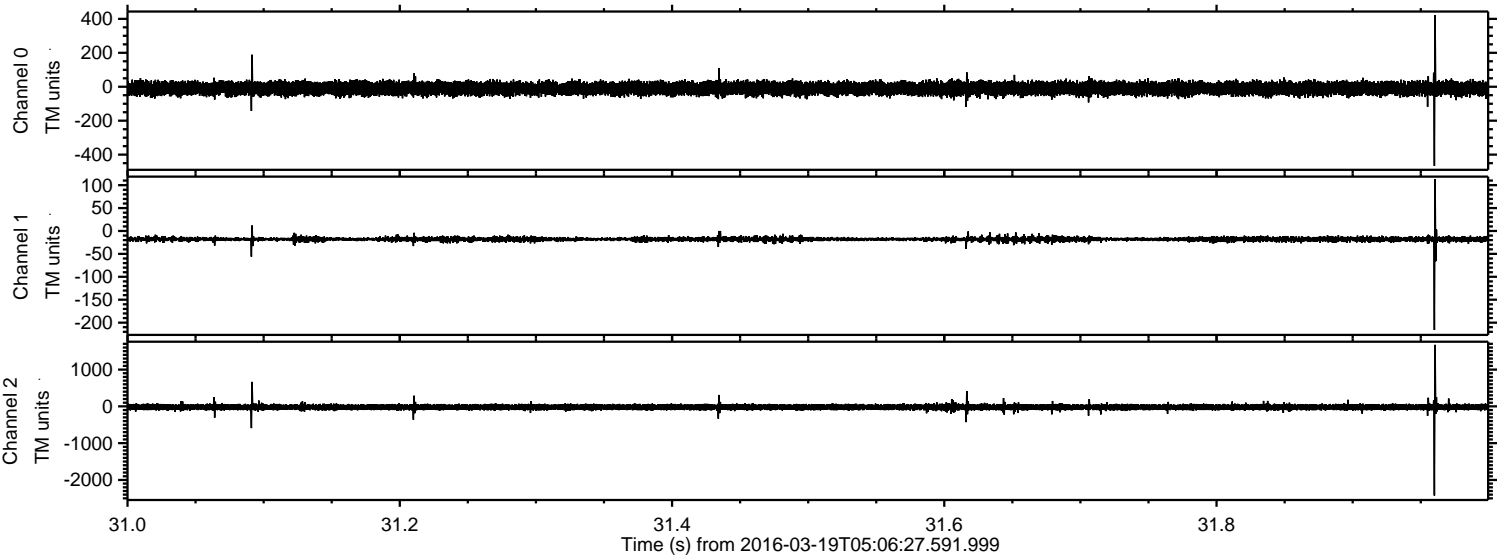


ELMAVAN 3D WAVEFORMS (Measured data sampled at 50 kHz) 51000 packets of 144 samples from 2016-03-19T05:06:27.591.999. Part 114/147

Processed Thu Apr 21 08:40:30 2016 by ELM ver.2012-10-06 from 001__elm20160319_050626__dat00.bin



Processed Thu Apr 21 08:40:31 2016 by ELM ver.2012-10-06 from 001__elm20160319_050626__dat00.bin

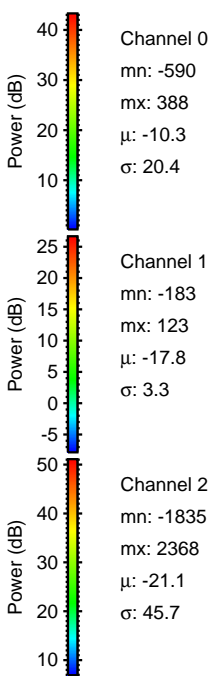
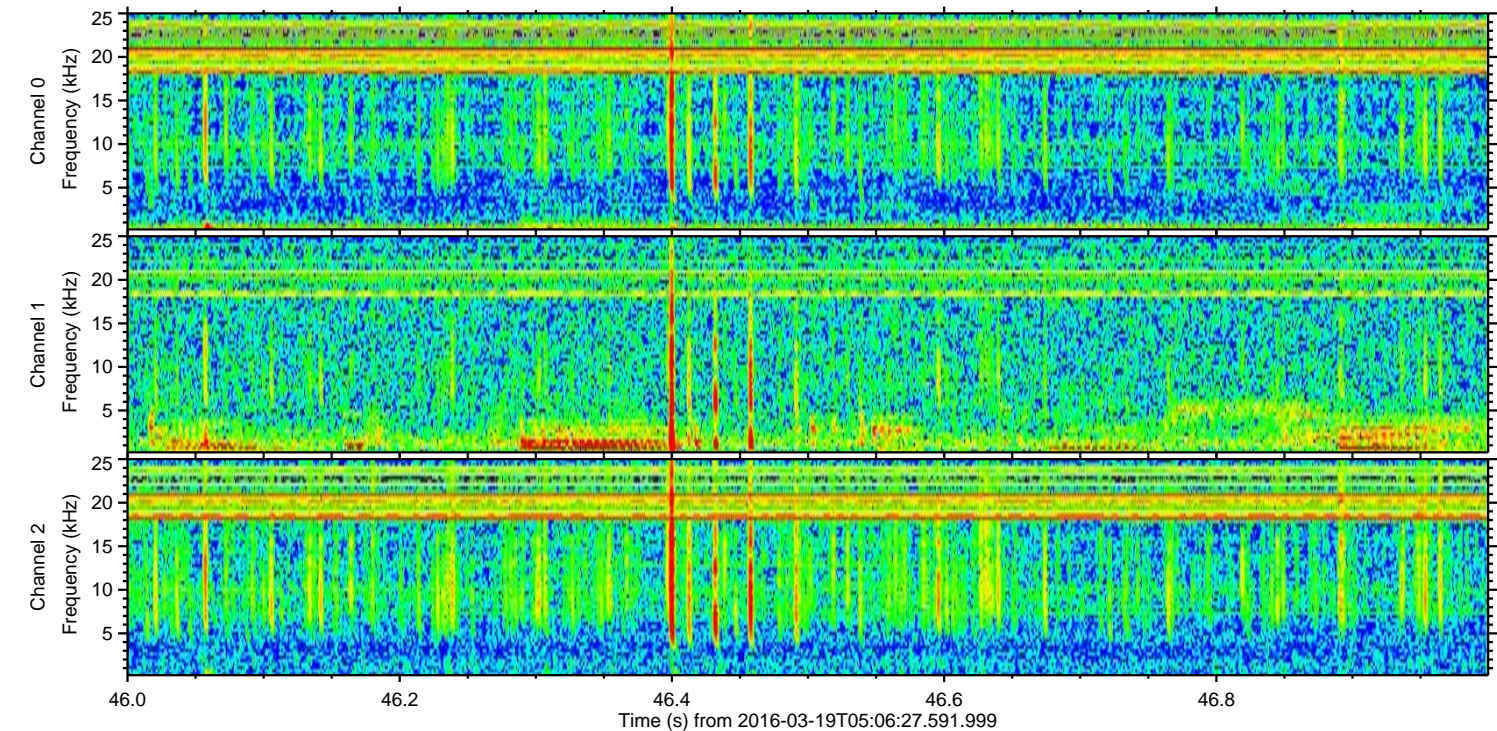
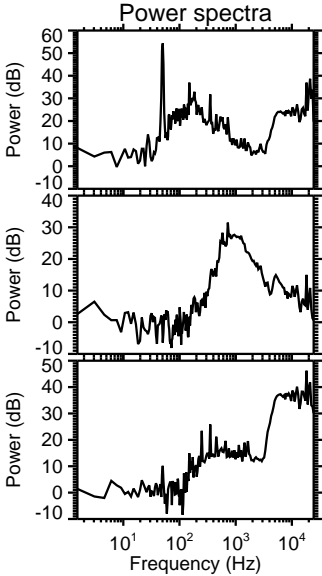
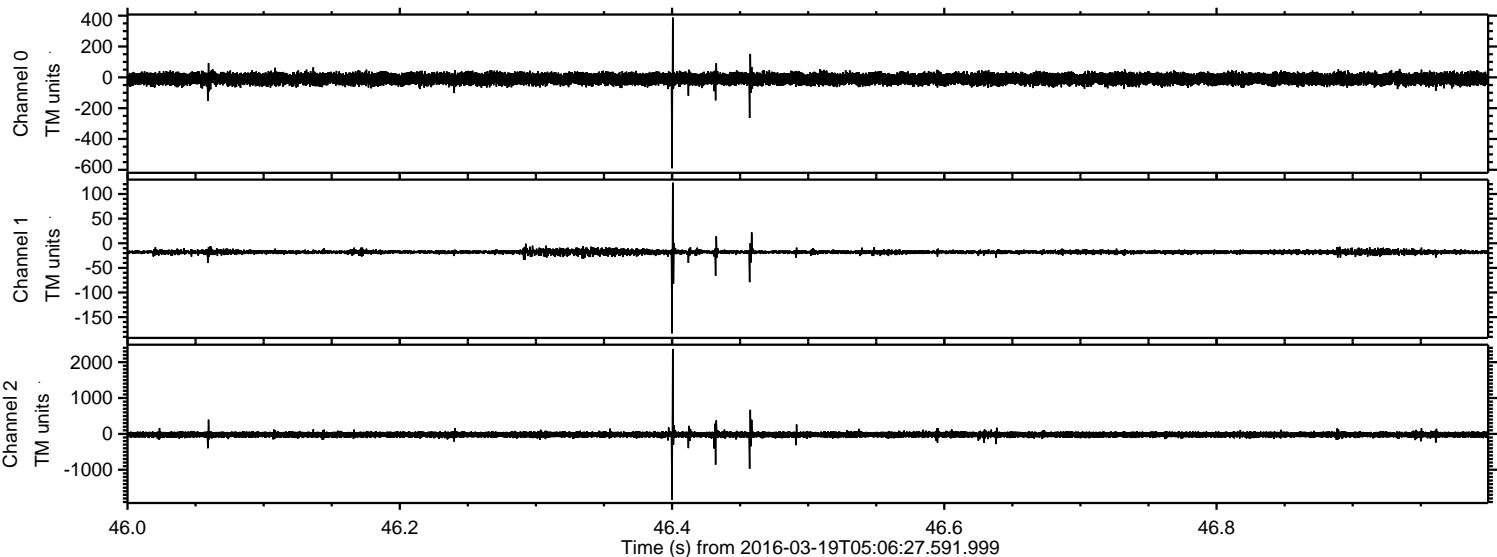


Channel 0
mn: -466
mx: 422
 μ : -10.3
 σ : 20.3

Channel 1
mn: -216
mx: 113
 μ : -17.8
 σ : 3.4

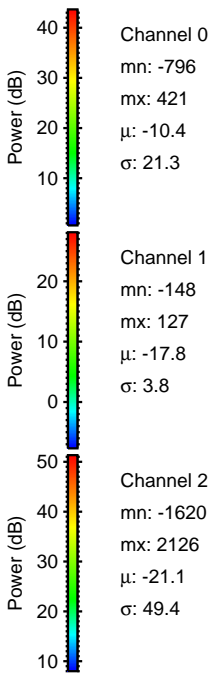
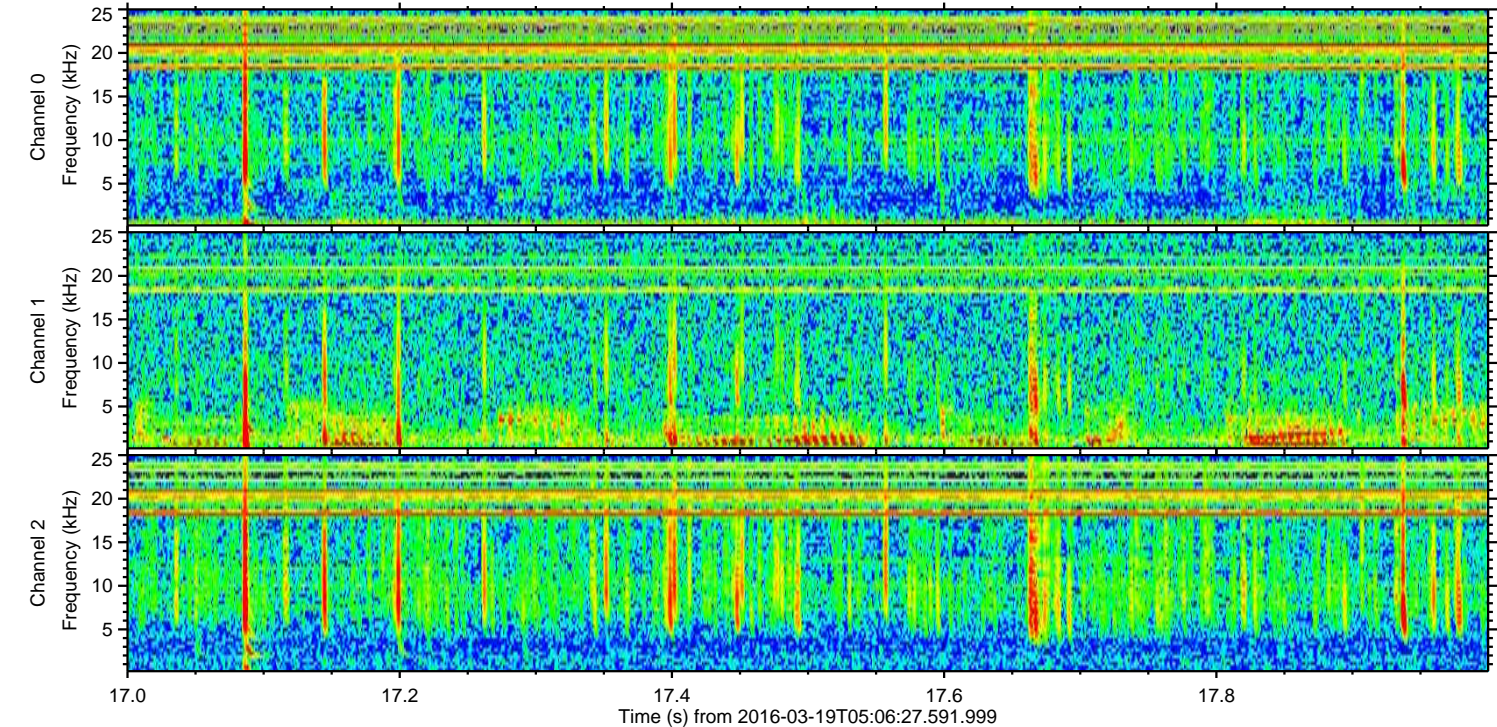
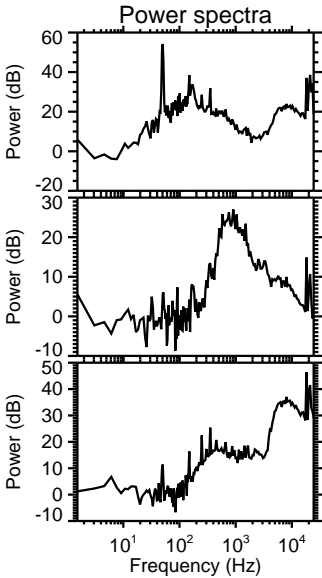
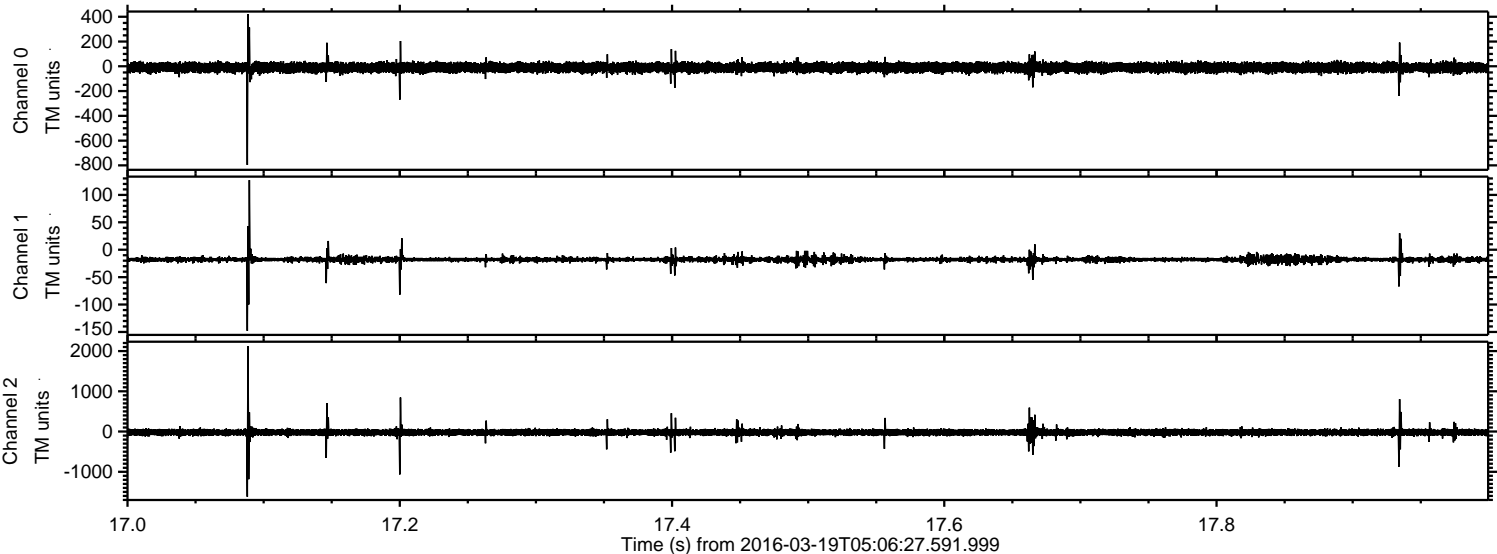
Channel 2
mn: -2424
mx: 1674
 μ : -21.1
 σ : 45.1

Processed Thu Apr 21 08:40:31 2016 by ELM ver.2012-10-06 from 001__elm20160319_050626__dat00.bin



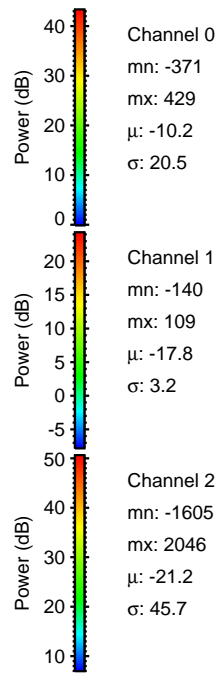
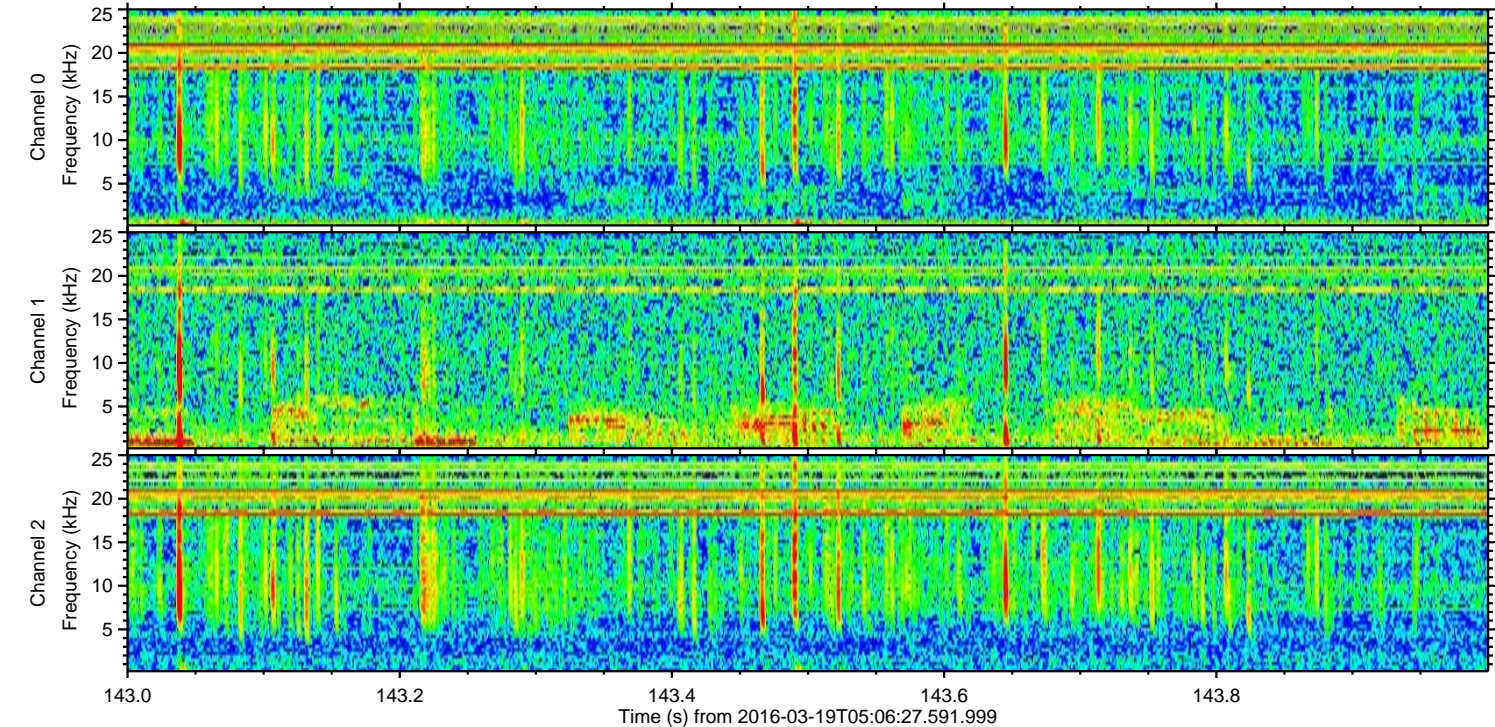
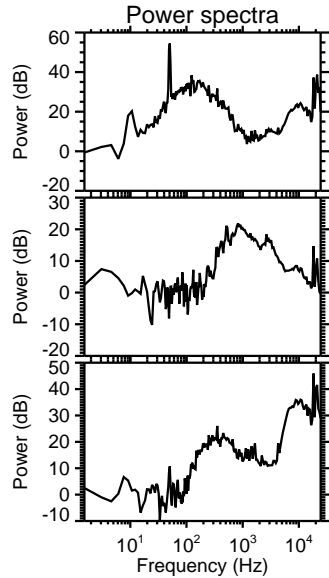
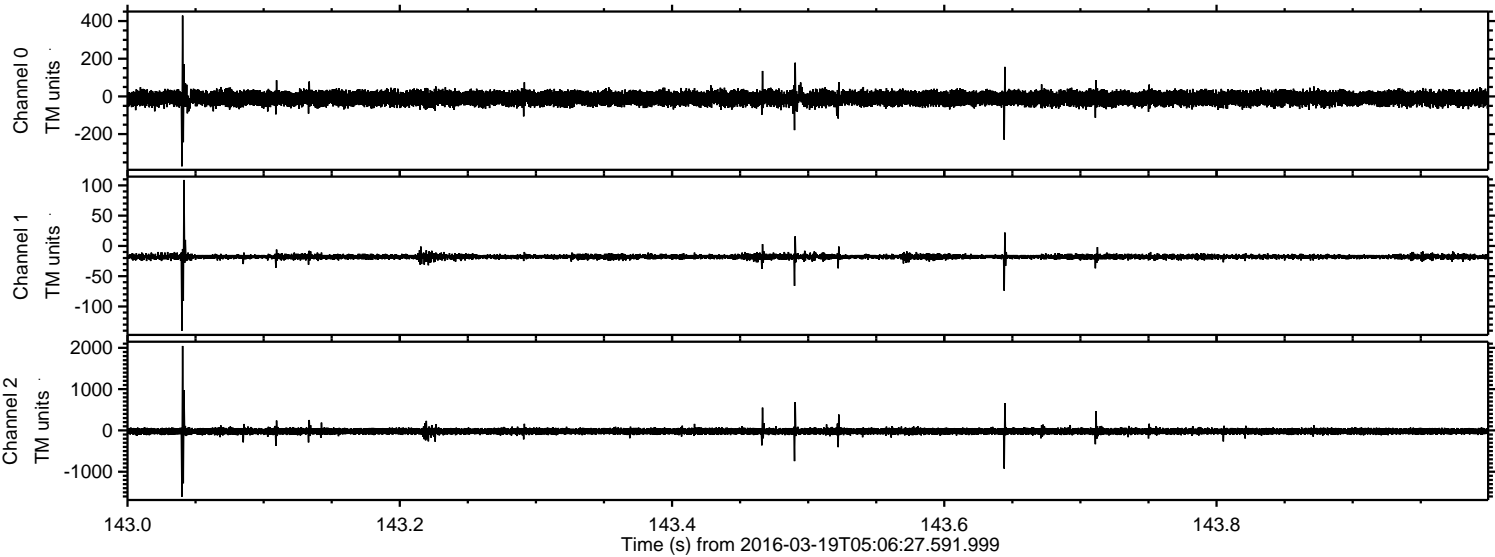
ELMAVAN 3D WAVEFORMS (Measured data sampled at 50 kHz) 51000 packets of 144 samples from 2016-03-19T05:06:27.591.999. Part 18/147

Processed Thu Apr 21 08:40:32 2016 by ELM ver.2012-10-06 from 001__elm20160319_050626__dat00.bin

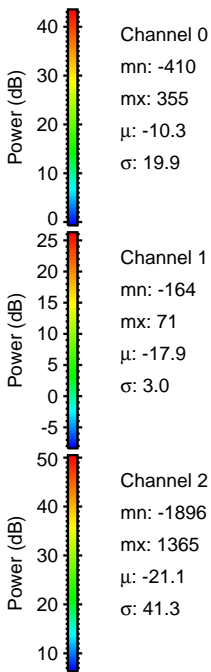
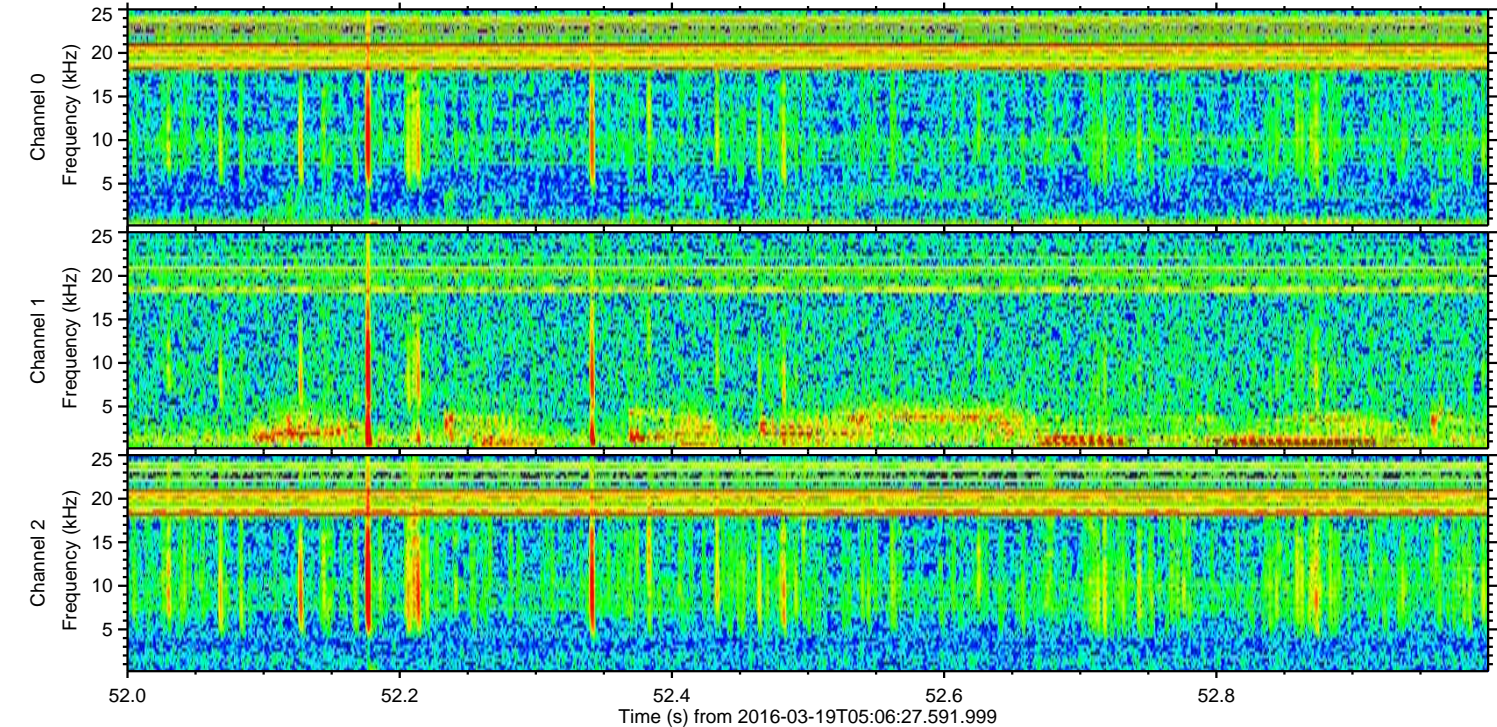
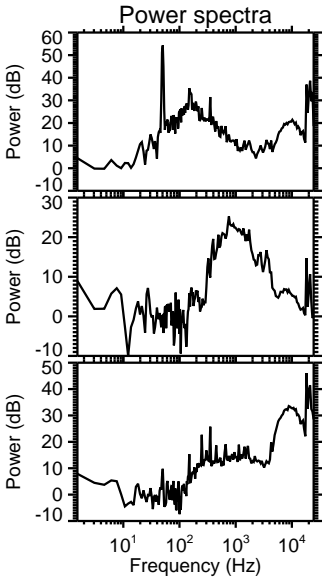
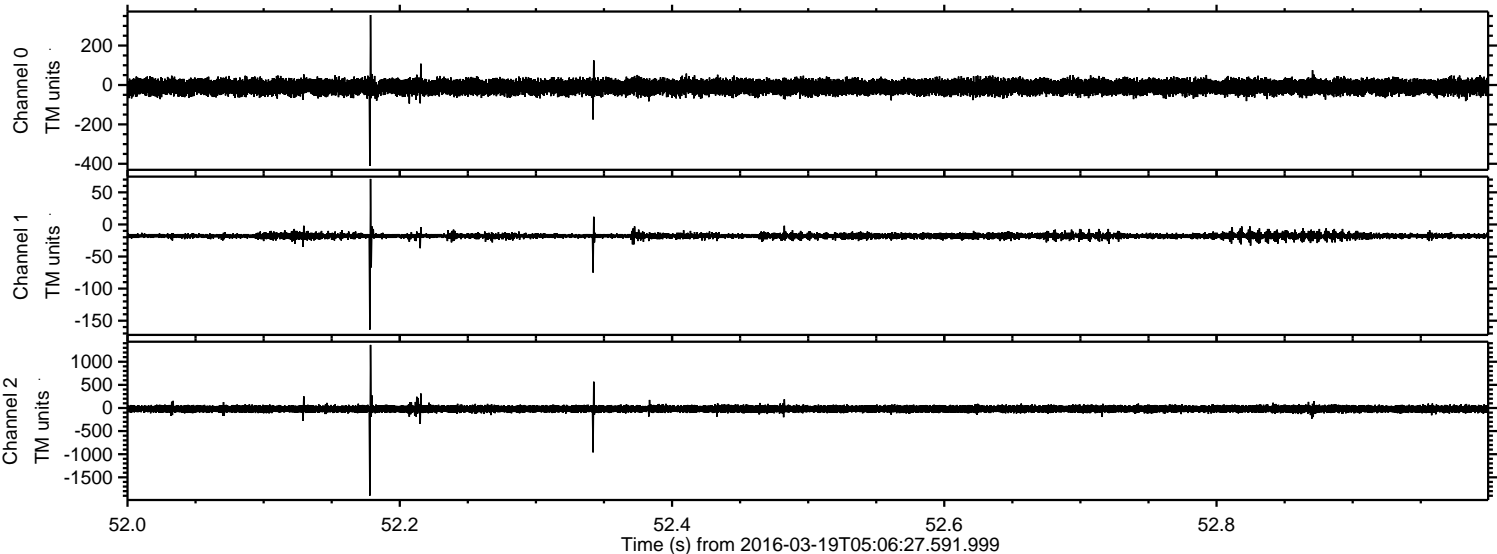


ELMAVAN 3D WAVEFORMS (Measured data sampled at 50 kHz) 51000 packets of 144 samples from 2016-03-19T05:06:27.591.999. Part 144/147

Processed Thu Apr 21 08:40:33 2016 by ELM ver.2012-10-06 from 001__elm20160319_050626__dat00.bin



Processed Thu Apr 21 08:40:34 2016 by ELM ver.2012-10-06 from 001__elm20160319_050626__dat00.bin



Processed Thu Apr 21 08:40:35 2016 by ELM ver.2012-10-06 from 001__elm20160319_050626__dat00.bin

