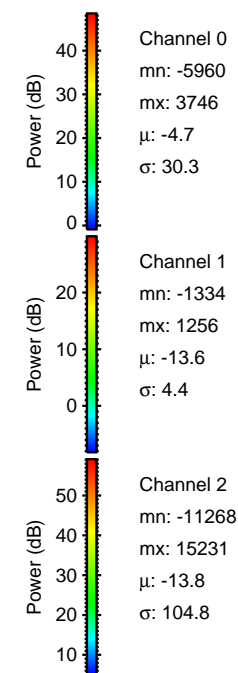
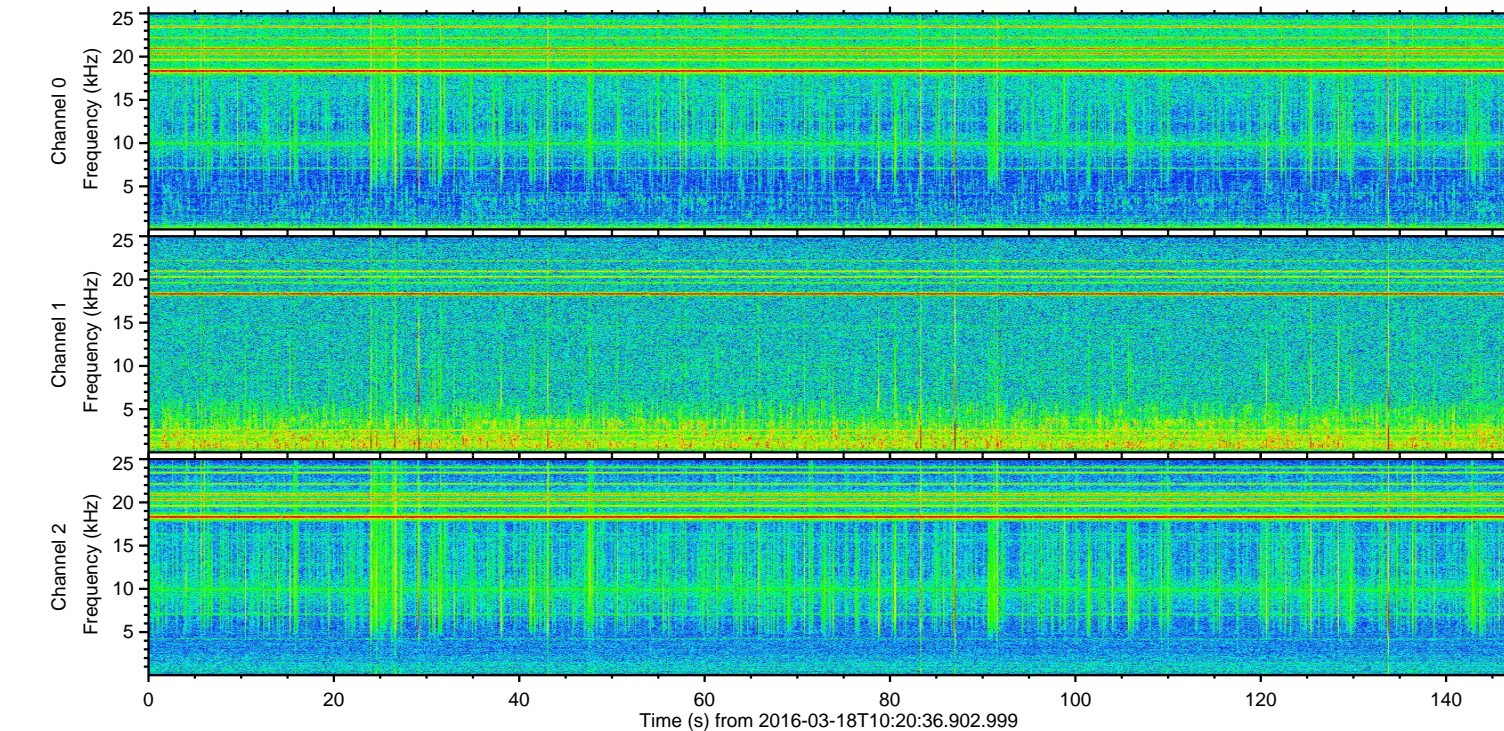
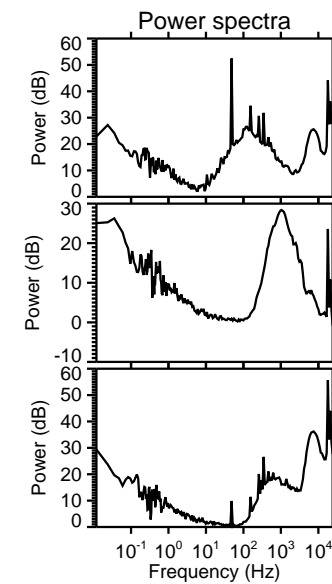
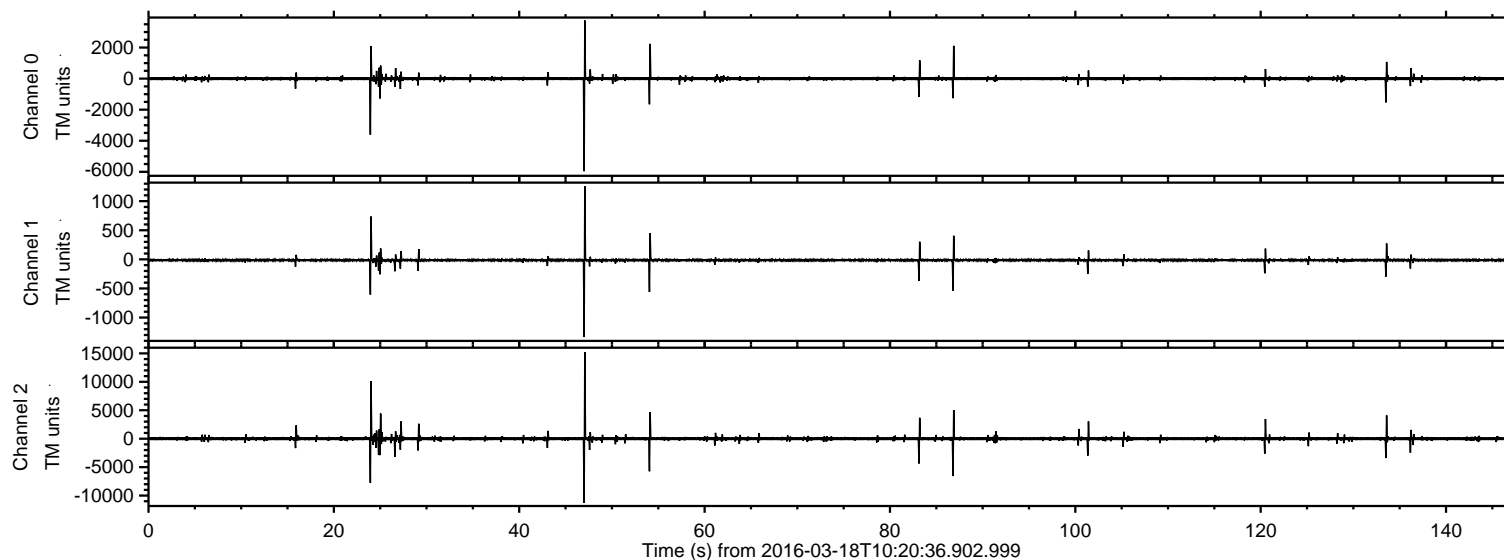


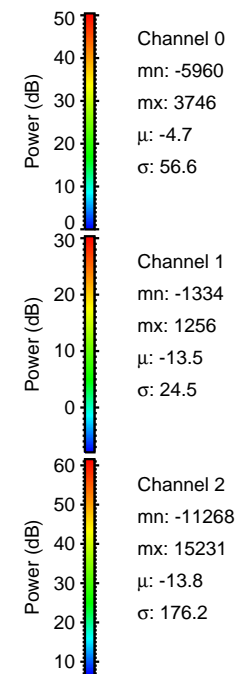
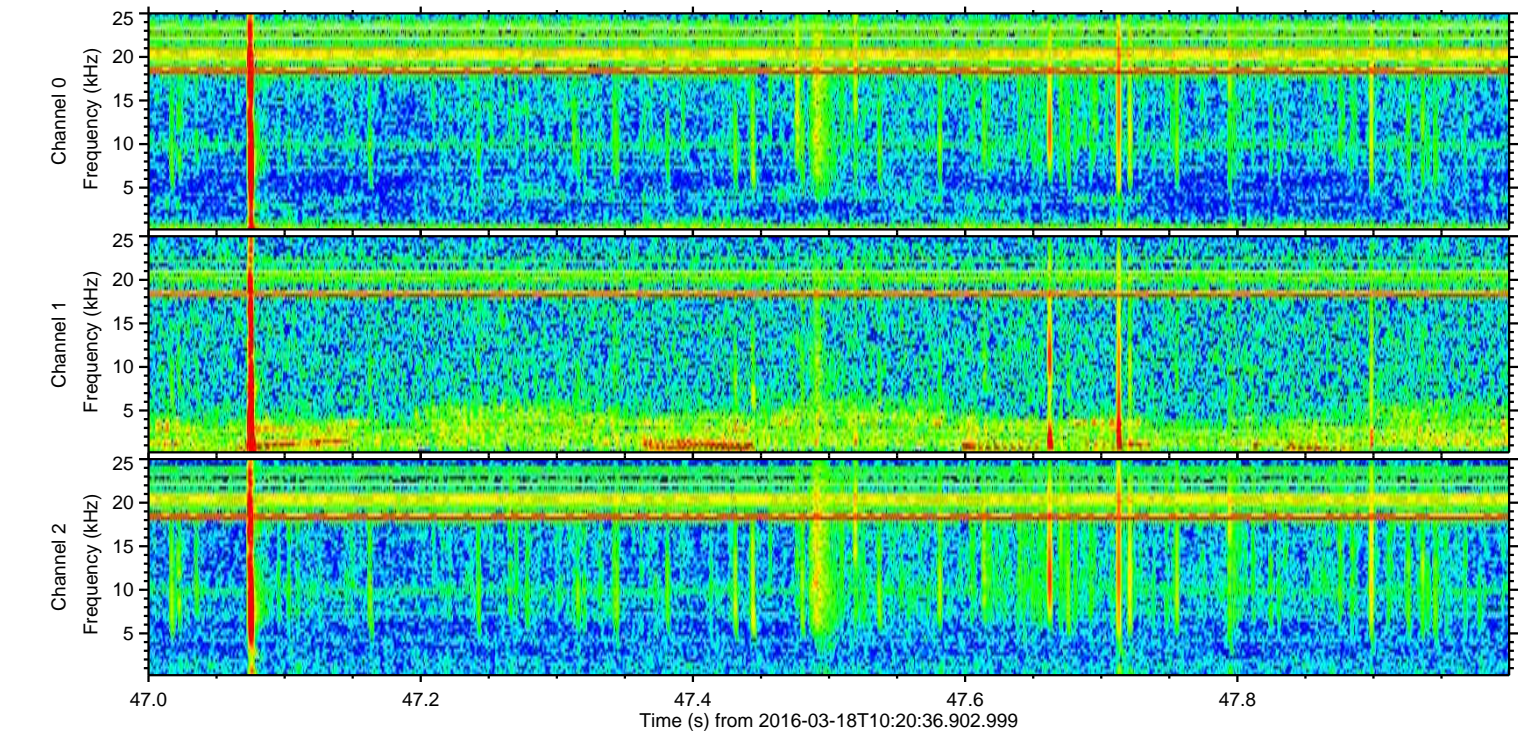
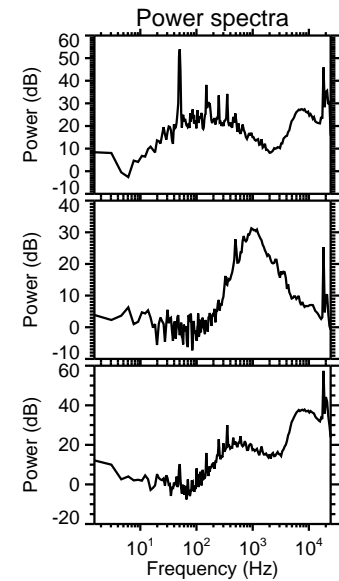
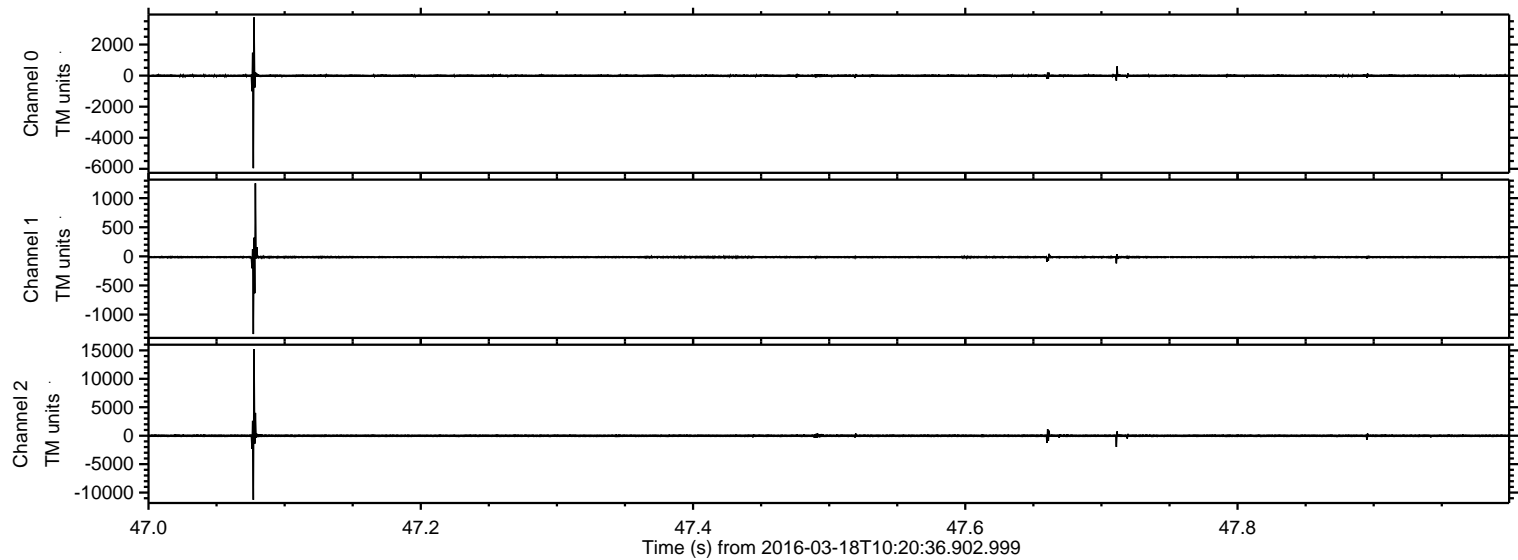
# ELMAVAN 3D WAVEFORMS (Measured data sampled at 50 kHz) 51000 packets of 144 samples from 2016-03-18T10:20:36.902.999.

Processed Thu Apr 21 04:48:03 2016 by ELM ver.2012-10-06 from 001\_\_elm20160318\_102035\_\_dat00.bin



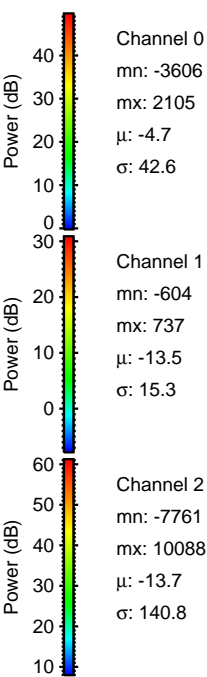
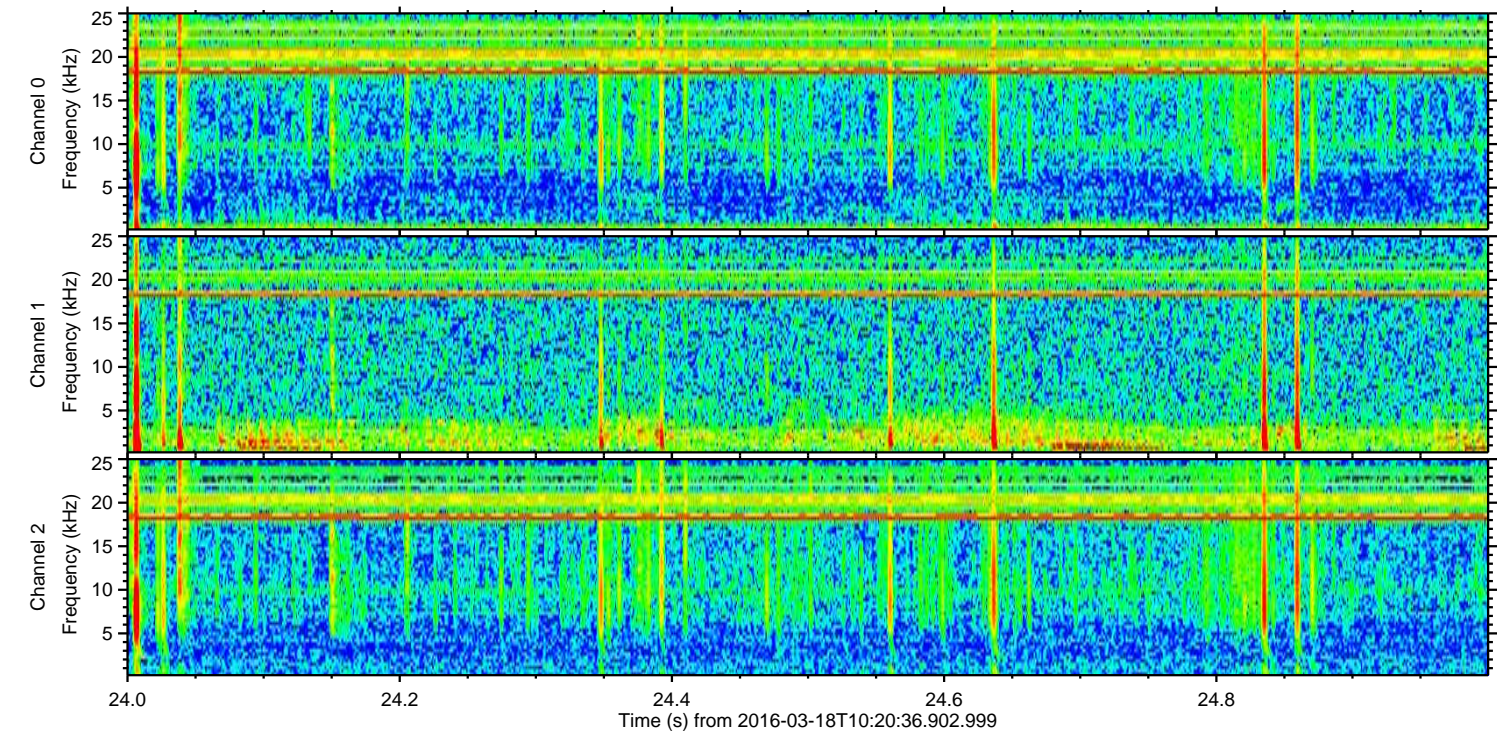
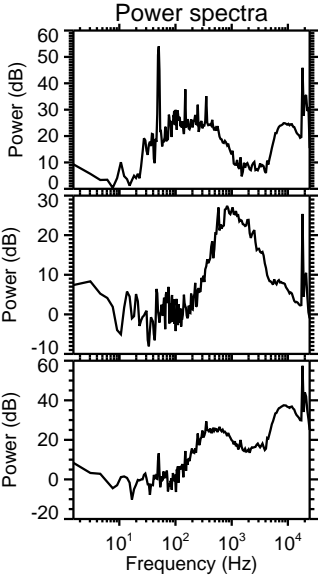
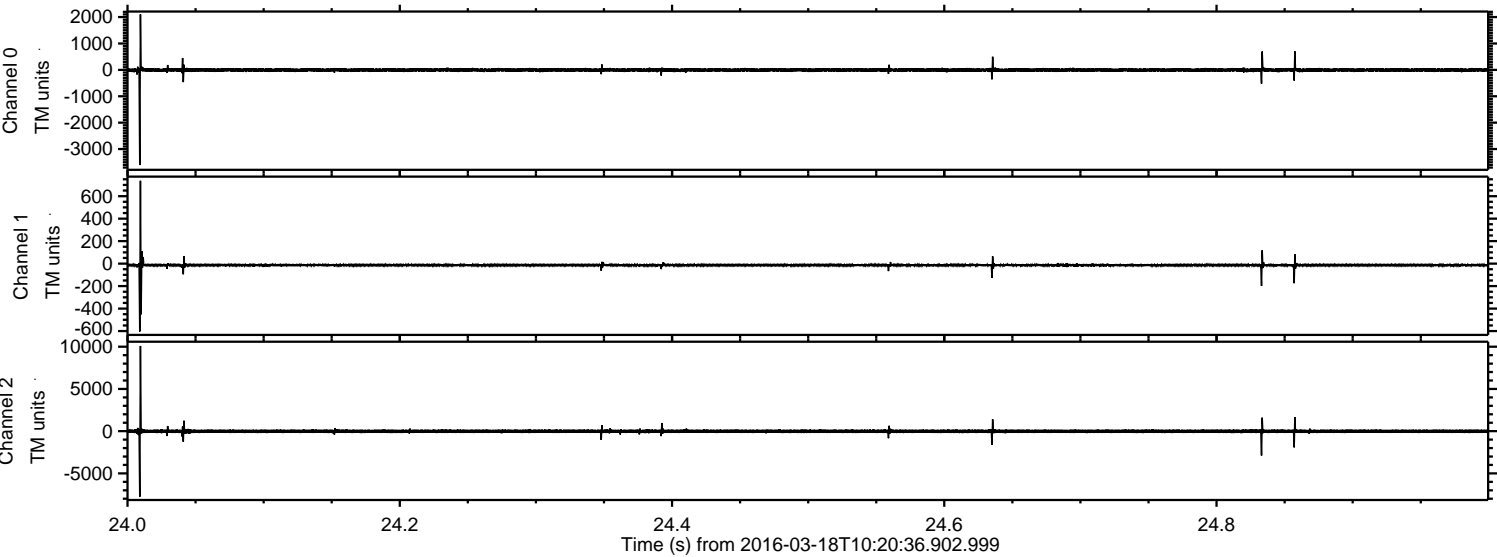


Processed Thu Apr 21 04:48:15 2016 by ELM ver.2012-10-06 from 001\_\_elm20160318\_102035\_\_dat00.bin



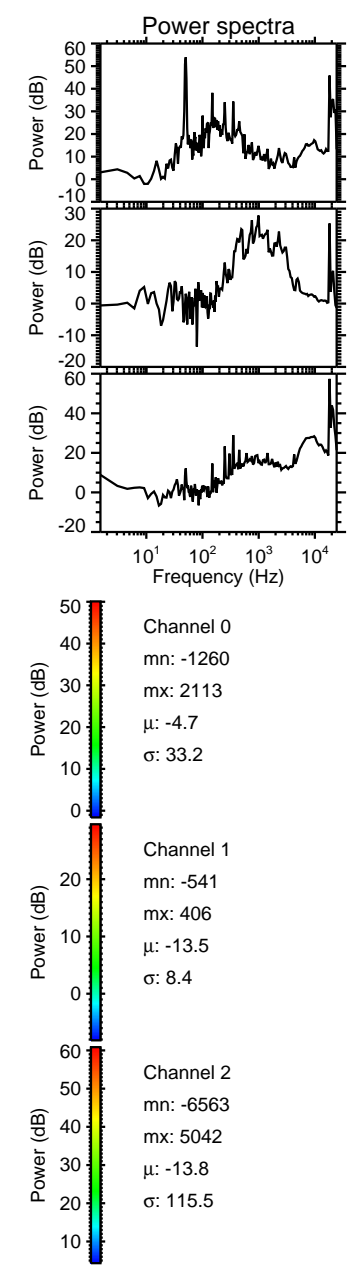
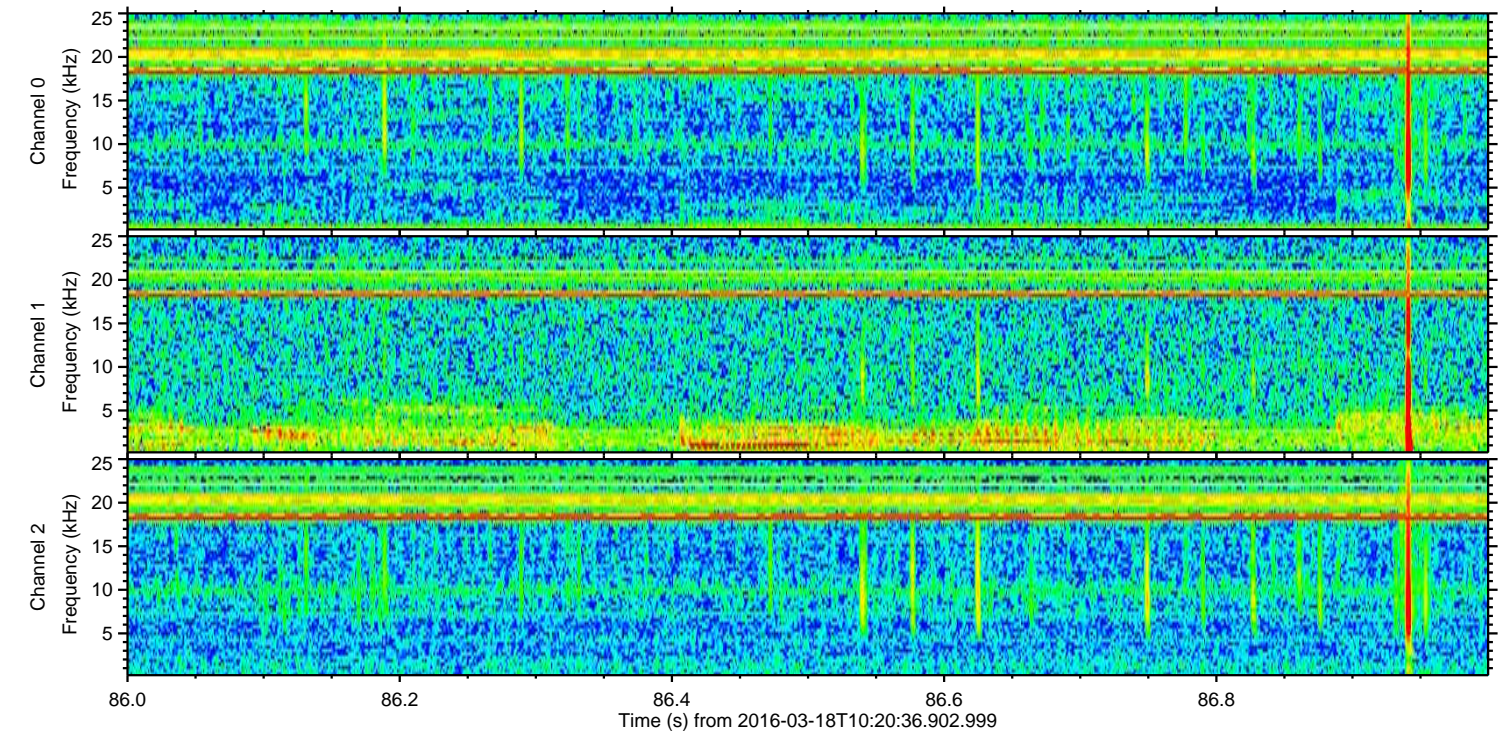
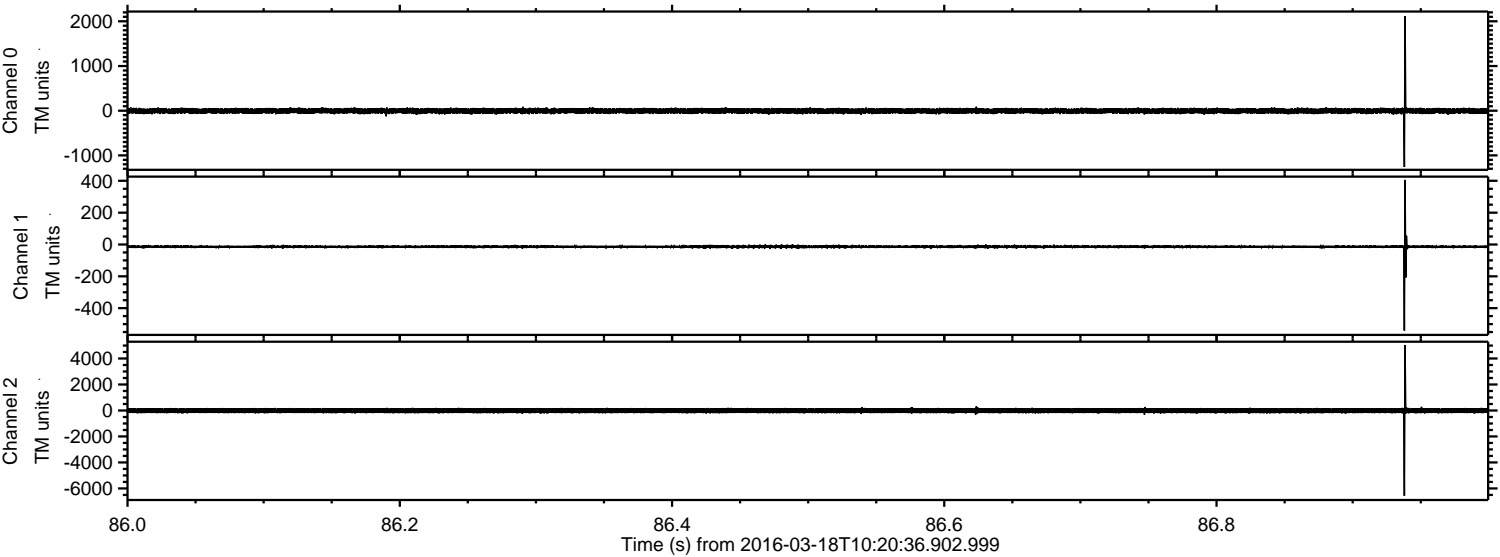


Processed Thu Apr 21 04:48:16 2016 by ELM ver.2012-10-06 from 001\_\_elm20160318\_102035\_\_dat00.bin



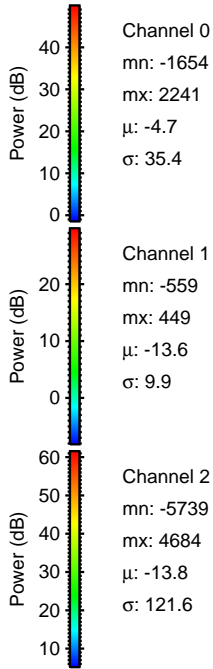
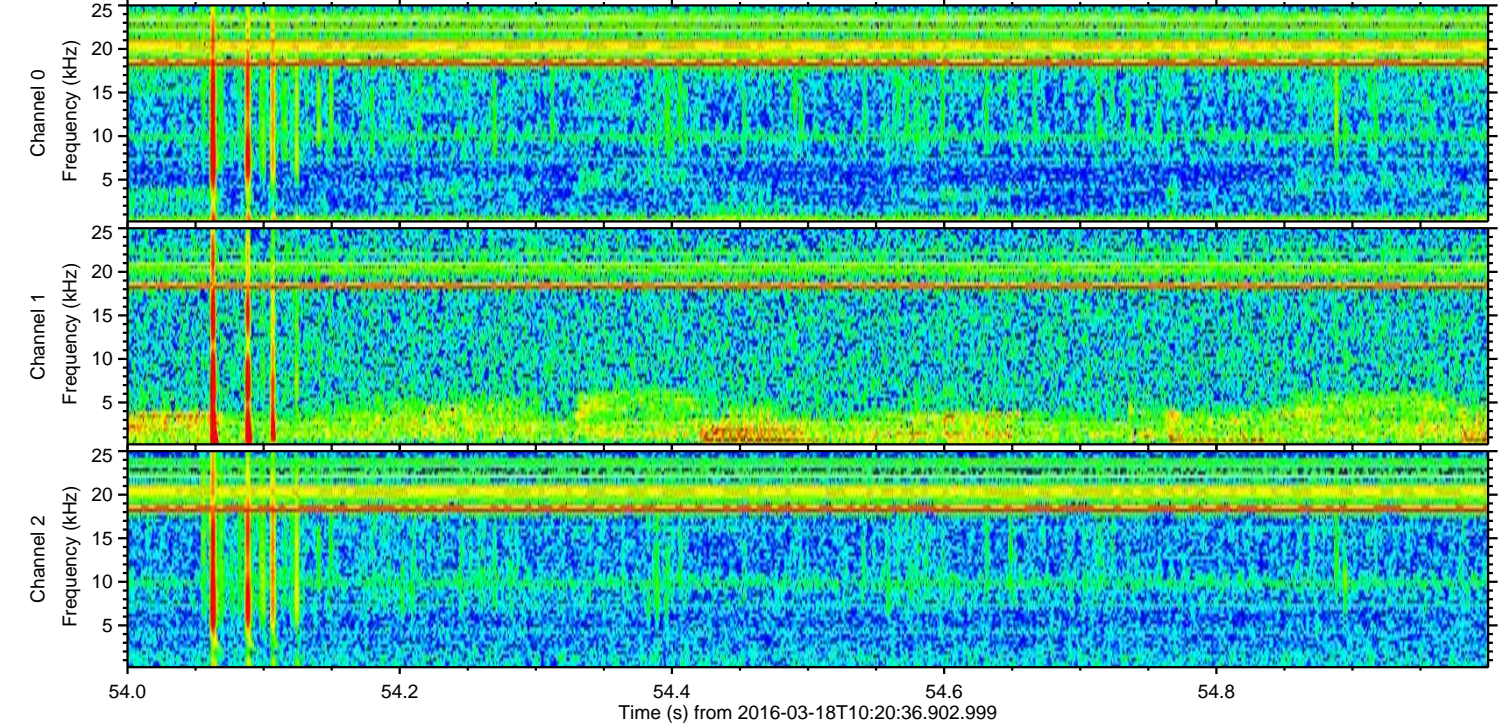
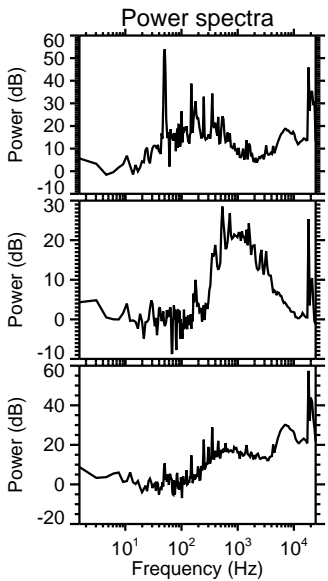
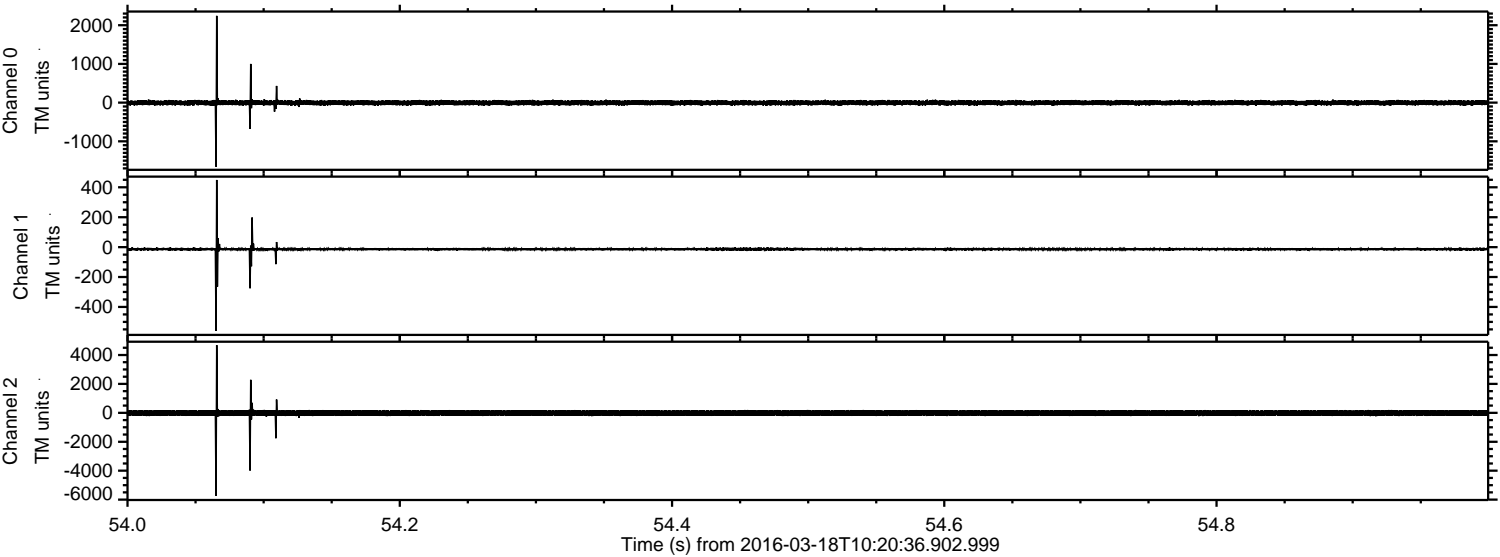


Processed Thu Apr 21 04:48:16 2016 by ELM ver.2012-10-06 from 001\_\_elm20160318\_102035\_\_dat00.bin



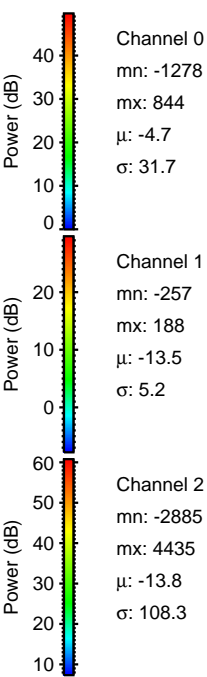
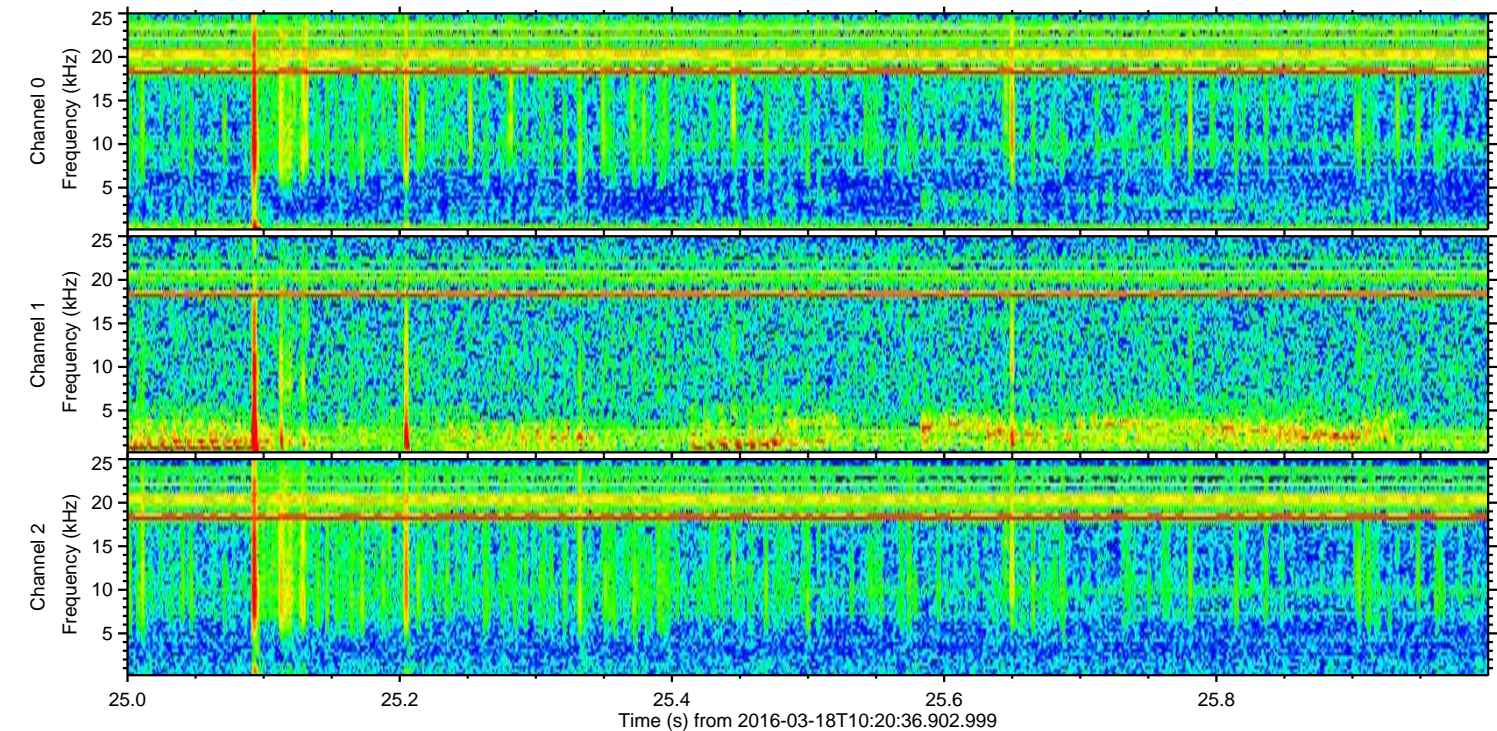
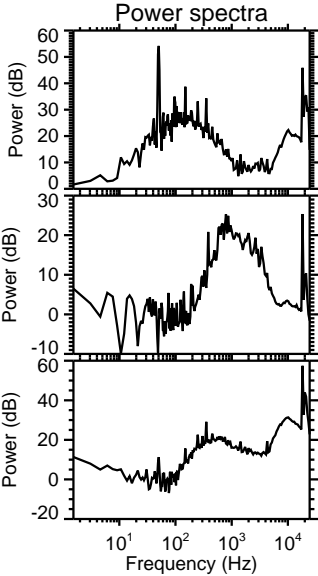
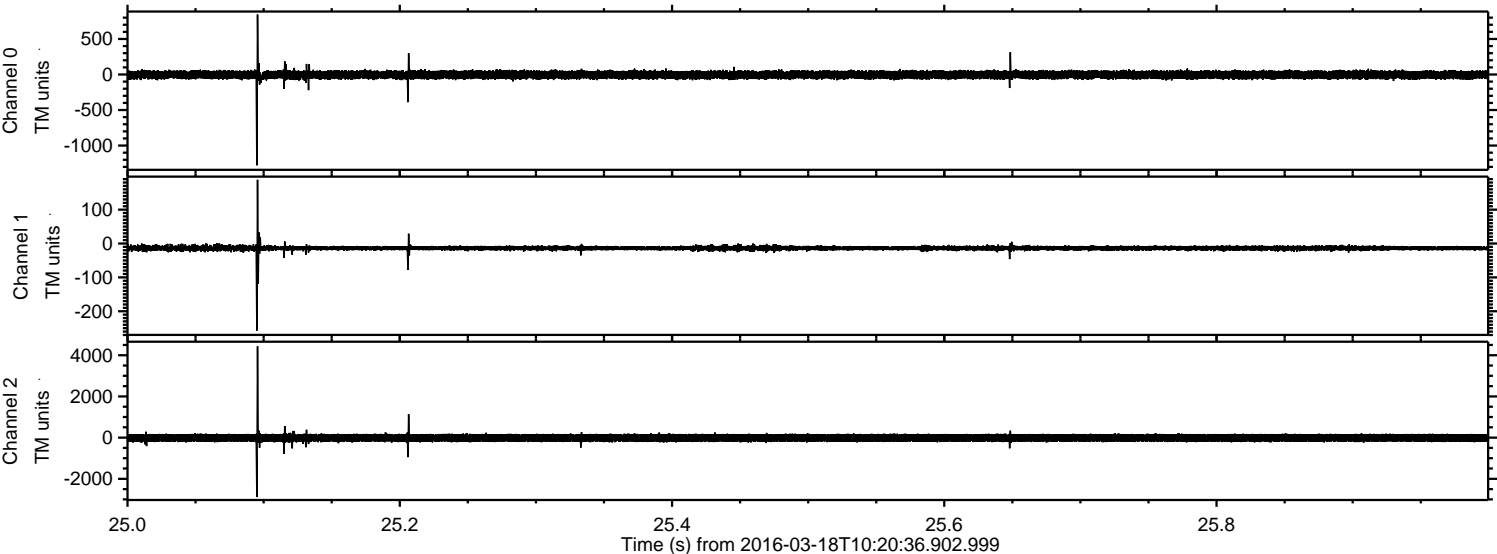


Processed Thu Apr 21 04:48:17 2016 by ELM ver.2012-10-06 from 001\_\_elm20160318\_102035\_\_dat00.bin



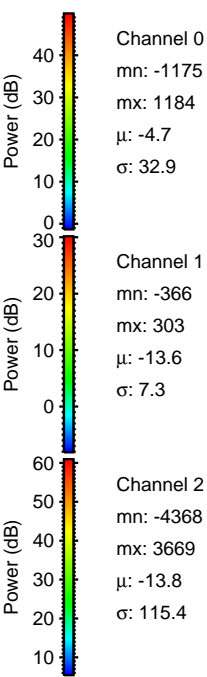
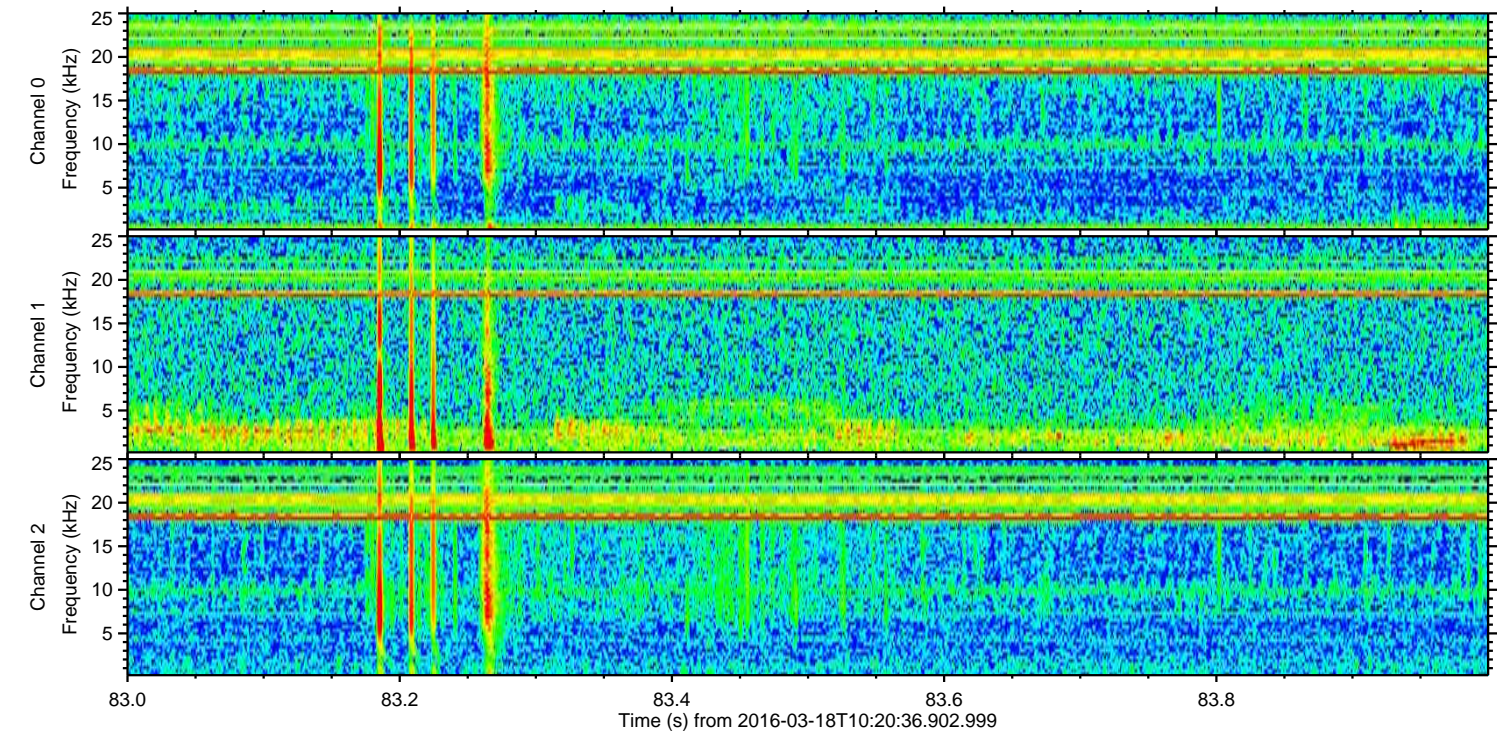
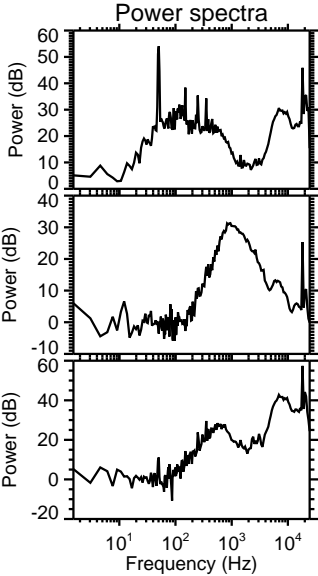
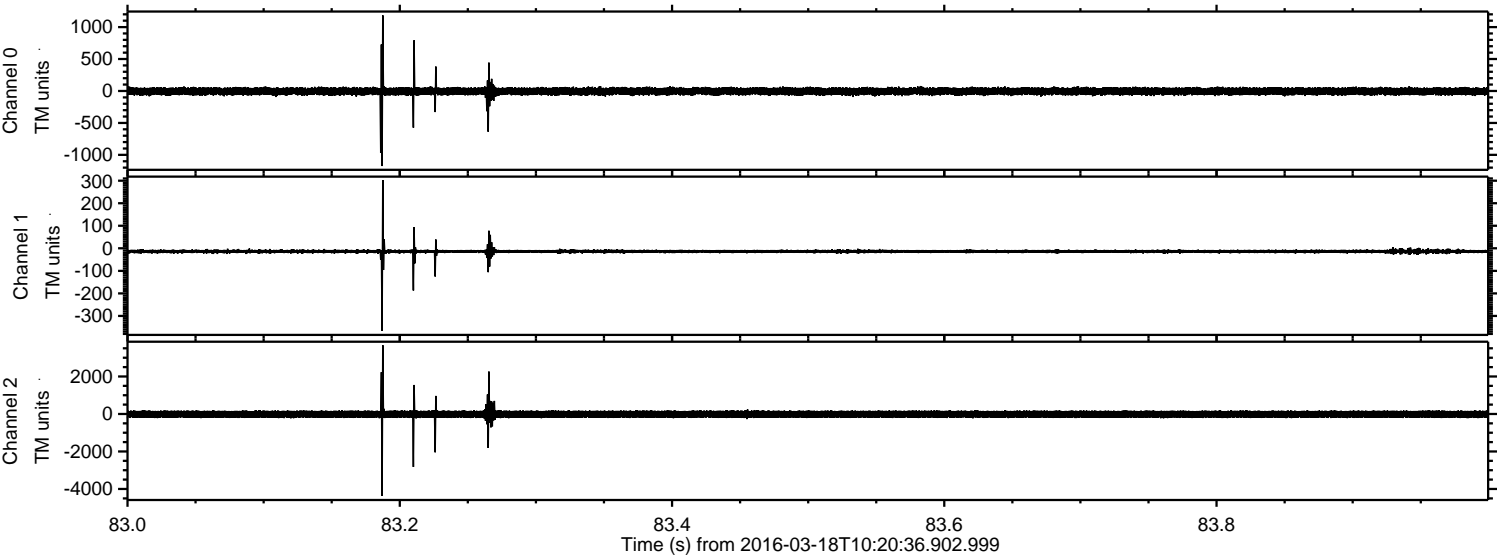


Processed Thu Apr 21 04:48:18 2016 by ELM ver.2012-10-06 from 001\_\_elm20160318\_102035\_\_dat00.bin





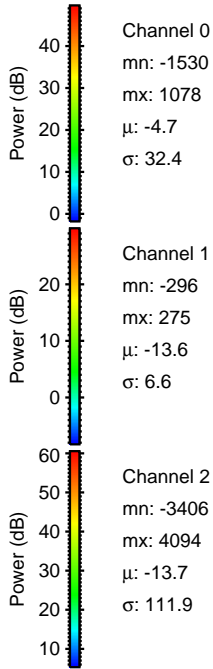
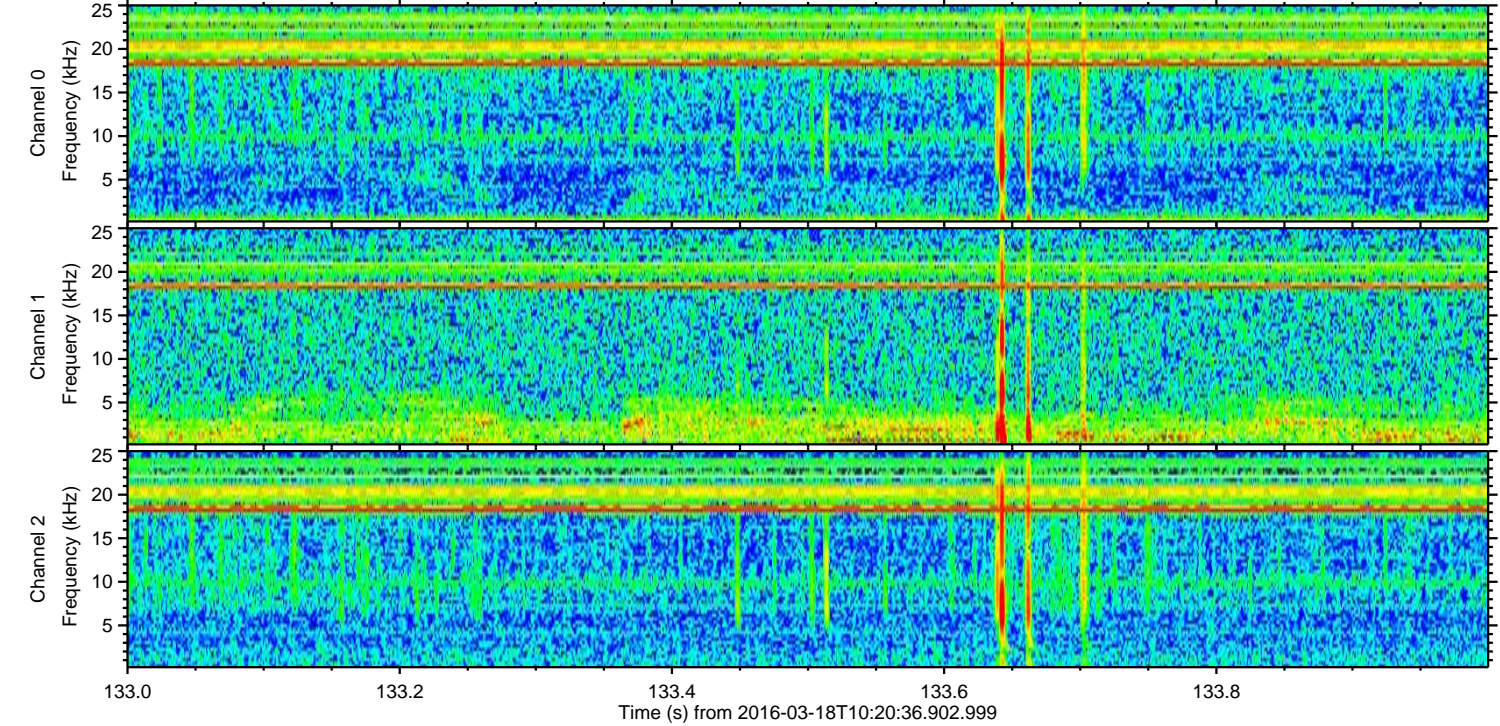
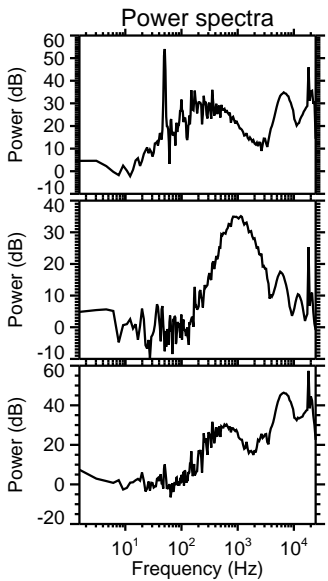
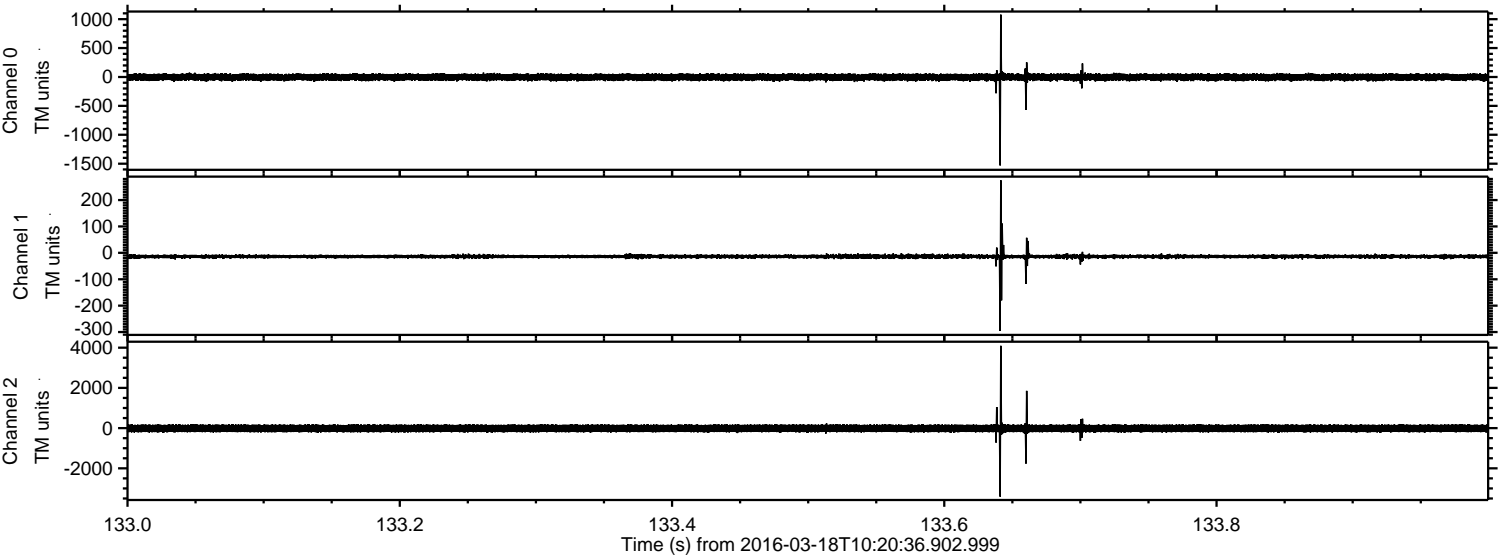
Processed Thu Apr 21 04:48:19 2016 by ELM ver.2012-10-06 from 001\_\_elm20160318\_102035\_\_dat00.bin





ELMAVAN 3D WAVEFORMS (Measured data sampled at 50 kHz) 51000 packets of 144 samples from 2016-03-18T10:20:36.902.999. Part 134/147

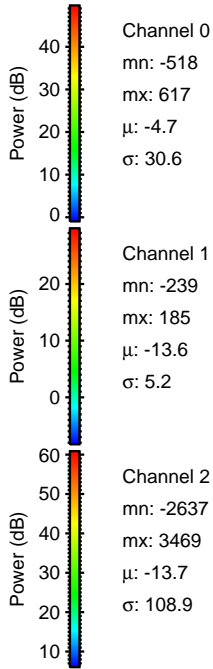
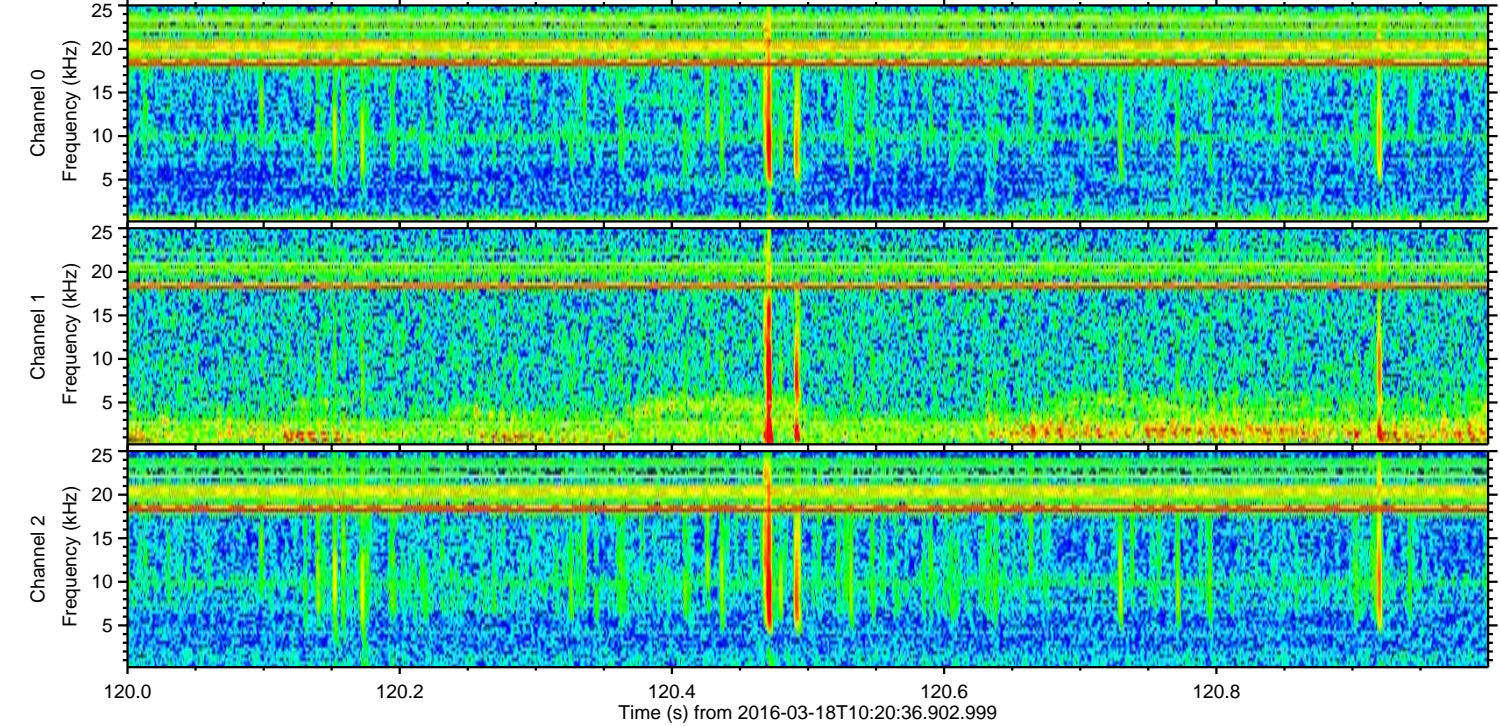
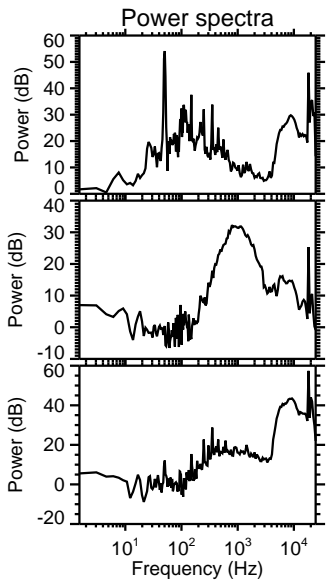
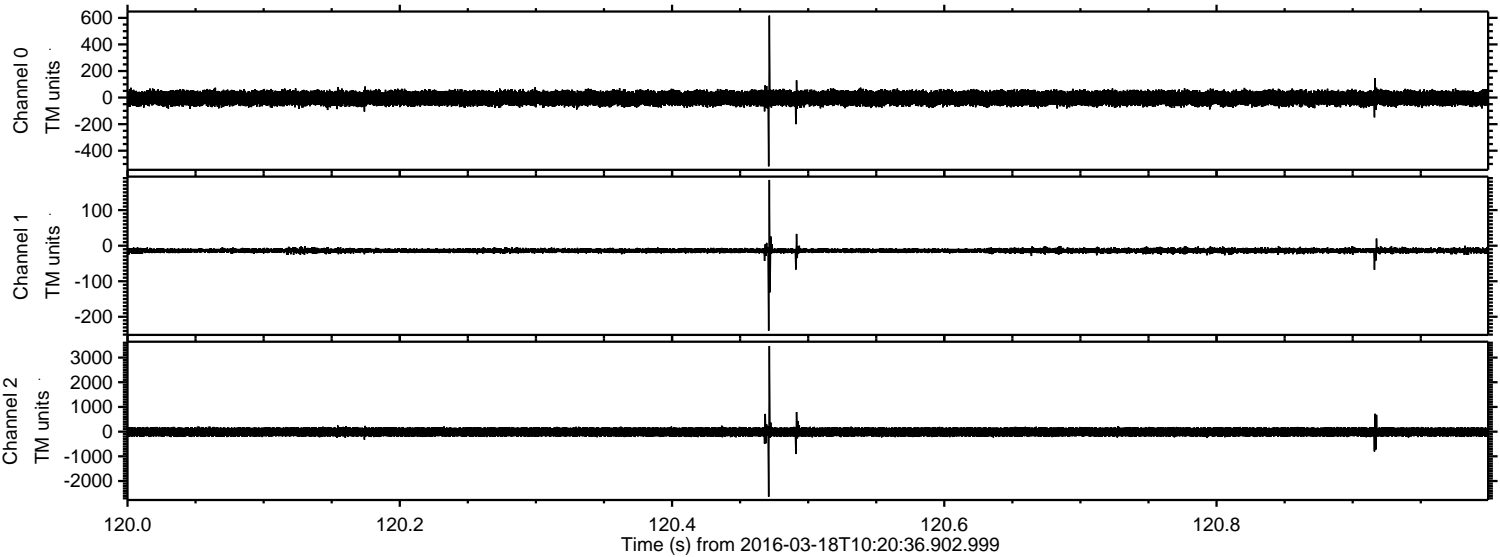
Processed Thu Apr 21 04:48:20 2016 by ELM ver.2012-10-06 from 001\_\_elm20160318\_102035\_\_dat00.bin





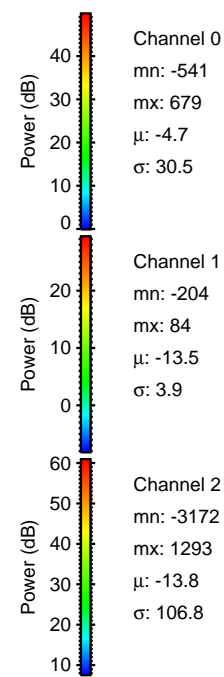
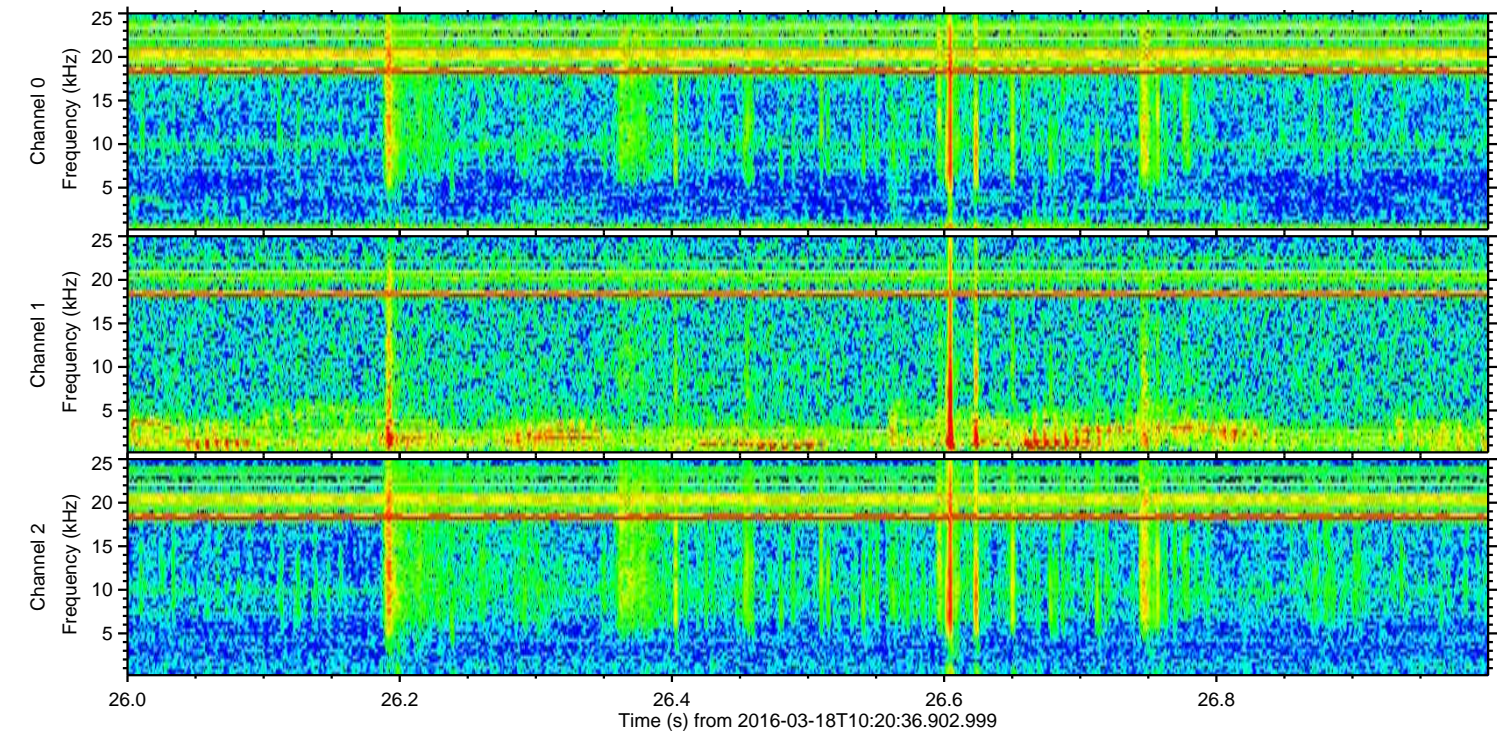
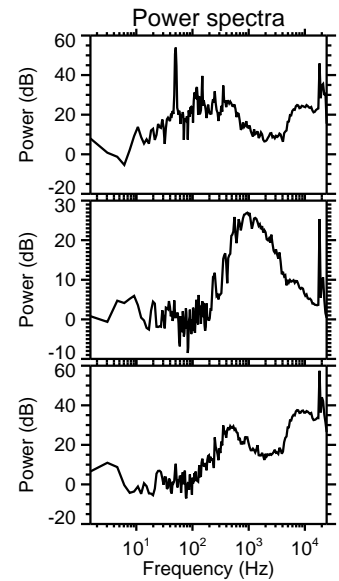
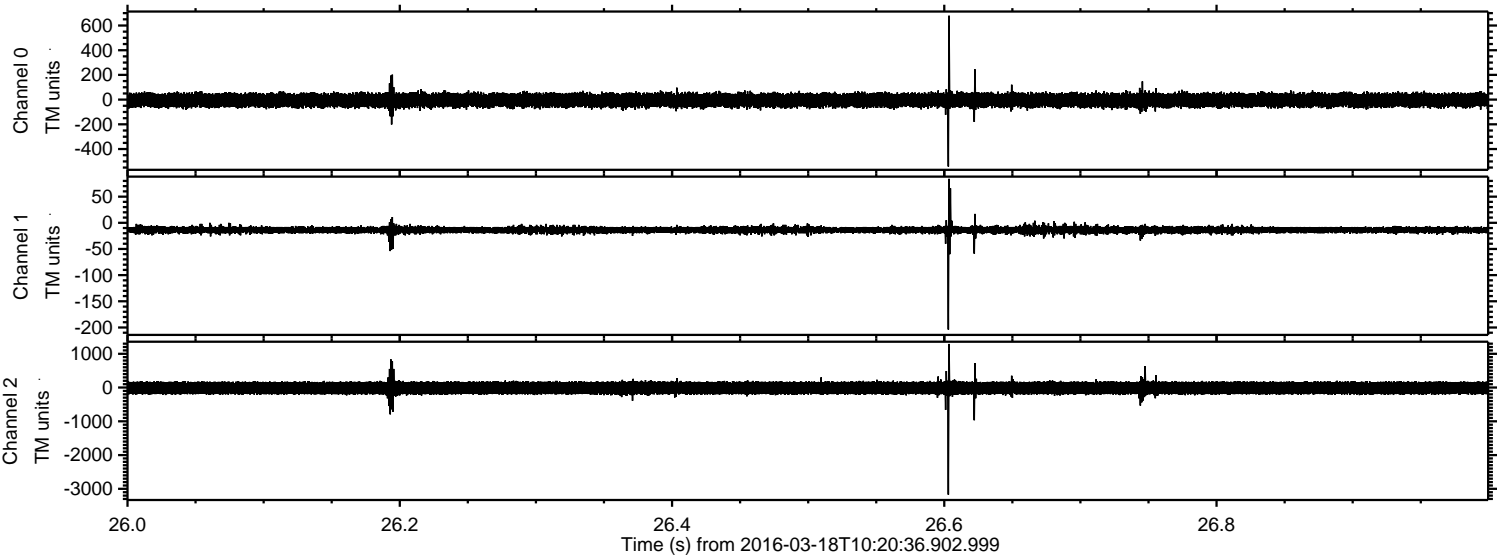
ELMAVAN 3D WAVEFORMS (Measured data sampled at 50 kHz) 51000 packets of 144 samples from 2016-03-18T10:20:36.902.999. Part 121/147

Processed Thu Apr 21 04:48:21 2016 by ELM ver.2012-10-06 from 001\_\_elm20160318\_102035\_\_dat00.bin





Processed Thu Apr 21 04:48:22 2016 by ELM ver.2012-10-06 from 001\_\_elm20160318\_102035\_\_dat00.bin



Channel 0  
mn: -541  
mx: 679  
 $\mu$ : -4.7  
 $\sigma$ : 30.5

Channel 1  
mn: -204  
mx: 84  
 $\mu$ : -13.5  
 $\sigma$ : 3.9

Channel 2  
mn: -3172  
mx: 1293  
 $\mu$ : -13.8  
 $\sigma$ : 106.8



