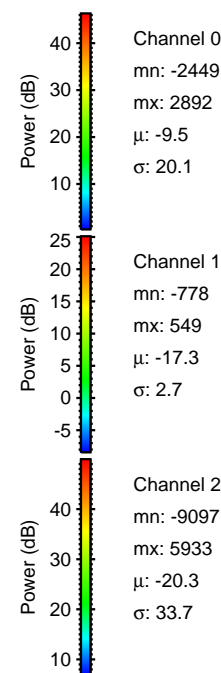
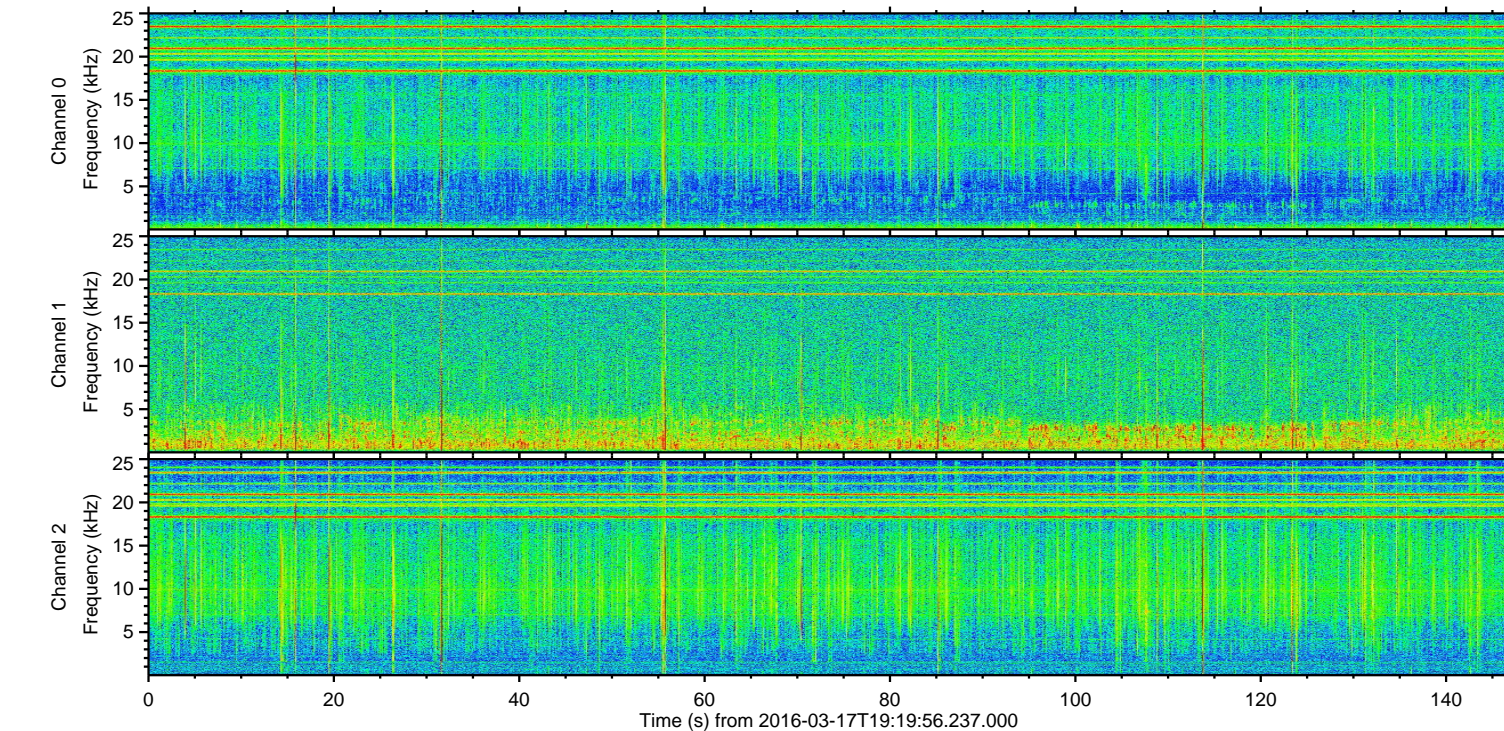
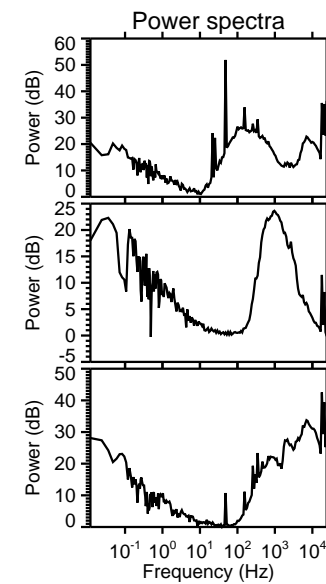
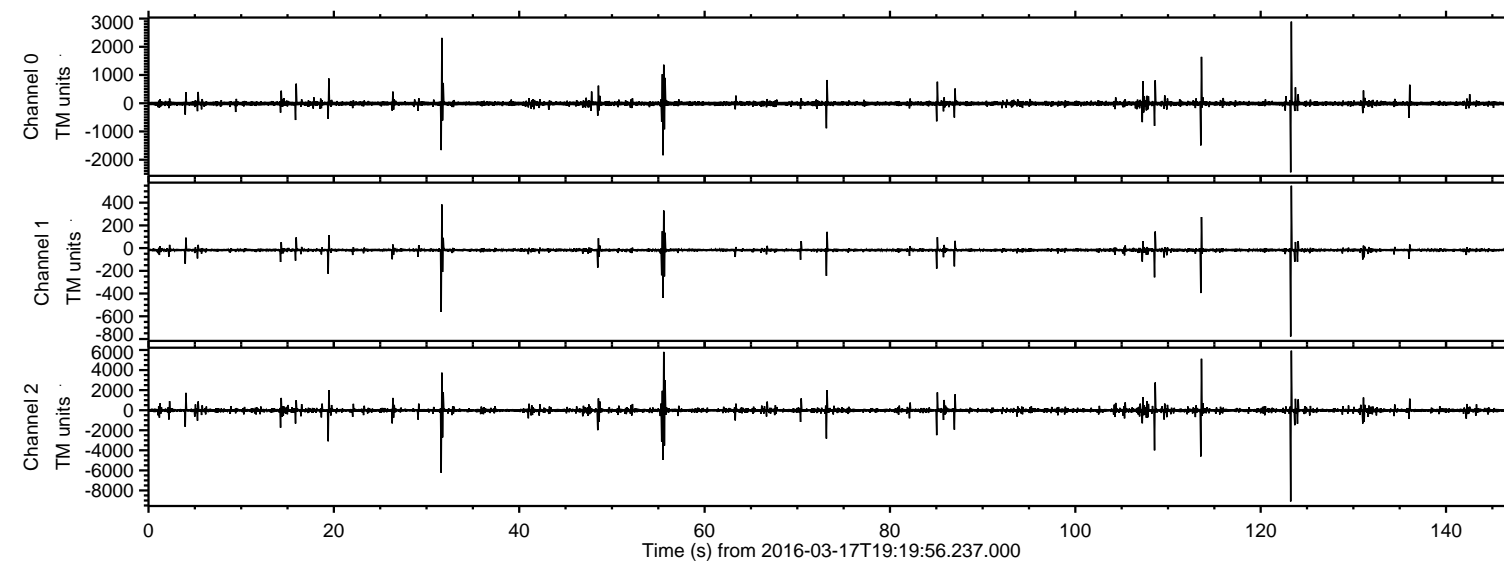


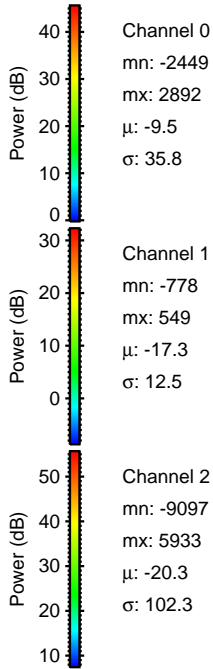
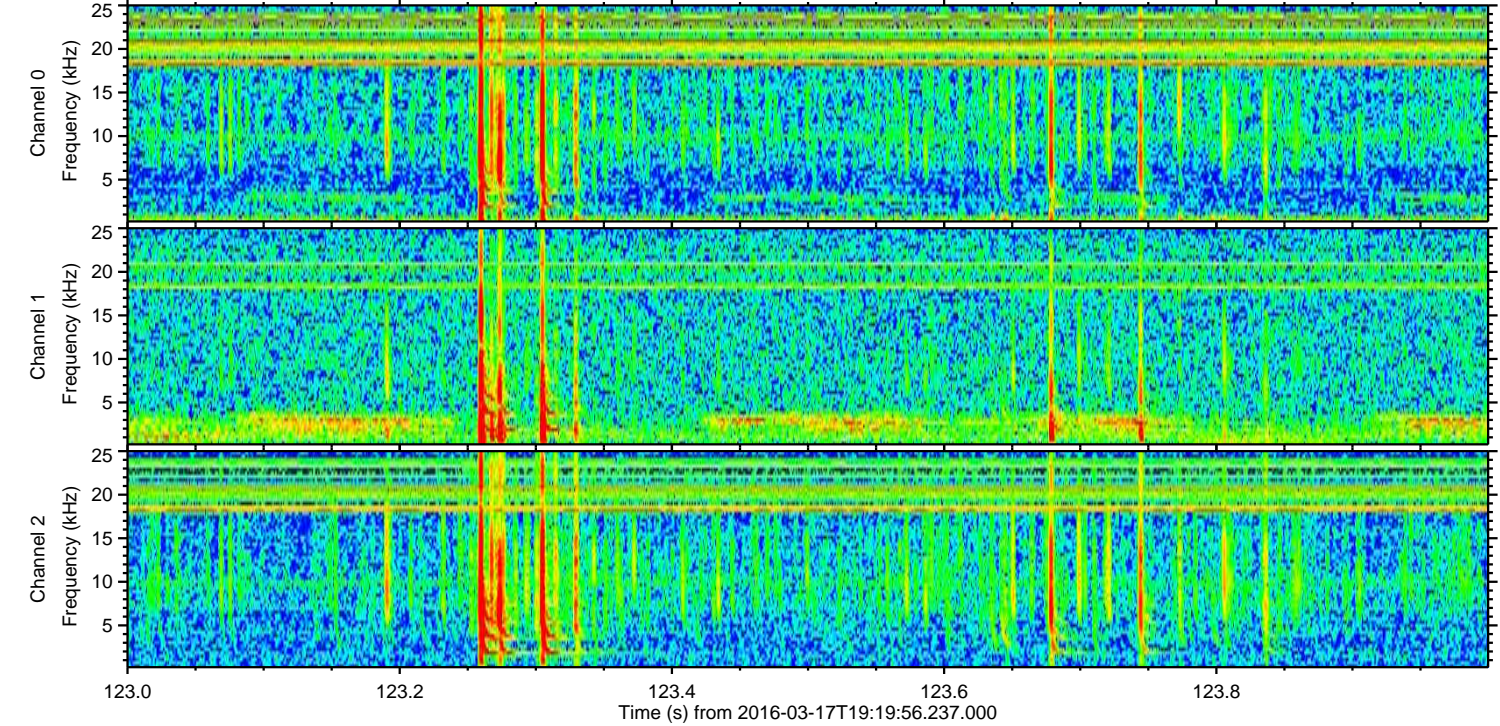
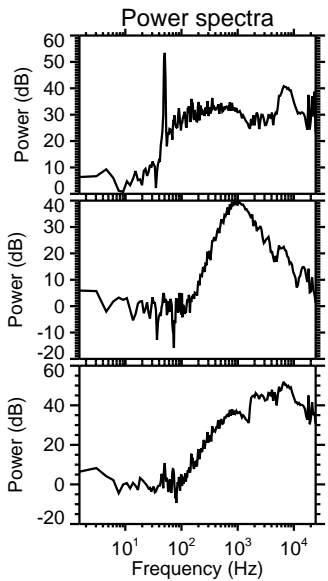
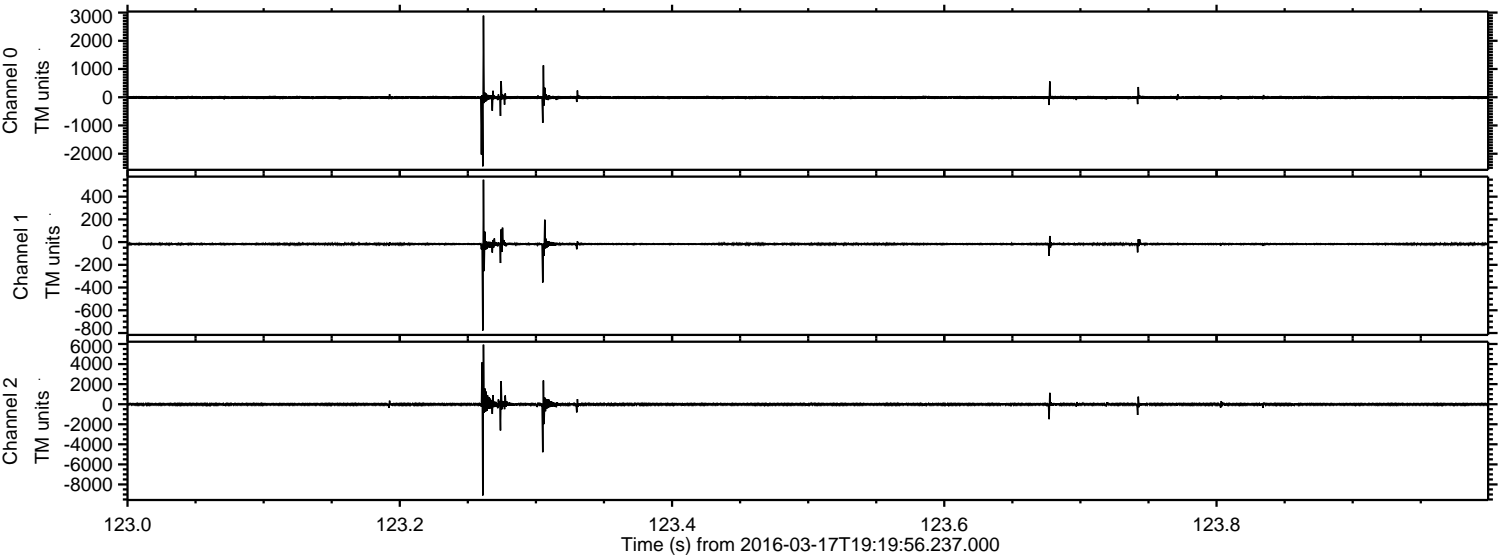
ELMAVAN 3D WAVEFORMS (Measured data sampled at 50 kHz) 51000 packets of 144 samples from 2016-03-17T19:19:56.237.000.

Processed Thu Apr 21 01:44:22 2016 by ELM ver.2012-10-06 from 001__elm20160317_191955__dat00.bin



ELMAVAN 3D WAVEFORMS (Measured data sampled at 50 kHz) 51000 packets of 144 samples from 2016-03-17T19:19:56.237.000. Part 124/147

Processed Thu Apr 21 01:44:35 2016 by ELM ver.2012-10-06 from 001__elm20160317_191955__dat00.bin

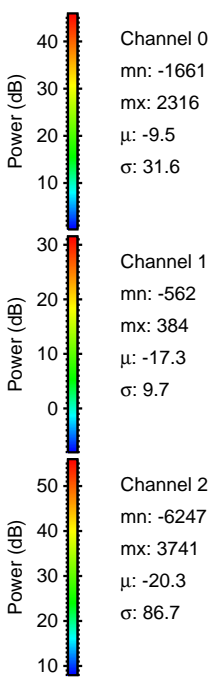
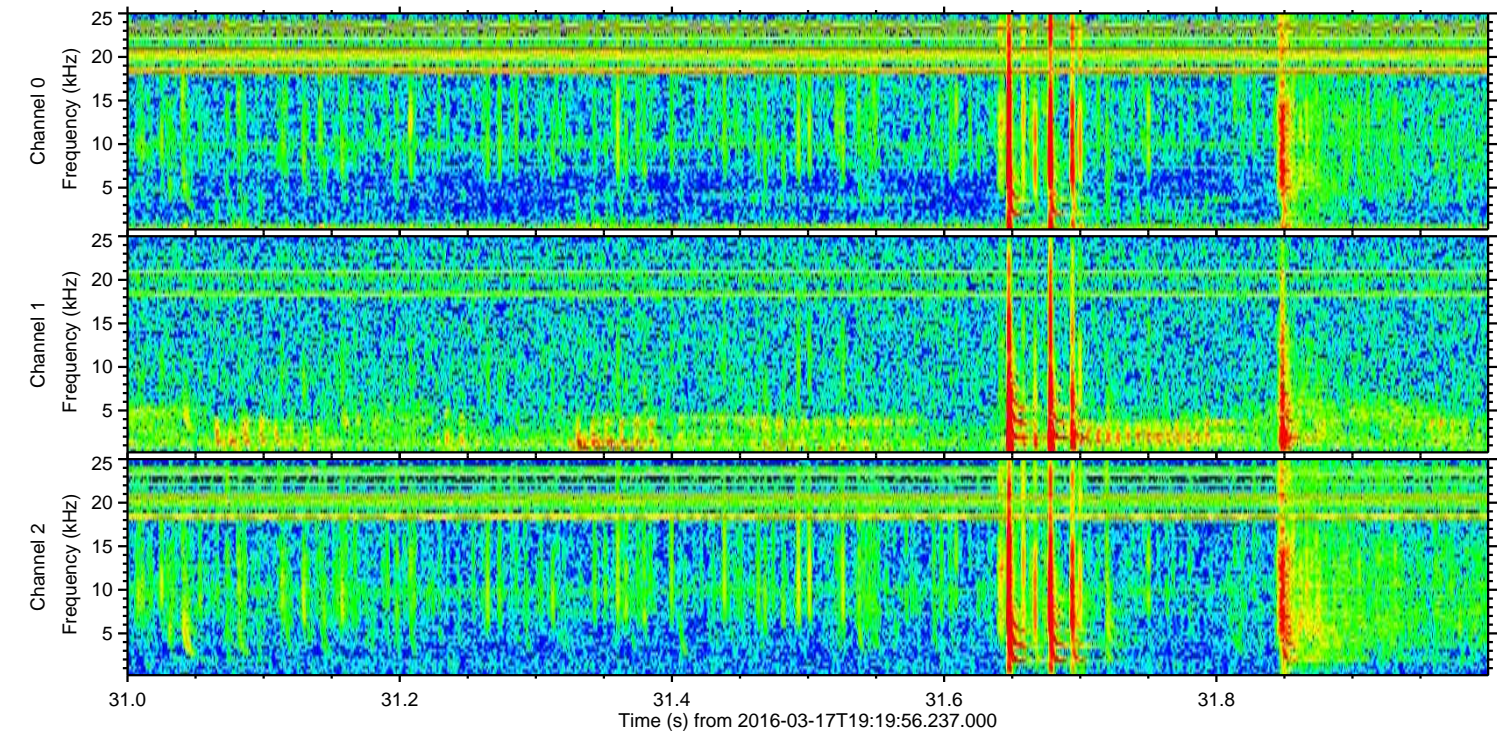
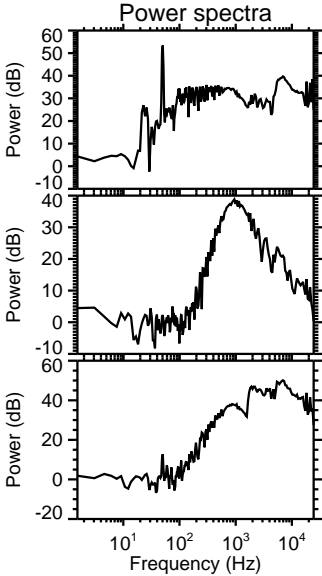
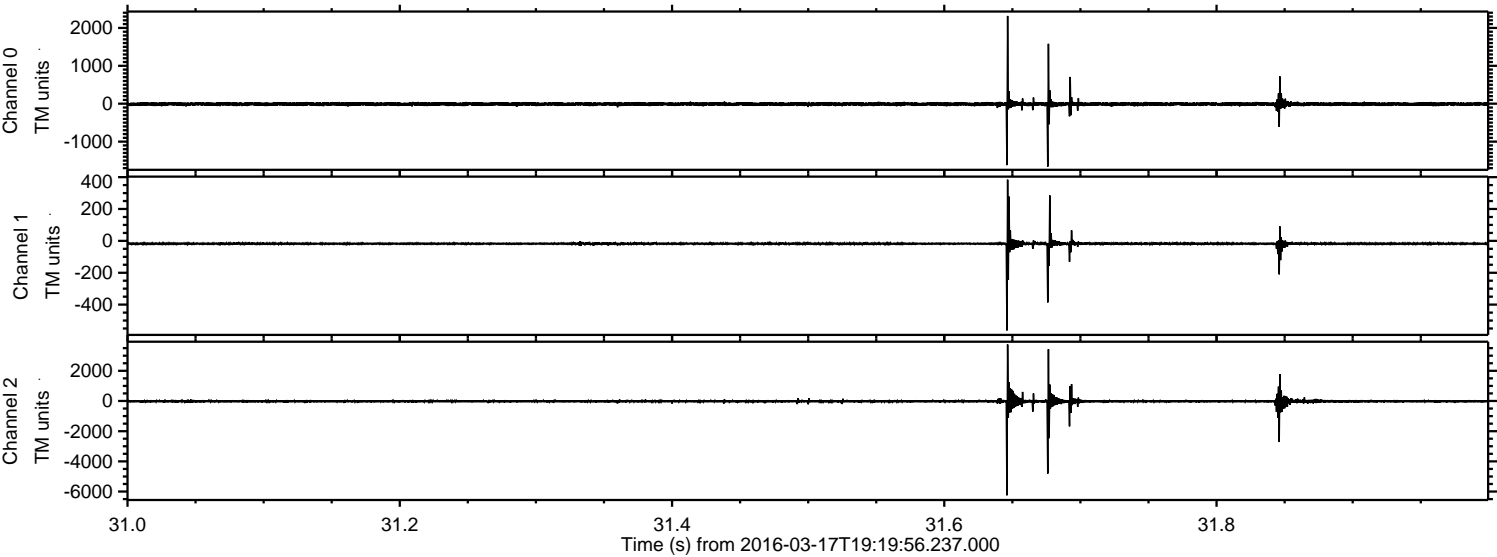


Channel 0
mn: -2449
mx: 2892
 μ : -9.5
 σ : 35.8

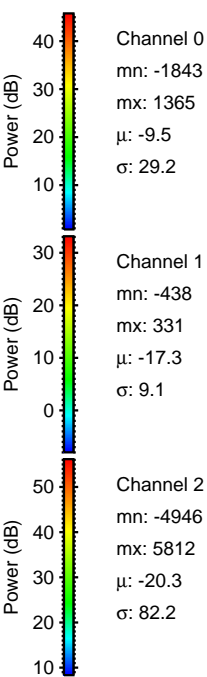
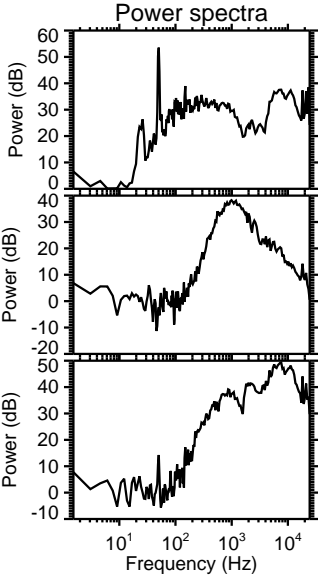
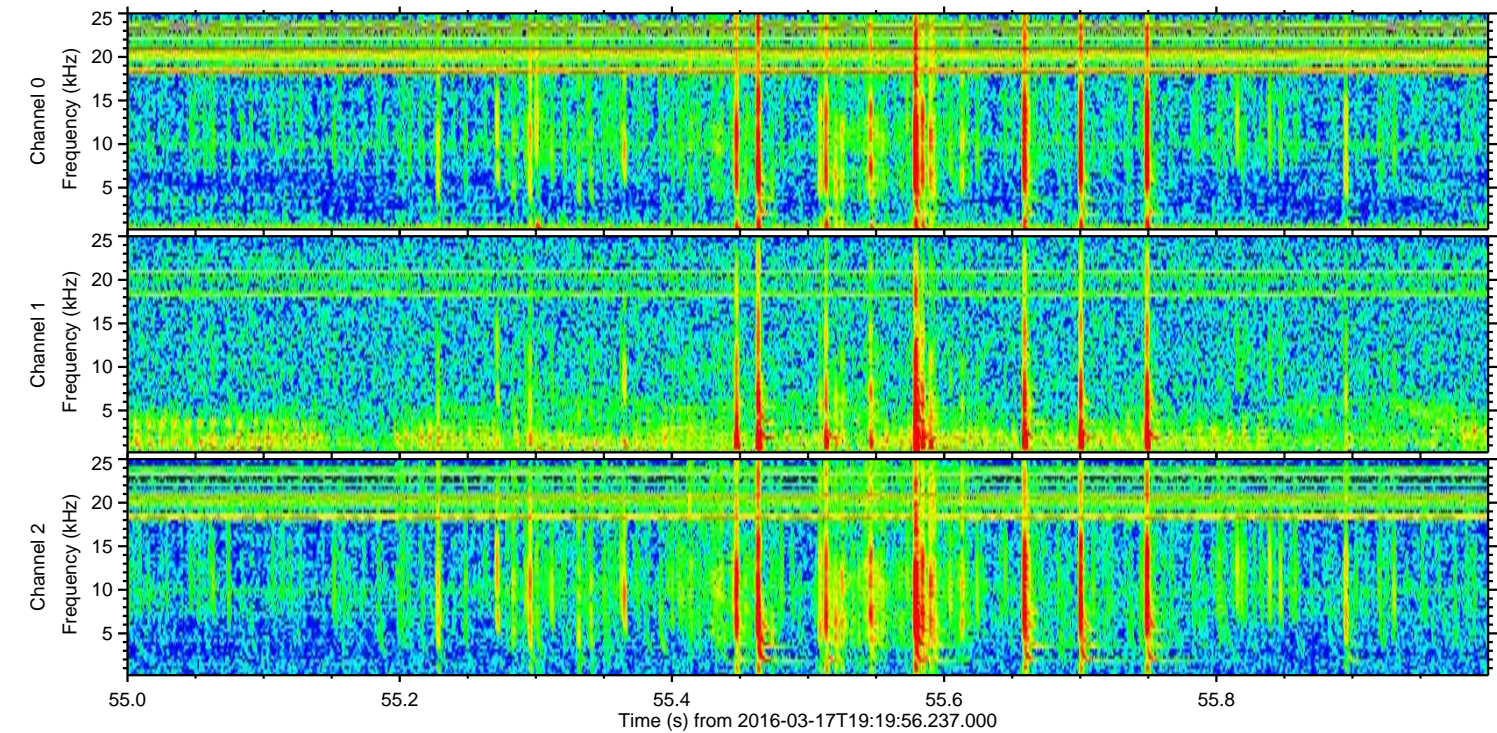
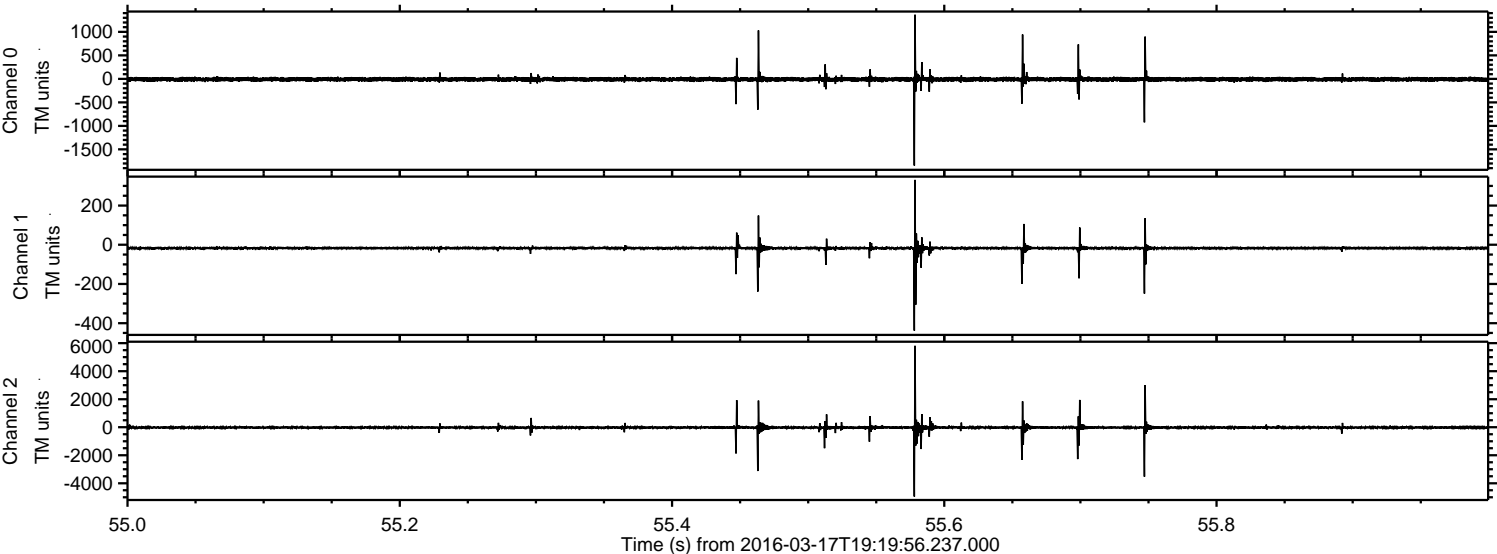
Channel 1
mn: -778
mx: 549
 μ : -17.3
 σ : 12.5

Channel 2
mn: -9097
mx: 5933
 μ : -20.3
 σ : 102.3

Processed Thu Apr 21 01:44:36 2016 by ELM ver.2012-10-06 from 001__elm20160317_191955__dat00.bin

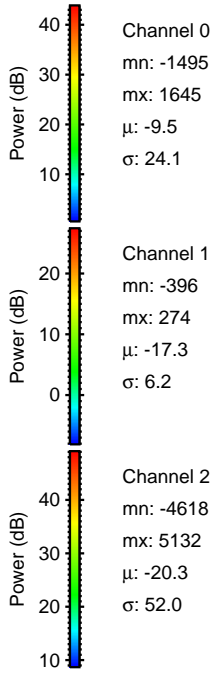
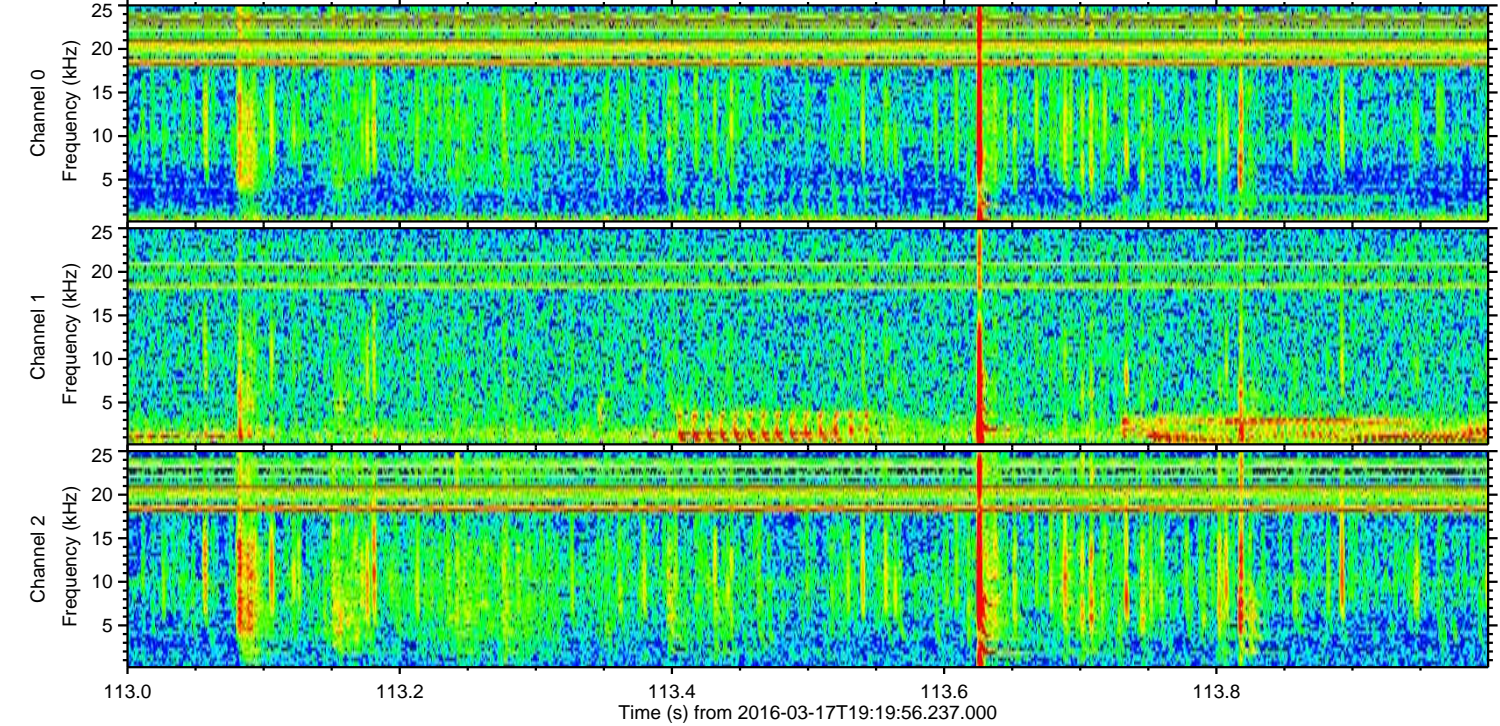
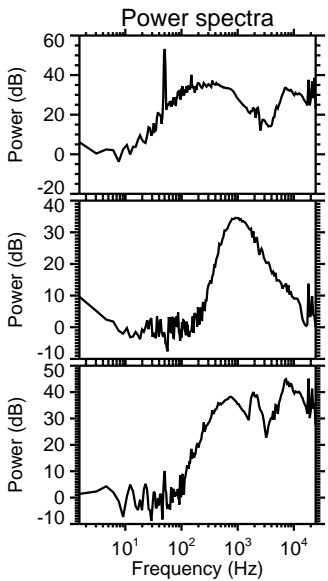
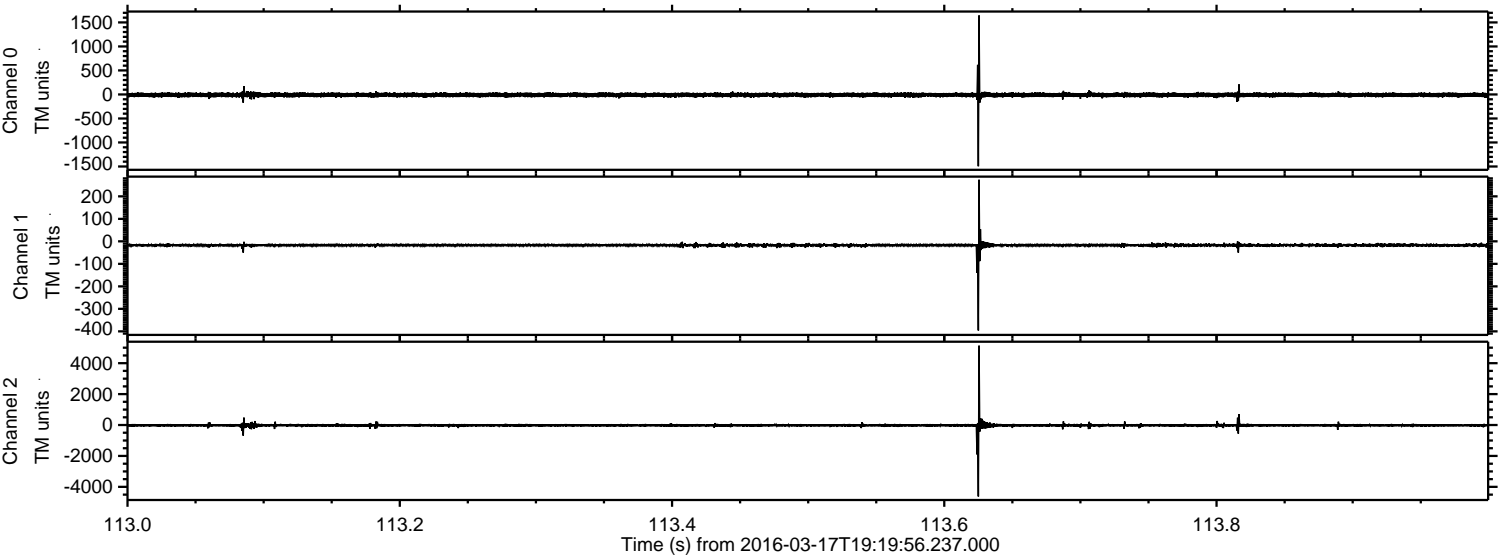


Processed Thu Apr 21 01:44:37 2016 by ELM ver.2012-10-06 from 001__elm20160317_191955__dat00.bin



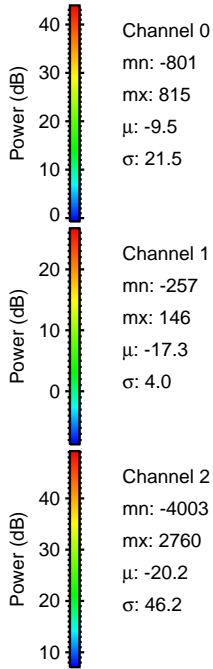
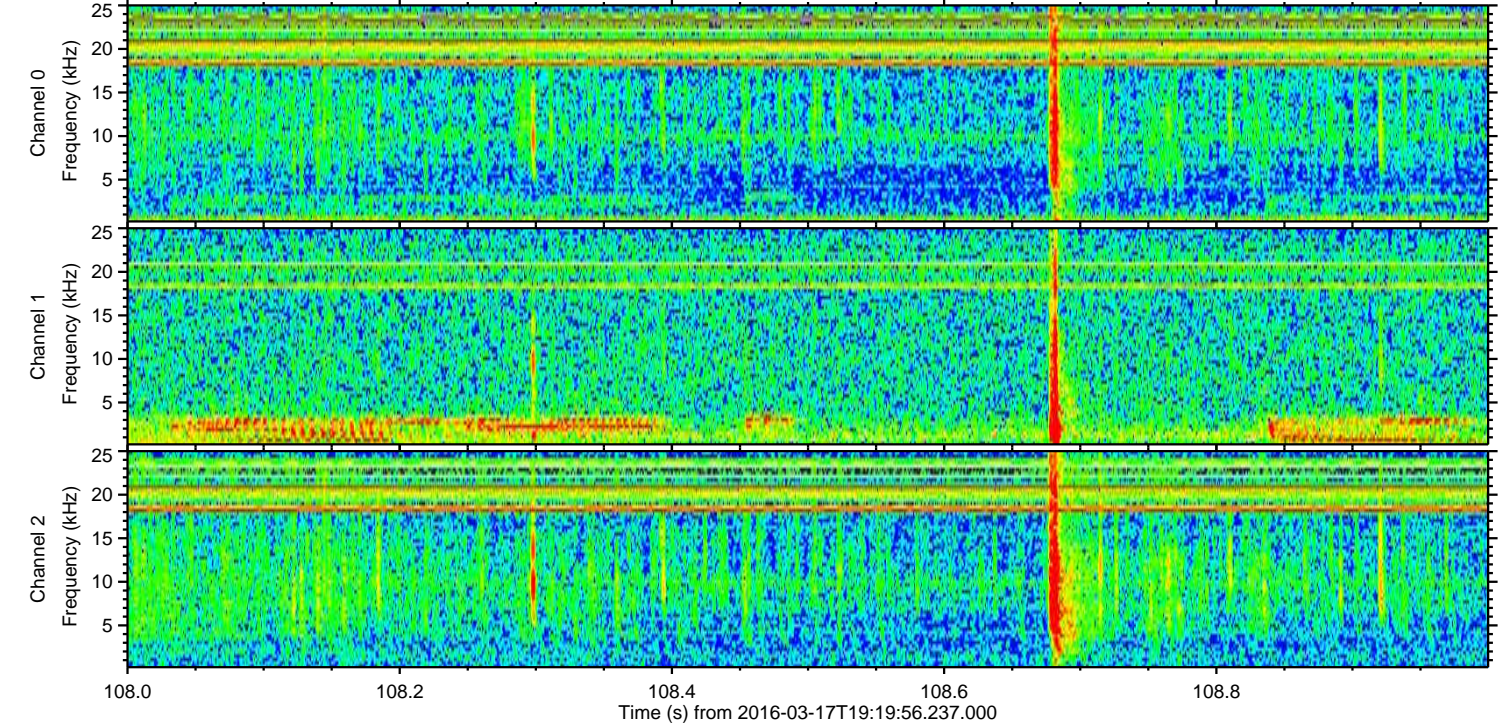
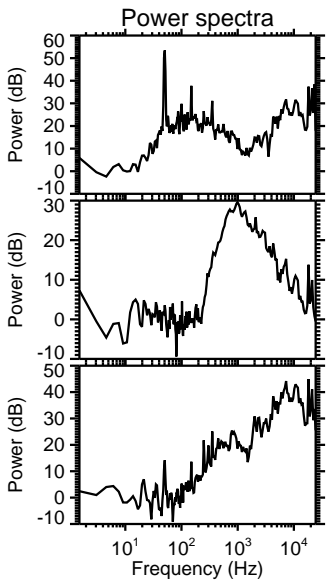
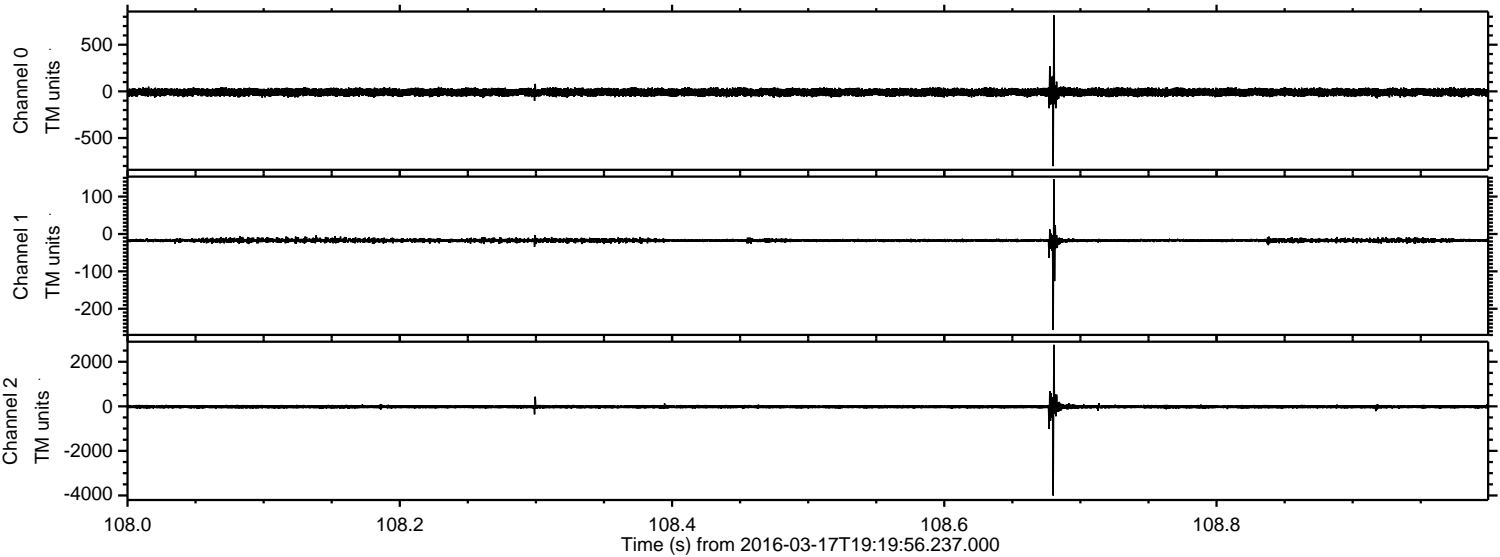
ELMAVAN 3D WAVEFORMS (Measured data sampled at 50 kHz) 51000 packets of 144 samples from 2016-03-17T19:19:56.237.000. Part 114/147

Processed Thu Apr 21 01:44:37 2016 by ELM ver.2012-10-06 from 001__elm20160317_191955__dat00.bin

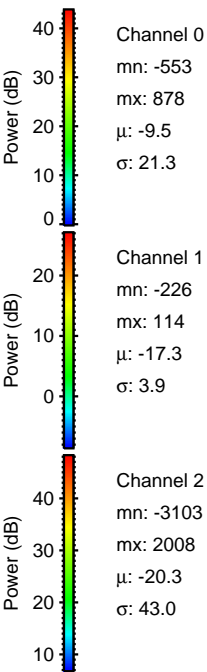
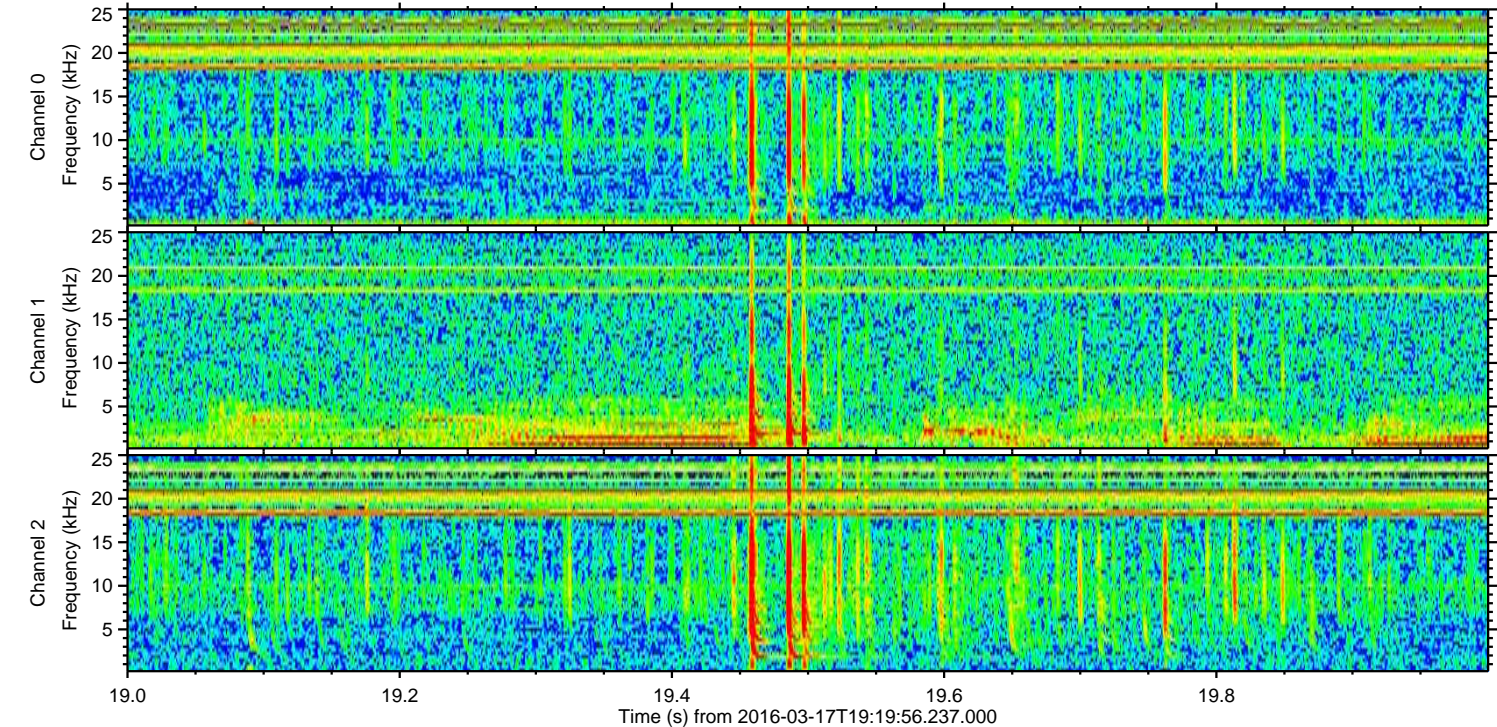
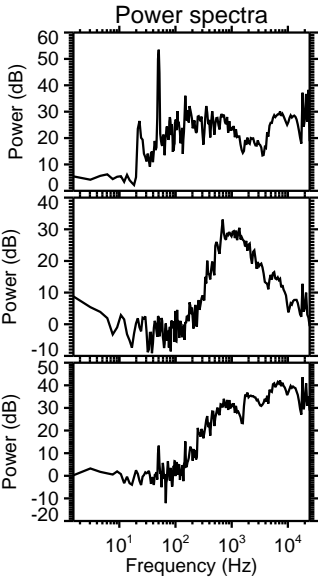
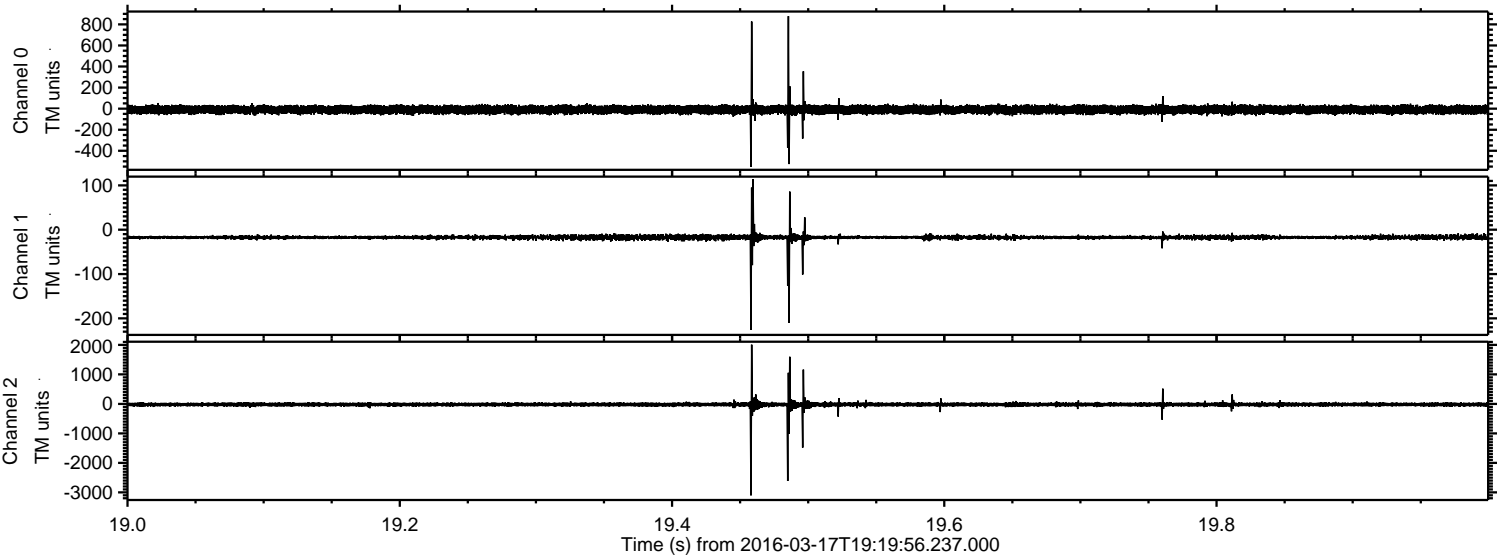


ELMAVAN 3D WAVEFORMS (Measured data sampled at 50 kHz) 51000 packets of 144 samples from 2016-03-17T19:19:56.237.000. Part 109/147

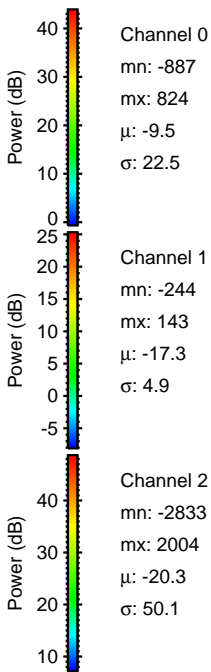
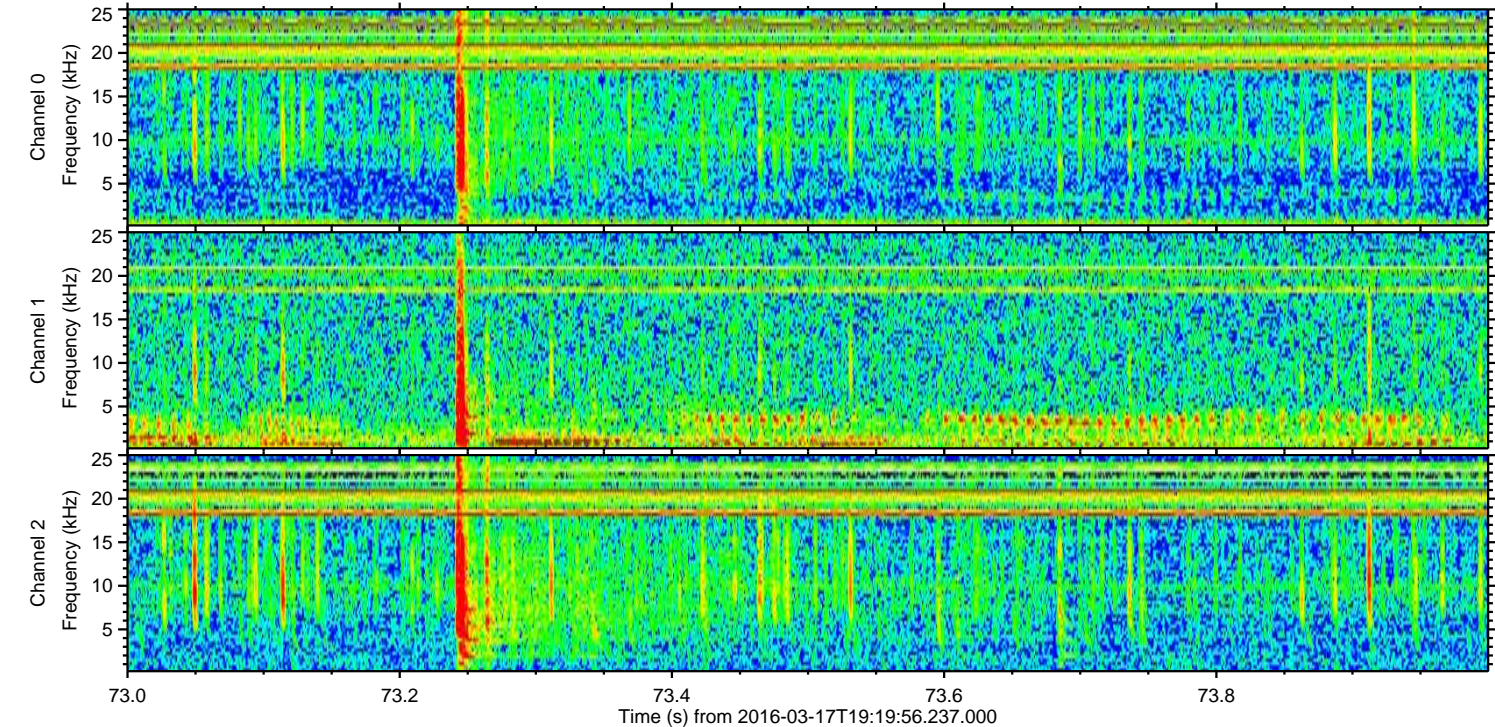
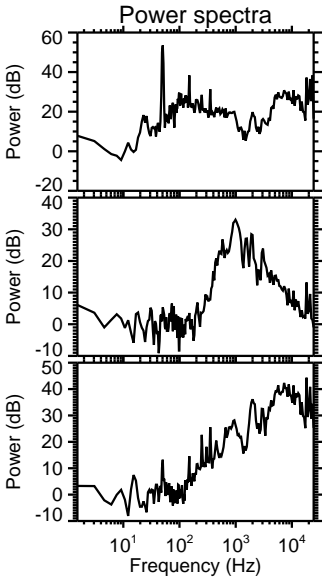
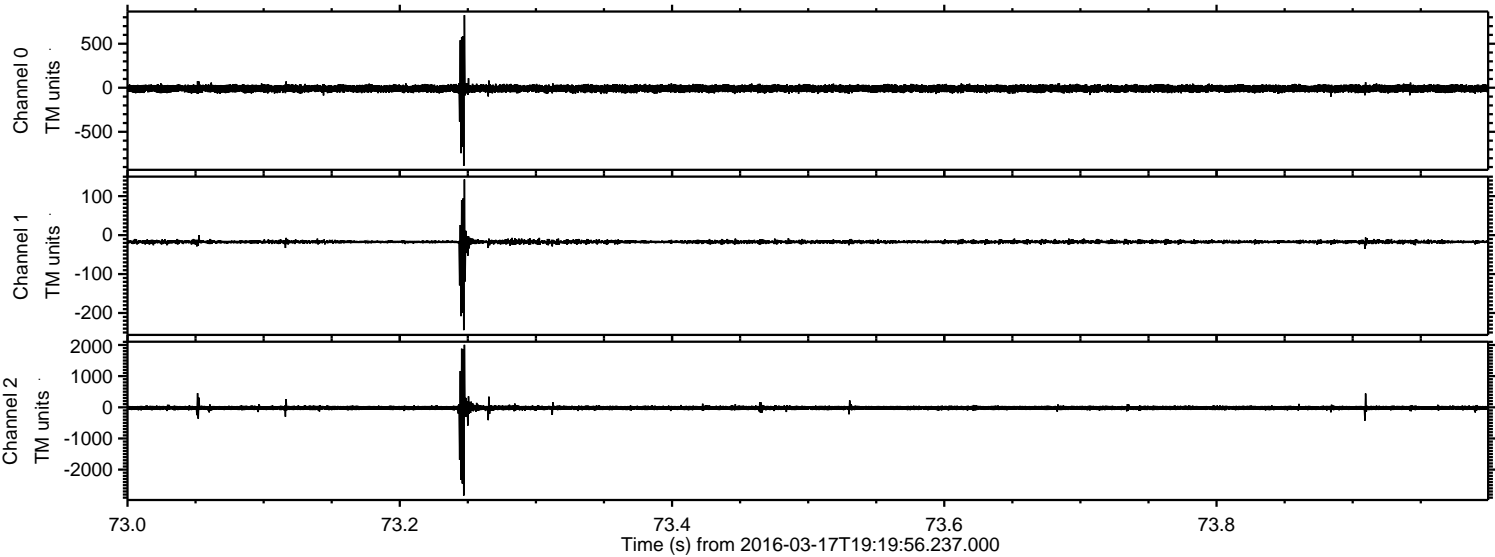
Processed Thu Apr 21 01:44:38 2016 by ELM ver.2012-10-06 from 001__elm20160317_191955__dat00.bin



Processed Thu Apr 21 01:44:39 2016 by ELM ver.2012-10-06 from 001__elm20160317_191955__dat00.bin



Processed Thu Apr 21 01:44:40 2016 by ELM ver.2012-10-06 from 001__elm20160317_191955__dat00.bin

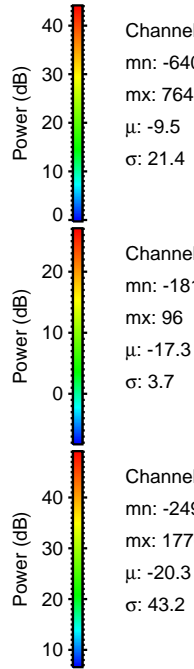
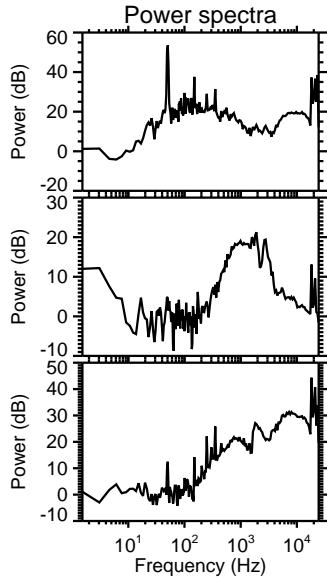
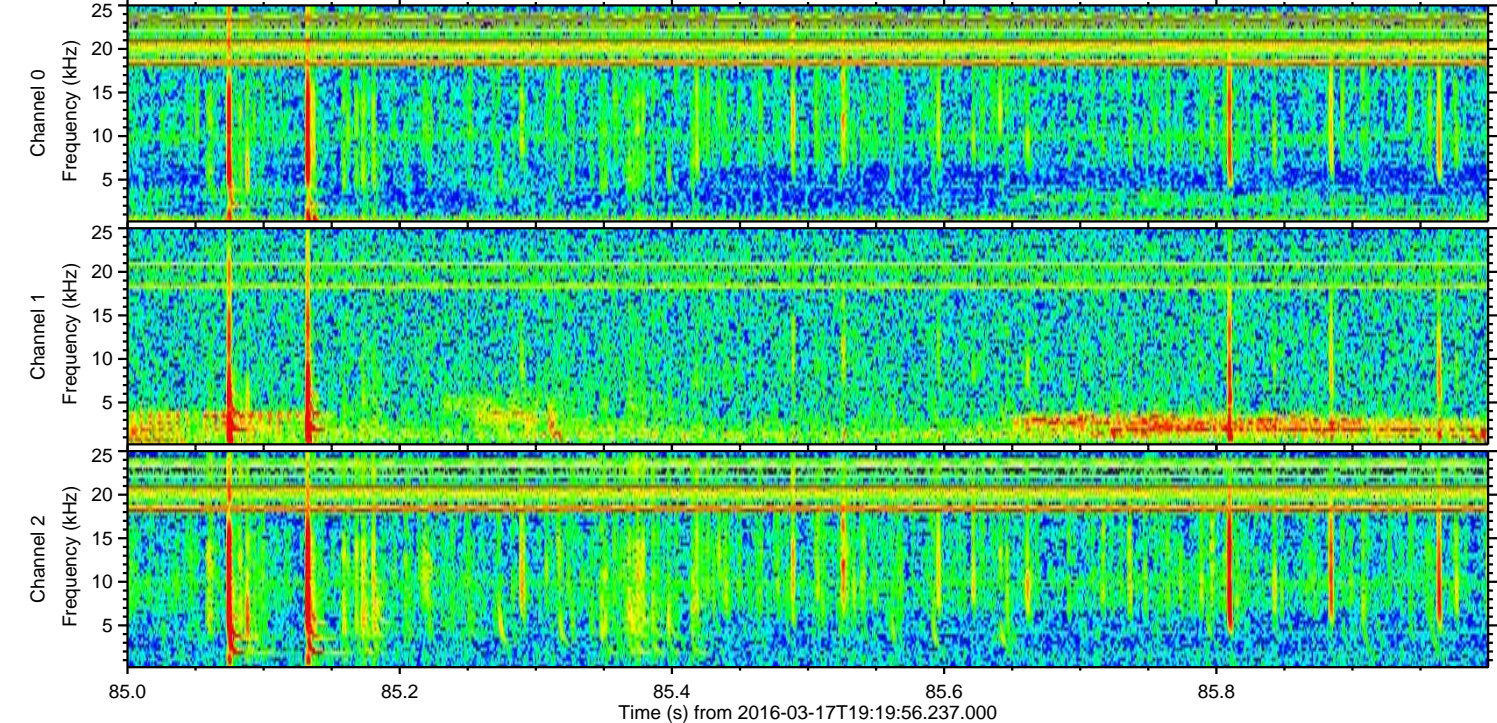
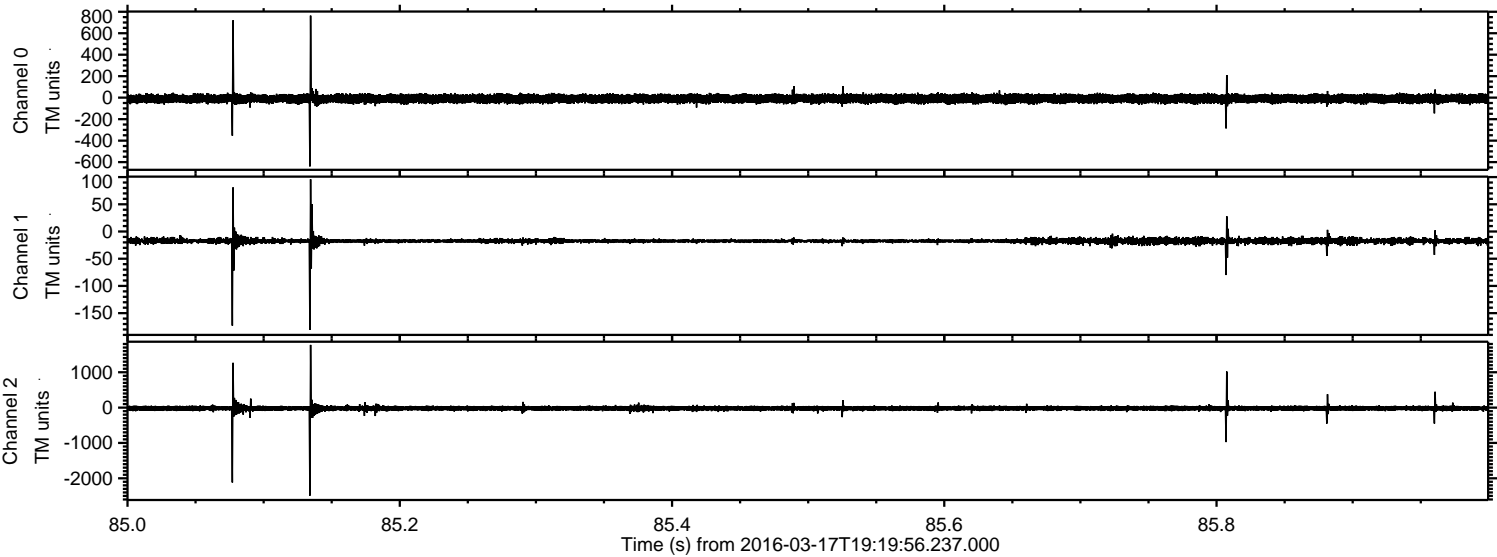


Channel 0
mn: -887
mx: 824
 μ : -9.5
 σ : 22.5

Channel 1
mn: -244
mx: 143
 μ : -17.3
 σ : 4.9

Channel 2
mn: -2833
mx: 2004
 μ : -20.3
 σ : 50.1

Processed Thu Apr 21 01:44:41 2016 by ELM ver.2012-10-06 from 001__elm20160317_191955__dat00.bin

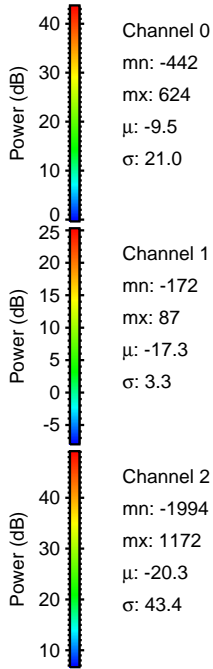
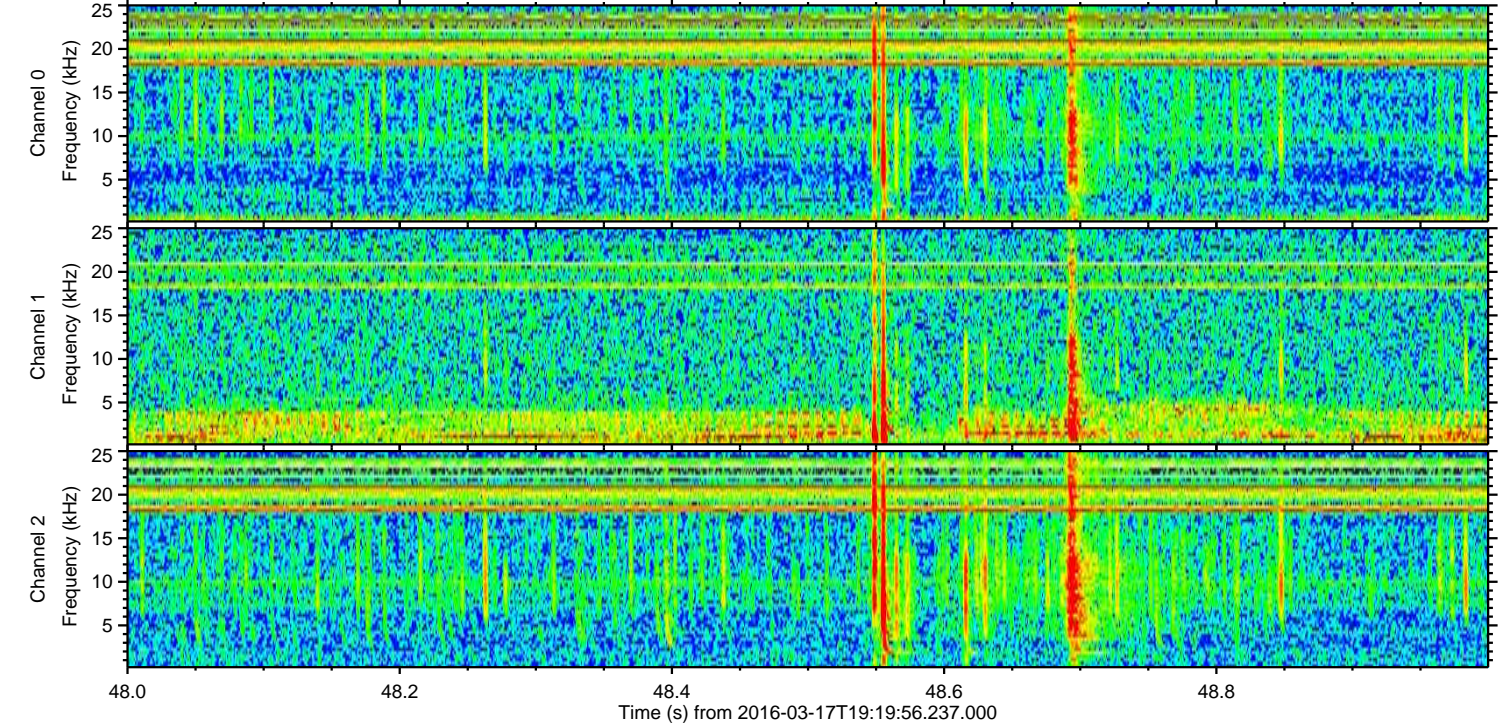
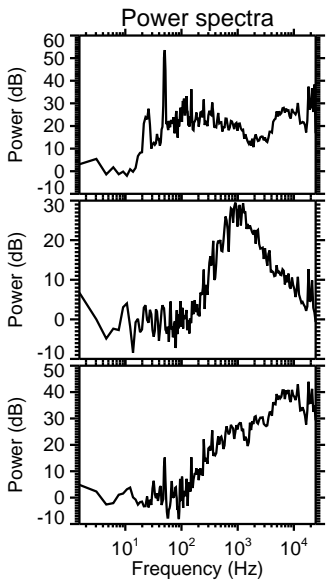
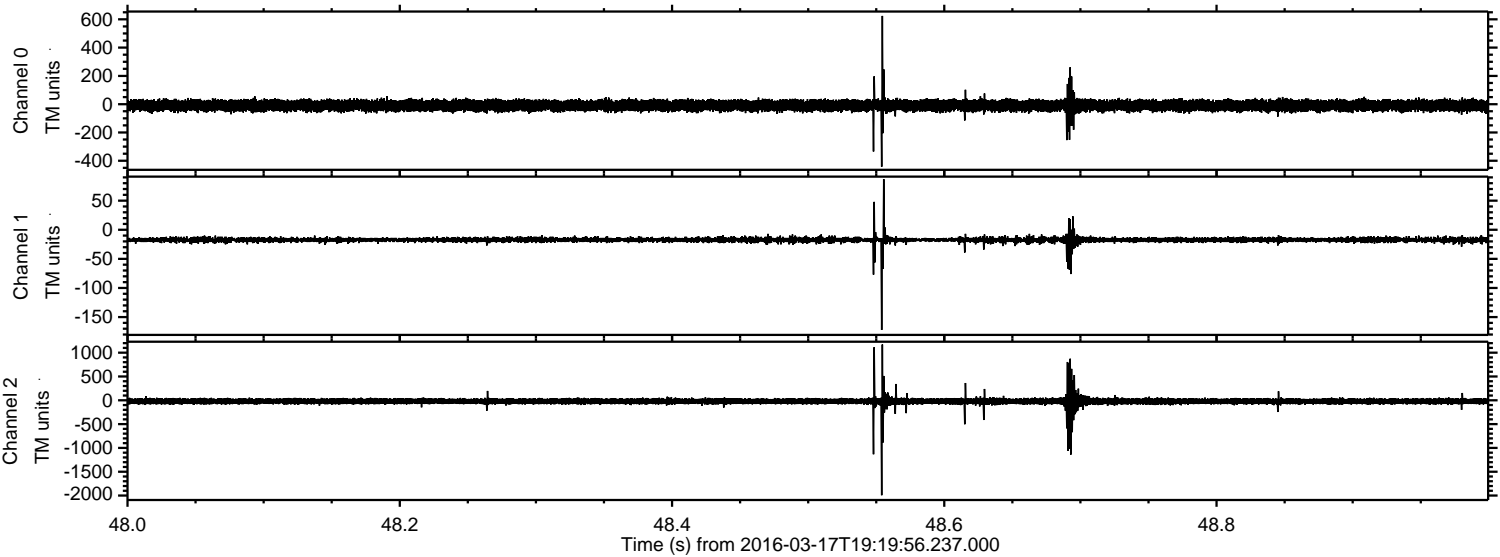


Channel 0
mn: -640
mx: 764
 μ : -9.5
 σ : 21.4

Channel 1
mn: -181
mx: 96
 μ : -17.3
 σ : 3.7

Channel 2
mn: -2490
mx: 1776
 μ : -20.3
 σ : 43.2

Processed Thu Apr 21 01:44:42 2016 by ELM ver.2012-10-06 from 001__elm20160317_191955__dat00.bin



Processed Thu Apr 21 01:44:43 2016 by ELM ver.2012-10-06 from 001__elm20160317_191955__dat00.bin

