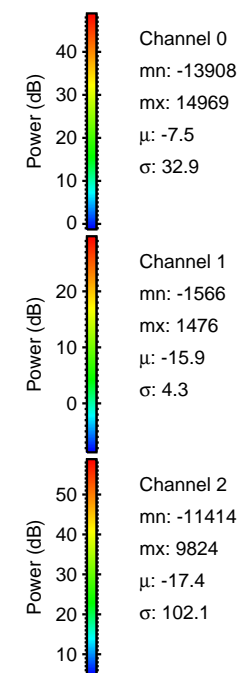
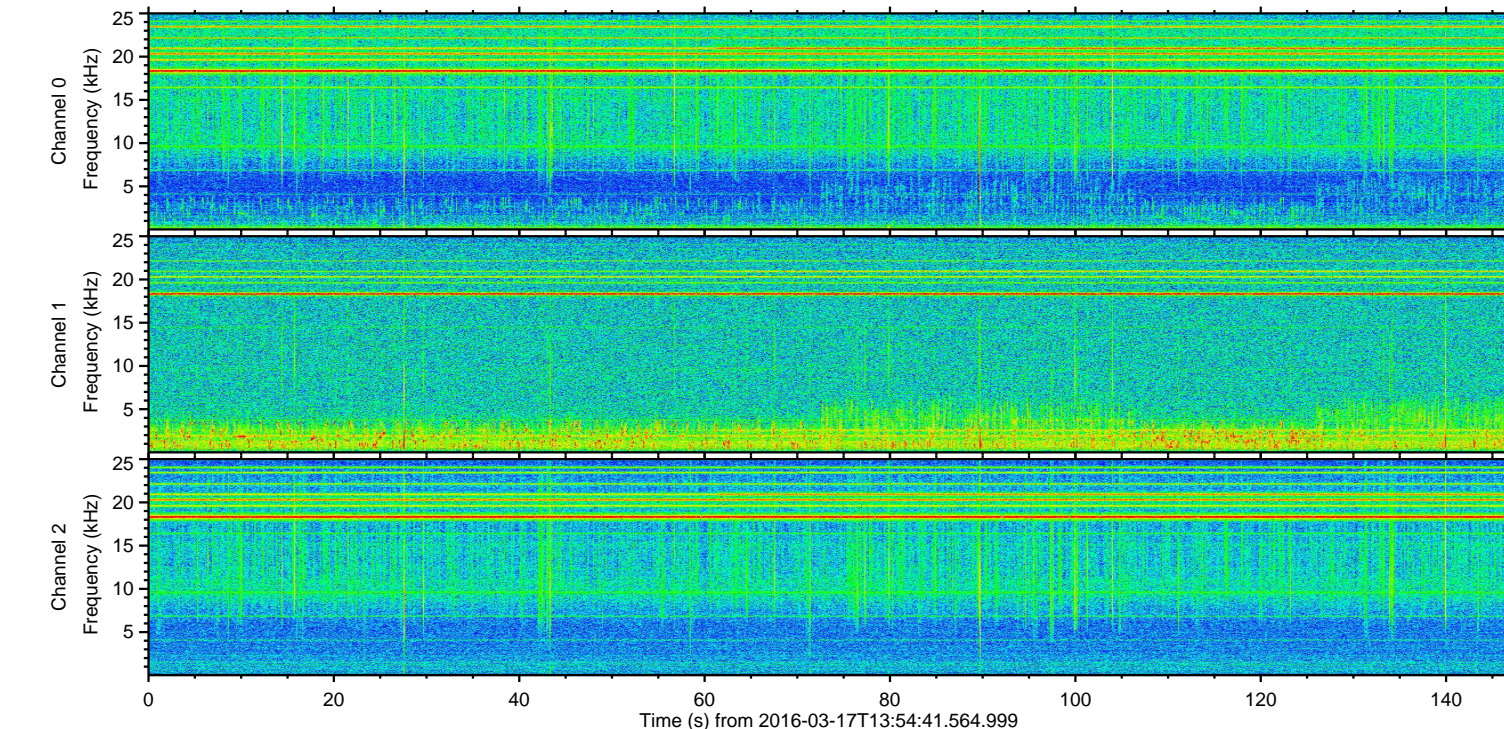
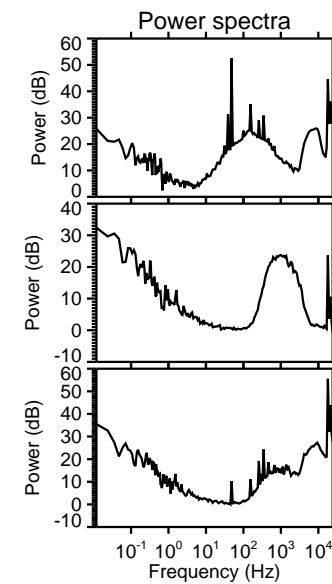
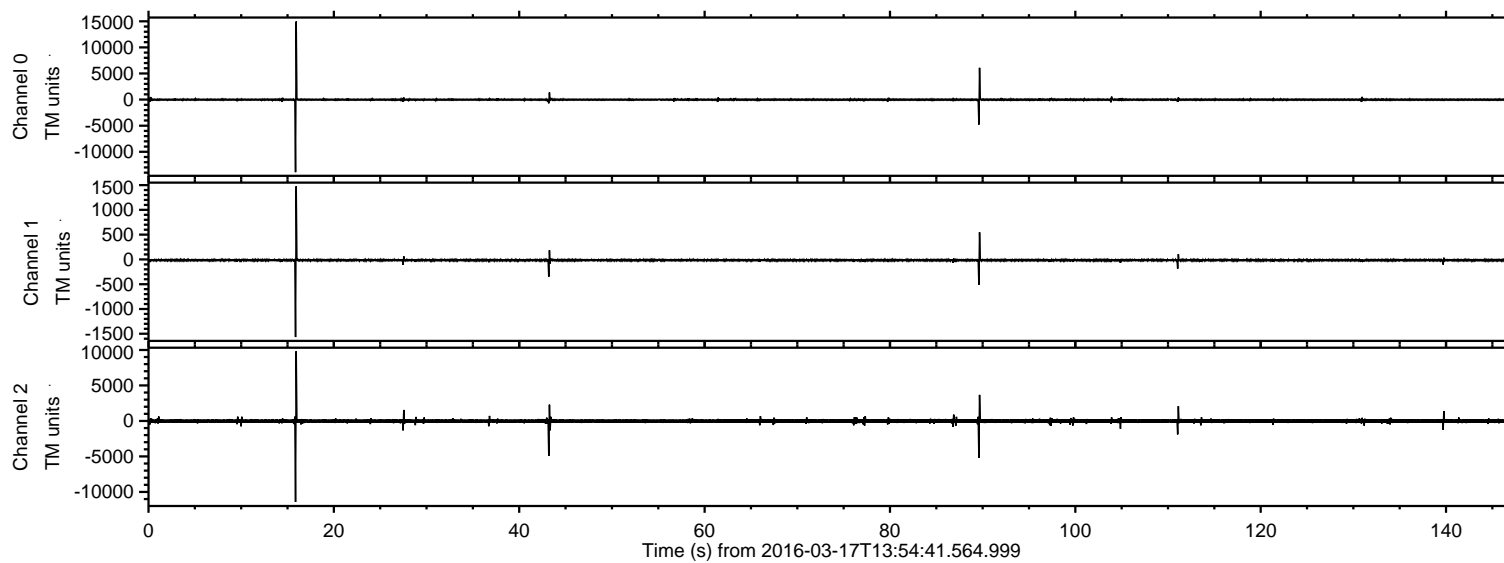


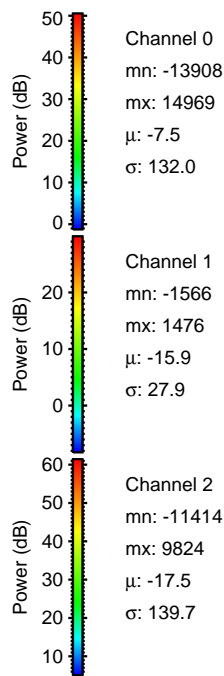
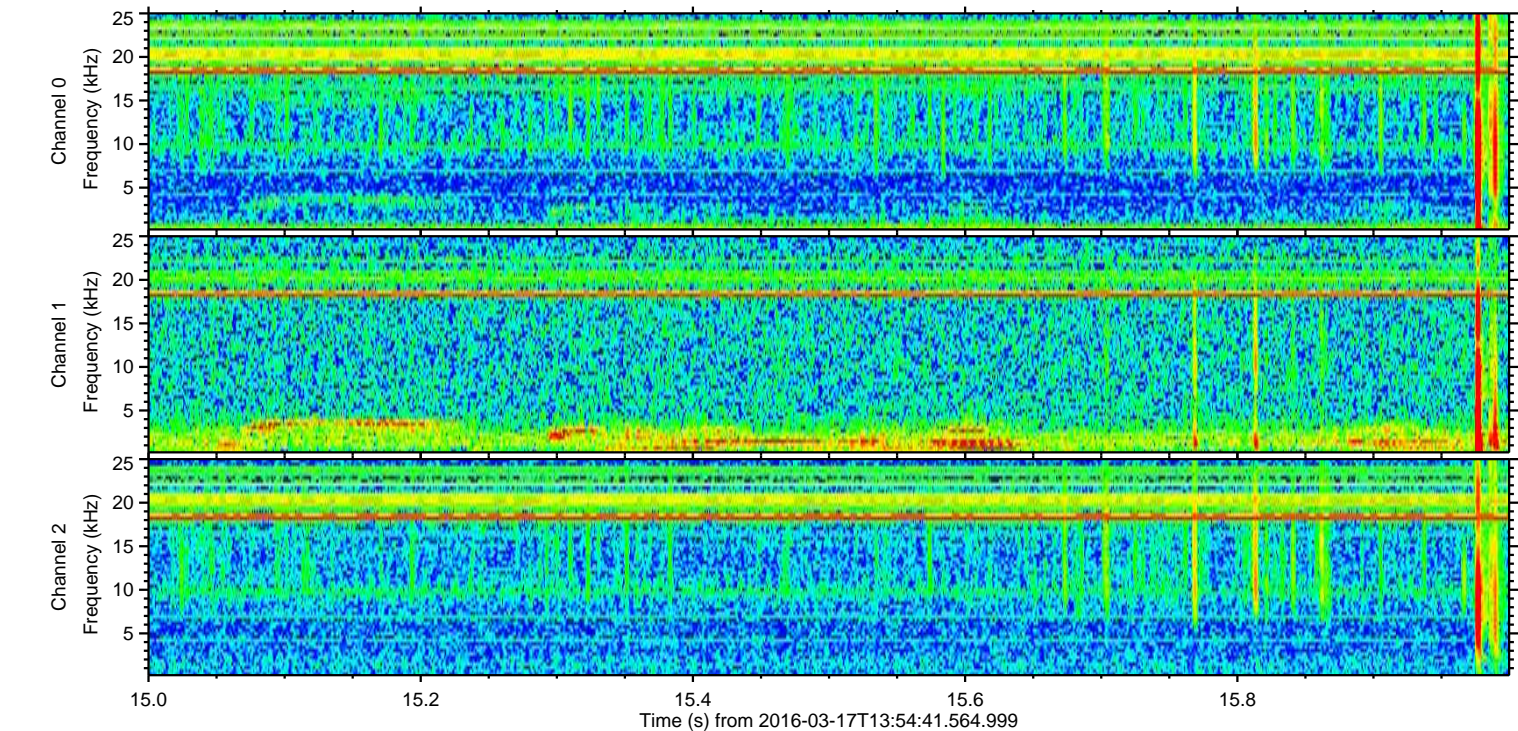
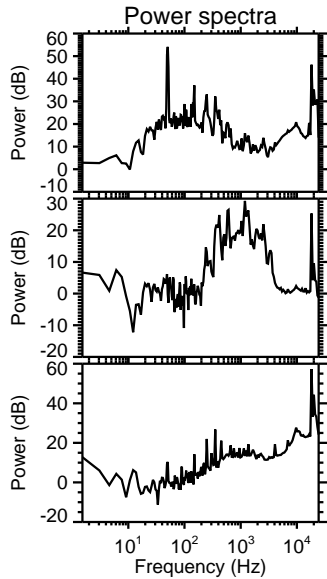
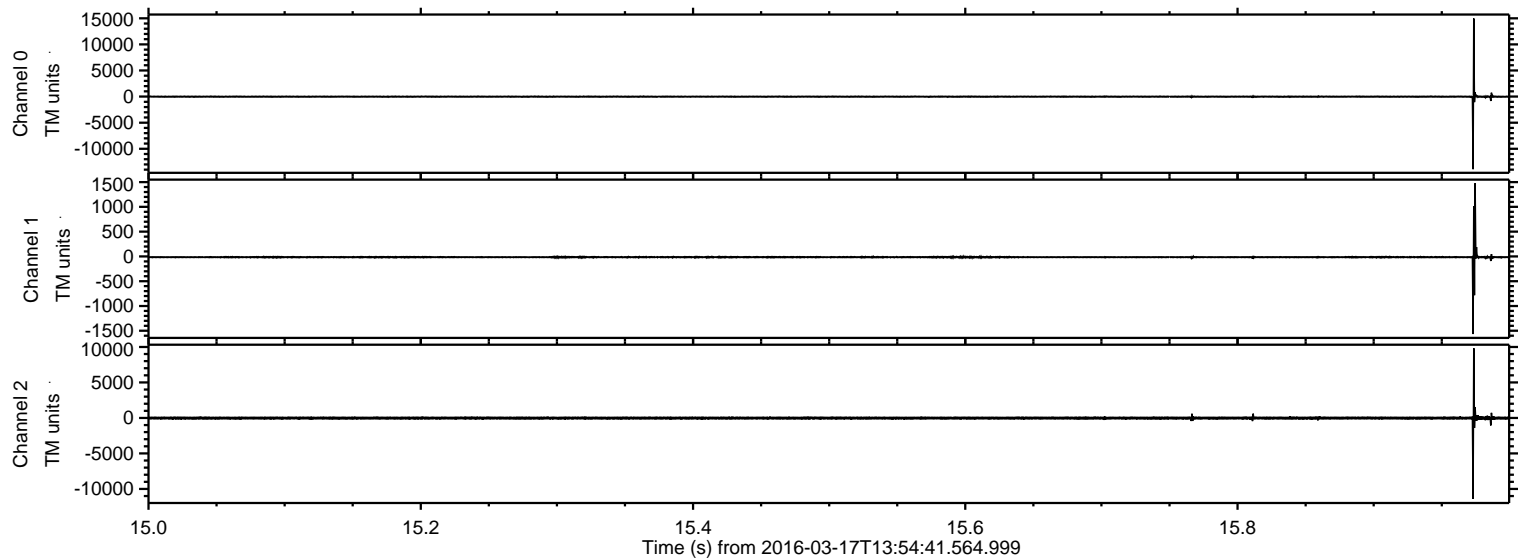
ELMAVAN 3D WAVEFORMS (Measured data sampled at 50 kHz) 51000 packets of 144 samples from 2016-03-17T13:54:41.564.999.

Processed Thu Apr 21 00:36:53 2016 by ELM ver.2012-10-06 from 001__elm20160317_135440__dat00.bin

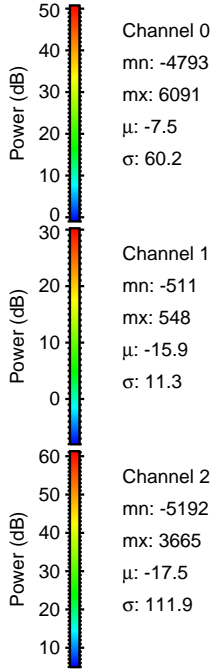
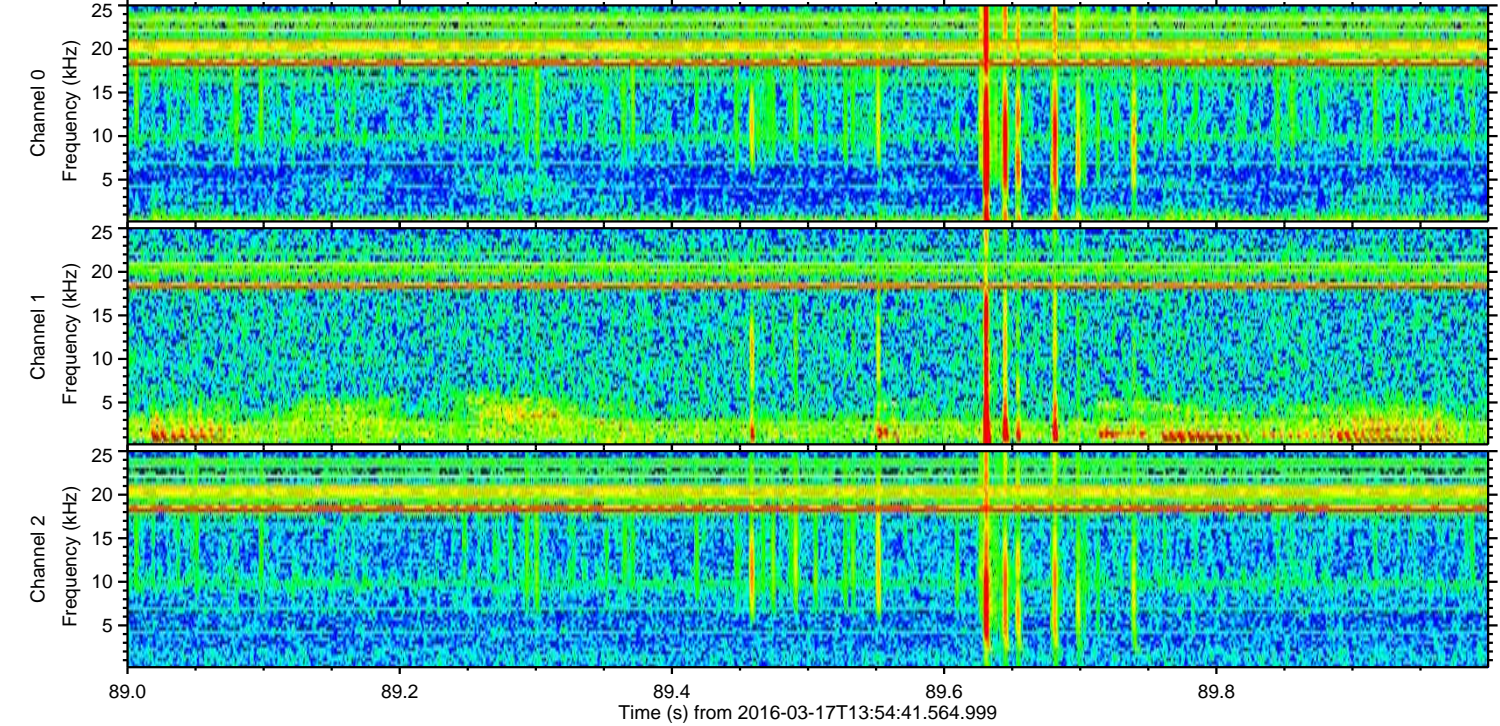
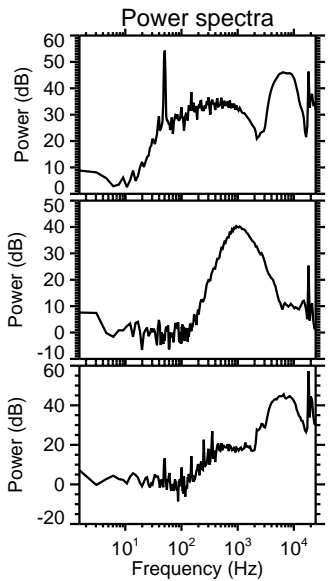
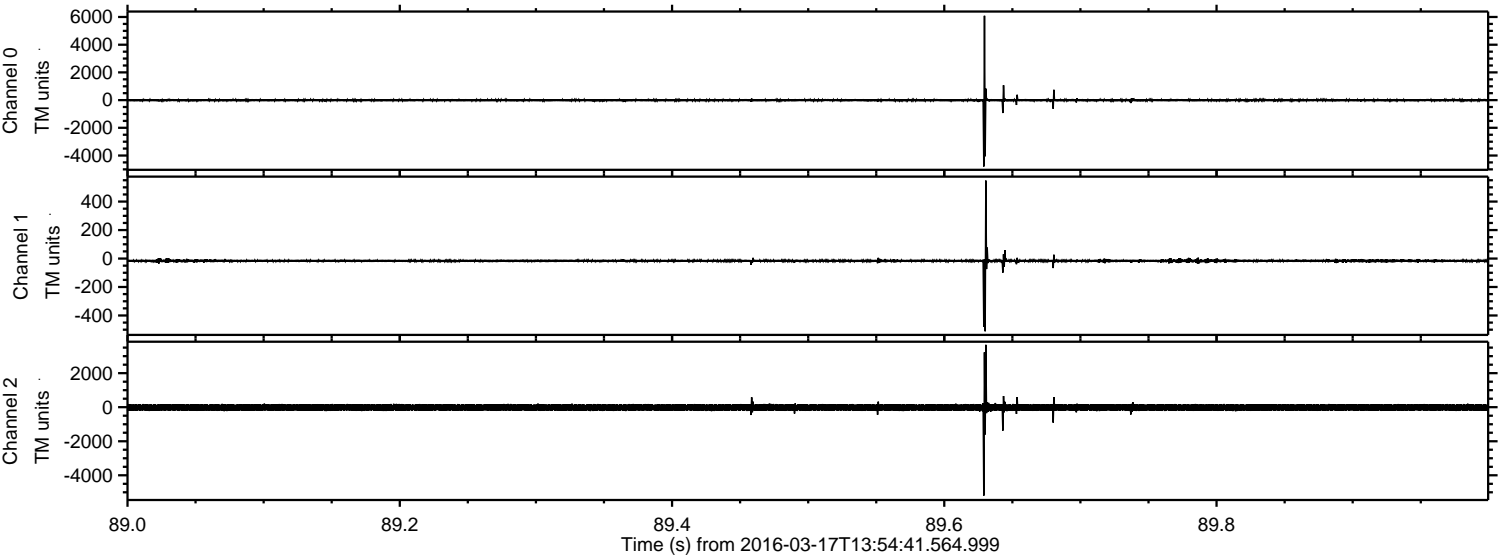


ELMAVAN 3D WAVEFORMS (Measured data sampled at 50 kHz) 51000 packets of 144 samples from 2016-03-17T13:54:41.564.999. Part 16/147

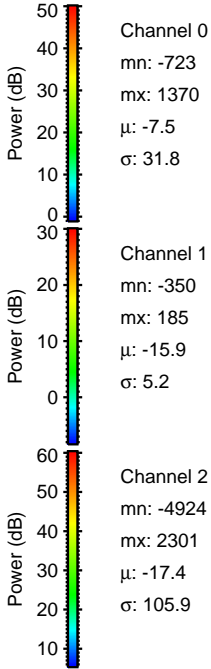
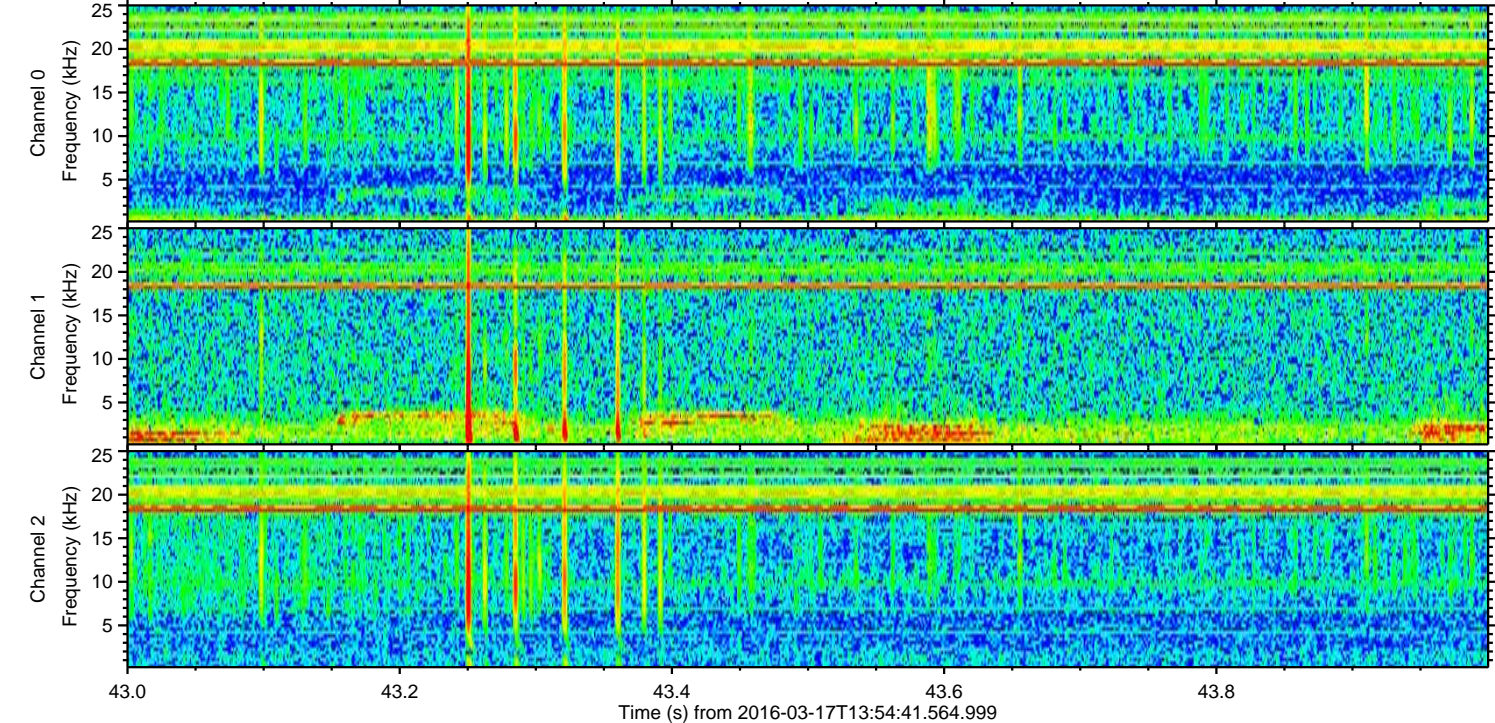
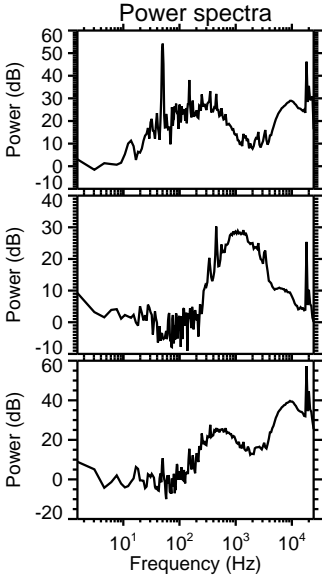
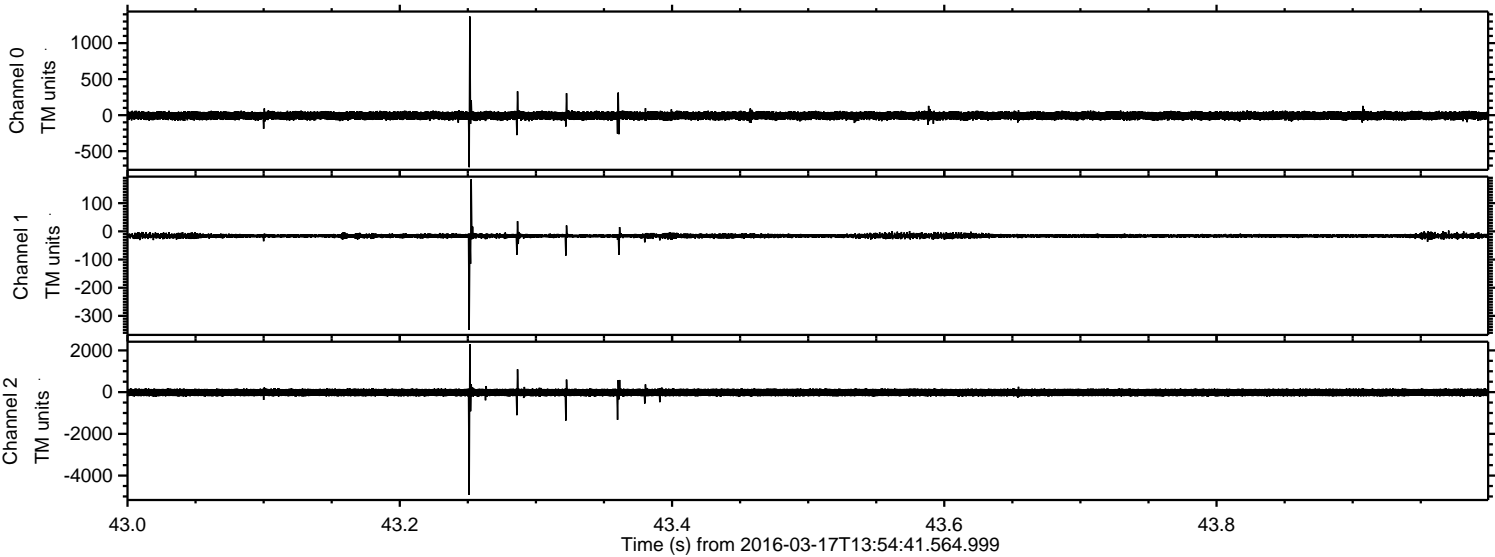
Processed Thu Apr 21 00:37:05 2016 by ELM ver.2012-10-06 from 001__elm20160317_135440__dat00.bin



Processed Thu Apr 21 00:37:06 2016 by ELM ver.2012-10-06 from 001__elm20160317_135440__dat00.bin

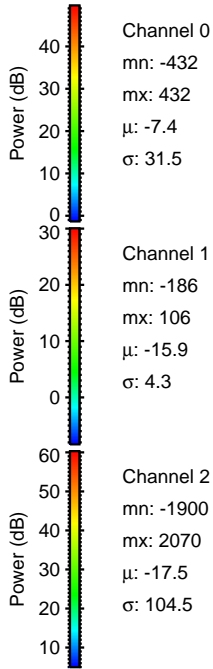
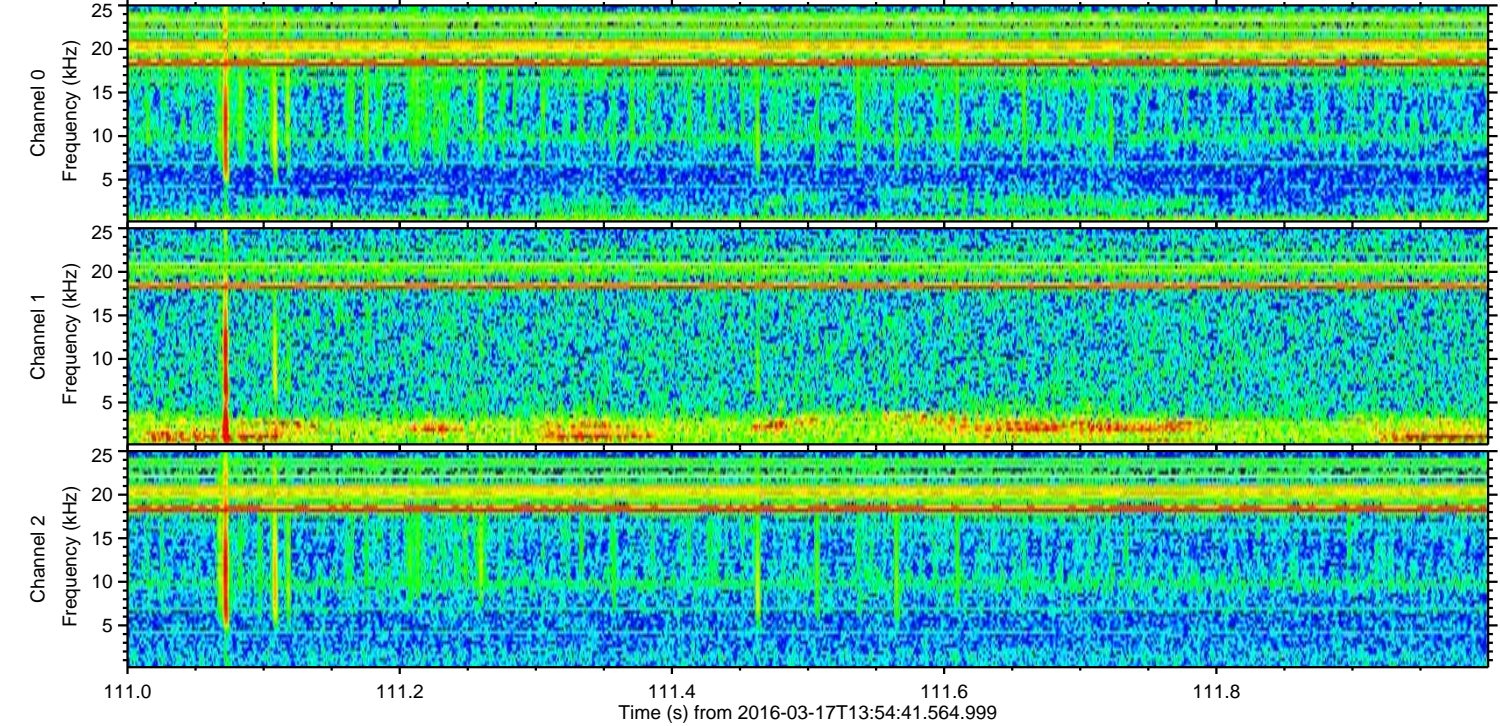
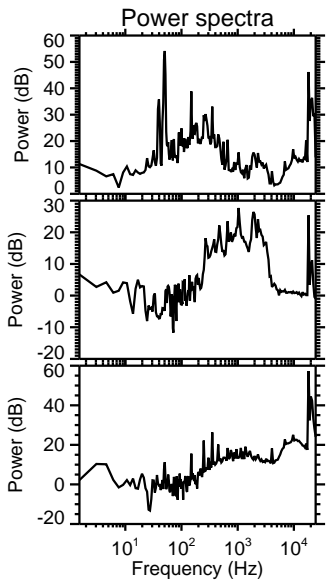
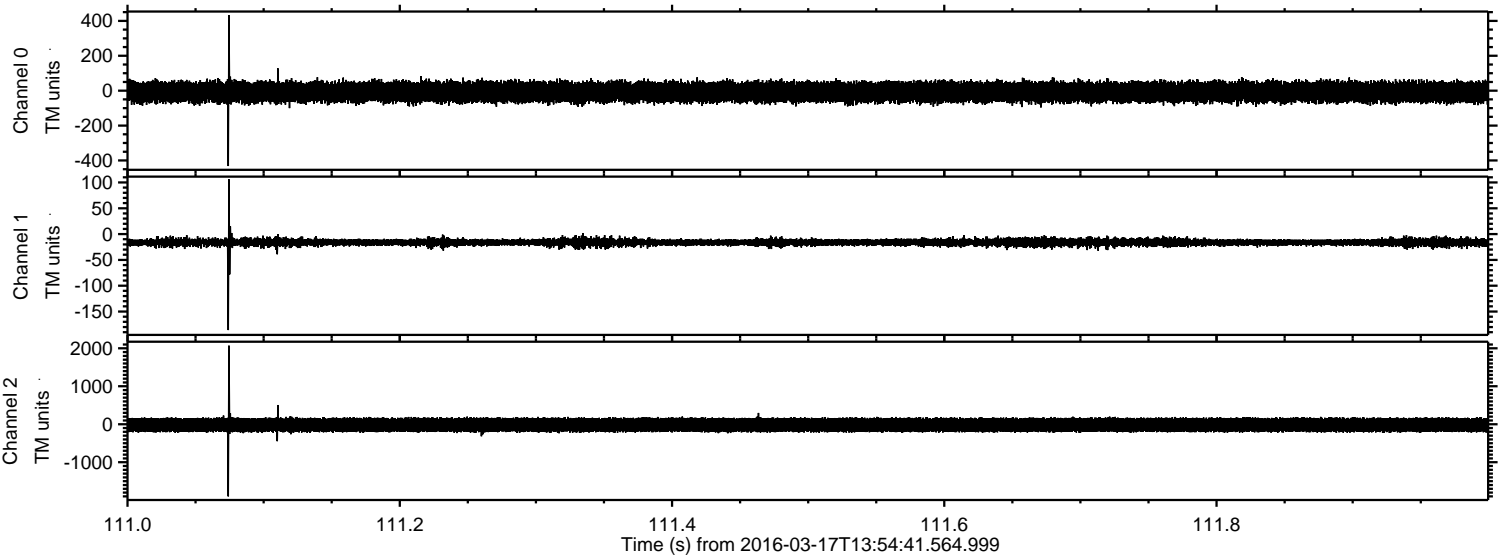


Processed Thu Apr 21 00:37:07 2016 by ELM ver.2012-10-06 from 001__elm20160317_135440__dat00.bin

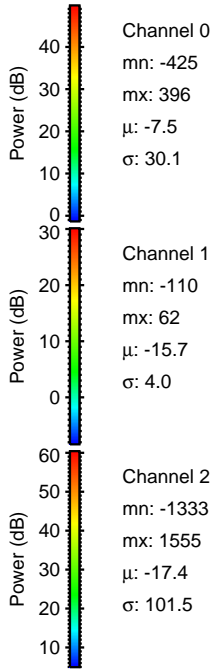
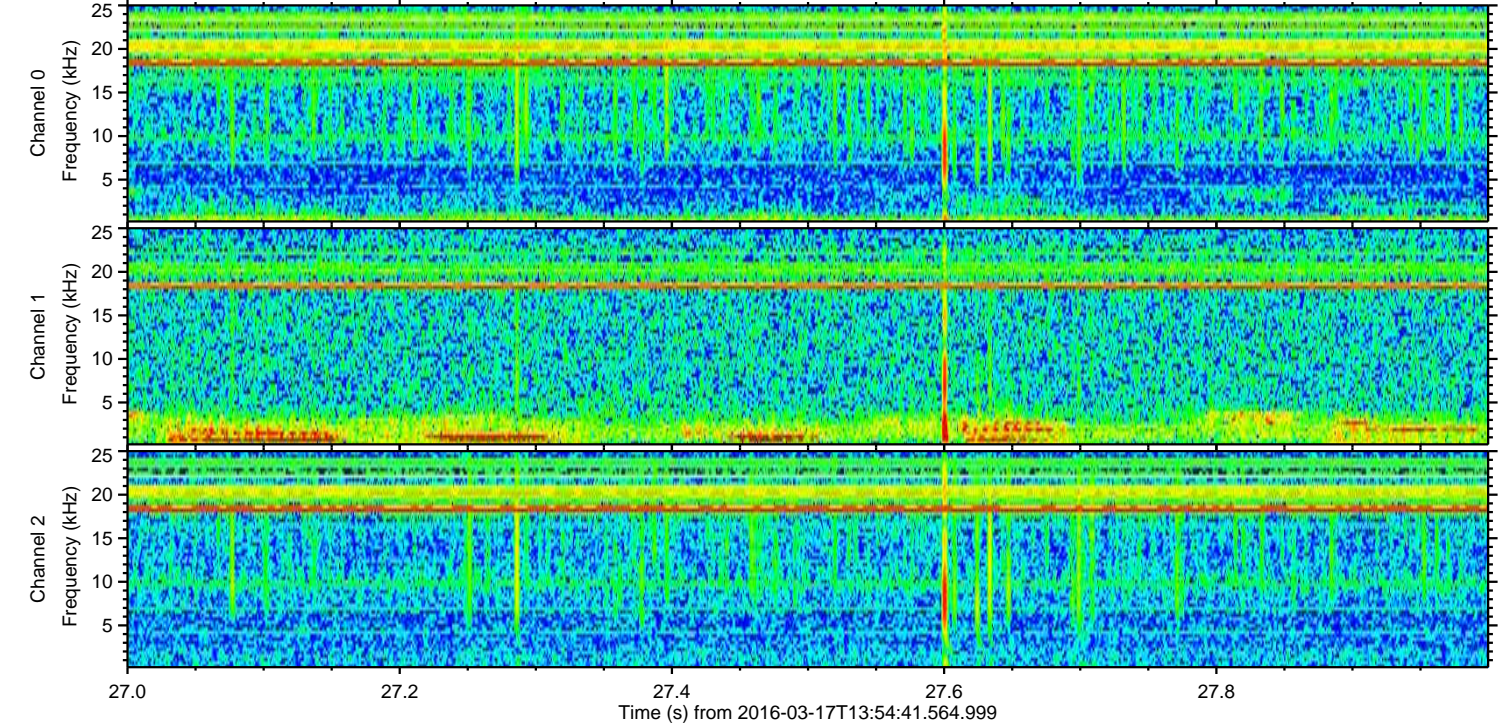
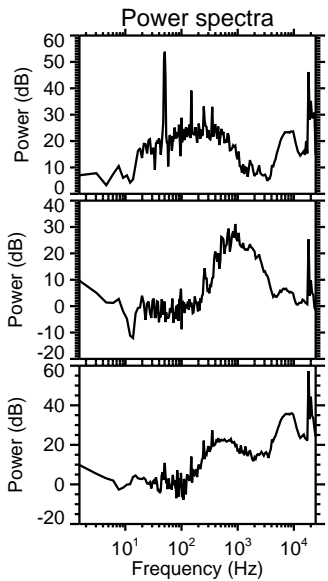
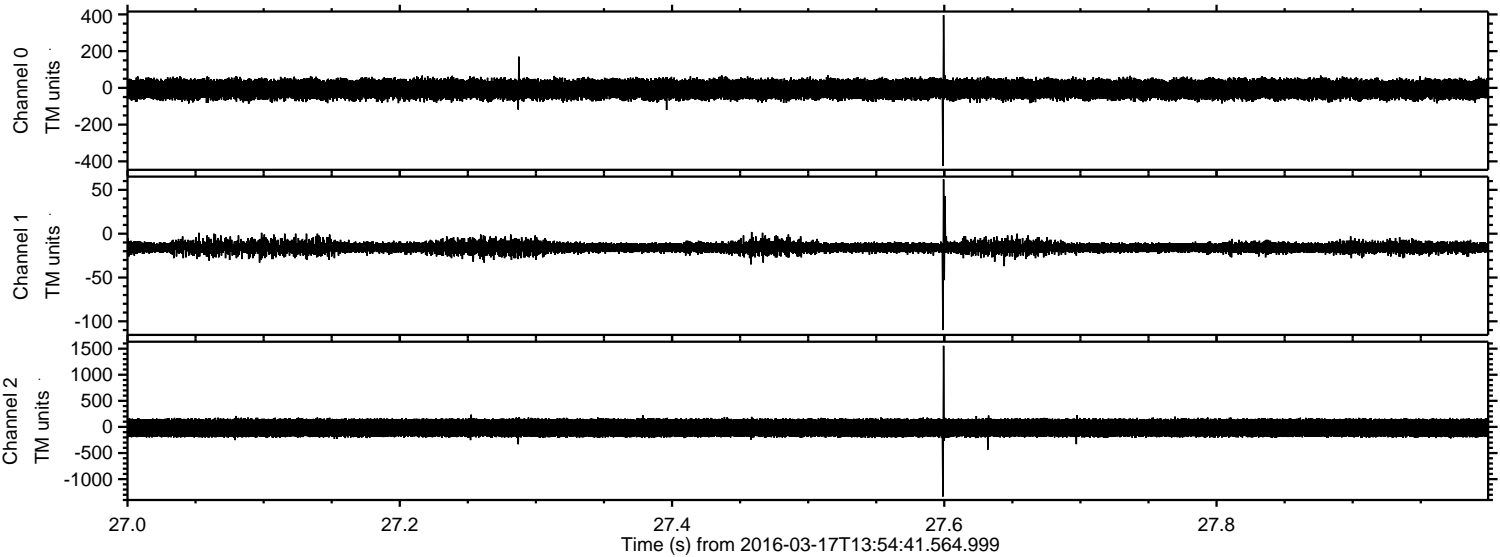


ELMAVAN 3D WAVEFORMS (Measured data sampled at 50 kHz) 51000 packets of 144 samples from 2016-03-17T13:54:41.564.999. Part 112/147

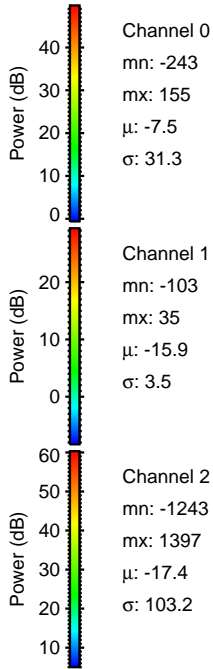
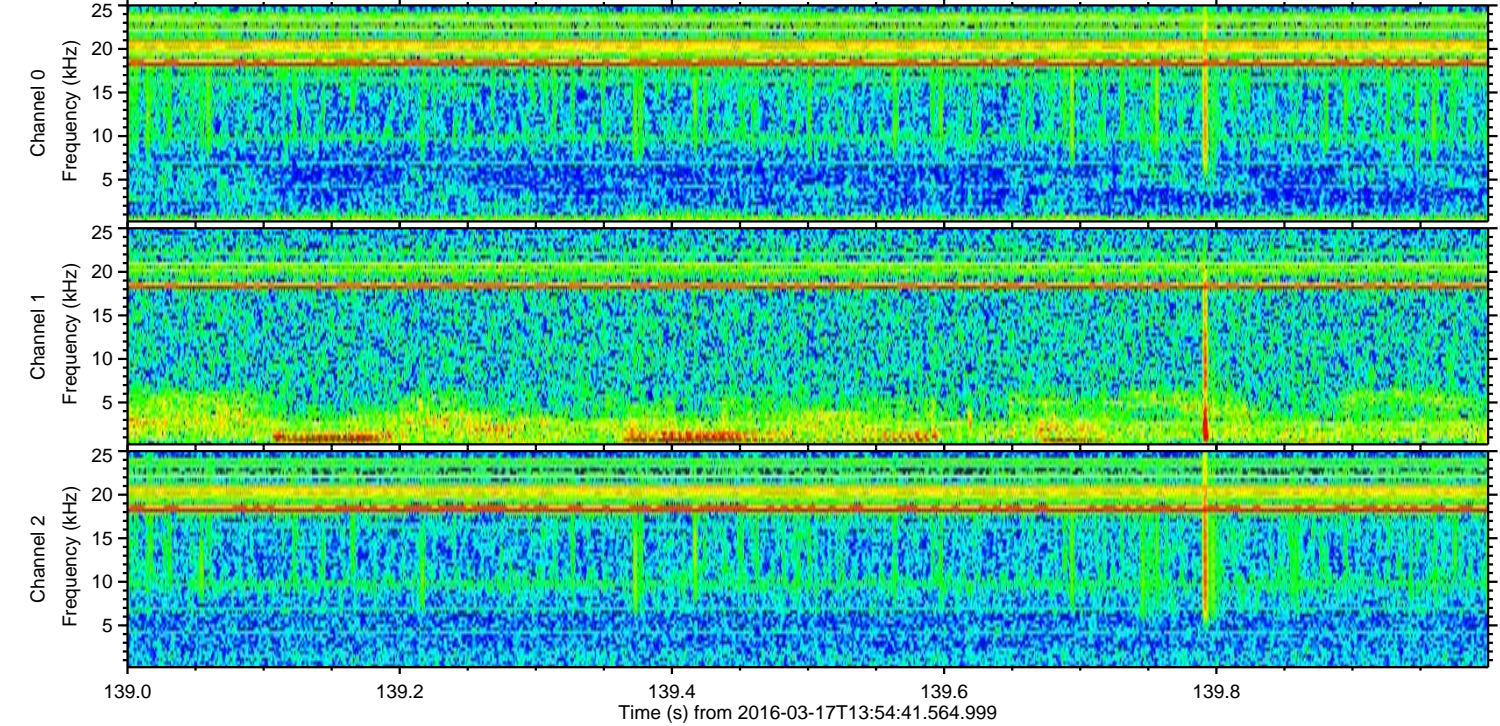
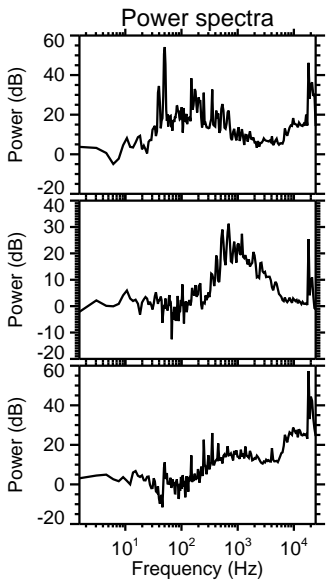
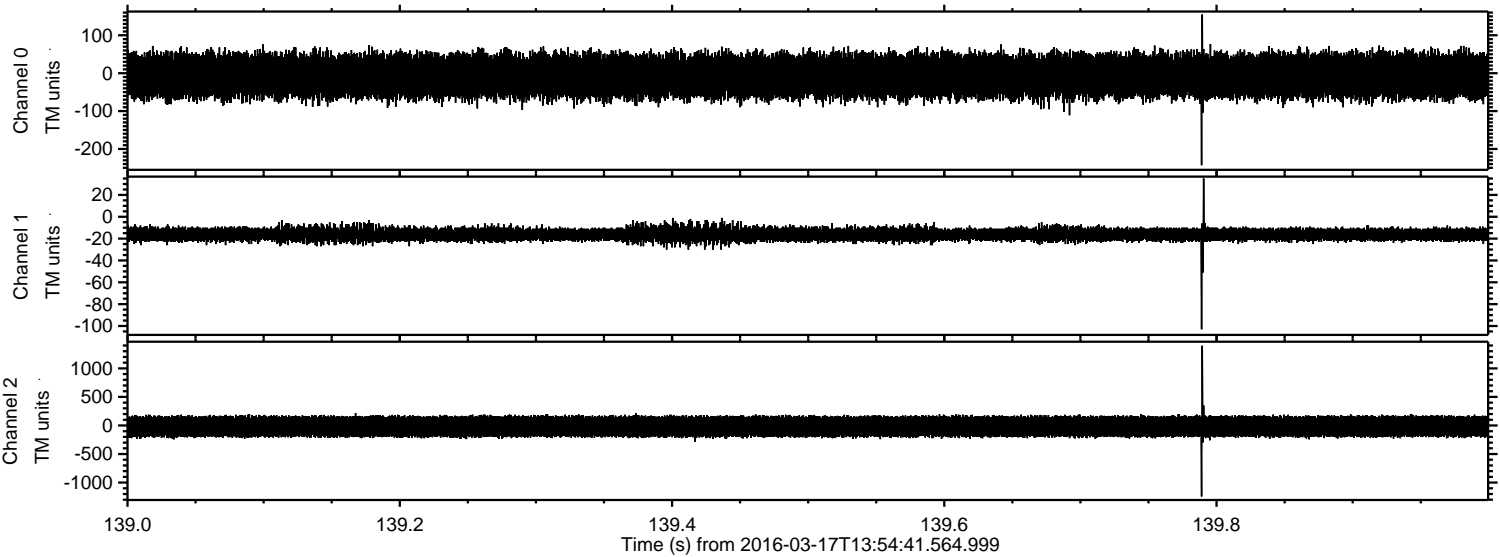
Processed Thu Apr 21 00:37:08 2016 by ELM ver.2012-10-06 from 001__elm20160317_135440__dat00.bin



Processed Thu Apr 21 00:37:08 2016 by ELM ver.2012-10-06 from 001__elm20160317_135440__dat00.bin

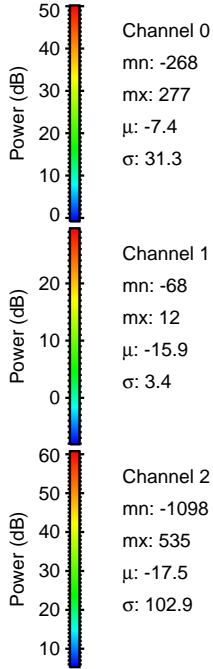
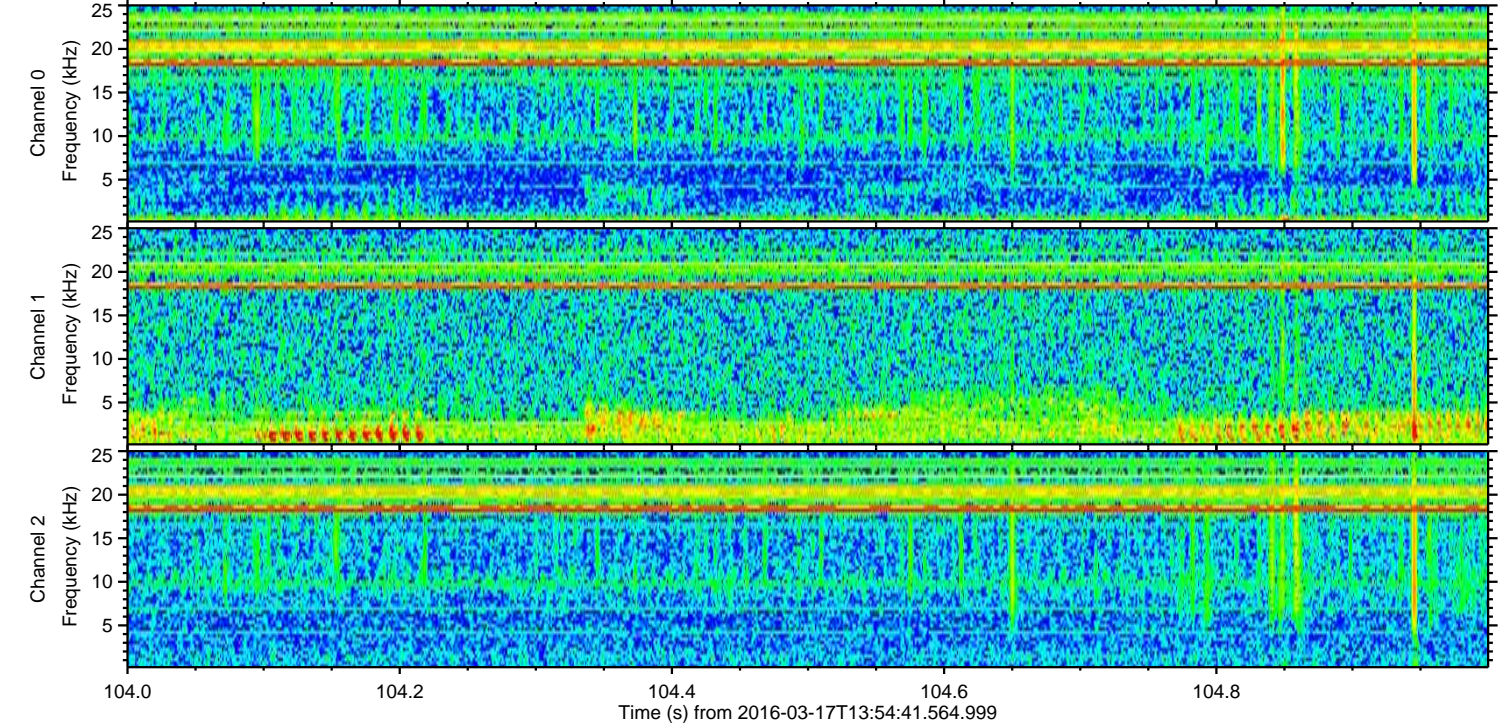
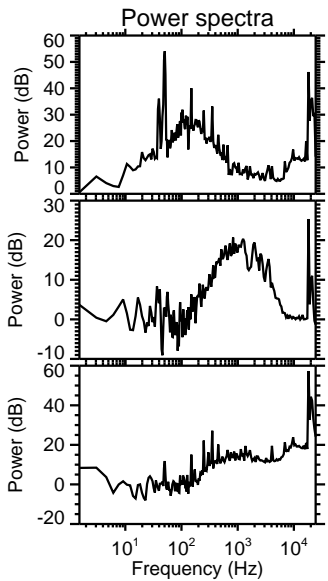
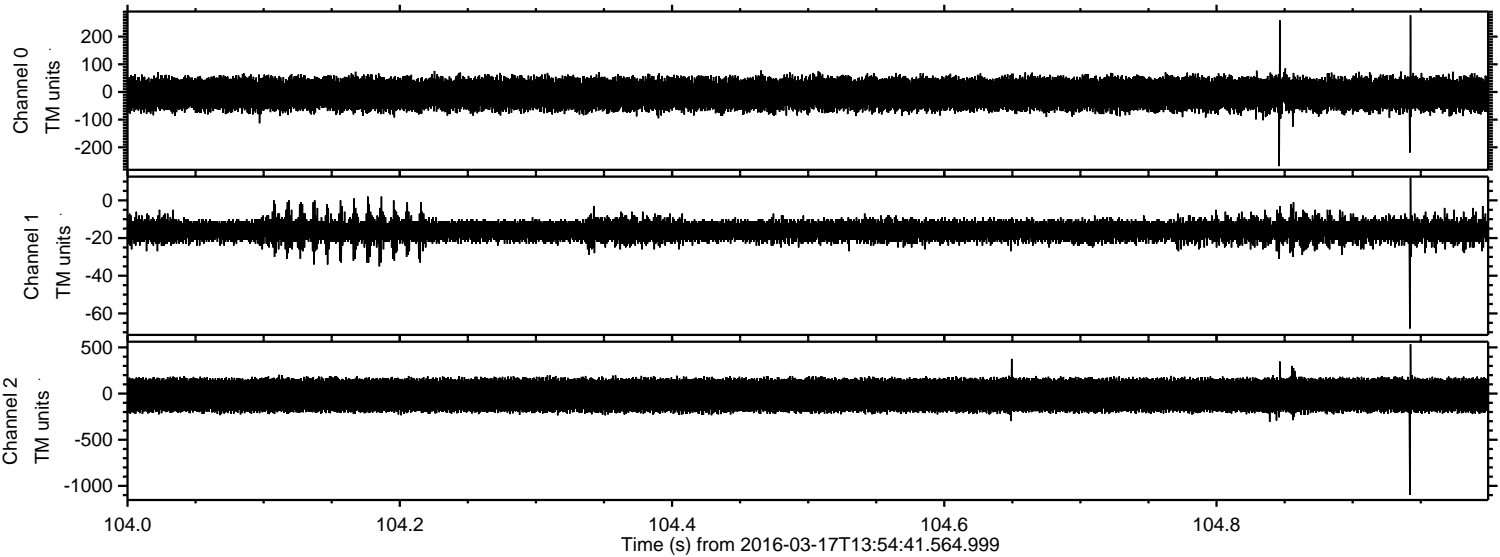


Processed Thu Apr 21 00:37:09 2016 by ELM ver.2012-10-06 from 001__elm20160317_135440__dat00.bin

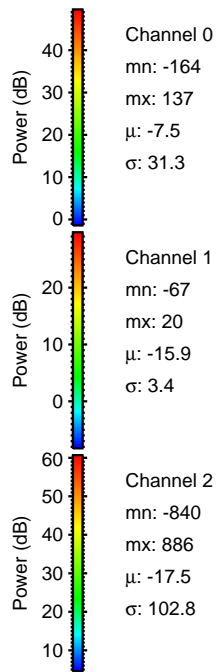
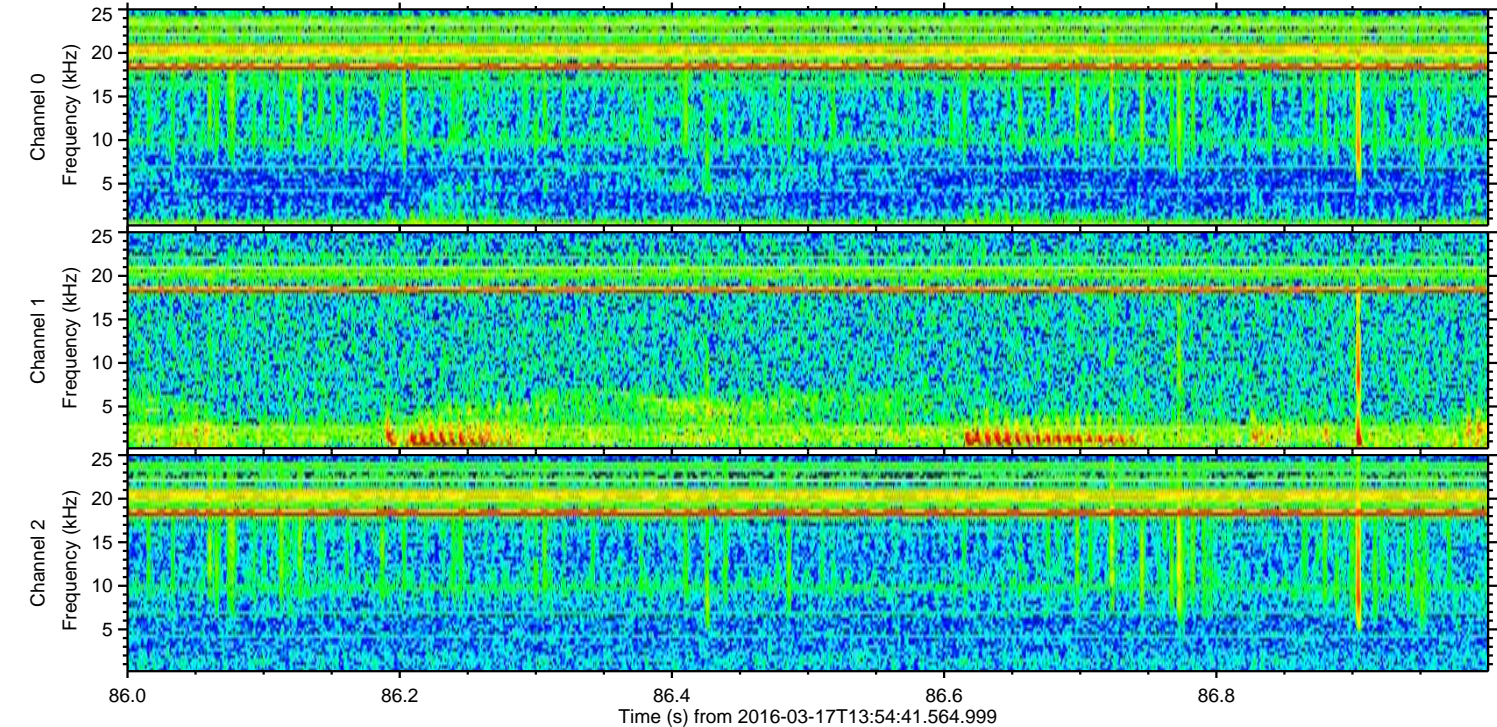
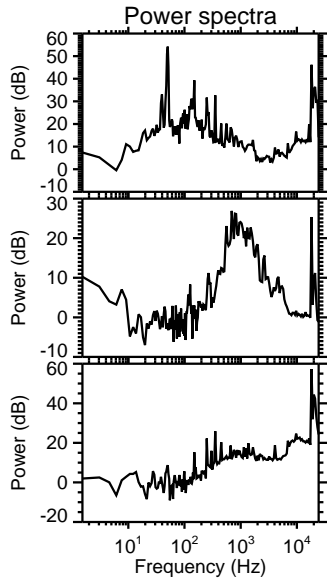
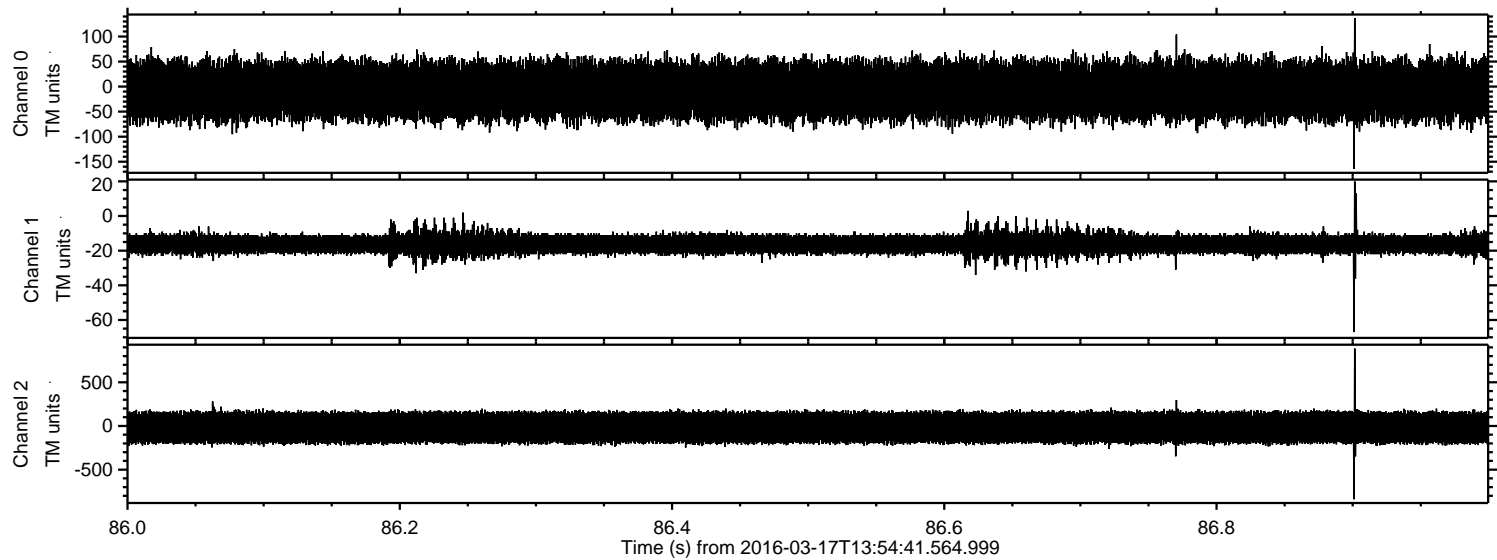


ELMAVAN 3D WAVEFORMS (Measured data sampled at 50 kHz) 51000 packets of 144 samples from 2016-03-17T13:54:41.564.999. Part 105/147

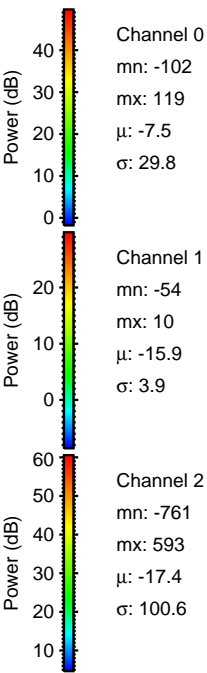
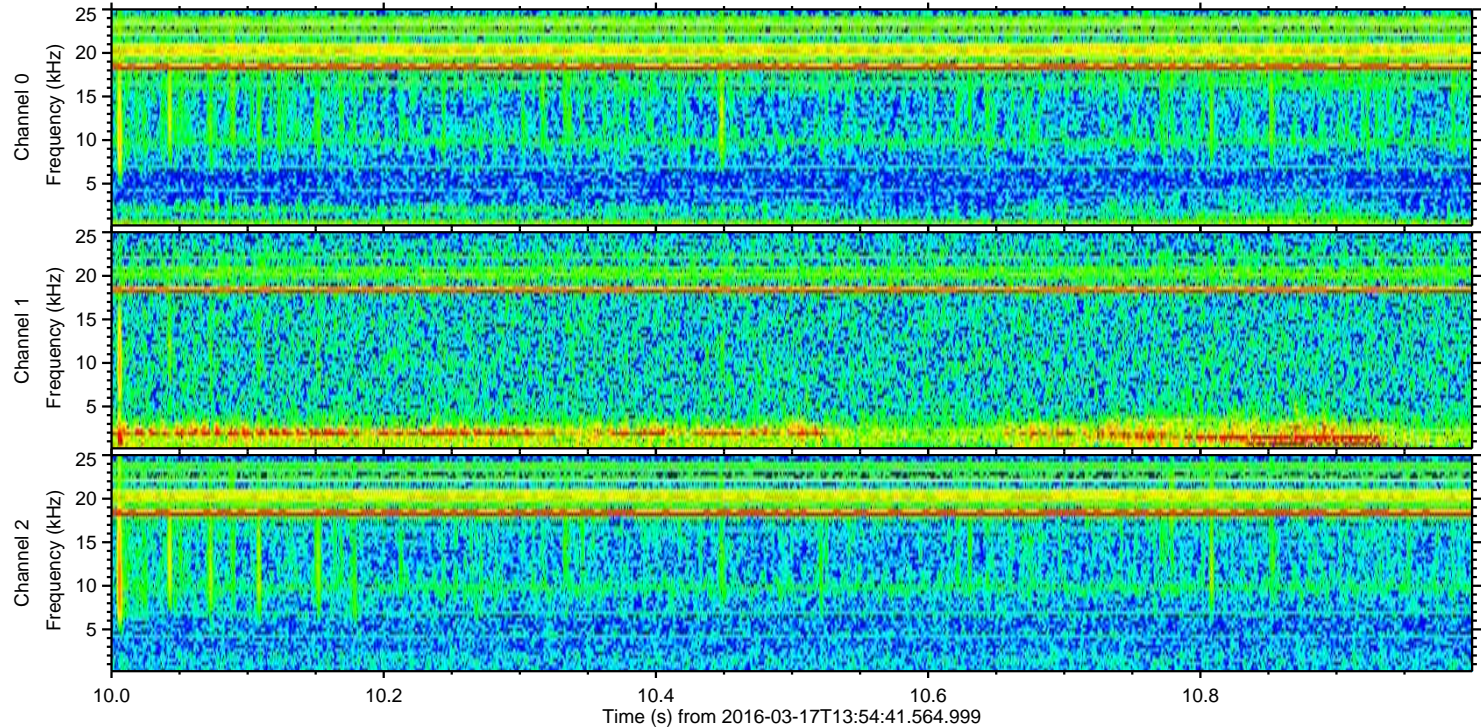
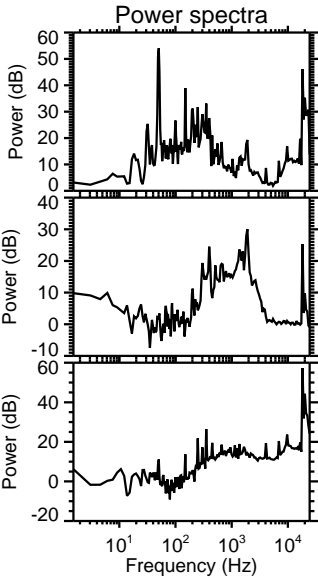
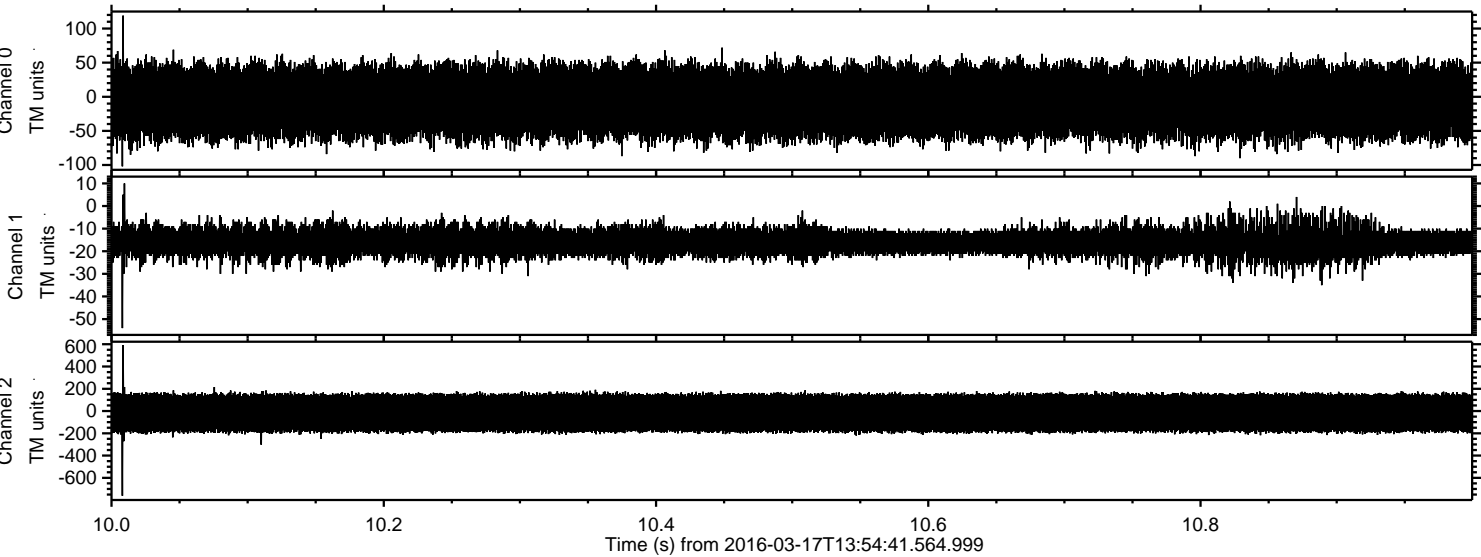
Processed Thu Apr 21 00:37:10 2016 by ELM ver.2012-10-06 from 001__elm20160317_135440__dat00.bin



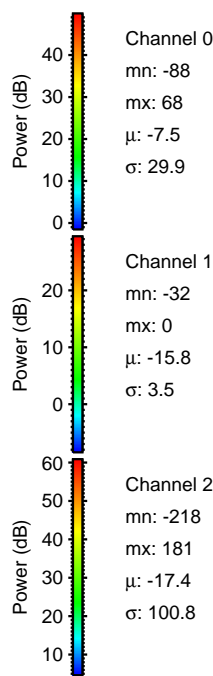
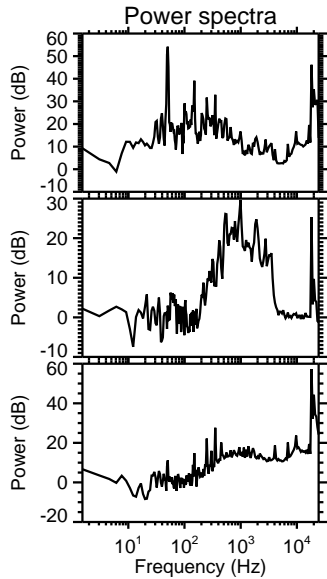
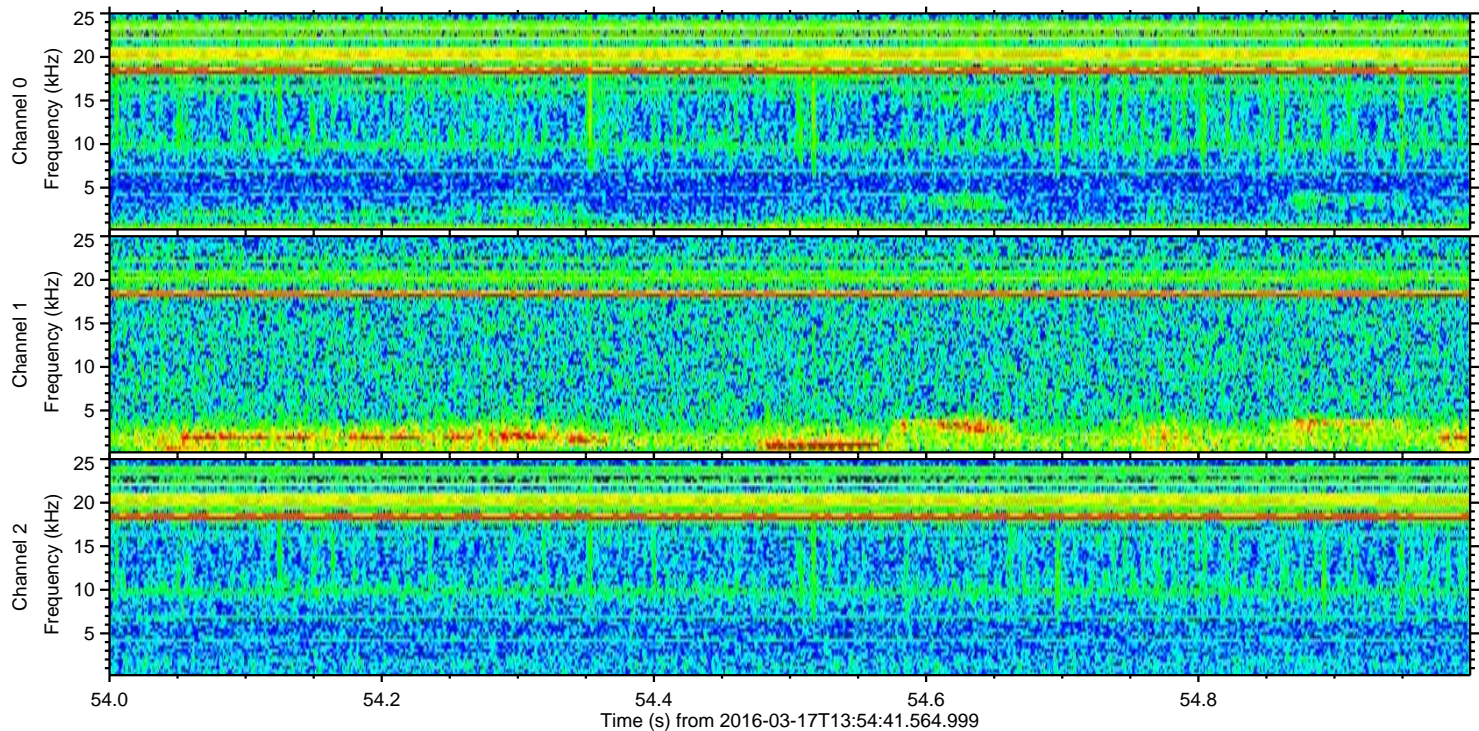
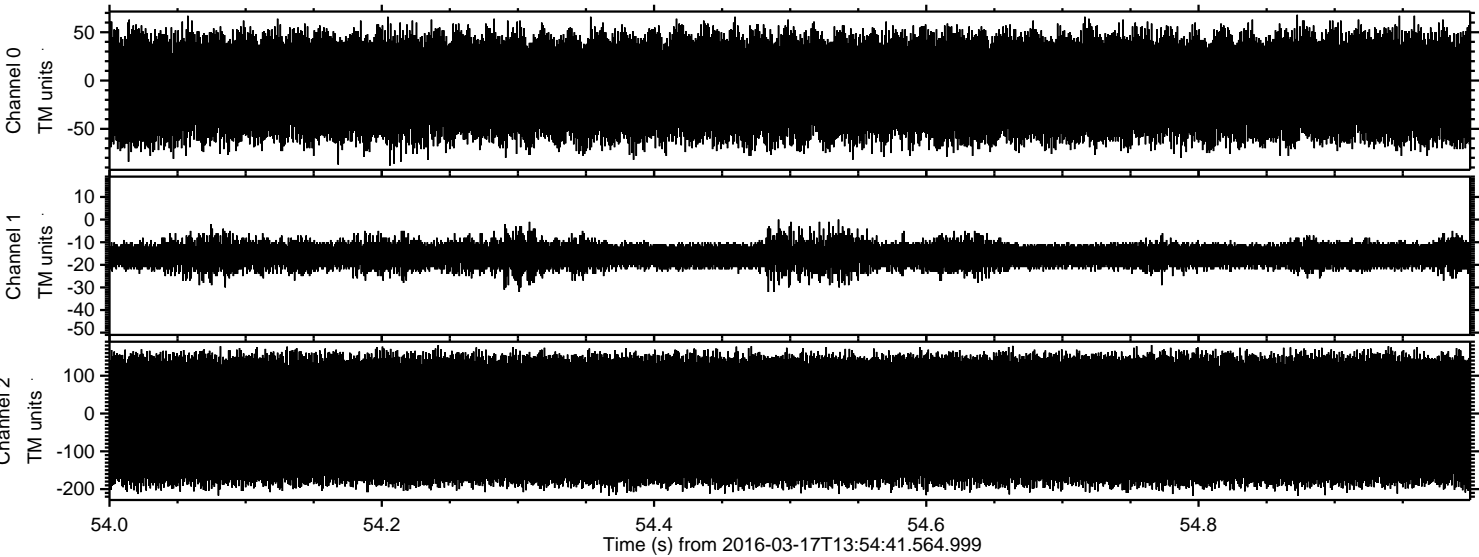
Processed Thu Apr 21 00:37:11 2016 by ELM ver.2012-10-06 from 001__elm20160317_135440__dat00.bin



Processed Thu Apr 21 00:37:12 2016 by ELM ver.2012-10-06 from 001__elm20160317_135440__dat00.bin



Processed Thu Apr 21 00:37:13 2016 by ELM ver.2012-10-06 from 001__elm20160317_135440__dat00.bin



Channel 0
mn: -88
mx: 68
 μ : -7.5
 σ : 29.9

Channel 1
mn: -32
mx: 0
 μ : -15.8
 σ : 3.5

Channel 2
mn: -218
mx: 181
 μ : -17.4
 σ : 100.8