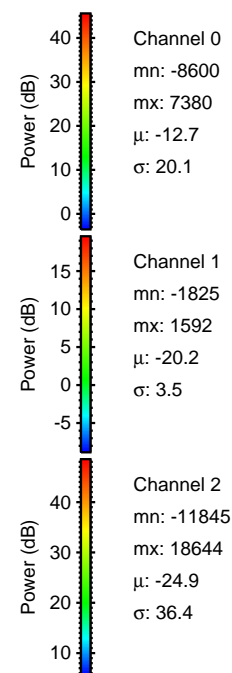
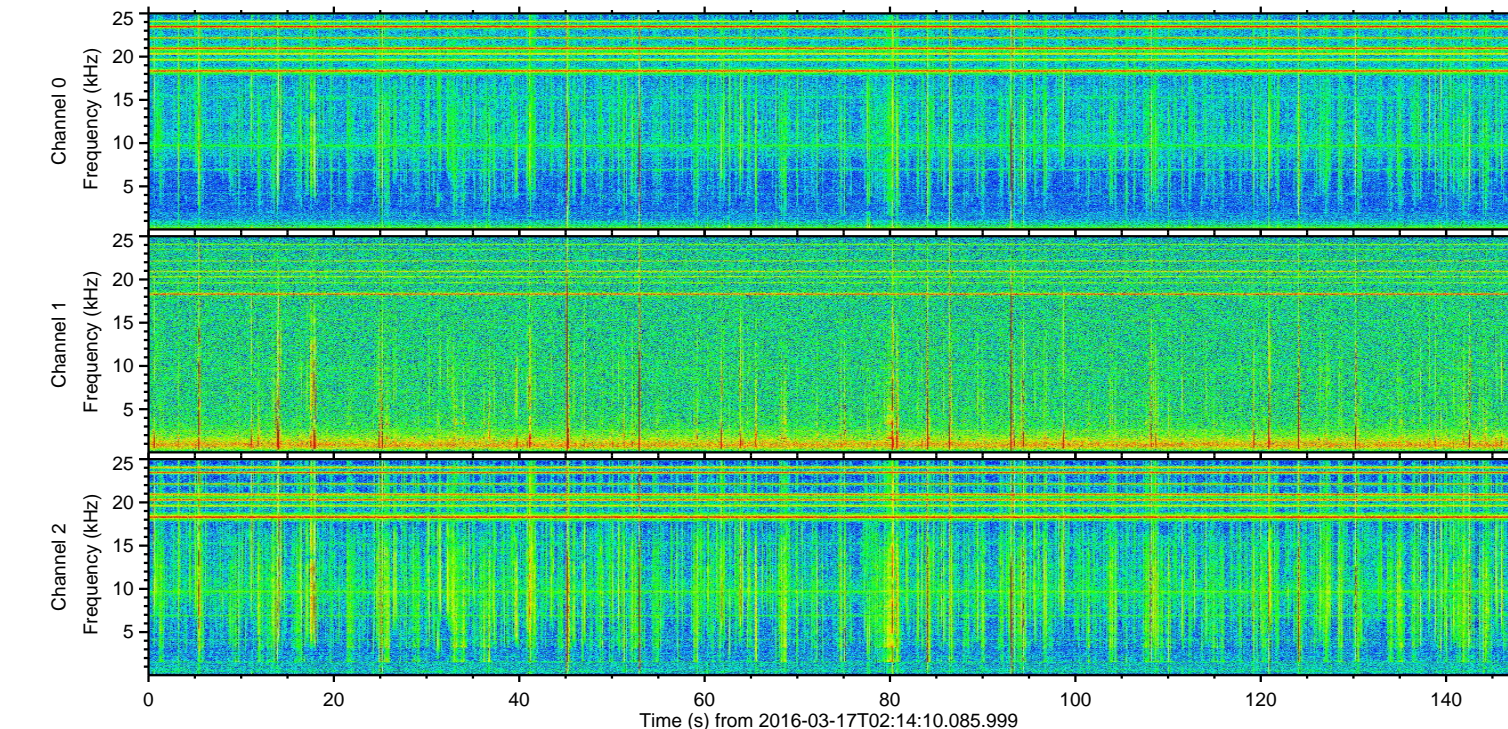
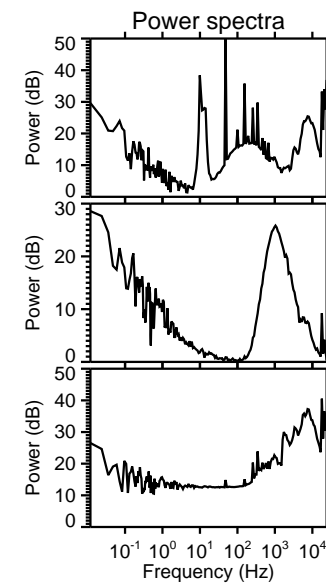
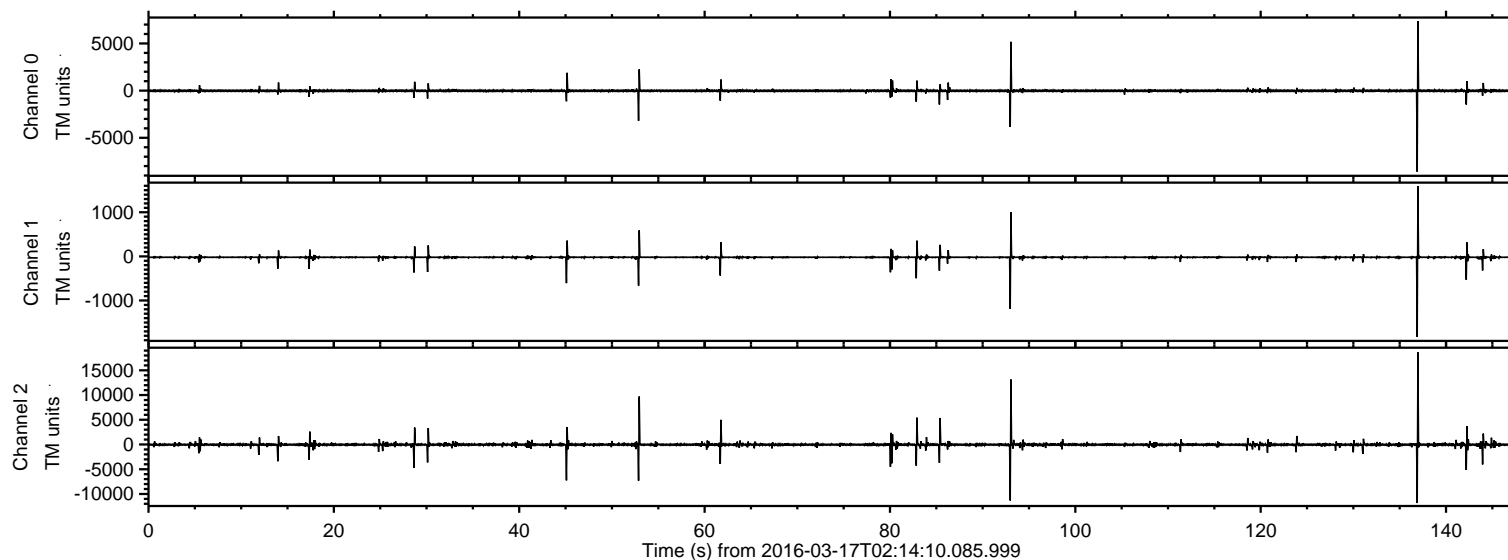


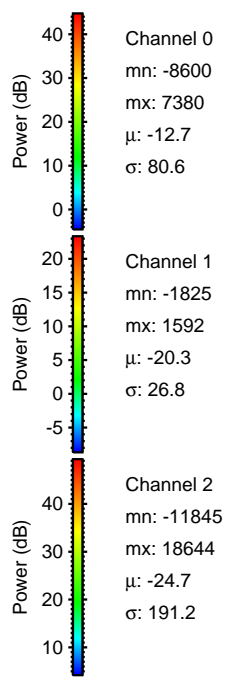
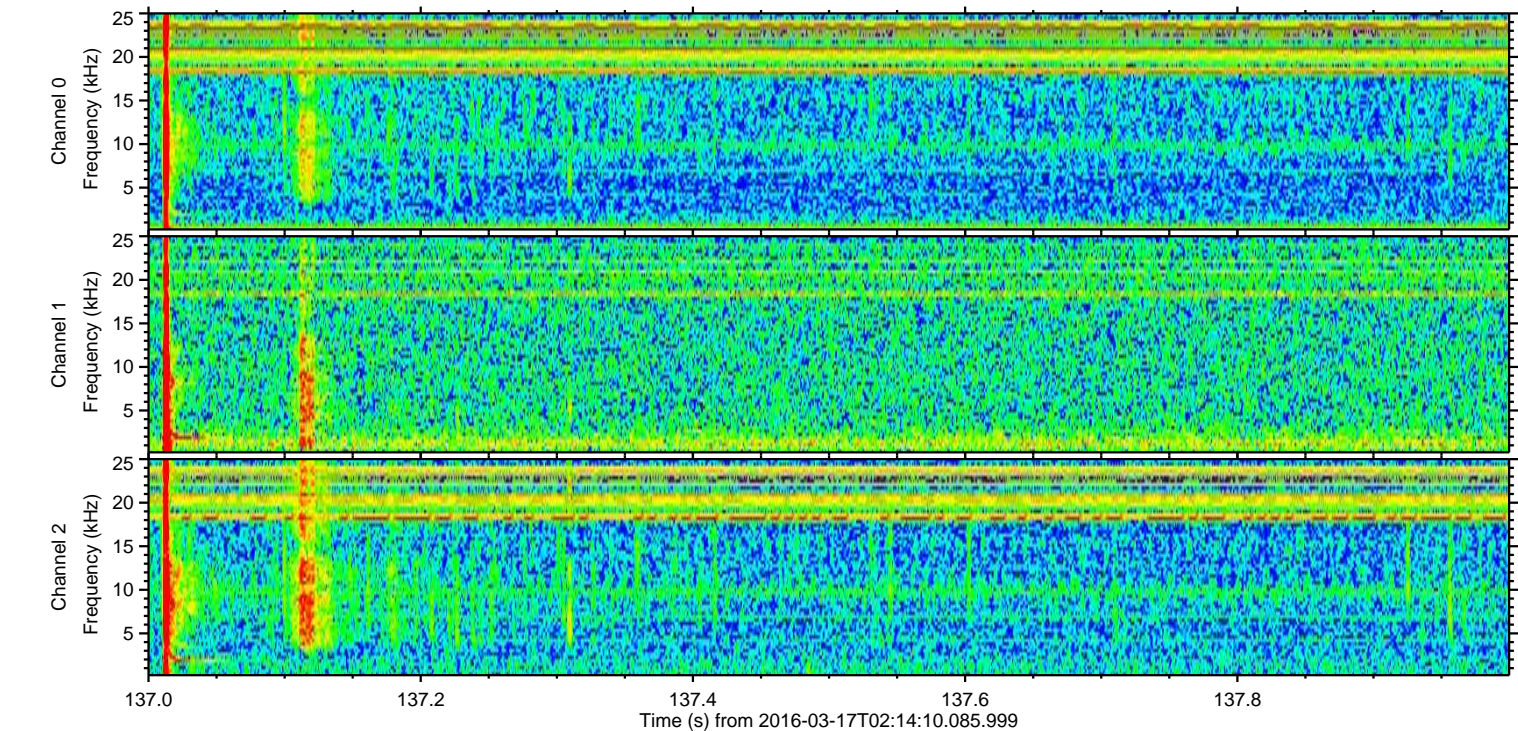
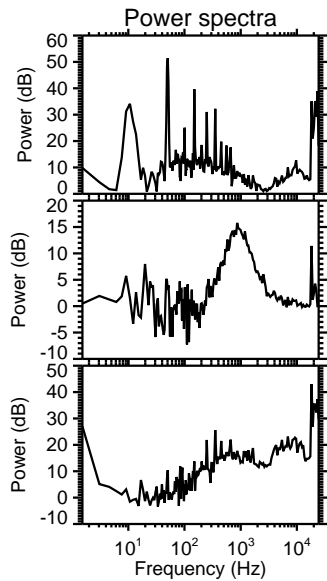
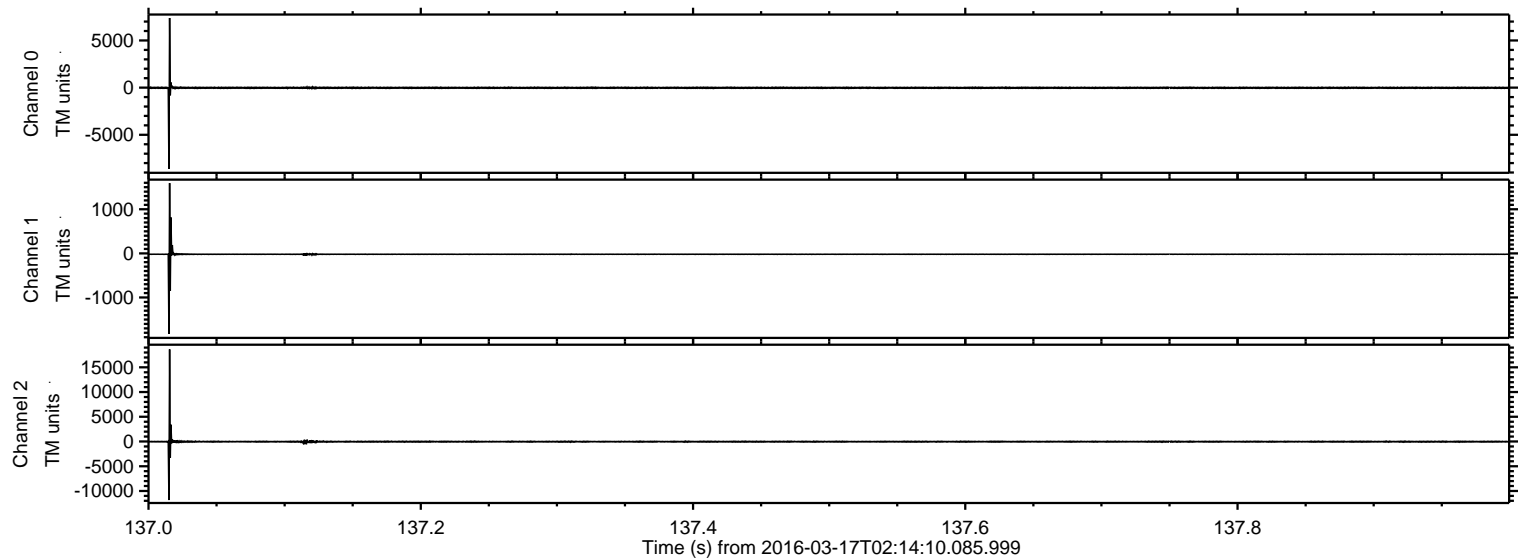
ELMAVAN 3D WAVEFORMS (Measured data sampled at 50 kHz) 51000 packets of 144 samples from 2016-03-17T02:14:10.085.999.

Processed Wed Apr 20 22:12:02 2016 by ELM ver.2012-10-06 from 001__elm20160317_021409__dat00.bin

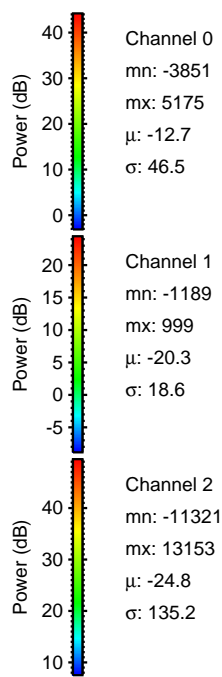
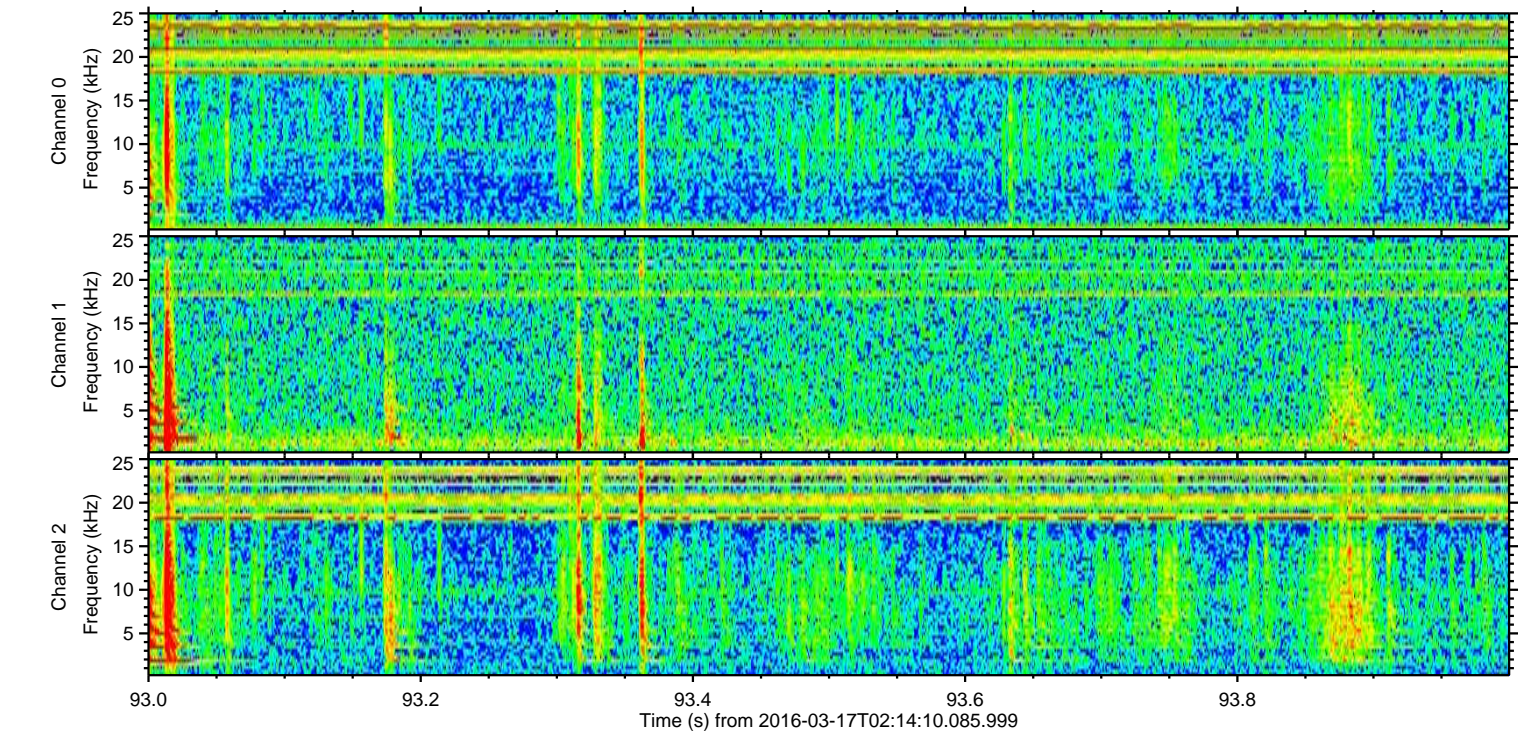
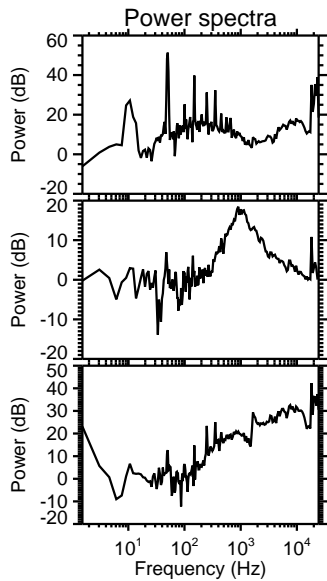
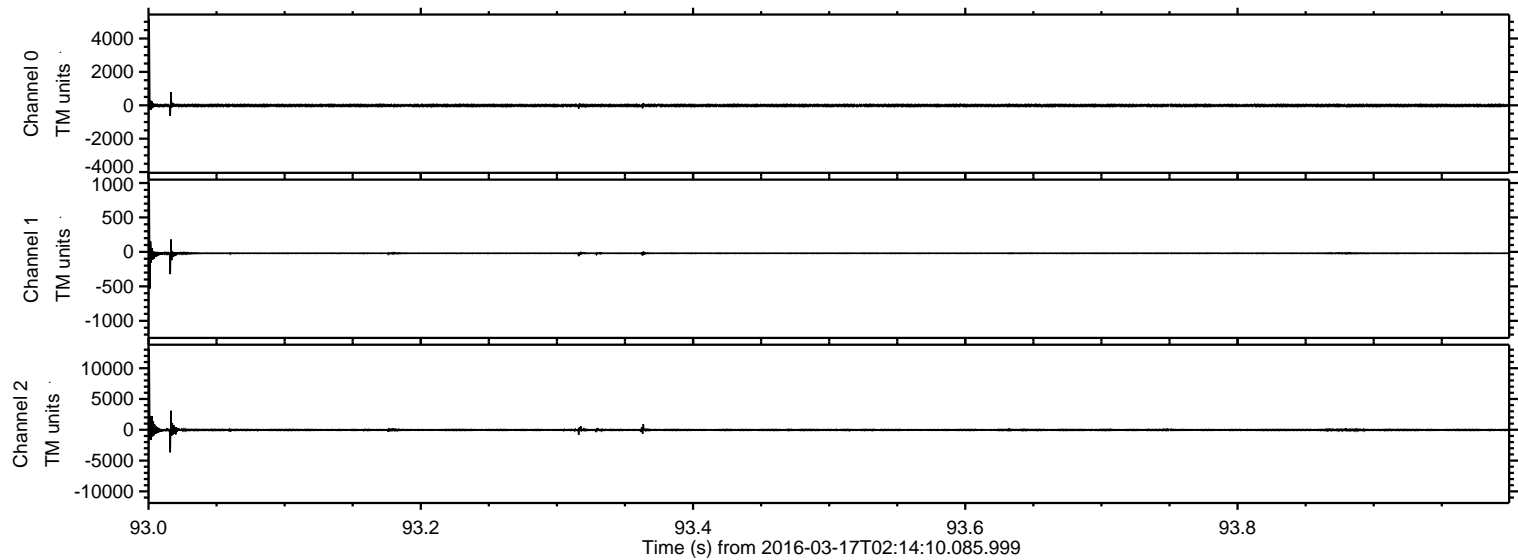


ELMAVAN 3D WAVEFORMS (Measured data sampled at 50 kHz) 51000 packets of 144 samples from 2016-03-17T02:14:10.085.999. Part 138/147

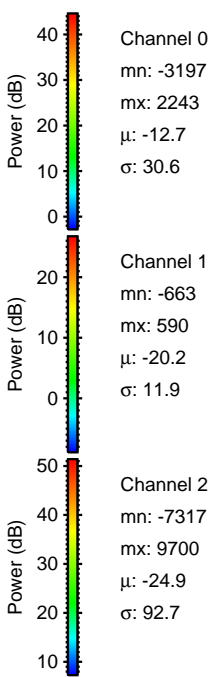
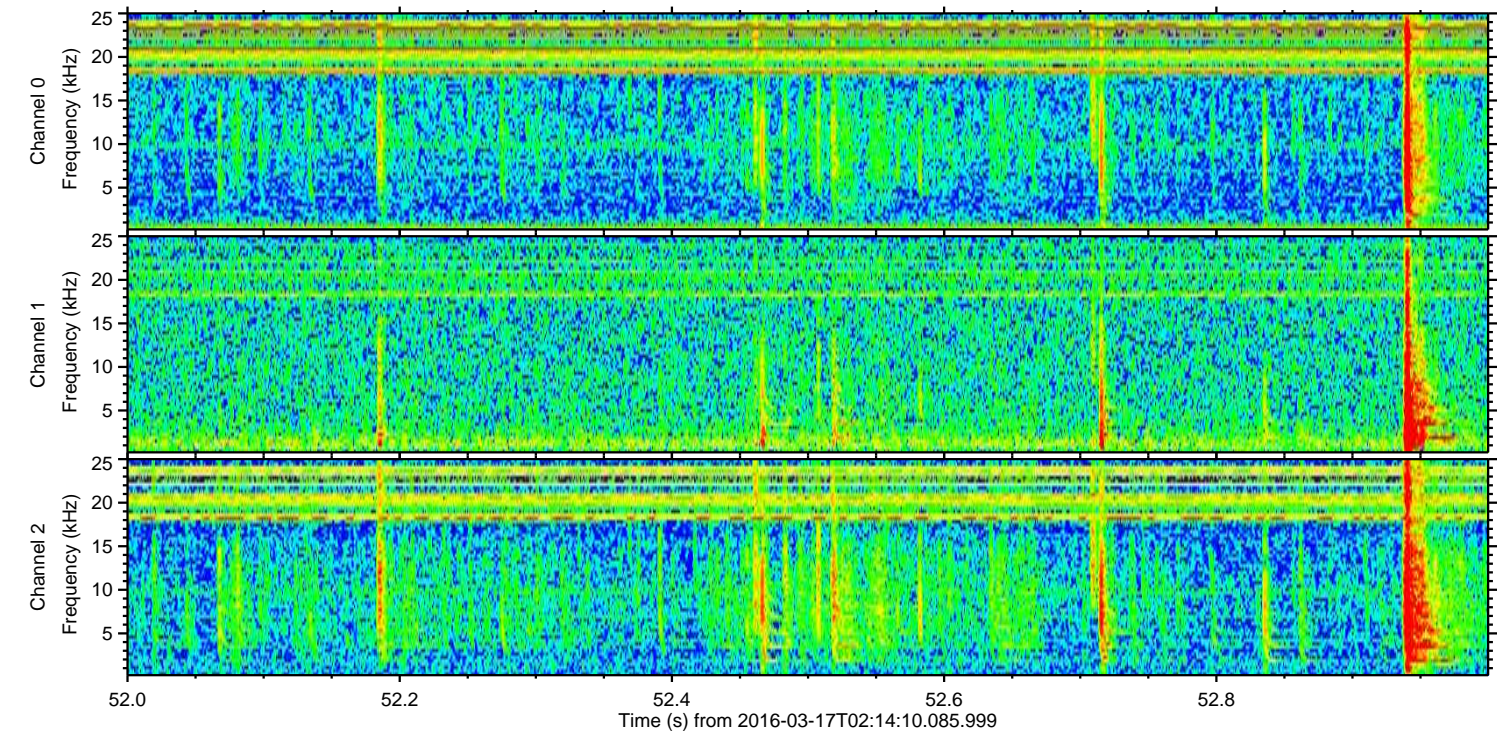
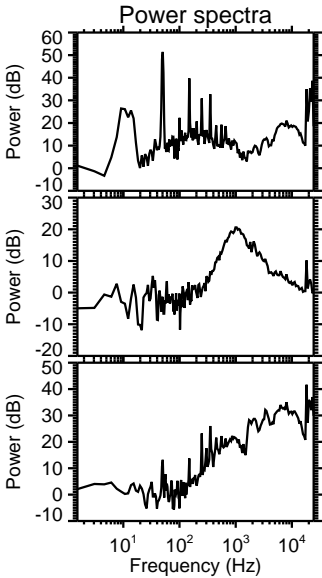
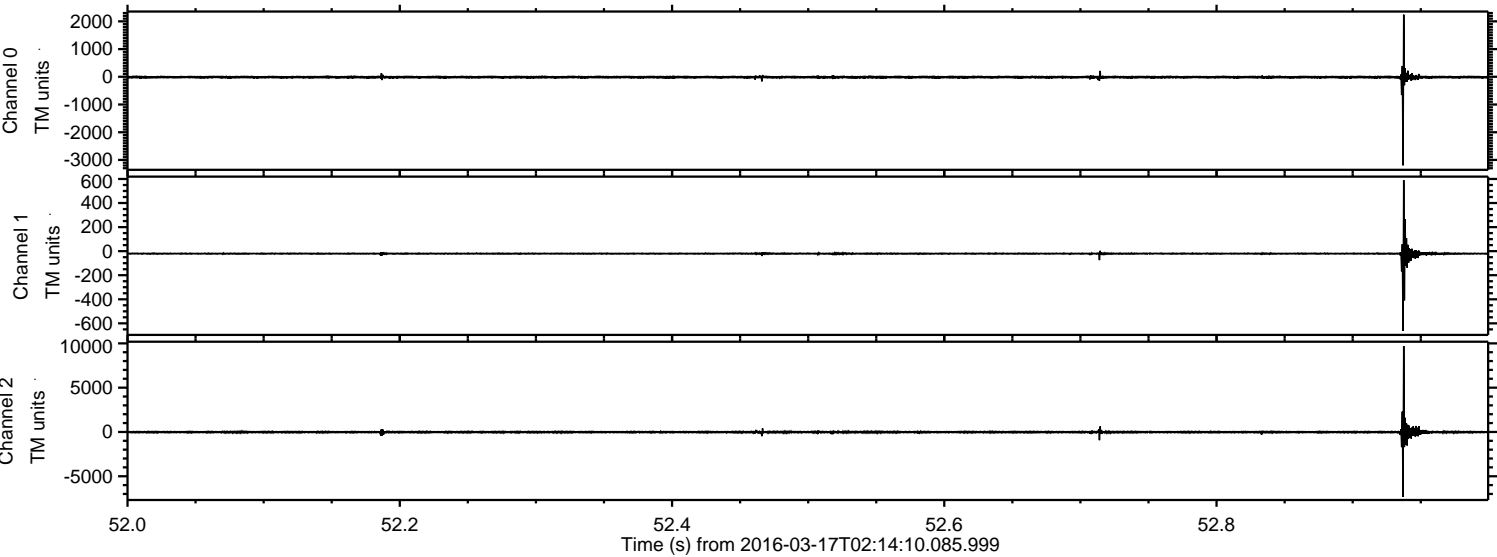
Processed Wed Apr 20 22:12:15 2016 by ELM ver.2012-10-06 from 001__elm20160317_021409__dat00.bin



Processed Wed Apr 20 22:12:15 2016 by ELM ver.2012-10-06 from 001__elm20160317_021409__dat00.bin

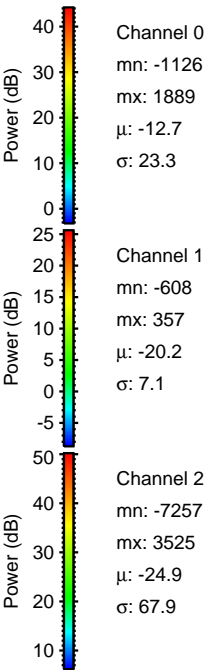
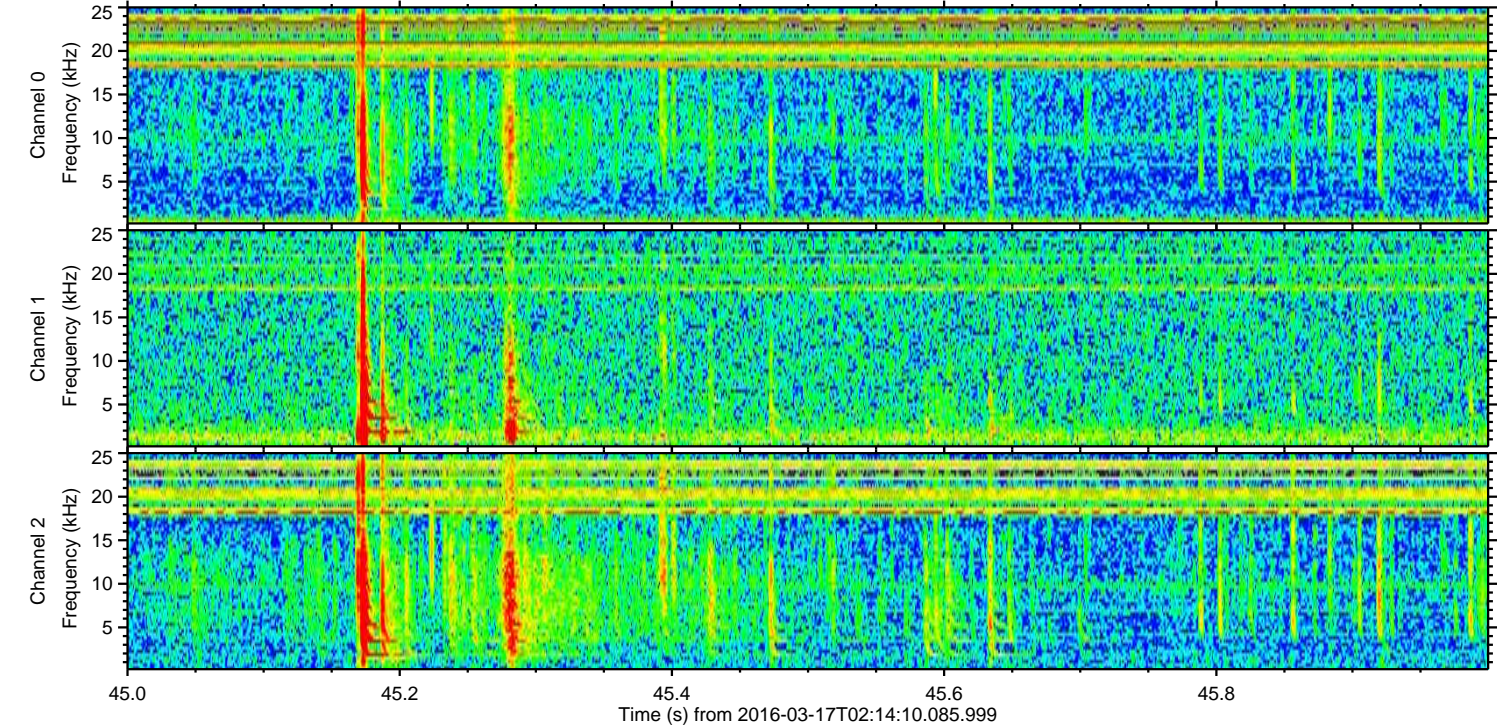
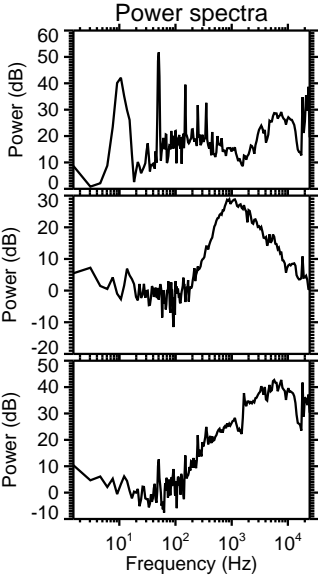
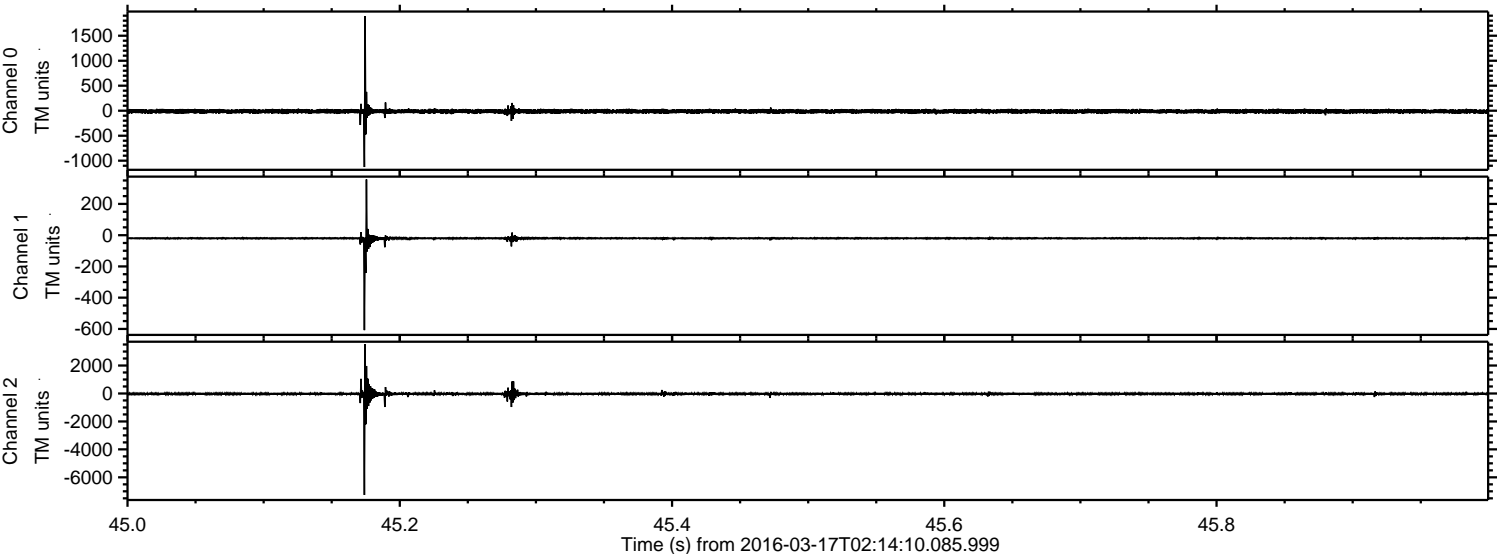


Processed Wed Apr 20 22:12:16 2016 by ELM ver.2012-10-06 from 001__elm20160317_021409__dat00.bin

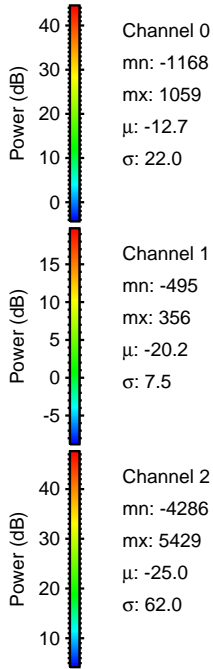
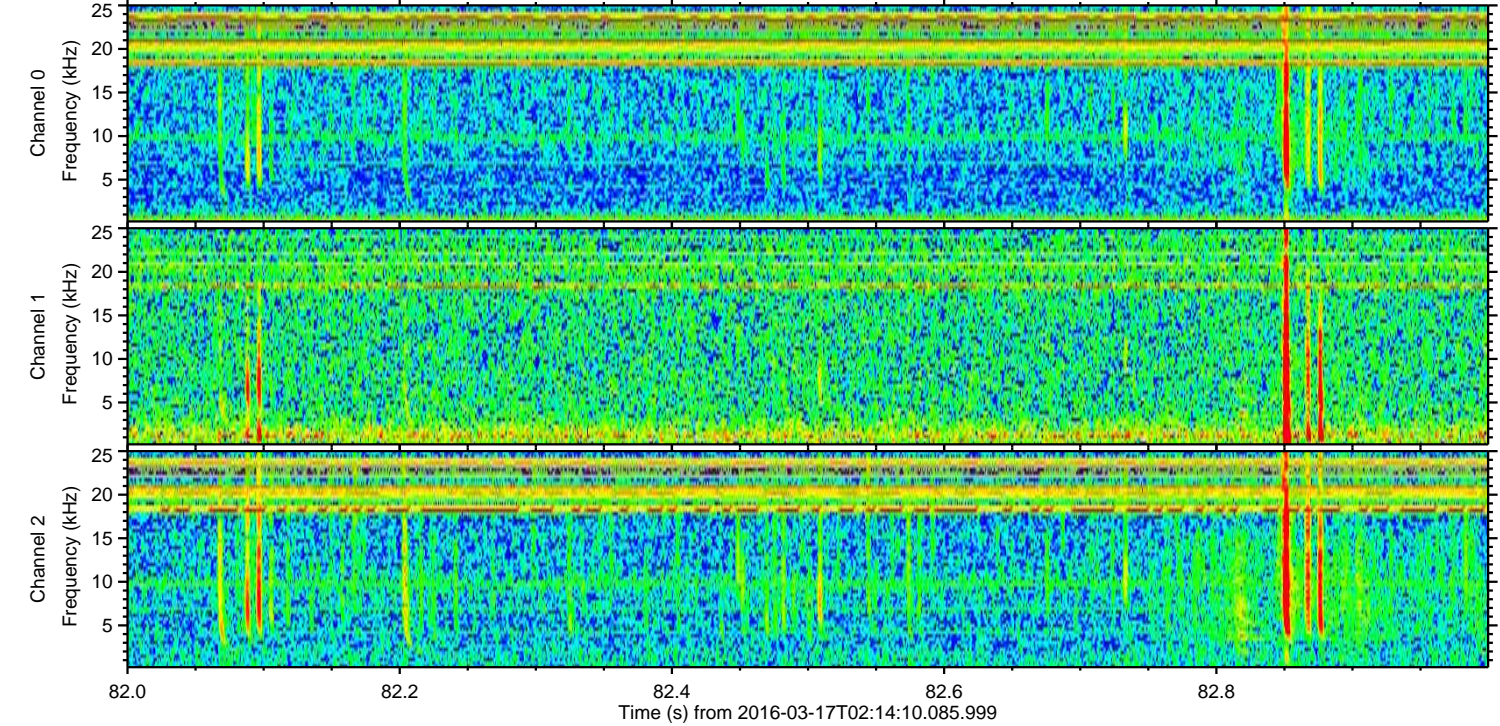
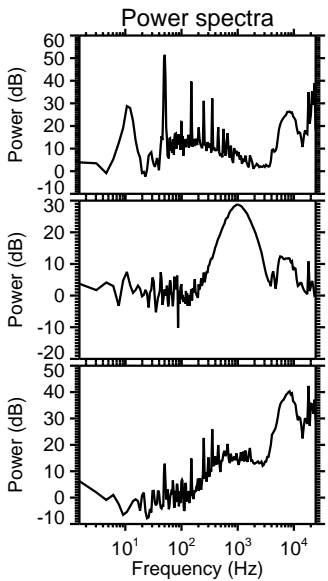
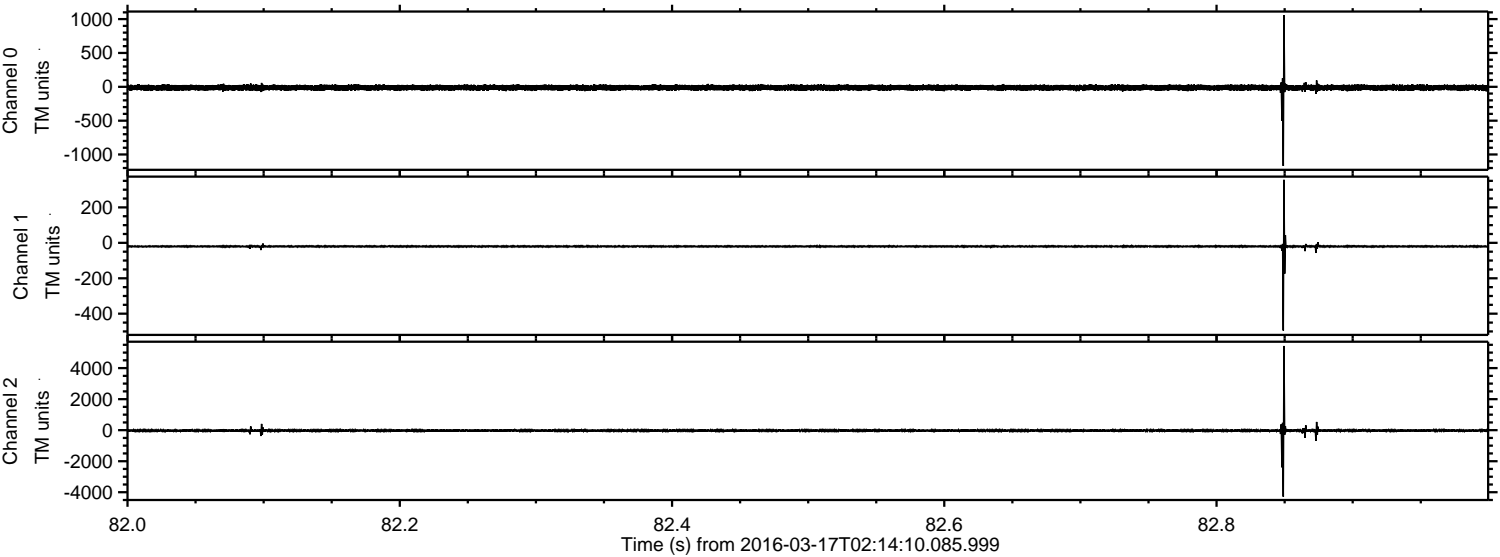


ELMAVAN 3D WAVEFORMS (Measured data sampled at 50 kHz) 51000 packets of 144 samples from 2016-03-17T02:14:10.085.999. Part 46/147

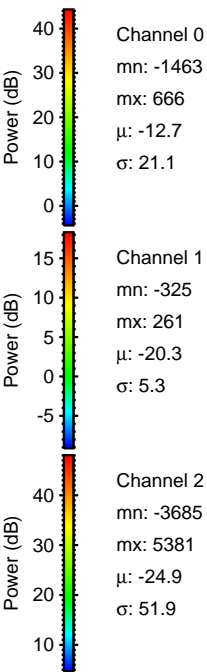
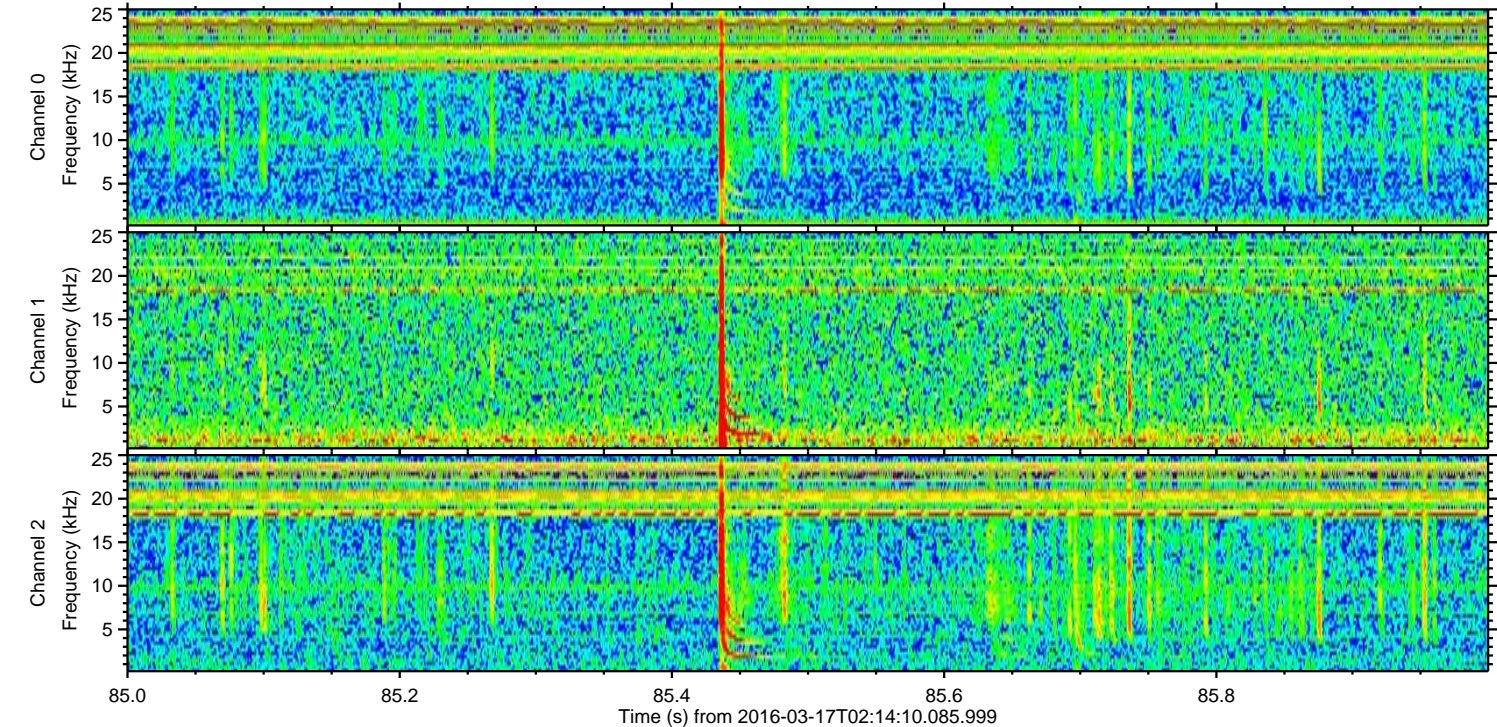
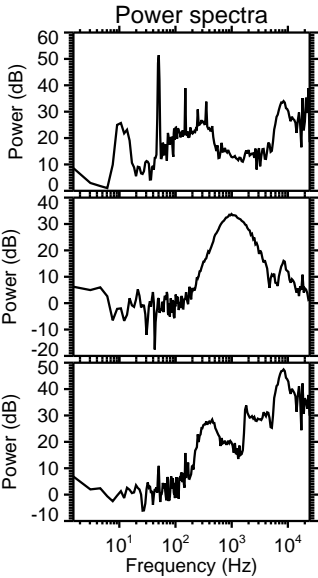
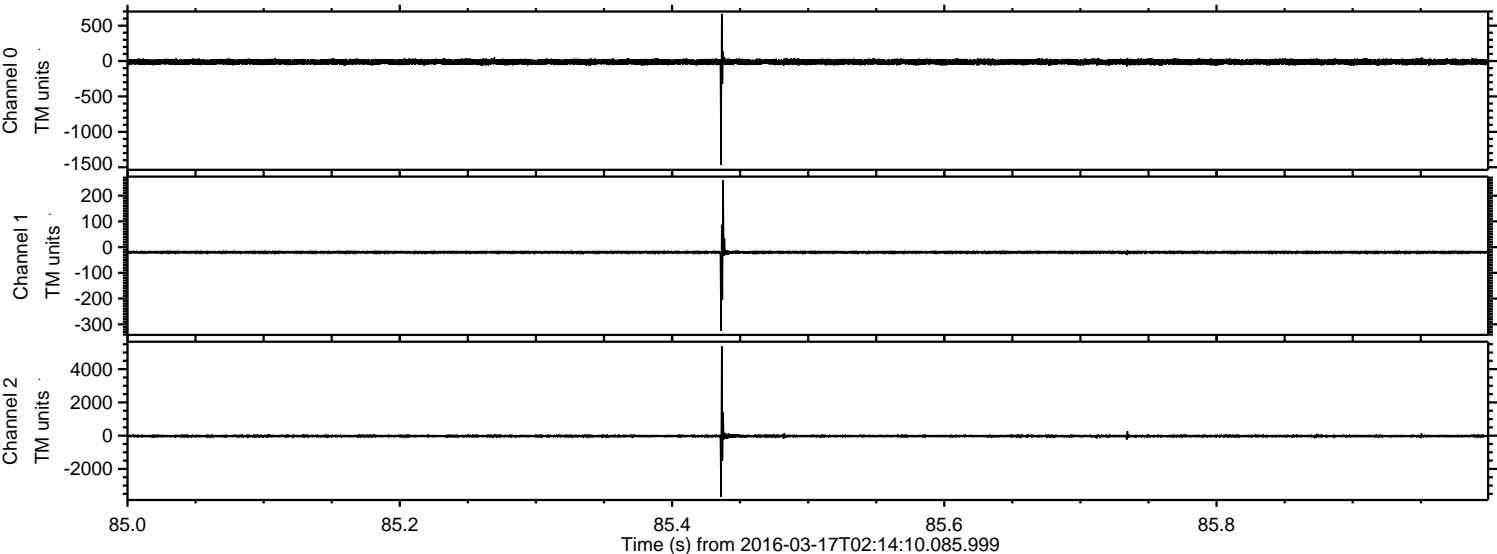
Processed Wed Apr 20 22:12:17 2016 by ELM ver.2012-10-06 from 001__elm20160317_021409__dat00.bin



Processed Wed Apr 20 22:12:18 2016 by ELM ver.2012-10-06 from 001__elm20160317_021409__dat00.bin

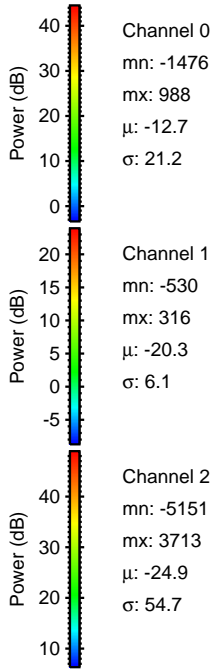
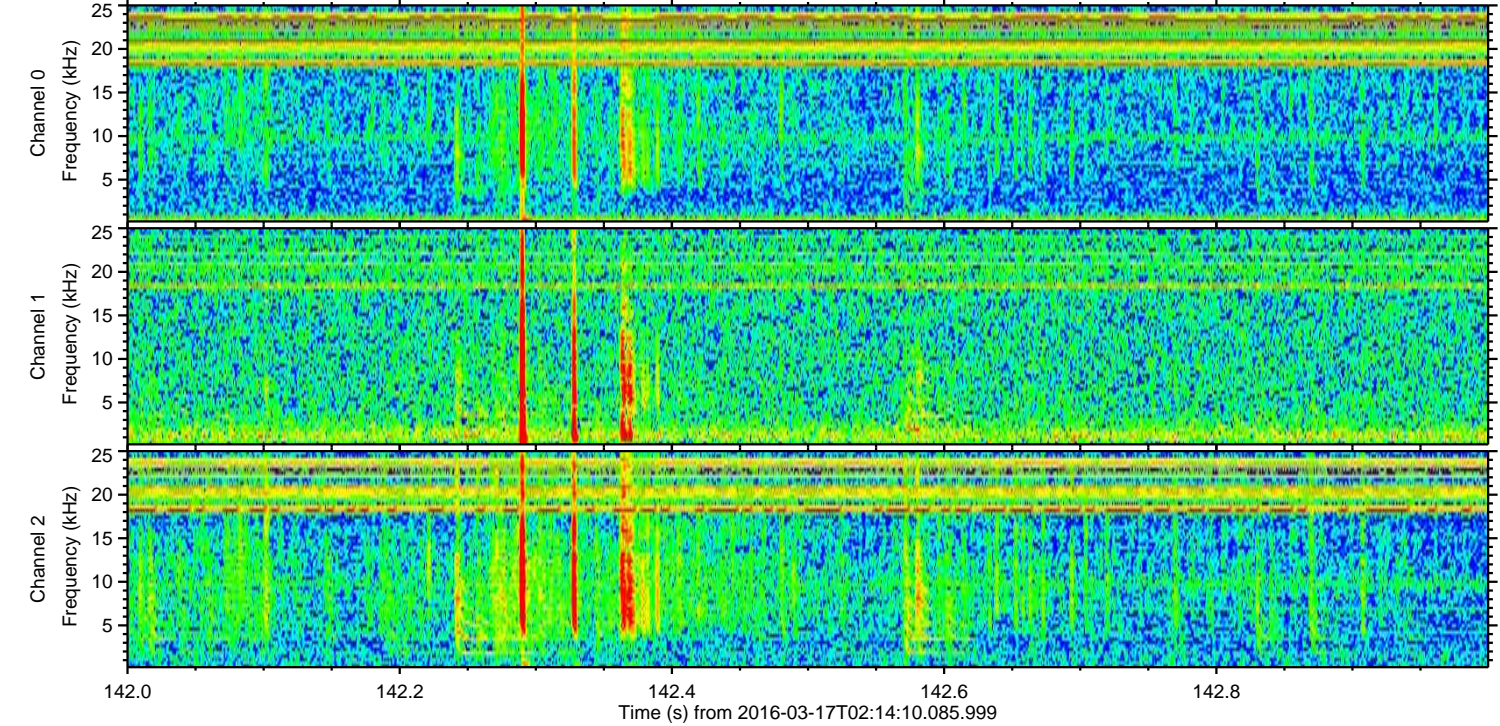
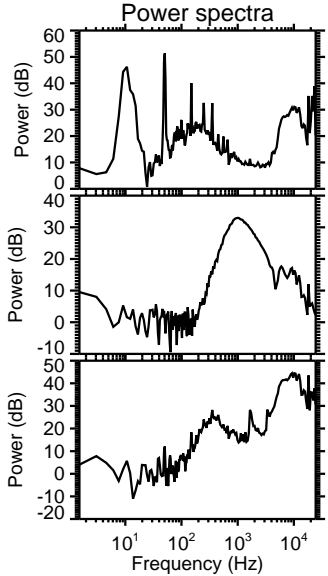
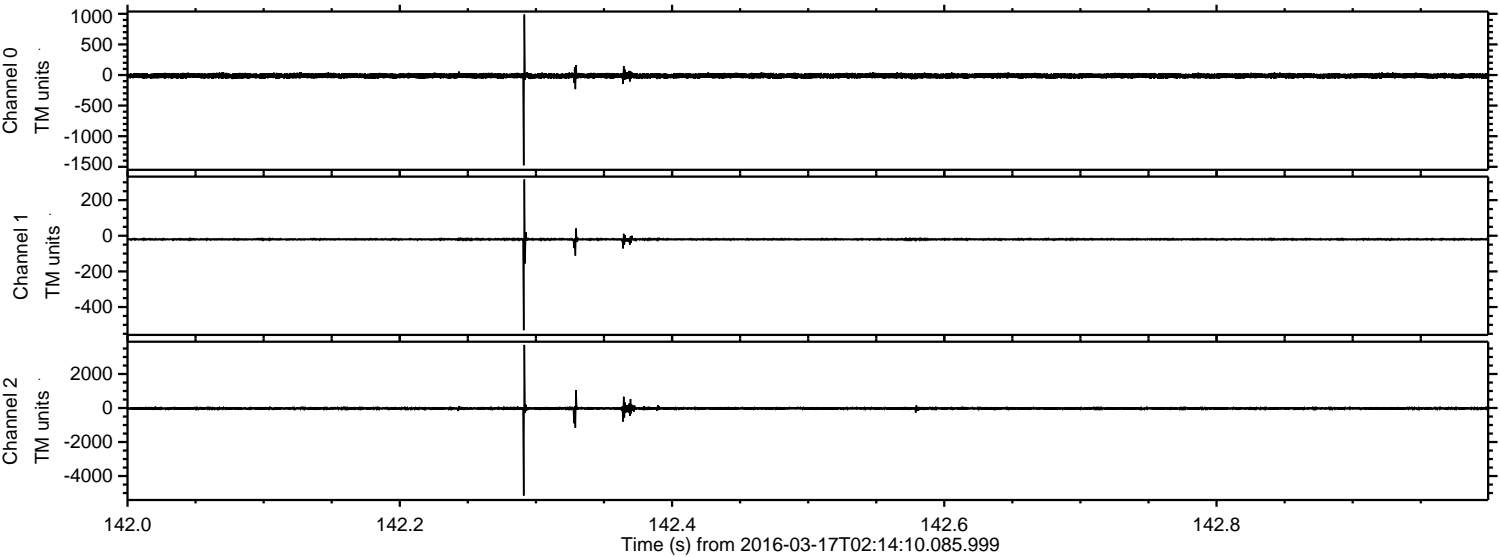


Processed Wed Apr 20 22:12:19 2016 by ELM ver.2012-10-06 from 001__elm20160317_021409__dat00.bin

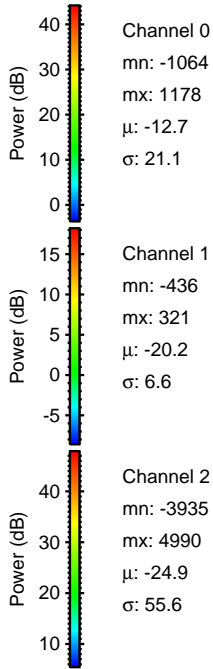
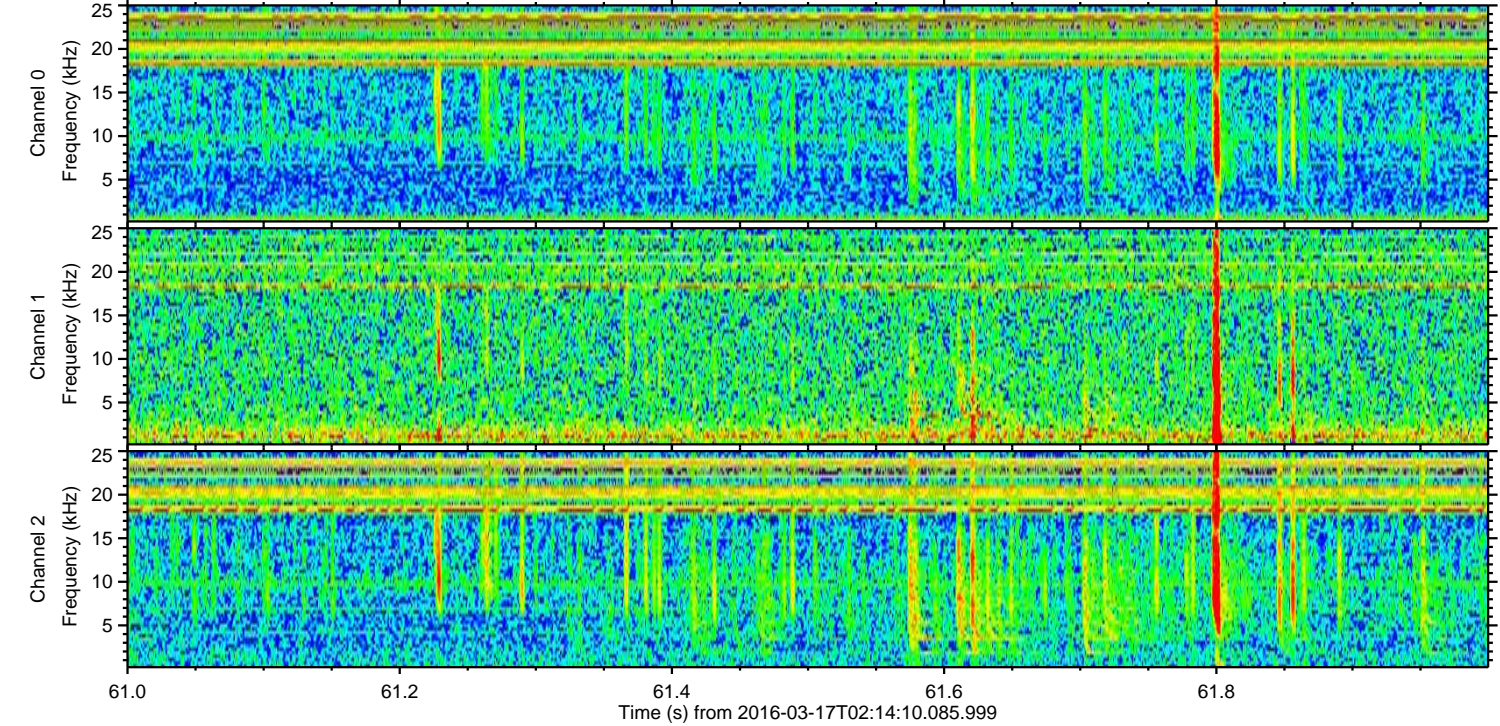
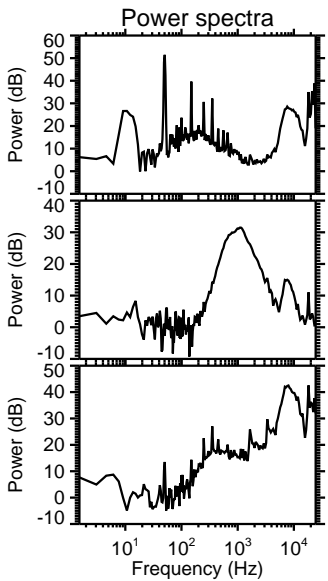
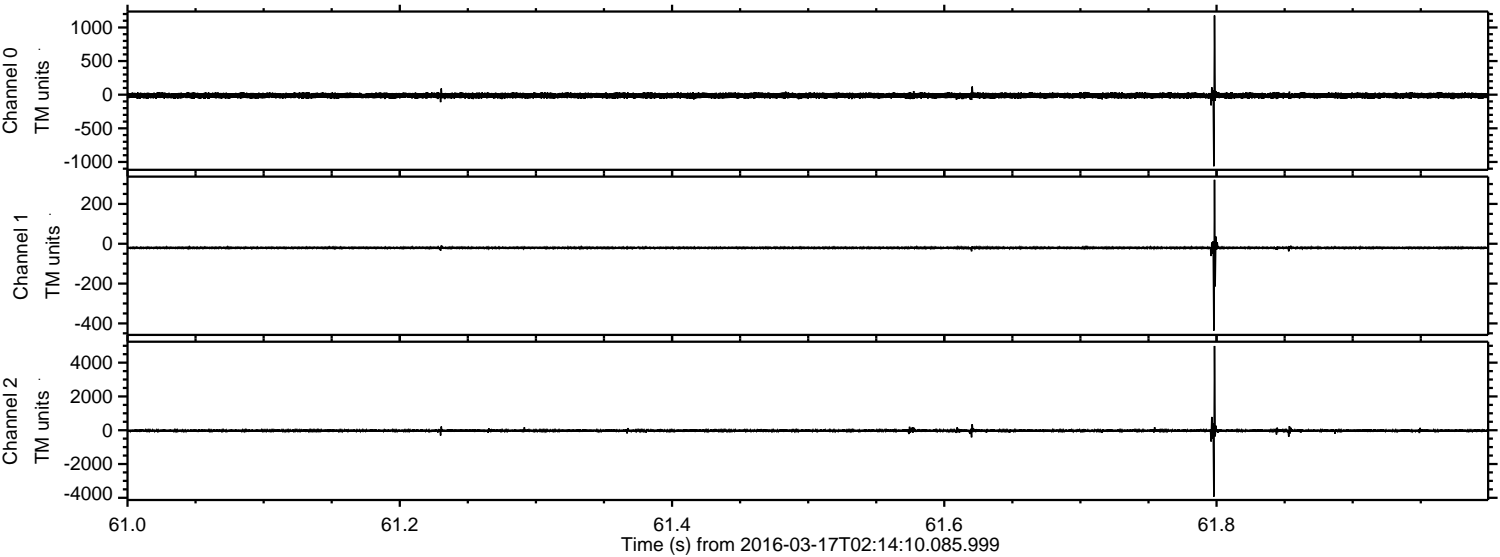


ELMAVAN 3D WAVEFORMS (Measured data sampled at 50 kHz) 51000 packets of 144 samples from 2016-03-17T02:14:10.085.999. Part 143/147

Processed Wed Apr 20 22:12:20 2016 by ELM ver.2012-10-06 from 001__elm20160317_021409__dat00.bin



Processed Wed Apr 20 22:12:21 2016 by ELM ver.2012-10-06 from 001__elm20160317_021409__dat00.bin

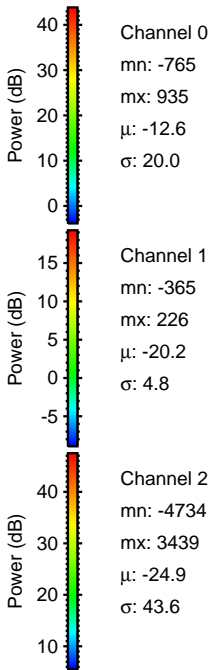
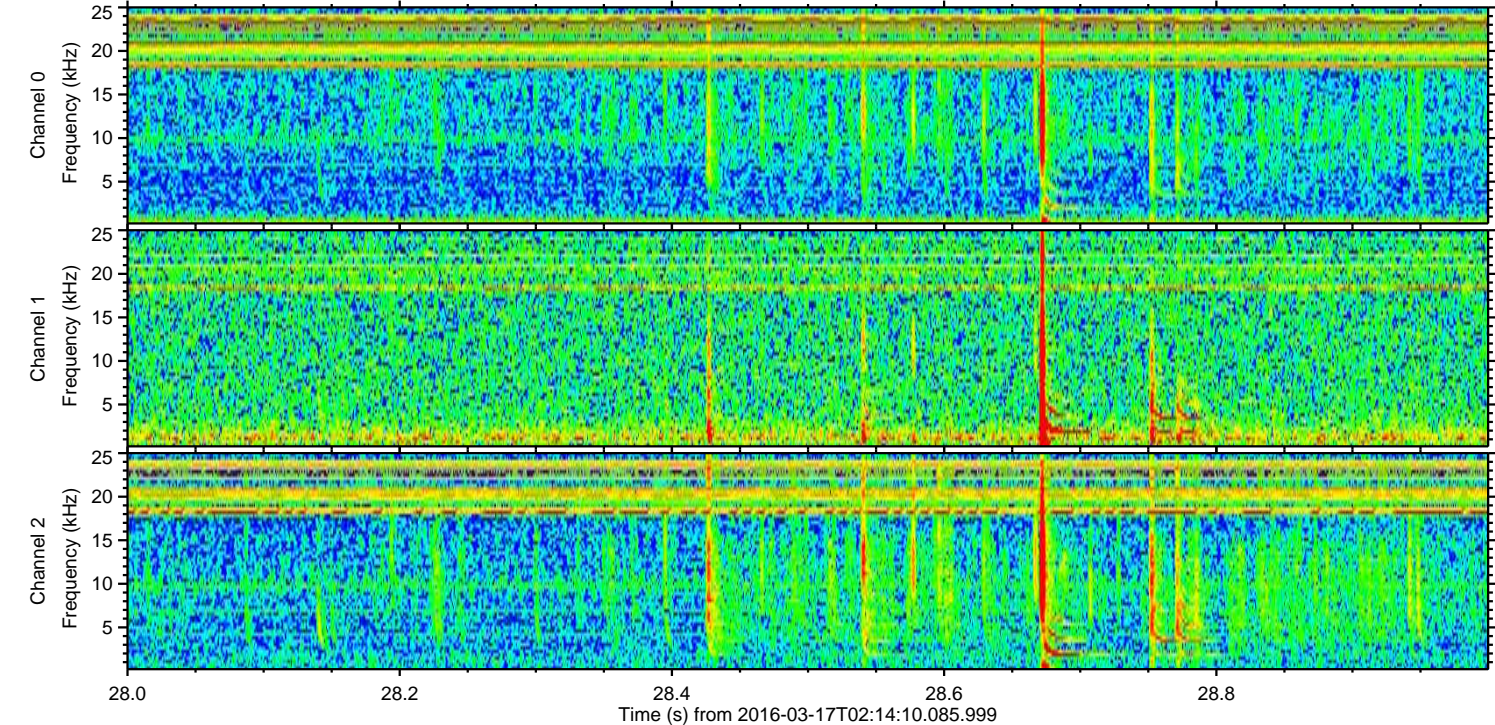
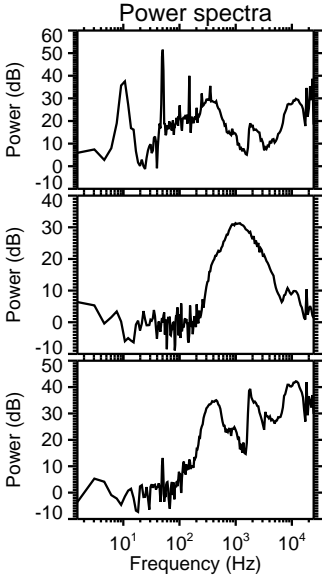
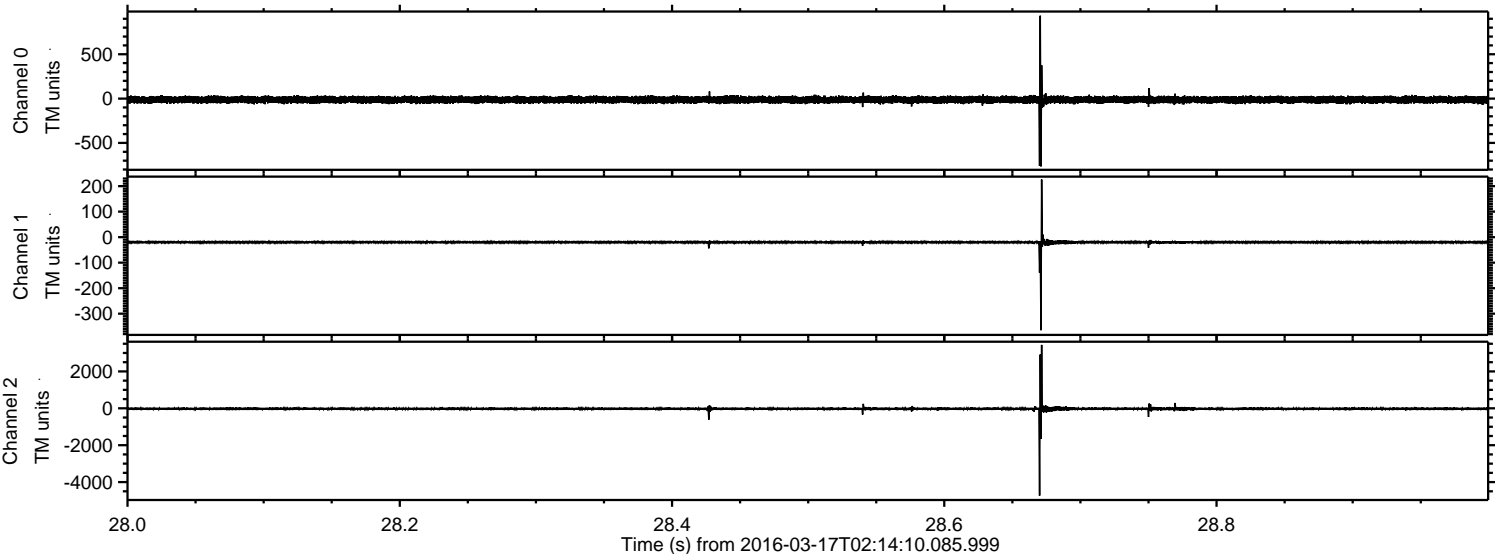


Channel 0
mn: -1064
mx: 1178
 μ : -12.7
 σ : 21.1

Channel 1
mn: -436
mx: 321
 μ : -20.2
 σ : 6.6

Channel 2
mn: -3935
mx: 4990
 μ : -24.9
 σ : 55.6

Processed Wed Apr 20 22:12:22 2016 by ELM ver.2012-10-06 from 001__elm20160317_021409__dat00.bin



Processed Wed Apr 20 22:12:23 2016 by ELM ver.2012-10-06 from 001__elm20160317_021409__dat00.bin

