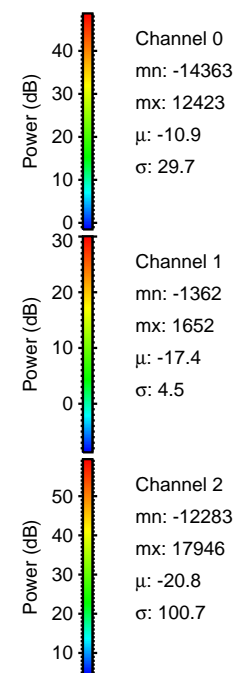
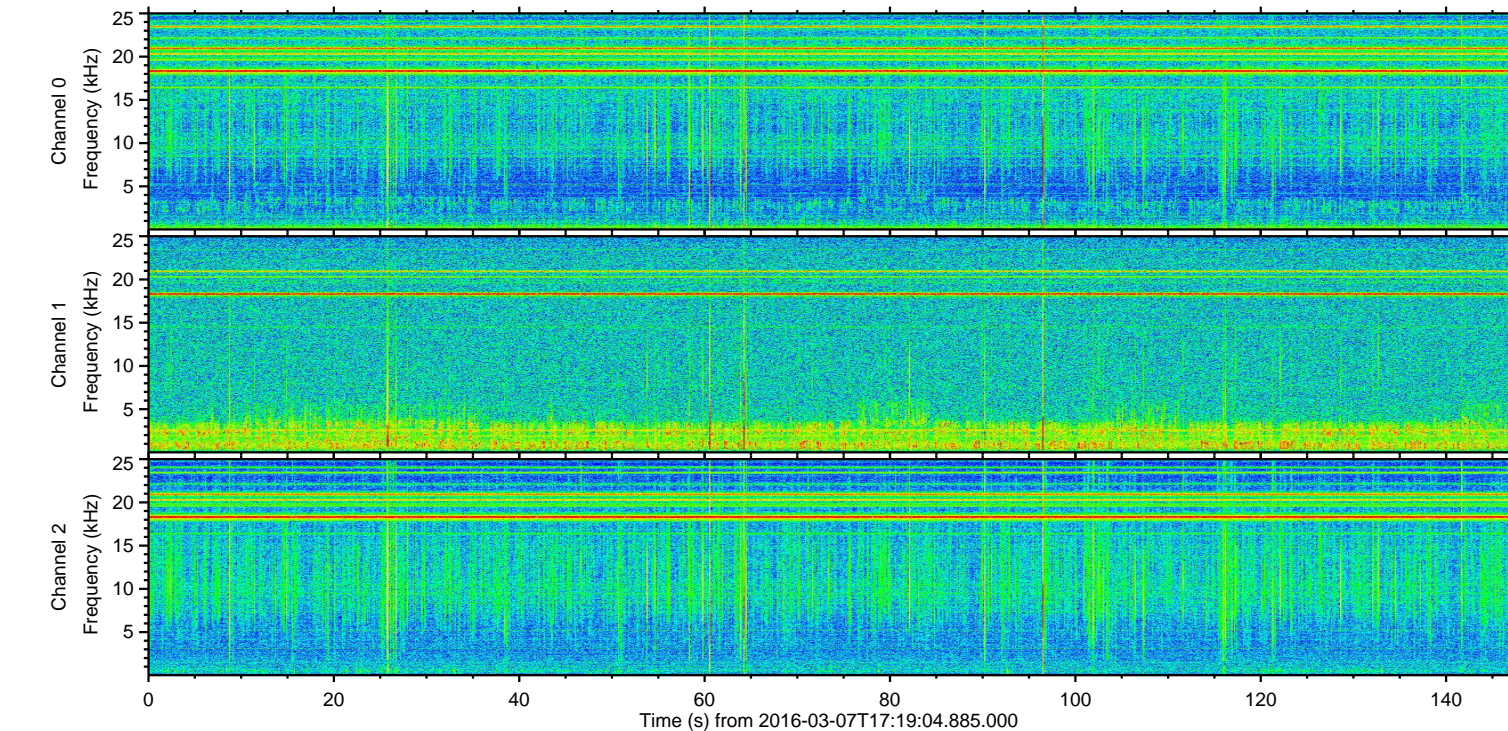
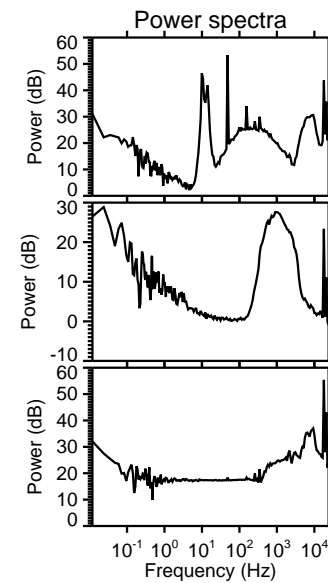
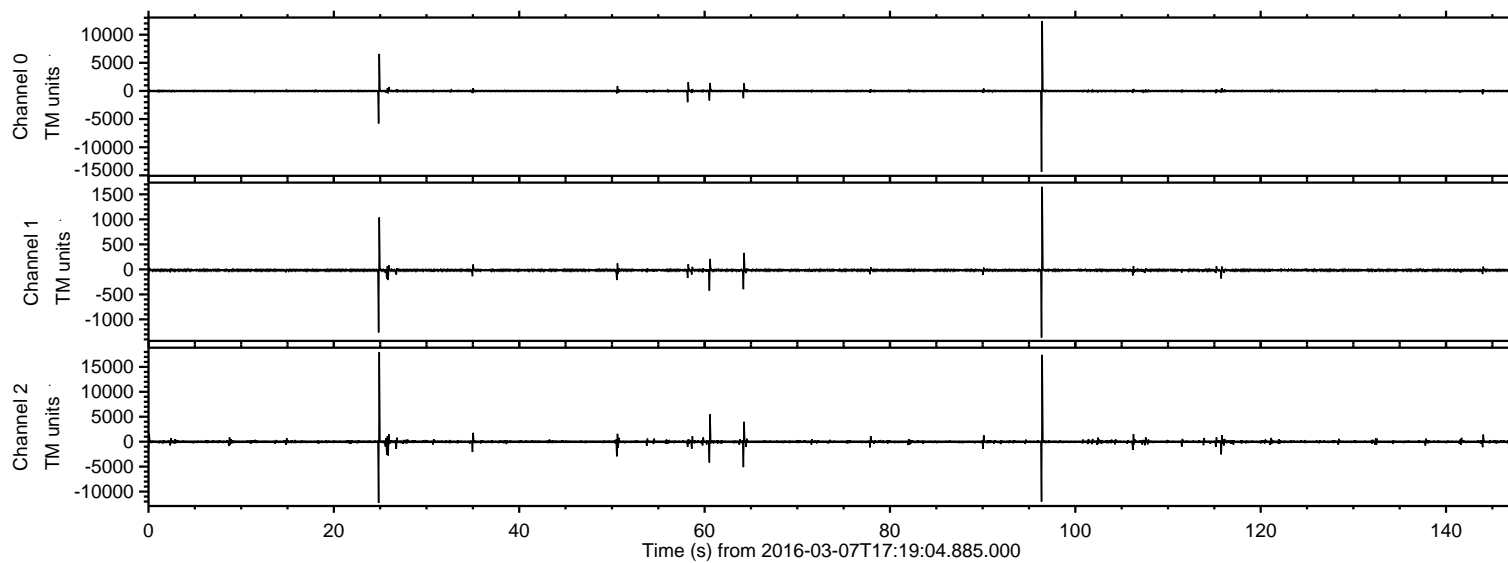
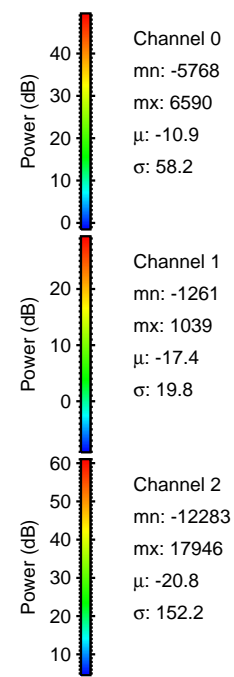
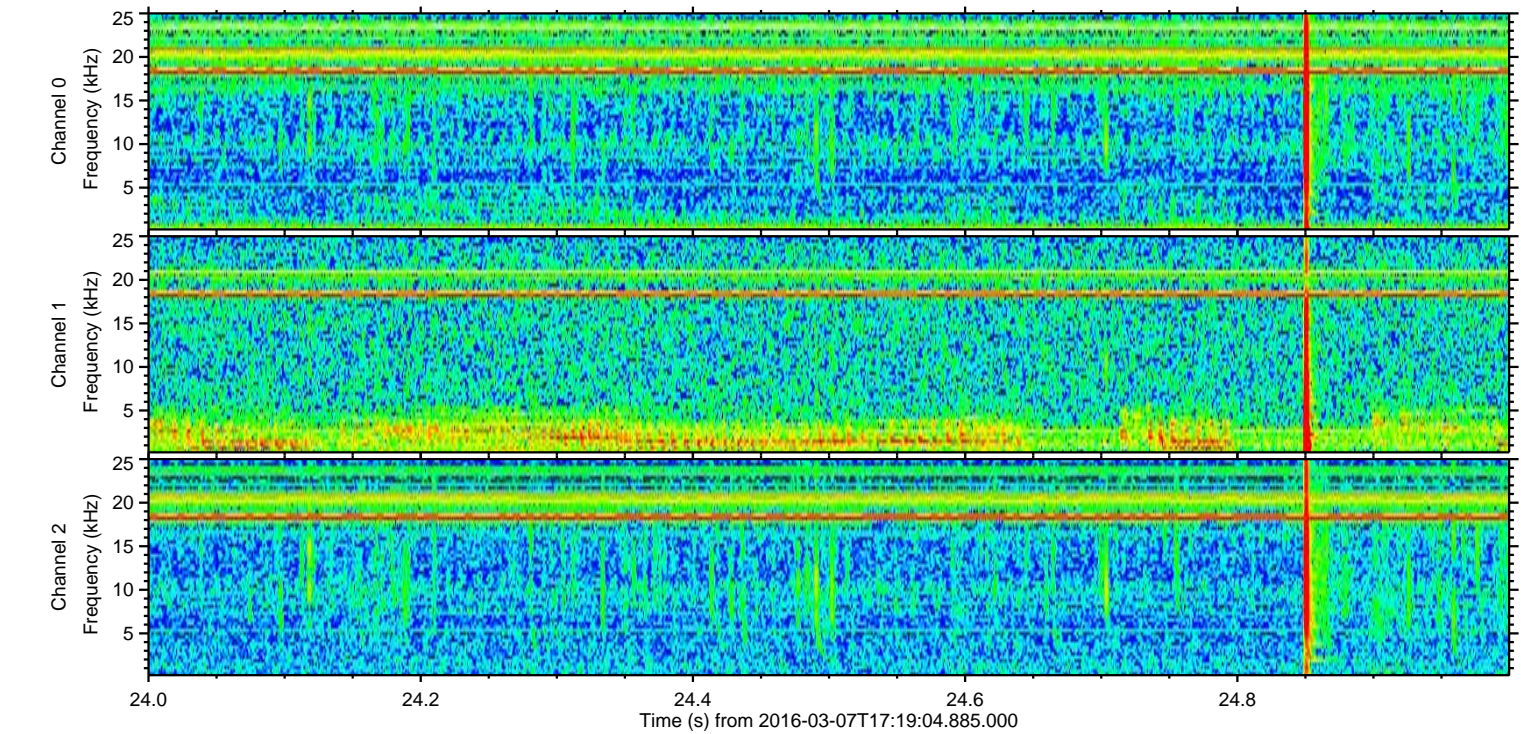
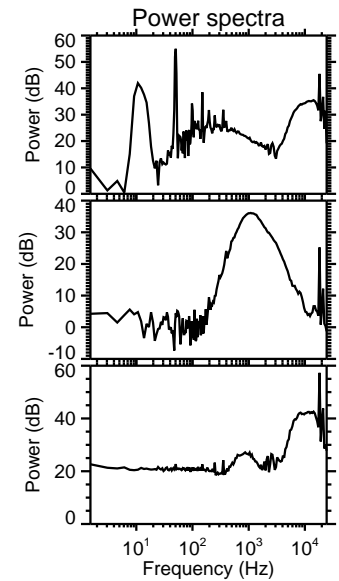
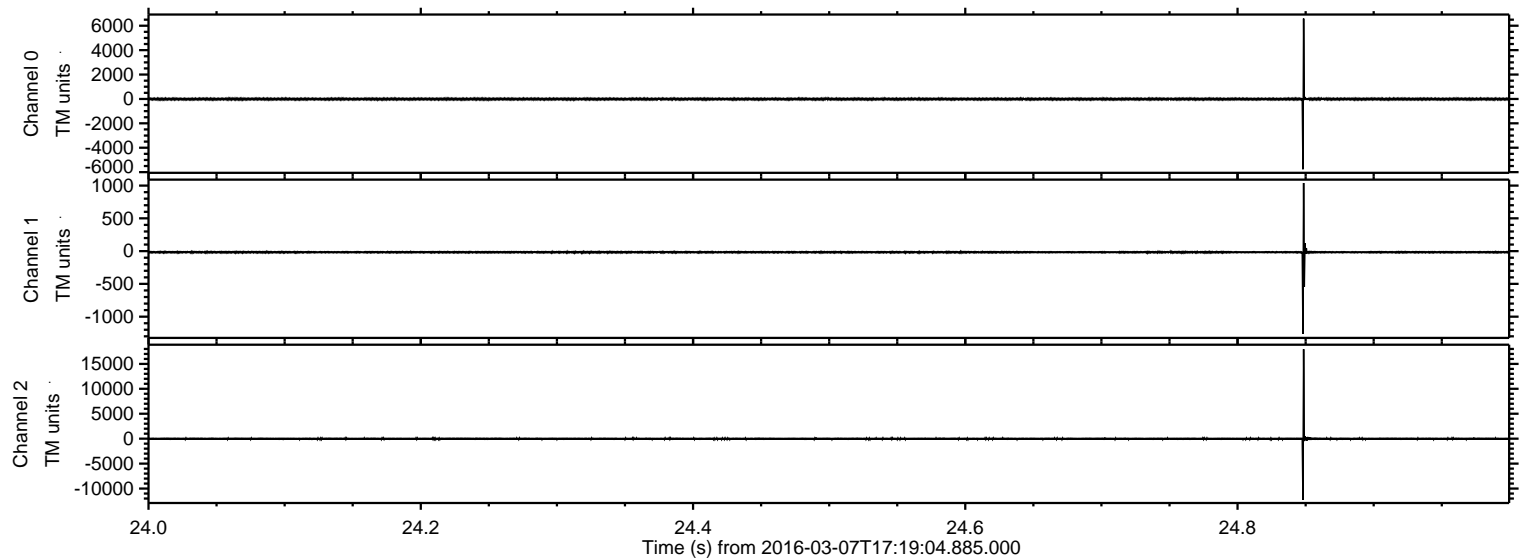


ELMAVAN 3D WAVEFORMS (Measured data sampled at 50 kHz) 51000 packets of 144 samples from 2016-03-07T17:19:04.885.000.

Processed Mon Apr 18 22:51:08 2016 by ELM ver.2012-10-06 from 001__elm20160307_171903__dat00.bin



Processed Mon Apr 18 22:51:19 2016 by ELM ver.2012-10-06 from 001__elm20160307_171903__dat00.bin

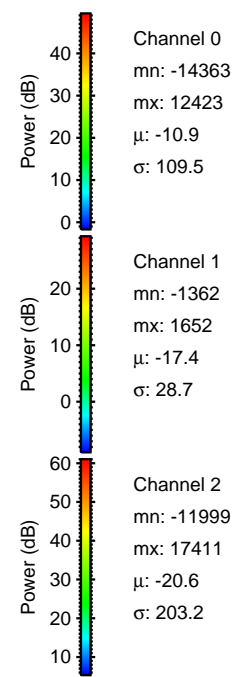
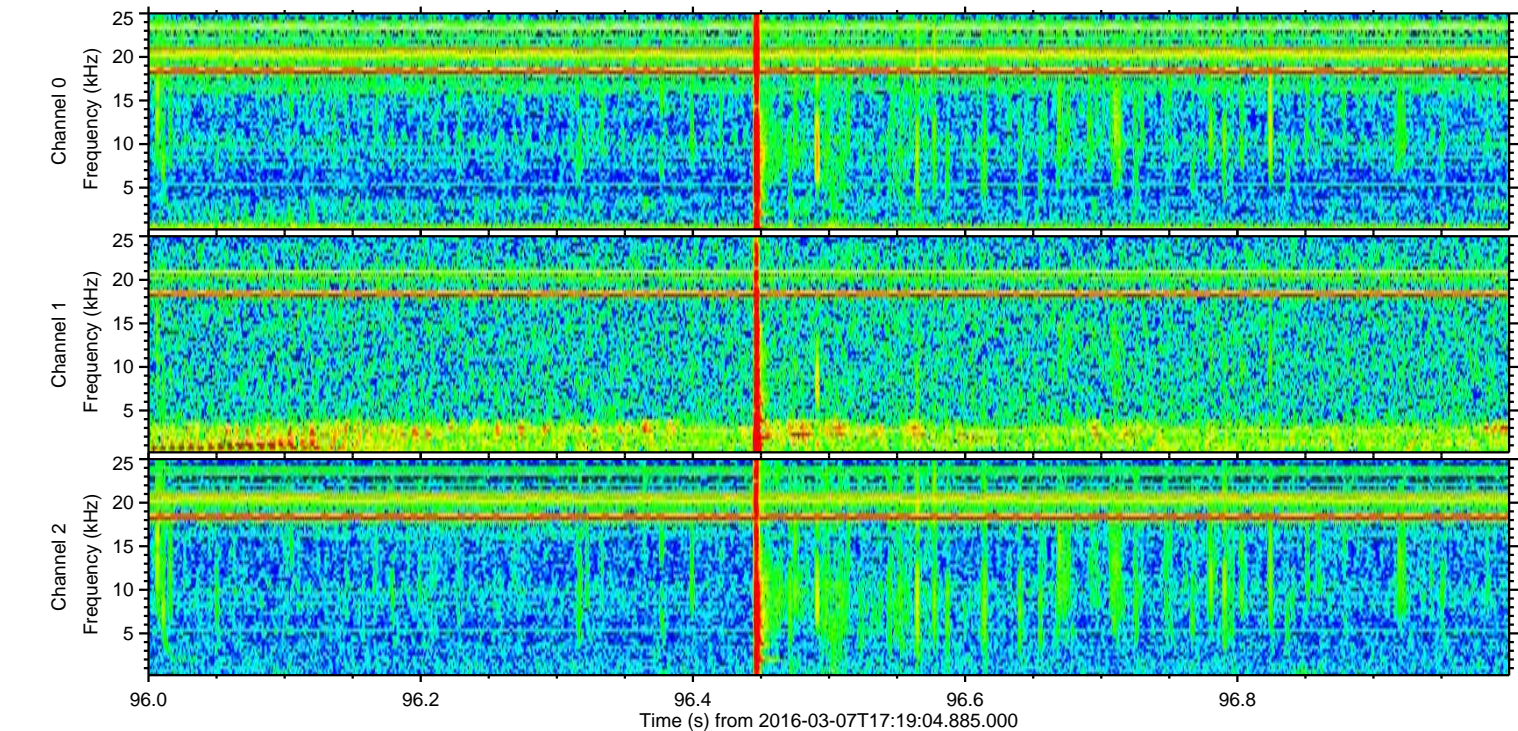
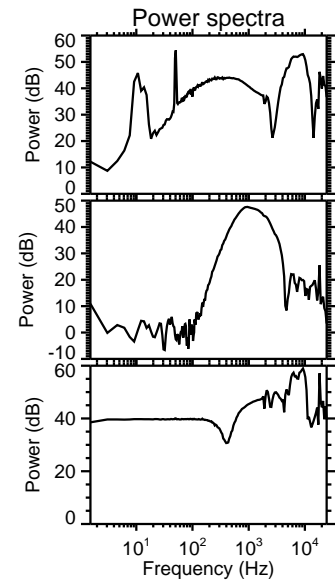
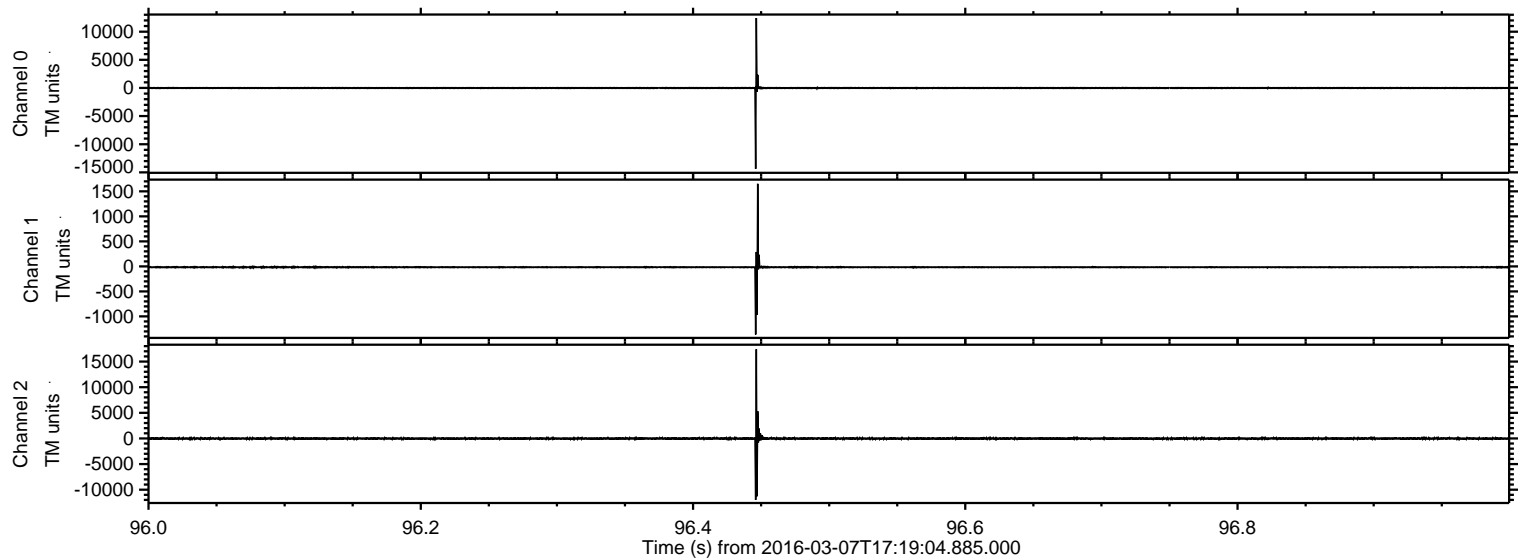


Channel 0
mn: -5768
mx: 6590
 μ : -10.9
 σ : 58.2

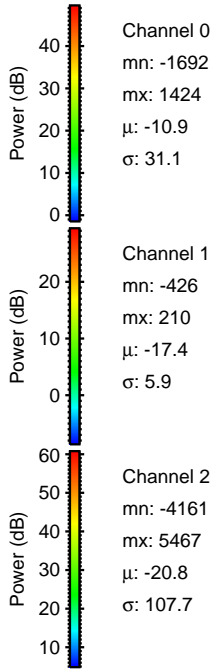
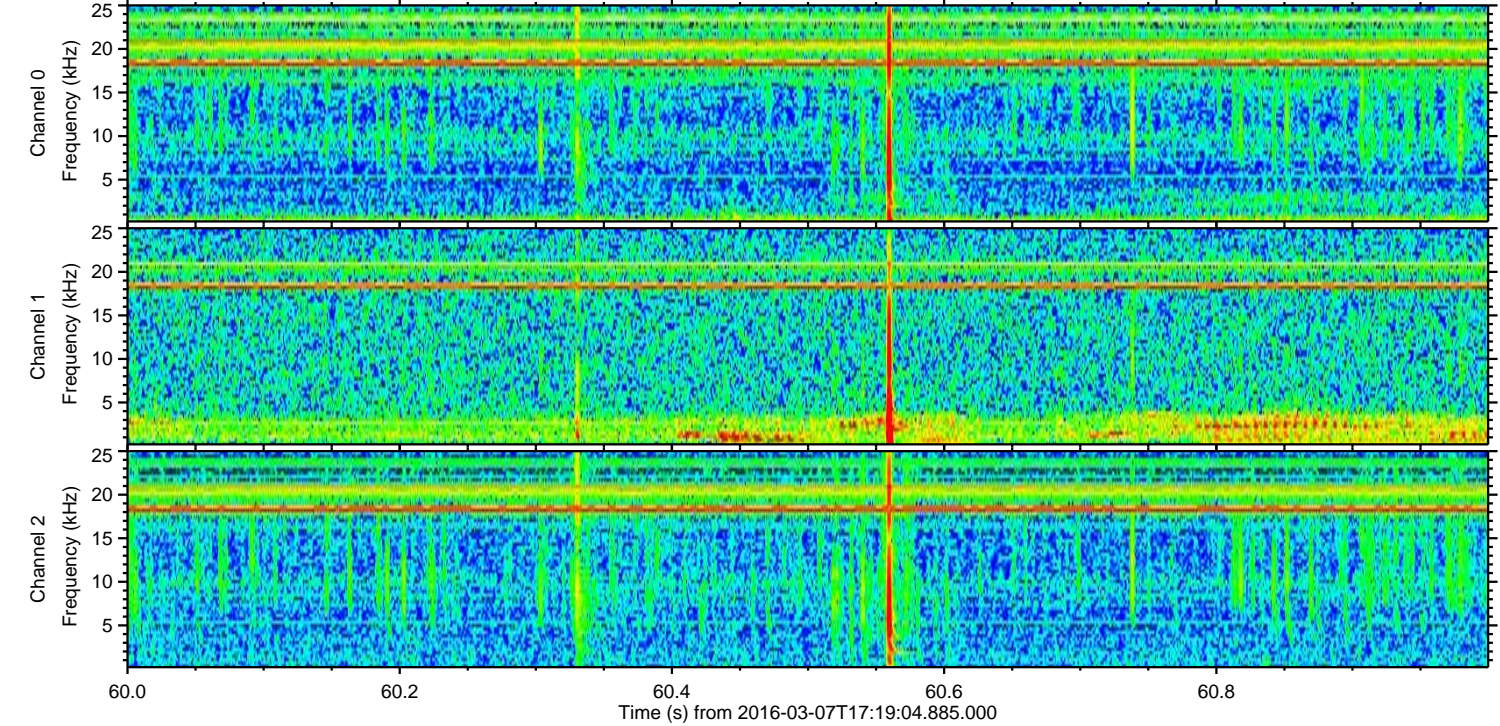
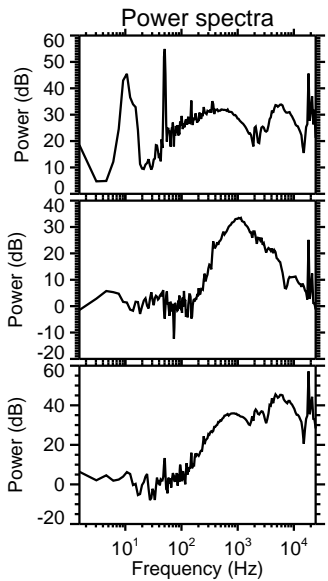
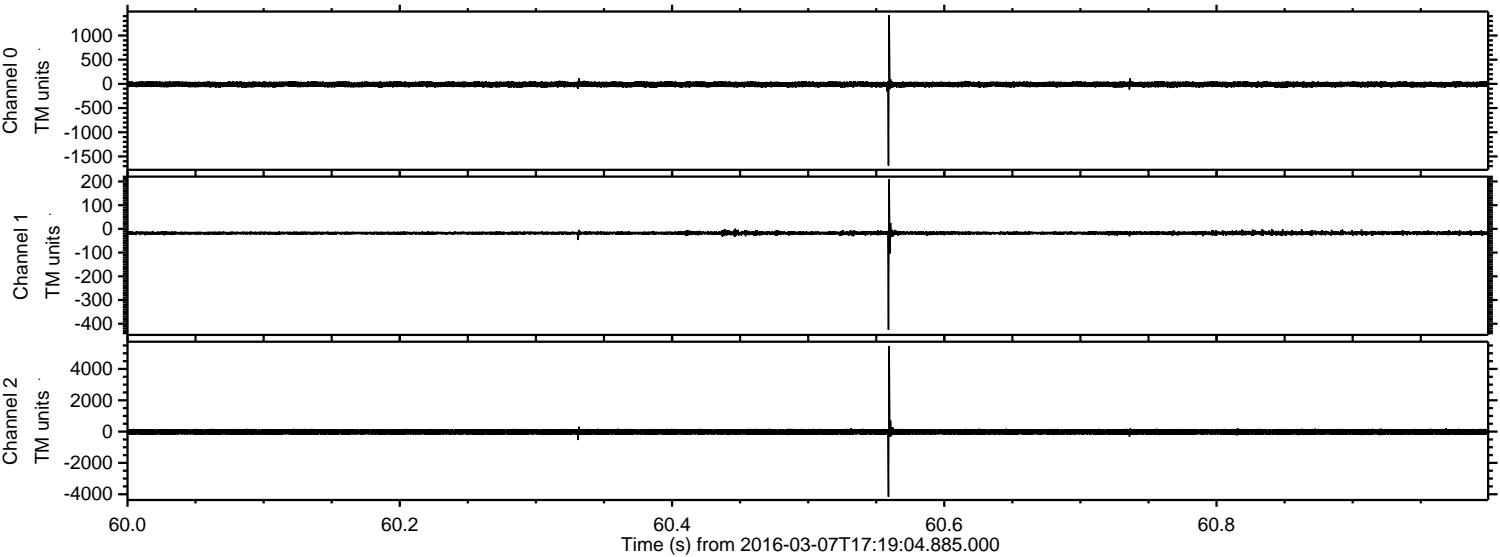
Channel 1
mn: -1261
mx: 1039
 μ : -17.4
 σ : 19.8

Channel 2
mn: -12283
mx: 17946
 μ : -20.8
 σ : 152.2

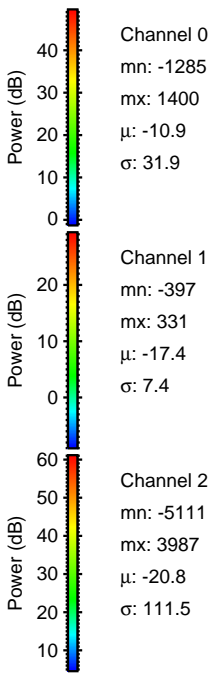
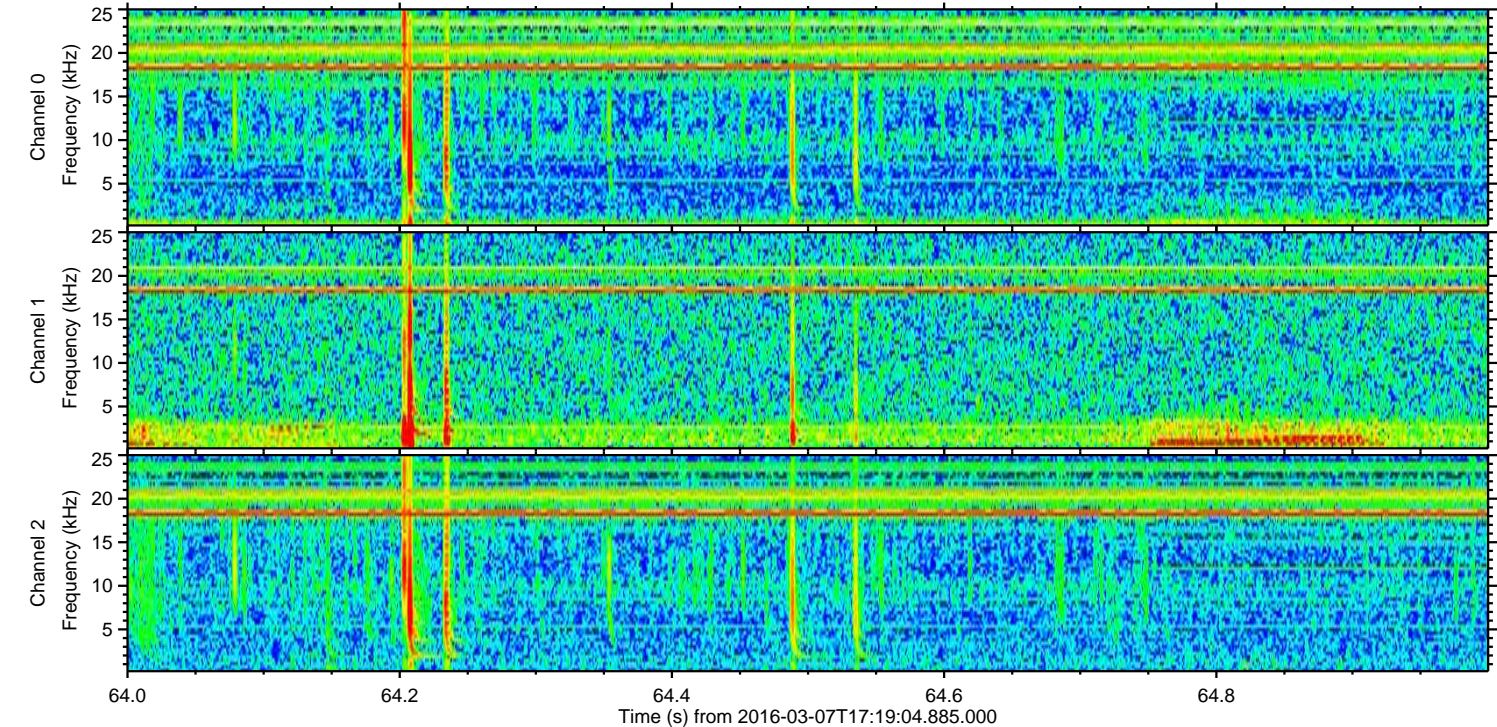
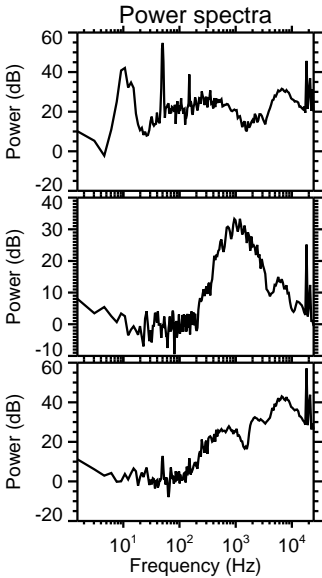
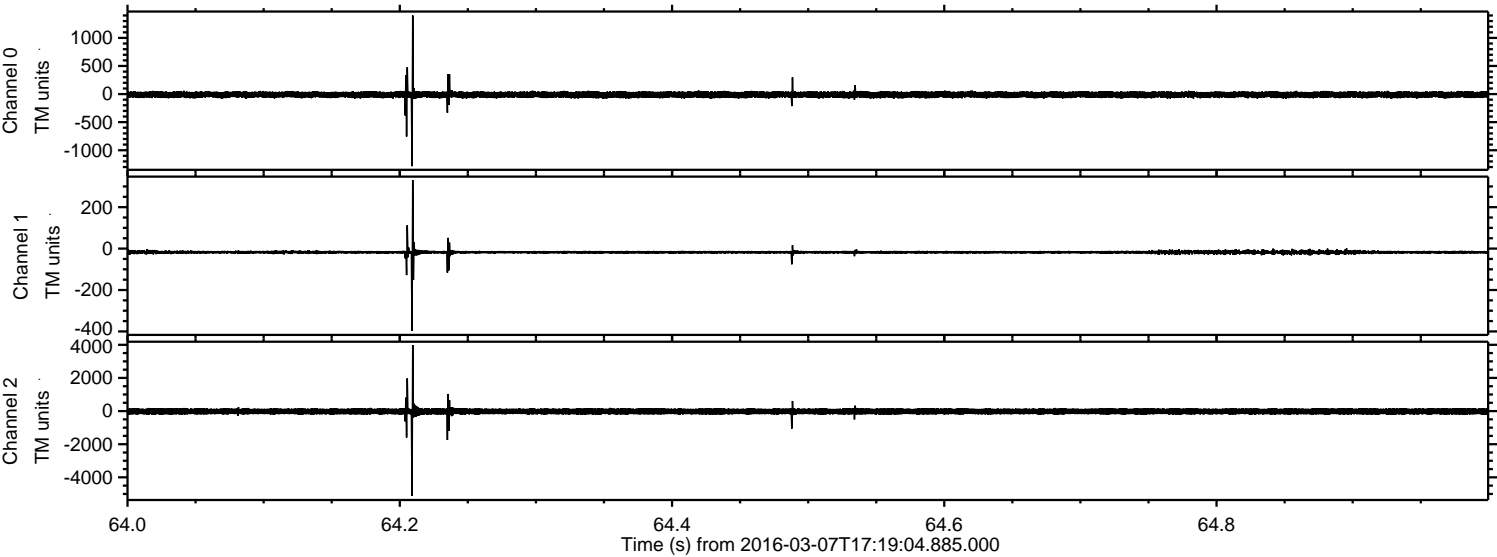
Processed Mon Apr 18 22:51:20 2016 by ELM ver.2012-10-06 from 001__elm20160307_171903__dat00.bin



Processed Mon Apr 18 22:51:21 2016 by ELM ver.2012-10-06 from 001__elm20160307_171903__dat00.bin



Processed Mon Apr 18 22:51:22 2016 by ELM ver.2012-10-06 from 001__elm20160307_171903__dat00.bin

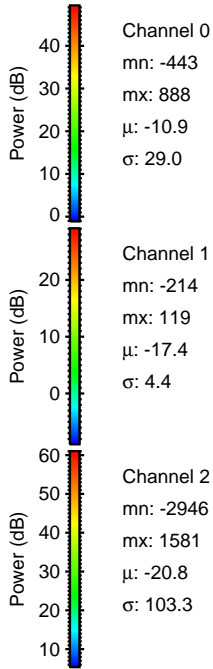
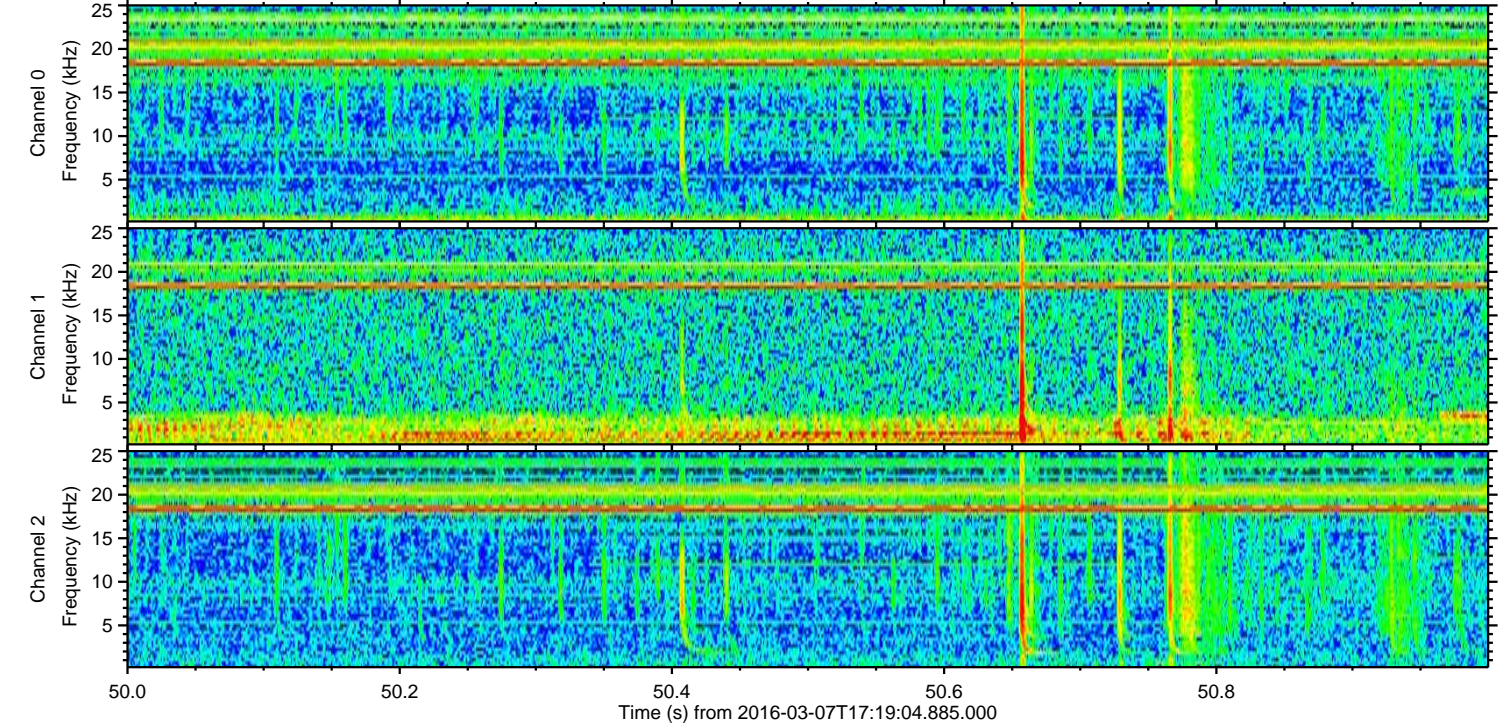
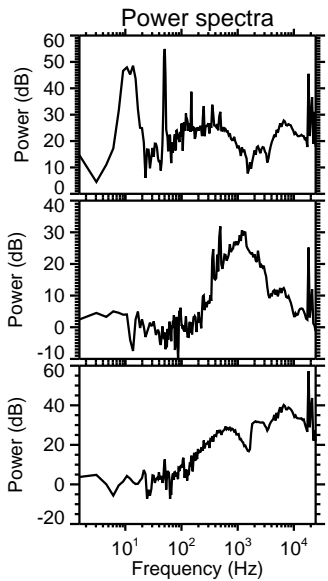
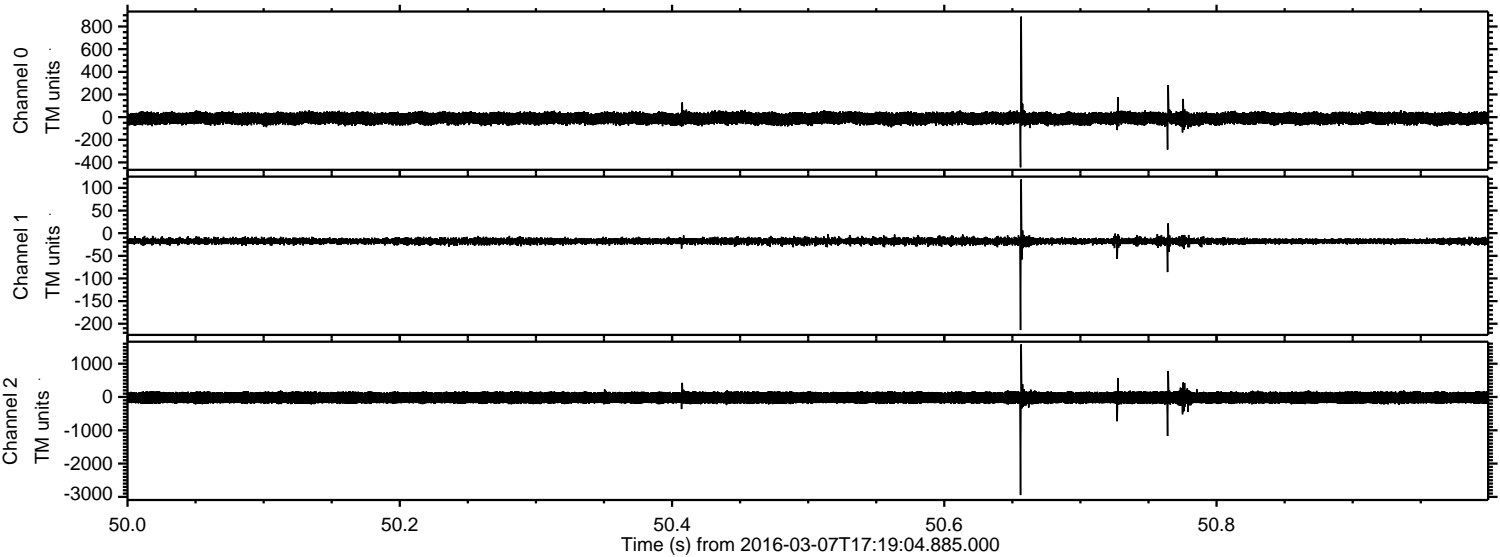


Channel 0
mn: -1285
mx: 1400
 μ : -10.9
 σ : 31.9

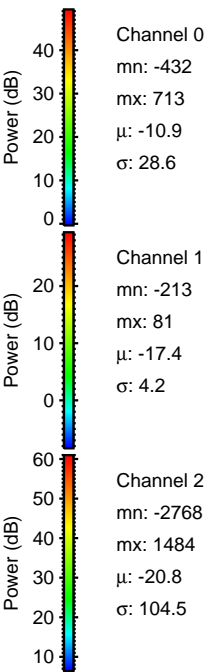
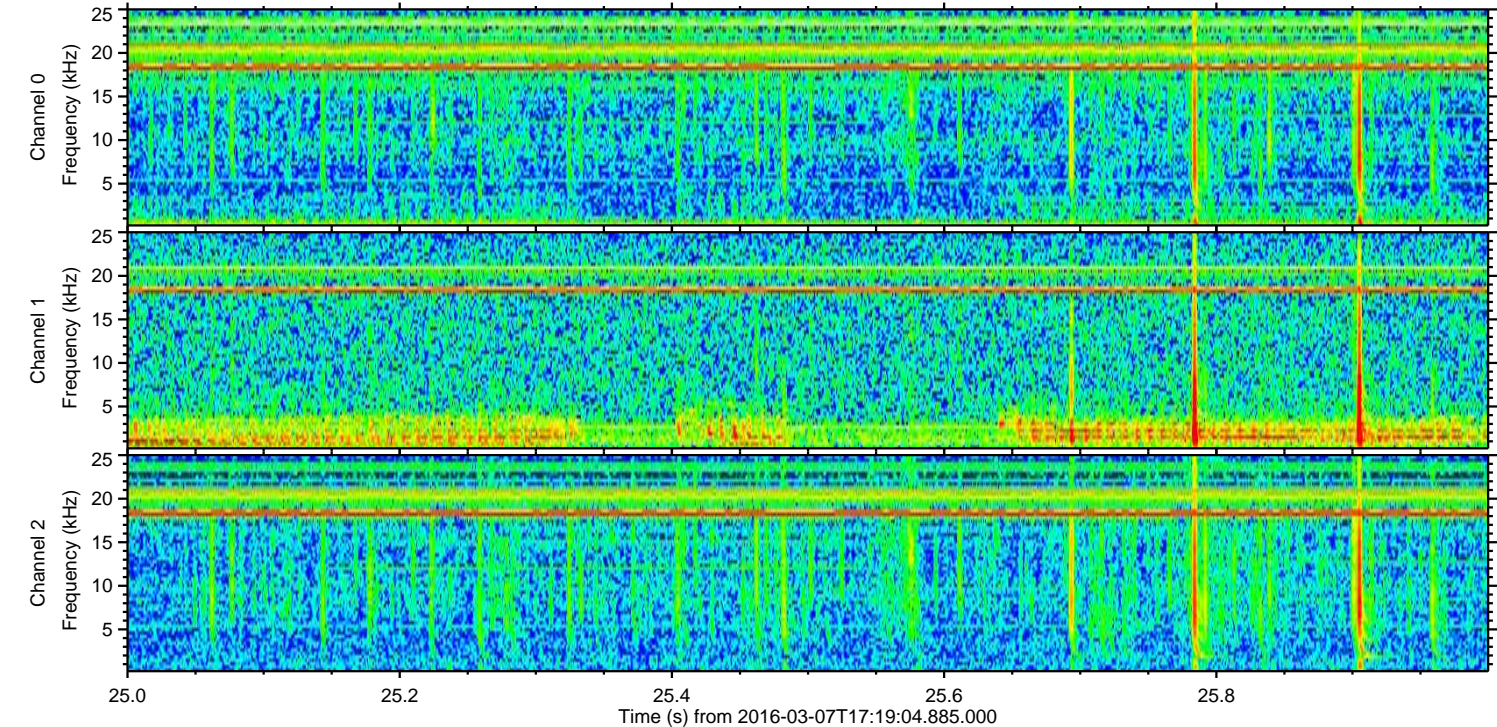
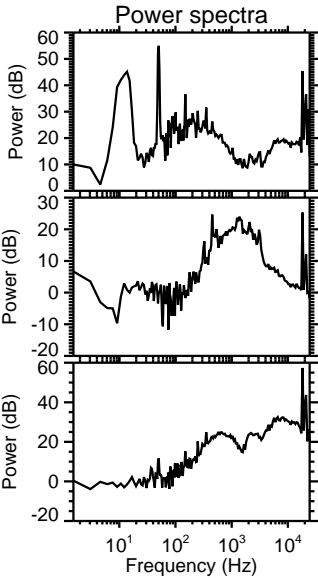
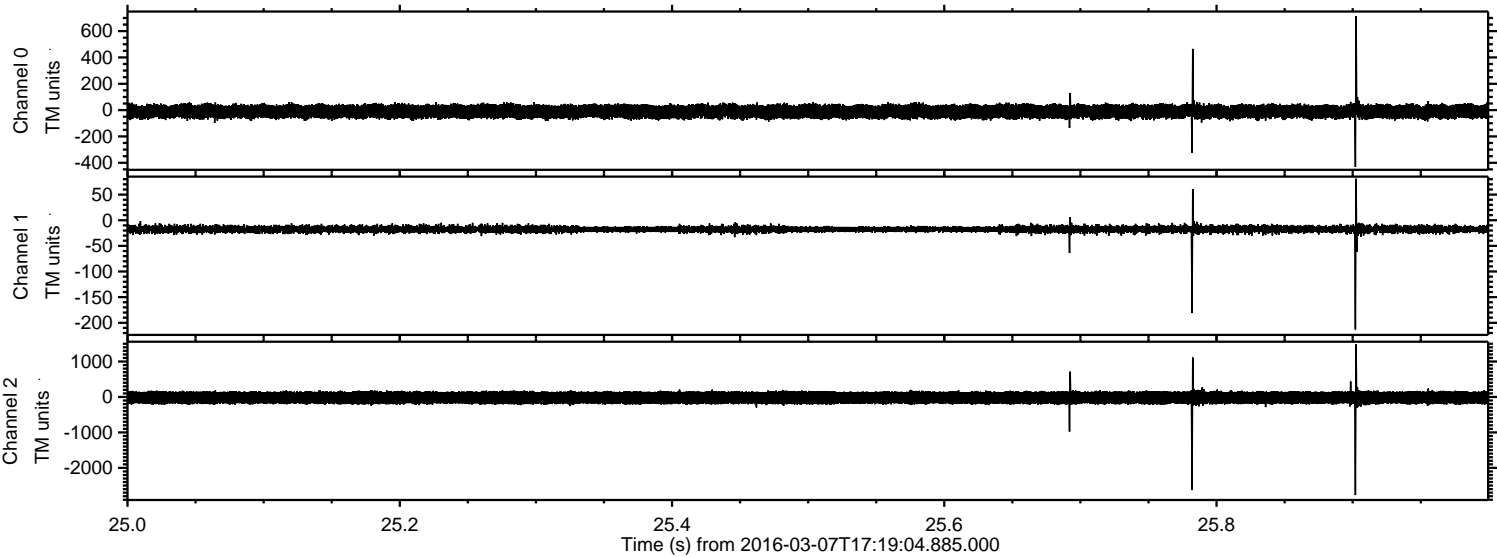
Channel 1
mn: -397
mx: 331
 μ : -17.4
 σ : 7.4

Channel 2
mn: -5111
mx: 3987
 μ : -20.8
 σ : 111.5

Processed Mon Apr 18 22:51:23 2016 by ELM ver.2012-10-06 from 001__elm20160307_171903__dat00.bin

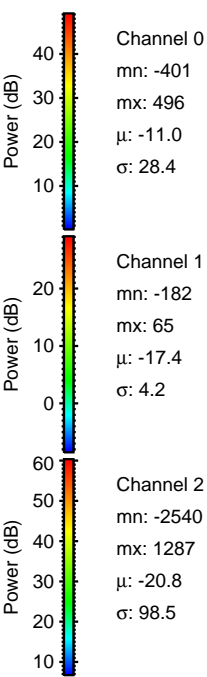
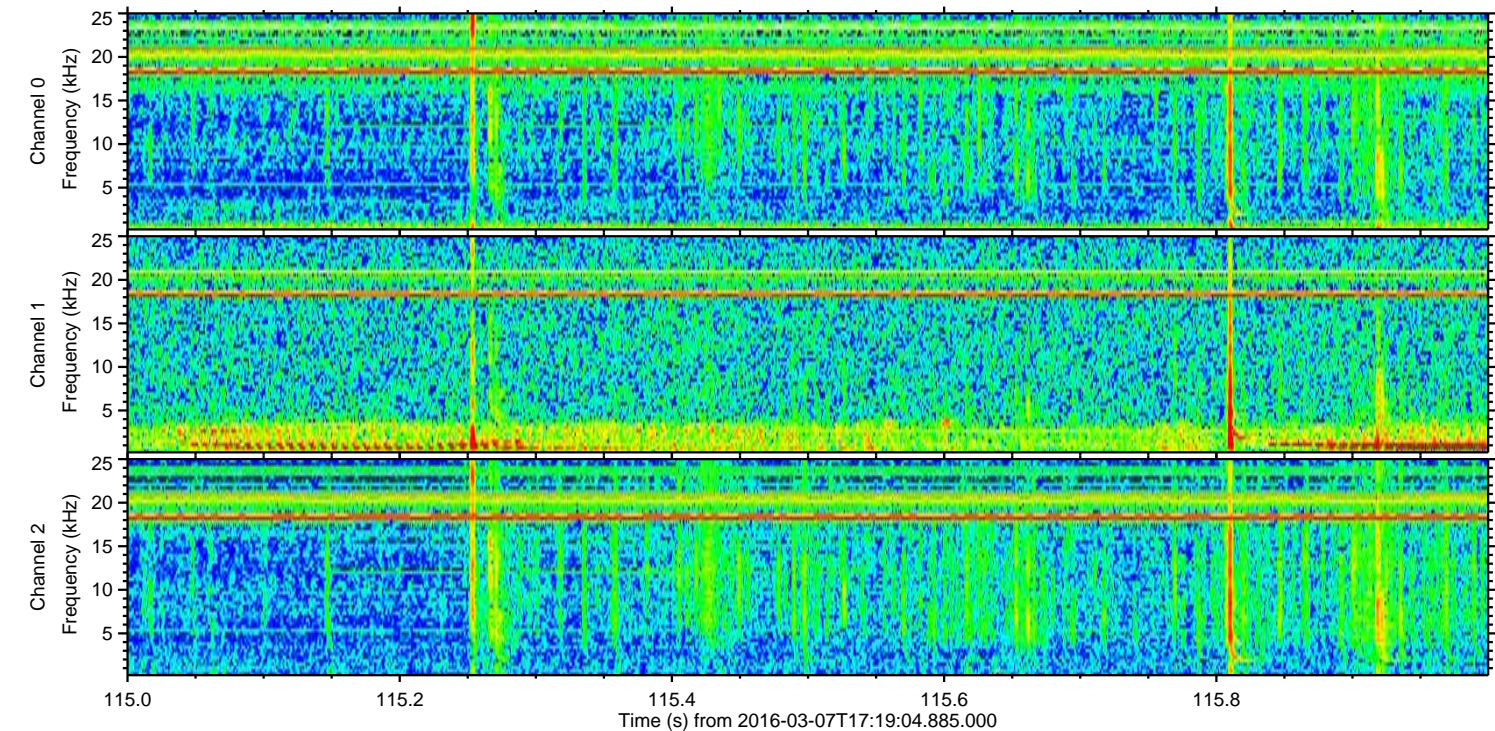
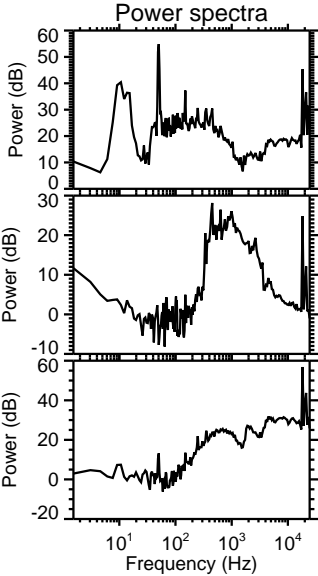
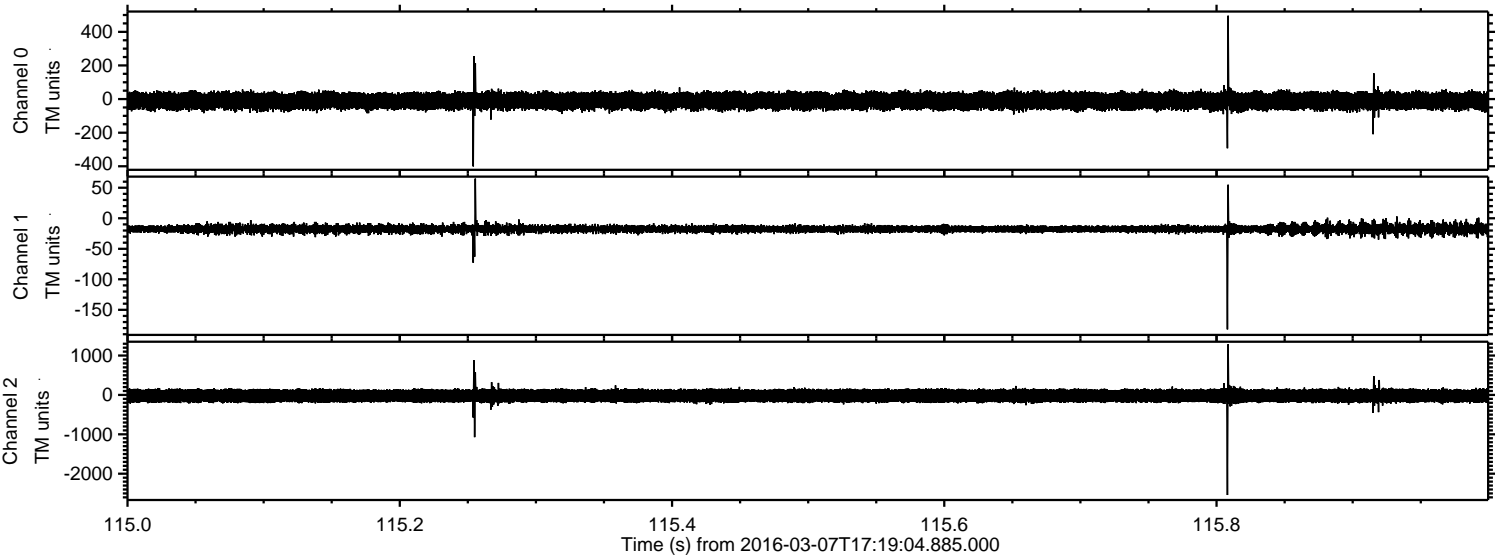


Processed Mon Apr 18 22:51:24 2016 by ELM ver.2012-10-06 from 001__elm20160307_171903__dat00.bin

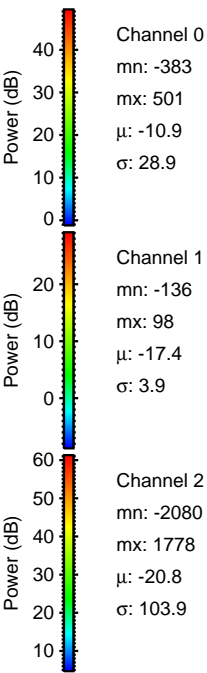
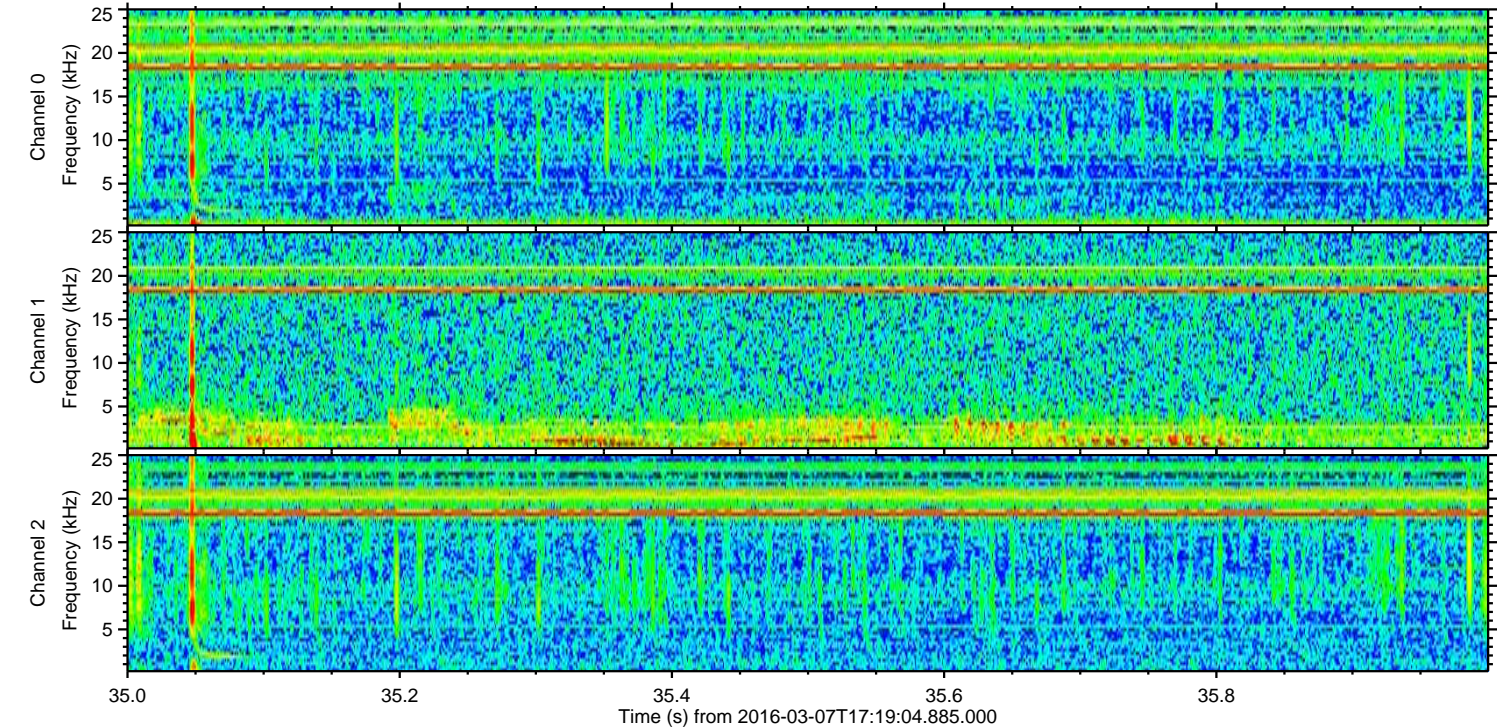
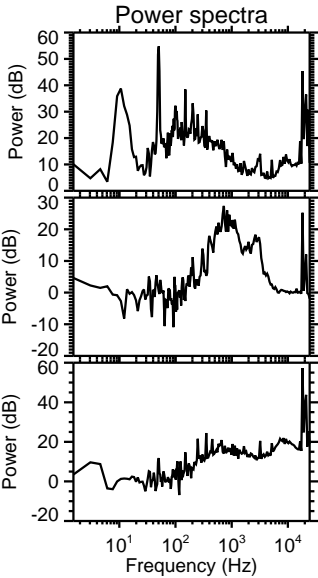
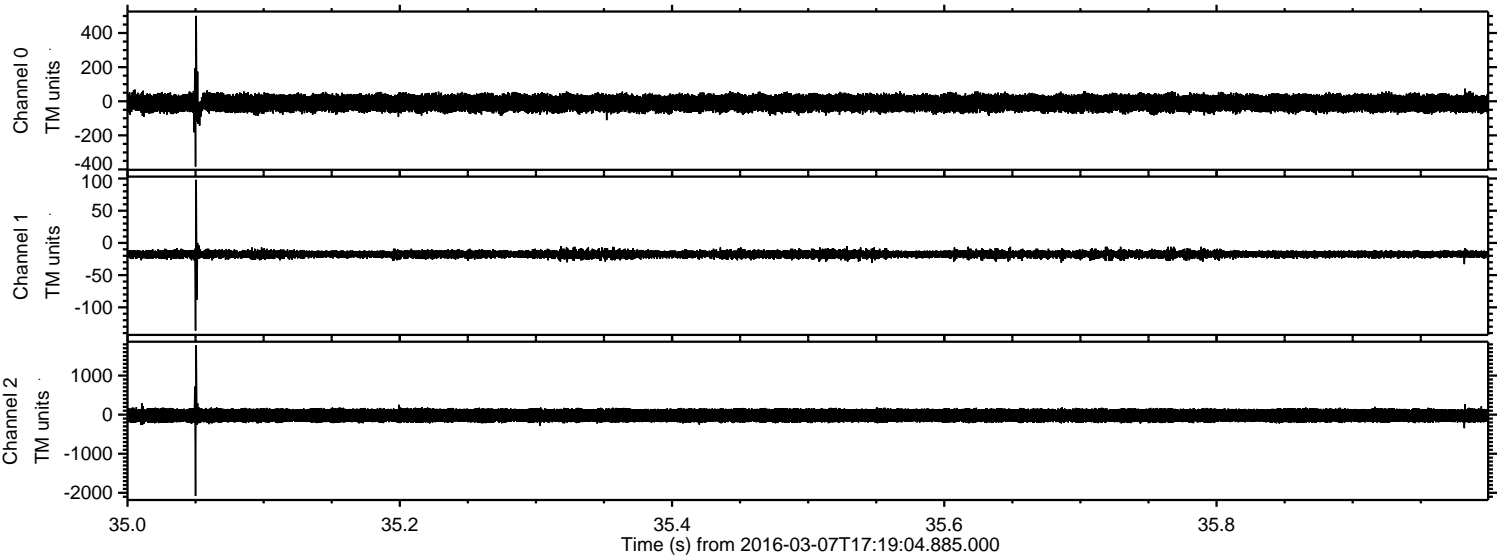


ELMAVAN 3D WAVEFORMS (Measured data sampled at 50 kHz) 51000 packets of 144 samples from 2016-03-07T17:19:04.885.000. Part 116/147

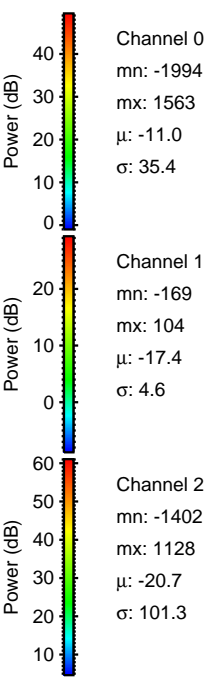
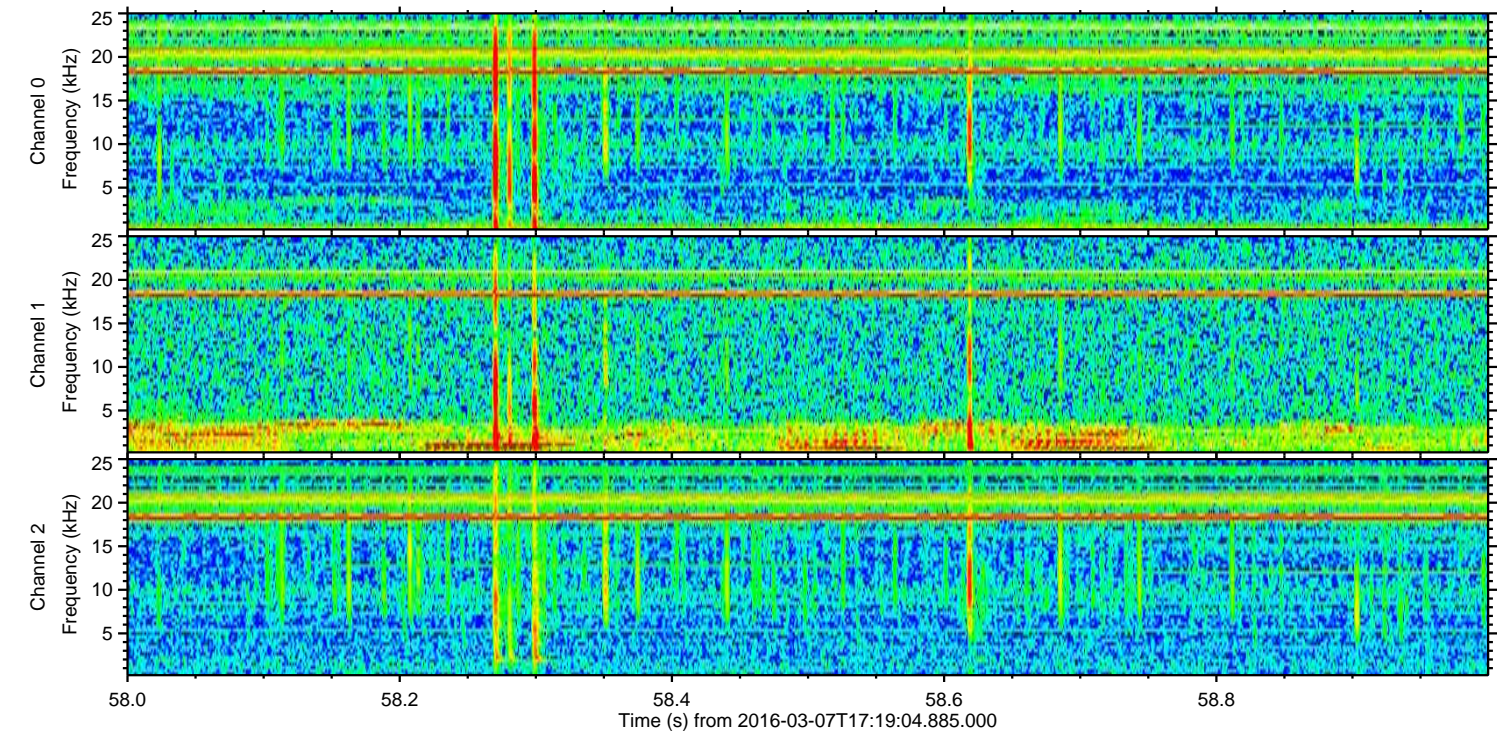
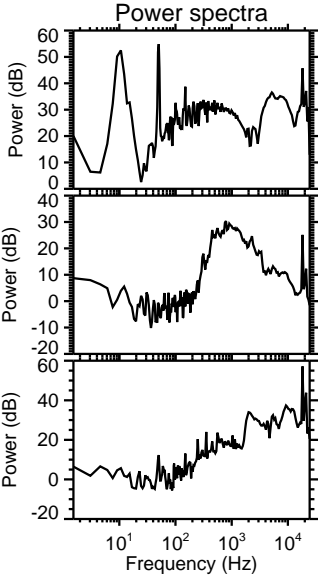
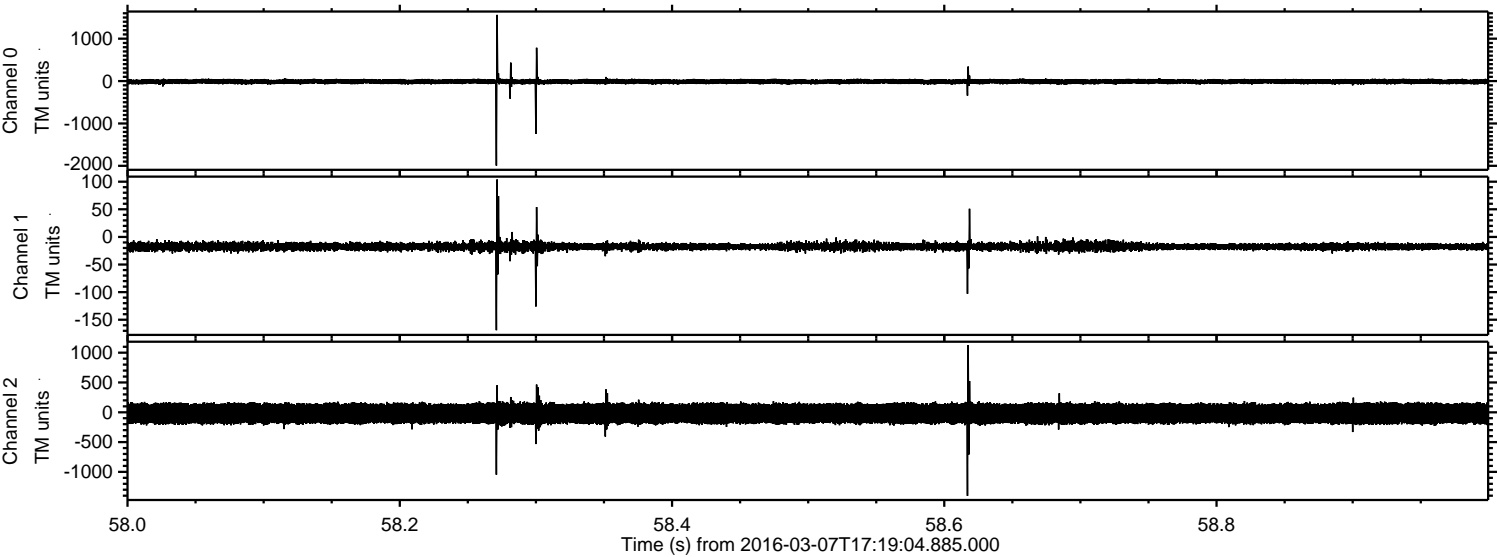
Processed Mon Apr 18 22:51:25 2016 by ELM ver.2012-10-06 from 001__elm20160307_171903__dat00.bin



Processed Mon Apr 18 22:51:26 2016 by ELM ver.2012-10-06 from 001__elm20160307_171903__dat00.bin



Processed Mon Apr 18 22:51:27 2016 by ELM ver.2012-10-06 from 001__elm20160307_171903__dat00.bin



Channel 0
mn: -1994
mx: 1563
 μ : -11.0
 σ : 35.4

Channel 1
mn: -169
mx: 104
 μ : -17.4
 σ : 4.6

Channel 2
mn: -1402
mx: 1128
 μ : -20.7
 σ : 101.3

Processed Mon Apr 18 22:51:28 2016 by ELM ver.2012-10-06 from 001__elm20160307_171903__dat00.bin

