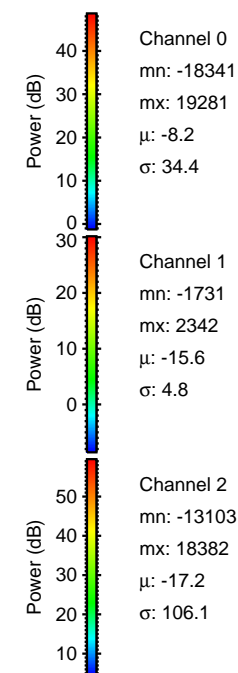
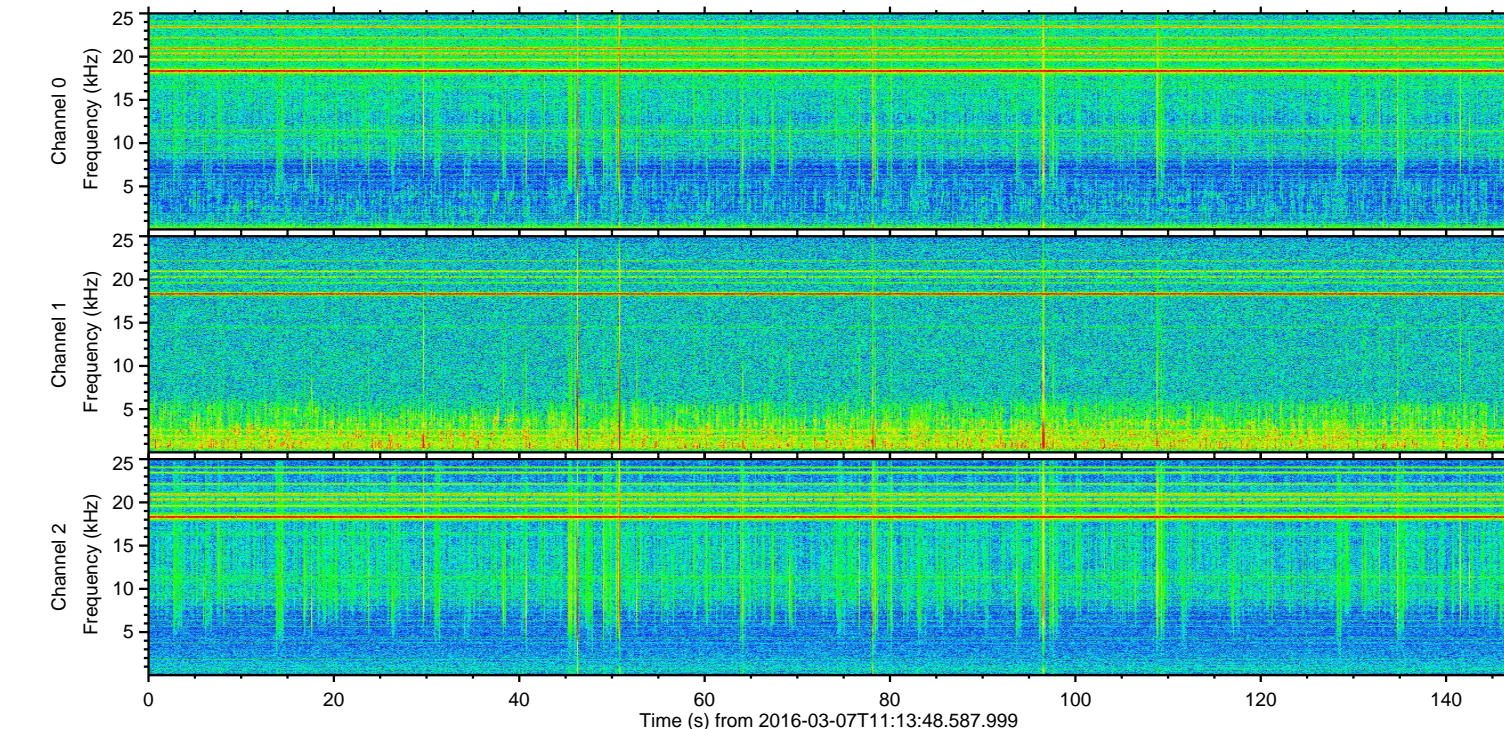
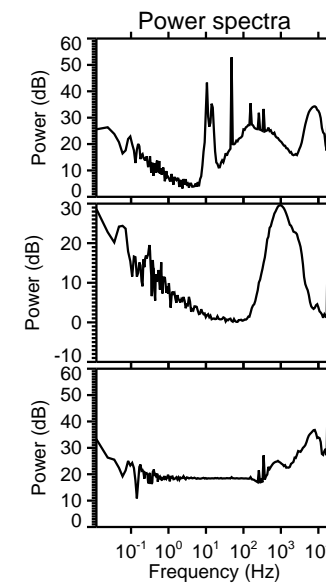
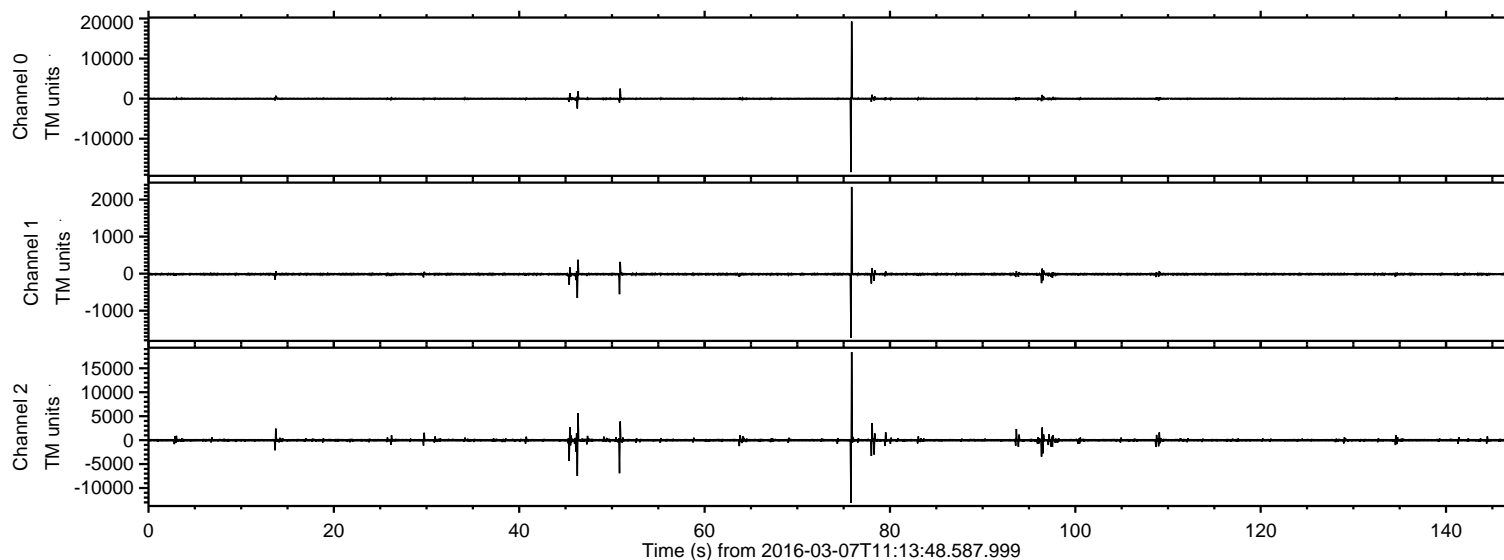


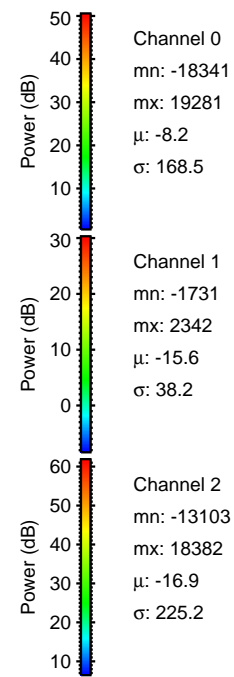
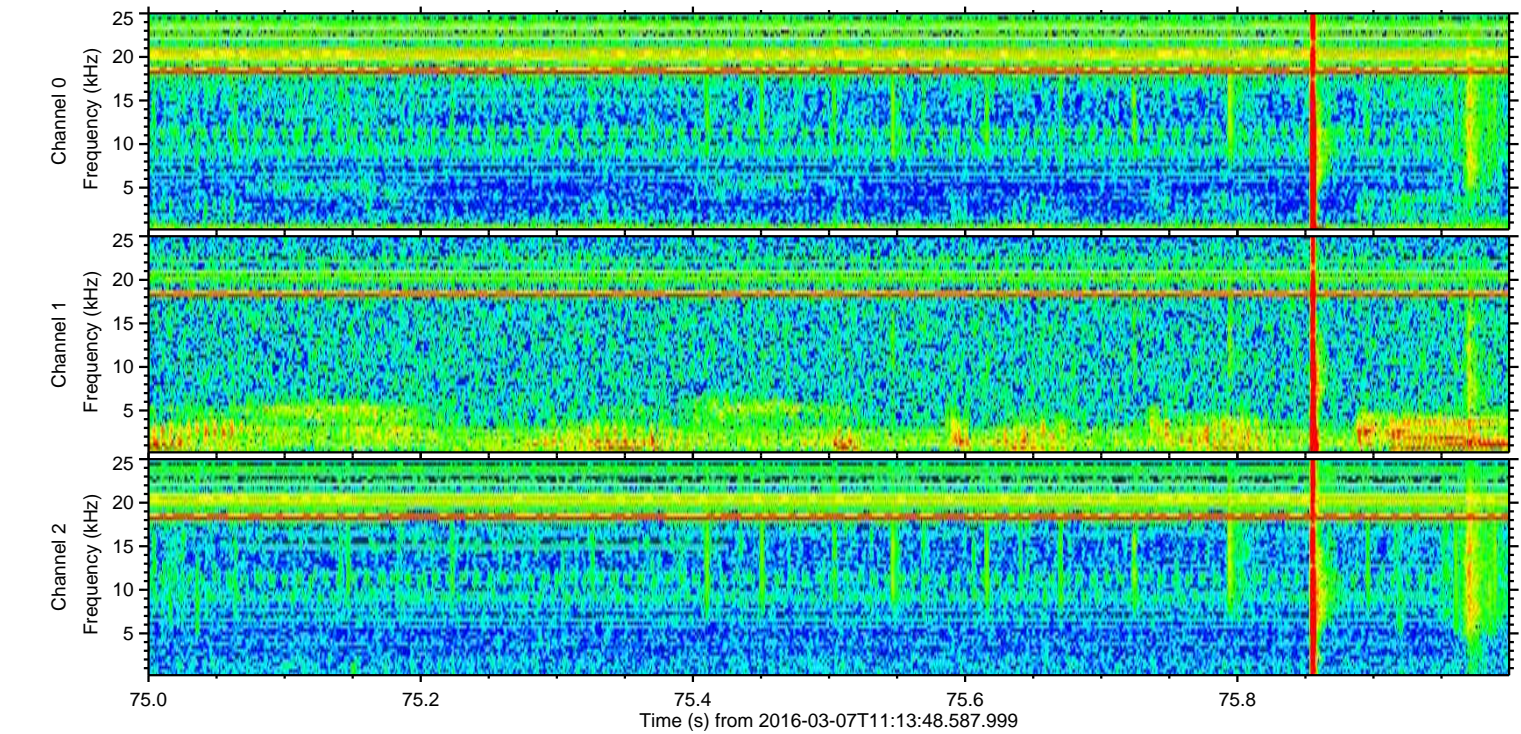
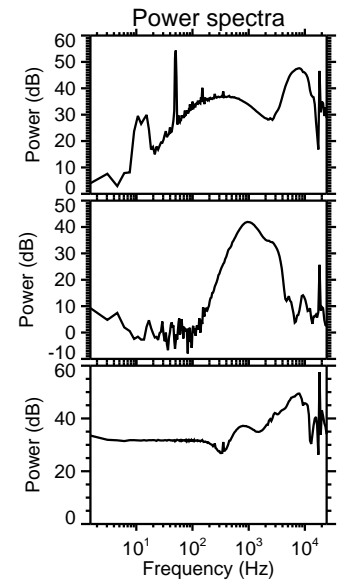
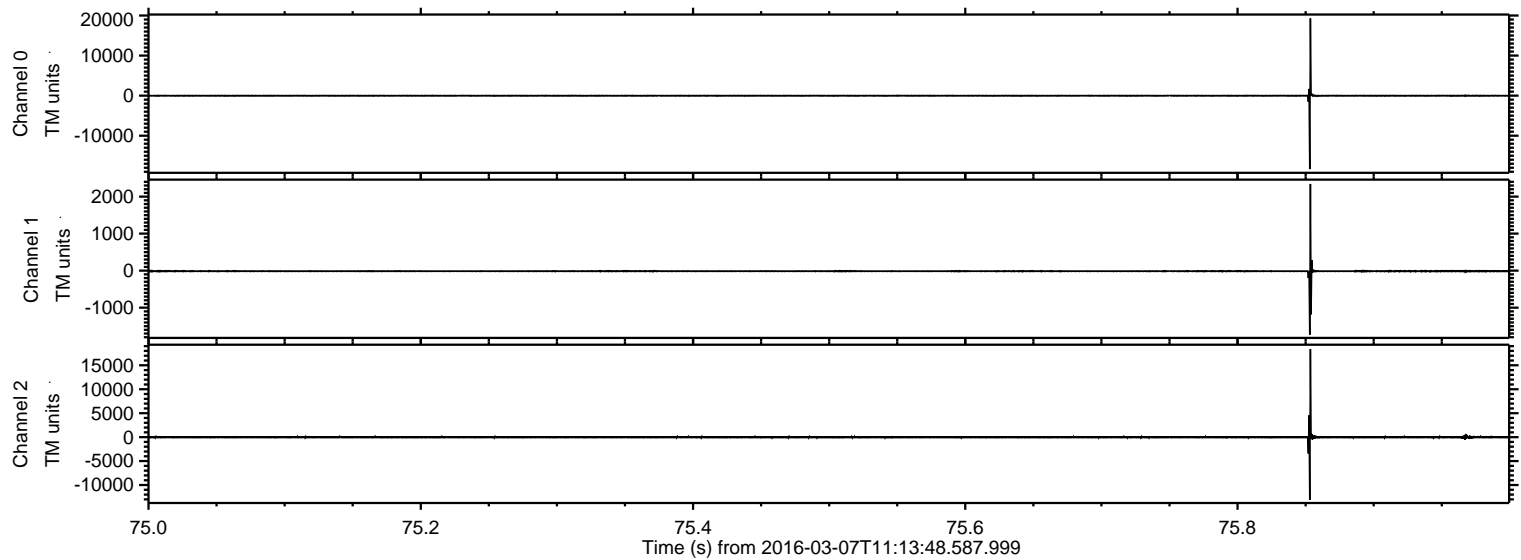
ELMAVAN 3D WAVEFORMS (Measured data sampled at 50 kHz) 51000 packets of 144 samples from 2016-03-07T11:13:48.587.999.

Processed Mon Apr 18 21:37:19 2016 by ELM ver.2012-10-06 from 001__elm20160307_111347__dat00.bin

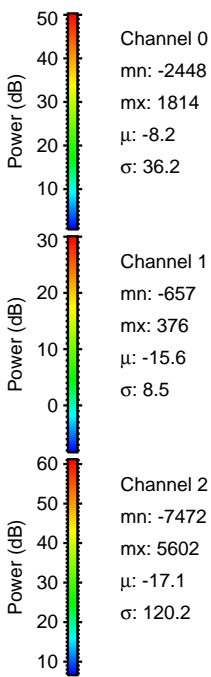
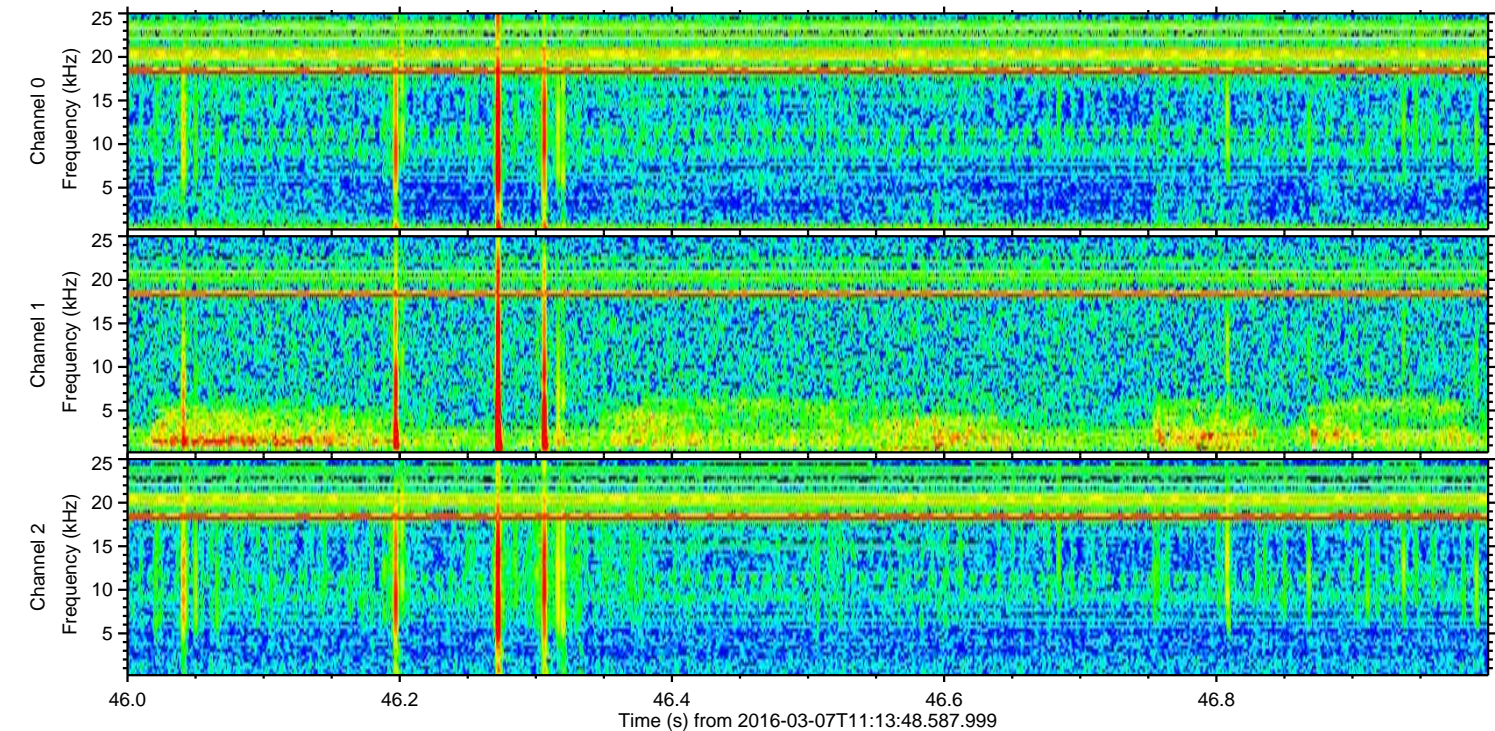
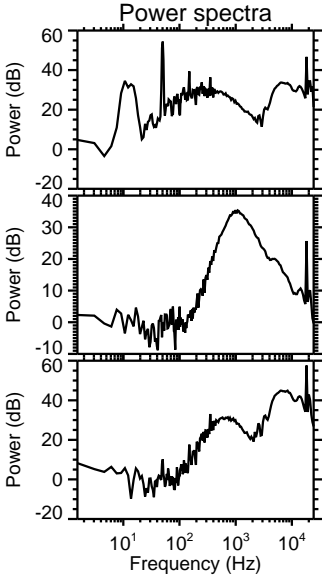
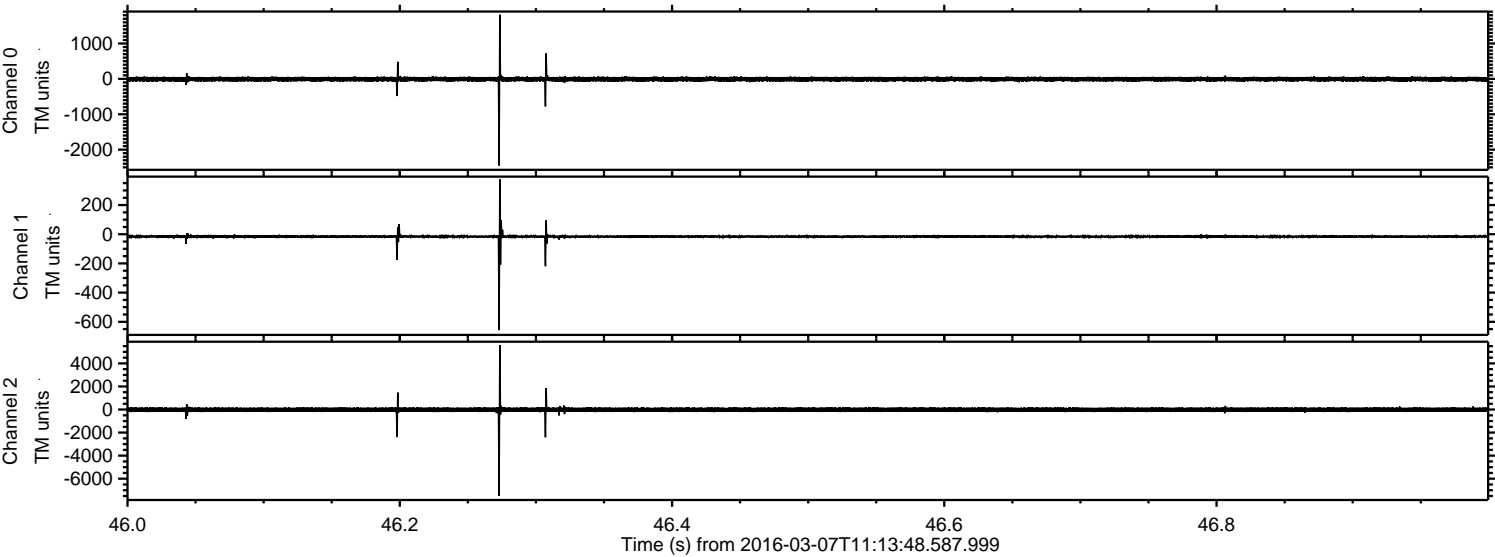


ELMAVAN 3D WAVEFORMS (Measured data sampled at 50 kHz) 51000 packets of 144 samples from 2016-03-07T11:13:48.587.999. Part 76/147

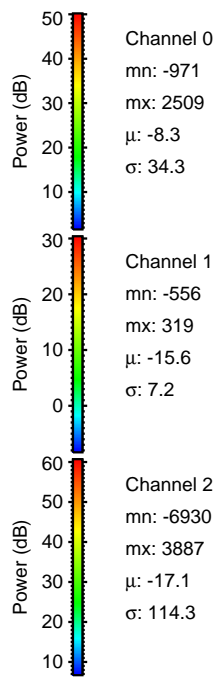
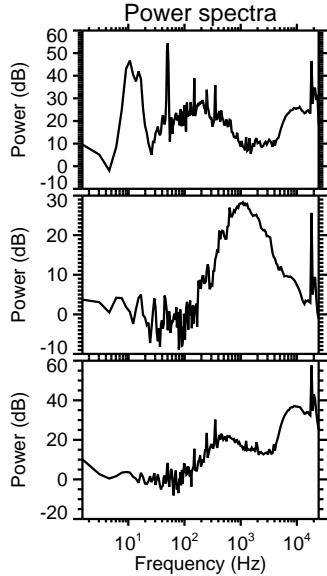
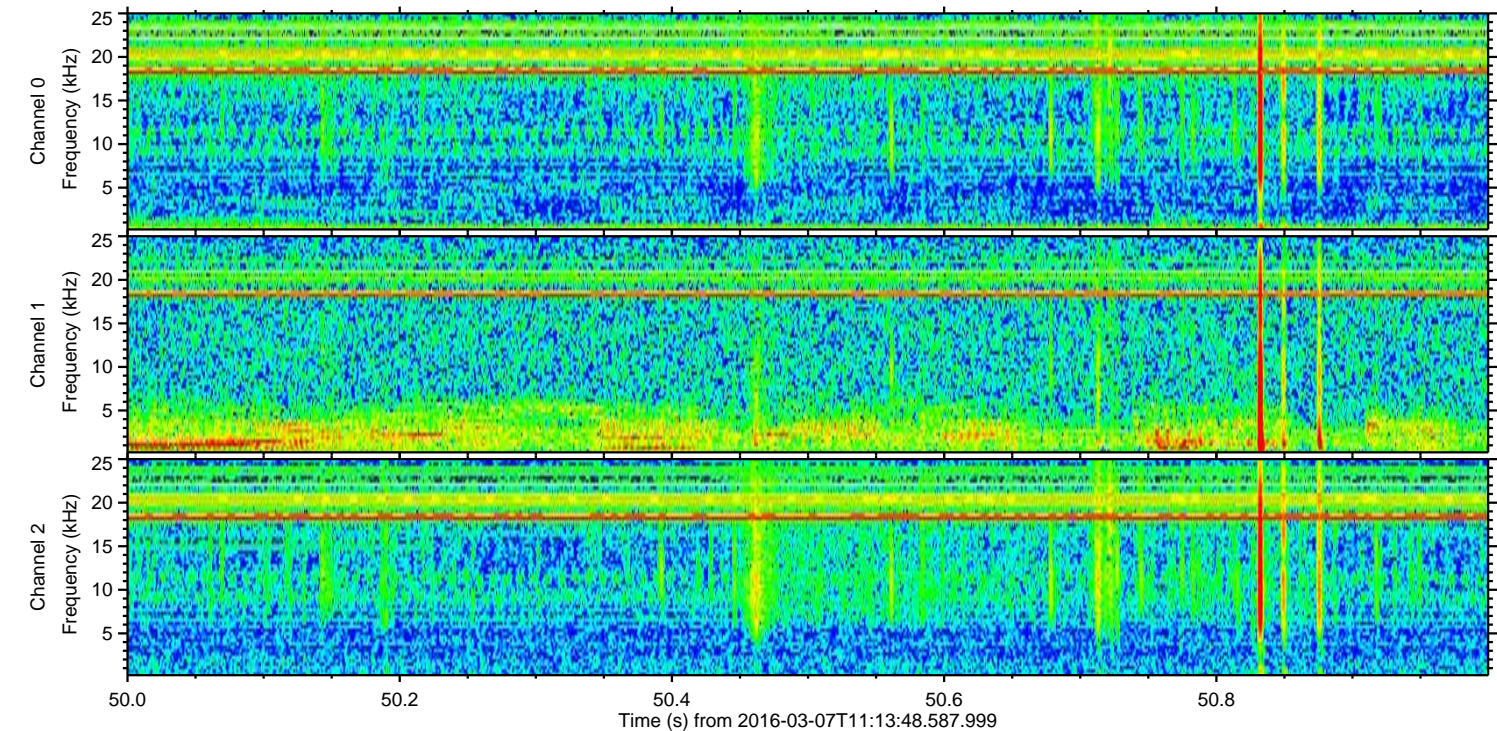
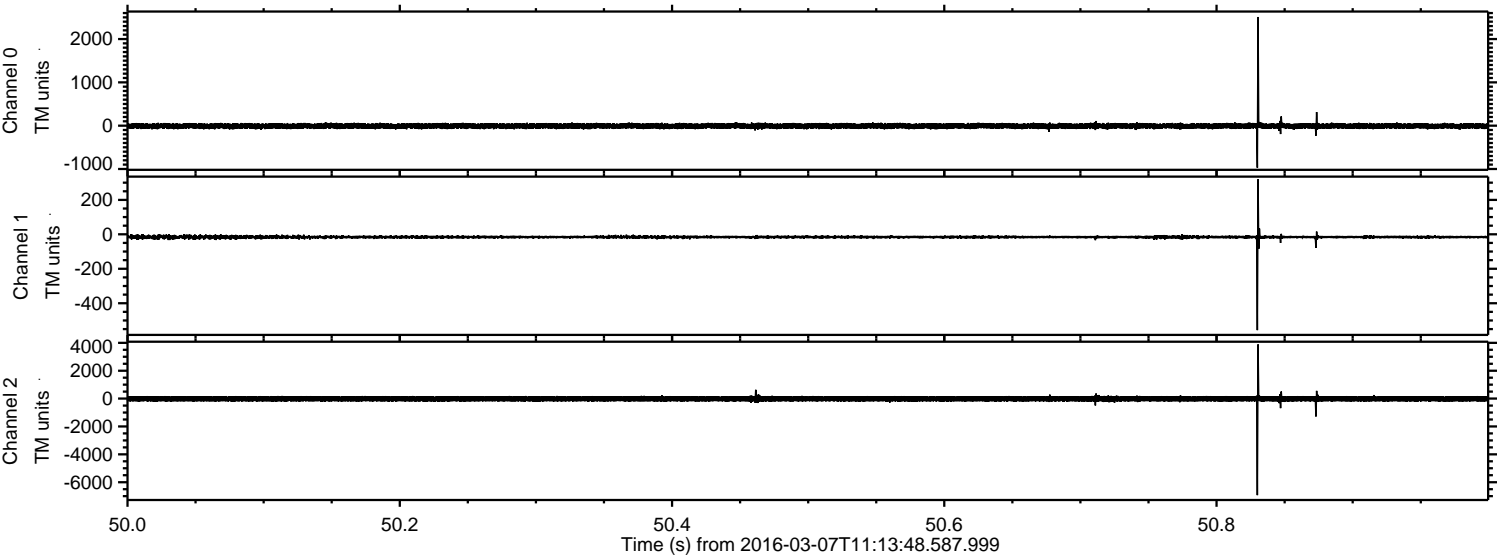
Processed Mon Apr 18 21:37:30 2016 by ELM ver.2012-10-06 from 001__elm20160307_111347__dat00.bin



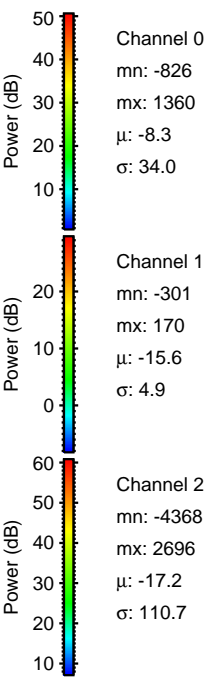
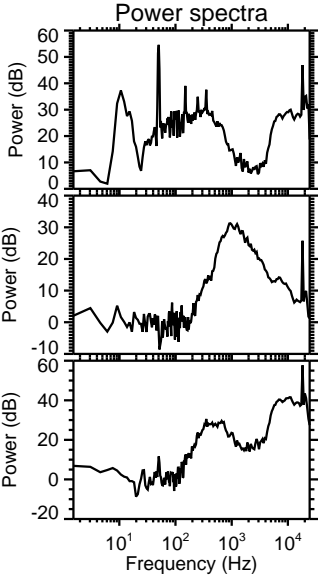
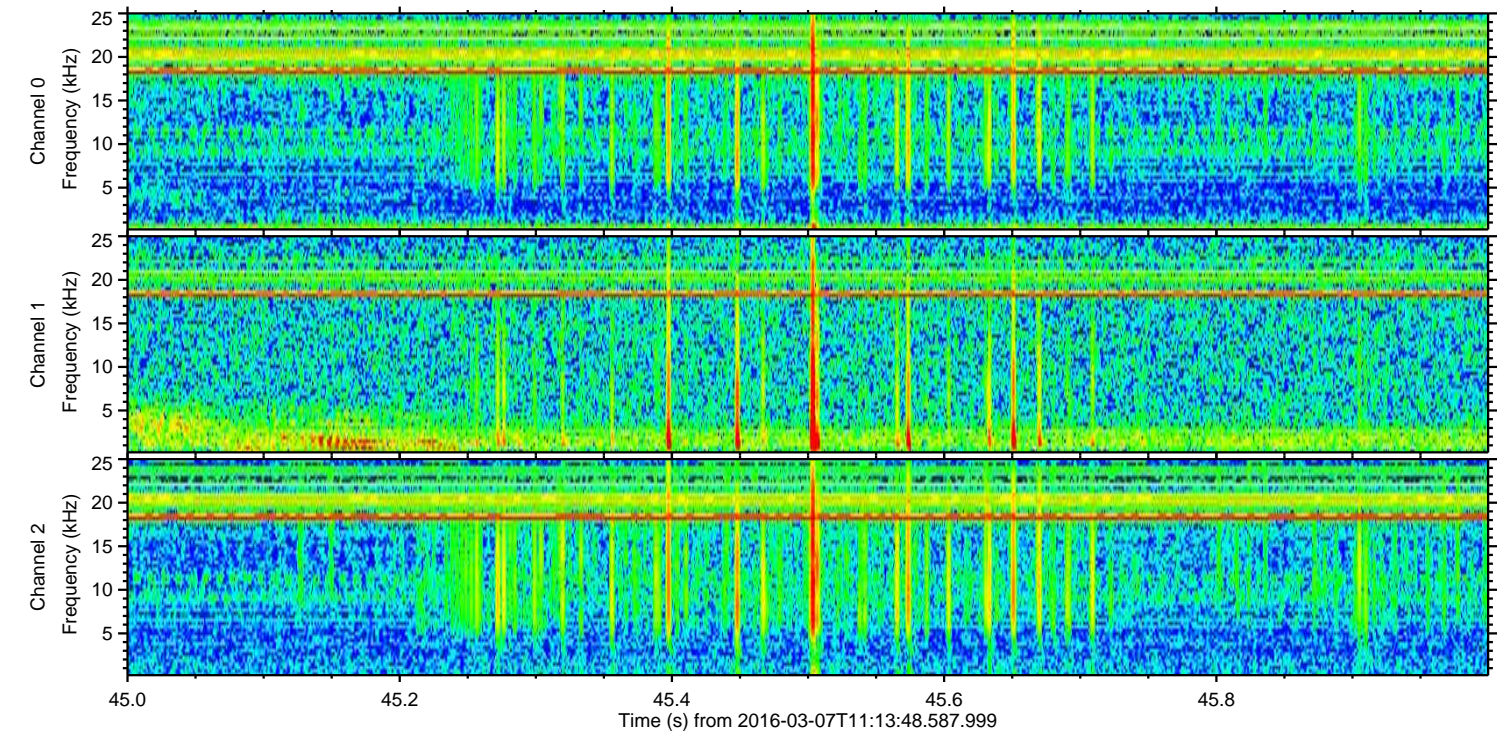
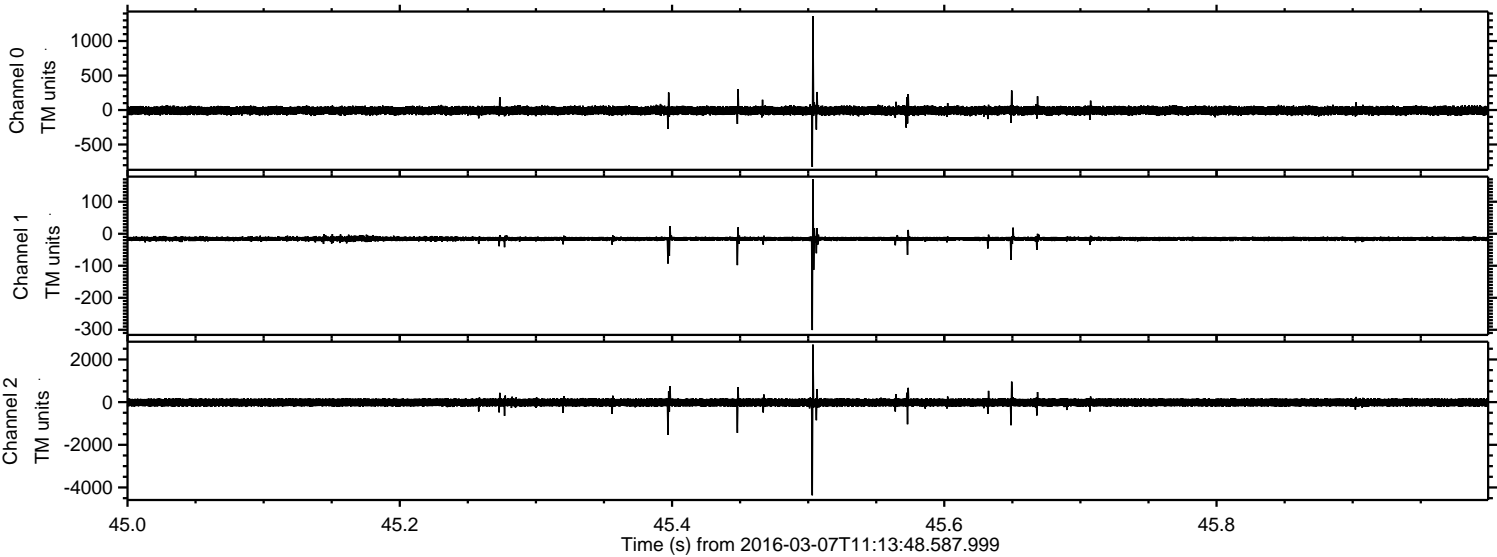
Processed Mon Apr 18 21:37:31 2016 by ELM ver.2012-10-06 from 001__elm20160307_111347__dat00.bin



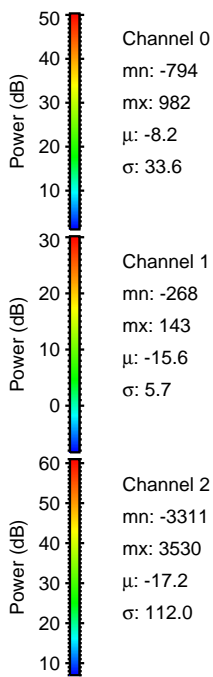
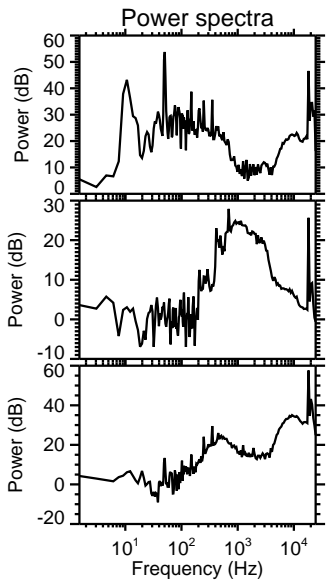
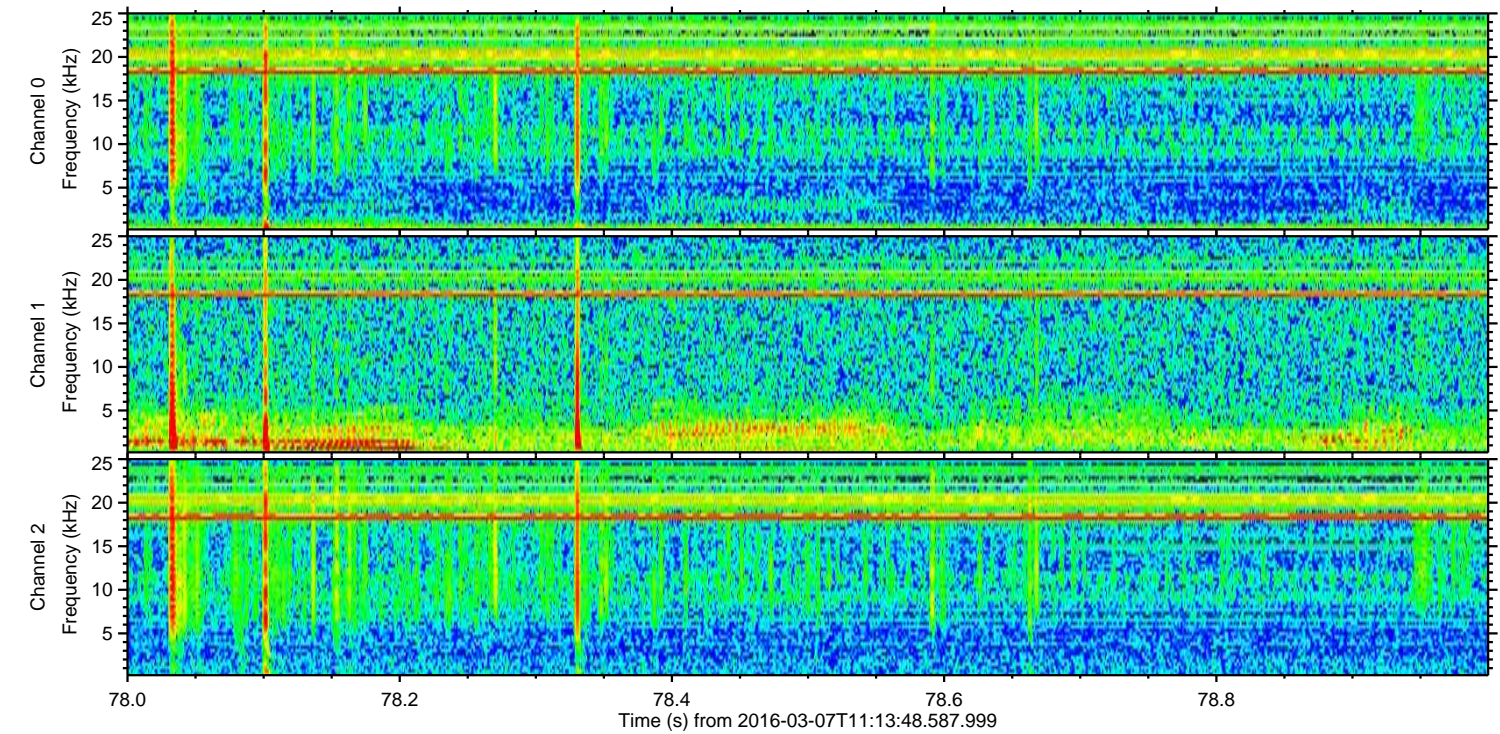
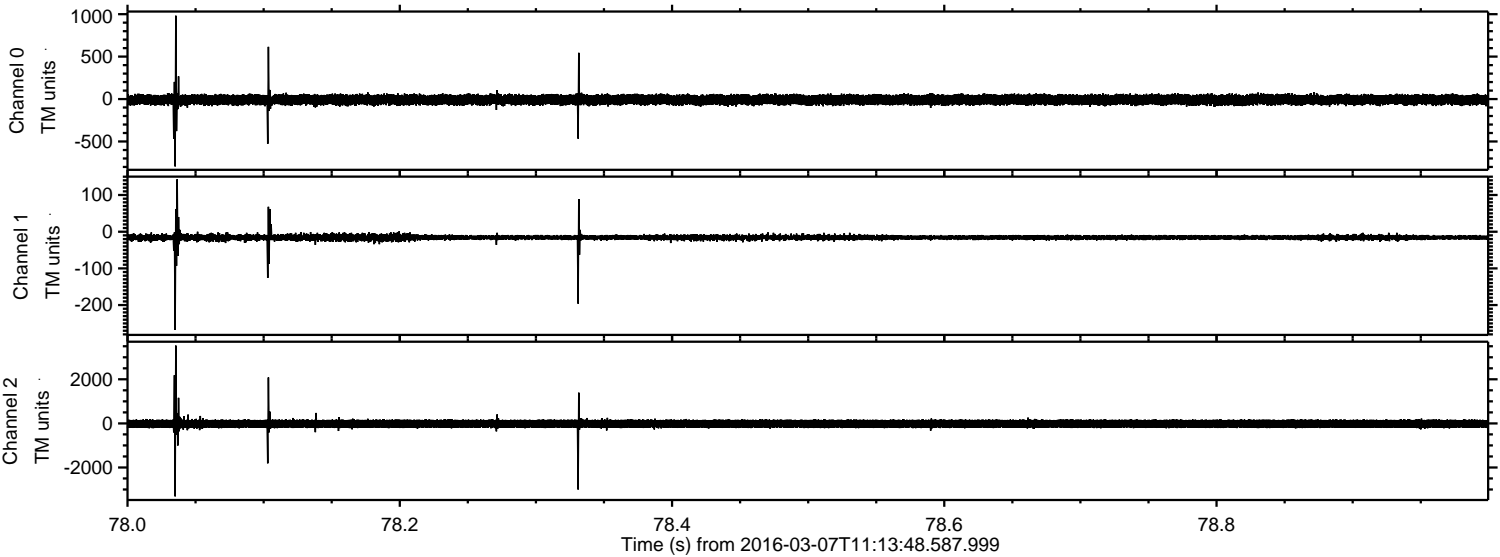
Processed Mon Apr 18 21:37:32 2016 by ELM ver.2012-10-06 from 001__elm20160307_111347__dat00.bin



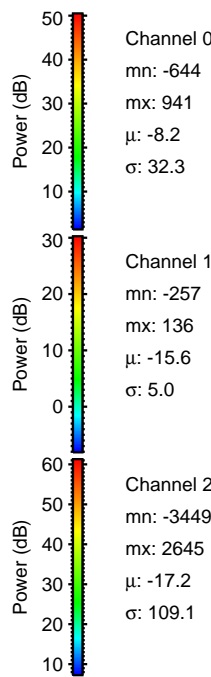
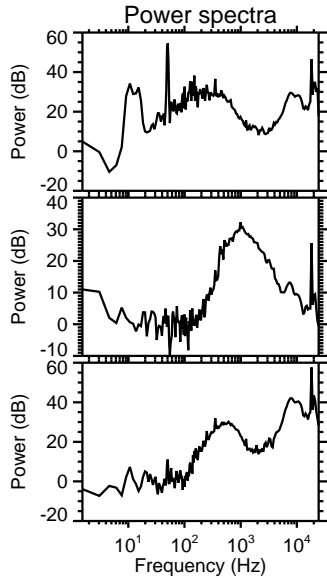
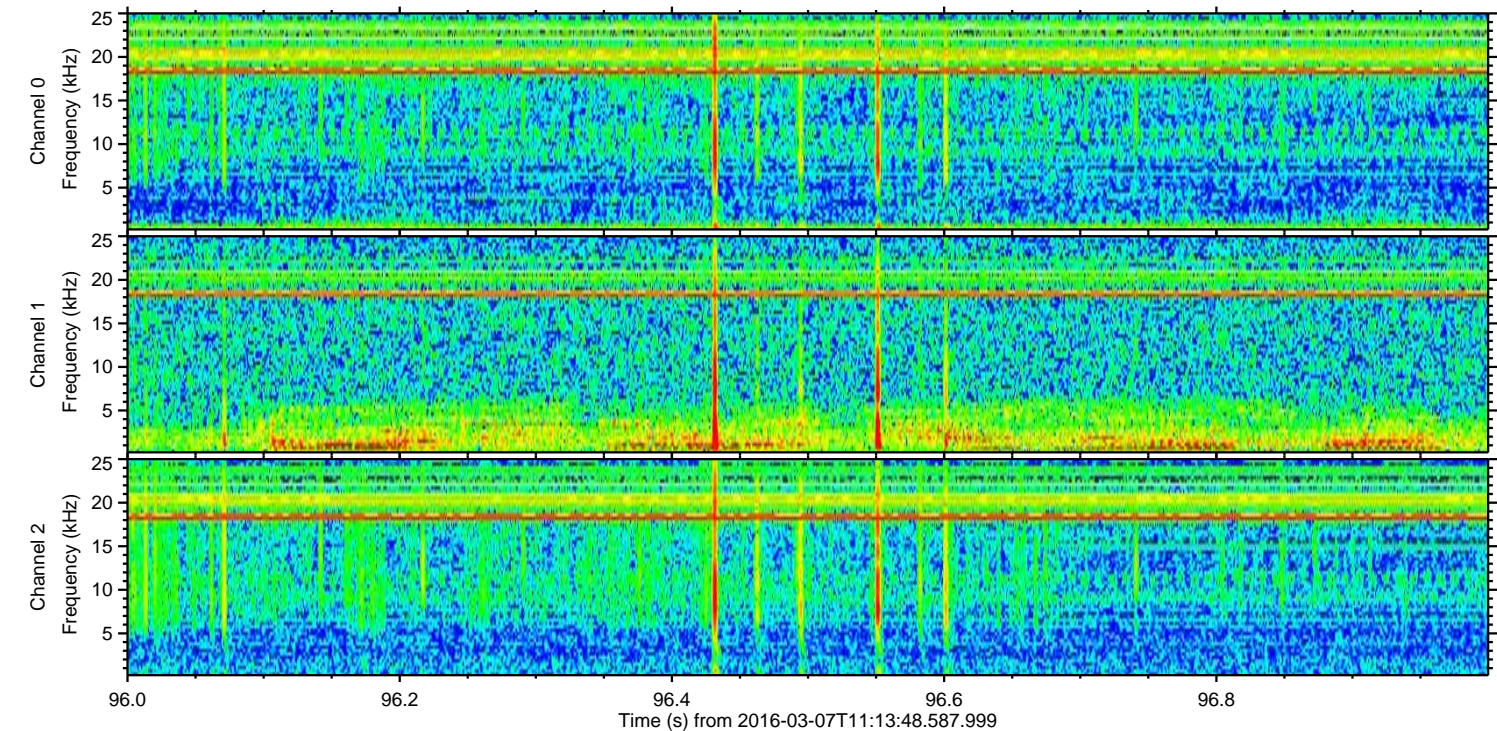
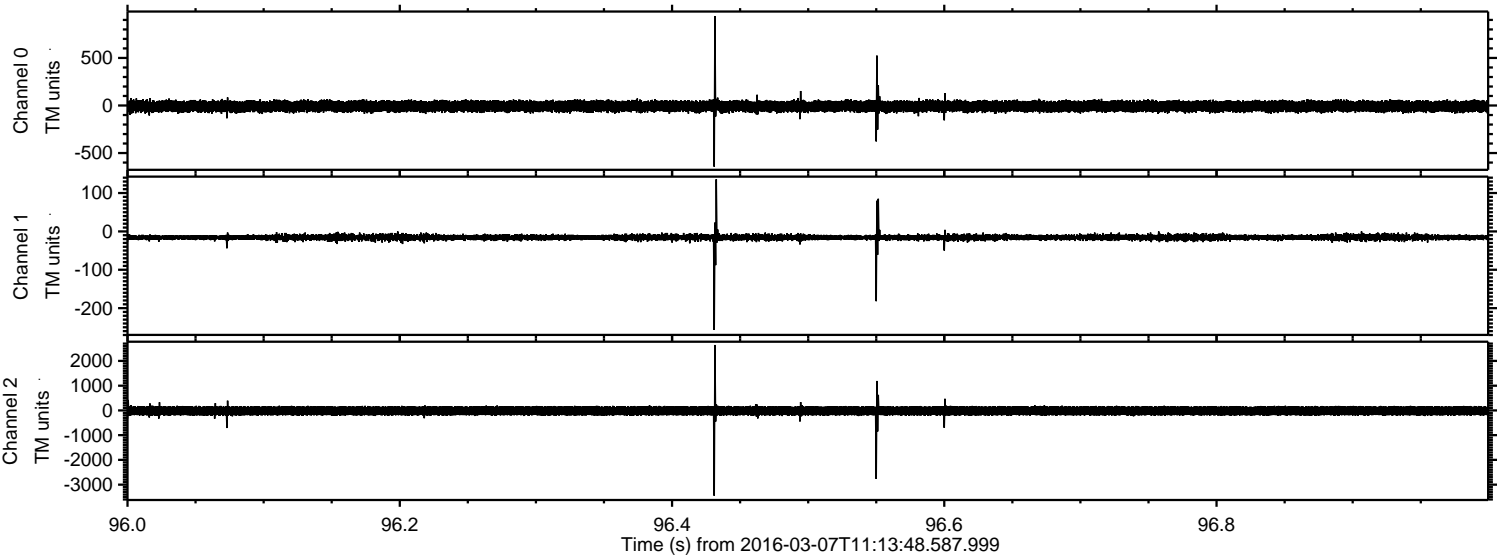
Processed Mon Apr 18 21:37:33 2016 by ELM ver.2012-10-06 from 001__elm20160307_111347__dat00.bin



Processed Mon Apr 18 21:37:34 2016 by ELM ver.2012-10-06 from 001__elm20160307_111347__dat00.bin



Processed Mon Apr 18 21:37:35 2016 by ELM ver.2012-10-06 from 001__elm20160307_111347__dat00.bin



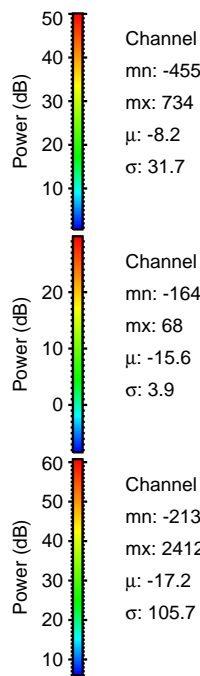
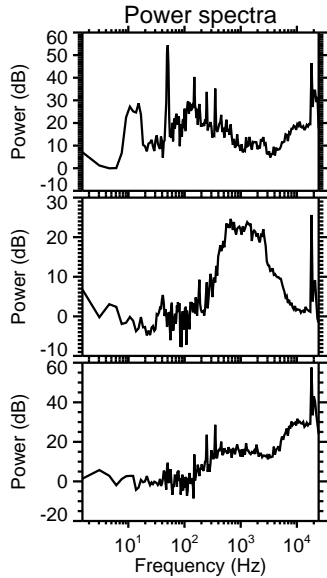
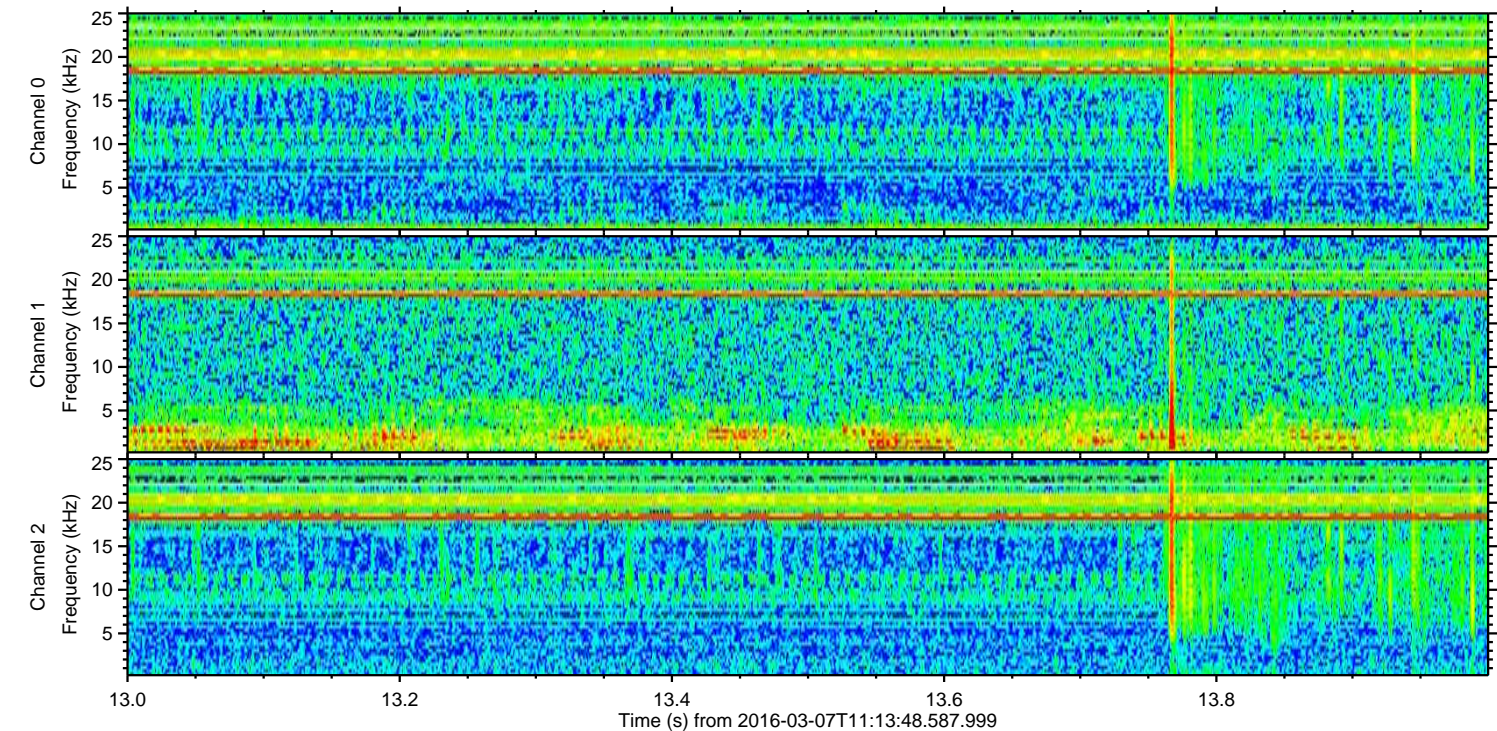
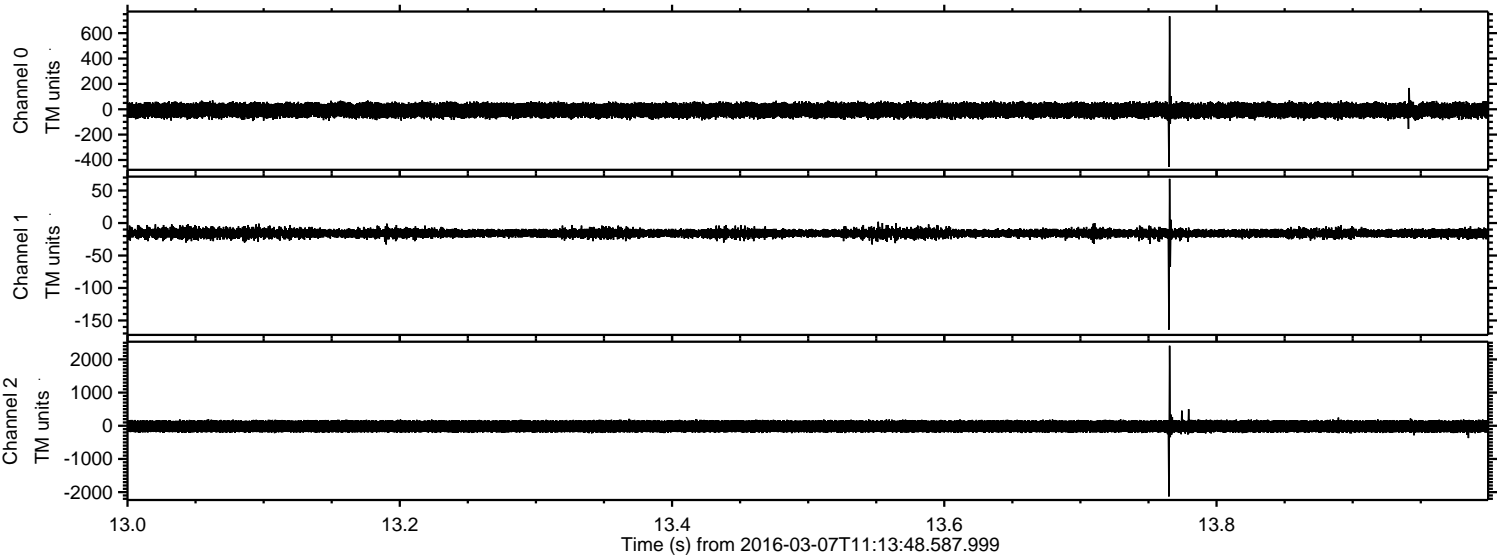
Channel 0
mn: -644
mx: 941
 μ : -8.2
 σ : 32.3

Channel 1
mn: -257
mx: 136
 μ : -15.6
 σ : 5.0

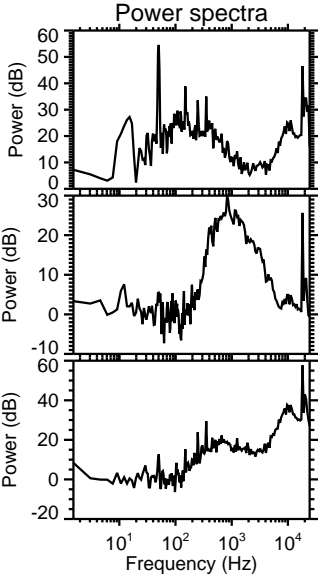
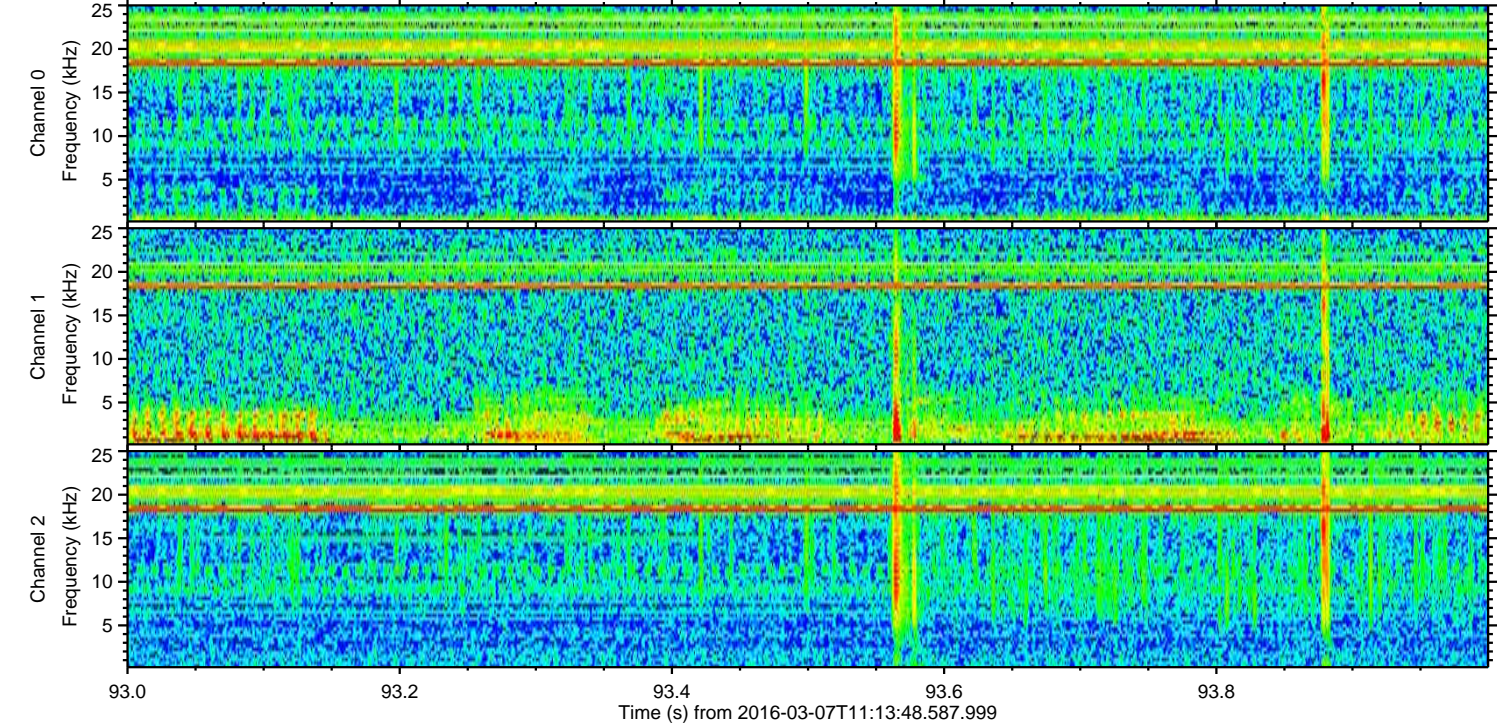
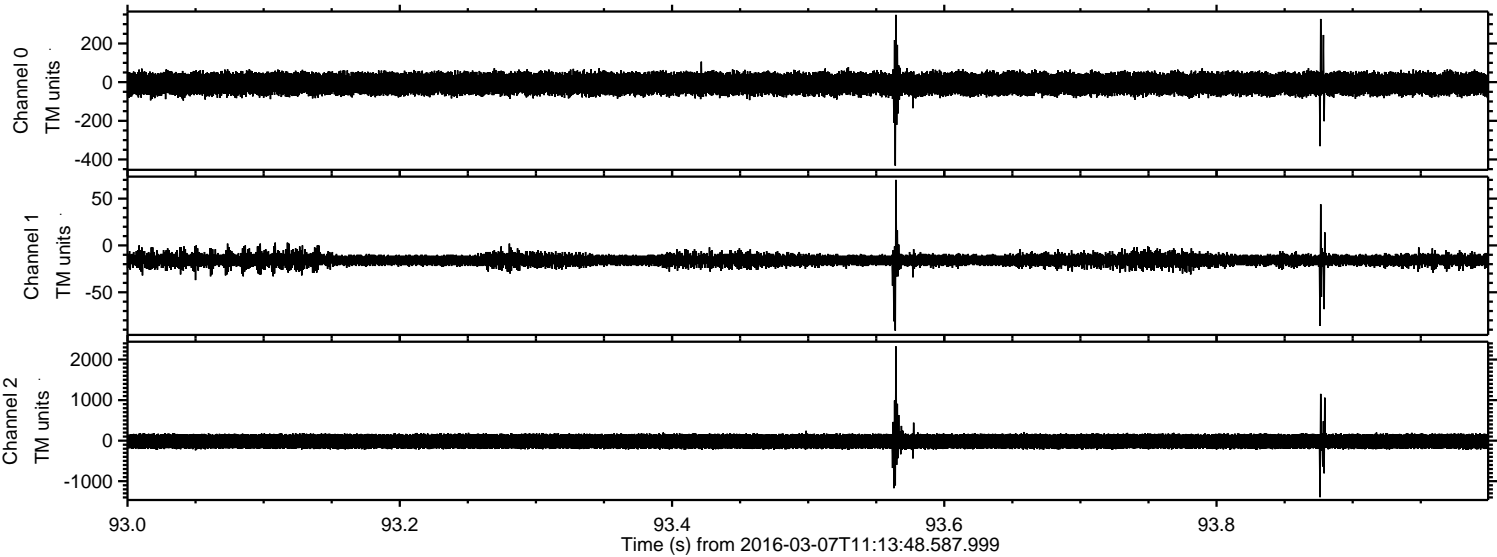
Channel 2
mn: -3449
mx: 2645
 μ : -17.2
 σ : 109.1

ELMAVAN 3D WAVEFORMS (Measured data sampled at 50 kHz) 51000 packets of 144 samples from 2016-03-07T11:13:48.587.999. Part 14/147

Processed Mon Apr 18 21:37:36 2016 by ELM ver.2012-10-06 from 001__elm20160307_111347__dat00.bin



Processed Mon Apr 18 21:37:37 2016 by ELM ver.2012-10-06 from 001__elm20160307_111347__dat00.bin

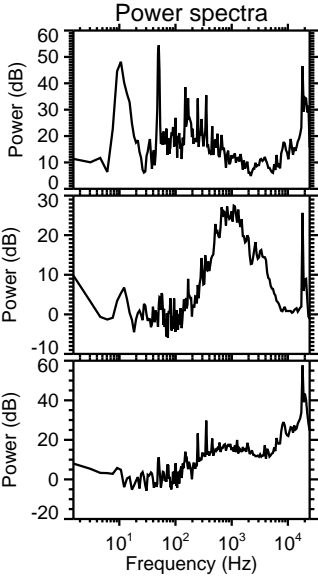
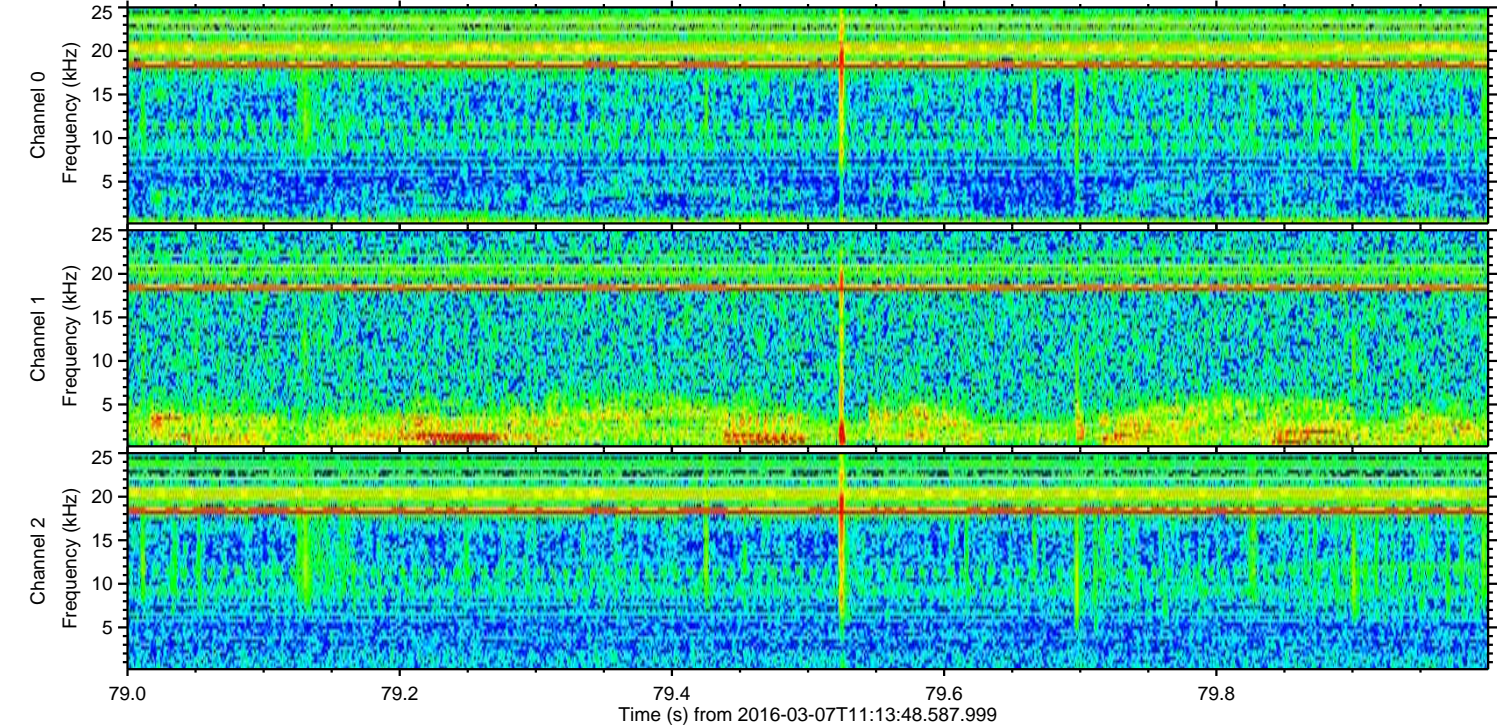
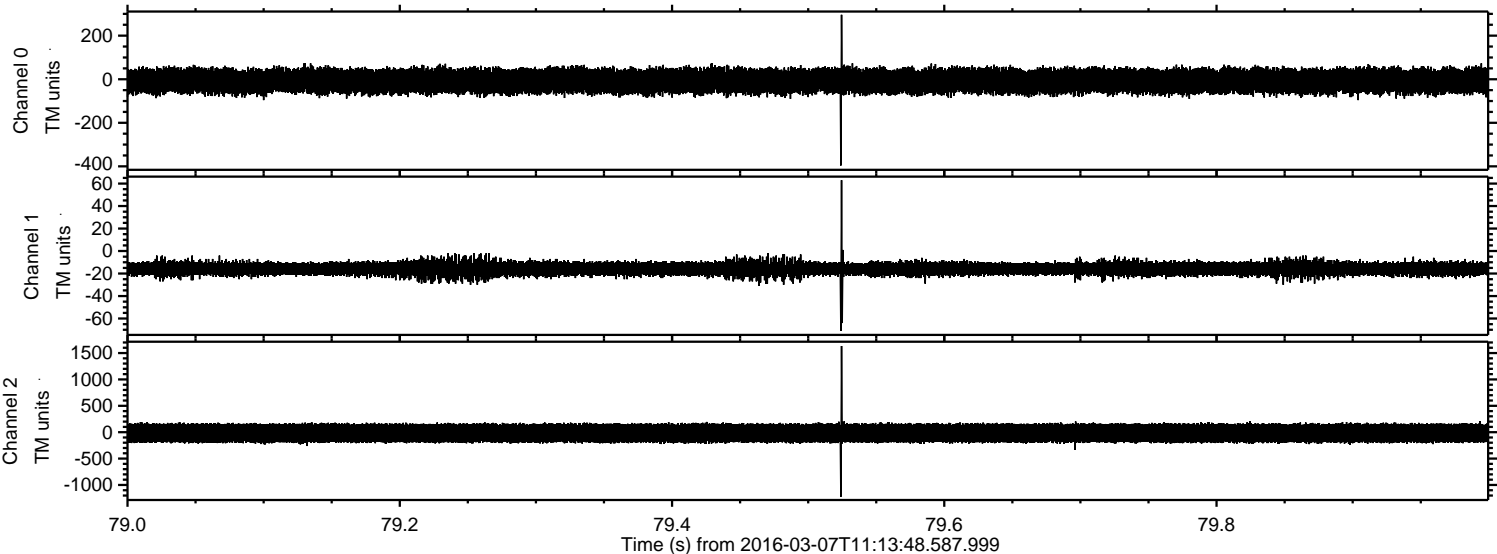


Channel 0
mn: -432
mx: 348
 μ : -8.2
 σ : 31.8

Channel 1
mn: -91
mx: 70
 μ : -15.6
 σ : 4.2

Channel 2
mn: -1394
mx: 2324
 μ : -17.2
 σ : 107.1

Processed Mon Apr 18 21:37:38 2016 by ELM ver.2012-10-06 from 001__elm20160307_111347__dat00.bin



Channel 0
mn: -396
mx: 296
 μ : -8.2
 σ : 31.6

Channel 1
mn: -71
mx: 63
 μ : -15.6
 σ : 3.8

Channel 2
mn: -1224
mx: 1633
 μ : -17.2
 σ : 105.1

Processed Mon Apr 18 21:37:39 2016 by ELM ver.2012-10-06 from 001__elm20160307_111347__dat00.bin

