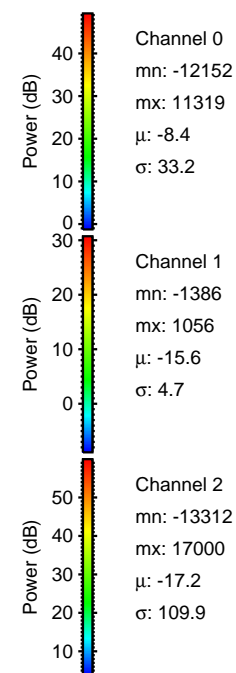
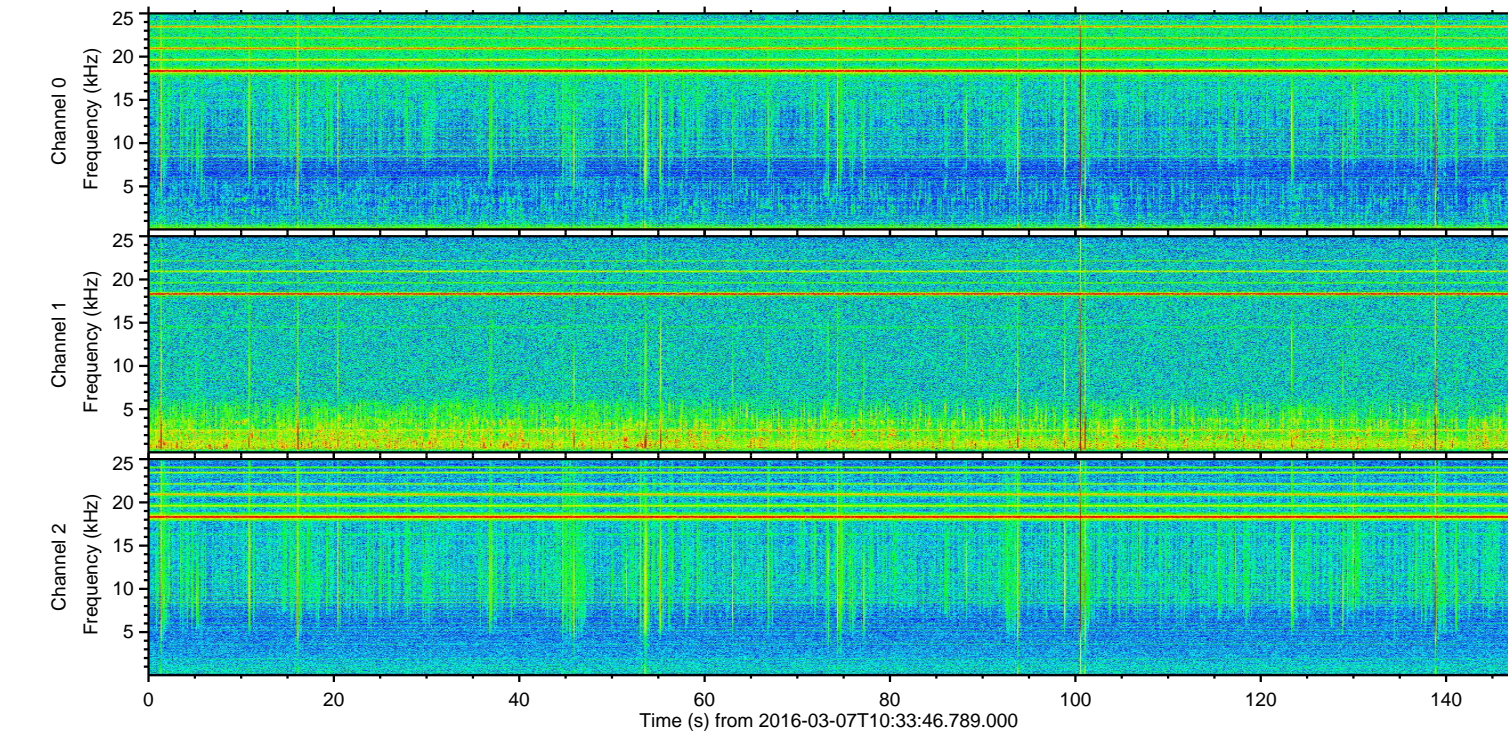
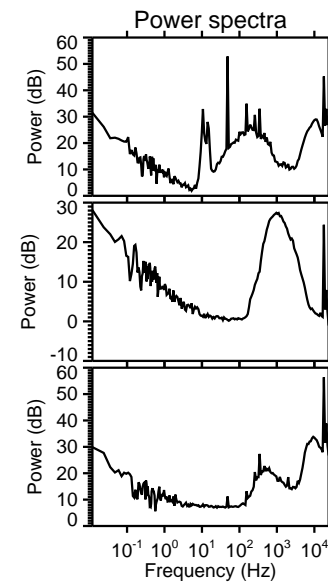
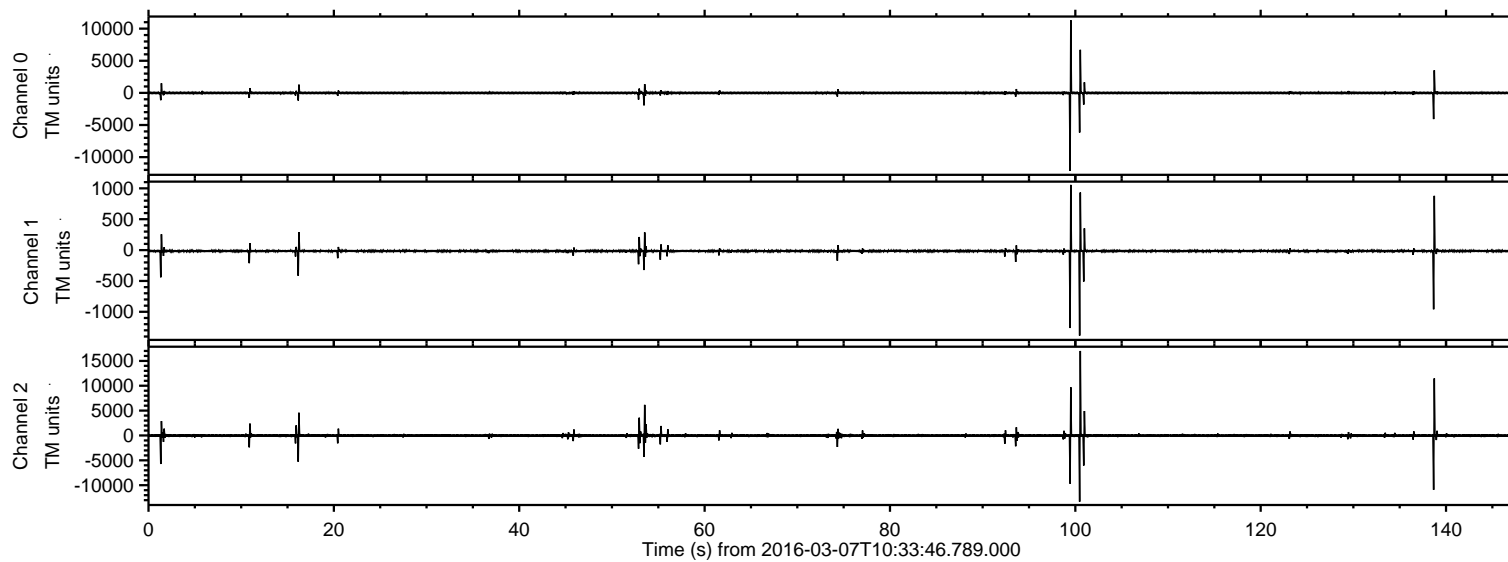


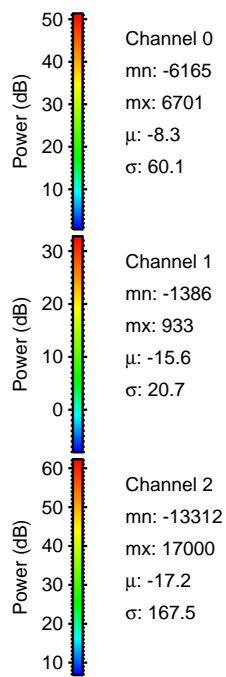
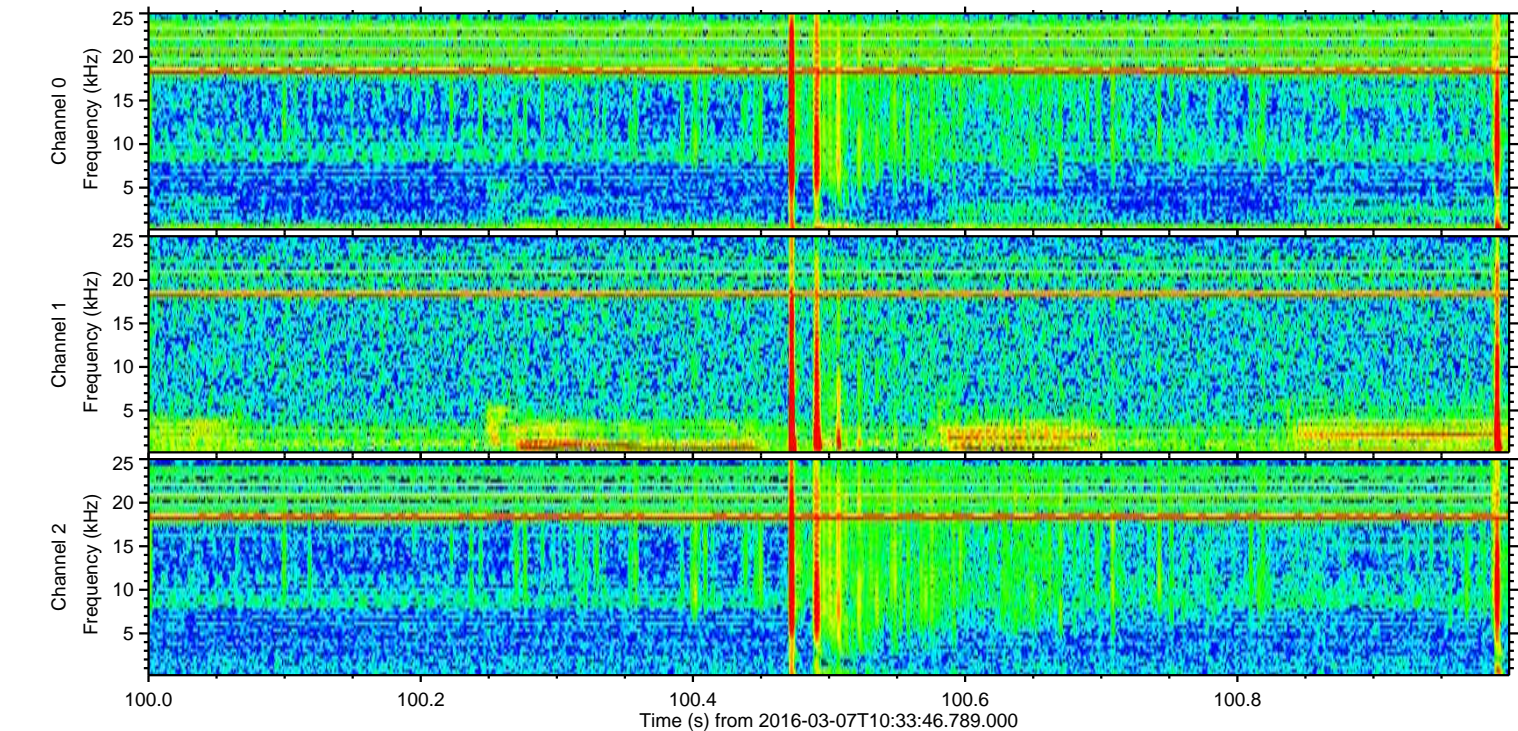
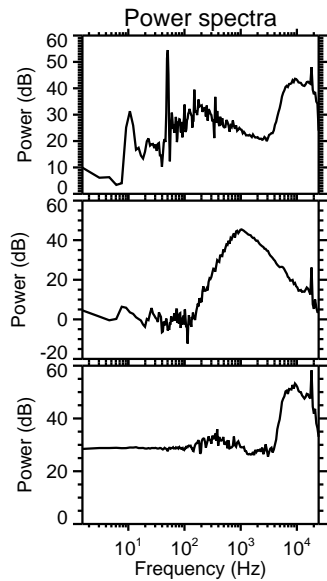
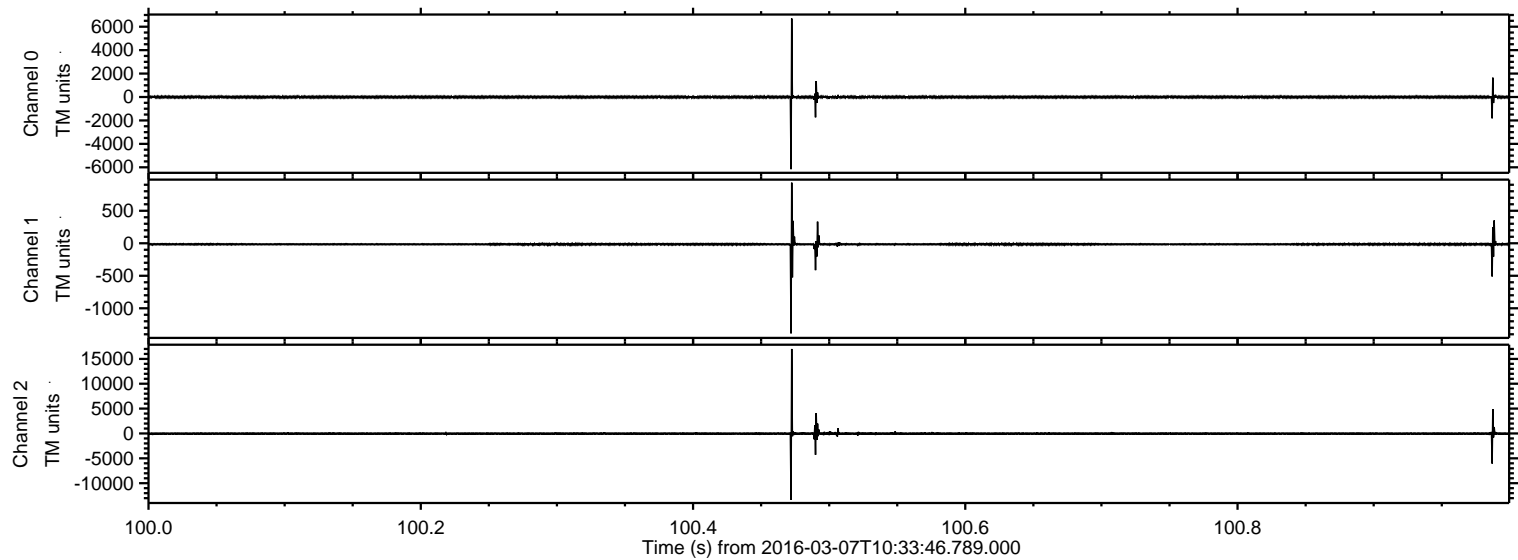
ELMAVAN 3D WAVEFORMS (Measured data sampled at 50 kHz) 51000 packets of 144 samples from 2016-03-07T10:33:46.789.000.

Processed Mon Apr 18 21:29:13 2016 by ELM ver.2012-10-06 from 001__elm20160307_103345__dat00.bin



ELMAVAN 3D WAVEFORMS (Measured data sampled at 50 kHz) 51000 packets of 144 samples from 2016-03-07T10:33:46.789.000. Part 101/147

Processed Mon Apr 18 21:29:25 2016 by ELM ver.2012-10-06 from 001__elm20160307_103345__dat00.bin



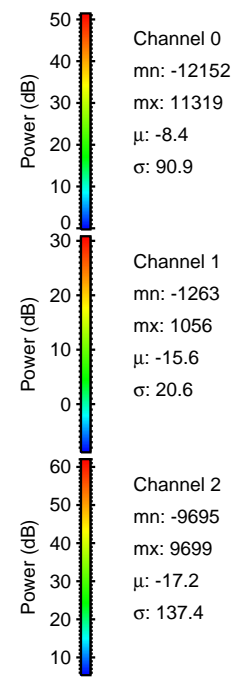
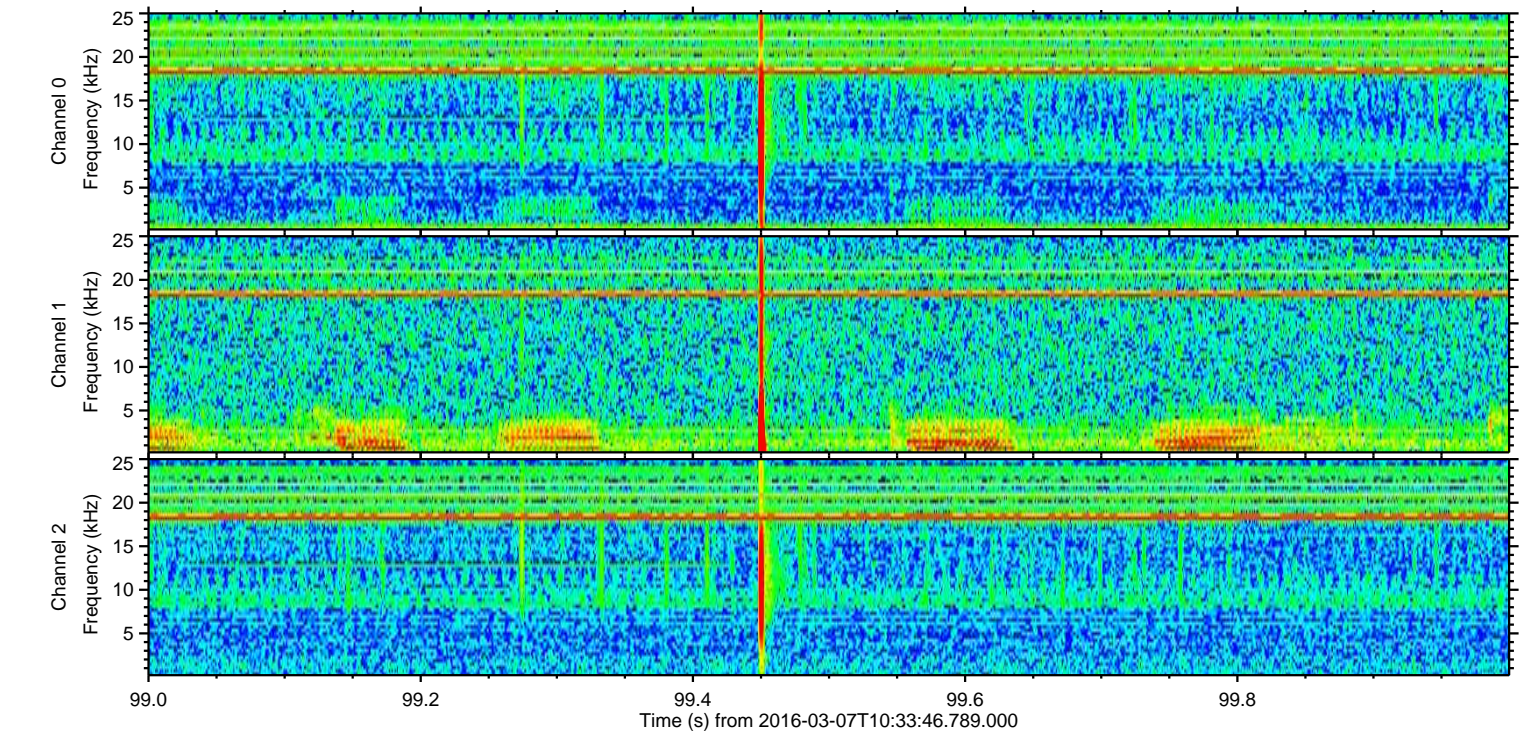
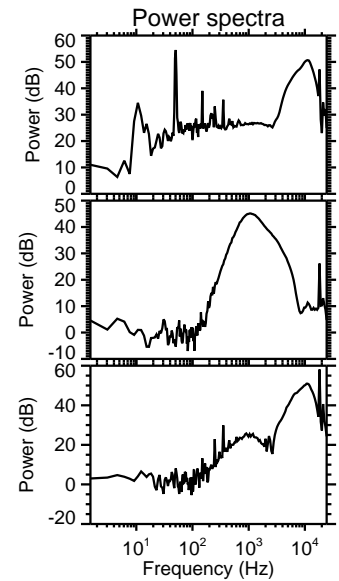
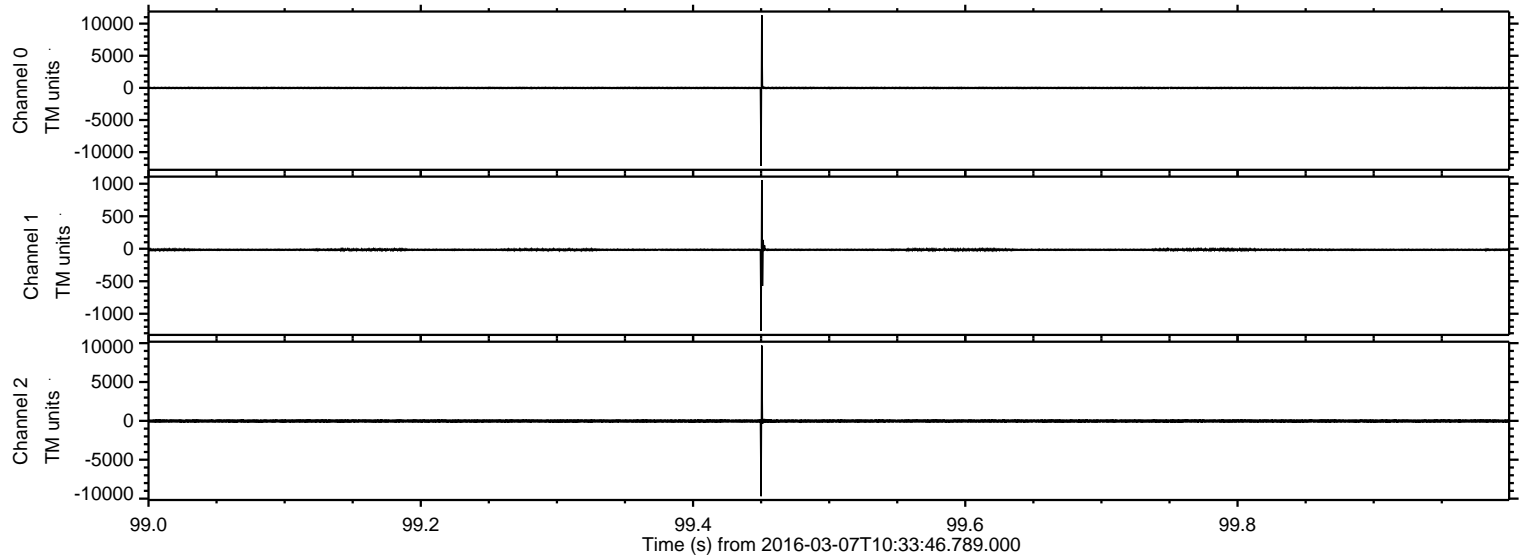
Channel 0
mn: -6165
mx: 6701
 μ : -8.3
 σ : 60.1

Channel 1
mn: -1386
mx: 933
 μ : -15.6
 σ : 20.7

Channel 2
mn: -13312
mx: 17000
 μ : -17.2
 σ : 167.5

ELMAVAN 3D WAVEFORMS (Measured data sampled at 50 kHz) 51000 packets of 144 samples from 2016-03-07T10:33:46.789.000. Part 100/147

Processed Mon Apr 18 21:29:26 2016 by ELM ver.2012-10-06 from 001__elm20160307_103345__dat00.bin



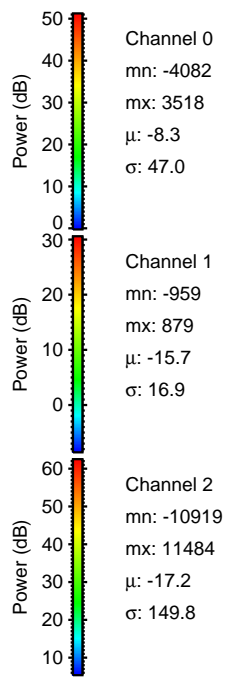
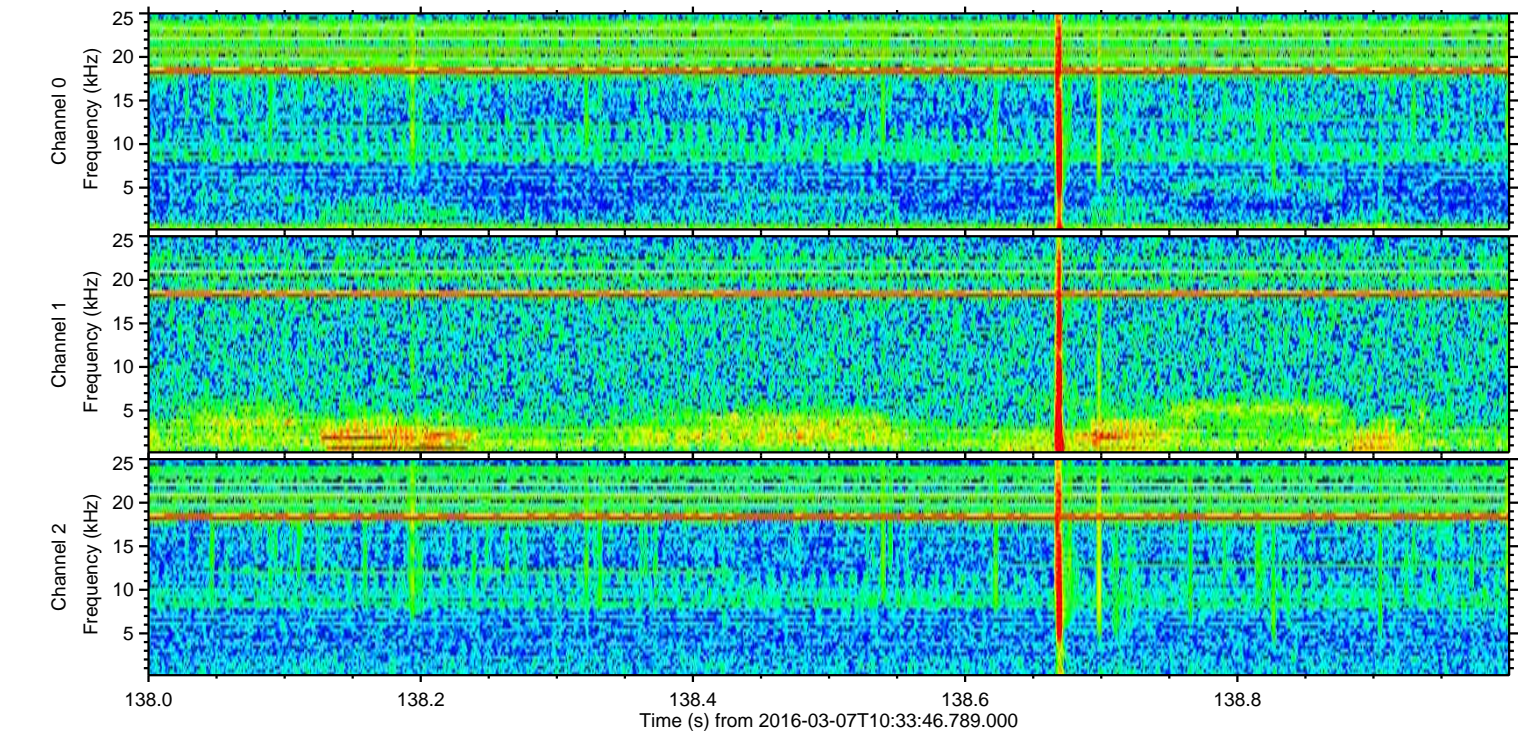
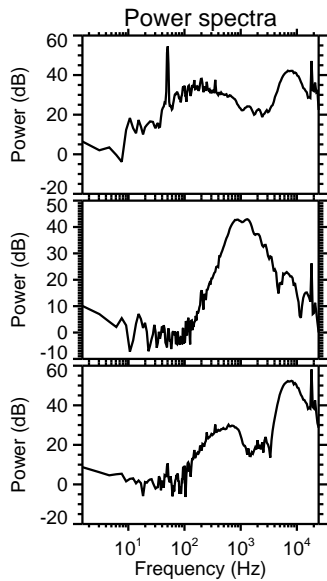
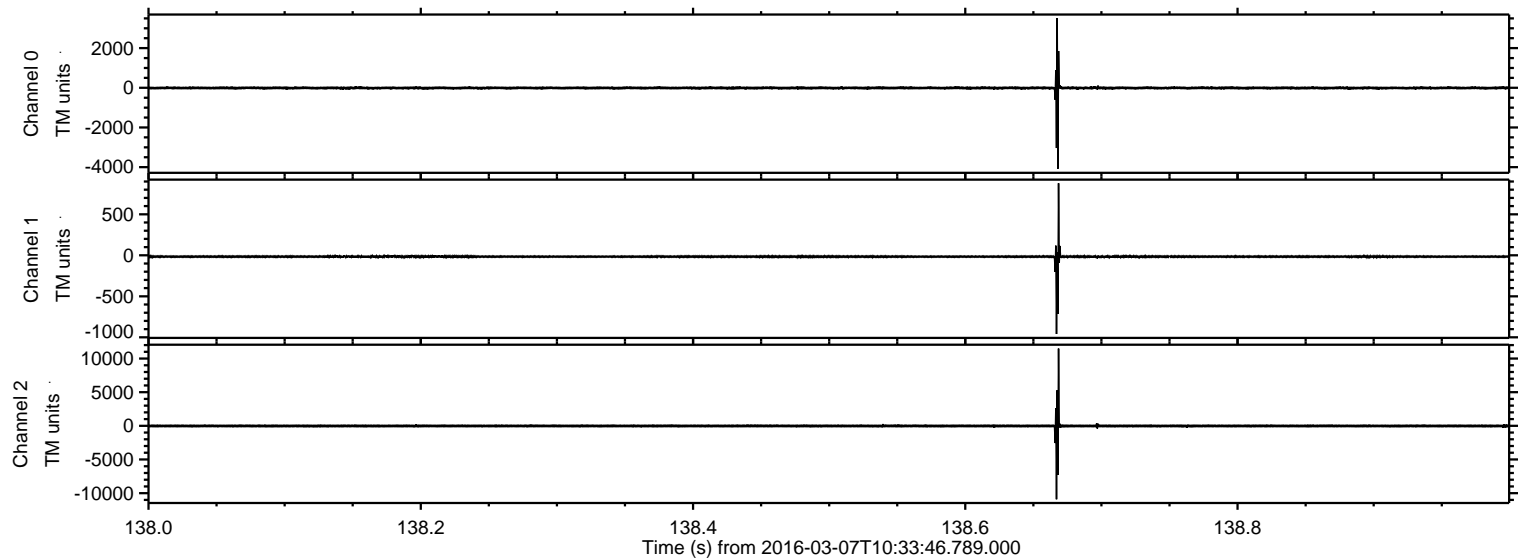
Channel 0
mn: -12152
mx: 11319
 μ : -8.4
 σ : 90.9

Channel 1
mn: -1263
mx: 1056
 μ : -15.6
 σ : 20.6

Channel 2
mn: -9695
mx: 9699
 μ : -17.2
 σ : 137.4

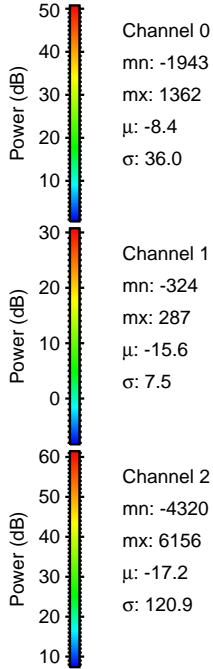
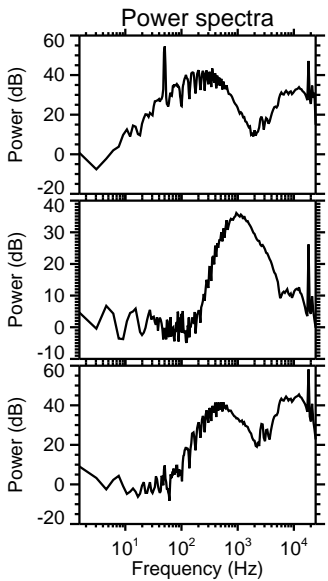
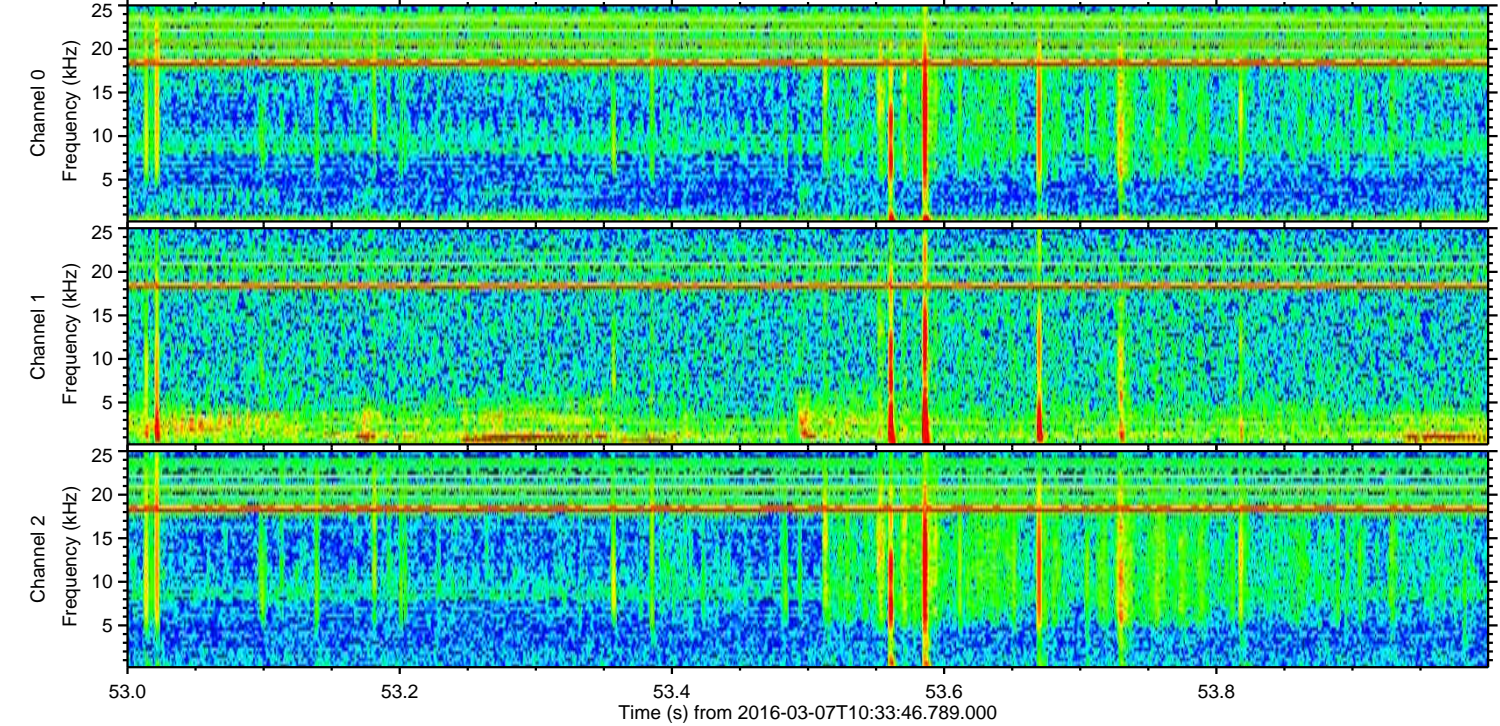
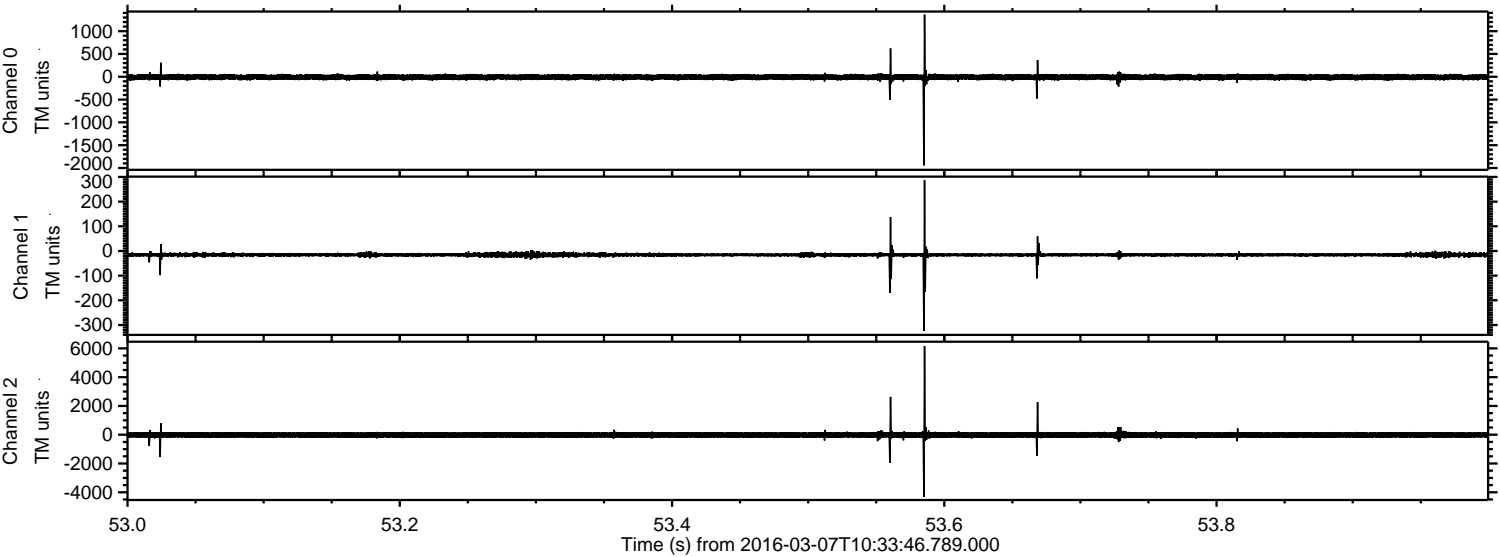
ELMAVAN 3D WAVEFORMS (Measured data sampled at 50 kHz) 51000 packets of 144 samples from 2016-03-07T10:33:46.789.000. Part 139/147

Processed Mon Apr 18 21:29:27 2016 by ELM ver.2012-10-06 from 001__elm20160307_103345__dat00.bin



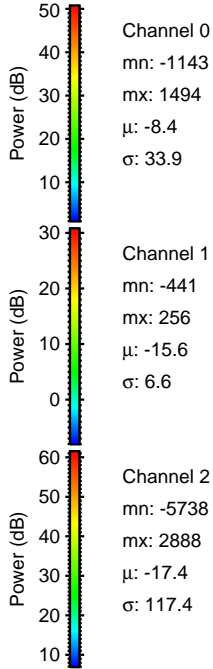
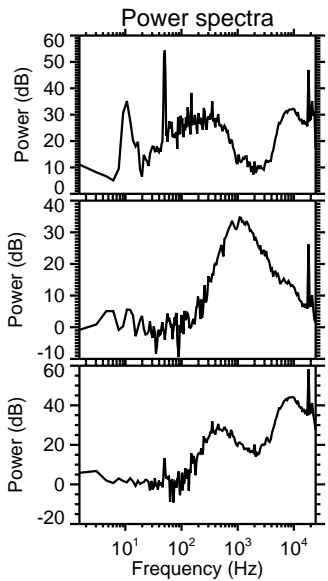
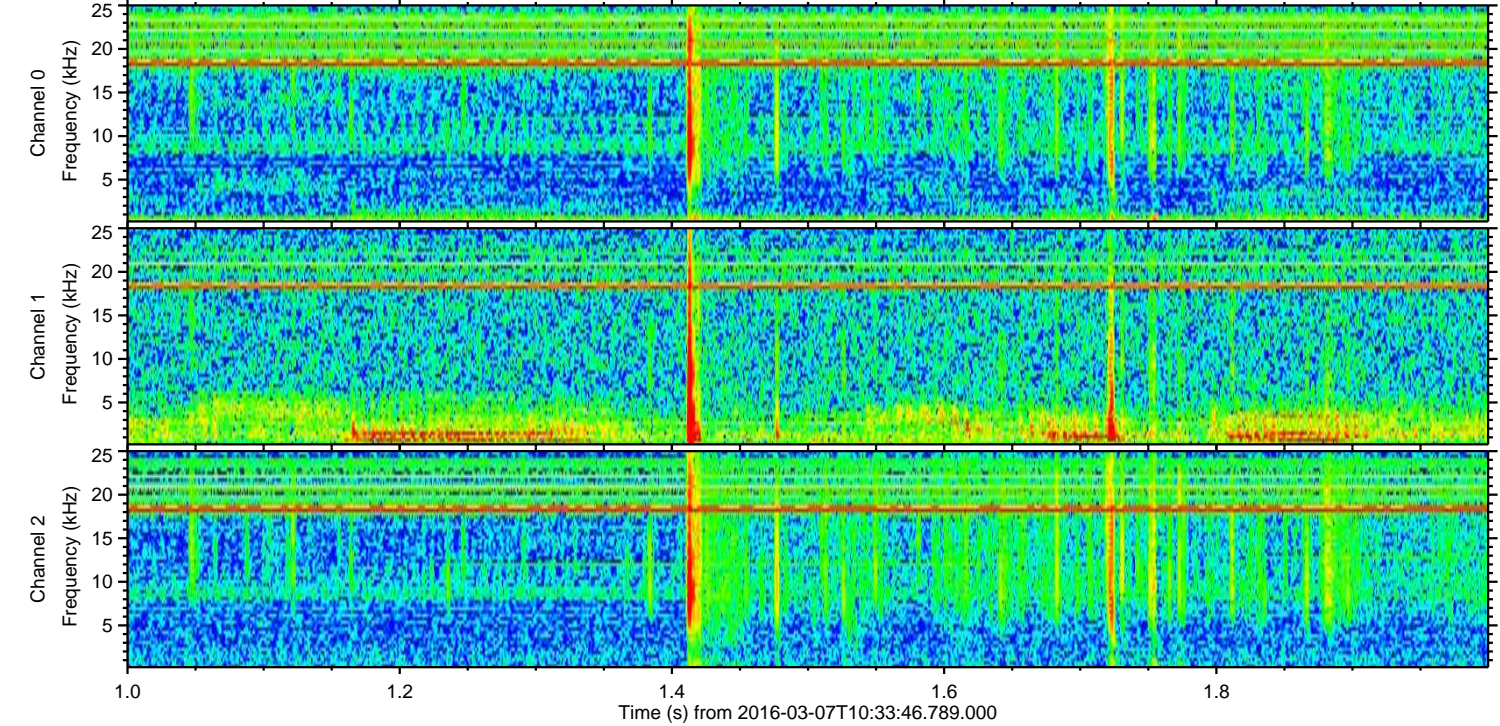
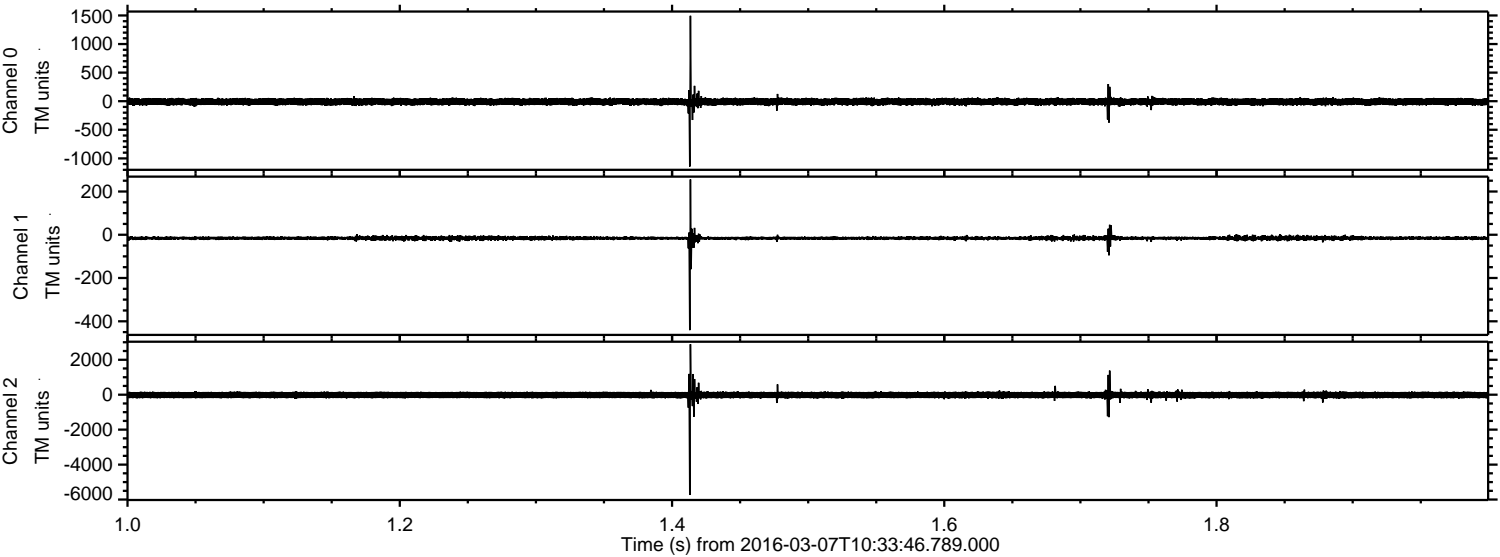
ELMAVAN 3D WAVEFORMS (Measured data sampled at 50 kHz) 51000 packets of 144 samples from 2016-03-07T10:33:46.789.000. Part 54/147

Processed Mon Apr 18 21:29:28 2016 by ELM ver.2012-10-06 from 001__elm20160307_103345__dat00.bin

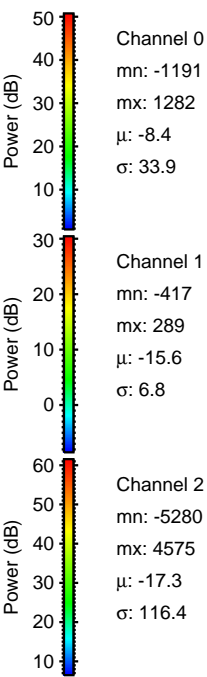
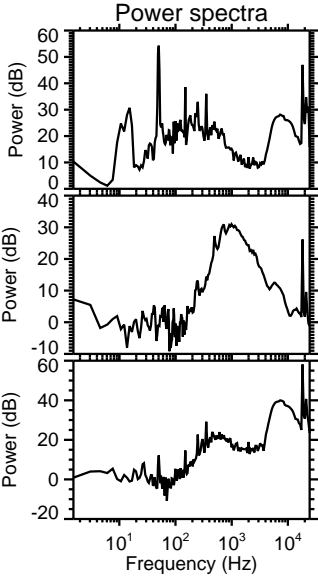
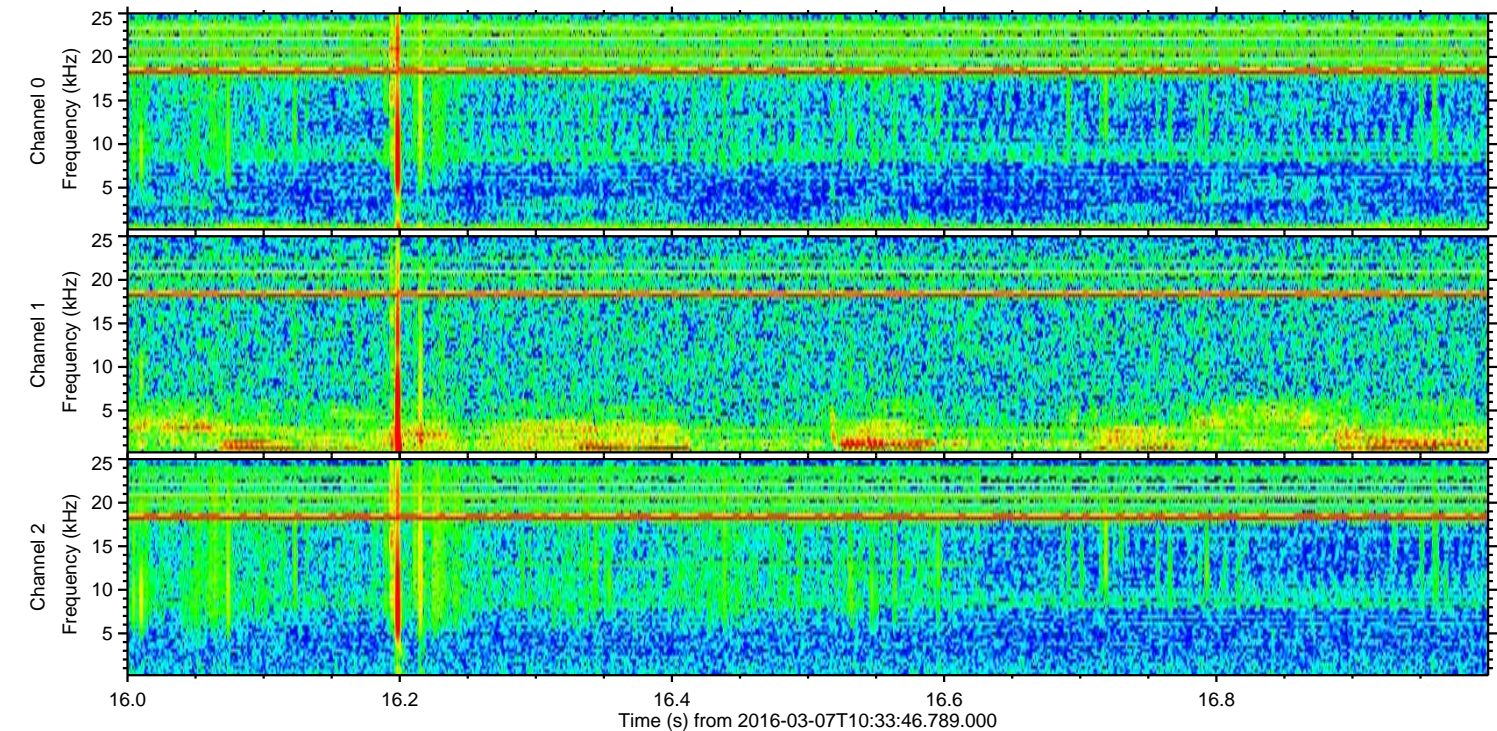
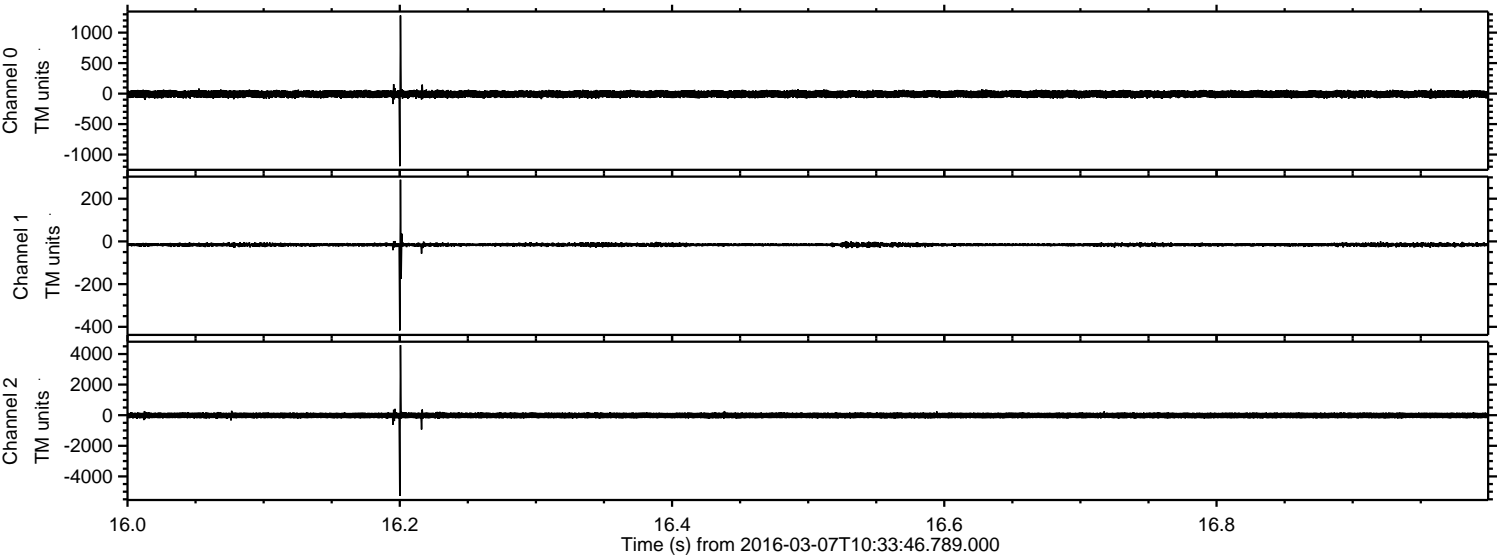


ELMAVAN 3D WAVEFORMS (Measured data sampled at 50 kHz) 51000 packets of 144 samples from 2016-03-07T10:33:46.789.000. Part 2/147

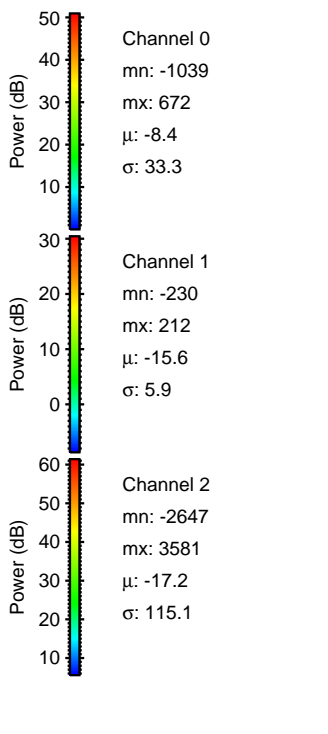
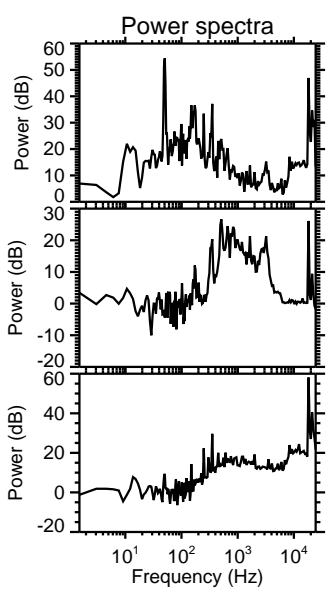
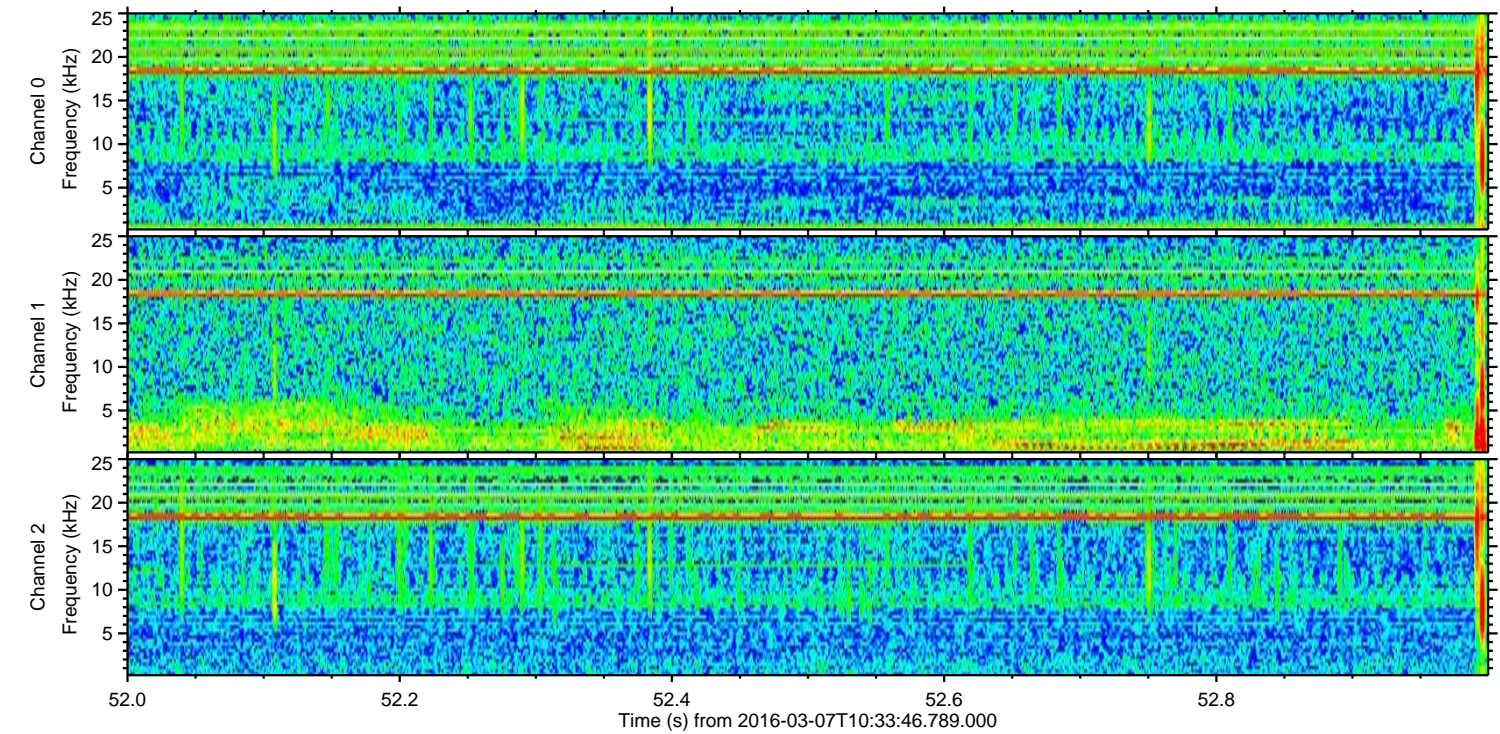
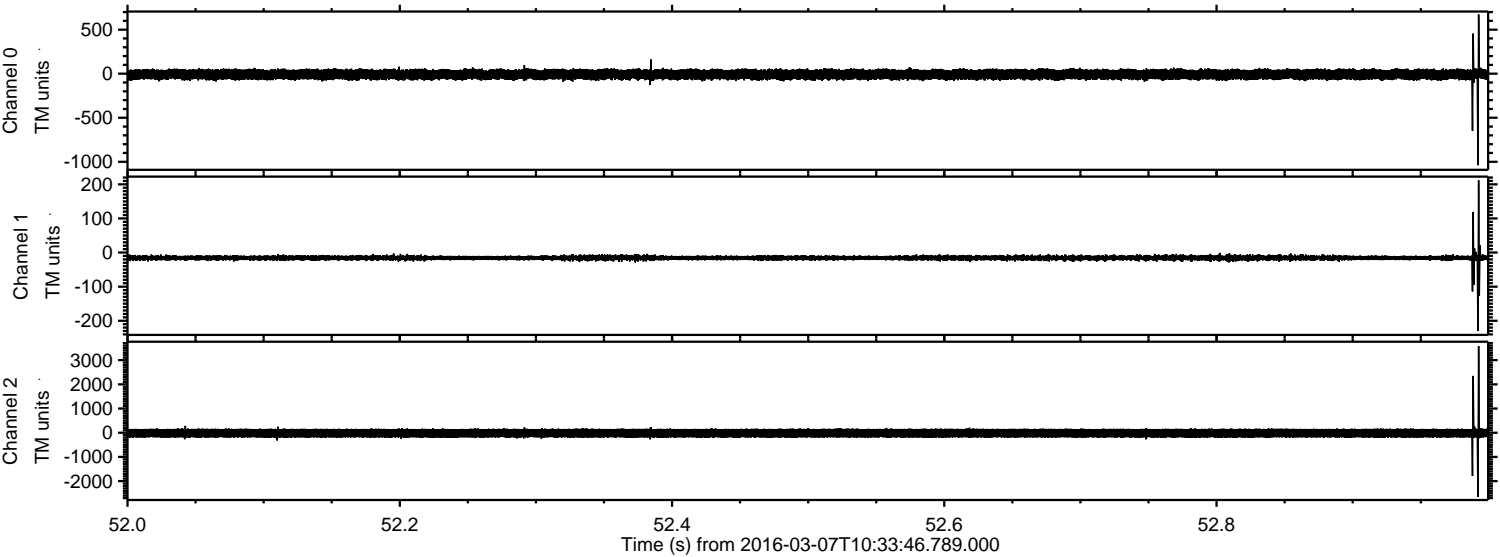
Processed Mon Apr 18 21:29:29 2016 by ELM ver.2012-10-06 from 001__elm20160307_103345__dat00.bin



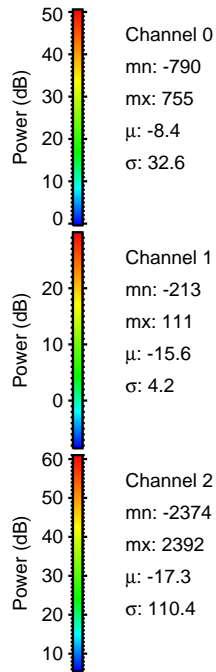
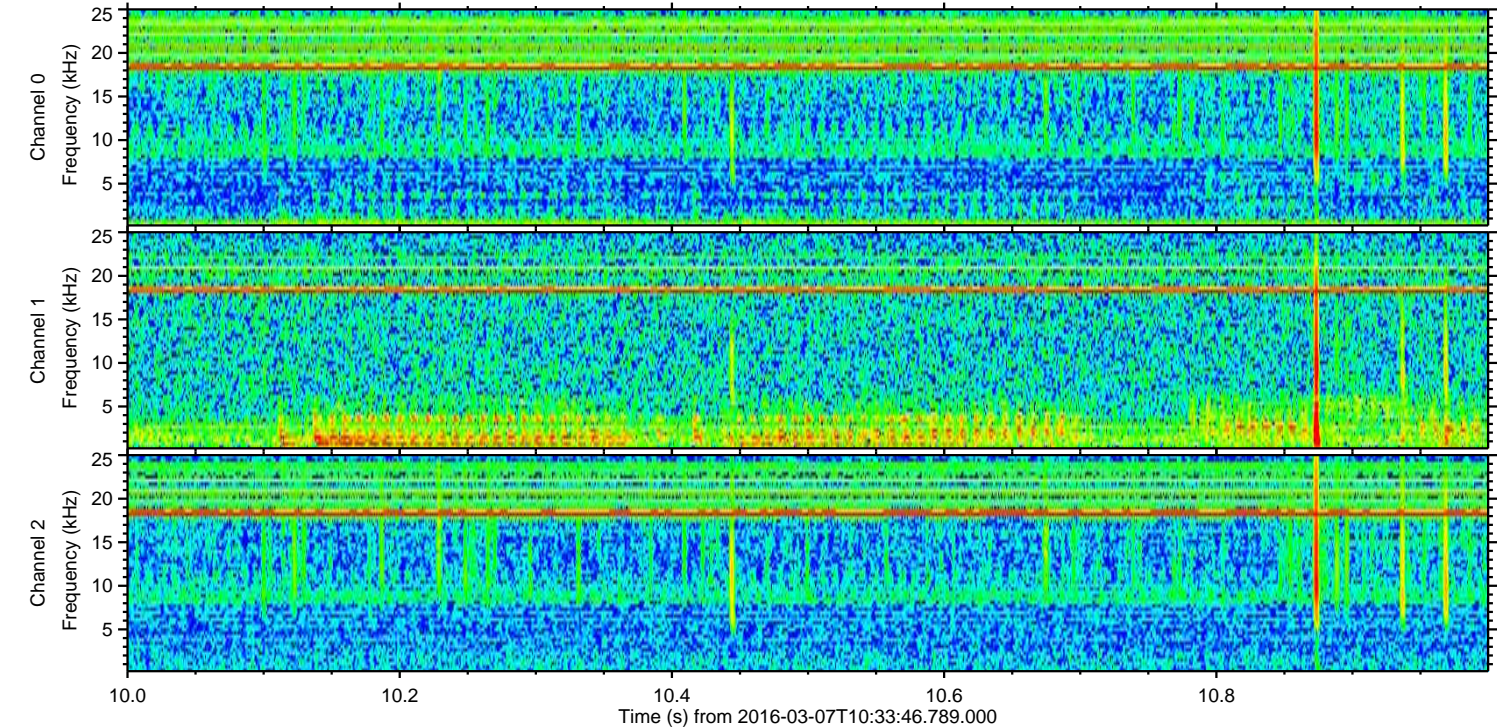
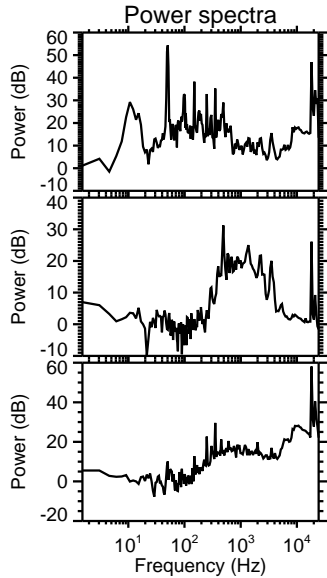
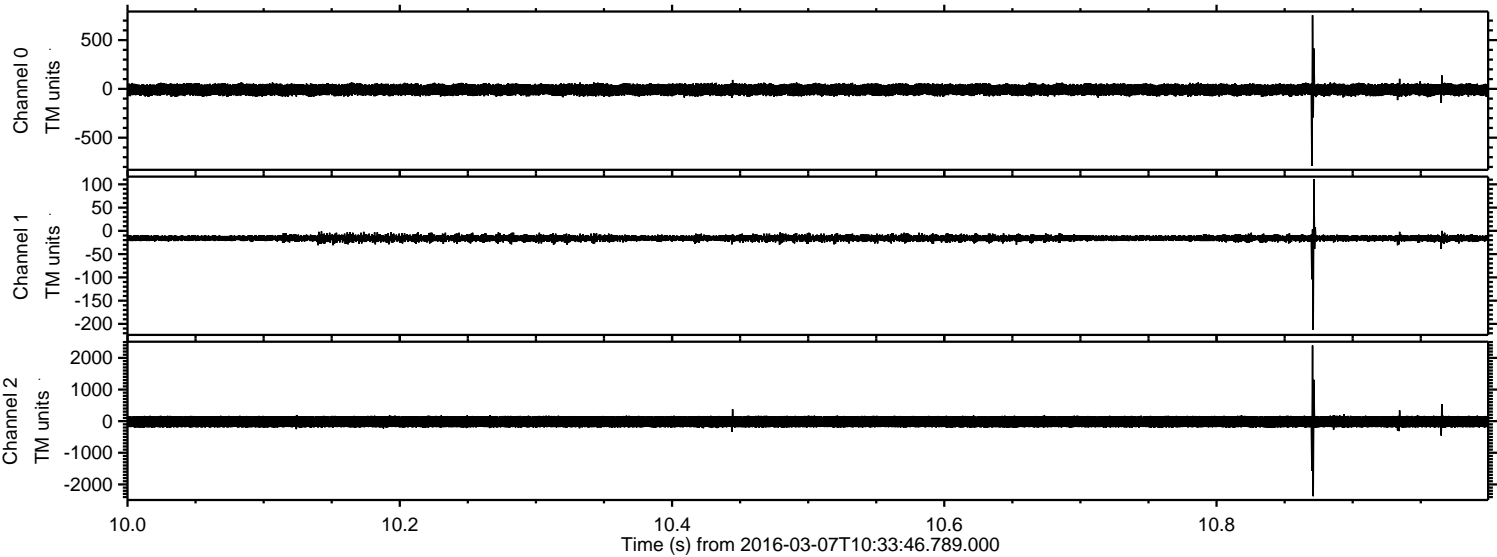
Processed Mon Apr 18 21:29:30 2016 by ELM ver.2012-10-06 from 001__elm20160307_103345__dat00.bin



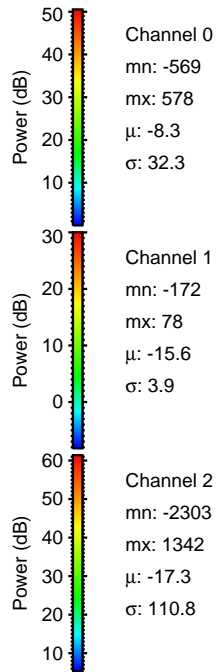
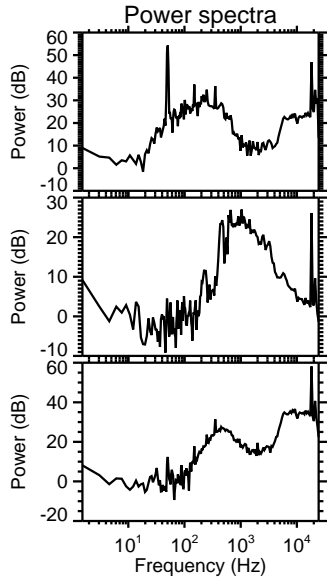
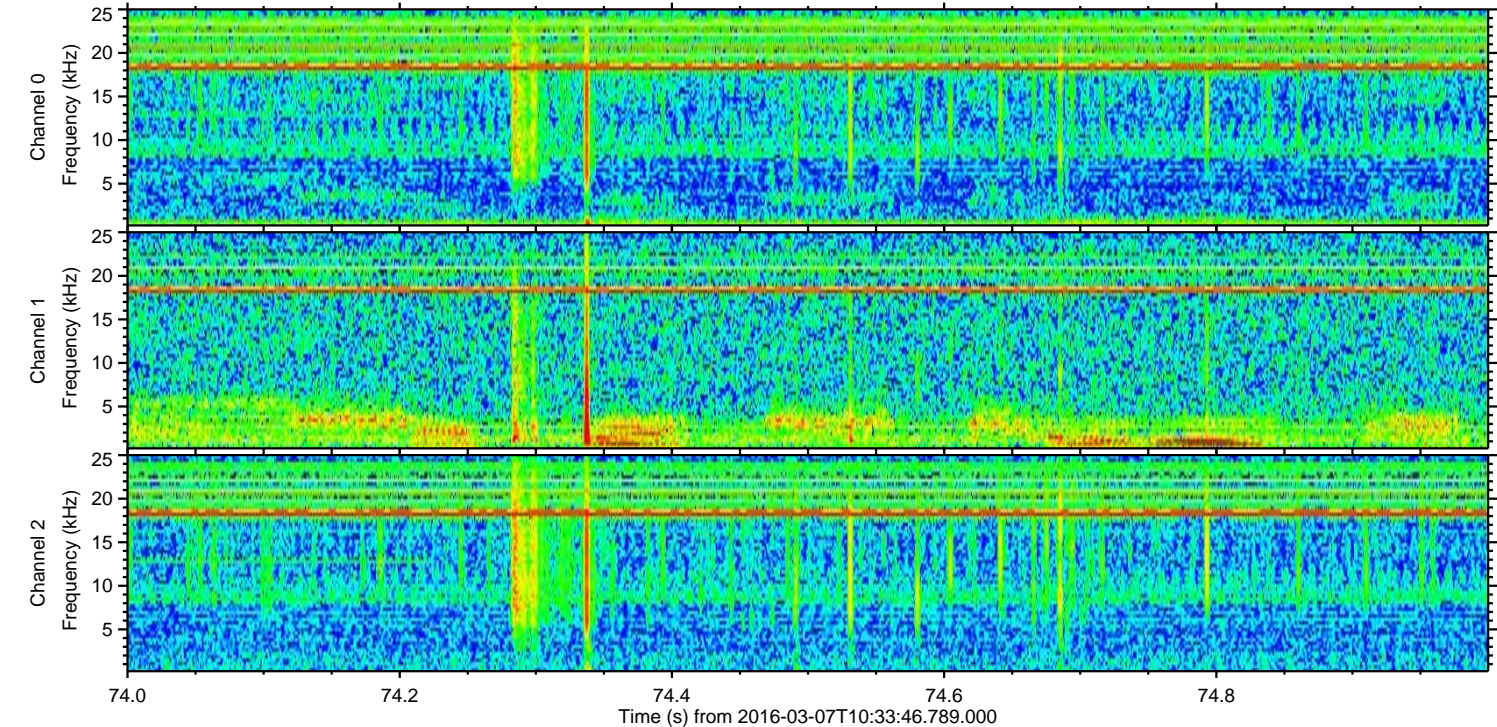
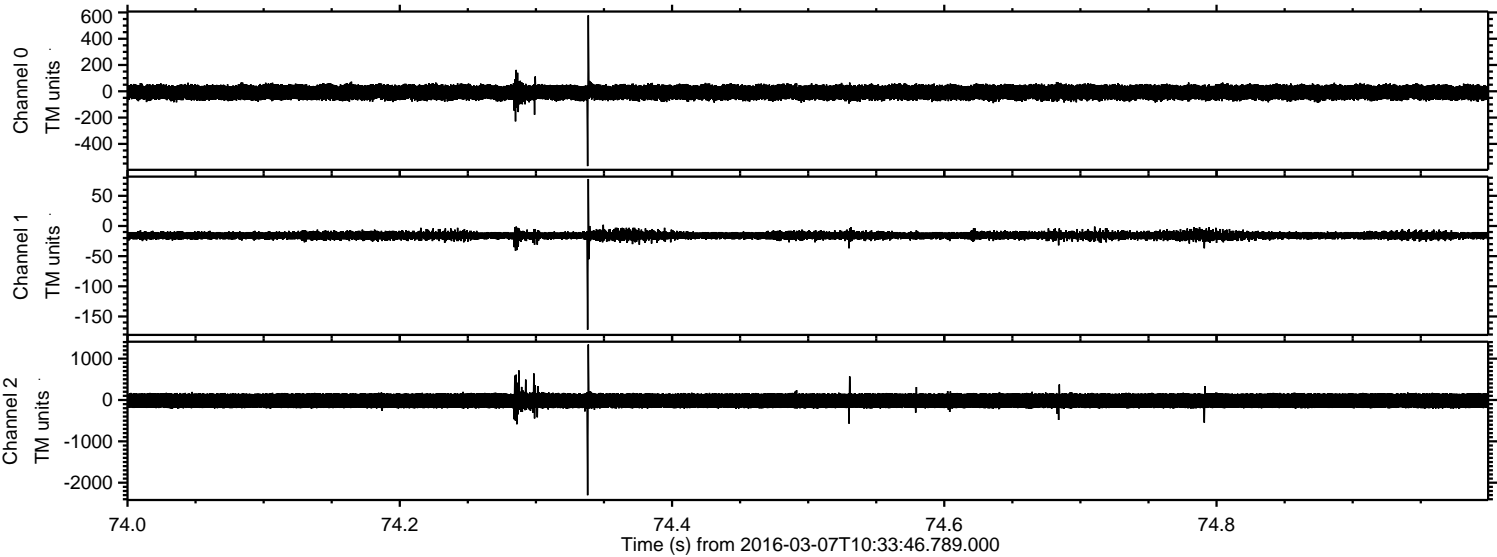
Processed Mon Apr 18 21:29:31 2016 by ELM ver.2012-10-06 from 001__elm20160307_103345__dat00.bin



Processed Mon Apr 18 21:29:32 2016 by ELM ver.2012-10-06 from 001__elm20160307_103345__dat00.bin



Processed Mon Apr 18 21:29:32 2016 by ELM ver.2012-10-06 from 001__elm20160307_103345__dat00.bin



Processed Mon Apr 18 21:29:33 2016 by ELM ver.2012-10-06 from 001__elm20160307_103345__dat00.bin

