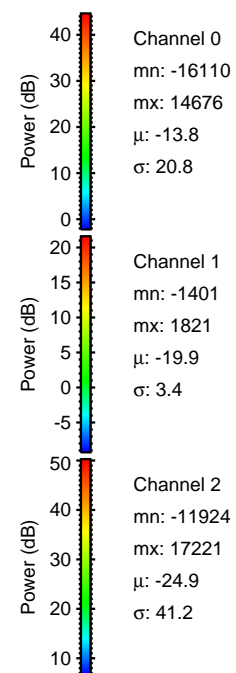
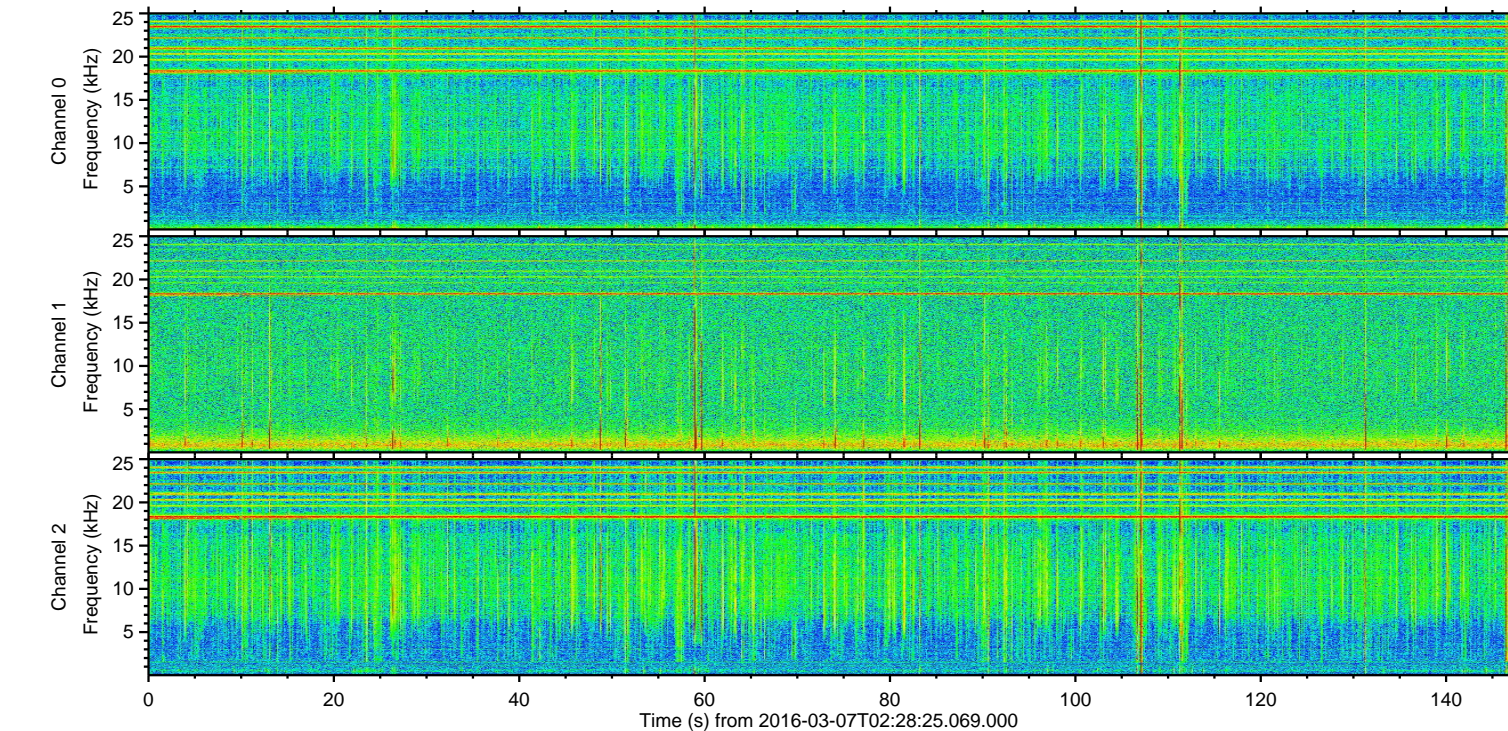
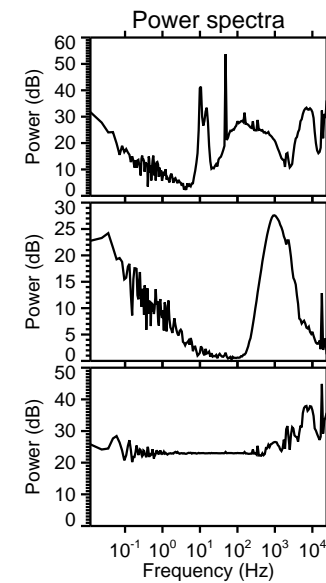
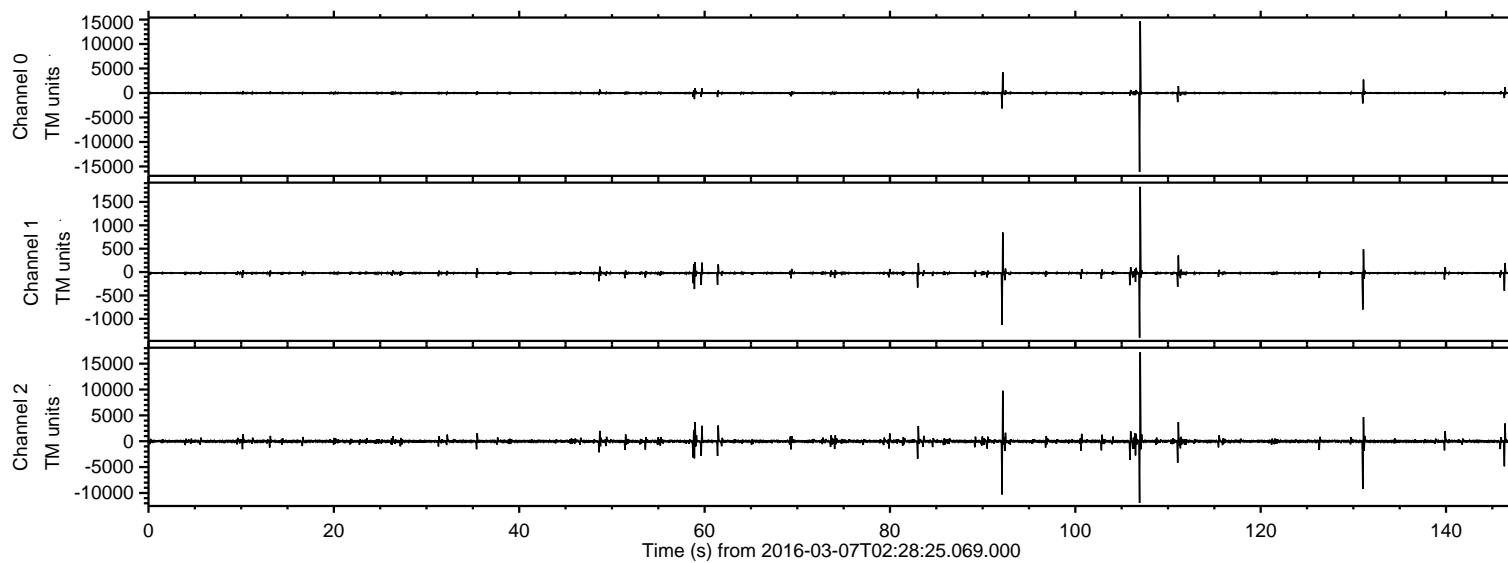


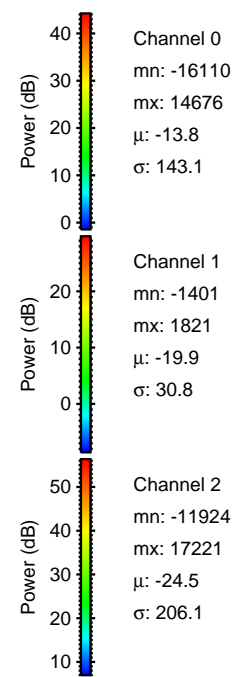
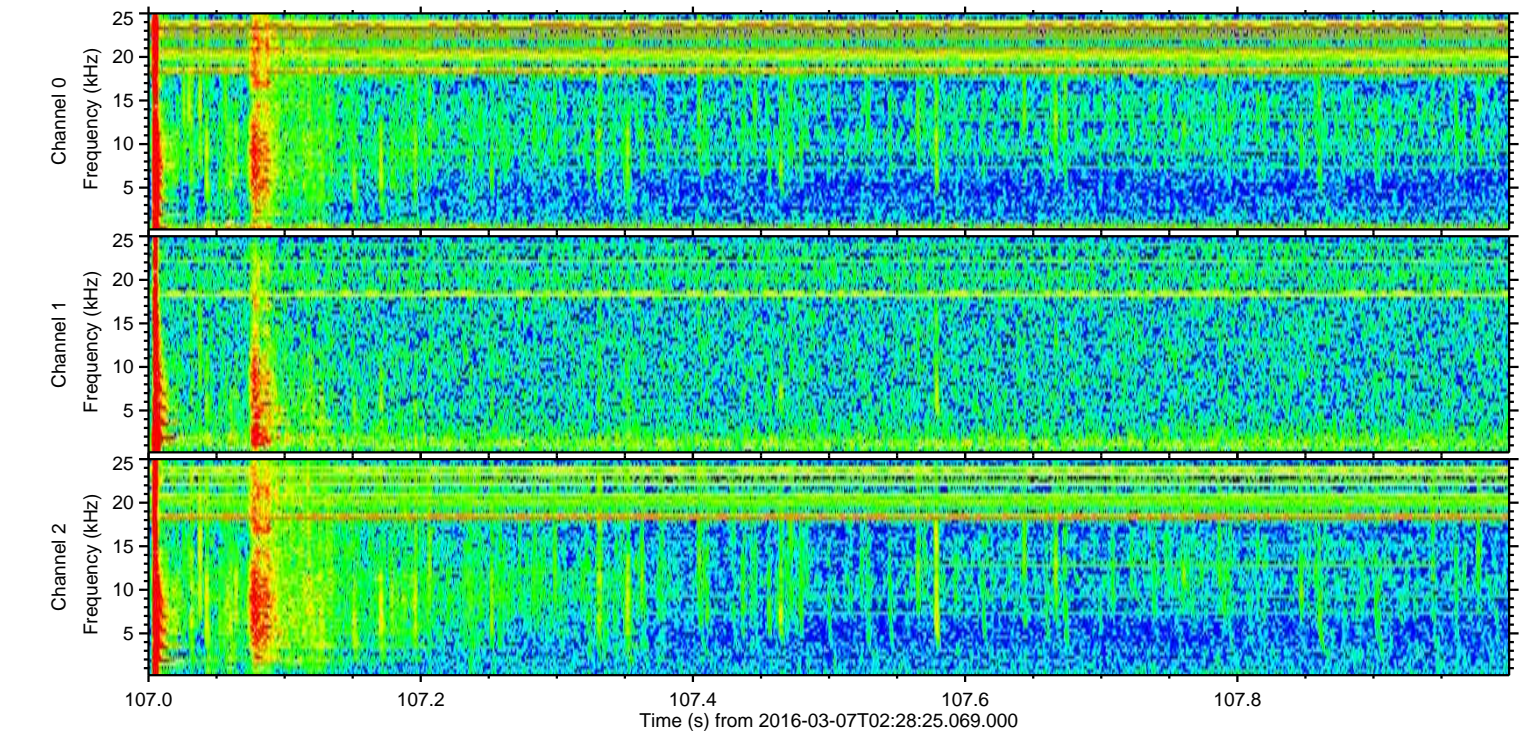
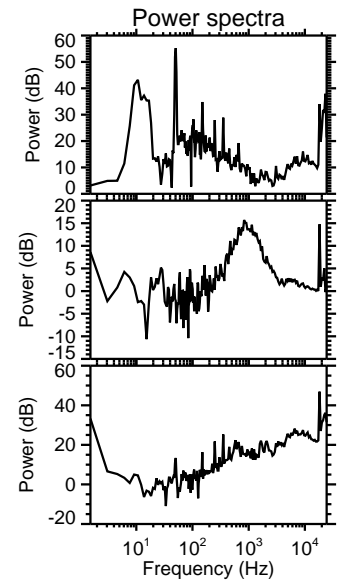
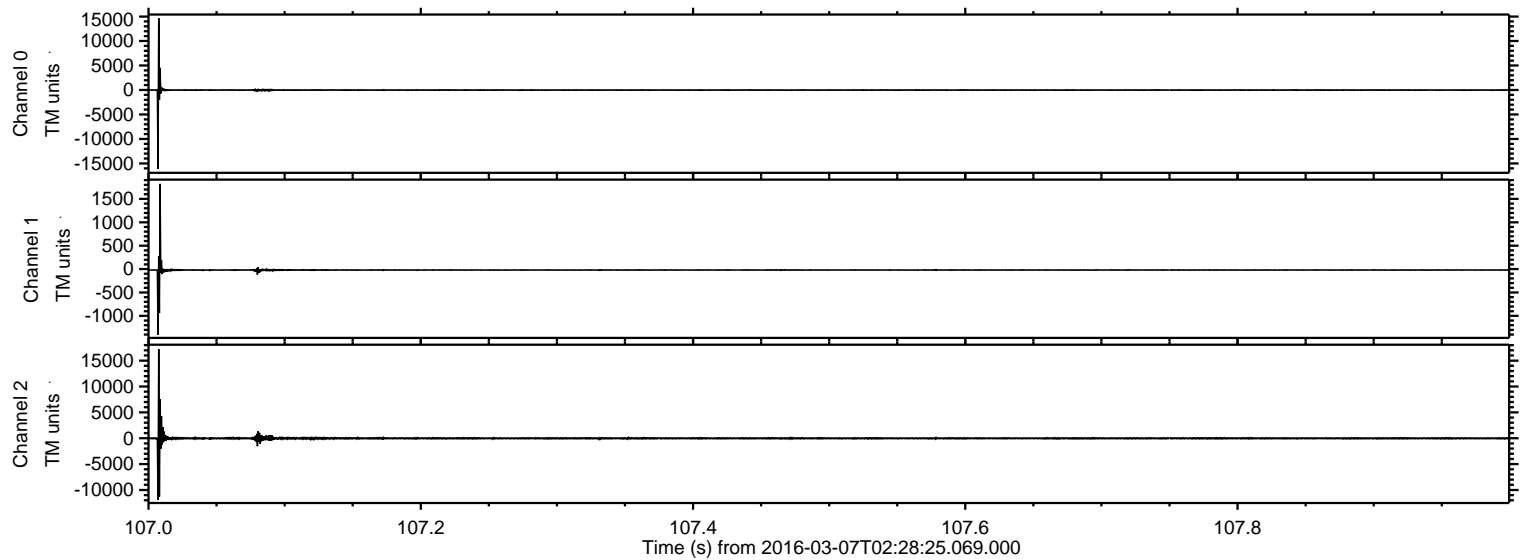
ELMAVAN 3D WAVEFORMS (Measured data sampled at 50 kHz) 51000 packets of 144 samples from 2016-03-07T02:28:25.069.000.

Processed Mon Apr 18 19:50:49 2016 by ELM ver.2012-10-06 from 001__elm20160307_022824__dat00.bin

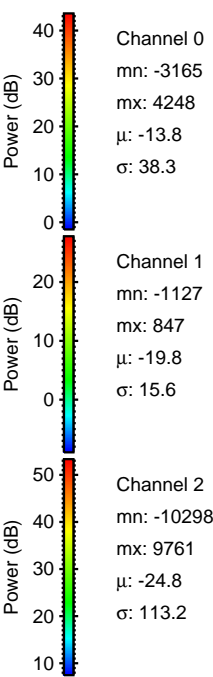
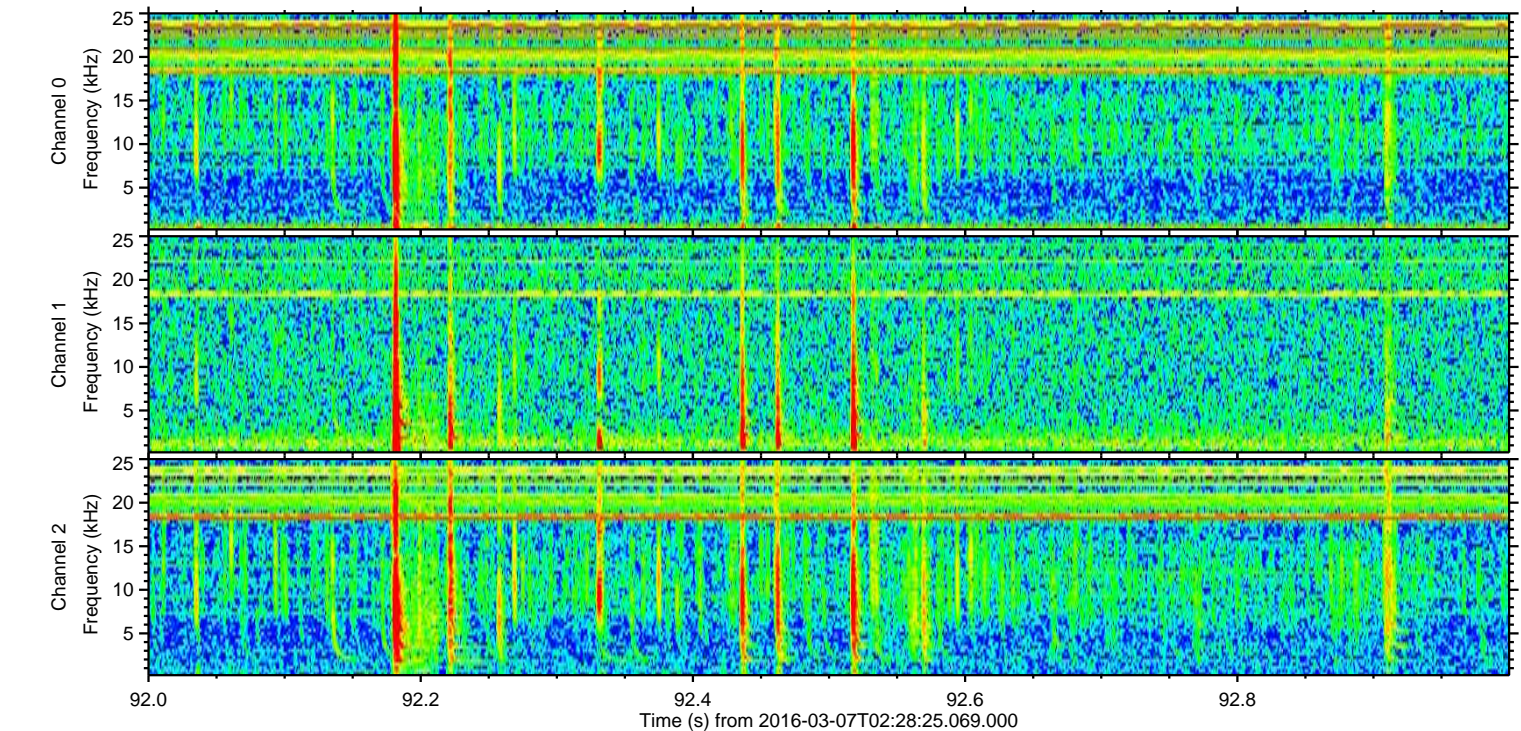
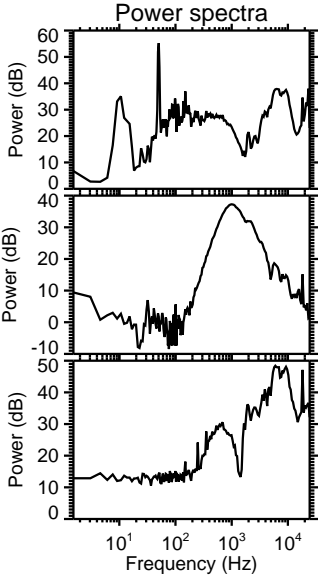
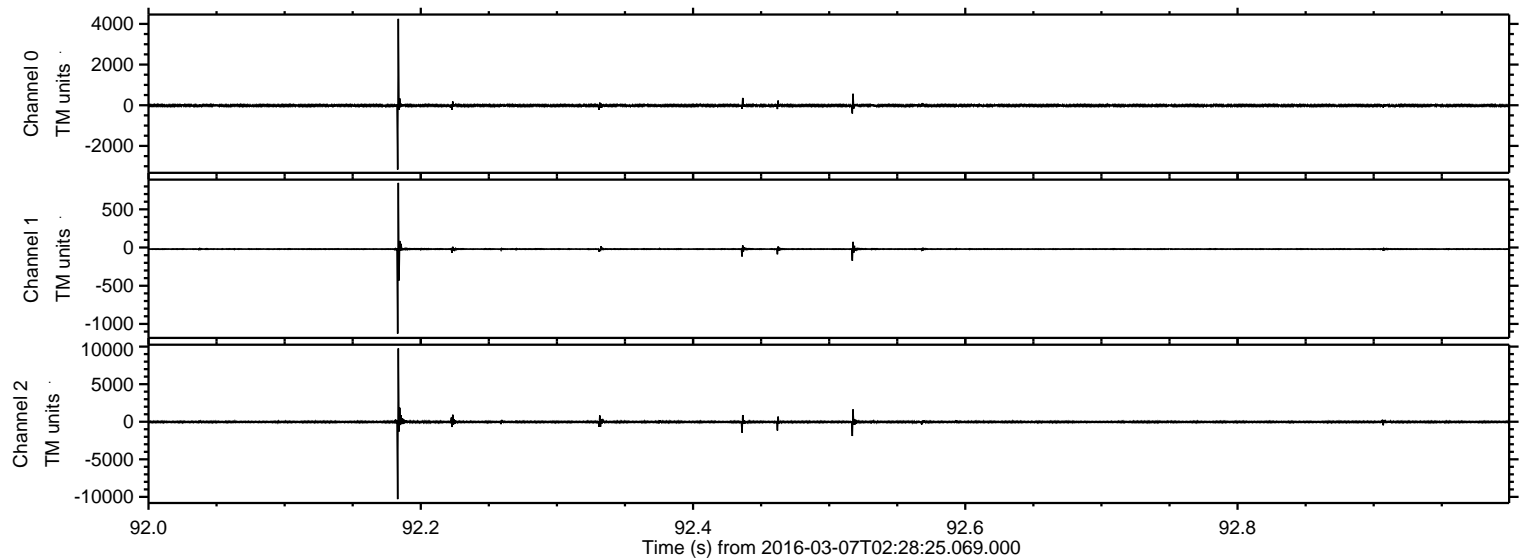


ELMAVAN 3D WAVEFORMS (Measured data sampled at 50 kHz) 51000 packets of 144 samples from 2016-03-07T02:28:25.069.000. Part 108/147

Processed Mon Apr 18 19:51:00 2016 by ELM ver.2012-10-06 from 001__elm20160307_022824__dat00.bin

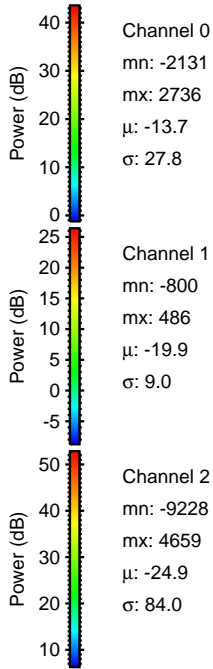
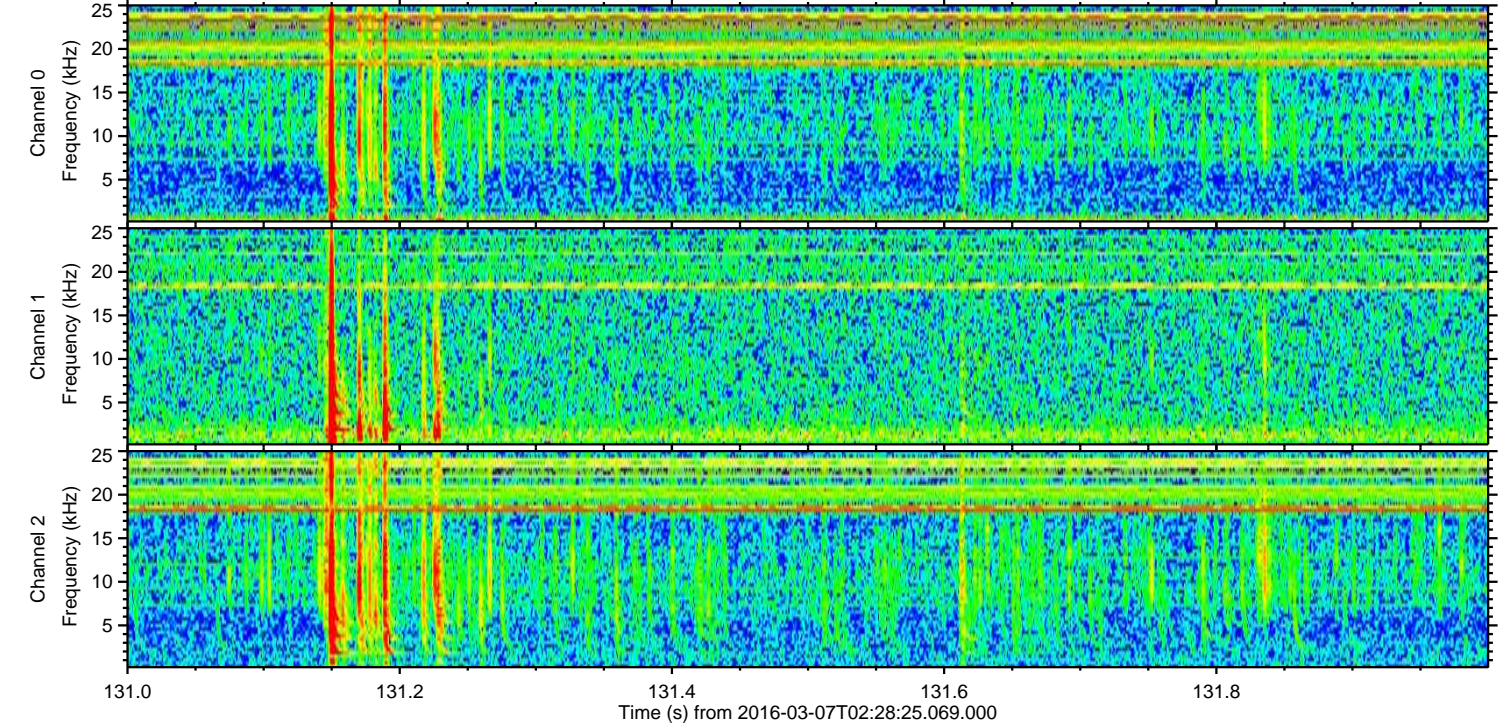
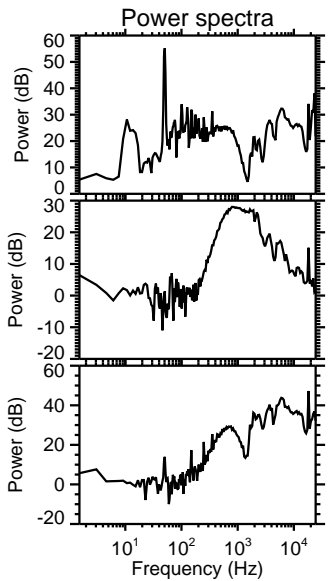
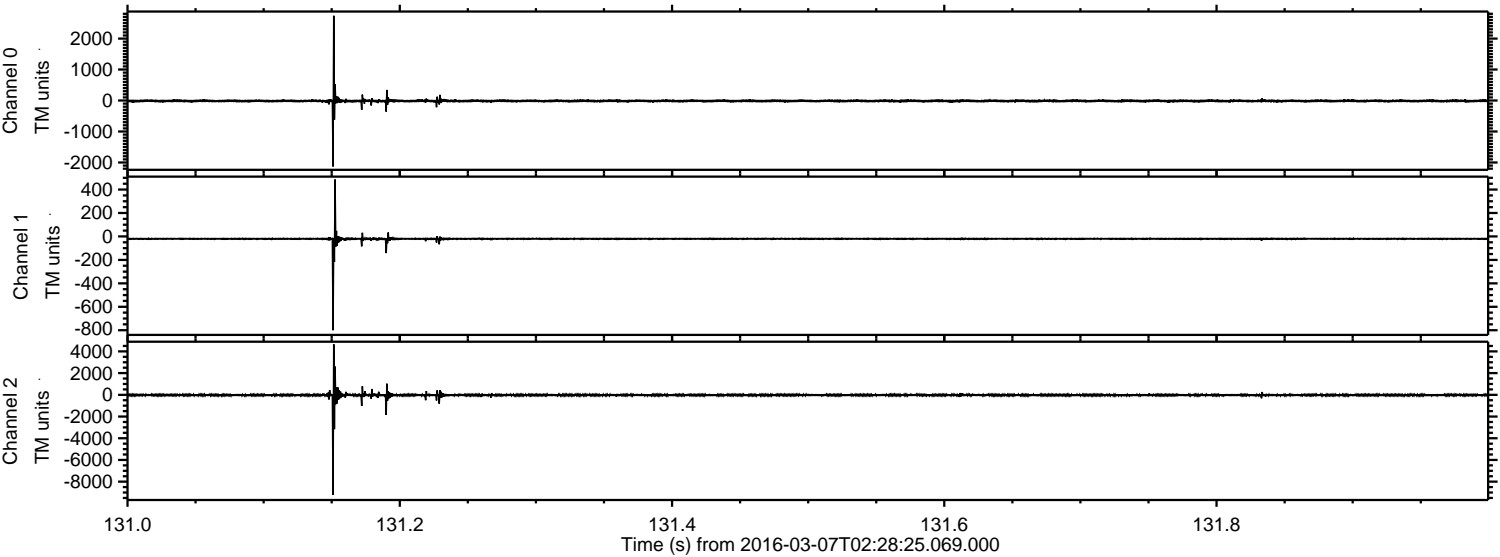


Processed Mon Apr 18 19:51:01 2016 by ELM ver.2012-10-06 from 001__elm20160307_022824__dat00.bin



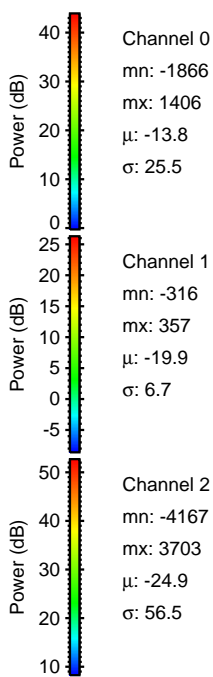
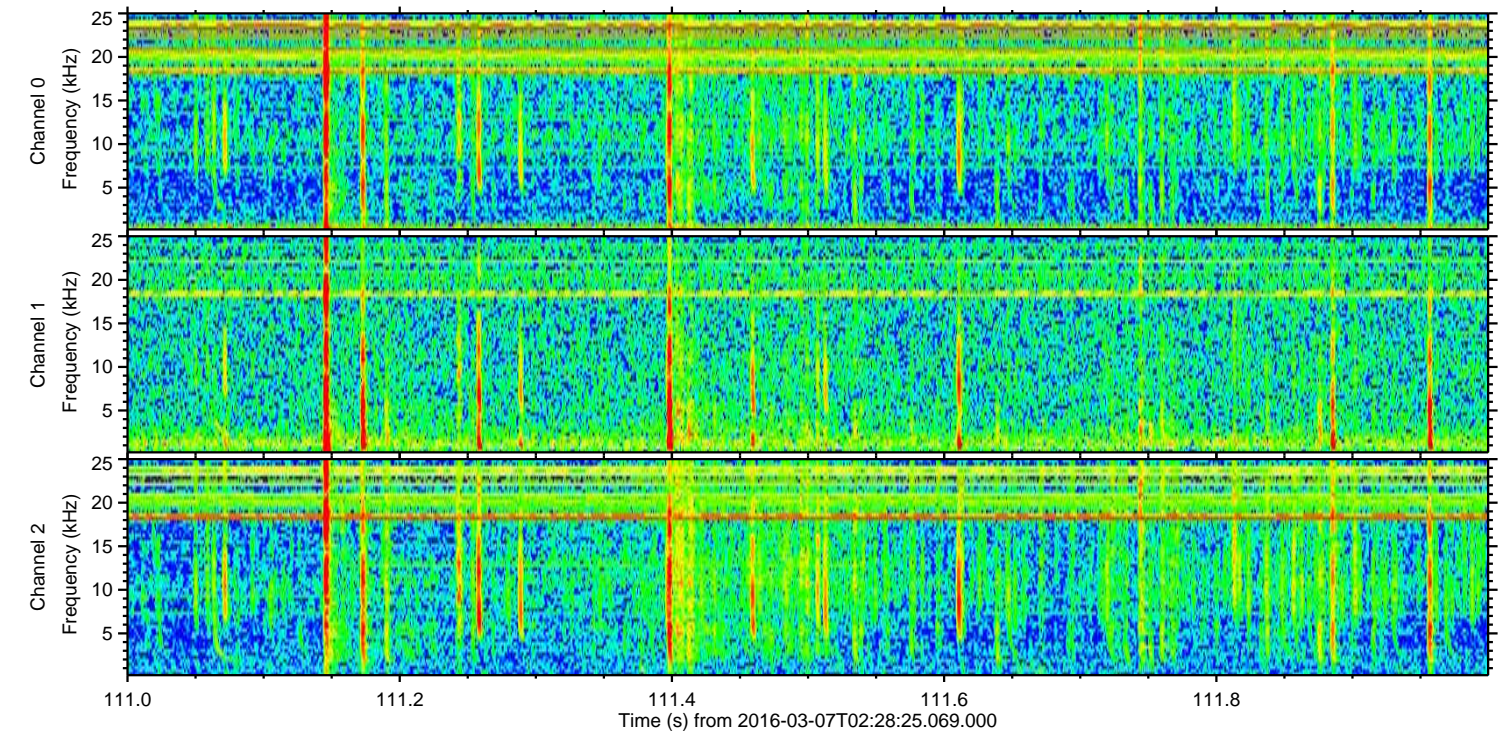
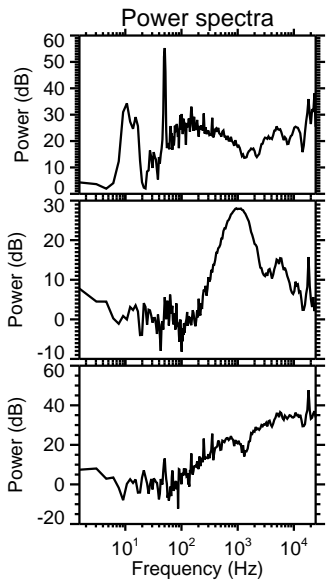
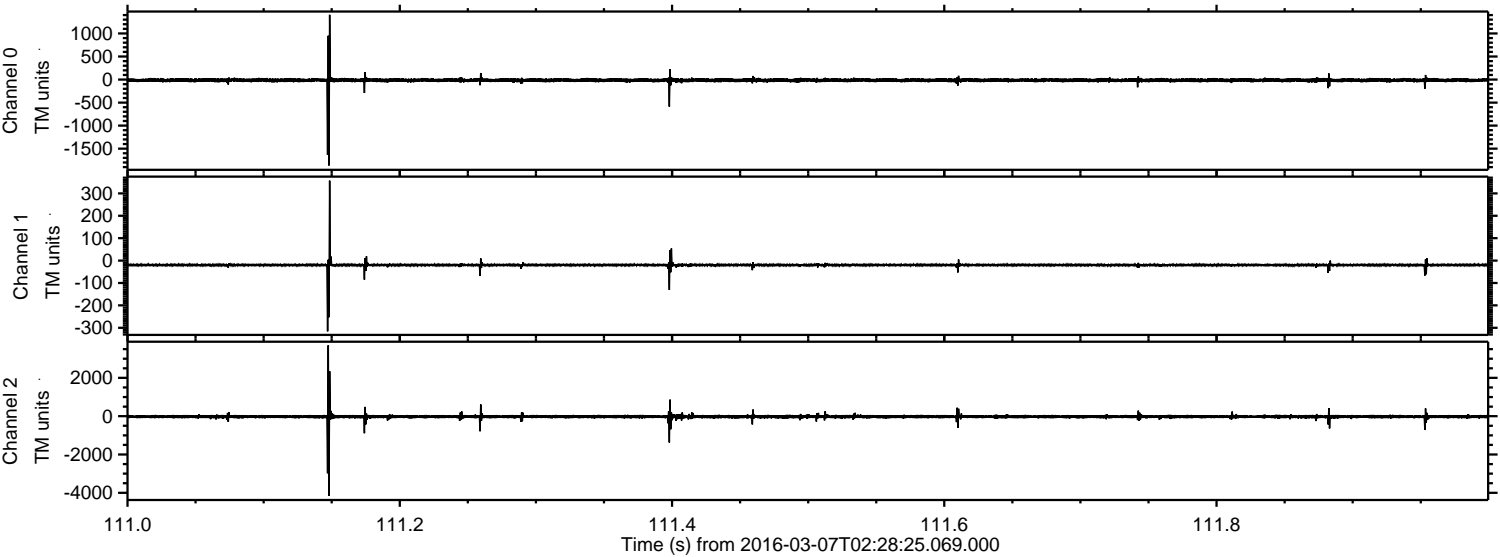
ELMAVAN 3D WAVEFORMS (Measured data sampled at 50 kHz) 51000 packets of 144 samples from 2016-03-07T02:28:25.069.000. Part 132/147

Processed Mon Apr 18 19:51:02 2016 by ELM ver.2012-10-06 from 001__elm20160307_022824__dat00.bin



ELMAVAN 3D WAVEFORMS (Measured data sampled at 50 kHz) 51000 packets of 144 samples from 2016-03-07T02:28:25.069.000. Part 112/147

Processed Mon Apr 18 19:51:03 2016 by ELM ver.2012-10-06 from 001__elm20160307_022824__dat00.bin

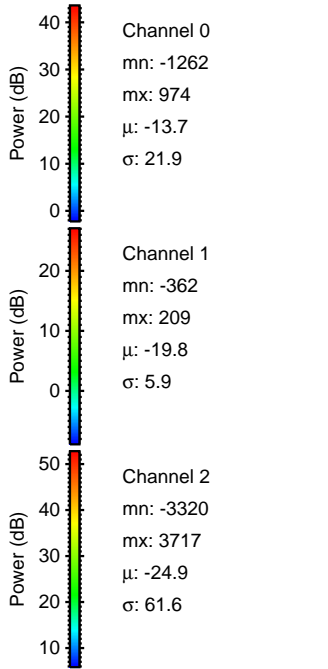
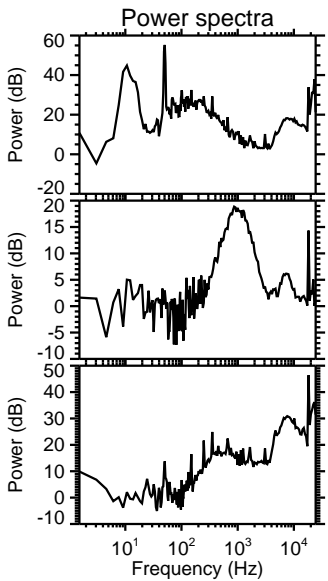
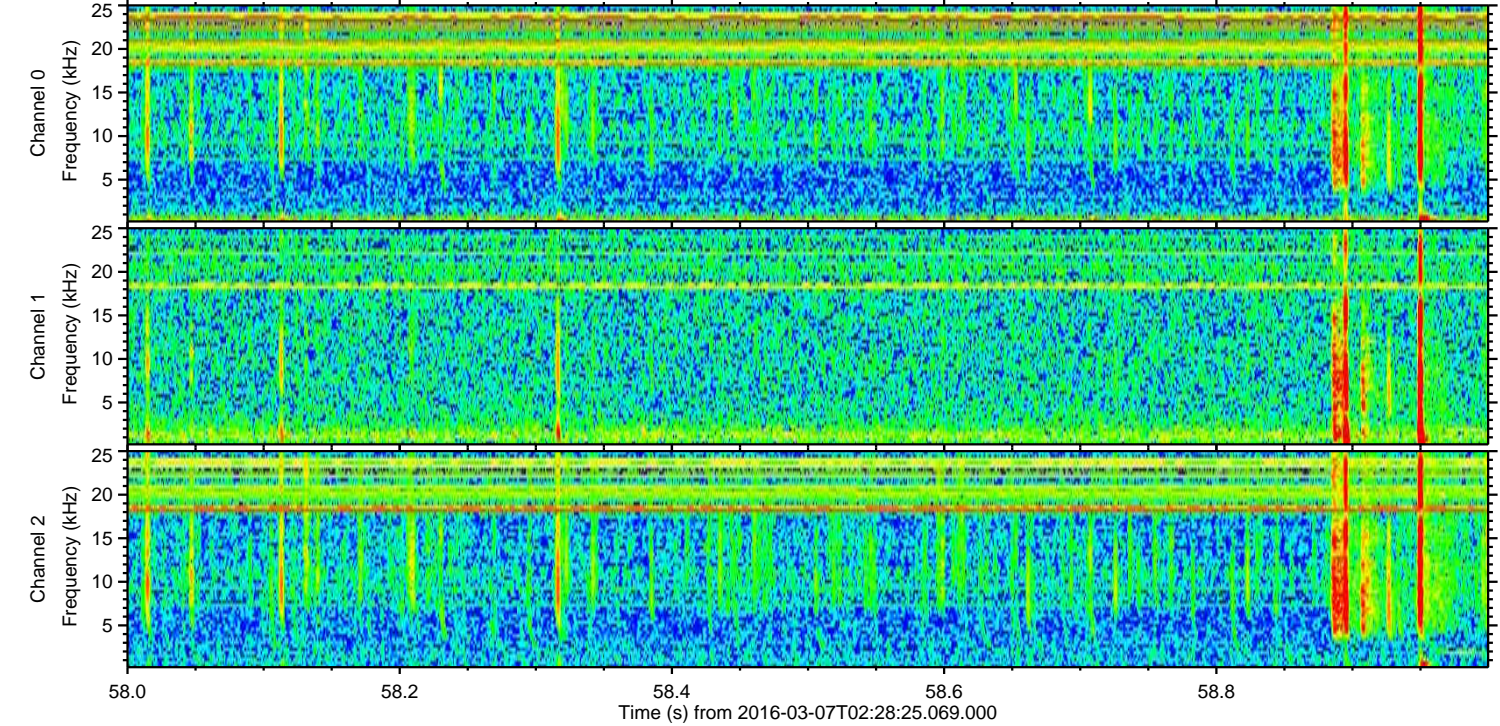
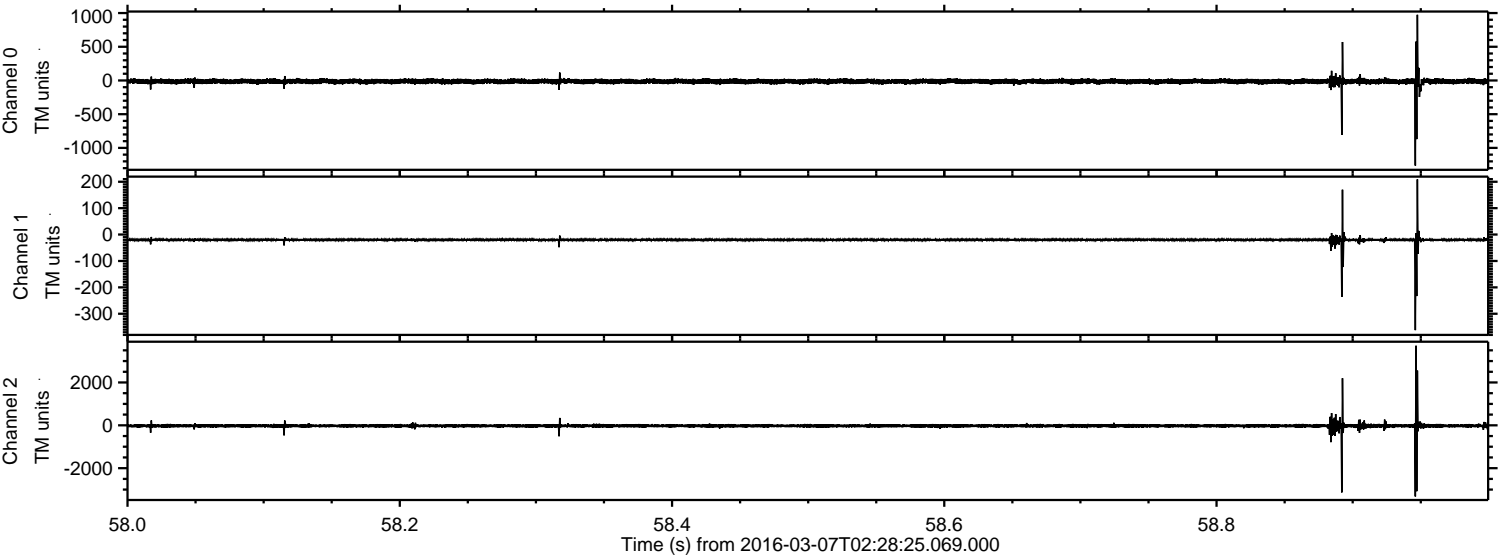


Channel 0
mn: -1866
mx: 1406
 μ : -13.8
 σ : 25.5

Channel 1
mn: -316
mx: 357
 μ : -19.9
 σ : 6.7

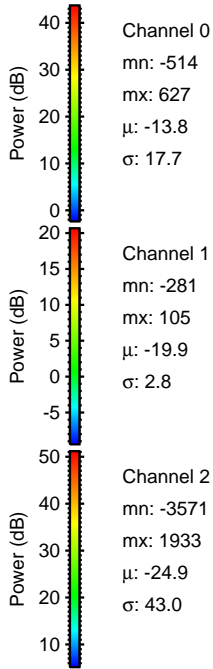
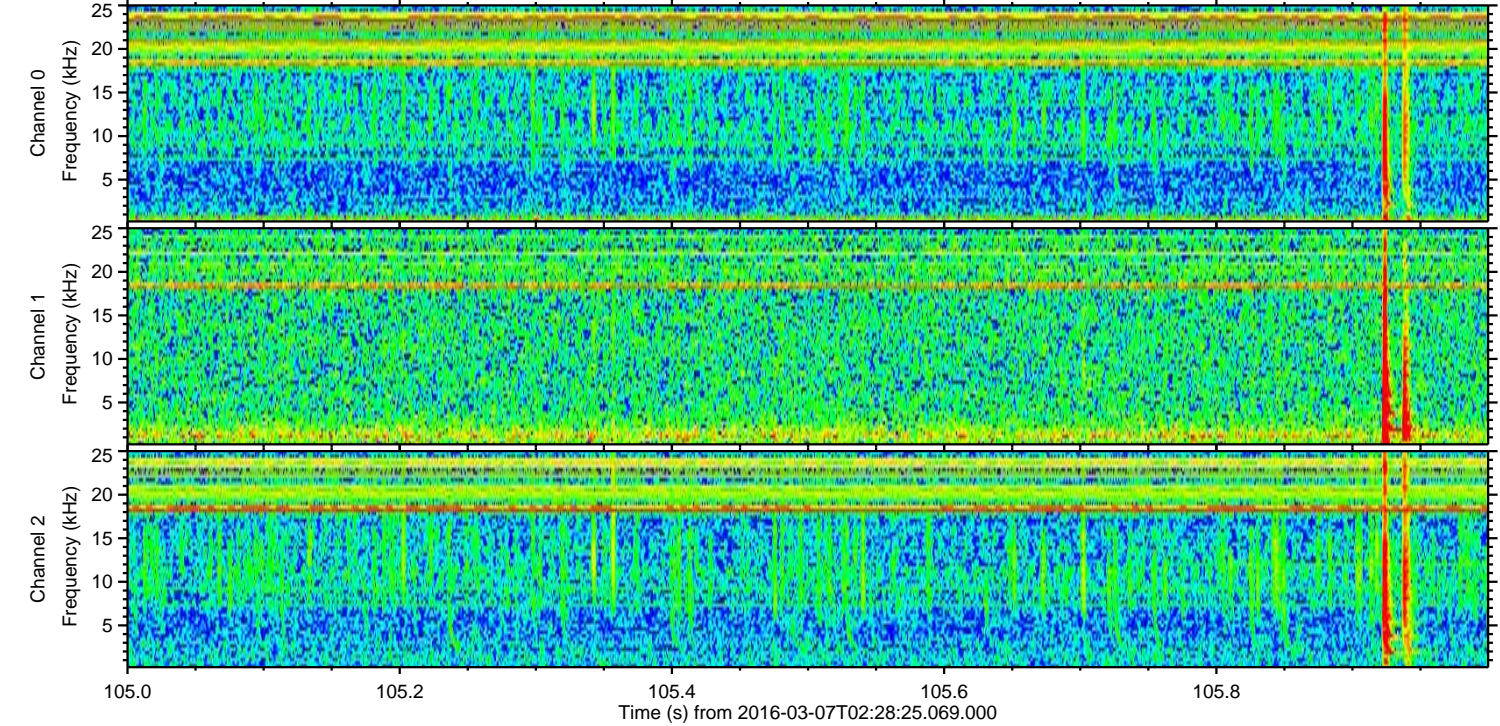
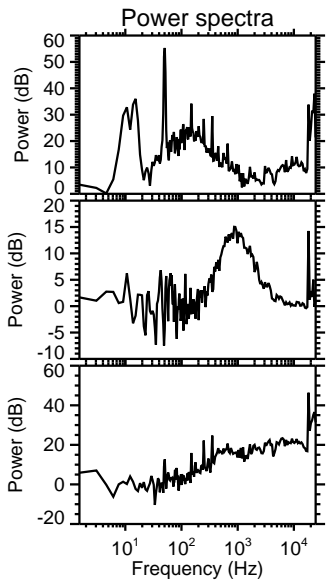
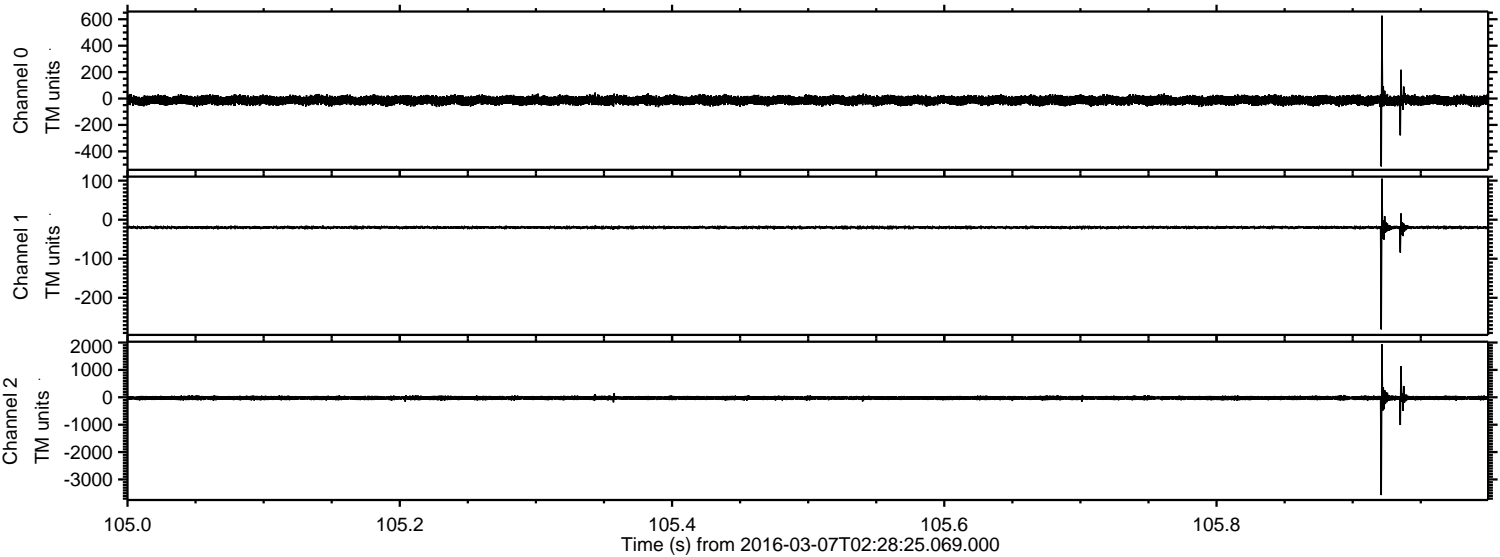
Channel 2
mn: -4167
mx: 3703
 μ : -24.9
 σ : 56.5

Processed Mon Apr 18 19:51:04 2016 by ELM ver.2012-10-06 from 001__elm20160307_022824__dat00.bin

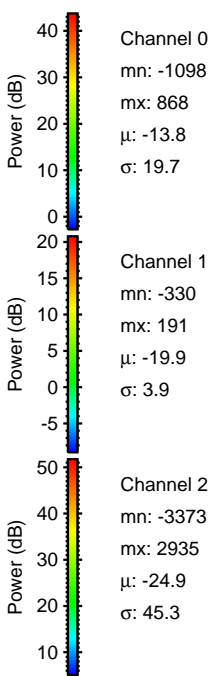
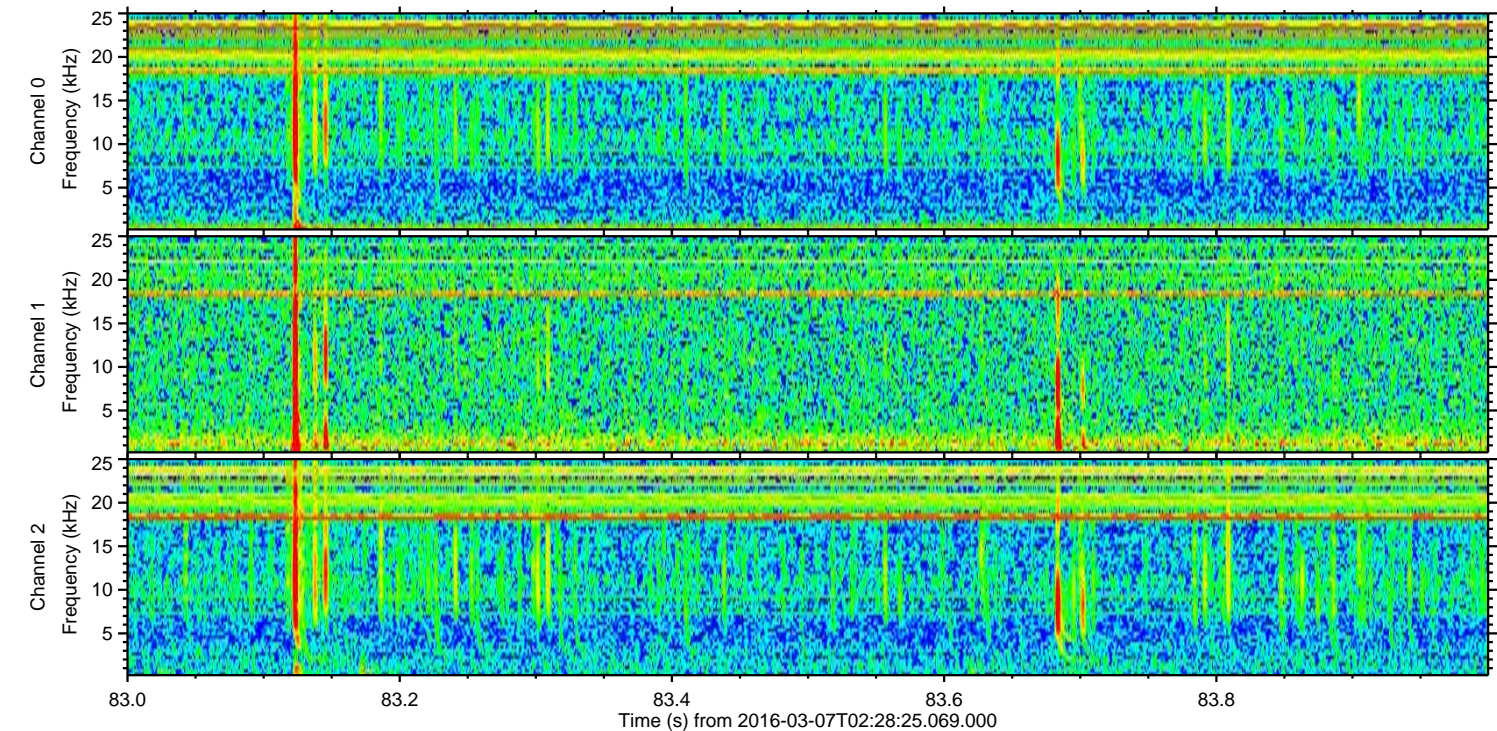
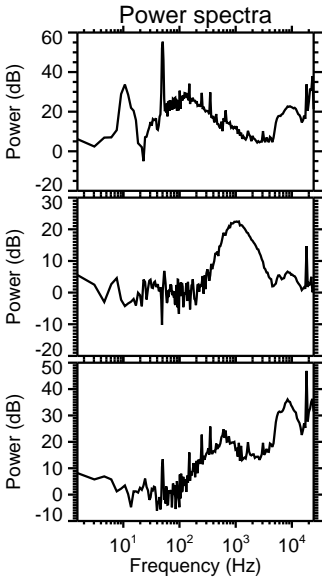
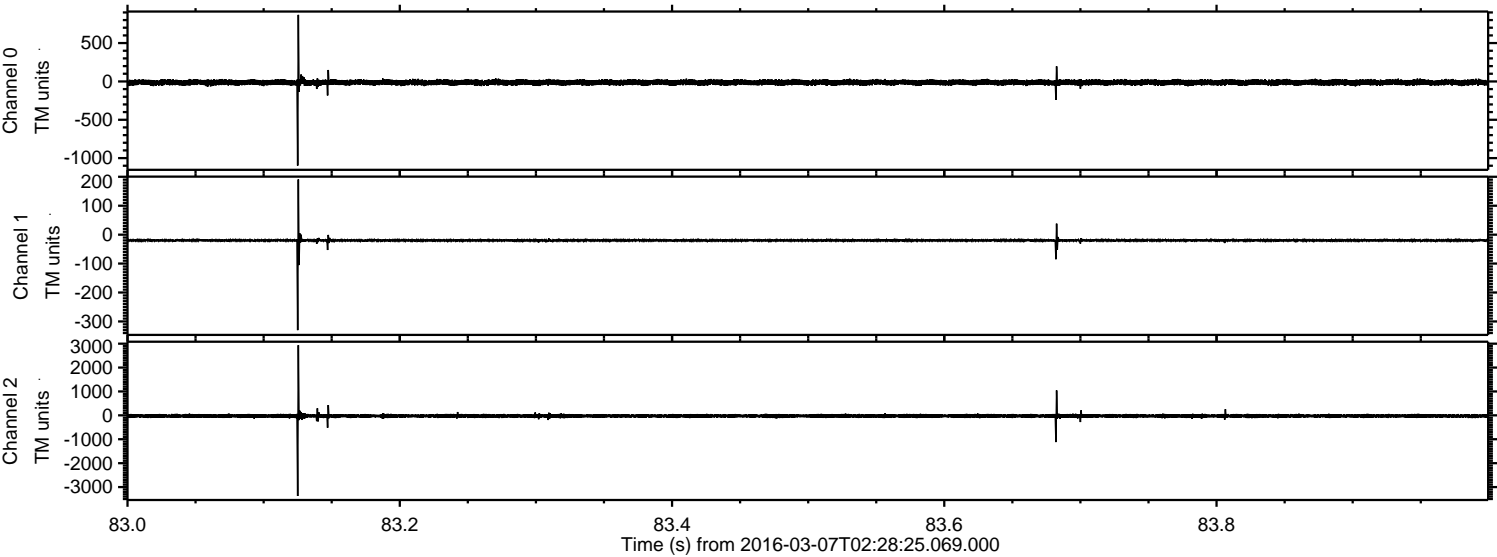


ELMAVAN 3D WAVEFORMS (Measured data sampled at 50 kHz) 51000 packets of 144 samples from 2016-03-07T02:28:25.069.000. Part 106/147

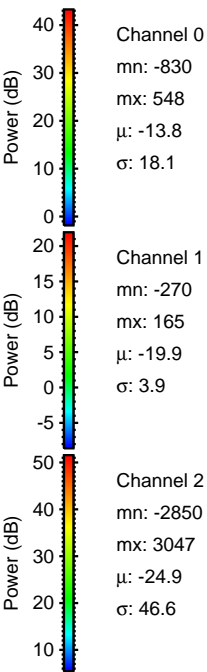
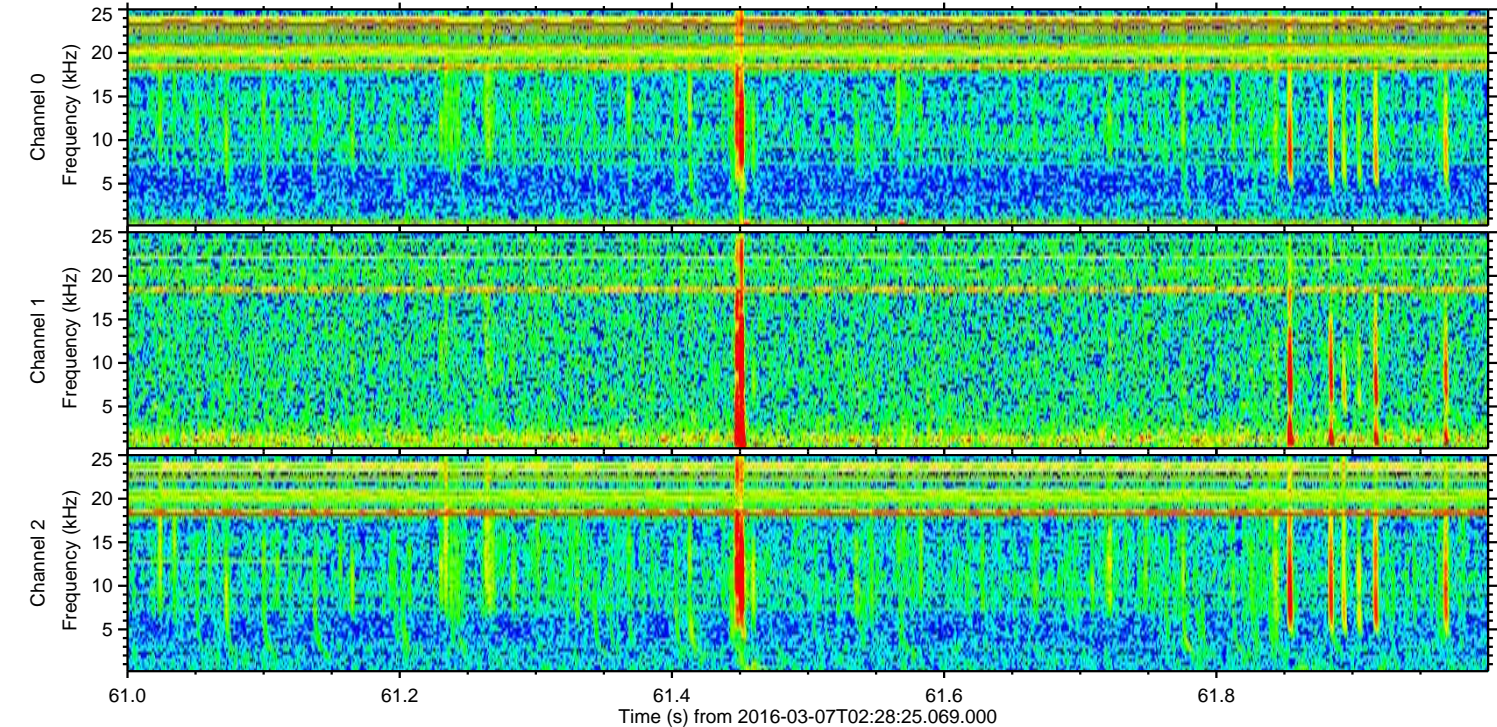
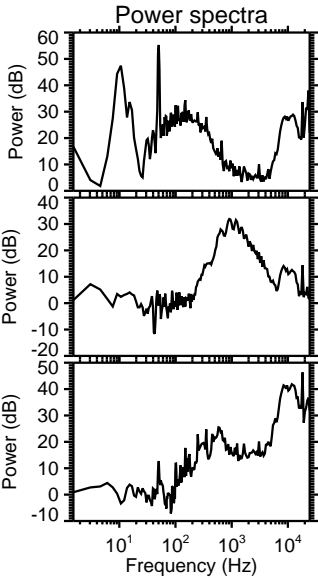
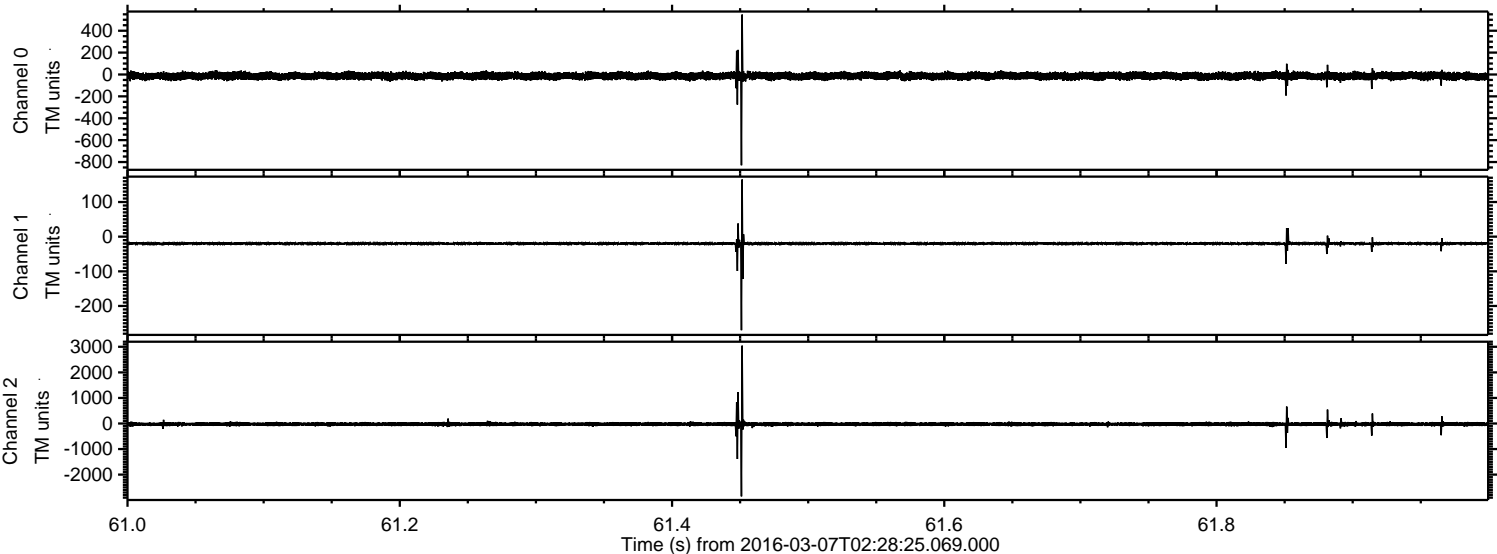
Processed Mon Apr 18 19:51:05 2016 by ELM ver.2012-10-06 from 001__elm20160307_022824__dat00.bin



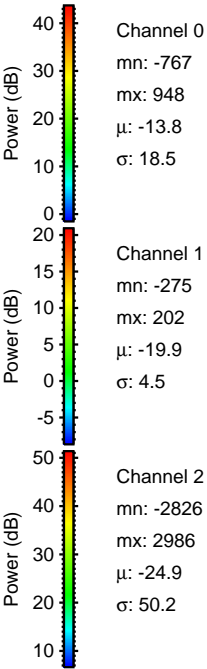
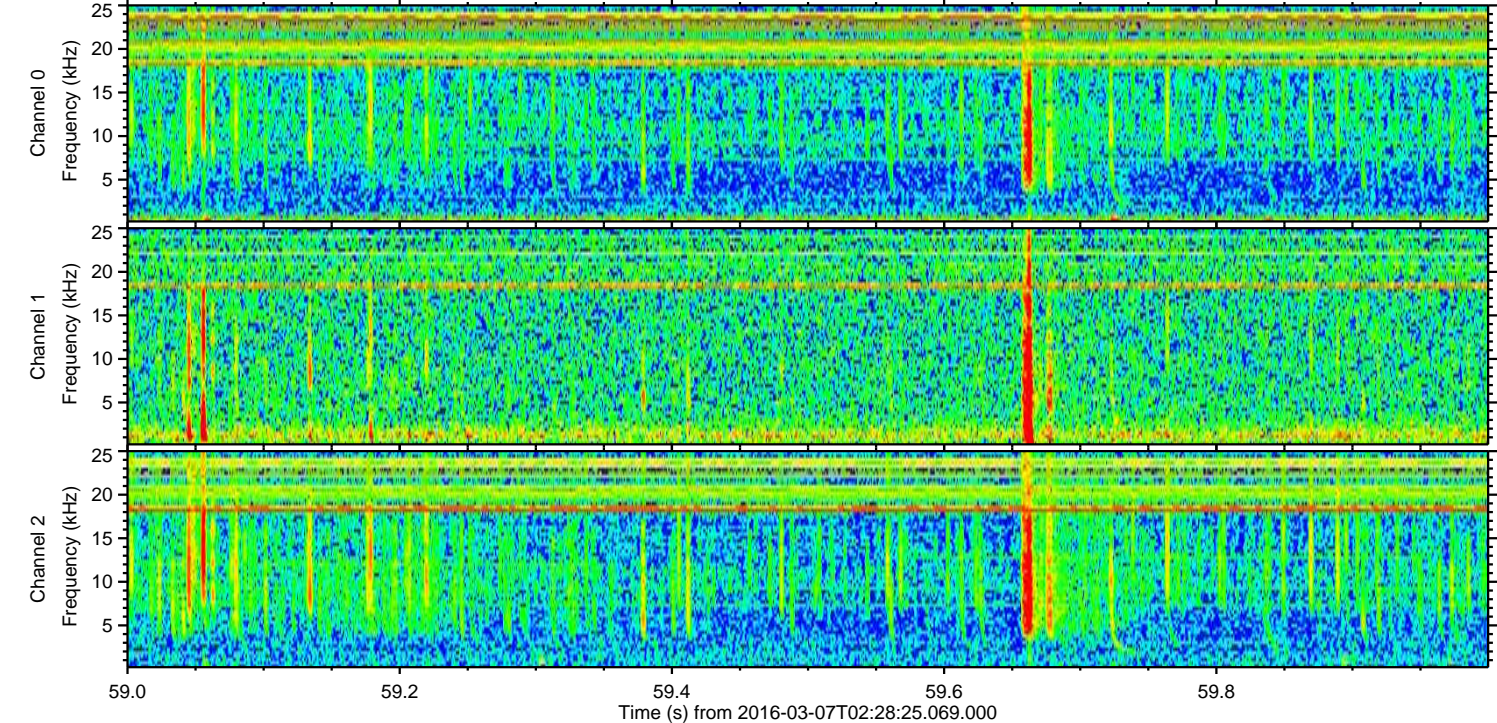
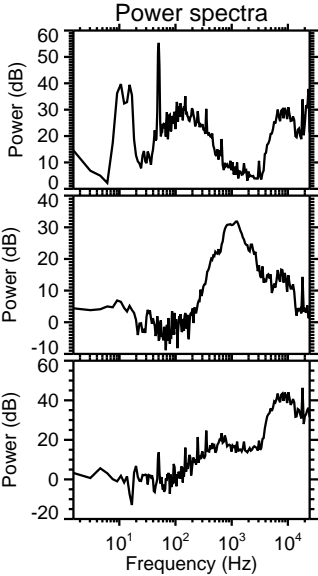
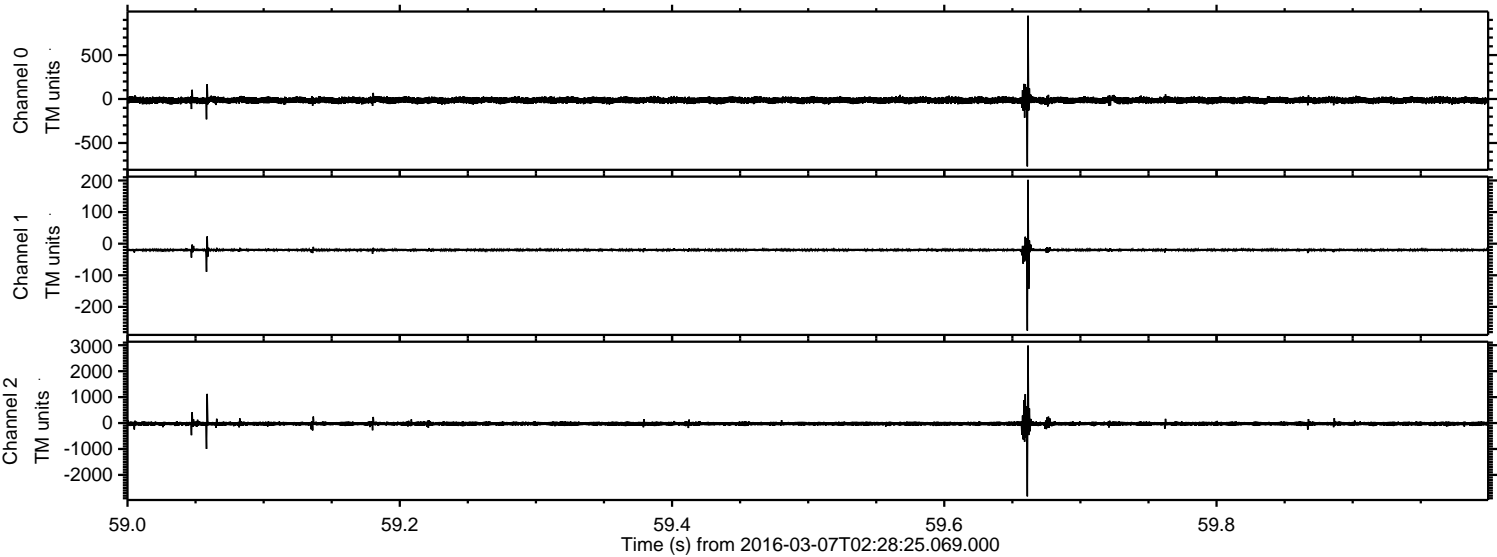
Processed Mon Apr 18 19:51:06 2016 by ELM ver.2012-10-06 from 001__elm20160307_022824__dat00.bin



Processed Mon Apr 18 19:51:07 2016 by ELM ver.2012-10-06 from 001__elm20160307_022824__dat00.bin



Processed Mon Apr 18 19:51:08 2016 by ELM ver.2012-10-06 from 001__elm20160307_022824__dat00.bin



Processed Mon Apr 18 19:51:09 2016 by ELM ver.2012-10-06 from 001__elm20160307_022824__dat00.bin

