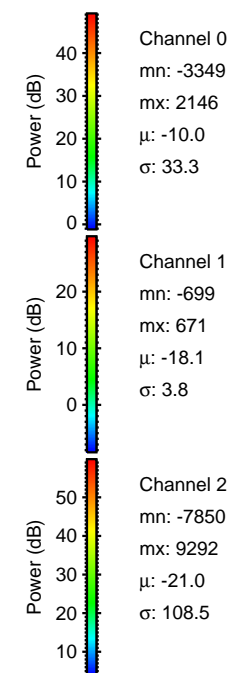
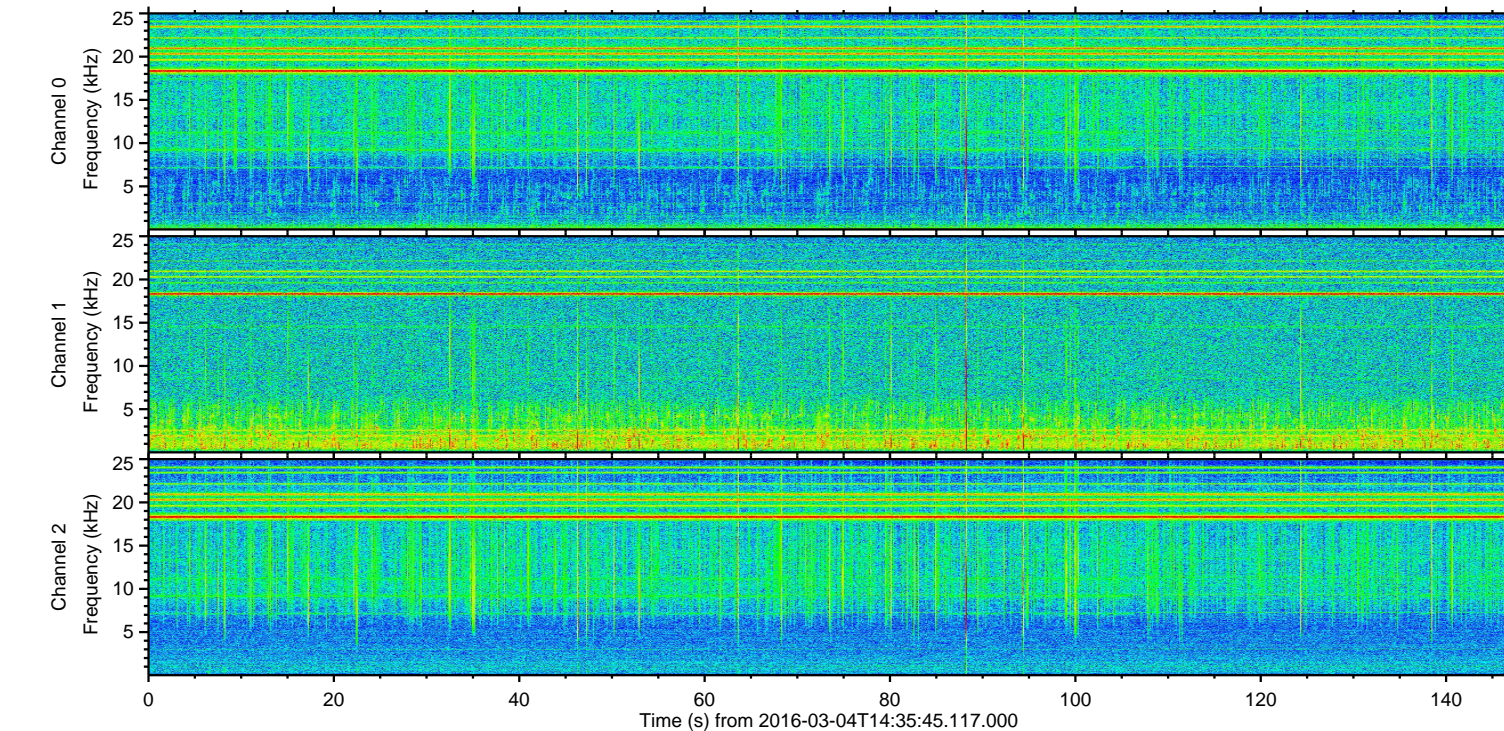
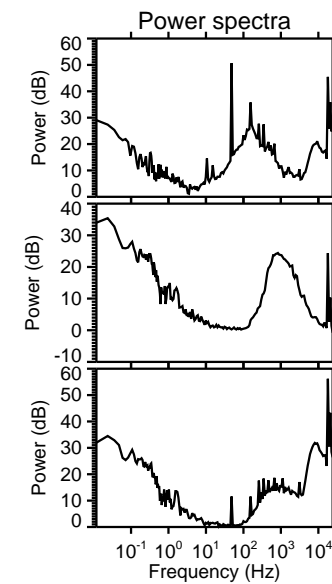
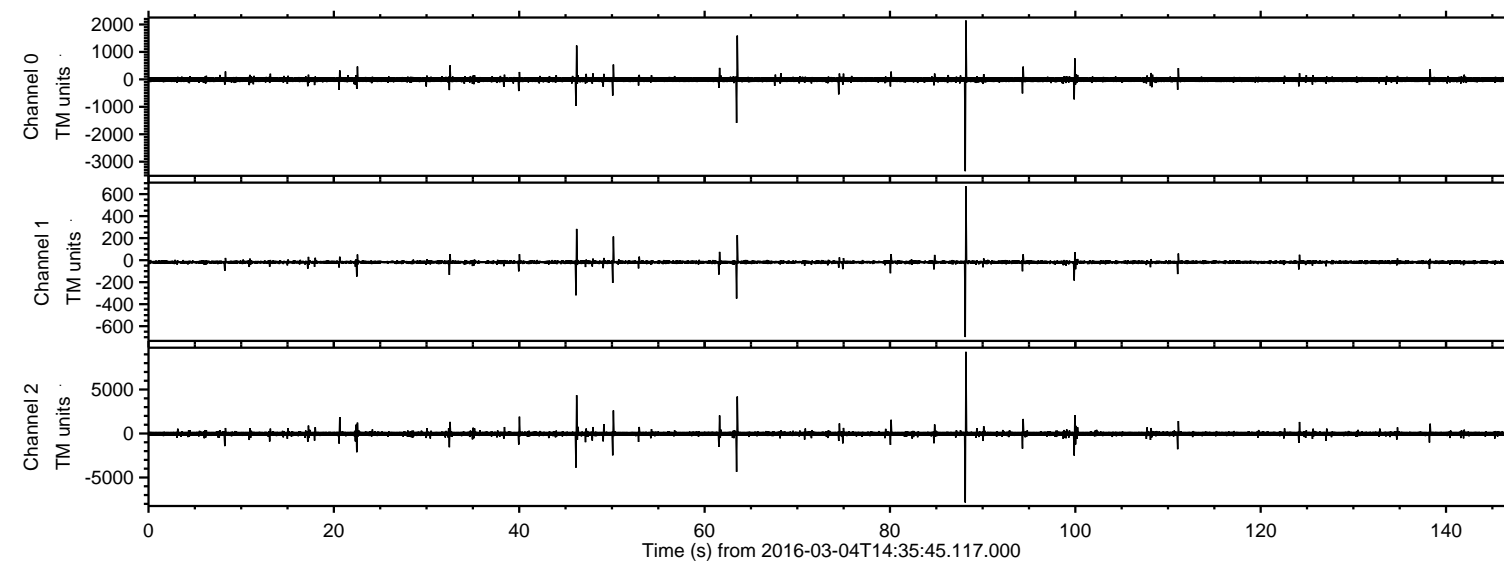


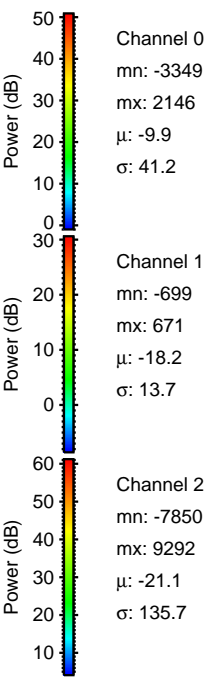
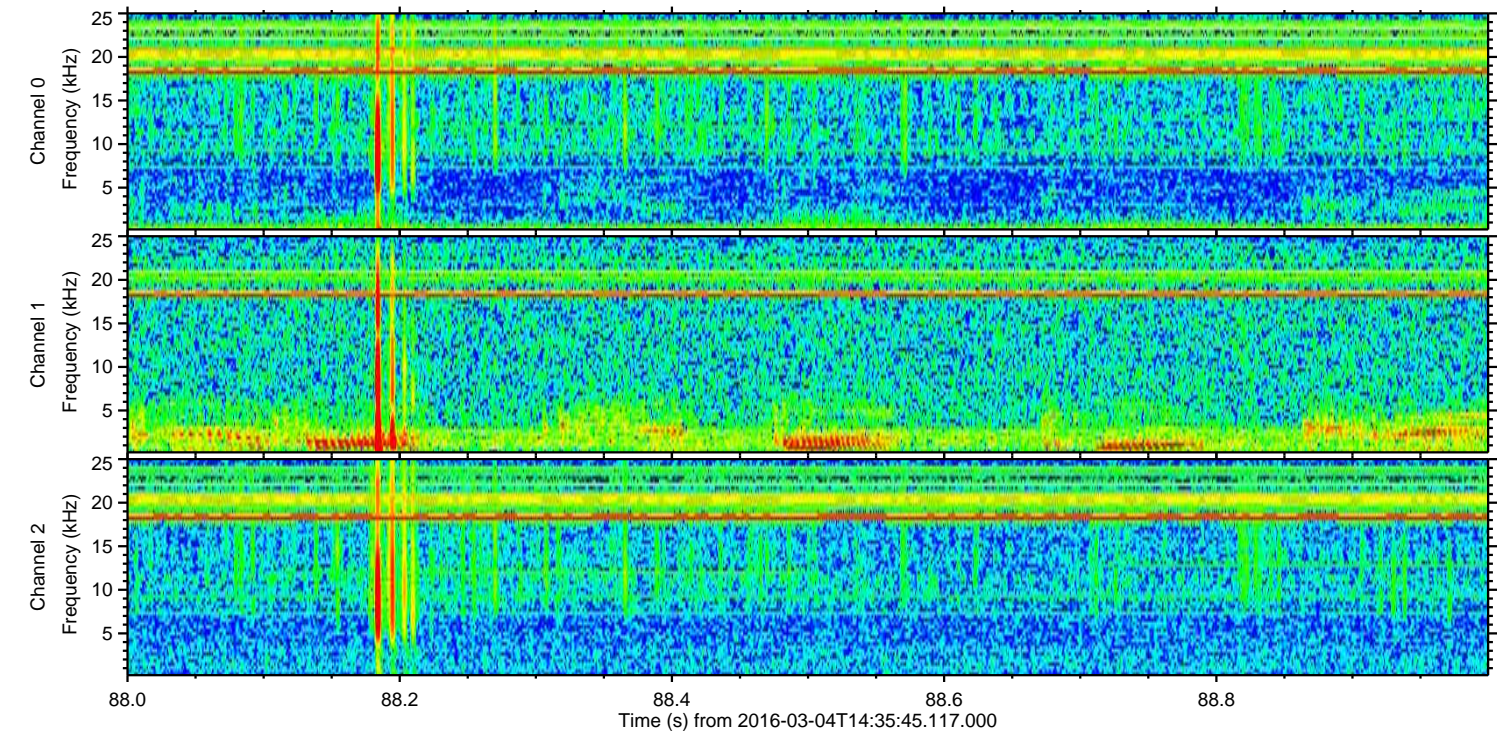
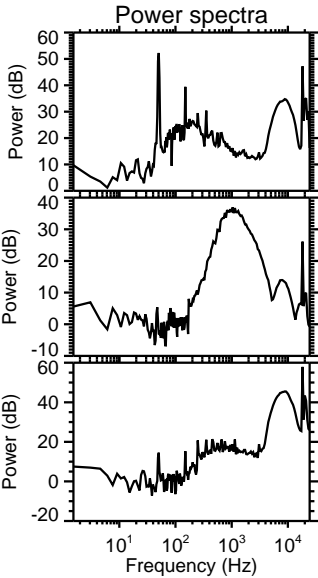
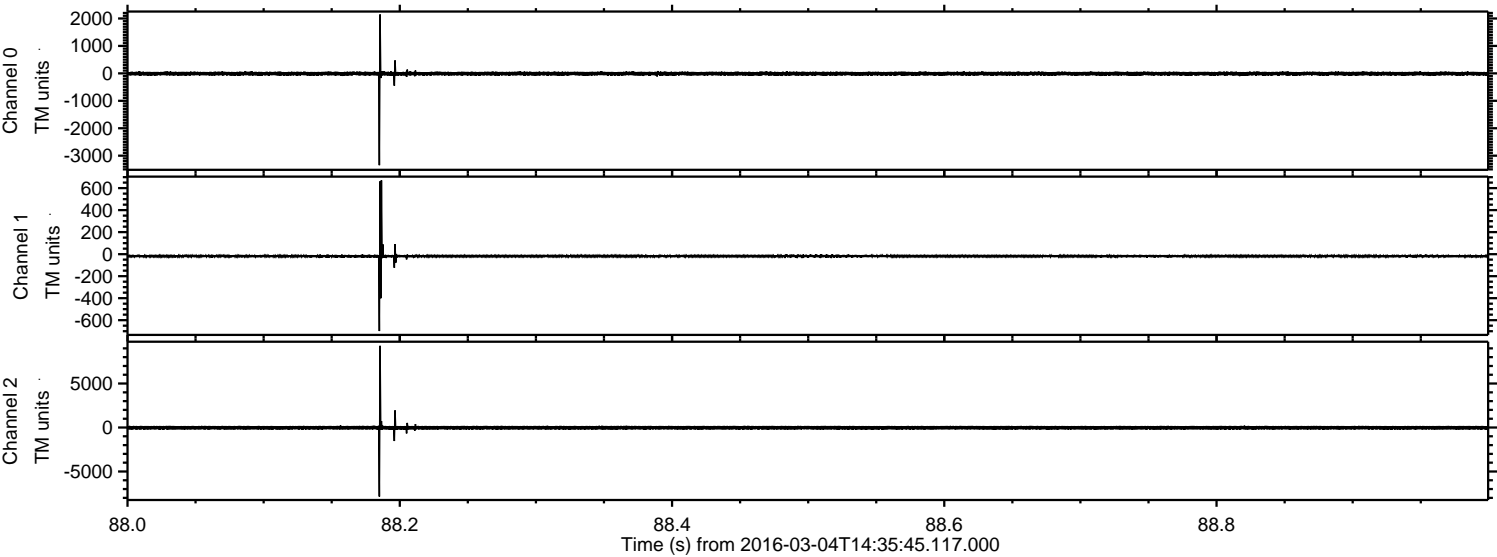
ELMAVAN 3D WAVEFORMS (Measured data sampled at 50 kHz) 51000 packets of 144 samples from 2016-03-04T14:35:45.117.000.

Processed Mon Apr 18 07:39:03 2016 by ELM ver.2012-10-06 from 001__elm20160304_143544__dat00.bin

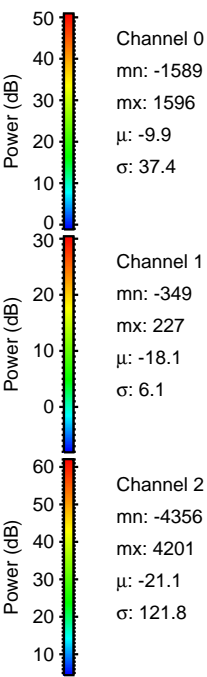
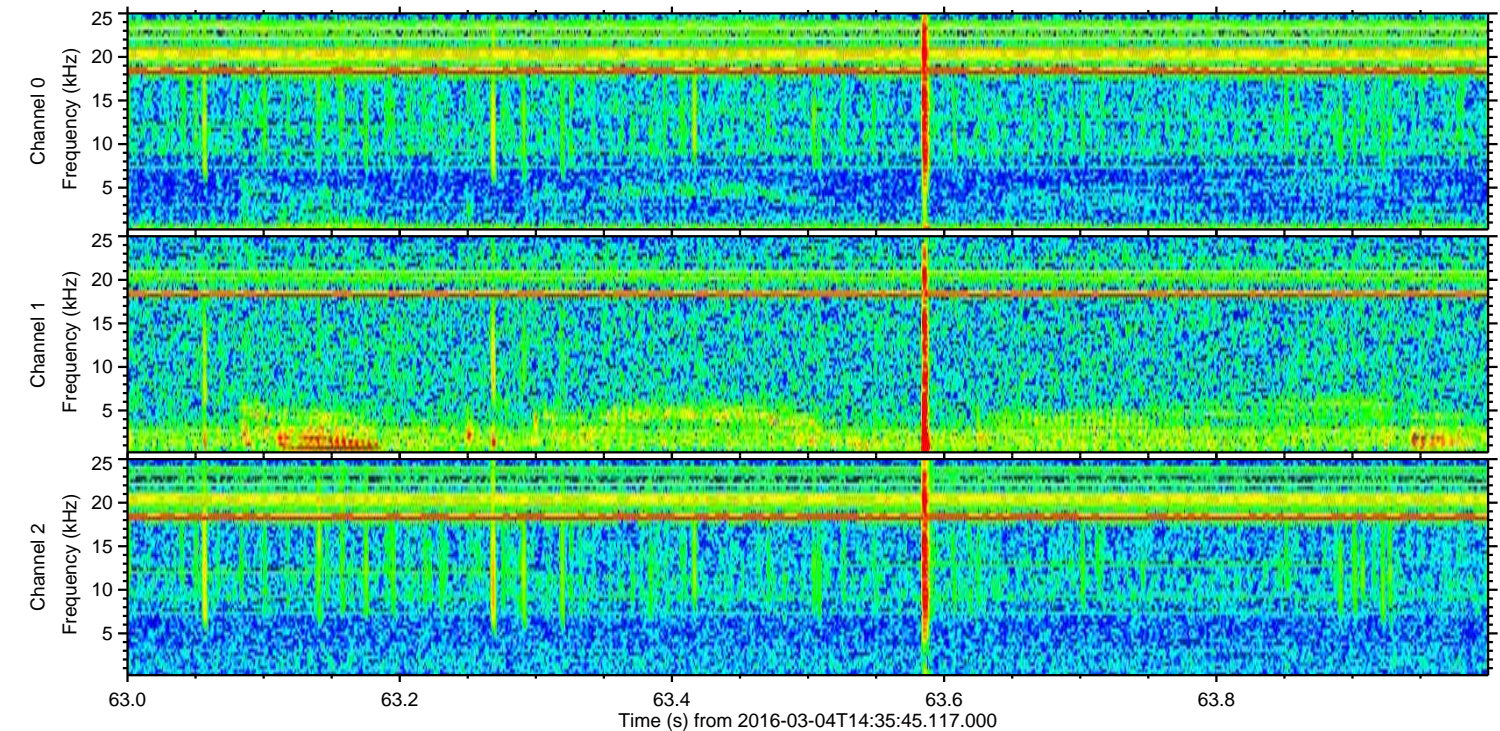
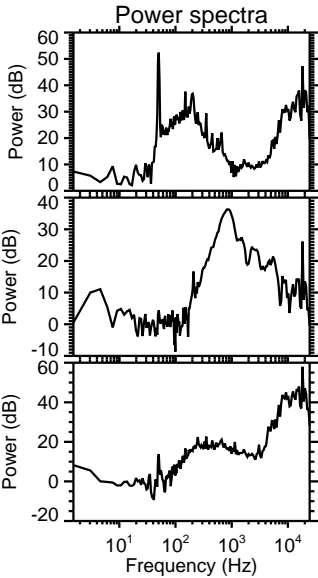
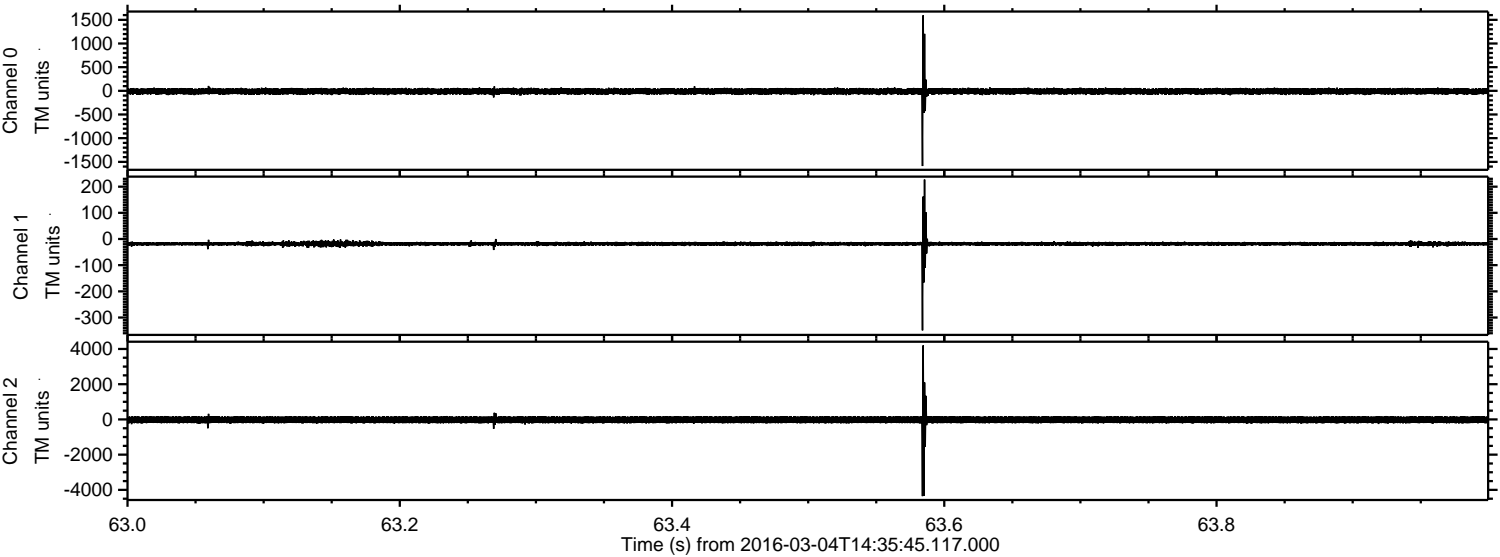


ELMAVAN 3D WAVEFORMS (Measured data sampled at 50 kHz) 51000 packets of 144 samples from 2016-03-04T14:35:45.117.000. Part 89/147

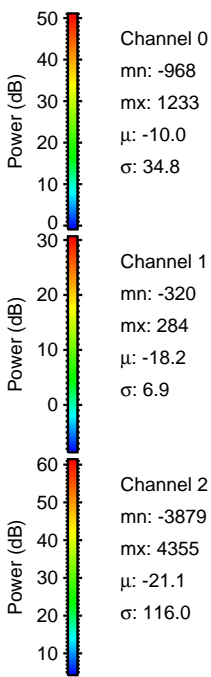
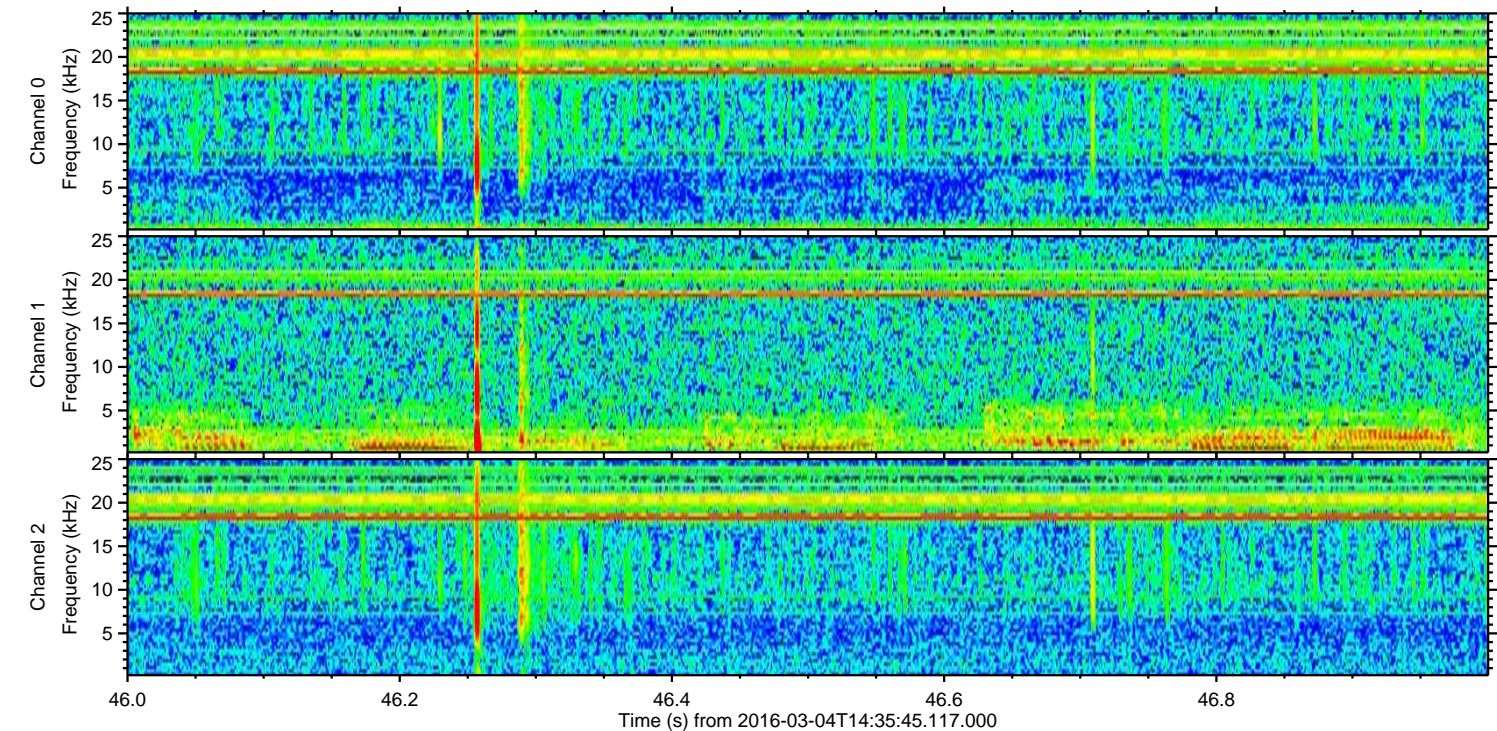
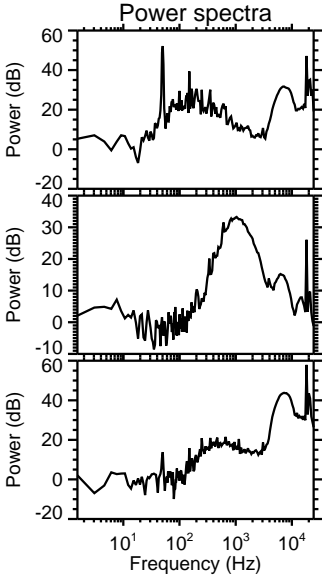
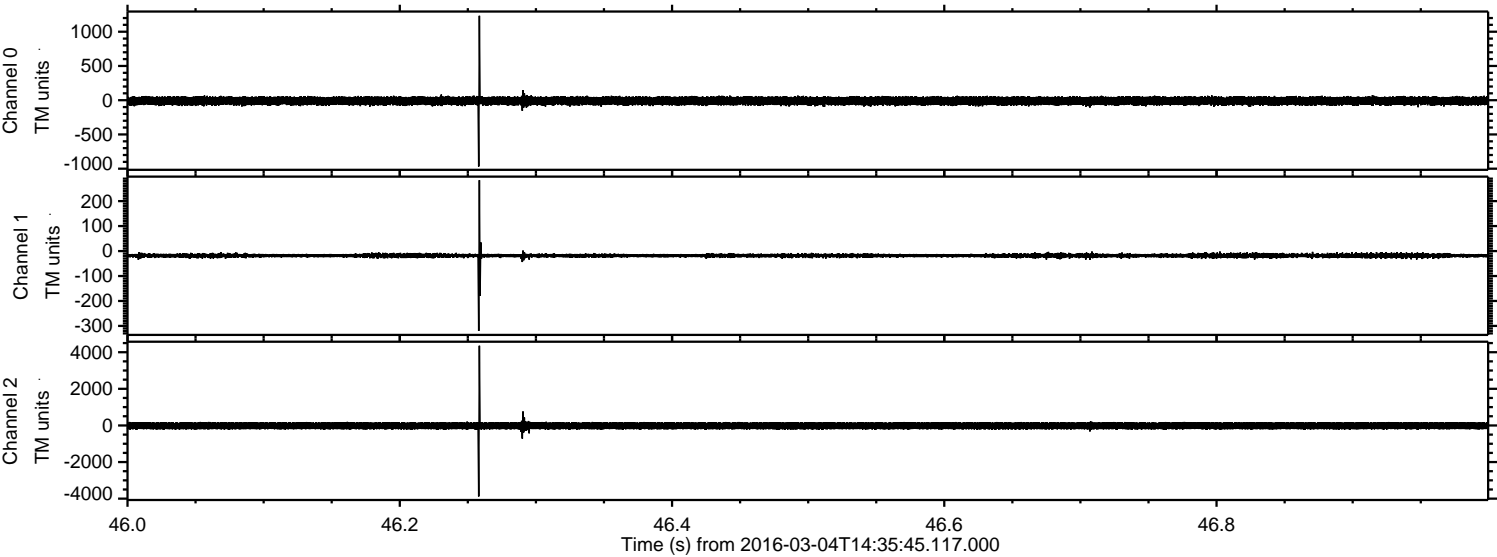
Processed Mon Apr 18 07:39:15 2016 by ELM ver.2012-10-06 from 001__elm20160304_143544__dat00.bin



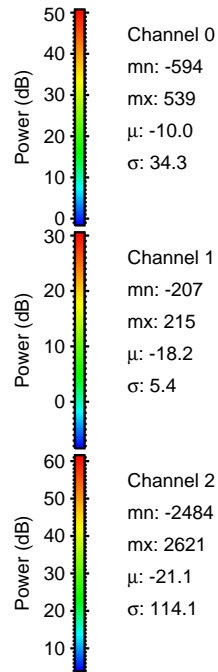
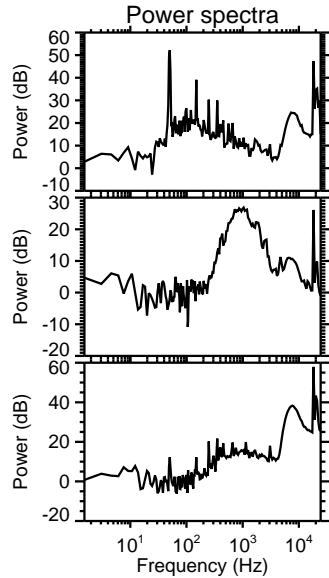
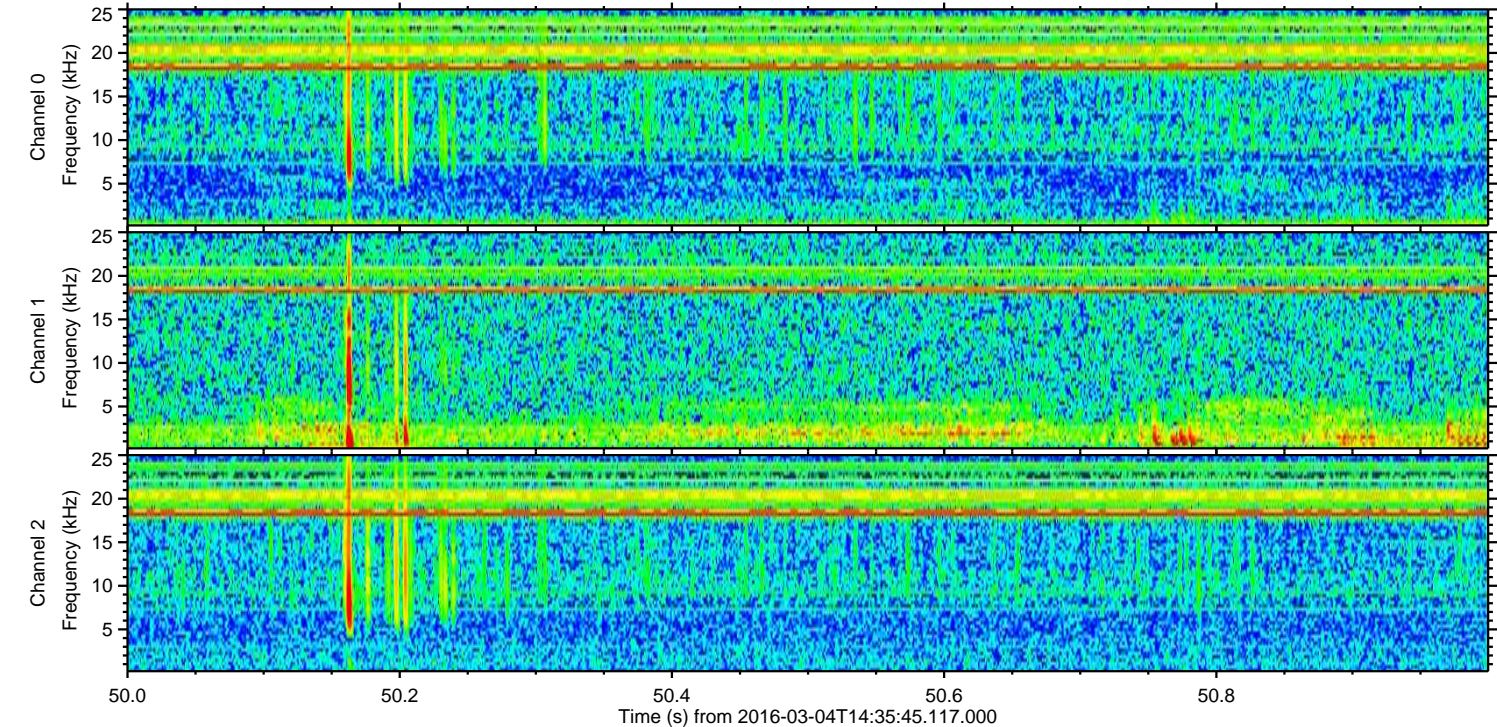
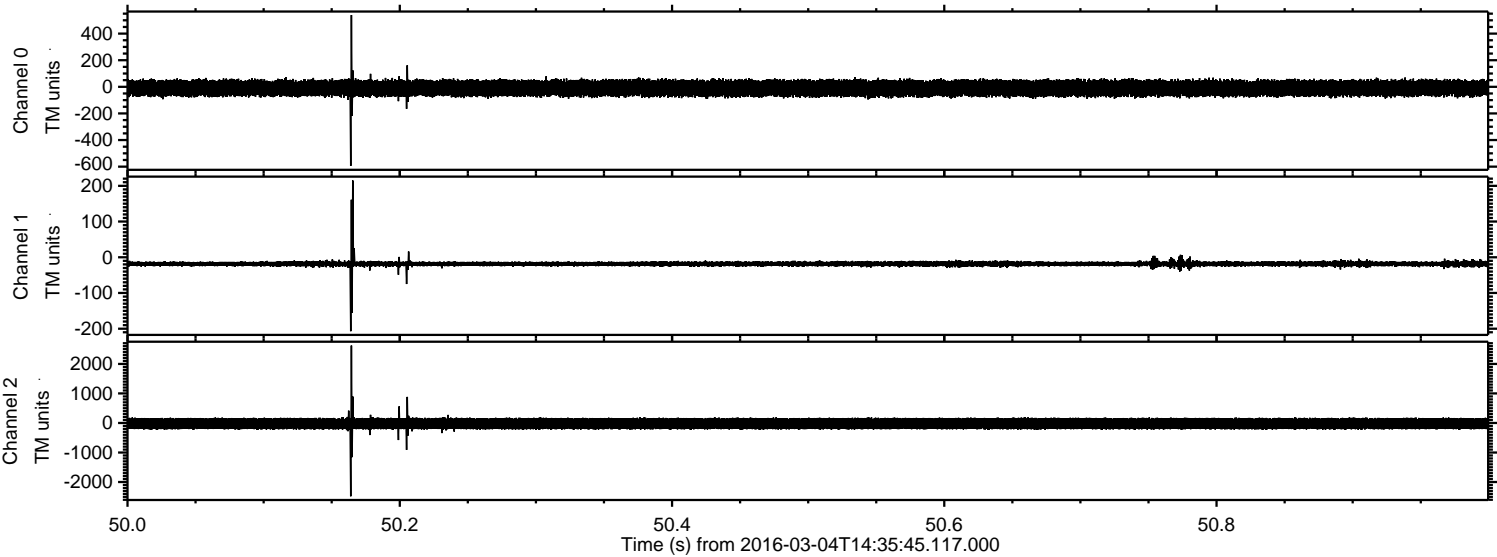
Processed Mon Apr 18 07:39:16 2016 by ELM ver.2012-10-06 from 001__elm20160304_143544__dat00.bin



Processed Mon Apr 18 07:39:17 2016 by ELM ver.2012-10-06 from 001__elm20160304_143544__dat00.bin

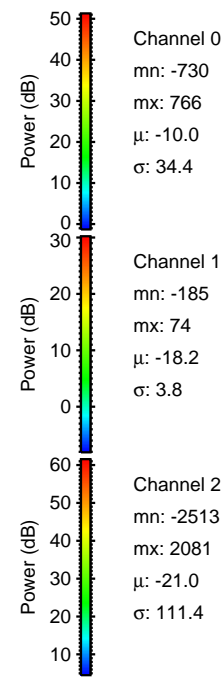
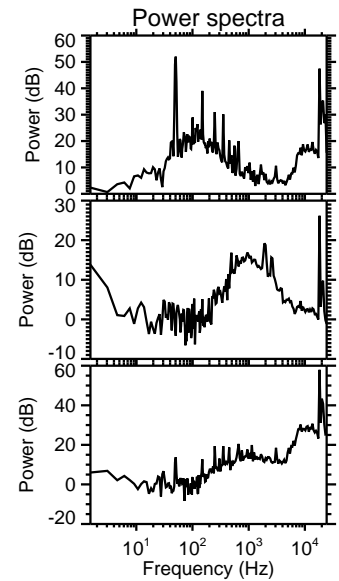
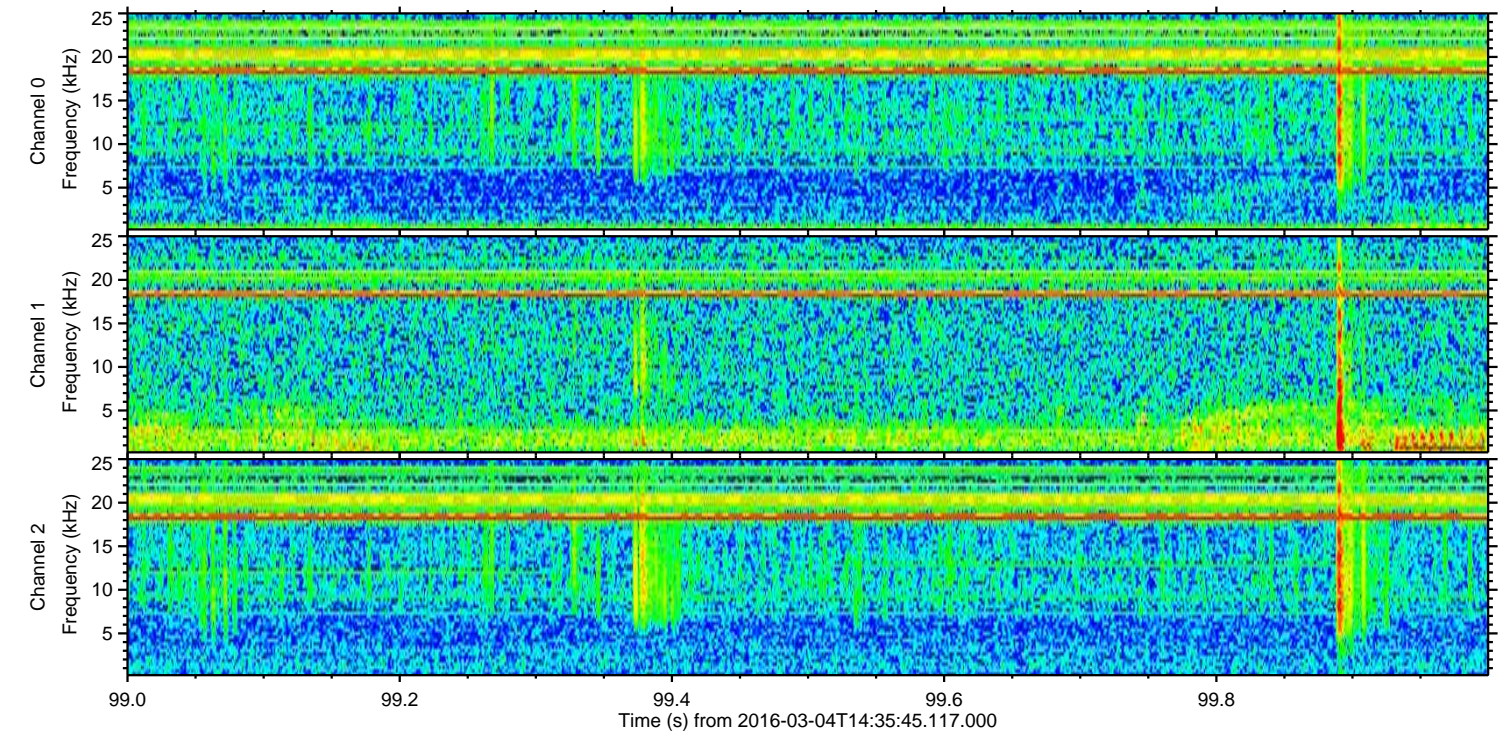
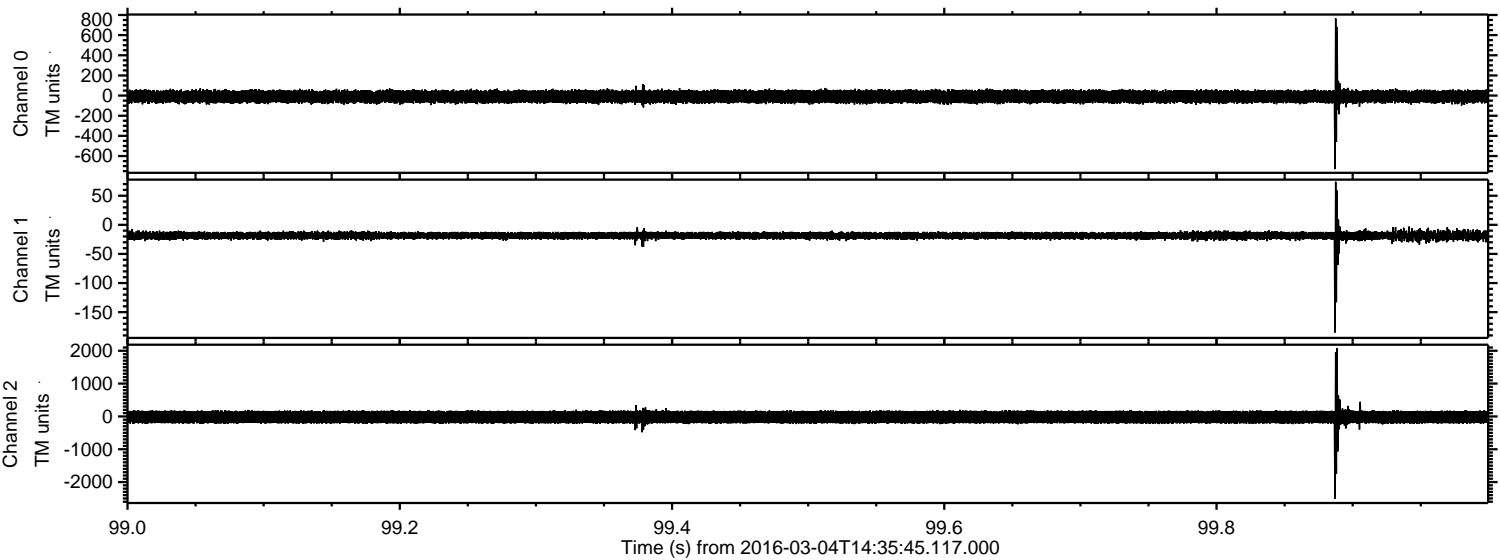


Processed Mon Apr 18 07:39:17 2016 by ELM ver.2012-10-06 from 001__elm20160304_143544__dat00.bin

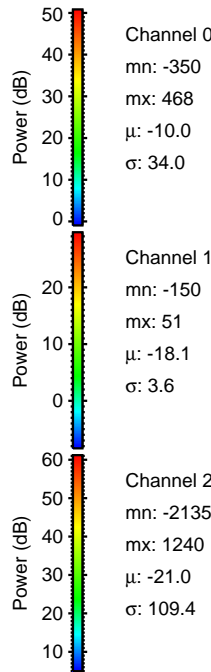
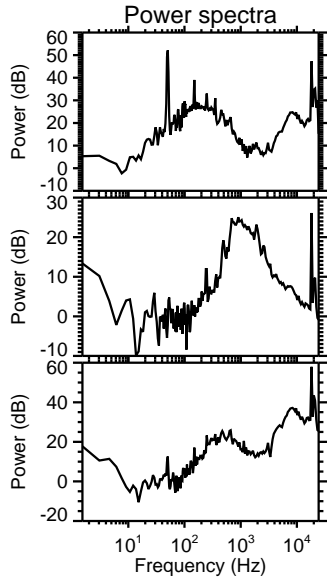
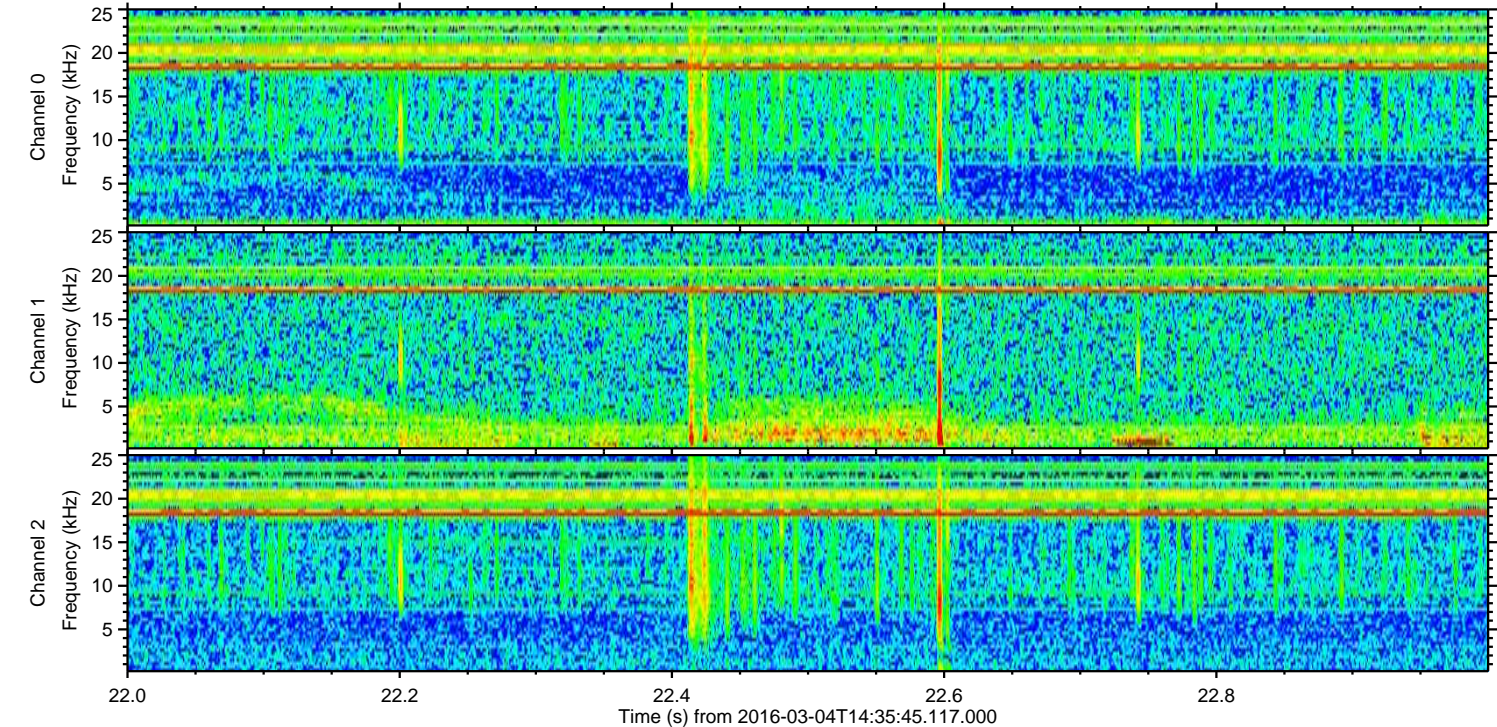
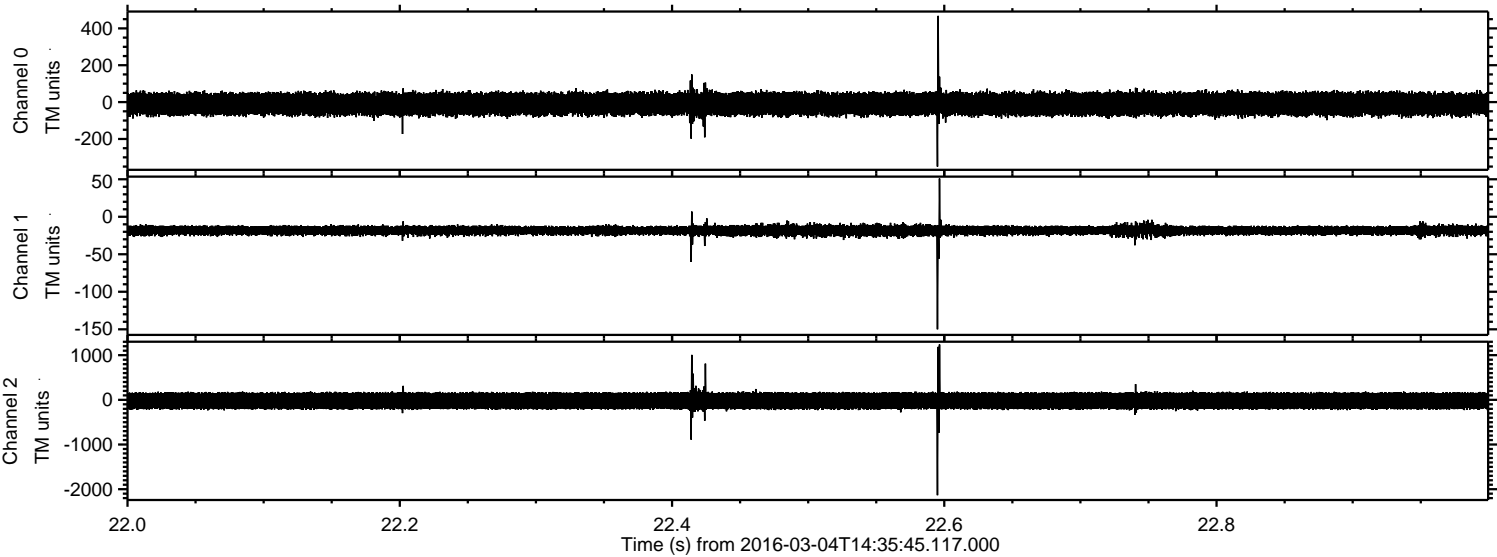


ELMAVAN 3D WAVEFORMS (Measured data sampled at 50 kHz) 51000 packets of 144 samples from 2016-03-04T14:35:45.117.000. Part 100/147

Processed Mon Apr 18 07:39:18 2016 by ELM ver.2012-10-06 from 001__elm20160304_143544__dat00.bin



Processed Mon Apr 18 07:39:19 2016 by ELM ver.2012-10-06 from 001__elm20160304_143544__dat00.bin

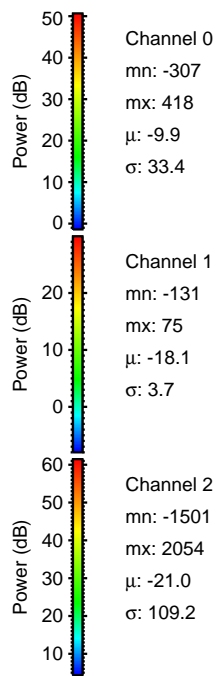
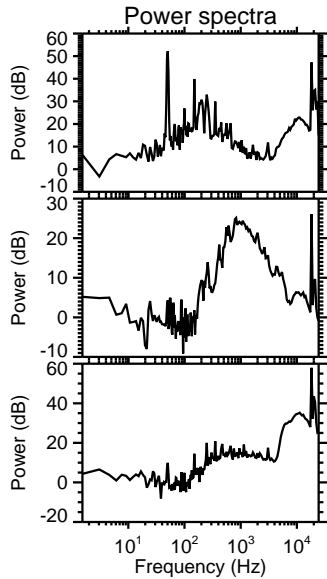
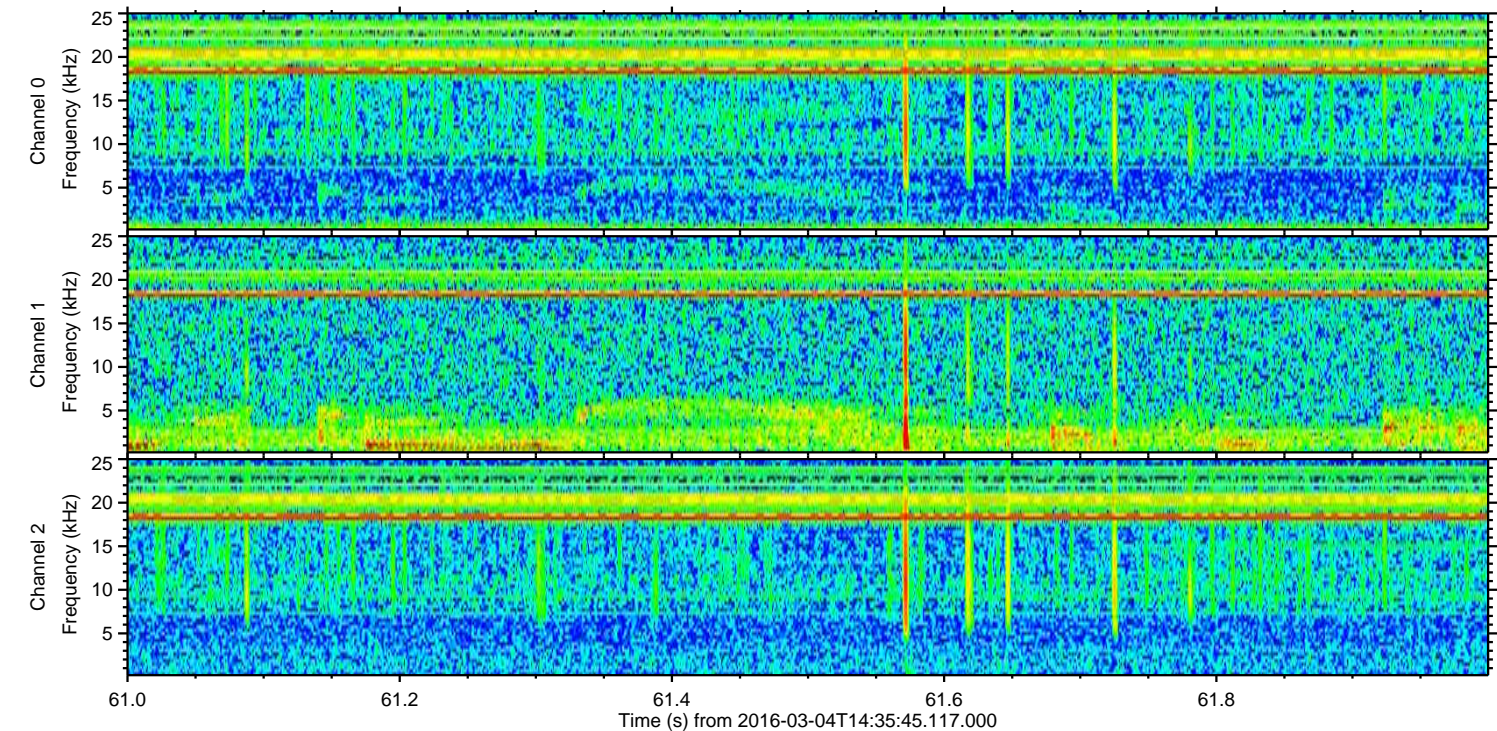
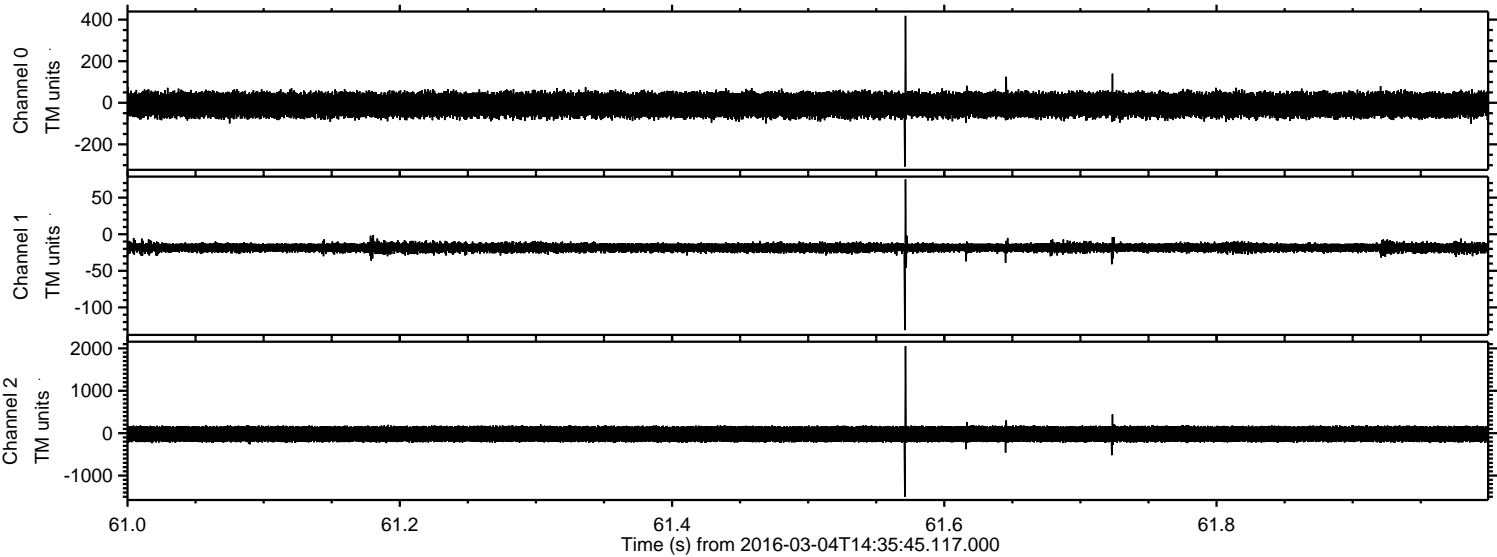


Channel 0
mn: -350
mx: 468
 μ : -10.0
 σ : 34.0

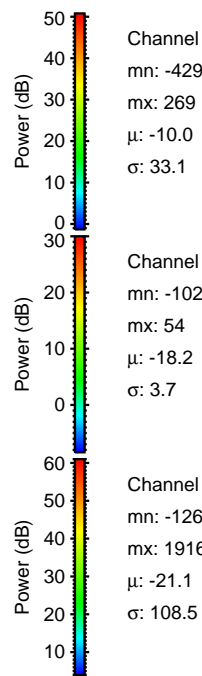
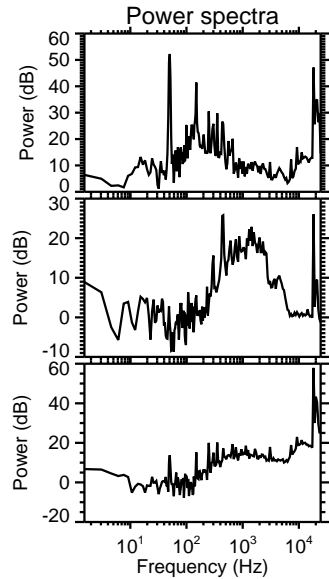
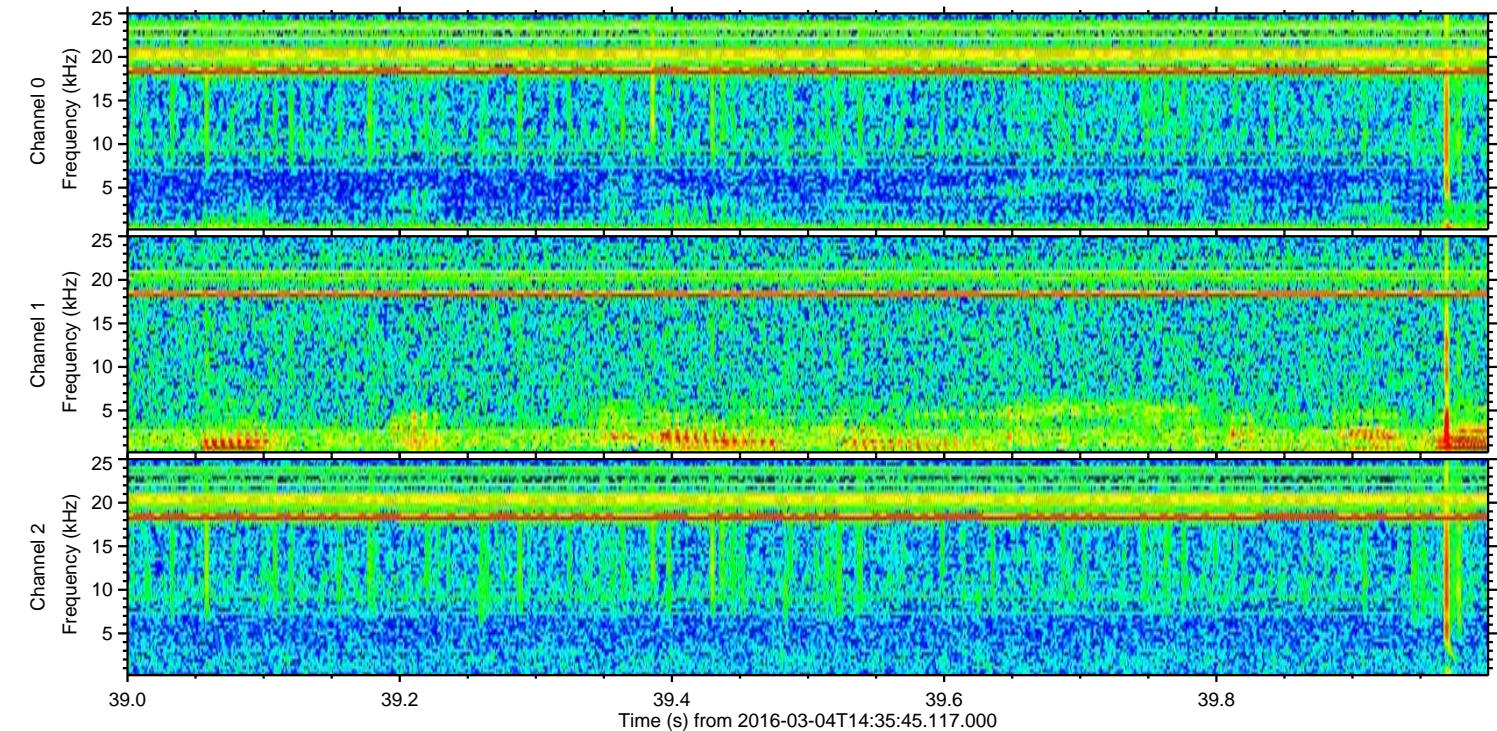
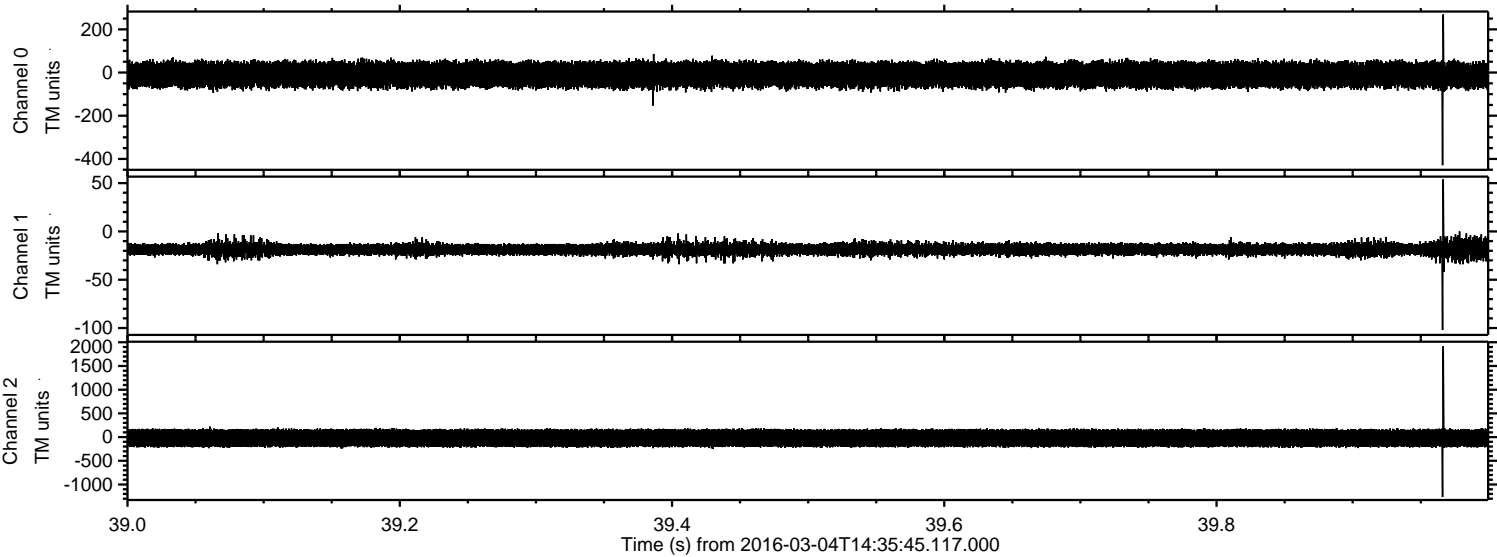
Channel 1
mn: -150
mx: 51
 μ : -18.1
 σ : 3.6

Channel 2
mn: -2135
mx: 1240
 μ : -21.0
 σ : 109.4

Processed Mon Apr 18 07:39:20 2016 by ELM ver.2012-10-06 from 001__elm20160304_143544__dat00.bin



Processed Mon Apr 18 07:39:21 2016 by ELM ver.2012-10-06 from 001__elm20160304_143544__dat00.bin

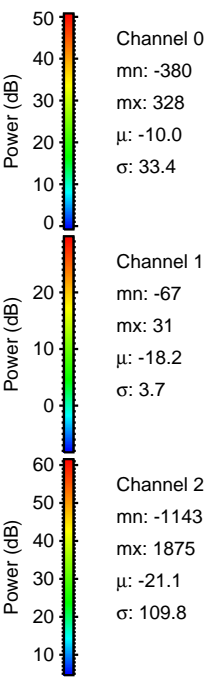
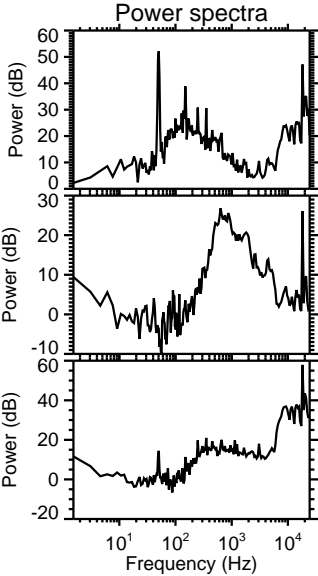
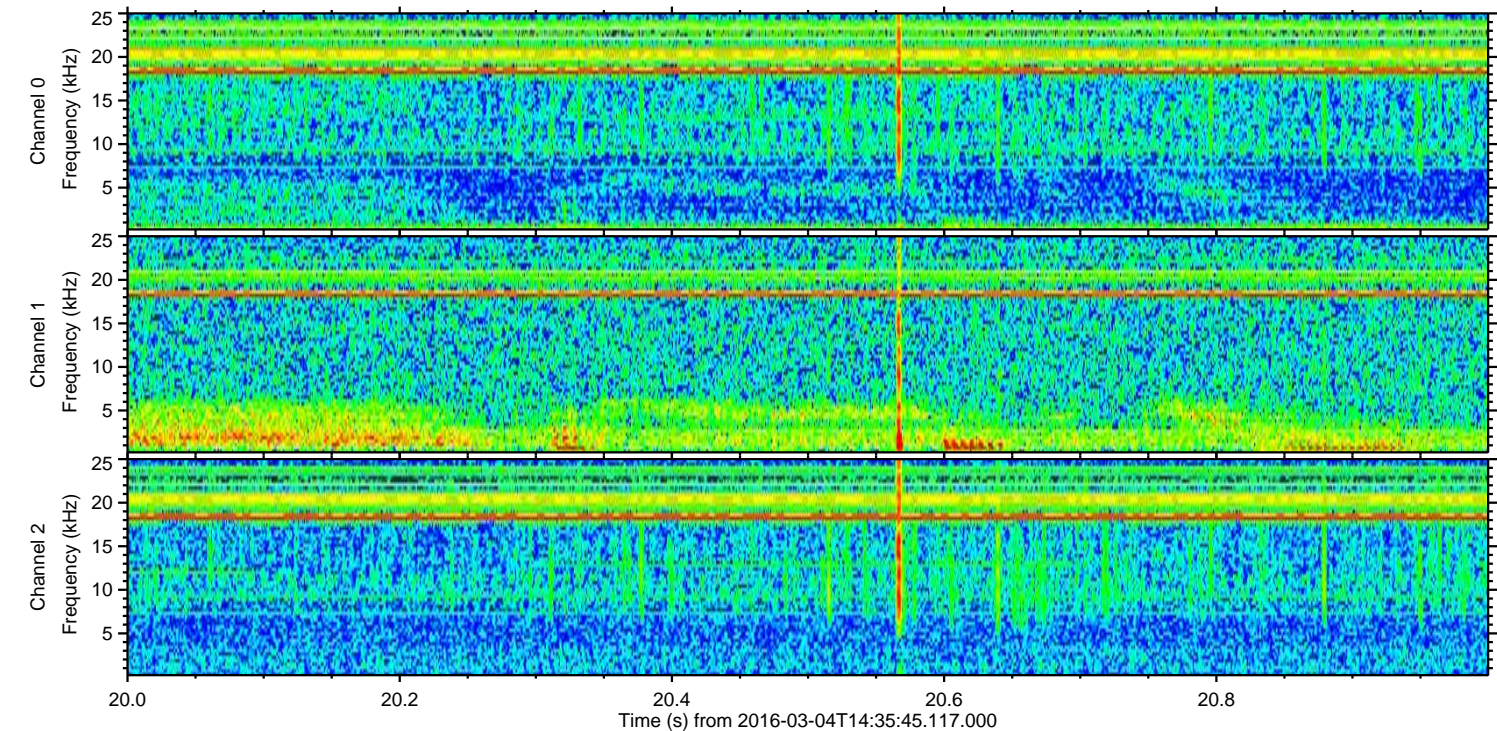
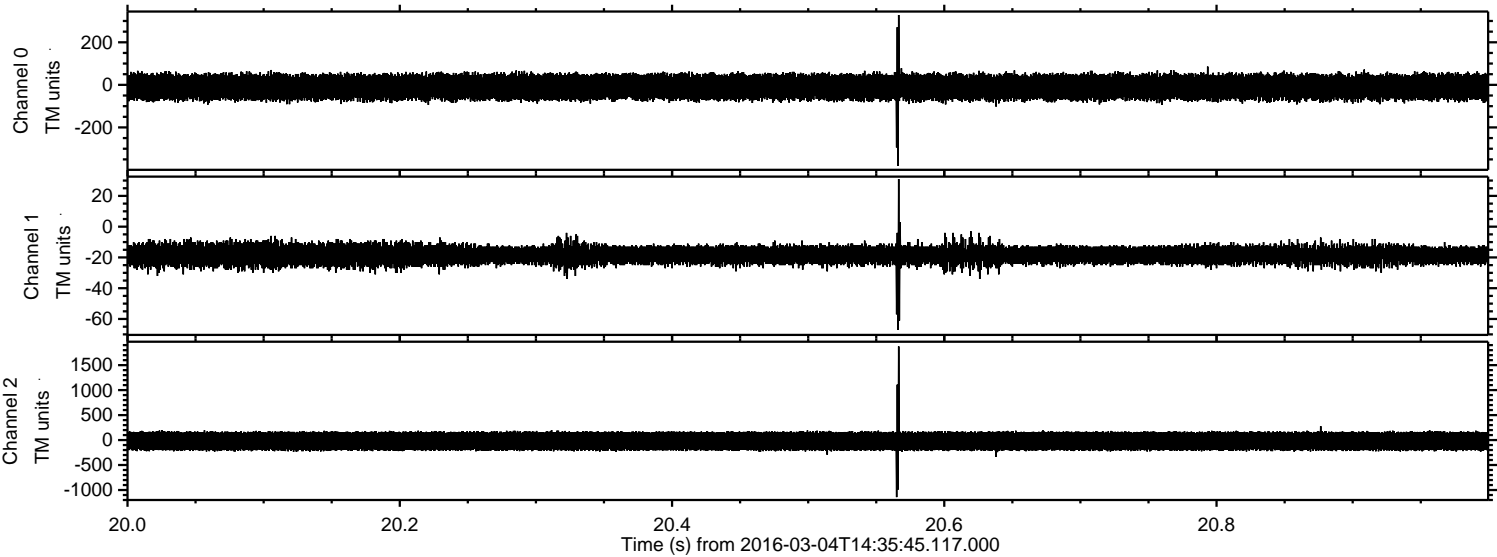


Channel 0
mn: -429
mx: 269
 μ : -10.0
 σ : 33.1

Channel 1
mn: -102
mx: 54
 μ : -18.2
 σ : 3.7

Channel 2
mn: -1264
mx: 1916
 μ : -21.1
 σ : 108.5

Processed Mon Apr 18 07:39:22 2016 by ELM ver.2012-10-06 from 001__elm20160304_143544__dat00.bin



Processed Mon Apr 18 07:39:23 2016 by ELM ver.2012-10-06 from 001__elm20160304_143544__dat00.bin

