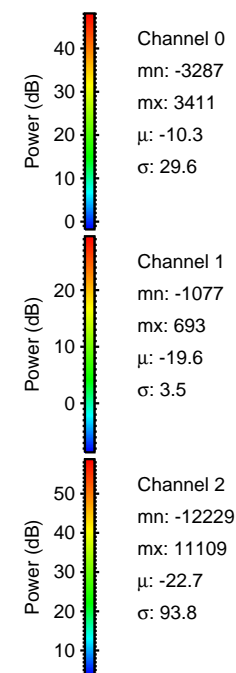
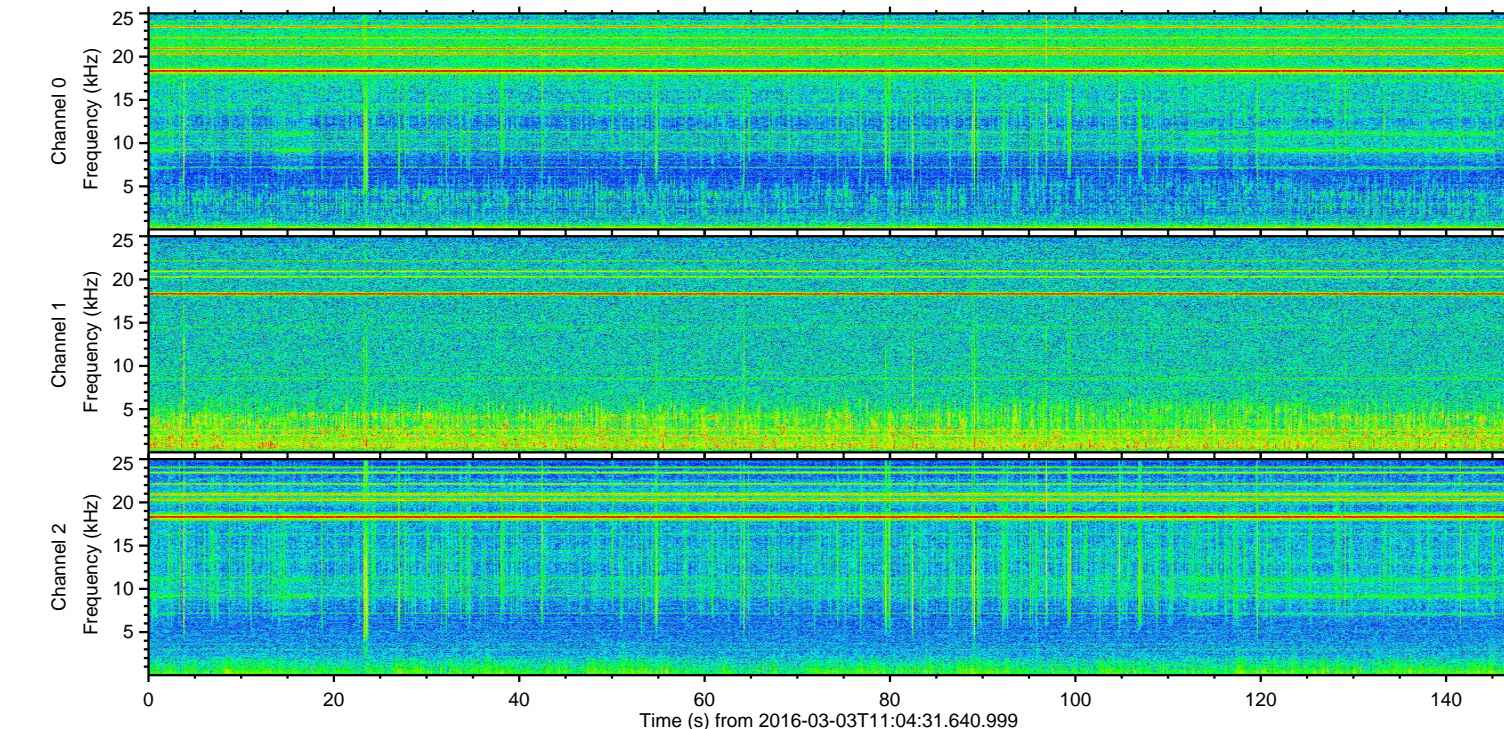
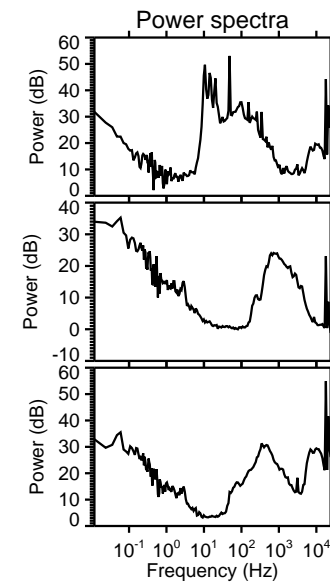
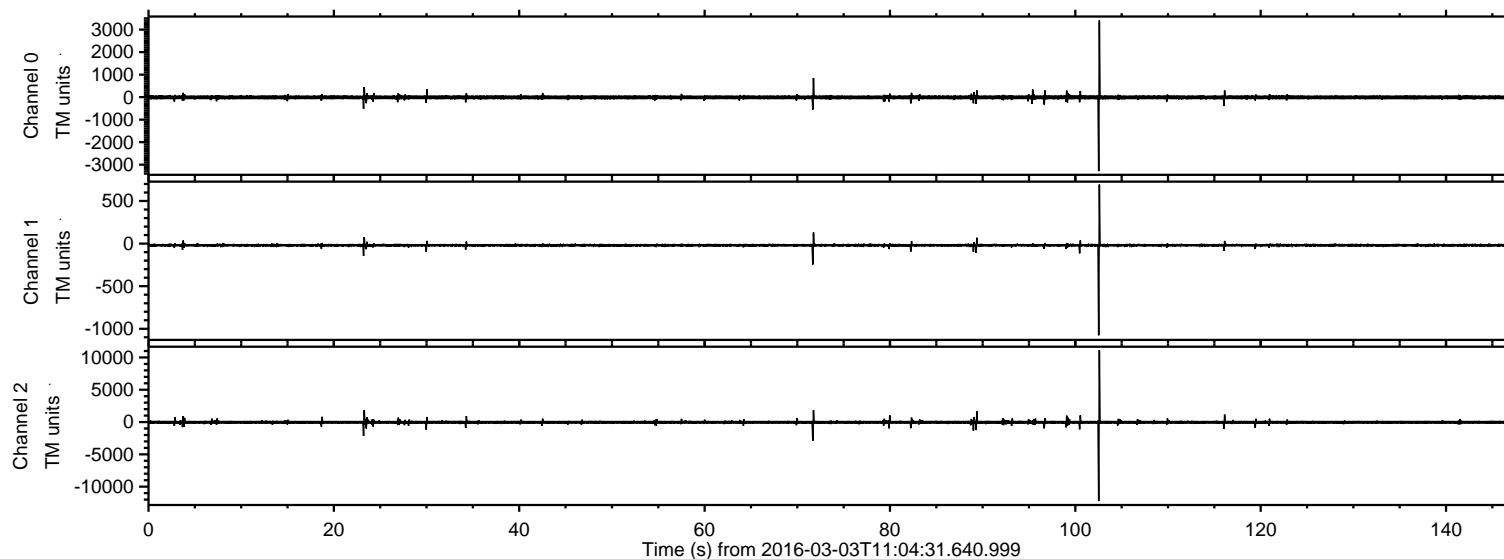


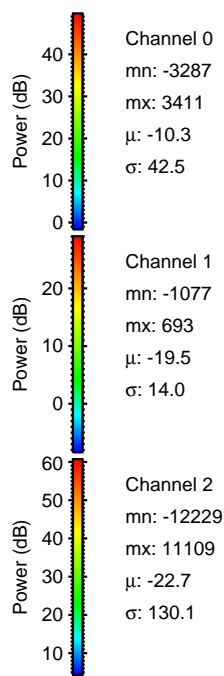
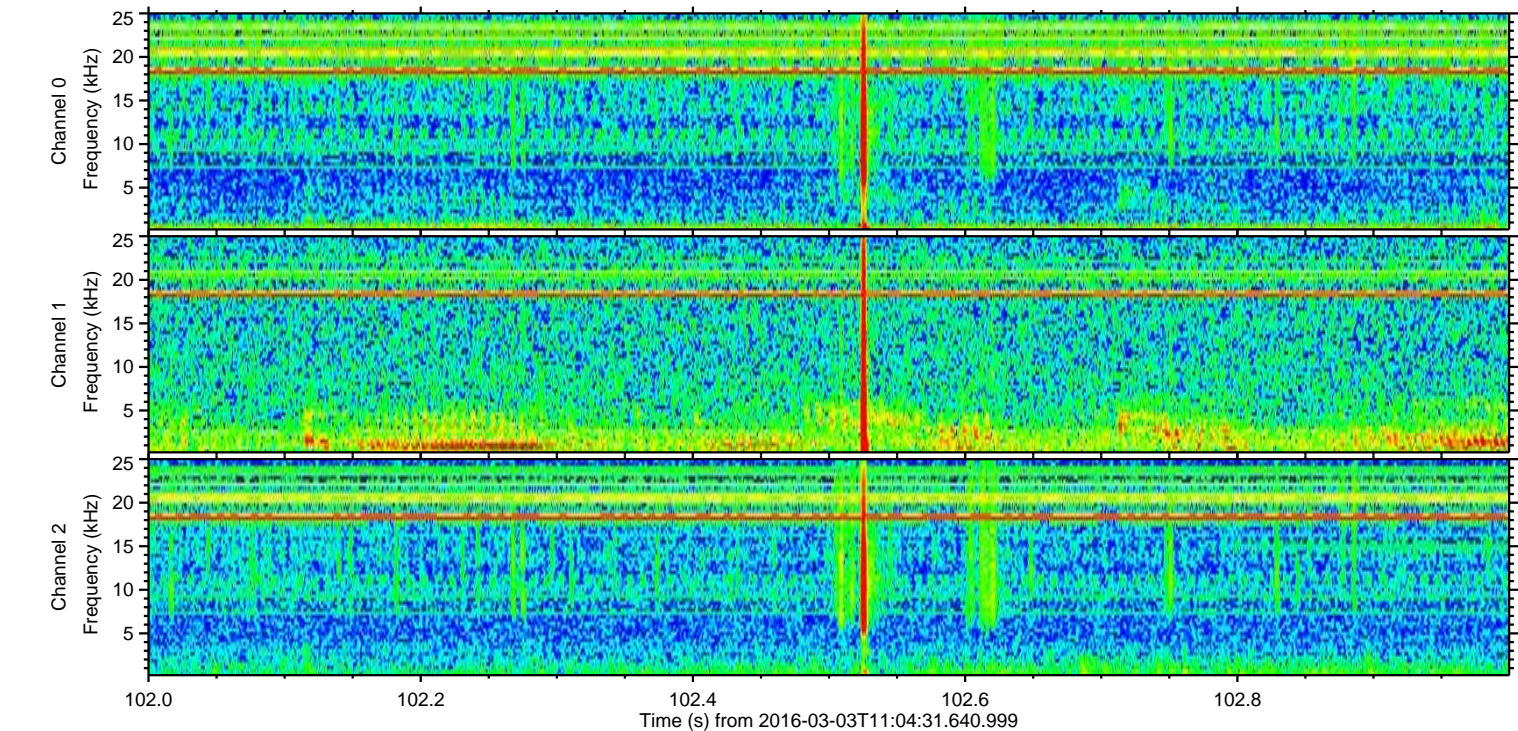
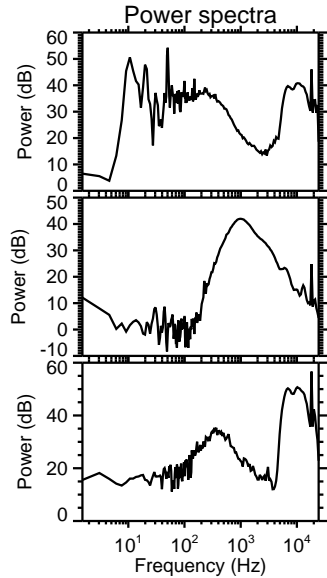
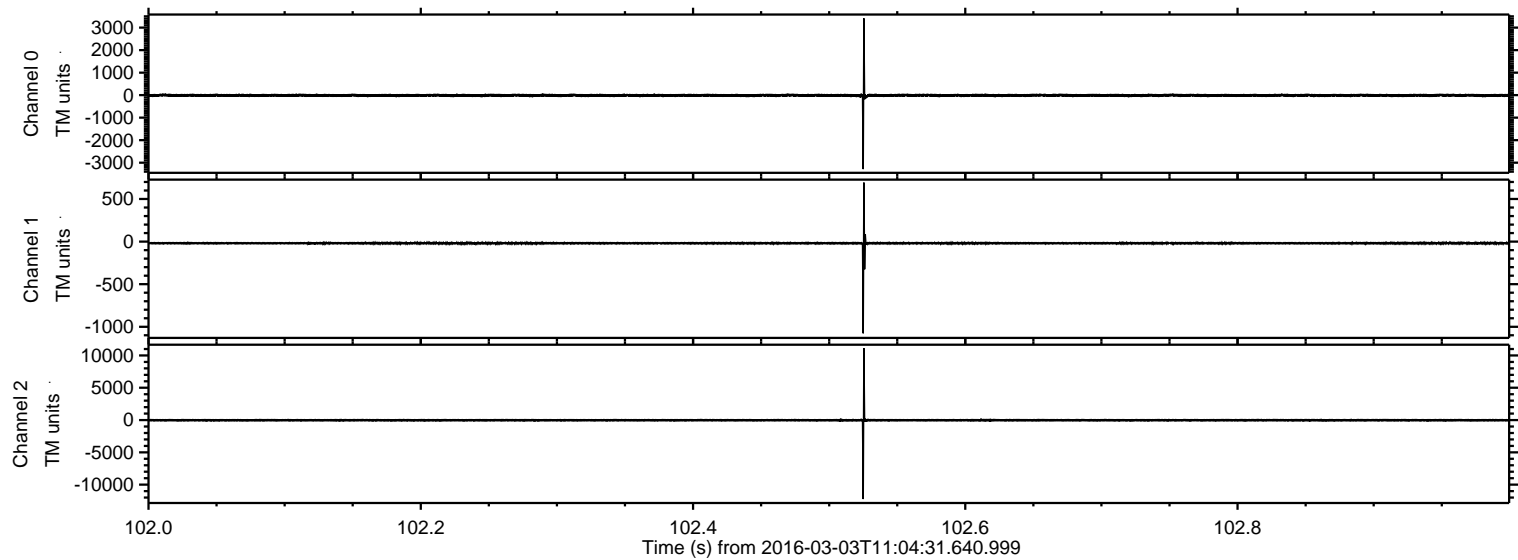
ELMAVAN 3D WAVEFORMS (Measured data sampled at 50 kHz) 51000 packets of 144 samples from 2016-03-03T11:04:31.640.999.

Processed Mon Apr 18 02:04:33 2016 by ELM ver.2012-10-06 from 001__elm20160303_110430__dat00.bin

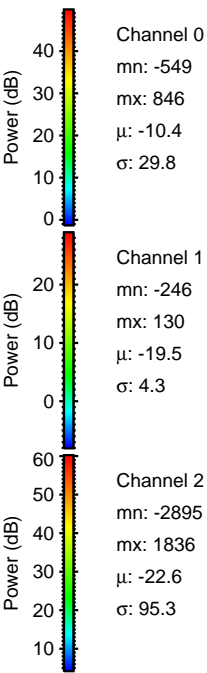
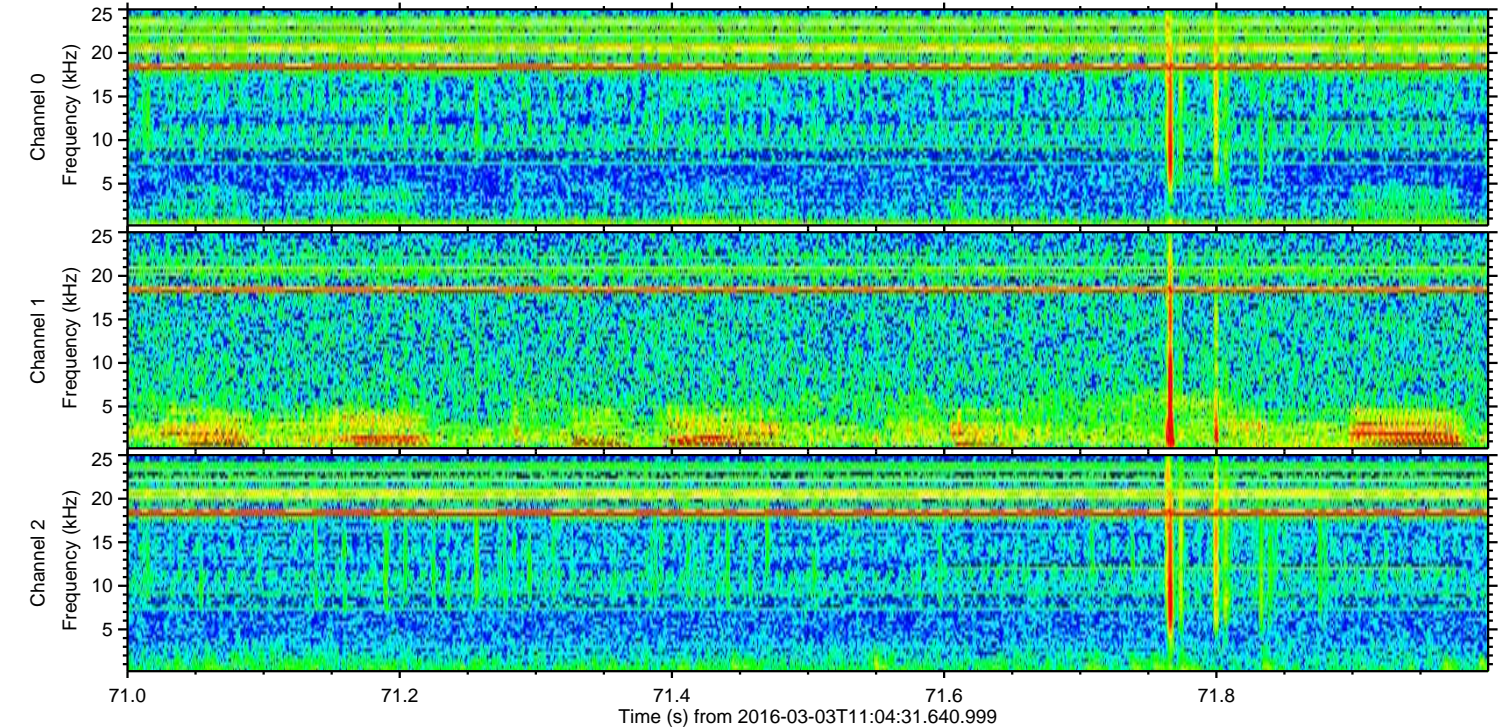
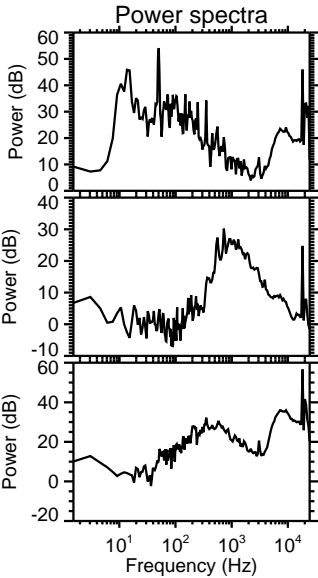
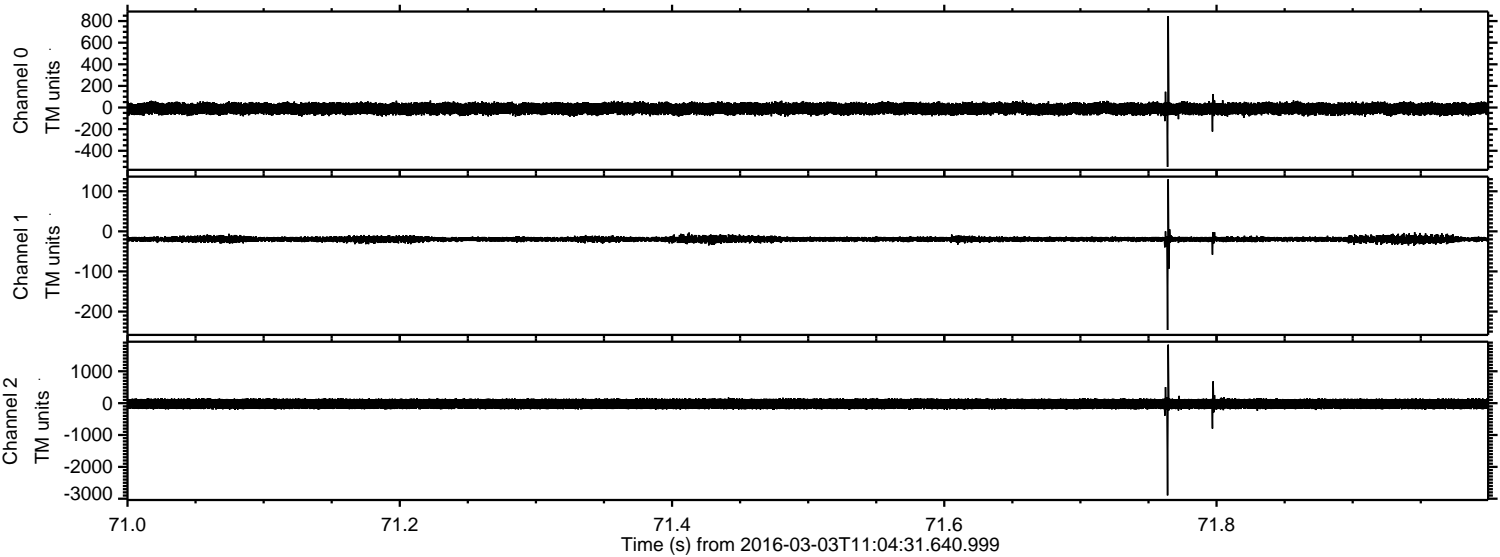


ELMAVAN 3D WAVEFORMS (Measured data sampled at 50 kHz) 51000 packets of 144 samples from 2016-03-03T11:04:31.640.999. Part 103/147

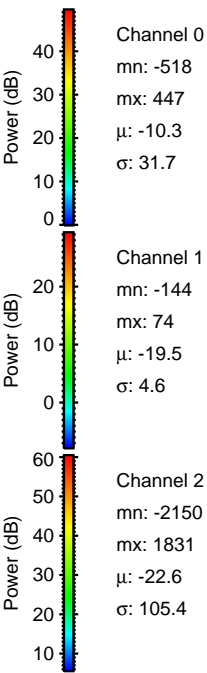
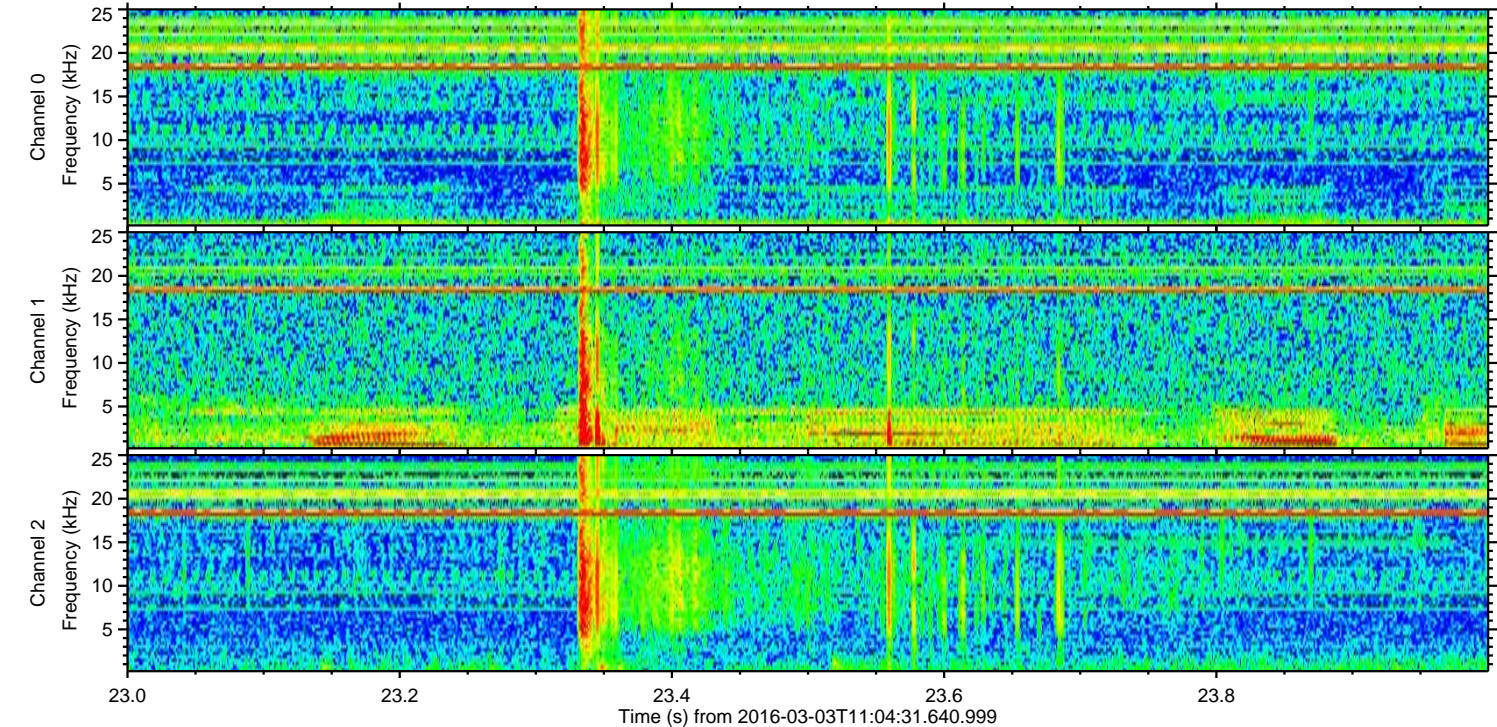
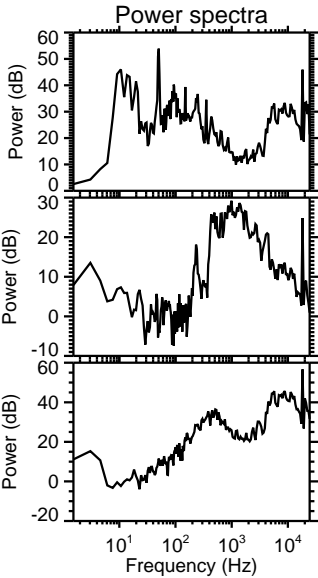
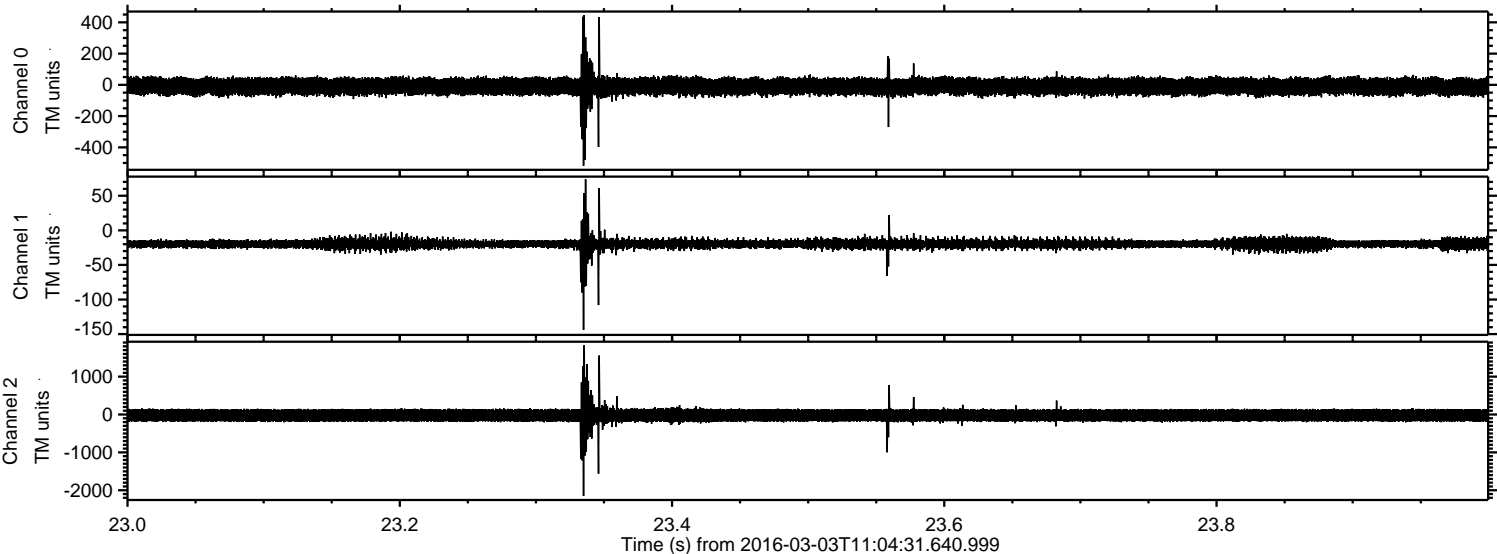
Processed Mon Apr 18 02:04:45 2016 by ELM ver.2012-10-06 from 001__elm20160303_110430__dat00.bin



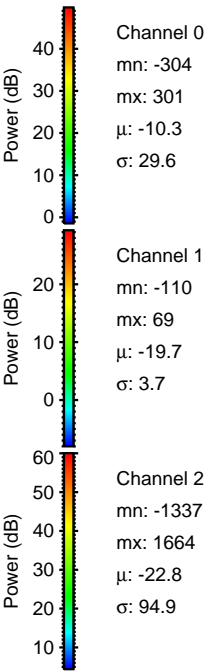
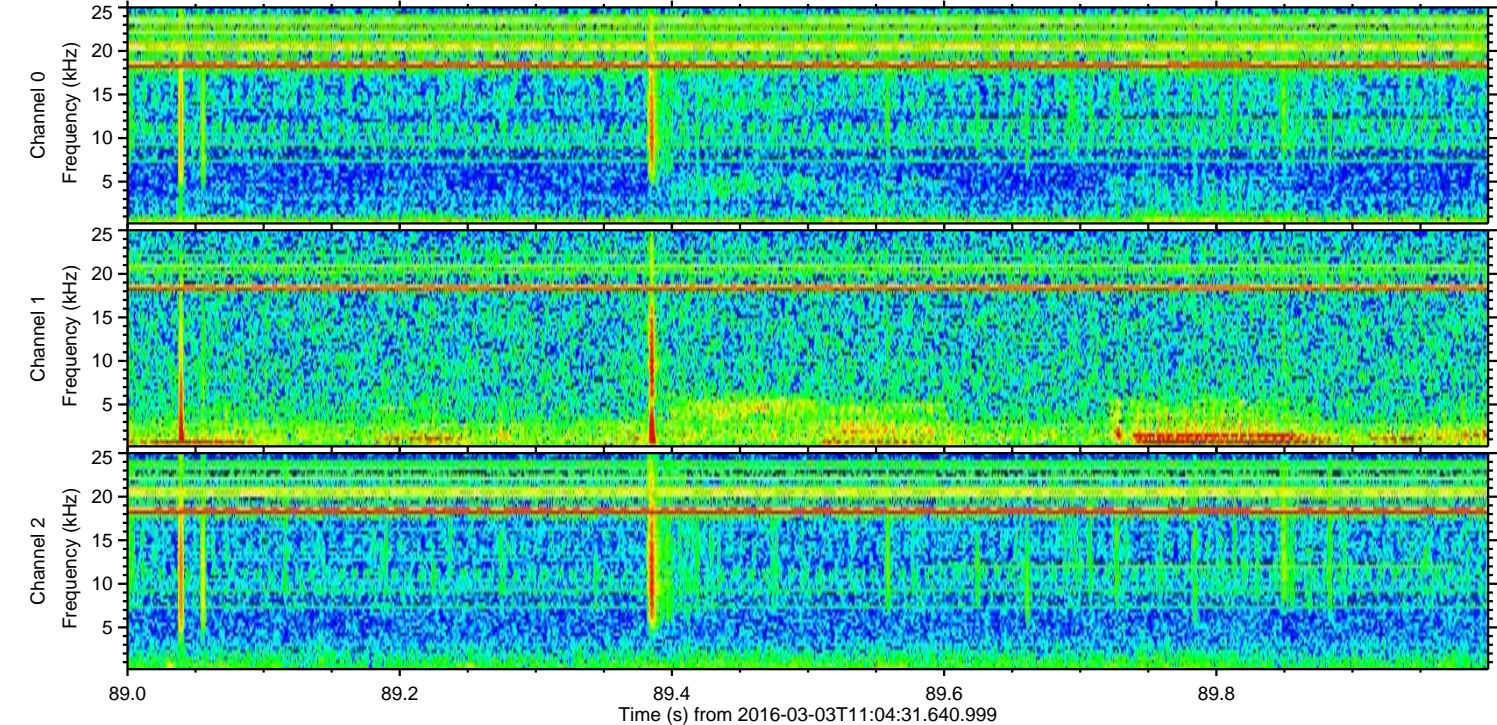
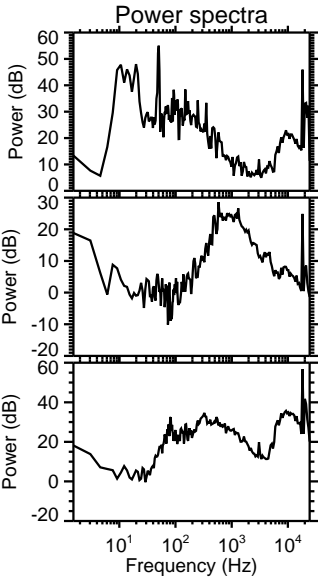
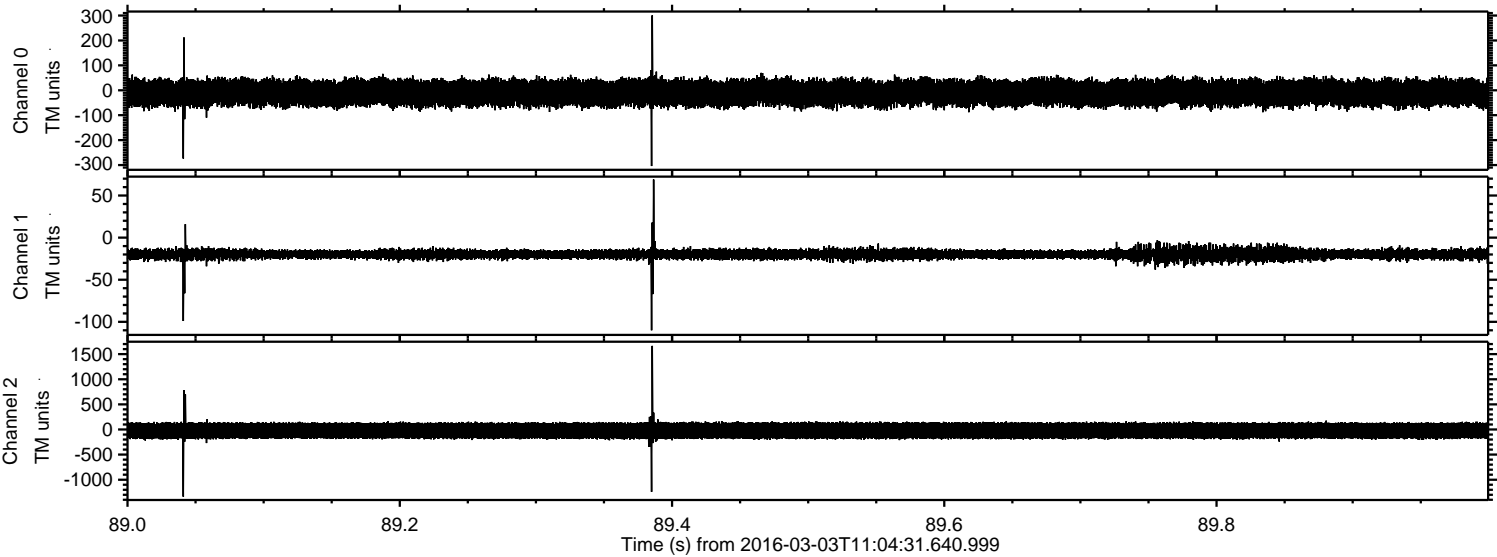
Processed Mon Apr 18 02:04:46 2016 by ELM ver.2012-10-06 from 001__elm20160303_110430__dat00.bin



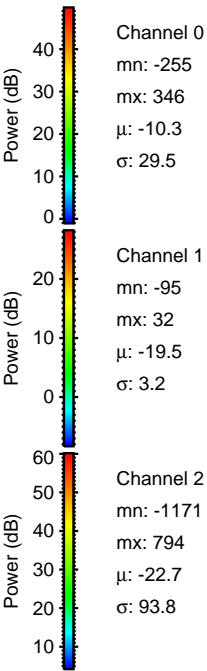
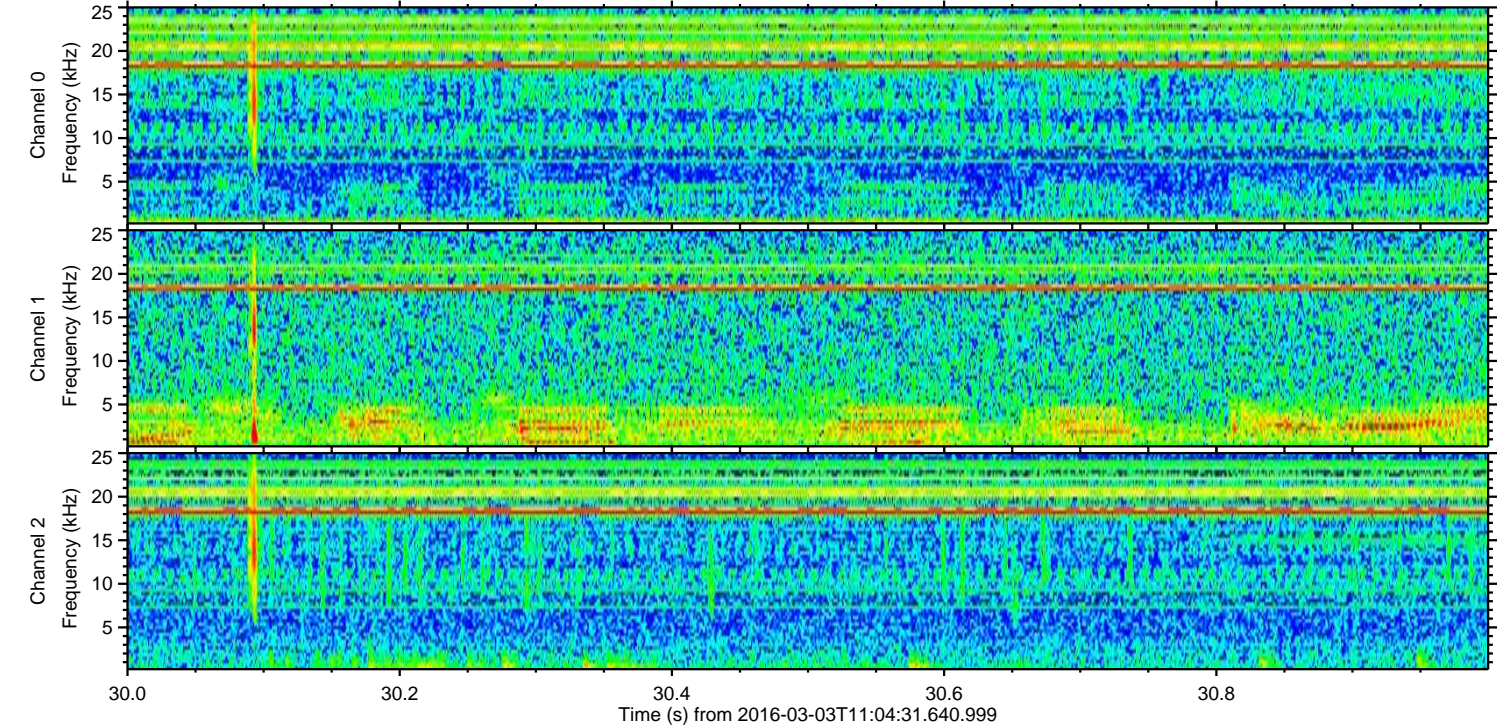
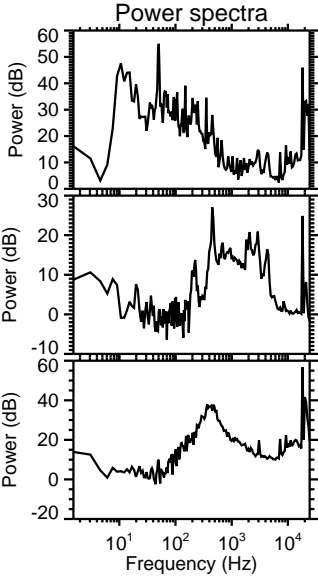
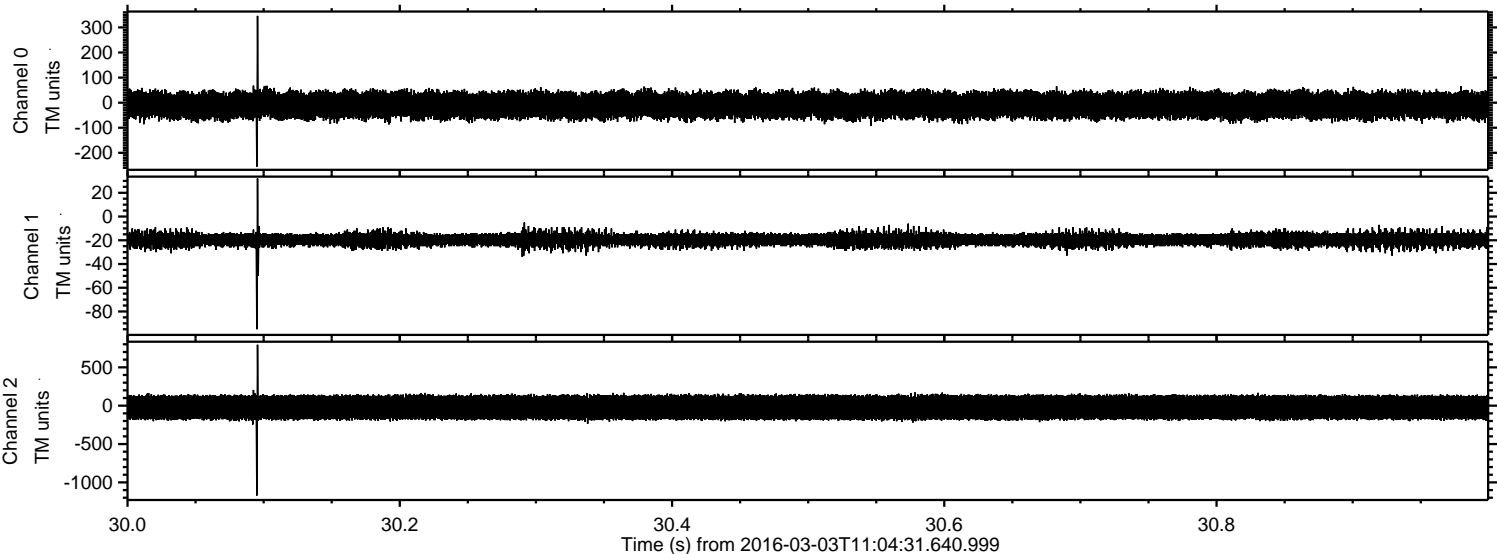
Processed Mon Apr 18 02:04:47 2016 by ELM ver.2012-10-06 from 001__elm20160303_110430__dat00.bin



Processed Mon Apr 18 02:04:48 2016 by ELM ver.2012-10-06 from 001__elm20160303_110430__dat00.bin

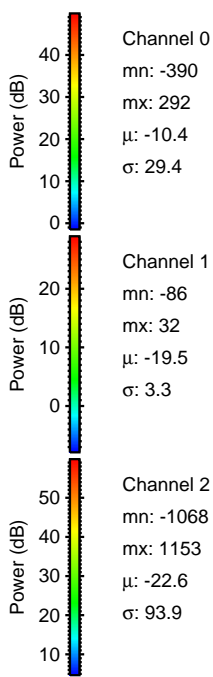
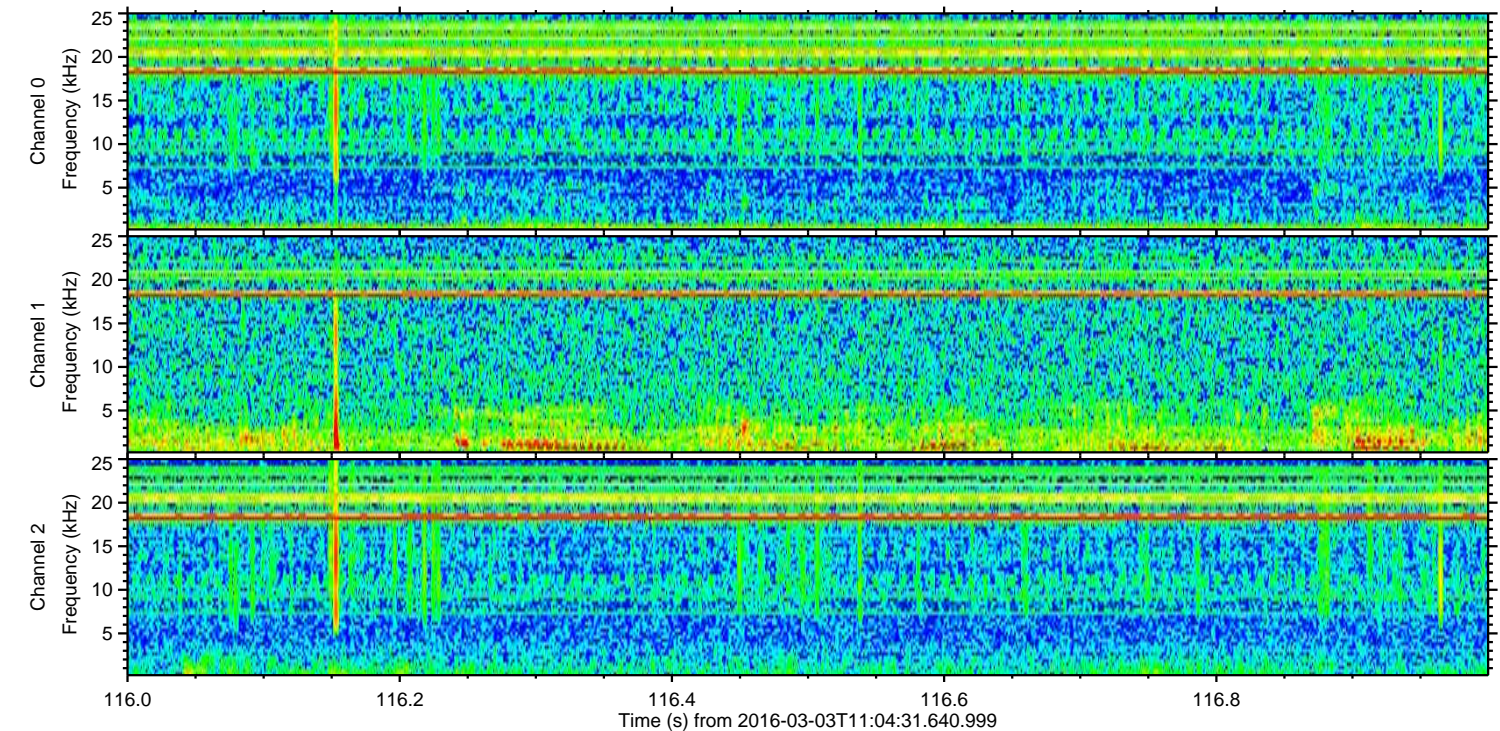
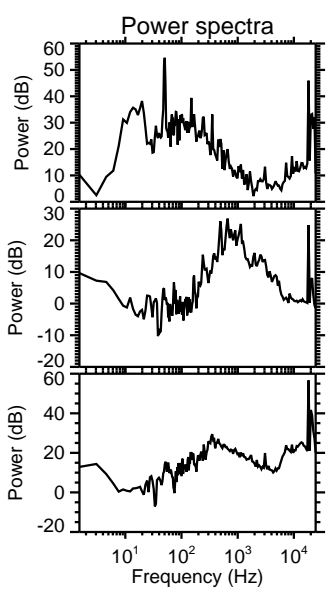
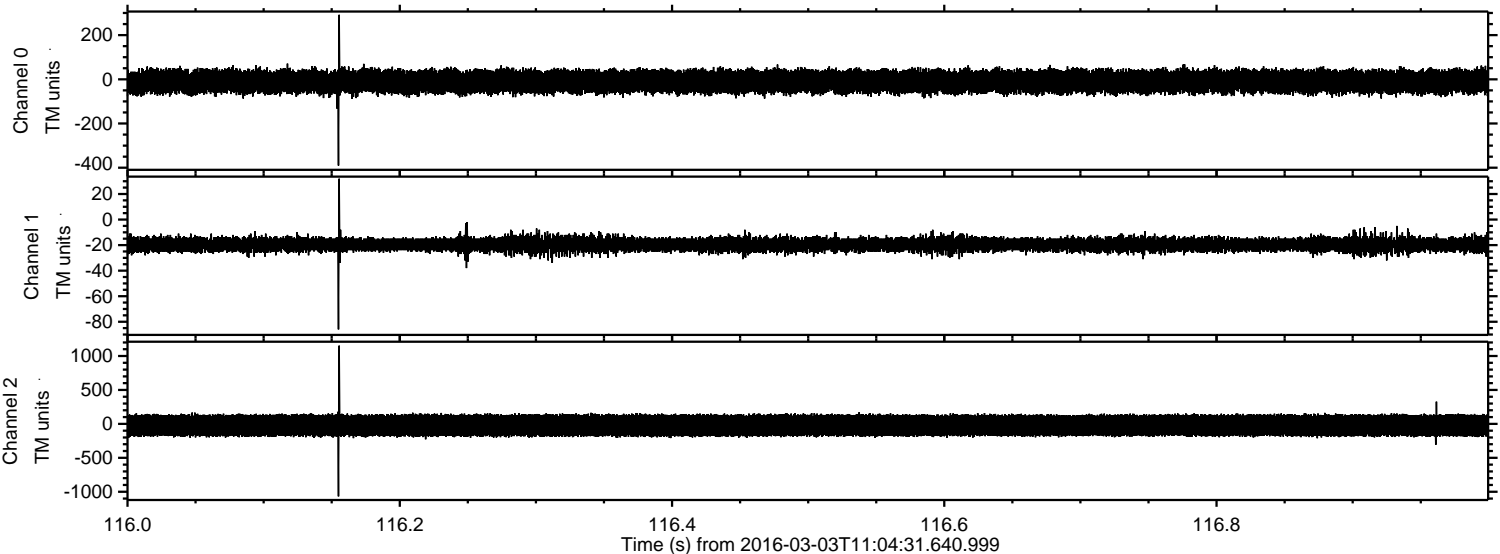


Processed Mon Apr 18 02:04:49 2016 by ELM ver.2012-10-06 from 001__elm20160303_110430__dat00.bin



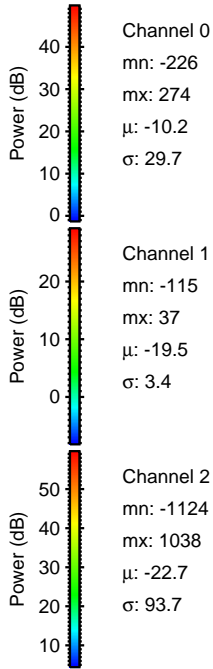
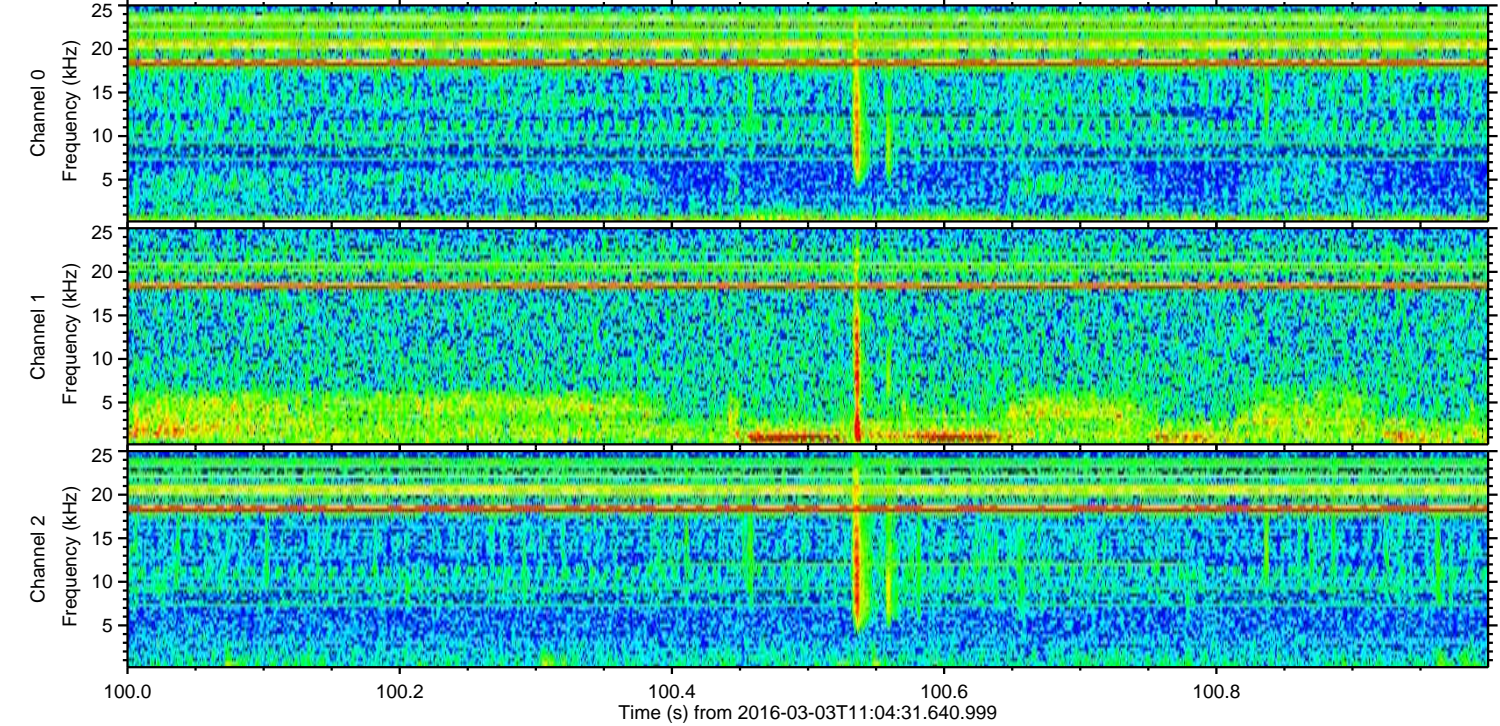
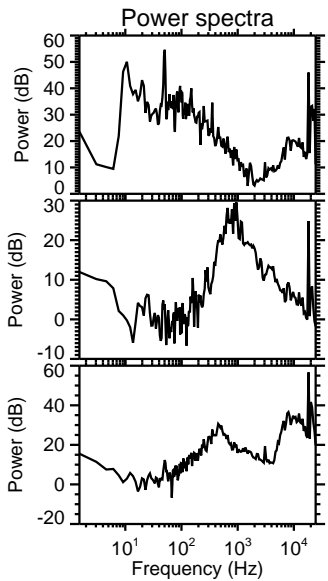
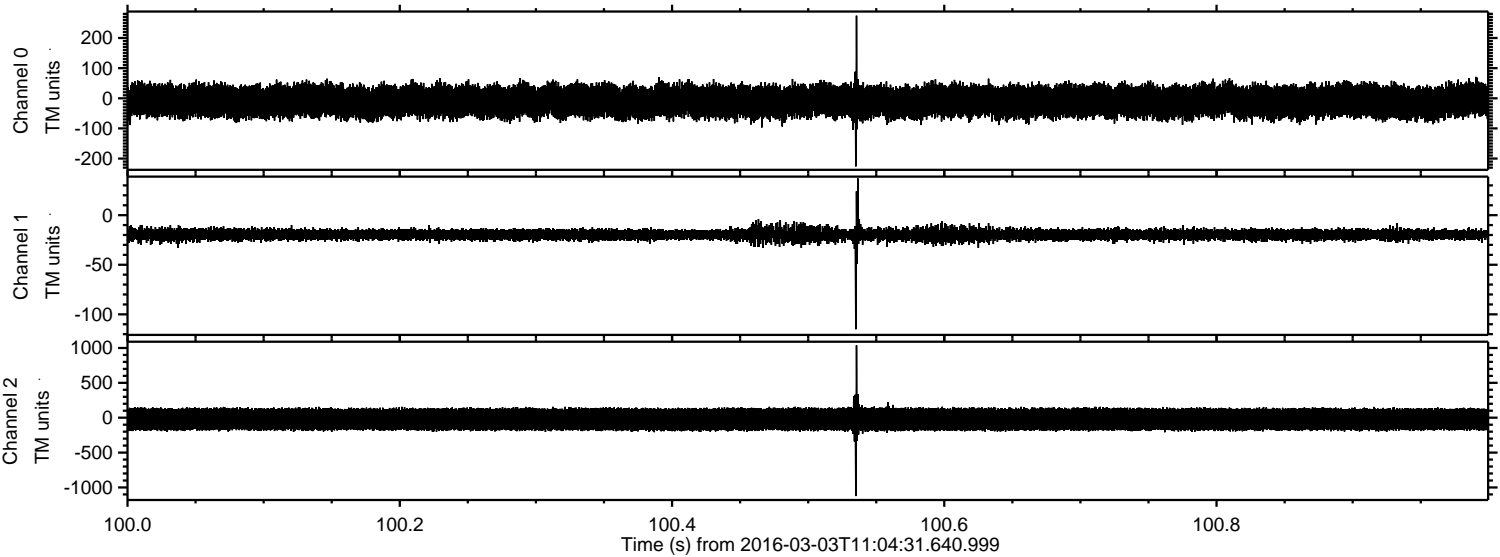
ELMAVAN 3D WAVEFORMS (Measured data sampled at 50 kHz) 51000 packets of 144 samples from 2016-03-03T11:04:31.640.999. Part 117/147

Processed Mon Apr 18 02:04:50 2016 by ELM ver.2012-10-06 from 001__elm20160303_110430__dat00.bin



ELMAVAN 3D WAVEFORMS (Measured data sampled at 50 kHz) 51000 packets of 144 samples from 2016-03-03T11:04:31.640.999. Part 101/147

Processed Mon Apr 18 02:04:51 2016 by ELM ver.2012-10-06 from 001__elm20160303_110430__dat00.bin

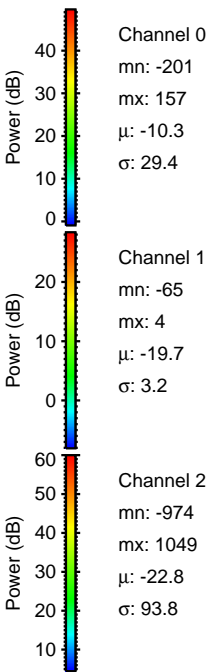
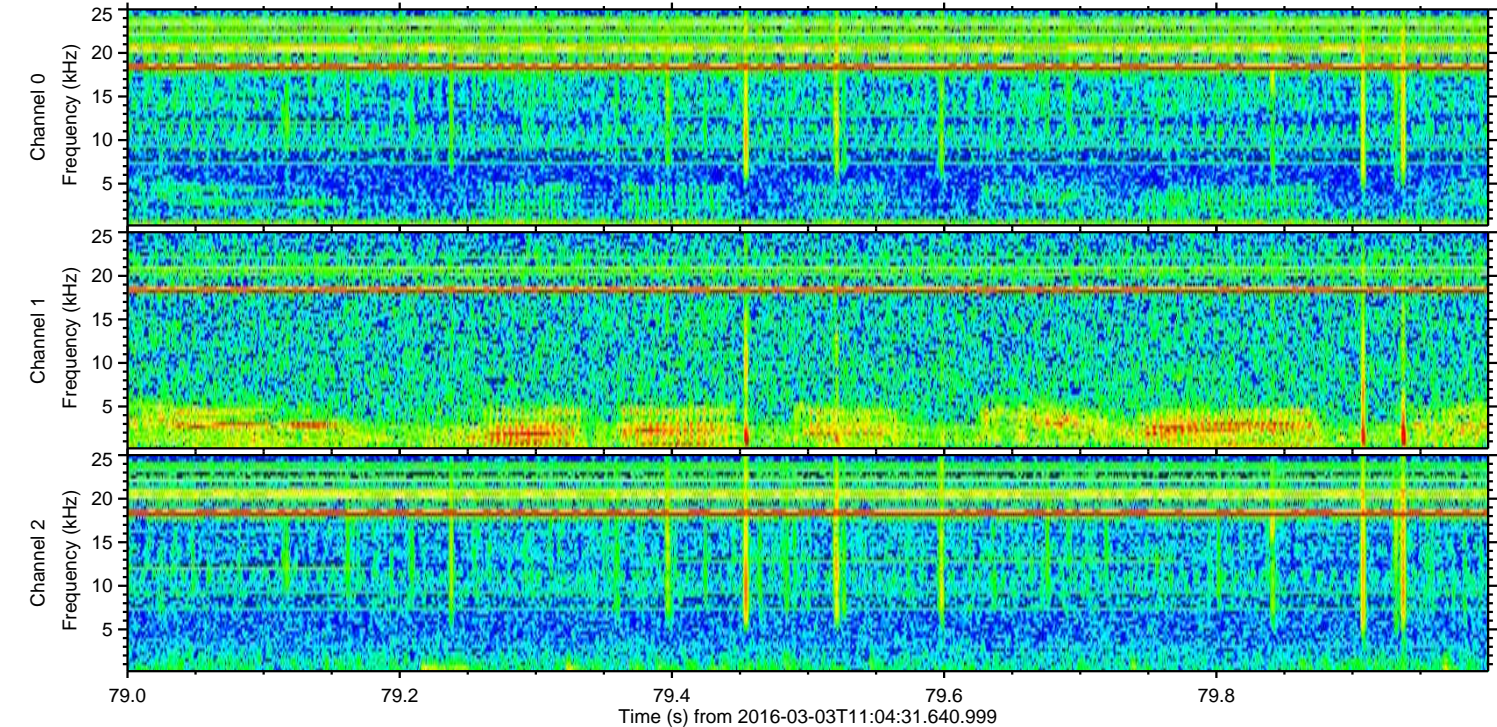
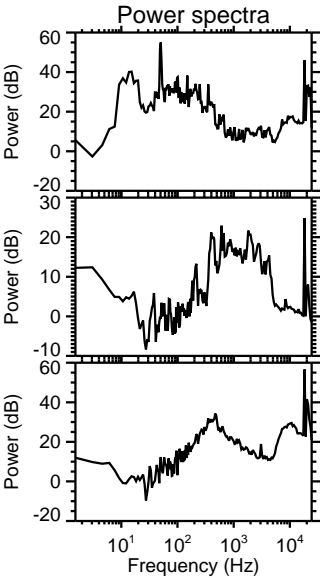
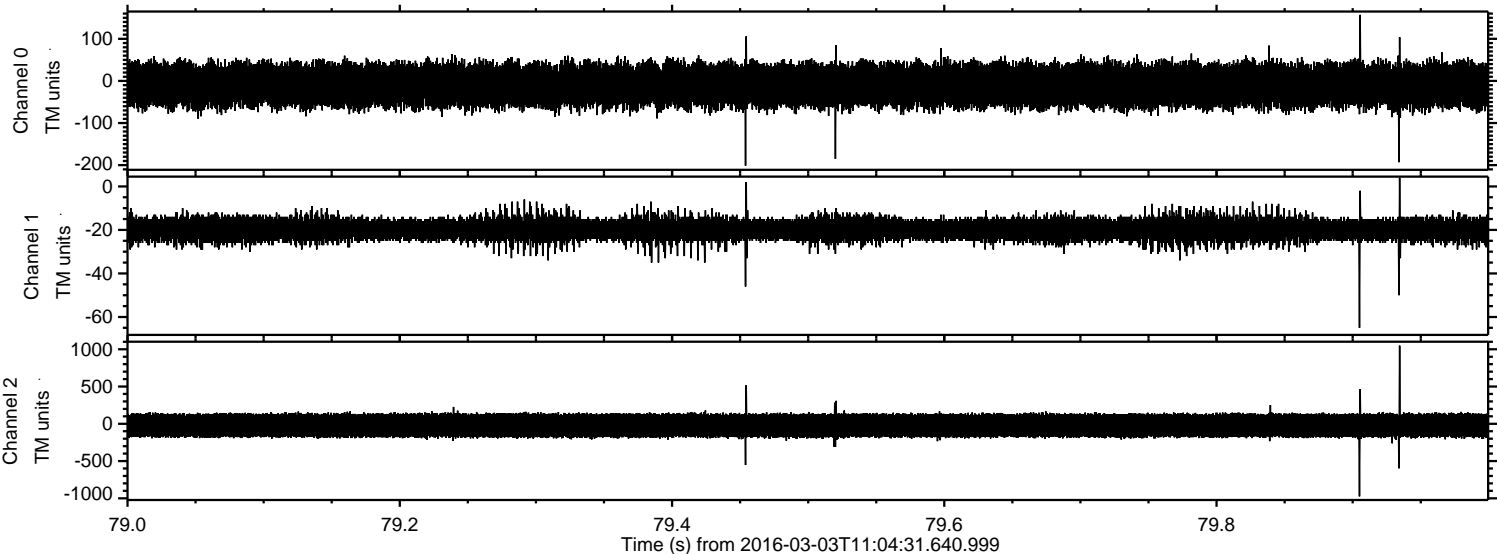


Channel 0
mn: -226
mx: 274
 μ : -10.2
 σ : 29.7

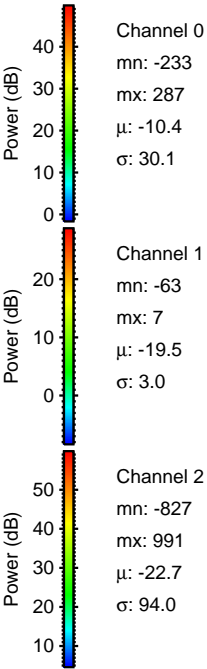
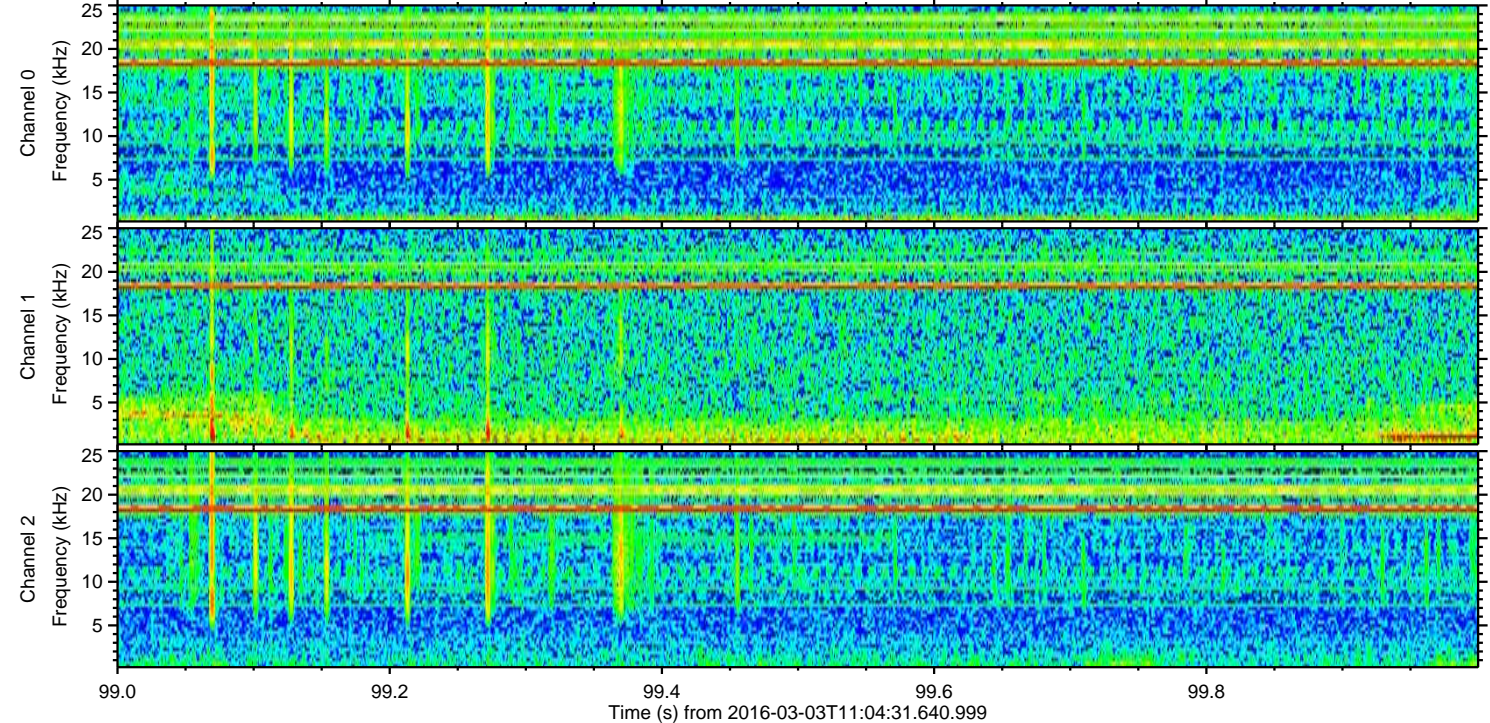
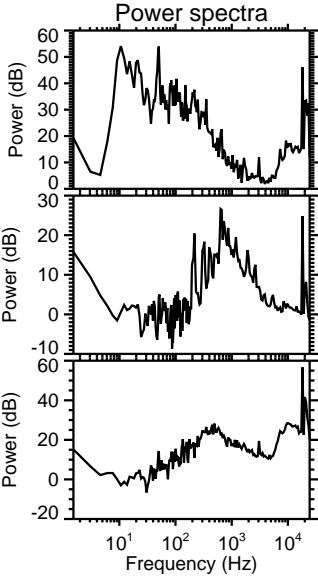
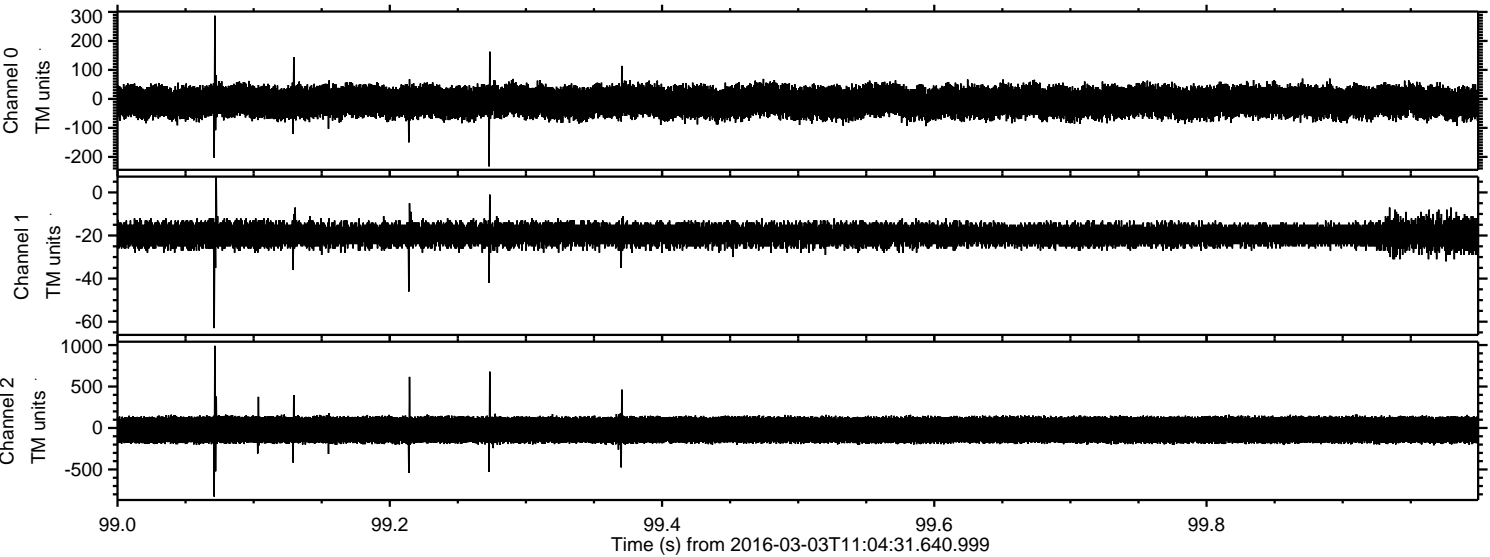
Channel 1
mn: -115
mx: 37
 μ : -19.5
 σ : 3.4

Channel 2
mn: -1124
mx: 1038
 μ : -22.7
 σ : 93.7

Processed Mon Apr 18 02:04:52 2016 by ELM ver.2012-10-06 from 001__elm20160303_110430__dat00.bin



Processed Mon Apr 18 02:04:53 2016 by ELM ver.2012-10-06 from 001__elm20160303_110430__dat00.bin



Processed Mon Apr 18 02:04:53 2016 by ELM ver.2012-10-06 from 001__elm20160303_110430__dat00.bin

