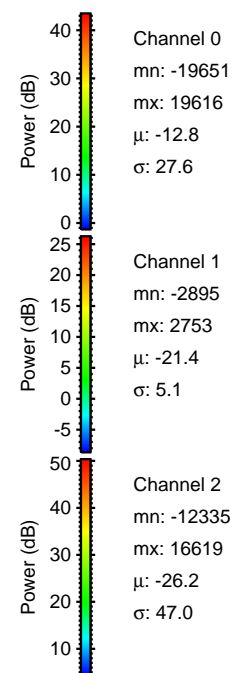
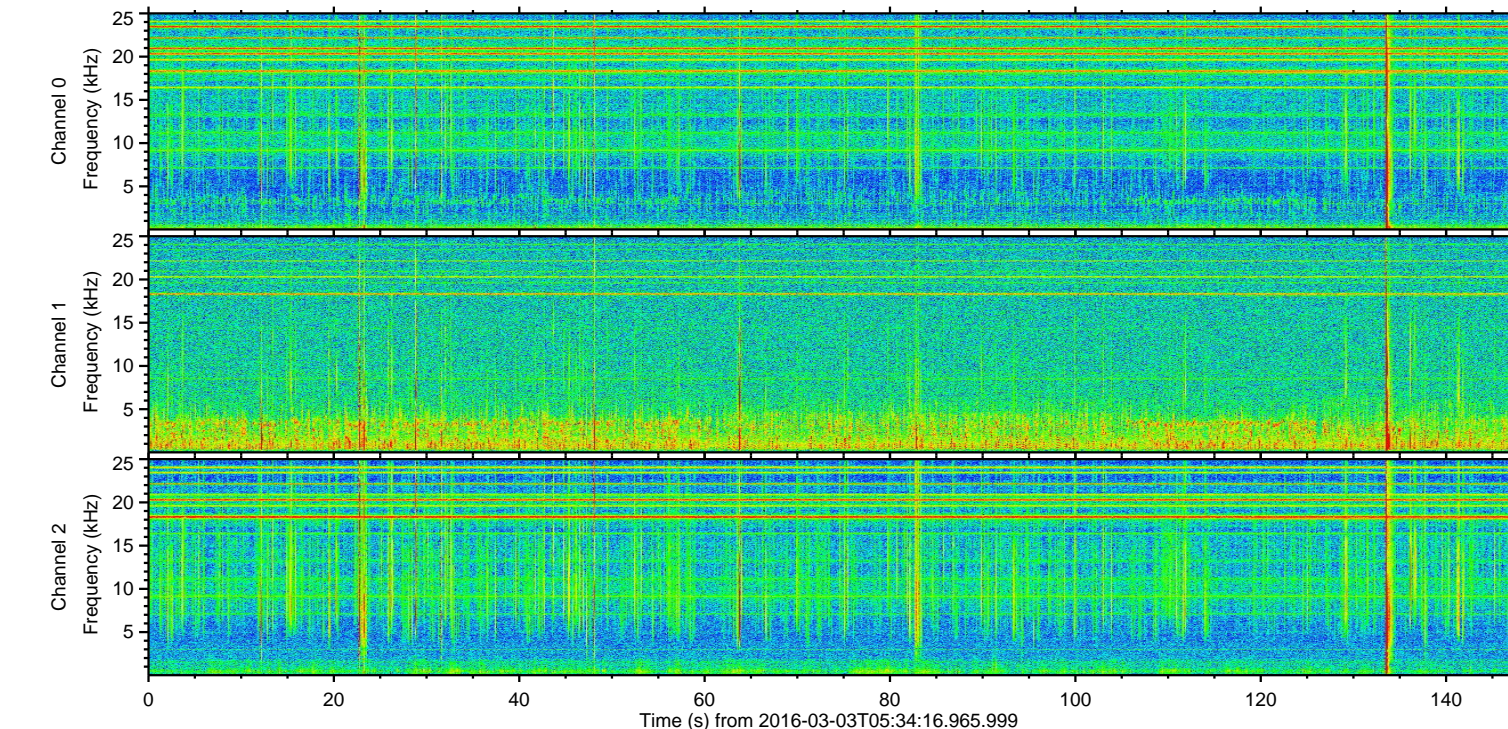
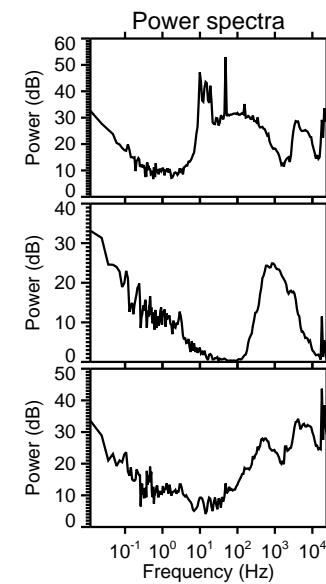
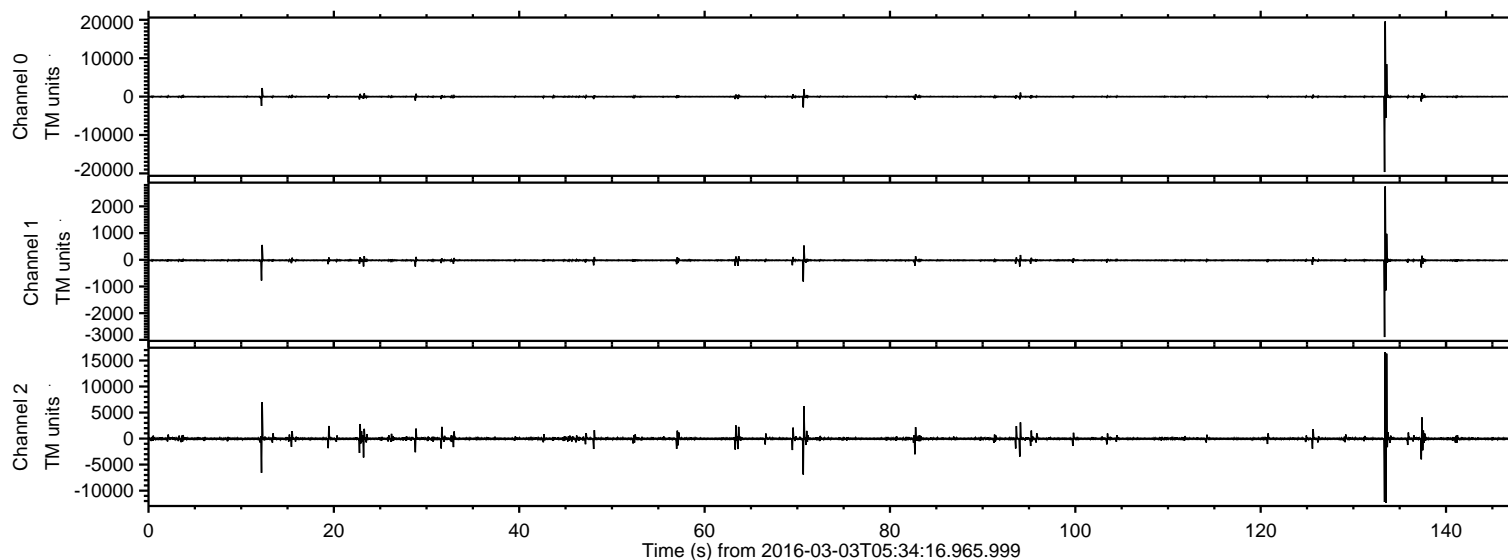


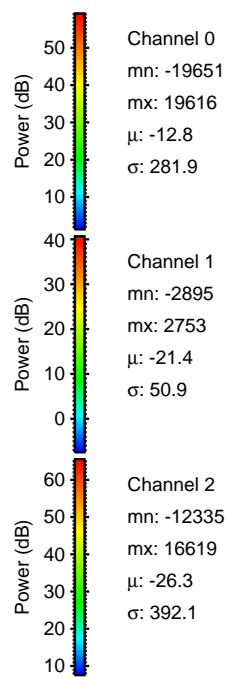
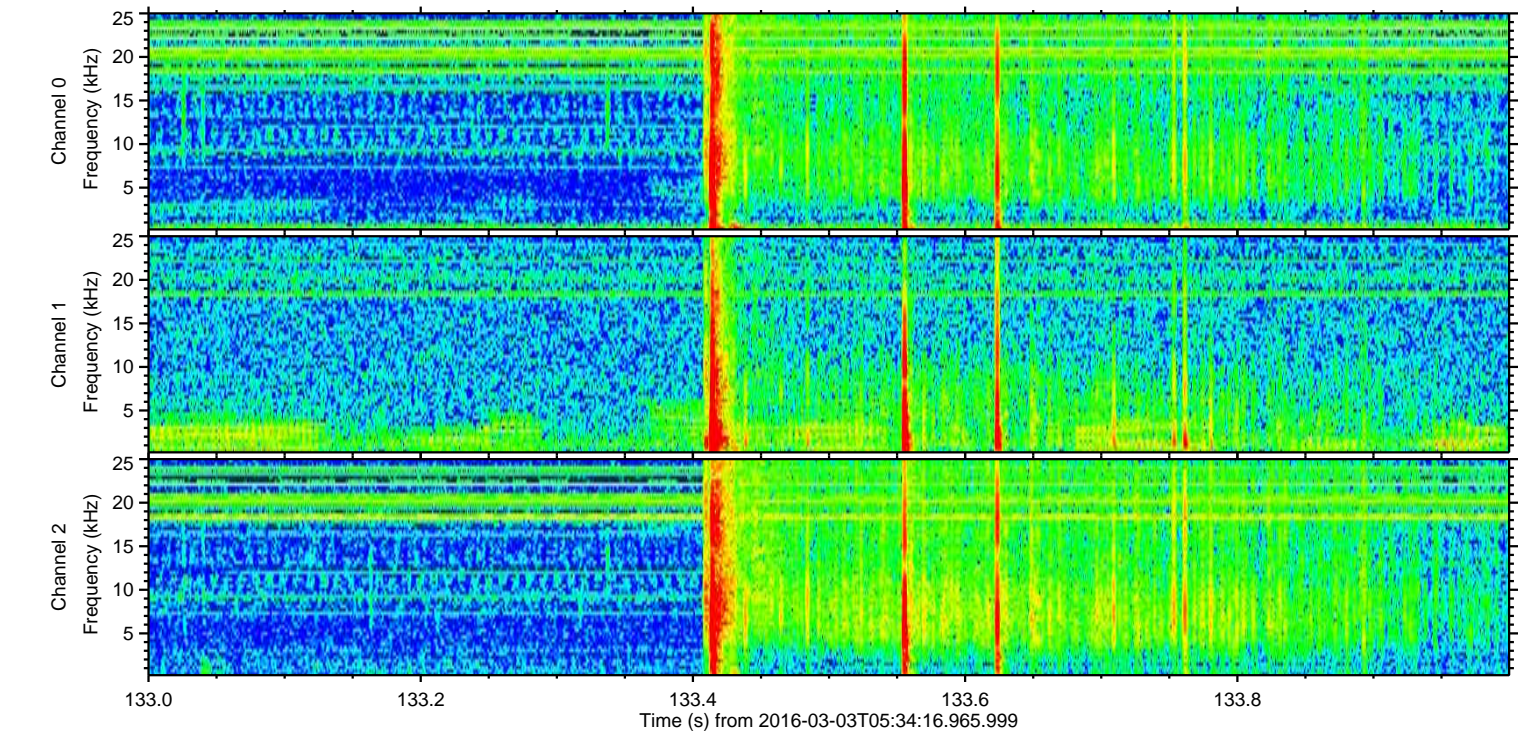
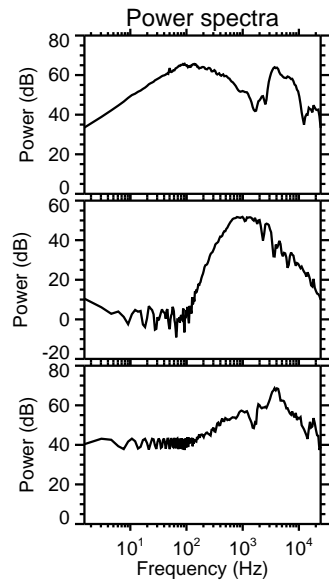
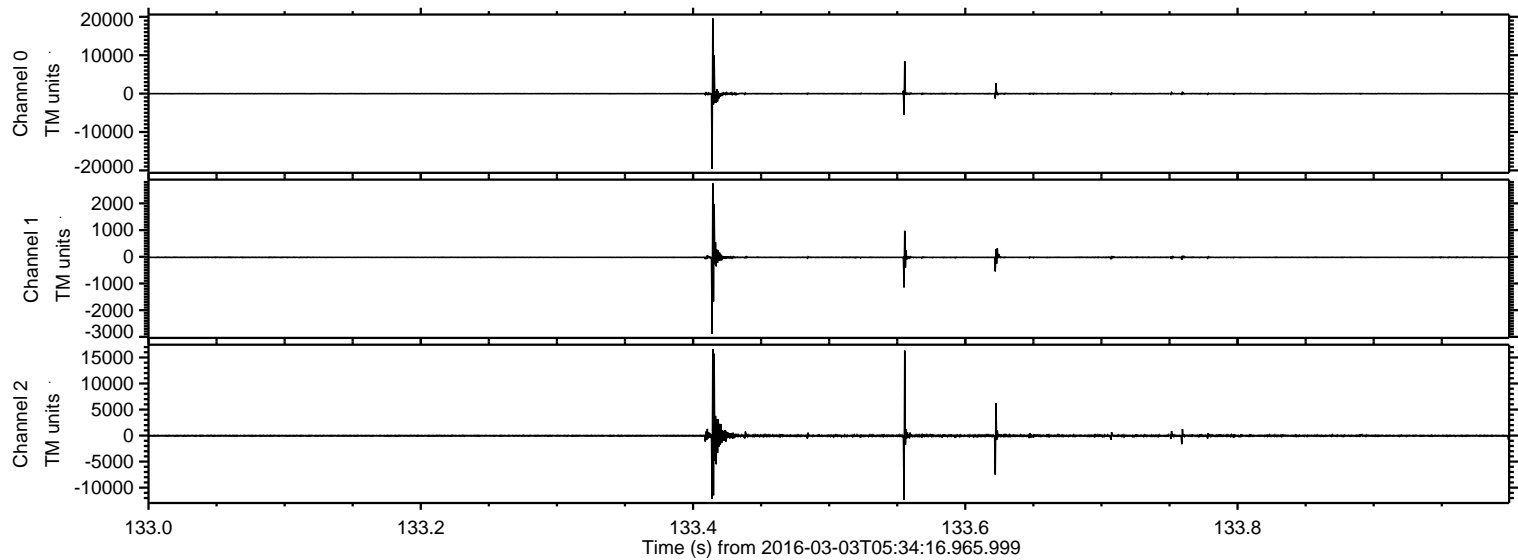
ELMAVAN 3D WAVEFORMS (Measured data sampled at 50 kHz) 51000 packets of 144 samples from 2016-03-03T05:34:16.965.999.

Processed Mon Apr 18 00:56:31 2016 by ELM ver.2012-10-06 from 001__elm20160303_053415__dat00.bin



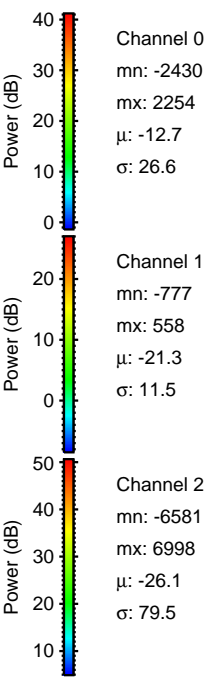
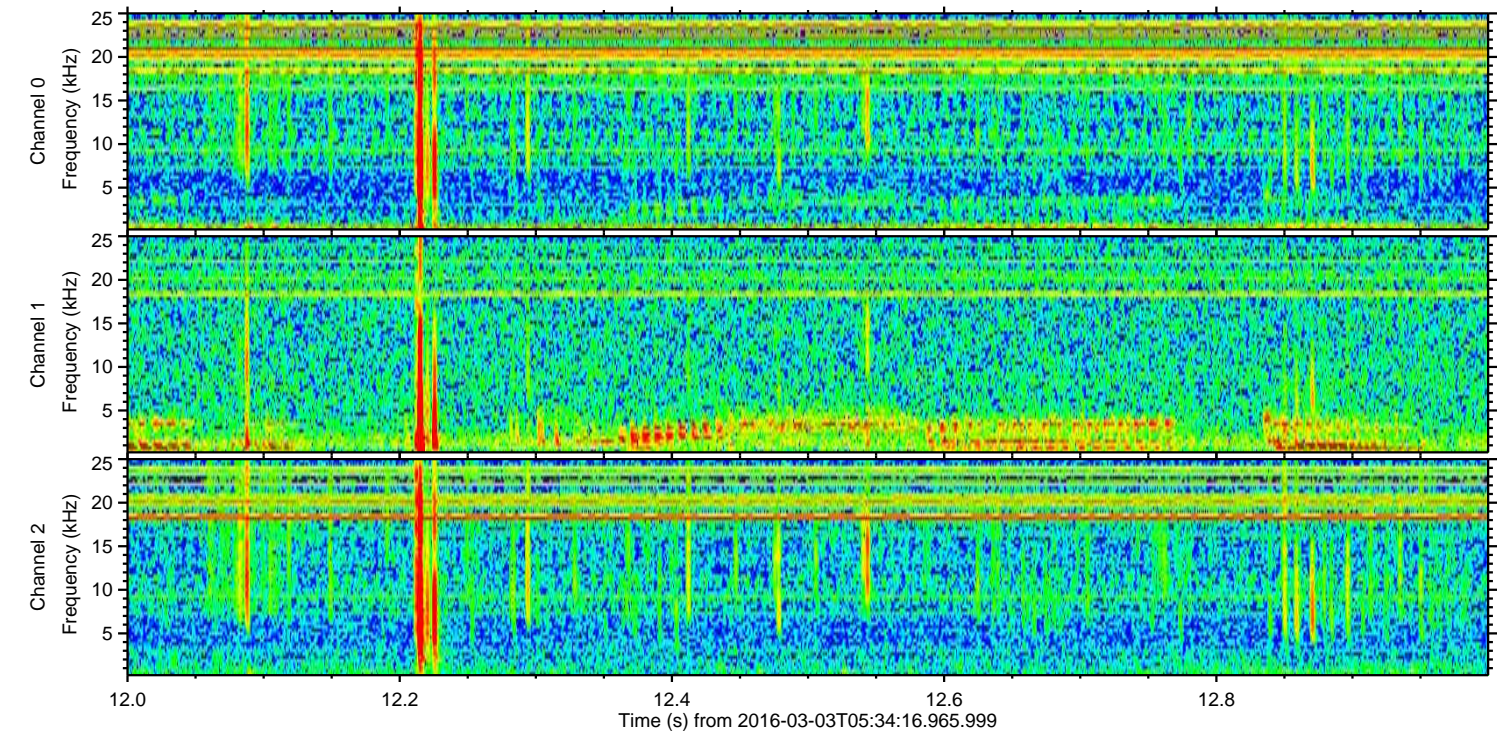
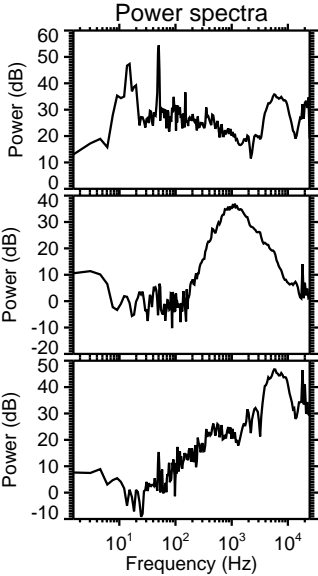
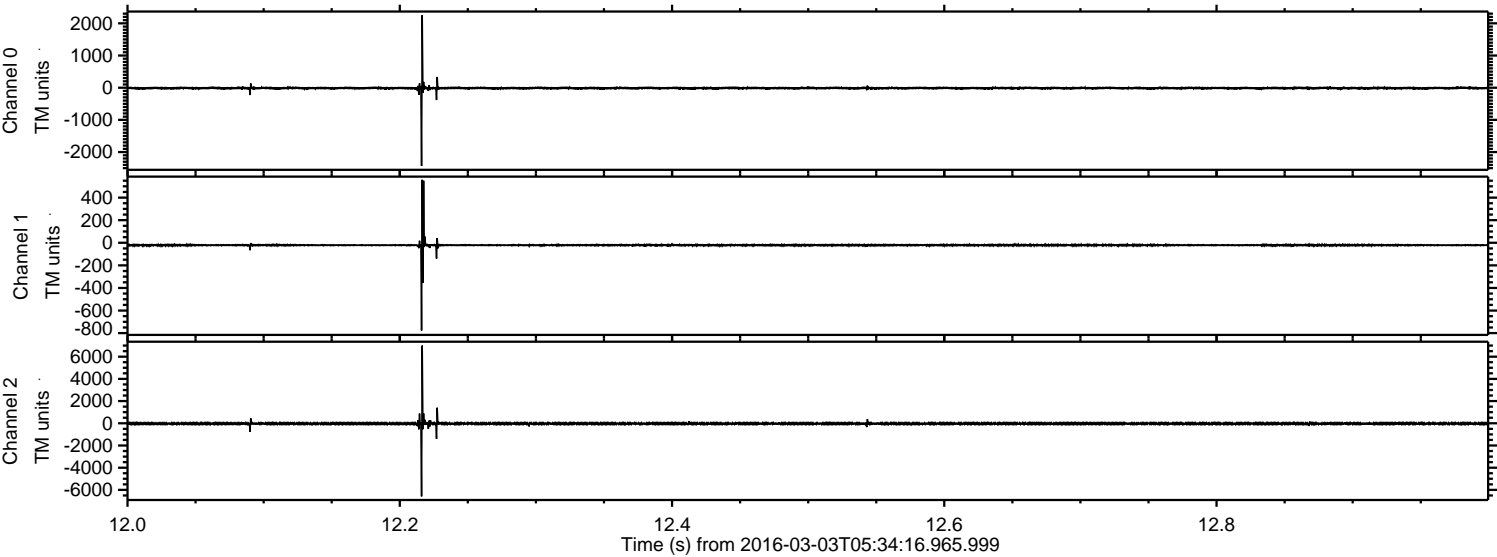
ELMAVAN 3D WAVEFORMS (Measured data sampled at 50 kHz) 51000 packets of 144 samples from 2016-03-03T05:34:16.965.999. Part 134/147

Processed Mon Apr 18 00:56:43 2016 by ELM ver.2012-10-06 from 001__elm20160303_053415__dat00.bin

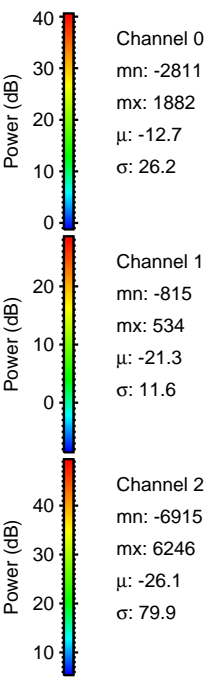
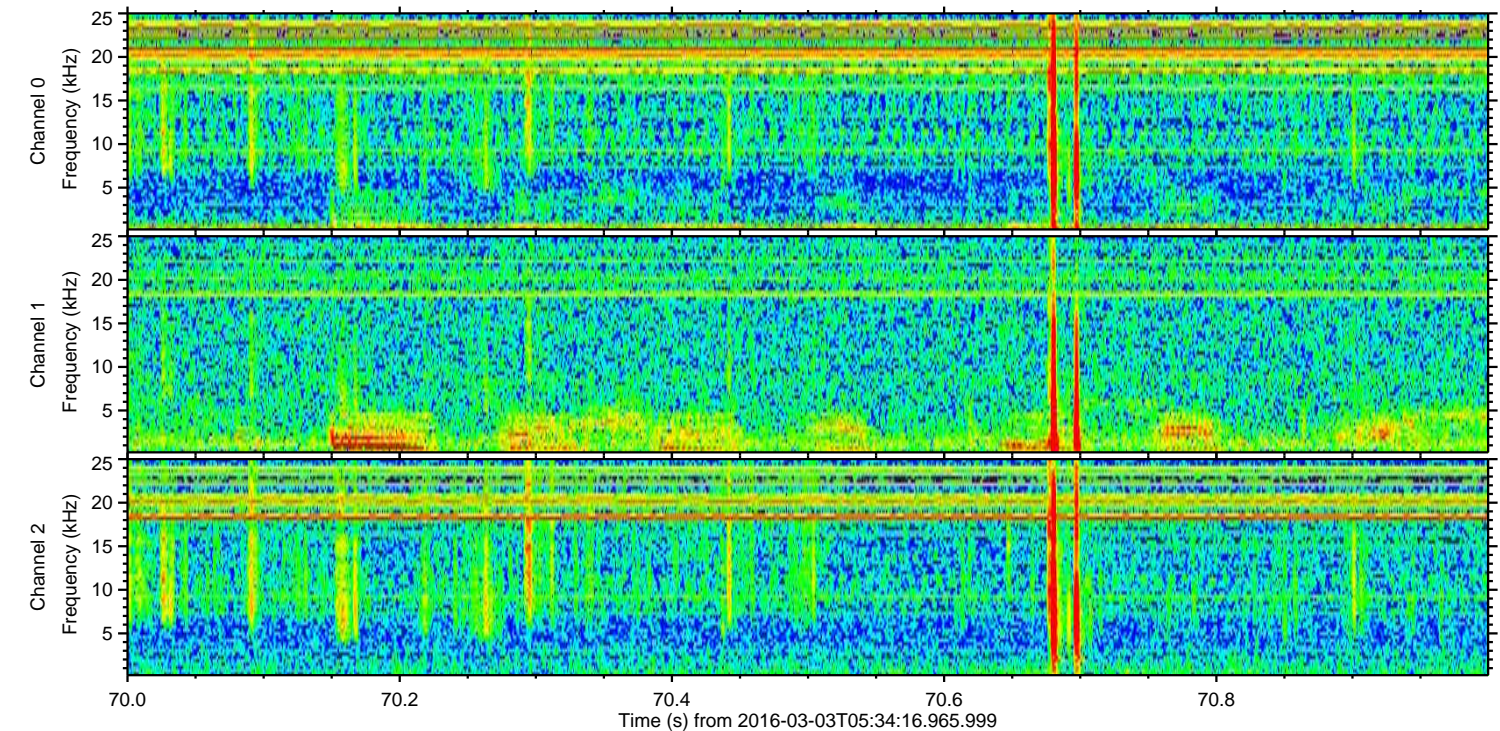
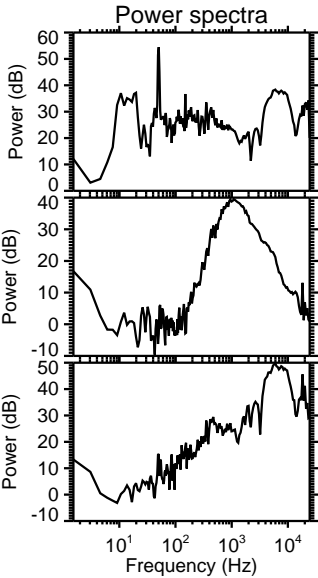
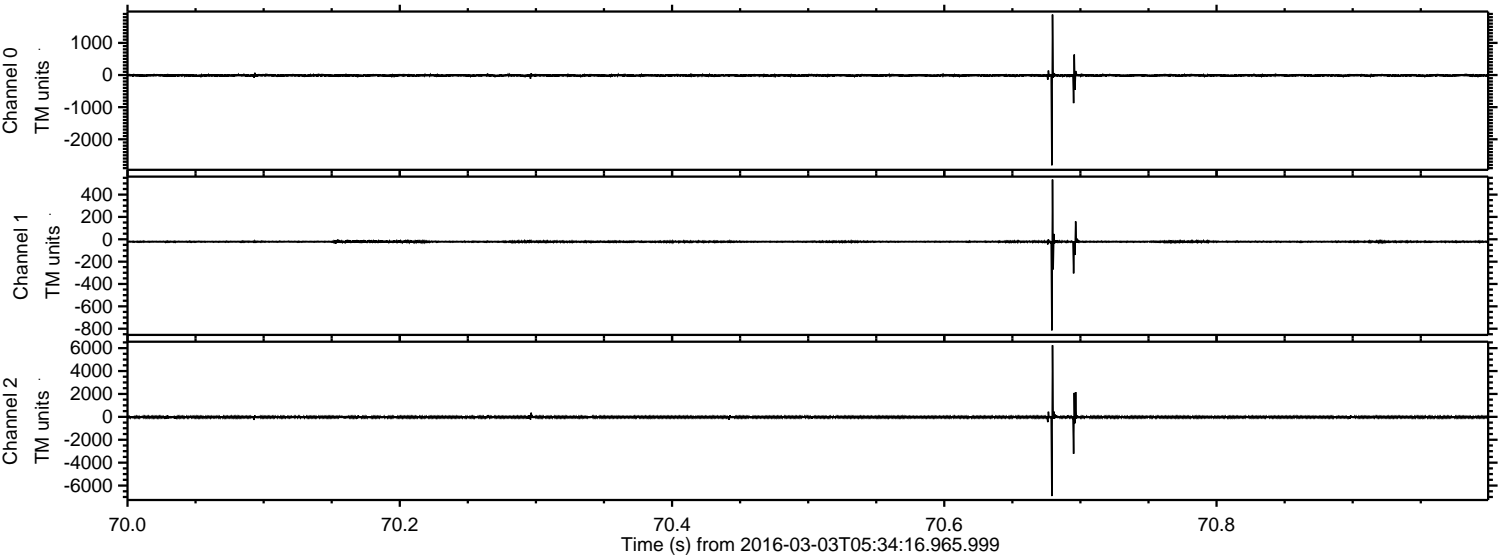


ELMAVAN 3D WAVEFORMS (Measured data sampled at 50 kHz) 51000 packets of 144 samples from 2016-03-03T05:34:16.965.999. Part 13/147

Processed Mon Apr 18 00:56:44 2016 by ELM ver.2012-10-06 from 001__elm20160303_053415__dat00.bin

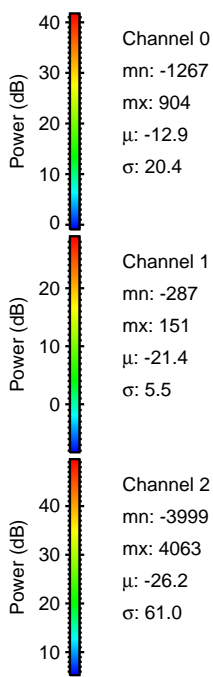
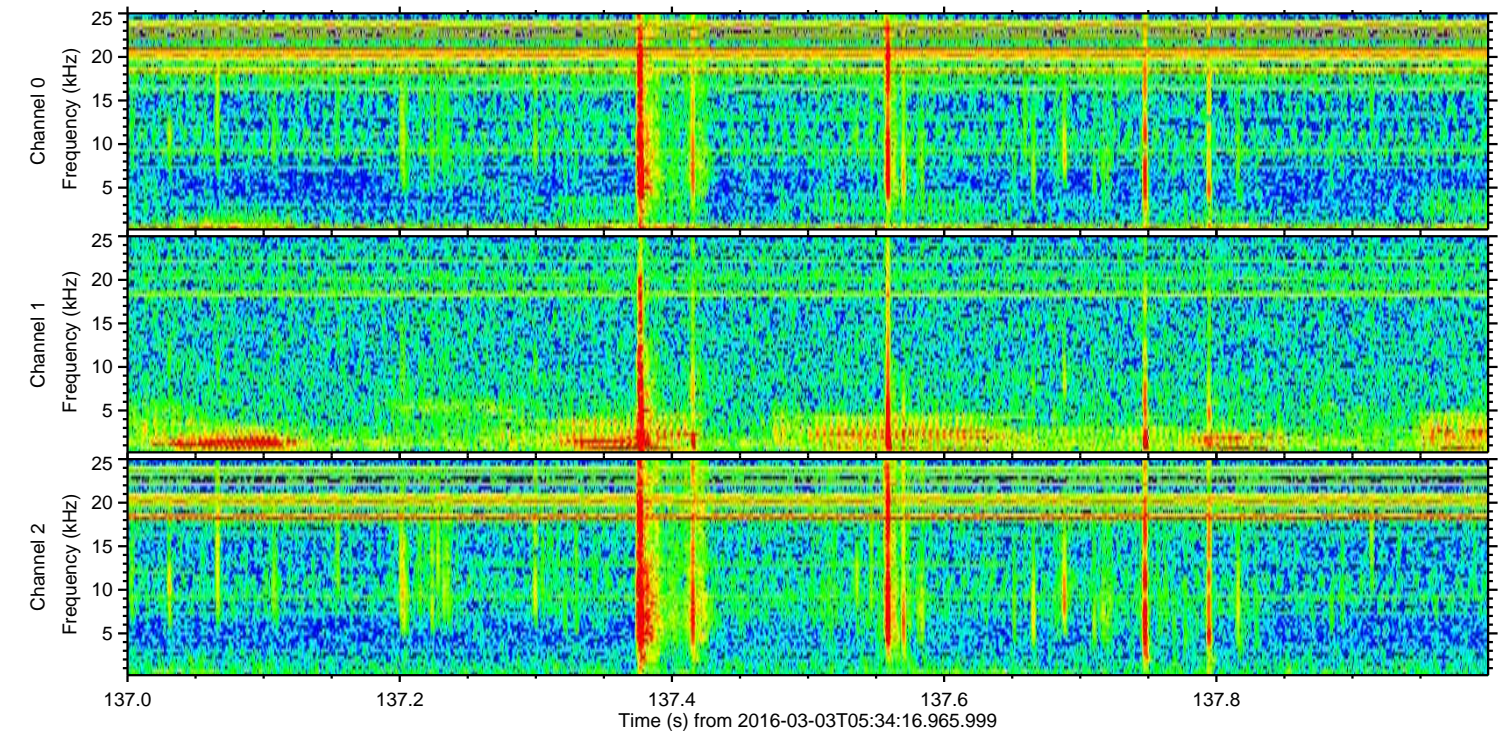
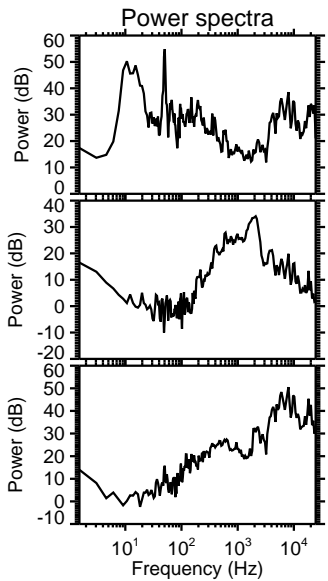
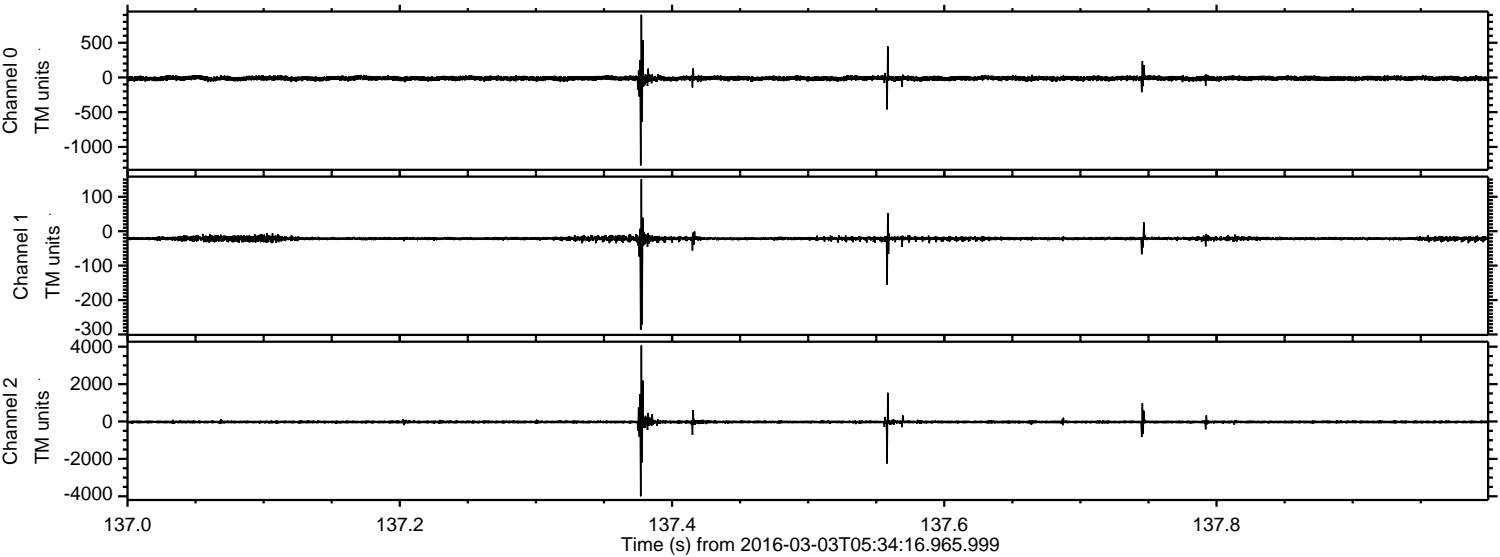


Processed Mon Apr 18 00:56:45 2016 by ELM ver.2012-10-06 from 001__elm20160303_053415__dat00.bin



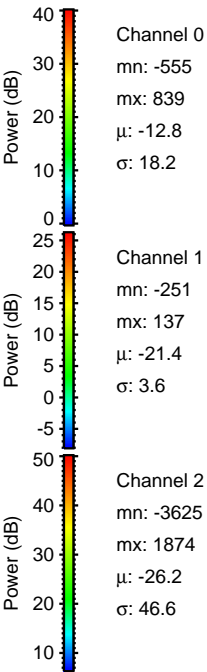
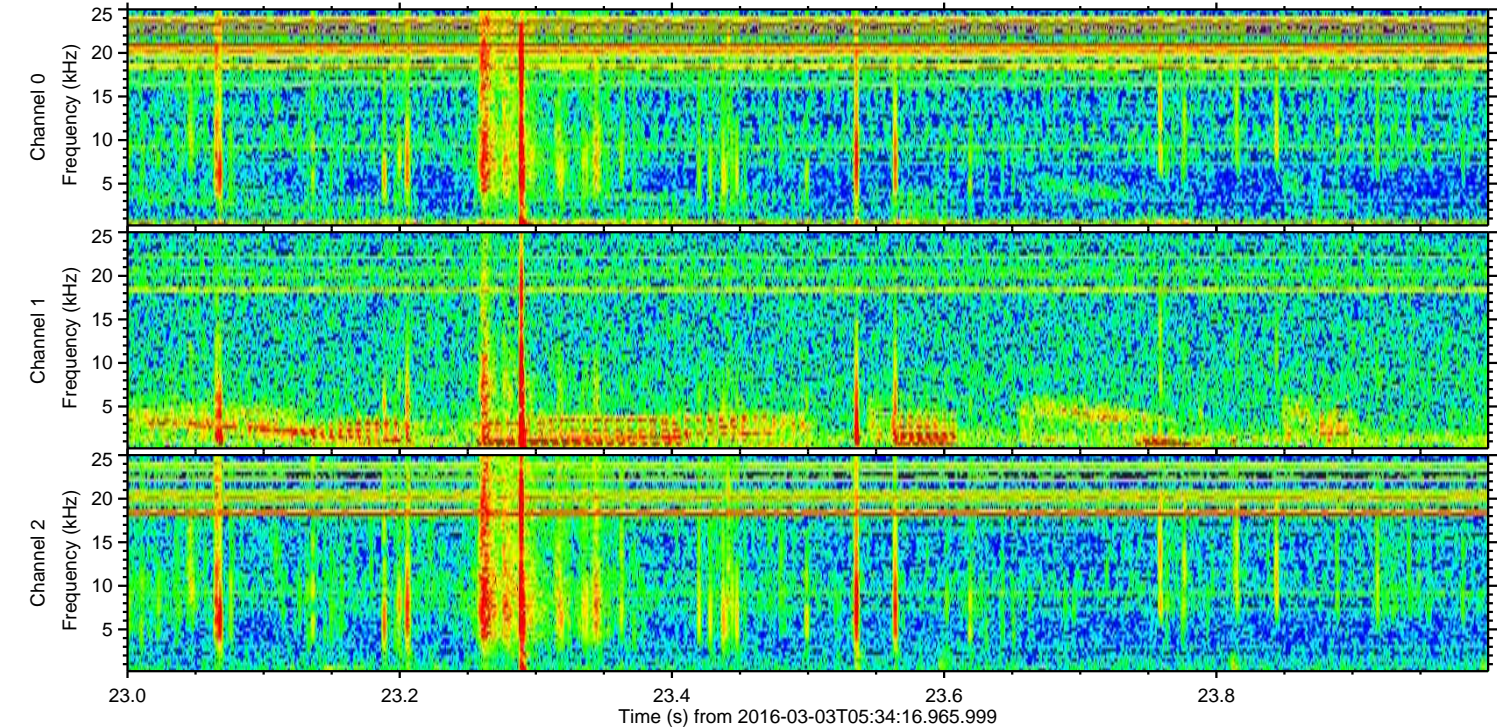
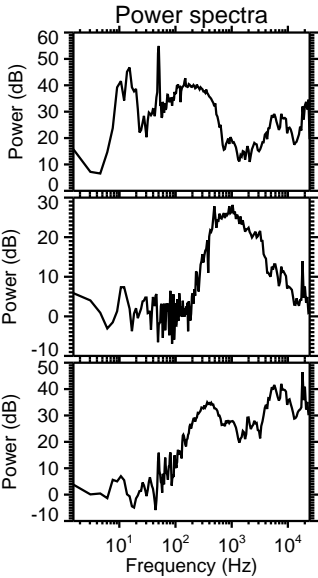
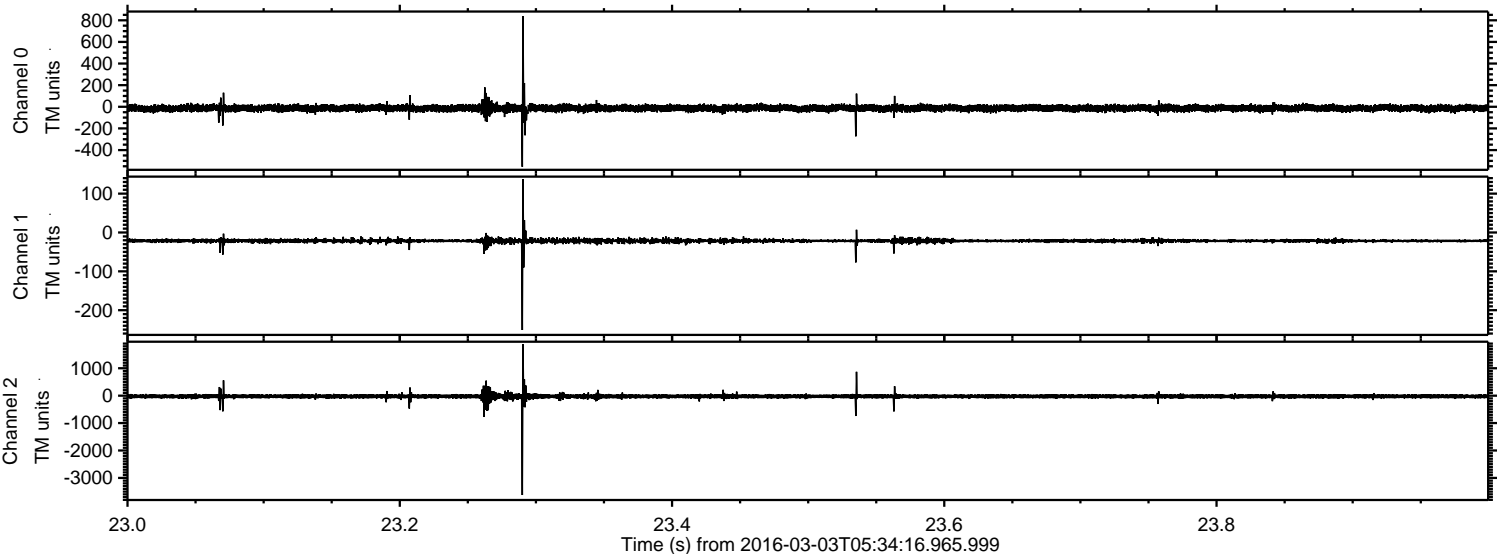
ELMAVAN 3D WAVEFORMS (Measured data sampled at 50 kHz) 51000 packets of 144 samples from 2016-03-03T05:34:16.965.999. Part 138/147

Processed Mon Apr 18 00:56:46 2016 by ELM ver.2012-10-06 from 001__elm20160303_053415__dat00.bin

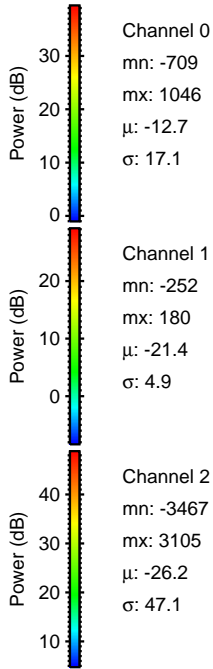
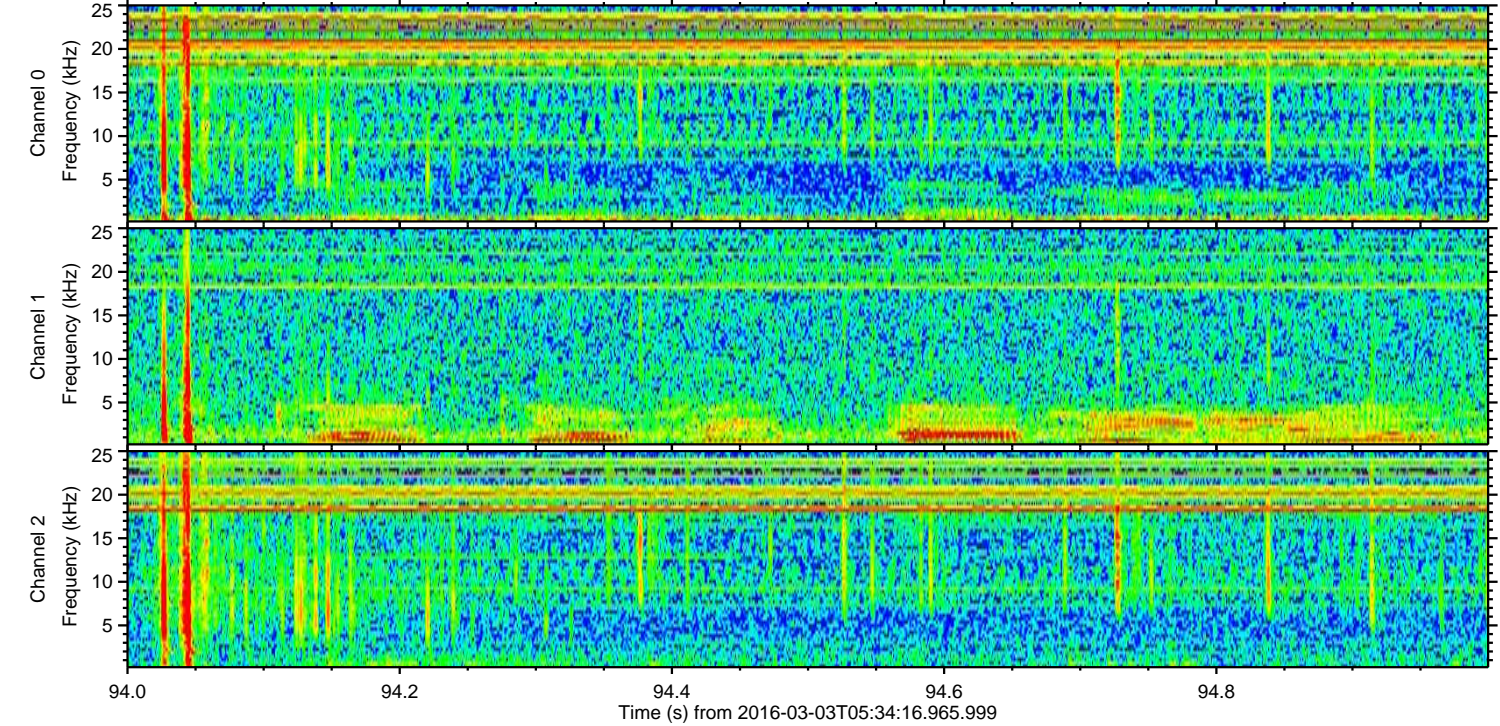
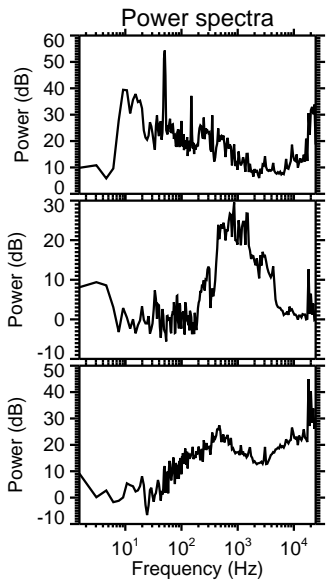
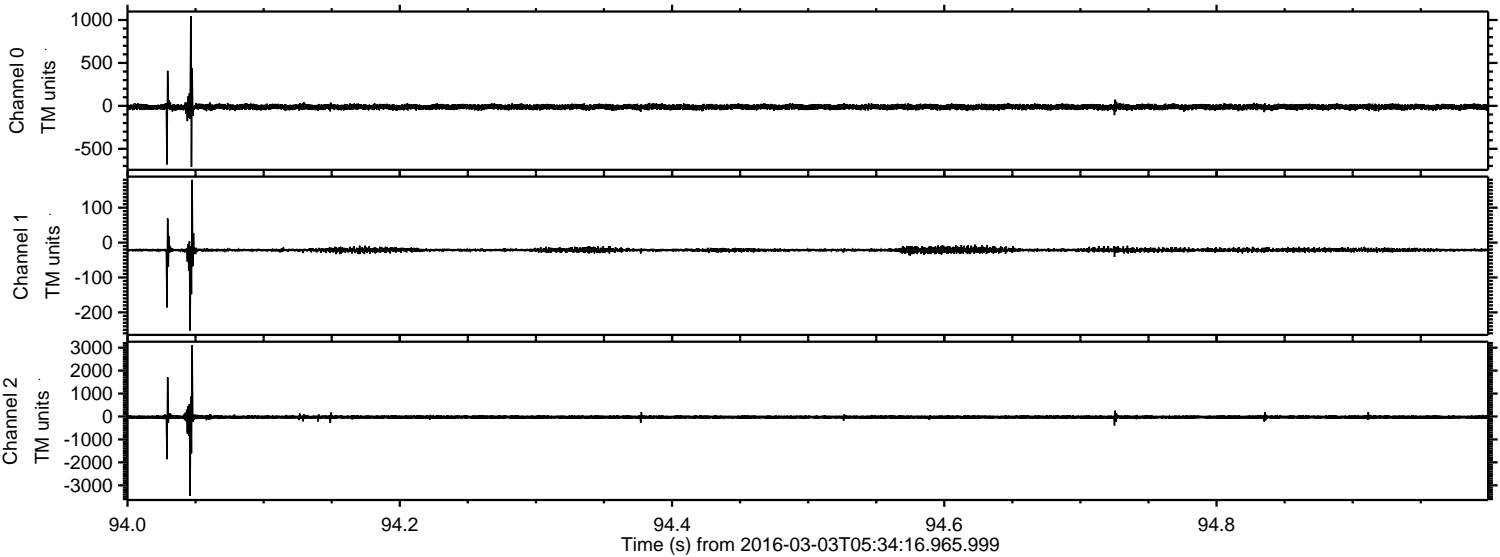


ELMAVAN 3D WAVEFORMS (Measured data sampled at 50 kHz) 51000 packets of 144 samples from 2016-03-03T05:34:16.965.999. Part 24/147

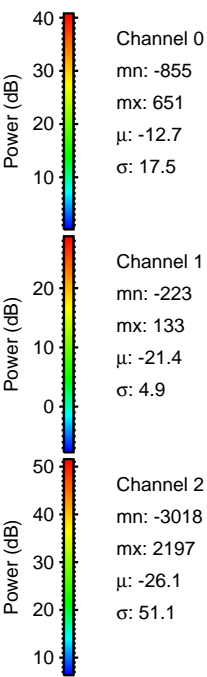
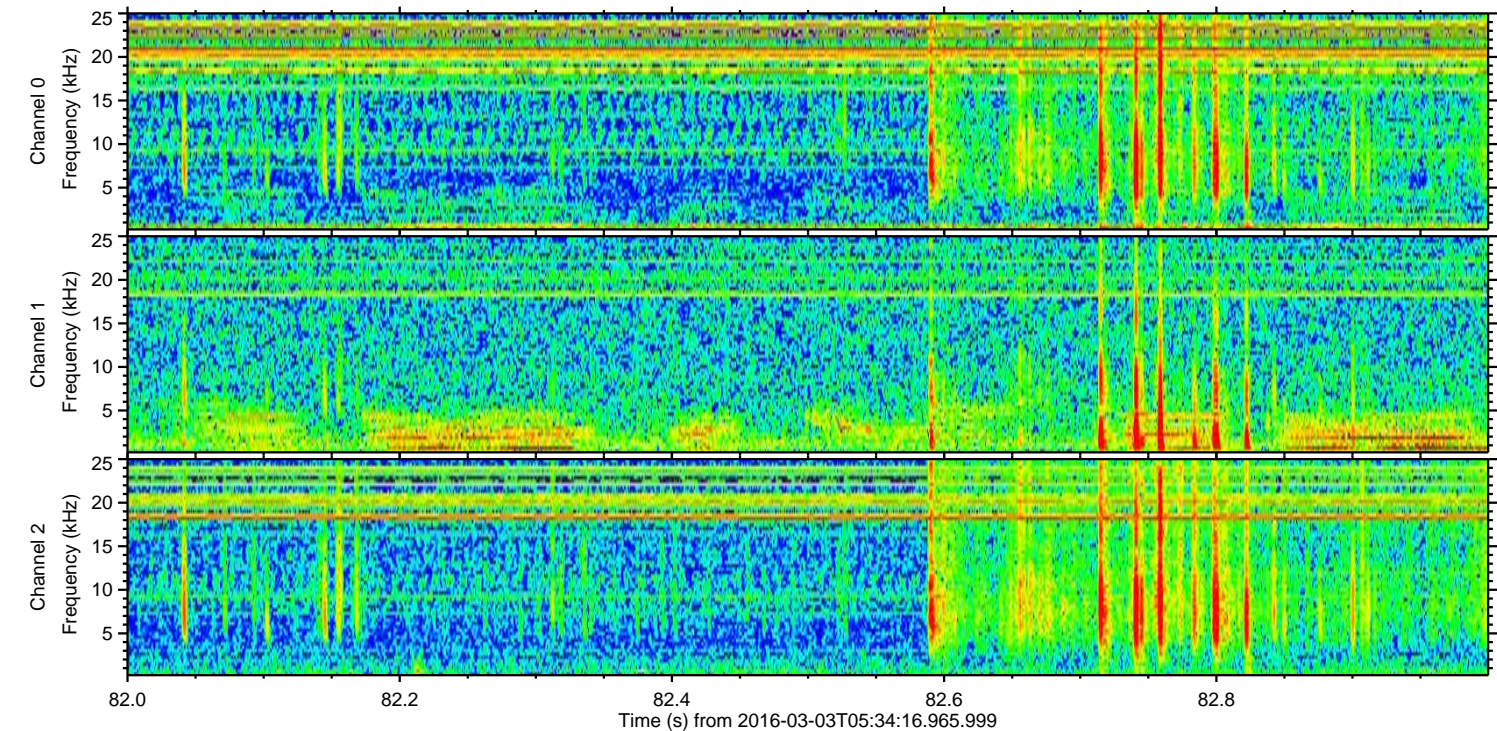
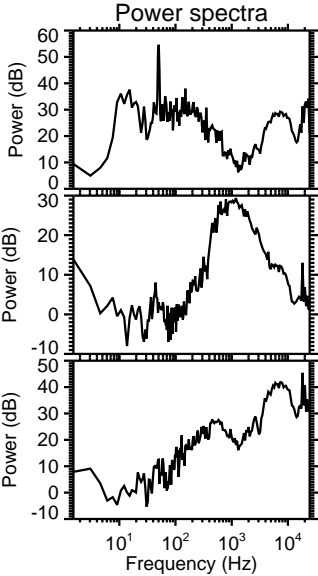
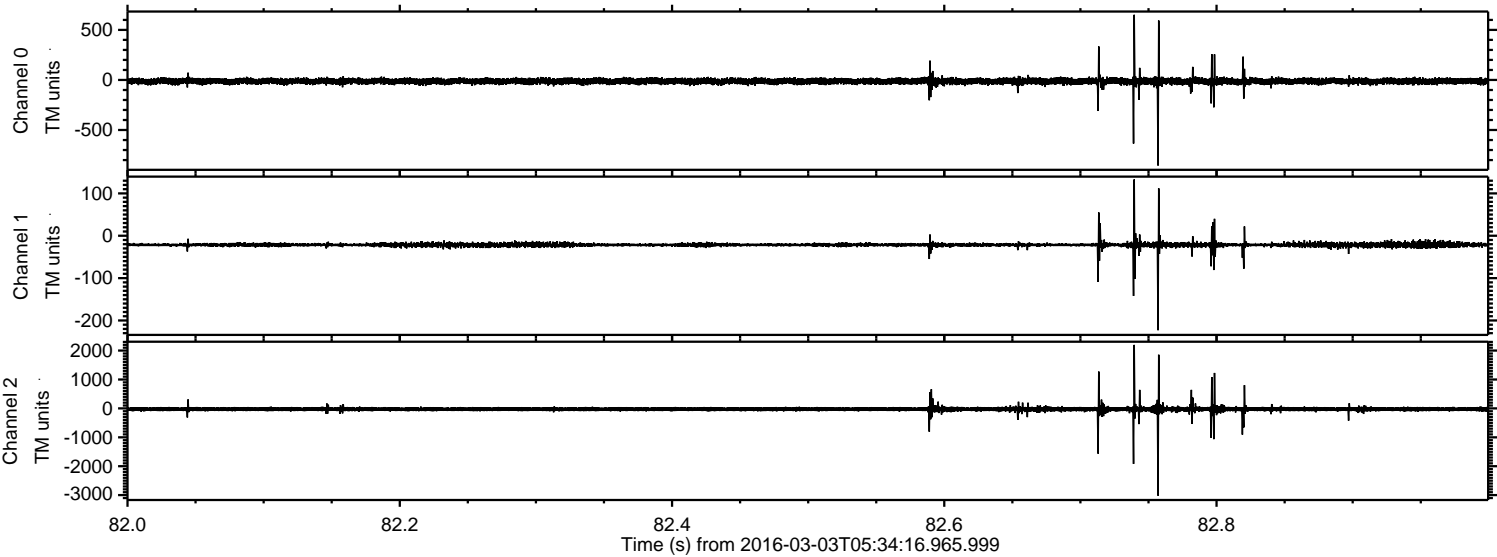
Processed Mon Apr 18 00:56:47 2016 by ELM ver.2012-10-06 from 001__elm20160303_053415__dat00.bin



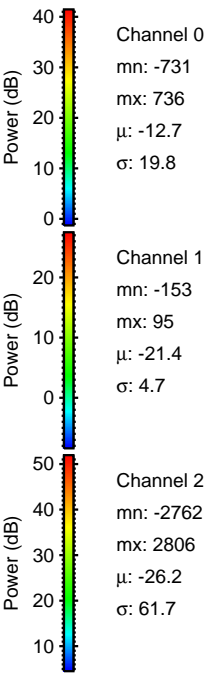
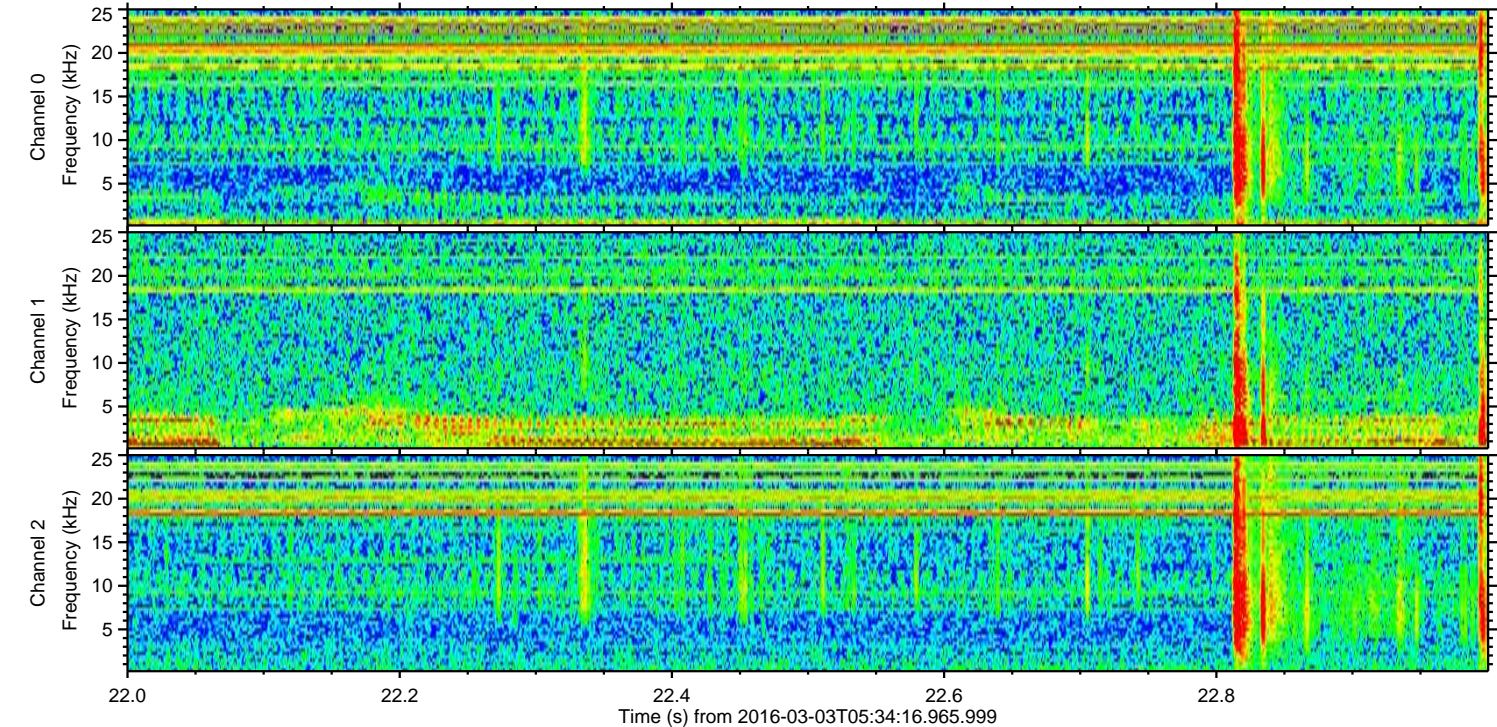
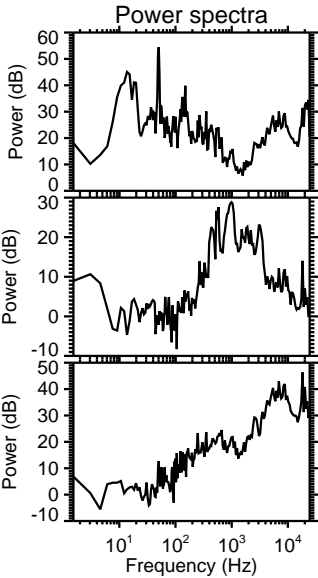
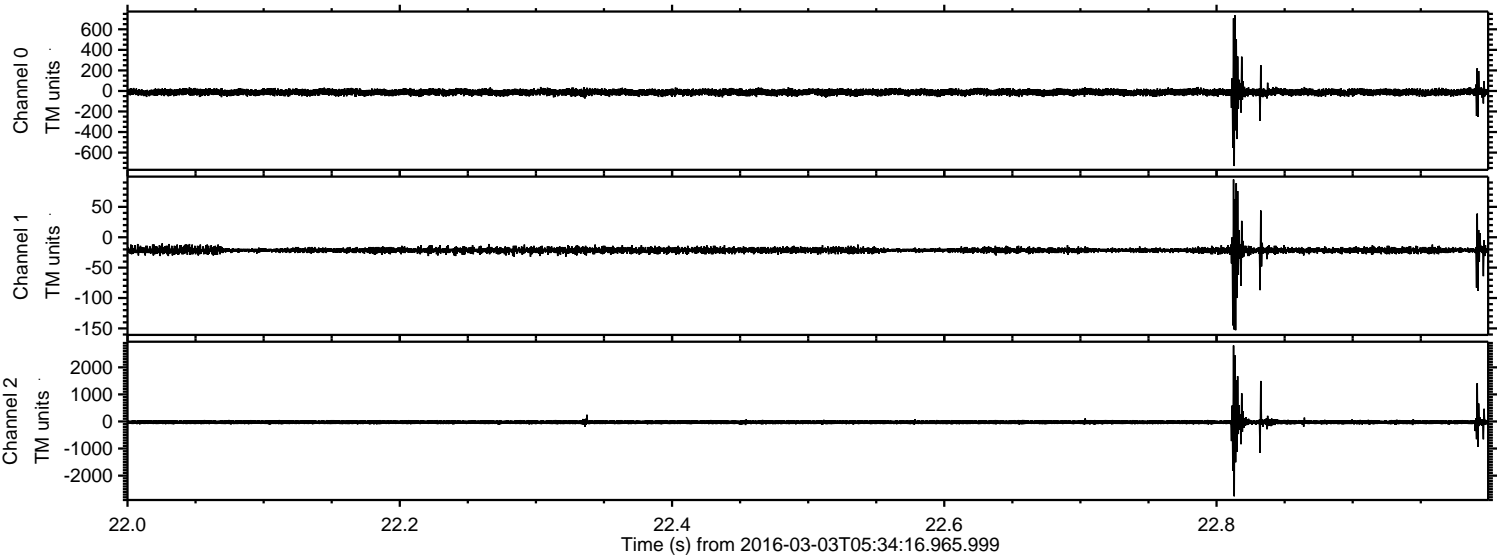
Processed Mon Apr 18 00:56:48 2016 by ELM ver.2012-10-06 from 001__elm20160303_053415__dat00.bin



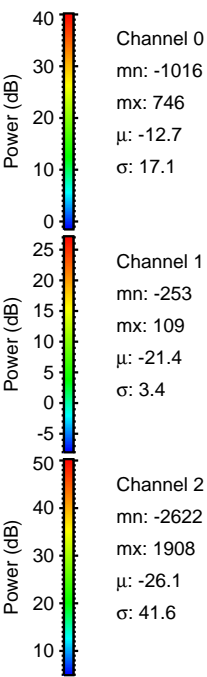
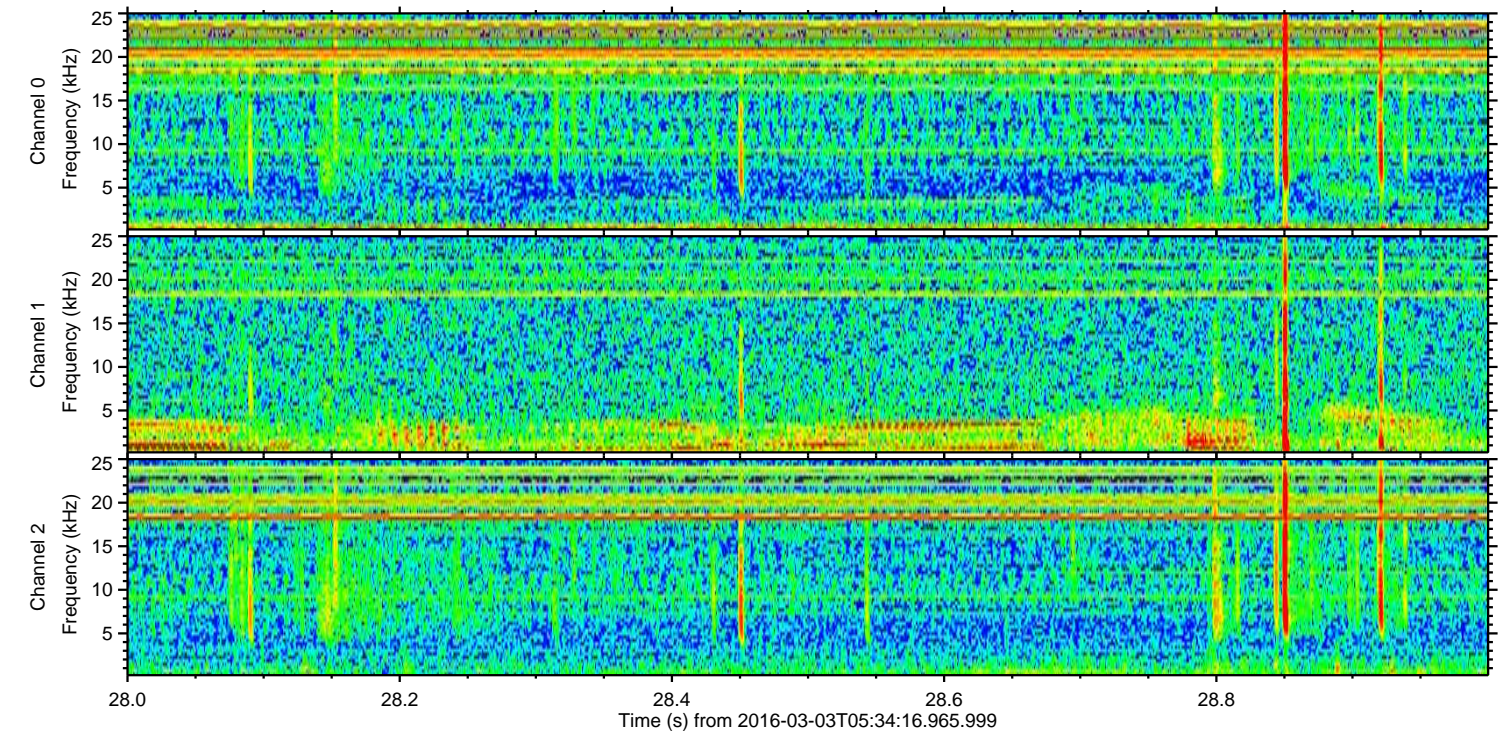
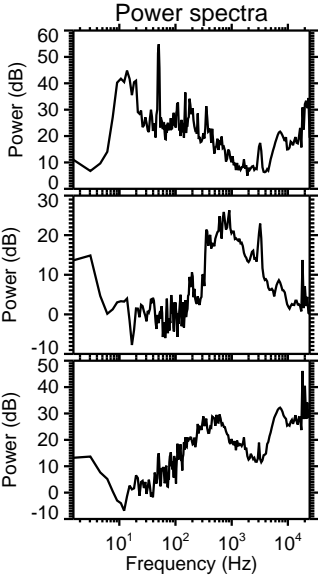
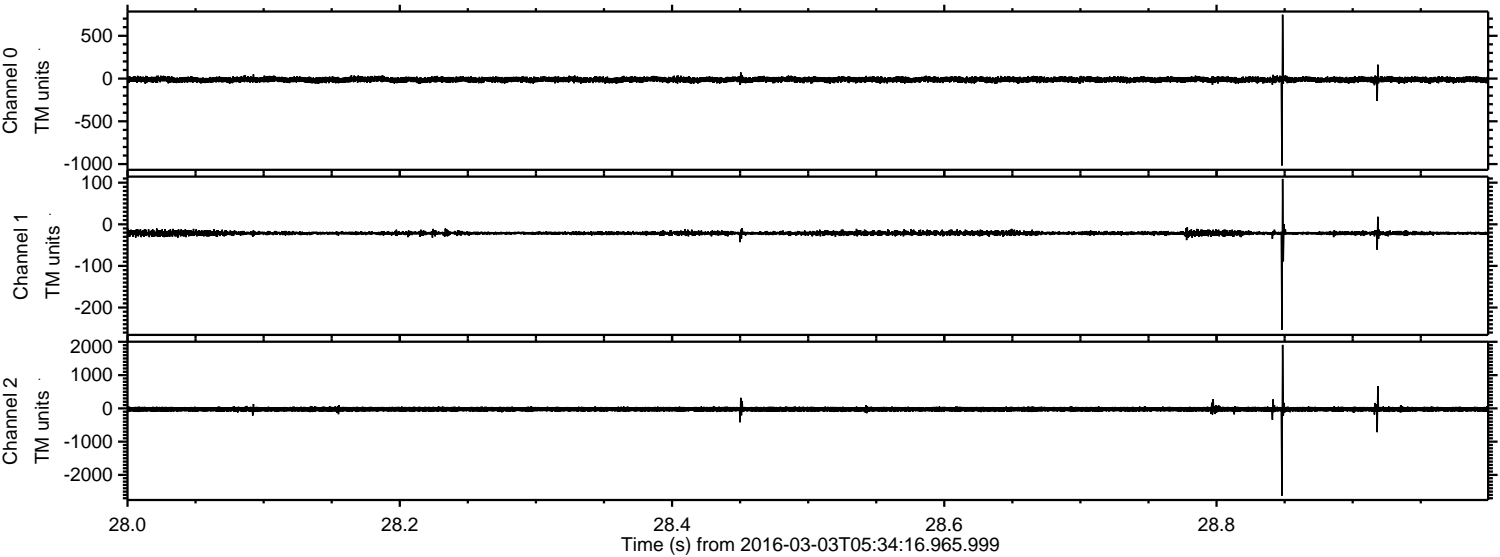
Processed Mon Apr 18 00:56:49 2016 by ELM ver.2012-10-06 from 001__elm20160303_053415__dat00.bin



Processed Mon Apr 18 00:56:50 2016 by ELM ver.2012-10-06 from 001__elm20160303_053415__dat00.bin



Processed Mon Apr 18 00:56:51 2016 by ELM ver.2012-10-06 from 001__elm20160303_053415__dat00.bin



Channel 0
mn: -1016
mx: 746
 μ : -12.7
 σ : 17.1

Channel 1
mn: -253
mx: 109
 μ : -21.4
 σ : 3.4

Channel 2
mn: -2622
mx: 1908
 μ : -26.1
 σ : 41.6

Processed Mon Apr 18 00:56:52 2016 by ELM ver.2012-10-06 from 001__elm20160303_053415__dat00.bin

