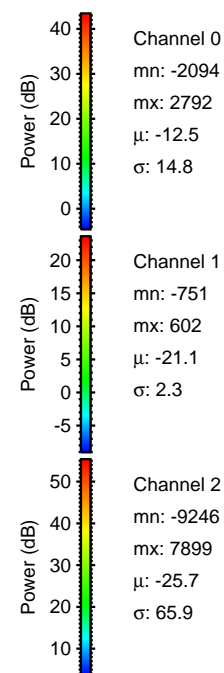
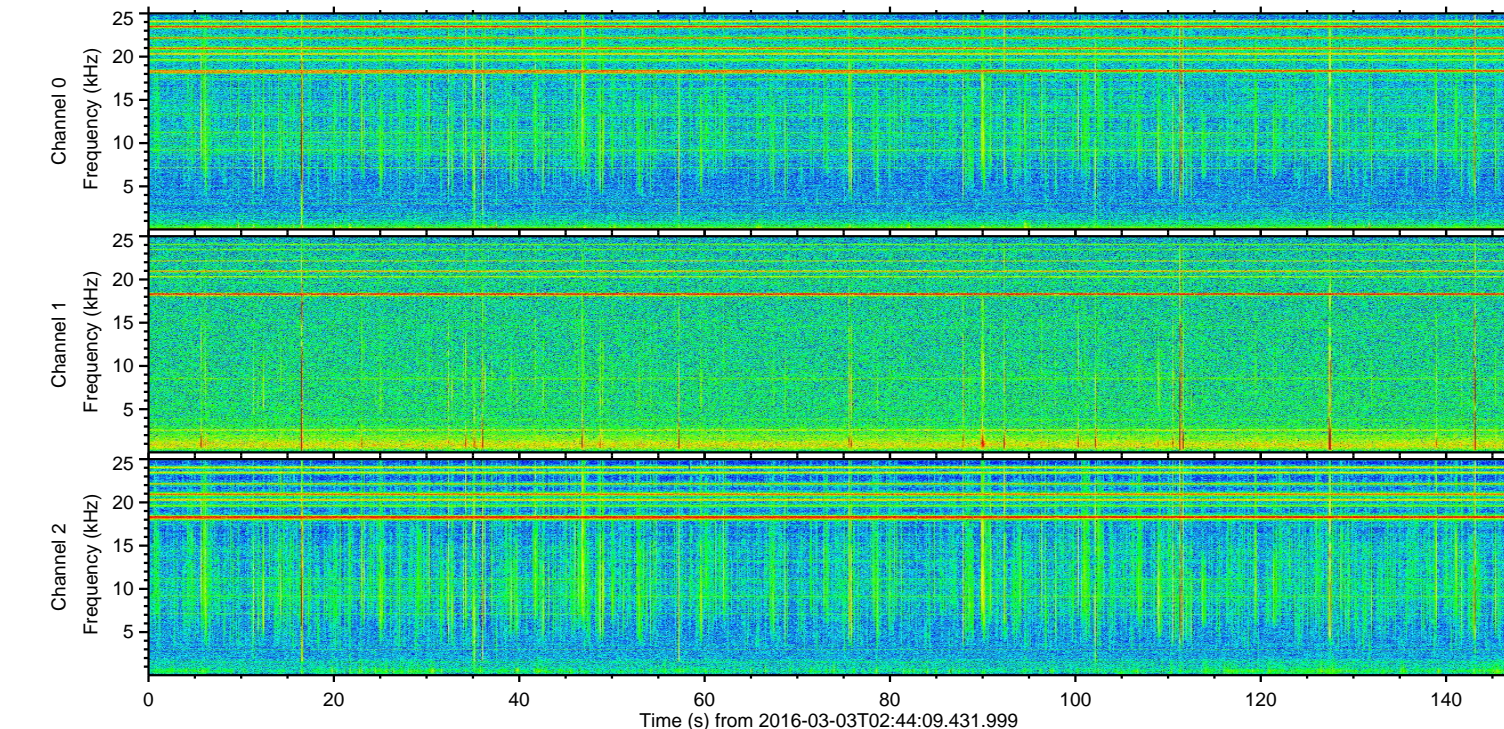
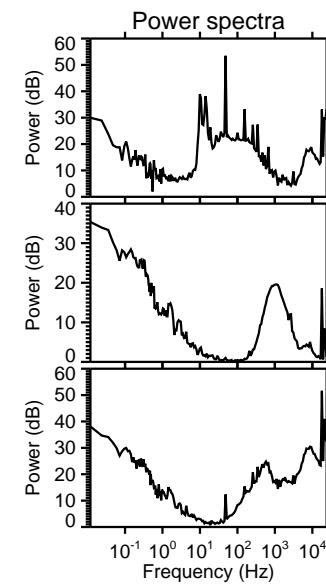
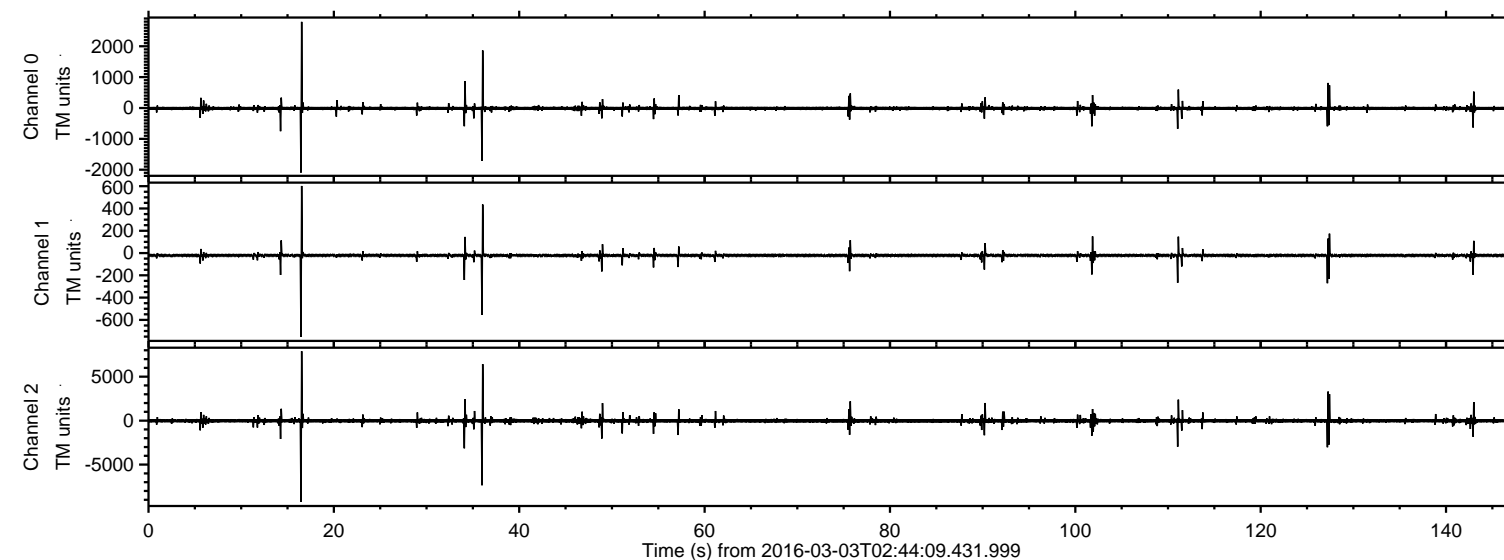


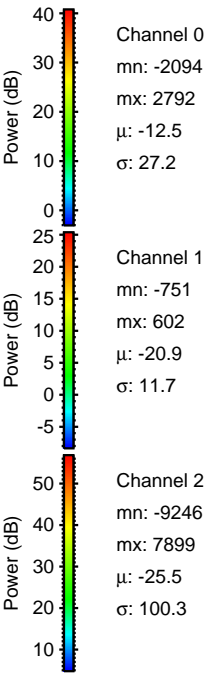
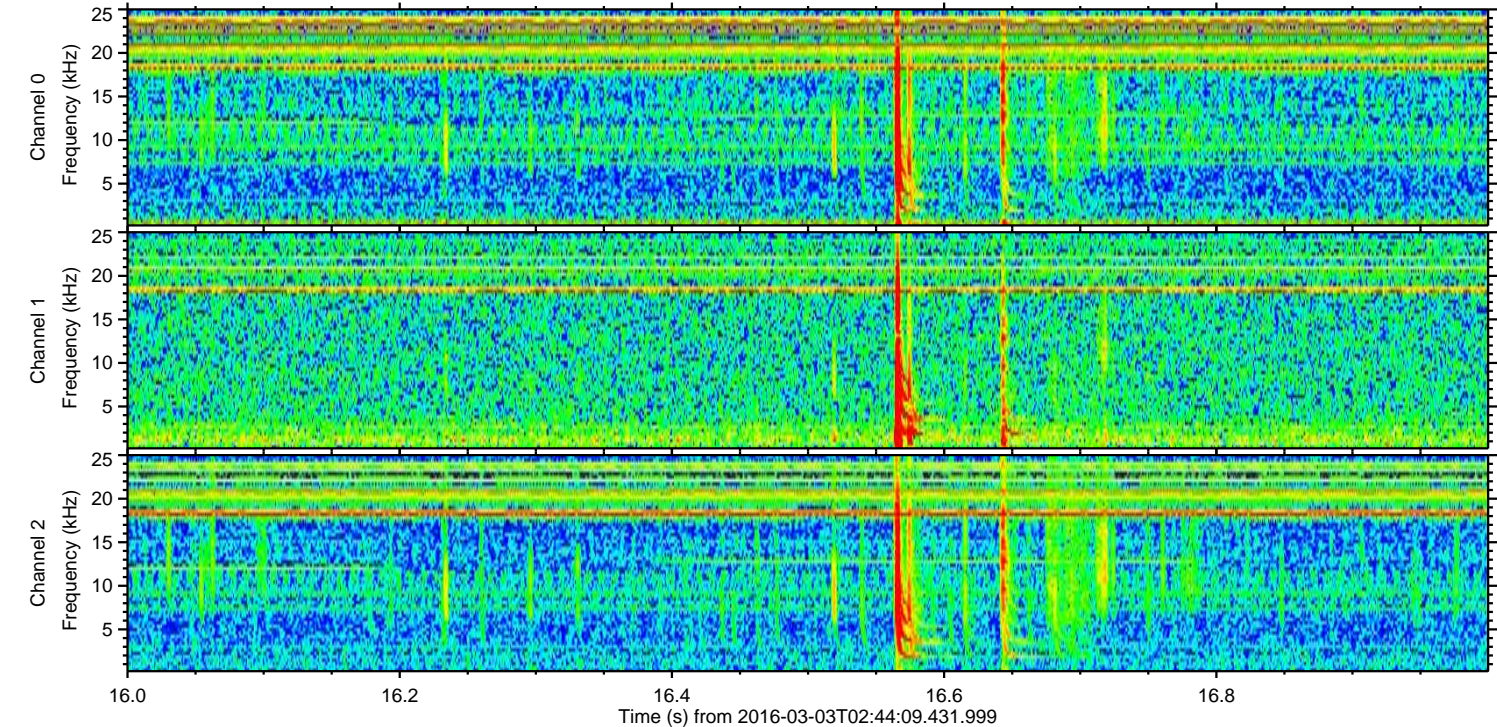
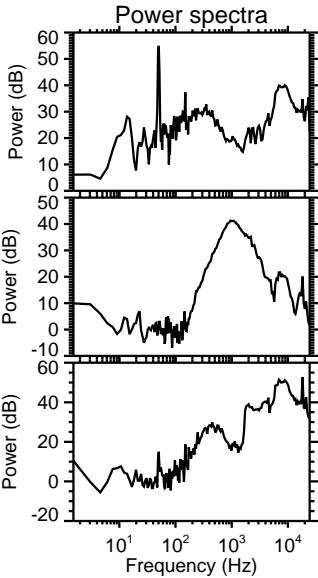
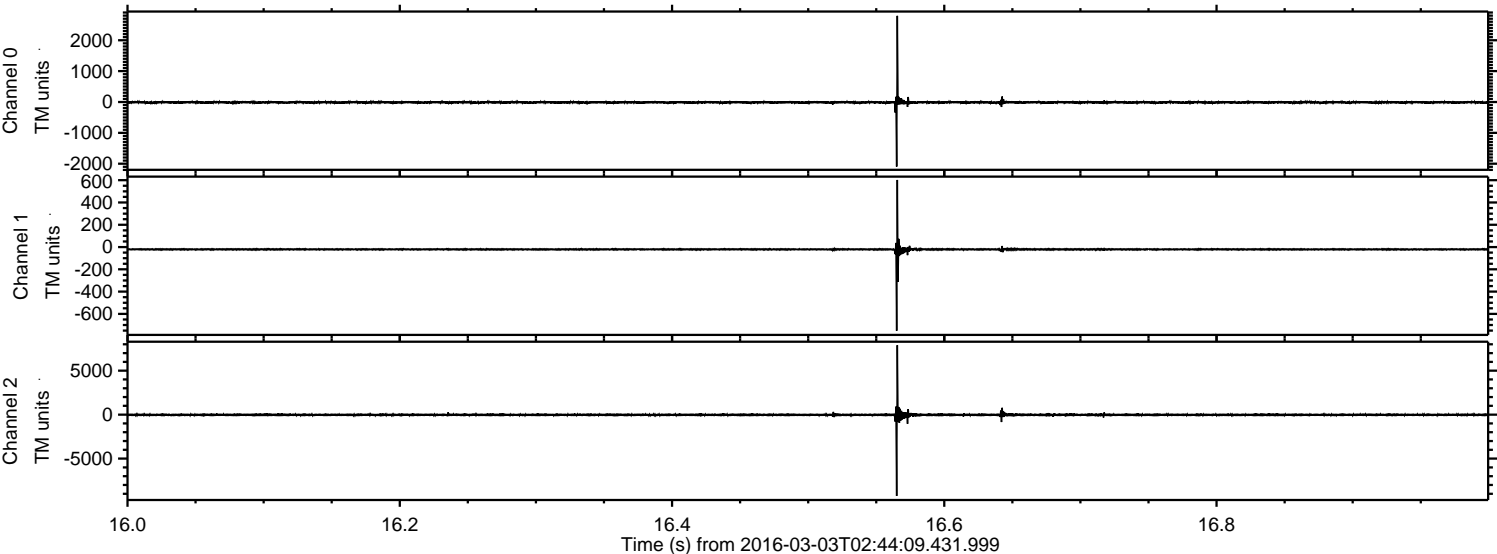
ELMAVAN 3D WAVEFORMS (Measured data sampled at 50 kHz) 51000 packets of 144 samples from 2016-03-03T02:44:09.431.999.

Processed Mon Apr 18 00:21:24 2016 by ELM ver.2012-10-06 from 001__elm20160303_024408__dat00.bin

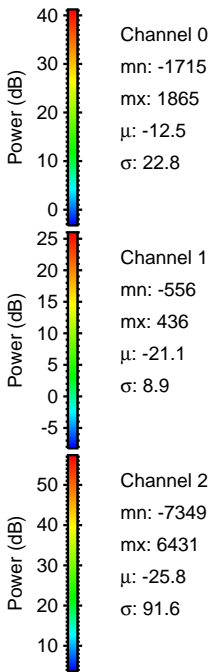
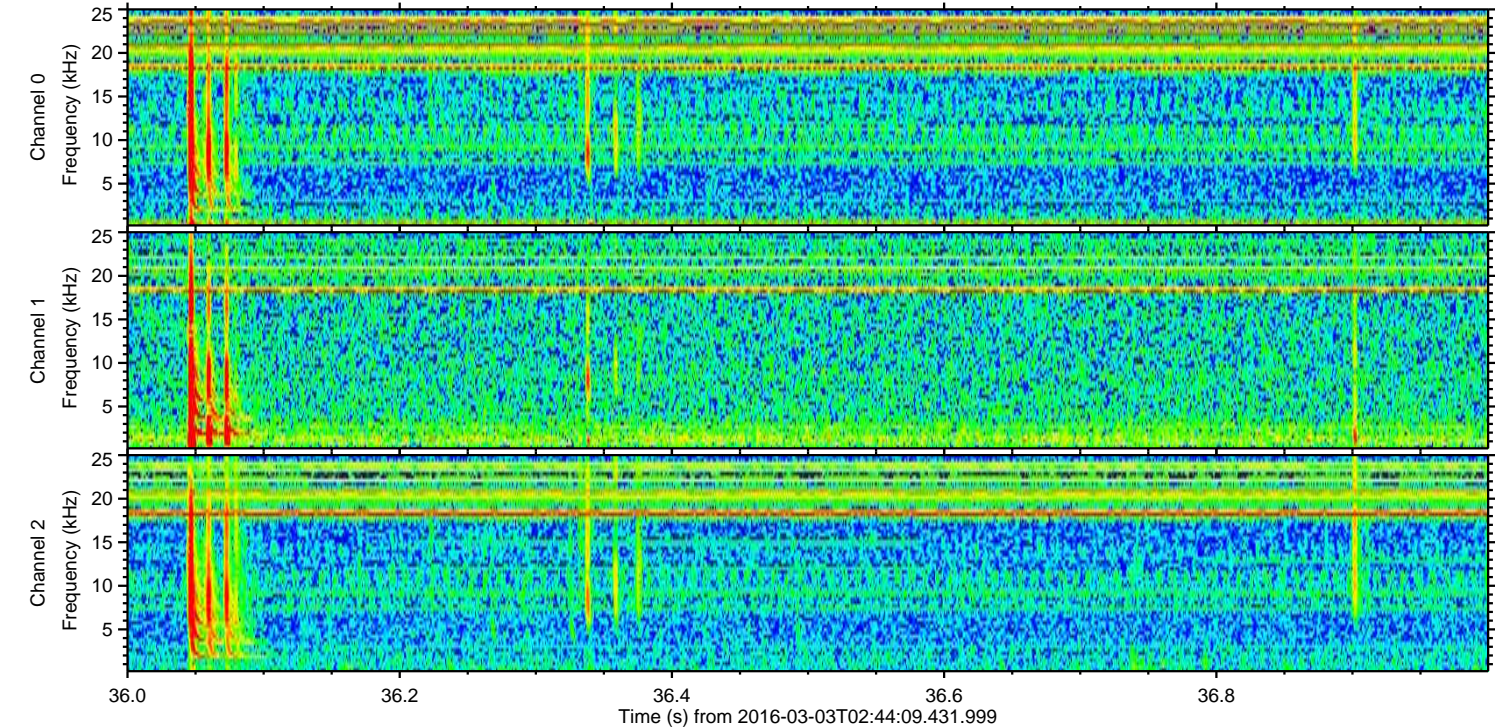
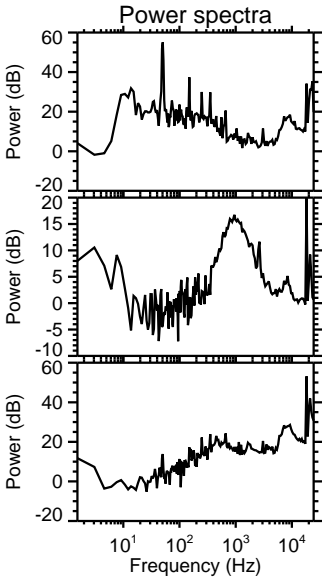
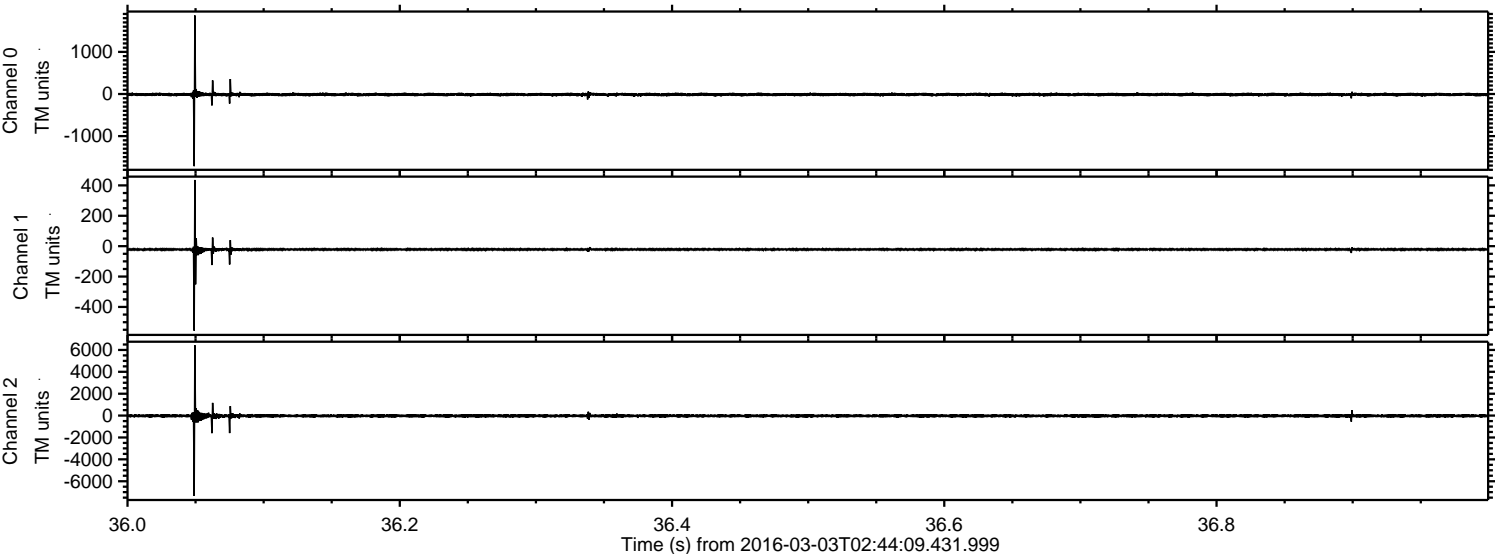


ELMAVAN 3D WAVEFORMS (Measured data sampled at 50 kHz) 51000 packets of 144 samples from 2016-03-03T02:44:09.431.999. Part 17/147

Processed Mon Apr 18 00:21:36 2016 by ELM ver.2012-10-06 from 001__elm20160303_024408__dat00.bin

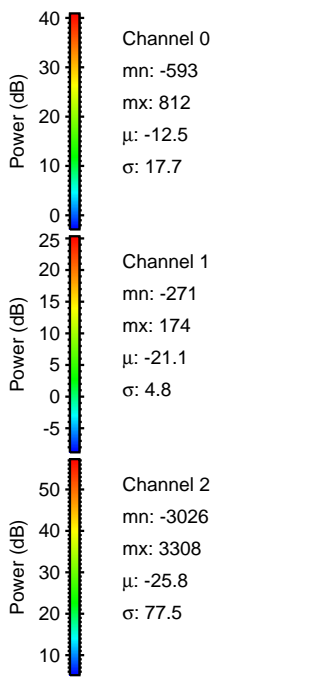
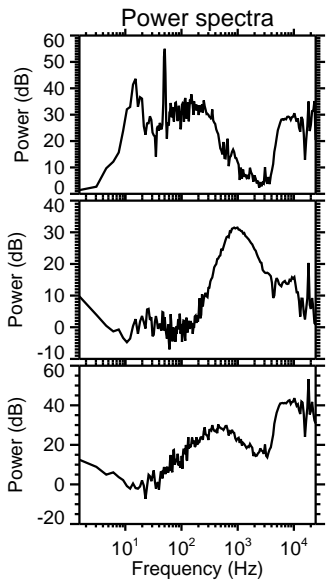
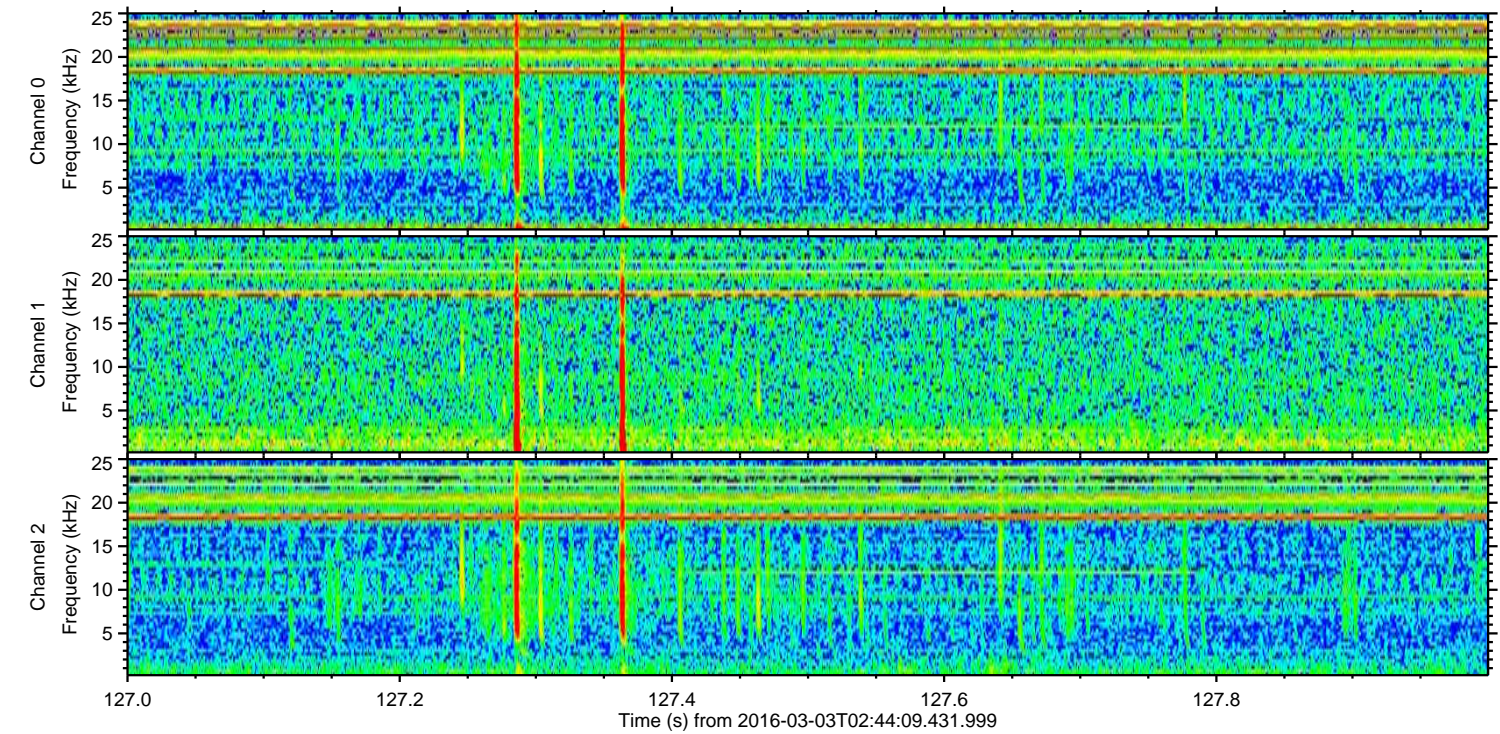
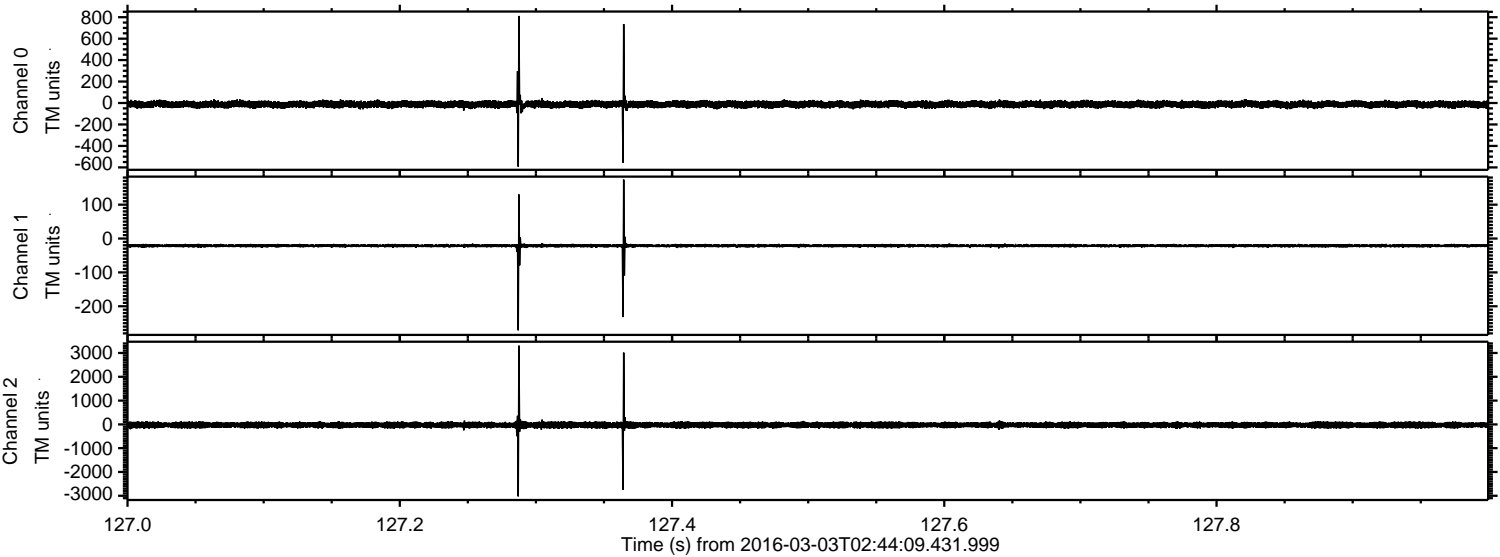


Processed Mon Apr 18 00:21:37 2016 by ELM ver.2012-10-06 from 001__elm20160303_024408__dat00.bin

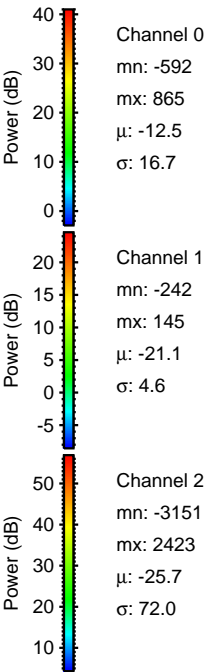
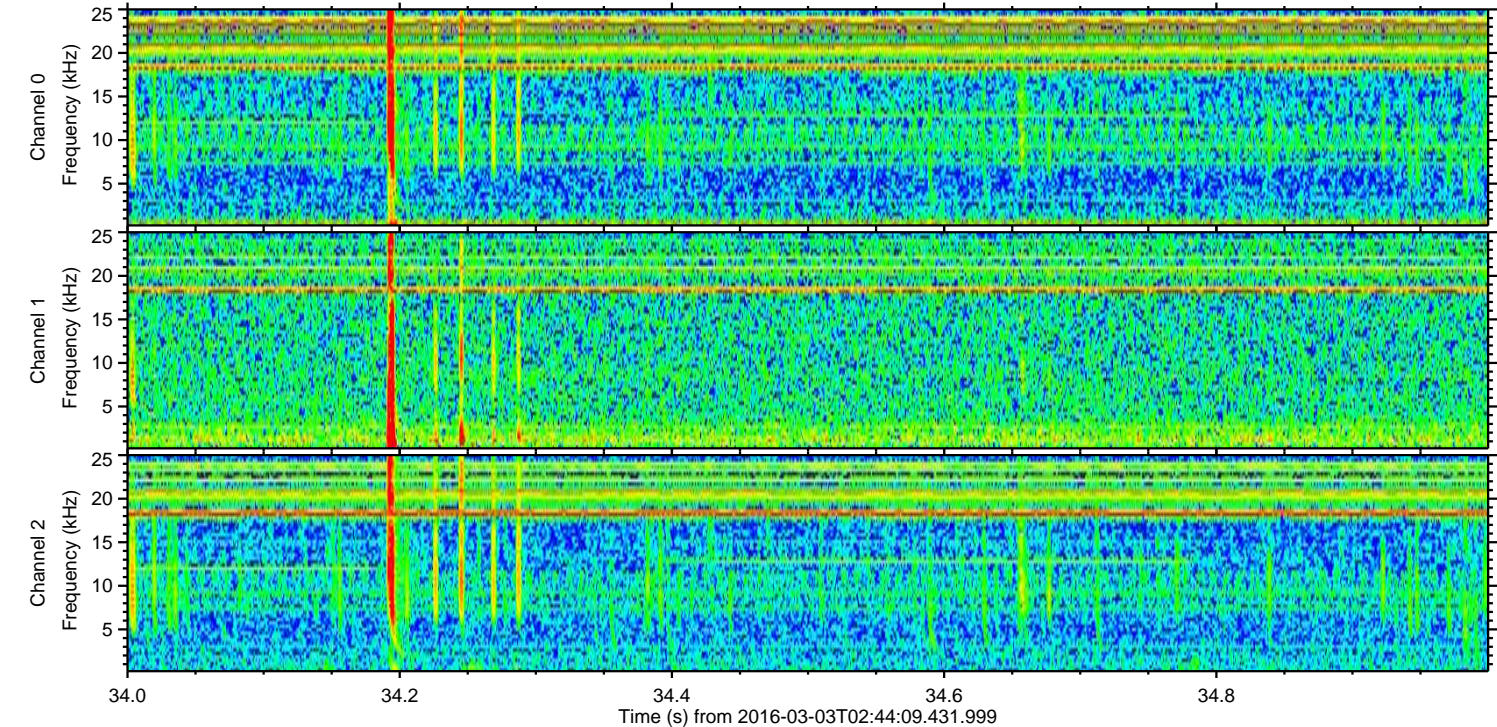
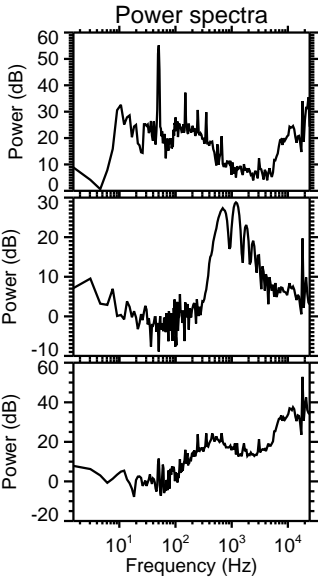
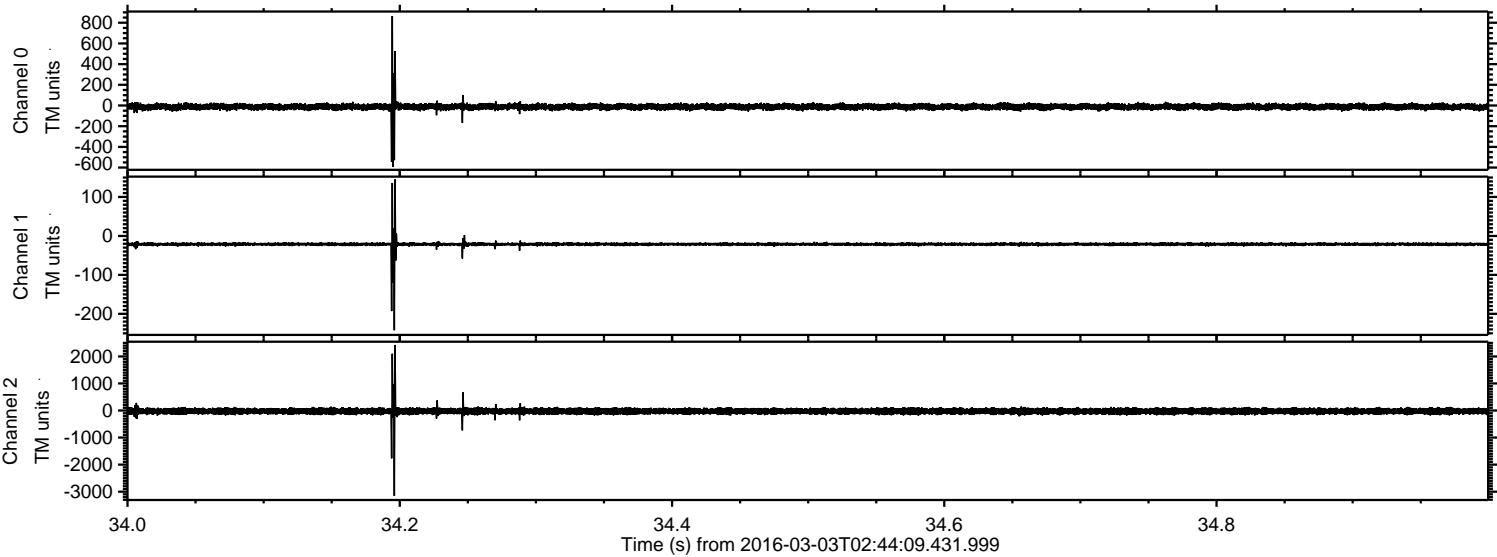


ELMAVAN 3D WAVEFORMS (Measured data sampled at 50 kHz) 51000 packets of 144 samples from 2016-03-03T02:44:09.431.999. Part 128/147

Processed Mon Apr 18 00:21:38 2016 by ELM ver.2012-10-06 from 001__elm20160303_024408__dat00.bin

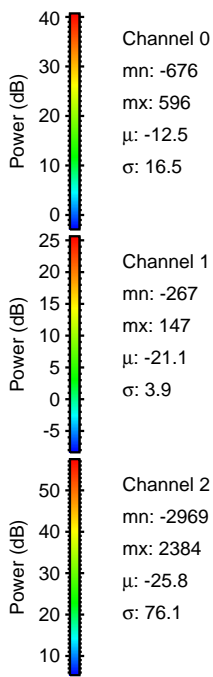
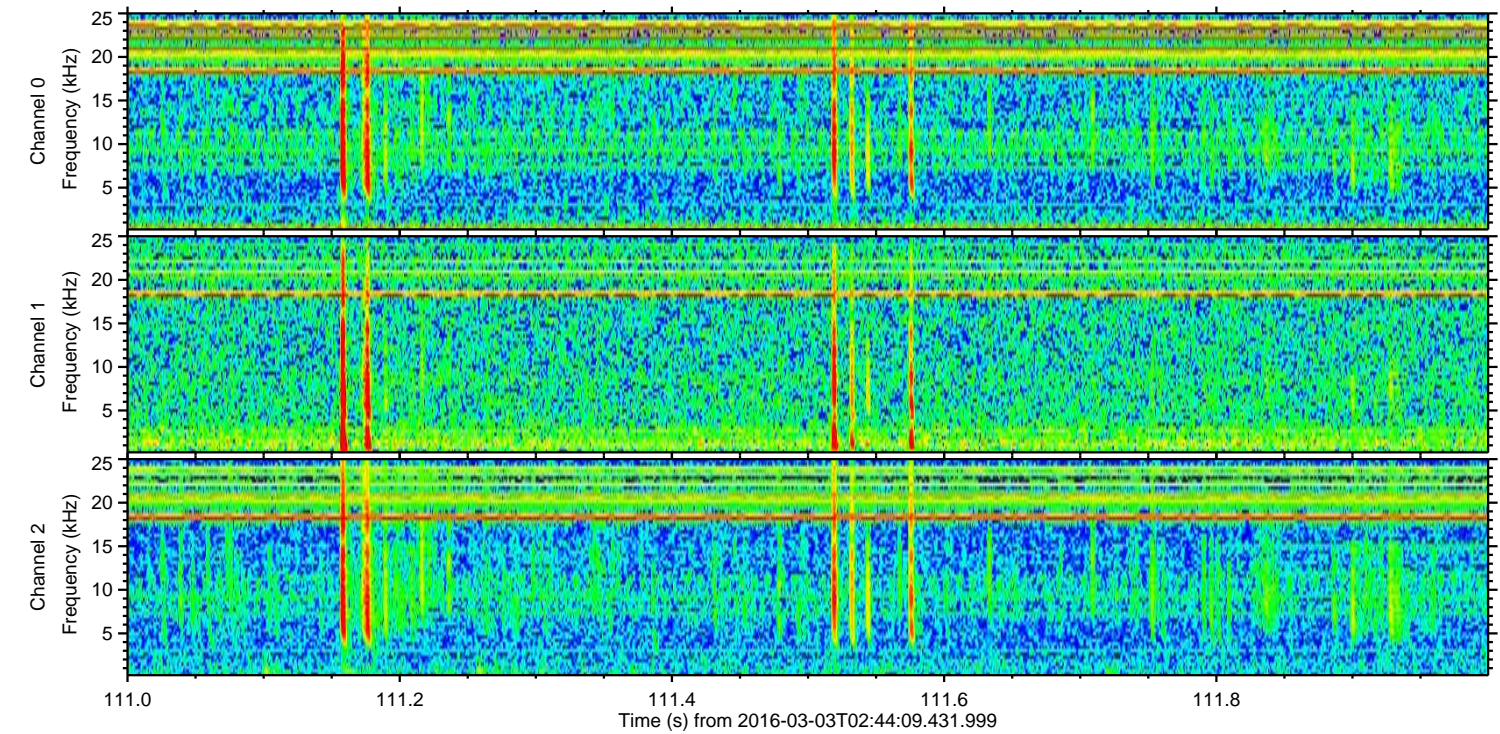
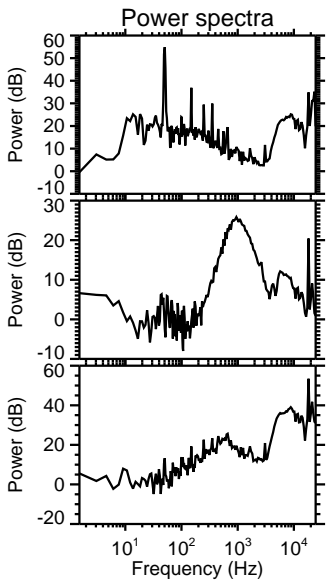
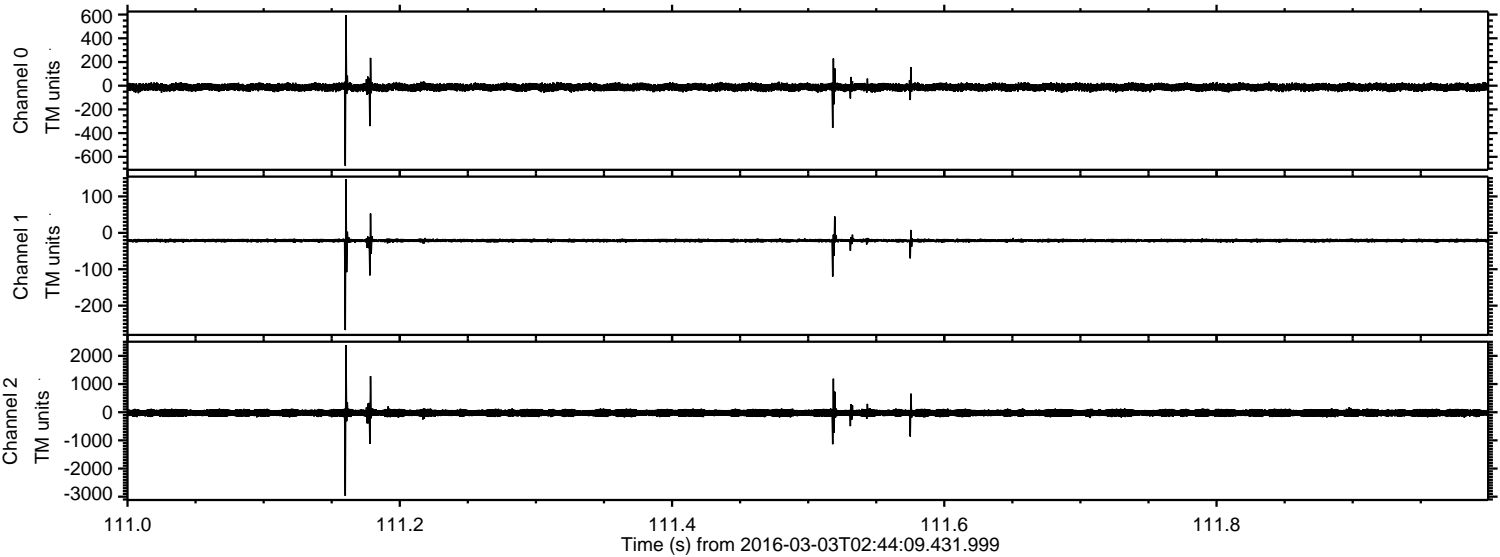


Processed Mon Apr 18 00:21:39 2016 by ELM ver.2012-10-06 from 001_elm20160303_024408__dat00.bin

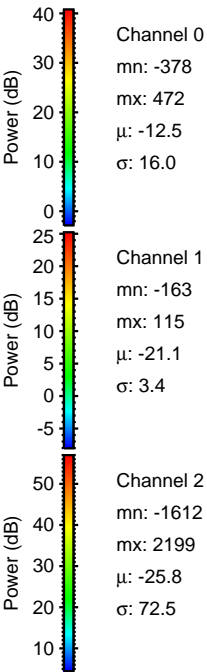
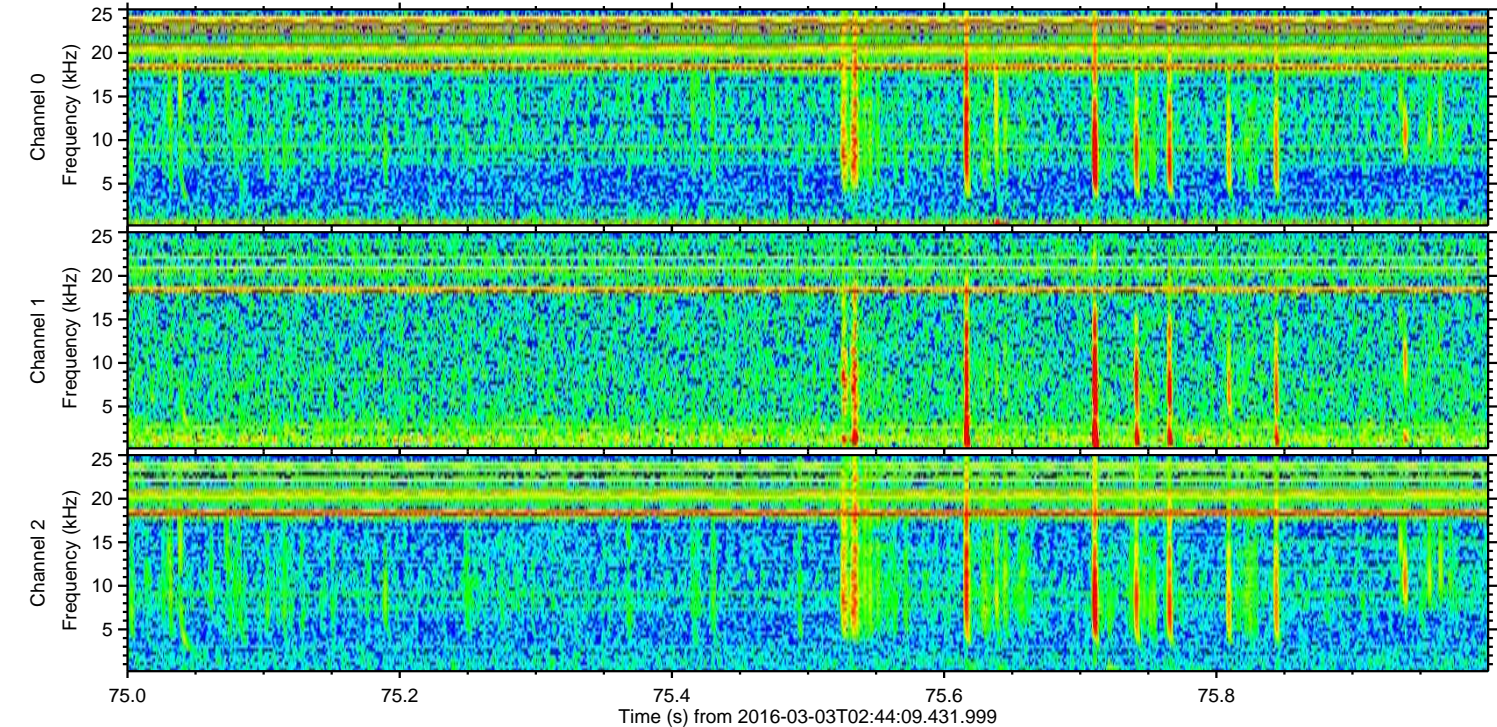
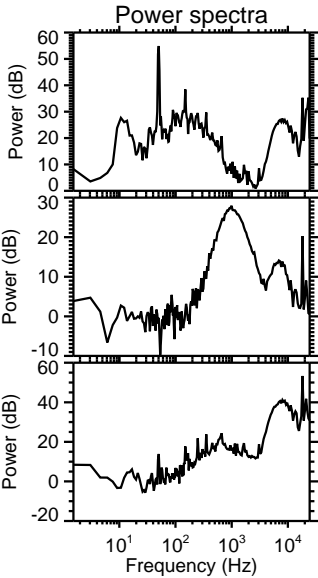
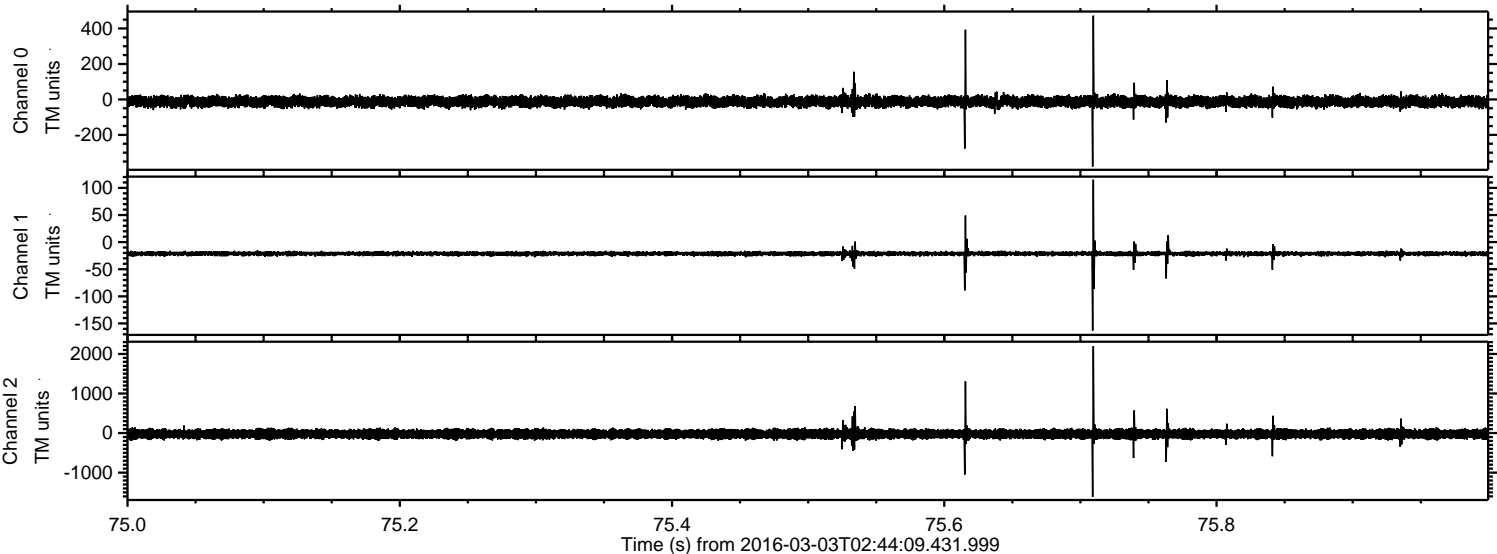


ELMAVAN 3D WAVEFORMS (Measured data sampled at 50 kHz) 51000 packets of 144 samples from 2016-03-03T02:44:09.431.999. Part 112/147

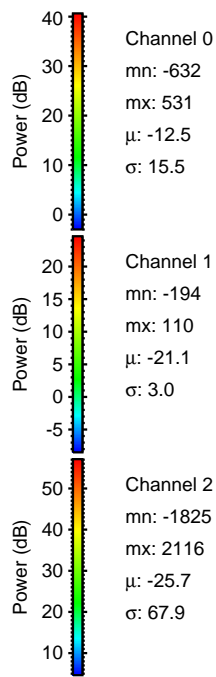
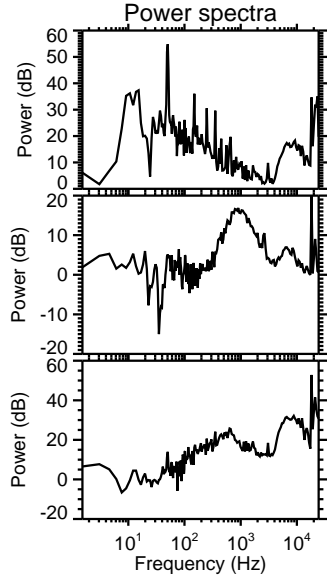
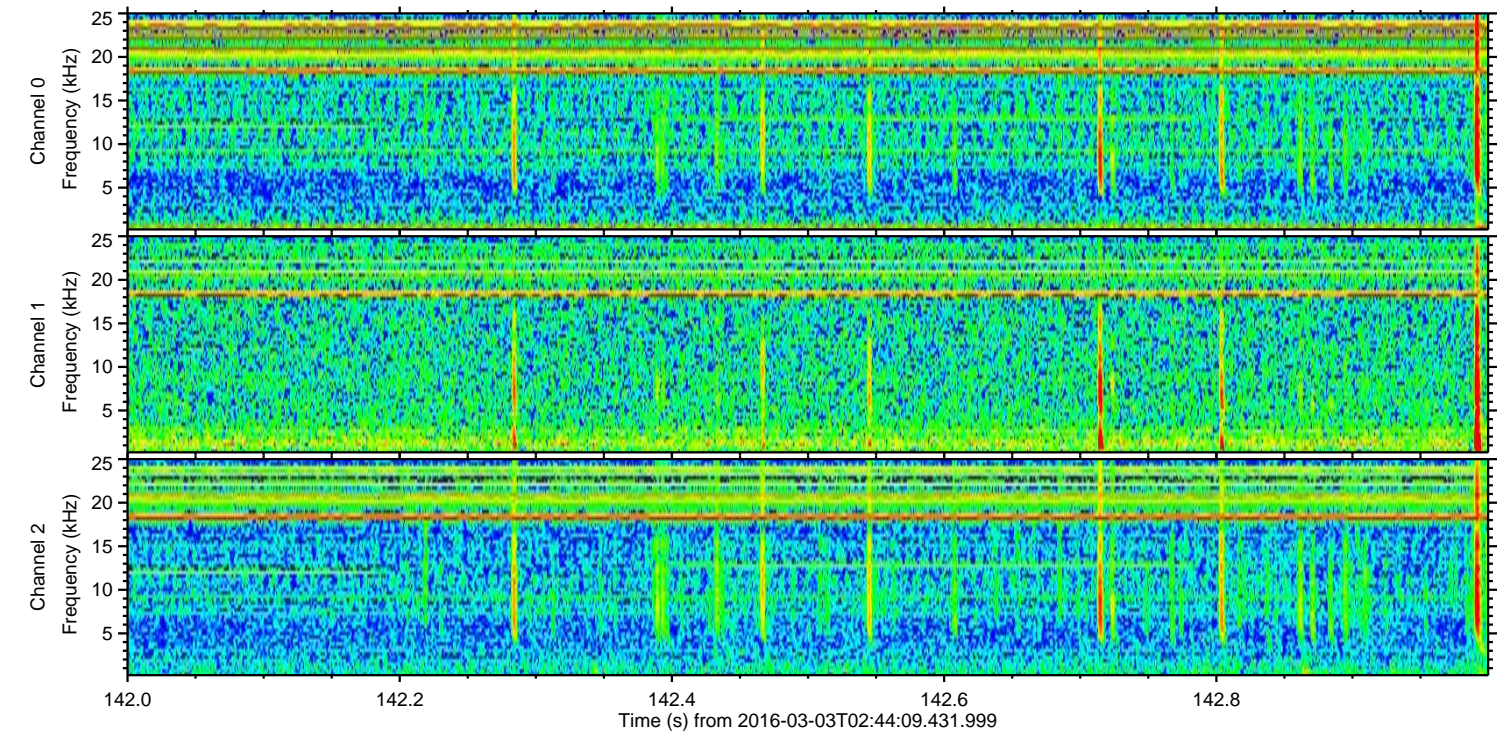
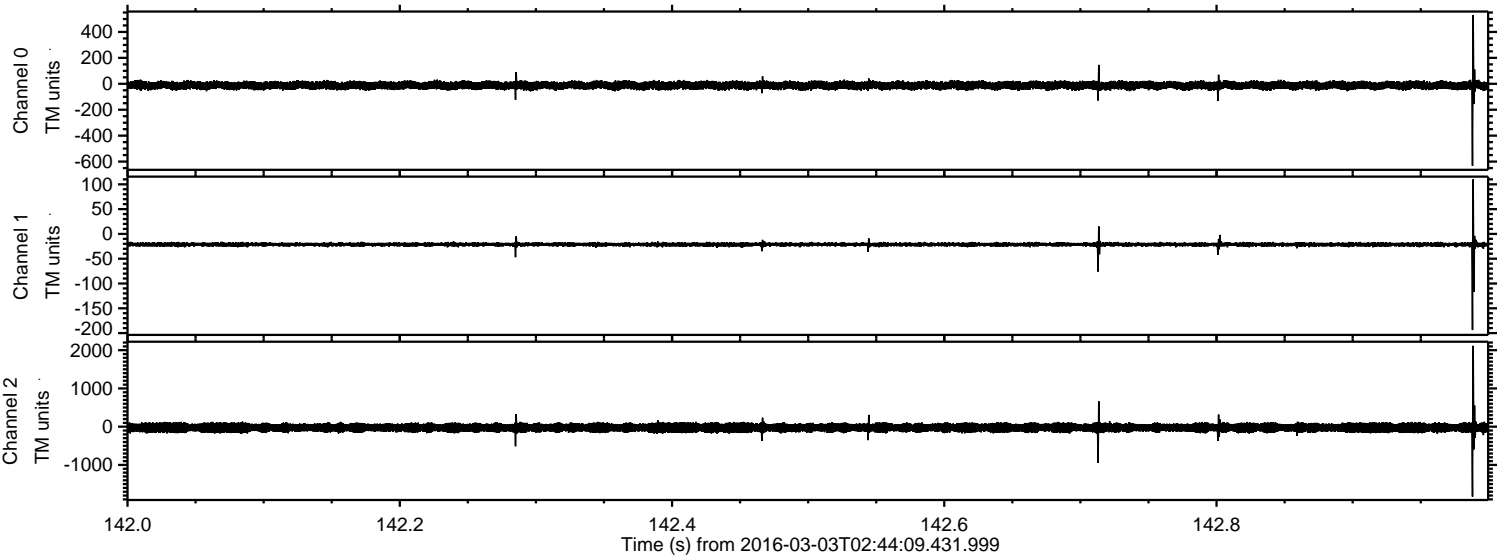
Processed Mon Apr 18 00:21:40 2016 by ELM ver.2012-10-06 from 001__elm20160303_024408__dat00.bin



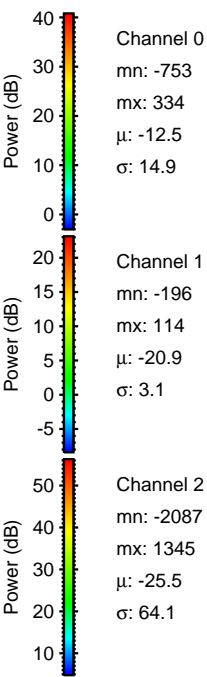
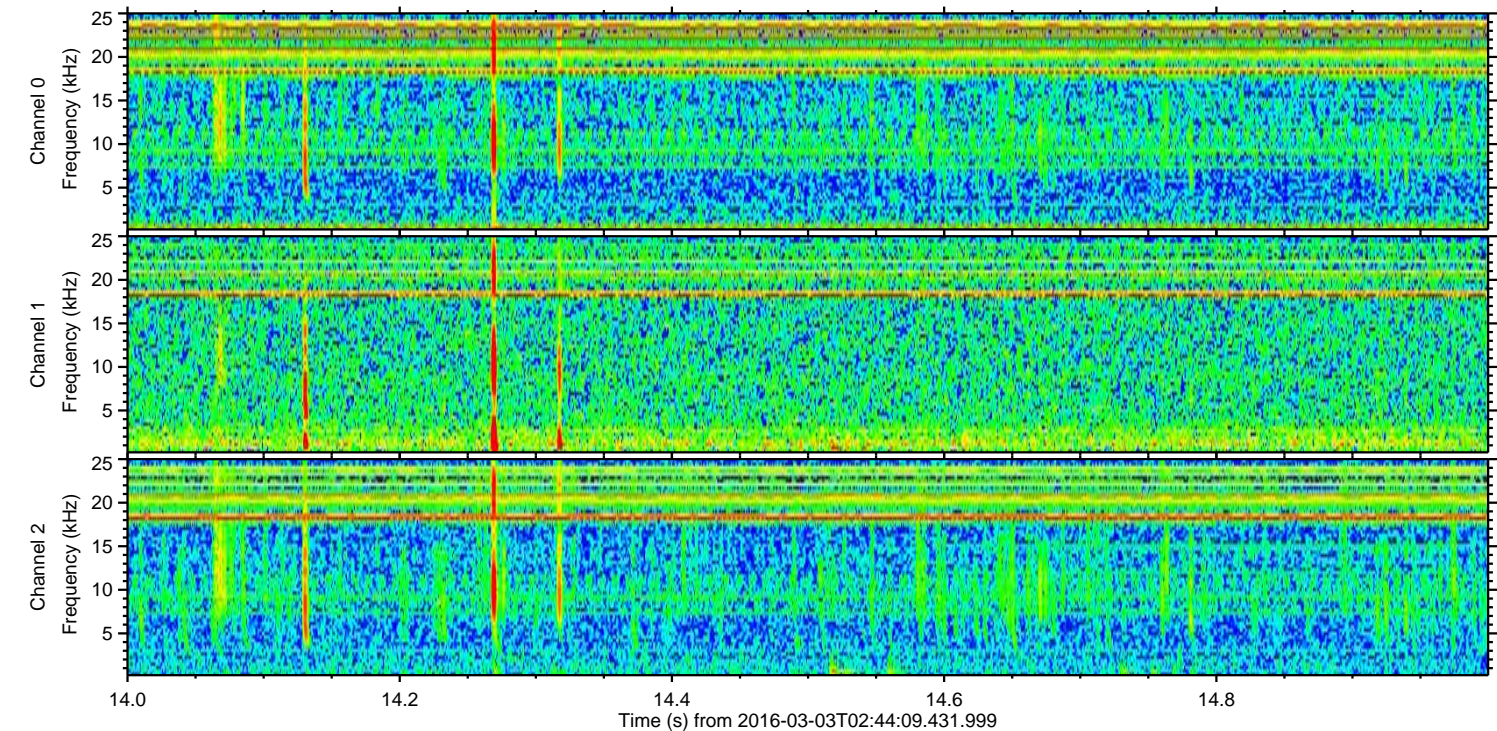
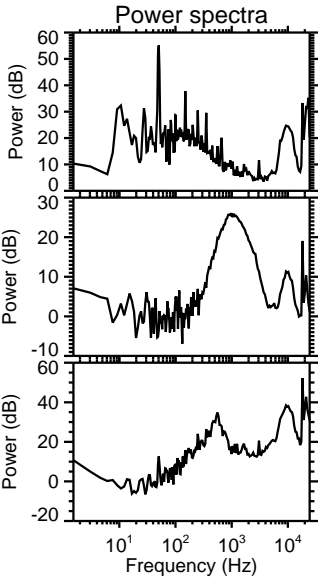
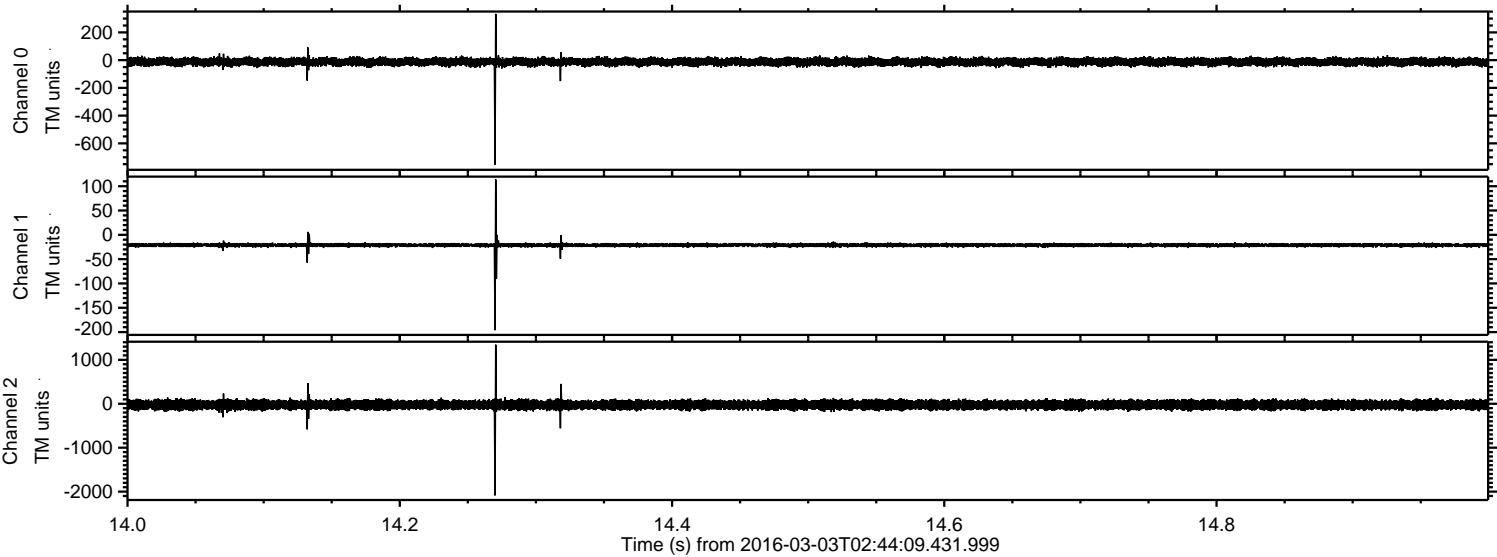
Processed Mon Apr 18 00:21:41 2016 by ELM ver.2012-10-06 from 001__elm20160303_024408__dat00.bin



Processed Mon Apr 18 00:21:42 2016 by ELM ver.2012-10-06 from 001__elm20160303_024408__dat00.bin



Processed Mon Apr 18 00:21:43 2016 by ELM ver.2012-10-06 from 001__elm20160303_024408__dat00.bin

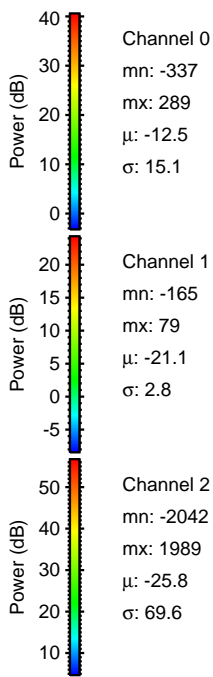
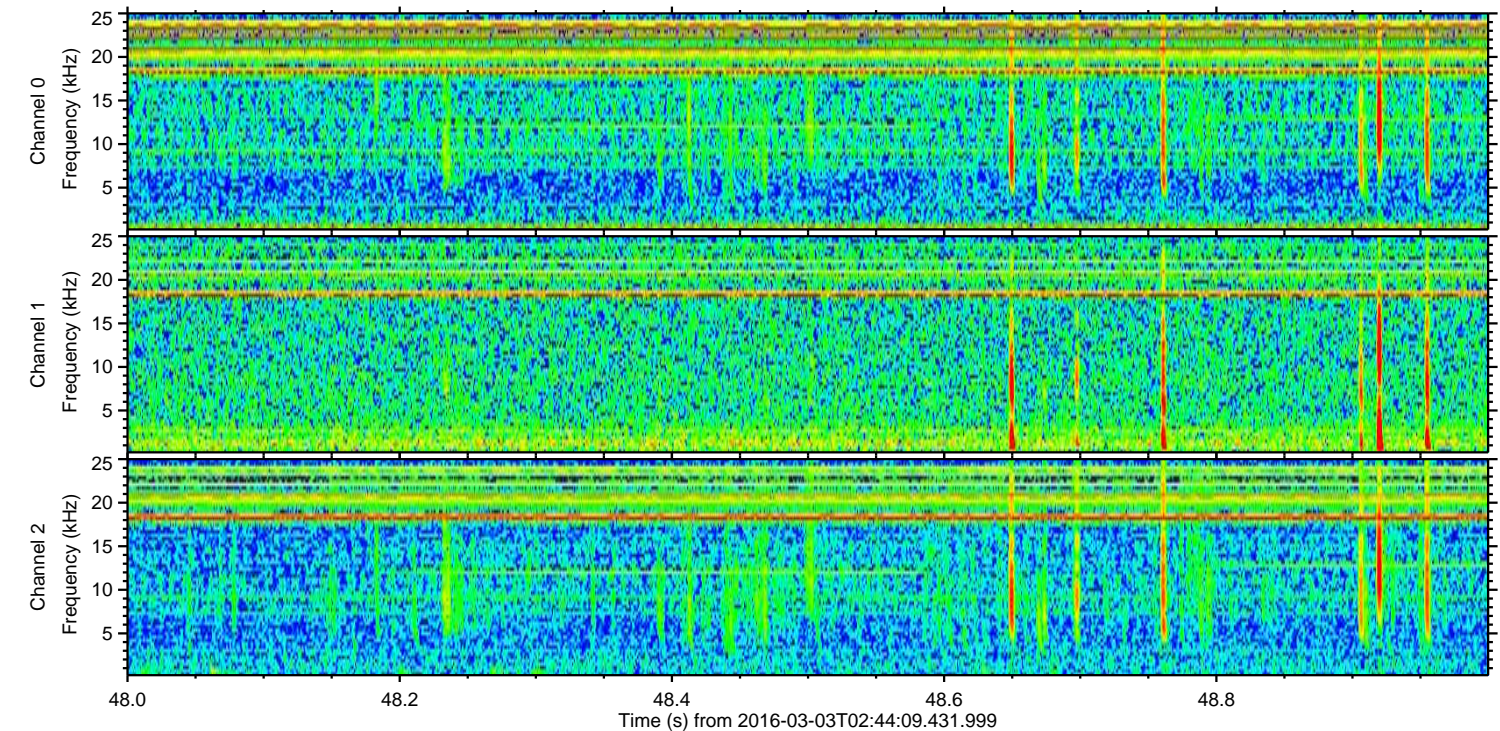
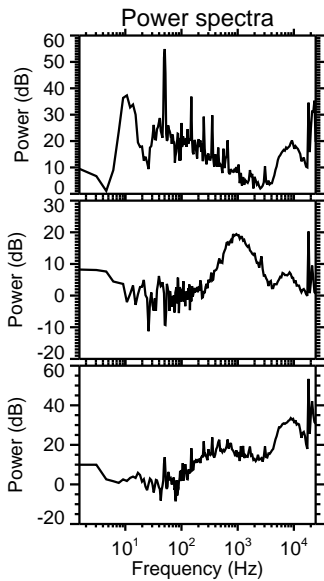
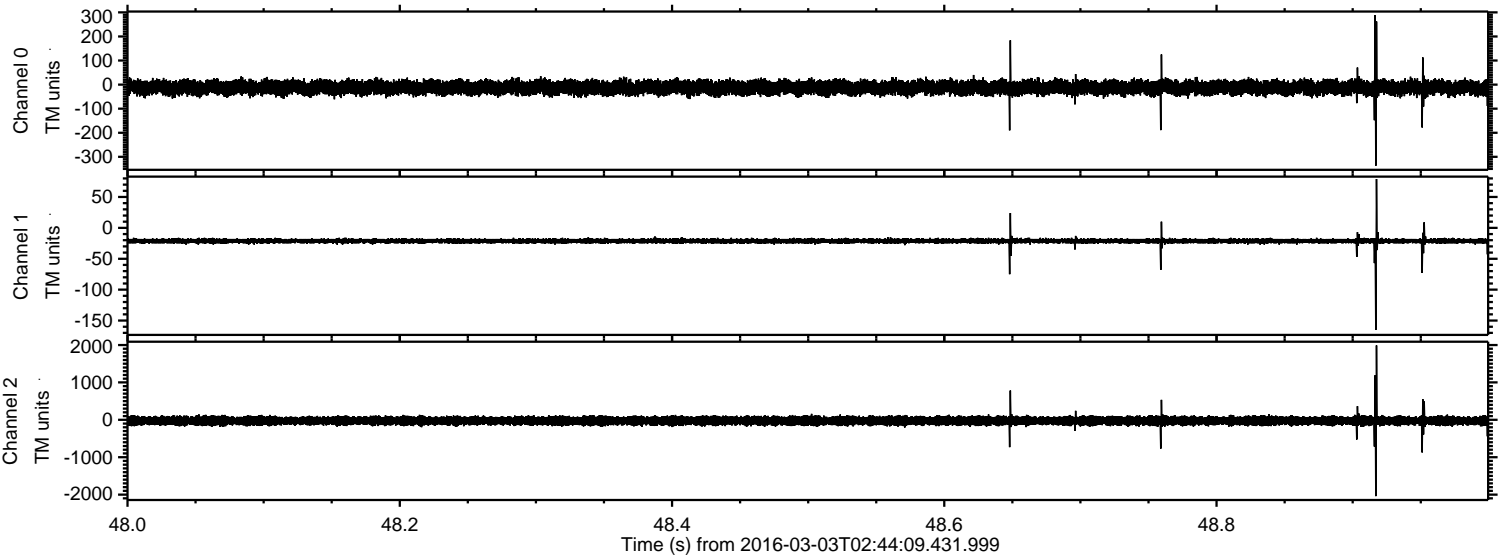


Channel 0
mn: -753
mx: 334
 μ : -12.5
 σ : 14.9

Channel 1
mn: -196
mx: 114
 μ : -20.9
 σ : 3.1

Channel 2
mn: -2087
mx: 1345
 μ : -25.5
 σ : 64.1

Processed Mon Apr 18 00:21:44 2016 by ELM ver.2012-10-06 from 001__elm20160303_024408__dat00.bin



Processed Mon Apr 18 00:21:45 2016 by ELM ver.2012-10-06 from 001__elm20160303_024408__dat00.bin

