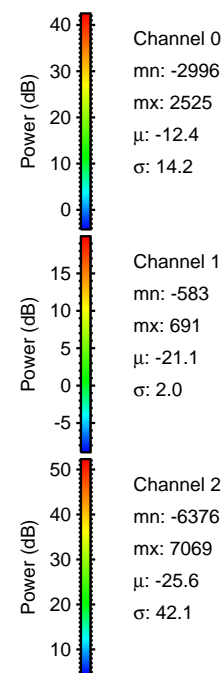
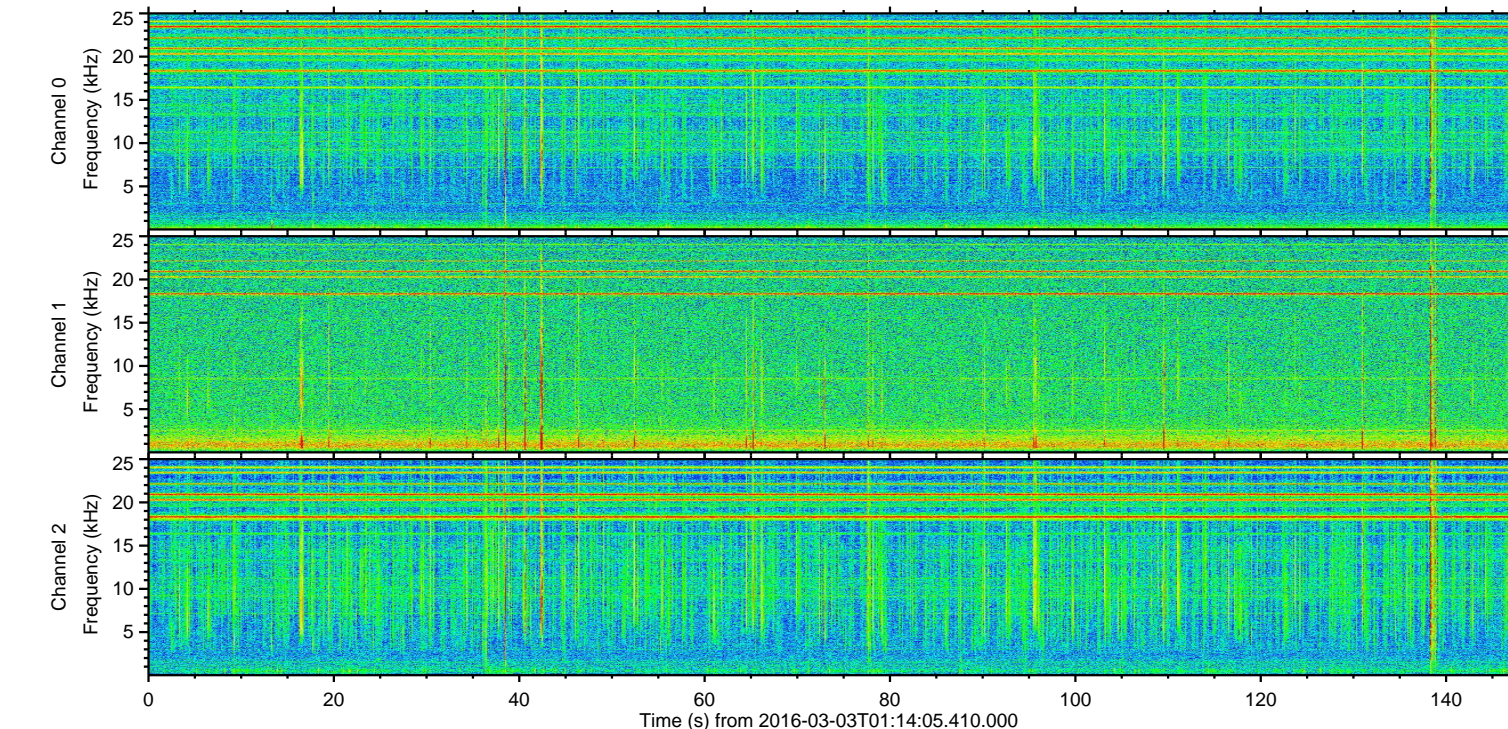
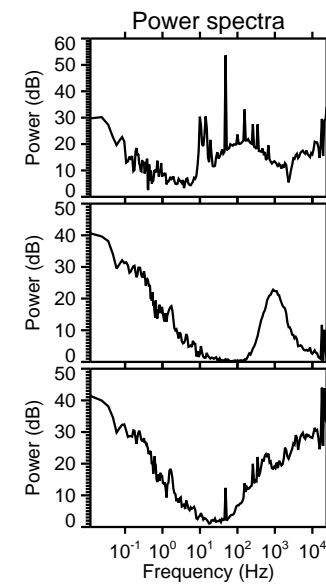
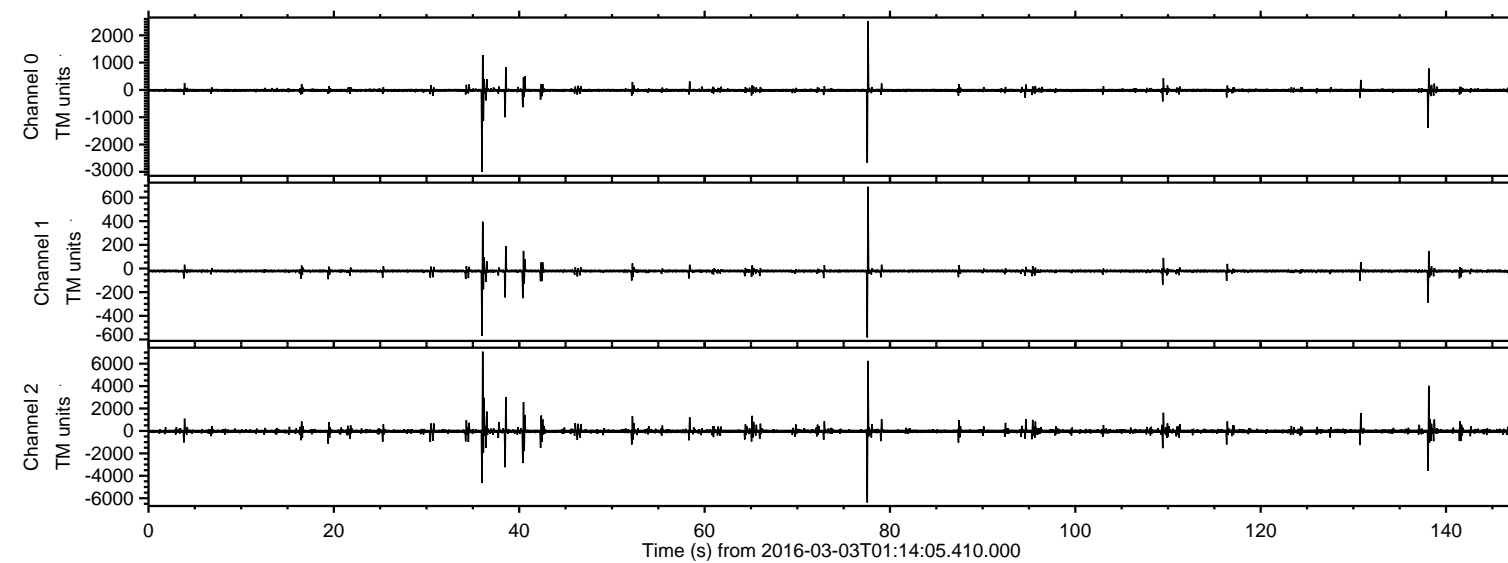


# ELMAVAN 3D WAVEFORMS (Measured data sampled at 50 kHz) 51000 packets of 144 samples from 2016-03-03T01:14:05.410.000.

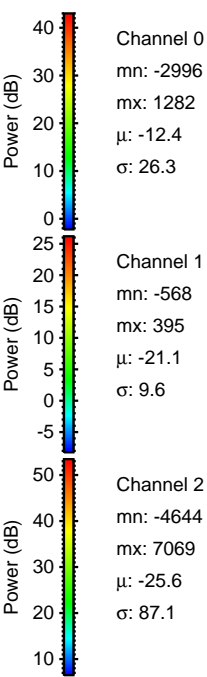
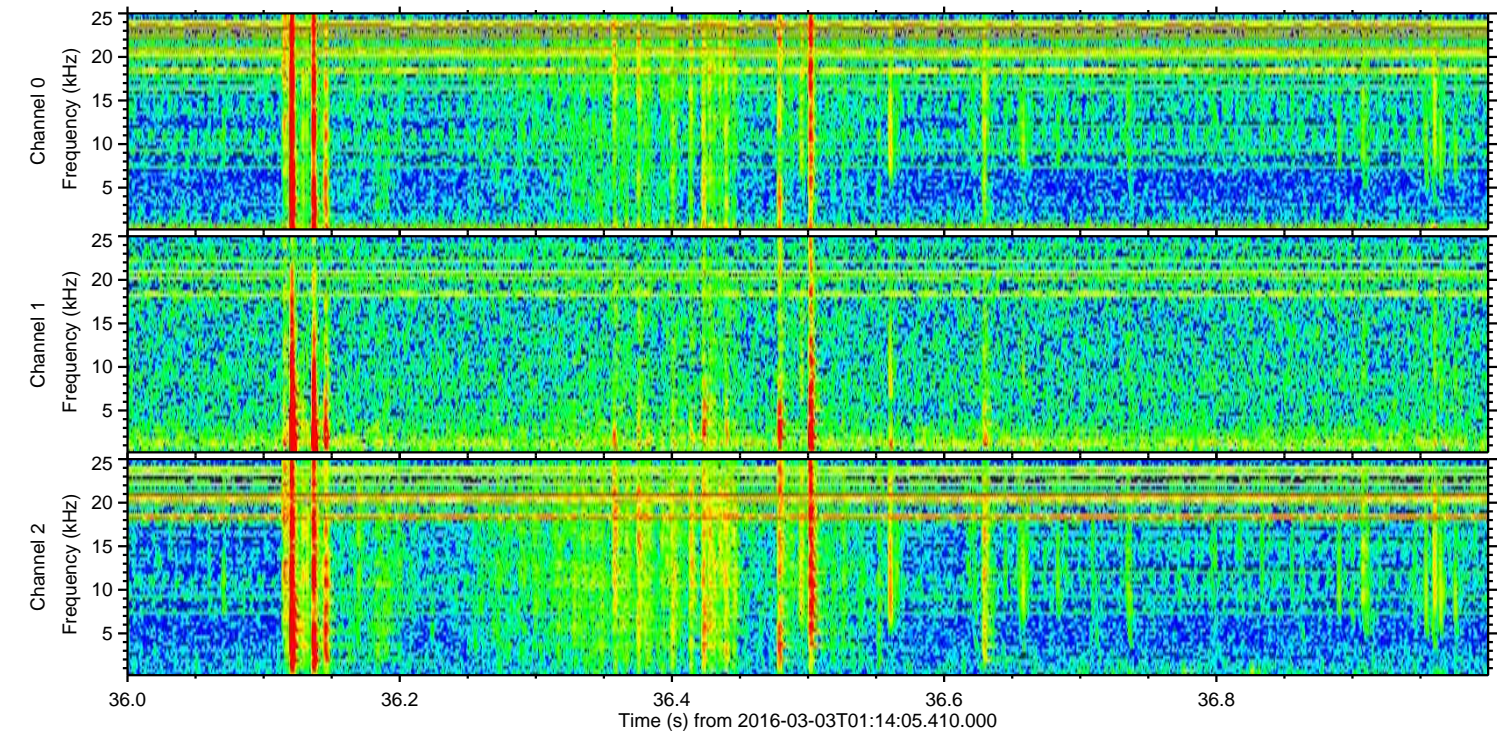
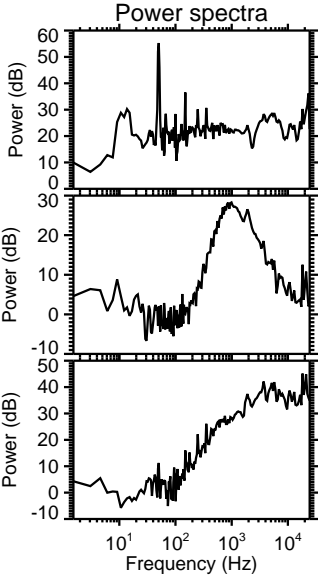
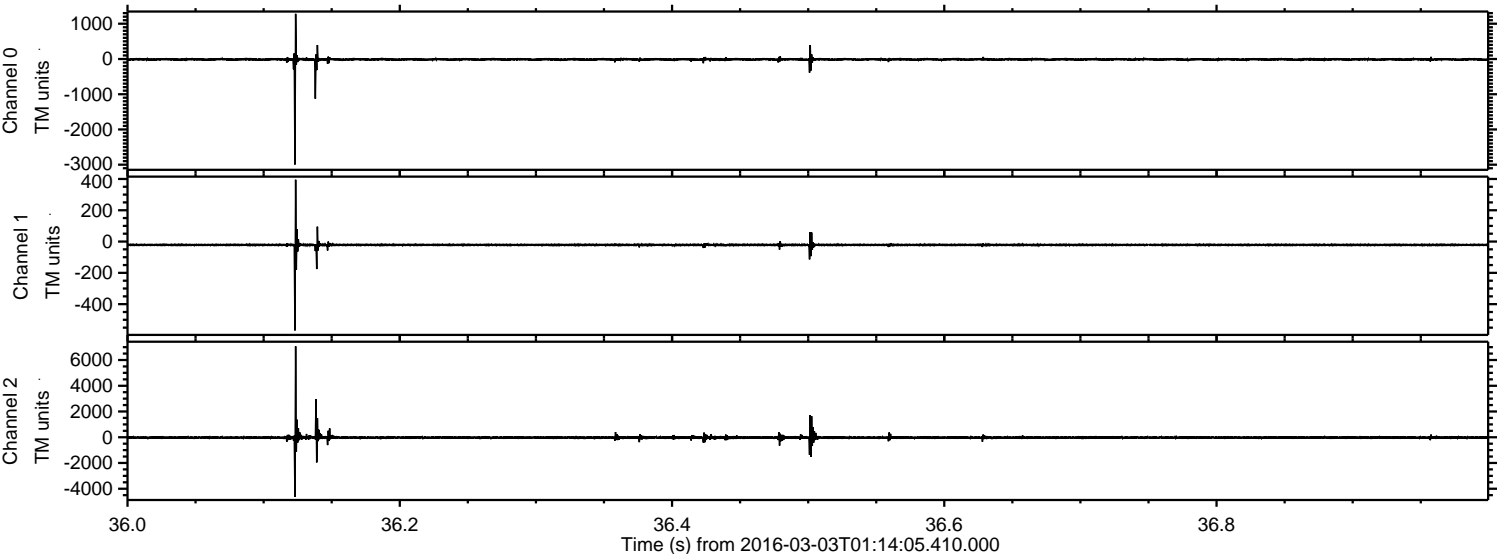
Processed Mon Apr 18 00:02:44 2016 by ELM ver.2012-10-06 from 001\_\_elm20160303\_011404\_\_dat00.bin





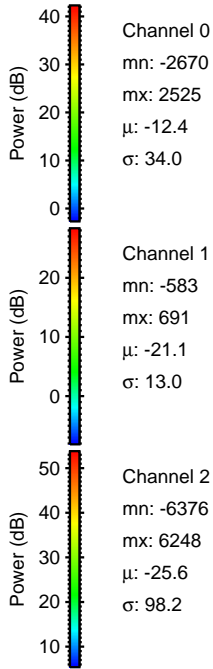
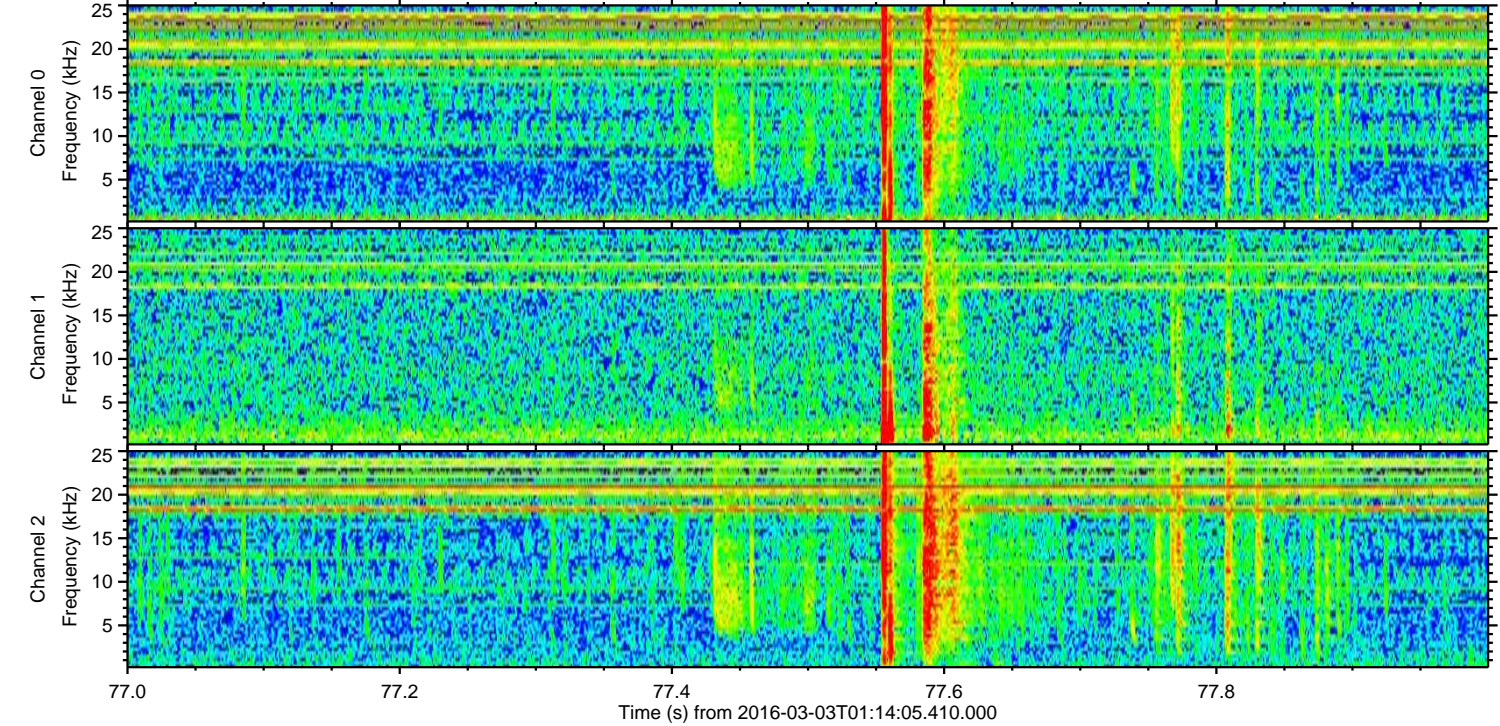
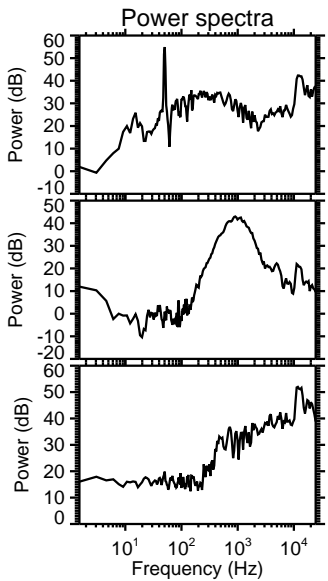
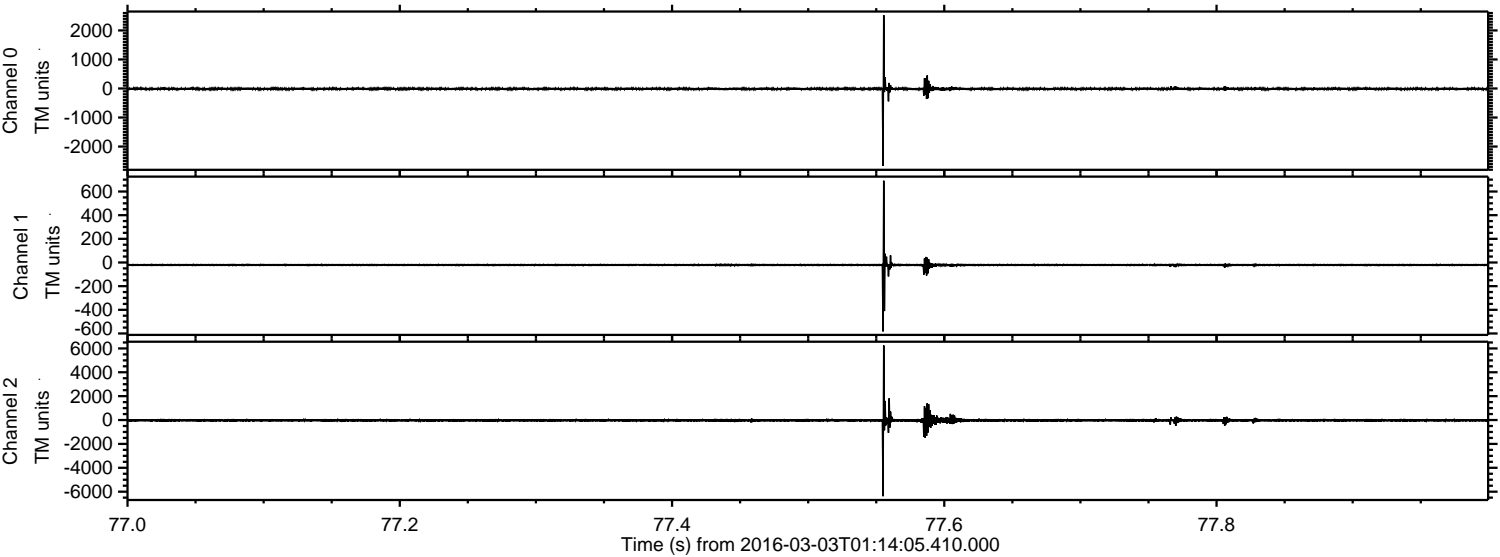
ELMAVAN 3D WAVEFORMS (Measured data sampled at 50 kHz) 51000 packets of 144 samples from 2016-03-03T01:14:05.410.000. Part 37/147

Processed Mon Apr 18 00:02:57 2016 by ELM ver.2012-10-06 from 001\_\_elm20160303\_011404\_\_dat00.bin





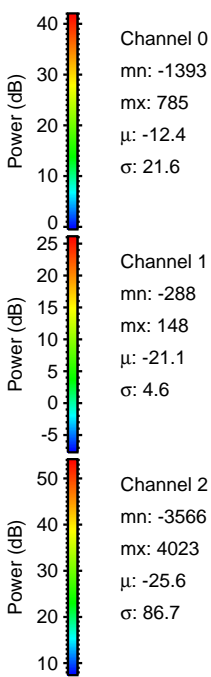
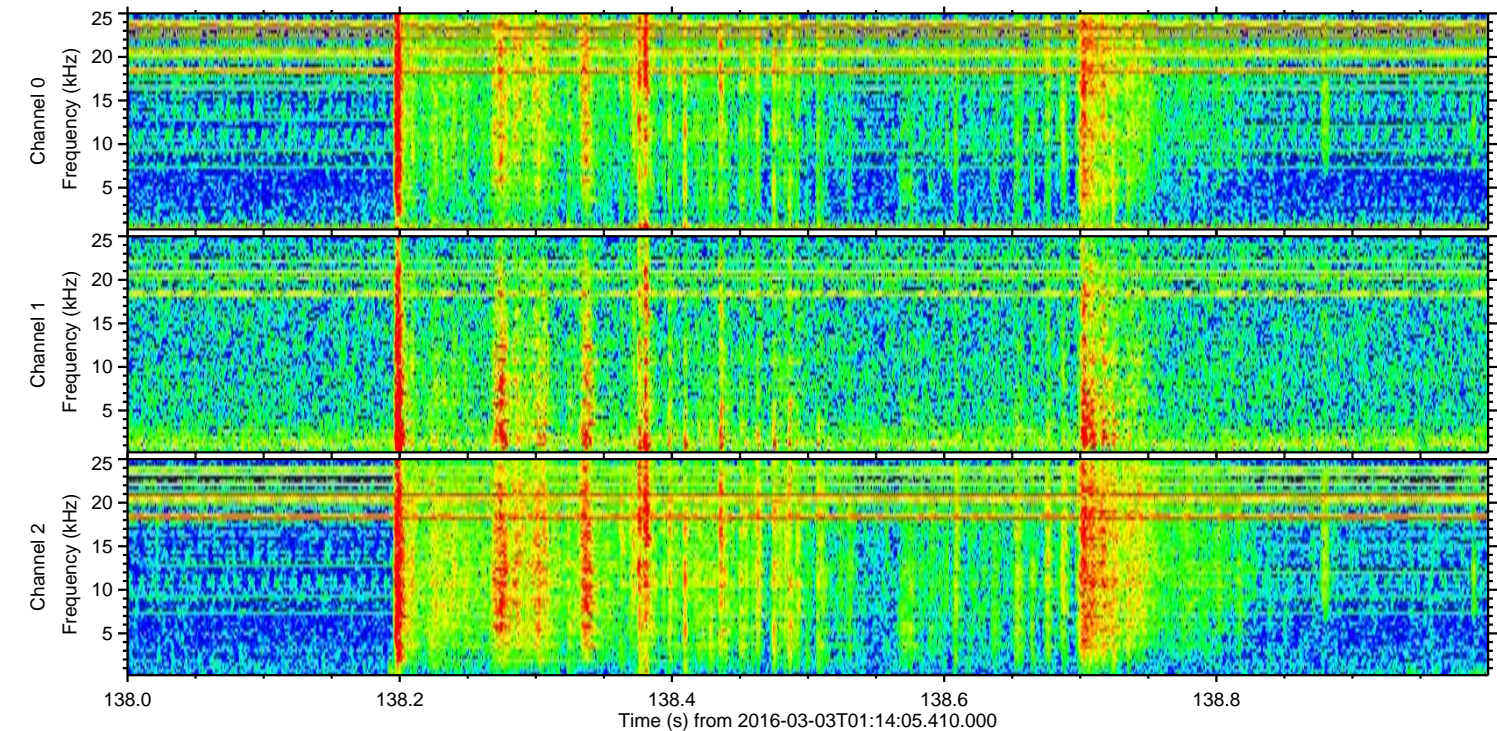
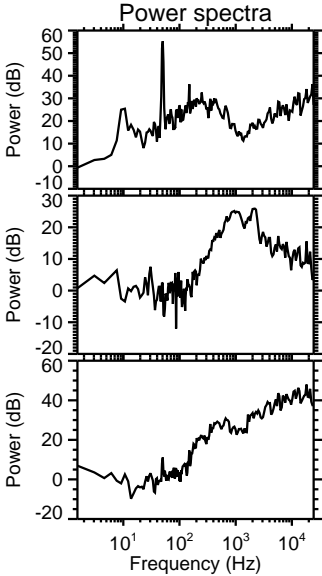
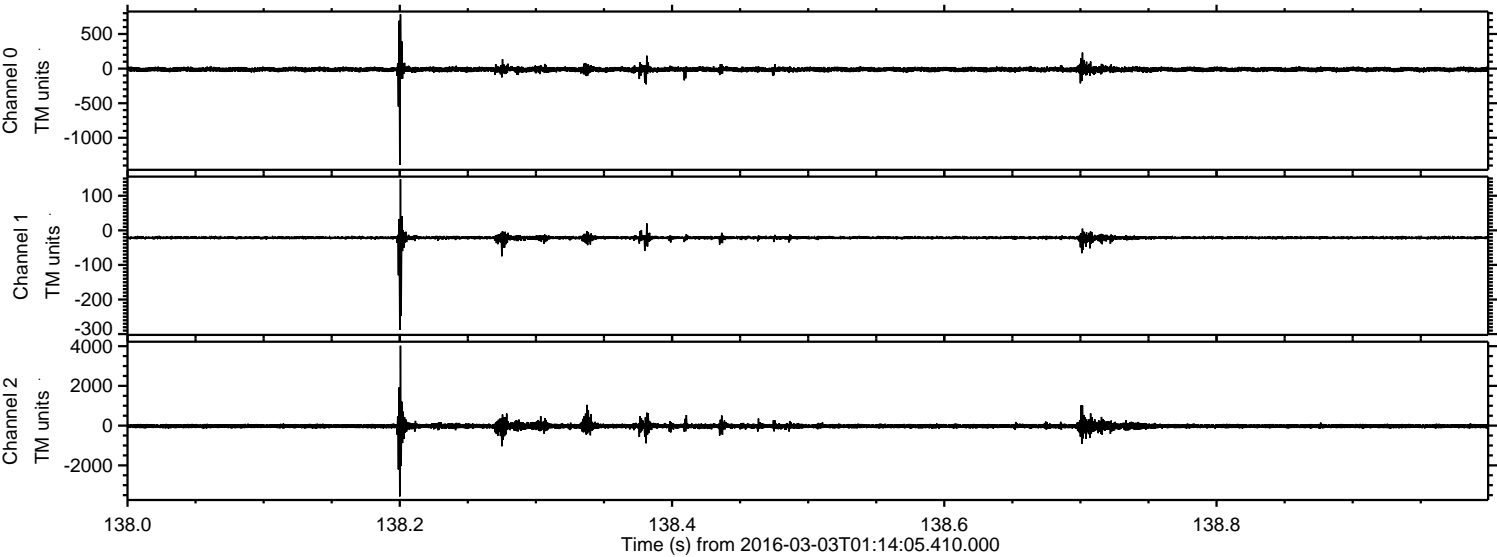
Processed Mon Apr 18 00:02:58 2016 by ELM ver.2012-10-06 from 001\_\_elm20160303\_011404\_\_dat00.bin





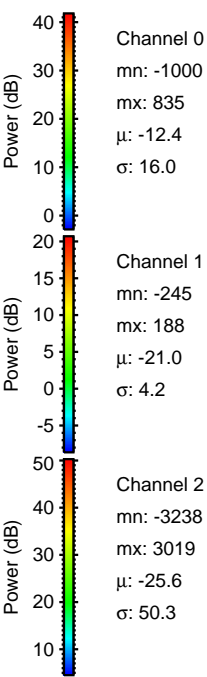
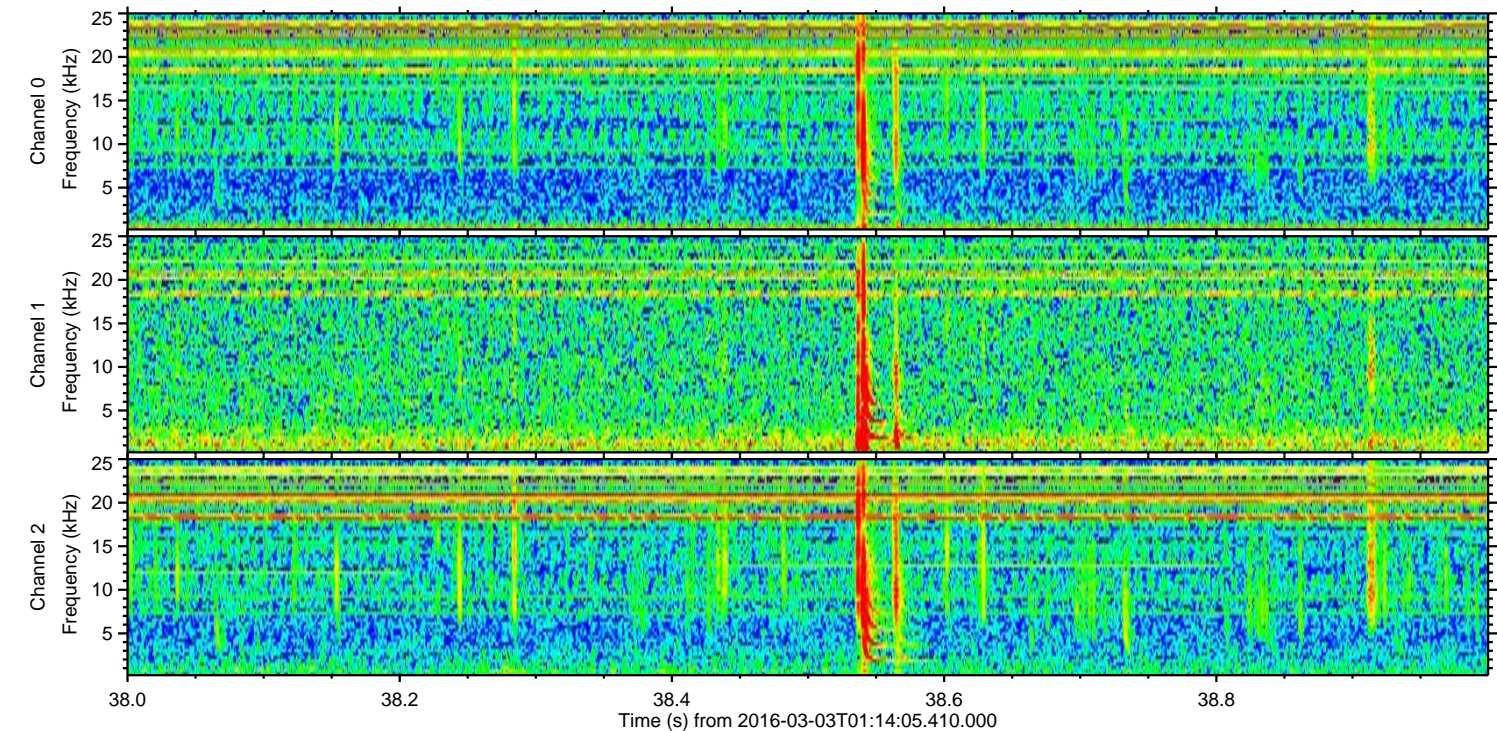
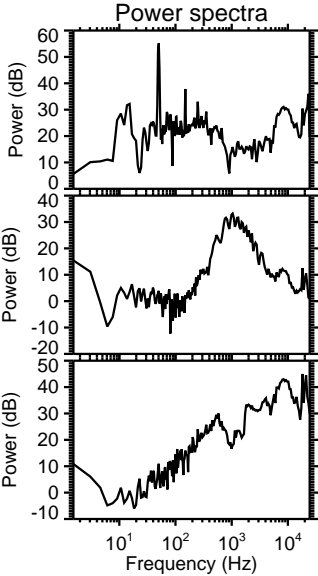
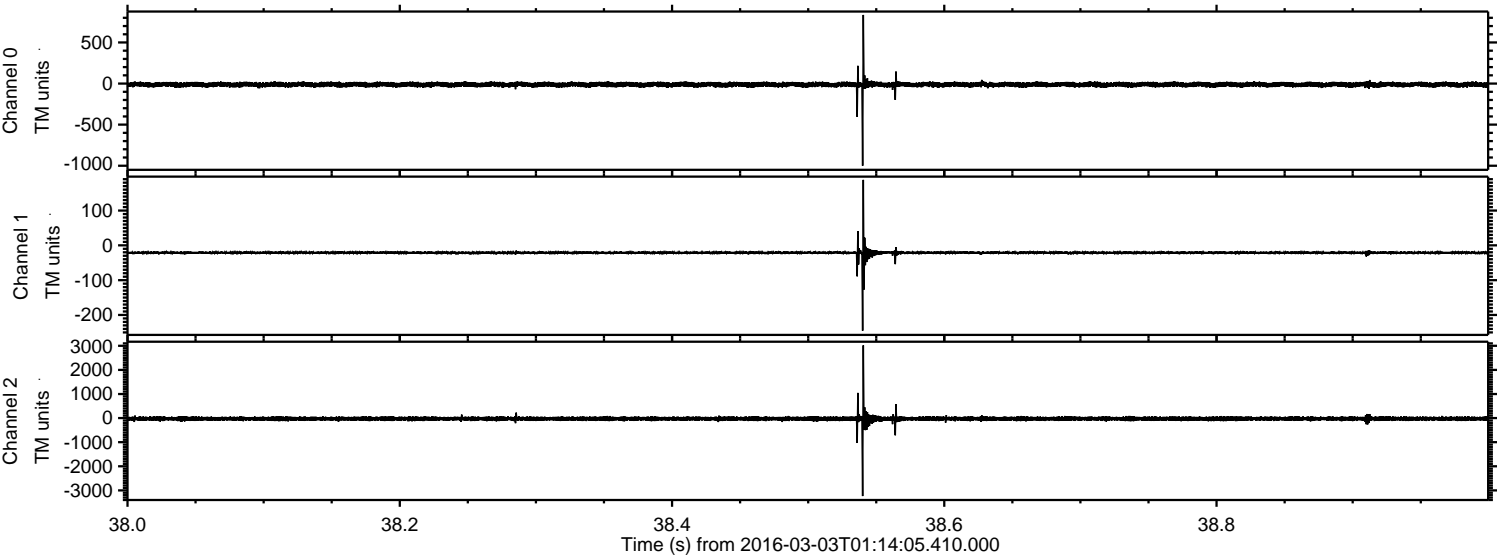
ELMAVAN 3D WAVEFORMS (Measured data sampled at 50 kHz) 51000 packets of 144 samples from 2016-03-03T01:14:05.410.000. Part 139/147

Processed Mon Apr 18 00:02:58 2016 by ELM ver.2012-10-06 from 001\_\_elm20160303\_011404\_\_dat00.bin



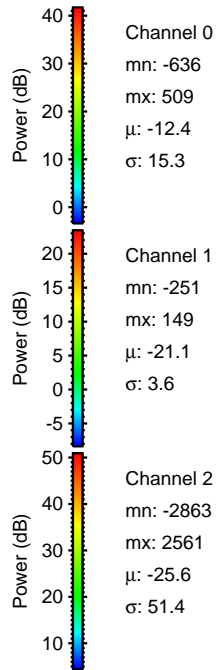
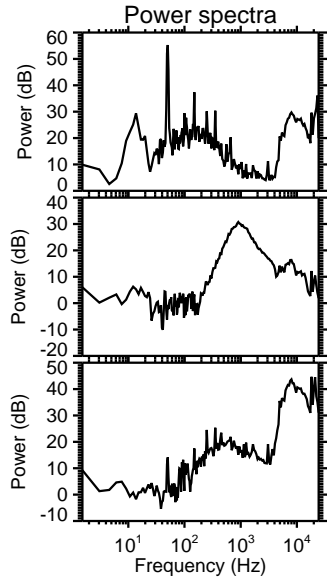
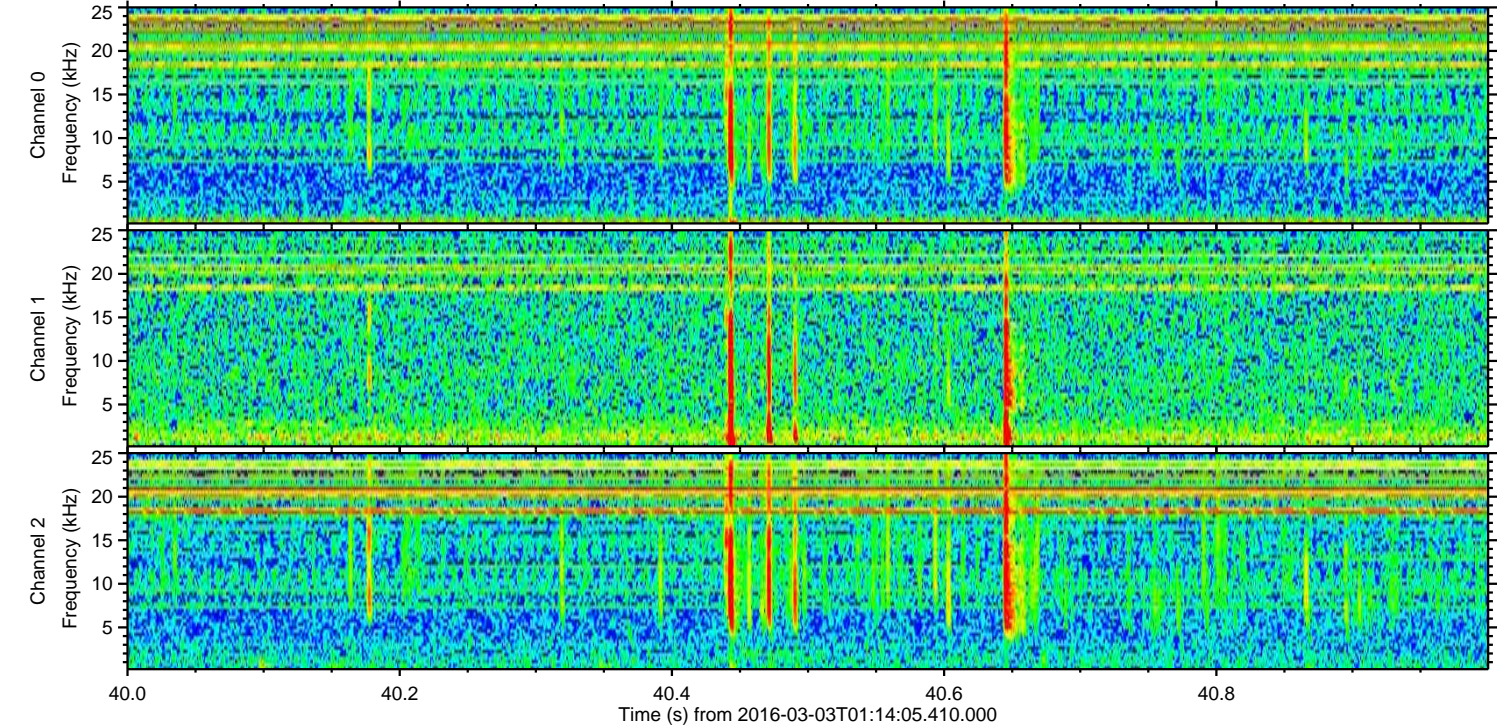
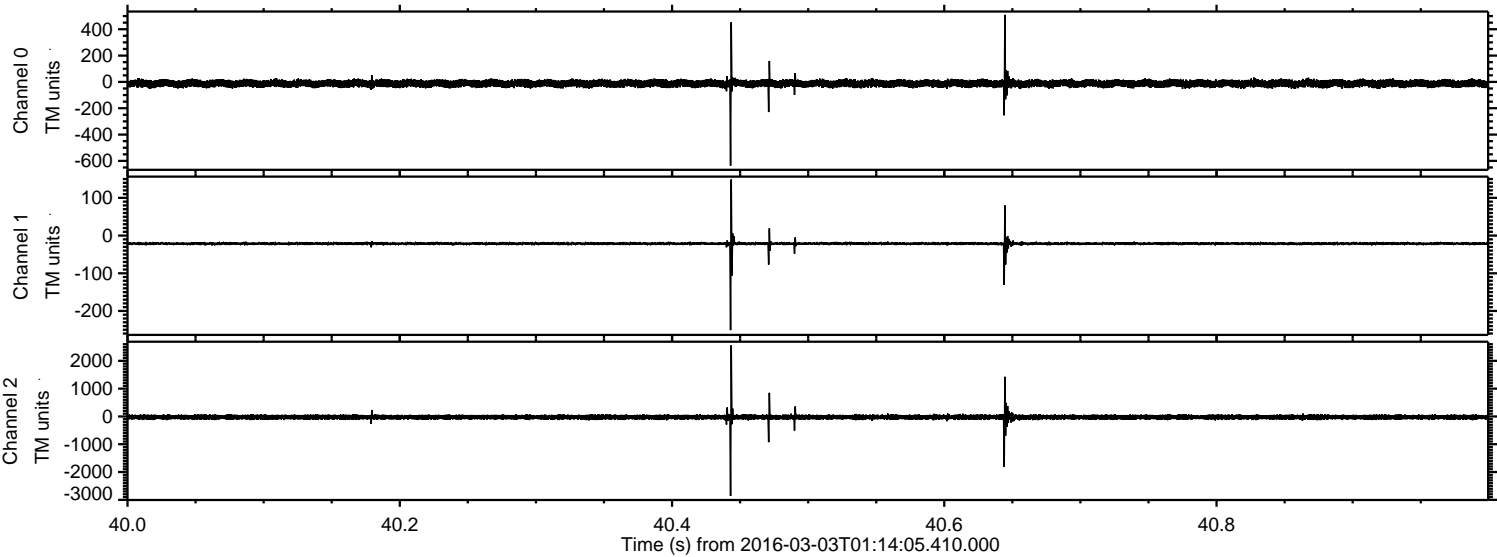


Processed Mon Apr 18 00:02:59 2016 by ELM ver.2012-10-06 from 001\_\_elm20160303\_011404\_\_dat00.bin





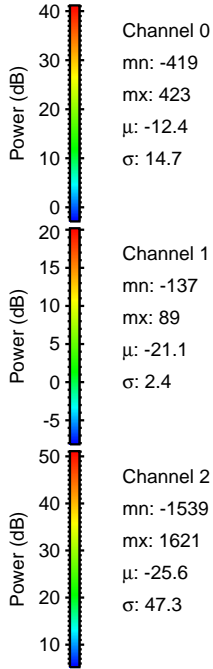
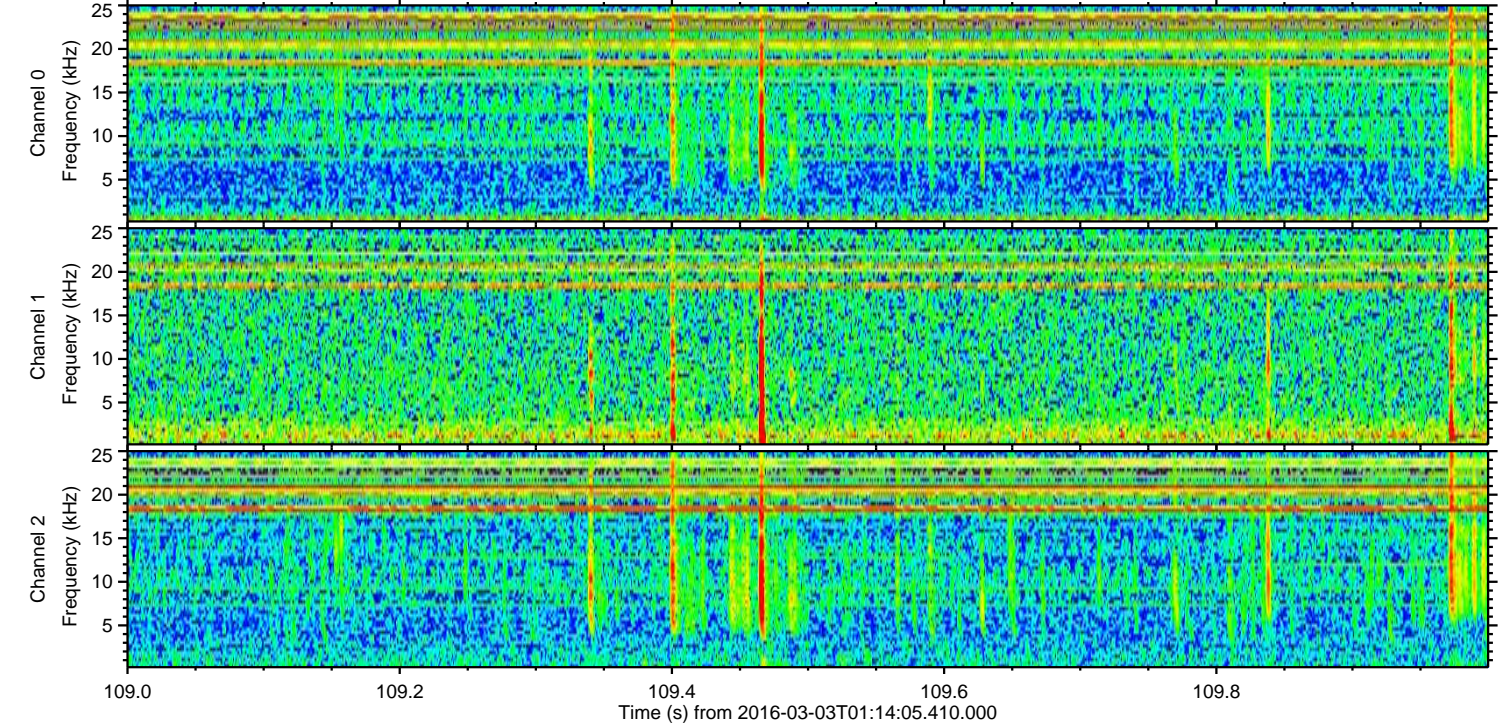
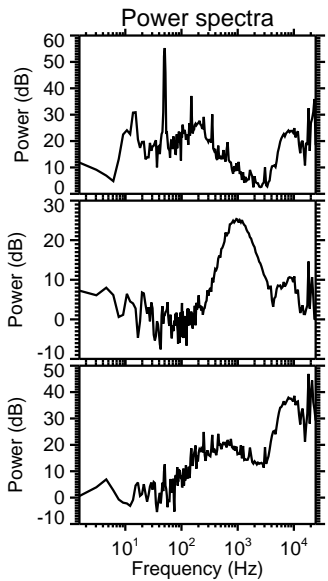
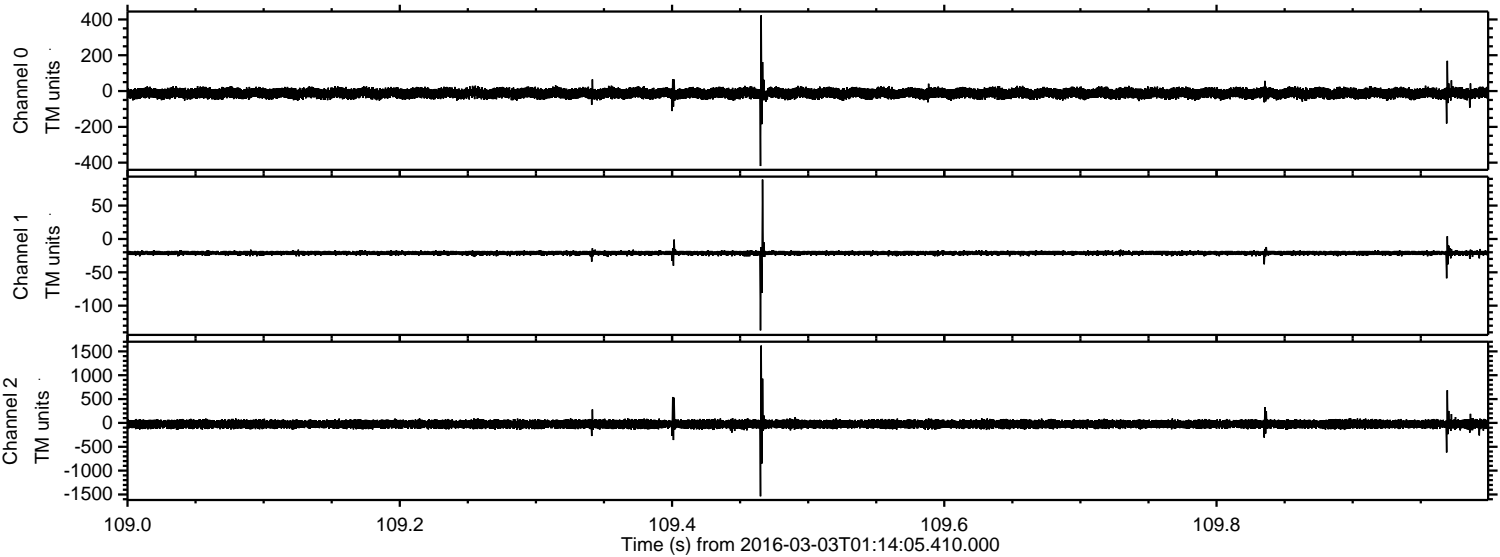
Processed Mon Apr 18 00:03:00 2016 by ELM ver.2012-10-06 from 001\_\_elm20160303\_011404\_\_dat00.bin





ELMAVAN 3D WAVEFORMS (Measured data sampled at 50 kHz) 51000 packets of 144 samples from 2016-03-03T01:14:05.410.000. Part 110/147

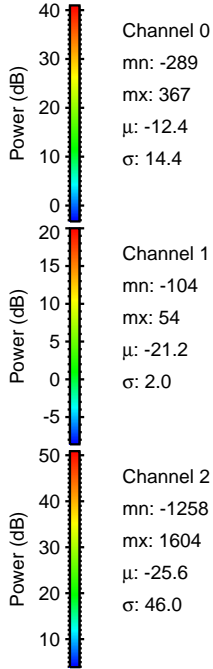
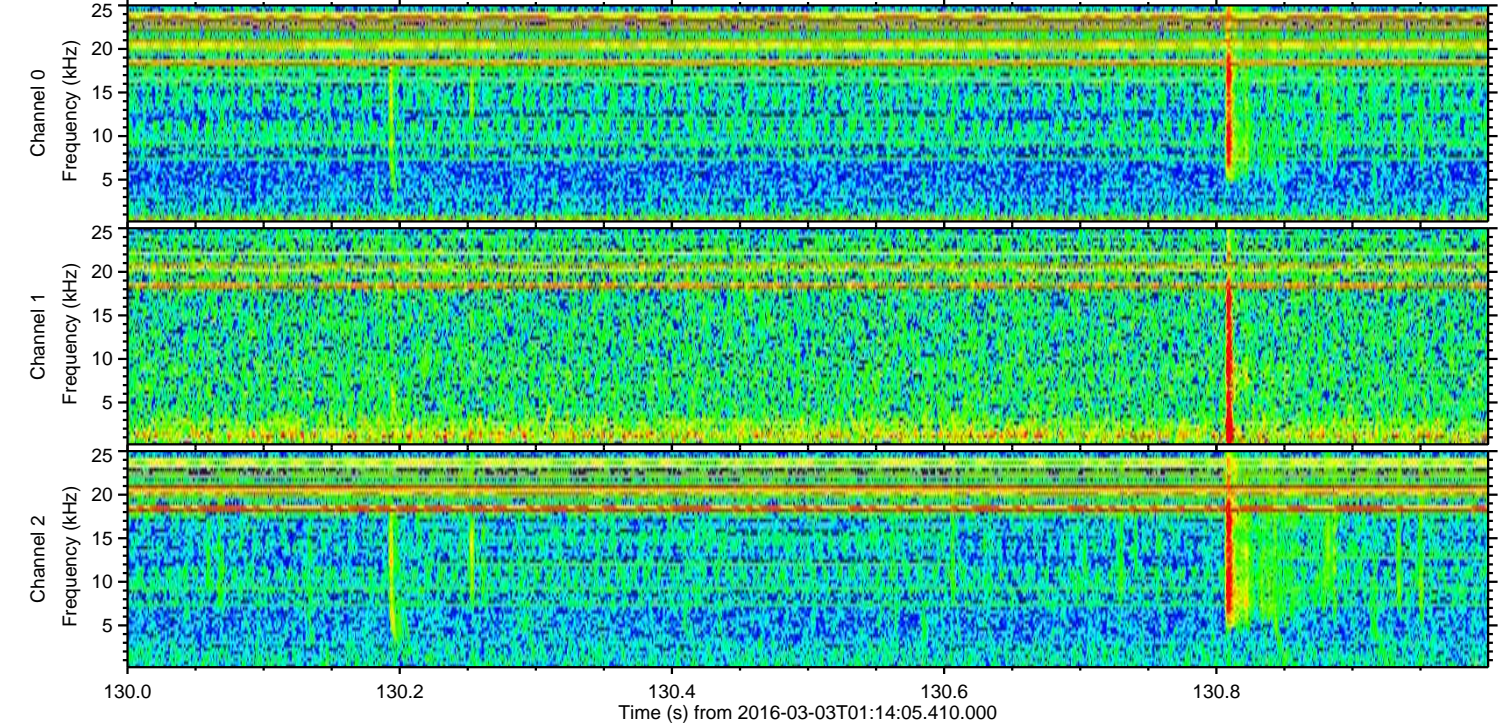
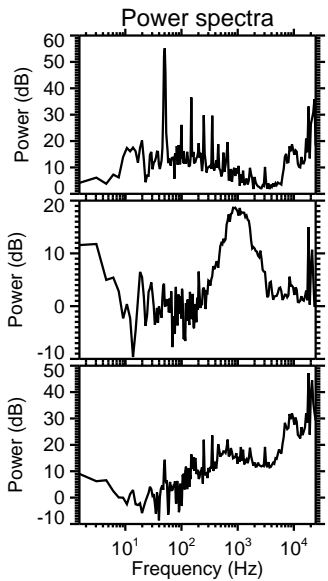
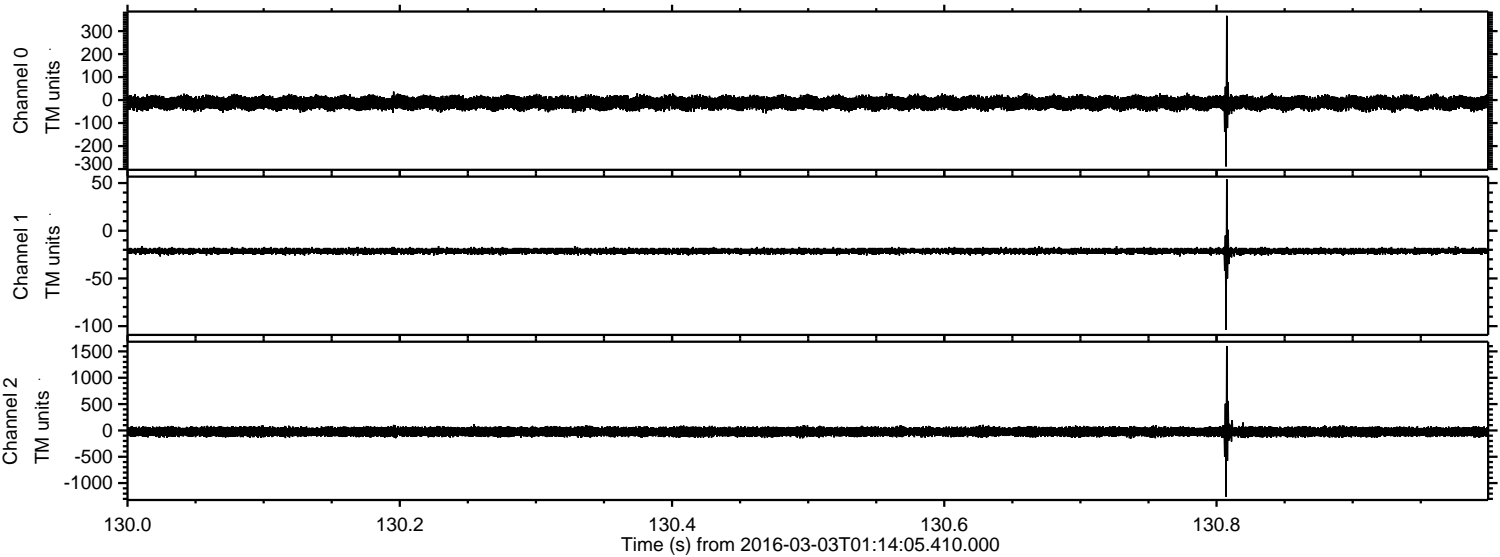
Processed Mon Apr 18 00:03:01 2016 by ELM ver.2012-10-06 from 001\_\_elm20160303\_011404\_\_dat00.bin





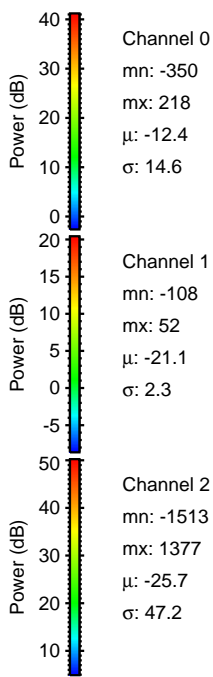
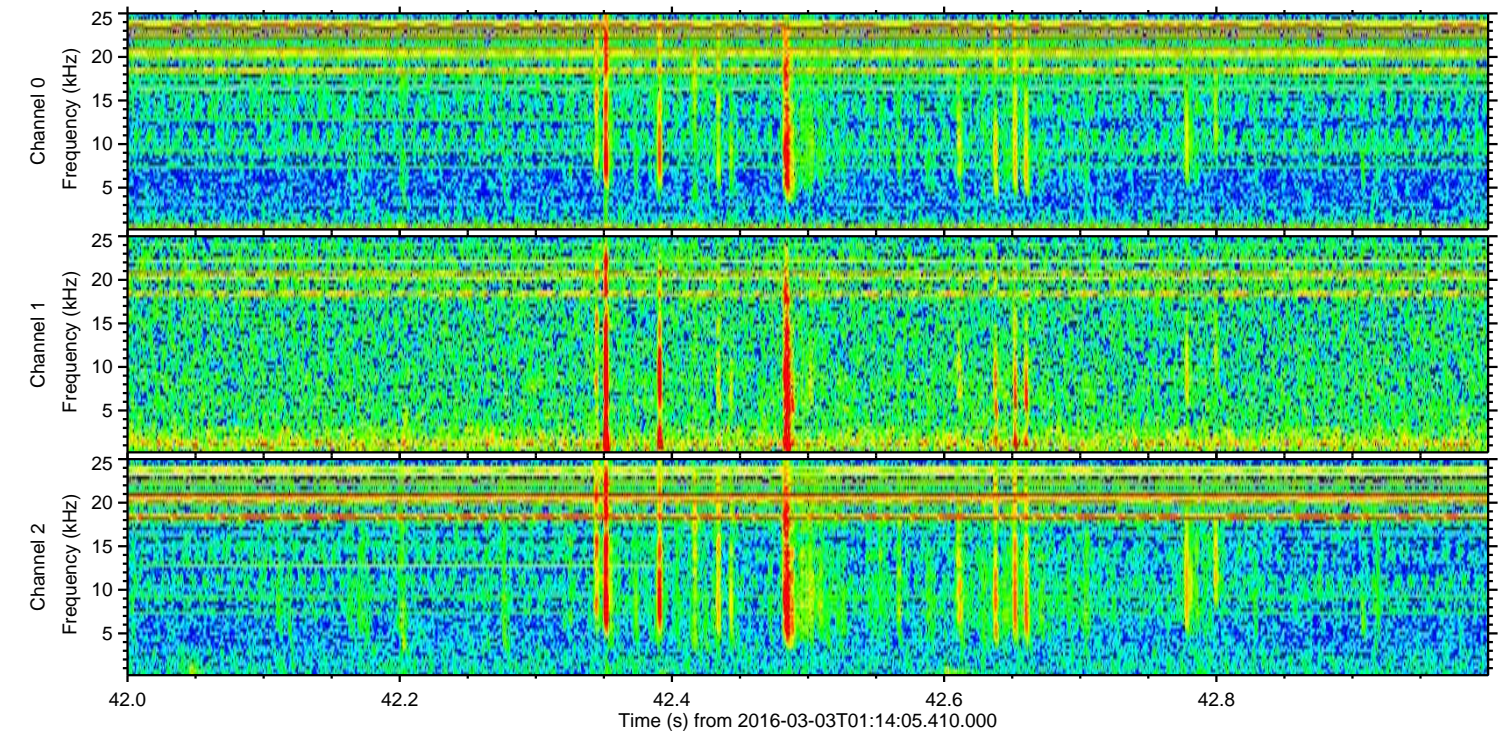
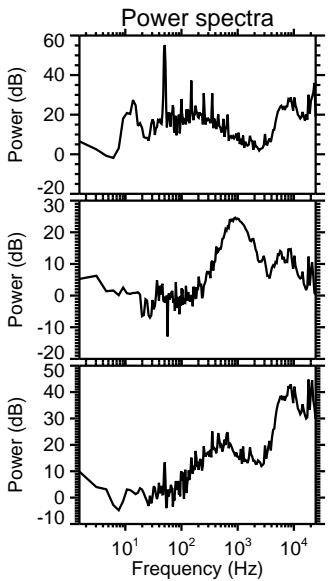
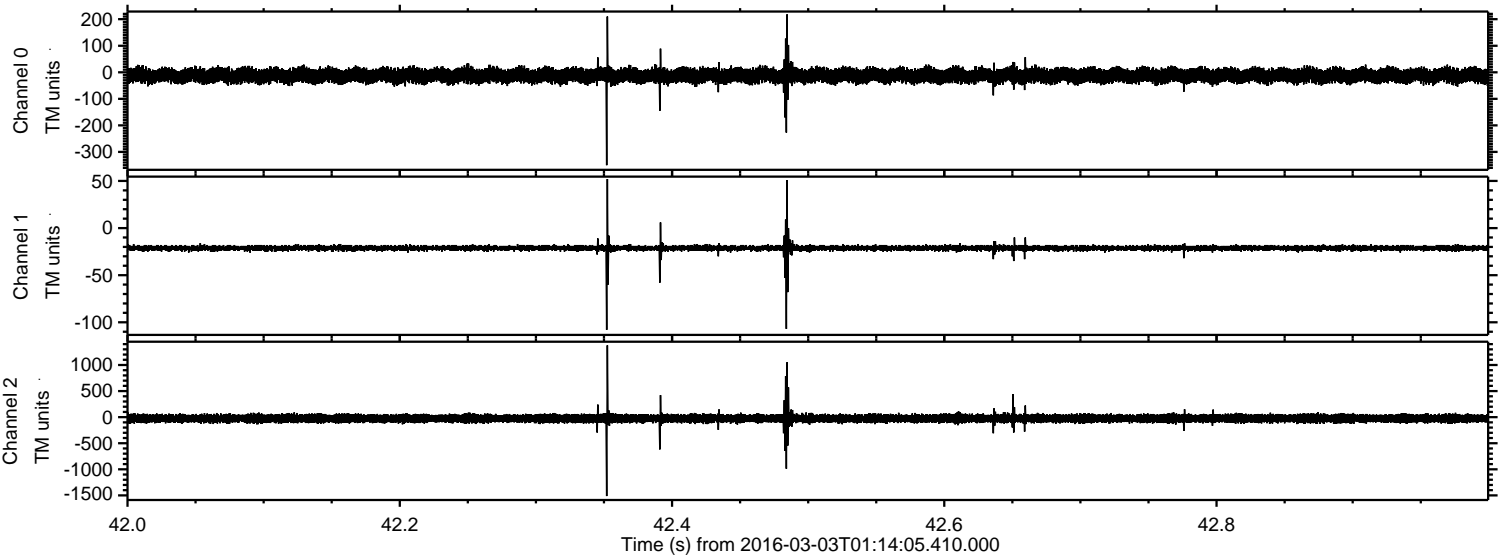
ELMAVAN 3D WAVEFORMS (Measured data sampled at 50 kHz) 51000 packets of 144 samples from 2016-03-03T01:14:05.410.000. Part 131/147

Processed Mon Apr 18 00:03:02 2016 by ELM ver.2012-10-06 from 001\_\_elm20160303\_011404\_\_dat00.bin



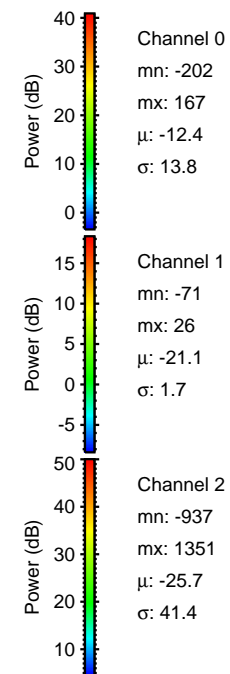
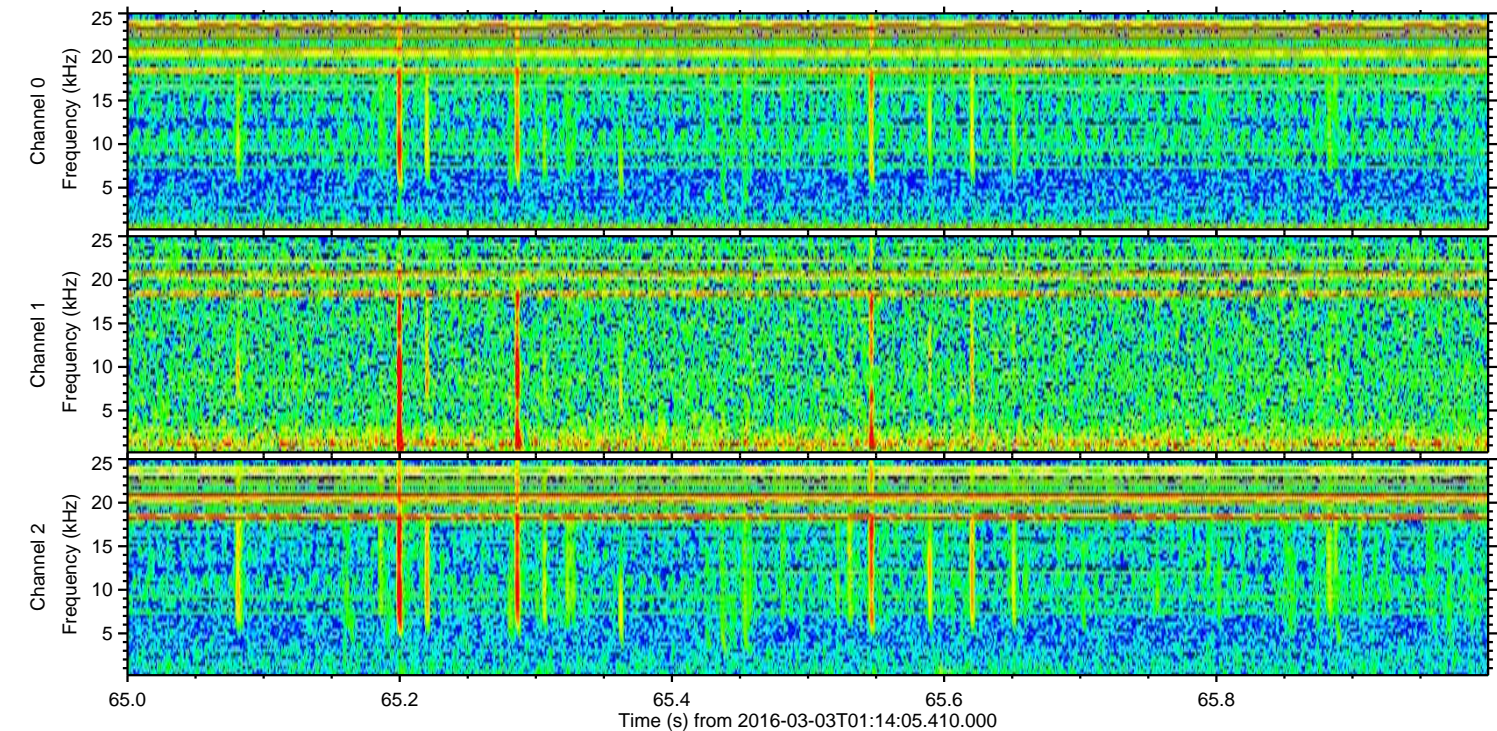
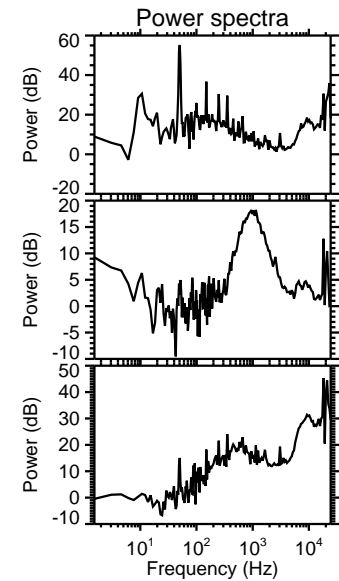
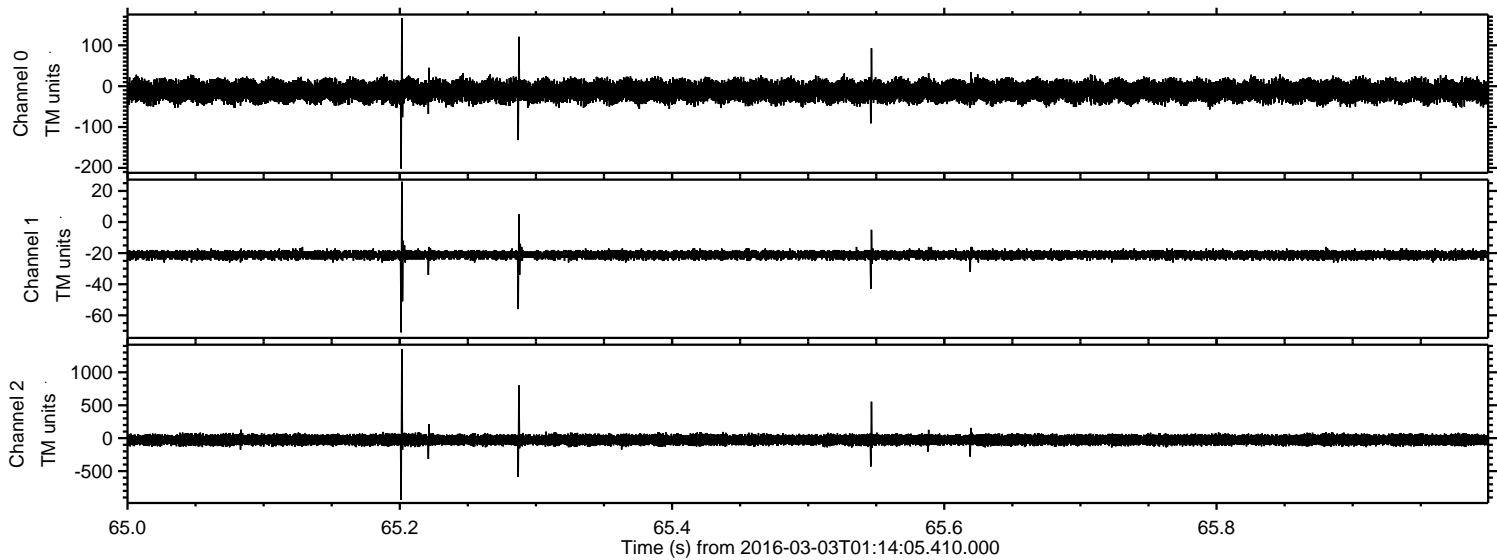


Processed Mon Apr 18 00:03:03 2016 by ELM ver.2012-10-06 from 001\_\_elm20160303\_011404\_\_dat00.bin





Processed Mon Apr 18 00:03:04 2016 by ELM ver.2012-10-06 from 001\_\_elm20160303\_011404\_\_dat00.bin





Processed Mon Apr 18 00:03:05 2016 by ELM ver.2012-10-06 from 001\_\_elm20160303\_011404\_\_dat00.bin

